

Consolidated Rail Yard Site Selection Process

Planning and Programming Committee
Thursday, November 19, 2008



Metro

Why Study is Needed

- As new lines are activated and projected peak headway service levels are reached, the result will be a deficit in the storage/maintenance facilities for light rail vehicles.
- The development time frame for a new yard facility is 7-10 years to:
 - Acquire and assemble a site;
 - Complete environmental clearances; and
 - Construct a new yard facility.

Goal and Objectives

- Expand rail yard capacity to meet the near-term and long-range maintenance and storage capacity needs of our Light Rail Fleet
- Reduce light rail operating costs and relieve overcrowding at existing maintenance facilities
- Develop new light rail yard facilities that maximize land use compatibility and minimize environmental impacts

Major Study Tasks

- Facility Site Selection Study: Identify and prioritize preferred storage and maintenance sites;
- Site Acquisition and Assembly Analysis: Assess issues, opportunities and constraints of preferred sites, including relocation and property acquisition costs;
- Site-Specific Requirements Analysis: Evaluate system-wide requirements and level of activity at each facility;
- Site-Specific Financial Feasibility Study: Identify financial feasibility of developing a maintenance/storage yard on each selected site;
- Preliminary Facility Plan: Develop a conceptual layout and preliminary plan & cost estimates for each preferred site.

Next Steps

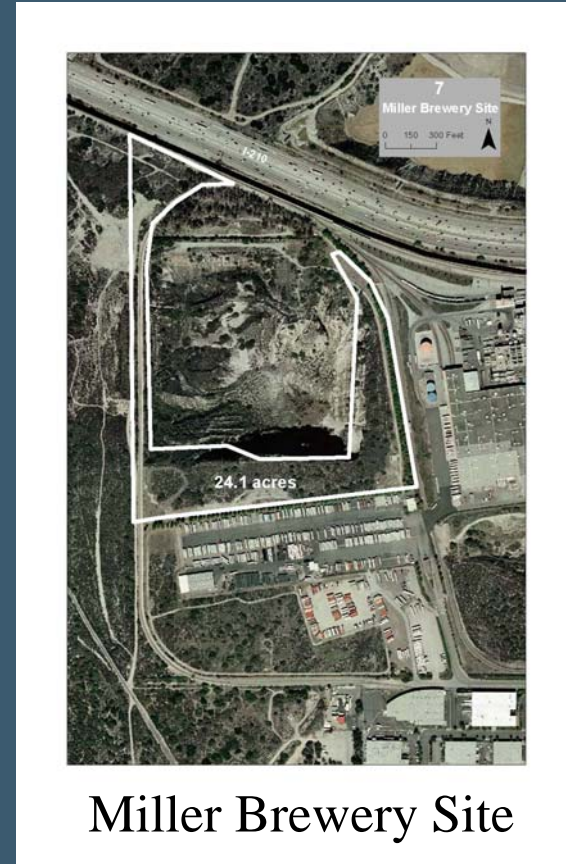
- Procure Consultant Services
- Conduct Site Selection Study
- Return to the Board with Recommendations

Top 9 Candidate Site Locations

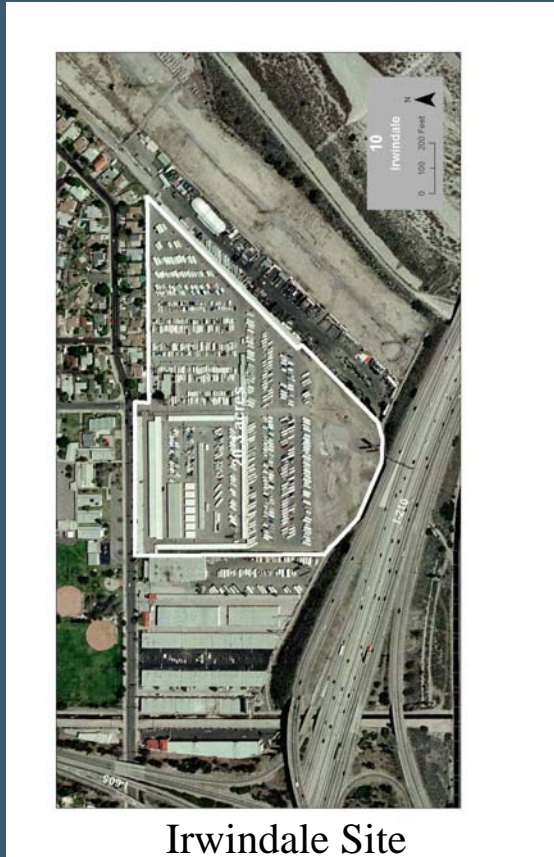


Union Pacific Yard

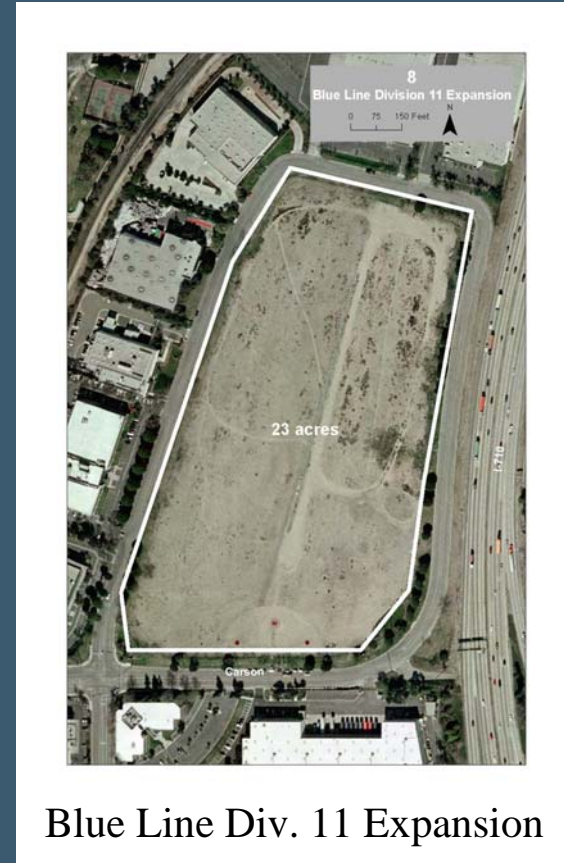
Top 9 Candidate Site Locations



Top 9 Candidate Site Locations



Irwindale Site



Blue Line Div. 11 Expansion

Top 9 Candidate Site Locations



Blue Line Div. 11 Expansion



Crenshaw Site B

Top 9 Candidate Site Locations



Crenshaw Site D



Expo 2 Option (Olympic/Stewart)