

ExpressLanes



Metro

METRO LA CRD (ExpressLanes) PROGRAM

MONTHLY PROJECT STATUS REPORT

THE PREPARATION OF THIS DOCUMENT HAS BEEN FINANCED IN PART THROUGH A GRANT FROM THE U. S. DEPARTMENT OF TRANSPORTATION, FEDERAL TRANSIT ADMINISTRATION (FTA).

NOVEMBER 2012

TABLE OF CONTENTS

| | Page No. |
|---|----------|
| Program Overview & Status..... | 1-8 |
| Management Issues..... | 9-10 |
| Program Status | |
| • Program Scope..... | 11-14 |
| • Schedule | |
| ○ Key Milestones Six-Month Lookahead | 15 |
| ○ Program Summary Schedule | 16 |
| ○ Critical Path Narrative..... | 17-22 |
| • Program Cost Status/Financial Grant Status..... | 23-28 |
| • Staffing..... | 29 |
| • Real Estate..... | 30 |
| • Environmental..... | 31 |
| • Community/Media Relations..... | 32 |
| • Quality Assurance..... | 33 |
| • Safety..... | 33 |
| • Third Party..... | 34-39 |
| Contract Status/Construction Photographs..... | 40-51 |
| Chronology of Events..... | 52-54 |
| “Go Live” Deployment Schedule..... | 55 |
| LA CRD Pre-Deployment Data Collection..... | 56-89 |
| Appendices..... | 90-93 |

PROGRAM OVERVIEW & STATUS

Metro, Caltrans, and other mobility partners are working together to develop a package of solutions that will increase traffic flow and provide better travel options on I-10 and I-110 in Los Angeles County. ExpressLanes is a one-year demonstration program that will test innovations to improve existing transportation systems in three sub-regions: the San Gabriel Valley, Central Los Angeles and the South Bay Cities. These three sub-regions represent nearly 50 percent of both population and employment in LA County.

The Program Goal is to improve mobility and provide congestion relief on I-10 and I-110 corridors through the introduction of congestion pricing by converting High Occupancy Vehicle (HOV) lanes to High Occupancy Toll (HOT) lanes, improvement of transit service and other alternatives to driving, improvements to transit facilities, and the implementation of an intelligent parking management system in downtown Los Angeles.

This program offers improved transportation options and a choice for drivers of single occupant vehicles (SOV) to pay to travel in a high occupancy lane. The minimum toll per mile is \$0.25 and the maximum toll per mile is \$1.40. The general purpose lanes will not be tolled. An additional aim of the program is to foster incentives for sustainable change that creates travel time savings, increased trip reliability, cost savings, improves air quality and effectively manages our current roadway network.

The federal grant name for this Program is the Los Angeles County Congestion Reduction Demonstration (LA CRD). It is estimated that more than 2,400 construction-related jobs will be generated by this program.

PROGRAM MANAGEMENT

Staff continues to work with Caltrans to address potential issues of conflict which may arise as a result of work they are currently performing related to the I-10 Rehab Project and other contractors working for Caltrans on the I-110 and I-10 Freeways. Staff is reviewing existing contracts and their status in order to manage any risk to our ExpressLanes program. **Based upon percent expended, the Program is 74.6 % complete.**

TOLL INFRASTRUCTURE AND FREEWAY/ROADWAY IMPROVEMENTS

This element has completed the Environmental and Preliminary Design phases. Caltrans is the lead agency for the NEPA and CEQA Environmental Documents. On April 28, 2010, the Final EIR/FONSI for the I-10 and I-110 HOT Lanes was approved. On May 14, 2010 the Environmental Assessment was approved. Upon concurrence from FHWA, the Design-Build-Operate-Maintain (DBOM) RFP was released on June 7, 2010. Five addenda were issued to the RFP. Three proposals were received on August 31, 2010. The DBOM Contract was awarded to Atkinson Contractors, LP on December 16, 2010. The Notice to Proceed (NTP) was given to the contractor on January 11, 2011. During June 2011 the DBOM contractor submitted the Final Design Documents for the I-110 ExpressLanes. The groundbreaking ceremony for the start of construction of the ExpressLanes was held July 6, 2011 at the Harbor Gateway Transit Center. Construction for the sign foundations started in early August on the I-110 freeway and started in late September on the I-10 freeway.

PROGRAM OVERVIEW & STATUS (Contd)

Staff worked with FTA/FHWA partners regarding the need for a schedule extension to ensure all roadway and tolling installations are completed prior to opening the HOT Lanes. Due to the high risk posed by the ongoing work being performed by the Caltrans I-10 Rehab Contractor on the I-10 corridor, Metro discussed with FHWA the need to have the I-110 tolling operation open before the I-10 tolling operation. A joint letter of concurrence from FHWA and FTA for the schedule extension was received February 2012.

The start of revenue operations on the I-110 HOT Lanes took place on **November 10, 2012** and the projected date for the start of revenue operations on the I-10 HOT Lanes is February 2013.

Caltrans has issued a Change Order (CCO) to the I-10 Rehab Contractor for striping of the general purpose lanes and the I-10 Rehab Contractor performed the final striping work. This work was critical to allow ExpressLanes Project Contractor to progress its electrical and communication work on the outside shoulder required for DMS and toll signs. Caltrans has provided the I-10 Rehab Contractor survey controls so the final striping of GP lanes was able to move forward. **Metro has accelerated the installation of the communication network on the I-10 Freeway to meet the revenue operations date due to delays encountered.** Metro continues to meet with these other contract REs in an effort to eliminate as many potential impacts as possible. Metro has diligently worked to take the lead role in advising other projects as to where and when our projects will be working at the various locations.

Access to the I-10 Freeway fiber optic cable installed by the I-10 Rehab Contractor has been granted to the DBOM Contractor by Caltrans for use on the ExpressLanes. This delay has created a schedule impact to the ExpressLanes Project.

Construction of the pedestrian bridge overcrossing on the I-110 Freeway at Adams Blvd. **was completed in November.** Construction work **was also completed** on the **widening of the** vehicular bridge at Adams. **The work in and around the POC was accelerated in order to support the I-110 ExpressLanes Revenue Operations.**

The DBOM Contractor began Dynamic Message Signs in concert with Metro's needs to inform the public on the I-10. Example: ExpressLanes Coming Visit FasTrakLa.net for Info. Metro coordinated the messages on the DMS signs with the actual opening date of the 110 ExpressLanes this month, and similar coordinated messages on the DMS signs will occur with the actual opening of the 10 ExpressLanes.

Testing of the various systems **on the I-110 and I-105 Freeways was completed before November 10, 2012.** Work is continuing on I-10 Freeway on various toll sites, **DMS** signs, drainage, striping, median barrier reconstruction, etc; in November.

PROGRAM OVERVIEW & STATUS (Contd)

Power drop installation for 47 locations along the I-10 is progressing with DBOM Contractor, DWP and SCE. ***Only one power drop remained to be installed on the I-10 Freeway after November.***

Design for the EarthCam cameras has been completed and the installation of the additional earth cam cameras continued in November along the I-110 and I-10 Freeways. The earthcam cameras will allow real time traffic monitoring when the ExpressLanes go into operation. This is an important aspect of project implementation and was issued to the DBOM Contractor as change order work. Metro is using a portion of the schedule contingency and some acceleration to implement this work into the project.

The DBOM Contractor has been impacted by Caltrans Contractor Flatiron/Lincoln Pacific working on the north end of the 110 Freeway. This contractor should have completed the fiber optic cable installation in the I-10/110 node in May 2012. This fiber optic cable installation by Flatiron was completed in October. The DBOM Contractor was able to complete the redundant loop between I-10 and I-110 Freeway a critical component of the fiber optic loop. Metro is analyzing this delay and will accelerate sections of the communication network to meet the project milestones. In September Metro issued a Contract Modification to the DBOM Contractor to acquire a leased line from ATT. This is still being installed and is due to be completed in December. This will provide additional Redundancy capacity if there are other future problems with the Caltrans fiber loop.

On I-10 Freeway the existing shoulder between Fremont and the I-605 Freeway will be restriped to create an additional Express Lane in each direction. A recent investigation of the existing shoulder condition revealed 6 areas that require pavement repairs before the shoulder is restriped to become the additional ExpressLane. This work needs to be completed prior to opening the I-10 ExpressLane to the traveling public in order to ensure it does not create a safety hazard. This work is being added to the scope of work to DBOM Contract and project schedule contingency will be used with selective acceleration to avoid impacts to the projected revenue operations date. During the month of September negotiations to perform this work. During the month of November; 4 of these 6 locations were completed. If not for the inclement weather all of this work would have been finished. The scheduled completion date for this change order work is December 2012.

Tenant improvements were completed for the Customer Service Center in Gardena and hiring and training of customer service staff was done. Since the first shipment of transponders were delivered in April to the CSC, inventory control measures have been implemented. The official ribbon-cutting ceremony was held July 25, 2012 at the CSC in Gardena announcing to the public that the transponders are now available.

PROGRAM OVERVIEW & STATUS (Contd)

Metro has nearly completed the analysis of the various schedule delays that have been experienced on the ExpressLanes Project and has issued a Contract Extension Change Notice to the DBOM Contractor using a portion of the Project Schedule Contingency. Based on this analysis, there will not be any impact to the Revenue Operations Dates for the I-110 Freeway being **November 10, 2012** and for the I-10 Freeway being February 2013.

Project Study Report (PSR): Adams Blvd. Figueroa St. HOV/HOT Lane Flyover – Metro and Caltrans executed a funding agreement on April 27, 2011 for Caltrans to perform a PSR and complete the environmental work for an extension of the I-110 HOV/HOT lanes from their current terminus at Adams Blvd. Caltrans held a kickoff meeting June 7th where the PSR was scheduled to be completed in April 2012 and the environmental work was to be completed in September 2013. However, in July Caltrans was informed by the Governor's office that it cannot perform any reimbursable work until November. Work started again in October and is back on schedule for a PSR/PID completion date of June 2012. To maintain the original schedule, the Scope of Work was revised to move some of the PSR/PID work to the PAED Phase. The final PSR/PD was approved in June. In July Caltrans started work on the PAED Phase of the project.

TRANSIT SERVICE IMPROVEMENTS

59 new clean-fuel buses will be operated to support the demonstration program. Metro continues to operate its new Silver Line service connecting passengers to the El Monte and Artesia Transit Centers. Phase I of the enhanced Silver Line service (increased frequencies for AM peak) began on the Harbor Transitway portion of the Silver Line June 26, 2011. ***For the month of November the Silver Line Harbor Transitway (Phase I) weekday boardings total was 5,461 which represents a 104.16% increase in ridership since the Phase I service changes in June 2011. For the month of November the combined Harbor Transitway and El Monte Busway Silver Line weekday boardings total was 13,515 which represents a 104.40% increase in ridership since the Silver Line started service in December 2009. For weekday service in November, the Silver Line had an On-Time performance of 71.9%.***

All of our municipal transit partners – Gardena, Foothill and Torrance have placed the order for their buses. Gardena has received its 2 buses and has completed the Post Delivery inspection (PDI) process. In June, all bike racks for the buses were procured and in August all bike racks were installed on the two buses (and all bus fleet) and were in service August 22, 2011. All 12 NABI 42 ft. CNG buses for Foothill Transit have been procured and accepted into their fleet. Torrance Transit met with New Flyer and decided to cancel its order for hybrid buses, due to the propulsion company declaring Chapter 11 bankruptcy. New CNG buses have been ordered and arrived in October 2011. Foothill, Gardena and Torrance are in the process of preparing their grant applications for their operating subsidies. Torrance Transit has submitted their FTA grant for operating funds and it is currently under review.

PROGRAM OVERVIEW & STATUS (Contd)

The FTA grant (CA-95-X203-00) was awarded on August 3, 2012 and executed on August 7, 2012. **The service commenced on November 19, 2012.** Foothill Transit's grant application CA-95-X138 for the Operating subsidy CMAQ \$3,200,000 was approved by the Federal Transit Administration (FTA) on July 9, 2012. The CMAQ funds have been switched over to the FTA and are now available to finance the added cost associated with the CRD project for Foothill Transit.

Municipal operators will deploy their buses upon opening day of the ExpressLanes. For Gardena and Torrance this will be **November 2012** and for Foothill Transit this will be February 2013. LADOT completed the signal design plans of 19 intersections in February 2010. Due to changes in the ARRA project construction scope, the project was redesigned to continue the interconnect link to the ATSAC Center. As a result, all bids were cancelled April 20, 2011. Preliminary conduit path investigation into ATSAC Control Center completed in May 2011. Project re-design was completed November 2011. The bid package was completed December 6, 2011 and bids were received on January 18, 2012. The Board of Public Works awarded the contract in March and issued a Notice to Proceed. Barring any other unforeseen conditions, construction is anticipated to be completed by July 2012. Construction commenced on April 9, 2012. The project is progressing per the schedule even with some delays for special events at LA Live. The contractor is trying to work Saturdays to compensate for any lost work days. Full system integration was complete in September 2012. During June, the field construction part of the project was completed. Work continued on the integration and database part of the project. Metro submitted the transponder information to LADOT. Project was completed in September 2012. Part of the TPS project also includes the extension of the existing AM peak-period northbound bus-only lane on Figueroa St. between 23rd Street and 4th Street to cover the PM peak-period. A Traffic Control Report (TCR) was approved by the General Manager of LADOT to extend the PM peak-period bus only lane. The Figueroa Street PM Peak Bus-Only Lane was completed in October. All the signs and pavement markings were installed by LADOT field crews. LADOT obtained funding approval from Metro for the camera installation work at Alameda. Completion is scheduled for December 2012.

TRANSIT FACILITY IMPROVEMENTS

El Monte Transit Center – Completed construction for Contract C0934R for Demo, Repave and Lighting Installation over the former Old Transportation Bldg. Completed construction at Power Chevrolet; Completed demolition of the Metro Transportation Building and completed paving at the site. Contract C0959 for the temporary terminal was awarded to S.H.E. for \$657K with NTP issued April 20, 2010; construction was completed on September 3rd and the transition to the temporary terminal took place in early September. Contract for \$39 million was awarded on June 18, 2010 to KPRS Construction Services, Inc. Notice to Proceed was issued 8/13/2010. A formal groundbreaking ceremony for the new El Monte Transit Center was held on September 22, 2010. Demolition of existing bus facility commenced on October 8, 2010 and was completed in November 2010. In November during initial excavation of the

PROGRAM OVERVIEW & STATUS (Contd)

north roadway and former station area, contaminated soil impacted with lead and total petroleum hydrocarbons (TPH) was discovered. Additional soil investigation has identified significant contamination which increased the project budget by more than \$6 million. (The \$6 million overrun was funded by a reallocation of funding from the Patsaouras Plaza Project). Metro issued a change order for a 99 calendar day time extension to KPRS to address the soils handling delay impacts. North Access Road construction was completed in February 2011 which will allow for the smoother flow of bus operations into the Temporary Terminal. The excavation and contaminated soils handling is complete with final cost impacts under evaluation. In August 2011, utility stubouts were completed. In October activities continued for station walls, column construction and foundation pours. Station construction completion is projected to be August 2012 with the Temporary Terminal restoration projected to be October 2012. The LOP budget for the El Monte Station increased to \$60.1 million. During July, KPRS completed the installation of the bus bay canopies on the concourse level, poured most of the curb and gutter around the perimeter of the station, and energized the Station after Southern California Edison pulled their conduit. With electrical power turned on, the site is now in log out-tag out. KPRS began installation of the photovoltaic cells on the concourse level and the ceiling tiles on the lower level of the station, and continued work on the two escalators and the three elevators. The last week in July, the pre-fabricated toilet arrived on site, and KPRS submitted an initial punchlist of items for closeout. KPRS made great strides on both the transit and retail buildings, completing most of the mechanical, electrical, and plumbing (MEP) work, HVAC ducting, interior dry walling, ceiling tile installation, and bathroom tile installation. KPRS also made the initial concrete pours on the plaza in front of the transit retail buildings.

In November, the project teams' primary focus was the task of converting the temporary bus terminal back to parking, and to complete the activity by December 12th. Activities for this task included removal of the temporary islands, grading, and repaving the site; and removing all remaining temporary power poles. In addition, the project team confirmed with Operations that Metro would no longer need to lease the former Gunderson Chevrolet parcel for patron parking, and asked Metro's Real Estate Department to notify the City of El Monte of the fact.

In November KPRS focused on renovation of the parking lot where the temporary terminal was operating out of. Planters, landscaping by Division 9, roadways, islands, lights, fences, overlays, etc; The intent is to open this lot by December 12th. Punchlist and close-out work continues as well.

Patsaouras Plaza – Received Caltrans approval of PR/PSR in May. 100% Advanced Conceptual Engineering was completed in September 2010. The Board approved additional funding as well as a new State of Good Repair federal grant to complete the Patsaouras Plaza Project for a Life of Project Budget of \$16.8 million and separated the LOP budget of Patsaouras Plaza from the LOP budget for the El Monte Station project as approved at the October 2011 Metro Board Meeting. In November staff re-engaged all consultant staff including traffic, geotechnical, and design engineers and started the process of revising the

PROGRAM OVERVIEW & STATUS (Contd)

preliminary engineering package and preparing the project for advertisement. Staff will work to refine and revise the preliminary engineering package to mitigate risk item such as traffic plans, foundation plans, geotechnical conditions and coordination with the ExpressLanes Project. On July 20th, Metro issued a third amendment to the IFB. This third amendment was primarily to give the contractor responsibility of the artwork; and it extended the bid period for an additional two weeks in order to give prospective bidders sufficient time to address the new requirement. Amendment 3 also extended the bids due date from August 7th to August 14th.

In November, the project team reviewed value engineering options that could be incorporated into the design and re-bidding of the project. The team began working on a statement of work for a Task Order to STV Incorporated – the team that developed the Advanced Conceptual Engineering (ACE) design document – to incorporate the value engineering options and lessons learned from the debriefing with prior bidders. The project will be Design-Build. NEPA approval was received February 2012.

Harbor Transitway – This project will have at least 5 procurements. The low bid at \$547K was awarded to Minco Construction for the Harbor Gateway Law Enforcement substation & CCTVs with NTP issued March 2010 and construction was completed in October 2010. The low bid at \$443K was awarded to Lime Inc. for the Station lighting & UPS with NTP issued June 2010. Construction was completed in December 2010. Contract of \$912,500 for the sound enclosure was awarded to low bidder, Peterson Chase, on August 18, 2010. NTP was issued in October 2010. Project completion has been delayed because the sound enclosure design was rejected by Caltrans and the Contractor had to re-design the project. Design concepts for mounting sound panels in stairwells has been approved by Caltrans. Panels will be issued in October 2010. Project completion has been delayed because the sound enclosure design was rejected by Caltrans and the Contractor had to re-design the project. Design concepts for mounting sound panels in stairwells has been approved by Caltrans. Panels will be ordered as soon as formal approval from Caltrans is received. ***In November, the contractor (Peterson Chase) continued working on punchlist items. Initial readings by the contractor indicated a 13 decibel reduction in noise readings. Environmental Services Department has issued a Task Order to AECOM for a formal reading and a report (due in December) summarizing findings.***

For the bus stop cutouts, the low bid of \$235,000 was awarded to RC Becker in March 2011 and NTP was provided on April 15, 2011. Construction for bus stop cutouts was completed in August 2011. CCTV Contract C0986 price bids have been received and the contract was awarded in February 2012. ***In November, Metro conducted final inspection of the work. First Fire initiated punchlist work, but the completion of punchlist items is still dependent on Metro's ITS Department completing installation of wireless antennas and programming of the servers.*** To date, project expenditures and encumbrances to date are well within the Project LOP.

PROGRAM OVERVIEW & STATUS (Contd)

Pomona Metrolink Station – In May 2010, 143 new parking spaces were opened for use east of the existing parking spaces. Construction of the temporary platform to board passengers on Main Track 2 (MT-2) traveling toward San Bernardino was completed and put into Service on June 20, 2010. In December 2010 the contractor completed widening of the platform and construction of the new east entrance. The platform was accepted for beneficial occupancy and put into service on December 15, 2010, along with the new east entrance with new pedestrian crossings. The MOU milestone of completion (beneficial occupancy) by December 30, 2010 was achieved. The last progress payment has been processed and paid by SCRRA. The closeout book has been completed and submitted to SCRRA's Contracts Dept. The contractor has requested release of the remaining retention. Project close out completed in July 2011.

DEMAND-BASED PARKING PRICING (EXPRESSPARK)

On August 31, 2010, Caltrans approved the E-76 for the PE 2 Phase of LA ExpressPark. Two qualified proposals were received on December 17, 2010. Because both proposals received exceeded the project budget, LADOT prepared additional guidance and a revised scope to be sent to the proposers. LADOT's Evaluation Panel completed its work on April 6, 2011, and recommended that ACS State & Local Solutions be selected as the prime contractor for LA ExpressPark. The second proposer filed a protest. The formal protest of the contractor selection process was withdrawn on May 20, 2011.

LADOT Board of Transportation Commissioners approved the LA ExpressPark contractor selection and forwarded their report to the Mayor and the CAO on June 9, 2011. The CAO's report was submitted for review on July 29th to the City Council. On August 12, 2011, the L.A. City Council unanimously approved the CAO report, authorizing LADOT to execute the contract with ACS for the implementation of the LA ExpressPark Intelligent Parking Management Project. Also, the City Council provided LADOT the authority to adjust on-street parking meter rates in the LA ExpressPark project area. On September 29, 2011, the City of Los Angeles executed the contract with ACS State and Local Solutions, Inc. for the implementation of the LA ExpressPark Intelligent Parking Management Program. It should be noted that the project has been separated into three phases. The date for LA ExpressPark to be fully operational (October 2012) will not impact the start of the Demo Evaluation Period. LA ExpressPark will support Phase I of the demand-based pricing no later than May 2012. It will be expanded to support Phase II no later than July 2012 and Phase III no later than November 2012, which is consistent with RFP requirements. Phase I will use the baseline data to refine base hourly rates to influence demand. Phase II will build on the demand balance from Phase I and will identify peak periods and establish hourly rates by the time of day. Phase III will adjust rates per block in select areas in real-time based on current demand.

Phase I of the IPM (MERGE System) was completed Sept. 24th. Phase 2 and 3 are underway. The MERGE System is currently scheduled to be fully operational in the first quarter 2013.

The new DMS signs in South Park will be installed in December. The neighborhood DMS signs are now scheduled for installation in early 2013. It has taken longer than anticipated to get the necessary approvals for the DMS installations.

MANAGEMENT ISSUES

Concern No. 1: Program Risk Register

Status/Action The Risk Register *was updated in November 2012.*

Concern No. 2: Caltrans Has Various Construction Contracts on the I-10 Freeway That May Impact the ExpressLanes Project

Status/Action Caltrans has contractors working on I-10 Freeway that *have potential to* impact revenue operations for the DBOM Contract. Due to some cancellations of lane closures by Caltrans, some delays to ExpressLanes schedule have been experienced.

Concern No. 3: Electrical Power Connections for the Express Toll Lanes Signs Along the I-10 and I-110 Freeways

Status/Action **CLOSED:** Metro and the DBOM Contractor are working closely with DWP and SCE to finalize all power connections for the various Express Lanes Toll Signs and equipment. As of the end of **November there is one** power drop remaining to be completed on I-10. **All power drops along the I-110 Freeway have been completed.**

Concern No. 4: Schedule Slippage by Caltrans I-10 Rehab Contractor is Impacting the ExpressLanes Project Schedule

Status/Action **CLOSED:** The **Caltrans** Rehab Contractor on the I-10 is **over one year** behind schedule and this **has created** Risk to the ExpressLanes Schedule. Metro has elevated the concerns to Caltrans upper Management and is working closely with Caltrans to address the delays caused by the I-10 Rehab Contractor. **Metro upper Management met with Caltrans upper Management to try and obtain a realistic schedule and find out when Caltrans plans on completing this contract. The Caltrans Rehab Contract completed their work in November 2012. There will be a cost and schedule impact by the ExpressLanes Project due to delays caused by Caltrans I-10 Rehab Contractor.**

Concern No. 5: Timing and Construction Coordination between ExpressLanes Operations and Patsaouras Plaza

Status/Action Metro has engaged traffic consultants and performed a Constructability Study to determine the mitigation measures. The results of these studies were analyzed for project impact by the Management Team responsible for preparing the RFP and advertisement. The construction effort required in order to complete the Patsaouras scope of work once awarded will make it necessary to coordinate completely with the ExpressLanes, even once open to the public. The one year demonstration period has a high potential of

MANAGEMENT ISSUES (Contd)

being impacted negatively if not recognized by the successful bidder with the performance of the work.

Concern No. 6: Patsaouras Plaza Cultural Resource Recovery Plan

Status/Action The Cultural Resources Monitoring and Discovery Plan was completed and submitted to FTA on March 9th. We submitted the document to SHPO for their concurrence on March 14th. SHPO concurred with the Cultural Resources Monitoring and Discovery Plan, that it was incorporated into the specifications for the project, and once construction begins, we will have monitoring by Native Americans and Archeologists as per the Plan.

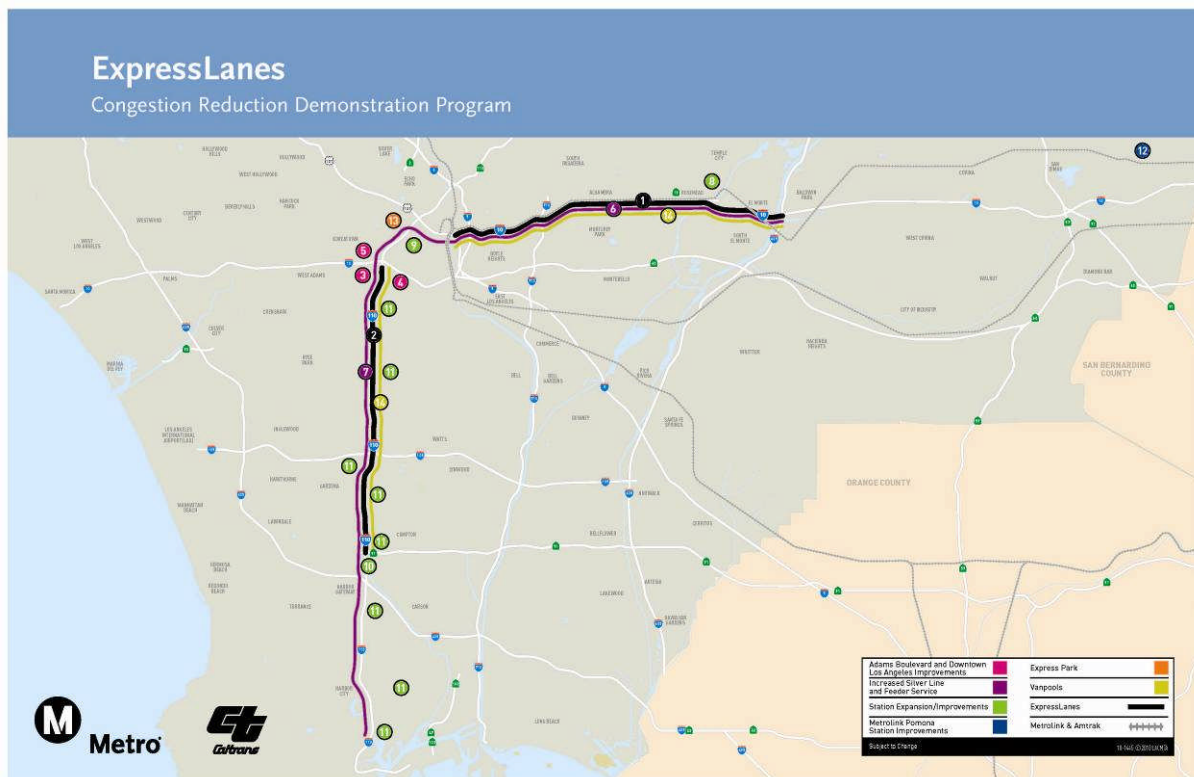
Concern No. 7: LA ExpressPark Xerox, has not Completed Contracts with all of its Subcontractors

Status/Action LADOT is working with Xerox to expedite this process. The subcontract with Crosstown has not been executed, but Xerox does not anticipate any issues, as the work that they will complete is later in the project schedule.

Concern No. 8: Plan Forward for Patsaouras Plaza

Status/Action Bids cancelled, project team to review value engineering options to reduce project costs. Evaluate between re-bidding the project or moving forward with another course of action such as furthering the design.

PROGRAM SCOPE



Los Angeles County Metropolitan Transportation Authority and Caltrans have partnered with Foothill Transit, Gardena Municipal Bus Lines, Los Angeles Department of Transportation, Southern California Regional Rail Authority (Metrolink) and Torrance Transit, to develop a package of solutions to increase traffic flow and provide travel options on the I-10 and I-110 freeways in Los Angeles County. These solutions will be incorporated into a one-year demonstration that will test new technologies to improve the existing transportation system called ExpressLanes.

The program goal is to improve mobility and provide congestion relief on the I-10 and I-110 freeways through the introduction of congestion pricing by converting High Occupancy Vehicle (HOV) Lanes to High Occupancy Toll (HOT) Lanes, improvements to the transit service along the freeways, transit facility improvements, increased funding for vanpools and the introduction of an intelligent parking management program, called ExpressPark, in downtown Los Angeles.

This program offers improved transportation options and a choice for drivers of single occupant vehicles (SOV) to pay to travel in a high occupancy lane. The general purpose lanes will not be tolled. The aim of the program is to foster incentives for sustainable change that creates travel time savings, increased trip reliability, cost savings, improved air quality and effectively manages our current roadway network.

PROGRAM SCOPE (Contd)

The features of the ExpressLanes program include:

1) TOLL INFRASTRUCTURE AND FREEWAY/ROADWAY IMPROVEMENTS

- **I-10 HOV Conversion to HOT Lanes (I-605 to Alameda St./Union Station) and I-110 HOV Conversion to HOT Lanes (Harbor Gateway Transit Center to Adams Blvd.)** – an electronic toll collection system will be constructed that includes toll infrastructure, changeable message and static signage, transponders, cameras, back-office administration and management, CHP enforcement, and incident management response.
- **Add 2nd HOT Lane on I-10 (between I-605 and I-1710)** – a 2nd HOT lane will be added on the I-10 between I-605 and I-710 in both the eastbound and westbound directions. This will be accomplished by re-striping the existing enforcement zone buffer and minor roadway widening.
- **Widen Adams Blvd. and Lane Modifications to Adams Blvd Off-Ramp** – modifications at Adams Blvd. include re-configuration to include two dedicated left turn lanes and one dedicated right turn lane. Widening of Adams Blvd. will require the sidewalk to be taken to add an additional dedicated right turn in the westbound direction. To replace the sidewalk, a pedestrian over-crossing will be constructed over the I-110 freeway on the north side of Adams Blvd.
- **Project Study Report (PSR): Adams Blvd.-Figueroa St. HOT Lane Flyover** – funding will be provided to Caltrans to perform a PSR to identify alternatives to connect from the northbound I-110 HOT Lanes to Figueroa St. The PSR will be coordinated with the Harbor Freeway Cap Park Feasibility Study lead by the City of Los Angeles.

2) TRANSIT SERVICE IMPROVEMENTS

- **Enhanced Silver Line BRT and Feeder Services** – Funding will be provided to Metro for 41 new CNG buses to enhance service on the I-10 and I-110 and create a new dual-hub BRT. In addition, Foothill Transit will deploy 12 new buses, Gardena Transit will deploy 2 new gas-hybrid buses and Torrance Transit will deploy 4 new buses to improve additional commuter bus service on both the I-10 and I-110. During the 1-year Demonstration period, Foothill, Torrance and Gardena will also receive an operating subsidy for their expanded service. Metro enhanced Silver Line service will be implemented in two phases – Phase I in FY12 and Phase II in FY13. All enhanced Metro Silver Line service will be in place prior to the opening of the ExpressLanes. Municipal operators will deploy their buses upon opening day of the ExpressLanes. For Gardena and Torrance this will be October 2012 and for Foothill Transit this will be February 2013.

PROGRAM SCOPE (Contd)

- **Transit Signal Priority in Downtown Los Angeles** – The LADOT will install bus signal priority technology on Figueroa St. between Wilshire Blvd. and Adams Blvd. (15 signals) and Flower St. between Wilshire Blvd. and Olympic Blvd. (5 signals) to enhance transit operations. This project will also extend the existing AM peak-period northbound bus-only lane on Figueroa St. to cover the PM peak-period.
- **Vanpools** – Activities to support the formation of 100 new vanpools include marketing and vanpool start-up costs such as training community groups to form commuter vanpools and ensure that vanpools are created and retained, ride-matching software, driver (or other empty seat subsidies), back-up driver training exams and parking lot leases.

3) TRANSIT FACILITY IMPROVEMENTS

- **El Monte Transit Center Improvements** – a new 30-bay bus terminal will be constructed at the current El Monte Transit Center location to accommodate service improvements and expansion. This will add capacity for Metro's dual-hub BRT service and Foothill's Silver Streak service and will be LEED Gold Certified.
- **Patsaouras Plaza Connector to the El Monte Busway** – the existing passenger boarding/alighting areas located at the corner of Alameda St. and the Busway entrance will be relocated to the south side of Patsouras Plaza to allow direct pedestrian access to the Plaza and Union Station.
- **Harbor Transitway Park and Ride Improvements** – improvements will include enhanced signage, lighting and security at 8 Park and Ride lots. A Sherriff's Substation will be constructed at Harbor Gateway Transit Center. New bike lockers will be installed and bus stops will be re-located for lines 108 and 115 so that they are under the Slauson and Manchester Transitway stations. And at the 37th Street Station translucent and architectural sound attenuation panels will be installed to reduce noise levels for waiting customers on the Harbor Transitway. Design of the panels is based on noise testing and analyses conducted by noise experts, the architecture of the station and Caltrans requirements. Before and after noise data will be collected to evaluate whether or not additional sound attenuation projects are implemented in the future at other freeway adjacent stations.
- **Pomona Metrolink Station Expansion** – this project consists of new pedestrian access improvements, 143 new parking spaces and the extension of the platform to accommodate additional rail cars at the Pomona (North) Metrolink Station that serves the San Bernardino Line. Operation of extended trains is projected to begin sometime in early 2011 on the San Bernardino Line.





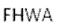
PROGRAM SCOPE (Contd)

4) DEMAND-BASED PARKING PRICING

- **LA ExpressPark** – the LADOT will deploy new parking meter technology to 5,500 on-street metered parking spaces in the Central Business District, Chinatown, Civic Center, East Downtown, Little Tokyo and Washington/Broadway. These new meters will charge demand-based parking rates depending on the time of day and length of stay. They will also provide alternative payment options (i.e. credit card, cell phone). In addition to the on-street meters, occupancy reporting systems will also be implemented for the major City-owned off-street parking facilities (approx 7,500). Real-time parking information for 13,000 public on- and off-street parking spaces will be provided through various media including: websites, mobile phones, and on-street dynamic message signs. The project will be implemented in three successive phases of demand-based pricing development. Phase I: Base Hourly Rate – using baseline data, the system will iteratively refine base hourly rate to influence demand. Phase II: Time of Day – Building upon the demand balance achieved in Phase I, the system will identify peak periods and establish hourly rates by time of day. Phase III: Adaptive – In select areas, the system will adjust rates per block in real-time based on current demand.

KEY MILESTONE SCHEDULE SIX-MONTH LOOKAHEAD

| | Milestone Date | Nov-12 | Dec-12 | Jan-13 | Feb-13 | Mar-13 | Apr-13 |
|---------------------------------------|----------------|--------|--------|--------|--------|--------|--------|
| HOT Lane Project | | | | | | | |
| I-110 System Acceptance Test | 11/3/12A | ○ | | | | | |
| I-10 EB Signs | 11/30/12A | ○ | | | | | |
| General Test Planning & Reporting | 11/30/12A | ○ | | | | | |
| I-10 WB Signs | 12/05/12 | | ○ | | | | |
| I-10 WB Electrical/Communication | 12/05/12 | | ○ | | | | |
| Installation Test | 12/09/12 | | ○ | | | | |
| I-10 Commisioning Test | 01/15/13 | | | ○ | | | |
| I-10 System Acceptance Test | 03/15/13 | | | | | ○ | |
| Transit Facilities Improvement | | | | | | | |
| Harbor Transit Way Improvement | | | | | | | |
| El Monte Transit Center | | | | | | | |
| Parking Lot | 12/12/12 | | ○ | | | | |
| Pastouras Plaza | | | | | | | |

| | | | | | |
|--|--------------------|---|---------------------------|---|---|
|  Metro | Metro Milestone |  | Design/Build Constructors |  | Third Parties Approval |
| CT | Caltrans Milestone |  | New Date |  | FHWA Federal Highway Administration /FTA Federal Transportation Authority Approval |

PROGRAM SUMMARY SCHEDULE

| Activity ID | Activity Name | Orig. Dur. | Rem. Dur. | Start | Finish | 2011 | | | | 2012 | | | | 2013 | | | | 2014 | | | |
|---|---|------------|-----------|------------|------------|------|----|----|----|------|----|----|----|------|----|----|----|------|----|----|----|
| | | | | | | Q1 | Q2 | Q3 | Q4 | Q1 | Q2 | Q3 | Q4 | Q1 | Q2 | Q3 | Q4 | Q1 | Q2 | Q3 | Q4 |
| Congestion Reduction Demonstration Program | | | | | | | | | | | | | | | | | | | | | |
| | Congestion Reduction Demonstration Program | 1305 | 354 | 01-09-09 A | 04-09-14 | | | | | | | | | | | | | | | | |
| | Community Outreach | 1073 | 342 | 06-08-09 A | 04-09-14 | | | | | | | | | | | | | | | | |
| | Hot Lanes Preliminary Design | 340 | 0 | 04-03-09 A | 08-04-10 A | | | | | | | | | | | | | | | | |
| | Hot Lanes DBOM Contract Procurement | 174 | 0 | 05-17-10 A | 01-10-11 A | | | | | | | | | | | | | | | | |
| | USDOT Agreement | 31 | 0 | 12-15-10 A | 09-07-12 A | | | | | | | | | | | | | | | | |
| | Outside Agency Utility Work | 836 | 27 | 06-08-09 A | 01-08-13 | | | | | | | | | | | | | | | | |
| | Hot Lanes DBOM Construction | 949 | 65 | 09-25-09 A | 02-28-13 | | | | | | | | | | | | | | | | |
| | I-10 Rehab Construction (CALTRANS ESTIMATE) | 1319 | 0 | 05-27-09 A | 11-15-12 A | | | | | | | | | | | | | | | | |
| | Transit Service Improvements (METRO) | 520 | 0 | 09-16-09 A | 10-31-11 A | | | | | | | | | | | | | | | | |
| | Transit Facility Improvements (METRO) | 1027 | 9 | 02-02-09 A | 12-12-12 | | | | | | | | | | | | | | | | |
| | Harbor Transitway Improvements CDRP | 858 | 0 | 02-02-09 A | 10-31-12 A | | | | | | | | | | | | | | | | |
| | El Monte Transit Ctr | 1027 | 9 | 02-02-09 A | 12-12-12 | | | | | | | | | | | | | | | | |
| | Metrolink Pomona Station Improvements | 480 | 0 | 01-09-09 A | 12-30-10 A | | | | | | | | | | | | | | | | |
| | Transit Signal Priority in Downtown (LADOT) | 724 | 0 | 09-15-09 A | 06-30-12 A | | | | | | | | | | | | | | | | |
| | ExpressPark (LADOT) | 1150 | 132 | 03-12-09 A | 06-03-13 | | | | | | | | | | | | | | | | |
| | Vanpools | 401 | 61 | 02-01-12 A | 02-28-13 | | | | | | | | | | | | | | | | |
| | CRD Data Collection | 731 | 496 | 02-01-12 A | 04-09-14 | | | | | | | | | | | | | | | | |

Project ID: HOT_Current

Data Date: 11-30-12

Summary Schedule

Page 1 of 1

CRITICAL PATH NARRATIVE

ExpressLanes Project

The Critical Path of the HOT Lanes DBOM contract runs through the Toll Implementation design/procurement/test related activities. The schedule assumes a one month end-to-end testing period for each of the corridors, following installation of the Toll Operation Service Center and two months of integrated test period for the entire system following the corridor-wide testing. Our design consultants have confirmed that those durations are adequate for the testing activities. The opening of the I-110 HOT Lanes **took place November 10, 2012** and the I-10 HOT Lanes is **projected in** February 2013.

Caltrans has issued a Change Order (CCO) to the I-10 Rehab Contractor for striping of the general purpose lanes **and** the I-10 Rehab Contractor performed most of the final striping work. This work **was** critical to allow ExpressLanes Project Contractor to progress its electrical and communication work on the outside shoulder required for DMS and toll signs. Caltrans has provided the I-10 Rehab Contractor survey controls so the final striping of GP lanes was able to move forward. **Metro has accelerated the installation of the communication network on the I-10 Freeway to meet the revenue operations date due to delays encountered.** Metro continues to meet with these other contract REs in an effort to eliminate as many potential impacts as possible. Metro has diligently worked to take the lead role in advising other projects as to where and when our projects will be working at the various locations.

Access to the I-10 Freeway fiber optic cable installed by the I-10 Rehab Contractor has now been granted to the DBOM Contractor by Caltrans for use on the ExpressLanes. This delay has created a schedule impact to the ExpressLanes Project.

Construction of the pedestrian bridge overcrossing on the I-110 Freeway at Adams Blvd. **was completed in November.** Construction work **was also completed** on the **widening of the** vehicular bridge at Adams. **The work in and around the POC was accelerated in order to support the I-110 ExpressLanes Revenue Operations.**

The DBOM Contractor began Dynamic Message Signs in concert with Metro's needs to inform the public on the I-10. Example: ExpressLanes Coming Visit FasTrakLa.net for Info. Metro coordinated the messages on the DMS signs with the actual opening date of the 110 ExpressLanes this month, and similar coordinated messages on the DMS signs will occur with the actual opening of the 10 ExpressLanes.

Testing of the various systems **on the I-110 and I-105 Freeways was completed before November 10, 2012.** Work is continuing on I-10 Freeway on various toll sites, DMS signs, drainage, striping, median barrier reconstruction, etc; in November.

CRITICAL PATH NARRATIVE (Contd)

Power drop installation for 47 locations along the I-10 is progressing with DBOM Contractor, DWP and SCE. ***Only one power drop remained to be installed on the I-10 Freeway after November.***

At Adams in June, Caltrans approved additional full freeway closures to allow for the installation of the falsework beam and forming of the full bridge widening. DBOM Contractor was able to finally pour the widened portion of the Adams Bridge in July.

Design for the EarthCam cameras has been completed and the installation of the additional EarthCam cameras continued in November along the I-110 and I-10 Freeways. The earthcam cameras will allow real time traffic monitoring when the ExpressLanes go into operation. This is an important aspect of project implementation and was issued to the DBOM Contractor as change order work. Metro is using a portion of the schedule contingency and some acceleration to implement this work into the project.

The DBOM Contractor has been impacted by Caltrans Contractor Flatiron/Lincoln Pacific working on the north end of the 110 Freeway. This contractor should have completed the fiber optic cable installation in the I-10/110 node in May 2012. This fiber optic cable installation by Flatiron was completed in October. The DBOM Contractor was able to complete the redundant loop between I-10 and I-110 Freeways as it is a critical component of the fiber optic loop. Metro is analyzing this delay and will accelerate sections of the communication network to meet the project milestones. In September Metro issued a Contract Modification to the DBOM Contractor to acquire a leased line from ATT. This is still being installed and is due to be completed in December. This will provide additional Redundancy capacity if there are other future problems with the Caltrans fiber loop.

On I-10 Freeway the existing shoulder between Fremont and the 605 Freeway will be restriped to create an additional Express Lane in each direction. A recent investigation of the existing shoulder condition revealed 6 areas that require pavement repairs before the shoulder is restriped to become the additional ExpressLane. This work needs to be completed prior to opening the I-10 ExpressLane to the traveling public in order to ensure it does not create a safety hazard. This work is being added to the scope of work to DBOM Contract and project schedule contingency will be used with selective acceleration to avoid impacts to the projected revenue operations date. During the month of September negotiations to perform this work were completed and the contractor started the work. Scheduled completion is December 2012.

CRITICAL PATH NARRATIVE (Contd)

Tenant improvements were completed for the Customer Service Center in Gardena and hiring and training of customer service staff was done. Since the first shipment of transponders were delivered in April to the CSC, inventory control measures have been implemented. The CSC in Gardena and the El Monte location was opened to the public in July and is fully operational. This was a major successful accomplishment leading to the I-110 Freeway future revenue operations.

Metro has nearly **completed** in the analysis of the various schedule delays that have been experienced on the ExpressLanes Project and **has issued** a Contract Extension Change Notice to the DBOM Contractor using a portion of the Project Schedule Contingency. Based on this analysis, there will not be any impact to the Revenue Operations Dates for the I-110 Freeway being **November 10, 2012** and for the I-10 Freeway being February 2013.

I-10 Rehab Construction

Caltrans I-10 Rehab contractor (Atkinson) previously provided Metro a schedule update, which showed the project completing April of 2012. **The Rehab Contractor completed work, however, after completing their work the Rehab Contractor had to come back to perform corrective work.** The Caltrans I-10 Rehab Contractor is now over one year behind schedule and this seriously **impacted** the DBOM's Contract Schedule.

Transit Service Improvement

Foothill and Gardena Transit – No changes to the critical path.

Transit Facility Improvements

El Monte Transit Center – Current contractor schedule shows the substantial completion date is September 2012. The sustained delays to critical activities on construction schedule was caused by the contaminated soil found during excavation and excessive rain days in December over the (5) rain delay days in the Baseline schedule. The Patsaouras Plaza Project was separated from the El Monte Station LOP at the October Metro Board Meeting. The LOP budget will be \$16.8 million for Patsaouras Plaza and the LOP budget for El Monte Station is increased to \$60.1 million. During July, KPRS completed the installation of the bus bay canopies on the concourse level, poured most of the curb and gutter around the perimeter of the station, and energized the Station after Southern California Edison pulled their conduit. With electrical power turned on, the site is now in log out-tag out. KPRS began installation of the photovoltaic cells on the concourse level and the ceiling tiles on the lower level of the station, and continued work on the two escalators and the three elevators. The last week in July, the pre-fabricated toilet arrived on site, and KPRS submitted an initial punchlist of items for closeout. KPRS made great strides on both the transit and retail buildings, completing most of the mechanical, electrical, and plumbing (MEP) work, HVAC ducting, interior dry walling, ceiling tile installation, and bathroom tile installation. KPRS also made the initial concrete pours on the plaza in front of the transit retail buildings.

CRITICAL PATH NARRATIVE (Contd)

In November, the project teams' primary focus was the task of converting the temporary bus terminal back to parking, and to complete the activity by December 12th. Activities for this task included removal of the temporary islands, grading, and repaving the site; and removing all remaining temporary power poles. In addition, the project team confirmed with Operations that Metro would no longer need to lease the former Gunderson Chevrolet parcel for patron parking, and asked Metro's Real Estate Department to notify the City of El Monte of the fact.

Pastaouras Plaza – Due to several factors: funding shortfall and potential construction schedule impacts to the ExpressLanes. Staff presented a Recovery Plan to the Board with a formal action in October 2011. Staff obtained additional Federal funding to complete the Patsaouras Plaza Project for a Life of Project Budget of \$16.8 million and will separate Patsaouras Plaza from the El Monte Station Project as approved at the October 2011 Metro Board Meeting. On July 20th, Metro issued a third amendment to the IFB. This third amendment was primarily to give the contractor responsibility of the artwork; and it extended the bid period for an additional two weeks in order to give prospective bidders sufficient time to address the new requirement. Amendment 3 also extended the bids due date from August 7th to August 14th. ***The project team will finalize the scope of work and issue a task order to STV Engineering to incorporate the lessons learned from the debriefing with prior bidders. The project team is also developing a Board Report to increase the Life of Project (LOP) budget from 16.8 M to 26.5 M.*** The project will be a Design-Build. Construction is scheduled for completion Summer 2014.

Harbor Transitway – Project completion has been delayed because the sound enclosure design was rejected by Caltrans and the Contractor must re-design the project. Caltrans has indicated it will take 4-6 weeks to review the re-design. To mitigate the delay, staff has requested additional support from the Metro Third Party Administration to work with Caltrans to accelerate their review and Metro procurement staff is working with the Contractor to accelerate their re-design. Design issues have been resolved on the sound barrier. Contractor (Peterson Chase) spent the month of July working on the construction work plan (CWP), and met with Metro to review the railing modifications during installation of the sound panels. Contractor is still scheduled to initiate post installation and base framing on August 22. Contractor schedule shows panels will be delivered by September 3rd and installed by September 24th. For the bus stop cutouts, the low bid of \$235,000 was awarded to RC Becker in March 2011 and NTP was provided on April 15, 2011.

Construction for bus stop cutouts was completed in August 2011. CCTV Contract C0986 price bids have been received and the contract was awarded in February 2012. By the end of July, the contractor (First Fire Systems) had installed most of the cameras, but cameras are not yet live because wiring to power and provide signal has not yet been

CRITICAL PATH NARRATIVE (Contd)

completed. Digital Message Signs arrived in July, and contractor has begun installing them at Harbor Gateway. A modification was issued to contractor for additional servers (and associated electrical components) required for the message boards. To date, project expenditures and encumbrances are well within the Project LOP. Contractor to accelerate their re-design. Design issues have been resolved on the sound barrier. ***In November, the contractor (Peterson Chase) continued working on punchlist items. Initial readings by the contractor indicated a 13 decibel reduction in noise readings. Environmental Services Department has issued a Task Order to AECOM for a formal reading and a report (due in December) summarizing findings.***

For the bus stop cutouts, the low bid of \$235,000 was awarded to RC Becker in March 2011 and NTP was provided on April 15, 2011. Construction for bus stop cutouts was completed in August 2011. CCTV Contract C0986 price bids have been received and the contract was awarded in February 2012. ***In November, Metro conducted final inspection of the work. First Fire initiated punchlist work, but the completion of punchlist items is still dependent on Metro's ITS Department completing installation of wireless antennas and programming of the servers.*** To date, project expenditures and encumbrances are well within the Project LOP.

Metrolink Pomona Station

The project is complete.

Transit Signal Priority in Downtown

The original completion date of December 31, 2010 was moved to August 31, 2011 due to a prolonged review process for the E-76 Authorization to Proceed with Construction and due to LADOT internal reorganization which resulted in Project Management being transferred to another group. Project assumed completion of ARRA TPS-ATSAC Communications System Rehabilitation, which was supposed to provide interconnect capacity for transit signal priority. Due to changes in the ARRA project construction scope, the project must be redesigned to continue the interconnect link to the ATSAC Center. The bids have been cancelled and the project was redesigned November 2011. The bid package was completed December 6, 2011 and 18 bids were opened January 18, 2012. The Board of Public Works awarded the contract in March and issued a Notice to Proceed. Construction commenced on April 9, 2012, and is anticipated to be completed by July 2012. The project is progressing per the schedule even with some delays for special events at LA Live. The contractor is trying to work Saturdays to compensate for any lost work days. Full system integration was completed in September 2012.

CRITICAL PATH NARRATIVE (Contd)

Metro **submitted** the transponder information to LADOT. Project was completed in September 2012. Part of the TPS project also includes the extension of the existing AM peak-period northbound bus-only lane on Figueroa St. between 23rd Street and 4th Street to cover the PM peak-period. A Traffic Control Report (TCR) was approved by the General Manager of LADOT to extend the PM peak-period bus only lane. The Figueroa Street PM Peak Bus-Only Lane was completed in October. All the signs and pavement markings were installed by LADOT field crews. LADOT obtained funding approval from Metro for the camera installation work at Alameda. Completion is scheduled for end of December 2012.

LA ExpressPark Project

LADOT's Evaluation Panel completed its work on April 6, 2011, and recommended that ACS State & Local Solutions be selected as the prime contractor for LA ExpressPark. The second proposer filed a protest. The formal protest of the contractor selection process was withdrawn on May 20, 2011. LADOT Board of Transportation Commissioners approved the LA ExpressPark contractor selection and forwarded their report to the Mayor and the CAO on June 9, 2011. On August 12, 2011, the L.A. City Council unanimously approved the CAO report, authorizing LADOT to execute the contract with ACS for the implementation of the LA ExpressPark Intelligent Parking Management Project. Also, the City Council provided LADOT the authority to adjust on-street parking meter rates in the LA ExpressPark project area. It should be noted that the project has been separated into three phases. The date for the LA ExpressPark to be fully operational (October 2012) will not impact the start of the Demo Evaluation Period. LA ExpressPark will support Phase I of the demand-based pricing no later than May 2012. It will be expanded to support Phase II no later than July 2012 and Phase III no later than November 2012, which is consistent with RFP requirements. Phase I will use the baseline data to refine base hourly rates to influence demand. Phase II will build on the demand balance from Phase I and will identify peak periods and establish hourly rates by the time of day. Phase III will adjust rates per block in select areas in real-time based on current demand.

Phase I of the IPM (MERGE System) was completed Sept. 24th. Phase 2 and 3 are underway. The MERGE System is currently scheduled to be fully operational in the first quarter 2013. ***The new DMS signs in South Park will be installed in December. The neighborhood DMS signs are now scheduled for installation in early 2013. It has taken longer than anticipated to get the necessary approvals for the DMS installations.***

PROGRAM COST STATUS

CONGESTION REDUCTION DEMONSTRATION PROGRAM
COMBINED COST REPORT BY PROJECT
METRO CONSTRUCTION MANAGEMENT DIVISION

PERIOD ENDING: NOV 2012
DOLLARS

| PROJECT | NOTES | ADOPTED BUDGET | CURRENT FORECAST | | COMMITMENTS* | | EXPENDITURES* | | BUDGET / FORECAST VARIANCE |
|---|---|--------------------|--------------------|--------------------|----------------|--------------------|------------------|--------------------|----------------------------|
| | | | PERIOD | TO DATE | PERIOD | TO DATE | PERIOD | TO DATE | |
| CP 201059 - PROCURE 41 BUSES | | 27,214,617 | - | 27,214,617 | - | 27,214,617 | - | 27,214,617 | - |
| CP 202286 - EL MONTE TRANSIT CENTER | 4 | 60,106,000 | | 60,106,000 | 101,093 | 56,594,993 | 908,647 | 54,795,155 | - |
| CP 202287 - HARBOR TRANSITWAY IMPROVEMENTS | | 3,850,000 | - | 3,850,000 | 18,282 | 3,517,040 | 173,936 | 2,573,928 | - |
| CP 202317 - PATSOURAS PLAZA CONNECTOR | 4 | 16,803,000 | - | 16,803,000 | 18,637 | 2,370,429 | (39,558) | 2,230,816 | - |
| CP 210115 - BIKE LOCKERS | | 101,012 | - | 101,012 | - | 101,012 | - | 101,012 | - |
| CP 210120 - TOLLTECHNOLOGY & ROADWAY IMPROVEMENTS | 1 | 120,635,000 | - | 120,635,000 | 200,632 | 104,845,808 | 6,131,012 | 99,610,049 | - |
| METRO & CALTRANS TOTAL | | 228,709,629 | - | 228,709,629 | 338,643 | 194,643,899 | 7,174,037 | 186,525,577 | - |
| OTHER AGENCIES OR OTHER METRO COSTS: | | | | | | | | | |
| METROLINK | POMONA METROLINK STATION - INC. PARKING | 5 | 10,815,476 | 10,815,476 | | 10,815,476 | | 10,815,476 | - |
| METRO | OPERATING SUBSIDY FOR DEMO | | 6,716,462 | 6,716,462 | 343,227 | 343,227 | 337,720 | 337,720 | - |
| METRO | I-110 Adams Flyover PSR - METRO | 3 | 7,840,790 | 7,840,790 | - | 1,451,156 | - | 764,024 | - |
| FOOTHILL TRANSIT | PROCURE 12 BUSES | | 7,500,000 | 7,500,000 | - | 7,305,825 | - | 7,305,825 | - |
| FOOTHILL TRANSIT | OPERATING SUBSIDY FOR DEMO | | 3,200,000 | 3,200,000 | - | - | - | - | - |
| TORRANCE TRANSIT | PROCURE 4 BUSES | | 2,800,000 | 2,800,000 | - | 2,800,000 | - | 2,286,900 | - |
| TORRANCE TRANSIT | OPERATING SUBSIDY FOR DEMO | | 1,200,000 | 1,200,000 | - | - | - | - | - |
| GARDENA TRANSIT | PROCURE 2 BUSES | | 1,200,000 | 1,200,000 | - | 1,200,000 | - | 1,129,584 | - |
| GARDENA TRANSIT | OPERATING SUBSIDY FOR DEMO | | 677,736 | 677,736 | - | - | - | - | - |
| LADOT | TRANSIT SIGNAL PRIORITY | | 856,796 | 856,796 | - | 580,426 | - | 580,426 | - |
| METRO | FACILITY O&M | | | | | | | | |
| METRO | VANPOOLS | | 400,000 | 400,000 | 110,208 | 110,208 | 37,368 | 37,368 | - |
| LADOT | EXPRESSPARK | | 18,500,000 | 18,500,000 | | 18,477,803 | 376,629 | 7,268,569 | - |
| OTHER AGENCIES OR OTHER METRO COSTS: | | | 61,707,260 | 61,707,260 | 453,435 | 43,084,121 | 751,717 | 30,525,892 | - |
| TOTAL CRD PROGRAM: | | 2 | 290,416,889 | 290,416,889 | 792,078 | 237,728,020 | 7,925,754 | 217,051,469 | - |

NOTE 1: \$120.6M ADOPTED BUDGET DOES NOT INCLUDE O&M COSTS FOR FIRST YEAR DEMONSTRATION.
NOTE 2: ADOPTED BUDGET OF APPROXIMATELY \$369.2M IS THE \$331.8M BUDGET BOARD APPROVED IN DEC-10 PLUS PARTNER LOCAL MATCH AND OTHER NON-CRD FUNDS TO BE USED IN CRD PROGRAM LESS THE UNION DIVISION WHICH HAS BEEN REMOVED FROM CRD PROGRAM, BRINGING THE ADOPTED BUDGET TO APPROXIMATELY \$291M.
NOTE 3: FUNDED BY ISTE A EARMARK AND LOCAL MATCH
NOTE 4: METRO BOARD REPORT AUTHORIZED TO SPLIT EL MONTE TRANSIT CENTER AND PATSOURAS PLAZA CONNECTOR INTO TWO SEPERATE PROJECTS IN OCTOBER, 2011.
NOTE: EXPENDITURES ARE CUMULATIVE THROUGH OCTOBER 31, 2012. CP 202001 - UNION DIVISION, HAS BEEN REMOVED FROM THE CRD PROGRAM.

**CONGESTION REDUCTION DEMONSTRATION PROGRAM
STATUS OF FUNDS BY SOURCE AS OF OCTOBER 31, 2012**

| Funding Sources | (A) | (B) | (C) | (D) | (E) | | (F) | | (G) | |
|--|-----------------------|-------------------------|-------------------------|-----------------------|-----------------------|--------|-----------------------|--------|--------------------------|--------|
| | Original Budget | Total Funds Anticipated | Add'l Funds Anticipated | Total Funds Available | Commitments | | Expenditures | | Billed to Funding Source | |
| | | | | | \$ | % | \$ | % | \$ | % |
| Federal - Section 5309 ⁽¹⁾ | \$ 210,600,000 | \$ - | \$ - | \$ - | \$ - | | \$ - | | \$ - | |
| Federal - Section 5307 ⁽²⁾ | \$ - | \$ 83,516,000 | \$ - | \$ 83,296,999 | \$ 82,902,898 | 99.3% | \$ 81,912,075 | 98.1% | \$ 81,865,491 | 98.0% |
| Cities' match to Section 5307 ⁽²⁾ | \$ - | \$ 2,256,000 | \$ - | \$ 2,256,000 | \$ 2,257,793 | 100% | \$ 1,910,610 | 84.7% | \$ 1,910,610 | 84.7% |
| Federal - CMAQ (transferred from 5307) | \$ - | \$ 57,500,000 | \$ 18,900,000 | \$ 76,400,000 | \$ 68,117,787 | 89.2% | \$ 54,697,018 | 71.6% | \$ 44,839,518 | 58.7% |
| Federal - CMAQ | \$ - | \$ - | \$ 18,300,000 | \$ 17,900,001 | \$ 453,435 | 2.5% | \$ 375,088 | 2.0% | \$ 63,368 | 0.3% |
| Federal - Section 5309 State of Good Repair | \$ - | \$ - | \$ - | \$ - | \$ - | | \$ - | | \$ - | |
| Federal - Section 5308 Clean Fuel | \$ - | \$ - | \$ - | \$ - | \$ - | | \$ - | | \$ - | |
| Federal - Section 5309 Livability Initiative | \$ - | \$ - | \$ 9,679,000 | \$ 9,679,000 | \$ 505,819 | 5.2% | \$ 366,206 | 3.8% | \$ 341,681 | 3.5% |
| Other agencies' Federal Funds | \$ - | \$ - | \$ 9,732,591 | \$ 9,732,591 | \$ 4,447,495 | 45.7% | \$ 3,897,789 | 40.0% | \$ 3,897,681 | 40.0% |
| State - Prop 1B SLPP ⁽³⁾⁽⁵⁾⁽⁶⁾ | \$ - | \$ 20,000,000 | \$ - | \$ 20,000,000 | \$ 20,000,000 | 100.0% | \$ 20,000,000 | 100.0% | \$ 20,000,000 | 100.0% |
| State - Prop 1B Transit | \$ - | \$ - | \$ - | \$ - | \$ - | | \$ - | | \$ - | |
| Local - Measure R 35% ⁽⁵⁾ | \$ - | \$ 3,586,931 | \$ - | \$ 3,586,931 | \$ 3,586,931 | 100% | \$ 3,586,931 | 100.0% | \$ 3,586,931 | 100% |
| Local - Prop C 40% ⁽⁵⁾ | \$ - | \$ 13,025,069 | \$ - | \$ 13,025,069 | \$ 12,920,786 | 99.2% | \$ 12,732,164 | 97.8% | \$ 12,720,517 | 97.7% |
| Local - Prop C 25% ⁽⁵⁾ | \$ - | \$ 28,355,000 | \$ 3,123,158 | \$ 31,478,158 | \$ 32,460,541 | 103.1% | \$ 31,854,458 | 101.2% | \$ 29,713,726 | 94.4% |
| Local - Prop C 10% ⁽⁵⁾ | \$ - | \$ 1,120,000 | \$ - | \$ 1,120,001 | \$ 1,120,001 | 100.0% | \$ 1,120,001 | 100.0% | \$ 1,120,001 | 100.0% |
| Local- Capital Projects Repayment ⁽⁵⁾ | \$ - | \$ 1,241,000 | \$ - | \$ 1,241,000 | \$ - | 0.0% | \$ - | 0.0% | \$ - | 0.0% |
| Local - SAFE ⁽⁴⁾ | \$ - | \$ - | \$ 4,000,000 | \$ - | \$ - | 0.0% | \$ - | 0.0% | \$ - | 0.0% |
| Other Local funds ⁽⁷⁾ | \$ - | \$ - | \$ 6,815,629 | \$ - | \$ 3,073,357 | 45.1% | \$ 1,273,519 | 18.7% | \$ 1,002,185 | 14.7% |
| Other agencies' contribution | \$ - | \$ - | \$ 9,266,510 | \$ 8,821,510 | \$ 5,881,178 | 63.5% | \$ 3,325,609 | 35.9% | \$ 3,316,874 | 35.8% |
| TOTALS | \$ 210,600,000 | \$ 210,600,000 | \$ 79,816,887 | \$ 278,537,260 | \$ 237,728,021 | | \$ 217,051,469 | | \$ 204,378,584 | |

Notes:

⁽¹⁾ Section 5309 original award of \$210.6m was obligated in full for Metro's Preventive Maintenance activities. A combination of Section 5307 and local funds were allocated to the CRD Program to replace the Section 5309 funds.

⁽²⁾ Metro allocated 100% 5307 federal funds to the cities. In return, the cities provided match by reducing their allocated funds and exchanging with their own local funds. Balance of unallocated federal funds are available to the cities for other purposes.

⁽³⁾ SLPP = State and Local Partnership Program

⁽⁴⁾ SAFE = Service Authority for Freeway Emergencies

⁽⁵⁾ Represent a series of Metro' internal funds exchanges between projects to swap Section 5307 funds for local funds.

⁽⁶⁾ We are working with Caltrans to develop a process to bill the SLPP grant. Therefore, the reimbursement of our expenditures has been slowed. We expect to catch up in the next few months.

⁽⁷⁾ Other Local Funds will be identified in the Metro Adopted Fiscal Year Budget of the year the expense is budgeted.

**CONGESTION REDUCTION DEMONSTRATION PROGRAM
STATUS OF FUNDS BY PROJECT AS OF OCTOBER 31, 2012**

| PROJECT | FUNDING SOURCES (Funds Anticipated) | | | | | | | | | | | Total Local Funds | Non CRD Funds | Total |
|--|-------------------------------------|------------------------|-------------------------------|-----------------------------------|-----------------------|--------------------|--------------------|--------------------|------------------------------------|----------------------|-------------------|-------------------|---------------|----------------|
| | Federal - CMAQ | | | | Local - Measure R 35% | Local - Prop C 40% | Local - Prop C 25% | Local - Prop C 10% | Local - Capital Projects Repayment | | | | | |
| | Federal - Section 5309 | Federal - Section 5307 | Cities' Match to Section 5307 | Federal - (Transferred from 5307) | | | | | | State - Prop 1B SLPP | Total Local Funds | | | |
| A | B | C | D | E | F | G | H | I | J | K | L | M | N | |
| Metro | | | | | | | | | | | | | | |
| PROCUREMENT 41 BUSES | \$ - | \$ 22,588,132 | \$ - | \$ - | \$ 3,586,931 | \$ 1,039,553 | \$ - | \$ - | \$ - | \$ - | \$ 4,626,485 | \$ - | \$ - | \$ 27,214,617 |
| DIVISION 13 | \$ - | \$ - | \$ - | \$ - | \$ - | \$ - | \$ - | \$ - | \$ - | \$ - | \$ - | \$ - | \$ - | \$ - |
| EL MONTE TRANSIT CENTER | \$ - | \$ 42,886,636 | \$ - | \$ - | \$ - | \$ 10,851,736 | \$ - | \$ - | \$ - | \$ - | \$ 10,851,736 | \$ 6,367,629 | \$ - | \$ 16,803,000 |
| PATSAOURAS PLAZA IMPROVEMENTS | \$ - | \$ 1,200,000 | \$ - | \$ - | \$ - | \$ 300,000 | \$ - | \$ - | \$ - | \$ - | \$ 300,000 | \$ 15,303,000 | \$ - | \$ 16,803,000 |
| HARBOR TRANSITWAY IMPROVEMENTS | \$ - | \$ 3,080,000 | \$ - | \$ - | \$ - | \$ 770,000 | \$ - | \$ - | \$ - | \$ - | \$ 770,000 | \$ - | \$ - | \$ 3,850,000 |
| BIKE LOCKERS (El Monte, Artesia) | \$ - | \$ 37,232 | \$ - | \$ - | \$ - | \$ 63,780 | \$ - | \$ - | \$ - | \$ - | \$ 63,780 | \$ - | \$ - | \$ 101,012 |
| TOLL TECHNOLOGY & ROADWAY IMPROVEMENTS (Express Lanes) | \$ - | \$ - | \$ - | \$ 41,500,000 | \$ 20,000,000 | \$ - | \$ - | \$ 28,355,000 | \$ - | \$ 1,241,000 | \$ 29,596,000 | \$ 29,539,000 | \$ - | \$ 120,635,000 |
| Metro Total | \$ - | \$ 69,792,000 | \$ - | \$ 41,500,000 | \$ 20,000,000 | \$ 3,586,931 | \$ 13,025,069 | \$ 28,355,000 | \$ - | \$ 1,241,000 | \$ 46,208,000 | \$ 51,209,628 | \$ - | \$ 228,709,628 |
| Other Agencies/Other Metro Costs | | | | | | | | | | | | | | |
| METROLINK - Pomona Station (Including Parking) | \$ - | \$ 4,480,000 | \$ - | \$ - | \$ - | \$ - | \$ - | \$ - | \$ 1,120,000 | \$ - | \$ 1,120,000 | \$ 5,215,476 | \$ - | \$ 10,815,476 |
| METRO - Operating Subsidy for Demo (Highway) | \$ - | \$ - | \$ - | \$ - | \$ - | \$ - | \$ - | \$ - | \$ - | \$ - | \$ - | \$ 2,915,338 | \$ - | \$ 2,915,338 |
| METRO - Operating Subsidy for Demo (Transit) | \$ - | \$ - | \$ - | \$ - | \$ - | \$ - | \$ - | \$ - | \$ - | \$ - | \$ - | \$ 3,801,124 | \$ - | \$ 3,801,124 |
| METRO - I-110 Adams Flyover (PSR) | \$ - | \$ - | \$ - | \$ - | \$ - | \$ - | \$ - | \$ - | \$ - | \$ - | \$ - | \$ 7,840,790 | \$ - | \$ 7,840,790 |
| FOOTHILL TRANSIT - Procure 12 Buses | \$ - | \$ 6,008,000 | \$ 1,492,000 | \$ - | \$ - | \$ - | \$ - | \$ - | \$ - | \$ - | \$ - | \$ - | \$ - | \$ 7,500,000 |
| FOOTHILL TRANSIT - Operating Subsidy For Demo | \$ - | \$ - | \$ - | \$ - | \$ - | \$ - | \$ - | \$ - | \$ - | \$ - | \$ - | \$ 3,200,000 | \$ - | \$ 3,200,000 |
| TORRANCE Transit - Procure 4 Buses | \$ - | \$ 2,276,000 | \$ 524,000 | \$ - | \$ - | \$ - | \$ - | \$ - | \$ - | \$ - | \$ - | \$ - | \$ - | \$ 2,800,000 |
| TORRANCE Transit - Operating Subsidy For Demo | \$ - | \$ - | \$ - | \$ - | \$ - | \$ - | \$ - | \$ - | \$ - | \$ - | \$ - | \$ 1,200,000 | \$ - | \$ 1,200,000 |
| GARDENA Transit - Procure 4 Buses | \$ - | \$ 960,000 | \$ 240,000 | \$ - | \$ - | \$ - | \$ - | \$ - | \$ - | \$ - | \$ - | \$ - | \$ - | \$ 1,200,000 |
| GARDENA Transit - Operating Subsidy For Demo | \$ - | \$ - | \$ - | \$ - | \$ - | \$ - | \$ - | \$ - | \$ - | \$ - | \$ - | \$ 677,736 | \$ - | \$ 677,736 |
| LADOT - Transit Signal Priority | \$ - | \$ - | \$ - | \$ 1,000,000 | \$ - | \$ - | \$ - | \$ - | \$ - | \$ - | \$ - | \$ - | \$ (143,204) | \$ 856,796 |
| METRO - Vanpools | \$ - | \$ - | \$ - | \$ - | \$ - | \$ - | \$ - | \$ - | \$ - | \$ - | \$ - | \$ 400,000 | \$ - | \$ 400,000 |
| LADOT - Express Park | \$ - | \$ - | \$ - | \$ 15,000,000 | \$ - | \$ - | \$ - | \$ - | \$ - | \$ - | \$ - | \$ 3,500,000 | \$ - | \$ 18,500,000 |
| Other Agencies/Other Metro Costs Total | \$ - | \$ 13,724,000 | \$ 2,256,000 | \$ 16,000,000 | \$ - | \$ - | \$ - | \$ - | \$ 1,120,000 | \$ - | \$ 1,120,000 | \$ 28,607,260 | \$ - | \$ 61,707,260 |
| TOTAL FUNDS ANTICIPATED | \$ - | \$ 83,516,000 | \$ 2,256,000 | \$ 57,500,000 | \$ 20,000,000 | \$ 3,586,931 | \$ 13,025,069 | \$ 28,355,000 | \$ 1,120,000 | \$ 1,241,000 | \$ 47,328,000 | \$ 79,816,888 | \$ - | \$ 290,416,888 |

Note: columns A+B+C+D+E sum up to \$210,600,000. The Non-CRD funds are beyond the \$210.6 million.
Division 13 was removed from the LA CRD program.

| PROJECT | FUNDING SOURCES (Expenditures) | | | | | | | | | | | Total Local Funds | Non CRD Funds | Total |
|--|--------------------------------|------------------------|-------------------------------|-----------------------------------|-----------------------|--------------------|--------------------|--------------------|------------------------------------|----------------------|-------------------|-------------------|---------------|----------------|
| | Federal - CMAQ | | | | Local - Measure R 35% | Local - Prop C 40% | Local - Prop C 25% | Local - Prop C 10% | Local - Capital Projects Repayment | | | | | |
| | Federal - Section 5309 | Federal - Section 5307 | Cities' Match to Section 5307 | Federal - (Transferred from 5307) | | | | | | State - Prop 1B SLPP | Total Local Funds | | | |
| A | B | C | D | E | F | G | H | I | J | K | L | M | N | |
| Available Sources | \$ - | \$ 83,516,000 | \$ 2,256,000 | \$ 57,500,000 | \$ 20,000,000 | \$ 3,586,931 | \$ 13,025,069 | \$ 28,355,000 | \$ 1,120,000 | \$ 1,241,000 | \$ 47,328,000 | \$ 79,816,888 | \$ - | \$ 290,416,888 |
| Metro | | | | | | | | | | | | | | |
| PROCUREMENT 41 BUSES | \$ - | \$ 22,588,132 | \$ - | \$ - | \$ - | \$ 3,586,931 | \$ 1,039,553 | \$ - | \$ - | \$ - | \$ 4,626,485 | \$ - | \$ - | \$ 27,214,617 |
| DIVISION 13 | \$ - | \$ - | \$ - | \$ - | \$ - | \$ - | \$ - | \$ - | \$ - | \$ - | \$ - | \$ - | \$ - | \$ - |
| EL MONTE TRANSIT CENTER | \$ - | \$ 42,886,636 | \$ - | \$ - | \$ - | \$ - | \$ 10,851,736 | \$ - | \$ - | \$ - | \$ 10,851,736 | \$ 1,056,783 | \$ - | \$ 54,795,155 |
| PATSAOURAS PLAZA IMPROVEMENTS | \$ - | \$ 1,049,234 | \$ - | \$ - | \$ - | \$ - | \$ 262,309 | \$ - | \$ - | \$ - | \$ 262,309 | \$ 919,273 | \$ - | \$ 2,230,816 |
| HARBOR TRANSITWAY IMPROVEMENTS | \$ - | \$ 2,059,142 | \$ - | \$ - | \$ - | \$ - | \$ 514,786 | \$ - | \$ - | \$ - | \$ 514,786 | \$ - | \$ - | \$ 2,573,928 |
| BIKE LOCKERS (El Monte, Artesia) | \$ - | \$ 37,232 | \$ - | \$ - | \$ - | \$ - | \$ 63,780 | \$ - | \$ - | \$ - | \$ 63,780 | \$ - | \$ - | \$ 101,012 |
| TOLL TECHNOLOGY & ROADWAY IMPROVEMENTS (Express Lanes) | \$ - | \$ - | \$ - | \$ 47,865,049 | \$ 20,000,000 | \$ - | \$ - | \$ 31,745,000 | \$ - | \$ - | \$ 31,745,000 | \$ - | \$ - | \$ 99,610,049 |
| Metro Total | \$ - | \$ 68,620,377 | \$ - | \$ 47,865,049 | \$ 20,000,000 | \$ 3,586,931 | \$ 12,732,164 | \$ 31,745,000 | \$ - | \$ - | \$ 48,064,095 | \$ 1,976,056 | \$ - | \$ 186,525,577 |
| Other Agencies/Other Metro Costs | | | | | | | | | | | | | | |
| METROLINK - Pomona Station (Including Parking) | \$ - | \$ 4,479,999 | \$ - | \$ - | \$ - | \$ - | \$ - | \$ - | \$ 1,120,001 | \$ - | \$ 1,120,001 | \$ 5,215,476 | \$ - | \$ 10,815,476 |
| METRO - Operating Subsidy for Demo (Highway) | \$ - | \$ - | \$ - | \$ - | \$ - | \$ - | \$ - | \$ - | \$ - | \$ - | \$ - | \$ - | \$ - | \$ - |
| METRO - Operating Subsidy for Demo (Transit) | \$ - | \$ - | \$ - | \$ - | \$ - | \$ - | \$ - | \$ - | \$ - | \$ - | \$ - | \$ 337,720 | \$ - | \$ 337,720 |
| METRO - I-110 Adams Flyover (PSR) | \$ - | \$ - | \$ - | \$ - | \$ - | \$ - | \$ - | \$ - | \$ - | \$ - | \$ - | \$ 764,024 | \$ - | \$ 764,024 |
| FOOTHILL TRANSIT - Procure 12 Buses | \$ - | \$ 5,812,032 | \$ 1,493,793 | \$ - | \$ - | \$ - | \$ - | \$ - | \$ - | \$ - | \$ - | \$ - | \$ - | \$ 7,305,825 |
| FOOTHILL TRANSIT - Operating Subsidy For Demo | \$ - | \$ - | \$ - | \$ - | \$ - | \$ - | \$ - | \$ - | \$ - | \$ - | \$ - | \$ - | \$ - | \$ - |
| TORRANCE Transit - Procure 4 Buses | \$ - | \$ 2,096,000 | \$ 190,900 | \$ - | \$ - | \$ - | \$ - | \$ - | \$ - | \$ - | \$ - | \$ - | \$ - | \$ 2,286,900 |
| TORRANCE Transit - Operating Subsidy For Demo | \$ - | \$ - | \$ - | \$ - | \$ - | \$ - | \$ - | \$ - | \$ - | \$ - | \$ - | \$ - | \$ - | \$ - |
| GARDENA Transit - Procure 4 Buses | \$ - | \$ 903,667 | \$ 225,917 | \$ - | \$ - | \$ - | \$ - | \$ - | \$ - | \$ - | \$ - | \$ - | \$ - | \$ 1,129,584 |
| GARDENA Transit - Operating Subsidy For Demo | \$ - | \$ - | \$ - | \$ - | \$ - | \$ - | \$ - | \$ - | \$ - | \$ - | \$ - | \$ - | \$ - | \$ - |
| LADOT - Transit Signal Priority | \$ - | \$ - | \$ - | \$ 554,514 | \$ - | \$ - | \$ - | \$ - | \$ - | \$ - | \$ - | \$ 25,912 | \$ - | \$ 580,426 |
| METRO - Vanpools | \$ - | \$ - | \$ - | \$ - | \$ - | \$ - | \$ - | \$ - | \$ - | \$ - | \$ - | \$ 37,368 | \$ - | \$ 37,368 |
| LADOT - Express Park | \$ - | \$ - | \$ - | \$ 6,277,455 | \$ - | \$ - | \$ - | \$ - | \$ - | \$ - | \$ - | \$ 991,114 | \$ - | \$ 7,268,569 |
| Other Agencies/Other Metro Costs Total | \$ - | \$ 13,291,698 | \$ 1,910,610 | \$ 6,831,369 | \$ - | \$ - | \$ - | \$ - | \$ 1,120,001 | \$ - | \$ 1,120,001 | \$ 7,371,614 | \$ - | \$ 30,525,892 |
| TOTAL EXPENDITURES | \$ - | \$ 81,912,075 | \$ 1,910,610 | \$ 54,697,018 | \$ 20,000,000 | \$ 3,586,931 | \$ 12,732,164 | \$ 31,745,000 | \$ 1,120,001 | \$ - | \$ 49,184,096 | \$ 9,347,669 | \$ - | \$ 217,051,469 |
| Underbudget(overbudget) | \$ - | \$ 1,603,925 | \$ 345,390 | \$ 2,802,982 | \$ - | \$ - | \$ 292,905 | \$ (3,390,000) | \$ (1) | \$ 1,241,000 | \$ (1,856,096) | \$ 70,469,219 | \$ - | \$ 73,365,420 |

Note: The Express Lanes exceeded the PC25% funds available by \$3.4 million. Items need to be reconciled.

PROGRAM COST ANALYSIS

Adopted Budget

The Adopted Budget reflects removal of Division 13 budget resulting in an adjusted CRD Program Budget of \$291 million.

Current Forecast

The Current Forecast of approximately \$291 million remains the same as the Adopted Budget.

Commitments

The Commitments increased by \$792K this period primarily for Metro staff charges, and purchase orders for materials and services for ExpressLanes, El Monte, Harbor Transitway, Patsaouras Plaza and Metro Operating Subsidies for Metro Vanpools Demonstration Project.

Expenditures

Expenditures increased by \$7.9M this period primarily for expenditures for El Monte, Harbor Transitway and ExpressLanes, LADOT's ExpressPark Project, design and construction management consulting, and Metro and Caltrans staff labor charges. The \$217.1 million in Project Expenditures to date represent 74.6% of the program budget of \$291 million.

STATUS OF FUNDS ANTICIPATED

FEDERAL CMAQ:

Transit Signal Priority (LADOT): \$856,796 of CMAQ funds are available for drawdown.
Express Park (LADOT): \$15,000,000 of CMAQ funds are available for drawdown.
ExpressLanes (Metro): \$25.762M of CMAQ funds are available for drawdown. A second request for \$41.238M in CMAQ funding was approved April 25, 2011. A total of \$67 million in CMAQ is available for drawdown. A third request of \$2.498 million for the operating funds was approved in May 2012.

FEDERAL FTA 5307:

Metro Bus Procurement: An FTA grant application of \$23.572M (CA-90-Y716) was awarded on July 2, 2009. Funds are available for drawdown.

Metro Bus Operations – In June a request was submitted to FHWA to transfer \$3,801,124 in CMAQ funds to FTA (CA-95-X099).

El Monte Transit Center: An FTA grant application of \$2.160M (CA-90-Y716) was awarded on July 2, 2009. Funds are available for drawdown.

Patsaouras Connector: An FTA grant application of \$1.2M (CA-90-Y716) was awarded on July 2, 2009. Funds are available for drawdown.

Harbor Transitway Improvements: An FTA grant application of \$2.0M (CA-90-Y716) was awarded on July 2, 2009. Funds are available for drawdown.

Bus Procurement and Operations (Other Agencies):

Foothill Transit: A grant application for \$7.5M (CA-90-Y797) has been approved and funds are available for drawdown.

Torrance Transit: A grant application for \$2.6M (CA-90-Y715) has been approved and funds are available for drawdown.

Gardena Transit: A grant application for \$960K (CA-90-Y707) has been approved and funds are available for drawdown.

Metrolink: A grant application for \$5.26M (CA-90-Y777) was approved in September 2010 and funds are available for drawdown. A separate grant for \$339K (CA-90-Y840) has been approved and funds are available for drawdown.

Metro Bus Operations: An FTA grant application of \$3.8M (CA-95-X099) for Metro Silver Line operations was submitted to FTA in October 2011.

FEDERAL FTA 5309:

Patsaouras Connector: An FTA grant award was announced in the amount of \$9.7 million on October 17, 2011.

STATE SLPP:

ExpressLanes (Metro): The CTC rather than approving a \$20M allocation in SLPP Funds approved a \$20M Letter of No Prejudice (LONP) at the September 2010 CTC Meeting. Per the Metro Board approval in August 2010, the use of Local Funds (PC25)

STATUS OF FUNDS ANTICIPATED (Contd)

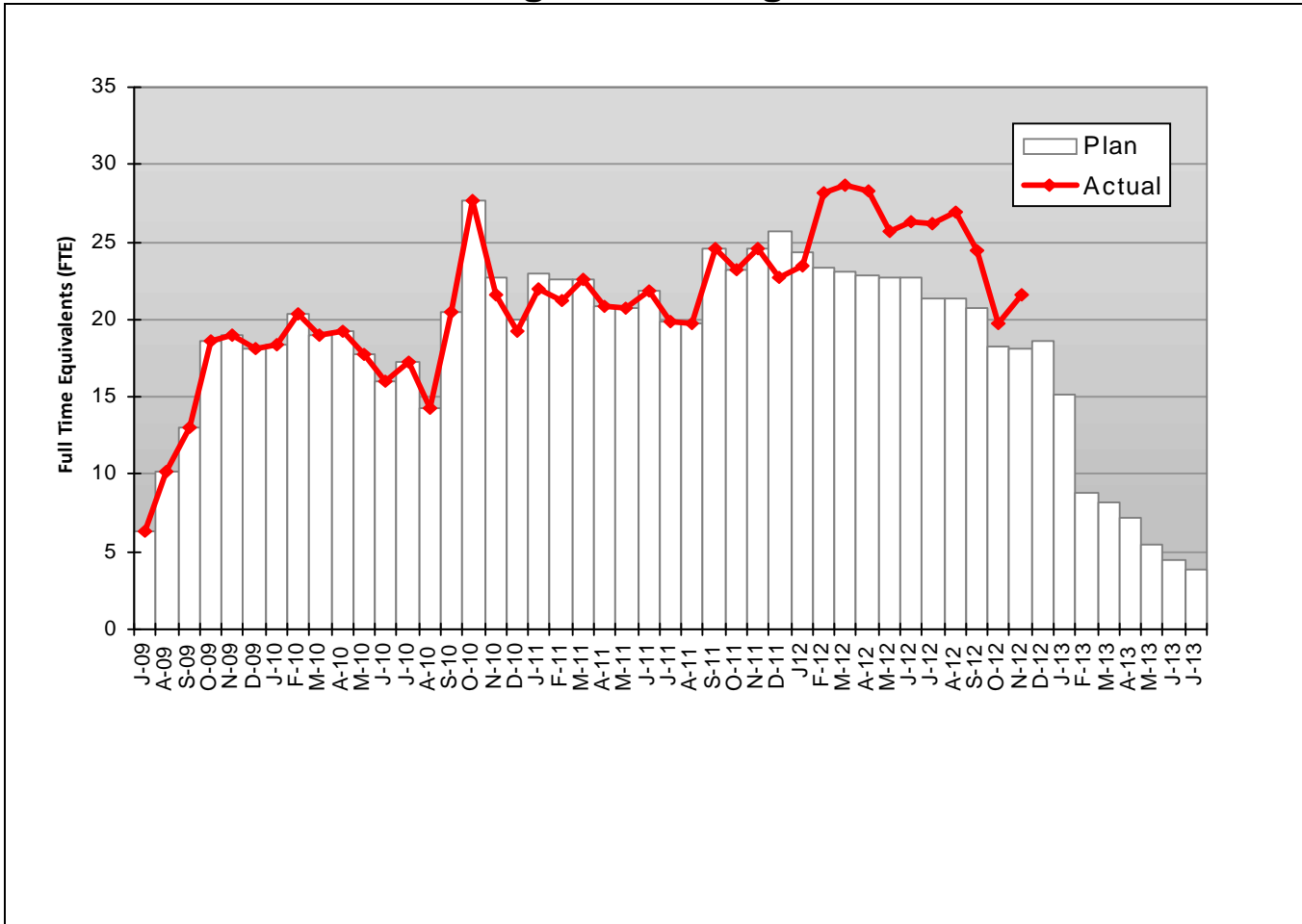
will be the fund source for the LONP. At its January 2011 Meeting, the CTC approved the \$20 million in SLPP funds so there is no further need for the LONP. The State will reimburse Metro for any funds that were expended prior to the allocation of the funds in January 2011.

ADAMS FLYOVER PSR ISTEAE FUNDS:

\$4,104,000 of ISTEAE funds was approved in December 2010. A second request for \$2,127,000 was approved by FHWA in February 2011. A third request for \$41,632 was approved by FHWA in March 2011. The full amount of \$6,272,632 in ISTEAE funds have been approved and are available for drawdown.

STAFFING STATUS

Total Program Staffing - FTEs



Total Program Staffing

The recent increase in the Actual Program Staffing Curve is a direct result of the Project's request to provide a Supervised Safe Work Zone in the areas of work that are directly adjacent to the Green Line Alignment and the I-110 Harbor Freeway interface with the Century freeway work zones.

REAL ESTATE STATUS

- The HOT Lanes Project will be built entirely within existing Caltrans ROW, no additional project ROW will be required.
- No additional ROW is required for any of the remaining projects.

REAL ESTATE STATUS TO DATE

| Number of Parcels | Required | In Appraisal Process | Appraisal Process Complete | Offer Made | Closing | Acquired | Turned Over to Contractor |
|----------------------|----------|-------------------------|----------------------------------|------------|---------|----------|------------------------------|
| This Period | 0 | 0 | 0 | 0 | 0 | 0 | 0 |
| Last Period | 0 | 0 | 0 | 0 | 0 | 0 | 0 |
| | | | | | | | |

ENVIRONMENTAL STATUS

There are seven (7) projects that require environmental approval. NEPA/CEQA approval has been received for all projects.

- I-10 and I-110 HOV Conversion to HOT Lanes – EIR/EA. NEPA approved May 2010. CEQA approved June 2010.
- Harbor Transitway Improvements – Listed Categorical Exclusion/Exemption, no approval required.
- El Monte Transit Center Improvements – Categorical Exclusion (NEPA)/Categorical Exemption (CEQA). Submitted September 2009. NEPA approved November 2009. CEQA approved December 2009.
- Patsaouras Plaza Connector – Categorical Exclusion (NEPA)/Categorical Exemption (CEQA). NEPA and CEQA approvals are pending. NEPA and CEQA approvals were received February 2012.
- Transit Signal Priority – Categorical Exclusion (NEPA)/Categorical Exemption (CEQA). NEPA and CEQA approved September 2009.
- LA ExpressPark – Categorical Exclusion (NEPA)/Categorical Exemption (CEQA). NEPA and CEQA approved October 2009.
- Pomona Metrolink Station Improvements – Categorical Exclusion (NEPA)/Statutory Exemption (CEQA). NEPA and CEQA submitted November 2007. CE approved July 2010.

COMMUNITY/MEDIA RELATIONS STATUS

During the month of November 2012 outreach briefings were provided to staff of federal, state and local elected officials at the Metro Quarterly Legislative Briefing, and stakeholders at the Metro ExpressLanes Live Web Chat, Metro ExpressLanes Business Roundtable. Metro South Bay Service Council, and Los Angeles Economic Development Corporation Infrastructure Committee.

The total of 443 program briefings/events were held between April 25, 2008 and November 30, 2012 as follows:

- *Program stakeholder briefings, technical advisory group meetings, and live web chats: 257*
- *Construction mitigation briefings: 4*
- *Legislative briefings: 77*
- *Corridor Advisory Group meetings: 16*
- *Public hearings: 8*
- *Community workshops: 7*
- *Information tables: 22*
- *Metro ExpressLanes Mobile Van (MEL) events: 52*

A total of 34 construction notices were distributed to the public between June 7, 2011 and November 30, 2012.

As of November 30, 2012, the Metro ExpressLanes stakeholder database included 2,750 contacts.

During the month of November 2012, 106 media stories mentioned Metro ExpressLanes Program.

QUALITY ASSURANCE STATUS

ExpressLanes Program

- Attended coordination and ITS Detection Systems Meetings.
- Reviewed Change Technical Evaluations for Change Notice 21.

SAFETY STATUS

ExpressLanes

- Participated in weekly Progress Meetings with Construction Manager and Atkinson's Management staff to discuss safety/security issues and construction schedule.
- Monitored daily and night construction activities to ensure compliance with contract specifications.
- Atkinson and their subcontractors reported 9,148 work hours and zero incidents for the month of November 2012. Total project to date work hours are 230,975 and three recordable incidents. The Recordable Incident Rate is 2.5 and the National Average is 3.8.

El Monte Transit Center

- Participated in weekly progress meeting with Construction Manager to discuss punchlist work and safety/security issues.
- Monitored daily construction activities to ensure compliance with contract specifications.
- KPRS and their subcontractors reported zero incidents and 1,000 work hours for the month of November 2012. Total project to date work hours are 265,847 and the incident rate is 1.5. The National Average Rate is 3.8.

**THIRD PARTY AGREEMENT STATUS
THIRD PARTY ADMINISTRATION AGREEMENTS**

| Agency | Agreement Type | Purpose | Special Provisions | Funding Amount | Type of Funds | Completion Status |
|--------------------------|--|--|--|----------------|---------------|--|
| Caltrans | Cooperative/ Funding Agreement | Outline roles; funding for environmental document and roadway improvements; Funding for Design/Construction Oversight and balance of Environmental Document | Includes Caltrans Review/ Approval Deadlines | \$6.9M | Capital | Executed |
| Caltrans | Encroachment Permit | | | | Capital | Completed |
| Expo | MOU | Overcrossing at Adams to Exposition | | | Capital | Completed |
| LADWP | Electrical Service Agreement | Drops by PB/IBI Application Only | | | Capital | Completed |
| So Cal Edison | Electrical Service Agreement | Drops by PB/IBI Application Only | | | Capital | Completed |
| City of Los Angeles | Maintenance Agreement | Adams Blvd. Pedestrian Bridge | | | | Draft agreement pending. |
| City of Los Angeles | Amendment to Master Cooperative Agreement | Design Review for Adams Blvd. and POC | | TBD | Capital | City signed the letter. Working with the City in preparing SPP's. |
| County of Los Angeles | Amendment to Master Cooperative Agreement | Design Review | | TBD | Capital | Executed. |
| SCRRRA | MOU | Design Review and Support Services Agreement | | TBD | Capital | Executed. |
| PUC | Crossing Application Approval | Adams Blvd. Crossing Modifications Across the Expo Line | | | Capital | Executed. |

AGENCY NOISE AGREEMENTS

| Agency | Agreement Type | Purpose | Special Provisions | Funding Amount | Type of Funds | Completion Status |
|-----------------------|--------------------------------|------------------------------------|------------------------------|-----------------------|----------------------|--|
| City of Los Angeles | Nighttime and Weekend Variance | Includes POC Bridge at Adams Blvd. | | | Capital | Noise variance was granted by the Police Commission. |
| City of Monterey Park | | Freeway Median Area | City Variance Not Required | | | N/A |
| City of Rosemead | | Freeway Median Area | City Variance Not Required | | | N/A |
| City of El Monte | | Freeway Median Area | City Variance Not Required | | | N/A |
| City of Baldwin Park | | N/A | No Work in this Jurisdiction | | | N/A |

INTEROPERABILITY AGREEMENTS

| Agency | Agreement Type | Purpose | Special Provisions | Funding Amount | Type of Funds | Completion Status |
|--|-----------------------|--------------------------------------|---------------------------|-----------------------|----------------------|---------------------------|
| Bay Area Toll Authority | User Fee Agreement | User Fee (Title 21 Interoperability) | | \$0 | Operating | Executed |
| Orange County Transportation Authority | User Fee Agreement | User Fee (Title 21 Interoperability) | | \$0 | Operating | With OCTA for Signature |
| San Diego Association of Governments | User Fee Agreement | User Fee (Title 21 Interoperability) | | \$0 | Operating | With SANDAG for Signature |
| TCA | User Fee Agreement | User Fee (Title 21 Interoperability) | | \$0 | Operating | Executed 6/8/10 |

OPERATIONS AND MAINTENANCE AGREEMENTS

| Agency | Agreement Type | Purpose | Special Provisions | Funding Amount | Type of Funds | Completion Status |
|---------------------------------|--------------------------------|--|-----------------------------|-----------------------------------|---------------|--------------------------------------|
| Caltrans | Cooperative Agreement | Outline roles for operations and maintenance of HOT Lanes | | \$0 | Operating | Executed |
| Caltrans | Joint Use Agreement | Advisory Committee & Sec. 166 Definitions | | | Operating | In Process |
| CHP | MOU | Dedicated Enforcement: 3 officers and 2 officers | Data Collection Requirement | \$1,994,284 CMAQ or Toll Revenues | Operating | With CHP for Signature |
| DMV | Requestor Account | Allows access to DMV records | None | \$250 | Operating | Executed 2/9/12 |
| USDOT | Tolling Agreement | Comply w/USC 166 | | \$0 | Operating | N/A |
| TCA | License Agreement | FasTrak Logo License | None | \$1 | Operating | Executed 6/8/10 |
| MTA | FSP Agreement | Amend FSP Agreement for dedicated trucks | | | Operating | In Process |
| MTA | Collection Agency Agreement | | | | Operating | Not Started |
| MTA | Transit Court Hearing Officers | Transit Court to provide Hearing Officers for Administrative Review Hearings | None | Actual Costs Toll Revenues | Operating | With Transit Court for final version |
| Foothill Transit | MOU | Non Revenue Usage Agreement | | \$0 | Operating | In Process |
| Torrance Transit | MOU | Non Revenue Usage Agreement | | \$0 | Operating | In Process |
| Gardena Municipal Bus Lines | MOU | Non Revenue Usage Agreement | | \$0 | Operating | In Process |
| Metro Bus Operations | MOU | Non Revenue Usage Agreement | | \$0 | Operating | In Process |
| OCTA | MOU | Non Revenue Usage Agreement | | \$0 | Operating | In Process |
| LADOT Commuter Express | MOU | Non Revenue Usage Agreement | | \$0 | Operating | In Process |
| USC | MOU | Non Revenue Usage Agreement | | \$0 | Operating | In Process |
| LAX Flyaway | MOU | Non Revenue Usage Agreement | | \$0 | Operating | In Process |
| LA County Sheriffs (Buses Only) | MOU | Non Revenue Usage Agreement | | \$0 | Operating | In Process |
| CHP | MOU | Non Revenue Usage Agreement | | \$0 | Operating | In Process |

OPERATIONS AND MAINTENANCE AGREEMENTS

| Agency | Agreement Type | Purpose | Special Provisions | Funding Amount | Type of Funds | Completion Status |
|---------------|-----------------------|---|---------------------------|-----------------------|----------------------|--------------------------|
| MTA | Welcome Package | Materials needed for new Customer Welcome Package | | | Operating | Completed |
| MTA | Retail Welcome Kit | Materials needed for Retail Transponder Packaging | | | Operating | Completed |

TRANSIT IMPROVEMENT AGREEMENTS

| Agency | Agreement Type | Purpose | Special Provisions | Funding Amount | Type of Funds | Completion Status |
|---------------|------------------------------|---------------------------|---------------------------|-----------------------|----------------------|--------------------------|
| Caltrans | Cooperative Agreement | Patsaouras Plaza | | TBD | Capital | Executed |
| Caltrans | MOU | El Monte Transit Center | | N/A | Capital | Executed |
| Caltrans | MOU | Harbor Transitway | | N/A | Capital | Executed April 2010 |
| LADWP | Electrical Service Agreement | Drops by Application Only | | | Capital | Completed |
| So Cal Edison | Electrical Service Agreement | Drops by Application Only | | | Capital | Completed |

FUNDING AGREEMENTS

| Agency | Agreement Type | Purpose | Special Provisions | Funding Amount | Type of Funds | Completion Status |
|---|-----------------------|--|---------------------------------|--|-----------------------|----------------------------|
| Caltrans | Cooperative Agreement | Initial Study for Environmental Document | | \$200,000 Prop C | Capital | Executed June 2009 |
| Caltrans | Funding Agreement | I-110 Flyover PSR and PA/ED | | \$7,395,790 | Capital | Executed 4/27/11 |
| Foothill Transit Agency | LOA | Purchase 10 42' buses and funding for 1 year operating subsidy | Data Collection Requirement | \$7,461,000 FTA 5307 \$3,200,000 CMAQ | Capital and Operating | Executed August 2009 |
| Foothill Transit Agency | LOA – Amendment #1 | Purchase of 2 additional buses | No Additional Operating Subsidy | \$7,461,000 FTA 5307 \$3,200,000 CMAQ | Capital and Operating | Executed November 2009 |
| Foothill Transit Agency | LOA – Amendment #2 | Revise to include specifics about Data Collection | | \$7,461,000 FTA 5307 \$3,200,000 CMAQ | Capital and Operating | Executed November 2011 |
| Gardena Municipal Bus Lines | LOA | Purchase 2 gas/hybrid buses and funding for 1 year operating subsidy | Data Collection Requirement | \$1,200,000 FTA 5307 \$580,187 CMAQ | Capital and Operating | Executed September 2009 |
| Gardena Municipal Bus Lines | LOA – Amendment #1 | Revise to include specifics about Data Collection | | \$1,200,000 FTA 5307 \$580,187 CMAQ | Capital and Operating | Executed January 2012 |
| Torrance Transit | LOA | Purchase 4 buses and funding for 1 year operating subsidy | Data Collection Requirement | \$2,800,000 FTA 5307 \$1,160,373 CMAQ | Capital and Operating | Executed July 2009 |
| Torrance Transit | LOA – Amendment #1 | Revise to include specifics about Data Collection | | \$2,800,000 FTA 5307 \$1,160,373 CMAQ | Capital and Operating | Executed January 2012 |
| Los Angeles Department of Transportation | LOA | Intelligent Parking Management Program | Data Collection Requirement | \$15,000,000 CMAQ | Capital | Executed August 2009 |
| Los Angeles Department of Transportation | LOA | Install Transit Signal Priority in Downtown Los Angeles | Data Collection Requirement | \$1,000,000 CMAQ | Capital | Executed August 2009 |
| Los Angeles Department of Transportation | LOA – Amendment #1 | Revise to include specifics about Data Collection | | \$15,000,000 CMAQ | Capital | In Progress |
| Los Angeles Department of Transportation | LOA – Amendment #1 | Revise to include specifics about Data Collection and add a camera at Alameda | | \$900,884 | Capital | Executed 7/17/12 |
| Southern California Regional Rail Authority | LOA | Construct 100 parking spaces and expand platform at the Metrolink Pomona Station | Data Collection Requirement | \$4,480,000 FTA 5307 \$1,120,000 Prop C 10% | Capital | Executed August 2009 |
| Southern California Regional Rail Authority | LOA – Amendment #1 | Revise to include specifics about Data Collection | | \$4,480,000 FTA 5307 \$1,120,000 Prop C 10% | Capital | Executed November 2011 |

FUNDING AGREEMENTS

| Agency | Agreement Type | Purpose | Special Provisions | Funding Amount | Type of Funds | Completion Status |
|--------|--------------------|--|--|--------------------------|---------------|--------------------------------|
| USDOT | MOU | Award CRD funding for I-10 and SR-210 Demonstration Project | Tolling Authority Required by 10/15/08; Revenue Operations by 12/31/10 | \$213.6 Million FTA 5309 | Capital | Executed April 2008 |
| USDOT | MOU – Amendment #1 | Shift from SR-210 to I-110 and I-10 Demonstration Project | Tolling Authority Required by 10/15/08; Revenue Operations by 12/31/10 | \$210.6 Million FTA 5309 | Capital | Executed July 2008 |
| USDOT | MOU – Amendment #2 | Administrative Amendment/ Reconcile MOU with Tolling Authority Legislation | Capacity Improvements by 12/31/08; Revenue Operations by 12/31/10 | \$210.6 Million FTA 5309 | Capital | Executed November 2008 |
| USDOT | Letter Agreement | Concurrence for Schedule Extension | | | Capital | Concurred February 2012 |

DBOM CONTRACTOR RESPONSIBILITY

| Agency | Agreement Type | Purpose | Special Provisions | Completion Status |
|--------|--|---|---------------------------|-------------------|
| FCC | License Agreement | Needed for Operation of Fastrak Transponders? | DBOM Contractor to secure | COMPLETE |
| TBD | Maintenance Agreement | Toll Electrical and Equipment Maintenance | DBOM Contractor to secure | |
| TBD | Facility Lease | Needed for Customer Service Center | DBOM Contractor to secure | COMPLETE |
| TBD | Credit Card/Bank Processing Agreements | Needed for Customer Service Center | DBOM Contractor to secure | COMPLETE |
| TBD | Website Hosting Agreement | Needed for Customer Service Center | DBOM Contractor to secure | COMPLETE |
| TBD | Phone/ Internet Service Agreement | Needed for Customer Service Center | DBOM Contractor to secure | COMPLETE |
| TBD | Mail Processing Agreement | Needed for Customer Service Center | DBOM Contractor to secure | COMPLETE |
| TBD | Armored Car Service Agreement | Needed for Customer Service Center | DBOM Contractor to secure | COMPLETE |

CONTRACT STATUS

| | | | | | | | | | | | | | | | | | | | | | | | | | | | | | | | | | | |
|---|--|-------------------|-------------------|------------------|---------------------------------|--------------------|-------------------------------|-----|--------------------------------|-----|------------------------------------|-----|----------------------------|-----|-------------------------------|-------|---|--|--|--|--|--|-----------------|--------|----------------------------|--------|---------------------------|-------|--|--------|-------------------|--------|---------------------------|-------|
| <p>ExpressLanes Project Contractor: Atkinson Construction</p> | <p>Contract No.: PS0922102333 Status as of: November 30, 2012</p> | | | | | | | | | | | | | | | | | | | | | | | | | | | | | | | | | |
| <p>Progress/Work Completed:</p> <ul style="list-style-type: none"> · All Dynamic Message Signs along I-10 corridor are operational. They are currently set up to notify the traveling public that "Expresslanes" are coming soon. · All sign elevation for sign structures along I-10 corridor were submitted to Caltrans Permits-Sacramento. · There was a 55-hours closure along I-10 for replacement of pavement panels. The work was completed with striping included in a very efficient manner. · I-110 corridor went live for revenue collection on November 10, 2012. · Caltrans provided training for Xerox, sub to Atkinson, so as to enter closure requests to support and maintain the tolling system along I-110 corridor. · The new pedestrian overcrossing bridge was turned over to the City on November 9, 2012. · On November 9, 2012, there was a press conference with local officials and media for revenue operations on November 10, 2012. <p>Areas of Concern:</p> <ul style="list-style-type: none"> · Coordination of the DBOM contractor proposed construction with other Caltrans contractors on I-10. · Coordination and installation of 12 Single Mode Fiber Optic (SMFO) cable with existing 12 SMFO cable on I-10 Freeway continues. · Coordination with Caltrans Design Build Project at I-605/I-10. | <p>Major Activities (In Progress):</p> <ul style="list-style-type: none"> · Sign panel replacement along I-10 continues. · Continue with setting up Customer Service Center to support all systems and operation functions in Gardena and El Monte Centers for I-10 opening. · Bioswale work along I-10EB and Rosemead continues. · DBOM will continue to complete AS BUILT drawings for entire project. · Systems work along I-10 continues. · All fiber connections are being made along I-10 to have communication of all DMS from off site locations. · 95% of the striping along I-10 is complete. · Install sign lighting along I-10 corridor. · Bridge mounted sign 2220 remains to be installed. · Continue installation of Earthcam Cameras on I-10 and I-110 corridors. · Installation of power feeds for DMS signs and lighting along I-10 continues. <p>Major Activities Next Period:</p> <ul style="list-style-type: none"> · Continue placing systems, loops, sensors, and cameras associated with I-10 corridor. · Complete panel replacements along I-10 corridor. · Complete striping along I-10 corridor. · Complete sign lighting for all sign structures along I-10 corridor. · Continue installation of Earthcam Cameras on I-10 and I-110 corridors. | | | | | | | | | | | | | | | | | | | | | | | | | | | | | | | | | |
| | | Original Baseline | Time Extension | Current Contract | Forecast Completion | Variance Cur-Fcast | | | | | | | | | | | | | | | | | | | | | | | | | | | | |
| | Commencement | 01/11/11 | 0 | 01/11/11 | 01/11/11 | 0 | | | | | | | | | | | | | | | | | | | | | | | | | | | | |
| | Completion | 09/26/12 | 0 | 09/26/12 | 09/26/12 | 0 | | | | | | | | | | | | | | | | | | | | | | | | | | | | |
| | Final Acceptance | 11/26/12 | 0 | 11/26/12 | 11/26/12 | 0 | | | | | | | | | | | | | | | | | | | | | | | | | | | | |
| <p>Schedule Summary:</p> <table border="0"> <tr> <td>Notice of Award</td> <td style="text-align: right;">12/15/10</td> </tr> <tr> <td>Notice to Proceed</td> <td style="text-align: right;">01/11/11</td> </tr> <tr> <td>Original Contract Duration (CD)</td> <td style="text-align: right;">685</td> </tr> <tr> <td>Approved Time Extensions (CD)</td> <td style="text-align: right;">135</td> </tr> <tr> <td>Current Contract Duration (CD)</td> <td style="text-align: right;">820</td> </tr> <tr> <td>Data Collection/Demonstration (CD)</td> <td style="text-align: right;">365</td> </tr> <tr> <td>Elapsed Time from NTP (CD)</td> <td style="text-align: right;">689</td> </tr> <tr> <td>Contract Elapsed Time Percent</td> <td style="text-align: right;">84.0%</td> </tr> </table> | Notice of Award | 12/15/10 | Notice to Proceed | 01/11/11 | Original Contract Duration (CD) | 685 | Approved Time Extensions (CD) | 135 | Current Contract Duration (CD) | 820 | Data Collection/Demonstration (CD) | 365 | Elapsed Time from NTP (CD) | 689 | Contract Elapsed Time Percent | 84.0% | <p>Cost Summary: \$ In 000's</p> <table border="0"> <tr> <td>1. Award Value:</td> <td style="text-align: right;">72,364</td> </tr> <tr> <td>2. Executed Modifications:</td> <td style="text-align: right;">12,361</td> </tr> <tr> <td>3. Pending Change Orders:</td> <td style="text-align: right;">4,978</td> </tr> <tr> <td>4. Current Contract Value (1 + 2 + 3):</td> <td style="text-align: right;">89,703</td> </tr> <tr> <td>5. Incurred Cost:</td> <td style="text-align: right;">77,518</td> </tr> <tr> <td>6. Percent Incurred Cost:</td> <td style="text-align: right;">86.4%</td> </tr> </table> | | | | | | 1. Award Value: | 72,364 | 2. Executed Modifications: | 12,361 | 3. Pending Change Orders: | 4,978 | 4. Current Contract Value (1 + 2 + 3): | 89,703 | 5. Incurred Cost: | 77,518 | 6. Percent Incurred Cost: | 86.4% |
| Notice of Award | 12/15/10 | | | | | | | | | | | | | | | | | | | | | | | | | | | | | | | | | |
| Notice to Proceed | 01/11/11 | | | | | | | | | | | | | | | | | | | | | | | | | | | | | | | | | |
| Original Contract Duration (CD) | 685 | | | | | | | | | | | | | | | | | | | | | | | | | | | | | | | | | |
| Approved Time Extensions (CD) | 135 | | | | | | | | | | | | | | | | | | | | | | | | | | | | | | | | | |
| Current Contract Duration (CD) | 820 | | | | | | | | | | | | | | | | | | | | | | | | | | | | | | | | | |
| Data Collection/Demonstration (CD) | 365 | | | | | | | | | | | | | | | | | | | | | | | | | | | | | | | | | |
| Elapsed Time from NTP (CD) | 689 | | | | | | | | | | | | | | | | | | | | | | | | | | | | | | | | | |
| Contract Elapsed Time Percent | 84.0% | | | | | | | | | | | | | | | | | | | | | | | | | | | | | | | | | |
| 1. Award Value: | 72,364 | | | | | | | | | | | | | | | | | | | | | | | | | | | | | | | | | |
| 2. Executed Modifications: | 12,361 | | | | | | | | | | | | | | | | | | | | | | | | | | | | | | | | | |
| 3. Pending Change Orders: | 4,978 | | | | | | | | | | | | | | | | | | | | | | | | | | | | | | | | | |
| 4. Current Contract Value (1 + 2 + 3): | 89,703 | | | | | | | | | | | | | | | | | | | | | | | | | | | | | | | | | |
| 5. Incurred Cost: | 77,518 | | | | | | | | | | | | | | | | | | | | | | | | | | | | | | | | | |
| 6. Percent Incurred Cost: | 86.4% | | | | | | | | | | | | | | | | | | | | | | | | | | | | | | | | | |

CONSTRUCTION PHOTOGRAPHS



DMS sign close to Fremont Ave on I-10 freeway.



Toll site I-10 freeway.

CONSTRUCTION PHOTOGRAPHS



10 EB pour before 710.



Facing West on 10 just east of 710.

CONSTRUCTION PHOTOGRAPHS



2 day notice on I-110 NB.



DMS along I-110 with fees.

CONSTRUCTION PHOTOGRAPHS



DSC



DSC

CONSTRUCTION PHOTOGRAPHS



Sweep train.



DSC

CONSTRUCTION PHOTOGRAPHS



DSC



Adams POC group picture.

CONSTRUCTION PHOTOGRAPHS



Adams POC group picture.

CONTRACT STATUS

| | | | | | | | | | | | | | | | | | | | | | | | | | | | | | | | | |
|--|--|----------------------|-------------------|---------------------|---------------------------------|-----------------------|-------------------------------|-----|--------------------------------|-----|----------------------------|-----|-------------------------------|-------|---|--|--|--|--|--|-----------------|--------|----------------------------|---|----------------------------|-------|--|--------|-------------------|--------|---------------------------|-------|
| <p>El Monte Transit Center Project Contractor: KPRS Construction Svcs Inc.</p> | <p>Contract No.: C0958 Status as: November 30, 2012</p> | | | | | | | | | | | | | | | | | | | | | | | | | | | | | | | |
| <p>Progress/Work Completed: Terminal - All major work has been completed, punch list work, final clean-up, landscaping. - DB Contractor to use retail building for close-out. - The parking lot replacement work continued thru-out November with a scheduled completion date of Dec. 10th. - Removed temporary CM offices from area.</p> <p>Retail/Transit Building - Full Height Wall Framing - Building Canopy - Roofing - Glass - Tile – Terrazo-interior finishing of Transit building</p> <p>Areas of Concern: - Weather - Any major equipment failures would be disruptive at this point.</p> | <p>Major Activities (In Progress): Terminal - Temporary terminal demobed and doing parking lot rebuild.</p> <p>Retail/Transit Building - Doing the final touch up work required to have area's ready for tenants and customers.</p> <p>Major Activities Next Period: - Complete parking lot. - Work on close-out activities.</p> | | | | | | | | | | | | | | | | | | | | | | | | | | | | | | | |
| | | Original Baseline | Time Extension | Current Contract | Forecast Completion | Variance Cur-Fcast | | | | | | | | | | | | | | | | | | | | | | | | | | |
| | Commencement | 08/13/10 | 0 | 08/13/10 | N/A | | | | | | | | | | | | | | | | | | | | | | | | | | | |
| | Completion | 06/05/12 | 190 | 12/12/12 | 12/12/12 | 0 | | | | | | | | | | | | | | | | | | | | | | | | | | |
| <p>Schedule Summary:</p> <table border="0"> <tr> <td>Notice of Award</td> <td>06/18/10</td> </tr> <tr> <td>Notice to Proceed</td> <td>08/13/10</td> </tr> <tr> <td>Original Contract Duration (CD)</td> <td>660</td> </tr> <tr> <td>Approved Time Extensions (CD)</td> <td>165</td> </tr> <tr> <td>Current Contract Duration (CD)</td> <td>825</td> </tr> <tr> <td>Elapsed Time from NTP (CD)</td> <td>810</td> </tr> <tr> <td>Contract Elapsed Time Percent</td> <td>98.2%</td> </tr> </table> | Notice of Award | 06/18/10 | Notice to Proceed | 08/13/10 | Original Contract Duration (CD) | 660 | Approved Time Extensions (CD) | 165 | Current Contract Duration (CD) | 825 | Elapsed Time from NTP (CD) | 810 | Contract Elapsed Time Percent | 98.2% | <p>Cost Summary: \$ In 000's</p> <table border="0"> <tr> <td>1. Award Value:</td> <td style="text-align: right;">39,001</td> </tr> <tr> <td>2. Executed Modifications:</td> <td style="text-align: right;">0</td> </tr> <tr> <td>3. Approved Change Orders:</td> <td style="text-align: right;">9,421</td> </tr> <tr> <td>4. Current Contract Value (1 + 2 + 3):</td> <td style="text-align: right;">48,422</td> </tr> <tr> <td>5. Incurred Cost:</td> <td style="text-align: right;">48,306</td> </tr> <tr> <td>6. Percent Incurred Cost:</td> <td style="text-align: right;">99.8%</td> </tr> </table> | | | | | | 1. Award Value: | 39,001 | 2. Executed Modifications: | 0 | 3. Approved Change Orders: | 9,421 | 4. Current Contract Value (1 + 2 + 3): | 48,422 | 5. Incurred Cost: | 48,306 | 6. Percent Incurred Cost: | 99.8% |
| Notice of Award | 06/18/10 | | | | | | | | | | | | | | | | | | | | | | | | | | | | | | | |
| Notice to Proceed | 08/13/10 | | | | | | | | | | | | | | | | | | | | | | | | | | | | | | | |
| Original Contract Duration (CD) | 660 | | | | | | | | | | | | | | | | | | | | | | | | | | | | | | | |
| Approved Time Extensions (CD) | 165 | | | | | | | | | | | | | | | | | | | | | | | | | | | | | | | |
| Current Contract Duration (CD) | 825 | | | | | | | | | | | | | | | | | | | | | | | | | | | | | | | |
| Elapsed Time from NTP (CD) | 810 | | | | | | | | | | | | | | | | | | | | | | | | | | | | | | | |
| Contract Elapsed Time Percent | 98.2% | | | | | | | | | | | | | | | | | | | | | | | | | | | | | | | |
| 1. Award Value: | 39,001 | | | | | | | | | | | | | | | | | | | | | | | | | | | | | | | |
| 2. Executed Modifications: | 0 | | | | | | | | | | | | | | | | | | | | | | | | | | | | | | | |
| 3. Approved Change Orders: | 9,421 | | | | | | | | | | | | | | | | | | | | | | | | | | | | | | | |
| 4. Current Contract Value (1 + 2 + 3): | 48,422 | | | | | | | | | | | | | | | | | | | | | | | | | | | | | | | |
| 5. Incurred Cost: | 48,306 | | | | | | | | | | | | | | | | | | | | | | | | | | | | | | | |
| 6. Percent Incurred Cost: | 99.8% | | | | | | | | | | | | | | | | | | | | | | | | | | | | | | | |

CONSTRUCTION PHOTOGRAPHS



Curb and gutter in place.



AC removal in Lot B.

CONSTRUCTION PHOTOGRAPHS



Punchlist work taking place on elevator no. 2.



Trenching in irrigation lines in Lot B.

CONSTRUCTION PHOTOGRAPHS



Concrete placement Lot B islands.



Island infill with concrete.

CHRONOLOGY OF EVENTS

| | |
|--------------------|--|
| April 24, 2008 | MOU w/USDOT for \$210 million Grant Award (I-210/I-10). |
| July 23, 2008 | CTC Eligibility Finding. |
| July 24, 2008 | 1 st Amendment to MOU w/USDOT (Changes Demo Project from I-210/1-10 to I-110/I-10). |
| August 24, 2008 | Preliminary Concept of Operations for I-10 and I-110. |
| September 28, 2008 | State Tolling Authority Legislation Approved (Expires 1/15/13). |
| September 29, 2008 | Metro/Caltrans certify funding available for ExpressLanes. |
| November 24, 2008 | 2 nd Amendment to MOU w/USDOT (administrative changes). |
| December 4, 2008 | ExpressLanes Project Inclusion in RTP approved. |
| December 22, 2008 | Key Physical Capacity Improvements identified to USDOT. |
| January 14, 2009 | FTIP approved: Amend #1 to the RTP and Amend 08-01 to 2008 RIP. |
| January 22, 2009 | Public Outreach & Communications Plan approved by Metro Board. |
| February 17, 2009 | RFIQ for Toll Systems Integrator released. |
| April 15, 2009 | Preliminary Engineering begins for Electronic Toll Collection. |
| May 4, 2009 | Short List of Toll Systems Integrator Firms completed. |
| June 22, 2009 | Public Hearings for Toll Rates (6). |
| July 23, 2009 | Toll Rates and Toll Policy adopted. |
| January 20, 2010 | Metro Board Approved USDOT National Evaluation Plan. |
| February 12, 2010 | Circulation of the Draft EIR/EA for the the I-10 and I-110. |
| March 9 & 10, 2010 | Public hearings held for the draft EIR/EA for I-10 and I-110. |
| March 25, 2010 | Metro Board Approved Low Income Commuter Assessment. |

CHRONOLOGY OF EVENTS

| | |
|-------------------|---|
| April 7, 2010 | CTC Authorizes Design-Build Authority for I-10 and I-110 HOT Lanes. |
| April 22, 2010 | Metro Board Approved Administrative Account Fee Schedule. |
| April 28, 2010 | EIR/FONSI for the I-10 and I-110 HOT Lanes is approved. FHWA Project Oversight Agreement Executed. |
| May 14, 2010 | Environmental Assessment for the I-10 and I-110 HOT Lanes is approved. |
| June 7, 2010 | DBOM RFP released. |
| June 16, 2010 | Issued DBOM RFP Addendum #1. |
| June 30, 2010 | CEQA Documents Approved for I-10 and I-110 HOT Lanes. |
| August 31, 2010 | DBOM RFP Proposals Received. |
| Sept. 20, 2010 | Received E-76 from FHWA for CMAQ Funds. |
| Sept. 22, 2010 | CTC Approval of LONP for SLPP Funds. El Monte Transit Center Groundbreaking. |
| Sept. 29, 2010 | State Tolling Authority extended until 1/15/15 (AB1244 Eng). |
| October 4, 2010 | USDOT announced award of \$47.75 million in Federal Discretionary Grant Funds for Division 13 Facility. |
| November 30, 2010 | Notice of Intent to Award DBOM Contract Circulated to LACMTA Board of Directors. |
| December 9, 2010 | LACMTA Board Approval Life of Project (LOP) Budget Increase. |
| December 16, 2010 | DBOM Contract Award to Atkinson Contractors, LP. |
| January 11, 2011 | Notice to Proceed (NTP) given to DBOM Contractor. |
| February 15, 2011 | Formal Partnering Session held with Atkinson Contractors, Caltrans, FHWA, Metrolink and Metro. |
| July 6, 2011 | Groundbreaking Ceremony for the Start of Construction of the ExpressLanes. |

CHRONOLOGY OF EVENTS

July 25, 2012 Ribbon-Cutting Ceremony for the Opening of the Customer Service Center.

October 10, 2012 Ribbon-Cutting Ceremony for the Opening of the El Monte Transit Station.

November 10, 2012 Start of Revenue Operations for 110 ExpressLanes.

”GO LIVE” DEPLOYMENT SCHEDULE

Timeline:

Scheduled Start of Operation ExpressLanes Program

| | |
|-------------------------|---|
| 2009 | |
| 8/2009 (Actual) | Bicycle Lockers @ Harbor Gateway Transit Center |
| 2010 | |
| 12/2010 (Actual) | Sheriff’s substation @ Harbor Gateway Transit Center |
| 12/2010 (Actual) | Metrolink Pomona (North) Station Improvements |
| 2011 | |
| 6/2011 (Actual) | Phase I Silver Line enhanced service starts – AM peak every 10 minutes |
| 7/2010 (Actual) | Lighting at Harbor Transitway Stations |
| 8/2011 (Actual) | Bus Stop Cutouts @ Slauson & Manchester Transitway Stations |
| 10/2011 | Community-based Vanpool Formation |
| Late 2011 – (Actual) | New Buses received for I-10 El Monte Busway |
| Late 2011 – (Actual) | New Buses received for I-110 Harbor Transitway |
| 2012 | |
| 5/2012 | LA ExpressPark-Phase I Begins |
| 6/2012 | I-110 Adams Blvd. Flyover – Project Initiation Document/Project Study Report (PID/PSR)* |
| 7/2012 | LA ExpressPark-Phase II Begins |
| 9/2012 | Noise Pilot @ 37” Street Harbor Transitway Station |
| 9/2012 | CCTV Installation @ Harbor Transitway Stations |
| 10/2012 | LA ExpressPark-Phase III Begins, IPM Fully Operational |
| 10/2012 (Actual) | El Monte Station Expansion |
| 9/2012 (Actual) | Adams Blvd. Street Widening |
| 11/2012 (Actual) | <i>I-110 ExpressLanes</i> |
| 2013 | |
| 2/2013 | I-10 ExpressLanes |
| 2014 | |
| Summer | Patsaouras Plaza Connector |
| 3/2014 | I-110 Adams Blvd. Flyover – Environmental Document (PAED)* |

* The dates reflected are completion dates. The Project is not fully funded for actual construction.

**LA CRD PRE-DEPLOYMENT DATA COLLECTION
Exogenous Factors**

Silver Line Non-UPA Transportation System Changes Log

| | |
|---|---|
| December 2009 | Service begins, bus assignments split between D9 & D18 |
| December 2009 | Service begins on Long Term Detour via 39 th St. to Figueroa due to Expo Line construction |
| June 2010 | Travel time added for schedule adherence |
| September 2010 | Service begins operating at adjacent El Monte Temporary Station during new station construction |
| December 2010 | Long Term Detour cancelled, buses begin operating via 37 th St. Station & Adams Blvd; buses begin running out of D9 only |
| December 2009 to Present – Selected Late Night Closures | El Monte Busway closed which resulted in detouring via local streets to serve Cal State LA; LAC + USC not served during this time |
| February 2011 – Selected Late Night Closures | Harbor Transitway closed which resulted in detouring via Figueroa between Harbor Gateway Transit Center & downtown LA |
| March 2011-Selected Late Night Closures | Harbor Transitway Closed which resulted in detouring via Figueroa between Harbor Gateway Transit Center & Downtown LA. Weekend night closures occurred for the El Monte Busway. |
| May 31, 2011 | Harbor Transitway closed which resulted in detouring via Figueroa between Harbor Gateway Transit Center & downtown LA |
| June 2011 | From June 1-10, 2011, the Harbor Transitway had night closures which resulted in detouring via Figueroa between Harbor Gateway Transit Center & downtown LA and bus stations were not served on freeway platform. |

Silver Line Non-UPA Transportation System Changes Log

| | |
|---|---|
| <p>August 2011</p> | <p>Beginning August 7, 2011 through September 2012 all stations along the Harbor Transitway are closed from 10:00 pm – 6:00 am every night due to Metro ExpressLanes construction. An alternate shuttle runs along Figueroa St. from 4:00 am – 6:00 am every day. No freeway platforms are served during the closure period.</p> |
| <p>September 2011</p> | <p>Beginning September 26, 2011 through September 2012, the El Monte Busway will be closed every night from 10:00 pm – 5 am (westbound) and 10:00 pm – 6:00 am (eastbound) due to Metro ExpressLanes construction. During this time, LAC+USC Medical Center Station and Cal State LA Station will not be served. Passengers are suggested to take Line 70 or Metrolink.</p> |
| <p>June 2012</p> | <p>Weekday rush hour service increased resulting in entire line operating a peak hour frequency of 4 1/2 min between El Monte and Downtown LA and frequency of 8 1/2 min (from 5 min and 10 min, respectively).</p> |
| <p>September – December 2012 – USC Football</p> | <p>Saturday USC football gamedays at the Coliseum will feature additional service for pre and post game movement, serving 37th St/USC Transitway Station.</p> <p>Traffic related delays expected during these occurrences.</p> |

Silver Line Non-UPA Transportation System Changes Log

| | |
|--------------|---|
| October 2012 | <p>New El Monte Station grand opening. Temporary bus terminal closed.</p> <p>Silver to Silver promotional fare program begins (pass reciprocity and lower cash fare on Foothill may shift some riders from Silver Line to Silver Streak).</p> <p>Restroom construction at Artesia TC.</p> |
|--------------|---|

Metrolink San Bernardino Line Transportation System Changes Log

| | |
|----------------------|---|
| <p>April 1, 2011</p> | <ul style="list-style-type: none"> Beginning on April 1st, after the Dodger's first home game, Antelope Valley and San Bernardino line trains will depart Union Station at 11 p.m. Ticket Packages for a Dodger ticket and Metrolink roundtrip ticket will start at \$20. |
| <p>May 2011</p> | <ul style="list-style-type: none"> Beginning on May 1st, San Bernardino Line train schedules will change to connect with a train at Union Station arriving at the Burbank Airport in time for 7 a.m. airport departures. Effective May 9th, San Bernardino Line will add four new trains and two new peak hour express trains that have a trip time of sixty minutes from San Bernardino to Union Station. |
| <p>July 2011</p> | <ul style="list-style-type: none"> Effective July 1st, Southern Californians can buy a weekend pass to ride unlimited Metrolink trains for only \$10. Unlimited weekend riding was added for monthly pass holders at no additional cost. New 10 percent student discount added to one-way and roundtrip ticket. New 7-Day Pass will be good seven consecutive days from purchase between a set origination and destination. The 10-trip Ticket will be discontinued sometime in the fall of 2011. A significant amount of lost revenue is attributed to this type of ticket due to a failure to validate, resulting in fare evasion. |

Metrolink San Bernardino Line Transportation System Changes Log

| | |
|--|--|
| <p>November 2011</p> | <ul style="list-style-type: none"> • San Bernardino Line closed in the evening Wednesday, November 2nd between Fontana and Rancho Cucamonga due to a freight train derailment. • Due to an annual track maintenance project, Metrolink train service will be limited on the San Bernardino Line on November 5-6, 12-13 and 19-20. |
| <p>December 2011</p> | <ul style="list-style-type: none"> • The 60 Freeway was closed in both directions due to a tanker explosion, resulting in traffic being diverted to the I-10 and public transportation. |
| <p>January 2012</p> | <p>Schedule changes went into effect January 9 to coordinate with Amtrak's schedule changes and improve reliability. San Bernardino Line – Monday thru Friday Service.</p> <ul style="list-style-type: none"> • Train 319 and 331 will arrive later into Los Angeles • Train 333, 337 and 387 times have changed out of San Bernardino • Train 330, 32, 334 times have changed out of Los Angeles |
| <p>August 31 – September 30, 2012 – LA County Fair Special Service</p> | <p>Take the San Bernardino Line to the special Fairplex Station that drops you off right at the fair. A free shuttle will take you to the Yellow Gate to begin your fair adventure.</p> |
| <p>October 2012</p> | <ul style="list-style-type: none"> • New train schedules effective Oct. 1, 2012 • Oct. 17, 2012 – reconstructed platform and three new tracks completed at Union Station |

Silver Line Ridership

| Month | Average Weekday Boardings | % Change from Jan. 2010 | Average Saturday Boardings | Average Sunday Boardings | HTW Average Weekday Boardings² | HTW % Change from June 2011 |
|------------------------|----------------------------------|--------------------------------|-----------------------------------|---------------------------------|--|------------------------------------|
| Dec. 2009 ¹ | 4,208 | -- | 969 | 1,335 | | |
| Jan. 2010 | 6,612 | -- | 2,231 | 1,411 | | |
| Feb. 2010 | 6,974 | 5.47% | 2,489 | 1,768 | | |
| Mar. 2010 | 7,170 | 8.44% | 2,566 | 1,805 | | |
| Apr. 2010 | 7,173 | 8.48% | 2,860 | 1,744 | | |
| May 2010 | 7,422 | 12.25% | 2,758 | 1,895 | | |
| Jun. 2010 | 7,227 | 9.30% | 2,880 | 1,929 | | |
| Jul. 2010 | 7,488 | 13.24% | 2,815 | 2,045 | | |
| Aug. 2010 | 7,487 | -- | 2,811 | 1,919 | | |
| Sept. 2010 | 7,741 | 17.07% | 2,788 | 2,018 | | |
| Oct. 2010 | 8,118 | 22.78% | 2,892 | 2,044 | | |
| Nov. 2010 | 7,522 | 13.76% | 2,304 | 1,474 | | |
| Dec. 2010 | 7,889 | 19.31% | 2,430 | 1,788 | | |
| Jan. 2011 | 8,049 | 21.73% | 2,800 | 1,701 | | |
| Feb. 2011 | 8,304 | 25.59% | 2,595 | 1,918 | | |
| Mar. 2011 | 8,540 | 29.15% | 2,836 | 1,804 | | |
| Apr. 2011 | 9,086 | 29.16% | 2,900 | 1,804 | | |
| May 2011 | 9,329 | 41.09% | 3,004 | 1,952 | | |
| Jun. 2011 | 8,892 | 34.48% | 2,919 | 1,973 | 2,763 | -- |
| Jul. 2011 | 9,480 | 43.38% | 3,746 | 2,294 | 3,372 | 22.04% |

¹Silver Line started operation on 12/13/09 so ridership estimate represents partial month.

² Phase I Service changes began June 26, 2011 on the Harbor Transitway (HTW) portion of the Silver Line.

Silver Line Ridership

| Month | Average Weekday Boardings | % Change from Jan. 2010 | Average Saturday Boardings | Average Sunday Boardings | HTW Average Weekday Boardings² | HTW % Change from June 2011 |
|------------------|----------------------------------|--------------------------------|-----------------------------------|---------------------------------|--|------------------------------------|
| Aug. 2011 | 9,730 | 47.16% | 3,825 | 2,517 | 3,429 | 24.10% |
| Sep. 2011 | 10,414 | 57.50% | 3,852 | 2,454 | 3,710 | 34.27% |
| Oct. 2011 | 11,234 | 69.90% | 4,095 | 2,433 | 3,833 | 38.73% |
| Nov. 2011 | 10,648 | 61.04% | 3,615 | 2,243 | 3,706 | 34.13% |
| Dec. 2011 | 9,386 | 41.95% | 3,473 | 2,443 | 3,410 | 23.42% |
| Jan. 2012 | 10,601 | 60.32% | 3,815 | 2,512 | 3,796 | 37.39% |
| Feb. 2012 | 11,089 | 67.71% | 4,122 | 2,555 | 3,969 | 43.65% |
| Mar. 2012 | 11,157 | 68.73% | 3,752 | 2,285 | 4,164 | 50.71% |
| Apr. 2012 | 11,241 | 70.00% | 4,099 | 2,642 | 4,134 | 49.62% |
| May 2012 | 11,419 | 72.70% | 4,218 | 2,679 | 4,202 | 52.08% |
| June 2012 | 10,941 | 65.47% | 4,064 | 2,806 | 4,110 | 48.75% |
| July 2012 | 11,206 | 69% | 4,529 | 3,093 | 4,504 | 63.01% |
| Aug. 2012 | 11,449 | 72.70% | 4,441 | 3,168 | 4,633 | 67.68% |
| Sep. 2012 | 12,197 | 84.47% | 4,757 | 3,109 | 4,899 | 77.31% |
| Oct. 2012 | 13,765 | 108.18% | 5,235 | 3,782 | 5,259 | 90.34% |
| Nov. 2012 | 13,515 | 104.40% | 4,832 | 3,437 | 5,641 | 104.16% |

¹Silver Line started operation on 12/13/09 so ridership estimate represents partial month.

²Phase I Service changes began June 26, 2011 on the Harbor Transitway (HTW) portion of the Silver Line. Ridership levels for the Harbor Transitway/I-110 corridor are distinguished as the amount of boardings between Artesia Transit Center and Downtown Los Angeles. For Northbound traffic, the last stop is Olympic & Figueroa. For Southbound, the first stop is 5th & Flower. Also, all ridership numbers are estimates and are, therefore, subject to minor discrepancies.

El Monte Transit Center Parking Data

| Date of Count | Time of Count | Count | Total Capacity | % Utilization |
|----------------------|----------------------|--------------|-----------------------|----------------------|
| Jan. 12, 2010 | 10:30 AM | 1,486 | 1,761 | 84.38% |
| June 10, 2010 | 11:45 AM | 1,492 | 2,069 | 72.11% |
| July 8, 2010 | 12:15 PM | 1,457 | 2,069 | 70.42% |
| August 12, 2010 | 12:45 PM | 1,449 | 2,053 | 69.85% |
| Sept. 9, 2010 | 10:45 AM | 1,449 | 2,053 | 70.58% |
| October 14, 2010 | 12:30 PM | 1,187 | 1,196 | 99.25% |
| Nov 10, 2010 | 4:15 PM | 1,138 | 1,196 | 95.15% |
| Dec. 9, 2010 | 12:00 PM | 1,162 | 1,196 | 97.16% |
| Jan. 13, 2011 | 1:15 PM | 1,188 | 1,196 | 99.33% |
| Feb. 10, 2011 | 2:00 PM | 1,088 | 1,105 | 98.46% |
| March 10, 2011 | 1:15 PM | 1,099 | 1,105 | 99.46% |
| April 27, 2011 | 2:30 PM | 1,115 | 1,134 | 98.32% |
| May 12, 2011 | 3:00 PM | 1,109 | 1,134 | 97.80% |
| June 9, 2011 | 3:15 PM | 1,058 | 1,134 | 93.30% |
| July 28, 2011 | 3:05 PM | 1,106 | 1,134 | 97.53% |
| August 11, 2011 | 3:30 PM | 1,080 | 1,134 | 95.24% |
| Sept. 15, 2011 | 2:30 PM | 1,092 | 1,134 | 96.30% |
| Oct. 26, 2011 | 2:15 PM | 1,115 | 1,134 | 98.32% |
| Nov. 17, 2011 | 1:10 PM | 1,121 | 1,134 | 98.85% |
| Dec. 15, 2011 | 3:30 PM | 1,055 | 1,134 | 93.03% |
| Jan. 19, 2012 | 3:15 PM | 1,012 | 1,134 | 89.24% |
| Feb. 9, 2012 | 3:00 PM | 1,094 | 1,134 | 96.47% |
| March 8, 2012 | 12:30 PM | 1,120 | 1,134 | 98.76% |
| April 12, 2012 | 12:30 PM | 1,134 | 1,134 | 100% |
| May 22, 2012 | 11:00 AM | 1,115 | 1,115 | 100% |
| June 21, 2012 | 1:30 PM | 1,097 | 1,115 | 98% |
| July 19, 2012 | 2:00 PM | 1,097 | 1,115 | 98.38% |
| August 9, 2012 | 2:00 PM | 1,067 | 1,115 | 95.69% |
| Sept. 2012 | Data Unavailable | | | |
| Oct. 2012 | Data Unavailable | | | |
| Nov. 7, 2012 | 11:30 AM | 1,089 | 1,115 | 97.66% |

*Prior to the April 27, 2011 counts. Parking Lot C at El Monte was restriped, creating an additional 29 Parking spots. The new capacity at the El Monte Transit center Parking Lot is 1,134 spots.

** On May 22, 2012 the total parking capacity for El Monte Transit Center was recounted. The capacity changed due to El Monte Station construction activity.

Harbor Transitway Center Parking Data

| Date of Count | Time of Count | Count | Total Capacity | % Utilization |
|----------------------|----------------------|--------------|-----------------------|----------------------|
| June 10, 2010 | 10:00 AM | 607 | 1,862 | 32.55% |
| July 8, 2010 | 10:30 AM | 606 | 1,862 | 32.54% |
| August 12, 2010 | 10:45 AM | 609 | 1,862 | 32.71% |
| Sept. 9, 2010 | 2:15 PM | 607 | 1,862 | 32.60% |
| Oct. 14, 2010 | 11:00 AM | 637 | 1,862 | 34.21% |
| Nov. 10, 2010 | 1:30 PM | 636 | 1,862 | 34.16% |
| Dec. 9, 2010 | 11:00 AM | 590 | 1,862 | 31.68% |
| Jan. 13, 2011 | 11:00 AM | 655 | 1,862 | 35.18% |
| Feb. 10, 2011 | 12:00 PM | 685 | 1,862 | 36.79% |
| March 10, 2011 | 10:45 AM | 681 | 1,862 | 36.57% |
| April 27, 2011 | 11:15 AM | 683 | 1,862 | 36.68% |
| May 12, 2011 | 10:45 AM | 759 | 1,862 | 40.76% |
| June 9, 2011 | 10:50 AM | 640 | 1,862 | 34.37% |
| July 28, 2011 | 12:00 PM | 644 | 1,862 | 34.59% |
| August 11, 2011 | 12:30 PM | 653 | 1,862 | 35.07% |
| Sept. 15, 2011 | 11:30 PM | 713 | 1,862 | 38.29% |
| Oct. 26, 2011 | 11:30 AM | 789 | 1,862 | 42.37% |
| Nov. 17, 2011 | 11:30 AM | 719 | 1,862 | 38.61% |
| Dec. 15, 2011 | 12:15 PM | 682 | 1,862 | 36.62% |
| Jan. 19, 2012* | 11:30 AM | 784 | 1,728 | 45.37% |
| Feb. 9, 2012 | 11:30 AM | 830 | 1,728 | 48.03% |
| March 8, 2012** | 11:30 AM | 810 | 1,551 | 52.22% |
| Apr. 12, 2012 | 10:30 AM | 760 | 1,551 | 49.00% |
| May 16, 2012*** | 2:30 PM | 850 | 1,633 | 52.05% |
| June 21, 2012 | 11:15 AM | 810 | 1,633 | 49.60% |
| July 19, 2012 | 11:45 PM | 780 | 1,633 | 47.76% |
| August 9, 2012 | 11:30 AM | 774 | 1,633 | 47.39% |
| Sept. 2012 | Data Unavailable | | | |
| Oct. 2012 | Data Unavailable | | | |
| Nov. 7, 2012 | 11:30 AM | 917 | 1,862 | 49.25% |

*During the January 19, 2012, a decrease in parking capacity was observed at Rosecrans. The Capacity was recalculated and found to be reduced from 342 to 207, decreasing the Harbor Transitway total parking capacity from 1,863 to 1,728.

** During the March 8, 2012, a decrease in parking capacity was observed at Artesia Transit Center due to construction materials. The capacity decreased by 177 parking spots, leaving Artesia Transit Center with 803 spots and the Harbor Transitway Total Parking Capacity with 1,551 spots.

***On May 16, 2012 the total parking capacity for the Harbor Transitway was recounted. The capacity changed due to construction activity for the metro ExpressLanes.

El Monte Transit Center Bike Parking Data

| Date of Count | Time of Count | Count | Total Capacity | % Utilization |
|----------------------|----------------------|--------------|-----------------------|----------------------|
| Nov. 10, 2010 | 4:15 PM | 25 | 56 | 44.64% |
| Dec. 9, 2010 | 12:00 AM | 34 | 56 | 60.71% |
| Jan. 13, 2011 | 1:15 PM | 21 | 56 | 37.50% |
| Feb. 10, 2011 | 2:00 PM | 35 | 56 | 62.5% |
| March 10, 2011 | 1:15 PM | 35 | 56 | 62.5% |
| April 27, 2011 | 2:30 PM | 33 | 56 | 58.93% |
| May 12, 2011 | 3:00 PM | 35 | 56 | 62.5% |
| June 9, 2011 | 3:15 PM | 35 | 56 | 62.5% |
| July 28, 2011 | 3:05 PM | 37 | 56 | 66.07% |
| Aug. 11, 2011 | 3:30 PM | 35 | 56 | 62.5% |
| Sept. 15, 2011 | 2:30 PM | 43 | 56 | 76.79% |
| Oct. 26, 2011 | 2:15 PM | 41 | 56 | 73.21% |
| Nov. 17, 2011 | 1:10 PM | 42 | 56 | 75% |
| Dec. 15, 2011 | 3:30 PM | 36 | 56 | 64.28% |
| Jan. 19, 2012 | 3:20 PM | 42 | 56 | 75% |
| Feb. 9, 2012 | 3:15 PM | 30 | 56 | 53.57% |
| March 8, 2012 | 3:00 PM | 30 | 56 | 53.57% |
| April 12, 2012 | 12:30 PM | 44 | 56 | 78.57% |
| May 22, 2012* | 11:00 AM | 43 | 44 | 97% |
| June 21, 2012 | 1:30 PM | 44 | 44 | 100% |
| July 19, 2012 ** | 2:00 PM | 45 | 56 | 80.35% |
| August 9, 2012 | 2:00 PM | 39 | 56 | 69.64% |
| Sept. 2012 | Data Unavailable | | | |
| Oct. 2012 *** | Data Unavailable | | | |
| Nov. 7, 2012 | 11:00 AM | 36 | 58 | 62.07% |

*On May 22, 2012 the bike parking capacity for the El Monte Transit Center was recounted.

** 6 Additional U-Racks were placed at El Monte Station prior to the July 19, 2012 counts,

*** Due to staffing changes parking data is unavailable.

Harbor Gateway Transit Center Bike Data

| Date of Count | Time of Count | Count | Total Capacity | % Utilization |
|----------------------|----------------------|--------------|-----------------------|----------------------|
| Oct. 14, 2010 | 11:00 AM | 1 | 16 | 6.25% |
| Nov. 10, 2010 | 2:15 PM | 0 | 22 | 0% |
| Dec. 9, 2010 | 11:15 AM | 1 | 22 | 4.54% |
| Jan. 13, 2011 | 11:20 AM | 4 | 22 | 18.18% |
| Feb. 10, 2011 | 12:00 PM | 4 | 22 | 18.18% |
| March 10, 2011 | 11:00 AM | 2 | 22 | 9.09% |
| April 27, 2011 | 11:15 AM | 7 | 22 | 31.82% |
| May 12, 2011 | 10:45 AM | 1 | 22 | 4.54% |
| June 9, 2011 | 11:30 AM | 2 | 22 | 9.09% |
| July 28, 2011 | 12:30 PM | 3 | 22 | 13.64% |
| Aug. 11, 2011 | 12:45 PM | 2 | 22 | 9.09% |
| Sept. 15, 2011 | 11:35 PM | 2 | 22 | 9.09% |
| Oct. 26, 2011 | 11:30 AM | 0 | 22 | 0% |
| Nov. 17, 2011 | 11:30 AM | 0 | 22 | 0% |
| Dec. 15, 2011 | 12:30 PM | 1 | 22 | 4.54% |
| Jan. 19, 2012 | 11:30 AM | 3 | 22 | 13.64% |
| Feb. 9, 2012 | 11:10 AM | 7 | 22 | 31.82% |
| March 8, 2012 | 11:30 AM | 3 | 22 | 13.64% |
| April 12, 2012 | 10:45 AM | 3 | 22 | 13.64% |
| May 16, 2012 | 3:00 PM | 5 | 22 | 22.72% |
| June 21, 2012 | 11:15 AM | 5 | 22 | 22.72% |
| July 19, 2012 | 10:45 PM | 4 | 22 | 18.18% |
| Aug. 9, 2012 | 11:30 AM | 5 | 22 | 22.72% |
| Sept. 2012 | Data Unavailable | | | |
| Oct. 2012 * | Data Unavailable | | | |
| Nov. 7, 2012 | 11:30 AM | 5 | 30 | 16.67% |

* Due to staffing changes parking data is unavailable.

**Metro LA CRD (ExpressLanes) Program
Monthly Project Status Report**

November 2012

Pomona Metrolink Station Parking Data

| Date of Count | Time of Count | Count | Total Capacity | % Utilization |
|----------------------|----------------------|--------------|-----------------------|----------------------|
| Sept. 16, 2009 | 10:45 AM | 230 | 230 | 100% |
| Oct. 21, 2009 | 10:30 AM | 230 | 230 | 100% |
| Nov. 18, 2009 | 10:15 AM | 230 | 230 | 100% |
| Dec. 16, 2009 | 10:45 AM | 230 | 230 | 100% |
| Jan. 20, 2010 | 10:00 AM | 230 | 230 | 100% |
| Mar. 17, 2010 | 10:15 AM | 230 | 230 | 100% |
| Apr. 21, 2010 | 10:30 AM | 230 | 230 | 100% |
| May 19, 2010 | 10:15 AM | 230 | 230 | 100% |
| June 9, 2010 | 1:00 PM | 307 | 373 | 82.53% |
| July 15, 2010 | 10:15 AM | 310 | 373 | 83.33% |
| August 12, 2010 | 1:30 PM | 310 | 372 | 83.33% |
| Sept. 9, 2010 | 11:45 AM | 310 | 372 | 83.33% |
| Oct. 14, 2010 | 1:25 PM | 344 | 372 | 92.47% |
| Nov. 10, 2010 | 3:40 PM | 271 | 372 | 72.85% |
| Dec. 9, 2010 | 1:00 PM | 232 | 372 | 62.36% |
| Jan. 13, 2011 | 12:20 PM | 291 | 372 | 78.23% |
| Feb. 10, 2011 | 1:00 PM | 309 | 372 | 83.06% |
| March 10, 2011 | 12:15 PM | 351 | 372 | 94.35% |
| April 27, 2011 | 12:35 PM | 308 | 372 | 82.80% |
| May 12, 2011 | 12:45 PM | 298 | 372 | 80.11% |
| June 9, 2011 | 12:45 PM | 276 | 372 | 74.19% |
| July 28, 2011 | 1:30 PM | 284 | 372 | 76.34% |
| August 11, 2011 | 1:45 PM | 294 | 372 | 79.03% |
| Sept. 15, 2011 | 12:30 PM | 309 | 372 | 83.06% |
| Oct. 26, 2011 | 1:40 PM | 321 | 372 | 86.29% |
| Nov. 17, 2011 | 12:35 PM | 315 | 372 | 84.67% |
| Dec. 15, 2011 | 1:20 PM | 298 | 372 | 80.11% |
| Jan. 19, 2012 | 12:30 PM | 323 | 372 | 86.82% |
| Feb. 9, 2012 | 12:30 PM | 317 | 372 | 85.21% |
| March 8, 2012 | 12:45 PM | 347 | 372 | 93.27% |
| April 12, 2012 | 11:45 AM | 322 | 372 | 86.55% |
| May 22, 2012 | 12:00 PM | 358 | 372 | 96.23% |
| June 21, 2012 | 2:05 PM | 302 | 372 | 81.18% |
| July 19, 2012 | 11:45 PM | 291 | 372 | 78.22% |
| August 9, 2012 | 12:45 PM | 305 | 372 | 81.98% |
| Sept. 2012 | Data Unavailable | | | |
| Oct. 2012* | Data Unavailable | | | |
| Nov. 8, 2012 | 1:00 PM | 334 | 372 | 89.78% |

* Due to staffing changes parking data is unavailable.

Metrolink San Bernardino Line Ave. Weekday Inbound Ridership

| Date | Boardings | % Change from Previous Month |
|----------------------|------------------|-------------------------------------|
| June 2009 | 6,264 | -- |
| July 2009 | 6,185 | -1.26% |
| August 2009 | 5,969 | -3.49% |
| September 2009 | 6,028 | 0.99% |
| October 2009 | 6,122 | 1.56% |
| November 2009 | 5,915 | -3.38% |
| December 2009 | 5,501 | -7.00% |
| January 2010 | 5,750 | 4.53% |
| February 2010 | 5,762 | 0.21% |
| March 2010 | 5,959 | 3.42% |
| April 2010 | 5,911 | -0.81% |
| May 2010 | 5,854 | -0.97% |
| June 2010 | 5,797 | -0.98% |
| July 2010 | 5,510 | -4.95% |
| August 2010 | 5,381 | -2.40% |
| September 2010 | 5,595 | 3.98% |
| October 2010 | 5,720 | 2.23% |
| November 2010 | 5,635 | -1.48% |
| December 2010 | 5,069 | -11.16% |
| January 2011 | 5,646 | 11.38% |
| February 2011 | 5,730 | 1.49% |
| March 2011 | 5,962 | 4.04% |
| April 2011 | 6,220 | 4.33% |
| May 2011 | 6,288 | 1.09% |
| June 2011 | 6,060 | -3.63% |
| July 2011 | 6,134 | 1.22% |
| August 2011 | 6,069 | -1.06% |
| September 2011 | 5,984 | -1.04% |
| October 2011 | 5,886 | -1.64% |
| November 2011 | 5,663 | -3.79% |
| December 2011 | 5,660 | -0.001% |
| January 2012 | 6,107 | 7.90% |
| February 2012 | 6,256 | 2.44% |
| March 2012 | 6,173 | -1.33% |
| April 2012 | 6,134 | -0.63% |
| May 2012 | 6,293 | 2.59% |
| June 2012 | 6,087 | -3.27% |
| July 2012 | 5,899 | -3.09% |
| August 2012 | 5,986 | 1.47% |
| September 2012 | 6,165 | 2.99% |
| October 2012 | 6,441 | 4.48% |
| November 2012 | 6,191 | -3.88% |

Cumulative Media Articles

| Date | Article | Publication or Blog |
|-------------------------------------|--|--|
| November/ December 2012 Issue | <i>MailBox: Not So Fast...</i> | <i>Westways</i> |
| November/ December 2012 | <i>Events: Metro ExpressLanes Open Nov. 10</i> | <i>CommuteSmart News</i> |
| November 2012 Issue | <i>No Free Rides</i> | <i>Los Angeles Magazine</i> |
| 11/29/2012 | <i>12,000 Drivers Find After New L.A. Toll Lanes Open</i> | <i>The Orange County Register</i> |
| 11/29/2012 | <i>Metro ExpressLanes Program Gears Up for Debut on I-10 in Early 2013</i> | <i>Mobility 21 - Forward Motion</i> |
| 11/28/2012 | <i>12,297 Tickets Already For Improper Use of the 110 Toll Lanes</i> | <i>Curbed LA</i> |
| 11/27/2012 | <i>I-110 Metro ExpressLanes Open in Los Angeles</i> | <i>HubDOT</i> |
| 11/27/2012 | <i>Thousands Hit With Toll Lane Citations</i> | <i>Supervisor Zev Yaroslavsky's Web Page</i> |
| 11/27/2012 | <i>El Monte Bus Station Grand Opening</i> | <i>Youtube (http://www.youtube.com/wat)</i> |
| 11/26/2012 | <i>Half CA/I-110 Express Lane Users Are Solo Driver Buy-Ins, Tolls Average 54 Cents/Mile</i> | <i>Toll Roads News</i> |
| 11/20/2012 | <i>Transportation Headlines, Tuesday, Nov. 20</i> | <i>The Source Blog</i> |
| 11/20/2012 | <i>Metro Introduces Toll Lane to 110 Freeway</i> | <i>The Daily Bruin</i> |
| 11/20/2012 | <i>Here's What Metro Will Do With Its New Toll Lane Money</i> | <i>Curbed LA</i> |
| 11/19/2012 | <i>First Electronic Metro ExpressLanes Display Message Boards Go Live Along 14-Miles of the I-10 San Bernardino Freeway Set to Debut in Early 2013</i> | <i>Metro Media Release</i> |
| 11/19/2012 | <i>50K Transponders Issued So Far; Preparations Underway to Launch ExpressLanes on 10 Freeway in Early 2013</i> | <i>The Source Blog</i> |
| 11/19/2012 | <i>Transportation Headlines, Monday, Nov. 19</i> | <i>The Source Blog</i> |

Cumulative Media Articles

| | | |
|------------|---|--|
| 11/19/2012 | <i>El Primer Cartel Electronico de Metro ExpressLanes Se Predera En La Autopista San Bernardino Esta Semana</i> | <i>El Pasajero Blog</i> |
| 11/19/2012 | <i>2nd Set of L.A. Toll Lanes May Open On 10 Freeway By Late January</i> | <i>LA Times Blog - L.A. Now</i> |
| 11/19/2012 | <i>How L.A.'s New Freeway Toll Lanes Works</i> | <i>LA Times</i> |
| 11/17/2012 | <i>Doing the Math on 'Lexus Lanes'</i> | <i>LA Times</i> |
| 11/16/2012 | <i>Toll Unsettles Los Angeles Motorists Used to 'Free' in Freeways</i> | <i>The New York Times</i> |
| 11/15/2012 | <i>The 110 Bumps the 91 for Highest Peak Toll Rate</i> | <i>The Orange County Register</i> |
| 11/14/2012 | <i>Weekly Transit eNewsletter, Volume 8, Issue 45</i> | <i>The Transit Coalition Newsletter</i> |
| 11/14/2012 | <i>Transportation Headlines, Wednesday, Nov. 14</i> | <i>The Source Blog</i> |
| 11/13/2012 | <i>L.A.'s First Freeway Toll Lanes Off to Smooth Start, Officials Say</i> | <i>LA Times Blog - L.A. Now</i> |
| 11/13/2012 | <i>ExpressLanes Quietly Open on I-110, Media Finds "Grumbling"...But Not Hysteria</i> | <i>Streetsblog LA</i> |
| 11/13/2012 | <i>Transportation Headlines, Tuesday, Nov. 13</i> | <i>The Source Blog</i> |
| 11/13/2012 | <i>Metro ExpressLanes Flowed Well on 110 on Tuesday Morning</i> | <i>The Source Blog</i> |
| 11/13/2012 | <i>Se Inicia El Cobro De Una Cuota En Carriles Del Proyecto ExpressLane De La Autopista 110</i> | <i>The Source Blog</i> |
| 11/12/2012 | <i>Los Angeles Adopts Congestion Toll</i> | <i>USC ATUN Annenberg TV News</i> |
| 11/12/2012 | <i>CHP to Begin Enforcing New Toll Lanes on 110 Freeway</i> | <i>KTLA.com</i> |
| 11/12/2012 | <i>How L.A.'s First Toll Road Could Help Reduce Traffic</i> | <i>KCET.com</i> |
| 11/11/2012 | <i>The Toll Lanes on the 110 Freeway Open, But Residents Have Polarized Opinions</i> | <i>Sing Tao Daily</i> |
| 11/11/2012 | <i>Our View: Are Toll Lanes a Slippery Slope?</i> | <i>San Gabriel Valley Tribune; Long Beach Press-Telegram</i> |

Cumulative Media Articles

| | | |
|------------|--|---|
| 11/11/2012 | L.A.'s First Toll Lanes Open; Trips Cost Up to \$15.40 | LA Times Blog - L.A. Now |
| 11/11/2012 | L.A. County Toll Lanes Get Smooth Start, Despite Some Grumbling | LA Times Blog - L.A. Now |
| 11/11/2012 | Single Drivers May Use HOV Lane For Fee | 89.3 KPCC |
| 11/10/2012 | The Toll Lanes on the 110 Freeway Opened Today | Sing Tao Daily |
| 11/10/2012 | The Toll Lanes on the 110 Freeway Open, and Residents Can Apply Now | The World Journal |
| 11/10/2012 | That's HOT! High Occupancy Toll Lanes Open On 110 Freeway | CBS Los Angeles |
| 11/10/2012 | LA Charges Into New Territory with Express Lanes | Associated Press; San Luis Obispo Tribune; Seattle Post-Intelligencer; San Francisco Chronicle; San Jose Mercury; Tulsa World; KRLA 870; Erie Times-News |
| 11/10/2012 | New 110 Freeway ExpressLanes Set to Open at 10 p.m. Saturday | Pasadena Star News; San Bernardino Sun; Daily Bulletin; Los Angeles Daily News |
| 11/10/2012 | Los Angeles Prepares City's First Toll Road | Woodland Hills Patch |
| 11/10/2012 | Toll Lanes Now Open on 11-mile Stretch of 110 Freeway | LA Times Blog - L.A. Now |
| 11/10/2012 | 110 Freeway Toll Lanes Open | Redondo Beach Patch |
| 11/10/2012 | And So it Begins: ExpressLanes - Los Angeles County's First Foray Into Congestion Pricing - Open Saturday Night on 110 Freeway! | The Source Blog |
| 11/10/2012 | ExpressLanes Set to Debut on 110 Freeway on Saturday Night, Weather Permitting | The Source Blog |
| 11/9/2012 | Metro ExpressLanes Set to Open Saturday, Nov. 10; Congestion Reduction Demonstration Project to Ease Commutes on 110 Harbor Freeway | Metro Media Release |
| 11/9/2012 | The First Express Toll Lanes Will Open on This Saturday | The World Journal |
| 11/9/2012 | Opening of Toll Lanes on 110 Harbor Freeway Delayed Until Saturday Night, Possibly Sunday Morning | San Gabriel Valley Tribune |
| 11/9/2012 | L.A. County Enters Era of Freeway Toll Lanes | Los Angeles Times |

Cumulative Media Articles

| | | |
|-----------|---|--|
| 11/9/2012 | <i>High Occupancy Toll Lanes Expected to Open on 110 Freeway</i> | <i>CBS Los Angeles</i> |
| 11/9/2012 | <i>New Toll Lanes Open This Weekend on The 110</i> | <i>Fox Los Angeles</i> |
| 11/9/2012 | <i>Los Angeles Metro Express Lanes - Will it Work?</i> | <i>Victor Caballero Blog</i> |
| 11/9/2012 | <i>Los Angeles Gets Its First Express Toll Lanes</i> | <i>Active Rain Blog</i> |
| 11/9/2012 | <i>What You Need to Know About L.A.'s First Toll Lanes Opening This Weekend</i> | <i>LAist</i> |
| 11/9/2012 | <i>110 Freeway Toll Lanes Opening Delayed</i> | <i>Redondo Beach Patch</i> |
| 11/9/2012 | <i>Metro ExpressLanes to Relieve Congestion By Allowing Single Riders on Toll Lanes</i> | <i>Bikes and Hikes LA Blog</i> |
| 11/9/2012 | <i>Lexus Lanes Coming to Los Angeles' Harbor Freeway</i> | <i>Blogging Los Angeles</i> |
| 11/9/2012 | <i>1st Toll Carpool Lanes to Open in Los Angeles County</i> | <i>ABC7.com</i> |
| 11/9/2012 | <i>Weather Blamed for Delay in Opening Harbor (110) Freeway ExpressLanes</i> | <i>Daily Breeze</i> |
| 11/9/2012 | <i>Weather Blamed for Delay in Opening Harbor (110) Freeway ExpressLanes</i> | <i>Contra Costa Times</i> |
| 11/9/2012 | <i>110 Freeway Toll Lanes to Debut This Weekend</i> | <i>KTLA.com</i> |
| 11/9/2012 | <i>Metro ExpressLanes se Inaugura el 10 De Noviembre</i> | <i>El Pasajero Blog</i> |
| 11/9/2012 | <i>Puntos Importantes Para Recordar Sobre Los ExpressLanes</i> | <i>El Pasajero Blog</i> |
| 11/9/2012 | <i>Video of Friday's ExpressLanes Media Event</i> | <i>The Source Blog</i> |
| 11/9/2012 | <i>MAP: 110 Freeway "FasTrak" ExpressLanes Take a Toll on Drivers Starting Nov. 10</i> | <i>89.3 KPCC</i> |
| 11/9/2012 | <i>Metro Express Lanes</i> | <i>KFI AM 640 - The Jon and Ken Show</i> |
| 11/9/2012 | <i>Metro ExpressLanes Begin Nov. 10!</i> | <i>Youtube (http://www.youtube.com/watch?v=9Xc7MAjXX9Y)</i> |
| 11/8/2012 | <i>ExpressLanes Basics Reviewed</i> | <i>The Source Blog</i> |

Cumulative Media Articles

| | | |
|-----------|---|--|
| 11/8/2012 | <i>Opening of Toll Lanes on 110 Harbor Freeway Delayed Until Saturday Night, Possibly Sunday Morning</i> | <i>Pasadena Star News</i> |
| 11/8/2012 | <i>Express Lanes on 110 Freeway to Open Saturday</i> | <i>Los Angeles Times - L.A. Now</i> |
| 11/8/2012 | <i>ExpressLanes to Bring "Congestion Pricing" to Harbor Freeway</i> | <i>NBC Los Angeles.com</i> |
| 11/8/2012 | <i>Metro ExpressLanes</i> | <i>Central City Association Newsletter</i> |
| 11/7/2012 | <i>Weekly Transit eNewsletter, Volume 8, Issue 44</i> | <i>The Transit Coalition Newsletter</i> |
| 11/6/2012 | <i>Metro Debuts New ExpressLanes on 110 Freeway</i> | <i>KCAL-TV Channel 9</i> |
| 11/6/2012 | <i>Transportation Headlines, Tuesday, November 6</i> | <i>The Source Blog</i> |
| 11/6/2012 | <i>Preview of November Service Council Meetings</i> | <i>The Source Blog</i> |
| 11/6/2012 | <i>ExpressLanes on the I-110 Open on Saturday</i> | <i>UCLA Transportation Website</i> |
| 11/6/2012 | <i>Pay Lanes: A First in L.A. County Will Start Saturday</i> | <i>Daily Breeze</i> |
| 11/6/2012 | <i>Everything You Need to Know About New 110 and 10 Toll Lanes</i> | <i>Curbed LA</i> |
| 11/6/2012 | <i>United States: How to Drive in LA: Zerox Eases Traffic, Parking with Innovative Data Management System</i> | <i>Equities.com</i> |
| 11/6/2012 | <i>Reuniones de los Concejos de Servicios de Metro para Noviembre</i> | <i>El Pasajero Blog</i> |
| 11/5/2012 | <i>The First Express Toll Lanes Will Open on This Saturday</i> | <i>The World Journal</i> |
| 11/5/2012 | <i>Congestion Pricing - Toll Lanes - Come to LA Freeways</i> | <i>LA Observed</i> |
| 11/5/2012 | <i>High Occupancy Toll (HOT) ExpressLanes to Open on 110 Freeway on Sat, Nov. 10 - Metro Los Angeles</i> | <i>Los Angeles County Sheriff's Department Website</i> |
| 11/5/2012 | <i>Metro ExpressLanes Arrive on I-110 Freeway This Week</i> | <i>Supervisor Don Knabe Weekly E-Newsletter</i> |
| 11/5/2012 | <i>Transportation Headlines, Monday, Nov. 5</i> | <i>The Source Blog</i> |
| 11/5/2012 | <i>How Do They Do That? ExpressLanes Transponders</i> | <i>The Source Blog</i> |

Cumulative Media Articles

| | | |
|-----------|--|---|
| 11/5/2012 | <i>ExpressLanes to Open November 10th - Get Your Transponder Now!</i> | <i>FAST Newsletter</i> |
| 11/5/2012 | <i>Ready to Pay \$1.40 A Mile For Faster Lanes on the 110 Freeway?</i> | <i>LA Weekly</i> |
| 11/5/2012 | <i>110 Freeway Toll Lanes to Debut Next Saturday</i> | <i>KTLA.com</i> |
| 11/5/2012 | <i>Como Determinan Los Transpondedores Quienes Viajan En Los ExpressLanes?</i> | <i>El Pasajero Blog</i> |
| 11/5/2012 | <i>Los Angeles To Open I-110 Metro ExpressLanes Saturday Nov 10, Dynamic Pricing Tested Monday</i> | <i>Toll Roads News</i> |
| 11/5/2012 | <i>Metro Debuts New Express Lanes on 110 Freeway</i> | <i>CBS Los Angeles</i> |
| 11/4/2012 | <i>ExpressLanes on 110 Freeway to Open Soon for Solo Drivers</i> | <i>ABC7.com</i> |
| 11/3/2012 | <i>Pay Lanes: A First in L.A. County Will Start Saturday</i> | <i>Daily News</i> |
| 11/3/2012 | <i>Pay Lanes: How It Works</i> | <i>San Gabriel Valley Tribune</i> |
| 11/3/2012 | <i>Pay Lanes: How It Works</i> | <i>Daily News</i> |
| 11/2/2012 | <i>Chat Live Today on ExpressLanes From Noon to 1 p.m.</i> | <i>The Source Blog</i> |
| 11/2/2012 | <i>Live Chat Transcripts On ExpressLanes is Posted!</i> | <i>The Source Blog</i> |
| 11/2/2012 | <i>How to Enter and Exit From ExpressLanes</i> | <i>The Source Blog</i> |
| 11/2/2012 | <i>HOT Lanes Are Heating Up in Los Angeles</i> | <i>CityWatch</i> |
| 11/2/2012 | <i>Como Entrar y Salir De Los ExpressLanes</i> | <i>El Pasajero Blog</i> |
| 11/1/2012 | <i>Nine Days and Counting Until ExpressLanes Open on 110 Freeway</i> | <i>The Source Blog</i> |
| 11/1/2012 | <i>Life in the ExpressLanes</i> | <i>Supervisor Zev Yaroslavsky's Web Page</i> |
| | | <i>ch?v=OsmfoKYCVf0&feature=youtu.be)</i> |
| | | |

Cumulative Media Articles

| Date | Article | Publication or Blog |
|--------------|--|--|
| Fall 2012 | Metro ExpressLanes Feature | Metro Motion |
| October 2012 | ExpressLanes to Open on I-110 | CommuteSmart News |
| 10/1/2012 | Toll Lanes Coming Soon to 110 Freeway; First in LA County | Blogdowntown.com |
| 10/2/2012 | Metro ExpressLanes and Carpooling: The Facts, the Benefits and More | LA Streetblog |
| 10/2/2012 | Weekly Transit Coalition eNewsletter, Volume 8, Issue 39 | The Transit Coalition Newsletter |
| 10/7/2012 | Students Say They Will Not Use New Toll Lanes on I-110 | Daily Trojan |
| 10/9/2012 | Weekly Transit Coalition eNewsletter, Volume 9, Issue 40 | The Transit Coalition Newsletter |
| 10/9/2012 | New El Monte Station Open Sunday | Baldwin Park Patch |
| 10/10/2012 | Metro and Elected Officials Dedicate New State-of-the-Art El Monte Station Marking Completion of Construction and Start of Passenger Service | Metro Media Release |
| 10/10/2012 | Metro and Elected Officials Dedicate New State-of-the-Art El Monte Station | The Source Blog |
| 10/10/2012 | Dedication of New El Monte Station | Metro Media Alert |
| 10/10/2012 | New \$60 million El Monte Bus Station Unveiled, Opens to the Public Sunday | Whittier Daily News |
| 10/11/2012 | ExpressLanes Van Out and About and Perhaps Coming to a Neighborhood Near You | The Source Blog |
| 10/15/2012 | Mel, the Metro ExpressLanes Van, Brings FasTrak Accounts to Commuters with Appearances at College Campuses, Government Offices and Events | Metro Media Release |
| 10/18/2012 | Metro ExpressLanes Live Internet Chat at Noon, Friday, Nov. 2 | The Source Blog |
| 10/24/2012 | Special Guest Appearance by MEL Tomorrow! | The Source Blog |
| 10/25/2012 | Today's Special Appearance by MEL Cancelled But Human Reps will be Assisting Instead | The Source Blog |
| 10/29/2012 | Toll Lanes Arrive in Los Angeles County November 10 | Supervisor Don Knabe Weekly E-Newsletter |
| 10/29/2012 | 110 Freeway Toll Lanes to Open Nov. 10 | Redondo Beach Patch |
| 10/29/2012 | HOT Lanes Are Heating Up in Los Angeles | The Frying Pan |

Cumulative Media Articles

| Date | Article | Publication or Blog |
|-----------|--|--|
| 10/30/12 | Harbor (110) Freeway ExpressLanes Opening Date Nears | Daily Breeze |
| 10/30/12 | Metro Reaches Milestone of Issuing 20,000 FasTrak Transponders Before the Nov. 10 ExpressLanes Opening on the 110 Harbor Freeway | Metro Media Release |
| 10/31/12 | Reminder: ExpressLanes Live Chat this Friday | The Source Blog |
| 10/31/12 | Do You Have Transponder Yet? Metro ExpressLanes Live Internet Chat this Friday | Metro Media Release |
| 10/31/12 | 110 Freeway Toll Lanes Open Nov. 10 | Beverly Hill Patch |
| 10/31/12 | More Than 20,000 Transponders Pre-Issued for 110 Freeway | LA Times Blog – L.A. Now |
| 10/31/12 | November 10 the ExpressLanes Open and a New Way of Looking at Getting Around Starts | Examiner.com |
| 10/31/12 | 110 Freeway Toll Lanes Open Nov. 10 | Beverly Hill Patch |
| 9/28/2012 | Governor Oks Free Toll Lane Access for Clean Cars | The Sacramento Bee |
| 9/27/2012 | Will Metro Rue the Day It Decided to Require Transponders for ExpressLanes Access | LA Streetsblog |
| 9/26/2012 | Share the Ride and Get the Chance to Win Prizes | The Source Blog |
| 9/26/2012 | Congestion Pricing Could Be a Solution to the Gas Tax Problem... | The Transit Coalition Newsletter |
| 9/26/2012 | Metro to Open New El Monte Station to the Public on Sunday, Oct. 14 | The Source Blog |
| 9/20/2012 | Los Angeles County's First ExpressLanes Project to Debut on Saturday, Nov. 10 | South Bay Environmental Services Center – South Bay Cities Council of Governments Newsletter |
| 9/19/2012 | Rideshare News | The Source Blog |
| 9/19/2012 | Golden Pylon Awards: Traffic Reporters Get Some Love from Southland Transit Agencies | USC Football Newsletter |
| 9/19/2012 | Freeway ExpressLanes | Daily Breeze |
| 9/18/2012 | ExpressLanes to Open November 10 th –You're Your Transponder Now! | FAST Newsletter |
| 9/18/2012 | The 110 Harbor Freeway Gets a HOT Makeover | LAist |
| 9/18/2012 | L.A.'s First Toll Lanes to Open Nov. 10 on 110 Freeway | Los Angeles Times-L.A. Now |

Cumulative Media Articles

| Date | Article | Publication or Blog |
|------------------------|---|--|
| 9/18/2012 | Harbor (110) Freeway ExpressLanes to Open on Nov. 10 | Daily Breeze |
| 9/18/2012 | Harbor (110) Freeway ExpressLanes to Open on Nov. 10 | San Jose Mercury News |
| 9/18/2012 | ExpressLanes to Open on 110 Freeway on Nov. 10 | The Source Blog |
| 9/18/2012 | Los Angeles County's First ExpressLanes Project to Debut on Saturday, Nov. 10 | Metro Media Release |
| 9/12/2012 | 5,000 Motorists Sign Up for Freeway Transponder | Daily Breeze |
| 9/12/2012 | 5,000 th Account Opened for Metro ExpressLanes | The Source Blog |
| 9/12/2012 | Metro ExpressLanes Reaches Significant Milestone with the Opening of the 5,000 th FasTrak Account for the Congestion Reduction Project | Metro Media Release |
| 9/11/2012 | Eat, Shop and Play Locally During Carmageddon II Weekend Sept. 29-30 | The Source Blog |
| 9/6/2012 | Automobile Club of Southern California Now Providing Transponders | L.A. Business This Week – A Weekly Update from the L.A. Area Chamber |
| September/October 2012 | Before You Sign Up for FasTrak, Read This... | CommuteSmart News |
| 9/1/2012 | More on ExpressLanes | Daily Breeze |
| September, 2012 | ExpressLanes Transponders | Westways |
| 8/27/2012 | ExpressLanes Transponders | Daily Breeze |
| 8/21/2012 | Metro ExpressLanes Transponders Now Available at Auto Club Branches Throughout Southern California | Los Angeles City and Press |
| 8/20/2012 | AAA Now Offering ExpressLanes Transponders with 20 Percent Discount on Initial Tolls for Auto Club Members | The Source |
| 8/20/2012 | Metro ExpressLanes Transponders Now Available at Auto Club Branches Throughout Southern California | Metro media release |
| 8/17/2012 | Los Angeles ExpressLane Transponders Now Available at Auto Club Branches | AAA Media Release |
| August, 2012 | Metro ExpressLanes Info Bus At City Hall | City of LA Personnel Department Commute Options Newsletter |
| 8/15/2012 | Metro ExpressLanes | USC Football Newsletter |
| 8/2/2012 | Freeway ExpressLanes | Daily Breeze |

Cumulative Media Articles

| Date | Article | Publication or Blog |
|-----------|---|---|
| 7/31/2012 | Metro and Caltrans Announce Availability of Metro ExpressLanes FasTrak® Transponders for Fall Debut | Mobility 21 - Forward Motion |
| 7/27/2012 | Metro Announces ExpressLanes Customer Walk-In Center in Gardena | LA Sentinel |
| 7/26/2012 | Metro Unveils FasTrak Devices for Freeway Toll Lanes | Neon Tommy - USC Annenberg Digital News |
| 7/26/2012 | Get in the ExpressLane: This ExpressLanes Congestion Pricing Thing Is... | Curbed LA |
| 7/26/2012 | LA Commuters to Need Transponders for ExpressLanes | ABC7.com |
| 7/26/2012 | Device Unveiled to Allow Motorists to Use Freeway Toll Lanes | LA Times, L.A. Now |
| 7/25/2012 | ExpressLanes Equipment for Access to Harbor, San Bernardino Freeway Toll Lanes Goes on Sale | Socalnews.com |
| 7/25/2012 | Metro and Caltrans Announce Availability of FasTrak Transponders for ExpressLanes Project on 10 and 110 Freeways | The Source Blog |
| 7/25/2012 | Ribbon-Cutting Opens the Metro ExpressLanes Walk-In Customer Center | The Source Blog |
| 7/25/2012 | Ribbon-Cutting Ceremony in Gardena | The Source Blog |
| 7/25/2012 | Metro ExpressLanes FasTrak Customer Service Center Ribbon Cutting Ceremony Program | The Source Blog |
| 7/25/2012 | Ya están disponibles los transpondedores para los nuevos Carriles Exprés en las autopistas 110 y 10 | El Pasajero Blog |
| 7/25/2012 | Metro and Caltrans Announce Availability of Metro ExpressLane FasTrak® Transponders for Fall debut of I-110 Harbor Freeway ExpressLanes; San Bernardino Freeway Metro ExpressLanes Debut Early 2013 | Metro Media Release |
| 7/24/2012 | Avisos de construcción en autopista I-10 por trabajos del proyecto ExpressLanes | El Pasajero Blog |
| 7/24/2012 | Anuncian Mañana La Apertura del Centro de Usuarios Para Los Carriles Exprés de Metro | El Pasajero Blog |
| 7/24/2012 | Metro, Caltrans & Elected Officials Announce Availability of Metro ExpressLanes FasTrak® Transponders for Debut of 110 Harbor Freeway ExpressLanes this Fall | Metro Media Advisory |
| 7/22/2012 | HOT Lanes are Coming to L.A. Area to Burn Up Congestion | Los Angeles Daily News Op Ed |

Cumulative Media Articles

| Date | Article | Publication or Blog |
|-------------------|---|---|
| 7/19/2012 | Transponders Hold Key to New Harbor (110) Freeway ExpressLanes | Daily Breeze, Contra Costa Times, and San Jose Mercury News |
| 7/18/2012 | 110 Freeway Express Lanes Coming in November | CBS Los Angeles |
| 7/12/2012 | ExpressLanes Program to Launch in the Fall | L.A. Business This Week - A Weekly Update from the L.A. Area Chamber |
| July 2012 Edition | Metro to Add ExpressLanes in Los Angeles | Los Angeles News for Travel Professionals |
| 7/11/2012 | Clearing Up Toll -Lane Confusion (or Trying To) | Los Angeles Daily News |
| 7/10/2012 | Construction of El Monte Bus Station on Track to Finish in Late August | San Gabriel Valley Tribune |
| 7/7/2012 | Editorial: Transportation Officials Must Do A Better Job Preparing for Metro ExpressLanes | Los Angeles Daily News |
| 7/5/2012 | More Details on LA HOT Lanes Project | Road Pricing |
| 7/3/2012 | Roadway Improvements Underway Throughout San Gabriel Valley | Whittier Daily News, San Gabriel Valley Tribune, and Pasadena Star News |
| July/August | Express Yourself: How New Express Lanes Are Changing Our Commutes | Westways |
| July, 2012 | Get Your Employees Prepared to Use Metro ExpressLanes | CommuteSmart News |
| 6/26/2012 | Our View: When Freeway is Not Free | San Gabriel Valley Tribune |
| 6/25/2012 | Drivers on the 10 Get Ready to Pay for Carpool Lane | Whittier Daily News, San Gabriel Valley Tribune, and Pasadena Star News |
| 6/15/2012 | ExpressLanes Construction Notice for City of Rosemead | The Source Blog |
| 6/12/2012 | Santa Monica Resets Its Parking Meter System | The New York Times |
| 6/7/2012 | Carpool Lanes on 110 to Go FasTrak | The Orange County Register |
| 6/6/2012 | Caltrans y Metro Muestran Como Funcionaran Los Carriles de Cuota En Las Autopista 110 y 10 | El Pasajero Blog |
| 5/31/2012 | Motorists to Begin Seeing First Electronic ExpressLanes Message Boards Along Harbor Freeway | The Source Blog |
| 5/25/2012 | Park This Way: Get ready to Pay Up to \$6 at Hour at Downtown meters | Los Angeles Downtown News |

Cumulative Media Articles

| Date | Article | Publication or Blog |
|------------------------|--|--|
| 5/22/2012 | Transportation Headlines, Tuesday, May 22 | The Source Blog |
| 5/21/2012 | In Los Angeles Demand-Based Pricing for Curbside Parking Goes Live | Smart Planet |
| 5/21/2012 | New Parking Meter System Goes Into Effect | Los Angeles Downtown News |
| 5/21/2012 | Downtown Parking Experiment Will Use GPS and Adjustable Pricing | Blogdowntown.com |
| 5/21/2012 | LA Express Park Will Make Parking and Getting Around Downtown Los Angeles Easier | City of Los Angeles Department of Transportation media Release |
| 5/19/2012 | Parking: What if Meters Reset Based on Demand? | Hollywood Patch |
| 5/18/2012 | Downtown L.A. parking Fees to Rise, Fall with Demand | LA Times, L.A. Now |
| May/June 2012 | Short Videos Explain ExpressLanes | CommuteSmart News |
| 5/1/2012 | How Do They Do That ? Make Roads Smarter | The Source Blog |
| 4/26/2012 | I-10 and I-110 ExpressLanes | Rideshare Connection |
| 4/10/2012 | ExpressLanes Signs Keep Going Up | The Source Blog |
| 3/29/2012 | Video en español: ¿cuáles son los reglamentos en los carriles de cuota? | El Pasajero Blog |
| 3/27/2012 | Video en español: ¿cómo funcionarán los carriles de cuota? | El Pasajero Blog |
| 3/26/2012 | Video en español: ¡Ya era Hora! Carriles ExpressLanes | El Pasajero Blog |
| 3/22/2012 | The Future of Intelligent Parking | The Atlantic Cities |
| 3/13/2012 | Video: The Greening of LA | The Source Blog |
| 3/8/2012 | More Progress on New El Monte Station | The Source Blog |
| March/April 2012 Issue | Metro ExpressLanes Update | CommuteSmart News |
| 3/6/2012 | Unblocking the Box – Congestion Relief May Be Coming Soon to a City Near You | The Source Blog |
| 3/2/2012 | ExpressLanes Video: carpool Loyalty Program | The Source Blog |
| 3/2/2012 | Work Continues on New El Monte Station | The Source Blog |
| 3/2/2012 | ExpressLanes Video: Rules of the Road and Enforcement | The Source Blog |
| 3/1/2012 | ExpressLanes Signs are Gathering! | The Source Blog |
| 3/1/2012 | Expresslanes Video: Explaining Congestion Pricing | The Source Blog |

Cumulative Media Articles

| Date | Article | Publication or Blog |
|------------------|---|---|
| 2/29/2012 | Access to the Car Pool Lane Can Be Yours, For a Price | The New York Times |
| 2/29/2012 | ExpressLanes Video: How it Works | The Source Blog |
| 2/28/2012 | ExpressLanes Video: It's About Time | The Source Blog |
| 2/24/2012 | 110 Freeway Gets its First ExpressLanes Sign | The Source Blog |
| 2/22/2012 | Buried Car, Other Debris Delay New El Monte Bus Station | San Gabriel Valley Tribune |
| 1/30/2012 | Transportation Headlines, Monday, Jan. 30 | The Source Blog |
| 1/23/2012 | 40 Years Ago This Week: Groundbreaking for El Monte Busway – California's First Multi-Modal System & The World's First Bus Rapid Transit Stations | Primary Resources, Metro Dorothy Peyton Gray Transportation Library and Archive |
| 1/9/2012 | Construction Notices for ExpressLanes Project | The Source Blog |
| 12/22/11 | ExpressLanes Signs for 110 Freeway on the Way | The Source Blog |
| 12/21/11 | Five Things I'm Thinking About Transportation, Dec. 21 Edition | The Source Blog |
| 12/14/11 | Behold: Metro ExpressLanes Congestion Pricing Transponder! | Curbed LA |
| 12/14/11 | Fist Look: Transponders for Metro's ExpressLanes Project | The Source Blog |
| 12/6/11 | Are Toll Lanes the Answer to Traffic Congestion? | The Orange County Register |
| 12/6/11 | Transportation Headlines, Tuesday, Dec. 6 | The Source Blog |
| 12/5/11 | New Timelines for Wilshire Bus Lanes Project | The Source Blog |
| 11/28/11 | Wilshire BRT and El Monte Busway Improvements Coming...in 2015 | LA Streetsblog |
| Nov/Dec 11 Issue | Take the Metro Expresslanes ETC Carpool Challenge to Win an iPad 2 | CommuteSmart News |
| 10/28/11 | FTA Officially Announces Two Big Grants to Metro | The Source Blog |
| 10/28/11 | U.S. Department of Transportation Announces \$34.7 Million for Improvements to Transit in Los Angeles | U.S. Department of Transportation News Release |
| 10/27/11 | ACS to Work with Los Angeles to Implement New Parking Program | ExecutiveBiz Blog |
| 10/25/11 | Bay Area Pushes for Huge ExpressLanes Expansion | The Source Blog |
| 10/11/11 | 18 Active Risk Items for Metro's ExpressLanes Project | Metro – Sync Life with Public Transit Blog |
| 10/1/11 | OJO: Cierres En Autopista I-10 Por Trabajos de Proyecto Expresslanes | El Pasajero Blog |

Cumulative Media Articles

| Date | Article | Publication or Blog |
|---------|--|-------------------------|
| 9/29/11 | Transit Agencies Give Frontline Traffic Reporters A Little Love | The Source Blog |
| 9/23/11 | L.A.'s Commuter Dream | LA Times Op Ed |
| 9/23/11 | Cierres Nocturnos de Carriles en Autopista San Bernardino a Partir del Domingo 25 | El Pasajero Blog |
| 9/14/11 | Solo Drivers of Low-Emission Autos Fume Over Fees to Use Carpool Lanes | La Times |
| 9/9/11 | Metro ExpressLanes Construction to Close San Bernardino Freeway I-10 Transitway carpool Lanes During late Night/Early Morning Hours Effective Sunday, Sept. 11 | Metro Media Release |
| 9/7/11 | Dynamic Pricing: Flutuating Parking Meter Prices | Smart Planet |
| 8/30/11 | Lane Markings Works Beginning on 110 Freeway Park of ExpressLanes Project | The Source Blog |
| 8/30/11 | Work on Harbor (110) Freeway Lanes to Cause Some Overnight Closures | Daily Breeze |
| 8/24/11 | Interview with Donald Shoup: Los Angeles Making Strides with ExpressPark | LA Streetsblog |
| 8/16/11 | Downtown LA Parking Meter Rate Hike Based on Demand | ABC7.com |
| 8/15/11 | Most Popular Downtown Parking Spots Could Get Very Pricey Soon | Curbed LA |
| 8/13/11 | New L.A. Parking Meter Plan Gets Ticking | LA Times |
| 8/11/11 | ExpressPark Contract Heads to Council with Questions about Technology | Blogdowntown.com |
| 8/3/11 | Toll Lanes | Daily Breeze |
| 8/2/11 | 110 Freeway to Gain Toll Lanes | Redondo Beach Patch.com |
| 8/2/11 | Metro ExpressLanes Construction to Close Harbor Freeway Transitway Carpool Lanes During Late Night/Early Morning Hours Effective Sunday August 7 | Metro Media Release |
| 7/13/11 | Express Park Set to Stack the Deck in Favor of Parking Enforcement | Blogdowntown.com |
| 7/11/11 | Escaping the 405 Mess on Flights of Fancy | LA Times Op Ed |
| 7/8/11 | Hearts and Minds: Comments Sections Shows Confusion, Anger for I-10 and I-110 HOT Lanes | LA Streetsblog |
| 7/7/11 | What? Toll Lanes for the 10 and 110? Where? How? Huh? | The Source Blog |
| 7/7/11 | Steve Lopez: Stop Whining About Toll Lanes on L.A. Freeways | LA Times Op Ed |

Cumulative Media Articles

| Date | Article | Publication or Blog |
|----------------|--|--|
| 7/7/11 | Traffic Relief for \$1.40 a mile: Toll Lane Construction Begins on 10 and 110 Where Aim is to Unclog Roads at Rush Hours; Toll Lanes Coming to 10 and 110 Freeways in Los Angeles County | LA Times |
| 7/6/11 | Metro Experiments with Toll Lanes on Harbor, San Bernardino Freeways | City News Service: Southern California Local News |
| 7/6/11 | Construction on New Toll Lanes on 10, 110 Freeways Getting Started | Whittier Daily News, San Gabriel Valley Tribune, and Pasadena Star News |
| 7/6/11 | Metro Experiments with Toll Lanes on Harbor, San Bernardino Freeway | The Los Angeles Independent |
| 7/6/11 | Groundbreaking Held for ExpressLanes Congestion Pricing Project | The Source Blog |
| 7/6/11 | Solo Drivers to Get HOV Lane Invite | MSNBC.com |
| 7/6/11 | Crews Begin HOV to HOT Project on 110, 10 Freeways | NBC Los Angeles.com |
| 7/6/11 | Metro and Caltrans Officially Break Ground on ExpressLanes Project | Metro Media Release |
| 7/1/11 | Parking Tech Helping Big Cities Ease Congestion | Government Technology Solutions for State & Local Government (Govtech.com) |
| 5/13/11 | About Those Transponder Fees for the ExpressLanes Project | The Source Blog |
| 5/13/11 | Update: Regular Carpoolers Will Not Have to Pay to Use ExpressLanes | LA Streetsblog |
| 5/11/11 | ExpressLanes Transponders, Coming to a Store Near You...and to the AAA! | LA Streetsblog |
| May 2011 Issue | Moving in the City | Roads and Bridges Magazine |
| 4/10/11 | HOT Lanes Are Not a Solution to Traffic Woes | Daily Trojan |
| 4/4/11 | Reminder: ExpressLanes Meeting Tonight to Discuss Adams Blvd. Improvements | The Source Blog |
| 3/24/11 | Metro's Freeway Projects Mean Better Transportation For Everyone | Everything Long Beach.com |
| 3/21/11 | Metro's Highway Program Ramps Up for Big Year | The Source Blog |
| 3/17/11 | Streetfilms v. Local News on Congestion Pricing | LA Streetsblog |
| 3/15/11 | Dueling Answers to Freeway Congestion | CityWatch |

Cumulative Media Articles

| Date | Article | Publication or Blog |
|----------|---|-------------------------------------|
| 3/15/11 | Media, Congress Members, Running Another ExpressLanes Mis-Information Campaign | Streetsblog LA |
| 3/14/11 | Both Sides of Congressional Aisle Hate Metro Congestion Pricing Plan | Curbed LA |
| 3/13/11 | Toll-Lane Project Faces Renewed Opposition in Congress | LA Times |
| 3/12/11 | Plan to Let Solo Drivers Pay Tolls to Use 10, 110 Freeway Carpool Lanes Opposed | LA Times Blog |
| 3/3/11 | LA Carpool Lanes to Open for Solo Drivers - In 2012, Drivers Can Choose to Pay More to Save Time on the Freeway | NBC Los Angeles.com |
| 3/3/11 | Car-Pool Lanes for Solo Drivers? Fee System Coming to L.A. | The Orange County Register |
| 2/25/11 | Highs and Lows for Electric Vehicle Companies, and How to Buy Into the Carpool Lane | Technology Review |
| 2/25/11 | LA To Charge a Toll For Driving Solo In HOV Lanes With New ExpressLanes | Autoblog Green |
| 2/25/11 | Solo Drivers in Los Angeles Will Soon Be Allowed To Drive In Carpool Lanes For a Fee | TechCrunch |
| 2/25/11 | ACS to Operate New Los Angeles HOT "ExpressLanes" System | Traffic Technology Today.com |
| 2/23/11 | To Curb Congestion, Los Angeles Rolls Out Dynamic Electric Toll Booths | Smart Planet |
| 2/23/11 | Xerox Unit Setting up Calif. Tollway | Hartford Business.com |
| 2/23/11 | ACS, A Xerox Company, to Keep Los Angeles Drivers Moving with Electric Toll Collection for New ExpressLanes | ACS, A Xerox Company, Media Release |
| 2/22/11 | Metro Plans to Remove Adams Blvd. Sidewalks New My Figueroa | LA Streetsblog |
| 2/15/11 | ExpressPark Hits Bump When Bids Come In Over Budget | Blogdowntown.com |
| 2/1/11 | O.C. Toll Roads Hit By Recession; Would you Pay for a Faster Commute? | LA Times Blog |
| 2/1/11 | Recession Slows Use of Orange County's Toll Roads | LA Times |
| 1/12/11 | ExpressLanes Project Picks Contractor | The Source Blog |
| 12/16/10 | The Truth About HOT Lanes | The Infrastructurist |
| 12/1/10 | ExpressPark Aims to Give Smarts to Downtown's Parking Spots | Blogdowntown.com |

Cumulative Media Articles

| Date | Article | Publication or Blog |
|----------|--|----------------------------|
| 11/22/10 | What a Difference Two Years Makes. Warm Reception for Congestion Pricing in the San Gabriel Valley | LA Streetsblog |
| 11/16/10 | MTA Considers More Freeway Toll Lanes to Reduce Congestion | LA Times |
| 11/16/10 | Paying to Use Those Carpool Lanes | Long Beach Press-Telegram |
| 11/16/10 | Our View: Taking the Free From Our Freeways | San Gabriel Valley Tribune |
| 11/16/10 | 57, 10 Freeways List As Candidates for Toll Lanes | San Gabriel Valley Tribune |
| 11/15/10 | Some Like it HOT: Metro Studying More Roads for Congestion Pricing | LA Streetsblog |
| 11/15/10 | MTA Considering More Freeway Toll Lanes To Reduce Congestion | LA Times |
| 11/15/10 | Will HOV Lanes Be Converted to Congestion Pricing Toll Lanes? Read the Study | The Source Blog |
| 9/22/10 | Metro Breaks Ground on New State-of-the-Art Transit Facility at the El Monte Station | Metro Media Release |
| 9/22/10 | Construction Begins on \$45 Million El Monte Bus Station | Pasadena Star-News |
| 9/21/10 | Busiest Transit Center West of Chicago Expands | Metro Media Advisory |
| 9/15/10 | New Temporary El Monte Bus Terminal Begin Operations | Mid Valley News Online |
| 9/9/10 | New Temporary El Monte Bus Terminal to Being Operations on Sunday, September 12 | Metro Media Release |
| 9/9/10 | New Temporary El Monte Bus Terminal Begins Operations on Sunday | The Source, Metro's Blog |
| 8/22/10 | LA Program Aims to Make Parking Easier | LA Times |
| 2/8/10 | HOT Lanes Project Draft EIR/EA Available for Public Review | Caltrans News Release |
| 12/9/09 | Silver Line Launches Sunday, Ready to Take You to the HOT Lane | Curbed LA |
| 7/24/09 | MTA Changes Course, Opening Carpool Lanes to Solo Drivers – For a Fee | LA Times |
| 7/23/09 | LA Transportation Officials Approve Letting Solo Drivers Pay a Toll to Use Carpool Lanes | LA Times |
| 7/23/09 | 10 & 100 Freeways to Get Express Toll Lanes in 2010 | Laist |

Cumulative Media Articles

| Date | Article | Publication or Blog |
|---------|---|---|
| 7/23/09 | Metro Board Approves Toll Rates for Freeway ExpressLanes as Part of Congestion Reduction Demonstration Project | Metro Media Release |
| 7/23/09 | MTA Board Approves Toll Rates for 10, 110 Freeways | Pasadena Star News |
| 7/19/09 | Coming Soon: Fast Lanes for the Rich | Daily Breeze Op Ed |
| 7/2/09 | Sign On To Metro's Next Chat and Ask Questions About ExpressLanes, Toll and Other Congestion Reduction Strategies | Metro Media Release |
| 6/28/09 | Harbor Area Neighborhood Councils Form Alliance | Daily Breeze |
| 6/26/09 | Express Lanes Coming To Our County | LBPost.com |
| 6/22/09 | Congestion Pricing: More Heat Than Light | CityWatchLA.com |
| 6/15/09 | Congestion Pricing – The Only Thing That Works | LA Times Op Ed |
| 6/14/09 | Letters to the Editor: Divisions on Toll Lanes | LA Times |
| 6/13/09 | For Whom The Toll Benefits | LA Times Op Ed |
| 6/12/09 | Metro Response to LA Times' Tim Rutten Column on Congestion Reduction Demonstration Project | Metro Media Release |
| 6/10/09 | Congestion Pricing – A Slippery Slope to Toll Roads | LA Times Op Ed |
| 6/9/09 | Fashioning Faster Freeways | Daily Breeze |
| 6/9/09 | A Pagar En Las Vias | La Opinion |
| 6/9/09 | Congestion Pricing Considered | LA Times |
| 6/9/09 | Solo Drivers Would Pay to Use Carpool Lanes Under Plan | Orange County Register |
| 6/8/09 | MTA Mulling Solo Harbor Freeway Carpool Lane Use – For a Fee | Daily Breeze |
| 6/8/09 | LA County Considers Toll Charges on Two Freeways | LA Times |
| 6/8/09 | Would You Pay \$1.40/Mile to Use the Carpool Lane Solo? | LAist |
| 6/8/09 | Metro to Hold Series of Community Public Hearings on Proposed Tolling Prices for Freeway ExpressLanes as Part of Congestion Reduction Demonstration Project | Metro Media Release |
| 6/8/09 | Toll Roads | Socalnews.com |
| 6/8/09 | MTA Details Toll Lane Plans for 10 and 110 Freeways | Whittier Daily News, San Gabriel Valley Tribune, and Pasadena Star News |
| | | |

Cumulative Media Articles

| Date | Article | Publication or Blog |
|---------|---|----------------------|
| 6/5/09 | Metro and Caltrans Officials to Hold Media Briefing on Status of I-10 and I-110 Freeway ExpressLanes Congestion Reduction Demonstration Project | Metro Media Advisory |
| 8/26/08 | Road Sage; Pricing May Not Hurt the Poor | LA Times |
| 7/9/08 | Road Sage; Congestion Pricing Plan May Switch Routes | LA Times |
| 6/10/08 | Road Sage; Leaders Try to Stall Toll Lanes | LA Times |
| 5/3/08 | The Way To Go; Freeway Toll Lanes Aren't an Experiment – They're Proven Congestion Busters | LA Times Op Ed |
| 4/29/08 | Not-So-Free ways; Toll Lanes Are One Answer to Our Traffic Problems. But the MTA Might Have Taken a Better Route | LA Times Op Ed |
| 4/26/08 | Diamond Lanes for the Rich | LA Times Op Ed |
| 4/24/08 | U.S. Offers Funds for Toll Lanes; MTA Will Weigh Congestion Pricing on Parts of 10 and 210, But Fees to use Freeways Remain Controversial | LA Times |
| 4/14/08 | Road Sage; Tolls on Freeways a Tough Sell | LA Times |

**Metro LA CRD (ExpressLanes) Program
Monthly Project Status Report**

November 2012

Cumulative Media Broadcasts

| Date | Broadcast | Media Outlet |
|-----------|---|---|
| 9/13/2012 | Vicky Moore/Dick Helton | KNX-AM |
| 9/13/2012 | Today in LA | KNBC |
| 7/25/2012 | Eyewitness News at 4:30 am, 5:00 am, 6:00 am, 11:00 am, 11:30 am, 4:30 pm, 5:00 pm, & 5:30 pm | KABC Channel 7 |
| 7/25/2012 | Today in LA | KNBC Channel 4 |
| 7/25/2012 | News – Air Talk | KPCC 89.3 |
| 6/8/2012 | Morning Broadcast | Univision |
| 6/7/2012 | Reporter's Notebook: Downtown LA Tests Adjustable Rate Parking | KCRW – Which Way, LA? |
| 6/5/2012 | WSBT News at 5:30 | WSBT (CBS) – South Bend, IN |
| 6/5/2012 | Story on Metro ExpressLanes Caltrans Museum Exhibit | KTTV-TV (FOX) Channel 11 |
| 6/4/2012 | Tolls to Let Drivers Buy Their Way Into the Carpool Lanes | NBCLA |
| 6/4/2012 | Caltrans to Offer Solo Drivers Premium Access to Carpool Lanes | CBS Los Angeles |
| 6/4/2012 | 5:11:46 AM | KABC-AM Radio |
| 6/4/2012 | 12:05:19 | KNX-AM 10.70 |
| 6/4/2012 | 8:08:09 | KNX-AM 10.70 |
| 7/7/11 | Pat Morrison: Life is a Highway, I Wanna Ride it All Night Long | KPCC-FM, 89.3 Los Angeles |
| 7/7/11 | The California Report: Los Angeles Congestion Pricing | KQED |
| 7/6/11 | Fox 11 Morning News at 6:00 am | KTTV-TV (FOX) Channel 11 |
| 7/6/11 | Larry Mantle's Air Talk | KPCC-FM, 89.3 Los Angeles |
| 7/6/11 | Today in LA at 5:00 am and 6:00 am | KNBC-TV Channel 4 |
| 7/6/11 | CBS 2 News at 11:00 am, Local Cut-In, and 6:00 pm | KCBS-TV Channel 2 |
| 7/6/11 | KCAL 9 News at Noon, 3:00 pm, and 10:00 pm | KCAL-TV Channel 9 |
| 7/6/11 | Eyewitness News at 11 am | KABC-TV Channel 7 |
| 3/14/11 | Plan Would Let Solo Drivers Pay to Use 10, 110 Carpool Lanes | KTLA News |
| 2/24/11 | ExpressLanes-A "HOT" Topic! ACS Discusses "High Occupancy Toll" Lanes | Blogtalkradio/Xerox Real Business Radio |
| 6/8/09 | The John and Ken Show | KFI-AM 640 |

Cumulative Media Broadcasts

| Date | Broadcast | Media Outlet |
|---------|--|------------------------|
| 6/8/09 | Tom Haule/Linda Nunez and KNX 1070 Newsradio | KNX-AM 1070 Newsradio |
| 6/8/09 | CBS 2 News | KCBS-TV Channel 2 |
| 6/8/09 | Today in LA and Channel 4 News Nightside | KNBC-TV Channel 4 |
| 6/8/09 | Eyewitness News at 5:30 am, 6:00 am, and 6:00 pm | KABC-TV Channel 7 |
| 6/8/09 | KCAL 9 News at 12:00 noon, 3:00 pm and 4:00 pm | KCAL-TV Channel 9 |
| 6/8/09 | Fox News at 11:00 am | KCOP-TV Channel 13 |
| 6/9/09 | Today in LA at 5:30 am and 6:00 am | KNBC-TV Channel 4 |
| 6/9/09 | KTLA News at 6:00 am, 9:00 am, Morning News, 1:00 pm, and Prime News at 10:00 pm | KTLA-TV Channel 5 |
| 6/9/09 | Fox 11 Morning News at 5:00 am and 6:00 am | KTTV-TV Channel 11 |
| 6/9/09 | Fox 11 Morning News at 6:00 am | KTTV-TV Fox Channel 11 |
| 6/10/09 | Today in LA | KNBC-TV Channel 4 |

APPENDICES

COST AND BUDGET TERMINOLOGY

ADOPTED BUDGET: The Approved Project Budget as established by Metro Board of Directors at the time it authorizes Construction Project Management Division to commence full design and construction of the project (Project Adoption).

CURRENT FORECAST: Evaluation of costs to go combined with actual expenditures.

COMMITMENTS: The total of actual contract awards, executed change orders or amendments, approved work orders of Master Cooperative Agreements, offers accepted for purchase of real estate, and other Metro actions which have been spent or result in the obligation of specific expenditures at a future time. Also includes commitments reported by other agencies.

EXPENDITURES: The total dollar amount of funds expended by Metro for contractor or consultant invoices, third party invoices, staff salaries, real estate and other expenses that is reported in Metro's Financial Information System (FIS and expenditures reported by other agencies.

APPENDIX
LIST OF ACRONYMS

| | |
|----------|---|
| ARRA | American Recovery & Reinvestment Act |
| AWIS | Automated Work Zone Information Systems |
| BRT | Bus Rapid Transit |
| CADD | Computer Aided Drafting and Design |
| CALTRANS | California Department of Transportation |
| CCTV | Closed Circuit Television |
| CD | Calendar Day |
| CDFG | California Department of Fish and Game |
| CM | Construction Manager |
| CMAC | Congestion Mitigation Air Quality |
| CMIA | Cash Management Improvement Act |
| CMS | Changeable Message Signs |
| CN | Change Notice |
| CNG | Natural Gas |
| CO | Change Order |
| COE | Corps of Engineers |
| COLA | City Of Los Angeles |
| CONOPS | Concept of Operations |
| CPM | Critical Path Method |
| CPUC | California Public Utilities Commission |
| CR | Camera Ready |
| CRD | Congestion Reduction Demonstration |
| CTC | California Transportation Commission |
| D-B | Design-Build |
| D-B-B | Design-Bid-Build |
| DBOM | Design, Build, Operate and Maintain |
| DD | Design Development |
| DEIR | Draft Environmental Impact Report |
| DWP | Department of Water and Power |
| EA | Environmental Assessment |
| EIR | Environmental Impact Report |
| EIS | Environmental Impact Statement |
| FD | Final Design |
| FEIR | Final Environmental Impact Report |
| FHWA | Federal Highway Administration |
| FIS | Financial Information System |
| FOCT | Fiber Optics Cable Transmission System |
| FTE | Full Time Equivalent |
| GDSR | Geotechnical Design Summary Report |
| GSA | General Services Administration |
| GSRD | Gross Solids Removal Devices |
| HAR | Highway Advisory Radio |

APPENDIX
LIST OF ACRONYMS (Continued)

| | |
|--------|--|
| HOT | High Occupancy Toll |
| HOV | High Occupancy Vehicle |
| IFB | Invitation for Bid |
| IPO | Integrated Project Office |
| ITS | Intelligent Transportation Systems |
| LA | Los Angeles |
| LABOE | Los Angeles Bureau of Engineering |
| LACFCD | Los Angeles County Flood Control District |
| LADOT | Los Angeles Department of Transportation |
| LADPW | Los Angeles Department of Public Works |
| LADWP | Los Angeles Department of Water and Power |
| LARTMC | Los Angeles Regional Transportation Management Center |
| LFAT | Local Field Acceptance Test |
| LNTP | Limited Notice To Proceed |
| LONP | Letter Of No Prejudice |
| LOP | Life of Project |
| MCA | Master Cooperative Agreement |
| METRO | Los Angeles County Metropolitan Transportation Authority |
| MIS | Major Investment Study |
| MOT | Maintenance of Traffic |
| MOU | Memorandum of Understanding |
| MPSR | Monthly Project Status Report |
| MVDS | Microwave Vehicle Detection System |
| MVP | Maintenance Vehicle Pullouts |
| MWD | Metropolitan Water District |
| N/A | Not Applicable |
| NEPA | National Environmental Protection Act |
| NHS | National Highway System |
| NOA | Notice of Award |
| NTE | Not to Exceed |
| NTP | Notice To Proceed |
| NTSC | National Television System Committee |
| P6 | Primavera Project Planner® (scheduling software) |
| PC | Project Control |
| PE | Preliminary Engineering |
| PIP | Project Implementation Plan |
| PM | Project Manager |
| PMA | Project Management Assistance |
| PMP | Project Management Plan |
| P&P | Policies & Procedures |
| PR | Project Report |
| PS&E | Plans, Specs & Engineering |

APPENDIX
LIST OF ACRONYMS (Continued)

| | |
|-------------|--|
| PSR | Project Study Report |
| QA | Quality Assurance |
| QAR | Quality Assurance Report |
| QC | Quality Control |
| QPSR | Quarterly Project Status Report |
| RFC | Request For Change or Released for Construction (based on context) |
| RFP | Request For Proposal |
| RMS | Ramp Metering Systems |
| ROM | Rough Order of Magnitude |
| ROW | Right-Of-Way |
| SIT | System Integration Testing |
| RSTP | Regional Surface Transportation Program |
| RWQCB | Regional Water Quality Control Board |
| SAFETEA-LU- | Safe, Accountable, Flexible, Efficient Transportation Equity Act: A Legacy for Users |
| SCE | Southern California Edison |
| SEMP | Systems Engineering Management Plan |
| SONET | Synchronous Optical Network |
| SOV | Single Occupant Vehicle |
| SOW | Statement Of Work |
| SP | Special Provision |
| TBD | To Be Determined |
| TCRP | Traffic Congestion Relief Program |
| TMS/CS | Traffic Monitoring Stations/Count Stations |
| TPM | Transportation Management Plan |
| UPS | Uninterrupted Power Supply |
| USDOT | United States Department of Transportation |
| VE | Value Engineering |
| WBS | Work Breakdown Structure |
| WP | Work Package |