

CRENSHAW/LAX PHOTOGRAPHIC UPDATE

Nov 13, 2020

Crenshaw/LAX Transit Project



- 8.5 miles Light Rail
- 8 Stations
- \$2,058.0 Million (Board approved revised LOP)

CRENSHAW/LAX PHOTOGRAPHIC UPDATE

Overview of trackwork progress issues for **10/15/2020 – 10/30/2020**
(Please note the attached Trackwork Progress Tracking Report)

Trackwork continues with punchlist and rework activities. Both DF and Ballasted Trackwork that was previously reported as 100% complete may yet require rework. The contractor is in the process of analyzing, planning, and executing the repair and rework required throughout the guideway limits. Remaining incomplete trackwork activities progress will be reported upon the execution of planned rework.

Current Issues:

General Notes:

Repair of plinth gap to invert continues with track gauge checking and adjustment at UG1 and joint sealing at UG4 per NCR-A-111;

Jet Grouting of Wall #202 continues.

Replacement of damaged switch points continues throughout Segment B2.

Previous Issues unresolved:

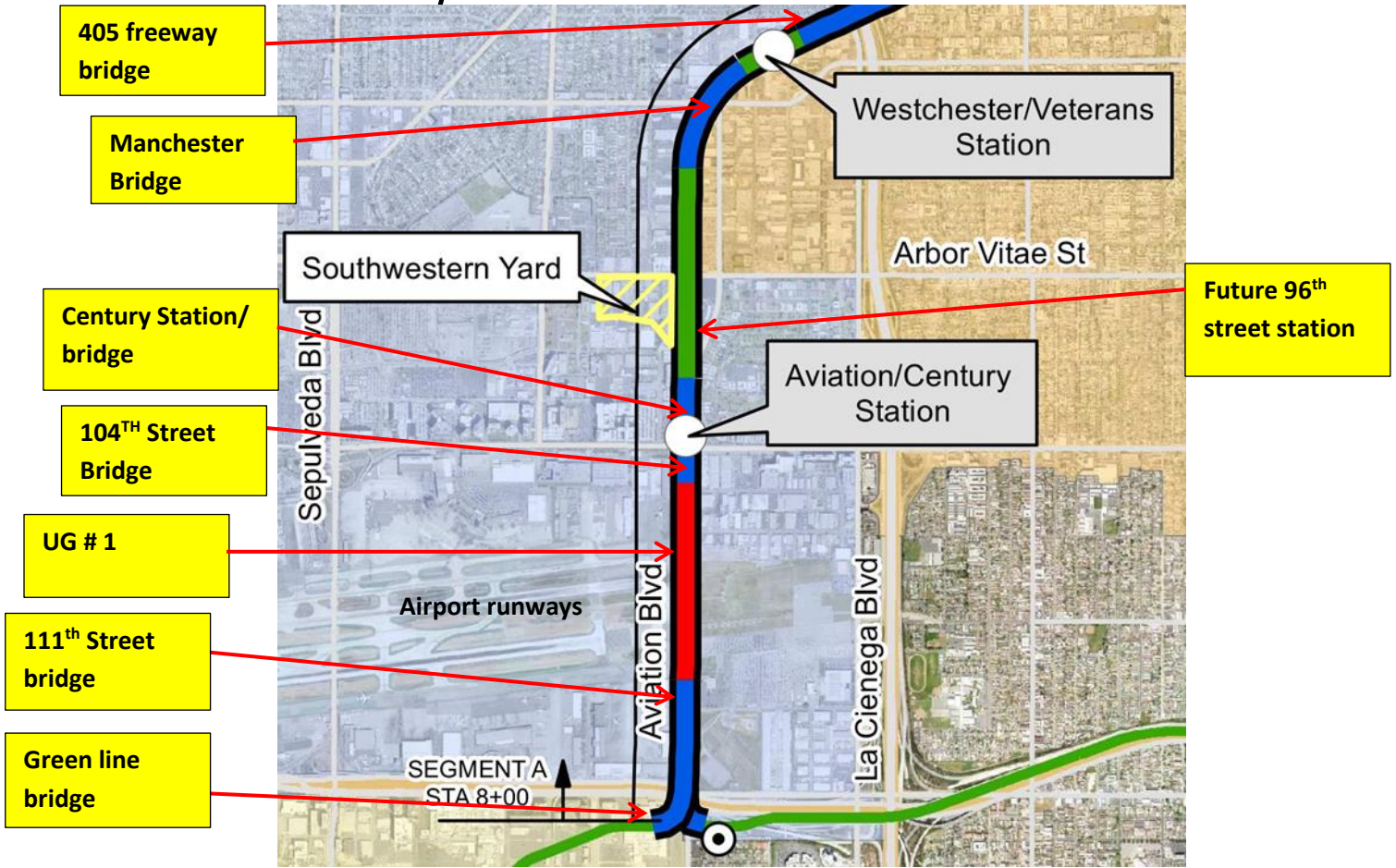
No Unresolved issues as this time.

GREEN LINE TIE-IN:

- Green Line Cutover work is completed at this time. Additional coordination is required.

Segment A

CRENSHAW/LAX PHOTOGRAPHIC UPDATE



SEGMENT A:

- Rework of plinth gap to invert complete throughout the Segment. Checking and adjusting track gauge and cross level.
- Punchlist walk with WSCC QC Inspector continues to review current completion status.
- Disturbed ballast due to systems electrical conduit relocations continues to be repaired and re-dressed.

CRENSHAW/LAX PHOTOGRAPHIC UPDATE



Guideway- WSCC at west leg of Wye SBW STA 13+52 re-placing damaged emergency walkway plate bolts (looking northwest) Rework



Guideway- WSCC at west leg of Wye SBW STA 13+52 re-placing damaged emergency walkway plate bolts (looking north) Rework

CRENSHAW/LAX PHOTOGRAPHIC UPDATE



AVIATION/CENTURY - Landscape irrigation place emtn at the Aviation Station.



AVIATION/CENTURY- Placing rebar for the Aviation Station stairway landing area.

CRENSHAW/LAX PHOTOGRAPHIC UPDATE



AVIATION/CENTURY- Excavating for the amended soil at the Sw corner of Aviation and Century.



AVIATION/CENTURY- Trenching for the traffic signal conduit on the SW corner of Aviation and Imperial.

CRENSHAW/LAX PHOTOGRAPHIC UPDATE



AVIATION/CENTURY- Placing concrete for the Aviation Station stairway landing.



AVIATION/CENTURY- Buffing the colored concrete placed yesterday at the Aviation Station.

CRENSHAW/LAX PHOTOGRAPHIC UPDATE



AVIATION/CENTURY- Excavating for the amended soil at Aviation and Century.



AVIATION/CENTURY- Trenching for the traffic signal conduit on Aviation at Imperial.

CRENSHAW/LAX PHOTOGRAPHIC UPDATE



AVIATION/CENTURY- Planting palm trees at the Aviation Station plaza.

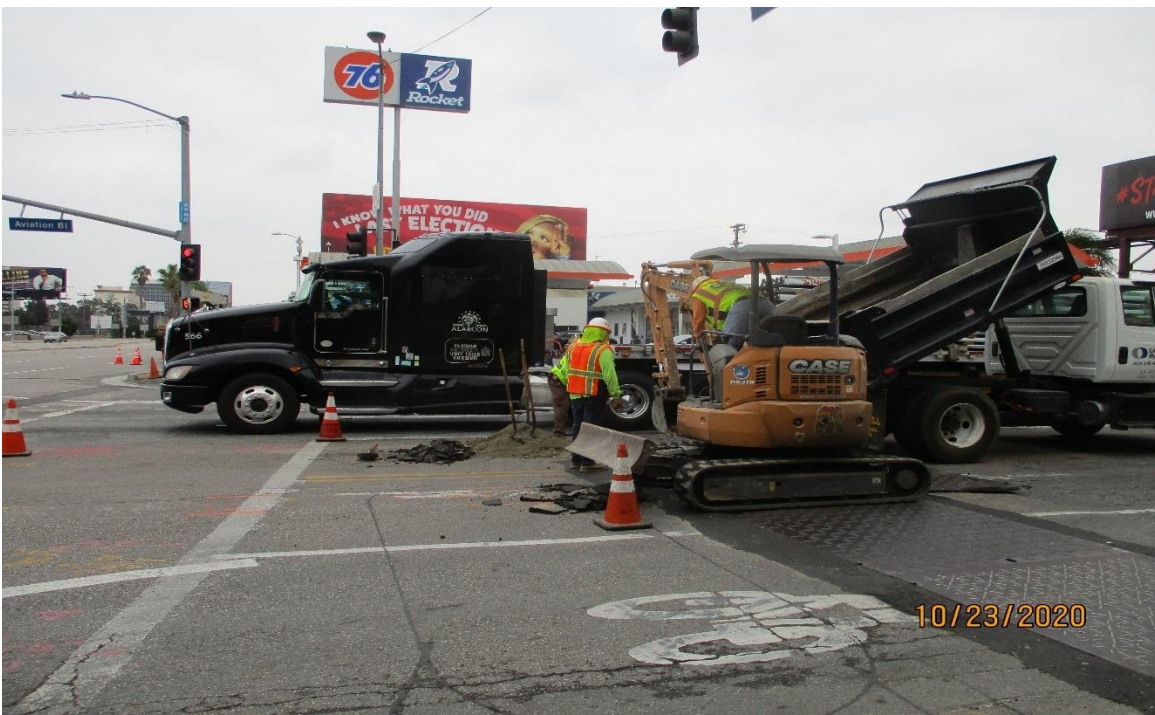


AVIATION/CENTURY- trenching for the palm tree irrigation at the Aviation Station.

CRENSHAW/LAX PHOTOGRAPHIC UPDATE



AVIATION/CENTURY- Excavating for the amended soil at Aviation and Century.



AVIATION/CENTURY- Traffic signal conduit installation at Aviation and Century.

CRENSHAW/LAX PHOTOGRAPHIC UPDATE



AVIATION/CENTURY- Placing concrete for the stairway and escalator landing area at the Aviation Station.



AVIATION/CENTURY- Fabricating the emergency exit fencing at the Aviation Station platform.

CRENSHAW/LAX PHOTOGRAPHIC UPDATE



AVIATION/CENTURY- Excavating for the amended soil at Aviation and Century.



AVIATION/CENTURY- Chipping out the anchor bolts on the light pole foundation at the Aviation Station due to an incorrect bol.

CRENSHAW/LAX PHOTOGRAPHIC UPDATE



AVIATION/CENTURY- Fabrication and erection of the Aviation Station platform south emergency exit gate.



AVIATION/CENTURY- Trenching for traffic signal conduit on the south side of Aviation at Century.

CRENSHAW/LAX PHOTOGRAPHIC UPDATE



AVIATION/CENTURY- Starting to rough grade the west median at Aviation and Century.



AVIATION/CENTURY- Traffic signal conduit installation for the Sw corner of Aviation and Century.

CRENSHAW/LAX PHOTOGRAPHIC UPDATE



AVIATION/CENTURY- Placing amended soil on the Sw corner of Aviation and Century



AVIATION/CENTURY- Grading at the Aviation Station.

CRENSHAW/LAX PHOTOGRAPHIC UPDATE



AVIATION/CENTURY- WSCC Excavated, made grade for and placed SWK conc at West St crossing.

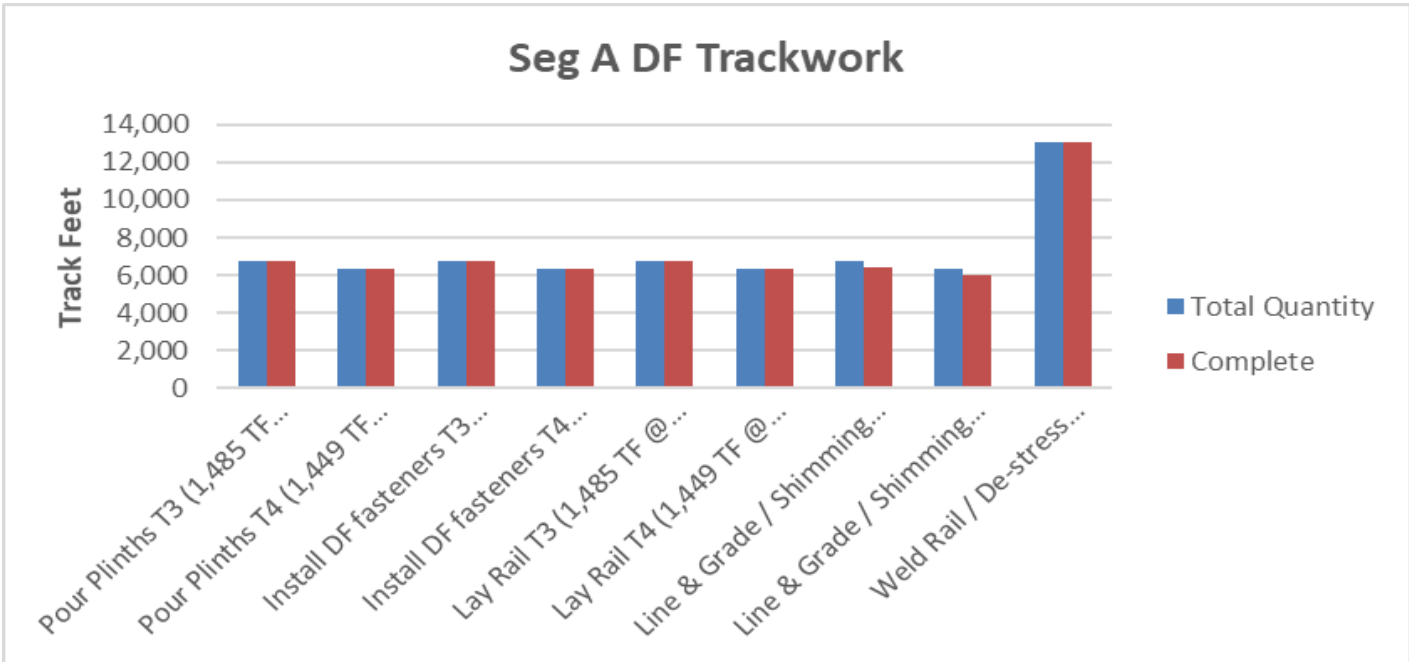
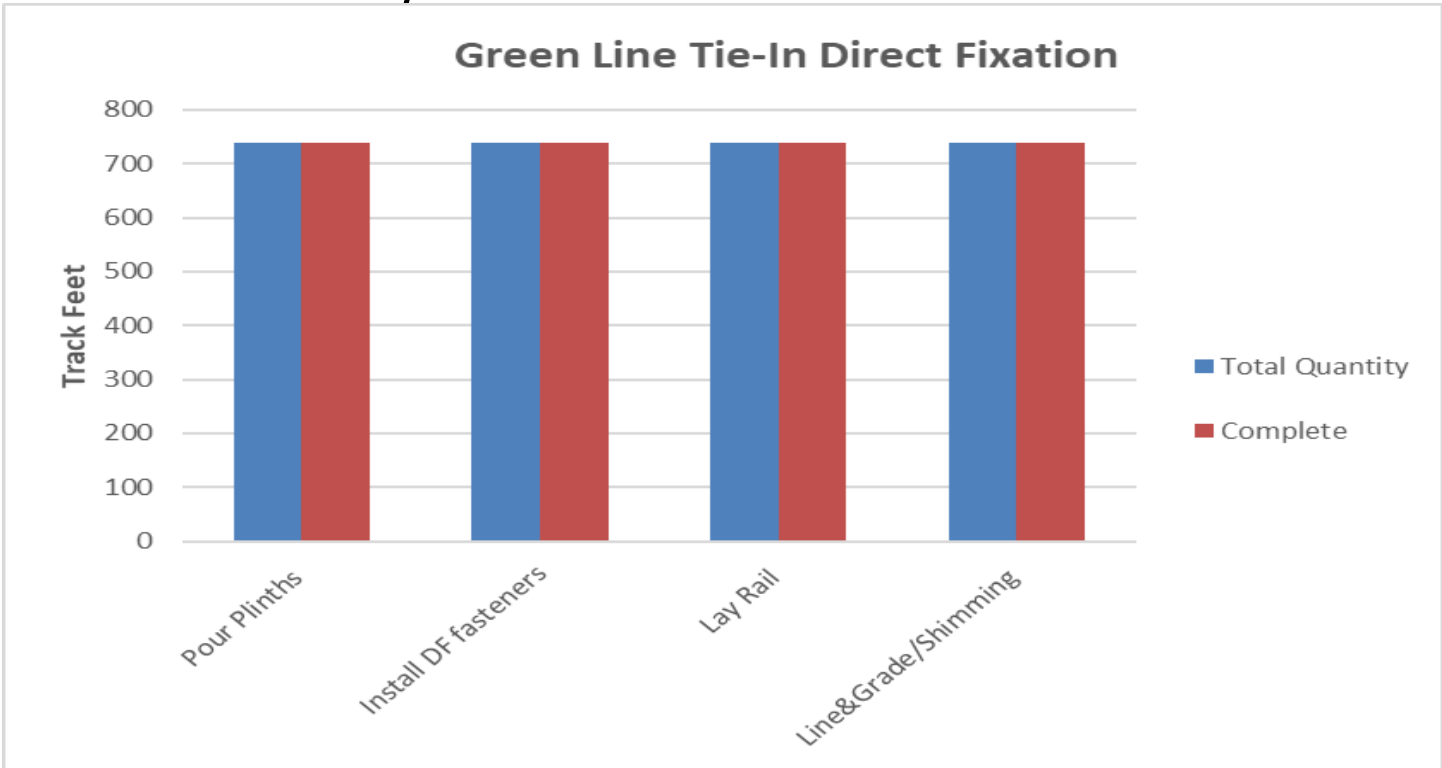


AVIATION/CENTURY- Cleanup and place Ac at West St crossing.

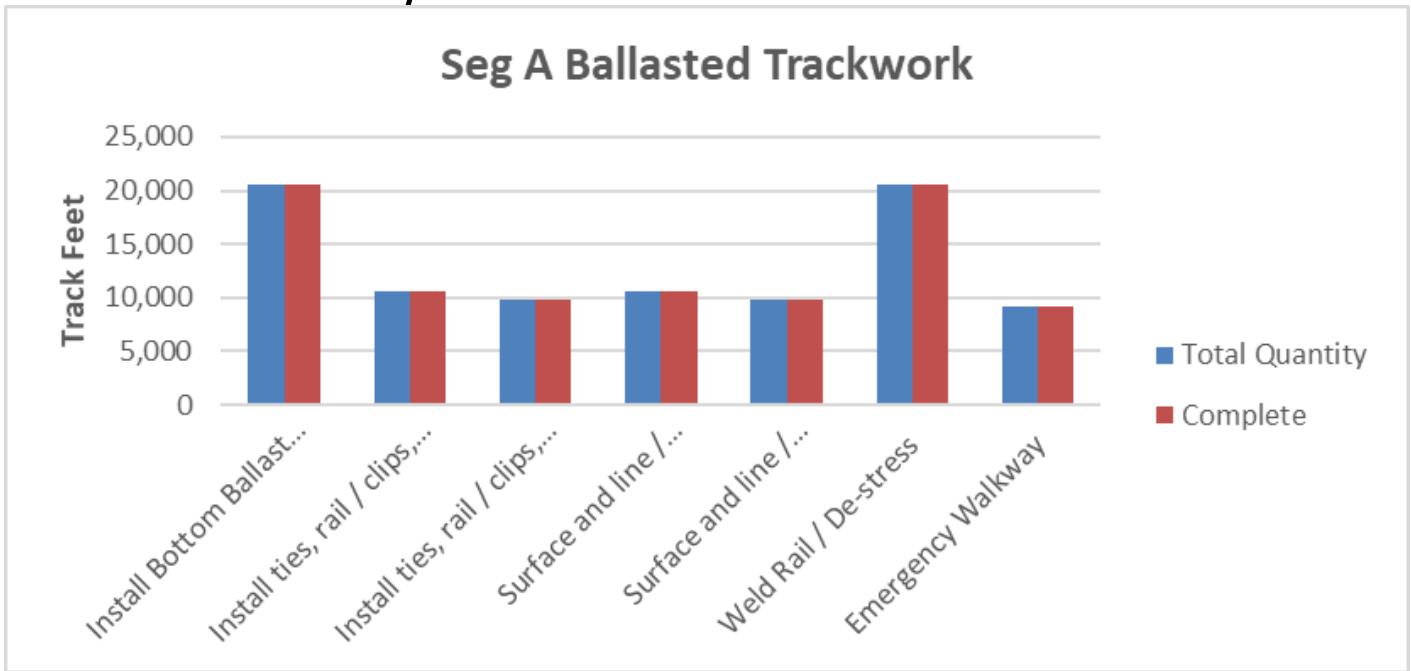
CRENSHAW/LAX PHOTOGRAPHIC UPDATE

PROJECT WIDE TRACKWORK PROGRESS									
	TRACK TYPE	ACTIVITY	TRACK FEET/QUANTITY	INSTALLED TO DATE	REMAINING	ACTIVITY % PROGRESS	Potential Rework *	Punchlist ** (Complete/Incomplete)	
GREENLINE TIE-IN	DIRECT FIXATION	Pour Plinths	738	738	0	100.00%			
		Install DF fasteners	738	738	0	100.00%			
		Lay Rail	738	738	0	100.00%			
		Line&Grade/Shimming	738	738	0	100.00%			
		Weld Rail/ Destress							
		Emergency Walkway	4	4	0	100.00%		INC	
	Acceptance for turnover to subcontractors	yes/no	yes						
	SPECIAL TRACKWORK	DF Double Crossovers (Diamond XING 1 & 2)	2	2	0	100.00%			
		Line & Grade / Shimming	2	2	0	100.00%			
		DF Single Crossovers (A/F, B/E, C/F, D/E)	4	4	0	100.00%			
		Line & Grade / Shimming	4	4	0	100.00%			
		Thermite Welds	40	40	0	100.00%			
		Insulated Joints (IJ's)	28	28	0	100.00%	*		
		Acceptance for turnover to subcontractors	yes/no	yes					
SEGMENT A	DF (13,089 TF include 395 TF of K1/K2 XO)	Pour Plinths T3 (1,485 TF @ wye + 4,884 TF + 395 TF K1/K2 XO) <i>(Insert rework continues)</i>	6,763	6,763	0	100.00%	*		
		Pour Plinths T4 (1,449 TF @ wye + 4,877 TF) <i>(Insert rework continues)</i>	6,326	6,326	0	100.00%	*		
		Install DF fasteners T3 (1,485 TF @ wye + 4,884 TF + 395 TF K1/K2 XO)	6,763	6,763	0	100.00%	*		
		Install DF fasteners T4 (1,449 TF @ wye + 4,877 TF)	6,326	6,326	0	100.00%	*		
		Lay Rail T3 (1,485 TF @ wye + 4,884 TF + 395 TF K1/K2 XO)	6,763	6,763	0	100.00%			
		Lay Rail T4 (1,449 TF @ wye + 4,877 TF)	6,326	6,326	0	100.00%			
		Line & Grade / Shimming T3 (1,485 TF @ wye + 4,884 TF + 395 TF K1/K2 XO)	6,763	6,425	338	95.00%			
		Line & Grade / Shimming T4 (1,449 TF @ wye + 4,877 TF)	6,326	6,010	316	95.00%			
		Weld Rail / De-stress (Rework complete)	13,089	13089	0	100.00%	*		
		Emergency Walkway							
	Acceptance for turnover to subcontractors	yes/no	no						
	BALLASTED TRACKWORK (20,551 TF including grade crossing, Yard Leads & Tail Track)	Install Bottom Ballast (T3+T4, and include SYL, NYL & Tail Track)	20,551	20,551	0	100.00%	*		
		Install ties, rail / clips, top ballast T3 (9,480 TF) + SYL (244 TF) + NYL (937 TF)	10,661	10,661	0	100.00%	*		
		Install ties, rail / clips, top ballast T4 (9,475 TF) + Tail Track (415 TF)	9,890	9,890	0	100.00%	*		
		Surface and line / Regulate T3 + SYL + NYL	10,661	10,661	0	100.00%	*	INC	
		Surface and line / Regulate T4 + Tail Track	9,890	9,890	0	100.00%	*	INC	
		Weld Rail / De-stress	20,550	20,550	0	100.00%	*	INC	
		Emergency Walkway	9,176	9,176	0	100.00%	*	INC	
	Acceptance for turnover to subcontractors	yes/no	no						
	SPECIAL TRACKWORK	Ballasted Double Crossover (G1/G2, H1/H2)	2	2	0	100.00%			
		DF Single Crossover (K1/K2)	2	2	0	100.00%		*	
		Line & Grade / Shimming	2	0	2				
		Ballasted Single Crossover (I1/IEQ, I2/IEQ, M1/M2, N1/N2)	4	4	0	100.00%			
		Install switches (A,B,C,D,E,F,G1,G2,H1,H2,I1,I2,IEQ,S,N1,N2,M1,M2 = 18)	18	18	0	100.00%			
Thermite Welds		130	130	0	100.00%				
Insulated Joints (IJ's)		74	74	0	100.00%		*		
Acceptance for turnover to subcontractors	yes/no	no							
GRADE X-ING	Construct Crossing (Arbor Vitae, Hindry)	2	2		100.00%				
DF =	Direct Fixation								
T3 =	Track 3								
T4 =	Track 4								
TF =	Track Feet								
*	Potential for rework based on recent guideway survey. Total impact of rework is unknown at this time.								
**	Punchlist Complete/Incomplete: Indicates the completion (COMP) or Incompletion (INC) of identified punchlist items								

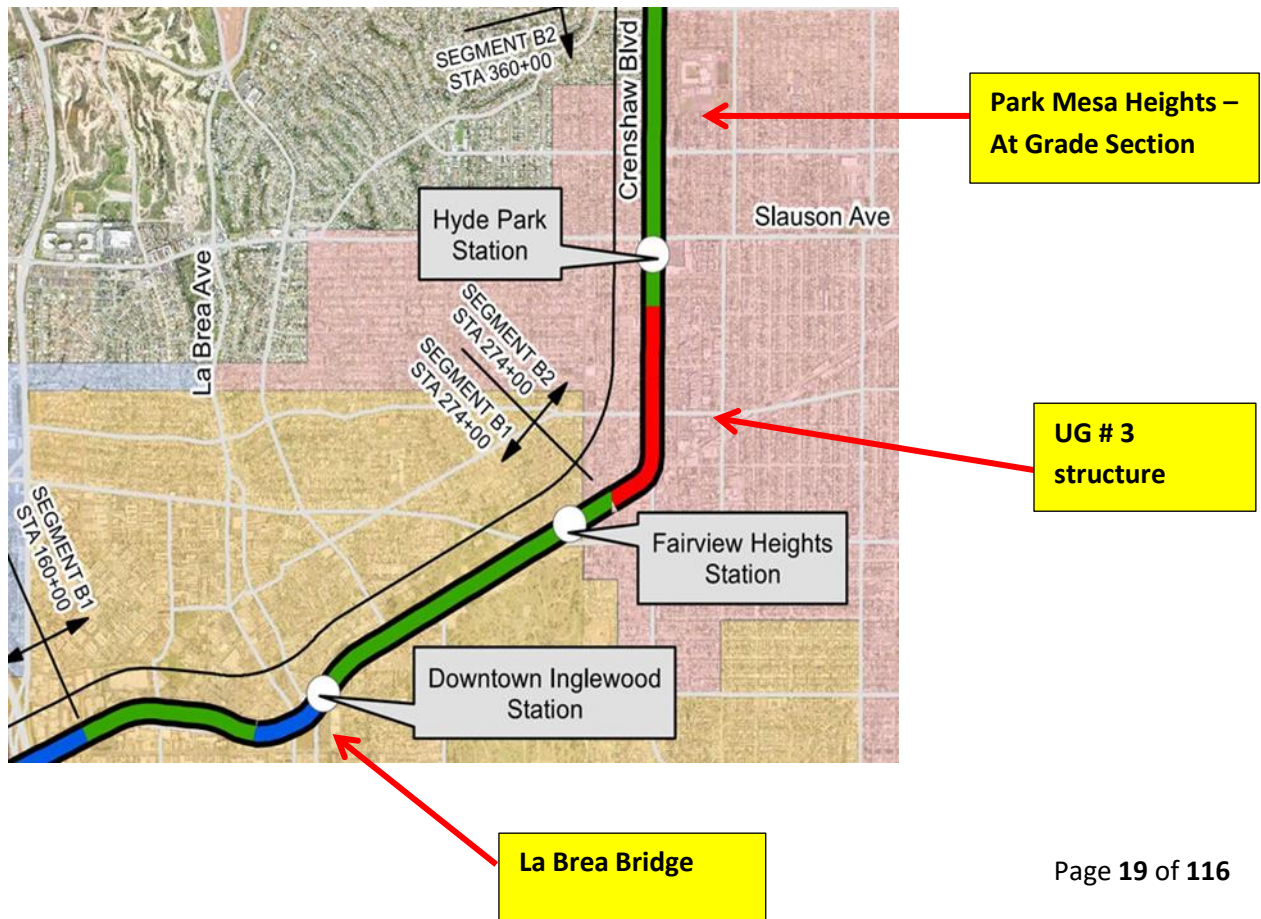
CRENSHAW/LAX PHOTOGRAPHIC UPDATE



CRENSHAW/LAX PHOTOGRAPHIC UPDATE



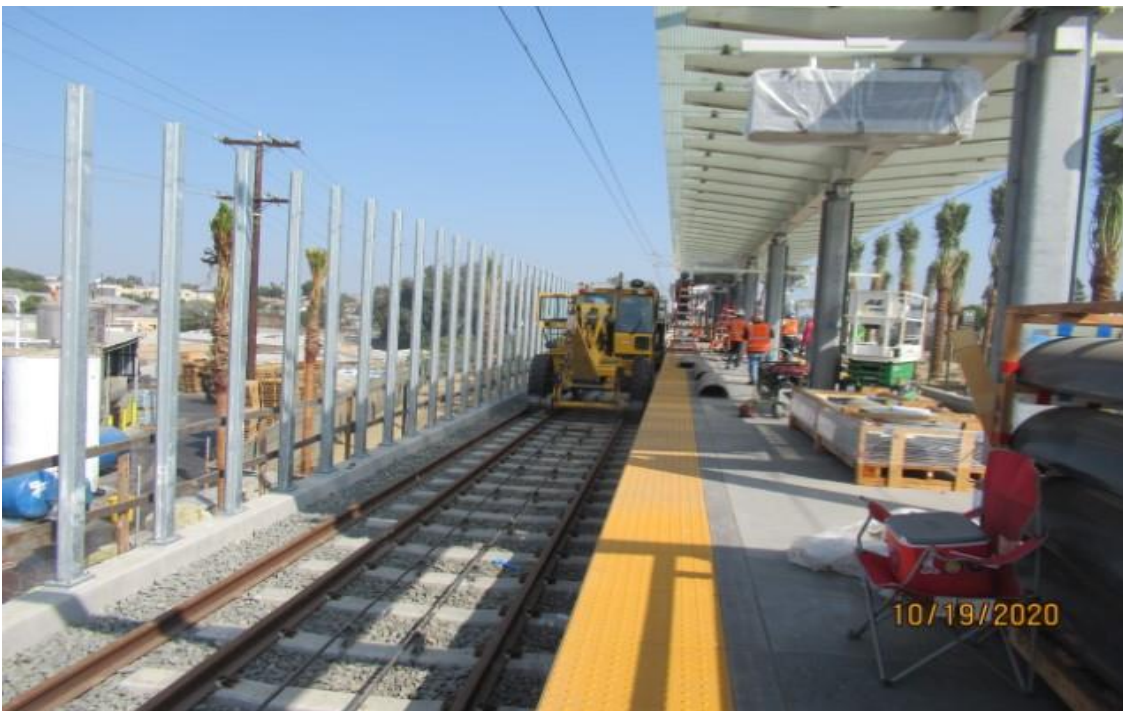
Segment B



CRENSHAW/LAX PHOTOGRAPHIC UPDATE



La Brea – La Brea wall 202 SB track WSCC has requested HCC to re-locate left rail into tie crib extending access deeper into platform area (looking north) Rework



La Brea – HCC Speed Swing at La Brea station, SB track waiting for WSCC to remove portable de-rail so HCC can re-align & reclip left rail for sub-contractor (Ace Fence) looking north Rework

CRENSHAW/LAX PHOTOGRAPHIC UPDATE



La Brea – Placing concrete for the ADA ramps at the La Brea Station.



La Brea – McMahon Place cladding on columns at La Brea Sta.

CRENSHAW/LAX PHOTOGRAPHIC UPDATE



Hindry – Prep to slot pave at the Hindry crossing.

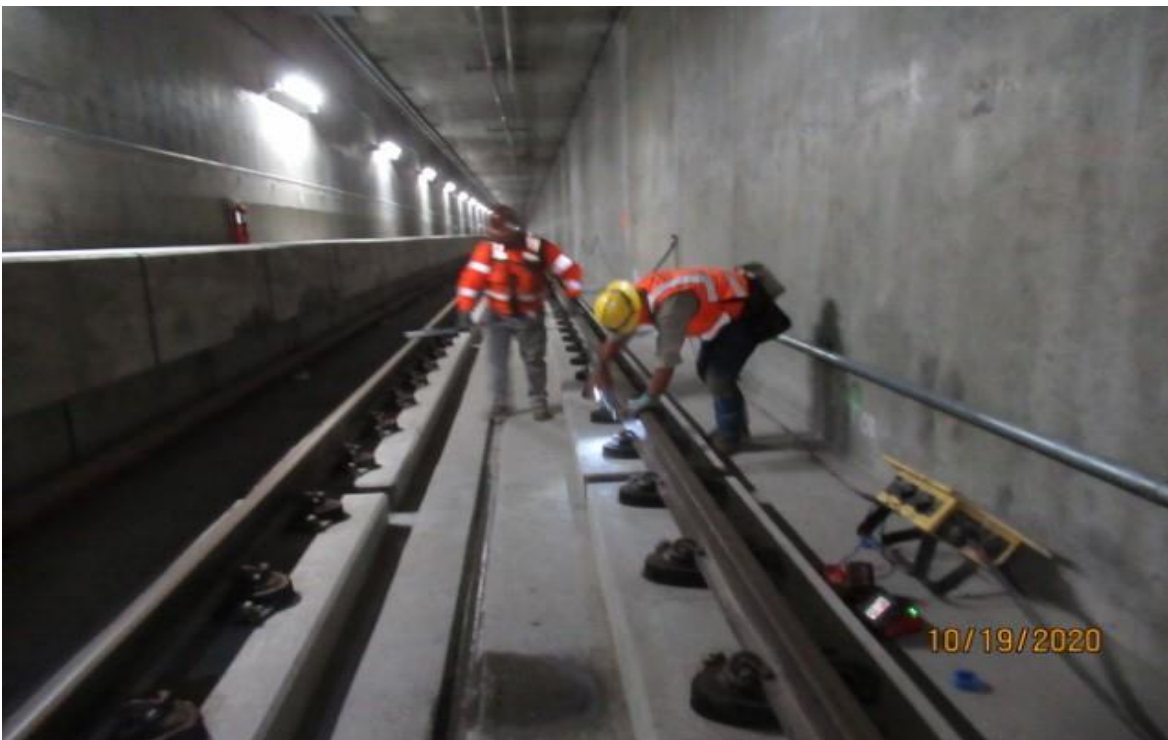


Hindry – Buffing the topping slabs for the NB Hindry platform.

CRENSHAW/LAX PHOTOGRAPHIC UPDATE



UG3 – WSCC preparing to butter top of plinths south end UG3 (looking south).



UG3 – WSCC inside UG3 SB track re-tightening DF fastener bolts that were previously removed for repair work (looking south) Rework NCR-A 111-B case 4

CRENSHAW/LAX PHOTOGRAPHIC UPDATE



UG3 – STA 279+20 TK#3/SB looking north – UG3 (Victoria) checking track geometry and adjusting as needed (REWORK)



UG3 – STA 284+00 TK#4/NB looking south – DF's AB torque in UG3 – Victoria (REWORK)

CRENSHAW/LAX PHOTOGRAPHIC UPDATE



UG3 – STA 287+20 TK#4/NB looking north – UG3 patching plinth PCC (REWORK)



UG3 – STA 288+75 TK#4/NB looking south – adjusting gage (track geometry) in UG3

CRENSHAW/LAX PHOTOGRAPHIC UPDATE



Crenshaw/Vernon – McMahon welding handrail at Vernon stairwell # 4

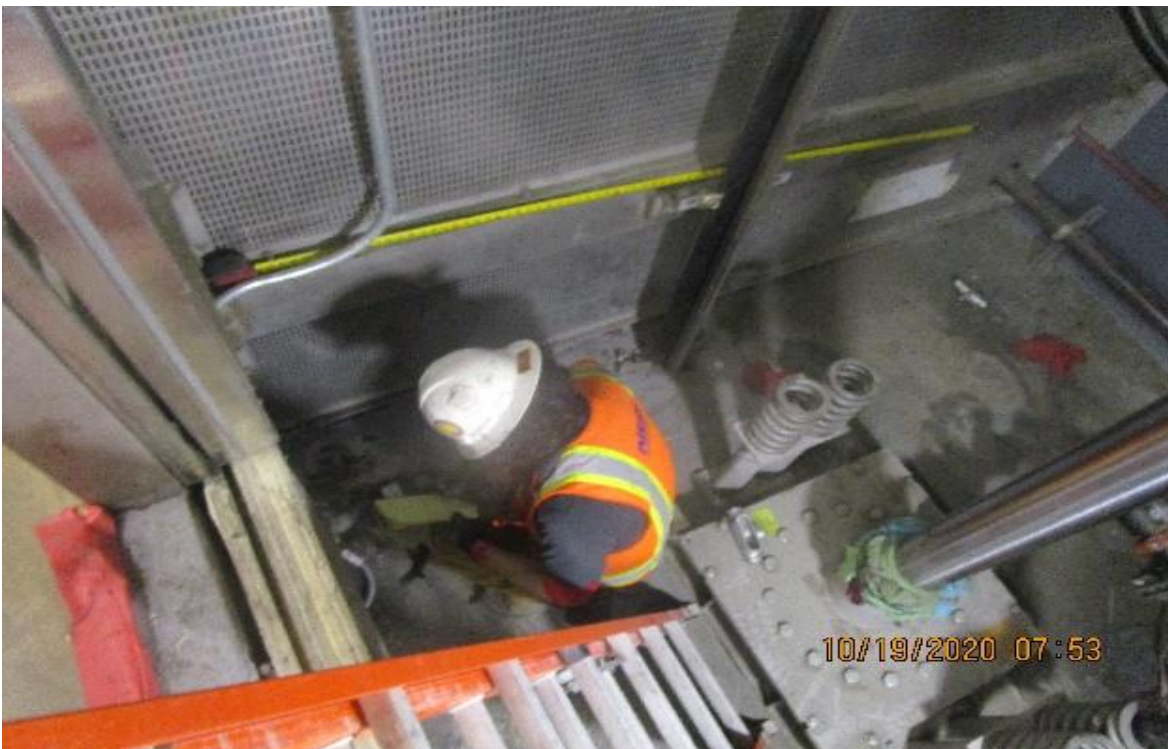


Crenshaw/Vernon – WSCC coring for handrail at Vernon plaza stairs.

CRENSHAW/LAX PHOTOGRAPHIC UPDATE



Crenshaw/Vernon – Vernon, Mechanical (S) C114, begin rough in 480,120 Sola HD transformer between disconnect & ACCP-1.



Crenshaw/Vernon – Vernon Platform Elevator 3 & 4 pits, continued rough in service & repair receptacles & lighting raceways & devises

CRENSHAW/LAX PHOTOGRAPHIC UPDATE



Crenshaw/Vernon – Southbound bored tunnel Vernon to MLK Begin removing 1-1.4” Radiax cable between CP5 & (S) MLK portal



Crenshaw/Vernon – Vernon Platform, Sump pump room (N) T110 continued rough in controller GRC to pit (3) 1-1/2” & (2) 2”

CRENSHAW/LAX PHOTOGRAPHIC UPDATE



Crenshaw/Vernon – Vernon Concourse, Aux power (N) C119, MCC1/N (CIC) pulling #14 control wiring to PAC-6-2 mechanical damper



Crenshaw/Vernon – Vernon (S) Platform, continued seismic supports at 2" & 2-1/2" GRC Radiax support conduit above drop ceiling.

CRENSHAW/LAX PHOTOGRAPHIC UPDATE



Crenshaw/Vernon – Vernon Platform, Sump pump room (N) T110 continued piping (3) 1-1/2" & (2) 2" GRC from control panel to pit

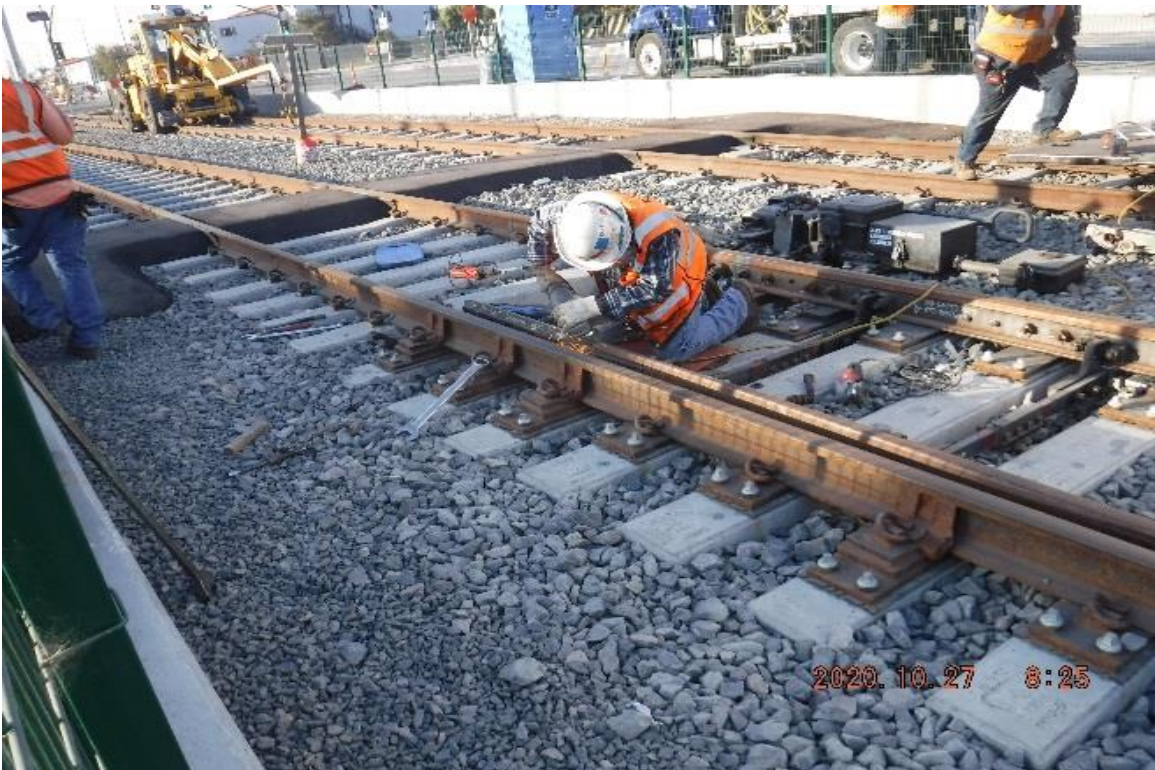


Crenshaw/Vernon – Vernon, Aux power (N) C119 continued identify, label & dressing FSD limit switch control #14 wiring MCC2/N

CRENSHAW/LAX PHOTOGRAPHIC UPDATE



Crenshaw/Vernon – Vernon Concourse, TC&C Room C112, Resume SCADA terminations 5 pair #22`s (seismic gas sensors) at MDF-1



CRENSHAW/LAX PHOTOGRAPHIC UPDATE

57th Street – STA 332+53 TK#4/NB looking south – finishing custom manganese insert replacement of 10U1LHXO (divert) (57th St)



57th street – STA 332+53 TK#4/NB looking east – re-set switch rods and switch machine of 10U1LHXO by LKC (57th St)



CRENSHAW/LAX PHOTOGRAPHIC UPDATE

PARK MESA – Built formwork and placed concrete for new ADA ramp installation on the northwest corner of Hyde Park Blvd and Crenshaw Blvd.



PARK MESA – Saw cutting ADA ramp on the northwest corner of Hyde Park Blvd and Crenshaw Blvd.



CRENSHAW/LAX PHOTOGRAPHIC UPDATE

PARK MESA – Placing asphalt concrete over Storm Drain Line F on the northeast corner of Crenshaw Blvd and 60th St.



PARK MESA – Building formwork for Catch Basin #6 on the northeast corner of Crenshaw Blvd and 60th St.



CRENSHAW/LAX PHOTOGRAPHIC UPDATE

PARK MESA – Continue building formwork for Catch Basin #6 on the northeast corner of Crenshaw Blvd and 60th St.



PARK MESA – Building formwork for the roof deck of Catch Basin #6 on the northeast corner of Crenshaw Blvd and 60th St.



PARK MESA – Sealing interior seams of Storm Drain Line F on northbound Crenshaw Blvd and 60th St.

CRENSHAW/LAX PHOTOGRAPHIC UPDATE



PARK MESA – Excavating northbound lane for new curb and gutter installation on the northeast corner of Crenshaw Blvd and 60th St.



PARK MESA – Built formwork and placed concrete for the new curb and gutter installation on the northeast corner of Crenshaw Blvd and 60th St.

CRENSHAW/LAX PHOTOGRAPHIC UPDATE



PARK MESA – Continue excavating to extend sidewalk on the northeast corner of Crenshaw Blvd and 60th St.



PARK MESA – Preparing to place concrete for the sub pump on southbound Crenshaw Blvd and 60th St.

CRENSHAW/LAX PHOTOGRAPHIC UPDATE



PARK MESA – Excavating for the installation of power conduits for signal lights and placing concrete on northbound Crenshaw Blvd and 60th St.



PARK MESA – Sacking and patching Manhole #20 on northbound Crenshaw Blvd and 60th St.

CRENSHAW/LAX PHOTOGRAPHIC UPDATE



PARK MESA – Saw cut and excavated concrete slabs on the intersection of Crenshaw Blvd and Slauson Ave.



PARK MESA – Continue building formwork and placing slurry on the north and southbound lanes for restoration at the intersection of Crenshaw Blvd and 57th St.

CRENSHAW/LAX PHOTOGRAPHIC UPDATE

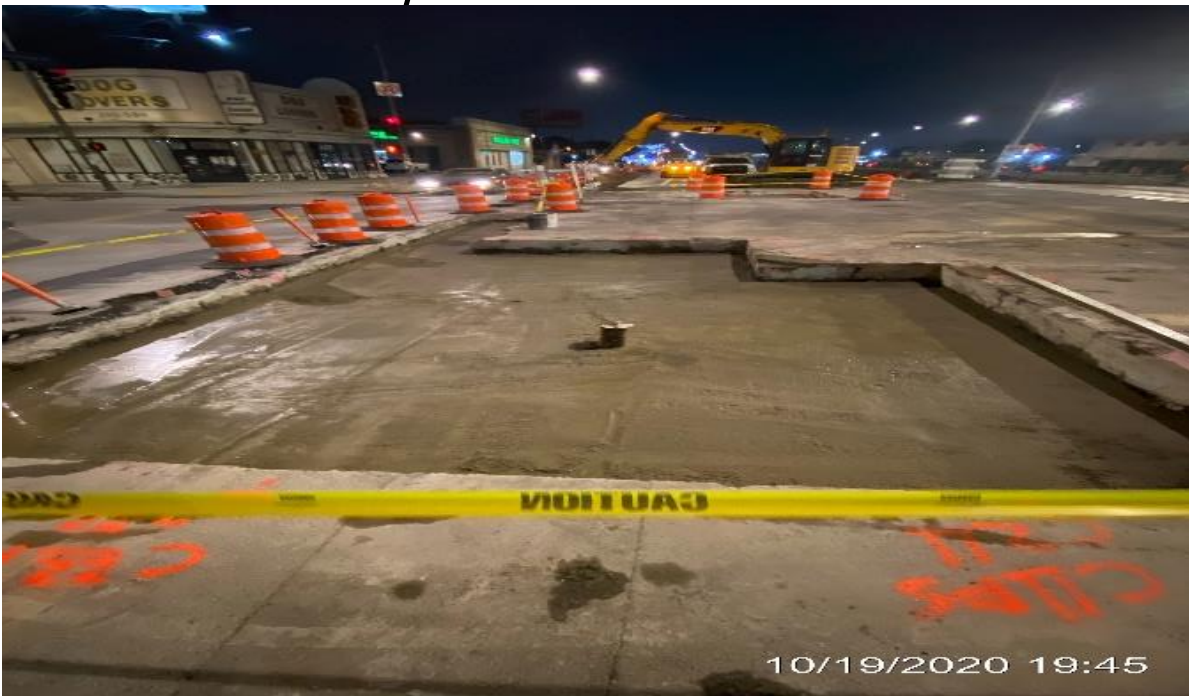


PARK MESA – Continue placing concrete slurry for roadway panels on northbound Crenshaw Blvd and Slauson Ave.



PARK MESA – Removed road slab on southbound Crenshaw Blvd and 57th St.

CRENSHAW/LAX PHOTOGRAPHIC UPDATE



PARK MESA – Continue placing slurry on the north and southbound lanes for restoration at the intersection of Crenshaw Blvd and 57th St.



PARK MESA – Continue placing slurry on the north and southbound lanes for restoration at the intersection of Crenshaw Blvd and 57th St.

CRENSHAW/LAX PHOTOGRAPHIC UPDATE



PARK MESA – Excavated and removed existing road slab on the intersection of Crenshaw Blvd and 54th St.



PARK MESA – Placing asphalt concrete for road slab on the intersection of Crenshaw Blvd and 54th St.

CRENSHAW/LAX PHOTOGRAPHIC UPDATE



PARK MESA – Excavating existing roadway slab and setting elevations on southbound Crenshaw Blvd and 52nd St.



PARK MESA – Placing rebar in preparation for concrete placement of the existing roadway slab on southbound Crenshaw Blvd and 52nd St.

CRENSHAW/LAX PHOTOGRAPHIC UPDATE



PARK MESA – Grading sidewalk in preparation for concrete placement on the northeast corner of Crenshaw Blvd and 48th St.



HYDE PARK STATION – Delivering stainless steel cladding for the platform columns covers.

CRENSHAW/LAX PHOTOGRAPHIC UPDATE



HYDE PARK STATION – Installing stainless steel cladding covers for the platform columns.



HYDE PARK STATION – Continue installing stainless steel cladding covers for the platform columns.

CRENSHAW/LAX PHOTOGRAPHIC UPDATE

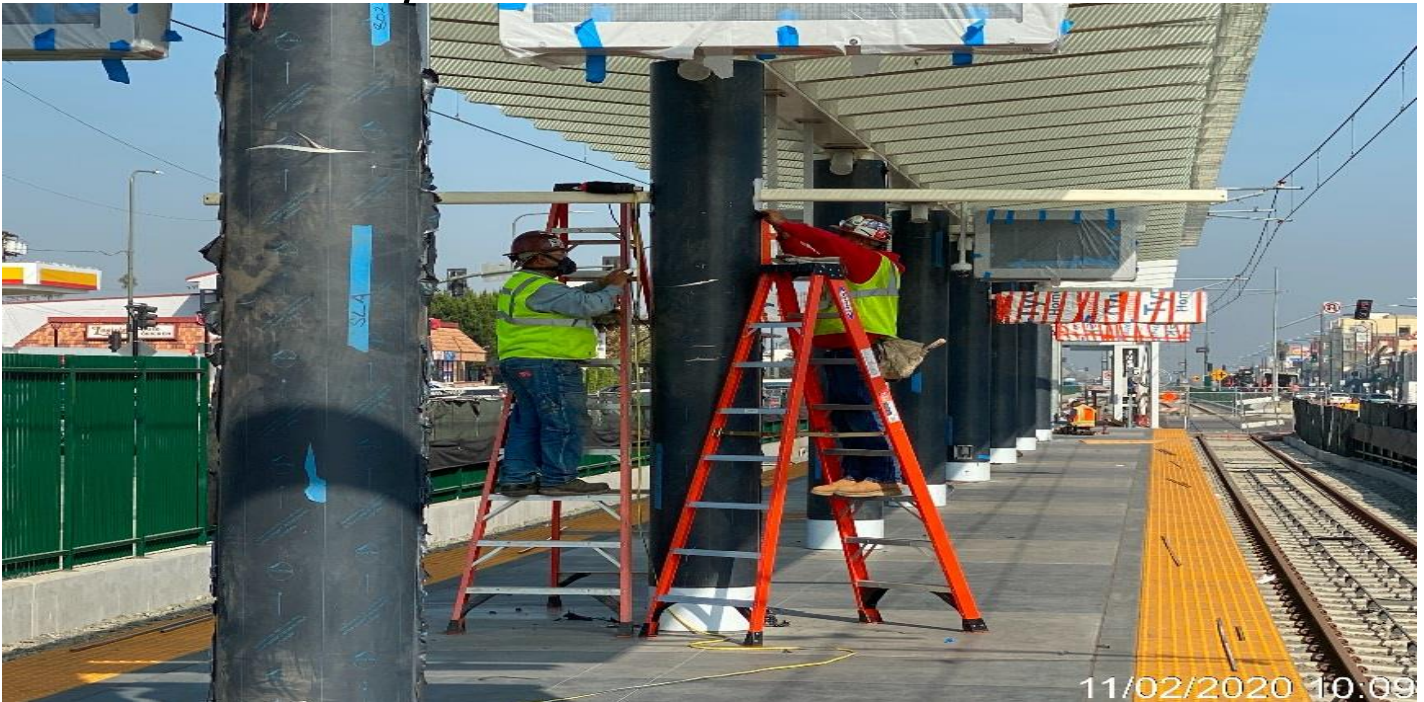


HYDE PARK STATION – Continue installing stainless steel cladding covers for the platform columns.



HYDE PARK STATION – Continue installing stainless steel cladding covers for the platform columns.

CRENSHAW/LAX PHOTOGRAPHIC UPDATE



HYDE PARK STATION – Continue installing stainless steel cladding covers for the platform columns.

SEGMENT B1:

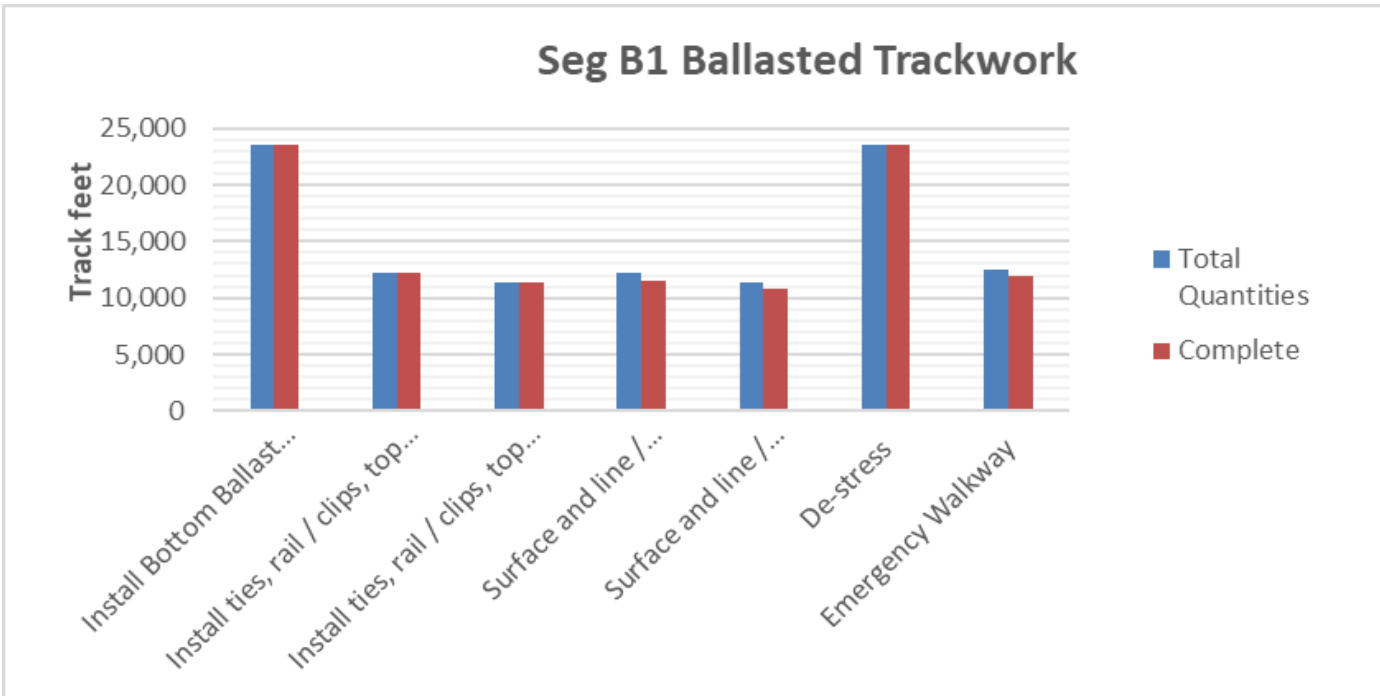
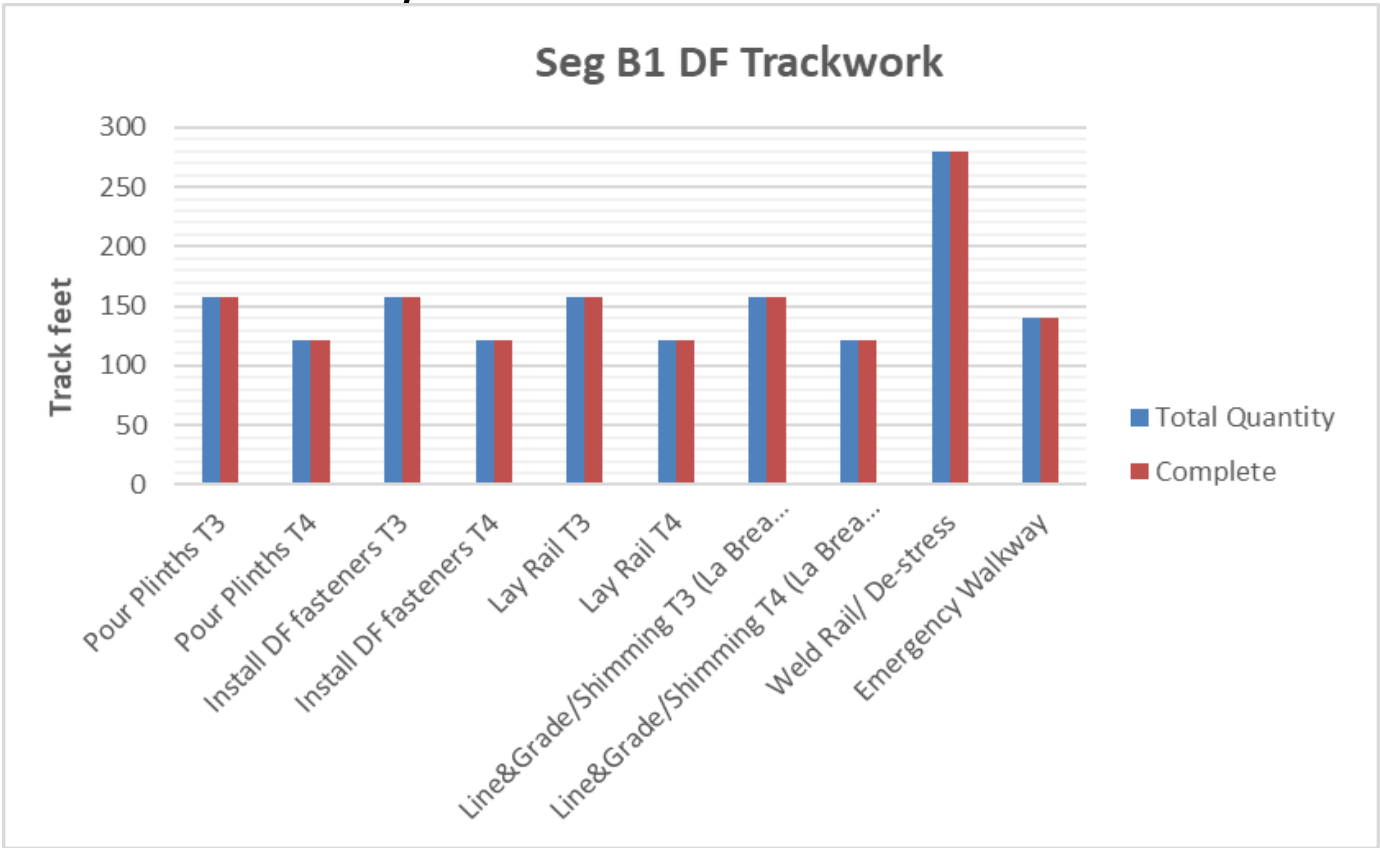
- Replacement of damaged switch points complete.
- Disturbed ballast due to systems electrical conduit relocations continues to be repaired and re-dressed.
- WSCC continues the Jet Grouting of MSE Wall 202.
- Investigation of rail flaws continues.

CRENSHAW/LAX PHOTOGRAPHIC UPDATE

PROJECT WIDE TRACKWORK PROGRESS

	TRACK TYPE	ACTIVITY	TRACK FEET/QUANTITY	INSTALLED TO DATE	REMAINING	ACTIVITY % PROGRESS	Potential Rework *	Punchlist ** (Complete/Incomplete)
SEGMENT B1	DF (279 TF)	Pour Plinths T3	158	158	0	100.00%		
		Pour Plinths T4	121	121	0	100.00%		
		Install DF fasteners T3	158	158	0	100.00%	*	INC
		Install DF fasteners T4	121	121	0	100.00%	*	INC
		Lay Rail T3	158	158	0	100.00%		
		Lay Rail T4	121	121	0	100.00%		
		Line&Grade/Shimming T3 (La Brea Bridge)	158	158	0	100.00%		
		Line&Grade/Shimming T4 (La Brea Bridge)	121	121	0	100.00%		
		Weld Rail/ De-stress	279	279	0	100.00%		
		Emergency Walkway	140	140	0	100.00%		
	Acceptance for turnover to subcontractors	yes/no	no					
	BALLASTED TRACKWORK (23,506 TF including grade crossings and Siding track)	Install Bottom Ballast (T3+T4 and Siding)	23,506	23,506	0	100.00%	*	INC
		Install ties, rail / clips, top ballast T3 + Siding	12,184	12,184	0	100.00%	*	INC
		Install ties, rail / clips, top ballast T4	11,322	11,322	0	100.00%	*	INC
		Surface and line / Regulate T3 + Siding	12,184	11,575	609	95.00%		
		Surface and line / Regulate T4	11,322	10,756	566	95.00%		
		De-stress	23,506	23,506	0	100.00%		
		Emergency Walkway	12,506	12,000	506	95.95%	*	INC
	Acceptance for turnover to subcontractors	yes/no	yes		N/A			
	SPECIAL TRACKWORK	Ballasted Single Crossover (O1/O2, P1/P2, Q1/Q2, T1/T2)	4	4	0	100.00%		
		Install switches (M, O1, O2, P1, P2, Q1, Q2, R, T1, T2 = 10)	10	10	0	100.00%		
		Thermite Welds	104	104	0	100.00%	*	
		Insulated Joints (IJ's)	43	43	0	100.00%	*	
	Acceptance for turnover to subcontractors	yes/no	No					
	GRADE X-ING	Construct Crossing (Oak/Cedar/Eucalyptus/Ivy/Centinea, High (50%), West, Brynhurst)	8	8		100.00%		
	DF =	Direct Fixation						
	T3 =	Track 3						
	T4 =	Track 4						
TF =	Track Feet							
*	Potential for rework based on recent guideway survey. Total impact of rework is unknown at this time.							
**	Punchlist Complete/Incomplete: Indicates the completion (COMP) or Incompletion (INC) of identified punchlist items							

CRENSHAW/LAX PHOTOGRAPHIC UPDATE

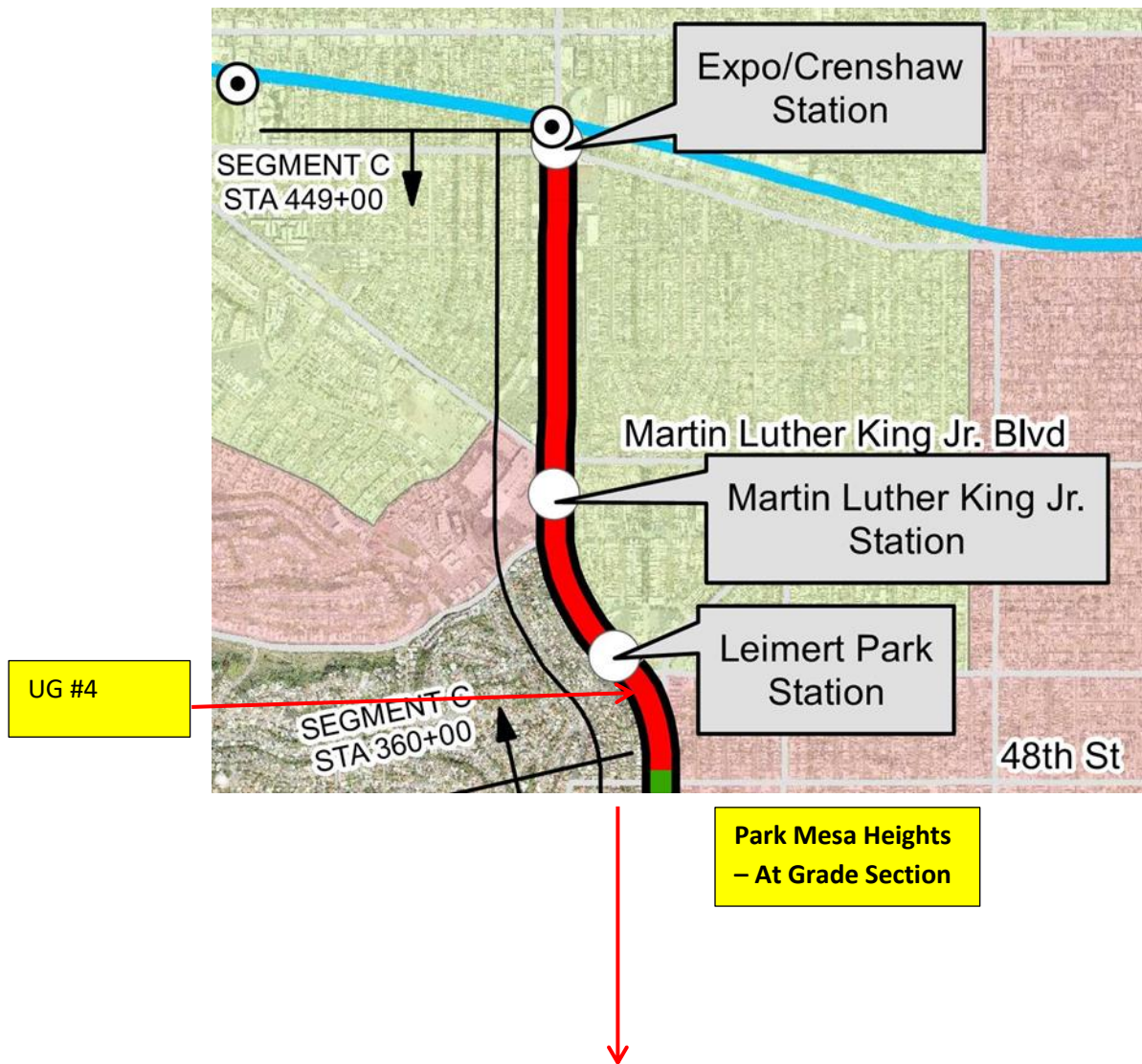


CRENSHAW/LAX PHOTOGRAPHIC UPDATE

SEGMENT B2:

- Disturbed ballast due to systems electrical conduit relocations continues to be repaired and re-dressed.
- Rework of plinth gap to invert continues throughout the Segment resetting and adjusting fasteners and sealing plinth to invert joints.
- Replacement of damaged switch points continues throughout Segment B2.

Segment C



CRENSHAW/LAX PHOTOGRAPHIC UPDATE



LEIMERT PARK STATION – Modifying handrails for the east entrance stairs at the plaza.



LEIMERT PARK STATION – Setting and installing planter pots throughout the plaza.

CRENSHAW/LAX PHOTOGRAPHIC UPDATE



LEIMERT PARK STATION – Continue setting and installing planter pots throughout the plaza.

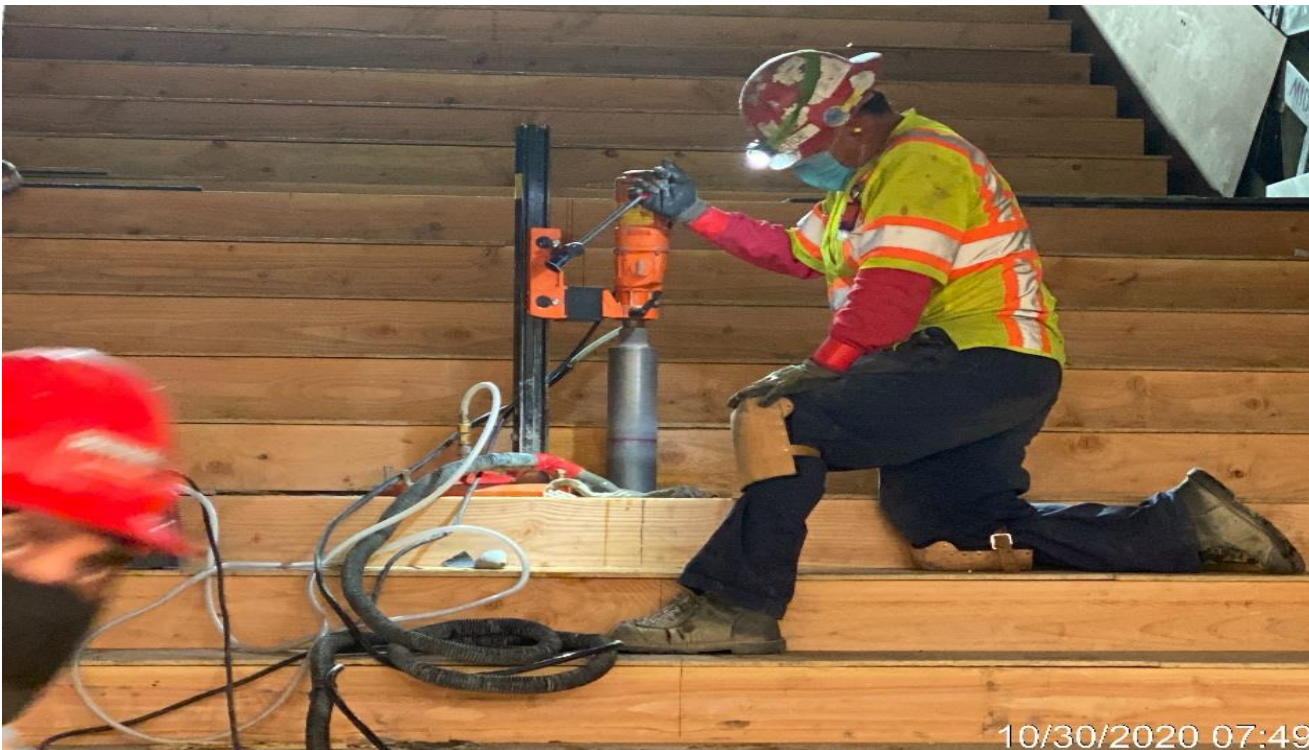


LEIMERT PARK STATION – Roughing flex to the main entrance canopy columns for BOCA light fixtures at the plaza.

CRENSHAW/LAX PHOTOGRAPHIC UPDATE

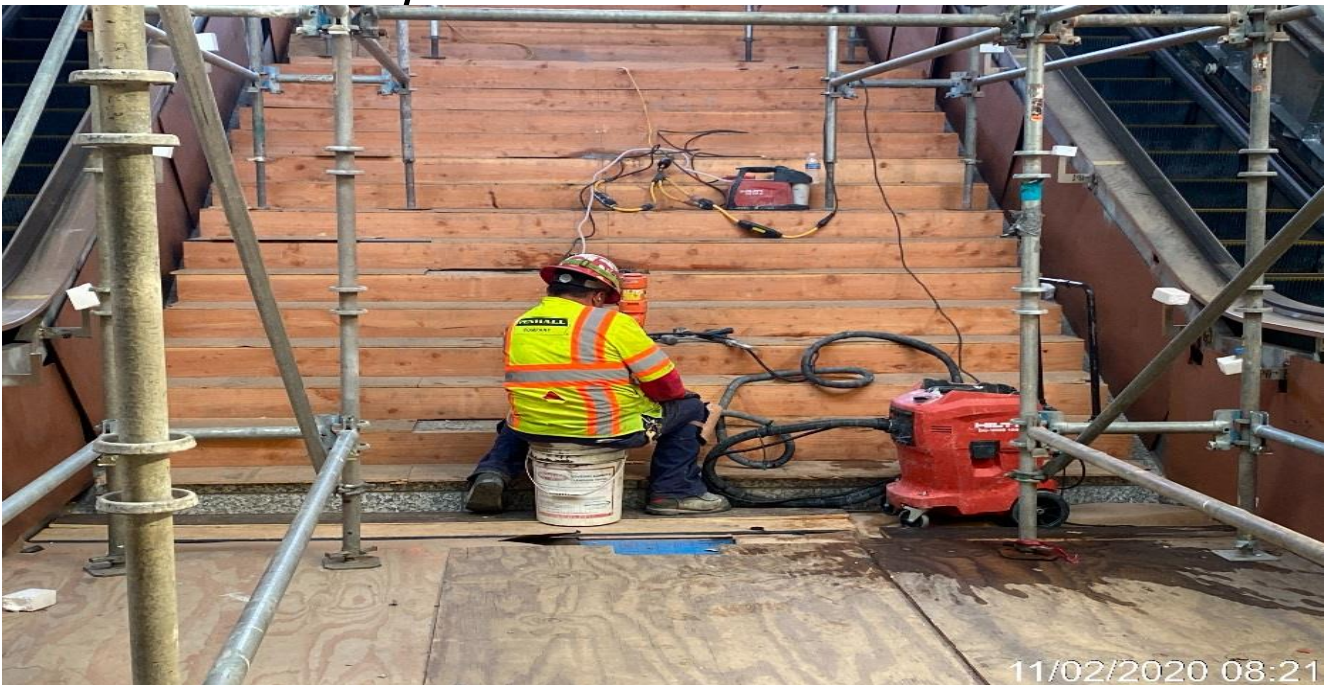


LEIMERT PARK STATION – Coring through Staircase #1 for handrail installation from plaza to the intermediate landing.

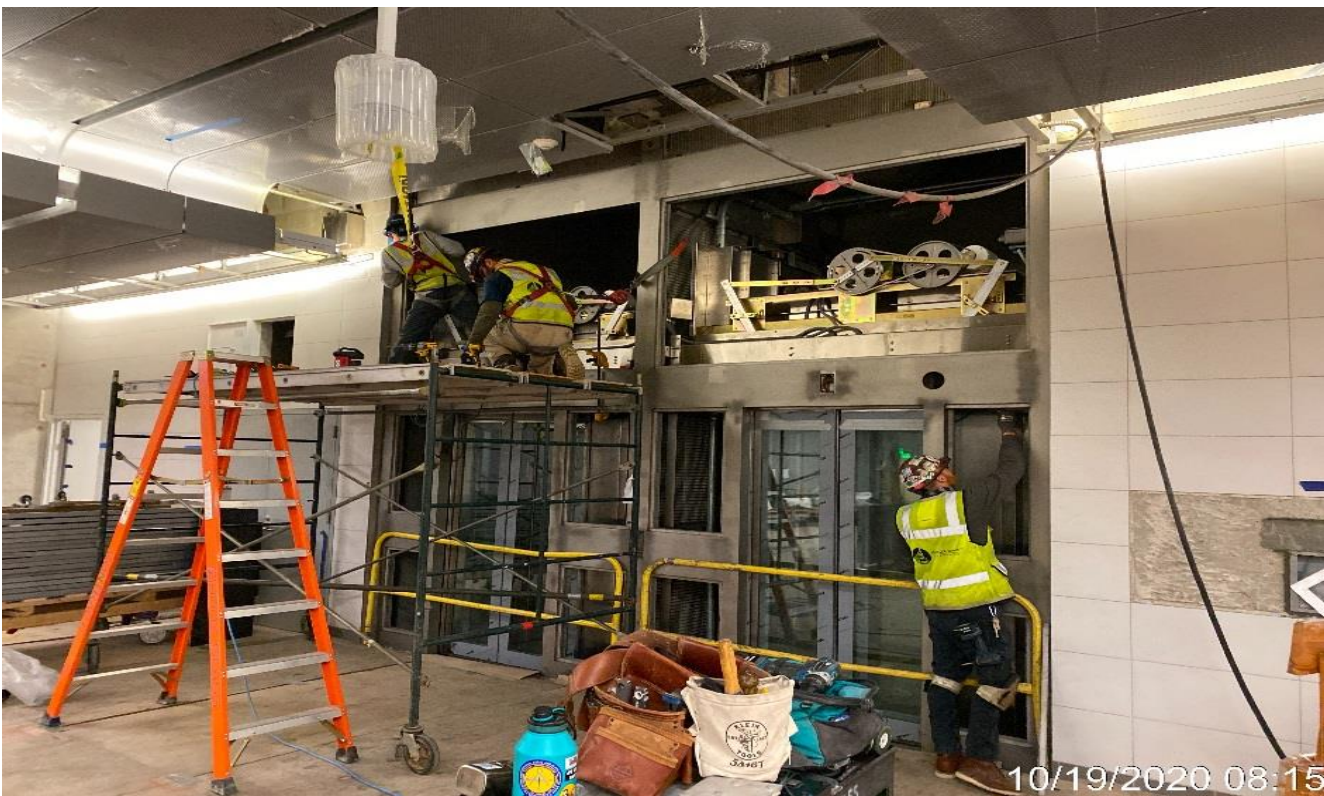


LEIMERT PARK STATION – Continue coring through Staircase #1 for handrail installation from plaza to the intermediate landing.

CRENSHAW/LAX PHOTOGRAPHIC UPDATE



LEIMERT PARK STATION – Continue coring through Staircase #1 for handrail installation from plaza to the intermediate landing.



LEIMERT PARK STATION – Continue installing glass tracks for all 4 Elevators at the concourse.

CRENSHAW/LAX PHOTOGRAPHIC UPDATE



LEIMERT PARK STATION – Continue installing perforated ceiling panels throughout the concourse.

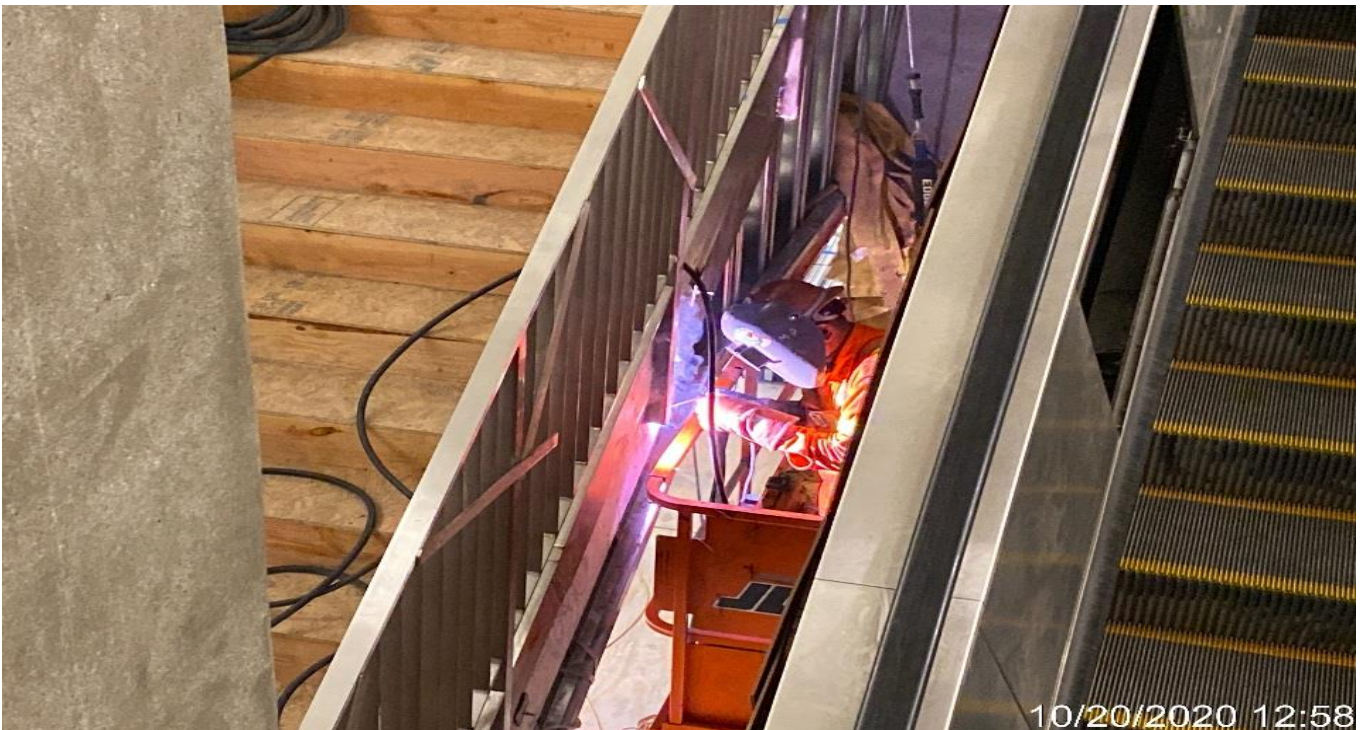


LEIMERT PARK STATION – Continue installing perforated ceiling panels throughout the concourse.

CRENSHAW/LAX PHOTOGRAPHIC UPDATE

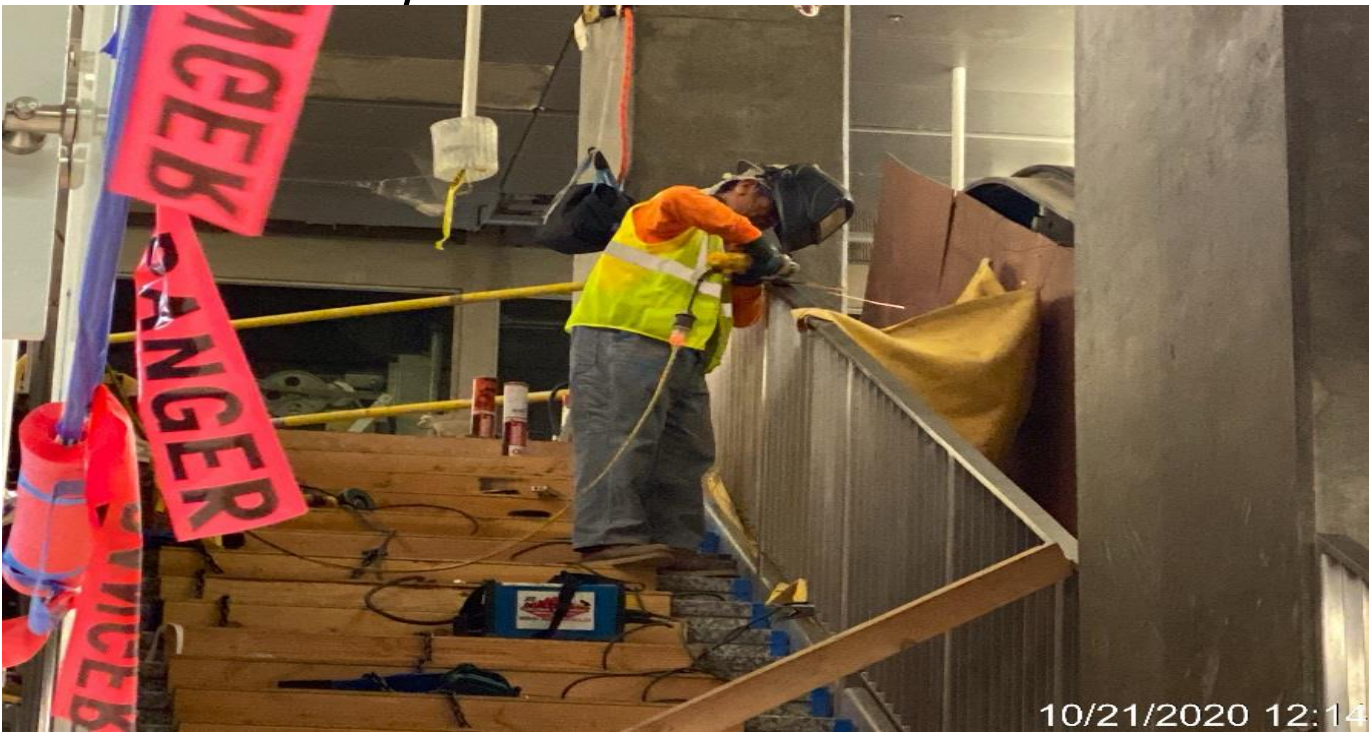


LEIMERT PARK STATION – Continue welding guardrails to Staircases 3&4 from concourse to platform.

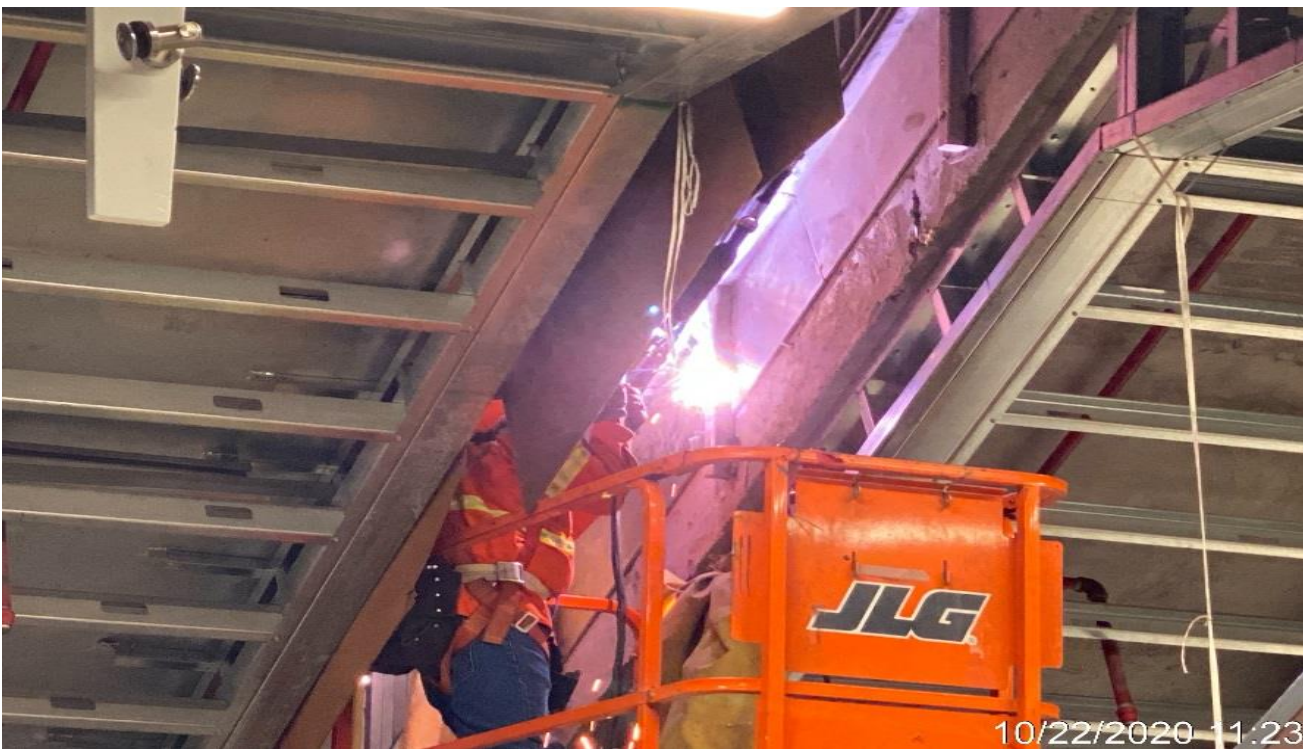


LEIMERT PARK STATION – Continue welding guardrails to Staircases 3&4 from concourse to platform.

CRENSHAW/LAX PHOTOGRAPHIC UPDATE

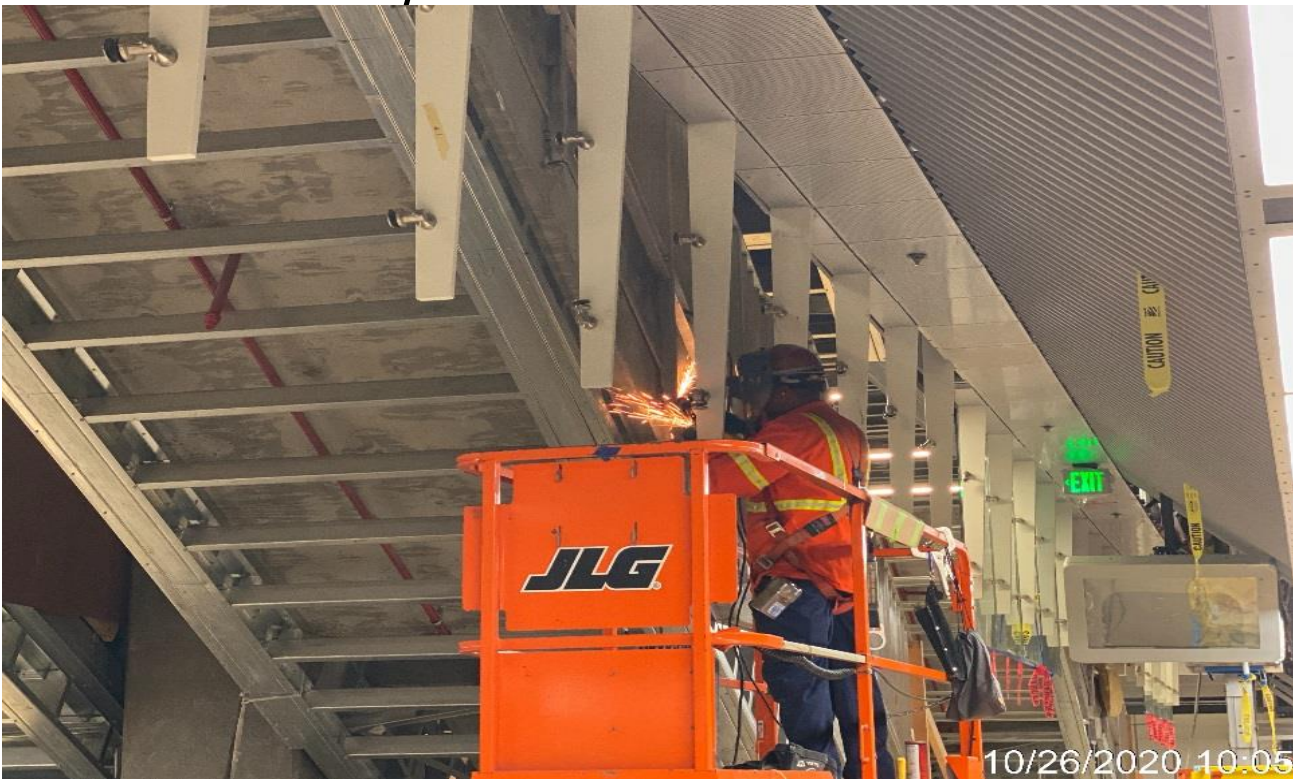


LEIMERT PARK STATION – Continue welding guardrails to Staircases 3&4 from concourse to platform.

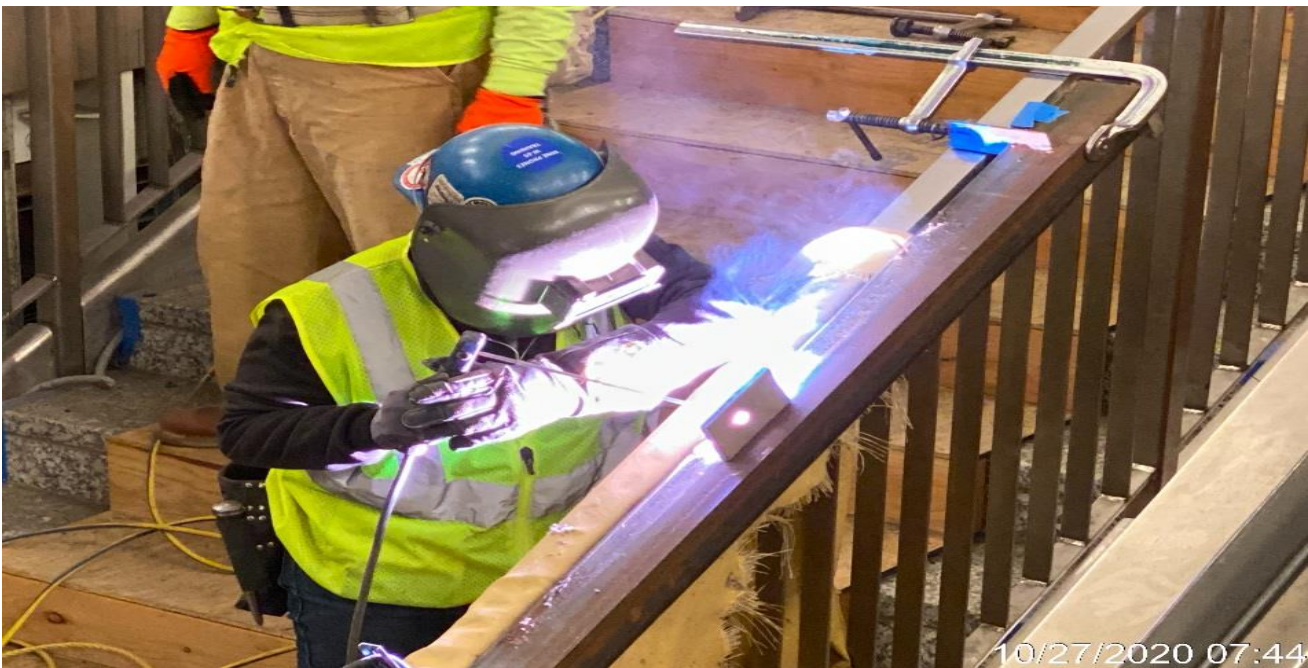


LEIMERT PARK STATION – Continue welding guardrails to Staircases 3&4 from concourse to platform.

CRENSHAW/LAX PHOTOGRAPHIC UPDATE



LEIMERT PARK STATION – Continue welding guardrails to Staircases 3&4 from concourse to platform.

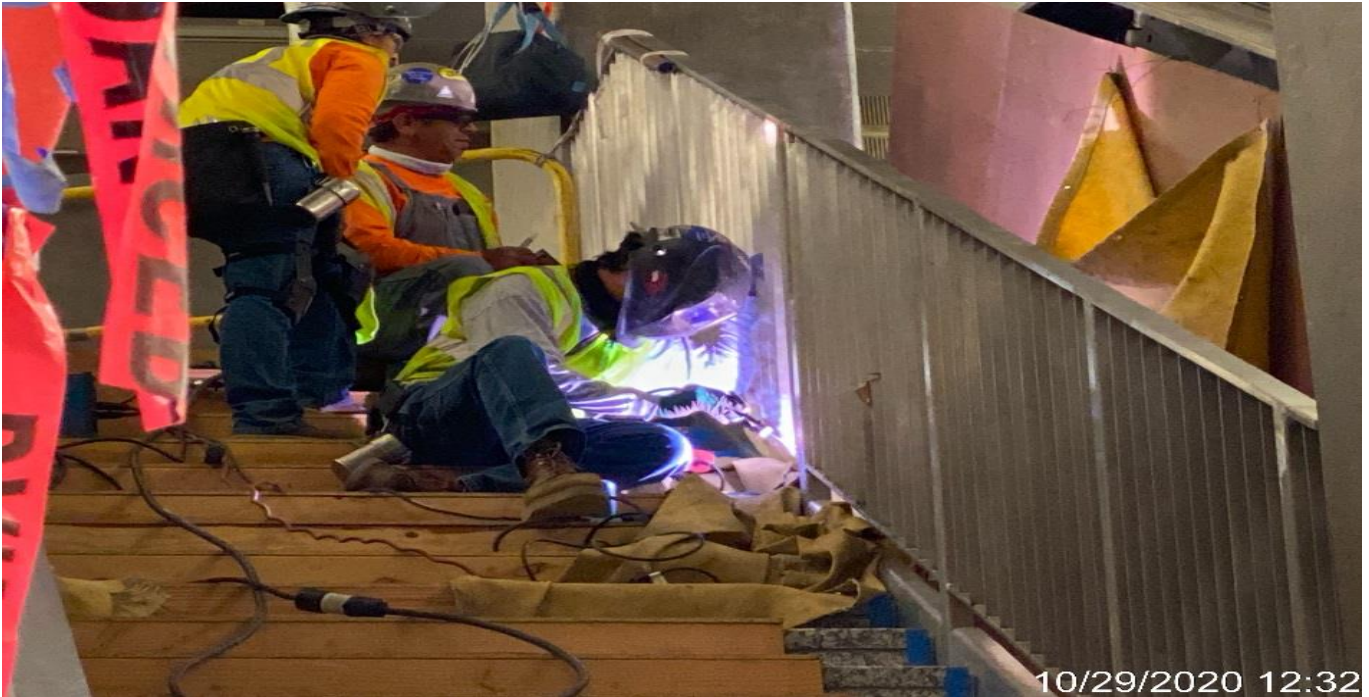


LEIMERT PARK STATION – Continue welding guardrails to Staircases 3&4 from concourse to platform.

CRENSHAW/LAX PHOTOGRAPHIC UPDATE

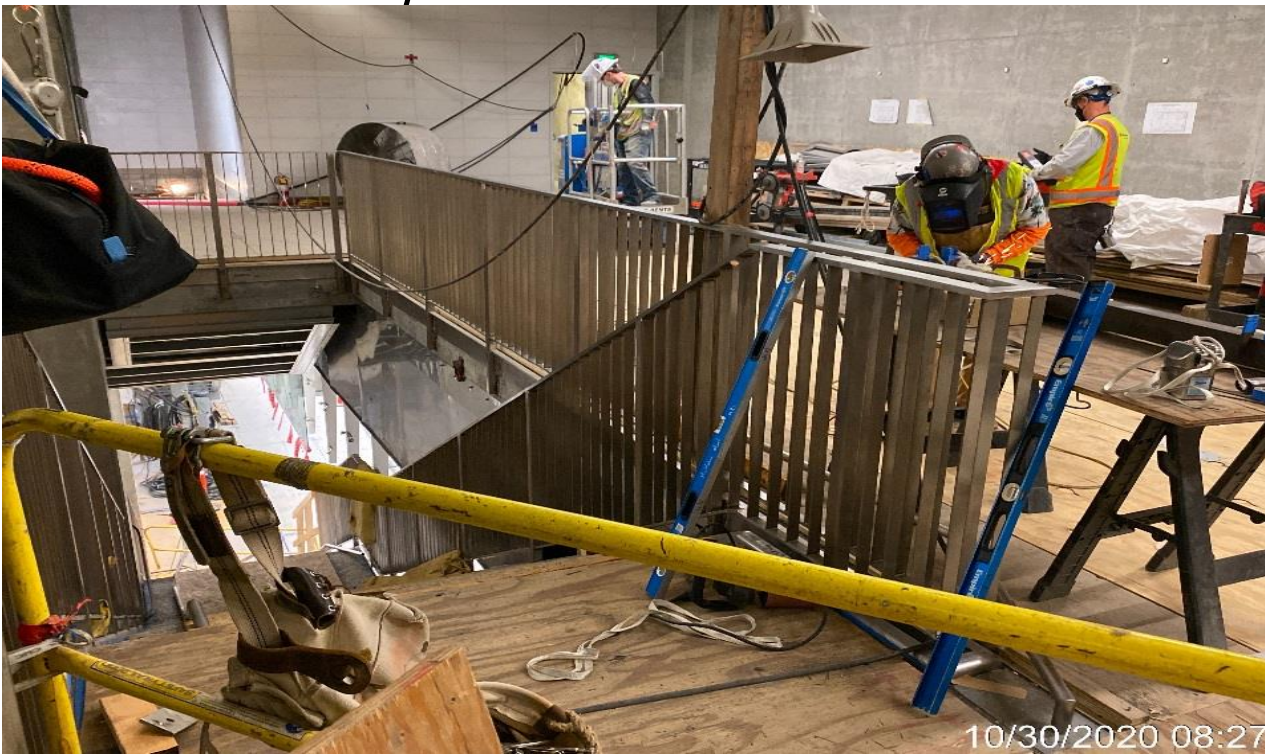


LEIMERT PARK STATION – Continue welding guardrails to Staircases 3&4 from concourse to platform.



LEIMERT PARK STATION – Continue welding guardrails to Staircases 3&4 from concourse to platform

CRENSHAW/LAX PHOTOGRAPHIC UPDATE

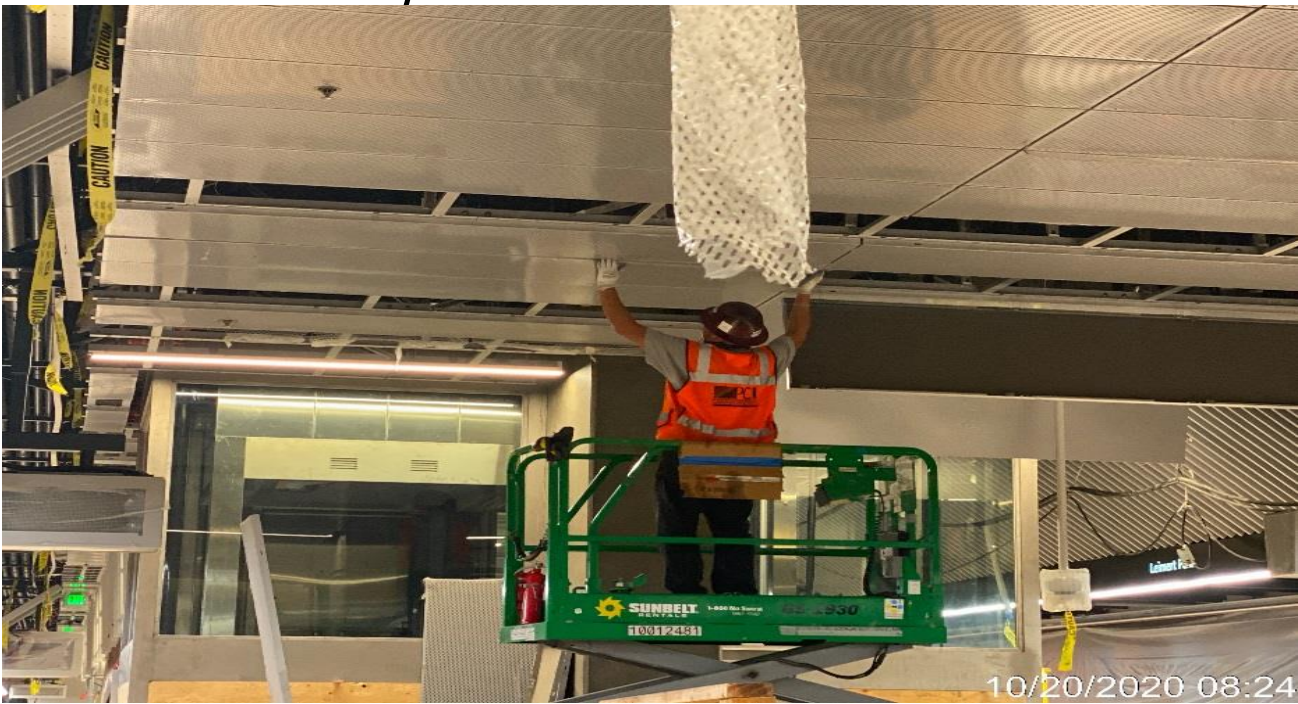


LEIMERT PARK STATION – Continue welding guardrails to Staircases 3&4 from concourse to platform.



LEIMERT PARK STATION – Installing diagonal screen ceiling panels on the SB side of the platform.

CRENSHAW/LAX PHOTOGRAPHIC UPDATE



LEIMERT PARK STATION – Continue installing ceiling panels throughout the platform.

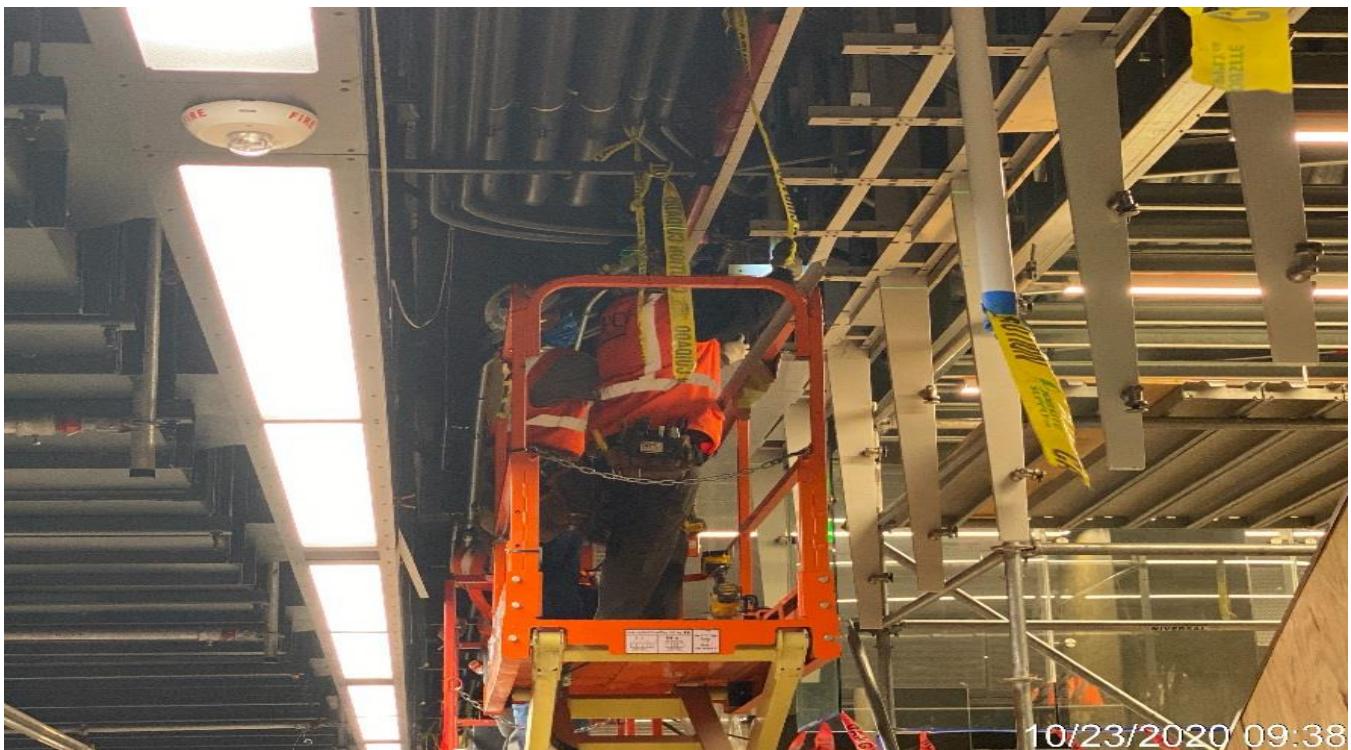


LEIMERT PARK STATION – Installing diagonal screen ceiling panels on the NB side of the platform.

CRENSHAW/LAX PHOTOGRAPHIC UPDATE



LEIMERT PARK STATION – Continue installing diagonal screen ceiling panels on the NB side of the platform.



LEIMERT PARK STATION – Continue installing diagonal screen ceiling panels on the NB side of the platform.

CRENSHAW/LAX PHOTOGRAPHIC UPDATE



MLK STATION – WSCC ironworkers drilling for lighting at canopy.



MLK STATION – Southbound bored tunnel Vernon to MLK Begin removing 1-1.4” Radiacx cable between CP5 & (S) MLK portal

CRENSHAW/LAX PHOTOGRAPHIC UPDATE

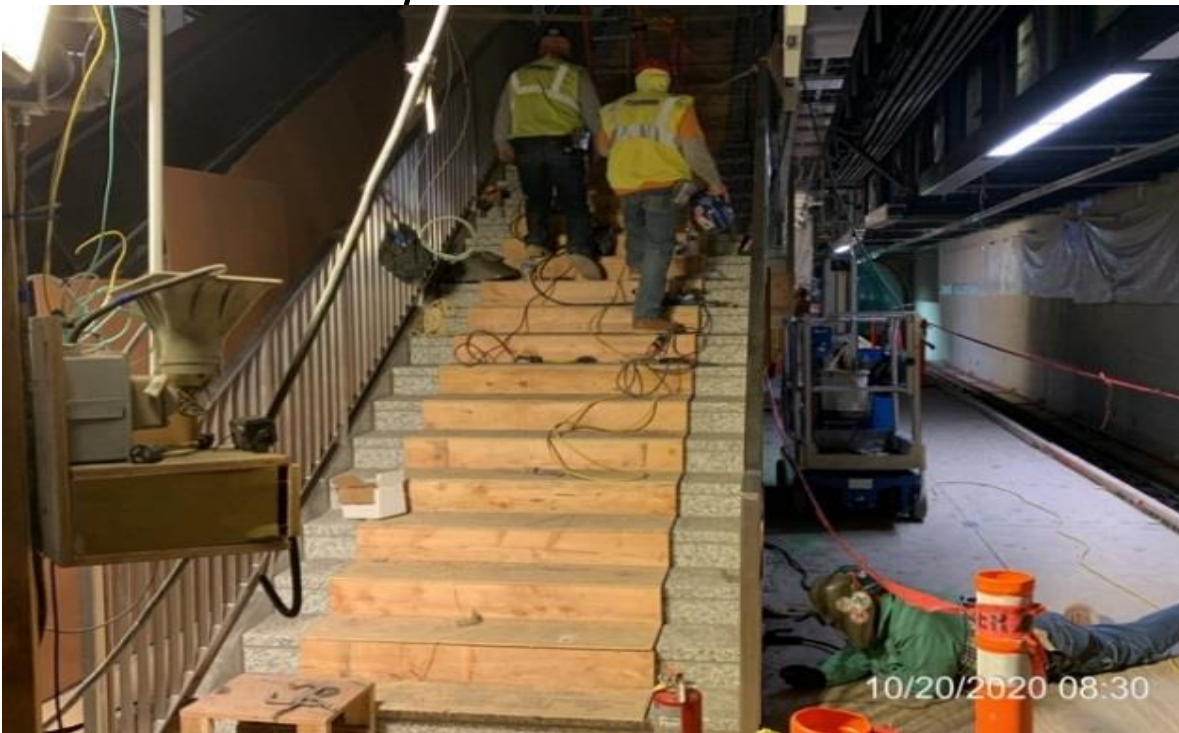


MLK STATION – MLK Plaza, North plaza continued setting embedded comm & lighting pull boxes to finish concrete elevation.



MLK STATION – MLK Invert, TPSS Room T109, Continued rework 7/8" Radiax cable separation of 8' & add supports.

CRENSHAW/LAX PHOTOGRAPHIC UPDATE



MLK STATION – McMahon installing guardrail on stair #2

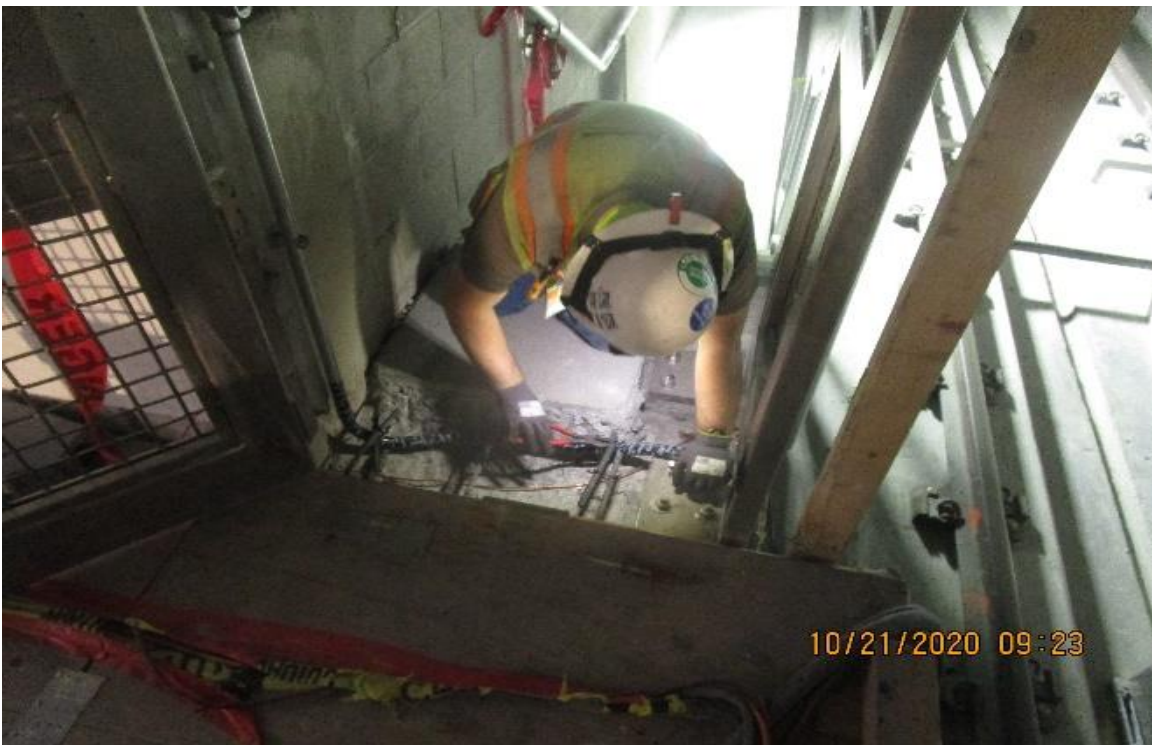


MLK STATION – WSCC ironworkers correcting placement of down stand bottom plates.

CRENSHAW/LAX PHOTOGRAPHIC UPDATE



MLK STATION – WSCC carpenter building mock-up security booth.



MLK STATION – MLK North platform end gates, continued rough in SCADA & bonding end gate frames with #6

CRENSHAW/LAX PHOTOGRAPHIC UPDATE



MLK STATION – MLK Platform, NB & SB tracks, continued piping 1" GRC & ¾" seal tight (speaker & FA) to edge lighting.



MLK STATION – MLK Plaza, North plaza continued setting embedded comm & lighting pull boxes & pulling #10 XHHW-2's.

CRENSHAW/LAX PHOTOGRAPHIC UPDATE

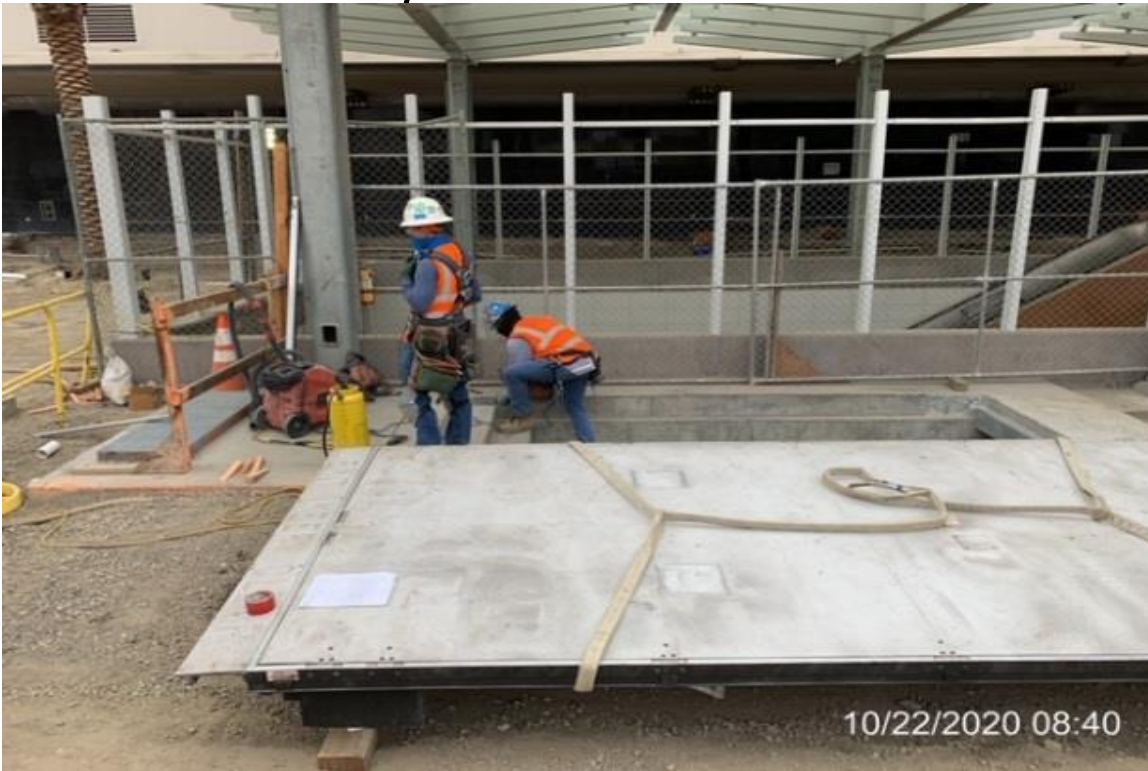


MLK STATION – WSCC crew laying 12” HDPE for storm drain.



MLK STATION – Smithcraft setting grand pylon signage.

CRENSHAW/LAX PHOTOGRAPHIC UPDATE



MLK STATION – WSCC crew installing hatch doors for emergency staircase



MLK STATION – WSCC carpenters setting formwork for bollard footing.

CRENSHAW/LAX PHOTOGRAPHIC UPDATE



MLK STATION – MLK Plaza, North plaza continued pulling #10 XHHW-2's from embedded pull boxes to pedestrian light

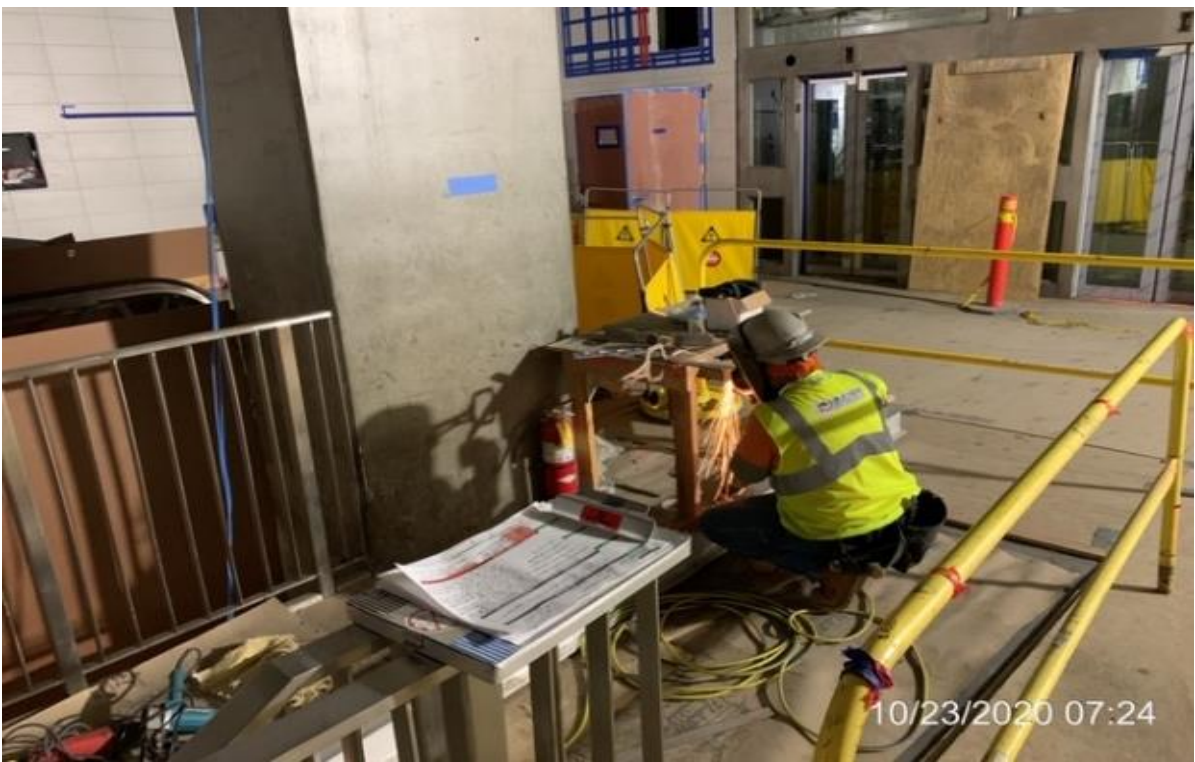


MLK STATION – MLK North platform resume installing Edge lighting fixtures at reworked edge lighting support posts.

CRENSHAW/LAX PHOTOGRAPHIC UPDATE



MLK STATION – WSCC crew adjusting 12” HDPE for storm drain.



MLK STATION – McMahan installing guard rail at stair #3.

CRENSHAW/LAX PHOTOGRAPHIC UPDATE



MLK STATION – WSCC crew epoxying bolts for vent stack base



MLK STATION – WSCC crew chipping concrete encasement and modifying concrete pull boxes.

CRENSHAW/LAX PHOTOGRAPHIC UPDATE



MLK STATION – MLK, (N) Plaza, begin chipping out lighting PVC conduit to lower & set embedded pull boxes to finish elevation

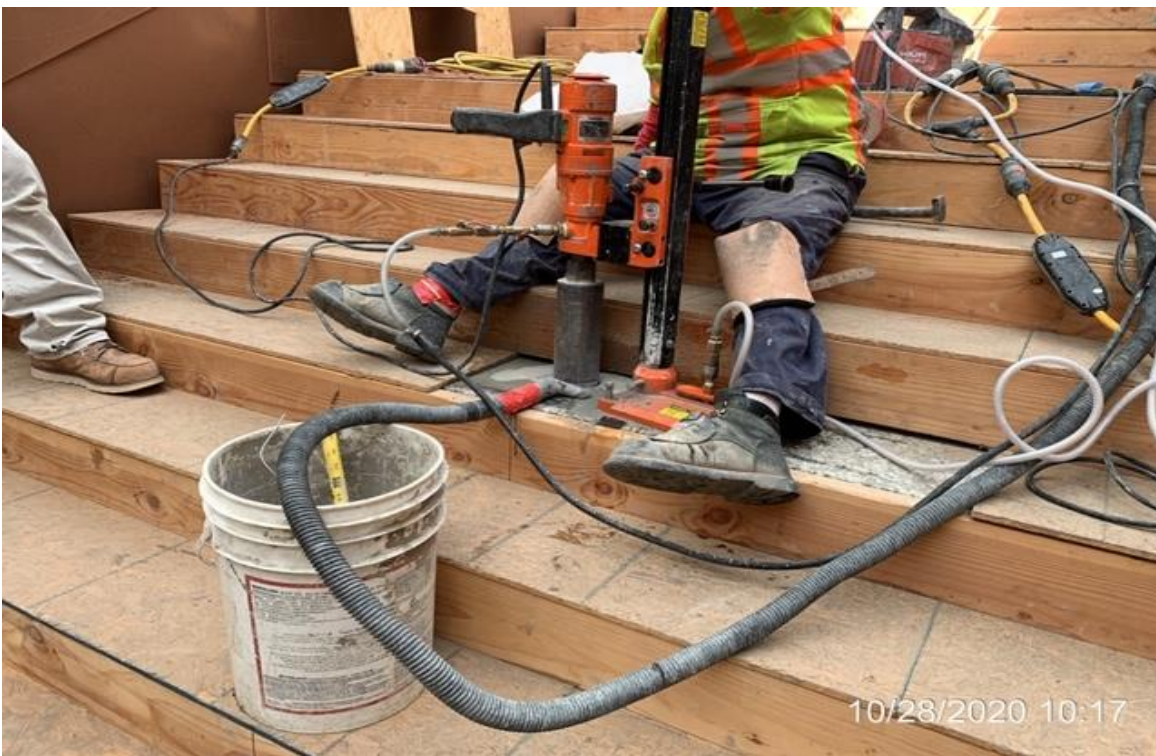


MLK STATION – PCI re-installing supports for angles ceiling panels.

CRENSHAW/LAX PHOTOGRAPHIC UPDATE



MLK STATION – WSCC crew grading north end of station adjacent to mall sign and planter.



MLK STATION – Penhall coring for main stair hand rail posts.

CRENSHAW/LAX PHOTOGRAPHIC UPDATE



MLK STATION – Installing rebar to the north end planter wall footing at the plaza level.



MLK STATION – WSCC installing soil liner inside south planter.

CRENSHAW/LAX PHOTOGRAPHIC UPDATE



MLK STATION – MLK Plaza, (N) continued Pulling #10 XHHW-2 lighting wiring & setting embedded pull boxes to finish elevation.



MLK STATION – MLK South Plaza, Begin Reworking 1” GRC landscape lighting to allow grate clearance & installation.

CRENSHAW/LAX PHOTOGRAPHIC UPDATE



MLK STATION – Setting rebar for the south vent stack foundation at the plaza.

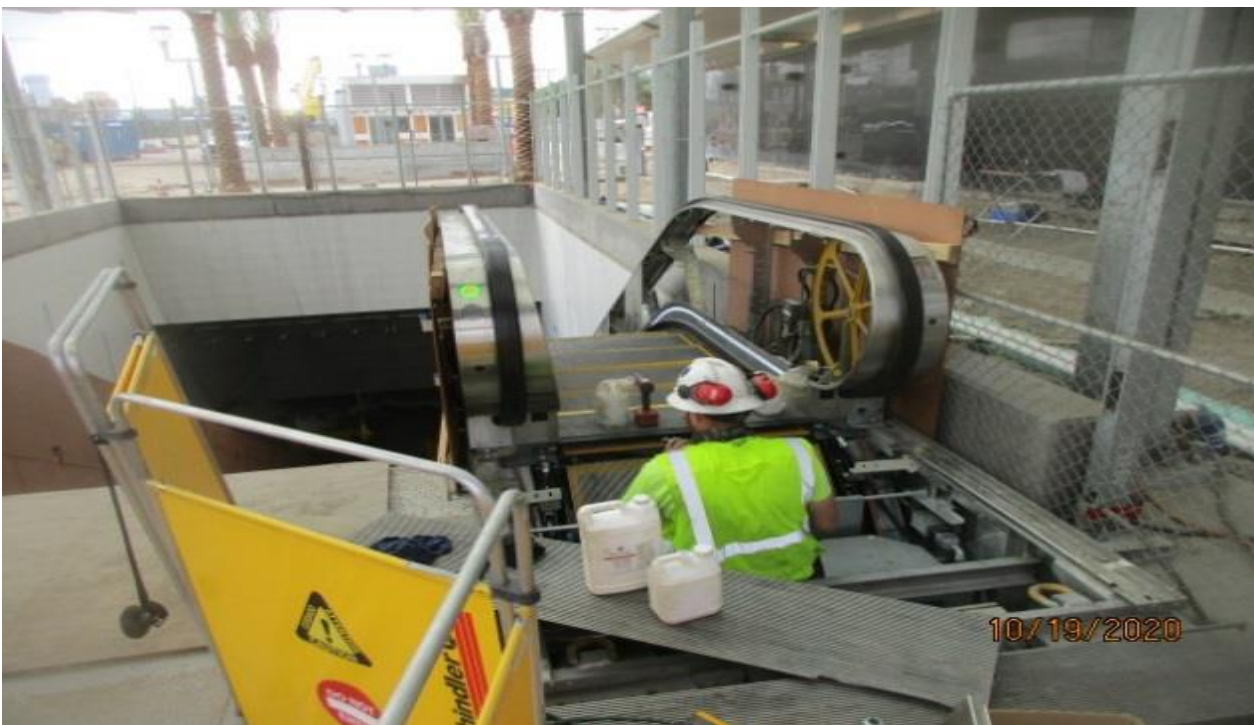


MLK STATION – Anchoring and aligning grating to Fresh Air Intake #1 at the plaza level.

CRENSHAW/LAX PHOTOGRAPHIC UPDATE



MLK STATION – Installing shaft to the south vent stack at the plaza.



MLK STATION – Adjusting and performing commissioning work for Escalators 1&2 at the main entrance.

CRENSHAW/LAX PHOTOGRAPHIC UPDATE



MLK STATION – Excavating/trenching for mall roof drainage at the far northwest area of the plaza.



MLK STATION – Laying down HDPE pipe for the mall roof drainage at the far northwest area of the plaza.

CRENSHAW/LAX PHOTOGRAPHIC UPDATE

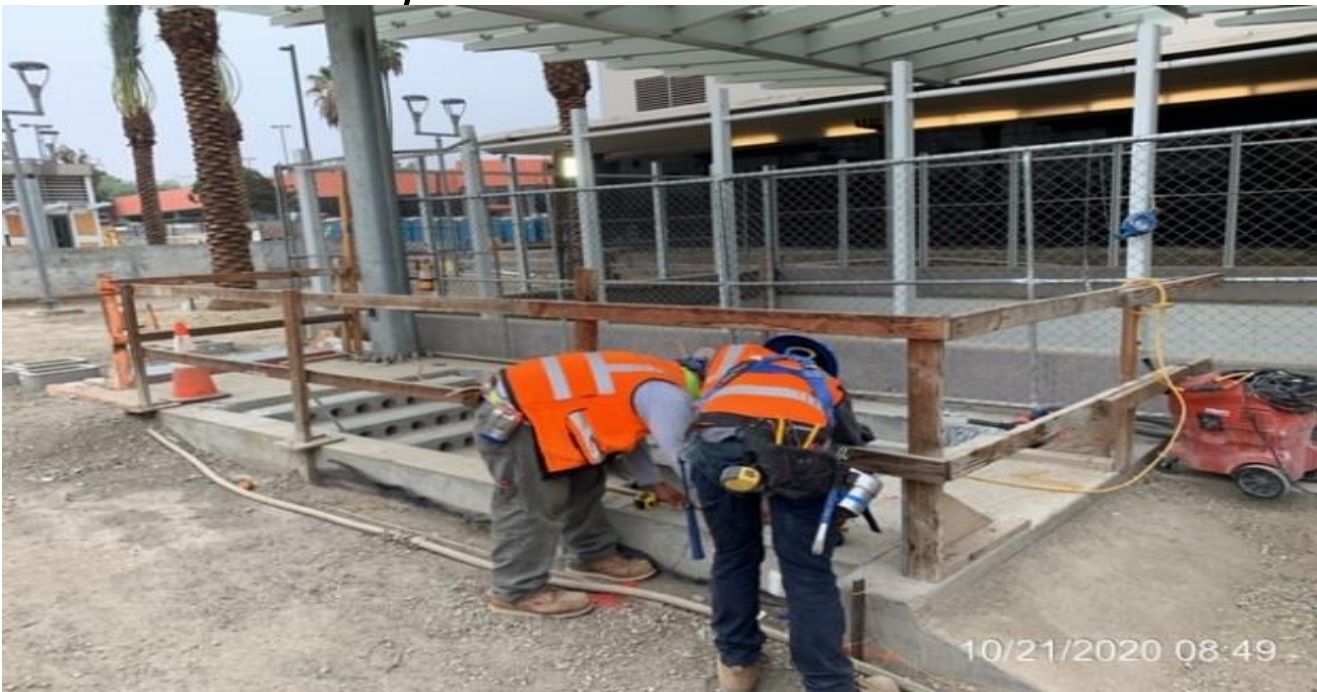


MLK STATION – Continue laying down HDPE pipe for the mall roof drainage at the far northwest area of the plaza.

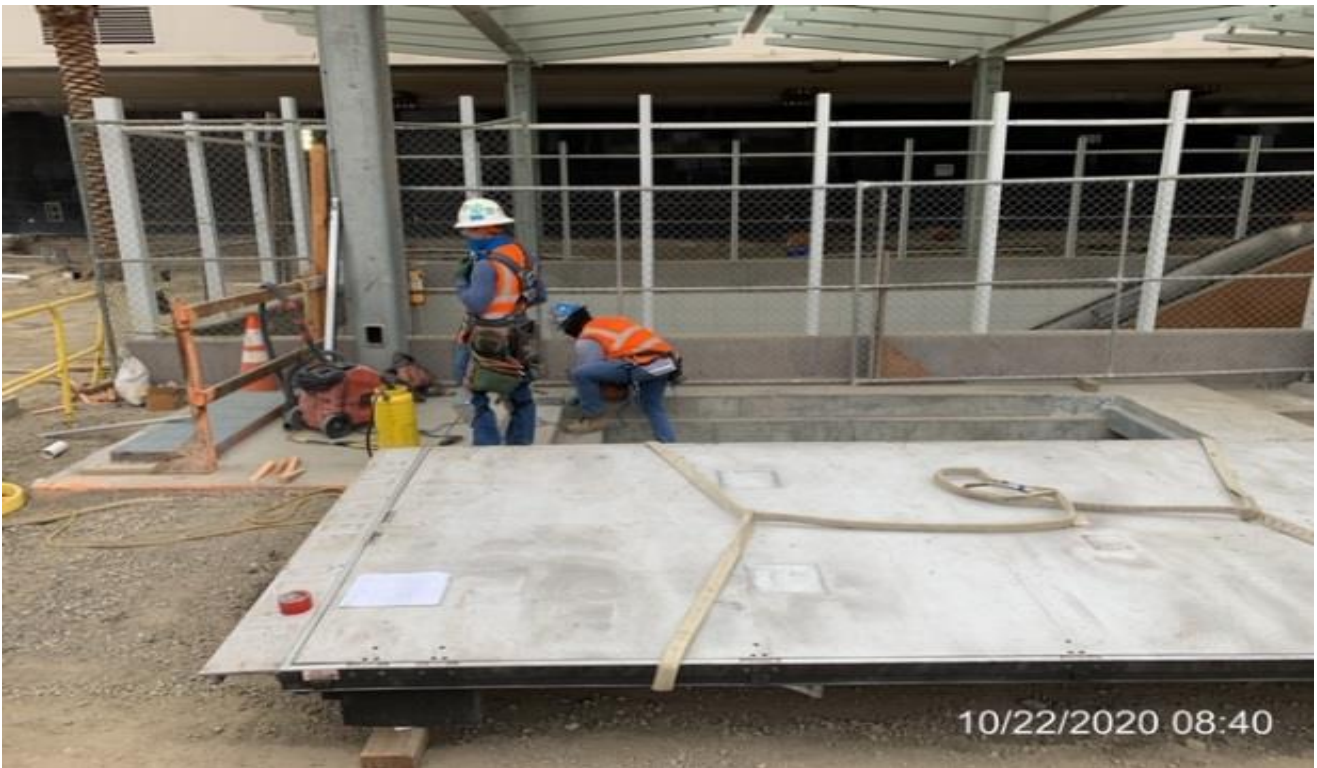


MLK STATION – Continue laying down HDPE pipe for the mall roof drainage at the far northwest area of the plaza.

CRENSHAW/LAX PHOTOGRAPHIC UPDATE



MLK STATION – Preparing to install hatches for the North and South Emergency Exit Stairs at the plaza.



MLK STATION – Installing hatches for the North and South Emergency Exit Stairs at the plaza.

CRENSHAW/LAX PHOTOGRAPHIC UPDATE



MLK STATION – Installing the Grand Pylon sign at the northeast corner of the plaza.



MLK STATION – Setting elevations and placing formwork along the east side of the plaza for new curb/gutter and bus pad installation.

CRENSHAW/LAX PHOTOGRAPHIC UPDATE



MLK STATION – Placing concrete along the east side of the plaza for new curb/gutter and bus pad installation.



MLK STATION – Removing formwork and saw-cutting curb/gutter and bus pad bay along the east side of the plaza.

CRENSHAW/LAX PHOTOGRAPHIC UPDATE



MLK STATION – Excavating/grading the northeast corner of the plaza.

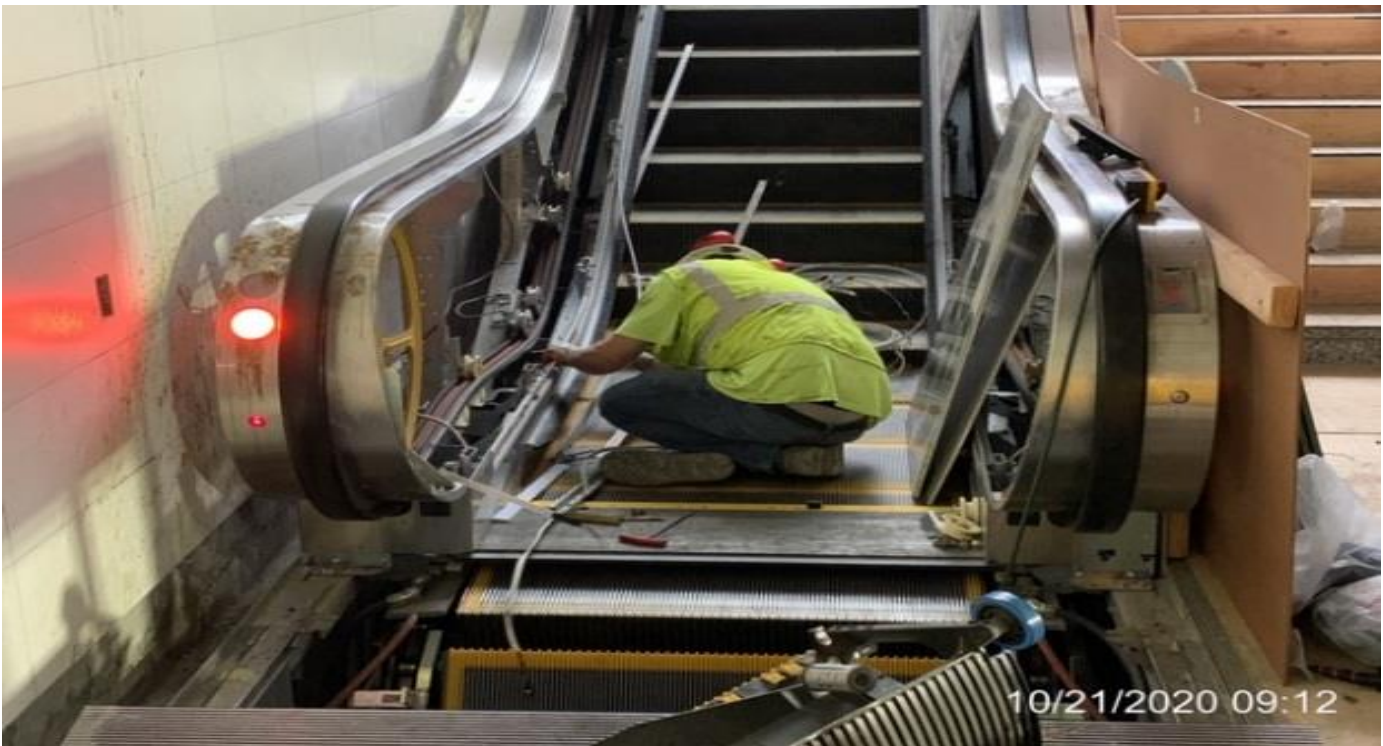


MLK STATION – Preparing to install soil liner inside the south planter wall at the plaza.

CRENSHAW/LAX PHOTOGRAPHIC UPDATE

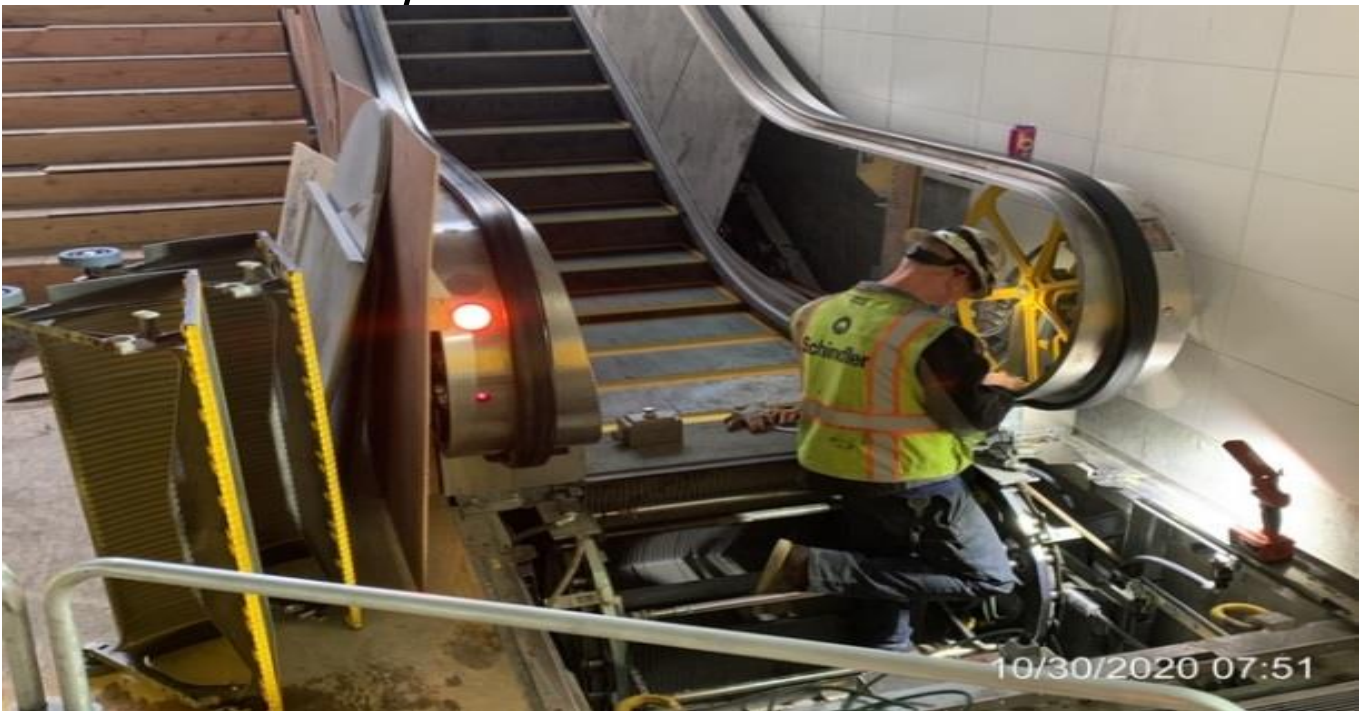


MLK STATION – Excavating/trenching for irrigation and landscape conduit at the plaza.



MLK STATION – Adjusting and performing commissioning work for Escalators 1&2 from plaza to concourse.

CRENSHAW/LAX PHOTOGRAPHIC UPDATE

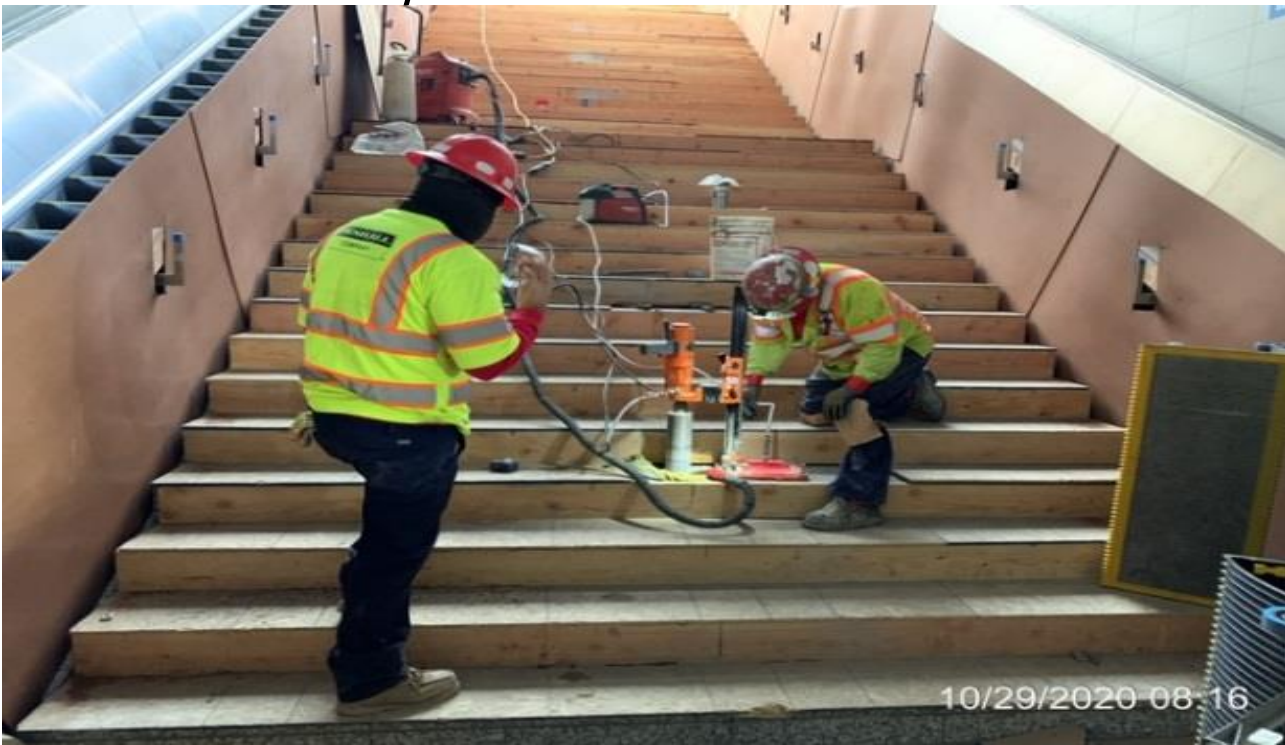


MLK STATION – Continue adjusting and performing commissioning work for Escalators 1&2 from plaza to concourse.



MLK STATION – Coring through Staircase #1 for handrail installation from plaza to concourse.

CRENSHAW/LAX PHOTOGRAPHIC UPDATE

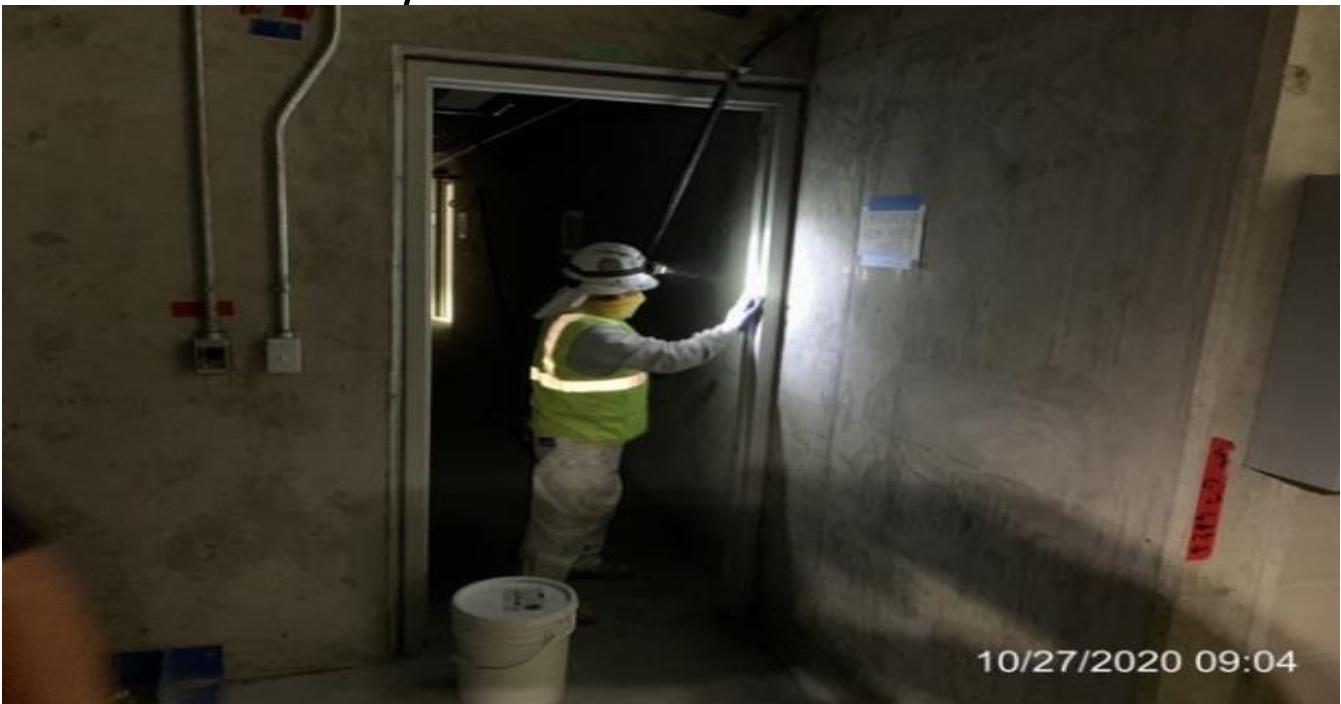


MLK STATION – Continue coring through Staircase #1 for handrail installation from plaza to concourse.

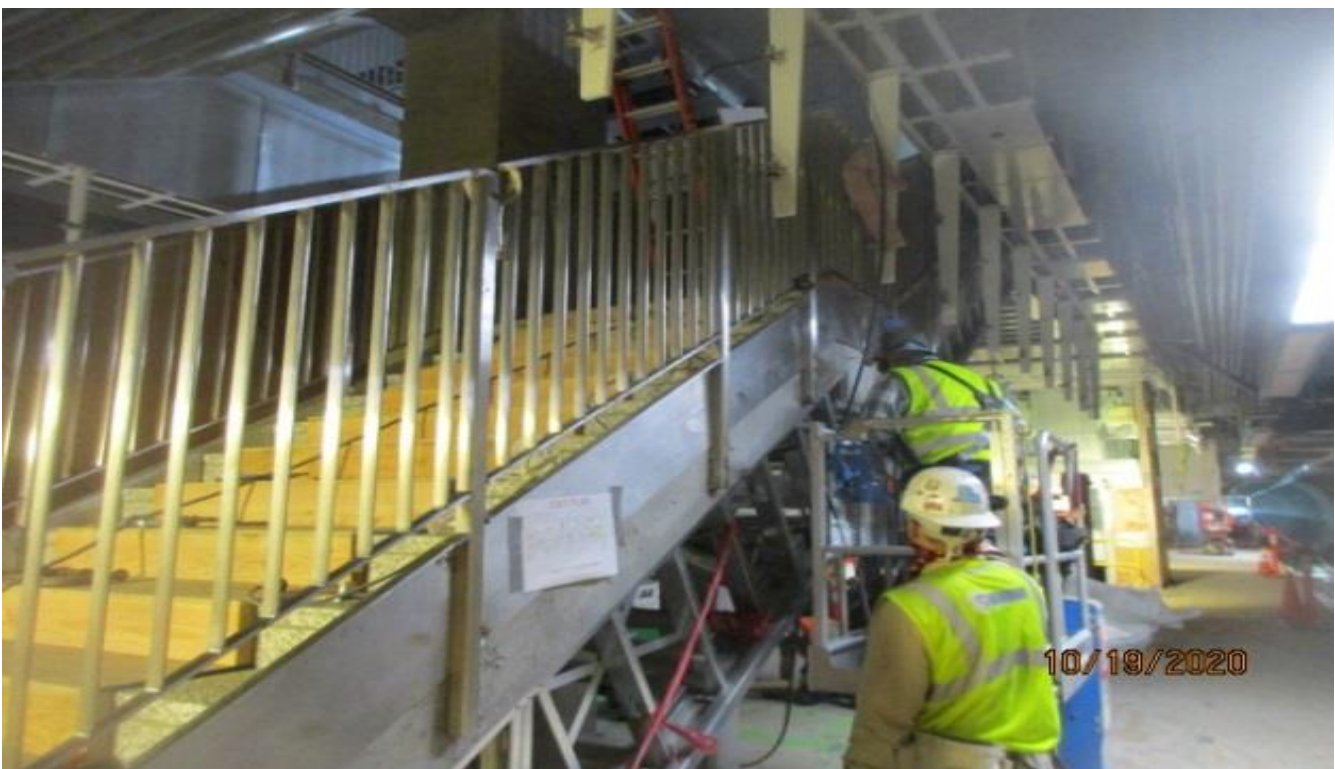


MLK STATION – Continue layout and coring of Staircase #1 for handrail installation from plaza to concourse.

CRENSHAW/LAX PHOTOGRAPHIC UPDATE

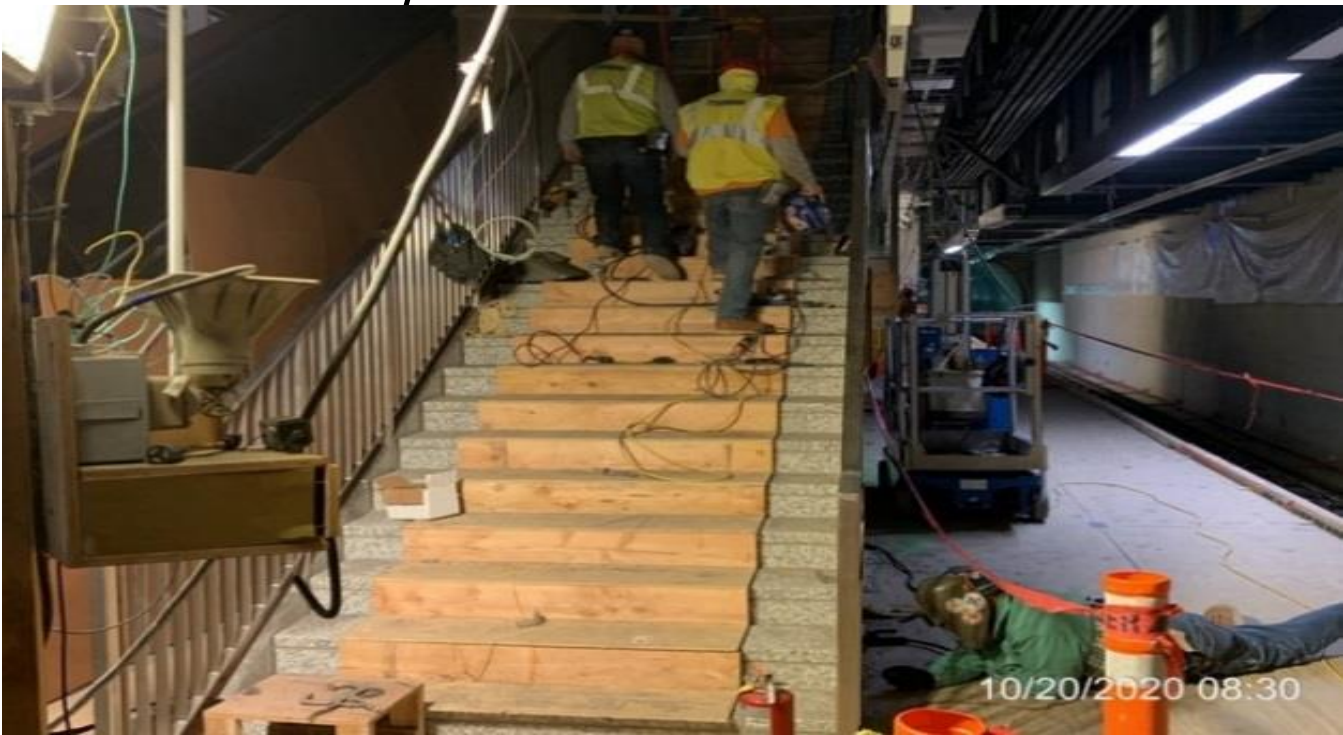


MLK STATION – Cleaning and applying primer to door frames throughout various location of the concourse level.

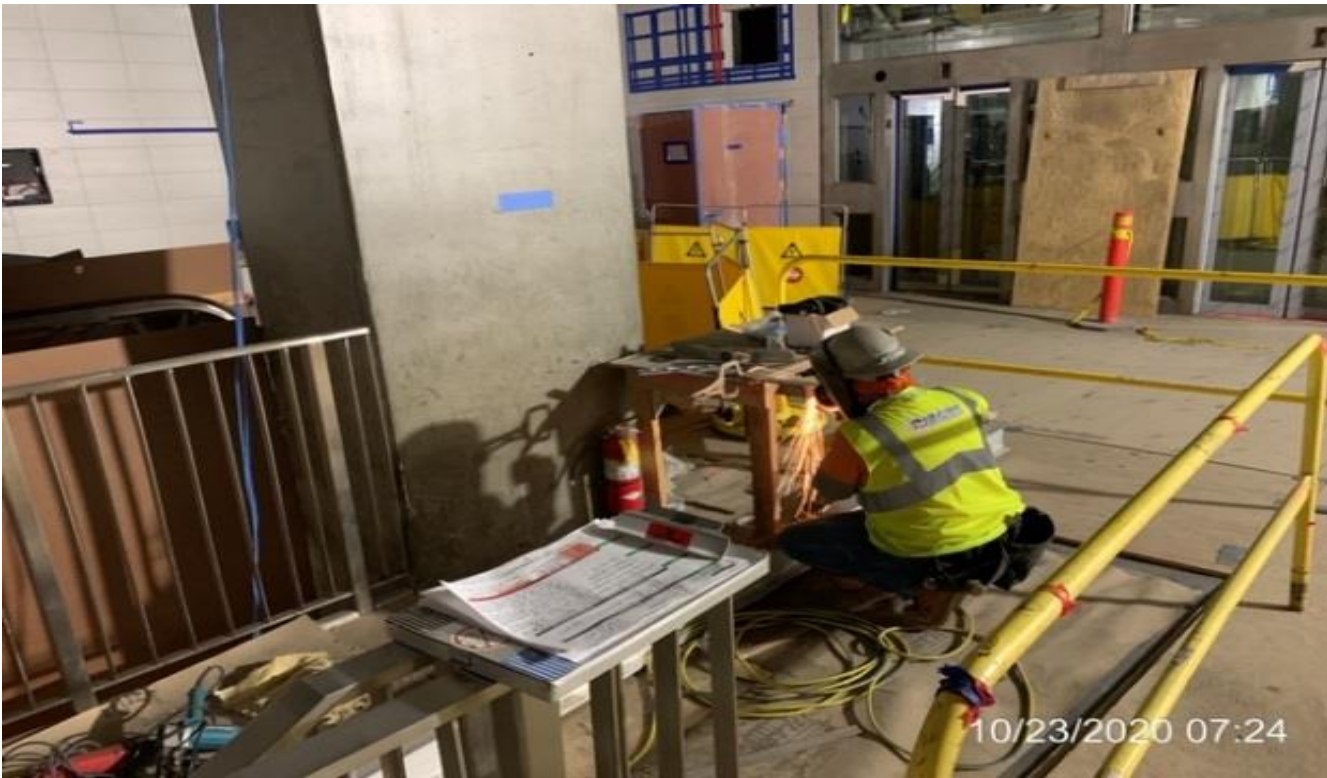


MLK STATION – Continue welding guardrails to Staircase 2 from concourse to platform.

CRENSHAW/LAX PHOTOGRAPHIC UPDATE



MLK STATION – Continue welding guardrails to Staircase 2 from concourse to platform.

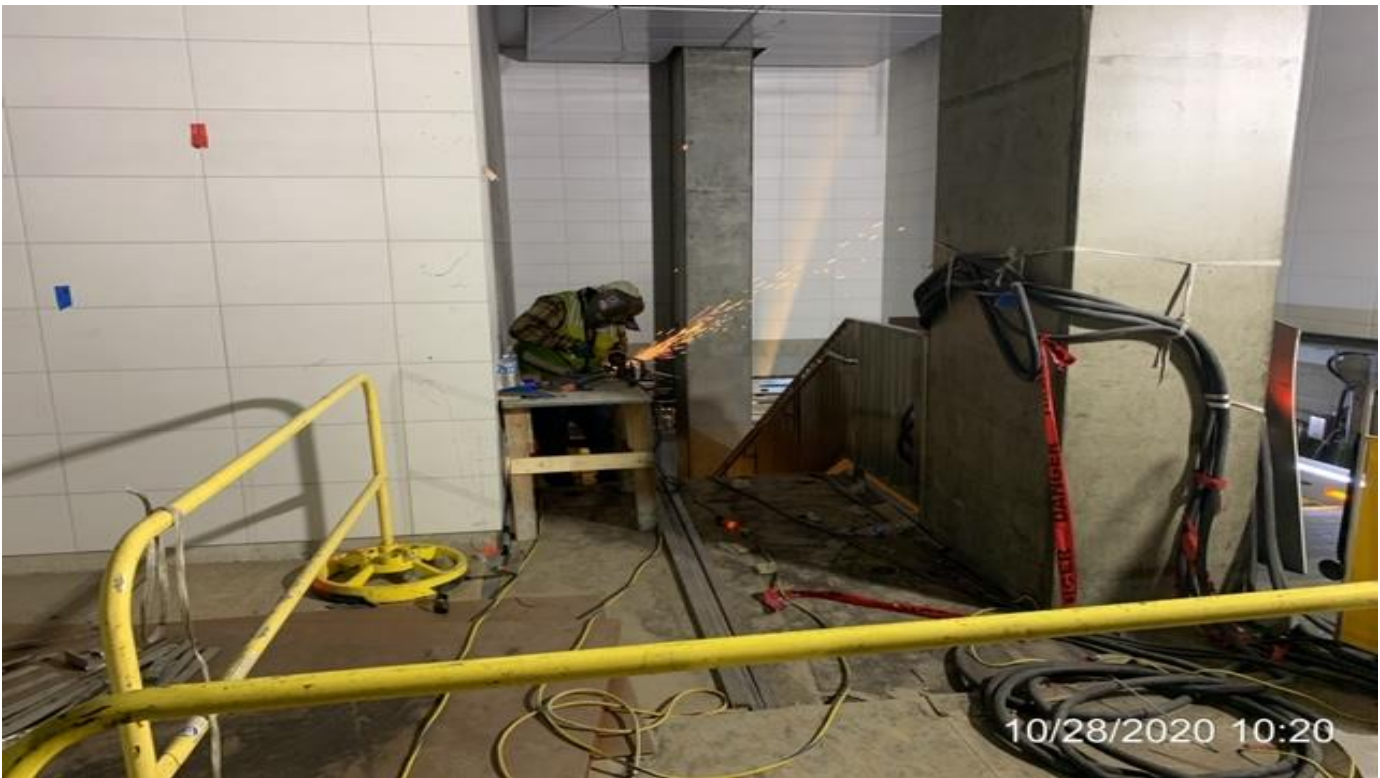


MLK STATION – Continue welding guardrails to Staircase 3 from concourse to platform.

CRENSHAW/LAX PHOTOGRAPHIC UPDATE

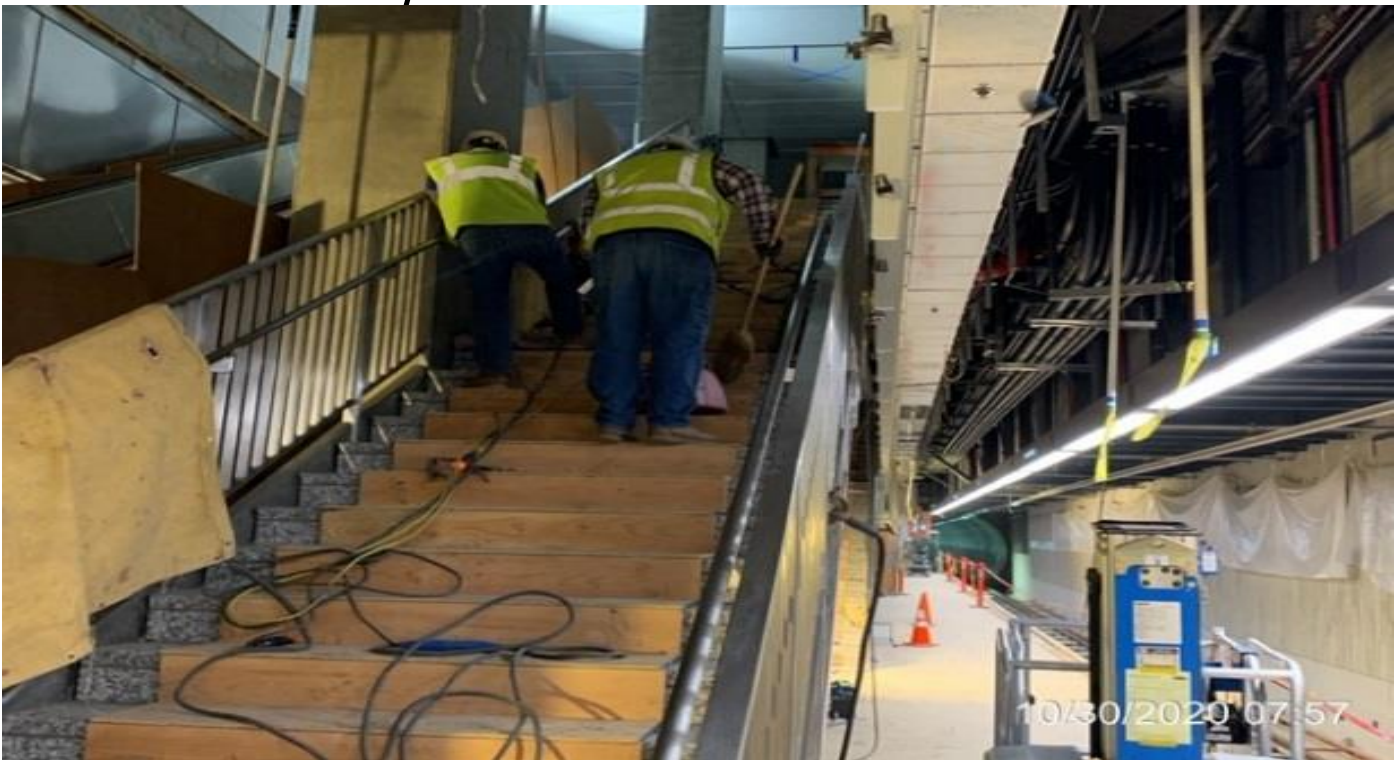


MLK STATION – Continue welding guardrails to Staircase 2 from concourse to platform.



MLK STATION – Continue welding guardrails to Staircase 2 from concourse to platform.

CRENSHAW/LAX PHOTOGRAPHIC UPDATE



MLK STATION – Continue welding guardrails to Staircase 2 from concourse to platform.



EXPO STATION - Select Electric excavating trench to extend conduits

CRENSHAW/LAX PHOTOGRAPHIC UPDATE



EXPO STATION – WSCC finishers removing tile and drilling into wall to expose conduit.



EXPO STATION– Giroux Glass fabricating and installing glass stops for elevator structure #1 & #2

CRENSHAW/LAX PHOTOGRAPHIC UPDATE



EXPO STATION– WSCC crew grading at north east end of station.



EXPO STATION – Broken exterior glass pane (right side) at platform, elevator #1.

CRENSHAW/LAX PHOTOGRAPHIC UPDATE



EXPO STATION – WSCC crew placing concrete for bollard footing.

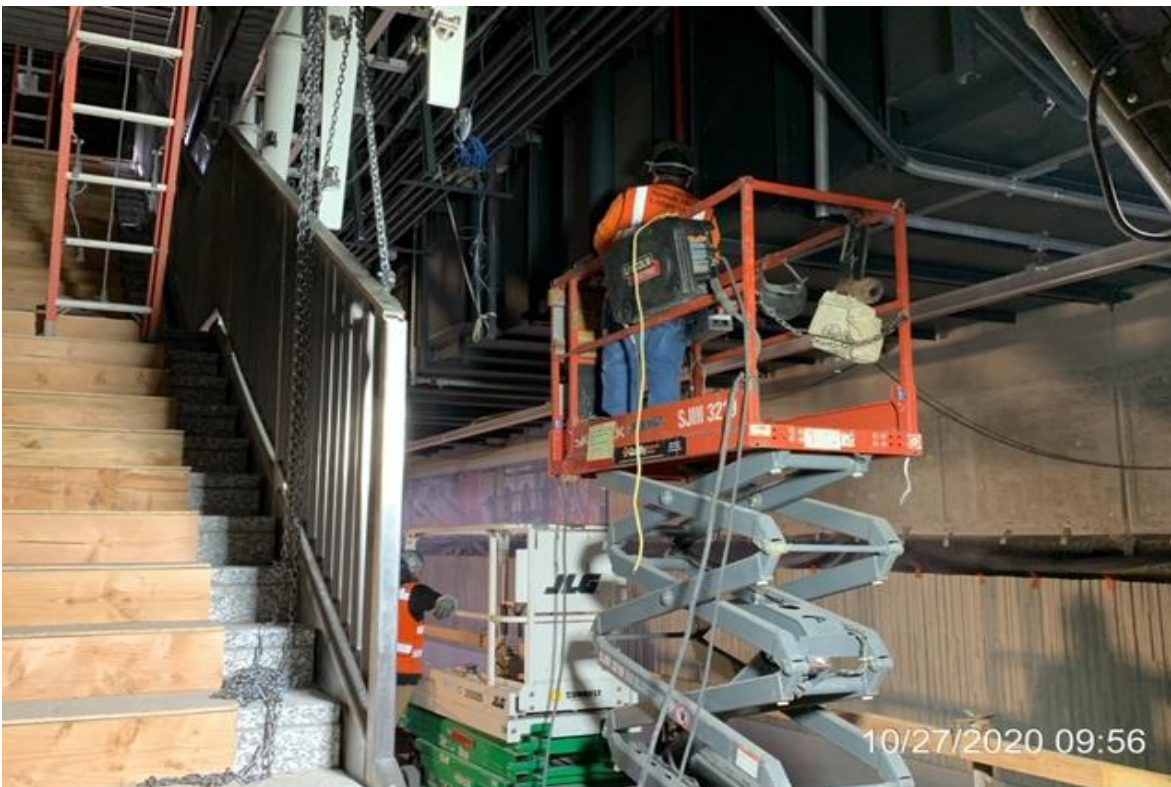


EXPO STATION – WSCC crew removing buried hoses from south side of yard prior to moving K-rail.

CRENSHAW/LAX PHOTOGRAPHIC UPDATE



EXPO STATION– WSCC carpenters building formwork for bulk heads for conduit runs.



EXPO STATION– WSCC ironworkers welding gusset and bottom plates on down stands.

CRENSHAW/LAX PHOTOGRAPHIC UPDATE



EXPO STATION – WSCC crew excavating to expose conduit for AT&T tie in.



EXPO STATION SITE – WSCC crew excavating trench for bollards.

CRENSHAW/LAX PHOTOGRAPHIC UPDATE

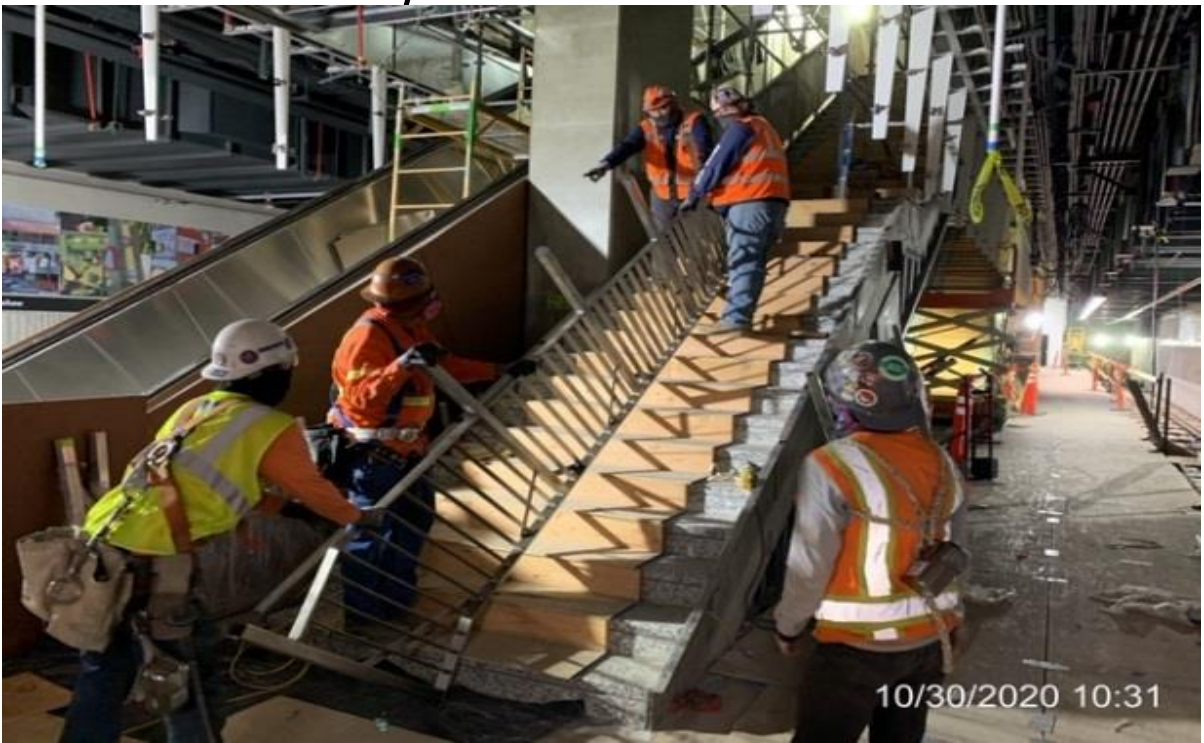


EXPO STATION SITE – WSCC carpenters setting bollards and formwork for footing.



EXPO STATION – Giroux Glass fabricating and installing glass stops on elevator structure #1 and #2.

CRENSHAW/LAX PHOTOGRAPHIC UPDATE

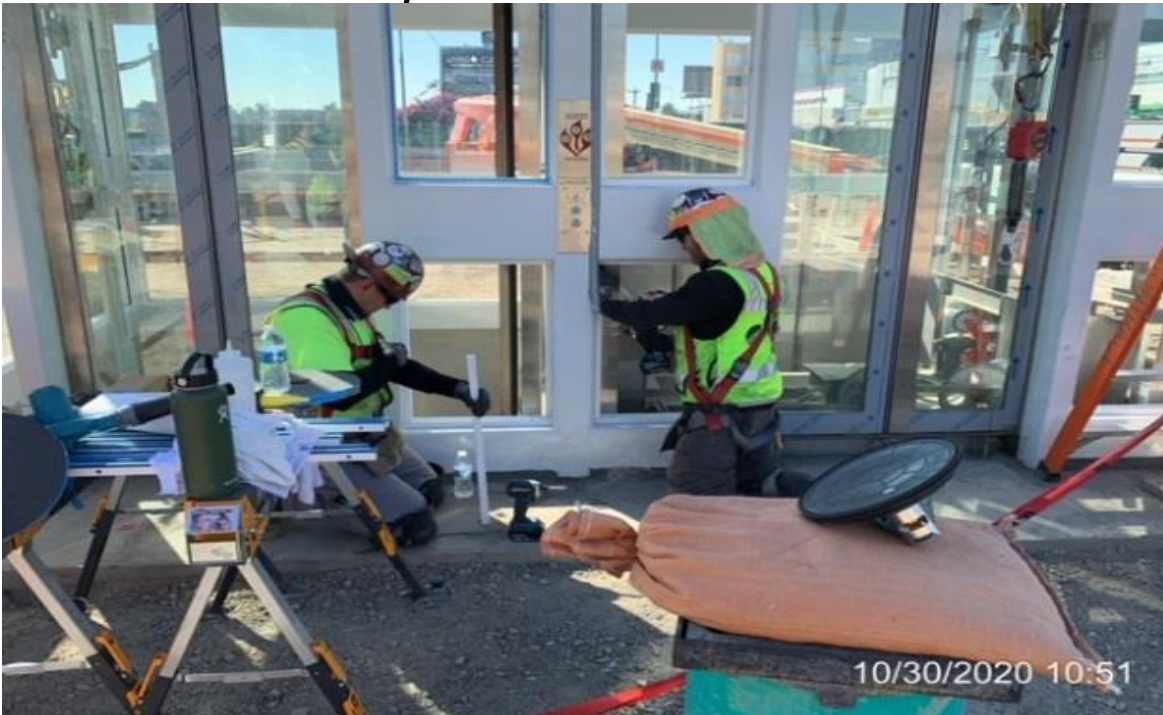


EXPO STATION – McMahon installing guardrail for stair #2.



EXPO STATION – WSCC carpenters placing concrete footing for bollards.

CRENSHAW/LAX PHOTOGRAPHIC UPDATE



EXPO STATION – Giroux Glass installing glass and caulking at elevator structure #1 and #2.



EXPO STATION – Excavating/grading sidewalk on westbound Obama Blvd and Crenshaw Blvd.

CRENSHAW/LAX PHOTOGRAPHIC UPDATE



EXPO STATION – Continue excavating/grading sidewalk on westbound Obama Blvd and Crenshaw Blvd.



EXPO STATION SITE– Continue excavating/grading sidewalk on westbound Obama Blvd and Crenshaw Blvd.

CRENSHAW/LAX PHOTOGRAPHIC UPDATE

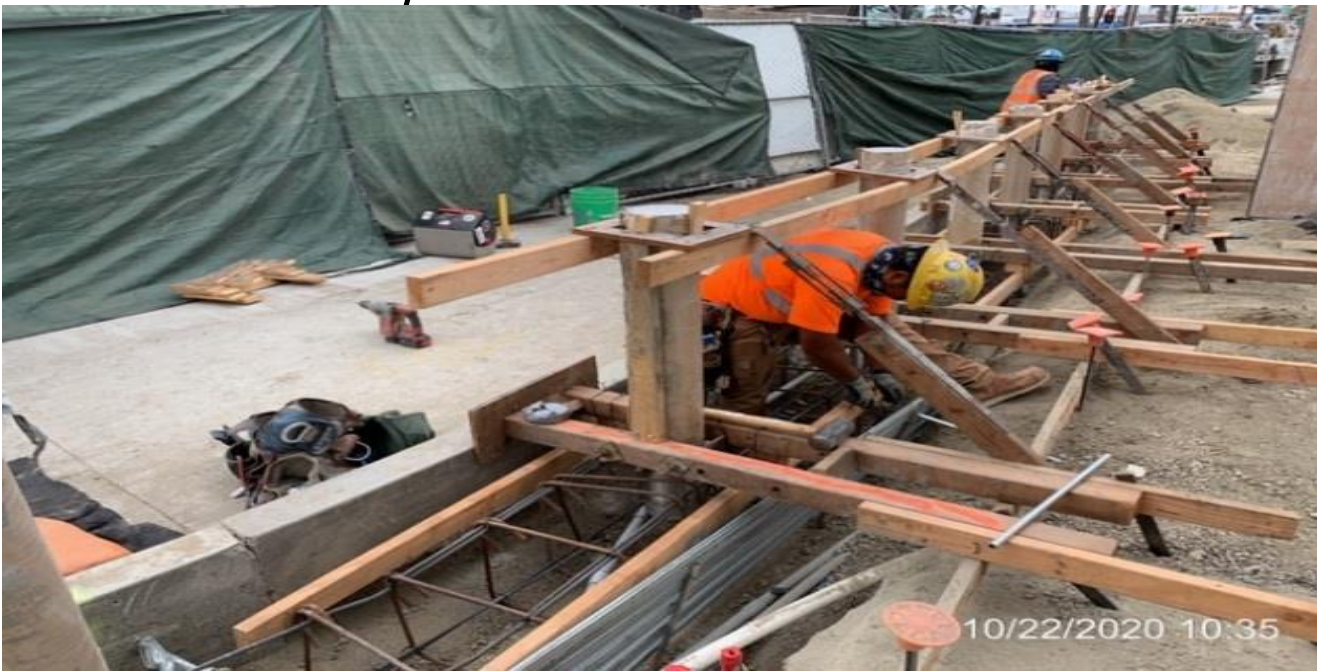


EXPO STATION – Placing concrete for traffic signal pole foundation on southeast corner of Crenshaw Blvd and Exposition Blvd.



EXPO STATION – Continue building formwork and setting the east side bollard foundations at the plaza.

CRENSHAW/LAX PHOTOGRAPHIC UPDATE



EXPO STATION – Continue building formwork for the west side bollard foundations at the plaza.



EXPO STATION – Placing concrete for the west side bollard foundations at the plaza.

CRENSHAW/LAX PHOTOGRAPHIC UPDATE

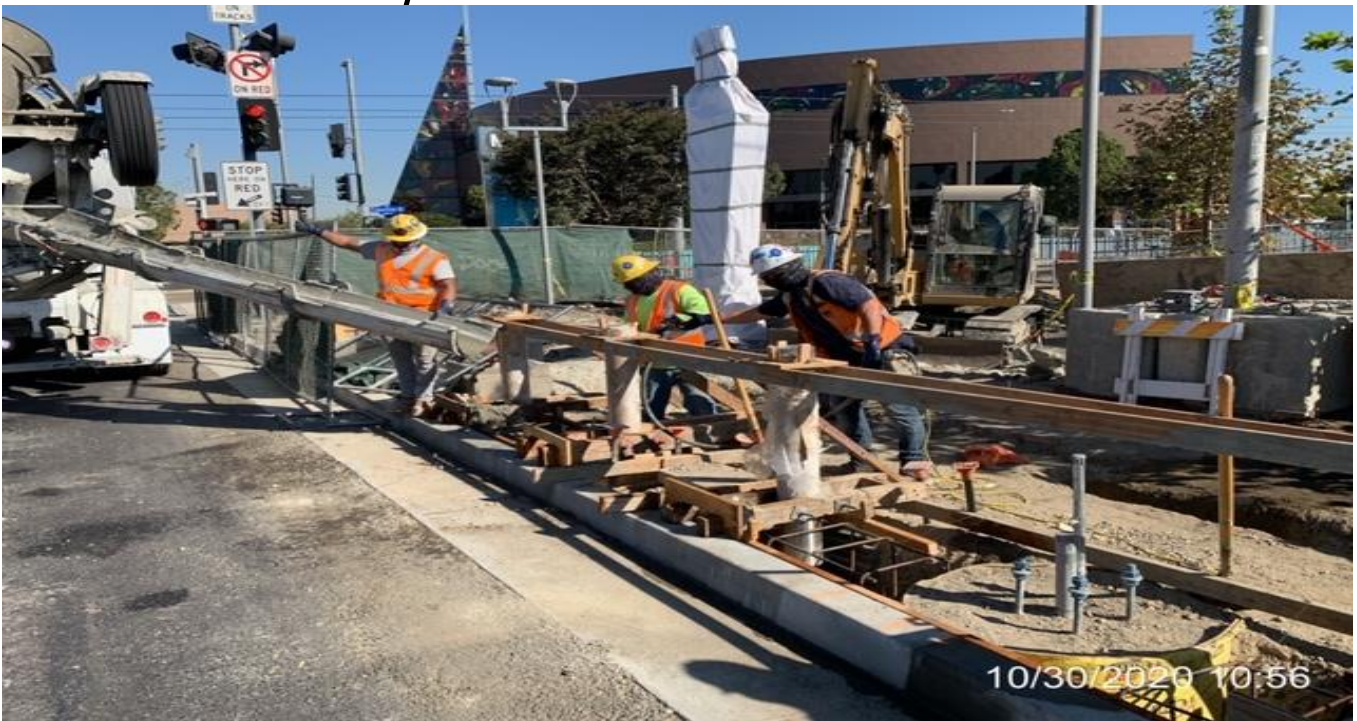


EXPO STATION – Continue setting and building formwork for the west side bollard foundations at the plaza.



EXPO STATION – Continue setting and building formwork for the west side bollard foundations at the plaza.

CRENSHAW/LAX PHOTOGRAPHIC UPDATE



EXPO STATION – Placing concrete for the west side bollard foundations at the plaza.



EXPO STATION – Excavating/trenching to extend conduit for landscape lighting at the northwest area of the plaza.

CRENSHAW/LAX PHOTOGRAPHIC UPDATE



EXPO STATION – Fine grading and compacting the northwest area of the plaza.



EXPO STATION - Installing glass stops to Elevators 1&2 at the plaza.

CRENSHAW/LAX PHOTOGRAPHIC UPDATE

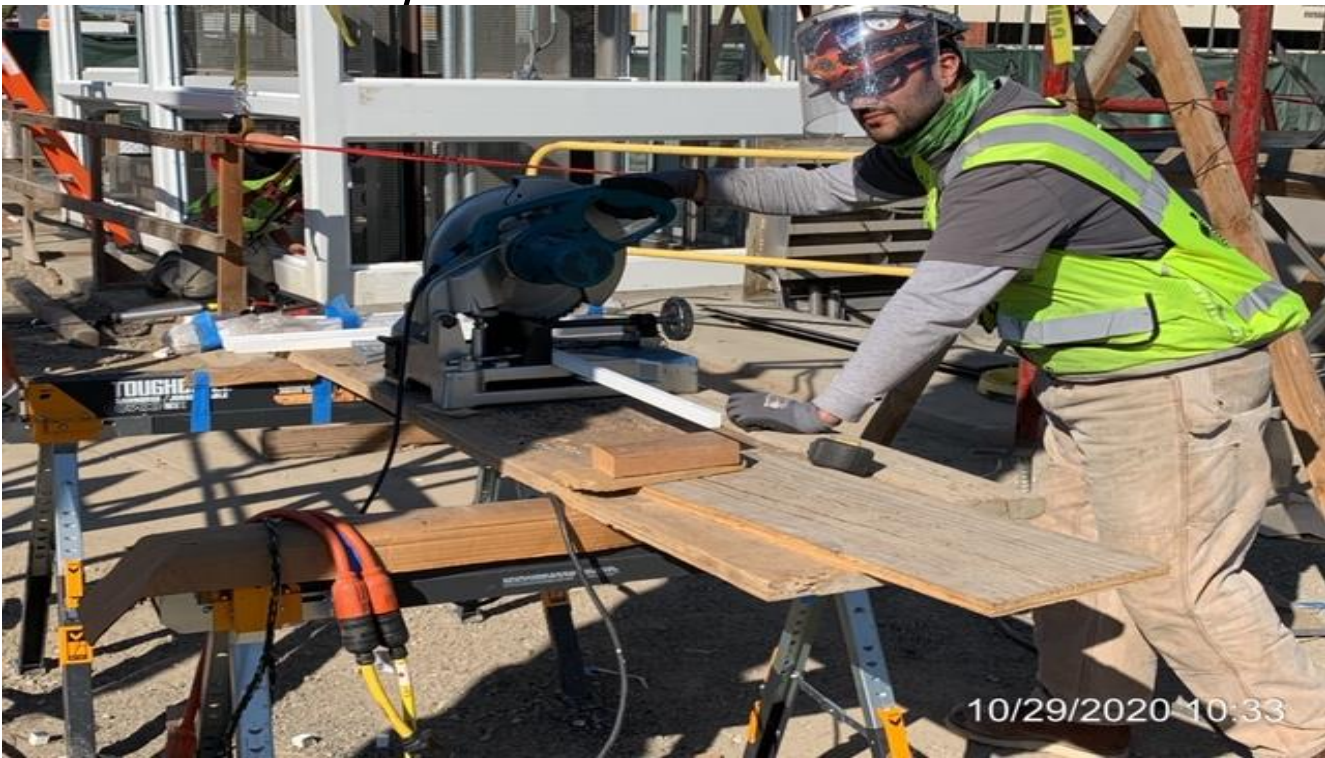


EXPO STATION – Continue installing glass stops to Elevators 1&2 at the plaza.

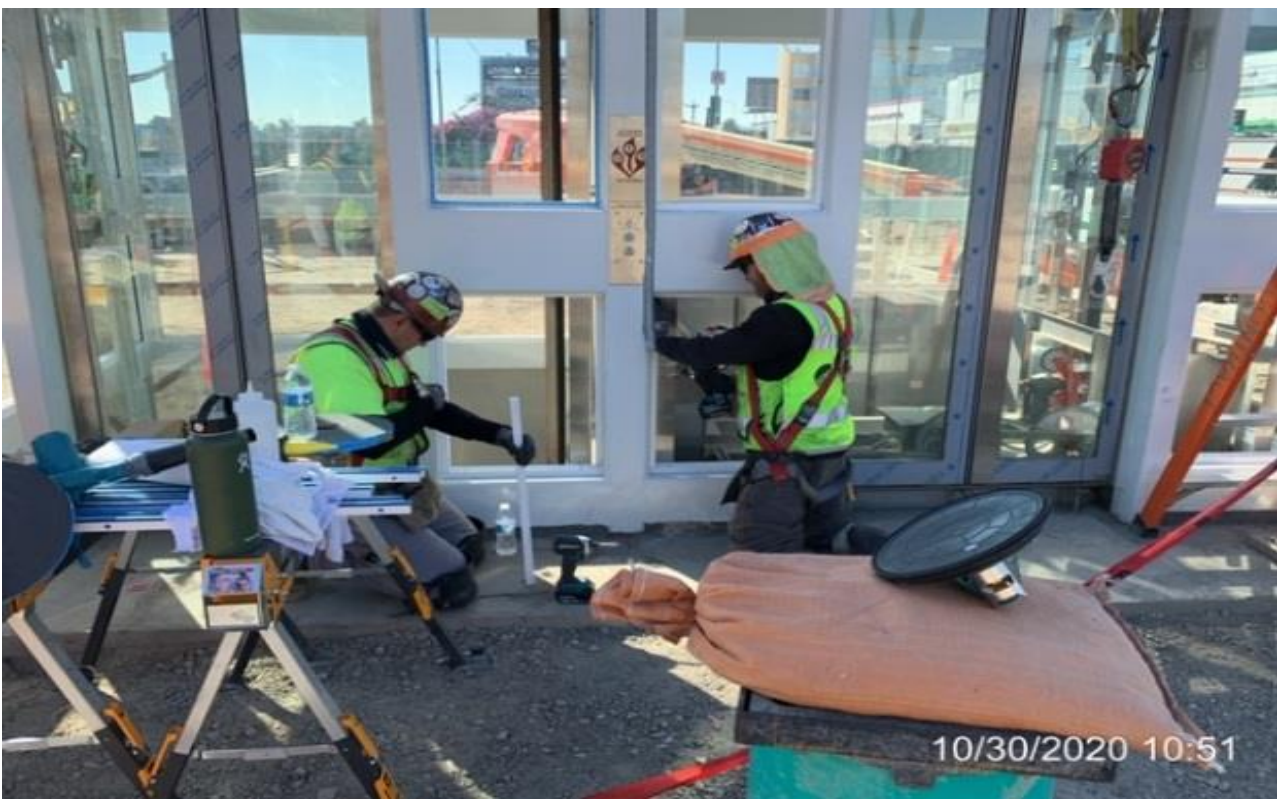


EXPO STATION – Continue installing glass stops to Elevators 1&2 at the plaza.

CRENSHAW/LAX PHOTOGRAPHIC UPDATE



EXPO STATION – Continue installing glass stops to Elevators 1&2 at the plaza.



EXPO STATION – Installing glass panels to Elevators 1&2 at the plaza.

CRENSHAW/LAX PHOTOGRAPHIC UPDATE



EXPO STATION – Adding screens to Catch Basin #12 on the southwest corner of the plaza.



EXPO STATION – Continue installing brackets for handrail installation for Staircase 1 at the main entrance.

CRENSHAW/LAX PHOTOGRAPHIC UPDATE



EXPO STATION – Continue excavating/trenching for the west side bollard foundations at the plaza level.



EXPO STATION – Drilling holes to the main entrance canopy structure for BOCA lighting at the plaza.

CRENSHAW/LAX PHOTOGRAPHIC UPDATE

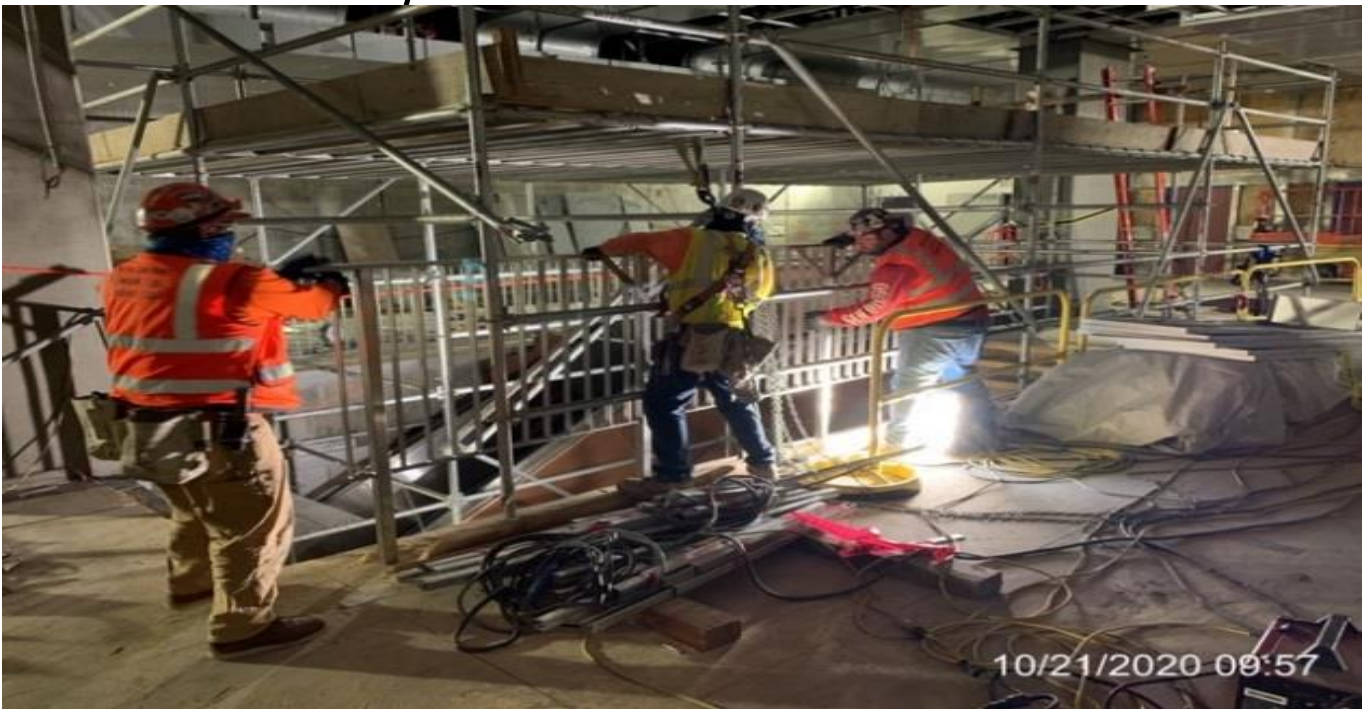


EXPO STATION – Installing map case on the east wall of the Paid Area at the concourse.

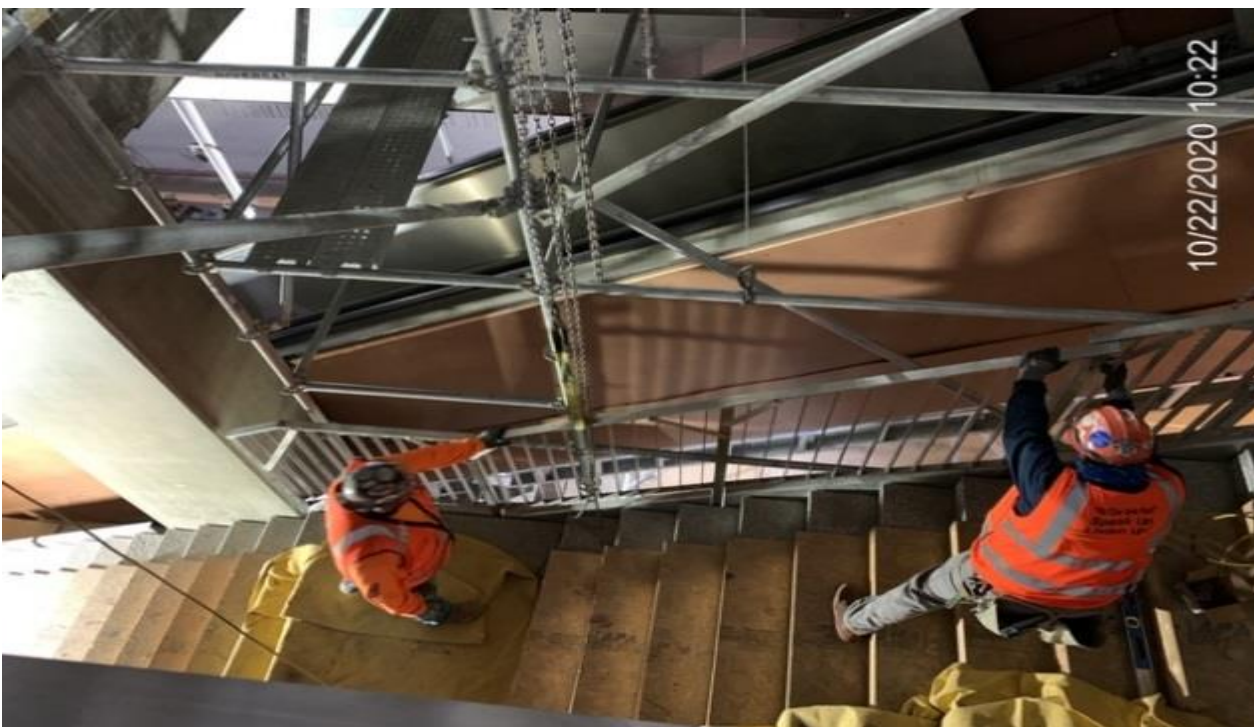


EXPO STATION – Installing/welding guardrails around the perimeter top floor opening leading into the platform and Staircase 3.

CRENSHAW/LAX PHOTOGRAPHIC UPDATE

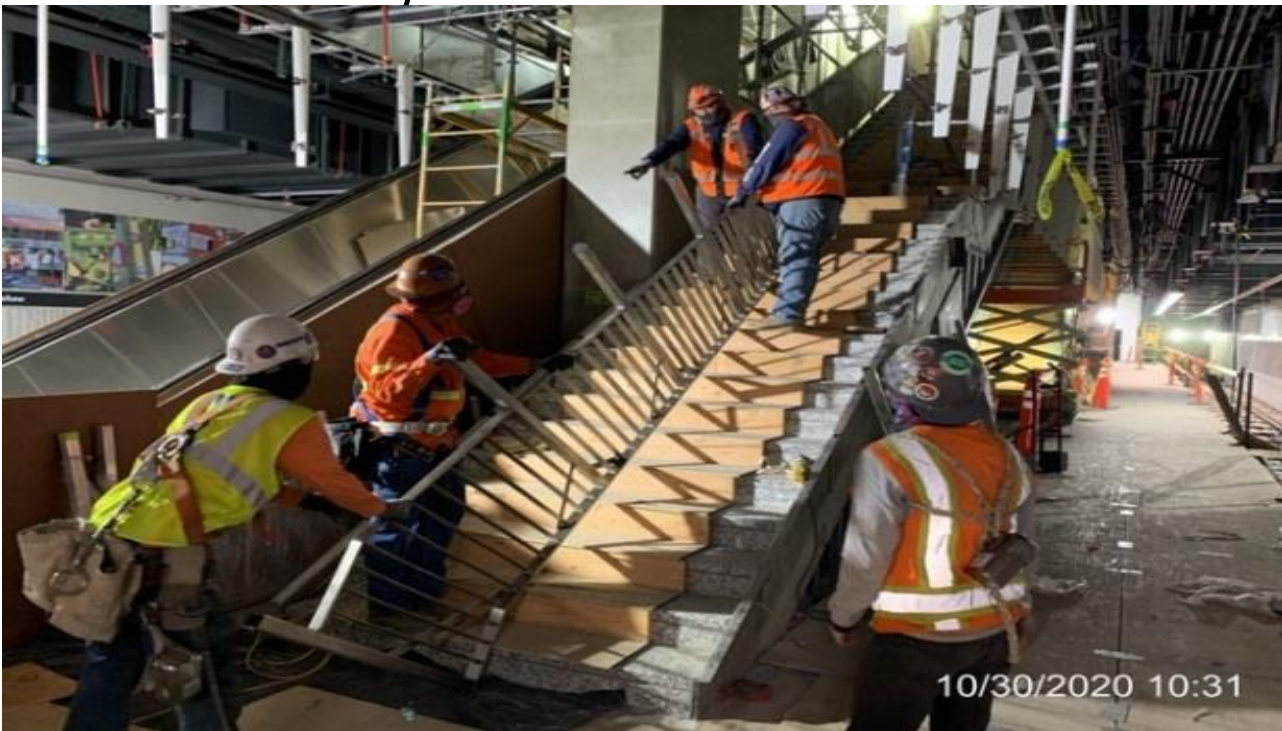


EXPO STATION – Continue installing/welding guardrails around the perimeter top floor opening leading into the platform and Staircase 3.

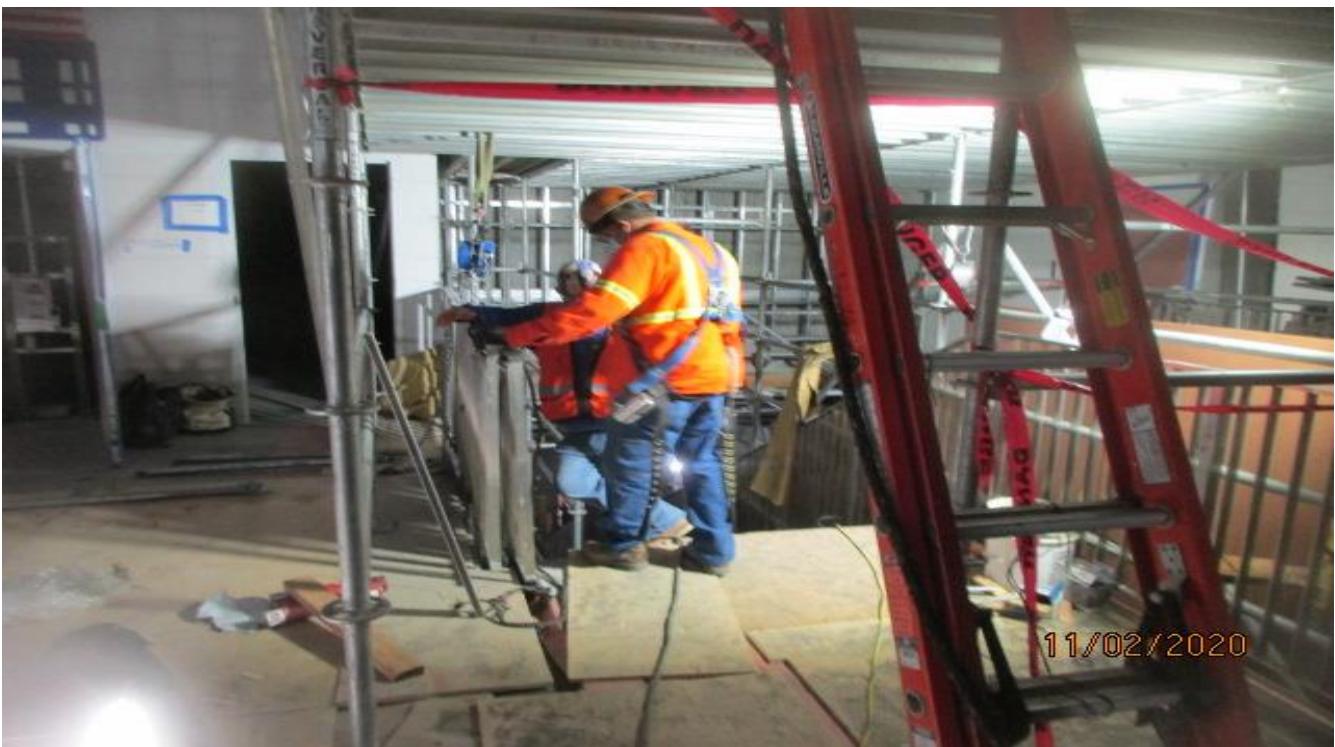


EXPO STATION – Continue installing/welding guardrails to Staircase 3 from concourse to platform.

CRENSHAW/LAX PHOTOGRAPHIC UPDATE



EXPO STATION – Continue installing/welding guardrails to Staircase 2 from concourse to platform.



EXPO STATION – Continue installing/welding guardrails to Staircase 2 from concourse to platform.

CRENSHAW/LAX PHOTOGRAPHIC UPDATE



EXPO STATION – Building mock-up for the Supervisor Room on the south end of the platform.

SEGMENT C:

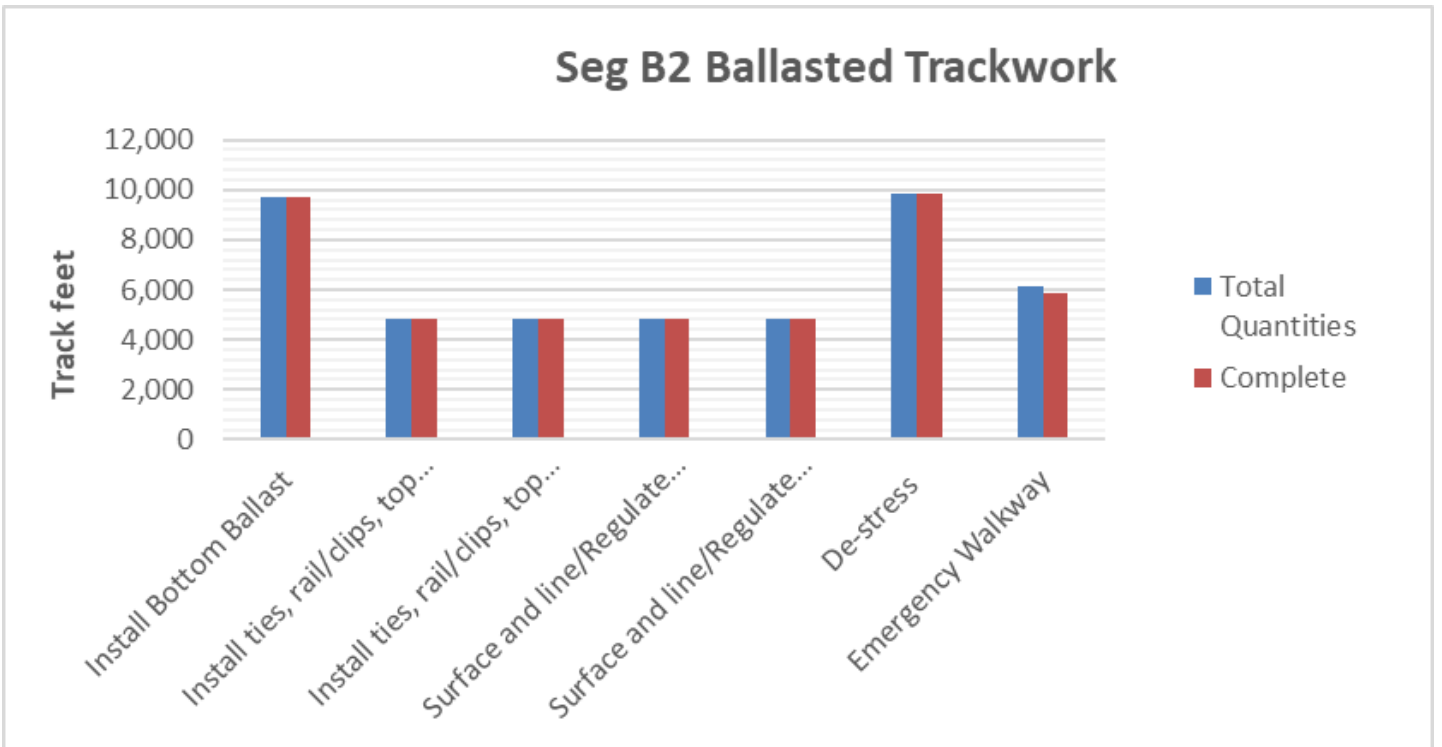
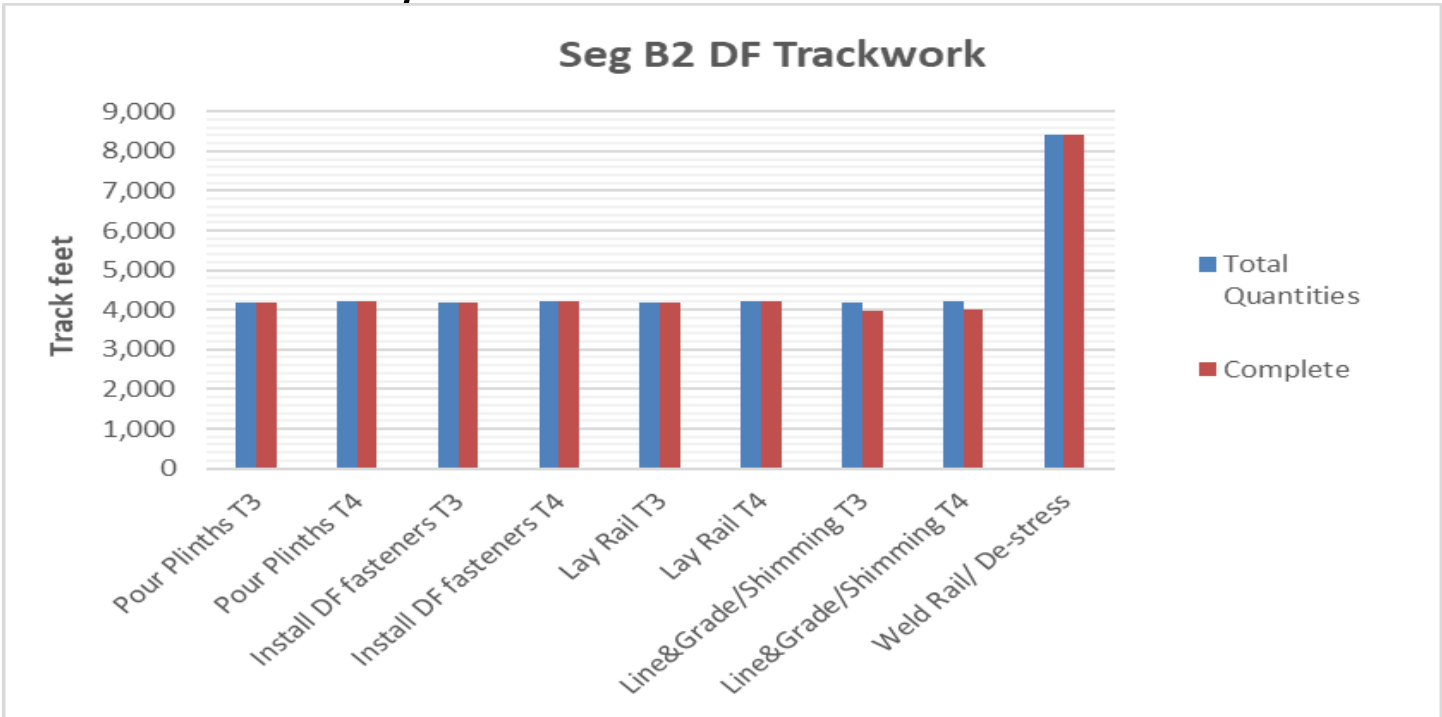
- Rework of plinth gap to invert continues throughout the Segment resetting and adjusting fasteners and sealing plinth to invert joints.
- Rework to replace damaged switch points is in progress.
- Rework of VHRF fasteners is still required due to missing shims and incorrect installation.
- Rework of plinths is still required due to damage by chipping and cracks.
- Incomplete plinth work.
- Rework of the Top-of-Rail is still required due to gouges in the rail.
- Replacement of plinths with failed inserts continues; awaiting pull test for new inserts.

CRENSHAW/LAX PHOTOGRAPHIC UPDATE

PROJECT WIDE TRACKWORK PROGRESS

	TRACK TYPE	ACTIVITY	TRACK FEET/QUANTITY	INSTALLED TO DATE	REMAINING	ACTIVITY % PROGRESS	Potential Rework *	Punchlist **
								(Complete/Incomplete)
SEGMENT B2	DF (8,408 TF)	Pour Plinths T3	4,193	4193	0	100.00%		
		Pour Plinths T4	4,215	4,215	0	100.00%		
		Install DF fasteners T3	4,193	4193	0	100.00%	*	
		Install DF fasteners T4	4,215	4215	0	100.00%	*	
		Lay Rail T3	4,193	4193	0	100.00%	*	
		Lay Rail T4	4,215	4215	0	100.00%	*	
		Line&Grade/Shimming T3	4,193	3983	210	95.00%		INC
		Line&Grade/Shimming T4	4,215	4004	211	94.99%		INC
		Weld Rail/ De-stress	8,408	8408	0	100.00%		
		Emergency Walkway						
	Acceptance for turnover to subcontractors	yes/no	no					
	BALLASTED TRACKWORK (9681 TF including grade crossings)	Install Bottom Ballast	9,681	9681	0	100.00%	*	INC
		Install ties, rail/clips, top ballast -T3	4,836	4836	0	100.00%	*	
		Install ties, rail/clips, top ballast -T4	4,845	4845	0	100.00%	*	
		Surface and line/Regulate T3	4,836	4836	0	100.00%	*	
		Surface and line/Regulate T4	4,845	4845	0	100.00%	*	
		De-stress	9,861	9861	0	100.00%		
		Emergency Walkway	6148	5840	308	94.99%		
	Acceptance for turnover to subcontractors	yes/no	no					
	SPECIAL TRACKWORK	Ballasted Single Crossover (U1/U2, V1/V2)	2	2	0	100.00%		INC
Thermite Welds		56	56	0	100.00%			
Insulated Joints (I's)		12	12	0	100.00%	*	INC	
Acceptance for turnover to subcontractors	yes/no	no						
GRADE X-ING	Construct Crossing (48th, 50th, 52nd, 54th, 57th, 59th, Slausen)	7	6	1	85.71%			
SEGMENT C	DF (16,756 TF)	Pour Plinths T3	8,385	8385	0	100.00%	*	INC
		Pour Plinths T4	8,371	8371	0	100.00%	*	INC
		Install DF fasteners T3 (VHRF installed - pending NCR)	8,385	7965	420	94.99%	*	
		Install DF fasteners T4 (VHRF installed - pending NCR)	8,371	7952	419	94.99%	*	
		Lay Rail T3	8,385	8385	0	100.00%	*	
		Lay Rail T4	8,371	8371	0	100.00%	*	
		Line&Grade/Shimming T3	8,385	7546	839	89.99%	*	INC
		Line&Grade/Shimming T4	8,371	7533	838	89.99%	*	INC
		Emergency Walkway						
		Acceptance for turnover to subcontractors	yes/no	no				
	SPECIAL TRACKWORK	DF Double Crossover (Diamond)	1	1	0	100.00%	*	
		Line&Grade/Shimming	1	1	0	100.00%	*	
		Thermite Welds	56	56	0	100.00%		
		Insulated Joints (I's)	20	20	0	100.00%	*	
		Acceptance for turnover to subcontractors	yes/no	no				
DF =	Direct Fixation							
T3 =	Track 3							
T4 =	Track 4							
TF =	Track Feet							
*	Potential for rework based on recent guideway survey. Total impact of rework is unknown at this time.							
**	Punchlist Complete/Incomplete: Indicates the completion (COMP) or Incompletion (INC) of identified punchlist items							

CRENSHAW/LAX PHOTOGRAPHIC UPDATE



CRENSHAW/LAX PHOTOGRAPHIC UPDATE

