

metro.net/measureR

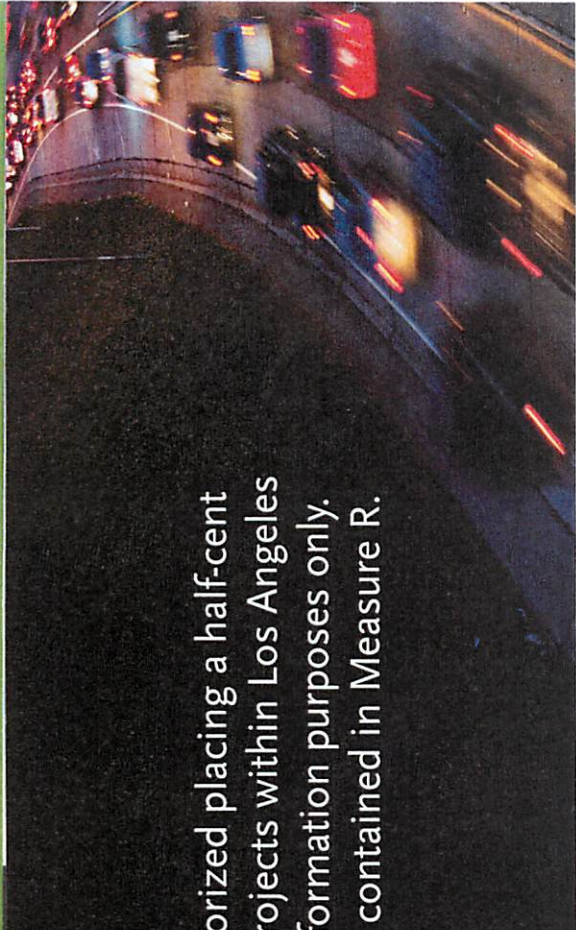


Measure R

Information Guide



Metro



In July 2008, the Metro Board of Directors authorized placing a half-cent sales tax before voters to fund transportation projects within Los Angeles County. Metro is providing this pamphlet for information purposes only. It details transportation projects and programs contained in Measure R.

What is Measure R?

Measure R is a half-cent sales tax increase that is expected to provide the local resources to finance new transportation projects and accelerate those already in the pipeline. Over 30 years, it is projected to generate \$40 billion for congestion relief projects. Measure R alone does not fully fund all projects. The expenditure plan identifies additional funding sources. To view the expenditure plan and the full text of Measure R, please visit metro.net/measureR.

The average cost is estimated to be \$25 a year per person

According to the private nonprofit Los Angeles County Economic Development Corporation (LAEDC), Measure R would cost residents an average of \$25 per person each year.

Taxpayer oversight

After conducting any legally required environmental review, the Metro Board will spend Measure R funds consistent with the voters' approval. There will be an annual independent audit and report to taxpayers and ongoing monitoring and review of spending by an independent taxpayer oversight committee.

CEQA

Prior to any approval and commencement of any Measure R project, any necessary environmental review required by the California Environmental Quality Act (CEQA) shall be completed.

Measure R GOALS

RAIL EXPANSION

- > Expand Metro Rail and busway systems
- > Accelerate and improve existing rail and bus projects
- > Connect Metro Rail to airport

STREET IMPROVEMENTS

- > Synchronize traffic signals to ease traffic flow
- > Accelerate pothole repair and other maintenance on local streets
- > Make neighborhood streets and intersections safer for drivers, bicyclists and pedestrians in each community

TRAFFIC REDUCTION

- > Reduce highway traffic congestion throughout LA County
- > Enhance highway safety and improve traffic flow

PUBLIC TRANSPORTATION

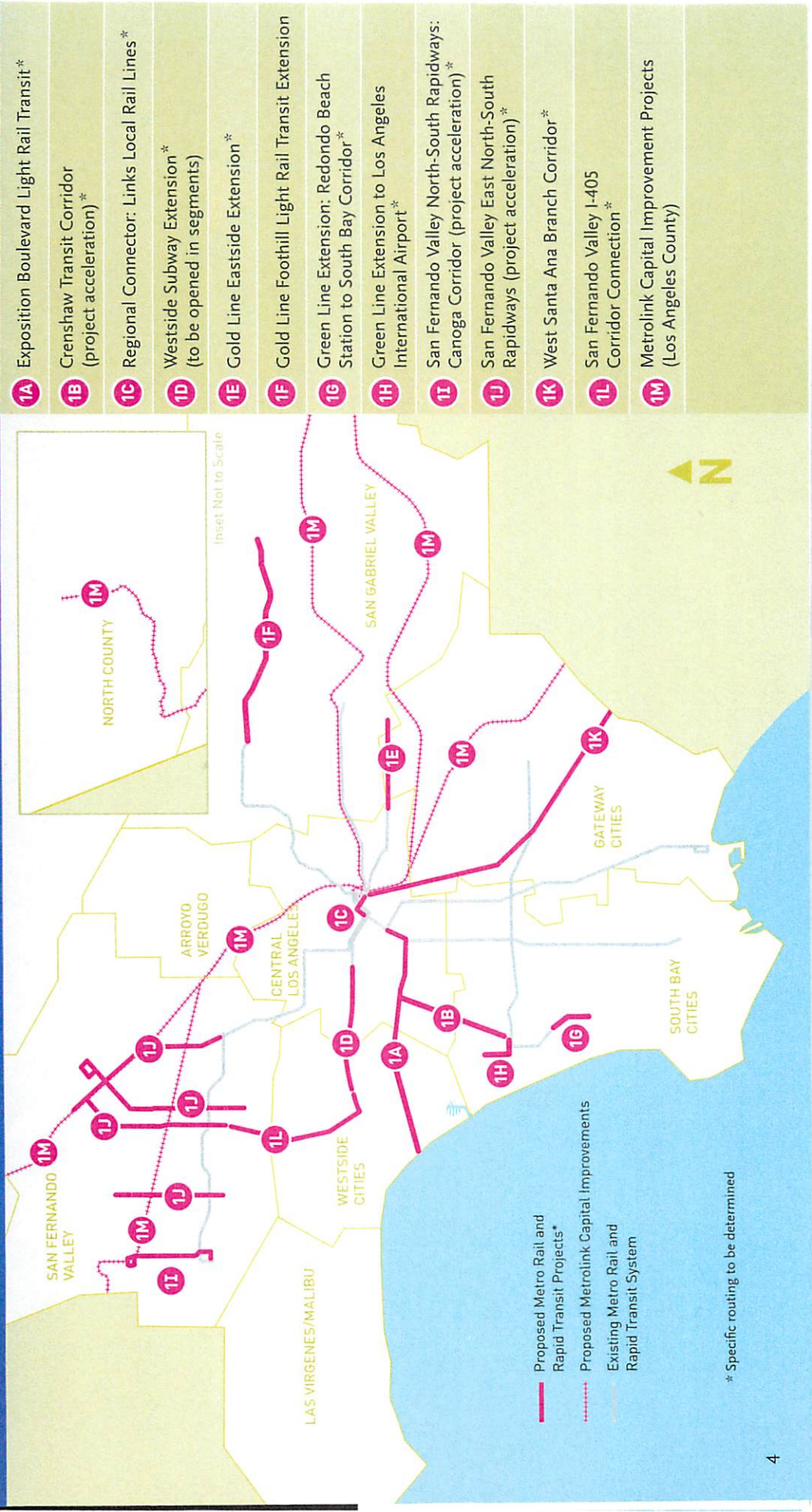
- > Maintain existing fares, especially for seniors and the disabled
- > Expand bus transit
- > Increase availability of public transportation

QUALITY OF LIFE

- > Enable people and freight to move freely in LA County
- > Enable residents to enjoy safer, cleaner transit

MEASURE R Proposed Rail and Rapid Transit Expansion

Project Name



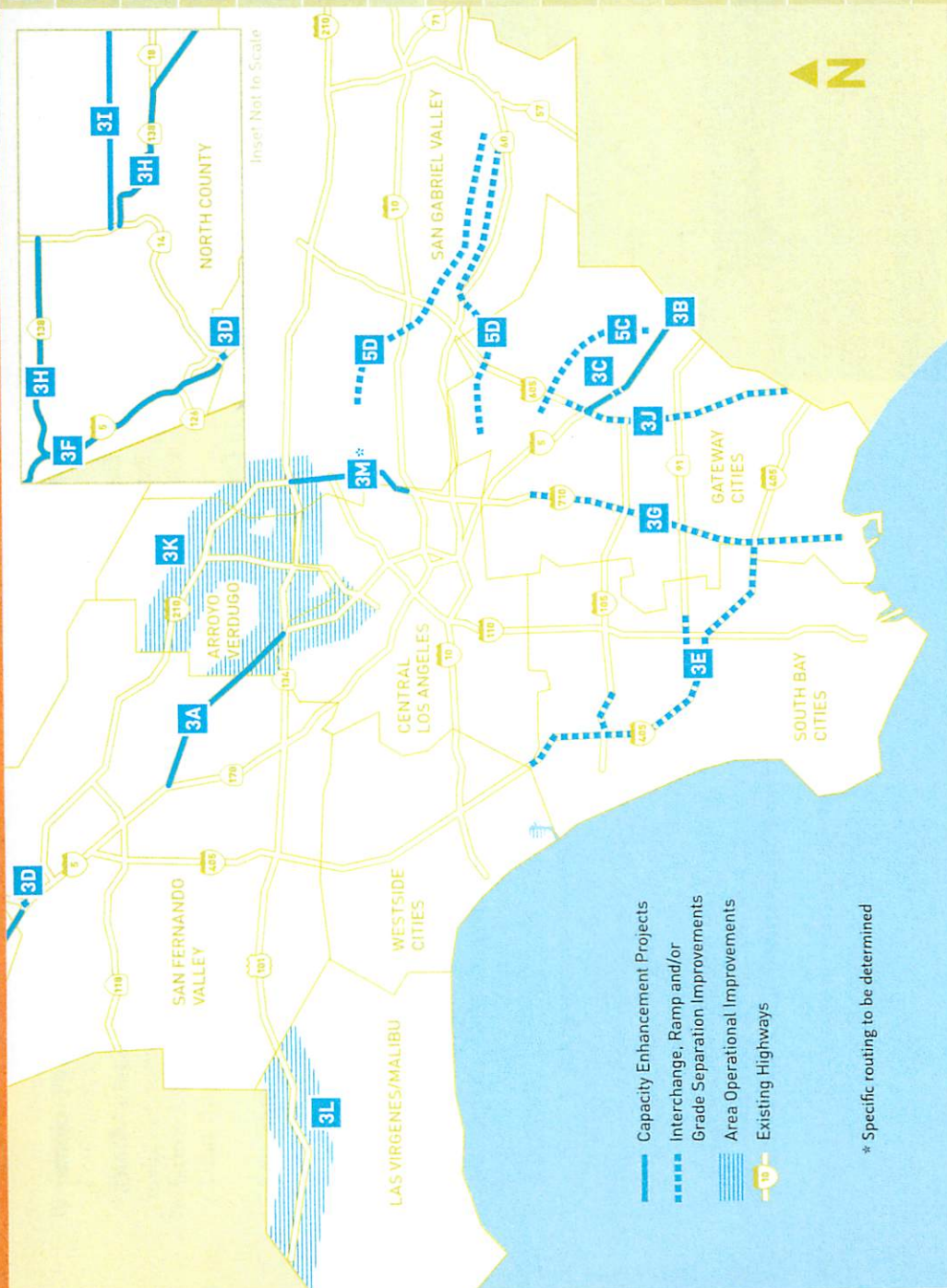
1A	Exposition Boulevard Light Rail Transit*
1B	Crenshaw Transit Corridor (project acceleration)*
1C	Regional Connector: Links Local Rail Lines*
1D	Westside Subway Extension* (to be opened in segments)
1E	Gold Line Eastside Extension*
1F	Gold Line Foothill Light Rail Transit Extension
1G	Green Line Extension: Redondo Beach Station to South Bay Corridor*
1H	Green Line Extension to Los Angeles International Airport*
1I	San Fernando Valley North-South Rapidways: Canoga Corridor (project acceleration)*
1J	San Fernando Valley East North-South Rapidways (project acceleration)*
1K	West Santa Ana Branch Corridor*
1L	San Fernando Valley I-405 Corridor Connection*
1M	Metrolink Capital Improvement Projects (Los Angeles County)

* Specific routing to be determined

MEASURE R Proposed Highway Improvements

Project Name

3A	I-5 Capacity Enhancement: SR-134 to SR-170
3B	I-5 Capacity Enhancement: I-605 to Orange County Line
3C	I-5/Carmenita Rd Interchange Improvement
3D	I-5/SR-14 Capacity Enhancement
3E	I-405, I-110, I-105 and SR-91 Ramp and Interchange Improvements: South Bay
3F	I-5 North Capacity Enhancements: SR-14 to Kern County Line (Truck Lanes)
3G	I-710 South and/or Early Action Projects
3H	SR-138 Capacity Enhancements
3I	High Desert Corridor (environmental)
3J	I-605 Corridor "Hot Spot" Interchanges
3K	Highway Operational Improvements in Arroyo Verdugo Subregion
3L	Highway Operational Improvements in Las Virgenes and Malibu Subregion
3M	SR-710 North Gap Closure*
5C	BNSF Grade Separations
5D	Alameda Corridor East Grade Separations Phase II



Rail Expansion

GOALS

- > Expand Metro Rail and busway systems
- > Accelerate and improve existing rail and bus projects
- > Connect Metro Rail to airport



Measure R is projected to provide funding for the following projects:

- 1A Exposition Boulevard Light Rail Transit: Culver City to Santa Monica***
Extends the Exposition Rail Line, currently under construction to Culver City, to Santa Monica.
- 1B Crenshaw Transit Corridor (project acceleration)***
Accelerates construction of a line along the Crenshaw Bl Corridor and connects Los Angeles, Inglewood, Hawthorne and El Segundo, plus unincorporated LA County.
- 1C Regional Connector: Links Local Rail Lines***
Links four light rail lines that terminate at the edges of Central LA. Expected to provide seamless connections between Long Beach/Pasadena, and Culver City/East LA, minimizing the need for rail transfers.
- 1D Westside Subway Extension (to be opened in segments)***
Extends Metro Rail to the Westside. The project is expected to serve Century City and Westwood/UCLA.
- 1E Gold Line Eastside Extension***
Extends Metro Gold Line farther east from the Pomona/Atlantic Station.
- 1F Gold Line Foothill Light Rail Transit Extension***
Extends the Metro Gold Line from its current terminus in Pasadena toward Claremont.

1G Green Line Extension: Redondo Beach Station to South Bay Corridor**
Continues the Metro Green Line from its current terminus in Redondo Beach to the South Bay Galleria.

1H Green Line Extension to Los Angeles International Airport**
Links the Metro Green Line to LAX at the Aviation Station.

1I San Fernando Valley North-South Rapidways: Canoga Corridor (project acceleration)
Extends the Metro Orange Line north from Canoga Park Station to Chatsworth with a projected completion three years early.

1J San Fernando Valley East North-South Rapidways (project acceleration)
Accelerates bus service improvements, including possible dedicated bus lanes, on four potential East San Fernando Valley corridors, including Van Nuys, Sepulveda, Reseda and Lankershim.

1K West Santa Ana Branch Corridor
Provides for the development of a grade-separated transit corridor. Phase I is designed to go from the LA County line toward downtown LA.

1L San Fernando Valley I-405 Corridor Connection**
Provides a rapid transit option through the Sepulveda Pass between the Westside and the San Fernando Valley.

1M Metrolink Capital Improvement Projects (Los Angeles County)
Purchases trains, expands the Eastern Maintenance Facility and



upgrades sidings and crossovers to increase speed and safety. Local jurisdictions could use funds to improve parking and station facilities within their cities and offer connecting shuttle services.

1N Metro Rail Capital Projects
Maintains rail facilities by improving operational systems, upgrading rail yards and purchasing new rail cars.

1O East Light Rail Access (Gold Line)
Increases access, including pedestrian and bicycle, to the Gold Line Eastside Light Rail project.

***Specific mode and routing will be subject to approved plans developed in cooperation with local jurisdictions and affected communities.*

2 Street Improvements

GOALS

- > Synchronize traffic signals to ease traffic flow
- > Accelerate pothole repair and other maintenance on local streets
- > Make neighborhood streets and intersections safer for drivers, bicyclists and pedestrians in each community



Measure R funds are projected to be used for the following programs:

2A Signal Synchronization*

Coordinated operation of traffic signals, including left-turn arrows at intersections, to improve traffic flow.

2B Major Street Resurfacing & Pothole Repair*

Accelerated repair of potholes and other street and curb damage.

2C Traffic Monitoring Programs*

Expand regional traffic monitoring systems, which provide continuous, real-time traffic and incident data to control centers and the public.

2D Bicycle Programs*

Development of bicycle facilities throughout Los Angeles County.

2E Pedestrian Improvement Program*

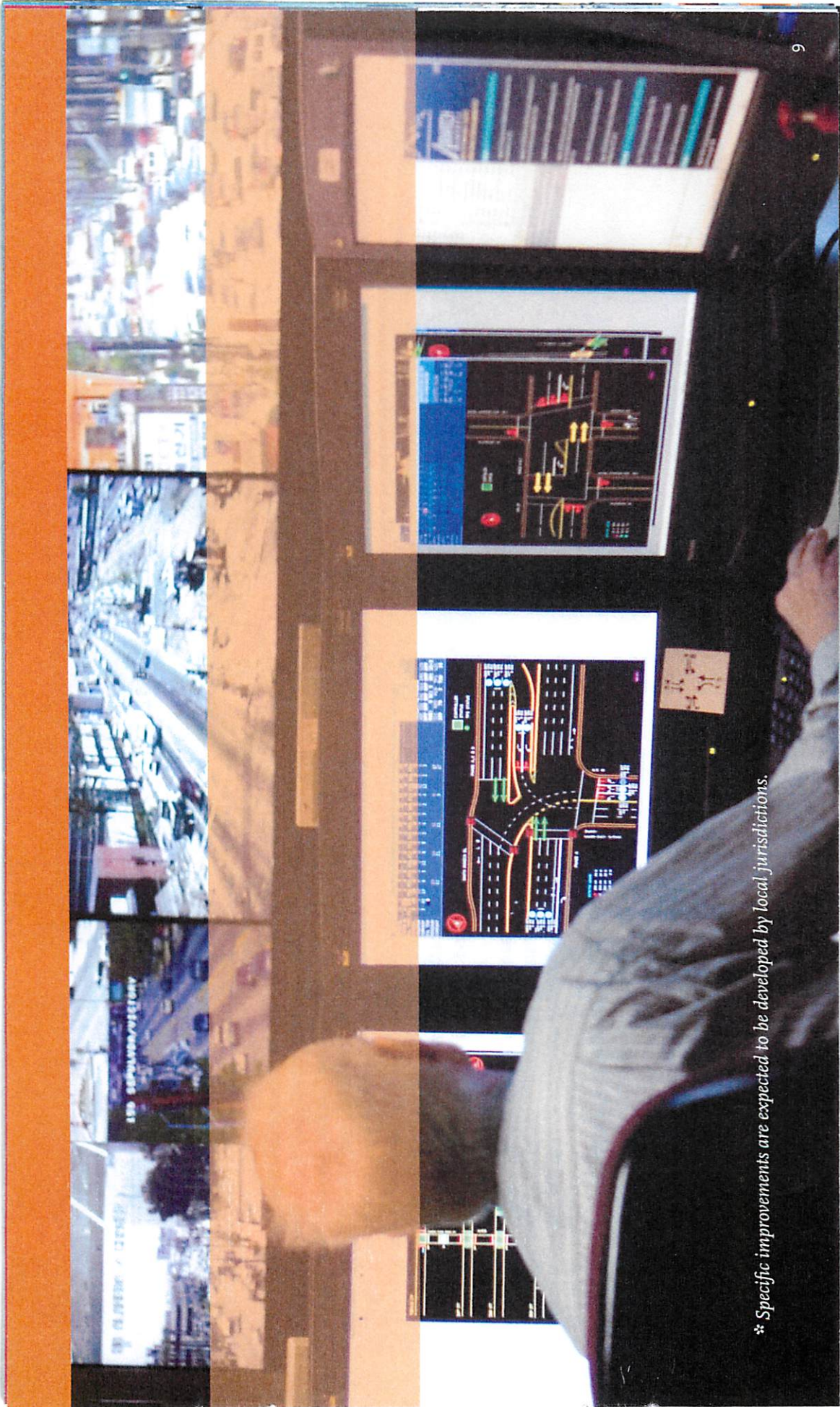
Improvements for pedestrians such as retrofitting existing facilities with enhanced signage and safety components.

2F Safer Bus Stops*

Enhancements to bus stops such as lighting, electronic real-time arrival signage, shelters and electronic surveillance.

2G Traffic Demand Management*

Strategies to offer alternatives to drive-alone vehicle travel. They include improving the efficiency of existing transportation infrastructure, eliminating vehicle trips and deployment of new technologies.

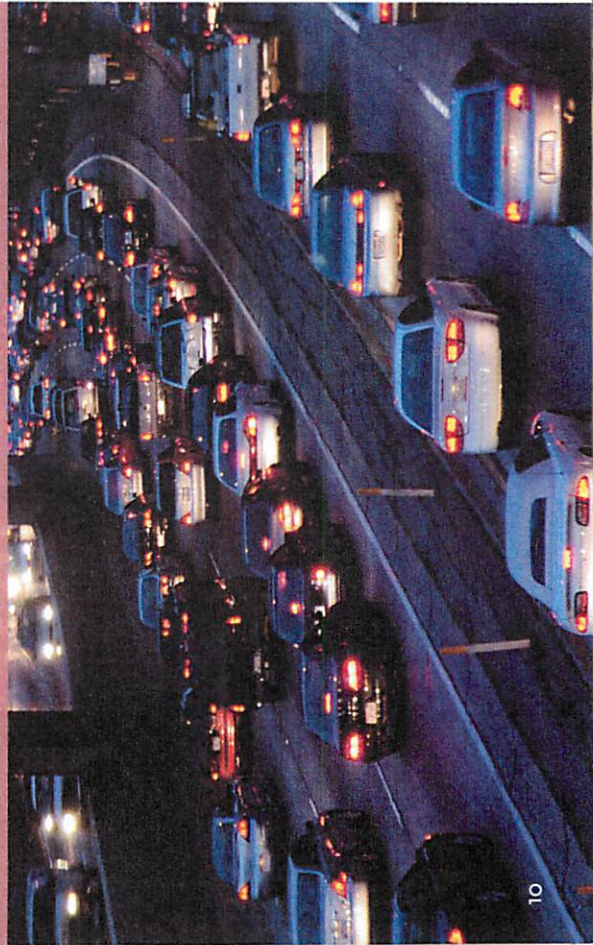


* Specific improvements are expected to be developed by local jurisdictions.

Traffic Reduction

GOALS

- > Reduce highway traffic congestion throughout L.A. County
- > Enhance highway safety and improve traffic flow



Measure R is projected to provide funding for the following projects:

3A I-5 Capacity Enhancement: SR-134 to SR-170

Constructs one carpool lane in each direction along the I-5 freeway between SR-134/SR-170, including access improvement for Empire Av.

3B I-5 Capacity Enhancement: I-605 to Orange County Line

Constructs one carpool lane and one mixed-flow lane in each direction extending 6.4 miles through Cerritos, La Mirada, Santa Fe Springs and Norwalk. Includes interchange reconstruction and arterial modifications.

3C I-5/Carmenita Rd Interchange Improvement

Removes existing two-lane structure and constructs a new eight-lane interchange with carpool lane on-ramps. Project is located in Santa Fe Springs and Norwalk, and could enable widening of I-5 in the area.

3D I-5/SR-14 Capacity Enhancement

Provides direct link for carpools between I-5 and SR-14 freeways, which eliminates need to exit carpool lanes when switching freeways.

3E I-405, I-110, I-105, SR-91 Ramp/Interchange Improvements: South Bay

Constructs improvements in the South Bay to reduce delays on the freeways. Examples include auxiliary lanes and ramp reconfigurations.

3F I-5 North Capacity Enhancements: SR-14 to Kern County Line (Truck Lanes)*:

Adds a carpool lane and a dedicated truck lane in both directions on the I-5 freeway north of SR-14 in the Santa Clarita Valley.

3G I-710 South and/or Early Action Projects**

Upgrades the freeway and improves truck and traffic flows between the Ports of Los Angeles and Long Beach and the SR-60 freeway. Also to be considered are upgrades to the I-710 freeway between Pacific Coast Highway and downtown Long Beach.

3H SR-138 Capacity Enhancements

Widens SR-138 by adding new lanes in each direction to the San Bernardino County line.

3I High Desert Corridor (environmental)**

Provides the initial study of the High Desert Corridor, linking the Antelope Valley to Apple Valley.

3J I-605 Corridor "Hot Spot" Interchanges

Improvements to interchanges along the I-605 corridor, such as at the SR-60, I-5, SR-91 and I-405 interchanges. Examples of improvements include roadway widening, ramp expansion and added signage within the interchange.

3K Highway Operational Improvements in Arroyo Verdugo Subregion

Constructs freeway operational enhancements such as ramp improvements, auxiliary lanes and interchange improvements in such areas as Burbank, Glendale and La Canada/Flintridge.

3L Highway Operational Improvements in Las Virgenes and Malibu Subregion

Constructs freeway operational improvements such as ramp



enhancements, auxiliary lanes and interchange improvements in areas of Agoura Hills, Calabasas, Hidden Hills, Westlake Village and Malibu.

3M SR-710 North Gap Closure**

Improvements to connection between SR-710 and I-210 freeways.

*** Partial funding by public/private partnerships is assumed to be part of the project plan.*

4 Public Transportation

GOALS

- > Maintain existing fares, especially for seniors and the disabled
- > Expand bus transit
- > Increase availability of public transportation



Measure R is projected to provide funding for the following programs:

4A Rapid Bus Improvements**

Continued operation of the Metro Rapid network with over 400 miles of service throughout Los Angeles County. These lines make fewer stops, follow simpler routes, run more frequently, use low-floor buses to facilitate boarding and are given priority at certain traffic signals.

4B Express Bus Improvements**

Continued operation and expansion of express bus service. Express lines use existing rights-of-way to provide efficient long-distance service.

4C Local Bus Improvements**

Improvements in the quality and reliability of local bus service over the next 30 years, such as utilization of higher capacity buses.

4D Improved Service for Seniors**

Continuation and expansion of efforts such as dedicated hands-on "sampler" buses, large-type mapping and route planning tools, outreach to senior centers and retirement homes, specialized large-type informational materials and audience-appropriate training videos.

4E Improved Service for the Disabled**

Continuation and expansion of enhancements on buses such as wheelchair lifts or ramps, automated voice enunciators and electronic signage to call out stops for visually and hearing impaired passengers.

4F Fares

The per-passenger cost of providing transit service is much higher than the fares charged to riders. As a result, transit service is subsidized. Measure R is expected to allow Metro to maintain its fares for one year and freeze fares for seniors, students, the disabled and commuters for five years.

4G Increased Bus Service to Rail Stations*

Continuation and expansion of connecting bus lines at various stations to increase access to rail lines.

4H Expanded Community-based Shuttle Services*

Continuation and expansion of community-based circulators.

4I Increased Local Transit Funding*

Continuation and expansion of municipal transit operator funding and other locally-based transit service providers.

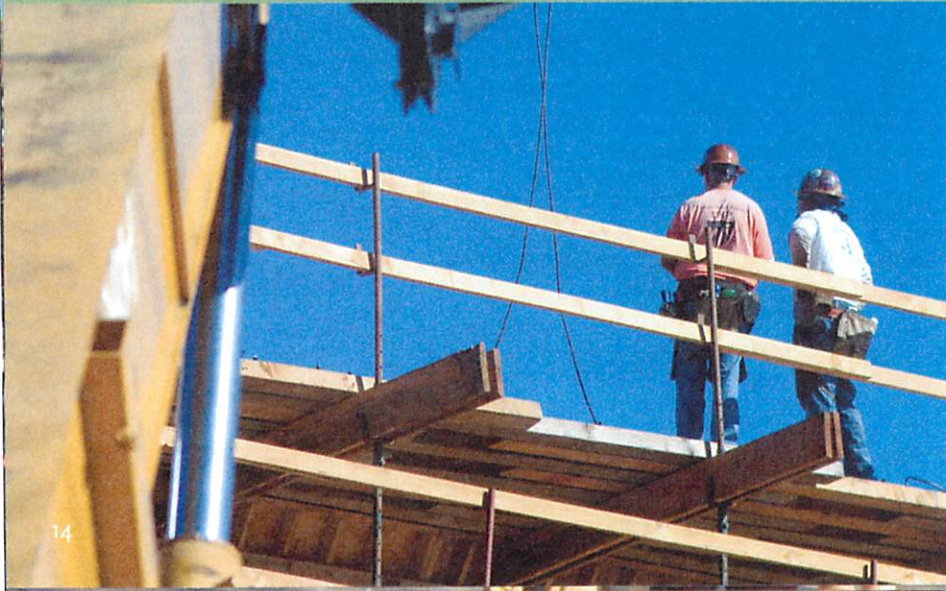
** Specific improvements are expected to be developed by local jurisdictions.*



5 Quality of Life

GOALS

- > Enable people and freight to move freely in LA County
- > Enable residents to enjoy safer, cleaner transit



Measure R is projected to provide funding for the following programs:

5A Alternative to High Gas Prices

Measure R funds are expected to offer alternatives to drive-alone vehicles.

5B Job Stimulus

According to the Los Angeles County Economic Development Corporation, Measure R would create over 210,000 new jobs and add more than \$32 billion into Los Angeles County's economy.

5C Burlington Northern Santa Fe Grade Separations in Gateway Cities

Construction of rail and roadway grade separations in the Gateway Cities area at five locations including: Rosecrans Av and Marquardt Av, Passons Bl, Los Nietos Rd and Norwalk Bl, Lakeland Rd and Pioneer Bl.

5D Alameda Corridor East Grade Separations Phase II

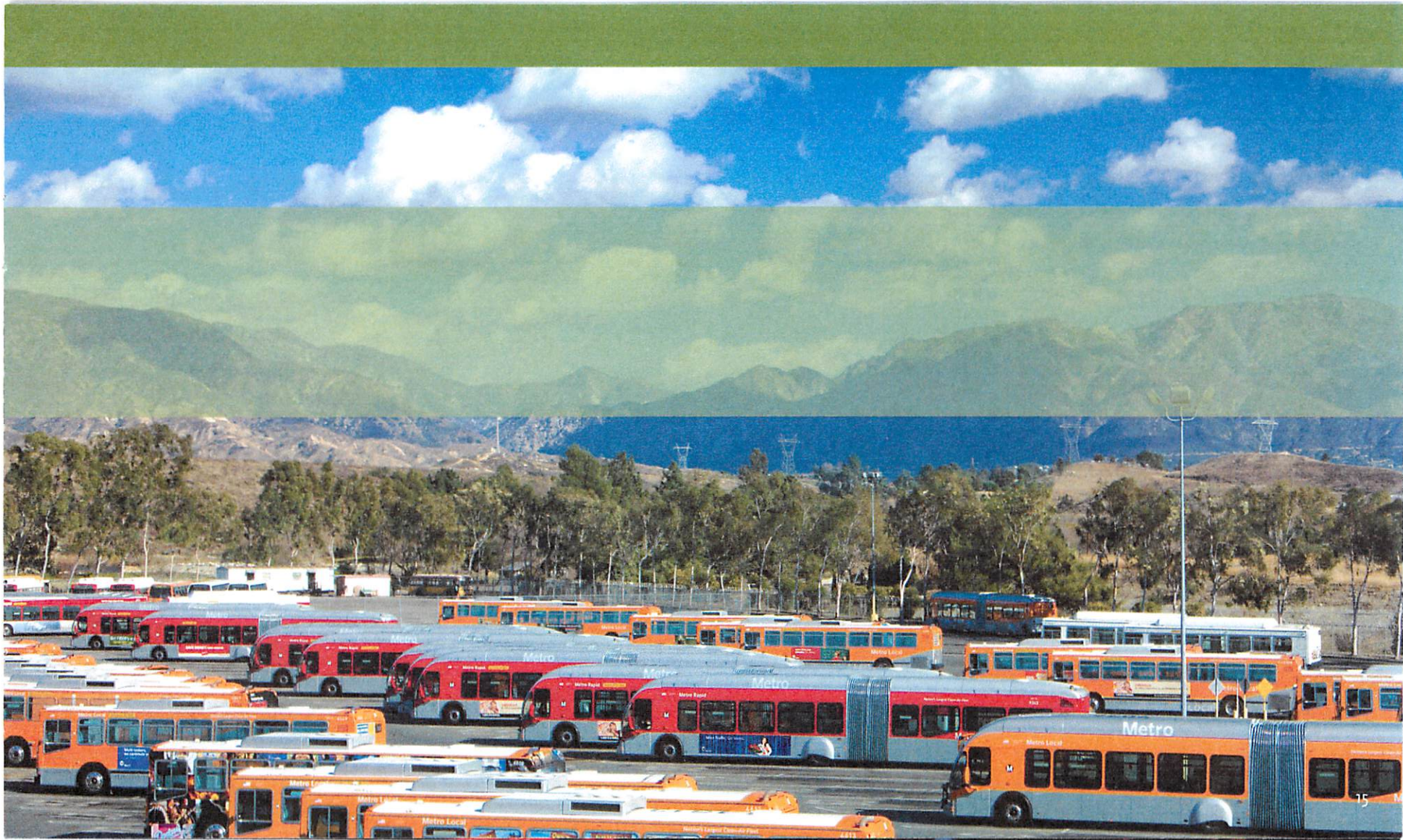
Constructs bridges or underpasses and improves the operation of other railroad intersections along a 35-mile stretch of the San Gabriel Valley.

5E Countywide Soundwall Construction

Continued construction of soundwall projects for major highway projects to reduce freeway noise levels.

5F Metro and Municipal Regional Clean-fuel Bus Capital Facilities and Rolling Stock

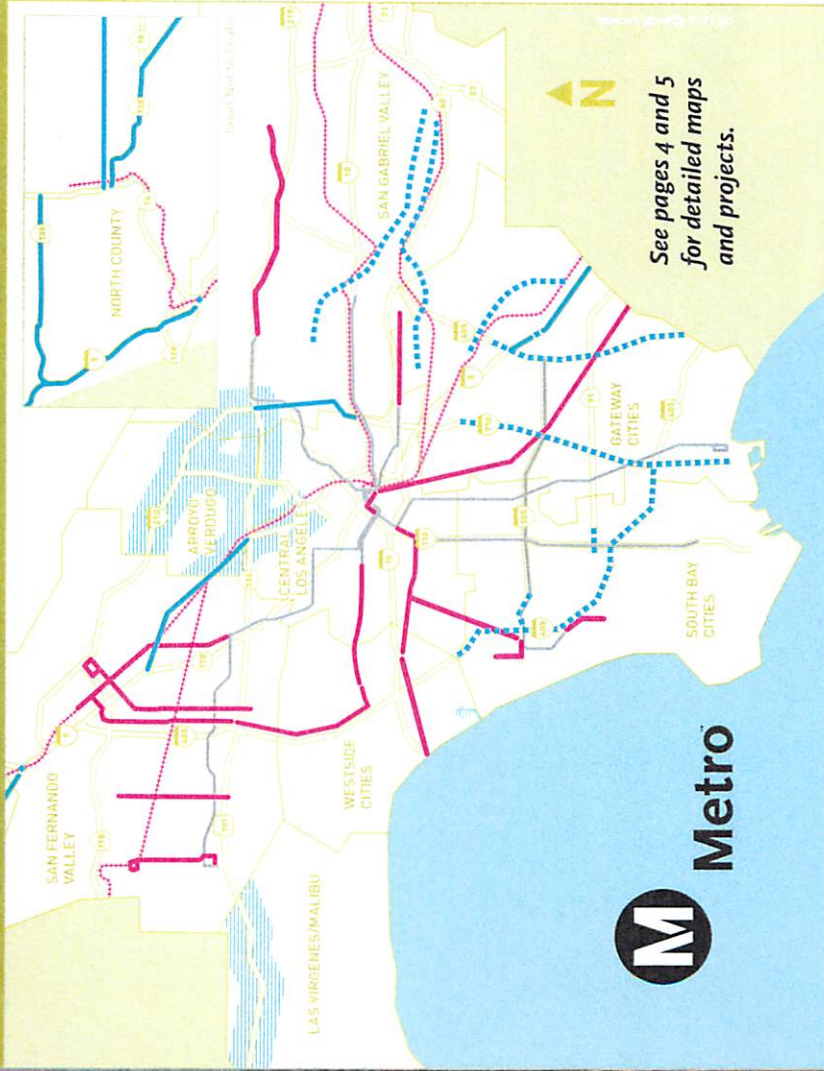
Purchase of clean-fuel buses by both Metro and municipal operators.



metro.net/measureR

Measure R

Information Guide



Los Angeles County
Metropolitan Transportation Authority
One Gateway Plaza
Los Angeles, CA 90012-2952

PRESORTED
STANDARD
U.S. POSTAGE
PAID
DUAL GRAPHICS

POSTAL CUSTOMER