



SR 710 North Study

State Route 710 North March 2015 Board Staff Briefing **Supplemental Information** *(Staff Follow-up)*

1. Provide the number of briefings/meetings held with Solis' office and schedule meeting/briefing with the New Transportation Deputy-
Please refer to Attachment A. Staff to schedule briefing.
2. Provide Study Area City Listings-
Please refer to Attachment B for the listing. The Study Area is generally bounded by Routes 2, 5, 10, 210 and 605. However, it should be noted the study limits may vary for individual technical studies conducted. For example, the study limits for Rights of Way were confined to the footprint of the proposed physical improvements for each alternative, which is less than the study area bounded by the routes described above. In contrast, the Traffic, Air Quality and Noise studies have study limits that extend beyond the footprint of the proposed physical improvements for each alternative, and are therefore greater than the designated study area bounded by the routes described above.
3. Provide listing of cities that have posted the SR 710 North Draft EIR/EIS News Release (with the hyperlink to the document)-
Please refer to Attachment C.
4. Note LACDPW agreed to post the SR 710 North Draft EIR/EIS News Release to their webpage.
Staff forwarded the News Release to LACDPW representative (John Walker) to be posted.
5. Provide copy of the SR 710 North Draft EIR/EIS Community Outreach/Public Participation Plan-
Please Refer to Attachments D, D1 and D2.
6. Provide individual cost estimates for the TSM/TDM components-
Please refer to Attachment E.
7. Regarding Slide No. 20, Active Transportation, it was noted additional cities (Baldwin Park, San Gabriel, El Monte, and Monterey Park) within the study area have adopted bike plans that are now shown on slide.
Staff to make updates to reflect proposed bike plans consistent with local agencies before finalizing the EIR/EIS.
8. Clarification offered regarding question raised about typical BRT ridership when viewing Slide No. 21, BRT-

Ridership, and peak/off peak headways for Bus Rapid Transit (BRT) corridors vary throughout LA County, and are based on a number of factors and community characteristics that include, but are not limited to, land use and density, major trip generators, per mile boarding, transit dependency and other socio economic data about the market that is being served. (Staff will make ridership stats for other BRT corridors with similar lengths available under separate email.)

9. Clarification offered regarding Slide No. 22, LRT, and the location of the LRT maintenance yard-
Staff confirmed there is a grade separated maintenance yard at Valley Boulevard that is situated within the existing Caltrans Right of way for the proposed LRT line. It should be noted maintenance yards are typically located close to the rail facility to allow direct access (e.g. an elevated connection in this case). Therefore, utilizing excess capacity reported at the Monrovia maintenance yard would not be practical.
- a. *Regarding the inquiry about a direct connection between the proposed LRT line and the existing Metro Gold and East Side rail lines- Metro's policy prohibits at-grade connections and therefore, a direct connection is not provided at either end of the LRT corridor.*
 - b. Correction: *There is approximately 200 feet between the proposed LRT Mednik station and the existing 1st Street East Side Gold Line station. Also, there is approximately 200 feet between the proposed LRT Fillmore underground station and the existing Fillmore Gold line station. (Staff incorrectly reported greater distances for both locations.)*
10. Provide civil drawings (plan and profile) for the Cal State University Los Angeles (CSULA) Light Rail Station-
Please refer to Attachment F.
11. Clarification offered regarding question about the existing Valley Boulevard interchange-
There is an existing half diamond interchange at Valley Boulevard which will be maintained, with off-ramps to Valley from NB SR 710 and on-ramp to SB SR 710. The interchange configuration will be modified to accommodate the proposed improvements.
12. Clarification offered regarding question about residential impacts related to the proposed SR 710 North build alternatives –
Staff confirmed there are no residential impacts related to any of the proposed SR 710 North build alternatives. (It should be noted that more than 1400 homes would have been impacted had the plan to extend the freeway at-grade been implemented as proposed in the 1992 Final EIR/EIS.)
13. Clarification offered regarding information on Slides 25 and 26 reported to be misleading-
Staff confirmed the figures reported on both slides are correct but offer the following regarding the construction jobs: the job figures represent both direct and indirect construction related job demand, and are reported in Person Years (i.e. a person working 3 full years is counted as 3 jobs for this purpose). (This explains why the figures appear larger than expected). In lieu of reporting raw numbers and figures, a graphic representation of the data reported on Slides 25 and 26 (with proper notes) will be provided at the Public Hearings.

3-26-15



14. Suggest defining what Section 4(f) means on Slide No. 27 -

Section 4(f) refers to the section of the federal law that describes special properties that should be protected when transportation improvements are contemplated. Such properties include publicly owned parks, recreation areas, and wildlife or waterfowl refuges, or any publicly or privately owned historic site listed or eligible for listing on the National Register of Historic Places. This information will be made available in the future.

15. Clarification offered regarding questions raised about the data reported on Slide No. 30 (Traffic and Transportation Summary Table) -

a. *New Transit Ridership Entries:*

- *For the Single Bore (SB) Freeway Tunnel Alternative design variation – The 10,100 additional transit riders is a result of the proposed TSM/TDM improvements (e.g. the Transit Enhancement component of the TSM/TDM Alternative) with a small amount attributed to the proposed express bus service.*
- *For the Dual Bore (DB) Freeway Tunnel Alternative design variation – The 9,700 additional transit riders is largely due to implementing the Transit Enhancement component of the TSM/TDM Alternative.*

b. *Staff confirmed initial traffic analyses indicate the demand for the SB tunnel would exceed the capacity if the facility is not tolled.*

16. Provide the number of East Los Angeles meetings/briefings held to date-
(See response provided for Item No. 5.)

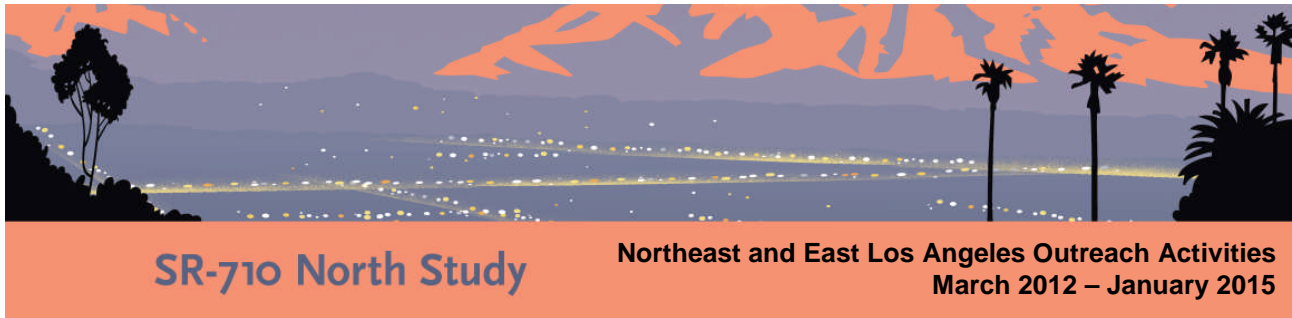
General Suggestions Noted by Staff included the following:

1. Referring to pg. 18 of the SR 710 North Exec Summary, it was suggested that there be more focus reporting on the existing traffic impacts on local arterials and that more stats and data such as the vehicle hours travelled (VHT) and vehicle miles travelled (VMT) should be reported. (The data can be found in Chapter 3, Section 3.5 of the SR 710 North Draft EIR/EIS, as well as in the supporting Traffic and Transportation report. Please refer to handout material.)
2. Consider offering driving tours for board staff/members that are interested in visiting SR 710 North existing stubs as well as the footprint of the build alternatives;
3. Consider mock questions to prepare for upcoming Public Hearings, briefings/meetings, media inquiries, etc.
4. Consider using more graphics and boards during the Public Hearings as opposed to raw numbers and figures when reporting stats; and
5. Continue outreach to elected officials.

3-26-15



ATTACHMENT A



Early and continuing coordination with the general public and public agencies is an essential part of the outreach effort for the State Route 710 North Study. To date, Metro Community Relations has conducted 92 community meetings, participated in six-sponsored community forums, and held over 200 hundred briefings throughout the Study area. Below are the outreach efforts conducted by Metro Community Relations in unincorporated East Los Angeles and northeast Los Angeles since initiation of the outreach contract.

DATE	OUTREACH TYPE	STAKEHOLDER	LOCATION
March 3, 2012	All Communities Convening Information Session	All Study Area Stakeholders	East Los Angeles Library
April 18, 2012	CLC - Presentation	El Sereno Senior Center	Lincoln Heights/ El Sereno
April 24, 2012	Community Liaison Council Meeting	East Los Angeles	Mothers of East Los Angeles
May 10, 2012	Briefing	Office of Gloria Molina	Metro
August 27, 2012	Briefing	Office of Congresswoman Judy Chu	District Office
September 20, 2012	Briefing	Office of Speaker John Perez	Downtown District Office
November 5, 2012	Briefing	Office of Gloria Molina	Metro
November 28, 2012	NC - Announcement	Boyle Heights Senior Center	Boyle Heights
November 29, 2012	Briefing	Office of Congresswoman Lucille Roybal-Allard	District Office
November 30, 2012	Announcement/Material Distribution (Farmers Market)	Mariachi Plaza Station	Boyle Heights

DATE	OUTREACH TYPE	STAKEHOLDER	LOCATION
December 4, 2012	Parent Meeting - Material Distribution	Puente Learning Center	Boyle Heights
December 5, 2012	NC - Announcement	El Sereno Senior Center	El Sereno
December 6, 2012	Senior Club - Announcement	El Sereno Senior Center	El Sereno
December 11, 2012	BH Chamber of Commerce meeting - Announcement	El Rinconcito Del Mar Restaurant	Boyle Heights
December 12, 2012	Briefing	Office of Senator Kevin De Leon	District Office
December 13, 2012	Hillside Village Property Owners Assoc. - Announcement	Absolute Towing	El Sereno
December 18, 2012	Briefing	Frank Furukawa - East LA Community College	East Los Angeles Community College
December 2012	Briefing	Administration – Cal State University, Los Angeles	Cal State LA
January 8, 2013	Rotary Club - Presentation	Tamayo Restaurant	East Los Angeles
January 15, 2013	BHC-BH Steering Committee - Announcement	Building Healthy Communities - Boyle Heights	Boyle Heights
January 17, 2013	VELA - Presentation	VELA	East Los Angeles
January 17, 2013	Material Distribution	Maria Cordova	Diana's Bakery - 3868 Cesar Chavez Ave.
January 17, 2013	Presentation	Maravilla Business Assoc.	Cities Restaurant
May 10, 2013	Briefing	Office of Supervisor Gloria Molina	ELA District Office
May 15, 2013	Briefing	Yolanda Duarte – Called and briefed	Maravilla Community Advisory Committee
May 11, 2013	Announcement/Material Distribution (Farmer's Market)	East LA Civic Center	East Los Angeles
May 16, 2013			East Los Angeles Chamber

DATE	OUTREACH TYPE	STAKEHOLDER	LOCATION
	Noticing	Business Owners	of Commerce
May 16, 2013	Announcement/Material Distribution (Community Event) - Taste of Boyle Heights	Mariachi Plaza	Boyle Heights
May 16, 2013	Briefing	Ron Mukai, Owner – Called and briefed	Civic Center Plaza – Mednik Ave. Property Owner
May 16, 2013	Noticing	Eddie torres	East Los Angeles Chamber of Commerce
May 16, 2013	Noticing	David Lizarraga, CEO	TELACU - Affordable Housing Developer
May 16, 2013	Noticing	Castulo De La Rocha, CEO	AltaMed
May 16, 2013	Noticing	Yvonne Chavez	East Los Angeles Chamber of Commerce
May 22, 2013	Briefing	Cesar Chavez Business Owners	Moles La Tia Restaurant
May 30, 2013	Briefing	Maravilla Community Advisory Committee	Olive Garden Restaurant
June 2, 2013	Announcement/Material Distribution (Community Event)	Heritage Square Museum	El Sereno
June 5, 2013	LA-32NC - Announcement	El Sereno Senior Center	El Sereno
June 8, 2013	Announcement/Material Distribution (Community Event)	Centro Estrella	East Los Angeles
June 11, 2013	BHNC Trans & Env. Commission Meeting - Announcement	Benjamin Franklin Library	Boyle Heights
June 13, 2013	LA-32 Transportation Sub-Committee Meeting - Presentation	Barrio Action Youth and Family Center	El Sereno

DATE	OUTREACH TYPE	STAKEHOLDER	LOCATION
June 14, 2013	Briefing	East Los Angeles Residents Association	Cities Restaurant
June 15, 2013	Briefing	Whittier Blvd. Merchants Association	Mission Furniture
June 15, 2013	Announcement/Material Distribution (Community Event)	Our Lady of Guadalupe School	El Sereno
June 17, 2013	Announcement	Alta Vista Apartment Complex	East Los Angeles
June 23, 2013	Briefing	Office of Supervisor Gloria Molina Field Staff:	East Los Angeles District Office
June 25, 2013	Briefing	East Los Angeles Empowerment Congress	4700 Whittier Blvd.
June 26, 2013	NC - Presentation	Boyle Heights Senior Center	Boyle Heights
June 29, 2013	Announcement/Material Distribution (Community Event)	El Sereno Park	El Sereno
June 30, 2013	Announcement/Material Distribution (Community Event)	East LA Civic Center	East Los Angeles
July 2, 2013	Presentation	Maravilla Community Advisory Committee Meeting	Maravilla Community Center
July 3, 2013	Briefing	Representatives of Supervisor Gloria Molina, Edgar Cisneros, Ericka Juarez	East LA District Office
July 5, 2013	Free Movie Night/Material Distribution (Community Event)	East LA Civic Center	East Los Angeles
July 9, 2014	Noticing	Ana Maria Arroyo	Padres Comunitarios
July 10, 2013	LA 32-NC - Announcement	El Sereno Senior Center	El Sereno
July 11, 2013	Presentation	City Terrace Coordinating Council	St. Lucy's, City Terrace

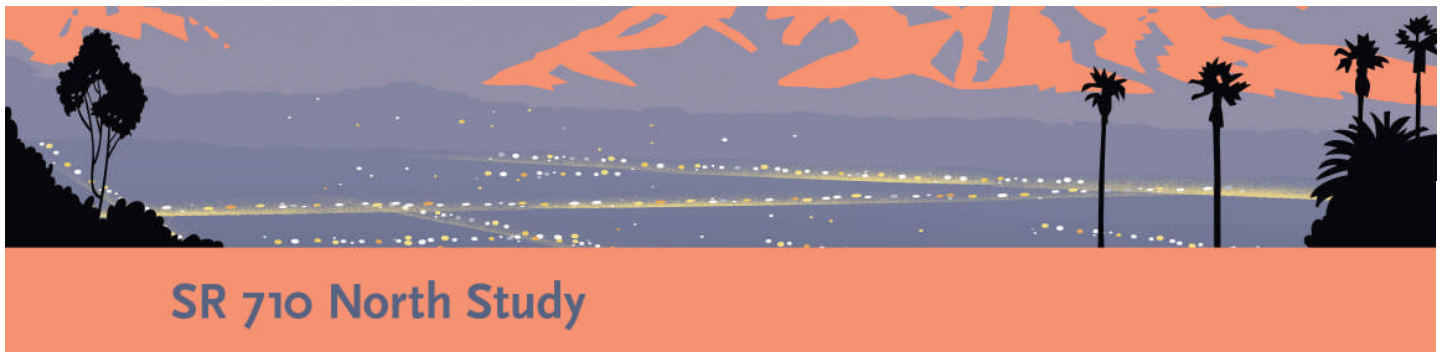
DATE	OUTREACH TYPE	STAKEHOLDER	LOCATION
July 11, 2013	Parents Meeting - Presentation	Apartment Complex (4100 City Terrace Dr., Los Angeles)	East Los Angeles
July 12, 2013	Announcement/Material Distribution (Farmer's Market)	Mariachi Plaza	Boyle Heights
July 13, 2013	Noticing	Maria Cordova	Diana's Bakery - 3868 Cesar Chavez Ave.
July 13, 2013	Noticing	Martha Jimenez	Alisol Flower Shop
July 13, 2013	Announcement/Material Distribution (Community Event)	Belvedere Park	East Los Angeles
July 13, 2013	Announcement/Material Distribution (Farmer's Market and Sail-A-Thon event)	East LA Civic Center	East Los Angeles
July 14, 2013	ELA Wheel Chair Wash	East LA Civic Center	East Los Angeles
July 15, 2013	CM - Announcement	Resurrection Church	Boyle Heights
July 15, 2013	Presentation	Whittier Boulevard Merchants Assoc., Maravilla Business Persons Association, ELA Chamber of Commerce and rep. of elected officials	Mission Furniture, 5012 Whittier Boulevard, East LA
July 16, 2013	Announcement and brief project overview	East LA College, Dean Flores, Work Force Education and Economic Development	East LA College
July 16, 2013	Elected Officials Briefings	Representatives from Offices of: - Congresswoman Lucille Roybal-Allard - Senator Ed Hernandez Assemblyman Jimmy Gomez	Metro
July 25, 2013	The East Los Angeles Empowerment Congress	Sponsored by: Assemblyman Jimmy Gomez (In attendance)	Inner City Struggle
August 26, 2013	East Los Angeles Information Session	East Los Angeles Residents	Centro Maravilla Services

DATE	OUTREACH TYPE	STAKEHOLDER	LOCATION
October 16, 2013	East Los Angeles Information Session	East Los Angeles Residents	Hilda Solis Learning Center
October 26, 2013	East Los Angeles Empowerment Cong.	- 4700 Whittier Blvd.	East Los Angeles
August 8, 2014	Briefing	Mayor's East LA Rep.	Metro Headquarters
August 28, 2014	Presentation	East Los Angeles Empowerment Congress	East Los Angeles Civic Center
September 2, 2014	Presentation	Maravilla Community Advisory Committee	Centro Maravilla
September 8, 2014	Presentation	El Sereno Historical Society	2486 Endicott St., LA 90032
Sept. 18, 2014	Presentation	El Sereno Senior Center	El Sereno Senior Center
October 7, 2014	Briefing	Ron Mukai, Community Stakeholder	209 S. Mednik Ave.
Nov 19, 2014	Presentation	SR 710 North Technical Advisory Committee	Metro Headquarters
Nov 20, 2014	Presentation	SR 710 Stakeholder Outreach Advisory Committee	Metro Headquarters
Dec 3, 2014	Presentation	LA 90032 Neighborhood Council (El Sereno)	El Sereno Senior Citizens Center
Dec 9, 2014	Presentation	Update East Los Angeles Advisory Group Executive Committee	Eastmont Community Center
Dec 17, 2014	Briefing	Father Morretta	Resurrection Church
January 19, 2015	Presentation	East Los Angeles Advisory Group	East Los Angeles Civic Center Library



STUDY AREA CITIES

The study area includes all or parts of the Cities of Alhambra, Arcadia, Duarte, El Monte, Glendale, La Cañada Flintridge, Los Angeles, Monrovia, Montebello, Monterey Park, Pasadena, Rosemead, San Gabriel, San Marino, Sierra Madre, South Pasadena, and Temple City. It also includes several distinct neighborhoods, including El Sereno, Arroyo Seco, Cypress Park, Eagle Rock, Glassell Park, Highland Park, and Lincoln Heights within the City of Los Angeles and parts of several unincorporated communities, including Altadena, East Los Angeles, East Pasadena, East San Gabriel, La Crescenta- Montrose, Mayflower Village, North El Monte, and San Pasqual, in the western San Gabriel Valley and foothills.



Cities posting SR 710 North Draft EIR/EIS News Release to their webpage

South Pasadena

<http://www.ci.south-pasadena.ca.us/index.aspx?page=57>

La Canada Flintridge

<https://sites.google.com/a/lcf.ca.gov/city-of-la-canada-flintridge-site/current-news-events/sr-710northstudydraftenvironmentaldocumentreleased>

Alhambra

http://www.cityofalhambra.org/page/467/710_close_the_gap_campaign/

San Gabriel

<http://www.sangabrielcity.com/CivicAlerts.aspx?AID=506>

San Marino

<http://www.ci.san-marino.ca.us/CivicAlerts.aspx?AID=111>

Duarte The 710 link is up on our website under "Latest News" See it here -

http://www.accessduarte.com/index.php?option=com_content&view=category&layout=blog&id=3&Itemid=183

[Type a quote from the document or the summary of an interesting point. You can position the text box anywhere in the document. Use the Drawing Tools tab to change the formatting of the pull quote text box.]

3-17-15





Los Angeles County
Metropolitan Transportation Authority

Metro

News

Contact:
(213) 897-9092 lauren.wonder@dot.ca.gov
gonzalesp@metro.net

Lauren Wonder
Paul Gonzales (213) 922-2702

Caltrans and Metro Release Draft Environmental Document on Proposal to Close SR-710 Gap

(March 6, 2015) The California Department of Transportation (Caltrans) and the Los Angeles County Metropolitan Transportation Authority (Metro) today released a Draft Environmental Impact Report/Environmental Impact Statement (EIR/EIS) on proposals regarding the 4.5 mile gap between the I-210 Freeway in Pasadena and the end of the I-710 freeway in East Los Angeles.

The five alternatives proposed in the Draft EIR/EIS are:

- No Build option that would leave conditions as they are
- A traffic management system to upgrade and synchronize signal and improvements to local street intersections to more quickly move traffic that exits the dead end freeway
- A rapid bus line featuring high frequency service with minimal stops and potentially a dedicated bus lane
- Light rail to carry passengers between East Los Angeles and Pasadena
- A freeway tunnel that would extend the SR-710

No decisions have been made on any proposed alternative in the Draft EIR/EIS. A 120-day public comment period begins with the release of the document. Two public hearings will be held for community input, the first will be on Saturday, April 11, 2015 at the Rosco C. Ingalls Auditorium on the campus of East Los Angeles College. There will be a 10 a.m. to 11 a.m. map viewing and 11 a.m. to 4 p.m. public hearing. The second will be on Tuesday, April 14, 2015 at the Pasadena Convention Center: A map viewing will be held from 5 p.m. to 6 p.m., and the public hearing will be held from 7 p.m. to 9 p.m. A third public hearing will be scheduled with date, time and place to be determined.

“We look forward to receiving valuable input from communities and the public on this critically important transportation issue that has affected not only this area, but the region, for decades,” said Caltrans District 7 Director Carrie Bowen. “The feedback we receive is a vital part of the project development process and helps inform the selection of a preferred alternative.”

-MORE-

Metro-Caltrans Release Draft Environmental Document on SR-710 (1st Add)

Members of the public are encouraged to attend the public hearings and read the document at http://www.dot.ca.gov/dist07/resources/envdocs/docs/710study/draft_eir-eis. Public comment can be made on the link provided. The public comment period ends July 6, 2015.

3-17-15



The full document can be viewed at the Caltrans District Office at 100 South Main Street, Los Angeles, CA 90012. Copies are also available at public libraries listed here: <http://www.metro.net/projects/sr-710-conversations/>

An EIR is required to comply with the California Environmental Quality Act and an EIS fulfills requirements of the National Environmental Policy Act. The laws require government agencies to identify the significant environmental impacts of their actions and to avoid, minimize or mitigate any adverse effects. Information from public comments will be weighed before preparing the final environmental document.

Altogether, approximately 26 detailed technical studies are included in the Draft EIR/EIS.

Through the process of compiling the Draft EIR/EIS, Metro and Caltrans conducted 92 community meetings, participated in six city-sponsored community forums and held over 200 briefings with community stakeholders.

###

3-17-15





SR-710
Public
Participation
Plan

Fall 2012



Executive Summary

The State Route 710 (SR 710) corridor is critical link of the local and regional transit systems of Los Angeles County, specifically the San Gabriel Valley.

The SR 710 Public Participation Program seeks to go beyond the California Environmental Quality Act and National Environmental Policy Act (CEQA/NEPA) requirements with strategies to engage stakeholders in a continuum that leads to their active participation in the environmental review process. Consensus Inc. along with MBI, Katherine Padilla & Associates, Imprinta Communications, and Gensler will design and implement the Public Participation Program to:

- Facilitate constructive and meaningful interaction among and between all stakeholders;
- Create a comprehensive and exhaustive outreach program in accordance with CEQA/NEPA requirements;
- Integrate CEQA/NEPA requirements into a program with both traditional and new media engagement.

This Public Participation Plan is informed by an overall Systems Approach which guides the philosophy and practice of the engagement infrastructure, digital engagement, outreach activities and tools, and meeting/forums. The series of steps described in this document are designed to help reach Metro's organizational goals of developing a legally defensible EIR/S.

The integrated approach is divided into a two-pronged outreach strategy and is delivered in three phases of the environmental review process:

- Two Pronged Outreach Strategy:
 - Regional
 - Local
- Three Phase Timeframe
 - **Phase 1** September 2012 – January 2013. Release of Alternatives Analysis Report/Final Confirmation of Five Alternatives for the EIR/EIS.
 - **Phase 2** February 2013 – February 2014. Education/Information about the Issues being studied in the EIR/EIS.



- **Phase 3:** March 2014 – June 2014, Public Release of EIR/EIS.

A separate **SR 710 Workplan** has been developed to implement the Public Participation Plan. The work plan details the following information:

- Communities within the Study area
- Organizations within each community
- Elected officials within each community
- Large Employers within each community
- Academic Institutions within each community
- Activity Centers within each community
- Detailed schedule of planned outreach activities to each of the target audiences listed above

Outreach History

Since February 2012, the Outreach Team has developed and implemented a comprehensive program for facilitating public outreach activities and messaging that support the technical team's work during the Alternative Analysis phase of the State Route (SR-710) Study. To date, our team has completed the following:

Community Meetings: A total of 37 SR 710 meetings have been conducted to date, including 20 Community Liaison Council Meetings, 3 Stakeholder Outreach Advisory Committee Meetings, 7 Technical Advisory Committee meetings, and 7 Open Houses. At these meetings a rich variety of information was presented through large boards, PowerPoint presentations, and Q & A with members of the Study Team.

Informational Materials: Several different types of materials have been produced to inform the public about the status of the Study and provide technical information regarding the alternatives. The materials include bulletins, announcements, and PowerPoint presentations available on the SR-710 Metro website: <http://www.metro.net/projects/sr-710-conversations/>

Digital Engagement: All materials and information regarding the SR 710 Study are posted on the SR 710 metro website. Additionally, the public has been engaged via social media through email, online advertisements, Facebook, and Twitter.



Integrated Approach: Customized Regional and Local Engagement Programs

Our approach to implementing this plan is driven by two primary factors: the diversity of stakeholders within the study area and the EIR/EIS timeline. Accordingly, we have developed a two-pronged strategy to outreach and a three-phase timeframe for implementing our Public Participation Plan. Our approach is a multi-faceted combination of grass-roots outreach and digital engagement.

- Two pronged outreach strategy:
 - Regional Strategy
 - Local Strategy

- Three Phase time-frame:
 - **Phase 1** September 2012 – January 2013: Finalization of Alternatives Analysis
 - **Phase 2** February 2013 – February 2014: Drafting of EIR/EIS
 - **Phase 3:** March 2014 – June 2014: Public Release of EIR/EIS

Regional Strategy:

As studies have shown, the SR 710 corridor is a critical link within the Los Angeles and surrounding counties' transit system. A regional strategy connects local communities with the overall regional transportation system of the Study Area and beyond. The regional strategy provides a “systems” approach to engaging the diverse needs and interests of local communities by linking these communities to the “Greater Good” of reducing congestion and increasing mobility within the Study Area.

Strategic Objectives

1. Drive awareness and broaden stakeholder reach – connect with new people who are unaware of and involved with the SR 710 Study.
2. Facilitate stakeholder understanding of the larger context of how the SR 710 plays a critical role in Los Angeles’ regional transportation puzzle.
3. Educate stakeholders about CEQA/NEPA process, EIR/EIS documentation process, “what is at stake” and “what is to gain” with this Study.
4. Engage stakeholders and drive their participation in a meaningful way, so they feel their time is well spent and they “get a return” on their time investment.



Success Measures

1. Increase in “new to the process” stakeholders attending open house events and participating in city and organization-sponsored events.
2. Increase in SR 710 coverage in editorials, blogs, and print media.
3. Increase in “MTA requests to speak” at community meetings, business, government, and other forums.
4. Increase in substantive comments regarding CEQA/NEPA process and issues.
5. Increase in diversity of stakeholder voices.
6. Increase in positive feedback about community outreach offerings and program overall.
7. Positive increase in social media analytics (more shares, more likes, more comments.)
8. Decrease in misinformation spread online and beyond (erroneous data, event dates, and environmental impacts).

Local Strategy

There are several diverse communities within the SR 710 Study Area, and each community has needs and issues specific to their community alone. A customized local strategy engages stakeholders to participate in the Study from a community perspective. The local strategy is respectful of and sensitive to all impacted communities with an eye to the overall regional impacts of the Study. The local strategy includes the development of culturally and linguistically appropriate materials for the many ethnic communities within the Study Area.

Strategic Objectives

1. Engage affected communities/stakeholders in a thoughtful and methodic process of understanding possible impacts of this project for each alternative.
2. Elevate awareness among elected officials and the business community to play and own an integral role in the community outreach process.
3. Facilitate local communities’ awareness of how they play a role in the regional context of the SR 710 Study.

Success Measures

1. Increase in the number of requests for city and business-sponsored community briefings and meetings regarding the SR 710 Study.
2. Increase in the number of database names, organizations, etc that mention the SR 710 Study in their online and/or print material.



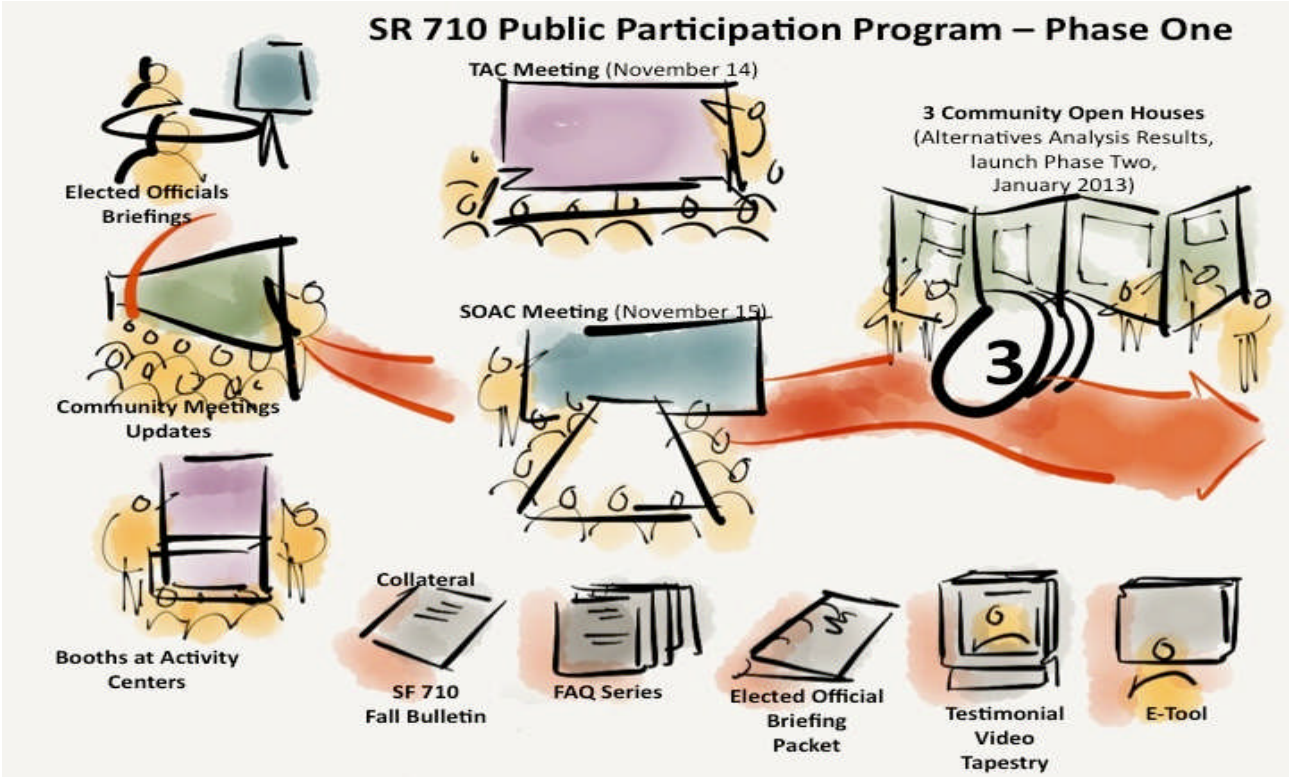
3. Increase in the number of inquiries coming from emails, Facebook pages, etc. as to how residents, businesses, and community based organizations can become more involved in the SR 710 Study.

Action Steps and Deliverables

The action steps and deliverables for implementing both Regional and Local Strategies will be accomplished through three primary channels: Activities, Collateral Materials, and Digital Engagement. The section that follows describes the activities, collateral materials, digital engagement, and messaging for each of the three phases of the Public Participation Plan. This Public Participation Plan has been developed as a tool to help guide the Outreach team achieve the deliverables identified through May of 2014. If there are inconsistencies between the stated success measures and goals, the Outreach Team will address these inconsistencies by revisiting this Plan and drafting alternative solutions to address the root causes of these inconsistencies.



Phase 1 Alternatives Analysis Results: September 2012-January 2013



Phase 1 includes those activities, events, and materials associated with the completion of the Alternatives Analysis and the introduction of the 5 alternatives that will be subjected to detailed review in the EIR/EIS. The primary activity and collateral deliverables of the phase include ongoing briefings with elected officials and community groups, the release of the SR 710 Fall Bulletin, and concludes with three Open Houses that review the 5 alternatives and the environmental documentation process. Our digital engagement activities include continued distribution of information, videos, and insights on the webpage and through our social media channels.

Phase 1 Messaging

- Public feedback from the May Open Houses, the Stakeholder Outreach Advisory Committee, the Technical Advisory Committee on the alternatives was received by the Study Team and is reflected in the alternatives development process.



- Five alternatives have been selected by the Study Team and will be further analyzed in the EIR/EIS which is beginning now and will continue through to Winter 2013.
- The purpose of this phase is to educate the public about the five selected alternatives, the screening criteria used in their selection process, and the type of analysis the alternatives will undergo in the draft EIR/EIS.
- It's critical that the Study area residents, businesses, et al become aware of and involved with the SR 710 Study Process – everyone can and will benefit by becoming a part of the process.
- The topics of the Phase 2 Informational Sessions will be identified from feedback received on the most compelling issues/discussion points raised during the briefings with elected officials and community meetings of Phase 1.

Phase 1 Activities (8)

1. Coordinate 15 Briefings with Elected Officials representing the Study Area (September 2012- January 2013)

In light of the resolutions passed by several cities within the Study Area, outreach to elected officials will be an integral outreach component in all phases of the Study. The Outreach Team will provide elected officials with an *Elected Official Briefing Packet* with pertinent facts on the alternatives, the Study process, and upcoming key milestones. Informational materials such as the SR 710 bulletin will also be delivered to Elected Officials so that they may distribute this collateral to their constituents.

2. Present at 25 community group meetings (September 2012-January 2013)

In an effort to leverage our outreach in local communities, the Outreach Team will present updates about the Study process and provide information about the selected alternatives to various groups, associations, organizations within the Study Area. The format of these updates will include a short PowerPoint presentation or video presentation and a question and answer session. Collateral material distributed at these meetings will include the SR 710 Seasonal Bulletin and Fact Sheets on each of the alternatives. A minimum of twenty presentations will be scheduled during this phase.

3. Staff booths at 15 Activity Centers/Events (September 2012- January 2013)



The Outreach team will staff booths at a minimum of 15 activity centers or events throughout the Study Area to broaden the stakeholder database, inform the public of the alternatives, and provide opportunities for public engagement with the SR 710 Study process. The outreach team will engage stakeholders at target-rich environments for maximum outreach potential. We have identified the most relevant ongoing events (such as weekly farmers markets) and singular events (such as Rail-volution). We will distribute public information materials such as the SR 710 Seasonal Bulletin in English, Spanish, and Mandarin.

4. Outreach to 100 Large Employers (September 2012- January 2013)

In order to broaden our reach and educate as many diverse stakeholders as possible within the Study Area, the Outreach Team will work directly with the business community through large employer outreach. We will distribute informational materials in public areas such as lunch and conference rooms and host informational sessions to inform employees about the impacts and milestones of the Study.

5. Outreach to 15 Academic Institutions (September 2012- January 2013)

The Outreach team will introduce young people to the Study process by engaging with the college youth population of the SR 710 Study Area. Outreach Team members will deploy to 15 universities and community colleges to set up information booths, distribute outreach materials, and communicate directly with teachers and students to identify innovative ways of engaging college youth in the Study Process.

6. Participate in TAC Meeting (November 14, 2012)

The Technical Advisory Committee (TAC) will convene on November 14th to receive a presentation from the Technical Team regarding updates on the Alternatives Analysis Report. The TAC will continue to shape the Study process by asking questions and offering suggestions to the Technical Team based on their technical expertise.

7. Participate in SOAC Meeting (November 15, 2012)

The Stakeholder Advisory Committee (SOAC) will convene on November 15th to receive a presentation from the Technical Team regarding updates on the Alternatives Analysis Report. The SOAC will continue to participate in the Study process by asking questions and offering suggestions to the Technical Team based on their civic leadership expertise. We anticipate



that this Public Participation Plan will be formally released to the SOAC for their feedback and suggestions on how best to reach their constituencies.

8. Conduct 3 Informational Open Houses (January 2013)

Three Open Houses will be held in January 2013 to provide an overview of the five alternatives to be studied in the EIR/EIS, review the schedule/process of the EIR/EIS preparation process, and demonstrate how public comments have been reflected in the Study Process and selection of alternatives. The format and structure of these Open Houses will be similar to those held previously, the January Open Houses will include simple, easy to understand, information graphics that will replace technical diagrams and charts to help make the information more accessible and digestible. A 15-20 minute narrated, loop presentation (powerpoint) will also be produced and presented in the corners of the Open House for those participants interested in “getting a quick overview” rather than working through each of the Open House Stations. Metro and Technical Team staff members will be positioned at each of the stations prepared to answer questions and provide information about the five alternatives and other information included in the Open House. Outreach team members will also be positioned at the stations to graphically record comments and questions from participants.

Phase 1 – Collateral (5)

1. SR 710 Fall Bulletin (October 10, 2012)

The Fall 2012 Bulletin is a critical information tool providing stakeholders with an overview of the SR 710 project purpose and need, timeline, and the alternatives selected to be carried forth into the draft EIR/EIS. The Fall Bulletin will be distributed at informational sessions, to elected officials, at community meetings, and posted on-line at the Metro website and through the project’s social media channels.

2. FAQ Series (October 12, 2012)

A five part FAQ series has been developed from questions asked during the seven May Open House, seven August Community Liaison Council meetings, on the Metro website, and on the SR 710 Facebook page. The series includes FAQs on the following topics: General Study Questions, Community Outreach, Alternatives, Goods Movement, and CEQA/NEPA and



EIR/EIS processes. The Outreach team will work with stakeholders to feature community-relevant highlights from the FAQs to insert into information channels such as city websites and community newsletters (both print and online).

3. Elected Official Briefing Packet (October 15, 2012)

The Elected Official Briefing Packet will be distributed at all scheduled meetings with elected officials to provide them with the information and talking points they need to inform their constituents. The content of the packet includes a Study overview, the scope, purpose, and need of the Study, community impacts for each alternative, and the FAQ series.

4. E-tool (November 14, 2012)

This interactive web-tool allows stakeholders to engage with the Study Area through a digital platform. Opportunities to engage include ranking their priorities in relation to the screening criteria used to identify the selected alternatives, interacting with the Study Area map, and providing suggestions and comments to the Study Team about what matters most to them.

5. Testimonial Video Tapestry (December 15, 2012)

This documentary-style video montage will feature stakeholders from within the Study Area speak about what they will gain from increased connectivity and mobility within the SR 710 corridor.

Phase 1 - Digital Engagement

- Share project-related data via simple, accessible infographics.
- Online advertisements to share the alternatives broadly at the grassroots level.
- Gather video comments with reactions.
- Build and promote e-tool.
- Review and respond to emails and social media inquiries.
- Gather and post videos and photos of community outreach and feedback.
- Work with team transportation experts to educate on issues of goods movement, and sources of LA County traffic congestion via video or written testimonial to be shared online.



- Promote project information by sharing content and storylines with blogs and online content curators.

Phase 1 Deliverables & Schedule Tables

Activities

Coordinate 15 Briefings with Elected Officials representing the Study Area	September 2012- January 2013
Present 20 updates at Community Meetings	September 2012- January 2013
Staff booths at 15 Activity Centers/Events throughout the Study Area	September 2012- January 2013
Conduct Outreach to 100 Large Employers	September 2012- January 2013
Conduct Outreach to 15 Academic Institutions	September 2012- January 2013
Participate in TAC Meeting	November 14, 2012
Participate in SOAC Meeting	November 15, 2012
Conduct 3 Open Houses	January 2013, 2013

Collateral

SR 710 Fall 2012 Bulletin	October 10, 2012
FAQ Series	October 12, 2012
Elected Official Briefing Packet	October 20, 2012
E-tool	November 15, 2012
Testimonial Video Tapestry	December 15, 2012

Phase 2 Preparing for the Draft EIR/EIS Release: February 2013- February 2014

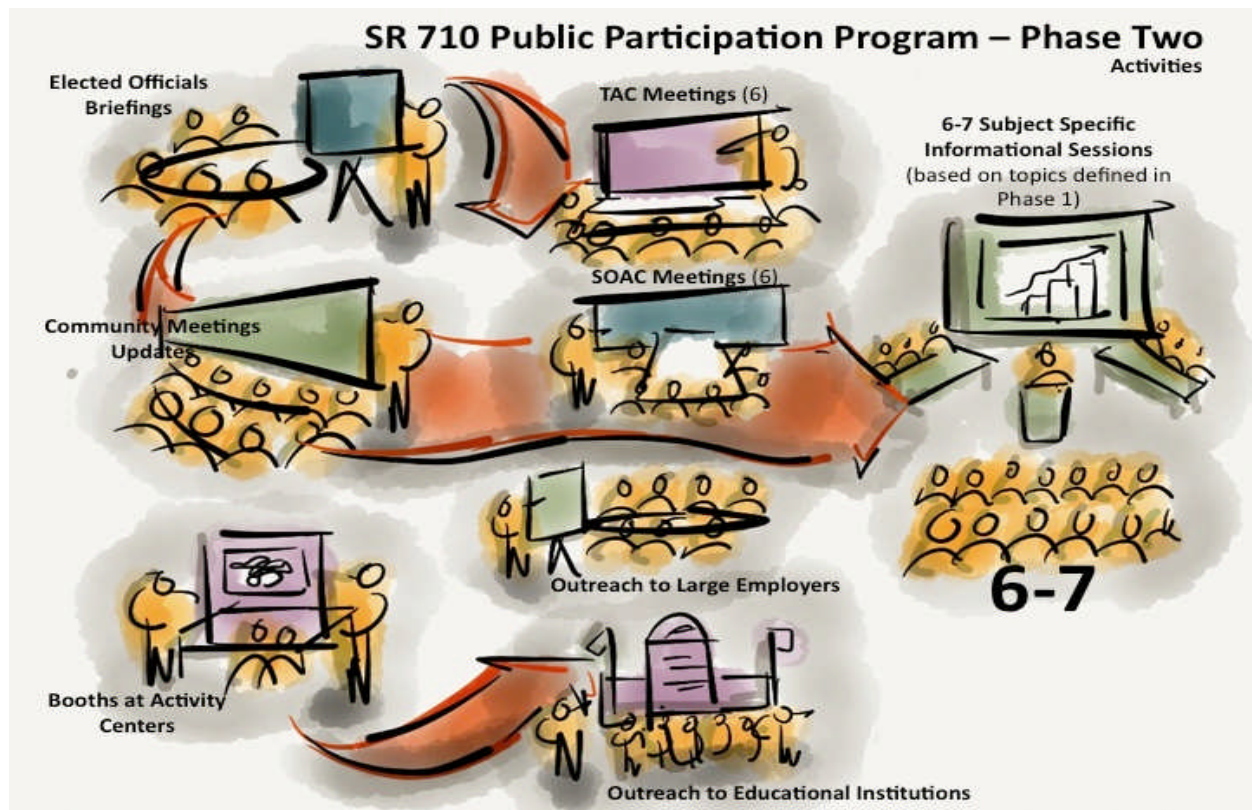
Phase 2 is the Documentation phase during which the Technical Team will draft the EIR/EIS. The primary goal during this phase of work is to help prepare and educate the community, stakeholders, and constituencies about the key issues that the Draft EIR/EIS document will study and report out in Phase 3. The primary activities and collateral deliverables of this phase include 5-6 Subject-Specific Informational Sessions and the SR 710 Seasonal Bulletins.

Phase 2 Messaging

- There are several outstanding issues the community would like to have answers to. The 5-6 most pressing issues of the SR 710 Study will be analyzed in Subject-Specific information sessions scheduled to take place over the year that the EIR/EIS will be prepared.



- The Outreach team will continue to provide meaningful opportunities to engage in the process through large employer outreach, staffing at activity centers, providing updates at community meetings, and briefings with elected officials.



Phase 2 Activities (8)

1) Conduct 6-7 Subject-Specific Informational Sessions (February 2013 – February 2014)

Six to seven Subject-Specific Informational Sessions will be conducted throughout the Documentation Phase to educate the public on complex issues cited as concerns by the communities within the Study Area. The format of these sessions is comprised of a short presentation by Metro, presentations by a panel of experts, and a robust question and answer period. The panel of experts will include academics, transportation authorities, and subject matter experts. Potential Informational Session topics will be identified through the Phase 1 meetings with elected officials and community organizations and will tentatively include:



- Goods Movement (February 2013)
- EIS/EIS and CEQA/NEPA processes (April 2013)
- Air and Noise Pollution (June 2013)
- BRT and LRT (August 2013)
- Preservation of Historic Architecture and Community Character (October 2013)
- Tunneling (December 2013 or January 2014)
- Emerging trend topic (February or March 2014)

2) Participate in 6 TAC Meetings (February 2013 – February 2014)

The Technical Advisory Committee will continue to convene every two months throughout the Documentation phase to stay abreast of the developments of the EIR/EIS. They will continue to receive presentations from the Technical team and shape the technical analysis based on their technical expertise.

3) Participate in 6 SOAC Meetings (February 2013 - February 2014)

The Stakeholder Advisory Committee will continue to convene every two months throughout the Documentation phase to stay abreast of the developments of the EIR/EIS. They will continue to receive presentations from the Technical team and shape the Study Process based on their civil leadership expertise.

4) Staff 36 (3 per month) booths at activity centers throughout the Study Area (February 2013- February 2014)

The Outreach team will staff booths at 50 activity centers throughout the Study Area to broaden the stakeholder database, inform the public of the alternatives, and provide opportunities for public engagement with the SR 710 Study process. The outreach team will engage stakeholders at target-rich environments for maximum outreach potential. We have identified the most relevant ongoing events (such as weekly farmers markets) and unique events (such as Mobility 21). We will distribute public information materials such as the SR 710 Seasonal Bulletin in English, Spanish, and Mandarin.

5) Present updates at 50 community meetings (February 2013 – February 2014)

In an effort to leverage our outreach in local communities, the Outreach Team will present updates about the Study process and provide information about the selected alternatives. The



types of community meetings at which we will present include business associations, chambers of commerce, Kiwanis clubs, etc. The format of these updates will include a short Powerpoint presentation and a question and answer session. Collateral material distributed at these meetings will include the SR 710 Seasonal Bulletin and Fact Sheets on each of the alternatives.

6) Coordinate 25 briefings with elected officials (February 2013 – February 2014)

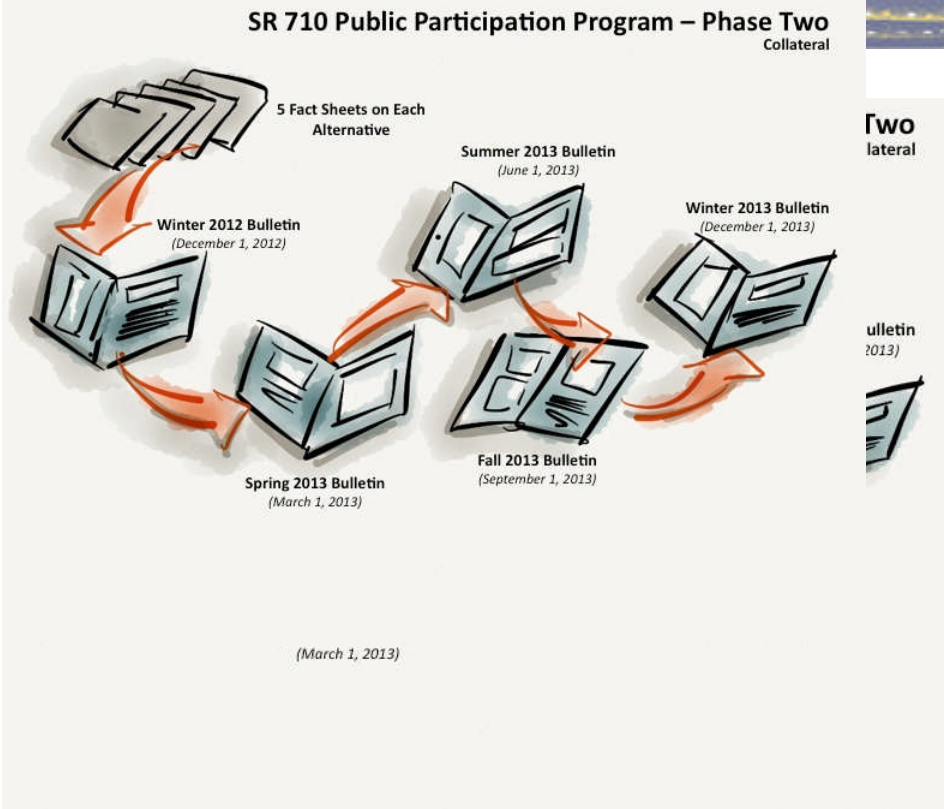
In light of the resolutions passed by several cities within the Study Area, outreach to elected officials will be an integral outreach component in Phase 2. The Outreach Team will provide elected officials with an updated *Elected Official Briefing Packet* with more detailed pertinent facts on the alternatives, Study process, and upcoming key milestones. Informational materials will also be delivered to Elected Officials so that they may distribute to their constituents.

7. Outreach to 150 Large Employers (February 2013 – February 2014)

In order to broaden our reach and educate as many diverse stakeholders as possible within the Study Area, the Outreach Team will work directly with the business community through large employer outreach. We will distribute our informational materials in public area such as lunch and conference rooms and host informational sessions to inform employees about the impacts and milestones of the Study.

8. Outreach to 15 Academic Institutions (February 2013 – February 2014)

The Outreach team will introduce young people to the Study process by engaging with the college youth population of the SR 710 Study Area. Outreach Team members will deploy to 15 universities and community colleges to set up information booths, distribute outreach materials, and communicate directly with teachers and students to identify innovative ways of engaging college youth in the Study Process



Phase 2 Collateral (10)

1) 5 Fact Sheets on Each Alternative (December 1, 2012)

To further strengthen stakeholders’ knowledge of the alternatives under consideration in the EIR/EIS, the Outreach team will develop 5 Fact Sheets for each alternative identified in the final Alternatives Analysis report. Each Fact Sheet will include pertinent data on community impacts and alignments specifically related to each alternative under review.

2) SR 710 Seasonal bulletin (4) (March 2013 – December 2013)

Five seasonal bulletins will be distributed at informational sessions, to elected officials, at community meetings, and posted on-line at the Metro website and through our social media channels. The content of the bulletin includes updates on content of the EIR/EIS, the Study timeline, and important key milestones of the Study Process. The five bulletins will be issued per season:



- Spring 2013 Bulletin- March 1, 2012
- Summer 2013 Bulletin- June 1, 2012
- Fall 2013 Bulletin- September 1, 2012
- Winter 2013 Bulletin- December 1, 2013

Phase 2 Digital Engagement

- Educational videos and infographics on project-related issue areas.
- Promote project information by sharing content and storylines with blogs and online content curators.
- Work with team transportation experts to educate on issues of goods movement, and sources of LA County traffic congestion via video or written testimonial to be shared online.
- Gather and post videos and photos of community outreach and feedback.
- Webcasting of information sessions.

Phase 2 Deliverables & Schedule Tables

Phase 2 Activities

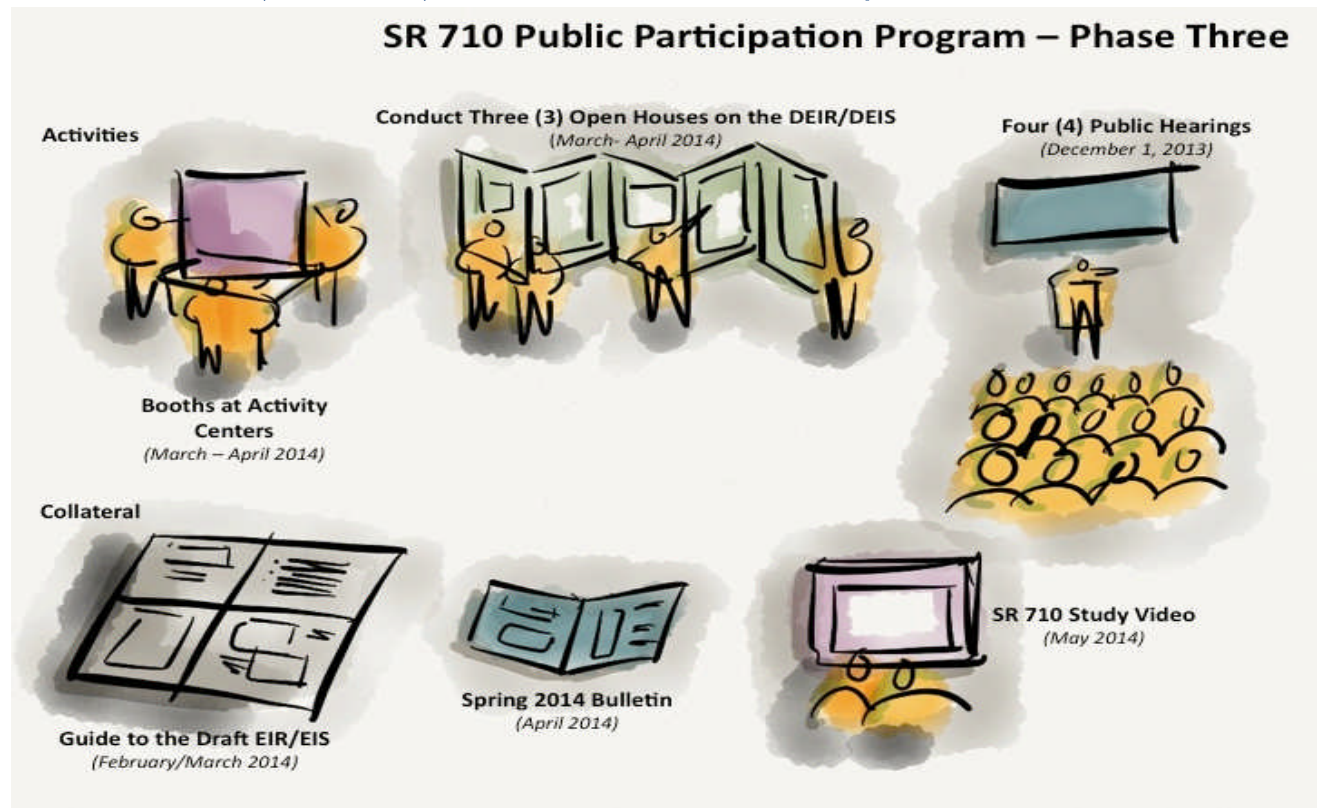
Conduct 6-7 Subject-Specific Informational Sessions	February 2013 –February 2014
Participate in 6 TAC Meetings	February 2013 –February 2014
Participate in 6 SOAC Meetings	February 2013 –February 2014
Staff 36 booths at activity centers throughout the Study Area	February 2013 –February 2014
Present updates at 50 community meetings	February 2013 –February 2014
Coordinate 25 briefings with elected officials	February 2013 –February 2014
Conduct Outreach to 150 Large Employers	February 2013 –February 2014
Conduct Outreach to 15 Academic Institutions	February 2013 –February 2014

Phase 2 Collateral

5 Fact Sheets on Each Alternative	December 1, 2012
Spring 2013 Bulletin	March 1, 2013
Summer 2013 Bulletin	June 1, 2013
Fall 2013 Bulletin	September 1, 2012
Winter 2013 Bulletin	December 1, 2013



Phase 3 February 2014-May 2014: Public Release of EIR/EIS



This phase marks the public release of the Draft EIR/EIS. The primary deliverables of this phase include conducting three Open Houses to inform the public of results/findings of the Draft EIR/EIS, hosting four formal Draft EIR/EIS Public Hearings and to produce and circulate the Guide to the SR 710 Draft EIR/EIS. Several digital engagement tools will also be leveraged during this phase including the preparation of digital infographics to describe (and simplify) the Draft EIR/EIS findings, support to blogs and social media channels, and virtual participation opportunities to allow those who can't attend an open house or public hearing to share their comments and insights virtually (i.e., webcasts, etc).

Phase 3 Messaging

- Public feedback received throughout the Study Process is reflected in the alternatives analyzed in the Draft EIR/S



- Thanks for staying engaged with the SR 710 Study Process – now let’s review the results of the Draft EIR that you’ve been waiting to see.
- Please play an active role in the review of the Draft EIR/EIS – your comments and questions will be systematically collected and responded to in the Final EIR/EIS.
- While the size and complexity of the Draft EIR/EIS can be daunting, the Outreach team has done its best to simplify and condense complex technical information into accessible, and easy to understand language.
- There are a myriad of ways for you to learn about and comment on the Draft EIR/EIS – there’s no excuse not to be a part of this important step in the SR 710 Study Process.

Phase 3 - Outreach Activities (3)

1. Staff booths at 15 Activity Centers (February 2014-May 2014)

The Outreach team will staff booths at 15 activity centers to notify stakeholders of the release of the draft EIR/EIS and the upcoming public hearings and open houses. We will distribute public information materials such as the SR 710 Seasonal Bulletin in English, Spanish, and Mandarin.

2. Conduct 3 Open Houses (March-April 2014)

Three (3) open houses will be conducted that will provide an overview of the results of the Draft EIR/EIS. The intent is to provide an opportunity for the community to better understand the findings/recommendations contained in the Draft EIR/EIS before they provide formal written comments at the upcoming public hearing (we could consider merging the open house and the public hearings into one hybrid event repeated 3-4 times during the DEIR/DEIS Public Comment Period).

3. Conduct 4 Public Hearings within the Study Areas including 1 virtual (online) Meeting (May, 2014)

As mandated by CEQA/NEPA, several public hearings will be conducted to solicit comments and questions on the Draft EIR/EIS document. This is the primary opportunity for the Study Team to gather formal comment regarding the findings/recommendations contained in the EIR/EIS. For those unable to physically attend one of the public hearings, an online public



hearing will be made available. The hearings will be offered in English, Spanish, and Mandarin.

Phase 3 Collateral (3)

1) Guide to the EIR/EIS (February – March 2014)

The Outreach team will prepare a comprehensive “guide” (an executive summary) to the Draft EIR/EIS that will simplify and condense the complex technical information of the environmental documentation. The Guide will provide a more readily digestible summary of the Draft EIR/EIS findings and recommendations and will provide local context of how the recommended alternative will affect each community with the SR 710 Study Area. The Guide can be made available both online and as a printed piece.

2) Spring 2014 Bulletin (April, 2014)

A Spring 2014 bulletin will be distributed at informational sessions, to elected officials, at community meetings, and posted on-line at the Metro website and through our social media channels. The content of the bulletin includes updates on Draft EIR/EIS findings, public hearings, and important key milestones leading up to finalizing the EIR/EIS.

3) Study Video (May, 2014)

An educational video rich with motion graphics and infographics will be produced to explain key findings of the EIR/EIS in a compelling and relatable manner. The video will highlight “hot spot” areas, details about costs, improvements and benefits.

Phase 3 Digital Engagement

- Promote project information by sharing content and storylines with blogs and online content curators.
- Online advertisements and social media posts to publicize public hearings and ways to provide public comment.
- Offer online opportunity to comment via either virtual meeting or webcast.



Phase 3 Deliverables & Schedule Tables

Phase 3 Activities

Staff booths at 15 Activity Centers	February 2014-March 2014
Conduct 3 Open Houses – DEIR/EIS Findings/Recommendations	March - April 2014
Conduct 4 Public Hearings within the Study Areas including 1 virtual (online) hearing	May 2014

Phase 3 Collateral

Guide to the EIR/EIS	February – March 2014
Spring 2014 Bulletin	April, 2014
SR 710 Study Video	May, 2014

Engagement Infrastructure

The engagement infrastructure utilized in the outreach for the SR 710 Study is dynamic and robust. What follows are the general descriptions of other infrastructure tools the Outreach Team utilizes to implement the Public Participation Program. The engagement infrastructure is a combination of ongoing digital and outreach strategies.

Weekly Social Media Monitoring

Provide a weekly social media monitoring report highlighting tone, hot topics and key discussions on social media. The weekly report is used to identify opportunities for engagement and education.

Value:

- Provides key insights around discussions taking place (tone, concerns, requests for information, etc.)
- Highlights key engagement opportunities across programs (Digital, Media, Community, etc.)
- Provides insights and intelligence into opportunities to adjust strategy and messaging.

SR-710 Website

- Build an online Stakeholder Toolkit for members of the public to easily share accurate information with their networks.
- Develop messaging and content for website updates.



- Create “shareability” tools to enable web sharing across email address books, Facebook and Twitter.
- Develop online event calendar.
- Advise on user interface.
- Enable navigation and ease-of-use.

Value:

- Central repository for all education materials.
- Effectively connects members of the community to information and engagement channels (Twitter, Facebook, etc.)
- Supports Metro Marketing team with counsel on web strategy.

Social Media Channel Management (Facebook, Twitter, YouTube, Flickr)

- Develop community management and engagement guidelines.
- Adhere to escalation protocol to address process for responding to posts and comments.
- Monitor and maintain content and responses on a daily basis.

Value:

- Creates platform to quickly correct misinformation, thereby preventing it from spreading virally.
- Content Calendar provides coordination, alignment and message discipline across multiple platforms (Twitter, Facebook, etc.). Also provides organizing framework to align multiple aspects of the campaign.
- Defined guidelines ensure comments can be handled in efficient manner.
- Outlines the escalation process to follow for issues management (what topics are on-topic and off-topic, process for dealing with negative postings and framework for day-to-day engagement.)

Social Media (Facebook/Twitter/YouTube) Applications

- Modify SR 710 social media to incorporate a user-friendly design.
- Could include customized applications such as email signup form and introductory video play box.



Value:

- Enhance user experience
- Facilitate participation
- Maximize ability to convey message through design and content.

Outreach to Blogs

- Reach out to key blogs with relevant content, including graphics and links that will contribute to placement.
- Create network of bloggers/academics etc. to regularly post via their own blogs or hosted via community or online media.

Value:

- Educate and activate third-party spokespersons across a number of digital channels
- Extend reach of outreach efforts
- Demonstrate diligent outreach program

Tweet-Up, Live-Tweeting, Tweet Chat Events

- LA Metro-hosted Tweet-Up Events: Mobilize SR-710 stakeholders, academics, students and media around a key milestone, such as a community meeting, to Live-Tweet real time updates from the meeting and drive discussion and awareness.
- Invite stakeholders to participate in an online Tweet Chat--online program to share facts via twitter and interact with interested parties via Twitter. Moderated by a skilled facilitator, the Tweet Chat will marked by a "hashtag" or keyword preceded by "#" to connect participants to the online discussion."

Value:

- Builds community of credible third-party experts to inform and provide updates on SR 710.
- Creates additional content and discussions and informs via other non-LA Metro channels.
- Enables participation via mobile phone or computer.

Digital Advertising and Search Engine Optimization

- Facebook Sponsored Stories



- Twitter Promoted Tweet
- Google Ad Network (searches related to SR 710 Study will direct visitors to our page.)
- Targeted coding and search-optimized content
- Builds the SR 710 Facebook and Twitter communities with highly-targeted and cost-effective advertising program.
- Facebook Ads help engage, educate and grow the SR 710 Facebook community in highly targeted way (geo-targeting by location.)

E-Blasts

- Designed to help foster stakeholder relationships
- Builds a compelling and engaging narrative about the SR-710 program
- Measured and modified based on metrics

Stakeholder Database

The Consensus Inc. team will continue to update and add to the already comprehensive list of stakeholders compiled during the previous outreach effort. The database will include rationale for reaching out to them and the best way to engage them, all based on our intimate and long-term knowledge of the local communities, as well as our singular expertise in electronic media. The project database will be updated with key constituencies, including neighborhood and community groups, civic clubs, industries, agencies, businesses and employment centers. The master list will be updated regularly and categorized to allow for tailored communications to these specific stakeholders.

ATTACHMENT D-1



SR-710 Study

STATE ROUTE 710 STUDY ELECTED OFFICIAL BRIEFINGS

Meeting	Date	Venue	Topic
Elected Officials			
STATE SENATORS			
Senator Carol Liu	5/4/12	Glendale Field Office	Project status update
Senator Carol Liu	9/25/12	Driving Tour	Alternative Concept routes
Senator Kevin De Leon	12/11/12	District Office	Los Angeles
Senator Ed Hernandez	7/25/13	East LA Empowerment Cong.	Outreach in East Los Angeles
Senator Carol Liu	6/27/14	Breakfast with Art Leahy	Caltrans Homes; LRT; Study Schedule
STATE CONGRESS MEMBERS			
Congressman Xavier Becerra	8/21/12	Echo Park District Office	Project status update
Congresswoman Judy Chu	8/27/12	Conference Call	Project status update
Congressman Adam Schiff	8/27/12	Conference Call	Project status update
Congresswoman Judy Chu	9/27/12	El Monte District Office	El Monte
Congresswoman Lucille Roybol-Allard	11/29/12	City of Industry Field Office	Alternatives Analysis Update
Congressman Xavier Becerra	2/14/13	Echo Park District Office	Overview of AA, Outreach, & Schedule
Congresswoman Janice Hahn	2/26/13	San Pedro District Office	Overview of AA, Outreach, & Schedule
Congresswoman Lucille Roybol-Allard	7/25/13	East LA Empowerment Cong.	Outreach in East Los Angeles
Congresswoman Roybal-Allard	8/5/13	Citadel Dr. Field Office	August East LA Information Session
Roybal-Allard meeting with Art Leahy	9/9/13	Metro Headquarters	October East LA Information Session
Congresswoman Judy Chu	2/18/14	Metro Headquarters	Briefing with Linda Shim, Leg. Dir.
Congresswoman Lucille Roybol-Allard	9/16/14	East Los Angeles Field Office	Project status update
Congresswoman Judy Chu	10/30/14	Pasadena Field Office	Briefing with Becky Cheng, Dist. Dir.
Congressman Adam Schiff	1/6/15	Field Office	SR 710 DEIR/EIS and Public Hearings
STATE ASSEMBLY MEMBERS			
Assemblyman Mike Eng	9/10/12	Alhambra District Office	Project update, outreach assistance
Assembly Member John Perez	9/20/12	Los Angeles Office	Alternative Concepts
Assembly Member Jimmy Gomez	7/25/13	East LA Empowerment Cong.	Outreach in East Los Angeles
Assembly Member Jimmy Gomez	9/23/14	Echo Park Field Office	Outreach in East Los Angeles
LOS ANGELES COUNTY SUPERVISORS			
Supervisor Gloria Molina	5/10/12	Metro Headquarters	Project status update
Supervisor Michael Antonovich	8/28/12	Conference Call	Project status update
Supervisor Gloria Molina (Staff)	11/5/12	East Los Angeles Civic Ctr.	Alternatives Analysis Update
Supervisor Gloria Molina (Staff)	4/10/13	East Los Angeles Civic Ctr.	SR-710 & I-710 Update
Supervisor Gloria Molina (Staff)	6/23/13	East Los Angeles Civic Ctr.	SR 710 Alt. Refinements
Supervisor Gloria Molina (Staff)	7/3/13	East Los Angeles Civic Ctr.	SR 710 Alt. Refinements / July ACCs
Supervisor Gloria Molina (Staff)	7/25/13	East LA Empowerment Cong.	Outreach in East Los Angeles
Supervisor Gloria Molina	6/11/14	Hall of Administration	Outreach in East Los Angeles
Supervisor Gloria Molina (Staff)	7/10/14	Hall of Administration	Outreach in East Los Angeles

Meeting	Date	Venue	Topic
Supervisor Michael Antonovich	3/23/15	Hall of Administration	SR 710 DEIR/EIS and Public Hearings
LOS ANGELES CITY COUNCIL			
Jose Huizar	5/30/12	CD-14 City Hall Office	Project status update
Jose Huizar	8/6/12	CD-14 City Hall Office	Project status update
Jose Huizar	8/15/12	CD-14 City Hall Office	Project status update
Jose Huizar	8/31/12	Conference Call	Remaining Alternative Concepts
Mayor, Antonio Villaraigosa	10/15/12	City of LA Mayor's Office	Roundtable Meeting
Jose Huizar	2/15/13	Caltrans/LA DOT	Project status update
Mayor's Office, Eric Garcetti	2/26/13	City of LA Mayor's Office	Project Briefing
Gil Cedillo	12/9/13	CD-1 City Hall Office	Project Briefing
Jose Huizar	5/9/14	CD-1 City Hall Office	Project Briefing
Jose Huizar	8/6/14	CD-1 City Hall Office	Project Briefing
Mayor's Office, East LA Rep. Patricia Alarcon	9/22/14	City of LA Mayor's Office	Project Briefing
METRO LEGISLATIVE BRIEFINGS			
Legislative Briefing	7/12/12	Metro Headquarters	Project status update
Legislative Briefing	8/28/12	Metro Headquarters	Project status update
Legislative Briefing	7/16/13	Metro Headquarters	SR 710 Alt. Refinements / July ACCs
LOCAL ELECTED OFFICIAL BRIEFINGS AND CITY MANAGERS			
Elected Official Briefings	5/10/12	Metro Headquarters	Project status update
Metro Board Director Ara Najarian	5/16/12	Metro Headquarters	May Open House Update
Metro Board Dir. John Fasana	8/27/12	Conference Call	Project status update
Alhambra Councilman Luis Ayala	9/18/12	Alhambra	Project update, outreach assistance
Alhambra Councilman Stephen Sham	9/19/12	Rosemead	Project update, outreach assistance
Monterey Park Councilman David Lau	9/25/12	Monterey Park City Hall	Project update, outreach assistance
San Marino Councilman Dennis Kneier	9/25/12	San Marino City Hall	Project update, outreach assistance
Pasadena Councilman Steve Madison	4/6/13	Downtown LA	Meeting with Josh Gertler, Consensus
Pasadena Councilman John Kenedy	7/16/13	Euro Pane, Pasadena	Alternative Refinements / July ACCs
Pasadena Councilwoman Jacque Robinson	8/21/13	Metro Headquarters	Alternative Refinements
Pasadena Councilman Kennedy Comm. Mtg.	3/26/14	Robinson Park Multi-Purpose Rm.	Study Update
Pasadena - City Manager	6/3/14	Breakfast with Art Leahy	Study Update
South Pasadena - City Manager	6/3/14	Breakfast with Art Leahy	Study Update
La Canada Flintridge - City Manager	6/3/14	Breakfast with Art Leahy	Study Update
Glendale - City Manager	6/3/14	Breakfast with Art Leahy	Study Update
Sierra Madre - City Manager	6/3/14	Breakfast with Art Leahy	Study Update
Alhambra Council person Barbara Messina	8/5/14	Metro Headquarters	Update / 1st vs. 2nd Decade Projects
Duarte - Craig Hensley, Comm. Dev. Director	8/7/14	Breakfast with Art Leahy	Status Update
East LA - Erica Juarez, SD-1, Assist Field Deputy	8/7/14	Breakfast with Art Leahy	Status Update
El Monte, Gabriel Gonzalez, Asst. City Manager	8/7/14	Breakfast with Art Leahy	Status Update
Monterey Park - Paul Talbot, City Manager	8/7/14	Breakfast with Art Leahy	Status Update
San Gabriel - Steven Preston, City Manager	8/7/14	Breakfast with Art Leahy	Status Update
San Marino - John Schaefer, City Manager	8/7/14	Breakfast with Art Leahy	Status Update
Temple City - Don Penman, Int. City Manager	8/7/14	Breakfast with Art Leahy	Status Update
City of LA Mayor's Office Eastside Representative	9/3/14	Los Angeles City Hall	Status Update
Pasadena Councilman Steve Madison & Art Leahy	10/8/14	Lunch Meeting	Briefing
South Gate City Council Briefing	10/14/14	South Gate City Hall	Briefing

ATTACHMENT D-2



SR-710 North Study

STATE ROUTE 710 NORTH STUDY COMMUNITY MEETINGS (Updated 3/23/15)

Meeting Type	Date	Venue	City / Community
Neighborhood Conversations - 12 Meetings Total			
Series 1: Transportation 101	2/15/11	Jefferson Middle School	San Gabriel
Series 1: Transportation 101	2/16/11	Alhambra Civic Center Library	Alhambra
Series 1: Transportation 101	2/19/11	Lake Avenue Church	Pasadena
Series 1: Transportation 101	2/23/11	South Pasadena High School	South Pasadena
Series 1: Transportation 101	2/24/11	LA Christian Presbyterian Church	El Sereno
Series 1: Transportation 101	2/26/11	Glendale Community College	Glendale
Series 2: CEQA / NEPA	3/1/11	Lake Avenue Church	Pasadena
Series 2: CEQA / NEPA	3/2/11	Jefferson Middle School	San Gabriel
Series 2: CEQA / NEPA	3/3/11	Alhambra Civic Center Library	Alhambra
Series 2: CEQA / NEPA	3/8/11	Glendale Community College	Glendale
Series 2: CEQA / NEPA	3/9/11	South Pasadena High School	South Pasadena
Series 2: CEQA / NEPA	3/17/11	LA Christian Presbyterian Church	El Sereno
Scoping - 9 Meetings total plus one virtual meeting			
Series 3: Public Scoping	3/14/11	Agency Scoping Meeting	Metro
Series 3: Public Scoping	3/15/11	Jefferson Middle School	San Gabriel
Series 3: Public Scoping	3/16/11	Alhambra Civic Center Library	Alhambra
Series 3: Public Scoping	3/22/11	Glendale Community College	Glendale
Series 3: Public Scoping	3/23/11	South Pasadena High School	South Pasadena
Series 3: Public Scoping	3/29/11	LA Christian Presbyterian Church	El Sereno
Series 3: Public Scoping	3/30/11	Lake Avenue Church	Pasadena
Series 3: Public Scoping	4/5/11	La Canada High School	La Canada
Series 3: Public Scoping	4/6/11	Ramona Hall Community Room	Highland Park
SR 710 Virtual Scoping Meeting	3/21 - 4/14/11	SR 710 Website	Internet Site
All Communities Convening - 14 Meetings Total			
All Communities Convening Info Session	3/1/12	Ramona Hall Community Room	Highland Park
All Communities Convening Info Session	3/3/12	East Los Angeles Library	East Los Angeles
All Communities Convening Open Houses	5/14/12	El Sereno Senior Center	El Sereno
All Communities Convening Open Houses	5/17/12	Eagle Rock Elementary School	Eagle Rock
All Communities Convening Open Houses	5/19/12	La Canada High School	La Canada
All Communities Convening Open Houses	5/22/12	El Monte Community Center	El Monte
All Communities Convening Open Houses	5/23/12	South Pasadena Library	South Pasadena
All Communities Convening Open Houses	5/24/12	First Baptist Church	Alhambra
All Communities Convening Open Houses	5/30/12	Rose Bowl Locker Room	Pasadena

Meeting Type	Date	Venue	City / Community
All Communities Convening/Open Houses	1/23/13	Maranatha High School	Pasadena
All Communities Convening/Open Houses	1/24/13	San Marino Community Church	San Marino
All Communities Convening/Open Houses	1/26/13	Cal State Los Angeles - Golden Eagle	Los Angeles
All Communities Convening Info Session	7/18/13	Los Angeles Presbyterian Church	El Sereno
All Communities Convening Info Session	7/20/13	Blair High School	Pasadena
All Communities Convening Info Session	7/23/13	Langley Senior Center	Monterey Park

Community Specific Information Sessions - 6 Total Meetings

Pasadena City Council Meeting Workshop	8/13/12	Pasadena Convention Center	Pasadena
Pasadena District 6 Informational Forum	9/18/12	Pasadena Convention Center	Pasadena
South Pasadena 710 Forum	9/26/12	So. Pasadena High School Aud.	South Pasadena
Pasadena City Council Special Meeting	12/10/12	Pasadena Convention Center	Pasadena
East LA Community Specific Info Session# 1	8/26/13	Centro Maravilla Service Center	East Los Angeles
East LA Community-Specific Info. Session #2	10/16/13	Hilda Solis Learning Academy	East Los Angeles

Community Liaison Councils - 19 Meetings Total

Community Liaison Councils	4/12/12	San Marino Center	San Marino/Arcadia
Community Liaison Councils	4/16/12	La Crescenta Valley Library	La Crescenta
Community Liaison Councils	4/17/12	El Monte Community Center	El Monte
Community Liaison Councils	4/18/12	Alhambra Civic Center Library	Alhambra
Community Liaison Councils	4/18/12	El Sereno Senior Center	El Sereno
Community Liaison Councils	4/19/12	Ramona Hall Community Room	Highland Park
Community Liaison Councils	4/19/12	Monrovia Library	Monrovia
Community Liaison Councils	4/23/12	Chef's Center	Pasadena
Community Liaison Councils	4/24/12	Garvey Community Center	Rosemead
Community Liaison Councils	4/24/12	Mothers of East Los Angeles	Boyle Heights
Community Liaison Councils	4/25/12	Garfield Youth House	South Pasadena
Community Liaison Councils	4/26/12	Glassell Park Senior Center	Glassell Park
Community Liaison Councils	4/30/12	La Canada High School	La Canada
Community Liaison Councils	8/6/12	Ramona Hall Community Room	Highland Park
Community Liaison Councils	8/8/12	Scottish Rite Center	Pasadena
Community Liaison Councils	8/8/12	Alhambra Civic Center Library	Alhambra
Community Liaison Councils	8/9/12	South Pasadena Library	South Pasadena
Community Liaison Councils	8/9/12	El Sereno Public Library	El Sereno
Community Liaison Councils	8/9/12	Monrovia Library	Monrovia
Community Liaison Councils	8/13/12	La Canada High School	La Canada

SR-710 Technical Advisory Committee (TAC) - 16 Meetings Total To Date

TAC Meeting #1	01/18/12	Metro Headquarters	Los Angeles
TAC Meeting #2	02/08/12	LA County Department of Public Works	Alhambra
TAC Meeting #3	03/07/12	Metro Headquarters	Los Angeles
TAC Meeting #4	04/05/12	Metro Headquarters	Los Angeles
TAC Meeting #5	05/09/12	Metro Headquarters	Los Angeles
TAC Meeting #6	07/11/12	LA County Department of Public Works	Alhambra
TAC Meeting #7	08/29/12	Metro Headquarters	Los Angeles
TAC Meeting #8	11/14/12	Metro Headquarters	Los Angeles
TAC Meeting #9	02/13/13	Caltrans	Los Angeles
TAC Meeting #10	04/24/13	Metro Headquarters	Los Angeles
TAC Meeting #11	07/10/13	Metro Headquarters	Los Angeles
TAC Meeting #12	07/11/13	Metro Headquarters	Los Angeles

Meeting Type	Date	Venue	City / Community
TAC Meeting #13	10/13/13	Metro Headquarters	Los Angeles
TAC Meeting #14	02/19/14	Metro Headquarters	Los Angeles
TAC Meeting #15	5/14/14	Metro Headquarters	Los Angeles
TAC Meeting #16	8/13/14	Metro Headquarters	Los Angeles
TAC Meeting #17	11/19/14	Metro Headquarters	Los Angeles

SR-710 Stakeholder Outreach Advisory Committee (SOAC) - 12 total Meetings To Date

SOAC Meeting #1	5/11/12	Metro Headquarters	Los Angeles
SOAC Meeting #2	7/20/12	Metro Headquarters	Los Angeles
SOAC Meeting #3	08/30/12	Metro Headquarters	Los Angeles
SOAC Meeting #4	11/15/12	Metro Headquarters	Los Angeles
SOAC Meeting #5	02/14/13	Metro Headquarters	Los Angeles
SOAC Meeting #6	04/25/13	Metro Headquarters	Los Angeles
SOAC Meeting #7	07/11/13	Metro Headquarters	Los Angeles
SOAC Meeting #8	07/12/13	Metro Headquarters	Los Angeles
SOAC Meeting #9	11/14/13	Metro Headquarters	Los Angeles
SOAC Meeting #10	02/20/14	Metro Headquarters	Los Angeles
SOAC Meeting #11	05/15/14	Metro Headquarters	Los Angeles
SOAC Meeting #12	08/14/14	Metro Headquarters	Los Angeles
SOAC Meeting #13	11/20/14	Metro Headquarters	Los Angeles

Public Hearings

Metro Board Briefings - 8 Total To Date

Contract Award for Technical Team	11/1/2011	Metro Headquarters	Los Angeles
Contract Award for Outreach Team	1/1/2012	Metro Headquarters	Los Angeles
Update on 12 Alternatives (staff)	8/16/12	Metro Headquarters	Los Angeles
Reveal best performing alternatives (staff)	8/23/12	Metro Headquarters	Los Angeles
Board Chair Announced 5 Alternatives	9/27/12	Metro Headquarters	Los Angeles
Metro Board Report (Receive and File)	2/20/13	Metro Headquarters	Los Angeles
Najarian Motion (MOU & Roles & Resp.)	4/25/13	Metro Headquarters	Los Angeles
Response Memo to Najarian Motion	7/25/13	Metro Headquarters	Los Angeles

Quarterly Legislative Briefings - 3 Total To Date

Legislative Briefing	7/12/12	Metro Headquarters	Los Angeles
Legislative Briefing	8/28/12	Metro Headquarters	Los Angeles
Legislative & Board Staff Briefing	7/16/13	Metro Headquarters	Los Angeles

Press Release/Media Interviews - 6 Total To Date

Alternatives Analysis Report	8/29/12	Metro Headquarters	Los Angeles
WebEx Media Briefing - July ACCs	7/12/13	Metro Headquarters	Los Angeles
KPCC Interview with Larry Mantel-Air Talk	7/17/13	KPCC Studios	Pasadena
Eastern Group Publications Interview	9/18/13	EGP Offices	Highland Park
Press Statement DEIR/S Delay Announcement	4/15/14	Metro Headquarters	Los Angeles
Press Statement DIR/S Release Date	5/2/14	Metro Headquarters	Los Angeles

Response to Stakeholder Letters to Correct Misinformation - 41 Total To Date

Meeting Type	Date	Venue	City / Community
2011			
Mayor Don Voss, La Canada Flintridge	3/8/11	Request for Scoping Meetings in La Canada Flintridge & La Crescenta	
2012			
Mayor Bogaard, Pasadena	4/5/12	Appointment of Louisa Nelson to SOAC	
Mayor Bogaard, Pasadena	5/3/12	Request for May Open House in Pasadena	
Mayor Bogaard, Pasadena	7/19/12	Granting May Open House in Pasadena	
Ron Paler, San Rafael Neighborhood. Assoc.	8/1/12	Concerns regarding SR 710 Alternatives	
Arturo Interian, WPRA Member	8/1/12	Concerns regarding SR 710 Alternatives	
Charala Thompson, WPRA Member	8/1/12	Concerns regarding SR 710 Alternatives	
William Urban, W. Pasadena Residents Assoc.	8/1/12	Concerns regarding SR 710 Alternatives	
Richard Eckardt	8/1/12	Law Office of Walker, Tyler, Wright & Ward - Objections to SR 710 Alts.	
Mayor Bogaard, Pasadena	8/3/12	Huntington Hospital considered as a sensitive receptor	
Mayor Bogaard, Pasadena	8/22/12	Appreciation letter for attending City Council Meeting of August 13, 2012	
Assembly member Anthony Portentino	8/22/12	Cease all activity relating to the advancement of the SR 710 Study	
John Schaefer, City Manager	8/30/12	Comments regarding TDM Alternatives planned in San Marino	
Councilman Steve Madison, Pasadena	9/7/12	Participation in 9/18/12 Community Forum	
Councilman Don Voss, La Canada Flintridge	9/11/12	Adoption of the 2012 RTP	
Senator Carol Liu	9/25/12	Request to eliminate F7 Tunnel Option from further study	
Jane Demian, No 710 Action Committee	11/19/12	SR 710 is Planned for a Goods Movement Corridor	
Mayor Michael Cacciotti, South Pasadena	12/5/12	2012 RTP/Sustainable Communities - Restoration of Authorized Language	
Councilman Don Voss, La Canada Flintridge	12/19/12	Concern regarding change in description during the adoption of 2012 RTP	
Mayor Stephen A. Del Guercio, La Canada	12/31/12	Comments on Draft Purpose and Need and Alternatives considered	
2013			
South Pasadena City Council	1/9/13	Draft Purpose and Need Statement	
Senator Carol Liu	1/10/13	Metro/Caltrans Memorandum of Understanding	
Congressman Adam Schiff	1/11/13	Freeway Tunnel Alternative, fiscal considerations, air quality concerns	
Senator Carol Liu	1/15/13	Request to eliminate tunnel option-F7	
Mayor Bill Bogaard, Pasadena	1/18/13	Concerns regarding the Freeway Tunnel Alternative	
Mayor Bill Bogaard, Pasadena	2/11/13	Appointment of Mic Hansen to the SOAC	
Congresswoman Judy Chu	2/19/13	Support for completing Alternatives Analysis Report	
Assemblyman Ed Chau	2/20/13	Support for the SR 710 North Connection and EIR/EIS	
Mayor Richard Schneider, So Pasadena	2/20/13	SR 710 North Draft Purpose and Need Statement	
Pasadena Councilman Steve Madison	2/21/13	Invitation to participate in an open forum	
Michael D. Antonovich, Chair of Metro Board	3/18/13	Ave. 64 and San Rafael Areas Removed From SR 710 Study	
Joanne Nuckols & Jan SooHoo, No 710 Action	3/28/13	TAC Meeting and Community Involvement Update	
William Urban, W. Pasadena Residents Assoc.	3/28/13	Freeway Tunnel Option	
Christy Zamani, Executive Dir., Day One, Inc.	3/28/13	Transportation Alternatives for 1-710 South and SR -710 North	
Mayor Bill Bogaard, Pasadena	3/28/13	Alternatives Analysis Report	
Mayor Richard Schneider, So Pasadena	4/22/13	Alternatives Analysis Report	
Heidi Johnson, Waverly School	5/8/13	Impacts to school facilities	
Pasadena & La Canada Flintridge	6/25/13	Comments provided on Light Rail Alternative	
William Urban, W. Pasadena Residents Assoc.	7/24/13	Freeway Tunnel Option	
Mayor Richard Schneider, So Pasadena	7/25/13	Comments on Motion by Director Narjarian	
Senator Carol Liu	8/20/13	Delegation Authority from Caltrans to Metro to Prepare EIR/EIS	
Pasadena San Rafael Library Association	9/12/13	Noise and traffic concerns	
2014			
Mayor Bill Bogaard, Pasadena	1/9/14	Request to extend public comment period	

Response to News Articles, Blogs, Patches to Correct Misinformation

Meeting Type	Date	Venue	City / Community
Peggy Drouet, Facebook Post	4/13/13	Air Quality Impacts	
Pasadena Star News, Letter to the Editor	1/30/14	710 Tunnel Fumes would affect two hospitals	
Pasadena Star News, Letter to the Editor	1/30/14	Metro has it's mind made up already	
Pasadena Star News, Letter to the Editor	1/30/14	No Decision has been made on 710 Freeway Tunnels	
South Pasadena Review, Opinion Section	1/29/14	Waiting on Preferred Alternative	
Pasadena Magazine Blog	1 & 2/14	The War Against the 710	
Pasadena Weekly, Letter to the Editor	7/3/14	Response to Councilman Terry Tornek Article - Pasadena Must Lead	
South Pasadena Review, Opinion Section	7/10/14	So. Pasadena City Council Authorizes Consultant to Promote 710	

Public Participation through Social Media

SR-710 Website: www.metro.net/sr710study
 Face Book: www.facebook.com/SR710Study
 Twitter: www.twitter.com/SR710Study
 Tweet-Up, Live Tweeting, Tweet Chat Events
 Interactive E-Tool: www.sr710etool.com
 Instagram
 YouToube
 E-Blasts

Special Requests (Meetings/Workshops, etc.) - 38 Total To Date

South Pasadena City Council Update	8/15/12	South Pasadena City Hall	South Pasadena
Jose Huizar Community Meeting	9/19/12	El Sereno Senior Center	El Sereno
San Gabriel Valley COG Trans. Committee	9/20/12	SCE CTAC	Irwindale
City of San Gabriel City Council Update	10/2/12	San Gabriel City Hall	San Gabriel
San Gabriel Valley COG Trans. Summit	10/3/12	Southern California Edison CTAC	Irwindale
San Gabriel Valley Service Council	10/8/12	El Monte City Hall	El Monte
City of Rosemead Status Update	10/9/12	Rosemead City Hall	Rosemead
Alhambra City Council Forum	11/19/12	Alhambra Civic Center Library	Alhambra
Arroyo Verdugo Subregion Steering Commtt.	2/4/13	La Canada Flintridge City Hall	La Canada Flintridge
Los Angeles County Public Works TAC	2/25/13	Embassy Suites	Arcadia
Briefing with City of LA Mayor's Office	2/26/13	LA City Hall	Los Angeles
San Gabriel Valley Economic Partnership	2/27/13	Rivergrade Road Business Park	Irwindale
Crescenta Valley Town Council Forum	2/27/13	Rosemont Elementary School	La Crescenta
Central City Association	3/14/13	626 Wilshire Blvd.	Los Angeles/Downtown LA
LA Department of Transportation	3/15/13	Department of Transportation	Los Angeles
San Gabriel Valley COG Trans. Committee	4/18/13	SCE CTAC	Irwindale
Construction Management Association	5/10/13	LA Hotel Downtown / Hyatt	Los Angeles
Grifols	5/30/13	Greater LA Chamber of Commerce	Los Angeles/El Sereno
Monterey Park Transportation Summit	6/1/13	George Elder Park Community Center	Monterey Park
710 Coalition Meeting	6/10/13		
Greater Los Angeles Chamber of Commerce	6/4/13	Greater LA Chamber of Commerce	Los Angeles
Briefing with Office of Councilman Huizar	6/6/13	Eagle Rock District Office	Los Angeles
San Gabriel Valley Economic Partnership	6/25/13	SCE Building	Irwindale
City Terrace Coordinating Council	7/11/13	Our Lady of Guadalupe Church	City Terrace
Arroyo Verdugo Subregion Steering Commtt.	7/15/13	La Canada Flintridge City Hall	La Canada Flintridge
Whittier Blvd. Merchants Association	7/15/13	Mission Furniture	East Los Angeles
Monterey Park City Council Briefing	7/17/13	City Council Chambers	Monterey Park
City of Monrovia Resolution	9/3/13	Council Chambers	Monrovia
San Gabriel Valley Service Center	9/9/13	Metro Division 9	El Monte
LA County Department of Public Works	9/17/13	Metro Headquarters	Los Angeles

Meeting Type	Date	Venue	City / Community
Empowerment Congress	9/26/13	4700 Whittier Boulevard, 2nd Floor	East Los Angeles
Briefing with Alhambra Councilman Luis Ayala	9/27/13	Twoheys Restaurant	Alhambra
Town Hall Mtg., Alhambra Councilman Ayala	10/10/13	Emery Park Community Center	Alhambra
East Arroyo Residents Association	11/9/13	Media Center, Rose Bowl Stadium	Pasadena
Pasadena Councilman Kennedy Comm. Mtg.	3/26/14	Robinson Park Multi-Purpose Room	Pasadena
SGV COG Transportation Forum	3/26/14	City of Industry	City of Industry
Grifols	3/31/14	Grifols Headquarters	El Sereno
Zocalo Public Square Panel Discussion	5/7/14	Museum of Contemporary Art (MOCA)	Los Angeles
Metro Public Private Partnership Roundtable	5/13/14	Metro Headquarters	Los Angeles
San Gabriel Valley Metro Service Council	9/8/14	Metro Division 9	El Monte (Metro Division 9)
Alma Family Services Gala for Sup. Molina	9/20/14	Centro Estrella & Alma Family Res. Ctr.	East Los Angeles
City of South Gate City Manager Briefing	9/25/14	South Gate City Hall	South Gate
Gateway COG City Manager Steering Committ	10/9/14	South Gate Park Auditorium	South Gate
South Gate City Council Briefing	10/14/14	South Gate City Hall	South Gate
San Gabriel Valley COG Public Works TAC	10/20/14	Embassy Suites	Arcadia
Briefing with Lee Dolley, Alhambra	10/28/14	Metro Headquarters	Los Angeles

Community-Based Outreach - 214 Total Meetings To Date

Sierra Madre Kiwanis Club	10/30/12	The Lodge	Sierra Madre
Monrovia Rotary Club	10/30/12	The Monrovia Restaurant	Monrovia
Monrovia Rotary Club	11/6/12	The Monrovia Restaurant	Monrovia
Rosemead Chamber of Commerce Board	11/13/12	Charley Brown's	Rosemead
Asian Pacific American Legal Center	11/15/12	First Baptist Church of Alhambra	Alhambra
Monterey Park Traffic Commission	11/15/12	Monterey Park City Hall	Monterey Park
Irwindale Chamber of Commerce	11/15/12	Southern California Edison, Irwindale	Irwindale
Alhambra City Council Meeting	11/19/12	Alhambra Civic Center Library	Alhambra
American Legion Post 397	11/21/12	Legion Hall	Monterey Park
Eagle Rock Chamber of Commerce	11/27/12	Solheim Lutheran Home	Eagle Rock
Monterey Park Planning Commission	11/27/12	Monterey Park City Hall	Monterey Park
San Marino Planning Commission	11/28/12	San Marino City Hall	San Marino
Boyle Heights Neighborhood Council Meeting	11/28/12	Boyle Heights Senior Center	Boyle Heights
Boyle Heights Farmers Market	11/30/12	Mariachi Plaza Station	Boyle Heights
Alhambra Planning Commission Meeting	12/3/12	Alhambra Council Chambers	Alhambra
El Monte City Council	12/4/12	El Monte Council Chambers	El Monte
San Gabriel City Council	12/4/12	San Gabriel Council Chambers	San Gabriel
Alhambra HCDA Committee Meeting	12/4/12	City Hall	Alhambra
Puente Learning Center Meeting	12/4/12	Puente Learning Center	Boyle Heights
Eagle Rock Neighborhood Council	12/4/12	Eagle Rock City Hall	Eagle Rock
Irwindale Chamber of Commerce Environmental Committee Meeting	12/5/12	Irwindale Chamber Office	Irwindale
Rosemead City Manager Briefing	12/5/12	Rosemead City Hall	Rosemead
Arroyo Seco Neighborhood Council	12/5/12	Ramona Hall	Highland Park
Monterey Park City Council Meeting	12/5/12	Council Chambers	Monterey Park
LA 32 Neighborhood Council	12/5/12	El Sereno Senior Center	El Sereno
Garvanza Improvement Association	12/5/12	Luther Burbank Middle School	Burbank
Rosemead Traffic Commission	12/6/12	Council Chambers	Rosemead
El Sereno Senior Club	12/6/12	El Sereno Senior Center	El Sereno
San Gabriel Planning Commission	12/10/12	San Gabriel City Hall	San Gabriel
Briefing w/ Senator Kevin De Leon	12/11/12	District Offices	Los Angeles
Azusa Unified Board Meeting	12/11/12	Administration Center: District Office	Azusa

Meeting Type	Date	Venue	City / Community
Arroyo View Estates Neighborhood Watch	12/11/12	Highland Park Hathaway-Sycamores Child & Family Svcs.	Los Angeles
Monterey Park Environmental Commission	12/11/12	Monterey Park City Hall	Monterey Park
Rosemead City Council	12/11/12	Rosemead Council Chambers	Rosemead
South El Monte City Council	12/11/12	Council Chambers	South El Monte
El Monte Planning Commission	12/11/12	City Hall	El Monte
Baldwin Park Planning Commission	12/12/12	Council Chambers	Baldwin Park
Boyle Heights Chamber of Commerce Annual Breakfast	12/11/12	El Rinconcito Del Mar Restaurant	Boyle Heights
Irwindale City Council	12/12/12	Council Chambers	Irwindale
Administration	12/--/12	Cal State Los Angeles	East Los Angeles
Hillside Village Property Owners Association	12/13/12	Absolute Towing 4760 East Valley Blvd	El Sereno
Rosemead Planning Commission Meeting	12/17/12	Council Chambers	Rosemead
East LA College Briefing	12/18/12	East LA College	East Los Angeles
Arcadia City Council	12/18/12	Council Chambers	Arcadia
South El Monte Planning Commission Meeting	12/18/12	Council Chambers	South El Monte
Temple City Council	12/18/12	Council Chambers	Temple City
Briefing with Frank Furukawa	12/18/12	East Los Angeles Community College	Los Angeles
Irwindale Chamber of Commerce Networking Breakfast	12/20/12	Southern California Edison, Irwindale	Irwindale
Cal State Los Angeles	12/20/12	California State University, Corporate Yard, Board Room, Suite 200	Los Angeles
Highland Park Neighborhood Council	12/20/12	Highland Park Senior Center	Highland Park
Azusa City Council	1/7/13	Council Chambers	Azusa
Pasadena City Council	1/7/13	Council Chambers	Pasadena
Temple City Planning Commission	1/8/13	Council Chambers	Temple City
Rotary Club of East Los Angeles	1/8/13	Tamayo Restaurant	East Los Angeles
Arcadia Planning Commission	1/8/13	City Hall	Arcadia
Sierra Madre City Council	1/8/13	Council Chambers	Sierra Madre
Chinese American Citizens Alliance – Greater	1/8/13	Empress Harbor Restaurant	Monterey Park
Hillside Village Property Owners Association	1/8/13	Absolute Towing 4760 East Valley Blvd	El Sereno
Briefing w/ Julio Torres	1/8/13		Los Angeles
Lincoln High School Principal/Parent Meeting	1/8/13	Lincoln High School	Los Angeles
El Monte Planning Commission	1/8/13	Council Chambers	El Monte
Temple City Unified School District	1/9/13	9700 Las Tunas Drive Temple City, CA	Temple City
San Marino City Council	1/9/13	Council Chambers	San Marino
Atwater Village Neighborhood Council	1/10/13	Christ's Church of Griffith Park	Los Angeles
Mt. Washington Homeowners Assoc. General Mtg.	1/14/13	Carlin G. Smith Recreation Center	Mt. Washington
Monrovia City Council	1/15/13	City Hall	Monrovia
Duarte City Council	1/15/13	Duarte Council Chambers	Duarte
Alhambra Unified School District Superintendent l	1/15/13	District Offices	Alhambra
Glassel Park Neighborhood Council	1/15/13	Glassel Park Comm. Center	Glassel Park
Cypress Park Neighborhood Council	1/15/13	Cypress Park Rec Center	Cypress Park
Baldwin Park City Council	1/16/13	Council Chambers	Baldwin Park
San Gabriel Chamber of Commerce Mixer	1/16/13	South Fire Station	San Gabriel
Candidate Forum CD 1	1/16/13	Franklin High School	Los Angeles
Alhambra Democratic Club	1/16/13	Denny's	Alhambra

PRELIMINARY COST ESTIMATE SUMMARY FOR TSM/TDM ALTERNATIVE ATTACHMENT E

Contract PS4710-2755
3/18/2015 4:14 PM

PROJECT DESCRIPTION

STATE ROUTE 710 STUDY

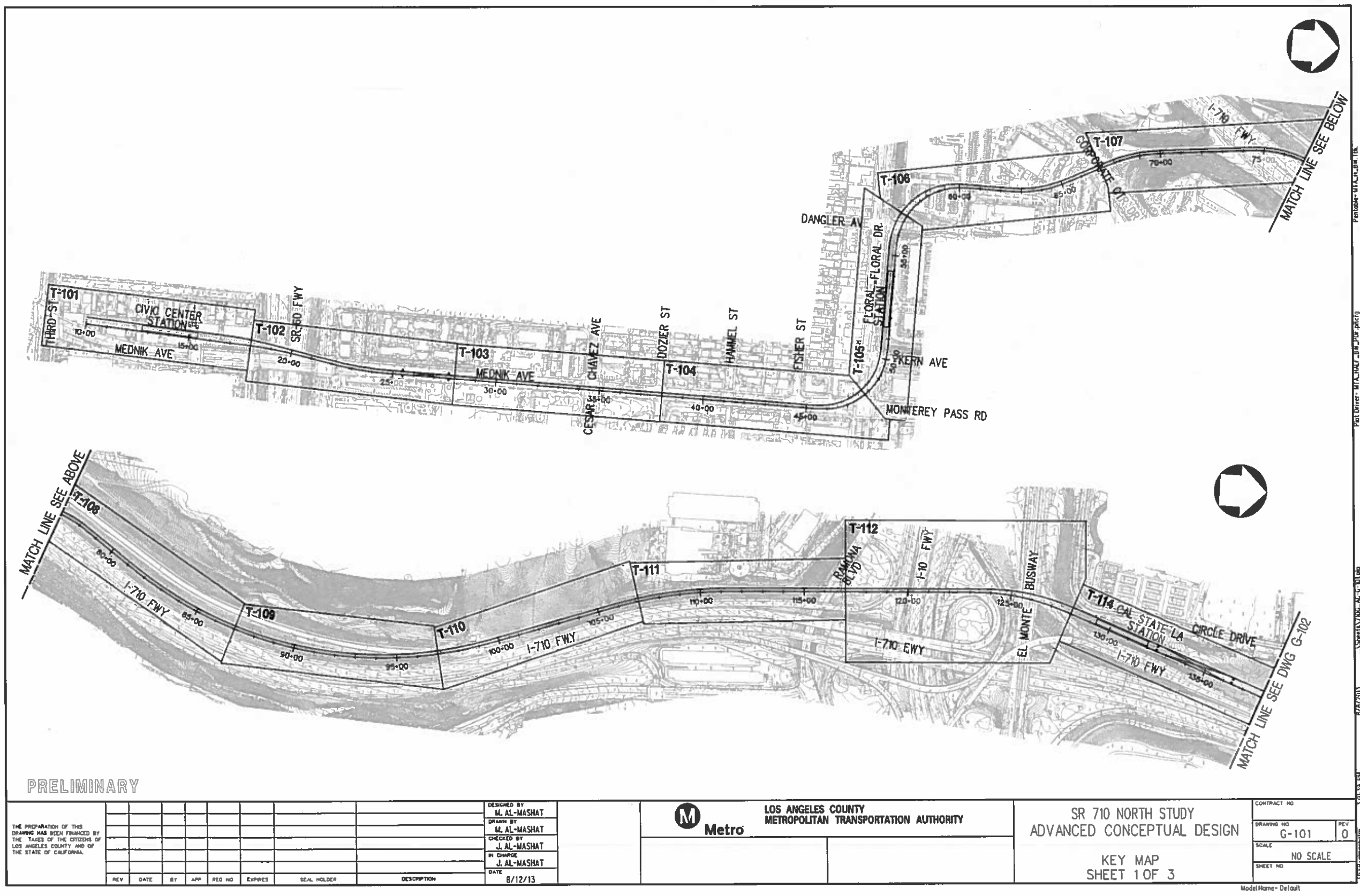
TSM/TDM Component Construction Cost Breakdown

	Cost in 2014 \$
Local Street and Intersection Improvements	\$79,205,000
ITS Improvements	\$4,583,000
Transit Refinement	\$19,943,000
Active Transportation	<u>\$0</u>
SUBTOTAL CONSTRUCTION	\$103,731,000
TOTAL COST	\$105,000,000

Notes:

- 1) Cost details shown in subsequent tabs.
- 2) Active transportation include bikeway enhancements that would be funded by another source.

Cal State Los Angeles LRT Station



PRELIMINARY

THE PREPARATION OF THIS DRAWING HAS BEEN FINANCED BY THE TAXES OF THE CITIZENS OF LOS ANGELES COUNTY AND OF THE STATE OF CALIFORNIA.						
REV	DATE	BY	APP	RED NO	EXPIRES	SEAL HOLDER

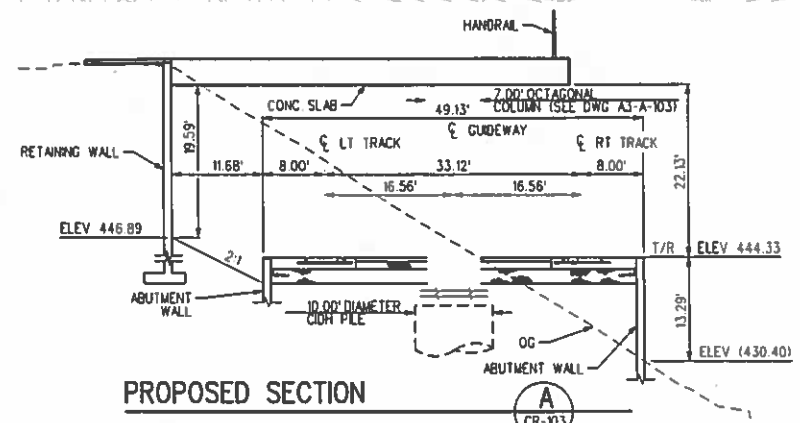
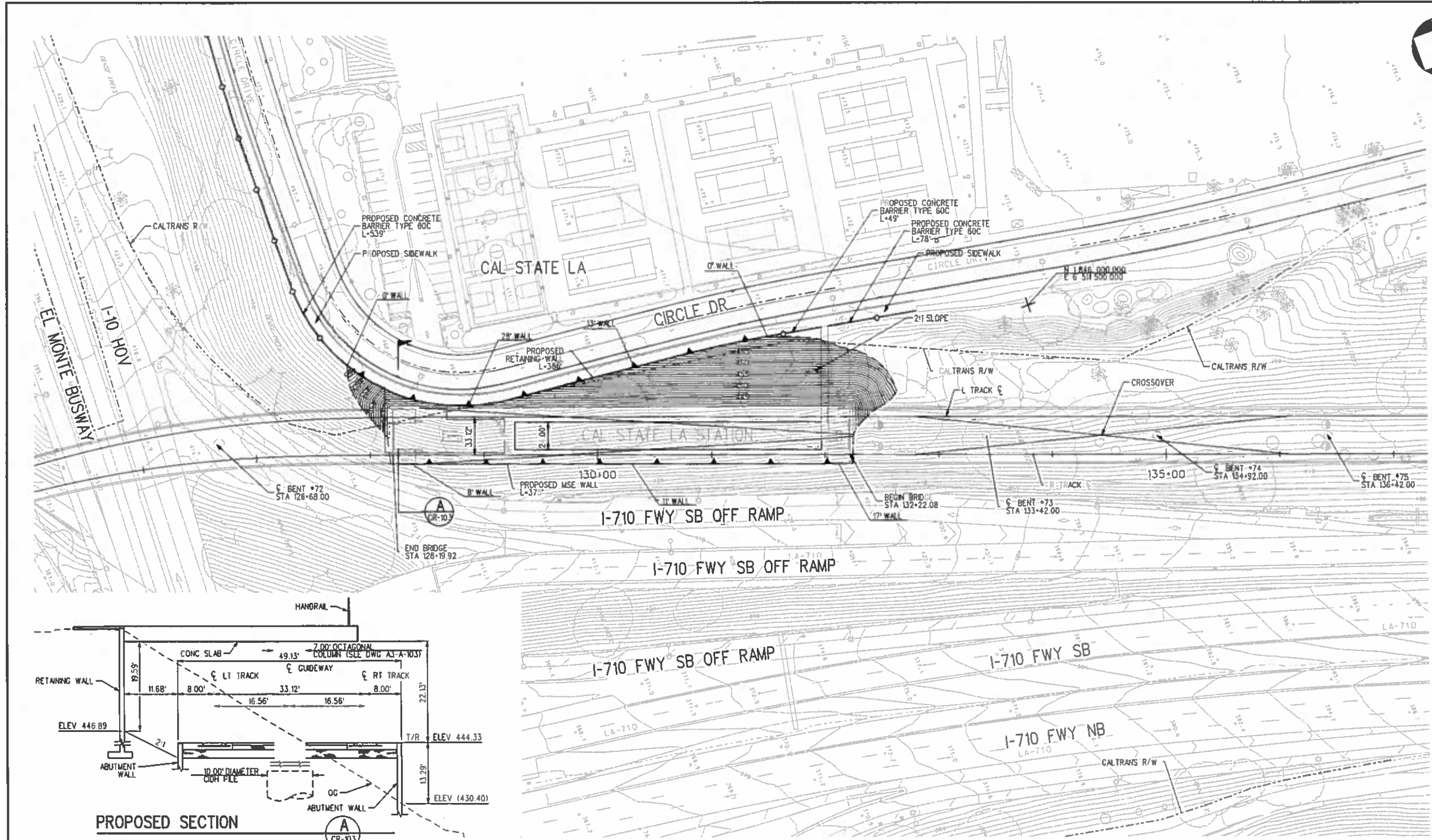
DESIGNED BY M. AL-MASHAT
DRAWN BY M. AL-MASHAT
CHECKED BY J. AL-MASHAT
IN CHARGE J. AL-MASHAT
DATE 8/12/13

M Metro LOS ANGELES COUNTY METROPOLITAN TRANSPORTATION AUTHORITY

SR 710 NORTH STUDY
ADVANCED CONCEPTUAL DESIGN
KEY MAP
SHEET 1 OF 3

CONTRACT NO	
DRAWING NO	G-101
REV	0
SCALE	NO SCALE
SHEET NO	

ModelName- Default



PRELIMINARY

REV	DATE	BY	APP	REG NO	EXPIRES	SEAL HOLDER	DESCRIPTION

DESIGNED BY
A. GRANDOV
 DRAWN BY
F. ALVARADO
 CHECKED BY
J. AL-MASHAT
 IN CHARGE
J. AL-MASHAT
 DATE
8/12/13

M Metro LOS ANGELES COUNTY METROPOLITAN TRANSPORTATION AUTHORITY

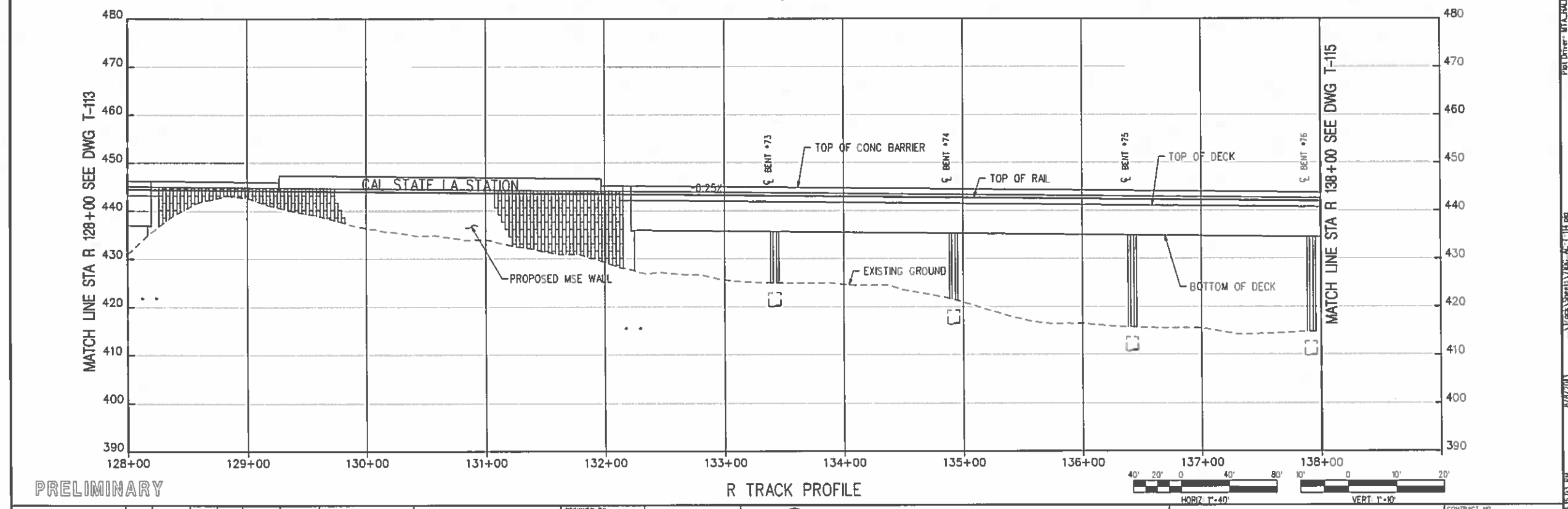
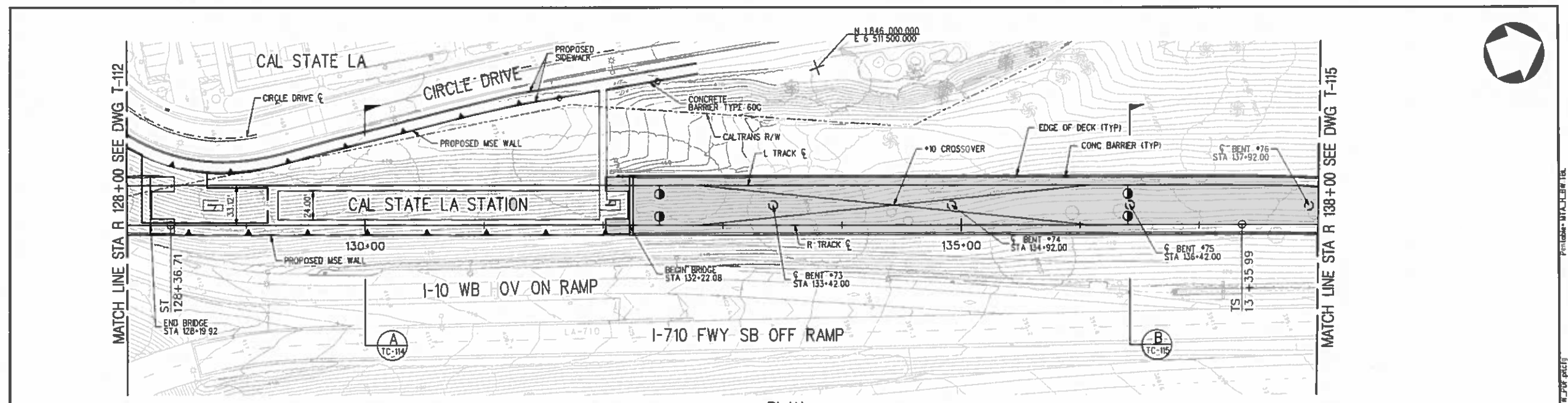
SR 710 NORTH STUDY
 ADVANCED CONCEPTUAL DESIGN
 GRADING PLAN
 SHEET 3 OF 6

CONTRACT NO.	
DRAWING NO.	CR-103
SCALE	1" = 40'
SHEET NO.	

ModelName: Default



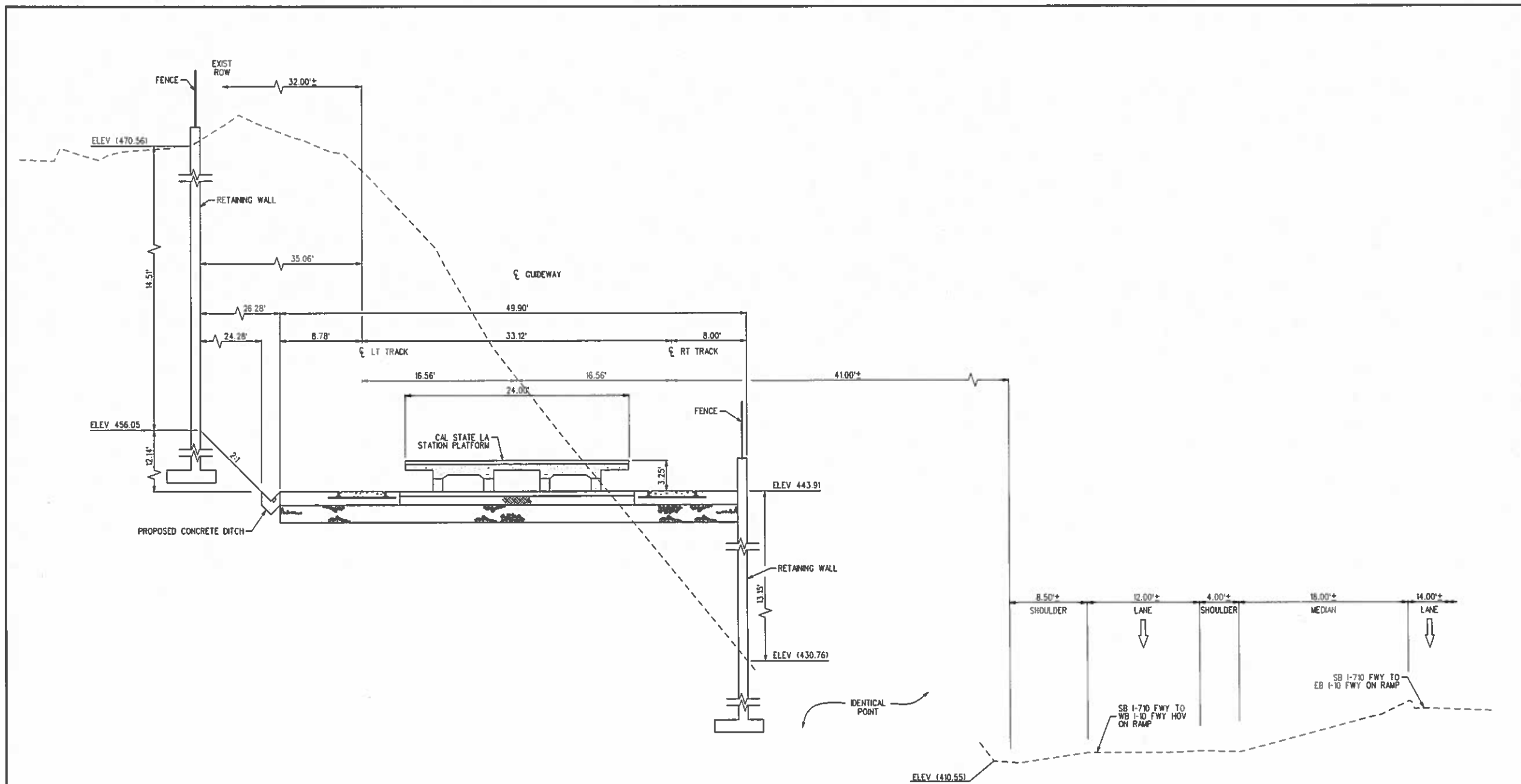
8/27/2013 3:07:45 PM
 S:\SR710\NORTH\LA-710\CR-103.PDF
 PLOT USER: MTA-CAD-DWG_PDF_PLOT19
 PLOT NAME: MTA-CAD-DWG_PDF_PLOT19



PRELIMINARY

THE PREPARATION OF THIS DRAWING HAS BEEN FINANCED BY THE TAXES OF THE CITIZENS OF LOS ANGELES COUNTY AND OF THE STATE OF CALIFORNIA.		DESIGNED BY A. GRANDOV DRAWN BY M. AL-MASHAT CHECKED BY J. AL-MASHAT IN CHARGE J. AL-MASHAT DATE 8/12/13	LOS ANGELES COUNTY METROPOLITAN TRANSPORTATION AUTHORITY	SR 710 NORTH STUDY ADVANCED CONCEPTUAL DESIGN TRACK ALIGNMENT PLAN AND PROFILE STA R 128+00 TO STA R 138+00	CONTRACT NO. DRAWING NO. T-114 SCALE HORIZ: 1"=40' VERT: 1"=10' SHEET NO.					
REV	DATE	BY	APP	REG NO	EXPIRES	SEAL HOLDER	DESCRIPTION	ModelName - Default		

3:15:33 PM 8/27/13 C:\Track\Sheet\YDC_AC-T-114.dwg P:\Driver\MTL\DWG_BF_PDF.plt



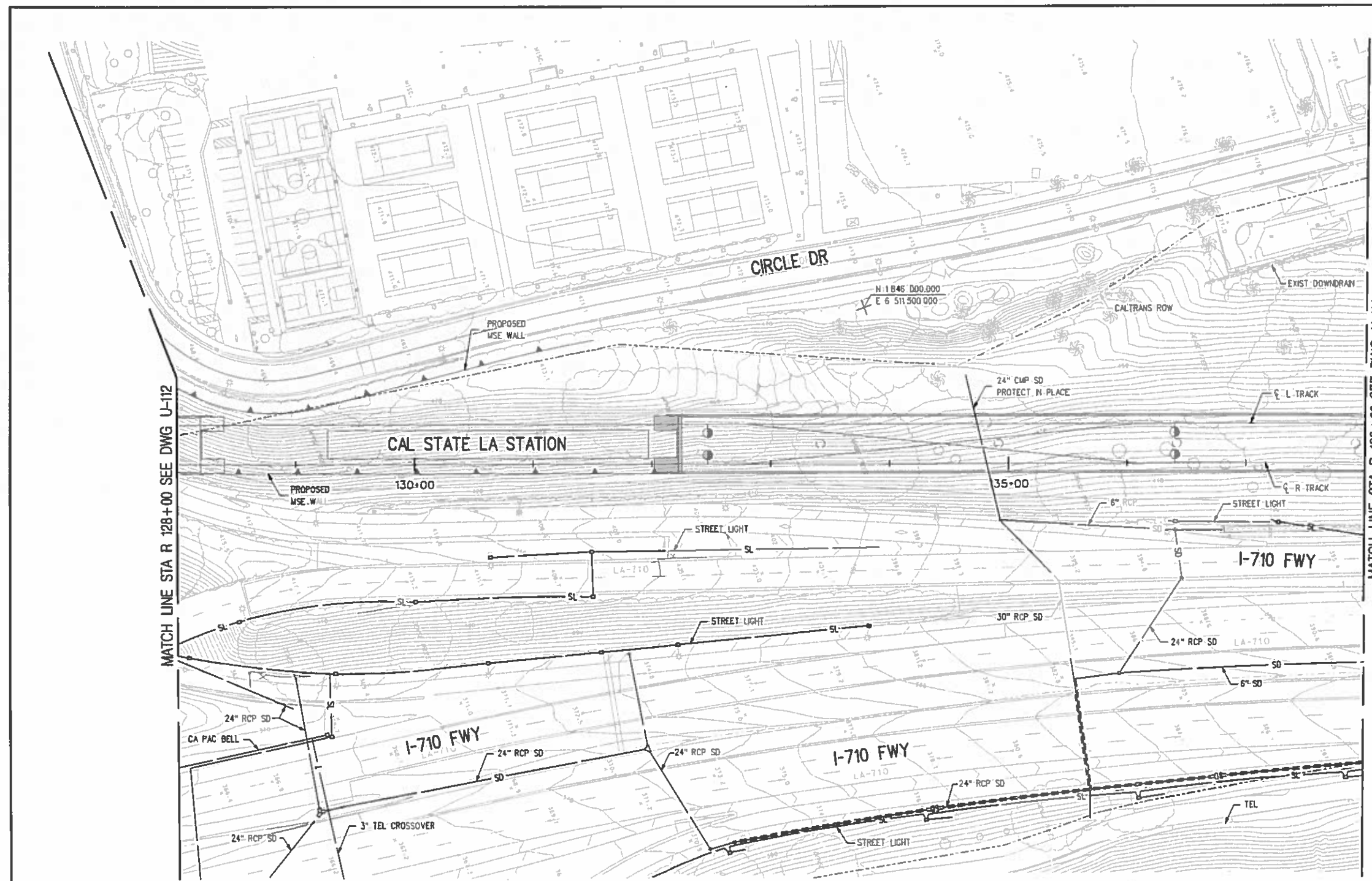
PROPOSED SECTION
AT STA 130+00.00

PRELIMINARY

THE PREPARATION OF THIS DRAWING HAS BEEN FINANCED BY THE TAXES OF THE CITIZENS OF LOS ANGELES COUNTY AND OF THE STATE OF CALIFORNIA.	DESIGNED BY	F. ALVARADO	LOS ANGELES COUNTY METROPOLITAN TRANSPORTATION AUTHORITY	SR 710 NORTH STUDY ADVANCED CONCEPTUAL DESIGN TRACK ALIGNMENT CROSS SECTIONS SHEET 14 OF 32	CONTRACT NO.		
	DRAWN BY	F. ALVARADO			DRAWING NO.	TC-114	REV.
CHECKED BY	J. AL-MASHAT	SCALE			HORIZ: 1"=5'	VERT: NTS	
IN CHARGE	J. AL-MASHAT	SHEET NO.					
DATE	8/12/13						
REV	DATE	BY	APP	REG NO	EXPIRES	SEAL HOLDER	DESCRIPTION

ModelName- Default

8/27/2013 3:29:18 PM J:\SHEET\1000\AC TC 114.P01 PLOT USER: MTA\CH-BW TBL



MATCH LINE STA R 128+00 SEE DWG U-112

MATCH LINE STA R 138+00 SEE DWG U-114

PRELIMINARY

EXISTING UTILITIES ARE INCOMPLETE FOR WATER, POWER (E) & SS



THE PREPARATION OF THIS DRAWING HAS BEEN FINANCED BY THE TAXES OF THE CITIZENS OF LOS ANGELES COUNTY AND OF THE STATE OF CALIFORNIA.						
REV	DATE	BY	APP	REG NO	EXPIRES	SEAL HOLDER

DESIGNED BY
A. MANDILAWI
DRAWN BY
L. GASTON
CHECKED BY
N. TIGO
IN CHARGE
J. AL-MASHAT
DATE
8/12/13



SR 710 NORTH STUDY
ADVANCED CONCEPTUAL DESIGN
COMPOSITE EXISTING UTILITIES
SHEET 13 OF 41

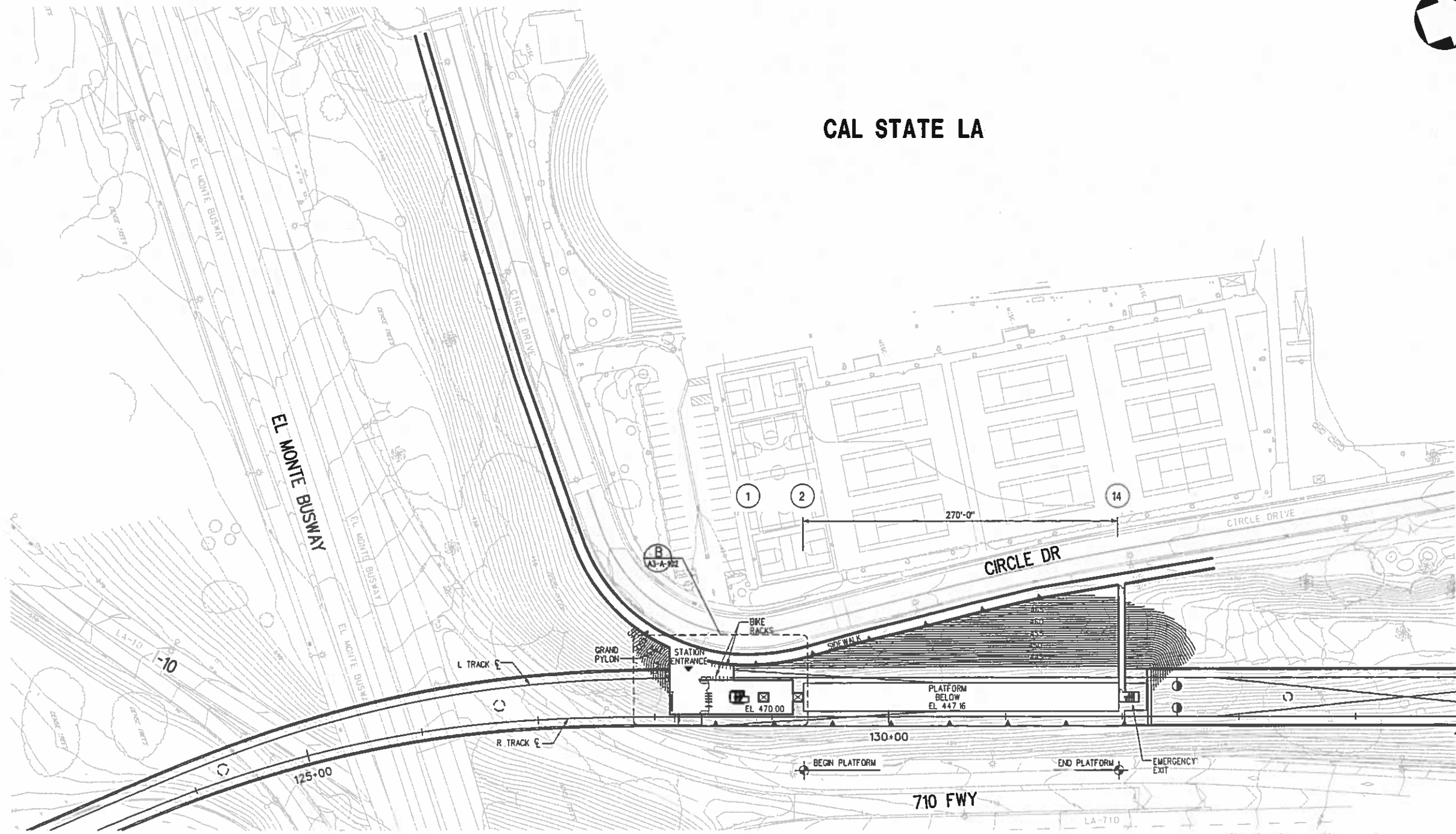
CONTRACT NO	
DRAWING NO	U-113
SCALE	1"=40'-0"
SHEET NO	

Model Name: Default

13/07/2013 3:35:32 PM
 \\SHEETV1006\AL\U-113.Plot
 Plot Driver: WTA_PLOT_2013.DWG_Plotter
 Plotter: WTA_PLOT_2013



CAL STATE LA



PRELIMINARY

THE PREPARATION OF THIS DRAWING HAS BEEN FINANCED BY THE TAXES OF THE CITIZENS OF LOS ANGELES COUNTY AND OF THE STATE OF CALIFORNIA.						
REV	DATE	BY	APP	REG NO	EXPIRES	DESCRIPTION


DESIGNED BY
R. NIGHT

DRAWN BY
R. NIGHT

CHECKED BY
J. AL-MASHAT

IN CHARGE
J. AL-MASHAT

DATE
8/12/13



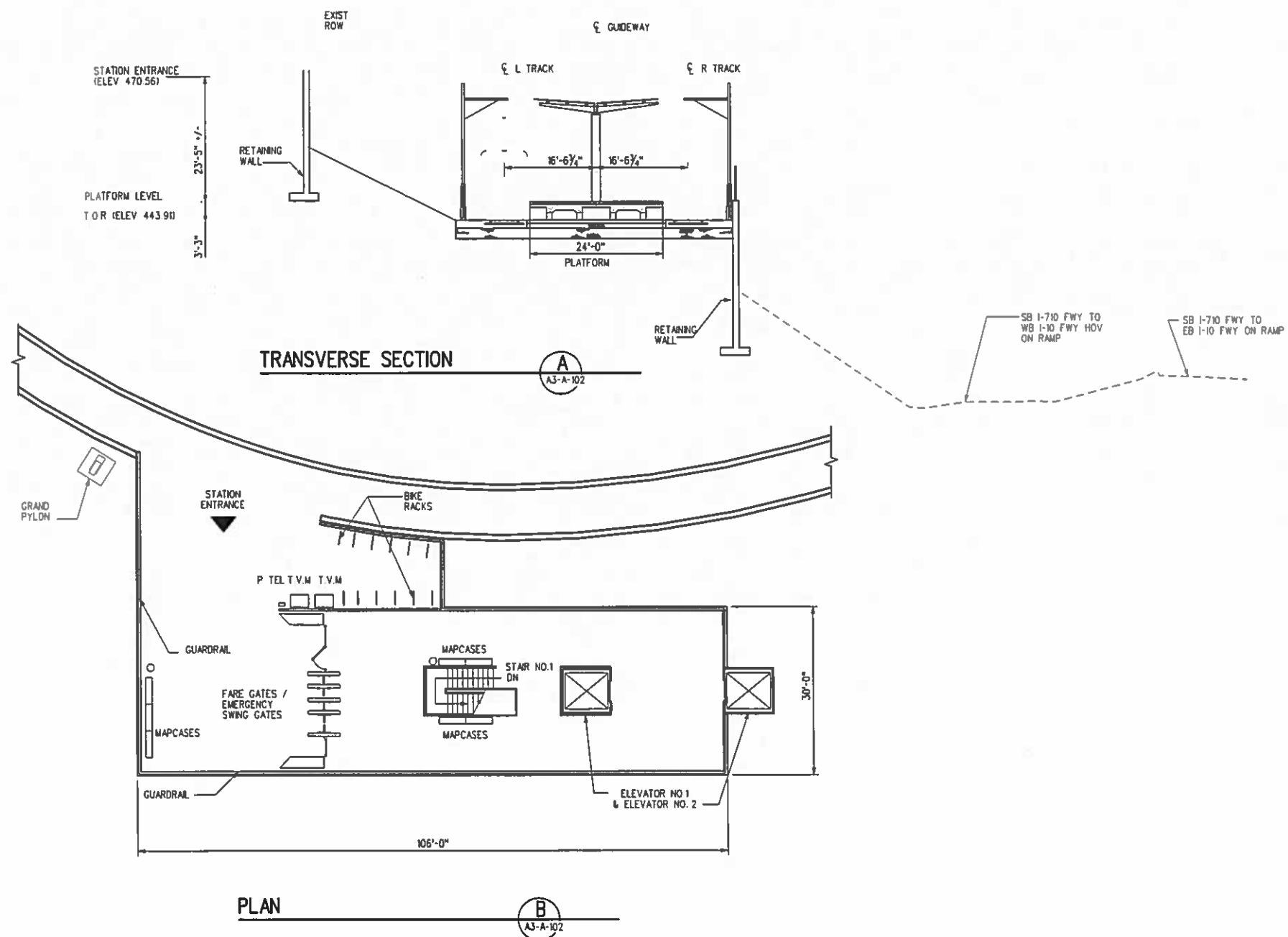
LOS ANGELES COUNTY METROPOLITAN TRANSPORTATION AUTHORITY

SR 710 NORTH STUDY
ADVANCED CONCEPTUAL DESIGN
CAL STATE LA STATION
SITE PLAN
STATION ENTRANCE AT CIRCLE DRIVE

CONTRACT NO.	
DRAWING NO.	A3-A-101
SCALE	1"=40'-0"
SHEET NO.	

Model Name- Default

3/15/12 PM
 8/27/2013
 C:\Users\jia\OneDrive\Documents\A3-A-101.dwg
 Plot Driver: WTA_PLOTTER.dwg



PRELIMINARY

THE PREPARATION OF THIS DRAWING HAS BEEN FINANCED BY THE TAXES OF THE CITIZENS OF LOS ANGELES COUNTY AND OF THE STATE OF CALIFORNIA.

REV	DATE	BY	APP	REQ NO	EXPRES	SEAL HOLDER	DESCRIPTION

DESIGNED BY
R. NIGHT
DRAWN BY
R. NIGHT
CHECKED BY
J. AL-MASHAT
IN CHARGE
J. AL-MASHAT
DATE
8/12/13



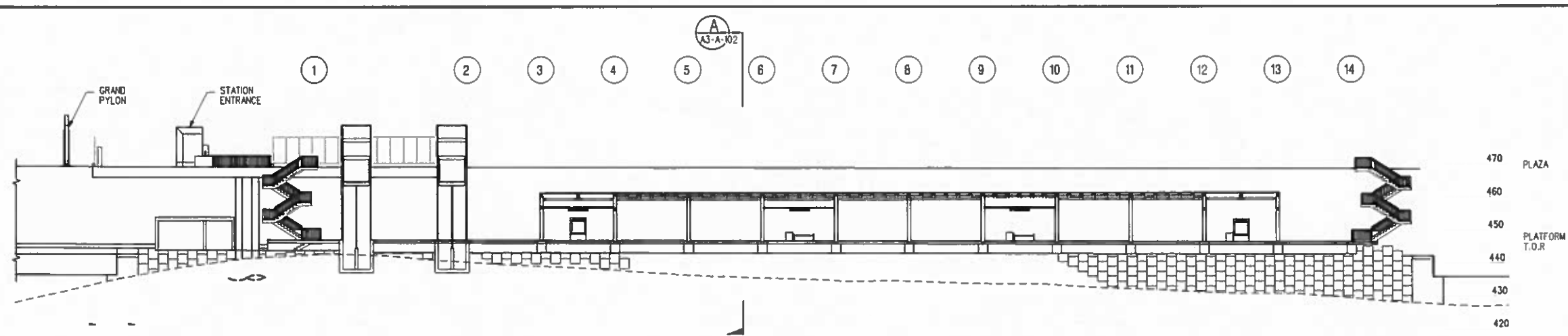
LOS ANGELES COUNTY METROPOLITAN TRANSPORTATION AUTHORITY

SR 710 NORTH STUDY
ADVANCED CONCEPTUAL DESIGN
CAL STATE LA STATION
STATION ENTRANCE PLAN
AND TRANSVERSE SECTION

CONTRACT NO	
DRAWING NO	A3-A-102
SCALE	1" = 10'-0"
SHEET NO	

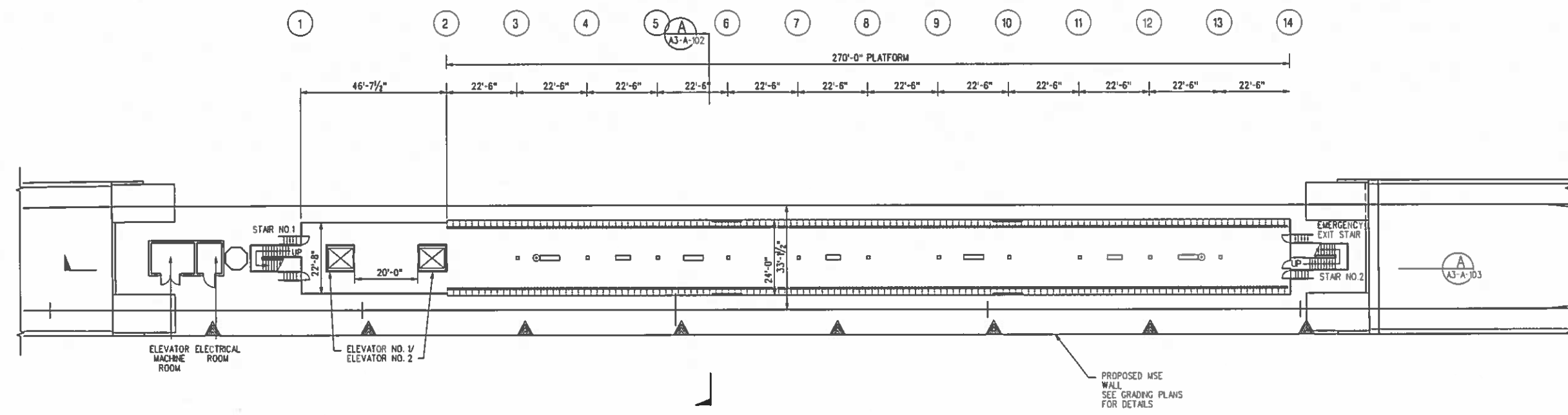
Model Name - Default

8/12/13
 3:16:11 PM
 USER: rnight
 C:\PROJECTS\SR710\A3-A-102\A3-A-102.dwg
 PLOT USER: MIA, PLOT DATE: 8/12/13



LONGITUDINAL SECTION

A
A3-A-103



PLAN

A
A3-A-103

PRELIMINARY



THE PREPARATION OF THIS DRAWING HAS BEEN FINANCED BY THE TAXES OF THE CITIZENS OF LOS ANGELES COUNTY AND OF THE STATE OF CALIFORNIA.

REV	DATE	BY	APP	RED NO	EXPIRES	SEAL HOLDER	DESCRIPTION

DESIGNED BY
R. NIGHT
DRAWN BY
R. NIGHT
CHECKED BY
J. AL-MASHAT
IN CHARGE
J. AL-MASHAT
DATE
8/12/13



LOS ANGELES COUNTY METROPOLITAN TRANSPORTATION AUTHORITY

SR 710 NORTH STUDY
ADVANCED CONCEPTUAL DESIGN
CAL STATE LA STATION
PLATFORM LEVEL PLAN AND
LONGITUDINAL SECTION

CONTRACT NO.
DRAWING NO. A3-A-103
SCALE 1/16" = 1'-0"
SHEET NO.

Model Name - Default

8/27/2013
 C:\Users\jwalsh\Documents\A3-A-103.dwg
 3/16/2014

Meeting Type	Date	Venue	City / Community
Building Healthy Communities-Boyle Heights	1/16/13	BHC Hub Office	Boyle Heights
Monrovia Kiwanis Club	1/17/13	The Monrovia Family Restaurant	Monrovia
Sierra Madre Planning Commission	1/17/13	City Hall	Sierra Madre
Lincoln Heights Neighborhood Council	1/17/13	Lincoln Heights Library	Lincoln Heights
VELA	1/17/13	VELA's Headquarters	East Los Angeles
Maravilla Business Association	1/17/13	Cities Restaurant	East Los Angeles
Alhambra Farmers Market	1/20/13	Monterey & Bay State St., Alhambra	Alhambra
W. Pasadena Residents Assoc. Annual Mtg.	5/1/13	Rose Bowl Locker Room	Pasadena
East Los Angeles Farmers Market	5/11/13	East LA Civic Center	East Los Angeles
Yolanda Duarte Conference Call	5/15/13	Maravilla community Advisory Commntt.	East Los Angeles
Eddie Torres (Noticing)	5/16/13	East LA Chamber of Commerce	East Los Angeles
Yvonne Chavez (Noticing)	5/16/13	East LA Chamber of Commerce	East Los Angeles
David Lizarraga, CEO (Noticing)	5/16/13	TELACU - Affordable Housing Dev.	East Los Angeles
Castulo De La Rocha, CEO (Noticing)	5/16/13	AltaMed Medical Center	East Los Angeles
Ron Mukai, Civic Ctr. Plaza Property Owner	5/16/13	Conference Call	East Los Angeles
Cesar Chavez Business Owners	5/22/13	Moles La Tia Restaurant	Los Angeles
Maravilla Business Association	5/22/13	Cities Restaurant	East Los Angeles
Cesar Chavez Business Owners	5/22/13	Moles Latia Restaurant	East Los Angeles
Irwindale Chamber of Commerce	5/23/13	Irwindale Chamber Office	Irwindale
Maravilla Community Advisory Committee	5/30/13	Olive Garden Restaurant, Montebello	East Los Angeles
Lummis Festival	6/2/13	Heritage Square	Los Angeles/Highland Park
Fixing Angelenos Stuck in Traffic	6/3/13		Los Angeles
Pasadena Farmer's Market	6/4/13	Villa-Parke Center	Pasadena
Academia Avance	6/5/13	Academia Avance	Los Angeles/Highland Park
Baldwin Park City Council	6/5/13	City of Baldwin Park	Baldwin Park
LA32 Neighborhood Council - Board Mtg.	6/5/13	El Sereno Senior Center	Los Angeles/El Sereno
Historic Highland Park Neighborhood Council	6/6/13	6152 N. Figueroa Bl.	Los Angeles/Highland Park
Lincoln Heights Neighborhood Council	6/6/13	2530 Workman St.	Los Angeles/Lincoln Heights
Northeast LA Faith based Coalition	6/7/13	7th Day Adventist, Los Angeles	Northeast Los Angeles
Alma Family Services - Resources Fair	6/8/13	Centro Estrella	East Los Angeles
Highland Park Heritage Trust Board	6/10/13	840 N. Avenue 66	Los Angeles/Highland Park
Boyle Heights NC - Transportation Cmte.	6/11/13	2200 E. 1st Street	Los Angeles/Boyle Heights
Lincoln Heights NC - Land Use & Planning	6/12/13		Los Angeles/Lincoln Heights
Atwater Village Neighborhood Council	6/12/13	Christ's Church of Griffith Park	Los Angeles/Atwater Village
Women's 20th Century Club - Eagle Rock	6/13/13	5105 Hermosa Ave.	Los Angeles/Eagle Rock
Northeast Democratic Club	6/13/13	IATSE Local 80	Los Angeles/Northeast
Boyle Heights Farmers Market	6/14/13	Mariachi Plaza Station	Los Angeles/Boyle Heights
East Los Angeles Residents Association	6/14/13	Cities Restaurant	East Los Angeles
Kids Day Concert/Festival	6/15/13	Our Lady of Guadalupe School	Los Angeles/El Sereno
East LA Comm. Corp. - Tenants of Alta Vista	6/17/13	Alta Vista (3rd St. near Atlantic Station)	East Los Angeles
Cypress Park Neighborhood Council	6/18/13		Los Angeles/Cypress Park
El Monte City Council	6/18/13	City of El Monte	El Monte
Glassell Park Neighborhood Council	6/18/13	Glassell Park Comm. Center	Los Angeles/Glassell Park
Historic Highland Park Neighborhood Council	6/20/13	Highland Park Senior Center	Los Angeles/Highland Park
Lincoln Heights Neighborhood Council	6/20/13	Lincoln Heights Library Comm. Rm.	Los Angeles/Lincoln Heights
CHCADA Awareness Walk & Resource Fair	6/23/13	4801 E. 3rd Street	East Los Angeles
Arroyo Seco Neighborhood Council	6/24/13	Highland Park Senior Center	Los Angeles/Arroyo Seco
Highland Park Overlay Zone Board Meeting	6/25/13	Ramona Hall Recreation Center	Highland Park/Los Angeles
Eagle Rock Chamber of Commerce	6/25/13	Solheim Lutheran Home	Los Angeles/Eagle Rock
Boyle Heights Neighborhood Council Meeting	6/26/13	2839 E. 3rd Street	Los Angeles/Boyle Heights

Meeting Type	Date	Venue	City / Community
Celebrating Freedom	6/29/13	El Sereno Park	Los Angeles/El Sereno
East LA Fireworks Show	6/30/13	East Los Angeles Civic Center	East Los Angeles
Eagle Rock Music Festival	6/30/13	Colorado Street	Los Angeles/Eagle Rock
Arroyo Seco Neighborhood Council	7/1/13		Arroyo Seco/Los Angeles
City of San Gabriel City Council Meeting	7/2/13	City Council Chambers	San Gabriel
Arcadia City Council Meeting	7/2/13	City Council Chambers	Arcadia
July ACC Notification Drop-Offs	7/2/13	Duarte City Hall / Duarte Library	Duarte
Eagle Rock Neighborhood Council	7/2/13	The Coffee Table Restaurant	Eagle Rock/Los Angeles
Maravilla Community Advisory Committee	7/2/13	Mission Furniture, 5012 Whittier Blvd.	East Los Angeles
El Sereno Farmers Market	7/3/13	5466 Huntington Drive	Los Angeles
Annual Alhambra Fourth of July Event	7/4/13	East Los Angeles Civic Center	East Los Angeles
Free Movie Night, East Los Angeles	7/5/13	East Los Angeles Civic Center	East Los Angeles
Eagle Rock Neighborhood Council	7/2/13	Eagle Rock City Hall	Los Angeles/Eagle Rock
Free Movie Night	7/5/13	East Los Angeles Civic Center	East Los Angeles
Mt. Washington Home Owners Alliance	7/8/13	Carlin G. Smith Recreation Center	Mt. Washington/Los Angeles
Highland Park Heritage Trust Board Meeting	7/8/13		Highland Park/Los Angeles
Ana Marina Arroyo (Noticing)	7/9/13	Padres Comunitarios	East Los Angeles
El Sereno, LA-32 Neighborhood Council	7/10/13	El Sereno Senior Citizens Center	El Sereno/Los Angeles
Kiwanis Cub of Greater Highland Park	7/11/13	Milo Tr. Baptist Church Comm. Rm.	Highland Park/Los Angeles
City Terrace Coordinating Council	7/11/13	St. Lucy's	City Terrace
Gloria Chavez and Parents	7/11/13	4100 City Terrace Dr.	Los Angeles
Boyle Heights Farmers Market	7/12/13	Bailey St. at E. First St.	Boyle Heights/Los Angeles
Monterey Park Farmers Market	7/12/13	318 South Ramona Ave	Monterey Park
Maria Cordova (Noticing)	7/13/13	Diana's Bakery	Los Angeles
Martha Jimenez	7/13/13	Allsol Flower Shop	Los Angeles
East Los Angeles Farmers Market (Event)	7/13/13	East Los Angeles Civic Center	East Los Angeles
East Los Angeles Sail-A-Thon (Event)	7/13/13	East Los Angeles Civic Center	East Los Angeles
East Los Angeles Wheel Chair Wash	7/14/13	East Los Angeles Civic Center	East Los Angeles
East Los Angeles Residents Association	7/14/13	Cities Restaurant	East Los Angeles
Alhambra Farmers Market	7/14/13	Corner of Monterey & Bay State St.	Alhambra
Whittier Blvd. Merchants Association	7/15/13	Mission Furniture, 5012 Whittier Blvd.	East Los Angeles
Maravilla Business Persons Association	7/15/13	Corner of Monterey & Bay State St.	East Los Angeles
East Los Angeles Chamber of Commerce	7/15/13	Mission Furniture, 5012 Whittier Blvd.	East Los Angeles
Dean Flores, Work Force Edu. & Econ. Dev.	7/16/13	East Los Angeles College	East Los Angeles
Historic Highland Park Neighborhood Council	7/16/13	Highland Park Senior Center	Los Angeles/Highland Park
John Kennedy, Pasadena Council District 3	7/16/13	Euro Pane Café	Pasadena
South Pasadena City Council/Trans. Comm.	7/17/12	City Hall	South Pasadena
East Los Angeles Community Corporation	7/17/13	ELCC, Tenants of Alta Vista	Alta Vista/East Los Angeles
Huntington Memorial Hospital Roundtable	7/18/13	Office of Philanthropy and Public Affairs	Pasadena
California Institute of Technology (Hall Daily)	7/24/13	Caltech Athenaeum	Pasadena
School Board Member Monica Garcia (Staff)	7/25/13	Empowerment Congress	East Los Angeles
School Board Member Bennett Keyser (Staff)	7/25/13	Empowerment Congress	East Los Angeles
InnerCity Struggle	7/25/13	Empowerment Congress	East Los Angeles
Volunteers of East Los Angeles	7/25/13	Empowerment Congress	East Los Angeles
East Los Angeles Chamber of Commerce	7/25/13	Empowerment Congress	East Los Angeles
Whittier Merchants Association	7/25/13	Empowerment Congress	East Los Angeles
Maravilla Business Association	7/25/13	Empowerment Congress	East Los Angeles
East Los Angeles Residents Association	7/25/13	Empowerment Congress	East Los Angeles
City Terrace Homeowners Association	7/25/13	Empowerment Congress	East Los Angeles
Altamed	7/25/13	Empowerment Congress	East Los Angeles

Meeting Type	Date	Venue	City / Community
Bienvenidos	7/25/13	Empowerment Congress	East Los Angeles
Eastmont Community Center	7/25/13	Empowerment Congress	East Los Angeles
The Tournament of Roses	7/30/13	Wriggley Estate	Pasadena
Taste of East Los Angeles	9/7/13	East LA Civic Center	East Los Angeles
Monitor S. Pasadena CC Mtg. w/Antonovich	9/25/13	Arroyo Seco Golf Course	South Pasadena
Pasadena City College	9/25/13	PCC, Building C, Room 221	Pasadena
Empowerment Congress	9/26/13	4700 Whittier Boulevard, 2nd Floor	East Los Angeles
East LA Rotary Club Announcement	10/1/13	T.B.D.	East Los Angeles
Monitor Carol Lu/So. Pasadena Briefing	10/11/13	Mike & Anne's, 1040 Mission St.	South Pasadena
Empowerment Congress	10/24/13	T.B.D.	East Los Angeles
Irwindale Chamber of Commerce	10/24/13	SCE Building	Irwindale
Rose Bowl Operating Company Briefing	10/30/13	Rose Bowl Stadium Admin. Offices	Pasadena
Pasadena City College Homecoming Event	10/5/13	PCC Quad	Pasadena
Norton Simon Museum	11/14/13	Norton Simon Museum Office	Pasadena
San Gabriel Valley Economic Partnership	7/23/14	4900 Rivergrade Road	Irwindale
Irwindale Chamber of Commerce	7/24/14	SCE Building	Irwindale
Pasadena - Breakfast with Art Leahy	6/3/14	Taix Restaurant	Los Angeles
South Pasadena - Breakfast with Art Leahy	6/3/14	Taix Restaurant	Los Angeles
La Canada Flintridge - Breakfast with Art Leahy	6/3/14	Taix Restaurant	Los Angeles
Glendale - Breakfast with Art Leahy	6/3/14	Taix Restaurant	Los Angeles
Sierra Madre - Breakfast with Art Leahy	6/3/14	Taix Restaurant	Los Angeles
San Gabriel Valley Economic Partnership	7/23/14	Rivergrade Road Business Park	Irwindale
Irwindale Chamber of Commerce	7/24/14	SCE Building	Irwindale
Los Angeles Chamber of Commerce	7/25/14	Breakfast & Pancakes Speaker Series	Downtown Los Angeles
Durarte - Craig Hensley, Com. Dev. Dir.	8/7/14	Highland Park Conference Room	Metro Headquarters
East LA - Erica Juarez, Asst. Field Deputy	8/8/14	Highland Park Conference Room	Metro Headquarters
El Monte - Gabriel Gonzalez, Asst. City Mgr.	8/9/14	Highland Park Conference Room	Metro Headquarters
Monterey Park - Paul Talbot, City Manager	8/10/14	Highland Park Conference Room	Metro Headquarters
San Gabriel - Stefve Preston, City Manager	8/11/14	Highland Park Conference Room	Metro Headquarters
San Marino - John Schaefer, City Manager	8/12/14	Highland Park Conference Room	Metro Headquarters
Temple City - Don Penman, Int. City Manager	8/13/14	Highland Park Conference Room	Metro Headquarters
Chinese Moon Festival (Booth)	8/23/14	Valley Boulevard Street Fair	Rosemead
East Los Angeles Empowerment Congress	8/28/14	ELA Civic Center "Fish Bowl"	East Los Angeles
Maravilla Community Advisory Committee	9/2/14	Centro Maravilla	East Los Angeles
El Sereno Historical Society Presentation	9/8/14	2486 Endicott St., LA 90032	El Sereno
El Sereno Senior Center Presentation	9/18/14	El Sereno Senior Center	El Sereno
CicLAVia (Booth)	10/5/14	Mariachi Plaza Hub	Boyle Heights
Chinese American Citizens Alliance	10/6/14	Empress Harbor Restaurant	Monterey Park
Briefing with Ron Mukai	10/7/14	Coffee Bean, 209 S. Mednik Ave.	East Los Angeles
East Los Angeles Empowerment Congress	10/26/14	4700 Whittier Boulevard, 2nd Floor	East Los Angeles
LA 90032 Neighborhood Council	12/3/14	El Sereno Senior Citizens Center	El Sereno, Los Angeles
East Los Angeles Advisory Group	12/9/14	Eastmont Community Center	East Los Angeles
Alhambra Rotary Club	12/16/14	700 S. Almansor Street	Alhambra
Briefing with Father Morretta	12/17/15	Resurrection Church	East Los Angeles
East Los Angeles Advisory Group	1/19/15	East Los Angeles Civic Center Library	East Los Angeles

Door-to-Door Flyer Distribution for Meeting Announcements

Distributed 13, 200 Flyers	5/12/12	Entire 90032 Zip Code	El Sereno
Distributed 2,700 Flyers	5/26/12	Properties with frontage on Ave. 64	Pas/Highland Park
Distributed 2,500 Save the Date Post Cards	7/8/13	Properties with frontage on Ave. 64	Pas/Highland Park

Meeting Type	Date	Venue	City / Community
Distributed 300 Save the Date Post Cards	7/8/13	Midwick Park Tract	Alhambra
Distributed 1,000 Save the Date Post Cards	7/8/13	Emery Park Tract	El Sereno/Alhambra
Distributed 500 Save the Date Post Cards	7/8/13	Maycrest and Lowell Ave.	El Sereno
Distributed 6,000 Flyers Announcing 8/26 Mtg.	8/19/13	90022 Zip Code	East Los Angeles
Distributed 6,000 Flyers Announcing 10/16 Mtg.	10/2/13	90022 Zip Code	East Los Angeles

Noticing

May 2012 ACC Open House Notification (emails, notice drop-offs, announcements)

Altamed Medical Center	East Los Angeles
Self Help Graphics	East Los Angeles
TELACU	East Los Angeles
Obregon Park Recreation Center	East Los Angeles
Starbucks - 3rd Gage	East Los Angeles
Chicana Service Action Center	East Los Angeles
Anthony Quinn Library	East Los Angeles
East Los Angeles College	East Los Angeles
East Los Angeles Community Youth Center	East Los Angeles
Maravilla Community Center	East Los Angeles
LA County Community and Senior Services	East Los Angeles
East Los Angeles County Counter	East Los Angeles
Roybal Health Center	East Los Angeles
Para Los Niños	East Los Angeles
Coffee Bean & Tea Leaf (ELA)	East Los Angeles
King Taco	East Los Angeles
VELA	East Los Angeles
Centro Estrella	East Los Angeles
La Causa, Inc.	East Los Angeles
Bienvenidos	East Los Angeles
East Los Angeles Chamber of Commerce	East Los Angeles

Jan. 2013 ACC Open House Notification (emails, notice drop-offs, announcements)

Anthony Quinn Library	East Los Angeles
City Terrance Library	East Los Angeles
ELA Performing Arts Academy at Esteban	East Los Angeles
ELA Renaissance Academy at Esteban Torres HS	East Los Angeles
Engineering and Technology Academy at Esteban	East Los Angeles
Humanities Academy of Art and Technology at Esteban	East Los Angeles
Our Lady of Guadalupe Catholic Church (Hammel)	East Los Angeles
Our Lady of Guadalupe Sanctuary	East Los Angeles
Our Lady of Lourdes	East Los Angeles
Ramona Opportunity HS, Social Justice Leadership Academy at Esteban Torres HS	East Los Angeles
Alphonso B. Perez Special Education Center	East Los Angeles
Costello Senior Dining Center	East Los Angeles
David Wark Griffith Middle School	East Los Angeles
ELA Library	East Los Angeles

Meeting Type	Date	Venue	City / Community
James A. Garfield Senior High School			East Los Angeles
Monterey Continuation			East Los Angeles
Our Lady of Victory Catholic Church			East Los Angeles
Ramon Garcia Recreation Center			East Los Angeles
Robert Louis Stevenson Middle School			East Los Angeles
Kipp Los Angeles College Preparatory School			East Los Angeles
July 1, 2013 ACC Open House Notification Activities (emails, notice drop-offs, announcements)			Various locations
Crowell Library San Marino			
Bruggemeyer Library, Monterey Park			
Azusa Library			
Cities College			
Monrovia City Hall			
Sierra Madre Library			
Sierra Madre City Hall			
Alhambra Chamber of Commerce			
Alhambra Latino Association of America			
Alhambra Teachers Association			
Alhambra Democratic Club			
710 Coalition			
Monterey Park Bus. Improvement District			
Monterey Park Chamber of Commerce			
Monterey Park Rotary Club			
Monterey Park Kiwanis Club			
American Legion Post 397 Monterey Park Lions Club			
Rosemead Chamber of Commerce			
West San Gabriel Valley Assoc. of Realtors			
La Casa de San Gabriel Community Center			
San Gabriel Chamber of Commerce			
Chinese Club of San Marino			
San Marino Chamber of Commerce			
Arcadia Association of Realtors			
Anthony Quinn Library			
City Terrace Library			
Our Lady of Guadalupe Catholic Church (Hammel)			
Our Lady of Lourdes Catholic Church			
Our Lady of Guadalupe Sanctuary			
East Los Angeles Library			
Robert Louis Stevenson Library			
San Francisco Catholic Church			
July 2013 ACC Open House Phone Calls			
Alhambra			
Monterey Park			
Rosemead			
Arcadia			
Temple City			
El Monte			

Meeting Type	Date	Venue	City / Community
South El Monte			
San Marino			
San Gabriel			
ELA Residents Association - Kristie Hernandez			East Los Angeles
La Causa - Celina Perez			East Los Angeles
Mothers of ELA - Dianna Del Pozo-Mora			East Los Angeles
Anthony Quinn Library			East Los Angeles
Azusa City Hall			East Los Angeles
City Terrace Library			East Los Angeles
Our Lady of Guadalupe Catholic Church (Hammel)			East Los Angeles
Our Lady of Guadalupe Sanctuary			East Los Angeles
Our Lady of Lourdes Catholic Church			East Los Angeles
East Los Angeles Library			East Los Angeles
Our Lady of Solitude Catholic Church			East Los Angeles
Robert Louis Stevenson Library			East Los Angeles
St. Alphonsus Catholic Church			East Los Angeles
San Francisco Catholic Church			East Los Angeles
ELA Community Corporation - Maria Cabildo	7/1/13	ELA Community Corp. Offices	Los Angeles
Night Crawlers	7/1/13	Ramona Hall	Los Angeles
LA Bike Coalition - Beto Martinez	7/2/13	Maravilla community Comm. Center	East Los Angeles
Maravilla Advisory Committee - Yolanda Duarte	7/2/13	City Council Chambers	San Gabriel
Blanchard MASH	7/2/13	City Council Chambers	Arcadia

East LA Community Specific Info Session # 2	10/16/13		
Noticing:			
Email Blast	9/16/13		East Los Angeles
Beleveder Comet News Ad	10/9/13		East Los Angeles
Door-to-Door Flyer Distribution (6,000)	10/7/2013		East Los Angeles