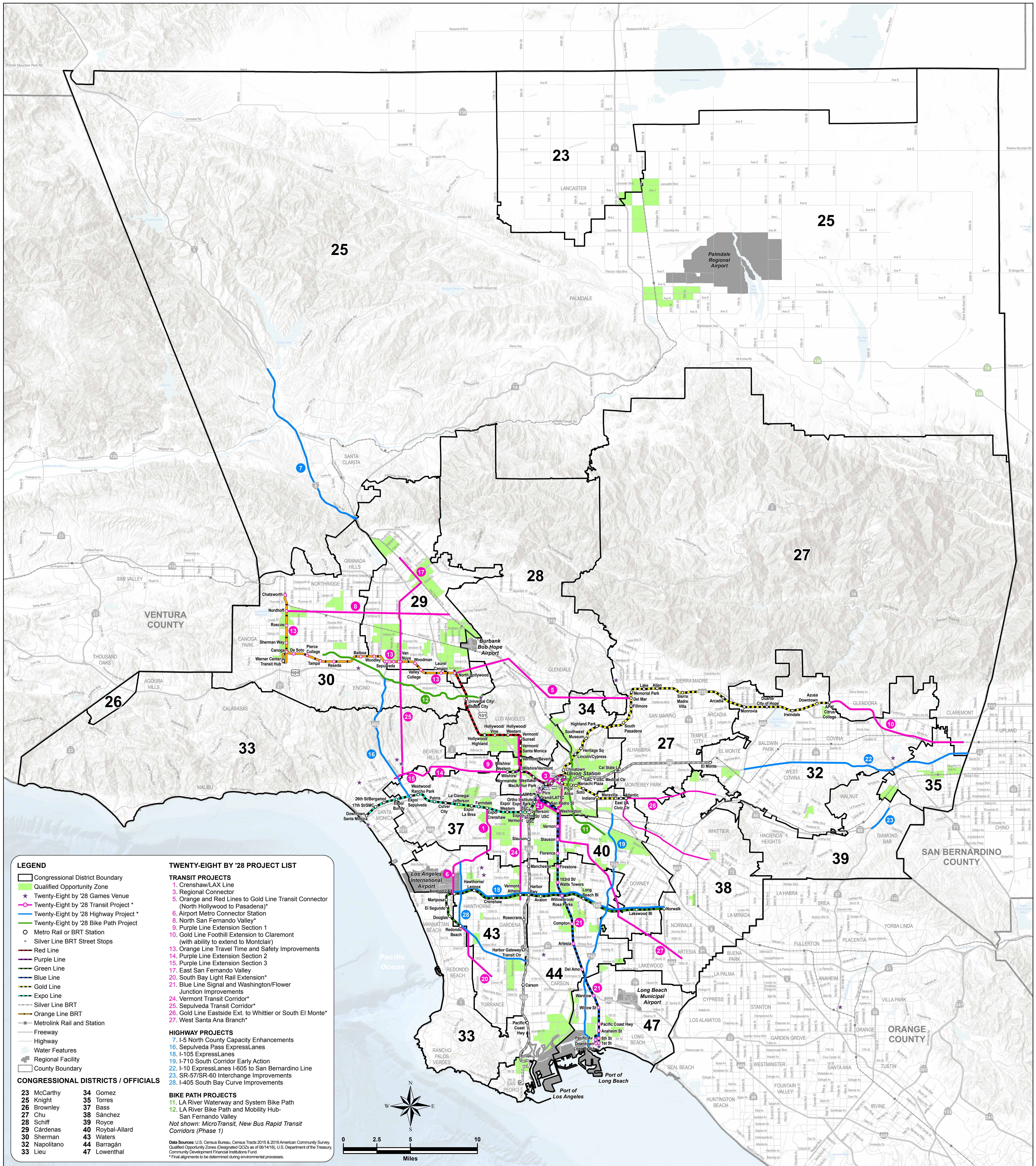




Metro Twenty-Eight by '28 Transportation Projects and Qualified Opportunity Zones in Los Angeles County



- LEGEND**
- Congressional District Boundary
 - Qualified Opportunity Zone
 - ★ Twenty-Eight by '28 Games Venue
 - Twenty-Eight by '28 Transit Project *
 - Twenty-Eight by '28 Highway Project *
 - Twenty-Eight by '28 Bike Path Project
 - Metro Rail or BRT Station
 - Silver Line BRT Street Stops
 - Red Line
 - Purple Line
 - Green Line
 - Blue Line
 - Gold Line
 - Expo Line
 - Silver Line BRT
 - Orange Line BRT
 - Metrolink Rail and Station
 - Freeway
 - Highway
 - Water Features
 - Regional Facility
 - County Boundary

- TWENTY-EIGHT BY '28 PROJECT LIST**
- TRANSIT PROJECTS**
1. Crenshaw/LAX Line
 2. Regional Connector
 3. Orange and Red Lines to Gold Line Transit Connector (North Hollywood to Pasadena)
 4. Airport Metro Connector Station
 5. North San Fernando Valley
 6. Purple Line Extension Section 1
 7. Gold Line Foothill Extension to Claremont (with ability to extend to Montclair)
 8. Orange Line Travel Time and Safety Improvements
 9. Purple Line Extension Section 2
 10. Purple Line Extension Section 3
 11. East San Fernando Valley
 12. South Bay Light Rail Extension*
 13. Blue Line Signal and Washington/Flower Junction Improvements
 14. Vermont Transit Corridor*
 15. Sepulveda Transit Corridor*
 16. Gold Line Eastside Ext. to Whittier or South El Monte*
 17. West Santa Ana Branch*
- HIGHWAY PROJECTS**
18. I-5 North County Capacity Enhancements
 19. Sepulveda Pass ExpressLanes
 20. I-105 ExpressLanes
 21. I-710 South Corridor Early Action
 22. I-10 ExpressLanes I-605 to San Bernardino Line
 23. SR-57/SR-60 Interchange Improvements
 24. I-405 South Bay Curve Improvements
- BIKE PATH PROJECTS**
25. LA River Waterway and System Bike Path
 26. LA River Bike Path and Mobility Hub-San Fernando Valley
- Not shown: MicroTransit, New Bus Rapid Transit Corridors (Phase 1)*

- CONGRESSIONAL DISTRICTS / OFFICIALS**
- | | |
|---------------|------------------|
| 23 McCarthy | 34 Gomez |
| 25 Knight | 35 Torres |
| 26 Brownley | 37 Bass |
| 27 Chu | 38 Sánchez |
| 28 Schiff | 39 Royce |
| 29 Cárdenas | 40 Roybal-Allard |
| 30 Sherman | 43 Waters |
| 32 Napolitano | 44 Barragán |
| 33 Lieu | 47 Lowenthal |

Data Sources: U.S. Census Bureau, Census Tracts 2015 & 2016 American Community Survey, Qualified Opportunity Zones (Designated QOZs as of 06/14/18), U.S. Department of the Treasury, Community Development Financial Institutions Fund
 * Final alignments to be determined during environmental processes.

