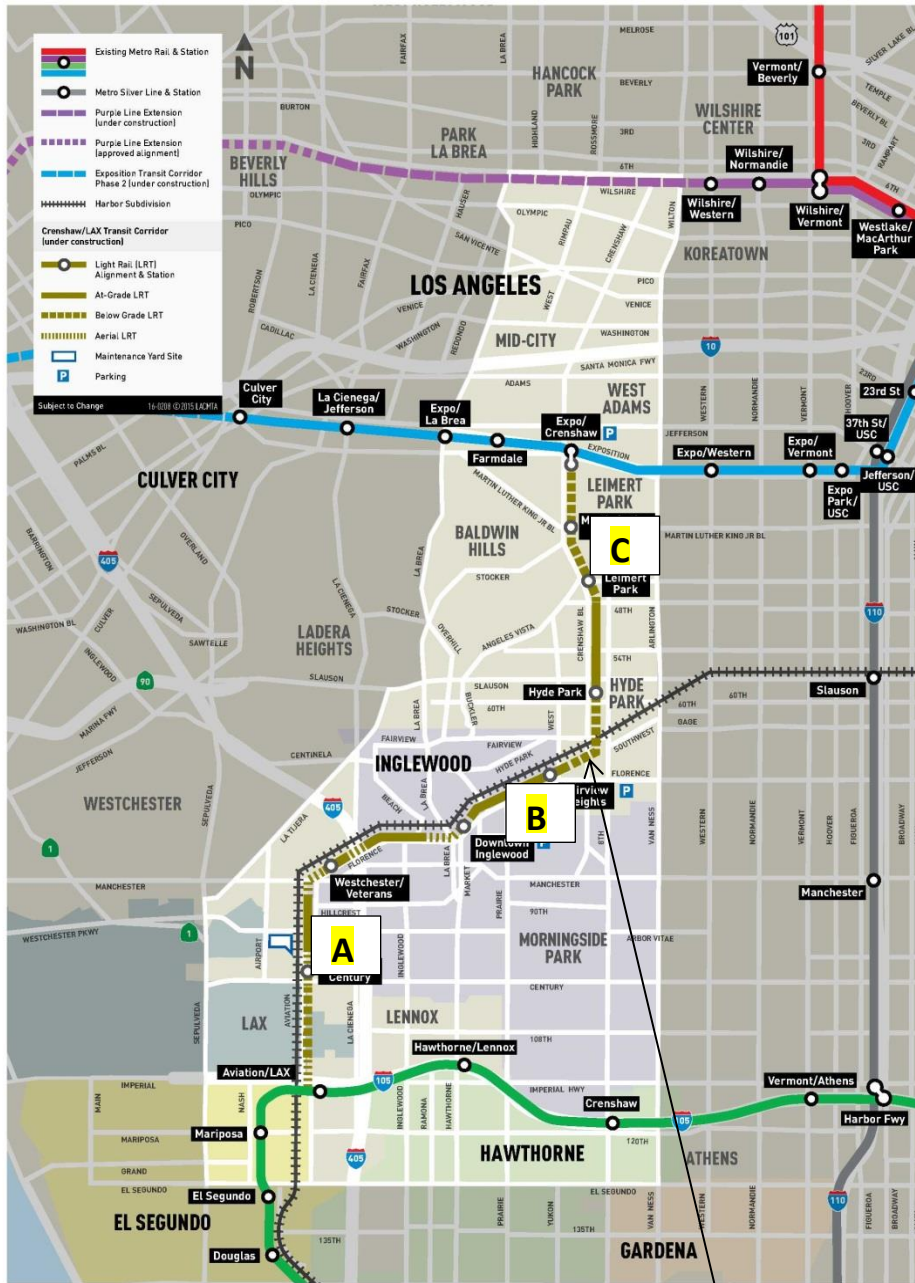


# CRENSHAW/LAX PHOTOGRAPHIC UPDATE

December 1, 2018

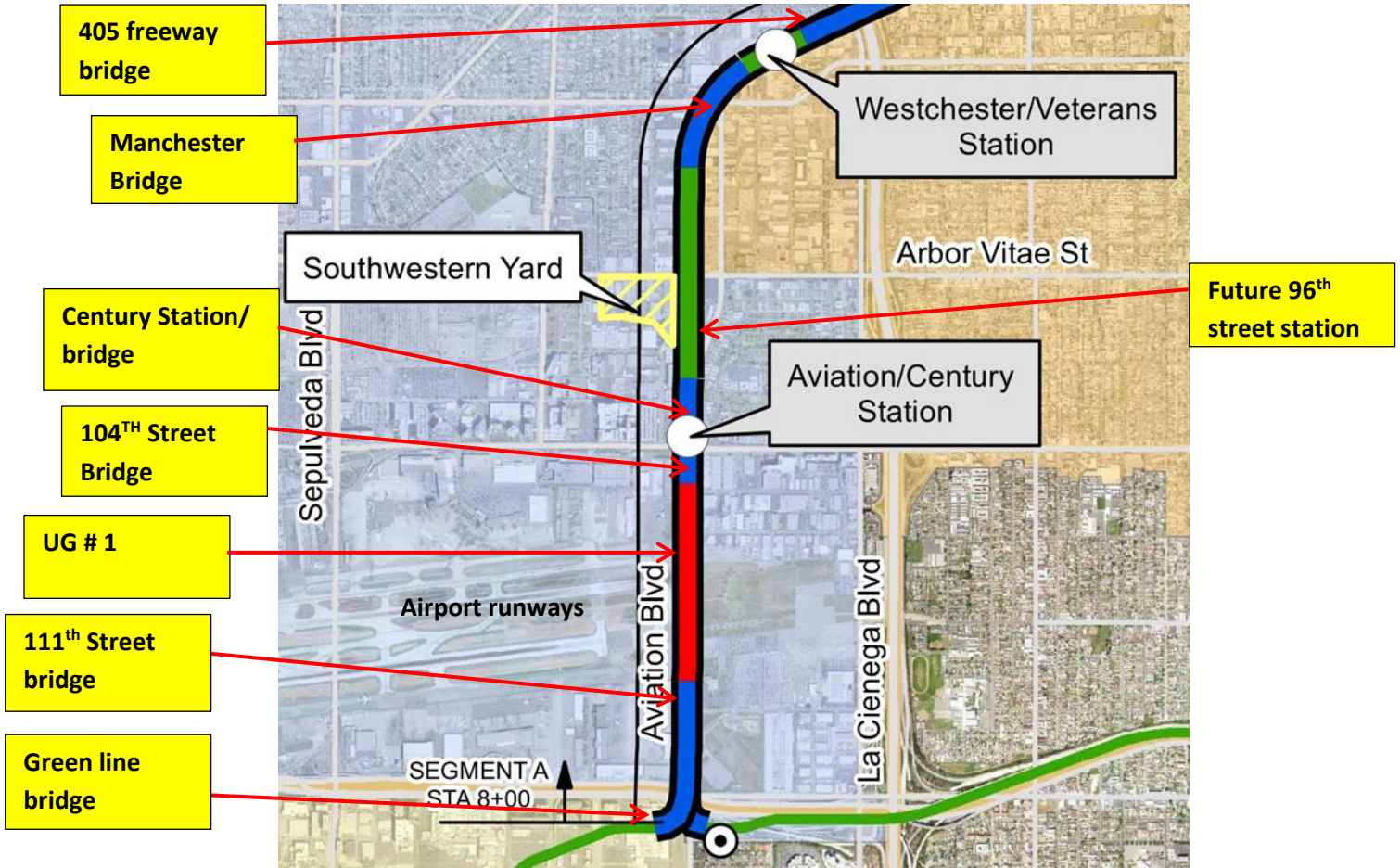
## Crenshaw/LAX Transit Project



- 8.5 miles Light Rail
- 8 Stations
- \$2,058.0 Million (Board approved revised LOP)

# CRENSHAW/LAX PHOTOGRAPHIC UPDATE

## Segment A



# CRENSHAW/LAX PHOTOGRAPHIC UPDATE



UG1- Anchor bolt installation as per RFI #2568A at UG-1 from sta. 42+00 to 45+00.



UG1- UG-1 anchor bolt installation as per NDC #369.

# CRENSHAW/LAX PHOTOGRAPHIC UPDATE



AVIATION/CENTURY STATION- Glass layout for the Aviation Station ticket kiosk.

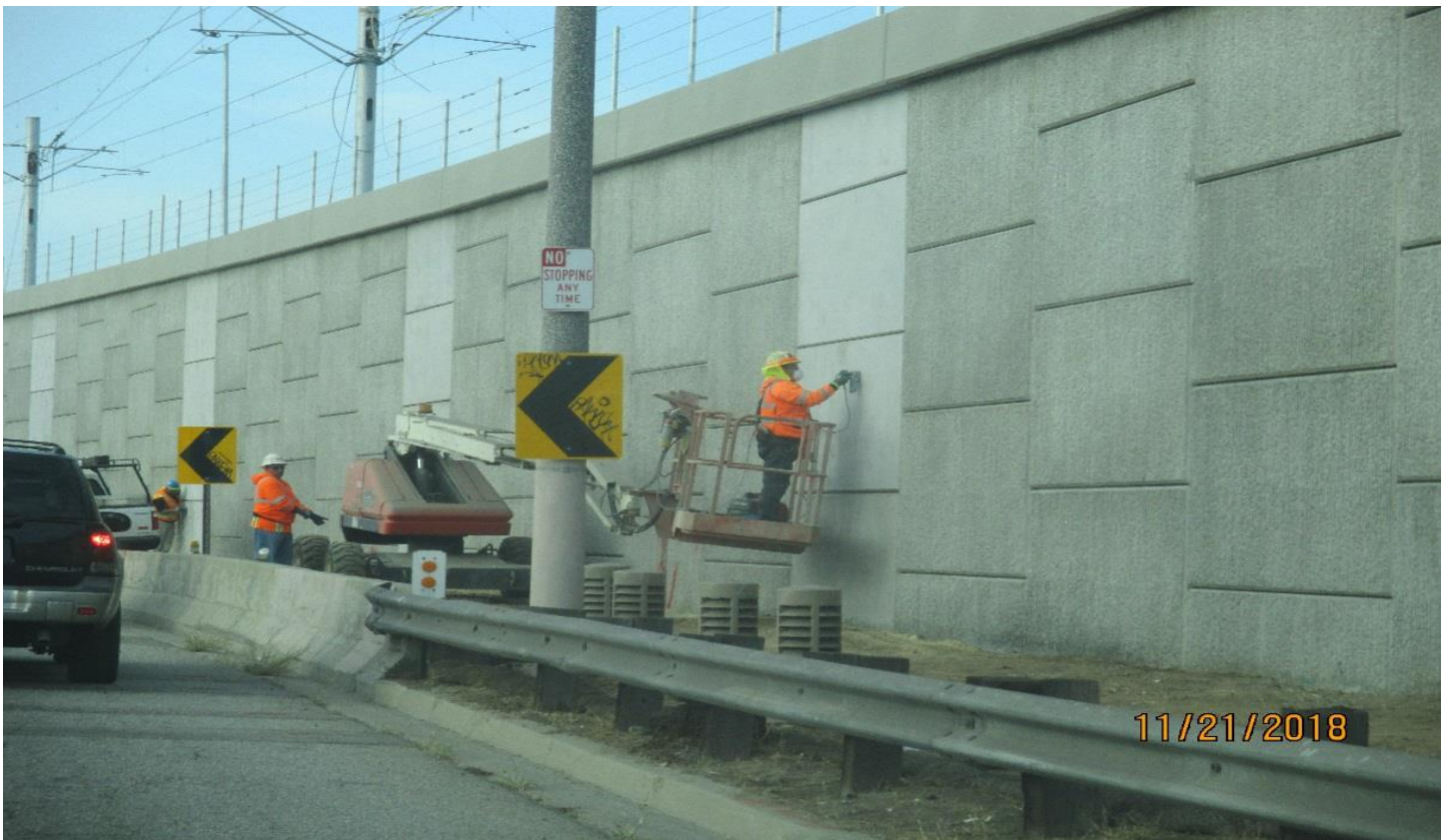


AVIATION/CENTURY STATION- Glass layout for the Aviation Station ticket kiosk.

# CRENSHAW/LAX PHOTOGRAPHIC UPDATE

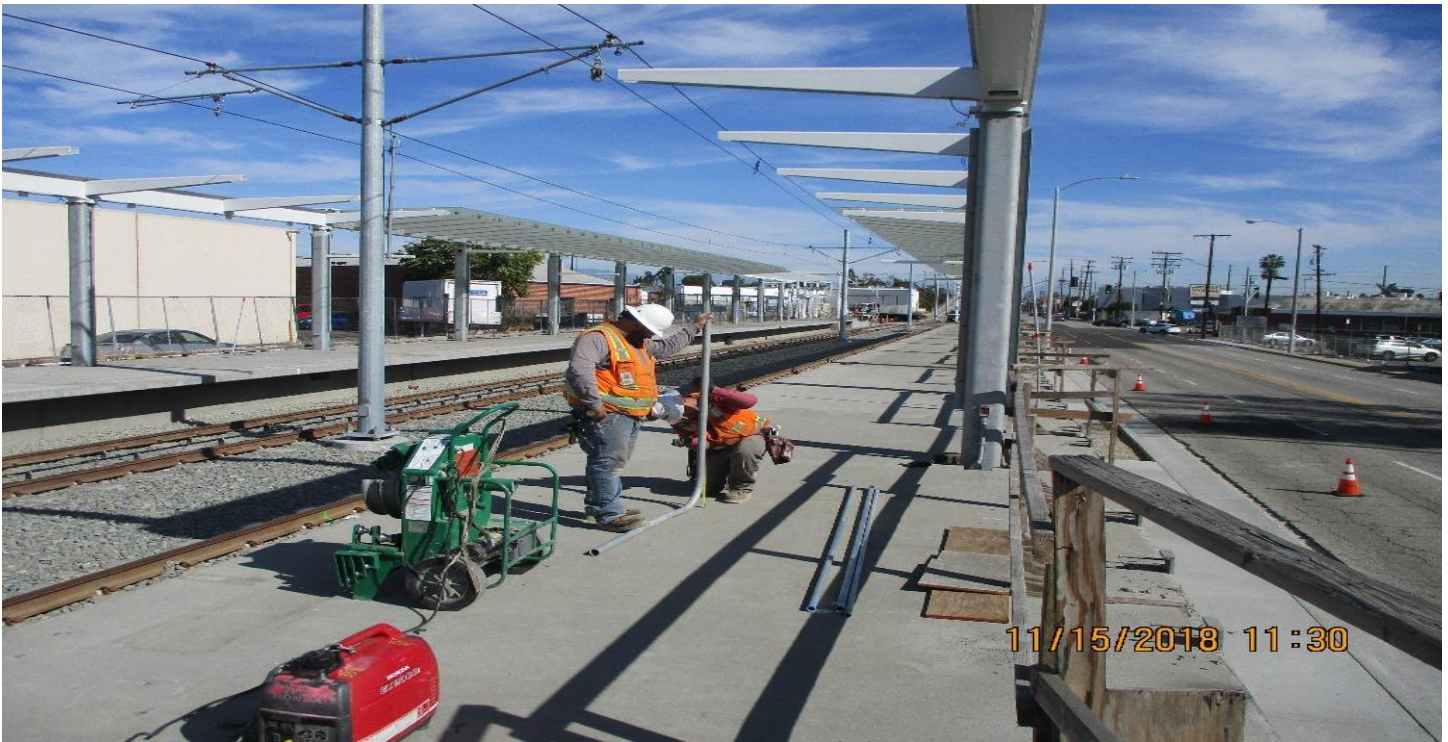


MSE 111L&R- Contour grading for the SB side of RW #111.

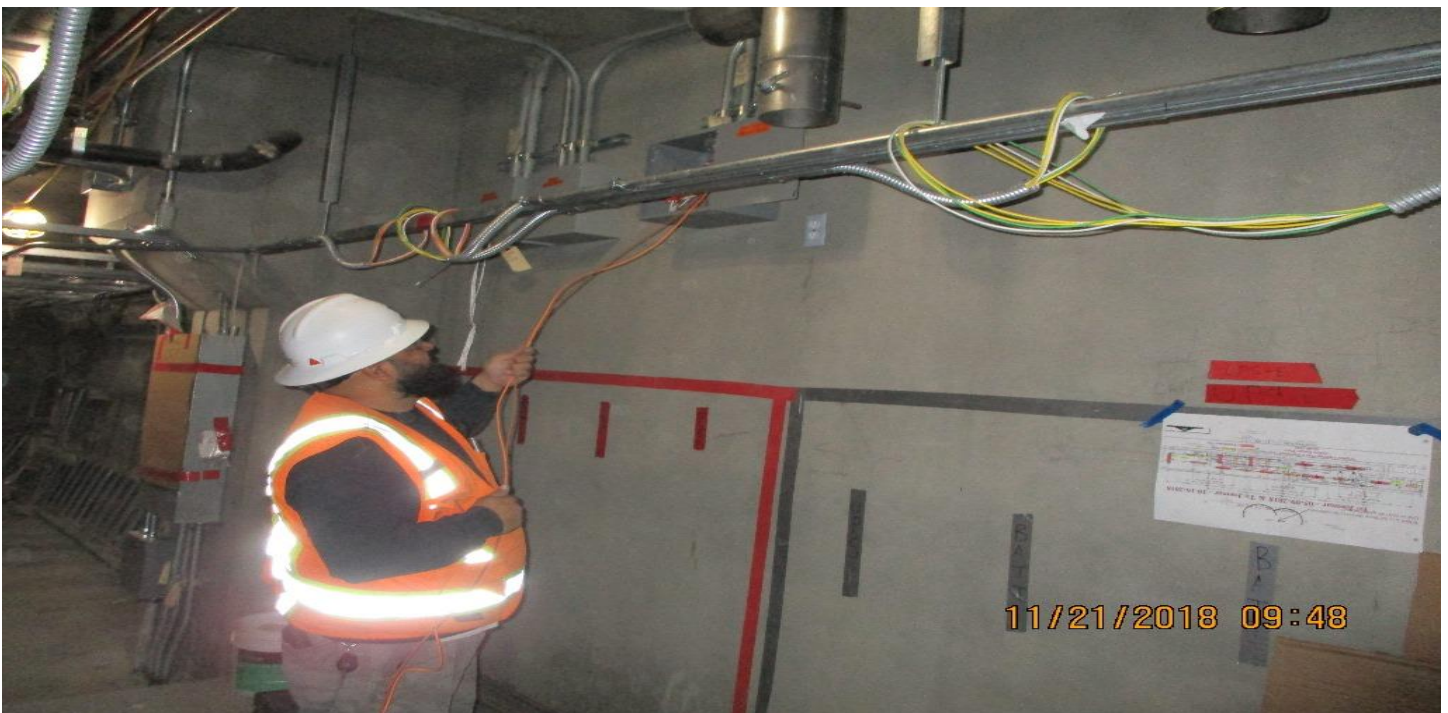


MSE 122 L&R- Concrete finish work for the NB side of RW #122

# CRENSHAW/LAX PHOTOGRAPHIC UPDATE



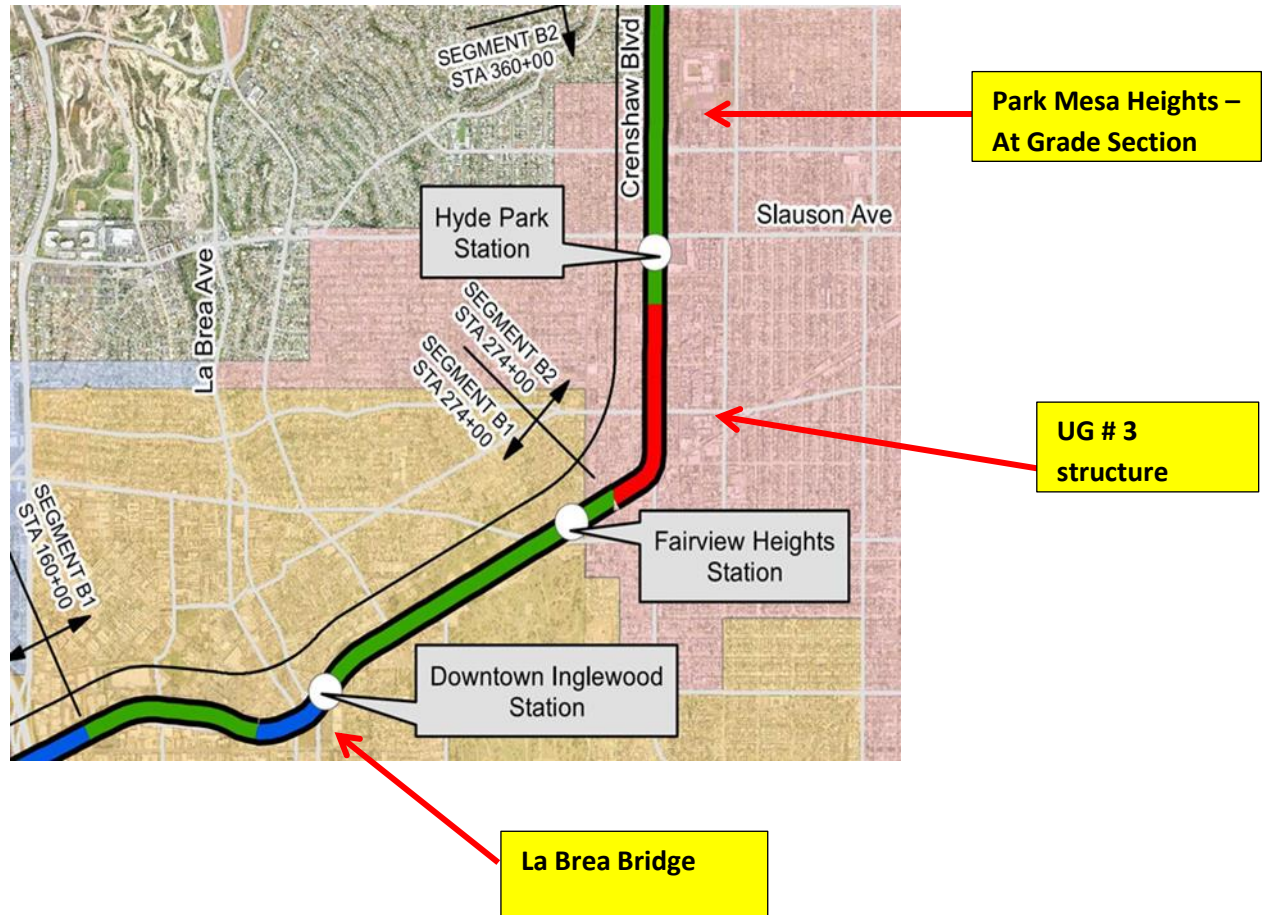
**WESTCHESTER STATION-** Bending conduit for CRP Panel in the TC&C room at the Westchester Station.



**WESTCHESTER STATION -** Pulling branch circuits in TC&C Room at the Westchester Station.

# CRENSHAW/LAX PHOTOGRAPHIC UPDATE

## Segment B



# CRENSHAW/LAX PHOTOGRAPHIC UPDATE



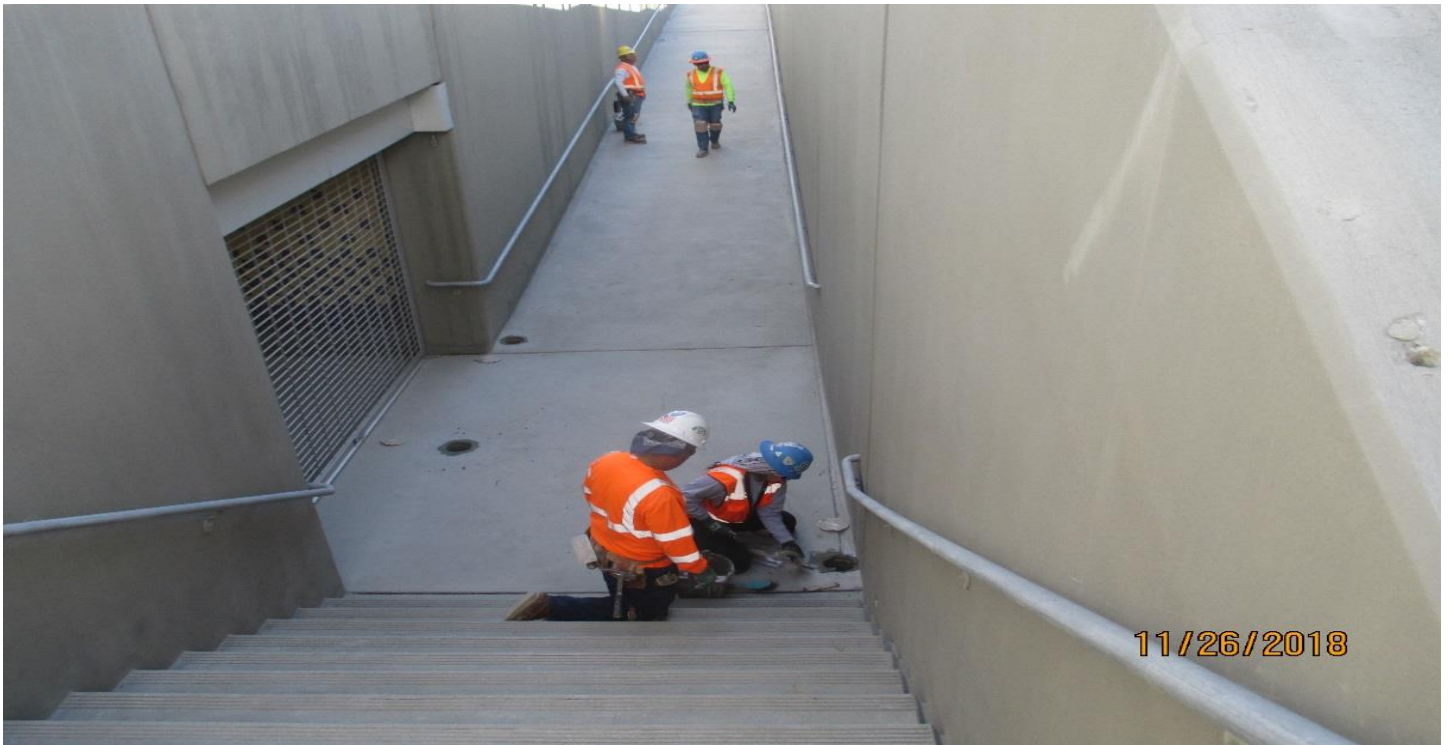
(AG-7) FCBC PED UP- Prepping to fog the concrete finish of the NB side of the FCBC walkway.



(AG-7) FCBC PED UP- Grinding the burrs from the FCBC walkway underpass hand rails.



# CRENSHAW/LAX PHOTOGRAPHIC UPDATE



(AG-7) FCBC PED UP- Concrete finish work at the FCBC walkway underpass.



(AG-7) FCBC PED UP- Finish concrete and steel hand rail work for the SB side of the FCBC.

# CRENSHAW/LAX PHOTOGRAPHIC UPDATE



B1 GUIDEWAY - B1 Guideway at High St. to West Sta. T1 crossover.



B1 GUIDEWAY - B1 Guideway between High St. and West Station placement of concrete ties for T1-T2 crossover.

# CRENSHAW/LAX PHOTOGRAPHIC UPDATE



**FAIRVIEW HEIGHTS STATION** - Excavating for a new catch basin at the Fairview Station.



**FAIRVIEW HEIGHTS STATION** - Excavating and laying 12" sub drain line at the Fairview Station.

# CRENSHAW/LAX PHOTOGRAPHIC UPDATE



TPSS- TPSS #1. Cables from metering gear to A01 have been hi-potted, terminated, & now being landed.

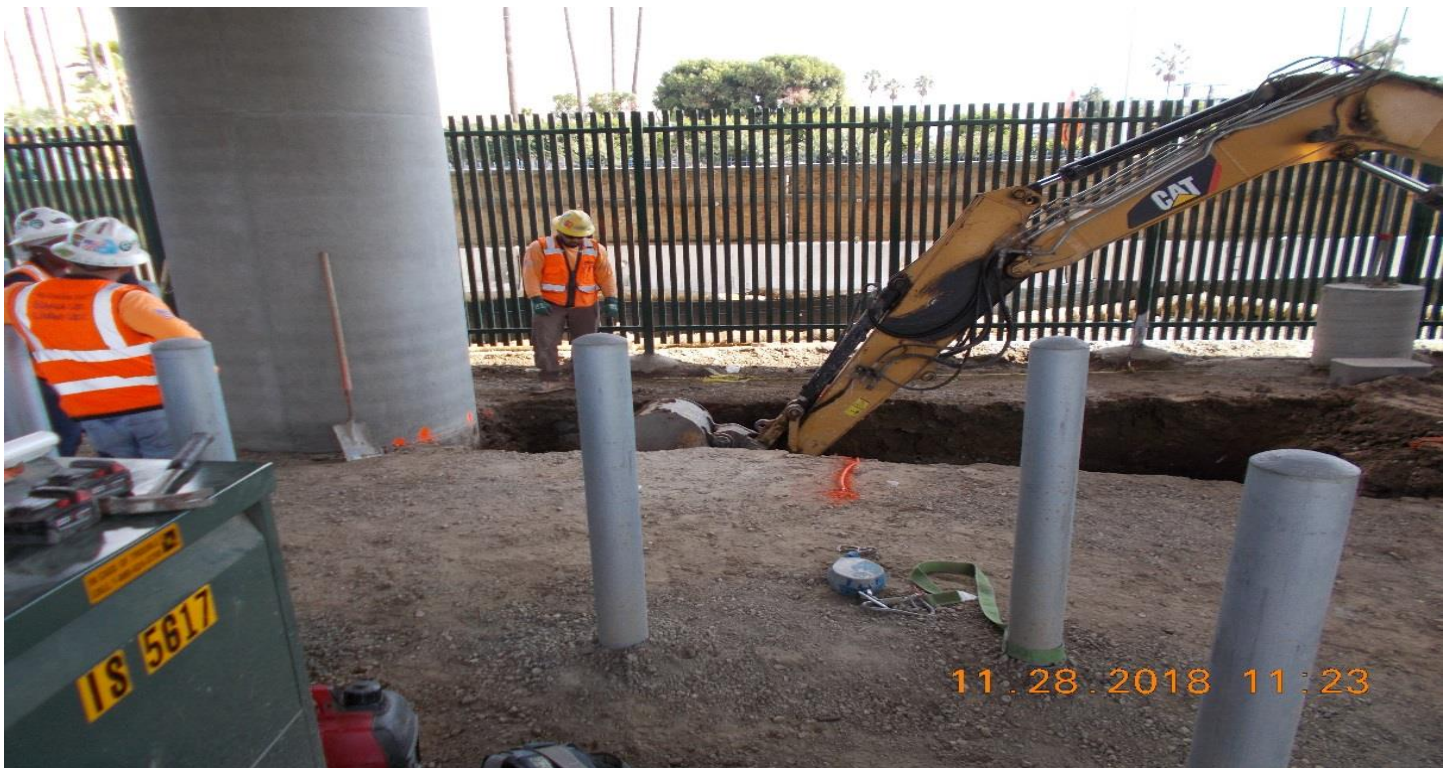


TPSS- TPSS #1. Metering gear Field Acceptance Test (FAT) testing by N.E.T.E

# CRENSHAW/LAX PHOTOGRAPHIC UPDATE



TPSS- TPSS #2. WSCC potholing for negative returns adjustment design change.



TPSS- TPSS #2. WSCC excavating for negative returns design change.

# CRENSHAW/LAX PHOTOGRAPHIC UPDATE



TPSS- TPSS #2. WSCC continued with excavation and added shoring to the trench.



UG3 - Concrete placement for roof section P63.

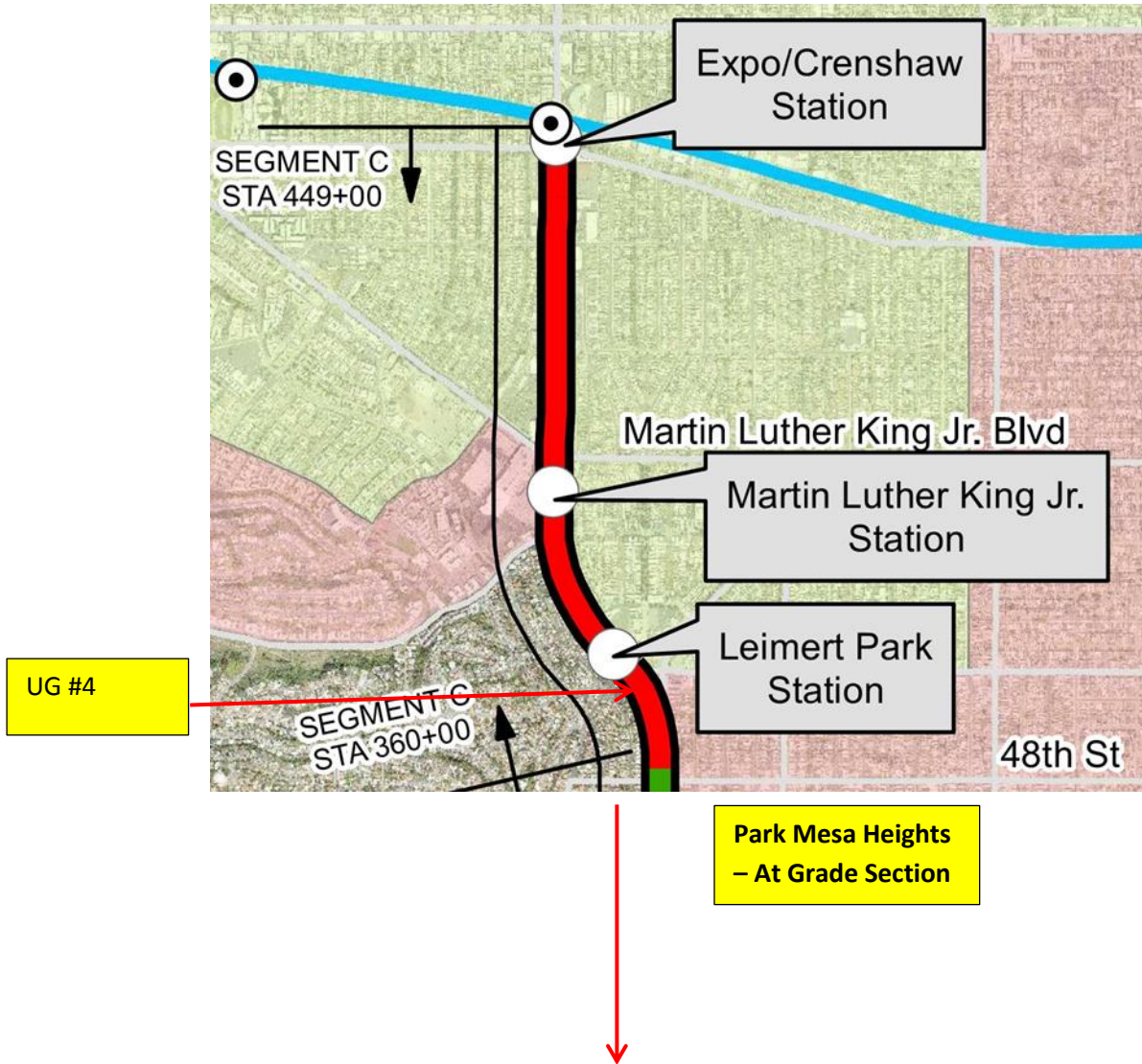
# CRENSHAW/LAX PHOTOGRAPHIC UPDATE



**UG3** - Installation of rebar for the barrier wall on the above the U-channel walls between P2 and P-11.

# CRENSHAW/LAX PHOTOGRAPHIC UPDATE

## Segment C





# CRENSHAW/LAX PHOTOGRAPHIC UPDATE



UG4 – Southbound tunnel looking north (No change since the 15th progress photos)



UG4 -- Tracks at the south portal looking south (No change since the 15th progress photos)

# CRENSHAW/LAX PHOTOGRAPHIC UPDATE



**LEIMERT PARK STATION** – Concrete placement for Stair #1 at the entrance structure.



**LEIMERT PARK STATION** – Construction of wall at North Emergency Exit #2.

# CRENSHAW/LAX PHOTOGRAPHIC UPDATE



**LEIMERT PARK STATION** – Concrete placement of equipment pads at Aux Power Room North.

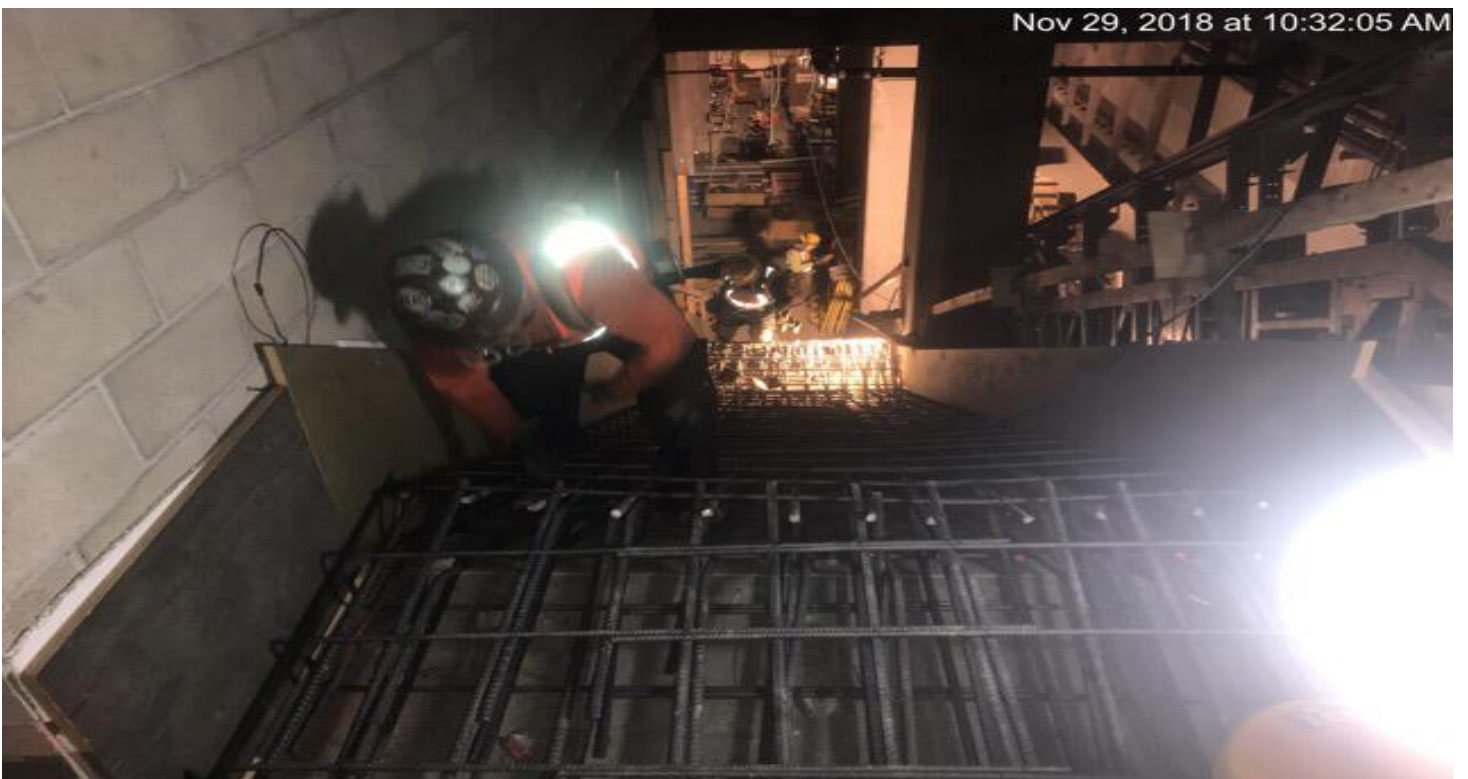


**LEIMERT PARK STATION** – Installation of CMU at ventilation duct niche south of Emergency stair #1 at the concourse level.

# CRENSHAW/LAX PHOTOGRAPHIC UPDATE



MARTIN LUTHER KING JR. STATION Installation of downstands above the platform.



MARTIN LUTHER KING JR. STATION- Installation of rebar at Stair #2 from the platform to concourse level.

# CRENSHAW/LAX PHOTOGRAPHIC UPDATE



**MARTIN LUTHER KING JR. STATION-** Concrete placement for equipment pads in Aux Power Room North at concourse level.



**MARTIN LUTHER KING JR. STATION-** Placement of slurry backfill around Emergency Vent South.

# CRENSHAW/LAX PHOTOGRAPHIC UPDATE

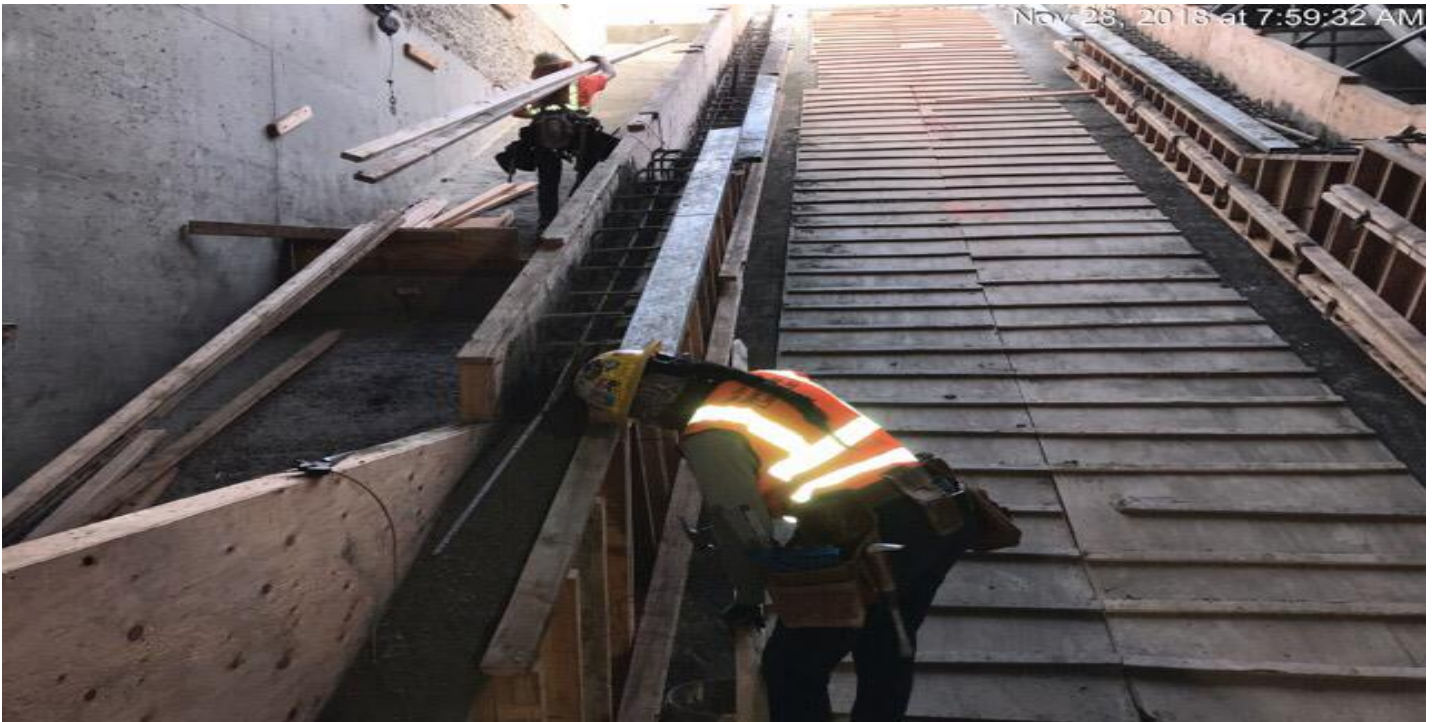


**EXPOSITION/CRENSHAW STATION – Concrete placement for Emergency Exit Stairs #3**

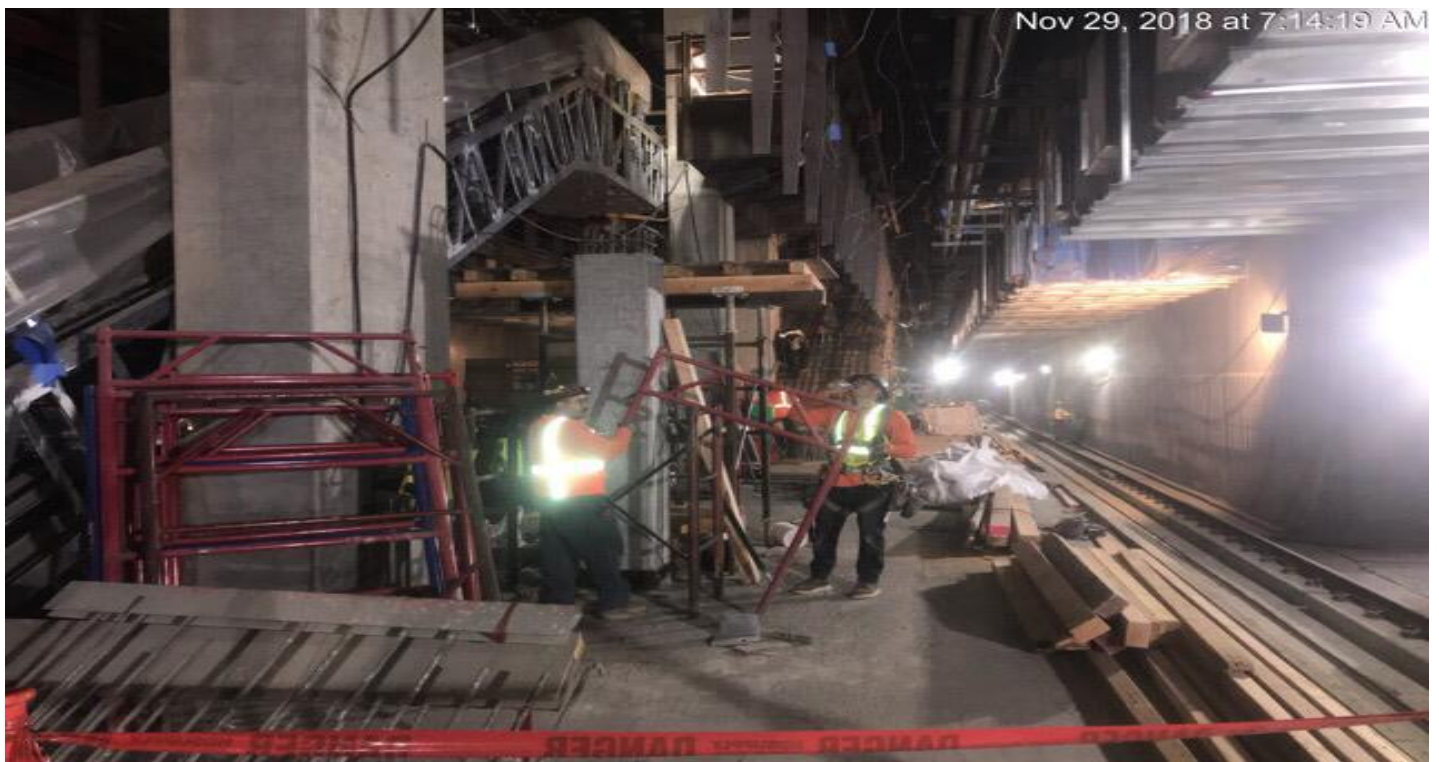


**EXPOSITION/CRENSHAW STATION – Installation of formwork for plaza wall R9.**

# CRENSHAW/LAX PHOTOGRAPHIC UPDATE



**EXPOSITION/CRENSHAW STATION** – Construction of stem walls at the main plaza staircase.

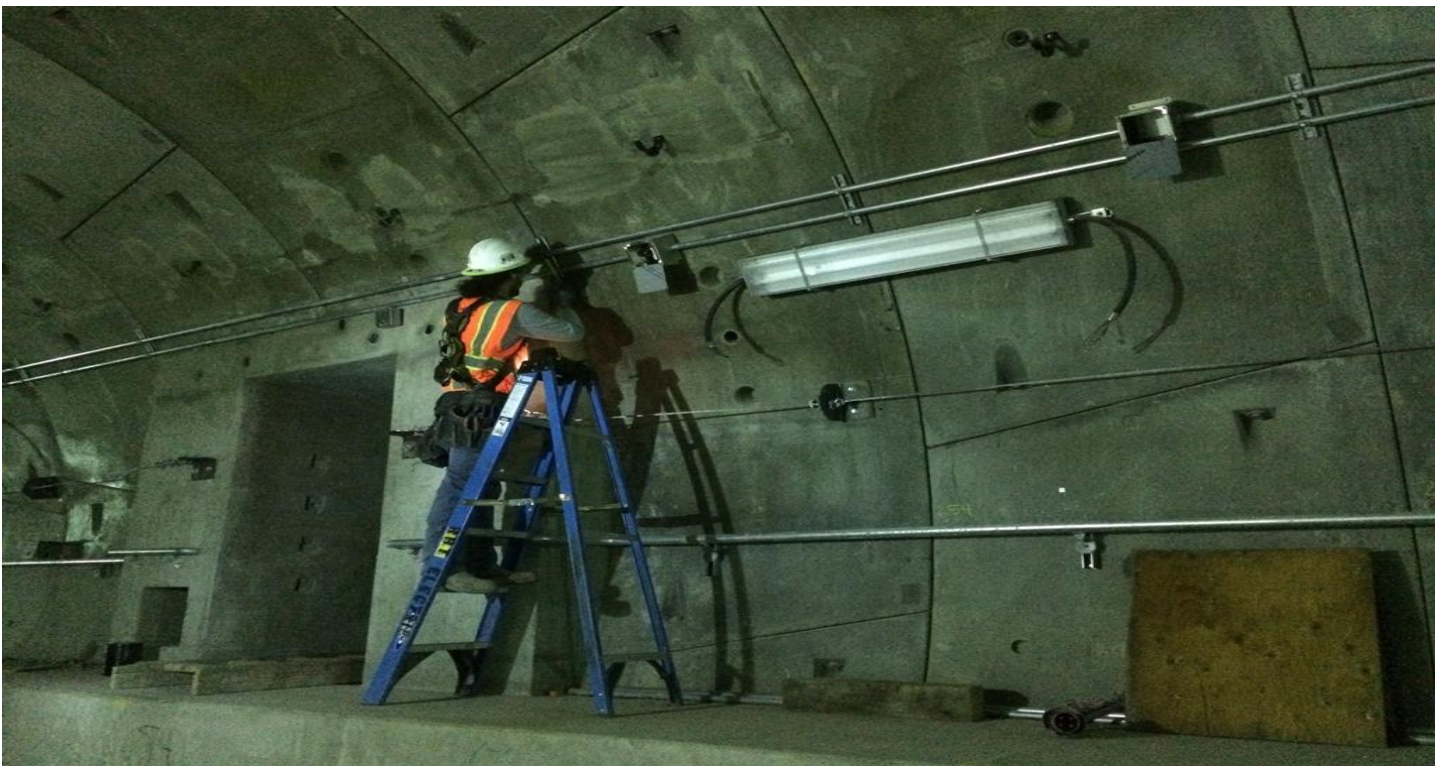


**EXPOSITION/CRENSHAW STATION** – Installation of falsework for Stairs #2 at the platform level

# CRENSHAW/LAX PHOTOGRAPHIC UPDATE



**TUNNEL** – Northbound tunnel between Expo and MLK Station.



**TUNNEL** –Installation of lighting components in the SB tunnel between EXPO and MLK Station