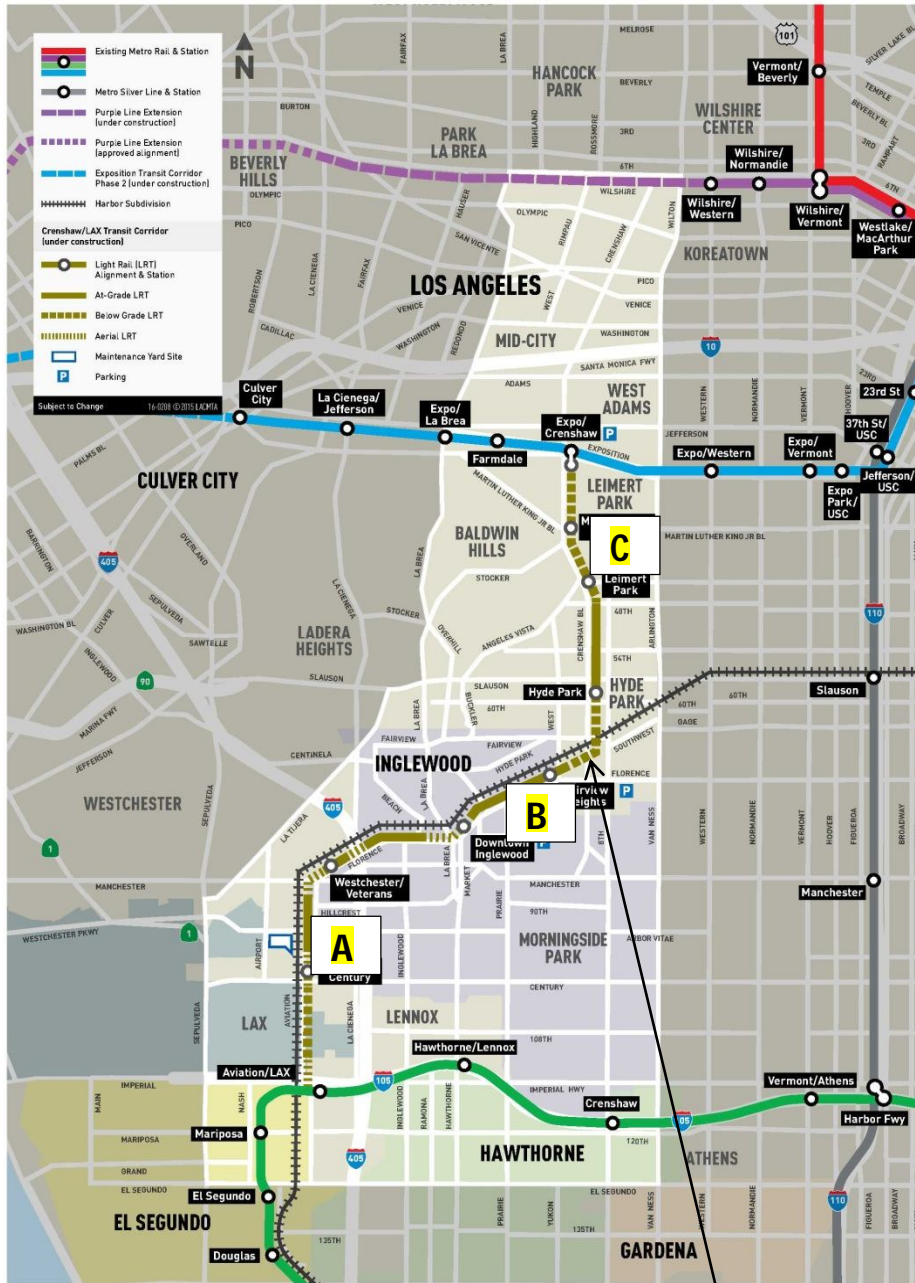


CRENSHAW/LAX PHOTOGRAPHIC UPDATE

January 1, 2019

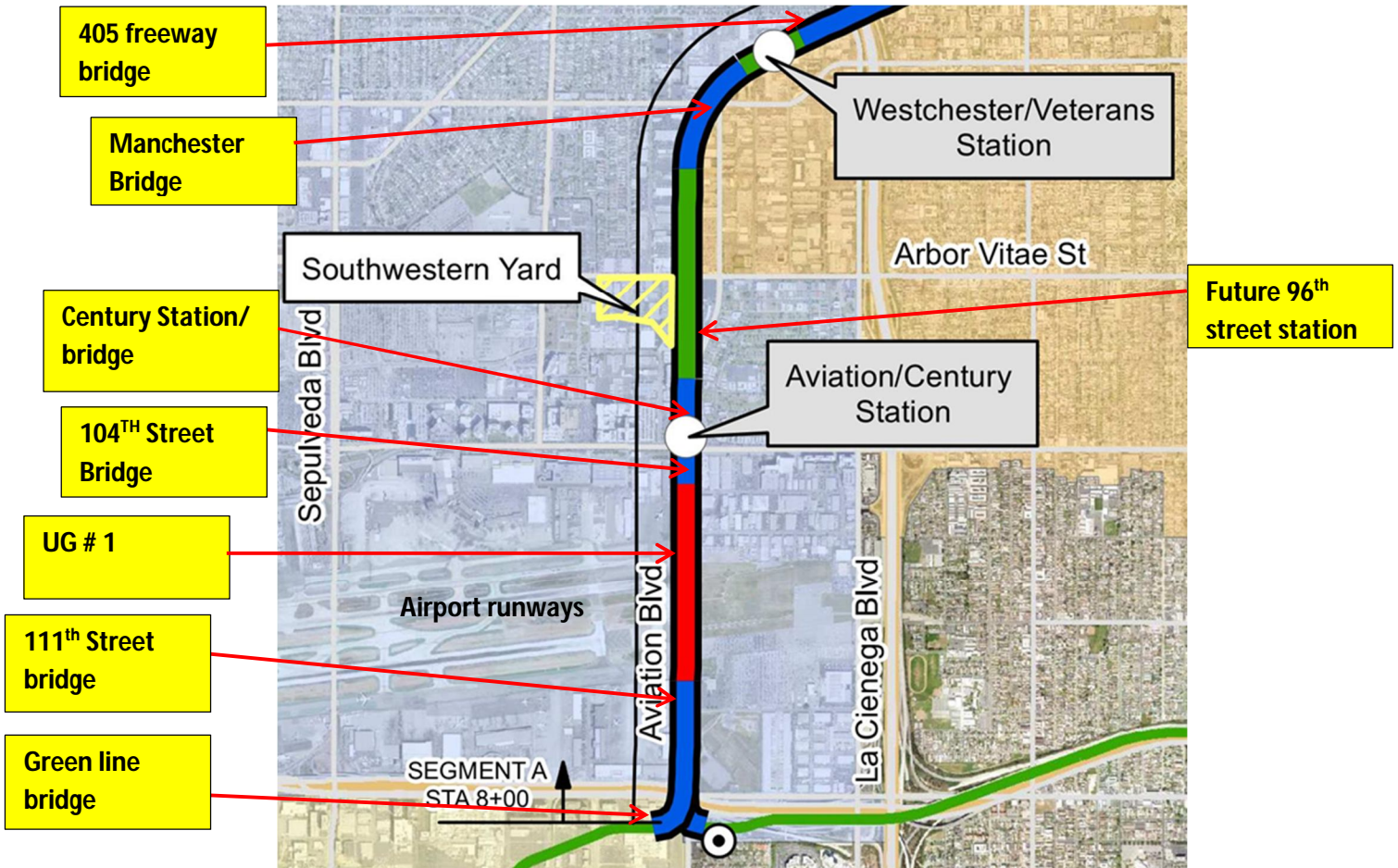
Crenshaw/LAX Transit Project



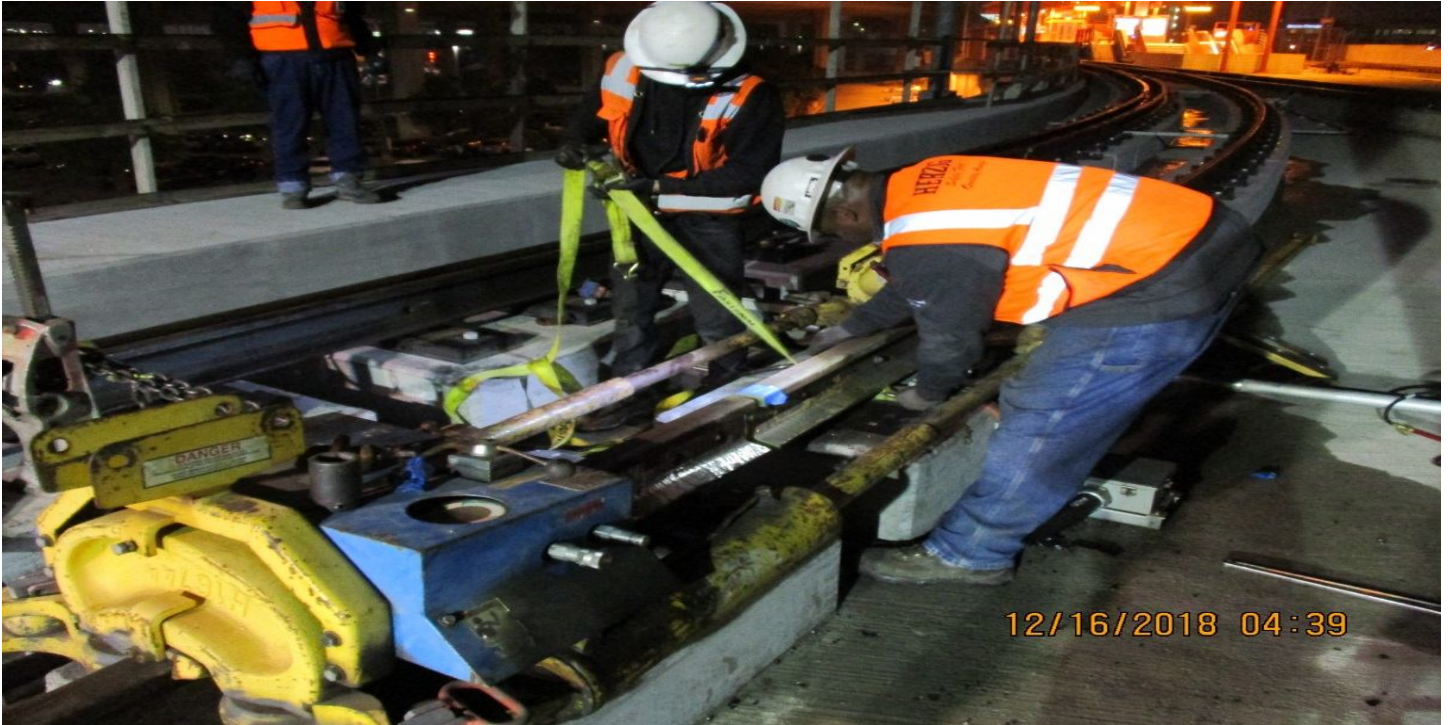
- 8.5 miles Light Rail
- 8 Stations
- \$2,058.0 Million
(Board approved revised LOP)

CRENSHAW/LAX PHOTOGRAPHIC UPDATE

Segment A



CRENSHAW/LAX PHOTOGRAPHIC UPDATE



GREENLINE UNDERPASS- BJ install, layout of restraining rail, and coring for skewed fasteners at Hinge 14.



GREENLINE UNDERPASS- BJ install, layout of restraining rail, and coring for skewed fasteners at Hinge 14.

CRENSHAW/LAX PHOTOGRAPHIC UPDATE



GREENLINE UNDERPASS- Restraining rail placement and drill at SBW track.



MSE17- Top ballast rock cribbing.

CRENSHAW/LAX PHOTOGRAPHIC UPDATE



UG1- Neal Electric installing tunnel lighting conduit near radio room.



UG1- Plastic based fixtures installed at 56+50.

CRENSHAW/LAX PHOTOGRAPHIC UPDATE



UG1- Stripping barrier wall forms at UG-1



UG1- Placing concrete for the barrier wall at UG-1.

CRENSHAW/LAX PHOTOGRAPHIC UPDATE



WESTCHESTER STATION- Neal E running CCTV conduit under NB Platform at.



WESTCHESTER STATION - RBT terminating Fire alarm Devices at Hindry Station.

CRENSHAW/LAX PHOTOGRAPHIC UPDATE



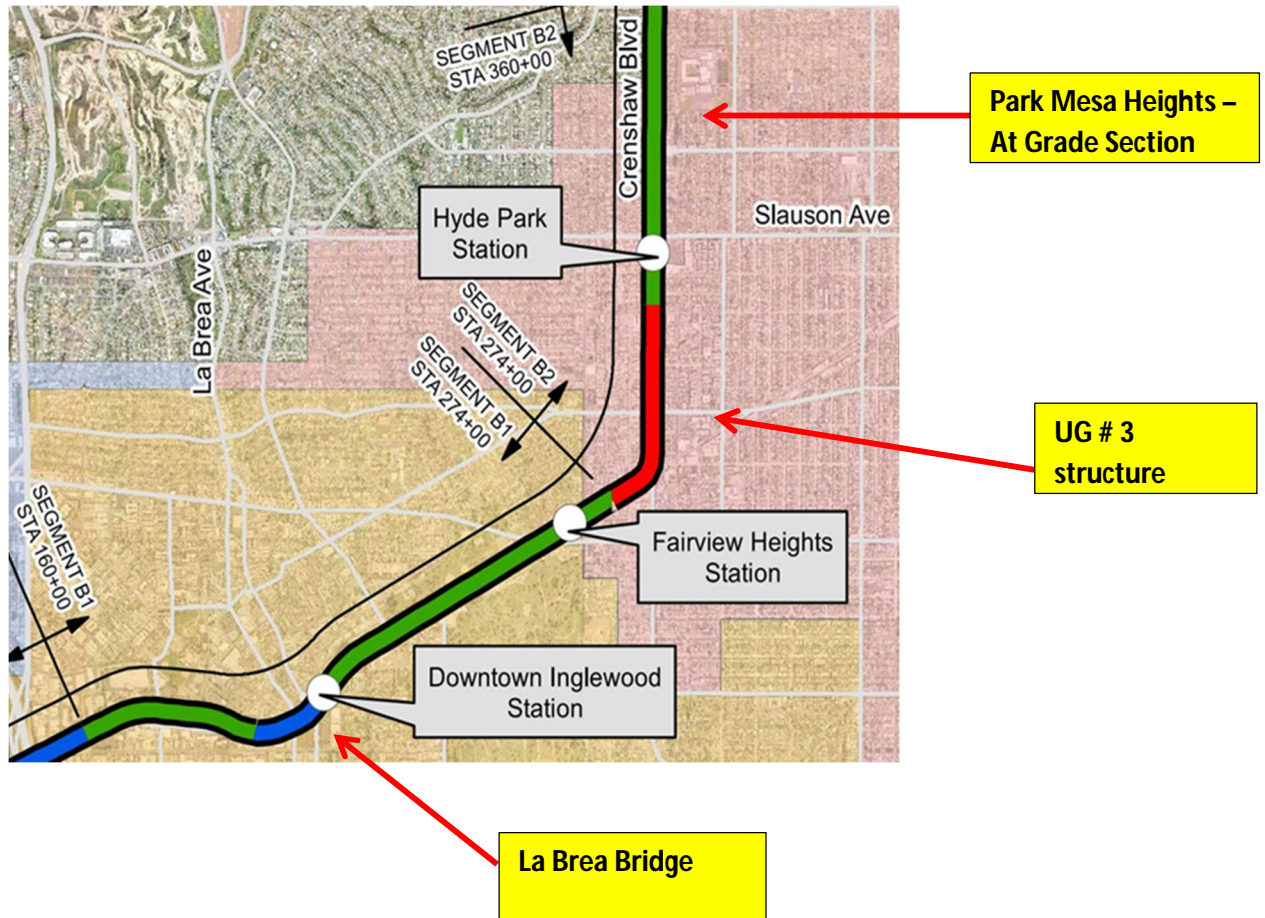
AG) I 405 BRIDGE- Working on the concrete finish for the 405 Bridge.



(AG-7) FCBC PED UP- Applying primer to the SB side of the FCBC walkway underpass.

CRENSHAW/LAX PHOTOGRAPHIC UPDATE

Segment B



CRENSHAW/LAX PHOTOGRAPHIC UPDATE



B1 GUIDEWAY - Applying primer to the SB side of the FCBC walkway underpass



B1 GUIDEWAY - B1 Guideway east of West Sta backfill for pullbox relocation at T1-T2.

CRENSHAW/LAX PHOTOGRAPHIC UPDATE



B1 GUIDEWAY - Setting forms for the Oak Street cross gutter.



B1 GUIDEWAY - Placing concrete for the Oak Street cross gutter.

CRENSHAW/LAX PHOTOGRAPHIC UPDATE



B1 GUIDEWAY - Forming the drive approach on Oak.



B1 GUIDEWAY - VDL loops placed and AC being placed over them on Oak.

CRENSHAW/LAX PHOTOGRAPHIC UPDATE



TPSS TPSS #1. NETE conducting pre-LFAT testing



TPSS- TPSS #1. WSCC Electrical continues to run traction 4-inch across Hornet Way.

CRENSHAW/LAX PHOTOGRAPHIC UPDATE



TPSS- TPSS #1. Traction 4-inch conduits with kink in expansion couplings.



TPSS- TPSS #3. Pre-LFAT testing.

CRENSHAW/LAX PHOTOGRAPHIC UPDATE



TPSS- TPSS #3. NETE was finishing AC switchgear function testing.



UG3 - Construction of the bulkhead wall at the south portal.

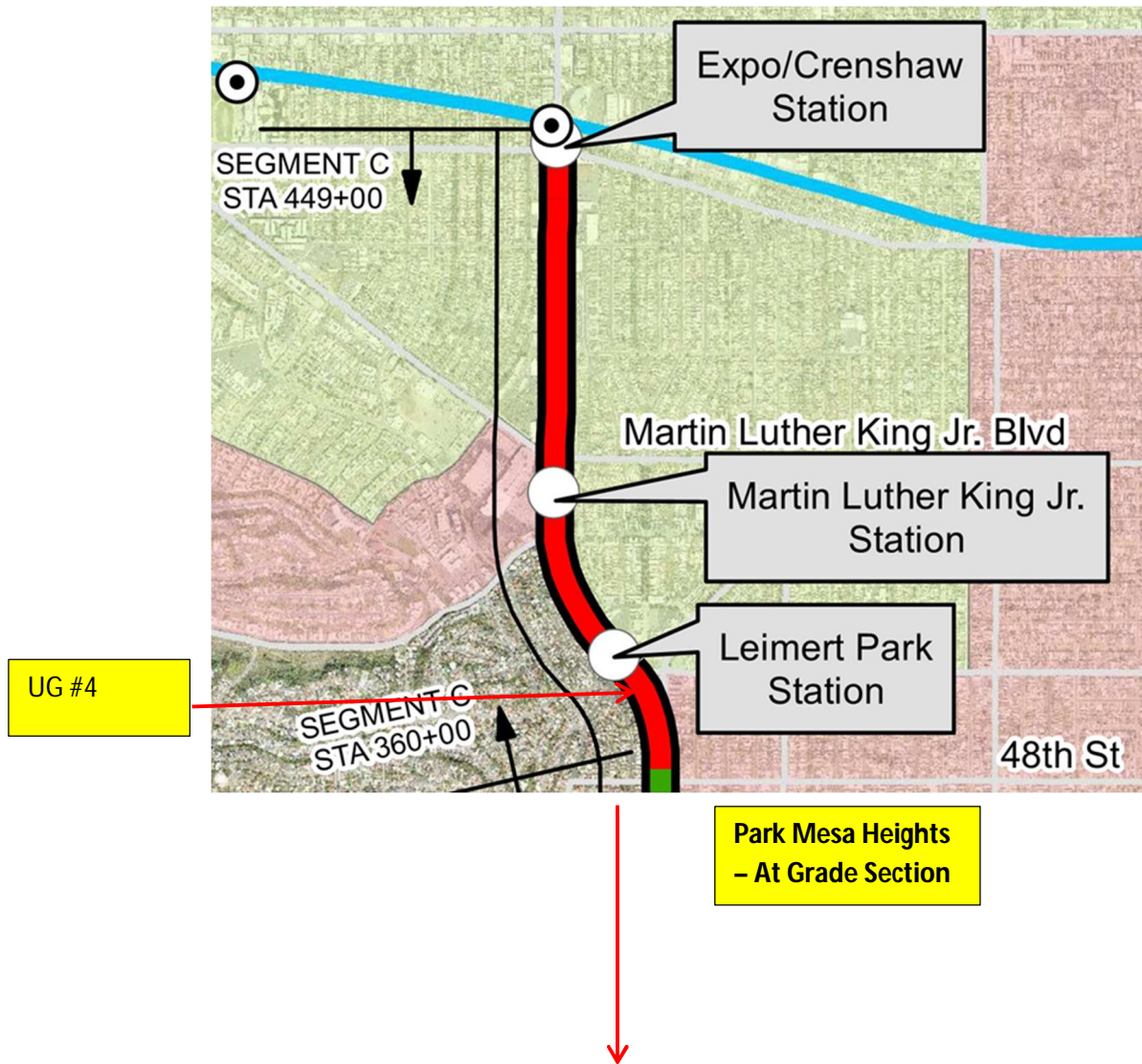
CRENSHAW/LAX PHOTOGRAPHIC UPDATE



UG3 - Waterproofing above the roof underneath the deck panels at 67th street.

Segment C

CRENSHAW/LAX PHOTOGRAPHIC UPDATE



CRENSHAW/LAX PHOTOGRAPHIC UPDATE



UG4 – Installation of electrical conduit at the southbound tunnel.

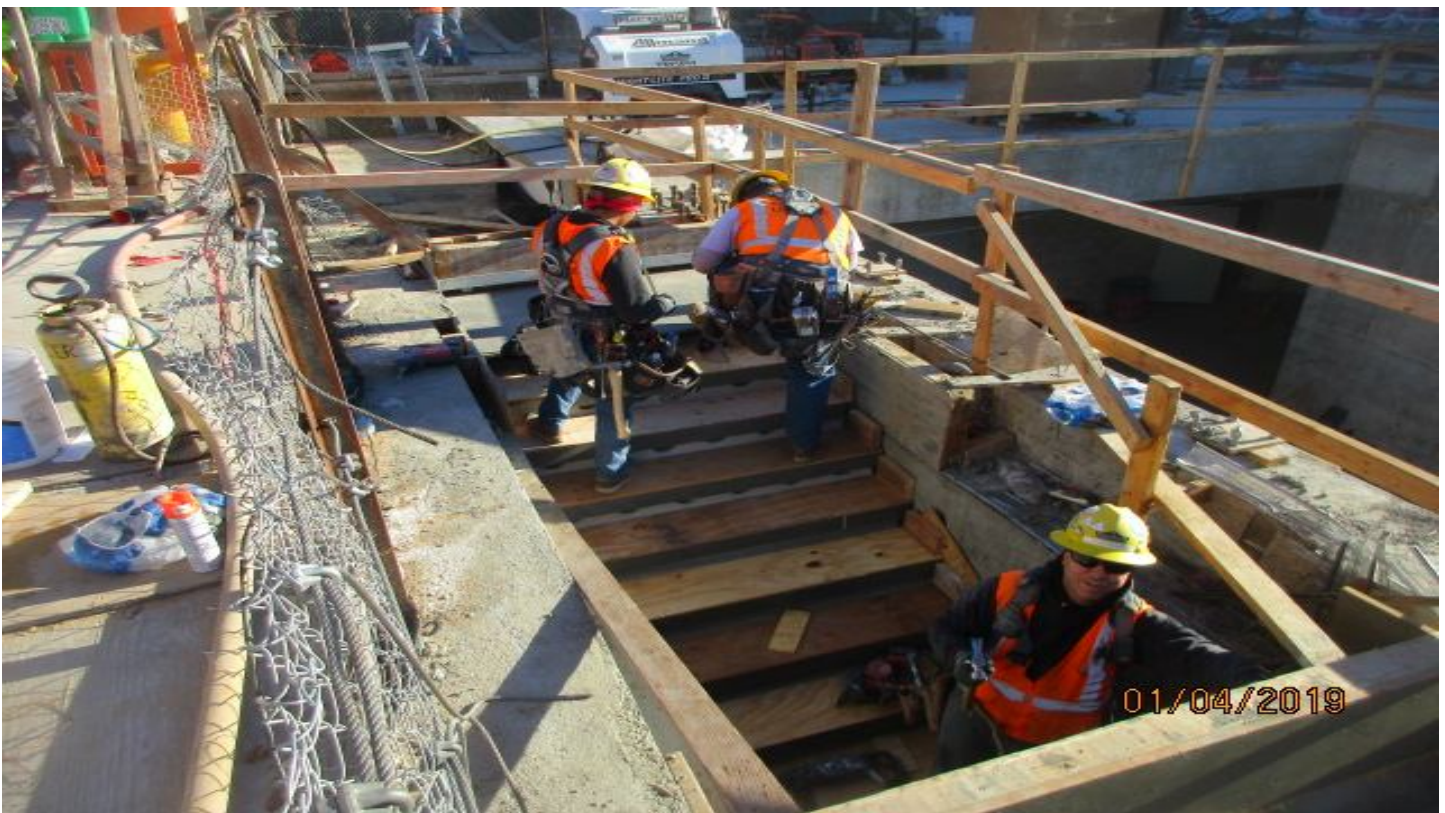


UG4 – Installation of electrical conduit at the northbound tunnel.

CRENSHAW/LAX PHOTOGRAPHIC UPDATE



LEIMERT PARK STATION – Concrete placement for Stair #1 at the entrance structure.



LEIMERT PARK STATION – Construction of wall at North Emergency Exit #2.

CRENSHAW/LAX PHOTOGRAPHIC UPDATE



LEIMERT PARK STATION – Preparation of the floor for sealant at the concourse level TC&C room .



LEIMERT PARK STATION – Metal ceiling hangers for the ceiling above the platform.

CRENSHAW/LAX PHOTOGRAPHIC UPDATE



MARTIN LUTHER KING JR. STATION Installation of waterproofing for the west plaza wall.



MARTIN LUTHER KING JR. STATION- Concrete placement for wall EW-25.

CRENSHAW/LAX PHOTOGRAPHIC UPDATE



MARTIN LUTHER KING JR. STATION- Removal of formwork from the interior elevator walls at the roof level.

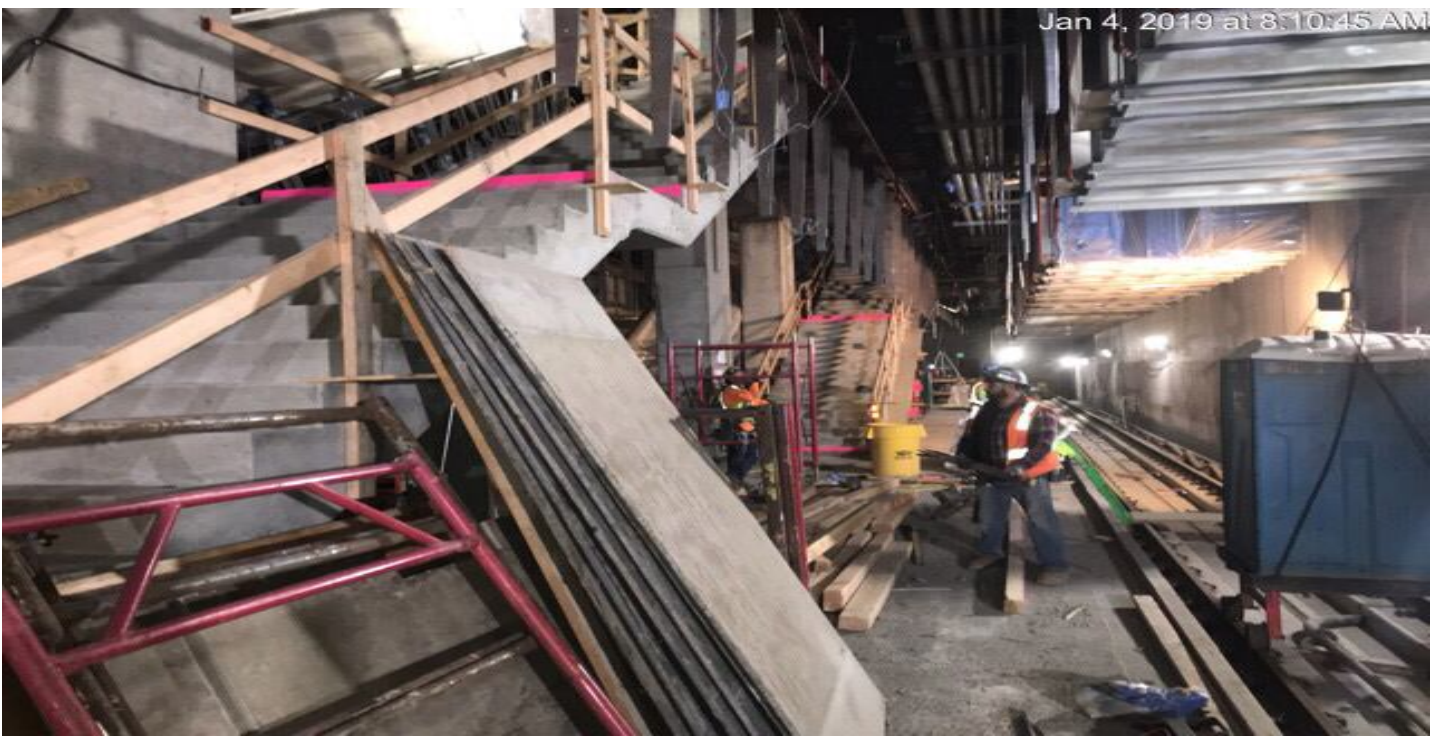


MARTIN LUTHER KING JR. STATION- Placement of slurry backfill around Emergency Vent South.

CRENSHAW/LAX PHOTOGRAPHIC UPDATE



EXPOSITION/CRENSHAW STATION – Installed of rebar and formwork for Emergency Exit Stairs #2 North.



EXPOSITION/CRENSHAW STATION – Removal of falsework at stairs 2 at the platform.

CRENSHAW/LAX PHOTOGRAPHIC UPDATE



EXPOSITION/CRENSHAW STATION – Installation of electrical conduit at TPSS 10.



EXPOSITION/CRENSHAW STATION – Installation of formwork for safety walkway.

CRENSHAW/LAX PHOTOGRAPHIC UPDATE



TUNNEL – Emergency lighting in the northbound tunnel between Expo and MLK Station.



TUNNEL – Southbound tunnel between EXPO and MLK Station.