

CRENSHAW/LAX PHOTOGRAPHIC UPDATE

February 1, 2019

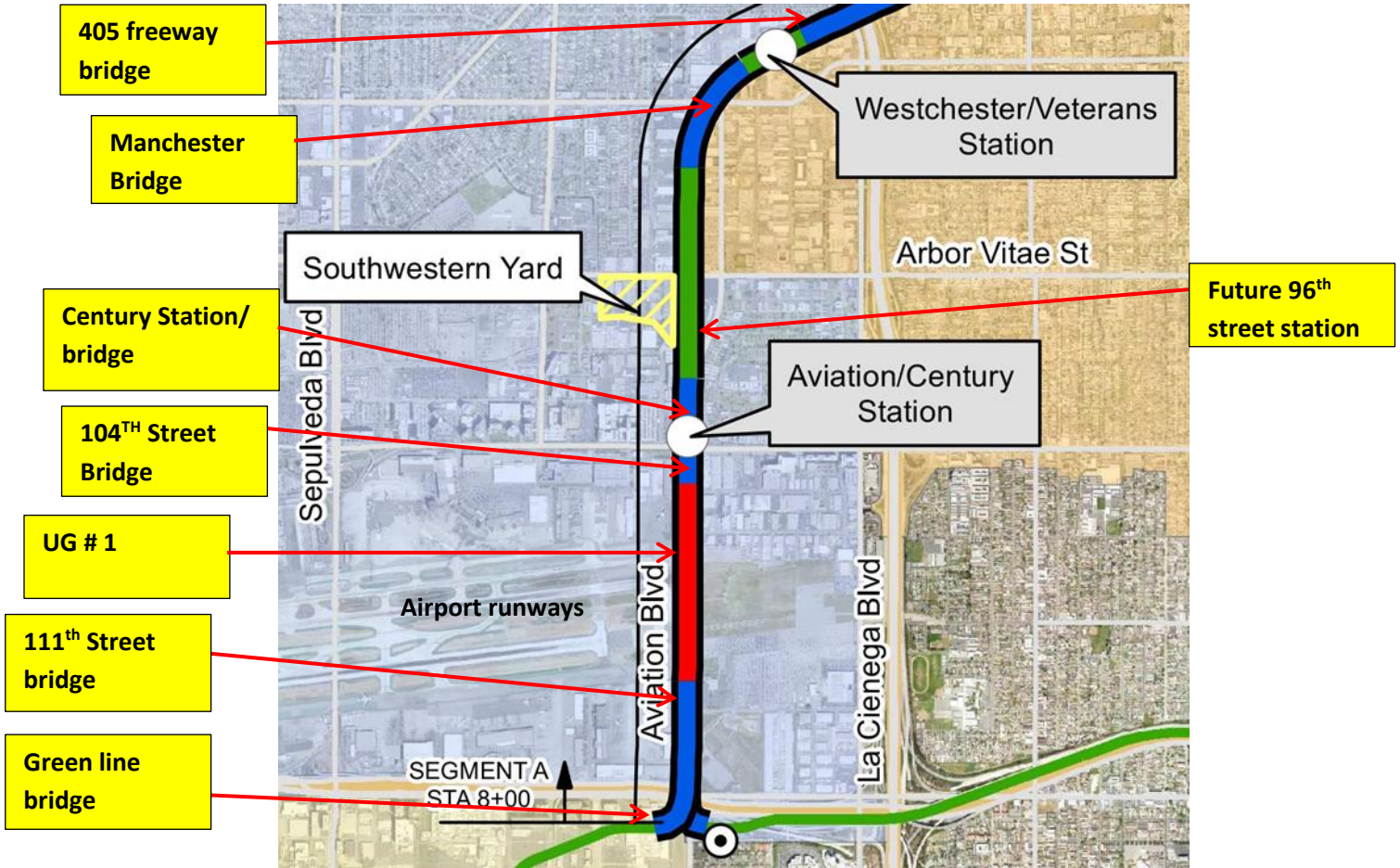
Crenshaw/LAX Transit Project



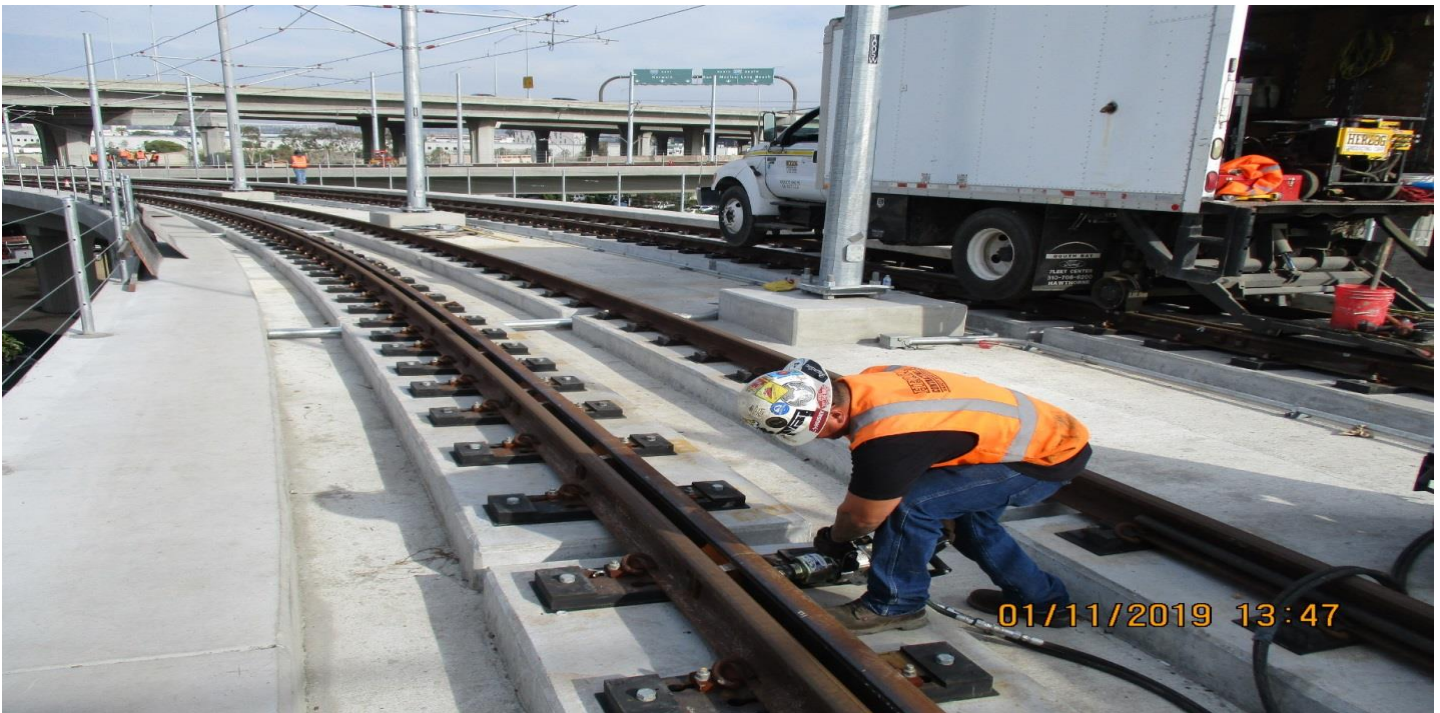
- 8.5 miles Light Rail
- 8 Stations
- \$2,058.0 Million
(Board approved revised LOP)

CRENSHAW/LAX PHOTOGRAPHIC UPDATE

Segment A



CRENSHAW/LAX PHOTOGRAPHIC UPDATE



GREENLINE UNDERPASS- A Guideway at Greenline Up restaing rail bolt torquing and galv walkway placement.fasteners at Hinge 14.



GREENLINE UNDERPASS- A Guideway at Greenline UP 20' rail plug install, placement of IJ and thermite welding.

CRENSHAW/LAX PHOTOGRAPHIC UPDATE



UG1- Concrete finish work for the SB barrier wall at UG1.



UG1- Plastic based fixtures installed at 56+50.

CRENSHAW/LAX PHOTOGRAPHIC UPDATE



AVIATION/CENTURY- Rubble Demo at the Aviation/Century Station Yard.

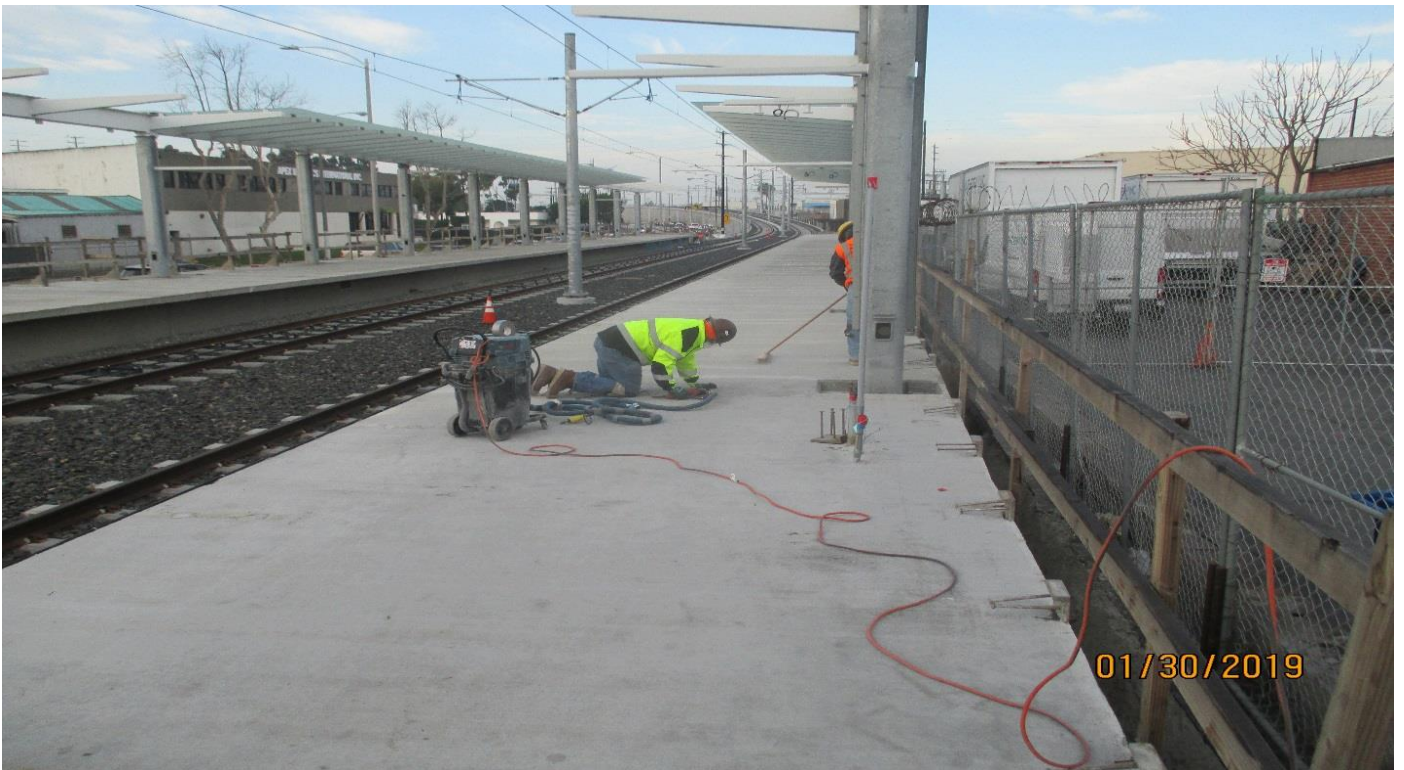


AVIATION/CENTURY- Forming the concrete walkway at STA.66+20 at the Aviation Station.

CRENSHAW/LAX PHOTOGRAPHIC UPDATE



AVIATION/CENTURY- Flooding at the Aviation Station.



WESTCHESTER STATION- Grinding the crack seal epoxy on the NB Hindry Platform.

CRENSHAW/LAX PHOTOGRAPHIC UPDATE



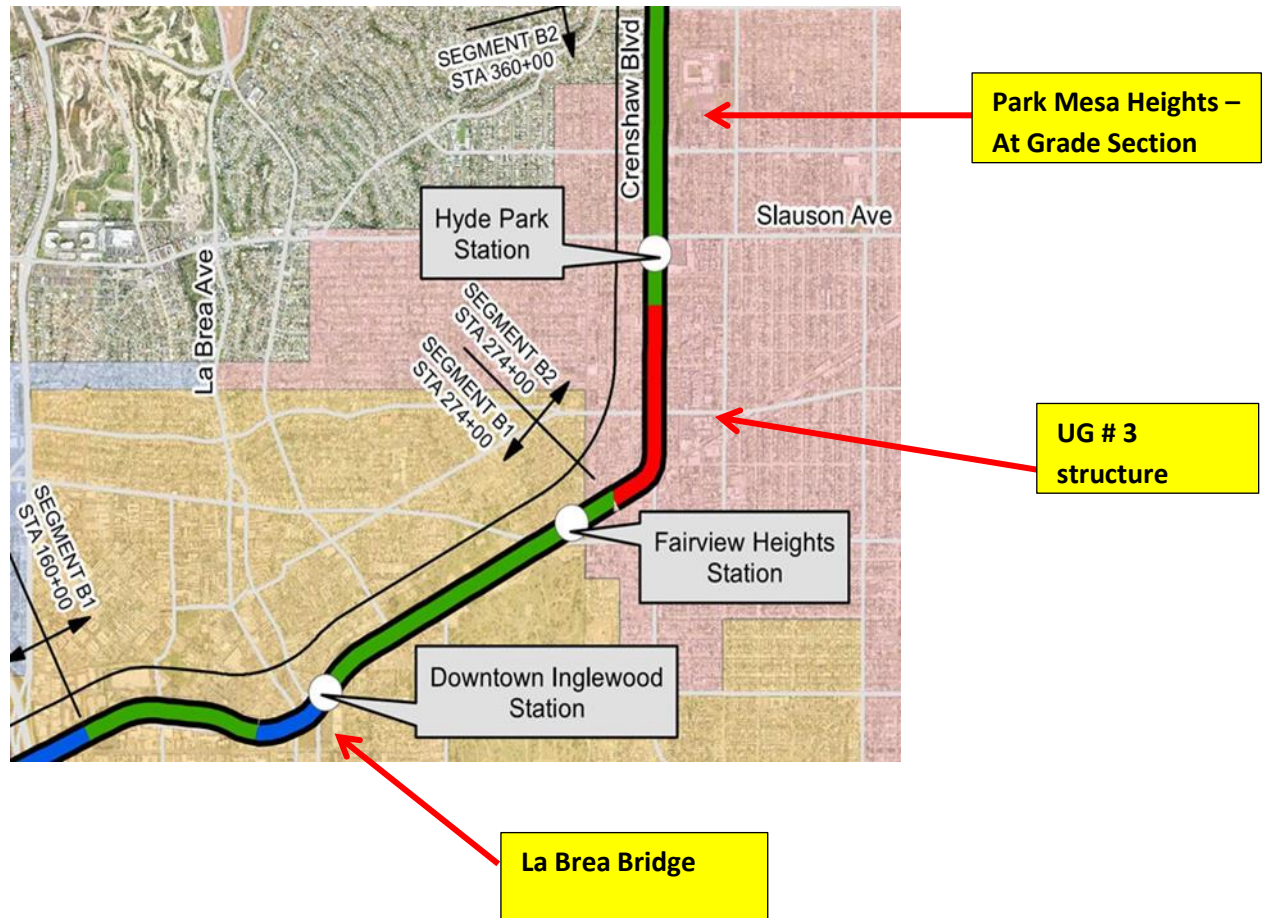
WESTCHESTER STATION- Dry pack around the hatch door for the Westchester Station.



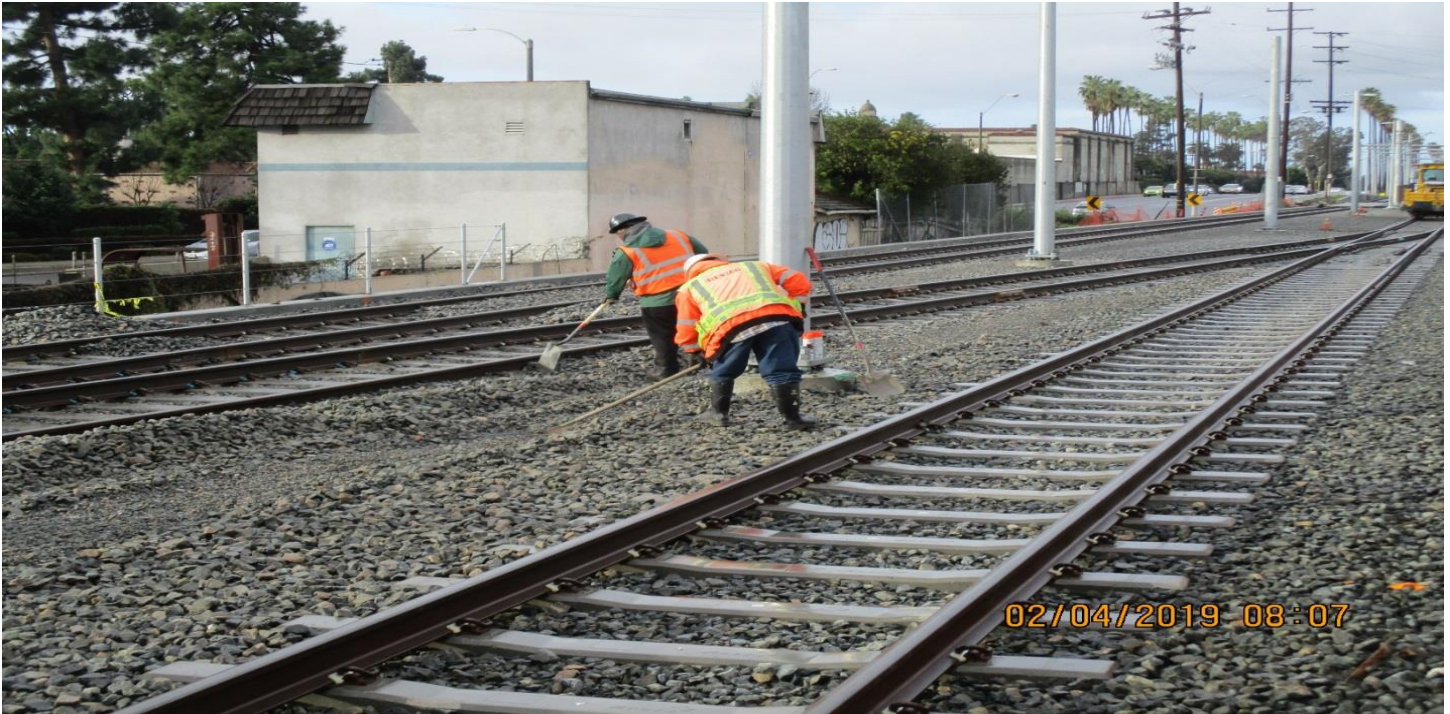
WESTCHESTER STATION- Grinding the crack seal epoxy on the NB Westchester platform deck.

CRENSHAW/LAX PHOTOGRAPHIC UPDATE

Segment B



CRENSHAW/LAX PHOTOGRAPHIC UPDATE



B1 GUIDEWAY - B1 guideway between High street and West blvd. surface, line, tamp, correct skewed ties and dressing ballast rock.



B1 GUIDEWAY - B1 guideway between High street and West blvd. surface, line, tamp, correct skewed ties and dressing ballast rock.

CRENSHAW/LAX PHOTOGRAPHIC UPDATE



TPSS TPSS #1. NETE was re-doing the ground grid test without the TPSS enclosure grounds connected.



TPSS- TPSS #2. Conduit racks being prepared for negative returns.

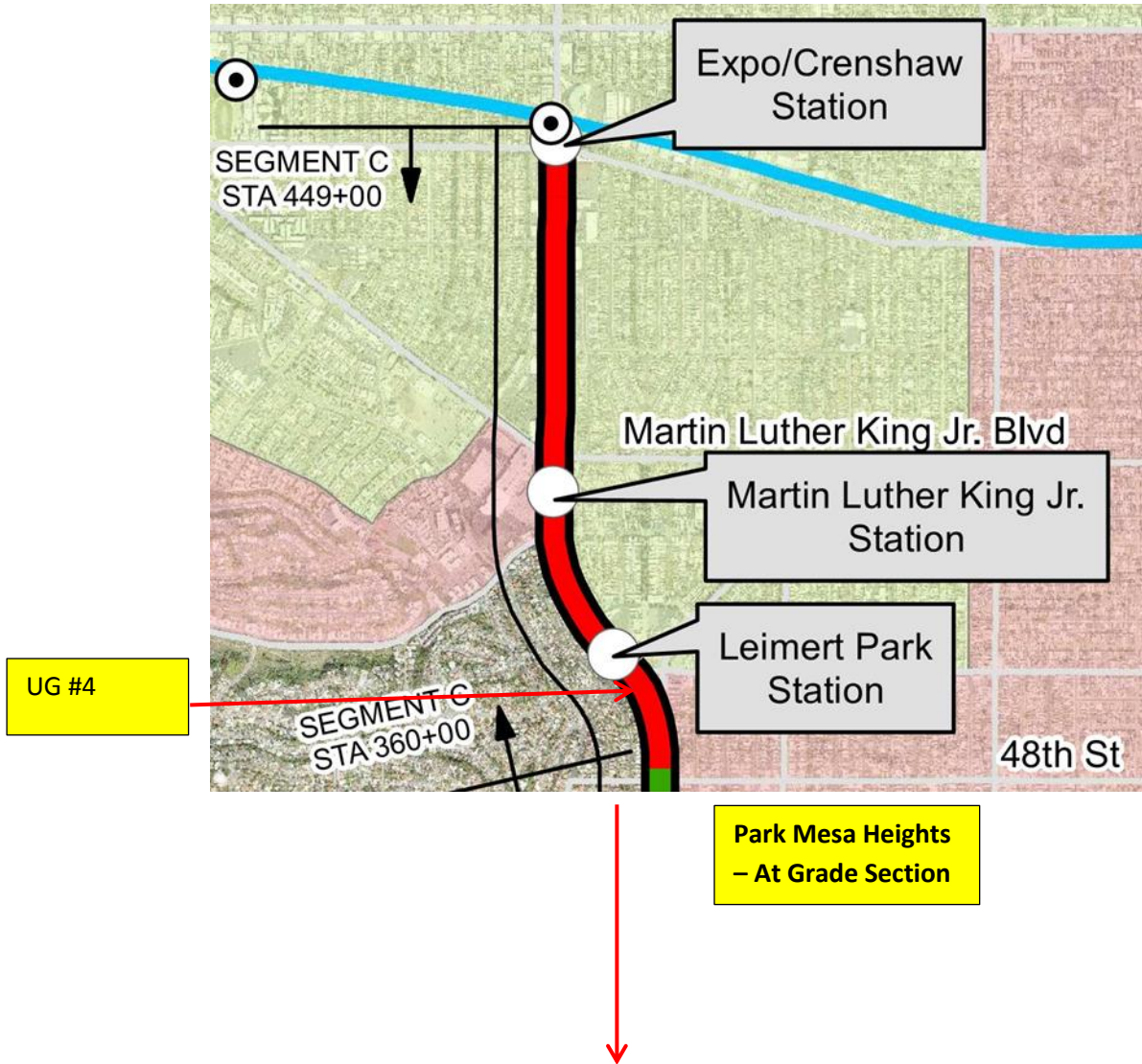
CRENSHAW/LAX PHOTOGRAPHIC UPDATE



TPSS- TPSS #3. Crane operator and Neal Electric getting the load managed.

CRENSHAW/LAX PHOTOGRAPHIC UPDATE

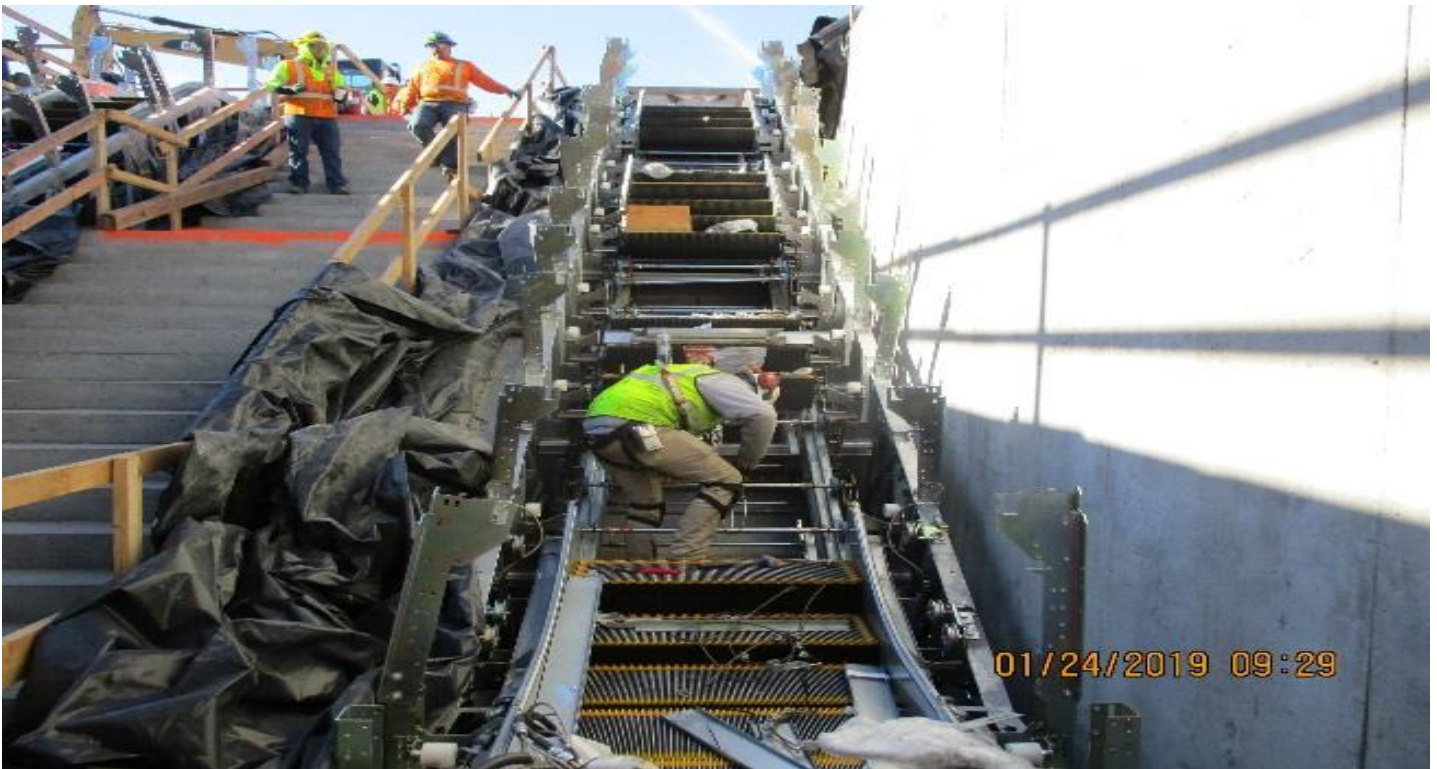
Segment C



CRENSHAW/LAX PHOTOGRAPHIC UPDATE



UG4 – Northbound tunnel. (No progress since last progress report)

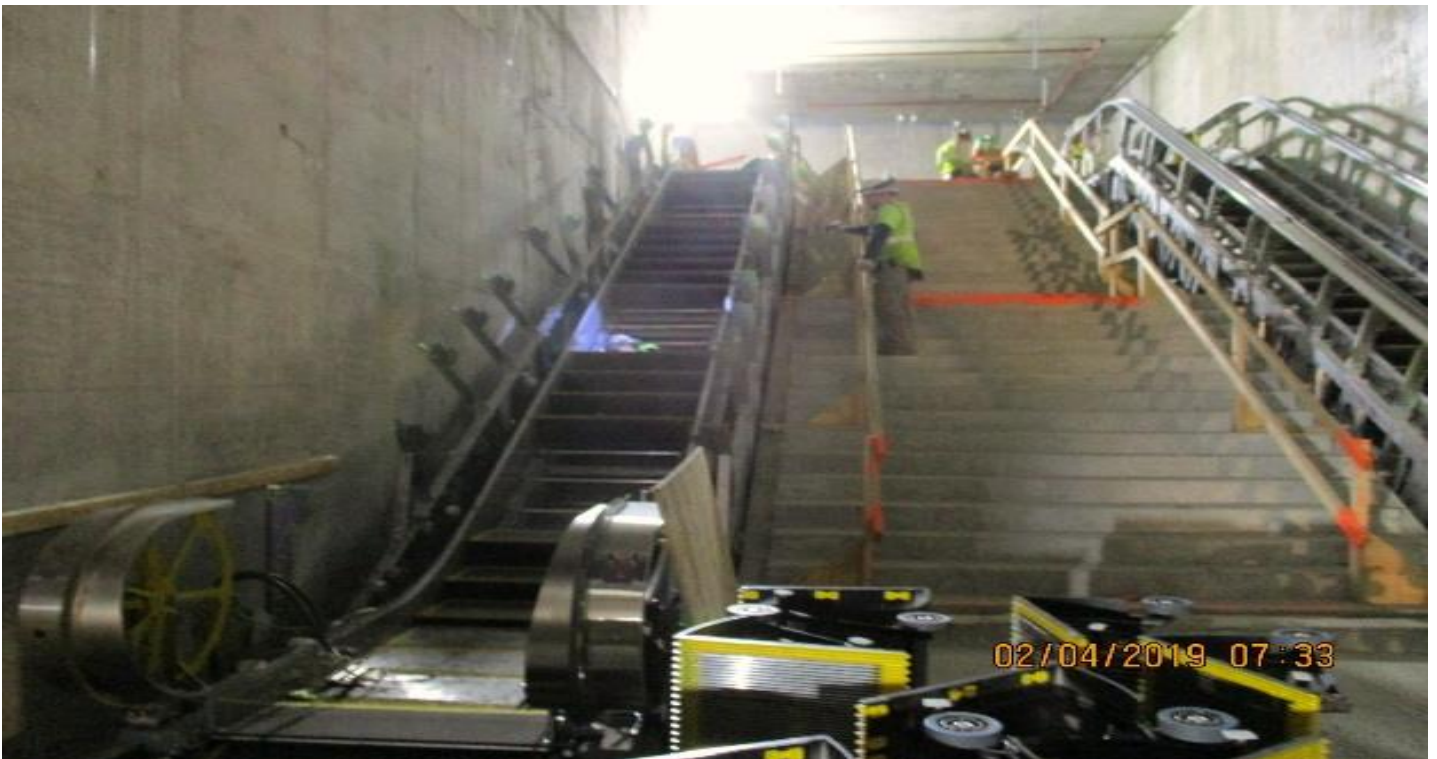


LEIMERT PARK STATION – Installation of escalator 1&2 at the entrance.

CRENSHAW/LAX PHOTOGRAPHIC UPDATE



LEIMERT PARK STATION – Backfill and compaction at the plaza level.

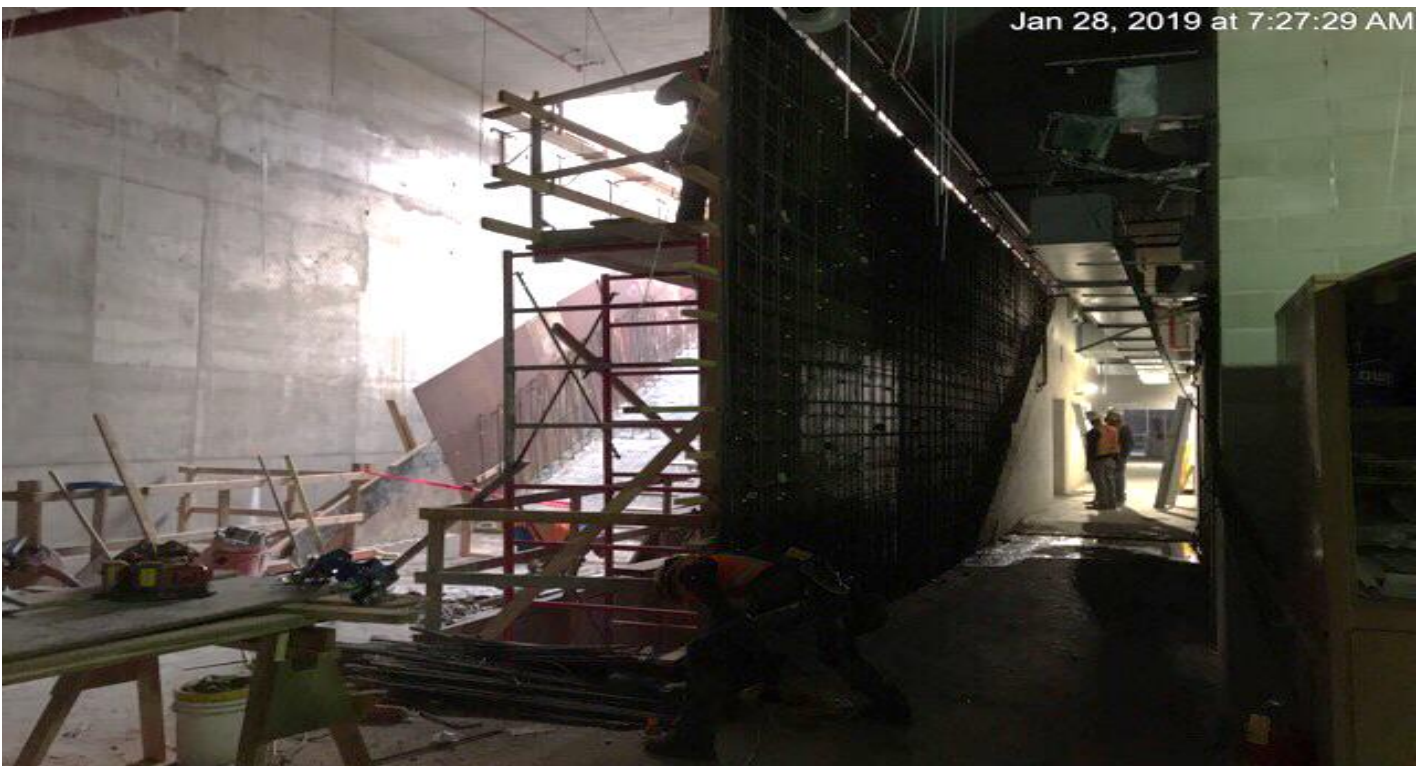


LEIMERT PARK STATION – Installation of escalator 3 & 4 at the concourse

CRENSHAW/LAX PHOTOGRAPHIC UPDATE

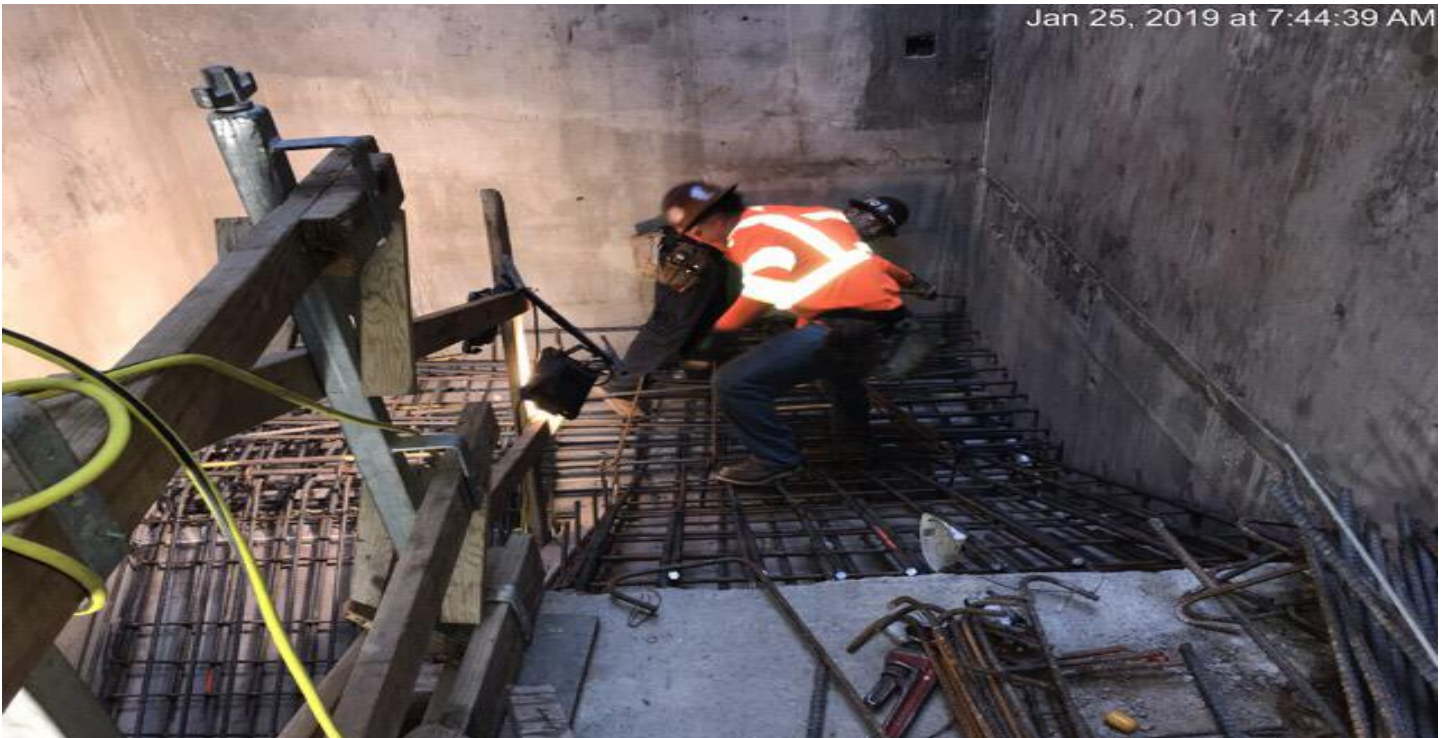


LEIMERT PARK STATION – Removal of piles along the southeast station for screen wall.

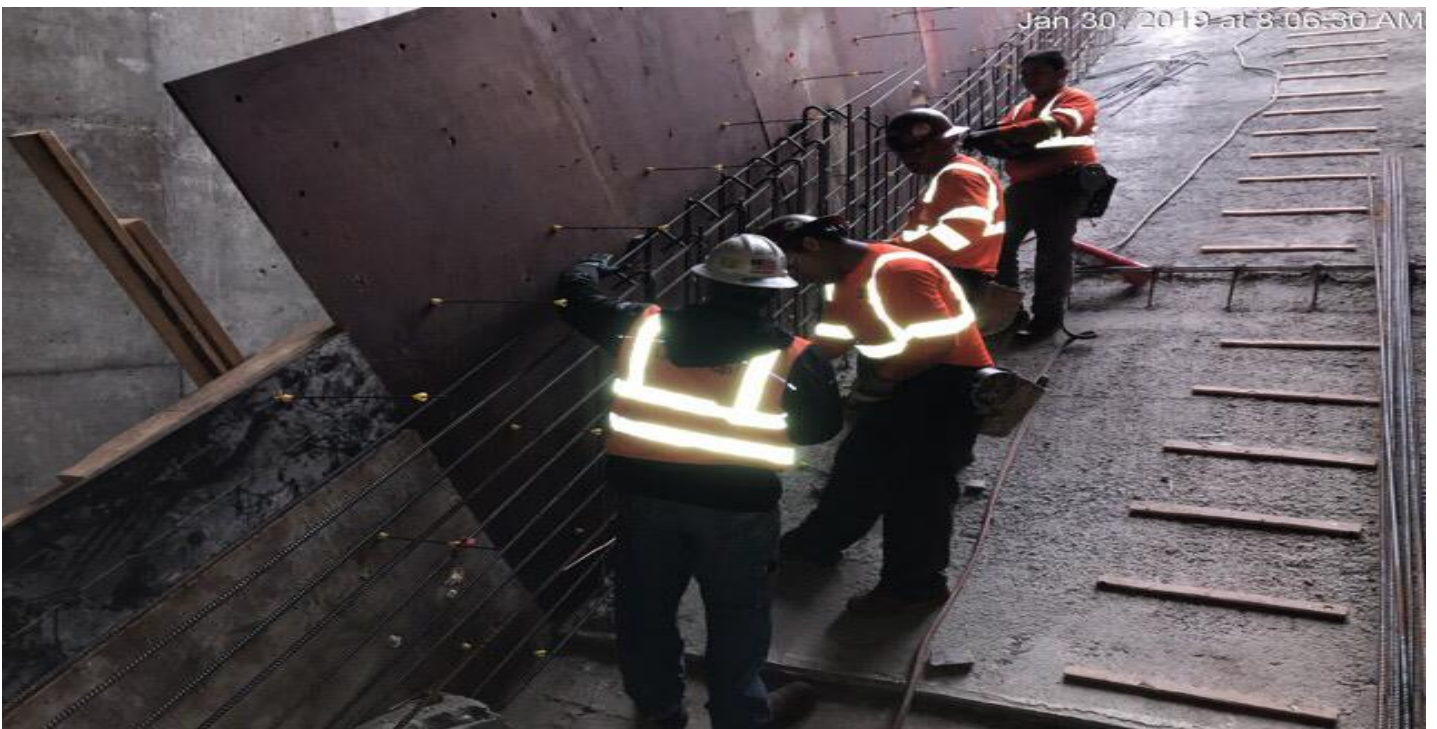


MARTIN LUTHER KING JR. STATION Construction of wall UW36 at the plaza staircase.

CRENSHAW/LAX PHOTOGRAPHIC UPDATE



MARTIN LUTHER KING JR. STATION- Installation of rebar for Emergency Exit Stair #2 South.

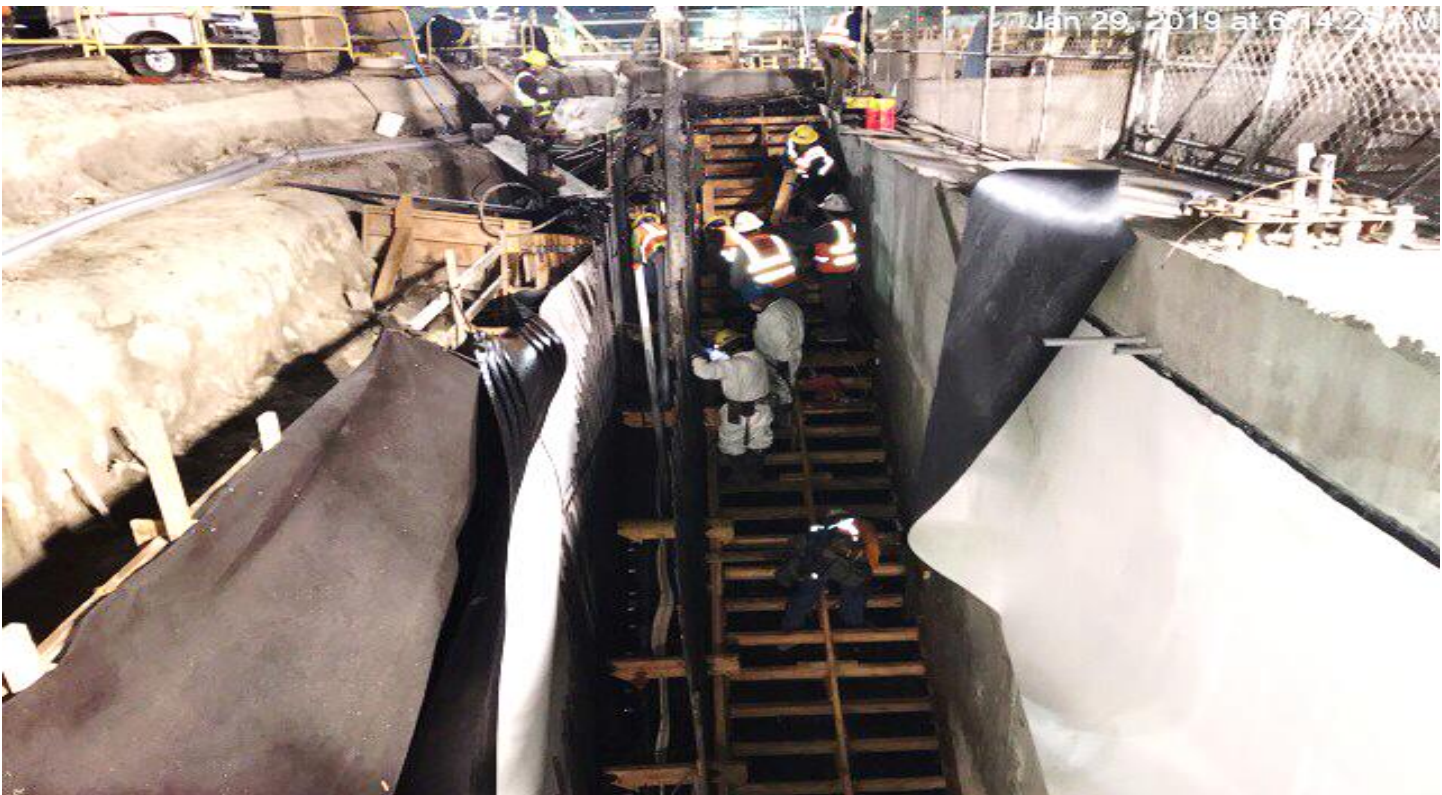


MARTIN LUTHER KING JR. STATION- Installation of stem wall on plaza slope.

CRENSHAW/LAX PHOTOGRAPHIC UPDATE

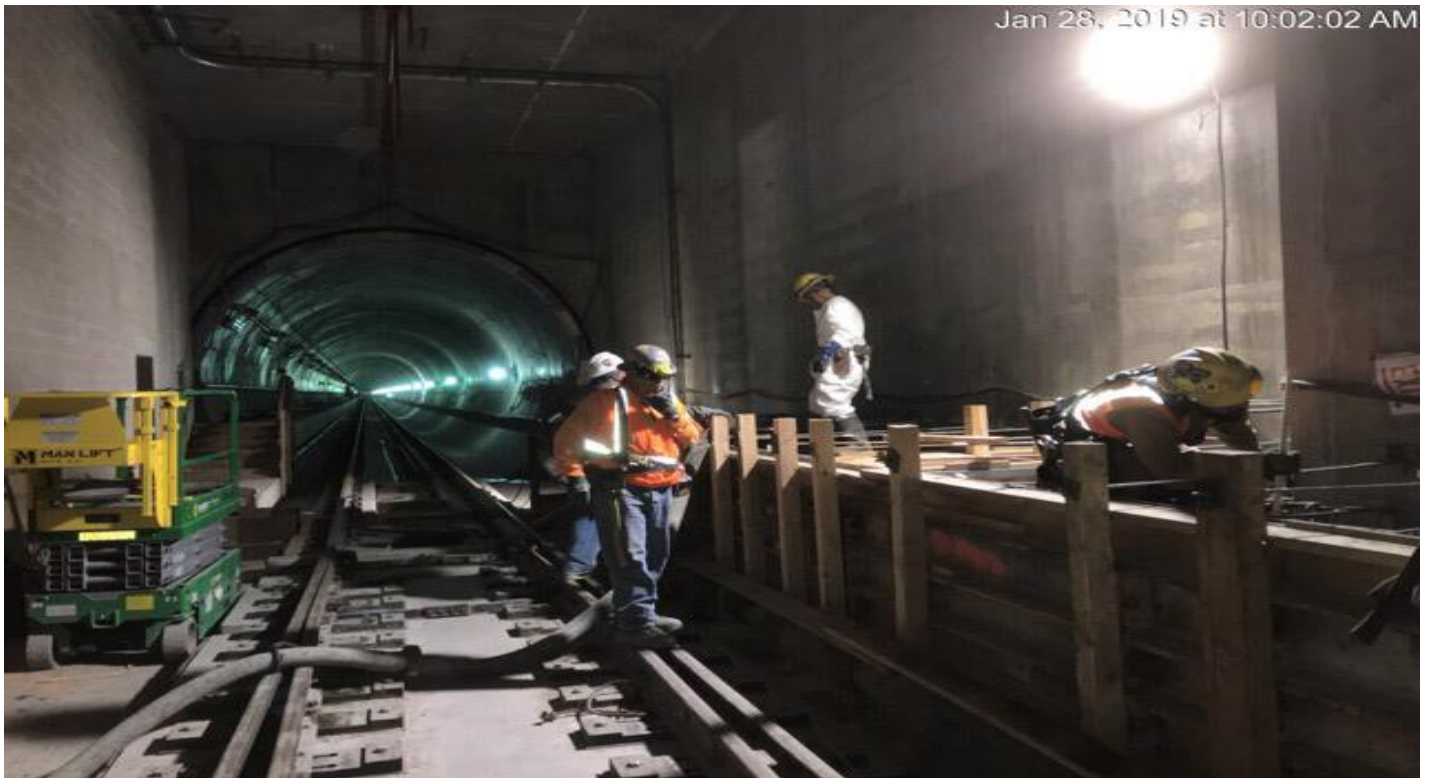


MARTIN LUTHER KING JR. STATION- Installed formwork for walls at the Plaza level.



EXPOSITION/CRENSHAW STATION – Concrete placement for Emergency Exit staircase #4.

CRENSHAW/LAX PHOTOGRAPHIC UPDATE



EXPOSITION/CRENSHAW STATION – Concrete placement for emergency sidewalk.



EXPOSITION/CRENSHAW STATION – Installation of formwork for Emergency Exit stairs #3.

CRENSHAW/LAX PHOTOGRAPHIC UPDATE



EXPOSITION/CRENSHAW STATION – Installation of metal ceiling at platform level.



TUNNEL – Installation of support anchors in the NB tunnel between EXPO and MLK Station.

CRENSHAW/LAX PHOTOGRAPHIC UPDATE



TUNNEL – Installation of electrical components at the SB tunnel between EXPO and MLK Station.