

# CRENSHAW/LAX PHOTOGRAPHIC UPDATE

March 1, 2019

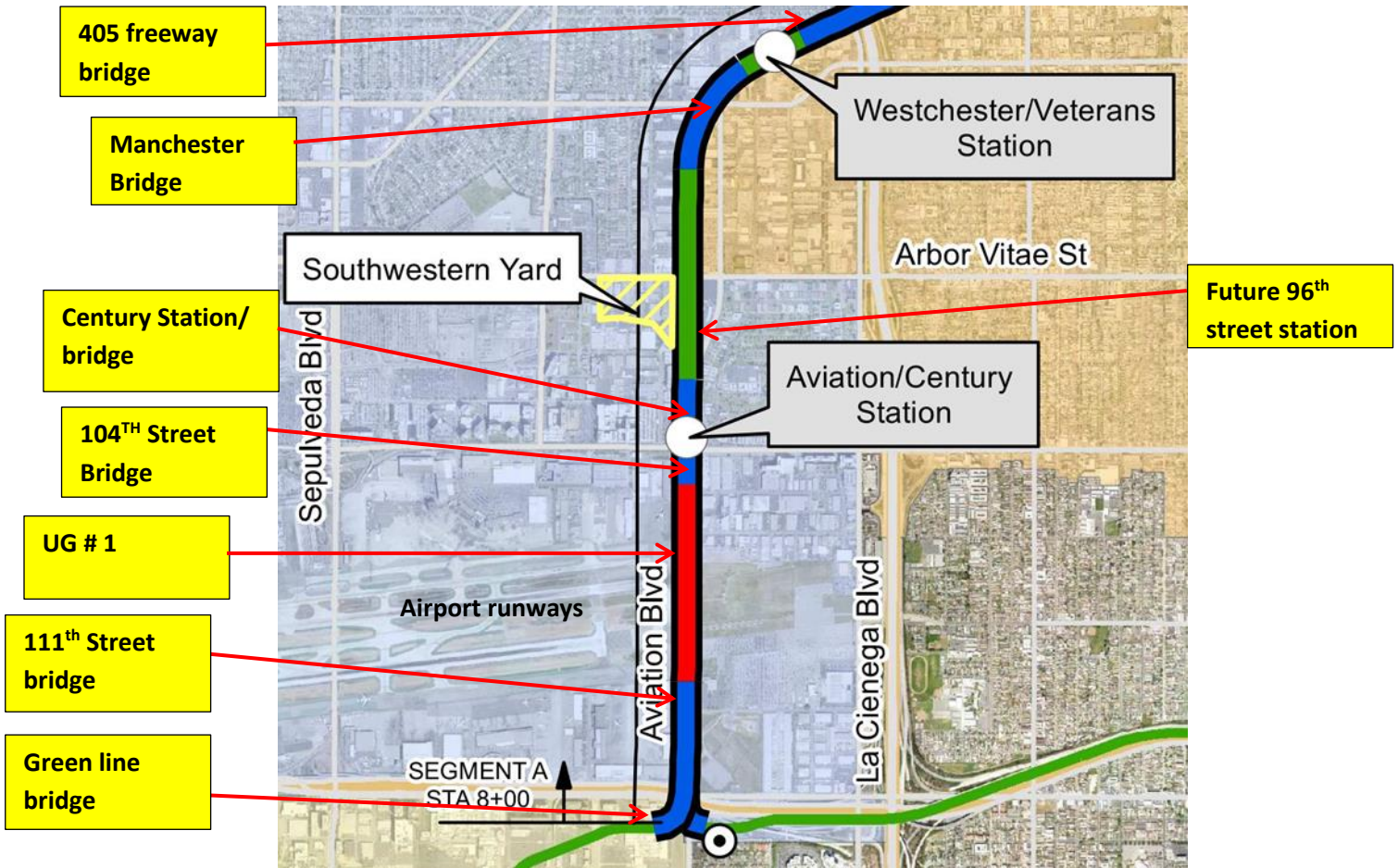
## Crenshaw/LAX Transit Project



- 8.5 miles Light Rail
- 8 Stations
- \$2,058.0 Million  
(Board approved revised LOP)

# CRENSHAW/LAX PHOTOGRAPHIC UPDATE

## Segment A



# CRENSHAW/LAX PHOTOGRAPHIC UPDATE



**GREENLINE UNDERPASS-** LKC lineman installation of EOS @ OCS Str. 1015E and 1015W. at the green wye.

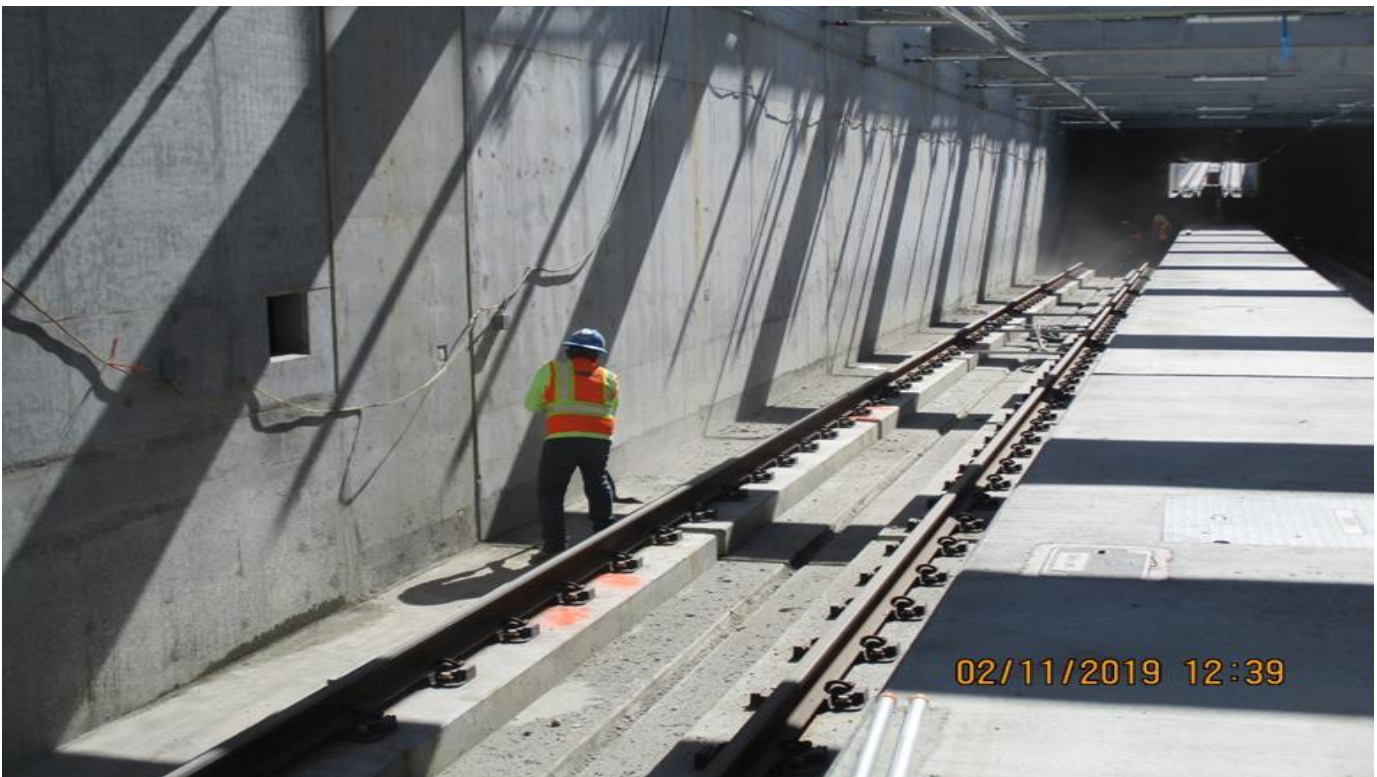


**GREENLINE UNDERPASS** - LKC lineman installation of EOS @ OCS Str. 1015E and 1015W at the Green Wye.

# CRENSHAW/LAX PHOTOGRAPHIC UPDATE



UG1- Concrete finish work at the north portal at UG-1



UG1- A Guide way at UG1 cleanout of concrete debris.

# CRENSHAW/LAX PHOTOGRAPHIC UPDATE



AVIATION/CENTURY- Forming the south stairway at the Aviation Station.

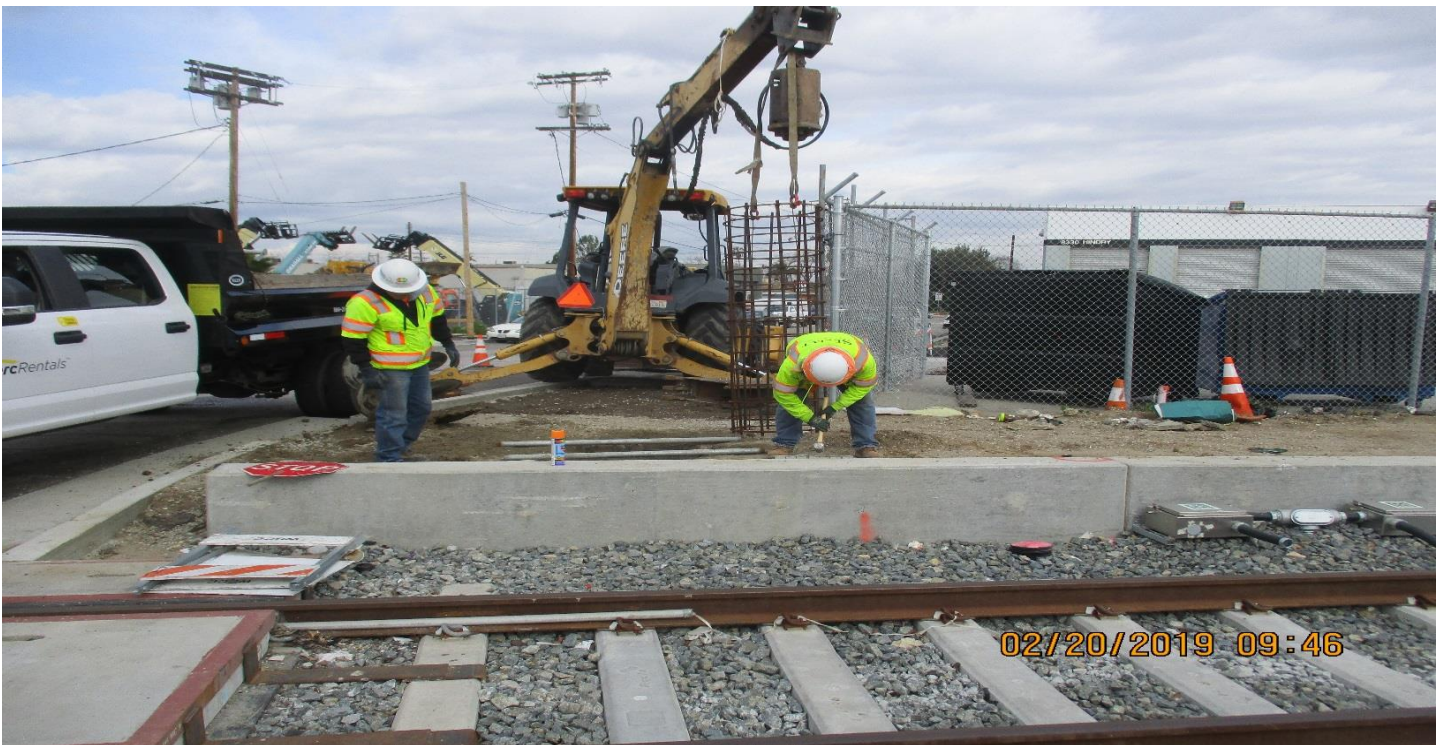


AVIATION/CENTURY- A Guideway UP NB-SB crosswalk forming.

# CRENSHAW/LAX PHOTOGRAPHIC UPDATE

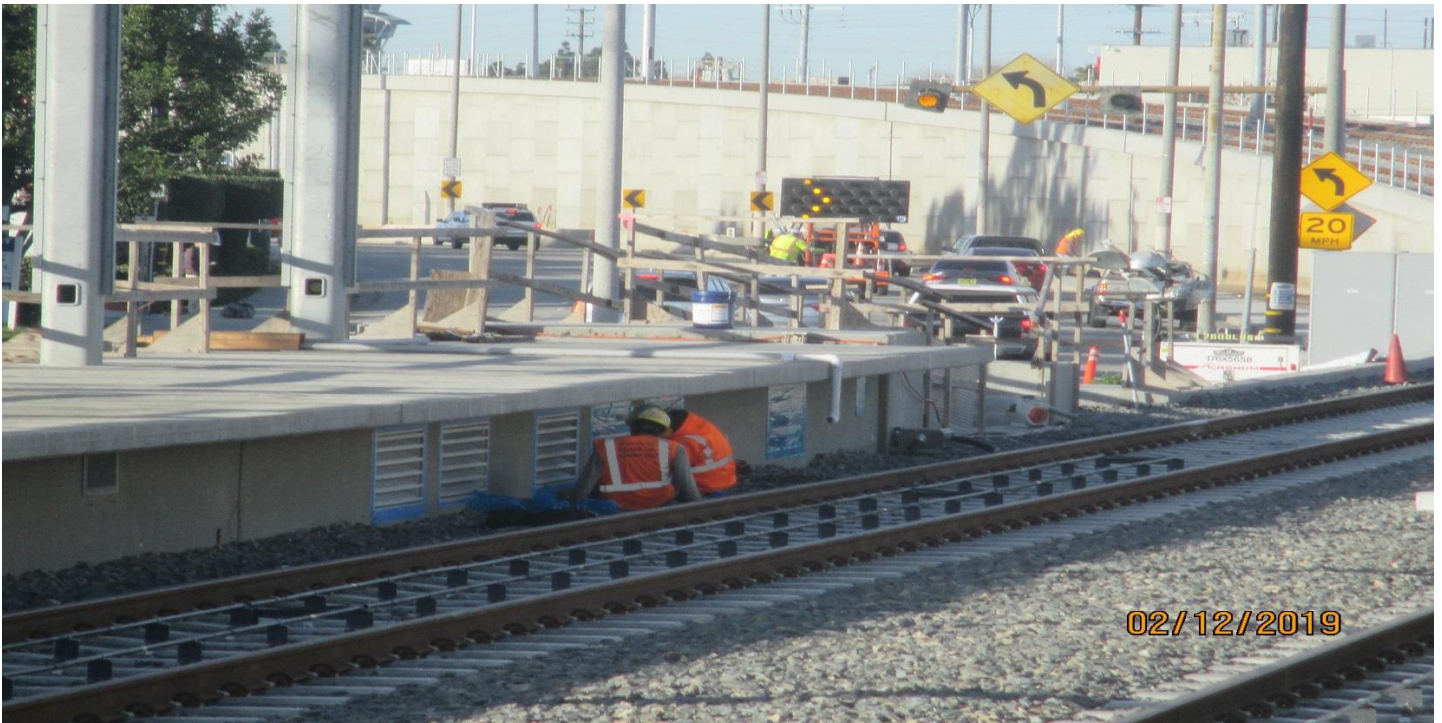


**AVIATION/CENTURY-** Forming the concrete walkway at STA.66+20 at the Aviation Station.



**WESTCHESTER STATION-** Select Electric Drilled holes for bush button poles at Hindry crossing and placed cages.

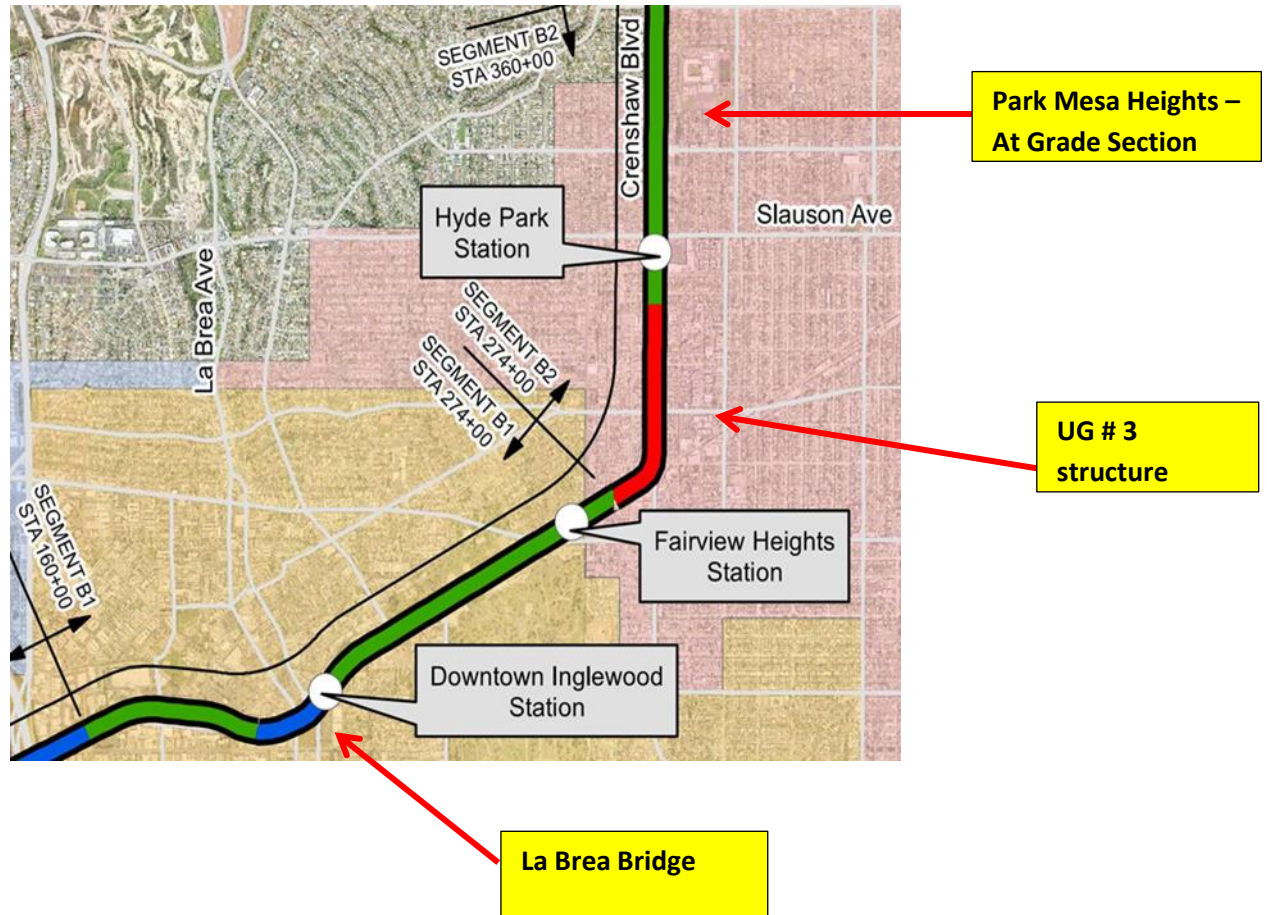
# CRENSHAW/LAX PHOTOGRAPHIC UPDATE



WESTCHESTER STATION- Sealing the louvers on the NB Hindry Station platform.

# CRENSHAW/LAX PHOTOGRAPHIC UPDATE

## Segment B





# CRENSHAW/LAX PHOTOGRAPHIC UPDATE



**B1 GUIDEWAY** - Replacing concrete tie inserts, patch concrete ties, and punch list at High st & West blvd.



**TPSS TPSS #1.** NETE was re-doing the ground grid test without the TPSS enclosure grounds connected.

# CRENSHAW/LAX PHOTOGRAPHIC UPDATE



TPSS- TPSS #2. WSCC Electrical was working on Negative returns on the Guideway.



TPSS- TPSS #3. Ace Fence Co finishing bollard install.

# CRENSHAW/LAX PHOTOGRAPHIC UPDATE



UG3- Installation of lighting fixtures and electrical components at the SB tunnel.



UG3- Installation of the CMU wall for the Radio room at the NB tunnel.

# CRENSHAW/LAX PHOTOGRAPHIC UPDATE



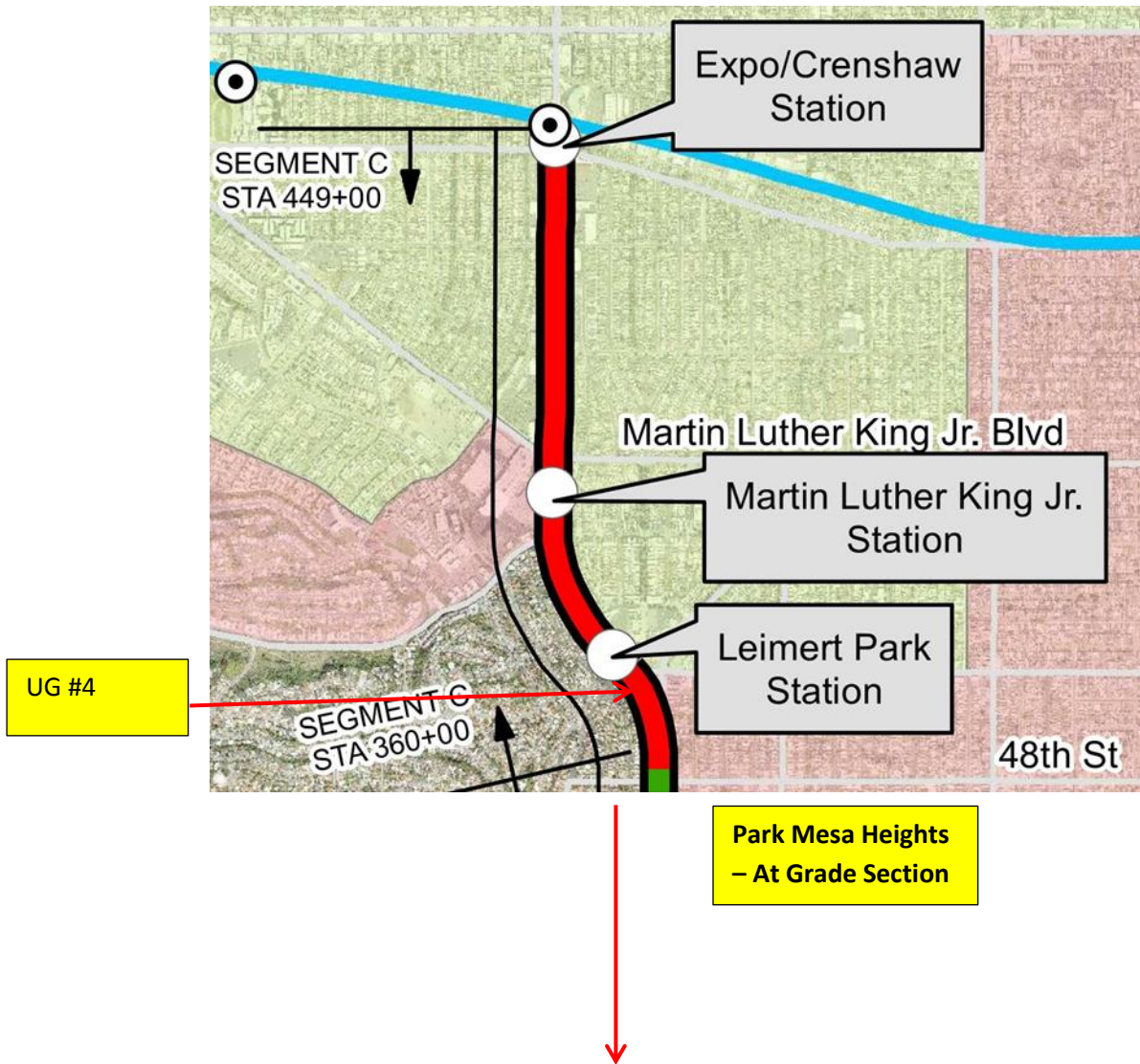
UG3- Installation of the barrier wall at the North Portal.



UG3- Installation of conduit in trench at Victoria yard.

# CRENSHAW/LAX PHOTOGRAPHIC UPDATE

## Segment C



# CRENSHAW/LAX PHOTOGRAPHIC UPDATE



**UG4** – Northbound tunnel. (No progress since last progress report)



**LEIMERT PARK STATION** – Installation of escalator 1&2 at the entrance.

# CRENSHAW/LAX PHOTOGRAPHIC UPDATE



**LEIMERT PARK STATION** – Installation of escalator 1&2 at the entrance.



**LEIMERT PARK STATION** – Installation of equipment access hatch panels in the Emergency Ventilation Shaft/OTE Plenum South (C101).

# CRENSHAW/LAX PHOTOGRAPHIC UPDATE



**LEIMERT PARK STATION** – Installation of metal ceiling at the Paid Area at the concourse.



**MARTIN LUTHER KING JR. STATION**- Installation of staircase forms for plaza entrance.



# CRENSHAW/LAX PHOTOGRAPHIC UPDATE



**MARTIN LUTHER KING JR. STATION-** Concrete placement at top section of plaza slope of main staircase entrance.

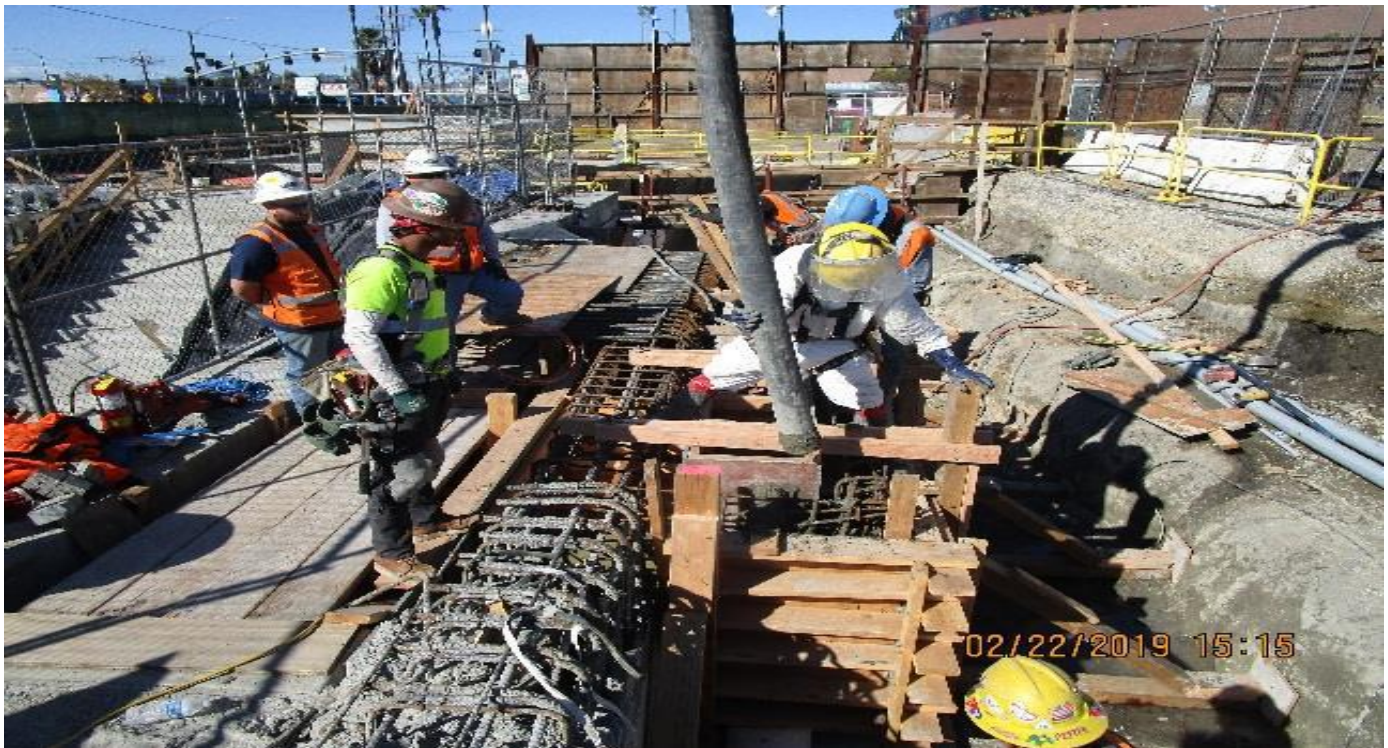


**MARTIN LUTHER KING JR. STATION-** Installation of waterproofing on the plaza roof.

# CRENSHAW/LAX PHOTOGRAPHIC UPDATE



**MARTIN LUTHER KING JR. STATION-** Installation of the supports for the metal ceiling at the Paid Area at the concourse.



**EXPOSITION/CRENSHAW STATION –** Concrete placement for wall G-37 at Emergency Exit #3.

# CRENSHAW/LAX PHOTOGRAPHIC UPDATE



**EXPOSITION/CRENSHAW STATION** – Installation of formwork for Emergency Exit Staircase #3.



**EXPOSITION/CRENSHAW STATION** – Installation of escalators in the main plaza entrance.

# CRENSHAW/LAX PHOTOGRAPHIC UPDATE



**EXPOSITION/CRENSHAW STATION** – Installation of metal ceiling at the Paid Area.



**TUNNEL** – Installation of electrical components at the SB tunnel between EXPO and MLK