



GIRLS

EMPOWERMENT SUMMIT



Metro[®]

Women + Girls
GOVERNING COUNCIL

LOS ANGELES COUNTY
WOMEN + GIRLS
INITIATIVE

WELCOME



Welcome to Metro's first annual Girls Empowerment Summit, which will introduce girls to the wide range of careers within the transportation industry. Metro is excited to have you here today in hopes that you feel inspired by the accomplished women you will hear from throughout the program and sessions. The doors are wide open and the possibilities are endless here at Metro. Jobs are available in every department – from our core business of bus and rail operations, to future transportation station designs, to planning and building bicycle infrastructure in your communities, and every career and interest in between.

Metro is dedicated to preparing LA County youth, such as yourself, for careers and college pathways in the transportation industry through our E3 Initiative – Expose, Educate and Employ the Next Generation of Transportation Professionals. With nearly 40% of Metro's workforce eligible for retirement in the next few years and estimates that Measure M alone will create and support more than 770,000 jobs over the next 40 years, you – participants of Metro's Girls Empowerment Summit – are the next generation of transportation professionals. Metro is eager to provide the tools and support that move women and girls beyond traditional careers. Today, I encourage all of you to open your minds to the exciting career opportunities in transportation that lie ahead for girls in LA County. Thank you for being here and enjoy the day!

Phillip A. Washington
Chief Executive Officer
Metro



Welcome to Metro's first annual Girls Empowerment Summit!

I am very glad you are all here and I hope your experiences today offer you some great ideas about career paths and your futures.

We want more and more women to work with us at Metro and we have made great strides this past year to build gender equity in the workplace. Right now, women represent just 29% of Metro's workforce and 37% of senior leadership. We are making a concerted effort to change that, and we really want young women like you to see a future for themselves here.

As the Chair of Metro's Board of Directors, I am deeply committed to opening doors for women. I hope you have a truly inspirational day and that you might see yourself building your future here at Metro.

Sheila Kuehl
Metro Board Chair
Los Angeles Supervisor 3rd District

MARCH 29, 2019

PROGRAM AT A GLANCE

8:30–9:15am

Registration/Meet & Greet

Los Angeles Union Station

9:15–9:45am

Opening Ceremony

Los Angeles Union Station

Welcome

Phillip A. Washington, CEO, Metro

Jacquelyn Dupont-Walker, Metro Board Member

Keynote Speaker

Seleta Reynolds, General Manager, LADOT

9:45–10:30am

Panel Discussion

Women Leaders in Transportation

10:30–10:45am

Break

10:45am–12:15pm

Workshops

Find Your Footing: Navigate a Career in Transportation Planning

Design the Future: Transit Station Design

Build a Career: Engineering and Construction

Next Stop: Transit System Operations

Location: Metro Division 13

The Future of Outreach in Transportation

12:15–12:30pm

Break

12:30–1pm

Closing Remarks/Lunch

Sheila Kuehl

Metro Board Chair

Los Angeles County Supervisor 3rd District



PANEL DISCUSSION

Women Leaders in Transportation

Panelists will share their career paths and personal stories of academic and professional development. These accomplished women will discuss their experiences working in positions of authority and describe their respective paths toward leadership. Participants will learn strategies for developing confidence and overcoming barriers to pursuing professional and personal goals.



Stephanie Wiggins
Chief Executive Officer,
Metrolink



Shirley Choate
Chief Deputy
District 7 Director,
CalTrans



Debra Avila
Chief Vendor Contract
Management Officer,
Metro



Debra Johnson
Deputy CEO,
Long Beach Transit



Seleta Reynolds
General Manager,
LA Department
of Transportation
(Moderator)

DRAFT



S
of Stoney Point Park

el Steel Art Panel (20'-0" x 3'-3")




e Mosaic Paving (17'-0" x 8'-0")



WORKSHOP 1

Find your Footing: Navigate a Career in Transportation Planning

Participants in this session will explore a career in transportation planning, learn about a “day in the life” of a transportation planner from diverse perspectives, obtain information on the planning phase of transportation projects and discuss how to navigate leadership  planner. Participants will also learn how to get into the transportation planning industry, prepare for a leadership role and hear perspectives from the public and private sectors.



Veronica Siranosian
Vice President,
AECOM



Monica Villalobos
President/Principal,
Vicous Planning



Kelli Bernard
Chief Executive Officer,
AECOM

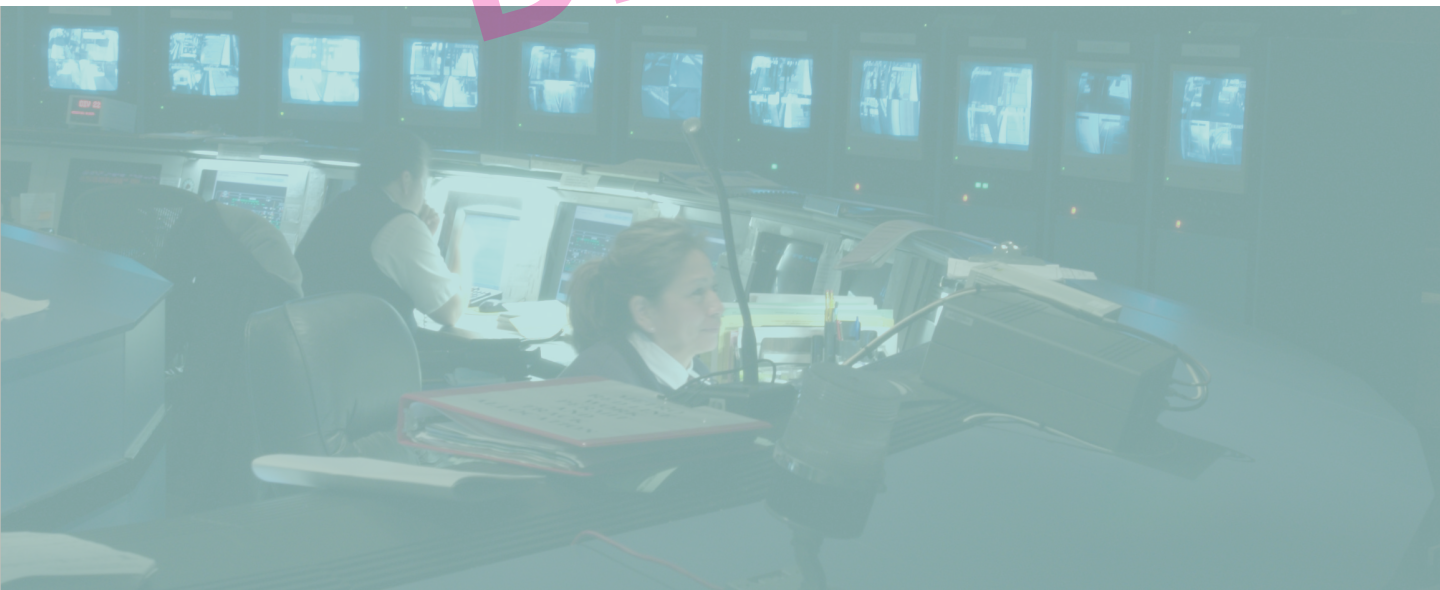


Carolyn Flowers
Managing Principal,
InfraStrategies



Meghna Khanna
Senior Director,
Countywide Planning
& Development,
Metro

DRAFT



WORKSHOP 2

Design the Future: Transit Station Design

Participants in this session will learn what it takes to design a multimodal transit hub, using real-life examples, such as the Blue Line Willowbrook/Rosa Parks Station Improvement Project. Participants will also learn about planning, architectural, engineering and public involvement processes when developing station design ideas. Presenters will discuss the roles and disciplines required in the design process and the many career opportunities in this line of work.



Tina Moschetti
Principal/
Managing Leader,
Stantec



Amy Chang
Senior Architecture
Associate, Stantec



Sherry Weinmeier
Principal Engineer, Stantec



Debora Amougou
Project Coordinator,
Stantec



Rhonda Bell
Associate Urban
Planner, Stantec



Maria Morris
Senior Transportation
Planner, Stantec



Rina Velasco
Office Engineer, Stantec



Kimberly Ong
Executive Officer,
Project Engineering,
Metro

DRAFT



WORKSHOP 3

Build a Career: Engineering and Construction

Participants in this session will learn about different functions of the Project Life Cycle (PLC) and break into groups to design, schedule, estimate, construct and learn about quality control and safety. Group activities will include sketching, developing cost estimates, model development and conducting safety requirements.



Stephanie Leslie
PE, Deputy Project
Manager,
Metro



Annette Cortez
Construction Relations
Manager,
Metro



Christi Fu
PE, Associate
Vice President, Arcadis



Tasha Higgins
MBA, PE, PMP,
Chief Executive Officer,
HigginsWorks



Shannon McQueen
Health, Safety &
Environment
Representative,
Walsh/Shea
Corridor Constructors



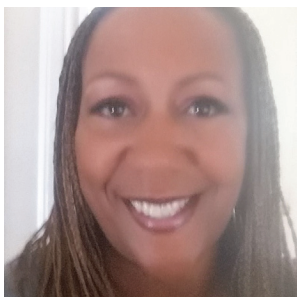
Charlette Newton
Assistant Project
Engineer, Walsh/Shea
Corridor Constructors



Michelle Smith
PE, Senior Director,
Program Management/
Highway Program,
Metro



Marcy Szarama
President,
Destination Enterprises



Elena Talley
Safety Manager,
Walsh/Shea Corridor
Constructors



Brianna Pearlman
Systems Engineer,
Mott MacDonald



Rose Perez
Construction Labor
Foreman,
Walsh/Shea Corridor
Constructors

WORKSHOP 4

Next Stop: Transit System Operations

Participants in this session will meet women with various positions in the Operations department, such as Maintenance Mechanics, a Division Director and more. Each woman will have a chance to share their respective career paths, and after the panel, there will be an opportunity to take a tour of Division 13.



Lisa Woodruff
Senior Executive Officer,
Operations,
Metro



Sonja Owens
Director, Transportation
Operations,
Metro



Maria Reynolds
Director,
Transportation
Operations,
Metro

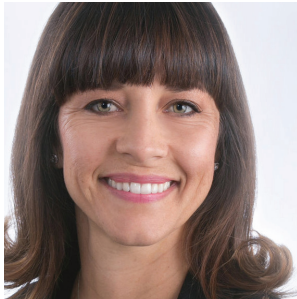
DRAFT



WORKSHOP 5

The Future of Outreach in Transportation

Participants in this session will learn how important public outreach is for all transportation studies and projects. The session will discuss the elements of communication strategy, plans and implementation. Participants will also find out how crucial it is to collaborate with technical and environmental teams. They will also learn about the various technology tools used in studies and projects to engage the public, which make it easy for stakeholders to help shape the outcomes.



Stacey Falcioni
Project Manager,
Arellano Associates



Yvette Rapose
Interim Chief
Communications Officer,
Metro



Jody Litvak
Director Community
Relations,
Metro



Laura Muna-Landa
Director of Projects,
Arellano Associates

DRAFT



Thank you to our partners!



GIRLS
EMPOWERMENT SUMMIT