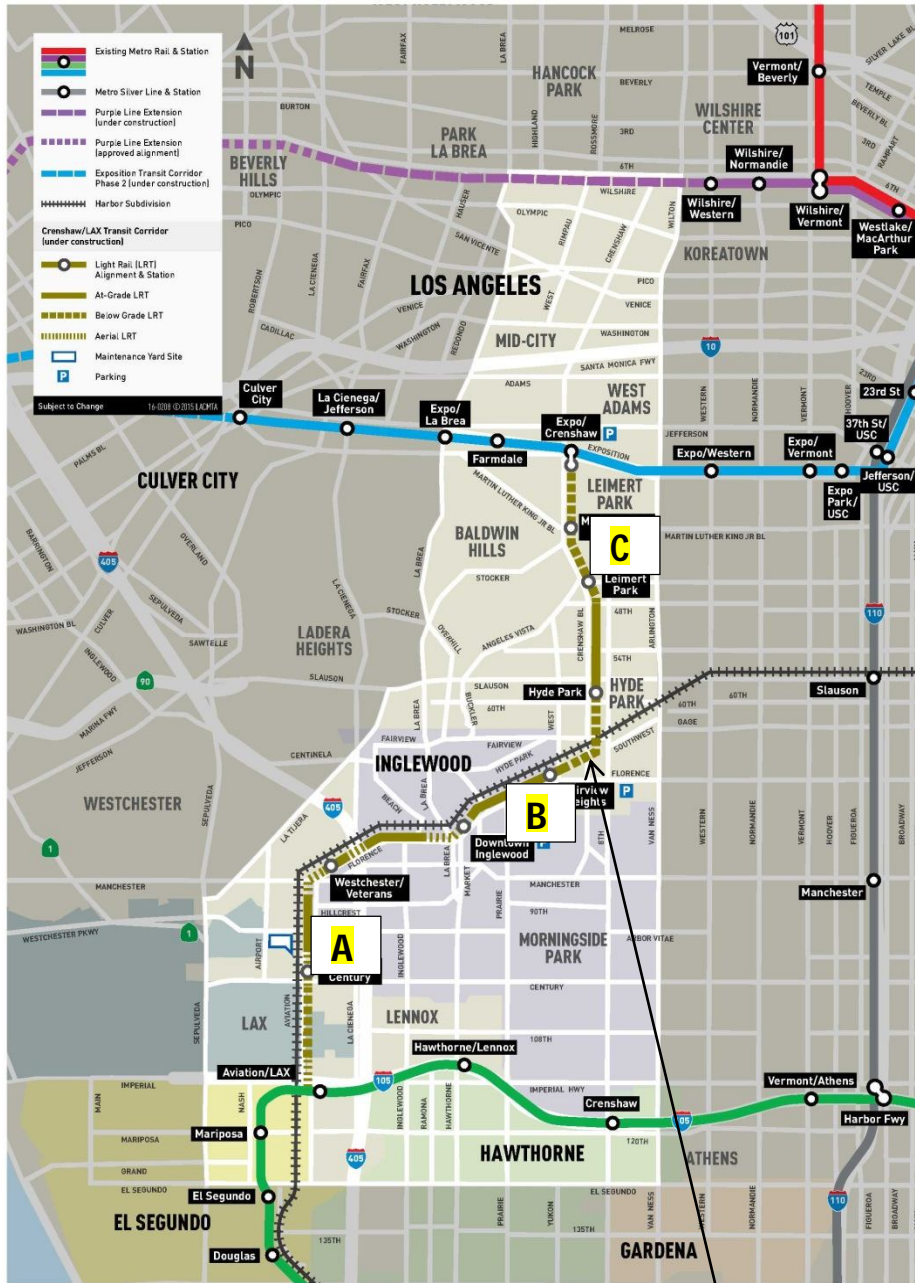


CRENSHAW/LAX PHOTOGRAPHIC UPDATE

April 1, 2019

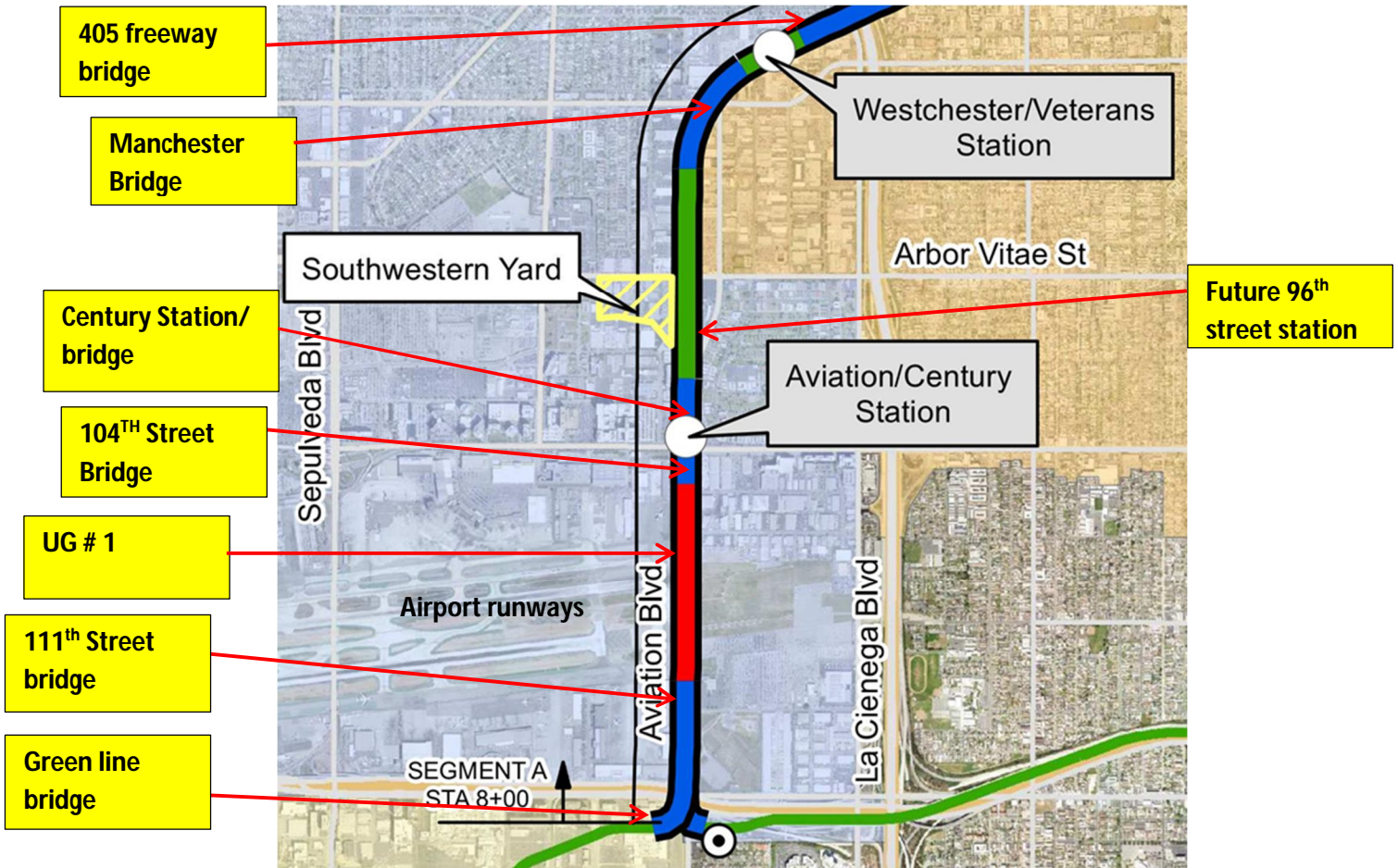
Crenshaw/LAX Transit Project



- 8.5 miles Light Rail
- 8 Stations
- \$2,058.0 Million (Board approved revised LOP)

CRENSHAW/LAX PHOTOGRAPHIC UPDATE

Segment A



CRENSHAW/LAX PHOTOGRAPHIC UPDATE



GREENLINE UNDERPASS- Crossing 3 switch machine installation.

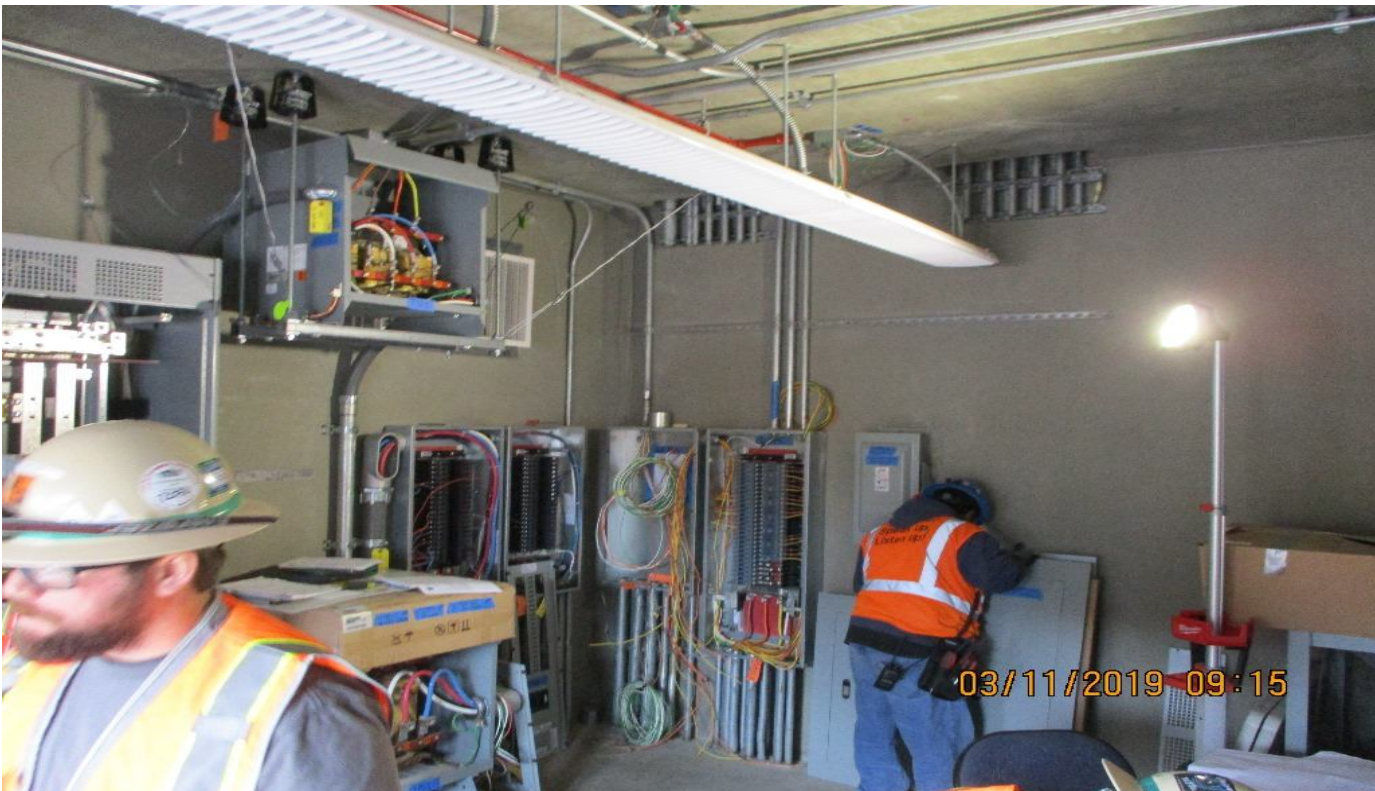


UG1- Installing 350 KCMIL contact wire run WR#08.

CRENSHAW/LAX PHOTOGRAPHIC UPDATE



AVIATION/CENTURY- Surveying lighting conduits on the Platform.



AVIATION/CENTURY- Investigating conduits, wire and equipment.

CRENSHAW/LAX PHOTOGRAPHIC UPDATE



WESTCHESTER STATION- Surveying lighting conduits on the Platform.



HINDRY CROSSING - Setting forms for the sidewalk for the northwest quadrant.

CRENSHAW/LAX PHOTOGRAPHIC UPDATE



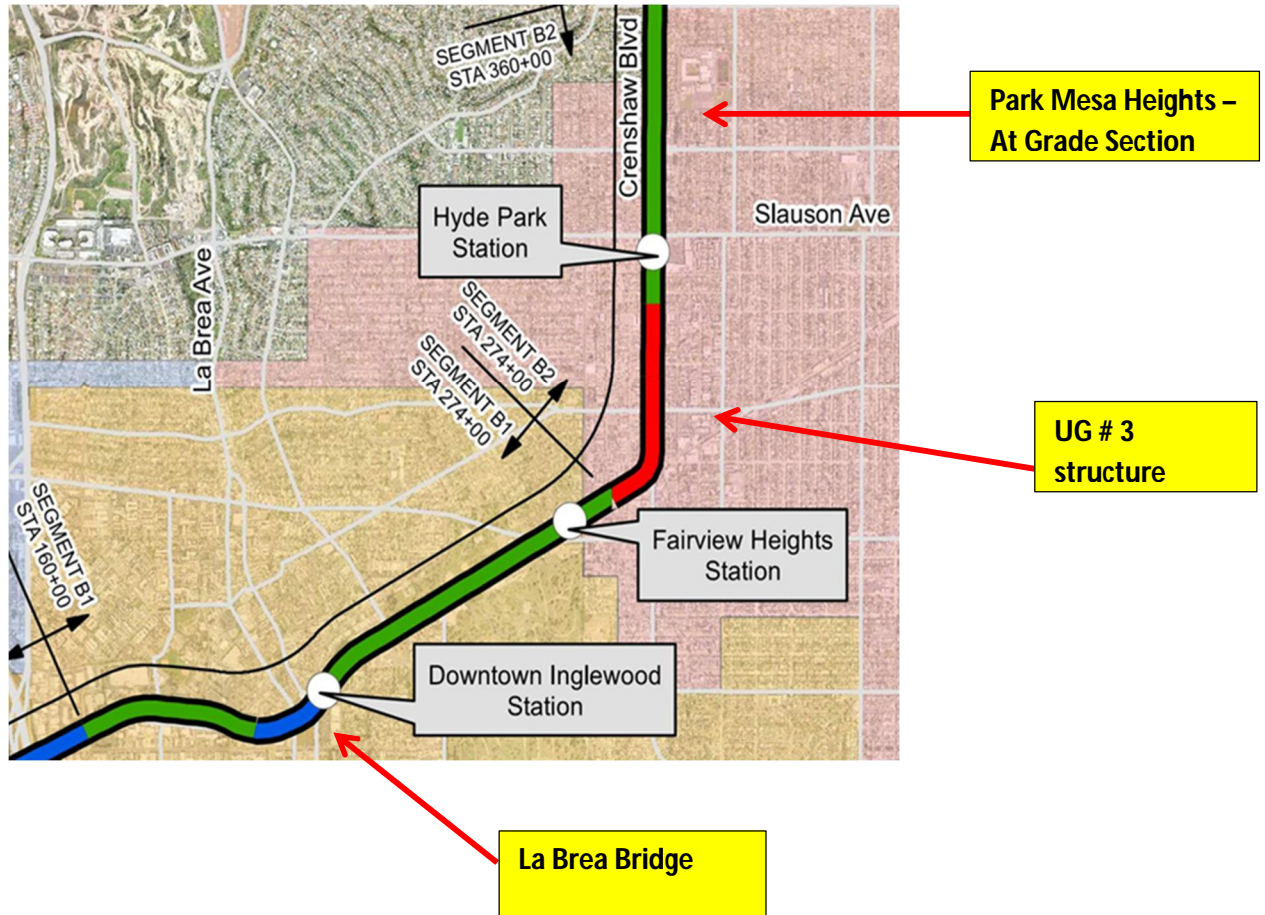
HINDRY & FLORENCE - Pulling wire and resetting traffic signal at Intersection.



FAIRVIEW HEIGHTS STATION - Extending conduits on North Side of Southbound Ballast wall

CRENSHAW/LAX PHOTOGRAPHIC UPDATE

Segment B



CRENSHAW/LAX PHOTOGRAPHIC UPDATE



B1 GUIDEWAY - Replacing concrete tie inserts, patch concrete ties, and punch list at High st & West blvd.



B1 GUIDEWAY - #3 SB Attaching messenger and contact wire WR#S1 to the yoke plate.

CRENSHAW/LAX PHOTOGRAPHIC UPDATE



HYDE PARK STATION TRACK #4 NB – Rail & Tie removed for MH #97 rework



B2 GUIDEWAY 54th to 57th Streets – Rail surface, line, ballast tamping and dressing.

CRENSHAW/LAX PHOTOGRAPHIC UPDATE



TPSS PP1 panel re-configured without generator feed.

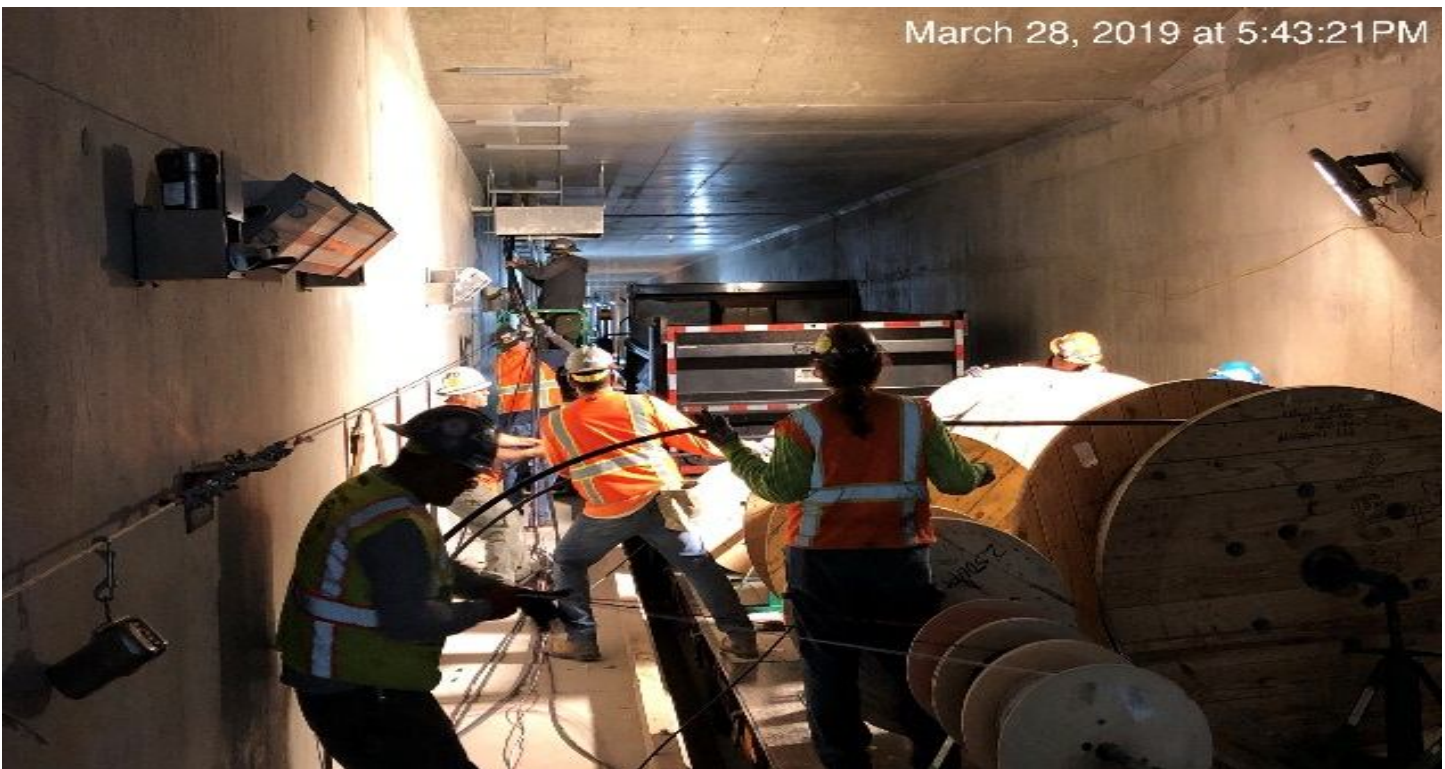


TPSS- AC switchgear upper cubicles.

CRENSHAW/LAX PHOTOGRAPHIC UPDATE



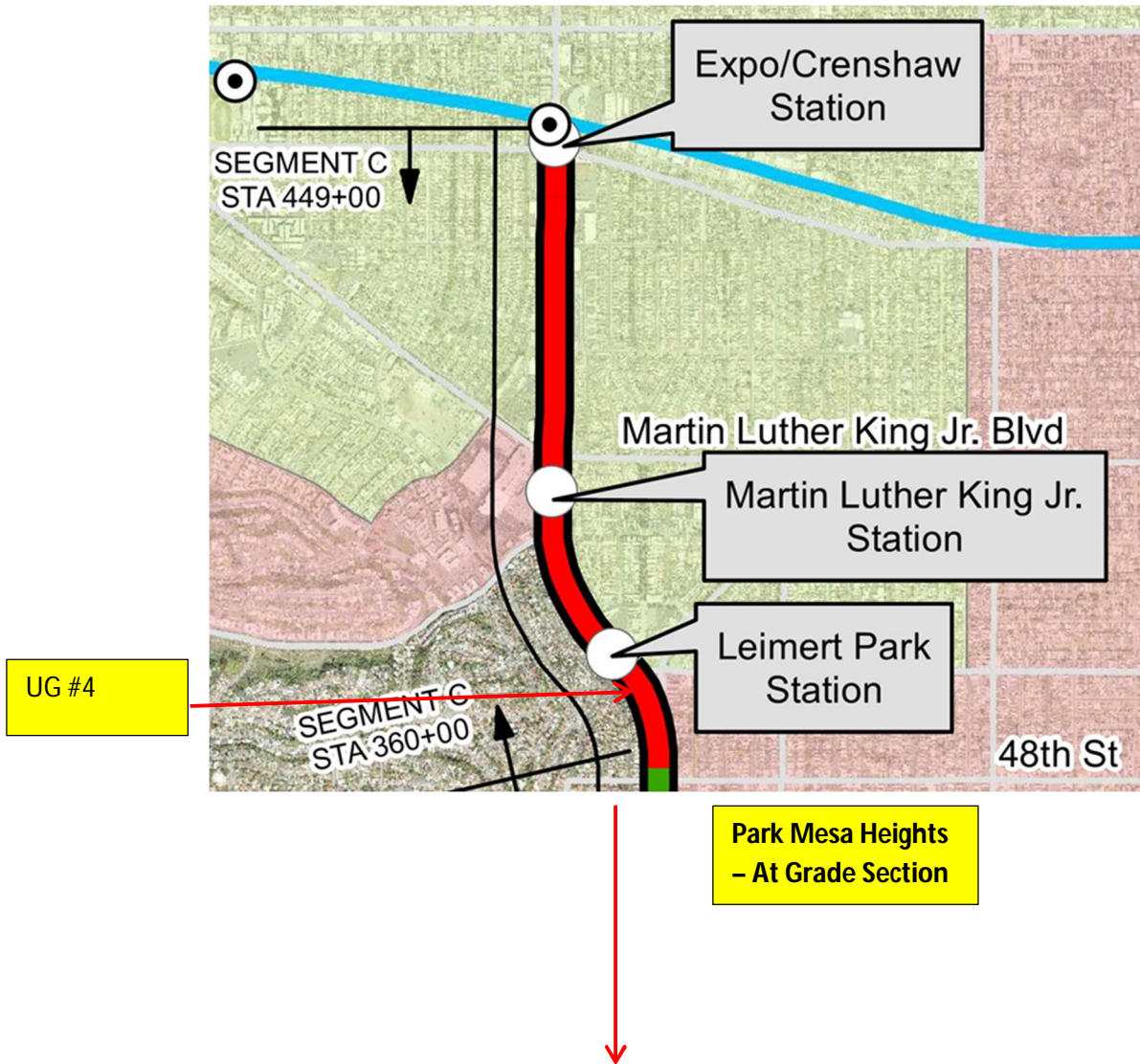
TPSS- Continuing to install negative return conduits.



UG3- Installation of electrical conduit at the southbound tunnel.

CRENSHAW/LAX PHOTOGRAPHIC UPDATE

Segment C



CRENSHAW/LAX PHOTOGRAPHIC UPDATE



UG4 – Installation of fire caulk for the Radio room at the NB tunnel.



LEIMERT PARK STATION – Concrete placement for green wall at the plaza.

CRENSHAW/LAX PHOTOGRAPHIC UPDATE



LEIMERT PARK STATION – Installation of ceramic tile at the Paid Area of the Concourse level.



LEIMERT PARK STATION – Installation of the supports for the metal ceiling at the Concourse level.

CRENSHAW/LAX PHOTOGRAPHIC UPDATE



LEIMERT PARK STATION – Installation of formwork for the EVF equipment pad in the north and south Fan room.



MARTIN LUTHER KING JR. STATION- Installation of the metal ceiling at the Concourse.

CRENSHAW/LAX PHOTOGRAPHIC UPDATE



MARTIN LUTHER KING JR. STATION- Preparing wall joints at the concourse level.



MARTIN LUTHER KING JR. STATION- Installation of falsework for Emergency Exit Stairs # 2 North.

CRENSHAW/LAX PHOTOGRAPHIC UPDATE



EXPOSITION/CRENSHAW STATION – Installation of metal ceiling at Concourse level.



EXPOSITION/CRENSHAW STATION – Installation of fire sprinklers at the Concourse level.

CRENSHAW/LAX PHOTOGRAPHIC UPDATE



EXPOSITION/CRENSHAW STATION – Installed dowels for CMU wall M131 phase 2 at the Concourse level.



EXPOSITION/CRENSHAW STATION – Prepared formwork for equipment pads in Mechanical room North C146.

CRENSHAW/LAX PHOTOGRAPHIC UPDATE



TUNNEL – UG4 Northbound Tunnel between the MLK and Expo Stations.