

# CRENSHAW/LAX PHOTOGRAPHIC UPDATE

May 1, 2019

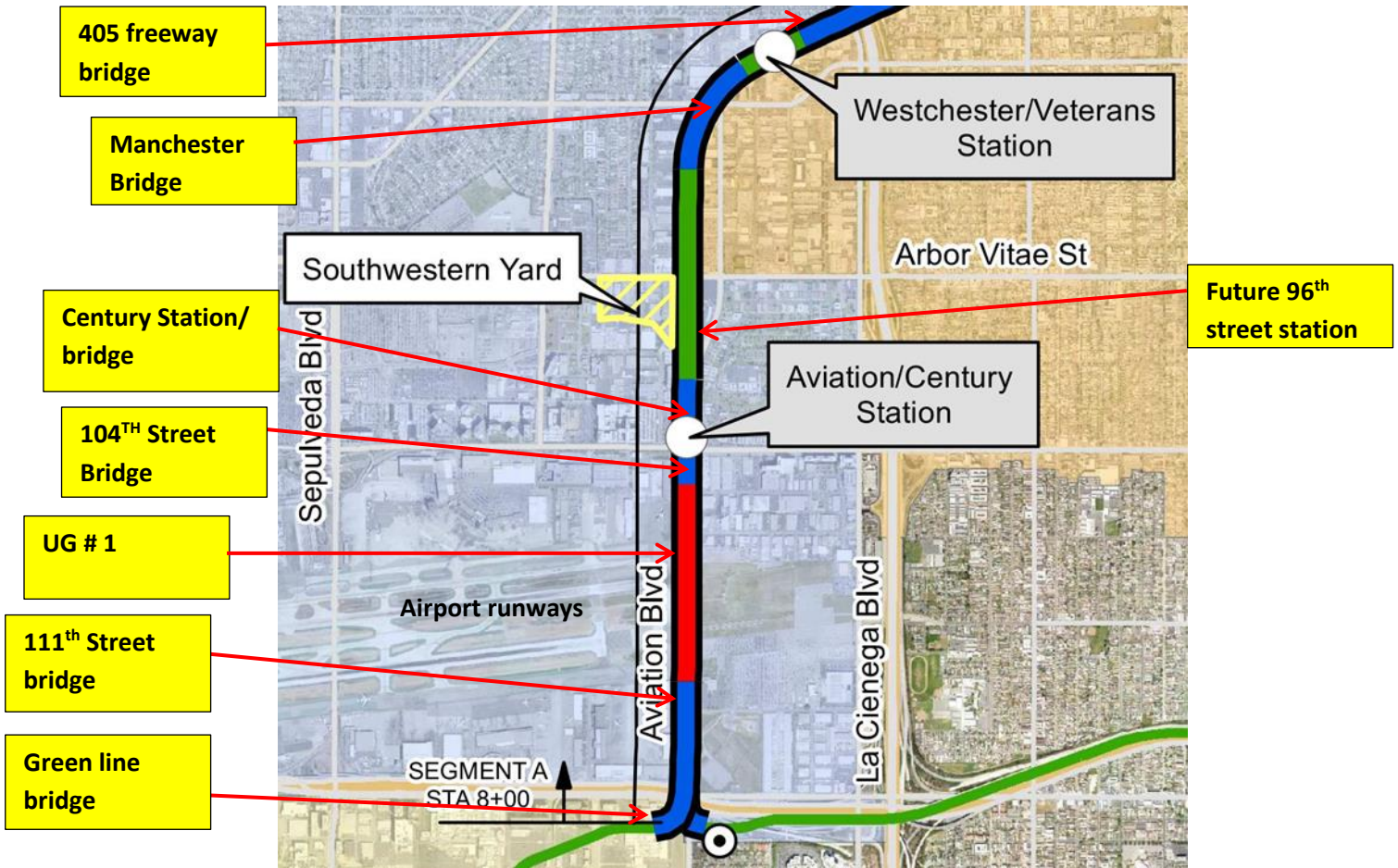
## Crenshaw/LAX Transit Project



- 8.5 miles Light Rail
- 8 Stations
- \$2,058.0 Million  
(Board approved revised LOP)

# CRENSHAW/LAX PHOTOGRAPHIC UPDATE

## Segment A



# CRENSHAW/LAX PHOTOGRAPHIC UPDATE

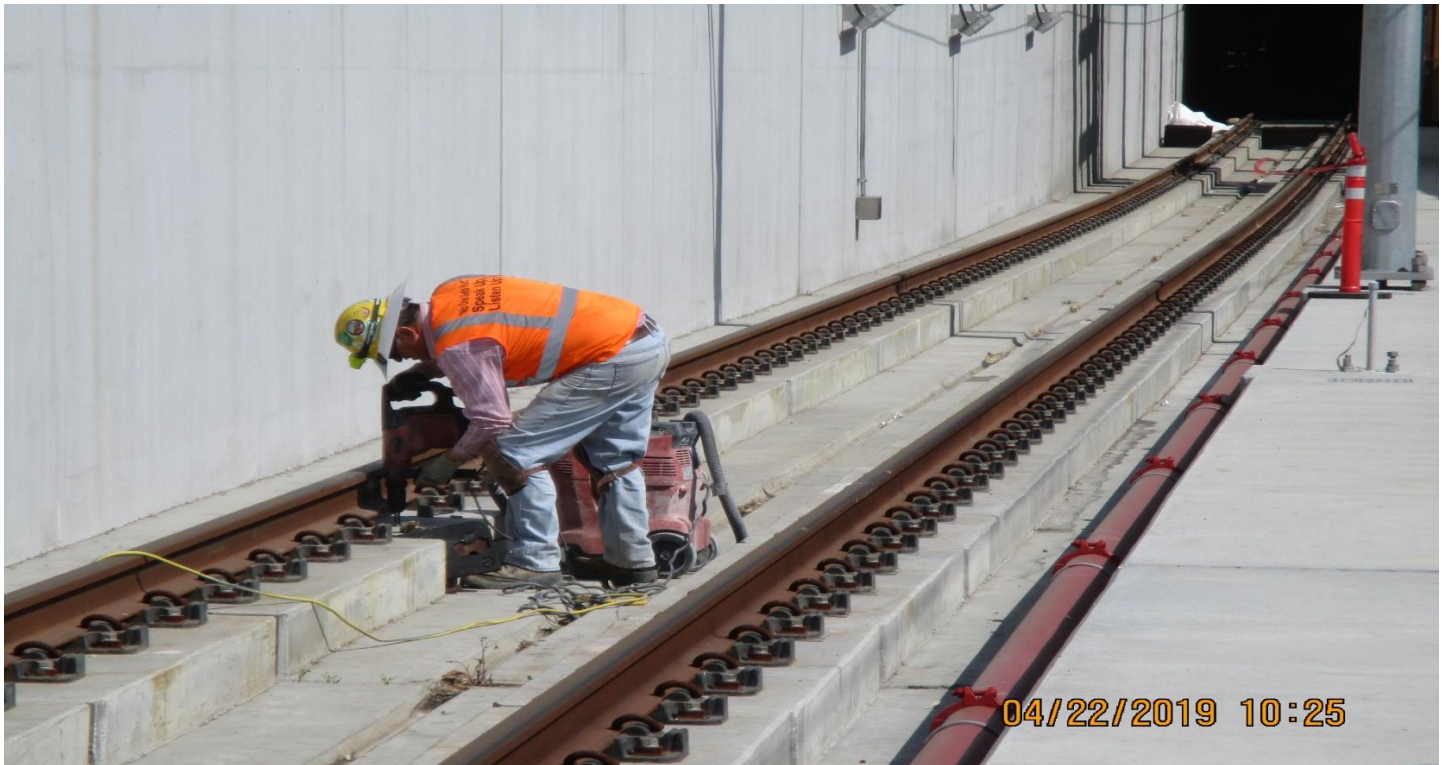


111<sup>th</sup> STREET- STA27+03 looking West - Removed bridge joint plates.



111<sup>th</sup> STREET - STA27+00 looking North - adjusting e-clip.

# CRENSHAW/LAX PHOTOGRAPHIC UPDATE



UG-1- A Guideway at UG1 preparation of cored holes for epoxy rail insert rework.



UG-1- LKC lineman continue finalization of WR#07 and WR#08.

# CRENSHAW/LAX PHOTOGRAPHIC UPDATE



AVIATION/CENTURY- UP chipping of SB track coping slab for U bars.



AVIATION/CENTURY- UP coring epoxy insert at NB track STA 68+00 to 70+10.

# CRENSHAW/LAX PHOTOGRAPHIC UPDATE



MSE 122 - STA125+64 looking South re-tamp & dress track ballast.

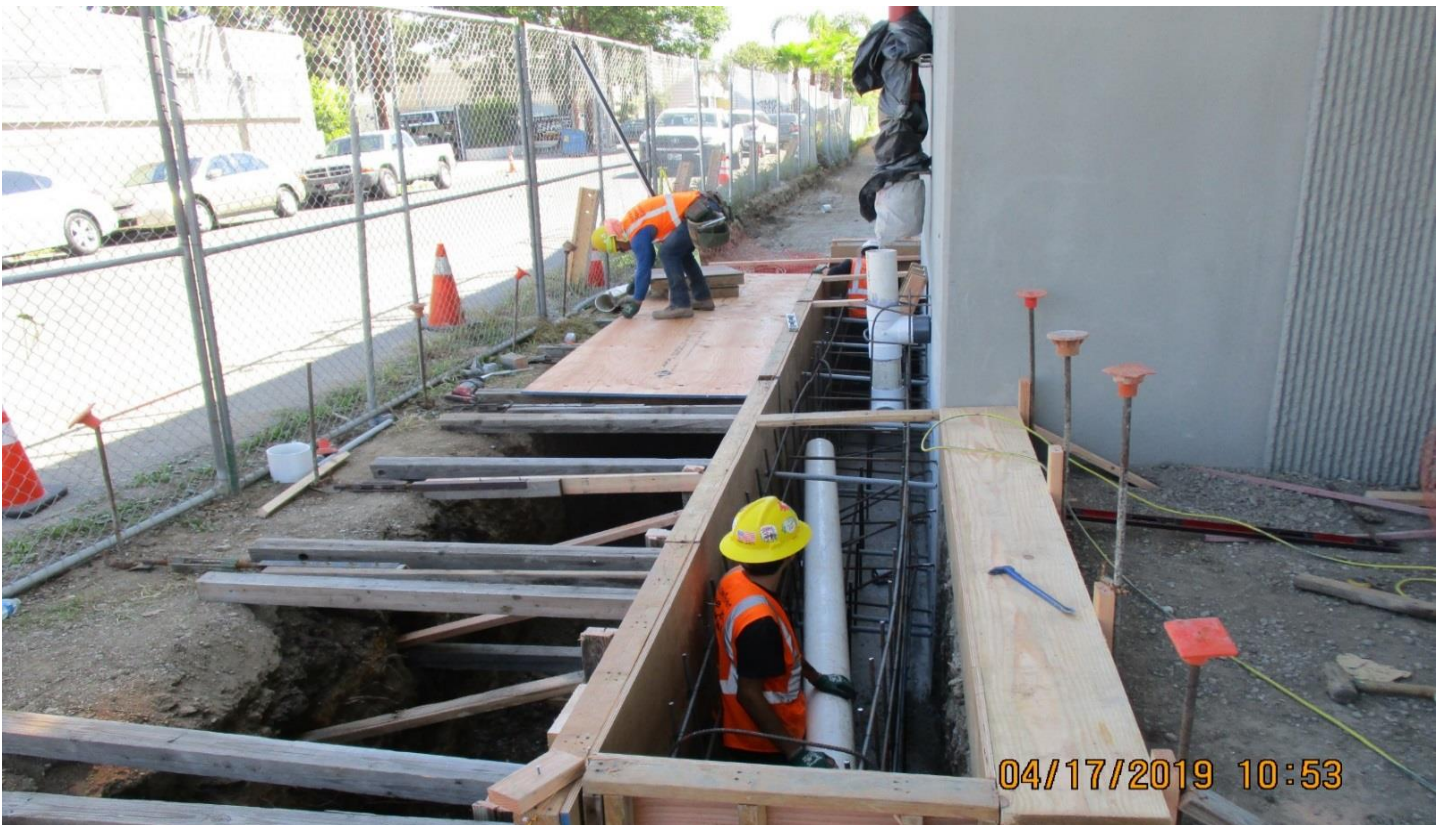


MSE 122 -STA121+50 looking South re-tamp & dress track ballast.

# CRENSHAW/LAX PHOTOGRAPHIC UPDATE



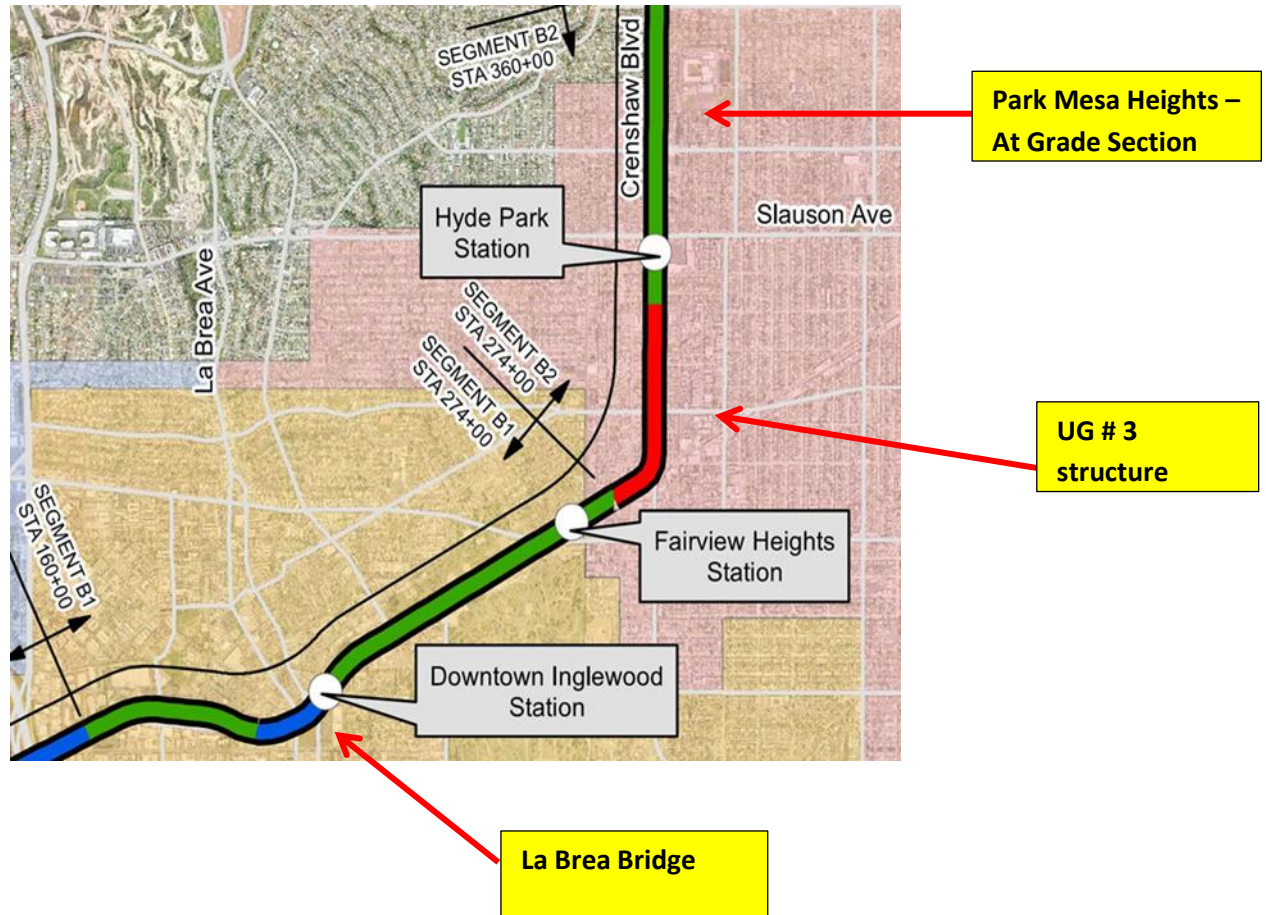
405 BRIDGE - Forming for drainage and COS protection system.



405 BRIDGE - Concrete placement for drainage outlet 6 in pipe.

# CRENSHAW/LAX PHOTOGRAPHIC UPDATE

## Segment B

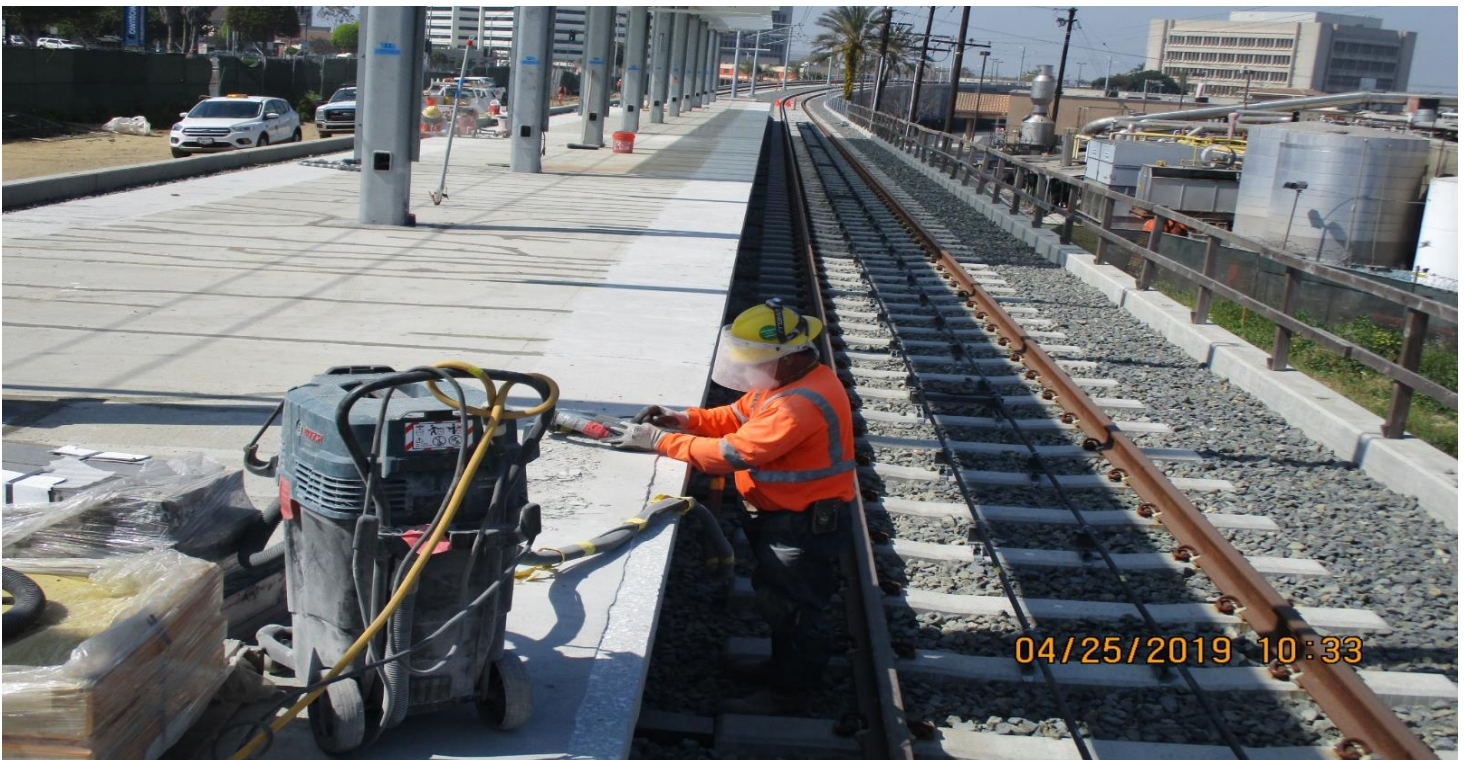




# CRENSHAW/LAX PHOTOGRAPHIC UPDATE



**DOWNTOWN INGLEWOOD STATION-** Guideway at La Brea Station install 6x6 treated lumber at conc ties.

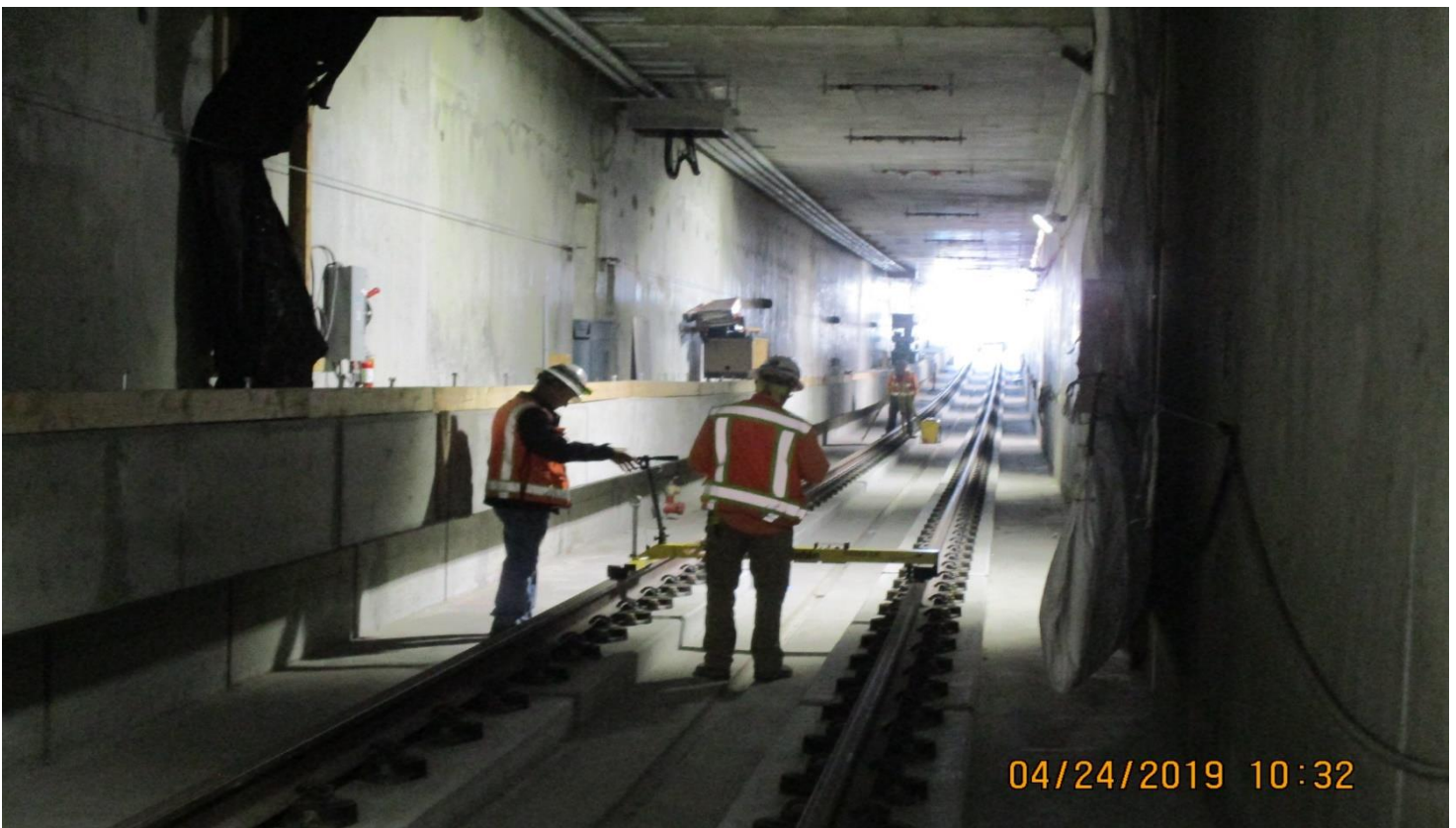


**DOWNTOWN INGLEWOOD STATION -** Guideway at La Brea Station grinding of station platform for levelness

# CRENSHAW/LAX PHOTOGRAPHIC UPDATE



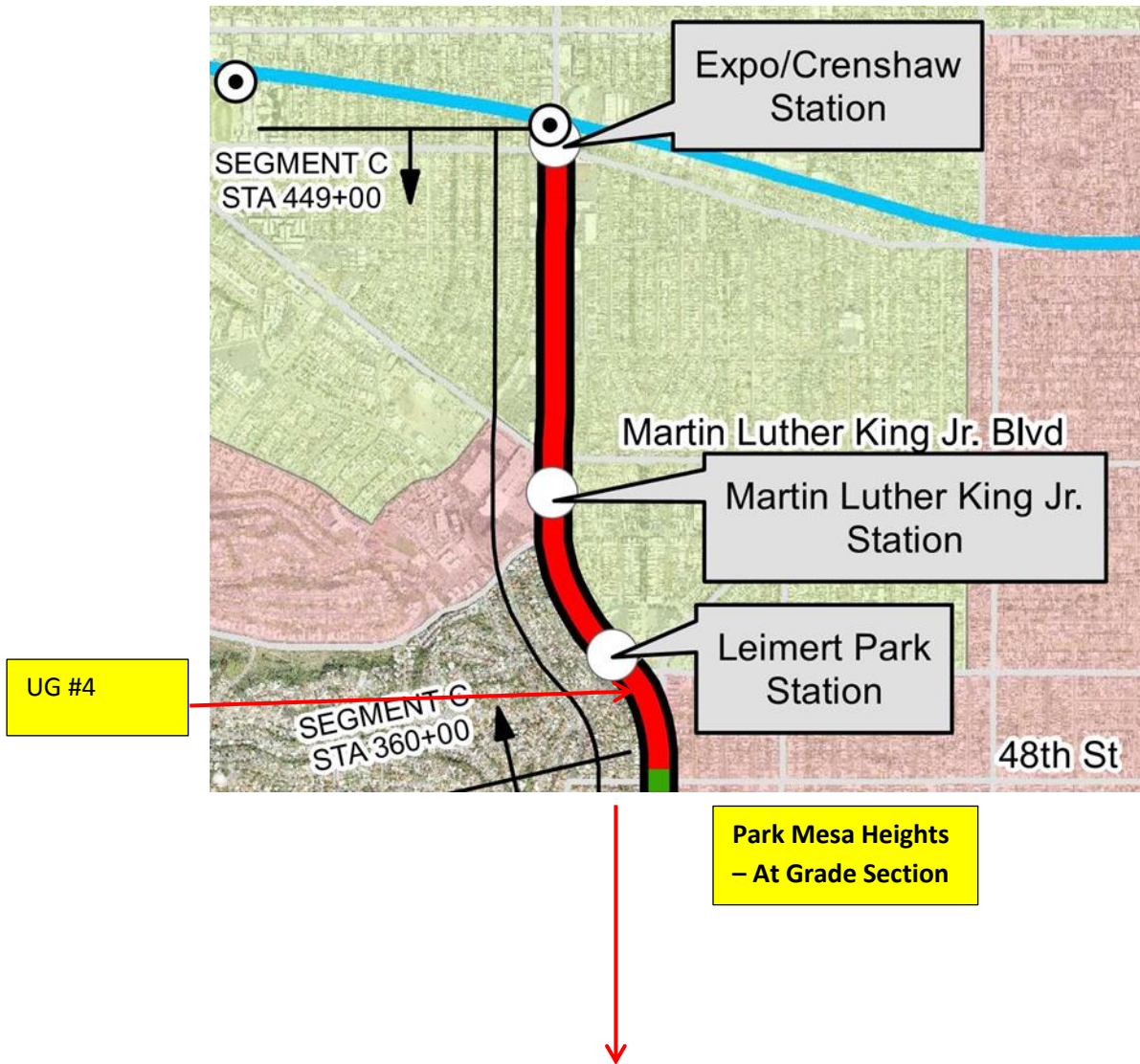
UG3- Installation of conduit for walkway lighting along the wall at the south portal.



UG3- Metro surveyors continue with Trimble trolley surveying at NB track.

# CRENSHAW/LAX PHOTOGRAPHIC UPDATE

## Segment C



# CRENSHAW/LAX PHOTOGRAPHIC UPDATE



**LEIMERT PARK STATION** – Removal of formwork from the green screen wall at the southeastern end of the station yard.



**LEIMERT PARK STATION** – Pipe relocation for the oil water separator at the station yard.

# CRENSHAW/LAX PHOTOGRAPHIC UPDATE



LEIMERT PARK STATION – Installation of ceramic tile at the entrance stairway walls.

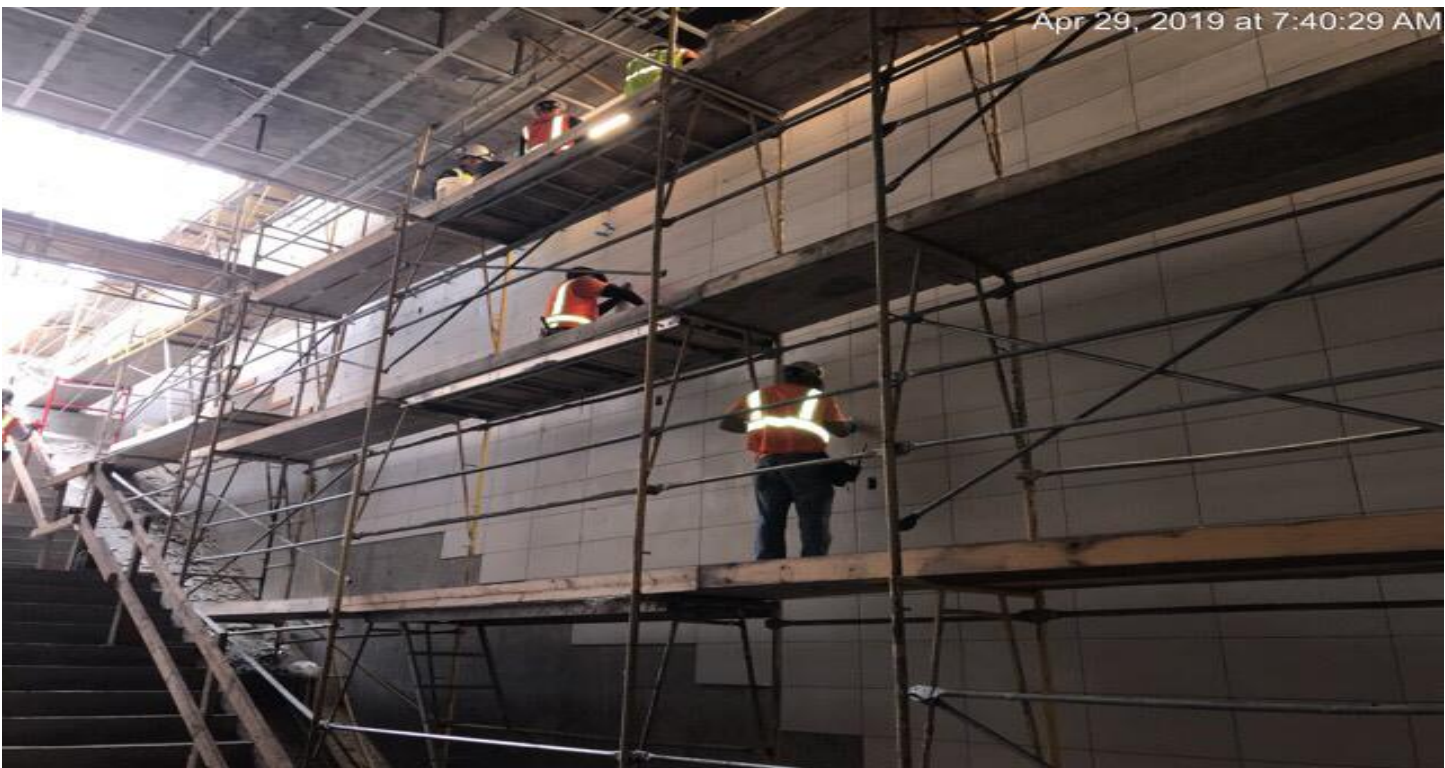


LEIMERT PARK STATION – Installation of metal ceiling grid at the platform.

# CRENSHAW/LAX PHOTOGRAPHIC UPDATE

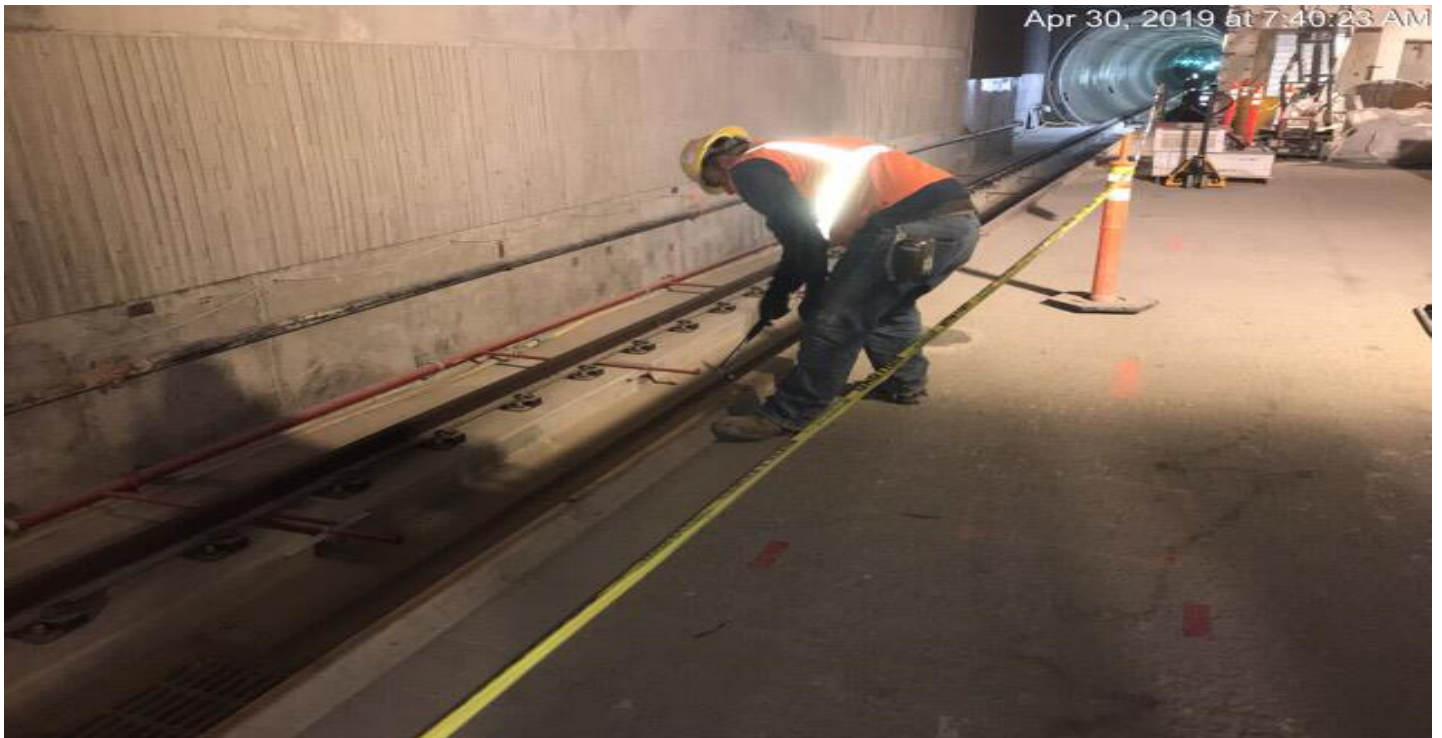


**MARTIN LUTHER KING JR. STATION-** Construction of the ramp and the entrance to Emergency Exit 2 South.

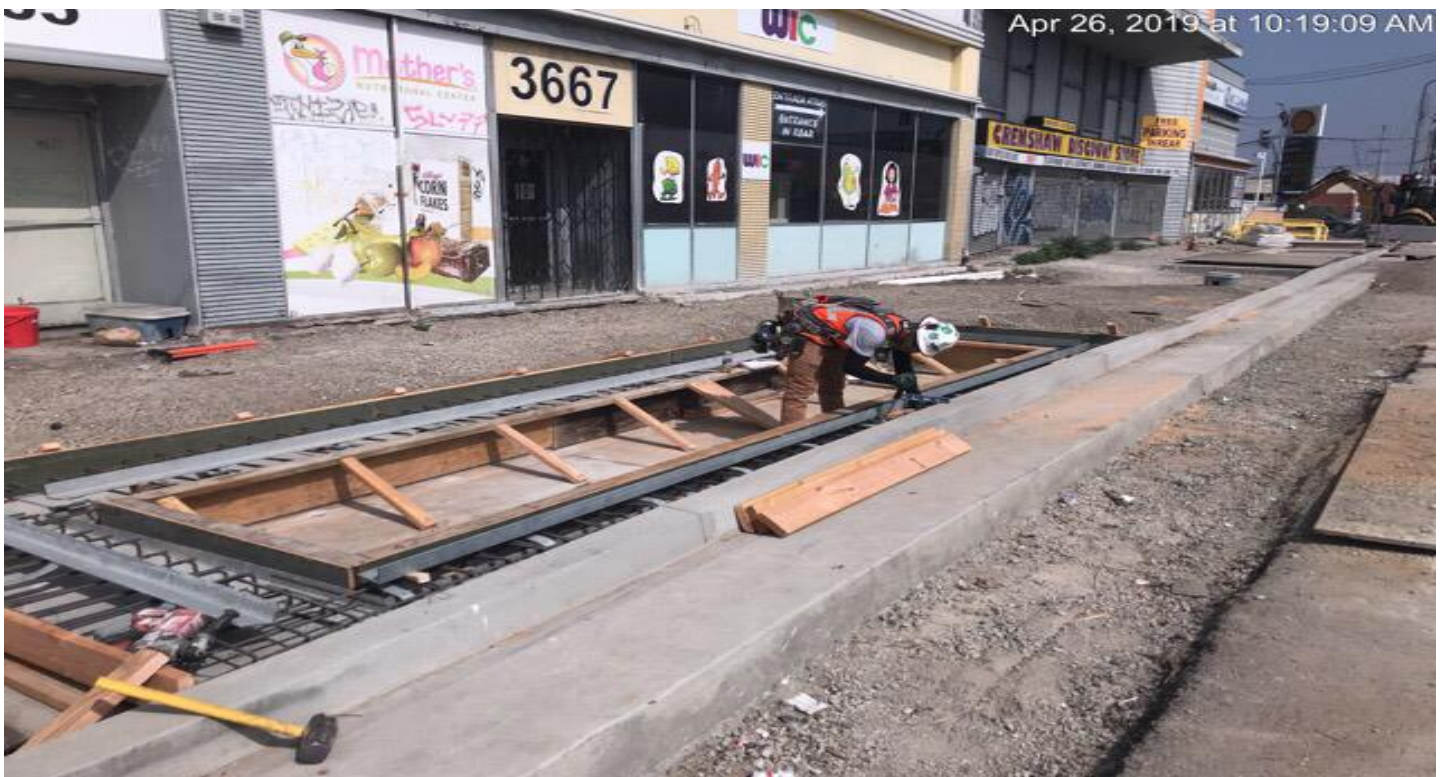


**MARTIN LUTHER KING JR. STATION-** Installation of ceramic tile at the walls of the entrance staircase.

# CRENSHAW/LAX PHOTOGRAPHIC UPDATE



**MARTIN LUTHER KING JR. STATION-** Preparation of the platform edge for installation of the dielectric pad.



**EXPOSITION/CRENSHAW STATION –** Installation of rebar at Exhaust Shaft 1.

# CRENSHAW/LAX PHOTOGRAPHIC UPDATE



**EXPOSITION/CRENSHAW STATION** – Installation of ceramic tile at the concourse level public area.



**EXPOSITION/CRENSHAW STATION** – Installation of the metal ceiling panel at the concourse public area.



# CRENSHAW/LAX PHOTOGRAPHIC UPDATE



**EXPOSITION/CRENSHAW STATION** – Preparation of the platform edge for installation of the dielectric pad.



**TUNNEL** – STA 372+71 to 377+40 layout of very high resilient direct fixation rail fasteners.