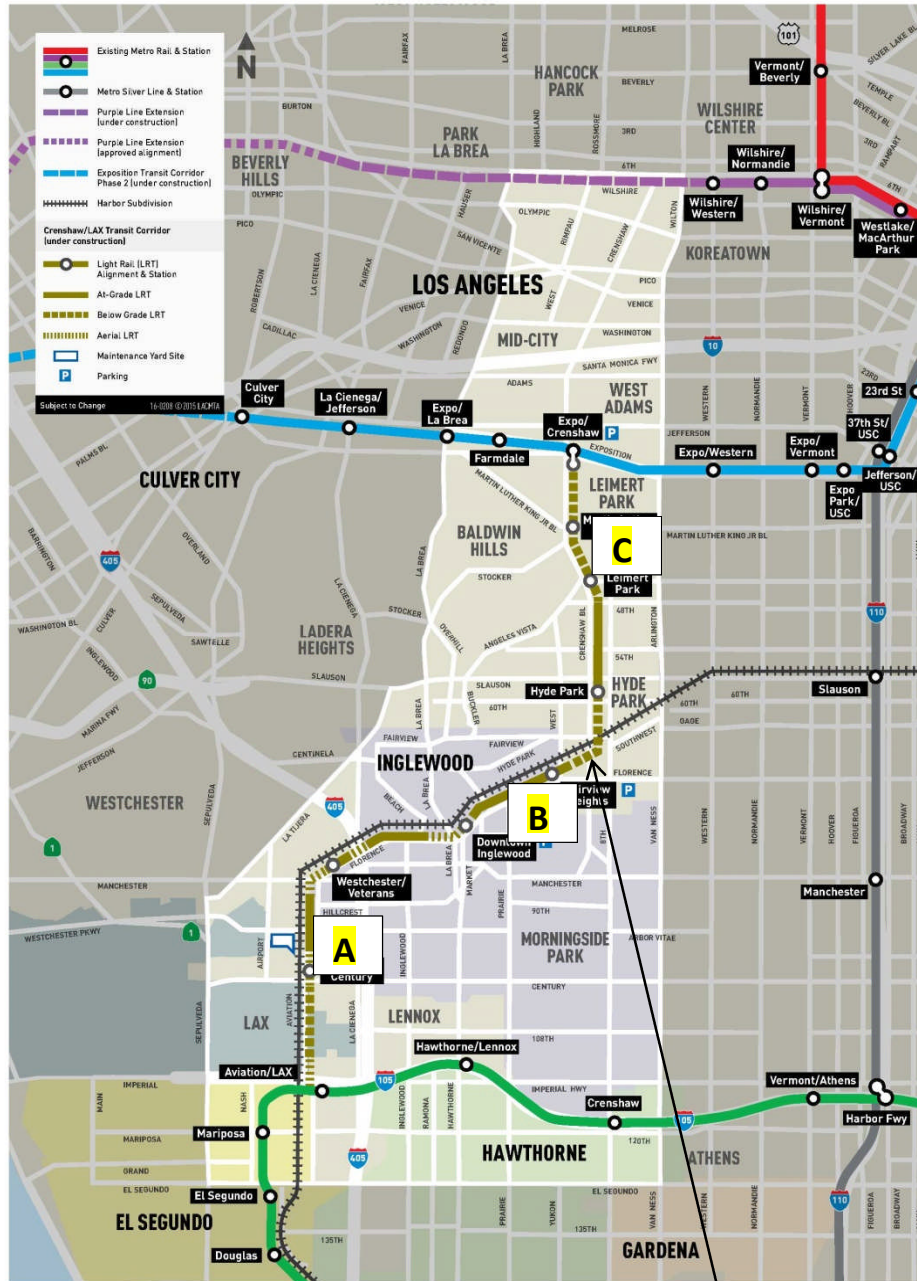


# CRENSHAW/LAX PHOTOGRAPHIC UPDATE

June 1, 2019

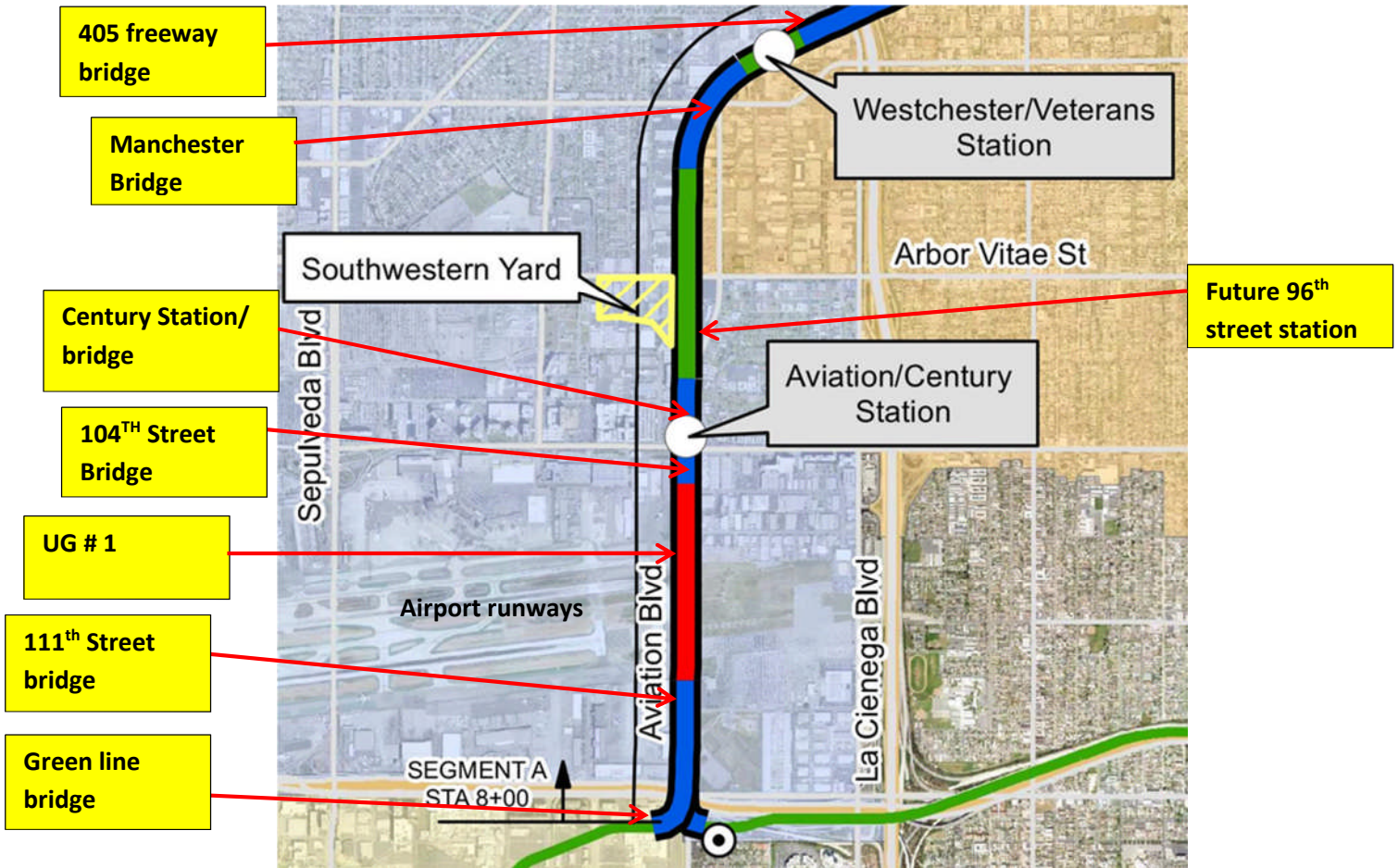
## Crenshaw/LAX Transit Project



- 8.5 miles Light Rail
- 8 Stations
- \$2,058.0 Million  
(Board approved revised LOP)

# CRENSHAW/LAX PHOTOGRAPHIC UPDATE

## Segment A



# CRENSHAW/LAX PHOTOGRAPHIC UPDATE



UG1- HCC welder aligning right rail for destress welding on NB.



UG1- Compaction of the contour grading at UG-1.

# CRENSHAW/LAX PHOTOGRAPHIC UPDATE



UG-1- Cutting the I beam shoring and backfilling at UG-1.



UG-1- Cutting the I beam shoring and backfilling at UG-1.

# CRENSHAW/LAX PHOTOGRAPHIC UPDATE

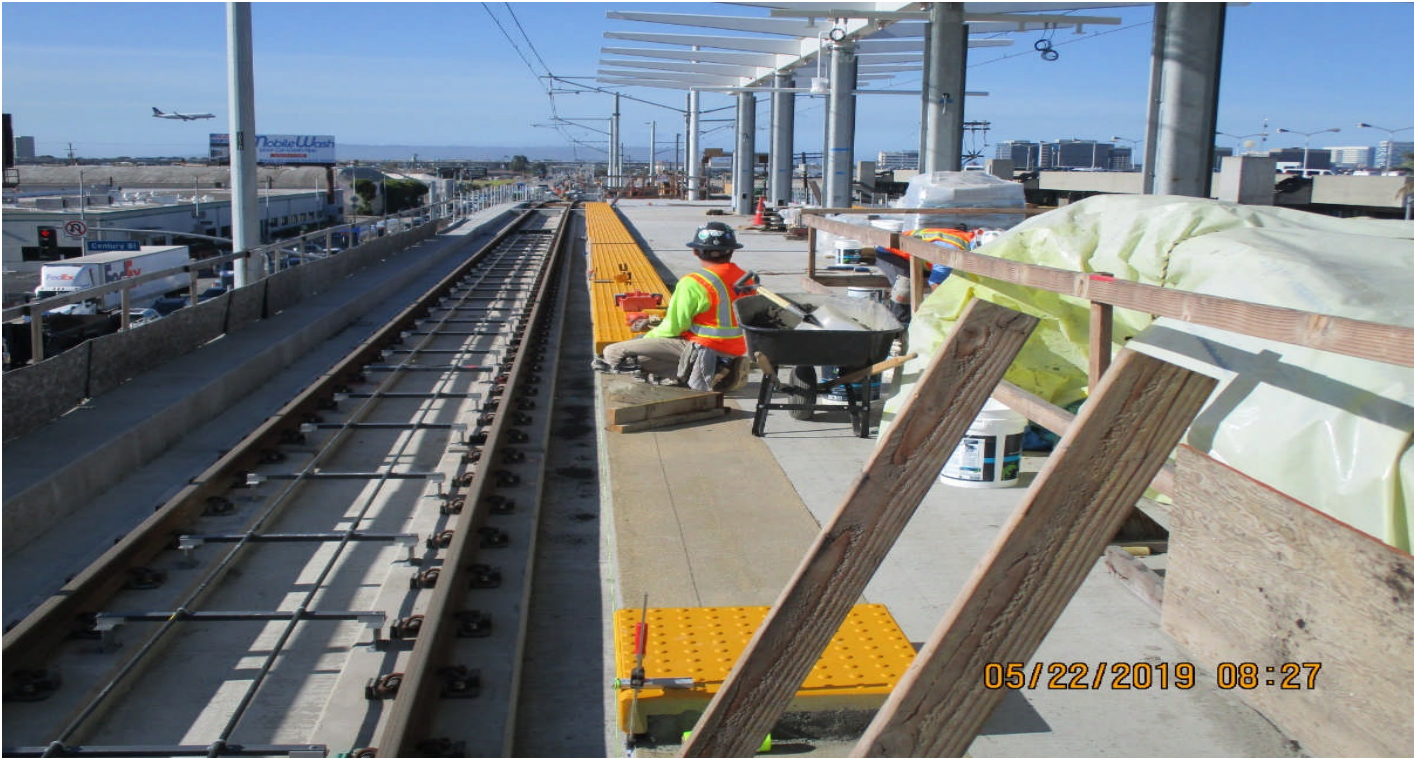


AVIATION/CENTURY- Construction debris demo at the Aviation Station yard.



AVIATION/CENTURY- Placing concrete for the map cabinet at the Aviation Station.

# CRENSHAW/LAX PHOTOGRAPHIC UPDATE



AVIATION/CENTURY- A Guideway at Aviation-Century UP tactile paver installation along platform.



AVIATION/CENTURY- A Guideway at Aviation-Century UP NB coping slab overhang bracket install.

# CRENSHAW/LAX PHOTOGRAPHIC UPDATE



AVIATION/CENTURY- A Guideway at Aviation-Century UP NB coping slab overhang bracket install.



GUIDEWAY at ARBOR VITAE- STA 85+00 to 86+50 - Re-tamping of NB track.

# CRENSHAW/LAX PHOTOGRAPHIC UPDATE



FLORENCE/HINDRY - Hindry Station TVM columns prior to concrete placement.



FLORENCE/HINDRY - A Guideway at Hindry Station removal of 6x6 treated lumber along both tracks.



# CRENSHAW/LAX PHOTOGRAPHIC UPDATE



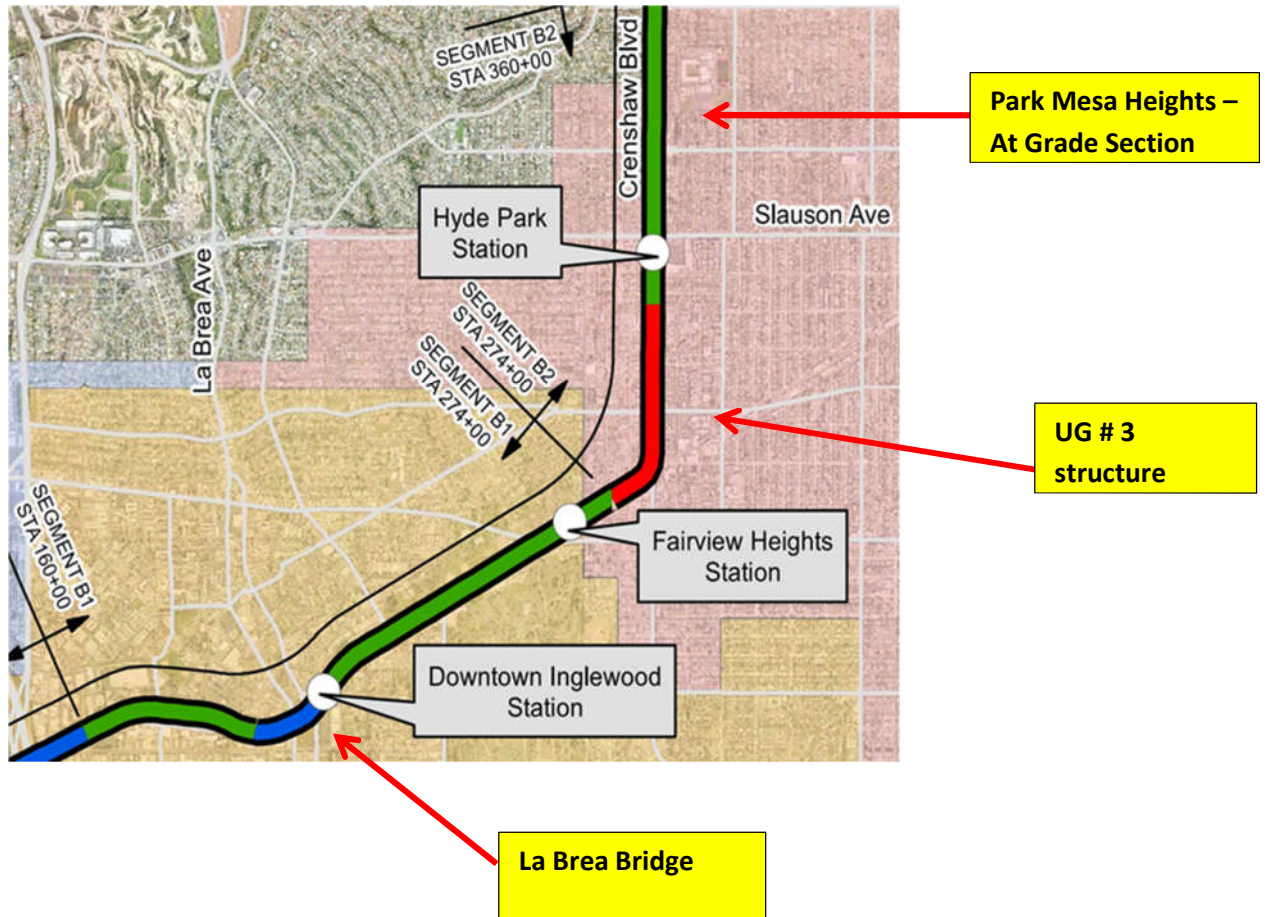
405 BRIDGE - A Guideway at 405 UP About 5 stripping of electrical duct bank and complete repair at JSA.



405 BRIDGE - A Guideway at 405 UP About 5 stripping of electrical duct bank and complete repair at JSA.

# CRENSHAW/LAX PHOTOGRAPHIC UPDATE

## Segment B



# CRENSHAW/LAX PHOTOGRAPHIC UPDATE



CEDAR STREET- Placing concrete for the Cedar street roadway.



EUCALYPTUS - Over excavation for the median on Eucalyptus.

# CRENSHAW/LAX PHOTOGRAPHIC UPDATE



EUCALYPTUS - Applying emulsion tack prior to AC placement on Eucalyptus.



EUCALYPTUS - Placing the AC base course on Eucalyptus.

# CRENSHAW/LAX PHOTOGRAPHIC UPDATE



**DOWNTOWN INGLEWOOD STATION-** Camera Pole and CIC on East approach to the La Brea Bridge.



**DOWNTOWN INGLEWOOD STATION-** A Guideway at La Brea Station removal of 6x6 treated lumber.

# CRENSHAW/LAX PHOTOGRAPHIC UPDATE



**HIGH STREET-** Guideway between High St. to West Station re-consolidation of track ballast rock.



**UG3-** Guideway at UG3 finishing of cut and cover.

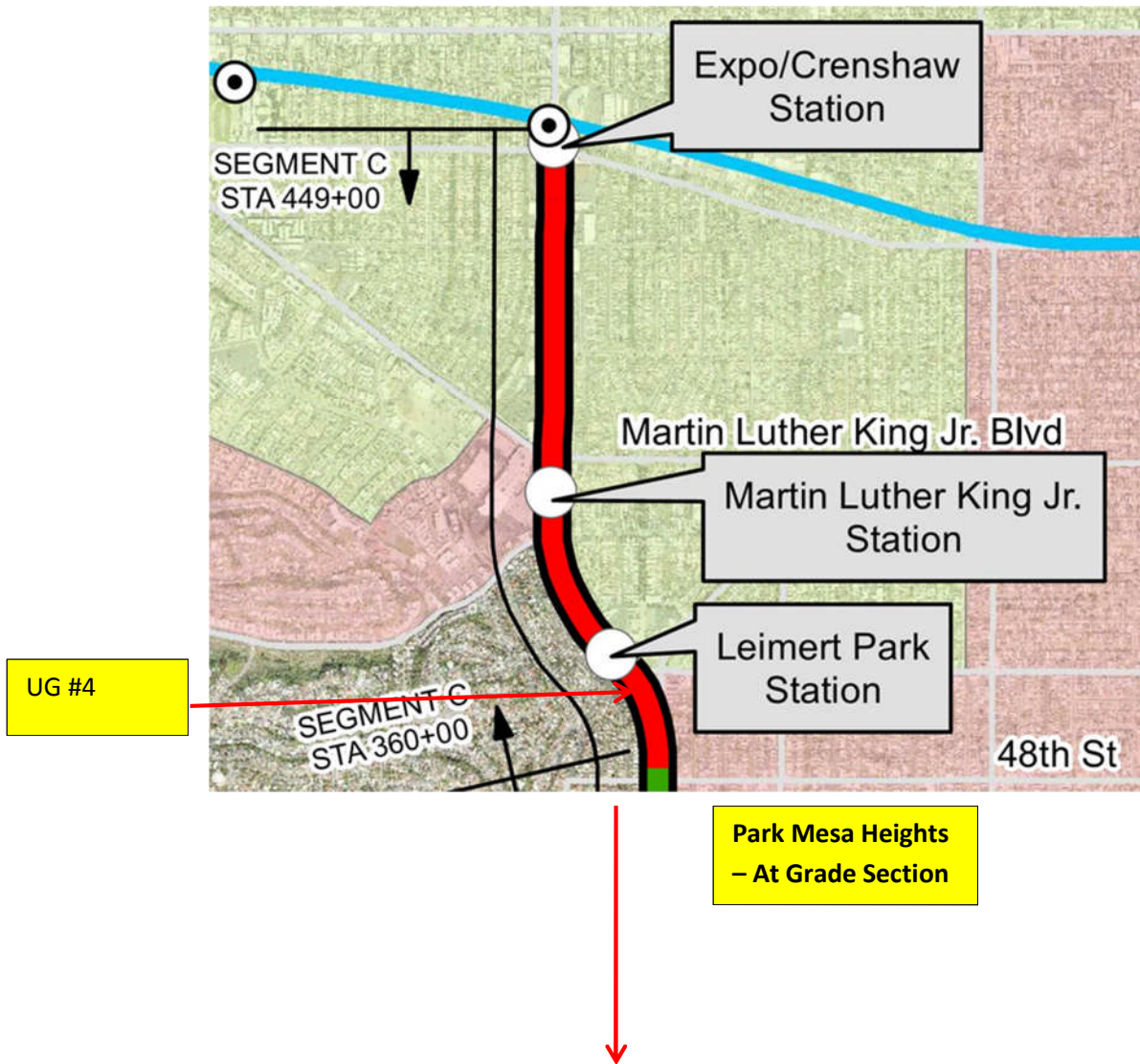
# CRENSHAW/LAX PHOTOGRAPHIC UPDATE



**UG3-** Grind sack and patch CIP struts at south portal.

# CRENSHAW/LAX PHOTOGRAPHIC UPDATE

## Segment C





# CRENSHAW/LAX PHOTOGRAPHIC UPDATE



LEIMERT PARK STATION – Backfill w/ storm drain for oil/water separator at station yard.



LEIMERT PARK STATION – Tile installation from mid landing to plaza at entrance stairs #1.

# CRENSHAW/LAX PHOTOGRAPHIC UPDATE



**LEIMERT PARK STATION** – Installation of ceramic tile at Entrance stairs #1.



**LEIMERT PARK STATION** – Installation of metal ceiling grid at the concourse level.

# CRENSHAW/LAX PHOTOGRAPHIC UPDATE



MARTIN LUTHER KING JR. STATION- Installation of Escalator 1 & 2 at plaza to concourse level.



MARTIN LUTHER KING JR. STATION- Finish work for Elevator 1 & 2 at the concourse level.

# CRENSHAW/LAX PHOTOGRAPHIC UPDATE



**MARTIN LUTHER KING JR. STATION-** Installation of top reflector plates at the concourse level.

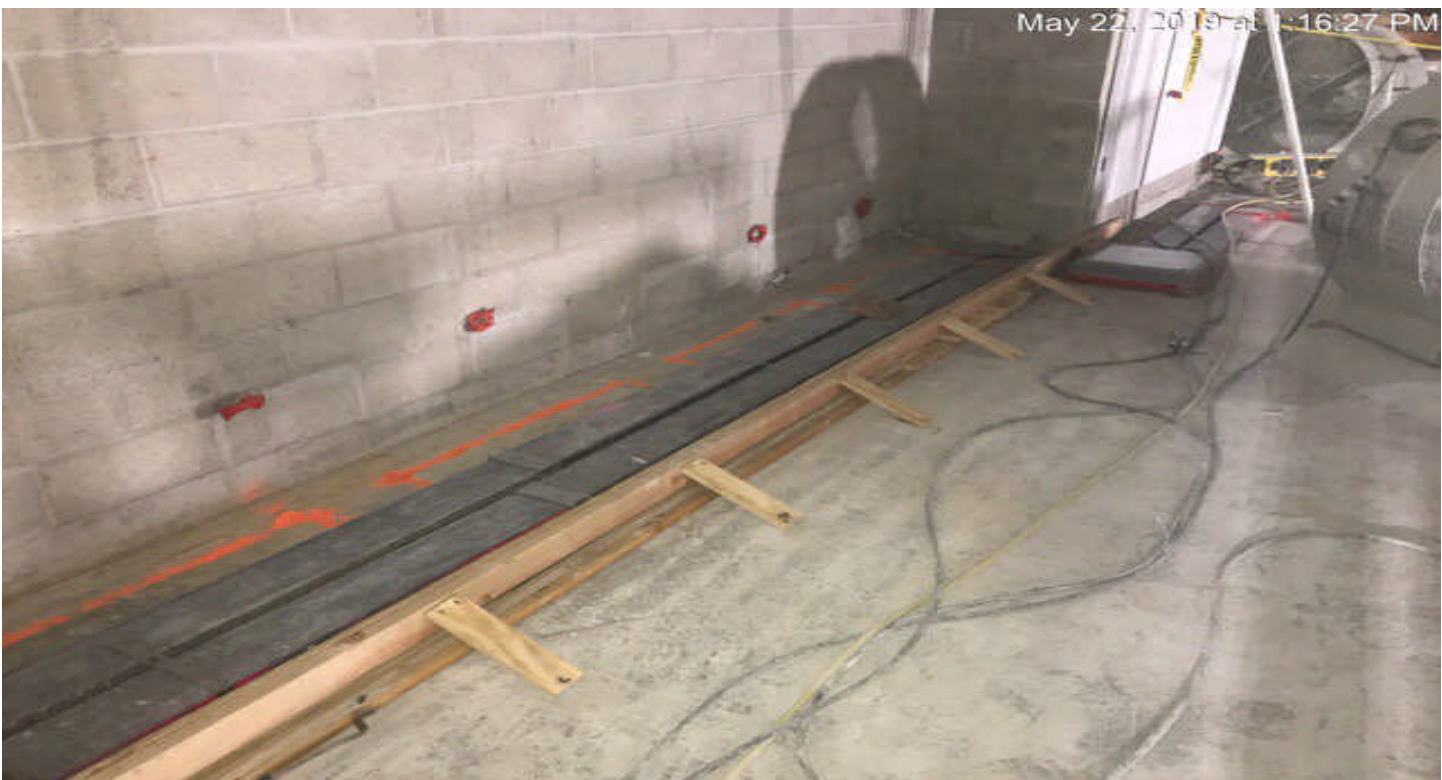


**EXPOSITION/CRENSHAW STATION –** Installation of the metal ceiling panel at the concourse level.

# CRENSHAW/LAX PHOTOGRAPHIC UPDATE



**EXPOSITION/CRENSHAW STATION – Installation of skin coat at plaza walls.**



**EXPOSITION/CRENSHAW STATION – Equipment pad installation at the concourse level.**

# CRENSHAW/LAX PHOTOGRAPHIC UPDATE



TUNNEL – Installation of emergency lighting at southbound tunnel.