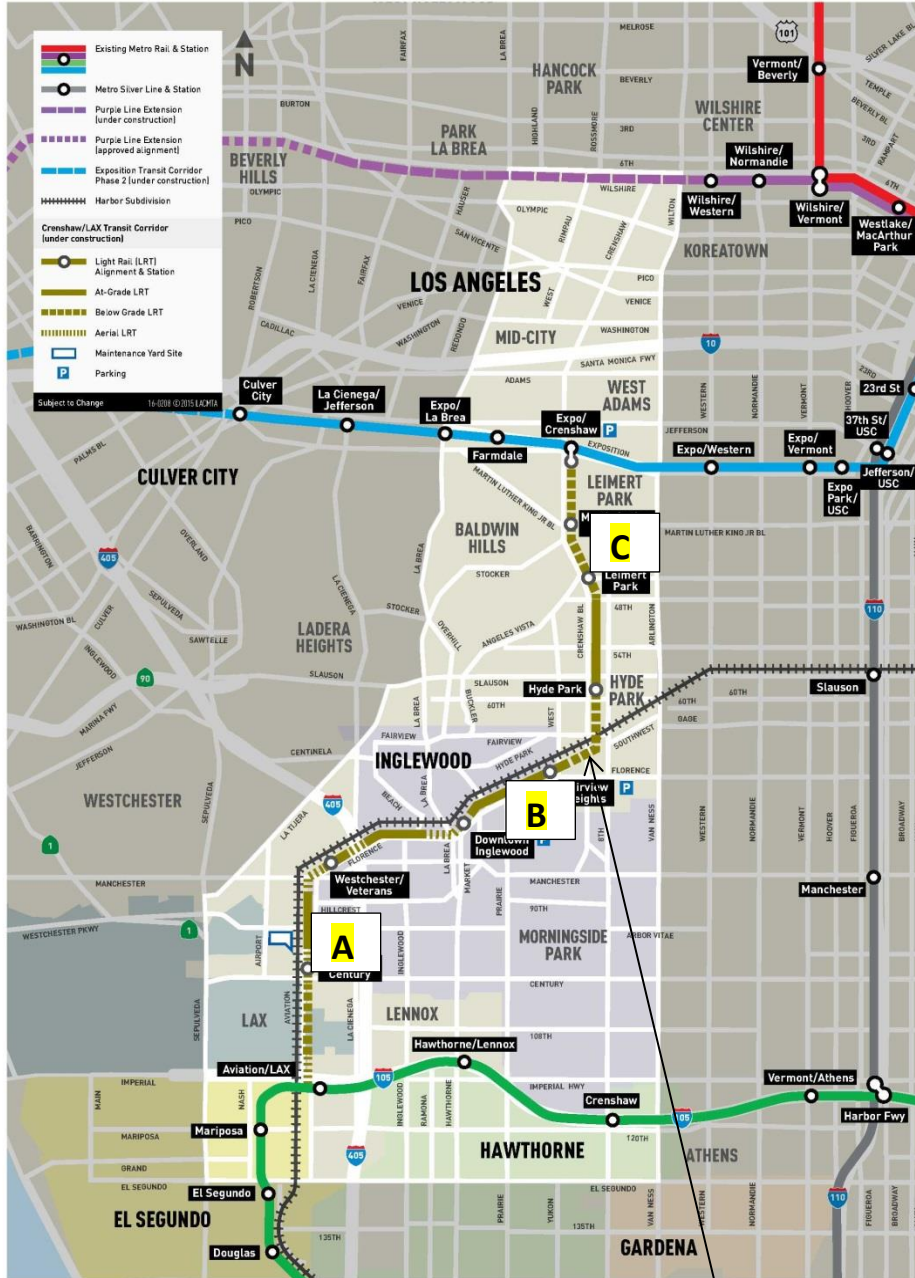


# CRENSHAW/LAX PHOTOGRAPHIC UPDATE

August 1, 2019

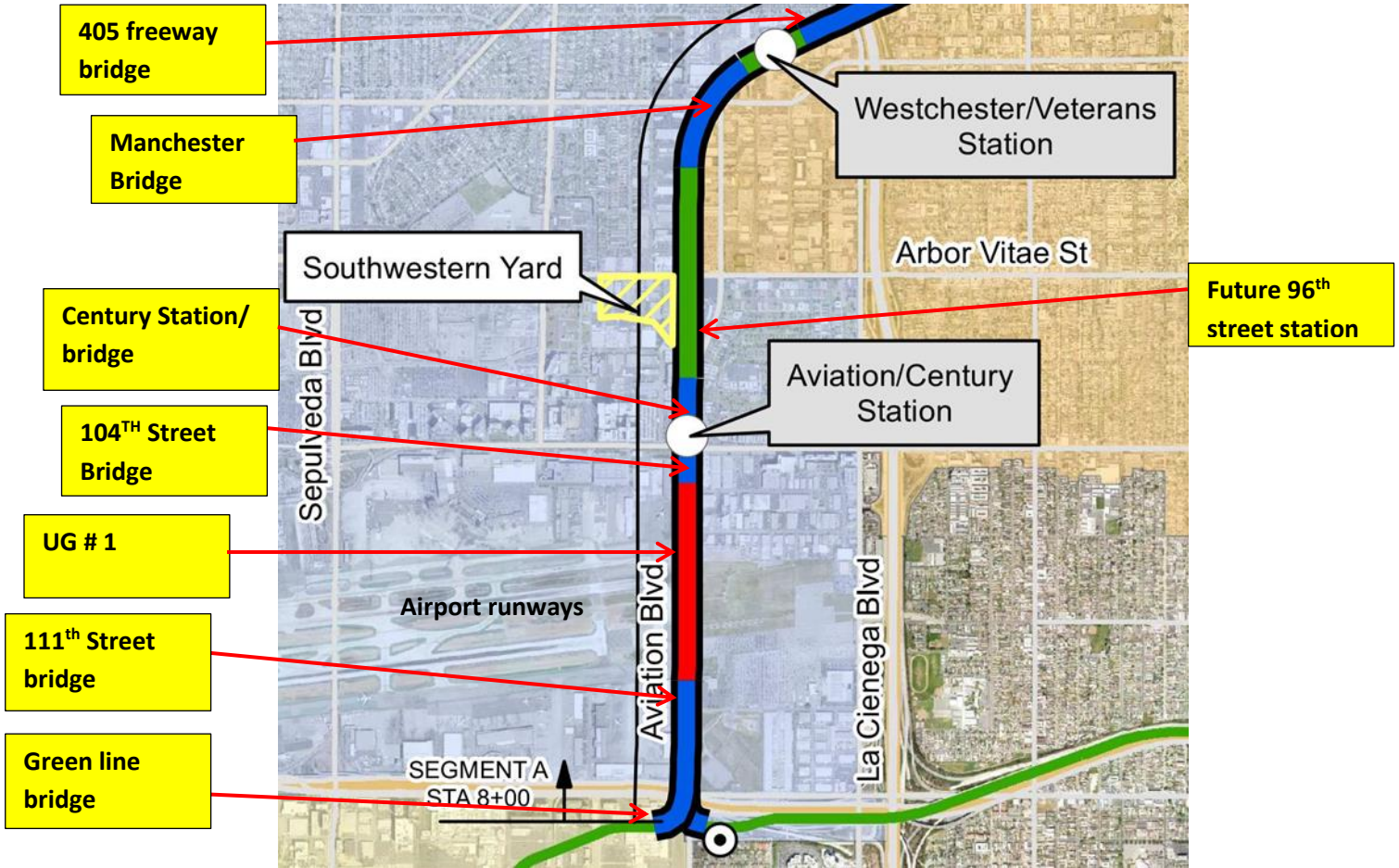
## Crenshaw/LAX Transit Project



- 8.5 miles Light Rail
- 8 Stations
- \$2,058.0 Million  
(Board approved revised LOP)

# CRENSHAW/LAX PHOTOGRAPHIC UPDATE

## Segment A



# CRENSHAW/LAX PHOTOGRAPHIC UPDATE



UG1- Cable barrier installation.



UG1- Cable safety barrier installation.

# CRENSHAW/LAX PHOTOGRAPHIC UPDATE



UG-1- 104th street south side no changes for UG1 Jet Fan conduit install.



UG-1- 104th street north side no changes for UG1 Jet Fan conduit install.

# CRENSHAW/LAX PHOTOGRAPHIC UPDATE



AVIATION/CENTURY- Reinstalling the galvanized fence anchor bolts at the Aviation Station

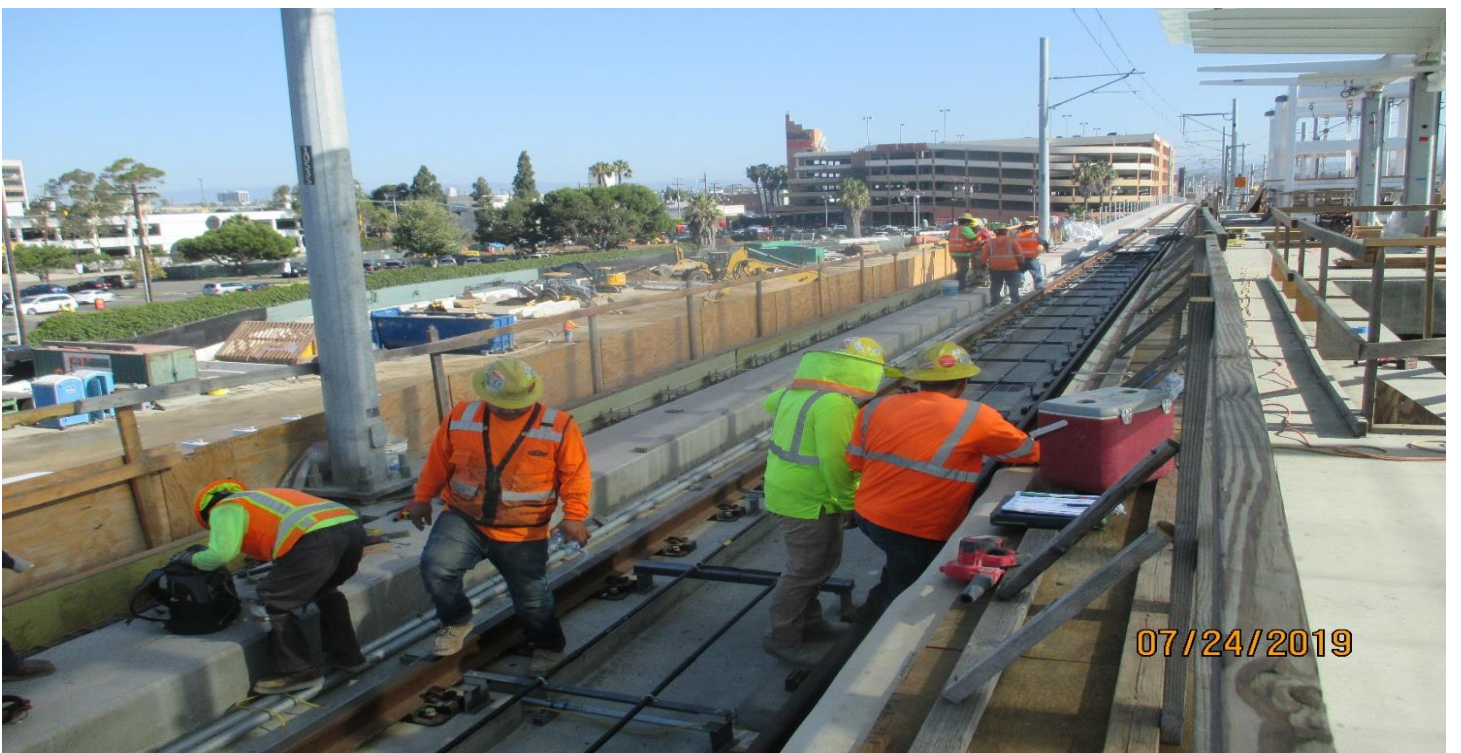


AVIATION/CENTURY- Grading for the Aviation Station plaza and parking lot.

# CRENSHAW/LAX PHOTOGRAPHIC UPDATE



AVIATION/CENTURY- Storm drain manhole prior to concrete placement at the yard.



AVIATION/CENTURY- Galvanized fence anchor bolt replacement at the Aviation Station.

# CRENSHAW/LAX PHOTOGRAPHIC UPDATE



AVIATION/CENTURY- Slurry backfill of the interceptor pit at the Aviation Station yard.



AVIATION/CENTURY- Stripping and setting forms for the galvanized bolt replacement.

# CRENSHAW/LAX PHOTOGRAPHIC UPDATE



AVIATION/CENTURY- Grading the plaza area at the Aviation Station.



AVIATION/CENTURY- Existing foundation to be removed at the NW corner of Aviation.



# CRENSHAW/LAX PHOTOGRAPHIC UPDATE



AVIATION/CENTURY- Grading for the plaza and parking lot at Aviation Station.



AVIATION/CENTURY- Slurry backfill of the interceptor pits at the Aviation Station yard.

# CRENSHAW/LAX PHOTOGRAPHIC UPDATE



AVIATION/CENTURY- Vacuum truck exposing a foundation to be removed at Aviation.



AVIATION/CENTURY- AVIATION/CENTURY- Vacuum.

# CRENSHAW/LAX PHOTOGRAPHIC UPDATE



MANCHESTER BRIDGE- SB track at Manchester Bridge DF replacement work.

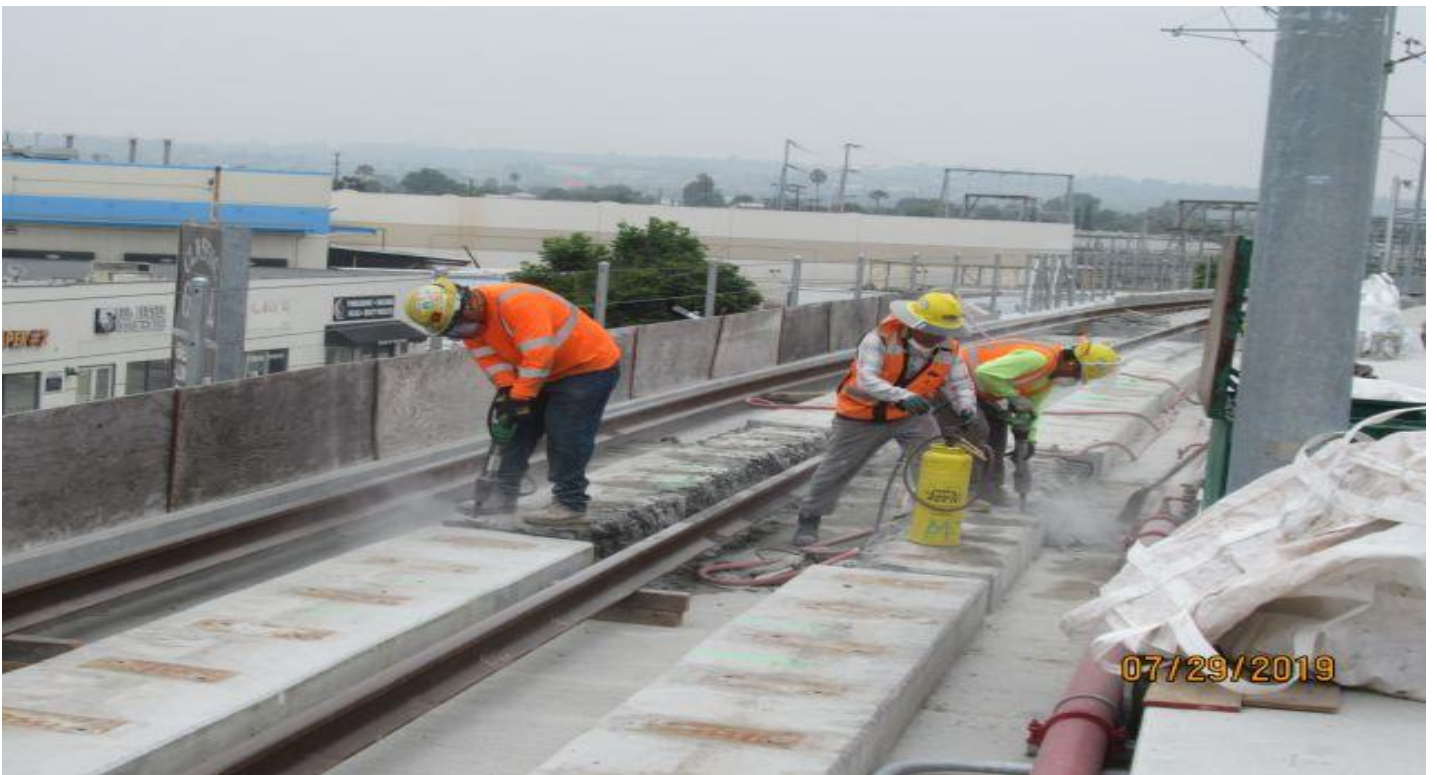


MANCHESTER BRIDGE- NB track WSCC finisher hand grinding plinths for 0" plane.

# CRENSHAW/LAX PHOTOGRAPHIC UPDATE



**MANCHESTER BRIDGE-** WSCC concrete crew demoing out required plinths on SB track.

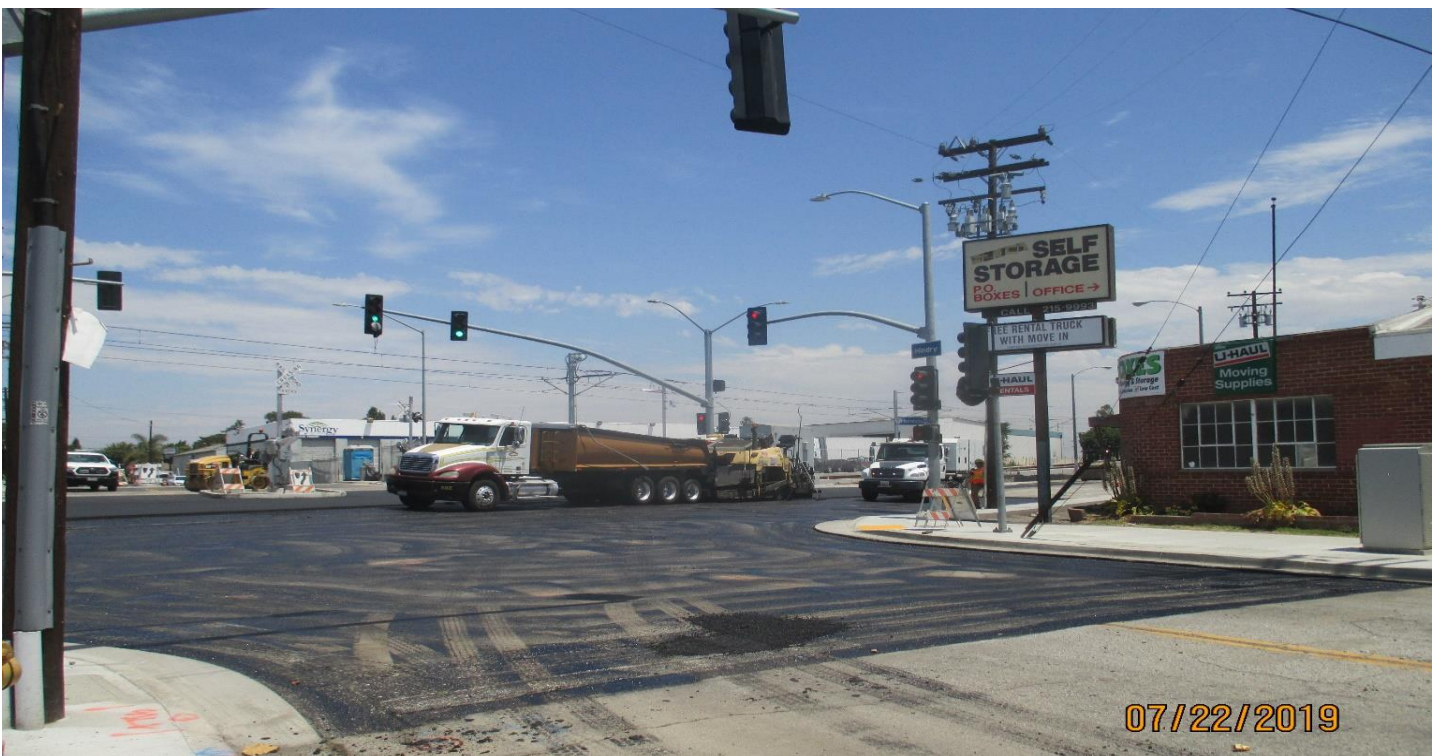


**MANCHESTER BRIDGE-** WSCC demoing out DF plinths that don't conform to Metro tollerances on Manchester Bridge SB track ..

# CRENSHAW/LAX PHOTOGRAPHIC UPDATE



FLORENCE/HINDRY - Sanding and prepping for paint at the Hindry Station.



FLORENCE/HINDRY - Paving on Florence at Hindry.

# CRENSHAW/LAX PHOTOGRAPHIC UPDATE



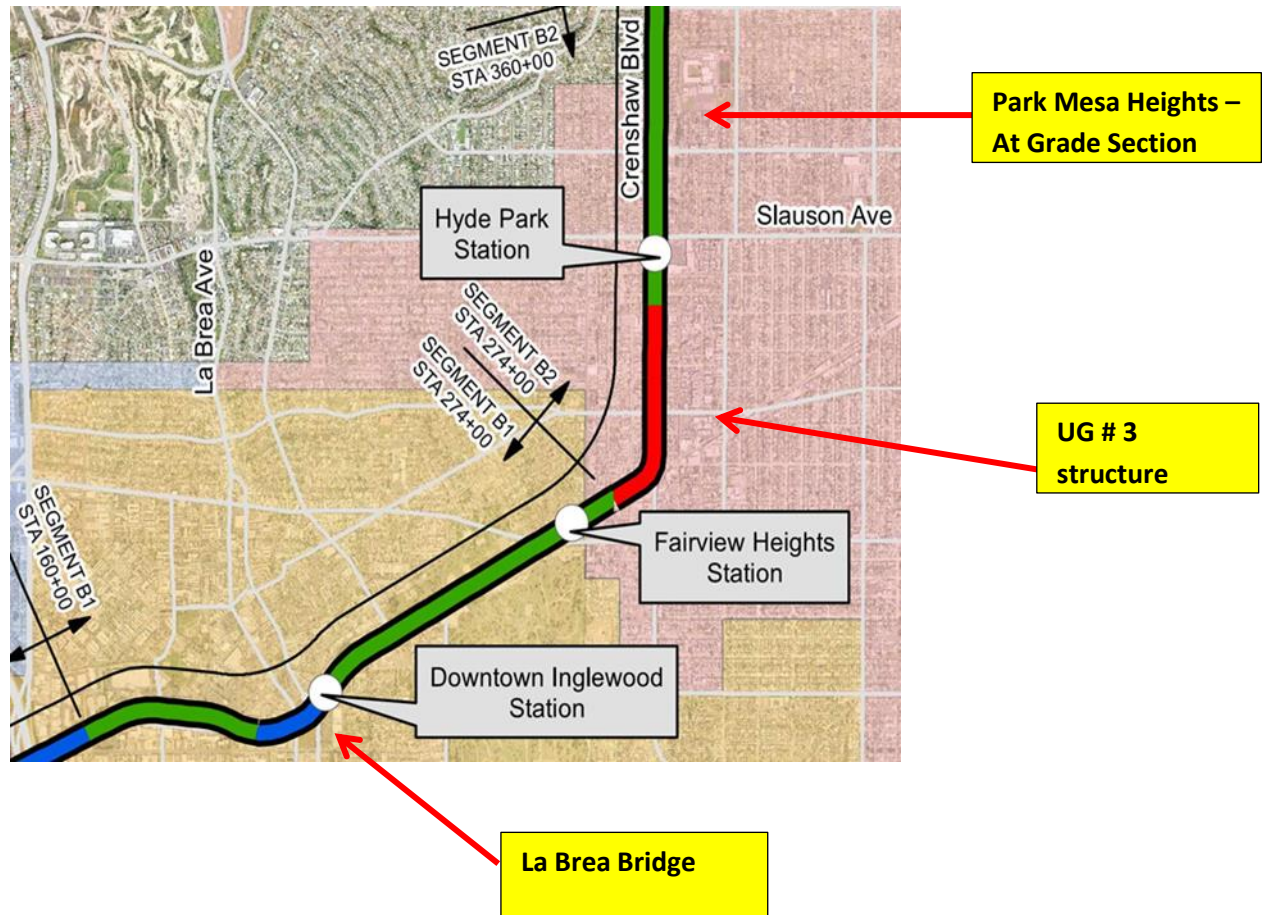
**FLORENCE/HINDRY** - Painting the TVM structure for the NB Hindry Station platform.



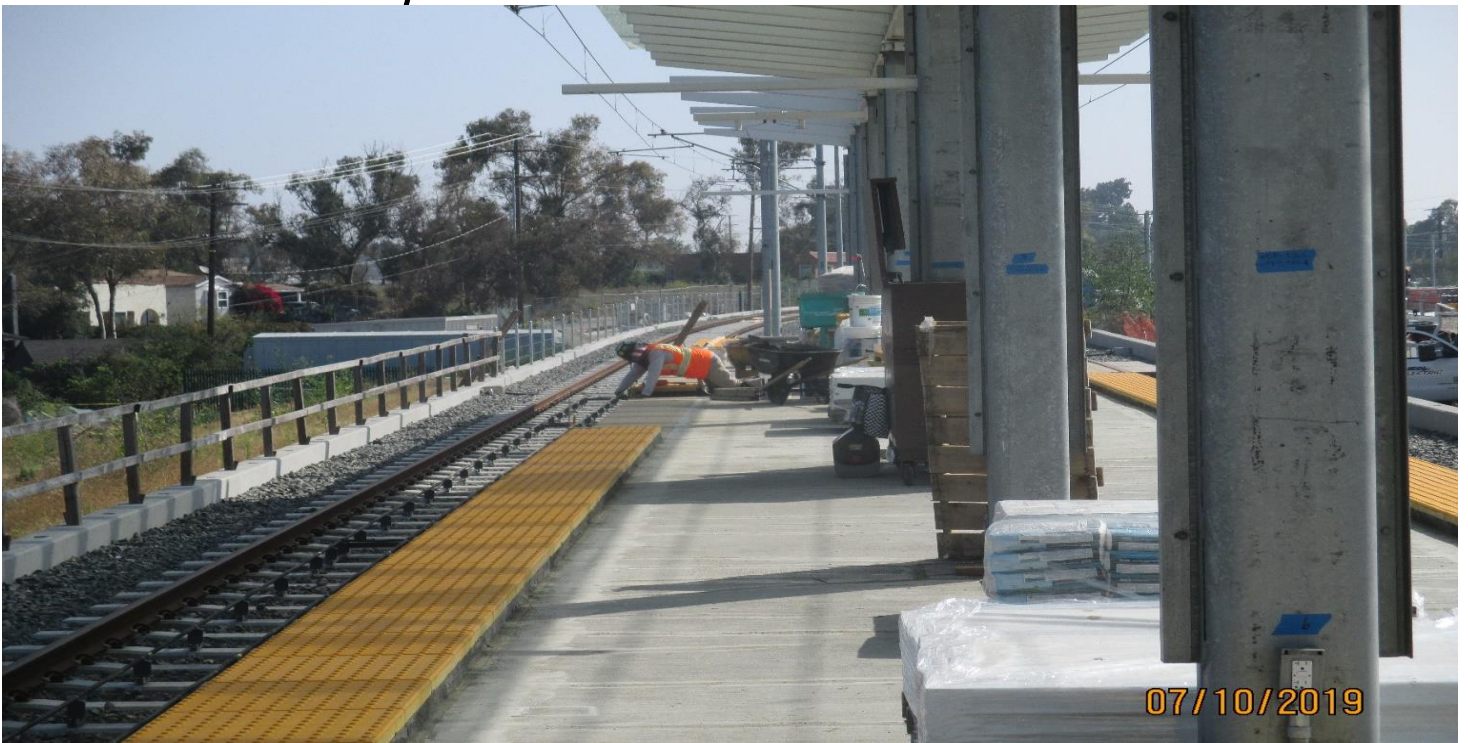
**FLORENCE/HINDRY** - Painting the ticket vending machine structure at the Hindry Station.

# CRENSHAW/LAX PHOTOGRAPHIC UPDATE

## Segment B



# CRENSHAW/LAX PHOTOGRAPHIC UPDATE



FLORENCE/LA BREA - Setting the truncated dome handicap pavers at the La Brea Station.



FLORENCE/LA BREA - WSCC Remove metal guard rail wall at WB Florence and La Brea.



# CRENSHAW/LAX PHOTOGRAPHIC UPDATE



**FLORENCE/LA BREA - Carrara Marble Place grout in yellow paver joints at La Brea Sta.**



**FLORENCE/LA BREA- WSCC Making grade and clear and grub for fence on north side of La Brea Sta.**

# CRENSHAW/LAX PHOTOGRAPHIC UPDATE



HIGH STREET- Select Electric Stand TS and SL poles at High and Redondo.



HIGH STREET- WSCC Grading for cross gutter at High ST crossing.

# CRENSHAW/LAX PHOTOGRAPHIC UPDATE



UG3- Continued lighting installation at the southbound tunnel.



UG3- Continued installation of barrier wall along the track of the southbound portal.

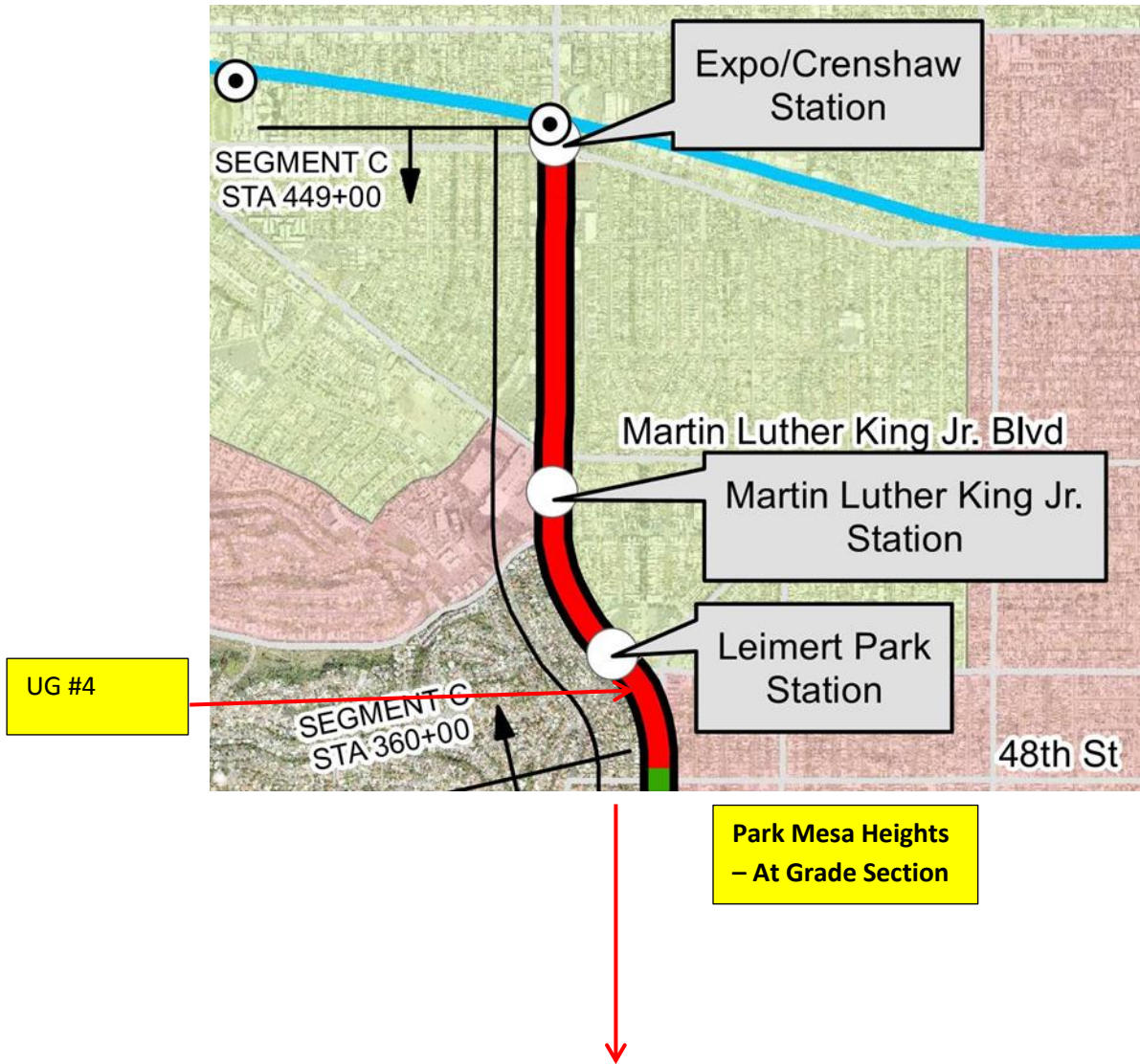
# CRENSHAW/LAX PHOTOGRAPHIC UPDATE



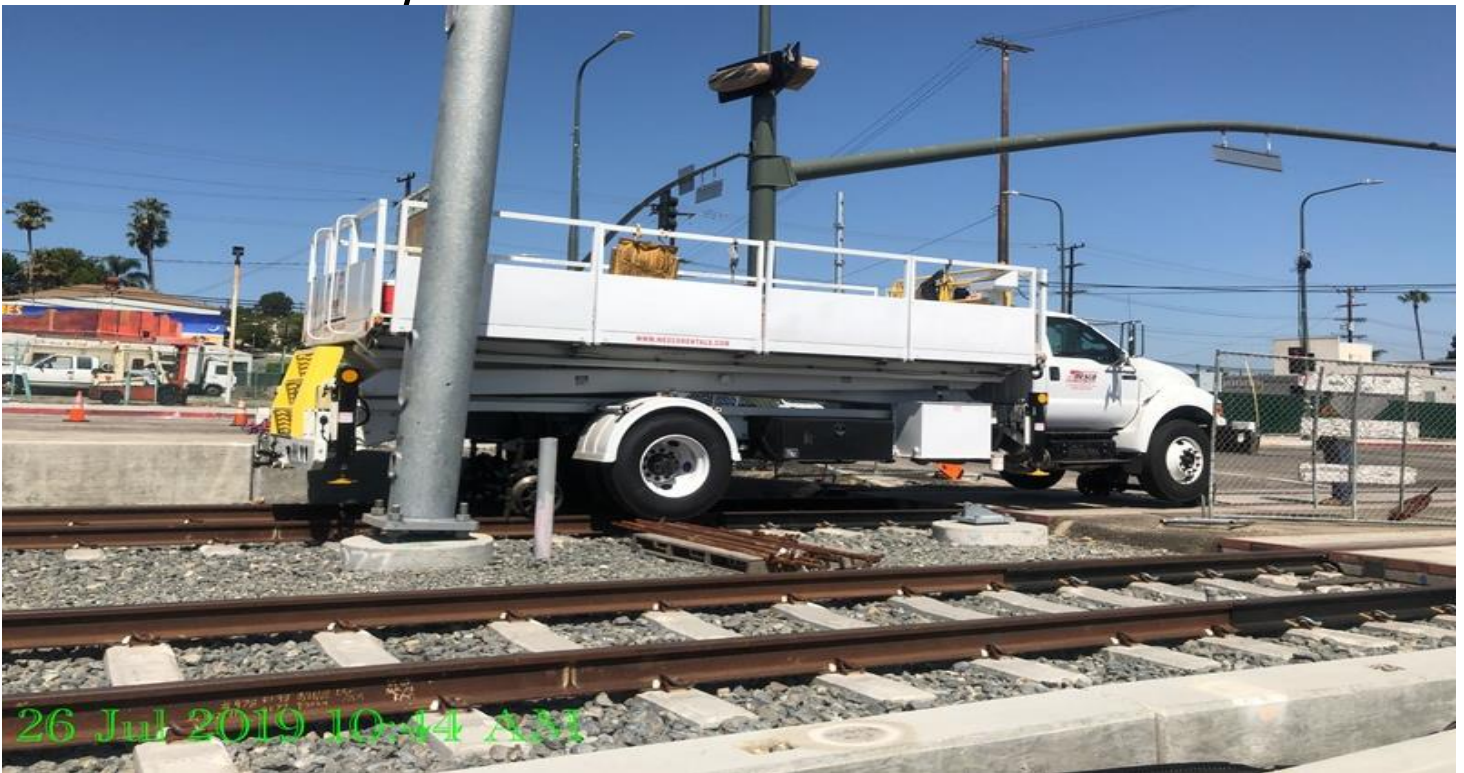
UG3- Continued installation of OCR brackets along the southbound tunnel.

# CRENSHAW/LAX PHOTOGRAPHIC UPDATE

## Segment C



# CRENSHAW/LAX PHOTOGRAPHIC UPDATE



UG4- LKC installation of cantilever arm brackets for OCR Expo Station UG-4.

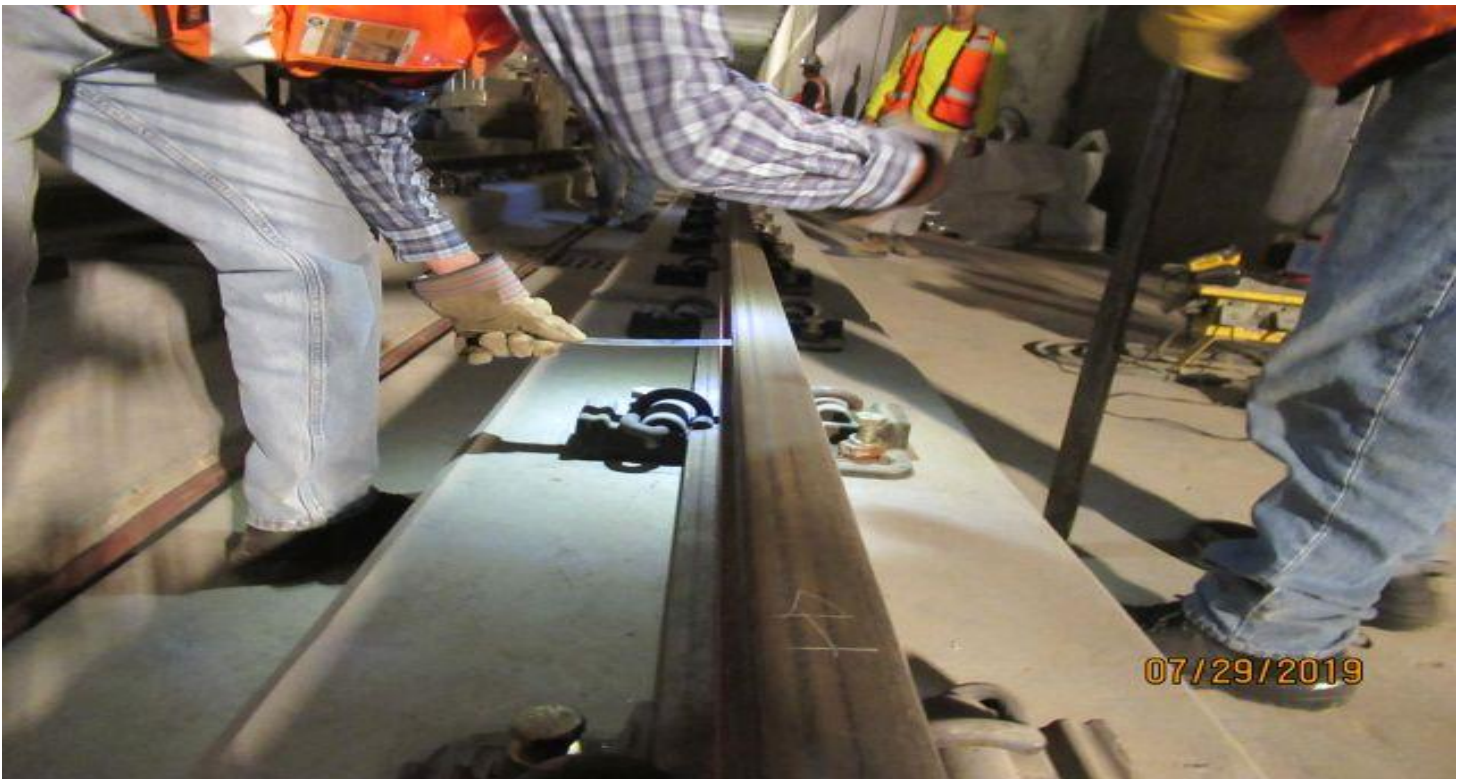


UG4- LKC installation of cantilever arm brackets for OCR Expo Station UG-4.

# CRENSHAW/LAX PHOTOGRAPHIC UPDATE



UG4- HCC verifying track gauge on SB track UG4 MLK station.



UG4- HCC adjusting alignment on SB track UG4 using string line off Coast Survey scribes.

# CRENSHAW/LAX PHOTOGRAPHIC UPDATE



UG4- HCC on SB track in UG4 at MLK platform station.



CRENSHAW/VERNON- NETE electrical testing on MSWGR-S, contact resistance.



# CRENSHAW/LAX PHOTOGRAPHIC UPDATE



CRENSHAW/VERNON- NETE performing megger testing on MSWGR-N.



LEIMERT PARK STATION- Continued installation of elevator frame 3 & 4 at the platform level

# CRENSHAW/LAX PHOTOGRAPHIC UPDATE

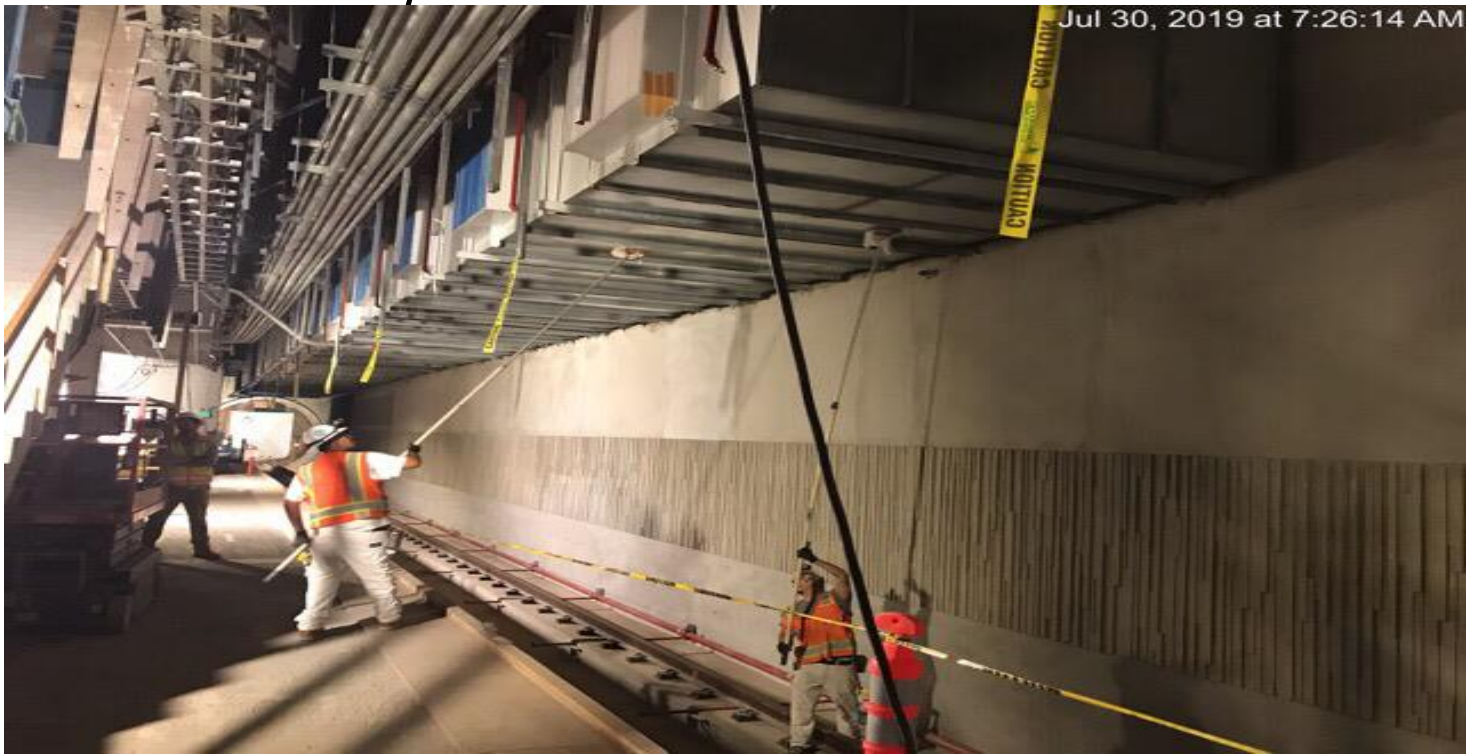


**LEIMERT PARK STATION-** Prep connection points for entrance canopy and Elevator 1 & 2 steel at the topside.



**LEIMERT PARK STATION-** Painting on northbound OTE vent duct at the invert level.

# CRENSHAW/LAX PHOTOGRAPHIC UPDATE



MARTIN LUTHER KING JR. STATION- Painting on northbound OTE vent duct at the invert level.



MARTIN LUTHER KING JR. STATION- Installation of rebar for C Line encasement at the topside.

# CRENSHAW/LAX PHOTOGRAPHIC UPDATE



**MARTIN LUTHER KING JR. STATION-** Continued installation of water line vault at the topside.



**EXPOSITION/CRENSHAW STATION –** Aux Power north MCC1N emergency fan cable feeds.

# CRENSHAW/LAX PHOTOGRAPHIC UPDATE

Jul 31, 2019 at 12:19:04 PM



**EXPOSITION/CRENSHAW STATION** – Painting on southbound OTE vent duct at the invert level.



**EXPOSITION/CRENSHAW STATION** – HCC adjusting alignment on NB track at Expo. station platform.