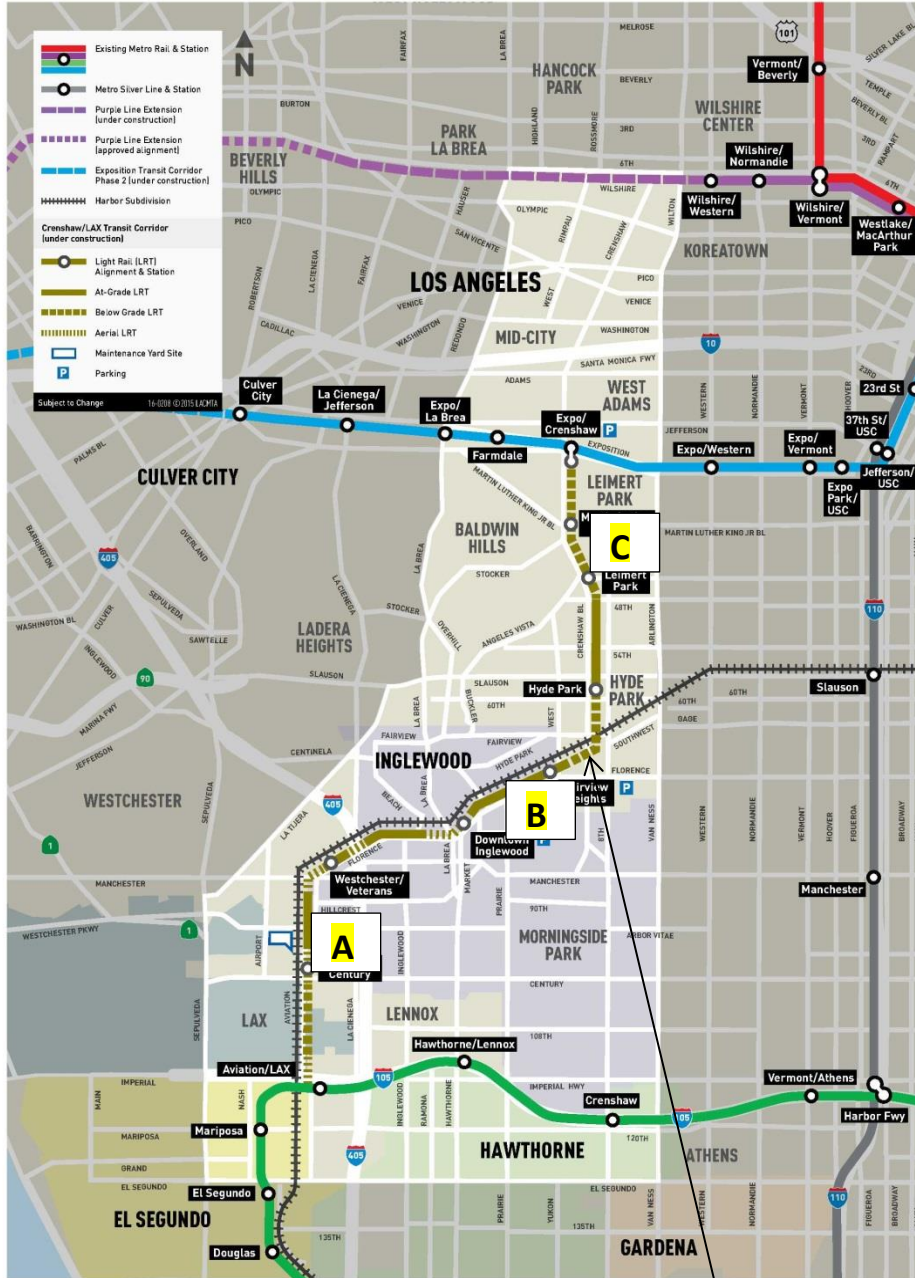


CRENSHAW/LAX PHOTOGRAPHIC UPDATE

September 1, 2019

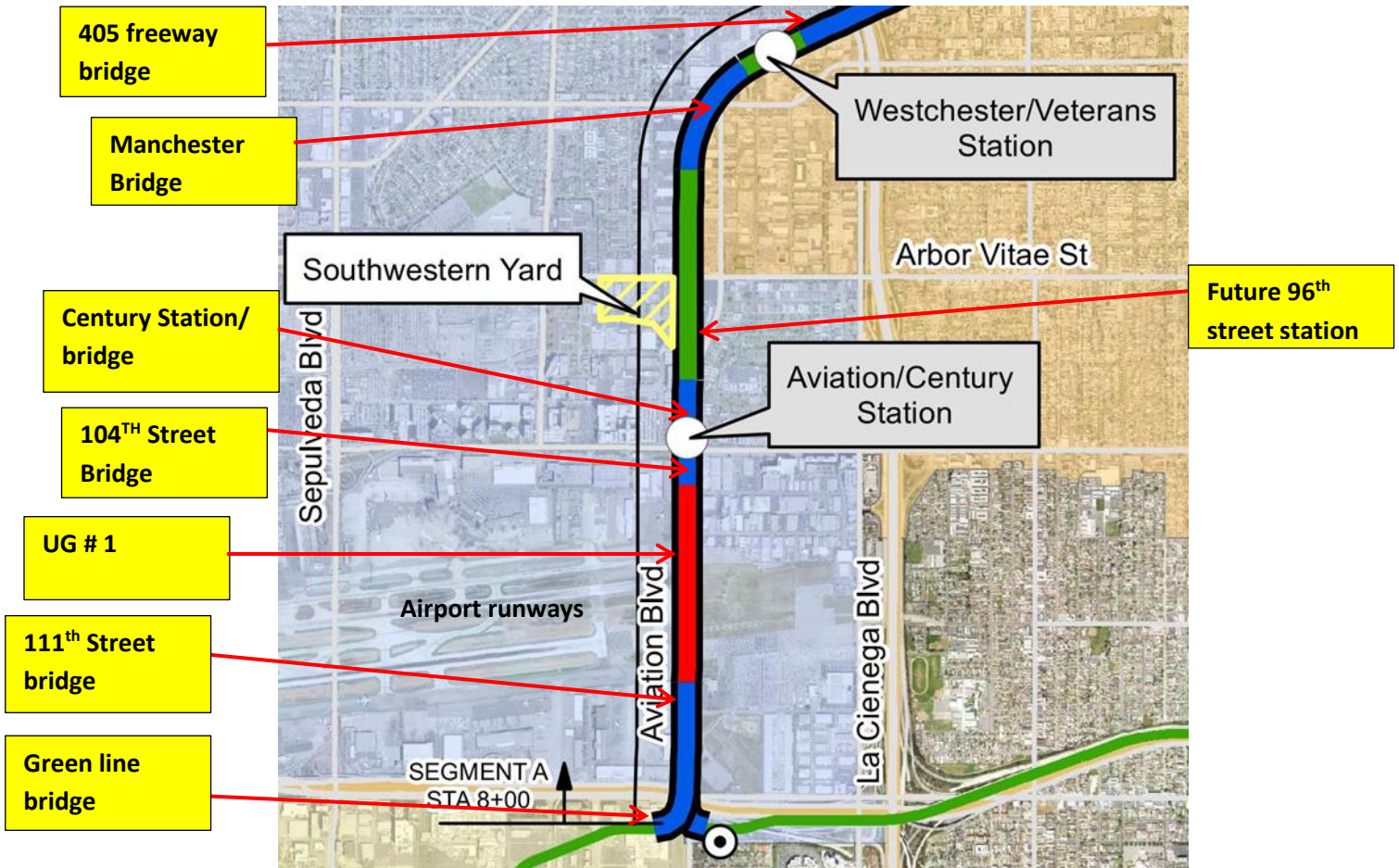
Crenshaw/LAX Transit Project



- 8.5 miles Light Rail
- 8 Stations
- \$2,058.0 Million
(Board approved revised LOP)

CRENSHAW/LAX PHOTOGRAPHIC UPDATE

Segment A



CRENSHAW/LAX PHOTOGRAPHIC UPDATE



UG1- WA Rasis loading dump truck with native spoils at 104th street for UG1.



UG1- HCC at south portal of UG1 transferring material boxes using speed swing.

CRENSHAW/LAX PHOTOGRAPHIC UPDATE



UG-1- Metro inspection walk in UG1 discussion of emergency walkway plate gaps on rails.



UG-1- Chipping the "U" wall concrete to build the BLS Trip Pad at UG-1.

CRENSHAW/LAX PHOTOGRAPHIC UPDATE

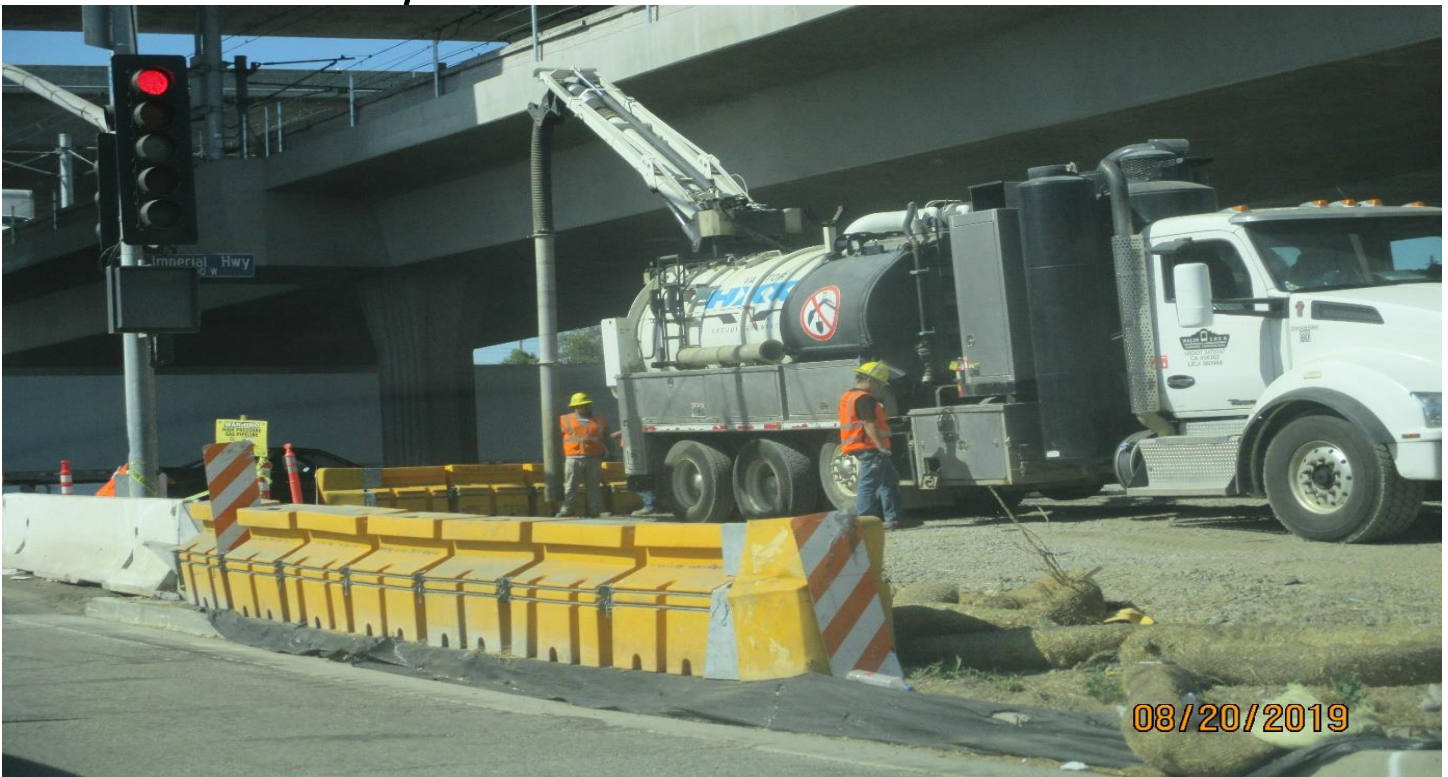


AVIATION/CENTURY- Stripping and finishing catch basin #4 on Aviation.



AVIATION/CENTURY- Stripping catch basin #4 on Aviation.

CRENSHAW/LAX PHOTOGRAPHIC UPDATE



AVIATION/CENTURY- Vacuum truck potholing for utilities at Aviation and Imperial.



AVIATION/CENTURY- WSCC Pot hole bat 111th St and Aviation.

CRENSHAW/LAX PHOTOGRAPHIC UPDATE



AVIATION/CENTURY- WSCC Placing CIDH insulator covers at Aviation bridge.



AVIATION/CENTURY- Class 1 concrete finish work for the Aviation Station bridge after the galvanized bolt replacement.

CRENSHAW/LAX PHOTOGRAPHIC UPDATE



AVIATION/CENTURY- Installing the bent safety covers at the Aviation Station.

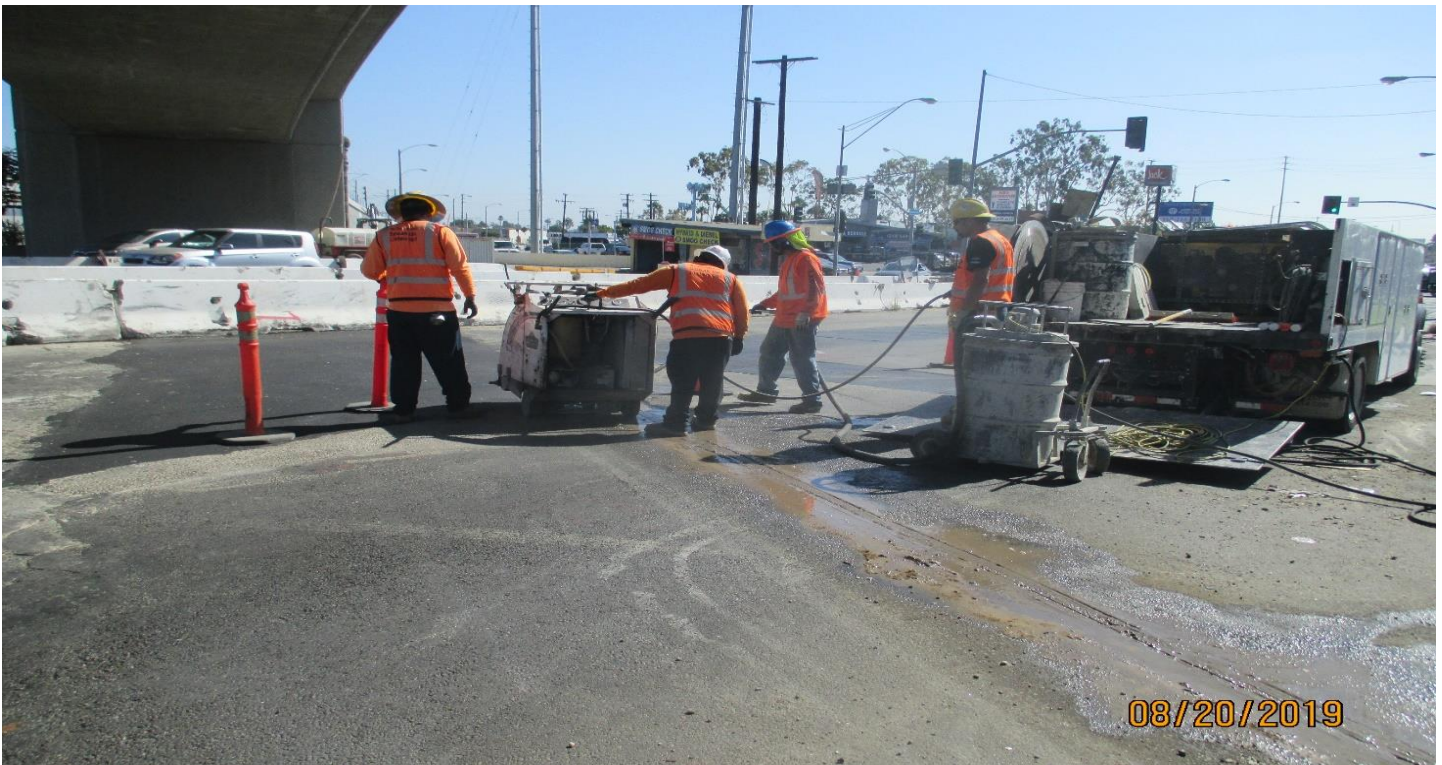


AVIATION/CENTURY- Bent safety cover installation at the Aviation Station bridge.

CRENSHAW/LAX PHOTOGRAPHIC UPDATE



MANCHESTER BRIDGE- Old track removal on Manchester.



MANCHESTER BRIDGE- Saw cutting to remove the old tracks on Manchester.

CRENSHAW/LAX PHOTOGRAPHIC UPDATE



MANCHESTER BRIDGE- Manchester Bridge north end no construction being performed.



MANCHESTER BRIDGE- Manchester Bridge NB & SB tracks mid. point no construction being performed.

CRENSHAW/LAX PHOTOGRAPHIC UPDATE



MANCHESTER BRIDGE- WSCC Grading for drainage swale at Portal area between arbor vitae & manchester bridge.



MANCHESTER BRIDGE- WSCC 8' common ties stacked near Manchester Bridge.

CRENSHAW/LAX PHOTOGRAPHIC UPDATE



FLORENCE/HINDRY - HCC removing asphalt edge on NB track at Hindry grade crossing.



FLORENCE/HINDRY - HCC on NB track at Hindry grade crossing .

CRENSHAW/LAX PHOTOGRAPHIC UPDATE



FLORENCE/HINDRY - HCC Speed Swing removing field crossing panels on SB track at Hindry grade crossing.



FLORENCE/HINDRY - HCC removing grade crossing panels on SB track to re-tamp at Hindry grade crossing.

CRENSHAW/LAX PHOTOGRAPHIC UPDATE



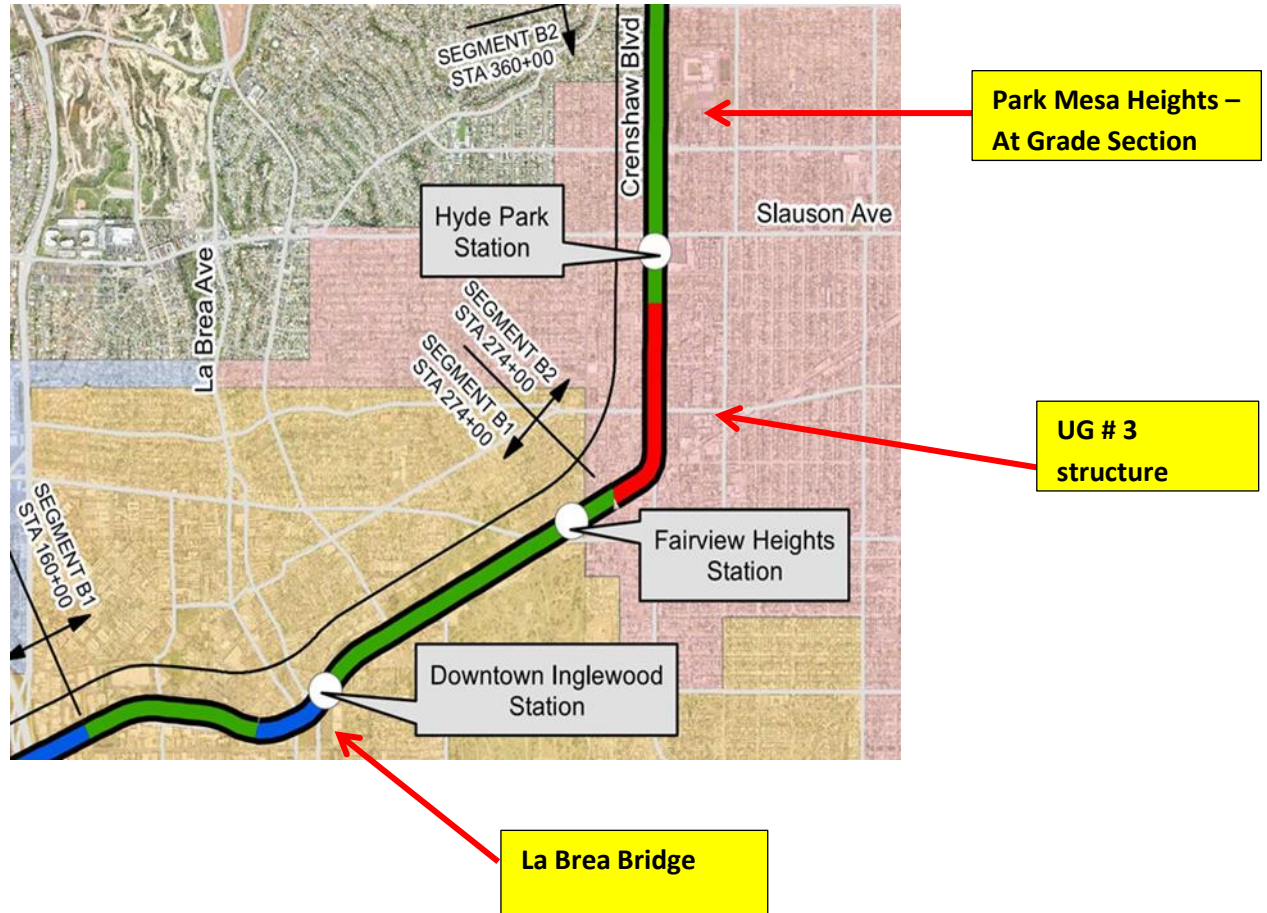
FLORENCE/HINDRY - SB track at Hindry grade crossing panels removed for re-tamping HCC.



FLORENCE/HINDRY - HCC at Hindry grade crossing dressing tie cribs after re-tamping NB track.

CRENSHAW/LAX PHOTOGRAPHIC UPDATE

Segment B



CRENSHAW/LAX PHOTOGRAPHIC UPDATE

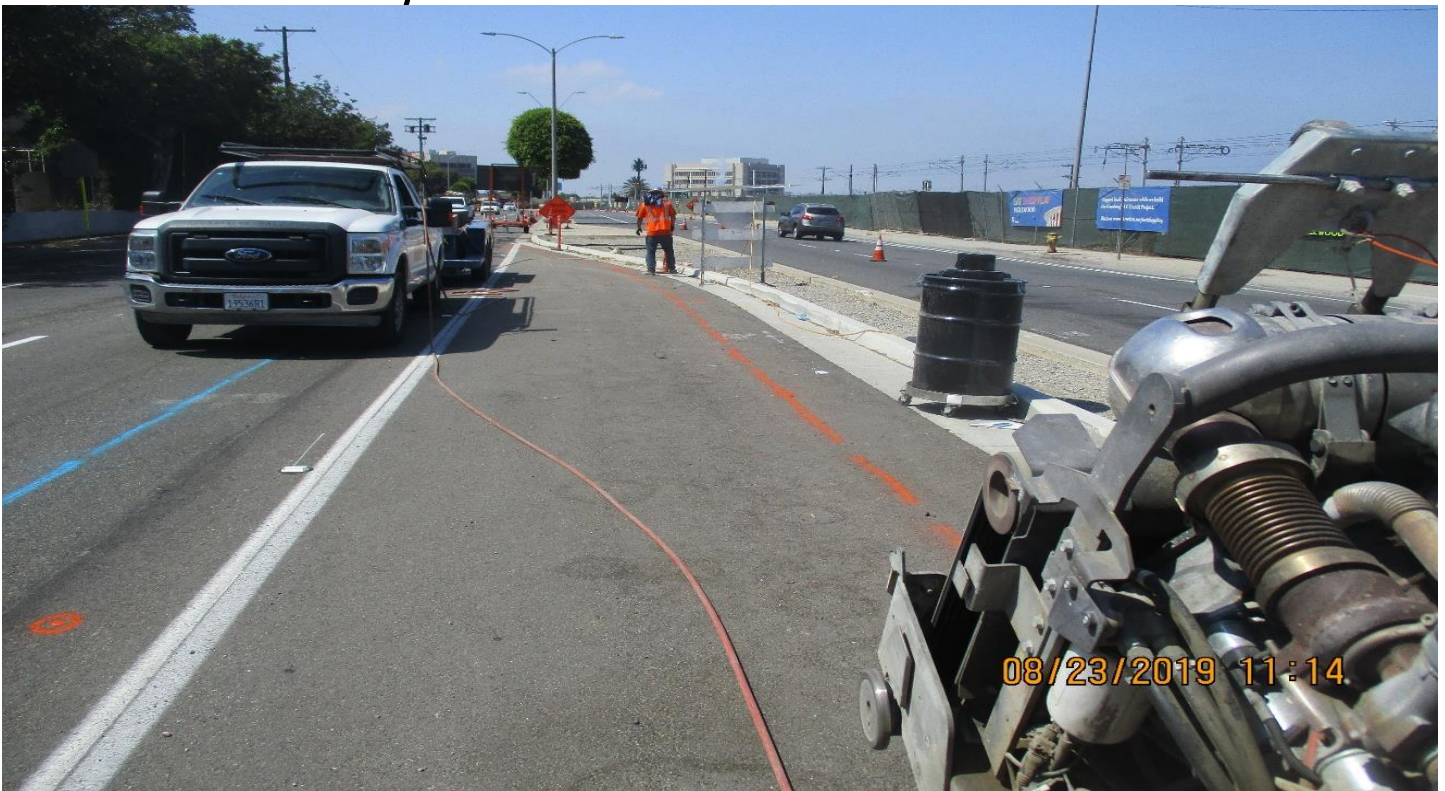


FLORENCE STREET - Select Electric Remove old controler at Eucalyptus and Florence.



FLORENCE/LA BREA - WSCC Worked on SD lines at Locust and Florence.

CRENSHAW/LAX PHOTOGRAPHIC UPDATE



FLORENCE STREET- WSCC Saw cut to Remove C& G on Florence Island at Hillcrest.



FLORENCE STREET - Potholing for utilities at La Cienega and Florence.

CRENSHAW/LAX PHOTOGRAPHIC UPDATE



FLORENCE STREET - WSSC Cut and make grade to replace C&G at Florence island w Hillcrest.



FLORENCE STREET- WSSC Excavate for SD lines at Locust and Florence.

CRENSHAW/LAX PHOTOGRAPHIC UPDATE

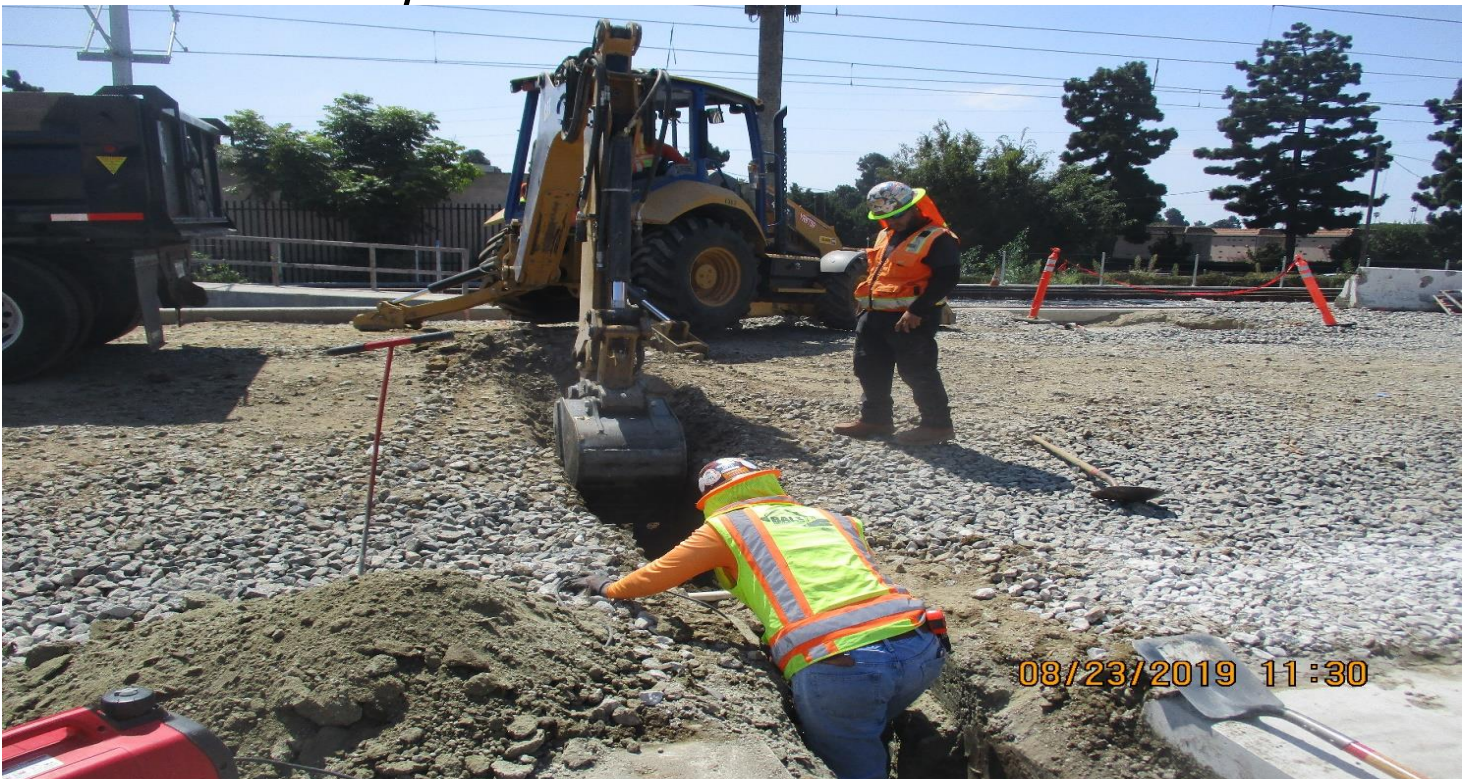


LA BREA BRIDGE- WSCC Relocated SD lines at La Brea bridge.



LA BREA BRIDGE- WSCC La Brea SD relocation.

CRENSHAW/LAX PHOTOGRAPHIC UPDATE



FLORENCE/WEST- Bali Const Placed 2" water line in to West Station parking area east of Redondo St.



FLORENCE/WEST- WSCC Clean out West Station parking lot.

CRENSHAW/LAX PHOTOGRAPHIC UPDATE



FLORENCE/WEST- Bali Const. Place 2" copper water line in West Sta parking lot.



FLORENCE/WEST- WSCC Place Conc in column wells on West Sta platform.st.

CRENSHAW/LAX PHOTOGRAPHIC UPDATE



UG3- Continued installation of conduit on intersection of 60th and Crenshaw Blvd.



UG3- Continued removal of beams and northbound/southbound piles at 63rd and Crenshaw Blvd.

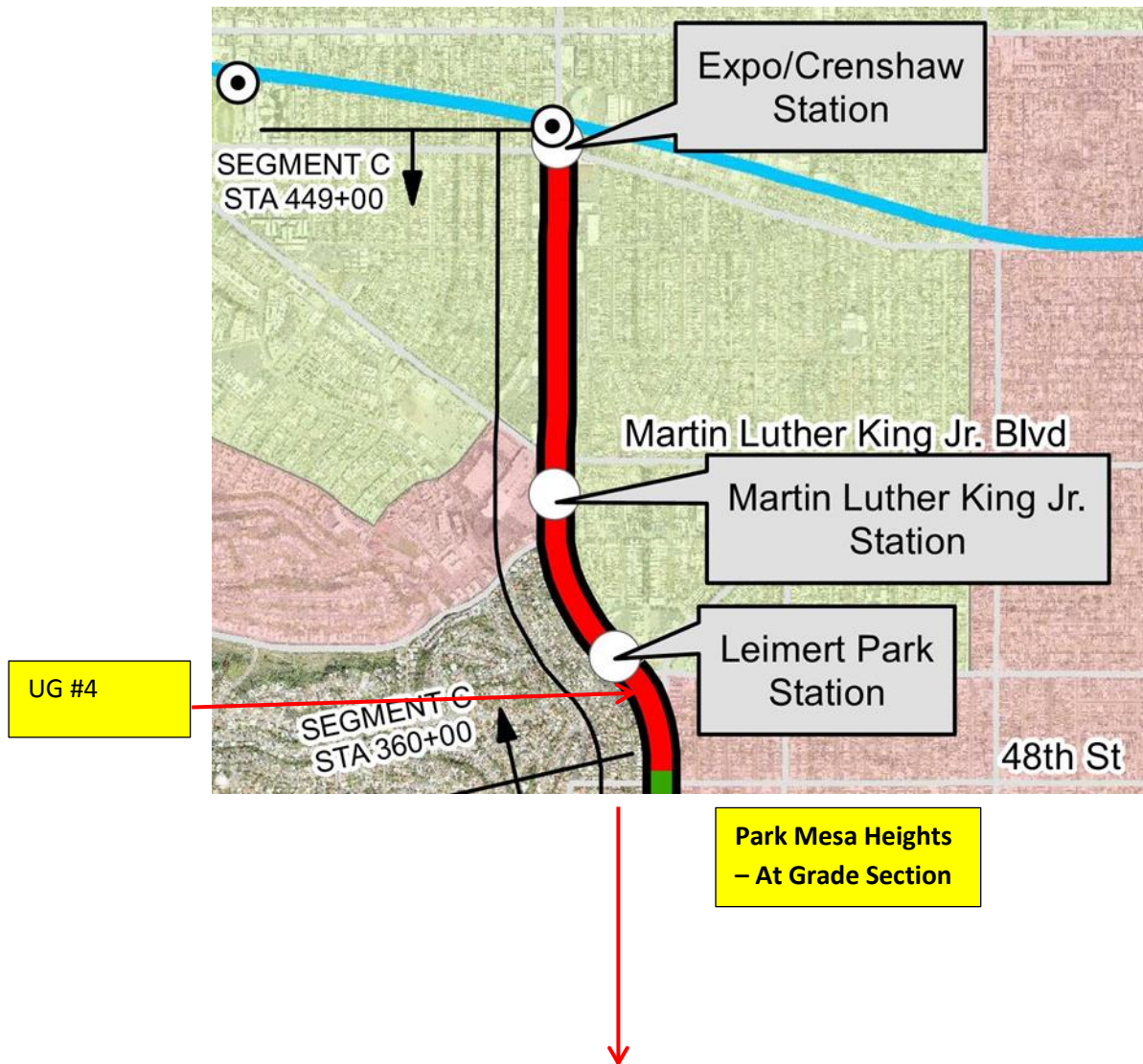
CRENSHAW/LAX PHOTOGRAPHIC UPDATE



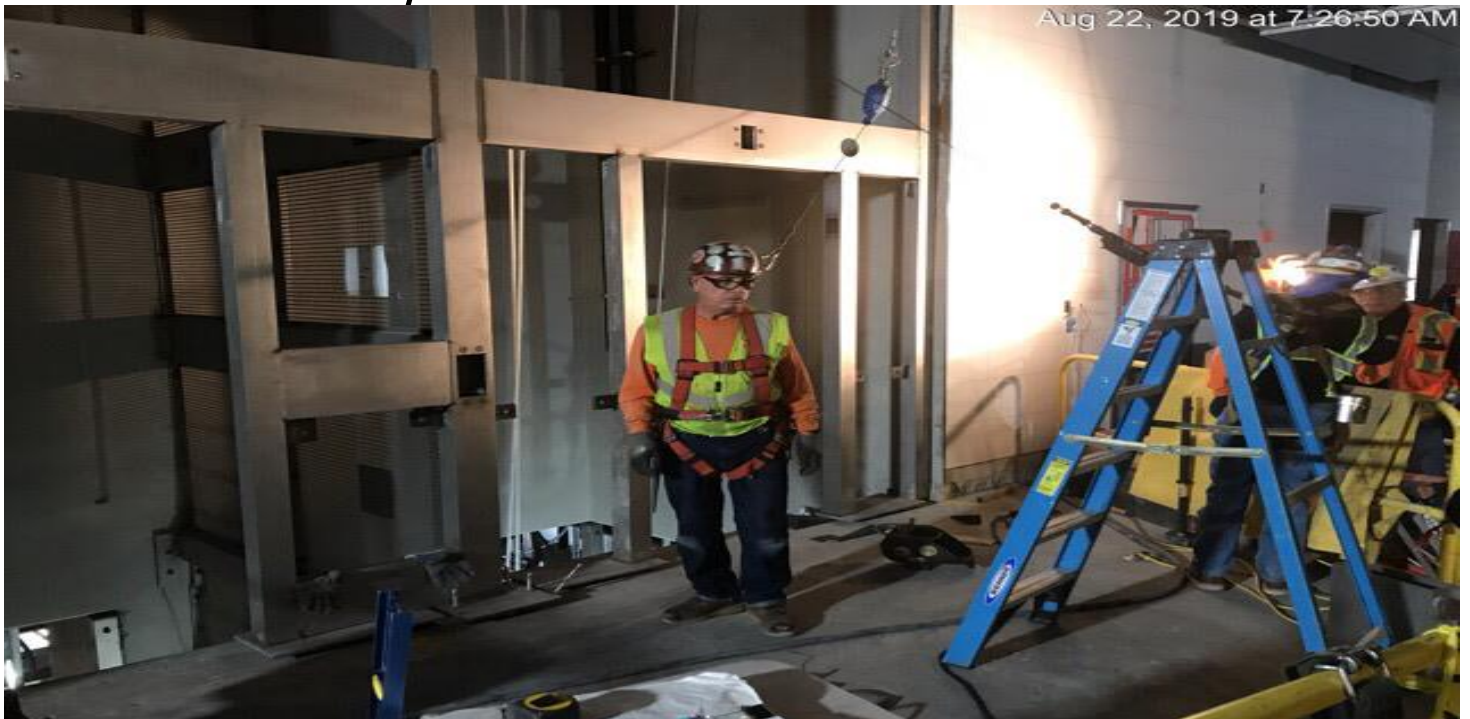
UG3- Continued backfill and compaction between 60th and 63rd Street.

CRENSHAW/LAX PHOTOGRAPHIC UPDATE

Segment C



CRENSHAW/LAX PHOTOGRAPHIC UPDATE



LEIMERT PARK STATION- Continued installation of elevator frame 3 & 4 at the platform level.

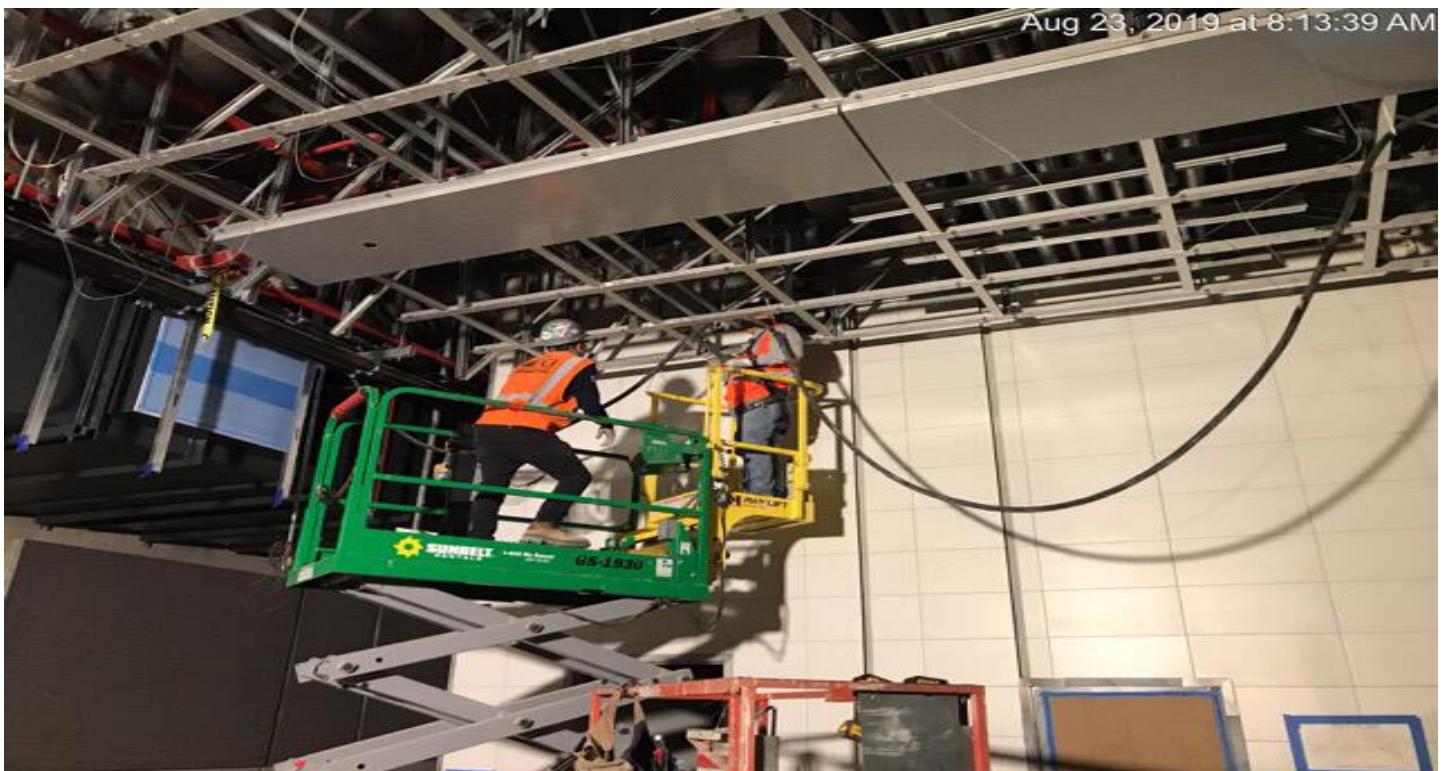


LEIMERT PARK STATION- Continued installation of entrance canopy steel for Elevator 1 & 2 at the topside.

CRENSHAW/LAX PHOTOGRAPHIC UPDATE



LEIMERT PARK STATION- Continued painting of northbound OTE vent duct at the invert level.



MARTIN LUTHER KING JR. STATION- Continued installation of metal ceiling system above the platform level.

CRENSHAW/LAX PHOTOGRAPHIC UPDATE



MARTIN LUTHER KING JR. STATION- Continued painting of southbound OTE vent duct at the invert level.

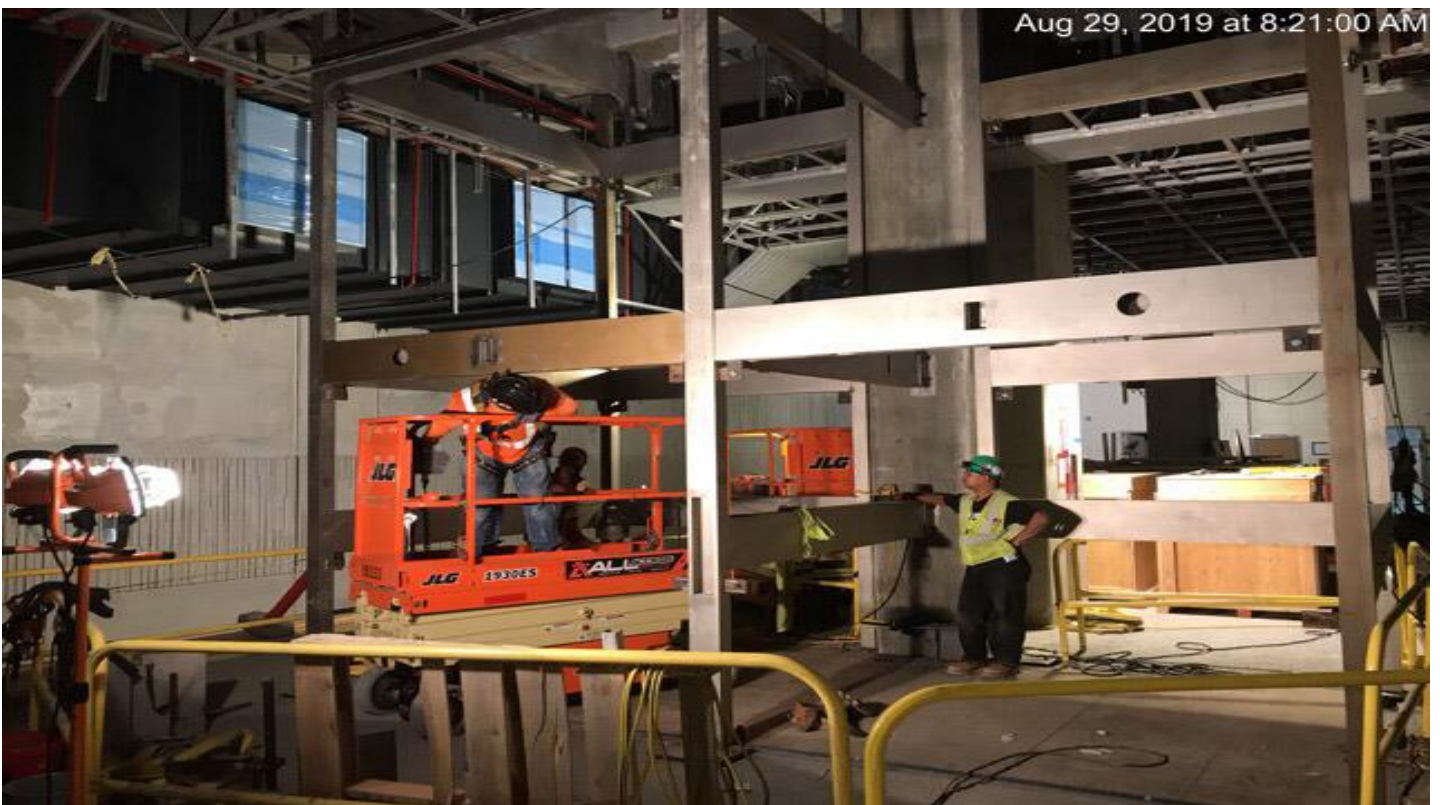


MARTIN LUTHER KING JR. STATION- Continued installation of wall forms for C Line encasement at the topside.

CRENSHAW/LAX PHOTOGRAPHIC UPDATE



MARTIN LUTHER KING JR. STATION- Continued installation of wall forms for Manhole #19 at the topside.



MARTIN LUTHER KING JR. STATION- Continued installation of elevator frame 3 & 4 at the invert level.

CRENSHAW/LAX PHOTOGRAPHIC UPDATE

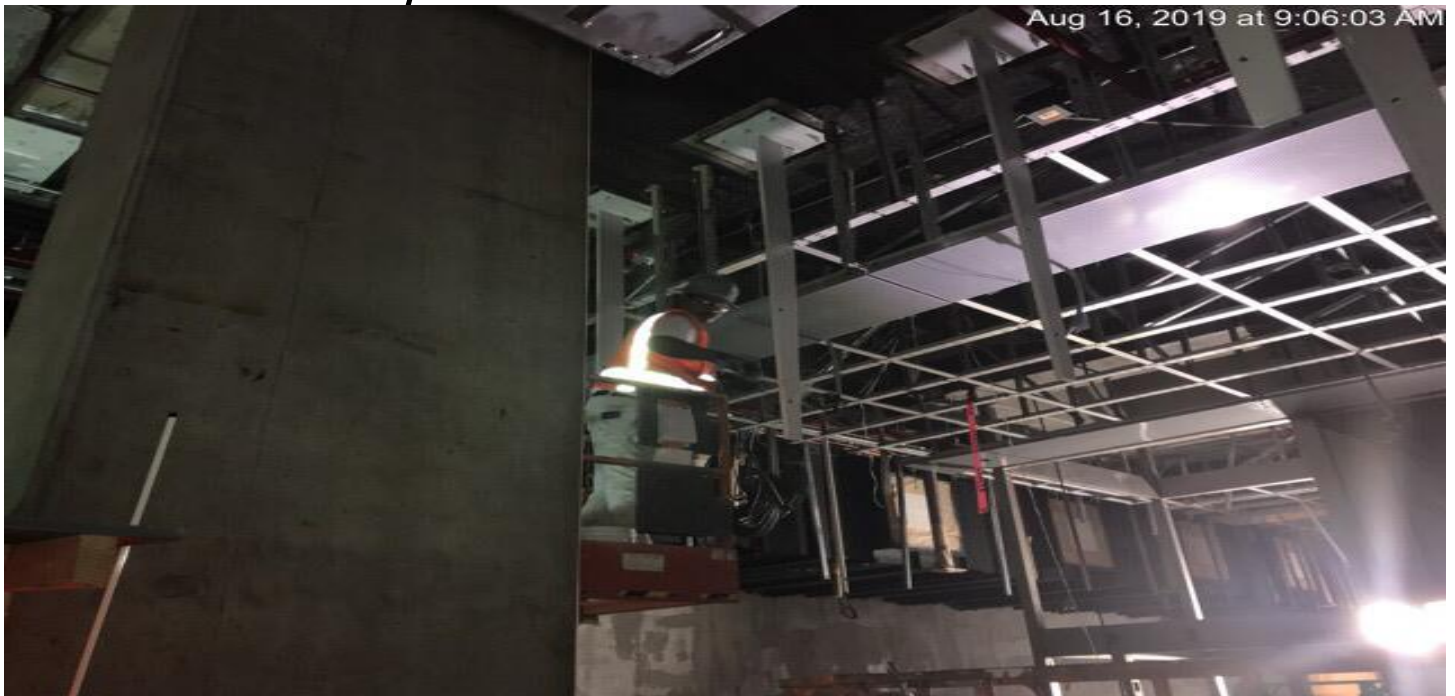


EXPOSITION/CRENSHAW STATION – Continued relocation of sewer manhole on N/W corner of Obama and Crenshaw Blvd.



EXPOSITION/CRENSHAW STATION – Continued painting of southbound OTE vent duct at the invert level.

CRENSHAW/LAX PHOTOGRAPHIC UPDATE



EXPOSITION/CRENSHAW STATION – Continued painting of down stands at the platform level.

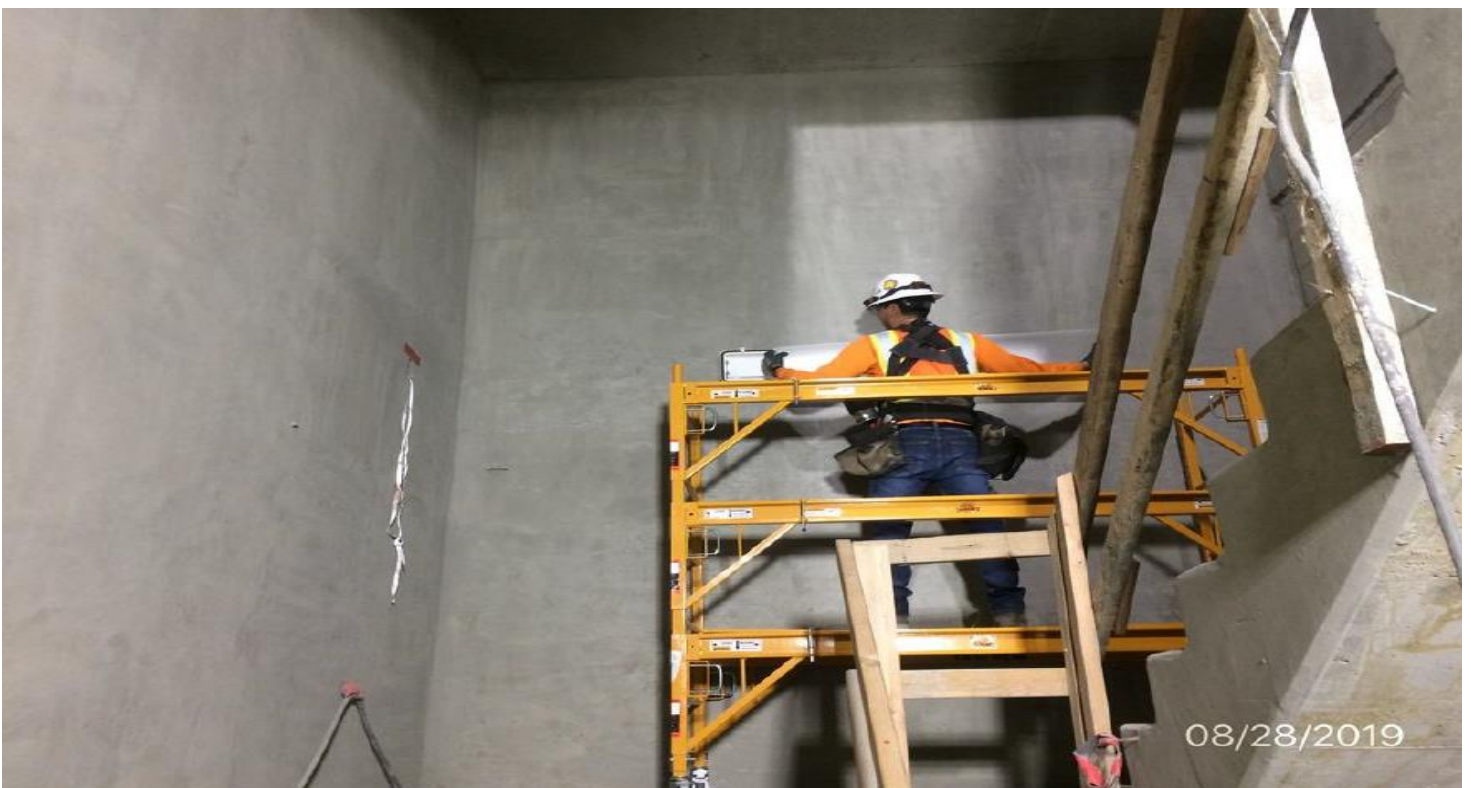


EXPOSITION/CRENSHAW STATION – Continued painting of connection plates for Emergency Ventilation Fans at the topside.

CRENSHAW/LAX PHOTOGRAPHIC UPDATE



EXPOSITION/CRENSHAW STATION – Installation of gutter box for Emergency Ventilation Fan at the concourse level.



EXPOSITION/CRENSHAW STATION – Installation of light fixtures in Emergency Exit Stair #4 at the concourse level.