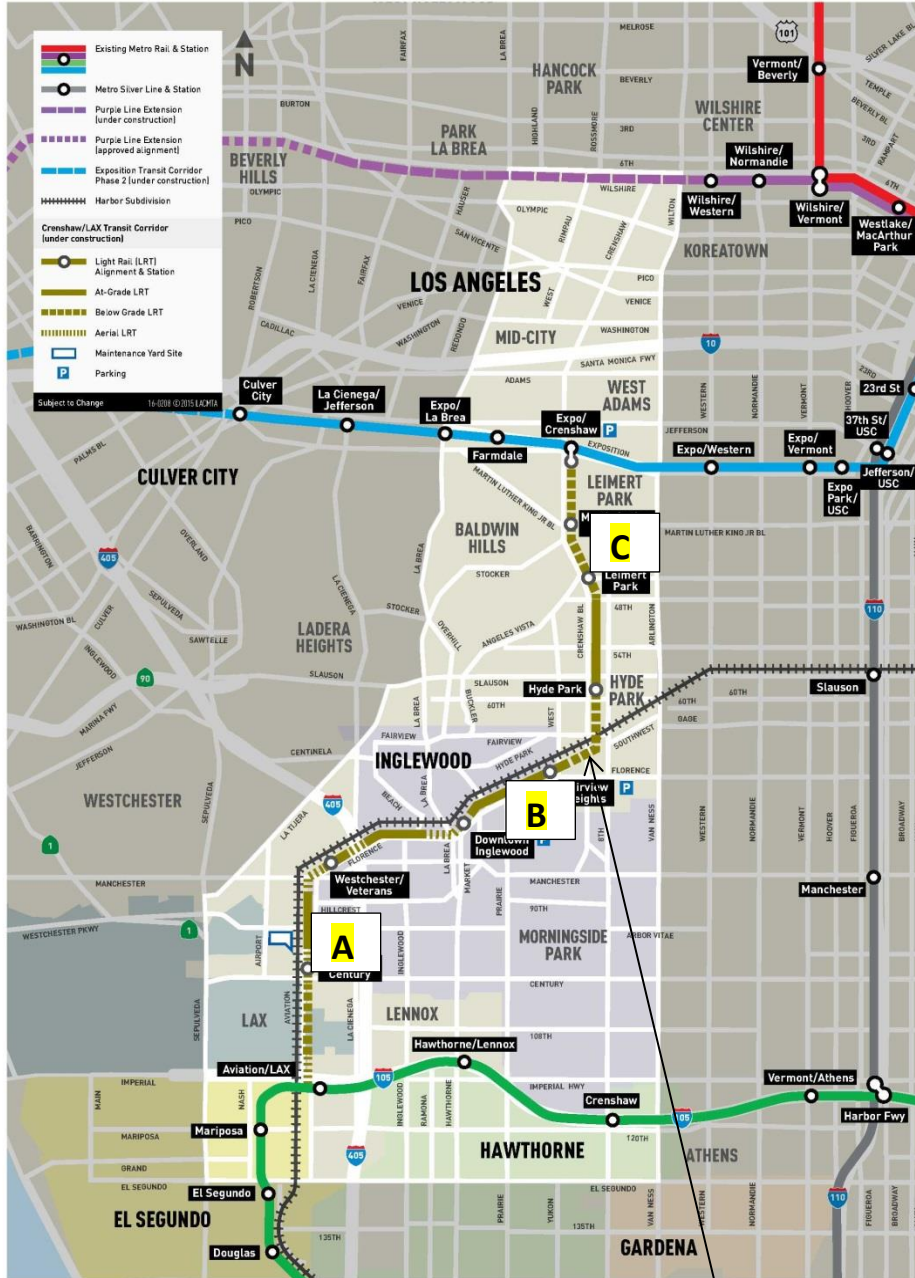


CRENSHAW/LAX PHOTOGRAPHIC UPDATE

November 1, 2019

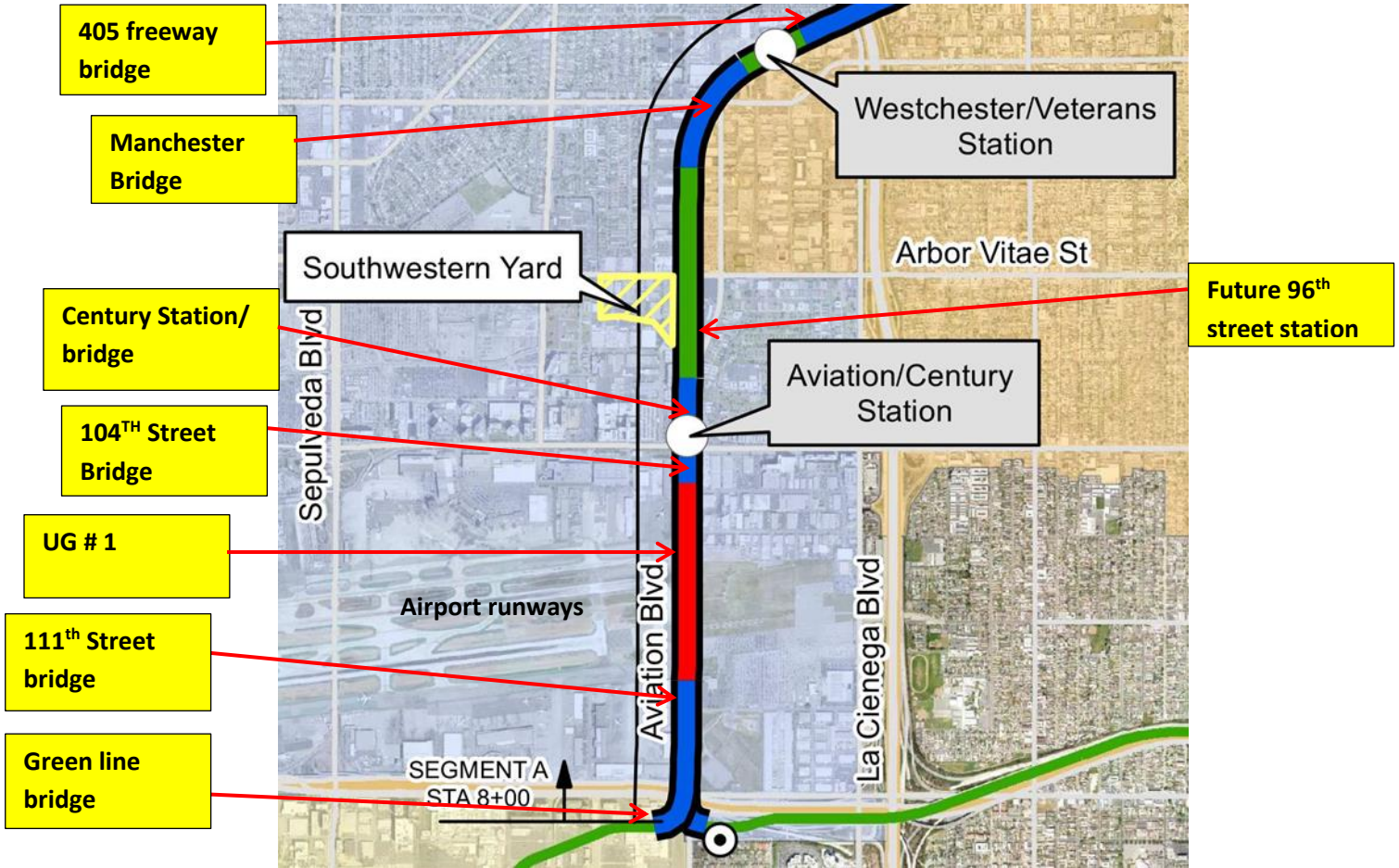
Crenshaw/LAX Transit Project



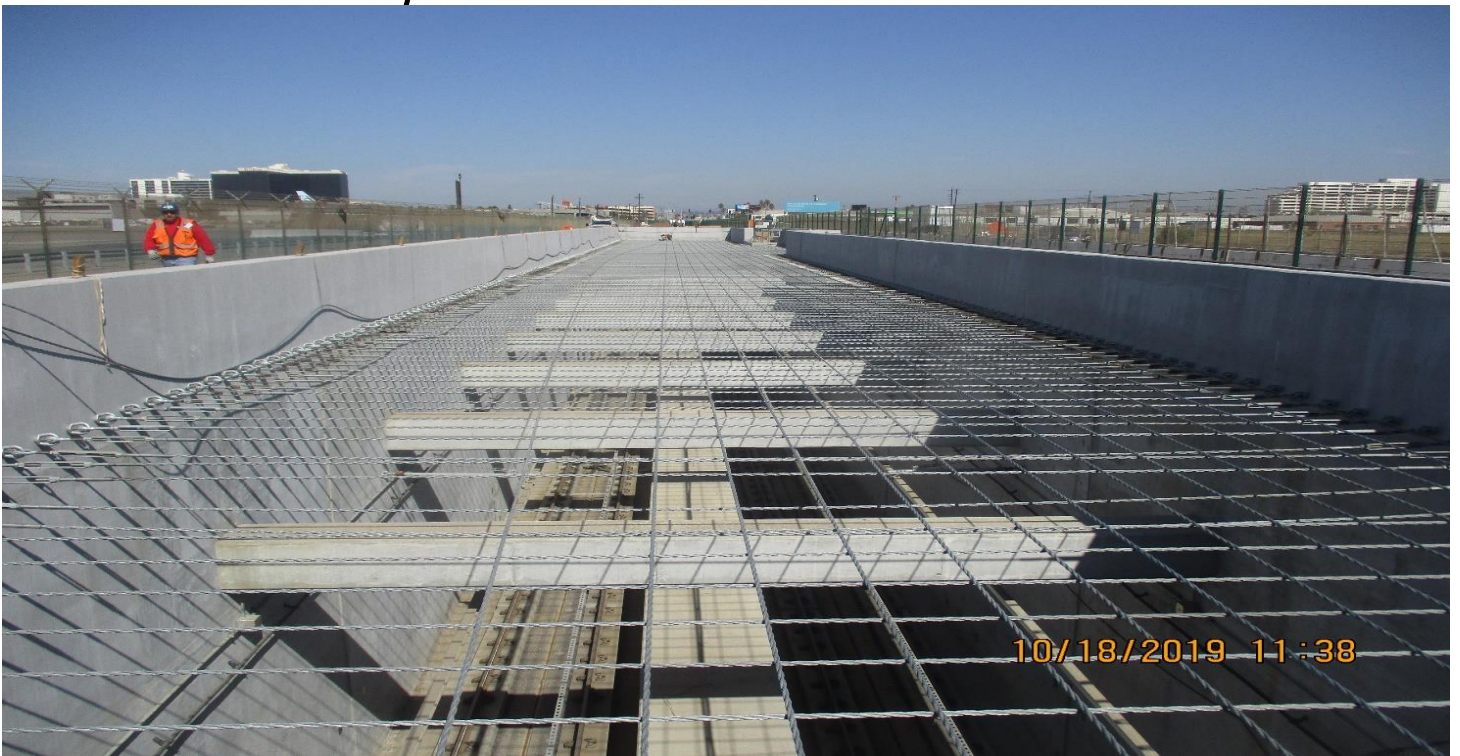
- 8.5 miles Light Rail
- 8 Stations
- \$2,058.0 Million
(Board approved revised LOP)

CRENSHAW/LAX PHOTOGRAPHIC UPDATE

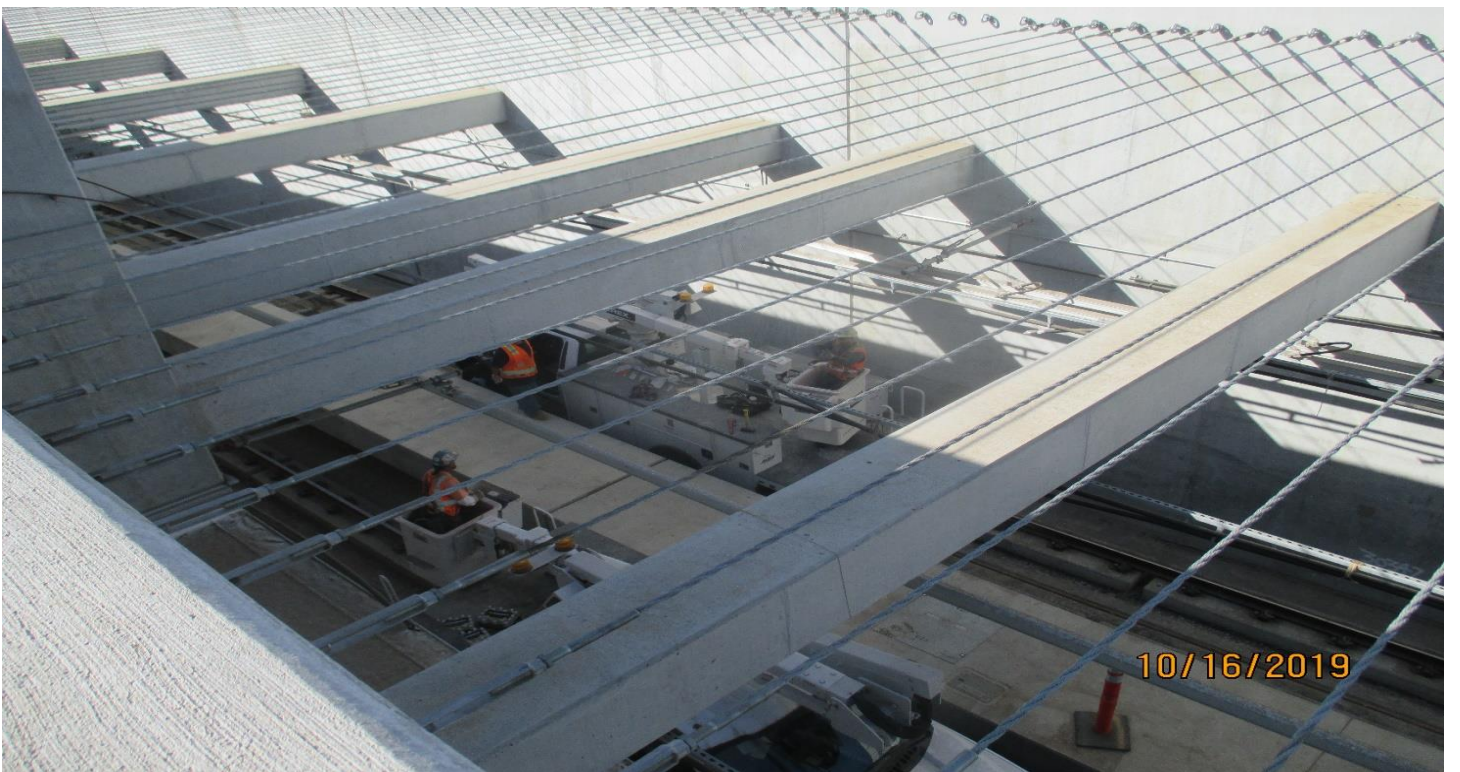
Segment A



CRENSHAW/LAX PHOTOGRAPHIC UPDATE



UG1- WSCC placing cable at UG-1.



UG1- Cable barrier installation at UG-1.

CRENSHAW/LAX PHOTOGRAPHIC UPDATE



UG-1- WSCC Conc finisher UG-1 Wall.



UG-1- WSCC Concrete finisher UG-1 Wall.

CRENSHAW/LAX PHOTOGRAPHIC UPDATE

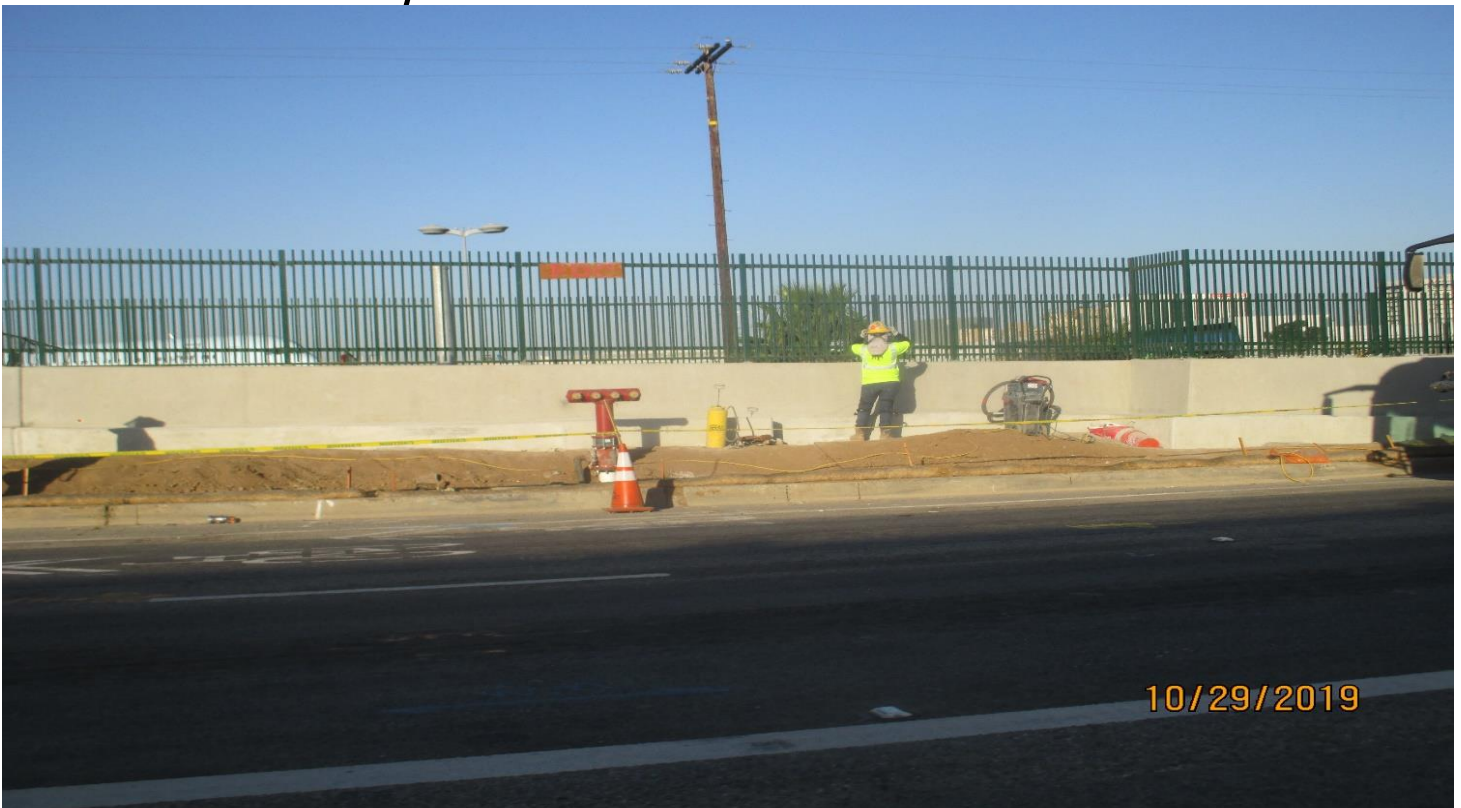


UG-1- Cable barrier installation at UG-1.



UG-1- WSCC Concrete finishing UG-1 wall south end of UG-1

CRENSHAW/LAX PHOTOGRAPHIC UPDATE



UG1 - Concrete finish work for the UG-1 north portal U wall.

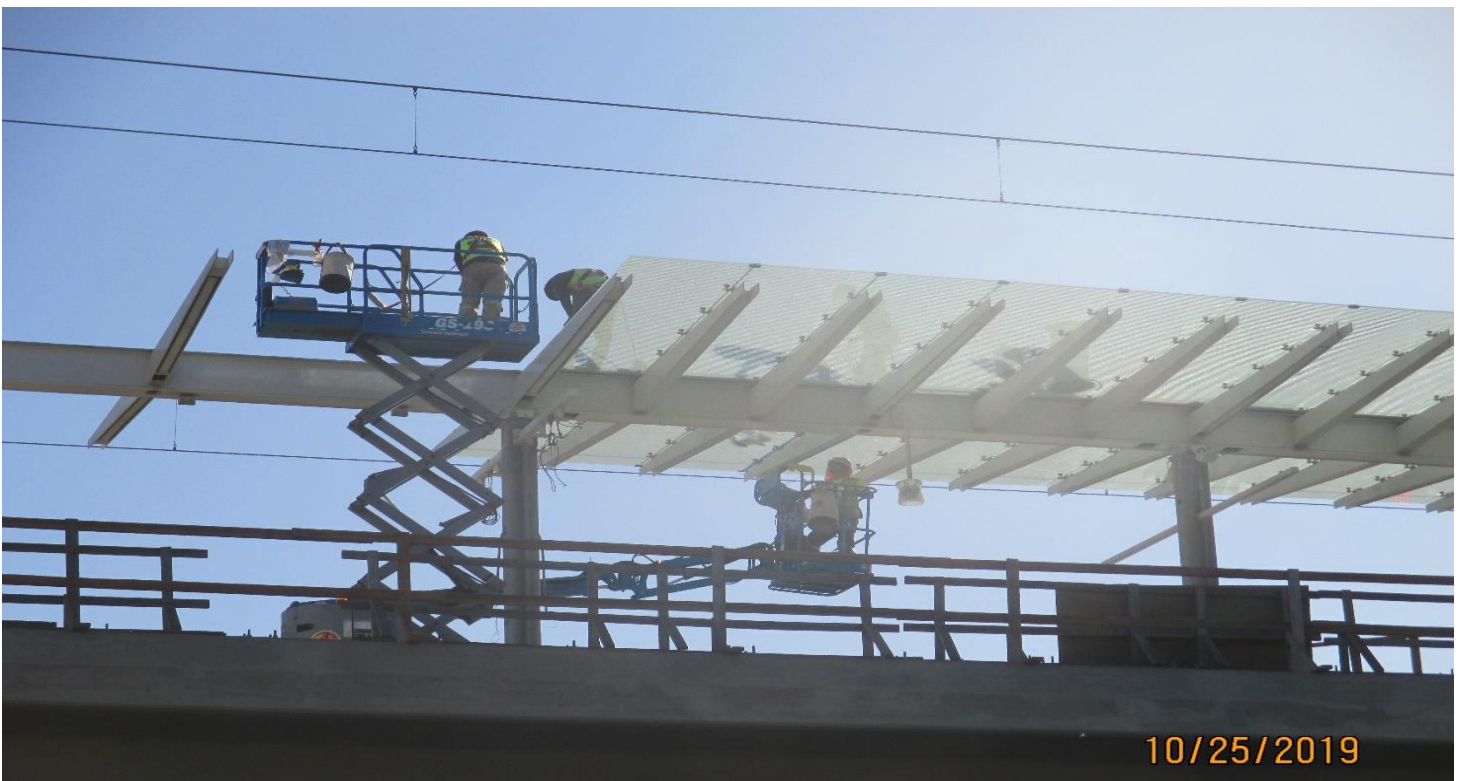


AVIATION STATION – Giroux Adjust new glass panels at Aviation Station.

CRENSHAW/LAX PHOTOGRAPHIC UPDATE



AVIATION STATION – Aviation Station platform canopy glass reinstatement.



AVIATION STATION – Canopy glass work at the Aviation Station.

CRENSHAW/LAX PHOTOGRAPHIC UPDATE



ARBOR VITAE – BLS Trip Station at Arbor vitae prior to backflying the conduits.



HINDRY AVE – Orgo Therm Weld setting profile grinder onto SB #3 track at Hindry grade crossing.

CRENSHAW/LAX PHOTOGRAPHIC UPDATE



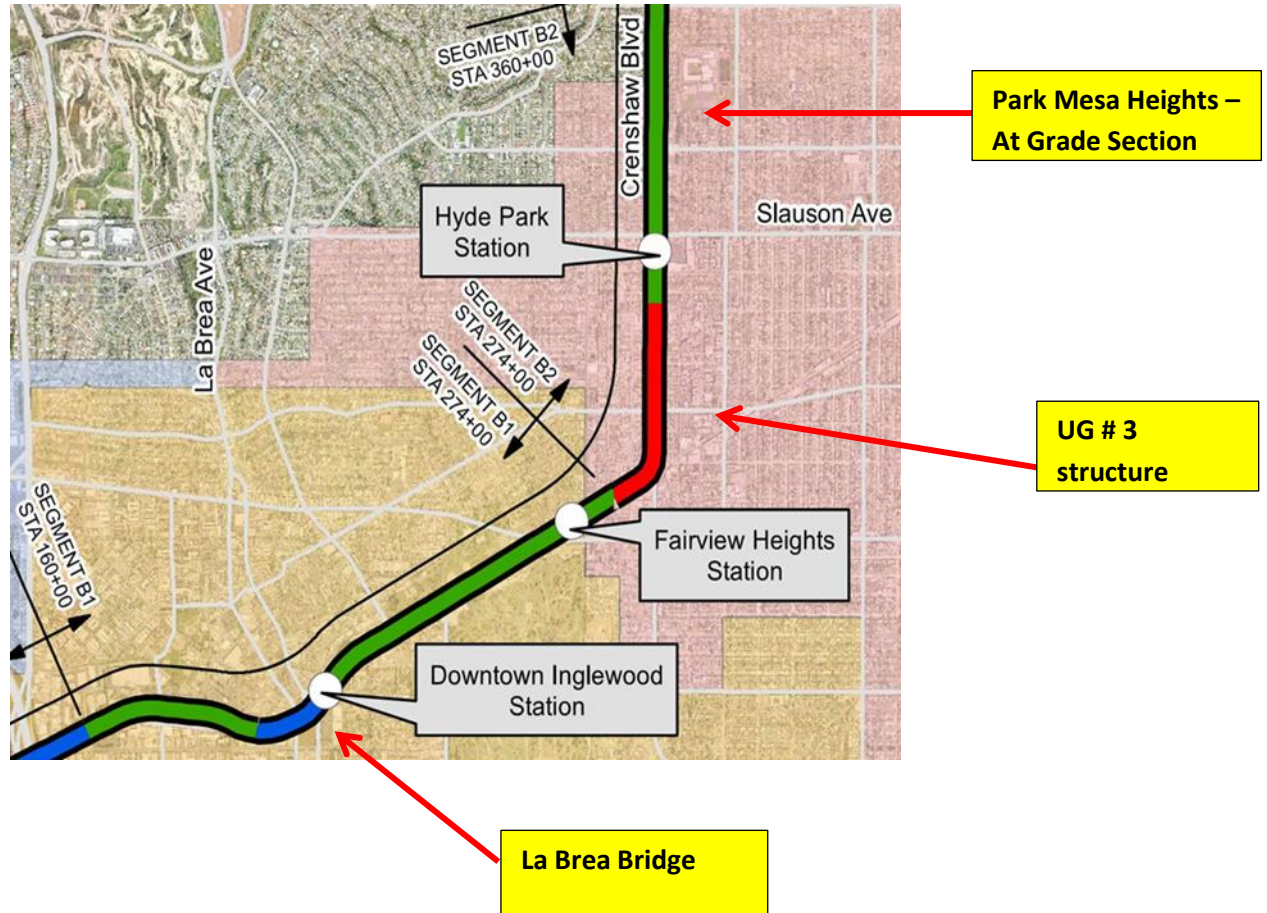
HINDRY AVE – Orgo Therm Weld setting profile work heads to correct profile CPG at Hindry on SB #3 track STA 136+42.



405 BRIDGE - Setting a shoring plate for the COS protection at abutment 5 of the 405

CRENSHAW/LAX PHOTOGRAPHIC UPDATE

Segment B



CRENSHAW/LAX PHOTOGRAPHIC UPDATE



OAK STREET - Oak St. grade crossing NB #4 track final profiling completed STA 136+08.



OAK STREET - STA161+10_ Looking North_ LT shoulder_ Excavation_ PUNCH LIST.

CRENSHAW/LAX PHOTOGRAPHIC UPDATE



OAK STREET - STA161+20_ Looking North_ LT shoulder_ GR work.



OAK STREET - STA161+20_ Looking South_ LT shoulder_ Excavation backfilled_ PUNCH LIST.

CRENSHAW/LAX PHOTOGRAPHIC UPDATE



CEDAR AVE – STA 168+46 field walk for rail condition at grade crossings project wide.



EUCALYPTUS STREET - Profile grinder inside Eucalyptus grade crossing SB #3 track STA 182+00.

CRENSHAW/LAX PHOTOGRAPHIC UPDATE



EUCALYPTUS STREET - HCC hi-rail water truck at grade crossing STA 182+25 SB #3 track.



EUCALYPTUS STREET - STA171+30_ Looking South_ System work & AC walk demo.

CRENSHAW/LAX PHOTOGRAPHIC UPDATE



FLORENCE/IVY - HCC hi-rail water truck pre-soaking down left side ROW on #3 SB track north of Ivy grade.



FLORENCE/IVY - Select Electric Placed concrete for TS foundation at Ivy and Florence.

CRENSHAW/LAX PHOTOGRAPHIC UPDATE



FLORENCE/IVY – Metro track inspector walking grade crossing for damaged rail conditions.



FLORENCE/IVY – Select Electric Pulling cable at Ivy intersection.

CRENSHAW/LAX PHOTOGRAPHIC UPDATE



FLORENCE/LA BREA- Bali Construction Place meter boxes and AC back fill water line trenches to La Brea Station.



FLORENCE/LA BREA- McMahon Work on ticket plaza columns at La Brea Station.

CRENSHAW/LAX PHOTOGRAPHIC UPDATE



FLORENCE/LA BREA- Orgo Threm Weld Profile grinder on La Brea OP #3 SB track profiling to CPC on both rails threw curves.



FLORENCE/LA BREA- HCC secured hi-rail water truck on #3 SB track south side of La Brea OP.

CRENSHAW/LAX PHOTOGRAPHIC UPDATE



FLORENCE/LA BREA - WSCC Place red stamped concrete at La Brea center island.



FLORENCE/LA BREA - McMahon Work on ticket plaza canopy at La Brea Station.

CRENSHAW/LAX PHOTOGRAPHIC UPDATE



FLORENCE/LA BREA - STA214+00_ Looking South_ TK ballast re-disturbance by system work_OCR1177S_PUNCH LIST.



FLORENCE/LA BREA - Select Electric Placed concrete for controller foundation at La Brea.

CRENSHAW/LAX PHOTOGRAPHIC UPDATE



FLORENCE/LA BREA - STA210+00_ Looking South_ TK ballast disturbance for water line.

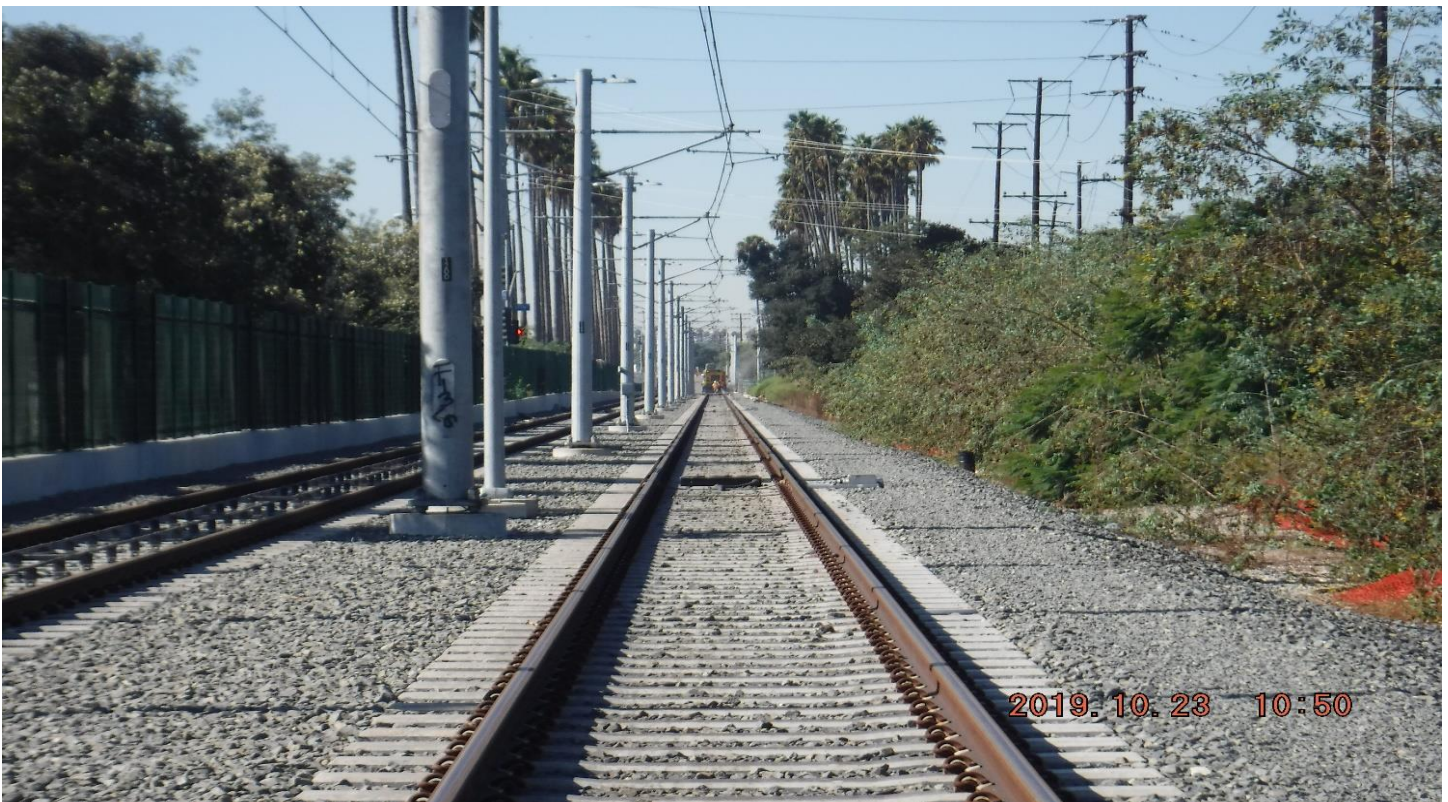


FLORENCE/LA BREA - WSSC Forming to place concrete foundation at restroom building.

CRENSHAW/LAX PHOTOGRAPHIC UPDATE



CENTINELA AVE - GRSI Cutting and placing wire in loops on Centinela St intersection.



CENTINELA AVE - STA245+00_ Looking South_ Rail grinding in background at Centinela.

CRENSHAW/LAX PHOTOGRAPHIC UPDATE



HIGH STREET- STA246+70_ Looking South_ Install tie plates frog 10Q2LHXO_rework.



HIGH STREET- STA246+70_ Looking South_ Install tie plates frog 10Q2LHXO_rework.

CRENSHAW/LAX PHOTOGRAPHIC UPDATE



HIGH STREET- STA256+10_lookS_TK ballast disturbance by system work OCR1212 PUNCH LIST.



FLORENCE/WEST- STA261+63_ Looking South_ New AC walkway demo 4 system work.

CRENSHAW/LAX PHOTOGRAPHIC UPDATE



FLORENCE/WEST- STA262+74_ Looking North_ Install crossing panels 4 pedestrians.



FLORENCE/WEST- WSCC Remove soil and make grade at West Sta parking lot.

CRENSHAW/LAX PHOTOGRAPHIC UPDATE



FLORENCE/WEST- STA262+74_ Looking South_ Status install crossing panels for pedestrians.



UG3- STA279+68_ Looking South_ Plinth demo_ Re-work_ UG3_ Victoria.

CRENSHAW/LAX PHOTOGRAPHIC UPDATE



UG3- Rail profiling southbound ramp at Sta 280+00 of the south end portal.

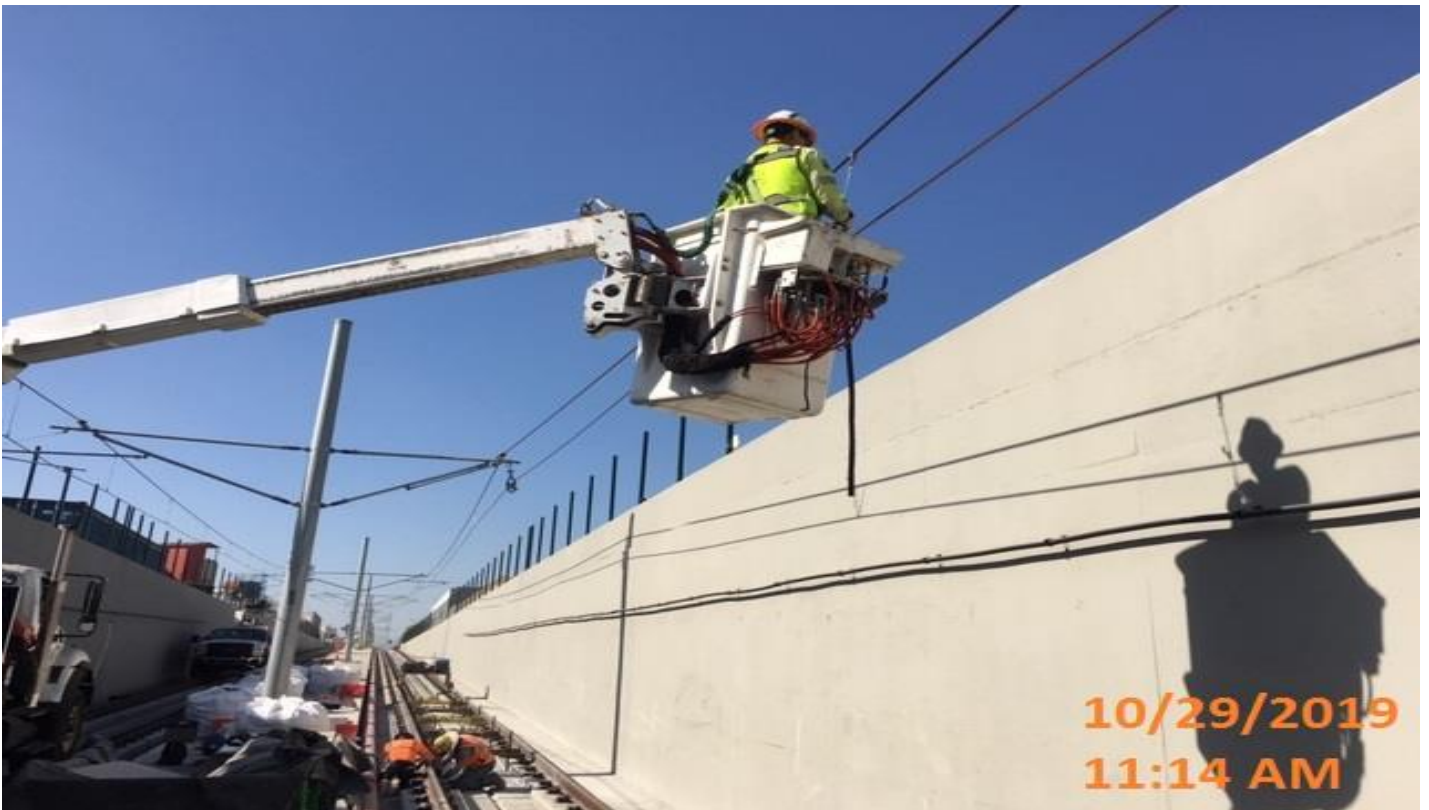


UG3- STA279+08_ Looking North_ Plinth demo_ Re-work_ QC_UG3_Victoria.

CRENSHAW/LAX PHOTOGRAPHIC UPDATE



UG3- LKC installation of MPA in the south bond side of UG-3.

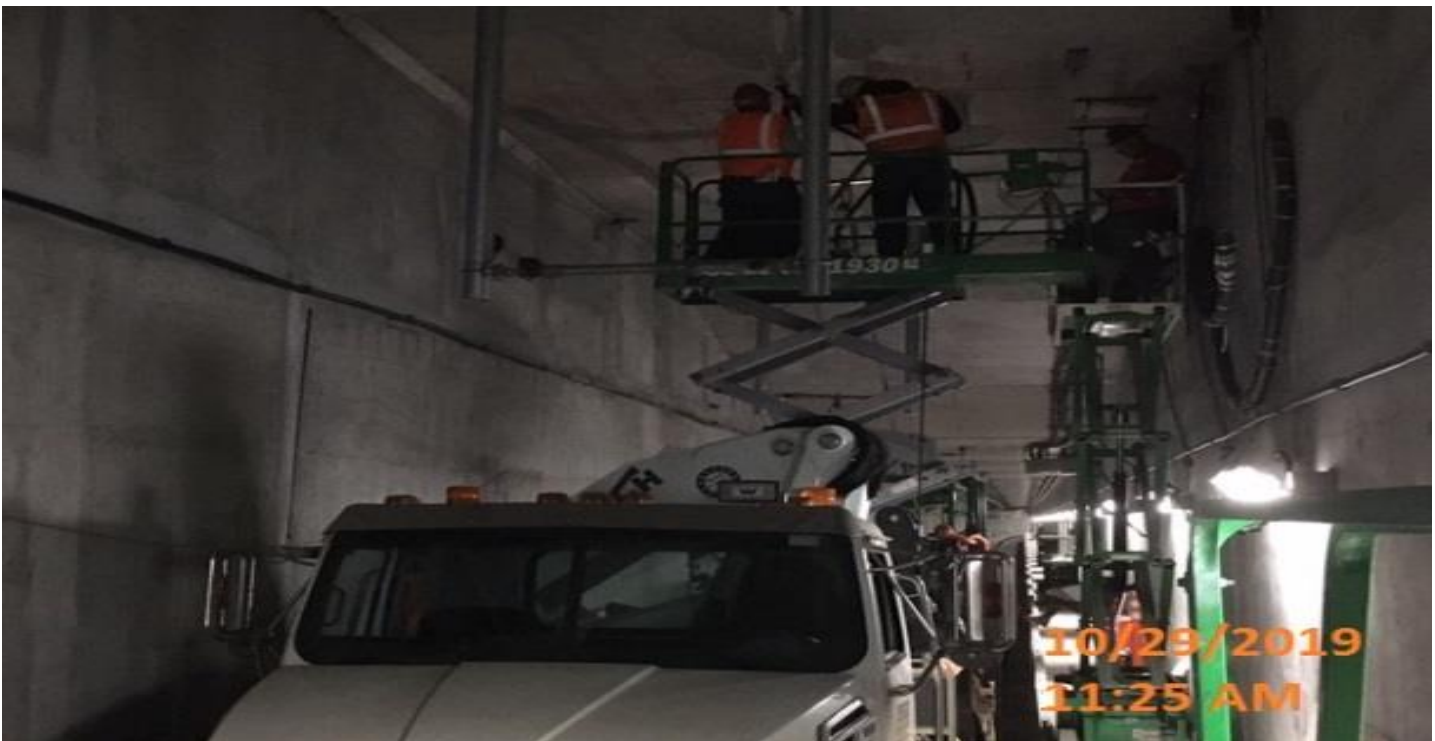


UG3- Installation of hangars for the overhead contact system at the south end portal.

CRENSHAW/LAX PHOTOGRAPHIC UPDATE



UG3- Continued installation of overhead conductor rail for contact system on the southbound tunnel at Sta 286+56.



UG3- Installation of anchor bolts for tunnel booster fans on the northbound tunnel at Sta 290+70.

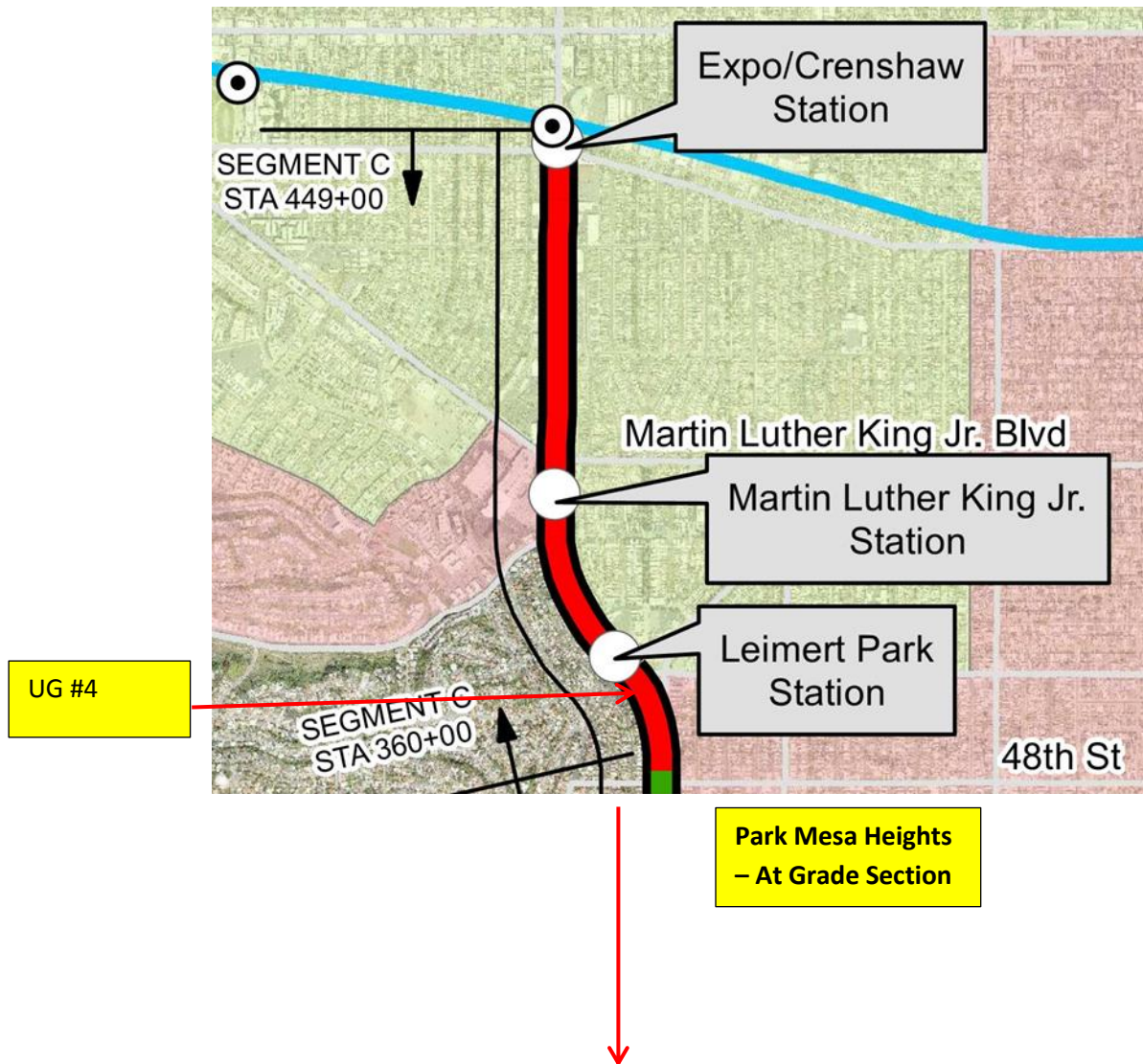
CRENSHAW/LAX PHOTOGRAPHIC UPDATE



UG3- Continued connecting fire rated cables for the tunnel booster fans on the northbound tunnel at Sta 307+42.

CRENSHAW/LAX PHOTOGRAPHIC UPDATE

Segment C



CRENSHAW/LAX PHOTOGRAPHIC UPDATE



PARK MESA- Curb and gutter placement on the northeast corner of 66th Pl & Crenshaw Blvd.



PARK MESA- Curb and gutter placement on the northeast corner of 66th St & Crenshaw Blvd.

CRENSHAW/LAX PHOTOGRAPHIC UPDATE



PARK MESA- Curb and gutter placement on the southeast corner of 63rd St & Crenshaw Blvd.

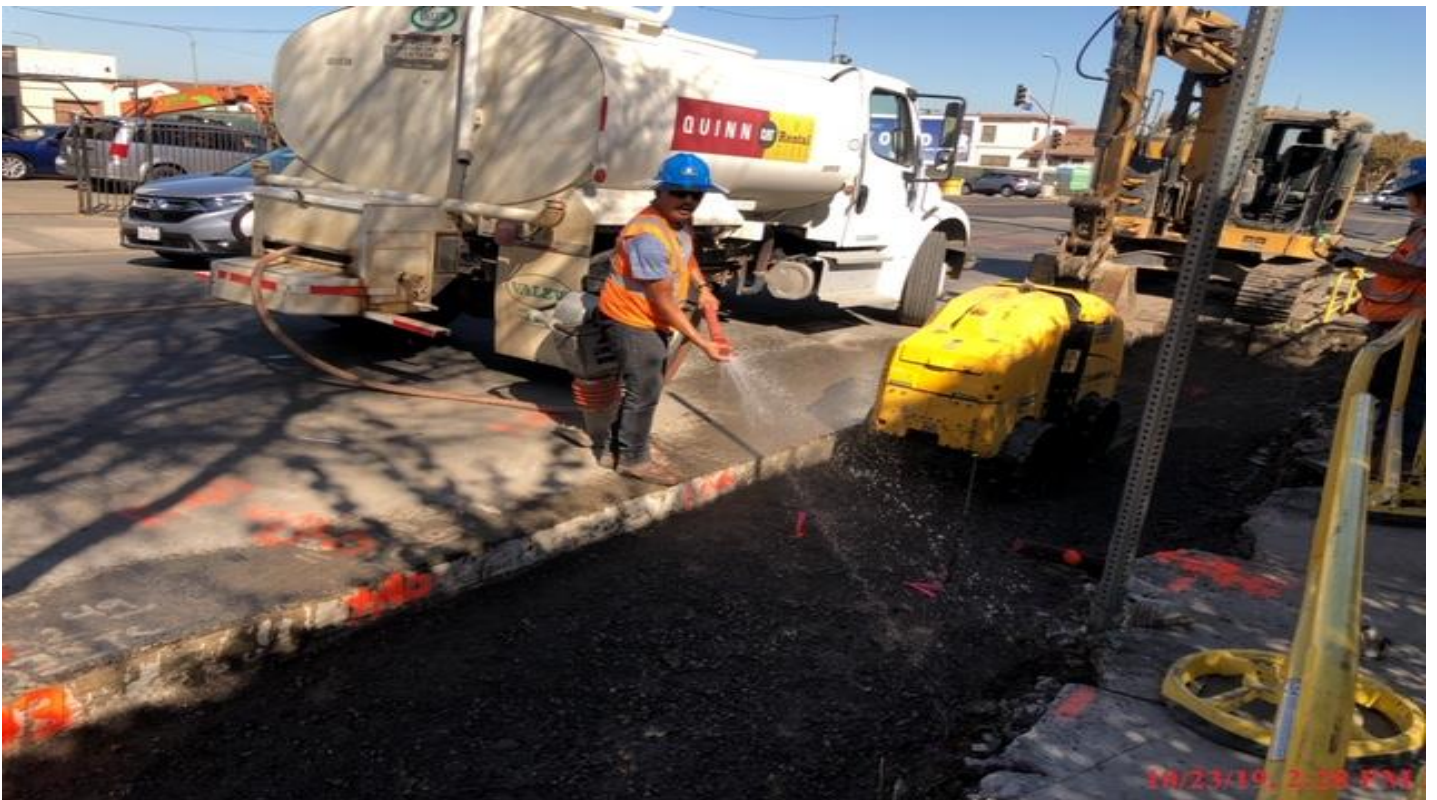


PARK MESA- Placing case 5 encasement for Catch Basin #5 on 60th St & Crenshaw Blvd.

CRENSHAW/LAX PHOTOGRAPHIC UPDATE



PARK MESA- Manhole collar forming and installing rebar for CB #5 on 60th St & Crenshaw Blvd.



PARK MESA- Curb and gutter excavation and compaction on the southwest corner of 60th St & Crenshaw Blvd.

CRENSHAW/LAX PHOTOGRAPHIC UPDATE



PARK MESA- Curb and gutter placement on the southbound side of 60th St & Crenshaw Blvd.



PARK MESA- Curb and gutter placement for bus pad on the southeast corner of 60th St & Crenshaw Blvd.

CRENSHAW/LAX PHOTOGRAPHIC UPDATE



PARK MESA- Excavating to form and cast Manhole #6 on the intersection of 60th St & Crenshaw Blvd.

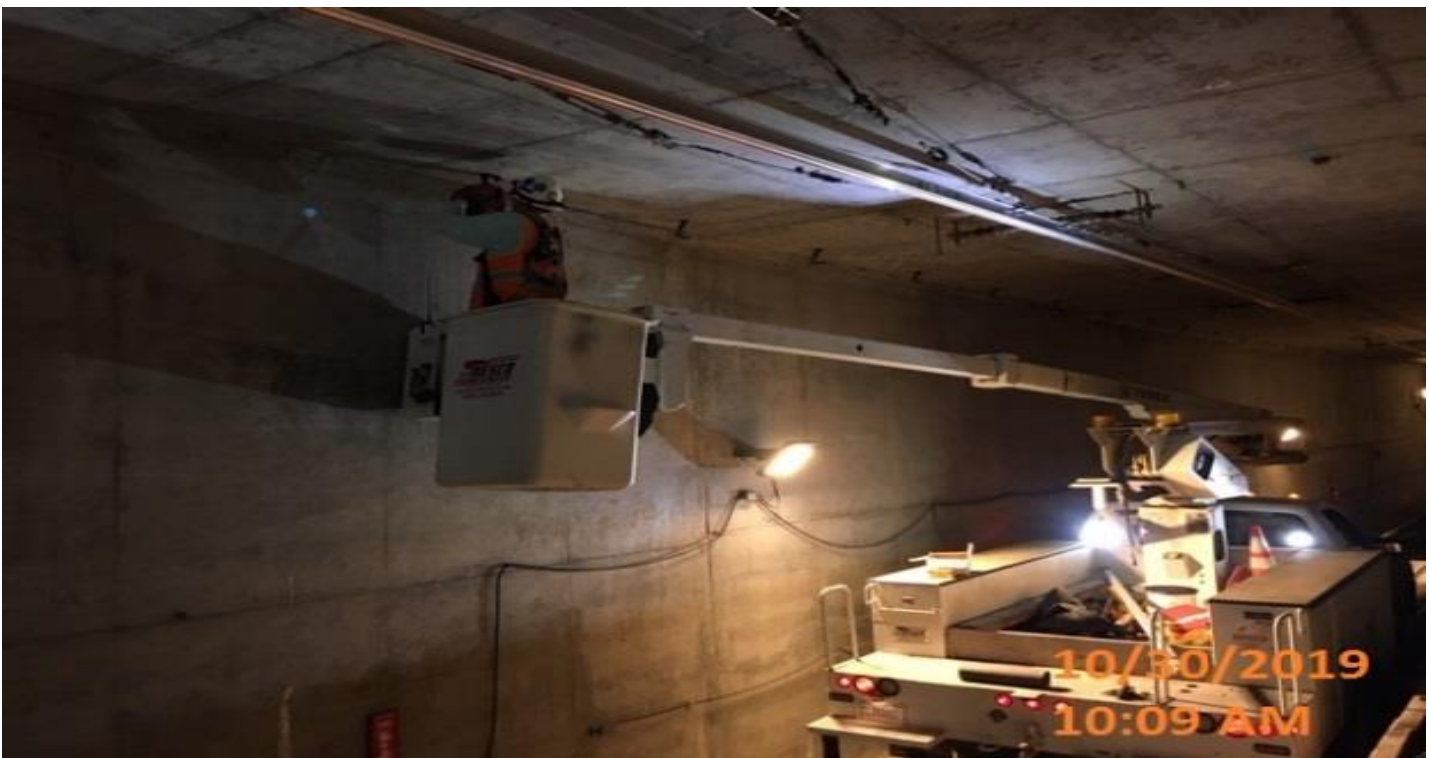


PARK MESA- Curb and gutter placement on the northbound side of Crenshaw Blvd from 54th to 57th St.

CRENSHAW/LAX PHOTOGRAPHIC UPDATE



PARK MESA- Continued curb and gutter placement on the northbound side of Crenshaw Blvd from 54th to 57th St.



UG4- Continued installation of cable brackets throughout the northbound tunnel at Sta 379+00.

CRENSHAW/LAX PHOTOGRAPHIC UPDATE



Oct 22, 2019 at 1:53:43 AM
Los Angeles

LEIMERT PARK STATION- Excavation at W – Line storm drain to install remaining concrete pipe on the intersection of 43rd St & Crenshaw Blvd.



Oct 22, 2019 at 10:57:14 PM
Los Angeles

LEIMERT PARK STATION- Mudding joints of remaining concrete pipe for W – Line storm drain on the intersection of 43rd St & Crenshaw Blvd.

CRENSHAW/LAX PHOTOGRAPHIC UPDATE



LEIMERT PARK STATION- Placing case 5 encasement for W – Line storm drain on the intersection of 43rd St & Crenshaw Blvd.



LEIMERT PARK STATION- Placing concrete for PCC roadway on Homeland and Crenshaw Blvd.

CRENSHAW/LAX PHOTOGRAPHIC UPDATE



LEIMERT PARK STATION- Setting canopy piece over the main entrance of the portal at the plaza level.



LEIMERT PARK STATION- Continued welding main beam connection for main entrance canopy portal at the plaza level.

CRENSHAW/LAX PHOTOGRAPHIC UPDATE



MARTIN LUTHER KING JR. STATION- Continued welding outriggers to main beam connection for main entrance canopy portal.



MARTIN LUTHER KING JR. STATION- Continued welding column beam connections for Elevator 1 & 2 at the plaza level.

CRENSHAW/LAX PHOTOGRAPHIC UPDATE



MARTIN LUTHER KING JR. STATION- Excavating Capri sewer line for E – Line storm drain at the topside.



MARTIN LUTHER KING JR. STATION- Installation of Reinforced concrete pipe for Capri E – Line storm drain at the topside.

CRENSHAW/LAX PHOTOGRAPHIC UPDATE



MARTIN LUTHER KING JR. STATION- Forming and excavating Manhole #2 & 3 for Capri E – Line storm drain at the topside.



EXPOSITION/CRENSHAW STATION – Forming tree wells for sidewalk posts on the southwest corner of Obama Blvd and Crenshaw Blvd.

CRENSHAW/LAX PHOTOGRAPHIC UPDATE



EXPOSITION/CRENSHAW STATION – Continued work on U – Line storm drain on the west side of the intersection of Obama Blvd and Crenshaw Blvd.



EXPOSITION/CRENSHAW STATION – Placing reinforced concrete pipe for U – Line storm drain on the west side of the intersection of Obama Blvd and Crenshaw Blvd.

CRENSHAW/LAX PHOTOGRAPHIC UPDATE



EXPOSITION/CRENSHAW STATION – Setting center canopy piece over the main entrance of the portal at the plaza level.



EXPOSITION/CRENSHAW STATION – Continued installation of ADA edge pavers on both sides of the platform level.

CRENSHAW/LAX PHOTOGRAPHIC UPDATE



EXPOSITION/CRENSHAW STATION – Continued grouting of ADA edge pavers on both sides of the platform level.