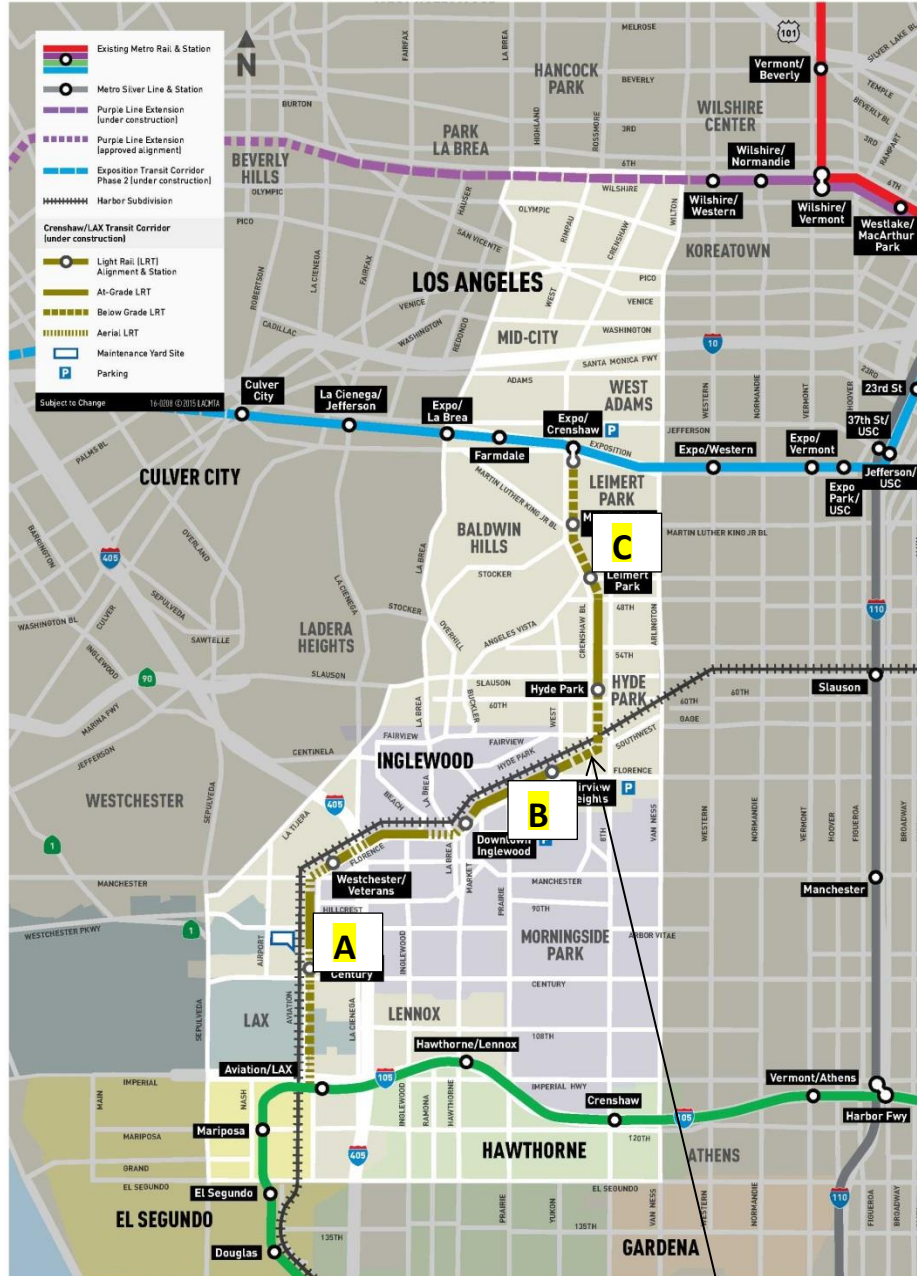


CRENSHAW/LAX PHOTOGRAPHIC UPDATE

December 1, 2019

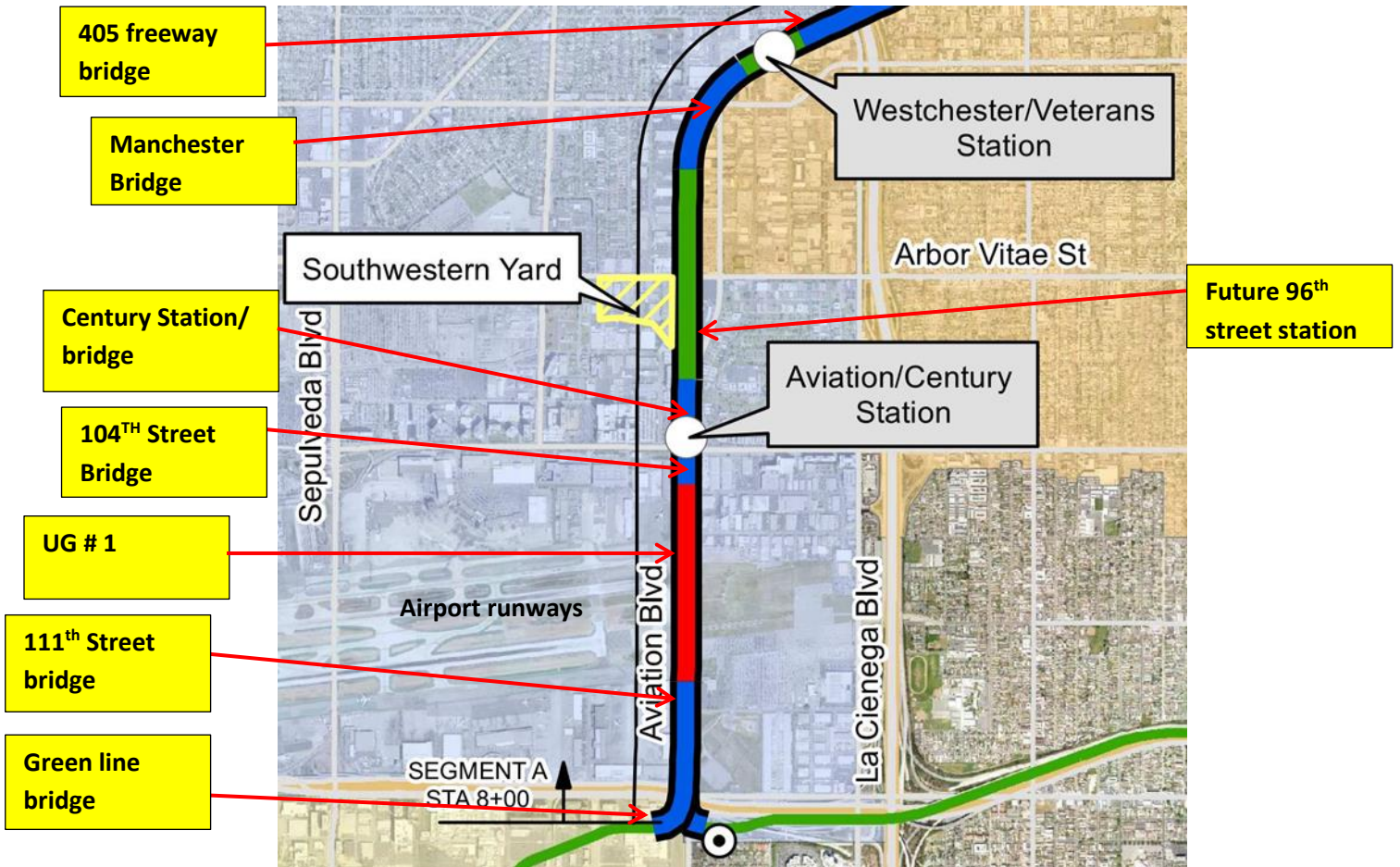
Crenshaw/LAX Transit Project



- 8.5 miles Light Rail
- 8 Stations
- \$2,058.0 Million
(Board approved revised LOP)

CRENSHAW/LAX PHOTOGRAPHIC UPDATE

Segment A



CRENSHAW/LAX PHOTOGRAPHIC UPDATE



UG1- Concrete finish work after cutting out the imbedded flanges at UG-1.

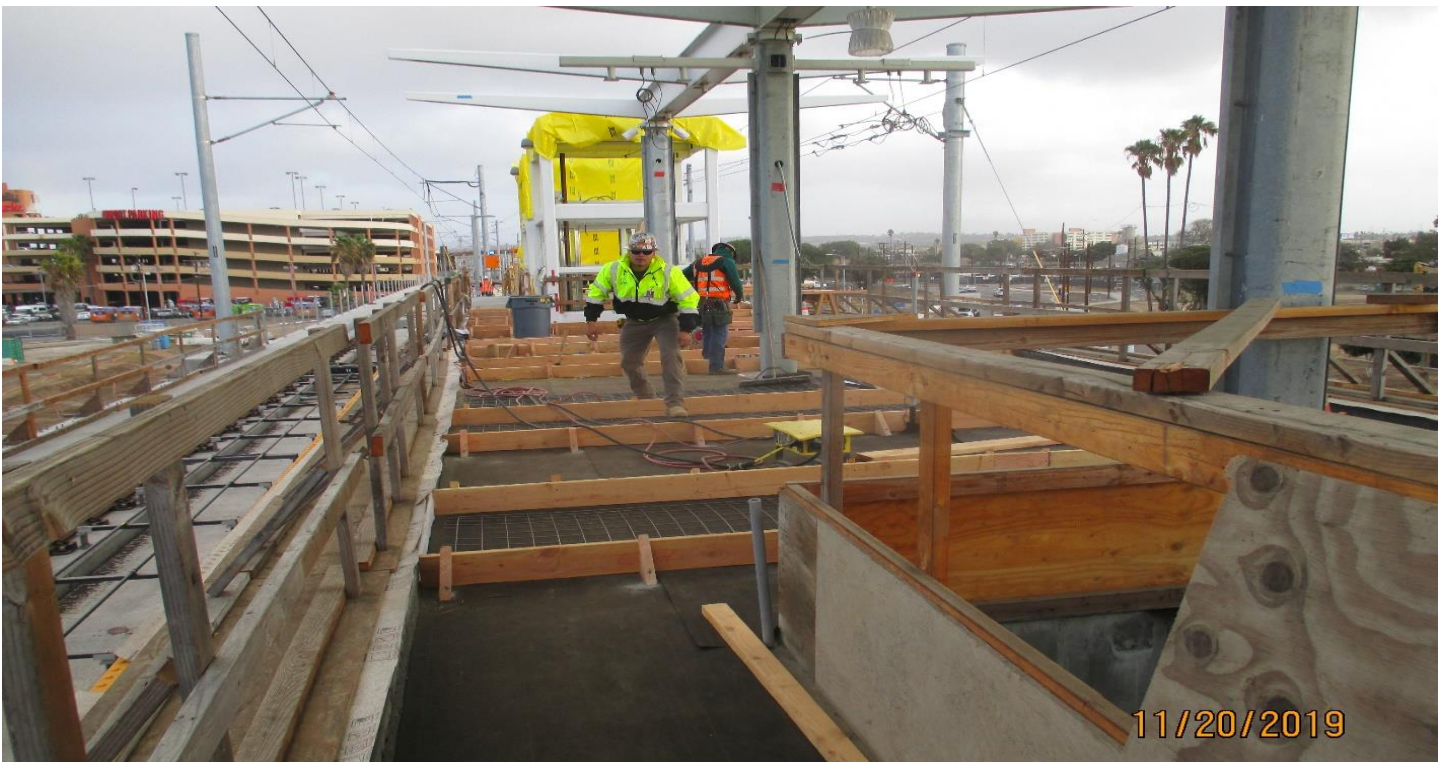


UG1- Imbedded I beam flange removal at UG-1.

CRENSHAW/LAX PHOTOGRAPHIC UPDATE



AVIATION STATION – Setting bond breaker paper, wire mesh and forms for the Aviation Station platform topping slab.



AVIATION STATION – Setting forms for the Aviation Station platform topping slab.

CRENSHAW/LAX PHOTOGRAPHIC UPDATE



AVIATION STATION – Dyna Electric continue installation of DWP underground conduits at 104th street and Aviation Blvd.



AVIATION STATION – Dyna Electric continue installation of DWP underground conduits at 104th street and Aviation Blvd.

CRENSHAW/LAX PHOTOGRAPHIC UPDATE



AVIATION STATION – Setting forms for the topping slab for the Aviation Station platform.



AVIATION STATION – Welding bent plates on the Aviation Station elevators.

CRENSHAW/LAX PHOTOGRAPHIC UPDATE



WESTCHESTER STATION – Demo of the parking lot to access the Westchester Station SB platform drain line.



WESTCHESTER STATION – Slurry placement for light foundations #203, 205 & 206 at the Westchester Station.

CRENSHAW/LAX PHOTOGRAPHIC UPDATE



WESTCHESTER STATION – Demo to access the backside of the Westchester Station SB platform drain line..



WESTCHESTER STATION – Setting forms for the Westchester Station SB platform topping slab.

CRENSHAW/LAX PHOTOGRAPHIC UPDATE



WESTCHESTER STATION – Excavating and placing a temporary 3 sump pump drain line at the Westchester Station on Florence.



WESTCHESTER STATION – Placing concrete for some sidewalk panels on Florence at the Westchester Station.

CRENSHAW/LAX PHOTOGRAPHIC UPDATE



GUIDEWAY AT 405- Slurry backfill for the COS protection structure at abutment 1 of the 405 bridge.



GUIDEWAY AT 405- WSCC chipping out concrete around insert hole on SB #3 track 405 fwy OP.

CRENSHAW/LAX PHOTOGRAPHIC UPDATE



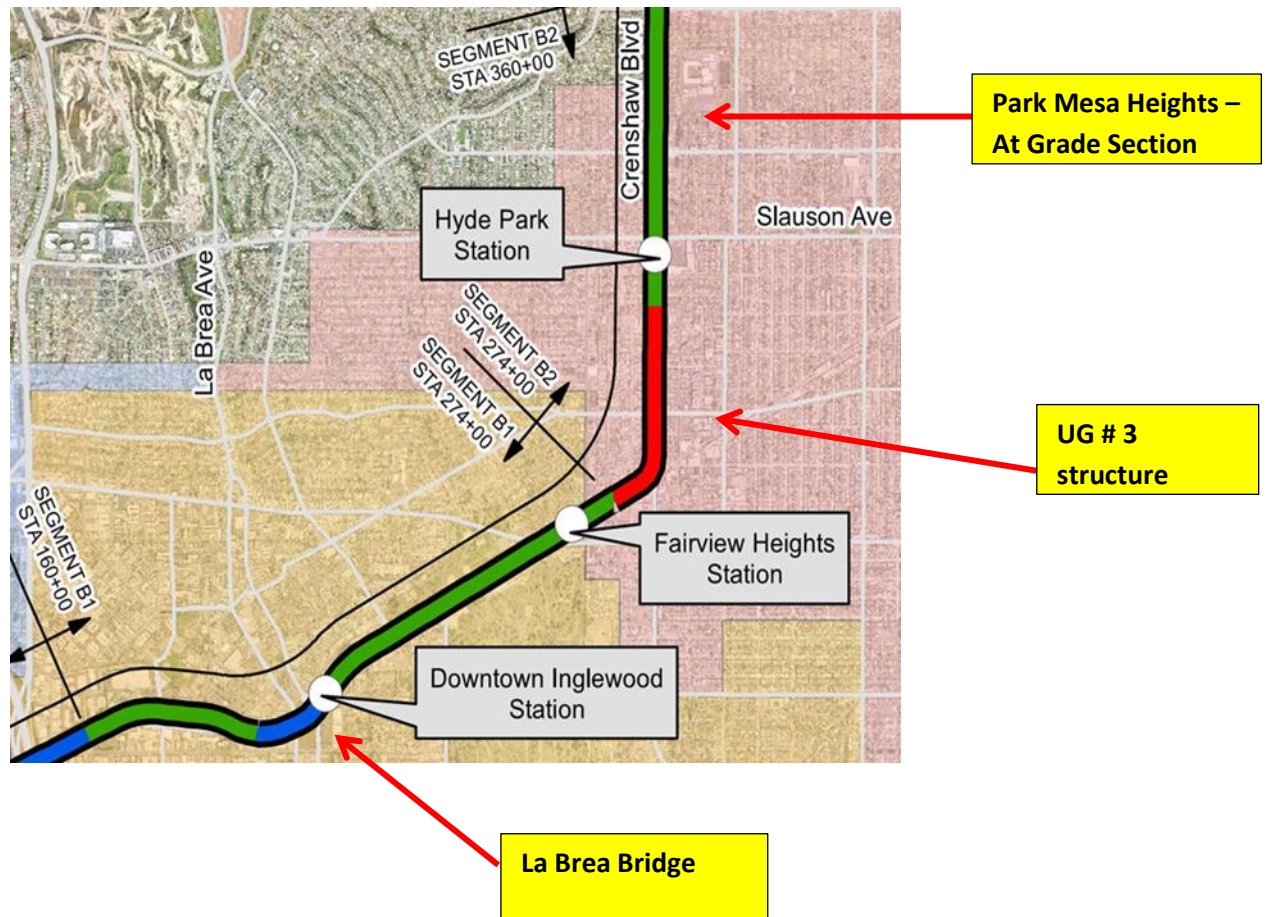
GUIDEWAY AT 405- Damaged strip rebar while coring insert on SB #3 track 405 fwy OP.



GUIDEWAY AT 405- WSCC preforming repair work on SB #3 track 405 fwy OP.

CRENSHAW/LAX PHOTOGRAPHIC UPDATE

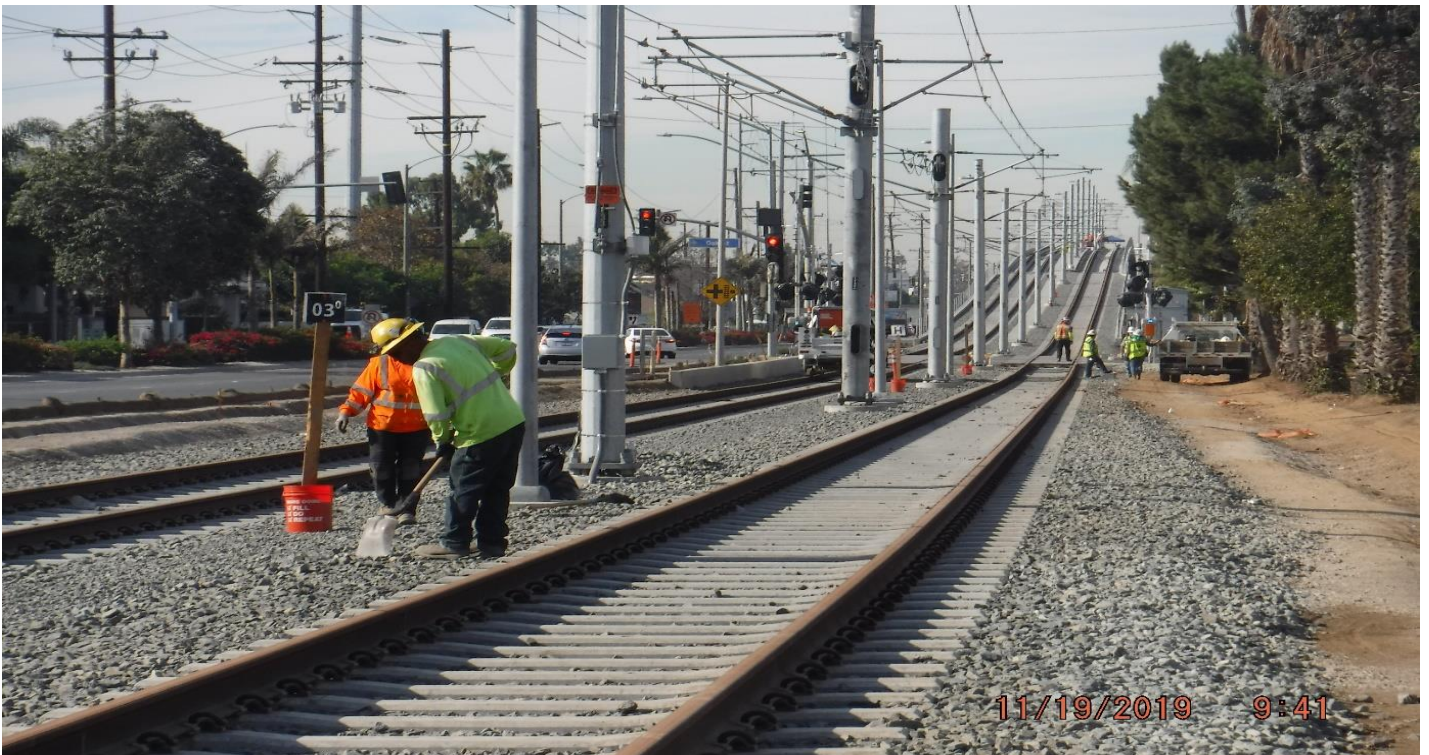
Segment B



CRENSHAW/LAX PHOTOGRAPHIC UPDATE



CEDAR AVE – STA181+00_ looking South_ Housekeeping & ballast dressing_ Eucalyptus-Cedar



CEDAR AVE – STA167+00_ Looking South_ Housekeeping & ballast dressing_ Cedar-Oak

CRENSHAW/LAX PHOTOGRAPHIC UPDATE



EUCALYPTUS STREET - Base placement and compaction for the median island on Eucalyptus.



EUCALYPTUS STREET - Placing colored concrete for the median island at Eucalyptus.

CRENSHAW/LAX PHOTOGRAPHIC UPDATE



HIGH STREET - STA245+15_ Looking East_ Disturbed track ballast_ PUNCH LIST_S616.



HIGH STREET - STA245+15_ Looking East_ Disturbed track ballast_ PUNCH LIST_S616.

CRENSHAW/LAX PHOTOGRAPHIC UPDATE



FLORENCE/WEST - STA262+74_ Looking East_ Disturbed track ballast_ Slurry pour.



FLORENCE/WEST - STA262+74_ Looking North_ Disturbed track ballast.

CRENSHAW/LAX PHOTOGRAPHIC UPDATE



FLORENCE/WEST – STA262+74_ Looking Down_ Vacuum Excavation_ Disturbed track ballast.



FLORENCE/WEST – STA262+68_ Looking North_ Disturbed track ballast.

CRENSHAW/LAX PHOTOGRAPHIC UPDATE



UG3- Building forms for DWP electrical slabs at Victoria Yard.



UG3- LKC ATC conducting continuity testing of wire for the ETS-38 in UG-3.

CRENSHAW/LAX PHOTOGRAPHIC UPDATE



UG3- Continued installation of conductor rail for the overhead contact system on the southbound tunnel at Sta 378+00.



UG3- Installation of light posts on the center divider at the north end portal.

CRENSHAW/LAX PHOTOGRAPHIC UPDATE



UG3- Smoothing surface to placed concrete at the north end portal.



UG3- Continued installation of conductor rail for the overhead contact system on the northbound tunnel at Sta 311+20.

CRENSHAW/LAX PHOTOGRAPHIC UPDATE

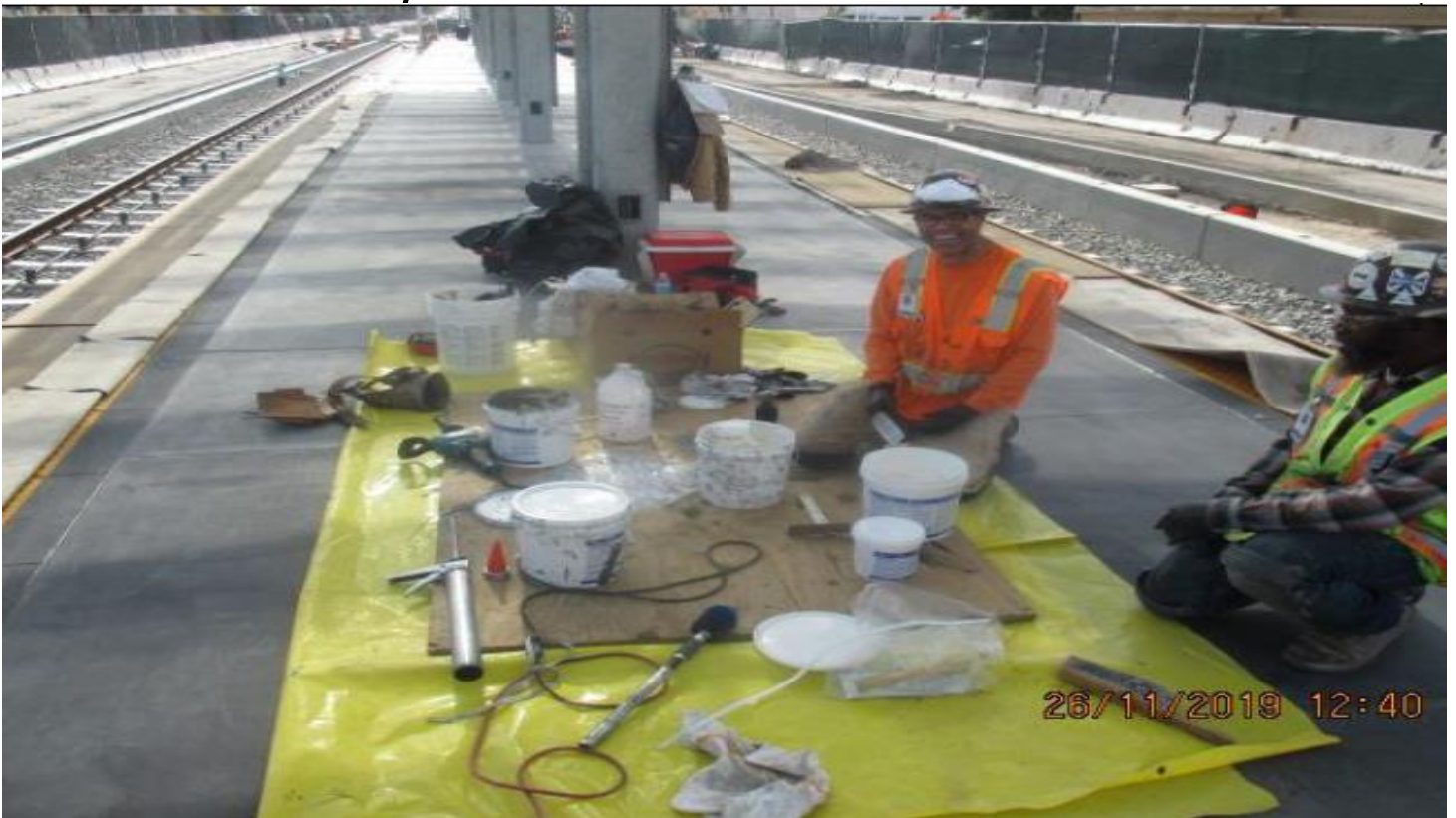


HYDE PARK- Curb and gutter placement on the southeast corner of Hyde Park Blvd & Crenshaw Blvd.



HYDE PARK- Continued curb and gutter work on the northeast corner of Hyde Park Blvd & Crenshaw Blvd. 12/3/19

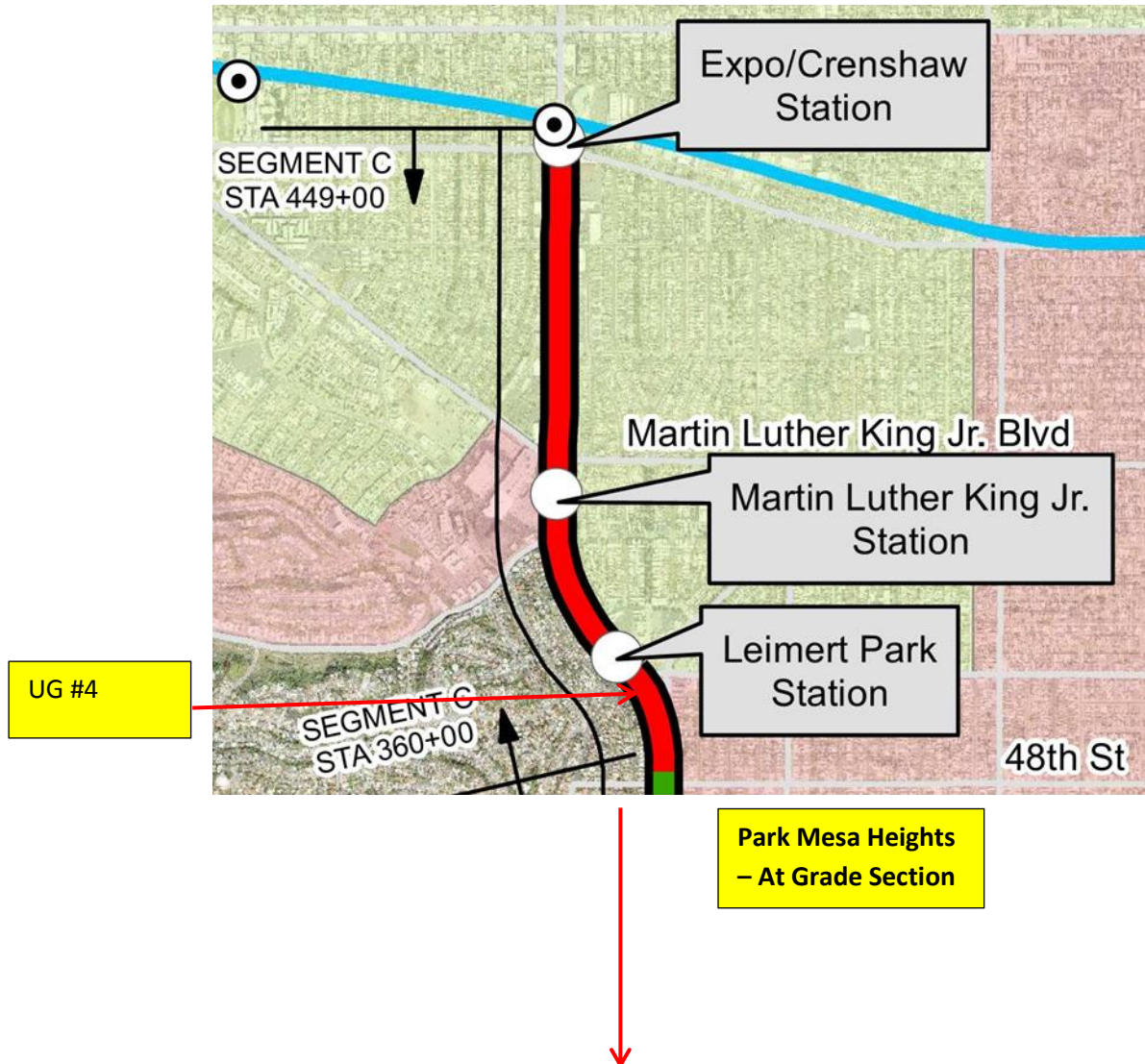
CRENSHAW/LAX PHOTOGRAPHIC UPDATE



HYDE PARK- Leveling grouting between topping slab and ADA edge pavers on the platform level.

CRENSHAW/LAX PHOTOGRAPHIC UPDATE

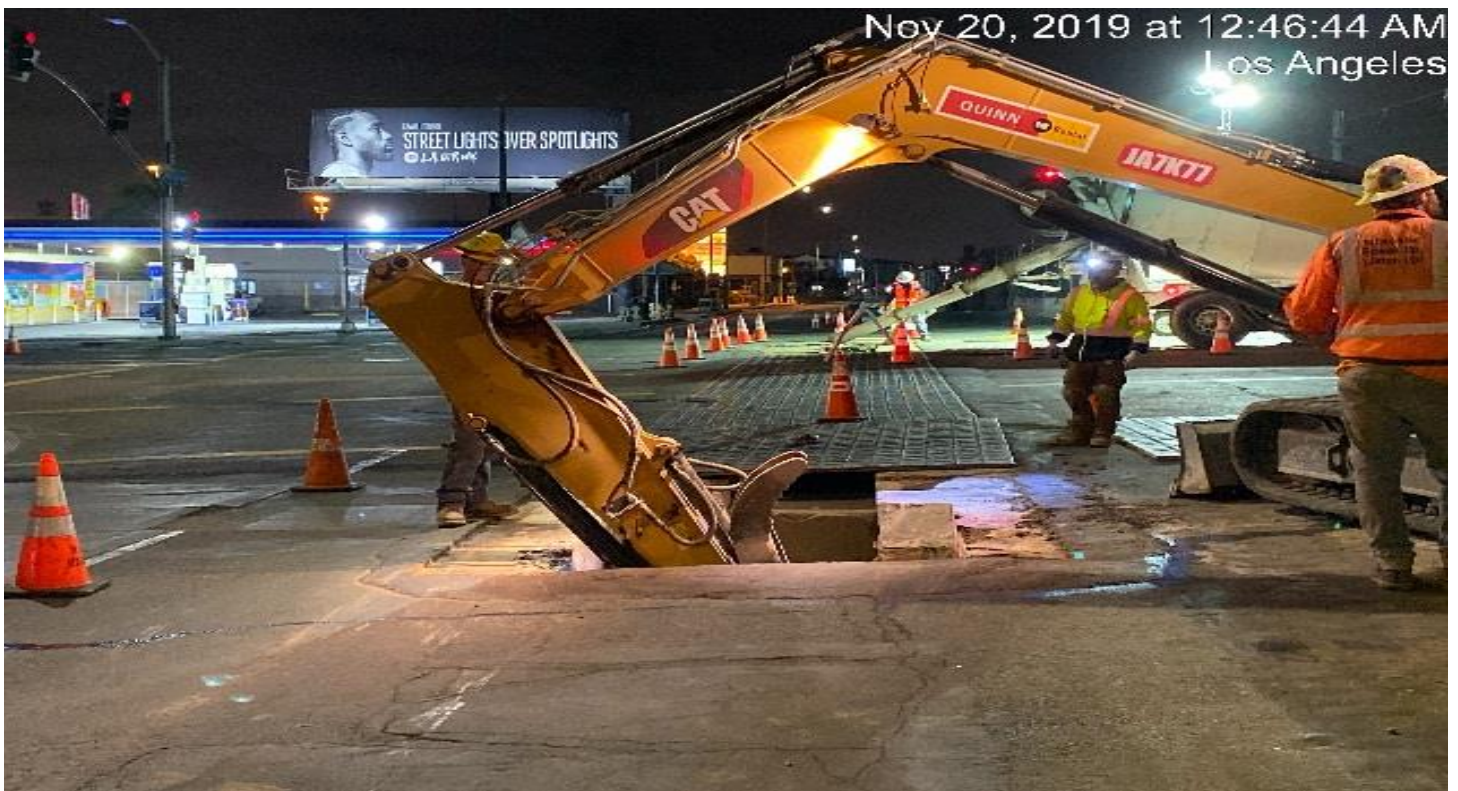
Segment C



CRENSHAW/LAX PHOTOGRAPHIC UPDATE



PARK MESA- Placing concrete on new manhole for 1025 – Line storm drain on the intersection of Slauson Ave & Crenshaw Blvd.



PARK MESA– Excavating for new manhole for 1025 – Line storm drain on the intersection of Slauson Ave & Crenshaw Blvd.

CRENSHAW/LAX PHOTOGRAPHIC UPDATE



PARK MESA – Removing forms and sacking and patching new northern manhole for 1025 Line storm drain on the intersection of Slauson Ave & Crenshaw Blvd.



PARK MESA – Concrete sidewalk placement on Crenshaw Blvd between 54th St and 57th St.

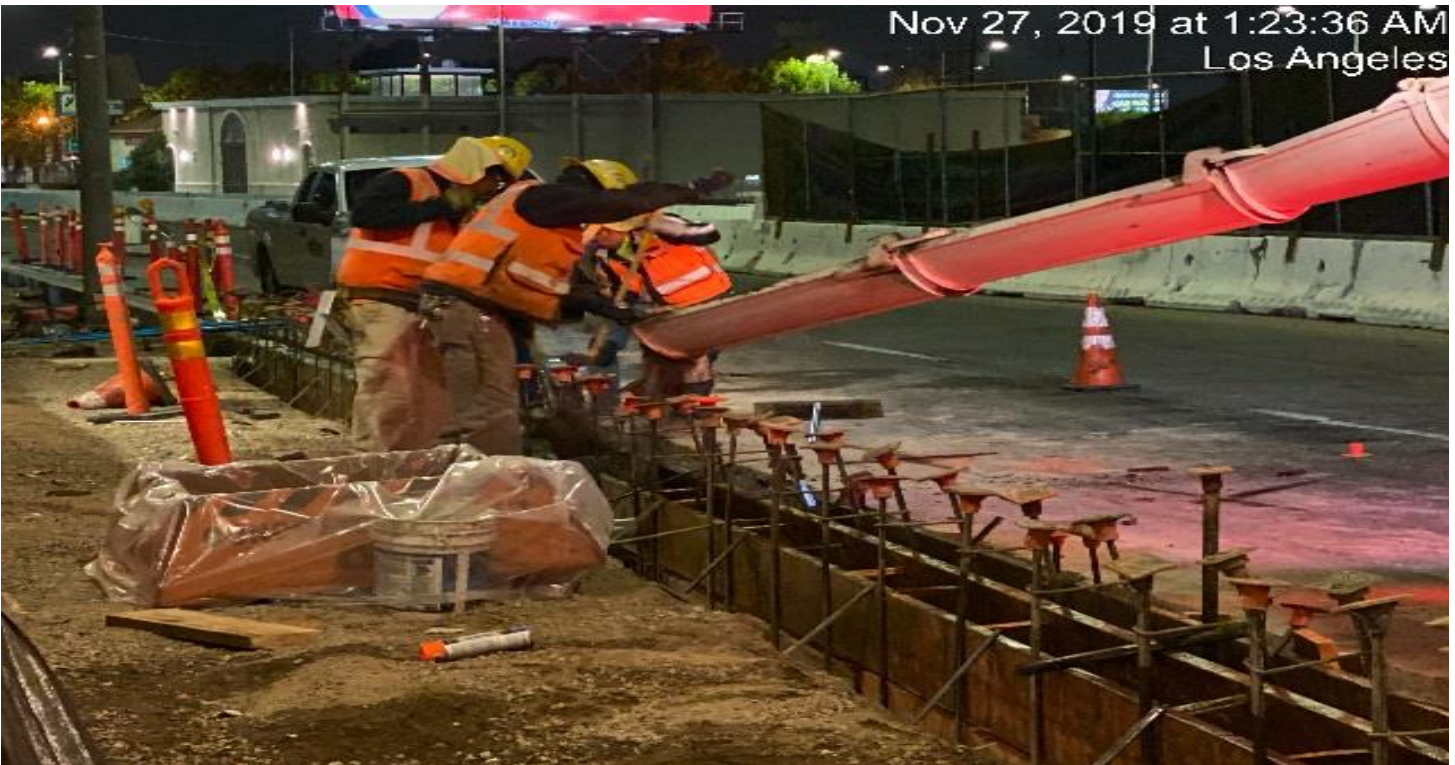
CRENSHAW/LAX PHOTOGRAPHIC UPDATE

Nov 21, 2019 at 4:55:24 AM
Los Angeles



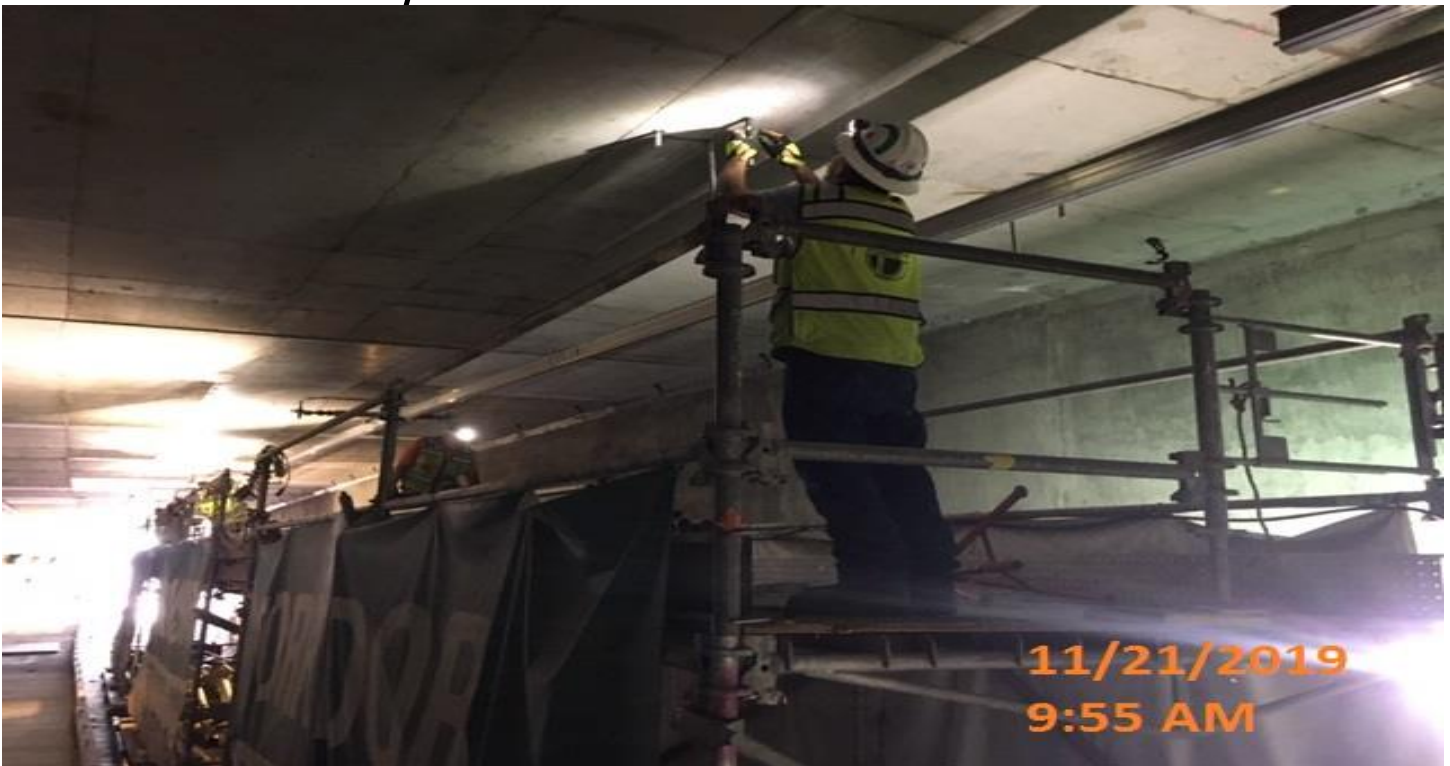
PARK MESA – Installation of overhead contact system wire from UG4 north portal to 48th St and Crenshaw Blvd.

Nov 27, 2019 at 1:23:36 AM
Los Angeles

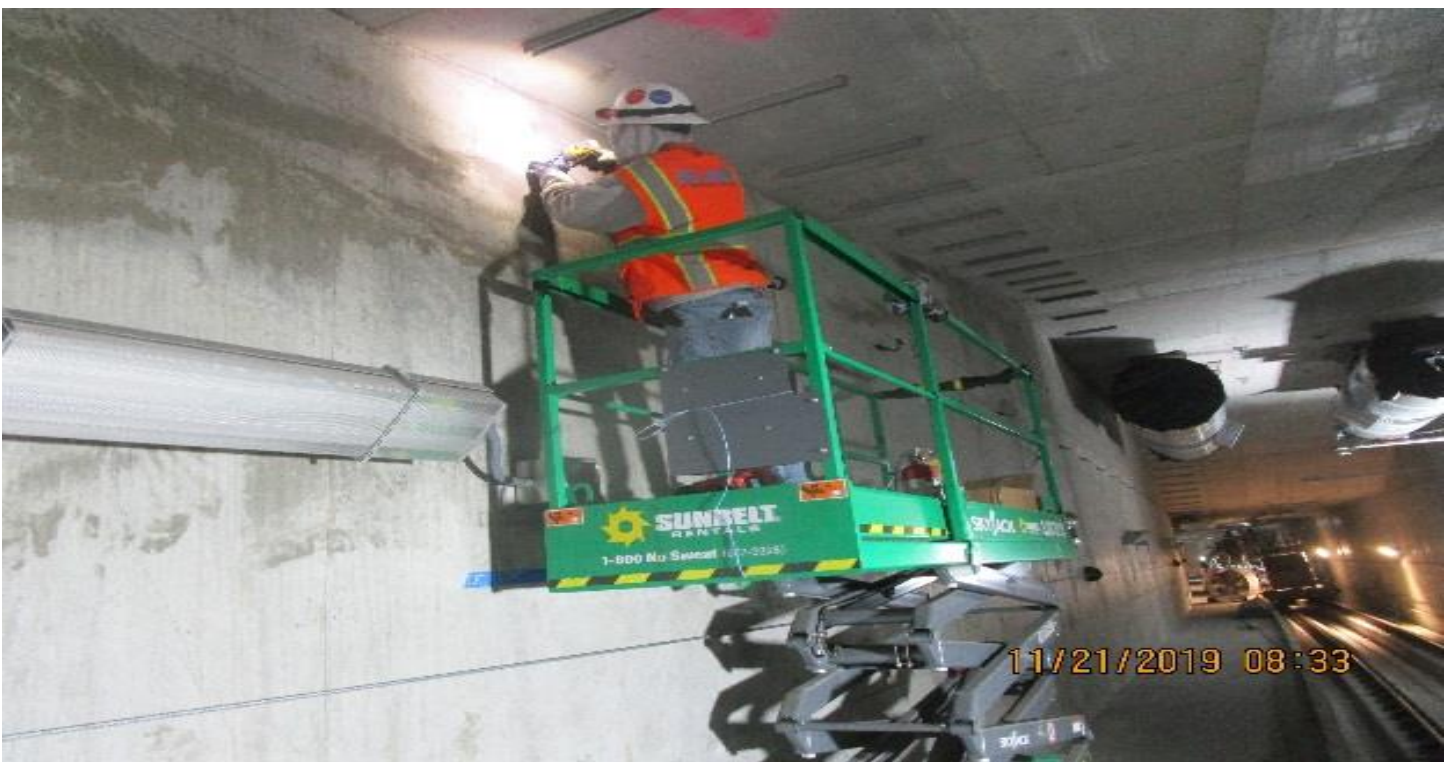


PARK MESA – Curb and gutter placement on 48th St and Crenshaw Blvd.

CRENSHAW/LAX PHOTOGRAPHIC UPDATE



UG4- Continued installation of rail and supports for overhead contact system on the southbound tunnel at Sta 374+00.



UG4- Continued installation of radiax cable support brackets throughout the northbound tunnel at Sta 373+24.

CRENSHAW/LAX PHOTOGRAPHIC UPDATE



UG4- STA367+50_ Looking North_ SIKA crack injection investigation_ NCR-C-129_ UG4_ 48ST.



LEIMERT PARK STATION- Curb and gutter placement on northbound Leimert Blvd and Crenshaw Blvd.

CRENSHAW/LAX PHOTOGRAPHIC UPDATE



LEIMERT PARK STATION- Continued surveying of the wind screen base plate for the main entrance portal at the plaza level.



LEIMERT PARK STATION- Continued working on wind screen frames for the main entrance portal at the plaza level.

CRENSHAW/LAX PHOTOGRAPHIC UPDATE



LEIMERT PARK STATION- Continued laying and forming second portion of architectural topping slab at the concourse level.



LEIMERT PARK STATION- Installation of station identification signage for both south and northbound tracks at the platform level.

CRENSHAW/LAX PHOTOGRAPHIC UPDATE



LEIMERT PARK STATION- Installation of porcelain enamel art panel on the southbound track of the platform level.



LEIMERT PARK STATION- Laying and forming for architectural topping slab at the platform level.

CRENSHAW/LAX PHOTOGRAPHIC UPDATE



MARTIN LUTHER KING JR. STATION- Chipping inside Manhole #1 for A – Line storm drain at the topside.



MARTIN LUTHER KING JR. STATION- Fitting up main entrance canopy portal frame at the plaza level.

CRENSHAW/LAX PHOTOGRAPHIC UPDATE



MARTIN LUTHER KING JR. STATION- Setting canopy section pieces over the main entrance of the portal at the plaza level.

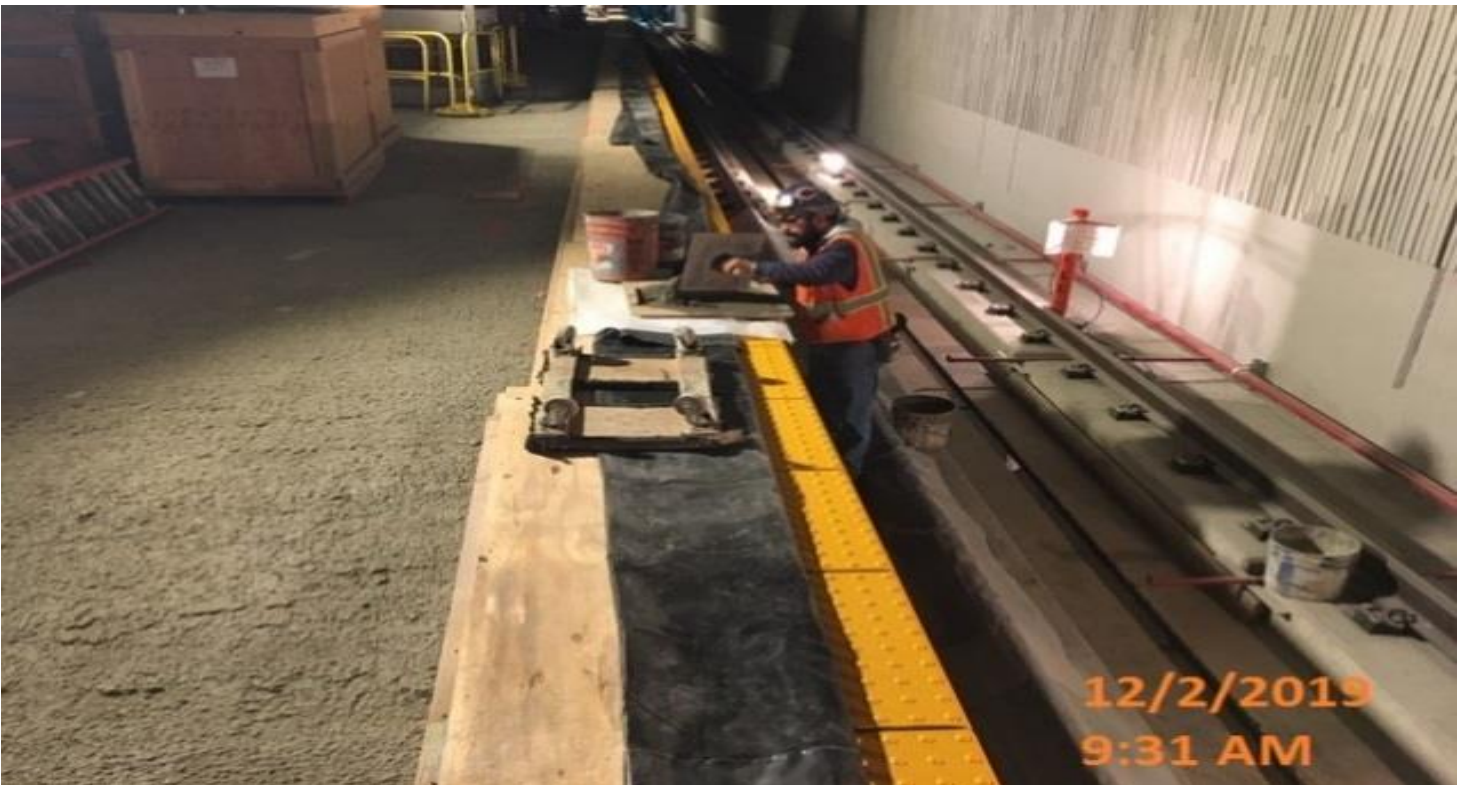


MARTIN LUTHER KING JR. STATION- Continued installation of device panels and ceiling at the concourse level.

CRENSHAW/LAX PHOTOGRAPHIC UPDATE



MARTIN LUTHER KING JR. STATION- Continued installation of ADA edge pavers on both sides of the platform level.



MARTIN LUTHER KING JR. STATION- Backfilling underneath ADA edge pavers on both sides of the platform level.

CRENSHAW/LAX PHOTOGRAPHIC UPDATE



EXPOSITION/CRENSHAW STATION – Excavation for reinforced concrete pipe placement for W – Line storm drain on the northwest corner of Obama Blvd and Crenshaw Blvd.



EXPOSITION/CRENSHAW STATION – Fabrication and installation of windscreen frames for the main entrance portal at the plaza level.

CRENSHAW/LAX PHOTOGRAPHIC UPDATE



EXPOSITION/CRENSHAW STATION – Installation of windscreen frames for the main entrance portal at the plaza level.

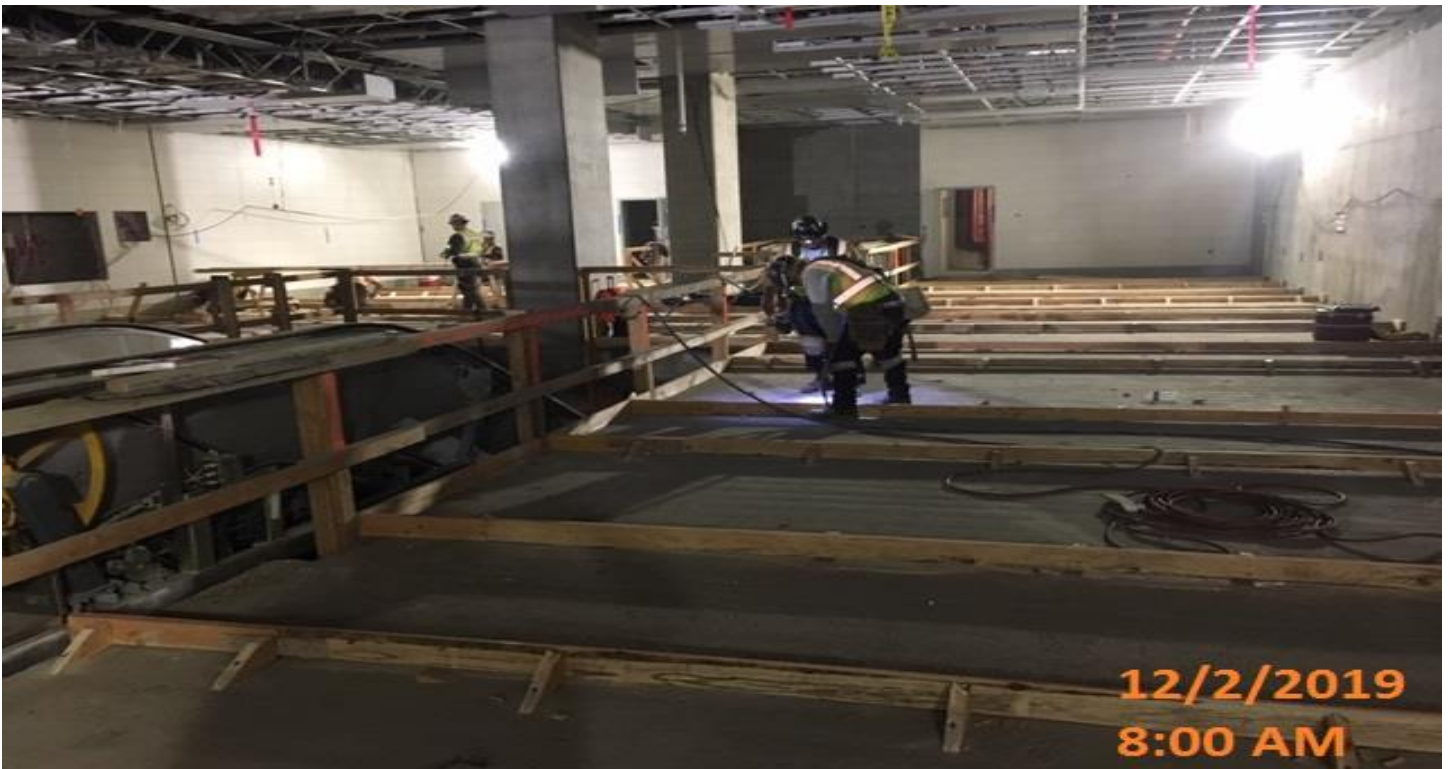


EXPOSITION/CRENSHAW STATION – Installation of bulkhead panels in the Pan Free Area of the concourse level.

CRENSHAW/LAX PHOTOGRAPHIC UPDATE



EXPOSITION/CRENSHAW STATION – Continued installation of device and field drop ceiling panels at the concourse level.



EXPOSITION/CRENSHAW STATION – Laying and forming for architectural topping slab at the concourse level.