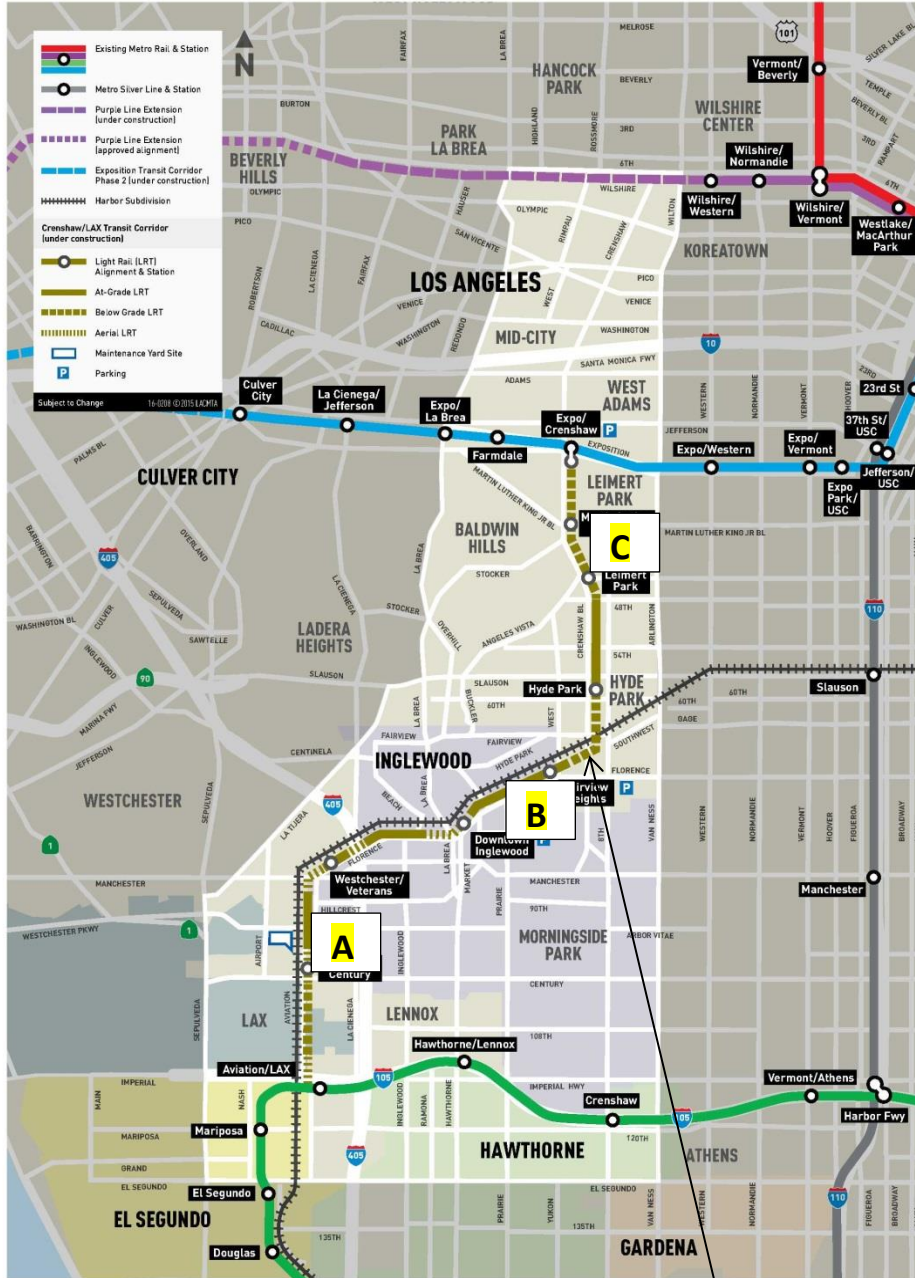


CRENSHAW/LAX PHOTOGRAPHIC UPDATE

January 1, 2020

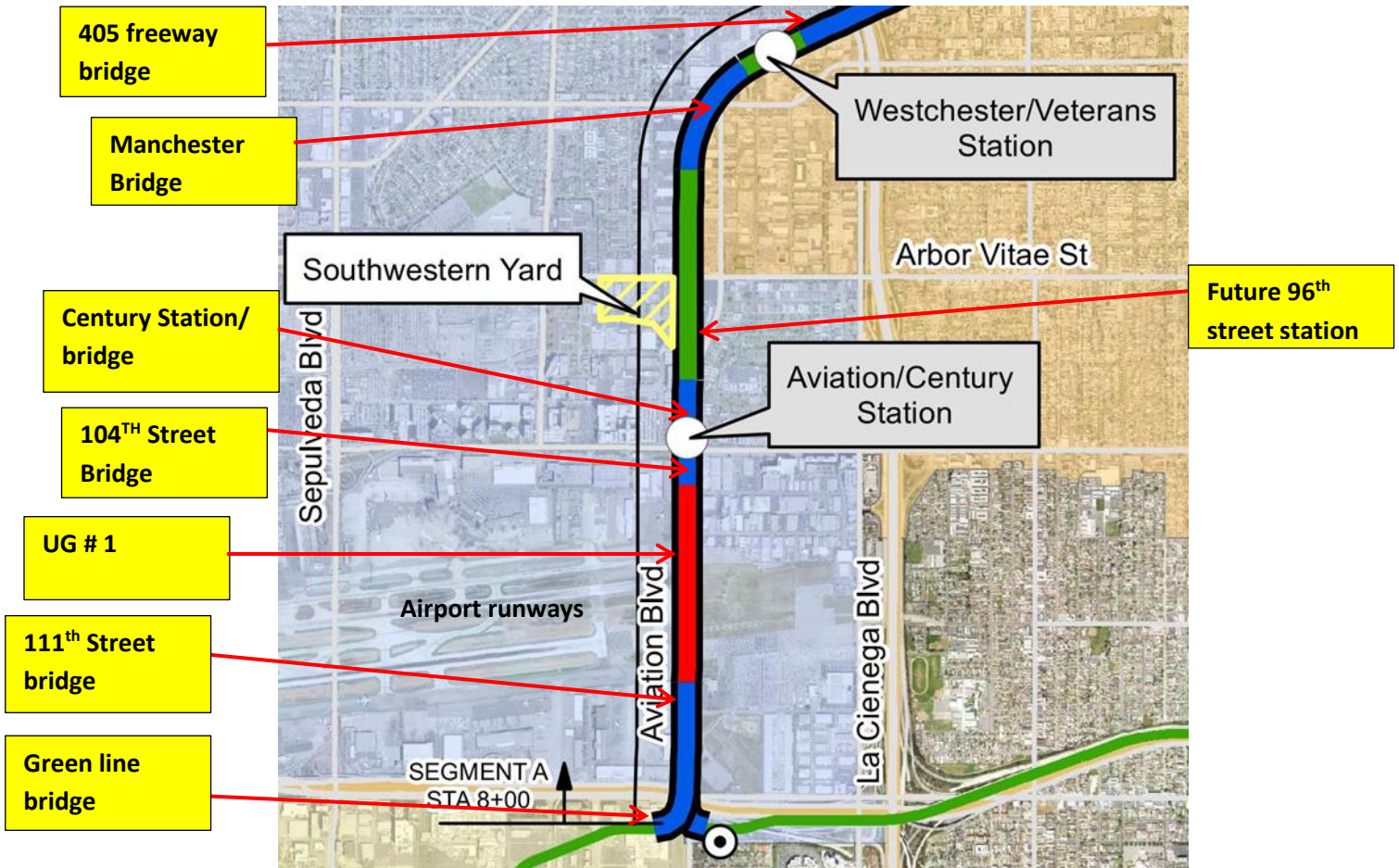
Crenshaw/LAX Transit Project



- 8.5 miles Light Rail
- 8 Stations
- \$2,058.0 Million
(Board approved revised LOP)

CRENSHAW/LAX PHOTOGRAPHIC UPDATE

Segment A



CRENSHAW/LAX PHOTOGRAPHIC UPDATE



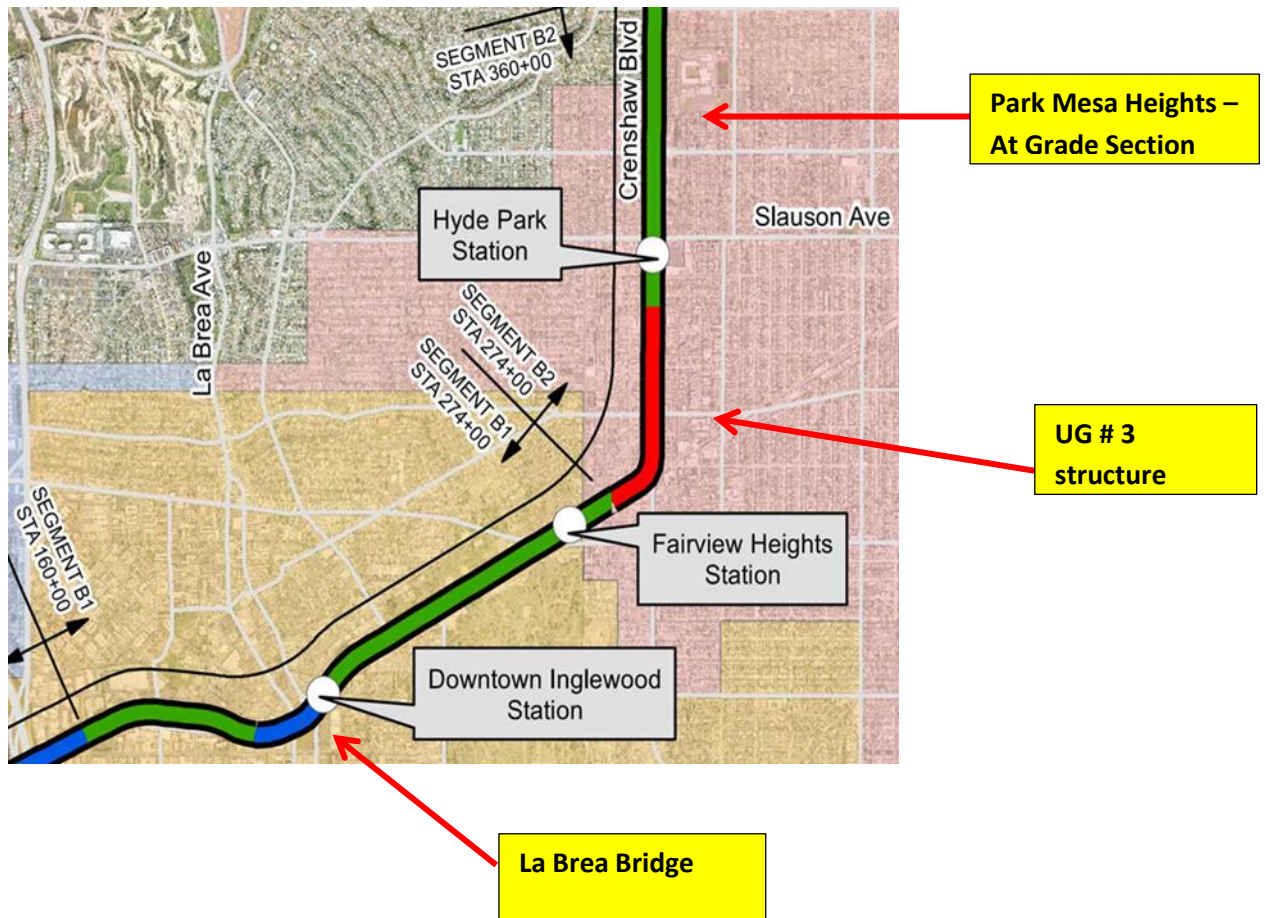
GREENLINE – Performing Cleanup of demoed DF inserts.



WESTCHESTER STATION – Setting conduit and foundation forms for light pole #214.

CRENSHAW/LAX PHOTOGRAPHIC UPDATE

Segment B



CRENSHAW/LAX PHOTOGRAPHIC UPDATE



B1 GUIDEWAY – Coring fence post holes in ballast wall near FCBC at Eucalyptus.



B1 GUIDEWAY – Setting wire mesh fence panels along SB B-1 Guideway.

CRENSHAW/LAX PHOTOGRAPHIC UPDATE



B1 GUIDEWAY - Surveying rail alignment and elevations on La Brea Bridge.



B1 GUIDEWAY - Form for curb & gutter on Florence at Market St.

CRENSHAW/LAX PHOTOGRAPHIC UPDATE



B2 GUIDEWAY - Track ballast disturbance searching for systems conduits near Slauson Station.



UG3- Backfilling and compacting soil for the auxiliary power site at Victoria Yard adjacent to the south end portal. (No change since last update)

CRENSHAW/LAX PHOTOGRAPHIC UPDATE



UG3- Forming and placing concrete for the pedestrian ramp on the southbound side of Victoria Ave. 12/19/19

CRENSHAW/LAX PHOTOGRAPHIC UPDATE



UG3- Continued placing concrete for the pedestrian ramp on the southbound side of Victoria Ave. 12/28/19



UG3- Continued installation of fence posts and panels on the north and southbound track walls from Sta 279+47 to 282+00.

CRENSHAW/LAX PHOTOGRAPHIC UPDATE



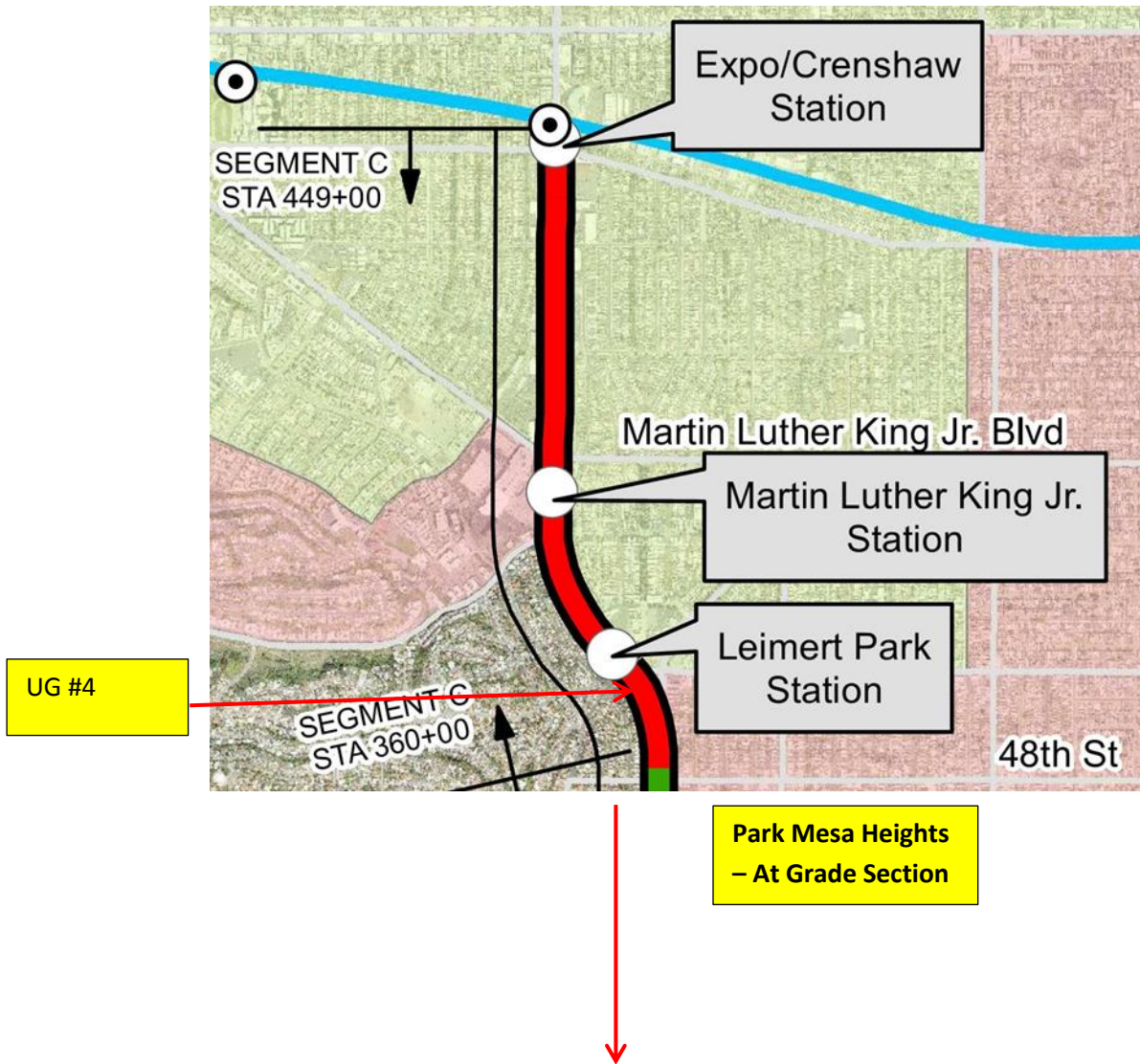
UG3- Registering and staggering the overhead contact system along the northbound tunnel at Sta 287+85.



UG3- Continue wiring booster fans at the northbound tunnel at Sta 386+20.

CRENSHAW/LAX PHOTOGRAPHIC UPDATE

Segment C



CRENSHAW/LAX PHOTOGRAPHIC UPDATE



PARK MESA- Placing concrete for Catch Basin #2 located on the northwest corner of Hyde Park Blvd & Crenshaw Blvd. 12/21/19.



PARK MESA- Laying pipe and slurry for 12" LADWP service line on the intersection of 60th St & Crenshaw Blvd.

CRENSHAW/LAX PHOTOGRAPHIC UPDATE



PARK MESA– Continue laying pipe and slurry for 12” LADWP service line on the intersection of 60th St & Crenshaw Blvd.

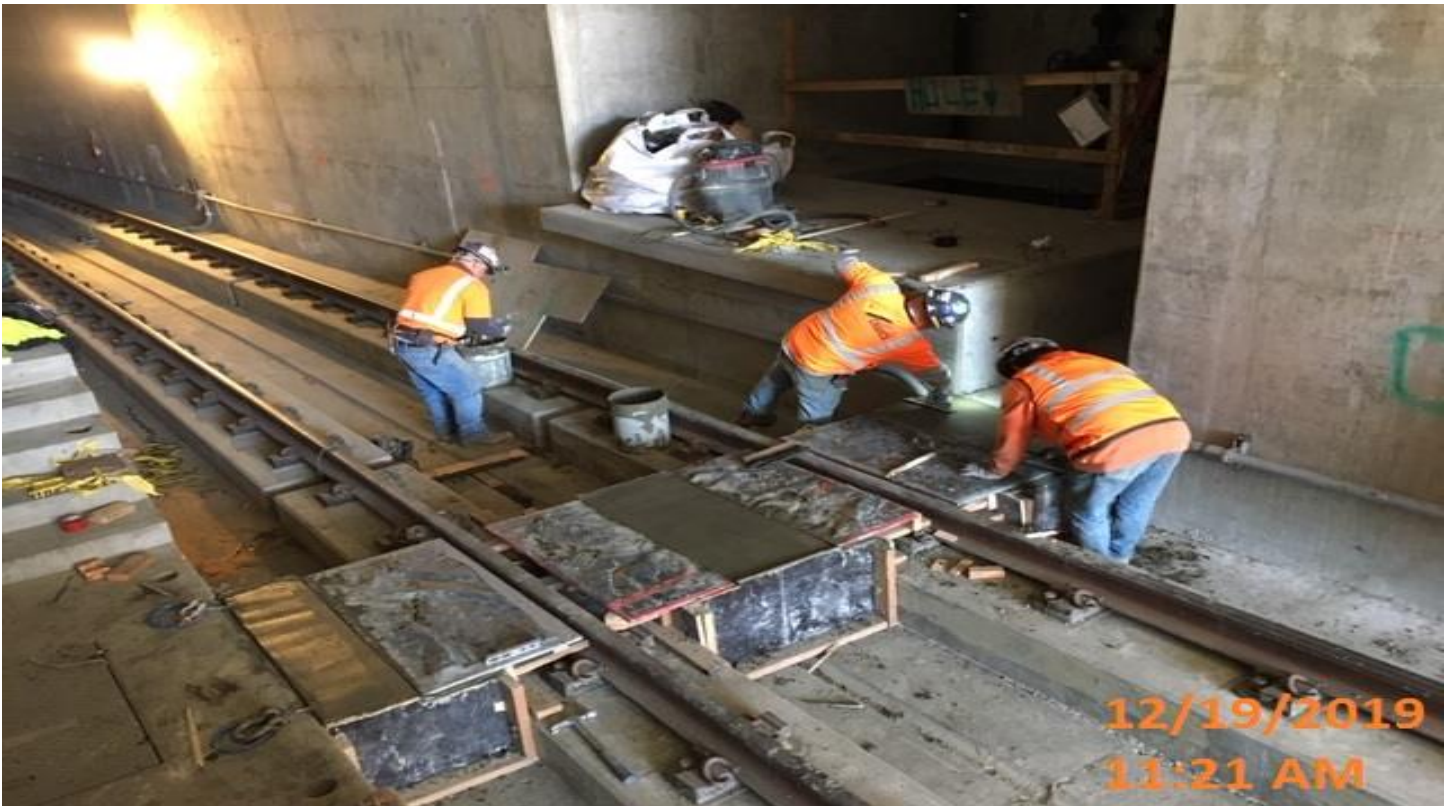


PARK MESA – Excavation of sidewalk for street and signal lights on the southeast corner of 60th St & Crenshaw Blvd. 2/1/20

CRENSHAW/LAX PHOTOGRAPHIC UPDATE

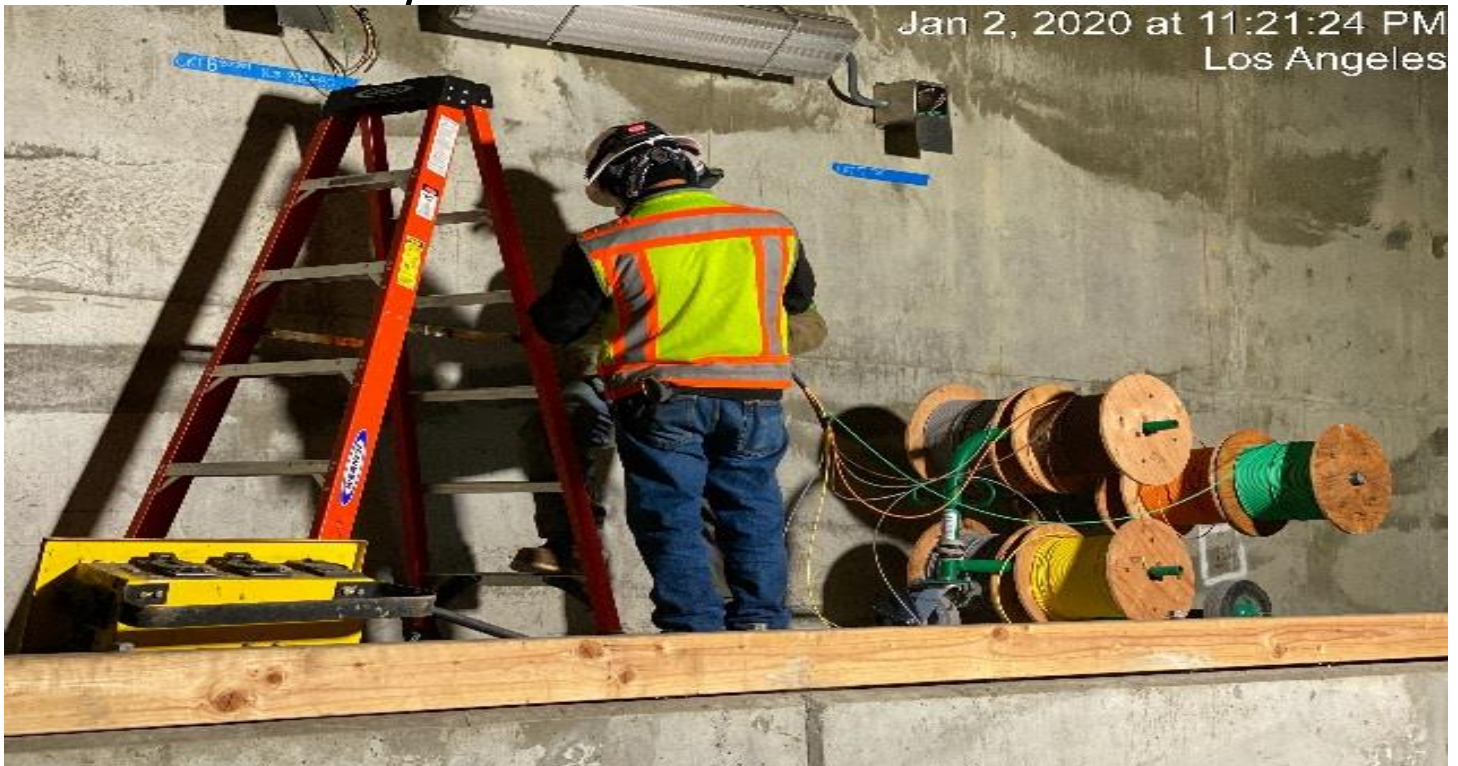


PARK MESA – Continued sidewalk excavation on Crenshaw Blvd from Brynhurst Ave to 48th St. 1/2/20



UG4- Concrete placement of the center path across the rails in the northbound tunnel at Sta 371+65.

CRENSHAW/LAX PHOTOGRAPHIC UPDATE



UG4- Continue pulling wire for the emergency lighting along the northbound tunnel.



LEIMERT PARK STATION- Continue saw cutting and excavating both sides of center median divider at northbound Leimert Blvd and Crenshaw Blvd. 12/20/19

CRENSHAW/LAX PHOTOGRAPHIC UPDATE



LEIMERT PARK STATION- Continue excavating and placing concrete on the center median divider at northbound Leimert Blvd and Crenshaw Blvd. 12/21/19



LEIMERT PARK STATION- Placing backfill and compacting sidewalk on northbound Leimert Blvd and Crenshaw Blvd. 1/2/20

CRENSHAW/LAX PHOTOGRAPHIC UPDATE



LEIMERT PARK STATION- Continued formwork for plantar wall at the plaza level.
12/28/19



LEIMERT PARK STATION- Continue precast panel formwork for the south equipment access area located at the plaza level.

CRENSHAW/LAX PHOTOGRAPHIC UPDATE



LEIMERT PARK STATION- Continued formwork for the wind screen curbs on the main entrance canopy at the plaza level.



LEIMERT PARK STATION- Stripping formwork for the wind screen curbs on the main entrance canopy at the plaza level. 12/30/19.

CRENSHAW/LAX PHOTOGRAPHIC UPDATE



LEIMERT PARK STATION - Installing edge plates to Escalator 1&2 at the main staircase landing between the plaza and intermediate levels.



LEIMERT PARK STATION - Continue installing edge plates to Escalator 1&2 at the main staircase landing between the plaza and intermediate levels.

CRENSHAW/LAX PHOTOGRAPHIC UPDATE



LEIMERT PARK STATION - Continue welding edge plates to Escalator 1&2 at the main staircase landing between the plaza and intermediate levels.

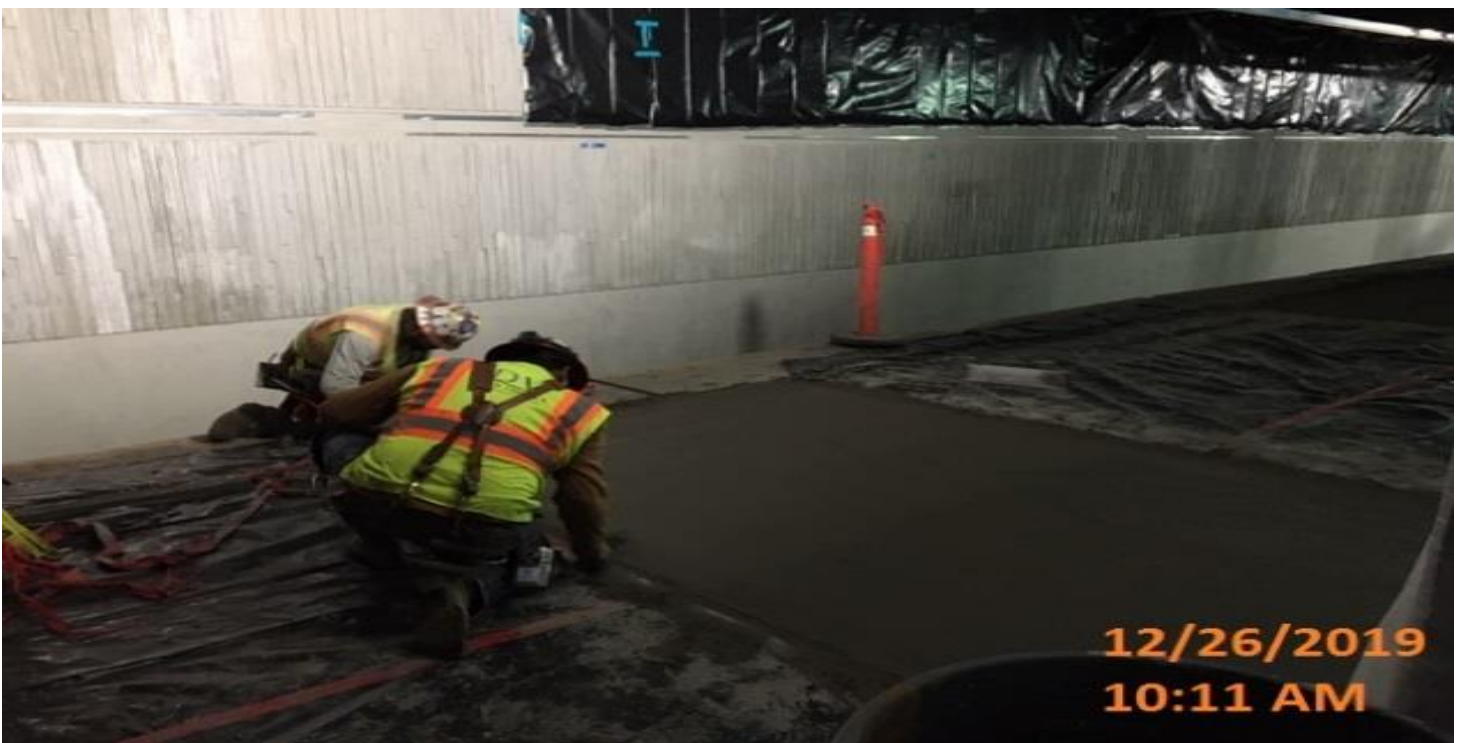


LEIMERT PARK STATION - Rerouting fit up for square to round transition pieces of the emergency ventilation fan units in the North Fan Room of the concourse level.

CRENSHAW/LAX PHOTOGRAPHIC UPDATE



LEIMERT PARK STATION - Continued installation of porcelain enamel art panel on the northbound track of the platform level.



LEIMERT PARK STATION - Placing third phase of concrete pour for the architectural topping slab at the platform level.

CRENSHAW/LAX PHOTOGRAPHIC UPDATE



MARTIN LUTHER KING STATION – Excavation for reinforced concrete pipe placement for W – Line storm drain on the northwest corner of Obama Blvd and Crenshaw Blvd.



MARTIN LUTHER KING STATION – Continue excavating for the installation of the oil water separator at the plaza level. 12/31/19.

CRENSHAW/LAX PHOTOGRAPHIC UPDATE



MARTIN LUTHER KING STATION – Excavating for the extension of the 8” fire department connection at the plaza level. 12/31/19.

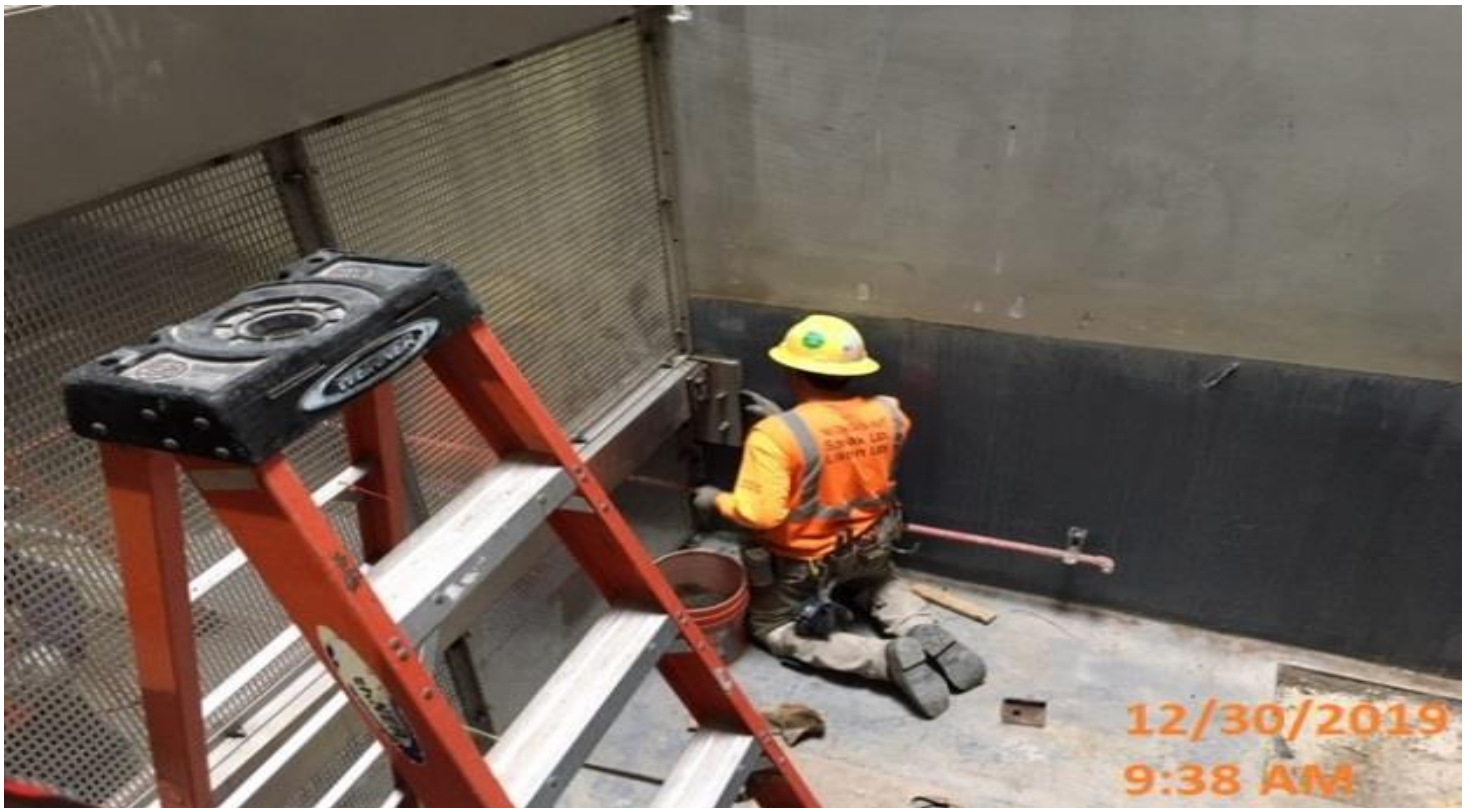


MARTIN LUTHER KING STATION – Setting and anchoring hydraulic power units and controllers in Elevator Machine Room C – 116 at the concourse level.

CRENSHAW/LAX PHOTOGRAPHIC UPDATE



MARTIN LUTHER KING STATION – Continue setting and anchoring hydraulic power units and oil coolers in Elevator Machine Room C – 116 at the concourse level.



MARTIN LUTHER KING STATION – Packing grout to anchor plates behind Elevator 1&2 at the concourse level.

CRENSHAW/LAX PHOTOGRAPHIC UPDATE



MARTIN LUTHER KING STATION – Installing bent plates at the edge slab of Escalator #4 at the concourse level.



MARTIN LUTHER KING STATION – Setting base plates for the fare collection system at the concourse level.

CRENSHAW/LAX PHOTOGRAPHIC UPDATE



MARTIN LUTHER KING STATION – Continued setting and welding edge lighting support posts #5 of 18 imbeds at the southbound track of the platform level.



MARTIN LUTHER KING STATION – Continued working on installing the artwork panels along the northbound track of the platform level.

CRENSHAW/LAX PHOTOGRAPHIC UPDATE

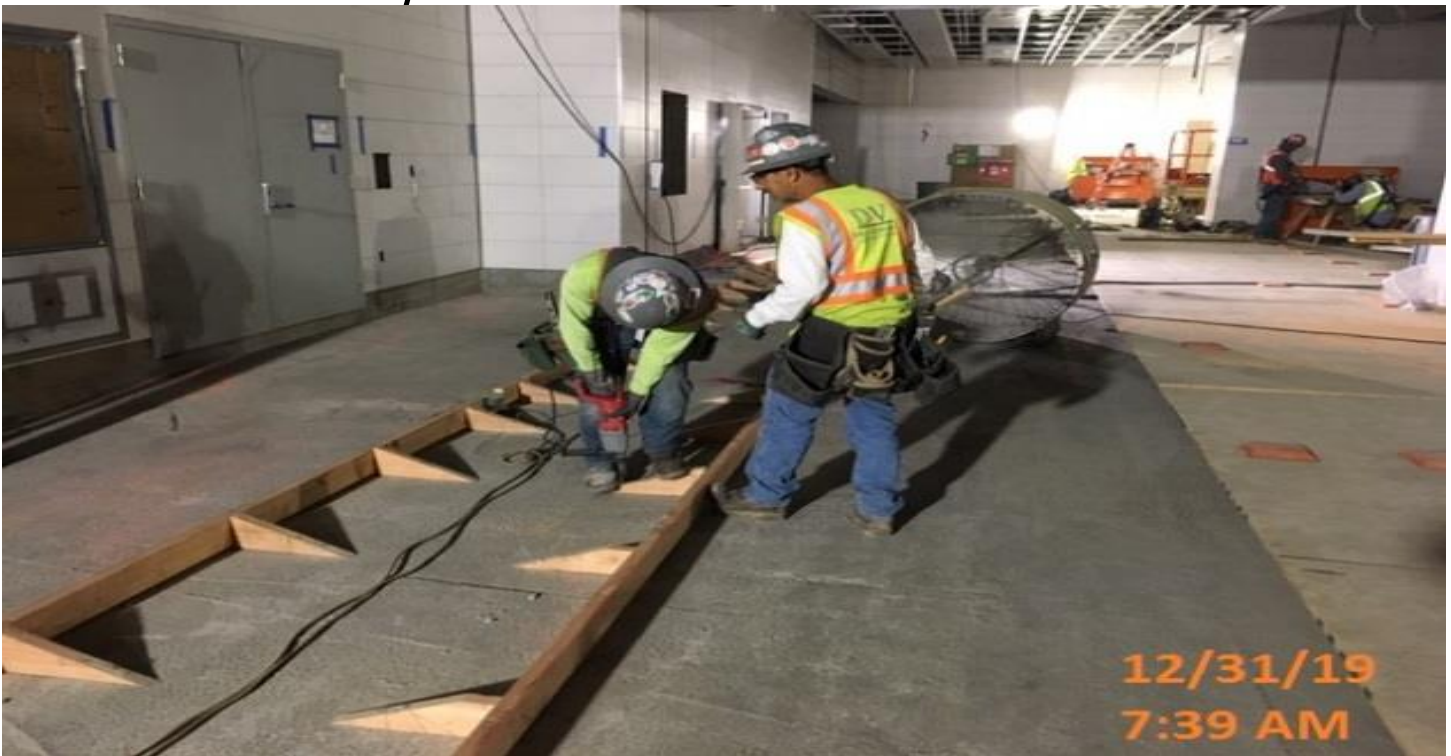


EXPOSITION/CRENSHAW STATION – Laying 24” of concrete reinforced pipe for Line U – storm drain on the northwest corner of Rodeo Blvd and Crenshaw Blvd.



EXPOSITION/CRENSHAW STATION – Continue installing rebar and welding metal wind screen dividers for Elevators 1&2 at the plaza level. 12/31/19

CRENSHAW/LAX PHOTOGRAPHIC UPDATE



EXPOSITION/CRENSHAW STATION – Formwork for remaining architectural topping slab at the concourse level.



EXPOSITION/CRENSHAW STATION – Placing remaining concrete for the architectural topping slab at the concourse level.

CRENSHAW/LAX PHOTOGRAPHIC UPDATE



EXPOSITION/CRENSHAW STATION – Adjusting rebar form the emergency ventilation fan pads in the South Fan Rooms of the concourse level.

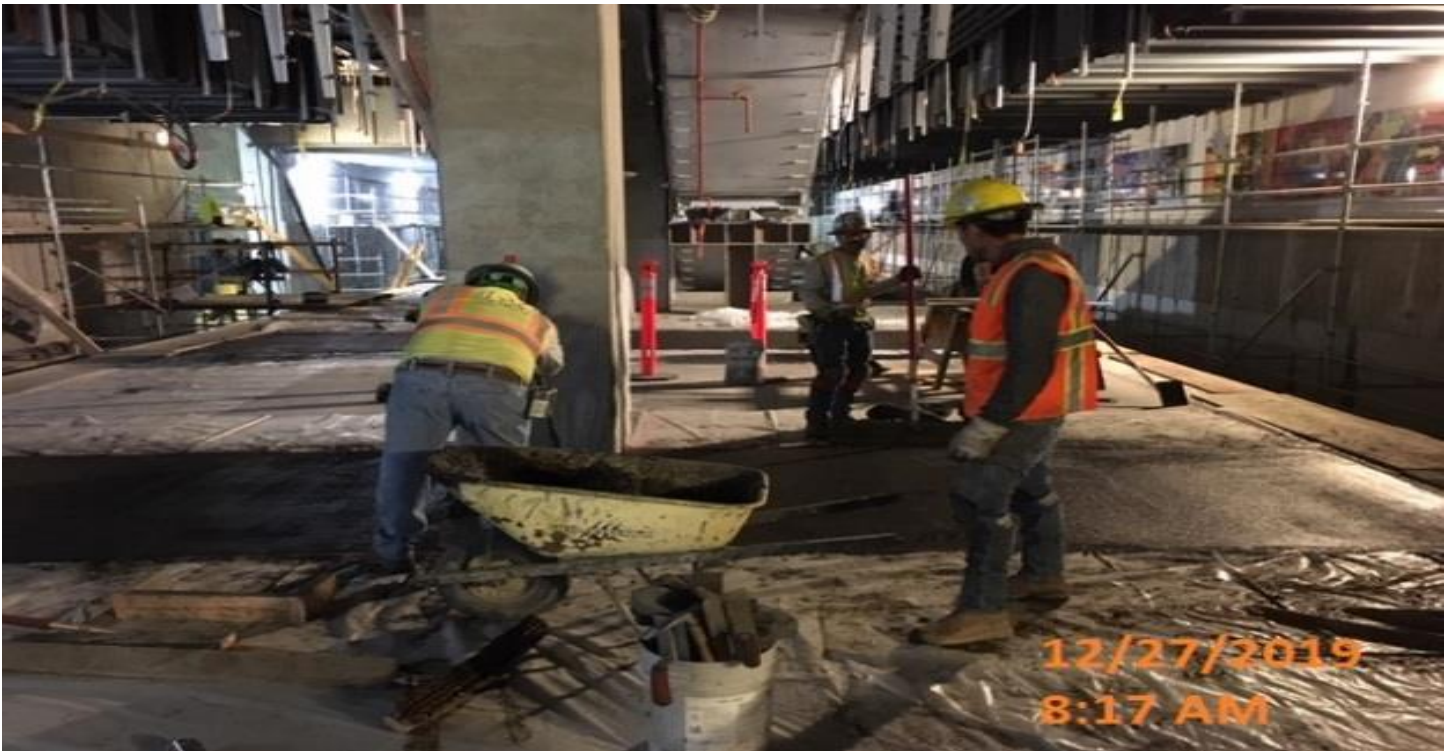


EXPOSITION/CRENSHAW STATION – Installing anchor bolts to emergency ventilation fan foundation pad in the North Fan Room of the concourse level.

CRENSHAW/LAX PHOTOGRAPHIC UPDATE



EXPOSITION/CRENSHAW STATION – Laying out installation of granite steps for staircases from concourse to platform level.



EXPOSITION/CRENSHAW STATION – Continued placing third phase of concrete for the architectural topping slab at the platform level.

CRENSHAW/LAX PHOTOGRAPHIC UPDATE



EXPOSITION/CRENSHAW STATION – Installation of angle brackets and porcelain enamel art panels on the northbound track of the platform level. 12/21/19