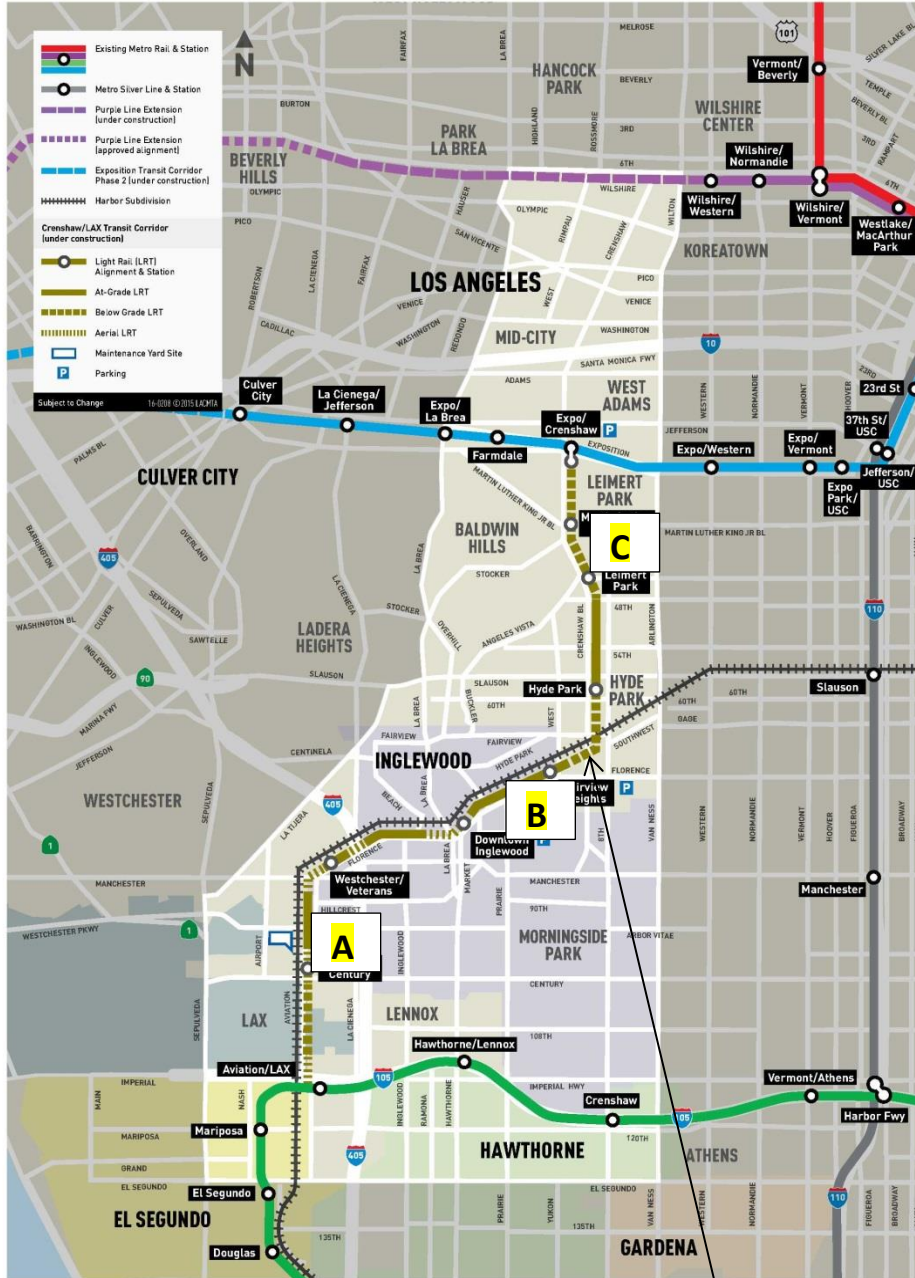


CRENSHAW/LAX PHOTOGRAPHIC UPDATE

Nov 30, 2020

Crenshaw/LAX Transit Project



- 8.5 miles Light Rail
- 8 Stations
- \$2,058.0 Million
(Board approved revised LOP)

CRENSHAW/LAX PHOTOGRAPHIC UPDATE

Overview of trackwork progress issues for **11/15/2020 – 11/30/2020**
(Please note the attached Trackwork Progress Tracking Report)

Trackwork continues with punchlist and rework activities. Both DF and Ballasted Trackwork that was previously reported as 100% complete may yet require rework. The contractor is in the process of analyzing, planning, and executing the repair and rework required throughout the guideway limits. Remaining incomplete trackwork activities progress will be reported upon the execution of planned rework.

Current Issues:

General Notes:

Repair of plinth gap to invert continues with track gauge checking and adjustment, joint sealing, and plinth surface finishing per NCR-A-111 in Segments B1, B2, and C;

Rework of previously reworked plinths due to failed inserts begins at the Century Bridge.

Jet Grouting of Wall #202 continues.

Replacement of damaged switch points continues throughout Segment C.

Installation of DX switch at the Expo Station begins.

Previous Issues unresolved:

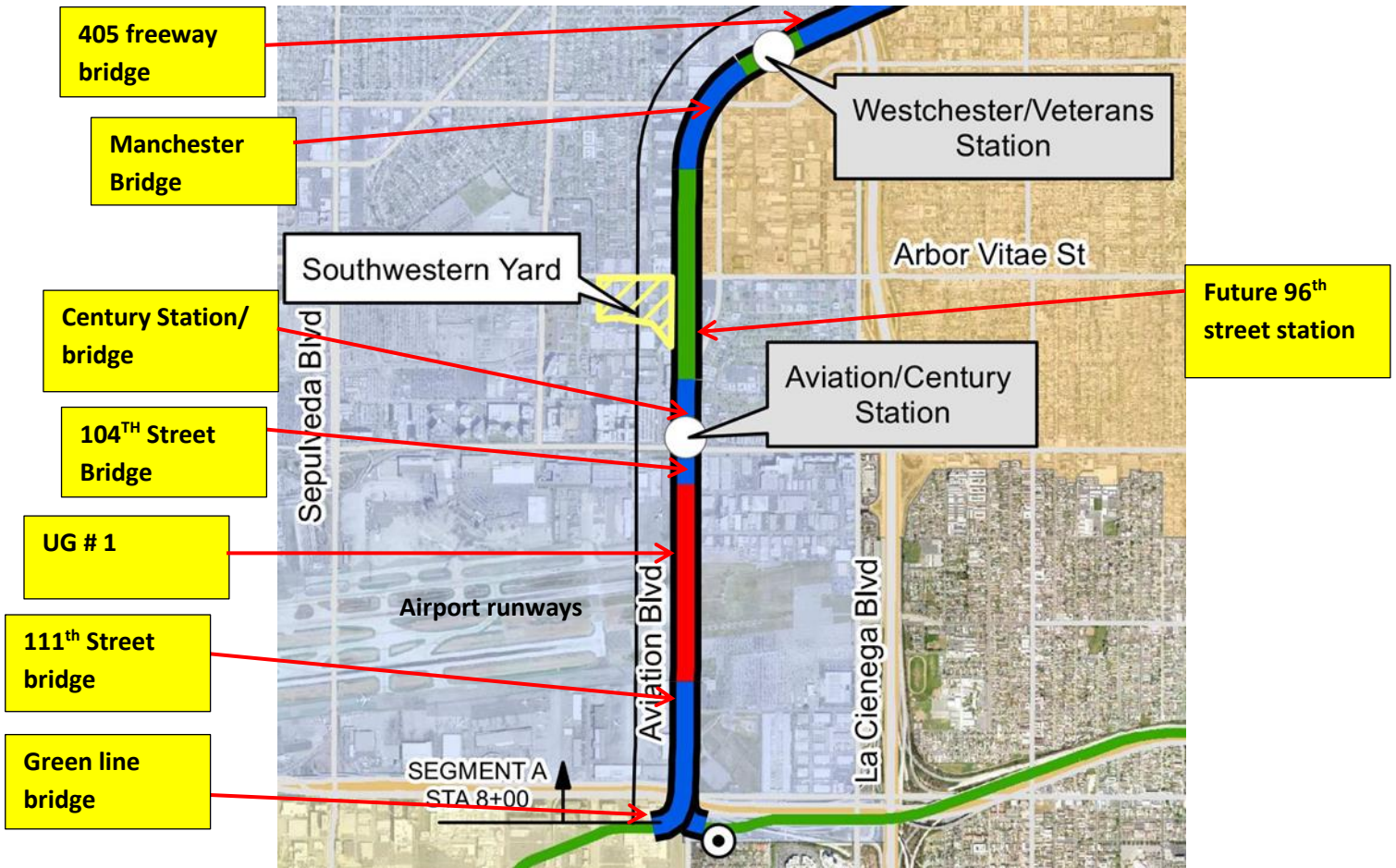
No Unresolved issues as this time.

GREEN LINE TIE-IN:

- Green Line Cutover work is completed at this time. Additional coordination is required.

CRENSHAW/LAX PHOTOGRAPHIC UPDATE

Segment A



SEGMENT A:

- Rework of plinth gap to invert on the Century Bridge resumes following failure of fastener inserts.
- Punchlist walk with WSCC QC Inspector continues to review current completion status.
- Disturbed ballast due to systems electrical conduit relocations continues to be repaired and re-dressed.

CRENSHAW/LAX PHOTOGRAPHIC UPDATE



Guideway- WSCC working on extending Emergency Walkway crossing at intersection of east & west legs of Wye STA 13+14 (looking east) Rework



Guideway- WSCC at GL Wye adjusting track gauge on SBW track (looking south) Rework

CRENSHAW/LAX PHOTOGRAPHIC UPDATE

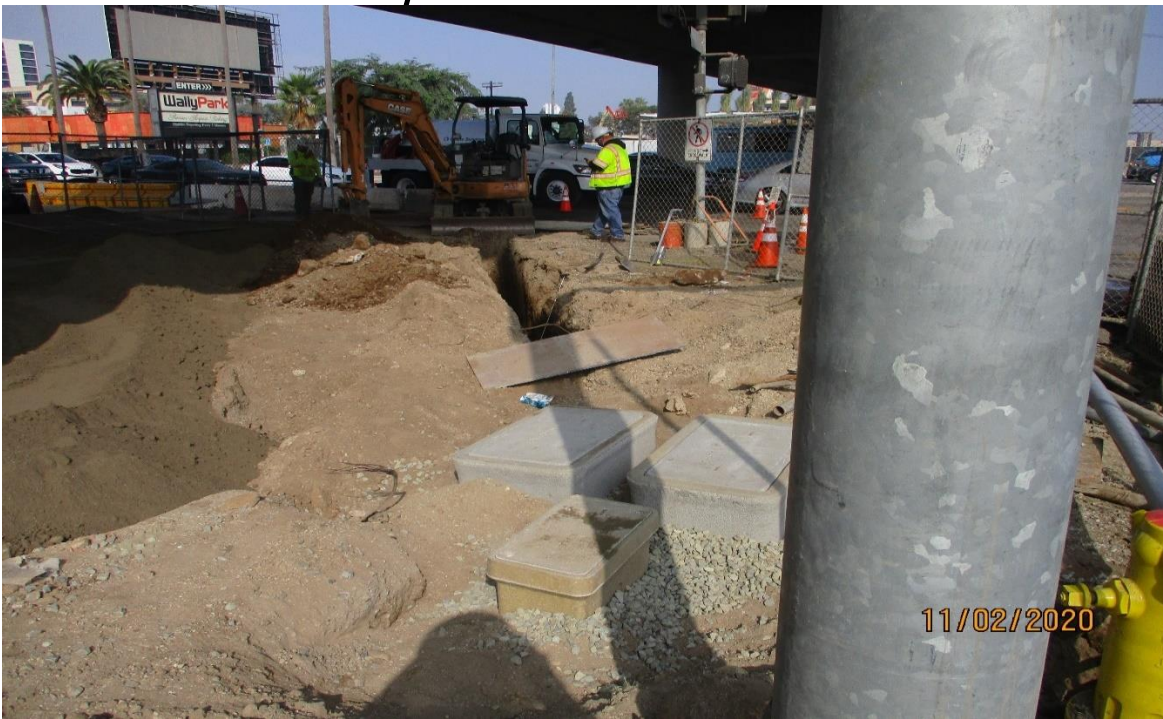


AVIATION/CENTURY - Placing amended soil for the planters at Aviation Station.

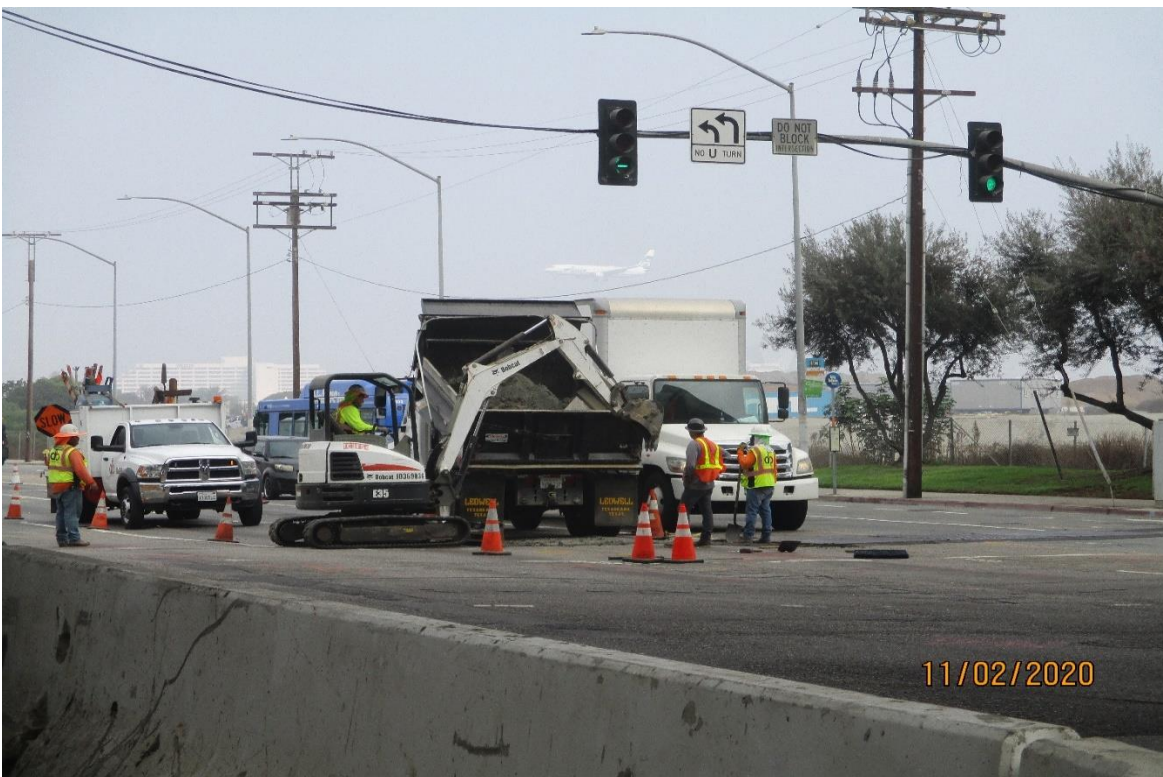


AVIATION/CENTURY- Grading for the hardscape at the Aviation Station.

CRENSHAW/LAX PHOTOGRAPHIC UPDATE



AVIATION/CENTURY- Trenching for the traffic signal and streetlight conduit on the SW corner of Aviation and Century. Facing NW.



AVIATION/CENTURY- Trenching on the north side of the Aviation and Imperial intersection. Facing NE.

CRENSHAW/LAX PHOTOGRAPHIC UPDATE

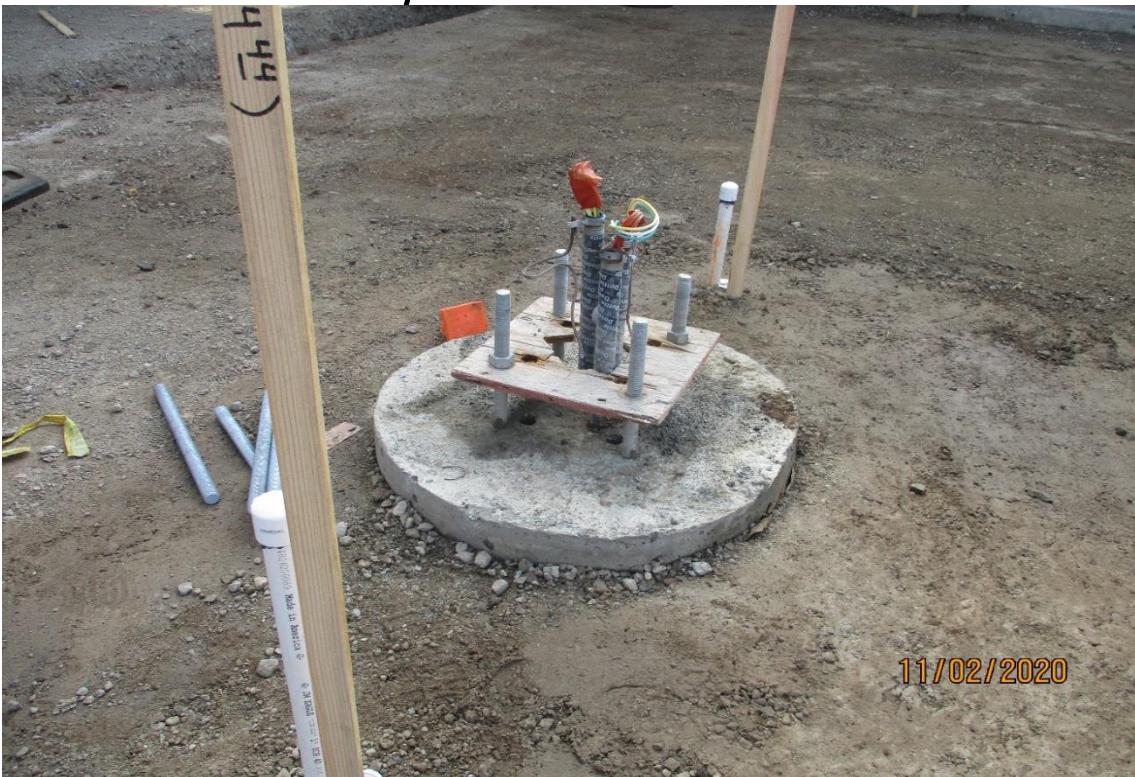


AVIATION/CENTURY- Placing and spreading the amended soil at the aviation Station. Facing SE.



AVIATION/CENTURY- Fine grading the base subgrade at the Aviation Station. Facing SW

CRENSHAW/LAX PHOTOGRAPHIC UPDATE



AVIATION/CENTURY- Drilling and epoxy doweling the anchor bolts for the Aviation Station light foundations.



AVIATION/CENTURY- WSCC Placed rebar for Aviation Sta plaza floor.

CRENSHAW/LAX PHOTOGRAPHIC UPDATE



AVIATION/CENTURY- WSCC remove Krail at Aviation and Century Blvd.



AVIATION/CENTURY- DB Electric Excavate trench for conduit across Aviation at Imp Hwy

CRENSHAW/LAX PHOTOGRAPHIC UPDATE

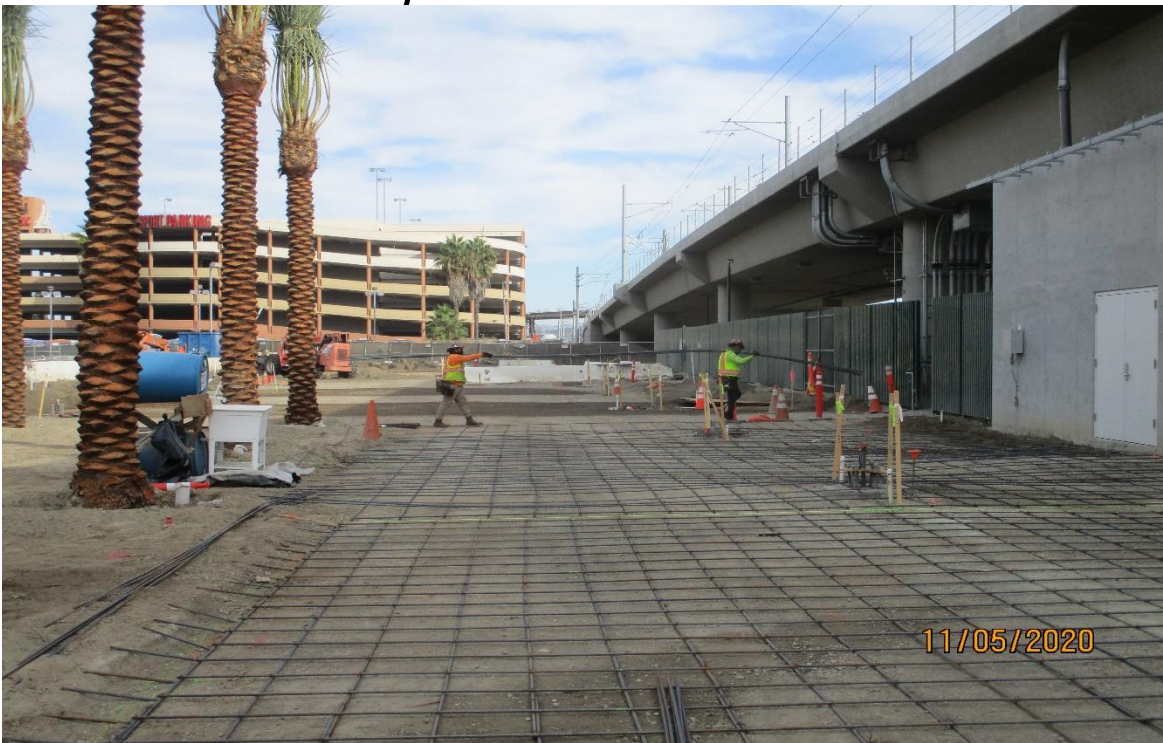


AVIATION/CENTURY- Placing amended soil at the Aviation Station plaza area.



AVIATION/CENTURY- Layout for the ADA ramp on the NW corner of Aviation and Century.

CRENSHAW/LAX PHOTOGRAPHIC UPDATE

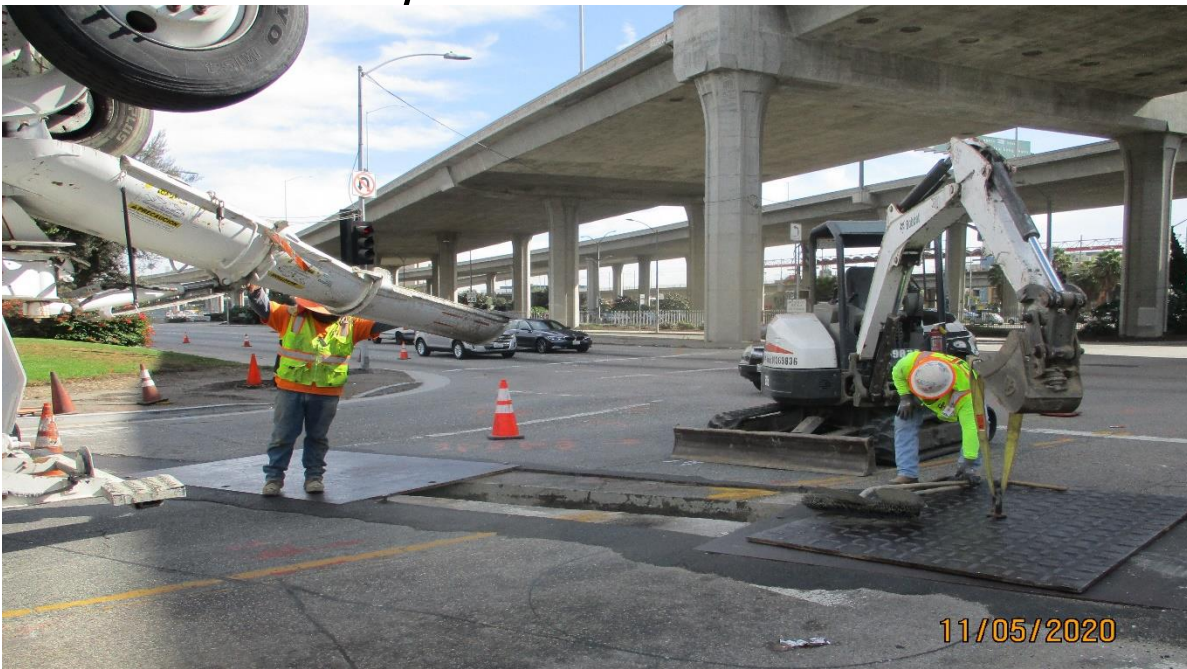


AVIATION/CENTURY- Placing and tying rebar for the Aviation Station plaza hardscape.

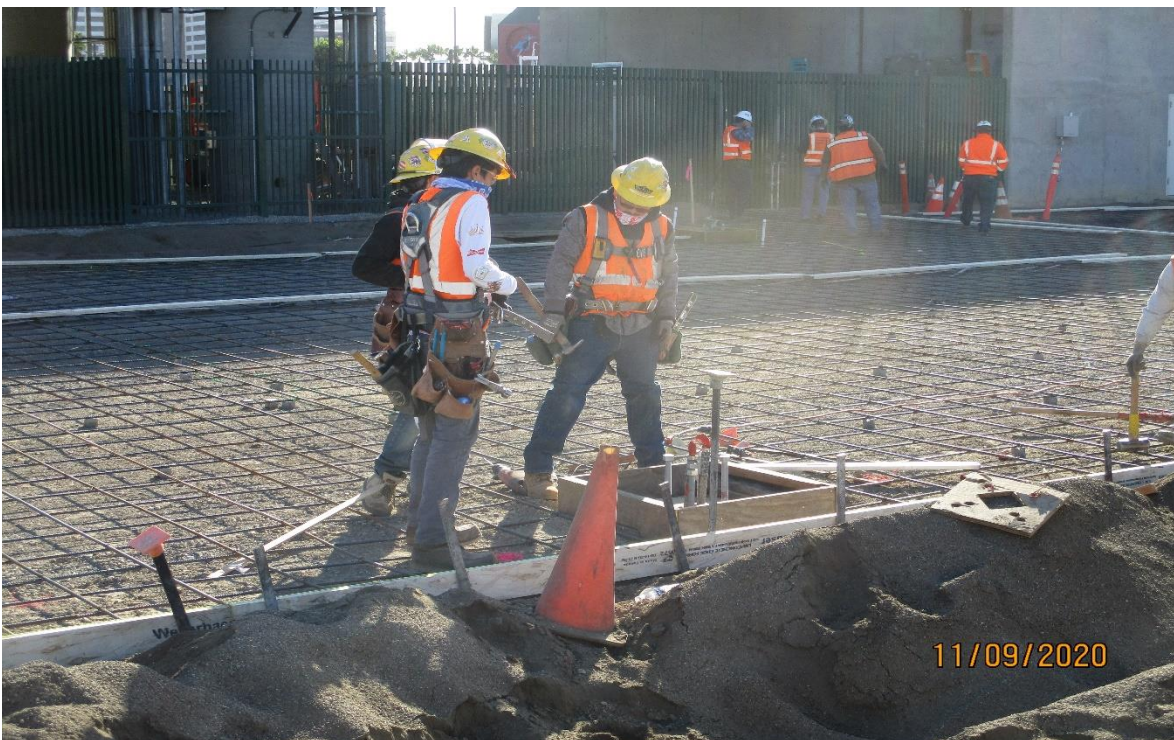


AVIATION/CENTURY- Exposing traffic signal conduit to find a kink in the line on Aviation and Century.

CRENSHAW/LAX PHOTOGRAPHIC UPDATE



AVIATION/CENTURY- Placing slurry to encase traffic signal conduit on Aviation at Imperial.



AVIATION/CENTURY- Building blockouts for the light pole foundations at the Aviation Station.

CRENSHAW/LAX PHOTOGRAPHIC UPDATE



AVIATION/CENTURY- Setting forms for the Aviation Station hardscape.



AVIATION/CENTURY- Excavating for traffic signal run 16 on Imperial at Aviation.

CRENSHAW/LAX PHOTOGRAPHIC UPDATE



AVIATION/CENTURY- Finishing the concrete placed for the Aviation Station plaza hardscape.



AVIATION/CENTURY- Building light pole foundation blockouts at the Aviation Station plaza.

CRENSHAW/LAX PHOTOGRAPHIC UPDATE

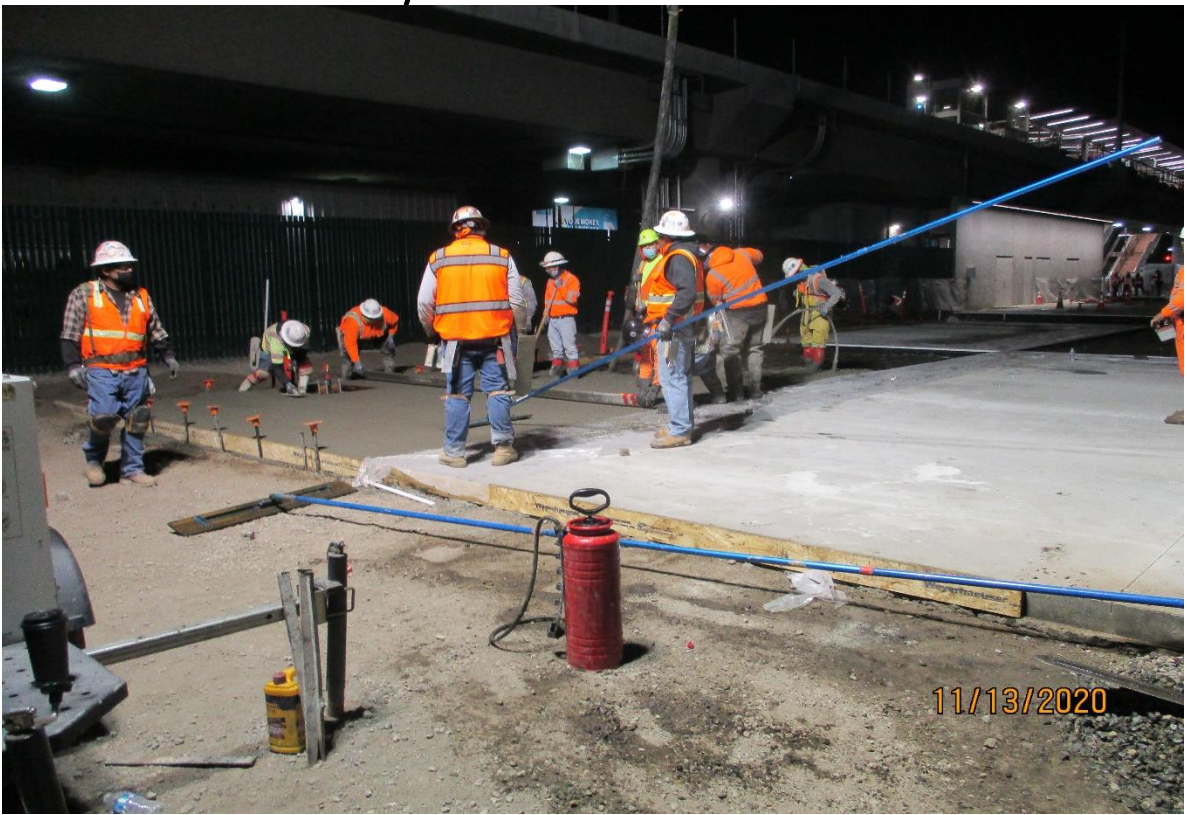


AVIATION/CENTURY- Removing the light pole foundation blockout at the Aviation Station plaza.

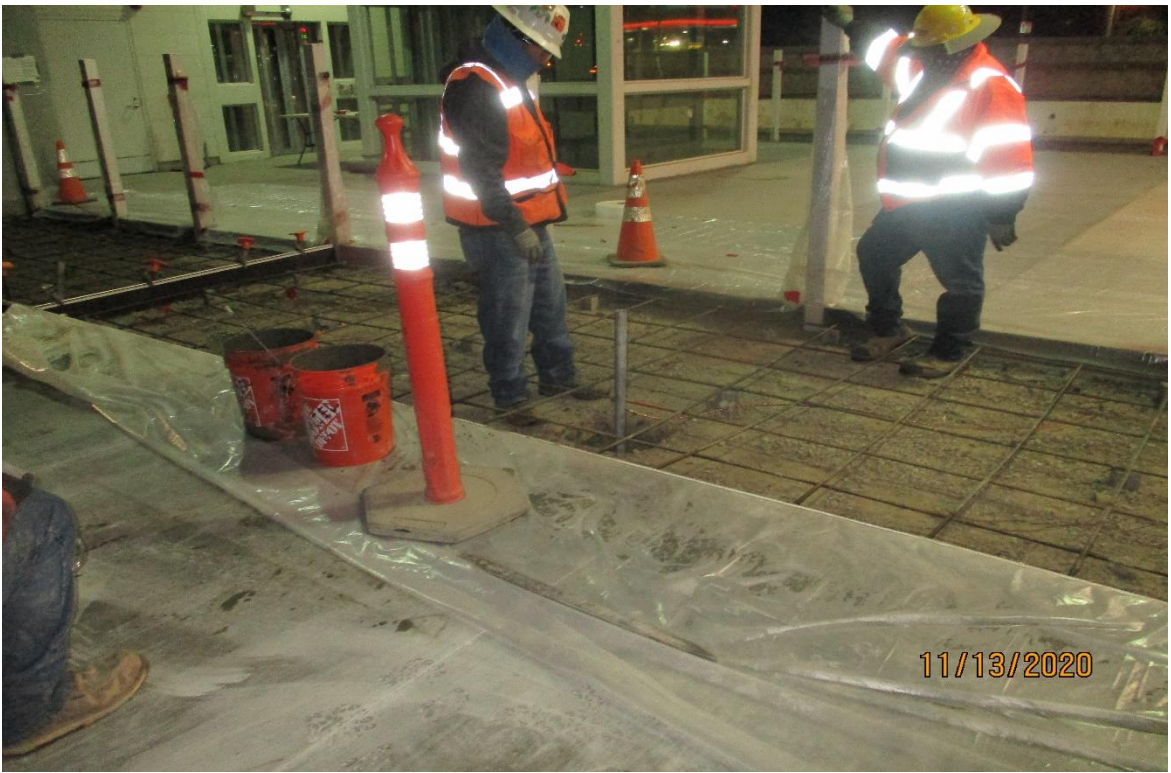


AVIATION/CENTURY- Setting expansion board for the plaza hardscape at the Aviation Station.

CRENSHAW/LAX PHOTOGRAPHIC UPDATE



AVIATION/CENTURY- Placing concrete for the Aviation Station plaza hardscape.



AVIATION/CENTURY- Setting a post for a future post at the Aviation Station plaza.

CRENSHAW/LAX PHOTOGRAPHIC UPDATE



AVIATION/CENTURY- Placing concrete for the Aviation Station plaza.

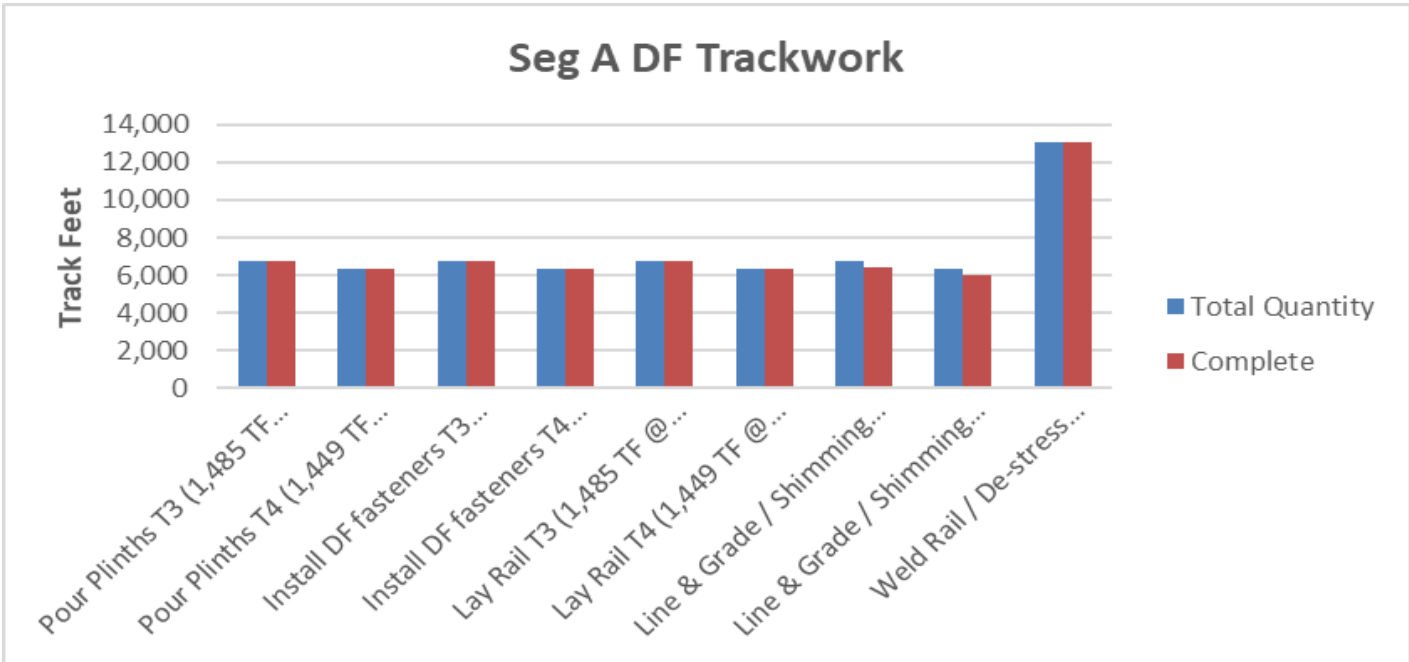
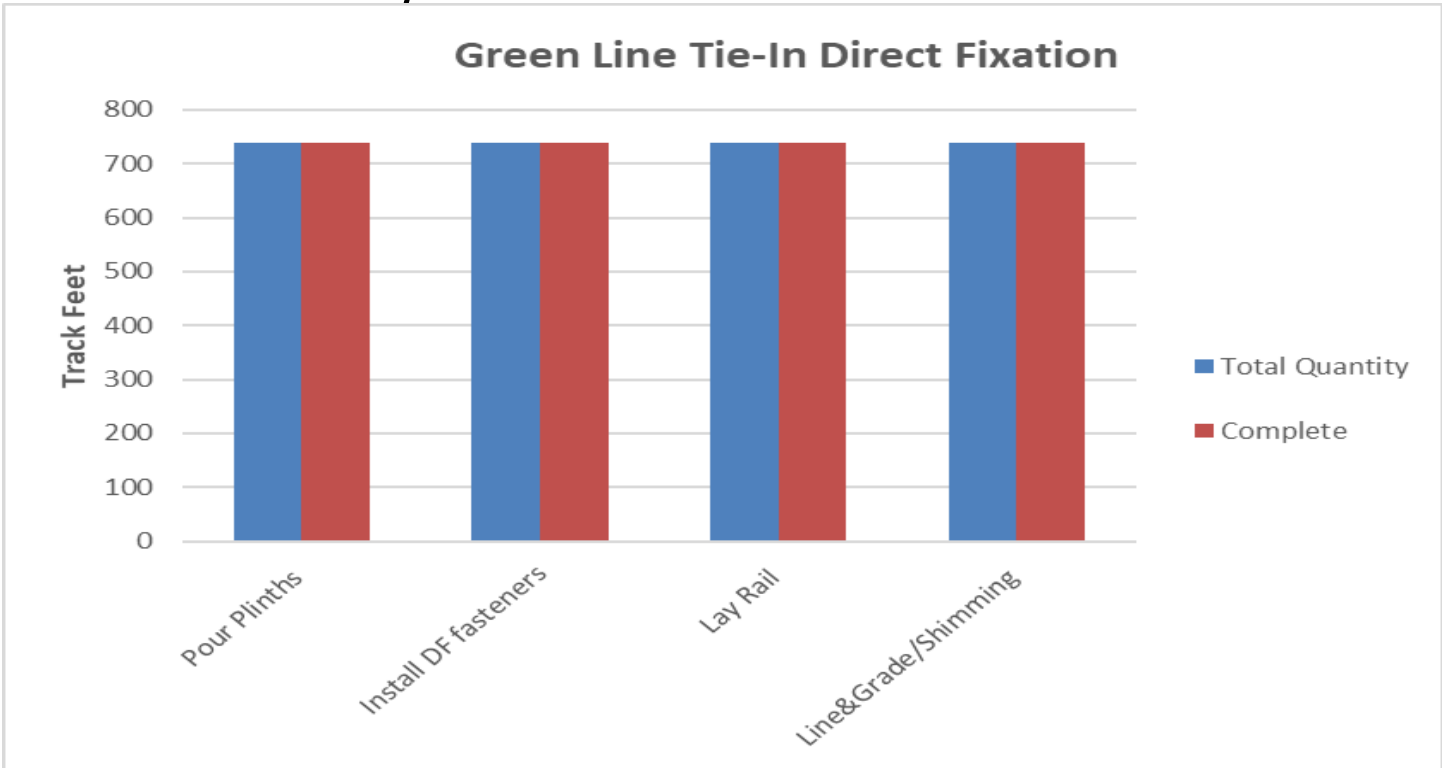


AVIATION/CENTURY- Century/Aviation bridge station platform NB track approx. STA 68+45 ponding storm water inside bridge deck invert (looking north)

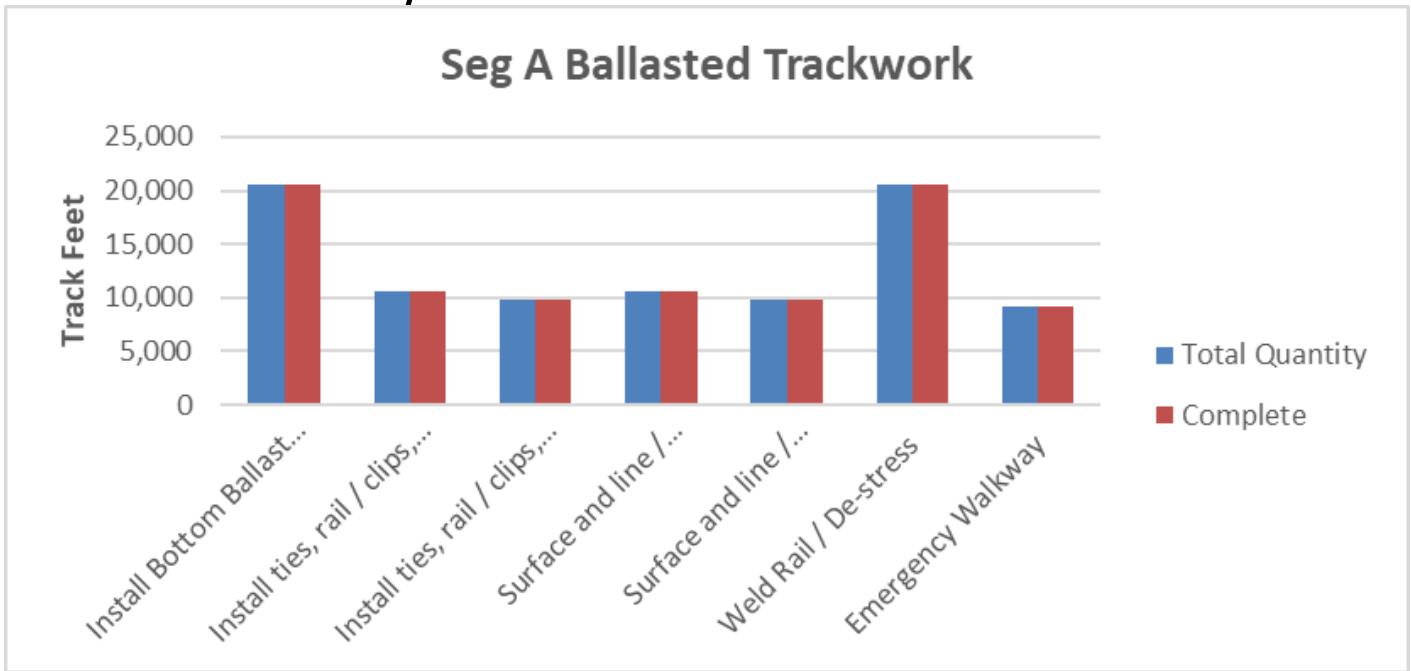
CRENSHAW/LAX PHOTOGRAPHIC UPDATE

PROJECT WIDE TRACKWORK PROGRESS									
	TRACK TYPE	ACTIVITY	TRACK FEET/QUANTITY	INSTALLED TO DATE	REMAINING	ACTIVITY % PROGRESS	Potential Rework *	Punchlist ** (Complete/Incomplete)	
GREENLINE TIE-IN	DIRECT FIXATION	Pour Plinths	738	738	0	100.00%			
		Install DF fasteners	738	738	0	100.00%			
		Lay Rail	738	738	0	100.00%			
		Line&Grade/Shimming	738	738	0	100.00%			
		Weld Rail/ Destress							
		Emergency Walkway	4	4	0	100.00%		INC	
	Acceptance for turnover to subcontractors	yes/no	yes						
	SPECIAL TRACKWORK	DF Double Crossovers (Diamond XING 1 & 2)	2	2	0	100.00%			
		Line & Grade / Shimming	2	2	0	100.00%			
		DF Single Crossovers (A/F, B/E, C/F, D/E)	4	4	0	100.00%			
		Line & Grade / Shimming	4	4	0	100.00%			
		Thermite Welds	40	40	0	100.00%			
		Insulated Joints (IJ's)	28	28	0	100.00%	*		
		Acceptance for turnover to subcontractors	yes/no	yes					
		SEGMENT A	DF (13,089 TF include 395 TF of K1/K2 XO)	Pour Plinths T3 (1,485 TF @ wye + 4,884 TF + 395 TF K1/K2 XO) <i>(Insert rework continues)</i>	6,763	6,763	0	100.00%	*
	Pour Plinths T4 (1,449 TF @ wye + 4,877 TF) <i>(Insert rework continues)</i>			6,326	6,326	0	100.00%	*	
	Install DF fasteners T3 (1,485 TF @ wye + 4,884 TF + 395 TF K1/K2 XO)			6,763	6,763	0	100.00%	*	
Install DF fasteners T4 (1,449 TF @ wye + 4,877 TF)	6,326			6,326	0	100.00%	*		
Lay Rail T3 (1,485 TF @ wye + 4,884 TF + 395 TF K1/K2 XO)	6,763			6,763	0	100.00%			
Lay Rail T4 (1,449 TF @ wye + 4,877 TF)	6,326			6,326	0	100.00%			
Line & Grade / Shimming T3 (1,485 TF @ wye + 4,884 TF + 395 TF K1/K2 XO)	6,763			6,425	338	95.00%			
Line & Grade / Shimming T4 (1,449 TF @ wye + 4,877 TF)	6,326			6,010	316	95.00%			
Weld Rail / De-stress (Rework complete)	13,089			13089	0	100.00%	*		
Emergency Walkway									
Acceptance for turnover to subcontractors	yes/no		no						
BALLASTED TRACKWORK (20,551 TF including grade crossing, Yard Leads & Tail Track)	Install Bottom Ballast (T3+T4, and include SYL, NYL & Tail Track)		20,551	20,551	0	100.00%	*		
	Install ties, rail / clips, top ballast T3 (9,480 TF) + SYL (244 TF) + NYL (937 TF)		10,661	10,661	0	100.00%	*		
	Install ties, rail / clips, top ballast T4 (9,475 TF) + Tail Track (415 TF)		9,890	9,890	0	100.00%	*		
	Surface and line / Regulate T3 + SYL + NYL		10,661	10,661	0	100.00%	*	INC	
	Surface and line / Regulate T4 + Tail Track		9,890	9,890	0	100.00%	*	INC	
	Weld Rail / De-stress		20,550	20,550	0	100.00%	*	INC	
	Emergency Walkway		9,176	9,176	0	100.00%	*	INC	
	Acceptance for turnover to subcontractors		yes/no	no					
SPECIAL TRACKWORK	Ballasted Double Crossover (G1/G2, H1/H2)		2	2	0	100.00%			
	DF Single Crossover (K1/K2)		2	2	0	100.00%		*	
	Line & Grade / Shimming		2	0	2				
	Ballasted Single Crossover (I1/IEQ, I2/IEQ, M1/M2, N1/N2)		4	4	0	100.00%			
	Install switches (A,B,C,D,E,F,G1,G2,H1,H2,I1,I2,IEQ,S,N1,N2,M1,M2 = 18)		18	18	0	100.00%			
	Thermite Welds		130	130	0	100.00%			
	Insulated Joints (IJ's)		74	74	0	100.00%		*	
Acceptance for turnover to subcontractors	yes/no		no						
GRADE X-ING	Construct Crossing (Arbor Vitae, Hindry)	2	2		100.00%				
DF =	Direct Fixation								
T3 =	Track 3								
T4 =	Track 4								
TF =	Track Feet								
*	Potential for rework based on recent guideway survey. Total impact of rework is unknown at this time.								
**	Punchlist Complete/Incomplete: Indicates the completion (COMP) or Incompletion (INC) of identified punchlist items								

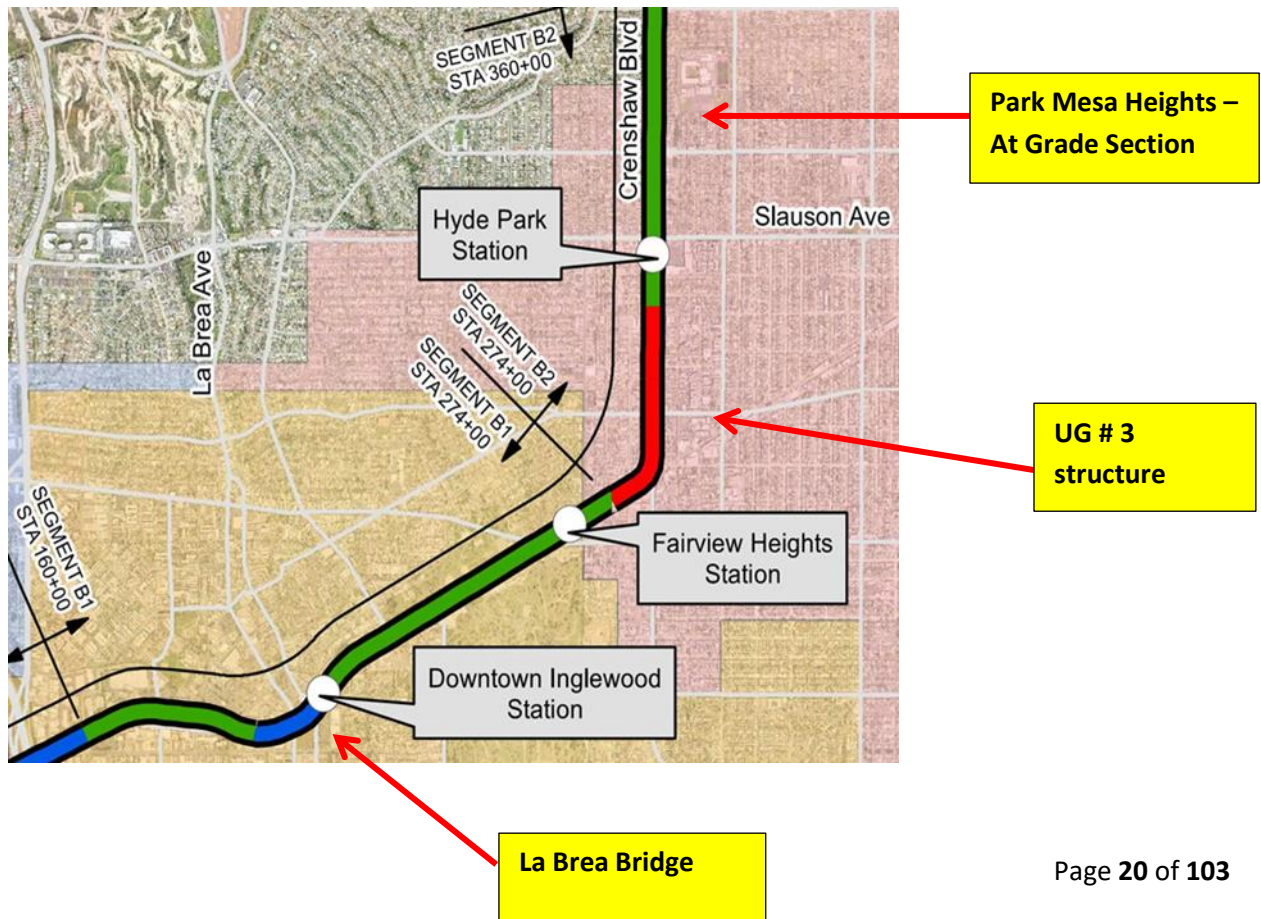
CRENSHAW/LAX PHOTOGRAPHIC UPDATE



CRENSHAW/LAX PHOTOGRAPHIC UPDATE



Segment B



CRENSHAW/LAX PHOTOGRAPHIC UPDATE



La Brea – ACE Fence Placed special panels on ballast wall at La Brea Sta.



La Brea – WSCC Prepare To place light poles on foundations at La Brea Plaza

CRENSHAW/LAX PHOTOGRAPHIC UPDATE

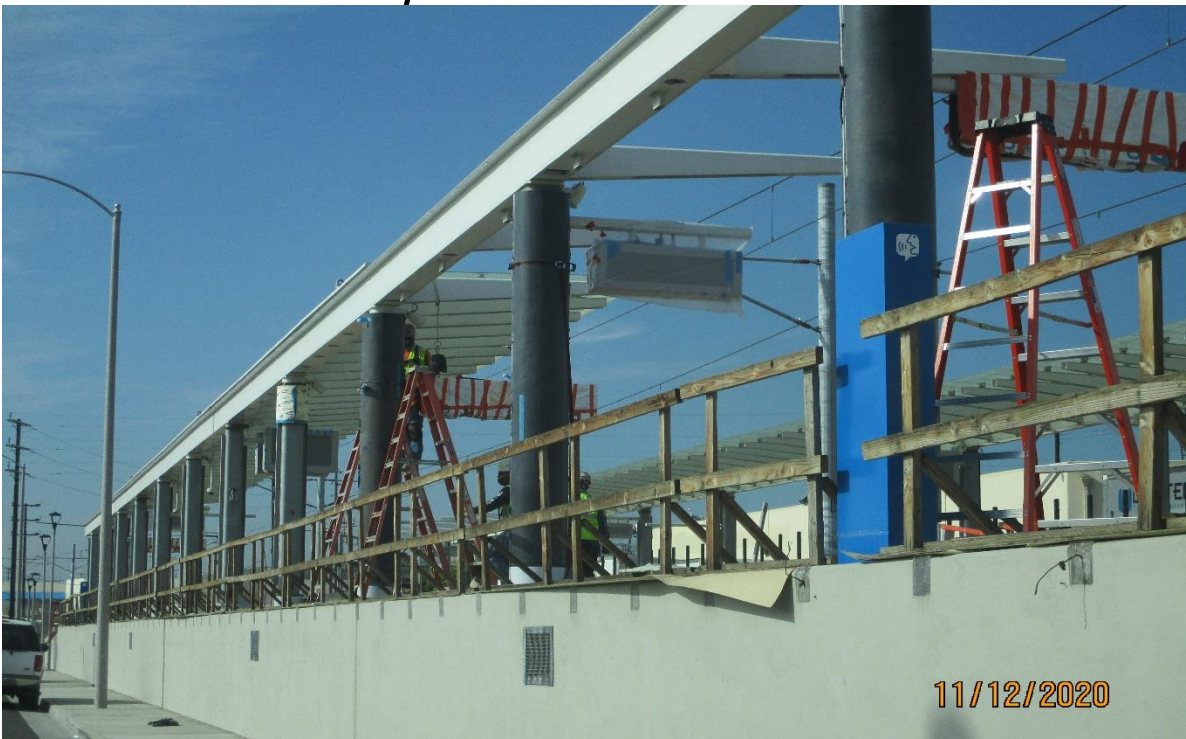


La Brea – Placing concrete for the ADA ramps at the La Brea Station.

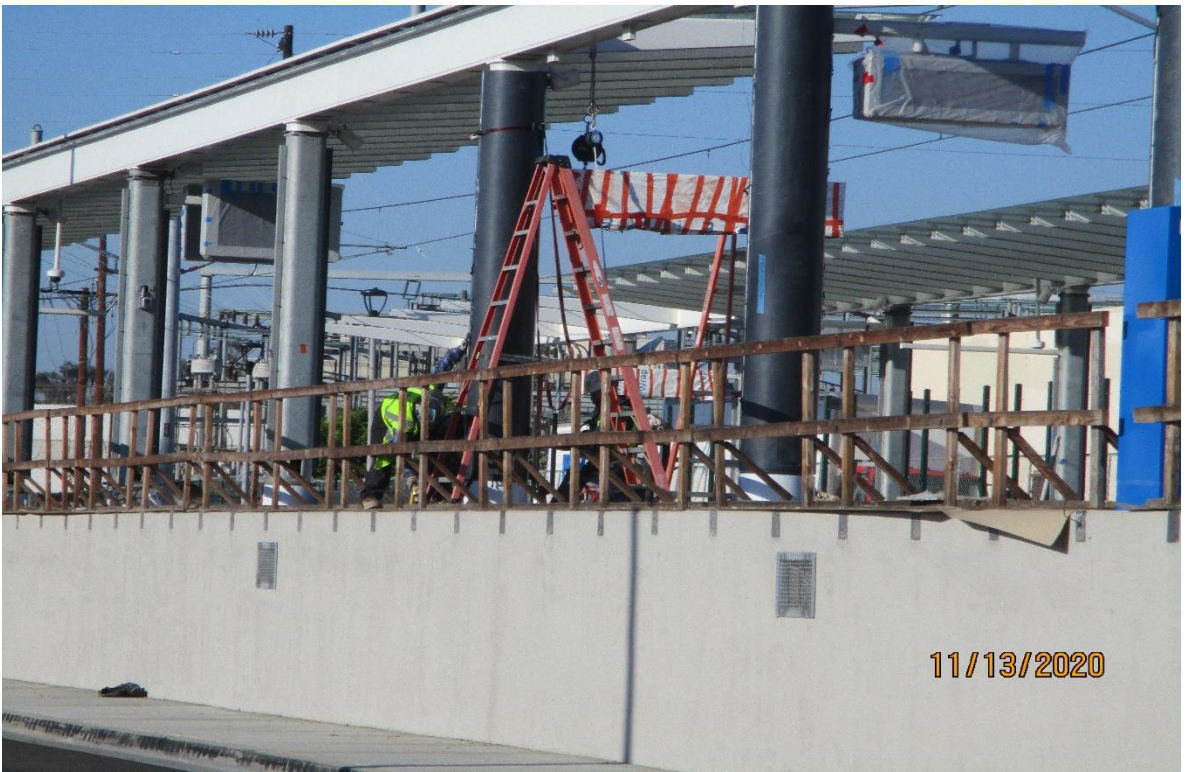


La Brea – McMahon Place cladding on columns at La Brea Sta.

CRENSHAW/LAX PHOTOGRAPHIC UPDATE



Hindry – Installing stainless steel cladding at the Hindry Station.

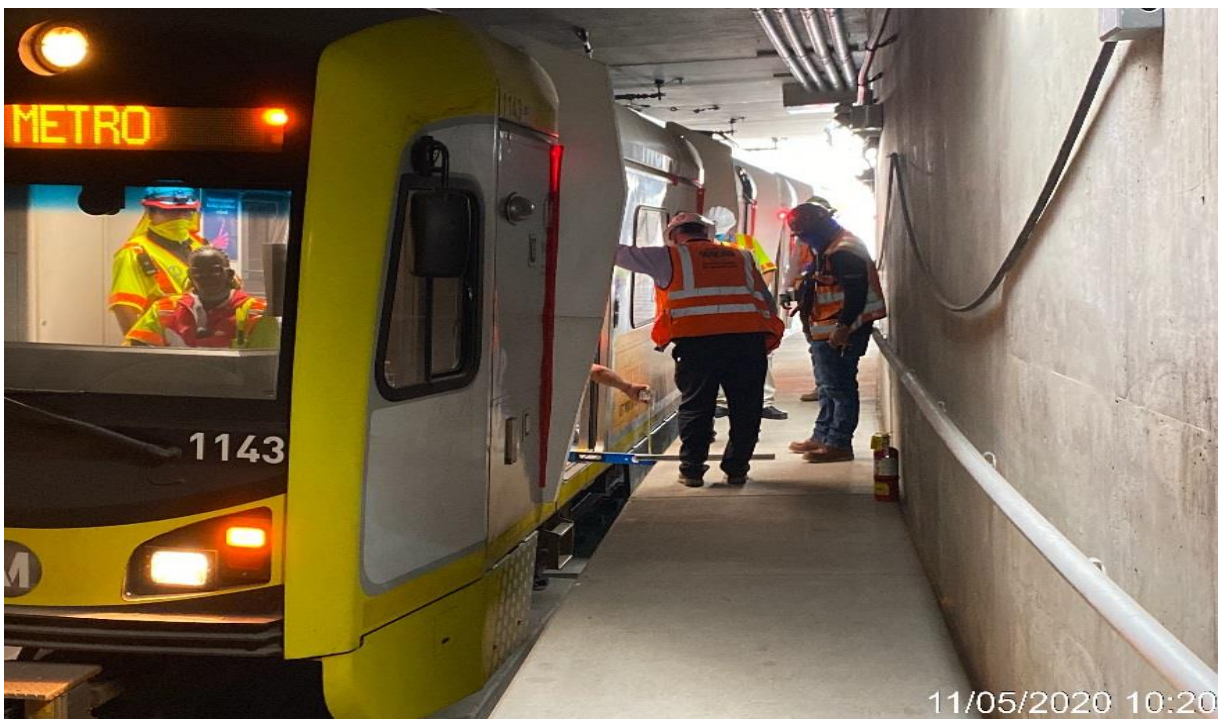


Hindry – Stainless steel cladding installation at the hindry Station.

CRENSHAW/LAX PHOTOGRAPHIC UPDATE



UG3 – Working on tunnel booster fans on the northbound tunnel at STA 292+30.



UG3 – Performing train testing on the northbound tunnel.

CRENSHAW/LAX PHOTOGRAPHIC UPDATE



UG3 – Building formwork for new ADA ramp and sidewalk installation on the southeast corner of Hyde Park Blvd and Crenshaw Blvd.

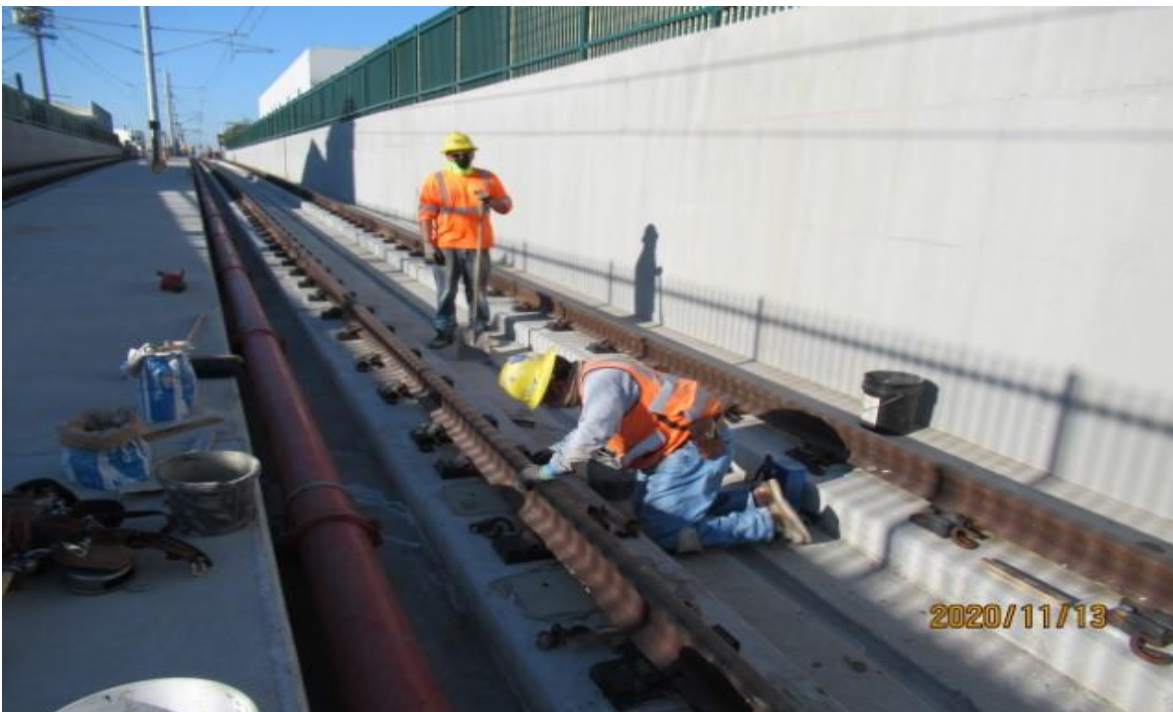


UG3 – Saw cutting ADA ramp and sidewalk installation on the southeast corner of Hyde Park Blvd and Crenshaw Blvd.

CRENSHAW/LAX PHOTOGRAPHIC UPDATE

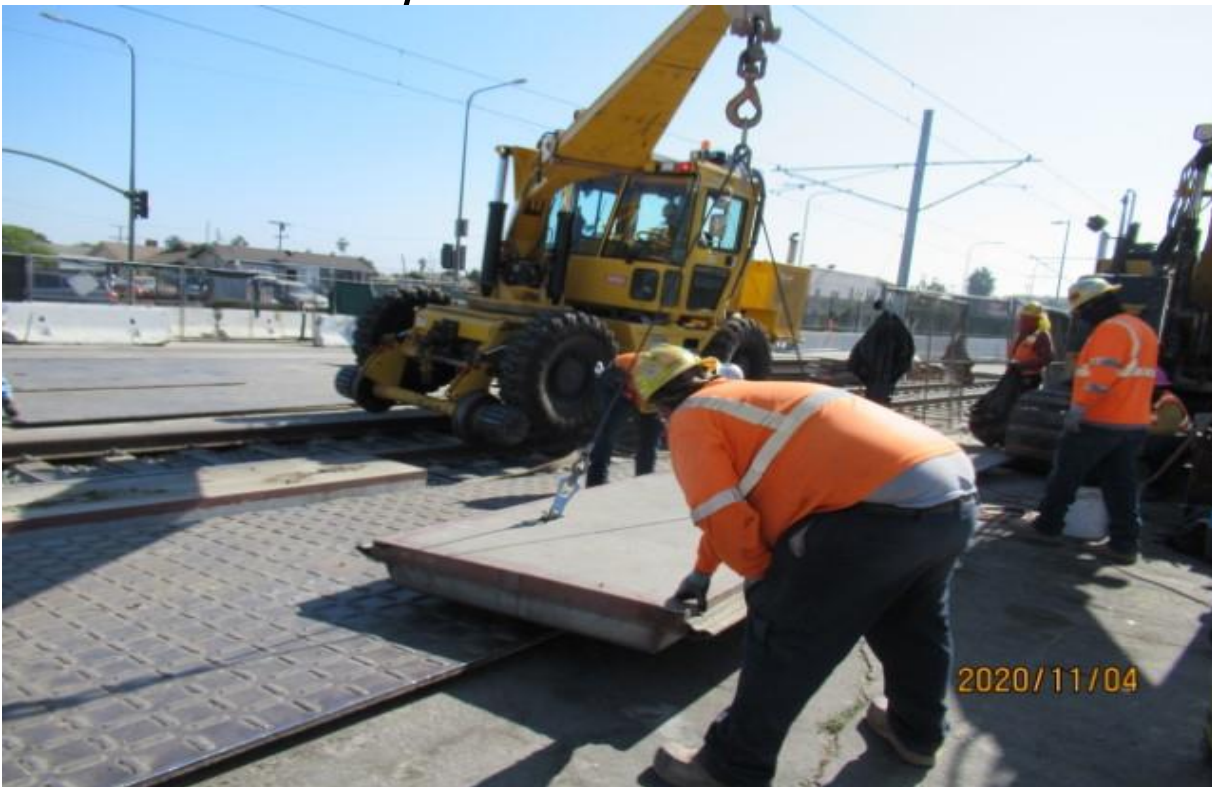


UG3 – UG3 north portal SB track stopping point for field site walk STA 311+48 (looking south).



UG3 – WSCC on SB track UG3 STA 275+45 point & patching plinths where excessive gaps exist between top of plinth & bottom of fastener plate (looking southwest) Rework

CRENSHAW/LAX PHOTOGRAPHIC UPDATE

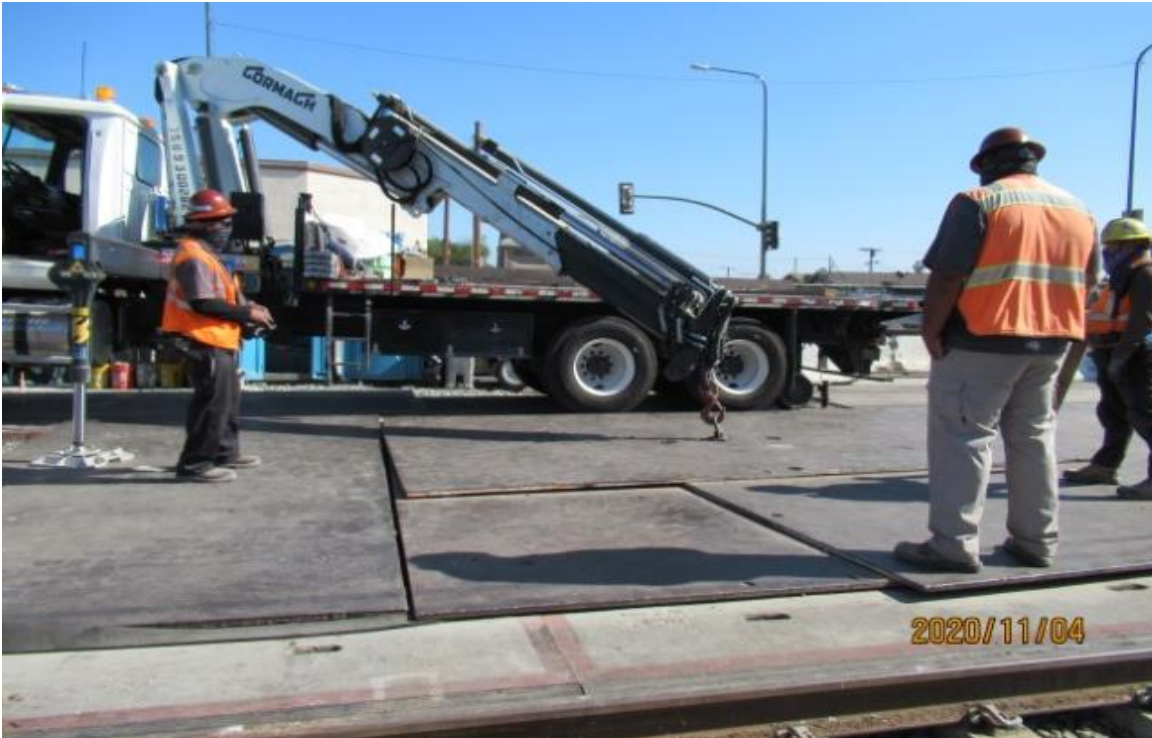


UG3 – HCC using Speed Swing to remove crossing panels at 59th Street for re-tamping SB track (looking southeast) Rework



UG3 – HCC/WSCC at 59th Street removing crossing panels on SB track for re-tamping through crossing (looking west) Rework

CRENSHAW/LAX PHOTOGRAPHIC UPDATE



UG3 – WSCC on SB track UG3 STA 275+45 point & patching plinths where excessive gaps exist between top of plinth & bottom of fastener plate (looking southwest) Rework



UG3 – 59th Street NB track southeast corner sub-grade compromised to be repaired Rework.

CRENSHAW/LAX PHOTOGRAPHIC UPDATE



UG3 – WSCC assisting HCC removing shoring plates between tracks using hi-rail Crain truck at 59th Street (looking north) Rework

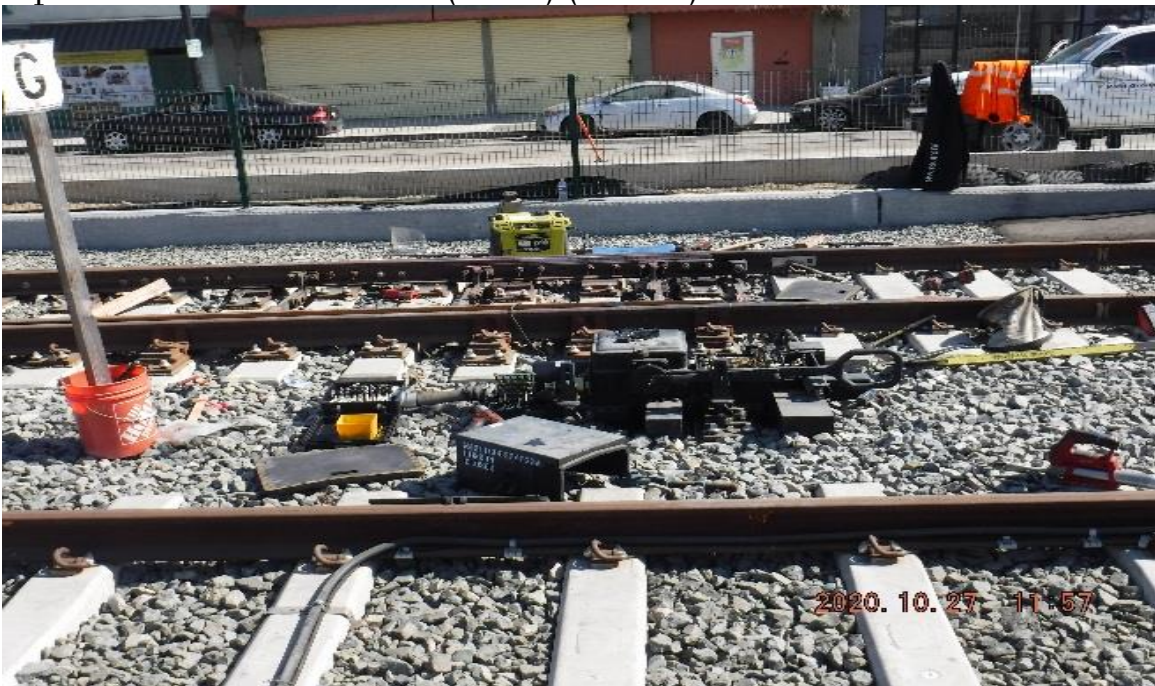


UG3 – STA 317+00 TK#4/NB looking south – 59th St at grade crossing work by WSCC and HCC started.

CRENSHAW/LAX PHOTOGRAPHIC UPDATE



57th Street – STA 332+53 TK#4/NB looking south – finishing custom manganese insert replacement of 10U1LHXO (divert) (57th St)



57th street – STA 332+53 TK#4/NB looking east – re-set switch rods and switch machine of 10U1LHXO by LKC (57th St)

CRENSHAW/LAX PHOTOGRAPHIC UPDATE



PARK MESA – Continue sacking and patching and installing ladder rungs to Manhole #20 on northbound Crenshaw Blvd and 60th St.



PARK MESA – Placing asphalt concrete around Manhole #20 on northbound Crenshaw Blvd and 60th St.

CRENSHAW/LAX PHOTOGRAPHIC UPDATE



PARK MESA – Saw-cut and excavate for new ADA ramp and curb/gutter installation on the southwest corner of Crenshaw Blvd and 60th St.



PARK MESA – Excavating and installing for HDPE pipe connection from Catch Basin #6 to TPSS#7 on the northeast corner of Crenshaw Blvd and 60th St.

CRENSHAW/LAX PHOTOGRAPHIC UPDATE



PARK MESA – Continue excavating and installing HDPE pipe connection from Catch Basin #6 to TPSS#7 on the northeast corner of Crenshaw Blvd and 60th St.



PARK MESA – Saw-cut and excavate along curb radius for asphalt concrete placement on the southeast corner of Crenshaw Blvd and 59th St.

CRENSHAW/LAX PHOTOGRAPHIC UPDATE



PARK MESA – Placed asphalt concrete on the southeast corner of Crenshaw Blvd and 59th St.



PARK MESA – Placed rebar and concrete for bus pad section on the southeast corner of Crenshaw Blvd and Slauson Ave.

CRENSHAW/LAX PHOTOGRAPHIC UPDATE

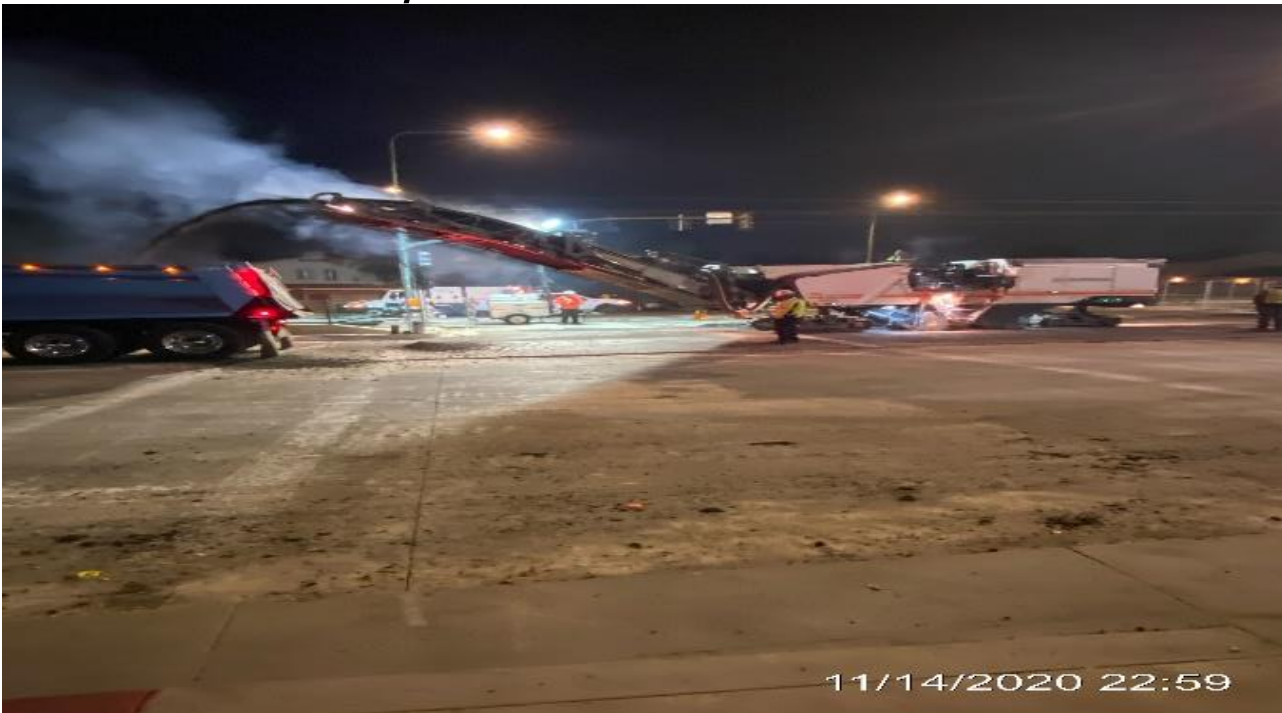


PARK MESA – Removing rings and access covers of sewer maintenance holes and placing protective plates prior to grind and overlay on southbound Crenshaw Blvd and Slauson Ave.

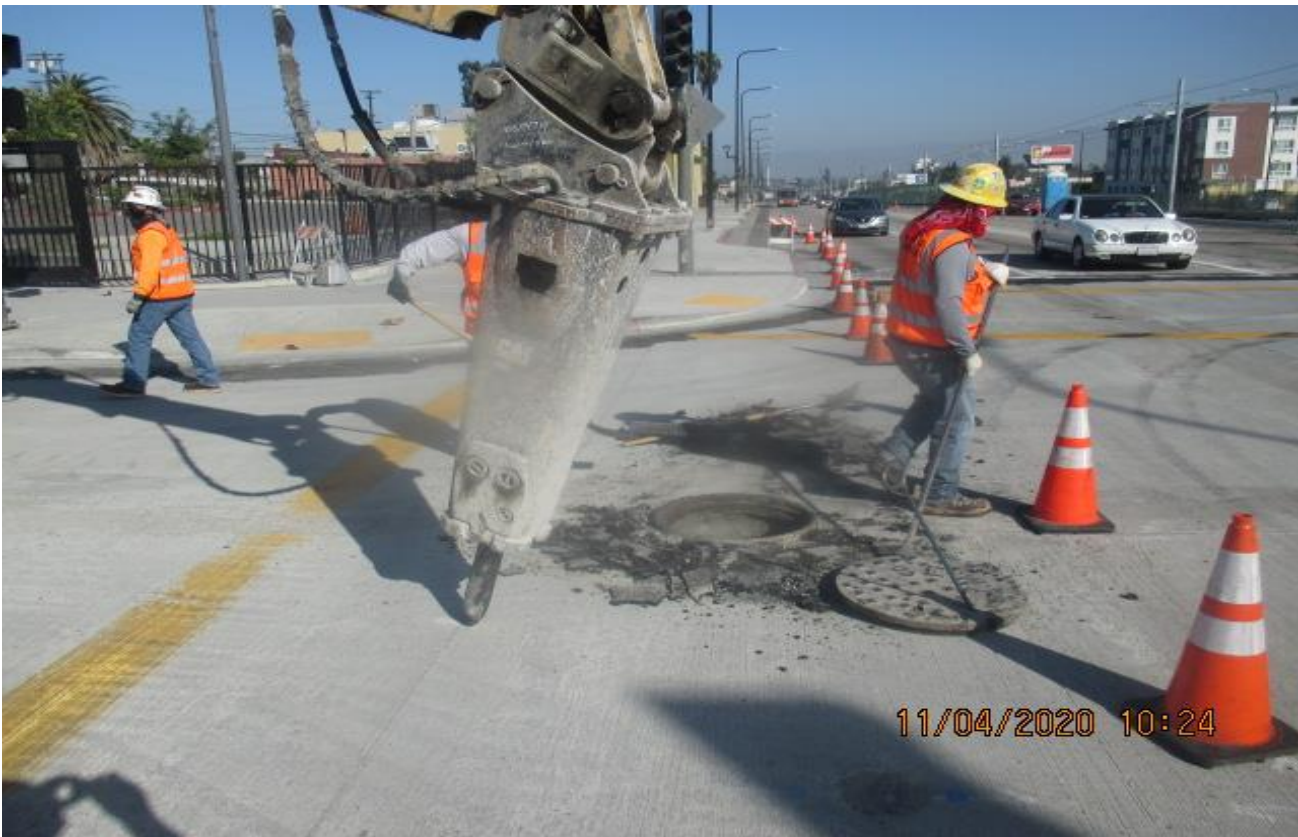


PARK MESA – Removing rings and access covers of sewer maintenance holes in preparation for grind and overlay of southbound Crenshaw Blvd and 57th St.

CRENSHAW/LAX PHOTOGRAPHIC UPDATE



PARK MESA – Removed existing asphalt and performed grinding and overlay on north and southbound lanes of Crenshaw Blvd from 54th St to 48th St.

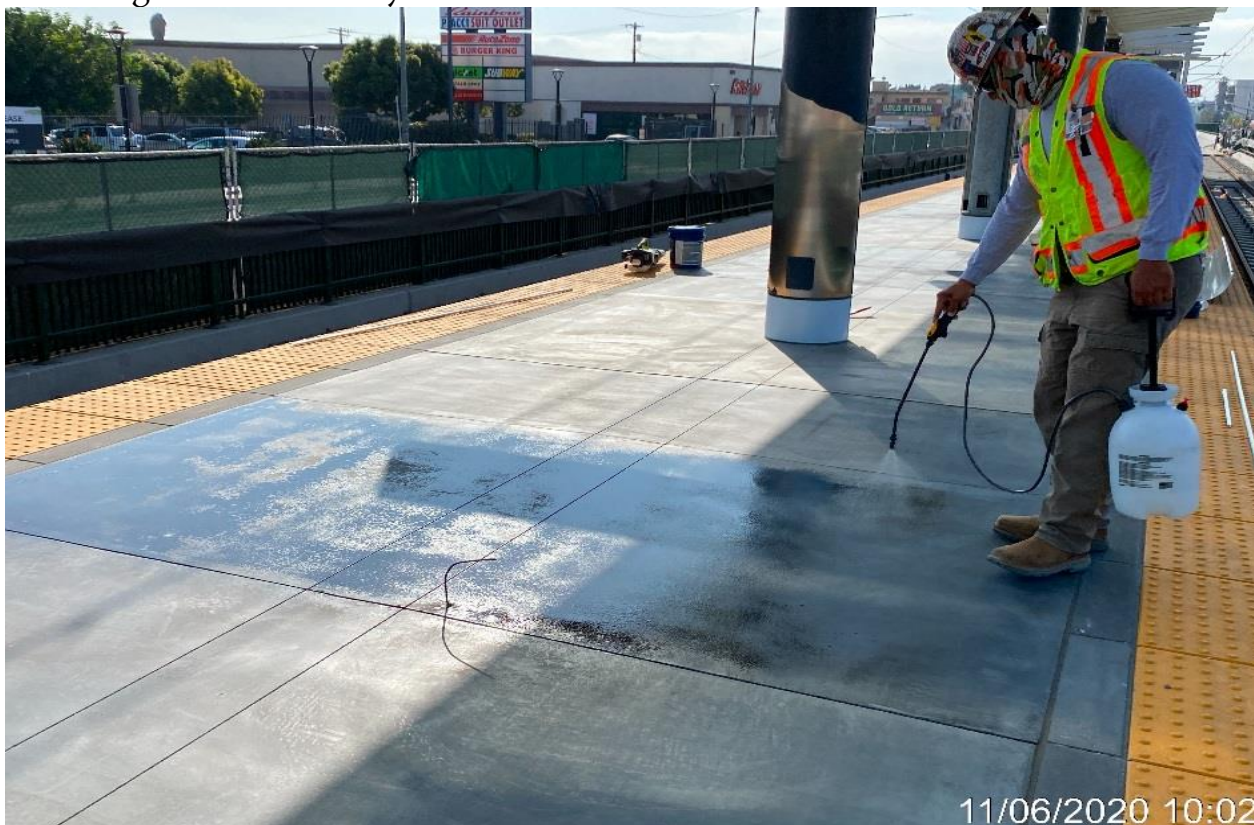


PARK MESA – Removing rings and access covers of sewer maintenance holes in preparation for final grind and overlay of southbound Crenshaw Blvd and 52nd St.

CRENSHAW/LAX PHOTOGRAPHIC UPDATE

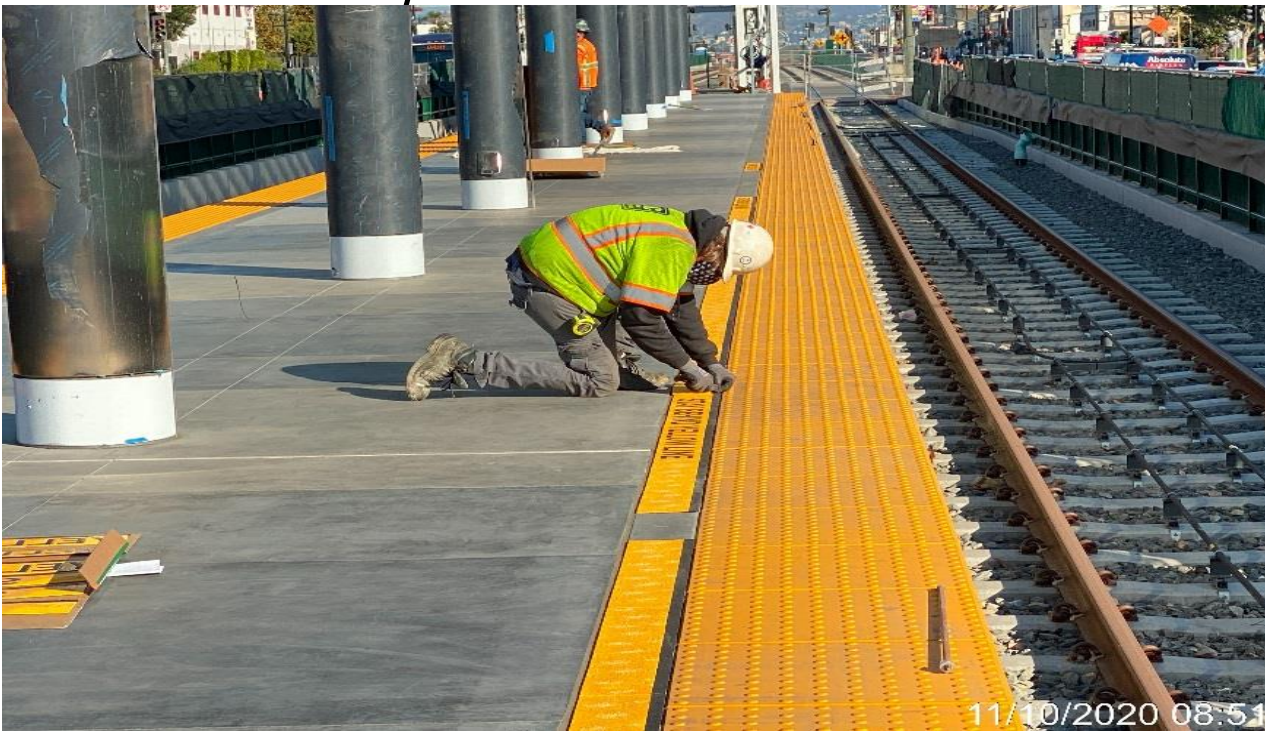


PARK MESA – Removing rings and access covers of sewer maintenance holes in preparation for final grind and overlay of north and southbound Crenshaw Blvd and 48th St.

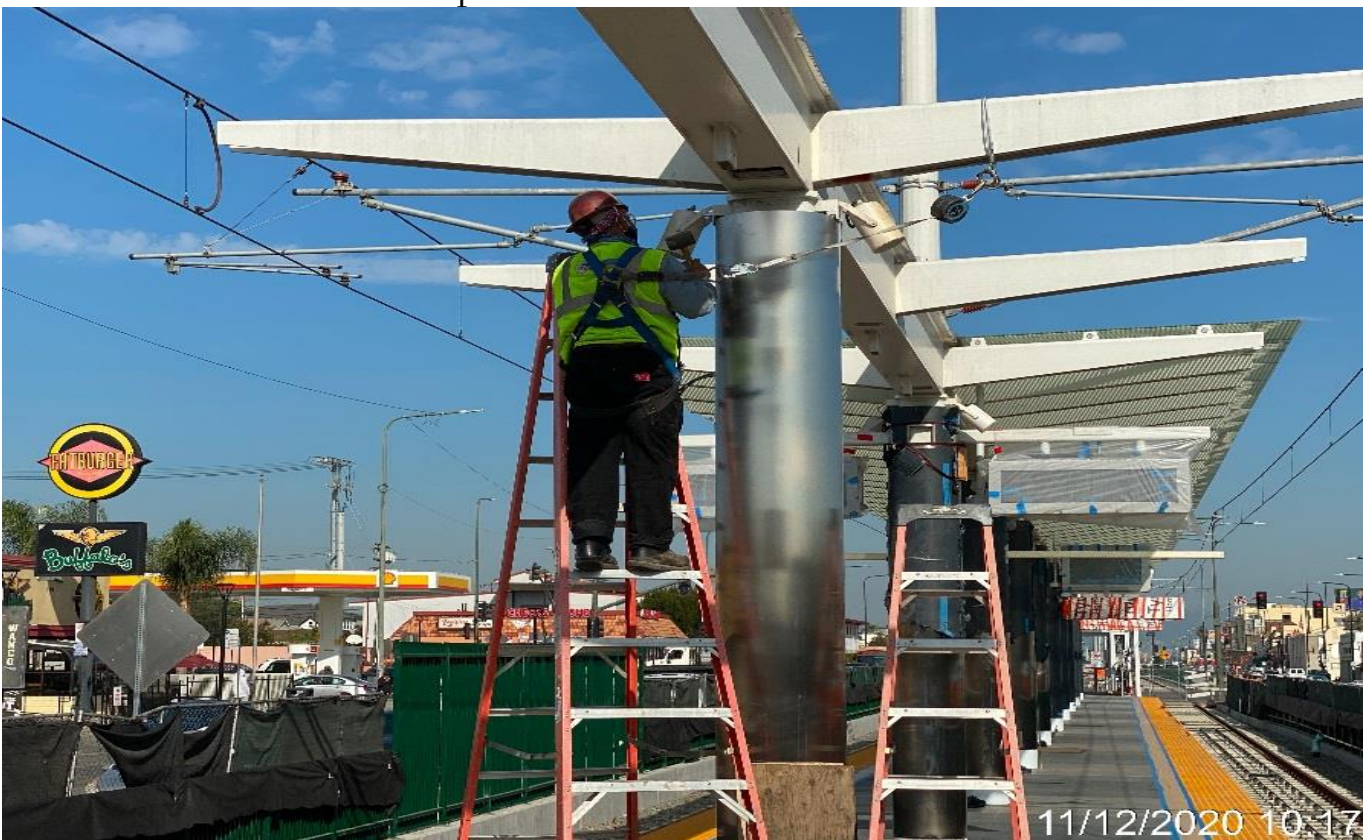


HYDE PARK STATION – Applied concrete sealer to the platform topping slab panels.

CRENSHAW/LAX PHOTOGRAPHIC UPDATE



HYDE PARK STATION – Installed thermoplastic pavement markings along the northbound and southbound sides of the platform.



HYDE PARK STATION – Continue installing stainless steel cladding covers for the platform columns.

CRENSHAW/LAX PHOTOGRAPHIC UPDATE



HYDE PARK STATION – Performing layout for guardrail installation for the NB entrance ramp leading to the platform.



HYDE PARK STATION – Installing guardrails along the NB entrance ramp leading into the platform.

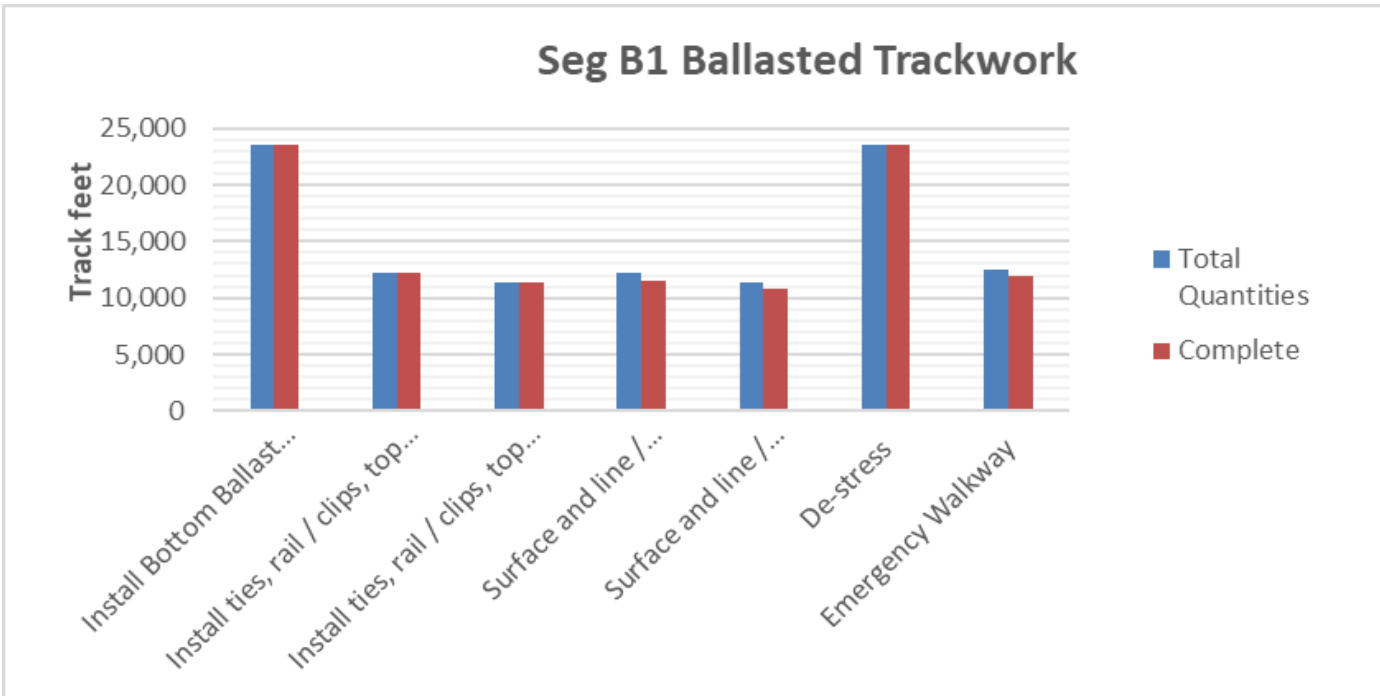
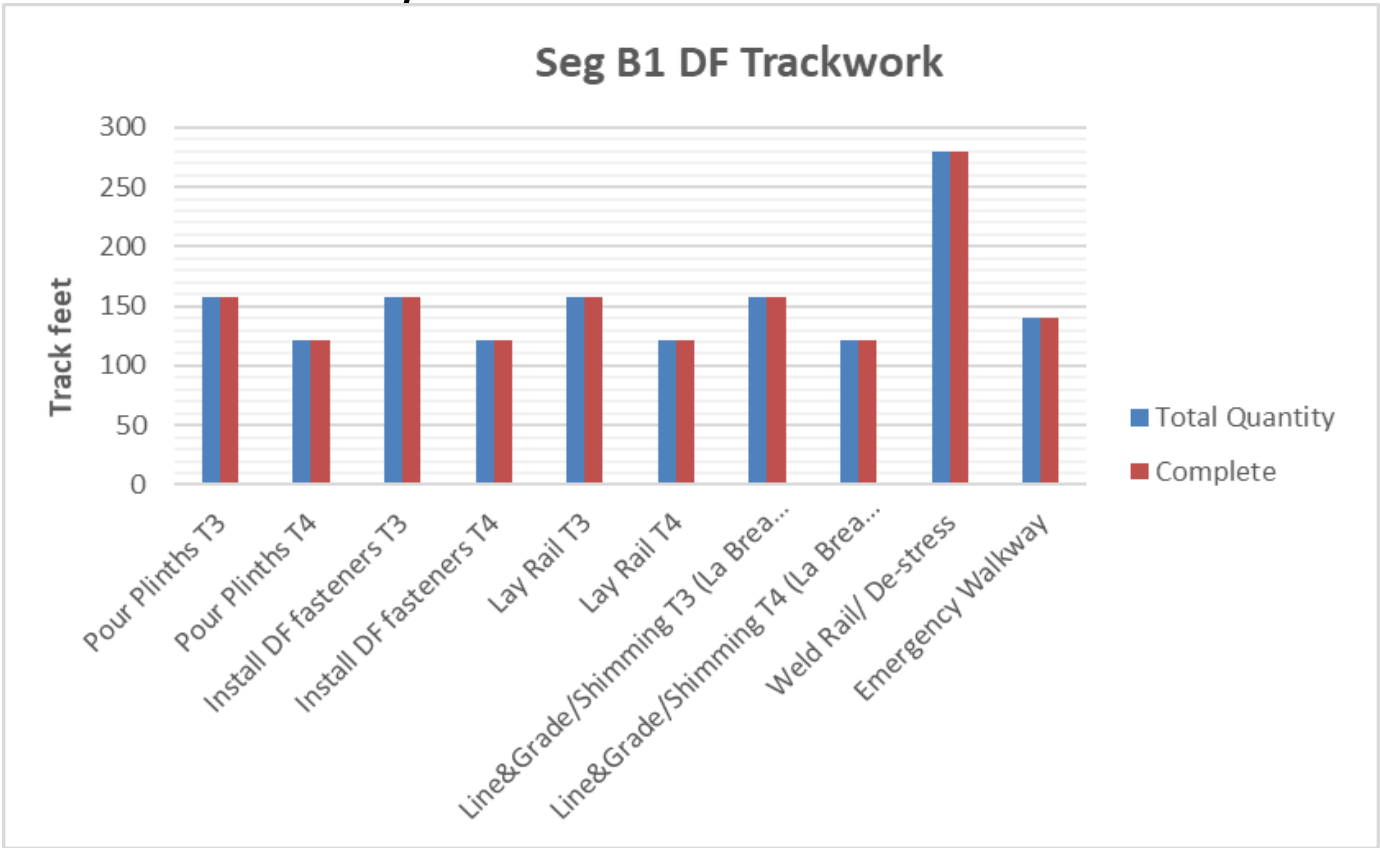
CRENSHAW/LAX PHOTOGRAPHIC UPDATE

SEGMENT B1:

- Disturbed ballast due to systems electrical conduit relocations continues to be repaired and re-dressed.
- WSCC continues the Jet Grouting of MSE Wall 202.
- Investigation of rail flaws continues.

PROJECT WIDE TRACKWORK PROGRESS								
	TRACK TYPE	ACTIVITY	TRACK FEET/QUANTITY	INSTALLED TO DATE	REMAINING	ACTIVITY % PROGRESS	Potential Rework *	Punchlist ** (Complete/Incomplete)
SEGMENT B1	DF (279 TF)	Pour Plinths T3	158	158	0	100.00%		
		Pour Plinths T4	121	121	0	100.00%		
		Install DF fasteners T3	158	158	0	100.00%	*	INC
		Install DF fasteners T4	121	121	0	100.00%	*	INC
		Lay Rail T3	158	158	0	100.00%		
		Lay Rail T4	121	121	0	100.00%		
		Line&Grade/Shimming T3 (La Brea Bridge)	158	158	0	100.00%		
		Line&Grade/Shimming T4 (La Brea Bridge)	121	121	0	100.00%		
		Weld Rail/ De-stress	279	279	0	100.00%		
		Emergency Walkway	140	140	0	100.00%		
	Acceptance for turnover to subcontractors	yes/no	no					
	BALLASTED TRACKWORK (23,506 TF including grade crossings and Siding track)	Install Bottom Ballast (T3+T4 and Siding)	23,506	23,506	0	100.00%	*	INC
		Install ties, rail / clips, top ballast T3 + Siding	12,184	12,184	0	100.00%	*	INC
		Install ties, rail / clips, top ballast T4	11,322	11,322	0	100.00%	*	INC
		Surface and line / Regulate T3 + Siding	12,184	11,575	609	95.00%		
		Surface and line / Regulate T4	11,322	10,756	566	95.00%		
		De-stress	23,506	23,506	0	100.00%		
		Emergency Walkway	12,506	12,000	506	95.95%	*	INC
		Acceptance for turnover to subcontractors	yes/no	yes		N/A		
	SPECIAL TRACKWORK	Ballasted Single Crossover (O1/O2, P1/P2, Q1/Q2, T1/T2)	4	4	0	100.00%		
		Install switches (M, O1, O2, P1, P2, Q1, Q2, R, T1, T2 = 10)	10	10	0	100.00%		
		Thermite Welds	104	104	0	100.00%	*	
		Insulated Joints (IJ's)	43	43	0	100.00%	*	
		Acceptance for turnover to subcontractors	yes/no	No				
	GRADE X-ING	Construct Crossing (Oak/Cedar/Eucalyptus/Ivy/Centinel, High (50%), West, Brynhurst)	8	8		100.00%		
	DF =	Direct Fixation						
	T3 =	Track 3						
	T4 =	Track 4						
TF =	Track Feet							
*	Potential for rework based on recent guideway survey. Total impact of rework is unknown at this time.							
**	Punchlist Complete/Incomplete: Indicates the completion (COMP) or Incompletion (INC) of identified punchlist items							

CRENSHAW/LAX PHOTOGRAPHIC UPDATE

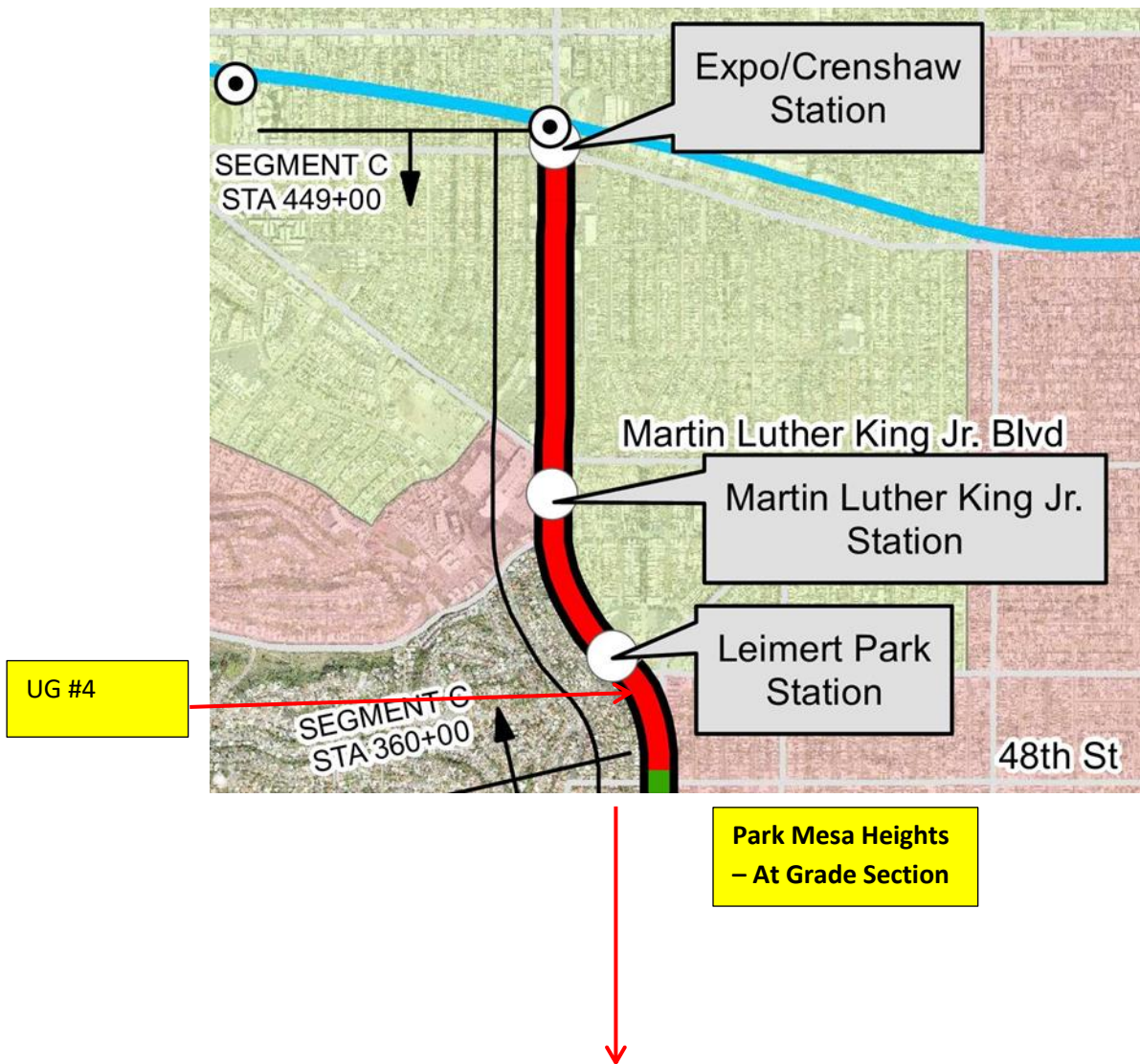


CRENSHAW/LAX PHOTOGRAPHIC UPDATE

SEGMENT B2:

- Disturbed ballast due to systems electrical conduit relocations continues to be repaired and re-dressed.
- Rework of plinth gap to invert continues throughout the Segment resetting and adjusting fasteners, sealing plinth to invert joints, and finishing the surface of the plinths.
- Rework of crossing panels is started.

Segment C



CRENSHAW/LAX PHOTOGRAPHIC UPDATE



LEIMERT PARK STATION – Working on tunnel booster fans on the northbound tunnel at STA 374+00.



LEIMERT PARK STATION – Sacking and patching CB#1 on SB Crenshaw Blvd between Vernon Ave and 43rd Pl.

CRENSHAW/LAX PHOTOGRAPHIC UPDATE



LEIMERT PARK STATION – Sacking and patching CB#10 and #11 on SB/NB Crenshaw Blvd and Brynhurst Ave.



LEIMERT PARK STATION – Drilling holes to the main entrance canopy outriggers for BOCA light fixture installation at the plaza.

CRENSHAW/LAX PHOTOGRAPHIC UPDATE



LEIMERT PARK STATION – Drilling holes to the main entrance canopy outriggers for BOCA light fixture installation at the plaza.



LEIMERT PARK STATION – Installing BOCA light fixtures to the main entrance canopy outriggers at the plaza.

CRENSHAW/LAX PHOTOGRAPHIC UPDATE



LEIMERT PARK STATION – Continue installing BOCA light fixtures to the main entrance canopy outriggers at the plaza.



LEIMERT PARK STATION – Continue installing BOCA light fixtures to the main entrance canopy outriggers at the plaza.

CRENSHAW/LAX PHOTOGRAPHIC UPDATE



LEIMERT PARK STATION – Continue installing BOCA light fixtures to the main entrance canopy outriggers at the plaza.

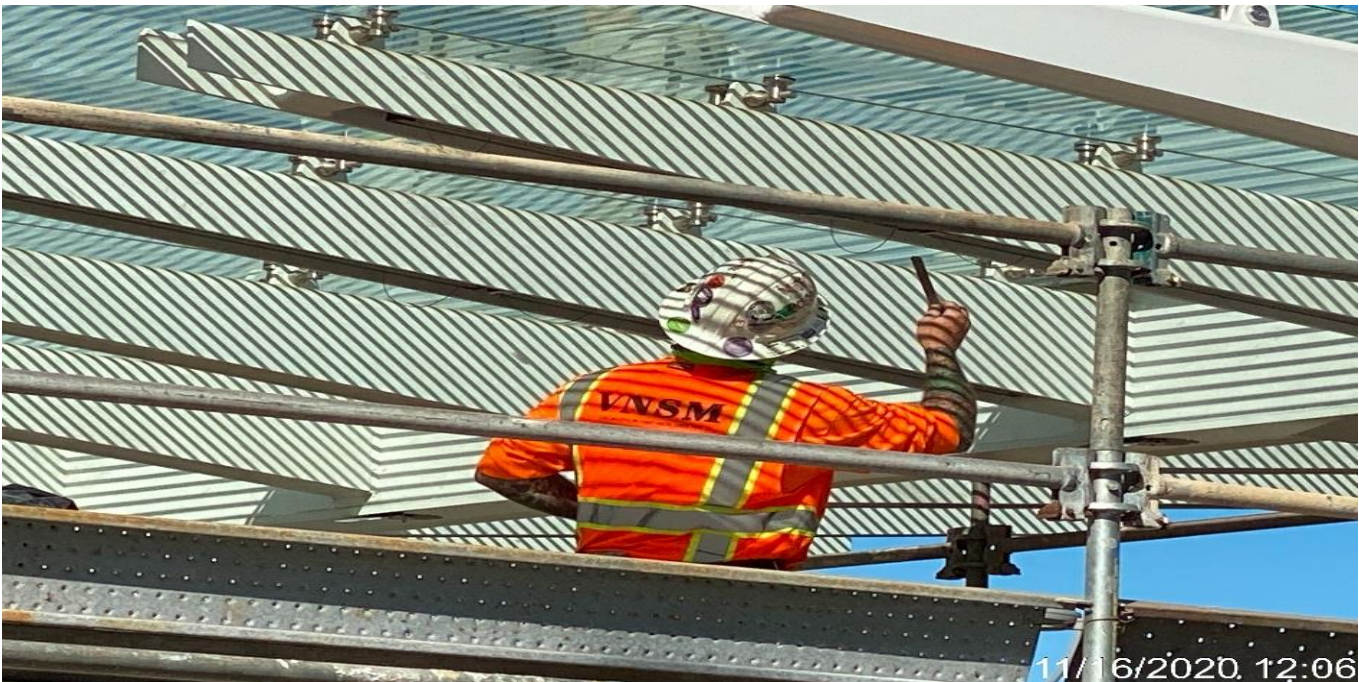


LEIMERT PARK STATION – Continue installing BOCA light fixtures to the main entrance canopy outriggers at the plaza.

CRENSHAW/LAX PHOTOGRAPHIC UPDATE

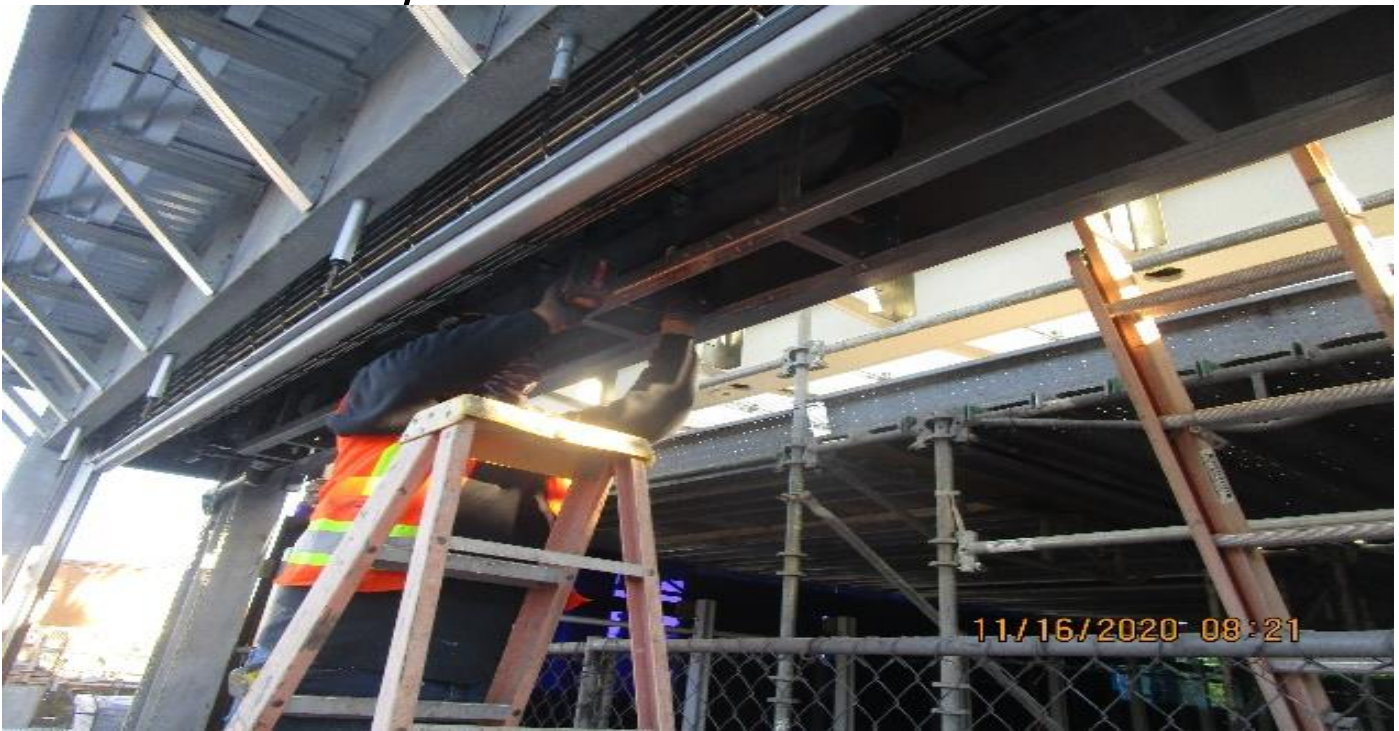


LEIMERT PARK STATION – Continue installing BOCA light fixtures to the main entrance canopy outriggers at the plaza.



LEIMERT PARK STATION – Continue installing BOCA light fixtures to the main entrance canopy outriggers at the plaza.

CRENSHAW/LAX PHOTOGRAPHIC UPDATE

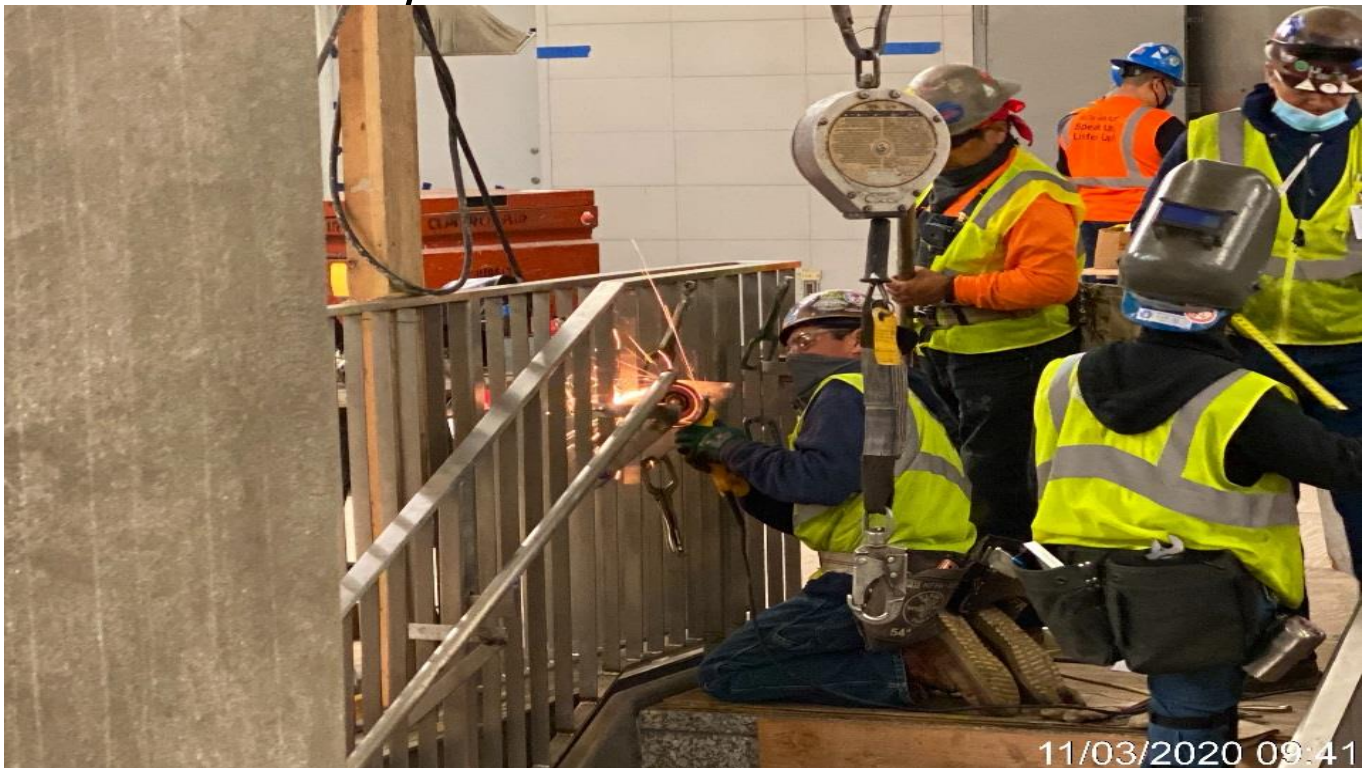


LEIMERT PARK STATION – Installing drain to the roll-up door at the plaza main entrance canopy structure.

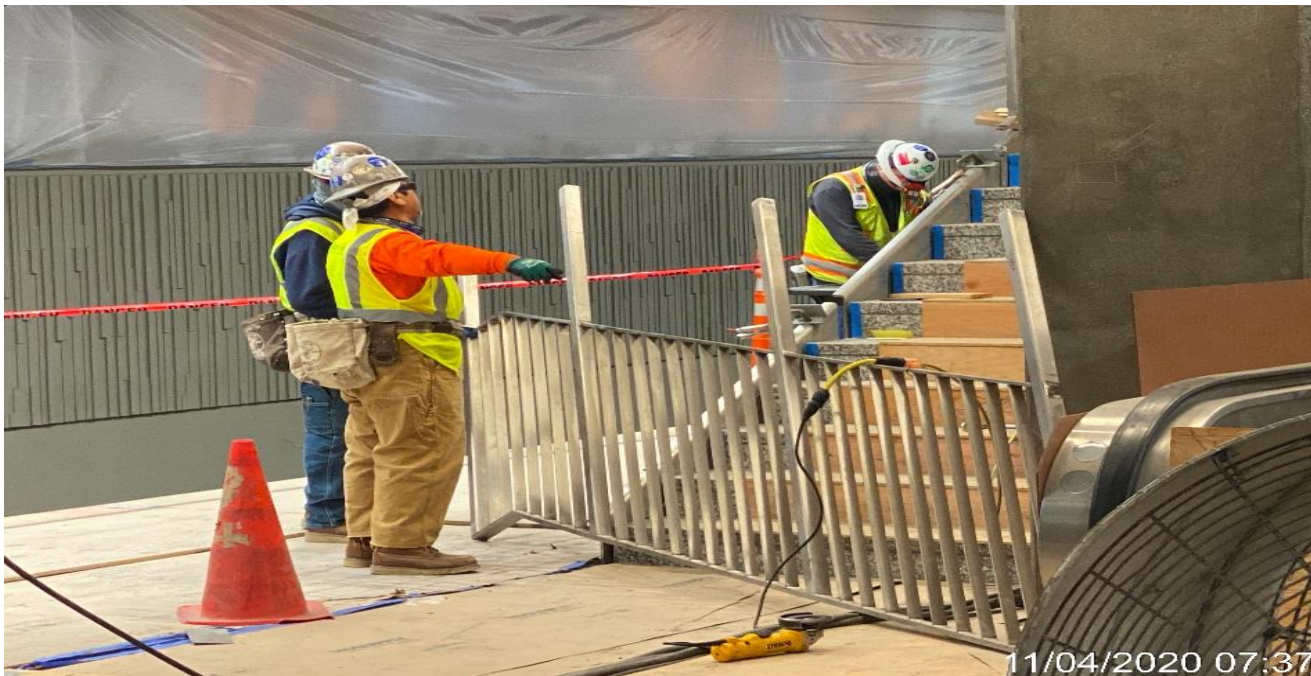


LEIMERT PARK STATION – Installing brackets to canopy outriggers of Elevators 1&2 for BOCA light fixture installation at the plaza.

CRENSHAW/LAX PHOTOGRAPHIC UPDATE

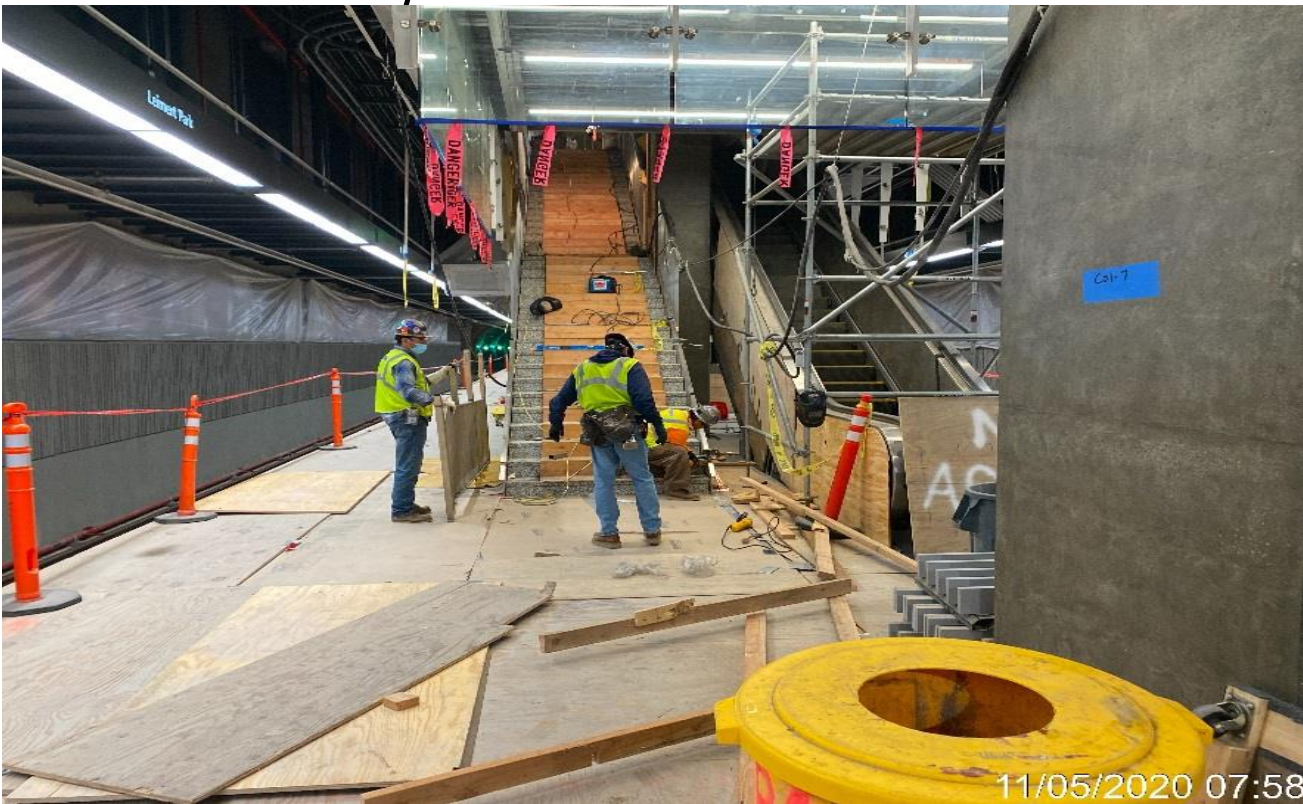


LEIMERT PARK STATION – Installing/welding and grinding handrails to the guardrails of Staircases 3&4 from concourse to platform.

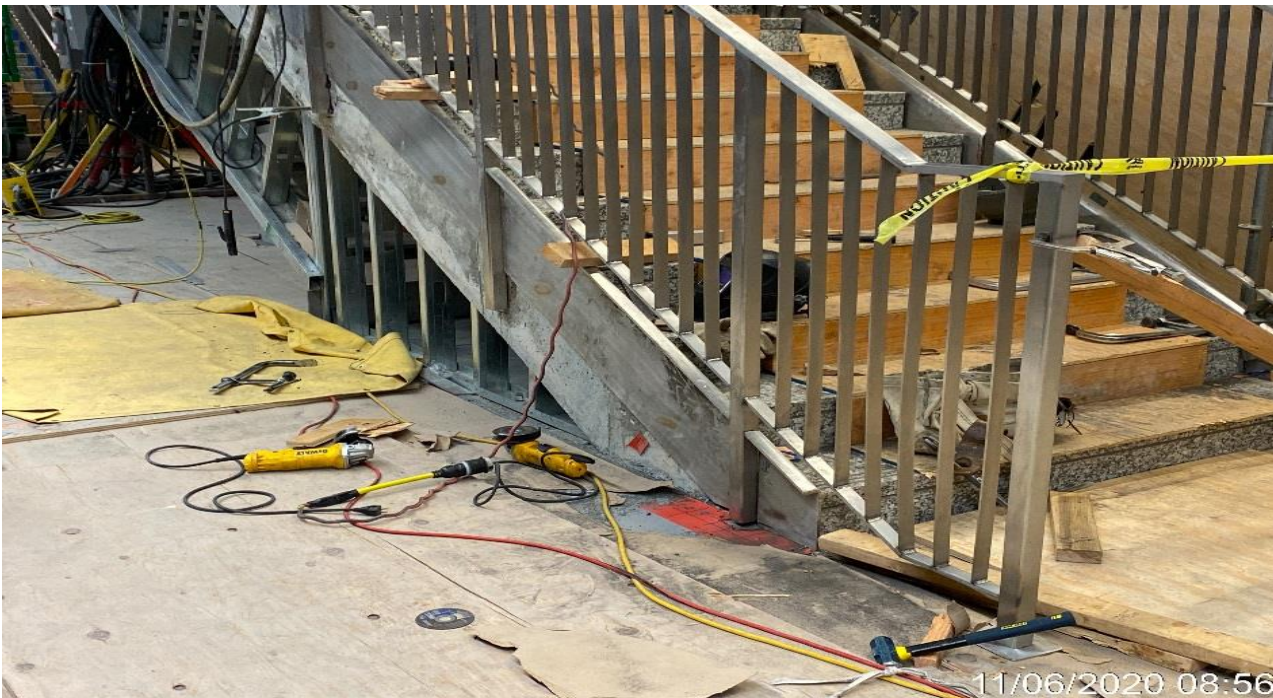


LEIMERT PARK STATION – Continue installing/welding guardrails to Staircases 3&4 from concourse to platform.

CRENSHAW/LAX PHOTOGRAPHIC UPDATE



LEIMERT PARK STATION – Continue installing/welding guardrails to Staircases 3&4 from concourse to platform.

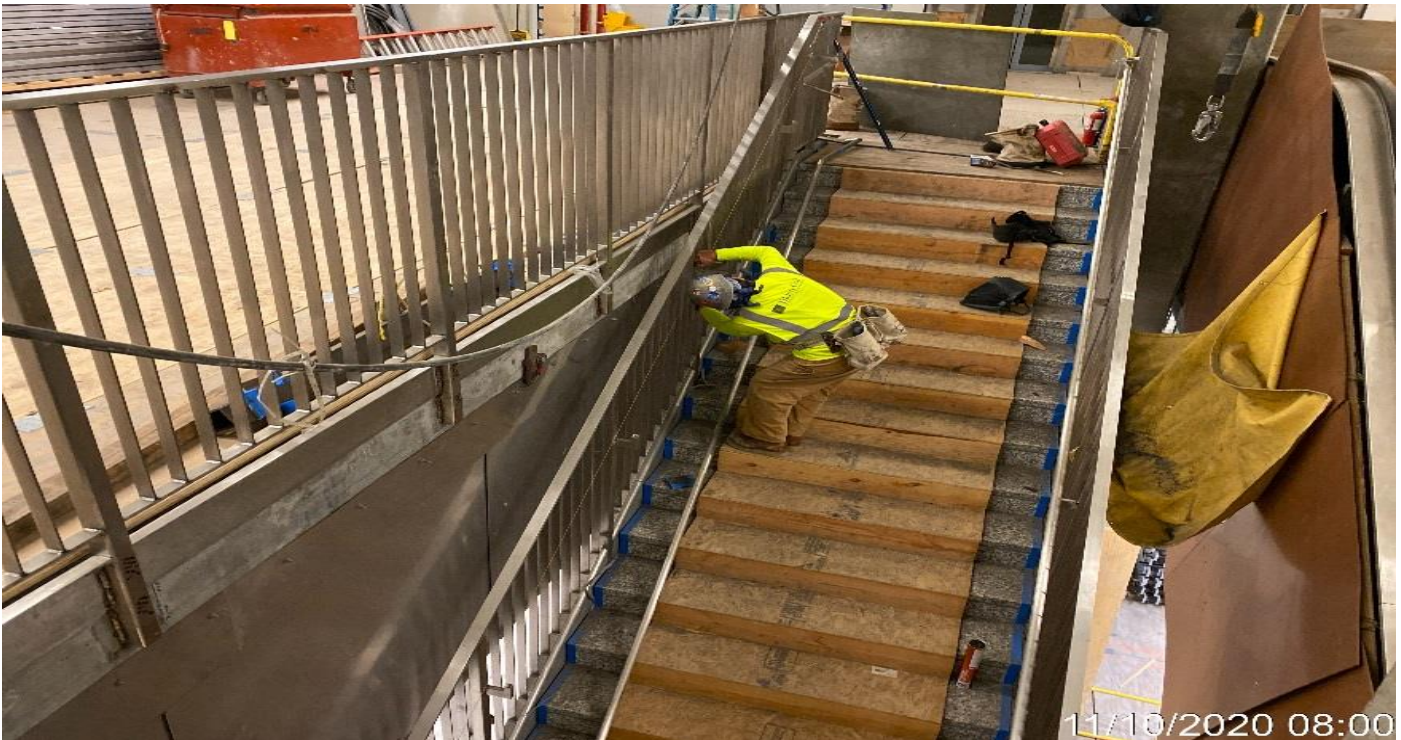


LEIMERT PARK STATION – Continue installing/welding guardrails to Staircases 3&4 from concourse to platform.

CRENSHAW/LAX PHOTOGRAPHIC UPDATE

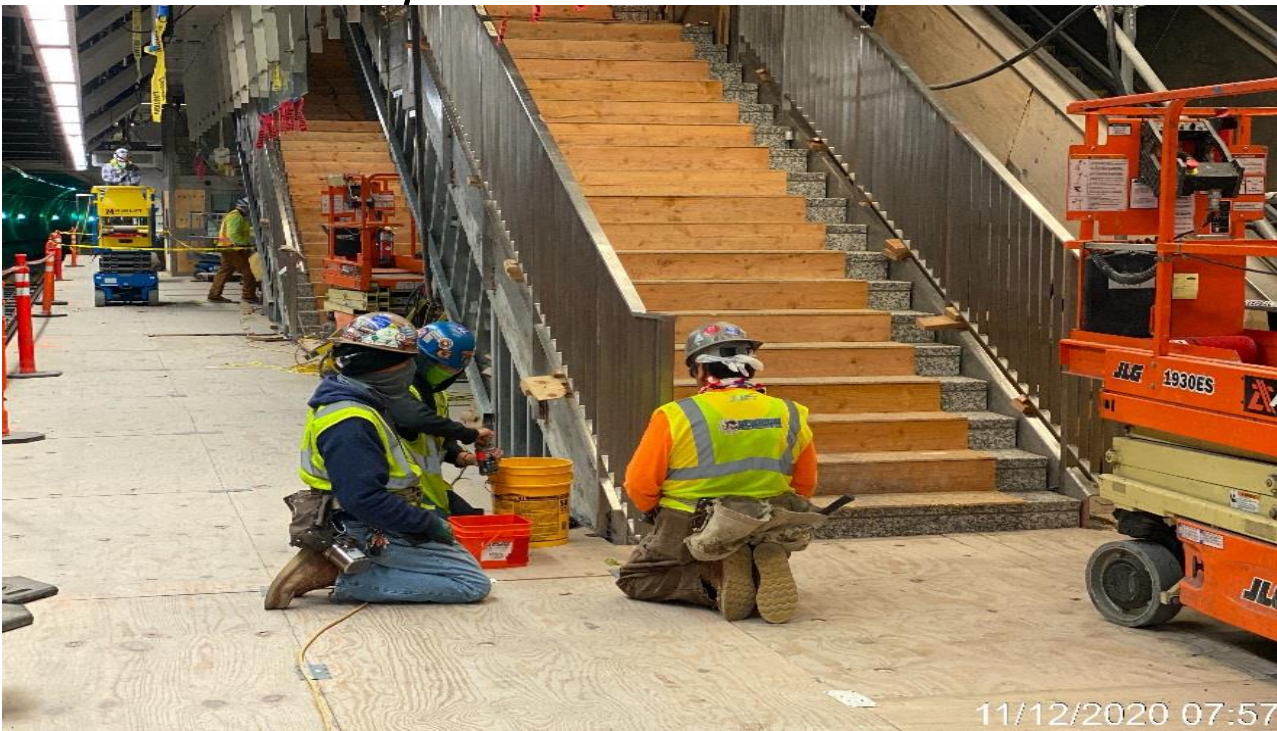


LEIMERT PARK STATION – Continue installing/welding guardrails to Staircases 3&4 from concourse to platform.

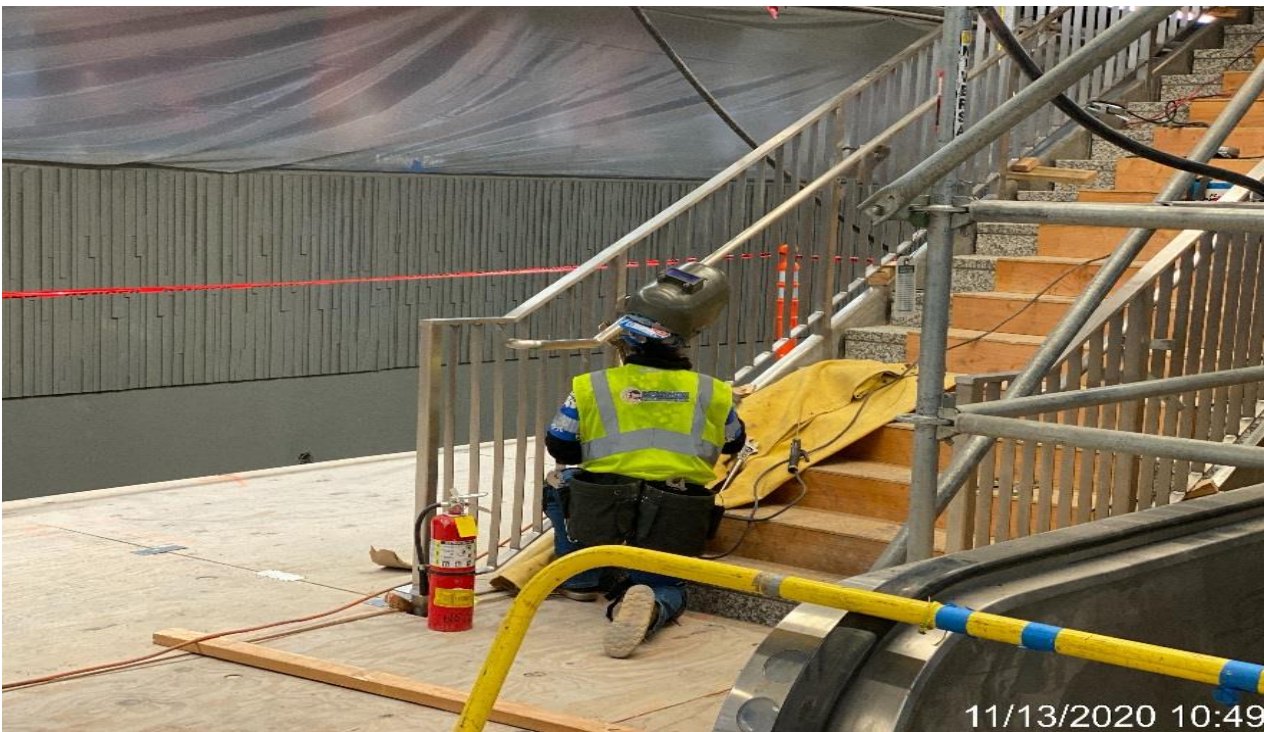


LEIMERT PARK STATION – Continue installing/welding guardrails to Staircases 3&4 from concourse to platform.

CRENSHAW/LAX PHOTOGRAPHIC UPDATE



LEIMERT PARK STATION – Continue installing/welding guardrails to Staircases 3 from concourse to platform.

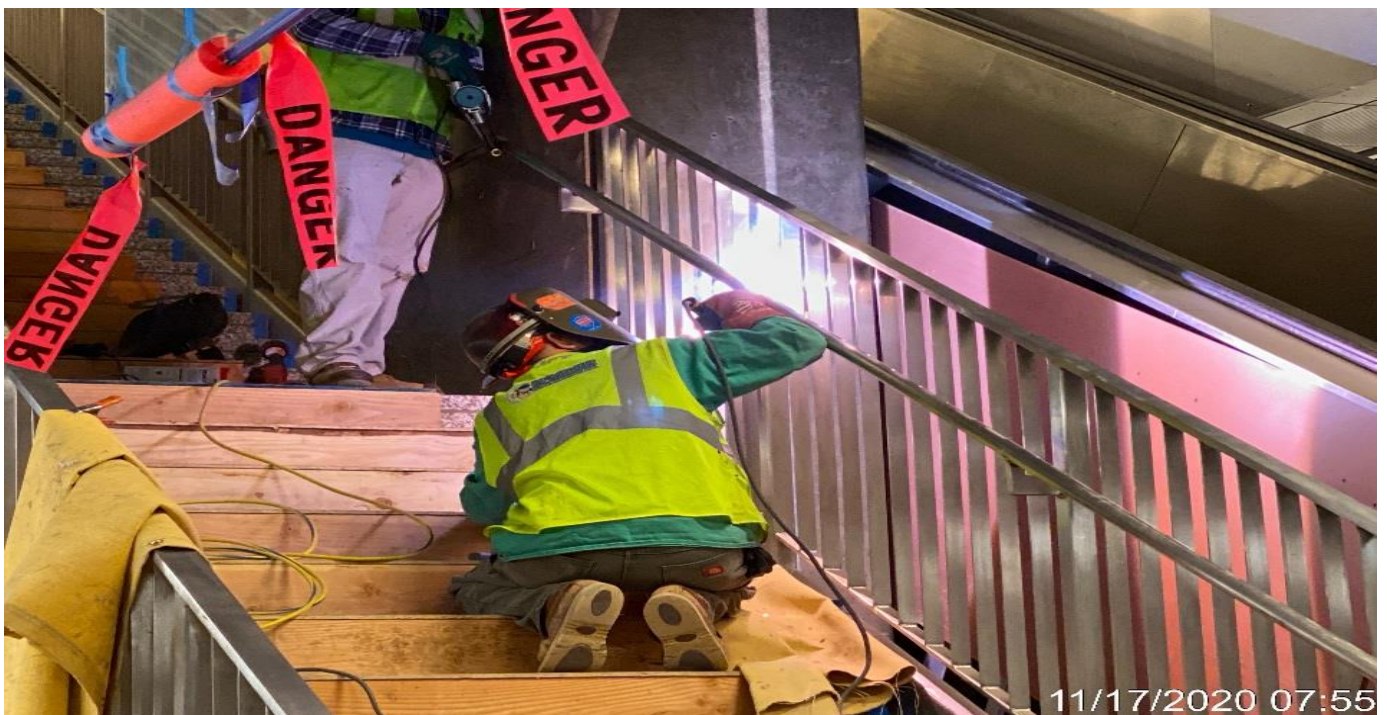


LEIMERT PARK STATION – Continue installing/welding guardrails to Staircases 3 from concourse to platform.

CRENSHAW/LAX PHOTOGRAPHIC UPDATE



LEIMERT PARK STATION – Continue installing/welding guardrails to Staircases 3 from concourse to platform.



LEIMERT PARK STATION – Continue installing/welding guardrails to Staircases 3 from concourse to platform.

CRENSHAW/LAX PHOTOGRAPHIC UPDATE



Leimert Park – WSCC saw cutting asphalt for removal at Vernon



Leimert Park – Vernon Plaza, Entrance Canopy begin pulling #10 XHHW-2 for normal & emergency lighting fixtures.

CRENSHAW/LAX PHOTOGRAPHIC UPDATE



Leimert Park – Vernon Plaza, continued pulling #10 HHW-2 wiring landscape lighting load conductors & grounds.



MLK STATION – Placing underground landscape conduit for irrigation at the plaza.

CRENSHAW/LAX PHOTOGRAPHIC UPDATE



MLK STATION – Encased irrigation conduit with concrete at the plaza.

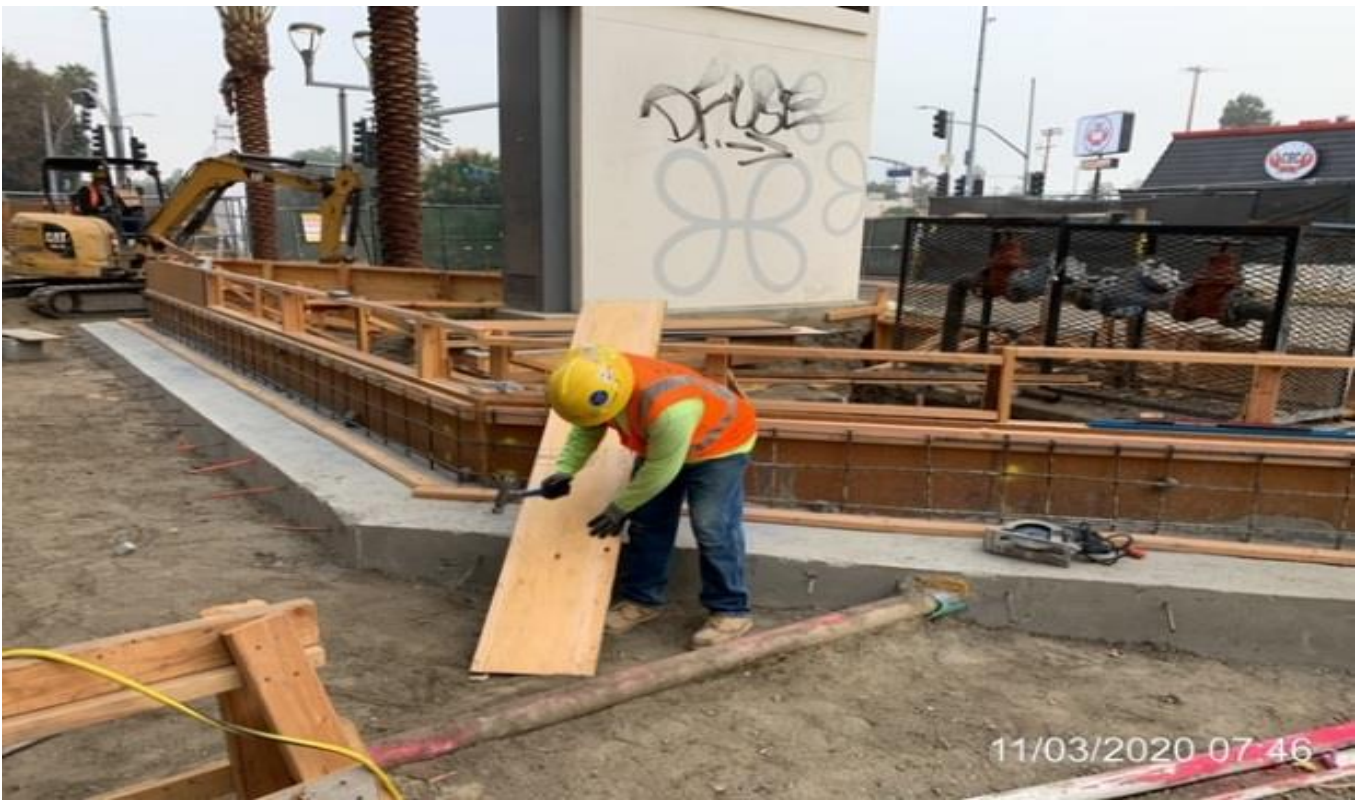


MLK STATION – Backfilling/compacting irrigation trenches at the far northwest area of the plaza.

CRENSHAW/LAX PHOTOGRAPHIC UPDATE



MLK STATION – Encased landscape conduit with concrete at the plaza.



MLK STATION – McMahan installing guardrail on stair #2

CRENSHAW/LAX PHOTOGRAPHIC UPDATE



MLK STATION – Continue building formwork for the north planter wall at the plaza.

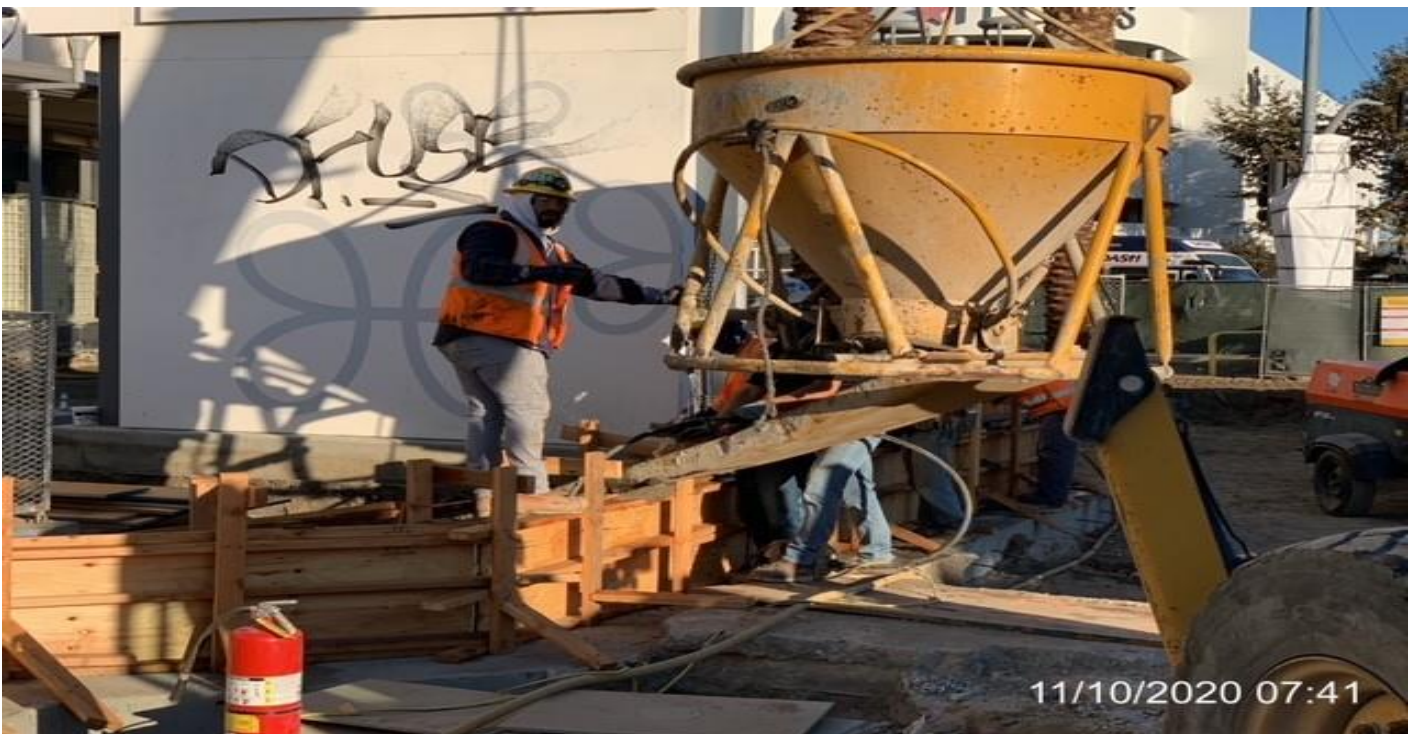


MLK STATION – Placing concrete for the north planter wall at the plaza.

CRENSHAW/LAX PHOTOGRAPHIC UPDATE

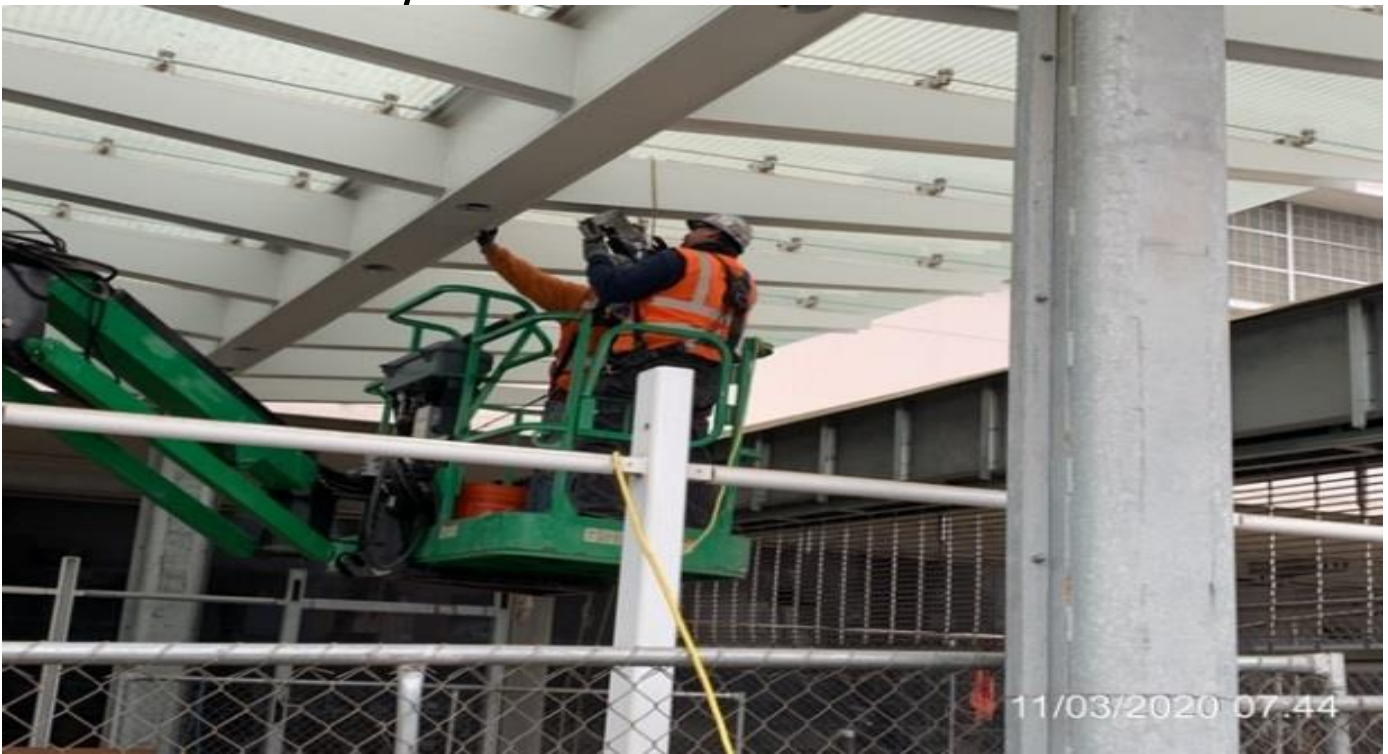


MLK STATION – Continue building formwork for the north planter wall at the plaza.



MLK STATION – Continue placing concrete for the north planter wall at the plaza.

CRENSHAW/LAX PHOTOGRAPHIC UPDATE



MLK STATION – Drilling holes to the main entrance canopy outriggers for BOCA light fixture installation at the plaza.



MLK STATION – Continue drilling holes to the main entrance canopy outriggers for BOCA light fixture installation at the plaza.

CRENSHAW/LAX PHOTOGRAPHIC UPDATE



MLK STATION – Installing BOCA light fixtures to the main entrance canopy outriggers at the plaza.



MLK STATION – Placing asphalt concrete around the bus pad pay on the east side of the plaza.

CRENSHAW/LAX PHOTOGRAPHIC UPDATE



MLK STATION – Grading/compacting the far northwest area of the plaza.



MLK STATION – Laying base and compacting the far northwest and northeast corner area of the plaza.

CRENSHAW/LAX PHOTOGRAPHIC UPDATE



MLK STATION – Continue laying base and compacting the far northwest area of the plaza.



MLK STATION – Installing top cabinet face section to the Grand Pylon Sign at the northeast corner of the plaza.

CRENSHAW/LAX PHOTOGRAPHIC UPDATE



MLK STATION – Setting formwork along the northeast corner of the Mall at the plaza for new walkway curb.



MLK STATION – Continue setting formwork along the northeast corner of the Mall at the plaza for new walkway curb.

CRENSHAW/LAX PHOTOGRAPHIC UPDATE

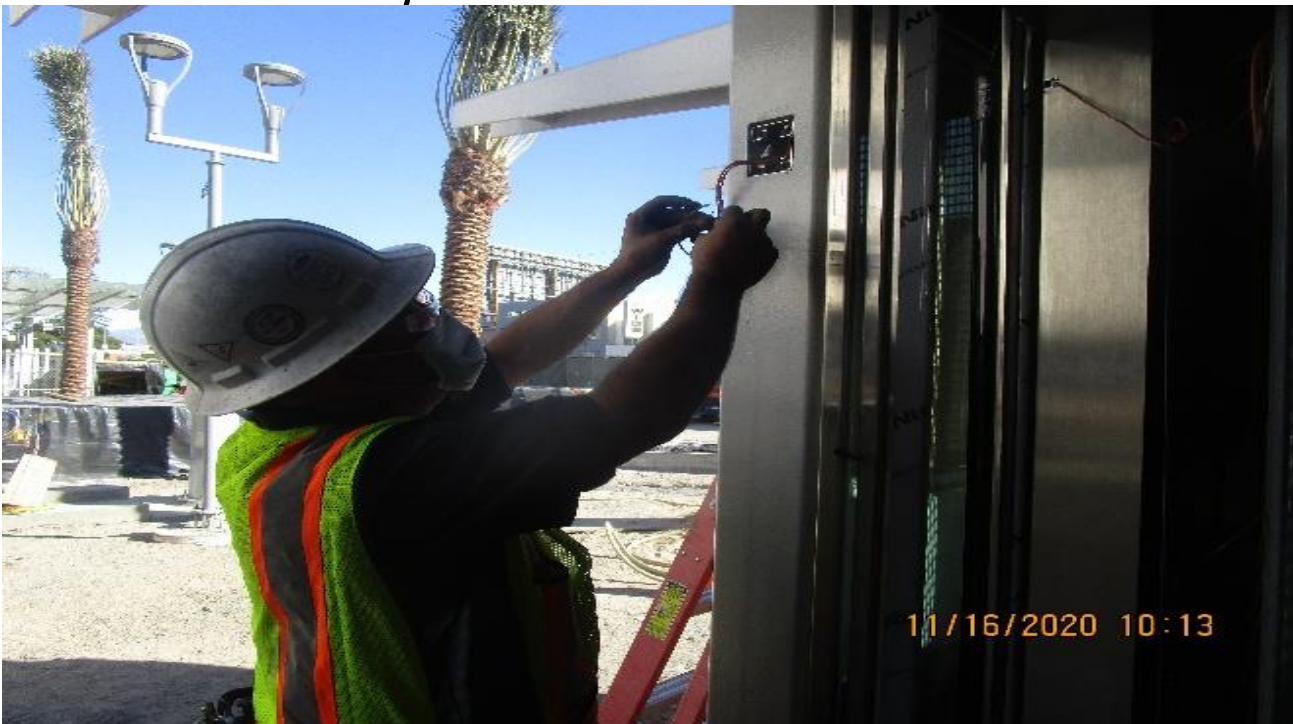


MLK STATION – Chipping door landing of the Mall for curb new walkway curb along the west side of the plaza.

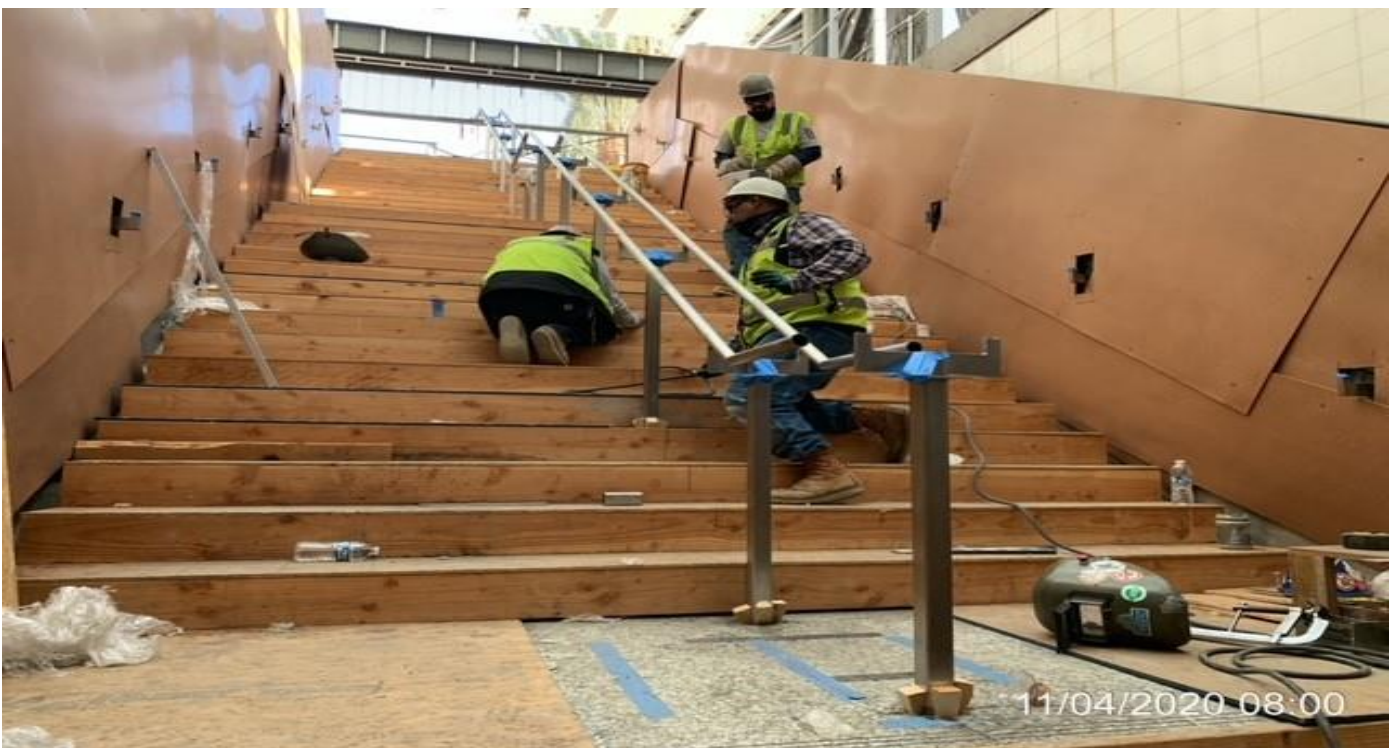


MLK STATION – Installing expansion board for curb wall along the east side of the Mall at the plaza.

CRENSHAW/LAX PHOTOGRAPHIC UPDATE



MLK STATION – Installing CCTV cameras and key switch to the exterior of Elevators 1&2 at the plaza level.



MLK STATION – Installing center handrail and grouting posts for Staircase 1 from plaza to concourse.

CRENSHAW/LAX PHOTOGRAPHIC UPDATE

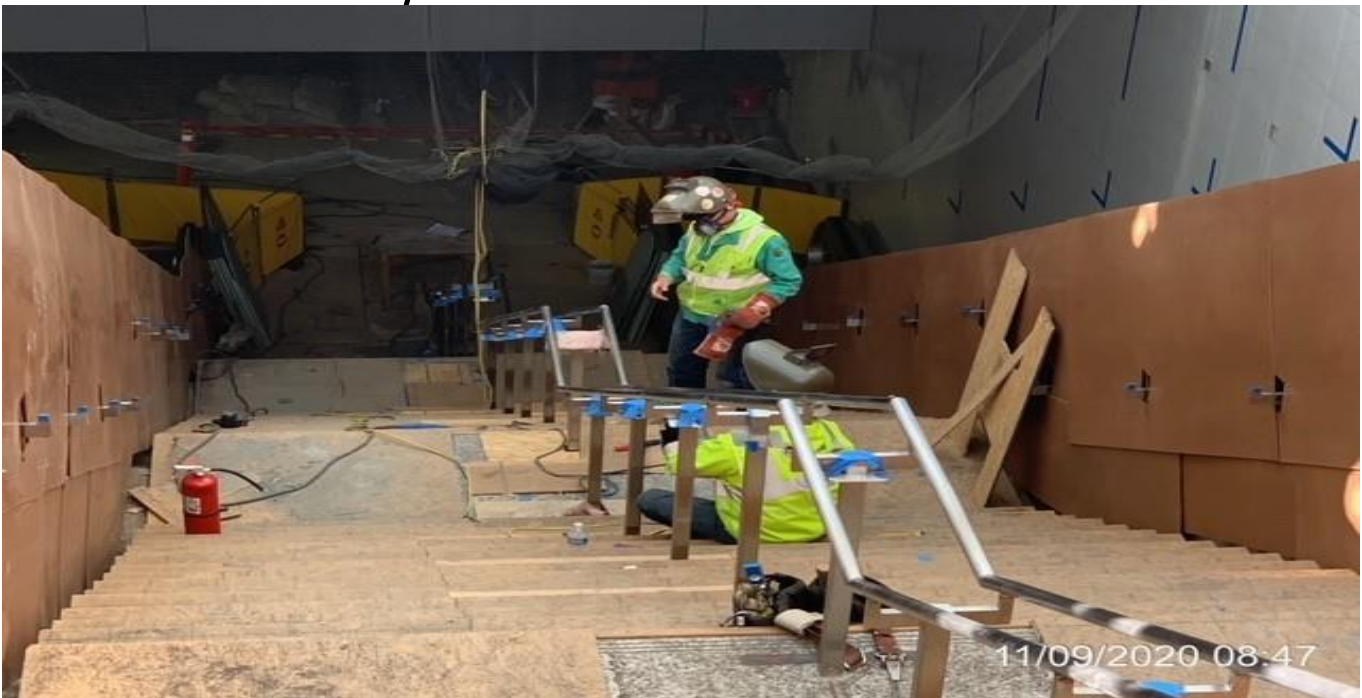


MLK STATION – Continue installing center handrail for Staircase 1 from plaza to concourse.



MLK STATION – Continue installing center handrail for Staircase 1 from plaza to concourse.

CRENSHAW/LAX PHOTOGRAPHIC UPDATE



MLK STATION – Continue installing center handrail for Staircase 1 from plaza to concourse.

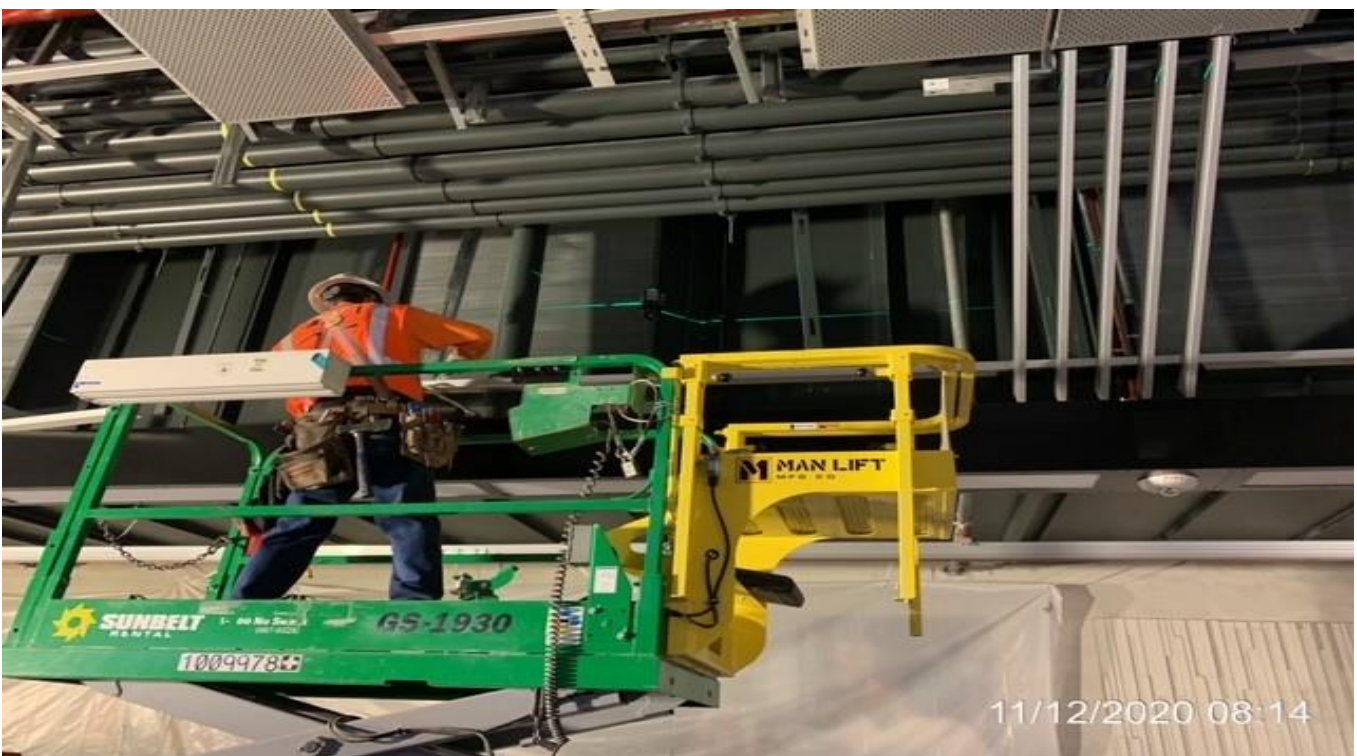


MLK STATION – Anchoring steel I-beams for catwalk installation in the Tunnel Vent/OTE Plenum North C-143 at the concourse.

CRENSHAW/LAX PHOTOGRAPHIC UPDATE



MLK STATION – Installing metal framing for catwalk installation in the Tunnel Vent/OTE Plenum North C-143 at the concourse.



MLK STATION – Installing runners for diagonal screen panel installation along the northbound platform.

CRENSHAW/LAX PHOTOGRAPHIC UPDATE



MLK STATION – Grinding and polishing welds for all the platform end gates.

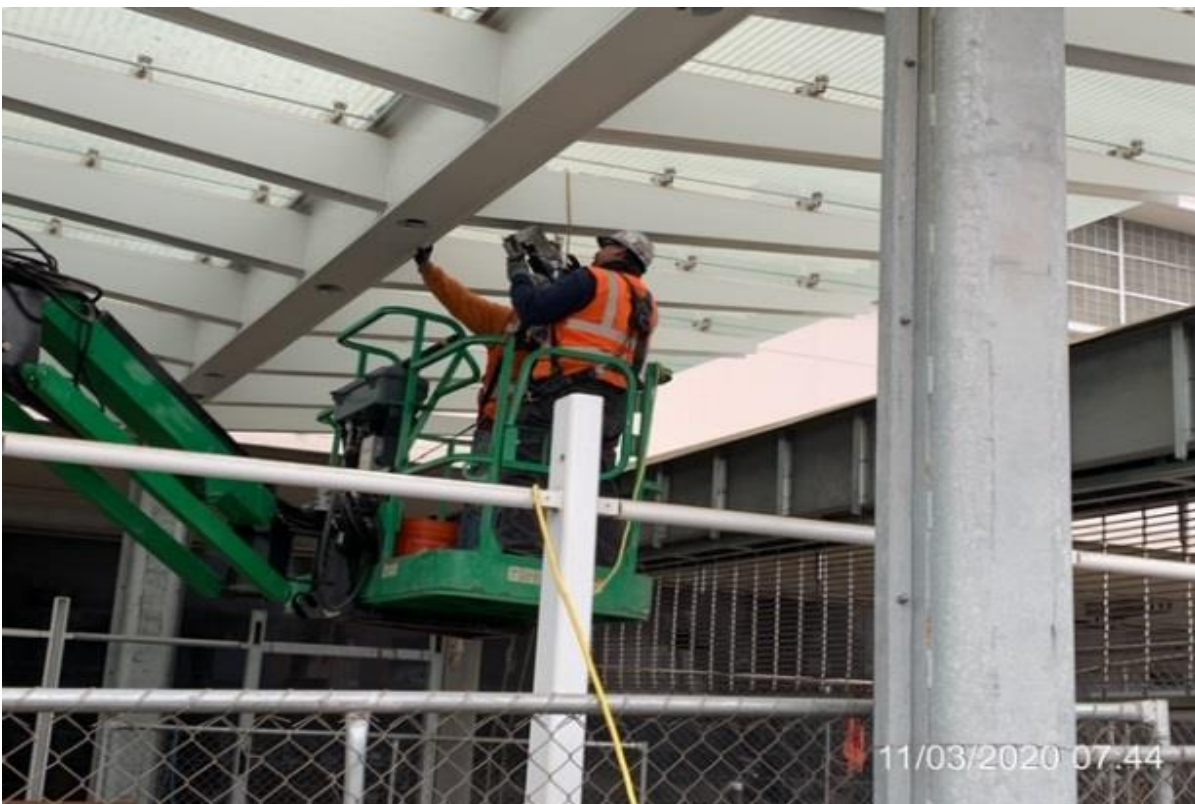


MLK STATION – WSCC crew placed concrete encasement for irrigation electrical conduit.

CRENSHAW/LAX PHOTOGRAPHIC UPDATE

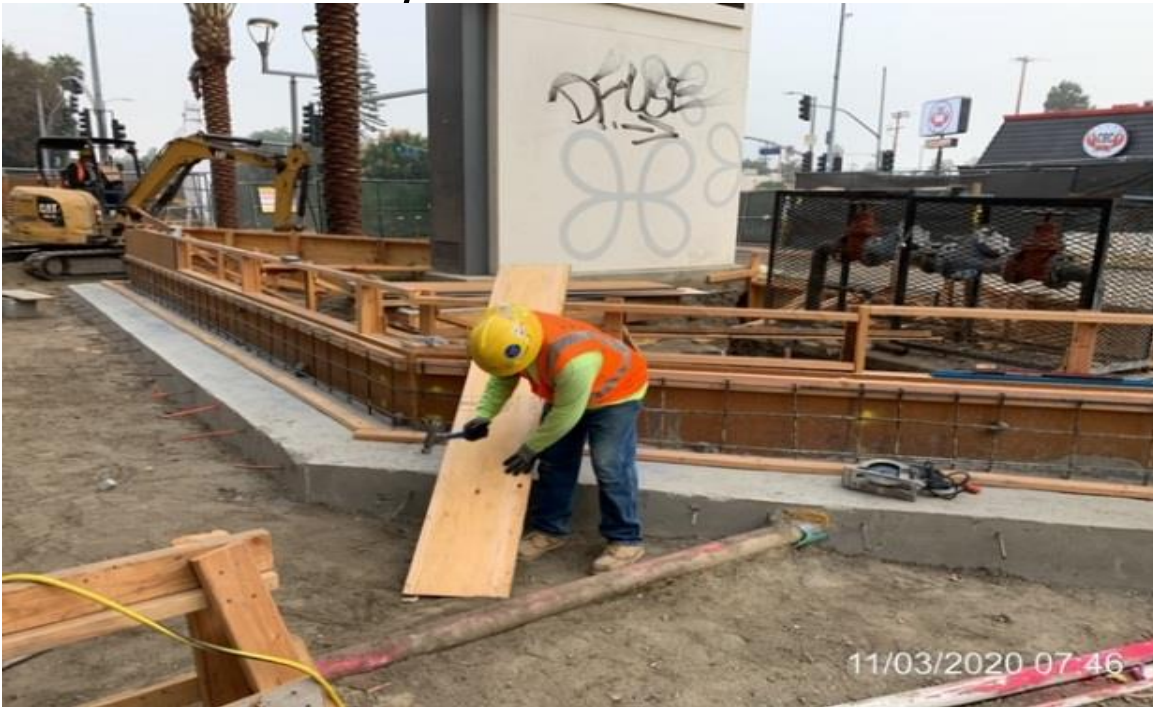


MLK STATION – MLK North Plaza, continued Reworking 1” GRC landscape lighting to allow grate clearance & installation.

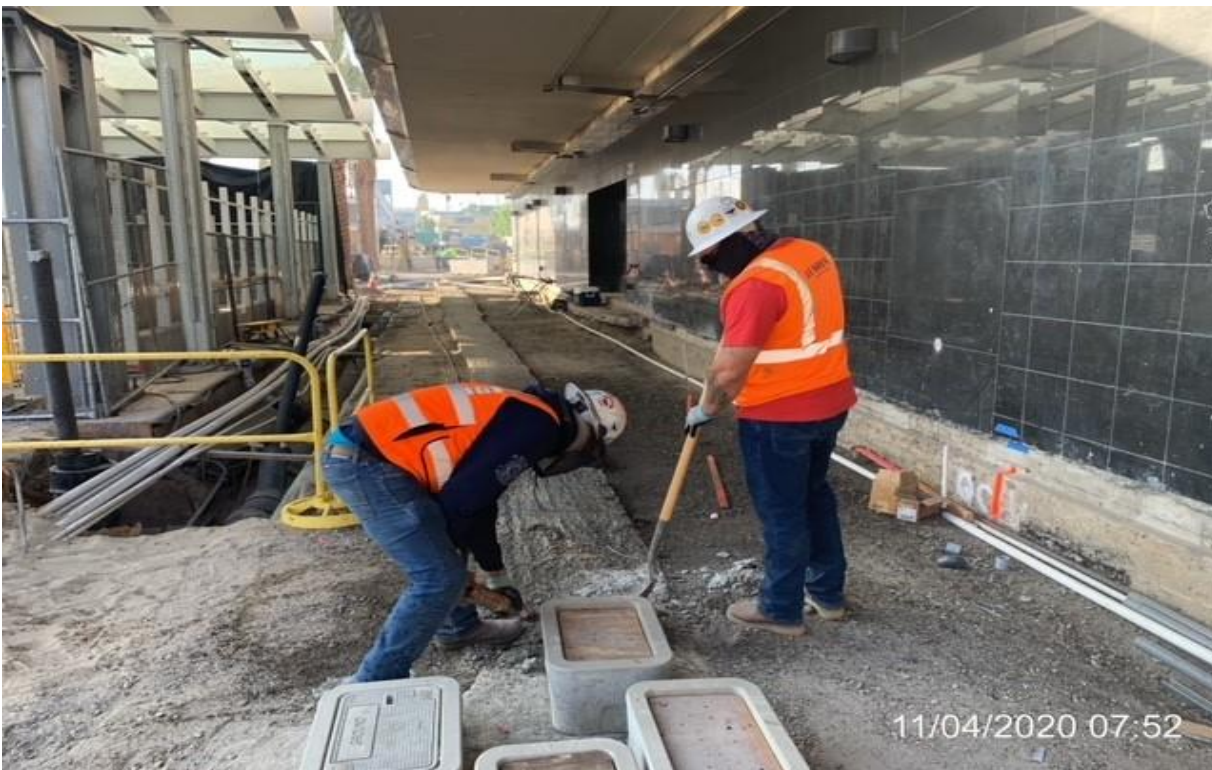


MLK STATION – WSCC ironworkers mag drilling for BOCA lights.

CRENSHAW/LAX PHOTOGRAPHIC UPDATE



MLK STATION – WSCC carpenters building formwork for north planter wall.



MLK STATION – WSCC crew chipping concrete encasement.

CRENSHAW/LAX PHOTOGRAPHIC UPDATE



MLK STATION – WSCC carpenters building formwork for north planter wall.



MLK STATION – MLK South Plaza, begin taking measurements for CAT-6 cables at light standards for CCTV cameras.

CRENSHAW/LAX PHOTOGRAPHIC UPDATE

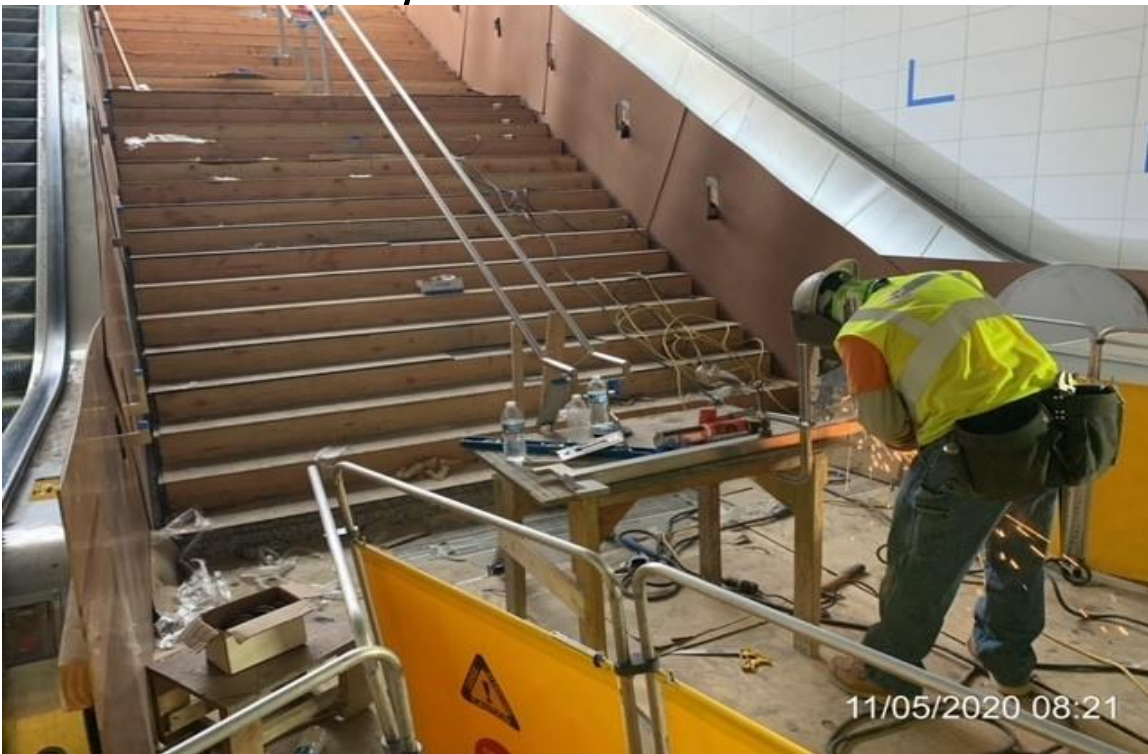


MLK STATION – WSCC crew backfilling and compacting.



MLK STATION – WSCC crew chipping concrete encasement.

CRENSHAW/LAX PHOTOGRAPHIC UPDATE

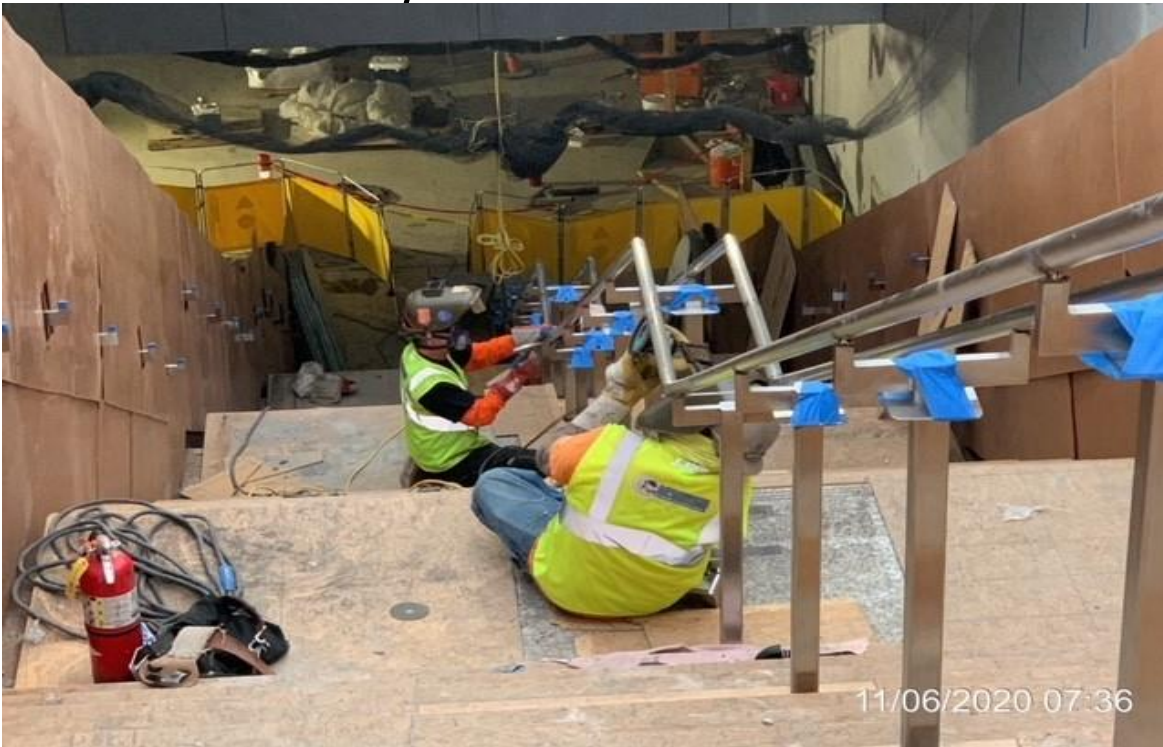


MLK STATION – McMahon installing center handrail at main staircase.



MLK STATION – WSCC crew placing concrete for north planter wall.

CRENSHAW/LAX PHOTOGRAPHIC UPDATE



MLK STATION – McMahon installing center handrail at main staircase.



MLK STATION – WSCC crew placing concrete encasement for 1” power and comm conduit.

CRENSHAW/LAX PHOTOGRAPHIC UPDATE



MLK STATION – MLK South Plaza, continued rework of CCTV PVC conduit & setting embedded pull box to elevation.



MLK STATION – WSCC crew setting formwork for curb next to mall footing.

CRENSHAW/LAX PHOTOGRAPHIC UPDATE



MLK STATION – MLK (S) Plaza, begin pulling #12 XHHW-2 landscape lighting wiring at palm trees to embedded pull boxes



EXPO STATION - Built formwork and placing concrete for sidewalk panels along westbound Obama Blvd and Crenshaw Blvd.

CRENSHAW/LAX PHOTOGRAPHIC UPDATE

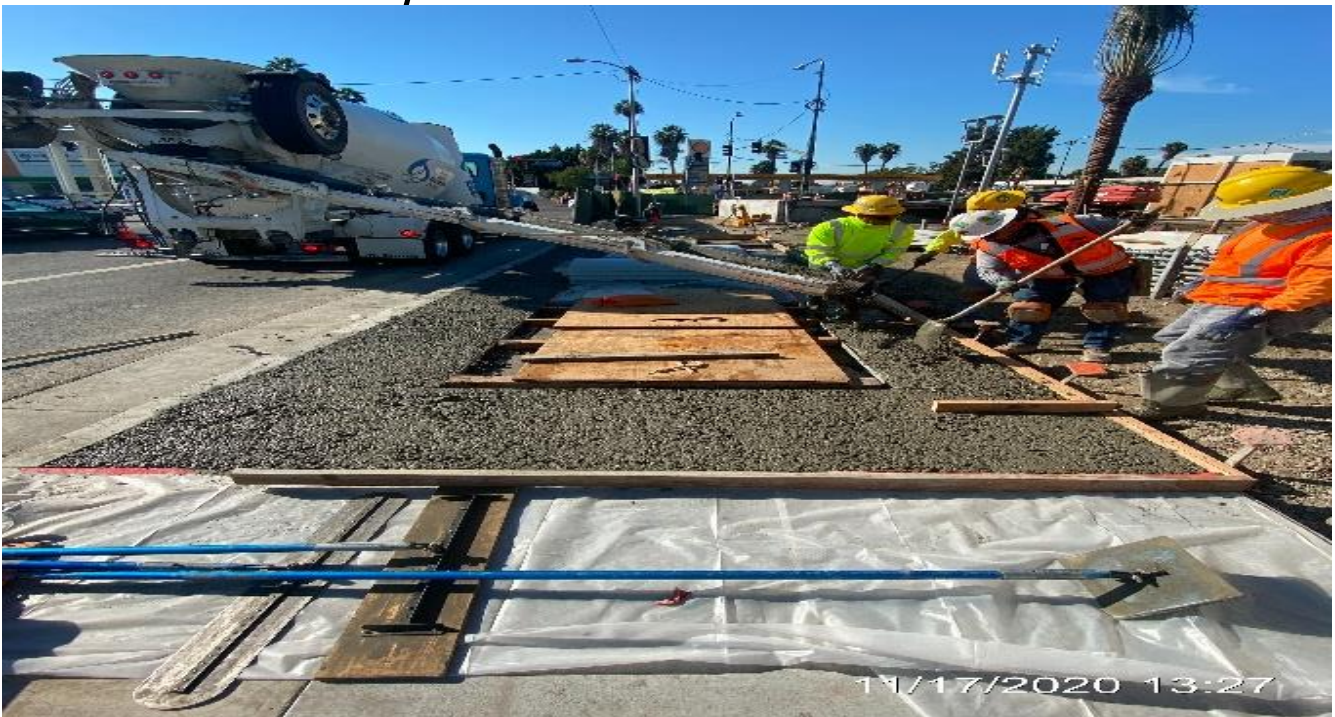


EXPO STATION – Built formwork and placing concrete for sidewalk panels along westbound Obama Blvd and Crenshaw Blvd.



EXPO STATION– Continue placing concrete for sidewalk panels along westbound Obama Blvd and Crenshaw Blvd.

CRENSHAW/LAX PHOTOGRAPHIC UPDATE



EXPO STATION– Continue building formwork and placing concrete for sidewalk panels along westbound Obama Blvd and Crenshaw Blvd.



EXPO STATION – Continue placing concrete for sidewalk panels along westbound Obama Blvd and Crenshaw Blvd.

CRENSHAW/LAX PHOTOGRAPHIC UPDATE



EXPO STATION – Built formwork and placed concrete for new ADA ramp on the southeast corner of Obama Blvd and Crenshaw Blvd.



EXPO STATION – Saw cut sidewalk panels and ADA ramp along northbound Crenshaw Blvd and at the southeast corner of Obama Blvd.

CRENSHAW/LAX PHOTOGRAPHIC UPDATE



EXPO STATION– Welding stainless steel encasement onto the South Vent Sack base on NB Crenshaw Blvd and Obama Blvd.

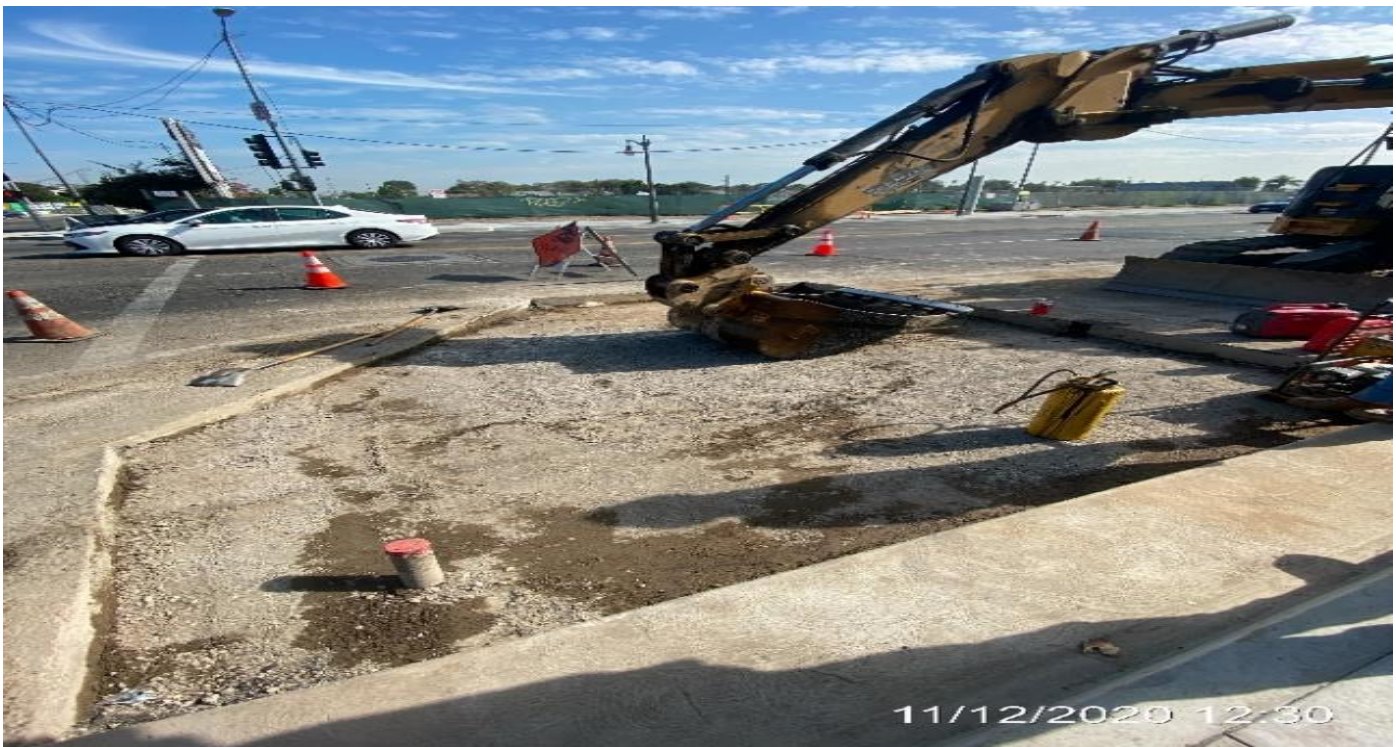


EXPO STATION– Slot paving on southbound Crenshaw Blvd between Obama Blvd and Exposition Blvd.

CRENSHAW/LAX PHOTOGRAPHIC UPDATE



EXPO STATION – Preparing to slot paved remaining section on southbound Crenshaw Blvd between Obama Blvd and Exposition Blvd.



EXPO STATION SITE – Preparing to place asphalt concrete on the southwest corner of Crenshaw Blvd and Obama Blvd.

CRENSHAW/LAX PHOTOGRAPHIC UPDATE



EXPO STATION SITE – Placing pedestrian light poles along the west side of the plaza.



EXPO STATION – Installing BOCA light fixtures to the main entrance canopy outriggers at the plaza.

CRENSHAW/LAX PHOTOGRAPHIC UPDATE



EXPO STATION – Continue installing BOCA light fixtures to the main entrance canopy outriggers at the plaza.



EXPO STATION – Continue installing BOCA light fixtures to the main entrance canopy outriggers at the plaza.

CRENSHAW/LAX PHOTOGRAPHIC UPDATE



EXPO STATION – Installing steel ladder inside the North Emergency Ventilation Shaft from plaza to concourse level.

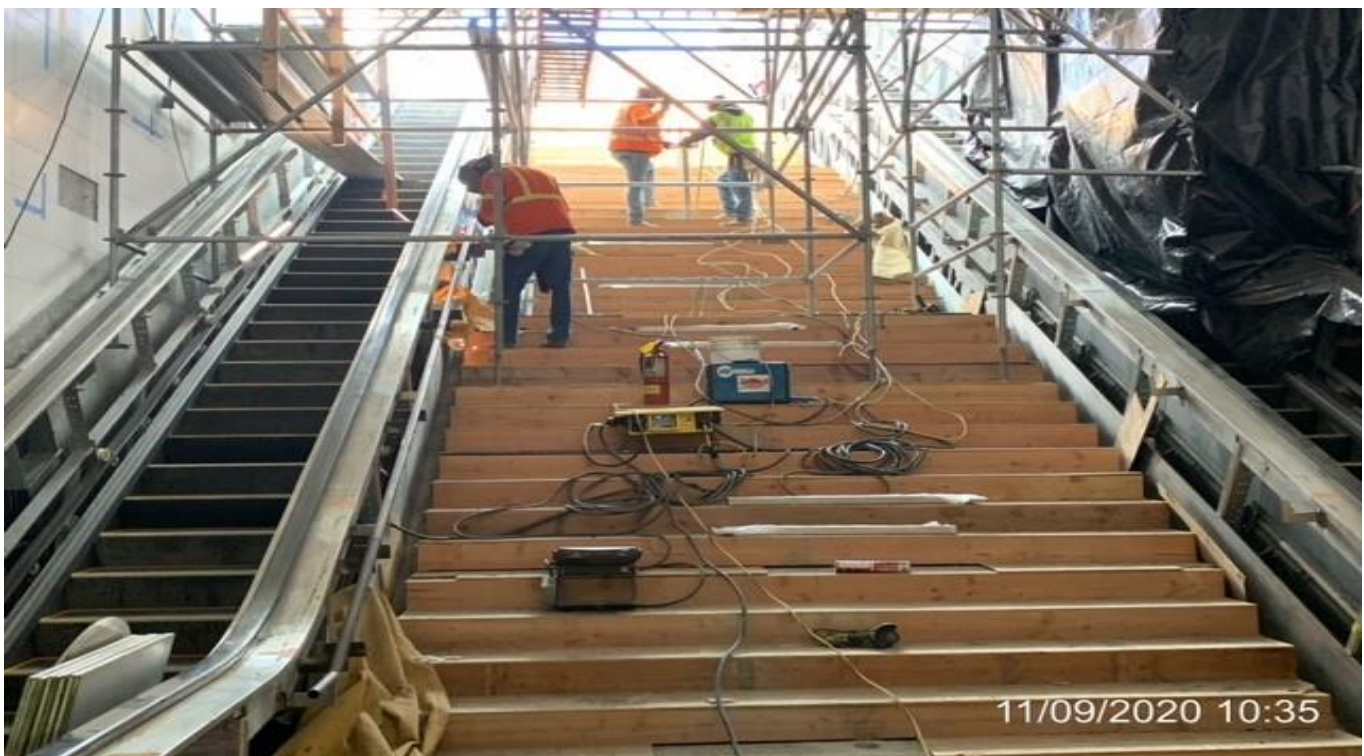


EXPO STATION – Grading and compacting the south end area of the plaza.

CRENSHAW/LAX PHOTOGRAPHIC UPDATE



EXPO STATION – Coring for center handrail installation at Staircase 1 from plaza to concourse.

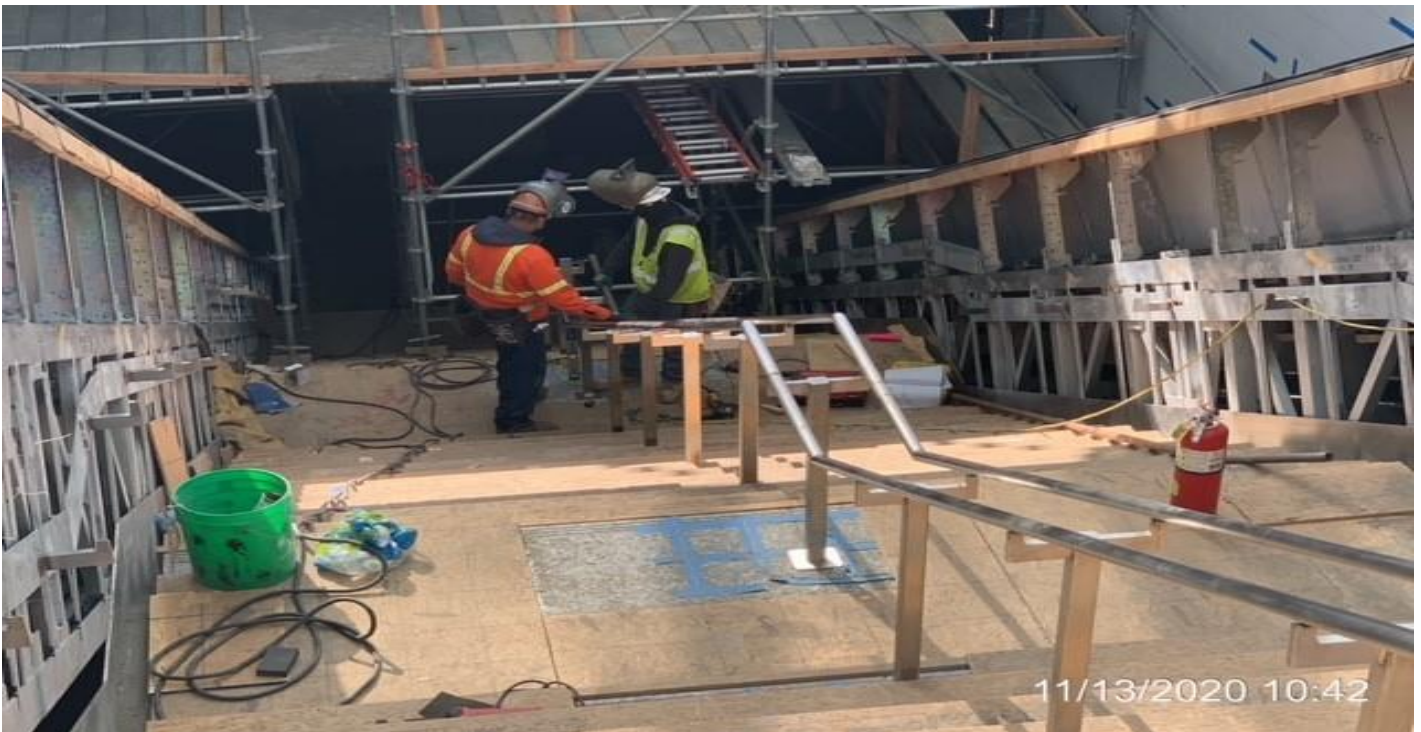


EXPO STATION SITE– Installing brackets to Escalators 1&2 for handrail installation and setting posts for center handrail of Staircase 1 from plaza to concourse.

CRENSHAW/LAX PHOTOGRAPHIC UPDATE

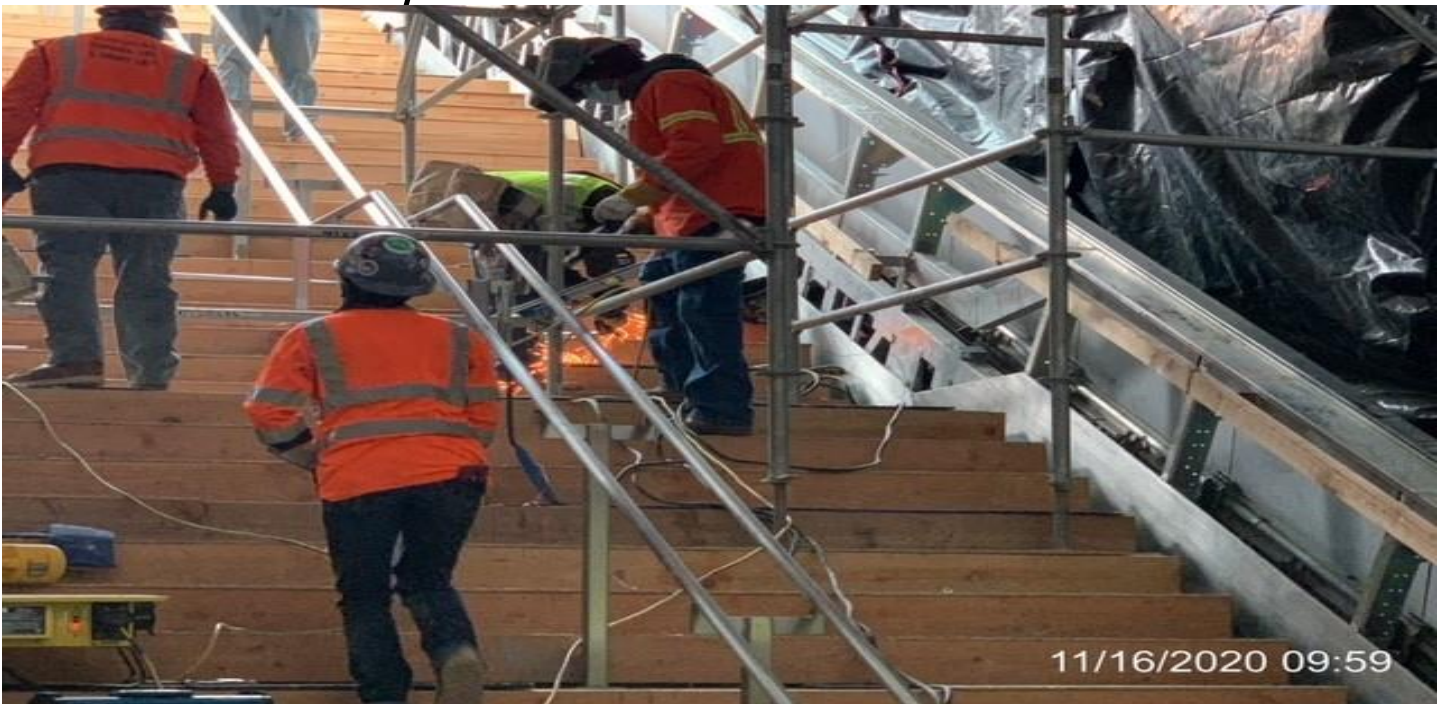


EXPO STATION – Continue installing center handrail for Staircase 1 from plaza to concourse.



EXPO STATION – Continue installing center handrail for Staircase 1 from plaza to concourse.

CRENSHAW/LAX PHOTOGRAPHIC UPDATE



EXPO STATION – Continue installing center handrail for Staircase 1 from plaza to concourse.

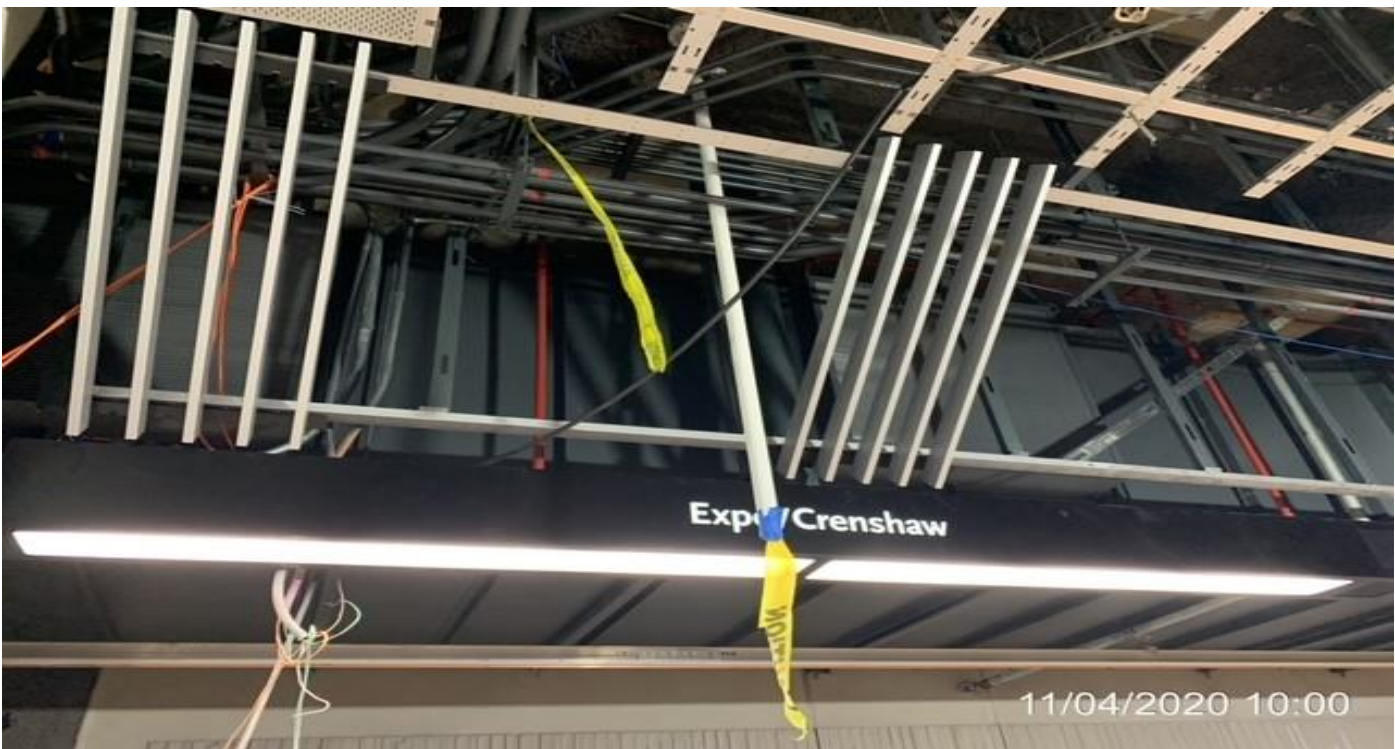


EXPO STATION – Continue installing center handrail for Staircase 1 from plaza to concourse.

CRENSHAW/LAX PHOTOGRAPHIC UPDATE



EXPO STATION – Drilling and anchoring free standing GTEs at the Paid Area of the concourse.

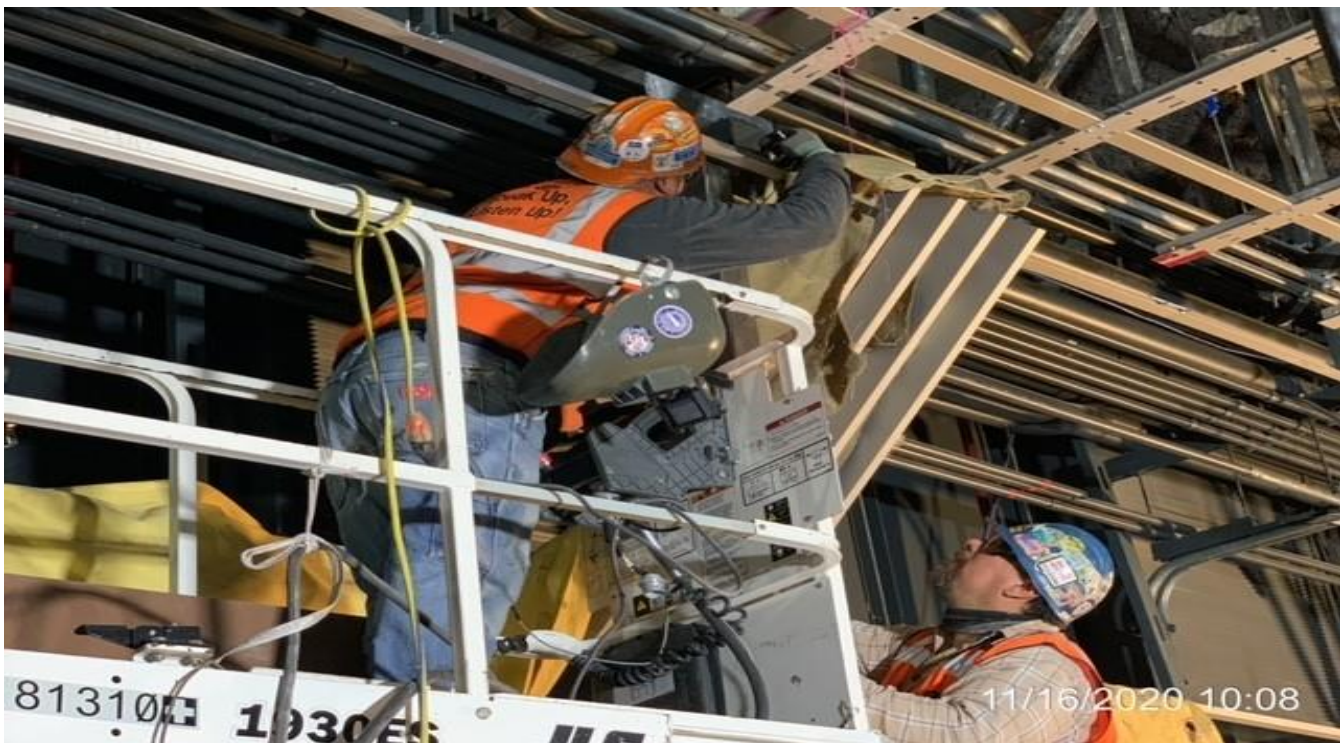


EXPO STATION – Installing diagonal screen panels along the northbound and southbound side of the platform.

CRENSHAW/LAX PHOTOGRAPHIC UPDATE



EXPO STATION – Continue installing diagonal screen panels along the northbound and southbound side of the platform.

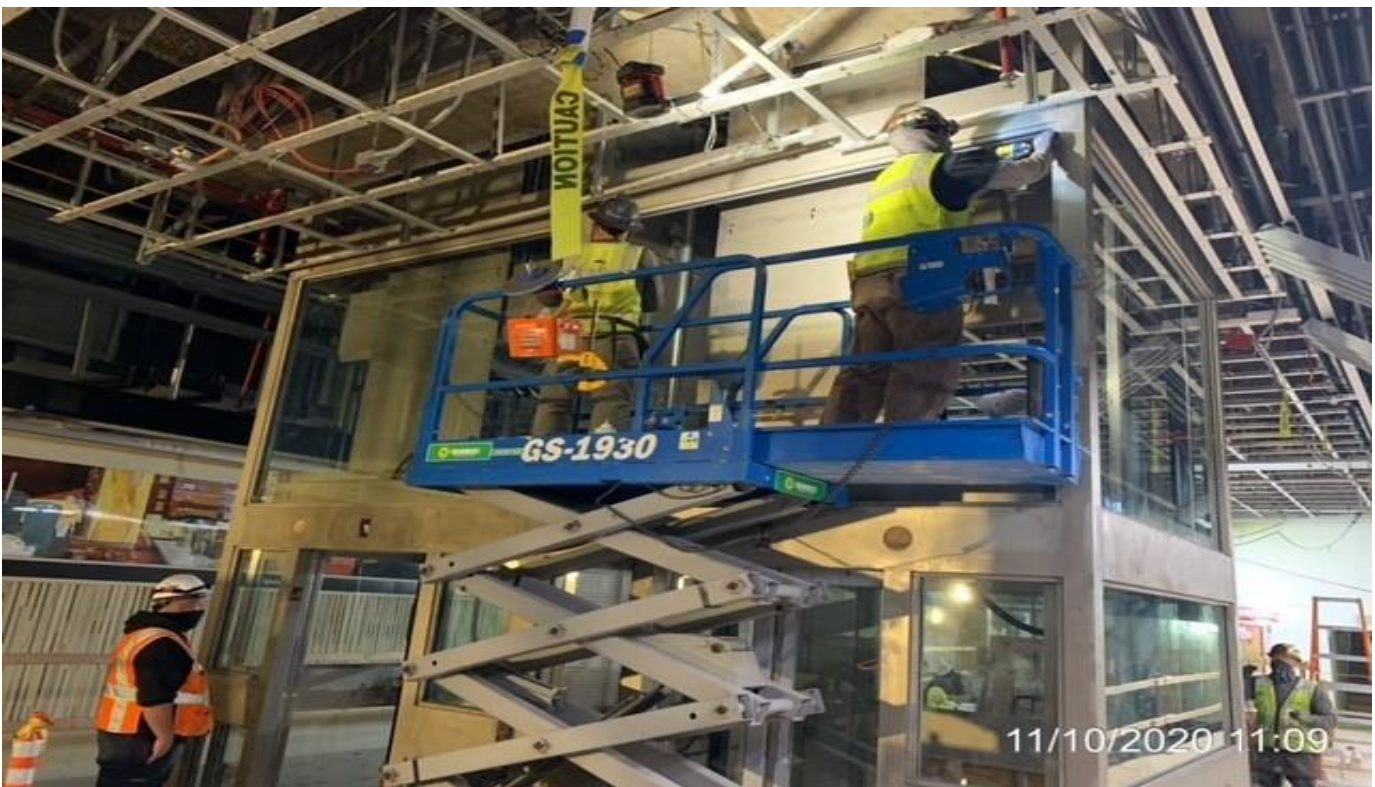


EXPO STATION – Installing LCD support system along the northbound and southbound side of the platform.

CRENSHAW/LAX PHOTOGRAPHIC UPDATE



EXPO STATION – Mobilizing glass panels to install to Elevators 3&4 at the platform.



EXPO STATION - Installing glass stops and panels to Elevators 3&4 at the platform.

CRENSHAW/LAX PHOTOGRAPHIC UPDATE



EXPO STATION – Continue installing glass stops and panels to Elevators 3&4 at the platform.



EXPO STATION – Caulking and sealing glass panels for Elevators 3&4 at the platform.

CRENSHAW/LAX PHOTOGRAPHIC UPDATE

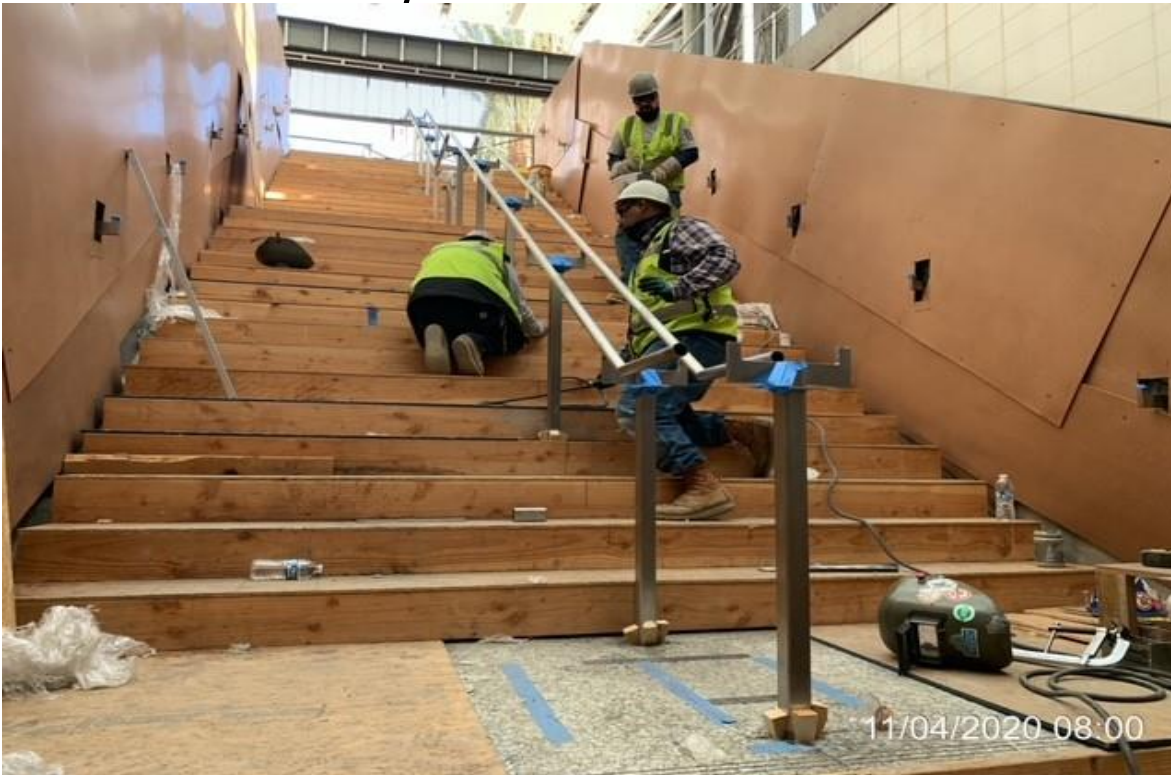


EXPO STATION – WSCC crew chipping for electrical conduit replacement.



EXPO STATION – WSCC chipping footing of north emergency ventilation shaft.

CRENSHAW/LAX PHOTOGRAPHIC UPDATE

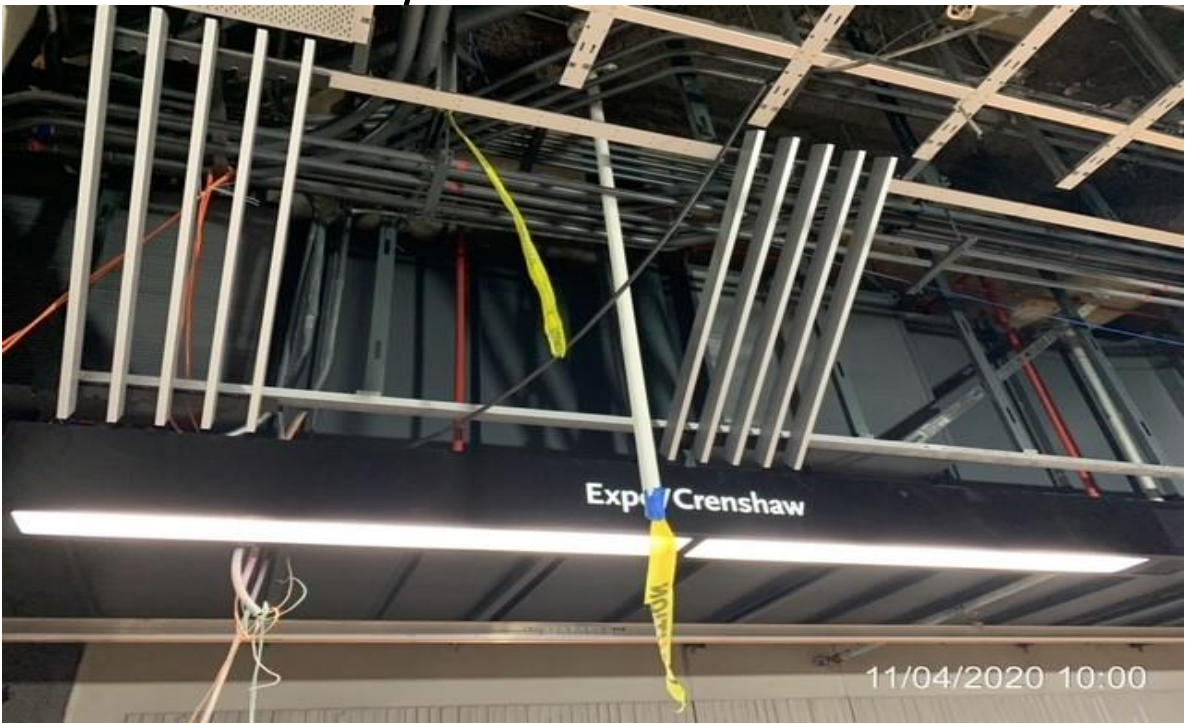


EXPO STATION – McMahon installing center handrail and grouting posts.



EXPO STATION – WSCC crew chipping encasement to add pull box..

CRENSHAW/LAX PHOTOGRAPHIC UPDATE



EXPO STATION – PCI installing “Barz” angle panels.



EXPO STATION – WSCC crew chipping footing of air exhaust shaft north.

CRENSHAW/LAX PHOTOGRAPHIC UPDATE

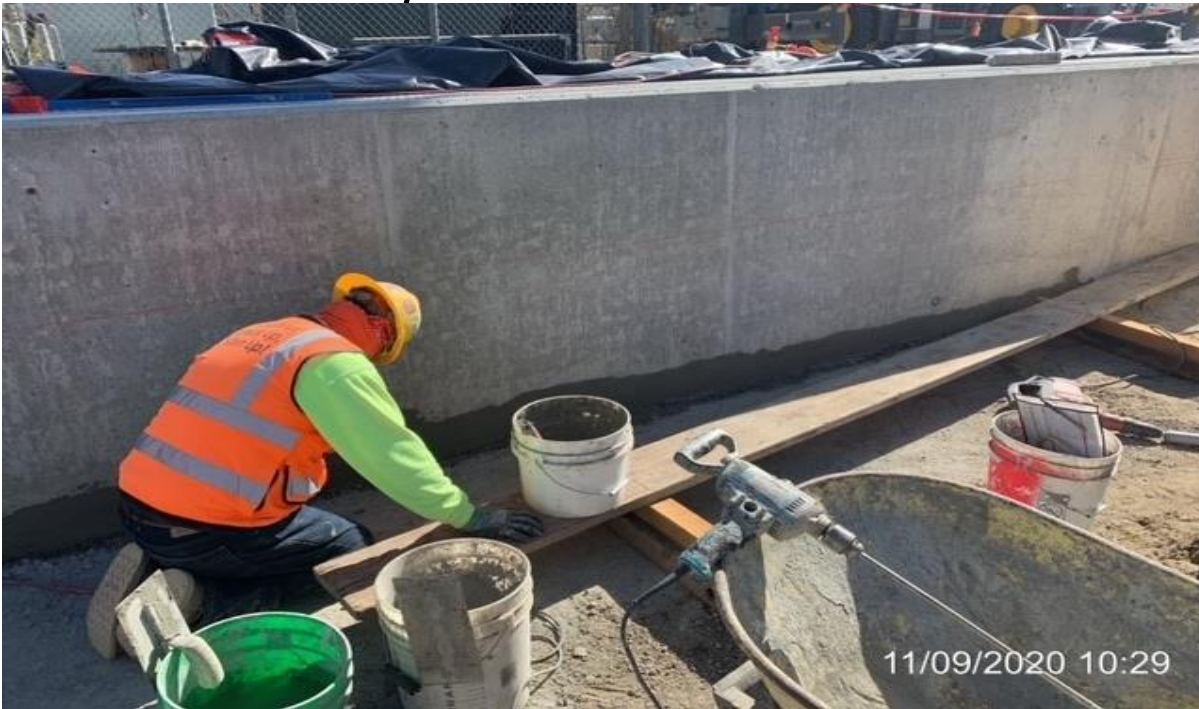


EXPO STATION – Giroux Glass mobilizing glass panels for elevator #3 and #4 at platform.



EXPO STATION – Entrance canopy, continued rough in 4' & 8' BOCA LED normal & emergency lighting fixtures.

CRENSHAW/LAX PHOTOGRAPHIC UPDATE



EXPO STATION – Finishers patching base of air exhaust shaft north.



EXPO STATION – WSCC crew removing and replacing damaged 12' PVC drain.

CRENSHAW/LAX PHOTOGRAPHIC UPDATE

SEGMENT C:

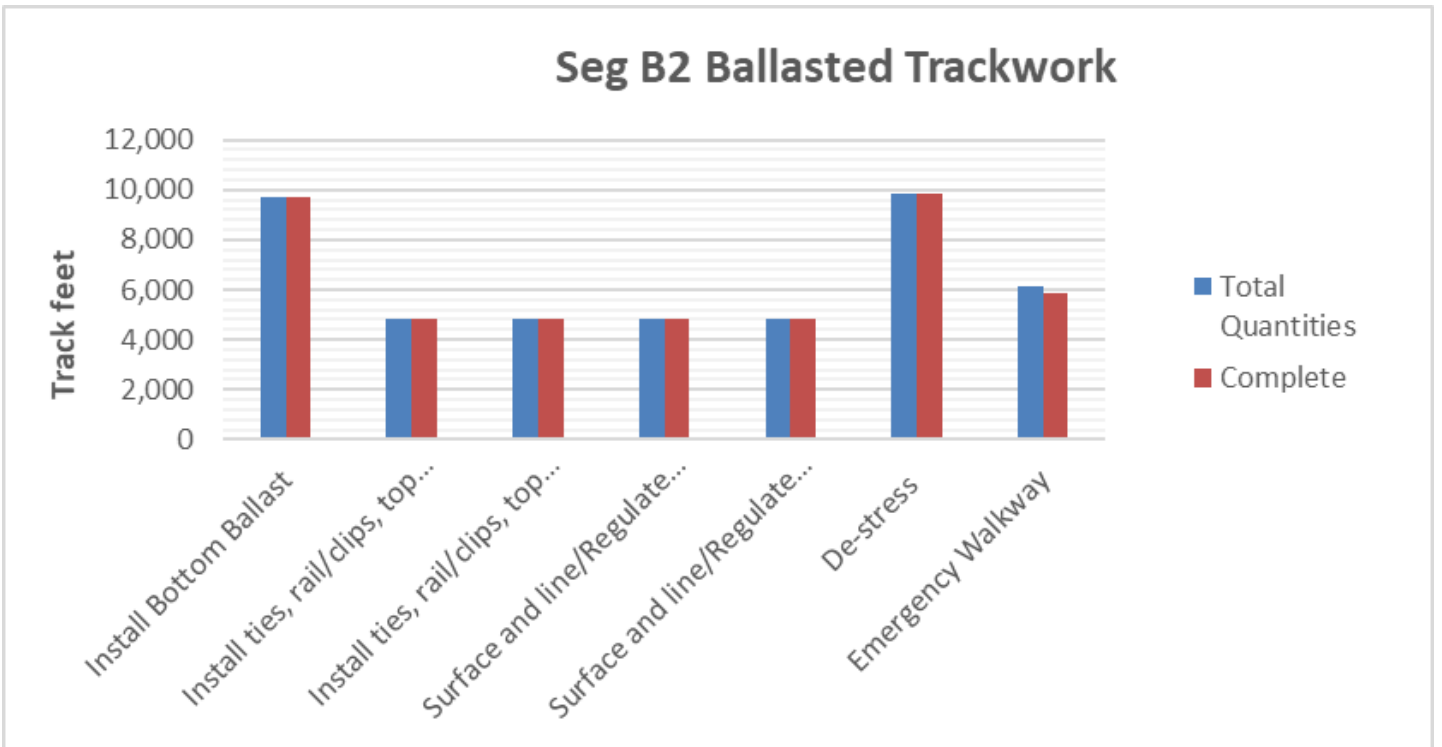
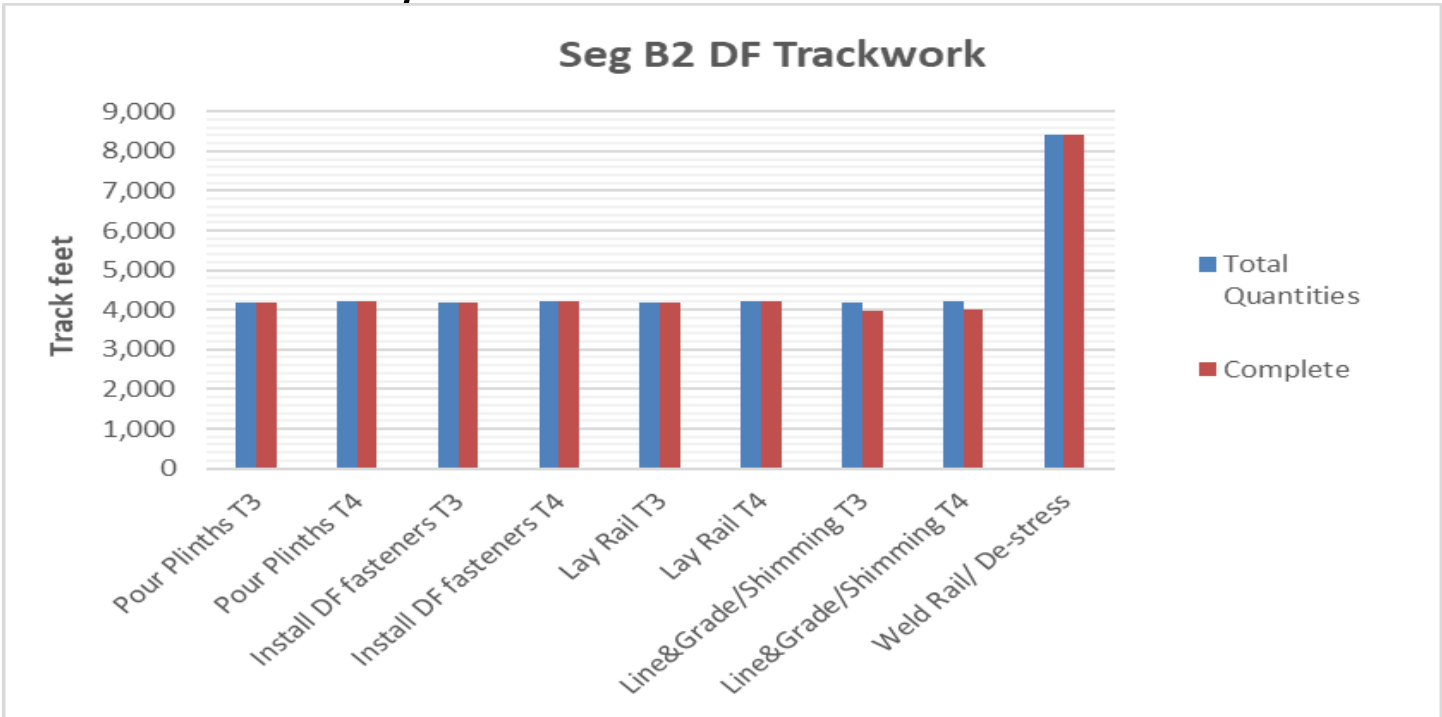
- Rework of plinth gap to invert continues throughout the Segment resetting and adjusting fasteners and sealing plinth to invert joints.
- Rework to replace damaged switch points is in progress.
- Rework of VHRF fasteners is still required due to missing shims and incorrect installation.
- Rework of plinths is still required due to damage by chipping and cracks.
- Incomplete plinth work.
- Rework of the Top-of-Rail is still required due to gouges in the rail.
- Replacement of plinths with failed inserts continues; awaiting pull test for new inserts.
- Installation of DX switch machine at Expo Station is started.

CRENSHAW/LAX PHOTOGRAPHIC UPDATE

PROJECT WIDE TRACKWORK PROGRESS

	TRACK TYPE	ACTIVITY	TRACK FEET/QUANTITY	INSTALLED TO DATE	REMAINING	ACTIVITY % PROGRESS	Potential Rework *	Punchlist **
								(Complete/Incomplete)
SEGMENT B2	DF (8,408 TF)	Pour Plinths T3	4,193	4193	0	100.00%		
		Pour Plinths T4	4,215	4,215	0	100.00%		
		Install DF fasteners T3	4,193	4193	0	100.00%	*	
		Install DF fasteners T4	4,215	4215	0	100.00%	*	
		Lay Rail T3	4,193	4193	0	100.00%	*	
		Lay Rail T4	4,215	4215	0	100.00%	*	
		Line&Grade/Shimming T3	4,193	3983	210	95.00%		INC
		Line&Grade/Shimming T4	4,215	4004	211	94.99%		INC
		Weld Rail/ De-stress	8,408	8408	0	100.00%		
		Emergency Walkway						
	Acceptance for turnover to subcontractors	yes/no	no					
	BALLASTED TRACKWORK (9681 TF including grade crossings)	Install Bottom Ballast	9,681	9681	0	100.00%	*	INC
		Install ties, rail/clips, top ballast -T3	4,836	4836	0	100.00%	*	
		Install ties, rail/clips, top ballast -T4	4,845	4845	0	100.00%	*	
		Surface and line/Regulate T3	4,836	4836	0	100.00%	*	
		Surface and line/Regulate T4	4,845	4845	0	100.00%	*	
		De-stress	9,861	9861	0	100.00%		
		Emergency Walkway	6148	5840	308	94.99%		
	Acceptance for turnover to subcontractors	yes/no	no					
	SPECIAL TRACKWORK	Ballasted Single Crossover (U1/U2, V1/V2)	2	2	0	100.00%		INC
Thermite Welds		56	56	0	100.00%			
Insulated Joints (IJ's)		12	12	0	100.00%	*	INC	
Acceptance for turnover to subcontractors	yes/no	no						
GRADE X-ING	Construct Crossing (48th, 50th, 52nd, 54th, 57th, 59th, Slausen)	7	6	1	85.71%			
SEGMENT C	DF (16,756 TF)	Pour Plinths T3	8,385	8385	0	100.00%	*	INC
		Pour Plinths T4	8,371	8371	0	100.00%	*	INC
		Install DF fasteners T3 (VHRF installed - pending NCR)	8,385	7965	420	94.99%	*	
		Install DF fasteners T4 (VHRF installed - pending NCR)	8,371	7952	419	94.99%	*	
		Lay Rail T3	8,385	8385	0	100.00%	*	
		Lay Rail T4	8,371	8371	0	100.00%	*	
		Line&Grade/Shimming T3	8,385	7546	839	89.99%	*	INC
		Line&Grade/Shimming T4	8,371	7533	838	89.99%	*	INC
		Emergency Walkway						
		Acceptance for turnover to subcontractors	yes/no	no				
	SPECIAL TRACKWORK	DF Double Crossover (Diamond)	1	1	0	100.00%	*	
		Line&Grade/Shimming	1	1	0	100.00%	*	
		Thermite Welds	56	56	0	100.00%		
		Insulated Joints (IJ's)	20	20	0	100.00%	*	
		Acceptance for turnover to subcontractors	yes/no	no				
DF =	Direct Fixation							
T3 =	Track 3							
T4 =	Track 4							
TF =	Track Feet							
*	Potential for rework based on recent guideway survey. Total impact of rework is unknown at this time.							
**	Punchlist Complete/Incomplete: Indicates the completion (COMP) or Incompletion (INC) of identified punchlist items							

CRENSHAW/LAX PHOTOGRAPHIC UPDATE



CRENSHAW/LAX PHOTOGRAPHIC UPDATE

