

CRENSHAW/LAX PHOTOGRAPHIC UPDATE

April 15, 2020

Crenshaw/LAX Transit Project



- 8.5 miles Light Rail
- 8 Stations
- \$2,058.0 Million
(Board approved revised LOP)

CRENSHAW/LAX PHOTOGRAPHIC UPDATE

Overview of trackwork progress issues for 03/15/2020 – 4/15/2020
(Please note the attached Trackwork Progress Tracking Report)

Trackwork continues with punchlist and rework activities. Both DF and Ballasted Trackwork that was previously reported as 100% complete may yet require rework. The contractor is in the process of analyzing, planning, and executing the repair and rework required throughout the guideway limits. Remaining incomplete trackwork activities progress will be reported upon the execution of planned rework.

Current Issues:

General Note: Rail de-stressing is completed in Segment C and double crossovers in Segment C have been completed.

Previous Issues unresolved:

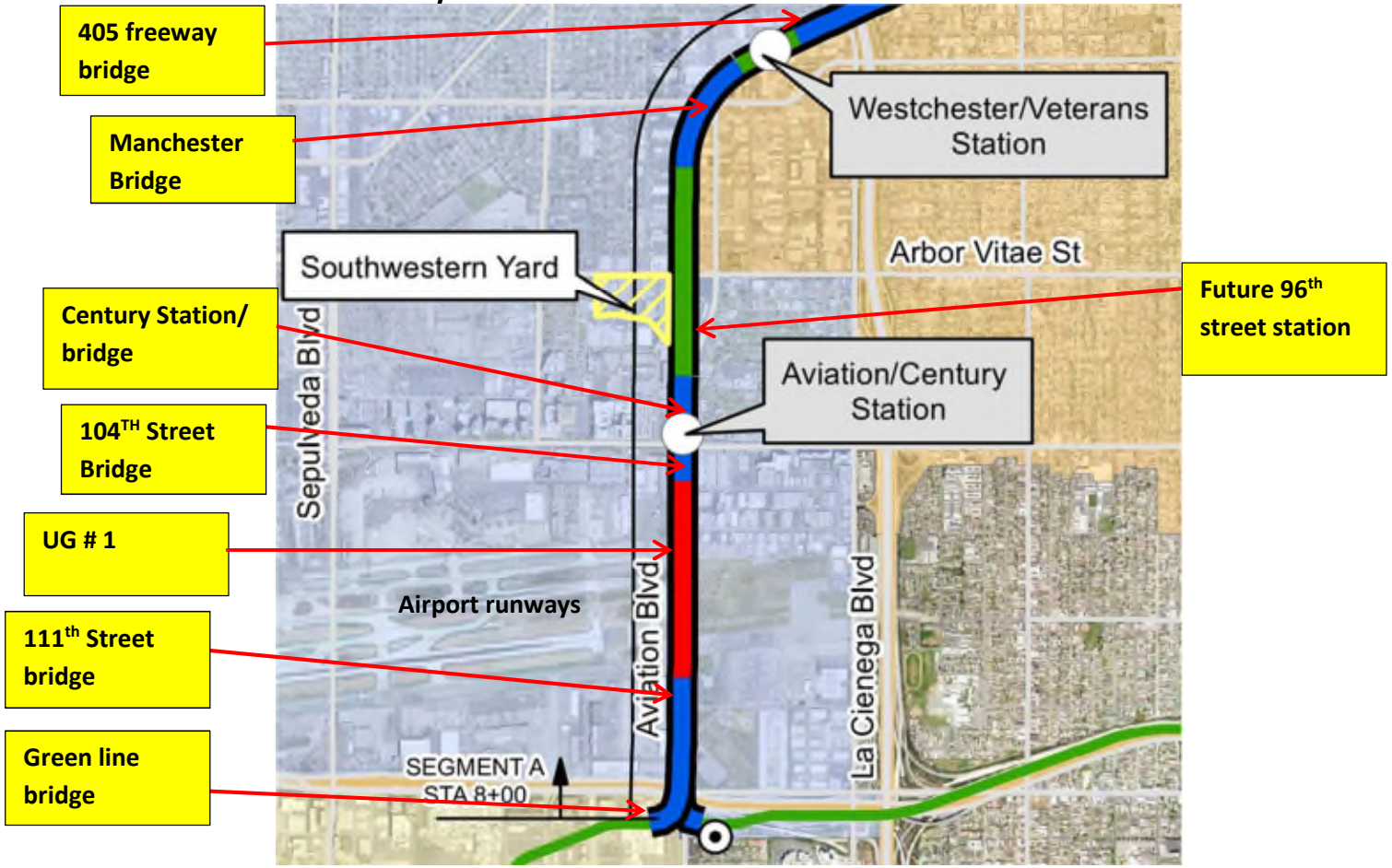
WSCC has completed the field work for the investigation of MSE Wall #202 where track misalignment has occurred. A geotechnical report is in process of being prepared and a repair plan will be prepared by WSCC upon receipt of the final report. WSCC also continues investigating the process to repair the gap between the plinth ends and the invert slab throughout the project limits and continues the relocation of incorrectly placed IJs in Segment B2.

GREEN LINE TIE-IN:

- Rework is still required for guard rail which had been installed with not-per-plan OTM
- Rework is still required for several temporary Insulated Joints (IJs) from the Green Line Tie-in across the Imperial Bridge to Segment A Guideway STATION 13+00
- Rework is still required for the inserts for the Movable Point Frog STA 13+99
- Rework is completed for the plinths and the reinstallation of the Movable Point Frog on the Green Line Wye STA 13+99.

Segment A

CRENSHAW/LAX PHOTOGRAPHIC UPDATE



CRENSHAW/LAX PHOTOGRAPHIC UPDATE



Guideway - GL Wye NBW 2310 STA 10+36 Metro-WSCC site walk for rail profile radius verification.



Guideway - Site walk for field verification of rail profile radius on NB1300 track STA 12+56 at GL Wye

CRENSHAW/LAX PHOTOGRAPHIC UPDATE



RMA-Site Scan inspector on SB2300 PT STA 12+92 GL Wye, ex-ray of rebar dowel location to invert (looking north)



WSSC & RMA- Site Scan, ex-ray of ends of plinths at GL Wye (looking east)

CRENSHAW/LAX PHOTOGRAPHIC UPDATE



WSSC & Metro WW inspectors at MPF, verifying overall condition of tracks at GL Wye STA 13+90 (looking south)



WSSC QC track inspector, verifying 300 FT. lbs. of torque on DF fastener bolts on PTSB 2300 at GL Wye STA 12+95

CRENSHAW/LAX PHOTOGRAPHIC UPDATE



Florence/Hindry – Removal of the fence post mounts at the Hindry Station SB platform.



Cedar Street - WSCC Placing & dressing walkway ballast, AREMA #5 between tracks #3 & 4 north of Cedar Ave grade crossing

CRENSHAW/LAX PHOTOGRAPHIC UPDATE



Florence/Hindry – Fence post anchor removal at the SB platform of the Hindry Station.



Florence/Hindry – Excavating to relocate a pull box at the Hindry crossing.

CRENSHAW/LAX PHOTOGRAPHIC UPDATE



Florence/Hindry – STA 135+60 TK#4-NB looking west – right rail limit between CPF and CPG after Hindry Station platform.



Florence/Hindry – STA 135+60 TK#4-NB looking south – checking rail grinding profile Hindry Station.

CRENSHAW/LAX PHOTOGRAPHIC UPDATE



Manchester Bridge – Select Electric Shut down Intersection at Manchester.



Manchester Bridge – Setting forms for the ADA ramp at Aviation and Manchester.

CRENSHAW/LAX PHOTOGRAPHIC UPDATE



Manchester Bridge – Grading for the proposed new ADA ramp at Manchester.



Manchester Bridge – Placing concrete for the ADA ramp at Manchester and Florence.

CRENSHAW/LAX PHOTOGRAPHIC UPDATE



Manchester Bridge – STA 131+00 TK#4-NB looking south - checking rail grinding profile north ramp Manchester Bridge.



Aviation/Century – Grading for the new curb and gutter on the SW corner of Century and Aviation.

CRENSHAW/LAX PHOTOGRAPHIC UPDATE



Aviation/Century – Subgrade compaction at the Aviation Station plaza area



Aviation/Century – Subgrade grading and removals at the Aviation Station plaza area

CRENSHAW/LAX PHOTOGRAPHIC UPDATE



Aviation/Century – Auguring for a traffic signal foundation on the NE corner of 111th & Aviation. Facing SE.



Aviation/Century – WSCC labor removing galvanized plate from Ped. Crossing on NB #4 track on Century.Aviation Bridge STA 66+18 Rework

CRENSHAW/LAX PHOTOGRAPHIC UPDATE



Aviation/Century – SB #3 track STA 66+19 Century-Aviation bridge, incomplete install of Ped. Crossing plates & inserts (looking west).



Aviation/Century – HCC at Century Aviation station platform cleaning guideway with high pressure water truck.

CRENSHAW/LAX PHOTOGRAPHIC UPDATE



Aviation/Century – HCC on NB #4 track Century. Aviation bridge, using hi-rail water truck to remove excess debris from profile grinder, Work out of Sequence.



Aviation/Century – WSCC Make C&G removals at 111th and Aviation.

CRENSHAW/LAX PHOTOGRAPHIC UPDATE



Aviation/Century – HCC using hi-rail water truck to remove excess debris from guideway on Century-Aviation deck thru 10K1LH XO (looking southwest)



Aviation/Century – VT Electric Excavating trench for TS conduit at Manchester and Aviation.

CRENSHAW/LAX PHOTOGRAPHIC UPDATE



Aviation/Century – Select Electric Relocating pull boxes away from ADA ramp at S/W cor of Manchester and Aviation.

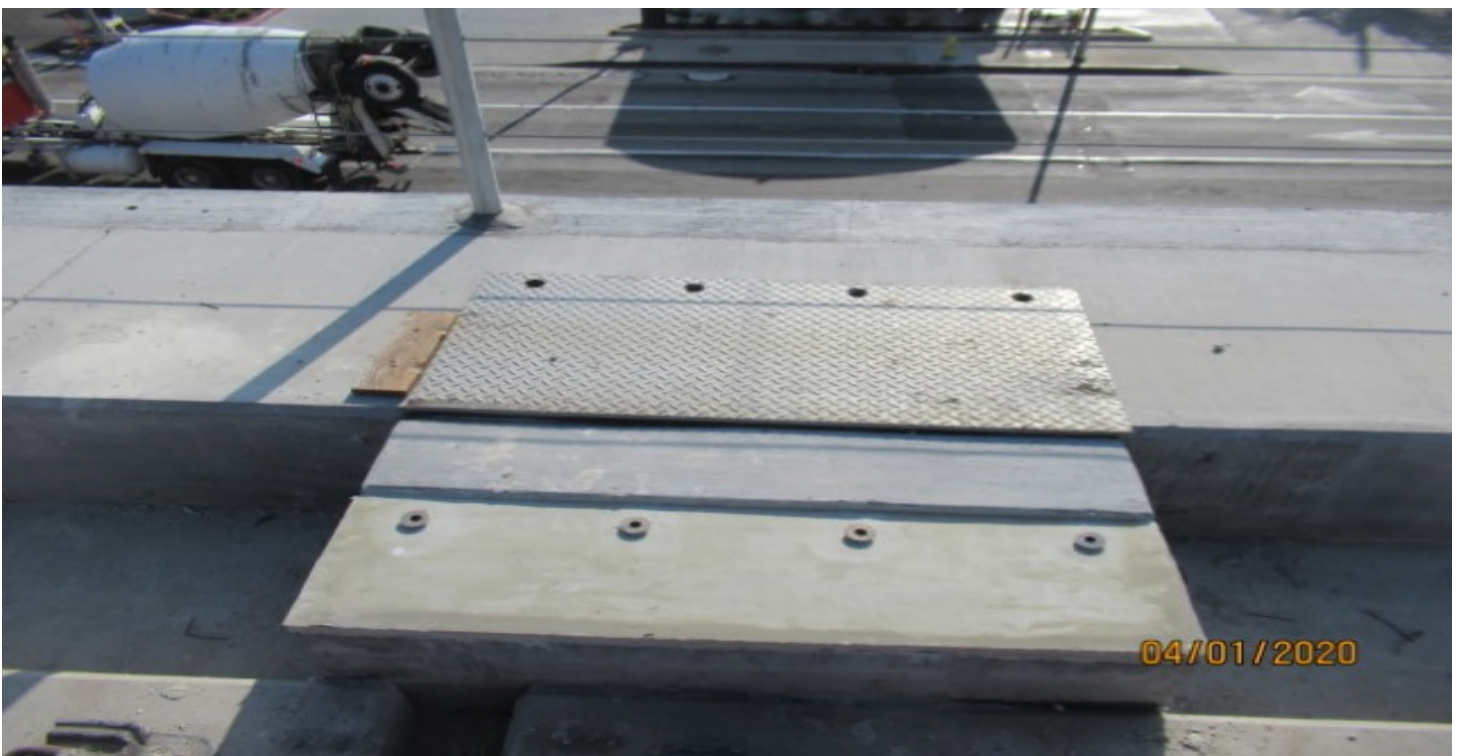


Aviation/Century – VT Electric Re directional bore conduit across Aviation.

CRENSHAW/LAX PHOTOGRAPHIC UPDATE



Aviation/Century – Select Electric Relocating pull boxes work at ADA ramps at intersection of Manchester and Aviation.



Aviation/Century – On-going installation of Ped. Walkway crossing on NB #4 track Century-Aviation bridge STA 66+18 (looking east)

CRENSHAW/LAX PHOTOGRAPHIC UPDATE



Aviation/Century – HCC on Century-Aviation bridge SB #3 track, cleaning bridge deck (looking south)



Aviation/Century – WSCC working on emergency walkway foundations Century-Aviation bridge SB #3 track STA 74+60 (looking west) Rework

CRENSHAW/LAX PHOTOGRAPHIC UPDATE



Aviation/Century – WSCC repairing protective plywood on platform at Century-Aviation station (looking southeast)



Aviation/Century – SWPPP operations and prep for the rain at the Aviation station yard.

CRENSHAW/LAX PHOTOGRAPHIC UPDATE



Aviation/Century – Removals for the sidewalk on the NW side of Aviation and 111th.



Aviation/Century – Traffic signal and street lighting conduit trenching on 111th and Aviation.

CRENSHAW/LAX PHOTOGRAPHIC UPDATE



Aviation/Century – Rain damage at Aviation Station.



Aviation/Century – HCC, repairing cross levels on 10K1LH XO Century-Aviation Bridge NB # 4 track.

CRENSHAW/LAX PHOTOGRAPHIC UPDATE



Aviation/Century – HCC installing Shim plates on 10K1LH XO on Century-Aviation bridge NB #4 track STA 70+50 (looking north) Rework



Aviation/Century – Irrigation pipe installation at the Aviation Station yard.

CRENSHAW/LAX PHOTOGRAPHIC UPDATE



Aviation/Century – Metal stud framing at the Aviation Station ticket kiosk.

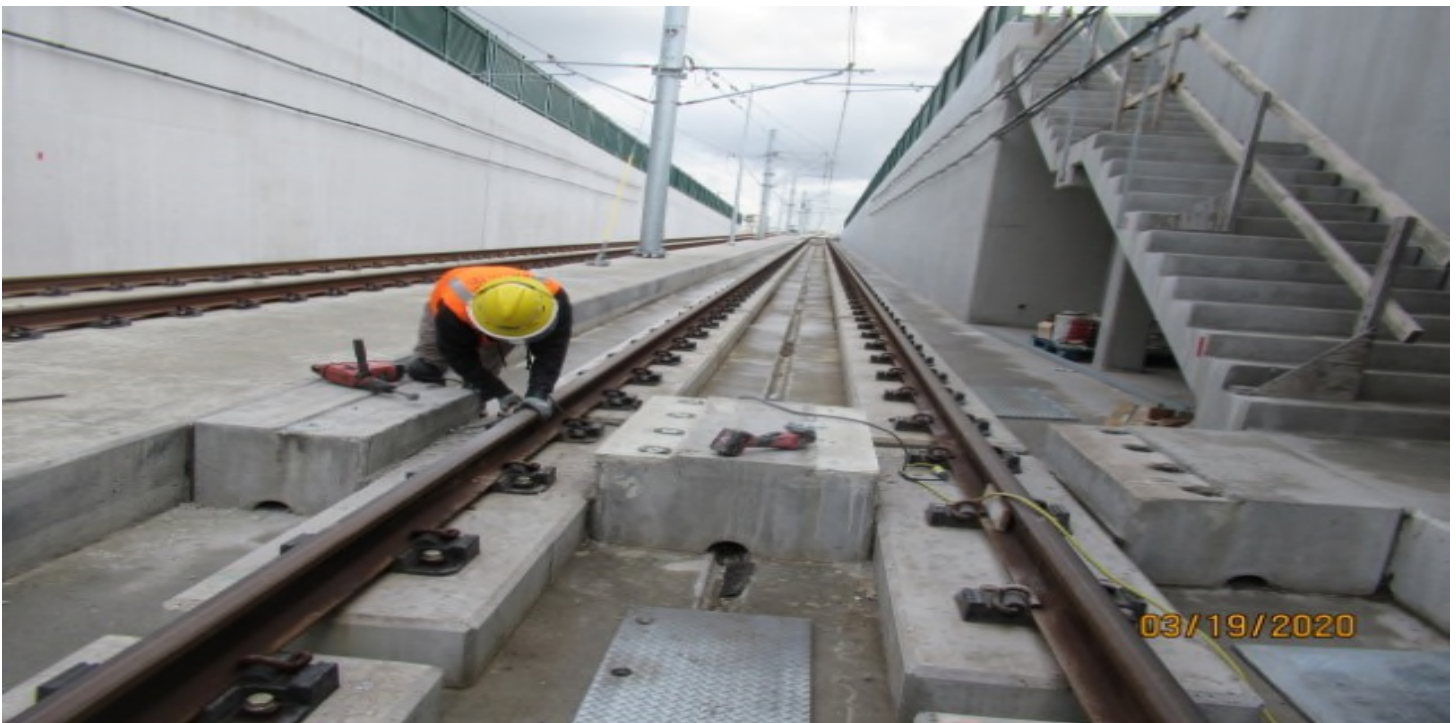


Aviation/Century – Abandoning a storm drain line at aviation Station.

CRENSHAW/LAX PHOTOGRAPHIC UPDATE



Aviation/Century – STA 21+96 TK#4-NB looking west – checking rail grinding CPC on tangent -Aviation



UG - 1 – WSCC at STA 56+50 in UG1 NB #4 track, repair work on Ped. crossing concrete foundations (looking north)

CRENSHAW/LAX PHOTOGRAPHIC UPDATE



UG – 1 - WSCC Bushing & grinding out concrete foundations for Ped. Crossings on NB #4 track in UG1 STA 56+50 (looking east)



111th Street – Terminating traffic signal connections on 111th street.

CRENSHAW/LAX PHOTOGRAPHIC UPDATE



111th Street – Potholing for utilities at 111thstreet.



111th Street – Curb and gutter over excavation on 111th.

CRENSHAW/LAX PHOTOGRAPHIC UPDATE



111th Street – Traffic signal work at 111th street.



111th Street – DB Electric Placing Concrete SL and TS foundations at 111th and 104th street.

CRENSHAW/LAX PHOTOGRAPHIC UPDATE



111th Street – Curb & gutter over-excavation and conduit installation at 111th street. Facing west

SEGMENT A:

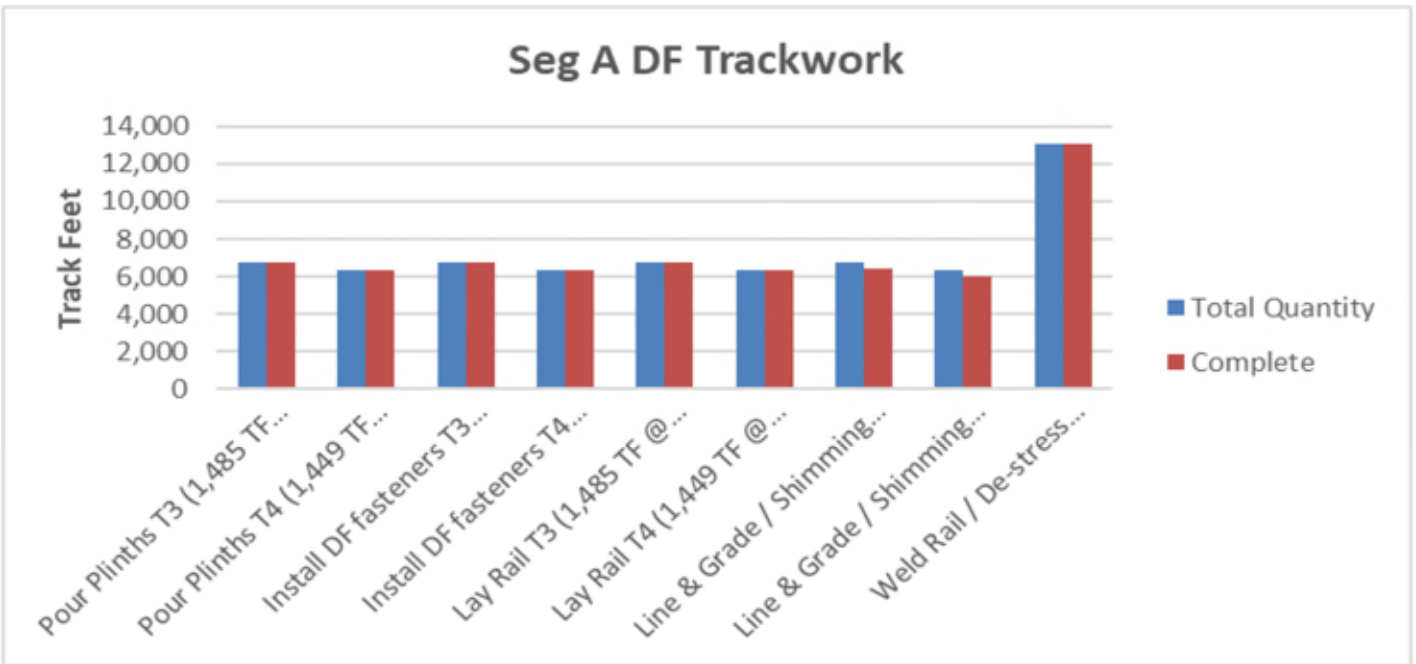
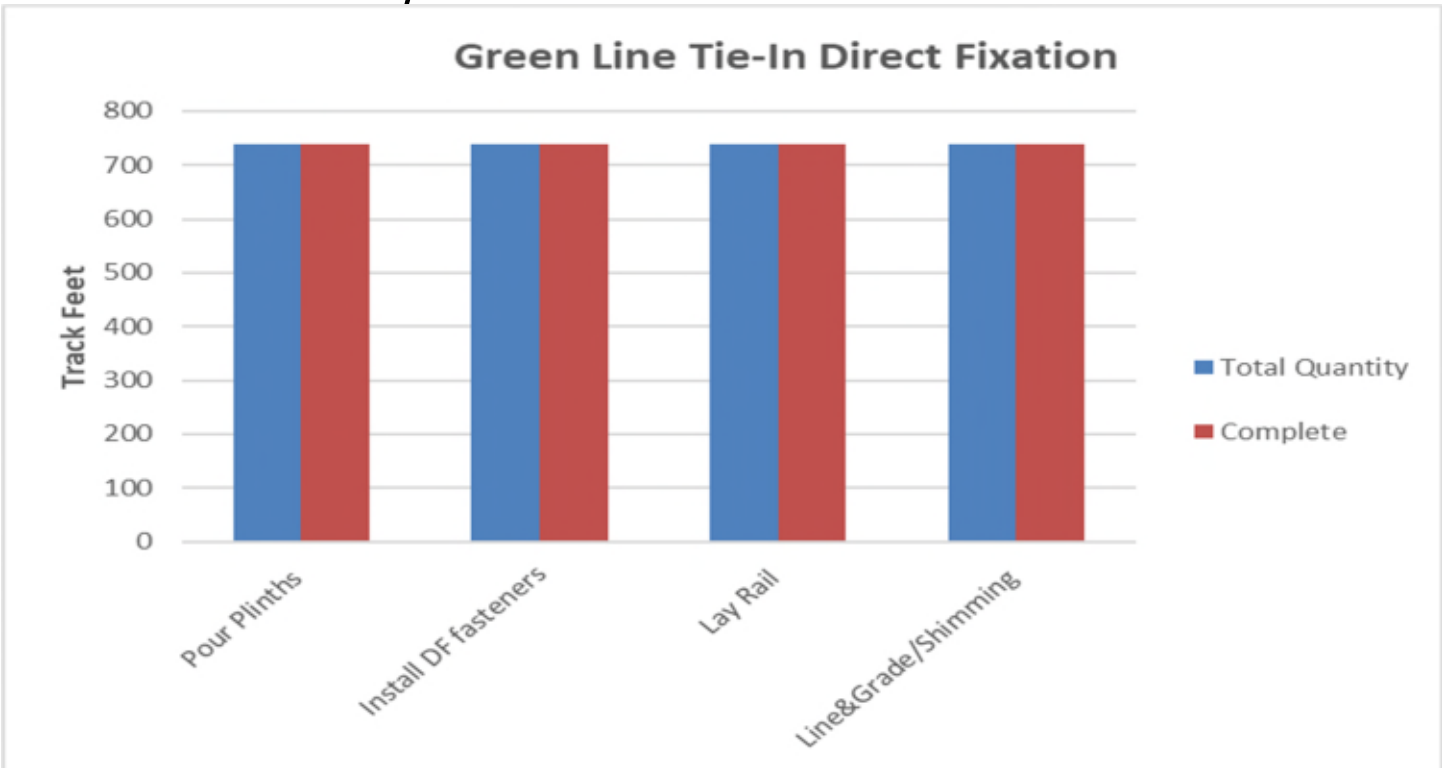
- Rework continues for emergency walkway insert plates due to miss-alignment.
- Disturbed track ballast / structure and emergency walkway ballast due to systems electrical conduit relocations continues to be repaired and re-dressed.
- Investigation of a possible repair process for plinth to invert gap continues in UG1 (NCR-A-111).

CRENSHAW/LAX PHOTOGRAPHIC UPDATE

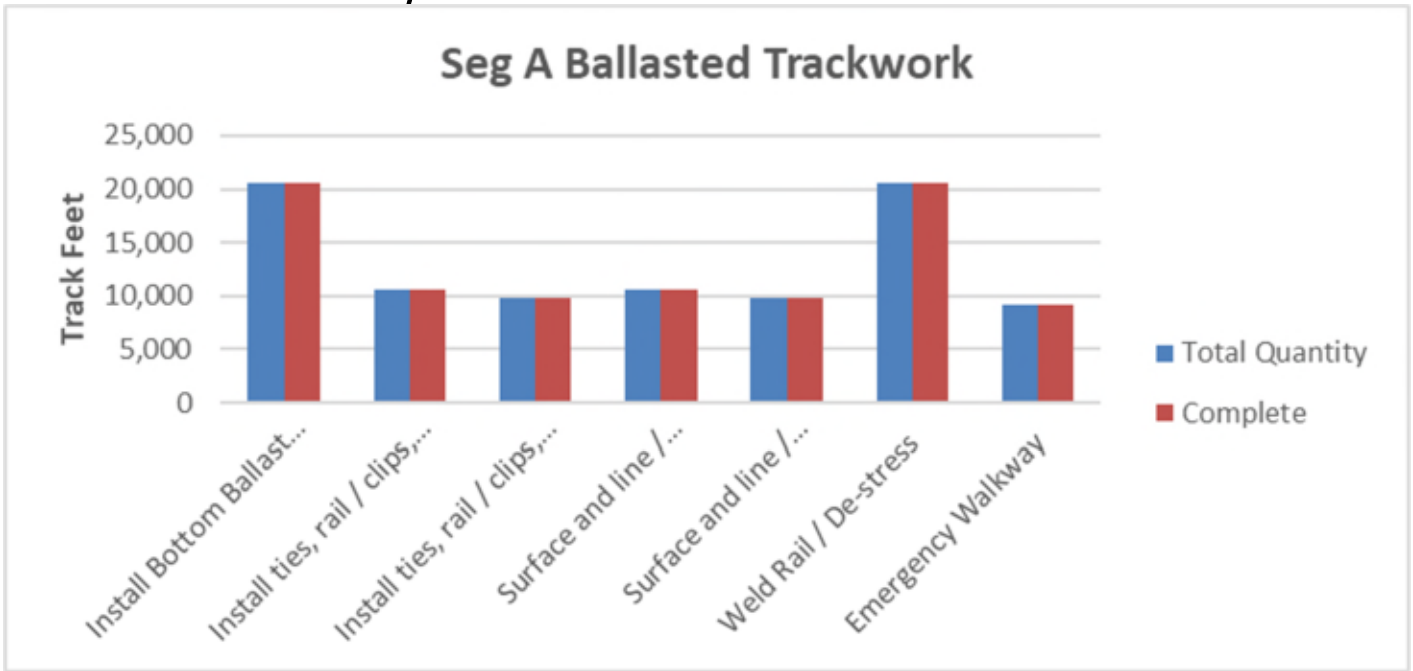
PROJECT WIDE TRACKWORK PROGRESS

	TRACK TYPE	ACTIVITY	TRACK FEET/QUANTITY	INSTALLED TO DATE	REMAINING	ACTIVITY % PROGRESS	Potential Rework *	Punchlist ** (Complete/Incomplete)	
GREENLINE TIE-IN	DIRECT FIXATION	Pour Plinths	738	738	0	100.00%			
		Install DF fasteners	738	738	0	100.00%			
		Lay Rail	738	738	0	100.00%			
		Line&Grade/Shimming	738	738	0	100.00%			
		Weld Rail/ Destress							
		Emergency Walkway	4	4	0	100.00%		INC	
	Acceptance for turnover to subcontractors	yes/no	yes						
	SPECIAL TRACKWORK	DF Double Crossovers (Diamond XING 1 & 2)	2	2	0	100.00%			
		Line & Grade / Shimming	2	2	0	100.00%			
		DF Single Crossovers (A/F, B/E, C/F, D/E)	4	4	0	100.00%			
		Line & Grade / Shimming	4	4	0	100.00%			
		Thermite Welds	40	40	0	100.00%			
		Insulated Joints (IJ's)	28	28	0	100.00%	*		
	Acceptance for turnover to subcontractors	yes/no	yes						
SEGMENT A	DF (13,089 TF include 395 TF of K1/K2 XO)	Pour Plinths T3 (1,485 TF @ wye + 4,884 TF + 395 TF K1/K2 XO) (Insert rework continues)	6,763	6,763	0	100.00%	*		
		Pour Plinths T4 (1,449 TF @ wye + 4,877 TF) (Insert rework continues)	6,326	6,326	0	100.00%	*		
		Install DF fasteners T3 (1,485 TF @ wye + 4,884 TF + 395 TF K1/K2 XO)	6,763	6,763	0	100.00%	*		
		Install DF fasteners T4 (1,449 TF @ wye + 4,877 TF)	6,326	6,326	0	100.00%	*		
		Lay Rail T3 (1,485 TF @ wye + 4,884 TF + 395 TF K1/K2 XO)	6,763	6,763	0	100.00%			
		Lay Rail T4 (1,449 TF @ wye + 4,877 TF)	6,326	6,326	0	100.00%			
		Line & Grade / Shimming T3 (1,485 TF @ wye + 4,884 TF + 395 TF K1/K2 XO)	6,763	6,425	338	95.00%			
		Line & Grade / Shimming T4 (1,449 TF @ wye + 4,877 TF)	6,326	6,010	316	95.00%			
		Weld Rail / De-stress (Rework complete)	13,089	13089	0	100.00%	*		
		Emergency Walkway							
	Acceptance for turnover to subcontractors	yes/no	no						
	BALLASTED TRACKWORK (20,551 TF including grade crossing, Yard Leads & Tail Track)	Install Bottom Ballast (T3+T4, and include SYL, NYL & Tail Track)	20,551	20,551	0	100.00%	*		
		Install ties, rail / clips, top ballast T3 (9,480 TF) + SYL (244 TF) + NYL (937 TF)	10,661	10,661	0	100.00%	*		
		Install ties, rail / clips, top ballast T4 (9,475 TF) + Tail Track (415 TF)	9,890	9,890	0	100.00%	*		
		Surface and line / Regulate T3 + SYL + NYL	10,661	10,661	0	100.00%	*	INC	
		Surface and line / Regulate T4 + Tail Track	9,890	9,890	0	100.00%	*	INC	
		Weld Rail / De-stress	20,550	20,550	0	100.00%	*	INC	
	Emergency Walkway	9,176	9,176	0	100.00%	*	INC		
	Acceptance for turnover to subcontractors	yes/no	no						
	SPECIAL TRACKWORK	Ballasted Double Crossover (G1/G2, H1/H2)	2	2	0	100.00%			
		DF Single Crossover (K1/K2)	2	2	0	100.00%		*	
		Line & Grade / Shimming	2	0	2				
		Ballasted Single Crossover (I1/IEQ, I2/IEQ, M1/M2, N1/N2)	4	4	0	100.00%			
		Install switches (A,B,C,D,E,F,G1,G2,H1,H2,I1,I2,IEQ,S,N1,N2,M1,M2 = 18)	18	18	0	100.00%			
		Thermite Welds	130	130	0	100.00%			
		Insulated Joints (IJ's)	74	74	0	100.00%		*	
	Acceptance for turnover to subcontractors	yes/no	no						
	GRADE X-ING	Construct Crossing (Arbor Vitae, Hindry)	2	2		100.00%			
DF =	Direct Fixation								
T3 =	Track 3								
T4 =	Track 4								
TF =	Track Feet								
*	Potential for rework based on recent guideway survey. Total impact of rework is unknown at this time.								
**	Punchlist Complete/Incomplete: Indicates the completion (COMP) or Incompletion (INC) of identified punchlist items								

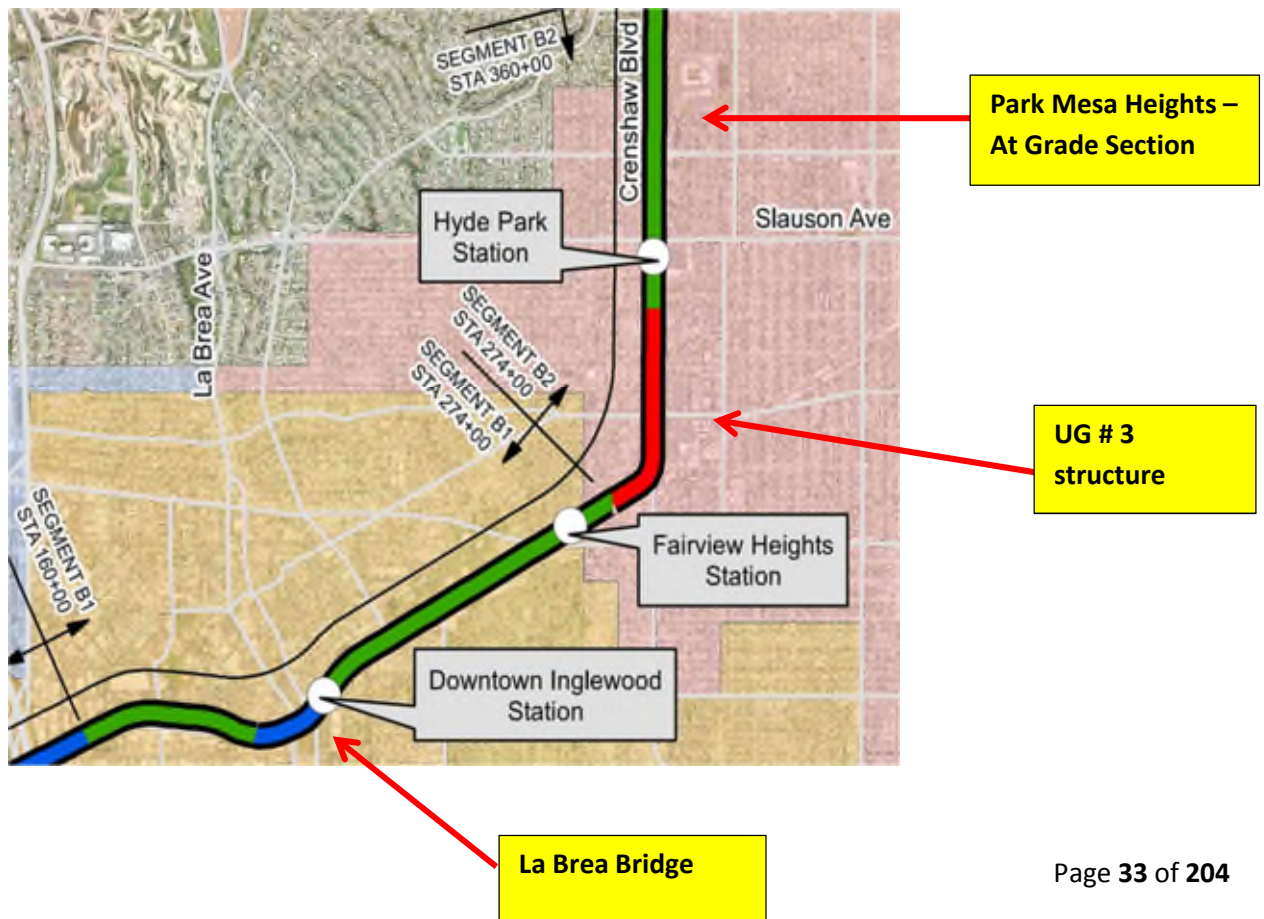
CRENSHAW/LAX PHOTOGRAPHIC UPDATE



CRENSHAW/LAX PHOTOGRAPHIC UPDATE



Segment B



CRENSHAW/LAX PHOTOGRAPHIC UPDATE



PARK MESA – Raising DWP meter sections in preparation for concrete placement of meter pad at TPSS#7 on 60th St & Crenshaw Blvd.



PARK MESA – Excavating for the 12” HDPE storm drain line N-12 at TPSS#7 on 60th St & Crenshaw Blvd. 3/19/20

CRENSHAW/LAX PHOTOGRAPHIC UPDATE



PARK MESA – Continue excavating for the 12” HDPE storm drain line N-12 at TPSS#7 on 60th St & Crenshaw Blvd. 3/20/20



PARK MESA – Placing slurry backfill for the 12” HDPE storm drain line N-12 at TPSS#7 on 60th St & Crenshaw Blvd. 3/23/20

CRENSHAW/LAX PHOTOGRAPHIC UPDATE



PARK MESA – Sack and patching inlet structure N-12 at TPSS#7 on 60th St & Crenshaw Blvd.
4/1/20



PARK MESA – Excavating for bollard installation around the DWP transformer pad at TPSS#7
on 60th St & Crenshaw Blvd.

CRENSHAW/LAX PHOTOGRAPHIC UPDATE



PARK MESA – Completed bollard installation around the DWP transformer pad at TPSS#7 on 60th St & Crenshaw Blvd.



PARK MESA – Excavating for new sidewalk and ADA ramp installation on the northeast corner of 54th St and Crenshaw Blvd. 3/23/20

CRENSHAW/LAX PHOTOGRAPHIC UPDATE



PARK MESA – Continue excavating for new sidewalk and ADA ramp installation on the northeast corner of 54th St and Crenshaw Blvd. 3/24/20



PARK MESA – Placing concrete for new sidewalk and ADA ramp installation on the northeast corner of 54th St and Crenshaw Blvd. 3/27/20

CRENSHAW/LAX PHOTOGRAPHIC UPDATE



PARK MESA – Continue excavating/demolishing for new concrete sidewalk installation on the northeast corner of 48th St and Crenshaw Blvd. 3/18/20



PARK MESA – Began installing UPS equipment inside the Auxiliary Power Bungalow at TPSS#7 on 60th St & Crenshaw Blvd.

CRENSHAW/LAX PHOTOGRAPHIC UPDATE



PARK MESA – Excavating/grading in preparation for concrete placement for new sidewalk and ADA ramp installation on the northeast corner of 59th Pl & Crenshaw Blvd. 4/3/20



PARK MESA – Placing concrete for the new sidewalk and ADA ramp installation on the northeast corner of 59th Pl & Crenshaw Blvd. 4/15/20

CRENSHAW/LAX PHOTOGRAPHIC UPDATE



48th Street - STA 363+00 TK#3. SB looking south – fence work SB ballast wall, south of 48th St.



48th Street - STA 365+00 looking north – Train Control (TC) system work south ramp of UG4, 48th St behind camera.

CRENSHAW/LAX PHOTOGRAPHIC UPDATE



48th Street - STA 364+70 TK#3-SB looking north – rail de-stress in progress (48th St behind camera).



48th Street - STA 364+87 TK#3-SB looking north – right rail de-stress weld in progress.

CRENSHAW/LAX PHOTOGRAPHIC UPDATE



48th Street - STA 364+73 TK#3-SB looking east – left rail de-stress weld (48th St)



48th Street - STA 364+87 TK#3-SB looking west – right rail de-stress weld (48th St)

CRENSHAW/LAX PHOTOGRAPHIC UPDATE



UG3 – Continued excavating/grading for the culvert drainage installation along the southbound barrier wall in preparation for concrete placement. 3/18/20



UG3 – Excavating for culvert drainage along the bottom of the southbound barrier wall in preparation for concrete placement. 3/20/20

CRENSHAW/LAX PHOTOGRAPHIC UPDATE



UG3 – Continue excavating for culvert drainage along the bottom of the southbound barrier wall in preparation for concrete placement. 3/26/20



UG3 – Continue grading and excavating for the culvert drainage along the southbound barrier wall in preparation for concrete placement. 3/27/20

CRENSHAW/LAX PHOTOGRAPHIC UPDATE



UG3 – Continue excavating for culvert drainage along the bottom of the southbound barrier wall in preparation for concrete placement. 4/1/20



UG3 – Continue grading/compaction for the new sidewalk/driveway installation on the southwest corner of 67th St and Crenshaw Blvd. 3/18/20

CRENSHAW/LAX PHOTOGRAPHIC UPDATE



UG3 – Continue new sidewalk/driveway installation on the southwest corner of 67th St and Crenshaw Blvd. 3/19/20



UG3 – Continue excavation for the new sidewalk/driveway installation on the southwest corner of 67th St and Crenshaw Blvd. 3/20/20

CRENSHAW/LAX PHOTOGRAPHIC UPDATE



UG3 – Placing concrete for the new sidewalk/driveway installation on the southwest corner of 67th St and Crenshaw Blvd. 3/23/20



UG3 – Installing fence posts around the Auxiliary power site perimeter adjacent to the south end portal entrance. 3/21/20

CRENSHAW/LAX PHOTOGRAPHIC UPDATE



UG3 – Continue installing fence posts around the Auxiliary power site perimeter adjacent to the south end portal entrance.

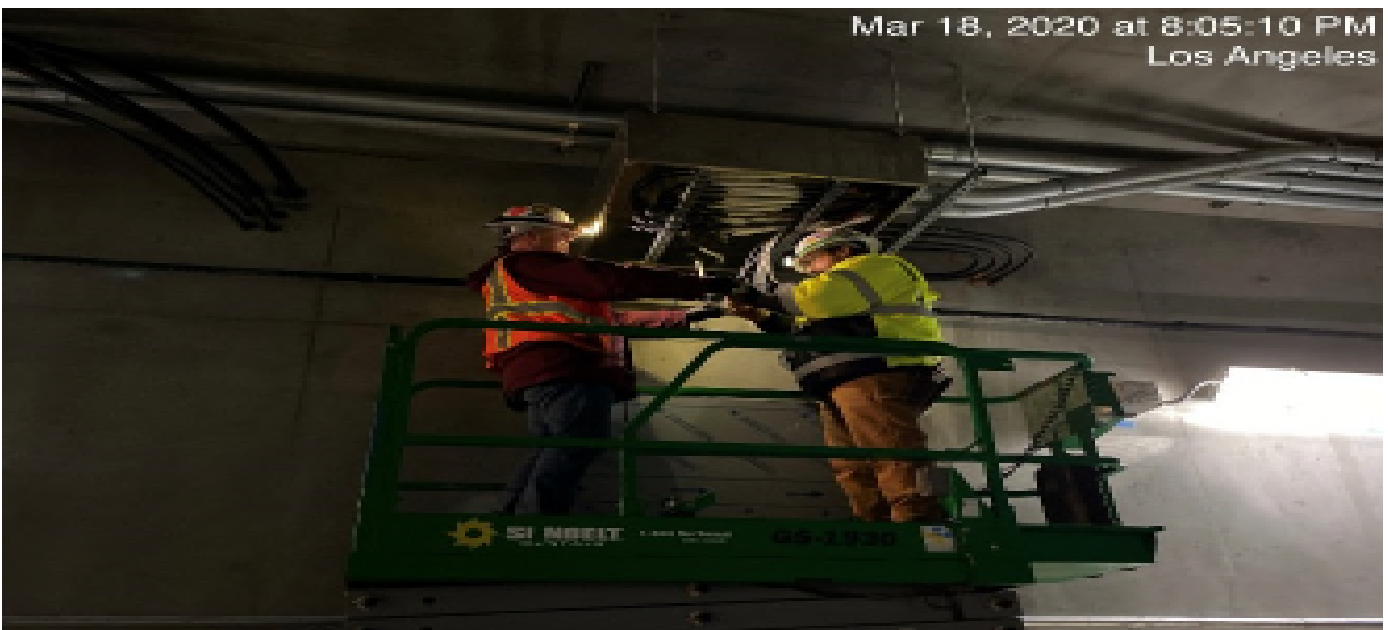


UG3 – Continue installing fence posts and floor channel for sliding fence gate around the Auxiliary power site perimeter adjacent to the south end portal entrance.

CRENSHAW/LAX PHOTOGRAPHIC UPDATE



UG3 – Installed block-out forms and place concrete for new Victoria Cul-de-sac sidewalk and driveway installation. 3/26/20



UG3 – Continue splicing wires for the tunnel booster junction boxes at the southbound tunnel at Sta 283+30.

CRENSHAW/LAX PHOTOGRAPHIC UPDATE

Mar 19, 2020 at 10:35:56 PM
Los Angeles



UG3 – Continue splicing wires for the tunnel booster junction boxes at the southbound tunnel at Sta 291+50.

Mar 20, 2020 at 7:34:11 PM
Los Angeles



UG3 – Continue splicing wires for the tunnel booster junction boxes at the southbound tunnel at Sta 291+50.

CRENSHAW/LAX PHOTOGRAPHIC UPDATE



UG3 – Continue grounding wires for the tunnel booster junction boxes at the southbound tunnel at Sta 291+50.



UG3 – Continue pulling wire for the emergency lighting on the northbound tunnel of the south end portal entrance.

CRENSHAW/LAX PHOTOGRAPHIC UPDATE



UG3 – Continue installing and welding handrails for the emergency walkway at the southbound tunnel from Sta 288+45 – 290+60.



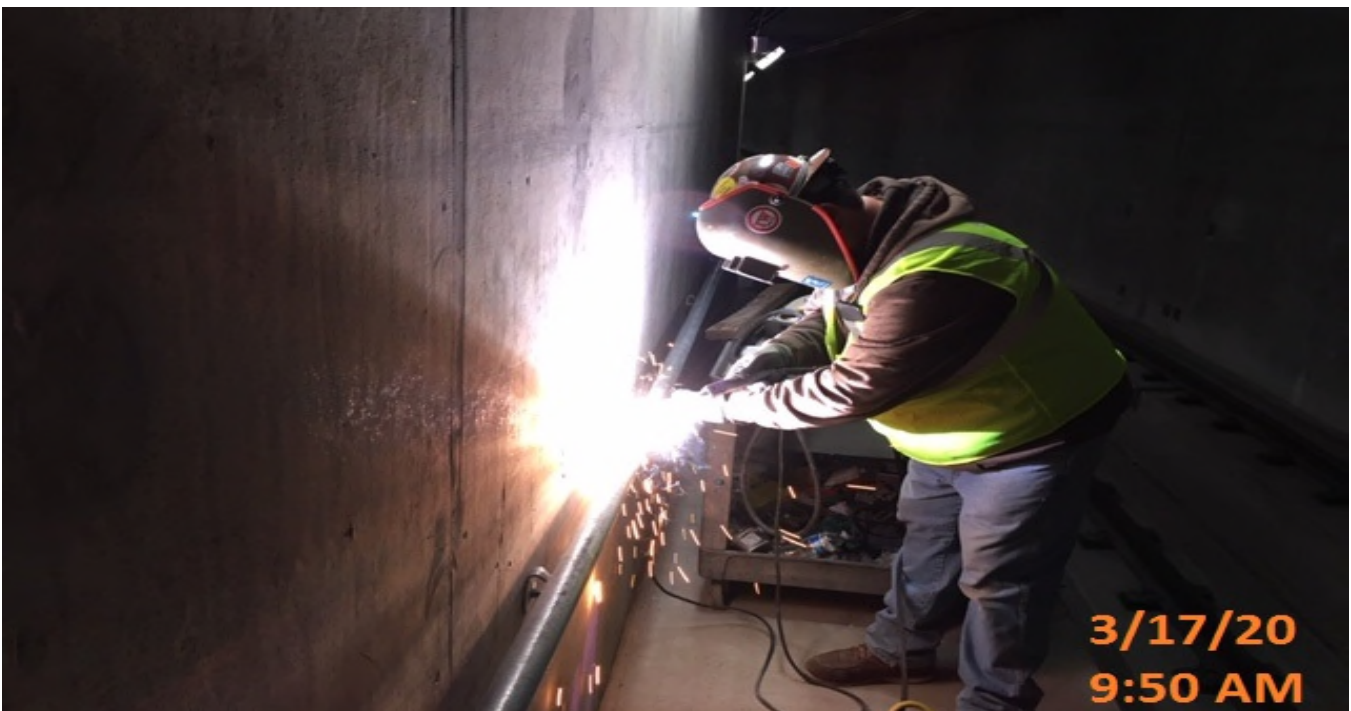
UG3 – Continue installing and welding handrails for the emergency walkway at the northbound tunnel at Sta 300+50.

CRENSHAW/LAX PHOTOGRAPHIC UPDATE

Apr 1, 2020 at 11:30:15 AM
Los Angeles



UG3 – Continue installing and welding handrails for the emergency walkway at the northbound tunnel at Sta 300+50.

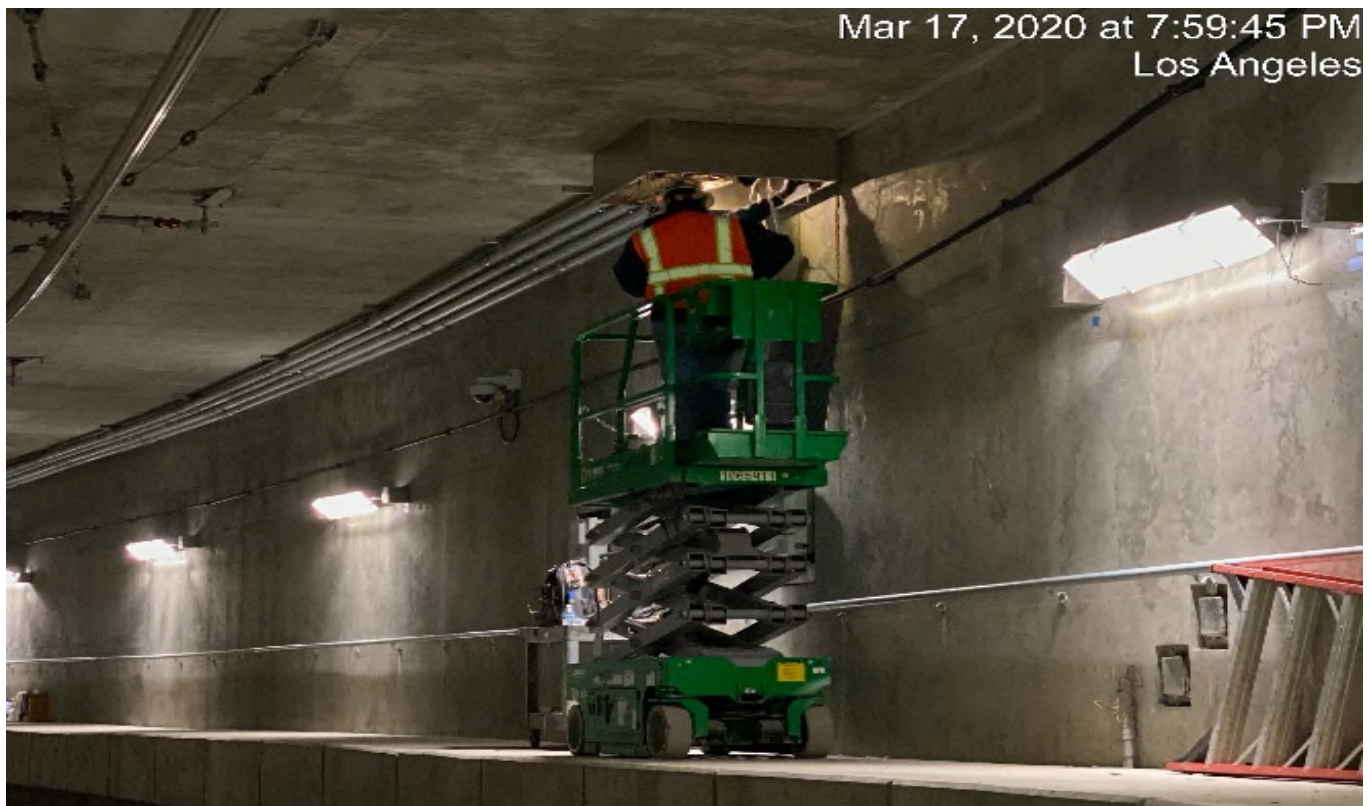


UG3 – McMahon installing handrail throughout NB and SB sides of emergency walkway.

CRENSHAW/LAX PHOTOGRAPHIC UPDATE



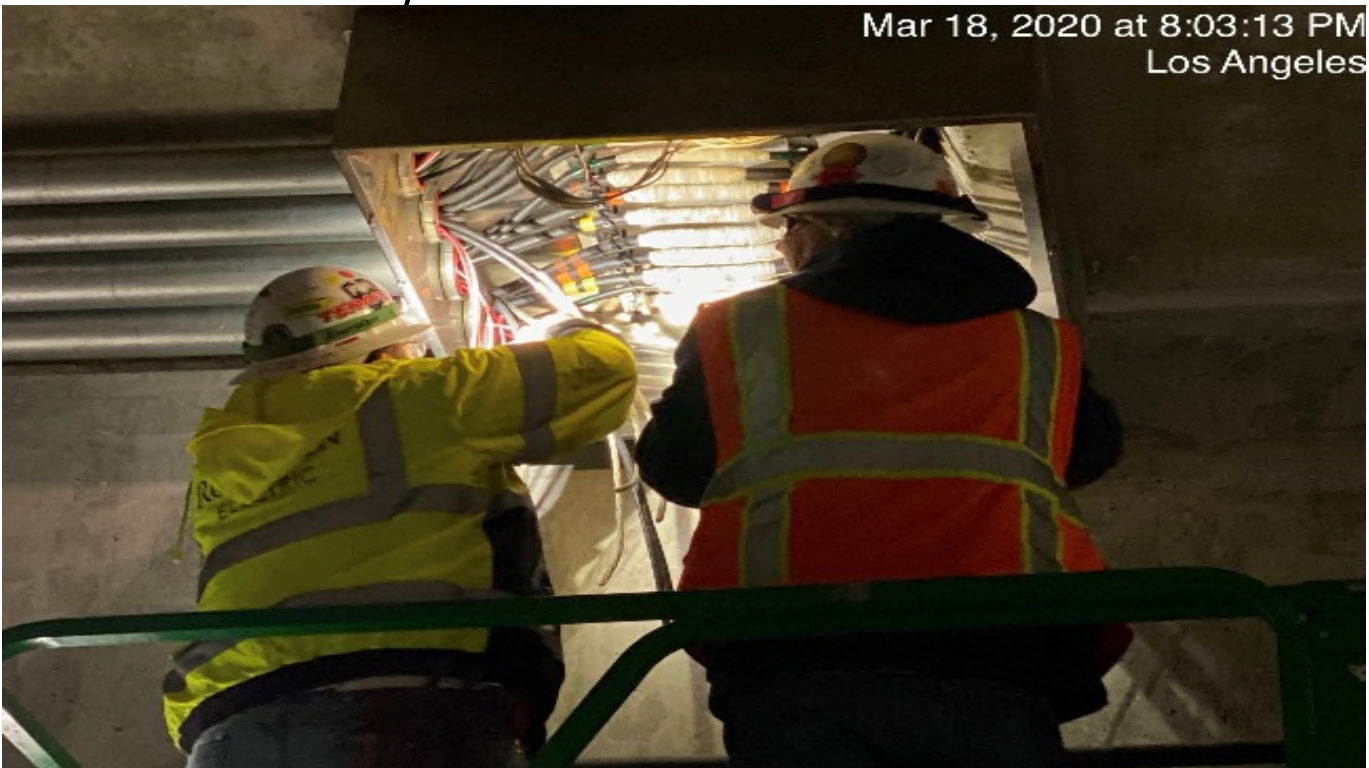
UG3 – DCD wiring up booster fans southbound UG-3.



UG3 – DCD splicing wires in junction box southbound UG-3.

CRENSHAW/LAX PHOTOGRAPHIC UPDATE

Mar 18, 2020 at 8:03:13 PM
Los Angeles



UG3 – DCD splicing wires in junction box southbound UG-3.



UG3 – Continue grading and excavating for the culvert drainage along the southbound barrier wall in preparation for concrete placement. 4/2/20

CRENSHAW/LAX PHOTOGRAPHIC UPDATE



UG3 – Excavating for 18” HDPE drain line connection to Catch Basin #1 on the southwest corner of 67th St and Crenshaw Blvd. 4/3/20



UG3 – Continue excavating for 18” HDPE drain line connection to Catch Basin #1 on the southwest corner of 67th St and Crenshaw Blvd. 4/7/20

CRENSHAW/LAX PHOTOGRAPHIC UPDATE



UG3 – Continue grading and excavating for the culvert drainage along the eastbound sidewalk of 67th St in preparation for concrete placement. 4/13/20

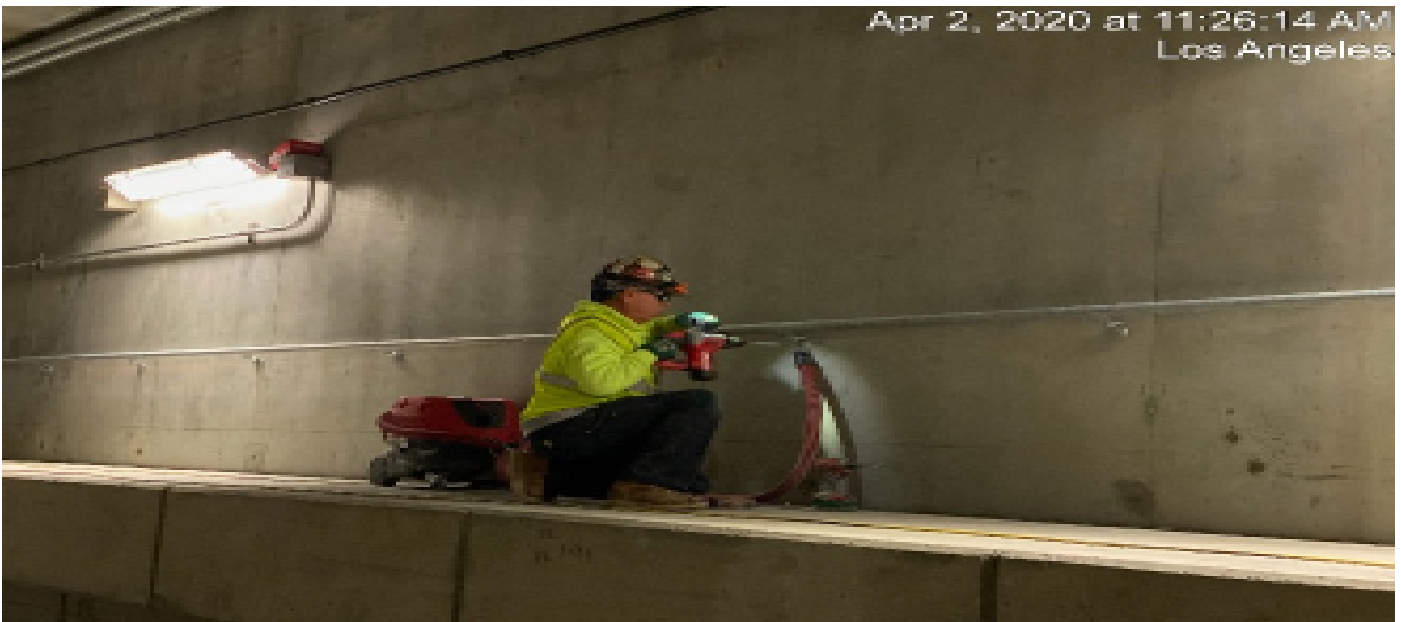


UG3 – Continue grading and excavating for the culvert drainage along the eastbound sidewalk of 67th St in preparation for concrete placement. 4/15/20

CRENSHAW/LAX PHOTOGRAPHIC UPDATE



UG3 – Finalizing grading/compaction for the new Cul-de-sac at North Victoria Ave.
4/16/20



UG3 – Continue installing handrails for the emergency walkways on both the north and southbound tunnels.

CRENSHAW/LAX PHOTOGRAPHIC UPDATE



UG3 – Continue installing handrails for the emergency walkways on both the north and southbound tunnels.



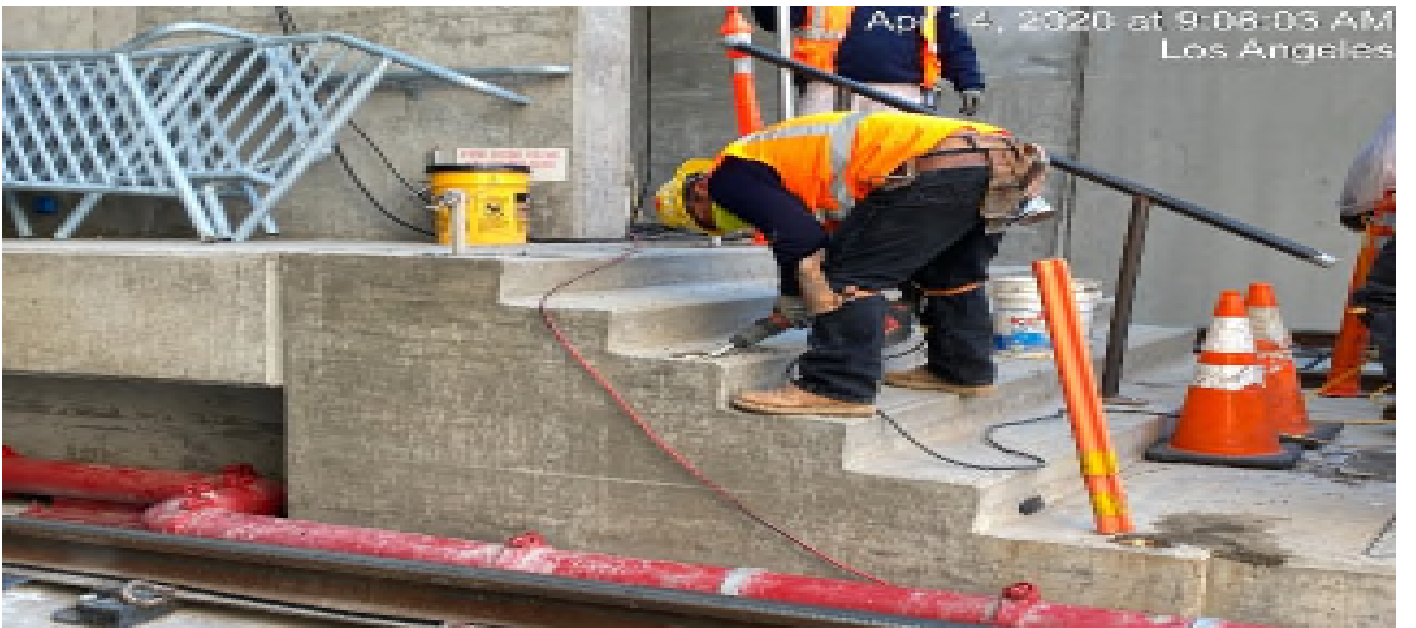
UG3 – Continue installing handrails for the emergency walkways on both the north and southbound tunnels.

CRENSHAW/LAX PHOTOGRAPHIC UPDATE

Apr 9, 2020 at 10:46:19 AM

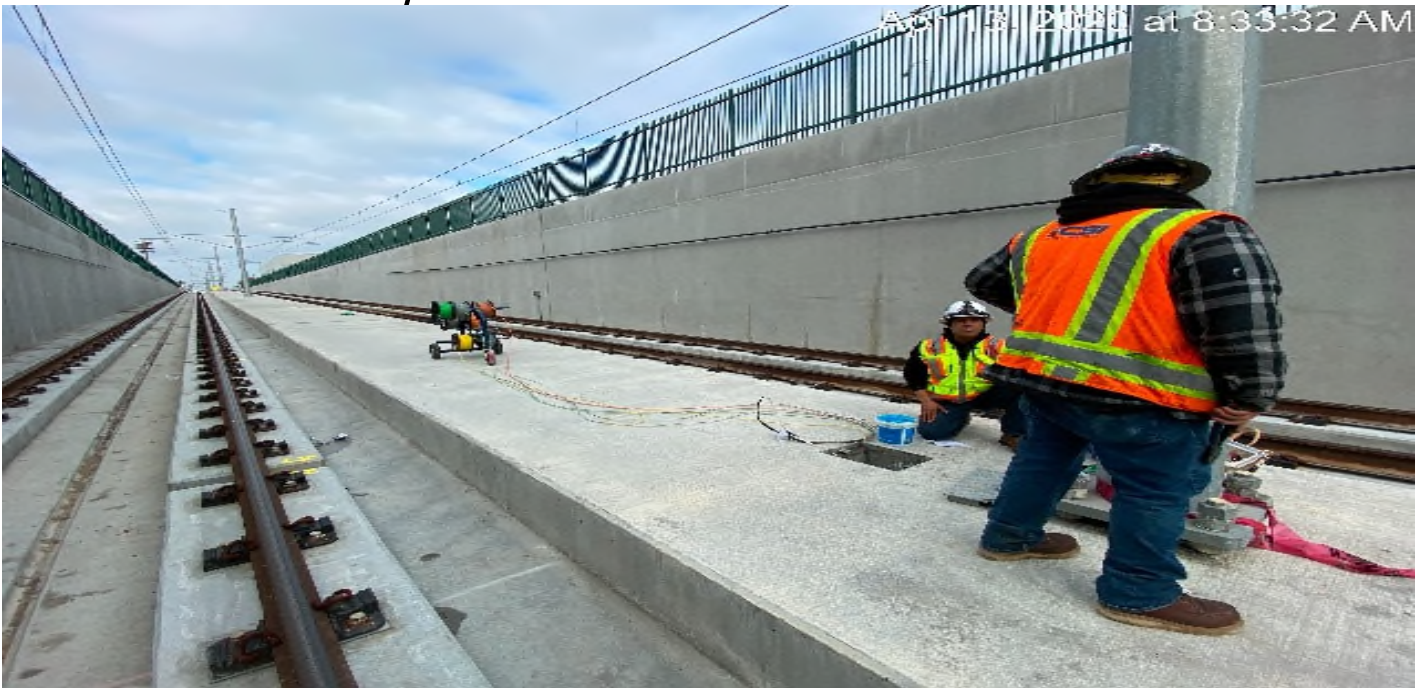


UG3 – Continue installing handrails for the emergency walkways on both the north and southbound tunnels.



UG3 – Continue installing handrails for the emergency walkways at the sound end portal entrance.

CRENSHAW/LAX PHOTOGRAPHIC UPDATE



UG3 – Pulling wires for the outdoor lighting for the south end portal entrance.



UG3 – Continue installing handrails for the Sump Pump Rooms for both north and southbound tunnels.

CRENSHAW/LAX PHOTOGRAPHIC UPDATE

Apr 1, 2020 at 11:14:55 AM
Los Angeles



UG3 – WSCC scrubbing floors at UG-3.

Apr 1, 2020 at 11:30:15 AM
Los Angeles



UG3 – McMahon installing hand rail at UG-3

CRENSHAW/LAX PHOTOGRAPHIC UPDATE

Apr 1, 2020 at 11:26:51 AM
Los Angeles



UG3 – DCD adjusting pull box southbound UG-3.

Apr 2, 2020 at 8:43:22 AM
Los Angeles



UG3 – DCD installing phenolic conduit at UG-3.

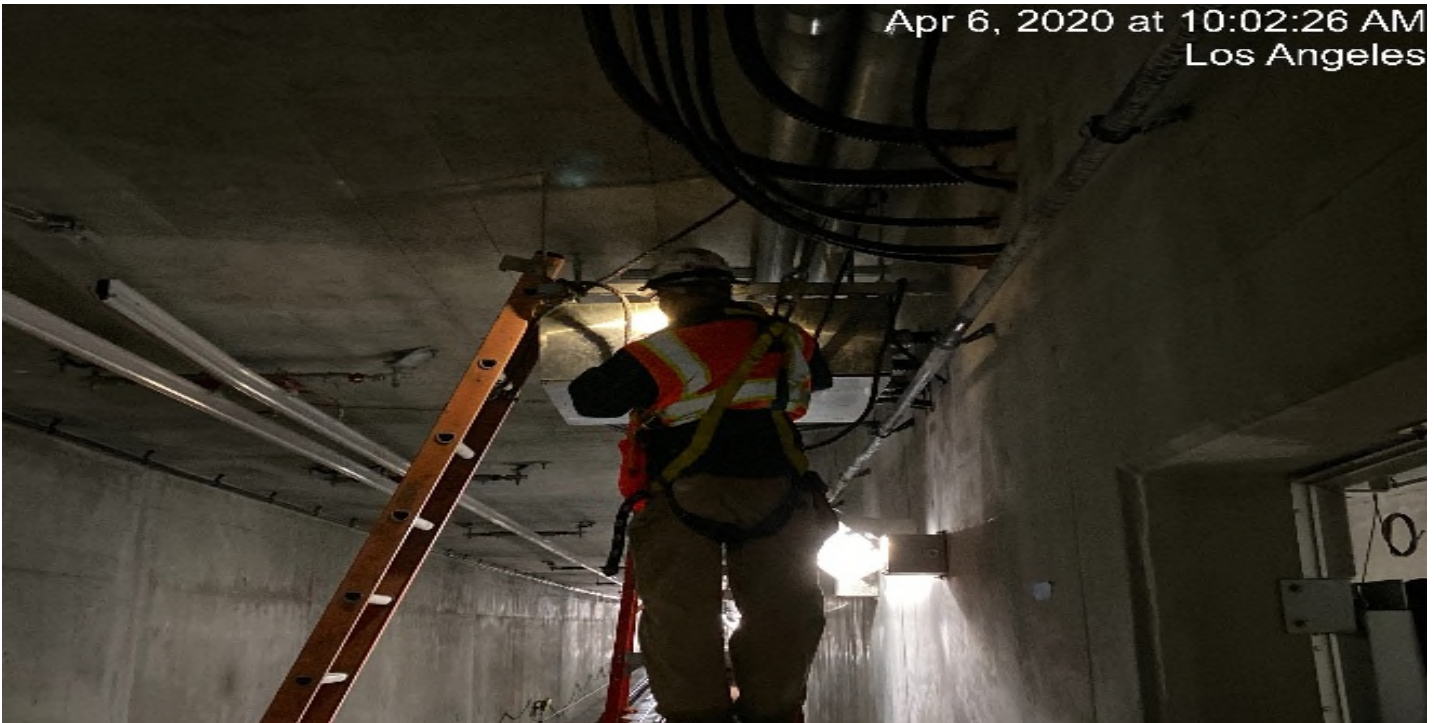
CRENSHAW/LAX PHOTOGRAPHIC UPDATE

Apr 6, 2020 at 9:42:02 AM
Los Angeles



UG3 – WSCC washing floors at UG-3.

Apr 6, 2020 at 10:02:26 AM
Los Angeles



UG3 – DCD adjusting pull box at the southbound side UG-3.

CRENSHAW/LAX PHOTOGRAPHIC UPDATE



UG3 – MC Mahon welding handrail NB UG-3.



UG3 – MC Mahon installing handrail SB UG-3.

CRENSHAW/LAX PHOTOGRAPHIC UPDATE



Hyde Park Station – Installing light gauge framing and roofing on the north end canopy structure. 3/30/20



Hyde Park Station – Installing light gauge framing and roofing on the north end canopy structure. 3/30/20

CRENSHAW/LAX PHOTOGRAPHIC UPDATE



Hyde Park Station – Continue installing light gauge framing and roofing on the south end canopy structure. 4/2/20



Hyde Park Station – Continue installing light gauge framing and roofing on the south end canopy structure. 4/7/20

CRENSHAW/LAX PHOTOGRAPHIC UPDATE



Florence/West – Layout for the Pylon foundation at the West Station.



Florence/West – Metal stud framing at the West Station.

CRENSHAW/LAX PHOTOGRAPHIC UPDATE



Florence/West – STA 262+80 TK#4. NB looking north – slurry level below finish elevation of sub-grade - water accumulation- PUNCH LIST



Florence/West – track ballast partly backfilled around new light pole foundation w.o control of sub-ballast refurbishing – PUNCH LIST

CRENSHAW/LAX PHOTOGRAPHIC UPDATE



Florence/West – STA 265+00 TK#4.NB looking north – grading work outside ballast wall.



Florence/West – STA 265+00 TK#4.NB looking north – grading work outside ballast wall.

CRENSHAW/LAX PHOTOGRAPHIC UPDATE



Florence/West – Select Electric Place conc foundation for controller at Redondo and West



Florence/West – Layout for the Grand Pylon foundation at the east side of the West Station. Facing SW.

CRENSHAW/LAX PHOTOGRAPHIC UPDATE



Florence/West – Chipping away the encased electrical conduit at the West Station. Facing SW.



Florence/West – Drainage swale grading along the West Station platform. Facing east.

CRENSHAW/LAX PHOTOGRAPHIC UPDATE



Florence/West – WSCC Make grade for swale at outside of Balast wall at West Sta



Florence/West – STA 267+40 TK#3 - SB looking north – vacuum fine materials from track ballast (West)

CRENSHAW/LAX PHOTOGRAPHIC UPDATE



Florence/West – STA 259+00 TK#3-SB looking south – track status; grading work West Station along TK#4 -NBs ballast retainer wall.



Florence/West – STA 267+40 right shoulder TK#3-SB looking north – track sub-structure disturbance around newly build pole foundation PUNCH LIST

CRENSHAW/LAX PHOTOGRAPHIC UPDATE



Florence/La Brea – Select Electrical install conduit and a pull box on La Brea. Facing SE.



Florence/Brea – McMahon Weld beams at S-ticket pavilion at La Brea.

CRENSHAW/LAX PHOTOGRAPHIC UPDATE



Florence/Brea – WSCC Start new swale from Fir St east toward La Brea.

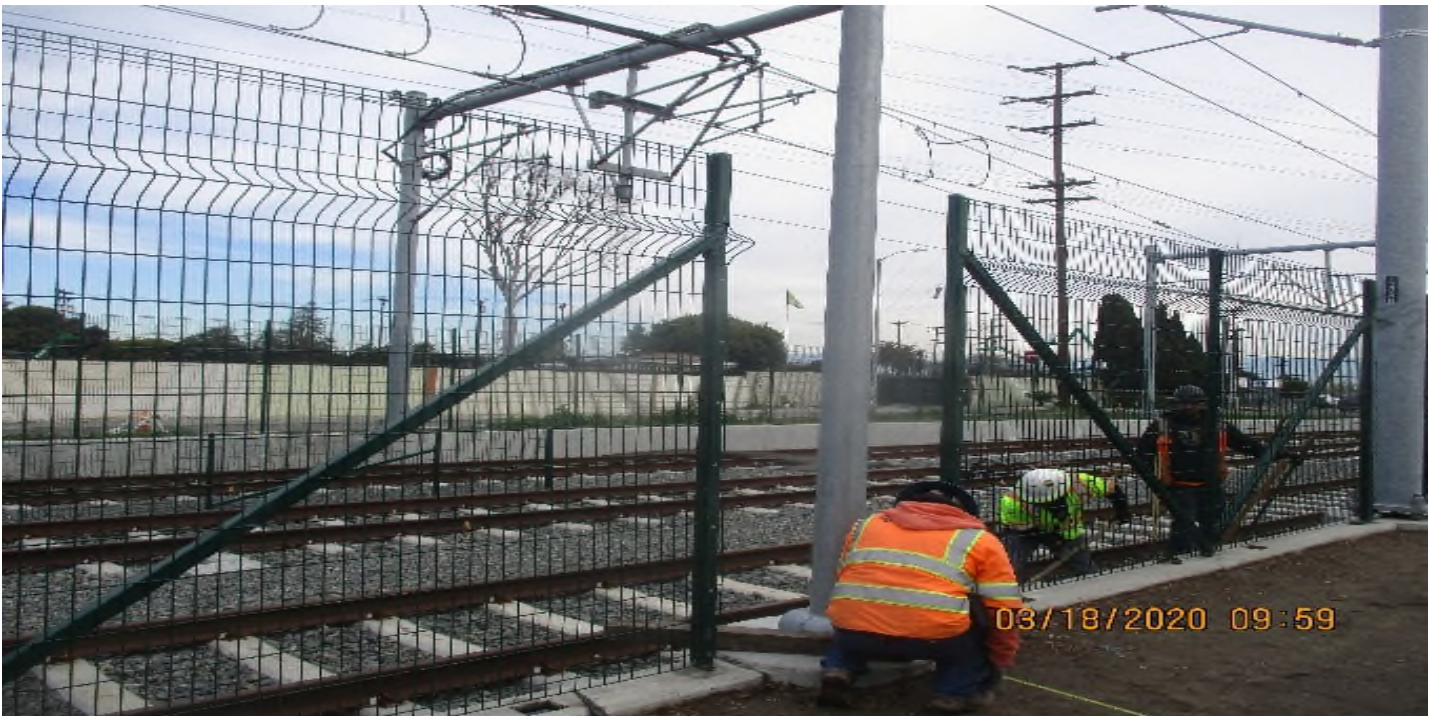


Florence/Brea – WSCC Carpenters formed for plaza platform at s-ticket pavilion La Brea Station.

CRENSHAW/LAX PHOTOGRAPHIC UPDATE



Florence/High St. - ACE Fence Place fence posts at East Bound Florence W-High



Florence/High St. - ACE Fence Dug Fence post holes at OCS poles on East Bound Florence Priarie to High.

CRENSHAW/LAX PHOTOGRAPHIC UPDATE



Florence/High St. - STA 245+00 TK#4 - NB looking north – track ballast cribbing and guideway housekeeping (Prairie Ave - High St)



Florence/High St. - ACE Fence Dig holes for posts at East Bound Florence W-High.

CRENSHAW/LAX PHOTOGRAPHIC UPDATE



Florence/High St. - STA 256+20 TK#4-NB looking south – system work south of High St at grade crossing - Siding Track.



Florence/High St. - Cut slope for new swale along ballast wall east of High St.

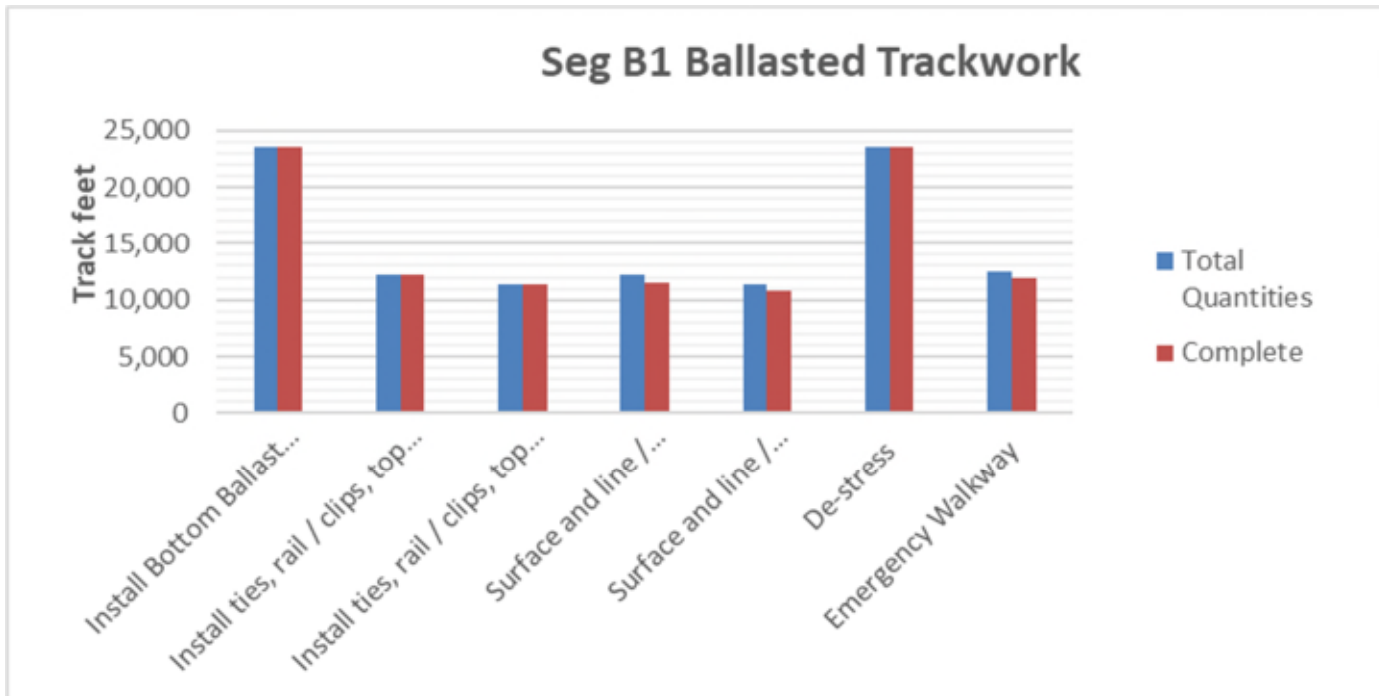
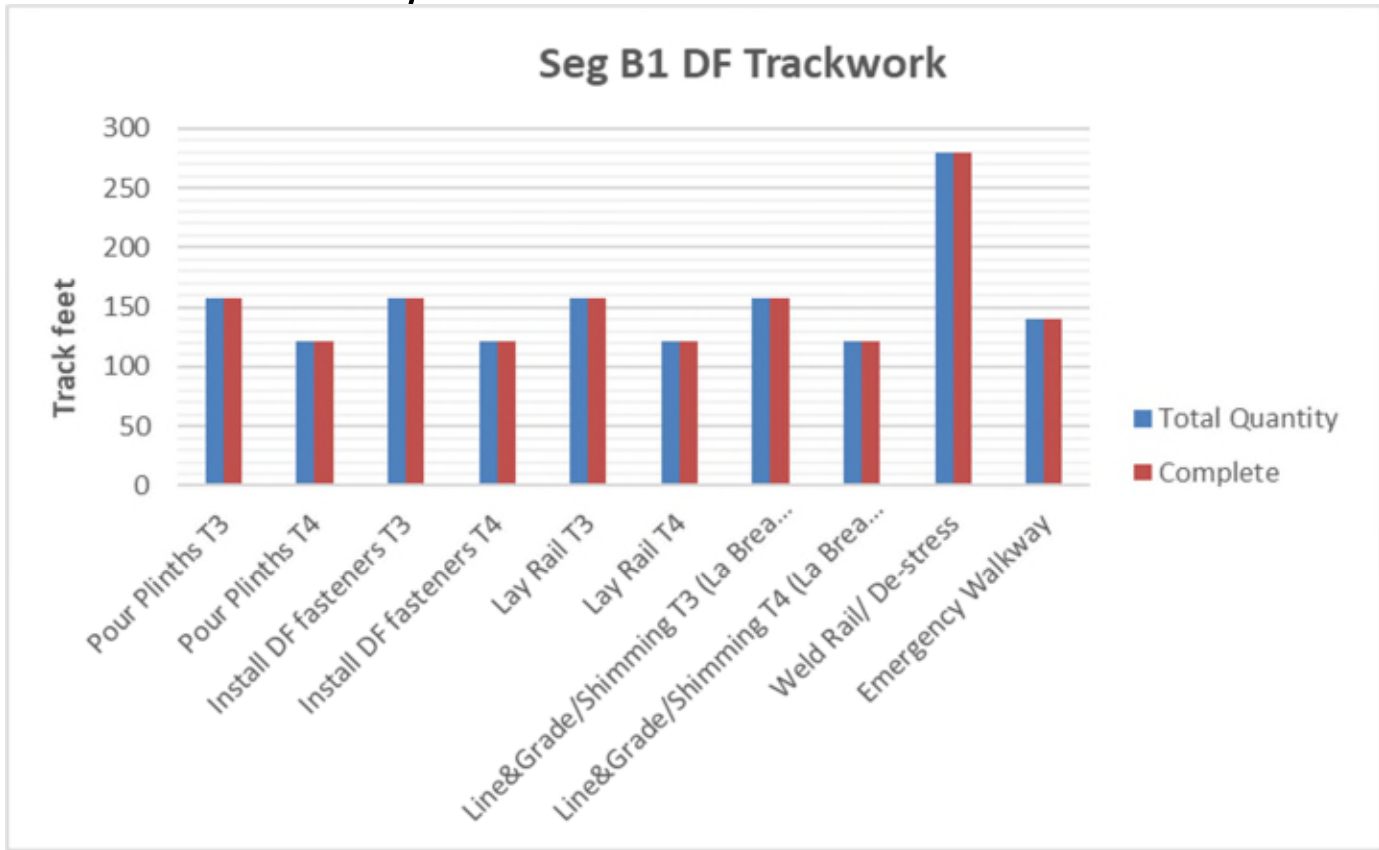
CRENSHAW/LAX PHOTOGRAPHIC UPDATE

SEGMENT B1:

- Disturbed ballast due to systems electrical conduit relocations continues to be repaired and re-dressed
- Investigation of track mis-alignment due to settlement of MSE Wall #202L is in process

PROJECT WIDE TRACKWORK PROGRESS									
	TRACK TYPE	ACTIVITY	TRACK FEET/QUANTITY	INSTALLED TO DATE	REMAINING	ACTIVITY % PROGRESS	Potential Rework *	Punchlist ** (Complete/Incomplete)	
SEGMENT B1	DF (279 TF)	Pour Plinths T3	158	158	0	100.00%			
		Pour Plinths T4	121	121	0	100.00%			
		Install DF fasteners T3	158	158	0	100.00%	*	INC	
		Install DF fasteners T4	121	121	0	100.00%	*	INC	
		Lay Rail T3	158	158	0	100.00%			
		Lay Rail T4	121	121	0	100.00%			
		Line&Grade/Shimming T3 (La Brea Bridge)	158	158	0	100.00%			
		Line&Grade/Shimming T4 (La Brea Bridge)	121	121	0	100.00%			
		Weld Rail/ De-stress	279	279	0	100.00%			
		Emergency Walkway	140	140	0	100.00%			
	Acceptance for turnover to subcontractors	yes/no	no						
	BALLASTED TRACKWORK (23,506 TF including grade crossings and Siding track)	Install Bottom Ballast (T3+T4 and Siding)	23,506	23,506	0	100.00%	*	INC	
		Install ties, rail / clips, top ballast T3 + Siding	12,184	12,184	0	100.00%	*	INC	
		Install ties, rail / clips, top ballast T4	11,322	11,322	0	100.00%	*	INC	
		Surface and line / Regulate T3 + Siding	12,184	11,575	609	95.00%			
		Surface and line / Regulate T4	11,322	10,756	566	95.00%			
		De-stress	23,506	23,506	0	100.00%			
		Emergency Walkway	12,506	12,000	506	95.95%	*	INC	
	Acceptance for turnover to subcontractors	yes/no	yes		N/A				
	SPECIAL TRACKWORK	Ballasted Single Crossover (O1/O2, P1/P2, Q1/Q2, T1/T2)	4	4	0	100.00%			
		Install switches (M, O1, O2, P1, P2, Q1, Q2, R, T1, T2 = 10)	10	10	0	100.00%			
		Thermite Welds	104	104	0	100.00%	*		
		Insulated Joints (IJ's)	43	43	0	100.00%	*		
	Acceptance for turnover to subcontractors	yes/no	No						
	GRADE X-ING	Construct Crossing (Oak/Cedar/Eucalyptus/Ivy/Centinel, High (50%), West, Brynhurst)	8	8		100.00%			
	DF =	Direct Fixation							
	T3 =	Track 3							
	T4 =	Track 4							
TF =	Track Feet								
*	Potential for rework based on recent guideway survey. Total impact of rework is unknown at this time.								
**	Punchlist Complete/Incomplete: Indicates the completion (COMP) or Incompletion (INC) of identified punchlist items								

CRENSHAW/LAX PHOTOGRAPHIC UPDATE



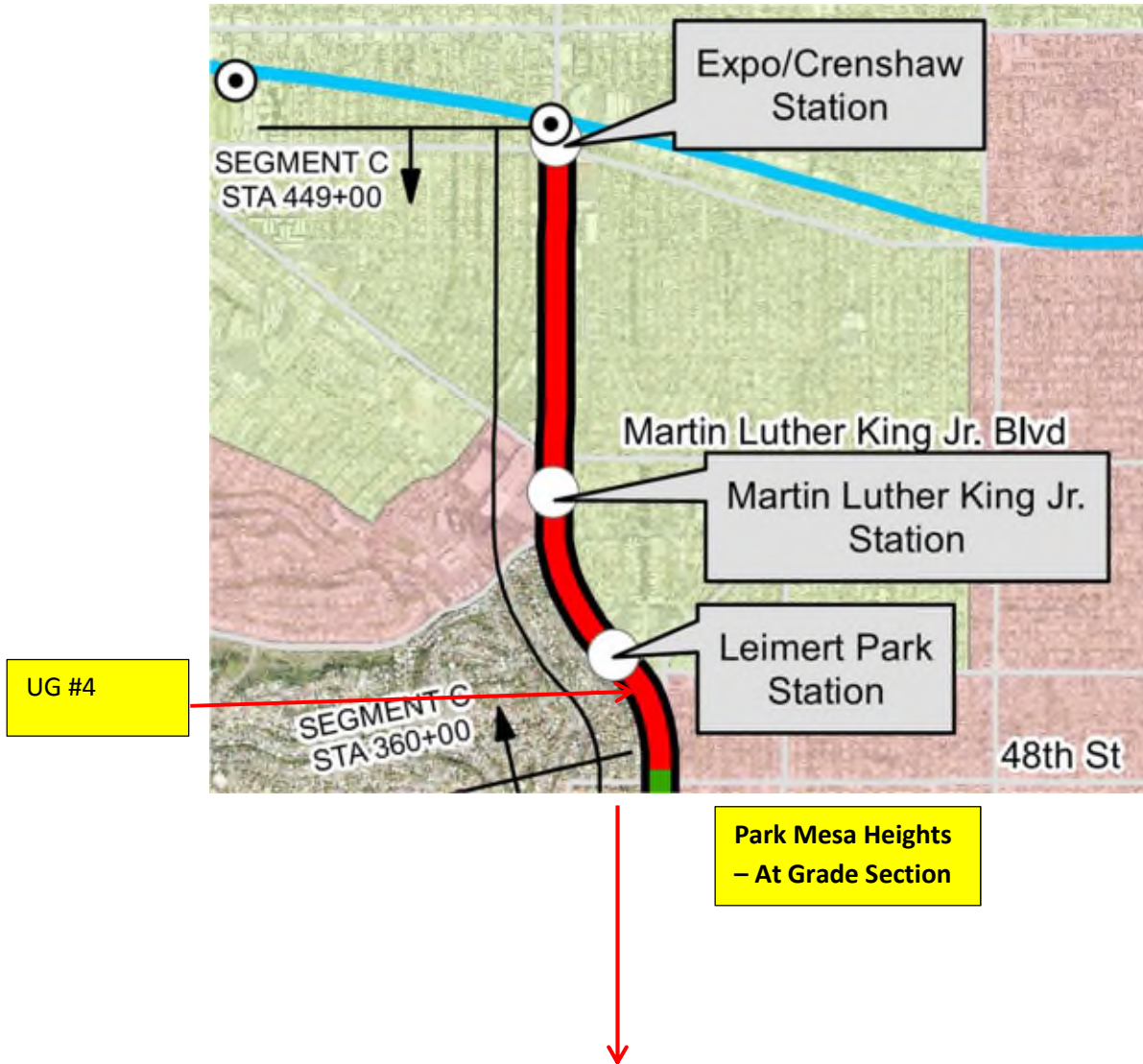
SEGMENT B2:

- Disturbed ballast due to systems electrical conduit relocations continues to be repaired and re-dressed.

CRENSHAW/LAX PHOTOGRAPHIC UPDATE

- Rework continues to relocate incorrectly installed Insulated Joints (IJs) for train control on both north and south bound tracks south of 57th Street.

Segment C



CRENSHAW/LAX PHOTOGRAPHIC UPDATE



EXPO STATION – Continue oil water separator installation on Rodeo Blvd and Crenshaw Blvd.



EXPO STATION – Continue oil water separator installation on Rodeo Blvd and Crenshaw Blvd.

CRENSHAW/LAX PHOTOGRAPHIC UPDATE



EXPO STATION – Building forms and placing concrete for new curb/gutter and ADA ramp installation on Bronson Ave east of the plaza.



EXPO STATION – Continue concrete placement for new curb/gutter and ADA ramp installation on Bronson Ave east of the plaza.

CRENSHAW/LAX PHOTOGRAPHIC UPDATE



EXPO STATION – Setting grid lines in preparation for underground electrical vault and fiber installation for duct banks M02 & M07 at the plaza.



EXPO STATION – Continue trenching in preparation for underground electrical vault and fiber installation for duct banks M02 & M07 at the plaza.

CRENSHAW/LAX PHOTOGRAPHIC UPDATE



EXPO STATION – Installing glass panel fittings for the main entrance canopy at the plaza level.



EXPO STATION – Continue installing glass panel fittings for the main entrance canopy at the plaza level.

CRENSHAW/LAX PHOTOGRAPHIC UPDATE



EXPO STATION – Began tempered glass installation for the main entrance canopy at the plaza level.



EXPO STATION – Continue surface finishing the wind screen curbs around the main entrance of the plaza level.

CRENSHAW/LAX PHOTOGRAPHIC UPDATE



EXPO STATION – Continue surface finishing the wind screen curbs around the main entrance of the plaza level.



EXPO STATION – Continue installing granite stair treads at the main entrance staircase landing of the plaza level.

CRENSHAW/LAX PHOTOGRAPHIC UPDATE



EXPO STATION – Continue installing fire rated conduit to the pull box for the EVFs in the North Fan Room C – 102 of the concourse level.



EXPO STATION – Began installing stainless steel cladding panels on the platform ceiling level.

CRENSHAW/LAX PHOTOGRAPHIC UPDATE



EXPO STATION – Continue installing stainless steel cladding panels on the platform ceiling level.



EXPO STATION – Placing concrete for new curb/gutter and driveway installation on southbound Crenshaw Blvd between Exposition Blvd and Rodeo Blvd.

CRENSHAW/LAX PHOTOGRAPHIC UPDATE



EXPO STATION – Backfilling and grading/compacting driveway on southbound Crenshaw Blvd between Exposition Blvd and Rodeo Blvd.



EXPO STATION – Continue excavating for new sidewalk and ADA ramp installation on Bronson Ave east of the plaza.

CRENSHAW/LAX PHOTOGRAPHIC UPDATE



EXPO STATION – Fine grading soil for the new sidewalk and ADA ramp installation on Bronson Ave east of the plaza.



EXPO STATION – Began saw cutting the sidewalk concrete on Bronson Ave east of the plaza.

CRENSHAW/LAX PHOTOGRAPHIC UPDATE



EXPO STATION – Placing concrete for the new ADA ramp installation on Bronson Ave east of the plaza.



EXPO STATION – Forming Catch Basin #2 in preparation of concrete placement on the northwest section of the plaza.

CRENSHAW/LAX PHOTOGRAPHIC UPDATE



EXPO STATION – Prepping to strip forms for Catch Basin #2 on the northwest section of the plaza.



EXPO STATION – Continue tempered glass installation on top of the main entrance canopy at the plaza level.

CRENSHAW/LAX PHOTOGRAPHIC UPDATE



EXPO STATION – Continue tempered glass installation on top of the main entrance canopy at the plaza level.



EXPO STATION – Caulking glass panel edges with silicone on top of the main entrance canopy at the plaza level.

CRENSHAW/LAX PHOTOGRAPHIC UPDATE



EXPO STATION – Continue caulking glass panel edges with silicone on top of the main entrance canopy at the plaza level.



EXPO STATION – Continue caulking glass panel edges with silicone on top of the main entrance canopy at the plaza level.

CRENSHAW/LAX PHOTOGRAPHIC UPDATE



EXPO STATION – Finalizing glass panel caulking on top of the main entrance canopy at the plaza level.



EXPO STATION – Continue fiber-tie in installation and placing slurry for the electrical duct banks M02 & M07 at the plaza level.

CRENSHAW/LAX PHOTOGRAPHIC UPDATE



EXPO STATION – Surfacing walls of the north emergency ventilation shaft at the plaza level.



EXPO STATION – Setting up materials to build scaffold and platform for Elevator shafts 1&2 at the plaza level.

CRENSHAW/LAX PHOTOGRAPHIC UPDATE



EXPO STATION – Continue installing granite stair treads at the main entrance staircase landing of the plaza level.

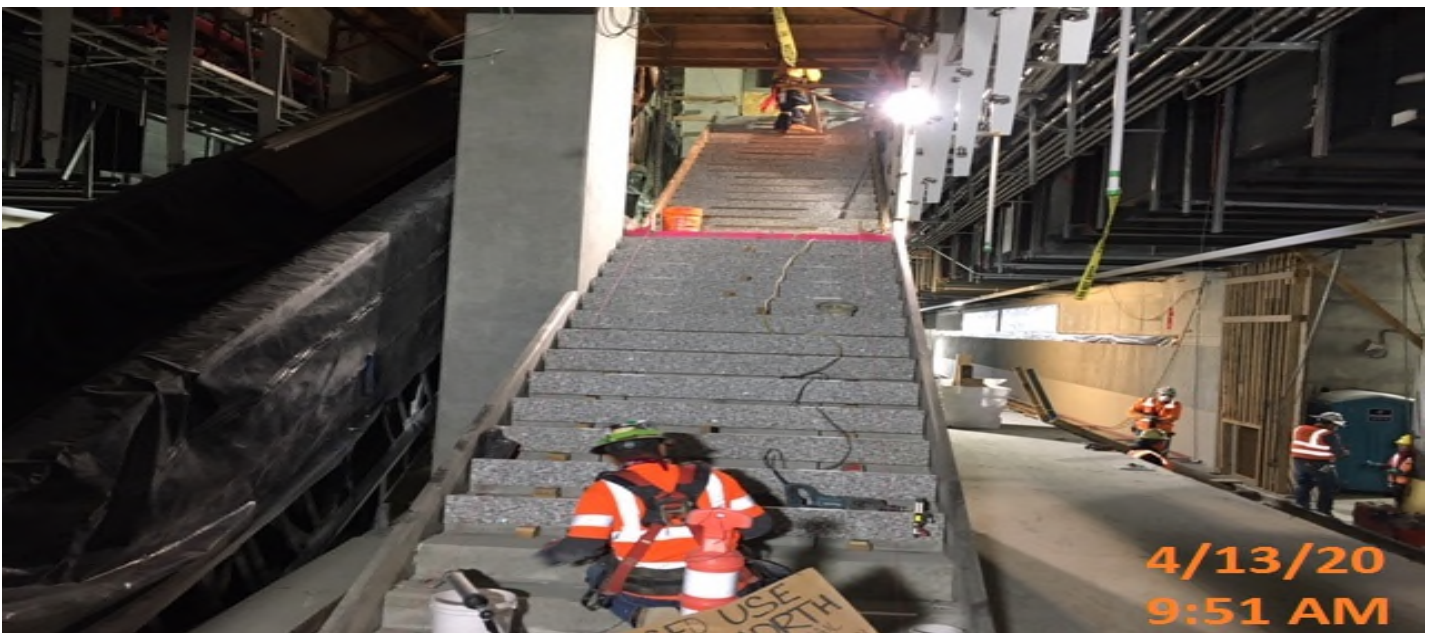


EXPO STATION – Installing light fixtures at the main entrance landing of the concourse level.

CRENSHAW/LAX PHOTOGRAPHIC UPDATE



EXPO STATION – Began installing granite risers for staircase #2 at the concourse level.

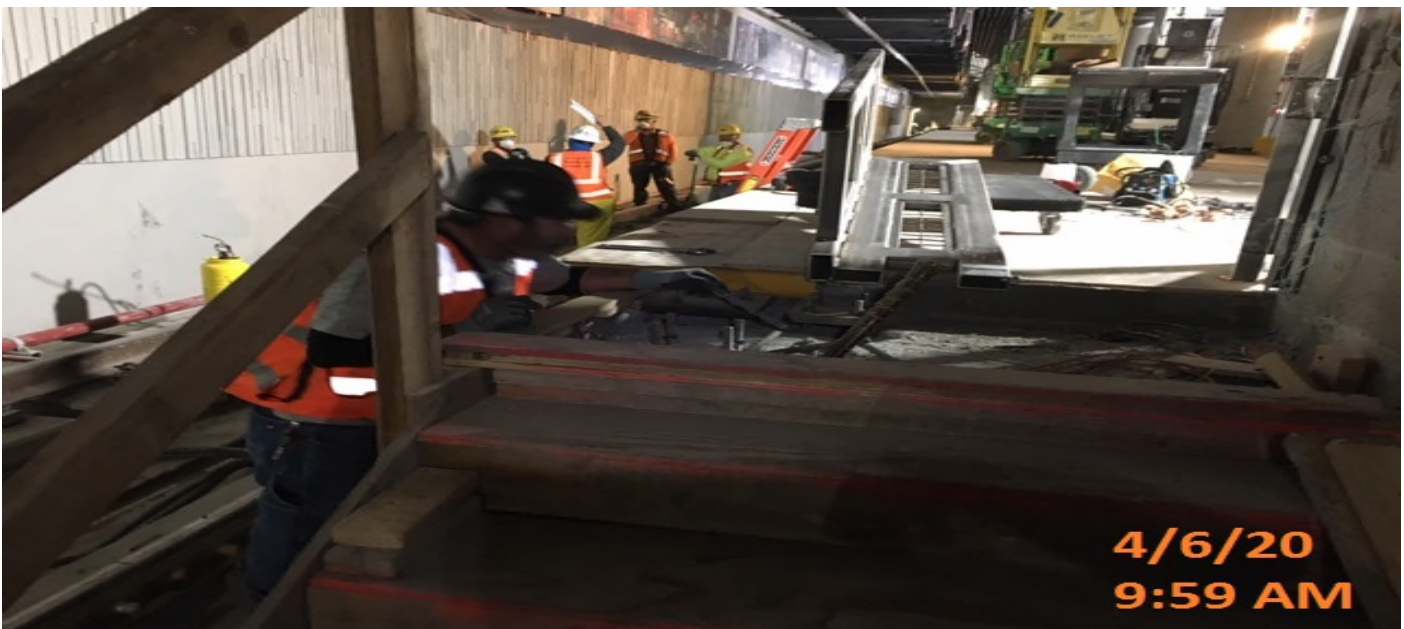


EXPO STATION – Continue installing granite risers for staircase #2 at the concourse level.

CRENSHAW/LAX PHOTOGRAPHIC UPDATE



EXPO STATION – Continue end gate installation for both the north and south ends of the platform level.

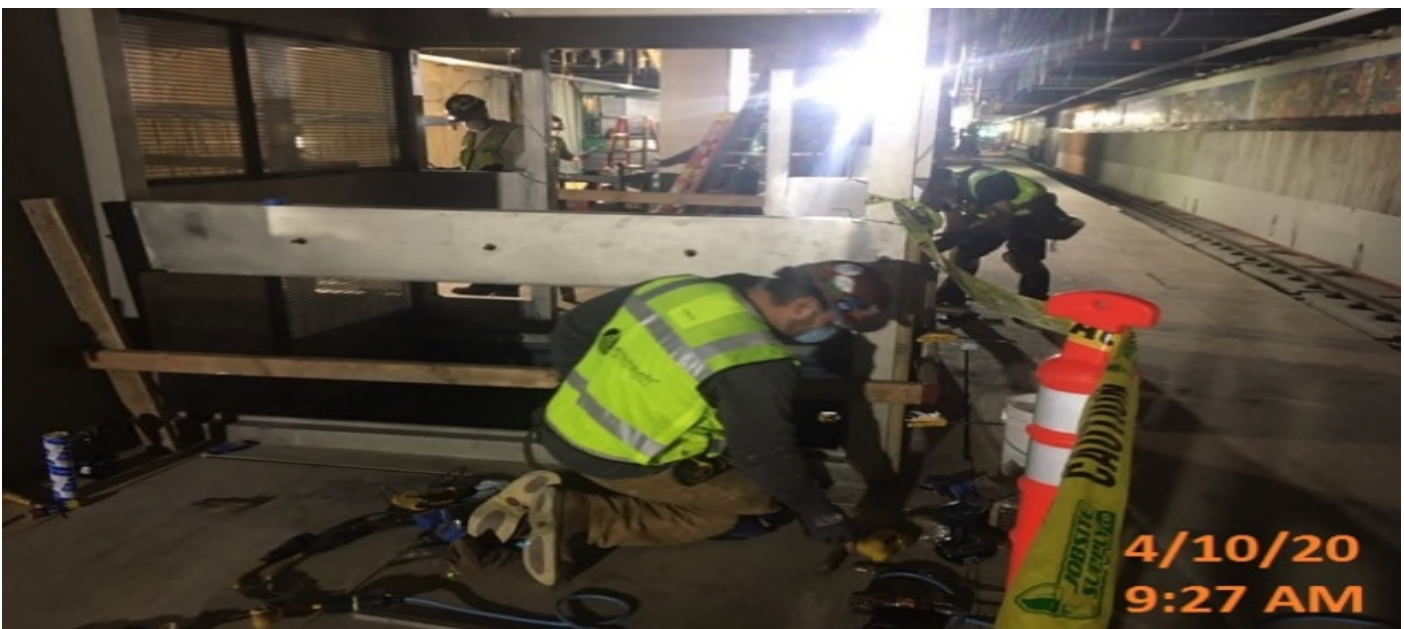


EXPO STATION – Continue end gate installation for the southbound stair landing on the south end of the platform level.

CRENSHAW/LAX PHOTOGRAPHIC UPDATE



EXPO STATION – Continue end gate installation for both the north and southbound stair landings on the south end of the platform level.



EXPO STATION – Installing glass panel rubber stops for Elevators 3&4 at the platform level.

CRENSHAW/LAX PHOTOGRAPHIC UPDATE



Crenshaw/Expo - WSCC excavating Neil Electric fiber optics Expo yard



Crenshaw/Expo - WSCC excavating concrete slab at Expo yard.

CRENSHAW/LAX PHOTOGRAPHIC UPDATE



Crenshaw/Expo - WSCC crew doing exploratory work on water intrusion into TPSS room.



Crenshaw/Expo - WSCC crew at main entrance surface finishing wind screen curb.

CRENSHAW/LAX PHOTOGRAPHIC UPDATE



Crenshaw/Expo - WSCC finishers applying fire mortar around ductwork.



Crenshaw/Expo - WSCC setting gridlines for excavation and placement of electrical vaults.

CRENSHAW/LAX PHOTOGRAPHIC UPDATE

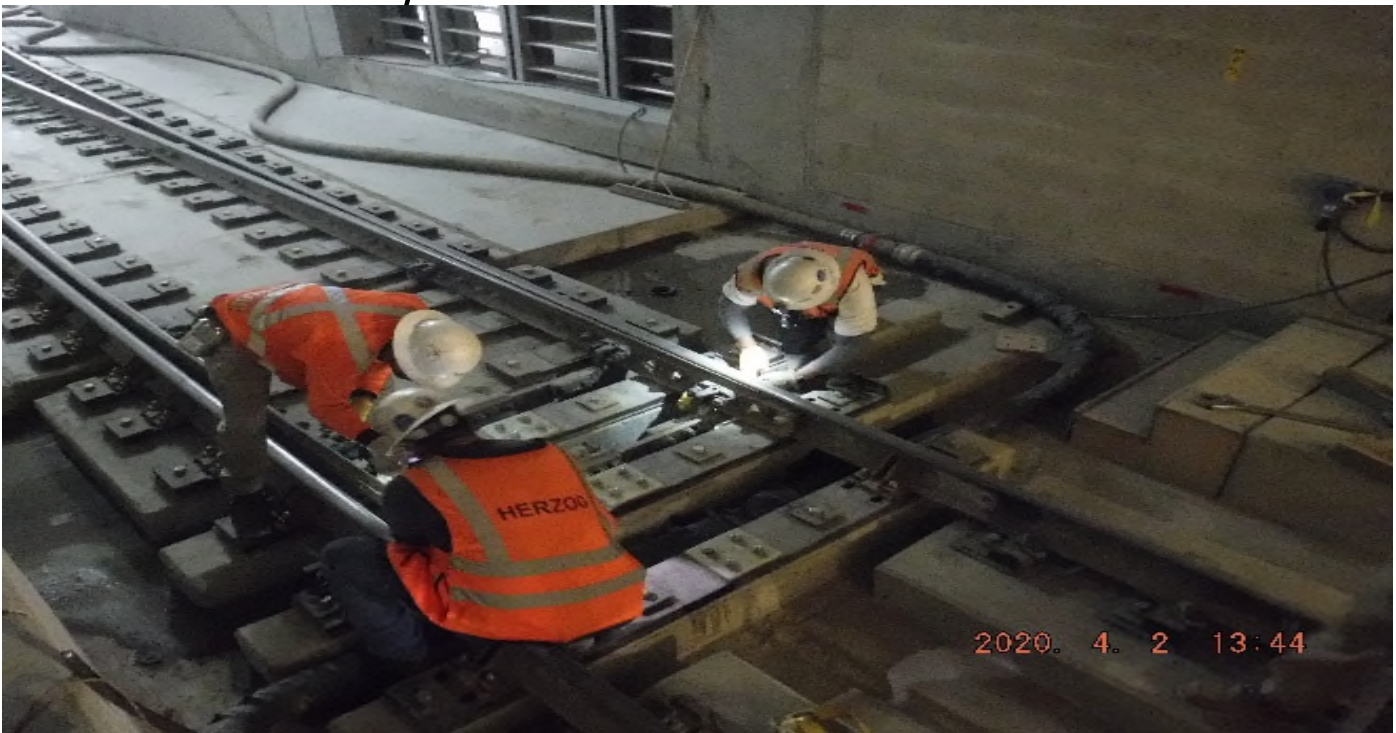


Crenshaw/Expo - STA 448+00 TK#4-NB looking north – plinth rebar scanning in progress UG4 Exposition Station.

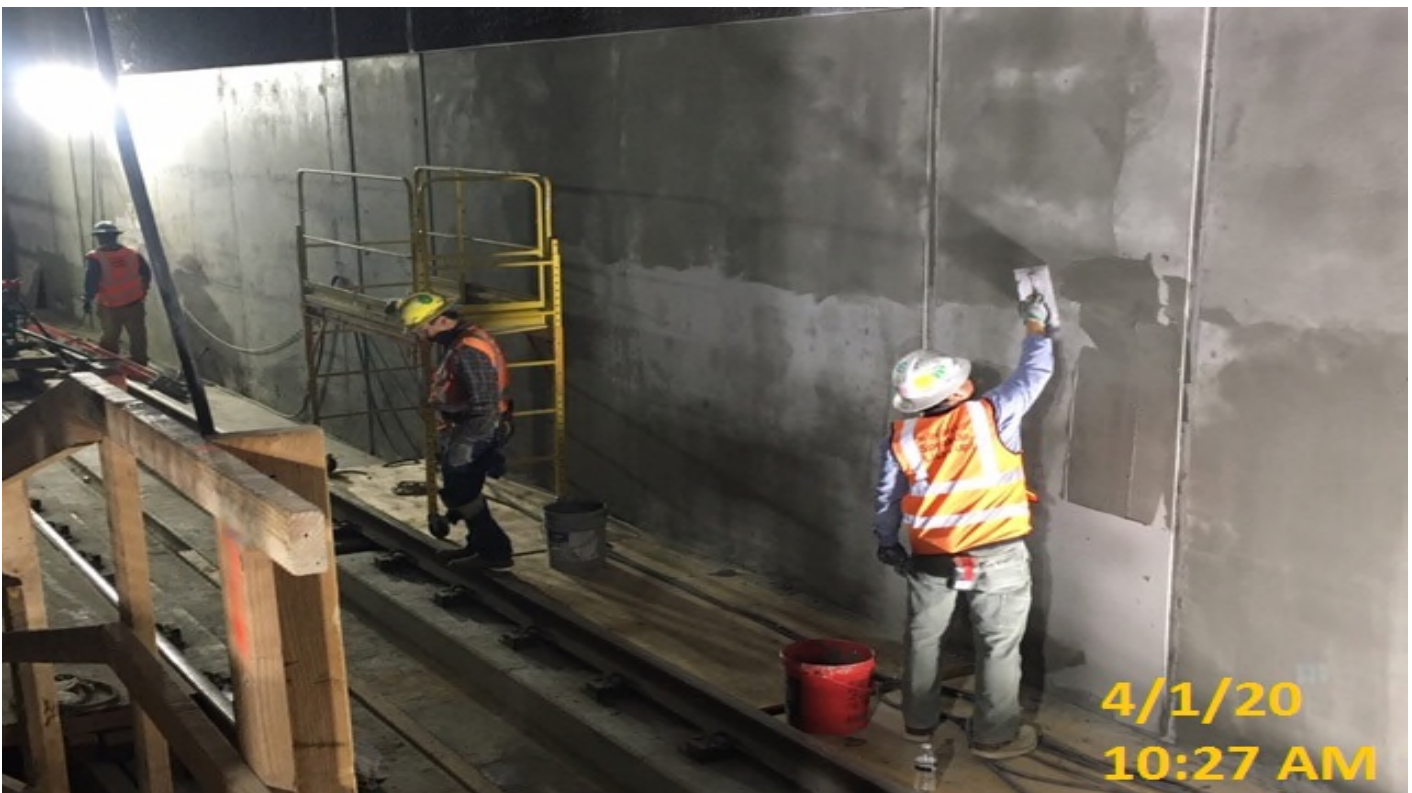


Crenshaw/Expo - STA 447+80 TK#4-NB looking east – record data after plinth rebar scanning UG4 Exposition Station.

CRENSHAW/LAX PHOTOGRAPHIC UPDATE

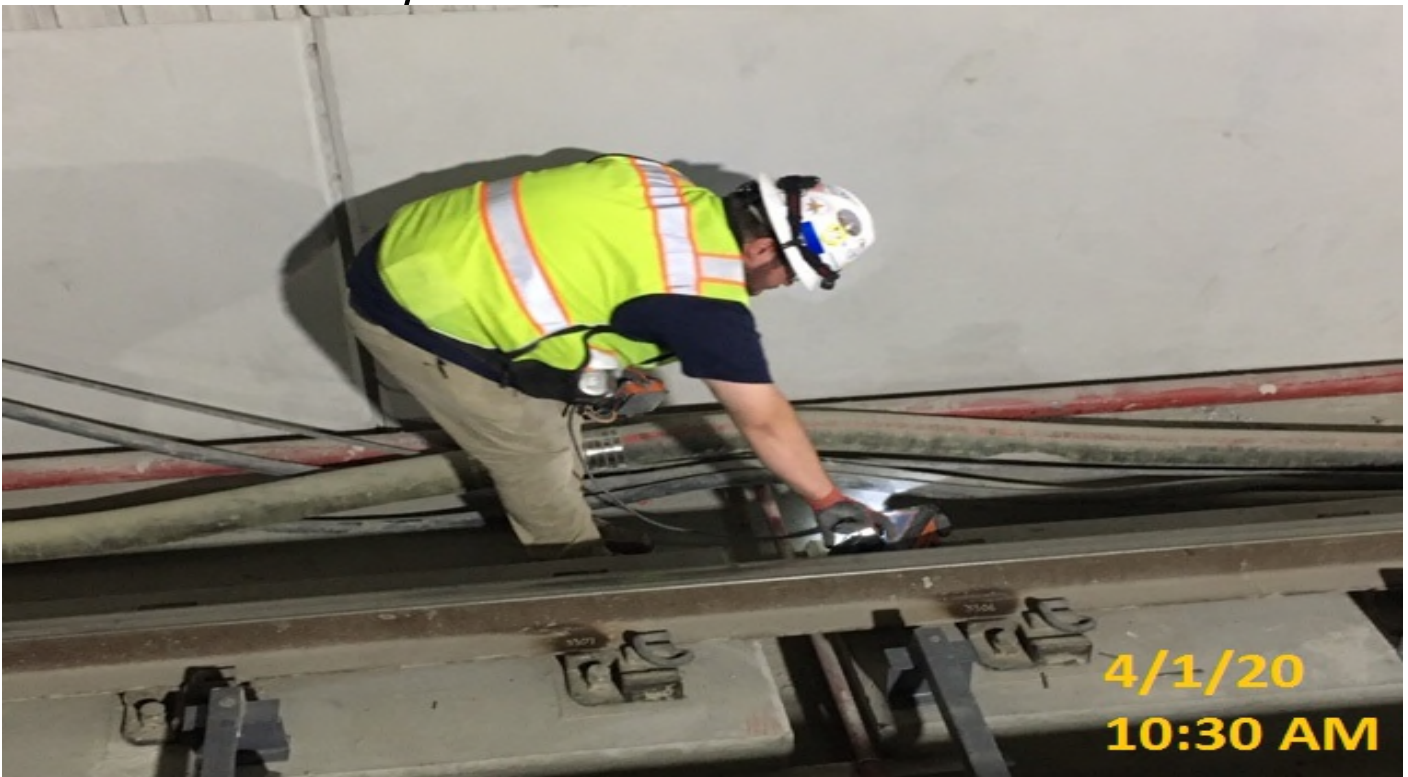


Crenshaw/Expo - STA 444+40 TK#4-NB looking south – PS 8X2RH XO inspection by HCC UG4 Exposition.



Crenshaw/Expo - EXPO – WSCC finishers patching and resurfacing NB track wall.

CRENSHAW/LAX PHOTOGRAPHIC UPDATE



Crenshaw/Expo - Site Scan performing dowel scans in plinths at track level.



Crenshaw/Expo - EXPO – Giroux Glass installing glass panels at main entrance canopy.

CRENSHAW/LAX PHOTOGRAPHIC UPDATE



Crenshaw/Expo - EXPO – Carrera Marble continue installing treads at main staircase.



Crenshaw/Expo - EXPO – WSCC ironworkers grinding platform end gates.

CRENSHAW/LAX PHOTOGRAPHIC UPDATE



Crenshaw/Expo - EXPO – Giroux Glass installing glass panels at main entrance canopy platform end gates.



Crenshaw/Expo - EXPO – WSCC crew vacuum excavating additional depth for fiber tie in.

CRENSHAW/LAX PHOTOGRAPHIC UPDATE



Crenshaw/Expo - EXPO – WSCC crew placing slurry backfill around electrical vault.



MLK Station - Excavating for 6” pipe for planter wall drainage at the plaza level.

CRENSHAW/LAX PHOTOGRAPHIC UPDATE



MLK STATION – Began formwork and placing rebar for the planter wall and footings at the west side of the plaza level.



MLK STATION – Continue planter wall and footing installation at the west side of the plaza level.

CRENSHAW/LAX PHOTOGRAPHIC UPDATE



MLK STATION – Continue planter wall and footing installation at the west side of the plaza level.



MLK STATION – Continue planter wall and footing installation at the west side of the plaza level.

CRENSHAW/LAX PHOTOGRAPHIC UPDATE



MLK STATION – Placing concrete for the planter wall and footing installation at the west side of the plaza level.



MLK STATION – Continue formwork for the planter wall installation at the west side of the plaza level.

CRENSHAW/LAX PHOTOGRAPHIC UPDATE



MLK STATION – Installing concrete thrust block supports on top of the fire protection vault at the plaza level.



MLK STATION – Continue building forms for the metal base plates of the main entrance canopy columns at the plaza level.

CRENSHAW/LAX PHOTOGRAPHIC UPDATE

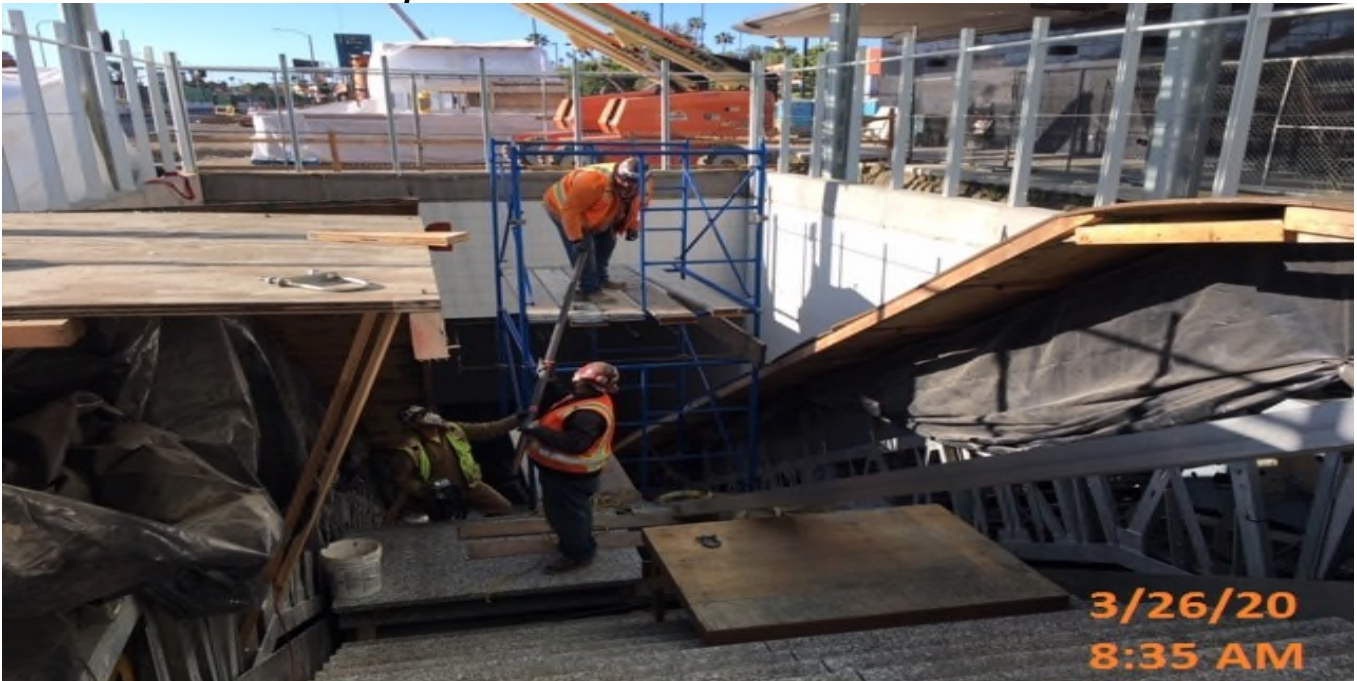


MLK STATION – Began tempered glass installation above the main entrance canopy structure at the plaza level.



MLK STATION – Finalizing tempered glass installation above the main entrance canopy structure at the plaza level.

CRENSHAW/LAX PHOTOGRAPHIC UPDATE



MLK STATION – Moving granite landing sections into place for installation at the main entrance structure of the plaza level.



MLK STATION – Continue moving granite landing sections into place for installation at the main entrance structure of the plaza level.

CRENSHAW/LAX PHOTOGRAPHIC UPDATE



MLK STATION – Completed granite installation at the main entrance structure of the plaza level.



MLK STATION – Continue installing light cove and ceiling panels throughout the Free & Paid Area of the concourse level.

CRENSHAW/LAX PHOTOGRAPHIC UPDATE



MLK STATION – Continue installing light cove and ceiling panels throughout the Free & Paid Area of the concourse level.



MLK STATION – Continue installing light cove and ceiling panels throughout the Free & Paid Area of the concourse level.

CRENSHAW/LAX PHOTOGRAPHIC UPDATE



MLK STATION – Continue installing light cove and ceiling panels throughout the Free & Paid Area of the concourse level.



MLK STATION – Continue installing light cove and ceiling panels throughout the Free & Paid Area of the concourse level.

CRENSHAW/LAX PHOTOGRAPHIC UPDATE



MLK STATION – Continue installing light cove and ceiling panels throughout the Free & Paid Area of the concourse level.



MLK STATION – Continue installing light cove and ceiling panels throughout the Free & Paid Area of the concourse level.

CRENSHAW/LAX PHOTOGRAPHIC UPDATE



MLK STATION – Continue installing light cove and ceiling panels throughout the Free & Paid Area of the concourse level.



MLK STATION – Began installing door mechanisms for Elevators 1 – 4 at the concourse level.

CRENSHAW/LAX PHOTOGRAPHIC UPDATE



MLK STATION – Installing anchor tabs for the edge plate installation for stairwell #2 between concourse and platform level.



MLK STATION – Continue installing steel stud track and framing underneath escalator 3 at the platform level.

CRENSHAW/LAX PHOTOGRAPHIC UPDATE



MLK STATION – Continue formwork for the planter wall installation at the west side of the plaza level.

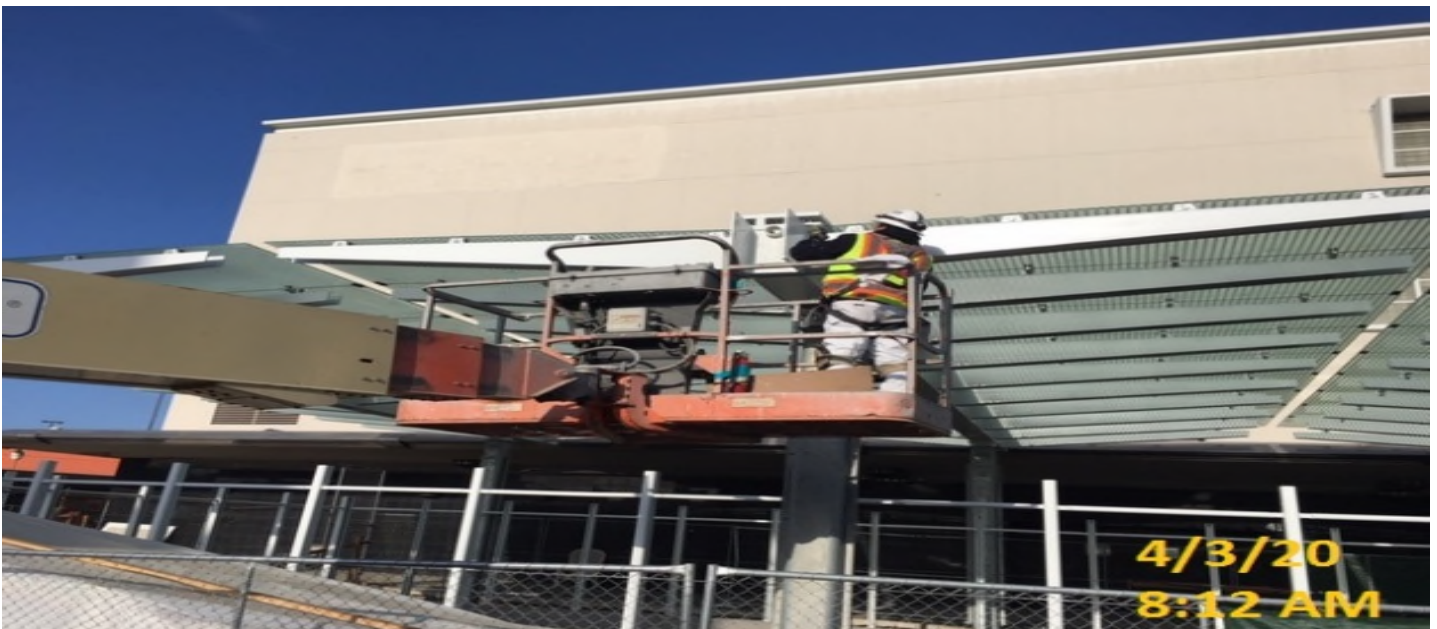


MLK STATION – Stripping forms from the planter wall at the west side of the plaza level.

CRENSHAW/LAX PHOTOGRAPHIC UPDATE



MLK STATION – Continue applying finish coat paint to the main entrance canopy structure at the plaza level.



MLK STATION – Continue applying finish coat paint to the main entrance canopy structure at the plaza level.

CRENSHAW/LAX PHOTOGRAPHIC UPDATE



MLK STATION – Finalizing granite landing sections at the main entrance of the plaza level.



MLK STATION – Began installing overhead coiling grille components to the main entrance canopy at the plaza level.

CRENSHAW/LAX PHOTOGRAPHIC UPDATE



MLK STATION – Continue installing the overhead ceiling grille to the main entrance canopy at the plaza level.



MLK STATION – Continue cab assembly and stainless steel fascia panel installation for Elevators 3&4 at the concourse level.

CRENSHAW/LAX PHOTOGRAPHIC UPDATE



MLK STATION – Continue cab assembly and stainless steel fascia panel installation for Elevators 3&4 at the concourse level.



MLK STATION – Continue cab assembly and stainless steel fascia panel installation for Elevators 1&2 at the concourse level.

CRENSHAW/LAX PHOTOGRAPHIC UPDATE



MLK STATION – Continue cab assembly and stainless steel fascia panel installation for Elevators 1&2 at the concourse level.



MLK STATION – Continue cab assembly and stainless steel fascia panel installation for all the Elevators at the concourse level.

CRENSHAW/LAX PHOTOGRAPHIC UPDATE



MLK STATION – Installing flex whips for the drop ceiling light fixtures at the concourse level.

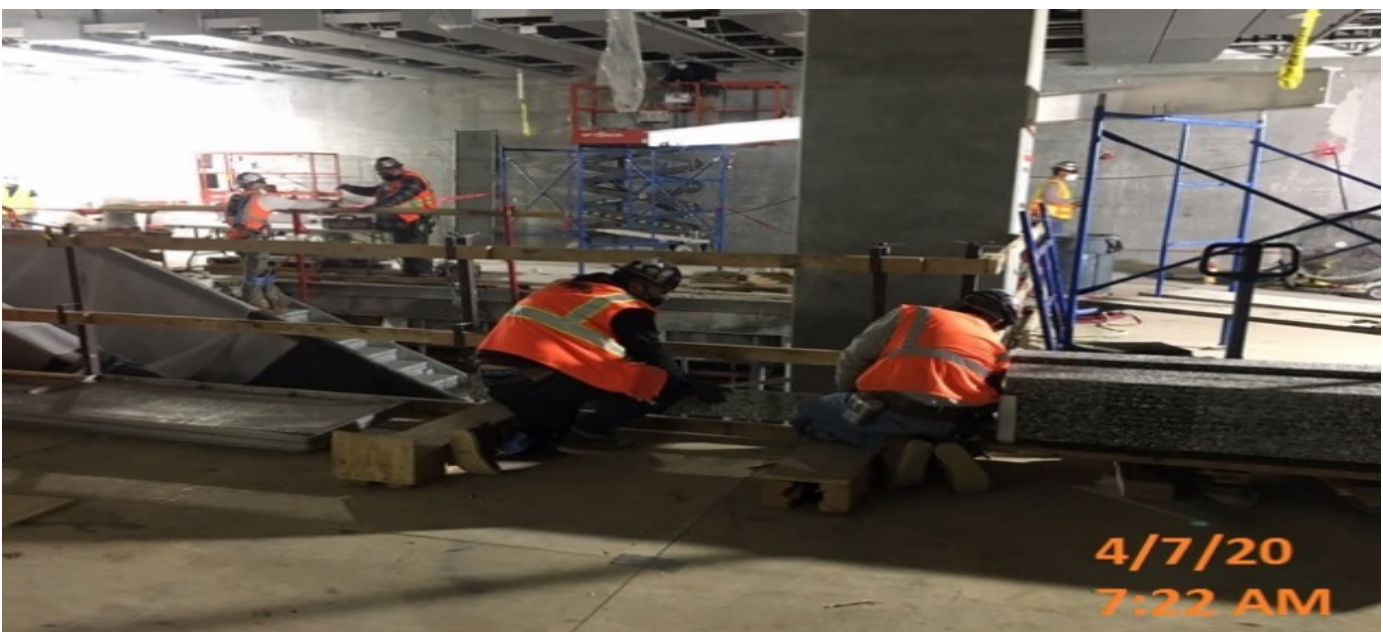


MLK STATION – Began cab door stop installation for all the Elevators at the concourse level.

CRENSHAW/LAX PHOTOGRAPHIC UPDATE



MLK STATION – Installing granite treads and landing sections to staircase #3 at the concourse level.

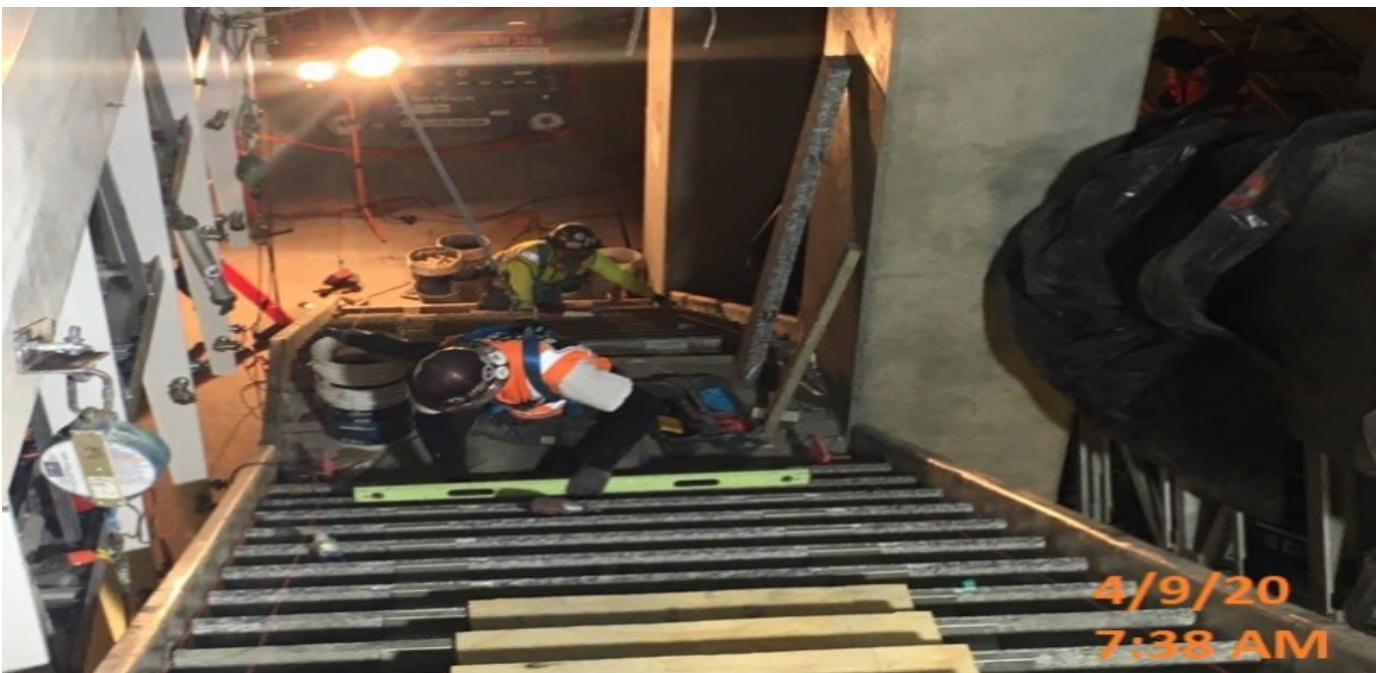


MLK STATION – Continue installing granite treads and landing sections to staircase #3 at the concourse level.

CRENSHAW/LAX PHOTOGRAPHIC UPDATE



MLK STATION – Continue installing granite treads and landing sections for staircases 2&3 between concourse and platform level.

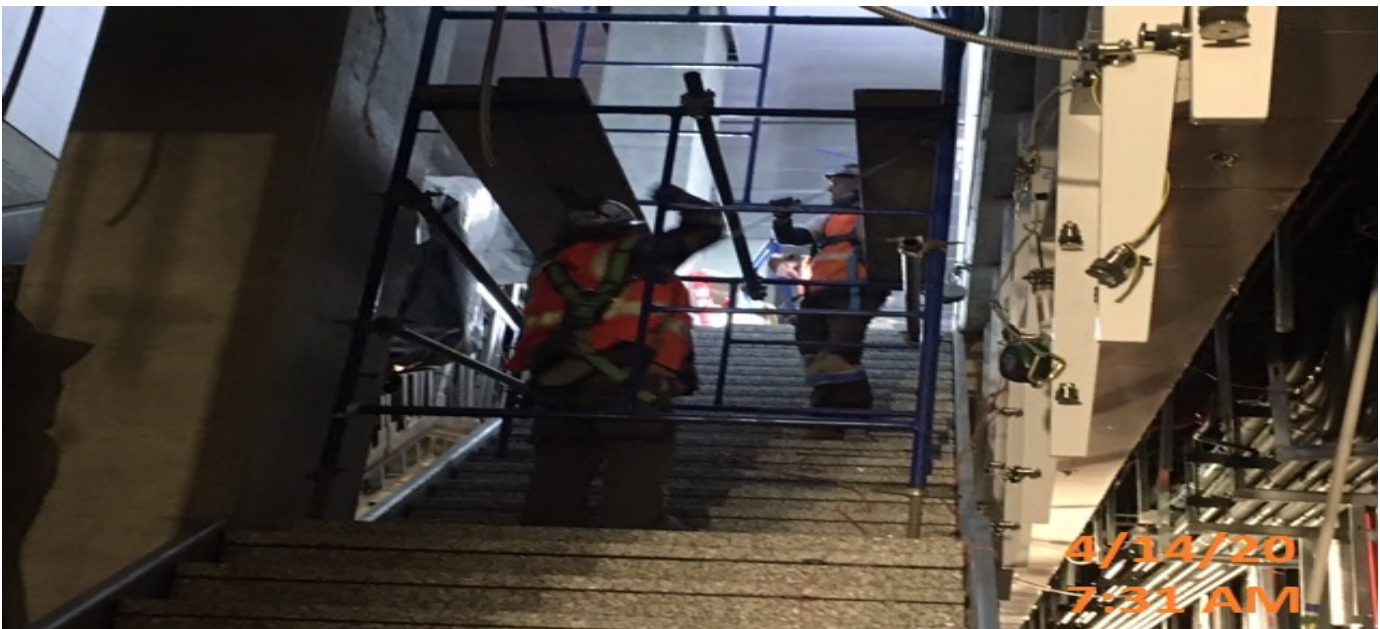


MLK STATION – Continue installing granite risers for staircases 2&3 between concourse and platform level.

CRENSHAW/LAX PHOTOGRAPHIC UPDATE

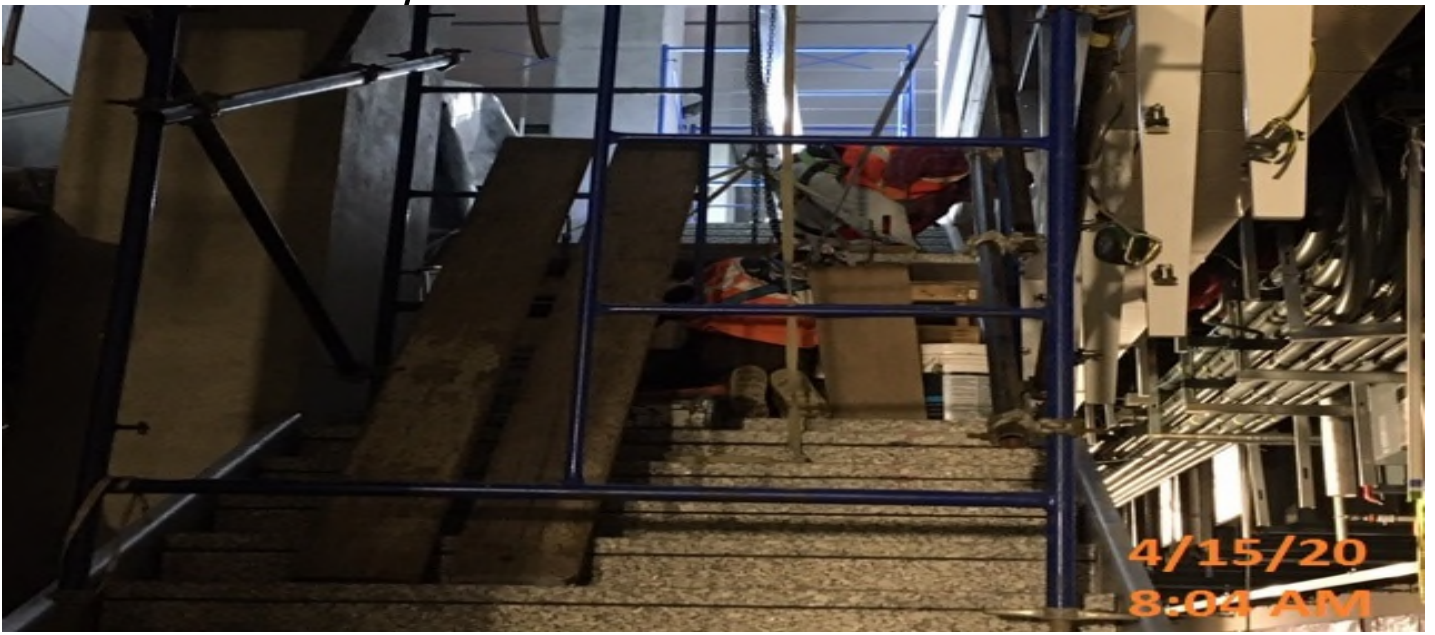


MLK STATION – Continue installing granite risers for staircase #3 between concourse and platform level.

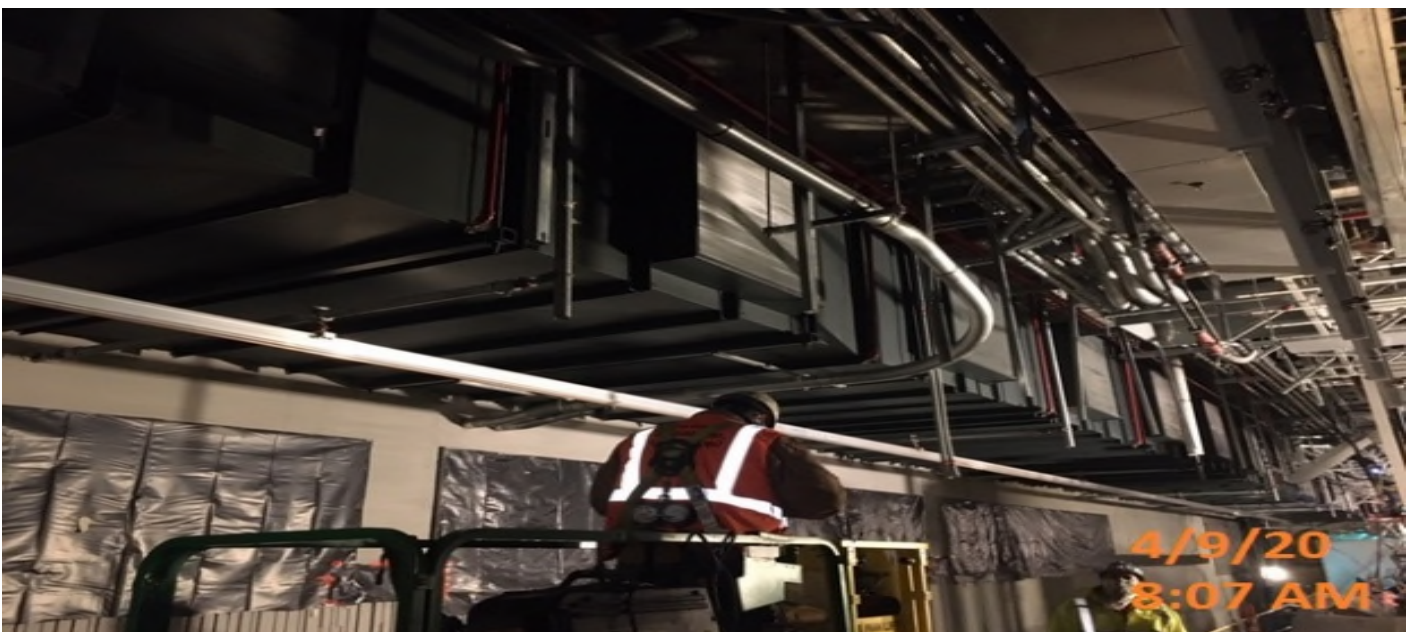


MLK STATION – Continue installing granite risers for staircase #3 between concourse and platform level.

CRENSHAW/LAX PHOTOGRAPHIC UPDATE

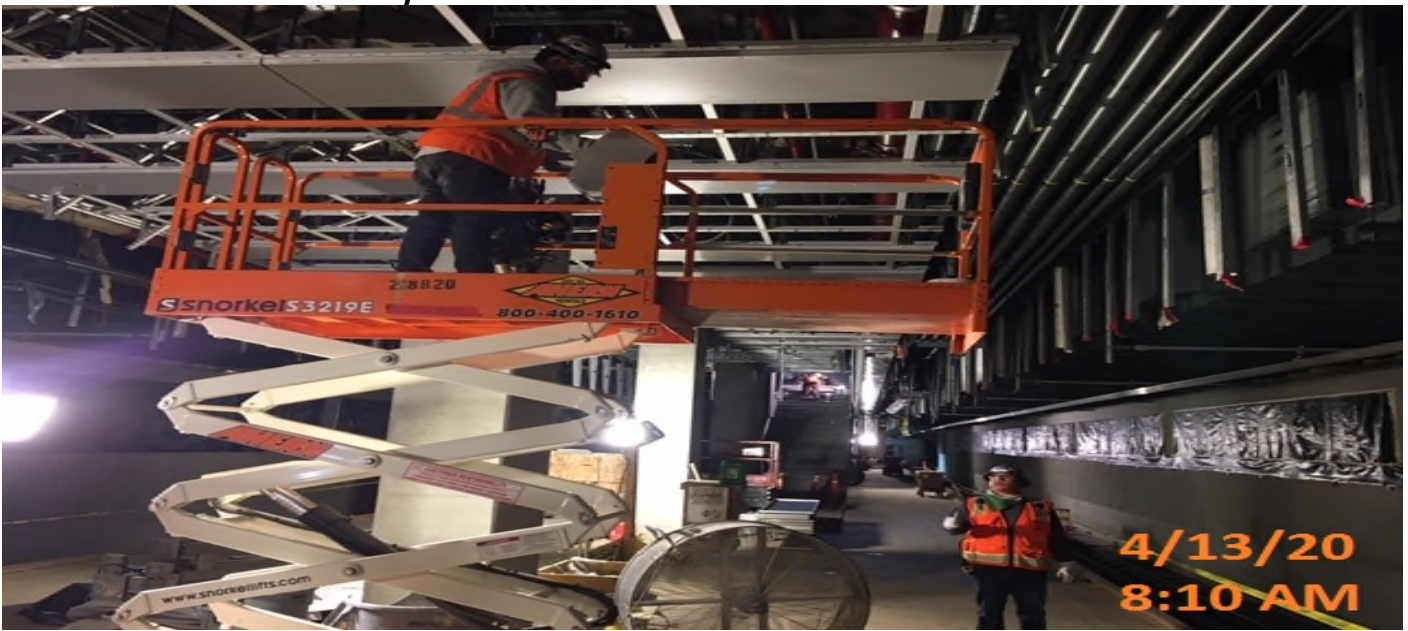


MLK STATION – Continue installing granite risers for staircase #3 between concourse and platform level.

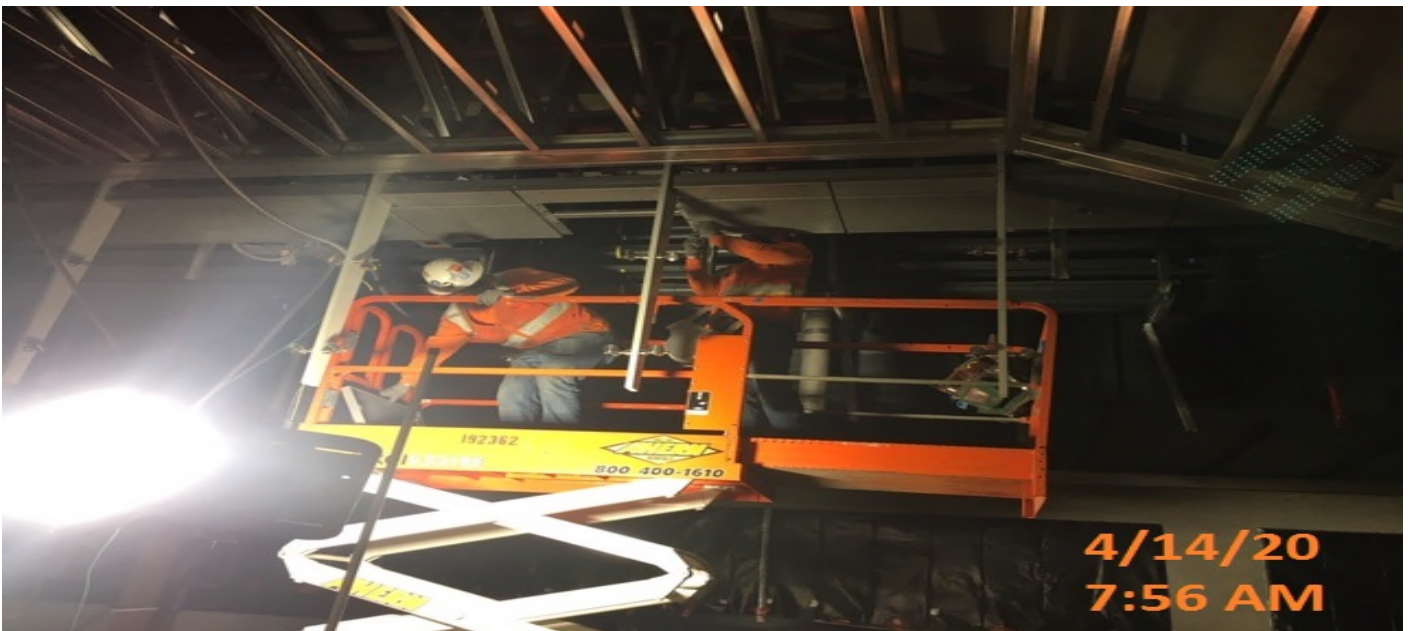


MLK STATION – Installing extension framework for the upcoming edge lighting drop tube installation at the platform level.

CRENSHAW/LAX PHOTOGRAPHIC UPDATE



MLK STATION – Resume metal ceiling panel installation for the platform ceiling level.



MLK STATION – Installing panel and draft stop panels for the down stands at the platform ceiling level.

CRENSHAW/LAX PHOTOGRAPHIC UPDATE



MLK STATION – Preparing for end gate installation at the northbound stair landings of the north end of the platform level.



MLK STATION – Removing protective wrap for artwork inspection at the platform level.

CRENSHAW/LAX PHOTOGRAPHIC UPDATE

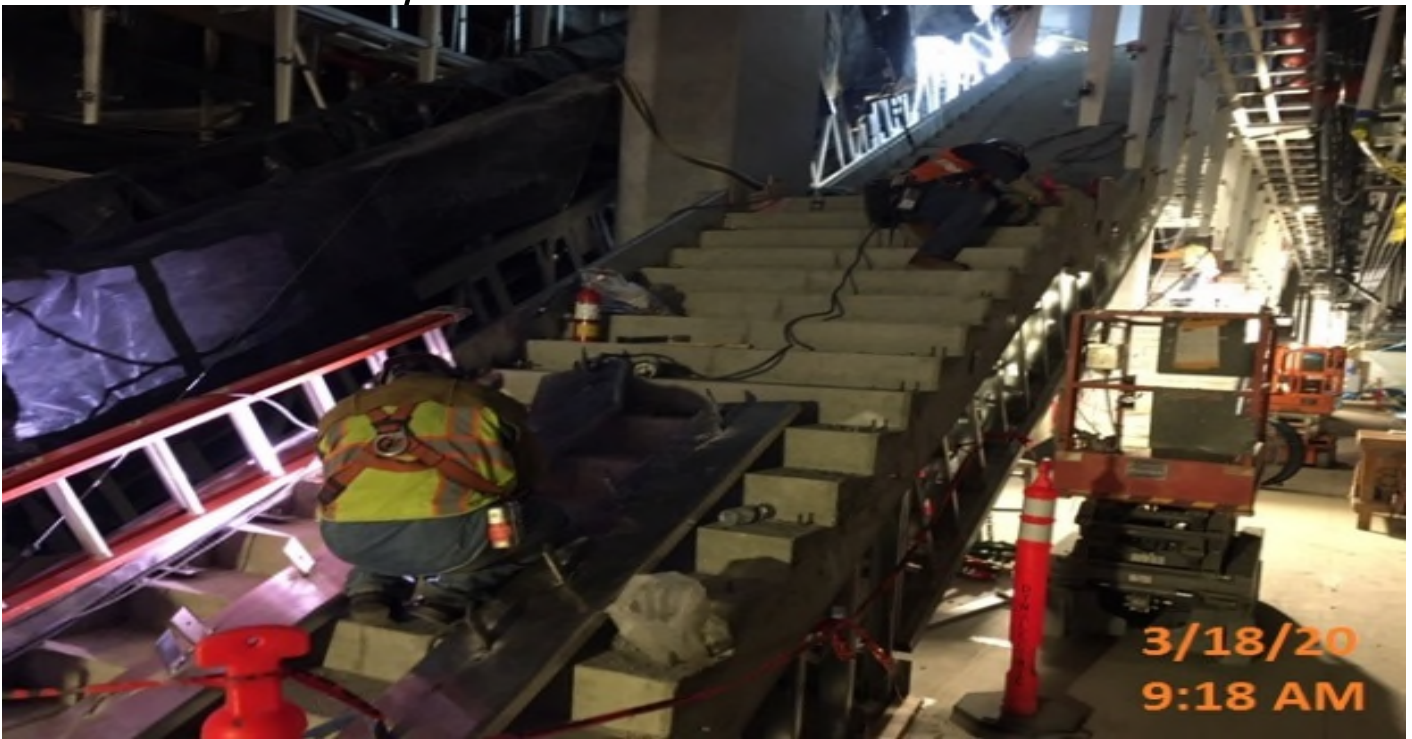


Crenshaw/MLK - WSCC crew building formwork for planter wall.



Crenshaw/MLK - Giroux Glass installing canopy glass panels at main entrance.

CRENSHAW/LAX PHOTOGRAPHIC UPDATE



Crenshaw/MLK - McMahon crew installing anchor tabs on edge plates for stair #2.



Crenshaw/MLK - WSCC crew building forms for main entrance canopy base plates.

CRENSHAW/LAX PHOTOGRAPHIC UPDATE

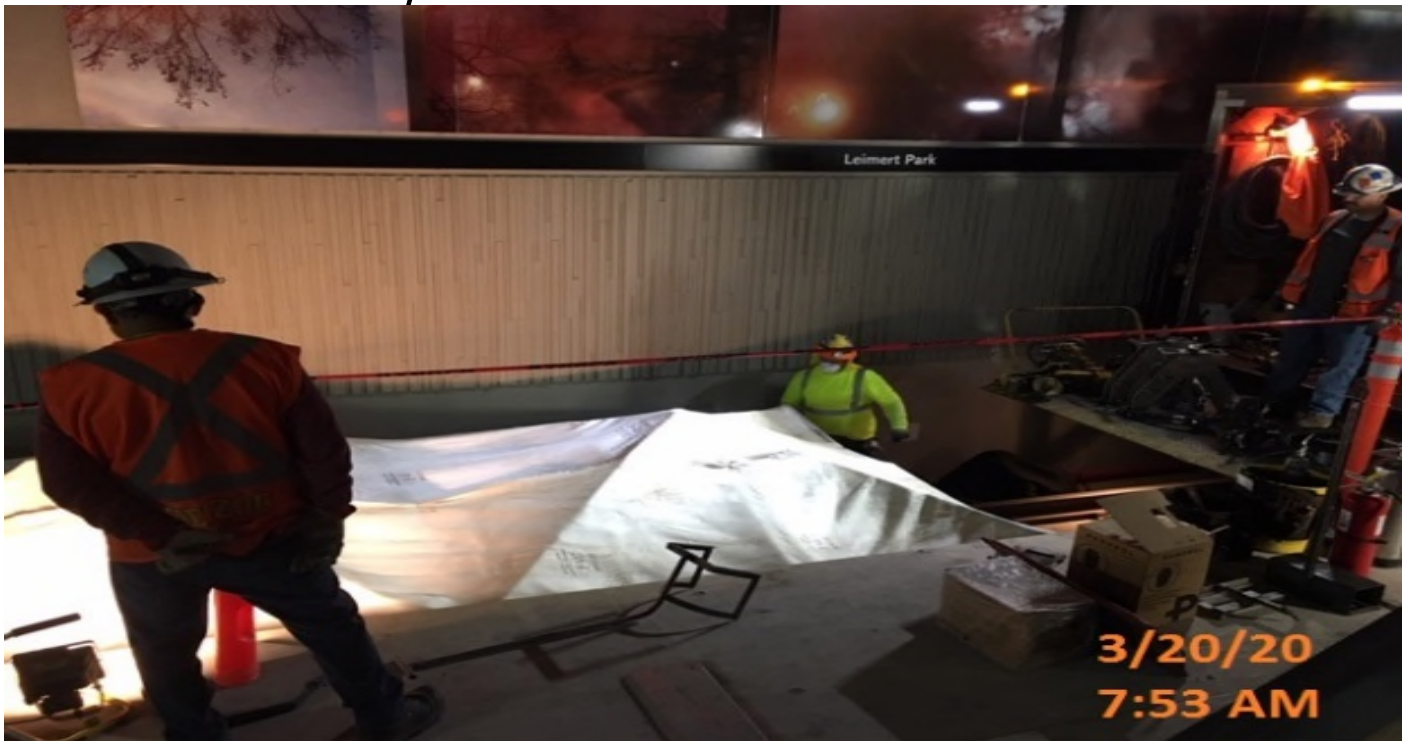


Crenshaw/MLK - WSCC crew hand excavating and setting drainage for planters.



Crenshaw/MLK - IRP placing rebar for planter wall and footings

CRENSHAW/LAX PHOTOGRAPHIC UPDATE



Crenshaw/MLK - Herzog removing section of bad rail on SB side.



Crenshaw/MLK - WSCC crew continue exploratory excavation into station leak.

CRENSHAW/LAX PHOTOGRAPHIC UPDATE



Crenshaw/MLK - MLK – WSCC crew stripping and building formwork for west planter wall.



Crenshaw/MLK - MLK – Mariscal Painting applying primer touch-ups to main entrance canopy.

CRENSHAW/LAX PHOTOGRAPHIC UPDATE



Crenshaw/MLK - MLK – WSCC crew building formwork for west planter wall.



Crenshaw/MLK - MLK – WSCC crew building formwork for west planter wall.

CRENSHAW/LAX PHOTOGRAPHIC UPDATE



Crenshaw/MLK - MLK – Mariscal Painting applying 1st coat of finish touch up to main entrance canopy.



Crenshaw/MLK - MLK – Carrera Marble completing sections of landing at main entrance.

CRENSHAW/LAX PHOTOGRAPHIC UPDATE



Crenshaw/MLK - Hayward Baker removing polyurethane crack-cold joint grout injections packers at platform level.

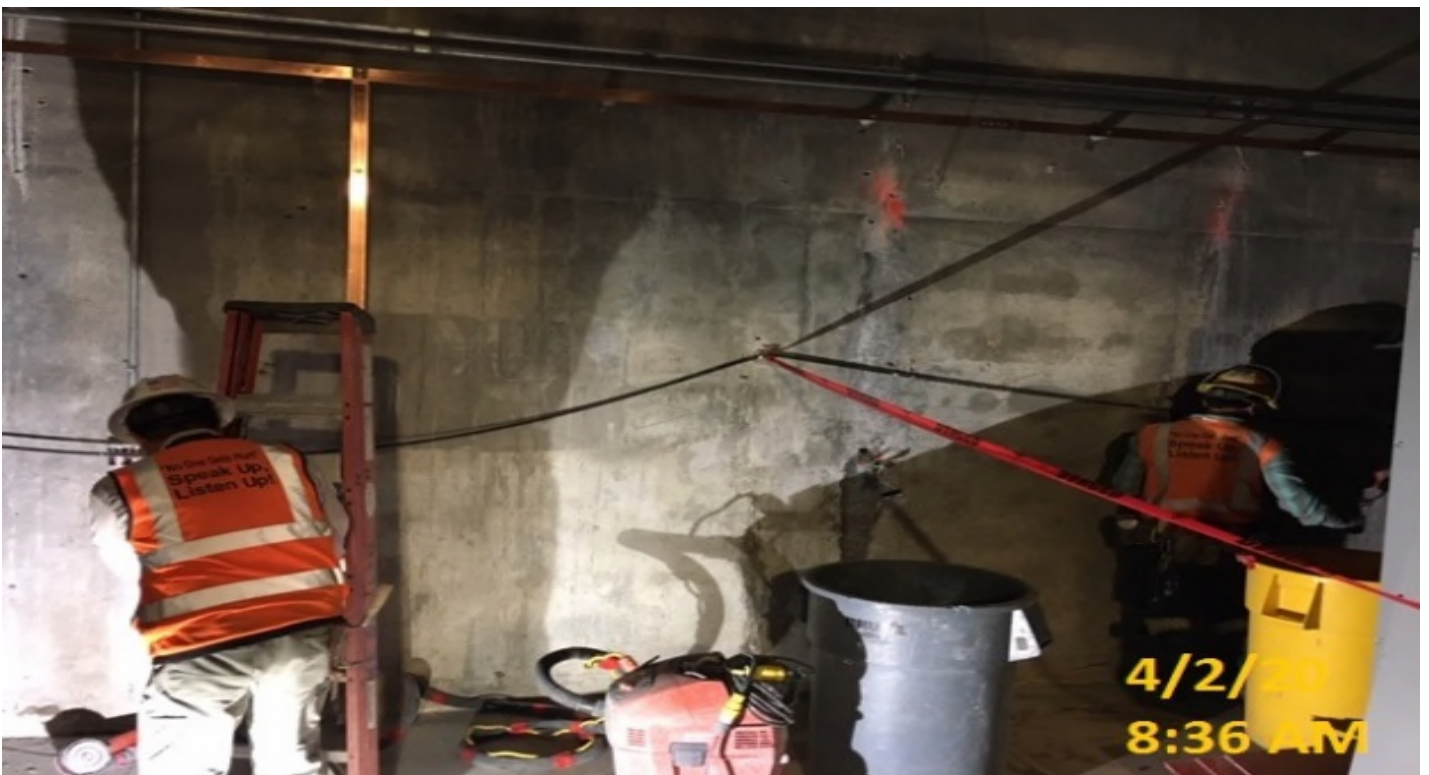


Crenshaw/MLK - MLK Concourse, Corridor 1080 Continued pipping 1" GRC & rough in 4S malleable steel JBs for smoke & strobes.

CRENSHAW/LAX PHOTOGRAPHIC UPDATE

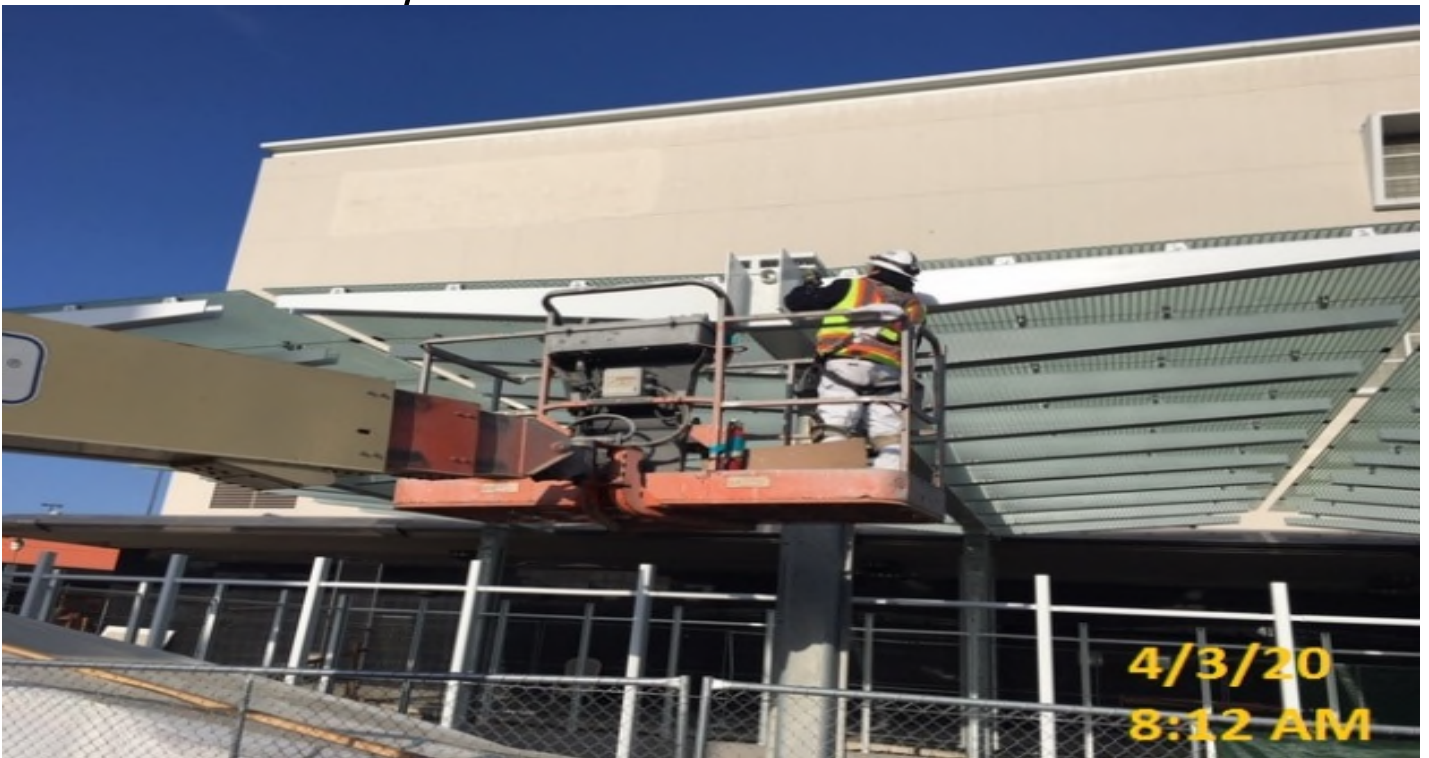


Crenshaw/MLK - MLK Platform, Continued rough in 2" GRC for Radiax & coaxial cable support W-O benefit of AFC drawings.



Crenshaw/MLK - WSCC finishers patching and resurfacing west wall of TPSS room.

CRENSHAW/LAX PHOTOGRAPHIC UPDATE



Crenshaw/MLK - Mariscal Painting applying 2nd coat of finish touch up to main entrance canopy.



Crenshaw/MLK - MLK Concourse, Paid Area C119 continued rough in Radiax & coaxial cable conduit support racks.

CRENSHAW/LAX PHOTOGRAPHIC UPDATE



Crenshaw/MLK - MLK Concourse, Elevator 1 & 2 Cabs, Continued rough in stainless steel finish facia panels.



Crenshaw/MLK - MLK, Aux Power (N) C132, southside PX1-N, Overhead water intrusion from embedded 12"x12" comm JB-34.

CRENSHAW/LAX PHOTOGRAPHIC UPDATE



Crenshaw/MLK - Corridor C120, Rough in anchors, supports & Pipping 1" GRC to device locations for fire alarm strobes.



Crenshaw/MLK - MLK Platform, Elevator 3 & 4, continued install cab car canopy panel sections & car operating control panel.

CRENSHAW/LAX PHOTOGRAPHIC UPDATE



Crenshaw/MLK - MLK, TC&C Room C113, begin pulling 12-SM fiber optic cable from MDF-3 to RIO-03 in Aux power room (S) C109.



Crenshaw/MLK - MLK, Concourse Paid Area C146, resume rough in 3/4" flex whips to Williams light cover fixtures at drop ceiling.

CRENSHAW/LAX PHOTOGRAPHIC UPDATE



Crenshaw/Vernon - WSCC continue excavating trench for bollards.



Crenshaw/Vernon - VNSM crew installing stainless steel clad panels.

CRENSHAW/LAX PHOTOGRAPHIC UPDATE



Crenshaw/Vernon - WSCC crew installing mock-up gates at platform level



Crenshaw/Vernon - Vestibule #2 C108, begin cut in 24"x24" oval EA access doors (upper & lower) for F.A JB access.

CRENSHAW/LAX PHOTOGRAPHIC UPDATE



Crenshaw/Vernon - Emergency fan room (N) C142, begin installing bird screens at EVF-6-302 (A)-south attenuator.



Crenshaw/Vernon - WSCC crew exploratory excavating for water leak into station mechanical room.

CRENSHAW/LAX PHOTOGRAPHIC UPDATE



Crenshaw/Vernon - VNSM crew installing stainless steel panels adjacent to down stands.



Crenshaw/Vernon - STA 363+00 TK#3 – new 22.7' rail plug delivered on site for T&M work
Vernon Station

CRENSHAW/LAX PHOTOGRAPHIC UPDATE



Crenshaw/Vernon - IRP installing rebar for planter wall and footings.



Crenshaw/Vernon - WSCC crew removing acoustic material from ceiling to investigate leak.

CRENSHAW/LAX PHOTOGRAPHIC UPDATE



Crenshaw/Vernon - VERNON – ECA performing HCR membrane repair.



Crenshaw/Vernon - VERNON – WSCC crew placing 4” protective concrete slab over HCR membrane.

CRENSHAW/LAX PHOTOGRAPHIC UPDATE



Crenshaw/Vernon - Vernon Platform, northbound, north platform continued rough in Radiax & coaxial cable conduit support racks



Crenshaw/Vernon - Vernon, Tunnel Vent Plenum (N) #2 C125- TFD-6-352 Continued Nema4X JB`s & 1" FRP to limit switches.

CRENSHAW/LAX PHOTOGRAPHIC UPDATE

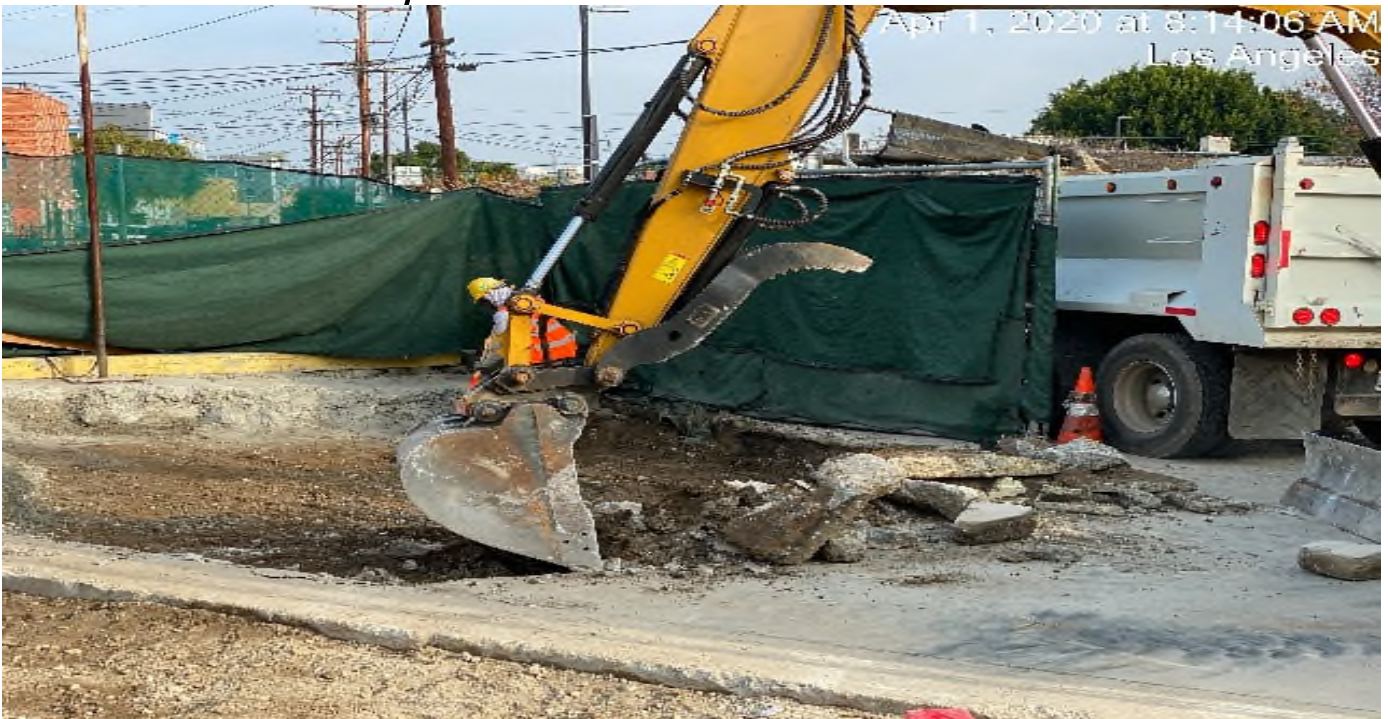


Crenshaw/Vernon - Vernon, Emergency fan room (S) Begin rough in & bolting bird screens prep to install TFD-6-301 per RFI-029.



Crenshaw/Vernon - WSCC placing forms for planter box at Vernon.

CRENSHAW/LAX PHOTOGRAPHIC UPDATE



Crenshaw/Vernon - WSCC removing concrete slab at entrance of Vernon.

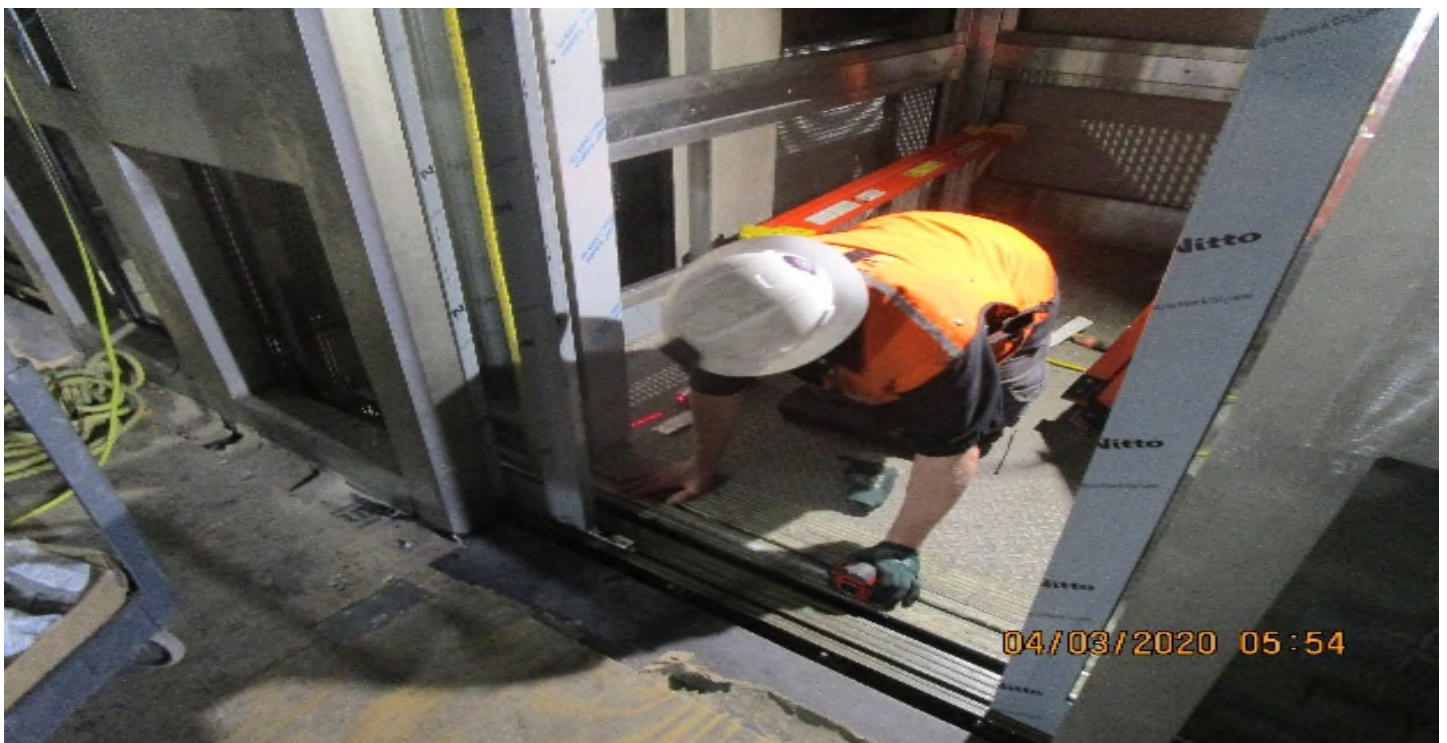


Crenshaw/Vernon - WSCC placing forms for planter box at Vernon.

CRENSHAW/LAX PHOTOGRAPHIC UPDATE



Crenshaw/Vernon - Vernon Concourse, Elevators 3, begin re-work of hoist way electrical conduit that is encroaching into hoist way.



Crenshaw/Vernon - Elevator #4, Continued assemble Cab, including canopy & control operating stainless steel return panels

CRENSHAW/LAX PHOTOGRAPHIC UPDATE



Crenshaw/Vernon - Emergency fan room (S) continued rough in & bolting bird screens prep to install TFD-6-301 per RFI-029.



Crenshaw/Vernon - WSCC placing forms for stair risers at Vernon.

CRENSHAW/LAX PHOTOGRAPHIC UPDATE



Crenshaw/Vernon - Concourse, Tunnel vent plenum (S) #2 C106, TFD-6-101 begin rough in framing & support hardware.



Crenshaw/Vernon - Plaza level, North of Station entrance begin rough in 1" PVC to footing of free-standing map case.

CRENSHAW/LAX PHOTOGRAPHIC UPDATE



Crenshaw/Vernon - South platform, northbound continued rough in Radiax cable 2" GRC conduit & support racks.



Crenshaw/Vernon - WSCC placing string line for formwork at Vernon.

CRENSHAW/LAX PHOTOGRAPHIC UPDATE



Crenshaw/Vernon - Carrera placing stair treads at Vernon.



Crenshaw/Vernon - Carrera placing stair treads at Vernon.

CRENSHAW/LAX PHOTOGRAPHIC UPDATE



Crenshaw/Vernon - WSCC sacking and patching plenum walls at Vernon.



LEIMERT PARK STATION – Began formwork and placing rebar for the planter wall and footings at the west side of the plaza level.

CRENSHAW/LAX PHOTOGRAPHIC UPDATE



LEIMERT PARK STATION – Continue formwork and placing rebar for the planar wall and footings at the east side of the plaza level.



LEIMERT PARK STATION – Placing concrete for the planar wall and footings at the east side of the plaza level.

CRENSHAW/LAX PHOTOGRAPHIC UPDATE



LEIMERT PARK STATION – Continue rebar installation for the planar wall and footings at the east side of the plaza level.



LEIMERT PARK STATION – Continue formwork for the planar wall at the east side of the plaza level.

CRENSHAW/LAX PHOTOGRAPHIC UPDATE

Apr 1, 2020 at 8:13:43 AM
Los Angeles



LEIMERT PARK STATION – Continue formwork for the planter wall at the east side of the plaza level.



LEIMERT PARK STATION – Installing stainless steel station bollards at the west edge of the plaza level. 3/21/20

CRENSHAW/LAX PHOTOGRAPHIC UPDATE



LEIMERT PARK STATION – Placing concrete for the stainless steel station bollards at the west edge of the plaza level.



LEIMERT PARK STATION – Finalizing tempered glass installation above the main entrance canopy structure at the plaza level.

CRENSHAW/LAX PHOTOGRAPHIC UPDATE



LEIMERT PARK STATION – Began layout for granite installation at the main stair case landing of the plaza level.



LEIMERT PARK STATION – Excavating for DWP water line adjacent to the southeast corner of Crenshaw Blvd and 43rd Pl.

CRENSHAW/LAX PHOTOGRAPHIC UPDATE



LEIMERT PARK STATION – Resume emergency management panel installation at the concourse level.



LEIMERT PARK STATION – Continue tunnel fan damper section installation for the sound attenuator for EVF-6-302 in the North Fan Room C – 142 of the concourse level.

CRENSHAW/LAX PHOTOGRAPHIC UPDATE



LEIMERT PARK STATION – Continue tunnel fan damper section installation for the sound attenuator for EVF-6-102 in the North Fan Room C – 142 of the concourse level.



LEIMERT PARK STATION – Continue tunnel fan damper section installation for the sound attenuator for EVF-6-102 in the North Fan Room C – 142 of the concourse level.

CRENSHAW/LAX PHOTOGRAPHIC UPDATE

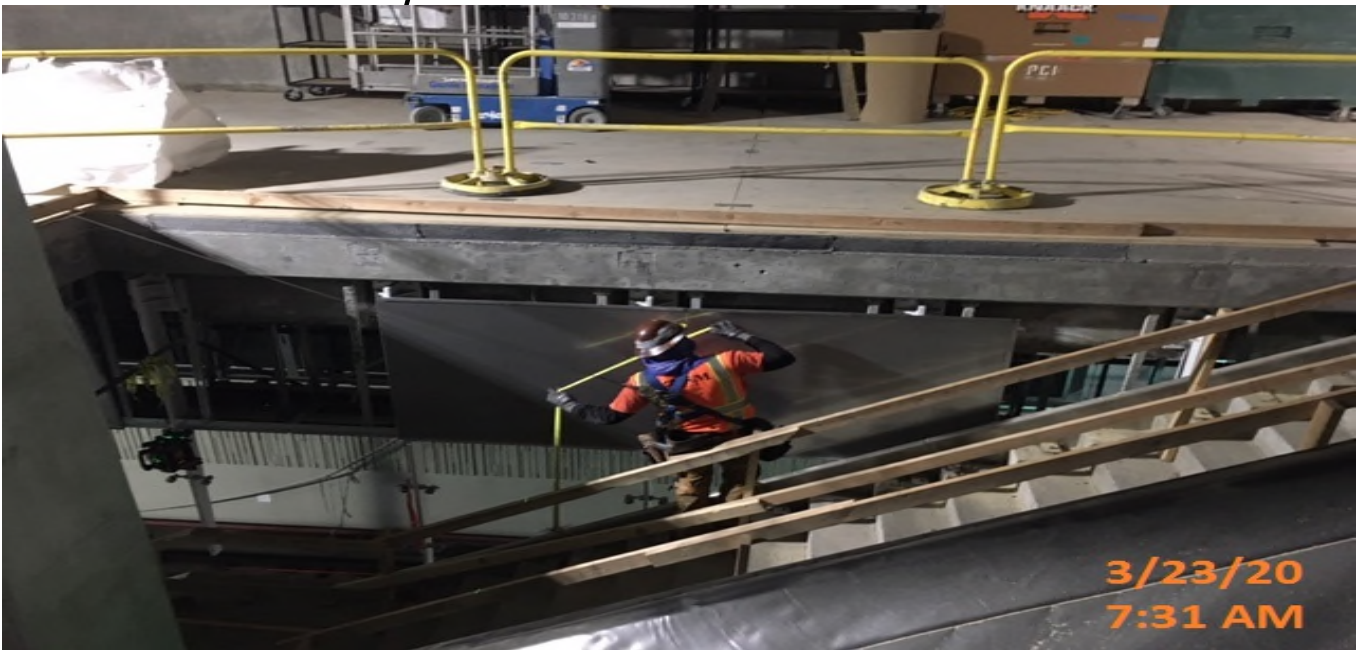


LEIMERT PARK STATION – Installing bird screen protection for the sound attenuator for EVF-6-301 in the South Fan Room C – 102 of the concourse level.



LEIMERT PARK STATION – Continue installing stainless steel cladding panels on the platform ceiling level.

CRENSHAW/LAX PHOTOGRAPHIC UPDATE



LEIMERT PARK STATION – Continue installing stainless steel cladding panels on the platform ceiling level.



LEIMERT PARK STATION – Continue installing stainless steel cladding panels on the platform ceiling level.

CRENSHAW/LAX PHOTOGRAPHIC UPDATE

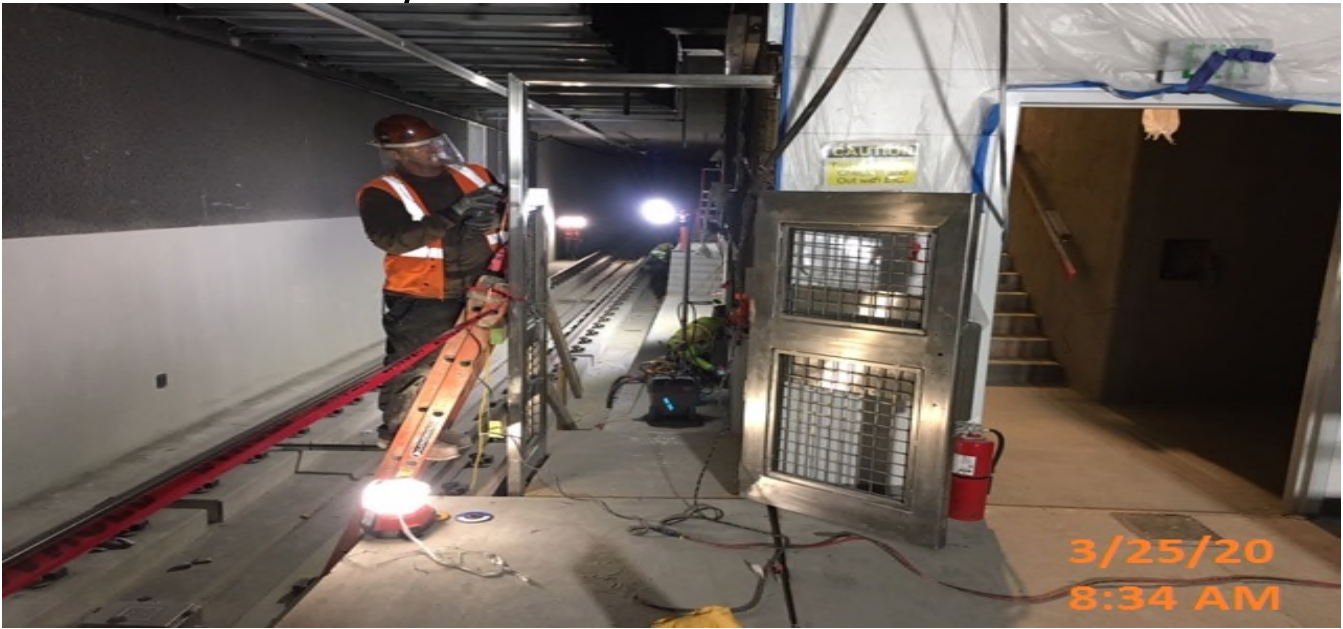


LEIMERT PARK STATION – Installing end gates for the southbound stair landing on the north end of the platform level.



LEIMERT PARK STATION – Continue end gate installation for the southbound stair landing on the south end of the platform level.

CRENSHAW/LAX PHOTOGRAPHIC UPDATE



LEIMERT PARK STATION – Continue end gate installation for both north and southbound stair landings of the south end of the platform level.



LEIMERT PARK STATION – Continue end gate installation for both the north and south end of the platform level.

CRENSHAW/LAX PHOTOGRAPHIC UPDATE



LEIMERT PARK STATION – Installing end gates for the southbound stair landing on the north end of the platform level.



LEIMERT PARK STATION – Continue backfilling/grading the center median

CRENSHAW/LAX PHOTOGRAPHIC UPDATE



LEIMERT PARK STATION – Continue formwork for the planar wall at the east side of the plaza level.



LEIMERT PARK STATION – Placing concrete for the planar wall at the east side of the plaza level.

CRENSHAW/LAX PHOTOGRAPHIC UPDATE

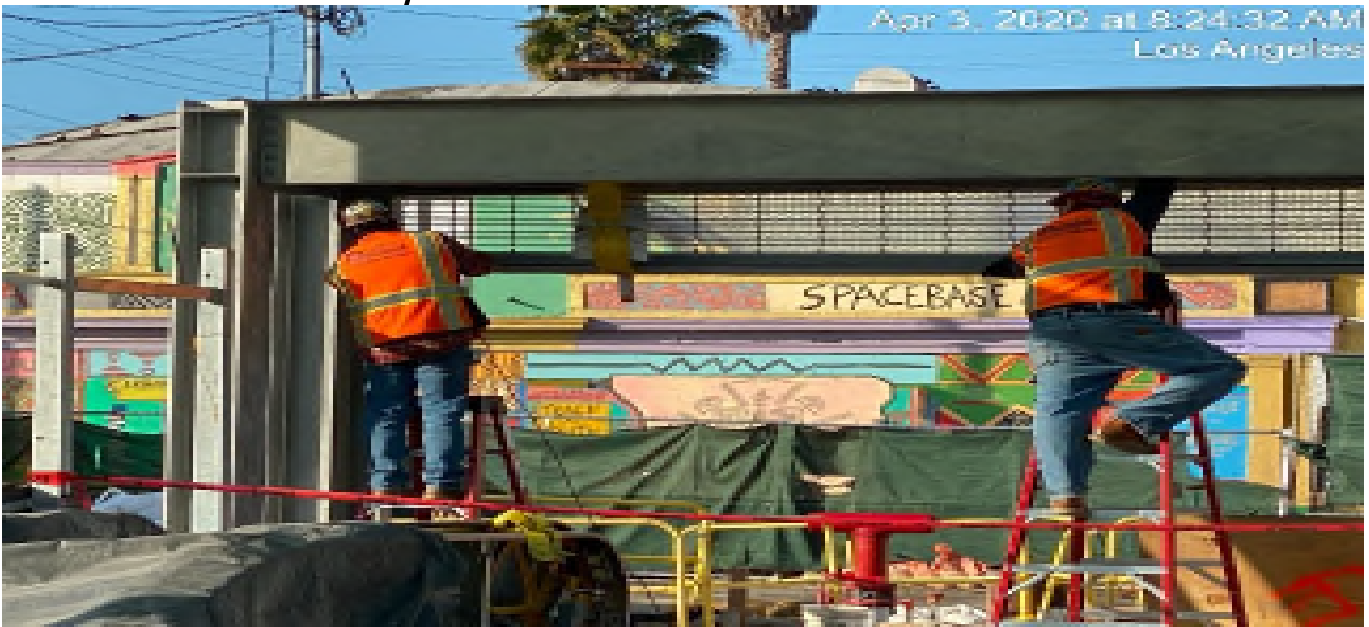


LEIMERT PARK STATION – Continue working on the planar wall installation at the east side of the plaza level.



LEIMERT PARK STATION – Began installing overhead coiling grille components to the main entrance canopy at the plaza level.

CRENSHAW/LAX PHOTOGRAPHIC UPDATE



LEIMERT PARK STATION – Continue installing overhead coiling grille components to the main entrance canopy at the plaza level.

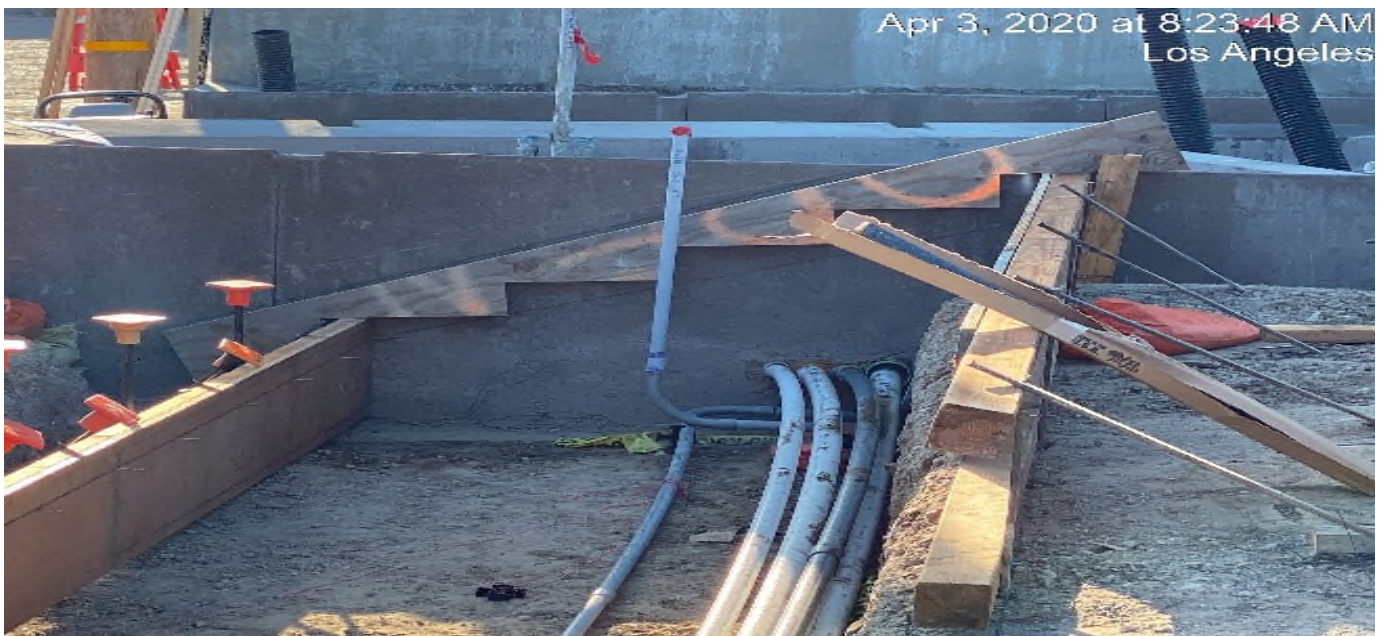


LEIMERT PARK STATION – Installing framing for stainless steel cladding in preparation for the overhead coiling grille installation on the main entrance canopy at the plaza level.

CRENSHAW/LAX PHOTOGRAPHIC UPDATE



LEIMERT PARK STATION – Continue installing framing for stainless steel cladding in preparation for the overhead coiling grille installation on the main entrance canopy at the plaza level.



LEIMERT PARK STATION – Began layout and formwork for stair risers at the plaza level.

CRENSHAW/LAX PHOTOGRAPHIC UPDATE



LEIMERT PARK STATION – Setting string lines in preparation for formwork for the planter section stair risers at the plaza level.



LEIMERT PARK STATION – Continue formwork for the planter section stair risers at the plaza level.

CRENSHAW/LAX PHOTOGRAPHIC UPDATE



LEIMERT PARK STATION – Continue formwork for the planter section stair risers at the plaza level.

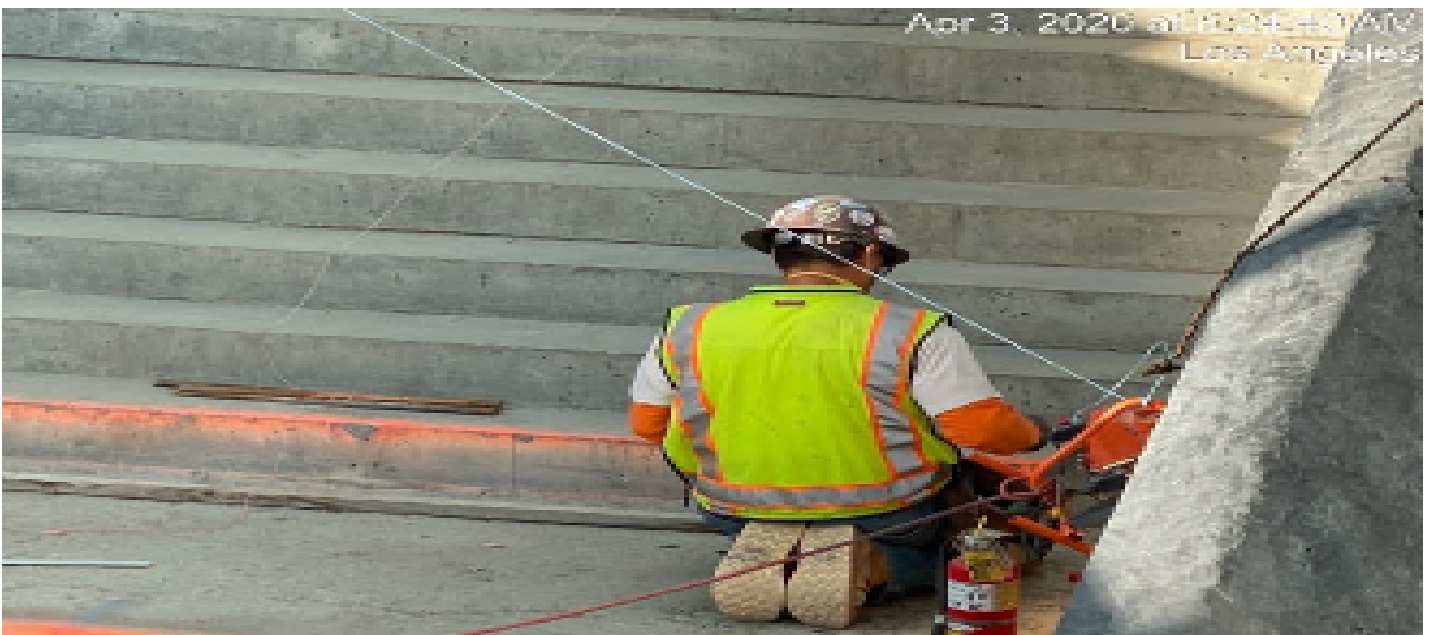


LEIMERT PARK STATION – Placing concrete for the stainless steel bollards at the plaza level.

CRENSHAW/LAX PHOTOGRAPHIC UPDATE



LEIMERT PARK STATION – Begin rough-in of PVC pipe for the free standing map case installation at the plaza level.



LEIMERT PARK STATION – Continue layout for granite installation at the main stair case landing of the plaza level.

CRENSHAW/LAX PHOTOGRAPHIC UPDATE



LEIMERT PARK STATION – Continue granite thread and riser installation at the main stair case landing of the plaza level.

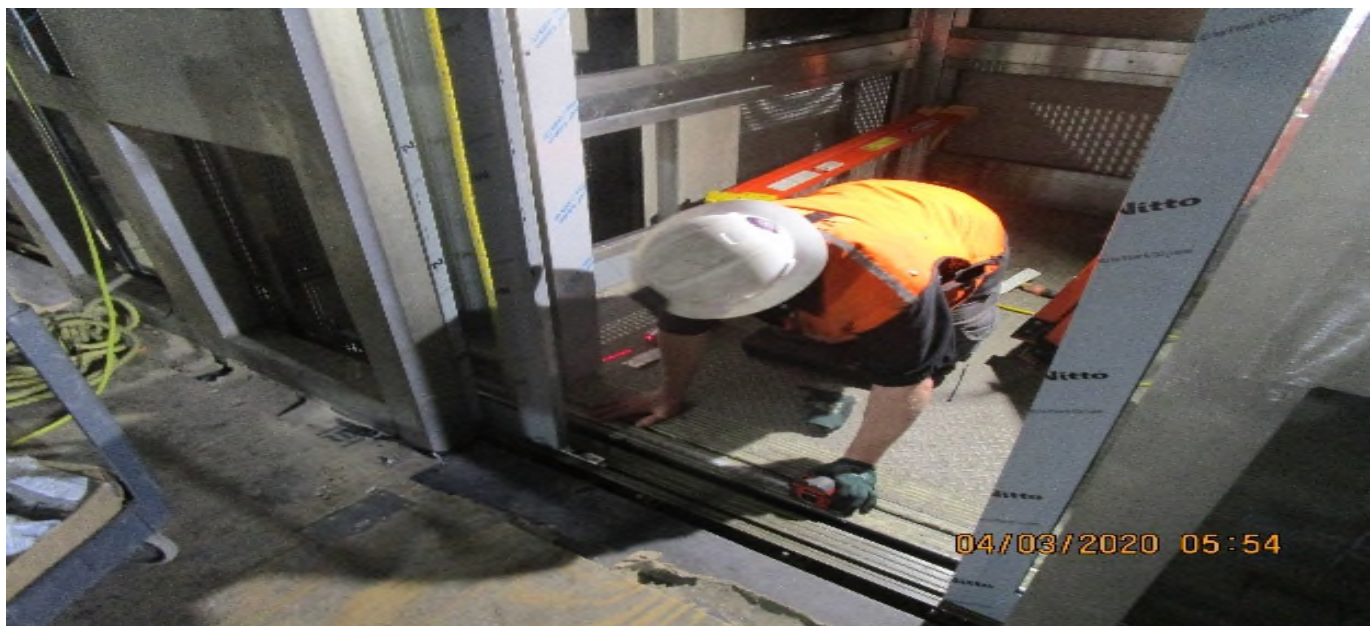


LEIMERT PARK STATION – Continue granite thread and riser installation at the main stair case landing of the plaza level.

CRENSHAW/LAX PHOTOGRAPHIC UPDATE



LEIMERT PARK STATION – Continue granite thread and riser installation at the main stair case landing of the plaza level.

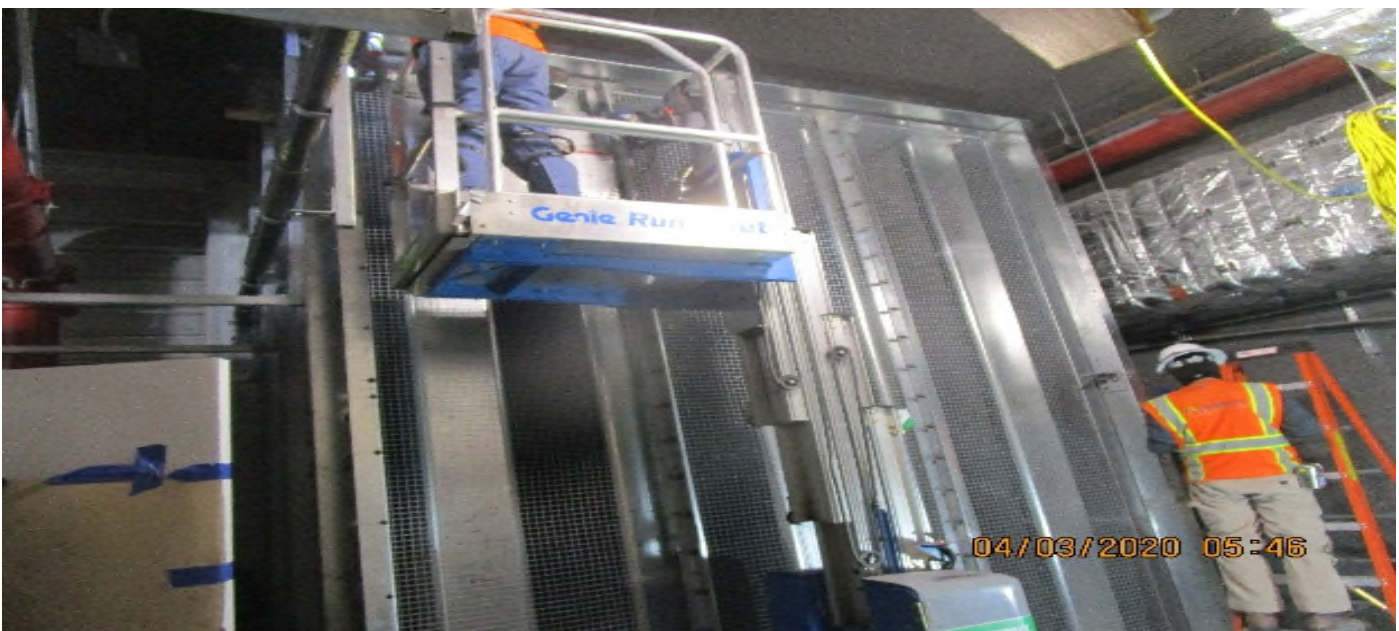


LEIMERT PARK STATION – Continue cab assembly and stainless steel fascia panel installation for Elevators 3&4 at the concourse level.

CRENSHAW/LAX PHOTOGRAPHIC UPDATE

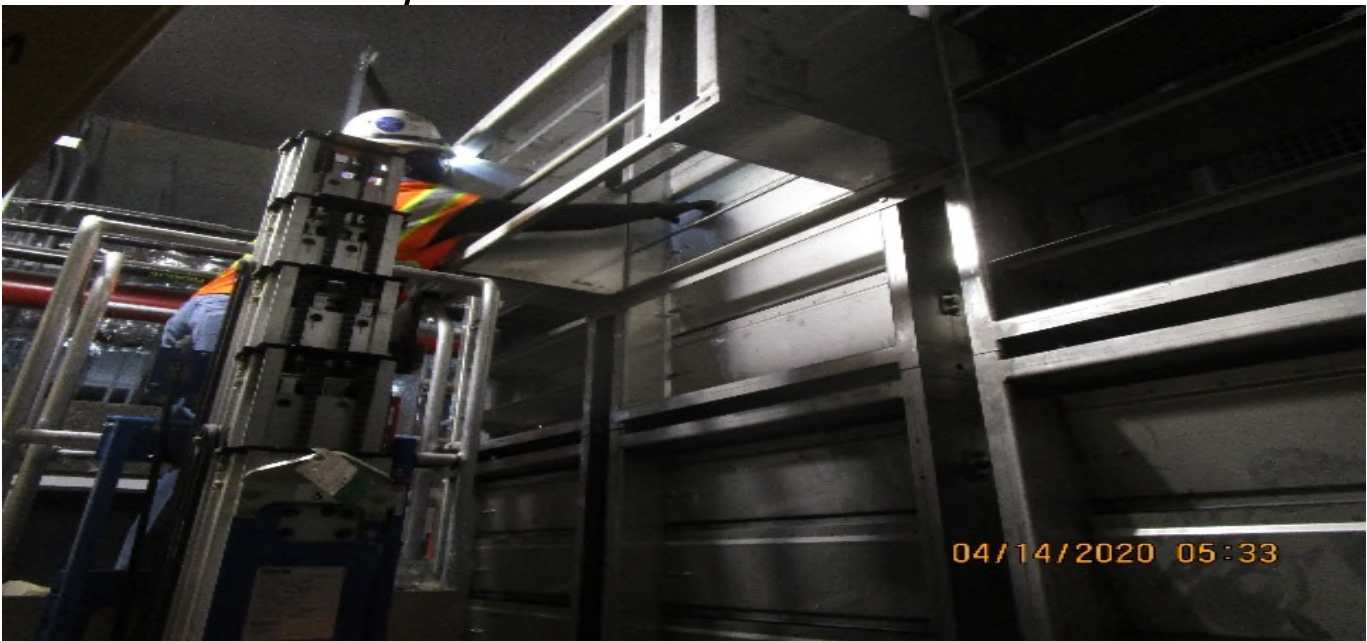


LEIMERT PARK STATION – Continue installing bird screen protection to the sound attenuator for EVF-6-301 in the South Fan Room C – 102 of the concourse level.



LEIMERT PARK STATION – Continue installing bird screen protection to the sound attenuator for EVF-6-301 in the South Fan Room C – 102 of the concourse level.

CRENSHAW/LAX PHOTOGRAPHIC UPDATE

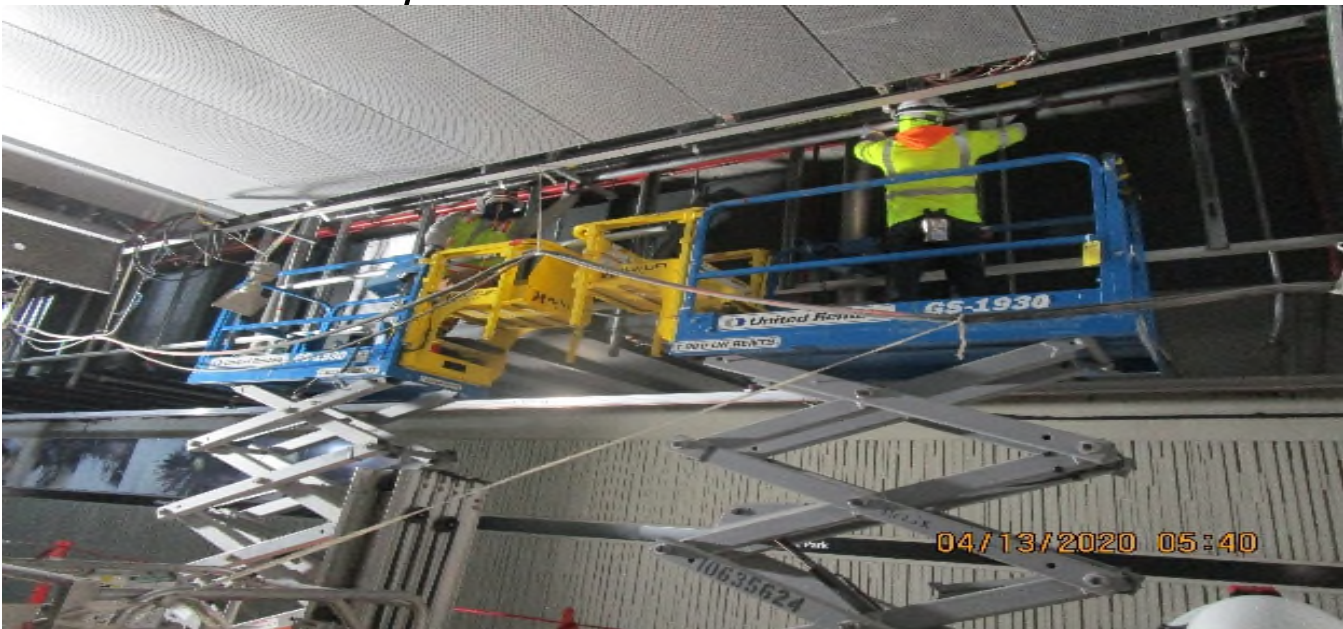


LEIMERT PARK STATION – Began rough-in of actuators and limit switch boxes for the tunnel fan dampers in the South Tunnel vent Plenum C – 104 of the concourse level.



LEIMERT PARK STATION – Began rough-in of support framing and hardware for the tunnel fan dampers in the South Tunnel vent Plenum C – 104 of the concourse level.

CRENSHAW/LAX PHOTOGRAPHIC UPDATE



LEIMERT PARK STATION – Continue radiax cable conduit and support rack installation on the platform ceiling level.



LEIMERT PARK STATION – Continue radiax cable conduit and support rack installation on the platform ceiling level.

CRENSHAW/LAX PHOTOGRAPHIC UPDATE



LEIMERT PARK STATION – Continue radiax cable conduit and support rack installation on the platform ceiling level.



LEIMERT PARK STATION – Continue radiax cable conduit and support rack installation on the platform ceiling level.

CRENSHAW/LAX PHOTOGRAPHIC UPDATE

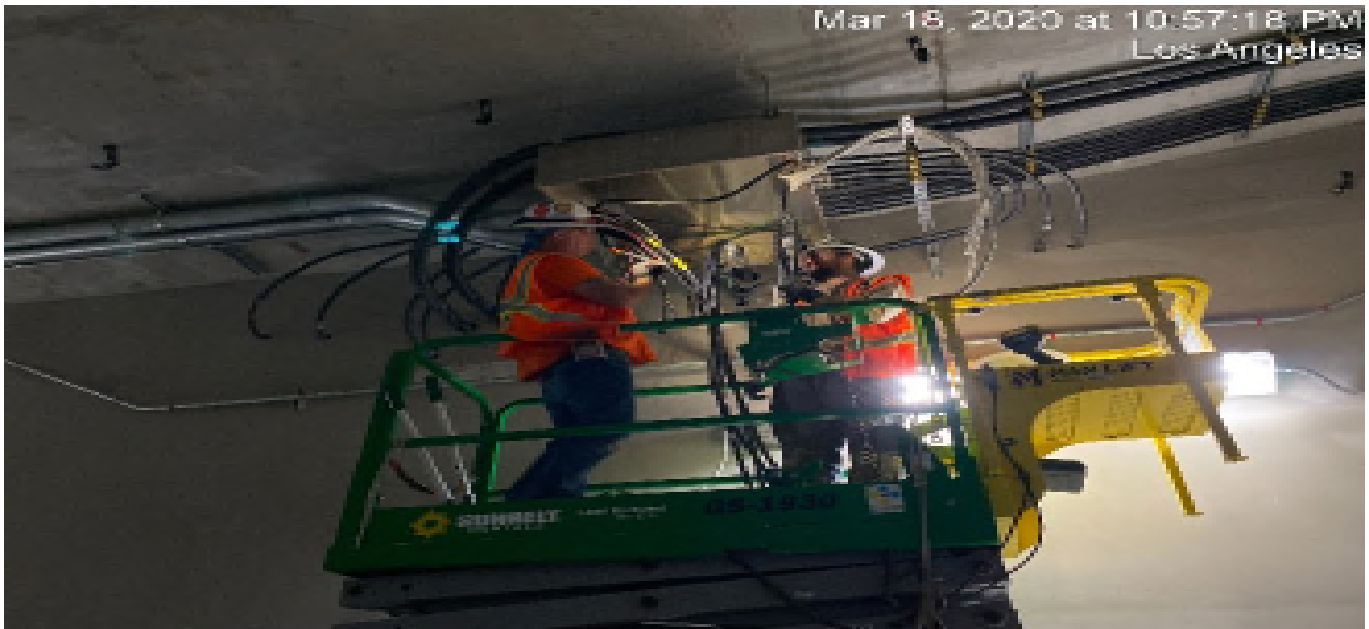


UG-4- Continue pulling wire for the pole lighting at the south end portal entrance.

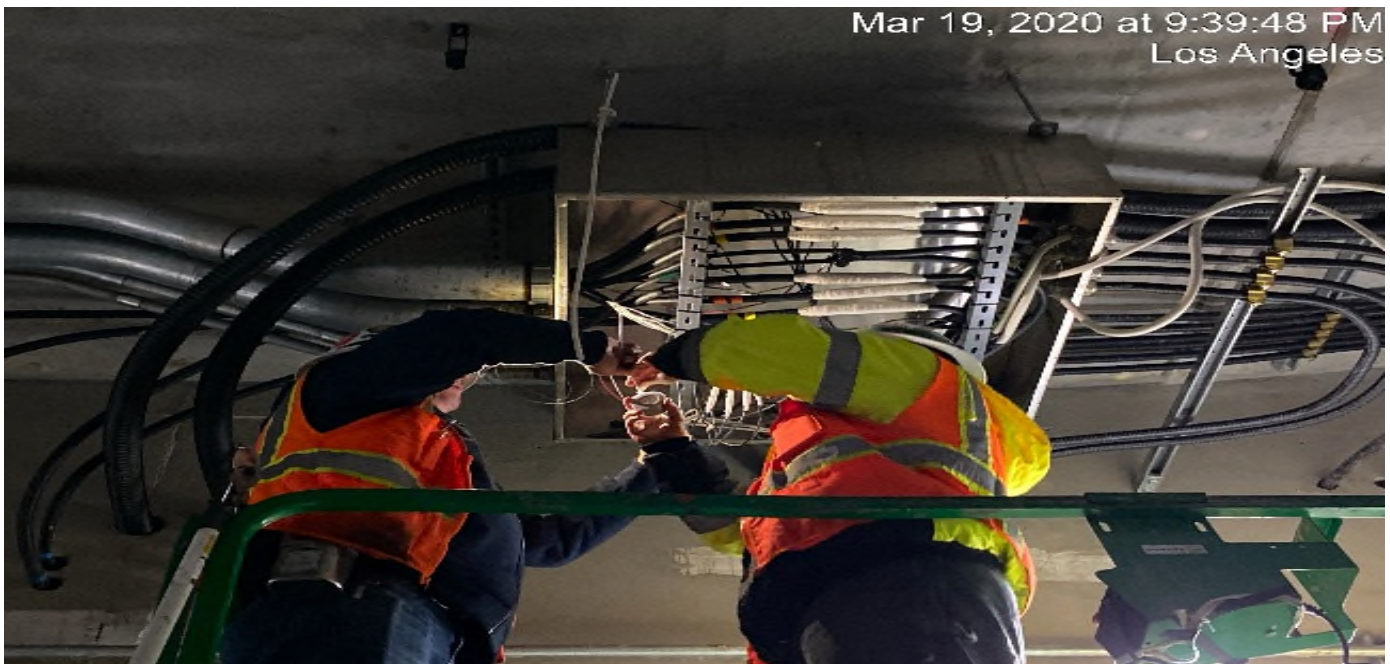


UG-4- Continue pulling wire for the emergency lighting at the south end portal entrance.

CRENSHAW/LAX PHOTOGRAPHIC UPDATE



UG-4- Splicing wires for the tunnel booster junction boxes at the southbound tunnel at Sta 378+75.



UG-4- Continue splicing wires for the tunnel booster junction boxes at the southbound tunnel at Sta 374+00.

CRENSHAW/LAX PHOTOGRAPHIC UPDATE

Mar 20, 2020 at 8:40:54 PM
Los Angeles



UG-4- Continue splicing wires for the tunnel booster junction boxes at the southbound tunnel at Sta 374+00.

Mar 23, 2020 at 10:19:20 PM
Los Angeles

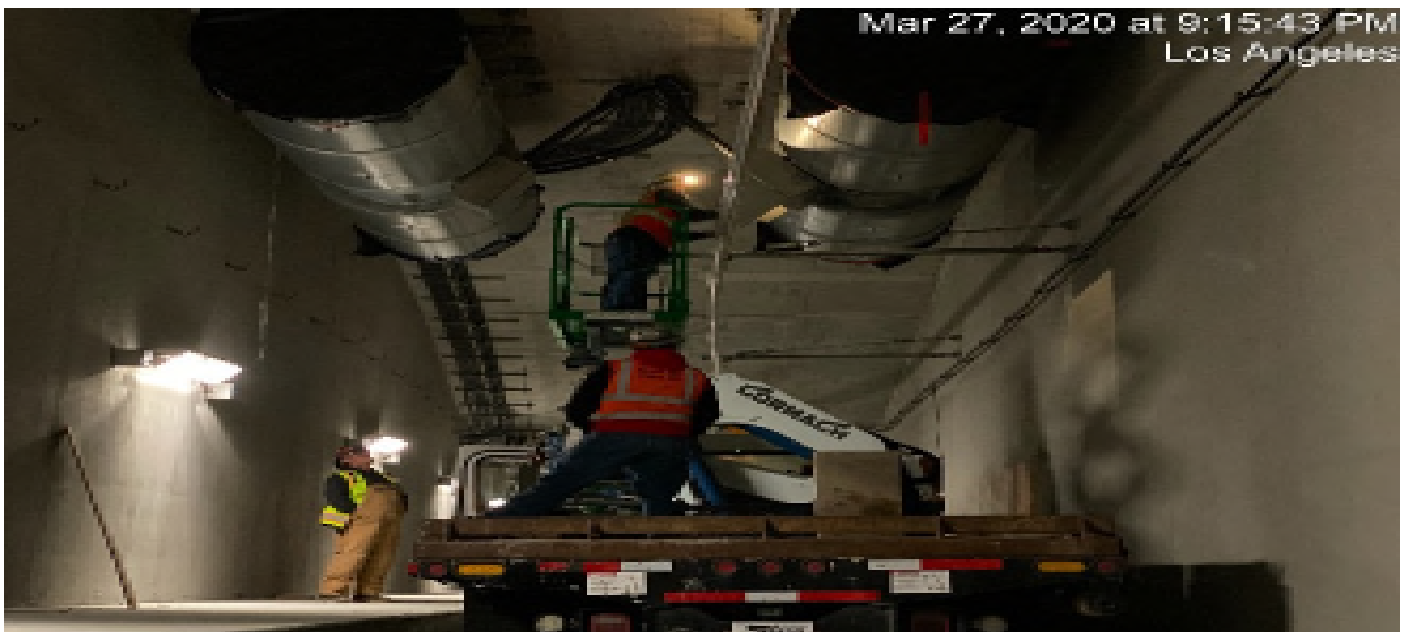


UG-4- Continue splicing wires for the tunnel booster junction boxes at the southbound tunnel at Sta 374+00.

CRENSHAW/LAX PHOTOGRAPHIC UPDATE



UG-4- Continue splicing and grounding wires for the tunnel booster junction boxes at the southbound tunnel at Sta 374+00.



UG-4- Continue final wiring inspection for the tunnel booster fans in the northbound tunnel.

CRENSHAW/LAX PHOTOGRAPHIC UPDATE



UG-4- DCD wiring up UG lighting southbound UG-4.



UG-4- DCD splicing wires in junction box southbound UG-4.

CRENSHAW/LAX PHOTOGRAPHIC UPDATE

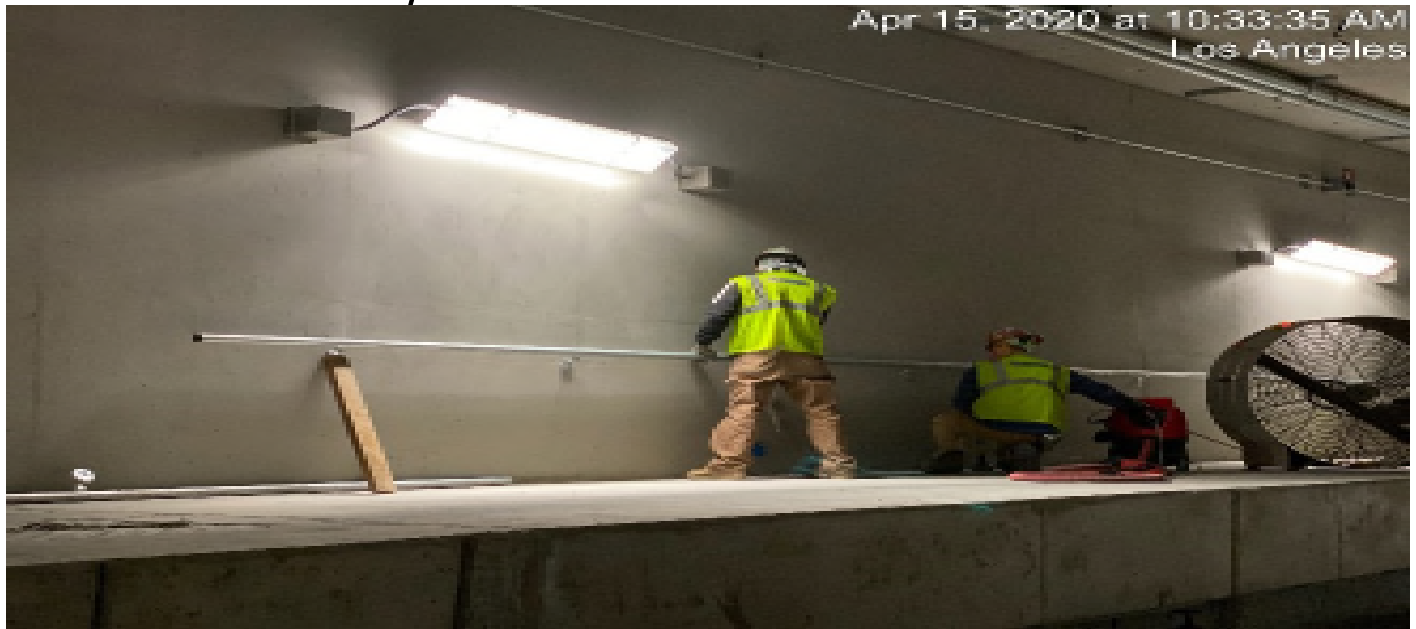


UG4 – Installing gates at the south end portal entrance.



UG4 – Began layout for handrail installation for the emergency walkways along the southbound tunnel.

CRENSHAW/LAX PHOTOGRAPHIC UPDATE



UG4 – Installing handrails for the emergency walkways along the southbound tunnel.

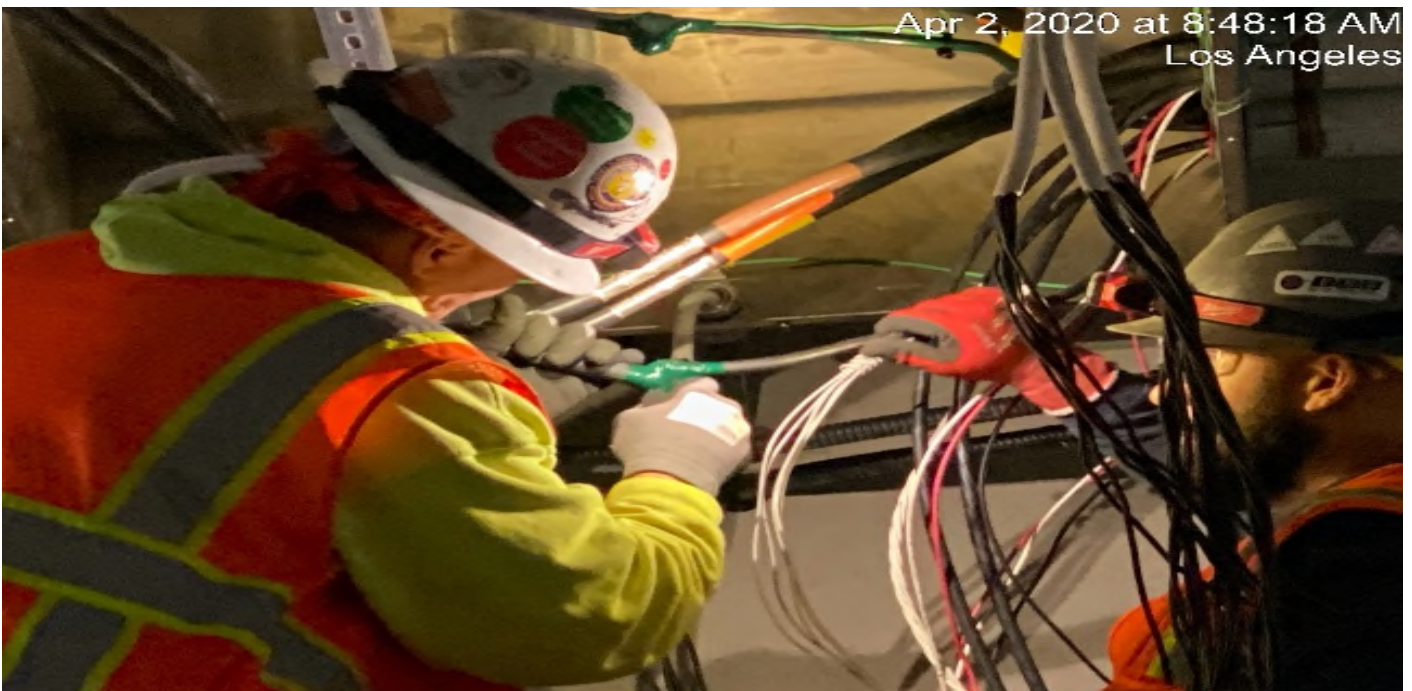


UG4 – Continue handrail installation for the emergency walkways along the southbound tunnel.

CRENSHAW/LAX PHOTOGRAPHIC UPDATE



UG4 – WSCC in UG4 NB #4 track STA 371+64, repair work on emergency walkway foundations.



UG4 – DCD splicing wires in pullbox at UG-4.

CRENSHAW/LAX PHOTOGRAPHIC UPDATE



UG4 – WSCC adjusting diamond plates UG-4 sump walkway.



UG4 – LK Comstock adjusting OCS rail at UG-4.

CRENSHAW/LAX PHOTOGRAPHIC UPDATE



UG4 – STA 372+50 TK#3-SB looking south – north lim of rail de-stress @ VHRF (UG4 48th St-Vernon)



UG4 – McMahon layout for hand rail at UG-4.

CRENSHAW/LAX PHOTOGRAPHIC UPDATE

SEGMENT C:

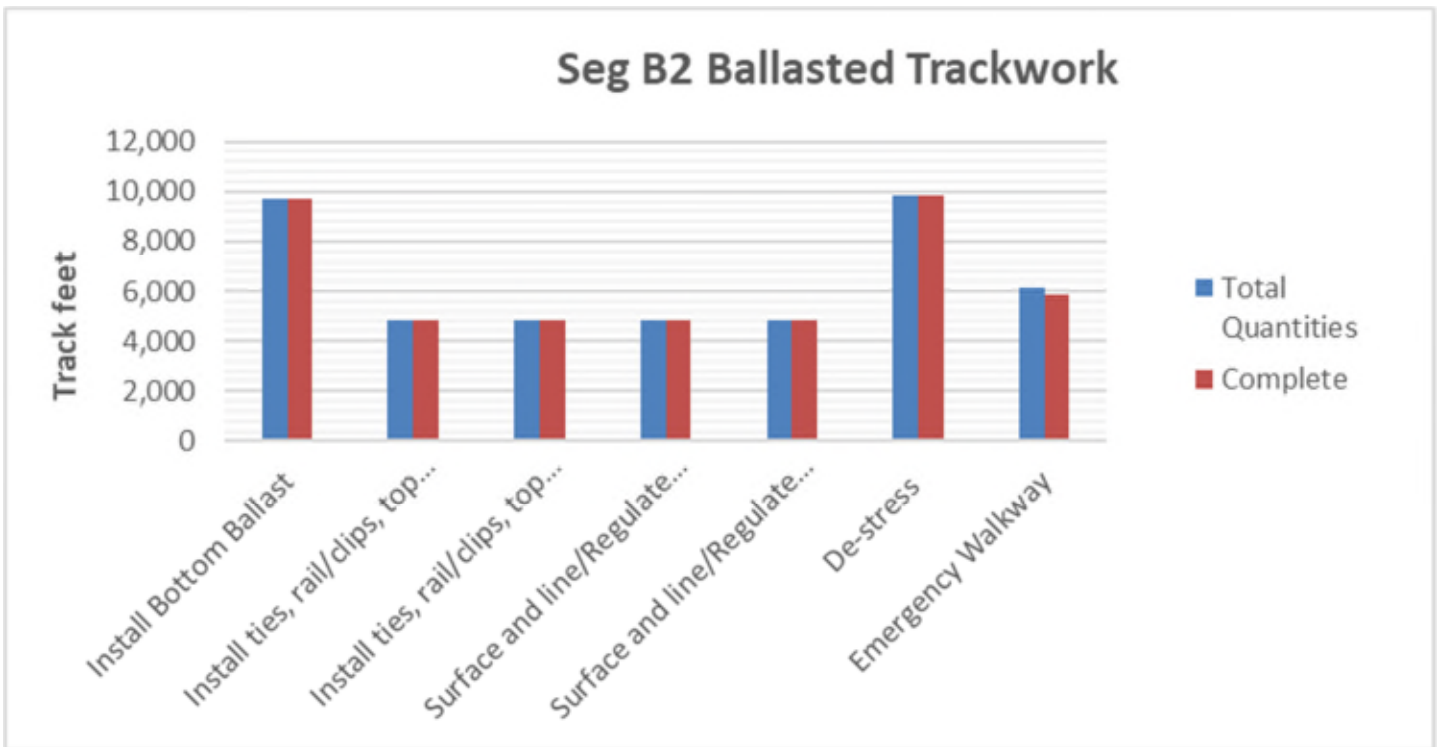
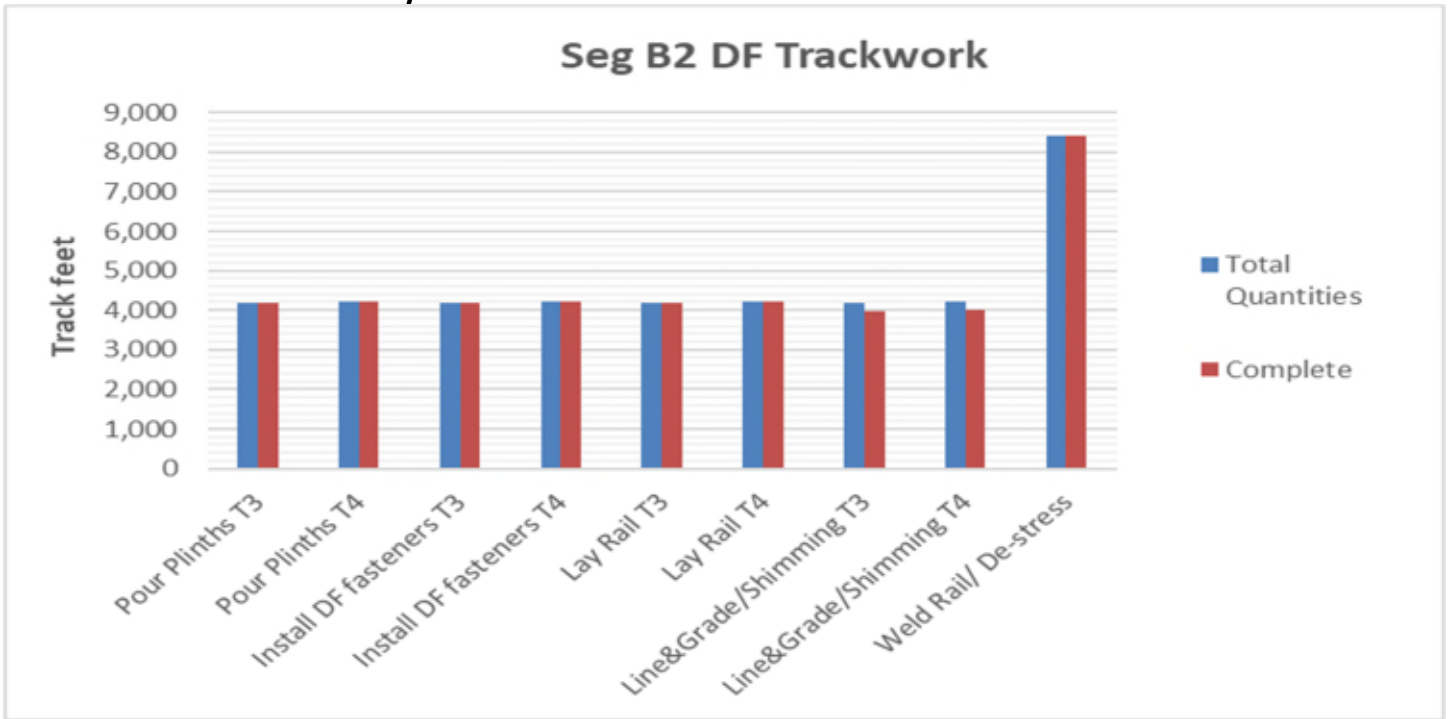
- Rework of VHRF fasteners is still required due to missing shims and incorrect installation.
- Incomplete Double Crossovers due to parts shortage.
- Rework of plinths is still required due to damage by chipping and cracks.
- Incomplete plinth work.
- Rework of the Top-of-Rail is still required due to gouges in the rail.
- Investigation of a possible repair process for plinth to invert gap continues.

CRENSHAW/LAX PHOTOGRAPHIC UPDATE

PROJECT WIDE TRACKWORK PROGRESS

	TRACK TYPE	ACTIVITY	TRACK FEET/QUANTITY	INSTALLED TO DATE	REMAINING	ACTIVITY % PROGRESS	Potential Rework	Punchlist
								(Complete/Incomplete)
SEGMENT B2	DF (8,408 TF)	Pour Plinths T3	4,193	4193	0	100.00%		
		Pour Plinths T4	4,215	4,215	0	100.00%		
		Install DF fasteners T3	4,193	4193	0	100.00%	*	
		Install DF fasteners T4	4,215	4215	0	100.00%	*	
		Lay Rail T3	4,193	4193	0	100.00%	*	
		Lay Rail T4	4,215	4215	0	100.00%	*	
		Line&Grade/Shimming T3	4,193	3983	210	95.00%		INC
		Line&Grade/Shimming T4	4,215	4004	211	94.99%		INC
		Weld Rail/ De-stress	8,408	8408	0	100.00%		
		Emergency Walkway						
	Acceptance for turnover to subcontractors	yes/no	no					
	BALLASTED TRACKWORK (9681 TF including grade crossings)	Install Bottom Ballast	9,681	9681	0	100.00%	*	INC
		Install ties, rail/clips, top ballast -T3	4,836	4836	0	100.00%	*	
		Install ties, rail/clips, top ballast -T4	4,845	4845	0	100.00%	*	
		Surface and line/Regulate T3	4,836	4836	0	100.00%	*	
		Surface and line/Regulate T4	4,845	4845	0	100.00%	*	
		De-stress	9,861	9861	0	100.00%		
		Emergency Walkway	6148	5840	308	94.99%		
	Acceptance for turnover to subcontractors	yes/no	no					
	SPECIAL TRACKWORK	Ballasted Single Crossover (U1/U2, V1/V2)	2	2	0	100.00%		INC
Thermite Welds		56	56	0	100.00%			
Insulated Joints (IJ's)		12	12	0	100.00%	*	INC	
Acceptance for turnover to subcontractors	yes/no	no						
GRADE X-ING	Construct Crossing (48th, 50th, 52nd, 54th, 57th, 59th, Slauson)	7	6	1	85.71%			
SEGMENT C	DF (16,756 TF)	Pour Plinths T3	8,385	8385	0	100.00%	*	INC
		Pour Plinths T4	8,371	8371	0	100.00%	*	INC
		Install DF fasteners T3 (VHRF installed - pending NCR)	8,385	7965	420	94.99%	*	
		Install DF fasteners T4 (VHRF installed - pending NCR)	8,371	7952	419	94.99%	*	
		Lay Rail T3	8,385	8385	0	100.00%	*	
		Lay Rail T4	8,371	8371	0	100.00%	*	
		Line&Grade/Shimming T3	8,385	7546	839	89.99%	*	INC
		Line&Grade/Shimming T4	8,371	7533	838	89.99%	*	INC
		Emergency Walkway						
		Acceptance for turnover to subcontractors	yes/no	no				
	SPECIAL TRACKWORK	DF Double Crossover (Diamond)	1	1	0	100.00%	*	
		Line&Grade/Shimming	1	1	0	100.00%	*	
		Thermite Welds	56	56	0	100.00%		
		Insulated Joints (IJ's)	20	20	0	100.00%	*	
		Acceptance for turnover to subcontractors	yes/no	no				
DF =	Direct Fixation							
T3 =	Track 3							
T4 =	Track 4							
TF =	Track Feet							
*	Potential for rework based on recent guideway survey. Total impact of rework is unknown at this time.							
**	Punchlist Complete/Incomplete: Indicates the completion (COMP) or Incompletion (INC) of identified punchlist items							

CRENSHAW/LAX PHOTOGRAPHIC UPDATE



CRENSHAW/LAX PHOTOGRAPHIC UPDATE

