

CRENSHAW/LAX PHOTOGRAPHIC UPDATE

July 7, 2020

Crenshaw/LAX Transit Project



- 8.5 miles Light Rail
- 8 Stations
- \$2,058.0 Million (Board approved revised LOP)

CRENSHAW/LAX PHOTOGRAPHIC UPDATE

Overview of trackwork progress issues for 06-22-2020 – July 7, 2020
(Please note the attached Trackwork Progress Tracking Report)

Trackwork continues with punchlist and rework activities. Both DF and Ballasted Trackwork that was previously reported as 100% complete may yet require rework. The contractor is in the process of analyzing, planning, and executing the repair and rework required throughout the guideway limits. Remaining incomplete trackwork activities progress will be reported upon the execution of planned rework.

Current Issues:

General Notes: Ballast repair is completed at the investigation areas of Wall 202; Plinth replacement due to failed insert pull tests continues in Segment C;

Previous Issues unresolved:

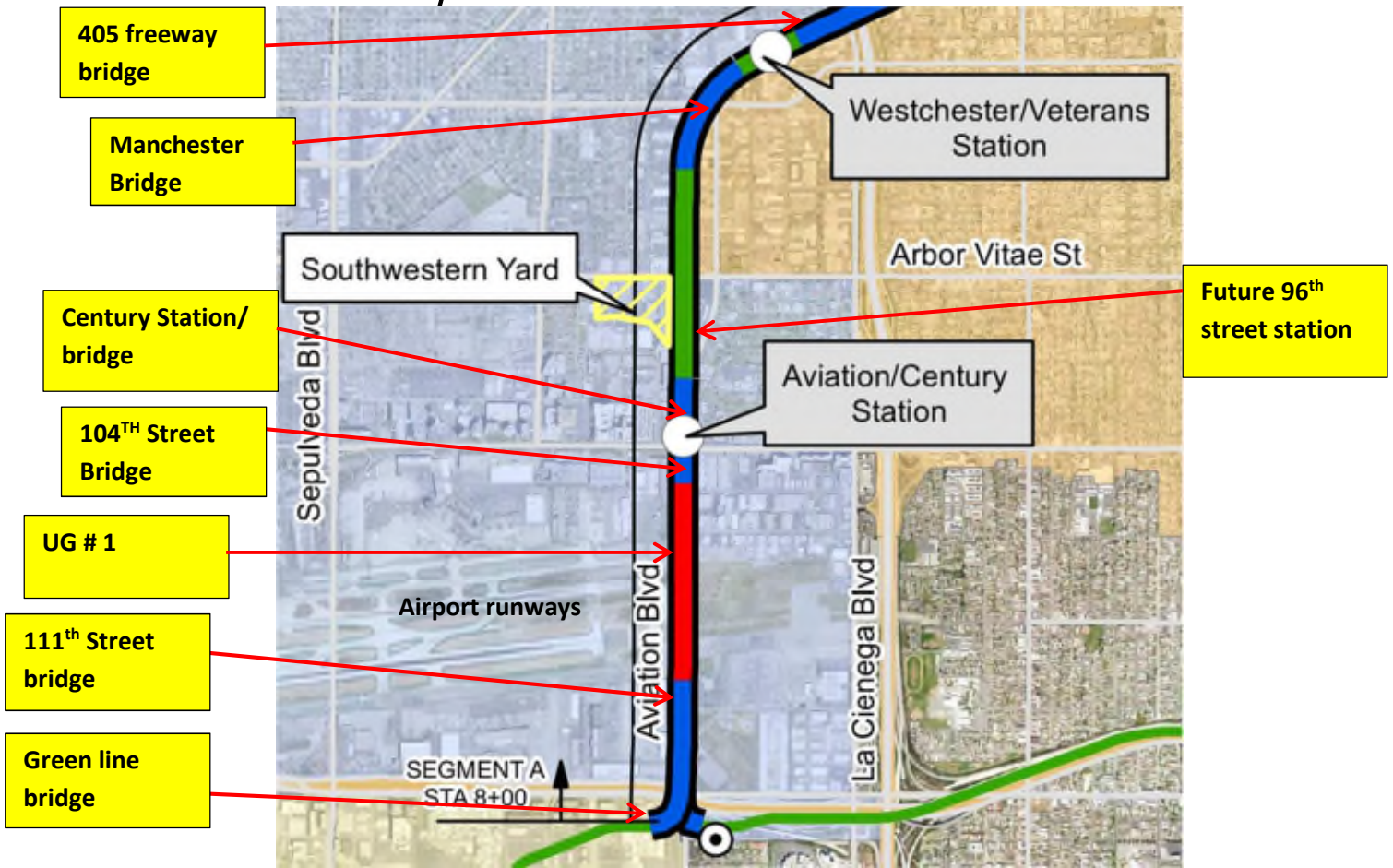
WSCC continues to develop the process to repair the gap between the plinth ends and the invert slab throughout the project limits.

GREEN LINE TIE-IN:

- Rework is completed for the relocation of the switch gear to the Green Line Wye.
- Final Green Line Cutover work is scheduled for June 19, 2020.

Segment A

CRENSHAW/LAX PHOTOGRAPHIC UPDATE



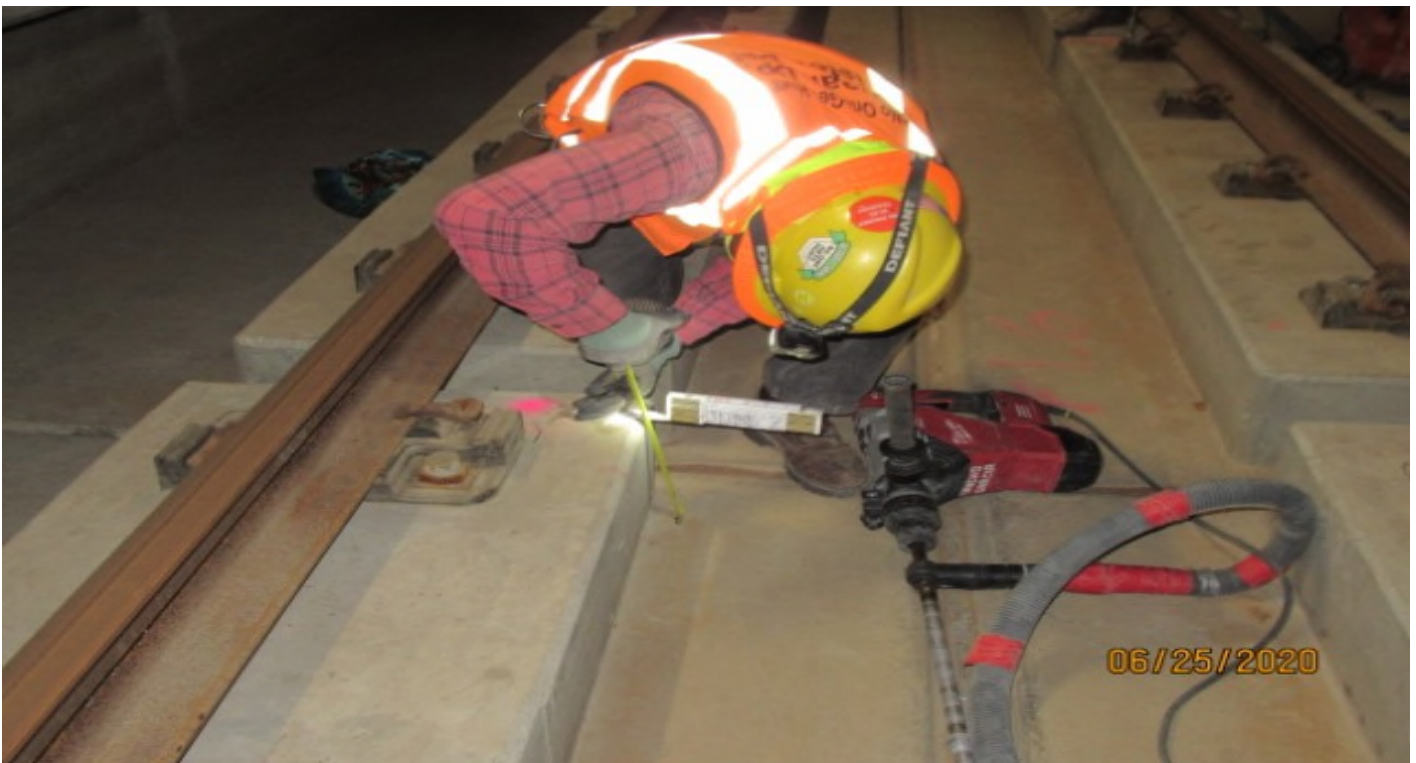
SEGMENT A:

- Punchlist walk with WSCC QC Inspector continues to review current completion status.
- Rework continues for emergency walkway insert plates due to miss-alignment.
- Disturbed ballast due to systems electrical conduit relocations continues to be repaired and re-dressed.
- Investigation of a possible repair process for plinth to invert gap continues in UG1.
- Replacement of damaged switch ties at TT #5EQLXO is completed.

CRENSHAW/LAX PHOTOGRAPHIC UPDATE



UG1- WSCC adjusting E-clips on NB #4 track UG1 south portal (looking south) Rework



UG1- WSCC measuring out distances for drilling through top of plinth to install additional reinforcement rebar dowels NB #4 track UG1 STA 39+20 (looking north) Rework

CRENSHAW/LAX PHOTOGRAPHIC UPDATE



UG1- STA 59+00 looking north – grading work next UG1 “U” wall toward RW60L



UG1- STA 60+50 looking south V-ditch grading along UG1 wall

CRENSHAW/LAX PHOTOGRAPHIC UPDATE



104th Street- Paving the electrical trench at 104th street.



104th Street- Trenching and placing conduit for a future light pole at 104th street.

CRENSHAW/LAX PHOTOGRAPHIC UPDATE



104th Street- Removal of the temporary AC for the traffic signal trench at 104th street.
Facing



104th Street- STA 55+00 at 104th St looking west – grading work mobilization SW corner
(across Aviation/background)

CRENSHAW/LAX PHOTOGRAPHIC UPDATE

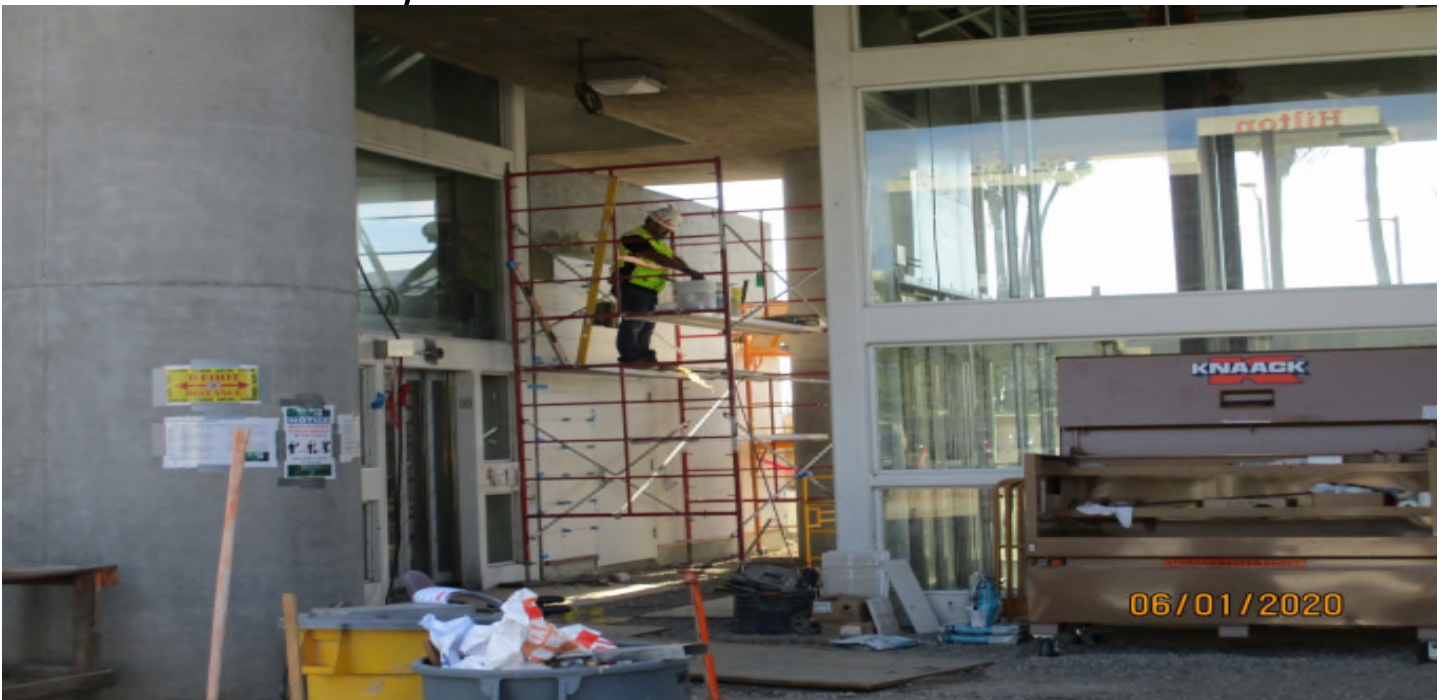


104th Street- Potholing for utilities at 104th street. Facing west.



104th Street- Over-excavation and compaction of the sidewalk subgrade at 104th street. Facing west.

CRENSHAW/LAX PHOTOGRAPHIC UPDATE



AVIATION/CENTURY - Setting tile at the Aviation Station service building.

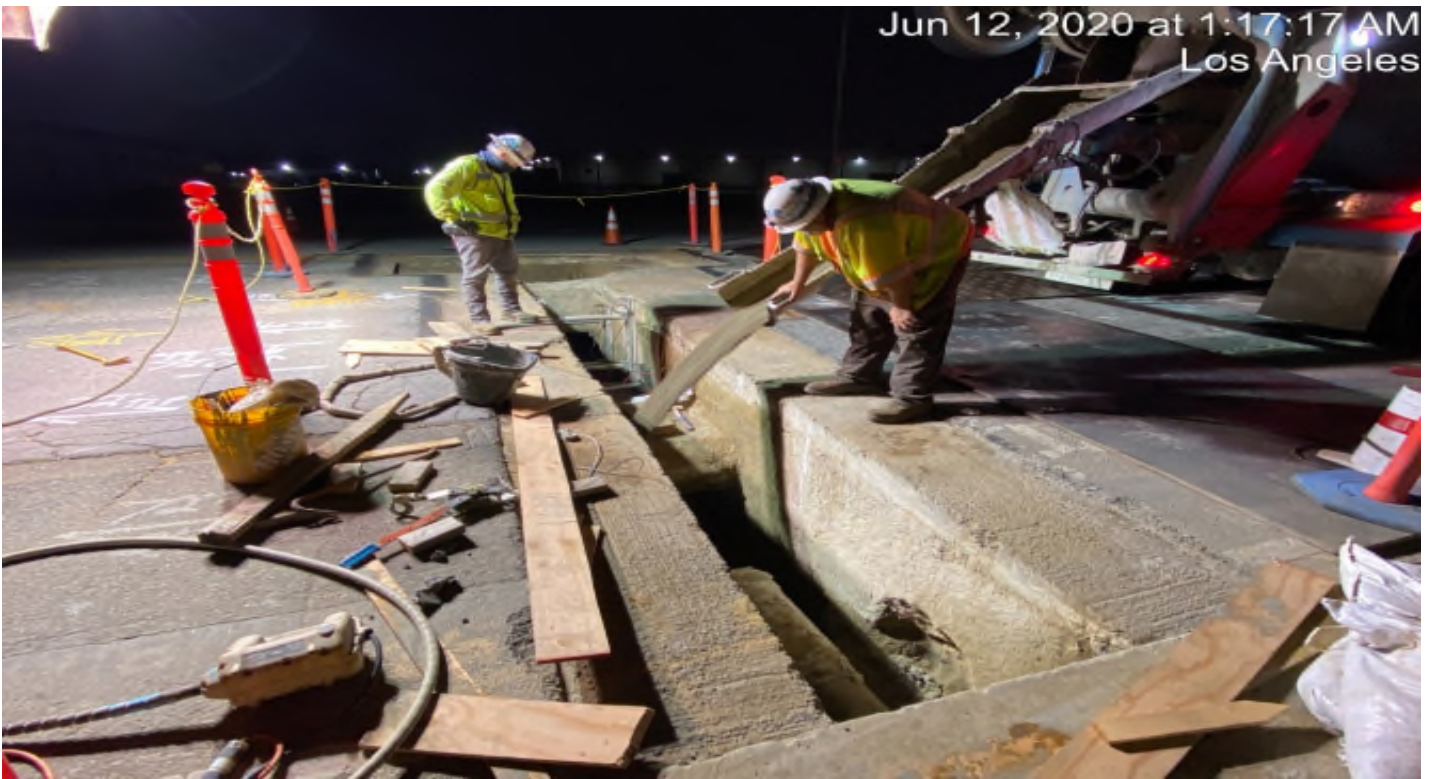


AVIATION/CENTURY- Welding and setting fence posts at the Aviation Station south stairway.

CRENSHAW/LAX PHOTOGRAPHIC UPDATE



AVIATION/CENTURY- Blois pressurizing the 8" fire line at Aviation & 111th looking south.



AVIATION/CENTURY- Blois backfilling trench with 100E100 sand slurry at Aviation & 104th looking south.

CRENSHAW/LAX PHOTOGRAPHIC UPDATE



AVIATION/CENTURY- Trenching and placing conduit for streetlight pole #30 on the SE corner of the 104th & Aviation intersection. Facing SW.



AVIATION/CENTURY- Placing and compacting AC for the traffic signal trench top on Aviation at 104th street. Facing south.

CRENSHAW/LAX PHOTOGRAPHIC UPDATE



AVIATION/CENTURY- south of 124th St looking south – dirt stockpile removal from BNSF R/W and reclaim the site – on hold



AVIATION/CENTURY- 111th Bridge area looking north (STA 33+00) – vacuum excavation subject of PCI 50505.04

CRENSHAW/LAX PHOTOGRAPHIC UPDATE



AVIATION/CENTURY- STA 55+00 at Aviation Blvd NB , 104th St looking north – trench work for traffic conduits in progress.



AVIATION/CENTURY- CorPro installing Cathodic Protection for 8” fire line at Aviation and 104th

CRENSHAW/LAX PHOTOGRAPHIC UPDATE



AVIATION/CENTURY- STA 55+00 at Aviation Blvd NB , 104th St looking west – slurry placed in trench work for traffic conduits.



AVIATION/CENTURY- South of 124th St looking south – dirt stockpile removal from BNSF R/W and reclaim the site.

CRENSHAW/LAX PHOTOGRAPHIC UPDATE



AVIATION/CENTURY- STA 55+00 at Aviation Blvd/104th St looking west – T&M work to expose DWP duct bank.



AVIATION/CENTURY- South of 124th St looking south – dirt stockpile removal from BNSF R/W and reclaim the site.

CRENSHAW/LAX PHOTOGRAPHIC UPDATE



AVIATION/CENTURY- STA 55+00 at Aviation Blvd/104th St looking west – T&M work to expose DWP duct bank – survey.



AVIATION/CENTURY- STA 55+00 at Aviation Blvd , 104th St looking south – sidewalk PCC pour SE corner of the intersection.

CRENSHAW/LAX PHOTOGRAPHIC UPDATE



AVIATION/CENTURY- Setting tile for the Aviation Station service building. Facing north.



AVIATION/CENTURY- SB #3 track STA 74+60, WSCC concrete demolishing partial plinth left (high) side of curve 7A (looking north) Rework.

CRENSHAW/LAX PHOTOGRAPHIC UPDATE



AVIATION/CENTURY- WSCC grading V-ditch along RW#60 Aviation Blvd. in Segment A using mini Excavator & 5-yard dump truck (looking southwest)



AVIATION/CENTURY- Carrera Marble & WSCC working together on stairway #1 at Century/Aviation plaza (looking south)

CRENSHAW/LAX PHOTOGRAPHIC UPDATE



AVIATION/CENTURY- STA 55+00 looking west – trenching for traffic conduits set crossing 104th St w/Aviation Blvd.



AVIATION/CENTURY- STA 27+00 looking west – 111th St w, Aviation Blvd. road work in front NEC of curb return (slot pave)

CRENSHAW/LAX PHOTOGRAPHIC UPDATE



AVIATION/CENTURY- STA 60+50 at Aviation Blvd, 104th St looking south – grading work next to UG1’s left wall toward RW60L.



AVIATION/CENTURY- STA 33+00 looking north Aviation Blvd. fresh PCC road surface – BLOIS

CRENSHAW/LAX PHOTOGRAPHIC UPDATE



AVIATION/CENTURY- Aviation Blvd south of 111th St. Stationing 28+50 Saw cutting (2) 31`-10" lateral saw cuts (2") deep by 1/8" wide



AVIATION/CENTURY- STA 68+00 Century/Aviation Station platform access stairs granite tile work status general view.

CRENSHAW/LAX PHOTOGRAPHIC UPDATE



AVIATION/CENTURY- STA 20+00 looking south along RW17R Aviation Blvd. grading work status



AVIATION/CENTURY- STA 59+00 looking north – Aviation – fresh PCC road surface on top of 8" DWP pipe

CRENSHAW/LAX PHOTOGRAPHIC UPDATE



111th Street- Hanging the traffic signal mast arm at 111th street.



111th Street- Placing concrete for the sidewalk at 111th street.

CRENSHAW/LAX PHOTOGRAPHIC UPDATE



111th Street- Grading and base placement for the ADA ramps at 111th street. Facing north.



111th Street- Saw cutting the existing roadway Ac for potholing at 111th street. Facing NW.

CRENSHAW/LAX PHOTOGRAPHIC UPDATE



111th Street- STA 27+00 under 111th bridge looking north – DBE mobilization material & equipment.



111th Street- Hanging the traffic signal mast arm at 111th street. Facing SW

CRENSHAW/LAX PHOTOGRAPHIC UPDATE



GREENLINE UNDERPASS- WSCC re-installing emergency walkway plates on west leg of GL Wye.



GREENLINE UNDERPASS- WSCC at west leg of GL Wye, installing repaired emergency walkway plates

CRENSHAW/LAX PHOTOGRAPHIC UPDATE



GREENLINE UNDERPASS- WSCC on east leg of Wye, repairing emergency walkway crossings (looking southwest) Rework

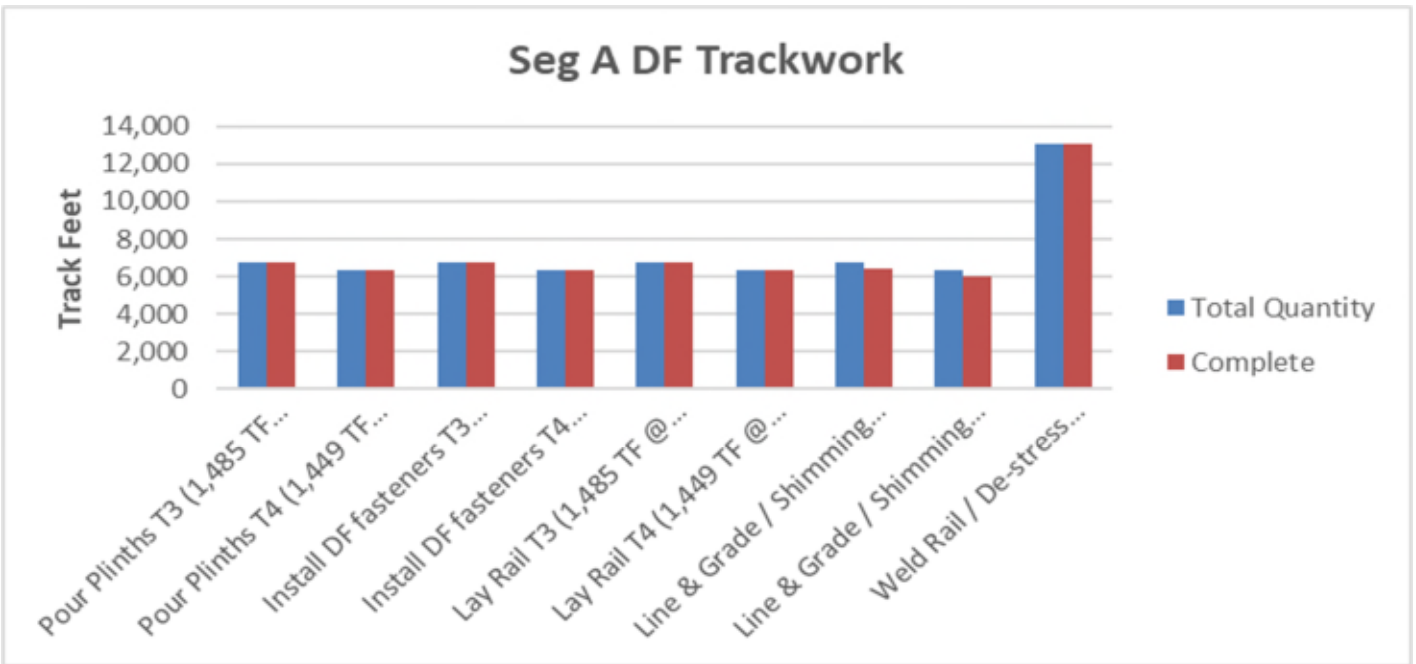
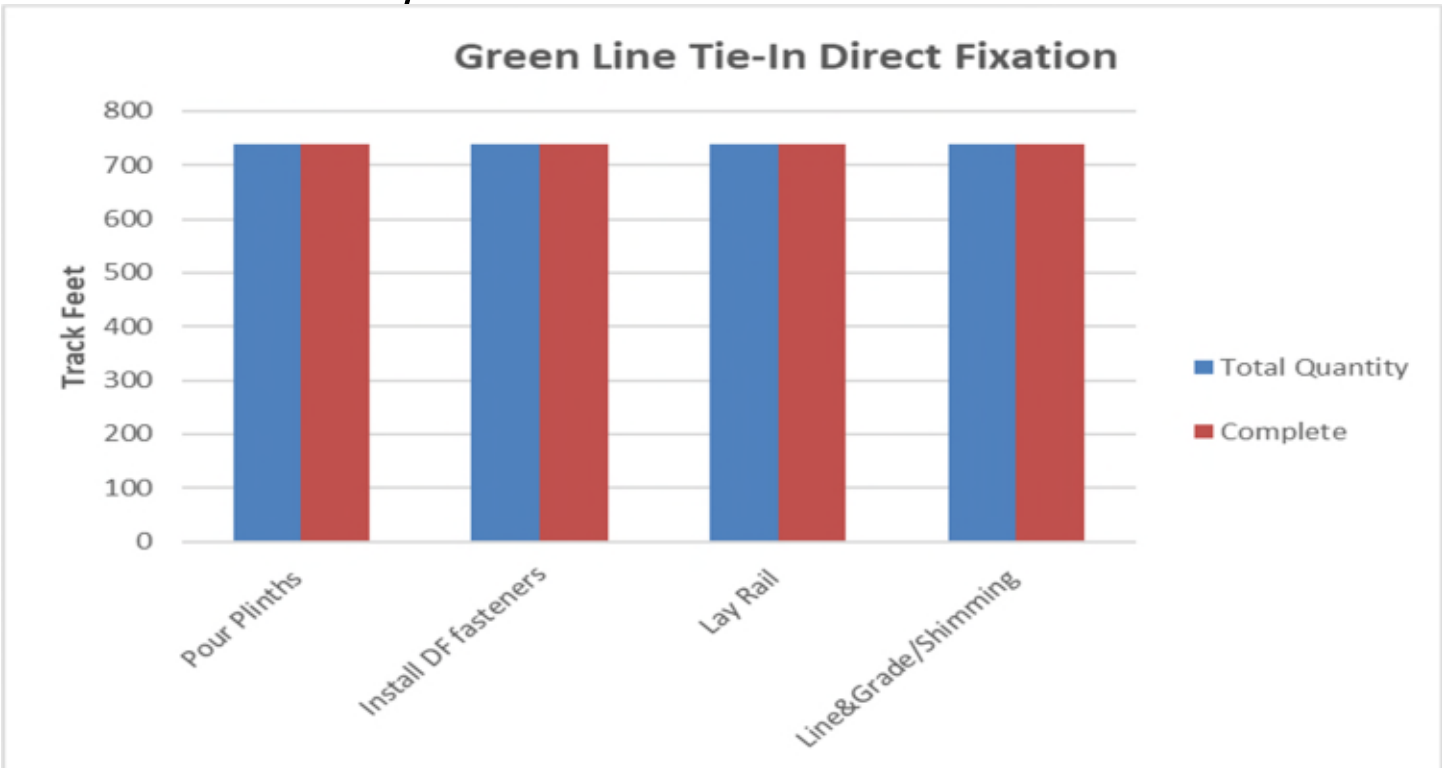


GREENLINE UNDERPASS- WSCC QC inspector checking cross level & track gauge where crossing plates will be re-installed GL Wye (looking north) Rework.

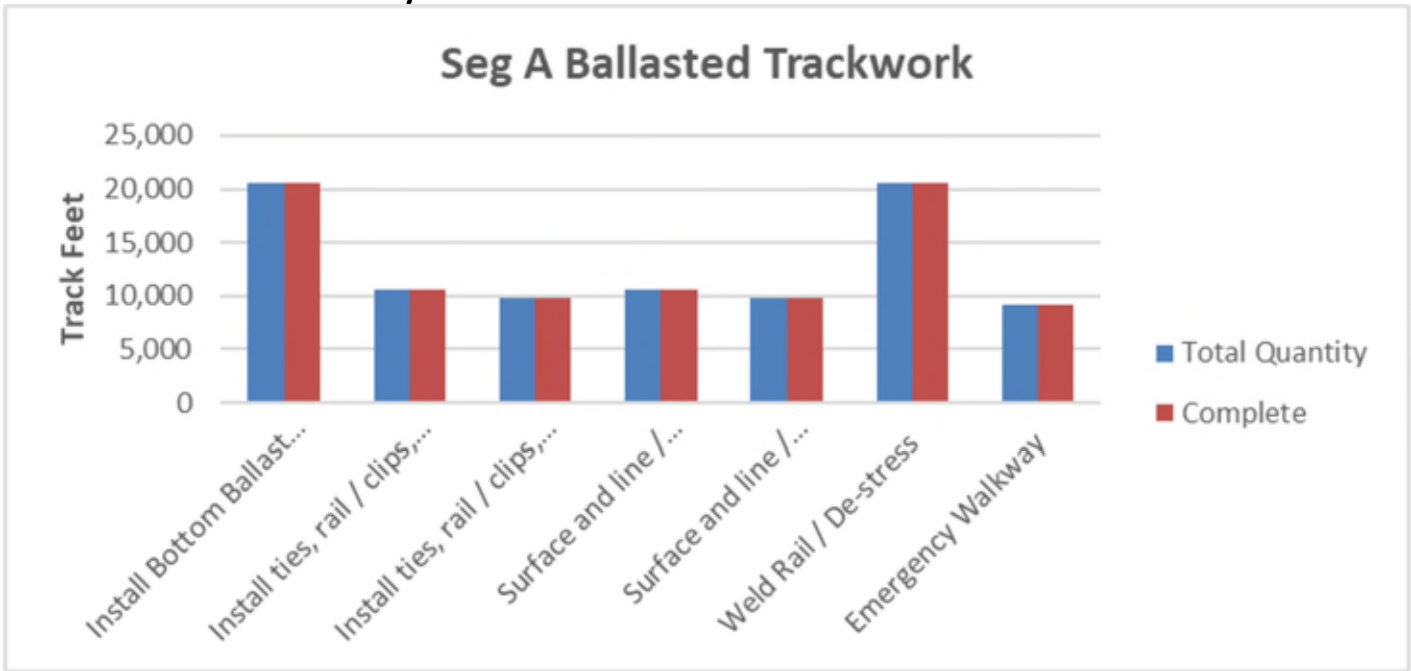
CRENSHAW/LAX PHOTOGRAPHIC UPDATE

PROJECT WIDE TRACKWORK PROGRESS									
	TRACK TYPE	ACTIVITY	TRACK FEET/QUANTITY	INSTALLED TO DATE	REMAINING	ACTIVITY % PROGRESS	Potential Rework *	Punchlist ** (Complete/Incomplete)	
GREENLINE TIE-IN	DIRECT FIXATION	Pour Plinths	738	738	0	100.00%			
		Install DF fasteners	738	738	0	100.00%			
		Lay Rail	738	738	0	100.00%			
		Line&Grade/Shimming	738	738	0	100.00%			
		Weld Rail/ Destress							
		Emergency Walkway	4	4	0	100.00%		INC	
	SPECIAL TRACKWORK	Acceptance for turnover to subcontractors	yes/no	yes					
		DF Double Crossovers (Diamond XING 1 & 2)	2	2	0	100.00%			
		Line & Grade / Shimming	2	2	0	100.00%			
		DF Single Crossovers (A/F, B/E, C/F, D/E)	4	4	0	100.00%			
		Line & Grade / Shimming	4	4	0	100.00%			
		Thermite Welds	40	40	0	100.00%			
		Insulated Joints (IJ's)	28	28	0	100.00%	*		
		Acceptance for turnover to subcontractors	yes/no	yes					
SEGMENT A	DF (13,089 TF include 395 TF of K1/K2 XO)	Pour Plinths T3 (1,485 TF @ wye + 4,884 TF + 395 TF K1/K2 XO) <i>(Insert rework continues)</i>	6,763	6,763	0	100.00%	*		
		Pour Plinths T4 (1,449 TF @ wye + 4,877 TF) <i>(Insert rework continues)</i>	6,326	6,326	0	100.00%	*		
		Install DF fasteners T3 (1,485 TF @ wye + 4,884 TF + 395 TF K1/K2 XO)	6,763	6,763	0	100.00%	*		
		Install DF fasteners T4 (1,449 TF @ wye + 4,877 TF)	6,326	6,326	0	100.00%	*		
		Lay Rail T3 (1,485 TF @ wye + 4,884 TF + 395 TF K1/K2 XO)	6,763	6,763	0	100.00%			
		Lay Rail T4 (1,449 TF @ wye + 4,877 TF)	6,326	6,326	0	100.00%			
		Line & Grade / Shimming T3 (1,485 TF @ wye + 4,884 TF + 395 TF K1/K2 XO)	6,763	6,425	338	95.00%			
		Line & Grade / Shimming T4 (1,449 TF @ wye + 4,877 TF)	6,326	6,010	316	95.00%			
		Weld Rail / De-stress (Rework complete)	13,089	13089	0	100.00%	*		
		Emergency Walkway							
	Acceptance for turnover to subcontractors	yes/no	no						
	BALLASTED TRACKWORK (20,551 TF including grade crossing, Yard Leads & Tail Track)	Install Bottom Ballast (T3+T4, and include SYL, NYL & Tail Track)	20,551	20,551	0	100.00%	*		
		Install ties, rail / clips, top ballast T3 (9,480 TF) + SYL (244 TF) + NYL (937 TF)	10,661	10,661	0	100.00%	*		
		Install ties, rail / clips, top ballast T4 (9,475 TF) + Tail Track (415 TF)	9,890	9,890	0	100.00%	*		
		Surface and line / Regulate T3 + SYL + NYL	10,661	10,661	0	100.00%	*	INC	
		Surface and line / Regulate T4 + Tail Track	9,890	9,890	0	100.00%	*	INC	
		Weld Rail / De-stress	20,550	20,550	0	100.00%	*	INC	
		Emergency Walkway	9,176	9,176	0	100.00%	*	INC	
		Acceptance for turnover to subcontractors	yes/no	no					
	SPECIAL TRACKWORK	Ballasted Double Crossover (G1/G2, H1/H2)	2	2	0	100.00%			
		DF Single Crossover (K1/K2)	2	2	0	100.00%		*	
		Line & Grade / Shimming	2	0	2				
		Ballasted Single Crossover (I1/IEQ, I2/IEQ, M1/M2, N1/N2)	4	4	0	100.00%			
		Install switches (A,B,C,D,E,F,G1,G2,H1,H2,I1,I2,IEQ,S,N1,N2,M1,M2 = 18)	18	18	0	100.00%			
		Thermite Welds	130	130	0	100.00%			
		Insulated Joints (IJ's)	74	74	0	100.00%		*	
	Acceptance for turnover to subcontractors	yes/no	no						
GRADE X-ING	Construct Crossing (Arbor Vitae, Hindry)	2	2		100.00%				
DF =	Direct Fixation								
T3 =	Track 3								
T4 =	Track 4								
TF =	Track Feet								
*	Potential for rework based on recent guideway survey. Total impact of rework is unknown at this time.								
**	Punchlist Complete/Incomplete: Indicates the completion (COMP) or Incompletion (INC) of identified punchlist items								

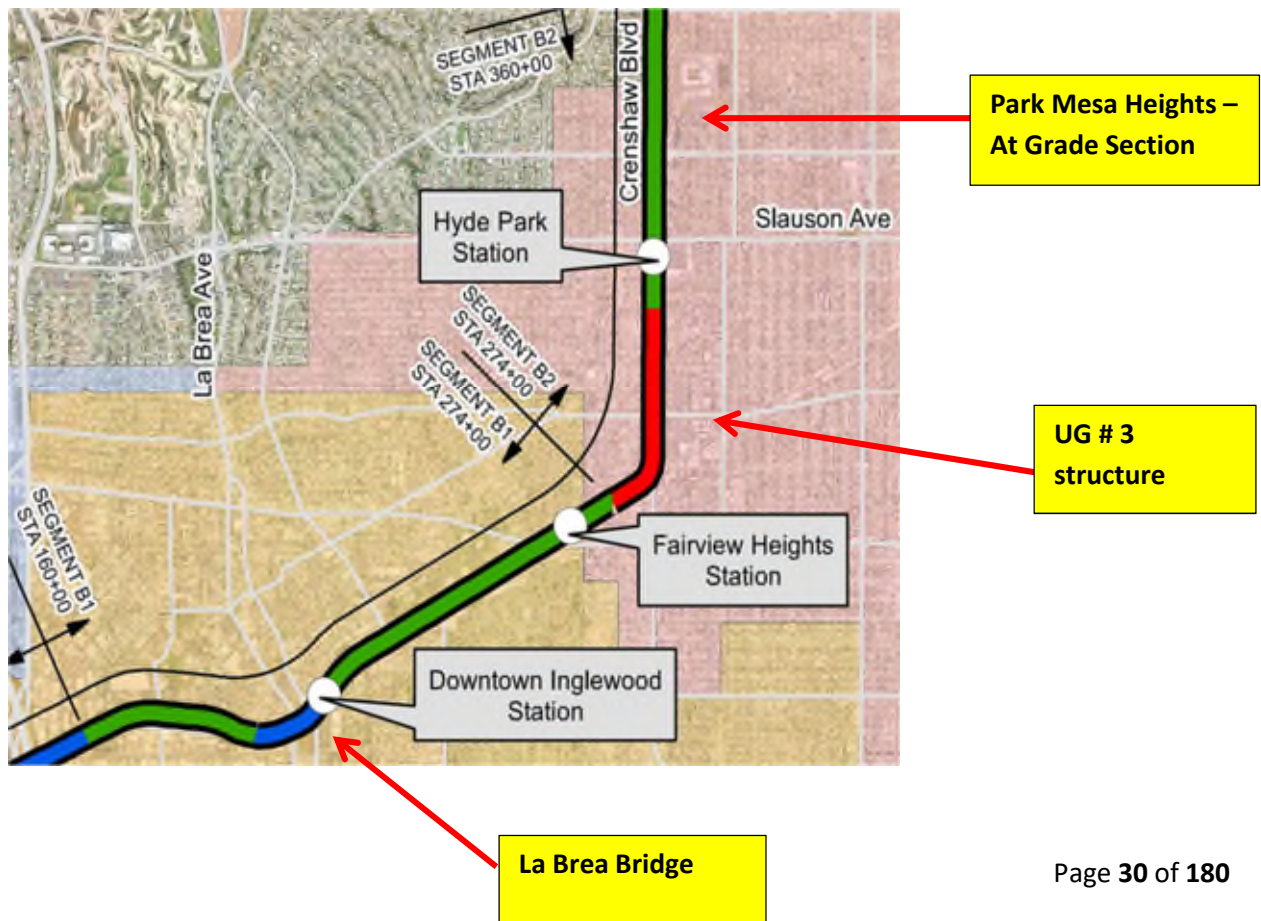
CRENSHAW/LAX PHOTOGRAPHIC UPDATE



CRENSHAW/LAX PHOTOGRAPHIC UPDATE



Segment B



CRENSHAW/LAX PHOTOGRAPHIC UPDATE



La Brea – WSCC civil dirt crew installing V-ditch, west side at La Brea (looking south)



La Brea – WSCC dirt crew installing pad for future concrete at La Brea station (looking northwest)

CRENSHAW/LAX PHOTOGRAPHIC UPDATE



La Brea – Select Electric Excavated to place pull boxes at La Brea and Florence and under La Brea Bridge.



La Brea – WSCC dirt crew on west side of La Brea station, repairing temp. fence lines.

CRENSHAW/LAX PHOTOGRAPHIC UPDATE



La Brea – WSCC at La Brea pavilion removing materials using excavator (looking southeast)



La Brea – WSCC on west side of La Brea, adding soils to slope & compacting using sheepfoot (looking north)

CRENSHAW/LAX PHOTOGRAPHIC UPDATE



La Brea – WSCC dirt crew rolling slope & adjusting elevations at La Brea (looking west)



La Brea – La Brea Station WSCC preparing to Burreto rap storm drain pipe next to NB ballast retaining wall STA 156+00 (looking north)

CRENSHAW/LAX PHOTOGRAPHIC UPDATE



La Brea – WSCC adjusting elevations on CMB in La Brea parking lot, using front end skip loader (looking south)



La Brea –Placing street signs on the traffic signal mast arm at La Brea.

CRENSHAW/LAX PHOTOGRAPHIC UPDATE



La Brea – WSCC final grading in La Brea parking lot (looking east)



La Brea – La Brea parking lot WSCC final grading CMB (looking south)

CRENSHAW/LAX PHOTOGRAPHIC UPDATE



Hindry Station – Framing in the roof block outs at the Hindry Station.



Hindry Station – Framing for the TVM roof deck at the Hindry Station SB platform.

CRENSHAW/LAX PHOTOGRAPHIC UPDATE



Hindry Station – Setting fence posts at the Hindry Station SB platform.

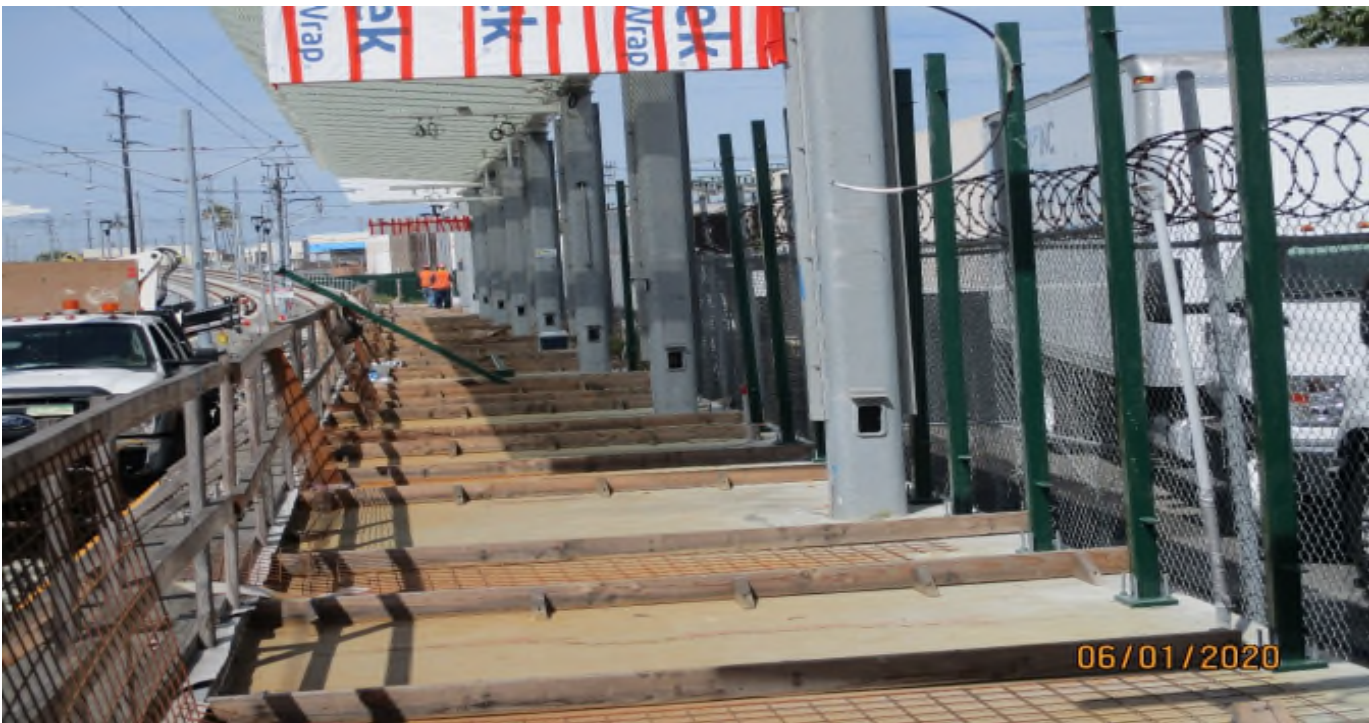


Hindry Station – STA 131+00 TK#3/SB looking north – Hindry Station install the 8' fence posts along the backside of the platform

CRENSHAW/LAX PHOTOGRAPHIC UPDATE



Hindry Station – STA 135+00 TK#3/SB looking south – Hindry Station install the 8' fence posts along the backside of the platform.



Hindry Station – Setting the fence posts at the Hindry Station SB platform. Facing west.

CRENSHAW/LAX PHOTOGRAPHIC UPDATE



High Street – Select Electric at High St. preparing street light foundation controller box (looking northeast)



High Street – HCC’s Mark IV tamper at High St. on SB #3 (looking south west)

CRENSHAW/LAX PHOTOGRAPHIC UPDATE



PARK MESA – Installing block-out forms for concrete placement of ADA ramp on the northwest corner of 67th St & Crenshaw Blvd. 6/12/20



PARK MESA – Completed swing gate installation at the entrance of TPSS#7 on 60th St & Crenshaw Blvd.

CRENSHAW/LAX PHOTOGRAPHIC UPDATE



PARK MESA – Installing street light poles on both north and southwest corners of 60th St & Crenshaw Blvd. 6/17/20



PARK MESA – Sack and patching Catch Basin #13 on southbound Crenshaw Blvd and Slauson Ave. 6/16/20

CRENSHAW/LAX PHOTOGRAPHIC UPDATE



PARK MESA – Continue sack and patching center median on northbound Crenshaw Blvd between 50th St. and 52nd St. 6/10/20



PARK MESA – Sack and patching Catch Basin #29 on southbound Crenshaw Blvd and 48th St. 6/11/20

CRENSHAW/LAX PHOTOGRAPHIC UPDATE



PARK MESA – Excavating/grading for new sidewalk installation on the southwest corner of 67th St & Crenshaw Blvd. 6/18/20



PARK MESA – Build block-out forms for ADA ramp installation and light pull boxes on the southwest corner of 67th St & Crenshaw Blvd. 6/19/20

CRENSHAW/LAX PHOTOGRAPHIC UPDATE



PARK MESA – Placing concrete for new sidewalk panel installation on the southwest corner of 67th St & Crenshaw Blvd. 6/22/20



PARK MESA – Placing concrete for new bud pad installation on the southwest corner of 67th St & Crenshaw Blvd. 6/24/20

CRENSHAW/LAX PHOTOGRAPHIC UPDATE



PARK MESA – Sack and patching Catch Basin #31 on the southwest corner of 67th St & Crenshaw Blvd. 6/26/20



PARK MESA – Sack and patching Manhole #4 on the southwest corner of 67th St & Crenshaw Blvd. 6/29/20

CRENSHAW/LAX PHOTOGRAPHIC UPDATE



PARK MESA – Installing new permanent street light poles along northbound Crenshaw Blvd between 57th St. and 54th St. 6/18/20



PARK MESA – Sack and patching Manhole #23 on southbound Crenshaw Blvd and 52nd St. 6/23/20

CRENSHAW/LAX PHOTOGRAPHIC UPDATE



UG3 – Continue excavating/grading the north east section of Victoria Yard for upcoming pavement installation. 6/2/20



UG3 – Continue excavating/grading the north east section of Victoria Yard for upcoming pavement installation.

CRENSHAW/LAX PHOTOGRAPHIC UPDATE



UG3 – Continue grading the north east section of Victoria Yard for upcoming pavement installation.



UG3 – Building and installing block-out forms and placing concrete on the southwest corner of “New Road” and Crenshaw Blvd.

CRENSHAW/LAX PHOTOGRAPHIC UPDATE



UG3 – Continue grading the north east section of Victoria Yard for upcoming pavement installation. 6/9/20



UG3 – Raising top elevation of existing manholes to road elevation at the Victoria Cul-de-sac. 6/10/20

CRENSHAW/LAX PHOTOGRAPHIC UPDATE



UG3 – Continue grading the north east section of Victoria Yard for upcoming pavement installation. 6/11/20



UG3 – Continue grading the north east section of Victoria Yard for upcoming pavement installation. 6/15/20

CRENSHAW/LAX PHOTOGRAPHIC UPDATE



UG3 – Installing rebar and placing concrete for the Victoria Cul-de-sac radius. 6/15/20



UG3 – Continue excavating/grading the north east section of Victoria Yard for upcoming pavement installation. 6/16/20

CRENSHAW/LAX PHOTOGRAPHIC UPDATE



UG3 – Grading for sidewalk installation for a section of the Victoria Cul-de-sac radius.
6/17/20



UG3 – Grading for sidewalk installation for a section of the Victoria Cul-de-sac radius.
6/17/20

CRENSHAW/LAX PHOTOGRAPHIC UPDATE



UG3 – Fine grading for tree well installation at the east side radius of the Victoria Cul-de-sac. 6/18/20



UG3 – Continue excavating/grading the north east section of Victoria Yard. 6/18/20

CRENSHAW/LAX PHOTOGRAPHIC UPDATE



UG3 – Continue excavating/grading the north east section of Victoria Yard. 6/22/20



UG3 – Continue excavating/grading the north east section of Victoria Yard. 6/23/20

CRENSHAW/LAX PHOTOGRAPHIC UPDATE



UG3 – Continue excavating/grading the north east section of Victoria Yard. 6/24/20



UG3 – Installing block-out forms and placing concrete for new sidewalk panels for the Victoria Cul-de-sac radius. 6/24/20

CRENSHAW/LAX PHOTOGRAPHIC UPDATE



UG3 – Continue excavating/grading the north east section of Victoria Yard. 6/25/20



UG3 – Continue excavating/grading and stockpiling granite base rocks for upcoming placement at Victoria Yard. 6/26/20

CRENSHAW/LAX PHOTOGRAPHIC UPDATE



UG3 – Placing granite base rock throughout Victoria Yard. 6/29/20



UG3 – Continue placing granite base rock throughout Victoria Yard. 6/30/20

CRENSHAW/LAX PHOTOGRAPHIC UPDATE



UG3 – Continue installing block-out forms and placing concrete for new sidewalk panels for the Victoria Cul-de-sac radius. 6/30/20



UG3 – Continue excavating/grading the remaining area of Victoria Yard and preparing for granite base rock placement. 7/1/20

CRENSHAW/LAX PHOTOGRAPHIC UPDATE

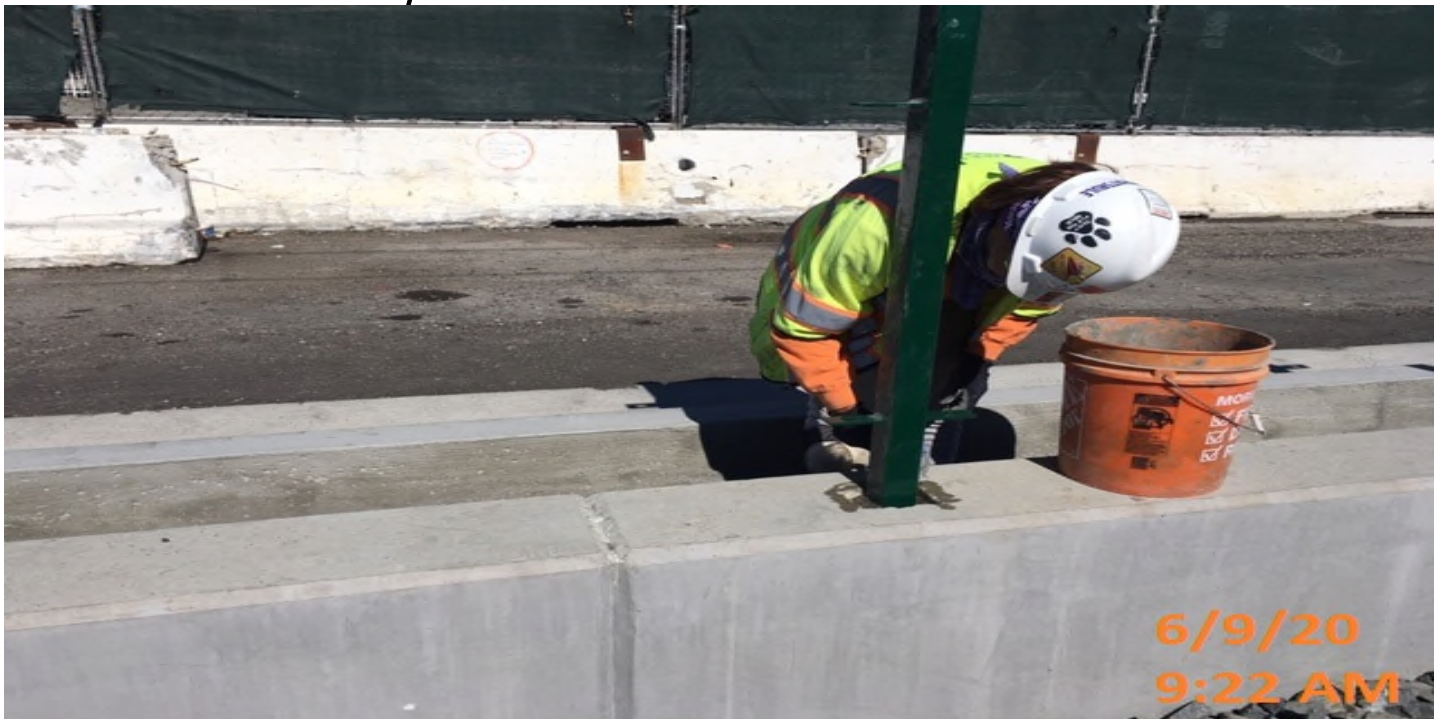


Hyde Park Station – Installing safety cables on top of the north end canopy at the platform level.



Hyde Park Station – Continue installing guardrail posts along the guideway curb on the southbound track.

CRENSHAW/LAX PHOTOGRAPHIC UPDATE



Hyde Park Station – Continue installing guardrail posts along the guideway curb on the southbound track.

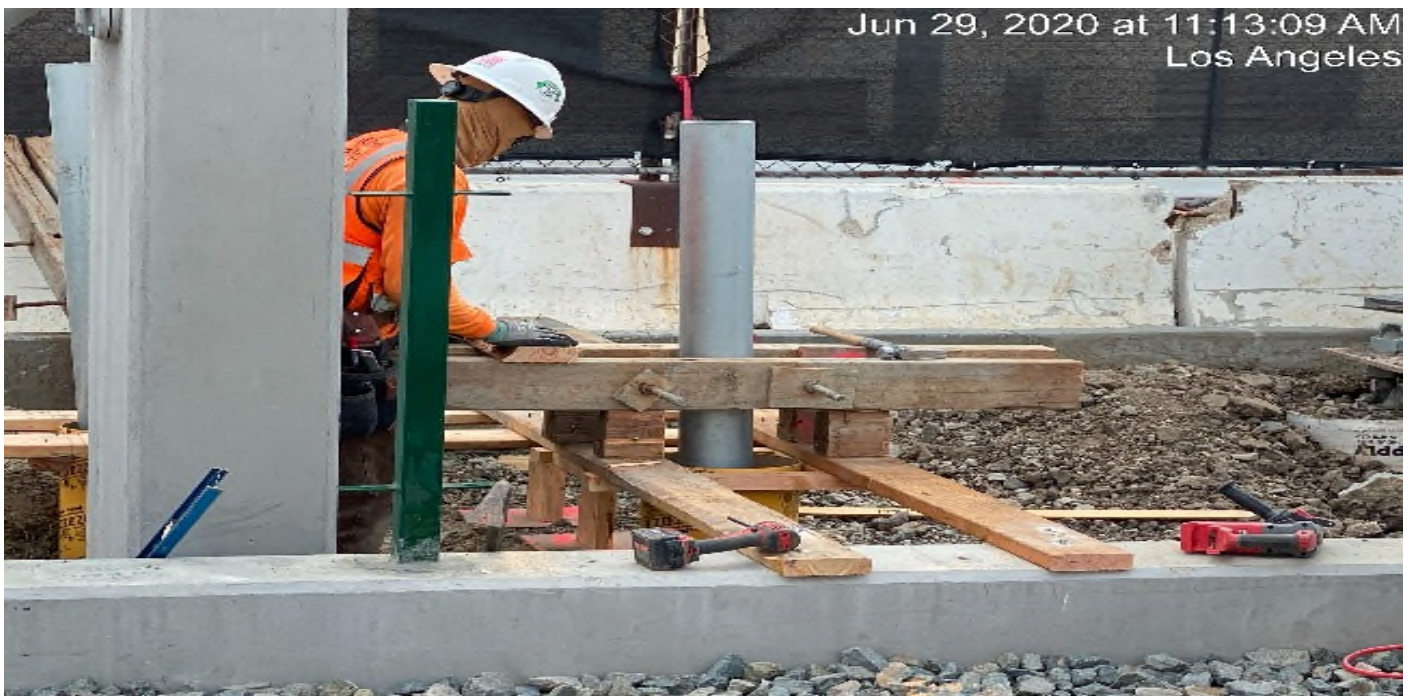


Hyde Park Station – Began layout for the upcoming ticket vending machine installation at the platform.

CRENSHAW/LAX PHOTOGRAPHIC UPDATE



Hyde Park Station – Forming roof for the north canopy structure at the platform.



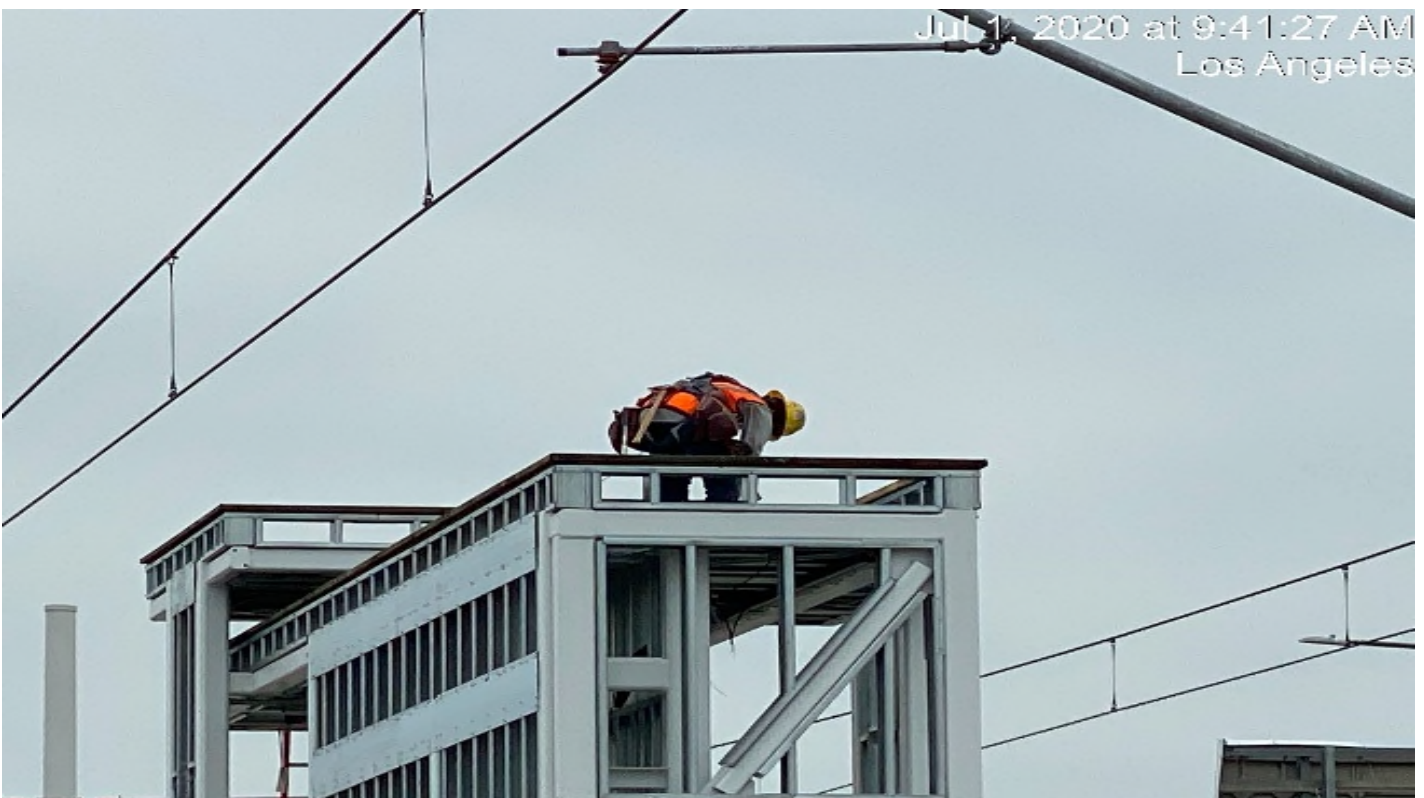
HYDE PARK STATION – Installing steel bollards in preparation for concrete placement at the north entrance.

CRENSHAW/LAX PHOTOGRAPHIC UPDATE

Jun 30, 2020 at 11:08:38 AM
Los Angeles



HYDE PARK STATION – Continue forming roof for the north canopy structure at the platform.



HYDE PARK STATION – Continue forming roof for the north canopy structure at the platform.

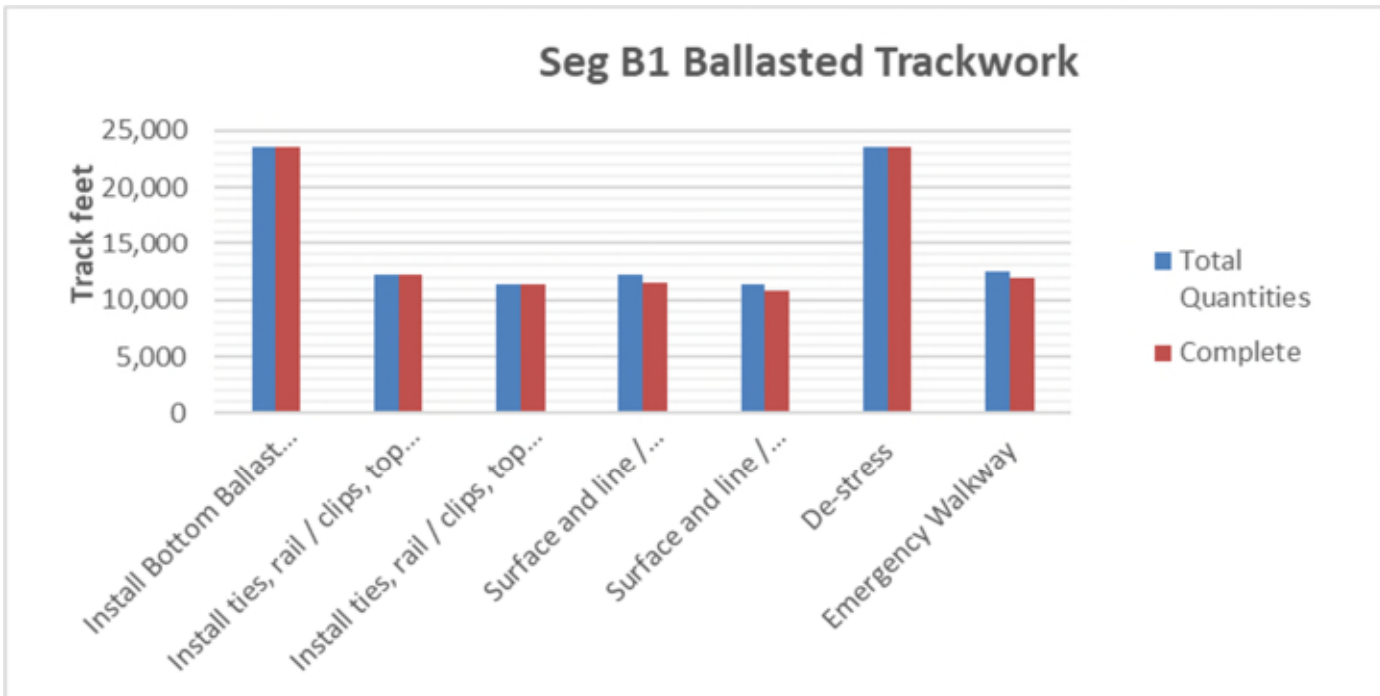
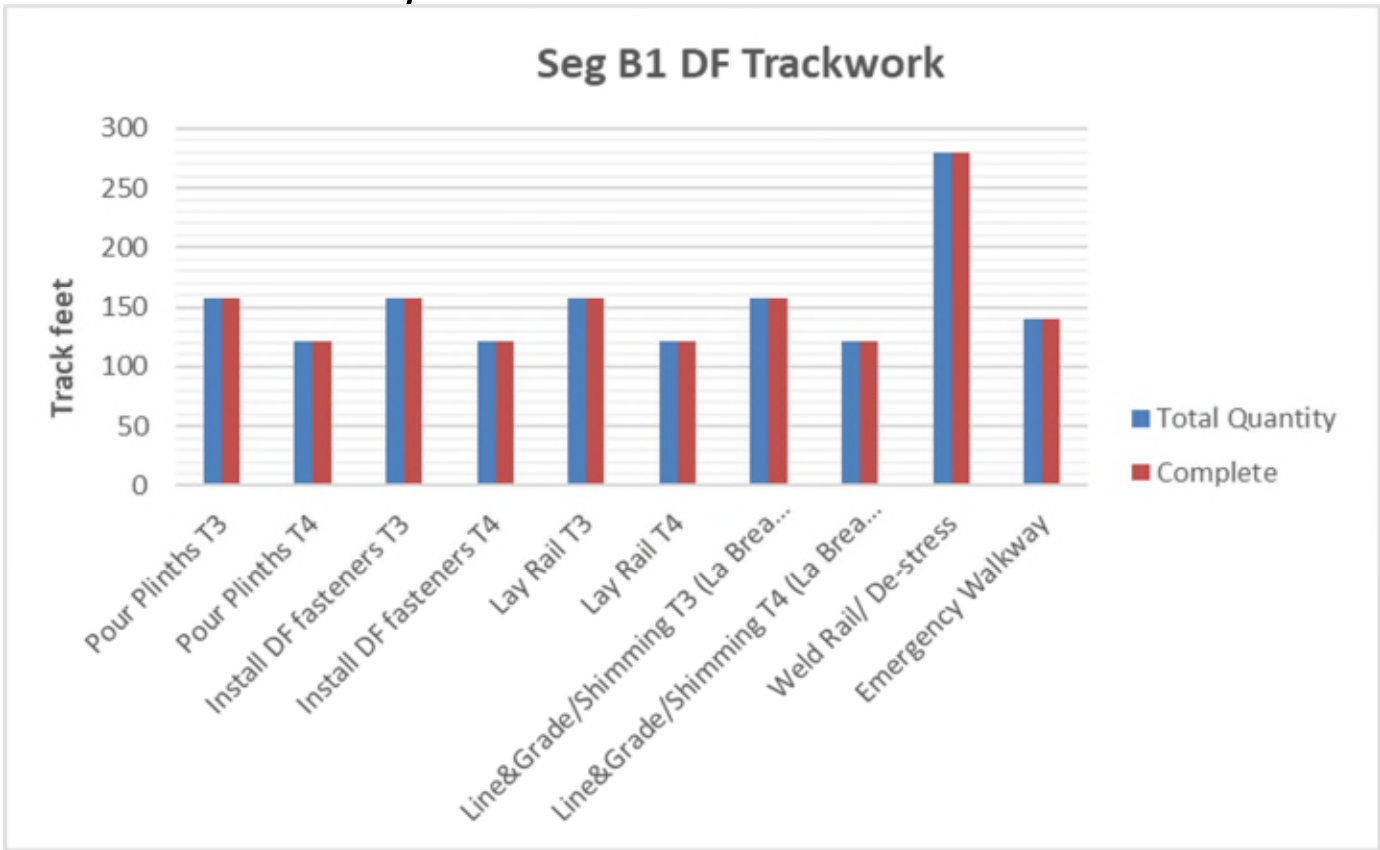
CRENSHAW/LAX PHOTOGRAPHIC UPDATE

SEGMENT B1:

- Disturbed ballast due to systems electrical conduit relocations continues to be repaired and re-dressed
- Investigation of track mis-alignment due to settlement of MSE Wall #202L is in process
- **Rework of the Top-of-Rail it may be required due to gouges in the rail at grade crossing – pending resolution.**
- **Ballast repair at Wall #202L investigation is started.**
- **Investigation of rail gouges is started.**

PROJECT WIDE TRACKWORK PROGRESS								
	TRACK TYPE	ACTIVITY	TRACK FEET/QUANTITY	INSTALLED TO DATE	REMAINING	ACTIVITY % PROGRESS	Potential Rework *	Punchlist ** (Complete/Incomplete)
SEGMENT B1	DF (279 TF)	Pour Plinths T3	158	158	0	100.00%		
		Pour Plinths T4	121	121	0	100.00%		
		Install DF fasteners T3	158	158	0	100.00%	*	INC
		Install DF fasteners T4	121	121	0	100.00%	*	INC
		Lay Rail T3	158	158	0	100.00%		
		Lay Rail T4	121	121	0	100.00%		
		Line&Grade/Shimming T3 (La Brea Bridge)	158	158	0	100.00%		
		Line&Grade/Shimming T4 (La Brea Bridge)	121	121	0	100.00%		
		Weld Rail/ De-stress	279	279	0	100.00%		
		Emergency Walkway	140	140	0	100.00%		
		Acceptance for turnover to subcontractors	yes/no	no				
	BALLASTED TRACKWORK (23,506 TF including grade crossings and Siding track)	Install Bottom Ballast (T3+T4 and Siding)	23,506	23,506	0	100.00%	*	INC
		Install ties, rail / clips, top ballast T3 + Siding	12,184	12,184	0	100.00%	*	INC
		Install ties, rail / clips, top ballast T4	11,322	11,322	0	100.00%	*	INC
		Surface and line / Regulate T3 + Siding	12,184	11,575	609	95.00%		
		Surface and line / Regulate T4	11,322	10,756	566	95.00%		
		De-stress	23,506	23,506	0	100.00%		
		Emergency Walkway	12,506	12,000	506	95.95%	*	INC
	Acceptance for turnover to subcontractors	yes/no	yes			N/A		
	SPECIAL TRACKWORK	Ballasted Single Crossover (O1/O2, P1/P2, Q1/Q2, T1/T2)	4	4	0	100.00%		
		Install switches (M, O1, O2, P1, P2, Q1, Q2, R, T1, T2 = 10)	10	10	0	100.00%		
		Thermite Welds	104	104	0	100.00%	*	
		Insulated Joints (IJ's)	43	43	0	100.00%	*	
		Acceptance for turnover to subcontractors	yes/no	No				
	GRADE X-ING	Construct Crossing (Oak/Cedar/Eucalyptus/Ivy/Centimela, High (50%), West, Brynhurst)	8	8		100.00%		
	DF =	Direct Fixation						
	T3 =	Track 3						
T4 =	Track 4							
TF =	Track Feet							
*	Potential for rework based on recent guideway survey. Total impact of rework is unknown at this time.							
**	Punchlist Complete/Incomplete: Indicates the completion (COMP) or Incompletion (INC) of identified punchlist items							

CRENSHAW/LAX PHOTOGRAPHIC UPDATE



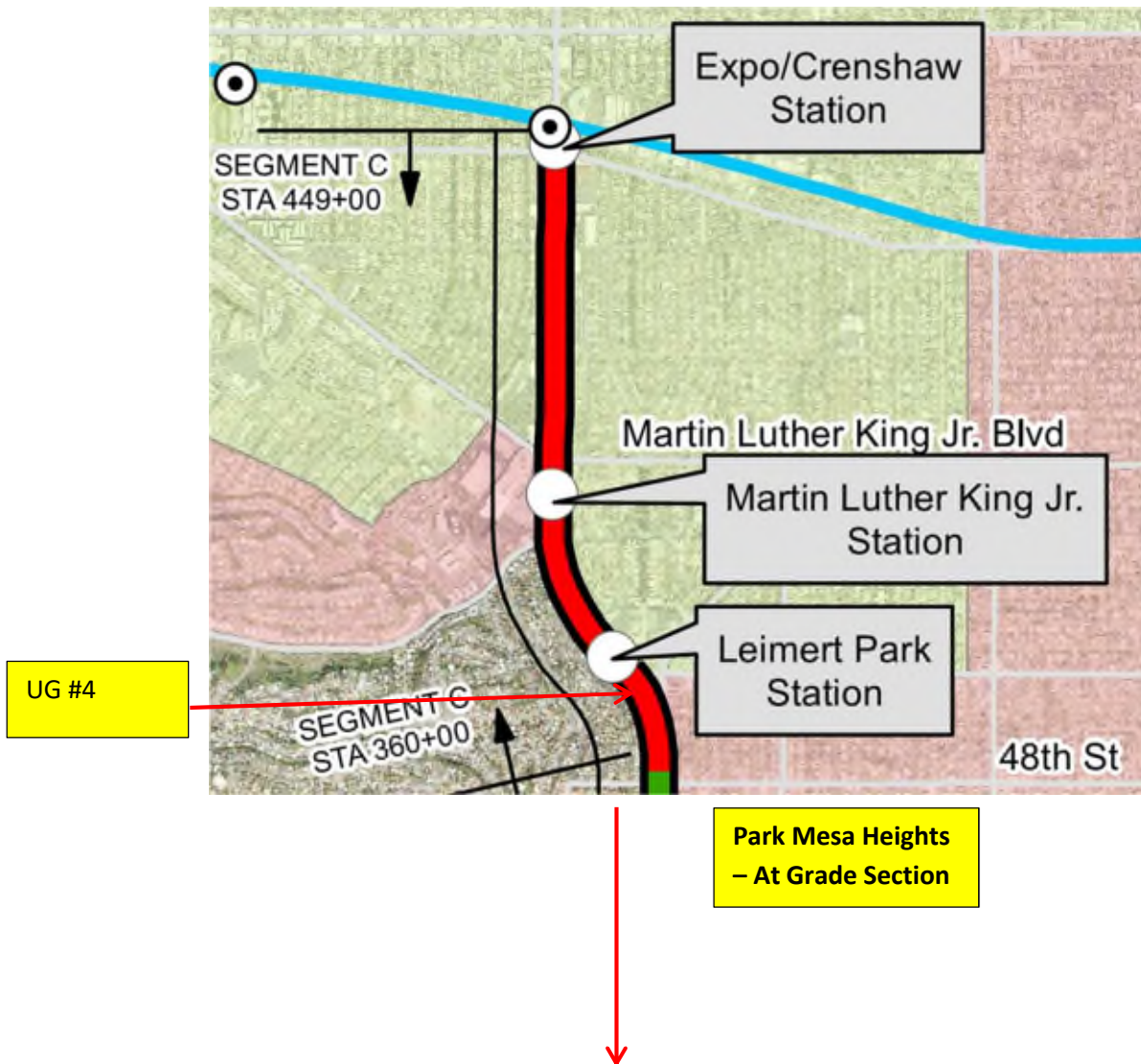
SEGMENT B2:

- Disturbed ballast due to systems electrical conduit relocations continues to be repaired and re-dressed.

CRENSHAW/LAX PHOTOGRAPHIC UPDATE

- Rework continues to relocate incorrectly installed Insulated Joints (IJs) for train control on both north and south bound tracks south of 57th Street.
- Rework of the Top-of-Rail it may be required due to gouges in the rail at grade crossing – pending resolution.

Segment C



CRENSHAW/LAX PHOTOGRAPHIC UPDATE



UG4 - Installing guardrail posts along both sides of the guideway curb at Sta 317+75.

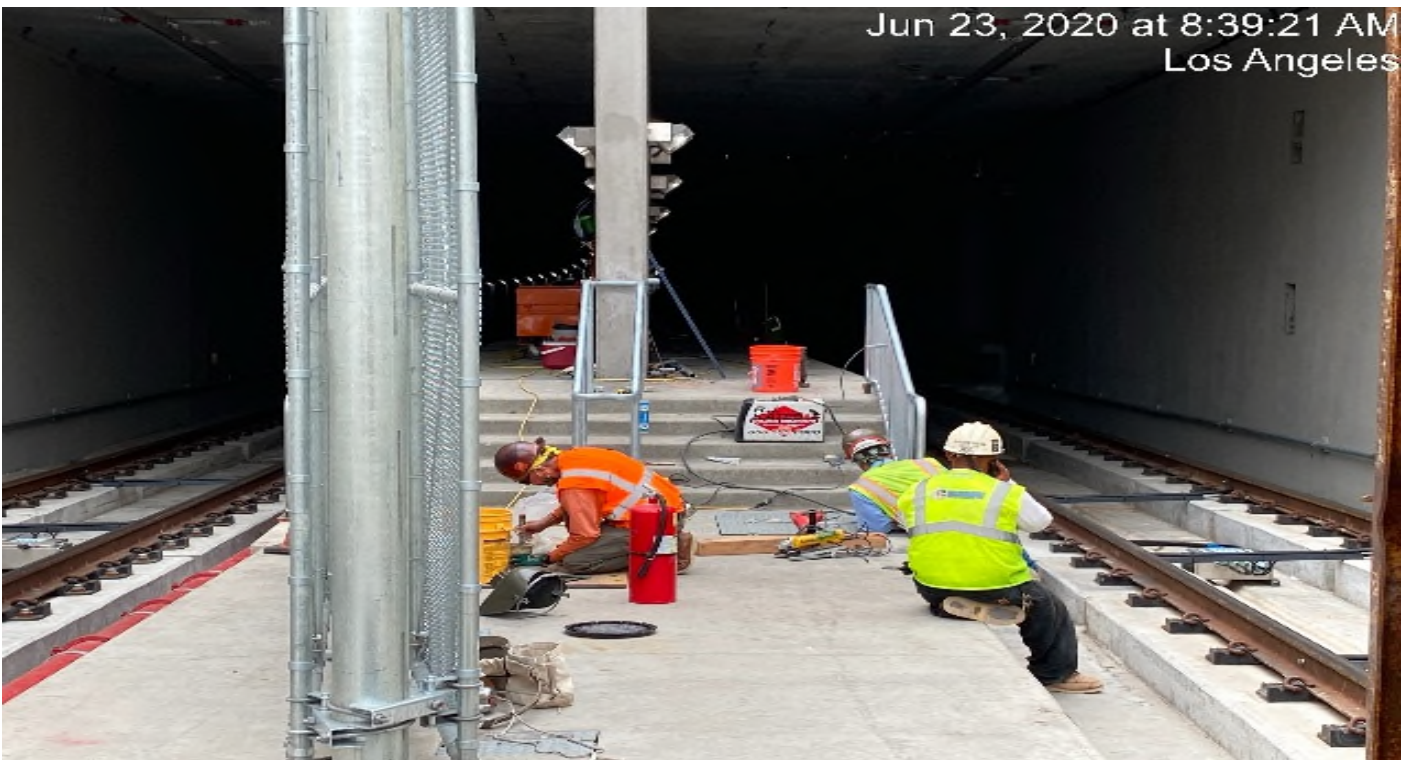


UG4 – Installing fence grill to guardrail posts along both sides of the guideway curb from Sta 317+75 – 322+40.

CRENSHAW/LAX PHOTOGRAPHIC UPDATE



UG4 – Installing handrails at the south end portal and throughout the northbound tunnel.



UG4 – Continue installing handrails at the south end portal and throughout the northbound tunnel.

CRENSHAW/LAX PHOTOGRAPHIC UPDATE

Jun 24, 2020 at 9:11:25 AM
Los Angeles



UG4 – Continue installing handrails at the south end portal and throughout the northbound tunnel.



UG4 – Crew demoing sections of plinths blocks.

CRENSHAW/LAX PHOTOGRAPHIC UPDATE



UG4 – WSCC QC inspectors verifying SC on SB-34 UG4 STA 374+32.



UG4 – WSCC crew continue demoing sections of plinths blocks.

CRENSHAW/LAX PHOTOGRAPHIC UPDATE



UG4 – WSCC crew removing rail fasteners.



UG4 – WSCC crew resurfacing section of plinths.

CRENSHAW/LAX PHOTOGRAPHIC UPDATE

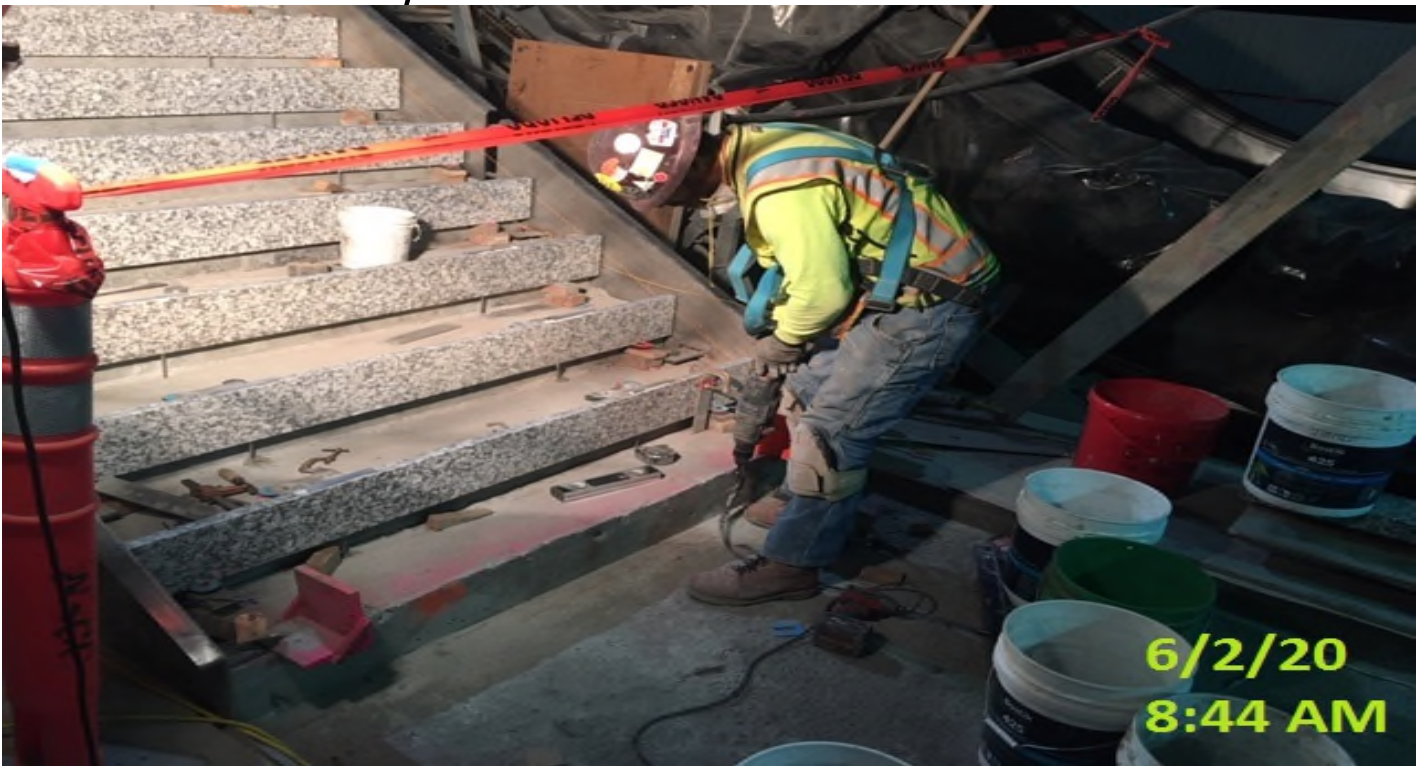


UG4 – Crew demoing sections of plinths blocks.

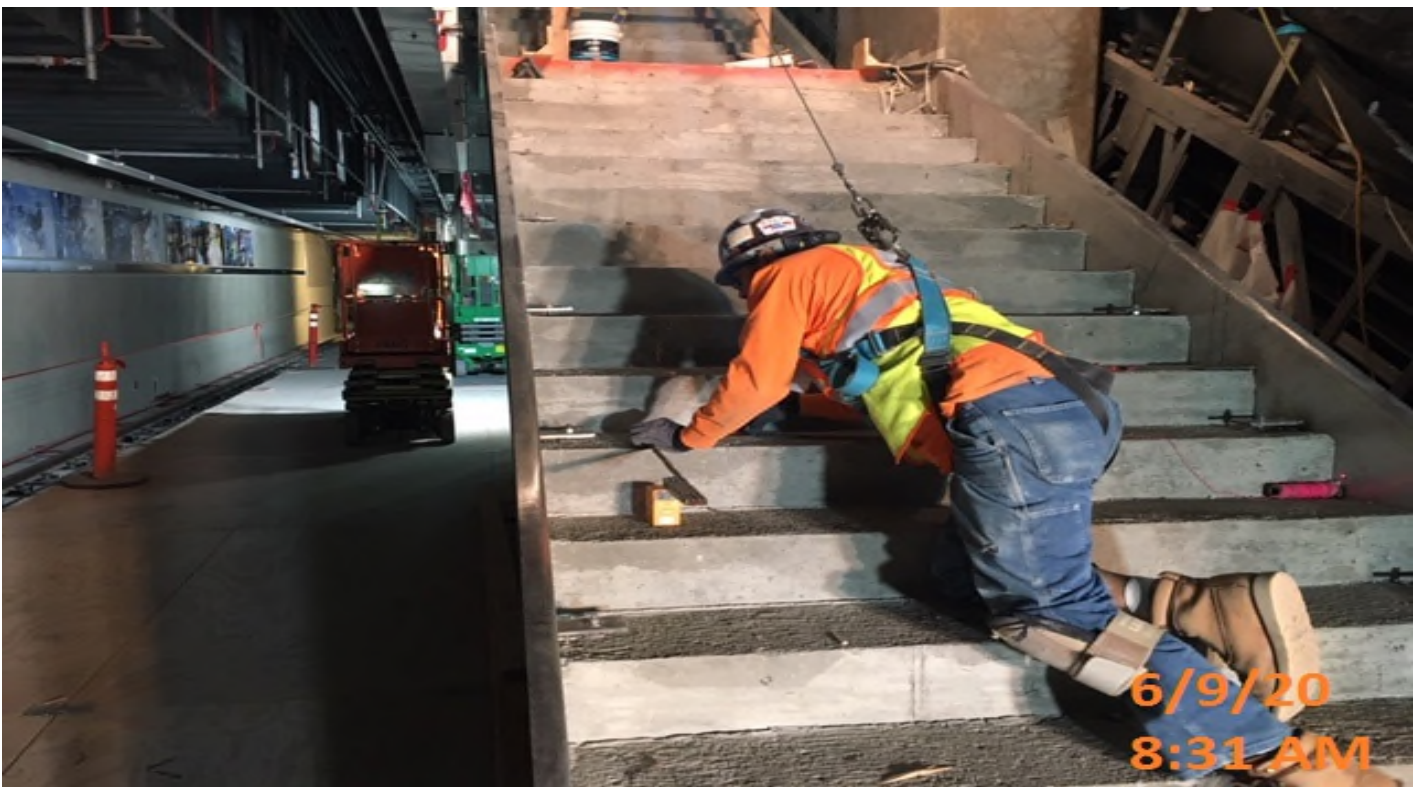


VERNON STATION- WSCC crew excavating for electrical trenches for conduit.

CRENSHAW/LAX PHOTOGRAPHIC UPDATE



VERNON STATION- Carrera Marble drilling for dowels for granite risers.



VERNON STATION- Carrera Marble setting risers in place at stair #4.

CRENSHAW/LAX PHOTOGRAPHIC UPDATE



VERNON STATION- WSCC placing concrete in conduit trench.



VERNON STATION- McMahon Steel adjusting edge plate height at stair #4.

CRENSHAW/LAX PHOTOGRAPHIC UPDATE

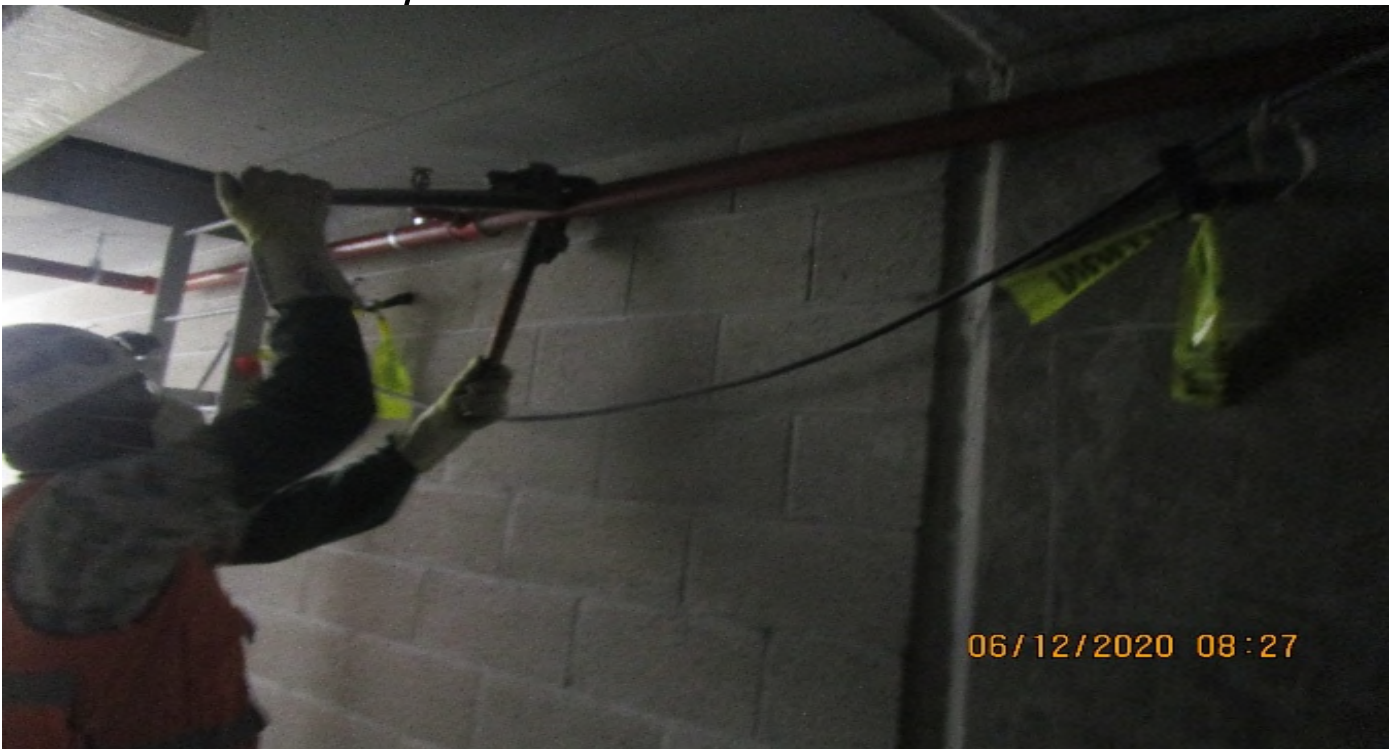


VERNON STATION- Continued rough in underground feeds (tie in) 1' schedule 40 PVC to light standard foundations stub outs.



VERNON STATION- Continued rough in underground CCTV & power (JB-38-175D & JB-76-775D) to 18"x18"x8" PB's.

CRENSHAW/LAX PHOTOGRAPHIC UPDATE



VERNON STATION- Emergency Exit corridor (N) C121 tie in 2" fire sprinkler main without expansion loop at building joint.



VERNON STATION- WSCC crew installing hatch doors for emergency exit #1.

CRENSHAW/LAX PHOTOGRAPHIC UPDATE



VERNON STATION- Continued rough in underground CCTV & power (JB-38-175D & JB-76-775D) to 18"x18"x8" PB's.



VERNON STATION- WSCC crew building formwork for air exhaust shaft.

CRENSHAW/LAX PHOTOGRAPHIC UPDATE

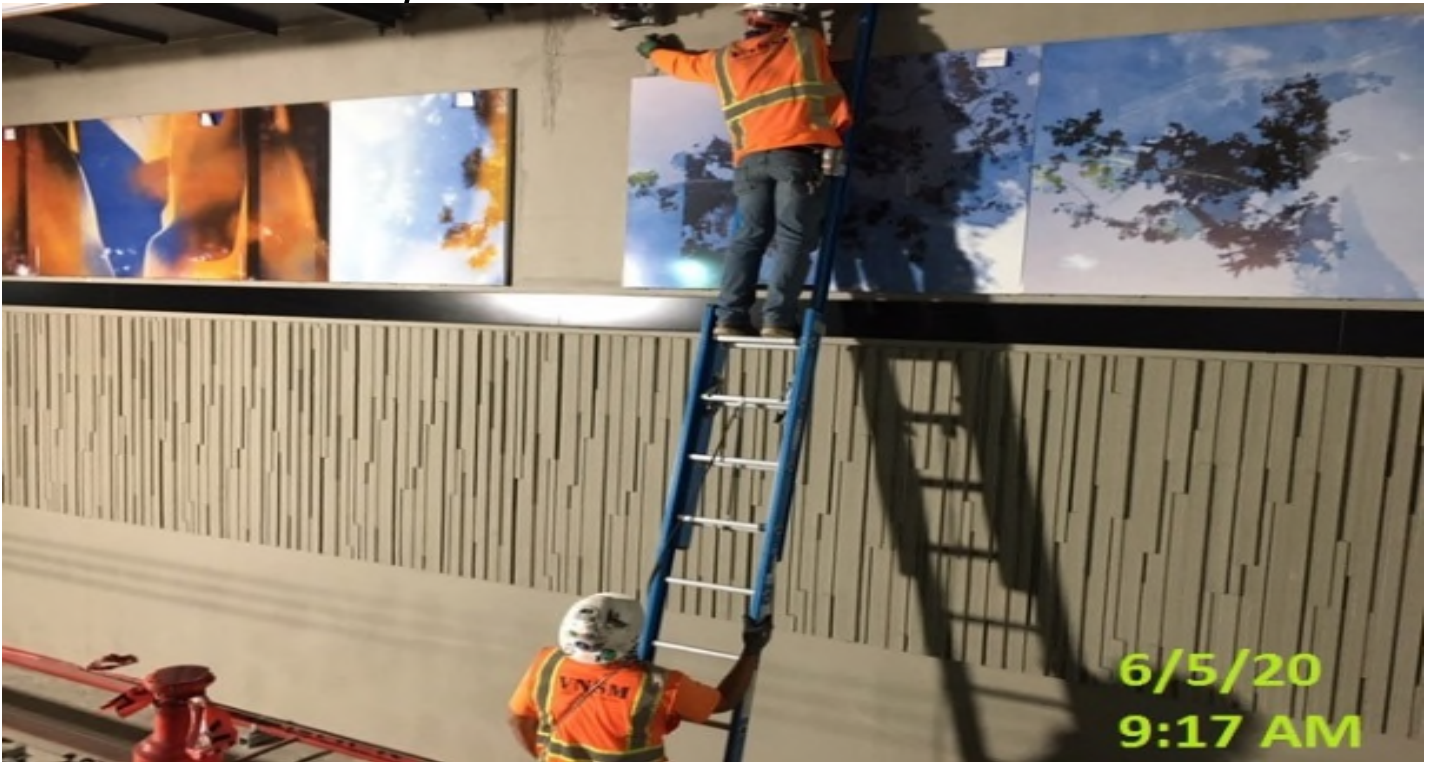


VERNON STATION- Continued rough in underground Comm power CCTV & telephone pull boxes behind elevators 1 & 2.



VERNON STATION- Resumed rough in underground Comm, CCTV, Elevator canopy lighting.

CRENSHAW/LAX PHOTOGRAPHIC UPDATE



VERNON STATION- VNSM working on punch list items.



VERNON STATION- WSCC crew grading SW section of station.

CRENSHAW/LAX PHOTOGRAPHIC UPDATE



VERNON STATION- Tunnel vent plenum (N) C125 TFD-6-302 Begin installing breathers & drains at Nema4X pull boxes.



VERNON STATION- Emergency fan room (N) C126, BD-6-102 & TD-6-102 begin installing drains & breathers at Nema4X JB's.

CRENSHAW/LAX PHOTOGRAPHIC UPDATE



VERNON STATION- GL's 5.5,B.5, Continued piping 2" GRC fire alarm between pull boxes (punch list)



EXPO STATION – Backfilling and fine grading sidewalk on southbound Crenshaw Blvd between Exposition Blvd and Obama Blvd.

CRENSHAW/LAX PHOTOGRAPHIC UPDATE



EXPO STATION – Placed concrete for sidewalk on southbound Crenshaw Blvd between Exposition Blvd and Obama Blvd. 6/9/20



EXPO STATION – Placed concrete for sidewalk on the northwest corner of Obama Blvd and Crenshaw Blvd. 6/11/20

CRENSHAW/LAX PHOTOGRAPHIC UPDATE



EXPO STATION – Installing conduit to supply power for the street light pole on the northwest corner of Obama Blvd and Crenshaw Blvd. 6/12/20



EXPO STATION – Drilling and installing bolts for manhole lid on southbound Crenshaw Blvd between Exposition Blvd and Obama Blvd.

CRENSHAW/LAX PHOTOGRAPHIC UPDATE



EXPO STATION – Installing hatch for North Emergency Exit Stair #2 on southbound Crenshaw Blvd between Exposition Blvd and Obama Blvd.



EXPO STATION – Sack and patching Catch Basin #8 on southbound Crenshaw Blvd between Rodeo Pl and Obama Blvd.

CRENSHAW/LAX PHOTOGRAPHIC UPDATE



EXPO STATION – Began formwork for manhole #1 on the northwest corner of the plaza.



EXPO STATION – Placed concrete for manhole #1 on the northwest corner of the plaza.

CRENSHAW/LAX PHOTOGRAPHIC UPDATE



EXPO STATION – Excavating/trenching for map case foundation footing at the plaza.



EXPO STATION – Continue excavating/trenching for map case foundation footing at the plaza.

CRENSHAW/LAX PHOTOGRAPHIC UPDATE



EXPO STATION – Excavating/trenching for irrigation/controller installation at the plaza.



EXPO STATION – Installing motor for the overhead coiling grille for the main entrance canopy at the plaza level.

CRENSHAW/LAX PHOTOGRAPHIC UPDATE



EXPO STATION – Continue excavating/trenching for underground conduit installation for landscape lighting/utilities and irrigation at the plaza level.



EXPO STATION – Continue excavating/trenching for underground conduit installation for landscape lighting/utilities and irrigation at the plaza level.

CRENSHAW/LAX PHOTOGRAPHIC UPDATE



EXPO STATION – Continue excavating/trenching for underground conduit installation for landscape lighting/utilities and irrigation at the plaza level.

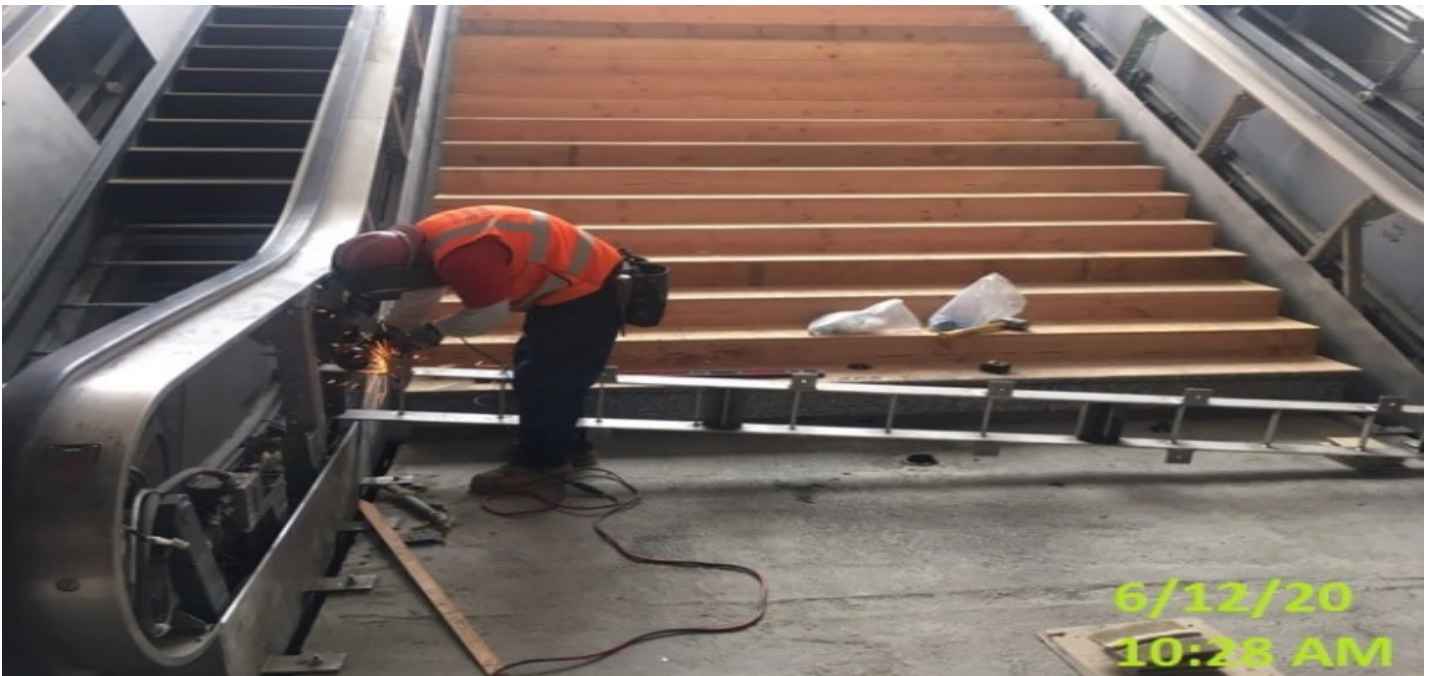


EXPO STATION – Continue excavating/trenching for underground conduit installation for landscape lighting/utilities and irrigation at the plaza level. 6/13/20

CRENSHAW/LAX PHOTOGRAPHIC UPDATE



EXPO STATION – Continue excavating/trenching for underground conduit installation for landscape lighting/utilities and irrigation at the plaza level.



EXPO STATION – Installing drain at the main entrance staircase landing.

CRENSHAW/LAX PHOTOGRAPHIC UPDATE



EXPO STATION – Installing stainless steel vertical channels underneath staircase 2 at the platform level.

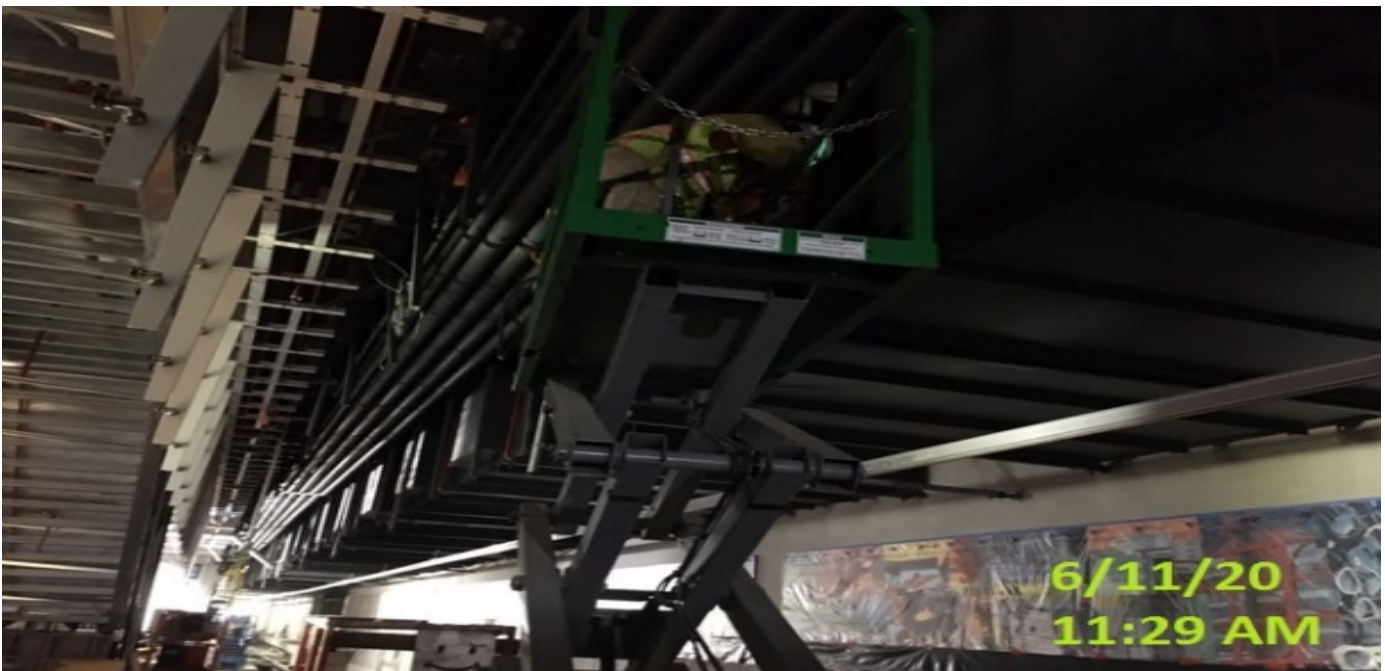


EXPO STATION – Installing embedment at the stair landings of the northbound emergency walkway in the invert level.

CRENSHAW/LAX PHOTOGRAPHIC UPDATE



EXPO STATION – Encased embed in concrete for the stair landings of the northbound emergency walkway in the invert level.



EXPO STATION – Continue welding upper plates to the supports posts for the platform edge lighting.

CRENSHAW/LAX PHOTOGRAPHIC UPDATE



EXPO STATION – Installing conduit to supply power for the street light pole on the southwest corner of Obama Blvd and Crenshaw Blvd.



EXPO STATION – Continue installing conduit to supply power for the street light pole on the southwest corner of Obama Blvd and Crenshaw Blvd.

CRENSHAW/LAX PHOTOGRAPHIC UPDATE



EXPO STATION – Preparing to install street light poles on the southwest corner of Obama Blvd and Crenshaw Blvd.



EXPO STATION – Excavating for new pedestrian signal head foundations on Crenshaw Blvd between Rodeo Rd and Obama Blvd.

CRENSHAW/LAX PHOTOGRAPHIC UPDATE



EXPO STATION – Sack and patched and installed steel steps for manhole #1 on the northwest corner of the plaza.



EXPO STATION – Demolishing/clearing the north side section of the plaza.

CRENSHAW/LAX PHOTOGRAPHIC UPDATE



EXPO STATION – Continue demolishing/clearing the north side section of the plaza.



EXPO STATION – Installing roofing deck to the main entrance canopy structure at the plaza.

CRENSHAW/LAX PHOTOGRAPHIC UPDATE



EXPO STATION – Continue demolishing/clearing the north side section of the plaza.



EXPO STATION – Measuring and preparing for stainless steel cladding installation for the main entrance escalators at the plaza.

CRENSHAW/LAX PHOTOGRAPHIC UPDATE



EXPO STATION – Continue demolishing/clearing the north side section of the plaza.



EXPO STATION – Continue demolishing/clearing the north side section of the plaza.

CRENSHAW/LAX PHOTOGRAPHIC UPDATE

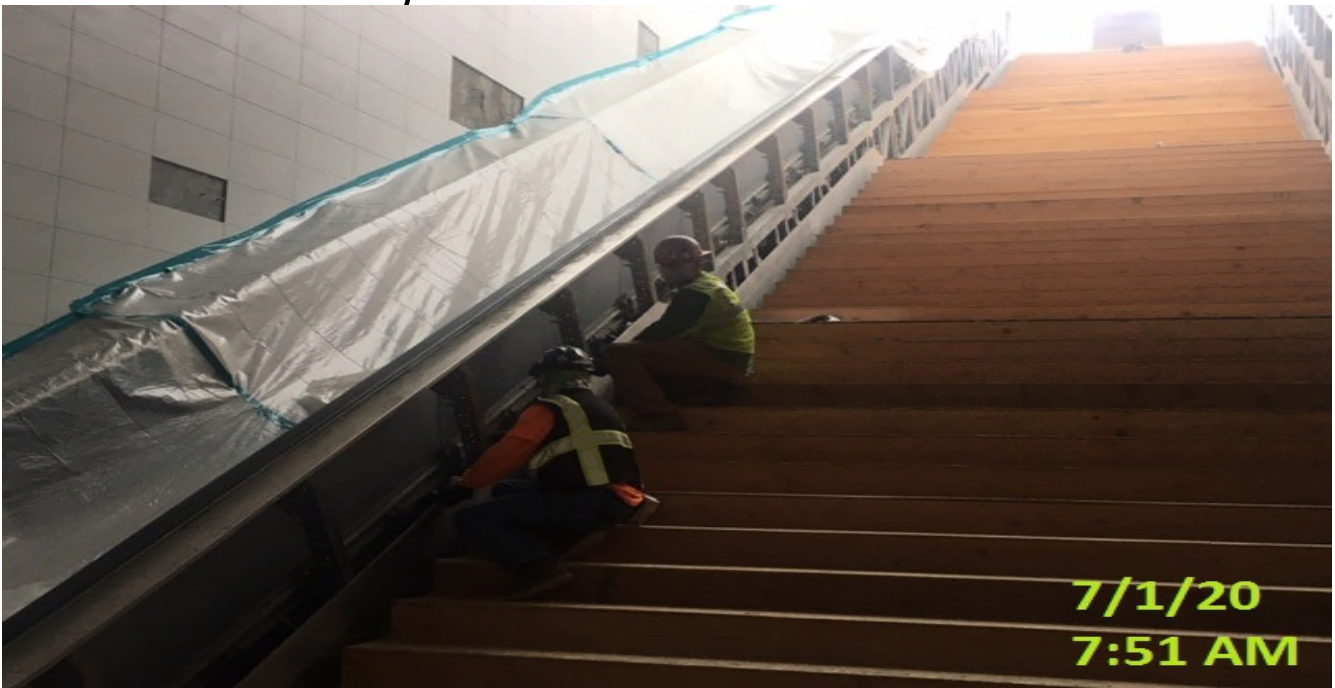


EXPO STATION – Excavating wells for palm tree installation throughout the plaza level.



EXPO STATION – Continue excavating wells for palm tree installation throughout the plaza level.

CRENSHAW/LAX PHOTOGRAPHIC UPDATE

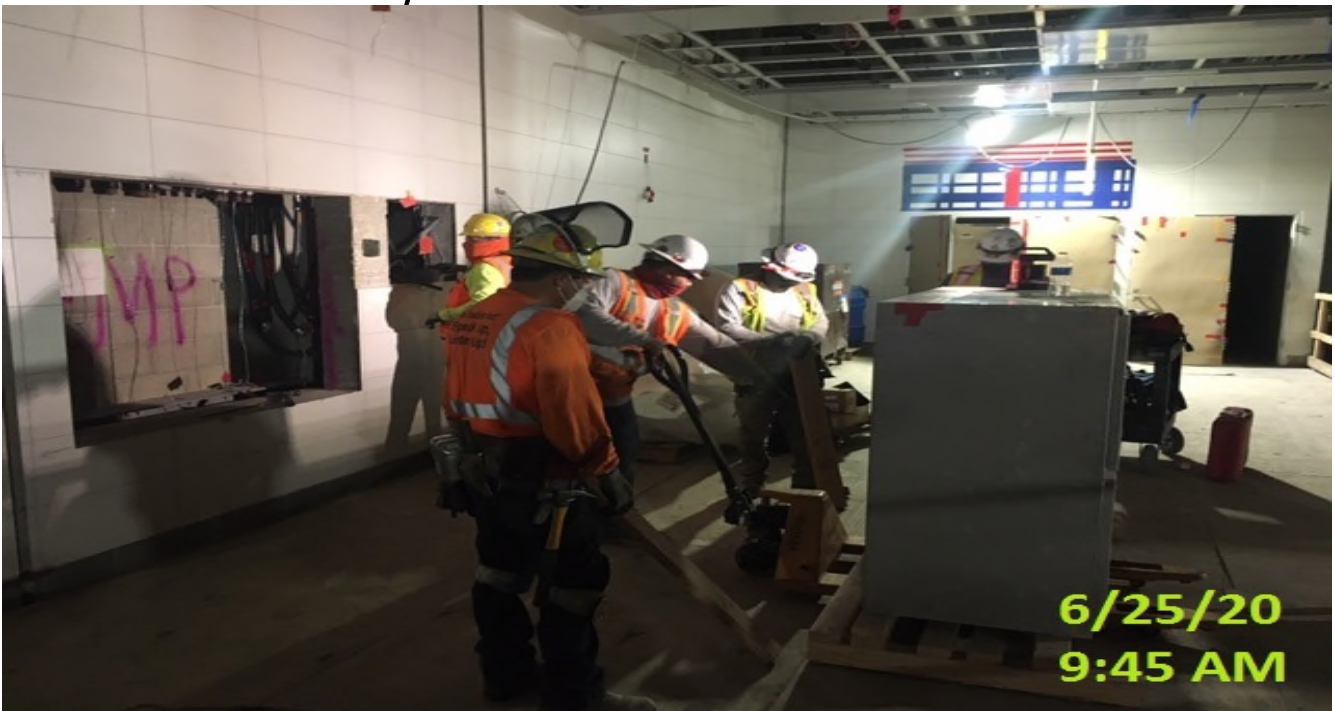


EXPO STATION – Measuring and preparing for handrail installation for the main entrance staircase at the plaza.



EXPO STATION – Grouting door frame for Elevator Machine Room South at the concourse level.

CRENSHAW/LAX PHOTOGRAPHIC UPDATE



EXPO STATION – Installed emergency management panel unit on the east wall of the concourse level.

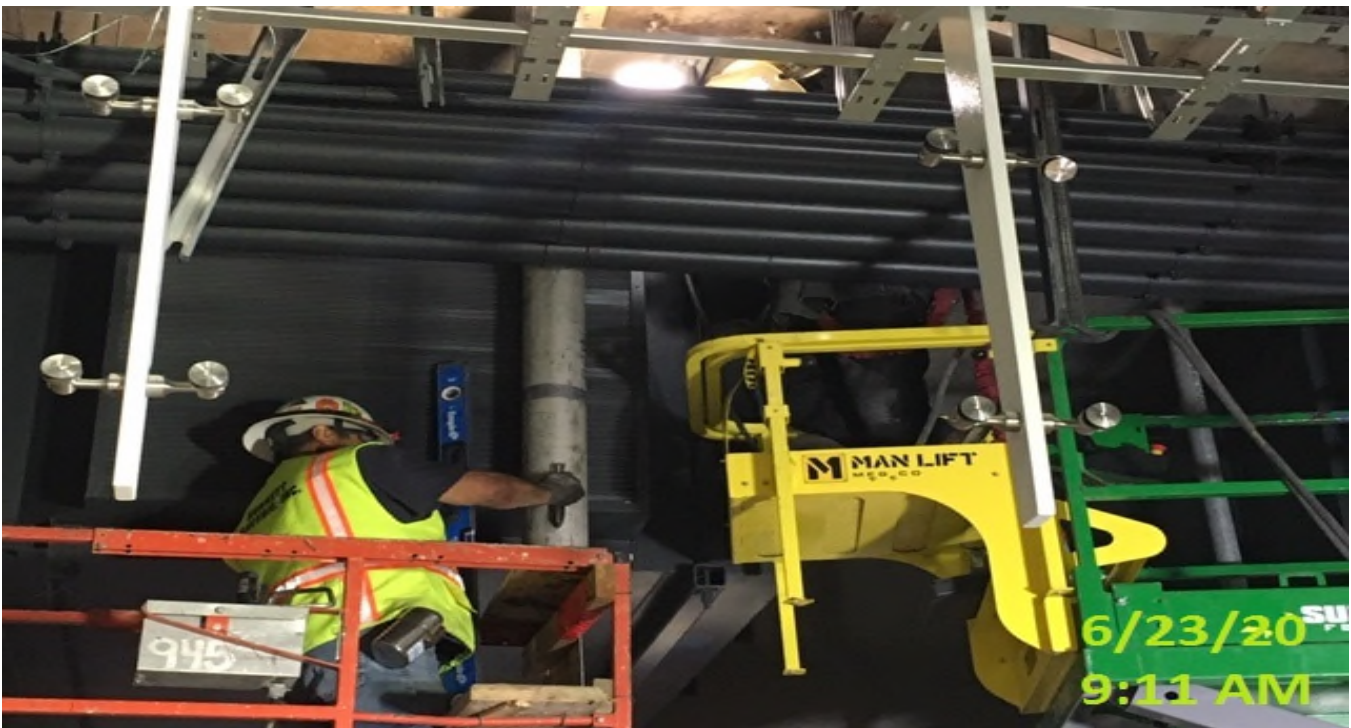


EXPO STATION – Placing and anchoring structural beams to ceiling plates in the North Fan Room of the concourse level.

CRENSHAW/LAX PHOTOGRAPHIC UPDATE



EXPO STATION – Continue welding and plumbing southbound edge light support poles along the platform level.



EXPO STATION – Continue welding and plumbing southbound edge light support poles along the platform level.

CRENSHAW/LAX PHOTOGRAPHIC UPDATE



EXPO STATION – Continue welding and plumbing southbound edge light support poles along the platform level.

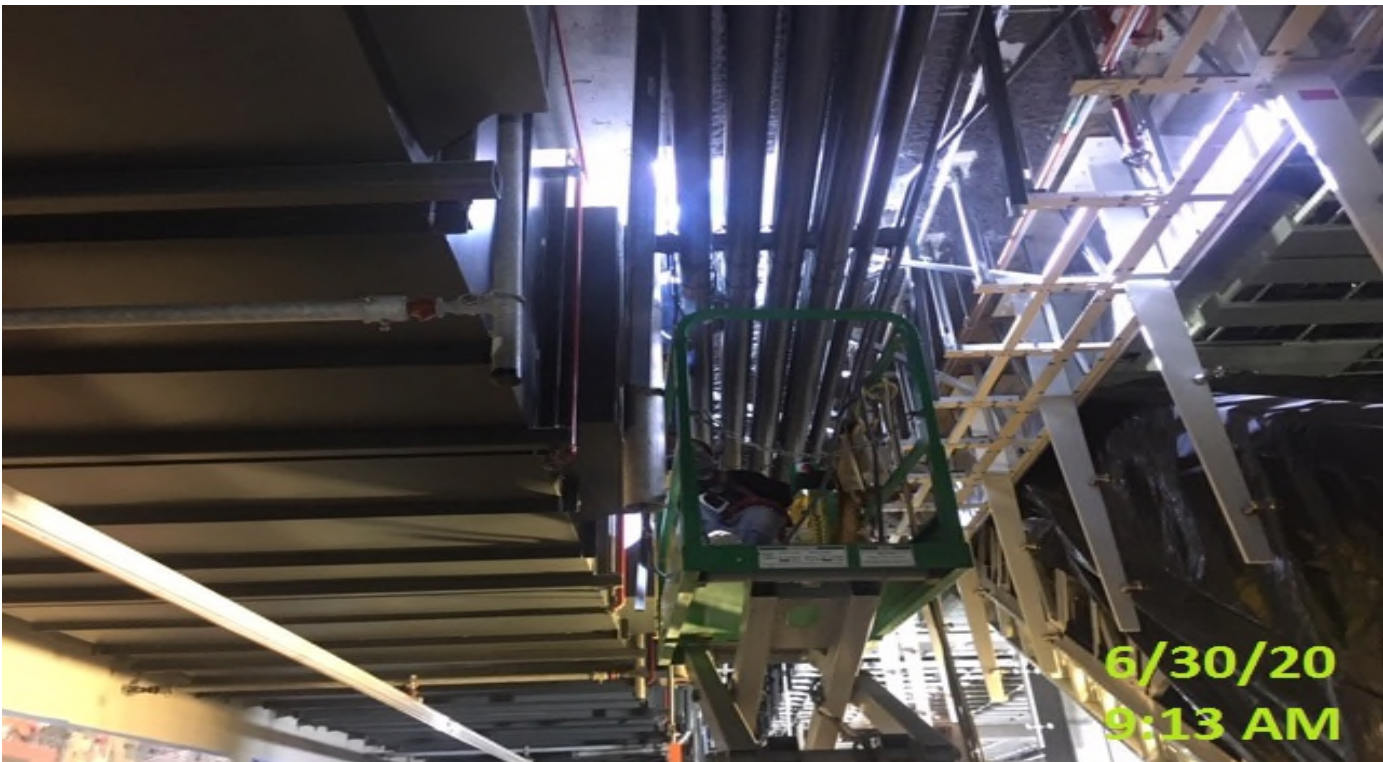


EXPO STATION – Continue welding and plumbing southbound edge light support poles along the platform level.

CRENSHAW/LAX PHOTOGRAPHIC UPDATE



EXPO STATION – Continue welding southbound edge light support poles along the platform level.



EXPO STATION – Continue welding southbound edge light support poles along the platform level.

CRENSHAW/LAX PHOTOGRAPHIC UPDATE



EXPO STATION- Carrera Marble wrapping completed sections of main staircase in plywood.



EXPO STATION- McMahon cutting edge plate for hand rail posts.

CRENSHAW/LAX PHOTOGRAPHIC UPDATE



EXPO STATION- WSCC crew building formwork for manhole #1.



EXPO STATION- VNSM installing hat channel braces underneath stairway #2.

CRENSHAW/LAX PHOTOGRAPHIC UPDATE



EXPO STATION- WSCC crew excavating trench for mapcase.



EXPO STATION- Ace Fence installing posts on guardrail curb.

CRENSHAW/LAX PHOTOGRAPHIC UPDATE



EXPO STATION- WSCC crew excavating for conduit and irrigation trench.



EXPO STATION- Excelsior running lines from motor leads to control panel.

CRENSHAW/LAX PHOTOGRAPHIC UPDATE



EXPO STATION- WSCC crew installing embed for stair landing at emergency walkway.



EXPO STATION- WSCC excavating trench for lighting conduit and irrigation.

CRENSHAW/LAX PHOTOGRAPHIC UPDATE



EXPO STATION- WSCC crew encasing embed in concrete for stair landing at emergency walkway.



EXPO STATION- WSCC excavating trench for lighting conduit and irrigation.

CRENSHAW/LAX PHOTOGRAPHIC UPDATE



EXPO STATION- WSCC crew hand digging adjacent to canopy footings for plaza lighting stubbing.

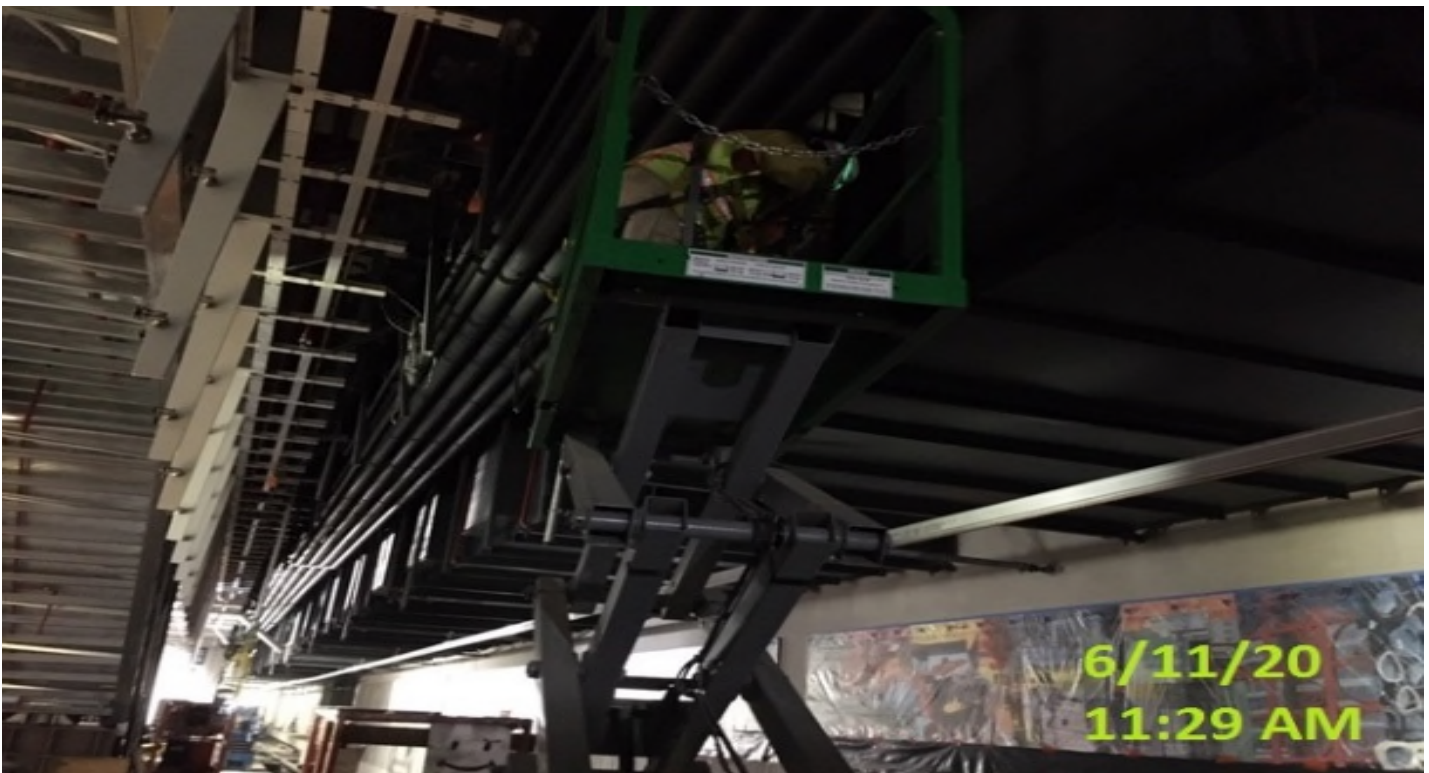


EXPO STATION- WSCC ironworkers installing trench drain at main staircase landing.

CRENSHAW/LAX PHOTOGRAPHIC UPDATE



EXPO STATION- View of MCC1N and interconnects being routed.



EXPO STATION- Genisa Ironworkers tack welding edge light support poles.

CRENSHAW/LAX PHOTOGRAPHIC UPDATE

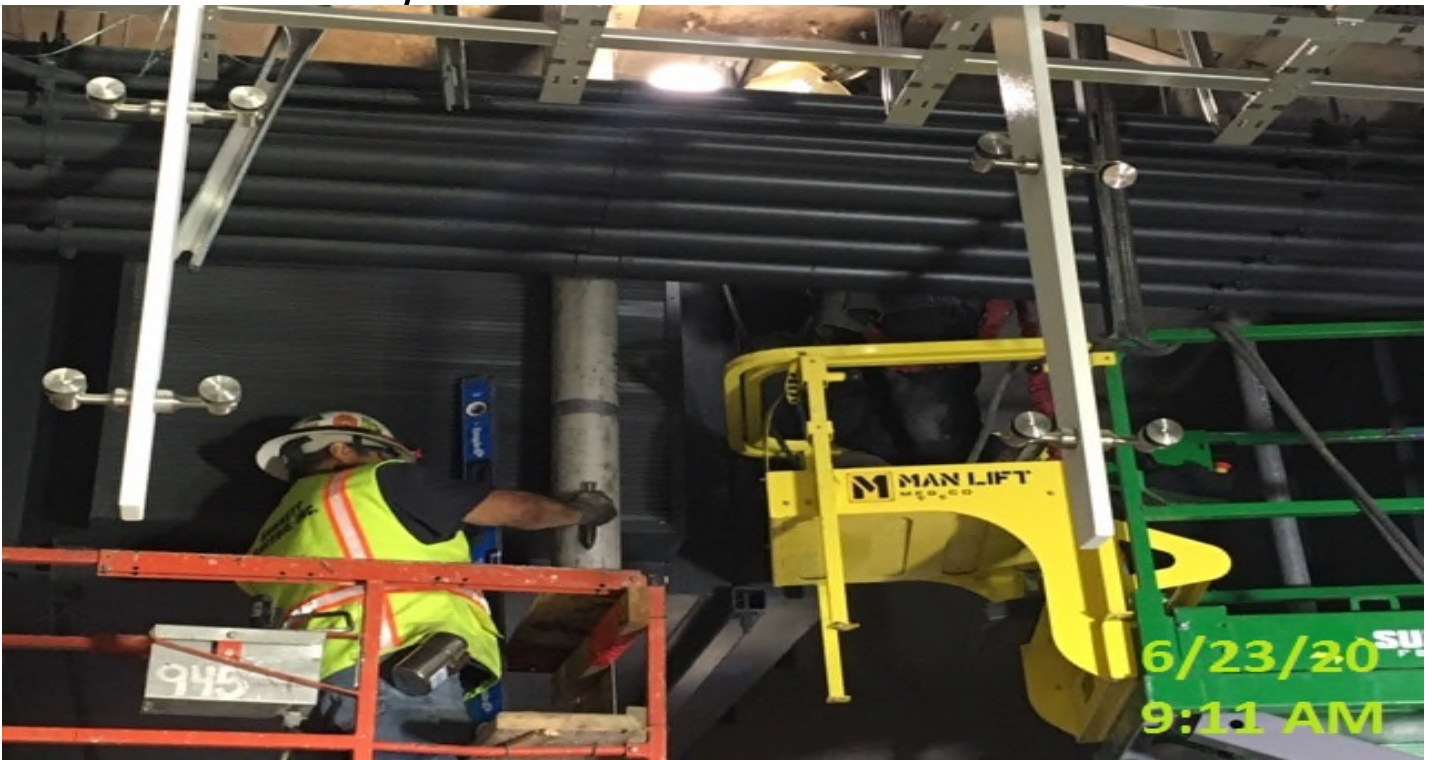


EXPO STATION- WSCC crew chipping and sack & patch inside of manhole #1.



EXPO STATION- WSCC crew demoing and removing concrete slab for park and ride.

CRENSHAW/LAX PHOTOGRAPHIC UPDATE



EXPO STATION- Genisa Iron plumbing edge light support poles along SB platform.



EXPO STATION- WSCC crew demoing slab at north end yard.

CRENSHAW/LAX PHOTOGRAPHIC UPDATE



EXPO STATION- WSCC crew sub-support installing EMP unit.



EXPO STATION- Marina Landscaping digging for palm tree placement.

CRENSHAW/LAX PHOTOGRAPHIC UPDATE

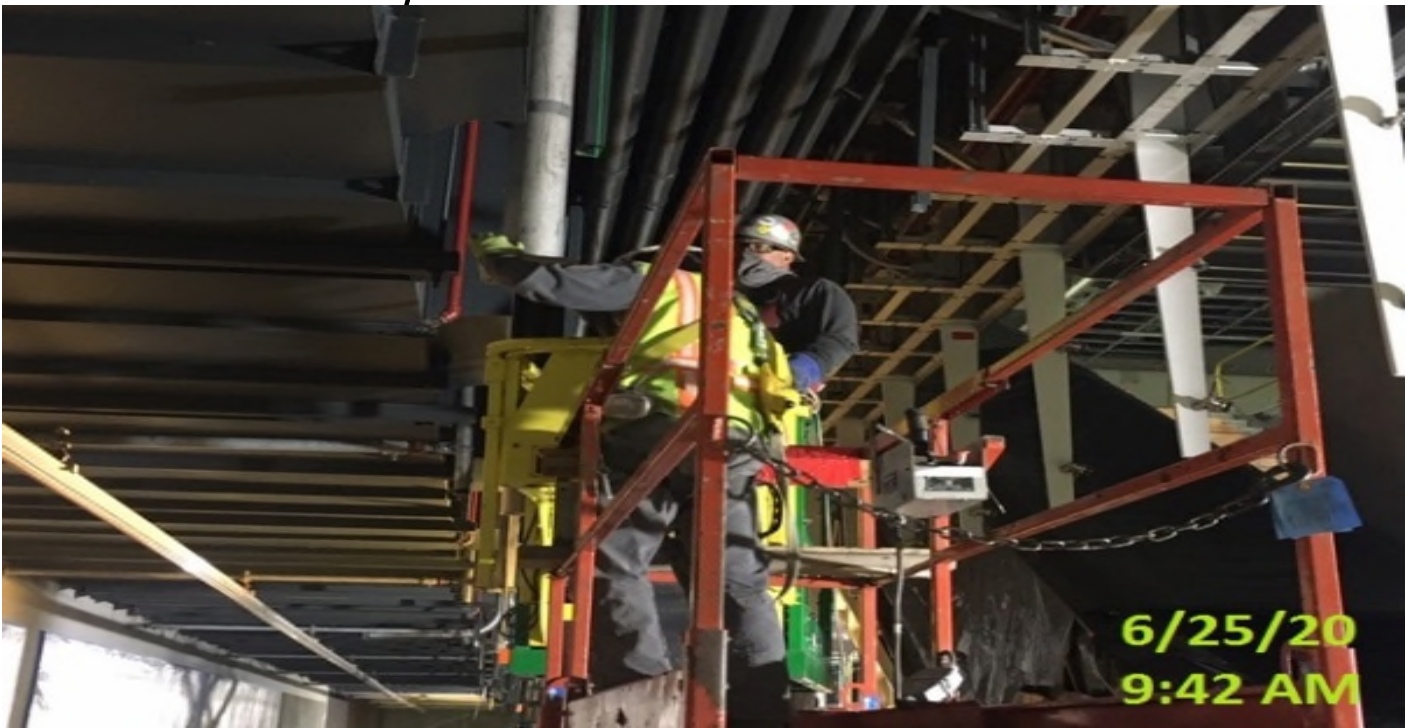


EXPO STATION- WSCC crew performing pull tests on edge lighting down stand embed plates.



EXPO STATION- Crenshaw & (S) of Exposition Blvd, potholing for 6" ductile iron sewer vent (Pan) piping penetrations for Expo leaks.

CRENSHAW/LAX PHOTOGRAPHIC UPDATE



EXPO STATION- Genisa Iron tack welding upper plates to support poles.



EXPO STATION- WSCC ironworkers using chain fall rigging to set in place and anchor hoist beam.

CRENSHAW/LAX PHOTOGRAPHIC UPDATE



MLK Station - Potholing for the installation of light pole foundations at the plaza level.



MLK Station - MLK – Continue potholing for the installation of light pole foundations and tree wells at the plaza level.

CRENSHAW/LAX PHOTOGRAPHIC UPDATE



MLK Station - Excavating for pedestrian light pole foundations at the northwest side of the plaza level.



MLK Station - Building and installing bulkheads for slurry encasement of the 12" HDPE drainage pipe at the plaza level.

CRENSHAW/LAX PHOTOGRAPHIC UPDATE



MLK – Placing slurry encasement for the 12” HDPE drainage pipe at the plaza level.



MLK - Backfilling the encased 12” HDPE drainage pipe line at the plaza level.

CRENSHAW/LAX PHOTOGRAPHIC UPDATE



MLK - Excavating for upcoming paver and sidewalk installation at the north end of the plaza level.



MLK - Continue excavating for upcoming paver and sidewalk installation at the north end of the plaza level.

CRENSHAW/LAX PHOTOGRAPHIC UPDATE



MLK, Installing roofing deck for Elevators 1&2 at the plaza level.

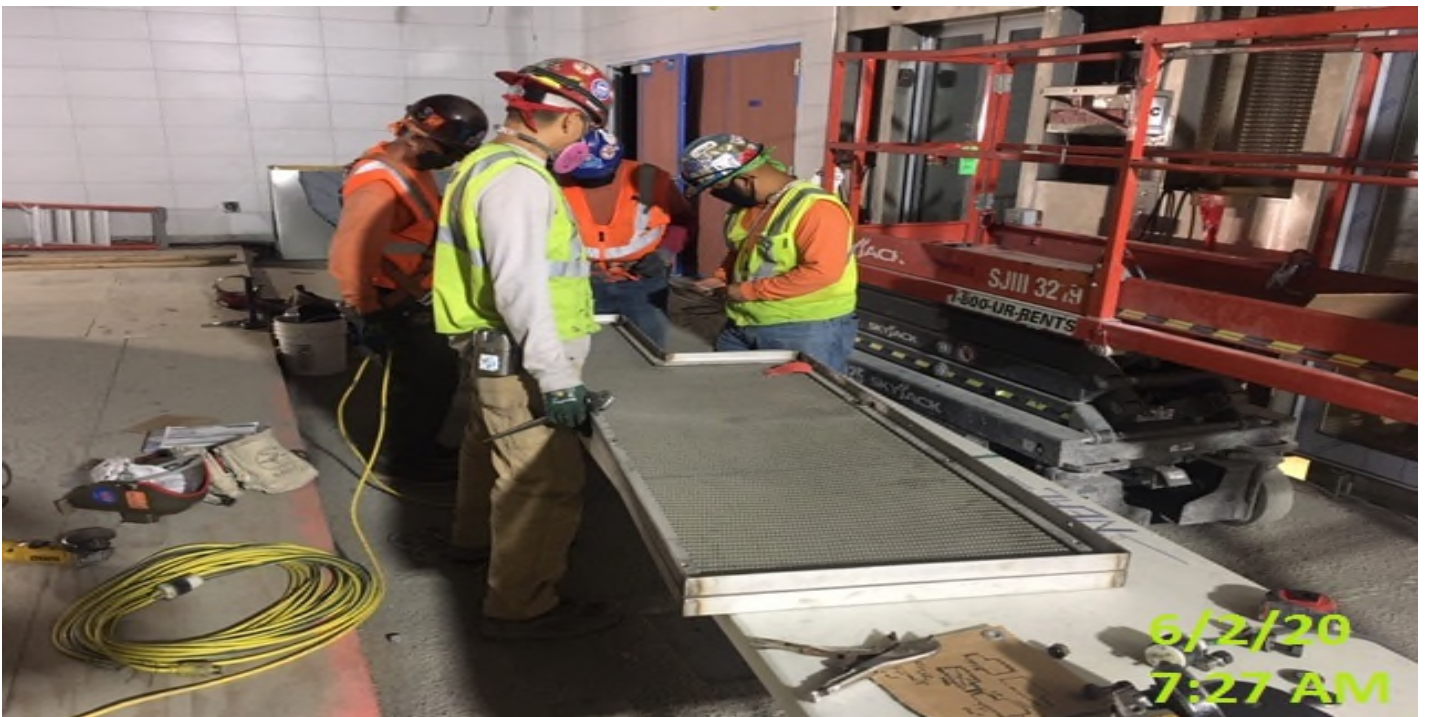


MLK - Continue installing roofing deck for Elevators 1&2 at the plaza level.

CRENSHAW/LAX PHOTOGRAPHIC UPDATE



MLK - Installing roofing deck to the main entrance canopy structure at the plaza level.



MLK, Constructing fascia mesh screen panels for Elevators 3&4 at the concourse level.

CRENSHAW/LAX PHOTOGRAPHIC UPDATE

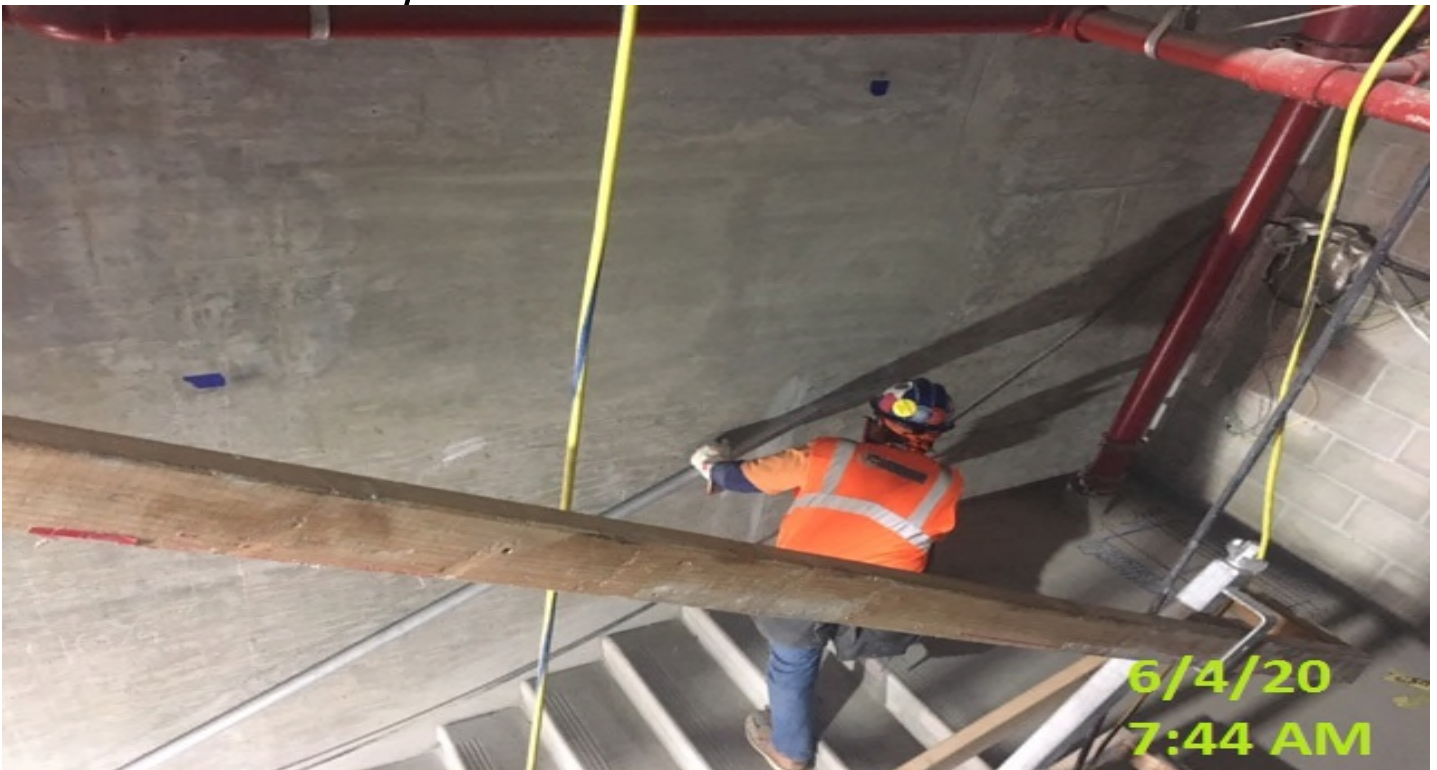


MLK – Began welding the fascia mesh screen panels to Elevators 3&4 at the concourse level.



MLK – Continue installing stainless steel cladding panels on the smoke screen edges at the platform level.

CRENSHAW/LAX PHOTOGRAPHIC UPDATE



MLK STATION – Installing handrails at the emergency exit stairs south #2 from concourse to invert level.



MLK STATION – Continue installing handrails at the emergency exit stairs south #2 from concourse to invert level.

CRENSHAW/LAX PHOTOGRAPHIC UPDATE



MLK STATION – Continue installing handrails at the emergency exit stairs south #2 from concourse to invert level.



MLK STATION – Continue installing handrails at the emergency exit stairs south #2 from concourse to invert level.

CRENSHAW/LAX PHOTOGRAPHIC UPDATE



MLK STATION – Continue installing handrails at the emergency exit stairs south #2 from concourse to invert level.



MLK STATION – Excavating/demolishing for new ADA ramp and sidewalk installation on the northwest corner of MLK Blvd and Crenshaw Blvd.

CRENSHAW/LAX PHOTOGRAPHIC UPDATE



MLK STATION – Excavating/demolishing for new ADA ramp and sidewalk installation on the west median corner of MLK Blvd and Crenshaw Blvd.



MLK STATION – Excavating/demolishing for new ADA ramp and sidewalk installation on the northeast corner of MLK Blvd and Crenshaw Blvd.

CRENSHAW/LAX PHOTOGRAPHIC UPDATE



MLK STATION – Building formwork for new ADA ramp and curb/gutter installation on the west median corner of MLK Blvd and Crenshaw Blvd.



MLK STATION – Continue building formwork and placing concrete for new ADA ramp installation on the northwest corner of MLK Blvd and Crenshaw Blvd.

CRENSHAW/LAX PHOTOGRAPHIC UPDATE



MLK STATION – Saw cutting new ADA ramp and curb/gutter on the northwest corner of MLK Blvd and Crenshaw Blvd.



MLK STATION – Continue building formwork for new ADA ramp and curb/gutter installation on the west median corner of MLK Blvd and Crenshaw Blvd.

CRENSHAW/LAX PHOTOGRAPHIC UPDATE



MLK STATION- McMahon installing mesh fascia screens for elevator #3 and #4.



MLK STATION- VNSM crew installing stainless steel panels between escalator #4 and down stands.

CRENSHAW/LAX PHOTOGRAPHIC UPDATE



MLK STATION – Excavating for new pedestrian signal head foundations on Crenshaw Blvd between Stocker St and MLK Blvd.



MLK STATION – Installing pedestrian signal head foundations on Crenshaw Blvd between Stocker St and MLK Blvd.

CRENSHAW/LAX PHOTOGRAPHIC UPDATE



MLK STATION – Continue installing roofing deck to the main entrance canopy structure at the plaza level.



MLK STATION – Backfilling and compacting storm drain trench at the plaza level.

CRENSHAW/LAX PHOTOGRAPHIC UPDATE



MLK STATION – Excavating/trenching for underground landscaping conduit installation at the west side of the plaza level.



MLK STATION – Potholing for tree wells and underground landscaping conduit installation at the northwest corner of the plaza level.

CRENSHAW/LAX PHOTOGRAPHIC UPDATE



MLK STATION –Continue excavating/trenching for underground landscaping conduit installation at the west side of the plaza level.



MLK STATION – Installing steel grating for the south air exhaust vent shaft at the plaza level.

CRENSHAW/LAX PHOTOGRAPHIC UPDATE



MLK STATION – Continue installing beams for steel grating for the south air exhaust vent shaft at the plaza level.



MLK STATION – Installing beams to the south air exhaust vent shaft and continue steel grating installation at the plaza level.

CRENSHAW/LAX PHOTOGRAPHIC UPDATE



MLK STATION – Continue excavating/trenching for underground landscaping conduit installation at the west side of the plaza level.



MLK STATION – Chipping and patching inside Man Hole #15 at the plaza level.

CRENSHAW/LAX PHOTOGRAPHIC UPDATE



MLK STATION – Setting rebar cages for pedestrian light pole foundations throughout the plaza level.



MLK STATION – Drilling and tapping the stainless steel bollards for ground wire prior to installation at the plaza level.

CRENSHAW/LAX PHOTOGRAPHIC UPDATE

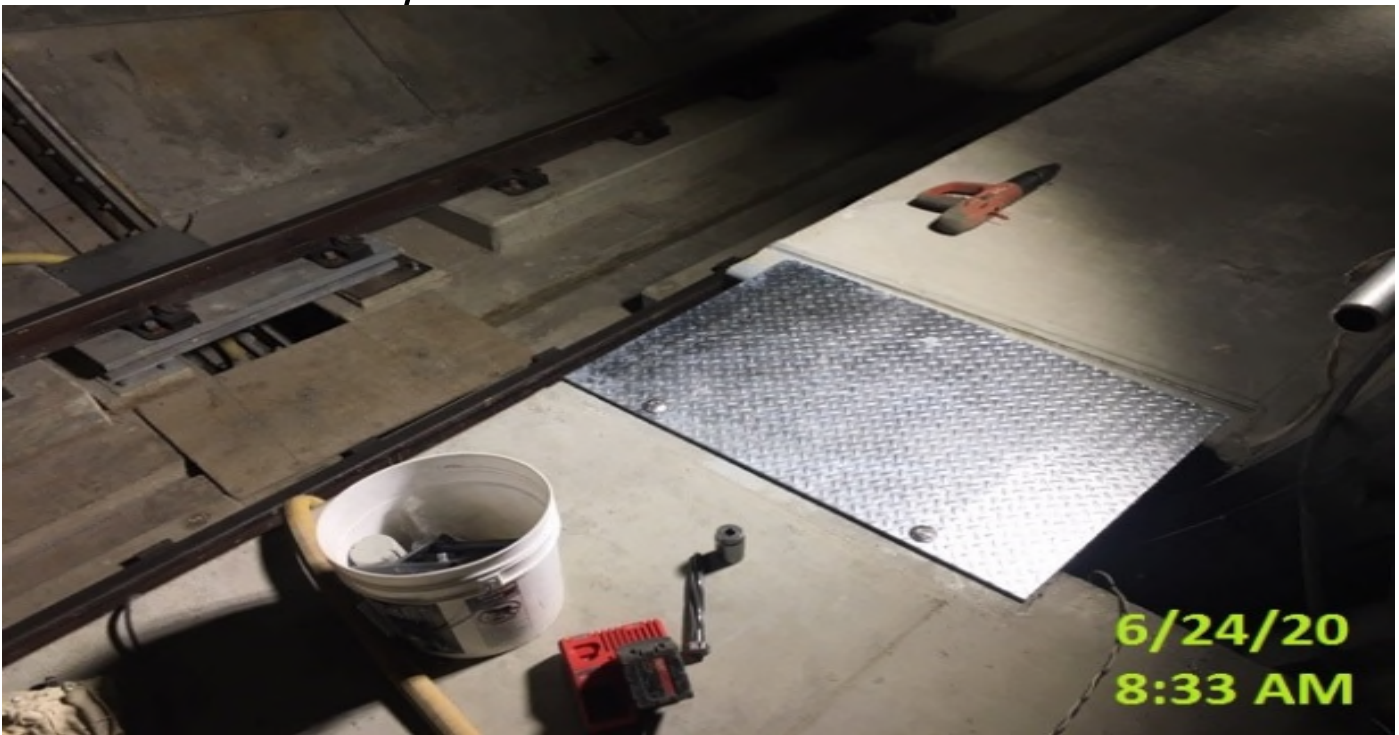


MLK STATION – Continue setting rebar cages for pedestrian light pole foundations throughout the plaza level.



MLK STATION – Resume trenching/potholing for underground landscaping conduit installation at the northwest corner of the plaza level.

CRENSHAW/LAX PHOTOGRAPHIC UPDATE

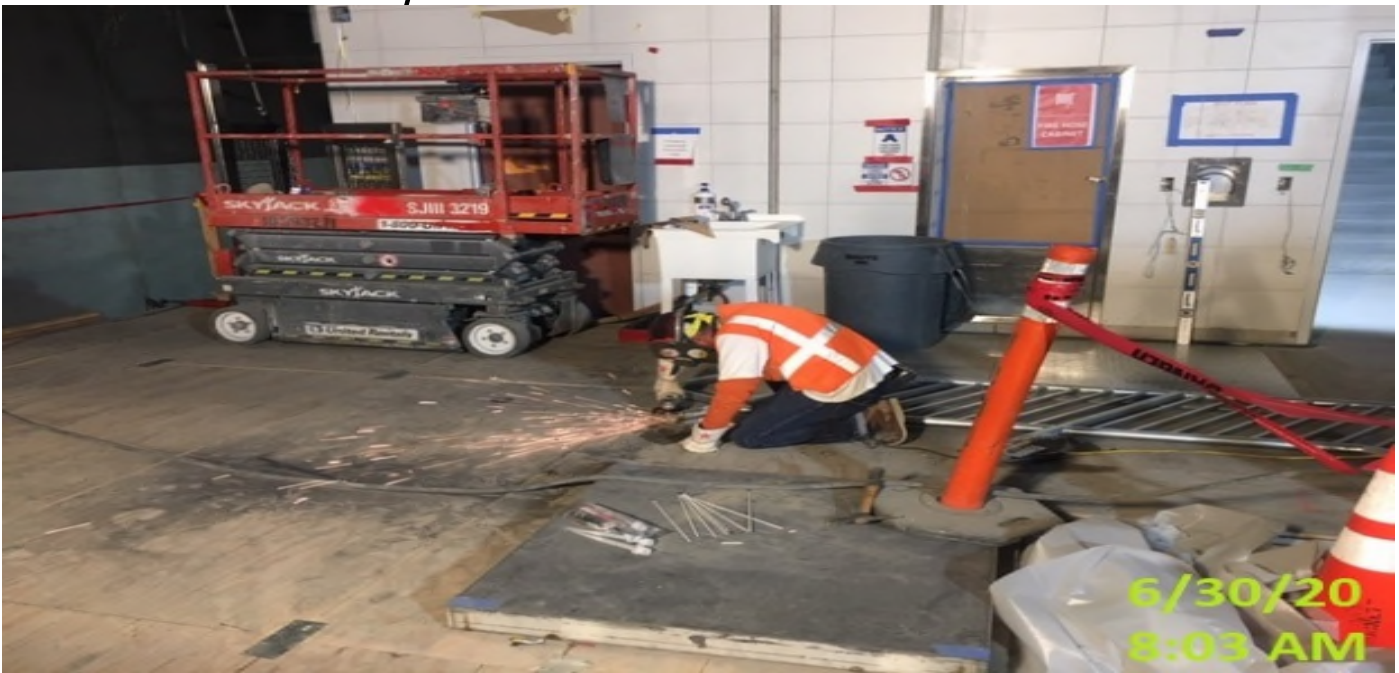


MLK STATION – Installing checkered steel plates for the southbound emergency walkways at the south end invert level.



MLK STATION – Continue installing guardrails for both south and northbound tunnels at the south end invert level.

CRENSHAW/LAX PHOTOGRAPHIC UPDATE



MLK STATION – Continue installing guardrails for both south and northbound tunnels at the north end invert level.

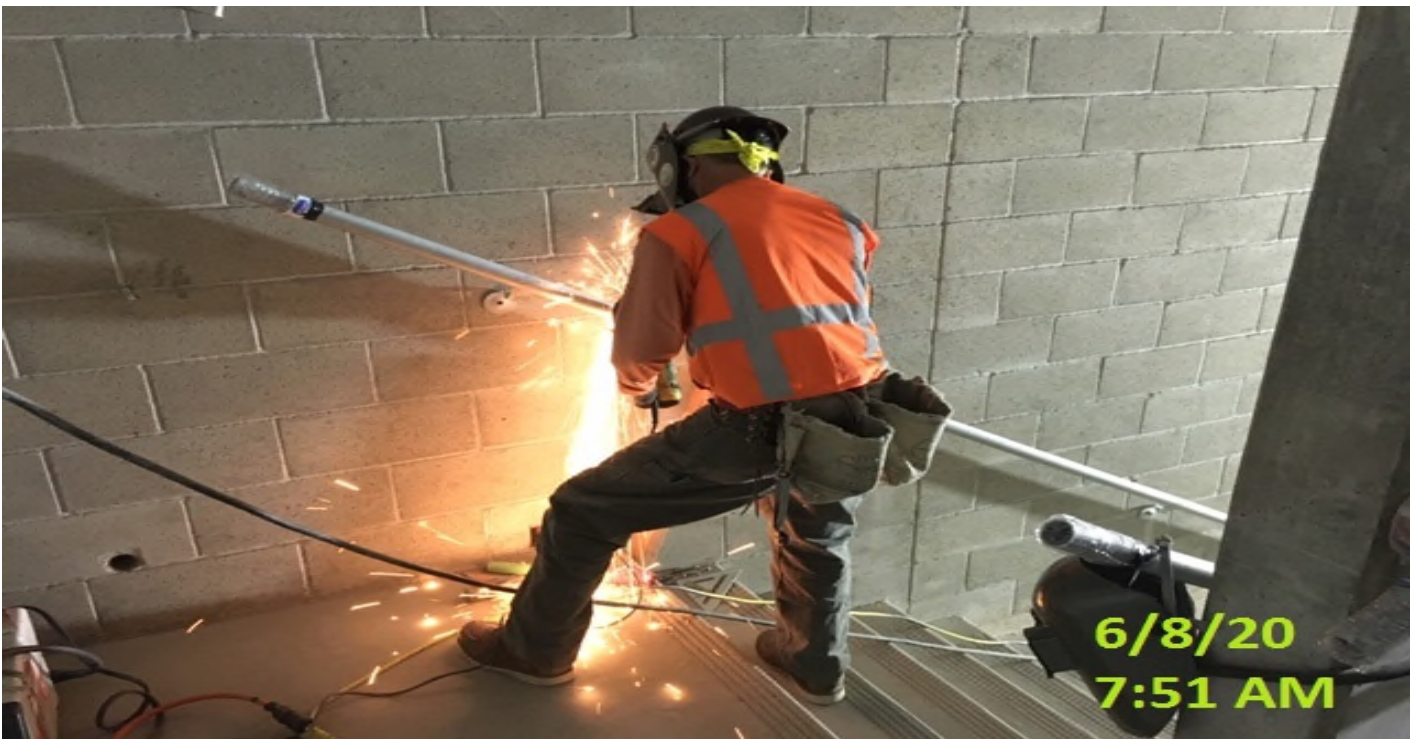


MLK STATION – Continue installing guardrails for both south and northbound tunnels at the north end invert level.

CRENSHAW/LAX PHOTOGRAPHIC UPDATE



MLK STATION- WSCC crew building formwork for air exhaust shaft, per NCR.



MLK STATION- McMahon Steel installing galvanized handrail.

CRENSHAW/LAX PHOTOGRAPHIC UPDATE



MLK STATION- WSCC crew hand digging for pedestrian light pole foundations.



MLK STATION- McMahon Steel installing handrail at emergency exit north stair #2.

CRENSHAW/LAX PHOTOGRAPHIC UPDATE



MLK STATION- WSCC Ironworkers installing metal roof deck at elevator structure #1 and #2.



MLK STATION- WSCC crew excavating to subgrade for pavers and sidewalk.

CRENSHAW/LAX PHOTOGRAPHIC UPDATE

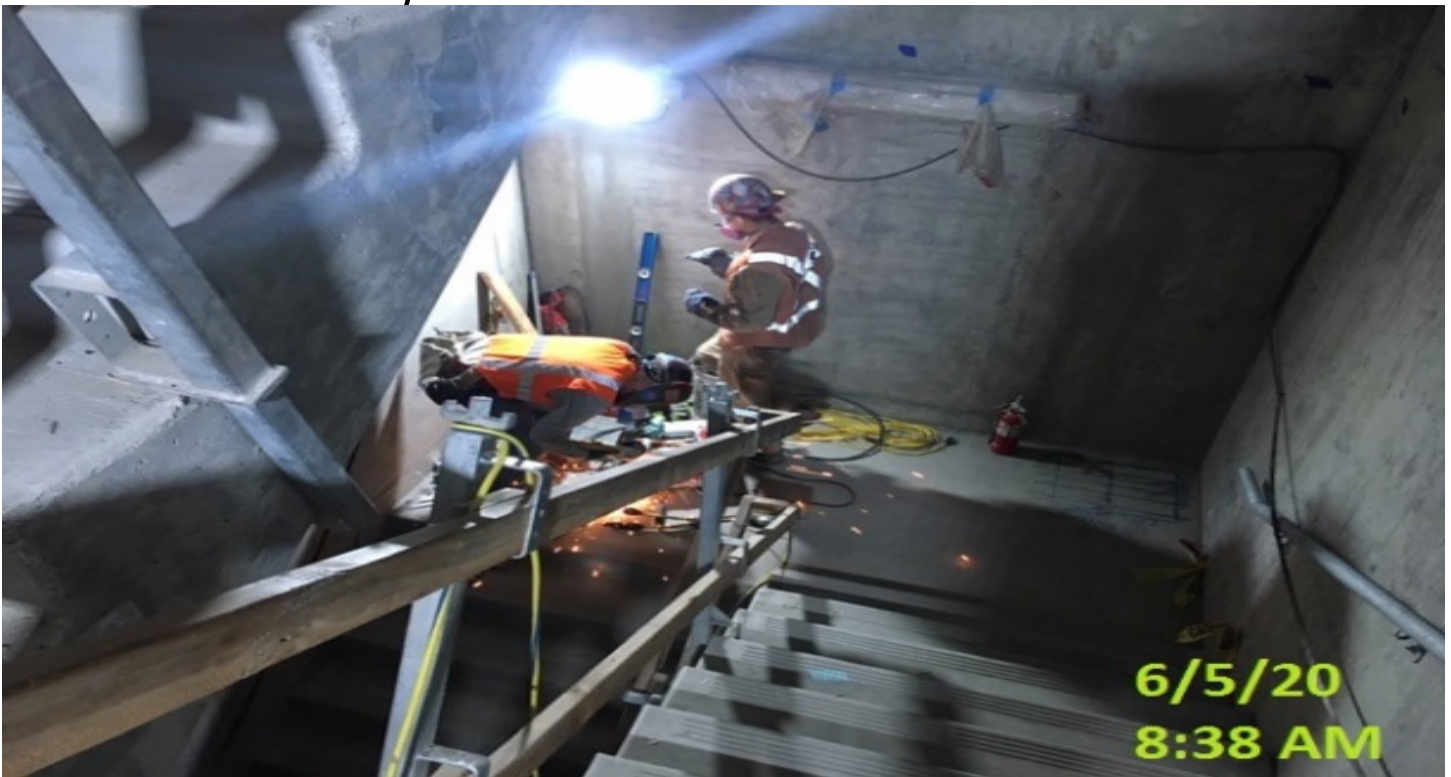


MLK STATION- WSCC crew backfilling encased 12" HDPE drain line with base grade.



MLK STATION- WSCC crew encasing 12" HDPE drain line in slurry.

CRENSHAW/LAX PHOTOGRAPHIC UPDATE



MLK STATION- McMahon Steel installing galvanized handrail.



MLK STATION- WSCC crew potholing for tree wells and utility conflicts.

CRENSHAW/LAX PHOTOGRAPHIC UPDATE



MLK STATION- WSCC crew potholing for light poles.



MLK STATION- McMahon Steel welding sections of fascia elevator #3 and #4.

CRENSHAW/LAX PHOTOGRAPHIC UPDATE



LEIMERT PARK STATION – Excavating for the installation of a street light foundation on southbound Crenshaw Blvd between 48th St and Brynhurst Ave.



LEIMERT PARK STATION – Excavating intersection in preparation for new concrete pavement on 46th St and Leimert Blvd. 6/12/20

CRENSHAW/LAX PHOTOGRAPHIC UPDATE



LEIMERT PARK STATION – Installing street light foundation on southbound Crenshaw Blvd between 48th St and Brynhurst Ave.



LEIMERT PARK STATION – Installing street light pole on southbound Crenshaw Blvd between 48th St and Brynhurst Ave.

CRENSHAW/LAX PHOTOGRAPHIC UPDATE

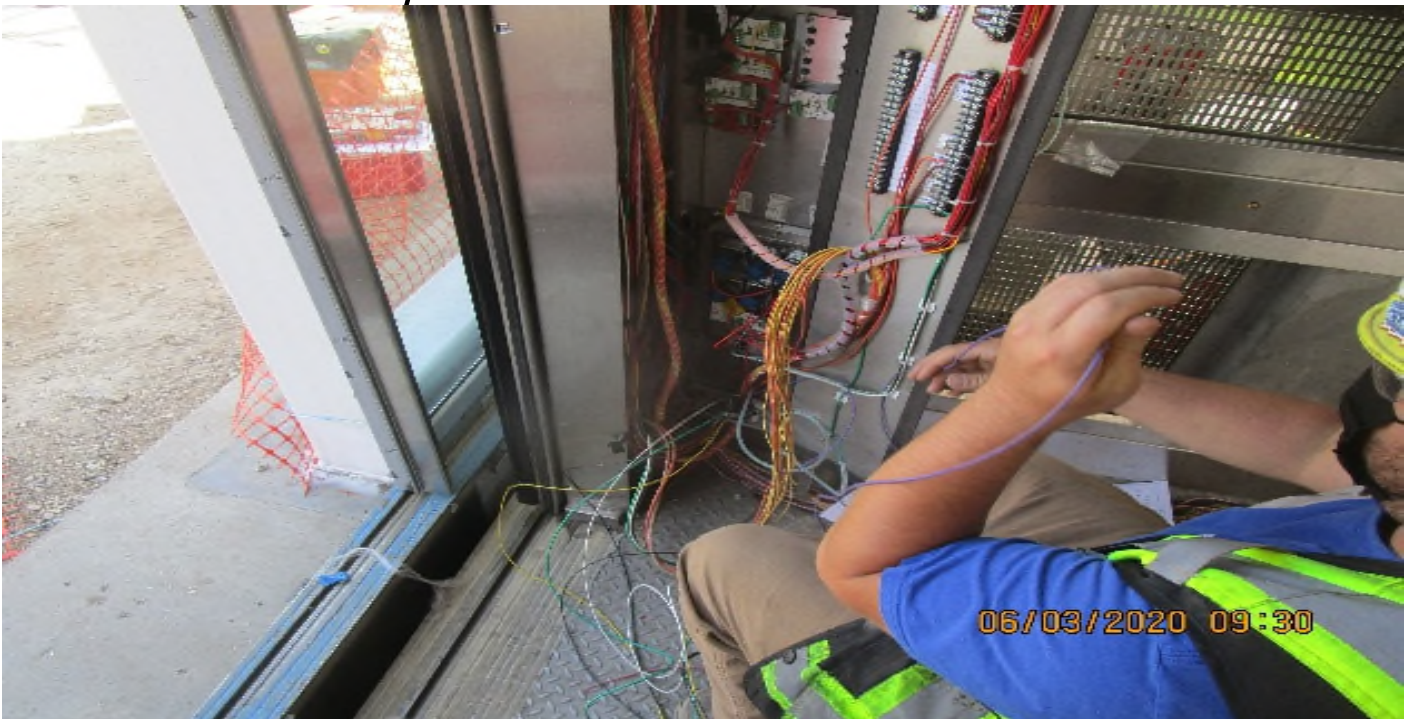


LEIMERT PARK STATION – Placing concrete for new sidewalk installation on southbound Crenshaw Blvd between 48th St and Brynhurst Ave.



LEIMERT PARK STATION – Placed new concrete pavement for the intersection of 46th St and Leimert Blvd. 6/13/20

CRENSHAW/LAX PHOTOGRAPHIC UPDATE



LEIMERT PARK STATION – Terminating wires for the cab operating panel for the exterior cab top of Elevator 1 at the plaza level.



LEIMERT PARK STATION – Excavating/grading at the southwest corner of the plaza level.

CRENSHAW/LAX PHOTOGRAPHIC UPDATE



LEIMERT PARK STATION – Continue underground conduit installation for landscape lighting and utilities at the plaza level.



LEIMERT PARK STATION – Continue underground conduit installation for landscape lighting and utilities at the plaza level.

CRENSHAW/LAX PHOTOGRAPHIC UPDATE



LEIMERT PARK STATION – Continue underground conduit installation for landscape lighting and utilities at the plaza level.



LEIMERT PARK STATION – Continue underground conduit installation for landscape lighting and utilities at the plaza level.

CRENSHAW/LAX PHOTOGRAPHIC UPDATE



LEIMERT PARK STATION – Installed hatch for the Emergency Exit Stair 1 at the plaza level.



LEIMERT PARK STATION – Continue underground conduit installation for landscape lighting and utilities at the plaza level.

CRENSHAW/LAX PHOTOGRAPHIC UPDATE



LEIMERT PARK STATION – Placing concrete for underground conduit trenches at the southeast section of the plaza level.



LEIMERT PARK STATION – Continue underground conduit installation for landscape lighting and utilities at the plaza level.

CRENSHAW/LAX PHOTOGRAPHIC UPDATE



LEIMERT PARK STATION – Stripping formwork from concrete encasement of the underground trenches at the southeast section of the plaza level.



LEIMERT PARK STATION – Continue underground conduit installation for landscape lighting and utilities at the plaza level.

CRENSHAW/LAX PHOTOGRAPHIC UPDATE



LEIMERT PARK STATION – Continue underground conduit installation for landscape lighting and utilities at the plaza level.

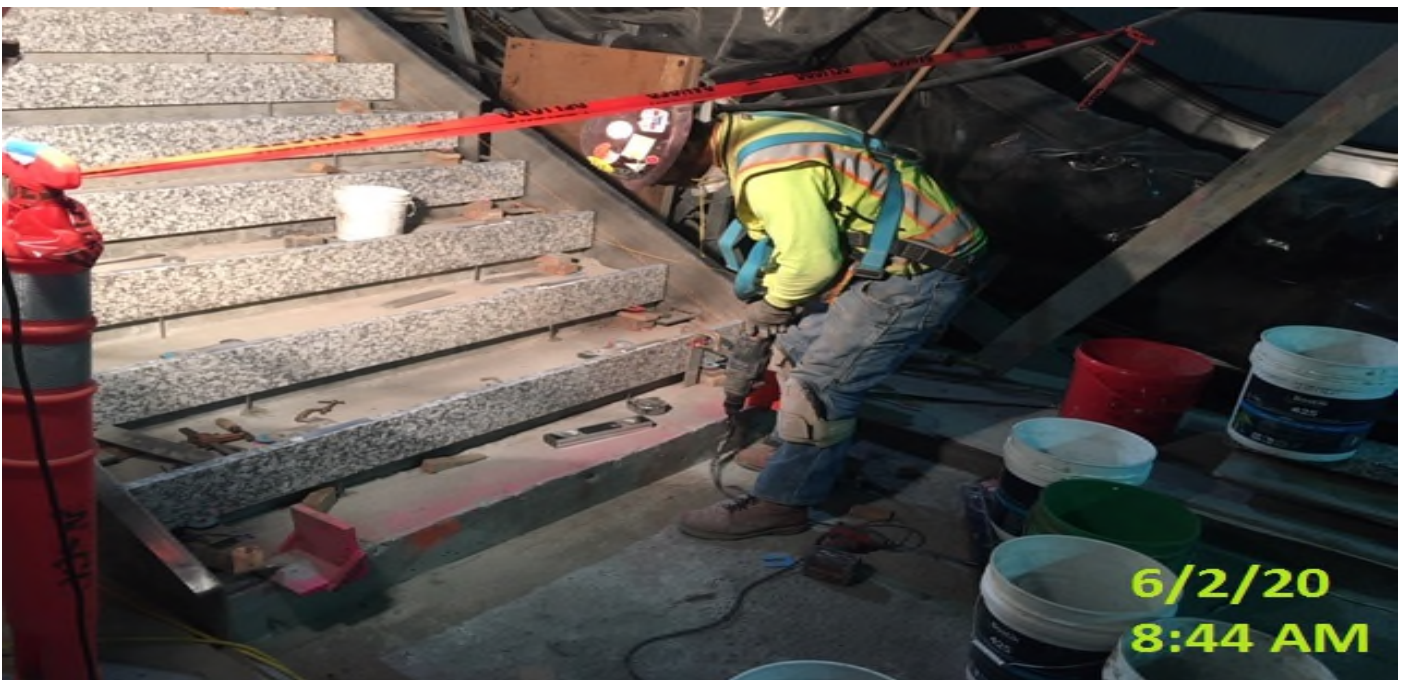


LEIMERT PARK STATION – Building formwork for the air exhaust shaft at the plaza level.

CRENSHAW/LAX PHOTOGRAPHIC UPDATE



LEIMERT PARK STATION – Continue building formwork for the air exhaust shaft at the plaza level.

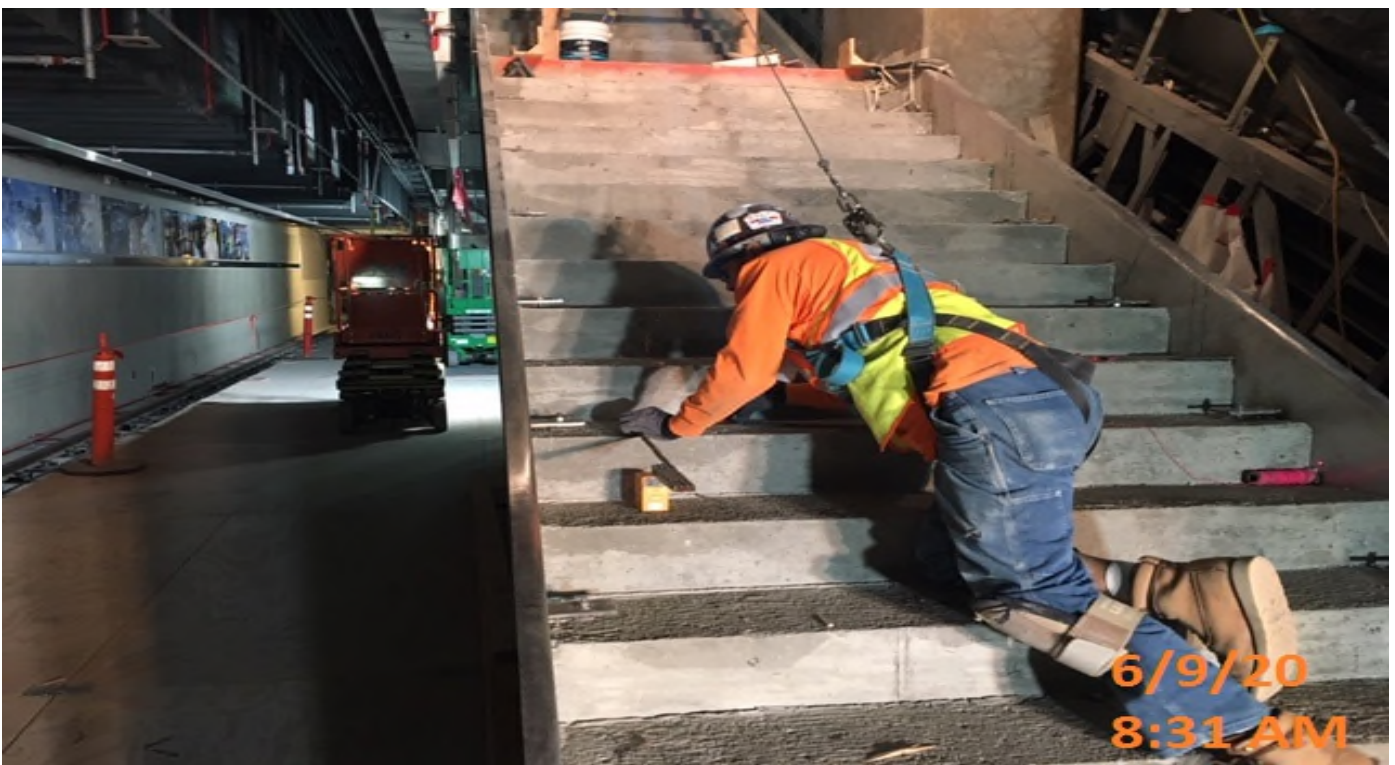


LEIMERT PARK STATION – Continue granite thread and riser installation from intermediate and concourse staircase landings.

CRENSHAW/LAX PHOTOGRAPHIC UPDATE

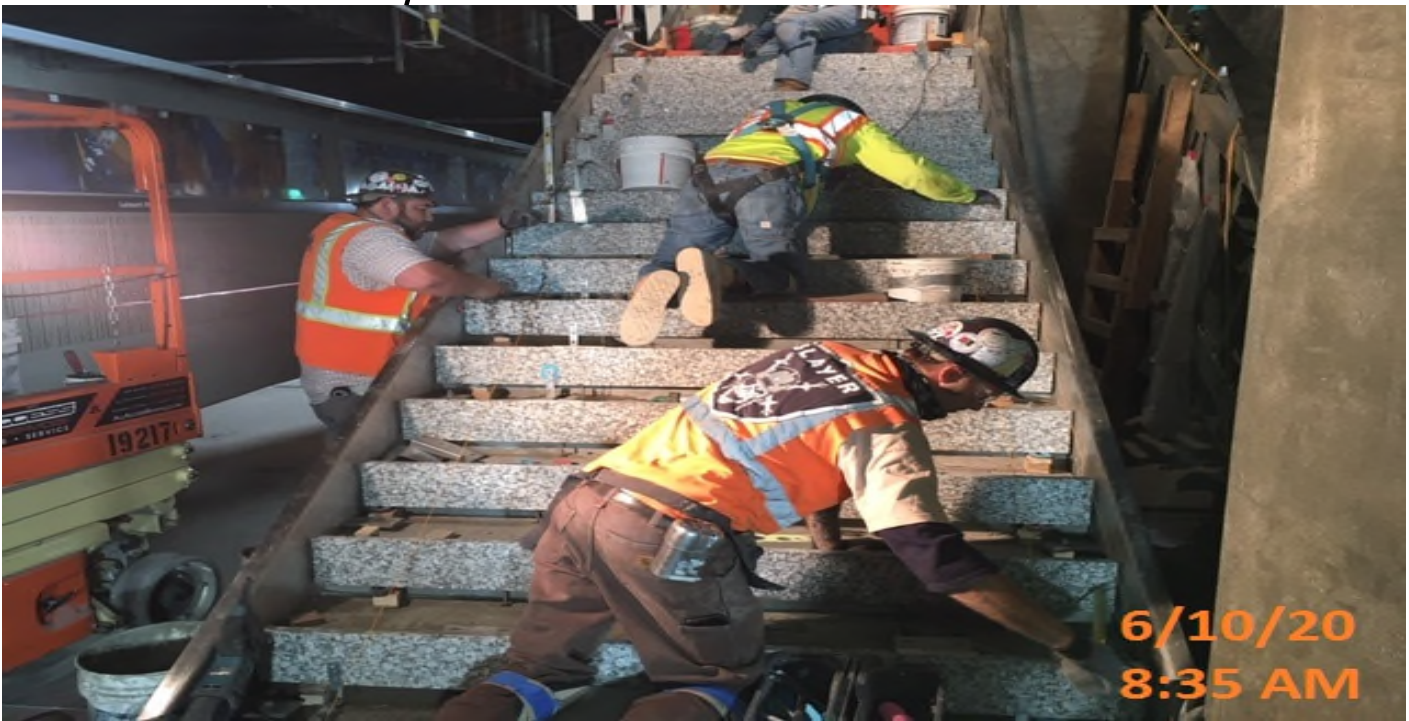


LEIMERT PARK STATION – Continue granite tread and riser installation for staircase #4 from concourse to platform level.

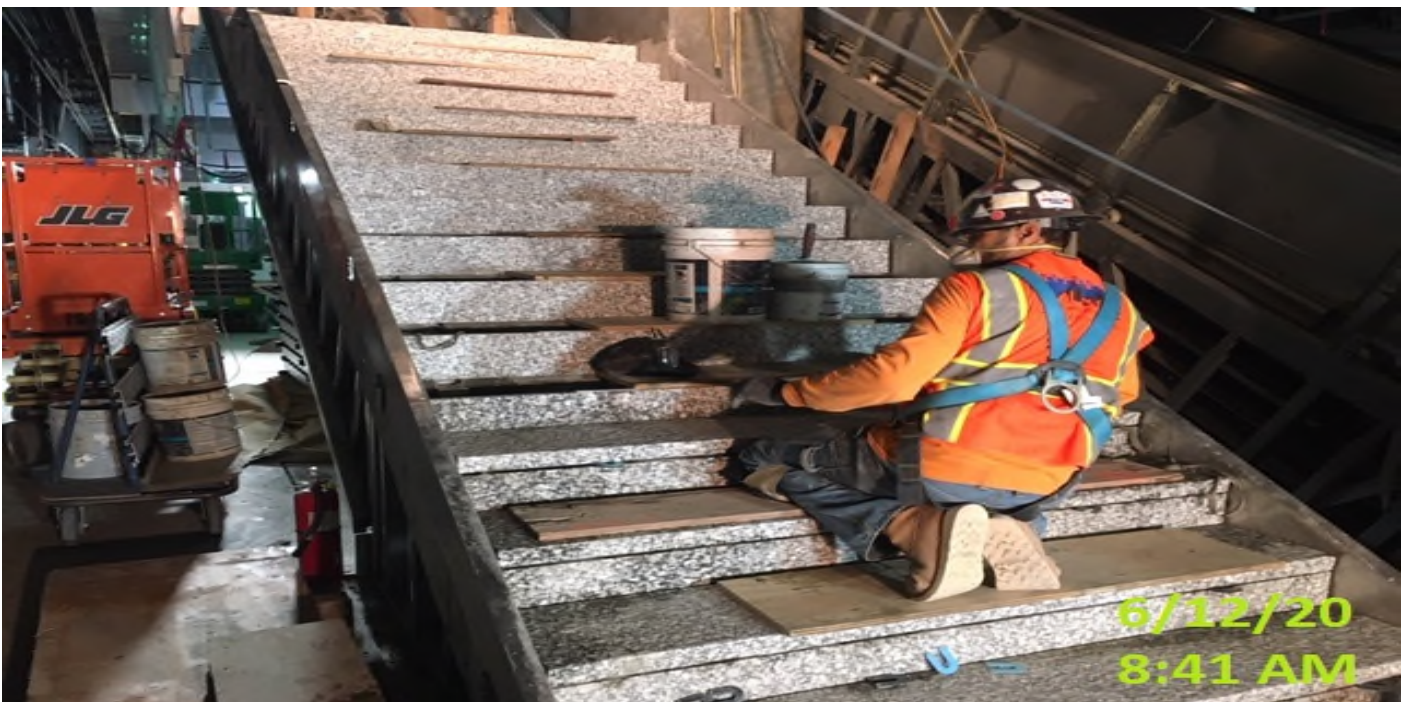


LEIMERT PARK STATION – Continue granite tread and riser installation for staircase #4 from concourse to platform level.

CRENSHAW/LAX PHOTOGRAPHIC UPDATE

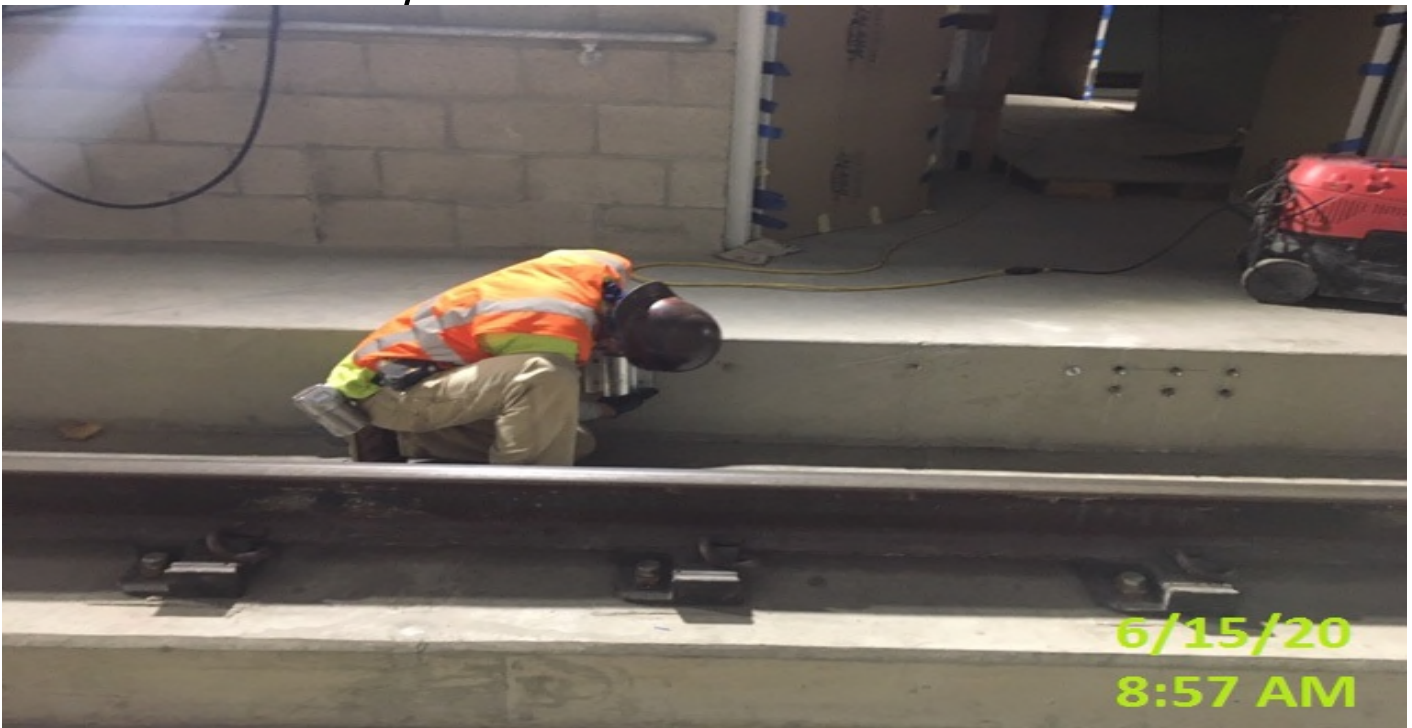


LEIMERT PARK STATION – Continue granite tread and riser installation for staircase #4 from concourse to platform level.

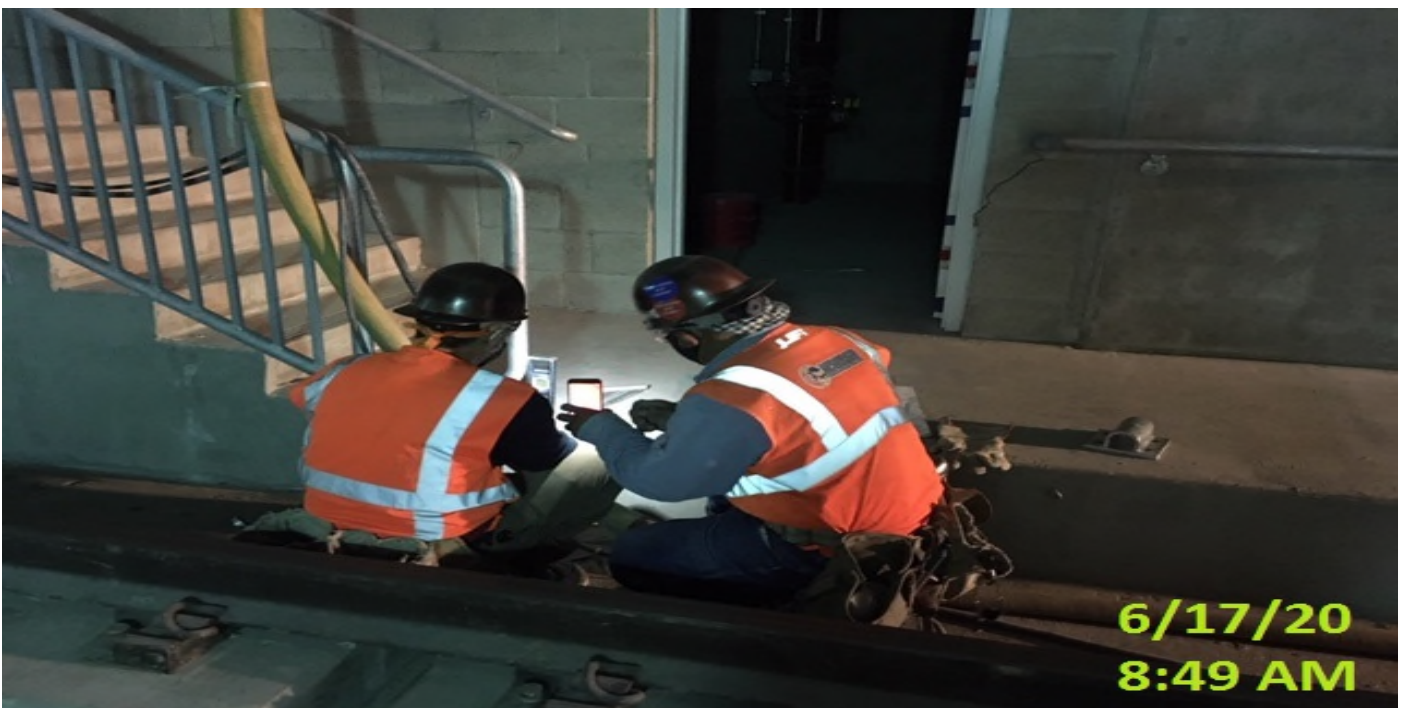


LEIMERT PARK STATION – Continue granite tread and riser installation for staircase #4 from concourse to platform level.

CRENSHAW/LAX PHOTOGRAPHIC UPDATE



LEIMERT PARK STATION – Measuring/prepping for guardrail installation at the north and southbound walkways of the platform level.



LEIMERT PARK STATION – Began guardrail installation at the north and southbound walkways of the platform level.

CRENSHAW/LAX PHOTOGRAPHIC UPDATE



LEIMERT PARK STATION – Excavating/demolishing existing driveway at southbound Leimert Blvd and Crenshaw Blvd.



LEIMERT PARK STATION – Placing concrete for new curb/gutter and driveway installation at southbound Leimert Blvd and Crenshaw Blvd.

CRENSHAW/LAX PHOTOGRAPHIC UPDATE



LEIMERT PARK STATION – Placed concrete for sidewalk on the northeast corner of Vernon Ave and Crenshaw Blvd.



LEIMERT PARK STATION – Preparing to install street light pole on the southwest corner of Vernon Ave and Crenshaw Blvd.

CRENSHAW/LAX PHOTOGRAPHIC UPDATE



LEIMERT PARK STATION – Installing street light pole on the southwest corner of Vernon Ave and Crenshaw Blvd.



LEIMERT PARK STATION – Installing pedestrian signal head foundations on northbound Crenshaw Blvd between Vernon Ave and 43rd Pl.

CRENSHAW/LAX PHOTOGRAPHIC UPDATE



LEIMERT PARK STATION – Continue underground conduit installation for landscape lighting and utilities at the plaza level.



LEIMERT PARK STATION – Placing concrete inside trenches for underground conduit at the plaza level.

CRENSHAW/LAX PHOTOGRAPHIC UPDATE



LEIMERT PARK STATION – Placing concrete for the air exhaust shaft at the plaza level.

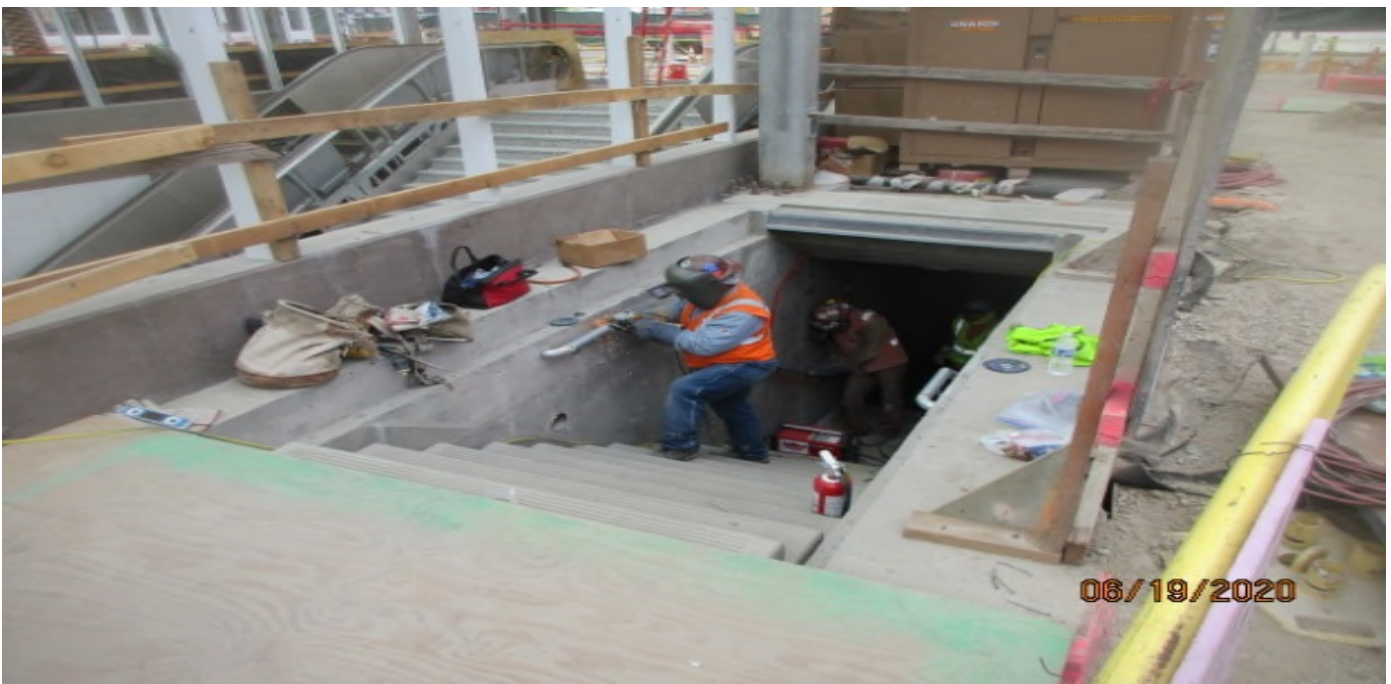


LEIMERT PARK STATION – Continue underground conduit installation for landscape lighting and utilities at the plaza level.

CRENSHAW/LAX PHOTOGRAPHIC UPDATE



LEIMERT PARK STATION – Installing roofing deck to the main entrance canopy structure at the plaza level.



LEIMERT PARK STATION – Continue installing handrails for Emergency Exit Stair #2 at the plaza level.

CRENSHAW/LAX PHOTOGRAPHIC UPDATE



LEIMERT PARK STATION – Continue excavating/trenching for irrigation installation at the plaza level.



LEIMERT PARK STATION – Installing irrigation lines throughout the plaza level.

CRENSHAW/LAX PHOTOGRAPHIC UPDATE

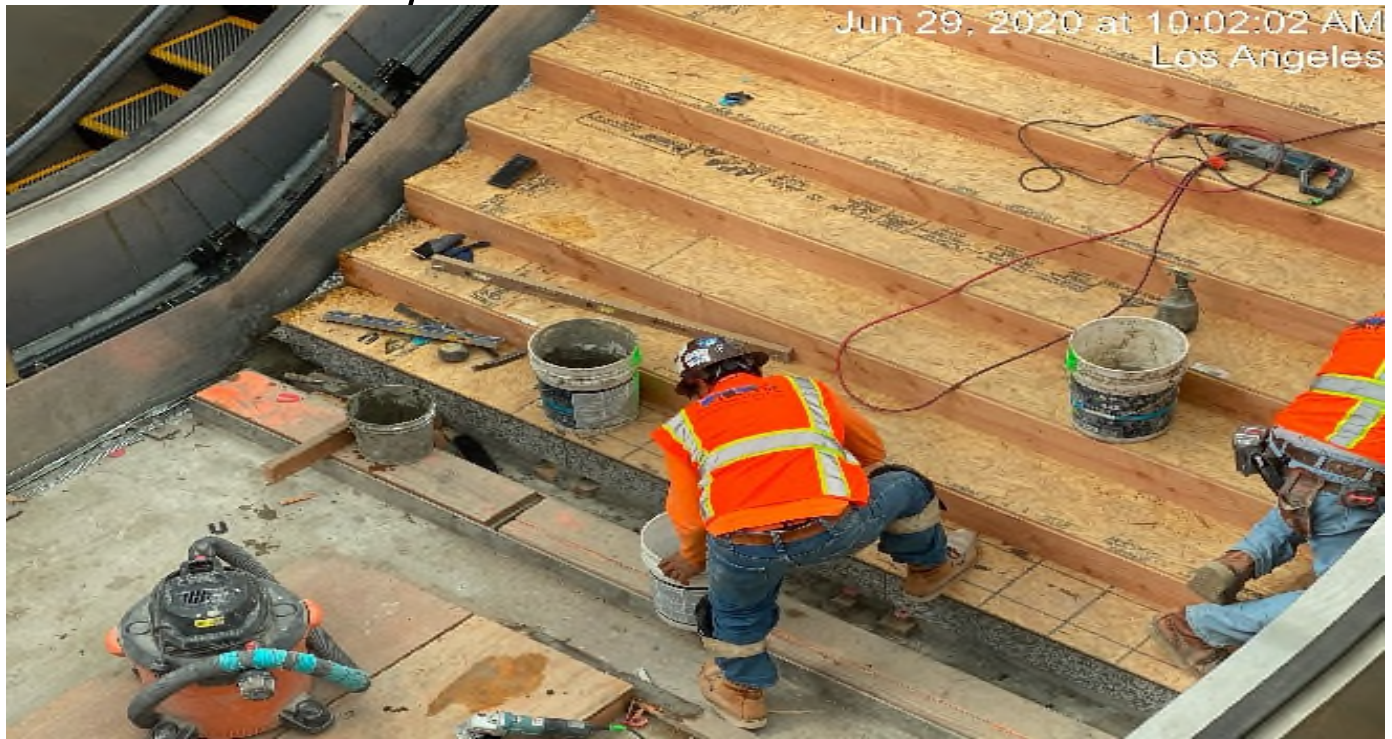


LEIMERT PARK STATION – Installing hatches to Emergency Exit Stair #2 at the plaza level.



LEIMERT PARK STATION – Installing granite treads for the main entrance staircases at the plaza level.

CRENSHAW/LAX PHOTOGRAPHIC UPDATE



LEIMERT PARK STATION – Continue installing granite treads for the main entrance staircases at the plaza level.



LEIMERT PARK STATION – Excavating for grand pylon foundation at the southeast corner of the plaza level.

CRENSHAW/LAX PHOTOGRAPHIC UPDATE



LEIMERT PARK STATION – Installing rebar for the grand pylon foundation at the southeast corner of the plaza level.

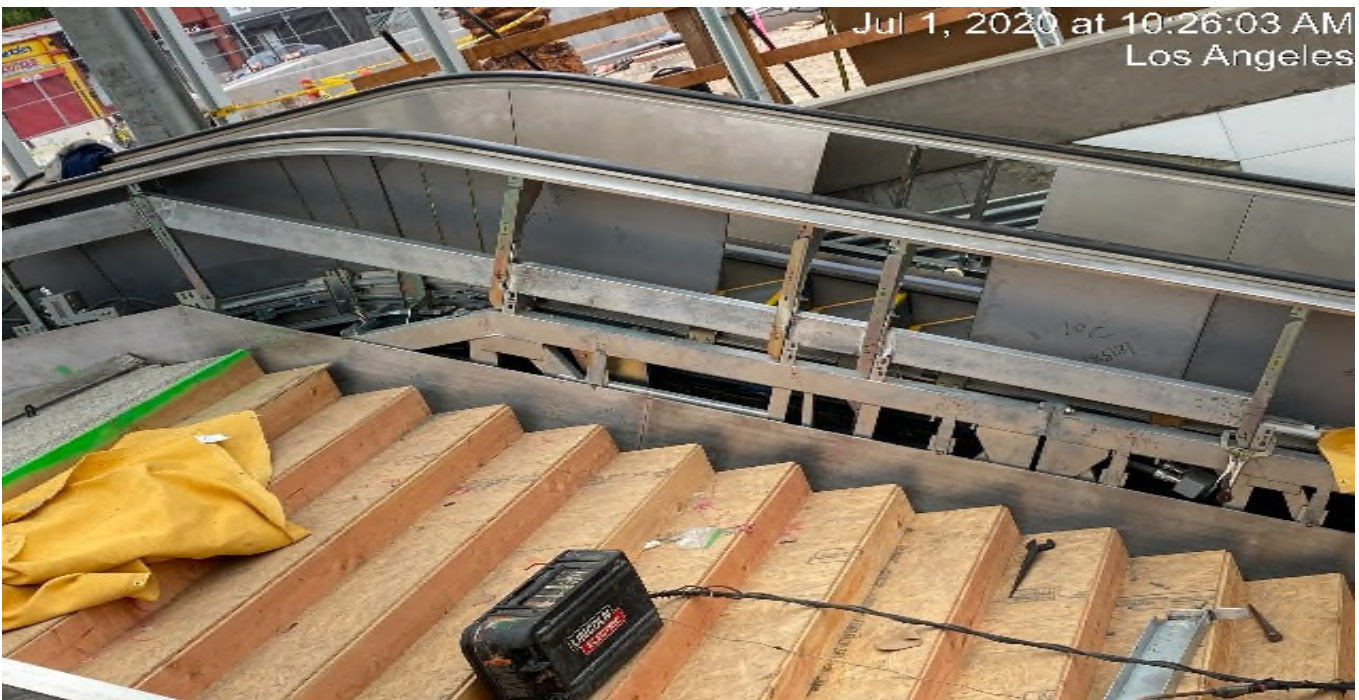


LEIMERT PARK STATION – Sack and patching the walls of Emergency Exit Stair 2 at the plaza level.

CRENSHAW/LAX PHOTOGRAPHIC UPDATE



LEIMERT PARK STATION – Installing handrail backer for Escalator 1 at the main entrance landing.

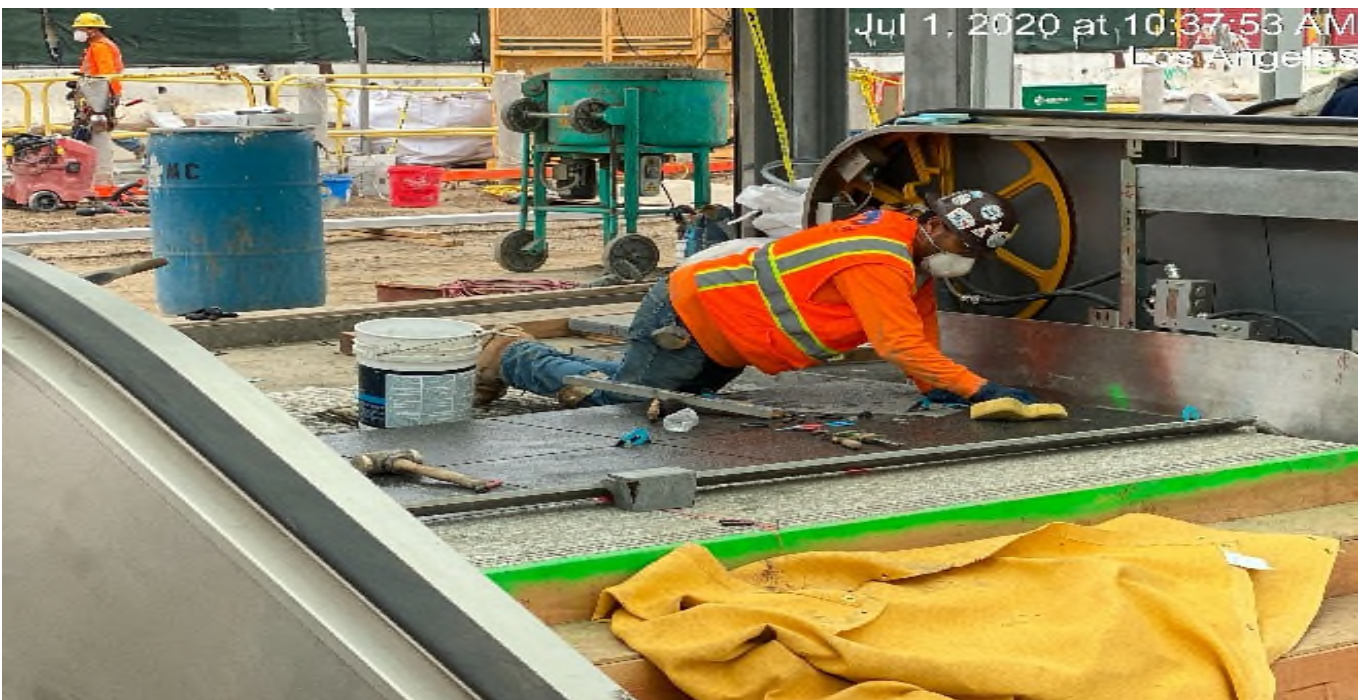


LEIMERT PARK STATION – Continue installing handrail backer for Escalator 1 at the main entrance landing.

CRENSHAW/LAX PHOTOGRAPHIC UPDATE

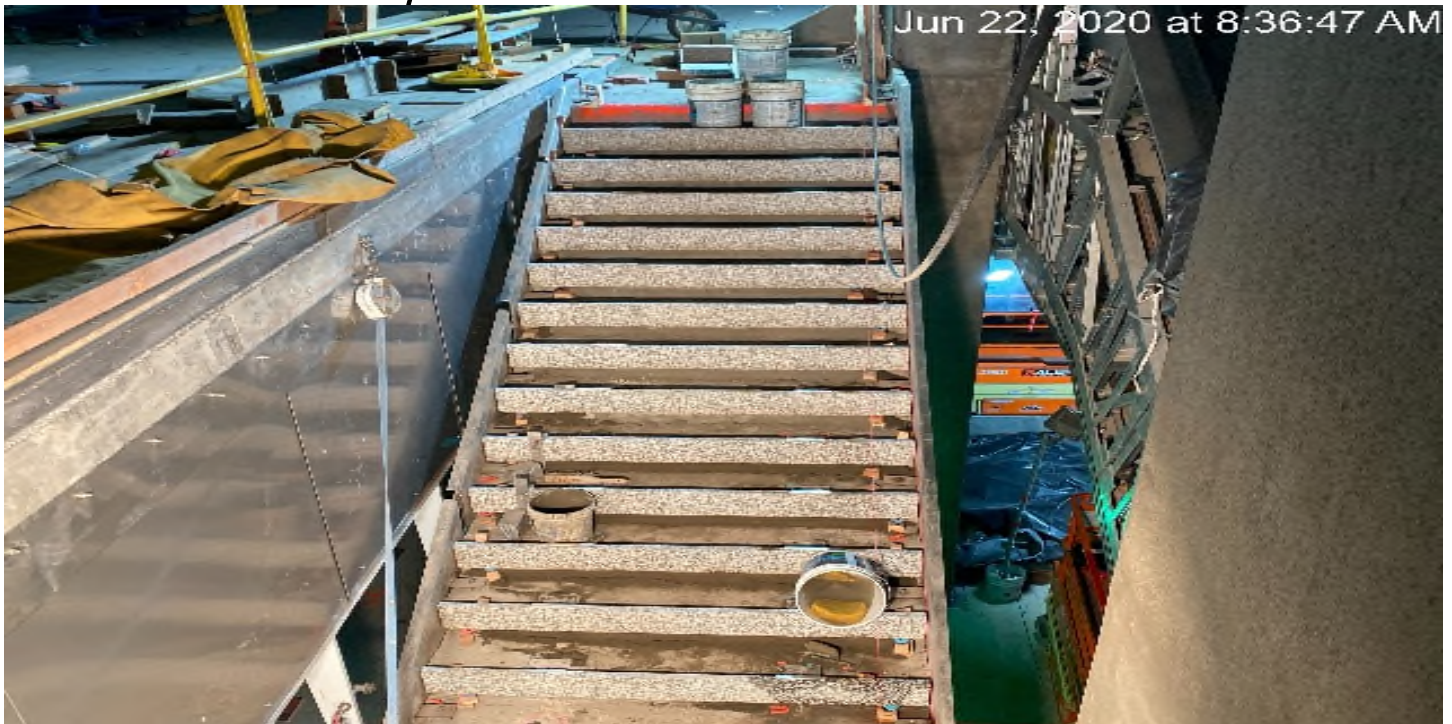


LEIMERT PARK STATION – Continue installing granite treads for the main entrance staircases at the plaza level.

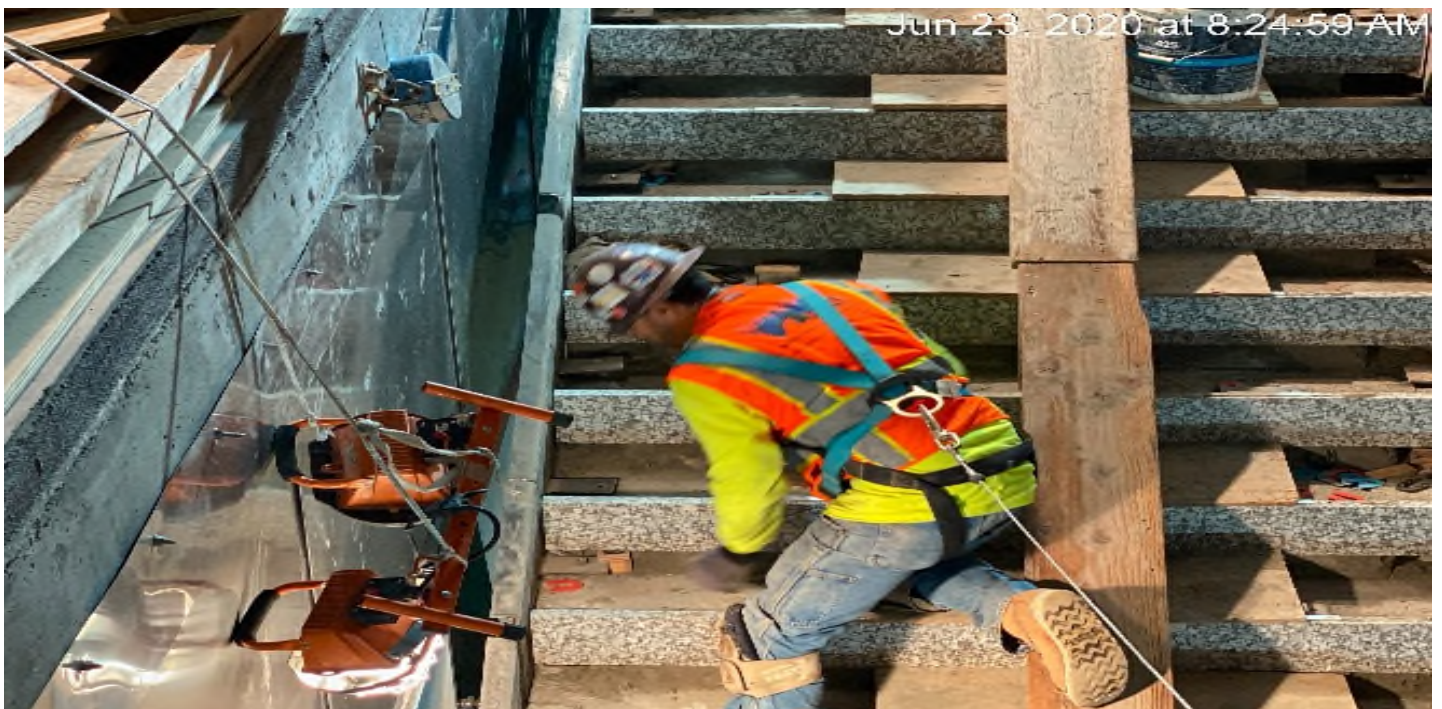


LEIMERT PARK STATION – Continue installing granite treads for the main entrance staircases at the plaza level.

CRENSHAW/LAX PHOTOGRAPHIC UPDATE



LEIMERT PARK STATION – Installing granite riser and threads for staircase #3 from concourse to platform level.



LEIMERT PARK STATION – Continue installing granite riser and threads for staircase #3 from concourse to platform level.

CRENSHAW/LAX PHOTOGRAPHIC UPDATE



LEIMERT PARK STATION – Continue installing granite riser and threads for staircase #3 from concourse to platform level.



LEIMERT PARK STATION – Continue installing granite riser and threads for staircase #3 from concourse to platform level.

CRENSHAW/LAX PHOTOGRAPHIC UPDATE

Jun 26, 2020 at 7:53:46 AM
Los Angeles



LEIMERT PARK STATION – Continue installing granite riser and threads for staircase #3 from concourse to platform level.



LEIMERT PARK STATION – Continue guardrail installation at the north and southbound walkways of the north end platform level.

CRENSHAW/LAX PHOTOGRAPHIC UPDATE



LEIMERT PARK STATION – Continue guardrail installation at the north and southbound walkways of the north end platform level.

SEGMENT C:

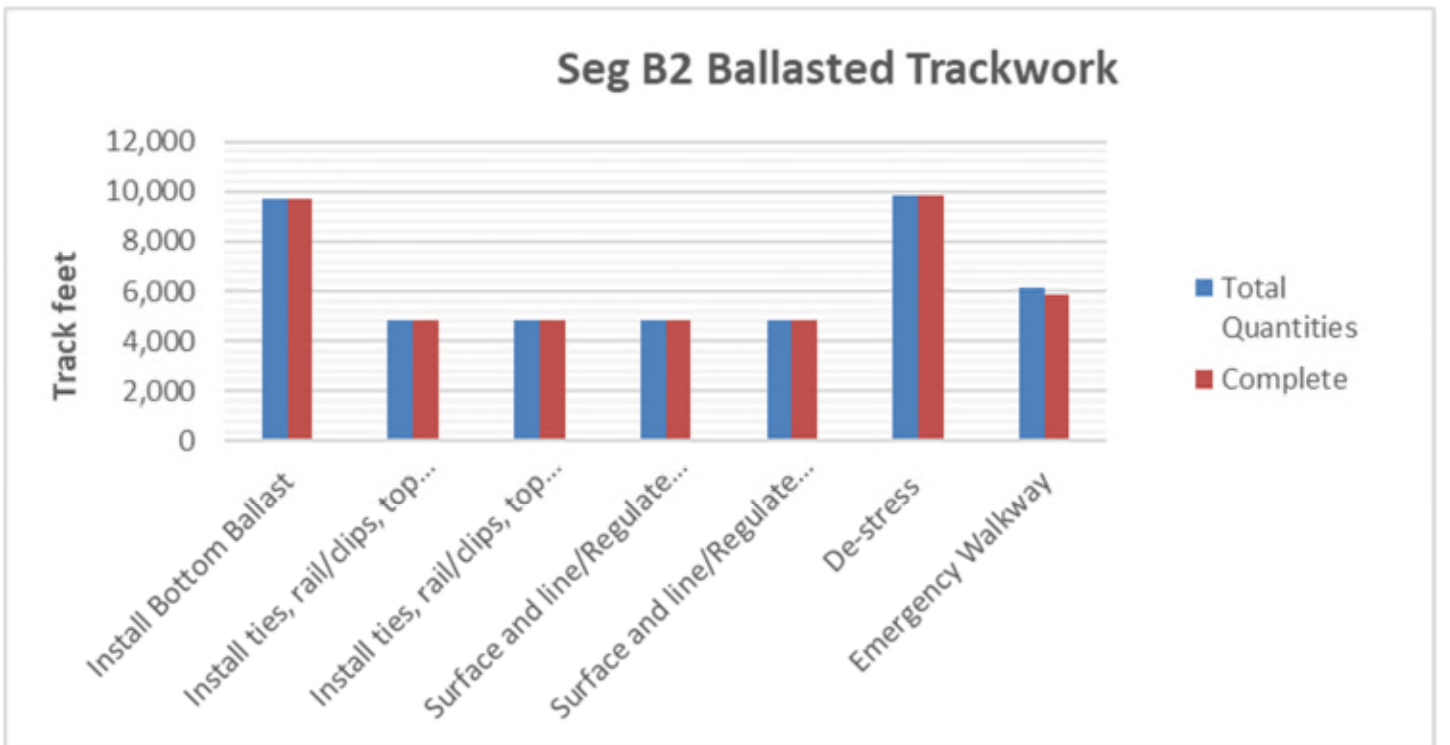
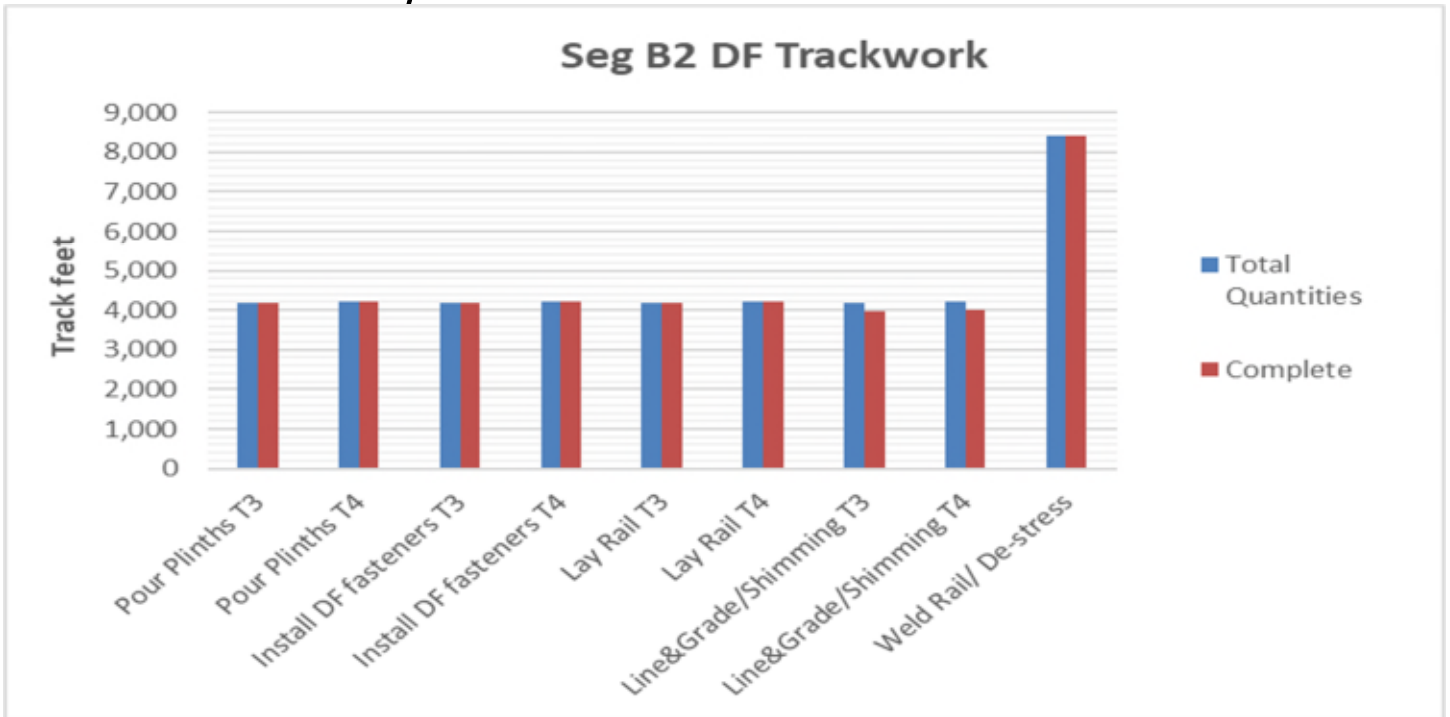
- Rework of VHRF fasteners is still required due to missing shims and incorrect installation.
- Incomplete Double Crossovers due to parts shortage.
- Rework of plinths is still required due to damage by chipping and cracks.
- Incomplete plinth work.
- Rework of the Top-of-Rail is still required due to gouges in the rail.
- Investigation of a possible repair process for plinth to invert gap continues.
- Rework of the Top-of-Rail it may be required due to gouges in the rail at grade crossing – pending resolution.
- Incomplete plinth work, damaged inserts / broken bolts.
- Replacement of plinths with failed inserts begins.
-

CRENSHAW/LAX PHOTOGRAPHIC UPDATE

PROJECT WIDE TRACKWORK PROGRESS

	TRACK TYPE	ACTIVITY	TRACK FEET/QUANTITY	INSTALLED TO DATE	REMAINING	ACTIVITY % PROGRESS	Potential Rework *	Punchlist ** (Complete/Incomplete)
SEGMENT B2	DF (8,408 TF)	Pour Plinths T3	4,193	4193	0	100.00%		
		Pour Plinths T4	4,215	4,215	0	100.00%		
		Install DF fasteners T3	4,193	4193	0	100.00%	*	
		Install DF fasteners T4	4,215	4215	0	100.00%	*	
		Lay Rail T3	4,193	4193	0	100.00%	*	
		Lay Rail T4	4,215	4215	0	100.00%	*	
		Line&Grade/Shimming T3	4,193	3983	210	95.00%		INC
		Line&Grade/Shimming T4	4,215	4004	211	94.99%		INC
		Weld Rail/ De-stress	8,408	8408	0	100.00%		
		Emergency Walkway						
	Acceptance for turnover to subcontractors	yes/no	no					
	BALLASTED TRACKWORK (9681 TF including grade crossings)	Install Bottom Ballast	9,681	9681	0	100.00%	*	INC
		Install ties, rail/clips, top ballast -T3	4,836	4836	0	100.00%	*	
		Install ties, rail/clips, top ballast -T4	4,845	4845	0	100.00%	*	
		Surface and line/Regulate T3	4,836	4836	0	100.00%	*	
		Surface and line/Regulate T4	4,845	4845	0	100.00%	*	
		De-stress	9,861	9861	0	100.00%		
		Emergency Walkway	6148	5840	308	94.99%		
	Acceptance for turnover to subcontractors	yes/no	no					
	SPECIAL TRACKWORK	Ballasted Single Crossover (U1/U2, V1/V2)	2	2	0	100.00%		INC
Thermite Welds		56	56	0	100.00%			
Insulated Joints (IJ's)		12	12	0	100.00%	*	INC	
Acceptance for turnover to subcontractors	yes/no	no						
GRADE X-ING	Construct Crossing (48th, 50th, 52nd, 54th, 57th, 59th, Slauson)	7	6	1	85.71%			
SEGMENT C	DF (16,756 TF)	Pour Plinths T3	8,385	8385	0	100.00%	*	INC
		Pour Plinths T4	8,371	8371	0	100.00%	*	INC
		Install DF fasteners T3 (VHRF installed - pending NCR)	8,385	7965	420	94.99%	*	
		Install DF fasteners T4 (VHRF installed - pending NCR)	8,371	7952	419	94.99%	*	
		Lay Rail T3	8,385	8385	0	100.00%	*	
		Lay Rail T4	8,371	8371	0	100.00%	*	
		Line&Grade/Shimming T3	8,385	7546	839	89.99%	*	INC
		Line&Grade/Shimming T4	8,371	7533	838	89.99%	*	INC
		Emergency Walkway						
		Acceptance for turnover to subcontractors	yes/no	no				
	SPECIAL TRACKWORK	DF Double Crossover (Diamond)	1	1	0	100.00%	*	
		Line&Grade/Shimming	1	1	0	100.00%	*	
		Thermite Welds	56	56	0	100.00%		
		Insulated Joints (IJ's)	20	20	0	100.00%	*	
		Acceptance for turnover to subcontractors	yes/no	no				
DF =	Direct Fixation							
T3 =	Track 3							
T4 =	Track 4							
TF =	Track Feet							
*	Potential for rework based on recent guideway survey. Total impact of rework is unknown at this time.							
**	Punchlist Complete/Incomplete: Indicates the completion (COMP) or Incompletion (INC) of identified punchlist items							

CRENSHAW/LAX PHOTOGRAPHIC UPDATE



CRENSHAW/LAX PHOTOGRAPHIC UPDATE

