

If you cannot view HTML in your email, [click here](#).



Friday, October 21, 2016

In this Issue

- [Closing the Week with 2016 Mobility 21 Summit: Empowering California](#)
- [Harriet Breaks Through at Crenshaw/LAX Line Leimert Park Station](#)
- [City of Westlake Village Opens New Park & Ride Facility](#)
- [Lowering and Naming of the Regional Connector Tunnel Boring Machine](#)
- [Weekend Closures for Wilshire/La Brea Decking Work Complete Six Weeks Early](#)
- [Metro and Caltrans Host Open Houses](#)
- [Metro is Increasing Expo Line Service Starting Next Week](#)
- [Procurement Postings](#)
- [Construction Notices](#)

Closing the Week with 2016 Mobility 21 Summit: Empowering California

We had a very busy week here at Metro and we capped it off today with the 2016 Mobility 21 Summit: Empowering California at the Disneyland Hotel in Anaheim. Metro Chair and City of Duarte Councilmember John Fasana participated in the "Chairmans' Roundtable: Balancing the Region, Delivering Promises" where he joined fellow Chairs of Southern California's regional transportation agencies to discuss their biggest challenges related to environmental concerns and emerging technology, including autonomous vehicles, and how they prioritize among the many issues they face. Also, Los Angeles Mayor and Metro Second Vice Chair Eric Garcetti provided some remarks and City of Inglewood Mayor and Metro Board Member James Butts joined the NFL and Mega Events panel. Many other business leaders, elected officials and offices of elected officials were in attendance or participating in discussions.

In the afternoon, I participated in the panel discussion "A New Transportation Paradigm for California?" where I joined CEO of OCTA Darrell Johnson, Chief Deputy Director at Caltrans Kome Ajise, Executive Director at VCTC Darren Kettle, and Executive Director at RCTC Anne Mayer to discuss the latest thoughts on identifying ways we can come together to influence the future of mobility and transportation in this great state. We had a few other Metro representatives on panels including Deputy CEO Stephanie Wiggins and Chief Innovation Officer Joshua Schank and several others in attendance. Thank you all for participating and representing our agency.

Harriet Breaks Through at Crenshaw/LAX Line Leimert Park Station

Yesterday, we held a great ceremony with Walsh-Shea Corridor Constructors to celebrate the breakthrough of Harriet, the tunnel boring machine (TBM) working on the Crenshaw/LAX rail line project. Metro Chair John Fasana and I were joined by Los Angeles County Supervisor and Metro Board Member Mark Ridley-Thomas, Metro Board Member Jacquelyn Dupont-Walker, U.S. Congresswoman Karen Bass, U.S. Congresswoman Maxine Waters, Senior Transportation Program Specialist for the FTA Raymond Tellis, State Assemblyman Sebastian Ridley-Thomas, President of Walsh Construction Company Daniel P. Walsh, Jr., project staff and a few community leaders. After delivering remarks and announcing a commitment to accelerate the project schedule, we all gathered to witness the TBM breakthrough the layer of earth to fully enter the future Leimert Park Metro Station. This now marks the completion of the first of the twin rail tunnels for the underground section of the project.



City of Westlake Village Opens New Park & Ride Facility

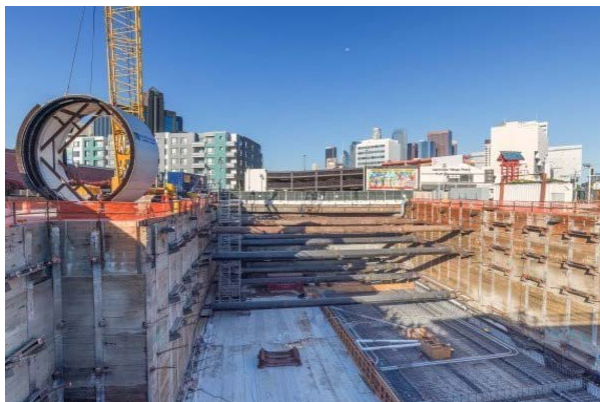
Also yesterday, Metro Board Member and City of Glendale Councilmember Ara Najarian joined officials from Westlake Village and a representative from the office of U.S. Congress Member Julia Brownley to officially open a new park & ride facility in Westlake Village. Located at 31107 East Thousand Oaks Boulevard, the 400-space lot was fully paid for with Measure R sales tax funds for Highway Operational Improvements, and will help promote carpooling and vanpooling on the congested 101 freeway in the Las Virgenes-Malibu area of Los Angeles County. Under Measure R, Metro committed \$175 million to capital projects for this region.



Lowering and Naming of the Regional Connector Tunnel Boring Machine

On Wednesday, I joined Metro Board Chair John Fasana, Metro First Vice Chair and City of Los Angeles Mayor Eric Garcetti, Metro Board Member and Los Angeles County Supervisor Hilda Solis, Metro Board Member Jacquelyn Dupont-Walker, Los Angeles City Councilman Jose Huizar, Assemblyman Miguel Santiago, High Speed Rail Authority CEO Jeff Morales, the Regional Connector Project Team and community stakeholders to commemorate a project milestone in Little Tokyo. Metro held a ceremony for the naming and lowering of a segment of “Angeli” the tunnel boring machine (TBM) that will dig twin 1.1-mile underground rail tunnels under downtown Los Angeles for the Regional Connector Project. This game-changing project will connect the Metro Blue, Expo and Gold Lines allowing passengers to travel seamlessly between Long Beach to Azusa, and East LA to Santa Monica without the need to transfer. Angeli is slated to begin digging in January.

Also, thanks to the student contest winners, Windsor McInerny and Alexander Li, who named the TBM and created an illustration of their ideal community for its tail shield. Contest winners received Metro TAP card fare prizes sponsored by Regional Connector Constructors. You can follow Angeli on Twitter at twitter.com/regionalTBM. For photos and videos from Wednesday’s ceremony, click [here](#).



Weekend Closures for Wilshire/La Brea Decking Work Complete Six Weeks Early

On Monday, Metro Board Chair John Fasana joined Metro First Vice Chair and City of Los Angeles Mayor

Eric Garcetti, Los Angeles City Council Member Paul Koretz and Metro Chief Program Management Officer Richard Clarke, to announce the early completion of weekend closures for decking at the future Purple Line Extension subway station at Wilshire/La Brea. Closures were originally scheduled to occur over 22 consecutive weekends starting June 10, 2016, and ending in late November. The schedule was expedited by six weeks. Skanska, Traylor, Shea, a Joint Venture was able to take advantage of early lane reductions on Fridays, and the project team helped facilitate work by coordinating closely with elected officials, community stakeholders and city departments. Future construction work at Wilshire/La Brea will include station excavation, deck openings for deliveries and street restoration. Metro anticipates starting the decking operation for the second station at Wilshire/Fairfax in January, and follow a similar closure format over 18 weekends.



Metro and Caltrans Host Open Houses

This week, Metro and Caltrans kicked off the environmental phase for the Westbound SR-91 Improvement Project at Open Houses in Artesia and Cerritos. The Open Houses were well-attended with 80 attendees the first night and 60 on the second night. Metro provided information about the proposed improvements and gathered feedback from the community. This project is part of the I-605 Corridor “Hot Spots” Projects, visit www.metro.net/605hotspots for more information.

Metro is Increasing Expo Line Service Starting Next Week

We have some good news for the Expo Line service. To keep pace with growing ridership, Expo Rail Line trains will begin running every six minutes for most of the day beginning Monday, October 24. Trains currently run every 12 minutes and the service changes are expected to help reduce crowding and wait times for riders. Metro has been running nine trains with three cars since the Expo Line Extension to Santa Monica opened last May, but starting Monday, service will shift to 18 trains with two cars every six minutes, a 33 percent increase in rail capacity service. As the new Kinkisharyo light rail vehicles are deployed, trains will be lengthened to three cars from two. For our Expo riders who have experienced our packed trains, this will be a welcomed change and a great relief for thousands of Metro commuters.

Procurement Postings

Coolant - (IFB)

Metro will release an Invitation for Bids (IFB) to procure coolant. The procurement process blackout period is expected to run from Thursday, October 27, 2016 through Tuesday February 28, 2017.

Coolant is used in all vehicles to prevent the engine from freezing and overheating, as well as protecting

the engine's cooling system from corrosion. Award of a contract will provide a commitment from the supplier to ensure availability at a fixed, competitive price.

Any inquiries concerning this procurement action during the blackout period must be directed to and may only be answered by Tanya Allen, Procurement Planning Administrator at (213) 922-1018.

Emergency Public Notification System Furnish & Install for Union Station (IFB)

Metro released an Invitation for Bids (IFB) to procure an Emergency Public Notification System Furnish and Installation. The procurement process blackout period is expected to run from Friday, October 20, 2016 through December 15, 2016.

The Los Angeles Metropolitan Transportation Agency (Metro) is seeking Bids for a vendor to furnish and install an Emergency Public Notification System for emergency notifications and evacuations for patrons and tenants residing in Union Station Complex, consisting of Union Station and Metro Gateway Headquarters. The Emergency Public Notification System will provide voice notifications for Union Station, Union Station parking lots, and Patsaouras Transit Plaza. The Emergency Public Notification System will involve the use of a "state-of-the-art" emergency public announcement system to ensure all personnel and passengers can clearly hear all announcements broadcasted within the complex. Potential Bidders are advised that Union Station is a historical building, and must maintain the historical and architectural aspect, while incorporating today's high-tech systems.

Any inquiries concerning this procurement action during the blackout period must be directed to and may only be answered by James Nolan, Sr. Contracts Administrator at (213) 922-7312.

Banking Services (RFP)

Metro will release a Request for Proposals (RFP) to procure Banking Services. The procurement process blackout period is expected to run from Wednesday, October 26, 2016 through Thursday, April 13, 2017.

Metro will procure the services of a qualified financial firm to provide basic and specialized banking services.

Any inquiries concerning this procurement action during the blackout period must be directed to and may only be answered by Greg Baker, Principal Contract Administrator at (213) 922-7577.

LA County Regional Intelligent Transportation Systems(ITS) Architecture Update (RFP) - Small Business Prime

Metro will release a Request for Proposals (RFP) to procure professional services in the area of Intelligent Transportation Systems (ITS) to update the Los Angeles County Regional Intelligent Transportation Systems Architecture. This solicitation is open to Metro Certified Small Businesses only. The procurement process blackout period is expected to run from Wednesday, October 26, 2017 through Friday, February 17, 2017.

The Los Angeles County Regional Intelligent Transportation Systems Architecture provides the framework for the planning and deployment of ITS in the Los Angeles County region. This procurement seeks to update the architecture to current ITS standards.

Any inquiries concerning this procurement action during the blackout period must be directed to and may only be answered by David Chia, Principal Contract Administrator, at (213) 922-1064.

Aruba Network Equipment Purchase (IFB)

Metro released an Invitation to Bid (IFB) to upgrade Metro's Wireless Local Area Network (WLAN) Cluster Based Architecture. The procurement process blackout period is expected to run from Friday, October 21, 2016 through Monday, January 2, 2017.

Metro is seeking a computer vendor to purchase Aruba, or equivalent, related networking equipment.

Any inquiries concerning this procurement action during the blackout period must be directed to and may

only be answered by Marc Margoni, Principal Administrator at (213) 922-1304.

Construction Notices - Metro Blue Line, I-5

Metro Blue Line: [Bus Shuttles Replace Rail Service](#) -- Between Willow Station and Downtown Long Beach Station

- The Metro Blue Line will be closed south of Willow Street Station for street light replacement and tree trimming work adjacent to Blue Line tracks and stations.
- Work and station closures will occur through the entire service hours on Saturday, October 22, 2016.
- Metro bus shuttle service will be in place from Willow Station south through Downtown Long Beach.

Caltrans Interstate 5: All Construction Updates [here](#).

“The great thing in this world is not so much where we are,
but in what direction we are going.”

~ Oliver Wendell Holmes

[Press Room](#) | [Project & Programs](#) | [Meeting Agendas](#) | [Riding Metro](#) | [Metro Library](#)

You have subscribed to receive Metro information, [edit your preferences](#) or [unsubscribe](#).
Your privacy is important to us, please review the [Privacy Policy](#).

© 2016 Metro (LACMTA) One Gateway Plaza, Los Angeles, CA 90012-2952
This email was sent to allmailusers@metro.net.
To continue receiving our emails, add us to your address book.

Bus & Rail Transit information
323.GO.METRO (323.466.3876)
6:30am - 7pm (Monday - Friday)
8:00am - 4:30pm (Saturday/Sunday)

