



Get \$10 off Universal Studios Hollywood



Get the star treatment when you bring your valid Metrolink pass or ticket to the Universal Studios Hollywood Box office and receive \$10 off general admission to the park.

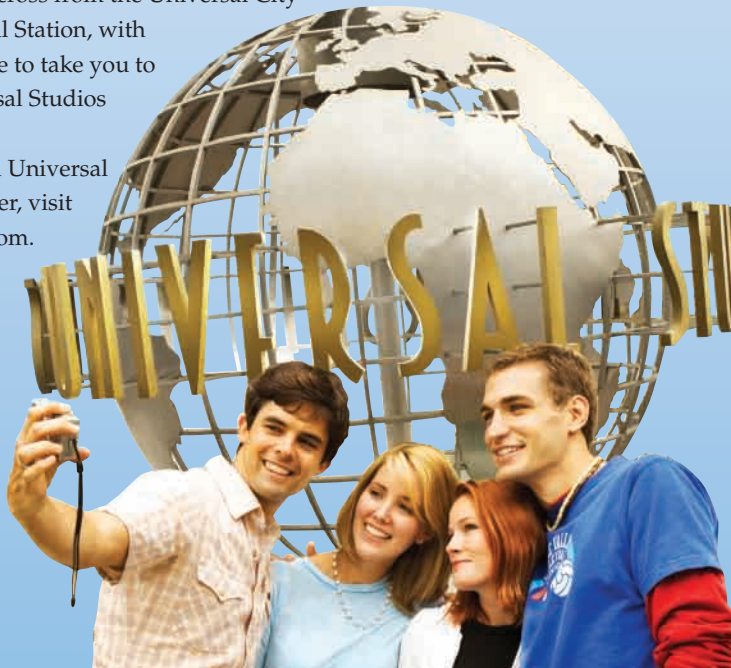
Enjoy innovative thrill rides, shops and restaurants at every turn, concerts every night, theaters, and entertainers roaming the streets at the Entertainment Capital of the World.

Universal Studios Hollywood is conveniently located across from the Universal City

Metro Rail Station, with convenient free shuttle service to take you to the main entrances to Universal Studios Hollywood and CityWalk.

To find out more about all Universal Studios Hollywood has to offer, visit universalstudioshollywood.com.

The \$10.00-off general admission ticket cannot be combined with any other offers or sightseeing tours—restrictions apply. Offer valid through 4/30/07. *One \$10.00-off general admission discount per Metrolink pass or ticket.*



The savings keep adding up, too!

In addition to the \$10.00 Universal Studios Hollywood discount, your Metrolink round-trip or 10-trip ticket or monthly pass is good for a free transfer to the Metro Red Line subway

Just take your Metrolink train to Los Angeles Union Station. Once there, follow the signs to the Metro Red Line subway entrance. Board the subway train that says “North Hollywood” in the window, disembark at the Universal City Station, and walk across the street to the tram stop. Be sure to keep your Metrolink ticket handy for the discount at the ticket booth, and for the return home on the subway.

For Metrolink information, or to check schedules, call Metrolink at (800) 371-LINK (5465) or visit metrolinktrains.com.

INSIDE

- 2 New Parking Fee at Norwalk
- Santa Ana Double-Track Safety Matters
- 3 Temporary Detour Amtrak Weekend Escape American Express at TVMs New Board Chair
- 4 City News Railfest 2007 Hockey Excitement Rail2Rail

Metrolink Service Alert: Antelope Valley Line

Due to planned track and signal system improvements, there will be a temporary disruption of service over four weekends on the Antelope Valley Line. If you ride the Antelope Valley Line weekend-service trains, please plan your trip accordingly.

On Saturdays and Sundays, March 10, 11, 17, and 18, Metrolink trains will travel only from Lancaster to Newhall, and from Los Angeles Union Station to Burbank. Buses will be provided to “bridge” trips between Burbank and Newhall.

On Saturdays and Sundays, March 24, 25, 31, and April 1, Metrolink trains



will travel only from Los Angeles Union Station to Sylmar/San Fernando. Buses will be provided to “bridge” the distance between Sylmar/San Fernando and Lancaster.

Buses will depart stations as close as possible to scheduled train departure times but plan on delays of 15 to 30 minutes. Metrolink is constantly working to maintain your

train system to meet the highest standards. We apologize for any inconvenience this work may cause. For more information on Metrolink’s service or planned closures, please call (800) 371-LINK (5465).



New Parking Fee at Norwalk Civic Center Park & Ride

Effective Monday, March 5, Metrolink commuters who park at the Norwalk Civic Center or Norwalk Transit Center parking structures will be required to pay a parking fee. The fee is \$20 per month, or \$1 per weekday. The Norwalk Transit Service will continue to provide shuttle service between the Civic Center parking structure and the Norwalk/SFS transportation facility.

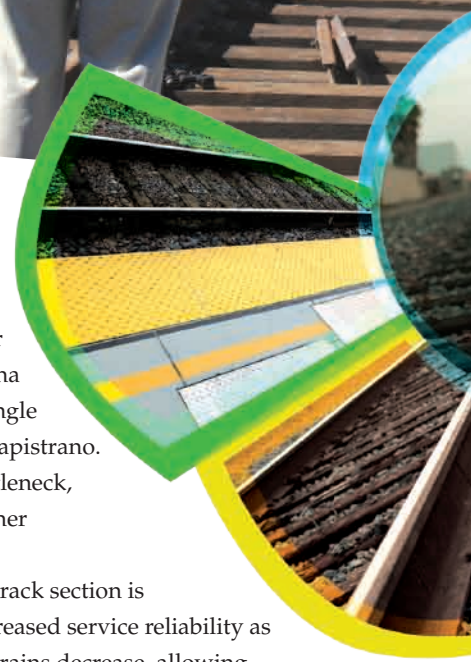
Parking permits go on sale February 12 at 8:00 a.m. You can purchase a permit at www.ntsfparking.com or by calling (800) 997-0197. Please note that there will be a \$4.95 postage and handling fee added to online sales. Parking fees will be automatically debited each month from your designated bank account or credit card until you cancel your permit subscription. Please direct any questions about permit sales to (800) 997-0197 or customerservice@permit-sales.com. For questions about this change, call Norwalk Transit Systems at (562) 929-5550.



Santa Ana Double-Track Project

Construction on the new double-track section of the Orange County Line is under way. The 1.7-mile section between Santa Ana and Orange has been the only section of single track between Los Angeles and San Juan Capistrano. This single-track section has acted as a bottleneck, requiring trains to wait at either end for other trains to pass.

When construction of the new double-track section is complete in July, riders will experience increased service reliability as conflicts with other passenger and freight trains decrease, allowing Metrolink to better adhere to schedules. As part of the project, four grade crossings are being redone, a section of Lincoln Avenue that runs alongside the new tracks in Santa Ana is being repaved, and several intersections will get new handicap-access curb cuts. There will also be new landscaping and decorative walls along Lincoln Avenue. The project is being funded by the State of California and the Orange County Transportation Authority.



Safety Matters



What would you do?

You are traveling home with your regular commuter pals. Suddenly, one of your buddies slumps over in his seat. He is nonresponsive.

What should you do? What should you do if there is a passenger emergency on board one of our trains?

- Have someone stay with the ill passenger while another passenger locates the conductor.
- Be sure to note the location and car number of the ill passenger.

- Make the conductor aware of the situation.
- Give the conductor as much information about the situation as you can.

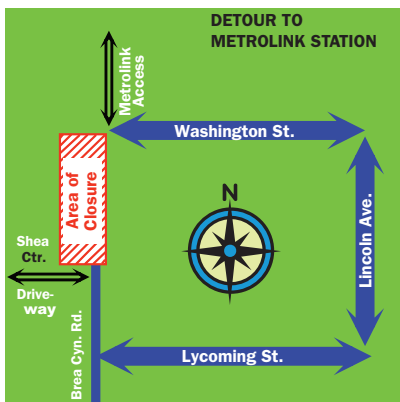
Even if regular cell phones are not working, Metrolink conductors have the ability to contact the Metrolink Operations Center by radio. Your conductor will alert our Operations dispatchers, who will contact the nearest emergency responders. They will make arrangements for the paramedics to meet the train at the nearest station or other safe location.



Temporary Detour: Industry Station Parking Lot

Commuters who reach the Industry Station parking lot via Brea Canyon Road will need to use a temporary detour route in late March. Starting March 12, a 300-foot portion of Brea Canyon Road, south of Washington Street, will be closed for two weeks to relocate a water main. A detour route will allow access to Washington Street and/or the Metrolink Industry Station parking lot. Parking lot access from the north will not be affected.

Work is expected to begin March 12 and to continue for two weeks. For more information, go to www.theaceproject.org or call (888) ACE-1426.



American Express Now Accepted at TVMs

American Express has been added as a credit-card option on Metrolink Ticket Vending Machines and at the ticket windows at Los Angeles Union Station. Fully implemented as of February 1, this new feature expands your payment options. Like other credit-card types, American Express can be used for standard TVM purchases as well as for Quick Ticket purchases.



New Board Chair Ron Roberts, Temecula councilmember

The board of directors of the Southern California Regional Rail Authority (SCRRA), the governing body that operates Metrolink, has unanimously elected a new chairman: Riverside County Transportation Commission (RCTC) member and Temecula councilmember Ron Roberts.

Roberts brings vast community-service experience to Metrolink. He has served on the Temecula City Council since 1992, occupying the role of mayor four times during his tenure. He has also served on the board of the Inland Empire chapter of Habitat for Humanity, the City of Temecula Traffic and Transportation Commission, the National League of Cities Transportation and Communications Committee, the Southern California Association of Governments (SCAG) Relational Council Executive Board, and the Southern California Intercity Rail Group.

Roberts replaces outgoing chair Arthur Brown, who has served on the SCRRA board since February 2002, representing the Orange County Transportation Authority. Ventura County Transportation Commission (VCTC) member and Moorpark councilmember Keith Millhouse is the new vice chair.

Amtrak Weekend Escape Continues

Need a weekend getaway to relax and unwind? Metrolink and Amtrak monthly-pass holders can ride Amtrak Pacific Surfliner trains north of Los Angeles to San Luis Obispo for free on Fridays, Saturdays, or Sundays through the month of April. Just show your monthly pass to the conductor and grab a seat to begin your weekend excursion. Visit metrolinktrains.com/weekend for fun trip ideas and special hotel offers. San Bernardino or Orange County line monthly pass holders get even more to love. Just show your pass and you can ride free on weekends, regardless of station pairs, to Los Angeles for your connection to Amtrak Pacific Surfliner trains. So what are you waiting for? Offer expires April 29, 2007.



City News

San Bernardino—California State University San Bernardino (CSUSB) College of Extended Learning (CEL) and the city of San Bernardino have partnered together to enhance access to higher education, professional development and personal enrichment. The College of Extended Learning is now offering classes at the new CSUSB Downtown Center, including: Achieving Excellence Seminar: 10 Secrets to Success; Human Resources Essentials for Managers and Supervisors; Supervisory Skills Development Series; and Sexual Harassment Prevention Training for Supervisors.

Additionally, the Master's of Business Administration for Executives will be offered beginning spring 2007. The MBA for Executives program has a class schedule more suitable to working professionals, free parking and on-site textbook service.

For more information on all classes, please call 909-537-5979 or register online at <http://cel.csusb.edu>. For more information about the MBA for Executives program call Michael-Anne Barner at 909-537-3907.



Lancaster—On April 21 and 22, the City of Lancaster's 16th annual California Poppy Festival bursts into bloom at Lancaster City Park with a host of new performers, pavilions, events and exotic exhibits.

Come experience Lancaster's abundant crop of vibrant poppies that are California's state flower. The Antelope Valley California Poppy Reserve, located just 15 miles from the Festival grounds is an excellent side-trip to enjoy the tiny flowers that blanket the hillsides in a sea of orange, welcoming spring to the high-desert.

With two days of celebrated musical performers, unrivaled events, and mouth-watering delicacies designed to delight, enchant and amuse people of all ages, discover why people keep coming back, year after year, to be part of the Antelope Valley's favorite springtime event—the California Poppy Festival!

The California Poppy Festival is open on April 21 and 22, 2007 from 10:00 a.m. to 6:00 p.m. daily. For more information, visit www.poppyfestival.com.

Railfest 2007: Rails, Rides, and Fun!

The whole family is invited to Fillmore on March 24 and 25 for the twelfth annual Santa Clara River Valley Railfest. Presented by a partnership between the Santa Clara River Valley Railroad Historical Society (SCRVRHS) and the Fillmore & Western Railway (F&W), Railfest 2007 is a celebration of railroad history and heritage and features train rides, exhibits, food, and performances by the Frontier Gunfighters.

Railfest activities will be held at Central Park in Fillmore, with other activities held in Piru and Santa Paula. The Fillmore & Western Railway will offer a \$25 adult one-day RailPass for travel from Fillmore to Piru and Santa Paula on board vintage pre-1940 trains. The trains will depart from Fillmore at 10:00 a.m., 12:30 p.m., and 3:00 p.m.

Metrolink will be on hand with a display of one of our trains, which will be open to the public in support of the event and sponsored by the Ventura County Transportation Commission (VCTC). Admission and parking are free.

Railfest is open from 9:00 a.m. to 5:00 p.m. on Saturday, March 24, and Sunday, March 25, 2007. Visit scrvrhs.com or fwry.com for more information.



Last Chance for Hockey Excitement

Special "Lucky Charm" Kings ticket sales for the March 17 St. Patrick's Day game end March 5.

Prices start at \$25 for the package, which includes a hockey ticket, a round-trip San Bernardino Line train ticket, and a voucher for a hot dog and soda. And don't worry about overtime—with the new late-night train departing Los Angeles at 11:30 p.m., you won't miss a minute of the game! Call (213) 763-4664 or go to metrolinktrains.com to order tickets online.



Rail2Rail

Metrolink would like to remind everyone that **Metrolink one-way, roundtrip, 4-trip, and 10-trip tickets are valid only on Amtrak trains 799 and 768, Monday through Friday, and only within the bounds of the trip specified on the ticket in hand. Metrolink monthly passes are valid for travel on Amtrak trains seven days a week under the Rail2Rail program.** For further clarification of the Rail2Rail program and ticketing restrictions, please visit metrolinktrains.com or call (800) 371-LINK (5465).



METROLINK MATTERS	
<p>Editor-in-Chief: Paul Sitkoff Contributors: Charlene Ariza and Tracy Berge Designer: Harlan West/HWDS Writing Consultant: Jessica Hoffmann C.E.O.: David Solow Director, Communications and Development: Steve Lantz Manager, External Communications: Francisco Oaxaca</p>	<p>Send comments or story ideas to metrolinkmatters@scra.net or to Metrolink Matters, 700 S. Flower St., Suite 2600, Los Angeles, CA 90017. Published by the External Communications Department.</p>

Printed on recycled paper with soy ink.

HWDS1521-2/07

WWW.METROLINKTRAINS.COM

(8 0 0) 3 7 1 - L I N K

