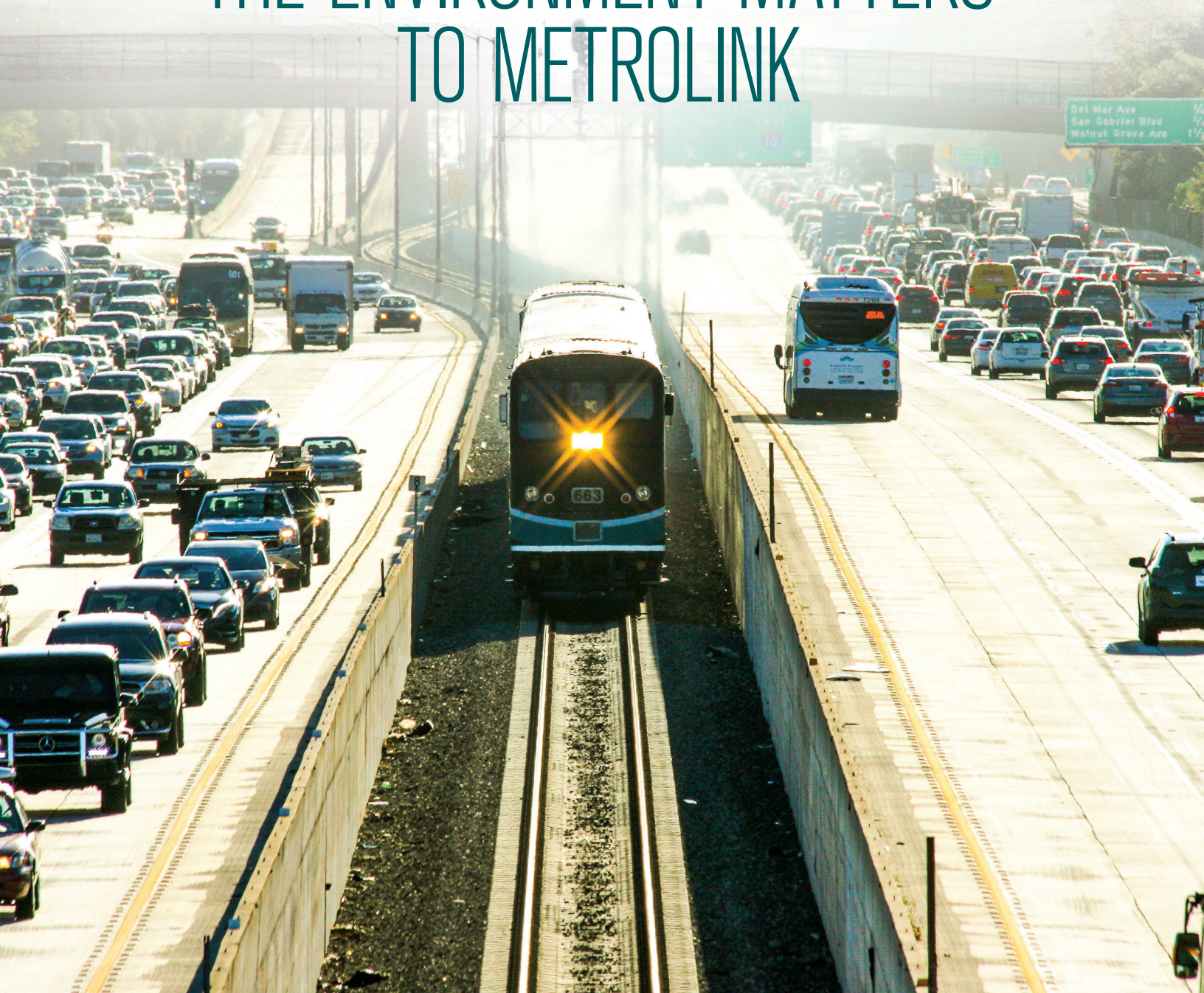


METROLINK **MATTERS** NEWS:EVENTS

CELEBRATING 25 YEARS OF SERVICE | 1992-2017

THE ENVIRONMENT MATTERS TO METROLINK



INSIDE

2

WORD FROM THE CEO
NEW METROLINK LOGO
MOBILE APP UPDATE

3

THE ENVIRONMENT
MATTERS TO METROLINK

4

SURF'S UP METROLINK
PTC SAVES LIVES AND TIME
STOP HUMAN TRAFFICKING

5

25 YEARS OF AIR
QUALITY IMPROVEMENTS

6

ANGELS EXPRESS
SCHEDULE CHANGE
RAILROAD DAYS
FIESTA BROADWAY



WORD FROM THE CEO

ARTHUR T. LEAHY | CHIEF EXECUTIVE OFFICER | METROLINK

Springtime is here and that means it is time for the return of America's national pastime: baseball.

Baseball has been a Southern California staple since the late 1800s, but truly took off when Major League Baseball came to town, first with the Dodgers in 1958, followed by the Angels in 1961. Rooting for the home team, usually while enjoying some peanuts and Cracker Jacks, is one of my favorite activities, as surely it is for many of our riders.

I am excited to announce that Metrolink's popular Angels Express trains will be returning beginning March 30, for only \$7 roundtrip. The Angels Express is a home run for fans near the Orange County Line to catch all the weeknight home games this season. Angels fans who live in Riverside County can also take the train to the game on Friday nights.

Dodgers fans, like myself, can take Metrolink to the games, too. Just take any train to Union Station and catch Metro's Dodger Stadium Express bus for curbside service to Dodger Stadium. The Metro Dodger Stadium Express is

free with any Metrolink ticket. Cover your bases and check for a late train to get you home after the game, or use a ride share app such as Uber or Lyft.

This season is sure to be like no other and I look forward to seeing you at the old ball game!

#METROLINKMEMORIES FROM RIDER TAMARA JASO:



We love Metrolink. We have taken it frequently for work, for convenience, but our favorite has to be the Angel games. This picture is of our group of friends on the way to the game after enjoying the Angels opening day pre-celebration at Irvine Station.



METROLINK®

METROLINK UNVEILS NEW LOGO

Metrolink adopted a new logo inspired by the new Tier 4 locomotives, which represents Metrolink's commitment to safety, environmental sustainability and innovation. It also pays tribute to Metrolink's past, its evolution and to the future.

The three lines in the design have a dual meaning; they symbolize Metrolink's first rail lines from 1992 (Ventura, San Bernardino and Antelope Valley lines) and represent our future - as the lines shape the profile of a Tier 4 locomotive. Furthermore, the color teal has been Metrolink's standard color since our founding in 1992. The gray and black colors were adopted after the purchase of the Hyundai Rotem passenger cars in 2010.

METROLINK APP UPDATE



The Metrolink App is the easiest way to purchase your ticket. Metrolink sells all tickets through the Metrolink App so whether you are traveling on the weekend with the Weekend Day Pass or commuting daily with a Monthly Pass, the Metrolink App could work for you. At this time, transfers to the Metro Rail system with the Metrolink App is not possible and requires a purchase of a paper ticket through the ticket vending machine. Metrolink is working to install optic readers on the Metro Gates which will allow you to transfer with the Metrolink App. The new feature is expected to come online by the end of 2017. You can download the Metrolink App on Android or iOS devices.

ON THE COVER

THE ENVIRONMENT MATTERS TO METROLINK

Metrolink joins organizations and communities across the world in observance of Earth Day on April 22. Riding Metrolink, instead of driving, is an environmentally-friendly decision that removes almost 20,000 cars from area roadways EVERY DAY resulting in 110,000 less tons of emissions. Metrolink will put its new Tier 4 locomotives into service later this year and retire the older locomotives. Tier 4 locomotives are up to 85% cleaner than the locomotives they are replacing.



The Great LA River CleanUp

America's largest urban river cleanup

various clean-up efforts across the region and Metrolink encourages you to get involved. Metrolink staff is also supporting an event coordinated by the Friends of the Los Angeles River (FOLAR). The event takes place over three weekends in April at different locations along the L.A. River. Please visit <https://folar.org/cleanup/> for more information.

If Metrolink riders want to do even more to support the environment, there are



In May, Metrolink will participate in Bike to Work Week. From May 15-19, anyone who brings a bike on board Metrolink can ride for free! On May 16, from 5-6 p.m., Metrolink will hold a Twitter party for all riders to give away a variety of prizes, including Metrolink tickets, bike accessories, and a grand prize of a URB-E electric scooter. Make sure you don't miss out! To participate, use the hashtag [#Pedal2Work17](https://twitter.com/Pedal2Work17).

If you have never considered taking a bike to the train or from work to your favorite eatery, now is the perfect time to give it a try. The Los Angeles County Metropolitan Transportation Authority (Metro) is offering up to 2,000 Metrolink riders a free month in its Bike Share program. There are 61 stations and hundreds of bikes - accessible everywhere from Union Station to the Arts District and other popular hotspots across Los Angeles. To redeem your free month, visit bikeshare.metro.net/signup. Use the coupon code METROLINKAM2017 for the free trial. Offer expires: June 30, 2017.



SURF'S UP METROLINK

Southern California surfers will have a new way to get to their favorite surf spot starting May 6! All designated Bike/Board cars hold up to five surfboards in the new surf netting carriers. Soon it'll be a breeze to take your surfboards onto Metrolink trains down to San Clemente Pier and Oceanside North Strand beaches. You can also take your surfboard to Santa Monica, on Metro's Expo Line from Union Station. For more information about our Bike/Board cars, visit metrolinktrains.com/surf.



surfboards

surfboard storage how to:

- CARRY YOUR SURFBOARD ONTO THE TRAIN BEING COURTEOUS OF FELLOW PASSENGERS & SURROUNDINGS
- TO ACCESS THE STORAGE NETTING PROVIDED, UNDO THE VELCRO STRAP OPENING
- GENTLY PLACE YOUR SURFBOARD FLAT INTO THE NETTING
- IF THERE ARE MULTIPLE BOARDS, LAY THEM ON TOP OF ONE ANOTHER
- CLOSE THE VELCRO STRAP ENSURING IT IS SECURE
- PLEASE MAKE SURE TO RETURN AND SECURE ANY SURFBOARD REMOVED TO GAIN ACCESS TO YOURS

surfboard storage rules:

- SURFBOARDS MUST NOT EXCEED 6FT 4IN
- ALL SURFBOARDS MUST BE IN A SEALED SURFBOARD BAG OR CARRYING CASE
- ALL SURFBOARDS MUST BE SAFELY SECURED WITHIN THE SURFBOARD STORAGE AREA. *IN THE INTEREST OF PASSENGER SAFETY, ANY UNSECURED SURFBOARDS ARE SUBJECT TO REMOVAL.*
- SURFBOARDS MUST NEVER BLOCK SEATS, AISLES, DOORWAYS, STAIRS OR EXITS
- USE SURFBOARD CARRIER AT YOUR OWN RISK. METROLINK IS NOT RESPONSIBLE FOR DAMAGE, THEFT, OR INJURY RESULTING FROM MISUSE OF SURFBOARD CARRIER.
- METROLINK EMPLOYEES, CONDUCTORS AND LAW ENFORCEMENT OFFICERS HAVE THE AUTHORITY TO REMOVE SURFBOARDS SHOULD THERE BE ANY SAFETY CONCERNS

TAKE THE TRAIN. METROLINK.



PTC SAVES LIVES AND TIME

Metrolink is now using life-saving Positive Train Control technology to help you plan your commute. By using GPS technology, Metrolink is working to allow you to track your train's location and status. Once complete, this new feature will provide updates to the website, station electronic message boards and the Metrolink App. In the coming weeks, you will have the opportunity to try it and provide feedback. Look out for more information soon.

STOP HUMAN TRAFFICKING



If you or someone you know is being forced to engage in any activity and cannot leave – call the National Human Trafficking Resource Center at 1-888-373-7888, or the California Coalition to Abolish Slavery and Trafficking (CAST) at 1-888-KEY-2-FRE(EDOM). Victims of slavery and human trafficking are protected under federal and state law.

If you see something you feel is out of the ordinary while on the train, please call Metrolink's security hotline at (866) 640-5190. Recognizing potential red flags and knowing the indicators of human trafficking is a key step in identifying victims and helping them find the assistance they need.

Possible red flags and indicators are if a person:

- Is not free to leave or come and go as he/she wishes
- Is fearful, anxious, depressed, submissive, tense, or nervous/paranoid
- Exhibits unusually fearful or anxious behavior after bringing up law enforcement
- Avoids eye contact
- Is in poor physical health
- Lacks health care
- Appears malnourished
- Shows signs of physical and/or sexual abuse, physical restraint, confinement, or torture

This list is not exhaustive and represents only a selection of possible indicators. Learn more at humantraffickinghotline.org.

THE ENVIRONMENT MATTERS TO METROLINK: 25 YEARS OF AIR QUALITY IMPROVEMENTS



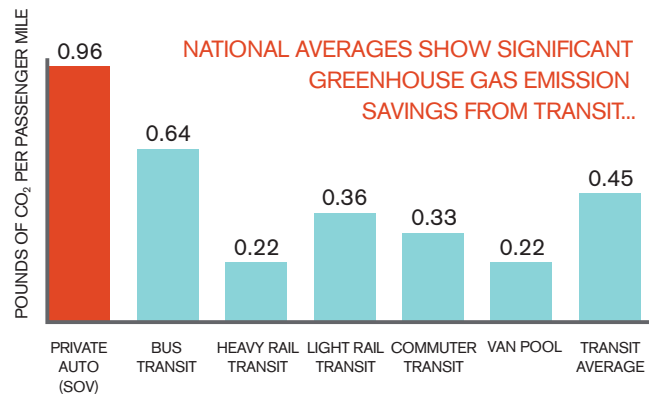
Over the past 40 years, Los Angeles has succeeded in improving its air quality in part by reducing harmful CO₂ emissions. Through the implementation of air quality standards and the efforts its citizens have made, Southern California has become an example of how megacities can take positive action to create healthier and more livable cities. In 2015, a USC study showed that children are breathing better than they did in the early 90s thanks to the air quality improvements.

One of the most effective ways people can reduce their carbon footprint, and improve the environment, is by using public transportation.

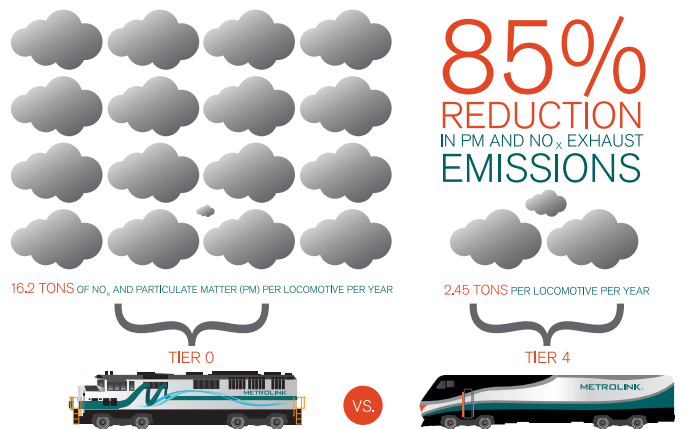
Since Metrolink began operations in 1992, approximately 225 million vehicle trips have been removed from the roadways. If those riders would've driven, the roads would be more congested and over 2.7 million tons of additional carbon monoxide would be added to the air.

Metrolink Antelope Valley Line rider, Mildred Jacla, started riding the train 15 years ago. In that time, she has reduced emissions by approximately 250,000 pounds of CO₂ emissions, which would take 11 million trees almost one year to absorb.

In addition to the positive impact Metrolink's riders have on the environment, Metrolink has made several operational changes to improve its own carbon footprint throughout the years. Between 2008 and 2010, the agency installed Automatic Engine Start/Stop technology on its locomotives to reduce idling. Additionally, in 2010, the agency installed ground power at its maintenance yards to further reduce idling and noise while equipment is being maintained.



Last year, Metrolink's first Tier 4 locomotive arrived, making Metrolink the first commuter rail agency in the nation to receive the cleanest diesel engines available. These locomotives will reduce emissions by up to 85 percent which is the equivalent of 550 tons of emissions or removing 31,320 vehicles from the roadway every year when all 40 Tier 4 locomotives are in service.



DESTINATIONS & EVENTS

CALENDAR OF SOUTHERN CALIFORNIA EVENTS AND DESTINATIONS TO REACH VIA METROLINK

For more events and destinations, go to: metrolinktrains.com/destinationsandevents

ANGELS EXPRESS TRAINS RETURN



Good news, Angels fans! Your convenient, traffic-free ride to Angel Stadium in Anaheim is back beginning March 30, and it's still only \$7!

Ride the Angels Express to all weeknight home games starting at 7:07 p.m. on the Orange County Line. On Friday nights only, Inland Empire fans can catch a ride on the Inland Empire-Orange County Line. All Angels Express trains stop at the Anaheim/ARTIC station, and from there it's an easy walk to the stadium. This season, Metrolink will operate trains to 54 weekday home games, including 14 Friday night games from the Inland Empire.

Wondering how to get your train ticket? Download the free Metrolink app from the Google Play or Apple App store, find your Angels Express tickets under Anaheim as a destination or origin, buy the ticket, and activate it prior to boarding the train. Tickets purchased at station vending machines and on the Metrolink App must be used the same day. Prices are \$7 adult round-trip, \$6 senior/disabled, or \$4 for youth (ages 6-18); children 5 and under are free with a paying adult, limit three per fare. The Angels Express service is made possible in part by the Clean Transportation Funding from the Mobile Source Air Pollution Reduction Review Committee.

SCHEDULE CHANGES

On Monday, April 3, Metrolink will make minor changes to the schedules on its Ventura County, San Bernardino, 91/Perris Valley and Inland Empire-Orange

County lines. There will be no changes to the Antelope Valley, Riverside or Orange County lines. Please visit metrolinktrains.com for more info.



As a reminder, Metrolink trains will not serve the San Bernardino or Rialto stations from March 27 to April 16. Service will resume, with a new schedule, at both stations beginning Monday, April 17. Please visit metrolinktrains.com for more details.

FULLERTON RAILROAD DAYS ARRIVES MAY 6-7



Take advantage of Metrolink's \$10 Weekend Day Pass and head to the Southern California Railway Plaza Association's 17th annual Railroad Days in Fullerton on May 6 and 7. This free community event honors the region's historic railroad "ties" through exhibits, train tours, model-trains, and much more. Metrolink is proudly involved in this event, so remember to stop by our booth to say hello. This family-friendly event is sure to be a fantastic weekend for train enthusiasts of all ages. Find out more at metrolinktrains.com/railroaddays.



CELEBRATE CINCO DE MAYO AT FIESTA BROADWAY

Take Metrolink into Los Angeles to celebrate Cinco de Mayo at the Annual Fiesta Broadway! This festival is L.A.'s signature Cinco de Mayo event and takes place along Broadway and the streets of City Hall and hosts more than 300,000 attendees. Come enjoy performances by well-known Latin American artists, authentic food from local-area vendors, and carnival-style games and rides for the whole family to enjoy!