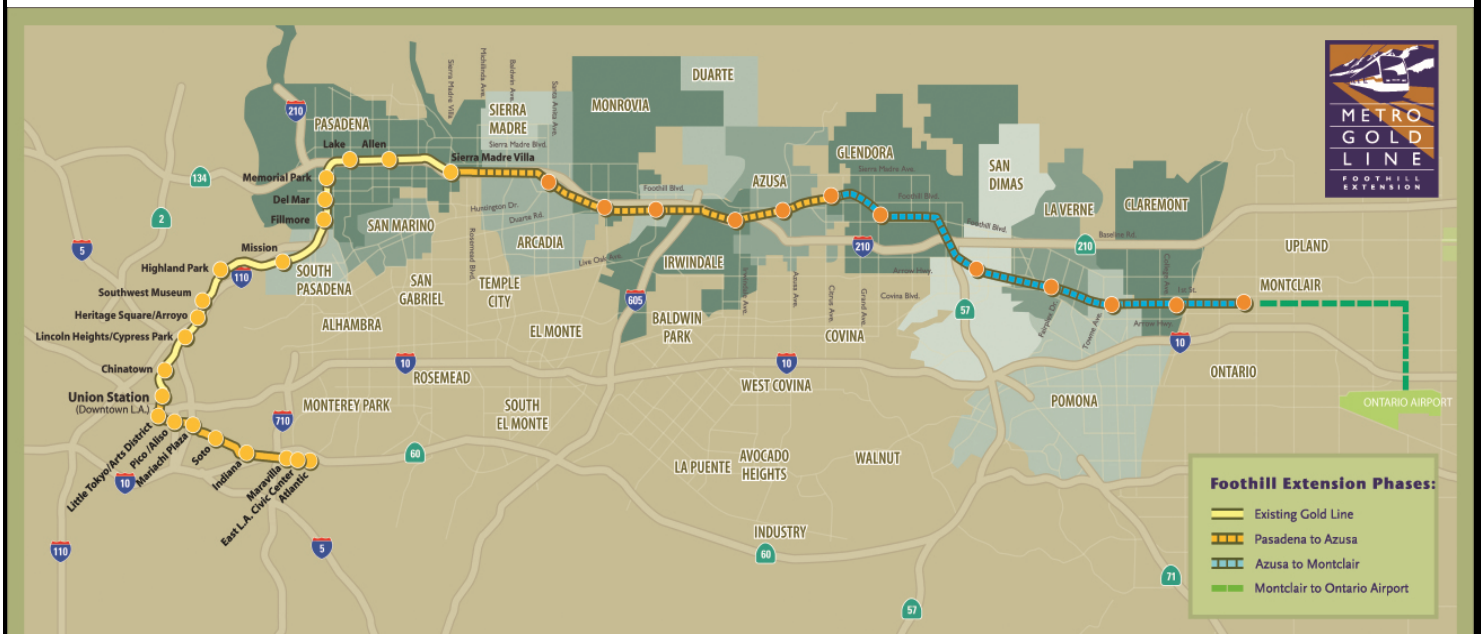


Metro Gold Line Foothill Extension Project

Monthly Project Status Report

August 2012



Metro Gold Line

Connecting Los Angeles, the San Gabriel Valley and Inland Empire



TABLE OF CONTENTS

PHASE II FOOTHILL EXTENSION PROJECT STATUS

Project Description..... 3

Pasadena to Azusa Segment..... 4

 Management Issues..... 4

 Key Activities Completed This Period 5

 Key Future Activities 6

 Critical Path Schedule 7

 Critical Path Float Trend..... 8

 IFS Structure Contract Status 9

 IFS Construction Images 10

 Alignment Contract Status 11

 Alignment Contract Status (continued)..... 12

 Alignment Construction Images..... 13

Azusa to Montclair Segment..... 14

Ontario Airport Segment..... 15

Financial Status 16



FOOTHILL EXTENSION PROJECT DESCRIPTION

The Authority's mandate is to plan, design and construct a 37-mile light rail link between Downtown Los Angeles and Claremont. In addition, the San Bernardino Associated Governments (SANBAG) has requested that planning be extended one mile inside San Bernardino County to the City of Montclair and then to Ontario Airport.

The Metro Gold Line Phase II (Foothill Extension) corridor includes the cities of Pasadena, Arcadia, Monrovia, Duarte, Irwindale, Azusa, Glendora, San Dimas, La Verne, Pomona, Claremont, and Montclair; and the counties of Los Angeles and San Bernardino (Figure 1). The Foothill Extension is estimated to cost approximately \$1.4 billion.

The Foothill Extension will be built in two segments to align effectively with projected cash flows and financial capacity constraints. The first segment is defined from the Sierra Madre Villa Station in Pasadena to the city of Azusa. Revenue service along this segment is planned for the year 2015. The second segment would include an extension from Azusa to the City of Montclair with revenue service projected for the year 2017 and the third segment will be comprised of an extension from Montclair to the Ontario Airport.

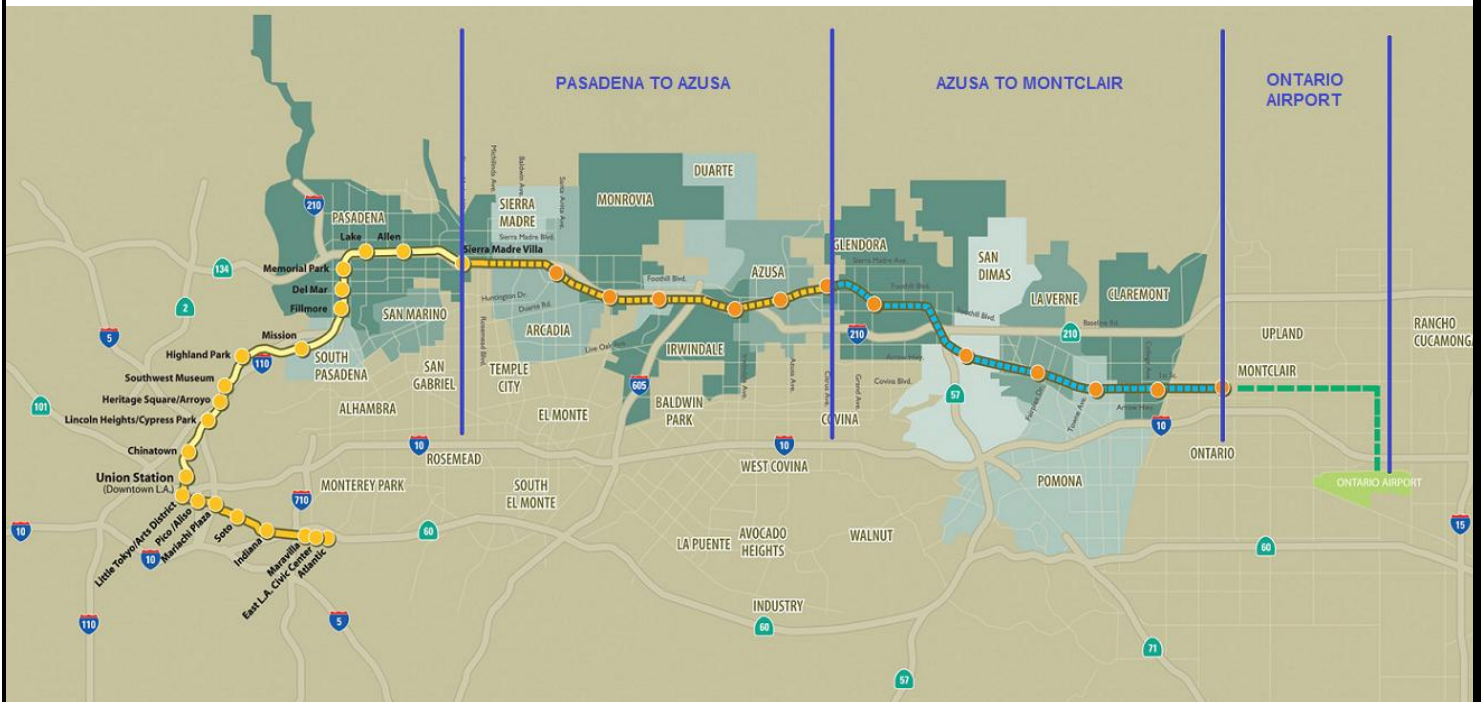


Figure 1: Metro Gold Line Foothill Extension Alignment



Pasadena to Azusa Segment

MANAGEMENT ISSUES

Metro Betterments

During the design process Metro staff have identified betterments that Metro staff would like to add to the project. Metro has provided a final disposition on all but one item. Authority staff continues to work with Metro staff to resolve the remaining item.

Irwindale Ramp Modifications

An environmental mitigation measure requires the addition of a second left turn lane from Irwindale Avenue on to the eastbound I-210 ramp. The PSR/PR document contains a widening of the ramp from two lanes to three, including a dedicated HOV lane. Caltrans staff recently requested that the dedicated HOV lane now be a metered lane. This request results in a longer ramp widening. The Authority and Caltrans have met to review the operational needs, and have identified potential configurations which may be within the scope of the C1135 Contract. A concept design will be developed by the Authority for Caltrans review.

TPSS Substations Michillinda and Soldano

The Authority has been in the process of negotiating a potential change order with the C1135 contractor, Foothill Transit Constructors (FTC), for the addition of these two substations. FTC's cost/schedule proposal exceeds the Authority's budget for the additional work. Authority staff have been unable to resolve the cost issues with FTC and will proceed to solicit bids from other potential contractors to construct the future sites and infrastructure. FTC will retain the systems portion of the work related to these substations.



KEY ACTIVITIES COMPLETED THIS PERIOD

Staff continued to attend coordination meetings with cities along the alignment.

Held regular coordination meetings with the C1134 (DB1) design-build contractor and participated in construction site visits

Continued construction work on Iconic Freeway Structure:

- Completed removal of exterior forms
- Completed concrete pour of deck
- Began post-tensioning work and removal of bridge falsework
- Submitted alternative assembly design of basket reed sections to Caltrans for approval
- Skanska reports the following safety statistics for the month of July:
 - No safety incidents recorded
 - 6,513 hours performed by Skanska
 - 67,802 total work hours performed to date
 - 0 Recordable Incidents reported
- Skanska reports the following SBE statistics for the month of July:
 - Current SBE commitment: \$1,686,613
 - SBE percent committed versus value of Project: 11.96%
 - Overall Authority Project SBE goal: 16%

Authority staff continues to meet with Metro staff to review and discuss the status of the Pasadena to Azusa segment

Held regular Task Force meetings with the C1135 (DB2) contractor, Foothill Transit Constructors (FTC)

FTC continued rail demolition and progressed critical design submittals to support the start of construction activities

Further developed advanced conceptual engineering of all parking structure facilities

Released the Request for Proposals (RFP) for the Intermodal Parking Facilities and Enhancements Project, RFP C1150 (DB3) on August 29, 2012.

Held meetings with Project stakeholders for the Intermodal Parking Facilities and Enhancements Project to discuss Industry Review Draft Contract documents

Held meetings with Project Stakeholders to resolve DB3 Industry Review comments

Continued abatement of lead, asbestos, and other hazards in the existing buildings on the M&O Facility property



KEY FUTURE ACTIVITIES

Continue discussions with corridor cities regarding station parking facilities

Continue management of the IFS contract, which will include evaluation of design and construction submittals

Continue management of the Alignment contract, which will include evaluation of design and Project management submittals

Release Addendum 1 to RFP C1150 (DB3) for the Intermodal Parking Facilities and Enhancements Project

Continue to attend to any issues that may come up by the cities along the alignment

Complete abatement of lead, asbestos, and other hazards in the existing buildings on the M&O Facility property

Transfer M&O Facility property to FTC

Finalize the following property acquisitions:

- Monrovia:
 1. Parcel 1602 (1401 Los Robles Ave, TPSS 03) – Lender requirements met. Due to close in early October.
 2. Parcel 1903 (Monrovia station strip) – Included in agreement with City of Monrovia.
 3. Parcel 1904 (Monrovia station parking) – Condemnation hearing 9/26/2012.
 4. Parcels 21A01 – 21A05 (Agency-owned M&O parcels) – Possession.
 5. Parcel 21A21 - City-owned street (North Duarte Avenue) – Due to close 10/16/2012.
- Duarte:
 1. Parcel 2602 (Duarte Station Parking – 1700 Business Center Drive) - Negotiating.
 2. Parcels 2801 and 2802 (Cal Am Water, TPSS 05) – In escrow. Due to close in early October.
 3. Parcel 2803 (Access Easement, TPSS 05) – Negotiating.
 4. Parcel 2804 (Access Easement, TPSS 05) – Preparing for Resolution of Necessity.
- Irwindale:
 1. Parcel 3302 (Irwindale Station Parking) – Negotiating. Preparing for Resolution of Necessity.
- Azusa:
 1. Parcel 3902 (736 N. Angelo Avenue) – Offer extended until 10/15/2012.
 2. Parcel 4002 (809 N. Azusa Avenue) – Counter offer due 9/23/2012. Preparing for Resolution of Necessity.
 3. Parcel 5003 (905 N. Pasadena Avenue) – Counter offer due 9/23/2012. Preparing for Resolution of Necessity.

**METRO GOLD LINE FOOTHILL
EXTENSION CONSTRUCTION AUTHORITY
Monthly Foothill Extension Project Status Report
Period Ending – August 31, 2012**

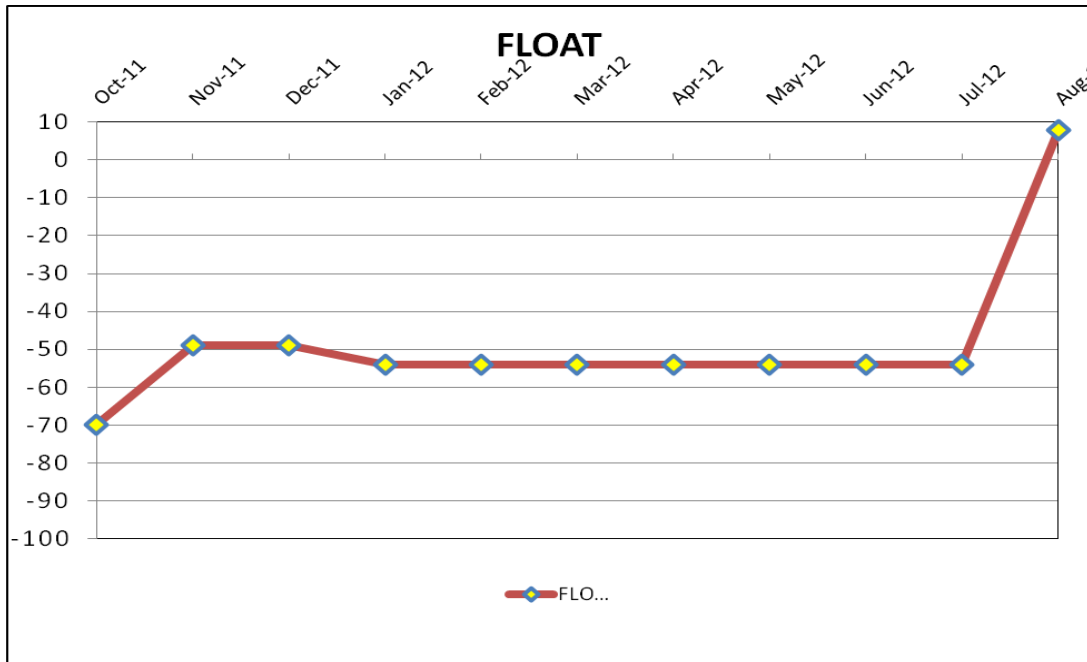


CRITICAL PATH SCHEDULE

Activity Name	OD	RD	AD	Start	Finish	Total Float	2012		2013			2014				2015				2016					
							Q2	Q3	Q4	Q1	Q2	Q3	Q4	Q1	Q2	Q3	Q4	Q1	Q2	Q3	Q4	Q1	Q2	Q3	Q4
PRIMARY CRITICAL PATH																									
RFP - LRV PROCUREMENT	375	0	557	18.Oct.10 08:00 A	26.Apr.12 15:00 A																				
LRV FABRICATION / DELIVER 15 VEHICLES	1353	1353	0	17.Aug.12 07:00	30.Apr.16 15:00	0																			
METRO - Pre-Revenue Operations - Phase 2A	60	60	0	01.May.16 07:00	29.Jun.16 15:00	0																			
METRO - Project Schedule Contingency (10 Mo.)	154	154	0	30.Jun.16 07:00	30.Nov.16 15:00	0																			
Phase 2A - Revenue Operations Date (ROD)	0	0	0		30.Nov.16 15:00*	0																			
SECONDARY CRITICAL PATH																									
C1135 - INTERIM NOTICE TO PROCEED	0	0	0	03.Nov.11 00:00 A																					
RETAINING WALLS - SEGMENT 4 - DESIGN	279	54	199	03.Nov.11 07:00 A	31.Oct.12 15:00	5																			
RETAINING WALLS - SEGMENT 4 (South Side)	126	126	0	01.Nov.12 07:00	25.Apr.13 15:00	5																			
GRADING - SEGMENT 4 (FRT)	90	90	0	04.Jan.13 07:00	09.May.13 15:00	5																			
GRADING - SEGMENT 3	75	75	0	01.Apr.13 07:00	12.Jul.13 15:00	5																			
DRAINAGE - SEGMENT 3	80	80	0	22.Apr.13 07:00	09.Aug.13 15:00	5																			
OCS FOUNDATIONS - SEGMENT 3	50	50	0	12.Aug.13 07:00	18.Oct.13 15:00	5																			
TRACK INSTALLATION - SEGMENT 3	140	140	0	23.Sep.13 07:00	04.Apr.14 15:00	5																			
TRACK INSTALLATION - SEGMENT 2	70	70	0	10.Feb.14 07:00	16.May.14 15:00	5																			
TRACK INSTALLATION - SEGMENT 1	90	90	0	24.Mar.14 07:00	25.Jul.14 15:00	5																			
TRACK INSTALLATION - SEGMENT 4 (LRT)	110	110	0	21.Apr.14 07:00	19.Sep.14 15:00	5																			
OCS - INSTALLATION - SEGMENT 4	150	150	0	18.Aug.14 07:00	13.Mar.15 15:00	5																			
OCS - TESTING - SEGMENT 4	40	40	0	16.Mar.15 07:00	08.May.15 15:00	5																			
SYSTEMS INTERGRATION TESTING	120	120	0	11.May.15 07:00	23.Oct.15 15:00	5																			
C1135 - >>>SUBSTANTIAL COMPLETION - 1420 CD<<<	0	0	0		23.Oct.15 15:00*	8																			
METRO - System Testing & Start-Up - Phase 2A	30	30	0	24.Oct.15 07:00	22.Nov.15 15:00	160																			
TERTIARY CRITICAL PATH																									
FOOTHILL BRIDGE (FRT)- DESIGN	292	94	181	01.Dec.11 07:00 A	26.Dec.12 15:00	23																			
FOOTHILL BRIDGE (FRT)- CONSTRUCTION	160	160	0	27.Dec.12 07:00	07.Aug.13 15:00	23																			
TRACK INSTALLATION - SEGMENT 4 (FRT)	250	250	0	01.Feb.13 07:00	16.Jan.14 15:00	7																			



CRITICAL PATH FLOAT TREND



Critical Path Analysis

Primary Critical Path - (0 Calendar Days / 0 Work Days)

This period, the critical path shifted from the Foothill freight bridge design and construction to the Metro Light Rail Vehicle (LRV) fabrication. The critical path shift is due to a delay in issuing Notice to Proceed to the LRV manufacturer and changes to the anticipated delivery of the 15 vehicles. The critical path continues through Metro Pre-Revenue Operations, and schedule contingency (5 months). The Metro Revenue Operations Date is currently on schedule for November 30, 2016.

Secondary Critical Path - (8 Calendar Days / 5 Work Days)

This period, the secondary critical path shifted to the Segment 4 retaining walls design and construction. The critical path shift is due to delay to the retaining wall design package delivery. The critical path continues through the Segment 4 freight track grading; Segment 3 grading, drainage, OCS pole foundation installation, and track installation; and track installation at Segment 2 and 1. Upon the completion of Segment 1, the track installation will return to the east in Segment 4 Light Rail Transit section. The path continues through Segment 4 OCS installation and testing. Systems Integration will begin after Segment 4 testing is complete. Upon completion of Systems Integration testing, the C1135 contractor will achieve Substantial Completion and turn over to Metro for Pre-Revenue Testing.

Project Float

This period, the Foothill Extension Funding Agreement was modified by both Metro and the Authority. The Alignment Substantial Completion was revised from July 2015 to October 2015. The Target Revenue Operations Date was revised from October 2015 to November 2016. Per the revised agreement, the Substantial Completion milestone is 8 calendar days ahead. The target ROD is on schedule for November 2016.

**METRO GOLD LINE FOOTHILL
EXTENSION CONSTRUCTION AUTHORITY
Monthly Foothill Extension Project Status Report
Period Ending – August 31, 2012**



Description: Iconic Freeway Structure

Status: August 17, 2012

Contract No.: C1134

Contractor: Skanska

Progress Completed This Period:

Construction: During this reporting period, the contractor completed the installation of the lost deck and deck rebar. In addition, the concrete deck was poured on August 1st. The contractor completed the removal of the exterior forms.

Design: The basket reeds design was submitted to Caltrans for review. The review comments for the design submittal are expected in September 2012.

Areas of Concern:

The contractor is fifty-four (54) days behind schedule with a few months of work to complete. The lengthy design and approval period for the architectural baskets and reed elements continues to threaten the substantial completion deadline. The Authority is working closely with the contractor, Caltrans and structural designers to facilitate a timely solution.

The Authority is also recommending that the retaining walls for the bridge approach fills be completed under the C1134 contract. The addition of this work will result in a time extension to the contract. The program schedule reflects adequate schedule float to accommodate a potential time extension.

Schedule Assessment:

The contractor completed the installation of the deck and the removal of the exterior forms. The post-tension activities will begin next period and will be followed by the release of falsework.

This period, the Substantial Completion forecast slipped (5) days from last period. The slip is due to late start of the pre-cast reed design. Caltrans and the contractor are finalizing a concept for securing the pre-cast reed elements to the top of the Bent 3 outrigger.

Cost Assessment:

The current Contract cost forecast increased from 19.50 million to 19.61 Million. The cost increase is due to Potential Change Order 013 - Retaining Walls at Approaches and potential cost due to an RFC for additional stripping requirements.

This period the budget increased \$300K due to a transfer of funds from the Alignment Contract to the IFS Contract. The transfer was initiated to provide funding for Potential Change Order 013.

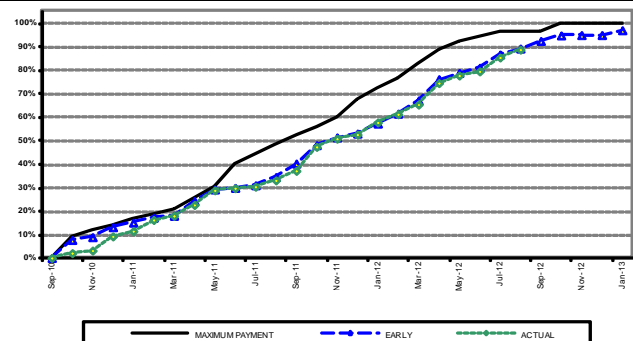
Schedule Summary:

Contract Award:	06/18/10		
Notice to Proceed (NTP) :	08/03/10		
Original Contract Duration:	880	Calendar Days	
Current Contract Duration:	945	Calendar Days	
Elapsed Time from NTP:	745	Calendar Days	

Cost Summary:

	Million(s)
CONTRACT	
Contract Award Value:	18.57
Executed Change Orders:	0.21
Current Contract Value:	18.78
Potential Change Orders:	0.83
Current Forecast:	19.61
Earned Value/Actual Cost to Date	16.04
AUTHORIZATION FOR EXPENDITURE	
Budget	19.80
Commitment	19.50
Balance	(0.11)

Milestones	Description	Original Contract	Current Contract	Forecast	Variance
1	Substantial Completion	07/03/12	09/06/12	10/30/12	(54)
2	Punchlist Complete	10/01/12	12/05/12	01/28/13	(54)
3	Final Acceptance	12/30/12	03/05/13	04/28/13	(54)





Change Management Log

Date: 9/19/2012

Page: 1 of 1

Project: C1134 IFS - Skanska Contract #: C1134

Original Contract Amount:	\$19,800,000				
Approved Change Orders:	\$958,182	4.84%	Pending Change Orders:	\$0	0.00%
Current Contract Total:	\$20,758,182		Pending Contract Total:	\$20,758,182	4.84%

Change Orders

Number	Change Management	Title	Initiated Date	Approved Date	Outstanding Days	Time Extension	Amount
EXECUTED Change Orders							
001.00	001.00	Project Concept Advisor Services	2/15/2011	2/15/2011	0		\$0
002.00	002.00	Professional Liability Insurance	3/9/2011	3/9/2011	0		\$0
003.00	003.00	Sound Wall Requirement Changes	4/25/2011	4/25/2011	0		(\$38,552)
004.00	008.00	Deletion of Abutment 14	10/28/2011	10/28/2011	0		\$41,739
005.00	009.00	Additional Superstructure Arch Chng	12/14/2011	12/15/2011	1		\$122,259
006.00	010.00	Drainage System Location	12/22/2011	12/22/2011	0		\$5,617
007.00	011.00	Caltrans Requested Renderings	3/1/2012	3/2/2012	1		\$14,768
008.00	012.00	Time Extension	4/11/2012	4/13/2012	2	65	\$0
009.00	005.00	Aesthetic Lighting, Misc Extra Work	7/18/2012	7/19/2012	1		\$61,094
010.00	007.00	Architectural Features	9/5/2012	9/12/2012	7		\$18,494
011.00	013.00	Retaining Walls at IFS Approaches	9/18/2012	9/18/2012	0	84	\$732,762
						Subtotal:	\$958,182
						Subtotal:	\$958,182
						Total:	\$958,182

Open PCOs

PCO Number	Title
OPEN	
006.00	Landscape/Hardscape
015.00	Added Falsework Stripping Req'ts.

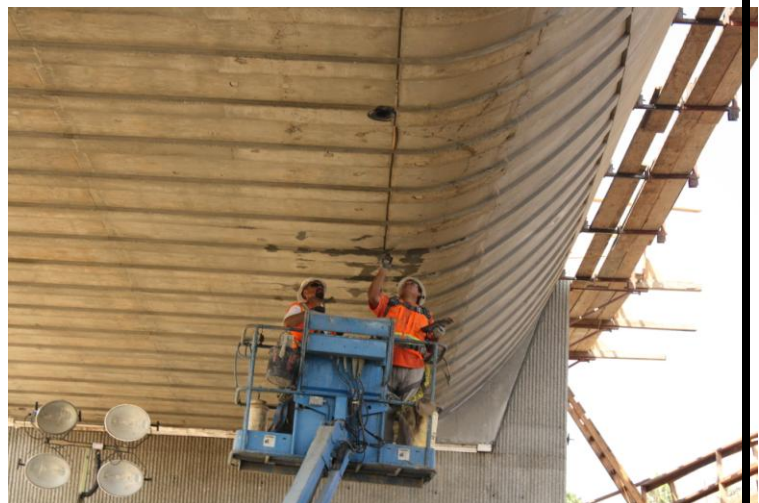
IFS Construction Images

View of removed
exterior formwork



Falsework removal
in process

View of
bridge soffit



**METRO GOLD LINE FOOTHILL
EXTENSION CONSTRUCTION AUTHORITY
Monthly Foothill Extension Project Status Report
Period Ending – August 31, 2012**



Description: Alignment Design / Build

Status: August 17, 2012

Contract No.: C1135

Contractor: Foothill Transit Constructors (Kiewit-Parsons J.V.)

Progress Completed This Period

- Submit Community Construction Safety Plan
- Submit 85% Design - M&O Facility Track Alignment
- Submit 85% Design - Traffic Signal & Lighting M&O Facility
- Submit 100% Design - MOT & Detours Segment 4
- Submit 85% Design - M&O Facility Civil Site
- Submit 100% Design - Civil Roadway Segment 4
- Submit 85% Design - Grading & Drainage - Segments 4 (West)
- Submit 85% Design - Contract Utilities M&O
- Submit 100% Design - Contract Utilities Segment 4
- Submit 85% Design - 5th Ave Pedestrian Crossing
- Submit 85% Design - Saw Pit Wash Bridge
- Submit 85% Design - San Gabriel River Bridge
- Submit 85% Design - Foothill BI LRT Bridge
- Submit 100% Design - Palm Dr Freight Bridge
- Submit 100% Design - Palm Dr LRT Bridge
- Submit 100% Design - Citrus Ave Freight Bridge
- Submit 100% Design - Citrus Ave LRT Bridge
- Submit 100% Design - IFS Modifications
- Submit 60% Design - Traction Power - M&O Facility
- Submit 60% Design - OCS - M&O Facility
- Submit 85% Design - M&O Facility

Activities Planned Next Period

- Submit IFC Design - IFS Modifications
- Submit 100% Design - Track Alignment
- Submit 100% Design - Walls Segment 4 (East)
- Submit 100% Design - M&O Facility Track Alignment
- Submit 85% Design - Civil Roadway Segment 2 & 3
- Submit 85% Design - Traffic Signal & Lighting Segment 2 & 3
- Submit IFC Design - Traffic Signal & Lighting Segment 4
- Submit 85% Design - Foothill BI Freight Bridge
- Submit 100% Design - Grading & Drainage - Segments 4 (East)
- Submit 100% Design - Grading & Drainage - Segments 4 (West)
- Submit 100% Design - Citrus Ave Freight Bridge
- Submit 100% Design - MOT & Detours Segment 2 & 3
- Submit 85% Design - Colorado BI Bridge
- Submit 85% Design - Contract Utilities Segment 2
- Submit 85% Design - Santa Anita Ave Bridge
- Submit 85% Design - Huntington Drive Bridge
- Submit 85% Design - Santa Anita Wash Bridge
- Submit 85% Design - Alta Vista Wash Bridge
- Submit IFC Design - Palm Dr LRT Bridge
- Submit IFC Design - Citrus Ave LRT Bridge
- Submit 85% Design - Communications Mainline

Areas of Concern

- Monrovia Yard TPSS utility feed. The Design-Build Contractor is proposing to provide one (1) electrical source feed to the TPSS. The Authority and Design-Build Contractor are reviewing the Metro Design Criteria and developing a path forward for a resolution to this issue.

Areas of Concern (Continued)

**METRO GOLD LINE FOOTHILL
EXTENSION CONSTRUCTION AUTHORITY**
Monthly Foothill Extension Project Status Report
Period Ending – August 31, 2012



Description: Alignment Design / Build

Status: August 17, 2012

Contract No.: C1135

Contractor: Foothill Transit Constructors (Kiewit-Parsons J.V.)

Cost Summary:

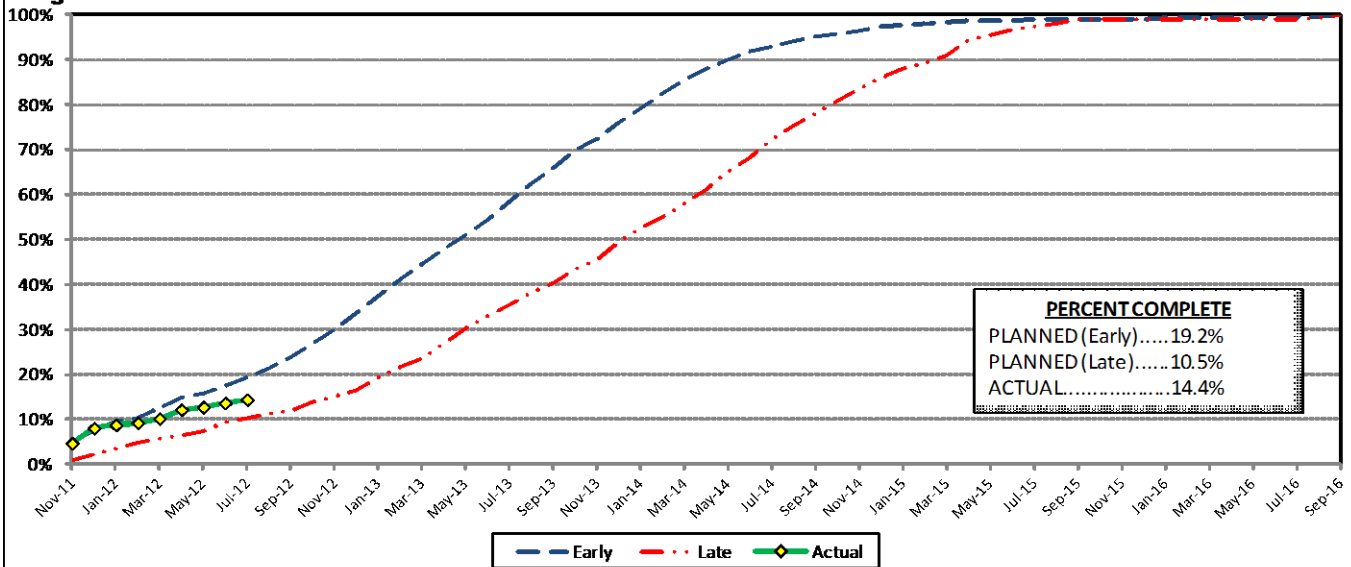
	Million(s)
CONTRACT	
Contract Award Value:	485.9
Executed Change Orders:	0.1
Current Contract Value:	486.0
Potential Change Orders:	7.3
Current Forecast:	493.3
Eamed Value/Actual Cost	69.0
AUTHORIZATION FOR EXPENDITURE	
Budget	503.6
Commitment	503.6
Balance	10.2

Cost Assessment:

This period the Contract forecast increased from \$488.0 Million to \$493.3 Million. The potential cost increase is due to the increased Design-Build contractor's proposal to complete the design and installation of two additional substation locations at Michillinda Ave and Soldano Ave. Due to the potential cost, the Authority may solicit bids to potential contractors to obtain a more competitive price for the additional work.

The Design-Build contractor has earned 69.0 Million and is currently 14.4% complete.

Progress Curve



Schedule Summary:

Contract Award:	07/27/11
Interim Notice to Proceed (NTP):	11/03/11
Original Contract Duration:	1,780 Calendar Days
Current Contract Duration:	1,780 Calendar Days
Elapsed Time from NTP:	288 Calendar Days

Contract Milestones

Milestones	Description	Original Contract	Current Contract	Forecast	Variance
1	Substantial Completion	09/23/15	09/23/15	10/23/15	(30)
2	Runchlist Complete	06/19/16	06/19/16	07/19/16	(30)
3	Final Completion	09/17/16	09/17/16	10/17/16	(30)
4	Access - IFS Br.	12/15/12	12/15/12	12/15/12	0
5	Test Track Complete	03/27/15	03/27/15	03/10/15	17
6	Colorado Br. Demo Complete	02/01/12	02/01/12	6/15/2012 A	(135)

Schedule Assessment

This period, the Substantial Completion milestone slipped one month due to potential design delays associated with the Foothill Blvd Freight bridge and the Segment 4 Retaining Walls. At this time, the two noted designs are the most critical to support the relocation of the existing freight mainline track. The contractor is maintaining the schedule with other designs, which were previously on the critical path to support the freight track relocation. The 100% designs for the Segment 4 Utilities, Citrus Ave Bridges, and the Palm Dr Bridges were completed. The Substantial Completion Milestone is behind schedule and is forecast to be complete on October 23, 2015.

The IFS Access is anticipated on December 15, 2012 which is per the contractual requirement. At this time the access is based upon the C1134 contractor achieving Substantial Completion. There is a potential for shared access after the C1134 Substantial Completion to complete non-structural work activities.

The Test Track Completion is forecast to be complete on March 10, 2015. At this time, all activities are progressing on schedule to be complete the test track by March 27, 2015.



Change Management Log

Date: 9/19/2012

Page: 1 of 1

Project: C1135 Alignment - FTC Contract #: C1135

Original Contract Amount:	\$505,567,000				
Approved Change Orders:	\$281,023	0.06%	Pending Change Orders:	\$184,657	0.04%
Current Contract Total:	\$505,848,023		Pending Contract Total:	\$506,032,680	0.09%

Change Orders

Number	Change Management	Title	Initiated Date	Approved Date	Outstanding Days	Time Extension	Amount
EXECUTED Change Orders							
001.00	000.00	Interim NTP	11/3/2011	11/3/2011	0		\$0
002.00	013.00	Colorado Bridge Haz Mat	5/17/2012	5/18/2012	1		\$121,382
002.01	013.01	Colorado Bridge HazMat - Final	9/5/2012	9/7/2012	2		\$13,164
003.00	001.00	Sound Wall Deletion - Duarte Road	7/12/2012	7/18/2012	6		(\$74,707)
004.00	018.00	Revise Block Design - CBD Calc	8/23/2012	8/29/2012	6		\$3,986
005.00	023.00	Wayside Signal Aspect Revision	9/6/2012	9/7/2012	1		\$26,072
006.00	040.00	Arcadia Frieze, Bench-Artist Design	9/6/2012	9/10/2012	4		\$13,683
007.00	019.02	Soils Testing Abutments & Fdns	9/14/2012	9/18/2012	4		\$44,993
008.00	041.00	Unknown Utilities RFCN 005 006 008	9/14/2012	9/18/2012	4		\$132,450
						Subtotal:	\$281,023
						Subtotal:	\$281,023
PENDING Change Orders							
009.00	038.00	Illuminate City Names @ Stations	9/18/2012		1		\$184,657
						Subtotal:	\$184,657
						Subtotal:	\$184,657
						Total:	\$465,680

Open PCOs

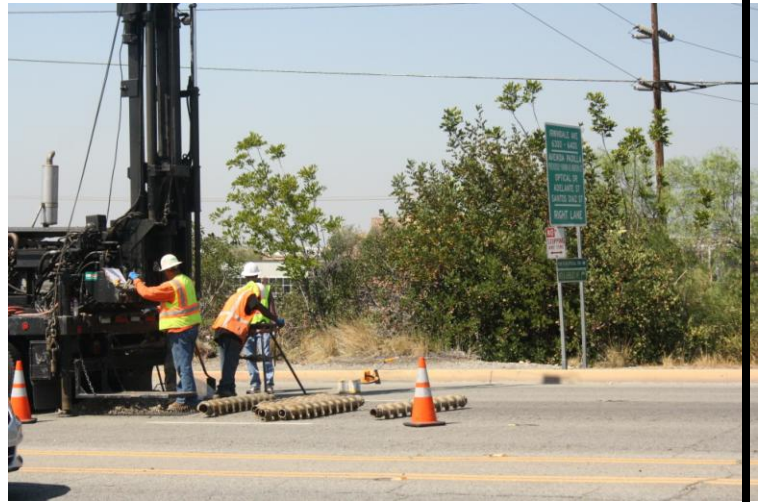
PCO Number	Title
OPEN	
002.00	Relocation of Access Road to 3M Fac
003.01	Systems and Testing for Added TPSS
004.00	Station Architectural Changes
005.02	IDIQ Communications Contract (Rev 2)
006.00	IFS Related Scope Modifications
007.00	Proposed Changes to FLS Criteria
011.00	Add 3 Electrical Conduits for ALW
012.00	SCE Relocation Duarte Rd (UG)
013.01	M&O - Materials Storage Revisions
015.01	New Location for Layover Building
016.01	Arcadia Frieze & Bench-Construction
017.00	Santa Anita Trail Detour
018.00	Totten Tubes Credit
019.00	City of Hope Conduits
020.00	Landscaping-North side of Duarte Rd

Open RFCs

RFC Number	Title
OPEN	
009.00	HazMat - Various Bridges

Alignment Construction Images

Geotechnical boring
in Irwindale



Abatement work at M&O Facility
existing buildings

Clearing and grubbing
work in Irwindale





Azusa to Montclair Segment

Staff is working with Parsons Brinckerhoff (PB) to prepare responses for incoming public comments on the Draft Environmental Impact Report (DEIR) for the Azusa to Montclair extension Project and finalize the format and presentation for the September public hearings.

ACTIVITIES COMPLETED THIS PERIOD

PB completed preparation of the Draft EIR around mid-August. The Authority released the DEIR for public review on August 21st for a 45-day review period that ends October 5th. The Authority has started to receive public comments. The Authority and PB team continue to finalize the format and the presentation for the upcoming public hearings, schedule for September 20th and 24th.

KEY FUTURE ACTIVITIES

The Authority continues to receive comments from the public during the 45-day review period which ends October 5th. The Authority and its environmental team will host the Public Hearings, which are scheduled for September 20th and 24th. The environmental team will start to prepare responses to the public comments as part of the administrative record.

Federal Transit Administration (FTA)

The Metro Board excluded the Gold Line from seeking federal New Starts funding. The Authority will work together with Metro along with the Congressional delegation to seek funding to construct the extension following completion of the environmental review.



Ontario Airport Segment

Authority staff continues the negotiation process with KOA Corporation for the Ontario Airport segment alternatives analysis study which will likely begin later this year.

ACTIVITIES COMPLETED THIS PERIOD

Staff continued to pursue the needed funding to conduct the Alternatives Analysis for the Ontario Airport Segment. The San Bernardino Associated Governments (SANBAG) and the Authority are in discussions to develop a funding agreement for a portion of the initial Alternatives Analysis study.

KEY FUTURE ACTIVITIES

Authority staff will work to obtain funding for this Segment and complete negotiations with KOA.

**METRO GOLD LINE FOOTHILL
EXTENSION CONSTRUCTION AUTHORITY
Monthly Foothill Extension Project Status Report
Period Ending – August 31, 2012**



**PHASE II FOOTHILL EXTENSION FINANCIAL STATUS
Project Operating Budget Summary in Millions of Dollars
August 31, 2012**

	(a)	(b)	(c=a-b)	(d)
FINANCIAL PLAN	Current Budget	Funding Committed to Project	Uncommitted Funds	Revenues Received
SCAG	1.0	0.9	0.1	0.9
Interest Income	2.0	2.0	-	2.0
Bridge Replacement	13.9	13.9	-	13.9
Phase I Carryover	4.0	4.0	-	4.0
Maintenance and Operations Facility	-	-	-	-
Cities	11.0	-	11.0	-
Measure R - Pasadena to Azusa	735.0	735.0	-	148.9
Measure R - Azusa to Montclair	-	-	-	-
SANBAG	55.2	1.5	53.7	1.5
Federal TCSP	2.9	2.9	-	2.3
Federal Bus Intermodal Plan	9.0	9.0	-	2.1
Federal New Starts 2004 MTA Passthrough	4.0	4.0	-	4.0
Federal New Starts 2005 MTA Passthrough	0.5	0.5	-	0.5
Federal New Starts 2006 Corridor Study	2.5	2.5	-	2.1
Federal/Other	580.8	-	580.8	-
Total Revenues	1,421.8	776.2	645.6	182.2
	(a)	(b)	(c)	(d=a-b)
	Current Budget	Current Obligation	Current Expenditures	Current Available Balance
EXPENSES				
Program Management and Administration	101.9	50.0	48.8	51.9
Master Cooperative Agreements	12.0	2.2	2.1	9.8
Real Estate including ROW Acq	27.0	9.8	9.8	17.2
Special Programs	0.3	-	-	0.3
Procurement/Vehicles	60.0	-	-	60.0
Maintenance and Operations Facility Land	22.0	21.7	21.8	0.3
Construction - IFS	19.5	18.6	15.2	0.9
Construction - Pasadena to Azusa segment	330.8	314.8	57.4	16.0
Construction - Azusa to Montclair segment	658.8	-	-	658.8
Construction - M&O	46.0	44.0	4.6	2.0
Construction - Parking Structures	32.5	-	-	32.5
MTA Project Costs	64.0	12.9	13.0	51.1
Contingency	27.4	-	-	27.4
Project Reserve	19.6	-	-	19.6
Total Project	1,421.8	474.0	172.7	947.8