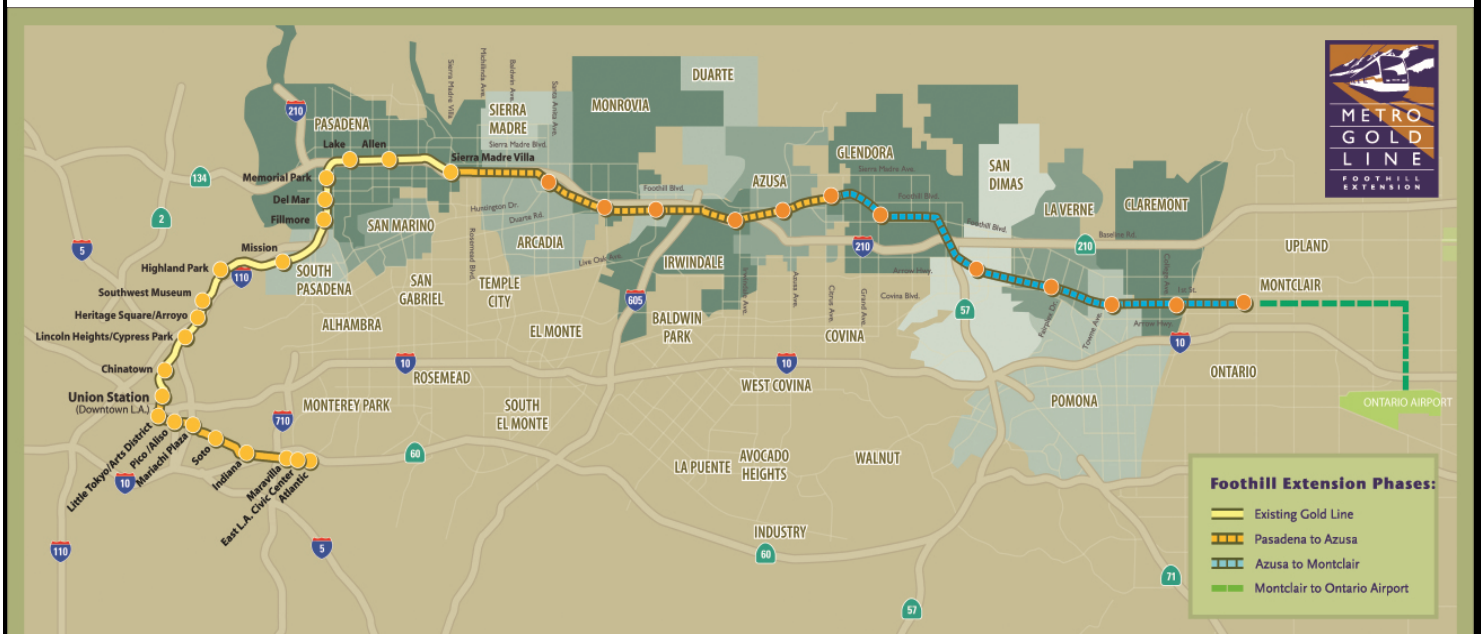


# Metro Gold Line Foothill Extension Project

## Monthly Project Status Report

November 2012



Metro Gold Line

Connecting Los Angeles, the San Gabriel Valley and Inland Empire



## TABLE OF CONTENTS

### PHASE II FOOTHILL EXTENSION PROJECT STATUS

<b>Project Description.....</b>	<b>3</b>
<b>Pasadena to Azusa Segment.....</b>	<b>4</b>
Management Issues.....	4
Key Activities Completed This Period .....	5
Key Future Activities .....	6
Critical Path Schedule .....	8
Critical Path Float Trend.....	9
Gold Line Bridge Contract Status .....	10
Gold Line Bridge Construction Images.....	11
Alignment Contract Status .....	12
Alignment Contract Status (continued).....	13
Alignment Construction Images.....	14
<b>Azusa to Montclair Segment.....</b>	<b>15</b>
<b>Ontario Airport Segment.....</b>	<b>16</b>
<b>Financial Status .....</b>	<b>17</b>



**FOOTHILL EXTENSION PROJECT DESCRIPTION**

The Authority’s mandate is to plan, design and construct a 37-mile light rail link between Downtown Los Angeles and Claremont. In addition, the San Bernardino Associated Governments (SANBAG) has requested that planning be extended one mile inside San Bernardino County to the City of Montclair and then to Ontario Airport.

The Metro Gold Line Phase II (Foothill Extension) corridor includes the cities of Pasadena, Arcadia, Monrovia, Duarte, Irwindale, Azusa, Glendora, San Dimas, La Verne, Pomona, Claremont, and Montclair; and the counties of Los Angeles and San Bernardino (Figure 1). The Foothill Extension is estimated to cost approximately \$1.4 billion.

The Foothill Extension will be built in two segments to align effectively with projected cash flows and financial capacity constraints. The first segment is defined from the Sierra Madre Villa Station in Pasadena to the city of Azusa. Revenue service along this segment is planned for the year 2015. The second segment would include an extension from Azusa to the City of Montclair with revenue service projected for the year 2017 and the third segment will be comprised of an extension from Montclair to the Ontario Airport.

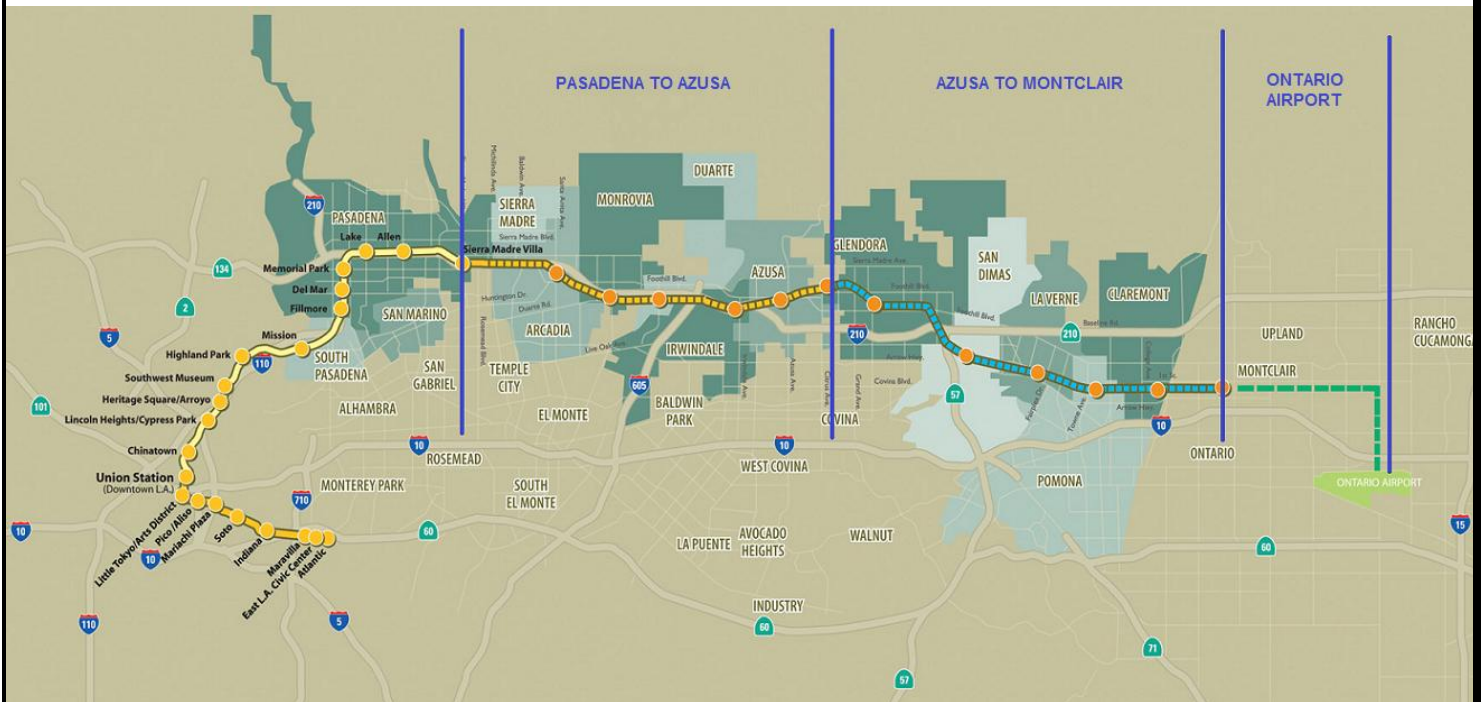


Figure 1: Metro Gold Line Foothill Extension Alignment



## **Pasadena to Azusa Segment**

### **MANAGEMENT ISSUES**

#### **Metro Betterments**

During the design process Metro staff have identified betterments that Metro staff would like to add to the project. Metro has provided a final disposition on all but a few items. Authority staff continues to work with Metro staff to resolve the remaining items.

#### **TPSS Substations Michillinda and Soldano**

The Authority has been in the process of negotiating a potential change order with the C1135 contractor, Foothill Transit Constructors (FTC), for the addition of these two substations. FTC's cost/schedule proposal exceeds the Authority's budget for the additional work. Authority staff have been unable to resolve the cost issues with FTC and will proceed to solicit bids from other potential contractors to construct the future sites and infrastructure. FTC will retain the systems portion of the work related to these substations. Authority staff have negotiated the cost of the change order for the systems portion of the work that will be done by FTC and obtained Board approval for this work at the November 14<sup>th</sup> meeting. This item will be removed from the management issues next reporting period.

#### **Deviations**

During the final design process there are instances where the project cannot comply with or it does not make sense to comply with either the Metro or Southern California Regional Rail Authority (SCRRA) design criteria. When these instances occur a deviation request is submitted to the appropriate agency. A number of deviation requests are with Metro and SCRRA for their approval. Several design packages are complete and ready for final approval pending approval of these deviation requests. Metro staff have made significant progress towards processing these open deviation requests but some still remain unresolved. SCRRA staff have also made progress towards processing their open deviation requests but some remain unresolved with SCRRA as well. Authority staff will continue to work with both Metro and SCRRA to resolve all outstanding requests.



## **KEY ACTIVITIES COMPLETED THIS PERIOD**

Staff continued to attend coordination meetings with cities along the alignment.

Held regular coordination meetings with the C1134 (DB1) design-build contractor and participated in construction site visits

Continued construction work on Iconic Freeway Structure:

- Completed installation of pre-cast basket panels, south side slope restoration, and retaining walls 1, 2, and 4
- Began installation of architectural lighting conduits, barrier rail installation, and retaining wall 3
- Skanska reports the following safety statistics for the month of August:
  - No safety incidents recorded
  - 4,756 hours performed by Skanska
  - 72,970 total work hours performed to date
  - 0 Recordable Incidents reported
- Skanska reports the following SBE statistics for the month of August:
  - Current SBE commitment: \$1,845,300
  - SBE percent committed versus value of Project: 12.85%
  - Overall Authority Project SBE goal: 16%

Authority staff continues to meet with Metro staff to review and discuss the status of the Pasadena to Azusa segment

Held regular Task Force meetings with the C1135 (DB2) contractor, Foothill Transit Constructors (FTC)

FTC continued rail demolition and progressed critical design submittals to support the start of construction activities

26 of 82 AFC packages completed for C1135 project

Further developed advanced conceptual engineering of all parking structure facilities

Received proposals from three shortlisted Design-Build firms for DB3 (C1150) Contract and began performance of committee reviews for the proposals

Released Addendum #5 to the Request for Proposals (RFP) for the Intermodal Parking Facilities and Enhancements Project, RFP C1150 (DB3) on November 30<sup>th</sup>

Continued demolition of structures on the Gold Line Operations Campus

Completed abatement of lead, asbestos, and other hazards in the existing buildings on the Gold Line Operations Campus



## **KEY FUTURE ACTIVITIES**

Continue discussions with corridor cities regarding station parking facilities

Grant Substantial Completion for the Gold Line Bridge contract

Continue management of the Alignment contract, which will include evaluation of design and Project management submittals

Transfer Gold Line Bridge to Alignment contractor December 15<sup>th</sup>

Release Addendum 6 to RFP C1150 (DB3) for the Intermodal Parking Facilities and Enhancements Project

Hold discussions with DB3 proposers upon completion of reviews by each evaluation committee

Receive final/revised proposals from three shortlisted Design-Build firms for DB3 (C1150) Contract

Continue to attend to any issues that may come up by the cities along the alignment

Complete demolition of all buildings on the Gold Line Operations Campus (GLOC) and begin grading

Finalize the following property acquisitions:

- Arcadia:
  1. Parcel 6008 (Huntington Bridge Abutment easement) – Meet with owner 1/10/2013
  2. Parcel 6027 (2 La Porte St.) – Appraisal underway.
- Monrovia:
  1. Parcel 1601 (Encino Avenue) – Included in agreement with City of Monrovia.
  2. Parcel 1803 (1703 S. Magnolia Ave.) – Appraisal underway.
  3. Parcel 1804 (1631 S. Magnolia Ave.) – Appraisal underway.
  4. Parcel 1902 (1726 S. Magnolia Ave.) – Appraisal underway.
  5. Parcel 1903 (Monrovia station strip) – Included in agreement with City of Monrovia.
  6. Parcel 1904 (Monrovia station parking) – Condemnation papers filed with the court.
  7. Parcel 1905 (1726 S. Myrtle Ave.) – Set Just compensation at 12/12/2012 Board meeting.
  8. Parcel 1906 (145 W. Duarte R.) – Appraisal underway.
  9. Parcels 21A01 – 21A05 (City of Monrovia GLOC parcels) – Possession.
  10. Parcel 21A21 - City of Monrovia (Little Duarte Ave.) – Vacated.
  11. Parcel 21A22 – City of Monrovia (Shamrock Ave.) – City Council approved. Preparing to vacate.
  12. Parcel 2101 (1713 S. California Avenue) – Appraisal complete. FTC to make minor changes in design.
  13. Parcel 2103 (401 Monrovista) – Set Just compensation at 12/12/2012 Board meeting.
  14. Parcel 2205 (Home Depot) – Appraisal underway.
  15. Parcel 6020 (1406 Radford St.) – Appraisal underway.
  16. Parcel 6024 (1625 S. Magnolia Ave.) – Appraisal underway.
  17. Parcel 6020 (1721 S. Magnolia Ave.) – Appraisal underway.

**METRO GOLD LINE FOOTHILL  
EXTENSION CONSTRUCTION AUTHORITY  
Monthly Foothill Extension Project Status Report  
Period Ending – November 30, 2012**



- Duarte:
  1. Parcel 2401 (1727 Buena Vista) – Appraisal underway
  2. Parcel 2402 (1258 E. Duarte Road) – Set Just compensation at 12/12/2012 Board meeting.
  3. Parcel 2602 (Duarte Station Parking – 1700 Business Center Drive) - Negotiating. Resolution of Necessity hearing 12/12/2012.
  4. Parcel 2603 (1801 Highland Avenue) – Set Just compensation at 12/12/2012 Board meeting.
  5. Parcel 2803 (Access Easement, TPSS 05) – Agreement. Waiting for seller to sign PSA.
  6. Parcel 2804 (Access Easement, TPSS 05) – Condemnation papers filed with the court. Prejudgment possession hearing in early 2013.
- Irwindale:
  1. Parcel 3302 (Irwindale Station Parking) – Resolution of Necessity hearing 12/12/2012.
- Azusa:
  1. Parcel 3902 (736 N. Angelo Avenue) – Counter-offer received, Board to review 12/12/2012.
  2. Parcel 4002 (809 N. Azusa Avenue) – Seller preparing counter-offer. Prejudgment possession hearing in early 2013.
  3. Parcel 5003 (905 N. Pasadena Avenue) – Agreement. Possession in December.



**METRO GOLD LINE FOOTHILL  
EXTENSION CONSTRUCTION AUTHORITY  
Monthly Foothill Extension Project Status Report  
Period Ending – November 30, 2012**



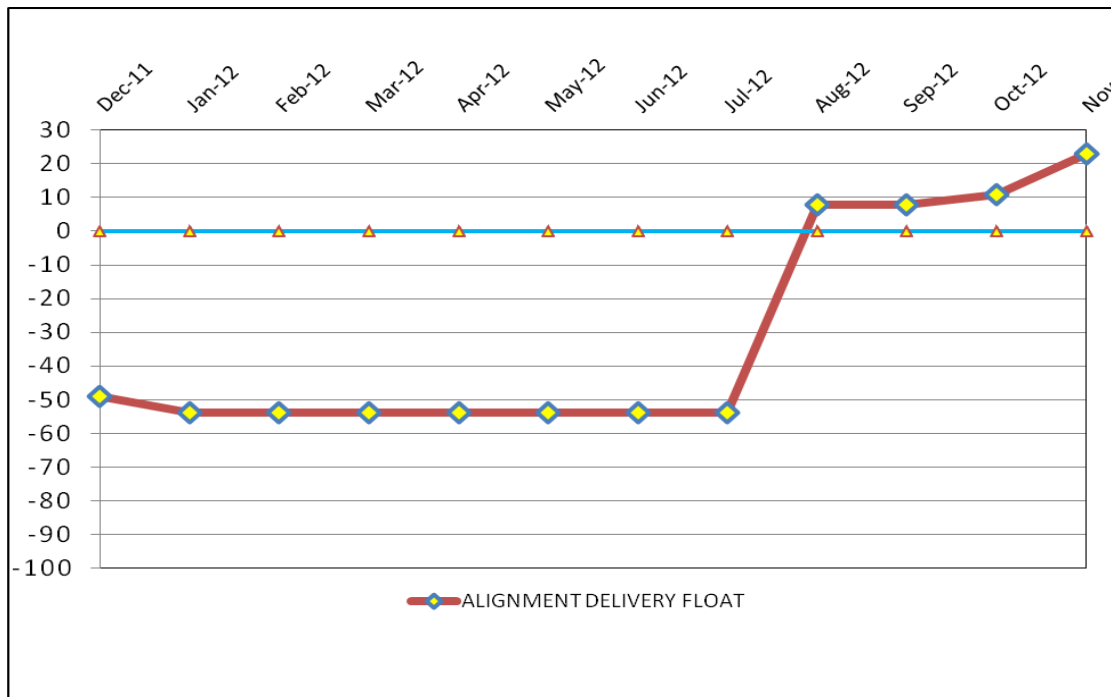
**CRITICAL PATH SCHEDULE**

Activity Name	OD	RD	AD	Start	Finish	Total Float	2012												2013				2014				2015				2016				2017	
							Q2	Q3	Q4	Q1	Q2	Q3	Q4	Q1	Q2	Q3	Q4	Q1	Q2	Q3	Q4	Q1	Q2	Q3	Q4	Q1	Q2	Q3	Q4	Q1	Q2	Q3	Q4	Q1	Q2	
<b>REVENUE OPERATIONS DATE - CRITICAL PATH</b>																																				
LRV FABRICATION / DELIVER 15 VEHICLES	1353	1263	90	17.Aug.12 07:00 A	30.Apr.16 15:00	0	[Red bar from Q2 2012 to Q4 2015]																													
METRO - Pre-Revenue Operations - Phase 2A	60	60	0	01.May.16 07:00	29.Jun.16 15:00	0																					[Red bar in Q3 2016]									
METRO - Project Schedule Contingency (10 Mo.)	154	154	0	30.Jun.16 07:00	30.Nov.16 15:00	0																					[Red bar in Q3 2016]									
Phase 2A - Revenue Operations Date (ROD)	0	0	0		30.Nov.16 15:00*	0																					[Purple diamond in Q3 2016]									
<b>ALIGNMENT DELIVERY DATE - CRITICAL PATH</b>																																				
STATIONS - DESIGN	237	5	263	03.Nov.11 00:00 A	21.Nov.12 15:00	16	[Blue bar from Q2 2012 to Q2 2012]																													
ALAMEDA STATION - PLATFORMS/RAMPS/WALKWAYS	195	195	0	20.Dec.12 07:00	18.Sep.13 15:00	16	[Green bar from Q3 2012 to Q4 2012]																													
MONROVIA STATION - PLATFORMS/RAMPS/WALKWAYS	150	150	0	01.Aug.13 07:00	26.Feb.14 15:00	16													[Green bar from Q1 2013 to Q2 2013]																	
IRWINDALE STATION - PLATFORMS/RAMPS/WALKWAYS	150	150	0	09.Jan.14 07:00	06.Aug.14 15:00	16													[Green bar from Q2 2013 to Q3 2013]																	
IRWINDALE STATION - ELEC./MECH./FINISHES	220	220	0	01.May.14 07:00	04.Mar.15 15:00	16													[Green bar from Q3 2013 to Q4 2013]																	
OCS - INSTALLATION - SEGMENT 4	150	150	0	01.Aug.14 07:00	26.Feb.15 15:00	16													[Green bar from Q4 2013 to Q1 2014]																	
OCS - TESTING - SEGMENT 4	40	40	0	27.Feb.15 07:00	23.Apr.15 15:00	16													[Green bar in Q1 2014]																	
SYSTEMS INTERGRATION TESTING	120	120	0	24.Apr.15 07:00	08.Oct.15 15:00	16													[Green bar from Q1 2014 to Q2 2014]																	
C1135 - >>>SUBSTANTIAL COMPLETION - 1420 CD<<<	0	0	0		08.Oct.15 15:00*	23																					[Purple diamond in Q2 2014]									
<b>ALIGNMENT DELIVERY DATE - SECONDARY - CRITICAL PATH</b>																																				
FOOTHILL BRIDGE (FRT) - DESIGN	292	23	245	01.Dec.11 07:00 A	17.Dec.12 15:00	17	[Blue bar from Q2 2012 to Q2 2012]																													
FOOTHILL BRIDGE (FRT) - CONSTRUCTION	170	170	0	18.Dec.12 07:00	12.Aug.13 15:00	17	[Green bar from Q3 2012 to Q4 2012]																													
TRACK INSTALLATION - SEGMENT 4 (FRT)	250	250	0	15.Jan.13 07:00	30.Dec.13 15:00	17	[Green bar from Q3 2012 to Q4 2012]																													
TRACK INSTALLATION - SEGMENT 3	130	130	0	19.Sep.13 07:00	19.Mar.14 15:00	17													[Green bar from Q1 2013 to Q2 2013]																	
TRACK INSTALLATION - SEGMENT 2	70	70	0	23.Jan.14 07:00	30.Apr.14 15:00	17													[Green bar in Q2 2013]																	
TRACK INSTALLATION - SEGMENT 1	90	90	0	06.Mar.14 07:00	09.Jul.14 15:00	17													[Green bar from Q2 2013 to Q3 2013]																	
TRACK INSTALLATION - SEGMENT 4 (LRT)	110	110	0	03.Apr.14 07:00	03.Sep.14 15:00	17													[Green bar from Q3 2013 to Q4 2013]																	





**CRITICAL PATH FLOAT TREND**



**Critical Path Analysis**

**Revenue Operations Date Critical Path - (0 Calendar Days / 0 Work Days)**

The Metro Light Rail Vehicle (LRV) fabrication remains on the critical path this period. The delay issuing Notice to Proceed to the LRV manufacturer and changes to the anticipated delivery of the 15 vehicles have placed this work as a priority to achieve ROD. The critical path continues through Metro Pre-Revenue Operations, and schedule contingency (5 months). The Metro Revenue Operations Date is currently on schedule for November 30, 2016.

**Alignment Delivery Date Critical Path - (23 Calendar Days / 16 Work Days)**

The Alignment Delivery Milestone improved this period due to the early start of Segment 4 grading. As a result, the Station Design is now the primary critical path to achieve Substantial Completion. The critical path continues through the station structural construction for all double platform stations. The critical path continues through the installation of the station finishes at Irwindale Station. The canopy installation is critical to allow access for Segment 4 OCS installation. The path continues through Segment 4 OCS installation and testing. Systems Integration will begin after Segment 4 testing is complete. Upon completion of Systems Integration testing, the C1135 contractor will achieve Substantial Completion and turn over to Metro for Pre-Revenue Testing.

**Project Float**

The project float for the Revenue Operations Date remains unchanged at 0 days. The critical activities on this path are on schedule to meet the Target Revenue Operations Date of November 2016. The Alignment Delivery Date float value improved twelve (12) days this period. The Alignment Delivery Date is currently 23 days ahead of the October 31, 2015 deadline.

**METRO GOLD LINE FOOTHILL  
EXTENSION CONSTRUCTION AUTHORITY  
Monthly Foothill Extension Project Status Report  
Period Ending – November 30, 2012**



**Description:** Iconic Freeway Structure

**Status:** November 15, 2012

**Contract No.:** C1134

**Contractor:** Skanska

**Progress Completed This Period:**

Construction: During this reporting period, the Design-Build Contractor completed the installation of pre-cast panels, south side slope restoration, and retaining walls 1, 2, and 4. The Design-Build Contractor started the installation of architectural lighting conduits, barrier rail installation and retaining wall 3.

**Areas of Concern:**

The Design-Build Contractor is currently behind schedule to complete the work by the Substantial Completion milestone. The Contractor will continue to work overtime and Saturdays to mitigate further impact to the Substantial Completion milestone. Work elements which are not critical for turnover to the C1135 Design-Build Contractor will be completed during the punchlist period. Non critical work items include landscaping and architectural lighting.

**Schedule Assessment:**

The Design-Build Contractor completed the pre-cast panel installation and retaining wall 1, 2, and 4. The critical work activities to be completed next period are: retaining wall 3, barrier rail, the approach slabs at abutment 1 and abutment 4, and the installation of the pre-cast reeds.

The Design-Build Contractor is approximately 8 days behind schedule and will not meet the Substantial Completion deadline on November 29, 2012.

**Cost Assessment:**

The current Contract cost forecast remains unchanged from last period. The forecast is at 19.61 million. The current forecast is \$166,841.00 under the authorized budget.

**Schedule Summary:**

Contract Award:	06/18/10
Notice to Proceed (NTP) :	08/03/10
Original Contract Duration:	880 Calendar Days
Current Contract Duration:	945 Calendar Days
Elapsed Time from NTP:	835 Calendar Days

**Cost Summary:**

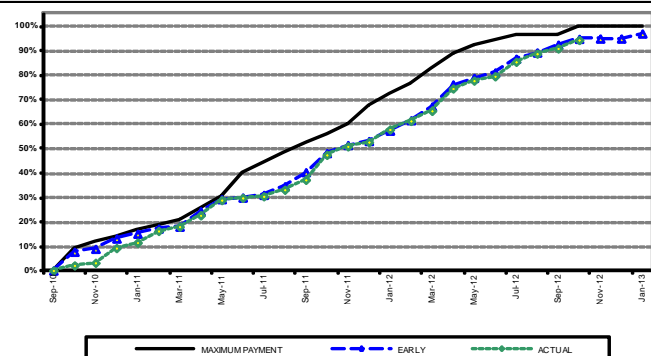
Million(s)

<b>CONTRACT</b>	
Contract Award Value:	18.57
Executed Change Orders:	1.06
Current Contract Value:	19.63
Potential Change Orders:	0.00
Current Forecast:	19.63
Earned Value/Actual Cost to Date	17.06

**AUTHORIZATION FOR EXPENDITURE**

Budget	19.80
Commitment	19.80
Balance	0.17

Milestones	Description	Original Contract	Current Contract	Forecast	Variance
1	Substantial Completion	07/03/12	11/29/12	12/07/12	(8)
2	Punchlist Complete	10/01/12	12/05/12	01/06/13	(32)
3	Final Acceptance	12/30/12	03/05/13	03/07/13	(2)



**Gold Line Bridge Construction Images**

Landscaping preparation



Landscaping elements

Concrete pour at  
south basket





Change Management Log

Date: 12/6/2012

Page: 1 of 1

Project: C1134 IFS - Skanska Contract #: C1134

Original Contract Amount:	\$18,570,092				
Approved Change Orders:	\$1,063,067	5.72%	Pending Change Orders:	\$0	0.00%
Current Contract Total:	\$19,633,159		Pending Contract Total:	\$19,633,159	5.72%

Change Orders

Number	Change Management	Title	Initiated Date	Approved Date	Outstanding Days	Time Extension	Amount
<b>EXECUTED Change Orders</b>							
001.00	001.00	Project Concept Advisor Services	2/15/2011	2/15/2011	0		\$0
002.00	002.00	Professional Liability Insurance	3/9/2011	3/9/2011	0		\$0
003.00	003.00	Sound Wall Requirement Changes	4/25/2011	4/25/2011	0		(\$38,552)
004.00	008.00	Deletion of Abutment 14	10/28/2011	10/28/2011	0		\$41,739
005.00	009.00	Additional Superstructure Arch Chng	12/14/2011	12/15/2011	1		\$122,259
006.00	010.00	Drainage System Location	12/22/2011	12/22/2011	0		\$5,617
007.00	011.00	Caltrans Requested Renderings	3/1/2012	3/2/2012	1		\$14,768
008.00	012.00	Time Extension	4/11/2012	4/13/2012	2	65	\$0
009.00	005.00	Aesthetic Lighting, Misc Extra Work	7/18/2012	7/19/2012	1		\$61,094
010.00	007.00	Architectural Features	9/5/2012	9/12/2012	7		\$18,494
011.00	013.00	Retaining Walls at IFS Approaches	9/18/2012	9/18/2012	0	84	\$732,762
012.00	015.00	Added Falsework Stripping Req'ts.	10/3/2012	10/4/2012	1		\$24,918
013.00	006.00	Landscape/Hardscape	10/12/2012	10/17/2012	5		\$79,967
<b>Subtotal:</b>							\$1,063,067
<b>Subtotal:</b>							\$1,063,067
<b>Total:</b>							\$1,063,067

**METRO GOLD LINE FOOTHILL  
EXTENSION CONSTRUCTION AUTHORITY  
Monthly Foothill Extension Project Status Report  
Period Ending – November 30, 2012**



**Description:** Alignment Design / Build

**Status:** November 15, 2012

**Contract No.:** C1135

**Contractor:** Foothill Transit Constructors (Kiewit-Parsons J.V.)

**Progress Completed This Period**

- Submit 100% Design - M&O Facility
- Submit 100% Design - Communications Mainline
- Submit 85% Design - Communications M&O Facility
- Submit 100% Design - Train Control (Freight)
- Submit 85% Design - Traction Power M&O Facility
- Submit 85% Design - DBCS (LRT)
- Submit 85% Design - DBCS M&O Facility
- Submit 100% Design - Traction Power
- Submit 100% Design - I-210 Barrier Replacement
- Submit 100% Design - Santa Anita Wash Bridge
- Submit 100% Design - Santa Anita Bridge
- Submit 100% Design - Colorado BI Bridge
- Submit AFC Design - Citrus Ave Bridge (FRT)
- Submit AFC Design - Palm Dr Bridge (FRT)
- Submit AFC Design - Contract Utilities Segment 4
- Submit AFC Design - MOT Segments 1,2,3 & 4
- Submit 100% Design - Huntington Drive Bridge
- Submit 85% Design - Grading & Drainage - Segments 3
- Submit 100% Design - Grading & Drainage - Seg 4 (West)
- Submit 100% Design - Contract Utilities M&O
- Submit 100% Design - Walls Segment 4 (West)

**Activities Planned Next Period**

- Submit AFC Design - Track Alignment Mainline
- Submit AFC Design - Track Alignment M&O Facility
- Submit 100% Design - Traffic Signal & Lighting Segment 2 & 3
- Submit AFC Design - M&O Facility Civil Site
- Submit AFC Design - Walls Segment 4 (East)
- Submit AFC Design - Stations
- Submit AFC Design - 5th Ave Pedestrian Crossing
- Submit AFC Design - Alta Vista Wash Bridge
- Submit AFC Design - San Gabriel River Bridge
- Submit AFC Design - Foothill BI LRT Bridge
- Submit AFC Design - OCS Mainline
- Submit 100% Design - OCS - M&O Facility
- Submit 100% Design - Train Control - Mainline
- Submit 85% Design - Grading & Drainage - Segments 1
- Submit AFC Design - Rosemead Bridge Modifications
- Submit AFC Design - Communications Mainline
- Submit 85% Design - Train Control Book of Plans (Zones 3-11)
- Submit AFC Design - Contract Utilities M&O Facility
- Submit AFC Design - Traffic Signal & Lighting Segment 4
- Submit AFC Design - Traffic Signal & Lighting M&O Facility
- 

**Areas of Concern**

- Mountain Ave Grade Crossing Permit. The Authority has decided to not modify the Mountain Avenue grade crossing and will continue to advance the current design, which reflects the approved CPUC permit. There is no schedule or cost impact.
- Highland Ave Grade Crossing Permit. The Authority will continue to advance the crossing design with the 40' crossing gate. The current design is consistent with approved CPUC permit. There is no schedule or cost impact due to this issue.
- 1st/Santa Clara Grade Crossing Permit. The Authority will seek approval from the CPUC for a revised GO-88b grade crossing application due to a potential redesign of the crossing gates. The application approval could have a potential schedule impact.

**Areas of Concern (Continued)**

- Segment 3 Grade Crossing Property Acquisitions. The Design-Build Contractor has been late delivering parcel legal descriptions in a timely manner. There is a potential schedule impact to the Segment 3 grade crossing construction and schedule if the parcel legal descriptions are not approved.



**METRO GOLD LINE FOOTHILL  
EXTENSION CONSTRUCTION AUTHORITY**  
Monthly Foothill Extension Project Status Report  
Period Ending – November 30, 2012



**Description:** Alignment Design/ Build

**Status:** November 15, 2012

**Contract No.:** C1135

**Contractor:** Foothill Transit Constructors (Kiewit-Parsons J.V.)

**Cost Summary:**

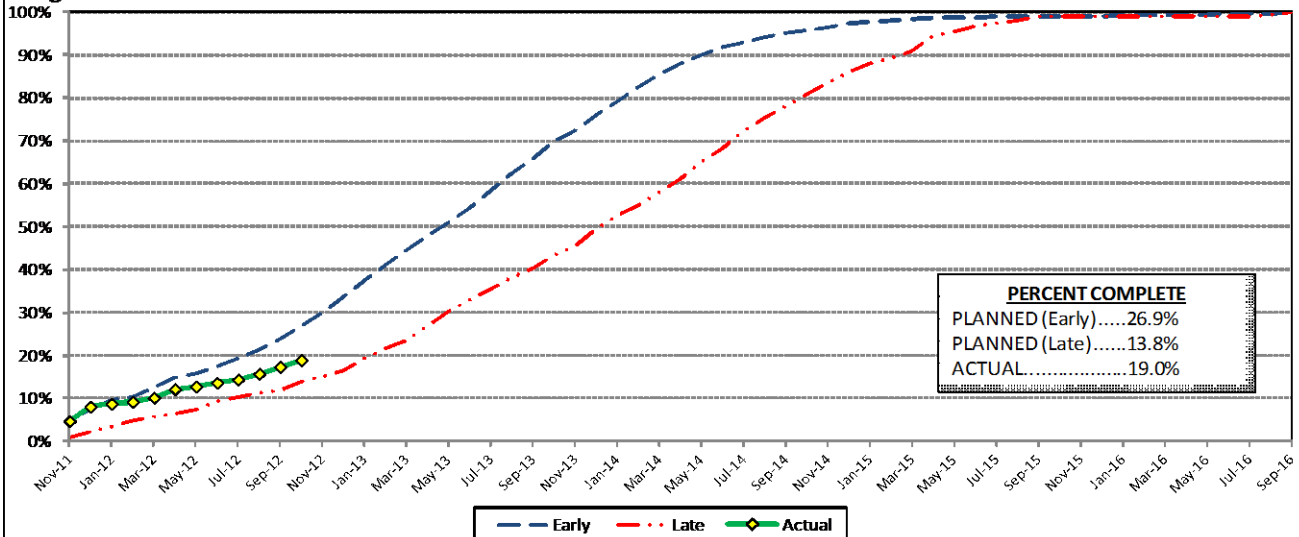
	Million(s)
<b>CONTRACT</b>	
Contract Award Value:	485.9
Executed Change Orders:	1.2
Current Contract Value:	487.0
Potential Change Orders:	2.5
Current Forecast:	489.5
Earned Value/Actual Cost	91.1
<b>AUTHORIZATION FOR EXPENDITURE</b>	
Budget	507.6
Commitment	503.6
Balance	14.0

**Cost Assessment:**

This period the Contract forecast decreased from \$490.2 Million to \$489.5 Million. This period, potential additional costs are due to PCO 022 - M&O IT Modifications Changes, PCO 13.02 - Material Storage Revisions, and PCO 023 - Station Lighting & Paver Changes. The potential changes added this period were offset by a cost decrease with PCO 3.01 - Systems & Testing for Added TPSS.

The Design-Build Contractor has earned 91.1 Million and is currently 19% complete. The progress is currently 7.9% behind the schedule, which is due to the late completion of critical design packages, such as the Stations, and Segment 4 Retaining Walls.

**Progress Curve**



**Schedule Summary:**

Contract Award:	07/27/11
Interim Notice to Proceed (NTP) :	11/03/11
Original Contract Duration:	1,780 Calendar Days
Current Contract Duration:	1,780 Calendar Days
Elapsed Time from NTP:	378 Calendar Days

**Contract Milestones**

Milestones	Description	Original Contract	Current Contract	Forecast	Variance
1	Substantial Completion	09/23/15	09/23/15	10/08/15	(15)
2	Punchlist Complete	06/19/16	06/19/16	07/04/16	(15)
3	Final Completion	09/17/16	09/17/16	10/02/16	(15)
4	Access - IFS Br.	12/15/12	12/15/12	12/15/12	0
5	Test Track Complete	03/27/15	03/27/15	03/15/15	12
6	Colorado Br. Demo Complete	02/01/12	02/01/12	6/15/2012 A	(135)

**Schedule Assessment**

This period, the Substantial Completion milestone improved due to the early start of Segment 4 grading work. As a result, the Segment 4 grading and retaining wall work is no longer on the critical path for Substantial Completion. The Stations Design Package is now the primary critical path activity. The critical path continues through the station construction work at Azusa-Alameda, Monrovia, and Irwindale. The Substantial Completion Milestone is fifteen days behind schedule and is forecast to be complete on October 8, 2015.

The IFS Access is anticipated on December 15, 2012 which is per the Contractual requirement. At this time the access is based upon the C1134 Design-Build Contractor achieving Substantial Completion. There is a potential for shared access after the C1134 Substantial Completion to complete non-structural work activities.

The Test Track Completion is forecast to be complete on March 15, 2015. The milestone has improved (18) eighteen days this period due to the projected early completion of demolition work.



**Alignment Construction Images**

Soldier pile installation at  
Gold Line Operations Campus



Drainage work at Citrus

Grading work in Segment 4





Change Management Log

Project: C1135 Alignment - FTC Contract #: C1135

Original Contract Amount:	\$485,867,000				
Approved Change Orders:	\$1,154,166	0.24%	Pending Change Orders:	\$2,143,483	0.44%
Current Contract Total:	\$487,021,166		Pending Contract Total:	\$489,164,649	0.68%

Change Orders

Number	Change Management	Title	Initiated Date	Approved Date	Outstanding Days	Time Extension	Amount
<b>EXECUTED Change Orders</b>							
001.00	000.00	Interim NTP	11/3/2011	11/3/2011	0		\$0
002.00	013.00	Colorado Bridge Haz Mat	5/17/2012	5/18/2012	1		\$121,382
002.01	013.01	Colorado Bridge HazMat - Final	9/5/2012	9/7/2012	2		\$13,164
003.00	001.00	Sound Wall Deletion - Duarte Road	7/12/2012	7/18/2012	6		(\$74,707)
004.00	018.00	Revise Block Design - CBD Calc	8/23/2012	8/29/2012	6		\$3,986
005.00	023.00	Wayside Signal Aspect Revision	9/6/2012	9/7/2012	1		\$26,072
006.00	040.00	Arcadia Frieze, Bench-Artist Design	9/6/2012	9/10/2012	4		\$13,683
007.00	019.02	Soils Testing Abutments & Fdns	9/14/2012	9/18/2012	4		\$44,993
008.00	041.00	Unknown Utilities RFCN 005 006 008	9/14/2012	9/18/2012	4		\$132,450
009.00	038.00	Illuminate City Names @ Stations	9/18/2012	9/24/2012	6		\$184,657
010.00	046.00	SGRB - Lead Based Paint Remediation	9/21/2012	9/24/2012	3		\$244,536
011.00	004.00	Station Architectural Changes	10/11/2012	10/12/2012	1		\$443,950
<b>Subtotal:</b>							\$1,154,166
<b>Subtotal:</b>							\$1,154,166
<b>PENDING Change Orders</b>							
012.00	003.01	Systems and Testing for Added TPSS	11/15/2012		21		\$1,438,853
013.00	005.02	IDIQ Comm Contract (Rev 2)	11/28/2012		8		\$704,630
<b>Subtotal:</b>							\$2,143,483
<b>Subtotal:</b>							\$2,143,483
<b>Total:</b>							\$3,297,649

Open PCOs

PCO Number	Title
<b>OPEN</b>	
002.00	Relocation of Access Road to 3M Fac
006.00	IFS Related Scope Modifications
007.00	Proposed Changes to FLS Criteria
011.00	Add 3 Electrical Conduits for ALW
012.00	SCE Relocation Duarte Rd (UG)
013.02	M&O - Materials Storage Revisions
015.01	Delete Layover Building
016.01	Arcadia Frieze & Bench-Construction
017.00	Santa Anita Trail Detour
018.00	Totten Tubes Credit
019.00	City of Hope Conduits
020.00	Landscaping-North side of Duarte Rd
021.00	Citrus TPSS Transformer Changes
022.00	M&O IT Changes
023.00	Station Lighting and Pavers Change
024.00	Monrovia Sound Wall Panel Change
025.00	Block Type Change at M&O Building

Open RFCs

RFC Number	Title
<b>OPEN</b>	
009.01	SGRB Lead Abatement Phase 2
009.02	Hazardous Abatement at Bridges
012.00	Live SS (vs. Abandoned) in Azusa
015.00	SS Lines (2 ea) Encasement in Azusa



## Change Management Log

Date: 12/6/2012

Page: 2 of 2

Project: C1135 Alignment - FTC Contract #: C1135

### Open PCOs

PCO Number	Title
026.00	Duarte Rd Screen Wall Change

OPEN



## **Azusa to Montclair Segment**

Staff is working with Parsons Brinckerhoff (PB) to prepare responses for incoming public comments on the Draft Environmental Impact Report (DEIR) for the Azusa to Montclair extension Project. In addition, staff is working with the environmental team to make the necessary changes in the DEIR to address all pertinent comments received.

### **ACTIVITIES COMPLETED THIS PERIOD**

PB continued to assemble and prepare responses to the incoming public comments on the Draft EIR. Authority staff and PB met and reviewed the comments and discussed the approach on preparing responses to all comments. In addition, PB continued to revise the DEIR to address any and all pertinent comments.

### **KEY FUTURE ACTIVITIES**

The environmental team will continue to prepare responses to the public comments as part of the administrative record. In addition, PB will revise the DEIR as necessary to address the comments and finalize the EIR and submit to the Authority for review.

### **Federal Transit Administration (FTA)**

The Metro Board excluded the Gold Line from seeking federal New Starts funding. The Authority will work together with Metro along with the Congressional delegation to seek funding to construct the extension following completion of the environmental review.



## **Ontario Airport Segment**

Authority staff continues the negotiation process with KOA Corporation for the Ontario Airport segment alternatives analysis study which will likely begin later this year.

### **ACTIVITIES COMPLETED THIS PERIOD**

Staff continued to pursue the needed funding to conduct the Alternatives Analysis for the Ontario Airport Segment. The San Bernardino Associated Governments (SANBAG) and the Authority are in discussions to develop a funding agreement for a portion of the initial Alternatives Analysis study.

### **KEY FUTURE ACTIVITIES**

Authority staff will work to obtain funding for this Segment and complete negotiations with KOA.

**METRO GOLD LINE FOOTHILL  
EXTENSION CONSTRUCTION AUTHORITY  
Monthly Foothill Extension Project Status Report  
Period Ending – November 30, 2012**



**PHASE II FOOTHILL EXTENSION FINANCIAL STATUS  
Project Operating Budget Summary in Millions of Dollars  
November 30, 2012**

	( a )	( b )	(c=a-b)	( d )
<b>FINANCIAL PLAN</b>	<b>Current Budget</b>	<b>Funding Committed to Project</b>	<b>Uncommitted Funds</b>	<b>Revenues Received</b>
SCAG	1.0	0.9	0.1	0.9
Interest Income	2.0	2.0	-	2.0
Bridge Replacement	13.9	13.9	-	13.9
Phase I Carryover	4.0	4.0	-	4.0
Maintenance and Operations Facility	-	-	-	-
Cities	11.0	-	11.0	-
Measure R - Pasadena to Azusa	735.0	735.0	-	161.6
Measure R - Azusa to Montclair	-	-	-	-
SANBAG	55.2	1.5	53.7	1.5
Federal TCSP	2.9	2.9	-	2.3
Federal Bus Intermodal Plan	9.0	9.0	-	2.1
Federal New Starts 2004 MTA Passthrough	4.0	4.0	-	4.0
Federal New Starts 2005 MTA Passthrough	0.5	0.5	-	0.5
Federal New Starts 2006 Corridor Study	2.5	2.5	-	2.1
Federal/Other	580.8	-	580.8	-
<b>Total Revenues</b>	<b>1,421.8</b>	<b>776.2</b>	<b>645.6</b>	<b>194.9</b>
	( a )	( b )	( c )	(d=a-b)
	<b>Current Budget</b>	<b>Current Obligation</b>	<b>Current Expenditures</b>	<b>Current Available Balance</b>
<b>EXPENSES</b>				
Program Management and Administration	101.9	55.0	50.6	46.9
Master Cooperative Agreements	12.0	2.8	2.3	9.2
Real Estate including ROW Acq	27.0	10.1	8.8	16.9
Special Programs	0.3	-	-	0.3
Procurement/Vehicles	60.0	-	-	60.0
Maintenance and Operations Facility Land	22.0	21.9	21.9	0.1
Construction - IFS	19.5	19.6	17.1	(0.1)
Construction - Pasadena to Azusa segment	330.8	314.8	69.1	16.0
Construction - Azusa to Montclair segment	658.8	-	-	658.8
Construction - M&O	46.0	44.0	5.5	2.0
Construction - Parking Structures	32.5	-	-	32.5
MTA Project Costs	64.0	16.0	13.2	48.0
Contingency	27.4	-	-	27.4
Project Reserve	19.6	-	-	19.6
<b>Total Project</b>	<b>1,421.8</b>	<b>484.2</b>	<b>188.5</b>	<b>937.6</b>