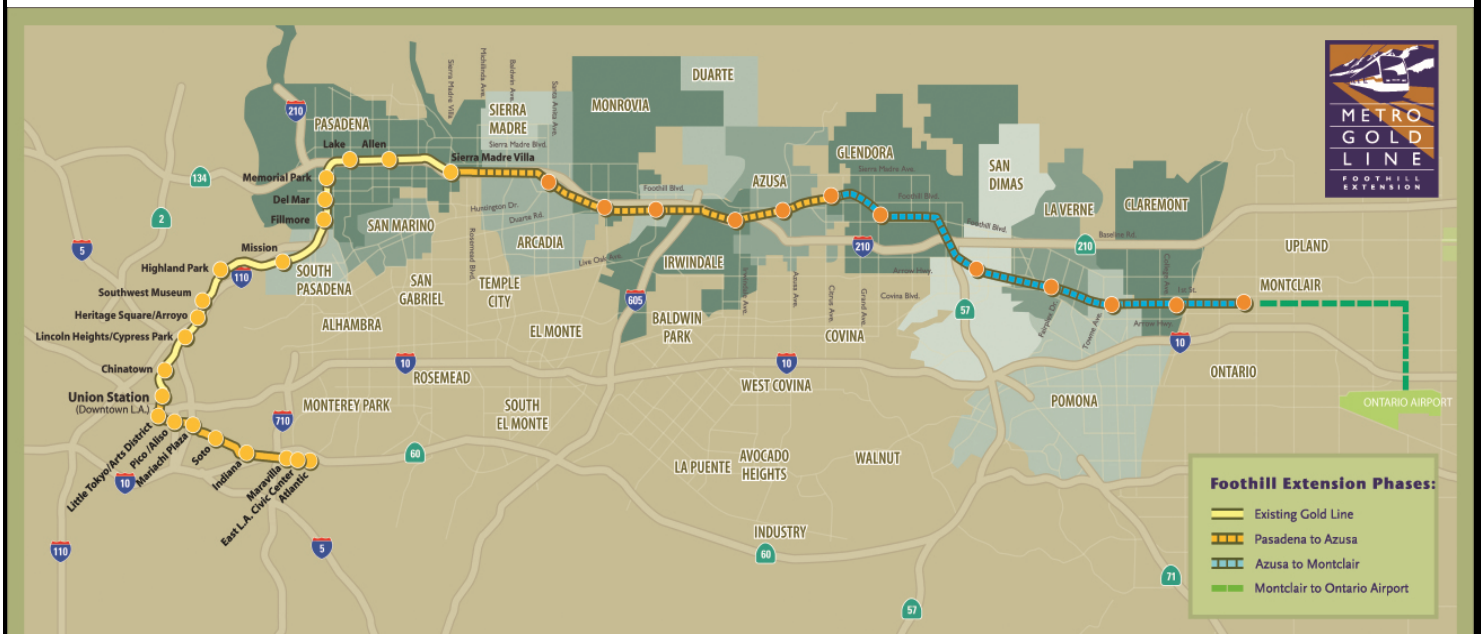


Metro Gold Line Foothill Extension Project

Monthly Project Status Report

September/October 2012



Metro Gold Line

Connecting Los Angeles, the San Gabriel Valley and Inland Empire



TABLE OF CONTENTS

PHASE II FOOTHILL EXTENSION PROJECT STATUS

Project Description..... 3

Pasadena to Azusa Segment..... 4

 Management Issues..... 4

 Key Activities Completed This Period 5

 Key Future Activities 6

 Critical Path Schedule 7

 Critical Path Float Trend..... 8

 IFS Structure Contract Status 9

 IFS Construction Images 10

 Alignment Contract Status 11

 Alignment Contract Status (continued)..... 12

 Alignment Construction Images..... 13

Azusa to Montclair Segment..... 14

Ontario Airport Segment..... 15

Financial Status 16



FOOTHILL EXTENSION PROJECT DESCRIPTION

The Authority’s mandate is to plan, design and construct a 37-mile light rail link between Downtown Los Angeles and Claremont. In addition, the San Bernardino Associated Governments (SANBAG) has requested that planning be extended one mile inside San Bernardino County to the City of Montclair and then to Ontario Airport.

The Metro Gold Line Phase II (Foothill Extension) corridor includes the cities of Pasadena, Arcadia, Monrovia, Duarte, Irwindale, Azusa, Glendora, San Dimas, La Verne, Pomona, Claremont, and Montclair; and the counties of Los Angeles and San Bernardino (Figure 1). The Foothill Extension is estimated to cost approximately \$1.4 billion.

The Foothill Extension will be built in two segments to align effectively with projected cash flows and financial capacity constraints. The first segment is defined from the Sierra Madre Villa Station in Pasadena to the city of Azusa. Revenue service along this segment is planned for the year 2015. The second segment would include an extension from Azusa to the City of Montclair with revenue service projected for the year 2017 and the third segment will be comprised of an extension from Montclair to the Ontario Airport.

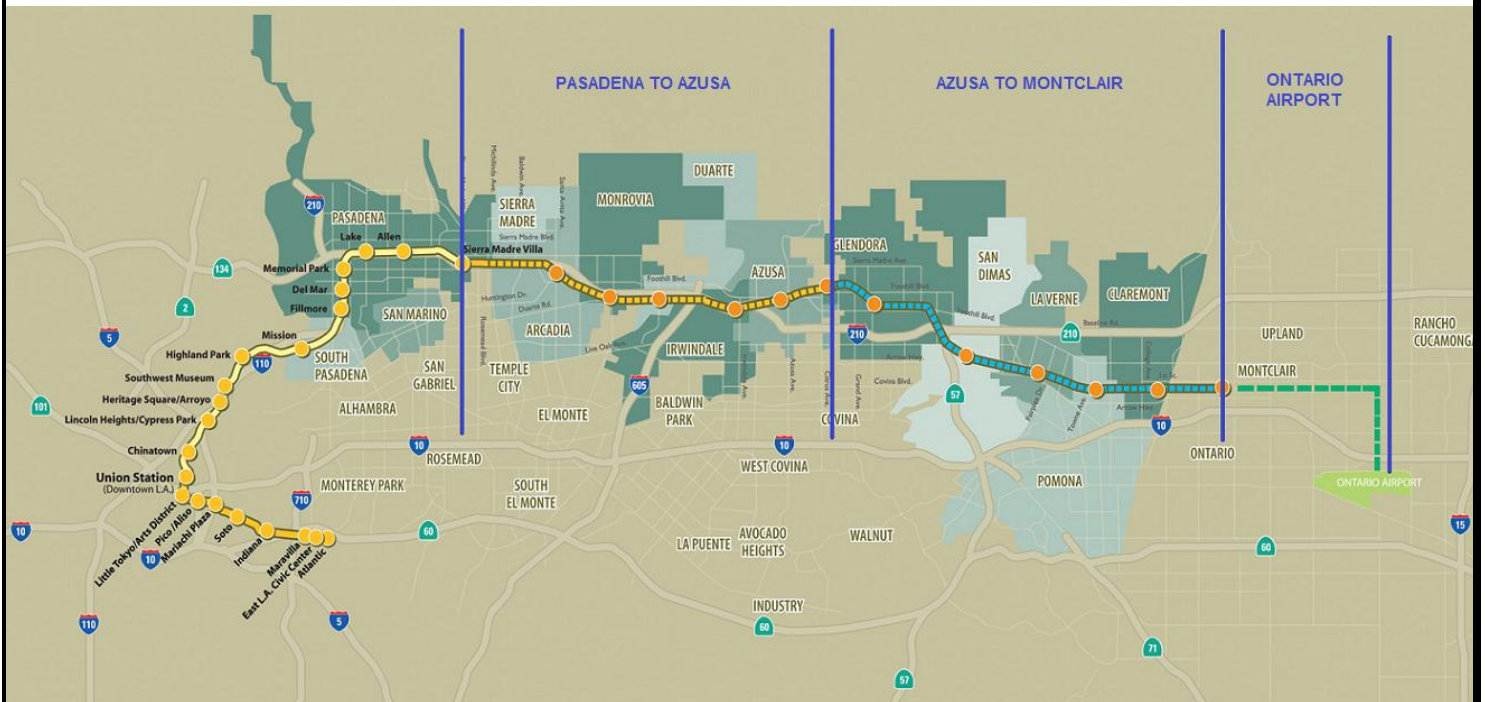


Figure 1: Metro Gold Line Foothill Extension Alignment



Pasadena to Azusa Segment

MANAGEMENT ISSUES

Metro Betterments

During the design process Metro staff have identified betterments that Metro staff would like to add to the project. Metro has provided a final disposition on all but a few items. Authority staff continues to work with Metro staff to resolve the remaining items.

Irwindale Ramp Modifications

An environmental mitigation measure requires the addition of a second left turn lane from Irwindale Avenue on to the eastbound I-210 ramp. The PSR/PR document contains a widening of the ramp from two lanes to three, including a dedicated HOV lane. Caltrans staff recently requested that the dedicated HOV lane now be a metered lane. This request results in a longer ramp widening. The Authority and Caltrans have met to review the operational needs, and have identified a configuration which is within the scope of the C1135 Contract. A concept design was developed by the Authority and has been approved by. This item will be removed from the management issues next reporting period.

TPSS Substations Michillinda and Soldano

The Authority has been in the process of negotiating a potential change order with the C1135 contractor, Foothill Transit Constructors (FTC), for the addition of these two substations. FTC's cost/schedule proposal exceeds the Authority's budget for the additional work. Authority staff have been unable to resolve the cost issues with FTC and will proceed to solicit bids from other potential contractors to construct the future sites and infrastructure. FTC will retain the systems portion of the work related to these substations. Authority staff have negotiated the cost of the change order for the systems portion of the work that will be done by FTC and are seeking Board approval.



KEY ACTIVITIES COMPLETED THIS PERIOD

Staff continued to attend coordination meetings with cities along the alignment.

Held regular coordination meetings with the C1134 (DB1) design-build contractor and participated in construction site visits

Continued construction work on Iconic Freeway Structure:

- Completed post-tensioning work and removal of bridge falsework
- Completed installation of footing for retaining wall 1
- Retaining wall 1 formwork and rebar installation, reed fabrication, and basket installation at column 3R are in progress
- Basket reed design was approved by Caltrans, completing all final design elements
- Skanska reports the following safety statistics for the month of July:
 - No safety incidents recorded
 - 6,513 hours performed by Skanska
 - 67,802 total work hours performed to date
 - 0 Recordable Incidents reported
- Skanska reports the following SBE statistics for the month of July:
 - Current SBE commitment: \$1,686,613
 - SBE percent committed versus value of Project: 11.96%
 - Overall Authority Project SBE goal: 16%

Authority staff continues to meet with Metro staff to review and discuss the status of the Pasadena to Azusa segment

Held regular Task Force meetings with the C1135 (DB2) contractor, Foothill Transit Constructors (FTC)

Conducted quarterly Partnering meeting with FTC on October 24, 2012

FTC continued rail demolition and progressed critical design submittals to support the start of construction activities

Further developed advanced conceptual engineering of all parking structure facilities

Released Addenda #1 through #4 to the Request for Proposals (RFP) for the Intermodal Parking Facilities and Enhancements Project, RFP C1150 (DB3)

Transferred M&O Facility site to DB2 contractor and began demolition of structures

Completed abatement of lead, asbestos, and other hazards in the existing buildings on the M&O Facility property



KEY FUTURE ACTIVITIES

Continue discussions with corridor cities regarding station parking facilities

Continue management of the IFS contract, which will include landscaping elements and construction of baskets

Continue management of the Alignment contract, which will include evaluation of design and Project management submittals

Transfer IFS to Alignment contractor

Release Addendum 5 to RFP C1150 (DB3) for the Intermodal Parking Facilities and Enhancements Project

Receive proposals from three shortlisted Design-Build firms for DB3 (C1150) Contract

Continue to attend to any issues that may come up by the cities along the alignment

Complete demolition of all buildings on the M&O Facility property and begin grading

Finalize the following property acquisitions:

- Monrovia:

1. Parcel 1601 (Encino Avenue) – Included in agreement with City of Monrovia.
2. Parcel 1903 (Monrovia station strip) – Included in agreement with City of Monrovia.
3. Parcel 1904 (Monrovia station parking) – Condemnation papers filed with the court.
4. Parcels 21A01 – 21A05 (Agency-owned M&O parcels) – Possession.
5. Parcel 21A21 - City-owned street (North Duarte Avenue) – Vacated.
6. Parcel 2101 (1713 S. California Avenue) – Sent Notice of Decision to Appraise 11/1/2012.
7. Parcel 2103 (401 Monrovista) – Sent Notice of Decision to Appraise 11/1/2012.

- Duarte:

1. Parcel 2401 (1258 E. Duarte Road) – Sent Notice of Decision to Appraise 11/1/2012.
2. Parcel 2602 (Duarte Station Parking – 1700 Business Center Drive) - Negotiating. Resolution of Necessity hearing 12/12/2012.
3. Parcel 2603 (1801 Highland Avenue) – Sent Notice of Decision to Appraise 11/1/2012.
4. Parcel 2803 (Access Easement, TPSS 05) – Agreement.
5. Parcel 2804 (Access Easement, TPSS 05) – Condemnation papers filed with the court.

- Irwindale:

1. Parcel 3302 (Irwindale Station Parking) – Price and Terms Negotiations. Resolution of Necessity hearing 12/12/2012.

- Azusa:

1. Parcel 3902 (736 N. Angelo Avenue) – Seller to submit counter-offer in early November.
2. Parcel 4002 (809 N. Azusa Avenue) – Seller preparing counter-offer.
3. Parcel 5003 (905 N. Pasadena Avenue) – Agreement.

**METRO GOLD LINE FOOTHILL
EXTENSION CONSTRUCTION AUTHORITY
Monthly Foothill Extension Project Status Report
Period Ending – October 31, 2012**

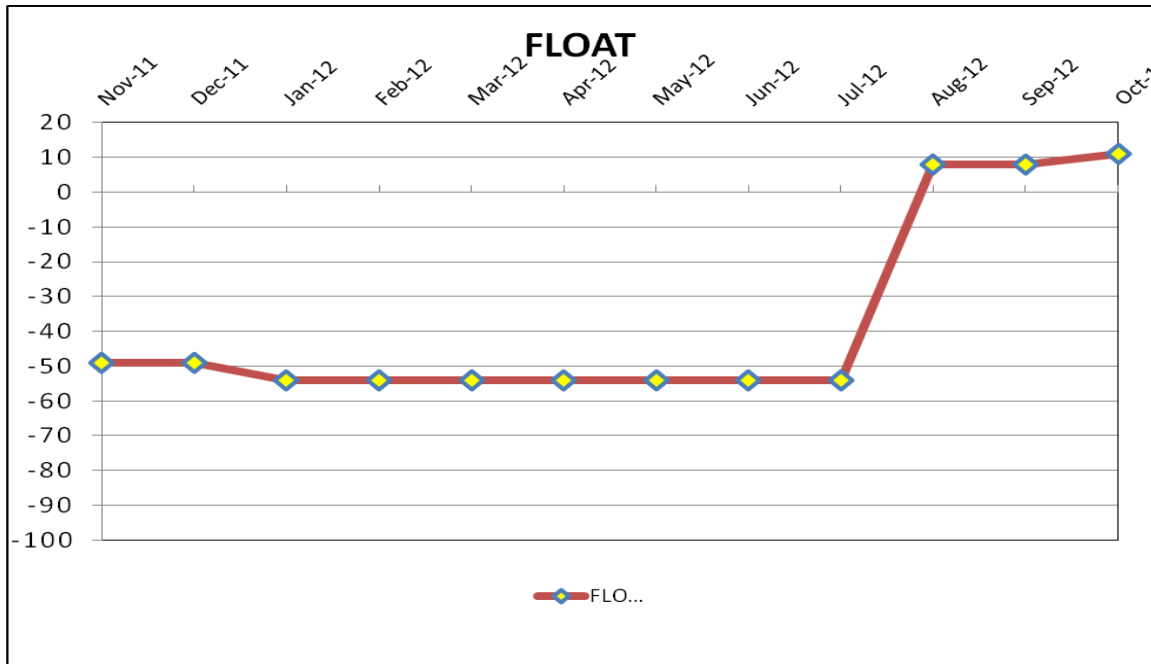


CRITICAL PATH SCHEDULE

Activity Name	OD	RD	AD	Start	Finish	Total Float	2012		2013			2014			2015			2016			2017	
							Q2	Q3	Q4	Q1	Q2	Q3	Q4	Q1	Q2	Q3	Q4	Q1	Q2	Q3	Q4	Q1
PRIMARY CRITICAL PATH																						
RFP - LRV PROCUREMENT	375	0	557	18.Oct.10 08:00 A	26.Apr.12 15:00 A																	
LRV FABRICATION / DELIVER 15 VEHICLES	1353	1295	58	17.Aug.12 07:00 A	30.Apr.16 15:00	0																
METRO - Pre-Revenue Operations - Phase 2A	60	60	0	01.May.16 07:00	29.Jun.16 15:00	0																
METRO - Project Schedule Contingency (10 Mo.)	154	154	0	30.Jun.16 07:00	30.Nov.16 15:00	0																
Phase 2A - Revenue Operations Date (ROD)	0	0	0		30.Nov.16 15:00*	0																
SECONDARY CRITICAL PATH																						
C1135 - INTERIM NOTICE TO PROCEED	0	0	0	03.Nov.11 00:00 A																		
RETAINING WALLS - SEGMENT 4 - DESIGN	279	9	240	03.Nov.11 07:00 A	25.Oct.12 15:00	8																
RETAINING WALLS - SEGMENT 4 (South Side)	126	126	0	26.Oct.12 07:00	19.Apr.13 15:00	8																
GRADING - SEGMENT 4 (FRT)	90	90	0	14.Jan.13 07:00	17.May.13 15:00	8																
TRACK INSTALLATION - SEGMENT 4 (FRT)	250	250	0	28.Jan.13 07:00	10.Jan.14 15:00	8																
DRAINAGE - SEGMENT 4 (FRT)	150	150	0	11.Feb.13 07:00	06.Sep.13 15:00	8																
TRACK INSTALLATION - SEGMENT 3	130	130	0	02.Oct.13 07:00	01.Apr.14 15:00	8																
TRACK INSTALLATION - SEGMENT 2	70	70	0	05.Feb.14 07:00	13.May.14 15:00	8																
TRACK INSTALLATION - SEGMENT 1	90	90	0	19.Mar.14 07:00	22.Jul.14 15:00	8																
TRACK INSTALLATION - SEGMENT 4 (LRT)	110	110	0	16.Apr.14 07:00	16.Sep.14 15:00	8																
OCS - INSTALLATION - SEGMENT 4	150	150	0	13.Aug.14 07:00	10.Mar.15 15:00	8																
OCS - TESTING - SEGMENT 4	40	40	0	11.Mar.15 07:00	05.May.15 15:00	8																
SYSTEMS INTERGRATION TESTING	120	120	0	06.May.15 07:00	20.Oct.15 15:00	8																
C1135 - >>>SUBSTANTIAL COMPLETION - 1420 CD<<<	0	0	0		20.Oct.15 15:00*	11																
METRO - System Testing & Start-Up - Phase 2A	30	30	0	21.Oct.15 07:00	19.Nov.15 15:00	163																
TERTIARY CRITICAL PATH																						
SAN GABRIEL RIVER BRIDGE - DESIGN	281	58	197	09.Jan.12 07:00 A	02.Jan.13 15:00	12																
SAN GABRIEL RIVER BRIDGE - CONSTRUCTION	200	200	0	21.Feb.13 07:00	27.Nov.13 15:00	12																
DIRECT FIXED TRACK INSTALLATION - (SG RIVER BRIDGE)	35	35	0	20.Feb.14 07:00	09.Apr.14 15:00	12																



CRITICAL PATH FLOAT TREND



Critical Path Analysis

Primary Critical Path - (0 Calendar Days / 0 Work Days)

The Metro Light Rail Vehicle (LRV) fabrication remains on the critical path this period. The delay issuing Notice to Proceed to the LRV manufacturer and changes to the anticipated delivery of the 15 vehicles have placed this work as a priority to achieve ROD. The critical path continues through Metro Pre-Revenue Operations, and schedule contingency (5 months). The Metro Revenue Operations Date is currently on schedule for November 30, 2016.

Secondary Critical Path - (11 Calendar Days / 8 Work Days)

The Segment 4 retaining walls design and construction are currently on the secondary critical path. The secondary critical path continues through the Segment 4 freight track grading. The path continues through Segment 3 grading, drainage, OCS pole foundation installation, and track installation. Upon completion of Segment 3 track installation, the path continues through track installation at Segment 2 and 1. Upon completion of Segment 1, the track installation will return to the east in Segment 4 Light Rail Transit section. The path continues through Segment 4 OCS installation and testing. Systems Integration will begin after Segment 4 testing is complete. Upon completion of Systems Integration testing, the C1135 contractor will achieve Substantial Completion and turn over to Metro for Pre-Revenue Testing.

Project Float

This period, the Foothill Extension Funding Agreement was modified by both Metro and the Authority. The Alignment Substantial Completion was revised from July 2015 to October 2015. The Target Revenue Operations Date was revised from October 2015 to November 2016. Per the revised agreement, the Substantial Completion milestone is forecast to be complete by October 2015 and the target ROD is on schedule for November 2016.

**METRO GOLD LINE FOOTHILL
EXTENSION CONSTRUCTION AUTHORITY
Monthly Foothill Extension Project Status Report
Period Ending – October 31, 2012**



Description: Iconic Freeway Structure

Status: October 15, 2012

Contract No.: C1134

Contractor: Skanska

Progress Completed This Period:

Construction: During this reporting period, the Design-Build Contractor completed post-tensioning and the removal of falsework. In addition, the contractor completed the retaining wall 1 footing installation. The reed fabrication, retaining wall 1 form work and rebar installation, and basket installation at column 3R are in progress.

Design: The basket reeds design was approved by Caltrans. All final design elements are complete.

Areas of Concern:

The Design-Build Contractor is currently on schedule to complete the work by the Substantial Completion milestone. However, the remaining work schedule has limited flexibility and the Authority is cautious with unforeseen conditions which may impact the timely completion of the remaining tasks.

Schedule Assessment:

The Design-Build Contractor completed the post-tensioning at the outrigger and super structure, the pre-cast panel fabrication and false work removal. The retaining wall installation is currently in progress. The slope restoration, architectural lighting, and landscape installation is planned to start after the retaining walls are complete.

The Design-Build Contractor was issued a time extension and is now currently on schedule to complete the work by November 29, 2012.

Cost Assessment:

The current Contract cost forecast increased from 19.61 million to 19.63 Million. The cost increase is due to execution of the change order for landscape installation for a greater amount than previously forecast.

The current forecast is \$166,841.00 under the authorized budget.

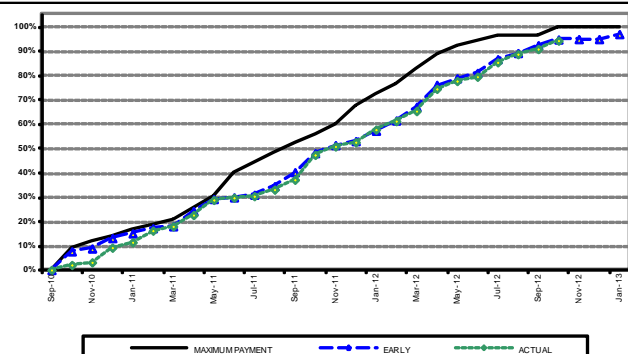
Schedule Summary:

Contract Award:	06/18/10		
Notice to Proceed (NTP) :	08/03/10		
Original Contract Duration:	880	Calendar Days	
Current Contract Duration:	945	Calendar Days	
Elapsed Time from NTP:	804	Calendar Days	

Cost Summary:

	Million(s)
CONTRACT	
Contract Award Value:	18.57
Executed Change Orders:	1.06
Current Contract Value:	19.63
Potential Change Orders:	0.00
Current Forecast:	19.63
Earned Value/Actual Cost to Date	17.06
AUTHORIZATION FOR EXPENDITURE	
Budget	19.80
Commitment	19.80
Balance	0.17

Milestones	Description	Original Contract	Current Contract	Forecast	Variance
1	Substantial Completion	07/03/12	11/29/12	11/29/12	0
2	Punchlist Complete	10/01/12	12/05/12	12/05/12	0
3	Final Acceptance	12/30/12	03/05/13	03/05/13	0





Change Management Log

Date: 11/8/2012

Page: 1 of 1

Project: C1134 IFS - Skanska Contract #: C1134

Original Contract Amount:	\$18,570,092				
Approved Change Orders:	\$1,063,067	5.72%	Pending Change Orders:	\$0	0.00%
Current Contract Total:	\$19,633,159		Pending Contract Total:	\$19,633,159	5.72%

Change Orders

Number	Change Management	Title	Initiated Date	Approved Date	Outstanding Days	Time Extension	Amount
EXECUTED Change Orders							
001.00	001.00	Project Concept Advisor Services	2/15/2011	2/15/2011	0		\$0
002.00	002.00	Professional Liability Insurance	3/9/2011	3/9/2011	0		\$0
003.00	003.00	Sound Wall Requirement Changes	4/25/2011	4/25/2011	0		(\$38,552)
004.00	008.00	Deletion of Abutment 14	10/28/2011	10/28/2011	0		\$41,739
005.00	009.00	Additional Superstructure Arch Chng	12/14/2011	12/15/2011	1		\$122,259
006.00	010.00	Drainage System Location	12/22/2011	12/22/2011	0		\$5,617
007.00	011.00	Caltrans Requested Renderings	3/1/2012	3/2/2012	1		\$14,768
008.00	012.00	Time Extension	4/11/2012	4/13/2012	2	65	\$0
009.00	005.00	Aesthetic Lighting, Misc Extra Work	7/18/2012	7/19/2012	1		\$61,094
010.00	007.00	Architectural Features	9/5/2012	9/12/2012	7		\$18,494
011.00	013.00	Retaining Walls at IFS Approaches	9/18/2012	9/18/2012	0	84	\$732,762
012.00	015.00	Added Falsework Stripping Req'ts.	10/3/2012	10/4/2012	1		\$24,918
013.00	006.00	Landscape/Hardscape	10/12/2012	10/17/2012	5		\$79,967
Subtotal:							\$1,063,067
Subtotal:							\$1,063,067
Total:							\$1,063,067

IFS Construction Images

Construction of retaining walls



Median basket installation



View of
southern basket

**METRO GOLD LINE FOOTHILL
EXTENSION CONSTRUCTION AUTHORITY
Monthly Foothill Extension Project Status Report
Period Ending – October 31, 2012**



Description: Alignment Design / Build

Status: October 15, 2012

Contract No.: C1135

Contractor: Foothill Transit Constructors (Kiewit-Parsons J.V.)

Progress Completed This Period

- Submit Palm Bridge Construction Work Plan
- Submit Citrus Bridge Construction Work Plan
- Submit 85% Design - Traffic Signal & Lighting Segment 2 & 3
- Submit 100% Design - MOT & Detours Segment 1
- Submit 85% Design - Civil Roadway Segments 2 & 3
- Submit 100% Design - Traffic Signal & Lighting M&O
- Submit 100% Design - M&O Facility Civil Site
- Submit 85% Design - Contract Utilities Segment 1
- Submit 85% Design - Contract Utilities Segment 2
- Submit 100% Design - Track Alignment
- Submit 100% Design - M&O Facility Track Alignment
- Submit 100% Design - San Gabriel River Bridge
- Submit 100% Design - Saw Pit Wash Bridge
- Submit 100% Design - 5th Ave Pedestrian Crossing
- Submit 100% Design - Foothill BI LRT Bridge
- Submit 100% Design - Stations
- Submit 85% Design - Traction Power
- Submit 85% Design - OCS - M&O Facility
- Submit 100% Design - OCS
- Submit 85% Design - Communications - M&O
- Submit AFC Design - Contract Utilities Segment 3

Activities Planned Next Period

- Submit IFC Design - IFS Modifications
- Submit 100% Design - Grading & Drainage - Segments 4 (West)
- Submit 100% Design - Santa Anita Wash Bridge
- Submit 100% Design - Rosemead Bridge Modifications
- Submit 100% Design - Train Control (Freight)
- Submit 85% Design - Communications M&O Facility
- Submit 100% Design - M&O Facility
- Submit 100% Design - Contract Utilities M&O
- Submit 85% Design - Grading & Drainage - Segments 3
- Submit 100% Design - Santa Anita Bridge
- Submit 100% Design - Huntington Drive Bridge
- Submit 85% Design - Traction Power M&O Facility
- Submit 100% Design - I-210 Barrier Replacement
- Submit 85% Design - DBCS (LRT)
- Submit 100% Design - Colorado BI Bridge
- Submit 85% Design - Walls Segment 3
- Submit 100% Design - Foothill BI Freight Bridge
- Submit 85% Design - DBCS M&O Facility
- Submit 100% Design - Walls Segment 4 (West)
- Submit 85% Design - Train Control - M&O Facility
- Submit 85% Design - Grading & Drainage - Segments 1

Areas of Concern

- Mountain Ave Grade Crossing Permit. The Authority will seek approval from the CPUC for a revised GO-88b grade crossing application due to an increased quantity of gates. The application approval could have a potential schedule impact.
- Highland Ave Grade Crossing Permit. The Authority will seek approval from the CPUC for a revised GO-88b grade crossing application due to design criteria conflict with the 40' crossing gate. The Metro criteria calls for a 34' maximum crossing gate. The application approval could have a potential schedule impact.

Areas of Concern (Continued)

**METRO GOLD LINE FOOTHILL
EXTENSION CONSTRUCTION AUTHORITY**
Monthly Foothill Extension Project Status Report
Period Ending – October 31, 2012



Description: Alignment Design / Build

Status: October 15, 2012

Contract No.: C1135

Contractor: Foothill Transit Constructors (Kiewit-Parsons J.V.)

Cost Summary:

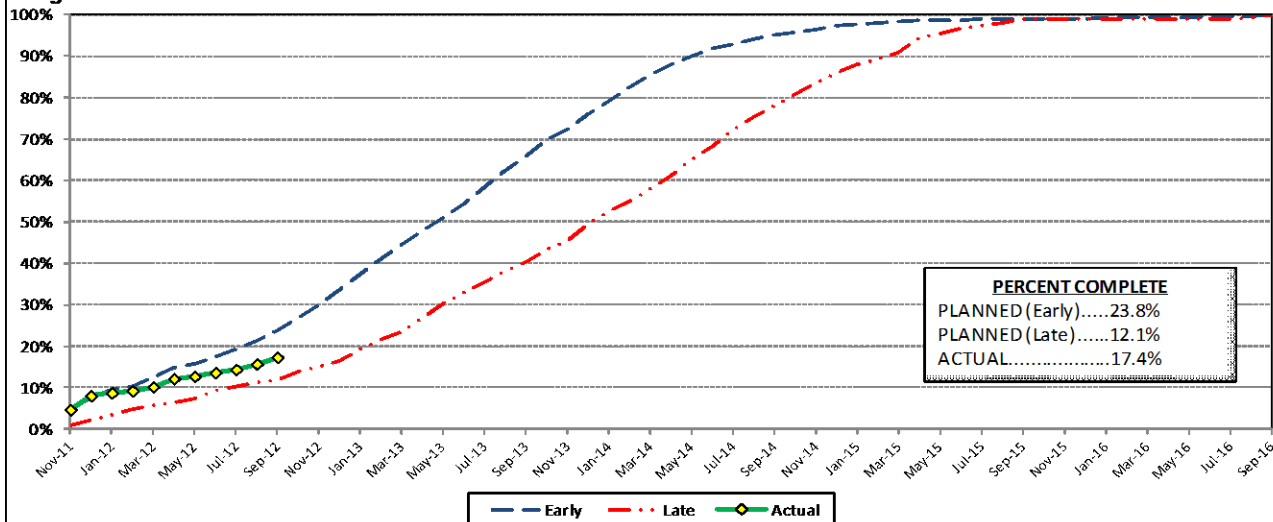
	Million(s)
CONTRACT	
Contract Award Value:	485.9
Executed Change Orders:	1.2
Current Contract Value:	487.0
Potential Change Orders:	3.1
Current Forecast:	490.1
Earned Value/Actual Cost	83.3
AUTHORIZATION FOR EXPENDITURE	
Budget	507.6
Commitment	503.6
Balance	13.5

Cost Assessment:

This period the Contract forecast decreased from \$493.3 Million to \$490.1 Million. The potential cost decrease is due to the decision to cancel PCO 003 - *Traction Power Supply Substations*. The Authority will include the additional substation work at Michillinda Ave and Soldano Ave in the C1150 - *Intermodal Parking Facilities Contract*.

The Design-Build Contractor has earned 83.3 Million and is currently 17.4% complete. The progress is currently 6.4% behind the schedule, which is due to the delayed completion of critical design packages, such as the *Segment 4 Retaining Walls and Grading & Drainage*.

Progress Curve



Schedule Summary:

Contract Award:	07/27/11
Interim Notice to Proceed (NTP):	11/03/11
Original Contract Duration:	1,780 Calendar Days
Current Contract Duration:	1,780 Calendar Days
Elapsed Time from NTP:	347 Calendar Days

Contract Milestones

Milestones	Description	Original Contract	Current Contract	Forecast	Variance
1	Substantial Completion	09/23/15	09/23/15	10/20/15	(27)
2	Punchlist Complete	06/19/16	06/19/16	07/16/16	(27)
3	Final Completion	09/17/16	09/17/16	10/14/16	(27)
4	Access - IFS Br.	12/15/12	12/15/12	12/15/12	0
5	Test Track Complete	03/27/15	03/27/15	04/02/15	(6)
6	Colorado Br. Demo Complete	02/01/12	02/01/12	6/15/2012 A	(135)

Schedule Assessment

This period, the Substantial Completion milestone improved due to the delivery of the 100% Retaining Wall Design - Segment 4 (East). The Segment 4 Retaining Walls are the most critical to support the relocation of the existing freight mainline track. The Design Build Contractor is maintaining the schedule with the projected delivery of the Grading & Drainage Design - Segment 4 and other designs, which were necessary to support the freight track relocation. The Substantial Completion Milestone is behind schedule and is forecast to be complete on October 20, 2015.

The IFS Access is anticipated on December 15, 2012 which is per the Contractual requirement. At this time the access is based upon the C1134 Design-Build Contractor achieving Substantial Completion. There is a potential for shared access after the C1134 Substantial Completion to complete non-structural work activities.

The Test Track Completion is forecast to be complete on April 2, 2015. The milestone has slipped six (6) days this period due to the projected Retaining Wall Design delivery.



Change Management Log

Date: 11/8/2012

Page: 1 of 1

Project: C1135 Alignment - FTC Contract #: C1135

Original Contract Amount:	\$485,867,000				
Approved Change Orders:	\$1,154,166	0.24%	Pending Change Orders:	\$0	0.00%
Current Contract Total:	\$487,021,166		Pending Contract Total:	\$487,021,166	0.24%

Change Orders

Number	Change Management	Title	Initiated Date	Approved Date	Outstanding Days	Time Extension	Amount
EXECUTED Change Orders							
001.00	000.00	Interim NTP	11/3/2011	11/3/2011	0		\$0
002.00	013.00	Colorado Bridge Haz Mat	5/17/2012	5/18/2012	1		\$121,382
002.01	013.01	Colorado Bridge HazMat - Final	9/5/2012	9/7/2012	2		\$13,164
003.00	001.00	Sound Wall Deletion - Duarte Road	7/12/2012	7/18/2012	6		(\$74,707)
004.00	018.00	Revise Block Design - CBD Calc	8/23/2012	8/29/2012	6		\$3,986
005.00	023.00	Wayside Signal Aspect Revision	9/6/2012	9/7/2012	1		\$26,072
006.00	040.00	Arcadia Frieze, Bench-Artist Design	9/6/2012	9/10/2012	4		\$13,683
007.00	019.02	Soils Testing Abutments & Fdns	9/14/2012	9/18/2012	4		\$44,993
008.00	041.00	Unknown Utilities RFCN 005 006 008	9/14/2012	9/18/2012	4		\$132,450
009.00	038.00	Illuminate City Names @ Stations	9/18/2012	9/24/2012	6		\$184,657
010.00	046.00	SGRB - Lead Based Paint Remediation	9/21/2012	9/24/2012	3		\$244,536
011.00	004.00	Station Architectural Changes	10/11/2012	10/12/2012	1		\$443,950
Subtotal:							\$1,154,166
Subtotal:							\$1,154,166
Total:							\$1,154,166

Open PCOs

PCO Number	Title
OPEN	
002.00	Relocation of Access Road to 3M Fac
003.01	Systems and Testing for Added TPSS
005.02	IDIQ Communications Contract (Rev 2)
006.00	IFS Related Scope Modifications
007.00	Proposed Changes to FLS Criteria
011.00	Add 3 Electrical Conduits for ALW
012.00	SCE Relocation Duarte Rd (UG)
013.02	M&O - Materials Storage Revisions
015.01	Delete Layover Building
016.01	Arcadia Frieze & Bench-Construction
017.00	Santa Anita Trail Detour
018.00	Totten Tubes Credit
019.00	City of Hope Conduits
020.00	Landscaping-North side of Duarte Rd
021.00	Citrus TPSS Transformer Changes
022.00	M&O IT Changes

Open RFCs

RFC Number	Title
OPEN	
009.01	SGRB Lead Abatement Phase 2
012.00	Live SS (vs. Abandoned) in Azusa
015.00	SS Lines (2 ea) Encasement in Azusa

Alignment Construction Images

M&O Facility demolition



Alignment grading work

San Gabriel Signal House





Azusa to Montclair Segment

Staff is working with Parsons Brinckerhoff (PB) to prepare responses for incoming public comments on the Draft Environmental Impact Report (DEIR) for the Azusa to Montclair extension Project. In addition, staff is working with the environmental team to make the necessary changes in the DEIR to address all pertinent comments received.

ACTIVITIES COMPLETED THIS PERIOD

PB started to assemble and prepare responses to the incoming public comments on the Draft EIR. Authority staff and PB met and reviewed the comments and discussed the approach on preparing responses to all comments. In addition, PB started to revise the DEIR to address any and all pertinent comments.

KEY FUTURE ACTIVITIES

The environmental team will continue to prepare responses to the public comments as part of the administrative record. In addition, PB will revise the DEIR as necessary to address the comments and finalize the EIR and submit to the Authority for review.

Federal Transit Administration (FTA)

The Metro Board excluded the Gold Line from seeking federal New Starts funding. The Authority will work together with Metro along with the Congressional delegation to seek funding to construct the extension following completion of the environmental review.



Ontario Airport Segment

Authority staff continues the negotiation process with KOA Corporation for the Ontario Airport segment alternatives analysis study which will likely begin later this year.

ACTIVITIES COMPLETED THIS PERIOD

Staff continued to pursue the needed funding to conduct the Alternatives Analysis for the Ontario Airport Segment. The San Bernardino Associated Governments (SANBAG) and the Authority are in discussions to develop a funding agreement for a portion of the initial Alternatives Analysis study.

KEY FUTURE ACTIVITIES

Authority staff will work to obtain funding for this Segment and complete negotiations with KOA.

**METRO GOLD LINE FOOTHILL
EXTENSION CONSTRUCTION AUTHORITY
Monthly Foothill Extension Project Status Report
Period Ending – October 31, 2012**



**PHASE II FOOTHILL EXTENSION FINANCIAL STATUS
Project Operating Budget Summary in Millions of Dollars
October 31, 2012**

	(a)	(b)	(c=a-b)	(d)
FINANCIAL PLAN	Current Budget	Funding Committed to Project	Uncommitted Funds	Revenues Received
SCAG	1.0	0.9	0.1	0.9
Interest Income	2.0	2.0	-	2.0
Bridge Replacement	13.9	13.9	-	13.9
Phase I Carryover	4.0	4.0	-	4.0
Maintenance and Operations Facility	-	-	-	-
Cities	11.0	-	11.0	-
Measure R - Pasadena to Azusa	735.0	735.0	-	161.6
Measure R - Azusa to Montclair	-	-	-	-
SANBAG	55.2	1.5	53.7	1.5
Federal TCSP	2.9	2.9	-	2.3
Federal Bus Intermodal Plan	9.0	9.0	-	2.1
Federal New Starts 2004 MTA Passthrough	4.0	4.0	-	4.0
Federal New Starts 2005 MTA Passthrough	0.5	0.5	-	0.5
Federal New Starts 2006 Corridor Study	2.5	2.5	-	2.1
Federal/Other	580.8	-	580.8	-
Total Revenues	1,421.8	776.2	645.6	194.9
	(a)	(b)	(c)	(d=a-b)
	Current Budget	Current Obligation	Current Expenditures	Current Available Balance
EXPENSES				
Program Management and Administration	101.9	55.0	49.5	46.9
Master Cooperative Agreements	12.0	2.2	2.1	9.8
Real Estate including ROW Acq	27.0	9.8	9.8	17.2
Special Programs	0.3	-	-	0.3
Procurement/Vehicles	60.0	-	-	60.0
Maintenance and Operations Facility Land	22.0	21.7	21.8	0.3
Construction - IFS	19.5	19.6	17.1	(0.1)
Construction - Pasadena to Azusa segment	330.8	314.8	64.8	16.0
Construction - Azusa to Montclair segment	658.8	-	-	658.8
Construction - M&O	46.0	44.0	5.5	2.0
Construction - Parking Structures	32.5	-	-	32.5
MTA Project Costs	64.0	16.0	13.2	48.0
Contingency	27.4	-	-	27.4
Project Reserve	19.6	-	-	19.6
Total Project	1,421.8	483.1	183.8	938.7