

Crenshaw/LAX Transit Corridor



Metro[®]

CRENSHAW/LAX TRANSIT CORRIDOR PROJECT

QUARTERLY PROJECT STATUS REPORT

THE PREPARATION OF THIS DOCUMENT HAS BEEN FINANCED IN PART THROUGH A GRANT FROM THE U. S. DEPARTMENT OF TRANSPORTATION, FEDERAL TRANSIT ADMINISTRATION (FTA).

MARCH 2013

TABLE OF CONTENTS

	Page No.
Project Overview.....	1-4
Management Issues.....	5-7
Project Alignment.....	8
Base Project Scope.....	9-11
Project Status	
• Project Schedule	
○ Key Milestones Six-Month Look Ahead.....	12
○ Project Summary Schedule.....	13
○ Critical Path Narrative.....	14
• Project Cost	
○ Project Cost	15
○ Project Cost Analysis.....	15-16
• Financial/Grant	
○ Financial/Grant	17
○ Status of Funds Anticipated.....	18
• Staffing	
○ Total Project Staffing.....	19
○ Metro Staffing.....	20
○ Construction Management Support Services Consultant.....	20
○ Engineering Services Consultant.....	21
• Real Estate.....	22
• Quality Assurance.....	23
• Environmental.....	23
• Construction Relations.....	24
• Art Development.....	24
• Safety & Security.....	24
• Third Party Agreement and Advanced Utility Relocation Status.....	25-26
• Nighttime Construction and Noise Variance.....	27
• California Public Utilities Commission (CPUC) Summary.....	28

TABLE OF CONTENTS (Continued)

	Page No.
• Federal Aviation Administration/Los Angeles World Airports Summary.....	29
• Chronology of Events.....	30-31
• Construction Contracts	
o Contract C0988 Status.....	32
o Contract C0990 Status.....	33
o Contract C0991 Status.....	34
• Construction Photographs.....	35-36
Appendices	
• Cost and Budget Terminology.....	37
• List of Acronyms.....	38-41

PROJECT OVERVIEW

Planning/Environmental

The Board approved the Project Definition and certified the Final Environmental Impact Report (FEIR) in September 2011. In addition, the Board authorized the Chief Executive Officer (CEO) to file a Notice of Determination (NOD), adopt the Finding of Fact and Statement of overriding Considerations, and the Mitigation Monitoring & Reporting Plan. The Record of Decision (ROD) was received from the FTA on December 30, 2011.

Metro worked with the FTA to include changes due to design refinements post ROD that are being evaluated in a supplemental environmental assessment to the FEIS as well as a CEQA addendum to the environmental documents. The circulation of the Supplemental Environmental Assessment commenced on July 2, 2012 and was completed on August 2, 2012. Preparation of a FONSI was completed and approved by FTA on September 4, 2012. The CEQA addendum was under review by Metro Legal Counsel and comments have been incorporated. Metro is reviewing with County Counsel if Metro Board action and filing of NOD is required. ***A CEQA addendum has been prepared and will be circulated to the Board and filed for record.***

Noise variances on all five construction segments have been approved by the Los Angeles Police Commission. Noise variances have to be renewed every six months; renewal on the first four segments were signed off by the Commission with written approvals issued to Metro. See page 24 for map of noise variance segments. One noise variance for Segment D (59th Street to West Blvd) was temporarily suspended by the Los Angeles Police Commission prior to start of construction work. Metro has reached out to Council District 8 outlining the planned construction work, outreach conducted and the impacts if the noise variance is not restored. Metro is seeking reestablishing the noise variance for its Advanced Utilities Relocation Contractor. ***Council District has requested Metro to reach out to the Park Mesa Neighborhood Council before a final decision is made for allowing utility work at night.*** Metro will also seek maintaining a noise variance when the main Design-Build Contractor begins construction.

Two potential changes in the base work have been evaluated as to the level of environmental clearance that may be required. These includes changing from a pedestrian crossing to a pedestrian undercrossing west of Eucalyptus Avenue and changing the La Brea LRT Underpass to an LRT Overpass that provides significant improvements to the LA Brea Station while also reducing cost. FTA has directed Metro to follow a 130 C (CE) process for these changes in base work. Metro received comments from FTA and has updated and resubmitted the CE for signoff by FTA. Following signoff, the CE will be filed for record purposes. ***A CEQA addendum has also been prepared and will be circulated to the board and filed for record.***

Design

The baseline preliminary engineering effort for the main alignment is complete. The design consultant submitted the final preliminary engineering drawing deliverables for Facilities and Systems in November 2011 and completed technical documents for the design-build main

PROJECT OVERVIEW (Continued)

alignment Contract C0988 Crenshaw/LAX Transit Corridor. The Contract is now in the final phase of a best value procurement phase as discussed in section below.

The preliminary engineering effort for the Southwestern Yard is now complete. The final preliminary engineering submittal was received on December 18, 2012. A design-build Invitation for Bid (IFB) contract package for the final design and construction of the Southwestern Yard has been rescheduled to be bid in spring 2015, which allows use of certain yard parcels by the C0988 Design Build Contractor.

Major Contract Procurement

The Request for Proposals for the design-build main alignment Contract C0988 Crenshaw/LAX Transit Corridor was released on June 22, 2012. Seven (7) amendments were issued to the RFP. Proposals were received on December 6, 2012. Two schedules for contract award were projected: February 2013 or May 2013 if a competitive range cannot be established with initial proposals and Best and Final Offers (BAFO) are deemed necessary. Due to the result that a competitive range could not be established with the initial proposals, Metro issued Amendment No. 8 on February 22nd to proposers requesting BAFO **submittals. BAFO's were submitted on March 15, 2013. BAFO review commenced with development of award strategies in process and** tentative Board action is scheduled for May 2013.

Third Party Agreements and Advanced Utility Relocations

Staff continues to coordinate outstanding design issues with FAA, LAWA, LADOT, LABOE, LABSL, DWP, City of Inglewood, Caltrans and CPUC on a regular basis. **Metro is working under existing agreements with the City of Los Angeles and DWP. Amendments are in process but work is proceeding under present agreements.** The majority of third parties have commenced advanced utility relocations – see page 25 for status.

Construction

The first construction contract, Contract C0990 Crenshaw/LAX Advanced Utility Relocations, was awarded to Metro Builders and Engineers Group, LTD and a notice to proceed was issued on July 17, 2012. Construction commenced in November 2012 with potholing in advance of utility relocation work to begin in January and continue through July 2013. Major ductbank relocation work at LAX commenced in January 2013 and will continue until May 2013. Major sewer line work **on 59th Place** also commenced in January 2013 and will continue until June 2013 **with remaining work including major sewer relocation work on 67th, storm drain relocation in Leimert Park and several water line relocations on Crenshaw Blvd.** See the Contract C0990 Status sheet at the end of this report for more information.

Right-of-Way

The updated Real Estate Acquisition Management Plan (RAMP) and Relocation Plan were completed on October 24, 2012. Metro requested and FTA has approved increasing the threshold value for property acquisitions from \$500,000 to \$1.5 Million. There are a total of 76

PROJECT OVERVIEW (Continued)

parcels. **Three parcels have been de-certified. Of the remaining 73 parcels certified, there are 34 full takes, 27 partial takes and 12 temporary construction easements (TCE's).** Twenty-six offers have been made and **five** agreements have been signed. **Five parcels have been acquired.**

Systems

Metro staff initiated a study to explore possible alternative layouts to accommodate the central control functions associated with new project needs, such as Crenshaw/LAX project, within the existing ROC facility as an interim measure. Metro has determined that the best interim course of action is to expand the existing functional operations at the ROC under a Phase 1 approach to support five new rail lines and extensions including the Crenshaw/LAX Project. The existing ROC will be expanded and will reconfigure the existing ROC service control and closed circuit television monitoring areas to increase overall space requirements by approximately 22 percent. Comments were received from the PMOC team and are being addressed by Metro's Engineering Group with an updated report distributed November 26, 2012. A full build-out of a combined BOC/ROC is also being planned under a Phase 2 approach on land to be acquired by Metro as a separate Capital Improvement Project near Division 20.

Program Management

The Board approved the Life-of-Project (LOP) budget of \$1,749 million in October 2011. The LOP Budget includes \$26 million for the environmental/planning scope of work and \$1,723 million for the design and construction scope of work. The Board in December 2012 approved an increase of \$13.9 million for a new LOP total of \$1,762.9 million. The Unallocated Contingency Standard Cost Category (SCC) 90 budget line item was increased by the \$13.9 million for a new total of \$191.1 million.

The current budget includes the 49% cost allocation share that the Project is responsible for paying for the design and construction of the Southwestern Yard. This amount is \$139.4 million of the \$285.2 million forecast cost for the Southwestern Yard. The \$139.4 million is allocated in the various SCC categories.

The amount of funding available for the Crenshaw/LAX Transit Corridor Project, excluding the Southwestern Yard allocation, is \$1,623.5 million.

The LOP budget is funded by various sources of funds which include federal grant, state and local funds. The TIFIA Loan is categorized under local funds as the loan is secured by a pledge of Measure R local sales tax funds. The federal percentage of the total funding is 5.84% with state and local 94.16%.

The project commitments thru **March 2013** are **\$108.8** million or **6.2%** of the Current Budget. The project expenditures thru **March 2013** are **\$82.8** million or **4.7%** of the Current Budget. The expenditures to date are for environmental/planning, preliminary engineering, third party utility relocation work, agency reviews/coordination, advance utility relocation construction, right-of-way and professional services.

PROJECT OVERVIEW (Continued)

The project master schedule reflects a forecast of a June 2019 Revenue Service Date. A revised Baseline Revenue Service Date will be updated upon the award of the design-build main alignment Contract C0988 Crenshaw/LAX Transit Corridor and a board decision on bid options in the RFP. With the revised forecast date, the project schedule contingency is nine months. (See Management Concern No. 3).

A Risk Register has been developed for the project and is being updated monthly to reflect the issues/risks identified to date, which includes new risks as well as risks resolved. An update to the Risk and Contingency Management Plan was completed in July 2012. The next formal risk assessment workshop will take place after the award of the design-build main alignment contract.

A Risk Management Quarterly Progress Report was issued in January 2013. The Report will continue to be updated quarterly until the design-build main alignment contract is awarded at which time the Report will be produced monthly. The next Report will be issued in **July 2013**.

Metro has been coordinating on lesson learned with the U.S. Department of Transportation (USDOT) on a TIGER Project Delivery Initiative. This initiative is to look at best practices and lessons learned on major transit projects. A final report was provided to Metro in January 2013. Further discussion on lessons learned is awaiting completion of the C0988 procurement process.

MANAGEMENT ISSUES

Concern No. 1: Complete definition of FAA/LAWA south runway construction requirements for procurement documents and file 7460-1 form for signoff on constructability. Also, confirm decisions required on civil infrastructure to be built by Metro and fiber installation by FAA/LAWA.

Status/Action A construction safety phasing plan (CSPP) for the advance utility work was approved on south runways 25R and 25L by FAA on April 26, 2012. Metro is complying with the conditions that include insurance provisions, payment bonds and indemnification which have been incorporated into the advance utility contract. The Advance Utility Contractor has proposed changes to the CSPP that have been submitted and are under review by FAA/LAWA. With the upcoming holiday moratorium period, utility relocation activities adjacent to the south runways will be deferred until January 2013 with no impact on schedule or cost. A CSPP has also been completed and submitted to FAA for the new Design-Build Contract C0988. Signoff of the CSPP by FAA/LAWA is dependent on award of the Design-Build contract and the responsible points of contact with the Design-Builder for the construction phase identified by name and number.

Concern No. 2: Some right-of-way parcels for the Southwestern Yard have required relocations that currently support car rental facilities including Dollar Rent-A-Car and Avis Rent-A-Car may take considerably longer than planned.

Status/Action Although the Southwestern Yard is not on the project critical path, staff has evaluated schedule impacts to the start of construction and procurement options on how Metro could move forward to minimize delays to schedule. Relocation consultants have been brought on board by Metro to work directly with the car rental companies. LAWA continues to work directly with Dollar/Thrifty Rent-A-Car for use of the former surface parking lot facilities near 111th Street and La Cienega Blvd. as a relocation site for Dollar/Thrifty Rent-A-Car and is finalizing a land lease agreement. Dollar/Thrifty is moving forward with plans to relocate its facilities by 2014. A timeline to complete the environmental process and relocation is estimated by Dollar at 18 months; or approximately December 31, 2013. LAWA and Avis **have negotiated** short term leasing of land at the former Lot E parking lot on 111th Street for rental car storage that is to be removed off the SW Yard site. Metro is assisting to accelerate this process. Avis has agreed to consolidate all its administrative facilities at its existing facility on Airport Boulevard.

As part of the BAFO process for the design-build main alignment Contract C0988, the right-of-way parcels for the Southwestern Yard have been made available to the C0988 Contractor to use for a period of time during final design and construction. Use of the parcels includes space for laydown, construction staging and a project office for co-location between the Design-Builder and Metro staff. These parcels will be made available to the Southwestern Yard Contractor for construction in the future.

MANAGEMENT ISSUES (Continued)

Concern No. 3: Reduction in schedule contingency in master schedule due to the longer procurement process for developing the Request for Proposals for design-build Contract C0988 Transit Corridor.

Status/Action Initially the master schedule maintained the FTA requested schedule contingency of approximately 20%. However, with the best value procurement *for the* design-build Contract on the schedule critical path, the delay in issuance of the Request for Proposal (Part II) and the extended procurement period net effect was to reduce the required schedule contingency to less than 5%. *With the February 2013* revision of the forecast of June 2019 for Revenue Service Date, the schedule contingency has been increased to over nine months. The amount of schedule contingency is dependent on what the revised Baseline Revenue Service Date will be once the award of the design-build main alignment Contract C0988 Crenshaw/LAX Transit Corridor tentatively scheduled for May 2013 and a board decision on bid options in the RFP is made.

Concern No. 4: The California Public Utilities Commission (CPUC) has suspended General Order 164-D process for approval of grade crossing improvements and has directed Metro to adopt a formal application process with public hearings as required. The project has a number of controversial crossings that have the potential for increased construction cost.

Status/Action Metro is preparing formal crossing applications with the initial application filed in November 2012 for three crossings located in the City of Inglewood: Eucalyptus Avenue, a pedestrian undercrossing west of Eucalyptus Avenue and Centinela Avenue. Two additional applications covering the remaining gated crossing in Inglewood and Los Angeles were filed in January 2013. The last application filings covering all grade separations and the at-grade street running segment on Crenshaw Boulevard was filed February 7, 2013. Notices of Protest were received on the first applications covering Eucalyptus Avenue, a pedestrian underpass west of Eucalyptus and Centinela Avenue. CPUC has scheduled a pre-hearing on April 9, 2013 to discuss the merits of the protests. An additional protest was also received on Package #4 covering the street running section on Crenshaw Blvd.

Concern No. 5: Some utility companies primarily DWP – Water and Power who are in process of relocations at Florence/Manchester, and at station sites at Crenshaw/Mark Luther King and Crenshaw/Exposition do not conform to Buy America FTA requirements. Noncompliant materials include 34.5 KV power cable, water valves and fittings. Material costs have been estimated at \$400,000 for power and \$300,000 for water. ***Dependent on Metro verifying the rights under license agreements on the Harbor Subdivision, there may be additional relocations with So. Cal Edison (two locations) and So. Cal Gas (one location) that would fall under Buy America.***

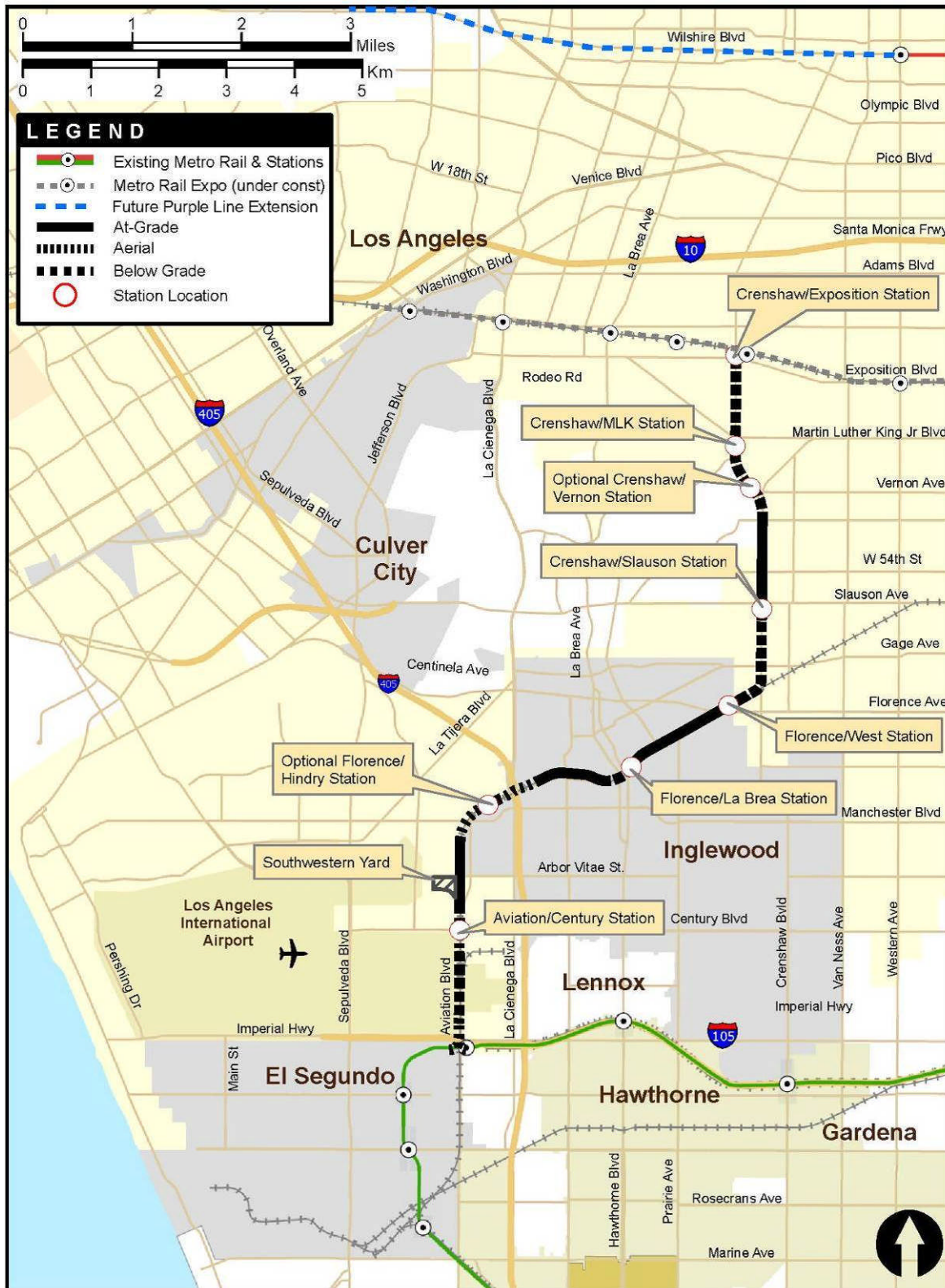
MANAGEMENT ISSUES (Continued)

Status/Action Metro is reviewing options including owner-furnished materials, issuance of change orders to an Advance Utility Contract or re-procurement of compliant materials by DWP in addition of consideration to request waivers from FTA. Metro has also prepared and presented to FTA a summary of potential delay and significant increased costs to a follow-on Design Build contractor. Metro has reached agreement with DWP-Power to order Buy America compliant power cable and change orders are being processed by DWP. Options have also been discussed with DWP-Water for compliance on water line relocations including gate valves and fittings and DWP has released RFPs for procurement of materials and has received bids for compliant materials. Metro and DWP are evaluating ways to accelerate the work to minimize impacts to project schedules including adding second crews. DWP has advised Metro they expect to meet the requested completion date of December 31, 2013. ***Metro is moving forward with SCE and SCG of the design of the utility relocations but no decision has been made as to responsibility on cost.***

Concern No. 6: Execution of Local Match Agreements for 3 percent project funding is required with the cities of Los Angeles and Inglewood.

Status/Action Metro has proposed to finance the 3 percent local match for the City of Inglewood. An agreement with the City of Inglewood is pending with no certainty of a timeline for execution. A memorandum of understanding is required with the City of Los Angeles with no certainty of a timeline for execution.

PROJECT ALIGNMENT



BASE PROJECT SCOPE

The Crenshaw/LAX Transit Corridor is a north/south corridor that serves the cities of Los Angeles, Inglewood, Hawthorne and El Segundo as well as portions of unincorporated Los Angeles County. The alignment extends 8.5 miles, from the intersection of Crenshaw and Exposition Boulevards to a connection with the Metro Green Line at the Aviation/LAX Station. The project provides major connections with the Los Angeles International Airport (LAX) as well as links to the Metro Green Line, the Exposition Line and countywide bus network. The Board adopted a light rail system as the Locally Preferred Alternative (LPA) in December 2009.

The alignment is comprised of a double-tracked right-of-way consisting of sections of at-grade in-street, at-grade within railroad right-of-way, aerial, and below-grade guideway sections, six stations, park and ride facilities at three locations, utilities, landscaping, roadway improvements required by the project and a maintenance & storage facility (Southwestern Yard). During preliminary engineering, scope modifications were incorporated as part of the project and adopted by the Metro Board as part of the Project Budget. These changes, resulting from consultations with agencies such as the Public Utility Commission, Los Angeles Department of Transportation, and Federal Aviation Authority, included:

- 1) At-grade changed to below-grade segment from Exposition Boulevard to 39th Street;
- 2) La Brea Avenue Grade Separation changed from aerial to below-grade;
- 3) Fully cut and cover segment changed to partially covered trench adjacent to LAX as an interim condition; and
- 4) Cost sharing of a consolidated maintenance & storage facility near LAX (Arbor Vitae/Bellanca) called Southwestern Yard.

Additional engineering refinements developed through Preliminary Engineering have been addressed through an environmental addendum with a FONSI signed by FTA on September 4, 2012. These include demolition of two existing BNSF bridge structures that allow for realignment of the LRT tracks and significant cost savings; and additional right-of-way acquisitions with the majority being small partial takings and temporary construction easements for grade crossing safety improvements, sidewalk and bus bay modifications.

Two additional changes are also being considered, a pedestrian undercrossing west of Eucalyptus Avenue and changing from a LRT underpass to a LRT overpass over La Brea Avenue. FTA has agreed to clear these additional changes under a 130 C process.

The two proposed optional stations, Crenshaw/Vernon (Leimert Park Village) and Westchester (Florence/Hindry), are not included in the adopted base project. However, a bid option will be included in the design-build contract for constructing an in-street underground Crenshaw/Vernon Station just north of Vernon Avenue that includes two options for station entrances as well as an additional bid option to cover a Westchester at-grade station without parking facilities near Florence/Hindry. The Crenshaw/Vernon in street station option is a

BASE PROJECT SCOPE (Continued)

change from the off-street station location cleared with the FEIS/FEIR. This alternative in-street location is being addressed through a supplemental environmental assessment for NEPA and a separate CEQA addendum. The Florence/Hindry Station option was previously cleared with the FEIS/FEIR but has been renamed from Manchester at-grade to Florence/Hindry.

The scope of work for the three construction contracts **and one owner-supplied equipment contract** is shown below.

Contract C0990 Crenshaw/LAX Advanced Utility Relocations

The design of several early utility relocations was advanced sufficiently into final design to allow for bidding of critical early utility relocations. This contract will include relocating three (3) existing duct banks that feed various NAVAIDS on the south airfield complex. New ductbank infrastructure will be built by Metro with the fiber replacement work and cut-over by FAA/LAWA. These ductbanks contain fiber lines and power lines which belong to both LAWA and FAA. Since the new track alignment is below grade at these crossings, the ductbanks have to be relocated in advance to allow for the construction of the track alignment. In addition, other wet utilities along the Harbor Branch and Crenshaw Boulevard segments of the corridor that can be relocated in advance are included as part of this contract.

The project delivery method for this contract is bid-build Invitation for Bid (IFB) approach.

Design-Build Contract C0988 Crenshaw/LAX Transit Corridor

This is the largest project contract which will complete final design and construction of the infrastructure required along the corridor alignment. The structures required to be constructed are six baseline stations, grade separations including flyover structures, cut and cover trenching, tunneling and three park-n-ride facilities. The scope of work will include all the necessary systems work including train control, traction power supply substations and distribution, overhead catenary, communications, and systems tie-in to the existing Metro Green Line. Two optional stations will be included as bid options as well as additional fire suppression measures in tunnel/cut and cover segments. Street improvements at the Slauson intersection have been added to the base work for which Metro will continue to seek partial reimbursement from the City of Los Angeles.

The project delivery method for this contract is design-build utilizing a two step best value procurement approach with submittal of qualification statements through a RFQ process, pre-qualification of qualified proposers followed by release of a RFP soliciting technical and price proposals with an option at Metro's discretion for best and final offers (BAFO).

BASE PROJECT SCOPE (Continued)

Design-Build Contract C0991 Southwestern Yard

The Board-adopted 2009 Long Range Transportation Plan (LRTP) for Los Angeles County envisioned one new central Light Rail Transit (LRT) Maintenance facility to be used by all projects. Since the LRTP adoption, substantial progress on light rail system planning and development, including more accurate vehicle assignments, cost estimates, and functional requirements, has led Metro to conclude that two new LRT yards, an Eastern Yard and a Southwestern Yard, are necessary. This contract will construct the Southwestern Yard which will consolidate maintenance facility requirements for this project as well as the operating Metro Green Line, proposed South Bay Metro Green Line Extension and proposed Metro Green Line to LAX. The cost of constructing the Southwestern Yard will be proportionately split among the four projects.

The project delivery method for this contract is design-build Invitation for Bid (IFB) approach with a two step evaluation process for technical qualifications and responsive low bid.

Owner-Supplied Equipment - Contract C0992 Crenshaw/LAX Rail and Tie Procurement

Metro has added a new contract for procuring owner-supplied equipment for the Design-Build Contract C0988 Crenshaw/LAX Transit Corridor Contractor. This equipment will include running rail, bumping posts, concrete ties and hardware with an option for running rail **for another Measure R Project: Regional Connector.**

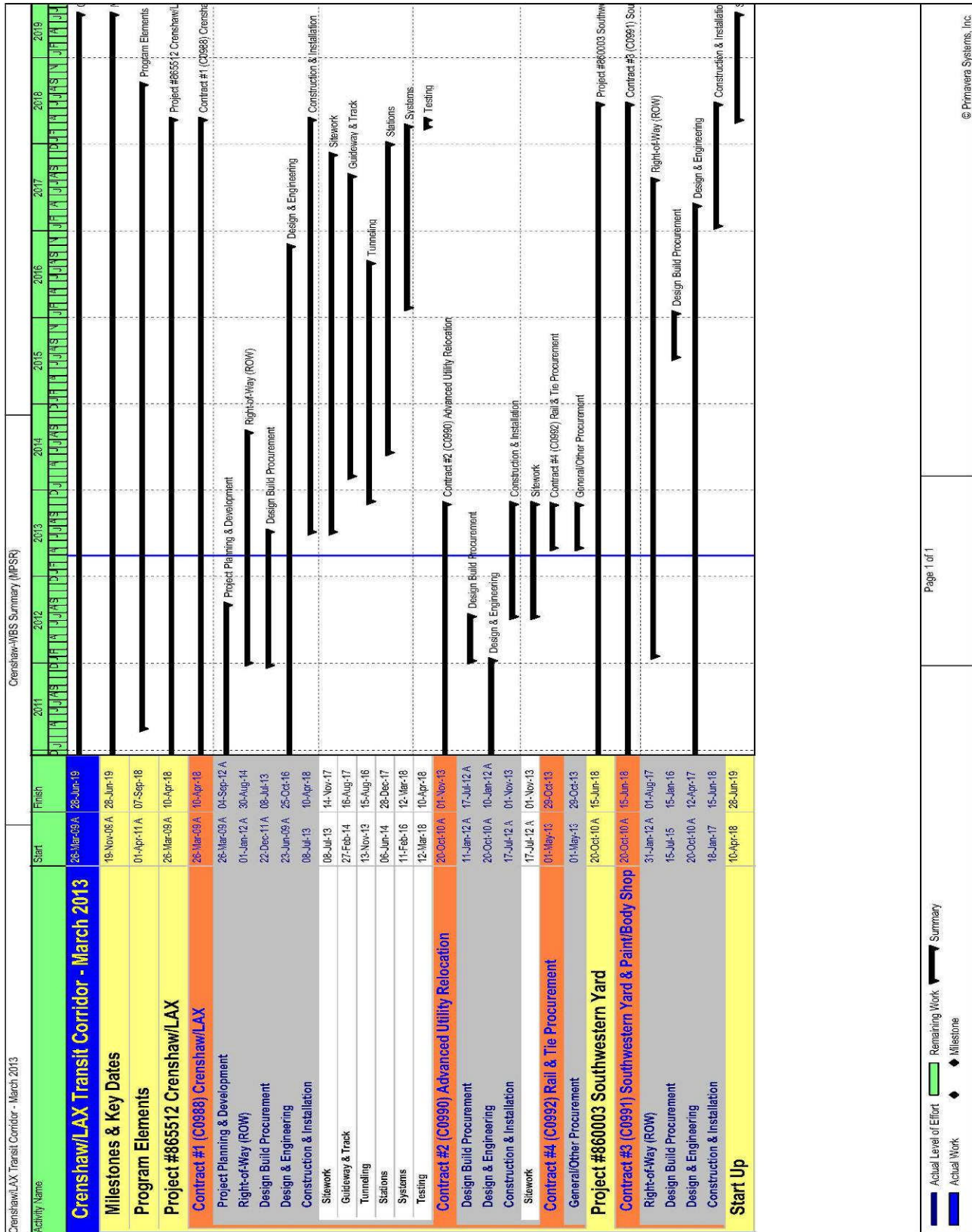
The project delivery method for this contract is bid-build Invitation for Bid (IFB) approach.

KEY MILESTONES SIX- MONTH LOOK AHEAD

	Milestone Date	Mar-13	Apr-13	May-13	Jun-13	Jul-13	Aug-13
Contract C0988 Board Approval	05/23/13			M			
Contract C0988 NTP	07/08/13					◆	
Contract C0992 Rail & Tie Advertisement	05/01/13			◆			
Contract C0991 "Southwestern Yard/P&B (on-hold)							

- ◆ MTA Staff
- Ⓜ MTA Board Action
- FTA (Federal Transportation Authority)
- △ Other Agencies
- Contractors
- HMM Design
- "A" following date is actual and completed
- * New

PROJECT SUMMARY SCHEDULE



CRITICAL PATH NARRATIVE

Critical Path:

The longest path to project substantial completion continues with the solicitation of the Design/Build Contract #1 Crenshaw/LAX Transit Corridor.

Upon notice to proceed to C0988 contractor, the critical path moves through final design for the alignment and completing shop drawings to begin procurement of the tunnel boring machines (TBMs). The TBMs are a long lead item and as packages of final design are approved for construction, work will commence on the alignment construction activities prior to the TBMs arrival, assembly and testing.

The critical path then flows to remaining construction elements; tunneling, guideway construction, station construction, and systems installation. Critical work concludes with phase 1 systems integration testing by the C0988 contractor, phase 2 systems integration testing by MTA and then pre-revenue operations.

PROJECT COST STATUS

COST REPORT BY ELEMENT

UNITS IN MILLIONS

SCC CODE	DESCRIPTION	ORIGINAL BUDGET	CURRENT BUDGET		COMMITMENTS		EXPENDITURES		CURRENT FORECAST		FORECAST VARIANCE
			PERIOD	TO DATE	PERIOD	TO DATE	PERIOD	TO DATE	PERIOD	TO DATE	
10-50	CONSTRUCTION	1,052.6	-	1,052.6	0.4	10.8	0.9	1.9	-	1,052.6	-
60	RIGHT-OF-WAY	132.3	-	132.3	0.2	10.2	0.2	9.7	-	132.3	-
70	LRT VEHICLES	87.8	-	87.8	-	-	-	-	-	87.8	-
80	PROFESSIONAL SERVICES	273.1	-	273.1	0.8	61.8	1.1	45.7	-	273.1	-
90	UNALLOCATED CONTINGENCY	177.2	-	191.1	-	-	-	-	-	191.1	-
865512 - SUBTOTAL		1,723.0	-	1,736.9	1.4	82.8	2.2	57.2	-	1,736.9	-
ENVIRONMENTAL/PLANNING-405512		5.5	-	5.5	-	5.5	-	5.5	-	5.5	-
ENVIRONMENTAL/PLANNING-465512		20.5	-	20.5	-	20.5	-	20.0	-	20.5	0.0
405512 & 465512 - SUBTOTAL		26.0	-	26.0	-	26.0	-	25.5	-	26.0	0.0
405512, 465512 & 865512 - TOTAL		1,749.0	-	1,762.9	1.4	108.8	2.2	82.8	-	1,762.9	0.0

Note-1: 405512, 465512, and 865512 are internal MTA project numbers to differentiate between environmental/planning and construction components of the project.

Note-2: Project 865512 expenditures are cumulative through March 2013.

PROJECT COST ANALYSIS

Original Budget and Current Budget:

The Board in October 2011 established the Life-of-Project (LOP) budget of \$1,749 million for the Crenshaw/LAX Transit Corridor Project. The Board in December 2012 approved an increase of \$13.9 million for a new LOP total of \$1,762.9 million. The Unallocated Contingency Standard Cost Category (SCC) 90 budget line item was increased by the \$13.9 million for a new total of \$191.1 million.

The current budget above includes the 49% cost allocation share that the Project is responsible for paying for the design and construction of the Southwestern Yard. This amount is \$139.4 million of the \$285.2 million forecast cost for the Southwestern Yard. The \$139.4 million is included in the appropriate SCC categories in the table above. A Life of Project Budget for the Southwestern Yard will be requested as Contract C0991 is closer to release of an IFB.

The amount of funding available for the Crenshaw/LAX Transit Corridor Project, excluding the Southwestern Yard allocation, is \$1,623.5 million.

Current Forecast:

The total project forecast is \$1,762.9 million.

PROJECT COST ANALYSIS (Continued)

Commitments:

The commitments are cumulative through March 2013. The total commitments increased by \$1.4 million this period. In the Construction element there was an increase of \$0.4 million for costs associated with the Advance Utility Relocation contract C0990, Los Angeles Department of Water and Power, and art program services. In the Right-of-Way element there was an increase of \$0.2 million for cost associated with environmental and relocation scope of work. In the professional Services element there was an increase of \$0.8 for project administration, IPMO field office lease and utilities, legal services, third party scope of work with Los Angeles City Departments, printing services, and environmental mitigation services. The \$108.8 million in commitments to date represents 6.2% of the current budget.

Expenditures:

The expenditures are cumulative through March 2013. The total expenditures increased by \$2.2 million this period. In the construction element there was an increase of \$0.9 million for costs associated with the Advance Utility Relocation contract C0990 with Metro Builders and Engineers LTD. In the Right-of-Way element there was an increase of \$0.2 million for appraisal, acquisition, environmental, and relocation scope of work. In the Professional Services element there was an increase of \$1.1 million primarily for costs associated with engineering and design contract E0117, Metro project administration, IPMO field office lease and utilities, construction management support services, legal services, third party scope of work with Los Angeles City Departments, printing services, miscellaneous specialty services, community relations, and Security Inspections and Guard Escort services with Los Angeles World Airports. The \$82.8 million in expenditures to date represents 4.7% of the Current Budget.

FINANCIAL/GRANT STATUS

\$ in millions

SOURCE	(A)	(B)	(C)	(D)		(E)		(F)	
	ORIGINAL BUDGET	TOTAL FUNDS ANTICIPATED	TOTAL FUNDS AVAILABLE	COMMITMENTS \$	(D/B) %	EXPENDITURES \$	(E/B) %	BILLED to \$	(F/B) FUNDING SOURCE %
FEDERAL - CMAQ	68.2	54.0	0.0	0.0	0%	0.0	0%	0.0	0%
FEDERAL - SECTION 5309 BUS CAPT	8.6	8.6	8.6	7.1	83%	7.1	83%	7.1	83%
FEDERAL - REGIONAL STP	20.0	48.2	0.0	0.0	0%	0.0	0%	0.0	0%
FEDERAL - ALTERNATIVE ANALYSIS	1.2	1.2	1.2	1.2	100%	1.2	100%	1.2	100%
FEDERAL - TIGER II		13.9	13.9	13.9	100%	1.1	8%	1.1	8%
FEDERAL REGIONAL IMPROV PROG	34.3	34.6	0.0	0.0	0%	0.0	0%	0.0	0%
STATE REGIONAL IMPROVEMENT PROG	2.2	2.2	2.2	2.2	100%	2.2	100%	2.2	100%
STATE PFM	0.179	0.179	0.179	0.179	100%	0.179	100%	0.179	100%
STATE PROP 1B PTMSEA	201.2	201.2	12.0	12.0	6%	12.0	6%	12.0	6%
STATE LOCAL PARTNERSHIP PROGRAM	0.0	8.0	0.0	0.0	0%	0.0	0%	0.0	0%
MEASURE R - TIFIALOAN	545.9	545.9	545.9	0.0	0%	0.0	0%	0.0	0%
MEASURE R	661.1	661.1	347.1	64.0	10%	50.8	8%	48.6	7%
LOCAL AGENCY FUNDS	52.4	52.4	0.0	0.0	0%	0.0	0%	0.0	0%
PROP C 25% HIGHWAY	148.9	81.2	3.8	3.3	4%	3.3	4%	3.3	4%
PROP A 35% RAIL CAPITAL	4.8	50.3	4.8	4.8	0%	4.8	0%	4.8	10%
TOTAL	1,749.0	1,762.9	939.7	108.8	6.2%	82.8	4.7%	80.5	4.6%

NOTE: Expenditures are cumulative through March 2013.

Original Budget based on Board approved October 2011 Funding/Expenditure Plan

Total Funds Anticipated based on March 2013 Long Range Transportation Plan

STATUS OF FUNDS ANTICIPATED

FEDERAL – CMAQ: Metro plans to submit to FTA in July 2013 a grant application for \$30M.

FEDERAL SECTION 5309 BUS CAPITAL: FTA approved Metro Grant on July 6, 2010 for a total of \$8.6M for bus and related facilities Preliminary Engineering effort. Funds are available for drawdown.

FEDERAL – REGIONAL STP: Metro plans to submit to FTA in July 2013 a grant application for \$28.2M.

FEDERAL ALTERNATIVE ANALYSIS: \$1.2M was approved by FTA under the alternative analysis program. Funds have been drawdown.

FEDERAL TIGER II: Federal Tiger II funds of \$13,903,535 was executed on September 20, 2012. Funds are available for drawdown,

STATE REGIONAL IMPROVEMENT PROGRAM: \$2.2M was allocated by the California Transportation Commission on January 28, 2011 for Preliminary Engineering work.

STATE PPM: \$178.6K was allocated by the State during the Planning Stage of the Project (FY07).

STATE PROP 1B – PTMISEA: A request for an allocation of \$38.4M was submitted to the State on June 1, 2011. A revised allocation request for \$12M was submitted in February 2012. This revised amount will fund ROW and final design activities. The revised allocation was approved in May 2012 and funds are available for drawdown. An additional funding allocation request of \$160M was submitted to Caltrans in March 2012. In March 2013, the allocation amount request was revised to \$11.4M. Allocation request is expected to be approved by May 2013.

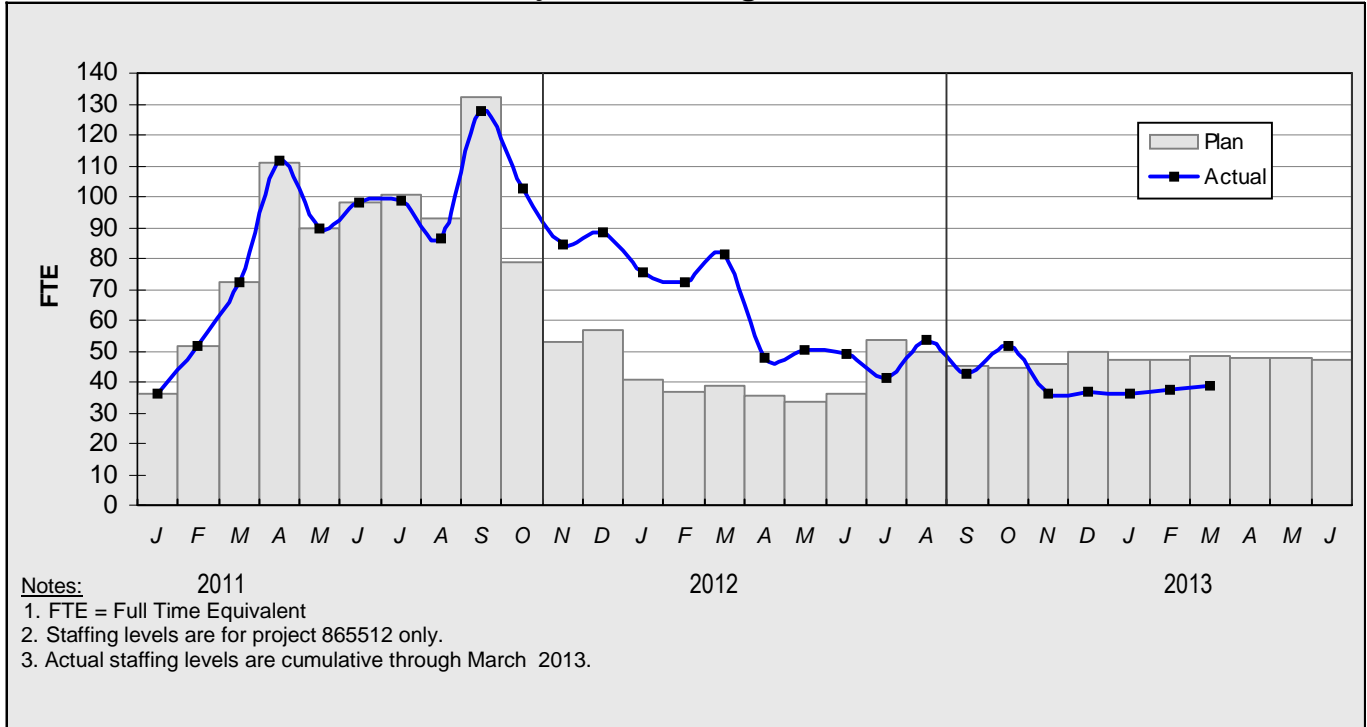
MEASURE R – TIFIA LOAN: \$53.4M has been allocated to the project based on the January 2012 Funding Plan. Funds are available for drawdown. An additional \$293.7M for FY13 has been allocated to the project based on the proposed May 2012 Measure R Extension Long Range Plan.

PROP C 25% HIGHWAY: \$3.8M has been allocated to the project based on the January 2012 Funding Plan. Funds are available for drawdown.

PROP A 35% RAIL CAPITAL: based on November 2011 Long Range Transportation Plan \$4.8 M of Proposition A 35% Rail Capital was allocated in FY2012 for the project.

STAFFING STATUS

Total Project Staffing – FTES



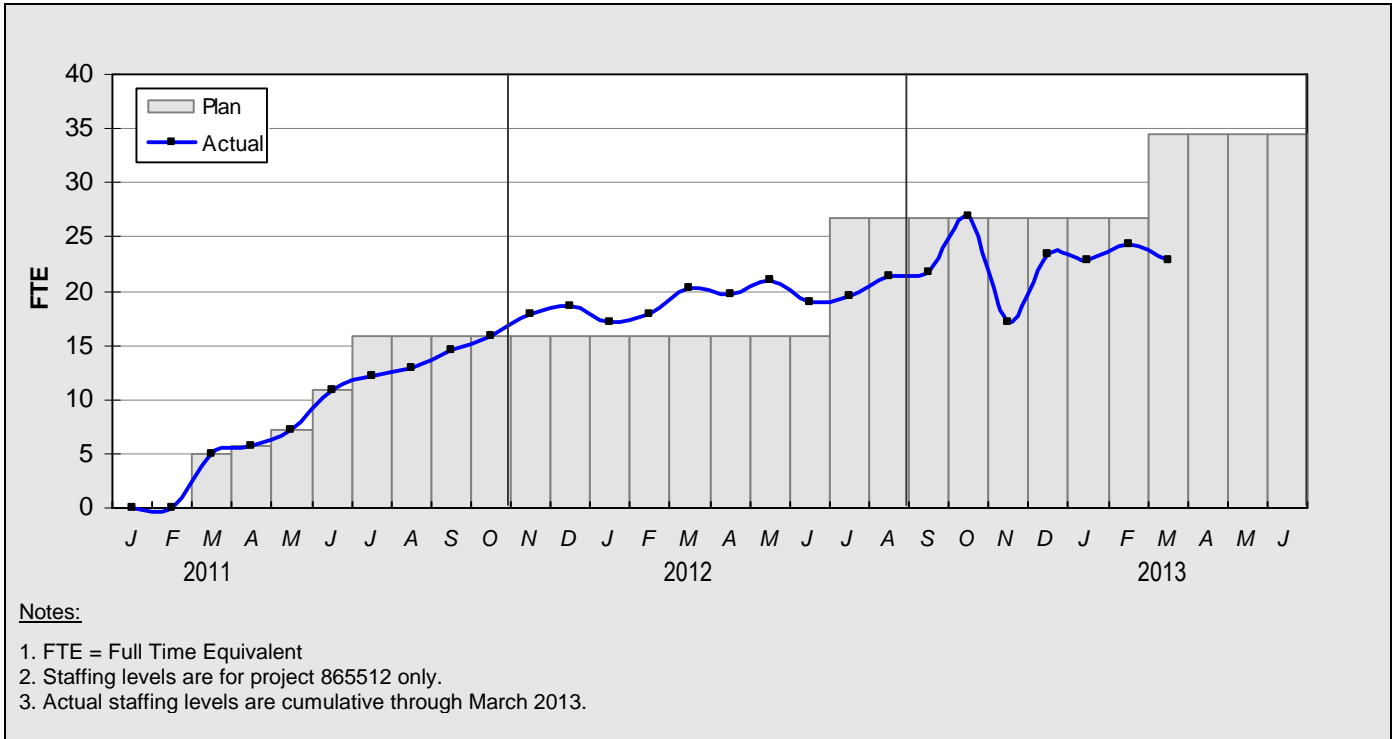
TOTAL PROJECT STAFFING

The overall FY13 Total Project Staffing plan averages 50.8 FTE's per month.

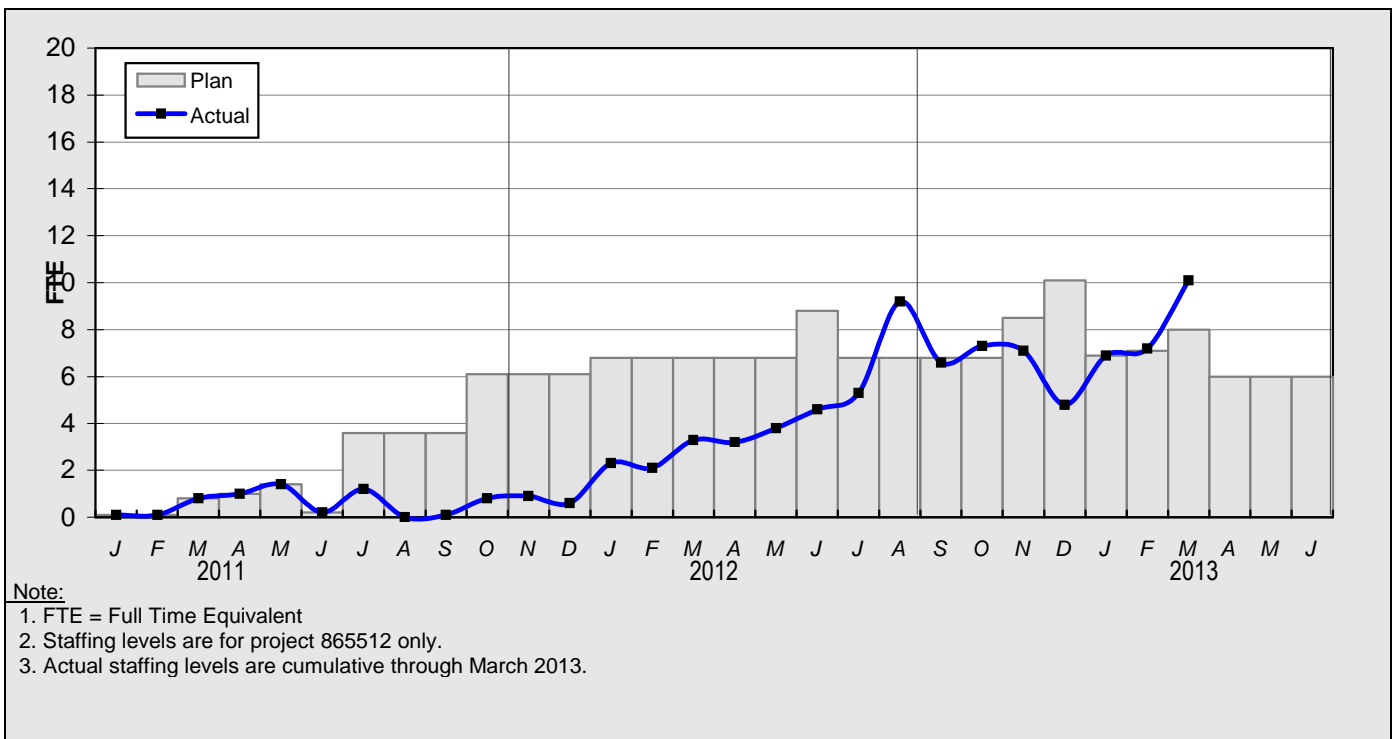
For March 2013, there were a total of 22.9 FTE's for MTA's Project Administration staff and 13.5 FTE's for consulting staff. The total project staffing was 36.4 FTE's for March 2013.

STAFFING STATUS (Continued)

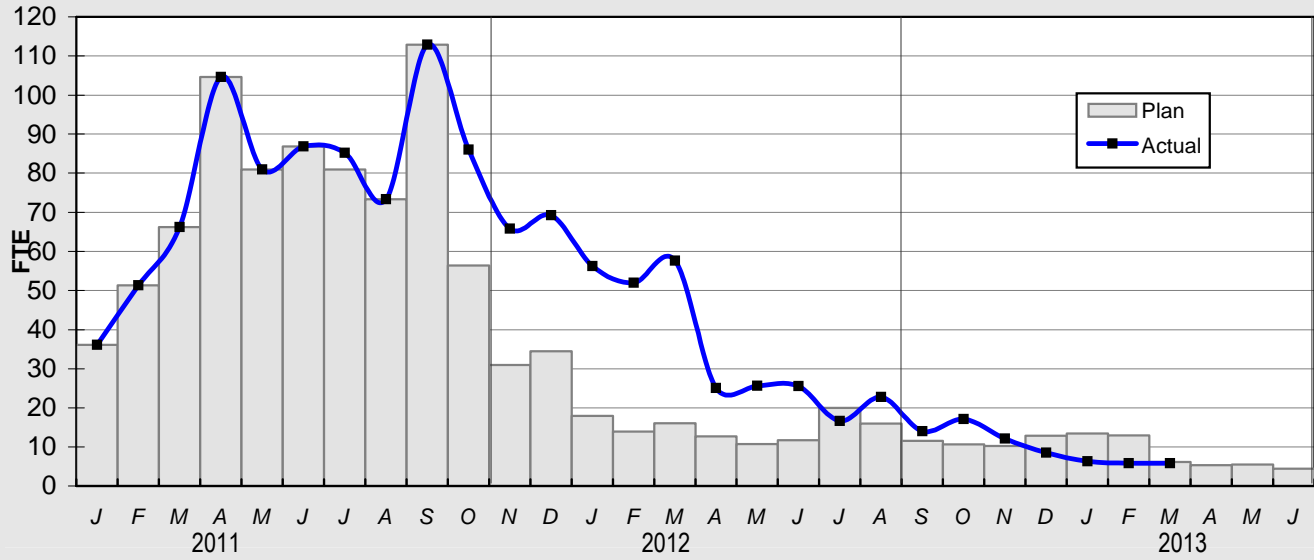
METRO STAFFING – FTES



**CONSTRUCTION MANAGEMENT
SUPPORT SERVICES CONSULTANT – FTES**



STAFFING STATUS (Continued)
ENGINEERING SERVICES CONSULTANT - FTES



- Notes:**
1. FTE = Full Time Equivalent
 2. Staffing levels are for project 865512 only.
 3. Actual staffing levels are cumulative through March 2013.

REAL ESTATE STATUS

Contract No.	Number of Parcels	Certified	Decertified	Appraisals in Process/Compl	Offers Made	Agreements Signed	Condemnation Filed	Relocations Complete	Parcels Available
C0988 C/LAX Transit Corridor (D-B):									
Crenshaw									
Full Takes	12	12		8	6	2	1		
Part Takes (PT or SE)	10	9	1	1	1	1			
TCE	10	10							
Subtotal Parcels	32	31	1	9	7	3	1		0
Relocations	15							1	
Harbor Subdivision									
Full Takes	14	14		14	12	1			
Part Takes (PT or SE)	19	18	1	3					
TCE	3	2	1						
Subtotal Parcels	36	34	2	17	12	1	0		0
Relocations	34							5	
Total HS/CR Parcels:	68	65	3	26	18	4	1		0
C0991 Southwestern Yard (D-B):									
Full Takes	8	8		8	7	1			
Part Takes	0								
TCE	0								
Total Parcels:	8	8	0	8	7	1	0		0
Relocations	4							0	
C0990 C/LAX Advance Utility Relocations:									
Total Parcels:	0								
Total Project Parcels	76	73	3	34	26	5	1	6	0

- 34 appraisals in various stages of completion.
- 36 environmental investigations underway.
- 41 owner and tenant relocations in various stages.
- Update to the March 2012 RAMP was submitted in late October; no further comments have been received.
- Twenty-six offers made to property owners.
- Five agreements have been signed.
- **Five parcels acquired.**

QUALITY ASSURANCE STATUS

C0990 Advanced Utility Relocations

- Attended weekly Project staff meetings with the Contractor, City of LA Construction Inspection, City of LA Engineering and Metro personnel.
- ***Reviewed and provided comments on several Construction Work Plans.***

ENVIRONMENTAL STATUS

Advanced Utilities Contract

- Continuing with periodic archaeological monitoring/oversight of the LAWA work and 59th Place.

Real Estate

- Reviewed Phase I or II's Reports.

Large Project Effort

- ***No major activities this month.***

CEQA Addendums

- ***Working with County Counsel to finalize addendums to cover minor design changes on the project post Record of Decision. Addendums are planned for Board action in May 2013.***

CONSTRUCTION RELATIONS STATUS

- *Participated in meeting with business owner of No. 1 Price Busters regarding access and impacts to his business.*
- *Participated in meeting with potential property owners regarding impacts to property located on Victoria St., noise impact and potential mitigations on Crenshaw Blvd. and Slauson Avenue.*
- *Participated in meeting with the office of Councilmember Bernard C. Parks regarding reinstatement request of Noise Variance for Segment D.*
- Participated in Advanced Utility Relocation Contractor Meetings.
- *Mailed out approximately 430 invitations to local schools, churches and senior centers regarding upcoming Construction Safety Training Program for the project.*

ART DEVELOPMENT STATUS

- *Artist selection development.*

SAFETY & SECURITY STATUS

- Participated in weekly progress meetings with Construction Manager and Contractor Management to discuss safety/security related issues and construction schedule.
- Monitored construction activities on a daily basis including night construction activities to ensure compliance with contract specifications.
- Reviewed contractor submittals and work plans to ensure compliance with contract specifications.
- ***Metro Builders reported zero incidents and 2,758 work hours for the month of March 2013. Total Project-to-Date work hours are 10,288 and zero incidents. The National Average is 3.8.***

THIRD PARTY AGREEMENT STATUS

Third Party	Type of Agreement	Forecast Execution Date	Required Need Date	Status/ Comments
City of Los Angeles	Amendment to Master Cooperative Agreement	4/13	N/A	Finalizing of three remaining issues; 2003 MCA remains in effect.
City of Inglewood	Master Cooperative Agreement	4/13	4/13	Executed Letter of Agreement April 2012. City still working and reviewing draft MCA.
Los Angeles Department of Water and Power	Amendment to Memorandum of Understanding	4/13	4/13	Metro addressed comments; LADWP to review; 2002 Utility Cooperative Agreement remains in effect.
Los Angeles County Public Works	Letter of Agreement	04/11	03/12	Executed
Caltrans	Amendment	08/11	03/12	Executed
Private Utilities	LOA, MOU or UCA	05/11 to 06/13	06/13	Discussions continuing with Third Party entities.

ADVANCED UTILITY RELOCATION STATUS

- Relocation of Qwest ducts near completion, cable placement to **started, should complete early 3rd Qtr.**
- Relocation of AT&T conduits, manholes and cables completed at MLK station site and design completed at La Brea Avenue. Construction at La Brea has been cancelled due to change from LRT underpass to LRT overpass.
- Relocation of communication lines completed at Manchester Avenue and Arbor Vitae.
- Relocation of DWP-Power conduits, and manholes completed at Manchester Avenue; installation of power cable is affected by Buy America. Installation of cable to **start 2nd Qtr. 2013.**
- Advance relocation of DWP-Power conduits, manholes and conduits in progress at MLK and Expo Station sites. Completion of this work is affected by Buy America. Metro has requested installation of cable to **start 3rd Qtr 2013.**
- Design in progress by DWP-Water for advance relocation of eleven (11) water lines along Crenshaw Boulevard. Construction scheduled to start in 1st quarter 2013 but is affected by Buy America. Metro has requested work to be completed by end of 2013.
- Design in progress by SCE for advance relocation of fiber crossings and pole supports along the Harbor Subdivision; and overhead power/line/feed at La Brea Station. Completion expected by end of 2nd Qtr. 2013.

ADVANCED UTILITY RELOCATION STATUS (Continued)

- **Construction completed** to relocate aerial communication lines at 96th St. south of Arbor Vitae. Design in progress to relocate aerial DWP-Power lines near 96th St. south of Arbor Vitae. Completion expected by end of 2nd Qtr. 2013.
- Abandoned BP Oil line **being** removed from the Crenshaw/LAX alignment by BP Oil Co., to complete by 2nd Qtr 2013.



CPUC CROSSING SUMMARY

Package	PE Consultant submits RCHAR* to MTA	MTA submits RCHAR* to CPUC	Field Diagnostic Meeting	CPUC Preliminary Recommendations to MTA	Revise RCHAR* & Submit to PUC for Additional Technical Evaluation	Submit Formal Application to PUC	CPUC Approval
1	1/26/2012A	2/6/2012A	03/28/12 - 3/30/12A	8/1/2012A	9/24/12A	Nov12/Feb13A	06/15/13
2	1/26/2012A	2/6/2012A	03/28/12 - 3/30/12A	8/1/2012A	9/24/12A	Nov12/Feb13A	06/15/13
3	1/26/2012A	2/6/2012A	03/28/12 - 3/30/12A	8/1/2012A	9/24/12A	Nov12/Feb13A	06/15/13
4	1/26/2012A	2/6/2012A	03/28/12 - 3/30/12A	8/1/2012A	9/24/12A	Nov12/Feb13A	06/15/13
5	1/26/2012A	2/6/2012A	03/28/12 - 3/30/12A	8/1/2012A	9/24/12A	Nov12/Feb13A	06/15/13

(*) [Rail Crossing Hazard Analysis Report \(RCHAR\)](#)

Package Description	
<p>1 Harbor Subdivision At Grade</p> <p>Centinela Av 25-FA Ivy Avenue 27-FA Eucalyptus Avenue 28-FA North Cedar Avenue 29-FA Oak Street 30-FA Arbor Vitae Street 36-FA</p>	<p>4 Crenshaw At Grade</p> <p>West 48th Street 5-FA West 50th Street 6-FA West 52nd Street 7-FA West 54th Street 8-FA West 57th Street 9-FA Crenshaw Boulevard/West 59th Street 11-FA Slauson Avenue 10-FA</p>
<p>2 Harbor Subdivision At Grade</p> <p>Victoria Avenue 21-88B Brynhurst Avenue 22-88B West Boulevard 23-FA Redondo (Closure) Hindry 34-FA La Brea Station Pedestrian Crossing High Street</p>	<p>5 Crenshaw Grade Separation</p> <p>Rodeo Road 2-FA Rodeo Place 3-FA Coliseum Street 4-FA Crenshaw Boulevard/West 60th Street 13-16 Crenshaw Boulevard/West 63rd Street 14-16 Crenshaw Boulevard/West 66th Street 16-16 Crenshaw Boulevard/West 66th Place 17-1 Crenshaw Boulevard/West 67th Street 18-16 Hyde Park Boulevard 31-88B Crenshaw Boulevard/West Vernon Avenue Crenshaw Boulevard/West 43rd Place Crenshaw Boulevard/West 43rd Street Crenshaw Boulevard/West Stocker Street Crenshaw Boulevard/West Martin Luther King Boulevard Crenshaw Boulevard/West Mall Entrance Crenshaw Boulevard/West 39th Street Crenshaw Boulevard/West Coliseum Place</p>
<p>3 Harbor Subdivision Grade Separation</p> <p>La Brea Street 26-88B San Diego (SR 405) UP 32-164D La Cienega Boulevard 33-88B Manchester (SR105) 35-88B Century Boulevard UP37-164D 104th Street 38 (877)-88B 111th Street 39-88B Imperial Highway 40-164D I-405 West Hyde Park</p>	

CPUC General Order No. 164-D process has been suspended by Commission. Project has been directed to file formal applications.

Protests were received on CPUC Application Packages 1 and 4. A pre-hearing is set for April 9, 2013 on Package 1 to review the elements of the protests. A pre-hearing on Package 4 has not been set.

FEDERAL AVIATION ADMINISTRATION (FAA)/
LOS ANGELES WORLD AIRPORTS (LAWA) SUMMARY STATUS

- Metro has included in the base scope a partially covered trench configuration as an interim condition which allows Metro to keep the overall project budget at \$1,749 million. The preliminary engineering design includes a partially covered trench which includes provisions to allow for a future 1,600 foot covered trench section. FAA approved a formal Notification of Proposed Construction Alteration (Form 7460-1) for the partially covered configuration on February 29, 2012. Metro has filed an additional 7460-1 permit application on March 1, 2012 to define construction phasing requirements and time of day limitations for construction. These requirements have been incorporated into the RFP technical documents. Metro has completed a construction safety phasing plan including a safety phasing plan check list and performance requirements for protection of airport operations as recommended by FAA staff to expedite approval. This was provided as a guideline to proposers in Contract C0988 Amendment No. 4 to the RFP released in September 2012.


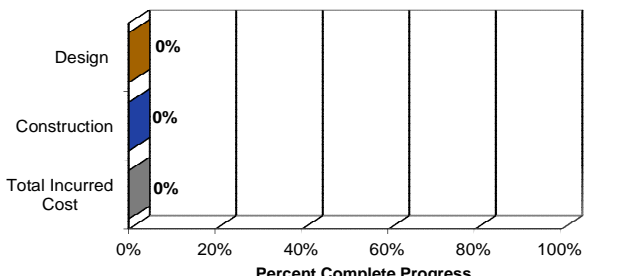
CHRONOLOGY OF EVENTS

2003	Major Investment Study
April 2007	Board authorized the CEO to award Contract PS 4330-1968 to complete environmental clearance and conceptual engineering.
December 2009	Board adopted the LRT Alternative as the Locally preferred Alternative and received and filed the Crenshaw Transit Corridor DEIS/DEIR.
December 2009	Board authorized the CEO to award Contract No. EO117 for Phase I, Advanced Conceptual Engineering.
September 2010	Board authorized the CEO to exercise option with Contract No. EO117 for Phase II Preliminary Engineering.
April 2011	Board adopted the Arbor Vitae/Bellanca (Site 14) LPA for the Maintenance Facility Site
July 2011	Board approved Southwestern Yard cost allocation.
September 2011	Board approved Project Definition and certified Final Environmental Impact Report
October 2011	Board approved the Life-of-Project Budget of \$1.749 billion.
December 15, 2011	CTC reviewed the FEIS/FEIR and adopted the required resolution for future funding consideration.
December 23, 2011	Request for Qualifications for Contract C0988 C/LAX Transit Corridor was released to Industry.
December 30, 2011	Received Record of Decision from FTA.
February 10, 2012	Released Invitation for Bid for Contract C0990 Crenshaw/LAX Advanced Utility Relocations.
March 12, 2012	Received Statement of Qualifications for Contract C0988 C/LAX Transit Corridor.
April 26, 2012	Board authorized the CEO to exercise option with Contract No. E0117 for Phase III Design Services During Construction.


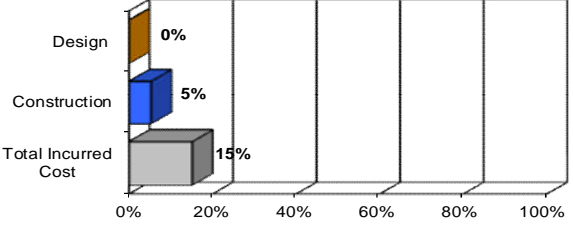
CHRONOLOGY OF EVENTS (Continued)

May 16, 2012	Notification of pre-qualified proposers for Contract C0988 C/LAX Transit Corridor.
May 30, 2012	Awarded Contract No. C0990 C/LAX Advanced Utility Relocations to Metro Builders and Engineers Group LTD.
June 4, 2012	Event held to announce beginning of the advanced utility relocation work.
June 22, 2012	Released Request for Proposals for Contract C0988 C/LAX Transit Corridor.
August 24, 2012	Received approval from the Surface Transportation Board regarding BNSF Railway Company abandonment along five-mile Crenshaw Segment of the Harbor Branch ROW.
September 4, 2012	Preparation of a FONSI for Supplemental Environmental Assessment to the FEIS was approved by FTA.
September 28, 2012	Completed abandonment process with BNSF.
September 28, 2012	TIFIA and TIGER II Grants approved.
December 6, 2012	Received proposals for Contract C0988 C/LAX Transit Corridor.
February 22, 2013	Issued Amendment No. 8 requesting Best and Final Offers (BAFO) for Contract C0988 C/LAX Transit Corridor.
March 15, 2013	Received BAFO's for Contract C0988 C/LA Transit Corridor.


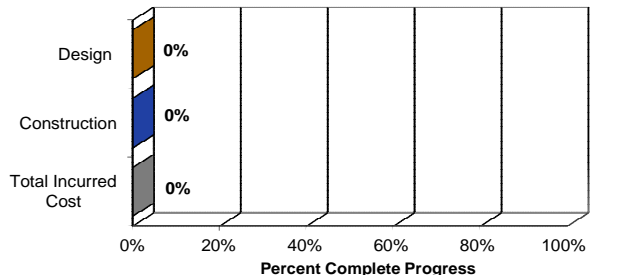
CONTRACT C0988 STATUS
Crenshaw/LAX Transit Corridor

<p>PE Design Consultant: Hatch Mott MacDonald (HMM) CM Construction: Stantec Contractor: - TBD</p>	<p>Contract No.: C0988</p> <p>Status as of: March 29, 2013</p>																																														
<p>Progress/Work Completed:</p> <ul style="list-style-type: none"> - Issued Request for Qualification (RFQ) in December 2011. - Received Statement of Qualifications in March 2012. - Notices for pre-qualified teams issued May 2012. - Issued Request for Proposals (RFP) in June 2012. - Proposers submitted final Alternate Technical Concepts (ATC's) in September 2012. - Supplemental Environmental Assessment (EA) and Finding of No Significant Impact (FONSI) issued in September 2012. - Alternate Technical Concepts (ATC) completed September 2012. - Issued RFP Package Amendment #6. - Technical & Price proposals submitted. - Best & Final Offer (BAFO) submitted by bidders March 2013. 	<p>Areas of Concern:</p> <ul style="list-style-type: none"> - A forecasted delay in the procurement phase of the contracting process will impact NTP issuance. To maintain sufficient schedule contingency the RSD has been revised to 06/28/19. <p>See mgmt. issues for further details.</p>																																														
<p>Schedule Assessment:</p>	<p>Cost Assessment:</p>																																														
<p>Schedule Summary:</p> <ol style="list-style-type: none"> 1. Date of Award: 2. Notice to Proceed: 3. Original Substantial Completion Duration: 4. Current Substantial Completion Duration: 5. Elapsed Time from NTP: 	<p>Cost Summary: \$ In 000's</p> <ol style="list-style-type: none"> 1. Award Value: 2. Executed Modifications: 3. Approved Change Orders: 4. Current Contract Value (1 + 2 + 3): - 5. Incurred Cost: 																																														
<table border="1" style="width: 100%; border-collapse: collapse;"> <thead> <tr> <th style="text-align: left;">Milestones</th> <th style="text-align: center;">Original Contract</th> <th style="text-align: center;">Current Contract</th> <th style="text-align: center;">Forecast</th> <th style="text-align: center;">Calendar Day Variance</th> </tr> </thead> <tbody> <tr><td> </td><td> </td><td> </td><td> </td><td style="text-align: center;">0</td></tr> <tr><td> </td><td> </td><td> </td><td> </td><td style="text-align: center;">0</td></tr> <tr><td> </td><td> </td><td> </td><td> </td><td style="text-align: center;">0</td></tr> <tr><td> </td><td> </td><td> </td><td> </td><td style="text-align: center;">0</td></tr> <tr><td> </td><td> </td><td> </td><td> </td><td style="text-align: center;">0</td></tr> <tr><td> </td><td> </td><td> </td><td> </td><td style="text-align: center;">0</td></tr> <tr><td> </td><td> </td><td> </td><td> </td><td style="text-align: center;">0</td></tr> <tr><td> </td><td> </td><td> </td><td> </td><td style="text-align: center;">0</td></tr> </tbody> </table>	Milestones	Original Contract	Current Contract	Forecast	Calendar Day Variance					0					0					0					0					0					0					0					0	<p align="center">PERCENT COMPLETE <i>from _____ to _____</i></p>  <p align="center"><i>Construction physical percent complete excludes mobilization and general requirements</i></p>	
Milestones	Original Contract	Current Contract	Forecast	Calendar Day Variance																																											
				0																																											
				0																																											
				0																																											
				0																																											
				0																																											
				0																																											
				0																																											
				0																																											

CONTRACT C0990 STATUS
Crenshaw/LAX Advanced Utility Relocations

<p>PE Design Consultant: Hatch Mott MacDonald (HMM) CM Consultant: Stantec Contractor: - Metro Builders and Engineers Group LTD</p>	<p>Contract No.: C0990</p>  <p>Status as of: March 29, 2013</p>																																			
<p>Progress/Work Completed:</p> <ul style="list-style-type: none"> - Awarded contract May 30, 2012. - NTP issued July 2012. - Contractor continued development of construction work plans, traffic control plans, shop drawings for City and DWP utility relocations. - Work has continued at 59th Street & Crenshaw with sewer excavation, sewer shoring, bedding/laying of sewer pipe, and sewer encasement. - Started installation of cast-in-place manhole "C" at LAWA runway 25R. - Completed installation of communication manhole 'D' at LAWA runway 25R. - Completed sawcutting, grinding of pavement, excavation and shoring of ductbank at LAWA Aviation Blvd., runway 25R and 25L. 	<p>Areas of Concern:</p> <ul style="list-style-type: none"> - Contaminated soil disposal located at 67th & Crenshaw could delay the start of construction at this location. 																																			
<p>Schedule Assessment:</p> <p>The forecast dates for Contract Milestones shown in the table below are based on the Feb13 Schedule Update. The Feb13 Schedule Update was the first update received since the Sep12 Schedule Update submittal. MTA approved the Feb13 Schedule submittal and has requested schedule recovery documentation and/or delay impact information. No Mar13 Schedule documentation was submitted at the time of this review.</p>	<p>Cost Assessment:</p> <p>The current construction contract cost forecast is \$8.08 million and within the Board authorized budget. The forecast has increased from previous reporting periods primarily due to approved change orders.</p> <p>The Contractor previously submitted their 2nd Payment Application in the approved amount of \$862 thousand.</p> <p>Increase in costs to the construction contract award value are a result of design enhancements and change orders.</p>																																			
<p>Schedule Summary:</p> <table border="0" style="width: 100%;"> <tr> <td style="width: 70%;">1. Date of Award:</td> <td style="text-align: right;">05/30/12</td> </tr> <tr> <td>2. Notice to Proceed:</td> <td style="text-align: right;">07/17/12</td> </tr> <tr> <td>3. Original Substantial Completion Duration:</td> <td style="text-align: right;">365</td> </tr> <tr> <td>4. Current Substantial Completion Duration:</td> <td style="text-align: right;">365</td> </tr> <tr> <td>5. Elapsed Time from NTP:</td> <td style="text-align: right;">255</td> </tr> </table>	1. Date of Award:	05/30/12	2. Notice to Proceed:	07/17/12	3. Original Substantial Completion Duration:	365	4. Current Substantial Completion Duration:	365	5. Elapsed Time from NTP:	255	<p>Cost Summary: \$ In 000's</p> <table border="0" style="width: 100%;"> <tr> <td style="width: 70%;">1. Award Value:</td> <td style="text-align: right;">7.83</td> </tr> <tr> <td>2. Executed Modifications:</td> <td style="text-align: right;">0.25</td> </tr> <tr> <td>3. Approved Change Orders:</td> <td style="text-align: right;">0.00</td> </tr> <tr> <td>4. Current Contract Value (1 + 2 + 3):</td> <td style="text-align: right;">8.08</td> </tr> <tr> <td>5. Incurred Cost:</td> <td style="text-align: right;">1.22</td> </tr> </table>	1. Award Value:	7.83	2. Executed Modifications:	0.25	3. Approved Change Orders:	0.00	4. Current Contract Value (1 + 2 + 3):	8.08	5. Incurred Cost:	1.22															
1. Date of Award:	05/30/12																																			
2. Notice to Proceed:	07/17/12																																			
3. Original Substantial Completion Duration:	365																																			
4. Current Substantial Completion Duration:	365																																			
5. Elapsed Time from NTP:	255																																			
1. Award Value:	7.83																																			
2. Executed Modifications:	0.25																																			
3. Approved Change Orders:	0.00																																			
4. Current Contract Value (1 + 2 + 3):	8.08																																			
5. Incurred Cost:	1.22																																			
<table border="1" style="width: 100%; border-collapse: collapse;"> <thead> <tr> <th style="text-align: center;">Milestones</th> <th style="text-align: center;">Original Contract</th> <th style="text-align: center;">Current Contract</th> <th style="text-align: center;">Forecast</th> <th style="text-align: center;">Calendar Day Variance</th> </tr> </thead> <tbody> <tr> <td>Milestone 1 - Contract Substantial Completion</td> <td style="text-align: center;">07/17/13</td> <td style="text-align: center;">07/17/13</td> <td style="text-align: center;">08/29/13</td> <td style="text-align: center;">-43</td> </tr> <tr> <td> </td> <td> </td> <td> </td> <td> </td> <td> </td> </tr> <tr> <td> </td> <td> </td> <td> </td> <td> </td> <td> </td> </tr> <tr> <td> </td> <td> </td> <td> </td> <td> </td> <td> </td> </tr> <tr> <td> </td> <td> </td> <td> </td> <td> </td> <td> </td> </tr> <tr> <td> </td> <td> </td> <td> </td> <td> </td> <td> </td> </tr> </tbody> </table>	Milestones	Original Contract	Current Contract	Forecast	Calendar Day Variance	Milestone 1 - Contract Substantial Completion	07/17/13	07/17/13	08/29/13	-43																										<p align="center">PERCENT COMPLETE <i>from July 17, 2012 to March 29, 2013</i></p>  <p align="center">Percent Complete Progress</p> <p align="center"><i>Construction physical percent complete excludes mobilization and general requirements</i></p>
Milestones	Original Contract	Current Contract	Forecast	Calendar Day Variance																																
Milestone 1 - Contract Substantial Completion	07/17/13	07/17/13	08/29/13	-43																																

CONTRACT C0991 STATUS
Southwestern Yard

<p>PE Design Consultant: Hatch Mott MacDonald (HMM) CM Consultant: - Stantec Contractor: - TBD</p>	<p>Contract No.: C0991 Status as of: March 29, 2013</p> 																																								
<p>Progress/Work Completed:</p> <ul style="list-style-type: none"> - HMM is continuing design to support advertising this contract in March 2013. - Incorporating value engineering and cost reduction strategies. - Pre-final PE drawings completed October 2012. Currently in review with comments being incorporated. Final PE drawing package delivery slated for December 2012. - LAWA commitment to car rental lease agreements. - PE drawing package completed December 2012. - IFB contract package on hold. Reaffirmation of contract delivery approach slated for April 2014. 	<p>Areas of Concern:</p> <p>- None.</p>																																								
<p>Schedule Assessment:</p>	<p>Cost Assessment:</p>																																								
<p>Schedule Summary:</p> <ol style="list-style-type: none"> 1. Date of Award: 2. Notice to Proceed: 3. Original Substantial Completion Duration: 4. Current Substantial Completion Duration: 5. Elapsed Time from NTP: 	<p>Cost Summary: \$ In 000's</p> <ol style="list-style-type: none"> 1. Award Value: 2. Executed Modifications: 3. Approved Change Orders: 4. Current Contract Value (1 + 2 + 3): - 5. Incurred Cost: 																																								
<table border="1" style="width: 100%; border-collapse: collapse;"> <thead> <tr> <th style="text-align: left;">Milestones</th> <th style="text-align: center;">Original Contract</th> <th style="text-align: center;">Current Contract</th> <th style="text-align: center;">Forecast</th> <th style="text-align: center;">Calendar Day Variance</th> </tr> </thead> <tbody> <tr><td> </td><td> </td><td> </td><td> </td><td style="text-align: center;">0</td></tr> <tr><td> </td><td> </td><td> </td><td> </td><td style="text-align: center;">0</td></tr> <tr><td> </td><td> </td><td> </td><td> </td><td style="text-align: center;">0</td></tr> <tr><td> </td><td> </td><td> </td><td> </td><td style="text-align: center;">0</td></tr> <tr><td> </td><td> </td><td> </td><td> </td><td style="text-align: center;">0</td></tr> <tr><td> </td><td> </td><td> </td><td> </td><td style="text-align: center;">0</td></tr> <tr><td> </td><td> </td><td> </td><td> </td><td> </td></tr> </tbody> </table>	Milestones	Original Contract	Current Contract	Forecast	Calendar Day Variance					0					0					0					0					0					0						<p align="center">PERCENT COMPLETE <i>from _____ to _____</i></p>  <p align="center"><i>Construction physical percent complete excludes mobilization and general requirements</i></p>
Milestones	Original Contract	Current Contract	Forecast	Calendar Day Variance																																					
				0																																					
				0																																					
				0																																					
				0																																					
				0																																					
				0																																					

CONSTRUCTION PHOTOGRAPHS



Advanced Utility Relocations contractor backfill and compaction of jack and bore pits 25L.



Advanced Utility Relocations contractor at 60th Street seating of manhole.

CONSTRUCTION PHOTOGRAPHS



Advanced Utility Relocations contractor at 60th St placing slurry.

APPENDIX
COST AND BUDGET TERMINOLOGY

Project Cost Descriptions -	
ORIGINAL BUDGET	The Original Project Budget as established by the Metropolitan Transportation Authority (Metro) Board on October 27, 2011.
CURRENT BUDGET	The Original Budget plus all budget amendments approved by formal Metro Board action. Also referred to as Approved Budget.
COMMITMENTS	The total of actual contracts awarded, executed change orders or amendments, approved work orders of Master Cooperative Agreements, offers accepted for purchase of real estate, and other Metro actions which have been spent or result in the obligation of specific expenditures at a future time.
EXPENDITURES	The total dollar amount of funds expended by Metro for contractor or consultant invoices, third party invoices, staff salaries, real estate and other expenses that is reported in Metro's Financial Information System (FIS).
CURRENT FORECAST	The best estimate of the final cost of the project when all checks have been issued and the project is closed out. Current Forecast is composed of actual costs incurred to date, the best estimate of work remaining and a current risk assessment for each budgeted cost item.
Cost Report by Element Descriptions -	
CONSTRUCTION	Includes construction contracts. Cost associated with Guideways, Stations, Southwestern Yard, Sitework/Special Conditions and Systems.
RIGHT-OF-WAY	Includes purchase cost of parcels, easements, right-of-entry permits, escrow fees, contracted real estate appraisals and tenant relocation.
VEHICLES	Includes the purchase of LRT vehicles and spare parts for the project.
PROFESSIONAL SERVICES	Includes design engineering, project management assistance, construction management support services, legal counsel, agency staff costs, and other specialty consultants.
CONTINGENCY	A fund established at the beginning of a project to provide for anticipated but unknown additional costs that may arise during the course of the project.
PROJECT REVENUE	Includes all revenue receivable to the Metro as a direct result of project activities. This includes cost sharing construction items, insurance premium rebates, and the like.

APPENDIX
LIST OF ACRONYMS

ATC	Automatic Train Control
ATSAC	Automated Traffic Surveillance and Control
BAFO	Best and Final Offer
BIM	Building Information Modeling
BNSF	Burlington Northern Santa Fe Railway Company
CADD	Computer Aided Drafting and Design
CALTRANS	California Department of Transportation
CCTV	Closed Circuit Television
CD	Calendar Day
CM	Construction Manager
CMAQ	Congestion Mitigation and Air Quality Improvement Program
CN	Change Notice
CO	Change Order
CPM	Critical Path Method
CPUC	California Public Utilities Commission
CR	Camera Ready
CSPP	Construction Safety Phasing Plan
CTC	California Transportation Commission
CUD	Contract Unit Description
DB	Design Build
DBB	Design Bid Build
DOT	Department of Transportation
DWP	Department of Water and Power
EIR	Environmental Impact Report
EIS	Environmental Impact Statement
EPBM	Earth Pressure Balance Machine
FAA	Federal Aviation Administration
FAR	Federal Acquisition Regulation
FD	Final Design
FEIS	Final Environmental Impact Statement
FEIR	Final Environmental Impact Report
FIS	Financial Information System
FLSR	Fire Life Safety Report
FRA	Federal Railroad Administration
FSEIR	Final Supplemental Environmental Impact Report
FSEIS	Final Supplemental Environmental Impact Statement
FTA	Federal Transit Administration
FTE	Full Time Equivalent
GBR	Geotechnical Baseline Report
GDSR	Geotechnical Design Summary Report
HMM	Hatch Mott MacDonald

APPENDIX
LIST OF ACRONYMS (Continued)

IFB	Invitation for Bid
IPMO	Integrated Project Management Office
ITS	Intelligent Transportation System
JPO	Joint Program Office
JV	Joint Venture
LA	Los Angeles
LABOE	Los Angeles Bureau of Engineering
LABOS	Los Angeles Bureau of Sanitation
LACFCD	Los Angeles County Flood Control District
LACMETR	
O	Los Angeles County Metropolitan Transportation Authority
LADOT	Los Angeles Department of Transportation
LADPW	Los Angeles Department of Public Works
LADWP	Los Angeles Department of Water and Power
LAUSD	Los Angeles Unified School District
LAWA	Los Angeles World Airports
LAX	Los Angeles International Airport
LNTP	Limited Notice To Proceed
LONP	Letter Of No Prejudice
LPA	Locally Preferred Alternative
LRT	Light Rail Transit
LRTP	Long Range Transportation Plan
LRV	Light Rail Vehicle
MIS	Major Investment Study
MPSR	Monthly Project Status Report
N/A	Not Applicable
NEPA	National Environmental Protection Act
NPDES	National Pollution Discharge Elimination System
NTE	Not to Exceed
NTP	Notice To Proceed
OCS	Overhead Cantenary System
OSHA	Occupational Health and Safety Administration
PA/VMS	Public Address/Visual Messaging Sign
PE	Preliminary Engineering
PEER	Permit Engineering Evaluation Report
PGL	Pasadena Gold Line
PIP	Project Implementation Plan
PLA	Project Labor Agreement
PM	Project Manager
PMIP	Project Management Implementation Plan
PMOC	Project Management Oversight Consultant
PMP	Project Management Plan

APPENDIX
LIST OF ACRONYMS (Continued)

P&P	Policies & Procedures
PR	Project Report
PSR	Project Study Report
QA	Quality Assurance
QAR	Quality Assurance Report
QC	Quality Control
QPSR	Quarterly Project Status Report
QTIB	Qualified Transit Improvement Bonds
RAMP	Real Estate Acquisition Management Plan
RCHAR	Rail Crossing Hazards Analysis Report
RCMP	Risk Assessment Management Plan
RFC	Request For Change
RFP	Request For Proposals
RFSC	Request for Special Consideration
RHA	Risk Hazard Analysis
RLPE	Red Light Photo Enforcement
ROCC	Rail Operations Control Center
ROD	Record Of Decision
ROM	Rough Order of Magnitude
ROW	Right-Of-Way
RPZ	Runway Protection Zone
RSD	Revenue Service Date
SAV	Stand Alone Validator
SCAQMD	Southern California Air Quality Management District
SCADA	Supervisory Control and Data Acquisition
SCC	Standard Cost Category
SCE	Southern California Edison
SCRRA	Southern California Regional Rail Authority
SHA	State Highway Account
SHPO	State Historic Preservation Office
SIT	System Integration Testing
SOQ	Statement of Qualification
SOV	Schedule Of Value
SOW	Statement Of Work
SP	Special Provision
SSMP	Safety and Security Management Plan
STB	Surface Transportation Board
STIP	State Transportation Improvement Program
STP	Surface Transportation Program
STV	STV Group

APPENDIX
LIST OF ACRONYMS (Continued)

TBD	To Be Determined
TBM	Tunnel Boring Machine
TCRP	Traffic Congestion Relief Program
TIFIA	Transportation Infrastructure Finance and Innovation Act
TIGER	Transportation Investment Generating Economic Recovery
TPSS	Traction Power Substation
TRACS	Transit Automatic Control System
TVA	Threat Vulnerability Analysis
TVM	Ticket Vending Machine
UFS	Universal Fare System
USDOT	United States Department Of Transportation
VE	Value Engineering
WBS	Work Breakdown Structure
WP	Work Package
YOE	Year of Expenditure