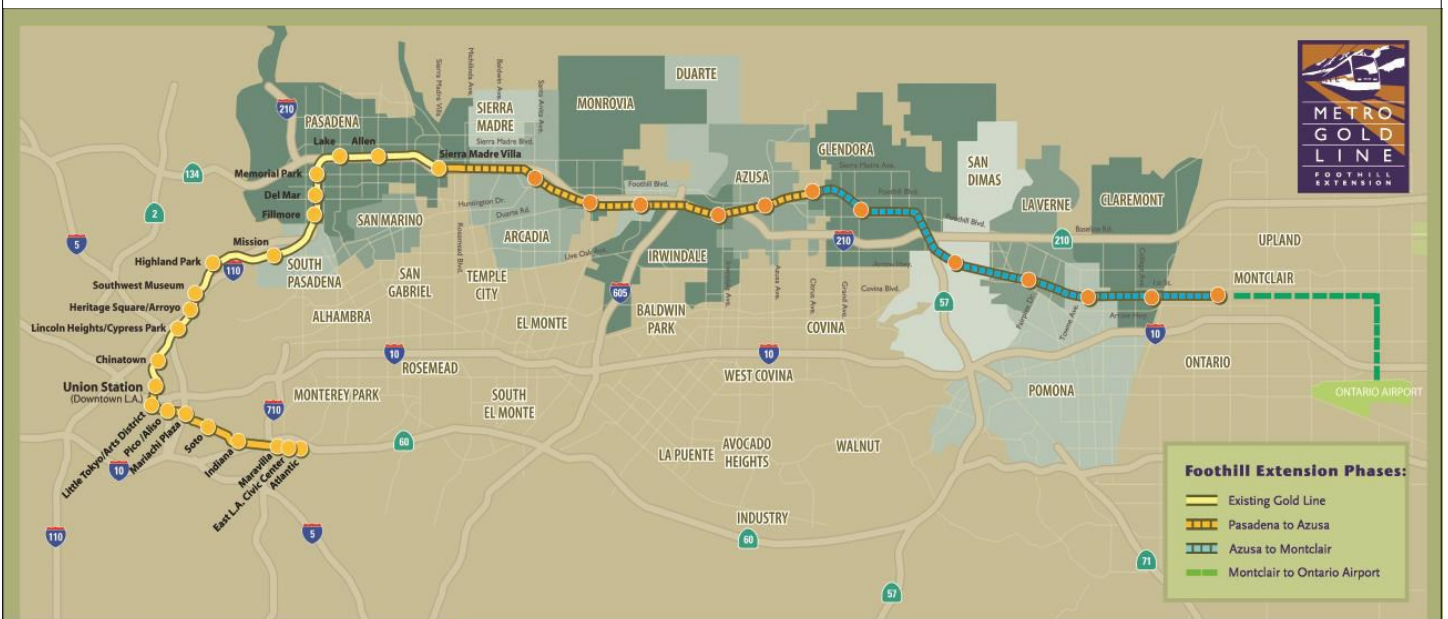


# Metro Gold Line

## Foothill Extension Project

### Monthly Project Status Report

October / November 2013



Metro Gold Line

Connecting Los Angeles, the San Gabriel Valley and Inland Empire



## TABLE OF CONTENTS

### **PHASE II FOOTHILL EXTENSION PROJECT STATUS**

<b>Project Description .....</b>	<b>3</b>
<b>Pasadena to Azusa Segment .....</b>	<b>4</b>
Management Issues .....	4
Key Activities Completed This Period .....	5
Key Future Activities .....	6
Critical Path Schedule .....	7
Critical Path Float Trend .....	8
Gold Line Bridge Contract Status .....	9
Gold Line Bridge Change Management Log .....	10
Alignment Contract Status .....	11
Alignment Construction Progress This Period .....	13
Facility Construction Progress This Period .....	14
Alignment Construction Progress Next Period .....	15
Facility Construction Progress Next Period .....	16
Alignment Construction Images .....	17
Alignment Change Management Log .....	19
Parking Facilities and Enhancements Contract Status .....	23
Parking Facilities and Enhancements Change Management Log .....	24
<b>Azusa to Montclair Segment .....</b>	<b>25</b>
<b>Ontario Airport Segment .....</b>	<b>26</b>
<b>Financial Status .....</b>	<b>27</b>

## FOOTHILL EXTENSION PROJECT DESCRIPTION

The Authority's mandate is to plan, design and construct a 37-mile light rail link between Downtown Los Angeles and Claremont. In addition, the San Bernardino Associated Governments (SANBAG) has requested that planning be extended one mile inside San Bernardino County to the City of Montclair and then to Ontario Airport.

The Metro Gold Line Phase II (Foothill Extension) corridor includes the cities of Pasadena, Arcadia, Monrovia, Duarte, Irwindale, Azusa, Glendora, San Dimas, La Verne, Pomona, Claremont, and Montclair; and the counties of Los Angeles and San Bernardino (Figure 1). The Foothill Extension is estimated to cost approximately \$1.7 billion.

The Foothill Extension will be built in two segments to align effectively with projected cash flows and financial capacity constraints. The first segment is defined from the Sierra Madre Villa Station in Pasadena to the city of Azusa. Revenue service along this segment is planned for the year 2015. The second segment would include an extension from Azusa to the City of Montclair with revenue service projected for the year 2017 and the third segment will be comprised of an extension from Montclair to the Ontario Airport.

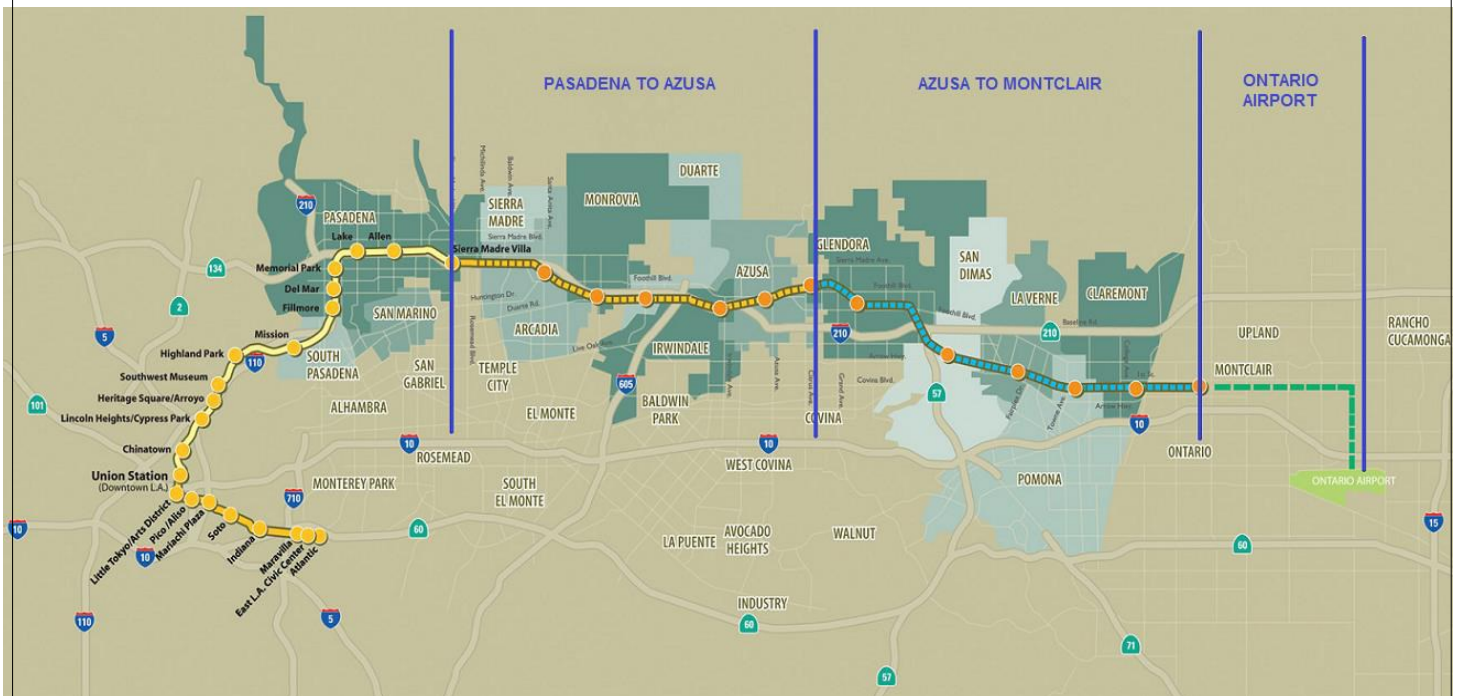


Figure 1: Metro Gold Line Foothill Extension Alignment



## **Pasadena to Azusa Segment**

### **MANAGEMENT ISSUES**

#### **Metro Betterments**

During the design process Metro staff have identified betterments that Metro staff would like to add to the project. Metro has provided a final disposition on all but a few items. Authority staff continues to work with Metro staff to resolve the remaining items.

#### **Southern California Edison (SCE) Overhead Electrical Line Relocation**

An SCE overhead electrical line stretching from Irwindale Avenue to the MillerCoors property requires an alignment adjustment to accommodate the Irwindale Traction Power Supply Substation (TPSS) and the parking structure for the Irwindale Station. There are several complications with this relocation that need to be resolved, including easement issues with MillerCoors, easement issues between Metro and SCE, and power shutdown issues with MillerCoors. Authority staff continues to work with all parties involved to resolve all complications in order to complete the relocation.

#### **SCE Easement for Mountain Avenue Relocation**

SCE recently instituted a policy of requiring an easement in lieu of a license agreement for new construction of its facilities. As such, SCE has requested an easement for the relocation of the SCE overhead lines necessary for the realignment of the Mountain Avenue intersection. Metro's policy has historically been to grant license agreements for these types of utilities crossing in its right-of-way. Metro has agreed to grant easements for SCE relocations on the Crenshaw and Expo 2 project but has recently refused to grant easements on the Foothill Extension project. Due to the disagreement between SCE and Metro regarding easements, SCE has refused to schedule the relocation at Mountain Avenue until Metro agrees to grant an easement for the relocation. The Authority's design-build contractor has provided written notification that SCE's refusal to perform the relocation work at Mountain Avenue could result in a delay to the project. Authority staff is working with both Metro and SCE to resolve this issue in a timely manner so as to avoid a delay to the project.



## **KEY ACTIVITIES COMPLETED THIS PERIOD**

Staff continued to attend coordination meetings with cities along the alignment

Authority staff continues to meet with Metro staff to review and discuss the status of the Pasadena to Azusa segment

Held regular meetings with the C1135 (DB2) contractor, Foothill Transit Constructors (FTC) and participated in construction site visits and audits

FTC reports the following SBE statistics for the month of July:

- Current SBE commitment: \$ 59,500,000
- SBE percent committed versus value of Project: 13.80%
- Overall Authority Project SBE goal: 16%

FTC reports the following approximate safety statistics to date:

- 456,575 total work hours performed by FTC, Mass Electric, and Subcontractors
- 3 recordable injuries reported
- 0 lost time injuries reported

Continued to review revised AFC drawings for C1135 project

Began installation of embedded track west of service and inspection pit at the Gold Line Operations Campus (Campus)

Completed construction of MOW canopy and storage building structure at the Campus

Continued bridge work at Foothill, Saw Pit Wash, Santa Anita Avenue, and Kincaid bridge

Began bridge work at Rosemead, Michillinda and Baldwin bridges

Began Punch List work at Palm and Citrus bridges

Continued work at Duarte, Monrovia and Arcadia Stations

Continued construction of San Gabriel, California, and 1st & Santa Clara crossings

Completed construction of Mayflower grade crossing

Continued to hold design and coordination meetings with DB3 contractor, Webcor Builders, for the Intermodal Parking Facilities and Enhancements Contract 1150

Continued to reviewed 100% design submittals for first TPSS Sites

Completed six AFC drawing packages for C1150 project to date

C1150 design-build contractor began work at Arcadia and Monrovia parking facilities, Irwindale intersection, and Michillinda and Soldano TPSS sites

## **KEY FUTURE ACTIVITIES**

Continue discussions with corridor cities regarding the project

Continue management of the Alignment contract, which will include oversight of construction activities and preparation for start-up activities

Continue to meet with Intermodal Parking Facilities and Enhancements Project contractor, Webcor Builders regarding design of the Project

Continue to attend to any issues that may come up by the cities or other stakeholders along the alignment

Complete trackwork at the Campus

Complete construction of the bridges at Foothill, Saw Pit Wash, Santa Anita Avenue, and Huntington

Complete construction of the Duarte, Monrovia, and Arcadia Stations

Finish work at California, San Gabriel grade, and 1st and Santa Clara crossings

Begin work at Myrtle and Virginia grade crossings

Finalize design for first three Parking Facilities

Finalize the following property acquisitions:

- Arcadia:

1. Parcel 1301a – Resolution of Necessity 12/18/13
2. Parcel 1301b – Resolution of Necessity 12/18/13
3. Parcel 1305 (108 E. Santa Clara Ave) – In escrow
4. Parcel 1308 (223 N. First Ave) – Resolution of Necessity 12/18/13
5. Parcel 6039 (325 N. Santa Anita Ave) – PSA out for signature

- Monrovia:

1. Parcel 1802/6035/6030 (1522 S. Mayflower Ave) – Ready for Purchase Agreement to be signed
2. Parcel 1805/6035/6030 (1602 S. Mayflower Ave) – Ready for Purchase Agreement to be signed
3. Parcel 6019a (1703 S. Mountain Ave) – Offer accepted. Waiting for LA County Board of Supervisor's Approval 12/17/13

- Duarte:

1. Parcel 6041/6042 (1500 Duarte Rd) – Accepted. Contract under review.

- Irwindale:

1. Parcel 6028 (16009 Avenida Padilla) – Motion for Possession filed with the court

- Azusa:

1. Parcel 6032 (819 W. 6th St) – In escrow
2. Parcel 6033 (809 E. Santa Fe) – Negotiating with property owner

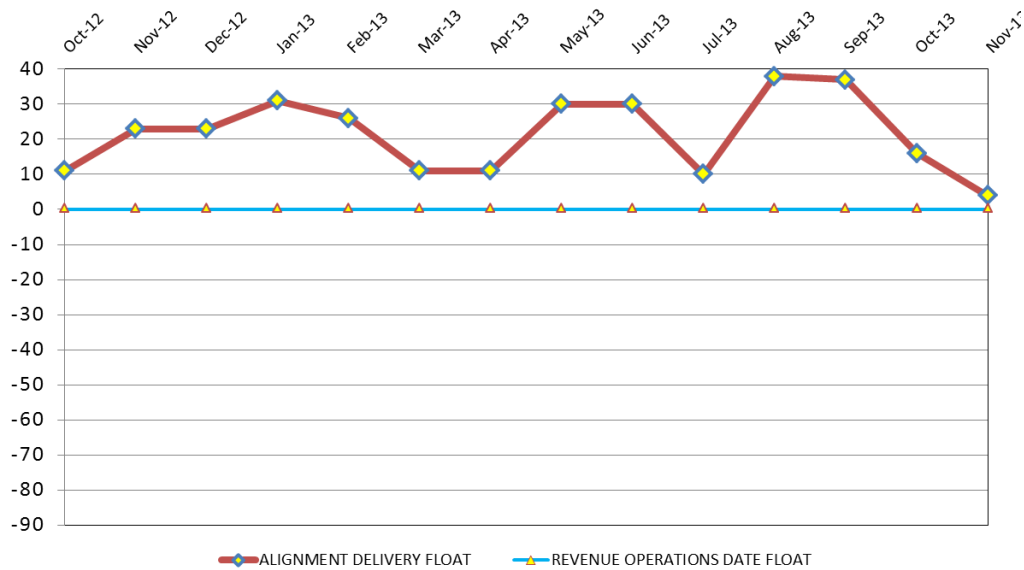


### CRITICAL PATH SCHEDULE

Activity Name	OD	RD	AD	Start	Finish	Total Float	Timeline																			
							2012				2013				2014				2015				2016			
							Q2	Q3	Q4	Q1	Q2	Q3	Q4	Q1	Q2	Q3	Q4	Q1	Q2	Q3	Q4	Q1	Q2	Q3	Q4	
<b>REVENUE OPERATIONS DATE - CRITICAL PATH</b>																										
RFP - LRV PROCUREMENT	375	0	557	18.Oct.10 08:00 A	26.Apr.12 15:00 A	0	[Gantt bar: 18.Oct.10 to 26.Apr.12]																			
LRV FABRICATION / DELIVER 15 VEHICLES	1353	999	455	17.Aug.12 07:00 A	09.Aug.16 15:00	0	[Gantt bar: 17.Aug.12 to 09.Aug.16]																			
METRO - Pre-Revenue Operations - Phase 2A	60	60	0	10.Aug.16 07:00	08.Oct.16 15:00	0	[Gantt bar: 10.Aug.16 to 08.Oct.16]																			
METRO - Project Schedule Contingency (10 Mo.)	53	53	0	09.Oct.16 07:00	30.Nov.16 15:00	0	[Gantt bar: 09.Oct.16 to 30.Nov.16]																			
Phase 2A - Revenue Operations Date (ROD)	0	0	0		30.Nov.16 15:00*	0	[Gantt bar: 30.Nov.16]																			
<b>ALIGNMENT DELIVERY DATE - CRITICAL PATH</b>																										
FOOTHILL BRIDGE (FRT) - CONSTRUCTION	155	88	185	01.Mar.13 07:00 A	18.Mar.14 15:00	3	[Gantt bar: 01.Mar.13 to 18.Mar.14]																			
TRACK INSTALLATION - SEGMENT 4 (FRT)	220	95	182	06.Mar.13 07:00 A	01.Apr.14 15:00	3	[Gantt bar: 06.Mar.13 to 01.Apr.14]																			
TRACK INSTALLATION - SEGMENT 4 (LRT)	155	155	0	02.Apr.14 07:00	04.Nov.14 15:00	3	[Gantt bar: 02.Apr.14 to 04.Nov.14]																			
OCS - INSTALLATION - SEGMENT 4	150	150	0	13.Aug.14 07:00	10.Mar.15 15:00	3	[Gantt bar: 13.Aug.14 to 10.Mar.15]																			
OCS - TESTING - SEGMENT 4	40	40	0	11.Mar.15 07:00	05.May.15 15:00	3	[Gantt bar: 11.Mar.15 to 05.May.15]																			
SYSTEMS INTERGRATION TESTING	125	125	0	06.May.15 07:00	27.Oct.15 15:00	3	[Gantt bar: 06.May.15 to 27.Oct.15]																			
C1135 - >>>SUBSTANTIAL COMPLETION - 1420 CD<<<	0	0	0		27.Oct.15 15:00*	4	[Gantt bar: 27.Oct.15]																			



### CRITICAL PATH FLOAT TREND



**FOOTHILL EXTENSION FUNDING AGREEMENT MILESTONES**  
 Alignment Delivery Date - October 31, 2015  
 Revenue Operation Date - November 30, 2016

#### **Revenue Operations Date Critical Path - (0 Calendar Days / 0 Work Days)**

The Metro Light Rail Vehicle Fabrication remains on the critical path this period. The delay issuing Notice to Proceed and changes to the anticipated delivery of the 15 vehicles have placed this work as a priority to achieve ROD. The anticipated delivery of the 56th of 78th vehicle is expected to be delivered in July 2016. Due to the critical path delays, the project schedule contingency was reduced to mitigate the impacts on the adopted Metro Revenue Operations Date. The critical path continues through Metro Pre-Revenue Operations, and schedule contingency (2 months). The Metro Revenue Operations Date is currently on schedule for November 30, 2016. However, Metro is forecasting a March 2016 Revenue Operations Date.

#### **Alignment Delivery Date Critical Path - (4 Calendar Days / 3 Days)**

This period, the critical path shifted from the retaining wall construction in Segment 2 to the Foothill Freight Bridge installation. Upon completion of the freight bridge, the critical path continues through the installation of freight track. After the freight track is completed, the critical path continues through the installation of the Segment 4 LRT track, which will be followed by the Segment 4 OCS installation and testing. Systems integration testing will commence after OCS testing is complete. Upon the completion of Systems Integration testing, the C1135 Contractor will achieve Substantial Completion and turn-over to Metro for Pre-Revenue Testing.

Other elements of construction work, which are in progress and near critical are Segment 2 & 3 Retaining Walls, Segment 3 Ductbank installation, and Rosemead Bridge Rehabilitation. All elements are pre-requisite for track installation.

#### **Project Float**

The project float for the Revenue Operations Date remains unchanged at 0 days. The critical activities on this path are on schedule to meet the Target Revenue Operations Date of November 2016. The Alignment Delivery Date float value slipped 12 days this period. The Alignment Delivery Date is currently 4 days ahead of the October 31,





**Description:** Iconic Freeway Structure      **Status:** November 15, 2013  
**Contract No.:** C1134      **Contractor:** Skanska

**Progress Completed This Period:**  
 The Authority granted Final Acceptance on October 4, 2014.

**Areas of Concern:**  
 No concerns

**Schedule Assessment:**  
 No concerns.

**Cost Assessment:**  
 The current Contract cost forecast is unchanged from last period. The forecast is 19.80 million and within the authorized budget.  
 The final payment will be issued to the Design-Build Contractor next period.

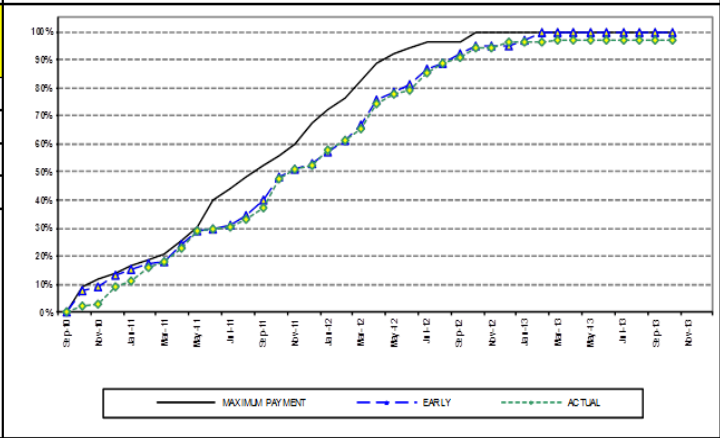
**Schedule Summary:**

Contract Award:	06/18/10	
Notice to Proceed (NTP) :	08/03/10	
Original Contract Duration:	880	Calendar Days
Current Contract Duration:	945	Calendar Days
Elapsed Time from NTP:	1,158	Calendar Days

**Cost Summary:** Million(s)

<b>CONTRACT</b>	
Contract Award Value:	18.57
Executed Change Orders:	1.23
Current Contract Value:	19.80
Potential Change Orders:	0.00
Current Forecast:	19.80
Eamed Value/Actual Cost to Date	19.80
<b>AUTHORIZATION FOR EXPENDITURE</b>	
Budget	19.80
Commitment	19.80
Balance	0.00

Milestones	Description	Original Contract	Current Contract	Forecast	Variance
1	Substantial Completion	07/03/12	11/29/12	11/29/2012 A	0
2	Punchlist Complete	10/01/12	12/05/12	2/4/2013 A	(61)
3	Final Acceptance	12/30/12	03/05/13	10/4/2013 A	(213)





Change Management Log

Date: 11/15/2013

Page: 1 of 1

Project: C1134 IFS - Skanska Contract #: C1134

Original Contract Amount:	\$18,570,092				
Approved Change Orders:	\$1,228,939	6.62%	Pending Change Orders:	\$0	0.00%
Current Contract Total:	\$19,799,031		Pending Contract Total:	\$19,799,031	6.62%

Change Orders

Number	Change Management	Title	Initiated Date	Approved Date	Outstanding Days	Time Extension	Amount
<b>EXECUTED Change Orders</b>							
001.00	001.00	Project Concept Advisor Services	2/15/2011	2/15/2011	0		\$0
002.00	002.00	Professional Liability Insurance	3/9/2011	3/9/2011	0		\$0
003.00	003.00	Sound Wall Requirement Changes	4/25/2011	4/25/2011	0		(\$38,552)
004.00	008.00	Deletion of Abutment 14	10/28/2011	10/28/2011	0		\$41,739
005.00	009.00	Additional Superstructure Arch Chng	12/14/2011	12/15/2011	1		\$122,259
006.00	010.00	Drainage System Location	12/22/2011	12/22/2011	0		\$5,617
007.00	011.00	Caltrans Requested Renderings	3/1/2012	3/2/2012	1		\$14,768
008.00	012.00	Time Extension	4/11/2012	4/13/2012	2	65	\$0
009.00	005.00	Aesthetic Lighting, Misc Extra Work	7/18/2012	7/19/2012	1		\$61,094
010.00	007.00	Architectural Features	9/5/2012	9/12/2012	7		\$18,494
011.00	013.00	Retaining Walls at IFS Approaches	9/18/2012	9/18/2012	0	84	\$732,762
012.00	015.00	Added Falsework Stripping Req'ts.	10/3/2012	10/4/2012	1		\$24,918
013.00	006.00	Landscape/Hardscape	10/12/2012	10/17/2012	5		\$79,967
014.00	016.00	Ceremony Prep and Misc. Added Work	2/15/2013	2/19/2013	4		\$160,464
015.00	017.00	Purchase Additional Light Fixtures	2/28/2013	2/28/2013	0		\$5,408
						<b>Subtotal:</b>	\$1,228,939
						<b>Subtotal:</b>	\$1,228,939
						<b>Total:</b>	\$1,228,939



**Description:** Alignment Design / Build

**Status:** November 15, 2013

**Contract No.:** C1135

**Contractor:** Foothill Transit Constructors (Kiewit-Parsons J.V.)

**Cost Summary:**

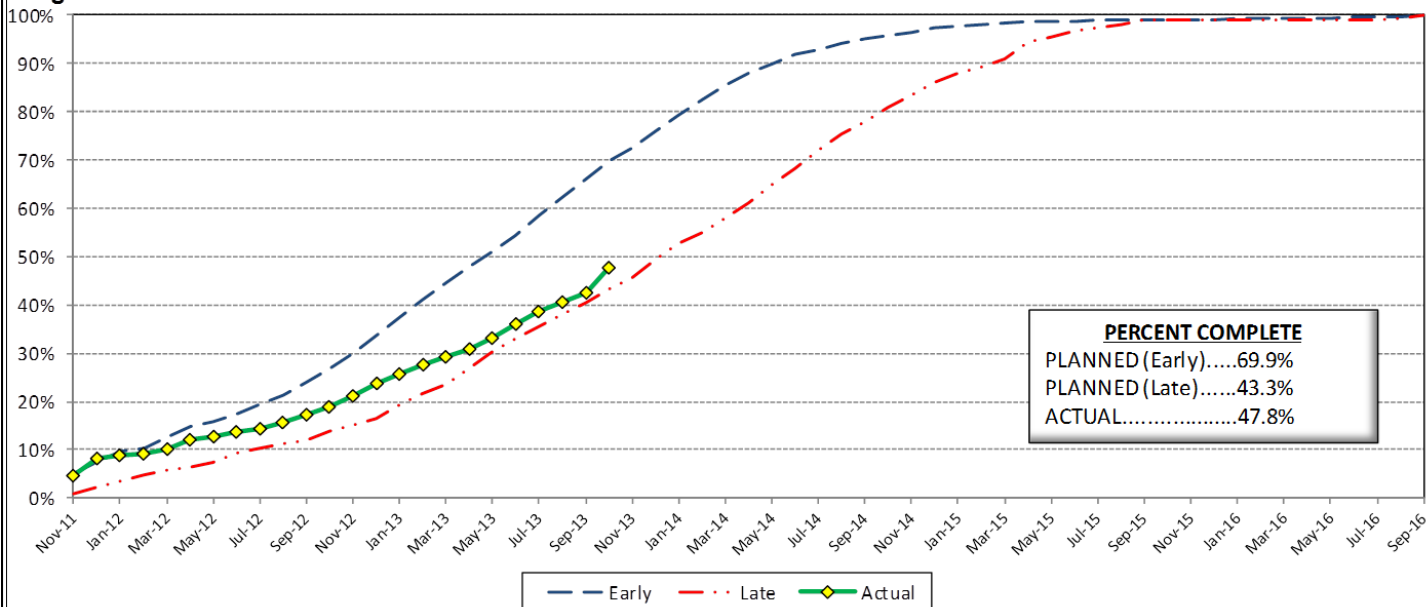
	Million(s)
<b>CONTRACT</b>	
Contract Award Value:	485.9
Executed Change Orders:	8.4
Current Contract Value:	494.2
Potential Change Orders:	2.6
Current Forecast:	496.8
Earned Value/Actual Cost	231.5
<b>AUTHORIZATION FOR EXPENDITURE</b>	
Budget	507.6
Commitment	503.6
Balance	6.7

**Cost Assessment:**

This period the Contract forecast increased \$469 Thousand. The increase is due to PCO 061 *Irwindale On-Ramp Stockpile*, PCO 058 - *Added Lighting at San Gabriel River Bridge*, PCO 036 - *Segment 4 Safety Manager R1*, and PCO 062 - *Delete Totten Tubes Scope of Work*. A portion of the increases reported were offset by the execution of change orders below the estimated value, which were CO 5.01 - *Wayside Signal "Call On" Function*, and CO 060 - *CTS Upgrade to OC-192*.

The Design-Build Contractor has earned 231.5 Million and is currently 47.8% complete. The progress is currently 22.1% behind the early planned curve, which is due to fabrication and delivery progress for materials such as *Special Track Work*, *M&O Structural Steel*, *M&O Equipment*, and *Bridge Girders*. In addition, the track work installation is behind the baseline plan.

**Progress Curve**



**Schedule Summary:**

Contract Award:	07/27/11
Interim Notice to Proceed (INTP) :	11/03/11
Original Contract Duration:	1,780 Calendar Days
Current Contract Duration:	1,780 Calendar Days
Elapsed Time from NTP:	743 Calendar Days

**Contract Milestones**

Milestones	Description	Original Contract	Current Contract	Forecast	Variance
1	Substantial Completion	09/23/15	09/23/15	10/27/15	(34)
2	Punchlist Complete	06/19/16	06/19/16	07/23/16	(34)
3	Final Completion	09/17/16	09/17/16	10/21/16	(34)
4	Access - IFS Br.	12/15/12	12/15/12	12/15/2012 A	0
5	Test Track Complete	03/27/15	03/27/15	04/22/15	(26)
6	Colorado Br. Demo Complete	02/01/12	02/01/12	6/15/2012 A	(135)

**Schedule Assessment:**

This period, the critical path shifted from the Segment 2 retaining wall to the Foothill Freight Bridge construction. The change in the critical path is due to the steel girder fabrication delay for the Foothill Freight bridge. The fabrication delay will impact the completion of the bridge installation and the final completion of the freight track re-alignment. As a result, the late completion of this work will impact the start of Segment 4 track installation and the remainder of the critical path, which continues through the OCS installation and testing, followed by systems integration testing.

The schedule contains minimal float between all Segments and will require concurrent installation of track work in Segments 1, 2 and 4.

The Test Track Completion is forecast to be available on April 24, 2015, which is 28 days behind the target date.



**Description:** Alignment Design / Build

**Status:** November 15, 2013

**Contract No.:** C1135

**Contractor:** Foothill Transit Constructors (Kiewit-Parsons J.V.)

**Progress Completed This Period**

**Design**

- Submit 100% Design - Train Control Book of Plans (Zone M&O)
- Submit 100% Design - Parking Structure Fire Alarm
- Submit AFC Design - Train Control Book of Plans (Zone 9)
- Submit AFC Design - Traction Power Package 11
- Submit AFC Design - FRT Re-Alignment at Kincaid Bridge
- Submit 100% Design - Rockvale Waterline Casing
- Submit 100% Design - Train Control Book of Plans (Zone 12)
- Submit AFC Design - M&O Body Shop Structural Slab

**Construction**

- See "Construction Progress This Period"

**Activities Planned Next Period**

**Design**

- Submit 100% Design - SCADA
- Submit AFC Design - M&O Trammig Table Structural Slab
- Submit AFC Design - 3M Drainage
- Submit AFC Design - Grading & Drainage at Totten Tubes
- Submit AFC Design - Virginia Crossing
- Submit AFC Design - Roadway 1st/Santa Clara Ave

**Construction**

- See "Construction Progress Next Period"

**Areas of Concern**

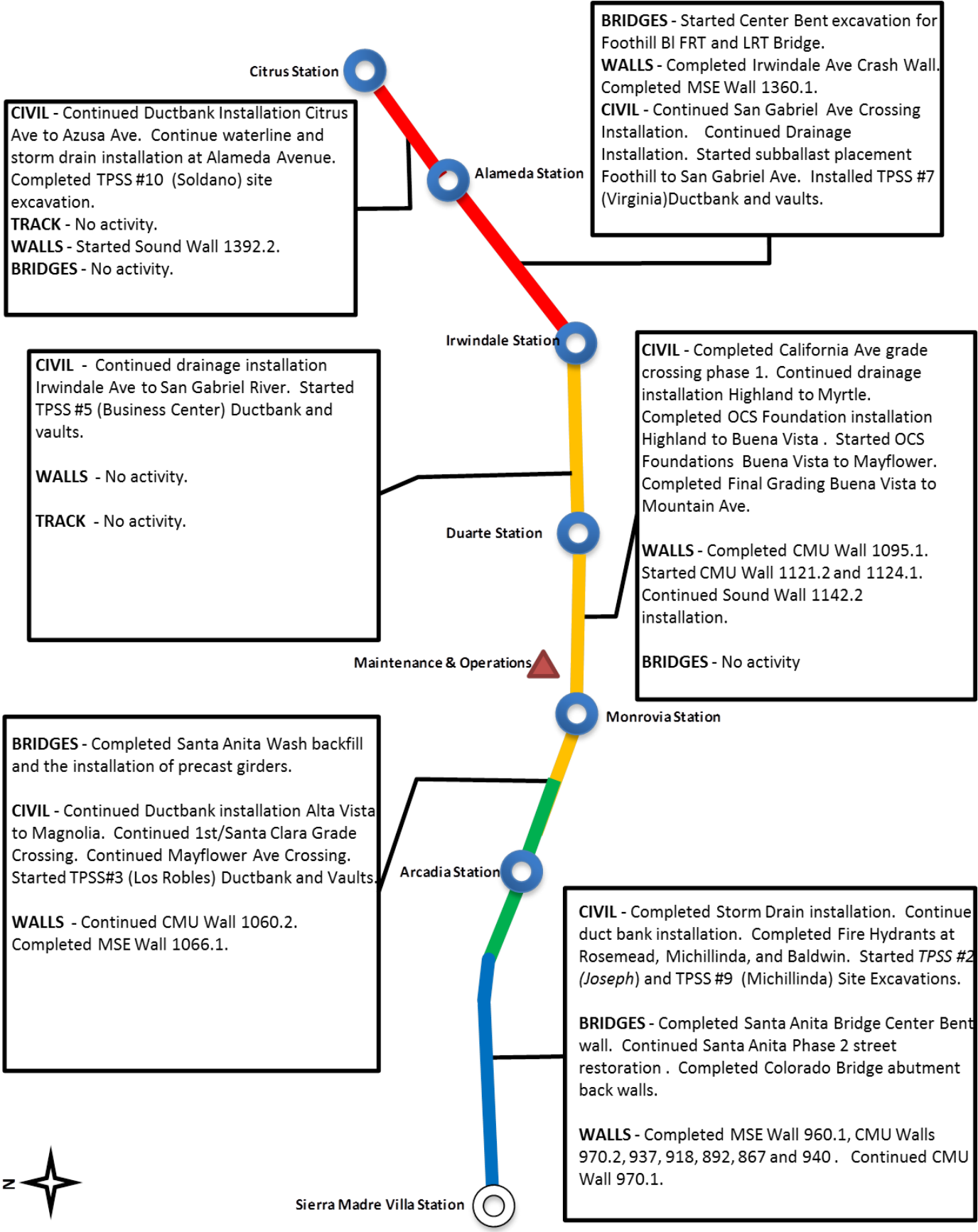
- **Grade Crossing Schedule.** The Grade crossing durations and schedules are slipping due to productivity. The Authority is working with the Design-Build Contractor to plan grade crossing activities and complete the work within the constraints established by Cities. The Design-Build Contractor has implemented the revised grade crossing sequence and has mitigated potential CPM schedule delays. However, the Design-Build Contractor has indicated in the revised schedule, that the re-sequence was due to additional schedule requirements by the Cities and may require additional costs.

**Areas of Concern (Continued)**

- **Segment 3 Grade Crossing Property Acquisitions.** The Design-Build Contractor has been late delivering parcel legal descriptions in a timely manner. There is a potential schedule impact to the Segment 3 grade crossing construction and schedule if the parcel legal descriptions are not approved. The Authority will attempt to mitigate potential delays by obtaining Right-of-Entry from property owners prior completing negotiations.



### ALIGNMENT CONSTRUCTION PROGRESS THIS PERIOD





**FACILITY CONSTRUCTION PROGRESS THIS PERIOD**

**Citrus Ave Station**

**STATION** - No progress anticipated next period.  
**PARKING** - Started site excavation.

**STATION** - Started Station Excavation  
**PARKING** - No activity this period.

**Alameda Station**

**STATION** - No activity planned.  
**PARKING** - Started traffic signal installation.

**Irwindale Station**

**STATION** - Continued station decks and ramps.  
**PARKING** - No activity this period.

**CIVIL** - Started Shamrock 8" sewer.  
**TRACK** - Continued embedded track installation at Wheel Truing Pit. Continued Ballast and track installation at North Storage Track.  
**STRUCTURES** - Continued Cleaning Platform. Continued M&O Building Foundations & Slab on Grade. Completed Car Wash Settling Pit Structure and start Backfill.

**Duarte Station**

**STATION** - Start North and South platform decks.  
**PARKING** - Continue site grading.

**Maintenance & Operations**

**Monrovia Station**

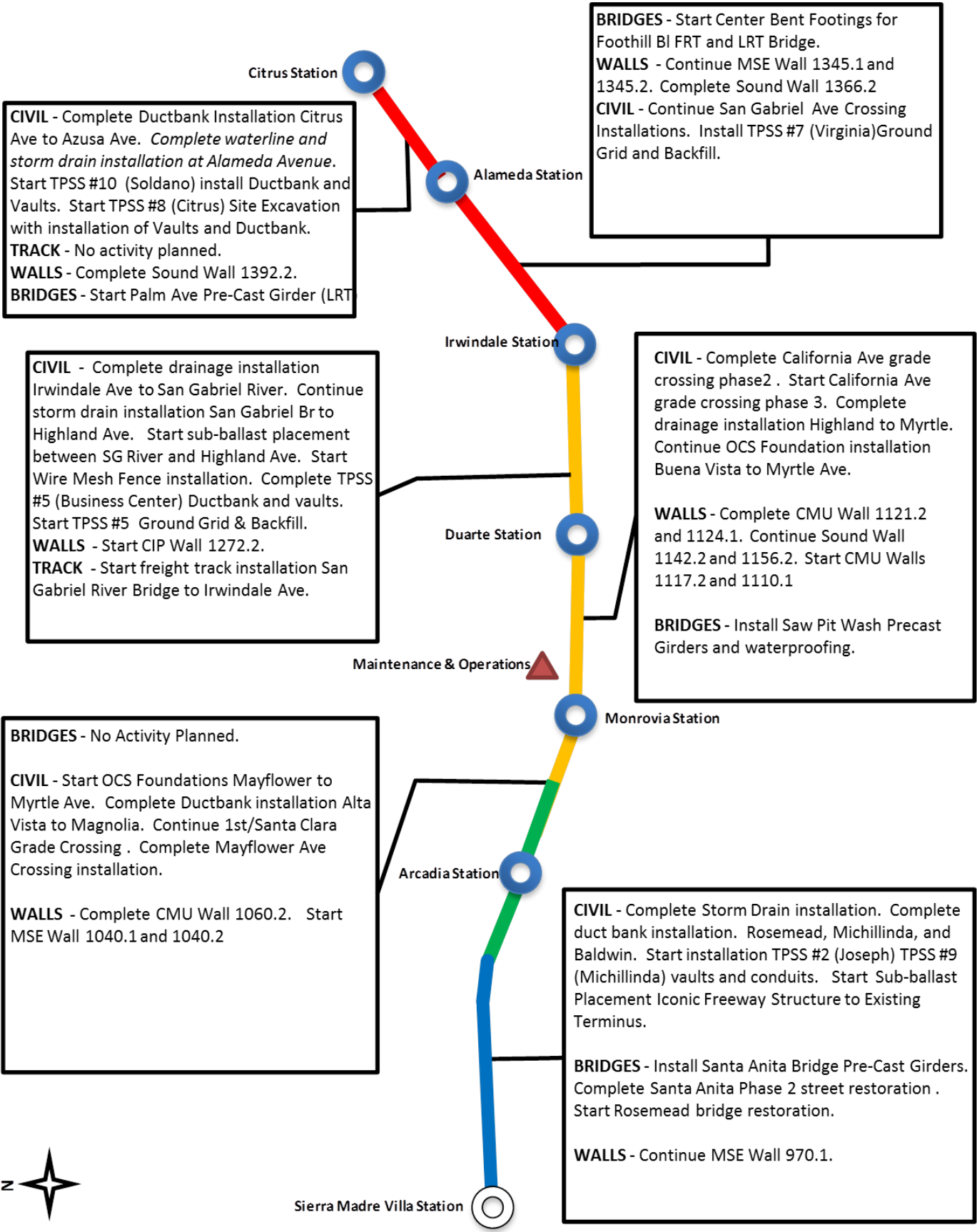
**STATION** - No activity planned  
**PARKING** - No activity planned

**Arcadia Station**





## ALIGNMENT CONSTRUCTION PROGRESS NEXT PERIOD





**FACILITY CONSTRUCTION PROGRESS NEXT PERIOD**

**Citrus Ave Station**

**STATION** - No progress anticipated next period.  
**PARKING** - Continue site excavation.

**STATION** - Continue Station Excavation  
**PARKING** - No activity planned.

**Alameda Station**

**STATION** - No activity planned.  
**PARKING** - Continue traffic signal installation. Start N. Irwindale Avenue Street Restoration Phase 1.

**Irwindale Station**

**STATION** - Complete station decks and ramps.  
**PARKING** - No activity planned.

**CIVIL** - Complete Shamrock 8" sewer. Start grading Yard Lead Track.  
**TRACK** - Continue embedded track installation at M&O Shops. Continue Ballast and track installation at North Storage Track. Start installation of Turnout Switches in North Storage Track Area.  
**STRUCTURES** - Continue Cleaning Platform. Continue M&O Building Foundations & Slab on Grade. Complete Car Wash Settling Pit Structure Backfill.

**Duarte Station**

**STATION** - Continue North and South platform decks.  
**PARKING** - Complete site grading.

**Maintenance & Operations**

**Monrovia Station**

**STATION** - No activity planned  
**PARKING** - Complete the installation of TWC and SCE ductbanks. SCE and TWC start pulling wire and cable for Utility Cutover.

**Arcadia Station**





## ALIGNMENT CONSTRUCTION IMAGES

Rosemead Bridge — Segment 1



Segment 2: 1st and Santa Clara —  
Waterline and Storm Drain Work

Segment 3: Duarte Station — East Ramp



**ALIGNMENT CONSTRUCTION IMAGES (CONTINUED)**



Segment 4 — Palm Ave Bridge Girder Installation

Segment 4 — Inter-Track Fence between  
Pasadena and Palm



Car Cleaning Platform



Change Management Log

Project: C1135 Alignment - FTC Contract #: C1135

Original Contract Amount:	\$485,867,000				
Approved Change Orders:	\$8,363,037	1.72%	Pending Change Orders:	\$56,384	0.01%
Current Contract Total:	\$494,230,037		Pending Contract Total:	\$494,286,421	1.73%

Change Orders

Number	Change Management	Title	Initiated Date	Approved Date	Outstanding Days	Time Extension	Amount
<b>EXECUTED Change Orders</b>							
001.00	000.00	Interim NTP	11/3/2011	11/3/2011	0		\$0
002.00	013.00	Colorado Bridge Haz Mat	5/17/2012	5/18/2012	1		\$121,382
002.01	013.01	Colorado Bridge HazMat - Final	9/5/2012	9/7/2012	2		\$13,164
003.00	001.00	Sound Wall Deletion - Duarte Road	7/12/2012	7/18/2012	6		(\$74,707)
004.00	018.00	Revise Block Design - CBD Calc	8/23/2012	8/29/2012	6		\$3,986
004.01	018.01	Revise Block Design - CBD Calc - 2	9/5/2013	9/11/2013	6		\$0
005.00	023.00	Wayside Signal Aspect Revision	9/6/2012	9/7/2012	1		\$26,072
005.01	023.01	Wayside Signal "Call On" Function	10/30/2013	11/1/2013	2		\$75,169
006.00	040.00	Arcadia Frieze, Bench-Artist Design	9/6/2012	9/10/2012	4		\$13,683
006.01	040.01	Arcadia Frieze, Bench-Construction	3/7/2013	3/12/2013	5		\$155,894
007.00	019.02	Soils Testing Abutments & Fdns	9/14/2012	9/18/2012	4		\$44,993
008.00	041.00	Unknown Utilities RFCN 005 006 008	9/14/2012	9/18/2012	4		\$132,450
009.00	038.00	Illuminate City Names @ Stations	9/18/2012	9/24/2012	6		\$184,657
010.00	046.00	SGRB - Lead Based Paint Remediation	9/21/2012	9/24/2012	3		\$244,536
011.00	004.00	Station Architectural Changes	10/11/2012	10/12/2012	1		\$443,950
012.00	003.01	Systems and Testing for Added TPSS	12/13/2012	12/14/2012	1		\$1,443,193
013.00	005.02	IDIQ Comm Contract (Rev 2)	12/14/2012	1/22/2013	39		\$698,259
014.00	060.00	Sewer Encasement Changes in Azusa	12/18/2012	1/24/2013	37		\$141,354
015.00	037.02	M&O - Materials Storage Revisions	12/26/2012	1/15/2013	20		\$62,862
015.01	037.03	M&O Storage Shelving Revisions	9/16/2013	9/19/2013	3		\$20,380
016.00	002.00	Relocation of Access Road to 3M Fac	12/26/2012	1/16/2013	21		\$53,814
017.00	025.00	3 Electrical Casings for ALW	2/27/2013	3/1/2013	2		\$219,033
018.00	073.00	Hazardous Abatement at Bridges	1/15/2013	2/6/2013	22		\$1,081,803
019.00	054.00	City of Hope Conduits	1/11/2013	1/22/2013	11		\$34,313
020.00	059.00	Citrus TPSS Transformer Pad Changes	2/6/2013	2/7/2013	1		\$34,536
021.00	075.00	Demo & Replace Palm Dr. Roadway	2/7/2013	2/14/2013	7		\$90,365
022.00	077.00	M&O Differing Site Conditions; Pt 1	2/13/2013	2/15/2013	2		\$66,360
022.01	093.00	M and O DSC T and M Work Part 2	3/8/2013	3/12/2013	4		\$66,625
022.02	103.00	M and O DSC Part 3	3/27/2013	3/28/2013	1		\$35,211
022.03	115.00	DSC at M and O Part 4	5/3/2013	5/7/2013	4		\$5,706
023.00	089.00	Contaminated Soil Abatement	2/26/2013	2/27/2013	1		\$422,068
024.00	068.00	Monrovia Sound Wall Panel Change	2/26/2013	2/28/2013	2		(\$24,150)
025.00	052.00	Santa Anita Trail Detour	3/8/2013	3/12/2013	4		\$27,691
026.00	070.00	Block Type Change at M&O Building	3/26/2013	3/26/2013	0		\$35,016
027.00	065.00	M&O IT Changes-Duct Banks/Conduits	3/26/2013	3/26/2013	0		\$88,650
027.01	065.01	M&O IT Changes - Power to WAP	9/4/2013	9/6/2013	2		\$73,049
028.00	039.01	Delete Layover Building	4/11/2013	4/12/2013	1		(\$313,832)
029.00	095.00	8in Sanitary Sewer Line- Alameda Av	4/23/2013	4/25/2013	2		\$226,089
030.00	102.00	M&O-Disconnect Switches, Insulators	4/23/2013	4/25/2013	2		\$67,817
031.00	110.00	Rmv Abandoned Utility Line @ Dalton	4/23/2013	4/25/2013	2		\$1,562
032.00	104.00	Highland Ave Abandoned CMP sleeves	5/1/2013	5/3/2013	2		\$15,005
033.00	114.00	Remove contaminated wood culvert	5/3/2013	5/7/2013	4		\$4,714
034.00	128.00	M&O Backup Power/Generator Changes	5/13/2013	5/21/2013	8		\$121,340
035.00	083.00	M&O Vehicle Sanding System Changes	5/21/2013	5/24/2013	3		\$27,463
036.00	006.00	IFS Related Contract Changes	6/7/2013	6/11/2013	4		(\$263,111)



Change Management Log

Project: C1135 Alignment - FTC Contract #: C1135

Change Orders

Table with columns: Number, Change Management, Title, Initiated Date, Approved Date, Outstanding Days, Time Extension, Amount. Includes EXECUTED Change Orders and a Subtotal of \$8,363,037.

PENDING Change Orders

Table with columns: Number, Change Management, Title, Initiated Date, Outstanding Days, Amount. Includes Subtotal of \$56,384 and Total of \$8,419,421.

Open PCOs

Table with columns: PCO Number, Title. Lists 10 open PCOs including M&O IT Changes, M&O / 3M Fence Revisions, etc.

Open RFCs

Table with columns: RFC Number, Title. Lists 2 open RFCs: Alameda Sewer Line Revised Scope, Unknown Utility at San Gabriel.



Change Management Log

Project: C1135 Alignment - FTC Contract #: C1135

Open PCOs

PCO Number	Title
OPEN	
046.00	1st/Santa Clara Grade X-ing Changes
047.00	M&O Body Shop Changes
049.02	M&O Trammig Table Changes (Rev. 2)
050.00	M&O Car Wash Betterments
052.00	Alameda Utility Changes
053.01	Irwindale Ramp Changes (Rev 1)
054.00	Costco Emergency Gate-Path to POS
055.00	Soldano Fence Credit
056.00	M&O Parts Carousel Extended Warranty
057.00	Added Sound Wall East of IFS
058.00	Added Lighting at SGRB
059.00	Mayflower Driveway/Wall Credit
060.00	M&O - Generator Load Bank
061.00	M&O - Electrical Sub-meters

Open RFC Notices

Number	Title
022.00	M and O Signaling and Train Control
037.00	DSC at Santa Anita Wash Abutment 1
041.00	M and O Facility Fire Flow Rate
043.00	DSC Storm Drain and Headwall Utilit
044.00	DSC Utility at Azusa Avenue
052.00	DSC Contaminated Soil at Monrovia S
053.00	Concrete Utility Removal at Sta 125
057.00	Rmvl Contmntd Wd Mtrls Stanta Anita
058.00	Removal of IR 0271 Abandoned Utilit
060.00	Alameda South Side Water Line Chang



**Description:** Intermodal Parking Facilities & Enhancements **Status:** November 15, 2013

**Contract No.:** C1150

**Contractor:** Webcor Builders

**Cost Summary:**

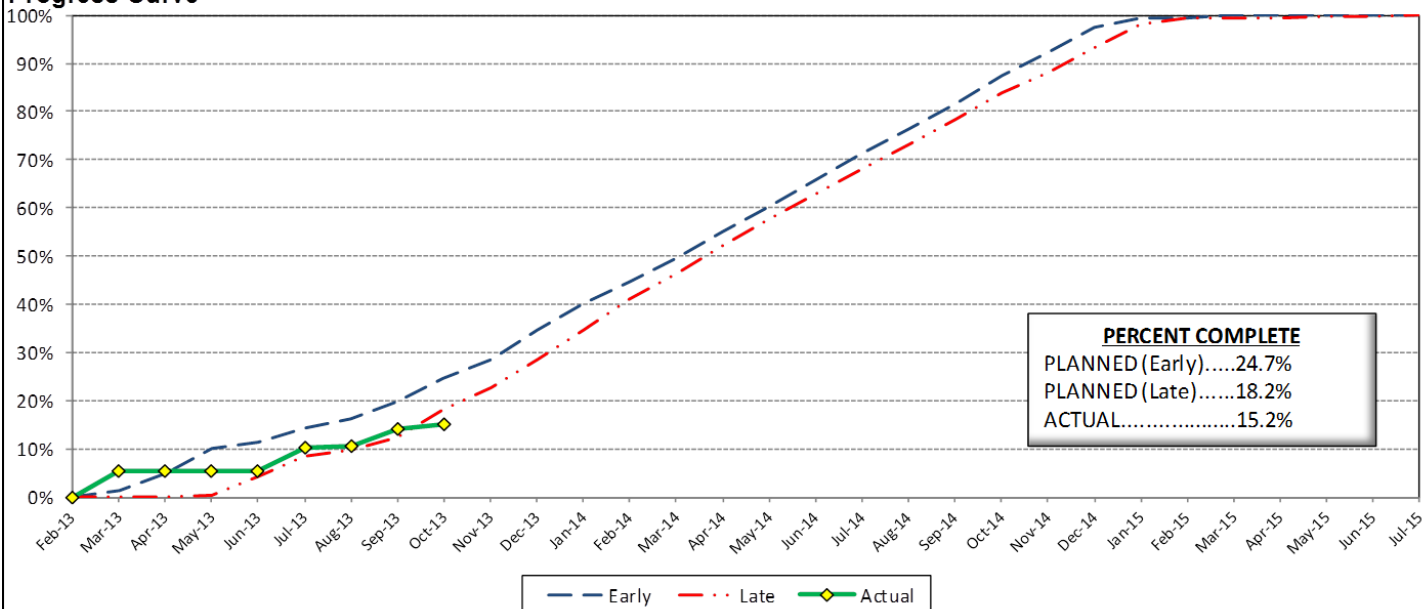
	Million(s)
<b>CONTRACT</b>	
Contract Award Value:	48.8
Executed Change Orders:	0.1
Current Contract Value:	48.9
Potential Change Orders:	0.1
Current Forecast:	49.0
Eamed Value/Actual Cost	6.8
<b>AUTHORIZATION FOR EXPENDITURE</b>	
Budget	50.3
Commitment	50.3
Balance	1.3

**Cost Assessment:**

The current cost forecast is 48.9 Million. The forecast is unchanged from the last period. The current forecast is within the authorized budget.

The Design-Build Contractor is trending beyond the late curve, which is due to the late submittal of critical designs, which include *Irwindale Traffic Signal, Irwindale Parking Structure, Azusa-Citrus Site Prep, and Michillinda TPSS*. In addition, The Design-Build Contractor reported progress is behind due to late delivery of the Schedule of Values for CDRL's, and Parking Facilities and TPSS Site Construction.

**Progress Curve**



**Schedule Summary:**

Contract Award:	02/27/13
Interim Notice to Proceed (INTP) :	03/20/13
Original Contract Duration:	845 Calendar Days
Current Contract Duration:	845 Calendar Days
Elapsed Time from NTP:	240 Calendar Days

**Contract Milestones**

Milestones	Description	Original Contract	Current Contract	Forecast	Variance
1	Substantial Completion	03/15/15	03/15/15	03/15/15	0
2	Punchlist Complete	05/29/15	05/29/15	05/29/15	0
3	Final Completion	07/13/15	07/13/15	07/13/15	0
4	TPSS Work	03/01/14	03/01/14	02/27/14	2

**Schedule Assessment:**

The critical path continues through the installation of the traffic signal and street restoration. Upon completion of the traffic signal, the critical path continues through the Irwindale Parking Structure construction. Currently, Substantial Completion is on schedule for completion in March 2015.

The TPSS Deadline critical path remains on schedule. The Michillinda On-Site package was approved and construction commenced this period. The Design-Build Contractor must complete the Michillinda Off-Site package by next period in order to meet the schedule deadline.



**Description:** Intermodal Parking Facilities & Enhancements **Status:** November 15, 2013

**Contract No.:** C1150

**Contractor:** Webcor Builders

**Progress Completed This Period**

**Design**

- Submit AFC Design - Monrovia Site Prep
- Submit AFC Design - Irwindale Traffic Signal
- Submit AFC Design - Michillinda - Traction Power Substation On-Site
- Submit AFC Design - Soldano - Traction Power Substation
- Michillinda - Geotechnical Report - Final
- Monrovia - Pre-Construction Survey
- Michillinda - Pre-Construction Survey
- Soldano - Pre-Construction Survey
- Arcadia - Pre-Construction Survey
- Soldano - TPSS Excavation Construction Work Plan
- Michillinda - TPSS Excavation Construction Work Plan
- Monrovia - Grading Construction Work Plan

**Activities Planned Next Period**

**Design**

- Submit AFC Design - Arcadia Parking Structure
- Submit AFC Design - Monrovia Parking Structure
- Submit AFC Design - Irwindale Site Prep
- Submit AFC Design - Michillinda - Traction Power Substation Off-Site

**Areas of Concern**

.

**Areas of Concern (Continued)**

.



Change Management Log

Project: C1150 Parking - Webcor Contract #: C1150

Original Contract Amount:	\$48,750,000				
Approved Change Orders:	\$116,622	0.24%	Pending Change Orders:	\$0	0.00%
Current Contract Total:	\$48,866,622		Pending Contract Total:	\$48,866,622	0.24%

Change Orders

Number	Change Management	Title	Initiated Date	Approved Date	Outstanding Days	Time Extension	Amount
<b>EXECUTED Change Orders</b>							
001.00	001.00	Monrovia Parking Alternative Layout	6/25/2013	7/11/2013	16		\$21,382
001.01	001.01	Monrovia Alternative - Cancellation	9/17/2013	10/7/2013	20		(\$12,006)
002.00	003.00	Clock Tower Procurement	7/3/2013	7/11/2013	8		\$107,246
						<b>Subtotal:</b>	\$116,622
						<b>Subtotal:</b>	\$116,622
						<b>Total:</b>	\$116,622

Open PCOs

PCO Number	Title
<b>OPEN</b>	
002.00	Relocate Elevator at Azusa-Citrus
004.00	TPSS Grounding Grid Modifications
006.00	St. Joseph Drainage Enhancements
007.00	St. Joseph TPSS Wall
008.00	Azusa-Citrus Plaza Pavers
009.01	Irwindale Intersection Betterments
010.00	Arcadia Transit Plaza Betterments
011.00	Soldano TPSS Added ROW Fence

Open RFC Notices

Number	Title
001.00	Arcadia Unforeseen Items
002.00	Monrovia unforeseen items





## **AZUSA TO MONTCLAIR SEGMENT**

### **ACTIVITIES COMPLETED THIS PERIOD**

Authority Board certified the EIR for the Azusa to Montclair segment on March 6, 2013. Following certification, staff filed the Notice of Determination (NOD) with both counties (Los Angeles and San Bernardino). This filing started a 30-day statute of limitations to court challenges to the approval of the project. The City of Pomona has filed a challenge. Authority staff continues to work with City of Pomona to resolve the environmental challenge. A project kick-off meeting was held on October 23th with key stakeholders, and a pre-proposal conference was conducted for the upcoming Request for Proposals for the advanced conceptual engineering support and NEPA consultant.

### **KEY FUTURE ACTIVITIES**

Authority staff continues work with legal counsel to review the challenge and provide the necessary defense.

### **Federal Transit Administration (FTA)**

The Metro Board of Directors excluded the Gold Line from seeking federal New Starts funding. The Authority will work together with Metro along with the Congressional delegation to seek funding to construct the extension following completion of the environmental review.



## **ONTARIO AIRPORT SEGMENT**

### **ACTIVITIES COMPLETED THIS PERIOD**

Staff continued to pursue the needed funding to conduct the Alternatives Analysis for the Ontario Airport Segment. The San Bernardino Associated Governments (SANBAG) and the Authority are in discussions to develop a funding agreement for a portion of the initial Alternatives Analysis study.

### **KEY FUTURE ACTIVITIES**

Authority staff will work to obtain funding for this Segment and complete negotiations with KOA.



**PHASE II FOOTHILL EXTENSION FINANCIAL STATUS**  
**Project Operating Budget Summary in Millions of Dollars**  
**November 30, 2013**

	( a )	( b )	(c=a-b)	( d )
<b>FINANCIAL PLAN</b>	<b>Current Budget</b>	<b>Funding Committed to Project</b>	<b>Uncommitted Funds</b>	<b>Revenues Received</b>
SCAG	1.0	0.9	0.1	0.9
Interest Income	2.0	2.0	-	2.0
Bridge Replacement	13.9	13.9	-	13.9
Phase I Carryover	4.0	4.0	-	4.0
Maintenance and Operations Facility	-	-	-	-
Cities	11.0	-	11.0	-
Measure R - Pasadena to Azusa	810.5	777.0	33.5	278.4
Measure R - Azusa to Montclair	-	-	-	-
SANBAG	55.2	1.5	53.7	1.5
Federal TCSP	2.9	2.9	-	2.4
Federal Bus Intermodal Plan	9.0	9.0	-	2.6
Federal New Starts 2004 MTA Passthrough	4.0	4.0	-	4.0
Federal New Starts 2005 MTA Passthrough	0.5	0.5	-	0.5
Federal New Starts 2006 Corridor Study	2.5	2.5	-	2.3
Federal/Other	802.5	-	802.5	-
<b>Total Revenues</b>	<b>1,719.0</b>	<b>818.2</b>	<b>900.8</b>	<b>312.5</b>

	( a )	( b )	( c )	(d=a-b)
	<b>Current Budget</b>	<b>Current Obligation</b>	<b>Current Expenditures</b>	<b>Current Available Balance</b>
<b>EXPENSES</b>				
Program Management and Administration	107.9	86.1	70.9	21.8
Master Cooperative Agreements	12.0	3.3	2.7	8.7
Real Estate including ROW Acq	21.0	13.4	13.4	7.6
Special Programs	0.3	-	-	0.3
Procurement/Vehicles	60.0	-	-	60.0
Maintenance and Operations Facility Land	22.0	22.0	22.0	-
Construction - IFS	19.8	19.8	19.8	-
Construction - Pasadena to Azusa segment	328.9	320.4	175.4	8.5
Construction - Azusa to Montclair segment	950.0	-	-	950.0
Construction - M&O	46.0	44.0	15.6	2.0
Construction - Parking Structures	44.2	44.2	7.4	-
MTA Project Costs	64.0	64.0	14.3	-
Contingency	27.4	-	-	27.4
Project Reserve	15.5	-	-	15.5
<b>Total Project</b>	<b>1,719.0</b>	<b>617.2</b>	<b>341.5</b>	<b>1,101.8</b>