

Westside Purple Line Extension



Metro®

WESTSIDE PURPLE LINE EXTENSION PROJECT

MONTHLY PROJECT STATUS REPORT

THE PREPARATION OF THIS DOCUMENT HAS BEEN FINANCED IN PART THROUGH A GRANT FROM THE U. S. DEPARTMENT OF TRANSPORTATION, FEDERAL TRANSIT ADMINISTRATION (FTA).

OCTOBER 2013

TABLE OF CONTENTS

	Page No.
Project Summary.....	1
Project Overview & Status.....	2-3
Management Issues.....	3
Project Alignment by Sections.....	4
Project Alignment Section 1.....	5
Base Project Scope.....	6-8
Project Status	
• Project Schedule	
◦ Key Milestones Six-Month Look Ahead.....	9
◦ Project Summary Schedule.....	10
◦ Critical Path Narrative.....	11
• Project Cost	
◦ Project Cost	12
◦ Project Cost Analysis.....	12
• Financial/Grant	
◦ Financial/Grant	13
◦ Status of Funding.....	13
• Staffing	
◦ Total Project Staffing.....	14
◦ Metro Staffing.....	15
◦ Construction Management Services Consultant.....	15
◦ Engineering Management Services Consultant.....	16
• Real Estate.....	17
• Quality Assurance.....	17
• Environmental.....	18
• Construction Relations.....	18
• Art Program.....	18
• Safety & Security.....	19
• Third Party Agreement and Advanced Utility Relocation	20
• Peak Hour and Nighttime Construction Variances.....	21

TABLE OF CONTENTS (Continued)


	Page No.
• Chronology of Events.....	22-23
• Construction Contracts	
o Contract C1034 Status.....	24
o Contract C1048 Status.....	25
• Construction Photographs.....	26-27
Appendices	
• Cost and Budget Terminology.....	28
• List of Acronyms.....	29-32

Westside Purple Line Extension Project

Monthly Project Status Report

October 2013

PROJECT SUMMARY

LOCATION: Los Angeles / Beverly Hills DESIGN CONSULTANT: Parsons / Brinckerhoff				CONSTRUCTION MANAGEMENT CONSULTANT: WEST JV CONTRACTOR: TBD			
EXPLORATORY SHAFT VENTILATION DUCTS				WORK COMPLETED PAST MONTH			
				<ul style="list-style-type: none"> - Exploratory Shaft excavation to 15' depth - C1048 Advanced Utilities Relocations at La Brea - CES Advanced Utility Relocation at La Brea - Continued efforts seeking relief from Peak Hour Exemptions and Holiday Moratorium work hour restrictions - Continuing real estate needs coordination for Division 20 - Continuing Advanced PE for Division 20 MOE and NRV facilities - Continuing design for advanced utilities relocations and traffic control - Preparation of Traffic Control Plans for station work 			
EXPENDITURE STATUS (\$ In Millions)				SCHEDULE ASSESSMENT			
ACTIVITIES	CURRENT ESTIMATE	EXPENDED AMOUNT	PERCENT EXPENDED	MAJOR SCHEDULE ACTIVITIES	PRIOR PLAN	CURRENT PLAN	VARIANCE WEEKS
DESIGN	\$163.0	\$47.0	28.8%	Environmental			
				FEIS / FEIR	N/A	05/31/12	completed
RIGHT-OF-WAY	\$212.5	\$1.2	0.6%				
CONSTRUCTION	\$1,437.6	\$4.9	0.3%	Design			
OTHER	\$1,048.2	\$52.3	5.0%	PE Notice to Proceed	N/A	01/12/11	completed
				Final Design complete	01/18/17	01/18/17	0
TOTAL	\$2,861.3	\$105.4	3.7%				
Current Estimate includes Planning and Finance Costs.				Right-of-Way			
				All parcels available	04/27/15	05/23/15	4
AREAS OF CONCERN				Construction - Main Design / Build Contract			
<ul style="list-style-type: none"> - Market conditions may lead to higher construction costs - LADWP Power: additional ducts at Fairfax - LADWP Water: changes at La Brea 				Notice to Proceed	07/22/14	07/22/14	0
				Construction complete	05/26/23	05/26/23	0
ROW ACQUISITION	PLAN	ACQUIRED	REMAINING	CRITICAL ACTIVITIES / 3 MONTH LOOK AHEAD			
PERMANENT PARCELS	24	0	24	<ul style="list-style-type: none"> - Continue Exploratory Shaft Excavation - Continue Advanced Utility Relocation construction - La Brea - Advanced utilities design - Fairfax and La Cienga - RFP Technical Evaluation - C1045 Design / Build contract - Advanced Utility Relocation design and bid package - Fairfax - Design-Build RFP Package - Division 20 MOW and NRV facilities 			
TEMPORARY PARCELS	3	0	3				
TOTAL PARCELS	27	0	27				

PROJECT OVERVIEW & STATUS

Section 1 of the Westside Purple Line Extension Project is the first of three sections to be designed and constructed as part of the Los Angeles County Metropolitan Transportation Authority (LACMTA) Measure R Program. The program was approved by Los Angeles County voters in November 2008 and provides a half-cent sales tax to finance new transportation projects. In April 2012, the three sections of the Project were environmentally cleared and adopted by LACMTA Board of Directors.

Section 1 will extend the existing Purple Line by 3.92 miles beginning at the Wilshire/Western Station. From this station, the twin tunnel alignment will travel westerly within the existing Wilshire Boulevard right-of-way. Stations will be located at the intersections of Wilshire/La Brea, Wilshire/Fairfax, and Wilshire/La Cienega. All three of the station boxes will be located within the Wilshire Boulevard right-of-way with station portals extending to off-street entrances. Two of the stations, Wilshire/La Brea and Wilshire/Fairfax are within the jurisdiction of the City of Los Angeles. The Wilshire/La Cienega Station is within the City of Beverly Hills jurisdiction.

Design

The Engineering Management Services Consultant has received comments from the City of Los Angeles and the City of Beverly Hills on the draft Traffic Management Plan (TMP) and traffic signal plans for the Wilshire/La Brea Station and Wilshire/La Cienega Station areas. The TMP is required for the peak hour exemption application to both cities and is being undertaken in support for Contract C1045.

Utility water relocation drawings for the Wilshire/La Brea Station area were approved by LABOE and LADWP. Final design is continuing for the advanced utility relocations at the Wilshire/Fairfax and Wilshire/La Cienega Station areas.

For the Wilshire/Fairfax advanced utility relocations contract, LADWP power has agreed to revise their previous design to allow for the construction of additional spare ducts to be conducted later in the project. This will minimize impacts to the project schedule and changes to the station depth. Plus, there was an opportunity to lower the Wilshire/Fairfax utility relocations sufficiently enough to allow the C1045 contractor the use of flush street decking in lieu of raised street decking. A redesign of the utilities and profiles is underway to include these changes in the C1055 and C1045 Contracts.

For the Wilshire/La Cienega advanced utility relocations contract, comments were received from the City of Beverly Hills on the second design submittal. Comments were incorporated the third design submittal to the City of Beverly Hills occurred on October 28, 2013.

A majority of the fieldwork for the tie-back location within the La Cienega Station tail track area has been completed.

Additional geotechnical borings in Tunnel Reach 1 to investigate deeper soil conditions were completed last period, with the laboratory testing completing this period. The test results will be included in the Amendment 4 to Contract C1045.

PROJECT OVERVIEW & STATUS (Continued)

Major Contract Procurement

Amendment 3 for Contract C1045 was issued on October 17, 2013. The amendment contained 112 drawings, six General and 10 Technical Requirement updates, three revised Geotechnical Design Memoranda, updates to the Geotechnical Design Report, and the inclusion of an Exploratory Shaft Field Observations Report. Amendment 3 also included changes to the ventilation requirements for the crossover structures at Wilshire/La Brea and Wilshire/La Cienega Stations, changes to the vista switch location at the Wilshire/Fairfax Station, and changes to the UPS rooms at Wilshire/Western and Wilshire/La Brea Stations.

Amendment 4 is in process with an anticipated issuance on November 19, 2013.

Construction

Excavation of the Fairfax Exploratory Shaft, Contract C1034, has progressed to the 17 foot level. At this depth is the "Paleo Zone" for which soil excavations are in six-inch lifts. The contractor has installed the ventilation system and carbon scrubbers. Gas monitoring sensors and detectors have been deployed within the shaft and hold tanks.

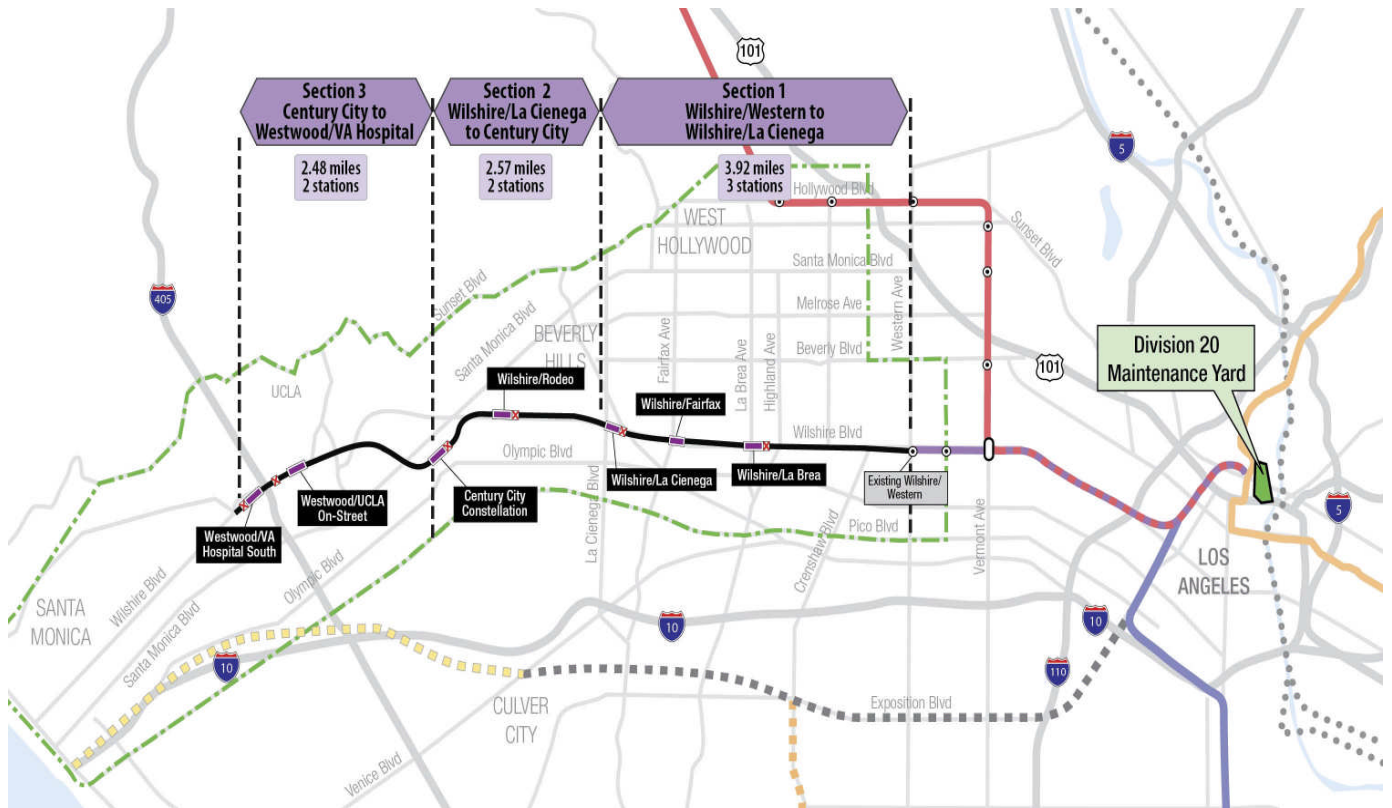
The advanced utility relocations at Wilshire/La Brea, Contract C1048, are three months into construction. The contractor has begun sawcutting the pavement, trenching and installation conduit. The City of Los Angeles has approved a holiday moratorium and the LAPD has extended the nighttime noise variance to April 2014.

The City of Los Angeles has approved the peak hour exemption for the installation of Wilshire/La Brea Station soldier piles, Contract C1045.

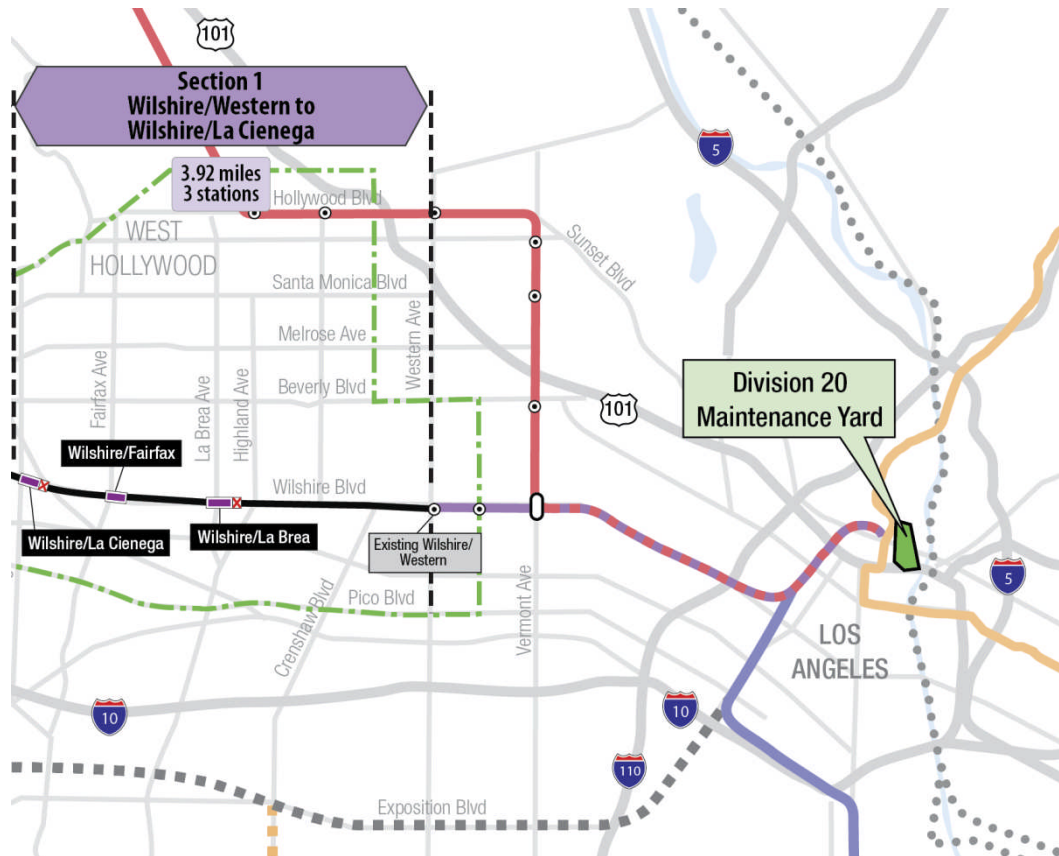
MANAGEMENT ISSUES

No Management Issues this period.

PROJECT ALIGNMENT by SECTIONS



PROJECT ALIGNMENT SECTION 1



BASE PROJECT SCOPE

Section 1 of the Westside Purple Line Extension Project is the first of three sections to be designed and constructed as part of the Los Angeles County Metropolitan Transportation Authority (LACMTA) Measure R Program. The program was approved by Los Angeles County voters in November 2008 and provides a half-cent sales tax to finance new transportation projects. In April 2012, the three sections of the Project were environmentally cleared and adopted by LACMTA Board of Directors.

Section 1 will extend the existing Purple Line by 3.92 miles beginning at the Wilshire/Western Station. From this station, the twin tunnel alignment will travel westerly within the existing Wilshire Boulevard right-of-way. Stations will be located at the intersections of Wilshire/La Brea, Wilshire/Fairfax, and Wilshire/La Cienega. All three of the station boxes will be located within the Wilshire Boulevard right-of-way with station portals extending to off-street entrances. Two of the stations, Wilshire/La Brea and Wilshire/Fairfax are within the jurisdiction of the City of Los Angeles. The Wilshire/La Cienega Station is within the City of Beverly Hills jurisdiction.

The Wilshire/La Brea Station box will be located under the center of Wilshire Boulevard in between Detroit Street and Orange Drive. A double crossover will be located east of the station box. The station entrance will be on the northwest corner of Wilshire Boulevard and La Brea Avenue.

The Wilshire/Fairfax Station box will be located under the center of Wilshire Boulevard west of Fairfax Avenue to west of Ogden Drive. The station entrance will be on the southeast corner of Wilshire Boulevard and Orange Grove Avenue.

The Wilshire/La Cienega Station box will be located under the center of Wilshire Boulevard immediately east of La Cienega Boulevard. A double crossover will be located east of the station box. The station entrance will be on the northeast corner of Wilshire Boulevard and La Cienega Boulevard. Since the station will be the terminus station for Section 1, a tail track will be located west of the station box.

Contract C1034 – Wilshire/Fairfax Exploratory Shaft

Metro is constructing an exploratory shaft to observe ground conditions prior to the award of Contract C1045. The location of the exploratory shaft is adjacent to the future Wilshire/Fairfax Station. The construction of the shaft includes furnishing and installing monitoring instruments, ventilation, and record and report instrumentation data during the excavation of the shaft. After construction of the shaft, the shaft will be maintained for an observation time period. Afterwards, the shaft will be dismantled and the site backfilled in a condition acceptable to the property owner.

BASE PROJECT SCOPE (Continued)

Contract C1048 – Wilshire/La Brea Advanced Utility Relocations

Relocate existing LADWP power and water utilities within the construction limits of the Wilshire/La Brea Station. The contractor is to obtain the necessary permits necessary for working in streets, procure materials, and coordinate with the utility owner. The contractor is to construct the new facilities in accordance with utility plans and specifications, provide traffic control, restore streets, and support utility crews installing cabling and during cut-over of the existing utilities.

Contract C1055 – Wilshire/Fairfax Advanced Utility Relocations

Relocate existing LADWP power and water utilities within the construction limits of the Wilshire/Fairfax Station. The contractor is to obtain the necessary permits necessary for working in streets, procure materials, and coordinate with the utility owner. The contractor is to construct the new facilities in accordance with utility plans and specifications, provide traffic control, restore streets, and support utility crews installing cabling and during cut-over of the existing utilities.

Contract C1056 – Wilshire/La Cienega Advanced Utility Relocations

Relocate existing City of Beverly Hills water and sewer utilities within the construction limits of the Wilshire/La Cienega Station. The contractor is to obtain the necessary permits necessary for working in streets, procure materials, and coordinate with the utility owner. The contractor is to construct the new facilities in accordance with utility plans and specifications, provide traffic control, restore streets, and support utility crews during cut-over of the existing utilities.

Contract C1045 – Tunnels, Stations, Trackwork, Systems and Systems Integration Testing

The procurement of this contract utilizes a two-step approach with the submittal of qualification statements through a Request for Qualification (RFQ) process, prequalification of qualified proposers followed by the release of a Request for Proposals (RFP) soliciting technical and price proposals with an option at Metro's discretion for Best and Final Offers (BAFO).

The Design/Build contract provides for final design and construction of the infrastructure along the 3.92 mile alignment. Contract scope includes demolition and removal of structures and clearing sites to facilitate construction operations. The structures to be constructed include twin bored tunnels, complete with cross-passages and walkways, including all mechanical, electrical and finish work. A retrieval shaft will be constructed to the west of the existing Wilshire/Western Station for extraction of the tunnel boring machines. Three underground stations are to be constructed, two with double-crossovers, and the terminus station to include a tail-track. Each station has a single entrance plaza with stairs, escalators and elevators which meet ADA requirements. The scope of work includes all architectural finishes, mechanical, electrical, systems and equipment including train control, traction power, communications, trackwork and the system tie-in to the existing Metro Purple Line, testing and commissioning.

BASE PROJECT SCOPE (Continued)

Metro Furnished Equipment

Metro will procure separate contacts to provide the 34 Heavy Rail Vehicles (HRV) and the Universal Fare System (UFS) necessary to operate the extension to the Purple Line. The scope of the HRV contract includes design, manufacturing, testing and delivery of the vehicles. The scope of the UFS contract includes design, fabrication and installation of equipment at the three stations and system testing.

Start Up

The commencement of pre-revenue operations will be determined by Metro. Generally, all systems integration testing will have been completed and passed. All testing will be required to include and pass a “stress test” of maximum operational service levels to be acceptable. Pre-Revenue Operations include train runs, especially those involving multiple trains, on the integrated and fully operational extension; rehearsal of expected revenue operations scenarios; as well as abnormal and emergency scenarios in which random combinations of system interactions are tested; equipment “burned-in”; and training of Metro personnel who will eventually operate and maintain the extension and for emergency services personnel. Activities occurring during Pre-Revenue Operations are carried out by a designated Metro Project Rail Activation Group.

KEY MILESTONES SIX- MONTH LOOK AHEAD

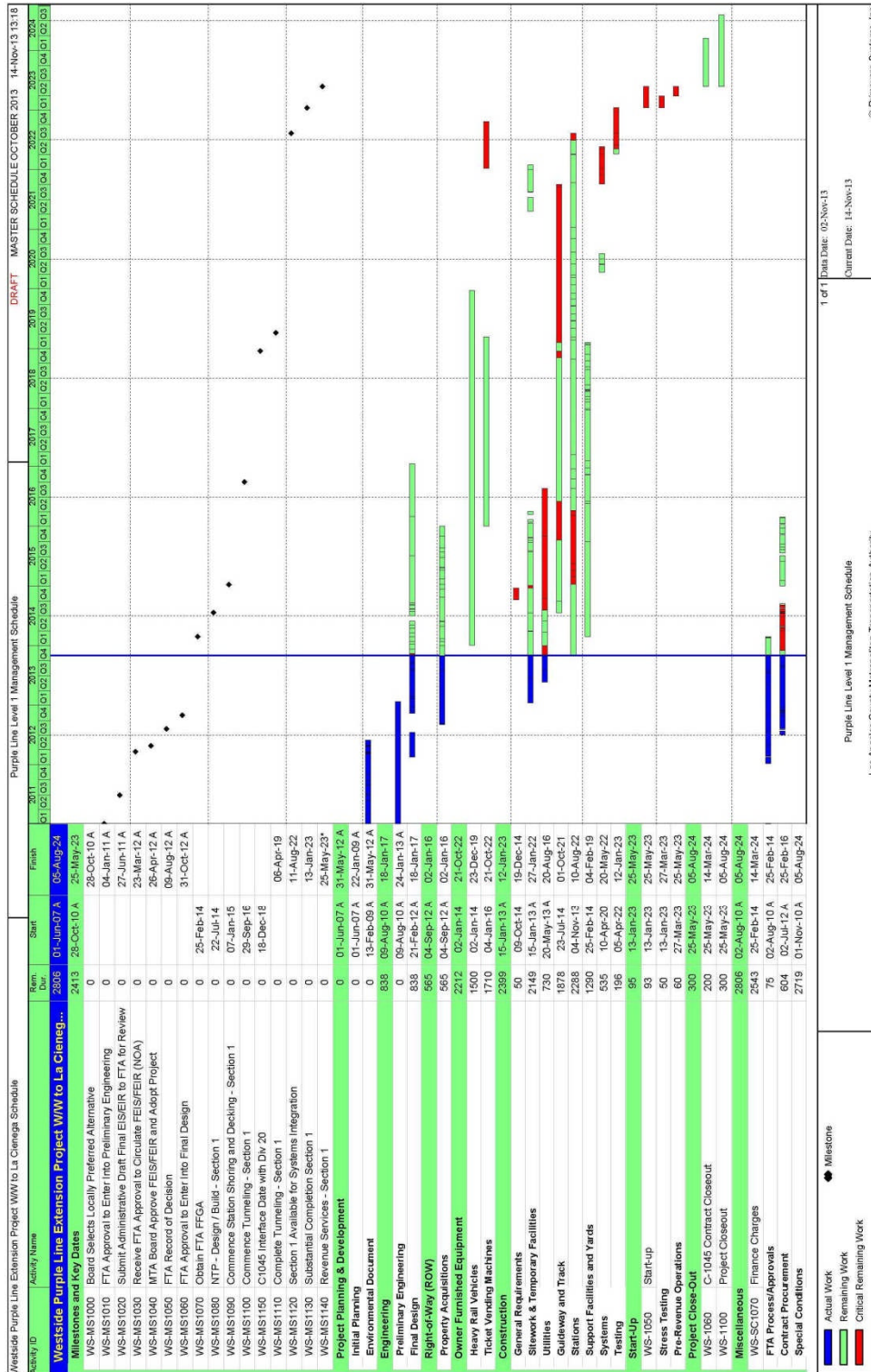
	Milestone Date	Oct-11	Nov-11	Dec-11	Jan-12	Feb-12	Mar-12
C1045 Design / Build Contract - Issue Amendment 4	11/19/13		◆				
C1045 Design / Build Contract - Submit Proposals	12/19/13			□			
C1048 La Brea AUR - Complete Construction - Power	12/30/13			□			
C1055 Fairfax AUR - Bids Due	01/28/14				□		
Complete Final Design of AUR Utilities - La Cienega	01/17/14				○		
C1056 La Cienega AUR - Advertise	02/07/14					◆	
Complete Final Design of 3rd Party Utilities - La Brea	02/13/14					○	
Obtain FTA FFGA	02/25/14					FTA	
C1034 Exploratory Shaft - Complete Construction	03/04/14						□
C1048 La Brea AUR - Complete Construction - Water	03/20/14						□

◆ MTA Staff M MTA Board Action FTA (Federal Transportation Authority)

△ Other Agencies □ Contractors ○ PB Design

"A" following date is actual and completed * New

PROJECT SUMMARY SCHEDULE



CRITICAL PATH NARRATIVE

Critical Path:

The critical path for the Westside Purple Line Extension Project begins with the procurement process for the C1045 Design / Build contract, mobilization of the design team for the selected contractor, and the start of final design for station boxes and tunnels. Final design is concurrent with the La Brea advanced utilities that are being relocated under the C1048 contract. Upon completion, the contractor begins installation of soldier piles, first on the north side of the La Brea station box, and then on the south side. Street decking is then installed, the station structural box is excavated, and invert concrete is placed. Tunneling then begins, first driving eastbound from Wilshire / La Brea to Wilshire / Western. TBMs are removed through a retrieval shaft at Wilshire / Western, re-assembled at Wilshire / La Brea, and then driven westbound to Wilshire / La Cienega. Following construction of cross passages, the critical path continues through construction of the Wilshire / Fairfax station box, installation of trackwork and traction power, systems integration and testing, and pre-revenue operations.

PROJECT COST STATUS

COST REPORT

DOLLARS IN THOUSANDS

DESCRIPTION	ORIGINAL BUDGET	CURRENT ESTIMATE		COMMITMENTS		EXPENDITURES		CURRENT FORECAST		ESTIMATE / FORECAST VARIANCE
		PERIOD	TO DATE	PERIOD	TO DATE	PERIOD	TO DATE	PERIOD	TO DATE	
ENGINEERING/CONSTRUCTION (465518 & 865518)	-	-	2,821,957	482	271,042	2,901	66,910	-	2,821,957	-
465518 & 865518 SUBTOTAL	-	-	2,821,957	482	271,042	2,901	66,910	-	2,821,957	-
ENVIRONMENTAL/PLANNING - 405518	-	-	8,505	-	8,505	-	8,505	-	8,505	-
ENVIRONMENTAL/PLANNING - 465518	-	-	30,865	-	30,865	50	30,093	-	30,865	-
405518 & 465518 SUBTOTAL	-	-	39,370	-	39,370	50	38,598	-	39,370	-
TOTAL	-	-	2,861,327	482	310,411	2,951	105,507	-	2,861,327	-

NOTE: EXPENDITURES ARE CUMULATIVE THROUGH SEPTEMBER 2013

PROJECT COST ANALYSIS

Original Budget

The Original Budget will be established upon receipt of the FFGA, which is expected in early 2014.

Current Estimate

The Current Estimate is \$2.9 billion. A Current Budget will be established upon Board Approval of the Life-Of-Project budget.

Current Forecast

The Current Forecast is \$2.9 billion.

Commitments

The Commitments increased by \$0.5 million primarily due to environmental work associated with the Exploratory Shaft. The Commitments represent Board Approved Budget through Fiscal Year 2014. Of the \$24.6 million in Commitments for Preliminary Engineering, \$0.6 million has been transferred from Section 1 to Sections 2 & 3 of the Purple Line Extension project. The current commitment amount includes \$24.0 million for Sections 2 & 3. As for the remaining \$24.0 million, Metro will amend Parsons Brinckerhoff's Contract Value amounts for each of the Sections of the project. The \$310.4 million in Commitments to date represents 10.8% of the Current Estimate.

Expenditures

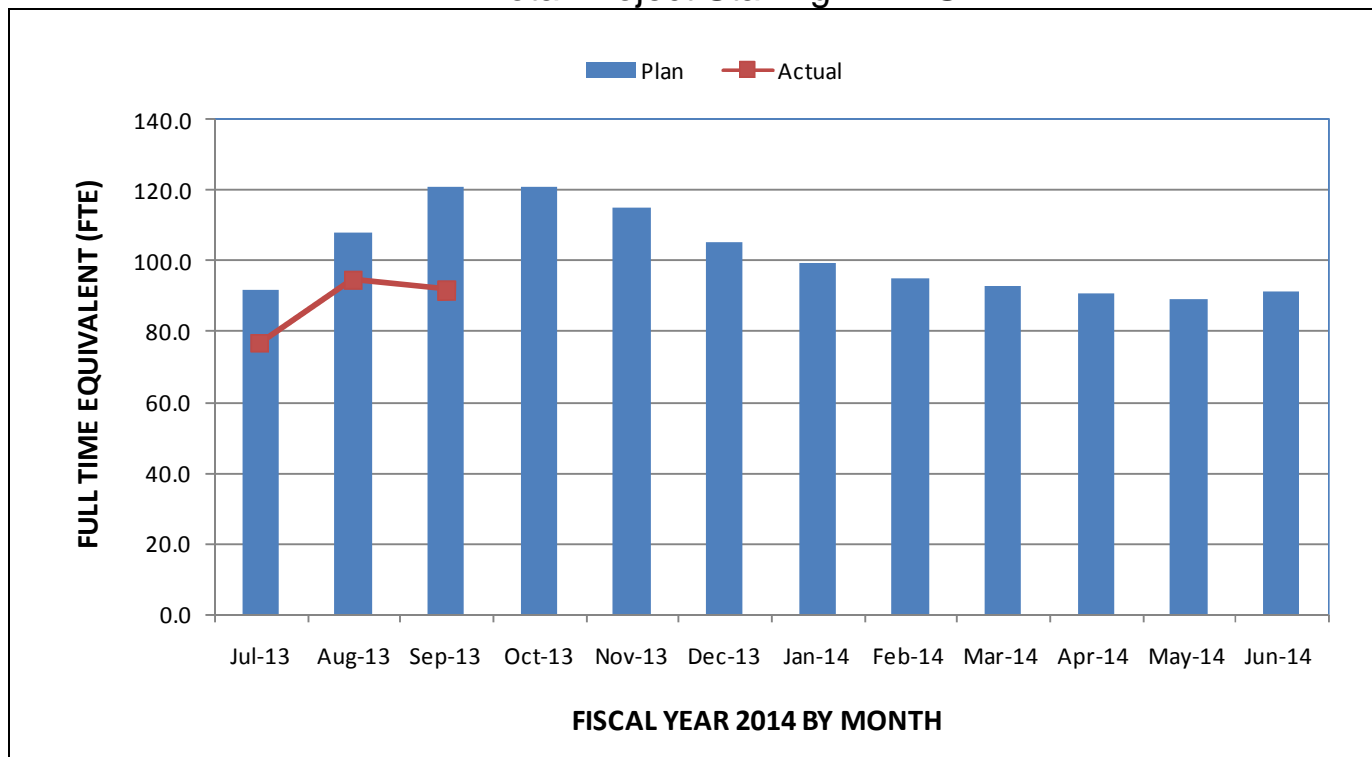
The expenditures are cumulative through September 2013. The expenditures increased by \$3.0 million this period primarily for costs associated with Real Estate appraisals, Engineering Management, and Metro Project Administration. \$24.6 million of Expenditures for Preliminary Engineering has been transferred from Section 1 to Sections 2 & 3. The \$105.5 million in Expenditures to date represents 3.7% of the Current Estimate.

FINANCIAL/GRANT STATUS

Funding source chart will be provided upon adoption of the Life-of-Project Budget.

STAFFING STATUS

Total Project Staffing - FTES

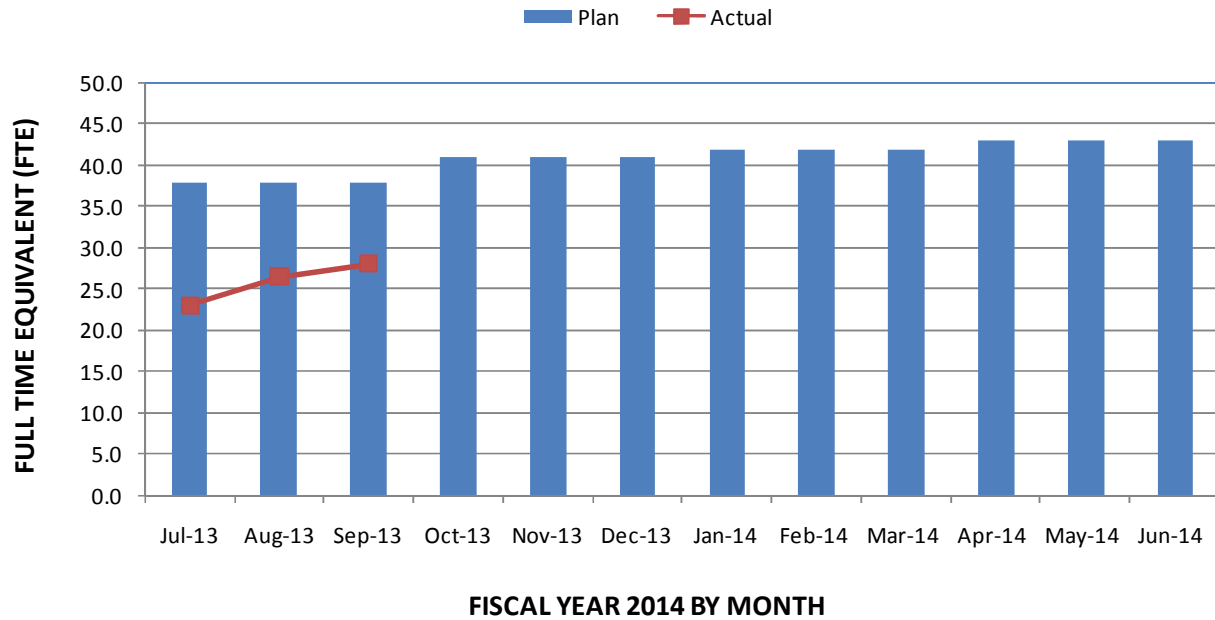


TOTAL PROJECT STAFFING

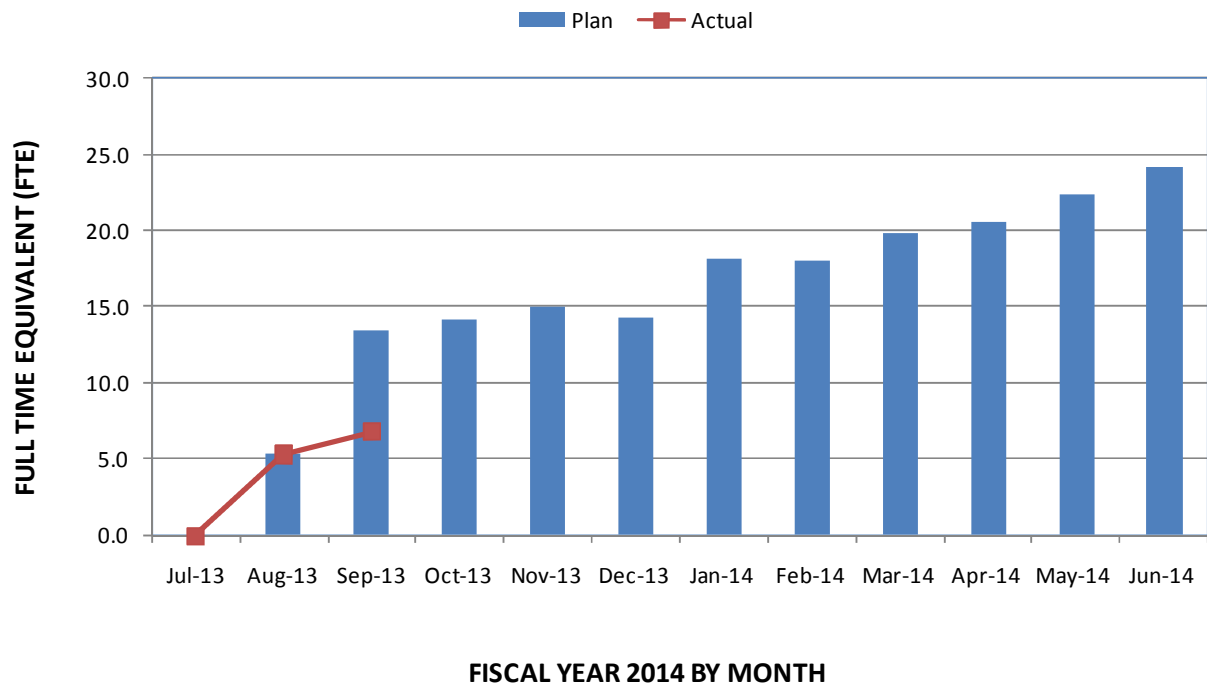
The overall FY14 Total Project Staffing plan averages 101.8 FTE's per month.

For September 2013, there were a total of 28.1 FTE's for MTA's Project Administration staff and 63.8 FTE's for consulting staff. The total project staffing for September 2013 was 91.9 FTEs.

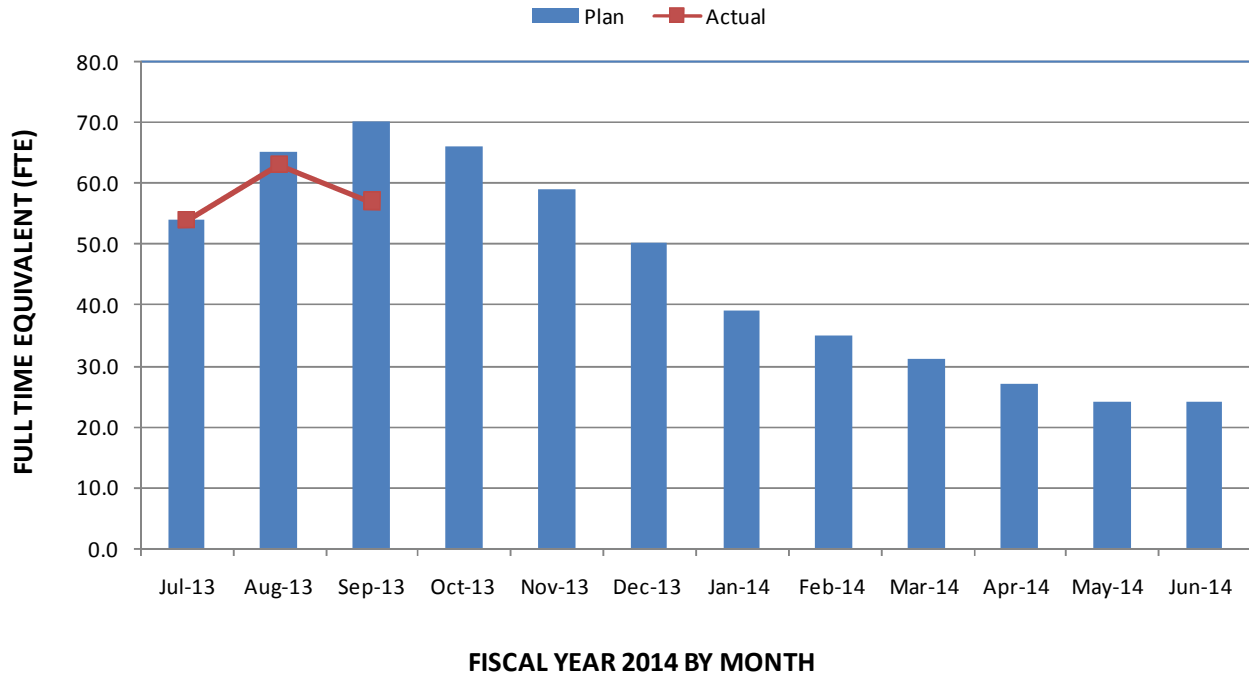
STAFFING STATUS (Continued)
METRO STAFFING – FTES



CONSTRUCTION MANAGEMENT
SERVICES CONSULTANT – FTES



STAFFING STATUS (Continued)
ENGINEERING MANAGEMENT SERVICES CONSULTANT – FTES



REAL ESTATE STATUS

Purple Line-Segment 1- Real Estate Status Summary October 2013									
Contract No.	Number of Parcels	Certified	Decertified	Appraisals In Process/ Completed	Offers Made	Agreements Signed	Condemnation Filed	Relocations Complete	Parcels Available
Full Takes	19	19	0	17	2	0	0	0	0
Part Takes	5	3	0	1	0	0	0	0	0
TCE	3	0	1	0	0	0	0	0	0
Sub Total Parcels:	27	22	1	18	2	0	0	0	0
Relocations									
Total Parcels:	27	22	1	18	2	0	0	0	0

QUALITY ASSURANCE STATUS

C1034 Exploratory Shaft D/B/B

- Attended weekly Project staff meetings with the Contractor.
- Reviewed and provided comments on submittals.
- Discussed inspection and testing procedures for upcoming activities.
- Coordinated special inspection as required by LA City Building and Safety.

C1045 Segment 1 D/B

- Attended bi-weekly Project staff meetings.
- Met with the Project Design Quality Manager to discuss upcoming submittals and QA/QC schedule.
- Reviewed upcoming Amendment QC documentation.

C1048 Segment 1 Advanced Utility Relocation D/B/B

- Attended weekly Project staff meetings with the Contractor.
- Reviewed and provided comments on initial quality submittals.
- Coordination with CMSS Inspector.
- Reviewed track deviation request.

ENVIRONMENTAL STATUS

- Continued environmental monitoring support for test shaft for VOC/GAS AQMD Rule 1116, 1150, Construction SWPPP, Noise.
- Noise and VOC monitoring in support of 1st Phase AUR Contracts.
- Conducting a reassessment of the ambient noise levels for Wilshire Blvd.
- Continued review of contractor submittals for AUR Project.
- Review and response to contractor questions on C1045 RFP.
- Continued review of Phase I ESA's for property acquisitions which included Johnie's Coffee Shop.
- Tree removal plan completed.
- Initiated OSHA study for employees at test shaft for VOCs in order to further define levels and PPE requirements.

CONSTRUCTION RELATIONS STATUS

- Attended Pre-Construction Meetings, Advanced Utility Relocation Meetings and Exploratory Shaft Meetings.
- Produced and distributed work notices for tie back operations and updated schedule at Wilshire and Le Doux.
- Made presentation to Purple Line Extension Section 1 Advisory Committee.
- Addressed gaseous smell complaint from 6010 Wilshire and noise complaint from 724 S. Sycamore.
- Updated Facebook as needed.

ART PROGRAM STATUS

- Define artwork opportunities and prepare bid documents.

SAFETY & SECURITY STATUS

- There were no recordable injuries on the Project during October 2013.
- Safety Staff participated in scheduled readiness review meetings to ensure compliance with approved Work Plans and contract specifications.
- Monitored construction activities (Advanced Utility Relocation and Exploratory Shaft) to ensure contractor compliance with contract specifications.
- Participated in weekly progress meetings and other project meetings to evaluate Contractors Safety Program compliance with contract requirements.
- Safety Staff continues to work with Procurement and Program Management staff to prepare documents for upcoming advanced utility relocation facility design and design/build contract packages.
- Safety Staff continues to work with Program Management and Construction Relations staff to address issues related to public concerns regarding noise and other issues.
- Injury/illness statistics to reported at the end of the current quarter.
- Metro Construction Safety Staff is providing Safety and Security Contract Compliance oversight during both day and night shifts.

THIRD PARTY AGREEMENT STATUS

Third Party	Type of Agreement	Forecast Execution Date	Required Need Date	Status/ Comments
City of Los Angeles	Amendment to Master Cooperative Agreement	N/A	N/A	Parties will work under 2003 MCA.
City of Beverly Hills	MCA	1/14	2/14	Awaiting comments on MCA from City.
Los Angeles Department of Water and Power	Amendment to Memorandum of Understanding	N/A	N/A	Metro and LADWP will work under 2002 Utility Cooperative Agreement which remains in effect.
Los Angeles County Public Works	Letter of Agreement	4/11	3/12	Executed
Caltrans	Amendment	8/11	3/12	Executed
Private Utilities	LOA, MOU or UCA	5/11 to 12/13	N/A	Metro is working with affected third party utilities under work orders unless license agreements dictate relocation by utility company.

ADVANCED UTILITY RELOCATION STATUS

- Fiber optic relocation work previously authorized under a work order with the individual telecommunications company is nearing completion at Wilshire/La Brea Station area.
- The contractor, Metro Builders, for Contract C1048 – Wilshire/La Brea Advanced Utility Relocations, is continuing with the LADWP Power relocations.
- Plans for relocation of water, sewer, storm drains and fiber optics at the Wilshire/La Cienega Station have been submitted to the City of Beverly Hills and are in the plan review process.

PEAK HOUR AND NIGHTTIME CONSTRUCTION VARIANCES

Metro is actively pursuing extended hour variances/exemptions to accommodate the Project needs. Metro staff is working with the City of Los Angeles Bureau of Engineering and the Los Angeles Police Commission to obtain Holiday Moratorium Variance, Peak Hour Exemption and Night Time Work Variance. Current efforts center around extending the existing extended hour permits to accommodate utility work at night at the La Brea and Fairfax Stations, processing of extended hour variances to allow night work and weekend work to accommodate the La Brea, Fairfax and La Cienega soldier pile and decking installation for the D/B contract; processing of holiday moratorium exemptions to accommodate utility relocation work at all three stations; and processing of peak hour variance via approved WTCP's to accommodate Metro's D/B soldier pile installation scope at all three stations.

CHRONOLOGY OF EVENTS

June 2007	Began Alternatives Analysis study
January 2009	Board approval of Alternatives Analysis study and next phase
February 2009	Began Draft Environmental Impact Statement / Report (EIS / EIR)
October 2010	Board approval of Draft EIS / EIR and selection of locally preferred alternative
January 2011	FTA approval to enter Preliminary Engineering
May 2011	Began Preliminary Engineering
April 2012	Board certification of Final EIS / EIR and adoption of project
July 2012	Completion of Exploratory Shaft final design
August 2012	FTA Record of Decision
September 2012	Began Real Estate Acquisition
November 2012	Began Final Design - C1048 - Advanced Utilities Relocation contract - La Brea
November 2012	Began Final Design - C1055 - Advanced Utilities Relocation contract - Fairfax
November 2012	Issued RFQ for C1045 Design / Build contract
December 2012	Began Final Design - C1056 - Advanced Utilities Relocation contract - La Cienaga
January 2013	Began C1034 Exploratory Shaft construction
February 2013	Received RFQ responses for C1045 Design / Build contract

CHRONOLOGY OF EVENTS (Continued)

June 2013	Issued RFP for C1045 Design/Build Contract
June 2013	Beginning of C1055 AUR Fairfax Bid Period
July 2013	Submitted draft FFGA application
July 2013	Completed Final Design - C1048 - Advanced Utilities Relocation contract La Brea
July 2013	Submitted TIFIA loan application
August 2013	Began C1048 Advanced Utilities Relocation at La Brea
August 2013	NTP for Construction Management Services Contract

CONTRACT C1034 STATUS

Description: Exploratory Shaft Contractor: Innovative Construction Solutions (ICS)	Contract No. C1034 Status as of: November 01, 2013					
Progress / Work Completed: - Notice to Proceed: 01/15/13 - Demolition / site preparation: 04/05/13 - 06/17/13 - Site Utilities: 05/06/13 - 09/04/13 - Soldier Piles: 07/05/13 - 08/27/13 - Shaft excavation started: 09/03/13 - Shaft excavation to 15' depth: 10/18/13 - Shaft excavation to 17' depth: 11/01/13 Areas of Concern:	Major Activities (In Progress): - Shaft excavation to second waler - Install steel platform and stairs - Install shotcrete lagging / rebar - Gas monitoring Major Activities Next Period: - Continue shaft excavation to second and third walers - Install steel platform and stairs - Install shotcrete lagging / rebar - Gas monitoring					
Schedule Summary: Date of Award: 11/26/12 Notice to Proceed: 01/15/13 Original Contract Duration: 669 CD Current Contract Duration: 735 CD Elapsed Time from NTP: 292 CD		Original Contract Dates	Time Extension	Current Contract	Forecast	Variance CDs
	Notice to Proceed	01/15/13	0	01/15/13	01/15/13	0
	Milestone 1: Shaft Completion	02/13/14	16	03/01/14	04/22/14	-52
	Milestone 2: Substantial Completion	11/14/14	14	11/28/14	01/19/15	-52
Physical Percent Complete: Physical completion as of 11/01/13: 57%* * Note: Physical completion assessment reflects work completed and work in progress.	Cost Summary: 1. Award Value: 6.5 2. Executed Modifications: 0.2 3. Approved Change Orders: 0.0 4. Current Contract Value (1+2+3): 6.7 5. Incurred Cost: 3.5					

Description: AUR - La Brea Contractor: Metro Builders & Engineers Group, Ltd.	Contract No. C1048 Status as of: November 01, 2013																								
<p>Progress / Work Completed:</p> <p>Procurement: elect conduit / vaults / hydrants / pipe / fittings</p> <p>Preparation for and power relocation at:</p> <ul style="list-style-type: none"> - Orange Drive - South of Wilshire - Intersection of Orange and Wilshire - Wilshire to Sycamore Ave. - Sycamore Ave - North of Wilshire - Sycamore Ave - South of Wilshire <p>Areas of Concern:</p>	<p>Major Activities (In Progress):</p> <p>At various locations throughout La Brea Station area:</p> <ul style="list-style-type: none"> - Site preparatation / excavation / shoring - Conduit installation - Encase conduit - Slurry backfill <p>Major Activities Next Period:</p> <p>At various locations throughout La Brea Station area:</p> <ul style="list-style-type: none"> - Continue site preparatation / excavation / shoring - Continue conduit installation - Continue encase conduit - Continue slurry backfill - Begin water line relocation 																								
<p>Schedule Summary:</p> <p>Date of Award: 05/13/13</p> <p>Notice to Proceed: 08/01/13</p> <p>Original Contract Duration: 230 CD</p> <p>Current Contract Duration: 251 CD</p> <p>Elapsed Time from NTP: 94 CD</p>	<table border="1"> <thead> <tr> <th></th><th>Original Contract Dates</th><th>Time Extension</th><th>Current Contract</th><th>Forecast</th><th>Variance CDs</th></tr> </thead> <tbody> <tr> <td>Notice to Proceed</td><td>08/01/13</td><td>0</td><td>08/01/13</td><td>08/01/13</td><td>0</td></tr> <tr> <td>Milestone 1: Completion of LADWP Power Work</td><td>12/28/13</td><td>0</td><td>12/28/13</td><td>01/15/14</td><td>-18</td></tr> <tr> <td>Milestone 2: Substantial Completion</td><td>03/18/14</td><td>0</td><td>03/18/14</td><td>04/08/14</td><td>-21</td></tr> </tbody> </table>		Original Contract Dates	Time Extension	Current Contract	Forecast	Variance CDs	Notice to Proceed	08/01/13	0	08/01/13	08/01/13	0	Milestone 1: Completion of LADWP Power Work	12/28/13	0	12/28/13	01/15/14	-18	Milestone 2: Substantial Completion	03/18/14	0	03/18/14	04/08/14	-21
	Original Contract Dates	Time Extension	Current Contract	Forecast	Variance CDs																				
Notice to Proceed	08/01/13	0	08/01/13	08/01/13	0																				
Milestone 1: Completion of LADWP Power Work	12/28/13	0	12/28/13	01/15/14	-18																				
Milestone 2: Substantial Completion	03/18/14	0	03/18/14	04/08/14	-21																				
<p>Physical Percent Complete:</p> <p>Physical completion as of 11/01/13: 9.3%*</p> <p>* Note: Physical completion assessment reflects work completed and work in progress.</p>	<p>Cost Summary: \$ In millions</p> <table> <tbody> <tr> <td>1. Award Value:</td><td style="text-align: right;">6.2</td></tr> <tr> <td>2. Executed Modifications:</td><td style="text-align: right;">0.0</td></tr> <tr> <td>3. Approved Change Orders:</td><td style="text-align: right;">0.1</td></tr> <tr> <td>4. Current Contract Value (1+2+3):</td><td style="text-align: right;">6.3</td></tr> <tr> <td>5. Incurred Cost:</td><td style="text-align: right;">0.7</td></tr> </tbody> </table>	1. Award Value:	6.2	2. Executed Modifications:	0.0	3. Approved Change Orders:	0.1	4. Current Contract Value (1+2+3):	6.3	5. Incurred Cost:	0.7														
1. Award Value:	6.2																								
2. Executed Modifications:	0.0																								
3. Approved Change Orders:	0.1																								
4. Current Contract Value (1+2+3):	6.3																								
5. Incurred Cost:	0.7																								

CONSTRUCTION PHOTOGRAPHS

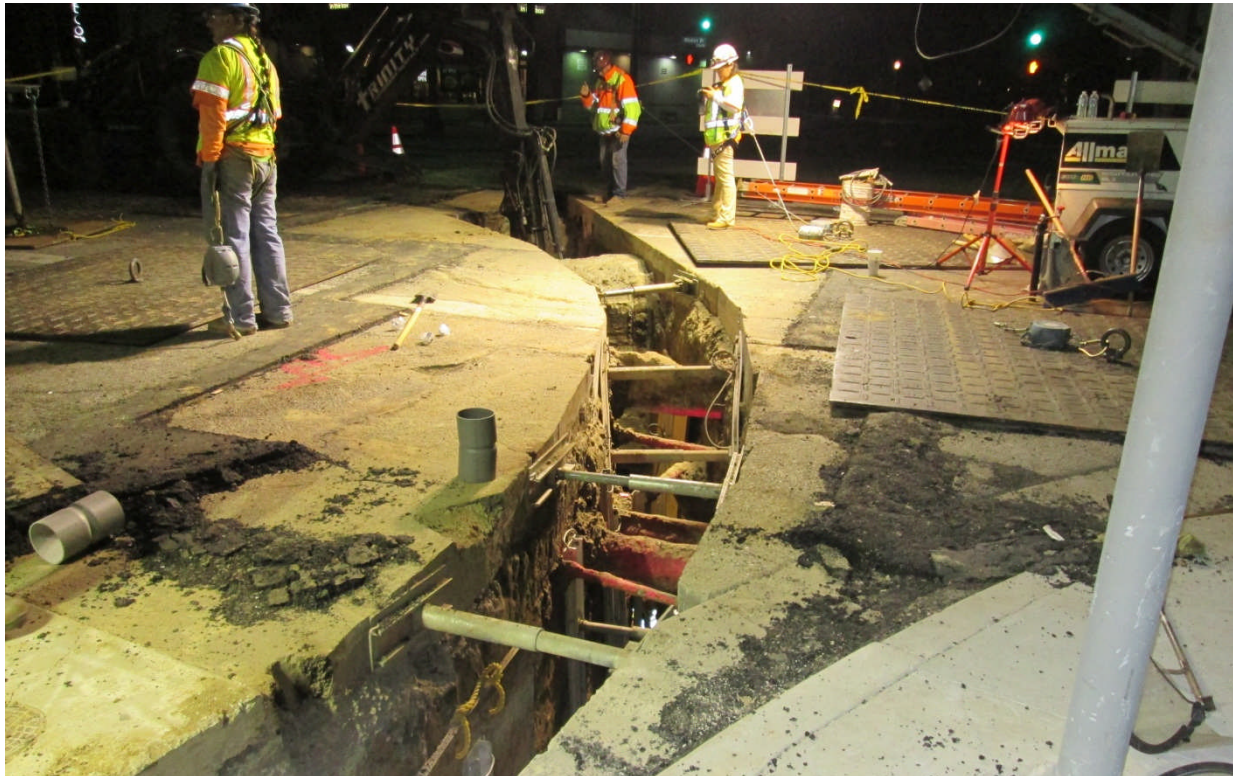


Excavation of the Exploratory Shaft

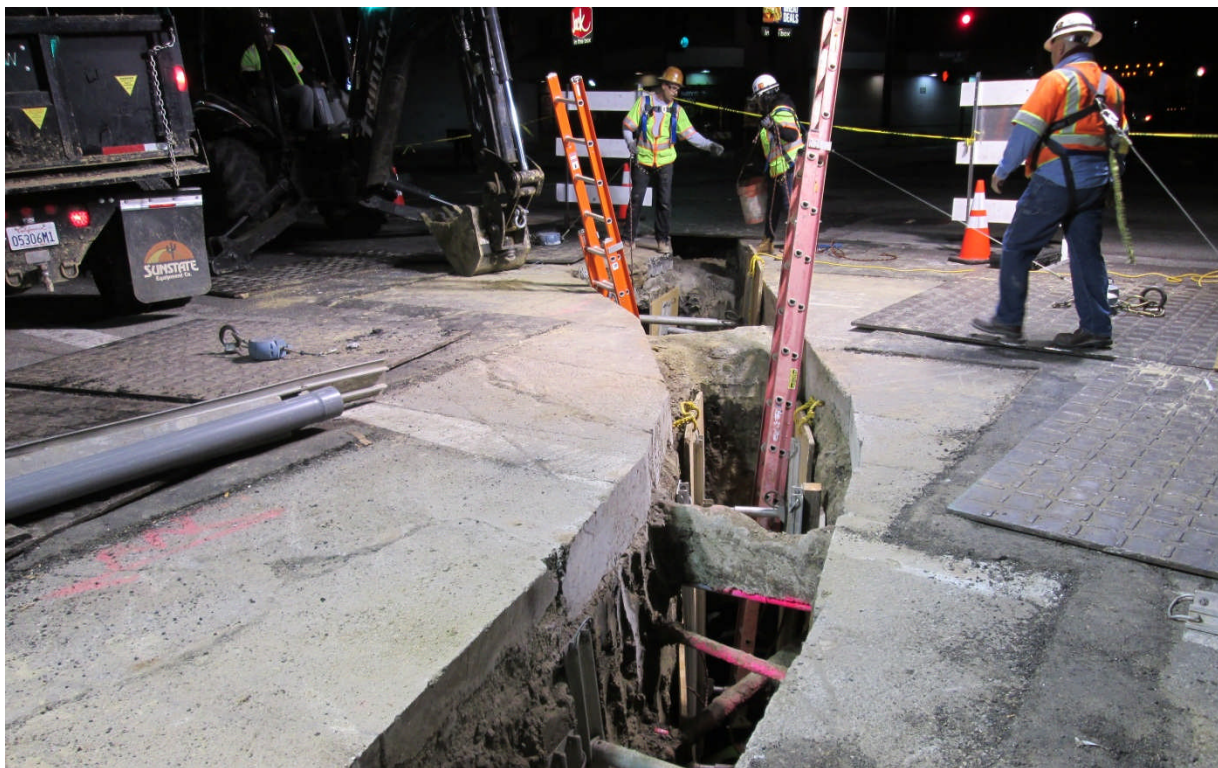


Exploratory Shaft East and South Walls with Shotcrete

CONSTRUCTION PHOTOGRAPHS



Placement of Utility Ducts by the C1048 (Wilshire/La Brea) Contractor



Utility Trenching by the C1048 (Wilshire/La Brea) Contractor

APPENDIX

COST AND BUDGET TERMINOLOGY

Project Cost Descriptions

ORIGINAL BUDGET	The Original Project Budget as authorized by the Metropolitan Transportation Authority (Metro) Board (to be established).
CURRENT BUDGET	The Original Budget plus all budget amendments approved by formal Metro Board action. Also referred to as Approved Budget.
COMMITMENTS	The total of actual contracts awarded, executed change orders or amendments, approved work orders of Master Cooperative Agreements, offers accepted for purchase of real estate, and other Metro actions which have been spent or result in the obligation of specific expenditures at a future time.
EXPENDITURES	The total dollar amount of funds expended by Metro for contractor or consultant services, third party services, staff salaries, real estate and other expenses that is reported in Metro's Financial Information System (FIS).
CURRENT FORECAST	The best estimate of the final cost of the Project when all checks have been issued and the Project is closed out. Current Forecast is composed of actual costs incurred to date, the best estimate of work remaining and a current risk assessment for each budgeted cost item.

Cost Report by Element Descriptions

CONSTRUCTION	Includes construction contracts. Cost associated with Guideways, Stations, Southwestern Yard, Sitework/Special Conditions and Systems.
RIGHT-OF-WAY	Includes purchase cost of parcels, easements, right-of-entry permits, escrow fees, contracted real estate appraisals and tenant relocation.
VEHICLES	Includes the purchase of Heavy Rail Vehicles and spare parts for the Project.
PROFESSIONAL SERVICES	Includes design engineering, project management assistance, construction management support services, legal counsel, agency staff costs, and other specialty consultants.
CONTINGENCY	A fund established at the beginning of a project to provide for anticipated but unknown additional costs that may arise during the course of the Project.
PROJECT REVENUE	Includes all revenue received by Metro as a direct result of project activities. This includes cost sharing construction items, insurance premium rebates, and the like.

APPENDIX

LIST OF ACRONYMS

ATC	Automatic Train Control
ATSAC	Automated Traffic Surveillance and Control
BAFO	Best and Final Offer
BIM	Building Information Modeling
BNSF	Burlington Northern Santa Fe Railway Company
BRT	Bus Rapid Transit
CADD	Computer Aided Drafting and Design
CALTRANS	California Department of Transportation
CCTV	Closed Circuit Television
CD	Calendar Day
CEQA	California Environmental Quality Act
CM	Construction Manager
CMAQ	Congestion Mitigation and Air Quality Improvement Program
CMSC	Construction Management Services Consultant
CN	Change Notice
CO	Change Order
COBH	City of Beverly Hills
COLA	City of Los Angeles
CPM	Critical Path Method
CPUC	California Public Utilities Commission
CR	Camera Ready
CSPP	Construction Safety Phasing Plan
CTC	California Transportation Commission
CUD	Contract Unit Description
DB	Design Build
DBB	Design Bid Build
DOT	Department of Transportation
DWP	Department of Water and Power
EIR	Environmental Impact Report
EIS	Environmental Impact Statement
EMSC	Engineering Management Services Consultant
EPBM	Earth Pressure Balance Machine
FAA	Federal Aviation Administration
FAR	Federal Acquisition Regulation
FD	Final Design
FEIS	Final Environmental Impact Statement
FEIR	Final Environmental Impact Report
FIS	Financial Information System
FLSR	Fire Life Safety Report
FONSI	Finding of No Significant Impact
FRA	Federal Railroad Administration
FSEIR	Final Supplemental Environmental Impact Report
FSEIS	Final Supplemental Environmental Impact Statement

APPENDIX
LIST OF ACRONYMS (Continued)

FTA	Federal Transit Administration
FTE	Full Time Equivalent
GBR	Geotechnical Baseline Report
GDSR	Geotechnical Design Summary Report
HMM	Hatch Mott MacDonald
HRT	Heavy Rail Transit
HRV	Heavy Rail Vehicle
IFB	Invitation for Bid
IPMO	Integrated Project Management Office
JV	Joint Venture
LA	Los Angeles
LABOE	Los Angeles Bureau of Engineering
LABOS	Los Angeles Bureau of Sanitation
LABSL	Los Angeles Bureau of Street Lighting
LACFCD	Los Angeles County Flood Control District
LACMTA	Los Angeles County Metropolitan Transportation Authority
LADOT	Los Angeles Department of Transportation
LADPW	Los Angeles Department of Public Works
LADWP	Los Angeles Department of Water and Power
LAUSD	Los Angeles Unified School District
LAWA	Los Angeles World Airports
LAX	Los Angeles International Airport
LNTP	Limited Notice To Proceed
LONP	Letter Of No Prejudice
LOP	Life-of-Project
LPA	Locally Preferred Alternative
LRTP	Long Range Transportation Plan
LRV	Light Rail Vehicle
MCA	Master Cooperative Agreement
MIS	Major Investment Study
MOU	Memorandum of Understanding
MPSR	Monthly Project Status Report
N/A	Not Applicable
NEPA	National Environmental Protection Act
NOD	Notice of Determination
NPDES	National Pollution Discharge Elimination System
NTE	Not to Exceed
NTP	Notice To Proceed
OCC	Operations Control Center
OSHA	Occupational Health and Safety Administration
PA/VMS	Public Address/Visual Messaging Sign
PE	Preliminary Engineering

APPENDIX
LIST OF ACRONYMS (Continued)

PEER	Permit Engineering Evaluation Report
PIP	Project Implementation Plan
PLA	Project Labor Agreement
PM	Project Manager
PMIP	Project Management Implementation Plan
PMOC	Project Management Oversight Consultant
PMP	Project Management Plan
P&P	Policies & Procedures
PR	Project Report
PSR	Project Study Report
QA	Quality Assurance
QAR	Quality Assurance Report
QC	Quality Control
QPSR	Quarterly Project Status Report
QTIB	Qualified Transit Improvement Bonds
RAMP	Real Estate Acquisition Management Plan
RCHAR	Rail Crossing Hazards Analysis Report
RCMP	Risk Assessment Management Plan
RFC	Request For Change
RFP	Request For Proposals
RFSC	Request for Special Consideration
RHA	Risk Hazard Analysis
RLPE	Red Light Photo Enforcement
ROC	Rail Operations Center
ROD	Record Of Decision
ROM	Rough Order of Magnitude
ROW	Right-Of-Way
RPZ	Runway Protection Zone
RSD	Revenue Service Date
SAV	Stand Alone Validator
SCAQMD	Southern California Air Quality Management District
SCADA	Supervisory Control and Data Acquisition
SCC	Standard Cost Category
SCE	Southern California Edison
SCG	Southern California Gas Company
SCRRA	Southern California Regional Rail Authority
SHA	State Highway Account
SHPO	State Historic Preservation Office
SIT	System Integration Testing
SOQ	Statement of Qualification
SOV	Schedule Of Value
SOW	Statement Of Work

APPENDIX
LIST OF ACRONYMS (Continued)

SP	Special Provision
SSMP	Safety and Security Management Plan
STB	Surface Transportation Board
STIP	State Transportation Improvement Program
STP	Surface Transportation Program
STV	STV Group
TBD	To Be Determined
TBM	Tunnel Boring Machine
TCE	Temporary Construction Easement
TCRP	Traffic Congestion Relief Program
TIFIA	Transportation Infrastructure Finance and Innovation Act
TIGER	Transportation Investment Generating Economic Recovery
TPSS	Traction Power Substation
TRACS	Transit Automatic Control System
TVA	Threat Vulnerability Analysis
TVM	Ticket Vending Machine
UFS	Universal Fare System
USDOT	United States Department Of Transportation
VE	Value Engineering
WBS	Work Breakdown Structure
WP	Work Package
YOE	Year of Expenditure