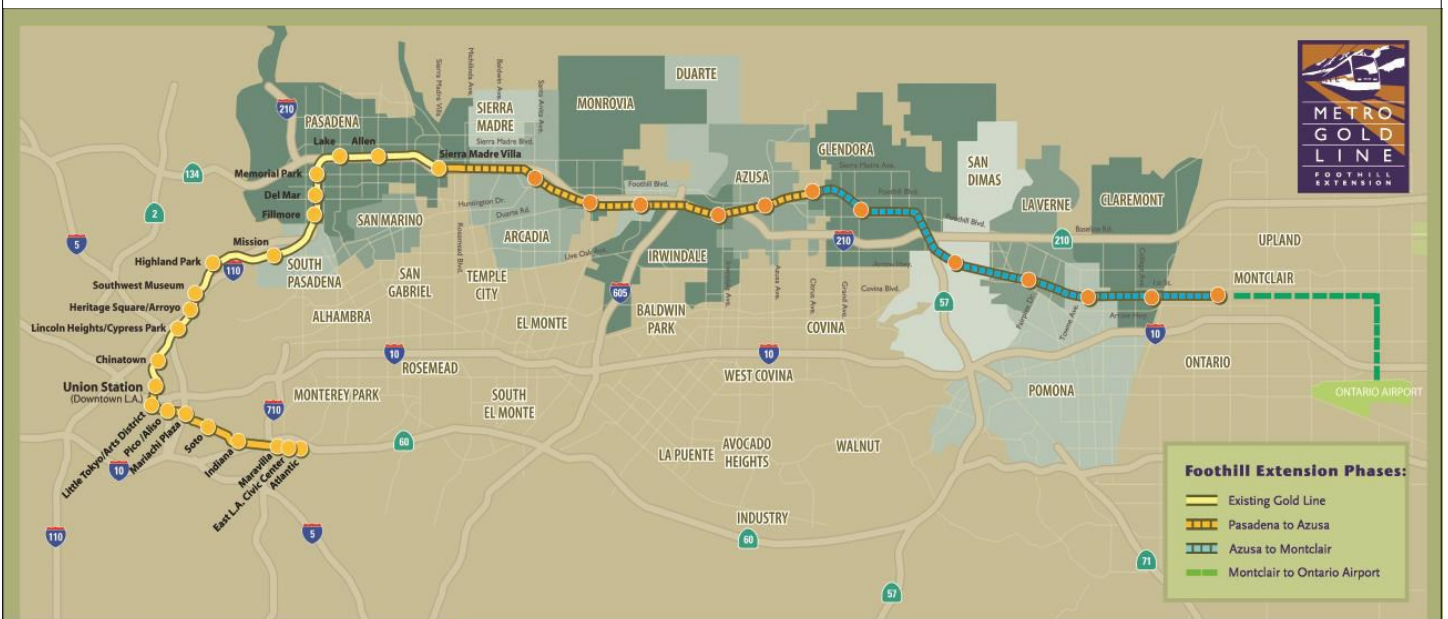


Metro Gold Line

Foothill Extension Project

Monthly Project Status Report

September 2013



Metro Gold Line

Connecting Los Angeles, the San Gabriel Valley and Inland Empire



TABLE OF CONTENTS

PHASE II FOOTHILL EXTENSION PROJECT STATUS

Project Description	3
Pasadena to Azusa Segment	4
Management Issues	4
Key Activities Completed This Period	5
Key Future Activities	6
Critical Path Schedule	8
Critical Path Float Trend	9
Gold Line Bridge Contract Status	10
Gold Line Bridge Change Management Log	11
Alignment Contract Status	12
Alignment Construction Progress This Period	14
Facility Construction Progress This Period	15
Alignment Construction Progress Next Period	16
Facility Construction Progress Next Period	17
Alignment Construction Images	18
Alignment Change Management Log	20
Parking Facilities and Enhancements Contract Status	24
Parking Facilities and Enhancements Change Management Log	25
Azusa to Montclair Segment	26
Ontario Airport Segment	27
Financial Status	28

FOOTHILL EXTENSION PROJECT DESCRIPTION

The Authority's mandate is to plan, design and construct a 37-mile light rail link between Downtown Los Angeles and Claremont. In addition, the San Bernardino Associated Governments (SANBAG) has requested that planning be extended one mile inside San Bernardino County to the City of Montclair and then to Ontario Airport.

The Metro Gold Line Phase II (Foothill Extension) corridor includes the cities of Pasadena, Arcadia, Monrovia, Duarte, Irwindale, Azusa, Glendora, San Dimas, La Verne, Pomona, Claremont, and Montclair; and the counties of Los Angeles and San Bernardino (Figure 1). The Foothill Extension is estimated to cost approximately \$1.7 billion.

The Foothill Extension will be built in two segments to align effectively with projected cash flows and financial capacity constraints. The first segment is defined from the Sierra Madre Villa Station in Pasadena to the city of Azusa. Revenue service along this segment is planned for the year 2015. The second segment would include an extension from Azusa to the City of Montclair with revenue service projected for the year 2017 and the third segment will be comprised of an extension from Montclair to the Ontario Airport.

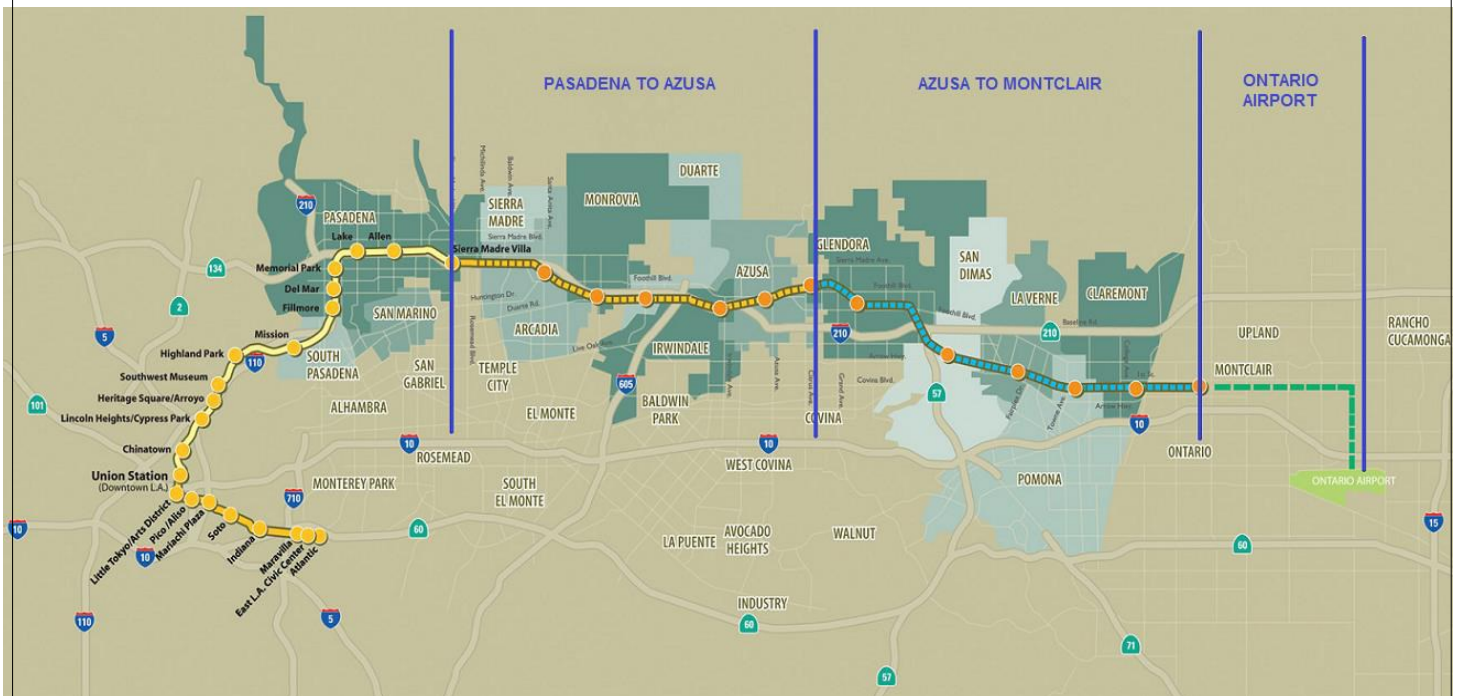


Figure 1: Metro Gold Line Foothill Extension Alignment



Pasadena to Azusa Segment

MANAGEMENT ISSUES

Metro Betterments

During the design process Metro staff have identified betterments that Metro staff would like to add to the project. Metro has provided a final disposition on all but a few items. Authority staff continues to work with Metro

Southern California Edison (SCE) Overhead Electrical Line Relocation

An SCE overhead electrical line stretching from Irwindale Avenue to the MillerCoors property requires an alignment adjustment to accommodate the Irwindale Traction Power Supply Substation (TPSS) and the parking structure for the Irwindale Station. There are several complications with this relocation that need to be resolved, including easement issues with MillerCoors, easement issues between Metro and SCE, and power shutdown issues with MillerCoors. Authority staff continues to work with all parties involved to resolve all complications in order to complete the relocation.

KEY ACTIVITIES COMPLETED THIS PERIOD

Staff continued to attend coordination meetings with cities along the alignment

Authority staff continues to meet with Metro staff to review and discuss the status of the Pasadena to Azusa segment

Held regular meetings with the C1135 (DB2) contractor, Foothill Transit Constructors (FTC) and participated in construction site visits and audits

FTC reports the following SBE statistics for the month of June:

- Current SBE commitment: \$ 59,500,000
- SBE percent committed versus value of Project: 13.47%
- Overall Authority Project SBE goal: 16%

FTC reports the following approximate safety statistics to date:

- 379,000 total work hours performed by FTC, Mass Electric, and Subcontractors
- 2 recordable injuries reported
- 0 lost time injuries reported

Continued to review revised AFC drawings for C1135 project

Continued installation of utilities, underground systems, and foundations at the Gold Line Operations Campus (Campus)

Completed construction of MOW canopy frame and began construction of MOW building at the Campus

Achieved Final Acceptance for the Gold Line Bridge (C1134 – “Iconic Freeway Structure”)

Continued bridge work at Foothill, Saw Pit Wash, and Santa Anita Avenue and began work at Kincaid bridge

Completed construction of San Gabriel River Bridge, Santa Anita Wash and Alta Vista Wash

Prepared for Punch List work at Palm and Citrus bridges

Continued work at Duarte, Monrovia and Arcadia Stations

Continued construction of San Gabriel and California grade crossings and began work at Mayflower and 1st & Santa Clara crossings

Opened Pasadena and Buena Vista grade crossings

Continued to hold design and coordination meetings with DB3 contractor, Webcor Builders, for the Intermodal Parking Facilities and Enhancements Contract 1150

Continued to reviewed 100% design submittals for first TPSS Sites and completed five AFC drawing packages for C1150 project

C1150 design-build contractor began work at Arcadia and Monrovia Sites

KEY FUTURE ACTIVITIES

Continue discussions with corridor cities regarding the project

Continue management of the Alignment contract, which will include oversight of construction activities and preparation for start-up activities

Continue to meet with Intermodal Parking Facilities and Enhancements Project contractor, Webcor Builders regarding design of the Project

Continue to attend to any issues that may come up by the cities or other stakeholders along the alignment

Complete utility installation and foundation work of new buildings at the Campus

Complete construction of the bridges at Foothill, Alta Vista Wash, Santa Anita Wash, Saw Pit Wash, and Santa Anita Avenue

Complete construction of the Duarte, Monrovia, and Arcadia Stations

Finish work at California and San Gabriel grade crossings

Begin work at Magnolia grade crossing

Finalize design for first three Parking Facilities

Finalize the following property acquisitions:

- Arcadia:

1. Parcel 1301a – Negotiating
2. Parcel 1301b – Negotiating
3. Parcel 1305 (108 E. Santa Clara Ave) – In escrow
4. Parcel 1307 (125 N. First Ave) – Counter-offer accepted. Waiting to get signed court documents.
5. Parcel 1308 (223 N. First Ave) – Seller's counter-offer to Board of Directors 11/13/2013
6. Parcel 6039 (325 N. Santa Anita Ave) – In escrow

- Monrovia:

1. Parcel 1702 (1527 S. Mayflower Ave.) – In escrow
2. Parcel 1802/6035/6030 (1522 S. Mayflower Ave) – Need to revise Just Compensation at 11/13/2013 Board meeting
3. Parcel 1805/6035/6030 (1602 S. Mayflower Ave) – Revising offer to purchase
4. Parcel 2201 (1711 Mountain Ave) – In escrow
5. Parcel 6019a (1703 S. Mountain Ave) – Seller counter-offer to Board 11/13/2013

- Duarte:

1. Parcel 2202 (904 Hamilton Rd.) – Counter-offer accepted. Waiting to get signed court documents.
2. Parcel 6041/6042 (1500 Duarte Rd) – Accepted. Contract under review.



KEY FUTURE ACTIVITIES (CONTINUED)

- Irwindale:

1. Parcel 6028 (16009 Avenida Padilla) – Hearing for Resolution of Necessity 11/13/2013

- Azusa:

1. Parcel 6032 (819 W. 6th St) – In escrow
2. Parcel 6033 (809 E. Santa Fe) – Seller counter-offer to Board 11/13/2013

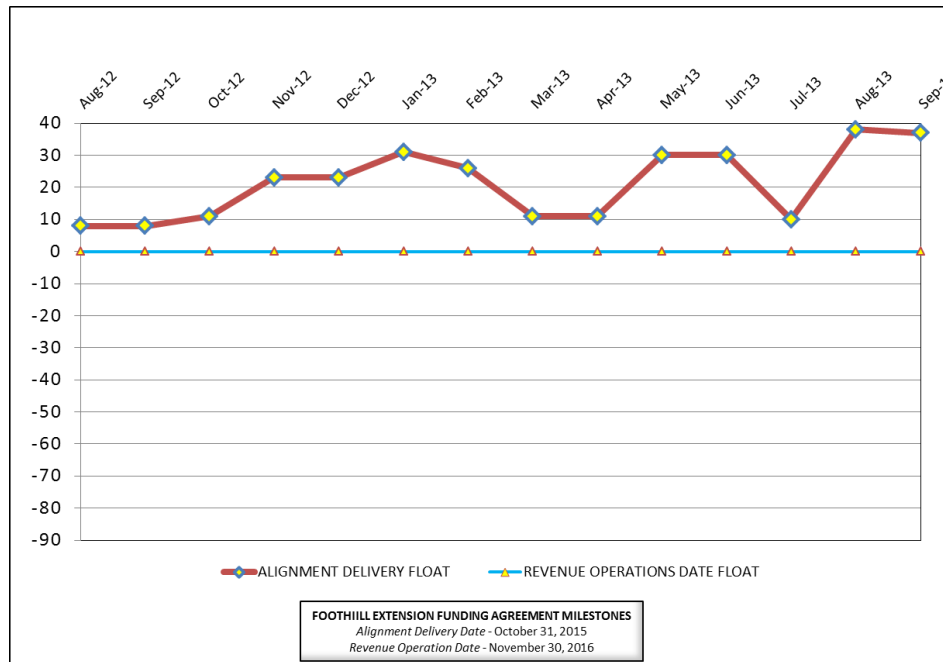


CRITICAL PATH SCHEDULE

Activity Name	OD	RD	AD	Start	Finish	Total Float	Timeline																			
							2012 Q2	2012 Q3	2012 Q4	2013 Q1	2013 Q2	2013 Q3	2013 Q4	2014 Q1	2014 Q2	2014 Q3	2014 Q4	2015 Q1	2015 Q2	2015 Q3	2015 Q4	2016 Q1	2016 Q2	2016 Q3	2016 Q4	2017 Q1
REVENUE OPERATIONS DATE - CRITICAL PATH																										
RFP - LRV PROCUREMENT	375	0	557	18.Oct.10 08:00 A	26.Apr.12 15:00 A		[Gantt bar: Oct 2010 - Apr 2012]																			
LRV FABRICATION / DELIVER 15 VEHICLES	1353	1048	394	17.Aug.12 07:00 A	28.Jul.16 15:00	0	[Gantt bar: Aug 2012 - Jul 2016]																			
METRO - Pre-Revenue Operations - Phase 2A	60	60	0	29.Jul.16 07:00	26.Sep.16 15:00	0	[Gantt bar: Jul 2016 - Sep 2016]																			
METRO - Project Schedule Contingency (10 Mo.)	65	65	0	27.Sep.16 07:00	30.Nov.16 15:00	0	[Gantt bar: Sep 2016 - Nov 2016]																			
Phase 2A - Revenue Operations Date (ROD)	0	0	0		30.Nov.16 15:00*	0	[Milestone: Nov 2016]																			
ALIGNMENT DELIVERY DATE - CRITICAL PATH																										
SAN GABRIEL RIVER BRIDGE - CONSTRUCTION	200	40	125	25.Mar.13 07:00 A	08.Nov.13 15:00	26	[Gantt bar: Mar 2013 - Nov 2013]																			
DIRECT FIXED TRACK INSTALLATION - (SG RIVER BRIDGE)	60	60	0	11.Nov.13 07:00	31.Jan.14 15:00	26	[Gantt bar: Nov 2013 - Jan 2014]																			
DIRECT FIXED TRACK INSTALLATION - (IFS BRIDGE)	100	100	0	03.Feb.14 07:00	20.Jun.14 15:00	26	[Gantt bar: Feb 2014 - Jun 2014]																			
TRACK INSTALLATION - SEGMENT 1	75	75	0	03.Mar.14 07:00	13.Jun.14 15:00	26	[Gantt bar: Mar 2014 - Jun 2014]																			
INTERLOCK '1' - INSTALL INSTRUMENT HOUSE/WIRE & TERMINATIONS	45	45	0	21.Apr.14 07:00	20.Jun.14 15:00	26	[Gantt bar: Apr 2014 - Jun 2014]																			
IJ/IB - INSTALL CASE (C867) WIRE & TERMINATIONS	22	22	0	23.Jun.14 07:00	22.Jul.14 15:00	26	[Gantt bar: Jun 2014 - Jul 2014]																			
IJ/IB - INSTALL CASE (C893) WIRE & TERMINATIONS	22	22	0	07.Jul.14 07:00	05.Aug.14 15:00	26	[Gantt bar: Jul 2014 - Aug 2014]																			
INTERLOCK '2' - INSTALL INSTRUMENT HOUSE/WIRE & TERMINATIONS	45	45	0	11.Jul.14 07:00	11.Sep.14 15:00	26	[Gantt bar: Jul 2014 - Sep 2014]																			
IJ/IB - INSTALL CASE (C918) WIRE & TERMINATIONS	22	22	0	14.Jul.14 07:00	12.Aug.14 15:00	26	[Gantt bar: Jul 2014 - Aug 2014]																			
INTERLOCK '7' - INSTALL INSTRUMENT HOUSE/WIRE & TERMINATIONS	45	45	0	05.Sep.14 07:00	06.Nov.14 15:00	26	[Gantt bar: Sep 2014 - Nov 2014]																			
INTERLOCK PULL SIGNAL CABLE ('6' to '7')	21	21	0	07.Nov.14 07:00	05.Dec.14 15:00	26	[Gantt bar: Nov 2014 - Dec 2014]																			
INTERLOCK PULL SIGNAL CABLE ('7' to '8')	21	21	0	08.Dec.14 07:00	05.Jan.15 15:00	26	[Gantt bar: Dec 2014 - Jan 2015]																			
INTERLOCK TEST SIGNAL CABLE ('7' to '8')	21	21	0	06.Jan.15 07:00	03.Feb.15 15:00	26	[Gantt bar: Jan 2015 - Feb 2015]																			
INTERLOCK TEST SIGNAL CABLE ('6' to '7')	21	21	0	04.Feb.15 07:00	04.Mar.15 15:00	26	[Gantt bar: Feb 2015 - Mar 2015]																			
INTERLOCK TEST SIGNAL CABLE ('5' to '6')	21	21	0	05.Mar.15 07:00	02.Apr.15 15:00	26	[Gantt bar: Mar 2015 - Apr 2015]																			
SYSTEMS INTERGRATION TESTING	125	125	0	03.Apr.15 07:00	24.Sep.15 15:00	26	[Gantt bar: Apr 2015 - Sep 2015]																			
C1135 - >>>SUBSTANTIAL COMPLETION - 1420 CD<<<	0	0	0		24.Sep.15 15:00*	37	[Milestone: Sep 2015]																			



CRITICAL PATH FLOAT TREND



Revenue Operations Date Critical Path - (0 Calendar Days / 0 Work Days)

The Metro Light Rail Vehicle Fabrication remains on the critical path this period. The delay issuing Notice to Proceed and changes to the anticipated delivery of the 15 vehicles have placed this work as a priority to achieve ROD. The anticipated delivery of the 56th of 78th vehicle is expected to be delivered in July 2016. Due to the critical path delays, the project schedule contingency was reduced to mitigate the impacts on the adopted Metro Revenue Operations Date. The critical path continues through Metro Pre-Revenue Operations, and schedule contingency (2 months). The Metro Revenue Operations Date is currently on schedule for November 30, 2016. However, Metro is forecasting a March 2016 Revenue Operations Date.

Alignment Delivery Date Critical Path - (37 Calendar Days / 26 Work Days)

This period, FTC extended the completion date of the San Gabriel River Bridge (SGRB). As a result, the critical path has shifted from the freight track installation to the SGRB. The critical path continues through the installation of the direct fixed light rail track at the SGRB, followed by the Iconic Freeway Bridge. The critical path continues through the completion of Segment 1 LRT ballast track installation. After the ballast track has been completed at the location of Interlock '1' (Sierra Madre Villa), the installation of the train control interlock house (bungalow) will begin. The critical path continues through the train control installation and testing. Systems Integration will begin after train control testing is complete. Upon the completion of Systems Integration testing, FTC will achieve Substantial Completion and turn-over to Metro for Pre-Revenue Testing. Other elements of construction work, which are in progress and near critical, are Segment 3 Ductbank installation, Santa Anita Bridge, Santa Anita Wash Bridge, and Alta Vista Wash Bridge. All elements are pre-requisite for track installation, which scheduled to start in November 2013.

Project Float

The project float for the Revenue Operations Date remains unchanged at 0 days. The critical activities on this path are on schedule to meet the Target Revenue Operations Date of November 2016. The Alignment Delivery Date float value improved 28 days this period. The Alignment Delivery Date is currently 37 days ahead of the October 31, 2015 deadline.



Description: Iconic Freeway Structure

Status: September 15, 2013

Contract No.: C1134

Contractor: Skanska

Progress Completed This Period:

The Design-Build Contractor completed the re-submittal of the As-Built drawings.

Areas of Concern:

No concerns

Schedule Assessment:

The critical path to Final Acceptance is through the Caltrans review of the As-Built drawings. Upon the acceptance of the submittal from Caltrans, the Authority will issue Final Acceptance.

Cost Assessment:

The current Contract cost forecast is unchanged from from last period. The forecast is 19.80 million and within the authorized budget.

Schedule Summary:

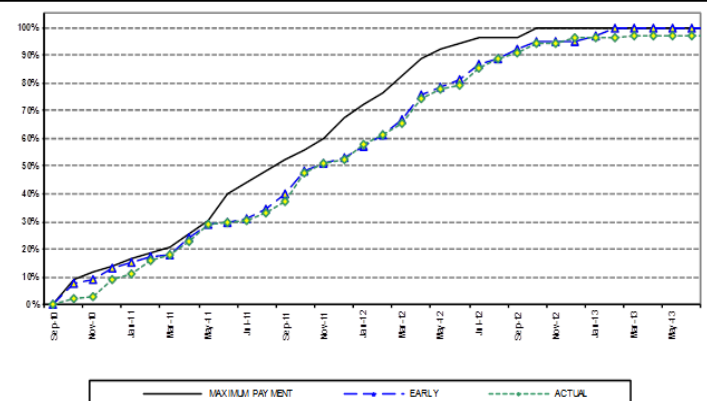
Contract Award:	06/18/10	
Notice to Proceed (NTP) :	08/03/10	
Original Contract Duration:	880	Calendar Days
Current Contract Duration:	945	Calendar Days
Elapsed Time from NTP:	1,139	Calendar Days

Cost Summary:

Million(s)

CONTRACT	
Contract Award Value:	18.57
Executed Change Orders:	1.23
Current Contract Value:	19.80
Potential Change Orders:	0.00
Current Forecast:	19.80
Eamed Value/Actual Cost to Date	19.23
AUTHORIZATION FOR EXPENDITURE	
Budget	19.80
Commitment	19.80
Balance	0.00

Milestones	Description	Original Contract	Current Contract	Forecast	Variance
1	Substantial Completion	07/03/12	11/29/12	11/29/2012 A	0
2	Punchlist Complete	10/01/12	12/05/12	2/4/2013 A	(61)
3	Final Acceptance	12/30/12	03/05/13	09/29/13	(208)





Change Management Log

Project: C1134 IFS - Skanska Contract #: C1134

Original Contract Amount:	\$18,570,092				
Approved Change Orders:	\$1,228,939	6.62%	Pending Change Orders:	\$0	0.00%
Current Contract Total:	\$19,799,031		Pending Contract Total:	\$19,799,031	6.62%

Change Orders

Number	Change Management	Title	Initiated Date	Approved Date	Outstanding Days	Time Extension	Amount
EXECUTED Change Orders							
001.00	001.00	Project Concept Advisor Services	2/15/2011	2/15/2011	0		\$0
002.00	002.00	Professional Liability Insurance	3/9/2011	3/9/2011	0		\$0
003.00	003.00	Sound Wall Requirement Changes	4/25/2011	4/25/2011	0		(\$38,552)
004.00	008.00	Deletion of Abutment 14	10/28/2011	10/28/2011	0		\$41,739
005.00	009.00	Additional Superstructure Arch Chng	12/14/2011	12/15/2011	1		\$122,259
006.00	010.00	Drainage System Location	12/22/2011	12/22/2011	0		\$5,617
007.00	011.00	Caltrans Requested Renderings	3/1/2012	3/2/2012	1		\$14,768
008.00	012.00	Time Extension	4/11/2012	4/13/2012	2	65	\$0
009.00	005.00	Aesthetic Lighting, Misc Extra Work	7/18/2012	7/19/2012	1		\$61,094
010.00	007.00	Architectural Features	9/5/2012	9/12/2012	7		\$18,494
011.00	013.00	Retaining Walls at IFS Approaches	9/18/2012	9/18/2012	0	84	\$732,762
012.00	015.00	Added Falsework Stripping Req'ts.	10/3/2012	10/4/2012	1		\$24,918
013.00	006.00	Landscape/Hardscape	10/12/2012	10/17/2012	5		\$79,967
014.00	016.00	Ceremony Prep and Misc. Added Work	2/15/2013	2/19/2013	4		\$160,464
015.00	017.00	Purchase Additional Light Fixtures	2/28/2013	2/28/2013	0		\$5,408
Subtotal:							\$1,228,939
Subtotal:							\$1,228,939
Total:							\$1,228,939



Description: Alignment Design / Build

Status: September 15, 2013

Contract No.: C1135

Contractor: Foothill Transit Constructors (Kiewit-Parsons J.V.)

Cost Summary:

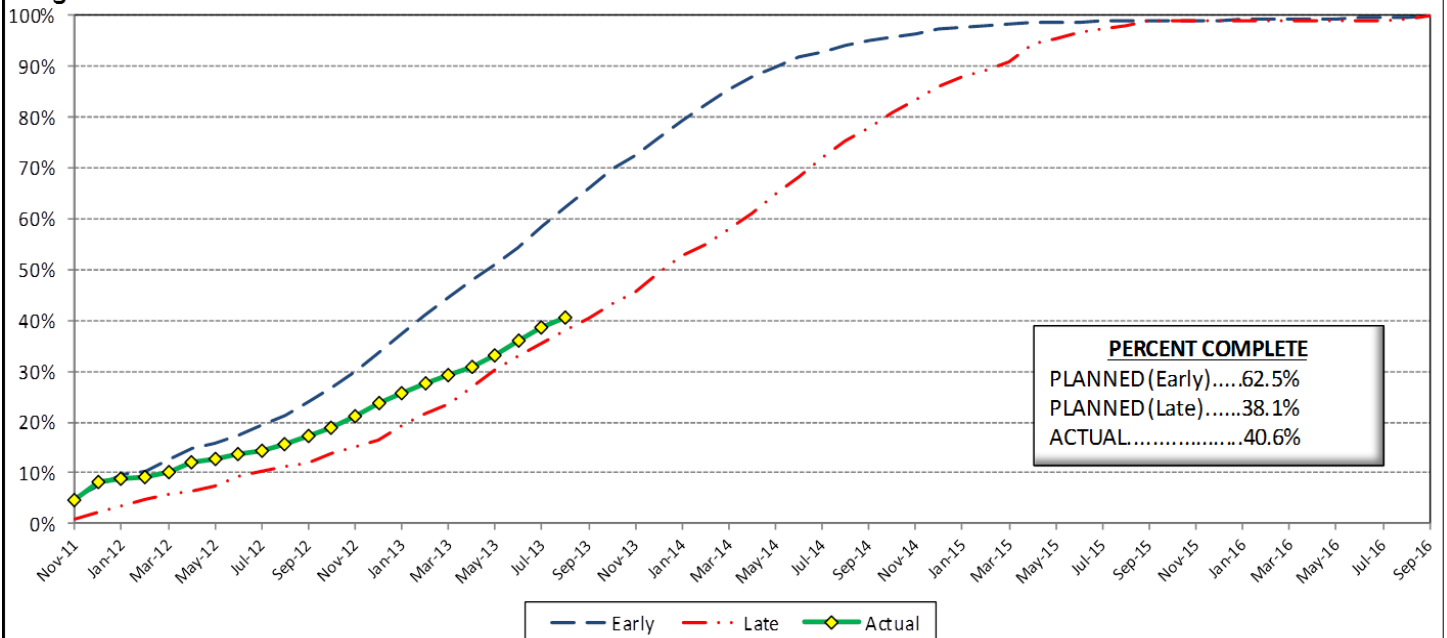
	Million(s)
CONTRACT	
Contract Award Value:	485.9
Executed Change Orders:	7.5
Current Contract Value:	493.4
Potential Change Orders:	2.4
Current Forecast:	495.8
Eamed Value/Actual Cost	197.0
AUTHORIZATION FOR EXPENDITURE	
Budget	507.6
Commitment	503.6
Balance	7.8

Cost Assessment:

This period the Contract forecast decreased \$254 Thousand. The decrease is due to CO 27.01 *M&O IT Changes - Power to WAP*, CO 047 - *St Joseph Drainage Enhancements*, CO 49 - *TPSS #5 Cal AM Power Conflict* which were executed for a value less than previous estimate. A portion of the decreases reported were offset by the reduction of the potential credit for CO 052 - *Duarte Screen Wall Change*.

The Design-Build Contractor has eamed 197.0 Million and is currently 40.6% complete. The progress is currently 21.9% behind the early planned curve, which is due to fabrication and delivery progress for materials such as *Special Track Work, M&O Steel M&O Equipment, Bridge Rebar and Bridge Girders*.

Progress Curve



Schedule Summary:

Contract Award:	07/27/11
Interim Notice to Proceed (INTP) :	11/03/11
Original Contract Duration:	1,780 Calendar Days
Current Contract Duration:	1,780 Calendar Days
Elapsed Time from NTP:	682 Calendar Days

Contract Milestones

Milestones	Description	Original Contract	Current Contract	Forecast	Variance
1	Substantial Completion	09/23/15	09/23/15	09/24/15	(1)
2	Punchlist Complete	06/19/16	06/19/16	06/20/16	(1)
3	Final Completion	09/17/16	09/17/16	09/18/16	(1)
4	Access - IFS Br.	12/15/12	12/15/12	12/15/2012 A	0
5	Test Track Complete	03/27/15	03/27/15	03/23/15	4
6	Colorado Br. Demo Complete	02/01/12	02/01/12	6/15/2012 A	(135)

Schedule Assessment:

This period, the Design-Build Contractor implemented minor logic changes, which removed the freight track construction from the critical path. The critical path is now passing through the completion of the San Gabriel River Bridge and continues through the direct fixed track installation at San Gabriel River Bridge, followed by the Iconic Freeway Structure, and Segment 1 ballast track. The remainder of the critical path continues through the train control installation and testing, followed by systems integration testing.

The schedule contains minimal float between all Segments and will require concurrent installation of track work in Segments 1, 3 and 4. At this time, the Design-Build Contractor remains on schedule for meeting the Substantial Completion Milestone.

The Test Track Completion is forecast to be available on March 23, 2015.



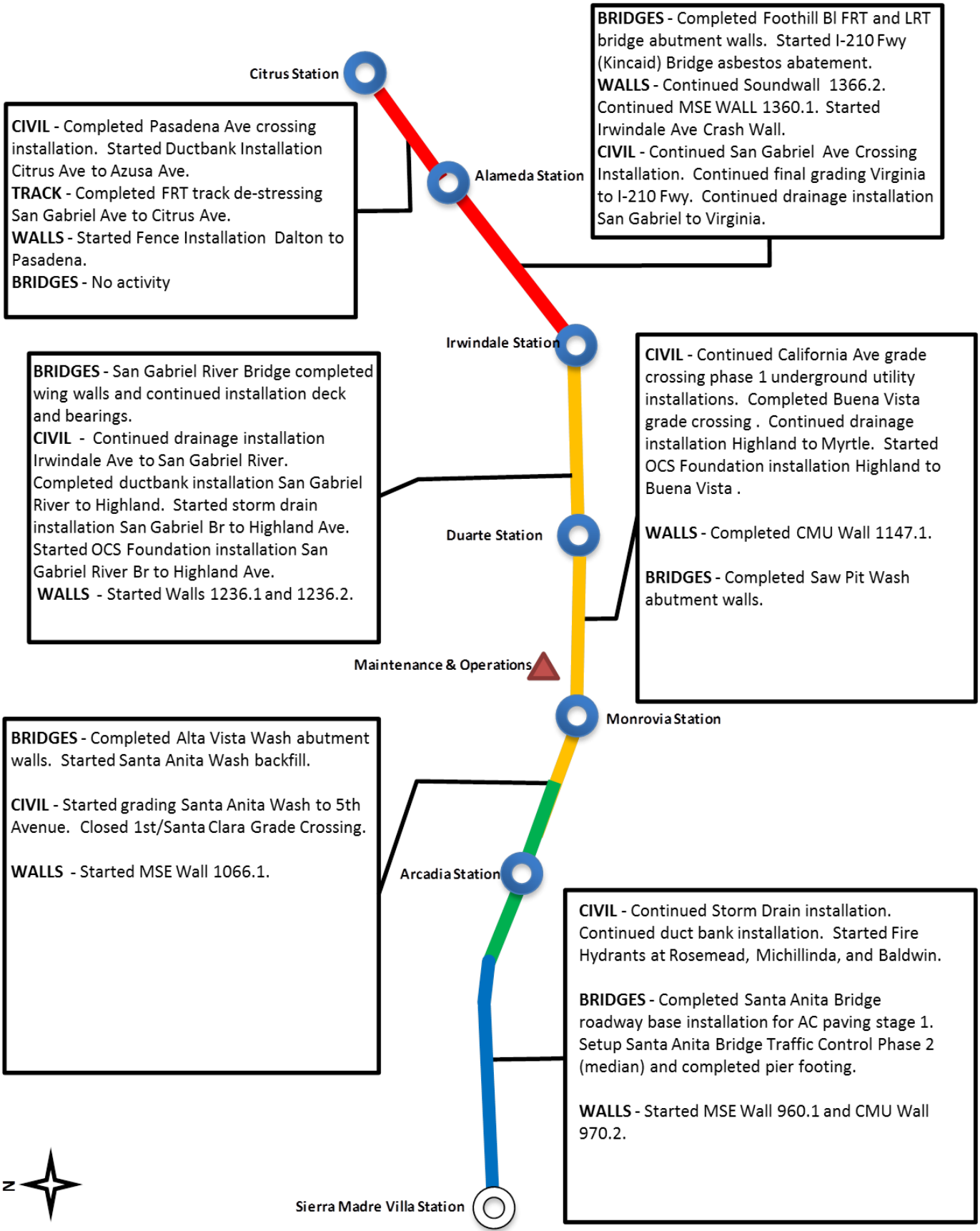
Description: Alignment Design / Build	Status: September 15, 2013
Contract No.: C1135	Contractor: Foothill Transit Constructors (Kiewit-Parsons J.V.)

Progress Completed This Period	Activities Planned Next Period
<p>Design</p> <ul style="list-style-type: none"> • Submit AFC Design - Traction Power Package 8 • Submit AFC Design - Traction Power Package 9 • Submit AFC Design - Water / Sewer @ Shamrock • Submit AFC Design - Foothill FRT Waterproofing • Submit AFC Design - Segment 3 Drainage - Myrtle • Submit Design - Geotech Summary • Submit 100% Design - Stair Package • Submit 100% Design - Train Control Book of Plans (Zone 1) • Submit 100% Design - Train Control Book of Plans (Zone 3) • Submit 100% Design - Track Wayside <p>Construction</p> <ul style="list-style-type: none"> • See "Construction Progress This Period" 	<p>Design</p> <ul style="list-style-type: none"> • Submit AFC Design - SCADA 100% • Submit AFC Design - M&O Communication Book of Plans • Submit AFC Design - Train Control Book of Plans (Zone 10) • Submit AFC Design - Train Control Book of Plans (Zone 9) • Submit AFC Design - Train Control Book of Plans (Zone 8) • Submit AFC Design - Traction Power Package 10 • Submit AFC Design - M&O Reserve Water Supply Piping System • Submit AFC Design - Stations Emergency Walkway and Fence • Submit AFC Design - 75" Encasement at 1168+67 • Submit AFC Design - California Avenue Revisions • Submit 100% Design - Train Control Book of Plans (Zone 4) • Submit 100% Design - Train Control Book of Plans (Zone 11) • Submit 100% Design - Communications Book of Plans (Parking Struc.) • Submit 100% Design - Signal Fire Alarm <p>Construction</p> <ul style="list-style-type: none"> • See "Construction Progress Next Period"

Areas of Concern	Areas of Concern (Continued)
<ul style="list-style-type: none"> • Grade Crossing Schedule. The Grade crossing durations and schedules are slipping due to productivity. The Authority is working with the Design-Build Contractor to plan grade crossing activities and complete the work within the constraints established by Cities. The Design-Build Contractor has implemented the revised grade crossing sequence and has mitigated potential CPM schedule delays. However, the Design-Build Contractor has indicated in the revised schedule, that the re-sequence was due to additional schedule requirements by the Cities and may require additional costs. 	<ul style="list-style-type: none"> • Segment 3 Grade Crossing Property Acquisitions. The Design-Build Contractor has been late delivering parcel legal descriptions in a timely manner. There is a potential schedule impact to the Segment 3 grade crossing construction and schedule if the parcel legal descriptions are not approved. The Authority will attempt to mitigate potential delays by obtaining Right-of-Entry from property owners prior completing negotiations.



ALIGNMENT CONSTRUCTION PROGRESS THIS PERIOD





FACILITY CONSTRUCTION PROGRESS THIS PERIOD

Citrus Ave Station

No progress this period.

No progress this period.

Alameda Station

No progress this period.

Irwindale Station

Continued electrical conduits. Continued station ramps . Started platform deck installation.

CIVIL - Continued installation of OCS Foundations. Continued systems train control and communications duct bank installaltion. Continued track underdrains. Continued final grading. Started sub-ballast placement.

STRUCTURES - Continued M&O Building Car Hoist MEP installations. Started M&O Building foundations. Continued MOW Building slab on grade. Started Cleaning Platform Canopy.

WALLS - No Activity this period.

Duarte Station

Continued North and South platform walls. Started drainage installation.

Maintenance & Operations

Monrovia Station

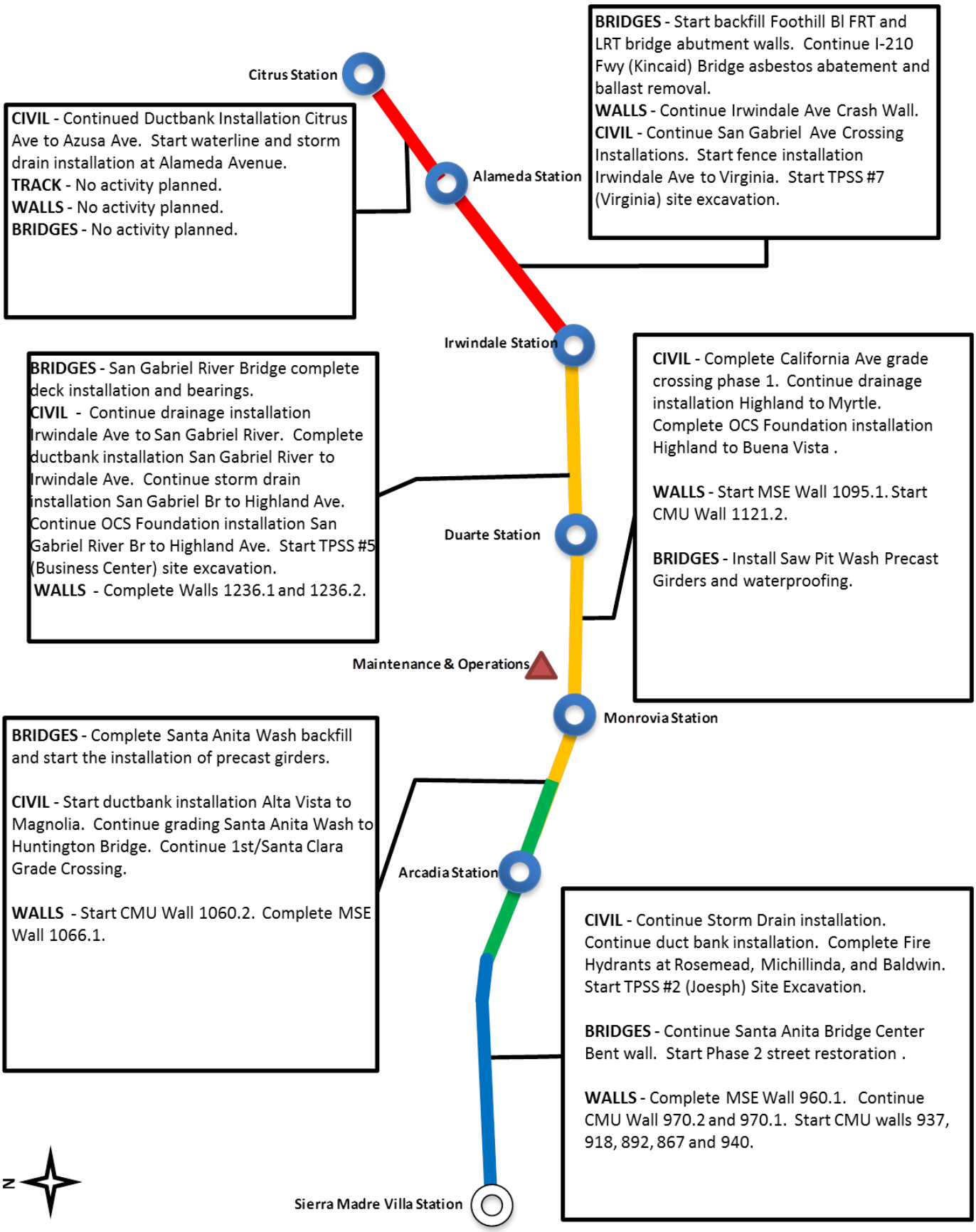
Completed platform walls. Started platform deck. Continued drainage installation

Arcadia Station





ALIGNMENT CONSTRUCTION PROGRESS NEXT PERIOD





FACILITY CONSTRUCTION PROGRESS NEXT PERIOD

Citrus Ave Station

No progress anticipated next period.

No progress anticipated next period.

Alameda Station

No progress anticipated next period.

Irwindale Station

Continue electrical conduits. Continue station ramps . Complete platform deck installation.

CIVIL - Continue OCS Foundations. Continue systems train control and communications duct bank installlition. Continue Track Underdrains. Continue final grading. Continue sub-ballast placement. Start Shamrock 6" sewer.
TRACK - Start embedded track at Wheel Truing. Place Initial Ballast at North Storage Track.
STRUCTURES - Continue Cleaning Platform Canopy. Complete M&O Building Car Hoist Concrete and Backfill. Continue M&O Building Foundations. Continue MOW Building Slab On Grade.

Duarte Station

Complete North and South platform walls. Continue drainage installation. Start platform deck installation.

Maintenance & Operations

Monrovia Station

Continue platform deck. Complete drainage installation
 Start station electrical conduit installation

Arcadia Station



ALIGNMENT CONSTRUCTION IMAGES

Excavation for Final CMU Wall in Segment 1



Arcadia Station Storm Drain Installation

Santa Anita Bridge Pier 2 Concrete Pour



ALIGNMENT CONSTRUCTION IMAGES (CONTINUED)



Duarte Station Ramp Foundations

Completed Sound Wall in Segment 4



Final Stages of Welding at MOW Canopy



Change Management Log

Project: C1135 Alignment - FTC Contract #: C1135

Original Contract Amount:	\$485,867,000				
Approved Change Orders:	\$8,363,037	1.72%	Pending Change Orders:	\$56,384	0.01%
Current Contract Total:	\$494,230,037		Pending Contract Total:	\$494,286,421	1.73%

Change Orders

Number	Change Management	Title	Initiated Date	Approved Date	Outstanding Days	Time Extension	Amount
EXECUTED Change Orders							
001.00	000.00	Interim NTP	11/3/2011	11/3/2011	0		\$0
002.00	013.00	Colorado Bridge Haz Mat	5/17/2012	5/18/2012	1		\$121,382
002.01	013.01	Colorado Bridge HazMat - Final	9/5/2012	9/7/2012	2		\$13,164
003.00	001.00	Sound Wall Deletion - Duarte Road	7/12/2012	7/18/2012	6		(\$74,707)
004.00	018.00	Revise Block Design - CBD Calc	8/23/2012	8/29/2012	6		\$3,986
004.01	018.01	Revise Block Design - CBD Calc - 2	9/5/2013	9/11/2013	6		\$0
005.00	023.00	Wayside Signal Aspect Revision	9/6/2012	9/7/2012	1		\$26,072
005.01	023.01	Wayside Signal "Call On" Function	10/30/2013	11/1/2013	2		\$75,169
006.00	040.00	Arcadia Frieze, Bench-Artist Design	9/6/2012	9/10/2012	4		\$13,683
006.01	040.01	Arcadia Frieze, Bench-Construction	3/7/2013	3/12/2013	5		\$155,894
007.00	019.02	Soils Testing Abutments & Fdns	9/14/2012	9/18/2012	4		\$44,993
008.00	041.00	Unknown Utilities RFCN 005 006 008	9/14/2012	9/18/2012	4		\$132,450
009.00	038.00	Illuminate City Names @ Stations	9/18/2012	9/24/2012	6		\$184,657
010.00	046.00	SGRB - Lead Based Paint Remediation	9/21/2012	9/24/2012	3		\$244,536
011.00	004.00	Station Architectural Changes	10/11/2012	10/12/2012	1		\$443,950
012.00	003.01	Systems and Testing for Added TPSS	12/13/2012	12/14/2012	1		\$1,443,193
013.00	005.02	IDIQ Comm Contract (Rev 2)	12/14/2012	1/22/2013	39		\$698,259
014.00	060.00	Sewer Encasement Changes in Azusa	12/18/2012	1/24/2013	37		\$141,354
015.00	037.02	M&O - Materials Storage Revisions	12/26/2012	1/15/2013	20		\$62,862
015.01	037.03	M&O Storage Shelving Revisions	9/16/2013	9/19/2013	3		\$20,380
016.00	002.00	Relocation of Access Road to 3M Fac	12/26/2012	1/16/2013	21		\$53,814
017.00	025.00	3 Electrical Casings for ALW	2/27/2013	3/1/2013	2		\$219,033
018.00	073.00	Hazardous Abatement at Bridges	1/15/2013	2/6/2013	22		\$1,081,803
019.00	054.00	City of Hope Conduits	1/11/2013	1/22/2013	11		\$34,313
020.00	059.00	Citrus TPSS Transformer Pad Changes	2/6/2013	2/7/2013	1		\$34,536
021.00	075.00	Demo & Replace Palm Dr. Roadway	2/7/2013	2/14/2013	7		\$90,365
022.00	077.00	M&O Differing Site Conditions; Pt 1	2/13/2013	2/15/2013	2		\$66,360
022.01	093.00	M and O DSC T and M Work Part 2	3/8/2013	3/12/2013	4		\$66,625
022.02	103.00	M and O DSC Part 3	3/27/2013	3/28/2013	1		\$35,211
022.03	115.00	DSC at M and O Part 4	5/3/2013	5/7/2013	4		\$5,706
023.00	089.00	Contaminated Soil Abatement	2/26/2013	2/27/2013	1		\$422,068
024.00	068.00	Monrovia Sound Wall Panel Change	2/26/2013	2/28/2013	2		(\$24,150)
025.00	052.00	Santa Anita Trail Detour	3/8/2013	3/12/2013	4		\$27,691
026.00	070.00	Block Type Change at M&O Building	3/26/2013	3/26/2013	0		\$35,016
027.00	065.00	M&O IT Changes-Duct Banks/Conduits	3/26/2013	3/26/2013	0		\$88,650
027.01	065.01	M&O IT Changes - Power to WAP	9/4/2013	9/6/2013	2		\$73,049
028.00	039.01	Delete Layover Building	4/11/2013	4/12/2013	1		(\$313,832)
029.00	095.00	8in Sanitary Sewer Line- Alameda Av	4/23/2013	4/25/2013	2		\$226,089
030.00	102.00	M&O-Disconnect Switches, Insulators	4/23/2013	4/25/2013	2		\$67,817
031.00	110.00	Rmv Abandoned Utility Line @ Dalton	4/23/2013	4/25/2013	2		\$1,562
032.00	104.00	Highland Ave Abandoned CMP sleeves	5/1/2013	5/3/2013	2		\$15,005
033.00	114.00	Remove contaminated wood culvert	5/3/2013	5/7/2013	4		\$4,714
034.00	128.00	M&O Backup Power/Generator Changes	5/13/2013	5/21/2013	8		\$121,340
035.00	083.00	M&O Vehicle Sanding System Changes	5/21/2013	5/24/2013	3		\$27,463
036.00	006.00	IFS Related Contract Changes	6/7/2013	6/11/2013	4		(\$263,111)



Change Management Log

Project: C1135 Alignment - FTC Contract #: C1135

Change Orders

Table with columns: Number, Change Management, Title, Initiated Date, Approved Date, Outstanding Days, Time Extension, Amount. Includes EXECUTED Change Orders and a Subtotal of \$8,363,037.

PENDING Change Orders

Table with columns: Number, Change Management, Title, Initiated Date, Outstanding Days, Amount. Includes Subtotal of \$56,384 and Total of \$8,419,421.

Open PCOs

Table with columns: PCO Number, Title. Lists 10 open PCOs including M&O IT Changes, Fence Revisions, and various mitigation projects.

Open RFCs

Table with columns: RFC Number, Title. Lists 2 open RFCs: Alameda Sewer Line Revised Scope and Unknown Utility at San Gabriel.



Change Management Log

Project: C1135 Alignment - FTC Contract #: C1135

Open PCOs

PCO Number	Title
OPEN	
046.00	1st/Santa Clara Grade X-ing Changes
047.00	M&O Body Shop Changes
049.02	M&O Trimming Table Changes (Rev. 2)
050.00	M&O Car Wash Betterments
052.00	Alameda Utility Changes
053.01	Irwindale Ramp Changes (Rev 1)
054.00	Costco Emergency Gate-Path to POS
055.00	Soldano Fence Credit
056.00	M&O Parts Carousel Extended Warranty
057.00	Added Sound Wall East of IFS
058.00	Added Lighting at SGRB
059.00	Mayflower Driveway/Wall Credit
060.00	M&O - Generator Load Bank
061.00	M&O - Electrical Sub-meters

Open RFC Notices

Number	Title
022.00	M and O Signaling and Train Control
037.00	DSC at Santa Anita Wash Abutment 1
041.00	M and O Facility Fire Flow Rate
043.00	DSC Storm Drain and Headwall Utilit
044.00	DSC Utility at Azusa Avenue
052.00	DSC Contaminated Soil at Monrovia S
053.00	Concrete Utility Removal at Sta 125
057.00	Rmvl Contmntd Wd Mtrls Stanta Anita
058.00	Removal of IR 0271 Abandoned Utilit
060.00	Alameda South Side Water Line Chang



Description: Intermodal Parking Facilities & Enhancements **Status:** September 15, 2013
Contract No.: C1150 **Contractor:** Webcor Builders

Cost Summary:

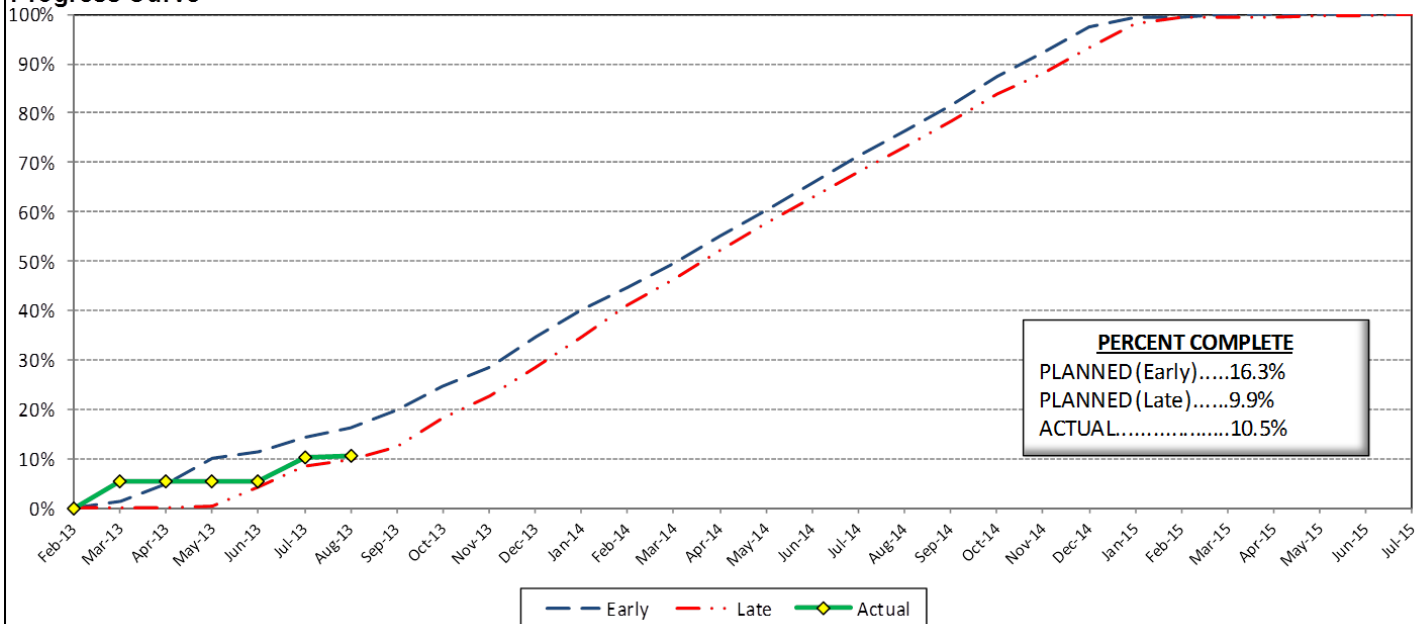
	Million(s)
CONTRACT	
Contract Award Value:	48.8
Executed Change Orders:	0.1
Current Contract Value:	48.9
Potential Change Orders:	0.0
Current Forecast:	48.9
Eamed Value/Actual Cost	5.1
AUTHORIZATION FOR EXPENDITURE	
Budget	50.3
Commitment	50.3
Balance	1.3

Cost Assessment:

The current cost forecast is 48.9 Million. The forecast decreased \$94,000 from last period. The decrease is due to PCO 004- *Grounding Grid Modifications* , and PCO 007 - *St. Joseph TPSS Wall* . The potential credits were offset by PCO 006 - *St. Joseph Drainage Enhancements* which may be constructed by Design-Build Contractor. The current forecast is within the authorized budget.

The Design-Build Contractor is trending toward the late curve, which is due to the late submittal of critical design. At this time, the Design-Build Contractor has not submitted the Schedule of Values for CDRL's, and Parking Facilities and TPSS Site Construction.

Progress Curve



Schedule Summary:

Contract Award:	02/27/13
Interim Notice to Proceed (INTP) :	03/20/13
Original Contract Duration:	845 Calendar Days
Current Contract Duration:	845 Calendar Days
Elapsed Time from NTP:	179 Calendar Days

Contract Milestones

Milestones	Description	Original Contract	Current Contract	Forecast	Variance
1	Substantial Completion	03/15/15	03/15/15	03/25/15	(10)
2	Punchlist Complete	05/29/15	05/29/15	06/08/15	(10)
3	Final Completion	07/13/15	07/13/15	07/23/15	(10)
4	TPSS Work	03/01/14	03/01/14	03/06/14	(5)

Schedule Assessment:

The Irwindale Parking Structure 85% design, which is a critical path submittal was received this period. The Authority is currently reviewing the design and will return the design with comments next period. The potential impact to the Substantial Completion Milestone due to the late delivery of the Irwindale Parking Structure design is ten (10) days. The Design-Build Contractor will have an opportunity to mitigate the potential delays by accelerating the 100% design submittal or re-sequencing the Irwindale Construction.

The TPSS Deadline has slipped five (5) days this period due to the late delivery of the Michillinda TPSS 100% design.



Description: Intermodal Parking Facilities & Enhancements **Status:** September 15, 2013

Contract No.: C1150

Contractor: Webcor Builders

Progress Completed This Period

Design

- Arcadia - Site Prep Design - 100%
- Arcadia - Parking Structure Design - 100%
- Arcadia - Enhancement Design - 100%
- Monrovia - Site Prep Design - 100%
- Monrovia - Enhancement Design - 100%
- Monrovia - Parking Structure Design - 100%
- Irwindale - Site Prep Design - 85%
- Irwindale - Enhancement Design - 85%
- Irwindale - Parking Structure Design - 85%
- Soldano - Traction Power Substation Site Design - 100%
- Michillinda - Traction Power Substation Off-Site Design - 100%
- Michillinda - Traction Power Substation On-Site Design - 100%
- Specifications - 100%
- Irwindale - Geotechnical Report - Draft
- TPSS Slab Calculations
- Michillinda Wall Structural Calculations

Activities Planned Next Period

Design

- Azusa-Citrus - Site Prep Design - 100%
- Azusa-Citrus - Enhancement Design - 100%
- Azusa-Citrus - Parking Structure Design - 100%
- Azusa-Citrus - Geotechnical Report - Final
- Monrovia - Geotechnical Report - Final
- Arcadia - Geotechnical Report - Final
- Signage Package - 85%
- Submit AFC Design - Arcadia Early Work (Site Prep)
- Submit AFC Design - Arcadia Site Prep
- Submit AFC Design - Monrovia Site Prep

Areas of Concern

•

Areas of Concern (Continued)

•



Change Management Log

Project: C1150 Parking - Webcor Contract #: C1150

Original Contract Amount:	\$48,750,000				
Approved Change Orders:	\$116,622	0.24%	Pending Change Orders:	\$0	0.00%
Current Contract Total:	\$48,866,622		Pending Contract Total:	\$48,866,622	0.24%

Change Orders

Number	Change Management	Title	Initiated Date	Approved Date	Outstanding Days	Time Extension	Amount
EXECUTED Change Orders							
001.00	001.00	Monrovia Parking Alternative Layout	6/25/2013	7/11/2013	16		\$21,382
001.01	001.01	Monrovia Alternative - Cancelation	9/17/2013	10/7/2013	20		(\$12,006)
002.00	003.00	Clock Tower Procurement	7/3/2013	7/11/2013	8		\$107,246
						Subtotal:	\$116,622
						Subtotal:	\$116,622
						Total:	\$116,622

Open PCOs

PCO Number	Title
OPEN	
002.00	Relocate Elevator at Azusa-Citrus
004.00	TPSS Grounding Grid Modifications
006.00	St. Joseph Drainage Enhancements
007.00	St. Joseph TPSS Wall
008.00	Azusa-Citrus Plaza Pavers
009.01	Irwindale Intersection Betterments
010.00	Arcadia Transit Plaza Betterments
011.00	Soldano TPSS Added ROW Fence

Open RFC Notices

Number	Title
001.00	Arcadia Unforeseen Items
002.00	Monrovia unforeseen items



AZUSA TO MONTCLAIR SEGMENT

ACTIVITIES COMPLETED THIS PERIOD

Authority Board certified the EIR for the Azusa to Montclair segment on March 6, 2013. Following certification, staff filed the Notice of Determination (NOD) with both counties (Los Angeles and San Bernardino). This filing started a 30-day statute of limitations to court challenges to the approval of the project. The City of Pomona has filed a challenge. Authority staff is working with legal counsel to review this challenge and prepare a response accordingly.

KEY FUTURE ACTIVITIES

Authority staff continues work with legal counsel to review the challenge and provide the necessary defense.

Federal Transit Administration (FTA)

The Metro Board of Directors excluded the Gold Line from seeking federal New Starts funding. The Authority will work together with Metro along with the Congressional delegation to seek funding to construct the extension following completion of the environmental review.



ONTARIO AIRPORT SEGMENT

ACTIVITIES COMPLETED THIS PERIOD

Staff continued to pursue the needed funding to conduct the Alternatives Analysis for the Ontario Airport Segment. The San Bernardino Associated Governments (SANBAG) and the Authority are in discussions to develop a funding agreement for a portion of the initial Alternatives Analysis study.

KEY FUTURE ACTIVITIES

Authority staff will work to obtain funding for this Segment and complete negotiations with KOA.



PHASE II FOOTHILL EXTENSION FINANCIAL STATUS

Project Operating Budget Summary in Millions of Dollars

September 30, 2013

	(a)	(b)	(c=a-b)	(d)
FINANCIAL PLAN	Current Budget	Funding Committed to Project	Uncommitted Funds	Revenues Received
SCAG	1.0	0.9	0.1	0.9
Interest Income	2.0	2.0	-	2.0
Bridge Replacement	13.9	13.9	-	13.9
Phase I Carryover	4.0	4.0	-	4.0
Maintenance and Operations Facility	-	-	-	-
Cities	11.0	-	11.0	-
Measure R - Pasadena to Azusa	810.5	741.0	69.5	257.9
Measure R - Azusa to Montclair	-	-	-	-
SANBAG	55.2	1.5	53.7	1.5
Federal TCSP	2.9	2.9	-	2.5
Federal Bus Intermodal Plan	9.0	9.0	-	2.3
Federal New Starts 2004 MTA Passthrough	4.0	4.0	-	4.0
Federal New Starts 2005 MTA Passthrough	0.5	0.5	-	0.5
Federal New Starts 2006 Corridor Study	2.5	2.5	-	2.3
Federal/Other	802.5	-	802.5	-
Total Revenues	1,719.0	782.2	936.8	291.8
	(a)	(b)	(c)	(d=a-b)
	Current Budget	Current Obligation	Current Expenditures	Current Available Balance
EXPENSES				
Program Management and Administration	107.9	86.1	70.1	21.8
Master Cooperative Agreements	12.0	3.3	2.7	8.7
Real Estate including ROW Acq	21.0	13.4	13.4	7.6
Special Programs	0.3	-	-	0.3
Procurement/Vehicles	60.0	-	-	60.0
Maintenance and Operations Facility Land	22.0	22.0	22.0	-
Construction - IFS	19.8	19.8	19.2	-
Construction - Pasadena to Azusa segment	328.9	320.4	149.0	8.5
Construction - Azusa to Montclair segment	950.0	-	-	950.0
Construction - M&O	46.0	44.0	14.1	2.0
Construction - Parking Structures	44.2	44.2	6.8	-
MTA Project Costs	64.0	64.0	14.3	-
Contingency	27.4	-	-	27.4
Project Reserve	15.5	-	-	15.5
Total Project	1,719.0	617.2	311.6	1,101.8