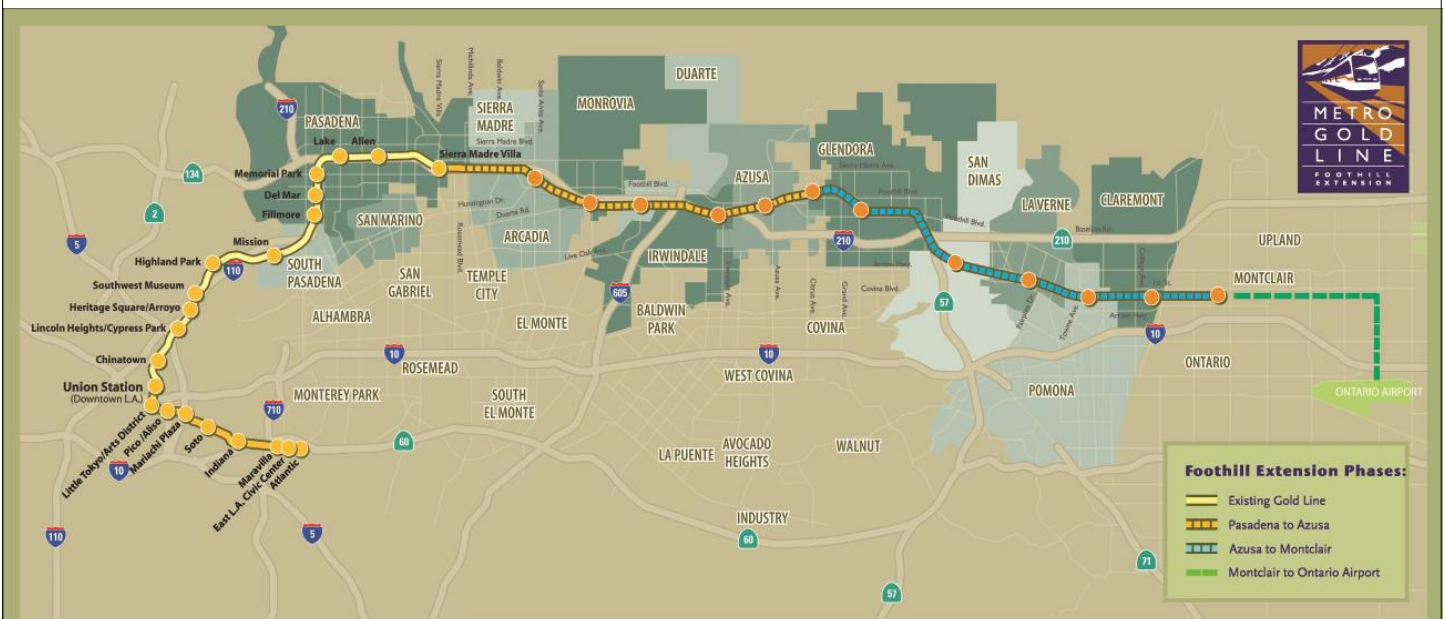


# Metro Gold Line Foothill Extension Project

## Monthly Project Status Report

April 2014



Metro Gold Line

Connecting Los Angeles, the San Gabriel Valley and Inland Empire





## TABLE OF CONTENTS

### PHASE II FOOTHILL EXTENSION PROJECT STATUS

|   |           |
|---|-----------|
| <b>Project Description .....</b>                                | <b>3</b>  |
| <b>Pasadena to Azusa Segment .....</b>                          | <b>4</b>  |
| Management Issues .....   | 4         |
| Key Activities Completed This Period .....                      | 5         |
| Key Future Activities .....                                     | 6         |
| Critical Path Schedule .....                                    | 7         |
| Critical Path Float Trend .....                                 | 8         |
| Alignment Contract Status .....                                 | 9         |
| Alignment Construction Progress This Period .....               | 11        |
| Facility Construction Progress This Period .....                | 12        |
| Alignment Construction Progress Next Period .....               | 13        |
| Facility Construction Progress Next Period .....                | 14        |
| Alignment Construction Images .....                             | 15        |
| Alignment Change Management Log .....                           | 17        |
| Parking Facilities and Enhancements Contract Status .....       | 21        |
| Parking Facilities and Enhancements Construction Images .....   | 24        |
| Parking Facilities and Enhancements Change Management Log ..... | 26        |
| <b>Azusa to Montclair Segment .....</b>                         | <b>27</b> |
| <b>Financial Status .....</b>                                   | <b>28</b> |



## FOOTHILL EXTENSION PROJECT DESCRIPTION

The Authority's mandate is to plan, design and construct a 37-mile light rail link between Downtown Los Angeles and Claremont. In addition, the San Bernardino Associated Governments (SANBAG) has requested that planning be extended one mile inside San Bernardino County to the City of Montclair and then to Ontario Airport.

The Metro Gold Line Phase II (Foothill Extension) corridor includes the cities of Pasadena, Arcadia, Monrovia, Duarte, Irwindale, Azusa, Glendora, San Dimas, La Verne, Pomona, Claremont, and Montclair; and the counties of Los Angeles and San Bernardino (Figure 1). The Foothill Extension is estimated to cost approximately \$1.719 billion.

The Foothill Extension will be built in two segments to align effectively with projected cash flows and financial capacity constraints. The first segment is defined from the Sierra Madre Villa Station in Pasadena to the city of Azusa. Revenue service along this segment is planned for the year 2015. The second segment would include an extension from Azusa to the City of Montclair with revenue service projected for the year 2017 and the third segment will be comprised of an extension from Montclair to the Ontario Airport.

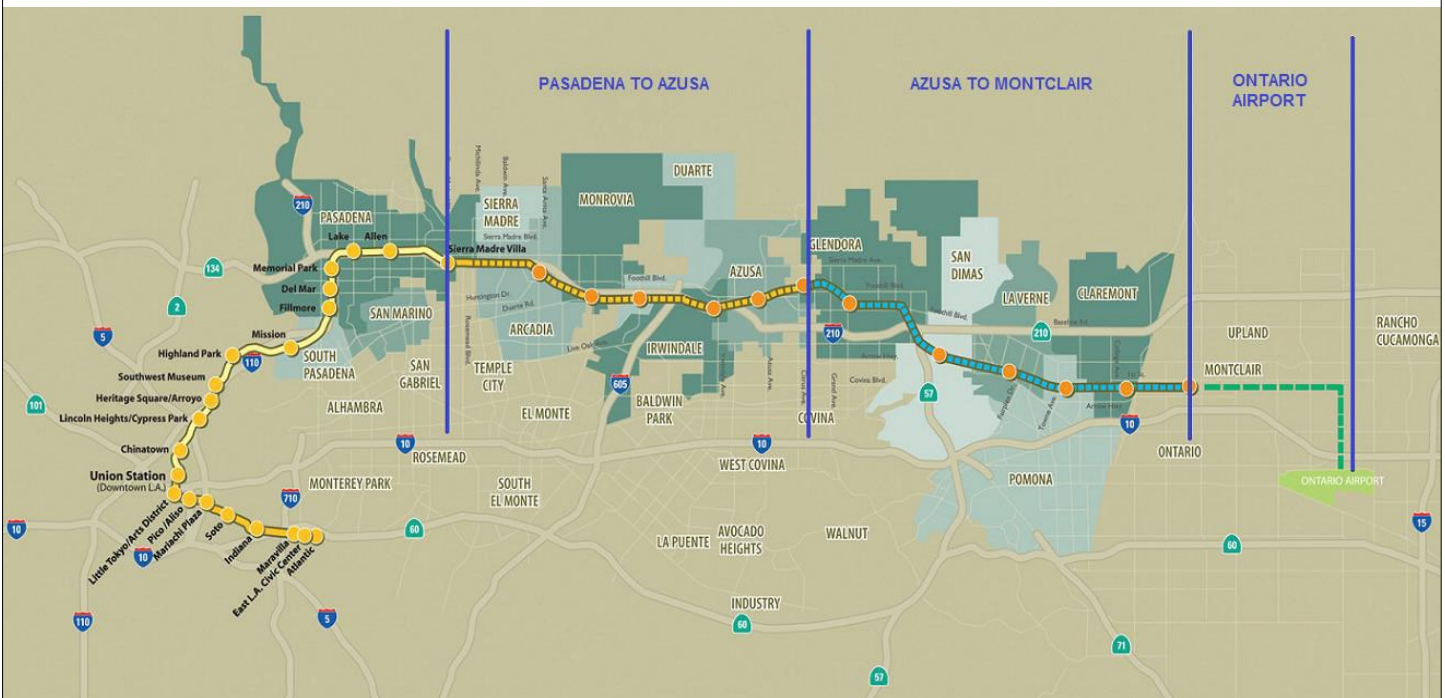


Figure 1: Metro Gold Line Foothill Extension Alignment



## **Pasadena to Azusa Segment**

### **MANAGEMENT ISSUES**

#### **Metro Betterments**

During the design process Metro staff have identified betterments that Metro staff would like to add to the project. Metro has provided a final disposition on all but a few items. Authority staff continues to work with Metro staff to resolve the remaining items.

#### **TPSS Delivery Dates**

The traction power substations (TPSS) provide equipment to transform utility power required for Light Rail Vehicle (LRV) propulsion, and then distribute that power to the LRVs via the overhead wires. Metro is responsible for purchasing the traction power substations. Currently, Metro's schedule indicates that the traction power substation delivery schedule is late. This is a major concern for the Authority as it has potential to impact the project schedule; however, staff is coordinating with Metro and FTC to ensure minimal impact to the project.



## **KEY ACTIVITIES COMPLETED THIS PERIOD**

Staff continued to attend coordination meetings with cities along the alignment

Authority staff continues to meet with Metro staff to review and discuss the status of the Pasadena to Azusa segment

Held regular meetings with the C1135 (DB2) contractor, Foothill Transit Constructors (FTC) and participated in construction site visits and audits

FTC reports the following SBE statistics for the month of January:

- Current SBE commitment: \$ 59,500,000
- SBE percent committed versus value of Project: 17.79%
- Overall Authority Project SBE goal: 16%

FTC reports the following approximate safety statistics to date:

- 685,723 total work hours performed by FTC, Mass Electric, and Subcontractors
- 6 recordable injuries reported
- 0 lost time injuries reported

Webcor reports the following approximate safety statistics to date:

- 43,015 total work hours performed by Webcor and Subcontractors
- 0 recordable injuries reported
- 0 lost time injuries reported

Continued trackwork at the Gold Line Operations Campus (Campus) - 60% complete

Continued construction of light rail mainline track - 33% complete

Continued OCS and Site Lighting Pole erection at the Campus

Continued bridge work at Rosemead, Huntington, Kincaid, and Foothill

Continued work at Azusa-Downtown, Azusa-Citrus, Irwindale, Duarte, Monrovia and Arcadia stations

Continued construction of San Gabriel and Virginia grade crossing and began construction of Magnolia

Completed Myrtle grade crossing

Continued installation of freight track between San Gabriel River Bridge and San Gabriel Avenue

Continued to hold design and coordination meetings with DB3 contractor, Webcor Builders, for the Intermodal Parking Facilities and Enhancements Contract 1150

Authority continued reviewing design submittals for Azusa-Citrus and Irwindale structures and enhancements

Continued construction of Arcadia, Monrovia, and Azusa-Citrus Parking Structures

Began work at the Irwindale Parking Structure

Completed paving of Irwindale intersection, pole installation to be completed shortly

## **KEY FUTURE ACTIVITIES**

Continue discussions with corridor cities regarding the project

Continue management of the Alignment contract, which will include oversight of construction activities and preparation for start-up activities

Continue to meet with Intermodal Parking Facilities and Enhancements Project contractor, Webcor Builders regarding design of the Project

Continue to attend to any issues that may come up by the cities or other stakeholders along the alignment

Complete trackwork at the Campus

Complete construction of the bridges at Foothill, Kincaid, Huntington, and Rosemead

Complete construction of all stations

Finish work at Virginia and Magnolia grade crossings

Begin work at Mountain grade crossing

Finalize design for the following Parking Facilities: Azusa Citrus, Irwindale, and Duarte

Finalize the following property acquisitions:

- Arcadia:

1. Parcel 1301a (Front St. Vacation) – Possession 5/29/14.
2. Parcel 1301b (Front St. Vacation) – Ready to close escrow.
3. Parcel 1308 (223 N. First Ave) – Settlement offer submitted for 5/28/14 Board meeting.
4. Parcel 6039 (325 N. Santa Anita Ave) – In escrow.

- Monrovia:

1. Parcel 1802 (1522 S. Mayflower Ave) – In escrow.
2. Parcel 6035/6030 (1602 S. Mayflower Ave) – In escrow.

- Duarte:

1. Parcel 6041/6042 (1500 Duarte Rd) – Accepted. Unable to get purchase and sale agreement signed by seller.

- Irwindale:

1. Parcel 3301a (Metro UP Alignment) – Accepted. Grant deed signed.

- Azusa:

1. Parcel 6033 (809 E. Santa Fe) – Negotiating with property owner.



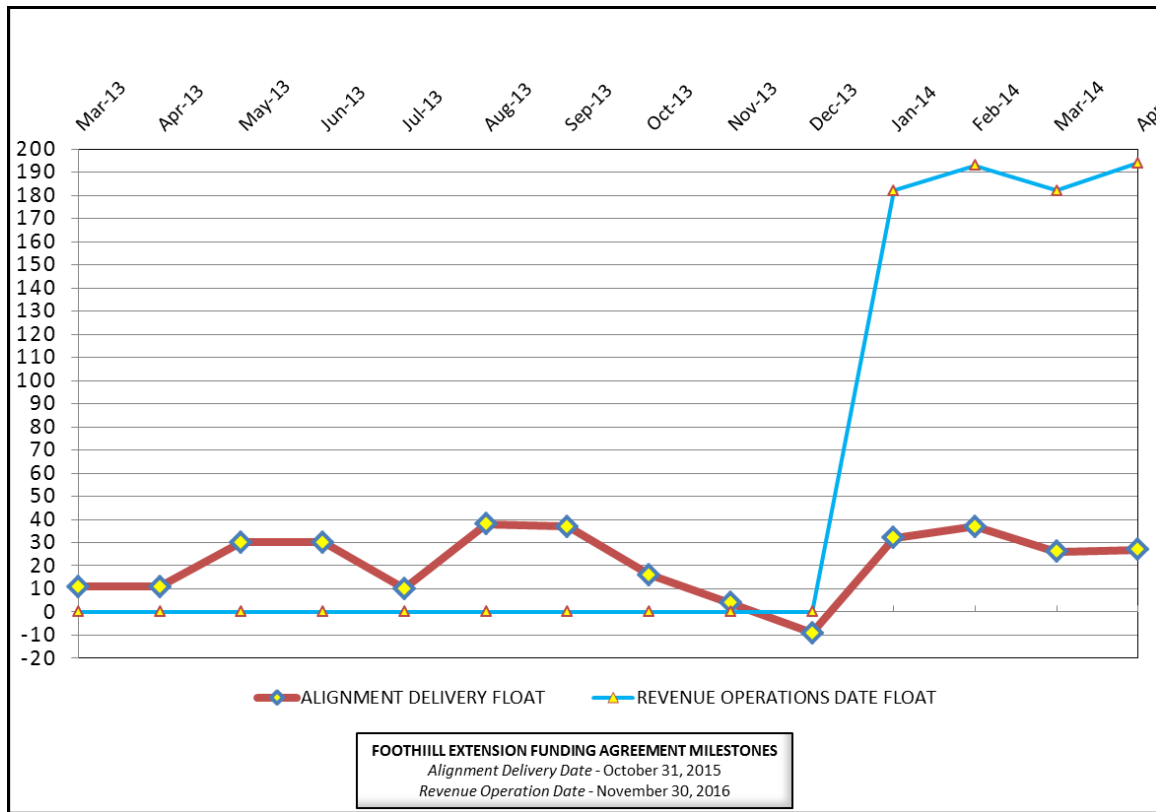


### CRITICAL PATH SCHEDULE

| Activity Name                                  | OD   | RD  | AD  | Start                | Finish              | Total Float | Timeline |    |    |      |    |    |      |    |    |      |    |    |      |    |    |
|--|------|-----|-----|----------------------|---------------------|-------------|----------|----|----|------|----|----|------|----|----|------|----|----|------|----|----|
|  |      |     |     |                      |                     |             | 2012     |    |    | 2013 |    |    | 2014 |    |    | 2015 |    |    | 2016 |    |    |
|  |      |     |     |                      |                     |             | Q2       | Q3 | Q4 | Q1   | Q2 | Q3 | Q4   | Q1 | Q2 | Q3   | Q4 | Q1 | Q2   | Q3 | Q4 |
| <b>REVENUE OPERATIONS DATE - CRITICAL PATH</b> |      |     |     |                      |                     |             |          |    |    |      |    |    |      |    |    |      |    |    |      |    |    |
| LRV FABRICATION / DELIVER 15 VEHICLES          | 1353 | 557 | 606 | 17.Aug.12<br>07:00 A | 23.Oct.15<br>15:00  | 194         |          |    |    |      |    |    |      |    |    |      |    |    |      |    |    |
| METRO - System Testing & Start-Up - Phase 2A   | 30   | 30  | 0   | 24.Sep.15<br>07:00   | 23.Oct.15<br>15:00  | 194         |          |    |    |      |    |    |      |    |    |      |    |    |      |    |    |
| METRO - Pre-Revenue Operations - Phase 2A      | 60   | 60  | 0   | 24.Oct.15<br>07:00   | 22.Dec.15<br>15:00  | 194         |          |    |    |      |    |    |      |    |    |      |    |    |      |    |    |
| METRO - Project Schedule Contingency (5 Mo.)   | 150  | 150 | 0   | 23.Dec.15<br>07:00   | 20.May.16<br>15:00  | 194         |          |    |    |      |    |    |      |    |    |      |    |    |      |    |    |
| Phase 2A - Revenue Operations Date (ROD)       | 0    | 0   | 0   |                      | 20.May.16<br>15:00* | 194         |          |    |    |      |    |    |      |    |    |      |    |    |      |    |    |
| <b>ALIGNMENT DELIVERY DATE - CRITICAL PATH</b> |      |     |     |                      |                     |             |          |    |    |      |    |    |      |    |    |      |    |    |      |    |    |
| FOOTHILL BRIDGE (FRT)- CONSTRUCTION            | 155  | 33  | 292 | 01.Mar.13<br>07:00 A | 29.May.14<br>15:00  | 27          |          |    |    |      |    |    |      |    |    |      |    |    |      |    |    |
| TRACK INSTALLATION - SEGMENT 4 (FRT)           | 220  | 17  | 289 | 06.Mar.13<br>07:00 A | 12.Jun.14<br>15:00  | 27          |          |    |    |      |    |    |      |    |    |      |    |    |      |    |    |
| TRACK INSTALLATION - SEGMENT 4 (LRT)           | 80   | 105 | 36  | 24.Feb.14<br>07:00 A | 18.Sep.14<br>15:00  | 27          |          |    |    |      |    |    |      |    |    |      |    |    |      |    |    |
| OCS - INSTALLATION - SEGMENT 4                 | 120  | 120 | 0   | 10.Jul.14<br>07:00   | 24.Dec.14<br>15:00  | 27          |          |    |    |      |    |    |      |    |    |      |    |    |      |    |    |
| OCS - TESTING - SEGMENT 4                      | 35   | 35  | 0   | 25.Dec.14<br>07:00   | 11.Feb.15<br>15:00  | 27          |          |    |    |      |    |    |      |    |    |      |    |    |      |    |    |
| OCS - TESTING - SEGMENT 2                      | 35   | 35  | 0   | 12.Feb.15<br>07:00   | 01.Apr.15<br>15:00  | 27          |          |    |    |      |    |    |      |    |    |      |    |    |      |    |    |
| OCS - TESTING - SEGMENT 1                      | 35   | 35  | 0   | 12.Feb.15<br>07:00   | 01.Apr.15<br>15:00  | 27          |          |    |    |      |    |    |      |    |    |      |    |    |      |    |    |
| SYSTEMS INTERGRATION TESTING                   | 125  | 125 | 0   | 02.Apr.15<br>07:00   | 23.Sep.15<br>15:00  | 27          |          |    |    |      |    |    |      |    |    |      |    |    |      |    |    |
| C1135 - >>>SUBSTANTIAL COMPLETION - 1420 CD<<< | 0    | 0   | 0   |                      | 23.Sep.15<br>15:00* | 38          |          |    |    |      |    |    |      |    |    |      |    |    |      |    |    |



### CRITICAL PATH FLOAT TREND



#### **Revenue Operations Date Critical Path - (194 Calendar Days)**

This period, the C1135 DB Contractor (FTC) resequenced the Huntington Bridge and the follow-on systems installation activities in Segment 2, which have mitigated the Substantial Completion and Alignment Delivery to September 23, 2015. The Metro Light Rail Vehicle Procurement has revised the forecast of the acceptance of the 15th of 78 vehicles to October 23, 2015. As result, the LRV procurement delivery has become the critical path for meeting the Revenue Operations Date. The critical path continues through Pre-Revenue Testing and five month schedule contingency. The anticipated ROD date is May 20, 2016. However, Metro is forecasting a March 2016 Revenue Operations Date.

#### **Alignment Delivery Date Critical Path - (38 Calendar Days / 27 Work Days)**

This period, FTC resequenced the Huntington Dr bridge installation and the follow-on systems installation activities in Segment 2. As result, the Foothill Blvd freight bridge installation has now emerged to the critical path for the Alignment Delivery. The critical path continues through the freight track installation, which will be followed by the completion of the Segment 4 LRT track installation. The remaining critical path continues through Segment 4 OCS installation and testing. Systems integration testing will commence after OCS testing is complete. Upon the completion of Systems Integration testing, FTC will achieve Substantial Completion and turn-over to Metro for Pre-Revenue Testing.

Other elements of construction work, which are in progress and near critical, are Rosemead Blvd bridge rehabilitation, Huntington Dr bridge shop drawing approval and fabrication, Segment 1 track installation, Segment 3 OCS installation, and Segment 2 retaining walls. Facility work, which is becoming near critical, includes Irwindale Station, Citrus Parking Structure, Irwindale Parking Structure, and the Maintenance & Operations Campus.

#### **Project Float**

The project float for the Revenue Operations Date increased to 194 days. The critical activities on this path are ahead of schedule to meet the Target Revenue Operations Date of November 2016. The Alignment Delivery Date float value slipped 11 days this period. The Alignment Delivery Date is currently 26 days ahead the October 31, 2015 deadline.



**Description:** Alignment Design / Build

**Status:** April 15, 2014

**Contract No.:** C1135

**Contractor:** Foothill Transit Constructors (Kiewit-Parsons J.V.)

**Progress Completed This Period**

**Design**

- Submit AFC Design - Bungalow Fire Alarms
- Submit AFC Design - Parking Structure Fire Alarms
- Submit AFC Design - Special Trackwork
- Submit AFC Design - TPSS Landscaping
- Submit AFC Design - Communications Fire Alarms
- Submit AFC Design - M&O Fence
- Submit AFC Design - Myrtle/Pomona Roadway Change

**Construction**

- See "Construction Progress This Period"

**Activities Planned Next Period**

**Design**

- Submit AFC Design - Myrtle/Pomona Roadway Change
- Submit AFC Design - 3M Lighting

**Construction**

- See "Construction Progress Next Period"

**Areas of Concern**

- **Huntington Bridge** - The Huntington Bridge shop drawing approval is near critical. The completion of the bridge is critical to support the final track installation by October 2014. The Design-Build Contractor will have to complete the bridge fabrication and delivery at an accelerated rate in order to meet the construction schedule requirements. The bridge, which will be fabricated in China must be delivered for installation by August 2014. Authority staff is closely monitoring the shop drawing submittal progress.

**Areas of Concern (Continued)**

-



**Description:** Alignment Design / Build

**Status:** April 15, 2014

**Contract No.:** C1135

**Contractor:** Foothill Transit Constructors (Kiewit-Parsons J.V.)

**Cost Summary:**

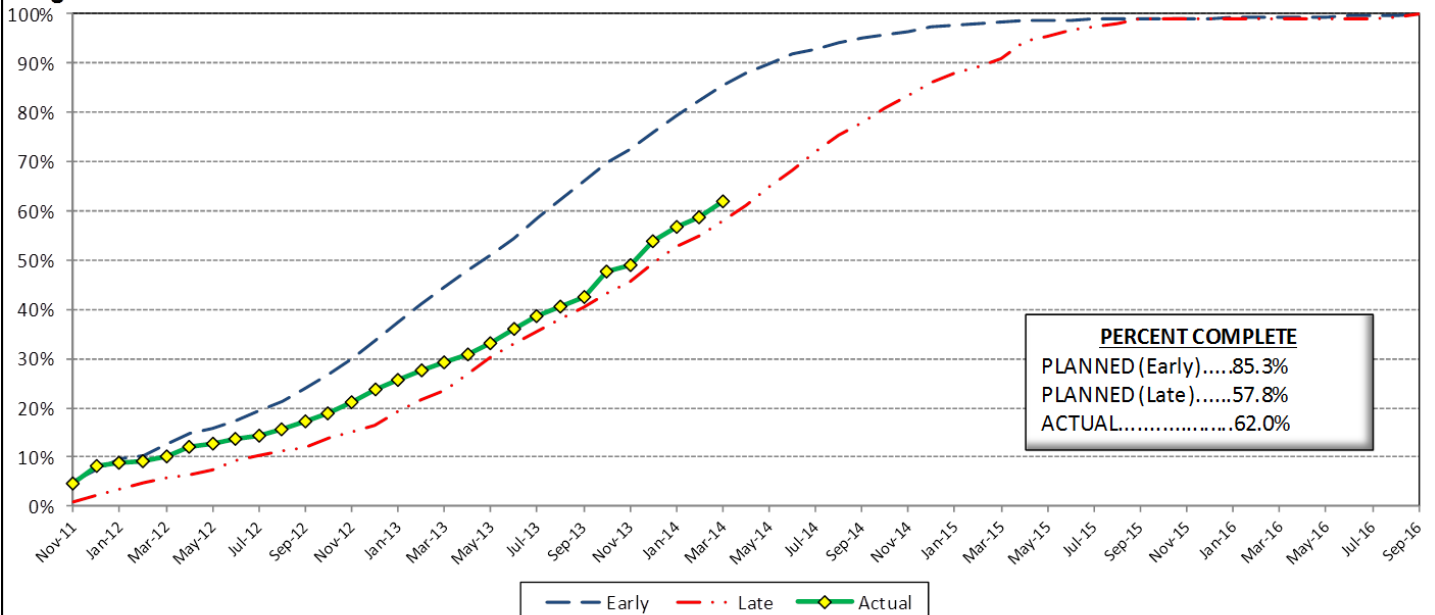
|                                      | Million(s) |
|--------------------------------------|------------|
| <b>CONTRACT</b>                      |            |
| Contract Award Value:                | 485.9      |
| Executed Change Orders:              | 9.8        |
| Current Contract Value:              | 495.7      |
| Potential Change Orders:             | 5.7        |
| Current Forecast:                    | 501.4      |
| Earned Value/Actual Cost             | 301.2      |
| <b>AUTHORIZATION FOR EXPENDITURE</b> |            |
| Budget                               | 507.9      |
| Commitment                           | 495.5      |
| Balance                              | 6.5        |

**Cost Assessment:**

This period the Contract forecast increased \$2.8 Million. The major increase were due to RFC 041 - *M&O Fire Water Tank*, PCO 068.01 - *M&O MOW Canopy Solar*, PCO 074 - *Monrovia Interlocking LCP Changes*, CO 091 - *Alameda Utility Changes*, PCO 071 - *Remove Stem Wall Along Duarte Rd*, and PCO 075 - *Comm Changes at Parking Structures*.

The Design-Build Contractor has earned 301.2 Million and is currently 62.0% complete. The progress is currently 23.2% behind the early planned curve, which is due to fabrication and delivery progress for materials such as Special Track Work, Steel Bridge Girders and M&O Equipment. In addition, the Segment 3 track work installation and Azusa Citrus and Alameda Stations are behind the baseline plan.

**Progress Curve**



**Schedule Summary:**

|                                    |                     |
|------------------------------------|---------------------|
| Contract Award:                    | 07/27/11            |
| Interim Notice to Proceed (INTP) : | 11/03/11            |
| Original Contract Duration:        | 1,780 Calendar Days |
| Current Contract Duration:         | 1,780 Calendar Days |
| Elapsed Time from NTP:             | 894 Calendar Days   |

**Contract Milestones**

| Milestones | Description                | Original Contract | Current Contract | Forecast     | Variance |
|------------|----------------------------|-------------------|------------------|--------------|----------|
| 1          | Substantial Completion     | 09/23/15          | 09/23/15         | 09/23/15     | 0        |
| 2          | Punchlist Complete         | 06/19/16          | 06/19/16         | 06/19/16     | 0        |
| 3          | Final Completion           | 09/17/16          | 09/17/16         | 09/17/16     | 0        |
| 4          | Access - IFS Br.           | 12/15/12          | 12/15/12         | 12/15/2012 A | 0        |
| 5          | Test Track Complete        | 03/27/15          | 03/27/15         | 04/05/15     | (9)      |
| 6          | Colorado Br. Demo Complete | 02/01/12          | 02/01/12         | 6/15/2012 A  | (135)    |

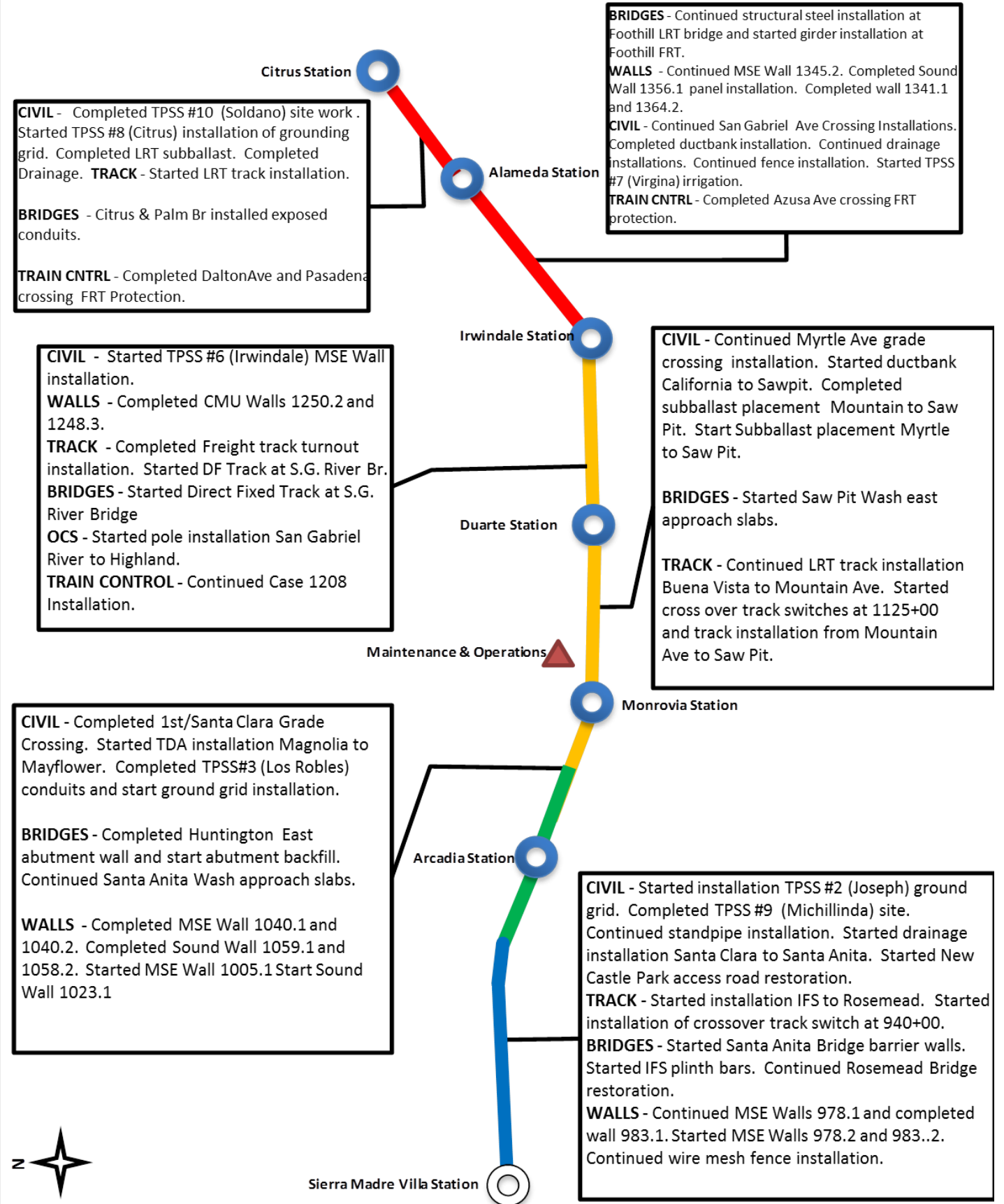
**Schedule Assessment:**

The critical path improved (12) days from the previous period. The schedule improvement is due to re-sequencing the Huntington Bridge rehabilitation in advance of the Huntington Bridge steel girder installation. In addition, the follow on Segment 2 train control installations have also been re-sequenced to optimize labor resources. As result, the Foothill Freight Bridge installation has re-emerged as the critical path. The remainder of the critical path continues through the completion of the Segment 4 FRT and LRT track installation, which will be followed by OCS installation and testing. Other areas which are near critical include: Huntington Bridge, Irwindale Station, Rosemead Bridge, Direct Fixed Track at IFS and San Gabriel River Bridge.

The Test Track Completion is forecast to be available on April 5, 2015, which is 9 days behind the target date.



## ALIGNMENT CONSTRUCTION PROGRESS THIS PERIOD







**FACILITY CONSTRUCTION PROGRESS THIS PERIOD**

**Citrus Ave Station**

**STATION** - Completed installation of platform walls. Started platform deck. Continued installation of conduits.

**PARKING** - Started site mobilization.

**STATION** - Continued South platform deck. Completed North Platform walls. Started North Platform Deck. Continued North platform conduits.

**PARKING** - No activity planned.

**Alameda Station**

**STATION** - Started platform footings , and continued the installation of grounding & conduits.

**PARKING** - Completed N. Irwindale Phase 3

**Irwindale Station**

**STATION** - No activity.

**PARKING** - No activity.

**CIVIL** - Started Shamrock 24" waterline. Completed Shamrock 8" waterline. Continued 6" sewer installation.

**WALLS** - Started screen wall foundations.

**TRACK** - Continued Ballast and track installation at North Storage Track and Turnout Switches.

**STRUCTURES** - *M&O Building* continued structural steel installation and completed the installation of 2nd floor metal decking and started concrete deck. Started 3rd floor metal decking. *Car Wash* - Continued foundation slab. *Cleaning Platform* - Started canopy and sanding equipment installations. *Material Storage* - no activity.

**OCS** - Continued poles and hardware installation at North Storage track area.

**Maintenance & Operations**

**Duarte Station**

**STATION** - Continued ramp walls and deck at North and South Platforms. Started canopy structural steel installation.

**PARKING** - Started installation level 1 columns and shear walls. Started installation of CMU Ramp Walls. Started level 1 mechanical/electrical . Completed elevator pit invert and started elevator pit walls

**Monrovia Station**

**STATION** - Continued ramp footings and walls.

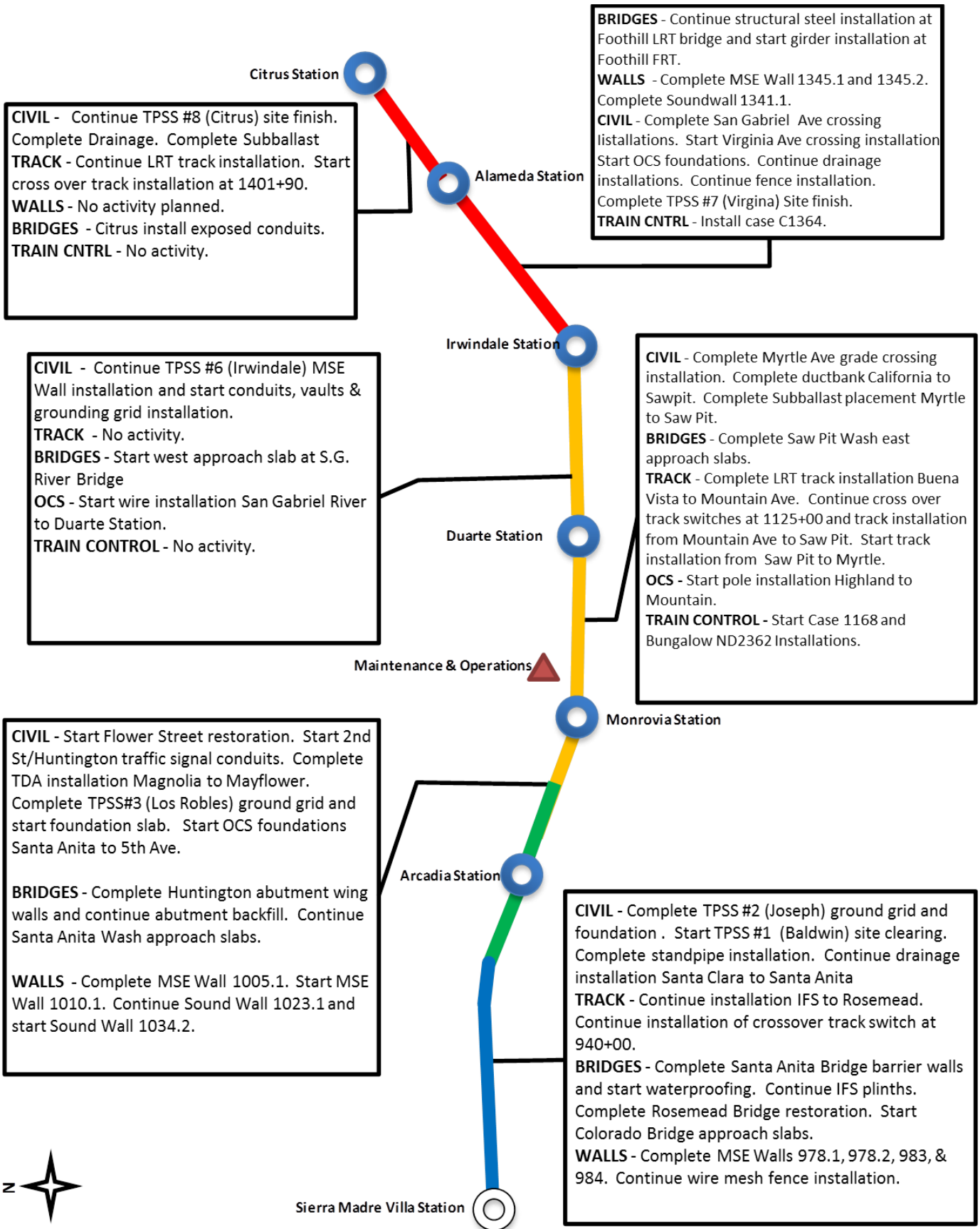
**PARKING** - Continued installation level 1 columns and shear walls. Started installation of CMU Ramp Walls. Started level 1 mechanical/electrical . Started slab on grade concrete. Completed elevator pit invert and started elevator pit walls.

**Arcadia Station**





## ALIGNMENT CONSTRUCTION PROGRESS NEXT PERIOD





**FACILITY CONSTRUCTION PROGRESS NEXT PERIOD**

**Citrus Ave Station**

**STATION** - Complete platform access ramps and stairs.  
**PARKING** - Complete the installation of shoring beams. Start level 1 excavation and lagging.

**STATION** - Start platform access ramps and stairs.  
**PARKING** - No activity planned.

**Alameda Station**

**STATION** - Complete North and South platform footings and start platform walls.  
**PARKING** - Start site excavation for MSE wall and stockpiling for Soil Nail wall. Complete demolition of existing pump station. Start pump station invert.

**Irwindale Station**

**CIVIL** - Complete Shamrock 24" waterline. Complete 6" sewer installation. Start water line lateral connections.  
**WALLS** - Complete screen wall foundations. Start screen wall post installation.  
**TRACK** - Complete Ballast and track installation at North Storage Track and Turnout Switches. Start installation of embedded track at Car Wash and MOW.  
**STRUCTURES** - *M&O Building* continue structural steel installation. Continue 2nd floor concrete deck. Complete 3rd floor metal decking. *Car Wash* - Complete foundation slab. *Cleaning Platform* - Complete canopy and sanding equipment installations. Start canopy painting. *Material Storage* - Complete structural steel painting. Start CMU walls and metal panels. *MOW Building* - Start CMU Walls.  
**OCS** - No activity planned.

**STATION** - Complete structural steel canopy painting. Start underplatform conduit installation and plumbing.  
**PARKING** - No activity planned.

**Duarte Station**

**STATION** - Complete stairs and access ramps. Start structural steel canopy painting. Start underplatform conduit installation.  
**PARKING** - Complete Level 1 columns and shear walls. Complete underground drainage installation. Continue CMU Ramp walls. Start slab on grade placement.

**Maintenance & Operations**

**Monrovia Station**

**STATION** - Complete stairs and access ramps. Start structural steel canopy painting.  
**PARKING** - Complete CMU Ramp backfill and slab on grade. Complete Level 1 slab on grade. Start Level 2 deck. Start Biofiltration drainage.

**Arcadia Station**





## ALIGNMENT CONSTRUCTION IMAGES

Segment 1: Track Work



Segment 2: Huntington Bridge -  
Backwall Form / Rebar

Segment 3: Monrovia Station -  
Canopy Paint Progress



**ALIGNMENT CONSTRUCTION IMAGES (CONTINUED)**



Segment 4: Foothill Bridge - Backwall Construction

Operations Campus: MOW Storage Building  
Exterior CMU Work



Operations Campus: Paint Shop  
Structural Steel Framing





Change Management Log

Date: 4/30/2014

Page: 1 of 4

Project: C1135 Alignment - FTC Contract #: C1135

|                           |               |       |                         |               |       |
|---------------------------|---------------|-------|-------------------------|---------------|-------|
| Original Contract Amount: | \$485,867,000 |       |                         |               |       |
| Approved Change Orders:   | \$10,038,155  | 2.07% | Pending Change Orders:  | \$0           | 0.00% |
| Current Contract Total:   | \$495,905,155 |       | Pending Contract Total: | \$495,905,155 | 2.07% |

Change Orders

| Number                        | Change Management | Title                               | Initiated Date | Approved Date | Outstanding Days | Time Extension | Amount      |
|-------------------------------|-------------------|-------------------------------------|----------------|---------------|------------------|----------------|-------------|
| <b>EXECUTED Change Orders</b> |                   |                                     |                |               |                  |                |             |
| 001.00                        | 000.00            | Interim NTP                         | 11/3/2011      | 11/3/2011     | 0                |                | \$0         |
| 002.00                        | 013.00            | Colorado Bridge Haz Mat             | 5/17/2012      | 5/18/2012     | 1                |                | \$121,382   |
| 002.01                        | 013.01            | Colorado Bridge HazMat - Final      | 9/5/2012       | 9/7/2012      | 2                |                | \$13,164    |
| 003.00                        | 001.00            | Sound Wall Deletion - Duarte Road   | 7/12/2012      | 7/18/2012     | 6                |                | (\$74,707)  |
| 004.00                        | 018.00            | Revise Block Design - CBD Calc      | 8/23/2012      | 8/29/2012     | 6                |                | \$3,986     |
| 004.01                        | 018.01            | Revise Block Design - CBD Calc - 2  | 9/5/2013       | 9/11/2013     | 6                |                | \$0         |
| 005.00                        | 023.00            | Wayside Signal Aspect Revision      | 9/6/2012       | 9/7/2012      | 1                |                | \$26,072    |
| 005.01                        | 023.01            | Wayside Signal "Call On" Function   | 10/30/2013     | 11/1/2013     | 2                |                | \$75,169    |
| 006.00                        | 040.00            | Arcadia Frieze, Bench-Artist Design | 9/6/2012       | 9/10/2012     | 4                |                | \$13,683    |
| 006.01                        | 040.01            | Arcadia Frieze, Bench-Construction  | 3/7/2013       | 3/12/2013     | 5                |                | \$155,894   |
| 007.00                        | 019.02            | Soils Testing Abutments & Fdns      | 9/14/2012      | 9/18/2012     | 4                |                | \$44,993    |
| 008.00                        | 041.00            | Unknown Utilities RFCN 005 006 008  | 9/14/2012      | 9/18/2012     | 4                |                | \$132,450   |
| 009.00                        | 038.00            | Illuminate City Names @ Stations    | 9/18/2012      | 9/24/2012     | 6                |                | \$184,657   |
| 010.00                        | 046.00            | SGRB - Lead Based Paint Remediation | 9/21/2012      | 9/24/2012     | 3                |                | \$244,536   |
| 011.00                        | 004.00            | Station Architectural Changes       | 10/11/2012     | 10/12/2012    | 1                |                | \$443,950   |
| 012.00                        | 003.01            | Systems and Testing for Added TPSS  | 12/13/2012     | 12/14/2012    | 1                |                | \$1,443,193 |
| 013.00                        | 005.02            | IDIQ Comm Contract (Rev 2)          | 12/14/2012     | 1/22/2013     | 39               |                | \$698,259   |
| 014.00                        | 060.00            | Sewer Encasement Changes in Azusa   | 12/18/2012     | 1/24/2013     | 37               |                | \$141,354   |
| 015.00                        | 037.02            | M&O - Materials Storage Revisions   | 12/26/2012     | 1/15/2013     | 20               |                | \$62,862    |
| 015.01                        | 037.03            | M&O Storage Shelving Revisions      | 9/16/2013      | 9/19/2013     | 3                |                | \$20,380    |
| 016.00                        | 002.00            | Relocation of Access Road to 3M Fac | 12/26/2012     | 1/16/2013     | 21               |                | \$53,814    |
| 017.00                        | 025.00            | 3 Electrical Casings for ALW        | 2/27/2013      | 3/1/2013      | 2                |                | \$219,033   |
| 018.00                        | 073.00            | Hazardous Abatement at Bridges      | 1/15/2013      | 2/6/2013      | 22               |                | \$1,081,803 |
| 019.00                        | 054.00            | City of Hope Conduits               | 1/11/2013      | 1/22/2013     | 11               |                | \$34,313    |
| 020.00                        | 059.00            | Citrus TPSS Transformer Pad Changes | 2/6/2013       | 2/7/2013      | 1                |                | \$34,536    |
| 021.00                        | 075.00            | Demo & Replace Palm Dr. Roadway     | 2/7/2013       | 2/14/2013     | 7                |                | \$90,365    |
| 022.00                        | 077.00            | M&O Differing Site Conditions; Pt 1 | 2/13/2013      | 2/15/2013     | 2                |                | \$66,360    |
| 022.01                        | 093.00            | M and O DSC T and M Work Part 2     | 3/8/2013       | 3/12/2013     | 4                |                | \$66,625    |
| 022.02                        | 103.00            | M and O DSC Part 3                  | 3/27/2013      | 3/28/2013     | 1                |                | \$35,211    |
| 022.03                        | 115.00            | DSC at M and O Part 4               | 5/3/2013       | 5/7/2013      | 4                |                | \$5,706     |
| 023.00                        | 089.00            | Contaminated Soil Abatement         | 2/26/2013      | 2/27/2013     | 1                |                | \$422,068   |
| 024.00                        | 068.00            | Monrovia Sound Wall Panel Change    | 2/26/2013      | 2/28/2013     | 2                |                | (\$24,150)  |
| 025.00                        | 052.00            | Santa Anita Trail Detour            | 3/8/2013       | 3/12/2013     | 4                |                | \$27,691    |
| 026.00                        | 070.00            | Block Type Change at M&O Building   | 3/26/2013      | 3/26/2013     | 0                |                | \$35,016    |
| 027.00                        | 065.00            | M&O IT Changes-Duct Banks/Conduits  | 3/26/2013      | 3/26/2013     | 0                |                | \$88,650    |
| 027.01                        | 065.01            | M&O IT Changes - Power to WAP       | 9/4/2013       | 9/6/2013      | 2                |                | \$73,049    |
| 028.00                        | 039.01            | Delete Layover Building             | 4/11/2013      | 4/12/2013     | 1                |                | (\$313,832) |
| 029.00                        | 095.00            | 8in Sanitary Sewer Line- Alameda Av | 4/23/2013      | 4/25/2013     | 2                |                | \$226,089   |
| 029.01                        | 095.01            | Alameda Sewer Line Revised Scope    | 11/22/2013     | 11/26/2013    | 4                |                | (\$37,425)  |
| 030.00                        | 102.00            | M&O-Disconnect Switches, Insulators | 4/23/2013      | 4/25/2013     | 2                |                | \$67,817    |
| 031.00                        | 110.00            | Rmv Abandoned Utility Line @ Dalton | 4/23/2013      | 4/25/2013     | 2                |                | \$1,562     |
| 032.00                        | 104.00            | Highland Ave Abandoned CMP sleeves  | 5/1/2013       | 5/3/2013      | 2                |                | \$15,005    |
| 033.00                        | 114.00            | Remove contaminated wood culvert    | 5/3/2013       | 5/7/2013      | 4                |                | \$4,714     |
| 034.00                        | 128.00            | M&O Backup Power/Generator Changes  | 5/13/2013      | 5/21/2013     | 8                |                | \$121,340   |
| 035.00                        | 083.00            | M&O Vehicle Sanding System Changes  | 5/21/2013      | 5/24/2013     | 3                |                | \$27,463    |



Change Management Log

Project: C1135 Alignment - FTC Contract #: C1135

Change Orders

| Number                        | Change Management | Title                               | Initiated Date | Approved Date | Outstanding Days | Time Extension | Amount      |
|-------------------------------|-------------------|-------------------------------------|----------------|---------------|------------------|----------------|-------------|
| <b>EXECUTED Change Orders</b> |                   |                                     |                |               |                  |                |             |
| 036.00                        | 006.00            | IFS Related Contract Changes        | 6/7/2013       | 6/11/2013     | 4                |                | (\$263,111) |
| 037.00                        | 137.00            | CTS Redesign                        | 7/12/2013      | 7/16/2013     | 4                |                | \$58,214    |
| 038.00                        | 138.00            | Segment 4 Safety Manager            | 7/12/2013      | 7/16/2013     | 4                |                | \$157,274   |
| 038.01                        | 138.01            | Segment 4 Safety manager - Part 2   | 11/19/2013     | 11/21/2013    | 2                |                | \$72,963    |
| 038.02                        | 138.02            | Segment 4 Safety Manager - Part 3   | 4/3/2014       | 4/7/2014      | 4                |                | \$82,271    |
| 039.00                        | 085.00            | M&O Drainage System Enhancements    | 7/19/2013      | 8/13/2013     | 25               |                | \$251,579   |
| 040.00                        | 067.00            | Station Paver Changes               | 7/23/2013      | 8/13/2013     | 21               |                | \$728,340   |
| 040.01                        | 067.01            | Rebar Changes for Station Pavers    | 10/28/2013     | 10/31/2013    | 3                |                | \$10,586    |
| 041.00                        | 112.00            | 12" Pasadena Waterline Potholes     | 8/12/2013      | 8/16/2013     | 4                |                | \$19,735    |
| 042.00                        | 150.00            | Demo Abandoned Water Lines @ Dalton | 8/12/2013      | 8/16/2013     | 4                |                | \$5,937     |
| 043.00                        | 007.01            | Emer. Backup for Guideway Lighting  | 8/16/2013      | 10/1/2013     | 46               |                | \$359,158   |
| 044.00                        | 172.00            | Contaminated Wood Culvert Sta. 1202 | 8/27/2013      | 8/28/2013     | 1                |                | \$7,712     |
| 045.00                        | 139.00            | BLS Changes                         | 8/28/2013      | 9/4/2013      | 7                |                | \$110,801   |
| 046.00                        | 165.00            | Azusa-Alameda Station; 2nd Portal   | 8/28/2013      | 9/4/2013      | 7                |                | \$77,175    |
| 047.00                        | 145.00            | St. Joseph drainage enhancements    | 9/4/2013       | 9/6/2013      | 2                |                | \$17,592    |
| 048.00                        | 149.00            | M&O - Lights at NW Corner Park      | 9/4/2013       | 9/6/2013      | 2                |                | \$29,351    |
| 049.00                        | 174.00            | TPSS #5 Cal-Am Power Conflict       | 9/4/2013       | 9/6/2013      | 2                |                | \$127,260   |
| 050.00                        | 171.00            | Relocate Access Stair to Foothill   | 9/4/2013       | 9/6/2013      | 2                |                | \$20,276    |
| 051.00                        | 173.00            | Dalton 8" Water Line Work           | 9/5/2013       | 9/12/2013     | 7                |                | \$35,316    |
| 052.00                        | 071.00            | Duarte Rd Screen Wall Change        | 9/5/2013       | 9/17/2013     | 12               |                | (\$133,864) |
| 053.00                        | 176.00            | Remove Contaminatd Wood-Buena Vista | 9/10/2013      | 9/12/2013     | 2                |                | \$5,543     |
| 054.00                        | 147.00            | DECCO Bypass                        | 9/10/2013      | 9/12/2013     | 2                |                | \$18,519    |
| 055.00                        | 166.00            | Foothill Blvd. Water/SD Relocation  | 9/20/2013      | 9/20/2013     | 0                |                | \$127,074   |
| 056.00                        | 186.00            | Contaminated Wood @ San Gabriel Ave | 9/23/2013      | 9/24/2013     | 1                |                | \$4,291     |
| 057.00                        | 194.00            | California/Duarte Water Line Work   | 10/28/2013     | 10/31/2013    | 3                |                | \$220,743   |
| 058.00                        | 189.00            | Four Utility Changes                | 10/28/2013     | 10/31/2013    | 3                |                | \$14,157    |
| 059.00                        | 180.00            | Remove/Dispose of ACM E of Highland | 10/30/2013     | 11/1/2013     | 2                |                | \$29,311    |
| 060.00                        | 179.00            | CTS Upgrade to OC-192               | 10/30/2013     | 11/1/2013     | 2                |                | \$112,543   |
| 061.00                        | 213.00            | Irwindale On-ramp Stockpile         | 11/8/2013      | 11/21/2013    | 13               |                | \$200,185   |
| 062.00                        | 053.00            | Delete Totten Tubes Scope of Work   | 11/8/2013      | 11/21/2013    | 13               |                | (\$143,801) |
| 063.00                        | 146.00            | Home Depot Striping and Signing     | 11/15/2013     | 11/21/2013    | 6                |                | \$21,003    |
| 064.00                        | 204.00            | Unknown Duct Bank @ San Gabriel Ave | 11/15/2013     | 11/21/2013    | 6                |                | \$1,265     |
| 065.00                        | 140.00            | M&O-Overhead Work Platform Changes  | 12/5/2013      | 12/16/2013    | 11               |                | \$317,656   |
| 066.00                        | 217.00            | Buried SD & Headwall, STA 1306+50   | 12/6/2013      | 12/17/2013    | 11               |                | \$1,020     |
| 067.00                        | 219.00            | Contaminated Soil, Monrovia Station | 12/12/2013     | 12/17/2013    | 5                |                | \$17,503    |
| 068.00                        | 220.00            | DSC at Sawpit Wash Abutments        | 12/12/2013     | 12/17/2013    | 5                |                | \$12,668    |
| 069.00                        | 188.00            | Costco Emergency Gate-Path to POS   | 1/21/2014      | 1/22/2014     | 1                |                | \$19,882    |
| 070.00                        | 214.00            | M&O - Generator Load Bank           | 1/21/2014      | 1/22/2014     | 1                |                | \$38,092    |
| 071.00                        | 224.00            | Alameda South Water Line Tie-in     | 1/30/2014      | 1/31/2014     | 1                |                | \$6,330     |
| 072.00                        | 202.00            | Aesthetic Lighting Provisions-SGRB  | 2/3/2014       | 2/4/2014      | 1                |                | \$27,055    |
| 073.00                        | 160.00            | Move Mountain Interlocking Bungalow | 2/11/2014      | 2/13/2014     | 2                |                | \$68,596    |
| 074.00                        | 200.00            | M&O Parts Carousel Warranty & PM    | 2/11/2014      | 2/13/2014     | 2                |                | \$68,906    |
| 075.00                        | 235.00            | Remove Contaminated Wood Ties       | 2/14/2014      | 2/18/2014     | 4                |                | \$4,571     |
| 076.00                        | 234.00            | Accelerate Work at California Ave   | 2/14/2014      | 2/18/2014     | 4                |                | \$5,663     |
| 077.00                        | 247.00            | Line Stop in California             | 2/18/2014      | 2/20/2014     | 2                |                | \$14,524    |
| 078.00                        | 201.00            | Added Sound Wall, SW of IFS         | 2/27/2014      | 2/28/2014     | 1                |                | \$18,201    |
| 079.00                        | 238.00            | M&O-MOW Canopy Structural Eval      | 2/27/2014      | 2/28/2014     | 1                |                | \$7,147     |
| 080.00                        | 232.00            | Car Moving Tractor-Coupler Upgrade  | 2/27/2014      | 2/28/2014     | 1                |                | \$177,145   |
| 081.00                        | 242.00            | Car Moving Tractor Options/Features | 2/27/2014      | 2/28/2014     | 1                |                | \$69,099    |
| 082.00                        | 091.00            | Rockvale Water Line Mitigation      | 3/4/2014       | 3/5/2014      | 1                |                | \$163,750   |



Change Management Log

Date: 4/30/2014

Page: 3 of 4

Project: C1135 Alignment - FTC Contract #: C1135

Change Orders

Table with columns: Number, Change Management, Title, Initiated Date, Approved Date, Outstanding Days, Time Extension, Amount. Includes EXECUTED Change Orders and Subtotal/Total rows.

Open PCOs

Table with columns: PCO Number, Title. Lists various Open PCOs such as M&O IT Changes, M&O / 3M Fence Revisions, etc.

Open RFCs

Table with columns: RFC Number, Title. Lists Open RFCs such as MandO Facility Train Control and Si, M and O Fire Water Tank CSP, etc.



### Change Management Log

Date: 4/30/2014

Page: 4 of 4

**Project: C1135 Alignment - FTC Contract #: C1135**

#### Open PCOs

| PCO Number | Title                                |
|------------|--------------------------------------|
| 080.00     | Delete Evergreen / Myrtle Mitigation |

#### Open RFC Notices

| Number | Title                              |
|--------|------------------------------------|
| 037.00 | DSC at Santa Anita Wash Abutment 1 |
| 044.00 | DSC Utility at Azusa Avenue        |
| 057.00 | Rmvl Contmtd Wd Mtrls Stanta Anita |



**Description:** Intermodal Parking Facilities & Enhancements **Status:** April 15, 2014

**Contract No.:** C1150

**Contractor:** Webcor Builders

**Progress Completed This Period**

**Design**

- Submit AFC Design - Irwindale Site Prep
- Submit AFC Design - Monrovia Parking Structure
- Submit AFC Design - Azusa-Citrus Site Prep
- Submit Pre-Construction Survey - Irwindale
- Submit Pre-Construction Survey - Azusa-Citrus
- Submit Specifications Revision 1

**Activities Planned Next Period**

**Design**

- Submit AFC Design - Azusa-Citrus Enhancements
- Submit AFC Design - Azusa-Citrus Parking Structure
- Submit Schedule of Values Azusa-Citrus
- Submit QA/QC Plan - Part 2
- Submit QA/QC Plan - Part 3

**Areas of Concern**

- **IRWINDALE PARKING STRUCTURE DESIGN** - The Authority has issued the Design-Build Contractor a Potential Change Order to revise the location of the Irwindale Parking Structure from the current location identified in the 85% design submittal. The revised design will require the parking structure to be moved in order to avoid a utility conflict with the existing SCE distribution line. The redesign effort will impact the completion of the AFC design and potentially impact the Substantial Completion milestone.

**Areas of Concern (Continued)**

-



**Description:** Intermodal Parking Facilities & Enhancements **Status:** April 15, 2014  
**Contract No.:** C1150 **Contractor:** Webcor Builders

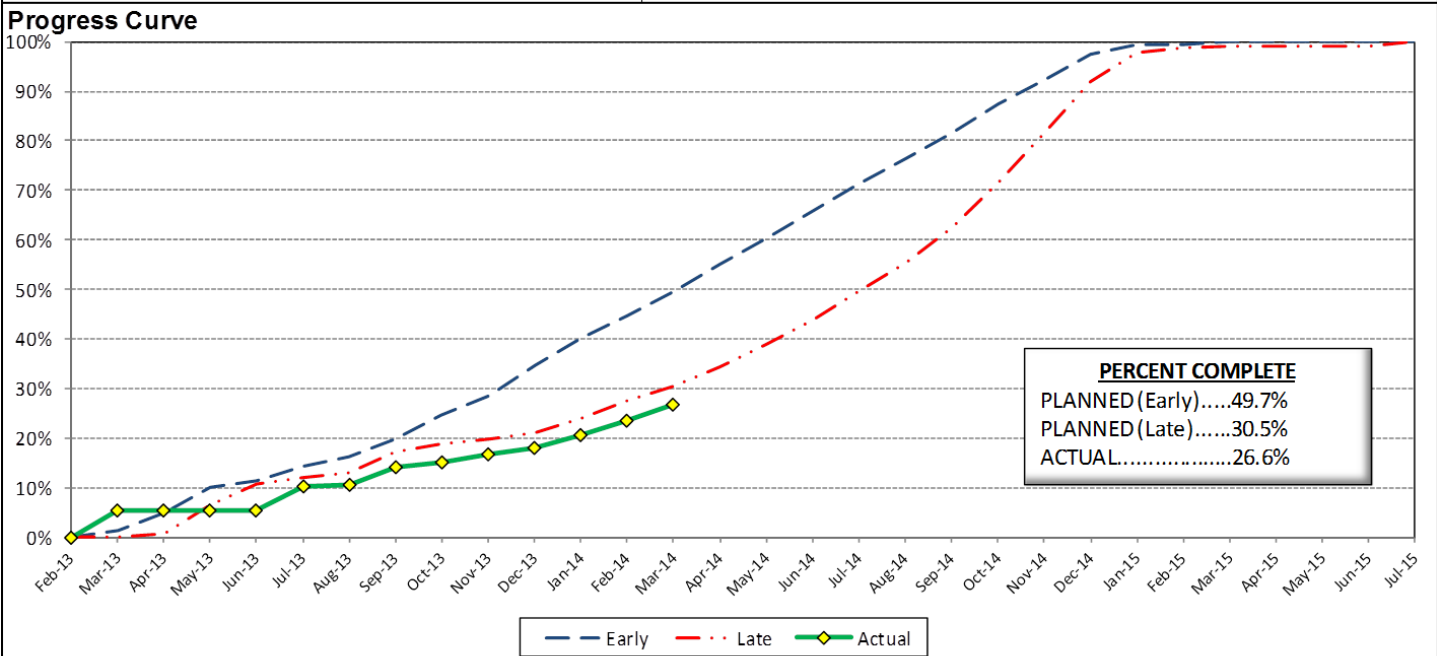
**Cost Summary:**

|                                      | Million(s) |
|--------------------------------------|------------|
| <b>CONTRACT</b>                      |            |
| Contract Award Value:                | 48.8       |
| Executed Change Orders:              | 0.4        |
| Current Contract Value:              | 49.1       |
| Potential Change Orders:             | 0.2        |
| Current Forecast:                    | 49.3       |
| Earned Value/Actual Cost             | 13.0       |
| <b>AUTHORIZATION FOR EXPENDITURE</b> |            |
| Budget                               | 50.3       |
| Commitment                           | 49.1       |
| Balance                              | 0.9        |

**Cost Assessment:**

The current cost forecast is 49.3 Million. The forecast increased \$89 Thousand from the previous period. The increase is due to CO 006 - *Arcadia Transit Plaza Betterments*, and the elimination of PCO 007 - *St. Joseph TPSS Wall Credit*. The current forecast is within the authorized budget.

The Design-Build Contractor is trending beyond the late curve, which is due to the progress of the *Irwindale Parking Structure*, and *Azusa-Citrus Parking Structure*, AFC designs. In addition, the Design-Build Contractor has not submitted a schedule of values for Contract Document Requirement List (CDRL) bid items, which is also having an impact on progress reporting.



**Schedule Summary:**

|                             |                   |
|-----------------------------|-------------------|
| Contract Award:             | 02/27/13          |
| Notice to Proceed (NTP) :   | 03/20/13          |
| Original Contract Duration: | 845 Calendar Days |
| Current Contract Duration:  | 845 Calendar Days |
| Elapsed Time from NTP:      | 391 Calendar Days |

**Contract Milestones**

| Milestones | Description            | Original Contract | Current Contract | Forecast | Variance |
|------------|------------------------|-------------------|------------------|----------|----------|
| 1          | Substantial Completion | 03/15/15          | 03/15/15         | 06/18/15 | (95)     |
| 2          | Punchlist Complete     | 05/29/15          | 05/29/15         | 09/01/15 | (95)     |
| 3          | Final Completion       | 07/13/15          | 07/13/15         | 10/16/15 | (95)     |
| 4          | TPSS Work              | 03/01/14          | 03/01/14         | 03/31/14 | (30)     |
|            |                        |                   |                  |          |          |

**Schedule Assessment:**

The Design-Build Contractor remains behind schedule due to the re-design of the Irwindale Parking facility. The structure footprint was moved to avoid a conflict with the existing Southern California Edison utility line. The site preparation package was approved and the site excavation for the MSE wall and soil nail wall started this period. The critical path will continue through the completion of the MSE wall and the pump station concrete structure construction. At this time, there is a potential impact of 95 days to the Substantial Completion milestone.

The Design-Build Contractor completed the TPSS site preparation at Michillinda and Soldano on March 31, 2014.



## PARKING FACILITY CONSTRUCTION IMAGES

Arcadia Parking Structure Site Overview



Arcadia Parking Structure Site Overview

Monrovia Parking Structure Site Overview



## PARKING FACILITY CONSTRUCTION IMAGES

Irwindale Parking Structure Site Excavation



Soldier Beams at Azusa-Citrus Parking Structure

Azusa-Citrus Parking Structure Overview





Change Management Log

Date: 4/30/2014

Page: 1 of 2

Project: C1150 Parking - Webcor Contract #: C1150

|                           |              |       |                         |              |       |
|---------------------------|--------------|-------|-------------------------|--------------|-------|
| Original Contract Amount: | \$48,750,000 |       |                         |              |       |
| Approved Change Orders:   | \$356,733    | 0.73% | Pending Change Orders:  | \$0          | 0.00% |
| Current Contract Total:   | \$49,106,733 |       | Pending Contract Total: | \$49,106,733 | 0.73% |

Change Orders

| Number                        | Change Management | Title                               | Initiated Date | Approved Date | Outstanding Days | Time Extension | Amount     |
|-------------------------------|-------------------|-------------------------------------|----------------|---------------|------------------|----------------|------------|
| <b>EXECUTED Change Orders</b> |                   |                                     |                |               |                  |                |            |
| 001.00                        | 001.00            | Monrovia Parking Alternative Layout | 6/25/2013      | 7/11/2013     | 16               |                | \$21,382   |
| 001.01                        | 001.01            | Monrovia Alternative - Cancelation  | 9/17/2013      | 10/7/2013     | 20               |                | (\$12,006) |
| 002.00                        | 003.00            | Clock Tower Procurement             | 7/3/2013       | 7/11/2013     | 8                |                | \$107,246  |
| 003.00                        | 002.00            | Relocate Elevator @ Azusa-Citrus PF | 12/18/2013     | 1/8/2014      | 21               |                | \$159,899  |
| 005.00                        | 018.00            | Monrovia Demo Unforseen Conditions  | 3/18/2014      | 3/26/2014     | 8                |                | \$17,013   |
| 006.00                        | 010.00            | Arcadia Transit Plaza Betterments   | 3/14/2014      | 3/26/2014     | 12               |                | \$35,466   |
| 007.00                        | 009.01            | Irwindale Intersection Betterments  | 3/25/2014      | 3/26/2014     | 1                |                | \$19,985   |
| 008.00                        | 017.00            | Irwindale Intersection Water Line   | 3/25/2014      | 4/14/2014     | 20               |                | \$7,748    |
| <b>Subtotal:</b>              |                   |                                     |                |               |                  |                | \$356,733  |
| <b>Subtotal:</b>              |                   |                                     |                |               |                  |                | \$356,733  |
| <b>PENDING Change Orders</b>  |                   |                                     |                |               |                  |                |            |
| 004.00                        | 013.00            | Irwindale Structure Relocation      | 1/23/2014      |               | 97               | 90             | \$0        |
| <b>Subtotal:</b>              |                   |                                     |                |               |                  |                | \$0        |
| <b>Subtotal:</b>              |                   |                                     |                |               |                  |                | \$0        |
| <b>Total:</b>                 |                   |                                     |                |               |                  |                | \$356,733  |

Open PCOs

| PCO Number  | Title                               |
|-------------|-------------------------------------|
| <b>OPEN</b> |                                     |
| 004.00      | TPSS Grounding Grid Modifications   |
| 006.00      | St. Joseph Drainage Enhancements    |
| 008.00      | Azusa-Citrus Plaza Pavers           |
| 011.00      | Soldano TPSS Added ROW Fence        |
| 012.00      | Additional Conduit Provisions       |
| 013.00      | Primrose Avenue cul-de-sac Deletion |
| 014.00      | Delete Azusa-Alameda Enhancements   |
| 015.00      | Monrovia Canopy & Color Betterments |

Open RFC Notices

| Number | Title                             |
|--------|-----------------------------------|
| 001.00 | Arcadia Unforeseen Items          |
| 003.00 | Michillinda unforeseen items      |
| 005.00 | Irwindale CCTV Power Pole         |
| 006.00 | Michillinda Demo of DB2 Conduit   |
| 007.00 | Added PME Switch & Spare Conduits |



## Change Management Log

**Project: C1150 Parking - Webcor Contract #: C1150**

### Open RFC Notices

| Number | Title                               |
|--------|-------------------------------------|
| 008.00 | SCE Power Feed to DB2 TPSS at Arcad |





## **AZUSA TO MONTCLAIR SEGMENT**

### **ACTIVITIES COMPLETED THIS PERIOD**

Staff has developed the First Addendum to the Phase 2B FEIR to study an LRT grade separation at Garey Avenue in the City of Pomona, which is being presented to the Board at its May 28, 2014 meeting.

The Board awarded AECOM the contract to support the Authority in developing the advanced conceptual engineering for the Azusa to Montclair segment. Advanced conceptual engineering has begun with a focus on the alignment. The Authority is preparing to restart the Station Design Art Program (SDAR).

### **KEY FUTURE ACTIVITIES**

The advanced conceptual engineering process is an 18-month process. Upon completion, the Azusa to Montclair segment will be ready for a design-build procurement. Upcoming activities include establishing coordination meetings with each corridor city, kickoff of the ROW drawing work, refinement of the alignment, restarting the SDAR, and kickoff of utility drawings and geotechnical investigations.

### **Federal Transit Administration (FTA)**

The Metro Board of Directors excluded the Gold Line from seeking federal New Starts funding. The Authority will work together with Metro along with the Congressional delegation to seek funding to construct the extension following completion of the environmental review.



## PHASE II FOOTHILL EXTENSION FINANCIAL STATUS

### Project Operating Budget Summary in Millions of Dollars

April 30, 2014

|   | ( a )                 | ( b )                               | (c=a-b)                     | ( d )                            |
|---|-----------------------|-------------------------------------|-----------------------------|----------------------------------|
| <b>FINANCIAL PLAN</b>                     | <b>Current Budget</b> | <b>Funding Committed to Project</b> | <b>Uncommitted Funds</b>    | <b>Revenues Received</b>         |
| SCAG                                      | 1.0                   | 0.9                                 | 0.1                         | 0.9                              |
| Interest Income                           | 2.0                   | 2.0                                 | -                           | 2.0                              |
| Bridge Replacement                        | 13.9                  | 13.9                                | -                           | 13.9                             |
| Phase I Carryover                         | 4.0                   | 4.0                                 | -                           | 4.0                              |
| Maintenance and Operations Facility       | -                     | -                                   | -                           | -                                |
| Cities                                    | 11.0                  | -                                   | 11.0                        | -                                |
| Measure R - Pasadena to Azusa             | 810.5                 | 777.0                               | 33.5                        | 346.0                            |
| Measure R - Azusa to Montclair            | -                     | -                                   | -                           | -                                |
| SANBAG                                    | 55.2                  | 1.5                                 | 53.7                        | 1.5                              |
| Federal TCSP                              | 2.9                   | 2.9                                 | -                           | 2.5                              |
| Federal Bus Intermodal Plan               | 9.0                   | 9.0                                 | -                           | 3.0                              |
| Federal New Starts 2004 MTA Passthrough   | 4.0                   | 4.0                                 | -                           | 4.0                              |
| Federal New Starts 2005 MTA Passthrough   | 0.5                   | 0.5                                 | -                           | 0.5                              |
| Federal New Starts 2006 Corridor Study    | 2.5                   | 2.5                                 | -                           | 2.4                              |
| Federal/Other                             | 802.5                 | -                                   | 802.5                       | -                                |
| <b>Total Revenues</b>                     | <b>1,719.0</b>        | <b>818.2</b>                        | <b>900.8</b>                | <b>380.7</b>                     |
|   | ( a )                 | ( b )                               | ( c )                       | (d=a-b)                          |
|   | <b>Current Budget</b> | <b>Current Obligation</b>           | <b>Current Expenditures</b> | <b>Current Available Balance</b> |
| <b>EXPENSES</b>                           |                       |                                     |                             |                                  |
| Program Management and Administration     | 107.9                 | 86.1                                | 83.0                        | 21.8                             |
| Master Cooperative Agreements             | 12.0                  | 3.3                                 | 2.8                         | 8.7                              |
| Real Estate including ROW Acq             | 21.0                  | 21.0                                | 12.5                        | -                                |
| Special Programs                          | 0.3                   | -                                   | -                           | 0.3                              |
| Procurement/Vehicles                      | 60.0                  | -                                   | -                           | 60.0                             |
| Maintenance and Operations Facility Land  | 22.0                  | 22.0                                | 22.0                        | -                                |
| Construction - IFS                        | 19.8                  | 19.8                                | 19.8                        | -                                |
| Construction - Pasadena to Azusa segment  | 328.9                 | 328.9                               | 231.5                       | -                                |
| Construction - Azusa to Montclair segment | 950.0                 | -                                   | -                           | 950.0                            |
| Construction - M&O                        | 46.0                  | 44.0                                | 21.3                        | 2.0                              |
| Construction - Parking Structures         | 44.2                  | 44.2                                | 15.4                        | -                                |
| MTA Project Costs                         | 64.0                  | 64.0                                | 14.3                        | -                                |
| Contingency                               | 27.4                  | -                                   | -                           | 27.4                             |
| Project Reserve                           | 15.5                  | -                                   | -                           | 15.5                             |
| <b>Total Project</b>                      | <b>1,719.0</b>        | <b>633.3</b>                        | <b>422.6</b>                | <b>1,085.7</b>                   |