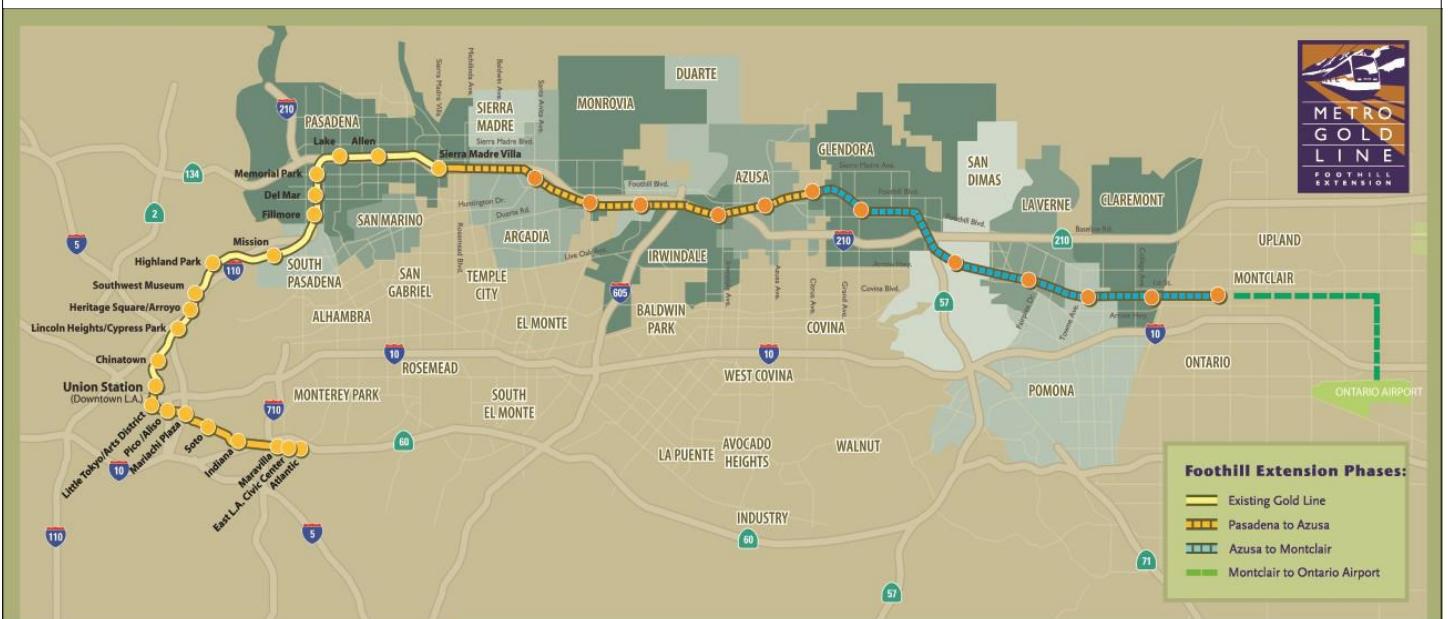


Metro Gold Line

Foothill Extension Project

Monthly Project Status Report

December 2014



Metro Gold Line

Connecting Los Angeles, the San Gabriel Valley and Inland Empire



TABLE OF CONTENTS

PHASE II FOOTHILL EXTENSION PROJECT STATUS

Project Description	3
Pasadena to Azusa Segment	4
Management Issues	4
Key Activities Completed This Period	5
Key Future Activities	6
Critical Path Schedule	7
Critical Path Float Trend	8
Alignment Contract Status	9
Alignment Construction Progress This Period	11
Facility Construction Progress This Period	12
Alignment Construction Progress Next Period	13
Facility Construction Progress Next Period	14
Alignment Construction Images	15
Alignment Change Management Log	17
Parking Facilities and Enhancements Contract Status	22
Parking Facilities and Enhancements Construction Images	24
Parking Facilities and Enhancements Change Management Log	26
Azusa to Montclair Segment	28
Financial Status	29

FOOTHILL EXTENSION PROJECT DESCRIPTION

The Authority's mandate is to plan, design and construct a 37-mile light rail link between Downtown Los Angeles and Claremont. In addition, the San Bernardino Associated Governments (SANBAG) has requested that planning be extended one mile inside San Bernardino County to the City of Montclair and then possibly to Ontario Airport.

The Metro Gold Line Phase II (Foothill Extension) corridor includes the cities of Pasadena, Arcadia, Monrovia, Duarte, Irwindale, Azusa, Glendora, San Dimas, La Verne, Pomona, Claremont, and Montclair; and the counties of Los Angeles and San Bernardino (Figure 1). The Foothill Extension is estimated to cost approximately \$1.950 billion.

The Foothill Extension will be built in two segments to align effectively with projected cash flows and financial capacity constraints. The first segment is defined from the Sierra Madre Villa Station in Pasadena to the city of Azusa. Revenue service along this segment is planned for the year 2016. The second segment would include an extension from Azusa to the City of Montclair with revenue service projected for the year 2023 and the third segment, if applicable, will be comprised of an extension from Montclair to the Ontario Airport.

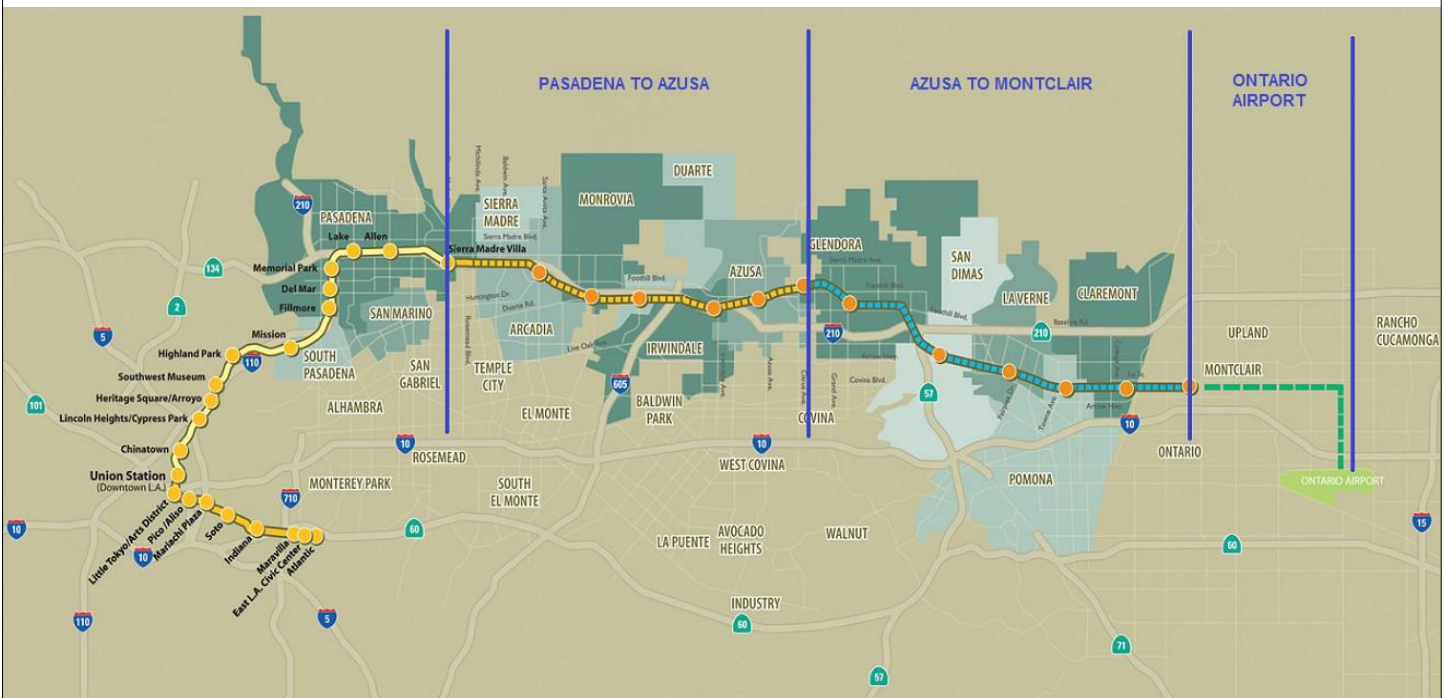


Figure 1: Metro Gold Line Foothill Extension Alignment



Pasadena to Azusa Segment

MANAGEMENT ISSUES

Metro Betterments

During the design process Metro staff have identified betterments that Metro staff would like to add to the project. Metro has provided a final disposition on all but a few items. Authority staff continues to work with Metro staff to resolve the remaining items.

TPSS Delivery Dates

The traction power substations (TPSS) provide equipment to transform utility power required for Light Rail Vehicle (LRV) propulsion, and then distribute that power to the LRVs via the overhead wires. Metro is responsible for purchasing the traction power substations. All TPSS have been delivered and set to date, however these deliveries were all behind schedule which proposed a potential to impact the project schedule. Authority staff coordinated with Metro and FTC to ensure minimal impact to the project, however the energization process will need to be finalized before schedule concerns are eliminated.

KEY ACTIVITIES COMPLETED THIS PERIOD

FTC reports the following SBE statistics for the month of August:

- Current SBE commitment: \$ 59,500,000
- SBE percent committed versus value of Project: 18.82%
- Overall Authority Project SBE goal: 16%

FTC reports the following approximate safety statistics to date:

- 1,745,875 total work hours performed by FTC, Mass Electric, and Subcontractors
- 13 recordable injuries reported
- 4 lost time injuries reported

Webcor reports the following DBE statistics for the month of August:

- Current DBE commitment: \$1,801,597
- DBE percent committed versus value of Project: 3.7%
- Overall Authority Project DBE goal: 2.3%

Webcor reports the following approximate safety statistics to date:

- 128,838 total work hours performed by Webcor and Subcontractors
- 1 recordable injuries reported
- 0 lost time injuries reported

The Business Center and Yard Traction Power Supply Substations have been energized (8 remaining)

Continued placement of art and architectural elements at all stations

Continued track distressing throughout the alignment

Continued trackwork at the Gold Line Operations Campus (Campus)

Continued OCS and Site Lighting Pole erection at the Campus and throughout the Alignment

Continued OCS wire runs in Segments 1, 2, 3, and 4

Continued installation of train control cases/bungalows and associated equipment

Conducted first powered train tests and began systems integration testing

Continued installation of Arcadia and Monrovia parking structure elevators

Completed construction of MSE and soil nail retaining wall at the Irwindale parking structure site

Began layout of the Irwindale parking structure foundation

Completed final deck pour at Azusa-Citrus parking structure

Authority continued reviewing design submittals for Azusa-Citrus and Irwindale structures

Authority and Webcor held meetings with the City of Duarte to finalize design of the Duarte parking lot

KEY FUTURE ACTIVITIES

Continue discussions with corridor cities regarding the project

Continue management of the Alignment contract, which will include oversight of construction activities and preparation for start-up activities

Continue to meet with Intermodal Parking Facilities and Enhancements Project contractor, Webcor Builders regarding design and construction of the Project

Continue to meet with cities along Phase 2B alignment regarding general coordination and negotiation of MCAs

Complete construction of art and architectural elements at all stations

Complete OCS installation

Complete installation of train control cases/bungalows and associated equipment

Complete installation of communications system

Complete powered train tests

Finalize design for the following Parking Facilities: Azusa Citrus, Irwindale, and Duarte

Energize Michillinda and Irwindale Traction Power Supply Substations

Finalize the following property acquisitions:

- Arcadia:

1. Parcel 13010/1311 (Indiana St.) – To be vacated by the City of Arcadia.
2. Parcel 1401a (Huntington Dr. Aerial Easement) – To be conveyed by the City of Arcadia.
3. Parcel 1401b (Huntington Dr. Bridge Abutments) – To be conveyed by the City of Arcadia.
4. Parcel 1403 (99 N. Second Av.) – Ready for appraisal/offer.
5. Parcel 6009 (Huntington Dr. Bridge Abutments) – To be conveyed by the City of Arcadia.
6. Parcel 6010 (Huntington Dr. Bridge Abutments) – To be conveyed by the City of Arcadia.
7. Parcel 6011 (Huntington Dr. Bridge Abutments) – To be conveyed by the City of Arcadia.

- Monrovia:

1. Parcel 1601 (Encino Av.) – To be conveyed by the City of Monrovia.
2. Parcel 1903 (Monrovia Station) – To be conveyed by the City of Monrovia.
3. Parcel 21A12 (3M Parking Lot) – Waiting for legal description/as-builts.
4. Parcel 21A23 (Shamrock Trapezoid) – To be conveyed by the City of Monrovia.

- Azusa:

1. Parcel 3501 (1220 W. Foothill Blvd.) – Engineers are preparing legal description.

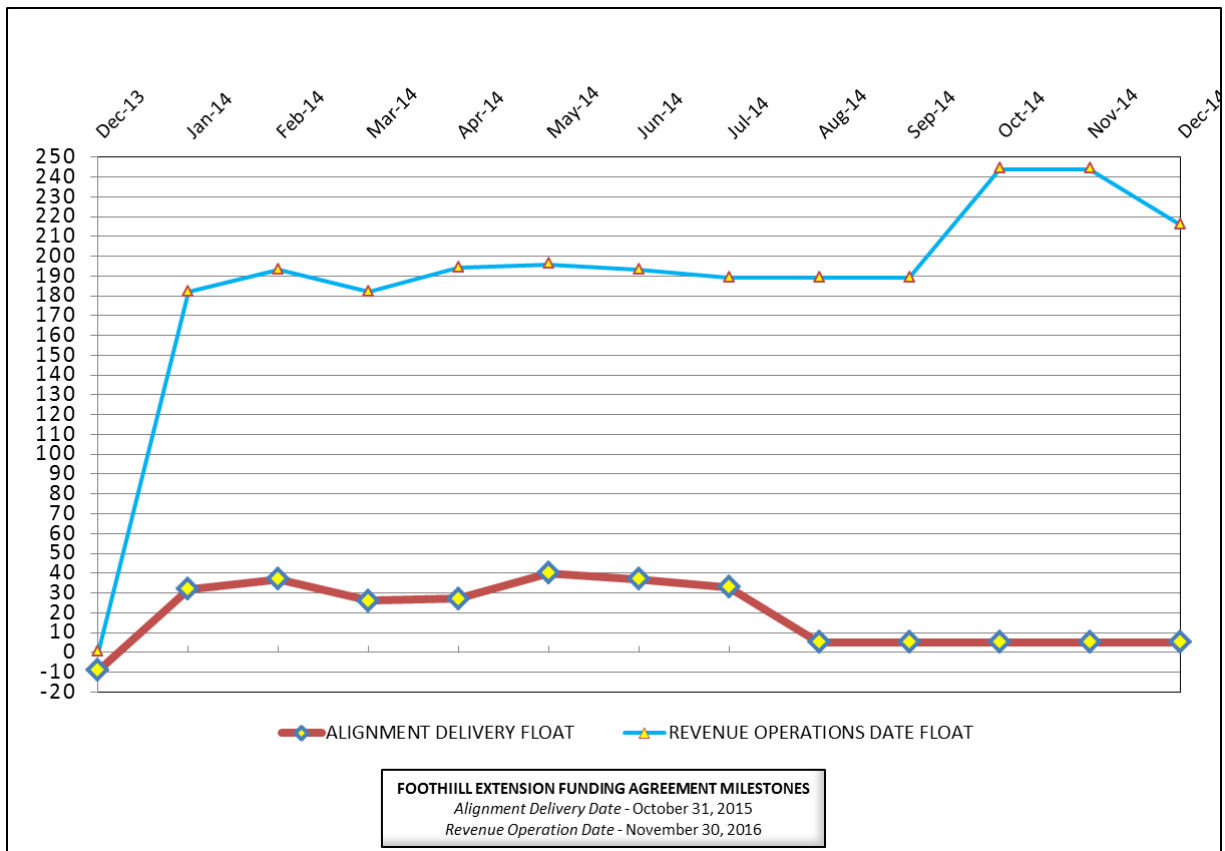


CRITICAL PATH SCHEDULE

Activity Name	OD	RD	AD	Start	Finish	Total Float	2012		2013		2014		2015		2016	
							Q2	Q3	Q4	Q1	Q2	Q3	Q4	Q1	Q2	Q3
REVENUE OPERATIONS DATE - CRITICAL PATH																
METRO - PROCURE CONSOLES/FACTORY TEST/DELIVER - GOLD LINE - PHASE 2	175	205	105	01.Sep.14 07:00 A	07.Jul.15 15:00	216										
METRO - SCADA INSTALL/CONFIGURE CONSOLES - GOLD LINE - PHASE 2	190	190	0	08.Jul.15 07:00	13.Jan.16 15:00	216										
METRO - SCADA INSTALL/TEST EQUIPMENT - GOLD LINE - PHASE 2	30	30	0	14.Jan.16 07:00	12.Feb.16 15:00	216										
METRO - Pre-Revenue Operations - Phase 2A	60	60	0	16.Jan.16 07:00	15.Mar.16 15:00	216										
>>>METRO - CUTOVER - GOLD LINE - PHASE 2<<<<	10	10	0	13.Feb.16 07:00	22.Feb.16 15:00	216										
METRO - Project Schedule Contingency (2 Mo.)	44	44	0	16.Mar.16 07:00	28.Apr.16 15:00	216										
Phase 2A - Revenue Operations Date (ROD)	0	0	0		28.Apr.16 15:00*	216										
ALIGNMENT DELIVERY DATE - CRITICAL PATH																
IRWINDALE STA PARKING STRUCTURE - DESIGN	150	20	425	29.Apr.13 07:00 A	09.Jan.15 15:00	14										
IRWINDALE STA PARKING STRUCTURE - CONSTRUCTION	316	180	175	14.Apr.14 07:00 A	21.Aug.15 15:00	4										
SYSTEMS INTERGRATION TESTING - PHASE 1	185	181	4	09.Dec.14 07:00 A	25.Aug.15 15:00	4										
IRWINDALE PARKING STRUCTURE - COMMUNICATIONS INSTL / TEST	45	45	0	25.May.15 07:00	24.Jul.15 15:00	4										
SYSTEMS INTERGRATION TESTING - PHASE 2	44	44	0	26.Aug.15 07:00	26.Oct.15 15:00	4										
C1135 - >>>SUBSTANTIAL COMPLETION - 1420 CD<<<<	0	0	0		26.Oct.15 15:00*	5										
ALIGNMENT DELIVERY DATE - SECONDARY - CRITICAL PATH																
TPSS No.10 - INSTALLATION & TESTING	52	41	19	18.Nov.14 07:00 A	09.Feb.15 15:00	5										
OCS - TESTING - SEGMENT 4	20	20	0	10.Feb.15 07:00	09.Mar.15 15:00	5										
OCS - TESTING - SEGMENT 1	20	20	0	10.Mar.15 07:00	06.Apr.15 15:00	5										
OCS - TESTING - SEGMENT 2	20	20	0	07.Apr.15 07:00	04.May.15 15:00	5										
ALIGNMENT DELIVERY DATE - TERTIARY CRITICAL PATH																
INTERLOCK '3' (ND2056) - INSTALL INSTRUMENT HOUSE/WIRE & TERMINATIONS	35	5	40	20.Oct.14 07:00 A	19.Dec.14 15:00	6										
INTERLOCK PULL SIGNAL CABLE ('3' to '4')	25	15	0	15.Dec.14 07:00 A	02.Jan.15 15:00	6										
INTERLOCK PULL SIGNAL CABLE ('2' to '3')	20	20	0	05.Jan.15 07:00	30.Jan.15 15:00	6										
INTERLOCK TEST SIGNAL CABLE ('6' to '7')	10	10	0	12.Jan.15 07:00	23.Jan.15 15:00	6										
INTERLOCK PULL SIGNAL CABLE ('1' to '2')	20	20	0	02.Feb.15 07:00	27.Feb.15 15:00	6										
INTERLOCK TEST SIGNAL CABLE ('1' to '2')	20	20	0	02.Mar.15 07:00	27.Mar.15 15:00	6										
INTERLOCK TEST SIGNAL CABLE ('7' to '8')	10	10	0	30.Mar.15 07:00	10.Apr.15 15:00	6										



CRITICAL PATH FLOAT TREND



Revenue Operations Date Critical Path - (216 Calendar Days)

This period, the critical path shifted from the Metro P3010 LRV procurement to the Metro Rail Operations Center (ROC) upgrade project. The critical path originates at the procurement and delivery of the SCADA consoles. Upon the completion of delivery, the consoles and displays will be installed and tested. The critical path continues through Pre-Revenue Operations, which is expected to be completed by March 15, 2016. The Revenue Operations Date (ROD) is projected to be complete by April 28, 2016, which is seven (7) months ahead of the Funding Agreement Milestone date of November 30, 2016. However, Metro is forecasting a March 2016 Revenue Operations Date.

Alignment Delivery Date Critical Path - (5 Calendar Days / 4 Work Days)

The Irwindale Parking Structure, which is currently being constructed by Webcor continues to be the primary critical path. Upon reaching the completion of the concrete structure and electrical room, FTC will be granted access to complete the communications installation at the Irwindale Parking Structure. The critical path continues through systems integration testing and upon completion, FTC will achieve Substantial Completion and turn-over to Metro for System Start-up Testing.

The elements of work which are near critical include, Soldano TPSS commissioning and testing, train control signal cable installation. Other elements of construction work, which are in progress and near critical are Irwindale Station mechanical, electrical, and finish installations; Segments 2 & 4 OCS installations. Other Facility work, which is near critical includes Citrus Parking Structure and the Maintenance & Operations Campus .

Project Float

The project float for the Revenue Operations Date is 216 days. The critical activities on this path are on schedule to meet the Target Revenue Operations Date of November 2016. The Alignment Delivery Date float value remained unchanged this period. The Alignment Delivery Date is currently 5 days ahead the October 31, 2015 deadline.



Description: Alignment Design / Build

Status: December 15, 2014

Contract No.: C1135

Contractor: Foothill Transit Constructors (Kiewit-Parsons J.V.)

Progress Completed This Period

Design

- Submit - Integrated Test Plan
- Submit AFC Design - Emergency Trip Station BOP
- Submit AFC Design - Duarte Station Ramp Modifications
- Submit AFC Design - Train Control Group 'E' Revisions
- Submit AFC Design - Train Control Group 'B' Revisions
- Submit AFC Design - Train Control Group 'D' Revisions

Construction

- See "Construction Progress This Period"

Activities Planned Next Period

Design

- None

Construction

- See "Construction Progress Next Period"

Areas of Concern

- ***Irwindale Parking Communications*** - The C1150 Design-Build Contractor is currently behind schedule to complete the structure by March 2015. As a result, the C1135 Design-Build Contractor will potentially be delayed accesses to the facility to begin the communications installation work, which will have an impact on the completion of Phase 1 systems integration testing. The Authority will evaluate the C1150 Design-Build Contractor's mitigation plan to recover lost time due to SCE shoring and pump station re-design delays. After evaluation of the plan, the Authority will review potential options to minimize the potential delay.

Areas of Concern (Continued)



Description: Alignment Design / Build

Status: December 15, 2014

Contract No.: C1135

Contractor: Foothill Transit Constructors (Kiewit-Parsons J.V.)

Cost Summary:

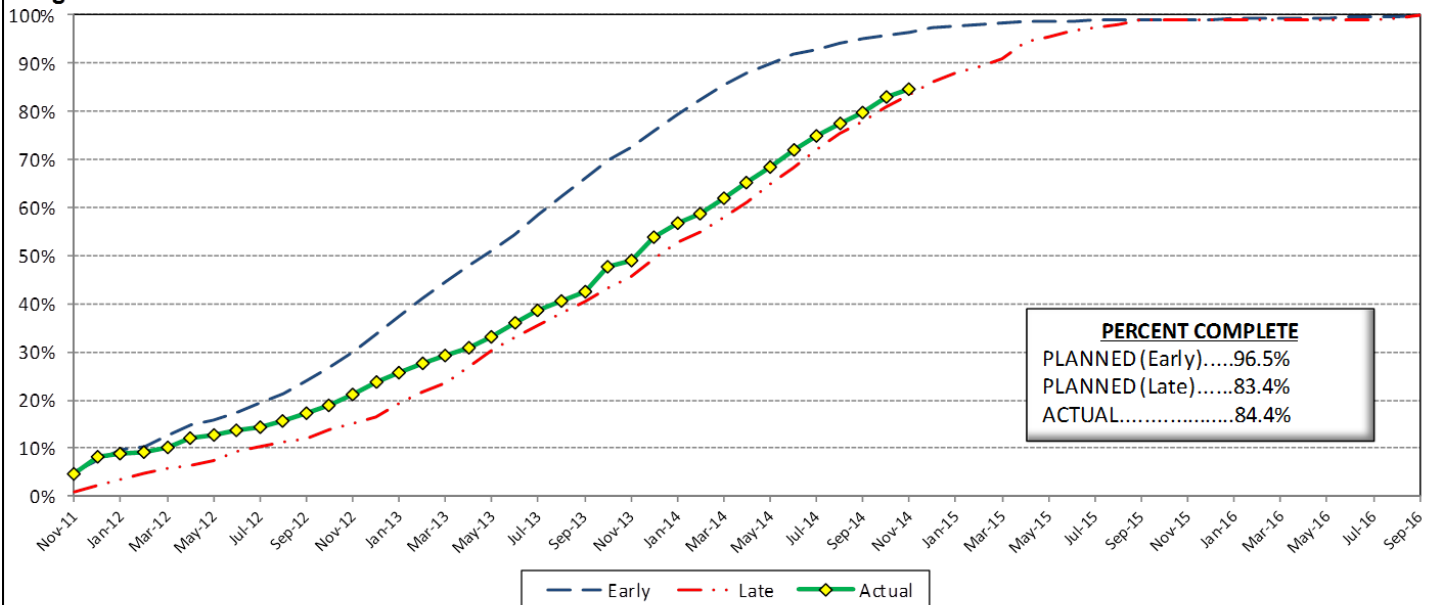
	Million(s)
CONTRACT	
Contract Award Value:	485.9
Executed Change Orders:	16.9
Current Contract Value:	502.8
Potential Change Orders:	2.2
Current Forecast:	504.9
Eamed Value/Actual Cost	411.5
AUTHORIZATION FOR EXPENDITURE	
Budget	514.5
Commitment	502.8
Balance	9.6

Cost Assessment:

This period the Contract forecast increased \$807 Thousand. The major increase was due to the following: PCO 075.00 - *Comm Changes Parking Structures*, RFC 075 - *Grade Xing Train Signal Changes*, RFC 077 - *Mountain Ave Pedestrian Crossing Changes*, RFC 081 - *Car Puller for Wheel Truing Machine*, PCO 082 - *M&O Guard House Changes*, PCO 102 - *M&O Interior Wall Revisions*.

The Design-Build Contractor has eamed 411.5 Million and is currently 84.4% complete. The progress is currently 12.1% behind the early planned curve, which is due to Segment 2 & 4 OCS, and Segment 1, 2, 4 train control installation progress.

Progress Curve



Schedule Summary:

Contract Award:	07/27/11
Interim Notice to Proceed (INTP) :	11/03/11
Original Contract Duration:	1,780 Calendar Days
Current Contract Duration:	1,780 Calendar Days
Elapsed Time from NTP:	1,138 Calendar Days

Contract Milestones

Milestones	Description	Original Contract	Current Contract	Forecast	Variance
1	Substantial Completion	09/23/15	09/23/15	10/26/15	(33)
2	Punchlist Complete	06/19/16	06/19/16	07/22/16	(33)
3	Final Completion	09/17/16	09/17/16	10/20/16	(33)
4	Access - IFS Br.	12/15/12	12/15/12	12/15/2012 A	0
5	Test Track Complete	03/27/15	03/27/15	04/05/15	(9)
6	Colorado Br. Demo Complete	02/01/12	02/01/12	6/15/2012 A	(135)

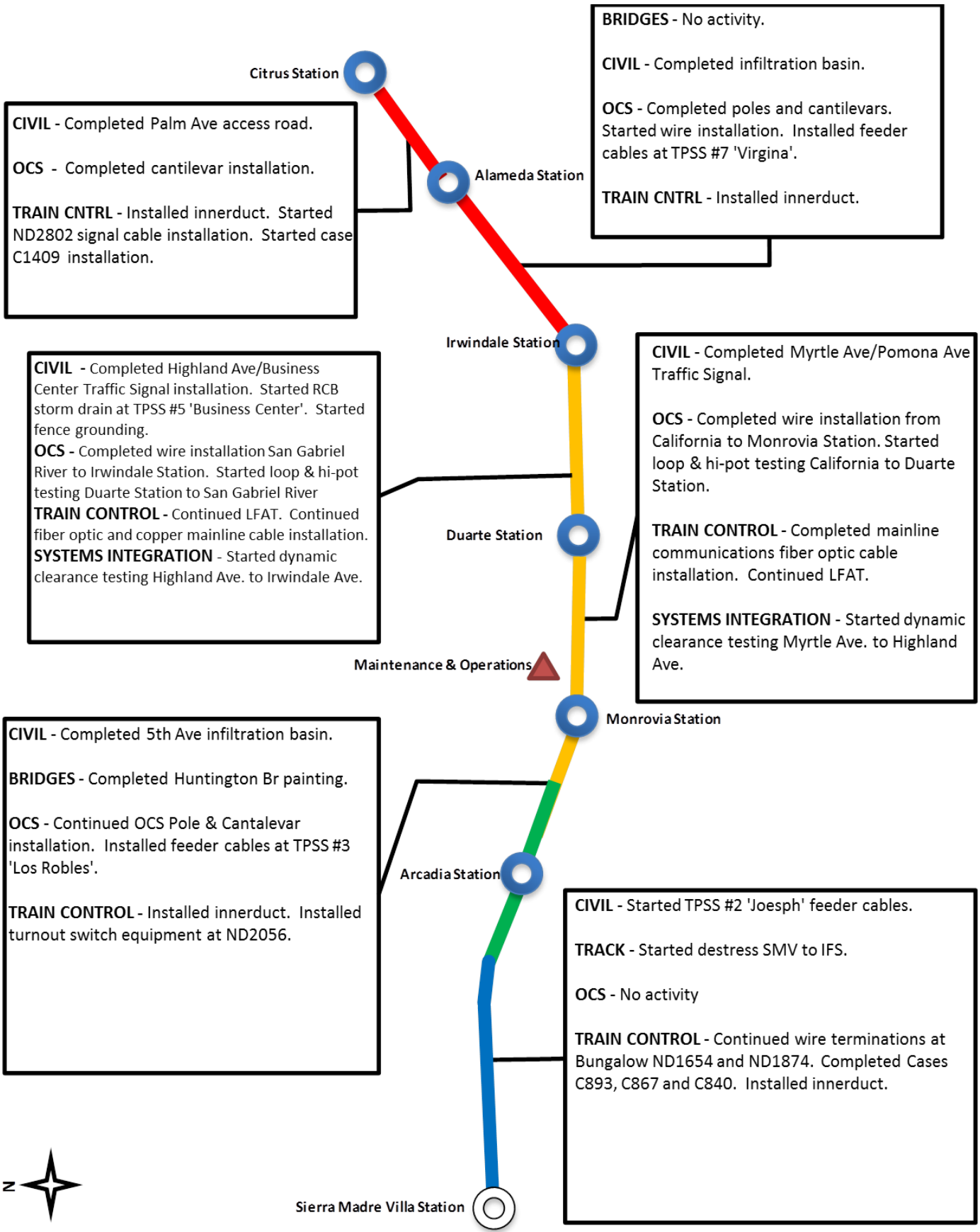
Schedule Assessment:

With the progress continuing to trend at the rate of the late progress curve, activities in all Segments continue to approach near critical. The Design-Build Contractor continues to meet the requisite use of resources in order to meet the critical elements of the schedule. At this time, the primary activities which are critical or near critical by Segment are as follows: Segment 1 - Train Control Installation, Segment 2 - Train Control Installation, Segment 3 - Duarte Station mechanical/electrical & finishes and M&O yard lead, Segment 4 - OCS Installation, and Inwindale Station mechanical/electrical & finishes. Maintenance & Operations Facility - train control installation & testing.

The Test Track Completion is forecast to be available on April 5, 2015, which is 9 days behind the target date.



ALIGNMENT CONSTRUCTION PROGRESS THIS PERIOD





FACILITY CONSTRUCTION PROGRESS THIS PERIOD

Citrus Ave Station

STATION - Started communications bungalow wire terminations. Completed platform paver installation. Started metal roofing.

PARKING - Completed level 3 columns, shear walls, and deck. Started Level 1 barrier walls. Started installation of stairs. Started elevator hoist way structural steel installation.

STATION - Continued canopy metal roofing. Continued electrical /communications bungalow wire installation & terminations. Started platform paver installation.

PARKING - No activity.

Alameda Station

STATION - Started canopy metal roofing installation. Continued wire installation & terminations.

PARKING - Completed pump station concrete lift 5 walls. Completed MSE Wall lifts 12 - 17 blocks. Completed soil nail wall lifts 4 - 6. Started Line 'A' & 'B' storm drains and 6" fire water line.

Irwindale Station

STATION - Continued installation communications equipment and terminations. Continued electrical wiring.

PARKING - No activity.

CIVIL - Completed yard lead grading.

WALLS - Completed Wall 'F' installation.

TRACK - Completed initial Yard Lead track ballast. Start ed installation of Yard Lead 1 & 2 turnouts. Start ed Yard Lead 1 tail track installation. Started car wash lead track installation.

STRUCTURES - *M&O Building* - Completed MEP rough-in installations. Continued drywall installation. Completed exterior insulation. Completed roofing installation. Continued Blow Down Steel installation. Started elevator installation. *Car Wash* - Continued exterior metal panels, start installation of car wash equipment. *Cleaning Platform* - Startd electrical wiring & lights. *Material Storage* - No activity. *MOW Building* - Completed MEP rough-in.

OCS - Started south yard OCS pole cantilever installations. Completed feeder cable installation.

TRAIN CONTROL - Completed wire termination at North bungalows. Started wire terminations at South bungalows.

Duarte Station

STATION - Completed lighting installation. Continued communications installation and wire terminations.

PARKING - Completed electrical equipment installation . Continued lighting fixtures and fire protection installation at levels 3 & 4 . Continued communications equipment and wire installation. Completed painting elevator steel hoist way and stairs. Started installation of electrical transformer.

Maintenance & Operations

Monrovia Station

STATION - Continued communications wire terminations, Continued electrical wire installation. Continued platform lighting installation.

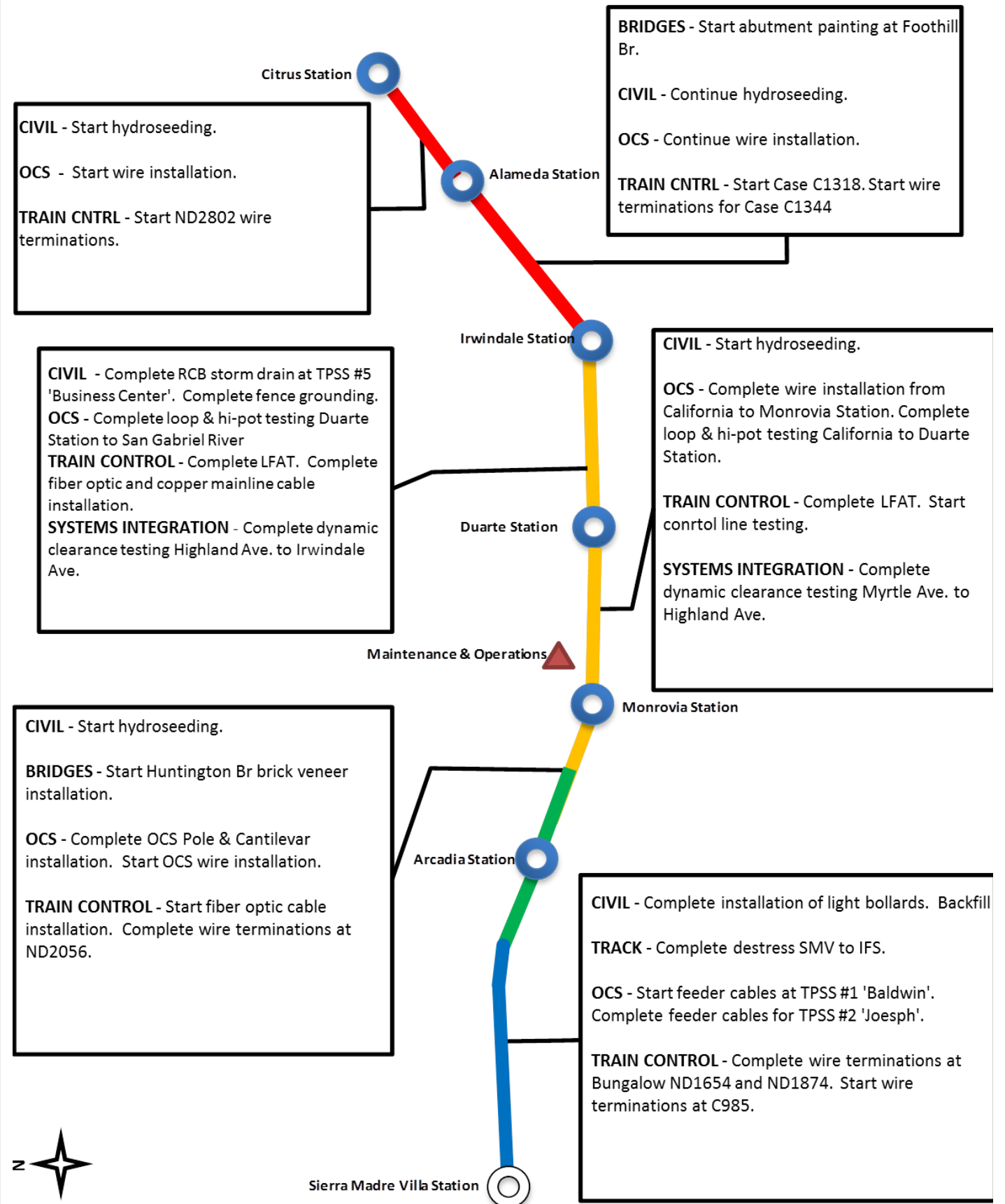
PARKING - Started communications wiring and installations. Completed elevator hoist way structural steel paint. Started installation of elevator rails and jack.

Arcadia Station





ALIGNMENT CONSTRUCTION PROGRESS NEXT PERIOD





FACILITY CONSTRUCTION PROGRESS NEXT PERIOD

Citrus Ave Station

STATION - Continue communications bungalow wire terminations. Continue metal roofing installation.
PARKING - Complete installation of stairs and elevator hoist way structural steel. Continue barrier rail concrete. Start installation of CMU walls for elevator and electrical rooms. Start Level 1 plumbing, fire protection, and electrical rough-in.

STATION - Continue canopy metal roofing installation. Continue electrical /communications bungalow wire installation & terminations. Complete platform paver installation.
PARKING - No activity planned.

Alameda Station

STATION - Start platform paver installation. Continue canopy metal roofing installation. Continue wire installation & terminations.
PARKING - Complete MSE wall and soil nail wall. Start parking structure foundation excavations.

Irwindale Station

CIVIL - Start 3M north lot demo. Complete installation of storm water detention system. Start Wall 'A' fence installation.
WALLS - No activity.
TRACK - Complete installation of Yard Lead 1 & 2 turnouts. Complete car wash lead track installation.
STRUCTURES - *M&O Building* - start interior doors & glazing. Complete drywall installation. Complete exterior metal panels. Complete car hoist installation. Complete Blow Down and Wheel Truing Steel installation. Complete elevators. *Car Wash* - Complete exterior metal panels, Continue installation of car wash equipment. Start roof installation. *Cleaning Platform* - Start drywall, doors, glazing, and tile. *Material Storage* - Start roll-up doors. *MOW Building* - Start roll-up doors.
OCS - Start OCS wire installations.
TRAIN CONTROL - Complete wire terminations at South bungalows. Continue track circuits, yard signals and Xing gates.

STATION - Complete installation communications equipment and terminations. Complete electrical wiring.
PARKING - No activity planned.

Duarte Station

STATION - Complete lighting installation. Complete communications installation and wire terminations.
PARKING - Continue communications equipment and wire installation. Re-paint elevator steel hoist way. Start hoist way glazing. Start installation of electrical transformer.

Maintenance & Operations

Monrovia Station

STATION - Continue communications wire terminations, Continue electrical wire installation
PARKING - Continue communications wiring and installations. Complete hoistway glazing installation. Start installation of elevator equipment and cabs.

Arcadia Station



ALIGNMENT CONSTRUCTION IMAGES

Segment 1: Michillinda TPSS Cabinet Installation



Segment 2: Arcadia Station Wire Pull for Switch Control



Segment 3: OCS Work

ALIGNMENT CONSTRUCTION IMAGES (CONTINUED)



Segment 4: Irwindale Station Progress

Segment 4: Foothill Bridge Cable Installation



Operations Campus: Bi-fold Train Doors at Paint Shop being installed



Change Management Log

Date: 1/5/2015

Page: 1 of 5

Project: C1135 Alignment - FTC Contract #: C1135

Original Contract Amount:	\$485,867,000				
Approved Change Orders:	\$17,133,504	3.53%	Pending Change Orders:	\$272,434	0.06%
Current Contract Total:	\$503,000,504		Pending Contract Total:	\$503,272,938	3.58%

Change Orders

Number	Change Management	Title	Initiated Date	Approved Date	Outstanding Days	Time Extension	Amount
EXECUTED Change Orders							
001.00	000.00	Interim NTP	11/3/2011	11/3/2011	0		\$0
002.00	013.00	Colorado Bridge Haz Mat	5/17/2012	5/18/2012	1		\$121,382
002.01	013.01	Colorado Bridge HazMat - Final	9/5/2012	9/7/2012	2		\$13,164
003.00	001.00	Sound Wall Deletion - Duarte Road	7/12/2012	7/18/2012	6		(\$74,707)
004.00	018.00	Revise Block Design - CBD Calc	8/23/2012	8/29/2012	6		\$3,986
004.01	018.01	Revise Block Design - CBD Calc - 2	9/5/2013	9/11/2013	6		\$0
005.00	023.00	Wayside Signal Aspect Revision	9/6/2012	9/7/2012	1		\$26,072
005.01	023.01	Wayside Signal "Call On" Function	10/30/2013	11/1/2013	2		\$75,169
006.00	040.00	Arcadia Frieze, Bench-Artist Design	9/6/2012	9/10/2012	4		\$13,683
006.01	040.01	Arcadia Frieze, Bench-Construction	3/7/2013	3/12/2013	5		\$155,894
007.00	019.02	Soils Testing Abutments & Fdns	9/14/2012	9/18/2012	4		\$44,993
008.00	041.00	Unknown Utilities RFCN 005 006 008	9/14/2012	9/18/2012	4		\$132,450
009.00	038.00	Illuminate City Names @ Stations	9/18/2012	9/24/2012	6		\$184,657
010.00	046.00	SGRB - Lead Based Paint Remediation	9/21/2012	9/24/2012	3		\$244,536
011.00	004.00	Station Architectural Changes	10/11/2012	10/12/2012	1		\$443,950
012.00	003.01	Systems and Testing for Added TPSS	12/13/2012	12/14/2012	1		\$1,443,193
013.00	005.02	IDIQ Comm Contract (Rev 2)	12/14/2012	1/22/2013	39		\$698,259
014.00	060.00	Sewer Encasement Changes in Azusa	12/18/2012	1/24/2013	37		\$141,354
015.00	037.02	M&O - Materials Storage Revisions	12/26/2012	1/15/2013	20		\$62,862
015.01	037.03	M&O Storage Shelving Revisions	9/16/2013	9/19/2013	3		\$20,380
016.00	002.00	Relocation of Access Road to 3M Fac	12/26/2012	1/16/2013	21		\$53,814
017.00	025.00	3 Electrical Casings for ALW	2/27/2013	3/1/2013	2		\$219,033
018.00	073.00	Hazardous Abatement at Bridges	1/15/2013	2/6/2013	22		\$1,081,803
019.00	054.00	City of Hope Conduits	1/11/2013	1/22/2013	11		\$34,313
020.00	059.00	Citrus TPSS Transformer Pad Changes	2/6/2013	2/7/2013	1		\$34,536
021.00	075.00	Demo & Replace Palm Dr. Roadway	2/7/2013	2/14/2013	7		\$90,365
022.00	077.00	M&O Differing Site Conditions; Pt 1	2/13/2013	2/15/2013	2		\$66,360
022.01	093.00	M and O DSC T and M Work Part 2	3/8/2013	3/12/2013	4		\$66,625
022.02	103.00	M and O DSC Part 3	3/27/2013	3/28/2013	1		\$35,211
022.03	115.00	DSC at M and O Part 4	5/3/2013	5/7/2013	4		\$5,706
023.00	089.00	Contaminated Soil Abatement	2/26/2013	2/27/2013	1		\$422,068
024.00	068.00	Monrovia Sound Wall Panel Change	2/26/2013	2/28/2013	2		(\$24,150)
025.00	052.00	Santa Anita Trail Detour	3/8/2013	3/12/2013	4		\$27,691
026.00	070.00	Block Type Change at M&O Building	3/26/2013	3/26/2013	0		\$35,016
027.00	065.00	M&O IT Changes-Duct Banks/Conduits	3/26/2013	3/26/2013	0		\$88,650
027.01	065.01	M&O IT Changes - Power to WAP	9/4/2013	9/6/2013	2		\$73,049
027.02	065.02	M&O IT Changes - Remaining Work	7/16/2014	7/17/2014	1		\$155,991
028.00	039.01	Delete Layover Building	4/11/2013	4/12/2013	1		(\$313,832)
029.00	095.00	8in Sanitary Sewer Line- Alameda Av	4/23/2013	4/25/2013	2		\$226,089
029.01	095.01	Alameda Sewer Line Revised Scope	11/22/2013	11/26/2013	4		(\$37,425)
030.00	102.00	M&O-Disconnect Switches, Insulators	4/23/2013	4/25/2013	2		\$67,817
031.00	110.00	Rmv Abandoned Utility Line @ Dalton	4/23/2013	4/25/2013	2		\$1,562
032.00	104.00	Highland Ave Abandoned CMP sleeves	5/1/2013	5/3/2013	2		\$15,005
033.00	114.00	Remove contaminated wood culvert	5/3/2013	5/7/2013	4		\$4,714
034.00	128.00	M&O Backup Power/Generator Changes	5/13/2013	5/21/2013	8		\$121,340



Change Management Log

Project: C1135 Alignment - FTC Contract #: C1135

Change Orders

Number	Change Management	Title	Initiated Date	Approved Date	Outstanding Days	Time Extension	Amount
EXECUTED Change Orders							
035.00	083.00	M&O Vehicle Sanding System Changes	5/21/2013	5/24/2013	3		\$27,463
036.00	006.00	IFS Related Contract Changes	6/7/2013	6/11/2013	4		(\$263,111)
037.00	137.00	CTS Redesign	7/12/2013	7/16/2013	4		\$58,214
038.00	138.00	Segment 4 Safety Manager	7/12/2013	7/16/2013	4		\$157,274
038.01	138.01	Segment 4 Safety manager - Part 2	11/19/2013	11/21/2013	2		\$72,963
038.02	138.02	Segment 4 Safety Manager - Part 3	4/3/2014	4/7/2014	4		\$82,271
039.00	085.00	M&O Drainage System Enhancements	7/19/2013	8/13/2013	25		\$251,579
040.00	067.00	Station Paver Changes	7/23/2013	8/13/2013	21		\$728,340
040.01	067.01	Rebar Changes for Station Pavers	10/28/2013	10/31/2013	3		\$10,586
041.00	112.00	12" Pasadena Waterline Potholes	8/12/2013	8/16/2013	4		\$19,735
042.00	150.00	Demo Abandoned Water Lines @ Dalton	8/12/2013	8/16/2013	4		\$5,937
043.00	007.01	Emer. Backup for Guideway Lighting	8/16/2013	10/1/2013	46		\$359,158
044.00	172.00	Contaminated Wood Culvert Sta. 1202	8/27/2013	8/28/2013	1		\$7,712
045.00	139.00	BLS Changes	8/28/2013	9/4/2013	7		\$110,801
046.00	165.00	Azusa-Alameda Station; 2nd Portal	8/28/2013	9/4/2013	7		\$77,175
047.00	145.00	St. Joseph drainage enhancements	9/4/2013	9/6/2013	2		\$17,592
048.00	149.00	M&O - Lights at NW Corner Park	9/4/2013	9/6/2013	2		\$29,351
049.00	174.00	TPSS #5 Cal-Am Power Conflict	9/4/2013	9/6/2013	2		\$127,260
050.00	171.00	Relocate Access Stair to Foothill	9/4/2013	9/6/2013	2		\$20,276
051.00	173.00	Dalton 8" Water Line Work	9/5/2013	9/12/2013	7		\$35,316
052.00	071.00	Duarte Rd Screen Wall Change	9/5/2013	9/17/2013	12		(\$133,864)
053.00	176.00	Remove Contaminatd Wood-Buena Vista	9/10/2013	9/12/2013	2		\$5,543
054.00	147.00	DECCO Bypass	9/10/2013	9/12/2013	2		\$18,519
055.00	166.00	Foothill Blvd. Water/SD Relocation	9/20/2013	9/20/2013	0		\$127,074
056.00	186.00	Contaminated Wood @ San Gabriel Ave	9/23/2013	9/24/2013	1		\$4,291
057.00	194.00	California/Duarte Water Line Work	10/28/2013	10/31/2013	3		\$220,743
058.00	189.00	Four Utility Changes	10/28/2013	10/31/2013	3		\$14,157
059.00	180.00	Remove/Dispose of ACM E of Highland	10/30/2013	11/1/2013	2		\$29,311
060.00	179.00	CTS Upgrade to OC-192	10/30/2013	11/1/2013	2		\$112,543
061.00	213.00	Irwindale On-ramp Stockpile	11/8/2013	11/21/2013	13		\$200,185
062.00	053.00	Delete Totten Tubes Scope of Work	11/8/2013	11/21/2013	13		(\$143,801)
063.00	146.00	Home Depot Striping and Signing	11/15/2013	11/21/2013	6		\$21,003
064.00	204.00	Unknown Duct Bank @ San Gabriel Ave	11/15/2013	11/21/2013	6		\$1,265
065.00	140.00	M&O-Overhead Work Platform Changes	12/5/2013	12/16/2013	11		\$317,656
066.00	217.00	Buried SD & Headwall, STA 1306+50	12/6/2013	12/17/2013	11		\$1,020
067.00	219.00	Contaminated Soil, Monrovia Station	12/12/2013	12/17/2013	5		\$17,503
068.00	220.00	DSC at Sawpit Wash Abutments	12/12/2013	12/17/2013	5		\$12,668
069.00	188.00	Costco Emergency Gate-Path to POS	1/21/2014	1/22/2014	1		\$19,882
070.00	214.00	M&O - Generator Load Bank	1/21/2014	1/22/2014	1		\$38,092
071.00	224.00	Alameda South Water Line Tie-in	1/30/2014	1/31/2014	1		\$6,330
072.00	202.00	Aesthetic Lighting Provisions-SGRB	2/3/2014	2/4/2014	1		\$27,055
073.00	160.00	Move Mountain Interlocking Bungalow	2/11/2014	2/13/2014	2		\$68,596
074.00	200.00	M&O Parts Carousel Warranty & PM	2/11/2014	2/13/2014	2		\$68,906
075.00	235.00	Remove Contaminated Wood Ties	2/14/2014	2/18/2014	4		\$4,571
076.00	234.00	Accelerate Work at California Ave	2/14/2014	2/18/2014	4		\$5,663
077.00	247.00	Line Stop in California	2/18/2014	2/20/2014	2		\$14,524
078.00	201.00	Added Sound Wall, SW of IFS	2/27/2014	2/28/2014	1		\$18,201
079.00	238.00	M&O-MOW Canopy Structural Eval	2/27/2014	2/28/2014	1		\$7,147
079.01	238.01	M&O - MOW Canopy Solar	8/20/2014	8/26/2014	6		\$714,659
080.00	232.00	Car Moving Tractor-Coupler Upgrade	2/27/2014	2/28/2014	1		\$177,145



Change Management Log

Date: 1/5/2015

Page: 3 of 5

Project: C1135 Alignment - FTC Contract #: C1135

Change Orders

Number	Change Management	Title	Initiated Date	Approved Date	Outstanding Days	Time Extension	Amount
EXECUTED Change Orders							
081.00	242.00	Car Moving Tractor Options/Features	2/27/2014	2/28/2014	1		\$69,099
082.00	091.00	Rockvale Water Line Mitigation	3/4/2014	3/5/2014	1		\$163,750
082.01	091.01	Rockvale Water Line-EIC credit	4/11/2014	4/14/2014	3		(\$5,391)
083.00	251.00	Cut and Move Rail to Segment 1	3/4/2014	3/5/2014	1		\$249,934
084.00	218.00	Delete Equipment at ROC	3/26/2014	3/27/2014	1		(\$91,708)
085.00	239.00	Install Sound Wall Door @ STA. 1169	3/26/2014	3/27/2014	1		\$12,737
086.00	250.00	Change Top Row of Block Wall 1124.1	3/26/2014	3/27/2014	1		\$3,688
087.00	229.00	Inwindale TPSS-Adjust Eqpt. Layout	4/3/2014	4/7/2014	4		\$17,878
088.00	262.00	Provisional Sum Adjustment	4/3/2014	4/7/2014	4		\$0
088.01	262.01	Provisional Sum Adjustment - 2	9/19/2014	9/25/2014	6		\$0
088.02	262.02	Provisional Sum Adjustment - 3	11/12/2014	11/14/2014	2		\$0
089.00	261.00	Longer DF Bolts - SGRB	4/3/2014	4/7/2014	4		\$17,331
090.00	169.02	M&O Trimming Table Changes (rev. 2)	4/11/2014	4/14/2014	3		\$54,083
091.00	181.00	Alameda Utility Changes	4/11/2014	4/14/2014	3		(\$9,599)
092.00	241.00	Business Center TPSS Crane Changes	4/23/2014	4/28/2014	5		\$13,655
093.00	276.00	Myrtle Early Completion Incentive	4/23/2014	4/28/2014	5		\$160,000
094.00	254.00	Drainage East of Pasadena Ave.	4/23/2014	4/28/2014	5		\$6,569
095.00	275.00	Remove Rail Ties at 1st/Santa Clara	4/23/2014	4/28/2014	5		\$2,270
096.00	274.00	Buried Concrete @ Huntington Bridge	4/23/2014	4/28/2014	5		\$2,819
097.00	269.00	Asbestos Pipe at Duarte and Myrtle	4/23/2014	4/28/2014	5		\$6,583
098.00	278.00	Abandoned Gas Line at California	5/6/2014	5/7/2014	1		\$8,170
099.00	170.00	M&O Car Wash Betterments	5/6/2014	5/7/2014	1		\$166,144
100.00	223.00	M&O-Volume Control for PA Speakers	5/6/2014	5/7/2014	1		\$38,105
101.00	283.00	Track Work Around at Mountain Ave	5/6/2014	5/7/2014	1		\$29,996
102.00	284.00	Install 115# Buffer Rails in Seg. 1	5/6/2014	5/7/2014	1		\$29,442
103.00	230.00	Azusa-Citrus Ped Crossing Operation	5/6/2014	5/7/2014	1		\$84,183
104.00	231.00	Red Signal Violation Indication	6/3/2014	6/3/2014	0		\$335,134
105.00	253.00	Remove Stem Wall along Duarte Rd.	6/11/2014	6/12/2014	1		\$37,527
106.00	271.00	DVR Changes	7/16/2014	7/17/2014	1		\$181,301
107.00	260.00	M&O Supplemental Fire Water System	7/16/2014	8/4/2014	19		\$1,642,824
108.00	163.00	1st/Santa Clara Grade X-ing Changes	7/25/2014	7/30/2014	5		\$156,177
109.00	164.00	M&O Body Shop Changes	7/25/2014	8/4/2014	10		\$488,598
110.00	256.00	Monrovia North Bunglow LCP Changes	7/25/2014	7/30/2014	5		\$125,313
111.00	237.00	M&O-Signaling System Changes	7/29/2014	8/4/2014	6		\$1,133,746
112.00	252.00	Inwindale Security Kiosk Provisions	8/4/2014	8/6/2014	2		\$178,044
113.00	281.00	M&O - Accent Colors	8/4/2014	8/6/2014	2		\$26,928
114.00	305.00	Lead Paint, Foothill Median Barrier	8/18/2014	8/20/2014	2		\$5,690
115.00	270.00	TES Load Flow Simulation	8/19/2014	8/21/2014	2		\$22,399
116.00	203.00	Mayflower Driveway/Wall Credit	8/20/2014	8/26/2014	6		(\$19,138)
117.00	307.00	Contaminated Wood Ties-Santa Anita	8/20/2014	8/26/2014	6		\$3,226
118.00	082.01	M&O / 3M Fence Revisions (rev 1)	9/17/2014	9/25/2014	8		\$886,650
119.00	314.00	Mountain Early Completion Incentive	9/17/2014	9/24/2014	7		\$80,000
120.00	301.00	Santa Anita Avenue Bridge Artwork	9/17/2014	9/25/2014	8		\$57,224
121.00	313.00	Additional Traffic Signal Testing D	9/19/2014	9/25/2014	6		\$7,875
122.00	320.00	Remove Asbestos Pipe at Virginia	11/12/2014	11/14/2014	2		\$9,485
123.00	303.00	Additional Anti-Graffiti Coating	12/8/2014	12/8/2014	0		\$63,727
124.00	326.00	Santa Anita Avenue Bridge Lighting	12/8/2014	12/8/2014	0		\$208,633
125.00	335.00	M&O - Interior Wall Revisions	12/18/2014	12/19/2014	1		\$43,786
126.00	304.00	M&O Lobby Aesthetic Changes	12/18/2014	12/19/2014	1		\$128,047



Change Management Log

Date: 1/5/2015

Page: 4 of 5

Project: C1135 Alignment - FTC Contract #: C1135

Change Orders

Number	Change Management	Title	Initiated Date	Approved Date	Outstanding Days	Time Extension	Amount	
EXECUTED Change Orders								
127.00	292.00	M&O - Guard House Changes	12/19/2014	12/19/2014	0		\$65,463	
							Subtotal:	\$17,133,504
PENDING Change Orders								
128.00	339.00	Mountain Ped. Crossing Changes	1/5/2015		0		\$96,159	
129.00	340.00	Business Center TPSS Drainage	1/5/2015		0		\$176,275	
							Subtotal:	\$272,434
							Subtotal:	\$272,434
							Total:	\$17,405,938

Open PCOs

PCO Number	Title
OPEN	
022.03	M&O IT Changes - Comm Room Floors
029.00	Del. Irwindale/Gladstone Mitigation
053.01	Irwindale Ramp Changes (Rev 1)
070.01	Irwindale Security Kiosk - Part 2
073.00	Virginia TPSS Access Road
075.00	Comm. Changes Parking Structures
075.01	Add 2 ETELS to Duarte Parking Lot
076.00	M&O Tactile Guidance Changes
080.00	Delete Evergreen / Myrtle Mitigation
081.00	Eliminate 'Train Coming' Signs
084.00	M&O Service Vehicle Pathways
085.00	Joseph TPSS Power Feed Credit
087.00	ETEL/PTEL Faceplate Betterment
091.00	UP Tunnel Analysis & Modifications
092.00	Abandoned California Water Lines
093.00	Replace Existing OCS Pole at SMV
094.00	Add Pavers to Duarte Station W. Ramp
095.00	M&O Facility-Paint OCS Feeder Poles
096.00	Station Identifier Changes
098.00	M&O Facility - NW Corner Changes
099.00	Rail Profile Grinding
100.00	Change Wayside Operational Signage
101.00	Peck Road Ramp

Open RFCs

RFC Number	Title
OPEN	
075.00	Grade X-ing Train Signal Changes CS
078.00	Addl Fence To Close Gaps at Alignmn
081.00	Car Puller for WI Tring Machine CSP

Open RFC Notices

Number	Title
037.00	DSC at Santa Anita Wash Abutment 1
044.00	DSC Utility at Azusa Avenue



Change Management Log

Date: 1/5/2015

Page: 5 of 5

Project: C1135 Alignment - FTC Contract #: C1135

Open RFC Notices

Number	Title
071.00	Create Access for TPSS No. 7 Delive
080.00	Irwindale Signal Case Location
083.00	Sierra Madre Track Rehab
084.00	Delay in Setting of Yard Substation
086.00	Ground Grid Damaged at Citrus TPSS
088.00	Change to Exit Gate Procedure



Description: Intermodal Parking Facilities & Enhancements **Status:** December 15, 2014

Contract No.: C1150

Contractor: Webcor Builders

Progress Completed This Period

Design

- Submit AFC Design - Azusa-Citrus Parking Structure (full set)
- Submit AFC Design - Irwindale Parking Structure (full set)

Activities Planned Next Period

Design

- Submit AFC Design - Arcadia Parking Structure Revisions
- Submit AFC Design - Irwindale Enhancements (full set)
- Submit AFC Design - Monrovia Parking Structure Revisions

Areas of Concern

- **IRWINDALE PARKING STRUCTURE RECOVERY** - The Design-Build Contractor is currently sixty-nine (69) days behind the revised Contractual Completion date of June 13, 2015. The delay is attributed to the SCE Pole Shoring and Irwindale pump station re-design. The schedule impact will potentially impact the C1135 Design-Build Contractor's communications installation work and the completion of systems integration testing. The Authority has discussed the potential schedule recovery solutions with the Design-Build Contractor in order to mitigate the impacts. Upon the completion of the Soil Nail and MSE wall, the Design-Build Contractor will begin a 6 day work week schedule to mitigate the lost time.

Areas of Concern (Continued)



Description: Intermodal Parking Facilities & Enhancements **Status:** December 15, 2014

Contract No.: C1150

Contractor: Webcor Builders

Cost Summary:

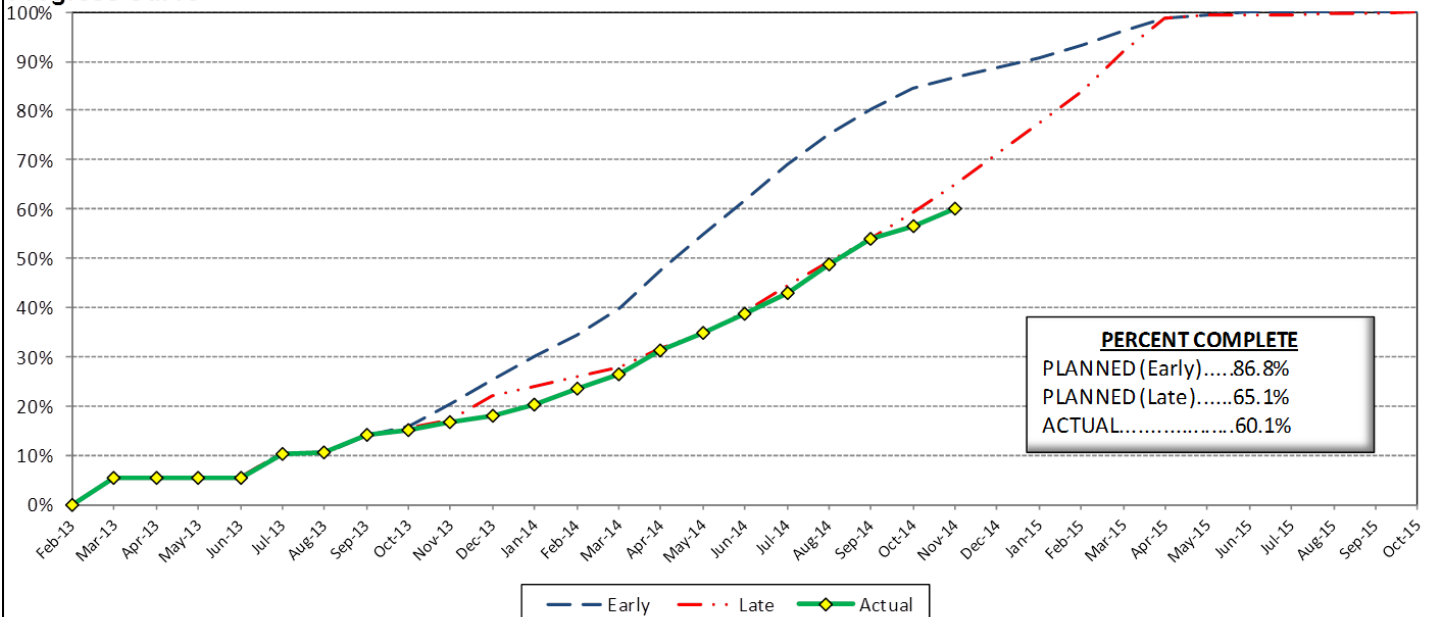
	Million(s)
CONTRACT	
Contract Award Value:	48.8
Executed Change Orders:	0.6
Current Contract Value:	49.4
Potential Change Orders:	0.5
Current Forecast:	49.8
Earned Value/Actual Cost	29.8
AUTHORIZATION FOR EXPENDITURE	
Budget	50.3
Commitment	49.4
Balance	0.4

Cost Assessment:

The current cost forecast is 49.8 Million and has decreased \$17 Thousand from the previous period. The decrease is due to the addition of PCO 013 - *Primrose Ave Cul-de-sac Deletion*. The decrease was offset by increases due to the addition of RFC 021 - Additional Slurry for City of Arcadia, RFC 005 - Irwindale CCTV Pole, RFC 018 - Engineering Costs for Arcadia Clock. The current forecast is within the authorized budget.

Although a 90 day time extension was granted, the Design-Build Contractor remains behind the revised plan due to schedule delays at the Irwindale site.

Progress Curve



Schedule Summary:

Contract Award:	02/27/13
Notice to Proceed (NTP) :	03/20/13
Original Contract Duration:	845 Calendar Days
Current Contract Duration:	935 Calendar Days
Elapsed Time from NTP:	635 Calendar Days

Contract Milestones

Milestones	Description	Original Contract	Current Contract	Forecast	Variance
1	Substantial Completion	03/15/15	06/13/15	08/21/15	(69)
2	Punchlist Complete	05/29/15	08/27/15	11/04/15	(69)
3	Final Completion	07/13/15	10/11/15	12/19/15	(69)
4	TPSS Work	03/01/14	03/01/14	3/31/2014 A	(30)

Schedule Assessment:

The critical path is currently through the Irwindale site preparation. The final concrete lift for the pump station is near complete this period. Both the MSE wall and Soil Nail wall installations are in progress, and are critical to support the start of the parking structure foundations and complete the site underground utility work. Approximately 17 or 18 MSE wall lifts and 5 of 7 Soil Nail wall lifts have been completed.

The Design-Build Contractor is approximately 69 days behind schedule, which is due to the pump station re-design, SCE pole shoring installation and MSE installation productivity. However, if the Design-Build Contractor is going to meet the Contractual Dates identified in Change Order No.4, then the Design-Build Contractor will need to mitigate the delays by accelerating the MSE wall and soil nail wall activities. After the MSE/Soil Nail wall is complete, the Design-Build Contractor is planning to start 6-Day work week once the parking structure concrete work begins.

PARKING FACILITY CONSTRUCTION IMAGES

Arcadia Elevator - Glass Installation Complete



Monrovia Elevator - Steel Framing Installed

PARKING FACILITY CONSTRUCTION IMAGES

Irwindale Parking Structure Foundation Layout



Azusa-Citrus Elevator - Steel Framing Installed

Azusa-Citrus Parking Structure Site Overview





Change Management Log

Date: 1/5/2015

Page: 1 of 2

Project: C1150 Parking - Webcor Contract #: C1150

Original Contract Amount:	\$48,750,000				
Approved Change Orders:	\$885,122	1.82%	Pending Change Orders:	\$6,220	0.01%
Current Contract Total:	\$49,635,122		Pending Contract Total:	\$49,641,342	1.83%

Change Orders

Number	Change Management	Title	Initiated Date	Approved Date	Outstanding Days	Time Extension	Amount
EXECUTED Change Orders							
001.00	001.00	Monrovia Parking Alternative Layout	6/25/2013	7/11/2013	16		\$21,382
001.01	001.01	Monrovia Alternative - Cancellation	9/17/2013	10/7/2013	20		(\$12,006)
002.00	003.00	Clock Tower Procurement	7/3/2013	7/11/2013	8		\$107,246
003.00	002.00	Relocate Elevator @ Azusa-Citrus PF	12/18/2013	1/8/2014	21		\$159,899
004.00	013.00	Irwindale Structure Relocation	1/23/2014	8/28/2014	217	90	(\$65,564)
005.00	018.00	Monrovia Demo Unforeseen Conditions	3/18/2014	3/26/2014	8		\$17,013
006.00	010.00	Arcadia Transit Plaza Betterments	3/14/2014	3/26/2014	12		\$35,466
007.00	009.01	Irwindale Intersection Betterments	3/25/2014	3/26/2014	1		\$19,985
008.00	017.00	Irwindale Intersection Water Line	3/25/2014	4/14/2014	20		\$7,748
009.00	020.00	Unforeseen Underground Demo-Arcadia	6/13/2014	7/9/2014	26		\$6,313
010.00	011.00	Soldano TPSS Added ROW Fence	7/24/2014	7/28/2014	4		\$8,481
011.00	024.00	SCE Power Feed to DB2 Arcadia TPSS	7/24/2014	7/28/2014	4		\$17,199
012.00	025.00	Additional Sidewalk at Arcadia	7/24/2014	7/28/2014	4		\$3,342
013.00	006.00	St. Joseph Drainage Enhancements	7/31/2014	7/31/2014	0		\$139,488
014.00	012.00	Additional Conduit Provisions	8/13/2014	9/3/2014	21		\$57,262
015.00	030.00	Unforeseen Conditions at Michillinda	8/22/2014	8/28/2014	6		\$1,643
016.00	019.00	Parking Facility Artwork	8/27/2014	8/28/2014	1		\$75,850
017.00	034.00	Michillinda Conduit Demo & Pull Box	11/12/2014	11/20/2014	8		\$31,506
018.00	016.00	Monrovia Canopy & Color Betterments	12/19/2014	12/29/2014	10		\$247,577
020.00	039.00	Engineering Costs for Arcadia Clock	12/17/2014	12/29/2014	12		\$5,292
Subtotal:							\$885,122
Subtotal:							\$885,122

PENDING Change Orders							
019.00	035.00	Irwindale CCTV Pole	12/29/2014		7		\$6,220
Subtotal:							\$6,220
Subtotal:							\$6,220
Total:							\$891,342

Open PCOs

PCO Number	Title
OPEN	
008.00	Azusa-Citrus Plaza Pavers
013.00	Primrose Avenue cul-de-sac Deletion
014.00	Delete Azusa-Alameda Enhancements
017.00	Michillinda Pull Box Replacement
018.00	Irwindale Kiosk Foundation
019.00	Michillinda TPSS Design Modification

Open RFCs

RFC Number	Title
OPEN	
007.00	Added PME Switch & 2 Spare Conduits
011.00	Comm. Duct Bank Interface with DB2
012.00	SCE Capacitor Bank at Michillinda T
013.00	EDEL Enclosures
015.00	Metro Requested Elevator Vent Detail
017.00	Elevator Holding Tanks
019.00	Temporary Power for Irrigation at M



Change Management Log

Date: 1/5/2015

Page: 2 of 2

Project: C1150 Parking - Webcor Contract #: C1150

Open RFCs

RFC Number	Title
021.00	Additional Slurry for City of Arcad

Open RFC Notices

Number	Title
016.00	Irwindale Added FH for LACFD Code C
020.00	Azusa Citrus Grand Pylon Power
023.00	Generator for Monrovia Elevators
024.00	Relocate Monrovia Jobsite Trailers

AZUSA TO MONTCLAIR SEGMENT

ACTIVITIES COMPLETED THIS PERIOD

Authority and City staff continued to hold coordination meetings to discuss the project. A draft of the Master Cooperative Agreement (MCA) has been distributed to all cities for review, after which all parties will convene to discuss and negotiate the MCA for execution. The MCA is expected to be agreed upon by all parties by April 30, 2015.

The Authority has also initiated the restart of the Station Design Art Program (SDAR) and has held regular coordination meetings with the SDAR committees from each city. In November, the Authority conducted a tour of the Gold Line Phase 1 artwork for the SDAR members of each city.

This period, Authority staff worked on the following technical elements of the project:

- Continued advancement of the plan and profile drawings
- Began right-of-way survey and drawings
- AECOM began surveying work
- AECOM began geotechnical work
- AECOM began Pomona parking facility conceptual design

KEY FUTURE ACTIVITIES

The advanced conceptual engineering process is an 18-month process. Upon completion, the Azusa to Montclair segment will be ready for a design-build procurement. Upcoming activities include continuing to attend coordination meetings with each corridor city, development of the ROW drawing work, refinement of the alignment, completing the SDAR, and completing the geotechnical investigations.

Federal Transit Administration (FTA)

The Metro Board of Directors excluded the Gold Line from seeking federal New Starts funding. The Authority will work together with Metro along with the Congressional delegation to seek funding to construct the extension following completion of the environmental review.



PHASE II FOOTHILL EXTENSION FINANCIAL STATUS

Project Operating Budget Summary in Millions of Dollars

December 31, 2014

	(a)	(b)	(c=a-b)	(d)
FINANCIAL PLAN	Current Budget	Funding Committed to Project	Uncommitted Funds	Revenues Received
SCAG	1.0	0.9	0.1	0.9
Interest Income	2.0	2.0	-	2.0
Bridge Replacement	13.9	13.9	-	13.9
Phase I Carryover	4.0	4.0	-	4.0
Maintenance and Operations Facility	-	-	-	-
Cities	11.0	-	11.0	-
Measure R - Pasadena to Azusa	810.5	777.0	33.5	460.7
Measure R - Azusa to Montclair	-	-	-	-
SANBAG	55.2	1.5	53.7	1.5
Federal TCSP	2.9	2.9	-	2.8
Federal Bus Intermodal Plan	9.0	9.0	-	4.6
Federal New Starts 2004 MTA Passthrough	4.0	4.0	-	4.0
Federal New Starts 2005 MTA Passthrough	0.5	0.5	-	0.5
Federal New Starts 2006 Corridor Study	2.5	2.5	-	2.5
Federal/Other	1,033.5	-	1,033.5	-
Total Revenues	1,950.0	818.2	1,131.8	497.4
	(a)	(b)	(c)	(d=a-b)
	Current Budget	Current Obligation	Current Expenditures	Current Available Balance
EXPENSES				
Program Management and Administration	108.9	99.0	96.2	9.9
Master Cooperative Agreements	11.0	3.3	2.7	7.7
Real Estate including ROW Acq	21.0	21.0	19.7	-
Special Programs	0.3	-	-	0.3
Procurement/Vehicles	60.0	-	-	60.0
Maintenance and Operations Facility Land	22.0	22.0	22.0	-
Construction - IFS	19.8	19.8	19.8	-
Construction - Pasadena to Azusa segment	328.9	328.9	293.9	-
Construction - Azusa to Montclair segment	1,181.0	-	-	1,181.0
Construction - M&O	47.0	44.0	33.6	2.0
Construction - Parking Structures	44.2	44.2	34.1	-
MTA Project Costs	64.0	64.0	14.3	-
Contingency	27.4	-	-	27.4
Project Reserve	14.5	-	-	14.5
Total Project	1,950.0	646.2	536.3	1,303.8