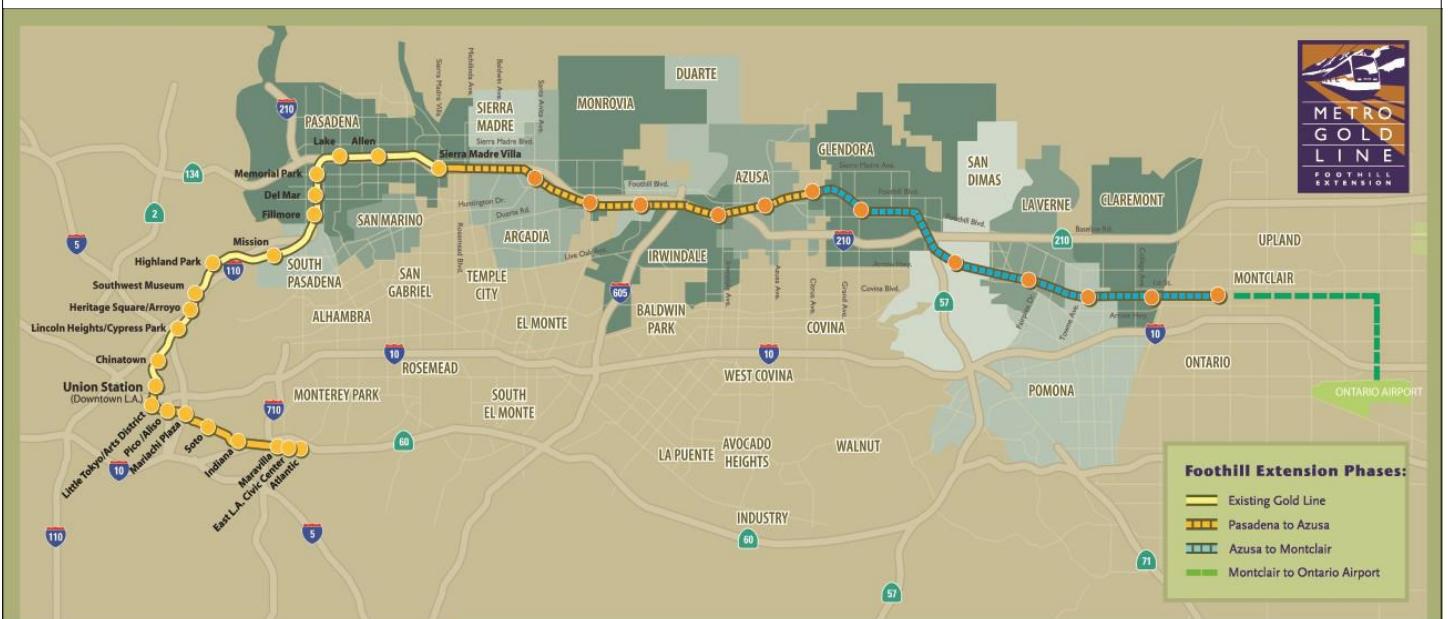


Metro Gold Line

Foothill Extension Project

Monthly Project Status Report

February 2014



Metro Gold Line

Connecting Los Angeles, the San Gabriel Valley and Inland Empire



TABLE OF CONTENTS

PHASE II FOOTHILL EXTENSION PROJECT STATUS

Project Description	3
Pasadena to Azusa Segment	4
Management Issues	4
Key Activities Completed This Period	5
Key Future Activities	6
Critical Path Schedule	7
Critical Path Float Trend	8
Alignment Contract Status	9
Alignment Construction Progress This Period	11
Facility Construction Progress This Period	12
Alignment Construction Progress Next Period	13
Facility Construction Progress Next Period	14
Alignment Construction Images	15
Alignment Change Management Log	17
Parking Facilities and Enhancements Contract Status	20
Parking Facilities and Enhancements Construction Images	23
Parking Facilities and Enhancements Change Management Log	24
Azusa to Montclair Segment	25
Ontario Airport Segment	26
Financial Status	27

FOOTHILL EXTENSION PROJECT DESCRIPTION

The Authority's mandate is to plan, design and construct a 37-mile light rail link between Downtown Los Angeles and Claremont. In addition, the San Bernardino Associated Governments (SANBAG) has requested that planning be extended one mile inside San Bernardino County to the City of Montclair and then to Ontario Airport.

The Metro Gold Line Phase II (Foothill Extension) corridor includes the cities of Pasadena, Arcadia, Monrovia, Duarte, Irwindale, Azusa, Glendora, San Dimas, La Verne, Pomona, Claremont, and Montclair; and the counties of Los Angeles and San Bernardino (Figure 1). The Foothill Extension is estimated to cost approximately \$1.7 billion.

The Foothill Extension will be built in two segments to align effectively with projected cash flows and financial capacity constraints. The first segment is defined from the Sierra Madre Villa Station in Pasadena to the city of Azusa. Revenue service along this segment is planned for the year 2015. The second segment would include an extension from Azusa to the City of Montclair with revenue service projected for the year 2017 and the third segment will be comprised of an extension from Montclair to the Ontario Airport.

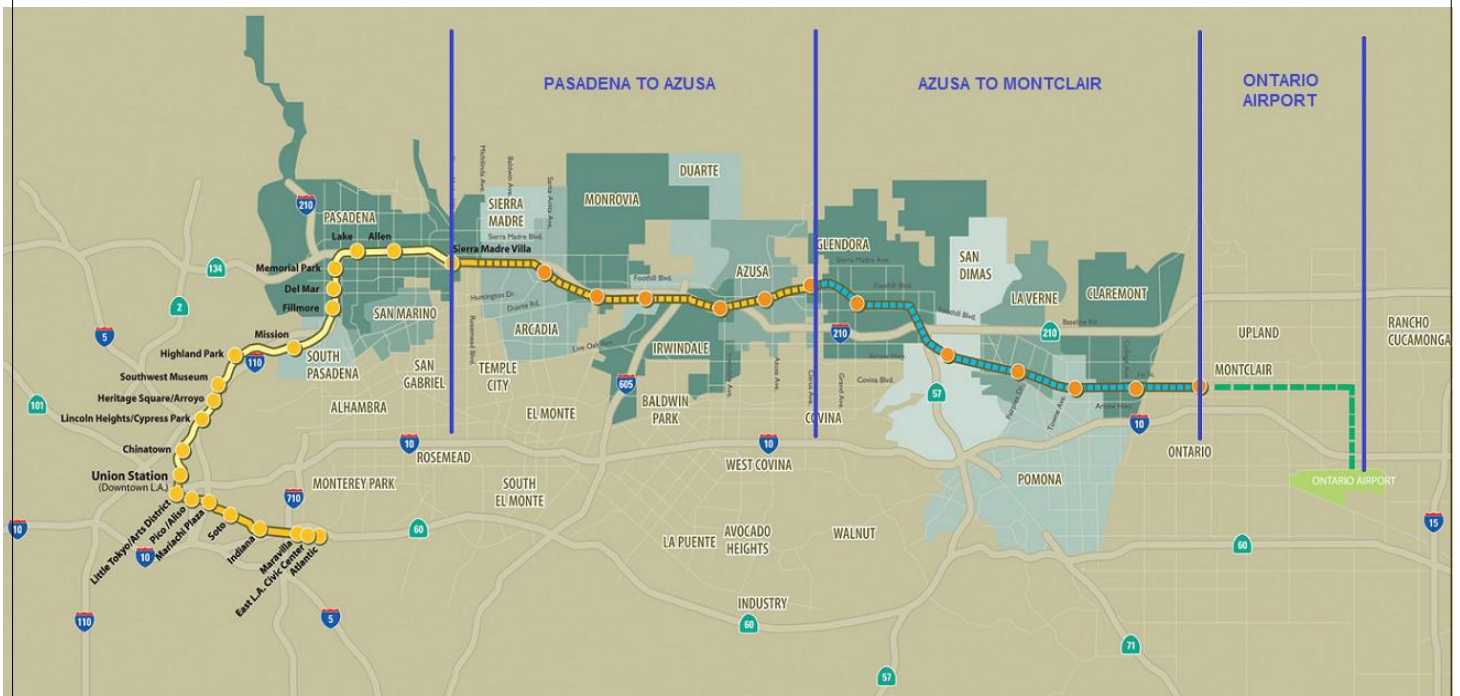


Figure 1: Metro Gold Line Foothill Extension Alignment



Pasadena to Azusa Segment

MANAGEMENT ISSUES

Metro Betterments

During the design process Metro staff have identified betterments that Metro staff would like to add to the project. Metro has provided a final disposition on all but a few items. Authority staff continues to work with Metro staff to resolve the remaining items.

TPSS Delivery Dates

The traction power substations (TPSS) provide equipment to transform utility power to power required for Light Rail Vehicle (LRV) propulsion, and then distribute that power to the LRVs via the overhead wires. Metro is responsible for purchasing the traction power substations. Currently, Metro's schedule indicates that the traction power substation delivery schedule is late. This is a major concern for the Authority as it has potential to impact the project schedule; however, staff is coordinating with Metro and FTC to ensure minimal impact to the project.



KEY ACTIVITIES COMPLETED THIS PERIOD

Staff continued to attend coordination meetings with cities along the alignment

Authority staff continues to meet with Metro staff to review and discuss the status of the Pasadena to Azusa segment

Held regular meetings with the C1135 (DB2) contractor, Foothill Transit Constructors (FTC) and participated in construction site visits and audits

FTC reports the following SBE statistics for the month of November:

- Current SBE commitment: \$ 59,500,000
- SBE percent committed versus value of Project: 15.72%
- Overall Authority Project SBE goal: 16%

FTC reports the following approximate safety statistics to date:

- 580,807 total work hours performed by FTC, Mass Electric, and Subcontractors
- 4 recordable injuries reported
- 0 lost time injuries reported

Webcor reports the following approximate safety statistics to date:

- 28,926 total work hours performed by Webcor and Subcontractors
- 0 recordable injuries reported
- 0 lost time injuries reported

Continued installation of duct bank, underdrain, and sub-ballast throughout the project (near complete)

Continued trackwork at the Gold Line Operations Campus (Campus)

Continued OCS and Site Lighting Pole erection at the Campus

Continued bridge work at Rosemead, Huntington, Kincaid, and Foothill

Completed Michillinda and Baldwin bridges

Continued work at Azusa-Downtown, Azusa-Citrus, Irwindale, Duarte, Monrovia and Arcadia stations

Continued construction of San Gabriel, Myrtle, and 1st & Santa Clara crossings

Continued installation of freight track between San Gabriel River Bridge and MillerCoors

Continued construction of light rail mainline track

Continued to hold design and coordination meetings with DB3 contractor, Webcor Builders, for the Intermodal Parking Facilities and Enhancements Contract 1150

Authority continued reviewing design submittals for Azusa-Citrus and Irwindale structures and enhancements

Continued construction of Arcadia and Monrovia Parking Structure footings and concrete placement

Webcor continued work at Irwindale intersection, and Michillinda and Soldano TPSS sites



KEY FUTURE ACTIVITIES

Continue discussions with corridor cities regarding the project

Continue management of the Alignment contract, which will include oversight of construction activities and preparation for start-up activities

Continue to meet with Intermodal Parking Facilities and Enhancements Project contractor, Webcor Builders regarding design of the Project

Continue to attend to any issues that may come up by the cities or other stakeholders along the alignment

Complete trackwork at the Campus

Complete construction of the bridges at Foothill, Kincaid, Huntington, and Rosemead

Complete construction of all stations

Finish work at San Gabriel, Myrtle, and 1st & Santa Clara grade crossings

Begin work at Virginia, Magnolia, and Mountain grade crossings

Finalize design for first three Parking Facilities

Finalize the following property acquisitions:

- Arcadia:
 1. Parcel 1301a – Motion for Possession filed with the court
 2. Parcel 1301b – Agreement reached. Ready to sign PSA
 3. Parcel 1308 (223 N. First Ave) – Motion for Possession filed with the court
 4. Parcel 6039 (325 N. Santa Anita Ave) – PSA being signed by sellers
- Monrovia:
 1. Parcel 1802/6035/6030 (1522 S. Mayflower Ave) – Revised dimensions. Waiting for revised Purchase Agreement to be signed.
 2. Parcel 1805/6035/6030 (1602 S. Mayflower Ave) – Revised dimensions. Waiting for revised Purchase Agreement to be signed. Ready for escrow.
- Duarte:
 1. Parcel 6041/6042 (1500 Duarte Rd) – Accepted. Purchase and sale agreement being reviewed by seller's counsel
- Irwindale:
 1. Parcel 6028 (16009 Avenida Padilla) – Accepted. Possession in April
- Azusa:
 1. Parcel 6032 (819 W. 6th St) – In escrow
 2. Parcel 6033 (809 E. Santa Fe) – Negotiating with property owner

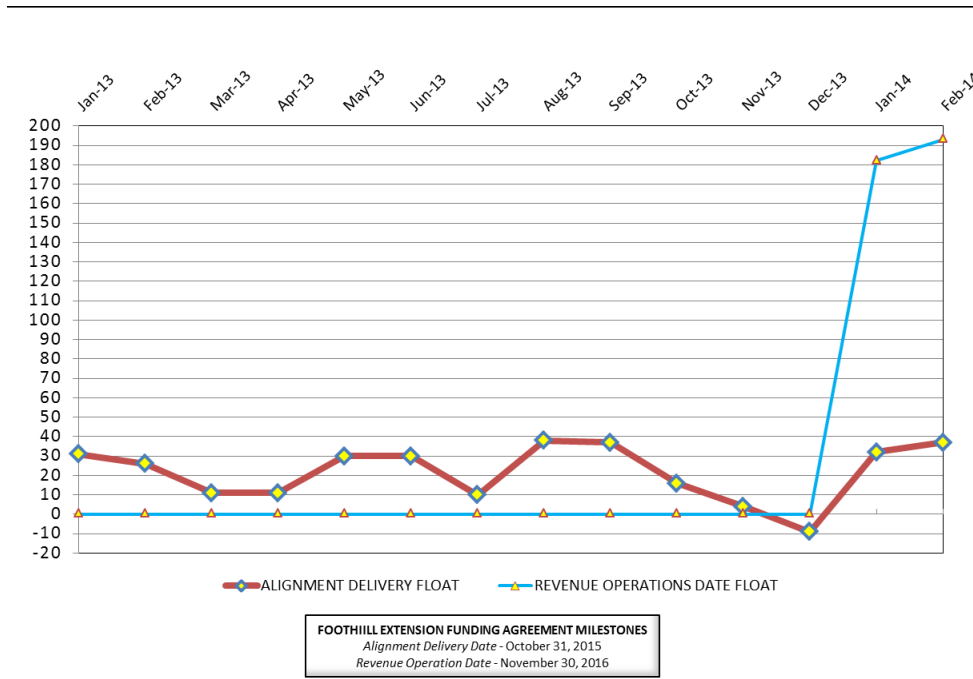


CRITICAL PATH SCHEDULE

Activity Name	OD	RD	AD	Start	Finish	Total Float																				
							2012			2013			2014			2015			2016							
							Q2	Q3	Q4	Q1	Q2	Q3	Q4	Q1	Q2	Q3	Q4	Q1	Q2	Q3	Q4	Q1	Q2	Q3	Q4	
REVENUE OPERATIONS DATE - CRITICAL PATH																										
RFP - LRV PROCUREMENT	375	0	557	18.Oct.10 08:00 A	26.Apr.12 15:00 A																					
LRV FABRICATION / DELIVER 15 VEHICLES	1353	613	547	17.Aug.12 07:00 A	20.Oct.15 15:00	197	[Gantt bar showing duration from Q3 2012 to Q4 2015]																			
METRO - Pre-Revenue Operations - Phase 2A	60	60	0	25.Oct.15 07:00	23.Dec.15 15:00	193	[Gantt bar showing duration from Q4 2015 to Q4 2016]																			
Phase 2A - Revenue Operations Date (ROD)	0	0	0		21.May.16 15:00*	193	[Gantt bar showing duration from Q4 2016 to Q1 2017]																			
METRO - Project Schedule Contingency (5 Mo.)	150	150	0	24.Dec.15 07:00	21.May.16 15:00	193	[Gantt bar showing duration from Q4 2015 to Q1 2017]																			
ALIGNMENT DELIVERY DATE - CRITICAL PATH																										
HUNTINGTON BRIDGE - CONSTRUCTION	165	147	25	13.Jan.14 07:00 A	09.Sep.14 15:00	26	[Gantt bar showing duration from Q1 2014 to Q3 2014]																			
HUNTINGTON BRIDGE REHABILITATION - CONSTRUCTION	50	50	0	30.Jul.14 07:00	07.Oct.14 15:00	26	[Gantt bar showing duration from Q3 2014 to Q4 2014]																			
TRACK INSTALLATION - SEGMENT 2	105	105	0	19.May.14 07:00	10.Oct.14 15:00	26	[Gantt bar showing duration from Q2 2014 to Q4 2014]																			
INTERLOCK '3' - INSTALL INSTRUMENT HOUSE/WIRE & TERMINATIONS	45	45	0	09.Sep.14 07:00	10.Nov.14 15:00	26	[Gantt bar showing duration from Q3 2014 to Q4 2014]																			
INTERLOCK PULL SIGNAL CABLE ('3' to '4')	30	30	0	30.Sep.14 07:00	10.Nov.14 15:00	26	[Gantt bar showing duration from Q4 2014 to Q1 2015]																			
INTERLOCK TEST SIGNAL CABLE ('3' to '4')	20	20	0	11.Nov.14 07:00	08.Dec.14 15:00	26	[Gantt bar showing duration from Q4 2014 to Q1 2015]																			
INTERLOCK TEST SIGNAL CABLE ('1' to '2')	20	20	0	09.Dec.14 07:00	05.Jan.15 15:00	26	[Gantt bar showing duration from Q1 2015 to Q1 2015]																			
INTERLOCK TEST SIGNAL CABLE ('2' to '3')	20	20	0	06.Jan.15 07:00	02.Feb.15 15:00	26	[Gantt bar showing duration from Q1 2015 to Q1 2015]																			
INTERLOCK TEST SIGNAL CABLE ('7' to '8')	21	21	0	03.Feb.15 07:00	03.Mar.15 15:00	26	[Gantt bar showing duration from Q1 2015 to Q1 2015]																			
INTERLOCK TEST SIGNAL CABLE ('6' to '7')	21	21	0	04.Mar.15 07:00	01.Apr.15 15:00	26	[Gantt bar showing duration from Q1 2015 to Q1 2015]																			
INTERLOCK TEST SIGNAL CABLE ('5' to '6')	21	21	0	02.Apr.15 07:00	30.Apr.15 15:00	26	[Gantt bar showing duration from Q1 2015 to Q1 2015]																			
C1135 - >>>SUBSTANTIAL COMPLETION - 1420 CD<<<	0	0	0		24.Sep.15 15:00*	37	[Gantt bar showing duration from Q4 2016 to Q1 2017]																			
SYSTEMS INTERGRATION TESTING	125	125	0	03.Apr.15 07:00	24.Sep.15 15:00	26	[Gantt bar showing duration from Q1 2015 to Q4 2015]																			
METRO - System Testing & Start-Up - Phase 2A	30	30	0	25.Sep.15 07:00	24.Oct.15 15:00	193	[Gantt bar showing duration from Q4 2015 to Q4 2015]																			



CRITICAL PATH FLOAT TREND



Revenue Operations Date Critical Path - (182 Calendar Days)

The Metro Light Rail Vehicle Fabrication remains on the critical path this period. This period, Metro's P3010 Vehicle Procurement indicates the 15th vehicle will be delivered by October 2015, which is one month earlier than the previous projection. Upon completion of the delivery, Pre-Revenue Operations will begin and it is anticipated that it will be completed by December 2015.

Since the project has surpassed the 50% mark, Metro has reduced the 10 month schedule contingency to 5 months. As a result, the Metro Revenue Operations Date is June 2016, which is 6 months ahead of the target date per the Funding Agreement date of November 2016. However, Metro is forecasting a March 2016 Revenue Operations Date.

Alignment Delivery Date Critical Path - (36 Calendar Days)

This period, FTC has further mitigated delays due to the Foothill Freight Bridge fabrication and installation by re-sequencing the Segment 4 OCS installation and testing. The mitigation has removed the Foothill Freight Bridge from the primary critical path and as a result the Huntington Bridge fabrication and installation has emerged onto the primary critical path. Currently, the Huntington Bridge abutments are under construction, and the bridge shop drawings are under review. Upon approval of the shop drawings, the bridge fabrication will commence. The bridge installation is targeted for completion by September 2014. The critical path continues through rehabilitation of the existing Huntington Bridge, which will allow the completion of the final section of Segment 2 track between 1st/Santa Clara to 5th Avenue. The remainder of the critical path continues through the train control installation and testing, which will be followed by systems integration testing. Upon the completion of Systems Integration testing, FTC will achieve Substantial Completion and turn-over to Metro for Pre-Revenue Testing .

Other elements of construction work, which are in progress and near critical are Rosemead Bridge Rehabilitation, Myrtle Grade Crossing, Segment 4 Retaining Walls, Segment 4 Grading & Drainage, and Foothill Freight Bridge.

Project Float

The project float for the Revenue Operations Date improved to 193 days. The critical activities on this path are on scheduled to meet the Target Revenue Operations Date of November 2016. The Alignment Delivery Date float value improved 4 days this period. The Alignment Delivery Date is currently 36 days ahead the October 31, 2015 deadline.



Description: Alignment Design / Build

Status: February 15, 2014

Contract No.: C1135

Contractor: Foothill Transit Constructors (Kiewit-Parsons J.V.)

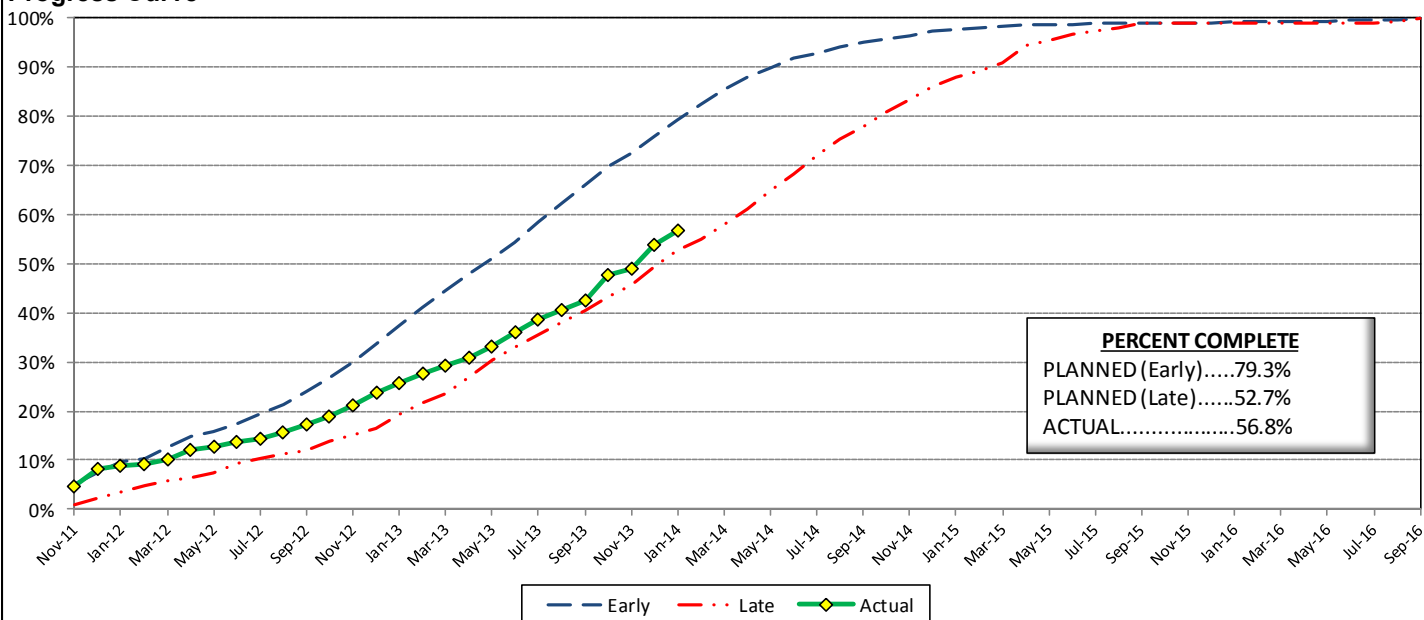
Cost Summary:

	Million(s)
CONTRACT	
Contract Award Value:	485.9
Executed Change Orders:	8.9
Current Contract Value:	494.8
Potential Change Orders:	3.6
Current Forecast:	498.4
Earned Value/Actual Cost	274.9
AUTHORIZATION FOR EXPENDITURE	
Budget	507.6
Commitment	503.6
Balance	5.2

Cost Assessment:

This period the Contract forecast increased \$1.1 million. The major increase were due to RFC 022 - M&O Facility Train Control & Signaling Sys , PCO 065 - Azusa-Citrus Ped Crossing Operation, PCO 066 - Red Signal Violation Indication, and PCO 067 - Brandt Truck Coupler Upgrade. The period cost increase was offset by cost decrease which were due to PCO 022.02 - M&O IT Changes, PCO 027 - Aesthetic Lighting Provisions-SGRB, and PCO043 - St. Joseph Sound Wall. The Design-Build Contractor has earned 274.9 Million and is currently 56.8% complete. The progress is currently 22.5% behind the early planned curve, which is due to fabrication and delivery progress for materials such as Special Track Work, Steel Bridge Girders and M&O Equipment. In addition, the Segment 3 track work installation and Azusa Citrus and Alameda Stations are behind the baseline plan.

Progress Curve



Schedule Summary:

Contract Award:	07/27/11
Interim Notice to Proceed (INTP) :	11/03/11
Original Contract Duration:	1,780 Calendar Days
Current Contract Duration:	1,780 Calendar Days
Elapsed Time from NTP:	835 Calendar Days

Contract Milestones

Milestones	Description	Original Contract	Current Contract	Forecast	Variance
1	Substantial Completion	09/23/15	09/23/15	09/24/15	(1)
2	Punchlist Complete	06/19/16	06/19/16	06/20/16	(1)
3	Final Completion	09/17/16	09/17/16	09/18/16	(1)
4	Access - IFS Br.	12/15/12	12/15/12	12/15/2012 A	0
5	Test Track Complete	03/27/15	03/27/15	04/11/15	(15)
6	Colorado Br. Demo Complete	02/01/12	02/01/12	6/15/2012 A	(135)

Schedule Assessment:

The critical path improved five (5) days from the previous period. The improvement is due to revised OCS installation and testing sequence in Segment 4. The revised sequence has removed the Foothill Freight bridge from the critical path and it has also alleviated the negative float on the Substantial Completion milestone. As a result of the revised sequencing, the Huntington Bridge fabrication and installation has emerged as the primary critical path.

The schedule contains minimal float between all Segments and will require concurrent installation of track work in Segments 1, 3 and 4. In addition, OCS installation will require early access to begin pole installations after track line sections are completed within each segment.

The Test Track Completion is forecast to be available on April 11, 2015, which is 35 days behind the target date.



Description: Alignment Design / Build

Status: February 15, 2014

Contract No.: C1135

Contractor: Foothill Transit Constructors (Kiewit-Parsons J.V.)

Progress Completed This Period

Design

- Submit AFC Design - SCADA
- Submit AFC Design - Train Control Book of Plans (Zone 12)
- Submit AFC Design - Train Control Book of Plans (Zone 4)
- Submit AFC Design - Tramming Table
- Submit AFC Design - Myrtle Traffic Signals
- Submit AFC Design - M&O Fence
- Submit AFC Design - S&I Platform Bettements
- Submit AFC Design - TPSS Landscaping
- Submit AFC Design - Fence and Wall Revisions
- Submit AFC Design - Caltrans Standpipe Pedestal
- Submit AFC Design - Bridge Stray Current Modifications

Construction

- See "Construction Progress This Period"

Activities Planned Next Period

Design

- Submit AFC Design - Mountain Bungalow Drainage & Fence

Construction

- See "Construction Progress Next Period"

Areas of Concern

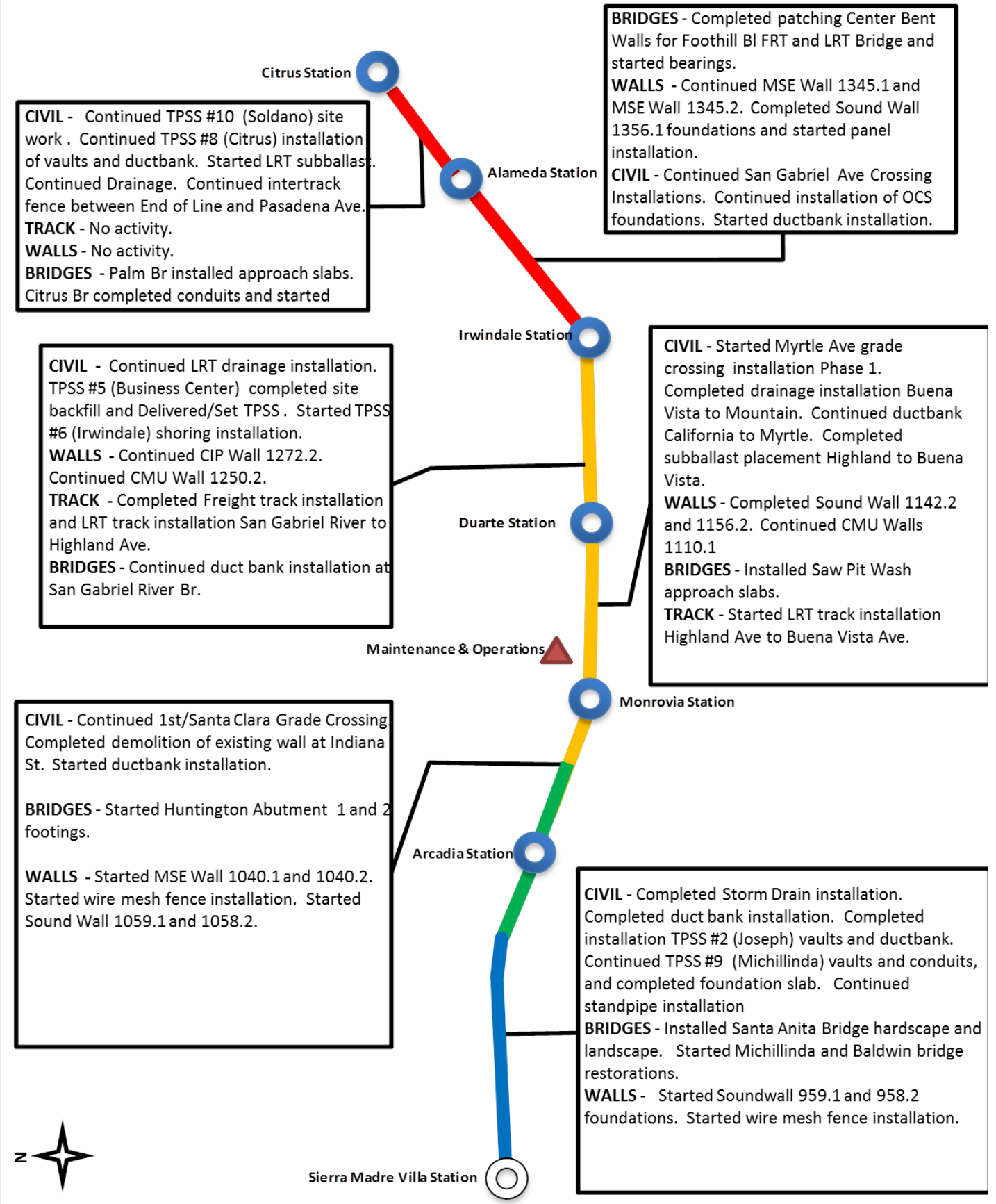
- **Grade Crossing Schedule.** The Grade crossing durations and schedules are slipping due to productivity. The Authority is working with the Design-Build Contractor to plan grade crossing activities and complete the work within the constraints established by Cities. The Design-Build Contractor has implemented the revised grade crossing sequence and has mitigated potential CPM schedule delays. However, the Design-Build Contractor has indicated in the revised schedule, that the re-sequence was due to additional schedule requirements by the Cities and may require additional costs.

Areas of Concern (Continued)

- **Segment 3 Grade Crossing Property Acquisitions.** The Design-Build Contractor has been late delivering parcel legal descriptions in a timely manner. There is a potential schedule impact to the Segment 3 grade crossing construction and schedule if the parcel legal descriptions are not approved. The Authority will attempt to mitigate potential delays by obtaining Right-of-Entry from property owners prior completing negotiations.



ALIGNMENT CONSTRUCTION PROGRESS THIS PERIOD





FACILITY CONSTRUCTION PROGRESS THIS PERIOD

Citrus Ave Station

STATION - Completed installation platform footing. Started installation of platform walls.

PARKING - No activity planned.

STATION - Completed south platform footing, continued south platform walls. started south platform footing backfill. Started North platform footing excavation and footing installation.

PARKING - No activity planned.

Alameda Station

STATION - No activity.

PARKING - Continued N. Irwindale Phase 3 street restoration.

Irwindale Station

CIVIL - Continue Shamrock 8" waterline. Completed 24" storm drain. Continued installation of infiltration basins. Installed TPSS Foundation.

TRACK - Completed embedded track installation at Heavy Repair, and continued embedded track installation Service & Inspection, and Blowdown. Continued Ballast and track installation at North Storage Track and Turnout Switches.

STRUCTURES - Completed Cleaning Platform deck and ramps. Continued M&O Building structural steel installation. Started Car Wash slab on grade.

STATION - Completed canopy structural steel installation. Installed track underdrain.

PARKING - No activity planned.

Duarte Station

STATION - Completed platform decks. Started ramps footings. Started installtion of plumbing and electrical conduits.

PARKING - Started installation of footings. Started level 1 column rebar and forms. Installed elevator casing.

Maintenance & Operations

Monrovia Station

STATION - Started installation of canopy structural steel. Started installation of underdrain.

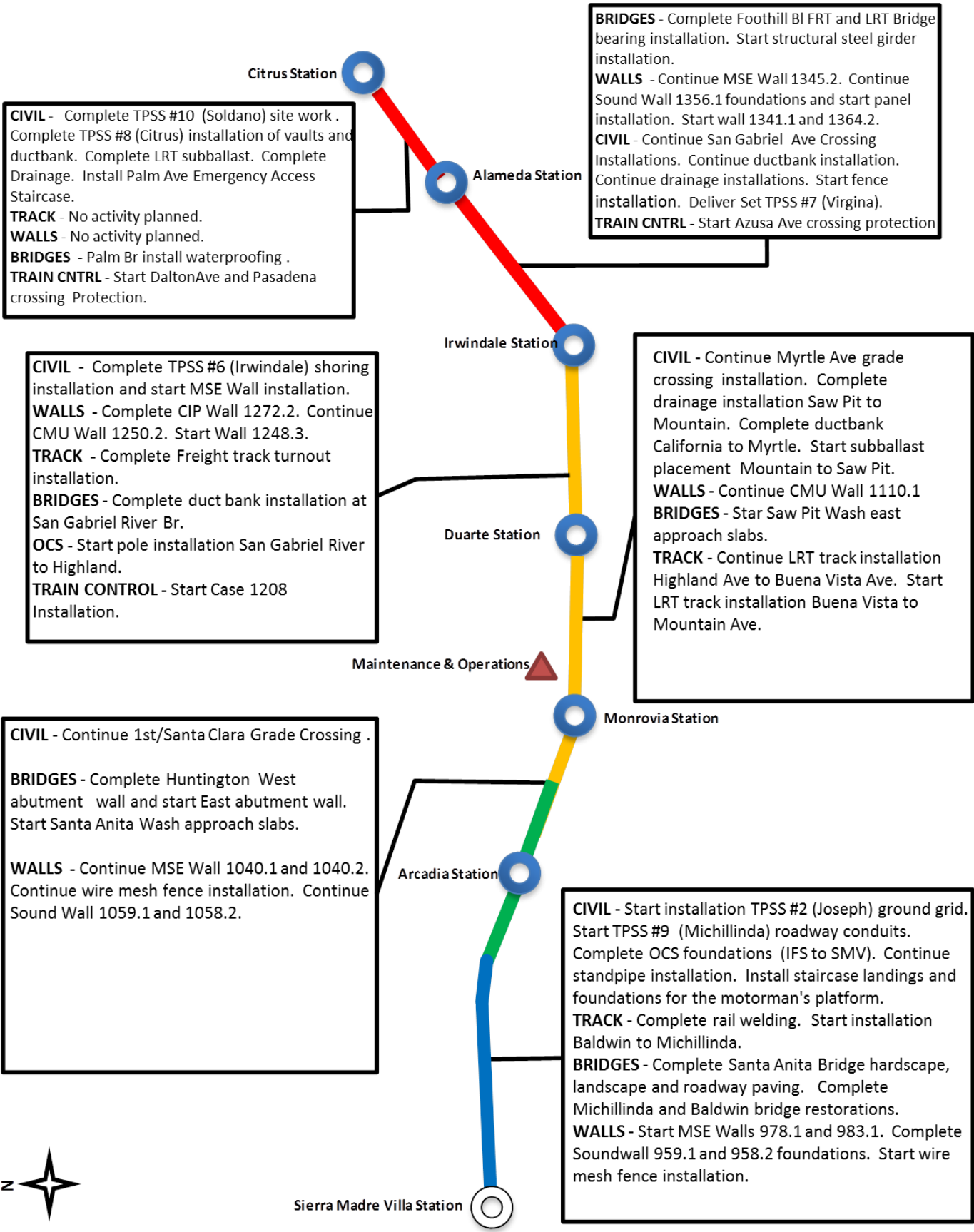
PARKING - Completed installation of footings, started installation level 1 columns and shear walls.

Arcadia Station





ALIGNMENT CONSTRUCTION PROGRESS NEXT PERIOD





FACILITY CONSTRUCTION PROGRESS NEXT PERIOD

Citrus Ave Station

STATION - Continue installation of platform walls. Start platform deck. Start installation of conduits.

PARKING - No activity planned.

STATION - Complete south platform platform walls. Complete south platform footing backfill. Complete South Platform conduits. Start South platform deck. Complete North platform footing. Start North Platform walls. Start North platform conduits.

PARKING - No activity planned.

Alameda Station

STATION - Start platform footing excavation, and the installation of grounding & underground conduits.

PARKING - Complete N. Irwindale Phase 3

Irwindale Station

STATION - Start light bollards and Art Installations.

PARKING - No activity planned.

CIVIL - Complete Shamrock 8" waterline. Continue installation of infiltration basins. Install TPSS meter pad.

TRACK - Complete embedded track installation at Service & Inspection, and Blowdown. Continue Ballast and track installation at North Storage Track and Turnout Switches. Start subballast placement at Southwest yard.

STRUCTURES - Continue M&O Building structural steel installation and start the installation of 2nd floor metal decking. Start Car Wash foundation slab rebar.

OCS - Start poles and hardware installation at North Storage track area.

Duarte Station

STATION - Complete ramps footings at the North and South Platforms. Start ramp walls at North and South Platforms.

PARKING - Continue installation of footings. Continue level 1 column rebar and forms. Start elevator pit excavations and invert.

Maintenance & Operations

Monrovia Station

STATION - Complete installation of canopy structural steel. Complete installation of underdrain. Start ramp footings and walls

PARKING - Continue installation level 1 columns and shear walls. Start elevator pit excavation and invert.

Arcadia Station



ALIGNMENT CONSTRUCTION IMAGES

Segment 2: Arcadia Station Canopy Erection



Segment 3: Sound Wall Post Erection between Mayflower & Alta Vista Wash

Segment 3: Placing Ties Between Buena Vista and Highland



ALIGNMENT CONSTRUCTION IMAGES (CONTINUED)



Segment 4: Forming Platform Walls—
Azusa-Downtown Station

Segment 4: Continuing work on ladder track
switches—lower NW Side



Operations Campus: OCS and Site Lighting Poles
erected throughout the North Storage Track areas



Change Management Log

Date: 3/19/2014

Page: 1 of 3

Project: C1135 Alignment - FTC Contract #: C1135

Original Contract Amount:	\$485,867,000				
Approved Change Orders:	\$9,764,969	2.01%	Pending Change Orders:	\$0	0.00%
Current Contract Total:	\$495,631,969		Pending Contract Total:	\$495,631,969	2.01%

Change Orders

Number	Change Management	Title	Initiated Date	Approved Date	Outstanding Days	Time Extension	Amount
EXECUTED Change Orders							
001.00	000.00	Interim NTP	11/3/2011	11/3/2011	0		\$0
002.00	013.00	Colorado Bridge Haz Mat	5/17/2012	5/18/2012	1		\$121,382
002.01	013.01	Colorado Bridge HazMat - Final	9/5/2012	9/7/2012	2		\$13,164
003.00	001.00	Sound Wall Deletion - Duarte Road	7/12/2012	7/18/2012	6		(\$74,707)
004.00	018.00	Revise Block Design - CBD Calc	8/23/2012	8/29/2012	6		\$3,986
004.01	018.01	Revise Block Design - CBD Calc - 2	9/5/2013	9/11/2013	6		\$0
005.00	023.00	Wayside Signal Aspect Revision	9/6/2012	9/7/2012	1		\$26,072
005.01	023.01	Wayside Signal "Call On" Function	10/30/2013	11/1/2013	2		\$75,169
006.00	040.00	Arcadia Frieze, Bench-Artist Design	9/6/2012	9/10/2012	4		\$13,683
006.01	040.01	Arcadia Frieze, Bench-Construction	3/7/2013	3/12/2013	5		\$155,894
007.00	019.02	Soils Testing Abutments & Fdns	9/14/2012	9/18/2012	4		\$44,993
008.00	041.00	Unknown Utilities RFCN 005 006 008	9/14/2012	9/18/2012	4		\$132,450
009.00	038.00	Illuminate City Names @ Stations	9/18/2012	9/24/2012	6		\$184,657
010.00	046.00	SGRB - Lead Based Paint Remediation	9/21/2012	9/24/2012	3		\$244,536
011.00	004.00	Station Architectural Changes	10/11/2012	10/12/2012	1		\$443,950
012.00	003.01	Systems and Testing for Added TPSS	12/13/2012	12/14/2012	1		\$1,443,193
013.00	005.02	IDIQ Comm Contract (Rev 2)	12/14/2012	1/22/2013	39		\$698,259
014.00	060.00	Sewer Encasement Changes in Azusa	12/18/2012	1/24/2013	37		\$141,354
015.00	037.02	M&O - Materials Storage Revisions	12/26/2012	1/15/2013	20		\$62,862
015.01	037.03	M&O Storage Shelving Revisions	9/16/2013	9/19/2013	3		\$20,380
016.00	002.00	Relocation of Access Road to 3M Fac	12/26/2012	1/16/2013	21		\$53,814
017.00	025.00	3 Electrical Casings for ALW	2/27/2013	3/1/2013	2		\$219,033
018.00	073.00	Hazardous Abatement at Bridges	1/15/2013	2/6/2013	22		\$1,081,803
019.00	054.00	City of Hope Conduits	1/11/2013	1/22/2013	11		\$34,313
020.00	059.00	Citrus TPSS Transformer Pad Changes	2/6/2013	2/7/2013	1		\$34,536
021.00	075.00	Demo & Replace Palm Dr. Roadway	2/7/2013	2/14/2013	7		\$90,365
022.00	077.00	M&O Differing Site Conditions; Pt 1	2/13/2013	2/15/2013	2		\$66,360
022.01	093.00	M and O DSC T and M Work Part 2	3/8/2013	3/12/2013	4		\$66,625
022.02	103.00	M and O DSC Part 3	3/27/2013	3/28/2013	1		\$35,211
022.03	115.00	DSC at M and O Part 4	5/3/2013	5/7/2013	4		\$5,706
023.00	089.00	Contaminated Soil Abatement	2/26/2013	2/27/2013	1		\$422,068
024.00	068.00	Monrovia Sound Wall Panel Change	2/26/2013	2/28/2013	2		(\$24,150)
025.00	052.00	Santa Anita Trail Detour	3/8/2013	3/12/2013	4		\$27,691
026.00	070.00	Block Type Change at M&O Building	3/26/2013	3/26/2013	0		\$35,016
027.00	065.00	M&O IT Changes-Duct Banks/Conduits	3/26/2013	3/26/2013	0		\$88,650
027.01	065.01	M&O IT Changes - Power to WAP	9/4/2013	9/6/2013	2		\$73,049
028.00	039.01	Delete Layover Building	4/11/2013	4/12/2013	1		(\$313,832)
029.00	095.00	8in Sanitary Sewer Line- Alameda Av	4/23/2013	4/25/2013	2		\$226,089
029.01	095.01	Alameda Sewer Line Revised Scope	11/22/2013	11/26/2013	4		(\$37,425)
030.00	102.00	M&O-Disconnect Switches, Insulators	4/23/2013	4/25/2013	2		\$67,817
031.00	110.00	Rmv Abandoned Utility Line @ Dalton	4/23/2013	4/25/2013	2		\$1,562
032.00	104.00	Highland Ave Abandoned CMP sleeves	5/1/2013	5/3/2013	2		\$15,005
033.00	114.00	Remove contaminated wood culvert	5/3/2013	5/7/2013	4		\$4,714
034.00	128.00	M&O Backup Power/Generator Changes	5/13/2013	5/21/2013	8		\$121,340
035.00	083.00	M&O Vehicle Sanding System Changes	5/21/2013	5/24/2013	3		\$27,463



Change Management Log

Project: C1135 Alignment - FTC Contract #: C1135

Change Orders

Number	Change Management	Title	Initiated Date	Approved Date	Outstanding Days	Time Extension	Amount
EXECUTED Change Orders							
036.00	006.00	IFS Related Contract Changes	6/7/2013	6/11/2013	4		(\$263,111)
037.00	137.00	CTS Redesign	7/12/2013	7/16/2013	4		\$58,214
038.00	138.00	Segment 4 Safety Manager	7/12/2013	7/16/2013	4		\$157,274
038.01	138.01	Segment 4 Safety manager - Part 2	11/19/2013	11/21/2013	2		\$72,963
039.00	085.00	M&O Drainage System Enhancements	7/19/2013	8/13/2013	25		\$251,579
040.00	067.00	Station Paver Changes	7/23/2013	8/13/2013	21		\$728,340
040.01	067.01	Rebar Changes for Station Pavers	10/28/2013	10/31/2013	3		\$10,586
041.00	112.00	12" Pasadena Waterline Potholes	8/12/2013	8/16/2013	4		\$19,735
042.00	150.00	Demo Abandoned Water Lines @ Dalton	8/12/2013	8/16/2013	4		\$5,937
043.00	007.01	Emer. Backup for Guideway Lighting	8/16/2013	10/1/2013	46		\$359,158
044.00	172.00	Contaminated Wood Culvert Sta. 1202	8/27/2013	8/28/2013	1		\$7,712
045.00	139.00	BLS Changes	8/28/2013	9/4/2013	7		\$110,801
046.00	165.00	Azusa-Alameda Station; 2nd Portal	8/28/2013	9/4/2013	7		\$77,175
047.00	145.00	St. Joseph drainage enhancements	9/4/2013	9/6/2013	2		\$17,592
048.00	149.00	M&O - Lights at NW Corner Park	9/4/2013	9/6/2013	2		\$29,351
049.00	174.00	TPSS #5 Cal-Am Power Conflict	9/4/2013	9/6/2013	2		\$127,260
050.00	171.00	Relocate Access Stair to Foothill	9/4/2013	9/6/2013	2		\$20,276
051.00	173.00	Dalton 8" Water Line Work	9/5/2013	9/12/2013	7		\$35,316
052.00	071.00	Duarte Rd Screen Wall Change	9/5/2013	9/17/2013	12		(\$133,864)
053.00	176.00	Remove Contaminatd Wood-Buena Vista	9/10/2013	9/12/2013	2		\$5,543
054.00	147.00	DECCO Bypass	9/10/2013	9/12/2013	2		\$18,519
055.00	166.00	Foothill Blvd. Water/SD Relocation	9/20/2013	9/20/2013	0		\$127,074
056.00	186.00	Contaminated Wood @ San Gabriel Ave	9/23/2013	9/24/2013	1		\$4,291
057.00	194.00	California/Duarte Water Line Work	10/28/2013	10/31/2013	3		\$220,743
058.00	189.00	Four Utility Changes	10/28/2013	10/31/2013	3		\$14,157
059.00	180.00	Remove/Dispose of ACM E of Highland	10/30/2013	11/1/2013	2		\$29,311
060.00	179.00	CTS Upgrade to OC-192	10/30/2013	11/1/2013	2		\$112,543
061.00	213.00	Irwindale On-ramp Stockpile	11/8/2013	11/21/2013	13		\$200,185
062.00	053.00	Delete Totten Tubes Scope of Work	11/8/2013	11/21/2013	13		(\$143,801)
063.00	146.00	Home Depot Striping and Signing	11/15/2013	11/21/2013	6		\$21,003
064.00	204.00	Unknown Duct Bank @ San Gabriel Ave	11/15/2013	11/21/2013	6		\$1,265
065.00	140.00	M&O-Overhead Work Platform Changes	12/5/2013	12/16/2013	11		\$317,656
066.00	217.00	Buried SD & Headwall, STA 1306+50	12/6/2013	12/17/2013	11		\$1,020
067.00	219.00	Contaminated Soil, Monrovia Station	12/12/2013	12/17/2013	5		\$17,503
068.00	220.00	DSC at Sawpit Wash Abutments	12/12/2013	12/17/2013	5		\$12,668
069.00	188.00	Costco Emergency Gate-Path to POS	1/21/2014	1/22/2014	1		\$19,882
070.00	214.00	M&O - Generator Load Bank	1/21/2014	1/22/2014	1		\$38,092
071.00	224.00	Alameda South Water Line Tie-in	1/30/2014	1/31/2014	1		\$6,330
072.00	202.00	Aesthetic Lighting Provisions-SGRB	2/3/2014	2/4/2014	1		\$27,055
073.00	160.00	Move Mountain Interlocking Bungalow	2/11/2014	2/13/2014	2		\$68,596
074.00	200.00	M&O Parts Carousel Warranty & PM	2/11/2014	2/13/2014	2		\$68,906
075.00	235.00	Remove Contaminated Wood Ties	2/14/2014	2/18/2014	4		\$4,571
076.00	234.00	Accelerate Work at California Ave	2/14/2014	2/18/2014	4		\$5,663
077.00	247.00	Line Stop in California	2/18/2014	2/20/2014	2		\$14,524
078.00	201.00	Added Sound Wall, SW of IFS	2/27/2014	2/28/2014	1		\$18,201
079.00	238.00	M&O-MOW Canopy Structural Eval	2/27/2014	2/28/2014	1		\$7,147
080.00	232.00	Car Moving Tractor-Coupler Upgrade	2/27/2014	2/28/2014	1		\$177,145
081.00	242.00	Car Moving Tractor Options/Features	2/27/2014	2/28/2014	1		\$69,099
082.00	091.00	Rockvale Water Line Mitigation	3/4/2014	3/5/2014	1		\$163,750



Change Management Log

Project: C1135 Alignment - FTC Contract #: C1135

Change Orders

Number	Change Management	Title	Initiated Date	Approved Date	Outstanding Days	Time Extension	Amount	
EXECUTED Change Orders								
083.00	251.00	Cut and Move Rail to Segment 1	3/4/2014	3/5/2014	1		\$249,934	
							Subtotal:	\$9,764,969
							Subtotal:	\$9,764,969
							Total:	\$9,764,969

Open PCOs

PCO Number	Title
OPEN	
022.02	M&O IT Changes - Remaining Work
027.01	M&O / 3M Fence Revisions (rev 1)
029.00	Del. Irwindale/Gladstone Mitigation
046.00	1st/Santa Clara Grade X-ing Changes
047.00	M&O Body Shop Changes
049.02	M&O Trammig Table Changes (Rev. 2)
050.00	M&O Car Wash Betterments
052.00	Alameda Utility Changes
053.01	Irwindale Ramp Changes (Rev 1)
059.00	Mayflower Driveway/Wall Credit
062.00	Delete Equipment at ROC
063.00	M&O-Volume Control for PA Speakers
064.00	Irwindale TPSS-Adjust Eqpt. Layout
065.00	Azusa-Citrus Ped Crossing Operation
066.00	Red Signal Violation Indication
069.00	Install Sound Wall Door @ STA. 1169
070.00	Irwindale Security Kiosk Provisions
071.00	Remove Stem Wall along Duarte Rd.
072.00	Drainage East of Pasadena Ave.
073.00	Virginia TPSS Access Road

Open RFCs

RFC Number	Title
OPEN	
022.00	MandO Facility Train Control and Si
065.00	R and R Top Course Wall 1124.1
068.00	Business Center TPSS Crane Changes

Open RFC Notices

Number	Title
037.00	DSC at Santa Anita Wash Abutment 1
041.00	M and O Facility Fire Flow Rate
044.00	DSC Utility at Azusa Avenue
057.00	Rmvl Contmntd Wd Mtrls Stanta Anita
058.00	Removal of IR 0271 Abandoned Utilit
067.00	Unknown Utility at Huntington Bridg
072.00	Asbestos Pipe Found Duarte Myrtle



Description: Intermodal Parking Facilities & Enhancements **Status:** February 15, 2014

Contract No.: C1150

Contractor: Webcor Builders

Cost Summary:

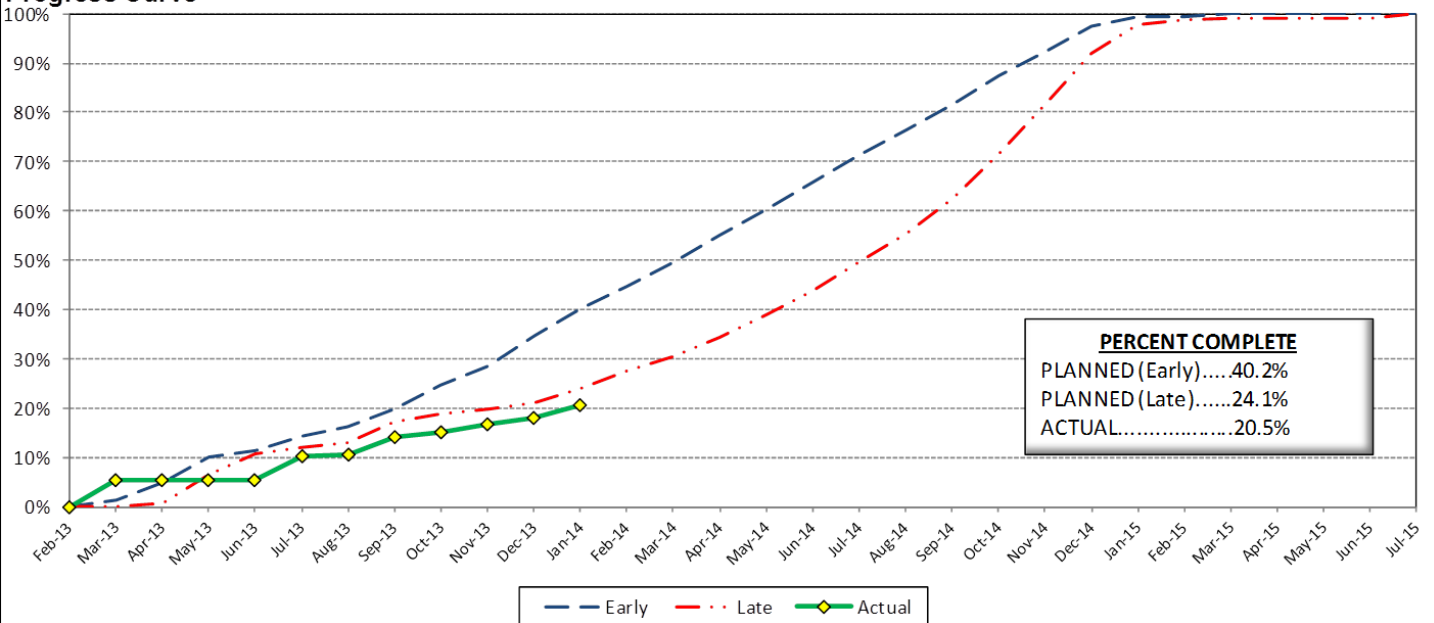
	Million(s)
CONTRACT	
Contract Award Value:	48.8
Executed Change Orders:	0.3
Current Contract Value:	49.0
Potential Change Orders:	0.0
Current Forecast:	49.0
Earned Value/Actual Cost	10.0
AUTHORIZATION FOR EXPENDITURE	
Budget	50.3
Commitment	50.3
Balance	1.2

Cost Assessment:

The current cost forecast is 49.0 Million. The forecast decreased \$100,000 from the previous period. The decrease is due to PCO 013 - *Primrose Ave Cul-de-Sac Deletion*, and PCO 014 - *Delete Azusa Alameda Enhancements*. The current within the authorized budget.

The Design-Build Contractor is trending beyond the late curve, which is due to the progress of the AFC designs, which include *Irwindale Parking Structure*, *Azusa-Citrus Parking Structure*, *Arcadia Parking Structure*, and *Monrovia Parking Structure*.

Progress Curve



Schedule Summary:

Contract Award:	02/27/13
Interim Notice to Proceed (INTP) :	03/20/13
Original Contract Duration:	845 Calendar Days
Current Contract Duration:	845 Calendar Days
Elapsed Time from NTP:	332 Calendar Days

Contract Milestones

Milestones	Description	Original Contract	Current Contract	Forecast	Variance
1	Substantial Completion	03/15/15	03/15/15	05/06/15	(52)
2	Punchlist Complete	05/29/15	05/29/15	07/20/15	(52)
3	Final Completion	07/13/15	07/13/15	09/03/15	(52)
4	TPSS Work	03/01/14	03/01/14	02/28/14	1

Schedule Assessment:

The Design-Build Contractor remains behind schedule due to the re-design of the Irwindale Parking facility. The structure footprint was moved to avoid a conflict with the existing Southern California Edison utility line. The re-design will impact the start of the Irwindale site preparation work, which includes the construction of the soil nail wall and MSE wall. Upon completion of the walls, the Design-Build Contractor will start the parking structure construction. At this time, there is a potential impact of 52 days to the Substantial Completion milestone.

The Design-Build Contractor is on schedule for completing the TPSS site preparation at Michillinda and Soldano by March 1, 2014.



Description: Intermodal Parking Facilities & Enhancements **Status:** February 15, 2014

Contract No.: C1150

Contractor: Webcor Builders

Progress Completed This Period

Design

- Re-Submit 100% Design - Azusa-Citrus Site Prep
- Submit 100% Irwindale - Enhancement Design
- Submit 100% Irwindale - Parking Structure Design
- Submit 100% Calculations - Arcadia Parking Structure
- Submit 100% Calculations - Irwindale Parking Structure
- Submit AFC Design - Arcadia Parking Structure

Activities Planned Next Period

Design

- Submit AFC Design - Azusa-Citrus Site Prep
- Submit AFC Design - Arcadia Enhancements
- Submit 100% Calculations - Azusa-Citrus Parking Structure
- Re-Submit 100% Design - Irwindale Site Prep
- Re-Submit 100% Design - Azusa-Citrus Enhancements
- Re-Submit 100% Design - Azusa-Citrus Parking Structure
- Submit QA/QC Plan - Part 2
- Submit QA/QC Plan - Part 3

Areas of Concern

- **IRWINDALE PARKING STRUCTURE DESIGN** - The Authority will issue the Design-Build Contractor a Potential Change Order to revise the location of the Irwindale Parking Structure from the current location identified in the 85% design submittal. The revised design will require the parking structure to be moved in order to avoid a utility conflict with the existing SCE distribution line. The redesign effort will impact the completion of the AFC design and potentially impact the Substantial Completion milestone.

Areas of Concern (Continued)

-

PARKING FACILITY CONSTRUCTION IMAGES

Arcadia Parking Structure Site Overview



Monrovia Parking Structure Site Overview

Irwindale Intersection Work



PARKING FACILITY CONSTRUCTION IMAGES

Azusa-Citrus Parking Structure Site Prep



Soldano TPSS On-Site Overview

Michillinda TPSS On-Site Overview





Change Management Log

Project: C1150 Parking - Webcor Contract #: C1150

Original Contract Amount:	\$48,750,000				
Approved Change Orders:	\$276,521	0.57%	Pending Change Orders:	\$52,479	0.11%
Current Contract Total:	\$49,026,521		Pending Contract Total:	\$49,079,000	0.67%

Change Orders

Number	Change Management	Title	Initiated Date	Approved Date	Outstanding Days	Time Extension	Amount
EXECUTED Change Orders							
001.00	001.00	Monrovia Parking Alternative Layout	6/25/2013	7/11/2013	16		\$21,382
001.01	001.01	Monrovia Alternative - Cancelation	9/17/2013	10/7/2013	20		(\$12,006)
002.00	003.00	Clock Tower Procurement	7/3/2013	7/11/2013	8		\$107,246
003.00	002.00	Relocate Elevator @ Azusa-Citrus PF	12/18/2013	1/8/2014	21		\$159,899
Subtotal:							\$276,521
<hr/>							
Subtotal:							\$276,521
PENDING Change Orders							
004.00	013.00	Irwindale Structure Relocation	1/23/2014		55	90	\$0
005.00	018.00	Monrovia Demo Unforeseen Conditions	3/18/2014		1		\$17,013
006.00	010.00	Arcadia Transit Plaza Betterments	3/14/2014		5		\$35,466
Subtotal:							\$52,479
Subtotal:							\$52,479
Total:							\$329,000

Open PCOs

PCO Number	Title
OPEN	
004.00	TPSS Grounding Grid Modifications
006.00	St. Joseph Drainage Enhancements
007.00	St. Joseph TPSS Wall
008.00	Azusa-Citrus Plaza Pavers
009.00	Irwindale Intersection LED Upgrade
009.01	Irwindale Intersection Betterments
011.00	Soldano TPSS Added ROW Fence
012.00	Additional Conduit Provisions
013.00	Primrose Avenue cul-de-sac Deletion
014.00	Delete Azusa-Alameda Enhancements
015.00	Monrovia Canopy & Color Betterments

Open RFCs

RFC Number	Title
OPEN	
004.00	Irwindale Intersection Water Line

Open RFC Notices

Number	Title
001.00	Arcadia Unforeseen Items
003.00	Michillinda unforeseen items
005.00	Irwindale CCTV Power Pole



AZUSA TO MONTCLAIR SEGMENT

ACTIVITIES COMPLETED THIS PERIOD

Authority staff issued the Request for Proposals (RFP) for the advanced conceptual engineering support and NEPA consultant. Staff is currently developing the First Addendum to the Phase 2B FEIR that is studying an LRT separation at Garey Avenue in the City of Pomona.

KEY FUTURE ACTIVITIES

The Authority will receive proposals from consultants in response to the RFP for the advanced engineering support and NEPA consultation in early March 2014, and will initiate the review and selection process for award in April 2014. Staff will present the First Addendum to the Phase 2B FEIR for Board consideration.

Federal Transit Administration (FTA)

The Metro Board of Directors excluded the Gold Line from seeking federal New Starts funding. The Authority will work together with Metro along with the Congressional delegation to seek funding to construct the extension following completion of the environmental review.



ONTARIO AIRPORT SEGMENT

ACTIVITIES COMPLETED THIS PERIOD

Staff continued to pursue the needed funding to conduct the Alternatives Analysis for the Ontario Airport Segment. The Authority is in discussions with the San Bernardino Associated Governments (SANBAG) and other agencies to develop a funding agreement for a portion of the initial Alternatives Analysis study. The Authority has decided to fund the Alternatives Analysis in the meantime, and plans on releasing the Request for Proposals for this segment in early 2014.

KEY FUTURE ACTIVITIES

Authority staff will continue to work with SANBAG and Cities to obtain funding for this Segment. Authority staff continues to finalize the Scope of Work for the Alternative Analysis Study RFP to issue in March 2014.



PHASE II FOOTHILL EXTENSION FINANCIAL STATUS
Project Operating Budget Summary in Millions of Dollars
February 28, 2014

	(a)	(b)	(c=a-b)	(d)
FINANCIAL PLAN	Current Budget	Funding Committed to Project	Uncommitted Funds	Revenues Received
SCAG	1.0	0.9	0.1	0.9
Interest Income	2.0	2.0	-	2.0
Bridge Replacement	13.9	13.9	-	13.9
Phase I Carryover	4.0	4.0	-	4.0
Maintenance and Operations Facility	-	-	-	-
Cities	11.0	-	11.0	-
Measure R - Pasadena to Azusa	810.5	777.0	33.5	317.1
Measure R - Azusa to Montclair	-	-	-	-
SANBAG	55.2	1.5	53.7	1.5
Federal TCSP	2.9	2.9	-	2.4
Federal Bus Intermodal Plan	9.0	9.0	-	2.6
Federal New Starts 2004 MTA Passthrough	4.0	4.0	-	4.0
Federal New Starts 2005 MTA Passthrough	0.5	0.5	-	0.5
Federal New Starts 2006 Corridor Study	2.5	2.5	-	2.3
Federal/Other	802.5	-	802.5	-
Total Revenues	1,719.0	818.2	900.8	351.2
	(a)	(b)	(c)	(d=a-b)
	Current Budget	Current Obligation	Current Expenditures	Current Available Balance
EXPENSES				
Program Management and Administration	107.9	86.1	72.2	21.8
Master Cooperative Agreements	12.0	3.3	2.7	8.7
Real Estate including ROW Acq	21.0	14.2	14.2	6.8
Special Programs	0.3	-	-	0.3
Procurement/Vehicles	60.0	-	-	60.0
Maintenance and Operations Facility Land	22.0	22.0	22.0	-
Construction - IFS	19.8	19.8	19.8	-
Construction - Pasadena to Azusa segment	328.9	328.9	205.0	-
Construction - Azusa to Montclair segment	950.0	-	-	950.0
Construction - M&O	46.0	44.0	19.8	2.0
Construction - Parking Structures	44.2	44.2	10.0	-
MTA Project Costs	64.0	64.0	14.3	-
Contingency	27.4	-	-	27.4
Project Reserve	15.5	-	-	15.5