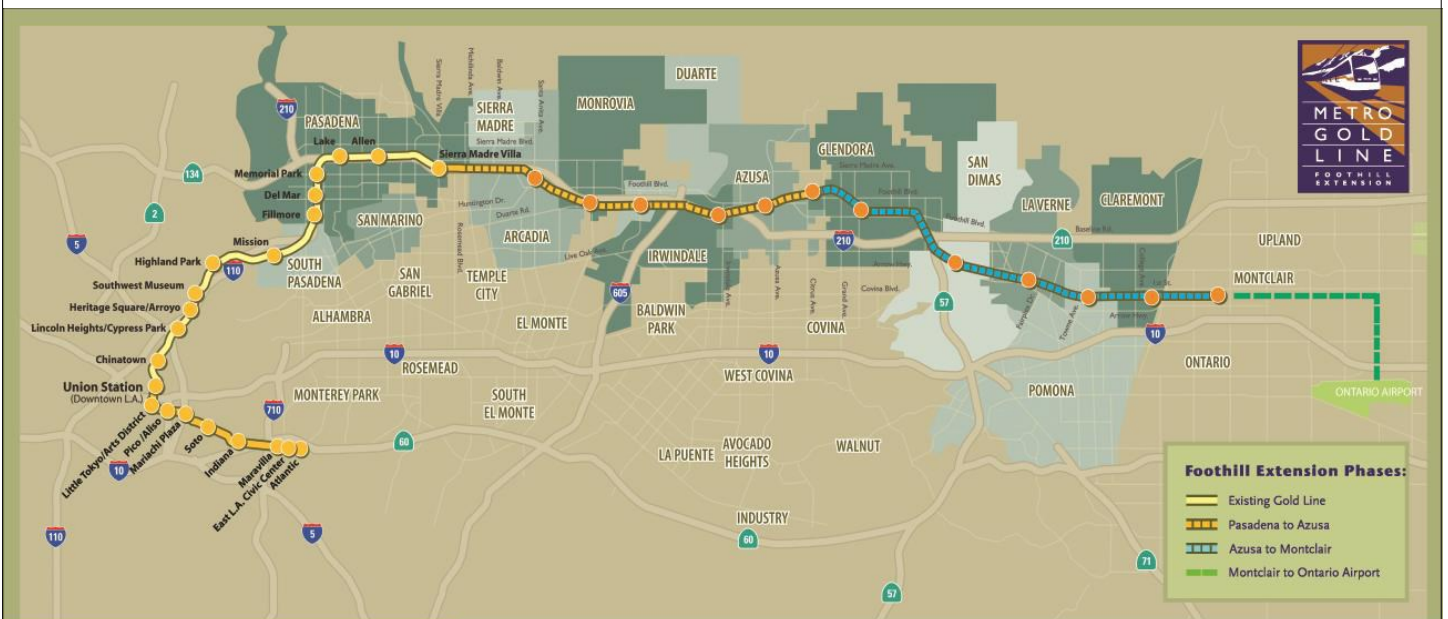


Metro Gold Line

Foothill Extension Project

Monthly Project Status Report

May 2014



Metro Gold Line

Connecting Los Angeles, the San Gabriel Valley and Inland Empire



TABLE OF CONTENTS

PHASE II FOOTHILL EXTENSION PROJECT STATUS

Project Description	3
Pasadena to Azusa Segment	4
Management Issues	4
Key Activities Completed This Period	5
Key Future Activities	6
Critical Path Schedule	7
Critical Path Float Trend	8
Alignment Contract Status	9
Alignment Construction Progress This Period	11
Facility Construction Progress This Period	12
Alignment Construction Progress Next Period	13
Facility Construction Progress Next Period	14
Alignment Construction Images	15
Alignment Change Management Log	17
Parking Facilities and Enhancements Contract Status	21
Parking Facilities and Enhancements Construction Images	24
Parking Facilities and Enhancements Change Management Log	26
Azusa to Montclair Segment	27
Financial Status	28

FOOTHILL EXTENSION PROJECT DESCRIPTION

The Authority's mandate is to plan, design and construct a 37-mile light rail link between Downtown Los Angeles and Claremont. In addition, the San Bernardino Associated Governments (SANBAG) has requested that planning be extended one mile inside San Bernardino County to the City of Montclair and then to Ontario Airport.

The Metro Gold Line Phase II (Foothill Extension) corridor includes the cities of Pasadena, Arcadia, Monrovia, Duarte, Irwindale, Azusa, Glendora, San Dimas, La Verne, Pomona, Claremont, and Montclair; and the counties of Los Angeles and San Bernardino (Figure 1). The Foothill Extension is estimated to cost approximately \$1.719 billion.

The Foothill Extension will be built in two segments to align effectively with projected cash flows and financial capacity constraints. The first segment is defined from the Sierra Madre Villa Station in Pasadena to the city of Azusa. Revenue service along this segment is planned for the year 2015. The second segment would include an extension from Azusa to the City of Montclair with revenue service projected for the year 2017 and the third segment will be comprised of an extension from Montclair to the Ontario Airport.

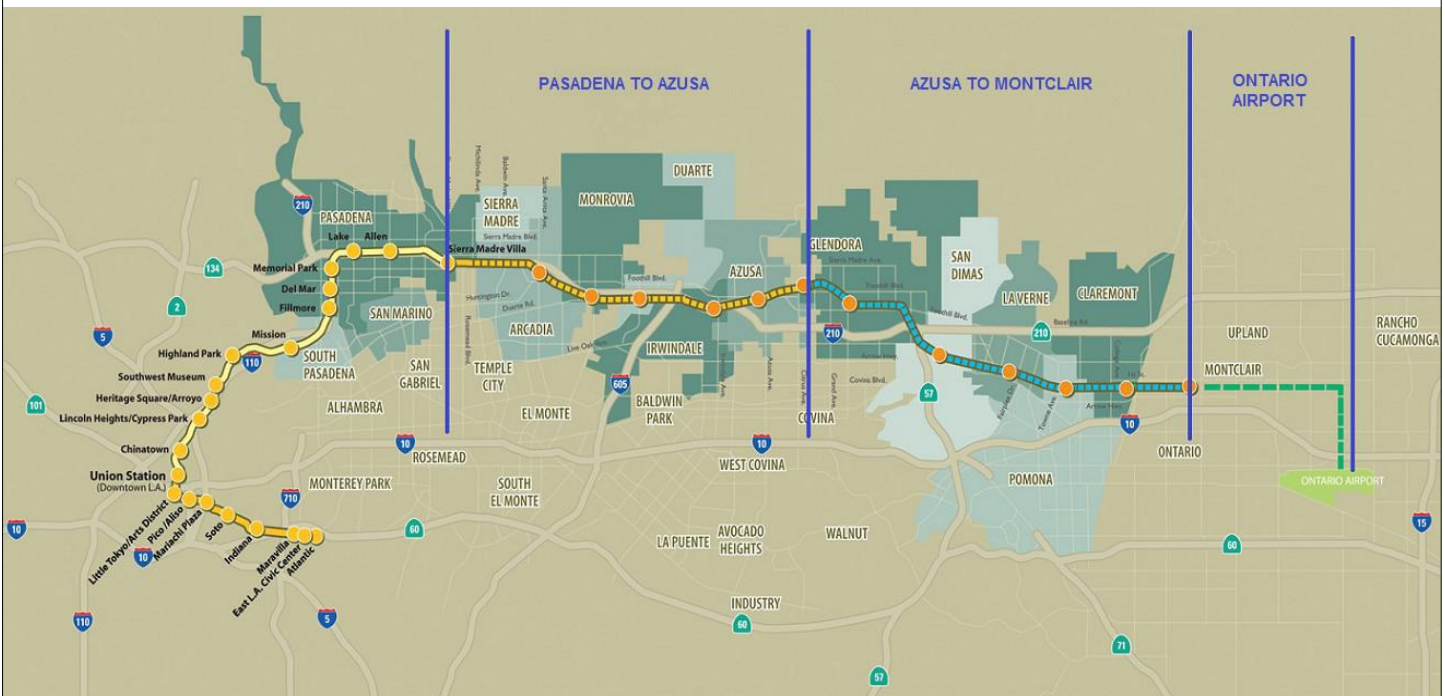


Figure 1: Metro Gold Line Foothill Extension Alignment



Pasadena to Azusa Segment

MANAGEMENT ISSUES

Metro Betterments

During the design process Metro staff have identified betterments that Metro staff would like to add to the project. Metro has provided a final disposition on all but a few items. Authority staff continues to work with Metro staff to resolve the remaining items.

TPSS Delivery Dates

The traction power substations (TPSS) provide equipment to transform utility power required for Light Rail Vehicle (LRV) propulsion, and then distribute that power to the LRVs via the overhead wires. Metro is responsible for purchasing the traction power substations. Currently, Metro's schedule indicates that the traction power substation delivery schedule is late. This is a major concern for the Authority as it has potential to impact the project schedule; however, staff is coordinating with Metro and FTC to ensure minimal impact to the project.



KEY ACTIVITIES COMPLETED THIS PERIOD

FTC reports the following SBE statistics for the month of March:

- Current SBE commitment: \$ 59,500,000
- SBE percent committed versus value of Project: 17.13%
- Overall Authority Project SBE goal: 16%

FTC reports the following approximate safety statistics to date:

- 771,543 total work hours performed by FTC, Mass Electric, and Subcontractors
- 6 recordable injuries reported
- 0 lost time injuries reported

Webcor reports the following DBE statistics for the month of March:

- Current DBE commitment: \$ 437,318
- DBE percent committed versus value of Project: 0.6%
- Overall Authority Project DBE goal: 2.3%

Webcor reports the following approximate safety statistics to date:

- 52,060 total work hours performed by Webcor and Subcontractors
- 0 recordable injuries reported
- 0 lost time injuries reported

Continued trackwork at the Gold Line Operations Campus (Campus) - 60% complete

Continued structural steel work at the Main Shop Building in the Campus

Began structural steel work for the car cleaning building in the Campus

Continued construction of light rail mainline track - 55% complete

Continued OCS and Site Lighting Pole erection at the Campus and throughout the Alignment

Continue installation of OCS and train control elements

Continued bridge work at Huntington, Kincaid, and Foothill

Completed bridge work at Rosemead

Continued work at Azusa-Downtown, Azusa-Citrus, Irwindale, Duarte, Monrovia and Arcadia stations

Continued construction of Magnolia, Mountain, and Virginia grade crossings

Completed construction of retaining walls and continued construction of sound walls throughout the alignment

Continued installation of freight track between San Gabriel River Bridge and San Gabriel Avenue

Authority continued reviewing design submittals for Azusa-Citrus and Irwindale structures and enhancements

Continued construction of Arcadia, Monrovia, Irwindale, and Azusa-Citrus Parking Structures

KEY FUTURE ACTIVITIES

Continue discussions with corridor cities regarding the project

Continue management of the Alignment contract, which will include oversight of construction activities and preparation for start-up activities

Continue to meet with Intermodal Parking Facilities and Enhancements Project contractor, Webcor Builders regarding design of the Project

Continue installation of mainline OCS

Continue installation of train control cases/bungalows and associated equipment

Continue to attend to any issues that may come up by the cities or other stakeholders along the alignment

Complete trackwork at the Campus

Complete construction of the bridges at Foothill, Kincaid, and Huntington

Complete construction of all stations

Finish work at Virginia, Magnolia, and Mountain grade crossings

Finalize design for the following Parking Facilities: Azusa Citrus, Irwindale, and Duarte

Finalize the following property acquisitions:

- Arcadia:

1. Parcel 1301b (Front St. Vacation) – Ready to close escrow.
2. Parcel 1308 (223 N. First Ave) – Possession hearing 7/10/14.
3. Parcel 6039 (325 N. Santa Anita Ave) – Due to close escrow 7/10/14.

- Monrovia:

1. Parcel 1802 (1522 S. Mayflower Ave) – In escrow.
2. Parcel 6035/6030 (1602 S. Mayflower Ave) – In escrow.

- Duarte:

1. Parcel 6041/6042 (1500 Duarte Rd) – Accepted. Attempting to get purchase and sale agreement signed by seller.

- Irwindale:

1. Parcel 3302a (MillerCoors easement for power utilities) - Negotiating.

- Azusa:

1. Parcel 6033 (809 E. Santa Fe) – Accepted. Ready for escrow.

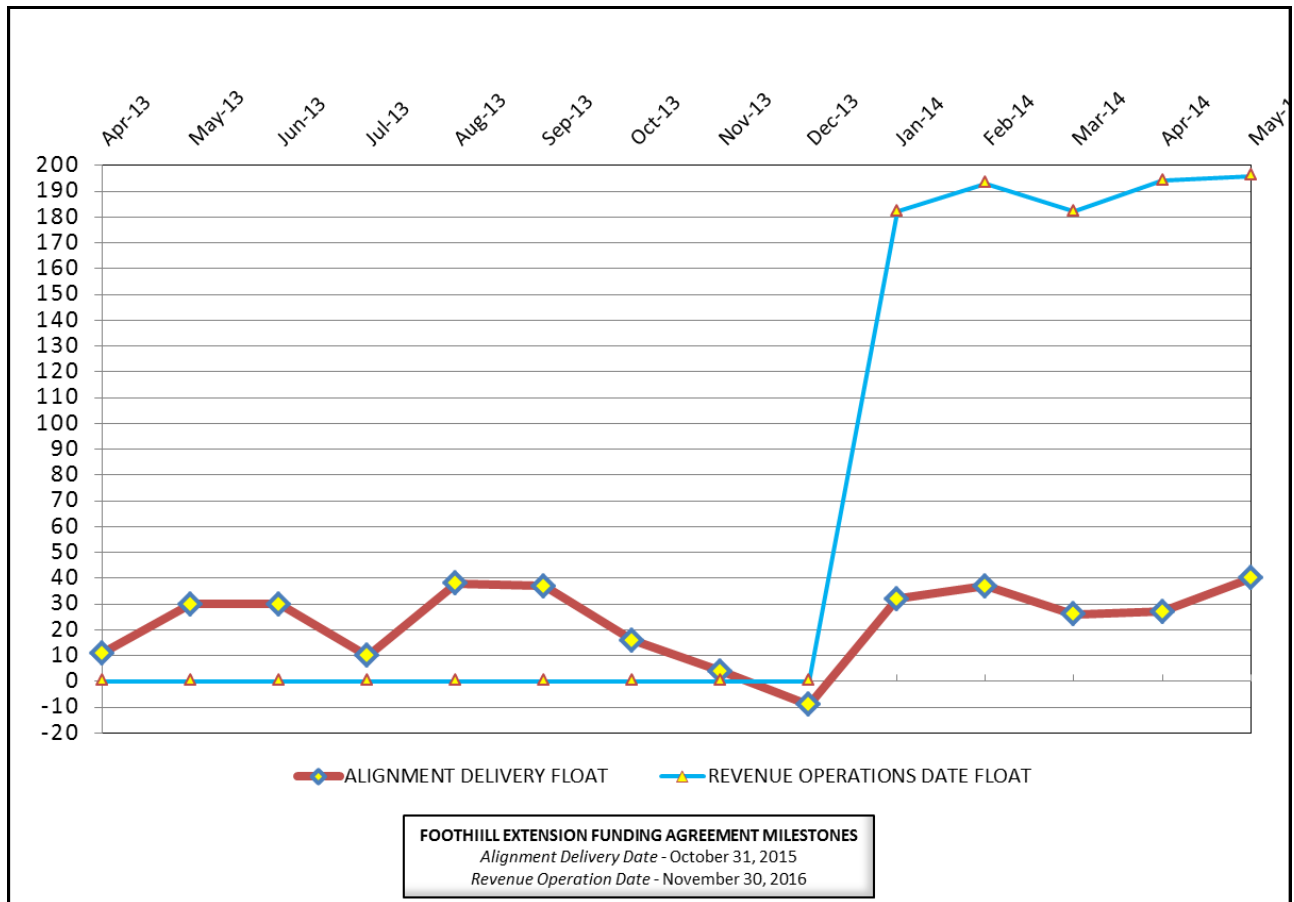


CRITICAL PATH SCHEDULE

Activity Name	OD	RD	AD	Start	Finish	Total Float	Timeline															
							2012			2013			2014			2015			2016			2017
							Q2	Q3	Q4	Q1	Q2	Q3	Q4	Q1	Q2	Q3	Q4	Q1	Q2	Q3	Q4	Q1
REVENUE OPERATIONS DATE - CRITICAL PATH																						
LRV FABRICATION / DELIVER 15 VEHICLES	1353	523	636	17.Aug.12 07:00 A	19.Oct.15 15:00	198																
METRO - System Testing & Start-Up - Phase 2A	30	30	0	22.Sep.15 07:00	21.Oct.15 15:00	196																
METRO - Pre-Revenue Operations - Phase 2A	60	60	0	22.Oct.15 07:00	20.Dec.15 15:00	196																
METRO - Project Schedule Contingency (5 Mo.)	150	150	0	21.Dec.15 07:00	18.May.16 15:00	196																
Phase 2A - Revenue Operations Date (ROD)	0	0	0		18.May.16 15:00*	196																
ALIGNMENT DELIVERY DATE - CRITICAL PATH																						
FOOTHILL BRIDGE (FRT) - CONSTRUCTION	155	3	314	01.Mar.13 07:00 A	19.May.14 15:00	31																
TRACK INSTALLATION - SEGMENT 4 (FRT)	220	15	311	06.Mar.13 07:00 A	04.Jun.14 15:00	29																
TRACK INSTALLATION - SEGMENT 4 (LRT)	80	78	58	24.Feb.14 07:00 A	08.Sep.14 15:00	29																
OCS - INSTALLATION - SEGMENT 4	130	130	0	24.Jun.14 07:00	22.Dec.14 15:00	29																
OCS - TESTING - SEGMENT 4	35	35	0	23.Dec.14 07:00	09.Feb.15 15:00	29																
OCS - TESTING - SEGMENT 2	35	35	0	10.Feb.15 07:00	30.Mar.15 15:00	29																
OCS - TESTING - SEGMENT 1	35	35	0	10.Feb.15 07:00	30.Mar.15 15:00	29																
SYSTEMS INTERGRATION TESTING	125	125	0	31.Mar.15 07:00	21.Sep.15 15:00	29																
C1135 - >>>SUBSTANTIAL COMPLETION - 1420 CD<<<	0	0	0		21.Sep.15 15:00*	40																
ALIGNMENT DELIVERY DATE - SECONDARY - CRITICAL PATH																						
IRWINDALE STATION - PLATFORMS/RAMPS/WALKWAYS	170	97	43	17.Mar.14 07:00 A	26.Sep.14 15:00	35																
IRWINDALE STATION - ELEC./MECH./FINISHES	150	150	0	25.Aug.14 07:00	20.Mar.15 15:00	35																
IRWINDALE STATION - COMMUNICATIONS INSTL / TEST	80	80	0	01.Dec.14 07:00	20.Mar.15 15:00	35																
ALIGNMENT DELIVERY DATE - TERTIARY CRITICAL PATH																						
GRADING - SEGMENT 4 (LRT)	195	38	148	21.Oct.13 07:00 A	14.Jul.14 15:00	37																
DUCTBANKS/CONDUITS - SEGMENT 4 (LRT)	120	16	128	18.Nov.13 07:00 A	12.Jun.14 15:00	37																
OCS FOUNDATIONS - SEGMENT 4	155	34	108	16.Dec.13 07:00 A	01.Jul.14 15:00	34																



CRITICAL PATH FLOAT TREND



Revenue Operations Date Critical Path - (196 Calendar Days)

Metro has revised the forecast for vehicle acceptance (15th of 78 vehicles) for the Light Rail Vehicle Procurement to October 19, 2015. As result, the LRV procurement delivery continues to remain on the critical path for meeting the Revenue Operations Date. The critical path continues through Pre-Revenue Testing and five month schedule contingency. The anticipated ROD date is May 18, 2016. However, Metro is forecasting a March 2016 Revenue Operations Date.

Alignment Delivery Date Critical Path - (40 Calendar Days / 29 Work Days)

The Foothill Blvd freight bridge installation remains on the critical path for the Alignment Delivery. The critical path continues through the freight track installation, which will be followed by the completion of the Segment 4 LRT track installation. The remaining critical path continues through Segment 4 OCS installation and testing. Systems integration testing will commence after OCS testing is complete. Upon the completion of Systems Integration testing, the C1135 Contractor will achieve Substantial Completion and turn-over to Metro for Pre-Revenue Testing.

Other elements of construction work, which are in progress and near critical are Huntington Dr bridge fabrication, Segment 1 track installation, Segment 3 OCS installation, and Segment 4 grading. Facility work, which is becoming near critical includes Irwindale Station, Citrus Parking Structure, Irwindale Parking Structure, and the Maintenance & Operations Campus.

Project Float

The project float for the Revenue Operations Date increased to 196 days. The critical activities on this path are ahead of schedule to meet the Target Revenue Operations Date of November 2016. The Alignment Delivery Date float value improved 2 days this period. The Alignment Delivery Date is currently 40 days ahead the October 31, 2015 deadline.



Description: Alignment Design / Build

Status: May 15, 2014

Contract No.: C1135

Contractor: Foothill Transit Constructors (Kiewit-Parsons J.V.)

Progress Completed This Period

Design

- Submit AFC Design - M&O Fence
- Submit AFC Design - Myrtle/Pomona Roadway Change
- Submit AFC Design - 3M Lighting
- Submit AFC Design - Arcadia Parking Fire Alarm
- Submit AFC Design - Monrovia Parking Fire Alarm
- Submit AFC Design - Train Control Book of Plans M&O
- Submit AFC Design - Indiana Wall Roadway

Construction

- See "Construction Progress This Period"

Activities Planned Next Period

Design

- Submit AFC Design - Mountain Ave Changes
-

Construction

- See "Construction Progress Next Period"

Areas of Concern

- **Huntington Bridge** - The Huntington Bridge shop drawing approval is near critical. The completion of the bridge is critical to support the final track installation by October 2014. The Design-Build Contractor will have to complete the bridge fabrication and delivery at an accelerated rate in order to meet the construction schedule requirements. The bridge, which will be fabricated in China must be delivered for installation by August 2014. The Authority staff are closely monitoring the fabrication progress.

Areas of Concern (Continued)

-



Description: Alignment Design / Build

Status: May 15, 2014

Contract No.: C1135

Contractor: Foothill Transit Constructors (Kiewit-Parsons J.V.)

Cost Summary:

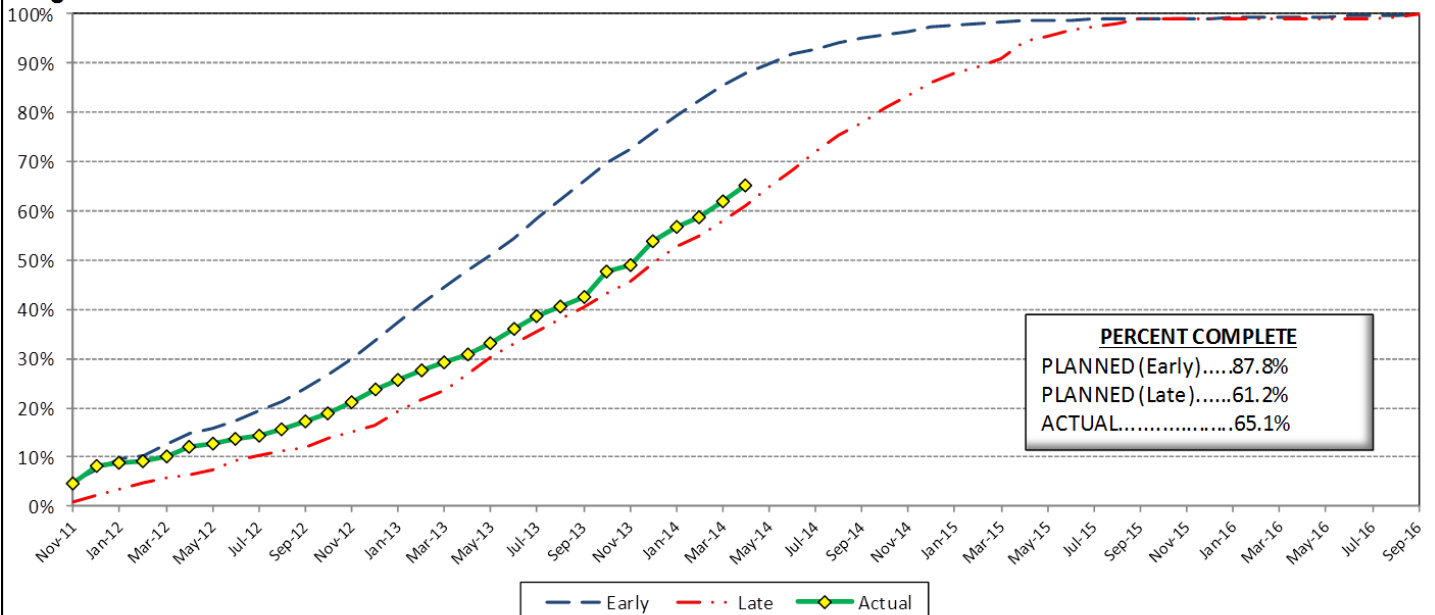
	Million(s)
CONTRACT	
Contract Award Value:	485.9
Executed Change Orders:	10.4
Current Contract Value:	496.3
Potential Change Orders:	5.4
Current Forecast:	501.7
Earned Value/Actual Cost	316.5
AUTHORIZATION FOR EXPENDITURE	
Budget	507.9
Commitment	495.5
Balance	6.2

Cost Assessment:

This period the Contract forecast increased \$333 Thousand. The major increase were due to CO 093 - Myrtle Early Completion Incentive, PCO 046 - 1st / Santa Clara Grade Xing Changes, PCO 078 - DVR Changes, PCO 079 - M & O Accent Colors, PCO 101 - Track Work Around at Mountain, PCO 102 - Install 115# Buffer Rails in Segment 1.

The Design-Build Contractor has earned 316.5 Million and is currently 65.1% complete. The progress is currently 22.7% behind the early planned curve, which is due to fabrication and delivery progress for materials such as Special Track Work, Steel Bridge Girders and M&O Equipment. In addition, the Segment 3 2, & 1 track work installation, Azusa Citrus and Irwindale Stations are behind the baseline plan.

Progress Curve



Schedule Summary:

Contract Award:	07/27/11
Interim Notice to Proceed (INTP) :	11/03/11
Original Contract Duration:	1,780 Calendar Days
Current Contract Duration:	1,780 Calendar Days
Elapsed Time from NTP:	924 Calendar Days

Contract Milestones

Milestones	Description	Original Contract	Current Contract	Forecast	Variance
1	Substantial Completion	09/23/15	09/23/15	09/21/15	2
2	Punchlist Complete	06/19/16	06/19/16	06/17/16	2
3	Final Completion	09/17/16	09/17/16	09/15/16	2
4	Access - IFS Br.	12/15/12	12/15/12	12/15/2012 A	0
5	Test Track Complete	03/27/15	03/27/15	03/31/15	(4)
6	Colorado Br. Demo Complete	02/01/12	02/01/12	6/15/2012 A	(135)

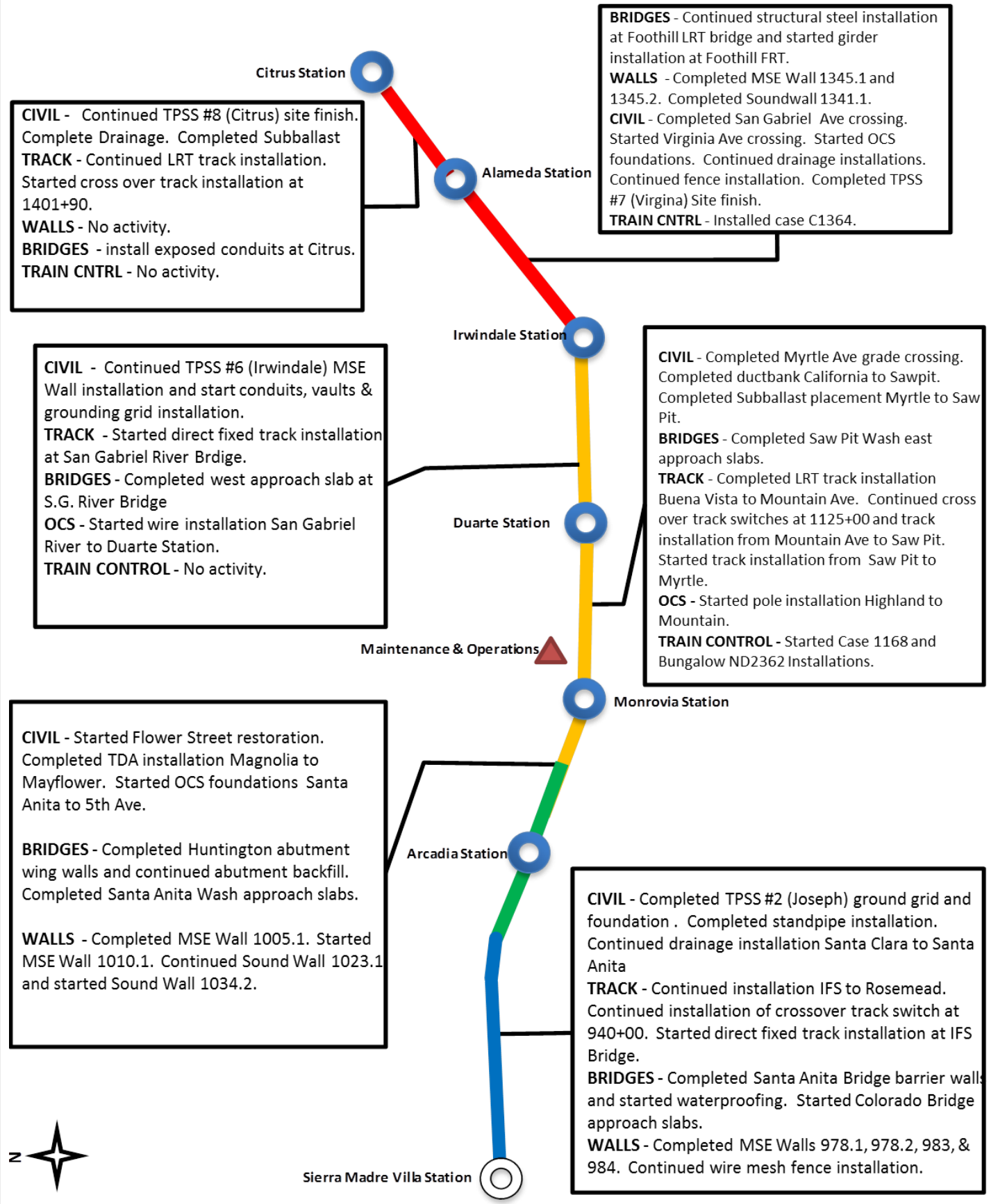
Schedule Assessment:

The Foothill Freight Bridge installation continues to be the primary critical path. The bridge installation is nearing completion, which will allow the access for track installation crews to re-align the final section of freight track. Upon the completion of the Segment 4 FRT track, the critical path continues through the Segment 4 LRT track installation, which will be followed by OCS installation and testing. Other areas which are near critical include: Irwindale Station, Direct Fixed Track at IFS and San Gabriel River Bridge, grading between I-210 and San Gabriel River. Although the Design-Build Contractor has mitigated the Huntington Bridge from the critical path, the fabrication and delivery of the structural steel remains a concern to the Authority. The Huntington Bridge has approximately one month of float.

The Test Track Completion is forecast to be available on March 31, 2015, which is 4 days behind the target date.



ALIGNMENT CONSTRUCTION PROGRESS THIS PERIOD





FACILITY CONSTRUCTION PROGRESS THIS PERIOD

Citrus Ave Station

STATION - Completed platform access ramps and stairs.
PARKING - Completed the installation of shoring beams. Started level 1 excavation and lagging.

STATION - Started platform access ramps and stairs.
PARKING - No activity planned.

Alameda Station

STATION - Completed North and South platform footings and started platform walls.
PARKING - Started site excavation for MSE wall and stockpiling for Soil Nail wall. Completed demolition of existing pump station.

Irwindale Station

STATION - Completed structural steel canopy painting. Started underplatform conduit installation and plumbing.
PARKING - No activity planned.

CIVIL - Completed Shamrock 24" waterline. Complete d 6" sewer installation. Started water line lateral connections.
WALLS - Completed screen wall foundations. Started screen wall installation.
TRACK - Completed ballast and track installation at North Storage Track and Turnout Switches. Completed installation of embedded track at Car Wash and started the installation of embedded track at MOW.
STRUCTURES - *M&O Building* continued structural steel installation. Continued 2nd floor concrete deck. Completed 3rd floor metal decking. *Car Wash* - Completed foundation slab. *Cleaning Platform* - Completed canopy and sanding equipment installations. *Material Storage* - Completed structural steel painting. Started CMU walls. *MOW Building* - Started CMU Walls.
OCS - No activity planned.

Duarte Station

STATION - Continued stairs and access ramps. Started structural steel canopy painting. Started underplatform conduit installation.
PARKING - Completed Level 1 columns and shear walls. Completed underground drainage installation. Continued CMU Ramp walls. Started slab on grade placement.

Maintenance & Operations

Monrovia Station

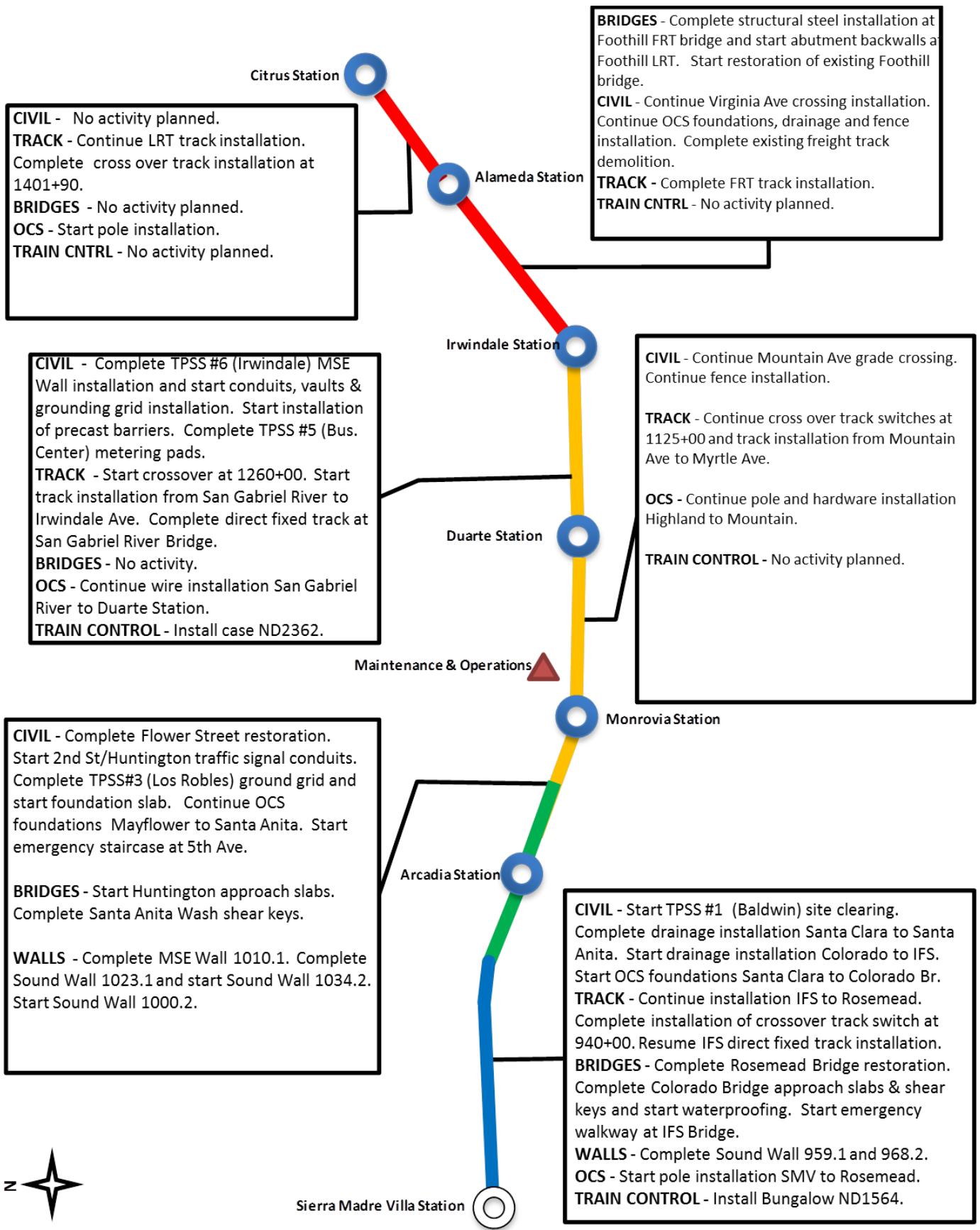
STATION - Completed stairs and access ramps. Started structural steel canopy painting.
PARKING - Completed CMU Ramp backfill and slab on grade. Completed Level 1 slab on grade. Started Level 2 deck. Started Level 1 barrier walls.

Arcadia Station





ALIGNMENT CONSTRUCTION PROGRESS NEXT PERIOD





FACILITY CONSTRUCTION PROGRESS NEXT PERIOD

Citrus Ave Station

STATION - Install 2" water line.

PARKING - Complete level 2 excavation and start level 3 excavation. Start geo pier installation.

STATION - Complete platform access ramps and stairs.

PARKING - No activity planned.

Alameda Station

STATION - Complete North and South platform platform walls. Start North and South Platform metal deck installation.

PARKING - Continue site excavation for pump station.

Irwindale Station

STATION - Install canopy metal roofing. Continue underplatform conduit installation and plumbing. Start pedestrian crossing equipment installation.

PARKING - No activity planned.

CIVIL - Start East side Shammrock Ave street restoration. Complete regrading south track areas and start subballast placement.

WALLS - Complete screen wall installation. Start Wall 'B' Footing.

TRACK - Continue installation of embedded track at MOW.

STRUCTURES - *M&O Building* continue structural steel installation. Complete 2nd floor concrete deck. Start 3rd floor concrete deck. Start exterior CMU walls and metal stud framing. *Car Wash* - Start structural steel installation. *Cleaning Platform* - Start canopy painting. *Material Storage* - Complete CMU walls. *MOW Building* - Start metal stud framing.

OCS - No activity planned.

Duarte Station

STATION - Complete stairs and access ramps. Continue underplatform conduit installation.

PARKING - Complete slab on grade placement and CMU Ramp walls. Start Level 1 deck.

Maintenance & Operations

Monrovia Station

STATION - No activity planned.

PARKING - Complete Level 2 deck. Start Level 2 barrier walls and light pole bases. Start biofiltration area. Start elevator tank. Start clock tower footing. Start plaza electrical conduits and irrigation pipes. Start water lines.

Arcadia Station



ALIGNMENT CONSTRUCTION IMAGES

Segment 1: IFS Emergency Walkway and Ductbank



Segment 2: Colorado Bridge Waterproofing

Segment 3: Duarte Station -
Canopy Roof Metal Installation



ALIGNMENT CONSTRUCTION IMAGES (CONTINUED)



Segment 4: Foothill Bridge - Initial Ballast



Operations Campus: Track Switch Installation



Operations Campus: Car Wash -
Structural Steel Work



Change Management Log

Date: 6/18/2014

Page: 1 of 4

Project: C1135 Alignment - FTC Contract #: C1135

Original Contract Amount:	\$485,867,000				
Approved Change Orders:	\$10,766,856	2.22%	Pending Change Orders:	\$0	0.00%
Current Contract Total:	\$496,633,856		Pending Contract Total:	\$496,633,856	2.22%

Change Orders

Number	Change Management	Title	Initiated Date	Approved Date	Outstanding Days	Time Extension	Amount
EXECUTED Change Orders							
001.00	000.00	Interim NTP	11/3/2011	11/3/2011	0		\$0
002.00	013.00	Colorado Bridge Haz Mat	5/17/2012	5/18/2012	1		\$121,382
002.01	013.01	Colorado Bridge HazMat - Final	9/5/2012	9/7/2012	2		\$13,164
003.00	001.00	Sound Wall Deletion - Duarte Road	7/12/2012	7/18/2012	6		(\$74,707)
004.00	018.00	Revise Block Design - CBD Calc	8/23/2012	8/29/2012	6		\$3,986
004.01	018.01	Revise Block Design - CBD Calc - 2	9/5/2013	9/11/2013	6		\$0
005.00	023.00	Wayside Signal Aspect Revision	9/6/2012	9/7/2012	1		\$26,072
005.01	023.01	Wayside Signal "Call On" Function	10/30/2013	11/1/2013	2		\$75,169
006.00	040.00	Arcadia Frieze, Bench-Artist Design	9/6/2012	9/10/2012	4		\$13,683
006.01	040.01	Arcadia Frieze, Bench-Construction	3/7/2013	3/12/2013	5		\$155,894
007.00	019.02	Soils Testing Abutments & Fdns	9/14/2012	9/18/2012	4		\$44,993
008.00	041.00	Unknown Utilities RFCN 005 006 008	9/14/2012	9/18/2012	4		\$132,450
009.00	038.00	Illuminate City Names @ Stations	9/18/2012	9/24/2012	6		\$184,657
010.00	046.00	SGRB - Lead Based Paint Remediation	9/21/2012	9/24/2012	3		\$244,536
011.00	004.00	Station Architectural Changes	10/11/2012	10/12/2012	1		\$443,950
012.00	003.01	Systems and Testing for Added TPSS	12/13/2012	12/14/2012	1		\$1,443,193
013.00	005.02	IDIQ Comm Contract (Rev 2)	12/14/2012	1/22/2013	39		\$698,259
014.00	060.00	Sewer Encasement Changes in Azusa	12/18/2012	1/24/2013	37		\$141,354
015.00	037.02	M&O - Materials Storage Revisions	12/26/2012	1/15/2013	20		\$62,862
015.01	037.03	M&O Storage Shelving Revisions	9/16/2013	9/19/2013	3		\$20,380
016.00	002.00	Relocation of Access Road to 3M Fac	12/26/2012	1/16/2013	21		\$53,814
017.00	025.00	3 Electrical Casings for ALW	2/27/2013	3/1/2013	2		\$219,033
018.00	073.00	Hazardous Abatement at Bridges	1/15/2013	2/6/2013	22		\$1,081,803
019.00	054.00	City of Hope Conduits	1/11/2013	1/22/2013	11		\$34,313
020.00	059.00	Citrus TPSS Transformer Pad Changes	2/6/2013	2/7/2013	1		\$34,536
021.00	075.00	Demo & Replace Palm Dr. Roadway	2/7/2013	2/14/2013	7		\$90,365
022.00	077.00	M&O Differing Site Conditions; Pt 1	2/13/2013	2/15/2013	2		\$66,360
022.01	093.00	M and O DSC T and M Work Part 2	3/8/2013	3/12/2013	4		\$66,625
022.02	103.00	M and O DSC Part 3	3/27/2013	3/28/2013	1		\$35,211
022.03	115.00	DSC at M and O Part 4	5/3/2013	5/7/2013	4		\$5,706
023.00	089.00	Contaminated Soil Abatement	2/26/2013	2/27/2013	1		\$422,068
024.00	068.00	Monrovia Sound Wall Panel Change	2/26/2013	2/28/2013	2		(\$24,150)
025.00	052.00	Santa Anita Trail Detour	3/8/2013	3/12/2013	4		\$27,691
026.00	070.00	Block Type Change at M&O Building	3/26/2013	3/26/2013	0		\$35,016
027.00	065.00	M&O IT Changes-Duct Banks/Conduits	3/26/2013	3/26/2013	0		\$88,650
027.01	065.01	M&O IT Changes - Power to WAP	9/4/2013	9/6/2013	2		\$73,049
028.00	039.01	Delete Layover Building	4/11/2013	4/12/2013	1		(\$313,832)
029.00	095.00	8in Sanitary Sewer Line- Alameda Av	4/23/2013	4/25/2013	2		\$226,089
029.01	095.01	Alameda Sewer Line Revised Scope	11/22/2013	11/26/2013	4		(\$37,425)
030.00	102.00	M&O-Disconnect Switches, Insulators	4/23/2013	4/25/2013	2		\$67,817
031.00	110.00	Rmv Abandoned Utility Line @ Dalton	4/23/2013	4/25/2013	2		\$1,562
032.00	104.00	Highland Ave Abandoned CMP sleeves	5/1/2013	5/3/2013	2		\$15,005
033.00	114.00	Remove contaminated wood culvert	5/3/2013	5/7/2013	4		\$4,714
034.00	128.00	M&O Backup Power/Generator Changes	5/13/2013	5/21/2013	8		\$121,340
035.00	083.00	M&O Vehicle Sanding System Changes	5/21/2013	5/24/2013	3		\$27,463



Change Management Log

Project: C1135 Alignment - FTC Contract #: C1135

Change Orders

Number	Change Management	Title	Initiated Date	Approved Date	Outstanding Days	Time Extension	Amount
EXECUTED Change Orders							
036.00	006.00	IFS Related Contract Changes	6/7/2013	6/11/2013	4		(\$263,111)
037.00	137.00	CTS Redesign	7/12/2013	7/16/2013	4		\$58,214
038.00	138.00	Segment 4 Safety Manager	7/12/2013	7/16/2013	4		\$157,274
038.01	138.01	Segment 4 Safety manager - Part 2	11/19/2013	11/21/2013	2		\$72,963
038.02	138.02	Segment 4 Safety Manager - Part 3	4/3/2014	4/7/2014	4		\$82,271
039.00	085.00	M&O Drainage System Enhancements	7/19/2013	8/13/2013	25		\$251,579
040.00	067.00	Station Paver Changes	7/23/2013	8/13/2013	21		\$728,340
040.01	067.01	Rebar Changes for Station Pavers	10/28/2013	10/31/2013	3		\$10,586
041.00	112.00	12" Pasadena Waterline Potholes	8/12/2013	8/16/2013	4		\$19,735
042.00	150.00	Demo Abandoned Water Lines @ Dalton	8/12/2013	8/16/2013	4		\$5,937
043.00	007.01	Emer. Backup for Guideway Lighting	8/16/2013	10/1/2013	46		\$359,158
044.00	172.00	Contaminated Wood Culvert Sta. 1202	8/27/2013	8/28/2013	1		\$7,712
045.00	139.00	BLS Changes	8/28/2013	9/4/2013	7		\$110,801
046.00	165.00	Azusa-Alameda Station; 2nd Portal	8/28/2013	9/4/2013	7		\$77,175
047.00	145.00	St. Joseph drainage enhancements	9/4/2013	9/6/2013	2		\$17,592
048.00	149.00	M&O - Lights at NW Corner Park	9/4/2013	9/6/2013	2		\$29,351
049.00	174.00	TPSS #5 Cal-Am Power Conflict	9/4/2013	9/6/2013	2		\$127,260
050.00	171.00	Relocate Access Stair to Foothill	9/4/2013	9/6/2013	2		\$20,276
051.00	173.00	Dalton 8" Water Line Work	9/5/2013	9/12/2013	7		\$35,316
052.00	071.00	Duarte Rd Screen Wall Change	9/5/2013	9/17/2013	12		(\$133,864)
053.00	176.00	Remove Contaminatd Wood-Buena Vista	9/10/2013	9/12/2013	2		\$5,543
054.00	147.00	DECCO Bypass	9/10/2013	9/12/2013	2		\$18,519
055.00	166.00	Foothill Blvd. Water/SD Relocation	9/20/2013	9/20/2013	0		\$127,074
056.00	186.00	Contaminated Wood @ San Gabriel Ave	9/23/2013	9/24/2013	1		\$4,291
057.00	194.00	California/Duarte Water Line Work	10/28/2013	10/31/2013	3		\$220,743
058.00	189.00	Four Utility Changes	10/28/2013	10/31/2013	3		\$14,157
059.00	180.00	Remove/Dispose of ACM E of Highland	10/30/2013	11/1/2013	2		\$29,311
060.00	179.00	CTS Upgrade to OC-192	10/30/2013	11/1/2013	2		\$112,543
061.00	213.00	Irwindale On-ramp Stockpile	11/8/2013	11/21/2013	13		\$200,185
062.00	053.00	Delete Totten Tubes Scope of Work	11/8/2013	11/21/2013	13		(\$143,801)
063.00	146.00	Home Depot Striping and Signing	11/15/2013	11/21/2013	6		\$21,003
064.00	204.00	Unknown Duct Bank @ San Gabriel Ave	11/15/2013	11/21/2013	6		\$1,265
065.00	140.00	M&O-Overhead Work Platform Changes	12/5/2013	12/16/2013	11		\$317,656
066.00	217.00	Buried SD & Headwall, STA 1306+50	12/6/2013	12/17/2013	11		\$1,020
067.00	219.00	Contaminated Soil, Monrovia Station	12/12/2013	12/17/2013	5		\$17,503
068.00	220.00	DSC at Sawpit Wash Abutments	12/12/2013	12/17/2013	5		\$12,668
069.00	188.00	Costco Emergency Gate-Path to POS	1/21/2014	1/22/2014	1		\$19,882
070.00	214.00	M&O - Generator Load Bank	1/21/2014	1/22/2014	1		\$38,092
071.00	224.00	Alameda South Water Line Tie-in	1/30/2014	1/31/2014	1		\$6,330
072.00	202.00	Aesthetic Lighting Provisions-SGRB	2/3/2014	2/4/2014	1		\$27,055
073.00	160.00	Move Mountain Interlocking Bungalow	2/11/2014	2/13/2014	2		\$68,596
074.00	200.00	M&O Parts Carousel Warranty & PM	2/11/2014	2/13/2014	2		\$68,906
075.00	235.00	Remove Contaminated Wood Ties	2/14/2014	2/18/2014	4		\$4,571
076.00	234.00	Accelerate Work at California Ave	2/14/2014	2/18/2014	4		\$5,663
077.00	247.00	Line Stop in California	2/18/2014	2/20/2014	2		\$14,524
078.00	201.00	Added Sound Wall, SW of IFS	2/27/2014	2/28/2014	1		\$18,201
079.00	238.00	M&O-MOW Canopy Structural Eval	2/27/2014	2/28/2014	1		\$7,147
080.00	232.00	Car Moving Tractor-Coupler Upgrade	2/27/2014	2/28/2014	1		\$177,145
081.00	242.00	Car Moving Tractor Options/Features	2/27/2014	2/28/2014	1		\$69,099
082.00	091.00	Rockvale Water Line Mitigation	3/4/2014	3/5/2014	1		\$163,750



Change Management Log

Project: C1135 Alignment - FTC Contract #: C1135

Change Orders

Table with columns: Number, Change Management, Title, Initiated Date, Approved Date, Outstanding Days, Time Extension, Amount. Includes a subtotal of \$10,766,856.

Open PCOs

Table with columns: PCO Number, Title. Lists 18 open PCOs.

Open RFCs

Table with columns: RFC Number, Title. Lists 2 open RFCs.



Change Management Log

Date: 6/18/2014

Page: 4 of 4

Project: C1135 Alignment - FTC Contract #: C1135

Open PCOs

PCO Number	Title
OPEN	
080.00	Delete Evergreen / Myrtle Mitigation
081.00	Eliminate 'Train Coming' Signs
082.00	M&O - Guard House Changes

Open RFC Notices

Number	Title
037.00	DSC at Santa Anita Wash Abutment 1
044.00	DSC Utility at Azusa Avenue
057.00	Rmvl Contmntd Wd Mtrls Stanta Anita



Description: Intermodal Parking Facilities & Enhancements **Status:** May 15, 2014

Contract No.: C1150

Contractor: Webcor Builders

Progress Completed This Period

Design

- Submit AFC Design - Monrovia Enhancements
- Submit Schedule of Values Azusa-Citrus
- Submit QA/QC Plan - Part 2
- Submit QA/QC Plan - Part 3
- Submit Post Construction Survey - Michillinda
- Submit Post Construction Survey - Soldano

Activities Planned Next Period

Design

- Submit AFC Design - Azusa-Citrus Enhancements
- Submit AFC Design - Azusa-Citrus Parking Structure
- Submit AFC Design - Irwindale Enhancements
- Submit AFC Design - Irwindale Parking Structure
- Submit Air Pollution Control Plan

Areas of Concern

- **IRWINDALE PARKING STRUCTURE DESIGN** - The Authority has issued the Design-Build Contractor a Potential Change Order to revise the location of the Irwindale Parking Structure from the current location identified in the 85% design submittal. The revised design will require the parking structure to be moved in order to avoid a utility conflict with the existing SCE distribution line. The redesign effort will impact the completion of the AFC design and potentially impact the Substantial Completion milestone. The parking structure package is expected to be completed by June 2014.

Areas of Concern (Continued)

- **IRWINDALE SITE PUMP STATION** - The site excavation, which is near complete has been suspended because the excavation for the pump station invert is within the railroad zone of influence. The Design-Build Contractor will re-design the pump station to avoid the installation of railroad shoring. The re-design will impact the completion of the site preparation.
- **IRWINDALE SCE POLE SHORING** - The existing SCE pole, which was left in place to avoid relocation requires shoring to complete the site excavation. The Design-Build Contractor will submit the shoring design to SCE for approval within the next period. The shoring approval and installation are required to start the completion of site excavation and MSE wall construction.



Description: Intermodal Parking Facilities & Enhancements **Status:** May 15, 2014
Contract No.: C1150 **Contractor:** Webcor Builders

Cost Summary:

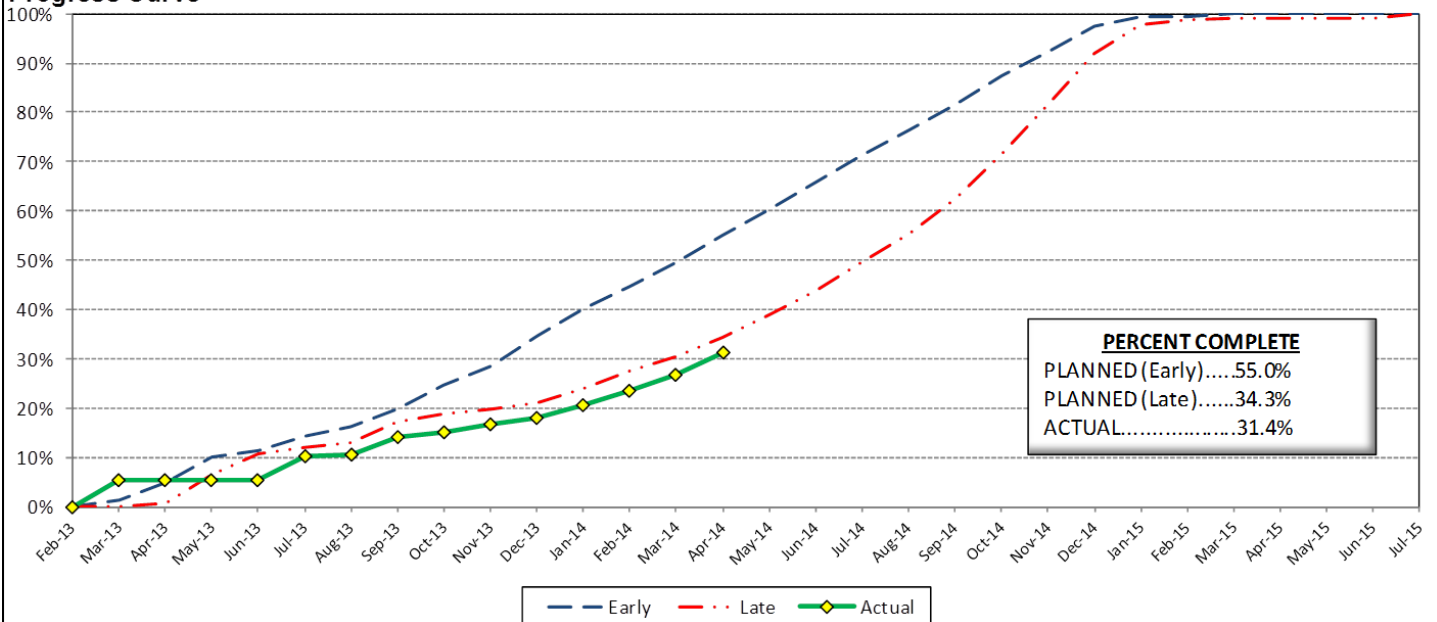
	Million(s)
CONTRACT	
Contract Award Value:	48.8
Executed Change Orders:	0.4
Current Contract Value:	49.1
Potential Change Orders:	0.2
Current Forecast:	49.3
Earned Value/Actual Cost	15.4
AUTHORIZATION FOR EXPENDITURE	
Budget	50.3
Commitment	49.1
Balance	0.9

Cost Assessment:

The current cost forecast is 49.3 Million. The forecast decreased \$20 Thousand from the previous period. The decrease is due to PCO 009 - *Irwindale Intersection LED Upgrade*. In the previous period, this PCO was incorrectly reflected as a potential cost after the CO 007 was executed. The current forecast is within the authorized budget.

The Design-Build Contractor is trending beyond the late curve, which is due to the progress of the *Irwindale Parking Structure*, and *Azusa-Citrus Parking Structure*, AFC designs. In addition, the Design-Build Contractor has not submitted a schedule of values for Contract Document Requirement List (CDRL) bid items, which is also having an impact on progress reporting.

Progress Curve



Schedule Summary:

Contract Award:	02/27/13	
Notice to Proceed (NTP) :	03/20/13	
Original Contract Duration:	845	Calendar Days
Current Contract Duration:	845	Calendar Days
Elapsed Time from NTP:	421	Calendar Days

Contract Milestones

Milestones	Description	Original Contract	Current Contract	Forecast	Variance
1	Substantial Completion	03/15/15	03/15/15	06/18/15	(95)
2	Punchlist Complete	05/29/15	05/29/15	09/01/15	(95)
3	Final Completion	07/13/15	07/13/15	10/16/15	(95)
4	TPSS Work	03/01/14	03/01/14	03/31/14	(30)

Schedule Assessment:

The critical path is currently through the Irwindale site preparation. Although the site has been excavated, the start of the pump station construction was suspended due to the Design-Build Contractor's re-design of the structure. The structure was re-designed to avoid the installation of railroad shoring. As a result, the installation of the soil nail wall and MSE walls can not begin until the pump station structure reaches the second of four concrete lifts. At this time, the pump station construction is expected to resume in early June 2014.

PARKING FACILITY CONSTRUCTION IMAGES

Arcadia Parking Structure Site Overview



Monrovia Parking Structure Site Overview

Monrovia Parking Structure Site Overview



PARKING FACILITY CONSTRUCTION IMAGES

Irwindale Parking Structure Site Excavation



Rebar reinforcement for shotcrete walls at Azusa-Citrus Parking Structure

Azusa-Citrus Parking Structure Overview





Change Management Log

Date: 6/18/2014

Page: 1 of 2

Project: C1150 Parking - Webcor Contract #: C1150

Original Contract Amount:	\$48,750,000				
Approved Change Orders:	\$356,733	0.73%	Pending Change Orders:	(\$59,251)	-0.12%
Current Contract Total:	\$49,106,733		Pending Contract Total:	\$49,047,482	0.61%

Change Orders

Number	Change Management	Title	Initiated Date	Approved Date	Outstanding Days	Time Extension	Amount
EXECUTED Change Orders							
001.00	001.00	Monrovia Parking Alternative Layout	6/25/2013	7/11/2013	16		\$21,382
001.01	001.01	Monrovia Alternative - Cancelation	9/17/2013	10/7/2013	20		(\$12,006)
002.00	003.00	Clock Tower Procurement	7/3/2013	7/11/2013	8		\$107,246
003.00	002.00	Relocate Elevator @ Azusa-Citrus PF	12/18/2013	1/8/2014	21		\$159,899
005.00	018.00	Monrovia Demo Unforseen Conditions	3/18/2014	3/26/2014	8		\$17,013
006.00	010.00	Arcadia Transit Plaza Betterments	3/14/2014	3/26/2014	12		\$35,466
007.00	009.01	Irwindale Intersection Betterments	3/25/2014	3/26/2014	1		\$19,985
008.00	017.00	Irwindale Intersection Water Line	3/25/2014	4/14/2014	20		\$7,748
		Subtotal:					\$356,733
		Subtotal:					\$356,733
PENDING Change Orders							
004.00	013.00	Irwindale Structure Relocation	1/23/2014		146	90	(\$65,564)
009.00	020.00	Unforeseen Underground Demo-Arcadia	6/13/2014		5		\$6,313
		Subtotal:					(\$59,251)
		Subtotal:					(\$59,251)
		Total:					\$297,482

Open PCOs

PCO Number	Title
OPEN	
004.00	TPSS Grounding Grid Modifications
006.00	St. Joseph Drainage Enhancements
008.00	Azusa-Citrus Plaza Pavers
011.00	Soldano TPSS Added ROW Fence
012.00	Additional Conduit Provisions
013.00	Primrose Avenue cul-de-sac Deletion
014.00	Delete Azusa-Alameda Enhancements
015.00	Monrovia Canopy & Color Betterments
016.00	Parking Facility Artwork

Open RFCs

RFC Number	Title
OPEN	
007.00	Added PME Switch & 2 Spare Conduits
008.00	SCE Power Feed to DB2 TPSS at Arcad
011.00	Comm. Duct Bank Interface with DB2
012.00	SCE Capacitor Bank at Michillinda T

Open RFC Notices

Number	Title
003.00	Michillinda unforeseen items
005.00	Irwindale CCTV Power Pole
006.00	Michillinda Demo of DB2 Conduit



Change Management Log

Date: 6/18/2014

Page: 2 of 2

Project: C1150 Parking - Webcor Contract #: C1150

Open RFC Notices

Number	Title
009.00	Additional Sidewalk Replacement
010.00	EV Charger Upgrades
013.00	ETEL Enclosures
014.00	Intrusion Alarms
015.00	Metro Requested Elevator Vent Detai



AZUSA TO MONTCLAIR SEGMENT

ACTIVITIES COMPLETED THIS PERIOD

The Board, at its May 28, 2014 meeting, certified the First Addendum to the Phase 2B FEIR. This addendum replaced the at-grade crossing at Garey Avenue in Pomona with an aerial grade separation of the light rail tracks. The Authority held kick-off meetings with each corridor city to discuss the project. Authority and City staff are beginning the process of negotiating a Master Cooperative Agreement. The Authority has also initiated the restart of the Station Design Art Program (SDAR). The first SDAR meetings are planned to begin in September 2014. Staff continues to work on the following technical elements of the project:

- Continued advancement of the plan and profile drawings
- Authority staff met with AECOM to discuss scope of work for the right-of-way and composite existing Utility drawings
- Began development of geotechnical scope of work for AECOM to perform
- Began development of parking facilities scope of work for AECOM to perform

KEY FUTURE ACTIVITIES

The advanced conceptual engineering process is an 18-month process. Upon completion, the Azusa to Montclair segment will be ready for a design-build procurement. Upcoming activities include establishing coordination meetings with each corridor city, kickoff of the ROW drawing work, refinement of the alignment, completing the SDAR, and kickoff of utility drawings and geotechnical investigations.

Federal Transit Administration (FTA)

The Metro Board of Directors excluded the Gold Line from seeking federal New Starts funding. The Authority will work together with Metro along with the Congressional delegation to seek funding to construct the extension following completion of the environmental review.



PHASE II FOOTHILL EXTENSION FINANCIAL STATUS

Project Operating Budget Summary in Millions of Dollars

May 31, 2014

	(a)	(b)	(c=a-b)	(d)
FINANCIAL PLAN	Current Budget	Funding Committed to Project	Uncommitted Funds	Revenues Received
SCAG	1.0	0.9	0.1	0.9
Interest Income	2.0	2.0	-	2.0
Bridge Replacement	13.9	13.9	-	13.9
Phase I Carryover	4.0	4.0	-	4.0
Maintenance and Operations Facility	-	-	-	-
Cities	11.0	-	11.0	-
Measure R - Pasadena to Azusa	810.5	777.0	33.5	355.2
Measure R - Azusa to Montclair	-	-	-	-
SANBAG	55.2	1.5	53.7	1.5
Federal TCSP	2.9	2.9	-	2.6
Federal Bus Intermodal Plan	9.0	9.0	-	3.4
Federal New Starts 2004 MTA Passthrough	4.0	4.0	-	4.0
Federal New Starts 2005 MTA Passthrough	0.5	0.5	-	0.5
Federal New Starts 2006 Corridor Study	2.5	2.5	-	2.5
Federal/Other	802.5	-	802.5	-
Total Revenues	1,719.0	818.2	900.8	390.5
	(a)	(b)	(c)	(d=a-b)
	Current Budget	Current Obligation	Current Expenditures	Current Available Balance
EXPENSES				
Program Management and Administration	107.9	86.1	83.6	21.8
Master Cooperative Agreements	12.0	3.3	2.9	8.7
Real Estate including ROW Acq	21.0	21.0	17.3	-
Special Programs	0.3	-	-	0.3
Procurement/Vehicles	60.0	-	-	60.0
Maintenance and Operations Facility Land	22.0	22.0	22.0	-
Construction - IFS	19.8	19.8	19.8	-
Construction - Pasadena to Azusa segment	328.9	328.9	244.6	-
Construction - Azusa to Montclair segment	950.0	-	-	950.0
Construction - M&O	46.0	44.0	22.0	2.0
Construction - Parking Structures	44.2	44.2	17.0	-
MTA Project Costs	64.0	64.0	14.3	-
Contingency	27.4	-	-	27.4
Project Reserve	15.5	-	-	15.5
Total Project	1,719.0	633.3	443.5	1,085.7