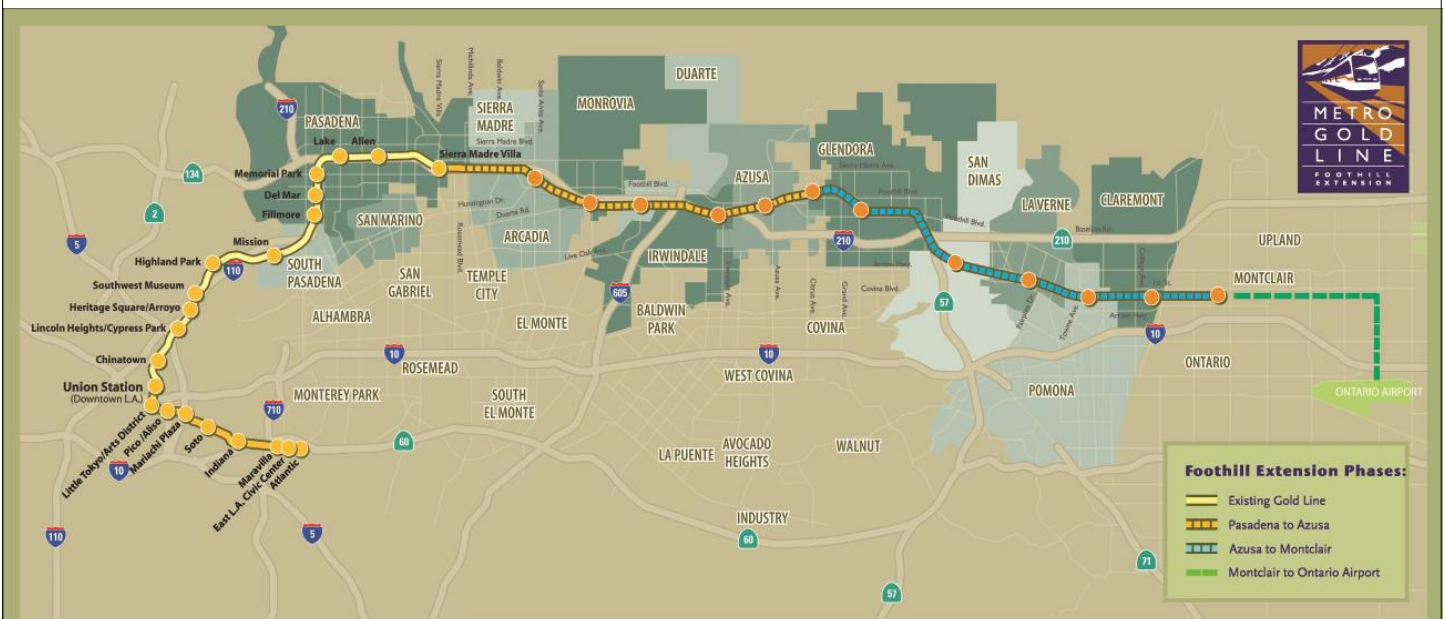


# Metro Gold Line

## Foothill Extension Project

### Monthly Project Status Report

November 2014



Metro Gold Line

Connecting Los Angeles, the San Gabriel Valley and Inland Empire





## TABLE OF CONTENTS

### PHASE II FOOTHILL EXTENSION PROJECT STATUS

<b>Project Description .....</b>	<b>3</b>
<b>Pasadena to Azusa Segment .....</b>	<b>4</b>
Management Issues .....	4
Key Activities Completed This Period .....	5
Key Future Activities .....	6
Critical Path Schedule .....	7
Critical Path Float Trend .....	8
Alignment Contract Status .....	9
Alignment Construction Progress This Period .....	11
Facility Construction Progress This Period .....	12
Alignment Construction Progress Next Period .....	13
Facility Construction Progress Next Period .....	14
Alignment Construction Images .....	15
Alignment Change Management Log .....	17
Parking Facilities and Enhancements Contract Status .....	21
Parking Facilities and Enhancements Construction Images .....	23
Parking Facilities and Enhancements Change Management Log .....	25
<b>Azusa to Montclair Segment .....</b>	<b>27</b>
<b>Financial Status .....</b>	<b>28</b>



## FOOTHILL EXTENSION PROJECT DESCRIPTION

The Authority's mandate is to plan, design and construct a 37-mile light rail link between Downtown Los Angeles and Claremont. In addition, the San Bernardino Associated Governments (SANBAG) has requested that planning be extended one mile inside San Bernardino County to the City of Montclair and then possibly to Ontario Airport.

The Metro Gold Line Phase II (Foothill Extension) corridor includes the cities of Pasadena, Arcadia, Monrovia, Duarte, Irwindale, Azusa, Glendora, San Dimas, La Verne, Pomona, Claremont, and Montclair; and the counties of Los Angeles and San Bernardino (Figure 1). The Foothill Extension is estimated to cost approximately \$1.950 billion.

The Foothill Extension will be built in two segments to align effectively with projected cash flows and financial capacity constraints. The first segment is defined from the Sierra Madre Villa Station in Pasadena to the city of Azusa. Revenue service along this segment is planned for the year 2016. The second segment would include an extension from Azusa to the City of Montclair with revenue service projected for the year 2023 and the third segment, if applicable, will be comprised of an extension from Montclair to the Ontario Airport.

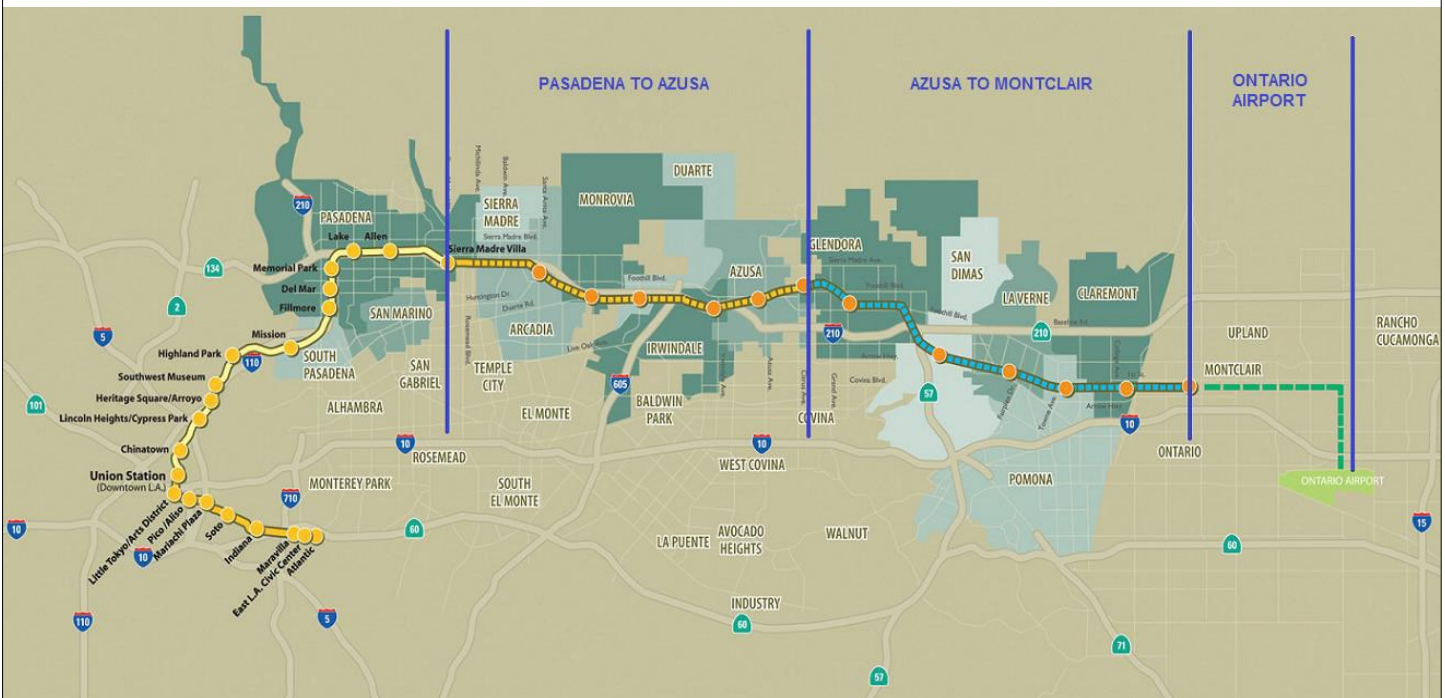


Figure 1: Metro Gold Line Foothill Extension Alignment



## **Pasadena to Azusa Segment**

### **MANAGEMENT ISSUES**

#### **Metro Betterments**

During the design process Metro staff have identified betterments that Metro staff would like to add to the project. Metro has provided a final disposition on all but a few items. Authority staff continues to work with Metro staff to resolve the remaining items.

#### **TPSS Delivery Dates**

The traction power substations (TPSS) provide equipment to transform utility power required for Light Rail Vehicle (LRV) propulsion, and then distribute that power to the LRVs via the overhead wires. Metro is responsible for purchasing the traction power substations. All TPSS have been delivered and set to date, however these deliveries were all behind schedule which proposed a potential to impact the project schedule. Authority staff coordinated with Metro and FTC to ensure minimal impact to the project, however the energization process will need to be finalized before schedule concerns are eliminated.

## **KEY ACTIVITIES COMPLETED THIS PERIOD**

FTC reports the following SBE statistics for the month of August:

- Current SBE commitment: \$ 59,500,000
- SBE percent committed versus value of Project: 18.82%
- Overall Authority Project SBE goal: 16%

FTC reports the following approximate safety statistics to date:

- 1,555,127 total work hours performed by FTC, Mass Electric, and Subcontractors
- 13 recordable injuries reported
- 5 lost time injuries reported

Webcor reports the following DBE statistics for the month of August:

- Current DBE commitment: \$1,801,597
- DBE percent committed versus value of Project: 3.7%
- Overall Authority Project DBE goal: 2.3%

Webcor reports the following approximate safety statistics to date:

- 122,050 total work hours performed by Webcor and Subcontractors
- 1 recordable injuries reported
- 0 lost time injuries reported

All Traction Power Supply Substations (TPSS) have been delivered (final two deliveries were Baldwin and Soldano)

Continued placement of art and architectural elements at all stations

Continued track destressing throughout the alignment

Continued trackwork at the Gold Line Operations Campus (Campus)

Continued OCS and Site Lighting Pole erection at the Campus and throughout the Alignment

Continued OCS wire runs in Segments 1 and 3, and 4

Continued installation of train control cases/bungalows and associated equipment

Continued construction of Arcadia, Monrovia, Irwindale, and Azusa-Citrus Parking Structures

Arcadia Transit Plaza elements completed and turned over to city

Continued installation of Arcadia parking structure elevators

Continued construction of MSE and soil nail retaining wall at the Irwindale parking structure site

Completed first deck pour at Azusa-Citrus parking structure

Authority continued reviewing design submittals for Azusa-Citrus and Irwindale structures

## **KEY FUTURE ACTIVITIES**

Continue discussions with corridor cities regarding the project

Continue management of the Alignment contract, which will include oversight of construction activities and preparation for start-up activities

Continue to meet with Intermodal Parking Facilities and Enhancements Project contractor, Webcor Builders regarding design and construction of the Project

Continue to meet with cities along Phase 2B alignment regarding general coordination and negotiation of MCAs

Complete construction of art and architectural elements at all stations

Complete OCS installation

Complete installation of train control cases/bungalows and associated equipment

Complete installation of communications system

Begin powered train tests

Begin system integration testing

Finalize design for the following Parking Facilities: Azusa Citrus, Irwindale, and Duarte

Finalize the following property acquisitions:

- Arcadia:

1. Parcel 13010/1311 (Indiana St.) – To be conveyed by the City of Arcadia.
2. Parcel 1401a (Huntington Dr. Aerial Easement ) – To be conveyed by the City of Arcadia.
3. Parcel 1401b (Huntington Dr. Bridge Abutments) – To be conveyed by the City of Arcadia.
4. Parcel 1403 (99 N. Second Av.) – Surveyors are preparing legal description.
5. Parcel 6009 (Huntington Dr. Bridge Abutments) – To be conveyed by the City of Arcadia.
6. Parcel 6010 (Huntington Dr. Bridge Abutments) – To be conveyed by the City of Arcadia.
7. Parcel 6011 (Huntington Dr. Bridge Abutments) – To be conveyed by the City of Arcadia.

- Monrovia:

1. Parcel 1601 (Encino Av.) – To be conveyed by the City of Monrovia.
2. Parcel 1903 (Monrovia Station) – To be conveyed by the City of Monrovia.
3. Parcel 21A12 (3M Parking Lot) – Waiting for legal description/as-builts.
4. Parcel 21A23 (Shamrock Trapezoid) – To be conveyed by the City of Monrovia.

- Irwindale:

1. Parcel 3302a (MillerCoors easement for power utilities) - Negotiating.

- Azusa:

1. Parcel 3501 (1220 W. Foothill Blvd.) – Engineers are preparing legal description.



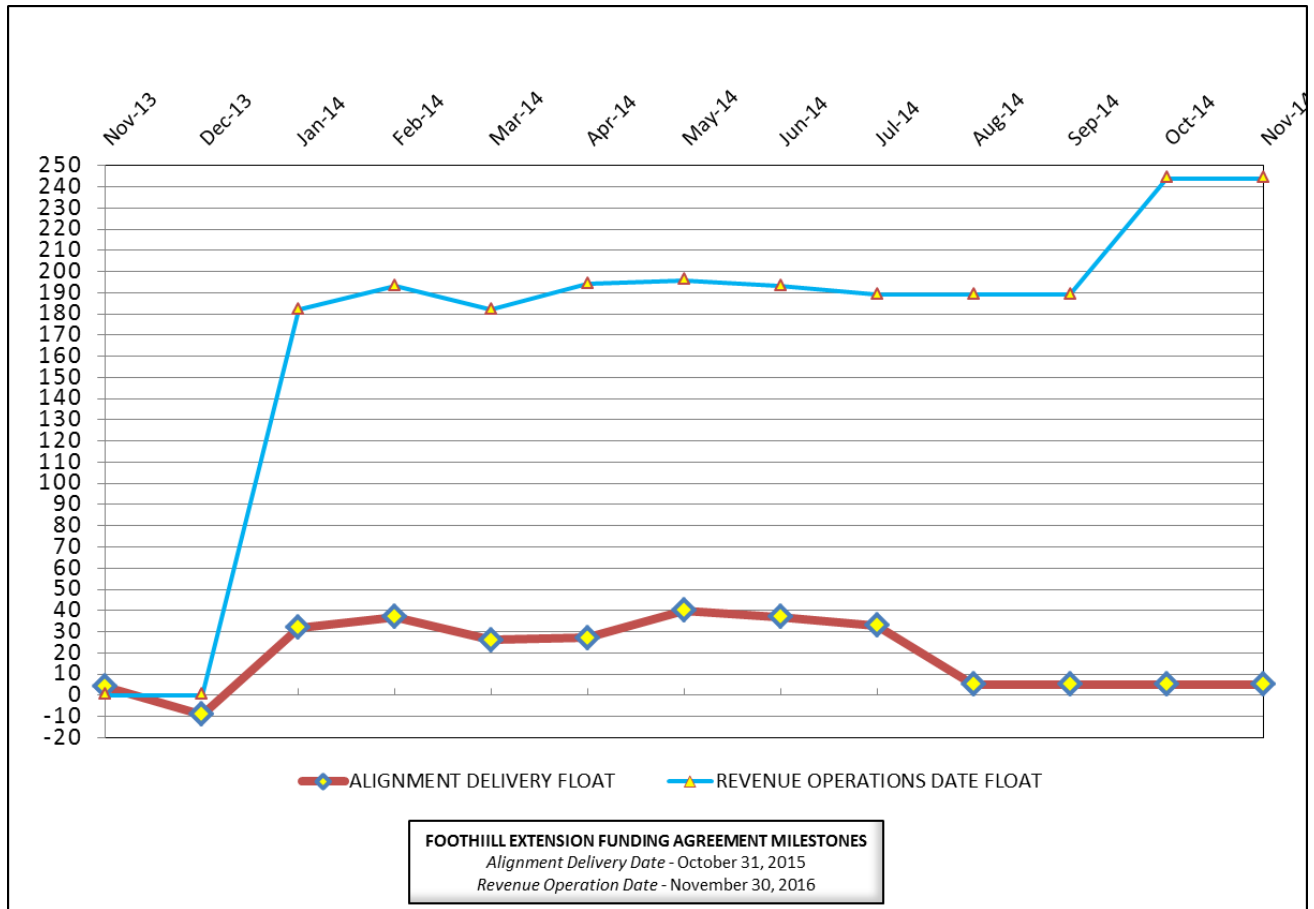


### CRITICAL PATH SCHEDULE

Activity Name	OD	RD	AD	Start	Finish	Total Float	Timeline											
							2012	2013	2014	2015	2016	Q2	Q3	Q4	Q1	Q2	Q3	Q4
<b>REVENUE OPERATIONS DATE - CRITICAL PATH</b>																		
LRV FABRICATION / DELIVER 15 VEHICLES	1353	399	820	17. Aug. 12 07:00 A	18. Dec. 15 15:00	244												
METRO - System Testing & Start-Up - Phase 2A	30	30	0	27. Oct. 15 07:00	25. Nov. 15 15:00	267												
METRO - Pre-Revenue Operations - Phase 2A	60	60	0	19. Dec. 15 07:00	16. Feb. 16 15:00	244												
METRO - Project Schedule Contingency (2 Mo.)	44	44	0	17. Feb. 16 07:00	31. Mar. 16 15:00	244												
Phase 2A - Revenue Operations Date (ROD)	0	0	0		31. Mar. 16 15:00*	244												
<b>ALIGNMENT DELIVERY DATE - CRITICAL PATH</b>																		
IRWINDALE STA PARKING STRUCTURE - DESIGN	150	20	405	29. Apr. 13 07:00 A	12. Dec. 14 15:00	34												
IRWINDALE STA PARKING STRUCTURE - CONSTRUCTION	316	200	155	14. Apr. 14 07:00 A	21. Aug. 15 15:00	4												
SYSTEMS INTERGRATION TESTING - PHASE 1	150	150	0	28. Jan. 15 07:00	25. Aug. 15 15:00	4												
IRWINDALE PARKING STRUCTURE - COMMUNICATIONS INSTL / TEST	45	45	0	25. May. 15 07:00	24. Jul. 15 15:00	4												
SYSTEMS INTERGRATION TESTING - PHASE 2	44	44	0	26. Aug. 15 07:00	26. Oct. 15 15:00	4												
C1135 - >>>SUBSTANTIAL COMPLETION - 1420 CD<<<	0	0	0		26. Oct. 15 15:00*	5												
<b>ALIGNMENT DELIVERY DATE - SECONDARY - CRITICAL PATH</b>																		
TPSS No. 4 - INSTALLATION & TESTING	32	16	61	22. Aug. 14 07:00 A	08. Dec. 14 15:00	5												
TPSS No. 9 - INSTALLATION & TESTING	42	24	36	26. Sep. 14 07:00 A	29. Dec. 14 15:00	5												
TPSS No. 2 - INSTALLATION & TESTING	43	39	21	17. Oct. 14 07:00 A	19. Jan. 15 15:00	5												
TPSS No. 10 - INSTALLATION & TESTING	52	52	0	28. Nov. 14 07:00	09. Feb. 15 15:00	5												
OCS - TESTING - SEGMENT 4	20	20	0	10. Feb. 15 07:00	09. Mar. 15 15:00	5												
OCS - TESTING - SEGMENT 1	20	20	0	10. Mar. 15 07:00	06. Apr. 15 15:00	5												
OCS - TESTING - SEGMENT 2	20	20	0	07. Apr. 15 07:00	04. May. 15 15:00	5												
<b>ALIGNMENT DELIVERY DATE - TERTIARY CRITICAL PATH</b>																		
INTERLOCK PULL SIGNAL CABLE ('4' to '5')	20	15	45	15. Sep. 14 07:00 A	05. Dec. 14 15:00	11												
INTERLOCK PULL SIGNAL CABLE ('5' to '6')	20	15	45	15. Sep. 14 07:00 A	05. Dec. 14 15:00	11												
INTERLOCK PULL SIGNAL CABLE ('3' to '4')	25	25	0	17. Nov. 14 07:00	19. Dec. 14 15:00	11												
INTERLOCK PULL SIGNAL CABLE ('6' to '7')	20	20	0	08. Dec. 14 07:00	02. Jan. 15 15:00	11												
INTERLOCK PULL SIGNAL CABLE ('2' to '3')	20	20	0	22. Dec. 14 07:00	16. Jan. 15 15:00	11												
INTERLOCK TEST SIGNAL CABLE ('6' to '7')	10	10	0	05. Jan. 15 07:00	16. Jan. 15 15:00	11												
INTERLOCK PULL SIGNAL CABLE ('1' to '2')	20	20	0	19. Jan. 15 07:00	13. Feb. 15 15:00	11												
INTERLOCK TEST SIGNAL CABLE ('1' to '2')	20	20	0	16. Feb. 15 07:00	13. Mar. 15 15:00	11												
INTERLOCK TEST SIGNAL CABLE ('7' to '8')	10	10	0	16. Mar. 15 07:00	27. Mar. 15 15:00	11												



### CRITICAL PATH FLOAT TREND



#### Revenue Operations Date Critical Path - (244 Calendar Days)

The critical path continues through the Light Rail Vehicle (LRV) fabrication and delivery. Metro's current forecast to complete the delivery of the fifteen (15) vehicles is December 2015. The projected Revenue Operations Date (ROD) is projected to be complete by March 31, 2016, which is eight (8) months ahead of the Funding Agreement Milestone date of November 30, 2016

#### Alignment Delivery Date Critical Path - (5 Calendar Days / 4 Work Days)

The Irwindale Parking Structure, which is currently being constructed by Webcor continues to be the primary critical path. Upon reaching the completion of the concrete structure and electrical room, FTC will be granted access to complete the communications installation at the Irwindale Parking Structure. The critical path continues through systems integration testing and upon completion, FTC will achieve Substantial Completion and turn-over to Metro for Pre-Revenue Testing.

Other elements of construction work, which are in progress and near critical are Irwindale Station mechanical, electrical, and finish installations; TPSS #4 (Yard) and #6 (Irwindale) Installation & Testing, Segment 3 Train Control Equipment Installations; Segments 3 & 4 OCS installations. Other Facility work, which is near critical includes Citrus Parking Structure and the Maintenance & Operations Campus.

#### Project Float

The project float for the Revenue Operations Date is 244 days. The critical activities on this path are on schedule to meet the Target Revenue Operations Date of November 2016. The Alignment Delivery Date float value remained unchanged this period. The Alignment Delivery Date is currently 5 days ahead the October 31, 2015 deadline.



<b>Description:</b> Alignment Design / Build	<b>Status:</b> November 15, 2014
<b>Contract No.:</b> C1135	<b>Contractor:</b> Foothill Transit Constructors (Kiewit-Parsons J.V.)

Progress Completed This Period	Activities Planned Next Period
<b>Design</b> <ul style="list-style-type: none"> <li>• Submit AFC Design - Train Control Revisions</li> <li>• Submit AFC Design - Communication Azusa-Citrus Station</li> <li>• Submit AFC Design - Duarte Station Ramp Modification</li> <li>• Submit AFC Design - LACFC Delford Drainage</li> <li>• Submit M&amp;O LEED Commissioning Plan</li> </ul> <b>Construction</b> <ul style="list-style-type: none"> <li>• See "Construction Progress This Period"</li> </ul>	<b>Design</b> <ul style="list-style-type: none"> <li>• Submit - Integrated Test Plan</li> <li>• Submit - Test Group 'B' TC Zones 5-7 - Part 1</li> <li>• Submit AFC Design - Emergency Trip Station Book of Plans</li> </ul> <b>Construction</b> <ul style="list-style-type: none"> <li>• See "Construction Progress Next Period"</li> </ul>

Areas of Concern	Areas of Concern (Continued)
<ul style="list-style-type: none"> <li>• <b>TPSS Power Drops</b> - Although the Metro TPSS Procurement Contractor has nearly completed the commissioning of the the Traction Power Substation to support the Test Track Area, the Design-Build Contractor has not completed the permanent power requirements for the three TPSS site locations. TPSS 4 - <i>Yard</i>, TPSS 5 - <i>Business Center</i>, and TPSS 6 - <i>Irwindale</i> are necessary to support the start of OCS testing. The Design-Build Contractor, and the Authority are coordinating with SCE to provide the required permanent power to support testing activities in December 2014.</li> </ul>	<ul style="list-style-type: none"> <li>• <b>Irwindale Parking Communications</b> - The C1150 Design-Build Contractor is currently behind schedule to complete the structure by March 2015. As a result, the C1135 Design-Build Contractor will potentially be delayed accesses to the facility to begin the communications installation work, which will have an impact on the completion of Phase 1 systems integration testing. The Authority will evaluate the C1150 Design-Build Contractor's mitigation plan to recover lost time due to SCE shoring and pump station re-design delays. After evaluation of the plan, the Authority will review potential options to minimize the potential delay.</li> </ul>



**Description:** Alignment Design / Build

**Status:** November 15, 2014

**Contract No.:** C1135

**Contractor:** Foothill Transit Constructors (Kiewit-Parsons J.V.)

**Cost Summary:**

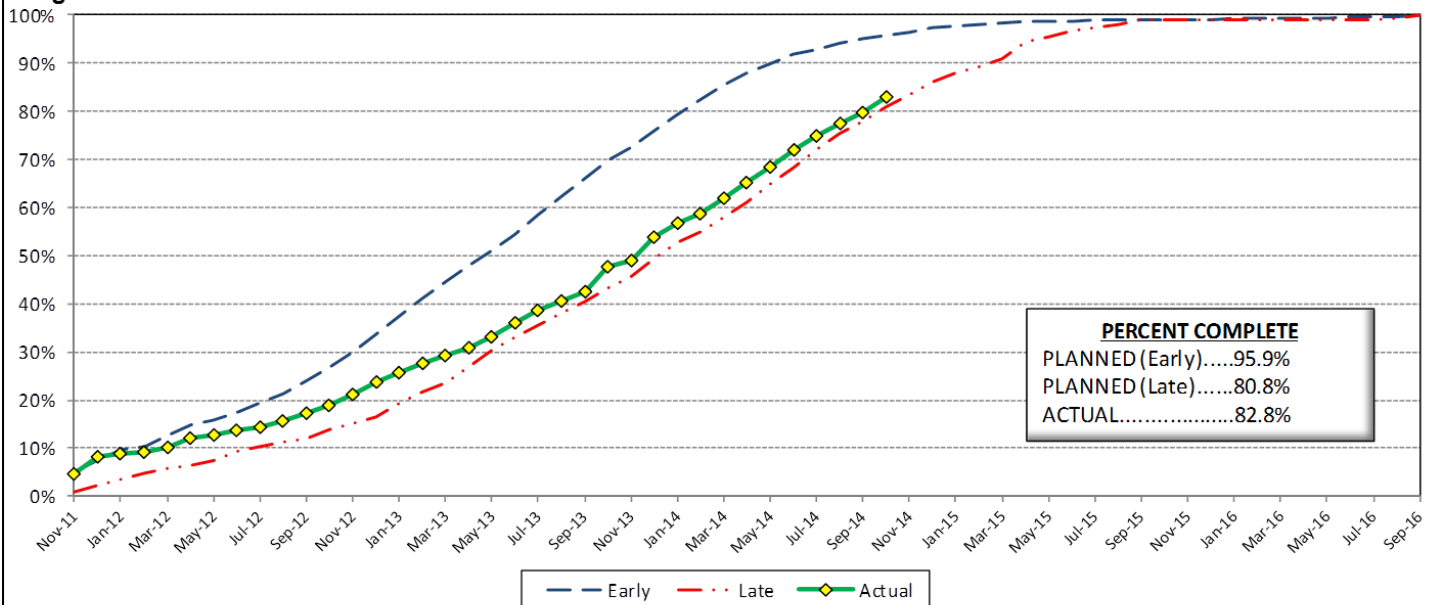
	Million(s)
<b>CONTRACT</b>	
Contract Award Value:	485.9
Executed Change Orders:	16.6
Current Contract Value:	502.5
Potential Change Orders:	1.6
Current Forecast:	504.1
Eamed Value/Actual Cost	403.0
<b>AUTHORIZATION FOR EXPENDITURE</b>	
Budget	507.9
Commitment	502.5
Balance	3.8

**Cost Assessment:**

This period the Contract forecast increased \$832 Thousand. The major increase was due to the following: PCO 099.00 - Rail Profile Grinding, PCO 087.00 - ETEL / PTEL Faceplate Betterment, PCO 097.00 - Santa Anita Bridge Lighting and PCO 095 - M&O Facility Paint OCS Feeder Poles.

The Design-Build Contractor has eamed 403.0 Million and is currently 82.8% complete. The progress is currently 13.1% behind the early planned curve, which is due to Segment 2 & 4 OCS, Segment 1, 2, 3, 4 train control installation progress.

**Progress Curve**



**Schedule Summary:**

Contract Award:	07/27/11
Interim Notice to Proceed (INTP) :	11/03/11
Original Contract Duration:	1,780 Calendar Days
Current Contract Duration:	1,780 Calendar Days
Elapsed Time from NTP:	1,108 Calendar Days

**Contract Milestones**

Milestones	Description	Original Contract	Current Contract	Forecast	Variance
1	Substantial Completion	09/23/15	09/23/15	10/26/15	(33)
2	Punchlist Complete	06/19/16	06/19/16	07/22/16	(33)
3	Final Completion	09/17/16	09/17/16	10/20/16	(33)
4	Access - IFS Br.	12/15/12	12/15/12	12/15/2012 A	0
5	Test Track Complete	03/27/15	03/27/15	03/23/15	4
6	Colorado Br. Demo Complete	02/01/12	02/01/12	6/15/2012 A	(135)

**Schedule Assessment:**

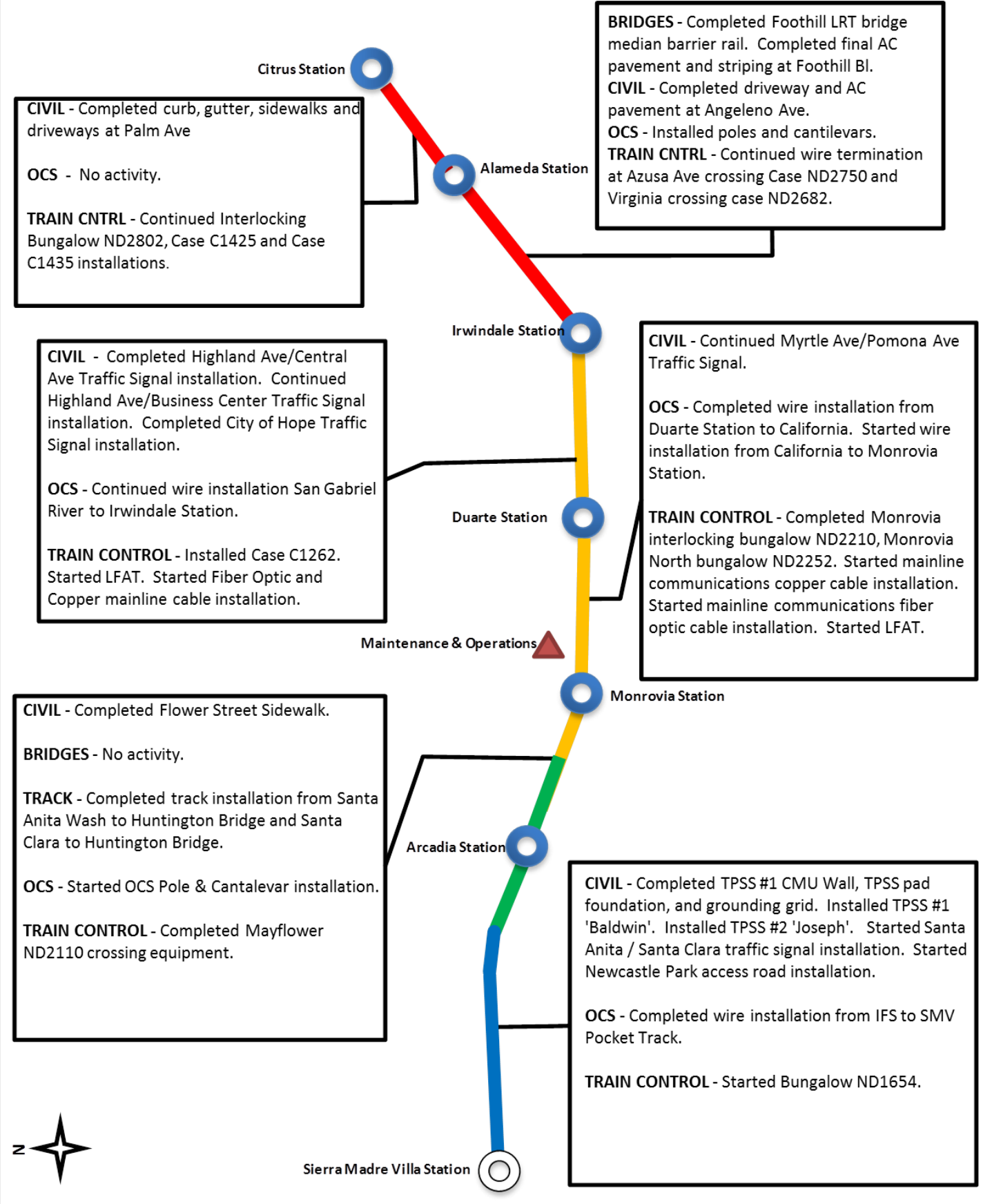
With the progress continuing to trend at the rate of the late progress curve, activities in all Segments continue to approach near critical. The Design-Build Contractor continues to meet the requisite use of resources in order to meet the critical elements of the schedule. At this time, the primary activities which are critical or near critical by Segment are as follows: Segment 1 - Train Control Installation, Segment 2 - Train Control Installation, Segment 3 - Duarte Station mechanical/electrical & finishes and M&O yard lead, Segment 4 - OCS Installation, and Irwindale Station mechanical/electrical & finishes. Maintenance & Operations Facility - train control installation & testing.

The Test Track Completion is forecast to be available on March 23, 2015, which is 4 days ahead of the target date.





## ALIGNMENT CONSTRUCTION PROGRESS THIS PERIOD





**FACILITY CONSTRUCTION PROGRESS THIS PERIOD**

**Citrus Ave Station**

**STATION** - Started platform paver installation.  
**PARKING** - Completed level 2 columns, shear walls, and deck.

**STATION** - Started canopy metal roofing. Started electrical /communications bungalow wire installation & terminations.  
**PARKING** - No activity.

**Alameda Station**

**STATION** - Completed canopy structural steel paint. Started electrical /communications bungalow wire installation & terminations.  
**PARKING** - Completed pump station lift 4 walls. Complete MSE Wall lift 2 - 11 blocks. Started soil

**Irwindale Station**

**STATION** - Continued installation communications equipment and terminations. Continued electrical wiring and lighting installations.  
**PARKING** - No activity.

**CIVIL** - No activity.  
**WALLS** - Completed Wall 'B' CMU block wall waterproofing. Started Wall 'F' installation. Completed Wall 'D' installation.  
**TRACK** - Completed installation of south track turnouts. Started car wash track lead. Continued installation of insulated joints and impedance bonds.  
**STRUCTURES** - *M&O Building* - Continued MEP rough-in installations. Continued drywall installation. Continued exterior insulation. Continued roofing installation. Installed S&I Pit Steel. Started Blow Down Steel installation. *Car Wash* - Started MEP rough-in installations, Continued exterior metal panels. *Cleaning Platform* - Completed canopy roofing. *Material Storage* - No activity. *MOW Building* - Continued MEP rough-in.  
**OCS** - Continue pole hardware installations at North storage yard. Continued feeder cable installation.  
**TRAIN CONTROL** - Started wire termination at North bungalows.

**Maintenance & Operations**

**Duarte Station**

**STATION** - Completed canopy metal roofing. Started lighting installation. Started communications installation and wire terminations.  
**PARKING** - Completed electrical equipment installation and lighting fixtures at levels 1 & 2. Completed fire protection installation. Started communications equipment and wire installation. Started site grading and curb, gutter, sidewalks.

**Monrovia Station**

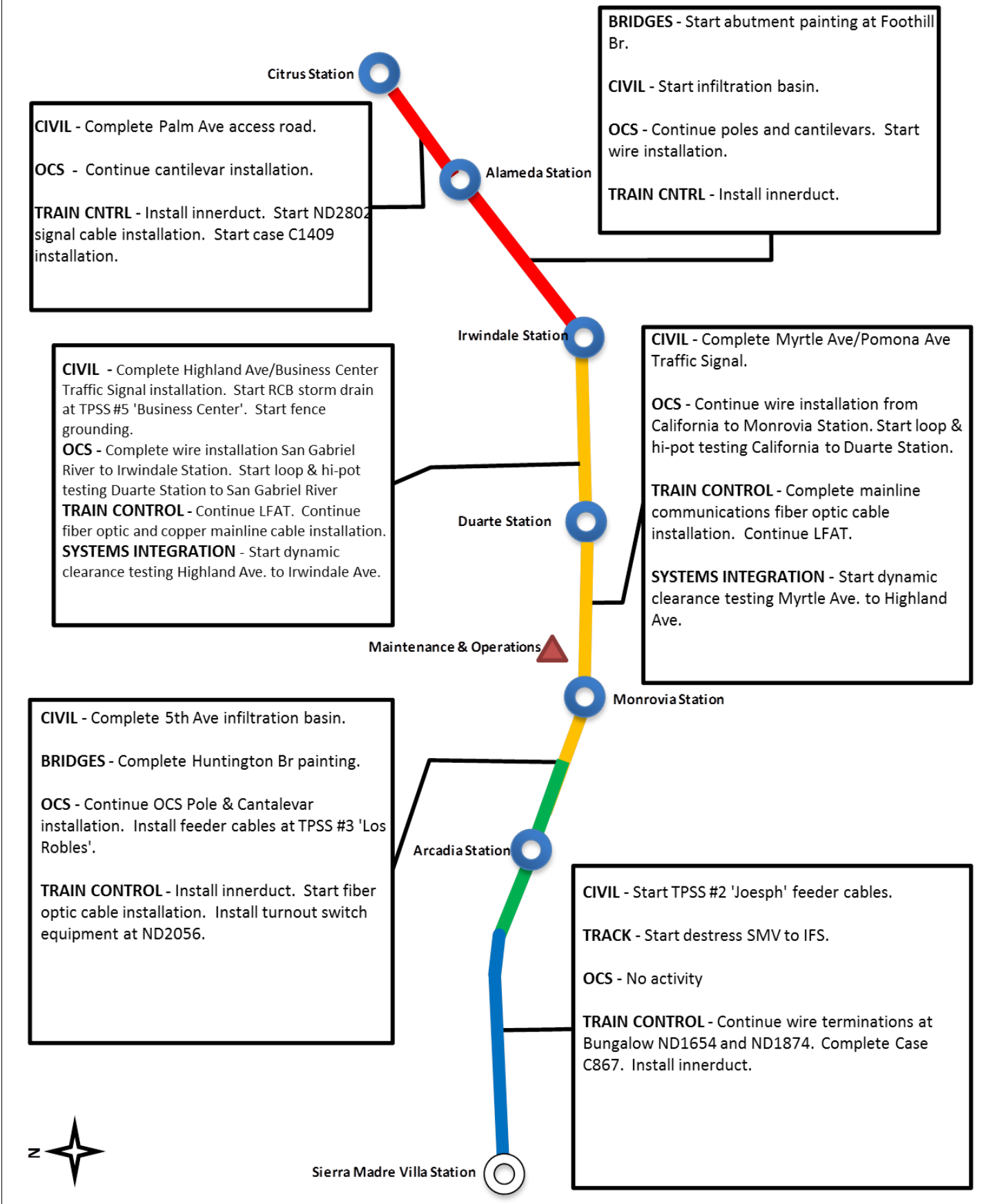
**STATION** - Continued communications wire terminations, Started electrical wire installation. Started platform lighting installation.  
**PARKING** - Completed installation of plaza pavers. Completed plaza seating. Completed landscape and irrigation. Completed CMU wall installation at St. Joseph Street.

**Arcadia Station**





## ALIGNMENT CONSTRUCTION PROGRESS NEXT PERIOD





**FACILITY CONSTRUCTION PROGRESS NEXT PERIOD**

**Citrus Ave Station**

**STATION** - Start communications bungalow wire terminations. Complete platform paver installation. Start metal roofing.  
**PARKING** - Complete level 3 columns, shear walls, and deck. Start Level 1 barrier walls. Start installation of stairs. Start installation of CMU walls for elevator and electrical rooms. Start elevator hoist way structural steel installation. Start Level 1 plumbing, fire protection, and electrical rough-in.

**STATION** - Complete canopy metal roofing. Continue electrical /communications bungalow wire installation & terminations. Start platform paver installation.  
**PARKING** - No activity planned.

**Alameda Station**

**STATION** - Start canopy metal roofing instalaltion. Continue wire installation & terminations.  
**PARKING** - Complete pump station lift 5 walls. Continue MSE Wall lifts 12 - 17 blocks. Continue soil nail wall lifts 4 - 6. Start Line 'A' & 'B' storm drains and 6" fire water line.

**Irwindale Station**

**STATION** - Continue installation communications equipment and terminations. Continue electrical wiring.  
**PARKING** - No activity planned.

**CIVIL** - Start 3M north lot demo. Complete installation of storm water detention system.  
**WALLS** - Complete Wall 'F' installation. .  
**TRACK** - Complete initial Yard Lead track ballast. Start installation of Yard Lead 1 & 2 turnouts. Start Yard Lead 1 tail track installation. Complete car wash lead track installation.  
**STRUCTURES** - *M&O Building* - Complete MEP rough-in installations. Complete drywall installation. Complete exterior insulation. Complete roofing installation. Complete Blow Down Steel installation. *Car Wash* - Continue exterior metal panels, start installation of car wash equipment. *Cleaning Platform* - Start electrical wiring. *Material Storage* - No activity. *MOW Building* - Continue MEP rough-in.  
**OCS** - Start south yard OCS pole cantilevar installations. Complete feeder cable installation.  
**TRAIN CONTROL** - Complete wire termination at North bungalows. Start wire terminations at South bungalows.

**Duarte Station**

**STATION** - Complete lighting installation. Continue communications installation and wire terminations.  
**PARKING** - Complete electrical equipment installation . Continue lighting fixtures and fire protection installation at levels 3 & 4 . Continue communications equipment and wire installation. Complete painting elevator steel hoist way and stairs. Start installation of electrical transformer.

**Maintenance & Operations**

**Monrovia Station**

**STATION** - Continue communications wire terminations, Continue electrical wire installation. Complete platform lighting installation.  
**PARKING** - Start communications wiring and installations. Start elevator hoist way structural steel paint. Start installation of elevator rails.

**Arcadia Station**





## ALIGNMENT CONSTRUCTION IMAGES

Segment 1: Insulated Joint Installation



Segment 2: Arcadia Station Light and Camera  
Fixtures Installed

Segment 3: Mountain to Buena Vista -  
Rail Destressing



**ALIGNMENT CONSTRUCTION IMAGES (CONTINUED)**



Segment 4: Azusa-Downtown Station -  
Roof Panel Installation

Segment 4: Azusa-Citrus Station -  
Platform Paver Work



Operations Campus: Train Control Bulgallow Wiring





Change Management Log

Date: 12/2/2014

Page: 1 of 4

Project: C1135 Alignment - FTC Contract #: C1135

Original Contract Amount:	\$485,867,000				
Approved Change Orders:	\$16,623,848	3.42%	Pending Change Orders:	\$0	0.00%
Current Contract Total:	\$502,490,848		Pending Contract Total:	\$502,490,848	3.42%

Change Orders

Number	Change Management	Title	Initiated Date	Approved Date	Outstanding Days	Time Extension	Amount
<b>EXECUTED Change Orders</b>							
001.00	000.00	Interim NTP	11/3/2011	11/3/2011	0		\$0
002.00	013.00	Colorado Bridge Haz Mat	5/17/2012	5/18/2012	1		\$121,382
002.01	013.01	Colorado Bridge HazMat - Final	9/5/2012	9/7/2012	2		\$13,164
003.00	001.00	Sound Wall Deletion - Duarte Road	7/12/2012	7/18/2012	6		(\$74,707)
004.00	018.00	Revise Block Design - CBD Calc	8/23/2012	8/29/2012	6		\$3,986
004.01	018.01	Revise Block Design - CBD Calc - 2	9/5/2013	9/11/2013	6		\$0
005.00	023.00	Wayside Signal Aspect Revision	9/6/2012	9/7/2012	1		\$26,072
005.01	023.01	Wayside Signal "Call On" Function	10/30/2013	11/1/2013	2		\$75,169
006.00	040.00	Arcadia Frieze, Bench-Artist Design	9/6/2012	9/10/2012	4		\$13,683
006.01	040.01	Arcadia Frieze, Bench-Construction	3/7/2013	3/12/2013	5		\$155,894
007.00	019.02	Soils Testing Abutments & Fdns	9/14/2012	9/18/2012	4		\$44,993
008.00	041.00	Unknown Utilities RFCN 005 006 008	9/14/2012	9/18/2012	4		\$132,450
009.00	038.00	Illuminate City Names @ Stations	9/18/2012	9/24/2012	6		\$184,657
010.00	046.00	SGRB - Lead Based Paint Remediation	9/21/2012	9/24/2012	3		\$244,536
011.00	004.00	Station Architectural Changes	10/11/2012	10/12/2012	1		\$443,950
012.00	003.01	Systems and Testing for Added TPSS	12/13/2012	12/14/2012	1		\$1,443,193
013.00	005.02	IDIQ Comm Contract (Rev 2)	12/14/2012	1/22/2013	39		\$698,259
014.00	060.00	Sewer Encasement Changes in Azusa	12/18/2012	1/24/2013	37		\$141,354
015.00	037.02	M&O - Materials Storage Revisions	12/26/2012	1/15/2013	20		\$62,862
015.01	037.03	M&O Storage Shelving Revisions	9/16/2013	9/19/2013	3		\$20,380
016.00	002.00	Relocation of Access Road to 3M Fac	12/26/2012	1/16/2013	21		\$53,814
017.00	025.00	3 Electrical Casings for ALW	2/27/2013	3/1/2013	2		\$219,033
018.00	073.00	Hazardous Abatement at Bridges	1/15/2013	2/6/2013	22		\$1,081,803
019.00	054.00	City of Hope Conduits	1/11/2013	1/22/2013	11		\$34,313
020.00	059.00	Citrus TPSS Transformer Pad Changes	2/6/2013	2/7/2013	1		\$34,536
021.00	075.00	Demo & Replace Palm Dr. Roadway	2/7/2013	2/14/2013	7		\$90,365
022.00	077.00	M&O Differing Site Conditions; Pt 1	2/13/2013	2/15/2013	2		\$66,360
022.01	093.00	M and O DSC T and M Work Part 2	3/8/2013	3/12/2013	4		\$66,625
022.02	103.00	M and O DSC Part 3	3/27/2013	3/28/2013	1		\$35,211
022.03	115.00	DSC at M and O Part 4	5/3/2013	5/7/2013	4		\$5,706
023.00	089.00	Contaminated Soil Abatement	2/26/2013	2/27/2013	1		\$422,068
024.00	068.00	Monrovia Sound Wall Panel Change	2/26/2013	2/28/2013	2		(\$24,150)
025.00	052.00	Santa Anita Trail Detour	3/8/2013	3/12/2013	4		\$27,691
026.00	070.00	Block Type Change at M&O Building	3/26/2013	3/26/2013	0		\$35,016
027.00	065.00	M&O IT Changes-Duct Banks/Conduits	3/26/2013	3/26/2013	0		\$88,650
027.01	065.01	M&O IT Changes - Power to WAP	9/4/2013	9/6/2013	2		\$73,049
027.02	065.02	M&O IT Changes - Remaining Work	7/16/2014	7/17/2014	1		\$155,991
028.00	039.01	Delete Layover Building	4/11/2013	4/12/2013	1		(\$313,832)
029.00	095.00	8in Sanitary Sewer Line- Alameda Av	4/23/2013	4/25/2013	2		\$226,089
029.01	095.01	Alameda Sewer Line Revised Scope	11/22/2013	11/26/2013	4		(\$37,425)
030.00	102.00	M&O-Disconnect Switches, Insulators	4/23/2013	4/25/2013	2		\$67,817
031.00	110.00	Rmv Abandoned Utility Line @ Dalton	4/23/2013	4/25/2013	2		\$1,562
032.00	104.00	Highland Ave Abandoned CMP sleeves	5/1/2013	5/3/2013	2		\$15,005
033.00	114.00	Remove contaminated wood culvert	5/3/2013	5/7/2013	4		\$4,714
034.00	128.00	M&O Backup Power/Generator Changes	5/13/2013	5/21/2013	8		\$121,340



Change Management Log

Project: C1135 Alignment - FTC Contract #: C1135

Change Orders

Number	Change Management	Title	Initiated Date	Approved Date	Outstanding Days	Time Extension	Amount
<b>EXECUTED Change Orders</b>							
035.00	083.00	M&O Vehicle Sanding System Changes	5/21/2013	5/24/2013	3		\$27,463
036.00	006.00	IFS Related Contract Changes	6/7/2013	6/11/2013	4		(\$263,111)
037.00	137.00	CTS Redesign	7/12/2013	7/16/2013	4		\$58,214
038.00	138.00	Segment 4 Safety Manager	7/12/2013	7/16/2013	4		\$157,274
038.01	138.01	Segment 4 Safety manager - Part 2	11/19/2013	11/21/2013	2		\$72,963
038.02	138.02	Segment 4 Safety Manager - Part 3	4/3/2014	4/7/2014	4		\$82,271
039.00	085.00	M&O Drainage System Enhancements	7/19/2013	8/13/2013	25		\$251,579
040.00	067.00	Station Paver Changes	7/23/2013	8/13/2013	21		\$728,340
040.01	067.01	Rebar Changes for Station Pavers	10/28/2013	10/31/2013	3		\$10,586
041.00	112.00	12" Pasadena Waterline Potholes	8/12/2013	8/16/2013	4		\$19,735
042.00	150.00	Demo Abandoned Water Lines @ Dalton	8/12/2013	8/16/2013	4		\$5,937
043.00	007.01	Emer. Backup for Guideway Lighting	8/16/2013	10/1/2013	46		\$359,158
044.00	172.00	Contaminated Wood Culvert Sta. 1202	8/27/2013	8/28/2013	1		\$7,712
045.00	139.00	BLS Changes	8/28/2013	9/4/2013	7		\$110,801
046.00	165.00	Azusa-Alameda Station; 2nd Portal	8/28/2013	9/4/2013	7		\$77,175
047.00	145.00	St. Joseph drainage enhancements	9/4/2013	9/6/2013	2		\$17,592
048.00	149.00	M&O - Lights at NW Corner Park	9/4/2013	9/6/2013	2		\$29,351
049.00	174.00	TPSS #5 Cal-Am Power Conflict	9/4/2013	9/6/2013	2		\$127,260
050.00	171.00	Relocate Access Stair to Foothill	9/4/2013	9/6/2013	2		\$20,276
051.00	173.00	Dalton 8" Water Line Work	9/5/2013	9/12/2013	7		\$35,316
052.00	071.00	Duarte Rd Screen Wall Change	9/5/2013	9/17/2013	12		(\$133,864)
053.00	176.00	Remove Contaminatd Wood-Buena Vista	9/10/2013	9/12/2013	2		\$5,543
054.00	147.00	DECCO Bypass	9/10/2013	9/12/2013	2		\$18,519
055.00	166.00	Foothill Blvd. Water/SD Relocation	9/20/2013	9/20/2013	0		\$127,074
056.00	186.00	Contaminated Wood @ San Gabriel Ave	9/23/2013	9/24/2013	1		\$4,291
057.00	194.00	California/Duarte Water Line Work	10/28/2013	10/31/2013	3		\$220,743
058.00	189.00	Four Utility Changes	10/28/2013	10/31/2013	3		\$14,157
059.00	180.00	Remove/Dispose of ACM E of Highland	10/30/2013	11/1/2013	2		\$29,311
060.00	179.00	CTS Upgrade to OC-192	10/30/2013	11/1/2013	2		\$112,543
061.00	213.00	Irwindale On-ramp Stockpile	11/8/2013	11/21/2013	13		\$200,185
062.00	053.00	Delete Totten Tubes Scope of Work	11/8/2013	11/21/2013	13		(\$143,801)
063.00	146.00	Home Depot Striping and Signing	11/15/2013	11/21/2013	6		\$21,003
064.00	204.00	Unknown Duct Bank @ San Gabriel Ave	11/15/2013	11/21/2013	6		\$1,265
065.00	140.00	M&O-Overhead Work Platform Changes	12/5/2013	12/16/2013	11		\$317,656
066.00	217.00	Buried SD & Headwall, STA 1306+50	12/6/2013	12/17/2013	11		\$1,020
067.00	219.00	Contaminated Soil, Monrovia Station	12/12/2013	12/17/2013	5		\$17,503
068.00	220.00	DSC at Sawpit Wash Abutments	12/12/2013	12/17/2013	5		\$12,668
069.00	188.00	Costco Emergency Gate-Path to POS	1/21/2014	1/22/2014	1		\$19,882
070.00	214.00	M&O - Generator Load Bank	1/21/2014	1/22/2014	1		\$38,092
071.00	224.00	Alameda South Water Line Tie-in	1/30/2014	1/31/2014	1		\$6,330
072.00	202.00	Aesthetic Lighting Provisions-SGRB	2/3/2014	2/4/2014	1		\$27,055
073.00	160.00	Move Mountain Interlocking Bungalow	2/11/2014	2/13/2014	2		\$68,596
074.00	200.00	M&O Parts Carousel Warranty & PM	2/11/2014	2/13/2014	2		\$68,906
075.00	235.00	Remove Contaminated Wood Ties	2/14/2014	2/18/2014	4		\$4,571
076.00	234.00	Accelerate Work at California Ave	2/14/2014	2/18/2014	4		\$5,663
077.00	247.00	Line Stop in California	2/18/2014	2/20/2014	2		\$14,524
078.00	201.00	Added Sound Wall, SW of IFS	2/27/2014	2/28/2014	1		\$18,201
079.00	238.00	M&O-MOW Canopy Structural Eval	2/27/2014	2/28/2014	1		\$7,147
079.01	238.01	M&O - MOW Canopy Solar	8/20/2014	8/26/2014	6		\$714,659
080.00	232.00	Car Moving Tractor-Coupler Upgrade	2/27/2014	2/28/2014	1		\$177,145



Change Management Log

Date: 12/2/2014

Page: 3 of 4

Project: C1135 Alignment - FTC Contract #: C1135

Change Orders

Number	Change Management	Title	Initiated Date	Approved Date	Outstanding Days	Time Extension	Amount
<b>EXECUTED Change Orders</b>							
081.00	242.00	Car Moving Tractor Options/Features	2/27/2014	2/28/2014	1		\$69,099
082.00	091.00	Rockvale Water Line Mitigation	3/4/2014	3/5/2014	1		\$163,750
082.01	091.01	Rockvale Water Line-EIC credit	4/11/2014	4/14/2014	3		(\$5,391)
083.00	251.00	Cut and Move Rail to Segment 1	3/4/2014	3/5/2014	1		\$249,934
084.00	218.00	Delete Equipment at ROC	3/26/2014	3/27/2014	1		(\$91,708)
085.00	239.00	Install Sound Wall Door @ STA. 1169	3/26/2014	3/27/2014	1		\$12,737
086.00	250.00	Change Top Row of Block Wall 1124.1	3/26/2014	3/27/2014	1		\$3,688
087.00	229.00	Inwindale TPSS-Adjust Eqpt. Layout	4/3/2014	4/7/2014	4		\$17,878
088.00	262.00	Provisional Sum Adjustment	4/3/2014	4/7/2014	4		\$0
088.01	262.01	Provisional Sum Adjustment - 2	9/19/2014	9/25/2014	6		\$0
088.02	262.02	Provisional Sum Adjustment - 3	11/12/2014	11/14/2014	2		\$0
089.00	261.00	Longer DF Bolts - SGRB	4/3/2014	4/7/2014	4		\$17,331
090.00	169.02	M&O Trimming Table Changes (rev. 2)	4/11/2014	4/14/2014	3		\$54,083
091.00	181.00	Alameda Utility Changes	4/11/2014	4/14/2014	3		(\$9,599)
092.00	241.00	Business Center TPSS Crane Changes	4/23/2014	4/28/2014	5		\$13,655
093.00	276.00	Myrtle Early Completion Incentive	4/23/2014	4/28/2014	5		\$160,000
094.00	254.00	Drainage East of Pasadena Ave.	4/23/2014	4/28/2014	5		\$6,569
095.00	275.00	Remove Rail Ties at 1st/Santa Clara	4/23/2014	4/28/2014	5		\$2,270
096.00	274.00	Buried Concrete @ Huntington Bridge	4/23/2014	4/28/2014	5		\$2,819
097.00	269.00	Asbestos Pipe at Duarte and Myrtle	4/23/2014	4/28/2014	5		\$6,583
098.00	278.00	Abandoned Gas Line at California	5/6/2014	5/7/2014	1		\$8,170
099.00	170.00	M&O Car Wash Betterments	5/6/2014	5/7/2014	1		\$166,144
100.00	223.00	M&O-Volume Control for PA Speakers	5/6/2014	5/7/2014	1		\$38,105
101.00	283.00	Track Work Around at Mountain Ave	5/6/2014	5/7/2014	1		\$29,996
102.00	284.00	Install 115# Buffer Rails in Seg. 1	5/6/2014	5/7/2014	1		\$29,442
103.00	230.00	Azusa-Citrus Ped Crossing Operation	5/6/2014	5/7/2014	1		\$84,183
104.00	231.00	Red Signal Violation Indication	6/3/2014	6/3/2014	0		\$335,134
105.00	253.00	Remove Stem Wall along Duarte Rd.	6/11/2014	6/12/2014	1		\$37,527
106.00	271.00	DVR Changes	7/16/2014	7/17/2014	1		\$181,301
107.00	260.00	M&O Supplemental Fire Water System	7/16/2014	8/4/2014	19		\$1,642,824
108.00	163.00	1st/Santa Clara Grade X-ing Changes	7/25/2014	7/30/2014	5		\$156,177
109.00	164.00	M&O Body Shop Changes	7/25/2014	8/4/2014	10		\$488,598
110.00	256.00	Monrovia North Bunglow LCP Changes	7/25/2014	7/30/2014	5		\$125,313
111.00	237.00	M&O-Signaling System Changes	7/29/2014	8/4/2014	6		\$1,133,746
112.00	252.00	Inwindale Security Kiosk Provisions	8/4/2014	8/6/2014	2		\$178,044
113.00	281.00	M&O - Accent Colors	8/4/2014	8/6/2014	2		\$26,928
114.00	305.00	Lead Paint, Foothill Median Barrier	8/18/2014	8/20/2014	2		\$5,690
115.00	270.00	TES Load Flow Simulation	8/19/2014	8/21/2014	2		\$22,399
116.00	203.00	Mayflower Driveway/Wall Credit	8/20/2014	8/26/2014	6		(\$19,138)
117.00	307.00	Contaminated Wood Ties-Santa Anita	8/20/2014	8/26/2014	6		\$3,226
118.00	082.01	M&O / 3M Fence Revisions (rev 1)	9/17/2014	9/25/2014	8		\$886,650
119.00	314.00	Mountain Early Completion Incentive	9/17/2014	9/24/2014	7		\$80,000
120.00	301.00	Santa Anita Avenue Bridge Artwork	9/17/2014	9/25/2014	8		\$57,224
121.00	313.00	Additional Traffic Signal Testing D	9/19/2014	9/25/2014	6		\$7,875
122.00	320.00	Remove Asbestos Pipe at Virginia	11/12/2014	11/14/2014	2		\$9,485
<b>Subtotal:</b>							\$16,623,848
<b>Subtotal:</b>							\$16,623,848
<b>Total:</b>							\$16,623,848



Change Management Log

Project: C1135 Alignment - FTC Contract #: C1135

Open PCOs

PCO Number	Title
OPEN	
022.03	M&O IT Changes - Comm Room Floors
029.00	Del. Irwindale/Gladstone Mitigation
053.01	Irwindale Ramp Changes (Rev 1)
070.01	Irwindale Security Kiosk - Part 2
073.00	Virginia TPSS Access Road
075.00	Comm. Changes Parking Structures
075.01	Add 2 ETEs to Duarte Parking Lot
076.00	M&O Tactile Guidance Changes
080.00	Delete Evergreen / Myrtle Mitigation
081.00	Eliminate 'Train Coming' Signs
082.00	M&O - Guard House Changes
084.00	M&O Service Vehicle Pathways
085.00	Joseph TPSS Power Feed Credit
087.00	ETEL/PTEL Faceplate Betterment
088.00	Additional Anti-Graffiti Coating
089.00	M&O Lobby Aesthetic Changes
091.00	UP Tunnel Analysis & Modifications
092.00	Abandoned California Water Lines
093.00	Replace Existing OCS Pole at SMV
094.00	Add Pavers to Duarte Station W. Ramp
095.00	M&O Facility-Paint OCS Feeder Poles
096.00	Station Identifier Changes
097.00	Santa Anita Avenue Bridge Lighting
098.00	M&O Facility - NW Corner Changes
099.00	Rail Profile Grinding
100.00	Change Wayside Operational Signage
101.00	Peck Road Ramp
102.00	M&O - Interior Wall Revisions

Open RFCs

RFC Number	Title
OPEN	
075.00	Grade X-ing Train Signal Changes CS
078.00	Addl Fence To Close Gaps at Algnmn

Open RFC Notices

Number	Title
037.00	DSC at Santa Anita Wash Abutment 1
044.00	DSC Utility at Azusa Avenue
071.00	Create Access for TPSS No. 7 Delive
077.00	Mountain Ave Pedestrian Crossing Ch
080.00	Irwindale Signal Case Location
081.00	Car Puller for Wheel Truing Machine
083.00	Sierra Madre Track Rehab
084.00	Delay in Setting of Yard Substation
086.00	Ground Grid Damaged at Citrus TPSS
087.00	Caltrans Drainage Flow near Bus TPS
088.00	Change to Exit Gate Procedure



**Description:** Intermodal Parking Facilities & Enhancements **Status:** November 15, 2014

**Contract No.:** C1150

**Contractor:** Webcor Builders

**Progress Completed This Period**

**Design**

- Submit AFC Design - Irwindale Enhancements (partial set)
- Submit - Bidding Procedures
- Submit - Project Management Plan
- Submit 100% Alameda - Enhancement Design
- Submit - Alameda - Geotechnical Report - Final
- Submit - Interface Management Plan

**Activities Planned Next Period**

**Design**

- Submit AFC Design - Azusa-Citrus Parking Structure (full set)
- Submit AFC Design - Irwindale Enhancements (full set)
- Submit AFC Design - Irwindale Parking Structure (full set)

**Areas of Concern**

- **IRWINDALE PARKING STRUCTURE RECOVERY** - The Design-Build Contractor is currently sixty-one (69) days behind the revised Contractual Completion date of June 13, 2015. The delay is attributed to the SCE Pole Shoring and Irwindale pump station re-design. The schedule impact will potentially impact the C1135 Design-Build Contractor's communications installation work and the completion of systems integration testing. The Authority will discuss potential schedule recovery solutions with the Design-Build Contractor in order to mitigate the potential impacts.

**Areas of Concern (Continued)**



**Description:** Intermodal Parking Facilities & Enhancements **Status:** November 15, 2014

**Contract No.:** C1150

**Contractor:** Webcor Builders

**Cost Summary:**

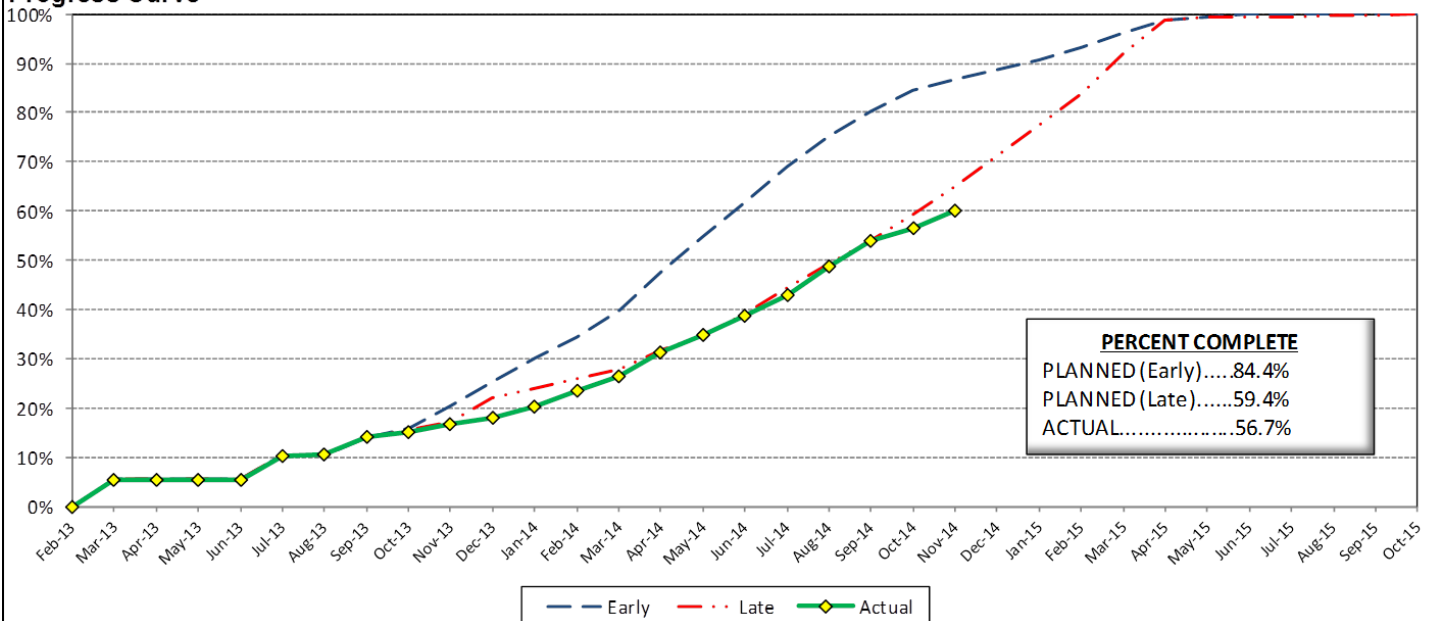
	Million(s)
<b>CONTRACT</b>	
Contract Award Value:	48.8
Executed Change Orders:	0.6
Current Contract Value:	49.4
Potential Change Orders:	0.5
Current Forecast:	49.9
Earned Value/Actual Cost	28.1
<b>AUTHORIZATION FOR EXPENDITURE</b>	
Budget	50.3
Commitment	49.4
Balance	0.4

**Cost Assessment:**

The current cost forecast is 49.9 Million and has increased \$76 Thousand from the previous period. The increase is due to the addition of PCO 017 - *Elevator Holding Tanks*. The current forecast is within the authorized budget.

Although a 90 day time extension was granted, the Design-Build Contractor remains behind the revised plan due to schedule delays at the Irwindale site.

**Progress Curve**



**Schedule Summary:**

Contract Award:	02/27/13	
Notice to Proceed (NTP) :	03/20/13	
Original Contract Duration:	845	Calendar Days
Current Contract Duration:	935	Calendar Days
Elapsed Time from NTP:	605	Calendar Days

**Contract Milestones**

Milestones	Description	Original Contract	Current Contract	Forecast	Variance
1	Substantial Completion	03/15/15	06/13/15	08/21/15	(69)
2	Punchlist Complete	05/29/15	08/27/15	11/04/15	(69)
3	Final Completion	07/13/15	10/11/15	12/19/15	(69)
4	TPSS Work	03/01/14	03/01/14	3/31/2014 A	(30)

**Schedule Assessment:**

The critical path is currently through the Irwindale site preparation. The pump station progress continues with the fourth of five concrete lifts completed this period. In addition, both the MSE wall and Soil Nail wall installations are in progress, and are critical to support the start of the parking structure foundations and complete the site underground utility work. Approximately 11 or 18 MSE wall lifts and 2 of 7 Soil Nail wall lifts have been completed.

The Design-Build Contractor is approximately 69 days behind schedule, which is due to the pump station re-design, SCE pole shoring installation and MSE installation productivity. However, if the Design-Build Contractor is going to meet the Contractual Dates identified in Change Order No.4, then the Design-Build Contractor will need to mitigate the delays by accelerating the MSE wall and soil nail wall activities.



**PARKING FACILITY CONSTRUCTION IMAGES**

Arcadia Parking Structure Site View



Arcadia Transit Plaza Overview

Monrovia Parking Structure Site Overview



**PARKING FACILITY CONSTRUCTION IMAGES**

Monrovia Parking Structure Stairwell



Irwindale Parking Structure Site  
MSE Wall Construction

Azusa-Citrus Parking Structure Deck View





Change Management Log

Date: 12/2/2014

Page: 1 of 2

Project: C1150 Parking - Webcor Contract #: C1150

Original Contract Amount:	\$48,750,000				
Approved Change Orders:	\$632,253	1.30%	Pending Change Orders:	\$0	0.00%
Current Contract Total:	\$49,382,253		Pending Contract Total:	\$49,382,253	1.30%

Change Orders

Number	Change Management	Title	Initiated Date	Approved Date	Outstanding Days	Time Extension	Amount
<b>EXECUTED Change Orders</b>							
001.00	001.00	Monrovia Parking Alternative Layout	6/25/2013	7/11/2013	16		\$21,382
001.01	001.01	Monrovia Alternative - Cancellation	9/17/2013	10/7/2013	20		(\$12,006)
002.00	003.00	Clock Tower Procurement	7/3/2013	7/11/2013	8		\$107,246
003.00	002.00	Relocate Elevator @ Azusa-Citrus PF	12/18/2013	1/8/2014	21		\$159,899
004.00	013.00	Irwindale Structure Relocation	1/23/2014	8/28/2014	217	90	(\$65,564)
005.00	018.00	Monrovia Demo Unforeseen Conditions	3/18/2014	3/26/2014	8		\$17,013
006.00	010.00	Arcadia Transit Plaza Betterments	3/14/2014	3/26/2014	12		\$35,466
007.00	009.01	Irwindale Intersection Betterments	3/25/2014	3/26/2014	1		\$19,985
008.00	017.00	Irwindale Intersection Water Line	3/25/2014	4/14/2014	20		\$7,748
009.00	020.00	Unforeseen Underground Demo-Arcadia	6/13/2014	7/9/2014	26		\$6,313
010.00	011.00	Soldano TPSS Added ROW Fence	7/24/2014	7/28/2014	4		\$8,481
011.00	024.00	SCE Power Feed to DB2 Arcadia TPSS	7/24/2014	7/28/2014	4		\$17,199
012.00	025.00	Additional Sidewalk at Arcadia	7/24/2014	7/28/2014	4		\$3,342
013.00	006.00	St. Joseph Drainage Enhancements	7/31/2014	7/31/2014	0		\$139,488
014.00	012.00	Additional Conduit Provisions	8/13/2014	9/3/2014	21		\$57,262
015.00	030.00	Unforeseen Conditions at Michillinda	8/22/2014	8/28/2014	6		\$1,643
016.00	019.00	Parking Facility Artwork	8/27/2014	8/28/2014	1		\$75,850
017.00	034.00	Michillinda Conduit Demo & Pull Box	11/12/2014	11/20/2014	8		\$31,506
<b>Subtotal:</b>							\$632,253
<b>Subtotal:</b>							\$632,253
<b>Total:</b>							\$632,253

Open PCOs

PCO Number	Title
<b>OPEN</b>	
008.00	Azusa-Citrus Plaza Pavers
013.00	Primrose Avenue cul-de-sac Deletion
014.00	Delete Azusa-Alameda Enhancements
015.00	Monrovia Canopy & Color Betterments
017.00	Michillinda Pull Box Replacement
018.00	Irwindale Kiosk Foundation
019.00	Michillinda TPSS Design Modification

Open RFCs

RFC Number	Title
<b>OPEN</b>	
005.00	Irwindale CCTV Pole
007.00	Added PME Switch & 2 Spare Conduits
011.00	Comm. Duct Bank Interface with DB2
012.00	SCE Capacitor Bank at Michillinda T
013.00	EDEL Enclosures
015.00	Metro Requested Elevator Vent Detail
015.00	Elevator Vent Detail Requested by M
017.00	Elevator Holding Tanks
018.00	Engineering Costs for Arcadia Clock
019.00	Temporary Power for Irrigation at M
021.00	Additional Slurry for City of Arcad



## Change Management Log

Date: 12/2/2014

Page: 2 of 2

**Project: C1150 Parking - Webcor Contract #: C1150**

### Open RFC Notices

Number	Title
016.00	Irwindale Added FH for LACFD Code C
018.00	Engineering Costs for Clock Tower a
019.00	Temporary Power for Irrigation at M
020.00	Azusa Citrus Grand Pylon Power
021.00	Additioanl Slurry for the City of A



## **AZUSA TO MONTCLAIR SEGMENT**

### **ACTIVITIES COMPLETED THIS PERIOD**

Authority and City staff continued to hold coordination meetings to discuss the project. A draft of the Master Cooperative Agreement (MCA) has been distributed to all cities for review, after which all parties will convene to discuss and negotiate the MCA for execution.

The Authority has also initiated the restart of the Station Design Art Program (SDAR). The first SDAR meeting was held on October 21st, with more planned for the coming months.

This period, Authority staff worked on the following technical elements of the project:

- Continued advancement of the plan and profile drawings
- Began right-of-way survey and drawings
- AECOM began surveying work
- Completed development of geotechnical scope of work for AECOM to perform - requested Form 60 from AECOM
- Completed development of Pomona parking facility scope of work for AECOM to perform - requested Form 60 from AECOM

### **KEY FUTURE ACTIVITIES**

The advanced conceptual engineering process is an 18-month process. Upon completion, the Azusa to Montclair segment will be ready for a design-build procurement. Upcoming activities include continuing to attend coordination meetings with each corridor city, kickoff of the ROW drawing work, refinement of the alignment, completing the SDAR, and kickoff of geotechnical investigations.

### **Federal Transit Administration (FTA)**

The Metro Board of Directors excluded the Gold Line from seeking federal New Starts funding. The Authority will work together with Metro along with the Congressional delegation to seek funding to construct the extension following completion of the environmental review.



## PHASE II FOOTHILL EXTENSION FINANCIAL STATUS

### Project Operating Budget Summary in Millions of Dollars

**November 30, 2014**

	( a )	( b )	(c=a-b)	( d )
<b>FINANCIAL PLAN</b>	<b>Current Budget</b>	<b>Funding Committed to Project</b>	<b>Uncommitted Funds</b>	<b>Revenues Received</b>
SCAG	1.0	0.9	0.1	0.9
Interest Income	2.0	2.0	-	2.0
Bridge Replacement	13.9	13.9	-	13.9
Phase I Carryover	4.0	4.0	-	4.0
Maintenance and Operations Facility	-	-	-	-
Cities	11.0	-	11.0	-
Measure R - Pasadena to Azusa	810.5	777.0	33.5	450.0
Measure R - Azusa to Montclair	-	-	-	-
SANBAG	55.2	1.5	53.7	1.5
Federal TCSP	2.9	2.9	-	2.7
Federal Bus Intermodal Plan	9.0	9.0	-	3.6
Federal New Starts 2004 MTA Passthrough	4.0	4.0	-	4.0
Federal New Starts 2005 MTA Passthrough	0.5	0.5	-	0.5
Federal New Starts 2006 Corridor Study	2.5	2.5	-	2.5
Federal/Other	1,033.5	-	1,033.5	-
<b>Total Revenues</b>	<b>1,950.0</b>	<b>818.2</b>	<b>1,131.8</b>	<b>485.6</b>
	( a )	( b )	( c )	(d=a-b)
	<b>Current Budget</b>	<b>Current Obligation</b>	<b>Current Expenditures</b>	<b>Current Available Balance</b>
<b>EXPENSES</b>				
Program Management and Administration	107.9	98.0	91.2	9.9
Master Cooperative Agreements	12.0	3.3	2.7	8.7
Real Estate including ROW Acq	21.0	21.0	19.7	-
Special Programs	0.3	-	-	0.3
Procurement/Vehicles	60.0	-	-	60.0
Maintenance and Operations Facility Land	22.0	22.0	22.0	-
Construction - IFS	19.8	19.8	19.8	-
Construction - Pasadena to Azusa segment	328.9	328.9	283.5	-
Construction - Azusa to Montclair segment	1,181.0	-	-	1,181.0
Construction - M&O	46.0	44.0	29.9	2.0
Construction - Parking Structures	44.2	44.2	28.1	-
MTA Project Costs	64.0	64.0	14.3	-
Contingency	27.4	-	-	27.4
Project Reserve	15.5	-	-	15.5
<b>Total Project</b>	<b>1,950.0</b>	<b>645.2</b>	<b>511.2</b>	<b>1,304.8</b>