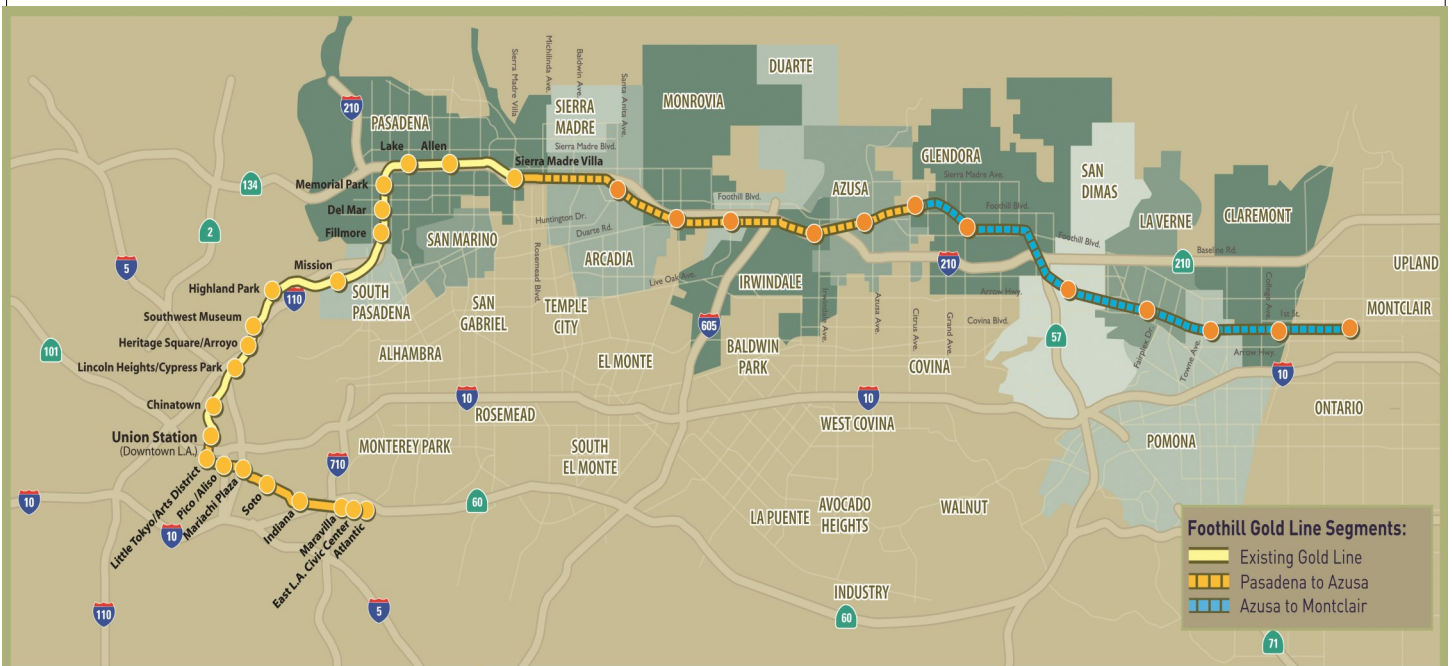


# Metro Gold Line

## Foothill Extension Project

### Monthly Project Status Report

April 2015



**Foothill Gold Line**

Connecting Los Angeles, the San Gabriel Valley and Inland Empire





## TABLE OF CONTENTS

### PHASE 2 FOOTHILL EXTENSION PROJECT STATUS

|   |           |
|---|-----------|
| <b>Project Description .....</b>                                | <b>3</b>  |
| <b>Pasadena to Azusa Segment .....</b>                          | <b>4</b>  |
| Management Issues .....   | 4         |
| Key Activities Completed This Period .....                      | 5         |
| Key Future Activities .....                                     | 6         |
| Critical Path Schedule .....                                    | 7         |
| Critical Path Float Trend .....                                 | 8         |
| Alignment Contract Status .....                                 | 9         |
| Alignment Construction Progress This Period .....               | 11        |
| Facility Construction Progress This Period .....                | 12        |
| Alignment Construction Progress Next Period .....               | 13        |
| Facility Construction Progress Next Period .....                | 14        |
| Alignment Construction Images .....                             | 15        |
| Alignment Change Management Log .....                           | 17        |
| Parking Facilities and Enhancements Contract Status .....       | 22        |
| Parking Facilities and Enhancements Construction Images .....   | 24        |
| Parking Facilities and Enhancements Change Management Log ..... | 26        |
| <b>Azusa to Montclair Segment .....</b>                         | <b>28</b> |
| <b>Financial Status .....</b>                                   | <b>29</b> |





## FOOTHILL EXTENSION PROJECT DESCRIPTION

The Authority's mandate is to plan, design and construct a 37-mile light rail link between Downtown Los Angeles and Claremont. In addition, the San Bernardino Associated Governments (SANBAG) has requested that planning be extended one mile inside San Bernardino County to the City of Montclair and then possibly to Ontario Airport.

The Metro Gold Line Phase 2 (Foothill Extension) corridor includes the cities of Pasadena, Arcadia, Monrovia, Duarte, Irwindale, Azusa, Glendora, San Dimas, La Verne, Pomona, Claremont, and Montclair; and the counties of Los Angeles and San Bernardino (Figure 1). The Foothill Extension is estimated to cost approximately \$1.950 billion.

The Foothill Extension will be built in two segments to align effectively with projected cash flows and financial capacity constraints. The first segment is defined from the Sierra Madre Villa Station in Pasadena to the city of Azusa. Revenue service along this segment is planned for the year 2016. The second segment would include an extension from Azusa to the City of Montclair with revenue service projected for the year 2023 and the third segment, if applicable, will be comprised of an extension from Montclair to the Ontario Airport.

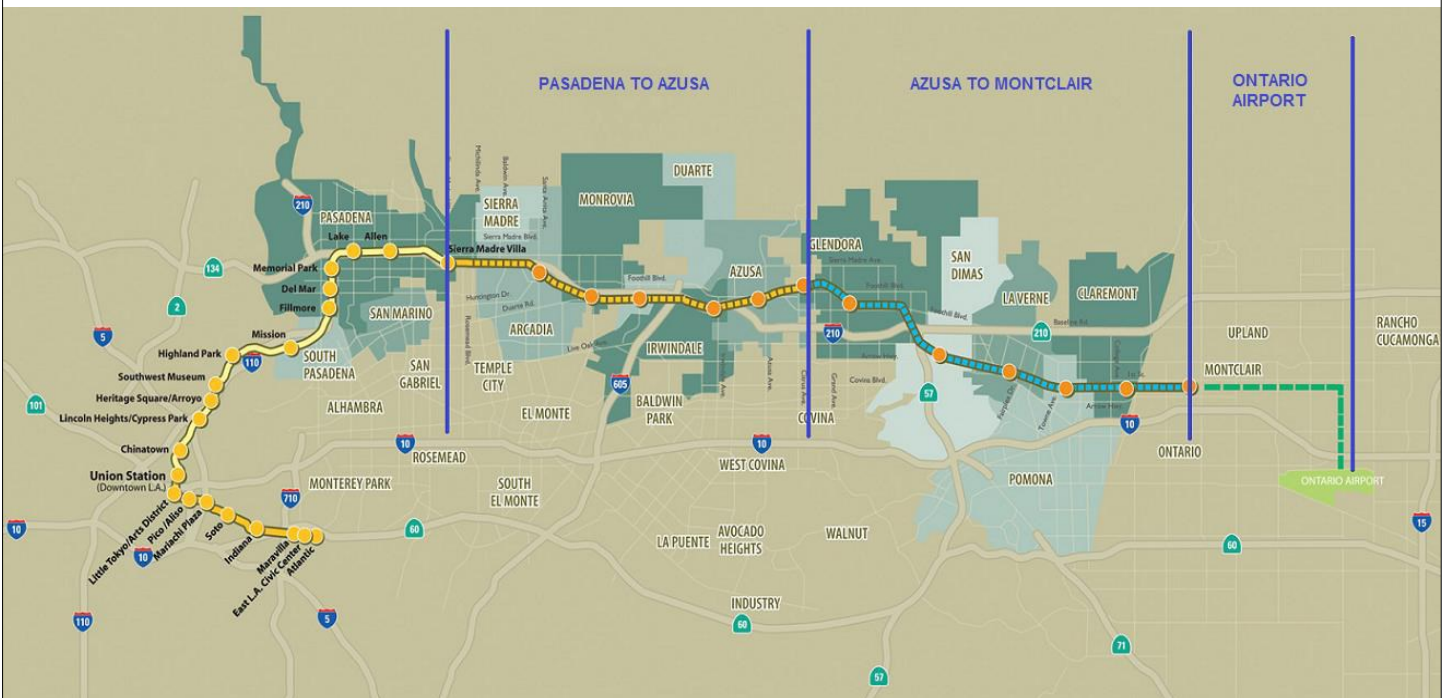


Figure 1: Metro Gold Line Foothill Extension Alignment



## **Pasadena to Azusa Segment**

### **MANAGEMENT ISSUES**

#### **Metro Betterments**

During the design process Metro staff have identified betterments that Metro staff would like to add to the project. Metro has provided a final disposition on all but a few items. Authority staff continues to work with Metro staff to resolve the remaining items.

#### **TPSS Commissioning**

The traction power substations (TPSS) provide equipment to transform utility power required for Light Rail Vehicle (LRV) propulsion, and then distribute that power to the LRVs via the overhead wires. Metro is responsible for purchasing the traction power substations. All TPSS have been delivered and set to date, however these deliveries were all behind schedule which proposed a potential to impact the project schedule. Authority staff coordinated with Metro and FTC to ensure minimal impact to the project, however the energization process will need to be finalized before schedule concerns are eliminated.



### **KEY ACTIVITIES COMPLETED THIS PERIOD**

FTC reports the following SBE statistics for the month of January:

- Target SBE commitment: \$59,500,000
- SBE percent committed versus value of Project: 19.32%
- Overall Authority Project SBE goal: 16%

FTC reports the following approximate safety statistics to date:

- 2,020,514 total work hours performed by FTC, Mass Electric, and Subcontractors
- 13 recordable injuries reported to date
- 4 lost time injuries reported to date

Webcor reports the following DBE statistics for the month of January:

- Target DBE commitment: \$1,121,250
- DBE percent committed versus value of Project: 4.74%
- Overall Authority Project DBE goal: 2.3%

Webcor reports the following approximate safety statistics to date:

- 187,711 total work hours performed by Webcor and Subcontractors
- 1 recordable injuries reported to date
- 0 lost time injuries reported to date

The Citrus Traction Power Supply Substation was energized (3 remaining)

Continued placement of art and architectural elements at all stations

Completed rail grinding throughout the Alignment

Completed OCS wire runs throughout the alignment and Operations Campus

Continued systems integration testing

Continued Communications Local Field Acceptance Testing (LFAT) throughout alignment

Continued OCS LFAT at Operations Campus

Continued work at the Operations Campus plaza

Began striping at Arcadia and Monrovia parking structures

FTC continued installation of communication devices and wiring at Arcadia, Monrovia and Azusa-Citrus

Continued installation of Azusa-Citrus elevators and finalized construction of parking structure

Continued constructing pole foundations for both on-side and off-site lighting at Duarte parking lot site

Completed construction of Irwindale parking structure and elevator hoistway

Continued construction of elevators at Azusa-Citrus and continued painting the exterior of the structure



## **KEY FUTURE ACTIVITIES**

Continue discussions with corridor cities regarding the project

Continue management of the Alignment contract, which will include oversight of construction activities and start-up activities

Continue to meet with Intermodal Parking Facilities and Enhancements Project contractor, Webcor Builders regarding design and construction of the Project

Complete construction of art and architectural elements at all stations

Complete system integration tests

Finalize construction of all Parking Facilities

Energize Los Robles, Soldano, and Virginia Traction Power Supply Substations

Finalize the following property acquisitions:

- Arcadia:

1. Parcel 1310/1311 (Indiana St.) – To be vacated by the City of Arcadia.
2. Parcel 1401a (Huntington Dr. Aerial Easement ) – To be conveyed by the City of Arcadia.
3. Parcel 1401b (Huntington Dr. Bridge Abutments) – To be conveyed by the City of Arcadia.
4. Parcel 1403 (99 N. Second Av.) – Negotiating. Condemnation Hearing set for 5/27.
5. Parcel 6009 (Huntington Dr. Bridge Abutments) – To be conveyed by the City of Arcadia.
6. Parcel 6010 (Huntington Dr. Bridge Abutments) – To be conveyed by the City of Arcadia.
7. Parcel 6011 (Huntington Dr. Bridge Abutments) – To be conveyed by the City of Arcadia.

- Monrovia:

1. Parcel 1601 (Encino Av.) – Conveyed by the City of Monrovia.
2. Parcel 1903 (Monrovia Station) – To be conveyed by the City of Monrovia.
3. Parcel 21A12 (3M Parking Lot) – Finalizing.
4. Parcel 21A23 (Shamrock Trapezoid) – To be conveyed by the City of Monrovia.

- Azusa:

1. Parcel 3501 (1220 W. Foothill Blvd.) – In escrow.



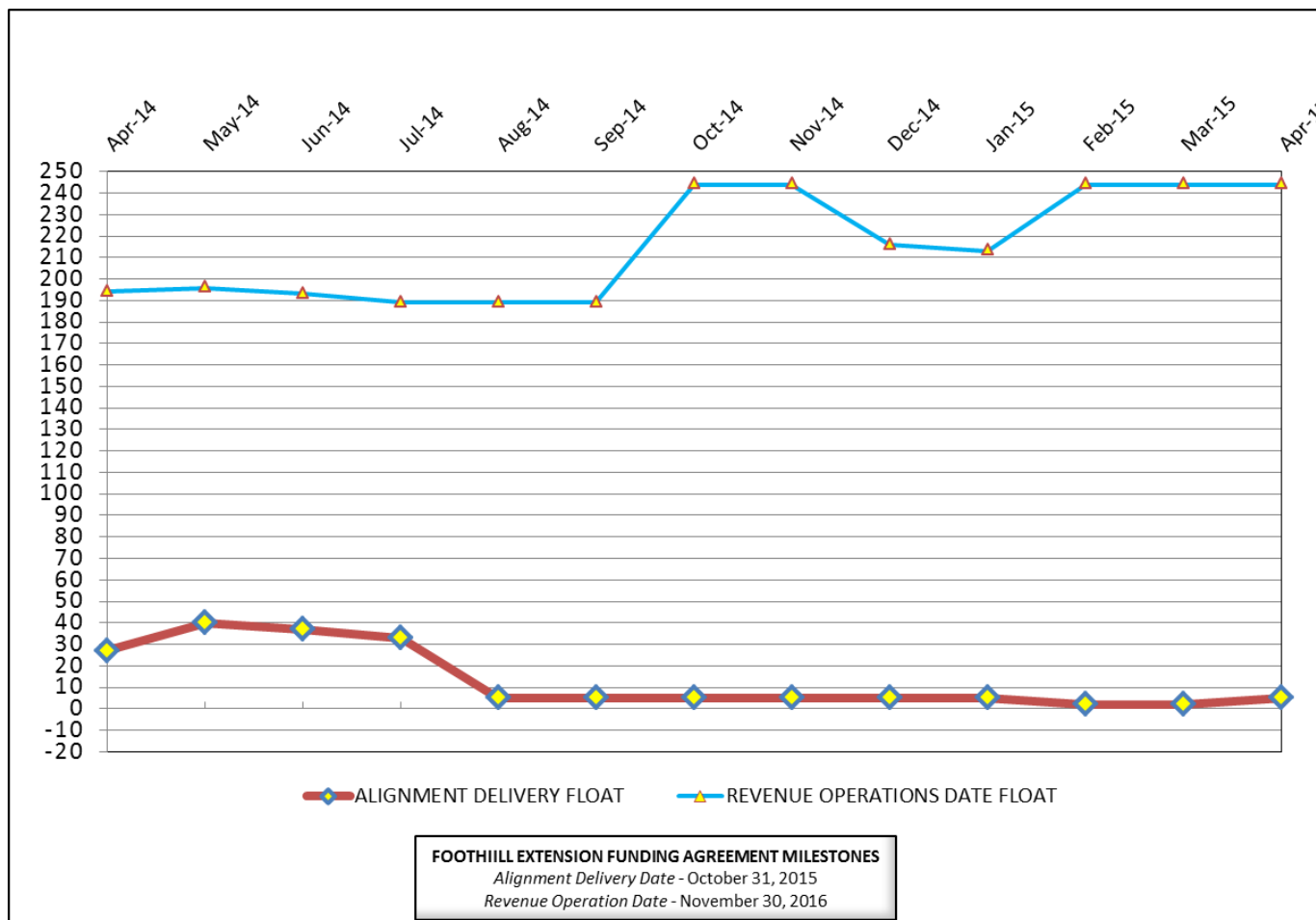


### CRITICAL PATH SCHEDULE

| Activity Name  | OD   | RD  | AD  | Start                | Finish               | Total Float | Timeline |    |    |      |    |    |      |    |    |      |    |    |      |    |    |
|--|------|-----|-----|----------------------|----------------------|-------------|----------|----|----|------|----|----|------|----|----|------|----|----|------|----|----|
|  |      |     |     |                      |                      |             | 2012     |    |    | 2013 |    |    | 2014 |    |    | 2015 |    |    | 2016 |    |    |
|  |      |     |     |                      |                      |             | Q2       | Q3 | Q4 | Q1   | Q2 | Q3 | Q4   | Q1 | Q2 | Q3   | Q4 | Q1 | Q2   | Q3 | Q4 |
| <b>REVENUE OPERATIONS DATE - CRITICAL PATH</b>             |      |     |     |                      |                      |             |          |    |    |      |    |    |      |    |    |      |    |    |      |    |    |
| RFP - LRV PROCUREMENT                                      | 375  | 0   | 557 | 18.Oct.10<br>08:00 A | 26.Apr.12<br>15:00 A |             |          |    |    |      |    |    |      |    |    |      |    |    |      |    |    |
| LRV FABRICATION / DELIVER 15 VEHICLES                      | 1353 | 248 | 971 | 17.Aug.12<br>07:00 A | 18.Dec.15<br>15:00   | 244         |          |    |    |      |    |    |      |    |    |      |    |    |      |    |    |
| METRO - Pre-Revenue Operations - Phase 2A                  | 60   | 60  | 0   | 19.Dec.15<br>07:00   | 16.Feb.16<br>15:00   | 244         |          |    |    |      |    |    |      |    |    |      |    |    |      |    |    |
| METRO - Project Schedule Contingency (2 Mo.)               | 44   | 44  | 0   | 17.Feb.16<br>07:00   | 31.Mar.16<br>15:00   | 244         |          |    |    |      |    |    |      |    |    |      |    |    |      |    |    |
| Phase 2A - Revenue Operations Date (ROD)                   | 0    | 0   | 0   |                      | 31.Mar.16<br>15:00*  | 244         |          |    |    |      |    |    |      |    |    |      |    |    |      |    |    |
| <b>ALIGNMENT DELIVERY DATE - CRITICAL PATH</b>             |      |     |     |                      |                      |             |          |    |    |      |    |    |      |    |    |      |    |    |      |    |    |
| SYSTEMS INTERGRATION TESTING - PHASE 1                     | 185  | 95  | 91  | 09.Dec.14<br>07:00 A | 25.Aug.15<br>15:00   | 4           |          |    |    |      |    |    |      |    |    |      |    |    |      |    |    |
| INTERLOCK PULL SIGNAL CABLE ('7' to '8')                   | 20   | 5   | 51  | 03.Feb.15<br>07:00 A | 21.Apr.15<br>15:00   | 4           |          |    |    |      |    |    |      |    |    |      |    |    |      |    |    |
| INTERLOCK TEST SIGNAL CABLE ('7' to '8')                   | 10   | 10  | 0   | 22.Apr.15<br>07:00   | 05.May.15<br>15:00   | 4           |          |    |    |      |    |    |      |    |    |      |    |    |      |    |    |
| SYSTEMS INTERGRATION TESTING - PHASE 2                     | 44   | 44  | 0   | 26.Aug.15<br>07:00   | 26.Oct.15<br>15:00   | 4           |          |    |    |      |    |    |      |    |    |      |    |    |      |    |    |
| C1135 - >>>SUBSTANTIAL COMPLETION - 1420 CD<<<             | 0    | 0   | 0   |                      | 26.Oct.15<br>15:00*  | 5           |          |    |    |      |    |    |      |    |    |      |    |    |      |    |    |
| <b>ALIGNMENT DELIVERY DATE - SECONDARY - CRITICAL PATH</b> |      |     |     |                      |                      |             |          |    |    |      |    |    |      |    |    |      |    |    |      |    |    |
| OCS - INSTALLATION - SEGMENT 4                             | 130  | 3   | 212 | 23.Jun.14<br>07:00 A | 17.Apr.15<br>15:00   | 6           |          |    |    |      |    |    |      |    |    |      |    |    |      |    |    |
| OCS - TESTING - SEGMENT 4                                  | 20   | 20  | 0   | 20.Apr.15<br>07:00   | 15.May.15<br>15:00   | 6           |          |    |    |      |    |    |      |    |    |      |    |    |      |    |    |
| <b>ALIGNMENT DELIVERY DATE - TERTIARY CRITICAL PATH</b>    |      |     |     |                      |                      |             |          |    |    |      |    |    |      |    |    |      |    |    |      |    |    |
| CITRUS STATION - COMMUNICATIONS INSTL / TEST               | 80   | 40  | 135 | 08.Oct.14<br>07:00 A | 09.Jun.15<br>15:00   | 9           |          |    |    |      |    |    |      |    |    |      |    |    |      |    |    |
| IRWINDALE STATION - COMMUNICATIONS INSTL / TEST            | 60   | 45  | 2   | 13.Apr.15<br>07:00 A | 16.Jun.15<br>15:00   | 9           |          |    |    |      |    |    |      |    |    |      |    |    |      |    |    |



**CRITICAL PATH FLOAT TREND**



**Revenue Operations Date Critical Path - (244 Calendar Days)**

The critical path is currently running through the P3010 LRV procurement. At this time, Metro is forecasting the delivery of the 15th vehicle by December 2015. The critical path continues through Pre-Revenue Operations, which is expected to be completed by February 16, 2016. The Revenue Operations Date (ROD) is projected to be complete by March 31, 2016, which is eight (8) months ahead of the Funding Agreement Milestone date of November 30, 2016.

**Alignment Delivery Date Critical Path - (5 Calendar Days / 4 Work Days)**

This period, both the Segment 4 Train Control installation and testing shifted back to the critical path. Upon completion of local field acceptance tests (LFAT), Segment 4 will be ready to begin Phase 1 systems integration testing. Upon the conclusion of systems integration testing, the alignment will be available for Metro to complete Pre-Revenue Operations.

Other elements of construction work, which are in progress and near critical are Segment 4 OCS installation; Citrus Station communications installation; Irwindale Station communications installation; Irwindale Parking Structure; Duarte parking lot; Citrus Station mechanical/electrical/finish installations; Citrus Parking Structure and the Maintenance & Operations Campus.

**Project Float**

The project float for the Revenue Operations Date is 244 days. The critical activities on this path are on schedule to meet the Target Revenue Operations Date of November 2016. The Alignment Delivery Date float value is 5 days and is currently on schedule to meet the October 31, 2015 deadline.



**Description:** Alignment Design / Build

**Status:** April 15, 2015

**Contract No.:** C1135

**Contractor:** Foothill Transit Constructors (Kiewit-Parsons J.V.)

**Progress Completed This Period**

**Design**

- Submit AFC Design - Duarte Communications Book of Plans
- Submit AFC Design - UP Tunnel
- Submit AFC Design - M&O Vehicle Service Pathways
- Submit AFC Design - San Gabriel River Bridge Stairs
- Submit AFC Design - M&O Northwest Comer Changes
- Submit AFC Design - M&O Lobby Wall Changes

**Construction**

- See "Construction Progress This Period"

**Activities Planned Next Period**

**Design**

- Submit AFC Design - Alameda Communications Book of Plans
- Submit AFC Design - Irwindale Communications Book of Plans
- Submit AFC Design - Parking Struc. Communications Book of Plans
- Submit AFC Design - Monrovia Communications Book of Plans
- Submit AFC Design - Irwindale Ramp

**Construction**

- See "Construction Progress Next Period"

**Areas of Concern**

- **Irwindale Parking Communications** - The C1150 Design-Build Contractor continues to mitigate the Irwindale Parking Structure railroad shoring delays which was causing a potential delay to the C1135 Design-Build Contractor to begin the communications installation. As of April 15, 2015, the Irwindale Parking Structure is on schedule and partial access has been granted to begin the communications installation. The C1150 Design-Build Contractor must complete the elevator installation, elevator canopy, and level 3 light pole installation to provide full access to the C1135 Design-Build Contractor.

**Areas of Concern (Continued)**

- **Communications Installation** - The communications installation progress at the Citrus and Irwindale stations are starting slip and approaching critical. Further delays may have an impact on the completion of Phase 1 Systems Integration testing. The Authority will continue monitor the field progress to ensure the installations are completed per the schedule and eliminate the potential impact to Phase 1 Systems Integration testing.



**Description:** Alignment Design / Build

**Status:** April 15, 2015

**Contract No.:** C1135

**Contractor:** Foothill Transit Constructors (Kiewit-Parsons J.V.)

**Cost Summary:**

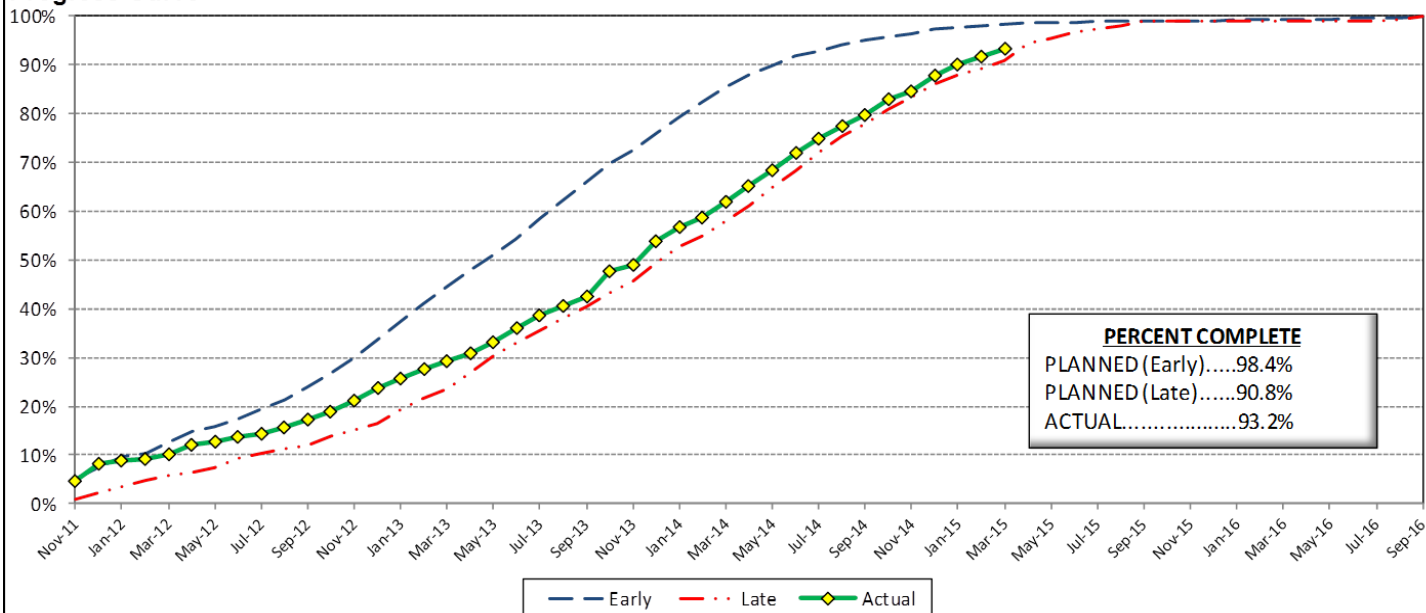
|                                      | Million(s) |
|--------------------------------------|------------|
| <b>CONTRACT</b>                      |            |
| Contract Award Value:                | 485.9      |
| Executed Change Orders:              | 19.2       |
| Current Contract Value:              | 505.1      |
| Potential Change Orders:             | 5.8        |
| Current Forecast:                    | 510.9      |
| Eamed Value/Actual Cost              | 459.5      |
| <b>AUTHORIZATION FOR EXPENDITURE</b> |            |
| Budget                               | 514.5      |
| Commitment                           | 505.1      |
| Balance                              | 3.7        |

**Cost Assessment:**

This period the Contract forecast increased \$1.7 Million. The major increase was due to the following: RFC 101 - *Changes To M&O Landscaping*, PCO 022.05 - *M&O IT Changes Office Equip.*, PCO 075.01 - *Add 2 ETEL's Duarte Parking*, PCO 091 - *UP Tunnel Analysis & Modifications*, RFC 088 - *Programing Changes for SCRRA Exit*, PCO 110 - *M&O Completion Items*, RFC 107 - *CTS Equipment Balance Due for IDIQ*.

The current forecast is within the Authorized budget.

**Progress Curve**



**Schedule Summary:**

|                                    |                     |
|------------------------------------|---------------------|
| Contract Award:                    | 07/27/11            |
| Interim Notice to Proceed (INTP) : | 11/03/11            |
| Original Contract Duration:        | 1,780 Calendar Days |
| Current Contract Duration:         | 1,780 Calendar Days |
| Elapsed Time from NTP:             | 1,259 Calendar Days |

**Contract Milestones**

| Milestones | Description                | Original Contract | Current Contract | Forecast     | Variance |
|------------|----------------------------|-------------------|------------------|--------------|----------|
| 1          | Substantial Completion     | 09/23/15          | 09/23/15         | 10/26/15     | (33)     |
| 2          | Punchlist Complete         | 06/19/16          | 06/19/16         | 07/22/16     | (33)     |
| 3          | Final Completion           | 09/17/16          | 09/17/16         | 10/20/16     | (33)     |
| 4          | Access - IFS Br.           | 12/15/12          | 12/15/12         | 12/15/2012 A | 0        |
| 5          | Test Track Complete        | 03/27/15          | 03/27/15         | 3/27/2015 A  | 0        |
| 6          | Colorado Br. Demo Complete | 02/01/12          | 02/01/12         | 6/15/2012 A  | (135)    |

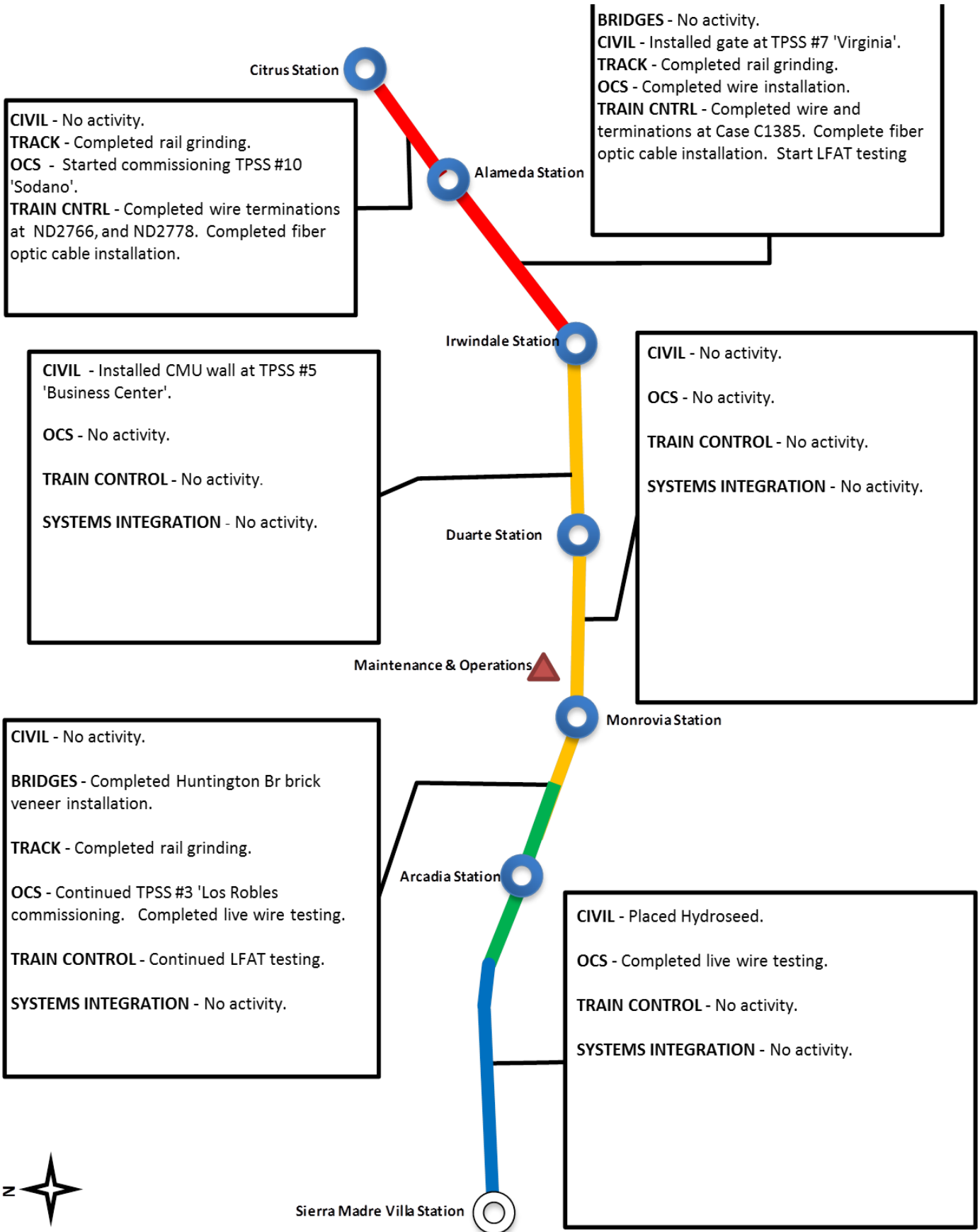
**Schedule Assessment:**

With the progress continuing to trend at the rate of the late progress curve, activities in all Segments continue to approach near critical. The Design-Build Contractor continues to meet the requisite use of resources in order to meet the critical elements of the schedule. At this time, the primary activities which are critical or near critical by Segment are as follows: Segment 2 - OCS testing, Train Control LFAT, Segment 3 - Duarte Station Communications LFAT Testing , Segment 4 - OCS Installation, Fiber Optic Cable Installation, and Irwindale Station mechanical/electrical & finishes. Maintenance & Operations Facility - train control installation & testing, OCS Installation, Main Building Finishes, Car Wash Building.

The Test Track Completion milestone was achieved on March 27, 2015.



### ALIGNMENT CONSTRUCTION PROGRESS THIS PERIOD





**FACILITY CONSTRUCTION PROGRESS THIS PERIOD**

**Citrus Ave Station**

**STATION** - Continued communications bungalow wire terminations. Continued metal roofing installation. Started CCTV/PA/Fire Alarm/Telephone installation. Started metal railing installation.  
**PARKING** - Continued elevator glazing installation. Continued electrical equipment installation. Continued sewer installation. Started elevator cab installations. Continued CCTV/PA/Fire Alarm/Telephone installation.

**STATION** - Started CCTV/PA/Fire Alarm/Telephone installation. Started metal picket fence. Completed metal platform railing installation. Completed wire & terminations.

**ENHANCEMENTS** - No activity.

**Alameda Station**

**STATION** - Continued paver installation. Completed canopy metal roofing installation. Continued wire installation & terminations. Started installation of platform metal railing.  
**PARKING** - Completed Level 3 deck. Completed elevator steel hoistway and started stair installation. Started installation of electrical equipment.

**Irwindale Station**

**STATION** - Continued Communications LFAT testing.

**PARKING** - Started installation of underground conduits. Started street light pole bases. Started irrigation installation.

**CIVIL** - Continued paving . Continued steel picket fence installations at Wall 'C', 'D' and start Wall 'B' and 3M . Started North East Plaza demolition and grading.  
**STRUCTURES** - *M&O Building* - Completed elevators. Continued acoustical ceiling tile installation. Completed fiber optic cable. Completed fire alarms. Started shop DC switch board. *Car Wash* - Completed wire terminations and communications installation. *Cleaning Platform* - Completed glazing and door installations. Completed communications installation. Completed tile and bathroom finishes. *MOW Building* - Completed communications installation. *Material Storage* - Completed communications installation. *Guard House* - Started foundation. *Fire Tank* - Installed roof.  
**OCS** - Completed wire installations. Completed testing.  
**TRAIN CONTROL** - Completed LFAT testing.

**Duarte Station**

**STATION** - Completed painting metal railings. Continued Communications LFAT testing.  
**PARKING** - Completed CCTV/PA/Telephone installation. Started Fire Alarm installation.

**Maintenance & Operations**

**Monrovia Station**

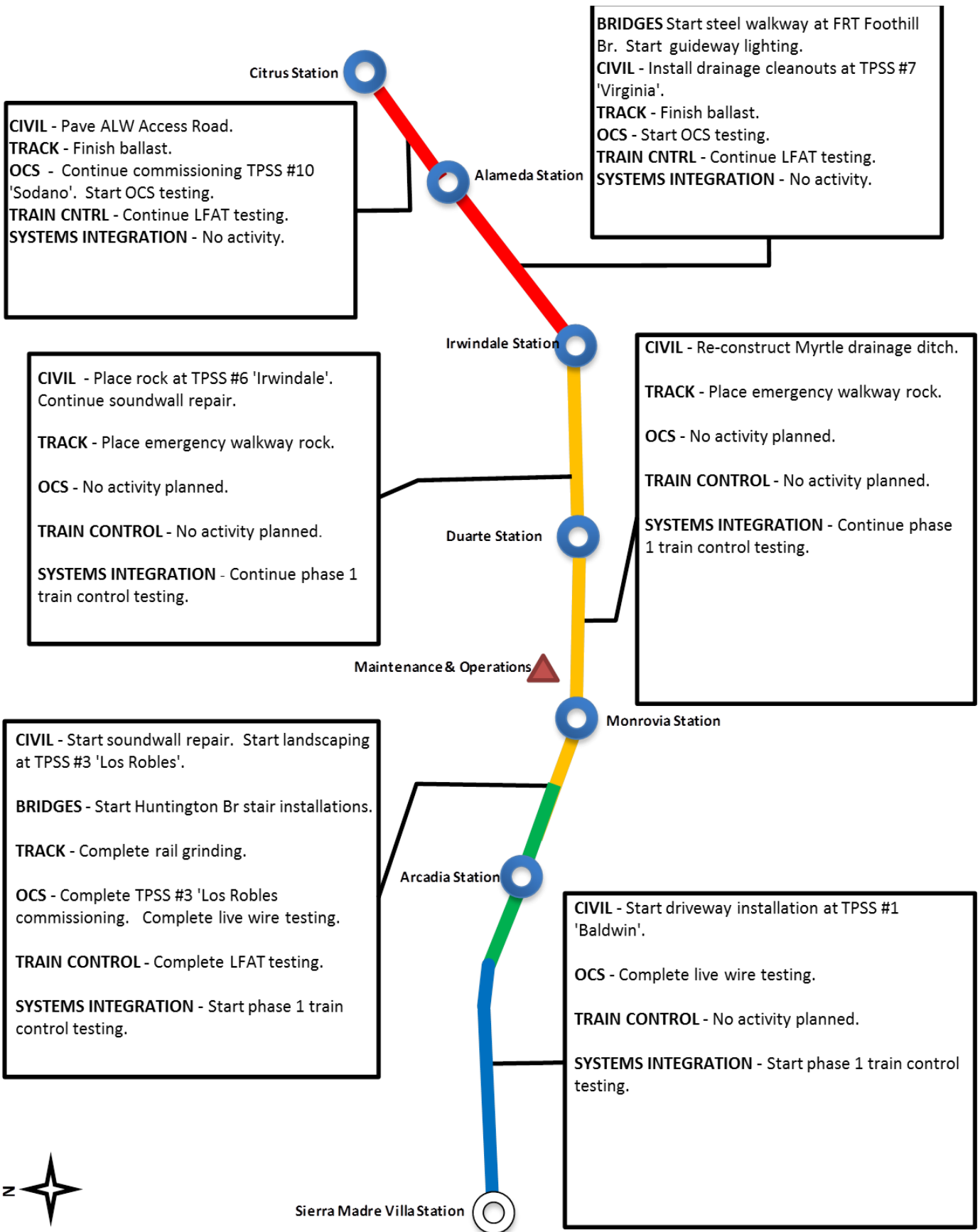
**STATION** - Continued communications wire terminations. Completed painting metal railing. Completed artwork installation. Started LFAT testing  
**PARKING** - Completed CCTV/PA/ Telephone installation. Started Fire Alarm installation.

**Arcadia Station**





## ALIGNMENT CONSTRUCTION PROGRESS NEXT PERIOD





**FACILITY CONSTRUCTION PROGRESS NEXT PERIOD**

**Citrus Ave Station**

**STATION** - Complete communications bungalow wire terminations. Complete metal roofing installation. Continue communications equipment installation. Start metal railing installation & steel picket fence. Install platform lighting.  
**PARKING** - Complete elevator glazing installation. Continue lay over room. Complete electrical equipment installation. Continue sewer installation. Complete elevator cab installations. Continue CCTV/PA/Fire Alarm/Telephone installation. Test elevators.

**STATION** - Continue Communications Equipment installation. Continue metal picket fence. Paint metal platform railing installation. Install platform lighting. Continue artwork installation. Install map cases. Install pylon.

**ENHANCEMENTS** - No activity planned.

**Alameda Station**

**STATION** - Complete metal railing installation. Paint metal railing. Install map cases. Install pylon. Start installation of Communications Equipment. Start Artwork installation.  
**PARKING** - Continue installation of electrical equipment and wiring installation. Start fire protection. Start elevator cab installations. Complete barrier walls.

**Irwindale Station**

**STATION** - Complete Communications LFAT testing. Install map cases. Install pylon. Complete paver installation.  
**PARKING** - Continue installation of underground conduits. Continue light pole bases. Start driveways & sidewalks. Start fence installation

**CIVIL** - Complete paving. Complete steel picket fence installations at Wall 'C', 'D' and start Wall 'B' and 3M fence installations. Complete North East Plaza flatwork & hardscape. Complete landscape irrigation. Install pre-cast wall panels and wire mesh art fence. Complete site lighting.  
**STRUCTURES** - *M&O Building* - Start art wall installation. Complete acoustical ceiling tile installation. Complete carpet & vinyl flooring. Complete fire alarms. Start shop DC switch board. *Car Wash* - Complete lighting installation. *Cleaning Platform* - No activity. *MOW Building* - Complete lighting installation. *Material Storage* - Complete lighting installation. *Guard House* - Install pre-fabricated structure. Start installation of finishes. *Fire Tank* - Start MEP testing.  
**OCS** - Start livewire testing.  
**TRAIN CONTROL** - Complete LFAT testing.

**Duarte Station**

**STATION** - Complete LFAT testing. Start artwork installation. Install map cases. Install pylon.  
**PARKING** - Complete Fire Alarm installation. Start installation of signs and start paint markings. Test elevators.

**Maintenance & Operations**

**Monrovia Station**

**STATION** - Complete artwork installation. Complete LFAT testing. Install map cases. Install pylon.  
**PARKING** - Complete Fire Alarm installation. Start LFAT testing. Complete signs & striping. Start St. Joesph landscape installation. Install bike lockers. Install expansion joints. Test elevators.

**Arcadia Station**







## ALIGNMENT CONSTRUCTION IMAGES

Segment 1: Baldwin TPSS Wire Mesh Fence



Segment 2: Arcadia Station - Bench Installation

Segment 3: Duarte Station - Trash Cans Installed





**ALIGNMENT CONSTRUCTION IMAGES (CONTINUED)**



Segment 3: Walkway Ballast Placement

Segment 4: Azusa-Citrus Station -  
Wayside Signage Installation



Operations Campus: Work on Lobby Art Wall



Change Management Log

Date: 5/4/2015

Page: 1 of 5

Project: C1135 Alignment - FTC Contract #: C1135

|                           |               |       |                         |               |       |
|---------------------------|---------------|-------|-------------------------|---------------|-------|
| Original Contract Amount: | \$485,867,000 |       |                         |               |       |
| Approved Change Orders:   | \$19,249,088  | 3.96% | Pending Change Orders:  | \$771,164     | 0.16% |
| Current Contract Total:   | \$505,116,088 |       | Pending Contract Total: | \$505,887,252 | 4.12% |

Change Orders

| Number                        | Change Management | Title                               | Initiated Date | Approved Date | Outstanding Days | Time Extension | Amount      |
|-------------------------------|-------------------|-------------------------------------|----------------|---------------|------------------|----------------|-------------|
| <b>EXECUTED Change Orders</b> |                   |                                     |                |               |                  |                |             |
| 001.00                        | 000.00            | Interim NTP                         | 11/3/2011      | 11/3/2011     | 0                |                | \$0         |
| 002.00                        | 013.00            | Colorado Bridge Haz Mat             | 5/17/2012      | 5/18/2012     | 1                |                | \$121,382   |
| 002.01                        | 013.01            | Colorado Bridge HazMat - Final      | 9/5/2012       | 9/7/2012      | 2                |                | \$13,164    |
| 003.00                        | 001.00            | Sound Wall Deletion - Duarte Road   | 7/12/2012      | 7/18/2012     | 6                |                | (\$74,707)  |
| 004.00                        | 018.00            | Revise Block Design - CBD Calc      | 8/23/2012      | 8/29/2012     | 6                |                | \$3,986     |
| 004.01                        | 018.01            | Revise Block Design - CBD Calc - 2  | 9/5/2013       | 9/11/2013     | 6                |                | \$0         |
| 005.00                        | 023.00            | Wayside Signal Aspect Revision      | 9/6/2012       | 9/7/2012      | 1                |                | \$26,072    |
| 005.01                        | 023.01            | Wayside Signal "Call On" Function   | 10/30/2013     | 11/1/2013     | 2                |                | \$75,169    |
| 006.00                        | 040.00            | Arcadia Frieze, Bench-Artist Design | 9/6/2012       | 9/10/2012     | 4                |                | \$13,683    |
| 006.01                        | 040.01            | Arcadia Frieze, Bench-Construction  | 3/7/2013       | 3/12/2013     | 5                |                | \$155,894   |
| 007.00                        | 019.02            | Soils Testing Abutments & Fdns      | 9/14/2012      | 9/18/2012     | 4                |                | \$44,993    |
| 008.00                        | 041.00            | Unknown Utilities RFCN 005 006 008  | 9/14/2012      | 9/18/2012     | 4                |                | \$132,450   |
| 009.00                        | 038.00            | Illuminate City Names @ Stations    | 9/18/2012      | 9/24/2012     | 6                |                | \$184,657   |
| 010.00                        | 046.00            | SGRB - Lead Based Paint Remediation | 9/21/2012      | 9/24/2012     | 3                |                | \$244,536   |
| 011.00                        | 004.00            | Station Architectural Changes       | 10/11/2012     | 10/12/2012    | 1                |                | \$443,950   |
| 012.00                        | 003.01            | Systems and Testing for Added TPSS  | 12/13/2012     | 12/14/2012    | 1                |                | \$1,443,193 |
| 013.00                        | 005.02            | IDIQ Comm Contract (Rev 2)          | 12/14/2012     | 1/22/2013     | 39               |                | \$698,259   |
| 014.00                        | 060.00            | Sewer Encasement Changes in Azusa   | 12/18/2012     | 1/24/2013     | 37               |                | \$141,354   |
| 015.00                        | 037.02            | M&O - Materials Storage Revisions   | 12/26/2012     | 1/15/2013     | 20               |                | \$62,862    |
| 015.01                        | 037.03            | M&O Storage Shelving Revisions      | 9/16/2013      | 9/19/2013     | 3                |                | \$20,380    |
| 016.00                        | 002.00            | Relocation of Access Road to 3M Fac | 12/26/2012     | 1/16/2013     | 21               |                | \$53,814    |
| 017.00                        | 025.00            | 3 Electrical Casings for ALW        | 2/27/2013      | 3/1/2013      | 2                |                | \$219,033   |
| 018.00                        | 073.00            | Hazardous Abatement at Bridges      | 1/15/2013      | 2/6/2013      | 22               |                | \$1,081,803 |
| 019.00                        | 054.00            | City of Hope Conduits               | 1/11/2013      | 1/22/2013     | 11               |                | \$34,313    |
| 020.00                        | 059.00            | Citrus TPSS Transformer Pad Changes | 2/6/2013       | 2/7/2013      | 1                |                | \$34,536    |
| 021.00                        | 075.00            | Demo & Replace Palm Dr. Roadway     | 2/7/2013       | 2/14/2013     | 7                |                | \$90,365    |
| 022.00                        | 077.00            | M&O Differing Site Conditions; Pt 1 | 2/13/2013      | 2/15/2013     | 2                |                | \$66,360    |
| 022.01                        | 093.00            | M and O DSC T and M Work Part 2     | 3/8/2013       | 3/12/2013     | 4                |                | \$66,625    |
| 022.02                        | 103.00            | M and O DSC Part 3                  | 3/27/2013      | 3/28/2013     | 1                |                | \$35,211    |
| 022.03                        | 115.00            | DSC at M and O Part 4               | 5/3/2013       | 5/7/2013      | 4                |                | \$5,706     |
| 023.00                        | 089.00            | Contaminated Soil Abatement         | 2/26/2013      | 2/27/2013     | 1                |                | \$422,068   |
| 024.00                        | 068.00            | Monrovia Sound Wall Panel Change    | 2/26/2013      | 2/28/2013     | 2                |                | (\$24,150)  |
| 025.00                        | 052.00            | Santa Anita Trail Detour            | 3/8/2013       | 3/12/2013     | 4                |                | \$27,691    |
| 026.00                        | 070.00            | Block Type Change at M&O Building   | 3/26/2013      | 3/26/2013     | 0                |                | \$35,016    |
| 027.00                        | 065.00            | M&O IT Changes-Duct Banks/Conduits  | 3/26/2013      | 3/26/2013     | 0                |                | \$88,650    |
| 027.01                        | 065.01            | M&O IT Changes - Power to WAP       | 9/4/2013       | 9/6/2013      | 2                |                | \$73,049    |
| 027.02                        | 065.02            | M&O IT Changes - Remaining Work     | 7/16/2014      | 7/17/2014     | 1                |                | \$155,991   |
| 028.00                        | 039.01            | Delete Layover Building             | 4/11/2013      | 4/12/2013     | 1                |                | (\$313,832) |
| 029.00                        | 095.00            | 8in Sanitary Sewer Line- Alameda Av | 4/23/2013      | 4/25/2013     | 2                |                | \$226,089   |
| 029.01                        | 095.01            | Alameda Sewer Line Revised Scope    | 11/22/2013     | 11/26/2013    | 4                |                | (\$37,425)  |
| 030.00                        | 102.00            | M&O-Disconnect Switches, Insulators | 4/23/2013      | 4/25/2013     | 2                |                | \$67,817    |
| 031.00                        | 110.00            | Rmv Abandoned Utility Line @ Dalton | 4/23/2013      | 4/25/2013     | 2                |                | \$1,562     |
| 032.00                        | 104.00            | Highland Ave Abandoned CMP sleeves  | 5/1/2013       | 5/3/2013      | 2                |                | \$15,005    |
| 033.00                        | 114.00            | Remove contaminated wood culvert    | 5/3/2013       | 5/7/2013      | 4                |                | \$4,714     |
| 034.00                        | 128.00            | M&O Backup Power/Generator Changes  | 5/13/2013      | 5/21/2013     | 8                |                | \$121,340   |



Change Management Log

Date: 5/4/2015

Page: 2 of 5

Project: C1135 Alignment - FTC Contract #: C1135

Change Orders

| Number                        | Change Management | Title                               | Initiated Date | Approved Date | Outstanding Days | Time Extension | Amount      |
|-------------------------------|-------------------|-------------------------------------|----------------|---------------|------------------|----------------|-------------|
| <b>EXECUTED Change Orders</b> |                   |                                     |                |               |                  |                |             |
| 035.00                        | 083.00            | M&O Vehicle Sanding System Changes  | 5/21/2013      | 5/24/2013     | 3                |                | \$27,463    |
| 036.00                        | 006.00            | IFS Related Contract Changes        | 6/7/2013       | 6/11/2013     | 4                |                | (\$263,111) |
| 037.00                        | 137.00            | CTS Redesign                        | 7/12/2013      | 7/16/2013     | 4                |                | \$58,214    |
| 038.00                        | 138.00            | Segment 4 Safety Manager            | 7/12/2013      | 7/16/2013     | 4                |                | \$157,274   |
| 038.01                        | 138.01            | Segment 4 Safety manager - Part 2   | 11/19/2013     | 11/21/2013    | 2                |                | \$72,963    |
| 038.02                        | 138.02            | Segment 4 Safety Manager - Part 3   | 4/3/2014       | 4/7/2014      | 4                |                | \$82,271    |
| 039.00                        | 085.00            | M&O Drainage System Enhancements    | 7/19/2013      | 8/13/2013     | 25               |                | \$251,579   |
| 040.00                        | 067.00            | Station Paver Changes               | 7/23/2013      | 8/13/2013     | 21               |                | \$728,340   |
| 040.01                        | 067.01            | Rebar Changes for Station Pavers    | 10/28/2013     | 10/31/2013    | 3                |                | \$10,586    |
| 041.00                        | 112.00            | 12" Pasadena Waterline Potholes     | 8/12/2013      | 8/16/2013     | 4                |                | \$19,735    |
| 042.00                        | 150.00            | Demo Abandoned Water Lines @ Dalton | 8/12/2013      | 8/16/2013     | 4                |                | \$5,937     |
| 043.00                        | 007.01            | Emer. Backup for Guideway Lighting  | 8/16/2013      | 10/1/2013     | 46               |                | \$359,158   |
| 044.00                        | 172.00            | Contaminated Wood Culvert Sta. 1202 | 8/27/2013      | 8/28/2013     | 1                |                | \$7,712     |
| 045.00                        | 139.00            | BLS Changes                         | 8/28/2013      | 9/4/2013      | 7                |                | \$110,801   |
| 046.00                        | 165.00            | Azusa-Alameda Station; 2nd Portal   | 8/28/2013      | 9/4/2013      | 7                |                | \$77,175    |
| 047.00                        | 145.00            | St. Joseph drainage enhancements    | 9/4/2013       | 9/6/2013      | 2                |                | \$17,592    |
| 048.00                        | 149.00            | M&O - Lights at NW Corner Park      | 9/4/2013       | 9/6/2013      | 2                |                | \$29,351    |
| 049.00                        | 174.00            | TPSS #5 Cal-Am Power Conflict       | 9/4/2013       | 9/6/2013      | 2                |                | \$127,260   |
| 050.00                        | 171.00            | Relocate Access Stair to Foothill   | 9/4/2013       | 9/6/2013      | 2                |                | \$20,276    |
| 051.00                        | 173.00            | Dalton 8" Water Line Work           | 9/5/2013       | 9/12/2013     | 7                |                | \$35,316    |
| 052.00                        | 071.00            | Duarte Rd Screen Wall Change        | 9/5/2013       | 9/17/2013     | 12               |                | (\$133,864) |
| 053.00                        | 176.00            | Remove Contaminatd Wood-Buena Vista | 9/10/2013      | 9/12/2013     | 2                |                | \$5,543     |
| 054.00                        | 147.00            | DECCO Bypass                        | 9/10/2013      | 9/12/2013     | 2                |                | \$18,519    |
| 055.00                        | 166.00            | Foothill Blvd. Water/SD Relocation  | 9/20/2013      | 9/20/2013     | 0                |                | \$127,074   |
| 056.00                        | 186.00            | Contaminated Wood @ San Gabriel Ave | 9/23/2013      | 9/24/2013     | 1                |                | \$4,291     |
| 057.00                        | 194.00            | California/Duarte Water Line Work   | 10/28/2013     | 10/31/2013    | 3                |                | \$220,743   |
| 058.00                        | 189.00            | Four Utility Changes                | 10/28/2013     | 10/31/2013    | 3                |                | \$14,157    |
| 059.00                        | 180.00            | Remove/Dispose of ACM E of Highland | 10/30/2013     | 11/1/2013     | 2                |                | \$29,311    |
| 060.00                        | 179.00            | CTS Upgrade to OC-192               | 10/30/2013     | 11/1/2013     | 2                |                | \$112,543   |
| 061.00                        | 213.00            | Irwindale On-ramp Stockpile         | 11/8/2013      | 11/21/2013    | 13               |                | \$200,185   |
| 062.00                        | 053.00            | Delete Totten Tubes Scope of Work   | 11/8/2013      | 11/21/2013    | 13               |                | (\$143,801) |
| 063.00                        | 146.00            | Home Depot Striping and Signing     | 11/15/2013     | 11/21/2013    | 6                |                | \$21,003    |
| 064.00                        | 204.00            | Unknown Duct Bank @ San Gabriel Ave | 11/15/2013     | 11/21/2013    | 6                |                | \$1,265     |
| 065.00                        | 140.00            | M&O-Overhead Work Platform Changes  | 12/5/2013      | 12/16/2013    | 11               |                | \$317,656   |
| 066.00                        | 217.00            | Buried SD & Headwall, STA 1306+50   | 12/6/2013      | 12/17/2013    | 11               |                | \$1,020     |
| 067.00                        | 219.00            | Contaminated Soil, Monrovia Station | 12/12/2013     | 12/17/2013    | 5                |                | \$17,503    |
| 068.00                        | 220.00            | DSC at Sawpit Wash Abutments        | 12/12/2013     | 12/17/2013    | 5                |                | \$12,668    |
| 069.00                        | 188.00            | Costco Emergency Gate-Path to POS   | 1/21/2014      | 1/22/2014     | 1                |                | \$19,882    |
| 070.00                        | 214.00            | M&O - Generator Load Bank           | 1/21/2014      | 1/22/2014     | 1                |                | \$38,092    |
| 071.00                        | 224.00            | Alameda South Water Line Tie-in     | 1/30/2014      | 1/31/2014     | 1                |                | \$6,330     |
| 072.00                        | 202.00            | Aesthetic Lighting Provisions-SGRB  | 2/3/2014       | 2/4/2014      | 1                |                | \$27,055    |
| 073.00                        | 160.00            | Move Mountain Interlocking Bungalow | 2/11/2014      | 2/13/2014     | 2                |                | \$68,596    |
| 074.00                        | 200.00            | M&O Parts Carousel Warranty & PM    | 2/11/2014      | 2/13/2014     | 2                |                | \$68,906    |
| 075.00                        | 235.00            | Remove Contaminated Wood Ties       | 2/14/2014      | 2/18/2014     | 4                |                | \$4,571     |
| 076.00                        | 234.00            | Accelerate Work at California Ave   | 2/14/2014      | 2/18/2014     | 4                |                | \$5,663     |
| 077.00                        | 247.00            | Line Stop in California             | 2/18/2014      | 2/20/2014     | 2                |                | \$14,524    |
| 078.00                        | 201.00            | Added Sound Wall, SW of IFS         | 2/27/2014      | 2/28/2014     | 1                |                | \$18,201    |
| 079.00                        | 238.00            | M&O-MOW Canopy Structural Eval      | 2/27/2014      | 2/28/2014     | 1                |                | \$7,147     |
| 079.01                        | 238.01            | M&O - MOW Canopy Solar              | 8/20/2014      | 8/26/2014     | 6                |                | \$714,659   |
| 080.00                        | 232.00            | Car Moving Tractor-Coupler Upgrade  | 2/27/2014      | 2/28/2014     | 1                |                | \$177,145   |



Change Management Log

Date: 5/4/2015

Page: 3 of 5

Project: C1135 Alignment - FTC Contract #: C1135

Change Orders

| Number                        | Change Management | Title                               | Initiated Date | Approved Date | Outstanding Days | Time Extension | Amount      |
|-------------------------------|-------------------|-------------------------------------|----------------|---------------|------------------|----------------|-------------|
| <b>EXECUTED Change Orders</b> |                   |                                     |                |               |                  |                |             |
| 081.00                        | 242.00            | Car Moving Tractor Options/Features | 2/27/2014      | 2/28/2014     | 1                |                | \$69,099    |
| 082.00                        | 091.00            | Rockvale Water Line Mitigation      | 3/4/2014       | 3/5/2014      | 1                |                | \$163,750   |
| 082.01                        | 091.01            | Rockvale Water Line-EIC credit      | 4/11/2014      | 4/14/2014     | 3                |                | (\$5,391)   |
| 083.00                        | 251.00            | Cut and Move Rail to Segment 1      | 3/4/2014       | 3/5/2014      | 1                |                | \$249,934   |
| 084.00                        | 218.00            | Delete Equipment at ROC             | 3/26/2014      | 3/27/2014     | 1                |                | (\$91,708)  |
| 085.00                        | 239.00            | Install Sound Wall Door @ STA. 1169 | 3/26/2014      | 3/27/2014     | 1                |                | \$12,737    |
| 086.00                        | 250.00            | Change Top Row of Block Wall 1124.1 | 3/26/2014      | 3/27/2014     | 1                |                | \$3,688     |
| 087.00                        | 229.00            | Irwindale TPSS-Adjust Eqpt. Layout  | 4/3/2014       | 4/7/2014      | 4                |                | \$17,878    |
| 088.00                        | 262.00            | Provisional Sum Adjustment          | 4/3/2014       | 4/7/2014      | 4                |                | \$0         |
| 088.01                        | 262.01            | Provisional Sum Adjustment - 2      | 9/19/2014      | 9/25/2014     | 6                |                | \$0         |
| 088.02                        | 262.02            | Provisional Sum Adjustment - 3      | 11/12/2014     | 11/14/2014    | 2                |                | \$0         |
| 088.03                        | 262.03            | Provisional Sum Adjustment - 4      | 3/19/2015      | 3/19/2015     | 0                |                | \$0         |
| 089.00                        | 261.00            | Longer DF Bolts - SGRB              | 4/3/2014       | 4/7/2014      | 4                |                | \$17,331    |
| 090.00                        | 169.02            | M&O Trimming Table Changes (rev. 2) | 4/11/2014      | 4/14/2014     | 3                |                | \$54,083    |
| 091.00                        | 181.00            | Alameda Utility Changes             | 4/11/2014      | 4/14/2014     | 3                |                | (\$9,599)   |
| 092.00                        | 241.00            | Business Center TPSS Crane Changes  | 4/23/2014      | 4/28/2014     | 5                |                | \$13,655    |
| 093.00                        | 276.00            | Myrtle Early Completion Incentive   | 4/23/2014      | 4/28/2014     | 5                |                | \$160,000   |
| 094.00                        | 254.00            | Drainage East of Pasadena Ave.      | 4/23/2014      | 4/28/2014     | 5                |                | \$6,569     |
| 095.00                        | 275.00            | Remove Rail Ties at 1st/Santa Clara | 4/23/2014      | 4/28/2014     | 5                |                | \$2,270     |
| 096.00                        | 274.00            | Buried Concrete @ Huntington Bridge | 4/23/2014      | 4/28/2014     | 5                |                | \$2,819     |
| 097.00                        | 269.00            | Asbestos Pipe at Duarte and Myrtle  | 4/23/2014      | 4/28/2014     | 5                |                | \$6,583     |
| 098.00                        | 278.00            | Abandoned Gas Line at California    | 5/6/2014       | 5/7/2014      | 1                |                | \$8,170     |
| 099.00                        | 170.00            | M&O Car Wash Betterments            | 5/6/2014       | 5/7/2014      | 1                |                | \$166,144   |
| 100.00                        | 223.00            | M&O-Volume Control for PA Speakers  | 5/6/2014       | 5/7/2014      | 1                |                | \$38,105    |
| 101.00                        | 283.00            | Track Work Around at Mountain Ave   | 5/6/2014       | 5/7/2014      | 1                |                | \$29,996    |
| 102.00                        | 284.00            | Install 115# Buffer Rails in Seg. 1 | 5/6/2014       | 5/7/2014      | 1                |                | \$29,442    |
| 103.00                        | 230.00            | Azusa-Citrus Ped Crossing Operation | 5/6/2014       | 5/7/2014      | 1                |                | \$84,183    |
| 104.00                        | 231.00            | Red Signal Violation Indication     | 6/3/2014       | 6/3/2014      | 0                |                | \$335,134   |
| 105.00                        | 253.00            | Remove Stem Wall along Duarte Rd.   | 6/11/2014      | 6/12/2014     | 1                |                | \$37,527    |
| 106.00                        | 271.00            | DVR Changes                         | 7/16/2014      | 7/17/2014     | 1                |                | \$181,301   |
| 107.00                        | 260.00            | M&O Supplemental Fire Water System  | 7/16/2014      | 8/4/2014      | 19               |                | \$1,642,824 |
| 108.00                        | 163.00            | 1st/Santa Clara Grade X-ing Changes | 7/25/2014      | 7/30/2014     | 5                |                | \$156,177   |
| 109.00                        | 164.00            | M&O Body Shop Changes               | 7/25/2014      | 8/4/2014      | 10               |                | \$488,598   |
| 110.00                        | 256.00            | Monrovia North Bungalow LCP Changes | 7/25/2014      | 7/30/2014     | 5                |                | \$125,313   |
| 111.00                        | 237.00            | M&O-Signaling System Changes        | 7/29/2014      | 8/4/2014      | 6                |                | \$1,133,746 |
| 112.00                        | 252.00            | Irwindale Security Kiosk Provisions | 8/4/2014       | 8/6/2014      | 2                |                | \$178,044   |
| 112.01                        | 252.01            | Irwindale Security Kiosk - Part 2   | 2/9/2015       | 2/11/2015     | 2                |                | \$47,168    |
| 113.00                        | 281.00            | M&O - Accent Colors                 | 8/4/2014       | 8/6/2014      | 2                |                | \$26,928    |
| 114.00                        | 305.00            | Lead Paint, Foothill Median Barrier | 8/18/2014      | 8/20/2014     | 2                |                | \$5,690     |
| 115.00                        | 270.00            | TES Load Flow Simulation            | 8/19/2014      | 8/21/2014     | 2                |                | \$22,399    |
| 116.00                        | 203.00            | Mayflower Driveway/Wall Credit      | 8/20/2014      | 8/26/2014     | 6                |                | (\$19,138)  |
| 117.00                        | 307.00            | Contaminated Wood Ties-Santa Anita  | 8/20/2014      | 8/26/2014     | 6                |                | \$3,226     |
| 118.00                        | 082.01            | M&O / 3M Fence Revisions (rev 1)    | 9/17/2014      | 9/25/2014     | 8                |                | \$886,650   |
| 119.00                        | 314.00            | Mountain Early Completion Incentive | 9/17/2014      | 9/24/2014     | 7                |                | \$80,000    |
| 120.00                        | 301.00            | Santa Anita Avenue Bridge Artwork   | 9/17/2014      | 9/25/2014     | 8                |                | \$57,224    |
| 121.00                        | 313.00            | Additional Traffic Signal Testing D | 9/19/2014      | 9/25/2014     | 6                |                | \$7,875     |
| 122.00                        | 320.00            | Remove Asbestos Pipe at Virginia    | 11/12/2014     | 11/14/2014    | 2                |                | \$9,485     |
| 123.00                        | 303.00            | Additional Anti-Graffiti Coating    | 12/8/2014      | 12/8/2014     | 0                |                | \$63,727    |
| 124.00                        | 326.00            | Santa Anita Avenue Bridge Lighting  | 12/8/2014      | 12/8/2014     | 0                |                | \$208,633   |
| 124.01                        | 326.01            | Santa Anita Bridge Lighting-Part 2  | 1/16/2015      | 1/19/2015     | 3                |                | \$5,744     |



Change Management Log

Date: 5/4/2015

Page: 4 of 5

Project: C1135 Alignment - FTC Contract #: C1135

Change Orders

| Number                        | Change Management | Title                               | Initiated Date | Approved Date | Outstanding Days | Time Extension | Amount       |
|-------------------------------|-------------------|-------------------------------------|----------------|---------------|------------------|----------------|--------------|
| <b>EXECUTED Change Orders</b> |                   |                                     |                |               |                  |                |              |
| 125.00                        | 335.00            | M&O - Interior Wall Revisions       | 12/18/2014     | 12/19/2014    | 1                |                | \$43,786     |
| 126.00                        | 304.00            | M&O Lobby Aesthetic Changes         | 12/18/2014     | 12/19/2014    | 1                |                | \$128,047    |
| 127.00                        | 292.00            | M&O - Guard House Changes           | 12/19/2014     | 12/19/2014    | 0                |                | \$65,463     |
| 128.00                        | 339.00            | Mountain Ped. Crossing Changes      | 1/8/2015       | 1/12/2015     | 4                |                | \$96,159     |
| 129.00                        | 340.00            | Business Center TPSS Drainage       | 1/16/2015      | 1/19/2015     | 3                |                | \$249,959    |
| 130.00                        | 255.00            | Virginia TPSS Access Road           | 1/8/2015       | 1/12/2015     | 4                |                | \$39,718     |
| 131.00                        | 291.00            | Eliminate 'Train Coming' Signs      | 1/8/2015       | 1/12/2015     | 4                |                | \$9,325      |
| 132.00                        | 322.00            | Replace Existing OCS Pole at SMV    | 1/16/2015      | 1/19/2015     | 3                |                | \$27,010     |
| 133.00                        | 187.01            | Irwindale Ramp Signs                | 1/20/2015      | 1/26/2015     | 6                |                | \$125,015    |
| 134.00                        | 346.00            | Delay in Setting of Yard Substation | 1/20/2015      | 1/26/2015     | 6                |                | \$15,181     |
| 135.00                        | 344.00            | Virginia TPSS-Access for Delivery   | 1/30/2015      | 2/2/2015      | 3                |                | \$67,019     |
| 136.00                        | 328.00            | Rail Profile Grinding               | 2/9/2015       | 2/18/2015     | 9                |                | \$524,000    |
| 137.00                        | 065.03            | M&O Main Building Comm. Room Floors | 2/17/2015      | 2/17/2015     | 0                |                | \$4,402      |
| 138.00                        | 353.00            | 1st/Santa Clara Noise Mitigations   | 2/17/2015      | 2/17/2015     | 0                |                | \$13,889     |
| 139.00                        | 323.00            | Add Pavers to Duarte Station W Ramp | 2/18/2015      | 2/18/2015     | 0                |                | \$31,982     |
| 140.00                        | 338.00            | M&O-Wheel Truing Machine Car Puller | 2/19/2015      | 2/19/2015     | 0                |                | \$83,112     |
| 141.00                        | 258.00            | M&O Tactile Guidance Changes        | 2/23/2015      | 2/26/2015     | 3                |                | \$203,945    |
| 142.00                        | 352.00            | M&O - Fire Alarm System             | 2/23/2015      | 2/26/2015     | 3                |                | \$238,983    |
| 143.00                        | 351.00            | Sierra Madre Track Rehab            | 2/23/2015      | 2/26/2015     | 3                |                | \$18,107     |
| 144.00                        | 349.00            | Remove water line east of Highland  | 2/23/2015      | 2/26/2015     | 3                |                | \$4,648      |
| 145.00                        | 360.00            | M&O Facility - Yard Control Console | 3/2/2015       | 3/3/2015      | 1                |                | \$23,158     |
| 146.00                        | 359.00            | Generators for Testing-SRGB to IRW  | 3/2/2015       | 3/3/2015      | 1                |                | \$6,758      |
| 147.00                        | 325.00            | Station Identifier Changes          | 3/23/2015      | 3/25/2015     | 2                |                | \$4,712      |
| 148.00                        | 345.00            | Irwindale Signal Case & Push Button | 3/24/2015      | 3/25/2015     | 1                |                | \$111,110    |
| 149.00                        | 296.00            | M&O Service Vehicle Pathways        | 3/26/2015      | 3/30/2015     | 4                |                | \$164,480    |
| <b>Subtotal:</b>              |                   |                                     |                |               |                  |                | \$19,249,088 |
| <b>Subtotal:</b>              |                   |                                     |                |               |                  |                | \$19,249,088 |

PENDING Change Orders

|                  |        |                                     |           |  |   |  |              |
|------------------|--------|-------------------------------------|-----------|--|---|--|--------------|
| 060.01           | 371.00 | IDIQ Pricing Error - OC-192 Cards   | 4/29/2015 |  | 5 |  | \$87,034     |
| 150.00           | 327.00 | M&O Facility-NW Corner Fence & Wall | 4/29/2015 |  | 5 |  | \$461,480    |
| 151.00           | 311.00 | Abandoned California Water Lines    | 4/29/2015 |  | 5 |  | \$61,219     |
| 152.00           | 358.00 | M&O Facility-Interior Wall Finishes | 4/29/2015 |  | 5 |  | \$24,582     |
| 153.00           | 337.00 | Grade X-ing Train Signal Changes    | 4/29/2015 |  | 5 |  | \$136,849    |
| <b>Subtotal:</b> |        |                                     |           |  |   |  | \$771,164    |
| <b>Subtotal:</b> |        |                                     |           |  |   |  | \$771,164    |
| <b>Total:</b>    |        |                                     |           |  |   |  | \$20,020,252 |

Open PCOs

| PCO Number  | Title                                |
|-------------|--------------------------------------|
| <b>OPEN</b> |                                      |
| 022.04      | M&O IT Changes - Furniture Interface |
| 022.05      | M&O IT Changes-OFCl Eqpt and A/V     |
| 029.00      | Del. Irwindale/Gladstone Mitigation  |
| 075.00      | Comm. Changes Parking Structures     |
| 075.01      | Add 2 ETEs to Duarte Parking Lot     |
| 080.00      | Delete Evergreen / Myrtle Mitigation |

Open RFCs

| RFC Number  | Title                               |
|-------------|-------------------------------------|
| <b>OPEN</b> |                                     |
| 051.00      | Irwindale Ramp CSP                  |
| 078.00      | Addl Fence To Close Gaps at Alignmn |
| 088.00      | Programming Changes for SCRRA Exit  |
| 101.00      | Changes to M&O Landscapping         |



### Change Management Log

Date: 5/4/2015

Page: 5 of 5

**Project: C1135 Alignment - FTC Contract #: C1135**

#### Open PCOs

| PCO Number | Title                               |
|------------|-------------------------------------|
| OPEN       |                                     |
| 085.00     | Joseph TPSS Power Feed Credit       |
| 087.00     | ETEL/PTEL Faceplate Betterment      |
| 091.00     | UP Tunnel Analysis & Modifications  |
| 100.00     | Change Wayside Operational Signage  |
| 101.00     | Peck Road Ramp                      |
| 103.00     | Tactile Guidance Tile at Stations   |
| 104.00     | Striping/Signs at Station Ped Xings |
| 107.00     | Add APS @ 2 intersections in Duarte |
| 108.00     | M&O - Move East Lobby Wall          |
| 109.00     | M&O Early Completion Milestone      |
| 110.00     | M&O Completion Items                |

#### Open RFCs

| RFC Number | Title                               |
|------------|-------------------------------------|
| OPEN       |                                     |
| 102.00     | Foothill Yard MOW Track Fouling Iss |

#### Open RFC Notices

| Number | Title                               |
|--------|-------------------------------------|
| 037.00 | DSC at Santa Anita Wash Abutment 1  |
| 044.00 | DSC Utility at Azusa Avenue         |
| 086.00 | Ground Grid Damaged at Citrus TPSS  |
| 096.00 | TPSS Metering Extension Changes     |
| 098.00 | Housekeeping Pads for Electrical Eq |
| 099.00 | Dispose of Haz Mat at Angelino Ave  |
| 100.00 | MO Yard Signage Changes             |
| 105.00 | MO Facility Blow Down Pit Grating C |
| 109.00 | MO Main Entrance Changes            |



**Description:** Intermodal Parking Facilities & Enhancements    **Status:** April 15, 2015

**Contract No.** C1150

**Contractor:** Webcor Builders

**Progress Completed This Period**

**Design**

- Submit AFC Design - Irwindale Enhancements (full set)
- Submit AFC Design - Irwindale Parking Structure (full set)
- Submit AFC Design - Citrus Parking Structure (full set)

**Activities Planned Next Period**

**Design**

- Submit AFC Design - Signage

**Areas of Concern**

- **IRWINDALE PARKING STRUCTURE RECOVERY**  
The Design-Build Contractor continues to accelerate the Irwindale parking structure and has made a significant improvement by implementing a 6-day work week schedule. The Design-Build Contractor has provided partial access for the C1135 - Alignment Design-Build Contractor. Full access is anticipated in late May 2015.

**Areas of Concern (Continued)**

- **DUARTE PARKING LOT PROCUREMENT** - In February 2015, the light pole procurement was incorporated into the Design-Build Contractor's schedule, and the projected duration for delivery was estimated to be four (4) months. As a result, there was a potential 1.5 month delay to the Substantial Completion milestone. In March 2015, the Design-Build Contractor revised the procurement duration to depict an expedited delivery of the light poles to minimize potential impacts to the Substantial Completion milestone.





**Description:** Intermodal Parking Facilities & Enhancements **Status:** April 15, 2015

**Contract No.:** C1150

**Contractor:** Webcor Builders

**Cost Summary:**

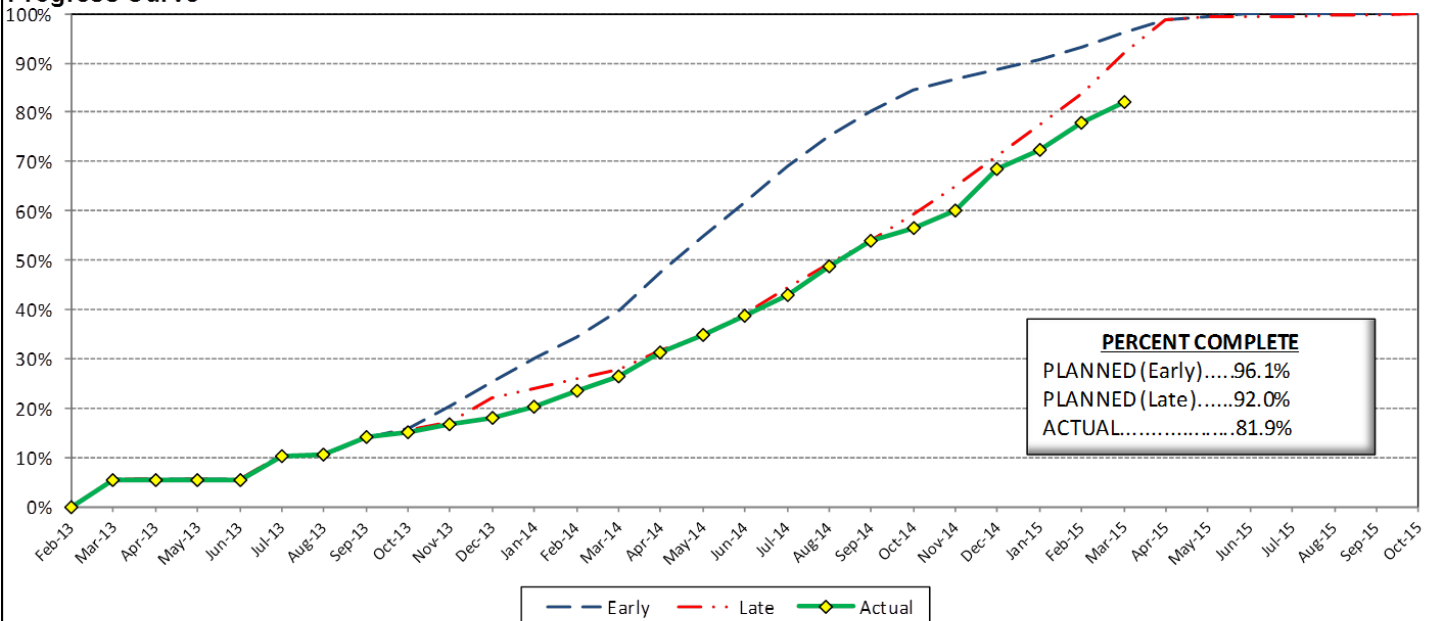
|                                      | Million(s) |
|--------------------------------------|------------|
| <b>CONTRACT</b>                      |            |
| Contract Award Value:                | 48.8       |
| Executed Change Orders:              | 1.0        |
| Current Contract Value:              | 49.8       |
| Potential Change Orders:             | 0.4        |
| Current Forecast:                    | 50.1       |
| Earned Value/Actual Cost             | 40.8       |
| <b>AUTHORIZATION FOR EXPENDITURE</b> |            |
| Budget                               | 50.3       |
| Commitment                           | 49.8       |
| Balance                              | 0.1        |

**Cost Assessment:**

This period, the current cost forecast is 50.1 Million and decreased 81 thousand from the previous period. The decrease is due to PCO 019 - *Michillinda TPSS Architectural Mods*, which was cancelled. The decrease was offset by an increase due to RFC 023 - *Generator for Monrovia Elevators*. The current forecast is within the authorized budget.

Although a 90 day time extension was granted, the Design-Build Contractor remains behind the revised plan due to schedule delays at the Irwindale site. In addition, the Design-Build Contractor has delayed the completion of the electrical testing, signage, striping at the Arcadia and Monrovia sites. Furthermore, the Duarte and Alameda sites have had minimal work and started as late as possible. In order to recover for an on schedule completion of June 2015, the Design-Build Contractor will need to progress 16% over the next period.

**Progress Curve**



**Schedule Summary:**

|                             |          |               |
|-----------------------------|----------|---------------|
| Contract Award:             | 02/27/13 |               |
| Notice to Proceed (NTP) :   | 03/20/13 |               |
| Original Contract Duration: | 845      | Calendar Days |
| Current Contract Duration:  | 938      | Calendar Days |
| Elapsed Time from NTP:      | 756      | Calendar Days |

**Contract Milestones**

| Milestones | Description            | Original Contract | Current Contract | Forecast    | Variance |
|------------|------------------------|-------------------|------------------|-------------|----------|
| 1          | Substantial Completion | 03/15/15          | 06/16/15         | 06/12/15    | 4        |
| 2          | Punchlist Complete     | 05/29/15          | 08/30/15         | 08/26/15    | 4        |
| 3          | Final Completion       | 07/13/15          | 10/14/15         | 10/10/15    | 4        |
| 4          | TPSS Work              | 03/01/14          | 03/01/14         | 3/31/2014 A | (30)     |

**Schedule Assessment:**

The Design-Build Contractor continues to successfully manage the schedule mitigation effort at the Irwindale parking structure site. In addition, the Duarte parking lot and Alameda enhancements are back on schedule for completion due to expedited fabrications for bus shelters and light pole procurements. The schedule progress at the Citrus parking structure slipped due to elevator hoistway delays.

The critical path is currently running through the Irwindale parking structure elevator structural steel installation. The secondary critical path is currently running through the Citrus parking structure elevator installation. Both the Duarte parking lot and Alameda plaza are near critical.



## **PARKING FACILITY CONSTRUCTION IMAGES**



Arcadia Parking Structure Striping



Monrovia Parking Structure Site Overview



## PARKING FACILITY CONSTRUCTION IMAGES

Duarte Parking Lot Site Overview



Irwindale Parking Structure Site Work

Azusa-Citrus Parking Structure Paint Work





Change Management Log

Date: 5/4/2015

Page: 1 of 2

Project: C1150 Parking - Webcor Contract #: C1150

|                           |              |       |                         |              |       |
|---------------------------|--------------|-------|-------------------------|--------------|-------|
| Original Contract Amount: | \$48,750,000 |       |                         |              |       |
| Approved Change Orders:   | \$1,094,244  | 2.24% | Pending Change Orders:  | \$12,884     | 0.03% |
| Current Contract Total:   | \$49,844,244 |       | Pending Contract Total: | \$49,857,128 | 2.27% |

**Change Orders**

| Number                        | Change Management | Title                               | Initiated Date | Approved Date | Outstanding Days | Time Extension   | Amount      |
|-------------------------------|-------------------|-------------------------------------|----------------|---------------|------------------|------------------|-------------|
| <b>EXECUTED Change Orders</b> |                   |                                     |                |               |                  |                  |             |
| 001.00                        | 001.00            | Monrovia Parking Alternative Layout | 6/25/2013      | 7/11/2013     | 16               |                  | \$21,382    |
| 001.01                        | 001.01            | Monrovia Alternative - Cancellation | 9/17/2013      | 10/7/2013     | 20               |                  | (\$12,006)  |
| 002.00                        | 003.00            | Clock Tower Procurement             | 7/3/2013       | 7/11/2013     | 8                |                  | \$107,246   |
| 003.00                        | 002.00            | Relocate Elevator @ Azusa-Citrus PF | 12/18/2013     | 1/8/2014      | 21               |                  | \$159,899   |
| 004.00                        | 013.00            | Irwindale Structure Relocation      | 1/23/2014      | 8/28/2014     | 217              | 90               | (\$65,564)  |
| 005.00                        | 018.00            | Monrovia Demo Unforeseen Conditions | 3/18/2014      | 3/26/2014     | 8                |                  | \$17,013    |
| 006.00                        | 010.00            | Arcadia Transit Plaza Betterments   | 3/14/2014      | 3/26/2014     | 12               |                  | \$35,466    |
| 007.00                        | 009.01            | Irwindale Intersection Betterments  | 3/25/2014      | 3/26/2014     | 1                |                  | \$19,985    |
| 008.00                        | 017.00            | Irwindale Intersection Water Line   | 3/25/2014      | 4/14/2014     | 20               |                  | \$7,748     |
| 009.00                        | 020.00            | Unforeseen Underground Demo-Arcadia | 6/13/2014      | 7/9/2014      | 26               |                  | \$6,313     |
| 010.00                        | 011.00            | Soldano TPSS Added ROW Fence        | 7/24/2014      | 7/28/2014     | 4                |                  | \$8,481     |
| 011.00                        | 024.00            | SCE Power Feed to DB2 Arcadia TPSS  | 7/24/2014      | 7/28/2014     | 4                |                  | \$17,199    |
| 012.00                        | 025.00            | Additional Sidewalk at Arcadia      | 7/24/2014      | 7/28/2014     | 4                |                  | \$3,342     |
| 013.00                        | 006.00            | St. Joseph Drainage Enhancements    | 7/31/2014      | 7/31/2014     | 0                |                  | \$139,488   |
| 014.00                        | 012.00            | Additional Conduit Provisions       | 8/13/2014      | 9/3/2014      | 21               |                  | \$57,262    |
| 015.00                        | 030.00            | Unforeseen Conditions at Michillind | 8/22/2014      | 8/28/2014     | 6                |                  | \$1,643     |
| 016.00                        | 019.00            | Parking Facility Artwork            | 8/27/2014      | 8/28/2014     | 1                |                  | \$75,850    |
| 017.00                        | 034.00            | Michillinda Conduit Demo & Pull Box | 11/12/2014     | 11/20/2014    | 8                |                  | \$31,506    |
| 018.00                        | 016.00            | Monrovia Canopies & Banding Color   | 12/19/2014     | 12/29/2014    | 10               |                  | \$247,577   |
| 019.00                        | 035.00            | Irwindale CCTV Pole                 | 12/29/2014     | 1/5/2015      | 7                |                  | \$6,220     |
| 020.00                        | 039.00            | Engineering Costs for Arcadia Clock | 12/17/2014     | 12/29/2014    | 12               |                  | \$5,292     |
| 021.00                        | 008.00            | Azusa-Citrus Plaza Pavers           | 1/5/2015       | 1/13/2015     | 8                |                  | \$7,350     |
| 022.00                        | 038.00            | Temporary Power for Irrigation at M | 1/7/2015       | 1/13/2015     | 6                |                  | \$1,465     |
| 023.00                        | 037.00            | Additional Slurry for City of Arcad | 1/7/2015       | 1/13/2015     | 6                |                  | \$7,460     |
| 024.00                        | 033.00            | Elevator Holding Tanks              | 3/25/2015      | 3/27/2015     | 2                |                  | \$76,833    |
| 025.00                        | 029.00            | Metro-Requestd Elevator Vent Detail | 2/12/2015      | 2/12/2015     | 0                |                  | \$11,553    |
| 026.00                        | 041.00            | Azusa Citrus Grand Pylon Power      | 2/13/2015      | 2/13/2015     | 0                |                  | \$4,742     |
| 027.00                        | 045.00            | Irwindale Form Liner Product Change | 4/9/2015       | 4/9/2015      | 0                |                  | \$13,170    |
| 028.00                        | 044.00            | Irwindale City Light Poles Upgrade  | 4/9/2015       | 4/9/2015      | 0                |                  | \$10,543    |
| 030.00                        | 027.00            | ETEL Enclosures                     | 4/10/2015      | 4/30/2015     | 20               |                  | \$42,885    |
| 031.00                        | 046.00            | Generator for Monrovia Elevators    | 4/21/2015      | 4/30/2015     | 9                |                  | \$26,901    |
|                               |                   |                                     |                |               |                  | <b>Subtotal:</b> | \$1,094,244 |
|                               |                   |                                     |                |               |                  | <b>Subtotal:</b> | \$1,094,244 |
| <b>PENDING Change Orders</b>  |                   |                                     |                |               |                  |                  |             |
| 029.00                        | 043.00            | Metro Requested Signage Betterments | 4/10/2015      |               | 24               |                  | \$12,884    |
|                               |                   |                                     |                |               |                  | <b>Subtotal:</b> | \$12,884    |
|                               |                   |                                     |                |               |                  | <b>Subtotal:</b> | \$12,884    |
|                               |                   |                                     |                |               |                  | <b>Total:</b>    | \$1,107,128 |



### Change Management Log

Date: 5/4/2015

Page: 2 of 2

**Project: C1150 Parking - Webcor Contract #: C1150**

#### Open PCOs

| PCO Number | Title                               |
|------------|-------------------------------------|
| OPEN       |                                     |
| 013.00     | Primrose Avenue cul-de-sac Deletion |
| 014.00     | Delete Azusa-Alameda Enhancements   |
| 016.01     | Artwork Installation                |
| 017.00     | Michillinda Pull Box Replacement    |
| 018.00     | Inwindale Kiosk Foundation          |
| 019.00     | Michillinda TPSS Architectural Mods |

#### Open RFCs

| RFC Number | Title                               |
|------------|-------------------------------------|
| OPEN       |                                     |
| 007.00     | Added PME Switch & 2 Spare Conduits |
| 011.00     | Comm. Duct Bank Interface with DB2  |
| 012.00     | SCE Capacitor Bank at Michillinda T |
| 016.00     | Inwindale Added FH for LACFD Code C |

#### Open RFC Notices

| Number | Title                              |
|--------|------------------------------------|
| 024.00 | Relocate Monrovia Jobsite Trailers |
| 025.00 | CCTV Scope at Duarte Surface Lot   |



## **AZUSA TO MONTCLAIR SEGMENT**

### **ACTIVITIES COMPLETED THIS PERIOD**

Authority and City staff continued to hold coordination meetings to discuss the project. A draft of the Master Cooperative Agreement (MCA) was distributed to all cities for review in September 2014, after which all the cities met to discuss the terms of the MCA. The cities provided comments in early February 2015, and the cities and Authority met on February 18th to discuss these comments. The MCA is expected to be agreed upon by all parties by June 2015. The Authority and cities are working together to meet this deadline.

The Authority also held Open Houses for each city during this period. Each city's art concepts were presented at these Open Houses in addition to a general overview of the Project.

This period, Authority staff worked on the following technical elements of the project:

- Continued advancement of the plan and profile drawings
- Continued right-of-way survey and drawings
- Continued geotechnical work
- Continued surveying work
- Continued Pomona parking facility conceptual design

### **KEY FUTURE ACTIVITIES**

The advanced conceptual engineering process is an 18-month process. Upon completion, the Azusa to Montclair segment will be ready for a design-build procurement. Upcoming activities include continuing to attend coordination meetings with each corridor city, finalizing the city MCAs, development of the ROW drawing work, refinement of the alignment, completing the SDAR, and completing the geotechnical investigations.

### **Federal Transit Administration (FTA)**

The Metro Board of Directors excluded the Gold Line from seeking federal New Starts funding. The Authority will work together with Metro along with the Congressional delegation to seek funding to construct the extension following completion of the environmental review.



## PHASE 2 FOOTHILL EXTENSION FINANCIAL STATUS

### Project Operating Budget Summary in Millions of Dollars

April 30, 2015

|   | ( a )                 | ( b )                               | (c=a-b)                     | ( d )                            |
|---|-----------------------|-------------------------------------|-----------------------------|----------------------------------|
| <b>FINANCIAL PLAN</b>                     | <b>Current Budget</b> | <b>Funding Committed to Project</b> | <b>Uncommitted Funds</b>    | <b>Revenues Received</b>         |
| SCAG                                      | 1.0                   | 0.9                                 | 0.1                         | 0.9                              |
| Interest Income                           | 2.0                   | 2.0                                 | -                           | 2.0                              |
| Bridge Replacement                        | 13.9                  | 13.9                                | -                           | 13.9                             |
| Phase I Carryover                         | 4.0                   | 4.0                                 | -                           | 4.0                              |
| Maintenance and Operations Facility       | -                     | -                                   | -                           | -                                |
| Cities                                    | 11.0                  | -                                   | 11.0                        | -                                |
| Measure R - Pasadena to Azusa             | 810.5                 | 777.0                               | 33.5                        | 502.8                            |
| Measure R - Azusa to Montclair            | -                     | -                                   | -                           | -                                |
| SANBAG                                    | 55.2                  | 1.5                                 | 53.7                        | 1.5                              |
| Federal TCSP                              | 2.9                   | 2.9                                 | -                           | 2.9                              |
| Federal Bus Intermodal Plan               | 9.0                   | 9.0                                 | -                           | 4.8                              |
| Federal New Starts 2004 MTA Passthrough   | 4.0                   | 4.0                                 | -                           | 4.0                              |
| Federal New Starts 2005 MTA Passthrough   | 0.5                   | 0.5                                 | -                           | 0.5                              |
| Federal New Starts 2006 Corridor Study    | 2.5                   | 2.5                                 | -                           | 2.5                              |
| Federal/Other                             | 1,033.5               | -                                   | 1,033.5                     | -                                |
| <b>Total Revenues</b>                     | <b>1,950.0</b>        | <b>818.2</b>                        | <b>1,131.8</b>              | <b>539.8</b>                     |
|   | ( a )                 | ( b )                               | ( c )                       | (d=a-b)                          |
|   | <b>Current Budget</b> | <b>Current Obligation</b>           | <b>Current Expenditures</b> | <b>Current Available Balance</b> |
| <b>EXPENSES</b>                           |                       |                                     |                             |                                  |
| Program Management and Administration     | 108.9                 | 102.9                               | 99.6                        | 6.0                              |
| Master Cooperative Agreements             | 11.0                  | 3.3                                 | 2.8                         | 7.7                              |
| Real Estate including ROW Acq             | 21.0                  | 21.0                                | 19.7                        | -                                |
| Special Programs                          | 0.3                   | -                                   | -                           | 0.3                              |
| Procurement/Vehicles                      | 60.0                  | -                                   | -                           | 60.0                             |
| Maintenance and Operations Facility Land  | 22.0                  | 22.0                                | 22.0                        | -                                |
| Construction - IFS                        | 19.8                  | 19.8                                | 19.8                        | -                                |
| Construction - Pasadena to Azusa segment  | 328.9                 | 328.9                               | 313.2                       | -                                |
| Construction - Azusa to Montclair segment | 1,181.0               | -                                   | -                           | 1,181.0                          |
| Construction - M&O                        | 47.0                  | 44.0                                | 38.7                        | 2.0                              |
| Construction - Parking Structures         | 44.2                  | 44.2                                | 40.8                        | -                                |
| MTA Project Costs                         | 64.0                  | 64.0                                | 14.3                        | -                                |
| Contingency                               | 27.4                  | -                                   | -                           | 27.4                             |
| Project Reserve                           | 14.5                  | -                                   | -                           | 14.5                             |
| <b>Total Project</b>                      | <b>1,950.0</b>        | <b>650.1</b>                        | <b>570.9</b>                | <b>1,299.9</b>                   |