







## TABLE OF CONTENTS

### PHASE 2 FOOTHILL EXTENSION PROJECT STATUS

<b>Project Description .....</b>	<b>3</b>
<b>Pasadena to Azusa Segment .....</b>	<b>4</b>
Management Issues .....	4
Key Activities Completed This Period .....	5
Key Future Activities .....	6
Critical Path Schedule .....	7
Critical Path Float Trend .....	8
Alignment Contract Status .....	9
Alignment Construction Progress This Period .....	11
Facility Construction Progress This Period .....	12
Alignment Construction Progress Next Period .....	13
Facility Construction Progress Next Period .....	14
Alignment Construction Images .....	15
Alignment Change Management Log .....	17
Parking Facilities and Enhancements Contract Status .....	22
Parking Facilities and Enhancements Construction Images .....	24
Parking Facilities and Enhancements Change Management Log .....	26
<b>Azusa to Montclair Segment .....</b>	<b>28</b>
<b>Financial Status .....</b>	<b>29</b>





## FOOTHILL EXTENSION PROJECT DESCRIPTION

The Authority's mandate is to plan, design and construct a 37-mile light rail link between Downtown Los Angeles and Claremont. In addition, the San Bernardino Associated Governments (SANBAG) has requested that planning be extended one mile inside San Bernardino County to the City of Montclair and then possibly to Ontario Airport.

The Metro Gold Line Phase 2 (Foothill Extension) corridor includes the cities of Pasadena, Arcadia, Monrovia, Duarte, Irwindale, Azusa, Glendora, San Dimas, La Verne, Pomona, Claremont, and Montclair; and the counties of Los Angeles and San Bernardino (Figure 1). The Foothill Extension is estimated to cost approximately \$1.950 billion.

The Foothill Extension will be built in two segments to align effectively with projected cash flows and financial capacity constraints. The first segment is defined from the Sierra Madre Villa Station in Pasadena to the city of Azusa. Revenue service along this segment is planned for the year 2016. The second segment would include an extension from Azusa to the City of Montclair with revenue service projected for the year 2023.

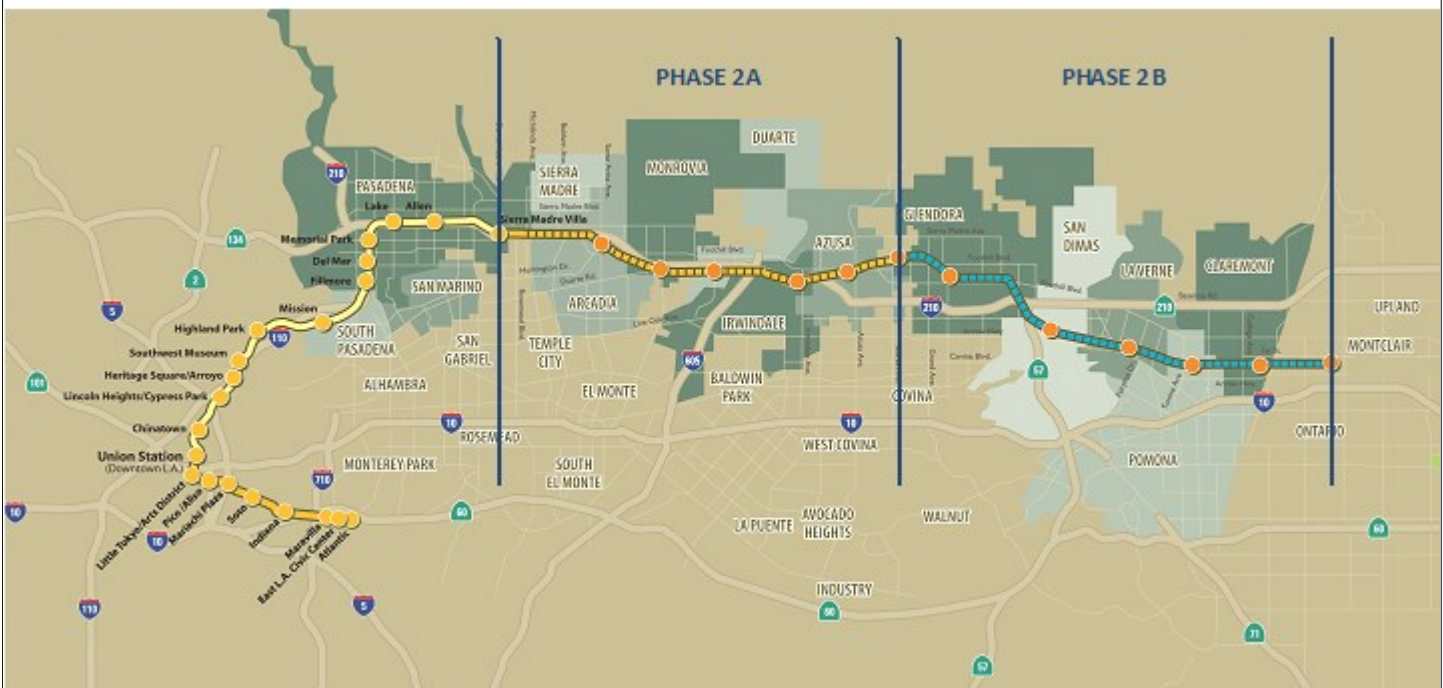


Figure 1: Metro Gold Line Foothill Extension Alignment



## **Pasadena to Azusa Segment**

### **MANAGEMENT ISSUES**

#### **Metro Betterments**

During the design process Metro staff have identified betterments that Metro staff would like to add to the project. Metro has provided a final disposition on all but a few items. Authority staff continues to work with Metro staff to resolve the remaining items.



## **KEY ACTIVITIES COMPLETED THIS PERIOD**

FTC reports the following SBE statistics for the month of June:

- Target SBE commitment: \$59,500,000
- SBE percent committed versus value of Project: 19.21%
- Overall Authority Project SBE goal: 12.25%

FTC reports the following approximate safety statistics to date:

- 2,184,049 total work hours performed by FTC, Mass Electric, and Subcontractors
- 14 recordable injuries reported to date
- 4 lost time injuries reported to date

Webcor reports the following DBE statistics for the month of June:

- Target DBE commitment: \$1,121,250
- DBE percent committed versus value of Project: 4.63%
- Overall Authority Project DBE goal: 2.3%

Webcor reports the following approximate safety statistics to date:

- 212,683 total work hours performed by Webcor and Subcontractors
- 1 recordable injuries reported to date
- 0 lost time injuries reported to date

Continued placement of art and architectural elements at all stations

Continued preparing for remaining station dedication events through September

Continued systems integration testing

Continued Communications Local Field Acceptance Testing (LFAT) throughout alignment

Prepared for Substantial Completion of the Alignment Contract (C1135), scheduled for September 23rd

Continued performing punch list walks with Metro along the Alignment

Achieved Substantial Completion for the Intermodal Parking Facilities and Intermodal Enhancements Contract (C1150) on August 28th

Continued addressing punch list items at all parking facilities

Continued elevator inspections at Irwindale and Azusa parking structure elevators to obtain state certifications



## **KEY FUTURE ACTIVITIES**

Continue discussions with corridor cities regarding the project

Continue management of the Alignment contract, which will include oversight of construction activities and start-up activities

Continue to meet with Intermodal Parking Facilities and Enhancements Project contractor, Webcor Builders regarding punch list and Final Acceptance

Complete construction of art and architectural elements at all stations

Hold remaining station dedication events

Complete system integration tests

Complete communications LFAT testing

Finalize the following property acquisitions:

- Arcadia:

1. Parcel 1310/1311 (Indiana St.) – To be vacated by the City of Arcadia.
2. Parcel 1401a (Huntington Dr. Aerial Easement ) – To be conveyed by the City of Arcadia.
3. Parcel 1401b (Huntington Dr. Bridge Abutments) – To be conveyed by the City of Arcadia.
4. Parcel 6009 (Huntington Dr. Bridge Abutments) – To be conveyed by the City of Arcadia.
5. Parcel 6010 (Huntington Dr. Bridge Abutments) – To be conveyed by the City of Arcadia.
6. Parcel 6011 (Huntington Dr. Bridge Abutments) – To be conveyed by the City of Arcadia.

- Monrovia:

1. Parcel 1601 (Encino Av.) – To be conveyed by the City of Monrovia.
2. Parcel 1903 (Monrovia Station) – To be conveyed by the City of Monrovia.
3. Parcel 21A12 (3M Parking Lot) – Land swap.
4. Parcel 21A21 (North Duarte Road) – Held in Fee Title by the City of Monrovia. Needs to be conveyed to the Authority.
5. Parcel 21A23 (Shamrock Trapezoid) – Held in Fee Title by the City of Monrovia. Needs to be conveyed to the Authority.



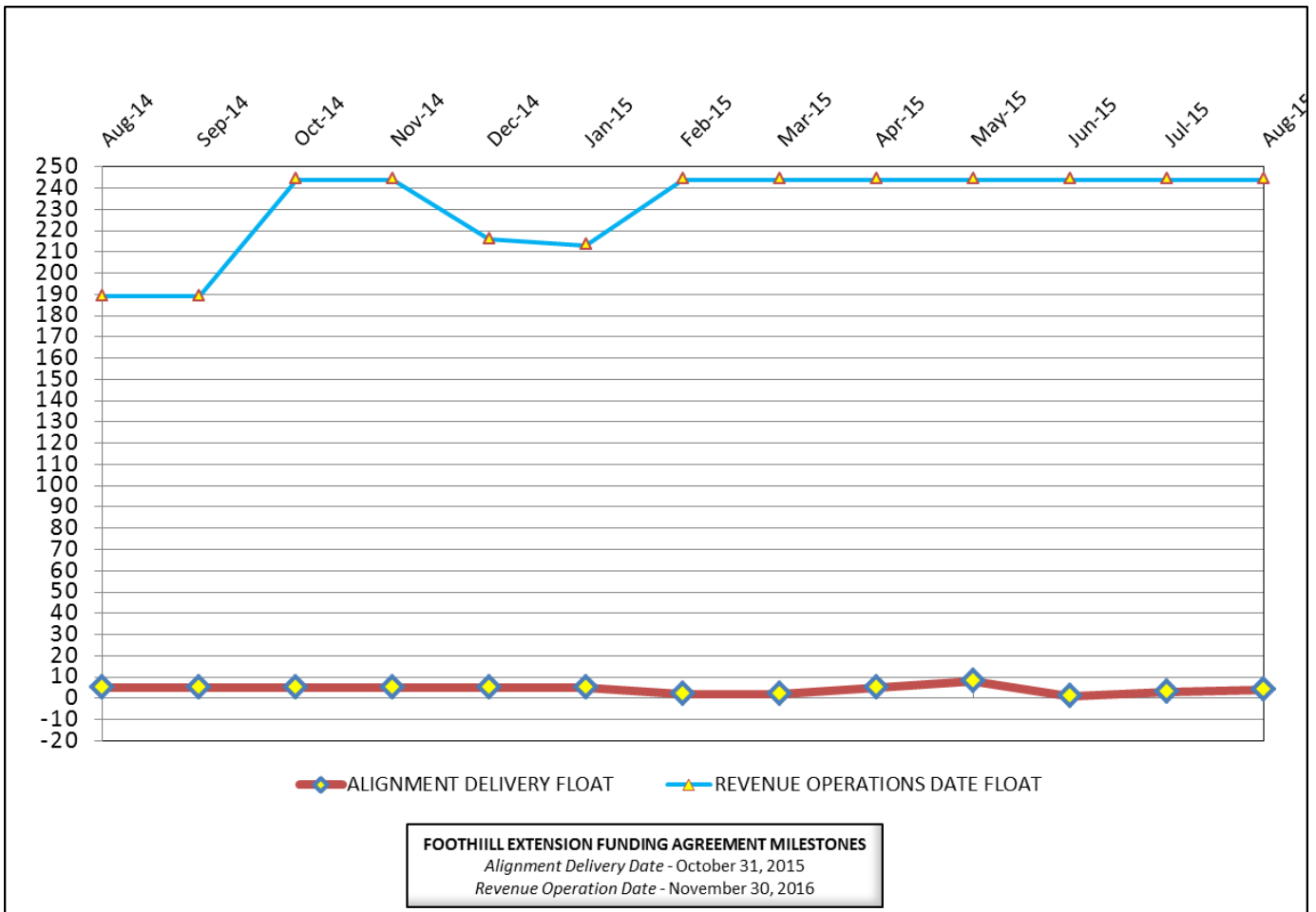


### CRITICAL PATH SCHEDULE

Activity Name	OD	RD	AD	Start	Finish	Total Float	Timeline																	
							2012			2013			2014			2015			2016					
							Q2	Q3	Q4	Q1	Q2	Q3	Q4	Q1	Q2	Q3	Q4	Q1	Q2	Q3	Q4			
<b>REVENUE OPERATIONS DATE - CRITICAL PATH</b>																								
RFP - LRV PROCUREMENT	375	0	557	18.Oct.10 08:00 A	26.Apr.12 15:00 A																			
LRV FABRICATION / DELIVER 15 VEHICLES	1353	126	1093	17.Aug.12 07:00 A	18.Dec.15 15:00	244																		
METRO - Pre-Revenue Operations - Phase 2A	60	60	0	19.Dec.15 07:00	16.Feb.16 15:00	244																		
METRO - Project Schedule Contingency (2 Mo.)	44	44	0	17.Feb.16 07:00	31.Mar.16 15:00	244																		
Phase 2A - Revenue Operations Date (ROD)	0	0	0		31.Mar.16 15:00*	244																		
<b>ALIGNMENT DELIVERY DATE - CRITICAL PATH</b>																								
SYSTEMS INTERGRATION TESTING - PHASE 1	185	15	179	09.Dec.14 07:00 A	08.Sep.15 15:00	3																		
DUARTE PARKING LOT - COMMUNICATIONS INSTL / TEST	22	15	10	03.Aug.15 07:00 A	04.Sep.15 15:00	3																		
SYSTEMS INTERGRATION TESTING - PHASE 2	35	35	0	09.Sep.15 07:00	27.Oct.15 15:00	3																		
C1135 - >>>SUBSTANTIAL COMPLETION - 1420 CD<<<	0	0	0		27.Oct.15 15:00*	4																		
<b>ALIGNMENT DELIVERY DATE - SECONDARY - CRITICAL PATH</b>																								
IRWINDALE STATION - COMMUNICATIONS INSTL / TEST	60	5	90	13.Apr.15 07:00 A	21.Aug.15 15:00	5																		
<b>ALIGNMENT DELIVERY DATE - TERTIARY CRITICAL PATH</b>																								
CITRUS STATION - COMMUNICATIONS INSTL / TEST	80	5	223	08.Oct.14 07:00 A	21.Aug.15 15:00	5																		



**CRITICAL PATH FLOAT TREND**



**Revenue Operations Date Critical Path - (244 Calendar Days)**

The critical path is currently running through the P3010 LRV procurement. At this time, Metro is forecasting the delivery of the 15th vehicle by December 2015. The critical path continues through Pre-Revenue Operations, which is expected to be completed by February 16, 2016. The Revenue Operations Date (ROD) is projected to be complete by March 31, 2016, which is eight (8) months ahead of the Funding Agreement Milestone date of November 30, 2016.

**Alignment Delivery Date Critical Path - (4 Calendar Days)**

This period, the Duarte Parking Lot communications installation and testing is on the critical path. The site is available to start the communications equipment installation at the parking lot, but Local Field Acceptance Testing (LFAT) is not expected to be complete until early September 2015. Upon completion of the SCADA Phase 1 SIT, the Phase 1 systems integration testing will conclude and Metro will begin Phase 2 systems integration testing. Upon the conclusion of Phase 2 systems integration testing, the alignment will be available for Metro to complete Pre-Revenue Operations.

Other elements of construction work, which are in progress and near critical are Segment 4 train control LFAT; Irwindale Station communications LFAT ; Irwindale Parking Structure communications LFAT, Citrus Station communications LFAT, and Duarte Station communications Phase 1 SIT.

**Project Float**

The project float for the Revenue Operations Date is 244 days. The critical activities on this path are on schedule to meet the Target Revenue Operations Date of November 2016. The Alignment Delivery Date float value is 4 days and is currently on schedule to meet the October 31, 2015 deadline.



<b>Description:</b> Alignment Design / Build	<b>Status:</b> August 15, 2015
<b>Contract No.:</b> C1135	<b>Contractor:</b> Foothill Transit Constructors (Kiewit-Parsons J.V.)

**Progress Completed This Period**

**Design**

- Submit AFC Design - Alameda Communications Book of Plans
- Submit AFC Design - Irwindale Communications Book of Plans
- Submit AFC Design - Parking Struc. Comm. Book of Plans
- Submit AFC Design - Monrovia Communications Book of Plans
- Submit AFC Design - Peck Rd Emergency Access

**Construction**

- See "Construction Progress This Period"

**Activities Planned Next Period**

**Design**

- Submit AFC Design - Irwindale Ramp

**Construction**

- See "Construction Progress Next Period"

**Areas of Concern**

- **Irwindale Parking Communications** - The C1150 Design-Build Contractor provided full access at the Irwindale Parking Structure late. As a result, the C1135 Design-Build Contractor was impacted. The delayed communications equipment installation will cause an impact to the elevator State Certification.
- **Communications Telephone Service** - The C1135 Design-Build Contractor has not completed the telephone service for the Irwindale Station and the Citrus Station communications rooms. The service is required to complete Phase 2 Systems Integration testing.

**Areas of Concern (Continued)**

- **Station Communications Installation** - Due to the communications installation schedule slip, the communications LFAT testing and Phase 1 Systems Integration testing at the Irwindale, Alameda, and Citrus stations will be impacted. The Authority will continue to monitor the Design-Build Contractor's LFAT testing progress to minimize the potential schedule impacts to the Phase 1 and Phase 2 Systems Integration testing.



**Description:** Alignment Design / Build **Status:** August 15, 2015  
**Contract No.:** C1135 **Contractor:** Foothill Transit Constructors (Kiewit-Parsons J.V.)

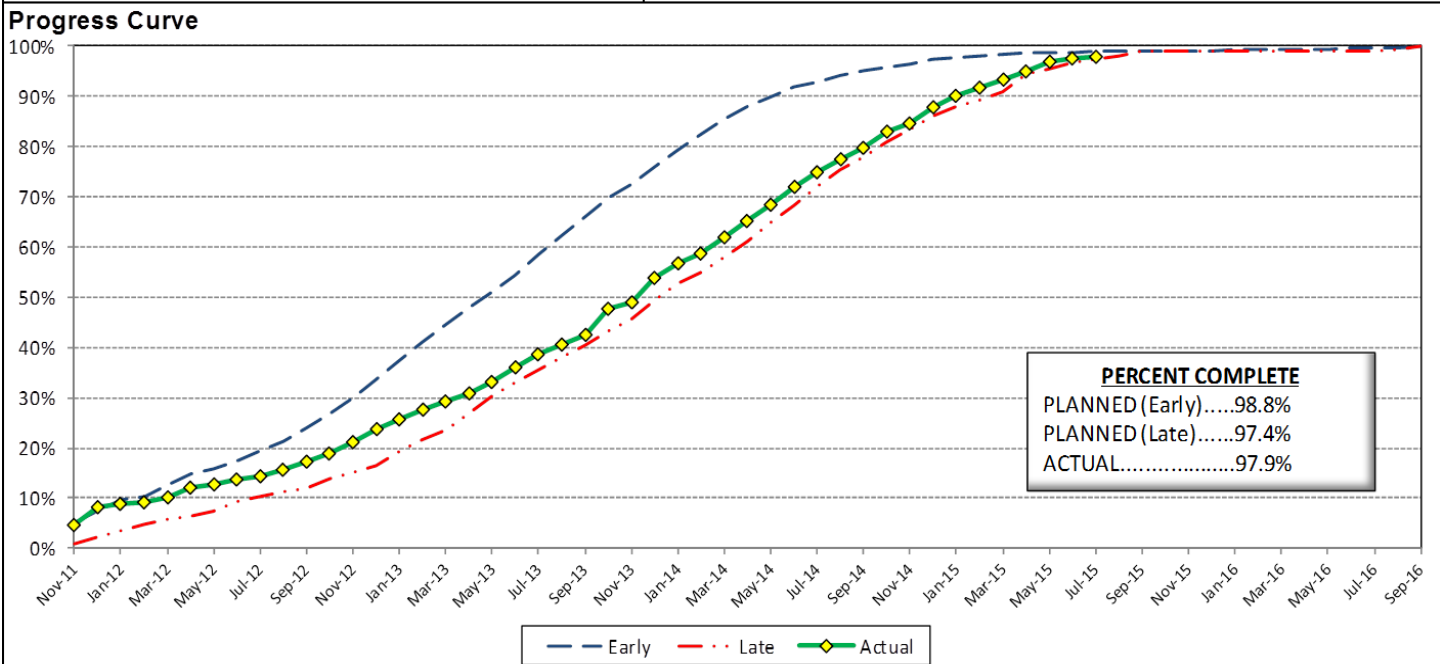
**Cost Summary:**

	Million(s)
<b>CONTRACT</b>	
Contract Award Value:	485.9
Executed Change Orders:	23.2
Current Contract Value:	509.1
Potential Change Orders:	2.9
Current Forecast:	511.9
Eamed Value/Actual Cost	488.4
<b>AUTHORIZATION FOR EXPENDITURE</b>	
Budget	514.5
Commitment	509.1
Balance	2.6

**Cost Assessment:**

This period the Contract forecast decreased \$40 thousand. The major decrease was due to the following: CO 27.04 - M&O IT Changes Office Equipment & A/V.

The current forecast is within the Authorized budget.



**Schedule Summary:**

Contract Award:	07/27/11
Interim Notice to Proceed (INTP) :	11/03/11
Original Contract Duration:	1,780 Calendar Days
Current Contract Duration:	1,780 Calendar Days
Elapsed Time from NTP:	1,381 Calendar Days

**Contract Milestones**

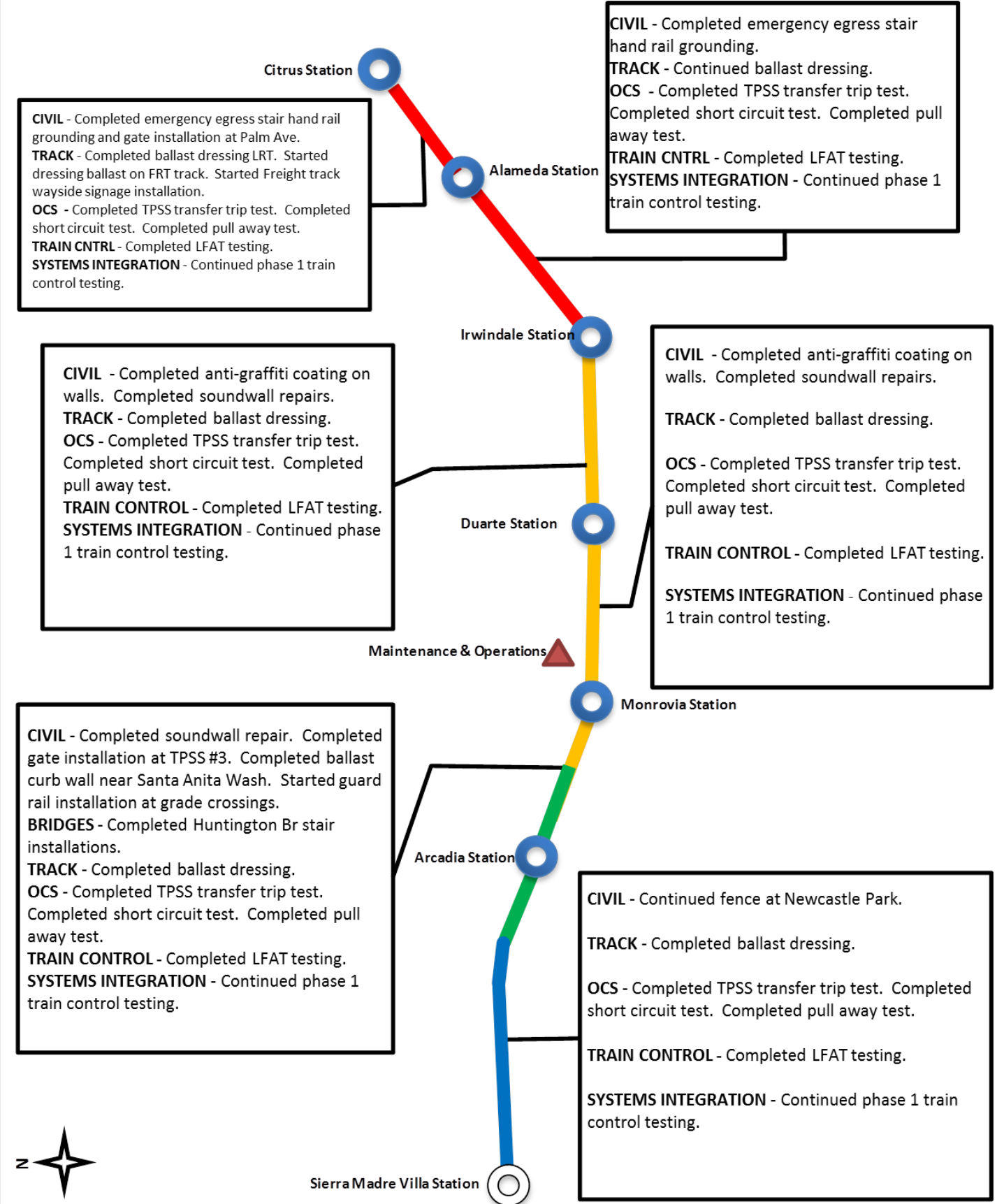
Milestones	Description	Original Contract	Current Contract	Forecast	Variance
1	Substantial Completion	09/23/15	09/23/15	10/27/15	(34)
2	Punchlist Complete	06/19/16	06/19/16	07/23/16	(34)
3	Final Completion	09/17/16	09/17/16	10/21/16	(34)
4	Access - IFS Br.	12/15/12	12/15/12	12/15/2012 A	0
5	Test Track Complete	03/27/15	03/27/15	3/27/2015 A	0
6	Colorado Br. Demo Complete	02/01/12	02/01/12	6/15/2012 A	(135)

**Schedule Assessment:**

With the progress continuing to trend at the rate of the late progress curve, activities in all Segments continue to approach near critical. The Design-Build Contractor continues to meet the requisite use of resources in order to meet the critical elements of the schedule. At this time, the primary activities which are critical or near critical are as follows: Irwindale Station Communications LFAT, Irwindale Parking Structure Communications LFAT, Train Control Phase 1 Systems Integration Testing, Duarte Parking Lot Communications installation, Station Communications Phase 1 Systems Integration Testing.



## ALIGNMENT CONSTRUCTION PROGRESS THIS PERIOD





**FACILITY CONSTRUCTION PROGRESS THIS PERIOD**

**Citrus Ave Station**

**STATION** - Continued communications LFAT testing. Completed map case installation. Completed installation of trash cans. Completed installation of pylon.  
**PARKING** - Completed lay over room. Continued communications LFAT testing. Started grading Citrus Ave roadway.

**STATION** - Continued artwork installation. Completed map case installation. Completed bench and trash can installations. Completed pylon installation. Continued communications LFAT testing.

**ENHANCEMENTS** - Completed permanent power.

**Alameda Station**

**STATION** - Continued map case installations. Completed installation of benches and trash cans. Completed pavers and hand rail at ramp landing. Continued Communications LFAT testing.

**PARKING** - Completed barrier walls. Completed pump station testing. Completed cast-in-place wall. Continued street lighting and sidewalks. Completed fence installation.

**Irwindale Station**

**STATION** - Completed Phase 1 systems integration testing. Completed map case installations. Completed trash can and bench installations. Installed pylon.

**PARKING** - Completed metal picket fence. Completed sidewalk and trees. Started communications installation.

**CIVIL** - Completed Wall 'B' and 3M fence installations. Continued storm drain and catch basin at Shamrock Ave. Installed main entrance gate.

**STRUCTURES** - *M&O Building* - No activity. *Car Wash* - No activity. *Cleaning Platform* - No activity. *MOW Building* - No activity. *Material Storage* - No activity. *Guard House* - No activity.

**OCS** - Completed short circuit test. Complete pull away test.

**TRAIN CONTROL** - Completed train control systems integration testing.

**Duarte Station**

**STATION** - Completed Phase 1 communications systems integration testing. Completed map case installation. Completed bench installations. Completed trash receptacle installations. Completed artwork installation.

**PARKING** - No activity.

**Maintenance & Operations**

**Monrovia Station**

**STATION** - Completed communications LFAT testing and started Phase 1 communications systems integration testing. Completed map case installation.

**PARKING** - Completed elevator State Certification.

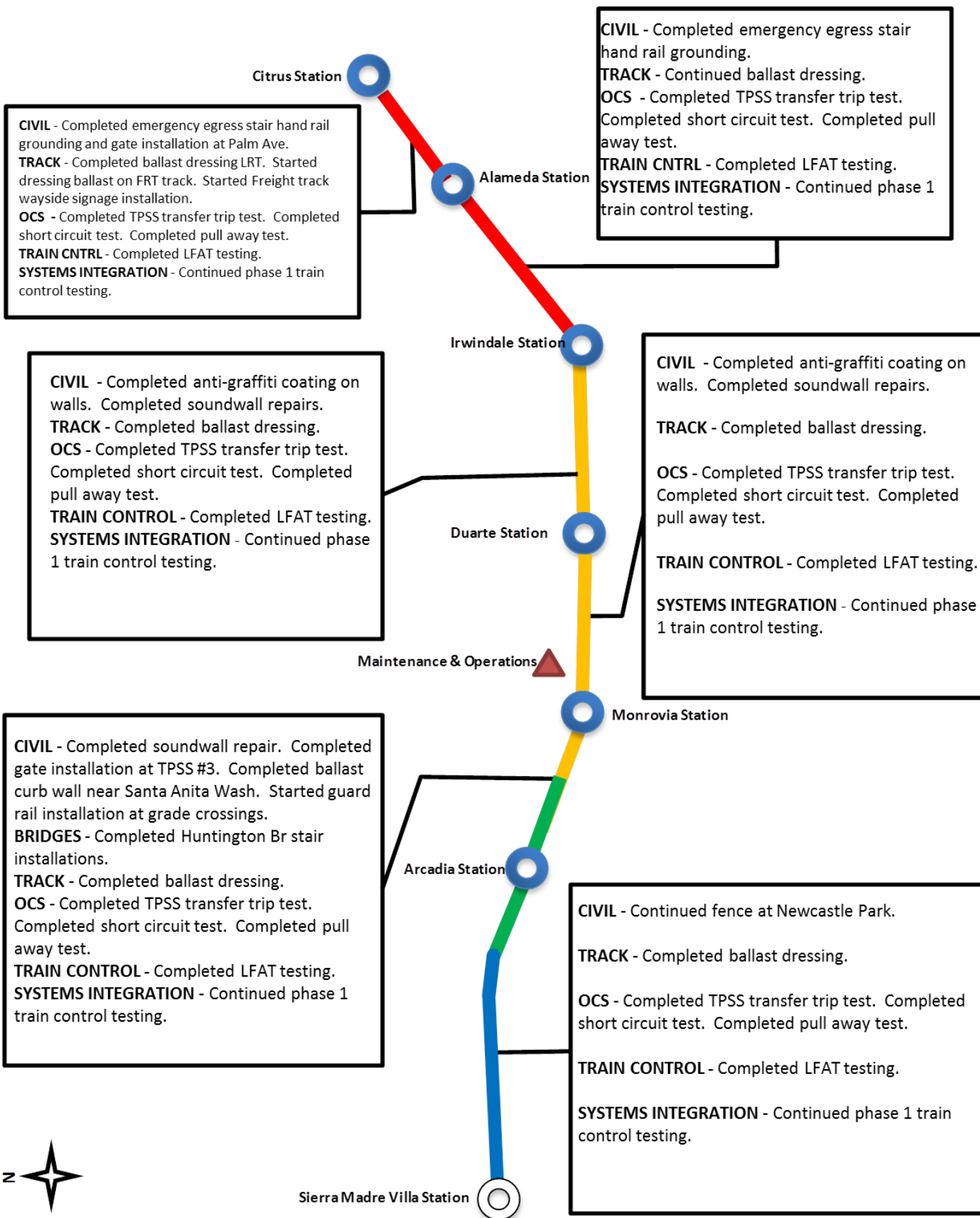
**Arcadia Station**





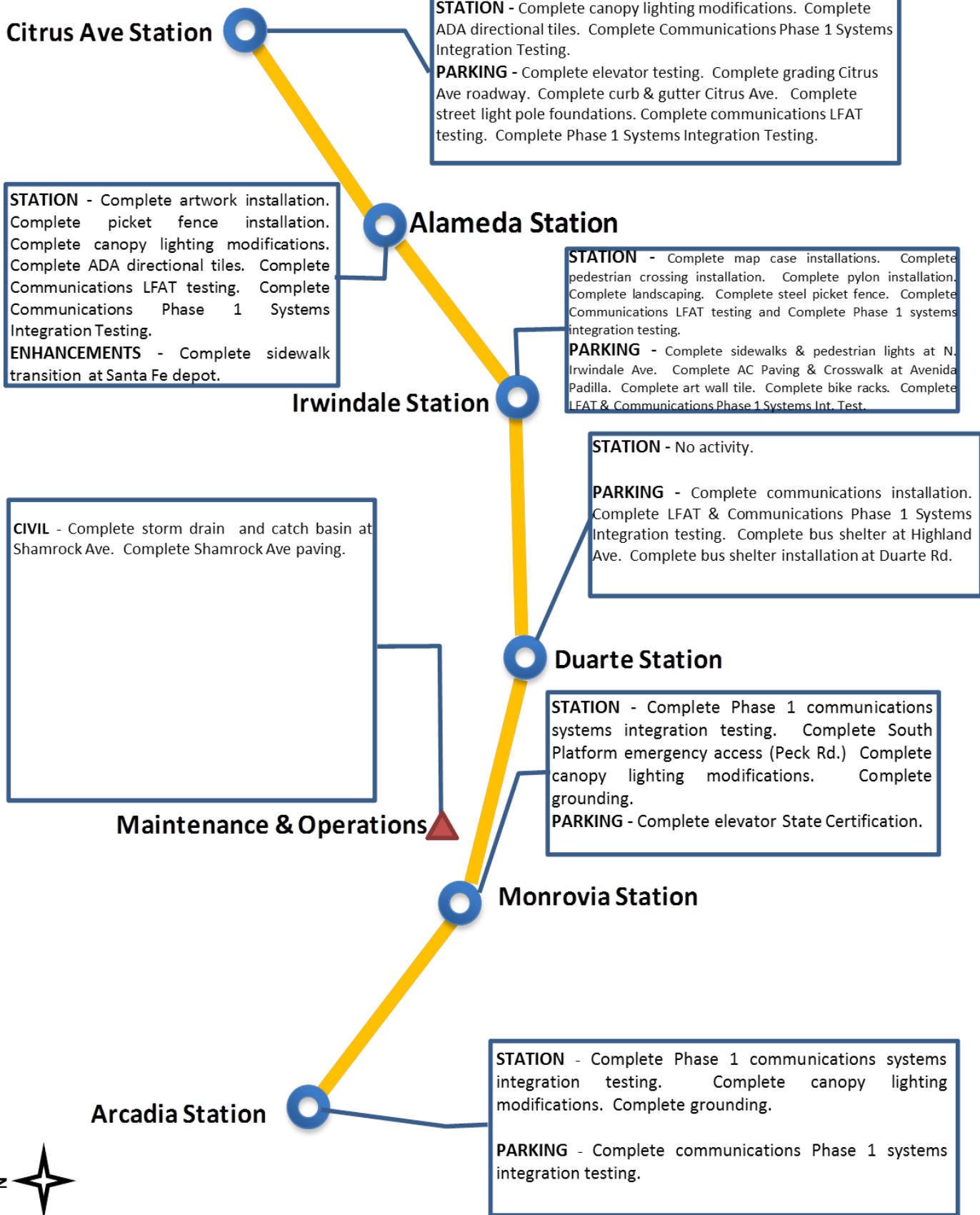


## ALIGNMENT CONSTRUCTION PROGRESS NEXT PERIOD





**FACILITY CONSTRUCTION PROGRESS NEXT PERIOD**





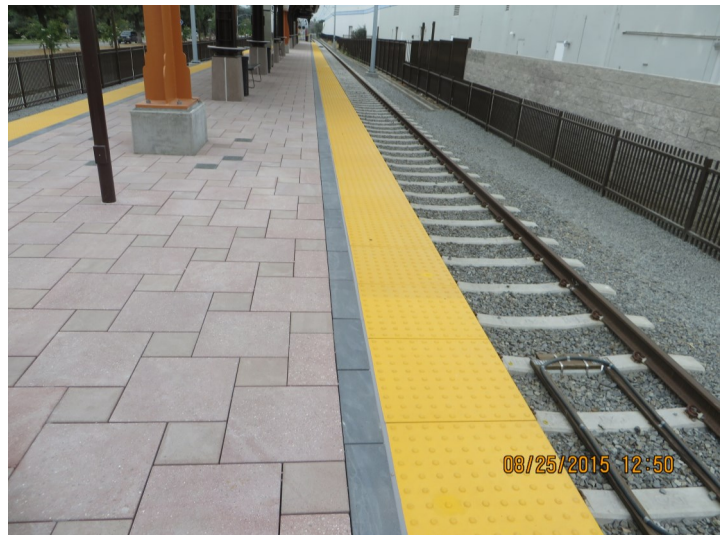


## ALIGNMENT CONSTRUCTION IMAGES

Segment 2: Metro Track Punch List Walk



Segment 2: 1st & Santa Clara  
CPUC Punch List Walk



Segment 3: Duarte Station - Dielectric Caulking

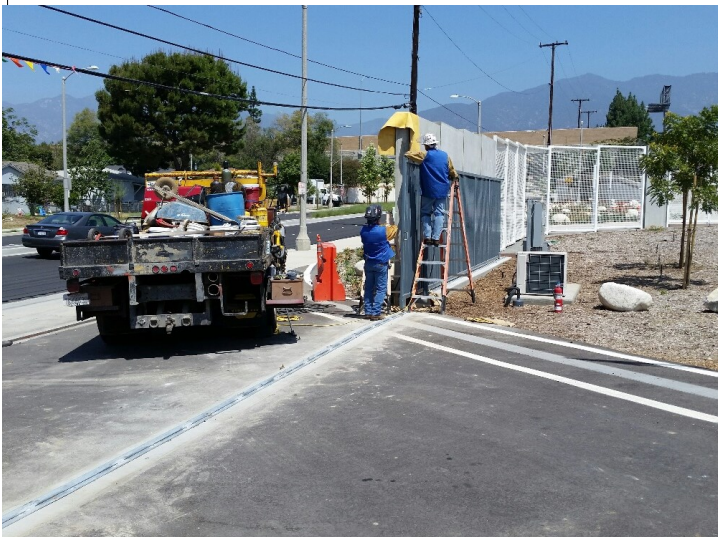


## ALIGNMENT CONSTRUCTION IMAGES (CONTINUED)



Segment 4: Irwindale Station Overview

Segment 4: Azusa Downtown Station -  
Column Mosaic Installation



Operations Campus: Main Gate Final Adjustments





Change Management Log

Date: 8/31/2015

Page: 1 of 6

Project: C1135 Alignment - FTC Contract #: C1135

Original Contract Amount:	\$485,867,000				
Approved Change Orders:	\$23,272,223	4.79%	Pending Change Orders:	\$18,601	0.00%
Current Contract Total:	\$509,139,223		Pending Contract Total:	\$509,157,824	4.79%

Change Orders

Number	Change Management	Title	Initiated Date	Approved Date	Outstanding Days	Time Extension	Amount
<b>EXECUTED Change Orders</b>							
001.00	000.00	Interim NTP	11/3/2011	11/3/2011	0		\$0
002.00	013.00	Colorado Bridge Haz Mat	5/17/2012	5/18/2012	1		\$121,382
002.01	013.01	Colorado Bridge HazMat - Final	9/5/2012	9/7/2012	2		\$13,164
003.00	001.00	Sound Wall Deletion - Duarte Road	7/12/2012	7/18/2012	6		(\$74,707)
004.00	018.00	Revise Block Design - CBD Calc	8/23/2012	8/29/2012	6		\$3,986
004.01	018.01	Revise Block Design - CBD Calc - 2	9/5/2013	9/11/2013	6		\$0
005.00	023.00	Wayside Signal Aspect Revision	9/6/2012	9/7/2012	1		\$26,072
005.01	023.01	Wayside Signal "Call On" Function	10/30/2013	11/1/2013	2		\$75,169
006.00	040.00	Arcadia Frieze, Bench-Artist Design	9/6/2012	9/10/2012	4		\$13,683
006.01	040.01	Arcadia Frieze, Bench-Construction	3/7/2013	3/12/2013	5		\$155,894
007.00	019.02	Soils Testing Abutments & Fdns	9/14/2012	9/18/2012	4		\$44,993
008.00	041.00	Unknown Utilities RFCN 005 006 008	9/14/2012	9/18/2012	4		\$132,450
009.00	038.00	Illuminate City Names @ Stations	9/18/2012	9/24/2012	6		\$184,657
010.00	046.00	SGRB - Lead Based Paint Remediation	9/21/2012	9/24/2012	3		\$244,536
011.00	004.00	Station Architectural Changes	10/11/2012	10/12/2012	1		\$443,950
012.00	003.01	Systems and Testing for Added TPSS	12/13/2012	12/14/2012	1		\$1,443,193
013.00	005.02	IDIQ Comm Contract (Rev 2)	12/14/2012	1/22/2013	39		\$698,259
014.00	060.00	Sewer Encasement Changes in Azusa	12/18/2012	1/24/2013	37		\$141,354
015.00	037.02	M&O - Materials Storage Revisions	12/26/2012	1/15/2013	20		\$62,862
015.01	037.03	M&O Storage Shelving Revisions	9/16/2013	9/19/2013	3		\$20,380
016.00	002.00	Relocation of Access Road to 3M Fac	12/26/2012	1/16/2013	21		\$53,814
017.00	025.00	3 Electrical Casings for ALW	2/27/2013	3/1/2013	2		\$219,033
018.00	073.00	Hazardous Abatement at Bridges	1/15/2013	2/6/2013	22		\$1,081,803
019.00	054.00	City of Hope Conduits	1/11/2013	1/22/2013	11		\$34,313
020.00	059.00	Citrus TPSS Transformer Pad Changes	2/6/2013	2/7/2013	1		\$34,536
021.00	075.00	Demo & Replace Palm Dr. Roadway	2/7/2013	2/14/2013	7		\$90,365
022.00	077.00	M&O Differing Site Conditions; Pt 1	2/13/2013	2/15/2013	2		\$66,360
022.01	093.00	M and O DSC T and M Work Part 2	3/8/2013	3/12/2013	4		\$66,625
022.02	103.00	M and O DSC Part 3	3/27/2013	3/28/2013	1		\$35,211
022.03	115.00	DSC at M and O Part 4	5/3/2013	5/7/2013	4		\$5,706
022.04	390.00	M&O DSC - Part 5	7/14/2015	7/21/2015	7		\$7,192
023.00	089.00	Contaminated Soil Abatement	2/26/2013	2/27/2013	1		\$422,068
024.00	068.00	Monrovia Sound Wall Panel Change	2/26/2013	2/28/2013	2		(\$24,150)
025.00	052.00	Santa Anita Trail Detour	3/8/2013	3/12/2013	4		\$27,691
026.00	070.00	Block Type Change at M&O Building	3/26/2013	3/26/2013	0		\$35,016
027.00	065.00	M&O IT Changes-Duct Banks/Conduits	3/26/2013	3/26/2013	0		\$88,650
027.01	065.01	M&O IT Changes - Power to WAP	9/4/2013	9/6/2013	2		\$73,049
027.02	065.02	M&O IT Changes - Remaining Work	7/16/2014	7/17/2014	1		\$155,991
027.03	065.04	M&O IT Changes -Furniture Interface	6/18/2015	6/19/2015	1		\$293,896
027.04	065.05	M&O IT Changes-OFCI Eqpt and A/V	7/17/2015	7/21/2015	4		\$380,546
028.00	039.01	Delete Layover Building	4/11/2013	4/12/2013	1		(\$313,832)
029.00	095.00	8in Sanitary Sewer Line- Alameda Av	4/23/2013	4/25/2013	2		\$226,089
029.01	095.01	Alameda Sewer Line Revised Scope	11/22/2013	11/26/2013	4		(\$37,425)
030.00	102.00	M&O-Disconnect Switches, Insulators	4/23/2013	4/25/2013	2		\$67,817
031.00	110.00	Rmv Abandoned Utility Line @ Dalton	4/23/2013	4/25/2013	2		\$1,562



Change Management Log

Date: 8/31/2015

Page: 2 of 6

Project: C1135 Alignment - FTC Contract #: C1135

Change Orders

Number	Change Management	Title	Initiated Date	Approved Date	Outstanding Days	Time Extension	Amount
<b>EXECUTED Change Orders</b>							
032.00	104.00	Highland Ave Abandoned CMP sleeves	5/1/2013	5/3/2013	2		\$15,005
033.00	114.00	Remove contaminated wood culvert	5/3/2013	5/7/2013	4		\$4,714
034.00	128.00	M&O Backup Power/Generator Changes	5/13/2013	5/21/2013	8		\$121,340
035.00	083.00	M&O Vehicle Sanding System Changes	5/21/2013	5/24/2013	3		\$27,463
036.00	006.00	IFS Related Contract Changes	6/7/2013	6/11/2013	4		(\$263,111)
037.00	137.00	CTS Redesign	7/12/2013	7/16/2013	4		\$58,214
038.00	138.00	Segment 4 Safety Manager	7/12/2013	7/16/2013	4		\$157,274
038.01	138.01	Segment 4 Safety manager - Part 2	11/19/2013	11/21/2013	2		\$72,963
038.02	138.02	Segment 4 Safety Manager - Part 3	4/3/2014	4/7/2014	4		\$82,271
039.00	085.00	M&O Drainage System Enhancements	7/19/2013	8/13/2013	25		\$251,579
040.00	067.00	Station Paver Changes	7/23/2013	8/13/2013	21		\$728,340
040.01	067.01	Rebar Changes for Station Pavers	10/28/2013	10/31/2013	3		\$10,586
041.00	112.00	12" Pasadena Waterline Potholes	8/12/2013	8/16/2013	4		\$19,735
042.00	150.00	Demo Abandoned Water Lines @ Dalton	8/12/2013	8/16/2013	4		\$5,937
043.00	007.01	Emer. Backup for Guideway Lighting	8/16/2013	10/1/2013	46		\$359,158
044.00	172.00	Contaminated Wood Culvert Sta. 1202	8/27/2013	8/28/2013	1		\$7,712
045.00	139.00	BLS Changes	8/28/2013	9/4/2013	7		\$110,801
046.00	165.00	Azusa-Alameda Station; 2nd Portal	8/28/2013	9/4/2013	7		\$77,175
047.00	145.00	St. Joseph drainage enhancements	9/4/2013	9/6/2013	2		\$17,592
048.00	149.00	M&O - Lights at NW Corner Park	9/4/2013	9/6/2013	2		\$29,351
049.00	174.00	TPSS #5 Cal-Am Power Conflict	9/4/2013	9/6/2013	2		\$127,260
050.00	171.00	Relocate Access Stair to Foothill	9/4/2013	9/6/2013	2		\$20,276
051.00	173.00	Dalton 8" Water Line Work	9/5/2013	9/12/2013	7		\$35,316
052.00	071.00	Duarte Rd Screen Wall Change	9/5/2013	9/17/2013	12		(\$133,864)
053.00	176.00	Remove Contaminatd Wood-Buena Vista	9/10/2013	9/12/2013	2		\$5,543
054.00	147.00	DECCO Bypass	9/10/2013	9/12/2013	2		\$18,519
055.00	166.00	Foothill Blvd. Water/SD Relocation	9/20/2013	9/20/2013	0		\$127,074
056.00	186.00	Contaminated Wood @ San Gabriel Ave	9/23/2013	9/24/2013	1		\$4,291
057.00	194.00	California/Duarte Water Line Work	10/28/2013	10/31/2013	3		\$220,743
058.00	189.00	Four Utility Changes	10/28/2013	10/31/2013	3		\$14,157
059.00	180.00	Remove/Dispose of ACM E of Highland	10/30/2013	11/1/2013	2		\$29,311
060.00	179.00	CTS Upgrade to OC-192	10/30/2013	11/1/2013	2		\$112,543
060.01	371.00	IDIQ Pricing Error - OC-192 Cards	4/29/2015	5/6/2015	7		\$87,034
061.00	213.00	Inwindale On-ramp Stockpile	11/8/2013	11/21/2013	13		\$200,185
062.00	053.00	Delete Totten Tubes Scope of Work	11/8/2013	11/21/2013	13		(\$143,801)
063.00	146.00	Home Depot Striping and Signing	11/15/2013	11/21/2013	6		\$21,003
064.00	204.00	Unknown Duct Bank @ San Gabriel Ave	11/15/2013	11/21/2013	6		\$1,265
065.00	140.00	M&O-Overhead Work Platform Changes	12/5/2013	12/16/2013	11		\$317,656
066.00	217.00	Buried SD & Headwall, STA 1306+50	12/6/2013	12/17/2013	11		\$1,020
067.00	219.00	Contaminated Soil, Monrovia Station	12/12/2013	12/17/2013	5		\$17,503
068.00	220.00	DSC at Sawpit Wash Abutments	12/12/2013	12/17/2013	5		\$12,668
069.00	188.00	Costco Emergency Gate-Path to POS	1/21/2014	1/22/2014	1		\$19,882
070.00	214.00	M&O - Generator Load Bank	1/21/2014	1/22/2014	1		\$38,092
071.00	224.00	Alameda South Water Line Tie-in	1/30/2014	1/31/2014	1		\$6,330
072.00	202.00	Aesthetic Lighting Provisions-SGRB	2/3/2014	2/4/2014	1		\$27,055
073.00	160.00	Move Mountain Interlocking Bungalow	2/11/2014	2/13/2014	2		\$68,596
074.00	200.00	M&O Parts Carousel Warranty & PM	2/11/2014	2/13/2014	2		\$68,906
075.00	235.00	Remove Contaminated Wood Ties	2/14/2014	2/18/2014	4		\$4,571
076.00	234.00	Accelerate Work at California Ave	2/14/2014	2/18/2014	4		\$5,663
077.00	247.00	Line Stop in California	2/18/2014	2/20/2014	2		\$14,524



Change Management Log

Date: 8/31/2015

Page: 3 of 6

Project: C1135 Alignment - FTC Contract #: C1135

Change Orders

Number	Change Management	Title	Initiated Date	Approved Date	Outstanding Days	Time Extension	Amount
<b>EXECUTED Change Orders</b>							
078.00	201.00	Added Sound Wall, SW of IFS	2/27/2014	2/28/2014	1		\$18,201
079.00	238.00	M&O-MOW Canopy Structural Eval	2/27/2014	2/28/2014	1		\$7,147
079.01	238.01	M&O - MOW Canopy Solar	8/20/2014	8/26/2014	6		\$714,659
080.00	232.00	Car Moving Tractor-Coupler Upgrade	2/27/2014	2/28/2014	1		\$177,145
081.00	242.00	Car Moving Tractor Options/Features	2/27/2014	2/28/2014	1		\$69,099
082.00	091.00	Rockvale Water Line Mitigation	3/4/2014	3/5/2014	1		\$163,750
082.01	091.01	Rockvale Water Line-EIC credit	4/11/2014	4/14/2014	3		(\$5,391)
083.00	251.00	Cut and Move Rail to Segment 1	3/4/2014	3/5/2014	1		\$249,934
084.00	218.00	Delete Equipment at ROC	3/26/2014	3/27/2014	1		(\$91,708)
085.00	239.00	Install Sound Wall Door @ STA. 1169	3/26/2014	3/27/2014	1		\$12,737
086.00	250.00	Change Top Row of Block Wall 1124.1	3/26/2014	3/27/2014	1		\$3,688
087.00	229.00	Irwindale TPSS-Adjust Eqpt. Layout	4/3/2014	4/7/2014	4		\$17,878
088.00	262.00	Provisional Sum Adjustment	4/3/2014	4/7/2014	4		\$0
088.01	262.01	Provisional Sum Adjustment - 2	9/19/2014	9/25/2014	6		\$0
088.02	262.02	Provisional Sum Adjustment - 3	11/12/2014	11/14/2014	2		\$0
088.03	262.03	Provisional Sum Adjustment - 4	3/19/2015	3/19/2015	0		\$0
089.00	261.00	Longer DF Bolts - SGRB	4/3/2014	4/7/2014	4		\$17,331
090.00	169.02	M&O Trimming Table Changes (rev. 2)	4/11/2014	4/14/2014	3		\$54,083
091.00	181.00	Alameda Utility Changes	4/11/2014	4/14/2014	3		(\$9,599)
092.00	241.00	Business Center TPSS Crane Changes	4/23/2014	4/28/2014	5		\$13,655
093.00	276.00	Myrtle Early Completion Incentive	4/23/2014	4/28/2014	5		\$160,000
094.00	254.00	Drainage East of Pasadena Ave.	4/23/2014	4/28/2014	5		\$6,569
095.00	275.00	Remove Rail Ties at 1st/Santa Clara	4/23/2014	4/28/2014	5		\$2,270
096.00	274.00	Buried Concrete @ Huntington Bridge	4/23/2014	4/28/2014	5		\$2,819
097.00	269.00	Asbestos Pipe at Duarte and Myrtle	4/23/2014	4/28/2014	5		\$6,583
098.00	278.00	Abandoned Gas Line at California	5/6/2014	5/7/2014	1		\$8,170
099.00	170.00	M&O Car Wash Betterments	5/6/2014	5/7/2014	1		\$166,144
100.00	223.00	M&O-Volume Control for PA Speakers	5/6/2014	5/7/2014	1		\$38,105
101.00	283.00	Track Work Around at Mountain Ave	5/6/2014	5/7/2014	1		\$29,996
102.00	284.00	Install 115# Buffer Rails in Seg. 1	5/6/2014	5/7/2014	1		\$29,442
103.00	230.00	Azusa-Citrus Ped Crossing Operation	5/6/2014	5/7/2014	1		\$84,183
104.00	231.00	Red Signal Violation Indication	6/3/2014	6/3/2014	0		\$335,134
105.00	253.00	Remove Stem Wall along Duarte Rd.	6/11/2014	6/12/2014	1		\$37,527
106.00	271.00	DVR Changes	7/16/2014	7/17/2014	1		\$181,301
107.00	260.00	M&O Supplemental Fire Water System	7/16/2014	8/4/2014	19		\$1,642,824
108.00	163.00	1st/Santa Clara Grade X-ing Changes	7/25/2014	7/30/2014	5		\$156,177
109.00	164.00	M&O Body Shop Changes	7/25/2014	8/4/2014	10		\$488,598
110.00	256.00	Monrovia North Bunglow LCP Changes	7/25/2014	7/30/2014	5		\$125,313
111.00	237.00	M&O-Signaling System Changes	7/29/2014	8/4/2014	6		\$1,133,746
112.00	252.00	Irwindale Security Kiosk Provisions	8/4/2014	8/6/2014	2		\$178,044
112.01	252.01	Irwindale Security Kiosk - Part 2	2/9/2015	2/11/2015	2		\$47,168
112.02	252.02	Irwindale Security Kiosk - Credit	7/14/2015	7/21/2015	7		(\$47,168)
113.00	281.00	M&O - Accent Colors	8/4/2014	8/6/2014	2		\$26,928
114.00	305.00	Lead Paint, Foothill Median Barrier	8/18/2014	8/20/2014	2		\$5,690
115.00	270.00	TES Load Flow Simulation	8/19/2014	8/21/2014	2		\$22,399
116.00	203.00	Mayflower Driveway/Wall Credit	8/20/2014	8/26/2014	6		(\$19,138)
117.00	307.00	Contaminated Wood Ties-Santa Anita	8/20/2014	8/26/2014	6		\$3,226
118.00	082.01	M&O / 3M Fence Revisions (rev 1)	9/17/2014	9/25/2014	8		\$886,650
119.00	314.00	Mountain Early Completion Incentive	9/17/2014	9/24/2014	7		\$80,000
120.00	301.00	Santa Anita Avenue Bridge Artwork	9/17/2014	9/25/2014	8		\$57,224



Change Management Log

Date: 8/31/2015

Page: 4 of 6

Project: C1135 Alignment - FTC Contract #: C1135

Change Orders

Number	Change Management	Title	Initiated Date	Approved Date	Outstanding Days	Time Extension	Amount
<b>EXECUTED Change Orders</b>							
121.00	313.00	Additional Traffic Signal Testing D	9/19/2014	9/25/2014	6		\$7,875
122.00	320.00	Remove Asbestos Pipe at Virginia	11/12/2014	11/14/2014	2		\$9,485
123.00	303.00	Additional Anti-Graffiti Coating	12/8/2014	12/8/2014	0		\$63,727
124.00	326.00	Santa Anita Avenue Bridge Lighting	12/8/2014	12/8/2014	0		\$208,633
124.01	326.01	Santa Anita Bridge Lighting-Part 2	1/16/2015	1/19/2015	3		\$5,744
124.02	380.00	Santa Anita Ave. Bridge Lighting-3	7/14/2015	7/21/2015	7		\$68,775
125.00	335.00	M&O - Interior Wall Revisions	12/18/2014	12/19/2014	1		\$43,786
126.00	304.00	M&O Lobby Aesthetic Changes	12/18/2014	12/19/2014	1		\$128,047
127.00	292.00	M&O - Guard House Changes	12/19/2014	12/19/2014	0		\$65,463
128.00	339.00	Mountain Ped. Crossing Changes	1/8/2015	1/12/2015	4		\$96,159
129.00	340.00	Business Center TPSS Drainage	1/16/2015	1/19/2015	3		\$249,959
130.00	255.00	Virginia TPSS Access Road	1/8/2015	1/12/2015	4		\$39,718
131.00	291.00	Eliminate 'Train Coming' Signs	1/8/2015	1/12/2015	4		\$9,325
132.00	322.00	Replace Existing OCS Pole at SMV	1/16/2015	1/19/2015	3		\$27,010
133.00	187.01	Irwindale Ramp Signs	1/20/2015	1/26/2015	6		\$125,015
134.00	346.00	Delay in Setting of Yard Substation	1/20/2015	1/26/2015	6		\$15,181
135.00	344.00	Virginia TPSS-Access for Delivery	1/30/2015	2/2/2015	3		\$67,019
136.00	328.00	Rail Profile Grinding	2/9/2015	2/18/2015	9		\$524,000
137.00	065.03	M&O Main Building Comm. Room Floors	2/17/2015	2/17/2015	0		\$4,402
138.00	353.00	1st/Santa Clara Noise Mitigations	2/17/2015	2/17/2015	0		\$13,889
139.00	323.00	Add Pavers to Duarte Station W Ramp	2/18/2015	2/18/2015	0		\$31,982
140.00	338.00	M&O-Wheel Truing Machine Car Puller	2/19/2015	2/19/2015	0		\$83,112
141.00	258.00	M&O Tactile Guidance Changes	2/23/2015	2/26/2015	3		\$203,945
142.00	352.00	M&O - Fire Alarm System	2/23/2015	2/26/2015	3		\$238,983
143.00	351.00	Sierra Madre Track Rehab	2/23/2015	2/26/2015	3		\$18,107
144.00	349.00	Remove water line east of Highland	2/23/2015	2/26/2015	3		\$4,648
145.00	360.00	M&O Facility - Yard Control Console	3/2/2015	3/3/2015	1		\$23,158
146.00	359.00	Generators for Testing-SRGB to IRW	3/2/2015	3/3/2015	1		\$6,758
147.00	325.00	Station Identifier Changes	3/23/2015	3/25/2015	2		\$4,712
148.00	345.00	Irwindale Signal Case & Push Button	3/24/2015	3/25/2015	1		\$111,110
149.00	296.00	M&O Service Vehicle Pathways	3/26/2015	3/30/2015	4		\$164,480
149.01	296.01	M&O-Service Vehicle Pathways - 2	6/18/2015	6/22/2015	4		\$4,955
150.00	327.00	M&O Facility-NW Corner Fence & Wall	4/29/2015	5/5/2015	6		\$461,480
151.00	311.00	Abandoned California Water Lines	4/29/2015	5/6/2015	7		\$61,219
152.00	358.00	M&O Facility-Interior Wall Finishes	4/29/2015	5/6/2015	7		\$24,582
153.00	337.00	Grade X-ing Train Signal Changes	4/29/2015	5/6/2015	7		\$136,849
154.00	367.00	M&O NW Corner Hardscape Changes	5/8/2015	5/20/2015	12		\$444,632
155.00	363.00	M&O Early Completion Milestone	5/13/2015	5/20/2015	7		\$215,290
156.00	375.00	M&O - Beaumont Acceleration for TCO	5/14/2015	5/20/2015	6		\$130,681
157.00	357.00	Add APS @ 2 intersections in Duarte	5/15/2015	5/20/2015	5		\$39,826
158.00	257.00	Comm. Changes Parking Structures	6/4/2015	6/4/2015	0		\$186,672
159.00	257.01	Duarte Parking Lot ETEs and CCTVs	6/4/2015	6/4/2015	0		\$289,578
160.00	364.00	M&O - MOW Track Fouling Issue	6/4/2015	6/4/2015	0		\$309,417
161.00	376.00	Remove Hazardous Waste at Angeleno	6/4/2015	6/4/2015	0		\$4,635
162.00	383.00	M&O - WTM elect changes in pit	6/4/2015	6/4/2015	0		\$19,063
163.00	381.00	M&O - Elevator Inspector Upgrades	6/4/2015	6/4/2015	0		\$12,200
164.00	382.00	M&O - Fire Alarm System Upgrades	6/11/2015	6/15/2015	4		\$109,631
164.01	389.00	M&O - Fire Alarm System Upgrades-2	6/18/2015	6/22/2015	4		\$109,920
165.00	385.00	M&O-replace LRV access stairs	6/11/2015	6/15/2015	4		\$9,519
166.00	384.00	M&O-NW Corner Added Paving & Curb	6/11/2015	6/15/2015	4		\$19,095



Change Management Log

Date: 8/31/2015

Page: 5 of 6

Project: C1135 Alignment - FTC Contract #: C1135

Change Orders

Number	Change Management	Title	Initiated Date	Approved Date	Outstanding Days	Time Extension	Amount
<b>EXECUTED Change Orders</b>							
167.00	391.00	M&O Main Entrance Changes	7/14/2015	7/21/2015	7		\$209,772
168.00	306.00	Close Fence Gaps to Adj. Buildings	7/14/2015	7/21/2015	7		\$19,939
169.00	377.00	Pedestrian Grade Crossing Mods	7/14/2015	7/21/2015	7		\$31,469
170.00	343.00	Striping/Signs at Station Ped Xings	7/14/2015	7/21/2015	7		\$267,488
171.00	362.00	M&O - Move East Lobby Wall	8/12/2015	8/13/2015	1		\$45,156
172.00	394.00	Intersection Changes at Highland an	8/14/2015	8/14/2015	0		\$25,146
173.00	393.00	Relocation of Buena Vista Pole D CS	8/14/2015	8/14/2015	0		\$44,646
<b>Subtotal:</b>							\$23,272,223
<b>Subtotal:</b>							\$23,272,223
<b>PENDING Change Orders</b>							
174.00	395.00	SCE TPSS Metering Pad Extensions	8/18/2015		13		\$18,601
<b>Subtotal:</b>							\$18,601
<b>Subtotal:</b>							\$18,601
<b>Total:</b>							\$23,290,824

Open PCOs

PCO Number	Title
<b>OPEN</b>	
029.00	Del. Irwindale/Gladstone Mitigation
080.00	Delete Evergreen / Myrtle Mitigation
085.00	Joseph TPSS Power Feed Credit
087.00	ETEL/PTEL Faceplate Betterment
091.00	UP Tunnel Analysis & Modifications
099.01	Rail Profile Grinding - Closeout
100.00	Change Wayside Operational Signage
101.00	Peck Road Ramp
103.00	Tactile Guidance Tile at Stations
110.00	M&O Completion Items
111.00	3M Fence Changes

Open RFCs

RFC Number	Title
<b>OPEN</b>	
051.00	Irwindale Ramp CSP
088.00	Programming Changes for SCRRA Exit
112.00	Temporary FACP Monitoring for Parki
114.00	Changes to MO Landscaping CSP
115.00	MO Flooring Acceleration CSP
127.00	Steam Cleaner Change CSP

Open RFC Notices

Number	Title
037.00	DSC at Santa Anita Wash Abutment 1
044.00	DSC Utility at Azusa Avenue
086.00	Ground Grid Damaged at Citrus TPSS
098.00	Housekeeping Pads for Electrical Eq
100.00	MO Yard Signage Changes
105.00	MO Facility Blow Down Pit Grating C
111.00	Move BLS at Azusa-Alameda Station
116.00	Added Paving at LRV Loading Driveway



## Change Management Log

Date: 8/31/2015

Page: 6 of 6

Project: C1135 Alignment - FTC Contract #: C1135

### Open RFC Notices

Number	Title
117.00	City of Hope Traffic Signal Conduit
123.00	Relocate the CICs at Stations
131.00	Additional Training for Wheel Truin
134.00	Pedestal Track Welds at MO
135.00	Irwindale Ped Xing Extra Work
136.00	MO Entrance Changes Part 2





**Description:** Intermodal Parking Facilities & Enhancements **Status:** August 15, 2015

**Contract No.:** C1150

**Contractor:** Webcor Builders

**Progress Completed This Period**

**Design**

- 

**Activities Planned Next Period**

**Design**

- 

**Areas of Concern**

- **ELEVATOR CERTIFICATION** - The Monrovia, Citrus, and Irwindale Parking Structure elevators have not received the required California State inspection and certification. Although the elevators at the noted locations have been completed, the C1135 Design-Build Contractor has not completed the installation and testing of the communications equipment, such as the emergency telephone and closed circuit television. The Authority has been monitoring the C1135 Design-Builders progress and expects testing to be completed before the end of August 2015, so that the state inspections can be scheduled.

**Areas of Concern (Continued)**



**Description:** Intermodal Parking Facilities & Enhancements **Status:** August 15, 2015

**Contract No.:** C1150

**Contractor:** Webcor Builders

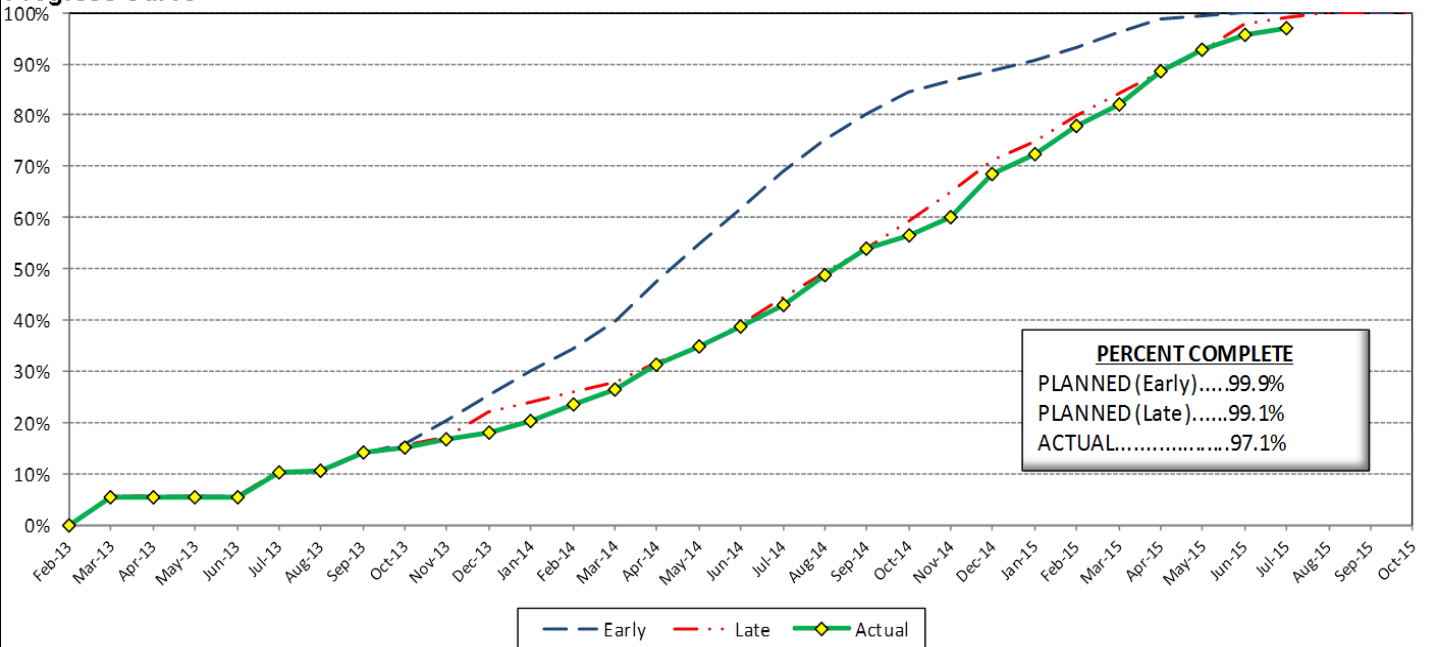
**Cost Summary:**

	Million(s)
<b>CONTRACT</b>	
Contract Award Value:	48.8
Executed Change Orders:	1.3
Current Contract Value:	50.1
Potential Change Orders:	(0.1)
Current Forecast:	50.0
Earned Value/Actual Cost	48.6
<b>AUTHORIZATION FOR EXPENDITURE</b>	
Budget	50.4
Commitment	50.1
Balance	0.4

**Cost Assessment:**

This period, the current cost forecast is \$50.0 Million and is unchanged from the previous period. The current forecast is within the authorized budget.

**Progress Curve**



**Schedule Summary:**

Contract Award:	02/27/13
Notice to Proceed (NTP) :	03/20/13
Original Contract Duration:	845 Calendar Days
Current Contract Duration:	1,011 Calendar Days
Elapsed Time from NTP:	878 Calendar Days

**Contract Milestones**

Milestones	Description	Original Contract	Current Contract	Forecast	Variance
1	Substantial Completion	03/15/15	08/28/15	09/01/15	(4)
2	Punchlist Complete	05/29/15	11/11/15	11/15/15	(4)
3	Final Completion	07/13/15	12/26/15	12/30/15	(4)
4	TPSS Work	03/01/14	03/01/14	3/31/2014 A	(30)

**Schedule Assessment:**

The Irwindale site finishes are in progress and are nearly complete. Over the next period the Design-Build Contractor will complete the landscape installation, art tile installation at the Irwindale crash wall, and the State of California elevator inspection & certification for the elevators at Irwindale and Monrovia parking structures. The Authority intends to issue a Change Order to partially complete Citrus Avenue roadway access to the parking structure at Citrus. The roadway will not be required for Substantial Completion, but will be completed prior to Final Completion.



## **PARKING FACILITY CONSTRUCTION IMAGES**



Arcadia Parking Structure Site Overview



Monrovia Parking Structure Site Overview





**PARKING FACILITY CONSTRUCTION IMAGES**

Duarte Parking Lot Overview



Irwindale Parking Structure Site Overview

Azusa-Citrus Parking Structure Site Overview





Change Management Log

Date: 8/31/2015

Page: 1 of 2

Project: C1150 Parking - Webcor Contract #: C1150

Original Contract Amount:	\$48,750,000				
Approved Change Orders:	\$1,309,077	2.69%	Pending Change Orders:	\$0	0.00%
Current Contract Total:	\$50,059,077		Pending Contract Total:	\$50,059,077	2.69%

**Change Orders**

Number	Change Management	Title	Initiated Date	Approved Date	Outstanding Days	Time Extension	Amount
<b>EXECUTED Change Orders</b>							
001.00	001.00	Monrovia Parking Alternative Layout	6/25/2013	7/11/2013	16		\$21,382
001.01	001.01	Monrovia Alternative - Cancellation	9/17/2013	10/7/2013	20		(\$12,006)
002.00	003.00	Clock Tower Procurement	7/3/2013	7/11/2013	8		\$107,246
003.00	002.00	Relocate Elevator @ Azusa-Citrus PF	12/18/2013	1/8/2014	21		\$159,899
004.00	013.00	Irwindale Structure Relocation	1/23/2014	8/28/2014	217	90	(\$65,564)
005.00	018.00	Monrovia Demo Unforeseen Conditions	3/18/2014	3/26/2014	8		\$17,013
006.00	010.00	Arcadia Transit Plaza Betterments	3/14/2014	3/26/2014	12		\$35,466
007.00	009.01	Irwindale Intersection Betterments	3/25/2014	3/26/2014	1		\$19,985
008.00	017.00	Irwindale Intersection Water Line	3/25/2014	4/14/2014	20		\$7,748
009.00	020.00	Unforeseen Underground Demo-Arcadia	6/13/2014	7/9/2014	26		\$6,313
010.00	011.00	Soldano TPSS Added ROW Fence	7/24/2014	7/28/2014	4		\$8,481
011.00	024.00	SCE Power Feed to DB2 Arcadia TPSS	7/24/2014	7/28/2014	4		\$17,199
012.00	025.00	Additional Sidewalk at Arcadia	7/24/2014	7/28/2014	4		\$3,342
013.00	006.00	St. Joseph Drainage Enhancements	7/31/2014	7/31/2014	0		\$139,488
014.00	012.00	Additional Conduit Provisions	8/13/2014	9/3/2014	21		\$57,262
015.00	030.00	Unforeseen Conditions at Michillind	8/22/2014	8/28/2014	6		\$1,643
016.00	019.00	Parking Facility Artwork	8/27/2014	8/28/2014	1		\$75,850
017.00	034.00	Michillinda Conduit Demo & Pull Box	11/12/2014	11/20/2014	8		\$31,506
018.00	016.00	Monrovia Canopies & Banding Color	12/19/2014	12/29/2014	10		\$247,577
019.00	035.00	Irwindale CCTV Pole	12/29/2014	1/5/2015	7		\$6,220
020.00	039.00	Engineering Costs for Arcadia Clock	12/17/2014	12/29/2014	12		\$5,292
021.00	008.00	Azusa-Citrus Plaza Pavers	1/5/2015	1/13/2015	8		\$7,350
022.00	038.00	Temporary Power for Irrigation at M	1/7/2015	1/13/2015	6		\$1,465
023.00	037.00	Additional Slurry for City of Arcad	1/7/2015	1/13/2015	6		\$7,460
024.00	033.00	Elevator Holding Tanks	3/25/2015	3/27/2015	2		\$76,833
025.00	029.00	Metro-Requestd Elevator Vent Detail	2/12/2015	2/12/2015	0		\$11,553
026.00	041.00	Azusa Citrus Grand Pylon Power	2/13/2015	2/13/2015	0		\$4,742
027.00	045.00	Irwindale Form Liner Product Change	4/9/2015	4/9/2015	0		\$13,170
028.00	044.00	Irwindale City Light Poles Upgrade	4/9/2015	4/9/2015	0		\$10,543
029.00	043.00	Metro Requested Signage Betterments	4/10/2015	6/24/2015	75		\$12,884
030.00	027.00	ETEL Enclosures	4/10/2015	4/30/2015	20		\$42,885
031.00	046.00	Generator for Monrovia Elevators	4/21/2015	4/30/2015	9		\$26,901
032.00	049.00	Irwindale Completion Incentive	6/8/2015	6/11/2015	3		\$50,000
033.00	053.00	Systems Interface Delay	6/10/2015	6/12/2015	2	34	\$0
034.00	047.00	CCTV Scope at Duarte Surface Lot	6/11/2015	6/16/2015	5		\$87,799
035.00	048.00	Irwindale Crash Wall Screen Revisio	6/25/2015	6/29/2015	4		\$26,694
036.00	054.00	Irwindale Street Improvements	7/7/2015	7/8/2015	1		\$14,707
037.00	055.00	Systems Interface Delay Part 2	7/16/2015	7/17/2015	1	42	\$0
038.00	051.00	Relocate Monrovia Jobsite Trailers	7/17/2015	7/23/2015	6		\$22,749
		<b>Subtotal:</b>					\$1,309,077
		<b>Subtotal:</b>					\$1,309,077
		<b>Total:</b>					\$1,309,077



### Change Management Log

Date: 8/31/2015

Page: 2 of 2

**Project: C1150 Parking - Webcor Contract #: C1150**

#### Open PCOs

PCO Number	Title
OPEN	
013.00	Primrose Avenue cul-de-sac Deletion
014.00	Delete Azusa-Alameda Enhancements
016.01	Artwork Installation
018.00	Inwindale Kiosk Foundation
020.00	Azusa-Citrus Roadway
PCO-021.00	Trailblazing Signs

#### Open RFC Notices

Number	Title
033.00	Station Dedication Betterments



## **AZUSA TO MONTCLAIR SEGMENT**

### **ACTIVITIES COMPLETED THIS PERIOD**

Authority and City staff continued to hold coordination meetings to discuss the project. The Authority has been meeting with the cities bi-monthly to discuss the terms of the Master Cooperative Agreement (MCA). The MCA has been executed by all cities except for La Verne and Pomona. La Verne has agreed to the MCA and their agreement will be executed in September. The Authority and Pomona are working together to finalize the MCA and expect to have an agreement executed in October.

This period, Authority staff worked on the following technical elements of the project:

- Continued advancement of the plan and profile drawings
- Continued right-of-way survey and drawings
- Continued geotechnical work
- Continued surveying work
- Continued conceptual design of the parking facilities
- Began preparing scope for environmental site assessments

### **KEY FUTURE ACTIVITIES**

The advanced conceptual engineering process is an 18-month process. Upon completion, the Azusa to Montclair segment will be ready for a design-build procurement. Upcoming activities include continuing to attend coordination meetings with each corridor city, finalizing the city MCAs, development of the ROW drawing work, refinement of the alignment, completing the SDAR, and completing the geotechnical investigations.

### **Federal Transit Administration (FTA)**

The Metro Board of Directors excluded the Gold Line from seeking federal New Starts funding. The Authority will work together with Metro along with the Congressional delegation to seek funding to construct the extension following completion of the environmental review.



## PHASE 2 FOOTHILL EXTENSION FINANCIAL STATUS

### Project Operating Budget Summary in Millions of Dollars

August 31, 2015

	( a )	( b )	(c=a-b)	( d )
<b>FINANCIAL PLAN</b>	<b>Current Budget</b>	<b>Funding Committed to Project</b>	<b>Uncommitted Funds</b>	<b>Revenues Received</b>
SCAG	1.0	0.9	0.1	0.9
Interest Income	2.0	2.0	-	2.0
Bridge Replacement	13.9	13.9	-	13.9
Phase I Carryover	4.0	4.0	-	4.0
Maintenance and Operations Facility	-	-	-	-
Cities	11.0	-	11.0	-
Measure R - Pasadena to Azusa	810.5	777.0	33.5	612.9
Measure R - Azusa to Montclair	-	-	-	-
SANBAG	55.2	1.5	53.7	1.5
Federal TCSP	2.9	2.9	-	2.9
Federal Bus Intermodal Plan	9.0	9.0	-	5.8
Federal New Starts 2004 MTA Passthrough	4.0	4.0	-	4.0
Federal New Starts 2005 MTA Passthrough	0.5	0.5	-	0.5
Federal New Starts 2006 Corridor Study	2.5	2.5	-	2.5
Federal/Other	1,033.5	-	1,033.5	-
<b>Total Revenues</b>	<b>1,950.0</b>	<b>818.2</b>	<b>1,131.8</b>	<b>650.9</b>
	( a )	( b )	( c )	(d=a-b)
	<b>Current Budget</b>	<b>Current Obligation</b>	<b>Current Expenditures</b>	<b>Current Available Balance</b>
<b>EXPENSES</b>				
Program Management and Administration	108.9	103.7	102.9	5.2
Master Cooperative Agreements	11.0	3.3	3.3	7.7
Real Estate including ROW Acq	21.0	21.0	20.0	-
Special Programs	0.3	-	-	0.3
Procurement/Vehicles	60.0	-	-	60.0
Maintenance and Operations Facility Land	22.0	22.0	22.0	-
Construction - IFS	19.8	19.8	19.8	-
Construction - Pasadena to Azusa segment	328.9	328.9	323.9	-
Construction - Azusa to Montclair segment	1,181.0	-	-	1,181.0
Construction - M&O	47.0	47.0	41.1	-
Construction - Parking Structures	44.2	44.2	44.2	-
MTA Project Costs	64.0	64.0	14.3	-
Contingency	27.4	-	-	27.4
Project Reserve	14.5	-	-	14.5
<b>Total Project</b>	<b>1,950.0</b>	<b>653.9</b>	<b>591.5</b>	<b>1,296.1</b>