

# Phase 2 Exposition Metro Line Project

## Monthly Project Status Report

December 2015







## TABLE OF CONTENTS

### PHASE 2 EXPO LINE PROJECT STATUS

|   |    |
|---|----|
| TABLE OF CONTENTS .....   | 2  |
| Phase 2 Exposition Metro Line Construction Authority Project Description .....                | 3  |
| Phase 2 Exposition Metro Line Construction Authority Culver City to Santa Monica Segment..... | 4  |
| Project Management Issues .....   | 4  |
| Key Activities Completed This Period .....  | 5  |
| Key Future Activities .....   | 6  |
| Phase 2 Exposition Metro Line Construction Authority Schedule Status .....                    | 7  |
| Critical Path Schedule.....   | 7  |
| Schedule Narrative .....  | 8  |
| Phase 2 Exposition Metro Line Construction Authority Financial Status.....                    | 9  |
| Project Cost Status and Analysis .....  | 9  |
| Expo Baseline Activities .....  | 10 |
| Metro Baseline Activities - Vehicles .....  | 11 |
| Non-Baseline Activities.....  | 12 |
| Phase 2 Exposition Metro Line Construction Authority Contract Status .....                    | 13 |
| Expo Phase 2 Design-Build Contract Status.....  | 13 |
| Expo Phase 2 VBU Design-Build Contract Status .....   | 14 |
| Expo Phase 2 OMF Contract Status.....   | 15 |
| Expo Phase 2 Bikeway Contract Status .....  | 16 |





## Phase 2 Exposition Metro Line Construction Authority Project Description

The Expo Phase 2 Project is located in the Westside of Los Angeles, extending approximately seven miles from the Expo Phase 1 terminus at Culver City Station to Santa Monica. The Phase 2 alignment begins at the terminus of Expo Phase 1 and utilizes the existing Exposition Right-of-Way (ROW), then diverges from the Exposition ROW and enters onto Colorado Avenue east of 17<sup>th</sup> Street. The alignment follows the center of Colorado Avenue to the proposed terminus in downtown Santa Monica in the vicinity of the intersection of 4<sup>th</sup> Street and Colorado Avenue.



Figure 1: Exposition Metro Line Construction Authority Phase 2 Alignment



## **Phase 2 Exposition Metro Line Construction Authority Culver City to Santa Monica Segment**

### **Project Management Issues**

#### **Mainline Schedule**

Skanska/Rados Joint Venture (SRJV) was granted Substantial Completion on December 18, 2015, which is approximately five (5) months beyond the contractual Substantial Completion date. The delay is due to several factors, which include delayed site turnover to the track installation subcontractor, delayed ductbank installation, and vibration mitigation design and construction. The contractor and the Authority are working through cost responsibility for the delay.

#### **City of Santa Monica**

Terminus property condemnation has been filed with the court. A trial date was set by the court for the fall of 2016.

#### **Operations and Maintenance Facility (OMF)**

The current project schedule shows Substantial Completion of the OMF in January 2016, which is over eight (8) months later than the current Substantial Completion date of May 2015. The project's slip is due to damage to the train control laterals, delays with the track work installation in the wash facility, the main and secondary building construction and the procurement of long-lead electrical equipment. The Authority anticipates having the facility turned over to Metro in February 2016.



### **Key Activities Completed This Period**

#### **Phase 2 Design-Build contractor, Skanska/Rados (SRJV)**

- Substantial Completion granted December 18th
- Continued to obtain street improvement “Finals” from COLA and CSM
- Completed soil stabilization grouting from Carmelita to Centinela and resumed roadway improvements at this section of the alignment
- Completed communications device installation at stations
- Continued electrical and communications finishes (labeling, etc. ) at station electrical and C/S rooms
- Continued irrigation, landscaping, signage and fencing
- Completed Phase 1 Train Control dynamic testing
- Continued communication systems testing
- Completion of Punchlist items and safety certification in progress

#### **Venice Boulevard Underpass Design-Build contractor**

- The Expo Phase 2 Contractor (SRJV) completed the remaining roadway construction work and continues final inspection with AHJ's and completion of punch list work.

#### **Operations and Maintenance Facility, Kiewit Building Group (KBG)**

- Continued to install finishes and shop equipment at the buildings
- Continued interior and exterior finishes at the Guard Shack
- Continued the installation of site finishes
- Continued the startup process for building systems
- Continued building systems testing and training
- Continued shop equipment testing and training
- Continued equipment installation and wiring at the main data room
- Completed Train Control testing
- Commenced signage installation
- Commenced punchlist preparation
- Commenced safety certification

#### **Bikeway**

- Signing and striping nearing completion.
- Punch list walks.
- Construction between Carmelina and Centinela and Centinela Intersection work.



## **Key Future Activities**

### **Phase 2 Design-Build contractor, Skanska/Rados (SRJV)**

- SRJV advance remaining design elements. Metro, Authority, and third party staff will continue to work with SRJV to resolve comments and open issues.
- SRJV will continue the following construction activities:
  - complete stations;
  - test guideway lighting;
  - advance landscaping;
  - SCE, DWP, and communication providers to finalize relocations and continue providing service to the remaining low voltage meters.

### **Venice Boulevard Underpass**

- Commence Culver City Plaza and associated roadway construction.
- Expo Phase 2 Contractor (SRJV) will work on the roadway construction work punch list items.

### **Operations and Maintenance Facility contractor, Kiewit Building Group**

- Continue Construction Safety Certification;
- Continue start-up and activation meetings;
- Complete construction of guard shack;
- Complete installation of site lighting, parking areas and site walls;
- Continue punchlist preparation and completion of punch list items;
- Submit application for Substantial Completion.

### **Bikeway**

- Complete construction, signing and striping.
- Bikeway from Carmelina to Centinela intersection

### **General**

- Continue coordination with the COLA, CSM, Metro, CPUC, and Caltrans.
- Facilitate Fire Life Safety Committee meetings.
- Continue FEIR mitigation measures.

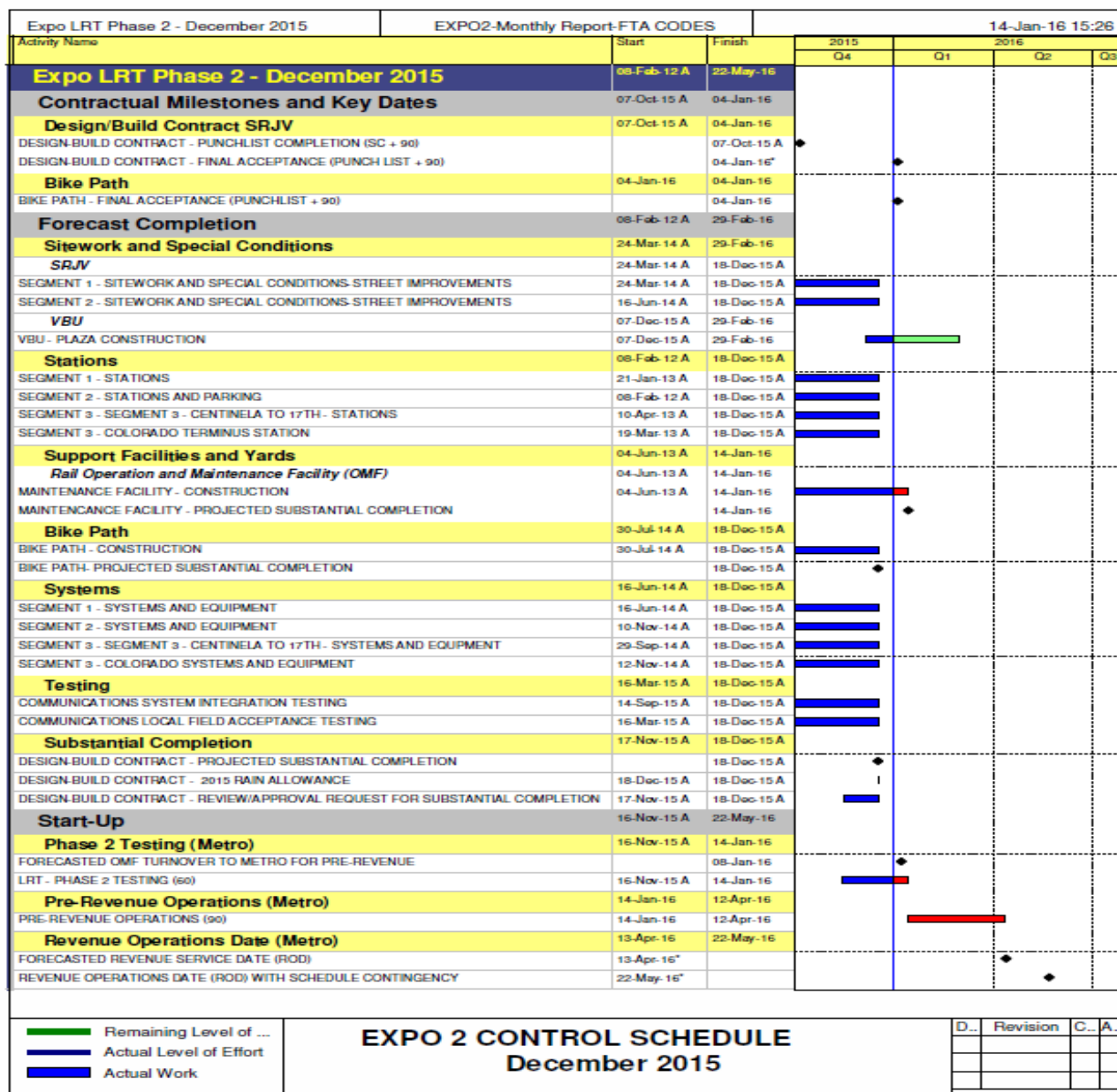


**EXPOSITION METRO LINE  
CONSTRUCTION AUTHORITY**  
Monthly Phase 2 Project Status Report  
Period Ending – December 31, 2015



**Phase 2 Exposition Metro Line Construction Authority Schedule Status**

**Critical Path Schedule,  
Period Ending December 31, 2015**





## Schedule Narrative

### Critical and Near-Critical Path Analysis

The critical path runs through completing the Metro Phase 2 Testing followed by Pre-Revenue Operation.

### Project Float/ Schedule Contingency

On January 5, 2012, the Board of Directors authorized the Authority to include schedule contingency in accordance with Metro's Project Contingency procedure which resulted in a Revenue Operations Date of November 5, 2016. At the January 9, 2014 Board Meeting half of the contingency was released. If all the remaining Schedule Contingency were needed, the projected Revenue Operation Date would be May 22, 2016.

|                      | Original Duration<br>(days) | Days<br>Released | Current<br>Duration (days) |
|----------------------|-----------------------------|------------------|----------------------------|
| Schedule Contingency | 334                         | 167              | 167                        |



## Phase 2 Exposition Metro Line Construction Authority Financial Status

### Project Cost Status and Analysis Expo/Metro Baseline

#### COST REPORT BY ELEMENT

UNITS IN MILLIONS

| Element      | Description           | Original Budget | Current Budget | Commitments    | Expenditures   | Current Forecast | Forecast Variance<br>Over/<Under> |
|--------------|-----------------------|-----------------|----------------|----------------|----------------|------------------|-----------------------------------|
| C            | CONSTRUCTION          | 766.3           | 759.8          | 722.3          | 661.0          | 759.8            | -                                 |
| R            | RIGHT-OF-WAY          | 265.0           | 257.6          | 115.5          | 113.8          | 257.6            | -                                 |
| V            | VEHICLES              | 202.1           | 202.1          | 202.1          | 80.1           | 202.1            | -                                 |
| P            | PROFESSIONAL SERVICES | 148.2           | 149.7          | 125.1          | 114.2          | 149.7            | -                                 |
| SC           | SPECIAL CONDITIONS    | 63.6            | 81.9           | 66.7           | 59.9           | 81.9             | -                                 |
| PR           | PROJECT RESERVE       | 66.0            | 60.1           | -              | -              | 60.1             | -                                 |
| <b>TOTAL</b> |                       | <b>1,511.2</b>  | <b>1,511.2</b> | <b>1,231.6</b> | <b>1,028.9</b> | <b>1,511.2</b>   | <b>-</b>                          |

NOTE: Expenditures are Paid-to-Date through 11/30/15

#### Original Budget and Current Budget:

The Life of Project Budget for the Phase 2 Exposition Metro Line Project was adopted in March 2011 for a value of \$1.511 billion.

#### Current Forecast:

The total project forecast at completion remains the same as the current budget of \$1.511 billion.



**Project Operating Budget Summary in Millions of Dollars**



**Expo**

*Sources & Uses of Funds - Phase 2*

*Status as of December 31, 2015*

**Metro / Expo Baseline Activities**

Sources of Funds (millions)

A

B

C = A - B

| Source                               | Budget            | Funding<br>Committed | Uncommitted |
|--------------------------------------|-------------------|----------------------|-------------|
| Prop A 35%                           | \$ 136.9          | \$ 136.9             | \$ -        |
| Prop C 25%                           | \$ 5.8            | \$ 5.8               | \$ -        |
| Measure R                            | \$ 909.0          | \$ 909.0             | \$ -        |
| Prop 1B Bonds - PTMISEA              | \$ 136.0          | \$ 136.0             | \$ -        |
| Prop 1B Bonds - SLPP                 | \$ 28.3           | \$ 28.3              | \$ -        |
| Regional Improvement Program (State) | \$ 47.8           | \$ 47.8              | \$ -        |
| Local Agency Contribution            | \$ 45.3           | \$ 45.3              | \$ -        |
|                                      | \$ 1,309.1        | \$ 1,309.1           | \$ -        |
| <b>Total Sources:</b>                | <b>\$ 1,309.1</b> | <b>\$ 1,309.1</b>    | <b>\$ -</b> |

Uses of Funds by Element (millions)

A

B

C

D = A - B

| Element                     | Budget            | Committed         | Paid            | Uncommitted     |
|-----------------------------|-------------------|-------------------|-----------------|-----------------|
| Design-Build Corridor       | \$ 594.5          | \$ 561.0          | \$ 526.3        | \$ 33.6         |
| Other Construction Elements | \$ 165.4          | \$ 161.3          | \$ 134.7        | \$ 4.0          |
| Right-of-Way                | \$ 257.6          | \$ 115.5          | \$ 113.8        | \$ 142.1        |
| Professional Services       | \$ 149.7          | \$ 125.1          | \$ 114.2        | \$ 24.6         |
| Special Conditions          | \$ 81.9           | \$ 66.7           | \$ 59.9         | \$ 15.1         |
| Project Reserve             | \$ 60.1           | \$ -              | \$ -            | \$ 60.1         |
| <b>Total Uses:</b>          | <b>\$ 1,309.1</b> | <b>\$ 1,029.5</b> | <b>\$ 948.8</b> | <b>\$ 279.6</b> |

Paid-to-Date through 11/30/15



Project Operating Budget Summary in Millions of Dollars



**Expo**

*Sources & Uses of Funds - Phase 2*

*Status as of December 31, 2015*

***Metro / Expo Baseline Activities - Vehicles***

Sources of Funds (millions)

A

B

C = A - B

| Source                             | Budget          | Funding<br>Committed | Uncommitted |
|------------------------------------|-----------------|----------------------|-------------|
| RSTP (Federal) for LRVs            | \$ 7.7          | \$ 7.7               | \$ -        |
| CMAQ (Federal) for LRVs            | \$ 41.3         | \$ 41.3              | \$ -        |
| Reg. Imp. Prog. (Federal) for LRVs | \$ 153.1        | \$ 153.1             | \$ -        |
|                                    | \$ 202.1        | \$ 202.1             | \$ -        |
| <b>Total Sources:</b>              | <b>\$ 202.1</b> | <b>\$ 202.1</b>      | <b>\$ -</b> |

Uses of Funds by Element (millions)

A

B

C

D = A - B

| Element            | Budget          | Committed       | Paid           | Uncommitted |
|--------------------|-----------------|-----------------|----------------|-------------|
| Vehicles           | \$ 202.1        | \$ 202.1        | \$ 80.1        | \$ -        |
| <b>Total Uses:</b> | <b>\$ 202.1</b> | <b>\$ 202.1</b> | <b>\$ 80.1</b> | <b>\$ -</b> |

Paid-to-Date through 11/30/15



## Project Operating Budget Summary in Millions of Dollars



**Expo**

*Sources & Uses of Funds - Phase 2*

*Status as of December 31, 2015*

### **Non - Baseline Activities**

Sources of Funds (millions)

|  | A              | B                    | C = A - B   |
|--|----------------|----------------------|-------------|
| Source   | Budget         | Funding<br>Committed | Uncommitted |
| Project Revenue: City of LA Betterment           | \$ 5.4         | \$ 5.4               | \$ -        |
| Project Revenue: Metro                           | \$ 3.9         | \$ 3.9               | \$ -        |
| Project Revenue: City of Santa Monica Betterment | \$ 20.2        | \$ 20.2              | \$ -        |
| <b>Total Sources:</b>                            | <b>\$ 29.5</b> | <b>\$ 29.5</b>       | <b>\$ -</b> |

Uses of Funds by Element (millions)

|   | A              | B              | C              | D = A - B     |
|---|----------------|----------------|----------------|---------------|
| Element   | Budget         | Committed      | Paid           | Uncommitted   |
| <b>Design-Build Betterments</b>                             |                |                |                |               |
| COLA - Sepulveda Blvd Bridge & Aerial Station (Diff.)       | \$ 5.3         | \$ 5.3         | \$ 5.1         | \$ -          |
| COLA - Greenway Project Culvert                             | \$ 0.1         | \$ 0.1         | \$ 0.1         | \$ -          |
| Metro - Various Betterments (Metro Board Approved 4/17/14)  | \$ 3.9         | \$ 2.8         | \$ 2.0         | \$ 1.1        |
| City of Santa Monica Water System Betterments               | \$ 1.6         | \$ 1.6         | \$ 1.5         | \$ -          |
| City of Santa Monica PCC Funding Agreement                  | \$ 0.5         | \$ 0.5         | \$ -           | \$ -          |
| City of Santa Monica Storm Drain Laterals                   | \$ 0.3         | \$ 0.3         | \$ 0.2         | \$ -          |
| 26th Street & 17th Street Station Betterments P.E           | \$ 0.4         | \$ 0.4         | \$ 0.4         | \$ -          |
| 26th Street & 17th Street Station Betterments Construction  | \$ 7.3         | \$ 6.8         | \$ 5.6         | \$ 0.5        |
| 4th Street Terminus Station P.E                             | \$ 0.5         | \$ 0.4         | \$ 0.4         | \$ 0.1        |
| 4th Street Terminus Station Construction                    | \$ 8.0         | \$ 7.7         | \$ 5.4         | \$ 0.3        |
| CSM Cont. Release - Jacob Guard Rails, Pavers & Landscaping | \$ 1.8         | \$ 1.7         | \$ -           | \$ 0.1        |
| <b>Total Uses:</b>  | <b>\$ 29.5</b> | <b>\$ 27.5</b> | <b>\$ 20.7</b> | <b>\$ 2.0</b> |

Paid-to-Date through 11/30/15



### Expo Phase 2 Design-Build Contract Status

|   |  |                         |                |                  |          |              |
|---|--|-------------------------|----------------|------------------|----------|--------------|
| <b>Expo Phase 2</b><br><b>Contractor: Skanska/Rados</b>   | <b>Contract No.: XP8902-002</b><br><br><b>Status as of: 31-Dec-15</b>  |                         |                |                  |          |              |
| <b>Progress/Work Completed:</b><br>See Page 6<br><br><b>Areas of Concern:</b><br>See Pages 4 and 5  | <b>Major Activities (In Progress):</b><br>See Page 5 and 6<br><br><b>Major Activities Next Period:</b><br>See Page 6 |                         |                |                  |          |              |
|   |  | Original Contract Dates | Time Extension | Current Contract | Forecast | Variance CDs |
|   | Substantial Completion   | 07/10/15                | 0              | 07/10/15         | 07/10/15 | 0            |
|   | Contract Completion  | 01/08/16                | 0              | 01/08/16         | 01/08/16 | 0            |
|   |  |                         |                |                  |          |              |
|   |  |                         |                |                  |          |              |
|   |  |                         |                |                  |          |              |
| <b><u>Schedule Summary:</u></b><br><br><br><br><br><br><br><br><br><br><br><br><br><br><br><br><br><br><br><br><br><br><br><br><br><br><br><br><br><br><br><br><br><br><br><br><br><br><br><br><br><br><br><br><br><br><br><br><br><br><br><br><br><br><br><br><br><br><br><br><br><br><br><br><br><br><br><br><br><br><br><br><br><br><br><br><br><br><br><br><br><br><br><br><br><br><br><br><br><br><br><br><br><br><br><br><br><br><br><br><br><br><br><br><br><br><br><br><br><br><br><br><br><br><br><br><br><br><br><br><br><br><br><br><br><br><br><br><br><br><br><br><br><br><br><br><br><br><br><br><br><br><br><br><br><br><br><br><br><br><br><br><br><br><br><br><br><br><br><br><br><br><br><br><br><br><br><br><br><br><br><br><br><br><br><br><br><br><br><br><br><br><br><br><br><br><br><br><br><br><br><br><br><br><br><br><br><br><br><br><br><br><br><br><br><br><br><br><br><br><br><br><br><br><br><br><br><br><br><br><br><br><br><br><br><br><br><br><br><br><br><br><br><br><br><br><br><br><br><br><br><br><br><br><br><br><br><br><br><br><br><br><br><br><br><br><br><br><br><br><br><br><br><br><br><br><br><br><br><br><br><br><br><br><br><br><br><br><br><br><br><br><br><br><br><br><br><br><br><br><br><br><br><br><br><br><br><br><br><br><br><br><br><br><br><br><br><br><br><br><br><br><br><br><br><br><br><br><br><br><br><br><br><br><br><br><br><br><br><br><br><br><br><br><br><br><br><br><br><br><br><br><br><br><br><br><br><br><br><br><br><br><br><br><br><br><br><br><br><br><br><br><br><br><br><br><br><br><br><br><br><br><br><br><br><br><br><br><br><br><br><br><br><br><br><br><br><br><br><br><br><br><br><br><br><br><br><br><br><br><br><br><br><br><br><br><br><br><br><br><br><br><br><br><br><br><br><br><br><br><br><br><br><br><br><br><br><br><br><br><br><br><br><br><br><br><br><br><br><br><br><br><br><br><br><br><br><br><br><br><br><br><br><br><br><br><br><br><br><br><br><br><br><br><br><br><br><br><br><br><br><br><br><br><br><br><br><br><br><br><br><br><br><br><br><br><br><br><br><br><br><br><br><br><br><br><br><br><br><br><br><br><br><br><br><br><br><br><br><br><br><br><br><br><br><br><br><br><br><br><br><br><br><br><br><br><br><br><br><br><br><br><br><br><br><br><br><br><br><br><br><br><br><br><br><br><br><br><br><br><br><br><br><br><br><br><br><br><br><br><br><br><br><br><br><br><br><br><br><br><br><br><br><br><br><br><br><br><br><br><br><br><br><br><br><br><br><br><br><br><br><br><br><br><br><br><br><br><br><br><br><br><br><br><br><br><br><br><br><br><br><br><br><br><br><br><br><br><br><br><br><br><br><br><br><br><br><br><br><br><br><br><br><br><br><br><br><br><br><br><br><br><br><br><br><br><br><br><br><br><br><br><br><br><br><br><br><br><br><br><br><br><br><br><br><br><br><br><br><br><br><br><br><br><br><br><br><br><br><br><br><br><br><br><br><br><br><br><br><br><br><br><br><br><br><br><br><br><br><br><br><br><br><br><br><br><br><br><br><br><br><br><br><br><br><br><br><br><br><br><br><br><br><br><br><br><br><br><br><br><br><br><br><br><br><br><br><br><br><br><br><br><br><br><br><br><br><br><br><br><br><br><br><br><br><br><br><br><br><br><br><br><br><br><br><br><br><br><br><br><br><br><br><br><br><br><br><br><br><br><br><br><br><br><br><br><br><br><br><br><br><br><br><br><br><br><br><br><br><br><br><br><br><br><br><br><br><br><br><br><br><br><br><br><br><br><br><br><br><br><br><br><br><br><br><br><br><br><br><br><br><br><br><br><br><br><br><br><br><br><br><br><br><br><br><br><br><br><br><br><br><br><br><br><br><br><br><br><br><br><br><br><br><br><br><br><br><br><br><br><br><br><br><br><br><br><br><br><br><br><br><br><br><br><br><br><br><br><br><br><br><br><br><br><br><br><br><br><br><br><br><br><br><br><br><br><br><br><br><br><br><br><br><br><br><br><br><br><br><br><br><br><br><br><br><br><br><br><br><br><br><br><br><br><br><br><br><br><br><br><br><br><br><br><br><br><br><br><br><br><br><br><br><br><br><br><br><br><br><br><br><br><br><br><br><br><br><br><br><br><br><br><br><br><br><br><br><br><br><br><br><br><br><br><br><br><br><br><br><br><br><br><br><br><br><br><br><br><br><br><br><br><br><br><br><br><br><br><br><br><br><br><br><br><br><br><br><br><br><br><br><br><br><br><br><br><br><br><br><br><br><br><br><br><br><br><br><br><br><br><br><br><br><br><br><br><br><br><br><br><br><br><br><br><br><br><br><br><br><br><br><br><br><br><br><br><br><br><br><br><br><br><br><br><br><br><br><br><br><br><br><br><br><br><br><br><br><br><br><br><br><br><br><br><br><br><br><br><br><br><br><br><br><br><br><br><br><br><br><br><br><br><br><br><br><br><br><br><br><br><br><br><br><br><br><br><br><br><br><br><br><br><br><br><br><br><br><br><br><br><br><br><br><br><br><br><br><br><br><br><br><br><br><br><br><br><br><br><br><br><br><br><br><br><br><br><br><br><br><br><br><br><br><br><br><br><br><br><br><br><br><br><br><br><br><br><br><br><br><br><br><br><br><br><br><br><br><br><br><br><br><br><br><br><br><br><br><br><br><br><br><br><br><br><br><br><br><br><br><br><br><br><br><br><br><br><br><br><br><br><br><br><br><br><br><br><br><br><br><br><br><br><br><br><br><br><br><br><br><br><br><br><br><br><br><br><br><br><br><br><br><br><br><br><br><br><br><br><br><br><br><br><br><br><br><br><br><br><br><br><br><br><br><br><br><br><br><br><br><br><br><br><br><br><br><br><br><br><br><br><br><br><br><br><br><br><br><br><br><br><br><br><br><br><br><br><br><br><br><br><br><br><br><br><br><br><br><br><br><br><br><br><br><br><br><br><br><br><br><br><br><br><br><br><br><br><br><br><br><br><br><br><br><br><br><br><br><br><br><br><br><br><br><br><br><br><br><br><br><br><br><br><br><br><br><br><br><br><br><br><br><br><br><br><br><br><br><br><br><br><br><br><br><br><br><br><br><br><br><br><br><br><br><br><br><br><br><br><br><br><br><br><br><br><br><br><br><br><br><br><br><br><br><br><br><br><br><br><br><br><br><br><br><br><br><br><br><br><br><br><br><br><br><br><br><br><br><br><br><br><br><br><br><br><br><br><br><br><br><br><br><br><br><br><br><br><br><br><br><br><br><br><br><br><br><br><br><br><br><br><br><br><br><br><br><br><br><br><br><br><br><br><br><br><br><br><br><br><br><br><br><br><br><br><br><br><br><br><br><br><br><br><br><br><br><br><br><br><br><br><br><br><br><br><br><br><br><br><br><br><br><br><br><br><br><br><br><br><br><br><br><br><br><br><br><br><br><br><br><br><br><br><br><br><br><br><br><br><br><br><br><br><br><br><br><br><br><br><br><br><br><br><br><br><br><br><br><br><br><br><br><br><br><br><br><br><br><br><br><br><br><br><br><br><br><br><br><br><br><br><br><br><br><br><br><br><br><br><br><br><br><br><br><br><br><br><br><br><br><br><br><br><br><br><br><br><br><br><br><br><br><br><br><br><br><br><br><br><br><br><br><br><br><br><br><br><br><br><br><br><br><br><br><br><br><br><br><br><br><br><br><br><br><br><br><br><br><br><br><br><br><br><br><br><br><br><br><br><br><br><br><br><br><br><br><br><br><br><br><br><br><br><br><br><br><br><br><br><br><br><br><br><br><br><br><br><br><br><br><br><br><br><br><br><br><br><br><br><br><br><br><br><br><br><br><br><br><br><br><br><br><br><br><br><br><br><br><br><br><br><br><br><br><br><br><br><br><br><br><br><br><br><br><br><br><br><br><br><br><br><br><br><br><br><br><br><br><br><br><br><br><br><br><br><br><br><br><br><br><br><br><br><br><br><br><br><br><br><br><br><br><br><br><br><br><br><br><br><br><br><br><br><br><br><br><br><br><br><br><br><br><br><br><br><br><br><br><br><br><br><br><br><br><br><br><br><br><br><br><br><br><br><br><br><br><br><br><br><br><br><br><br><br><br><br><br><br><br><br><br><br><br><br><br><br><br><br><br><br><br><br><br><br><br><br><br><br><br><br><br><br><br><br><br><br><br><br><br><br><br><br><br><br><br><br><br><br><br><br><br><br><br><br><br><br><br><br><br><br><br><br><br><br><br><br><br><br><br><br><br><br><br><br><br><br><br><br><br><br><br><br><br><br><br><br><br><br><br><br><br><br><br><br><br><br><br><br><br><br><br><br><br><br><br><br><br><br><br><br><br><br><br><br><br><br><br><br><br><br><br><br><br><br><br><br><br><br><br><br><br><br><br><br><br><br><br><br><br><br><br><br><br><br><br><br><br><br><br><br><br><br><br><br><br><br><br><br><br><br><br><br><br><br><br><br><br><br><br><br><br><br><br><br><br><br><br><br><br><br><br><br><br><br><br><br><br><br><br><br><br><br><br><br><br><br><br><br><br><br><br><br><br><br><br><br><br><br><br><br><br><br><br><br><br><br><br><br><br><br><br><br><br><br><br><br><br><br><br><br><br><br><br><br><br><br><br><br><br><br><br><br><br><br><br><br><br><br><br><br><br><br><br><br><br><br><br><br><br><br><br><br><br><br><br><br><br><br><br><br><br><br><br><br><br><br><br><br><br><br><br><br><br><br><br><br><br><br><br><br><br><br><br><br><br><br><br><br><br><br><br><br><br><br><br><br><br><br><br><br><br><br><br><br><br><br><br><br><br><br><br><br><br><br><br><br><br><br><br><br><br><br><br><br><br><br><br><br><br><br><br><br><br><br><br><br><br><br><br><br><br><br><br><br><br><br><br><br><br><br><br><br><br><br><br><br><br><br><br><br><br><br><br><br><br><br><br><br><br><br><br><br><br><br><br><br><br><br><br><br><br><br><br><br><br><br><br><br><br><br><br><br><br><br><br><br><br><br><br><br><br><br><br><br><br><br><br><br><br><br><br><br><br><br><br><br><br><br><br><br><br><br><br><br><br><br><br><br><br><br><br><br><br><br><br><br><br><br><br><br><br><br><br><br><br><br><br><br><br><br><br><br><br><br><br><br><br><br><br><br><br><br><br><br><br><br><br><br><br><br><br><br><br><br><br><br><br><br><br><br><br><br><br><br><br><br><br><br><br><br><br><br><br><br><br><br><br><br><br><br><br><br><br><br><br><br><br><br><br><br><br><br><br><br><br><br><br><br><br><br><br><br><br><br><br><br><br><br><br><br><br><br><br><br><br><br><br><br><br><br><br><br><br><br><br><br><br><br><br><br><br><br><br><br><br><br><br><br><br><br><br><br><br><br><br><br><br><br><br><br><br><br><br><br><br><br><br><br><br><br><br><br><br><br><br><br><br><br><br><br><br><br><br><br><br><br><br><br><br><br><br><br><br><br><br><br><br><br><br><br><br><br><br><br><br><br><br><br><br><br><br><br><br><br><br><br><br><br><br><br><br><br><br><br><br><br><br><br><br><br><br><br><br><br><br><br><br><br><br><br><br><br><br><br><br><br><br><br><br><br><br><br><br><br><br><br><br><br><br><br><br><br><br><br><br><br><br><br><br><br><br><br><br><br><br><br><br><br><br><br><br><br><br><br><br><br><br><br><br><br><br><br><br><br><br><br><br><br><br><br><br><br><br><br><br><br><br><br><br><br><br><br><br><br><br><br><br><br><br><br><br><br><br><br><br> |  |                         |                |                  |          |              |



## Expo Phase 2 VBU Design-Build Contract Status

|  |  |                         |                |                  |          |              |
|--|--|-------------------------|----------------|------------------|----------|--------------|
| <b>Expo Phase 2</b><br><b>Contractor: Balfour Beatty Infrastructure, Inc.</b>  | <b>Contract No.: XP8901-828</b><br><br><b>Status as of: 31-Dec-15</b>  |                         |                |                  |          |              |
| <b>Progress/Work Completed:</b><br>See Page 6<br><br><b>Areas of Concern:</b><br>See Pages 4 and 5   | <b>Major Activities (In Progress):</b><br>See Page 5 and 6<br><br><b>Major Activities Next Period:</b><br>See Page 6 |                         |                |                  |          |              |
|  |  | Original Contract Dates | Time Extension | Current Contract | Forecast | Variance CDs |
|  | Substantial Completion   | 07/12/13                | 262            | 03/31/14         | 03/31/14 | 0            |
|  |  |                         |                |                  |          |              |
|  |  |                         |                |                  |          |              |
|  |  |                         |                |                  |          |              |
| <b><u>Schedule Summary:</u></b><br><br><br><br><br><br><br><br><br><br><br><br><br><br><br><br><br><br><br><br><br><br><br><br><br><br><br><br><br><br><br><br><br><br><br><br><br><br><br><br><br><br><br><br><br><br><br><br><br><br><br><br><br><br><br><br><br><br><br><br><br><br><br><br><br><br><br><br><br><br><br><br><br><br><br><br><br><br><br><br><br><br><br><br><br><br><br><br><br><br><br><br><br><br><br><br><br><br><br><br><br><br><br><br><br><br><br><br><br><br><br><br><br><br><br><br><br><br><br><br><br><br><br><br><br><br><br><br><br><br><br><br><br><br><br><br><br><br><br><br><br><br><br><br><br><br><br><br><br><br><br><br><br><br><br><br><br><br><br><br><br><br><br><br><br><br><br><br><br><br><br><br><br><br><br><br><br><br><br><br><br><br><br><br><br><br><br><br><br><br><br><br><br><br><br><br><br><br><br><br><br><br><br><br><br><br><br><br><br><br><br><br><br><br><br><br><br><br><br><br><br><br><br><br><br><br><br><br><br><br><br><br><br><br><br><br><br><br><br><br><br><br><br><br><br><br><br><br><br><br><br><br><br><br><br><br><br><br><br><br><br><br><br><br><br><br><br><br><br><br><br><br><br><br><br><br><br><br><br><br><br><br><br><br><br><br><br><br><br><br><br><br><br><br><br><br><br><br><br><br><br><br><br><br><br><br><br><br><br><br><br><br><br><br><br><br><br><br><br><br><br><br><br><br><br><br><br><br><br><br><br><br><br><br><br><br><br><br><br><br><br><br><br><br><br><br><br><br><br><br><br><br><br><br><br><br><br><br><br><br><br><br><br><br><br><br><br><br><br><br><br><br><br><br><br><br><br><br><br><br><br><br><br><br><br><br><br><br><br><br><br><br><br><br><br><br><br><br><br><br><br><br><br><br><br><br><br><br><br><br><br><br><br><br><br><br><br><br><br><br><br><br><br><br><br><br><br><br><br><br><br><br><br><br><br><br><br><br><br><br><br><br><br><br><br><br><br><br><br><br><br><br><br><br><br><br><br><br><br><br><br><br><br><br><br><br><br><br><br><br><br><br><br><br><br><br><br><br><br><br><br><br><br><br><br><br><br><br><br><br><br><br><br><br><br><br><br><br><br><br><br><br><br><br><br><br><br><br><br><br><br><br><br><br><br><br><br><br><br><br><br><br><br><br><br><br><br><br><br><br><br><br><br><br><br><br><br><br><br><br><br><br><br><br><br><br><br><br><br><br><br><br><br><br><br><br><br><br><br><br><br><br><br><br><br><br><br><br><br><br><br><br><br><br><br><br><br><br><br><br><br><br><br><br><br><br><br><br><br><br><br><br><br><br><br><br><br><br><br><br><br><br><br><br><br><br><br><br><br><br><br><br><br><br><br><br><br><br><br><br><br><br><br><br><br><br><br><br><br><br><br><br><br><br><br><br><br><br><br><br><br><br><br><br><br><br><br><br><br><br><br><br><br><br><br><br><br><br><br><br><br><br><br><br><br><br><br><br><br><br><br><br><br><br><br><br><br><br><br><br><br><br><br><br><br><br><br><br><br><br><br><br><br><br><br><br><br><br><br><br><br><br><br><br><br><br><br><br><br><br><br><br><br><br><br><br><br><br><br><br><br><br><br><br><br><br><br><br><br><br><br><br><br><br><br><br><br><br><br><br><br><br><br><br><br><br><br><br><br><br><br><br><br><br><br><br><br><br><br><br><br><br><br><br><br><br><br><br><br><br><br><br><br><br><br><br><br><br><br><br><br><br><br><br><br><br><br><br><br><br><br><br><br><br><br><br><br><br><br><br><br><br><br><br><br><br><br><br><br><br><br><br><br><br><br><br><br><br><br><br><br><br><br><br><br><br><br><br><br><br><br><br><br><br><br><br><br><br><br><br><br><br><br><br><br><br><br><br><br><br><br><br><br><br><br><br><br><br><br><br><br><br><br><br><br><br><br><br><br><br><br><br><br><br><br><br><br><br><br><br><br><br><br><br><br><br><br><br><br><br><br><br><br><br><br><br><br><br><br><br><br><br><br><br><br><br><br><br><br><br><br><br><br><br><br><br><br><br><br><br><br><br><br><br><br><br><br><br><br><br><br><br><br><br><br><br><br><br><br><br><br><br><br><br><br><br><br><br><br><br><br><br><br><br><br><br><br><br><br><br><br><br><br><br><br><br><br><br><br><br><br><br><br><br><br><br><br><br><br><br><br><br><br><br><br><br><br><br><br><br><br><br><br><br><br><br><br><br><br><br><br><br><br><br><br><br><br><br><br><br><br><br><br><br><br><br><br><br><br><br><br><br><br><br><br><br><br><br><br><br><br><br><br><br><br><br><br><br><br><br><br><br><br><br><br><br><br><br><br><br><br><br><br><br><br><br><br><br><br><br><br><br><br><br><br><br><br><br><br><br><br><br><br><br><br><br><br><br><br><br><br><br><br><br><br><br><br><br><br><br><br><br><br><br><br><br><br><br><br><br><br><br><br><br><br><br><br><br><br><br><br><br><br><br><br><br><br><br><br><br><br><br><br><br><br><br><br><br><br><br><br><br><br><br><br><br><br><br><br><br><br><br><br><br><br><br><br><br><br><br><br><br><br><br><br><br><br><br><br><br><br><br><br><br><br><br><br><br><br><br><br><br><br><br><br><br><br><br><br><br><br><br><br><br><br><br><br><br><br><br><br><br><br><br><br><br><br><br><br><br><br><br><br><br><br><br><br><br><br><br><br><br><br><br><br><br><br><br><br><br><br><br><br><br><br><br><br><br><br><br><br><br><br><br><br><br><br><br><br><br><br><br><br><br><br><br><br><br><br><br><br><br><br><br><br><br><br><br><br><br><br><br><br><br><br><br><br><br><br><br><br><br><br><br><br><br><br><br><br><br><br><br><br><br><br><br><br><br><br><br><br><br><br><br><br><br><br><br><br><br><br><br><br><br><br><br><br><br><br><br><br><br><br><br><br><br><br><br><br><br><br><br><br><br><br><br><br><br><br><br><br><br><br><br><br><br><br><br><br><br><br><br><br><br><br><br><br><br><br><br><br><br><br><br><br><br><br><br><br><br><br><br><br><br><br><br><br><br><br><br><br><br><br><br><br><br><br><br><br><br><br><br><br><br><br><br><br><br><br><br><br><br><br><br><br><br><br><br><br><br><br><br><br><br><br><br><br><br><br><br><br><br><br><br><br><br><br><br><br><br><br><br><br><br><br><br><br><br><br><br><br><br><br><br><br><br><br><br><br><br><br><br><br><br><br><br><br><br><br><br><br><br><br><br><br><br><br><br><br><br><br><br><br><br><br><br><br><br><br><br><br><br><br><br><br><br><br><br><br><br><br><br><br><br><br><br><br><br><br><br><br><br><br><br><br><br><br><br><br><br><br><br><br><br><br><br><br><br><br><br><br><br><br><br><br><br><br><br><br><br><br><br><br><br><br><br><br><br><br><br><br><br><br><br><br><br><br><br><br><br><br><br><br><br><br><br><br><br><br><br><br><br><br><br><br><br><br><br><br><br><br><br><br><br><br><br><br><br><br><br><br><br><br><br><br><br><br><br><br><br><br><br><br><br><br><br><br><br><br><br><br><br><br><br><br><br><br><br><br><br><br><br><br><br><br><br><br><br><br><br><br><br><br><br><br><br><br><br><br><br><br><br><br><br><br><br><br><br><br><br><br><br><br><br><br><br><br><br><br><br><br><br><br><br><br><br><br><br><br><br><br><br><br><br><br><br><br><br><br><br><br><br><br><br><br><br><br><br><br><br><br><br><br><br><br><br><br><br><br><br><br><br><br><br><br><br><br><br><br><br><br><br><br><br><br><br><br><br><br><br><br><br><br><br><br><br><br><br><br><br><br><br><br><br><br><br><br><br><br><br><br><br><br><br><br><br><br><br><br><br><br><br><br><br><br><br><br><br><br><br><br><br><br><br><br><br><br><br><br><br><br><br><br><br><br><br><br><br><br><br><br><br><br><br><br><br><br><br><br><br><br><br><br><br><br><br><br><br><br><br><br><br><br><br><br><br><br><br><br><br><br><br><br><br><br><br><br><br><br><br><br><br><br><br><br><br><br><br><br><br><br><br><br><br><br><br><br><br><br><br><br><br><br><br><br><br><br><br><br><br><br><br><br><br><br><br><br><br><br><br><br><br><br><br><br><br><br><br><br><br><br><br><br><br><br><br><br><br><br><br><br><br><br><br><br><br><br><br><br><br><br><br><br><br><br><br><br><br><br><br><br><br><br><br><br><br><br><br><br><br><br><br><br><br><br><br><br><br><br><br><br><br><br><br><br><br><br><br><br><br><br><br><br><br><br><br><br><br><br><br><br><br><br><br><br><br><br><br><br><br><br><br><br><br><br><br><br><br><br><br><br><br><br><br><br><br><br><br><br><br><br><br><br><br><br><br><br><br><br><br><br><br><br><br><br><br><br><br><br><br><br><br><br><br><br><br><br><br><br><br><br><br><br><br><br><br><br><br><br><br><br><br><br><br><br><br><br><br><br><br><br><br><br><br><br><br><br><br><br><br><br><br><br><br><br><br><br><br><br><br><br><br><br><br><br><br><br><br><br><br><br><br><br><br><br><br><br><br><br><br><br><br><br><br><br><br><br><br><br><br><br><br><br><br><br><br><br><br><br><br><br><br><br><br><br><br><br><br><br><br><br><br><br><br><br><br><br><br><br><br><br><br><br><br><br><br><br><br><br><br><br><br><br><br><br><br><br><br><br><br><br><br><br><br><br><br><br><br><br><br><br><br><br><br><br><br><br><br><br><br><br><br><br><br><br><br><br><br><br><br><br><br><br><br><br><br><br><br><br><br><br><br><br><br><br><br><br><br><br><br><br><br><br><br><br><br><br><br><br><br><br><br><br><br><br><br><br><br><br><br><br><br><br><br><br><br><br><br><br><br><br><br><br><br><br><br><br><br><br><br><br><br><br><br><br><br><br><br><br><br><br><br><br><br><br><br><br><br><br><br><br><br><br><br><br><br><br><br><br><br><br><br><br><br><br><br><br><br><br><br><br><br><br><br><br><br><br><br><br><br><br><br><br><br><br><br><br><br><br><br><br><br><br><br><br><br><br><br><br><br><br><br><br><br><br><br><br><br><br><br><br><br><br><br><br><br><br><br><br><br><br><br><br><br><br><br><br><br><br><br><br><br><br><br><br><br><br><br><br><br><br><br><br><br><br><br><br><br><br><br><br><br><br><br><br><br><br><br><br><br><br><br><br><br><br><br><br><br><br><br><br><br><br><br><br><br><br><br><br><br><br><br><br><br><br><br><br><br><br><br><br><br><br><br><br><br><br><br><br><br><br><br><br><br><br><br><br><br><br><br><br><br><br><br><br><br><br><br><br><br><br><br><br><br><br><br><br><br><br><br><br><br><br><br><br><br><br><br><br><br><br><br><br><br><br><br><br><br><br><br><br><br><br><br><br><br><br><br><br><br><br><br><br><br><br><br><br><br><br><br><br><br><br><br><br><br><br><br><br><br><br><br><br><br><br><br><br><br><br><br><br><br><br><br><br><br><br><br><br><br><br><br><br><br><br><br><br><br><br><br><br><br><br><br><br><br><br><br><br><br><br><br><br><br><br><br><br><br><br><br><br><br><br><br><br><br><br><br><br><br><br><br><br><br><br><br><br><br><br><br><br><br><br><br><br><br><br><br><br><br><br><br><br><br><br><br><br><br><br><br><br><br><br><br><br><br><br><br><br><br><br><br><br><br><br><br><br><br><br><br><br><br><br><br><br><br><br><br><br><br><br><br><br><br><br><br><br><br><br><br><br><br><br><br><br><br><br><br><br><br><br><br><br><br><br><br><br><br><br><br><br><br><br><br><br><br><br><br><br><br><br><br><br><br><br><br><br><br><br><br><br><br><br>< |  |                         |                |                  |          |              |





### Expo Phase 2 OMF Contract Status

|  |  |                         |                |                  |                         |                                   |
|--|--|-------------------------|----------------|------------------|-------------------------|-----------------------------------|
| <b>Expo Phase 2</b><br><b>Contractor: Kiewitt Building Group</b><br><b>O&amp;M Facility</b>  | <b>Contract No.: XP8902-016</b><br><br><b>Status as of: 31-Dec-15</b>  |                         |                |                  |                         |                                   |
| <b>Progress/Work Completed:</b><br>See Page 6<br><br><b>Areas of Concern:</b><br>See Pages 4 and 5   | <b>Major Activities (In Progress):</b><br>See Page 5 and 6<br><br><b>Major Activities Next Period:</b><br>See Page 6 |                         |                |                  |                         |                                   |
|  |  | Original Contract Dates | Time Extension | Current Contract | Forecast                | Variance CDs                      |
|  | Substantial Completion   | 11/25/14                | 176            | 05/20/15         | 05/20/15                | 0                                 |
|  |  |                         |                |                  |                         |                                   |
|  |  |                         |                |                  |                         |                                   |
|  |  |                         |                |                  |                         |                                   |
|  |  |                         |                |                  |                         |                                   |
| <b><u>Schedule Summary:</u></b><br><br><br><br>Date of Award: 05/03/13<br>Limited Notice to Proceed: 06/03/13<br>Original Contract Duration: 540<br>Current Contract Duration: 540<br>Elapsed Time from NTP: 942 | <b><u>Cost Summary:</u></b>  |                         |                |                  |                         | <b>\$ In 000's</b>                |
|  |  |                         |                |                  | <b>Baseline Project</b> | <b>Betterments/ Modifications</b> |
|  | 1. Award Value:  |                         |                |                  | 99,930.56               |                                   |
|  | 2. Executed Modifications:   |                         |                |                  |                         | 475.60                            |
|  | 3. Approved Change Orders:   |                         |                |                  | 3,933.86                | -                                 |
|  | 4. Current Contract Value (1 + 2 + 3):   |                         |                |                  | 103,864.42              | 475.60                            |
|  | 5. Pending Changes:  |                         |                |                  | 166.56                  | 98.62                             |
|  | 6. Incurred Cost:  |                         |                |                  | 102,225.60              | 35.85                             |



### Expo Phase 2 Bikeway Contract Status

|   |  |                         |                |                  |          |              |
|---|--|-------------------------|----------------|------------------|----------|--------------|
| <b>Expo Phase 2</b><br><b>Contractor: Skanska/Rados</b><br><b>Bikeway Project</b>   | <b>Contract No.: XP8903-01</b>   |                         |                |                  |          |              |
|   | <b>Status as of: 31-Dec-15</b>   |                         |                |                  |          |              |
| <b>Progress/Work Completed:</b><br>See Page 6<br><br><b>Areas of Concern:</b><br>See Pages 4 and 5  | <b>Major Activities (In Progress):</b><br>See Page 5 and 6<br><br><b>Major Activities Next Period:</b><br>See Page 6 |                         |                |                  |          |              |
|   |  | Original Contract Dates | Time Extension | Current Contract | Forecast | Variance CDs |
|   | Substantial Completion   | 07/10/15                | 0              | 07/10/15         | 07/10/15 | 0            |
|   |  |                         |                |                  |          |              |
|   |  |                         |                |                  |          |              |
|   |  |                         |                |                  |          |              |
|   |  |                         |                |                  |          |              |
| <b><u>Schedule Summary:</u></b><br><br><br><br><br><br><br><br><br><br><br><br><br><br><br><br><br><br><br><br><br><br><br><br><br><br><br><br><br><br><br><br><br><br><br><br><br><br><br><br><br><br><br><br><br><br><br><br><br><br><br><br><br><br><br><br><br><br><br><br><br><br><br><br><br><br><br><br><br><br><br><br><br><br><br><br><br><br><br><br><br><br><br><br><br><br><br><br><br><br><br><br><br><br><br><br><br><br><br><br><br><br><br><br><br><br><br><br><br><br><br><br><br><br><br><br><br><br><br><br><br><br><br><br><br><br><br><br><br><br><br><br><br><br><br><br><br><br><br><br><br><br><br><br><br><br><br><br><br><br><br><br><br><br><br><br><br><br><br><br><br><br><br><br><br><br><br><br><br><br><br><br><br><br><br><br><br><br><br><br><br><br><br><br><br><br><br><br><br><br><br><br><br><br><br><br><br><br><br><br><br><br><br><br><br><br><br><br><br><br><br><br><br><br><br><br><br><br><br><br><br><br><br><br><br><br><br><br><br><br><br><br><br><br><br><br><br><br><br><br><br><br><br><br><br><br><br><br><br><br><br><br><br><br><br><br><br><br><br><br><br><br><br><br><br><br><br><br><br><br><br><br><br><br><br><br><br><br><br><br><br><br><br><br><br><br><br><br><br><br><br><br><br><br><br><br><br><br><br><br><br><br><br><br><br><br><br><br><br><br><br><br><br><br><br><br><br><br><br><br><br><br><br><br><br><br><br><br><br><br><br><br><br><br><br><br><br><br><br><br><br><br><br><br><br><br><br><br><br><br><br><br><br><br><br><br><br><br><br><br><br><br><br><br><br><br><br><br><br><br><br><br><br><br><br><br><br><br><br><br><br><br><br><br><br><br><br><br><br><br><br><br><br><br><br><br><br><br><br><br><br><br><br><br><br><br><br><br><br><br><br><br><br><br><br><br><br><br><br><br><br><br><br><br><br><br><br><br><br><br><br><br><br><br><br><br><br><br><br><br><br><br><br><br><br><br><br><br><br><br><br><br><br><br><br><br><br><br><br><br><br><br><br><br><br><br><br><br><br><br><br><br><br><br><br><br><br><br><br><br><br><br><br><br><br><br><br><br><br><br><br><br><br><br><br><br><br><br><br><br><br><br><br><br><br><br><br><br><br><br><br><br><br><br><br><br><br><br><br><br><br><br><br><br><br><br><br><br><br><br><br><br><br><br><br><br><br><br><br><br><br><br><br><br><br><br><br><br><br><br><br><br><br><br><br><br><br><br><br><br><br><br><br><br><br><br><br><br><br><br><br><br><br><br><br><br><br><br><br><br><br><br><br><br><br><br><br><br><br><br><br><br><br><br><br><br><br><br><br><br><br><br><br><br><br><br><br><br><br><br><br><br><br><br><br><br><br><br><br><br><br><br><br><br><br><br><br><br><br><br><br><br><br><br><br><br><br><br><br><br><br><br><br><br><br><br><br><br><br><br><br><br><br><br><br><br><br><br><br><br><br><br><br><br><br><br><br><br><br><br><br><br><br><br><br><br><br><br><br><br><br><br><br><br><br><br><br><br><br><br><br><br><br><br><br><br><br><br><br><br><br><br><br><br><br><br><br><br><br><br><br><br><br><br><br><br><br><br><br><br><br><br><br><br><br><br><br><br><br><br><br><br><br><br><br><br><br><br><br><br><br><br><br><br><br><br><br><br><br><br><br><br><br><br><br><br><br><br><br><br><br><br><br><br><br><br><br><br><br><br><br><br><br><br><br><br><br><br><br><br><br><br><br><br><br><br><br><br><br><br><br><br><br><br><br><br><br><br><br><br><br><br><br><br><br><br><br><br><br><br><br><br><br><br><br><br><br><br><br><br><br><br><br><br><br><br><br><br><br><br><br><br><br><br><br><br><br><br><br><br><br><br><br><br><br><br><br><br><br><br><br><br><br><br><br><br><br><br><br><br><br><br><br><br><br><br><br><br><br><br><br><br><br><br><br><br><br><br><br><br><br><br><br><br><br><br><br><br><br><br><br><br><br><br><br><br><br><br><br><br><br><br><br><br><br><br><br><br><br><br><br><br><br><br><br><br><br><br><br><br><br><br><br><br><br><br><br><br><br><br><br><br><br><br><br><br><br><br><br><br><br><br><br><br><br><br><br><br><br><br><br><br><br><br><br><br><br><br><br><br><br><br><br><br><br><br><br><br><br><br><br><br><br><br><br><br><br><br><br><br><br><br><br><br><br><br><br><br><br><br><br><br><br><br><br><br><br><br><br><br><br><br><br><br><br><br><br><br><br><br><br><br><br><br><br><br><br><br><br><br><br><br><br><br><br><br><br><br><br><br><br><br><br><br><br><br><br><br><br><br><br><br><br><br><br><br><br><br><br><br><br><br><br><br><br><br><br><br><br><br><br><br><br><br><br><br><br><br><br><br><br><br><br><br><br><br><br><br><br><br><br><br><br><br><br><br><br><br><br><br><br><br><br><br><br><br><br><br><br><br><br><br><br><br><br><br><br><br><br><br><br><br><br><br><br><br><br><br><br><br><br><br><br><br><br><br><br><br><br><br><br><br><br><br><br><br><br><br><br><br><br><br><br><br><br><br><br><br><br><br><br><br><br><br><br><br><br><br><br><br><br><br><br><br><br><br><br><br><br><br><br><br><br><br><br><br><br><br><br><br><br><br><br><br><br><br><br><br><br><br><br><br><br><br><br><br><br><br><br><br><br><br><br><br><br><br><br><br><br><br><br><br><br><br><br><br><br><br><br><br><br><br><br><br><br><br><br><br><br><br><br><br><br><br><br><br><br><br><br><br><br><br><br><br><br><br><br><br><br><br><br><br><br><br><br><br><br><br><br><br><br><br><br><br><br><br><br><br><br><br><br><br><br><br><br><br><br><br><br><br><br><br><br><br><br><br><br><br><br><br><br><br><br><br><br><br><br><br><br><br><br><br><br><br><br><br><br><br><br><br><br><br><br><br><br><br><br><br><br><br><br><br><br><br><br><br><br><br><br><br><br><br><br><br><br><br><br><br><br><br><br><br><br><br><br><br><br><br><br><br><br><br><br><br><br><br><br><br><br><br><br><br><br><br><br><br><br><br><br><br><br><br><br><br><br><br><br><br><br><br><br><br><br><br><br><br><br><br><br><br><br><br><br><br><br><br><br><br><br><br><br><br><br><br><br><br><br><br><br><br><br><br><br><br><br><br><br><br><br><br><br><br><br><br><br><br><br><br><br><br><br><br><br><br><br><br><br><br><br><br><br><br><br><br><br><br><br><br><br><br><br><br><br><br><br><br><br><br><br><br><br><br><br><br><br><br><br><br><br><br><br><br><br><br><br><br><br><br><br><br><br><br><br><br><br><br><br><br><br><br><br><br><br><br><br><br><br><br><br><br><br><br><br><br><br><br><br><br><br><br><br><br><br><br><br><br><br><br><br><br><br><br><br><br><br><br><br><br><br><br><br><br><br><br><br><br><br><br><br><br><br><br><br><br><br><br><br><br><br><br><br><br><br><br><br><br><br><br><br><br><br><br><br><br><br><br><br><br><br><br><br><br><br><br><br><br><br><br><br><br><br><br><br><br><br><br><br><br><br><br><br><br><br><br><br><br><br><br><br><br><br><br><br><br><br><br><br><br><br><br><br><br><br><br><br><br><br><br><br><br><br><br><br><br><br><br><br><br><br><br><br><br><br><br><br><br><br><br><br><br><br><br><br><br><br><br><br><br><br><br><br><br><br><br><br><br><br><br><br><br><br><br><br><br><br><br><br><br><br><br><br><br><br><br><br><br><br><br><br><br><br><br><br><br><br><br><br><br><br><br><br><br><br><br><br><br><br><br><br><br><br><br><br><br><br><br><br><br><br><br><br><br><br><br><br><br><br><br><br><br><br><br><br><br><br><br><br><br><br><br><br><br><br><br><br><br><br><br><br><br><br><br><br><br><br><br><br><br><br><br><br><br><br><br><br><br><br><br><br><br><br><br><br><br><br><br><br><br><br><br><br><br><br><br><br><br><br><br><br><br><br><br><br><br><br><br><br><br><br><br><br><br><br><br><br><br><br><br><br><br><br><br><br><br><br><br><br><br><br><br><br><br><br><br><br><br><br><br><br><br><br><br><br><br><br><br><br><br><br><br><br><br><br><br><br><br><br><br><br><br><br><br><br><br><br><br><br><br><br><br><br><br><br><br><br><br><br><br><br><br><br><br><br><br><br><br><br><br><br><br><br><br><br><br><br><br><br><br><br><br><br><br><br><br><br><br><br><br><br><br><br><br><br><br><br><br><br><br><br><br><br><br><br><br><br><br><br><br><br><br><br><br><br><br><br><br><br><br><br><br><br><br><br><br><br><br><br><br><br><br><br><br><br><br><br><br><br><br><br><br><br><br><br><br><br><br><br><br><br><br><br><br><br><br><br><br><br><br><br><br><br><br><br><br><br><br><br><br><br><br><br><br><br><br><br><br><br><br><br><br><br><br><br><br><br><br><br><br><br><br><br><br><br><br><br><br><br><br><br><br><br><br><br><br><br><br><br><br><br><br><br><br><br><br><br><br><br><br><br><br><br><br><br><br><br><br><br><br><br><br><br><br><br><br><br><br><br><br><br><br><br><br><br><br><br><br><br><br><br><br><br><br><br><br><br><br><br><br><br><br><br><br><br><br><br><br><br><br><br><br><br><br><br><br><br><br><br><br><br><br><br><br><br><br><br><br><br><br><br><br><br><br><br><br><br><br><br><br><br><br><br><br><br><br><br><br><br><br><br><br><br><br><br><br><br><br><br><br><br><br><br><br><br><br><br><br><br><br><br><br><br><br><br><br><br><br><br><br><br><br><br><br><br><br><br><br><br><br><br><br><br><br><br><br><br><br><br><br><br><br><br><br><br><br><br><br><br><br><br><br><br><br><br><br><br><br><br><br><br><br><br><br><br><br><br><br><br><br><br><br><br><br><br><br><br><br><br><br><br><br><br><br><br><br><br><br><br><br><br><br><br><br><br><br><br><br><br><br><br><br><br><br><br><br><br><br><br><br><br><br><br><br><br><br><br><br><br><br><br><br><br><br><br><br><br><br><br><br><br><br><br><br> |  |                         |                |                  |          |              |