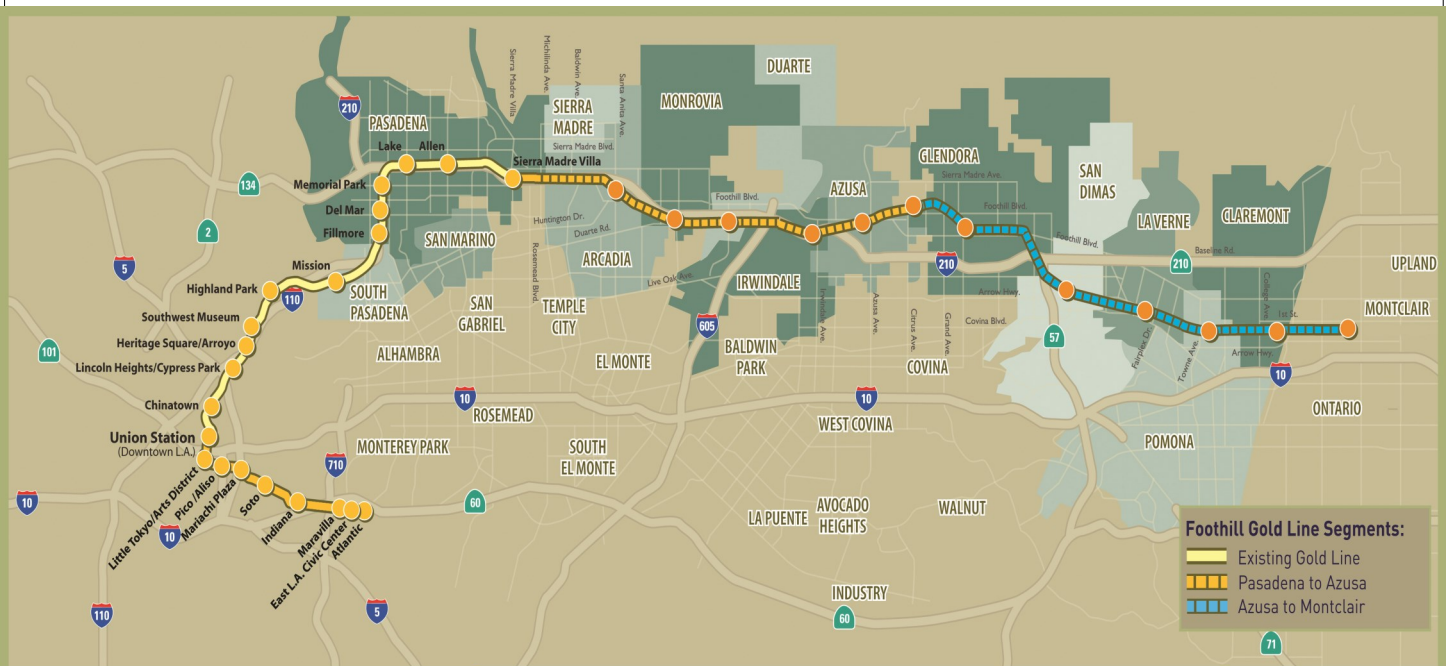


Metro Gold Line

Foothill Extension Project

Monthly Project Status Report

January 2015



Foothill Gold Line

Connecting Los Angeles, the San Gabriel Valley and Inland Empire



TABLE OF CONTENTS

PHASE 2 FOOTHILL EXTENSION PROJECT STATUS

| | |
|---|-----------|
| Project Description | 3 |
| Pasadena to Azusa Segment | 4 |
| Management Issues | 4 |
| Key Activities Completed This Period | 5 |
| Key Future Activities | 6 |
| Critical Path Schedule | 7 |
| Critical Path Float Trend | 8 |
| Alignment Contract Status | 9 |
| Alignment Construction Progress This Period | 11 |
| Facility Construction Progress This Period | 12 |
| Alignment Construction Progress Next Period | 13 |
| Facility Construction Progress Next Period | 14 |
| Alignment Construction Images | 15 |
| Alignment Change Management Log | 17 |
| Parking Facilities and Enhancements Contract Status | 22 |
| Parking Facilities and Enhancements Construction Images | 24 |
| Parking Facilities and Enhancements Change Management Log | 26 |
| Azusa to Montclair Segment | 28 |
| Financial Status | 29 |



FOOTHILL EXTENSION PROJECT DESCRIPTION

The Authority's mandate is to plan, design and construct a 37-mile light rail link between Downtown Los Angeles and Claremont. In addition, the San Bernardino Associated Governments (SANBAG) has requested that planning be extended one mile inside San Bernardino County to the City of Montclair and then possibly to Ontario Airport.

The Metro Gold Line Phase 2 (Foothill Extension) corridor includes the cities of Pasadena, Arcadia, Monrovia, Duarte, Irwindale, Azusa, Glendora, San Dimas, La Verne, Pomona, Claremont, and Montclair; and the counties of Los Angeles and San Bernardino (Figure 1). The Foothill Extension is estimated to cost approximately \$1.950 billion.

The Foothill Extension will be built in two segments to align effectively with projected cash flows and financial capacity constraints. The first segment is defined from the Sierra Madre Villa Station in Pasadena to the city of Azusa. Revenue service along this segment is planned for the year 2016. The second segment would include an extension from Azusa to the City of Montclair with revenue service projected for the year 2023 and the third segment, if applicable, will be comprised of an extension from Montclair to the Ontario Airport.

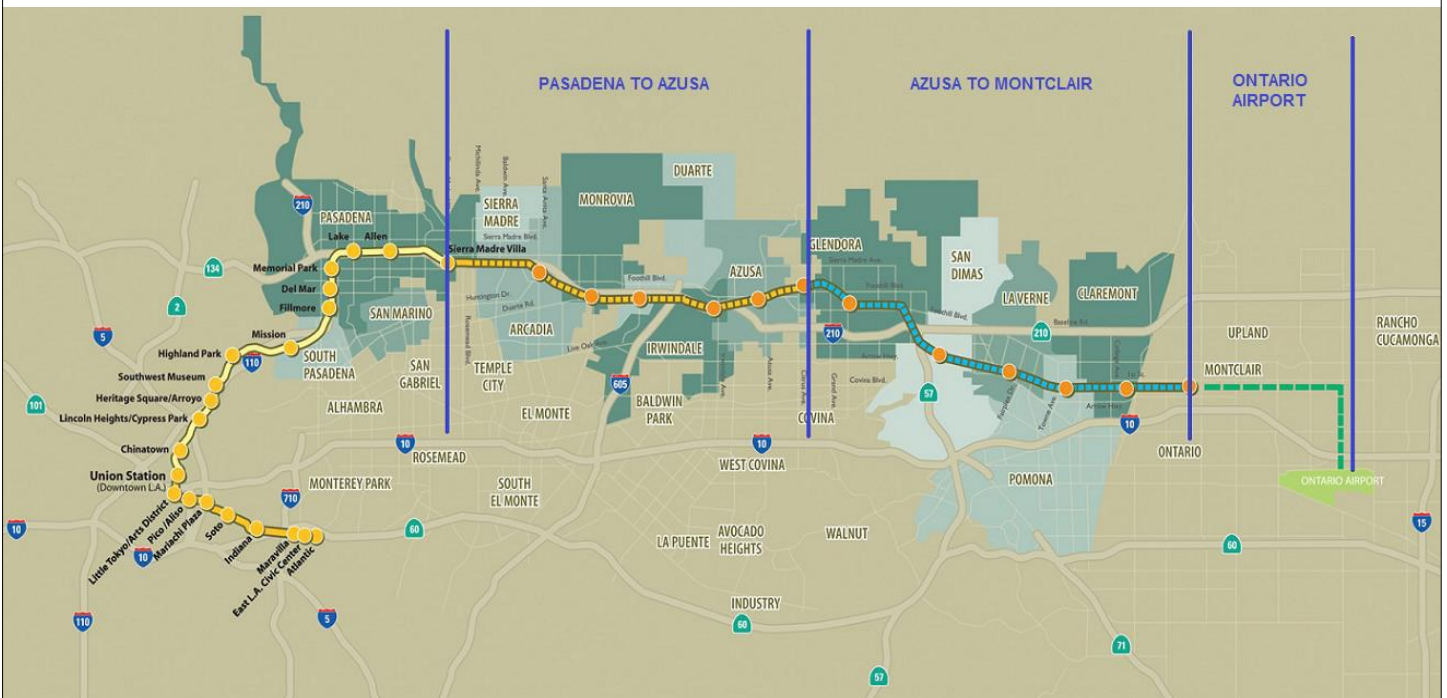


Figure 1: Metro Gold Line Foothill Extension Alignment



Pasadena to Azusa Segment

MANAGEMENT ISSUES

Metro Betterments

During the design process Metro staff have identified betterments that Metro staff would like to add to the project. Metro has provided a final disposition on all but a few items. Authority staff continues to work with Metro staff to resolve the remaining items.

TPSS Commissioning

The traction power substations (TPSS) provide equipment to transform utility power required for Light Rail Vehicle (LRV) propulsion, and then distribute that power to the LRVs via the overhead wires. Metro is responsible for purchasing the traction power substations. All TPSS have been delivered and set to date, however these deliveries were all behind schedule which proposed a potential to impact the project schedule. Authority staff coordinated with Metro and FTC to ensure minimal impact to the project, however the energization process will need to be finalized before schedule concerns are eliminated.



KEY ACTIVITIES COMPLETED THIS PERIOD

FTC reports the following SBE statistics for the month of September:

- Current SBE commitment: \$59,500,000
- SBE percent committed versus value of Project: 18.39%
- Overall Authority Project SBE goal: 16%

FTC reports the following approximate safety statistics to date:

- 1,815,911 total work hours performed by FTC, Mass Electric, and Subcontractors
- 13 recordable injuries reported to date
- 4 lost time injuries reported to date

Webcor reports the following DBE statistics for the month of September:

- Current DBE commitment: \$1,121,250
- DBE percent committed versus value of Project: 3.52%
- Overall Authority Project DBE goal: 2.3%

Webcor reports the following approximate safety statistics to date:

- 138,347 total work hours performed by Webcor and Subcontractors
- 1 recordable injuries reported to date
- 0 lost time injuries reported to date

The Irwindale and Michillinda Traction Power Supply Substations were energized (6 remaining)

Continued placement of art and architectural elements at all stations

Continued track distressing throughout the alignment

Continued trackwork at the Gold Line Operations Campus (Campus)

Continued OCS and Site Lighting Pole erection at the Campus and throughout the Alignment

Continued OCS wire runs in Segments 1, 2, 3, and 4

Continued installation of train control cases/bungalows and associated equipment

Continued systems integration testing

Continued installation of Arcadia, Monrovia, and Azusa-Citrus parking structure elevators

Began demolition of existing parking lot at Duarte parking lot site

Completed first level deck pour of the Irwindale parking structure

Completed final deck pour at Azusa-Citrus parking structure

Authority continued reviewing design submittals for Duarte, Azusa-Citrus and Irwindale structures



KEY FUTURE ACTIVITIES

Continue discussions with corridor cities regarding the project

Continue management of the Alignment contract, which will include oversight of construction activities and preparation for start-up activities

Continue to meet with Intermodal Parking Facilities and Enhancements Project contractor, Webcor Builders regarding design and construction of the Project

Complete construction of art and architectural elements at all stations

Complete OCS installation

Complete installation of train control system

Complete installation of communications system

Complete system integration tests

Finalize design for the following Parking Facilities: Azusa Citrus, Irwindale, and Duarte

Energize Baldwin, St. Joseph and Los Robles Traction Power Supply Substations

Finalize the following property acquisitions:

- **Arcadia:**

1. Parcel 13010/1311 (Indiana St.) – To be vacated by the City of Arcadia.
2. Parcel 1401a (Huntington Dr. Aerial Easement) – To be conveyed by the City of Arcadia.
3. Parcel 1401b (Huntington Dr. Bridge Abutments) – To be conveyed by the City of Arcadia.
4. Parcel 1403 (99 N. Second Av.) – Appraisal underway.
5. Parcel 6009 (Huntington Dr. Bridge Abutments) – To be conveyed by the City of Arcadia.
6. Parcel 6010 (Huntington Dr. Bridge Abutments) – To be conveyed by the City of Arcadia.
7. Parcel 6011 (Huntington Dr. Bridge Abutments) – To be conveyed by the City of Arcadia.

- **Monrovia:**

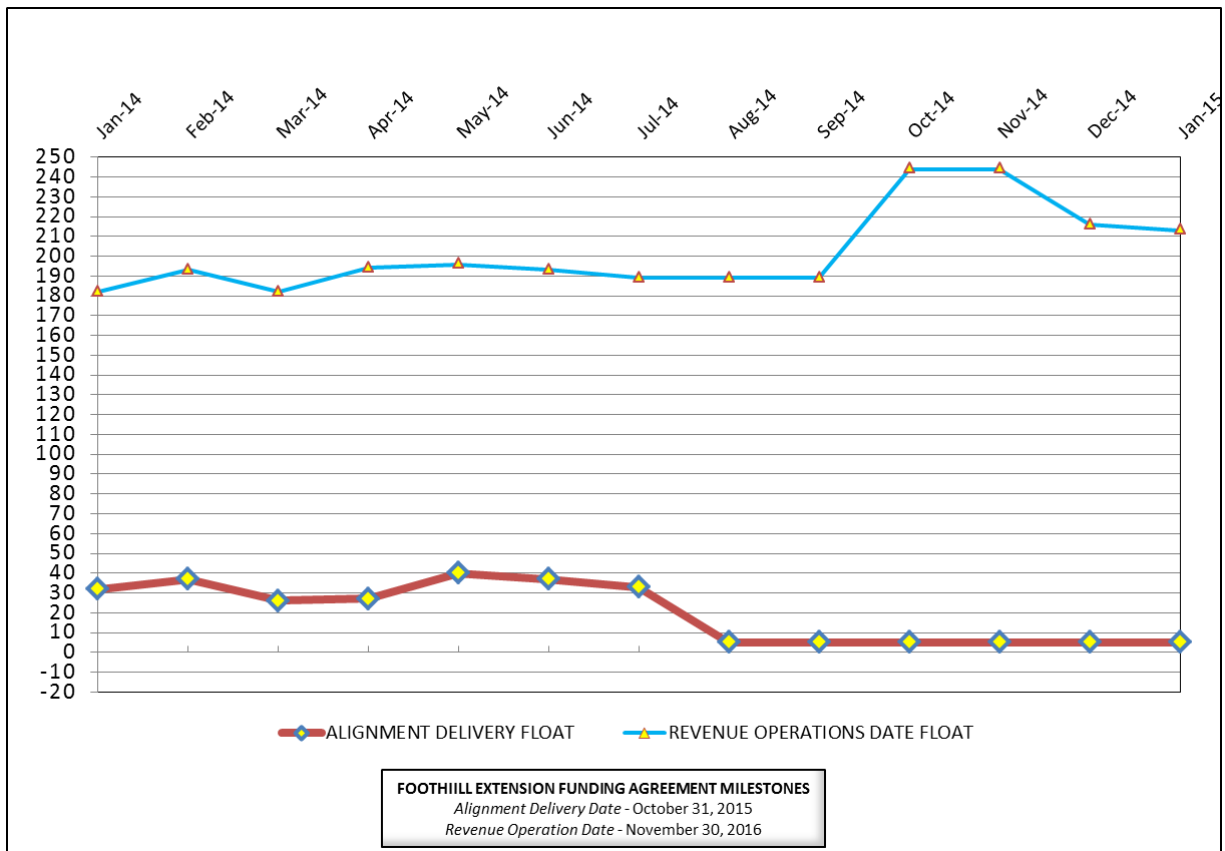
1. Parcel 1601 (Encino Av.) – To be conveyed by the City of Monrovia.
2. Parcel 1903 (Monrovia Station) – To be conveyed by the City of Monrovia.
3. Parcel 21A12 (3M Parking Lot) – Waiting for legal description/as-builts.
4. Parcel 21A23 (Shamrock Trapezoid) – To be conveyed by the City of Monrovia.

- **Azusa:**

1. Parcel 3501 (1220 W. Foothill Blvd.) – Appraisal underway.



CRITICAL PATH FLOAT TREND



Revenue Operations Date Critical Path - (213 Calendar Days)

The critical path continues through the Rail Operations Center (ROC) upgrade procurement and delivery of the SCADA consoles. Upon the completion of delivery, the consoles and displays will be installed and tested. The critical path continues through Pre-Revenue Operations, which is expected to be completed by March 15, 2016. The Revenue Operations Date (ROD) is projected to be complete by May 1, 2016, which is seven (7) months ahead of the Funding Agreement Milestone date of November 30, 2016. However, Metro is forecasting a March 2016 Revenue Operations Date.

Alignment Delivery Date Critical Path - (5 Calendar Days / 4 Work Days)

Webcor has started acceleration of the Irwindale Parking Facility and as a result, the work on this path has been removed from the critical path. FTC has revised the fiber optic cable installation sequence and is utilizing one (1) installation crew instead of two as previously planned. As a result, the fiber optic installation is now the primary critical path. Upon the completion of the fiber optic installation and testing, the critical path continues through systems integration testing and upon completion, FTC will achieve Substantial Completion and turn-over to Metro for System Start-up Testing.

The elements of work which are near critical include, Baldwin TPSS commissioning and testing, train control signal cable installation. Other elements of construction work, which are in progress and near critical are Irwindale Station mechanical, electrical, and finish installations; Segments 2 & 4 OCS installations. Other Facility work, which is near critical includes Citrus Parking Structure and the Maintenance & Operations Campus.

Project Float

The project float for the Revenue Operations Date is 213 days. The critical activities on this path are on schedule to meet the Target Revenue Operations Date of November 2016. The Alignment Delivery Date float value remained unchanged this period. The Alignment Delivery Date is currently 5 days ahead the October 31, 2015 deadline.



Description: Alignment Design / Build

Status: January 15, 2015

Contract No.: C1135

Contractor: Foothill Transit Constructors (Kiewit-Parsons J.V.)

Progress Completed This Period

Design

- Submit - Integrated Test Plan
- Submit AFC Design - M&O Communications Book of Plans
- Submit AFC Design - Citrus Fire Alarm Book of Plans
- Submit AFC Design - S.G River Bridge CCTV
- Submit AFC Design - Train Control Group 'C' Revisions
- Submit AFC Design - Pedestrian Swing Gates
- Submit AFC Design - Business Center Drainage

Construction

- See "Construction Progress This Period"

Activities Planned Next Period

Design

- Submit AFC Design - Citrus Communications Book of Plans
- Submit AFC Design - Duarte Communications Book of Plans
- Submit AFC Design - Monrovia Communications Book of Plans
- Submit AFC Design - Alameda Communications Book of Plans
- Submit AFC Design - Irwindale Communications Book of Plans
- Submit AFC Design - Parking Struc. Communications Book of Plans
- Submit AFC Design - Irwindale Ramp

Construction

- See "Construction Progress Next Period"

Areas of Concern

- **Irwindale Parking Communications** - The C1150 Design-Build Contractor is currently behind schedule to complete the structure by March 2015. As a result, the C1135 Design-Build Contractor will potentially be delayed accesses to the facility to begin the communications installation work, which will have an impact on the completion of Phase 1 systems integration testing. The Authority will evaluate the C1150 Design-Build Contractor's mitigation plan to recover lost time due to SCE shoring and pump station re-design delays. After evaluation of the plan, the Authority will review potential options to minimize the potential delay. At this time, the C1150 Design-Build Contractor has accelerated the Irwindale parking structure work and is on target for granting access before May 2015.

Areas of Concern (Continued)

-



Description: Alignment Design / Build

Status: January 15, 2015

Contract No.: C1135

Contractor: Foothill Transit Constructors (Kiewit-Parsons J.V.)

Cost Summary:

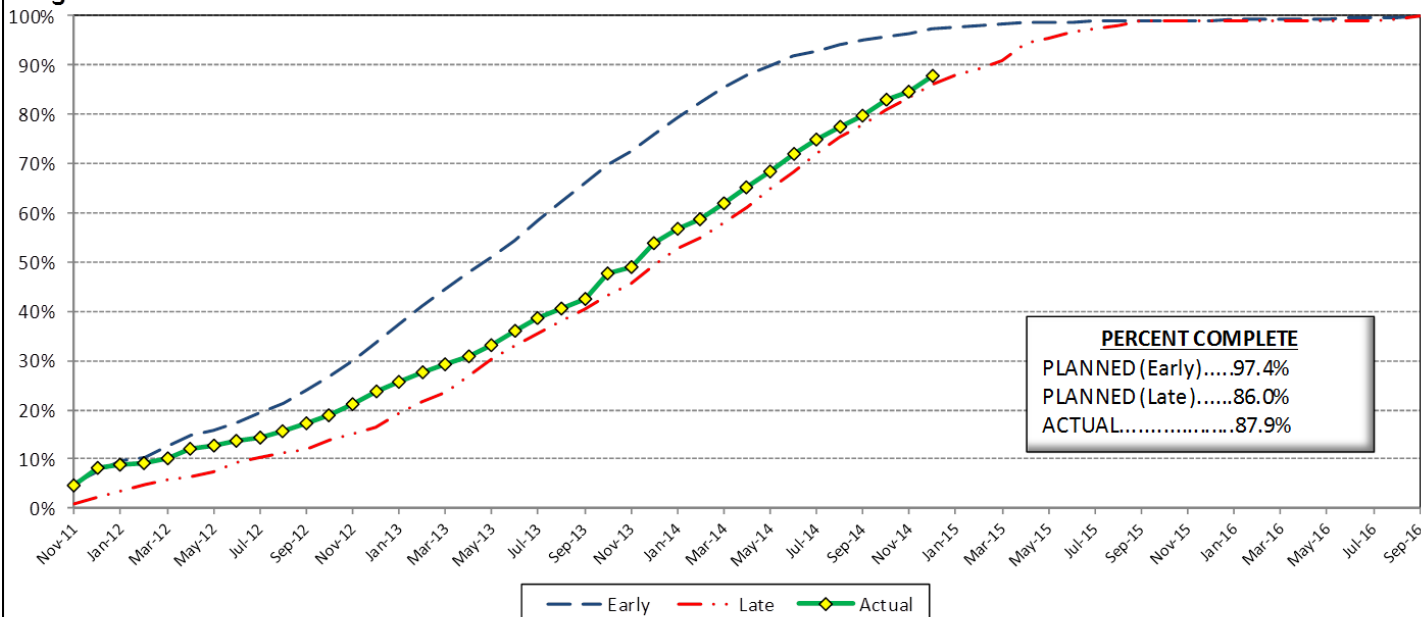
| | Million(s) |
|--------------------------------------|------------|
| CONTRACT | |
| Contract Award Value: | 485.9 |
| Executed Change Orders: | 17.3 |
| Current Contract Value: | 503.1 |
| Potential Change Orders: | 2.1 |
| Current Forecast: | 505.2 |
| Earned Value/Actual Cost | 428.2 |
| AUTHORIZATION FOR EXPENDITURE | |
| Budget | 514.5 |
| Commitment | 503.1 |
| Balance | 9.3 |

Cost Assessment:

This period the Contract forecast increased \$267 Thousand. The major increase was due to the following: CO 129 - *Business Center TPSS Drainage*, and PCO-095 - *M&O Paint Light Poles & Fixtures*. The overall increase to the cost forecast was offset due to reductions in the final negotiated price of CO 125 - *M&O Interior Wall Revisions*, and CO 131 - *Eliminate 'Train Coming' Signs*.

The Design-Build Contractor has earned \$428.2 Million and is currently 87.9% complete. The progress is currently 9.4% behind the early planned curve, which is due to Segment 2 & 4 OCS, and Segment 1, 2, 4 train control installation progress.

Progress Curve



Schedule Summary:

| | |
|------------------------------------|---------------------|
| Contract Award: | 07/27/11 |
| Interim Notice to Proceed (INTP) : | 11/03/11 |
| Original Contract Duration: | 1,780 Calendar Days |
| Current Contract Duration: | 1,780 Calendar Days |
| Elapsed Time from NTP: | 1,169 Calendar Days |

Contract Milestones

| Milestones | Description | Original Contract | Current Contract | Forecast | Variance |
|------------|----------------------------|-------------------|------------------|--------------|----------|
| 1 | Substantial Completion | 09/23/15 | 09/23/15 | 10/26/15 | (33) |
| 2 | Punchlist Complete | 06/19/16 | 06/19/16 | 07/22/16 | (33) |
| 3 | Final Completion | 09/17/16 | 09/17/16 | 10/20/16 | (33) |
| 4 | Access - IFS Br. | 12/15/12 | 12/15/12 | 12/15/2012 A | 0 |
| 5 | Test Track Complete | 03/27/15 | 03/27/15 | 04/26/15 | (30) |
| 6 | Colorado Br. Demo Complete | 02/01/12 | 02/01/12 | 6/15/2012 A | (135) |

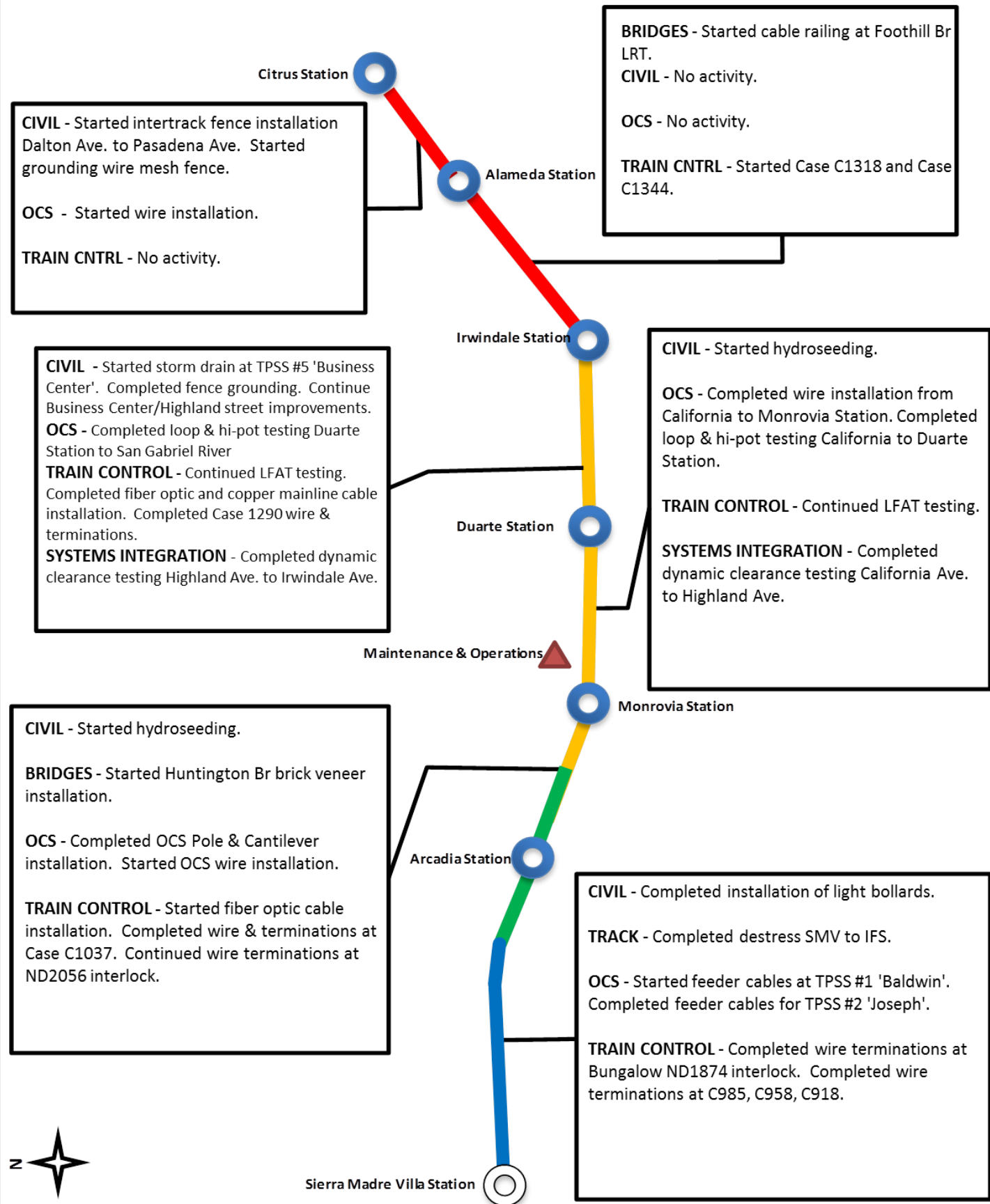
Schedule Assessment:

With the progress continuing to trend at the rate of the late progress curve, activities in all Segments continue to approach near critical. The Design-Build Contractor continues to meet the requisite use of resources in order to meet the critical elements of the schedule. At this time, the primary activities which are critical or near critical by Segment are as follows: Segment 1 - Train Control Installation & TPSS commissioning, Segment 2 - OCS Installation, Segment 3 - Duarte Station mechanical/electrical & finishes, Segment 4 - OCS Installation, and Inwindale Station mechanical/electrical & finishes. Maintenance & Operations Facility - train control installation & testing, OCS Installation, Main Building Finishes, Car Wash Building.

The Test Track Completion is forecast to be available on April 26, 2015, which is 30 days behind the target date.



ALIGNMENT CONSTRUCTION PROGRESS THIS PERIOD





FACILITY CONSTRUCTION PROGRESS THIS PERIOD

Citrus Ave Station

STATION - Continued communications bungalow wire terminations.
PARKING - Completed installation of stair No.1 and elevator hoist way structural steel No.1. Continued barrier rail concrete. Started installation of CMU walls for elevator and electrical rooms. Started Level 1 plumbing.

STATION - Continued canopy metal roofing installation. Continued electrical /communications bungalow wire installation & terminations. Continued platform paver installation.
PARKING - No activity.

Alameda Station

STATION - Continued canopy metal roofing installation. Continued wire installation & terminations.
PARKING - Completed MSE wall and soil nail wall. Started parking structure foundations and columns.

Irwindale Station

STATION - Continued installation communications equipment and terminations. Completed platform and walkway ramp lighting. Completed electrical wiring. Completed artwork column installations.
PARKING - No activity.

CIVIL - Started installation of storm water detention system. Started Wall 'A' fence installation.
TRACK - Completed installation of Yard Lead 1 & 2 turnouts. Completed car wash lead track installation.
STRUCTURES - *M&O Building* - started interior doors & glazing. Started bi-fold door installation. Continued drywall installation. Continued exterior metal panels. Continued car hoist installation. Continued Blow Down and Wheel Truing Steel installation. Continued elevators. *Car Wash* - Completed exterior metal panels, Continued installation of car wash equipment. Started roof installation. *Cleaning Platform* - Started glazing and communications wiring. *Material Storage* - Started roll-up doors. *MOW Building* - Completed roll-up doors. *Fire Tank* - completed foundation installation.
OCS - Started OCS wire installations.
TRAIN CONTROL - Continued wire terminations at South East bungalow. Continued track circuits, yard signals and Xing gates.

Duarte Station

STATION - Completed canopy lighting installation. Continued communications installation and wire terminations.
PARKING - Continued communications equipment and wire installation. Completed elevator steel hoist way painting. Completed hoist way glazing. Started elevator installation elevator equipment and platform. Started installation of electrical transformer.

Maintenance & Operations

Monrovia Station

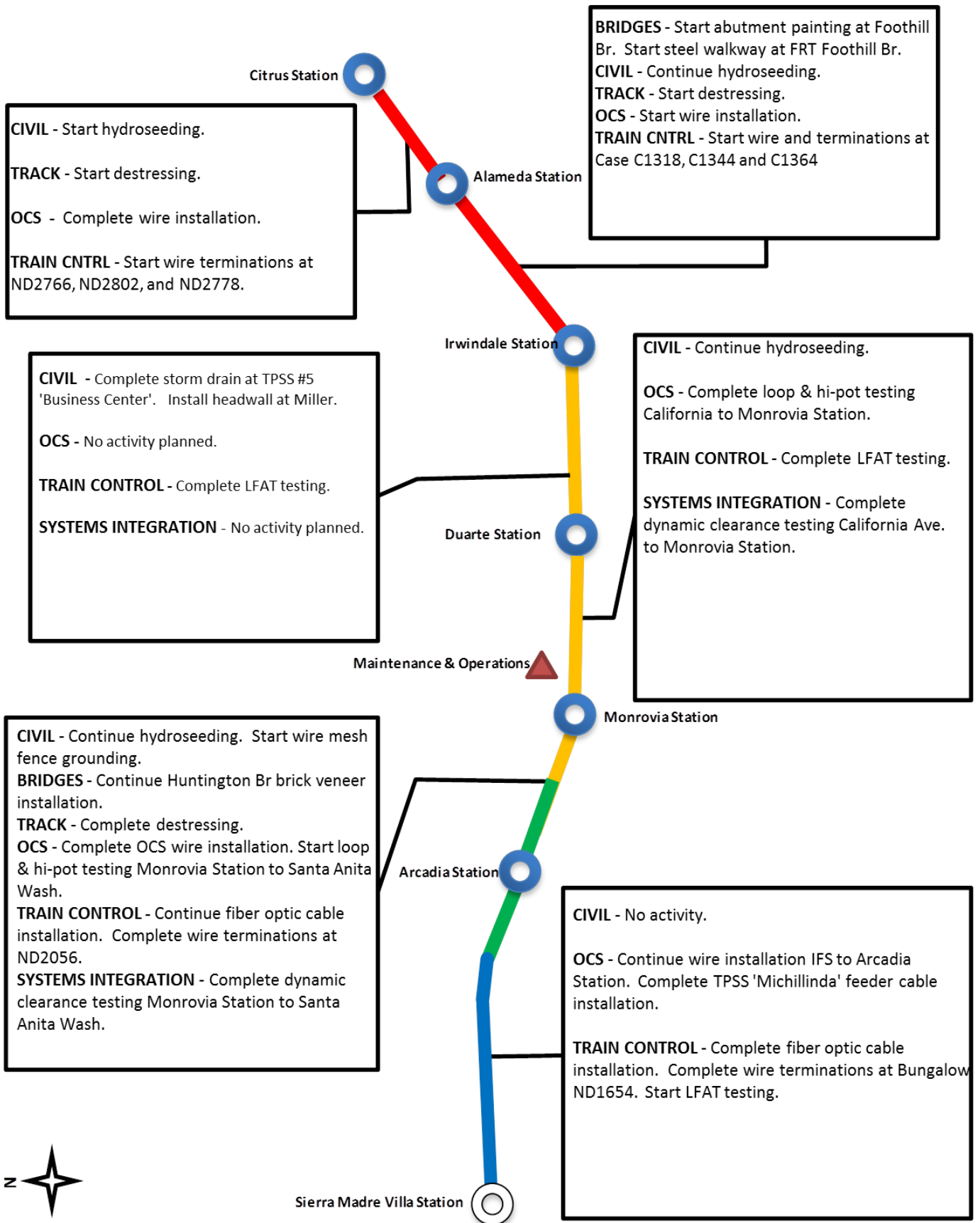
STATION - Continued communications wire terminations.
PARKING - Continued communications wiring and installations. Completed hoistway glazing installation. Continued installation of elevator equipment and cabs.

Arcadia Station



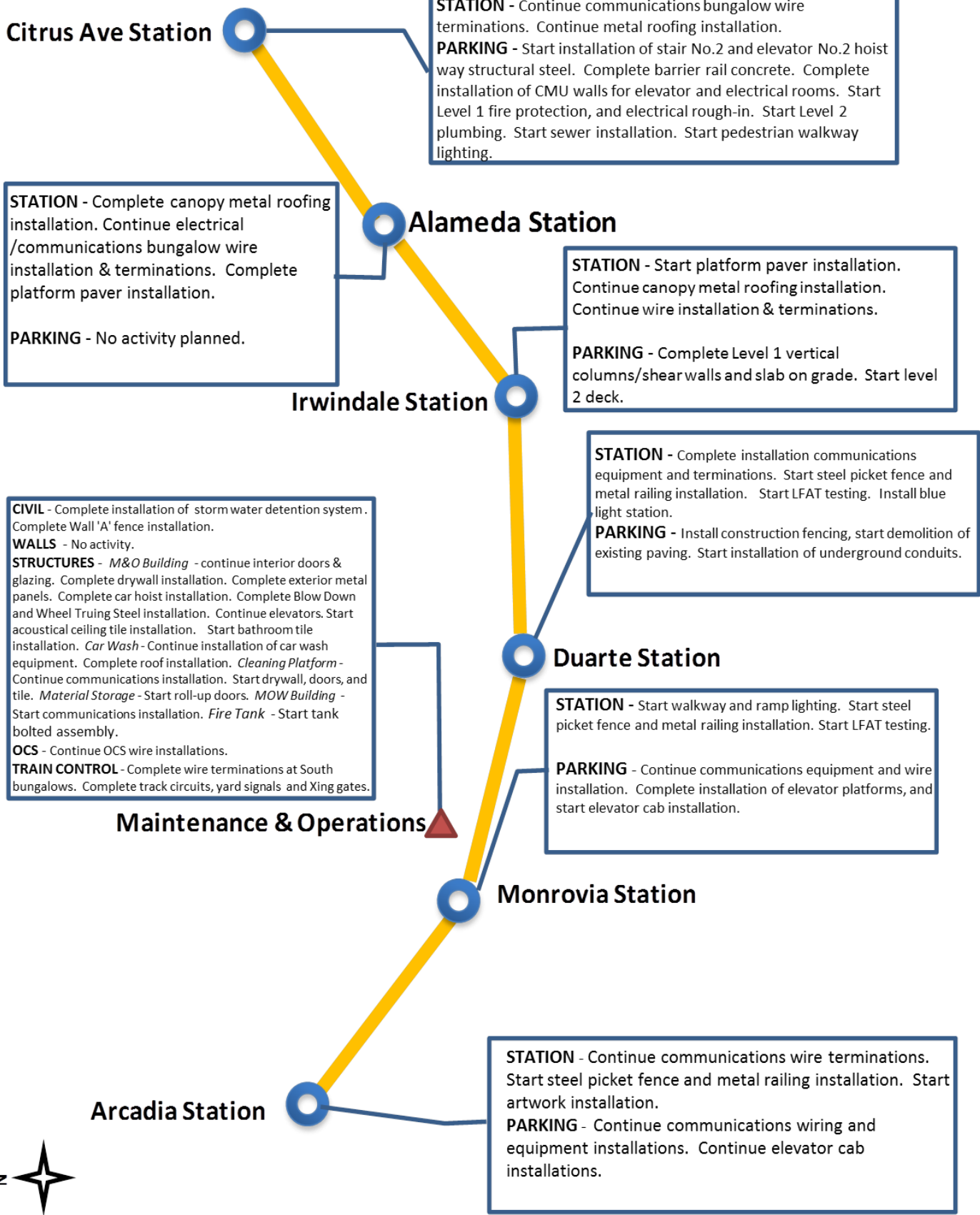


ALIGNMENT CONSTRUCTION PROGRESS NEXT PERIOD





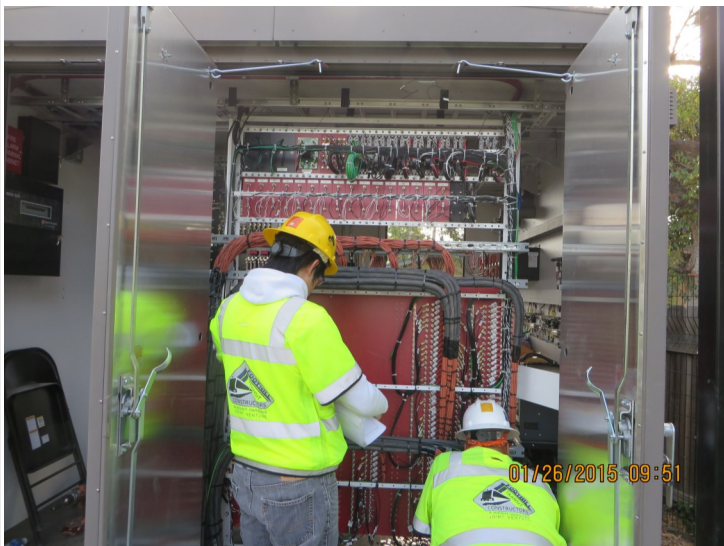
FACILITY CONSTRUCTION PROGRESS NEXT PERIOD





ALIGNMENT CONSTRUCTION IMAGES

Segment 1: Baldwin TPSS - CMU Wall Excavation



Segment 2: Mayflower Crossing Bungalow -
LFAT Testing



Segment 3: Business Center to SGRB -
Civil Pre-Punchlist Walk



ALIGNMENT CONSTRUCTION IMAGES (CONTINUED)



Segment 4: Azusa Downtown Station Progress

Operations Campus: Fire Reserve Tank



Operations Campus: Glazing at Main Entry nearing completion



Change Management Log

Date: 2/19/2015

Page: 1 of 5

Project: C1135 Alignment - FTC Contract #: C1135

| | | | | | |
|---------------------------|---------------|-------|-------------------------|---------------|-------|
| Original Contract Amount: | \$485,867,000 | | | | |
| Approved Change Orders: | \$18,473,187 | 3.80% | Pending Change Orders: | \$0 | 0.00% |
| Current Contract Total: | \$504,340,187 | | Pending Contract Total: | \$504,340,187 | 3.80% |

Change Orders

| Number | Change Management | Title | Initiated Date | Approved Date | Outstanding Days | Time Extension | Amount |
|-------------------------------|-------------------|-------------------------------------|----------------|---------------|------------------|----------------|-------------|
| EXECUTED Change Orders | | | | | | | |
| 001.00 | 000.00 | Interim NTP | 11/3/2011 | 11/3/2011 | 0 | | \$0 |
| 002.00 | 013.00 | Colorado Bridge Haz Mat | 5/17/2012 | 5/18/2012 | 1 | | \$121,382 |
| 002.01 | 013.01 | Colorado Bridge HazMat - Final | 9/5/2012 | 9/7/2012 | 2 | | \$13,164 |
| 003.00 | 001.00 | Sound Wall Deletion - Duarte Road | 7/12/2012 | 7/18/2012 | 6 | | (\$74,707) |
| 004.00 | 018.00 | Revise Block Design - CBD Calc | 8/23/2012 | 8/29/2012 | 6 | | \$3,986 |
| 004.01 | 018.01 | Revise Block Design - CBD Calc - 2 | 9/5/2013 | 9/11/2013 | 6 | | \$0 |
| 005.00 | 023.00 | Wayside Signal Aspect Revision | 9/6/2012 | 9/7/2012 | 1 | | \$26,072 |
| 005.01 | 023.01 | Wayside Signal "Call On" Function | 10/30/2013 | 11/1/2013 | 2 | | \$75,169 |
| 006.00 | 040.00 | Arcadia Frieze, Bench-Artist Design | 9/6/2012 | 9/10/2012 | 4 | | \$13,683 |
| 006.01 | 040.01 | Arcadia Frieze, Bench-Construction | 3/7/2013 | 3/12/2013 | 5 | | \$155,894 |
| 007.00 | 019.02 | Soils Testing Abutments & Fdns | 9/14/2012 | 9/18/2012 | 4 | | \$44,993 |
| 008.00 | 041.00 | Unknown Utilities RFCN 005 006 008 | 9/14/2012 | 9/18/2012 | 4 | | \$132,450 |
| 009.00 | 038.00 | Illuminate City Names @ Stations | 9/18/2012 | 9/24/2012 | 6 | | \$184,657 |
| 010.00 | 046.00 | SGRB - Lead Based Paint Remediation | 9/21/2012 | 9/24/2012 | 3 | | \$244,536 |
| 011.00 | 004.00 | Station Architectural Changes | 10/11/2012 | 10/12/2012 | 1 | | \$443,950 |
| 012.00 | 003.01 | Systems and Testing for Added TPSS | 12/13/2012 | 12/14/2012 | 1 | | \$1,443,193 |
| 013.00 | 005.02 | IDIQ Comm Contract (Rev 2) | 12/14/2012 | 1/22/2013 | 39 | | \$698,259 |
| 014.00 | 060.00 | Sewer Encasement Changes in Azusa | 12/18/2012 | 1/24/2013 | 37 | | \$141,354 |
| 015.00 | 037.02 | M&O - Materials Storage Revisions | 12/26/2012 | 1/15/2013 | 20 | | \$62,862 |
| 015.01 | 037.03 | M&O Storage Shelving Revisions | 9/16/2013 | 9/19/2013 | 3 | | \$20,380 |
| 016.00 | 002.00 | Relocation of Access Road to 3M Fac | 12/26/2012 | 1/16/2013 | 21 | | \$53,814 |
| 017.00 | 025.00 | 3 Electrical Casings for ALW | 2/27/2013 | 3/1/2013 | 2 | | \$219,033 |
| 018.00 | 073.00 | Hazardous Abatement at Bridges | 1/15/2013 | 2/6/2013 | 22 | | \$1,081,803 |
| 019.00 | 054.00 | City of Hope Conduits | 1/11/2013 | 1/22/2013 | 11 | | \$34,313 |
| 020.00 | 059.00 | Citrus TPSS Transformer Pad Changes | 2/6/2013 | 2/7/2013 | 1 | | \$34,536 |
| 021.00 | 075.00 | Demo & Replace Palm Dr. Roadway | 2/7/2013 | 2/14/2013 | 7 | | \$90,365 |
| 022.00 | 077.00 | M&O Differing Site Conditions; Pt 1 | 2/13/2013 | 2/15/2013 | 2 | | \$66,360 |
| 022.01 | 093.00 | M and O DSC T and M Work Part 2 | 3/8/2013 | 3/12/2013 | 4 | | \$66,625 |
| 022.02 | 103.00 | M and O DSC Part 3 | 3/27/2013 | 3/28/2013 | 1 | | \$35,211 |
| 022.03 | 115.00 | DSC at M and O Part 4 | 5/3/2013 | 5/7/2013 | 4 | | \$5,706 |
| 023.00 | 089.00 | Contaminated Soil Abatement | 2/26/2013 | 2/27/2013 | 1 | | \$422,068 |
| 024.00 | 068.00 | Monrovia Sound Wall Panel Change | 2/26/2013 | 2/28/2013 | 2 | | (\$24,150) |
| 025.00 | 052.00 | Santa Anita Trail Detour | 3/8/2013 | 3/12/2013 | 4 | | \$27,691 |
| 026.00 | 070.00 | Block Type Change at M&O Building | 3/26/2013 | 3/26/2013 | 0 | | \$35,016 |
| 027.00 | 065.00 | M&O IT Changes-Duct Banks/Conduits | 3/26/2013 | 3/26/2013 | 0 | | \$88,650 |
| 027.01 | 065.01 | M&O IT Changes - Power to WAP | 9/4/2013 | 9/6/2013 | 2 | | \$73,049 |
| 027.02 | 065.02 | M&O IT Changes - Remaining Work | 7/16/2014 | 7/17/2014 | 1 | | \$155,991 |
| 028.00 | 039.01 | Delete Layover Building | 4/11/2013 | 4/12/2013 | 1 | | (\$313,832) |
| 029.00 | 095.00 | 8in Sanitary Sewer Line- Alameda Av | 4/23/2013 | 4/25/2013 | 2 | | \$226,089 |
| 029.01 | 095.01 | Alameda Sewer Line Revised Scope | 11/22/2013 | 11/26/2013 | 4 | | (\$37,425) |
| 030.00 | 102.00 | M&O-Disconnect Switches, Insulators | 4/23/2013 | 4/25/2013 | 2 | | \$67,817 |
| 031.00 | 110.00 | Rmv Abandoned Utility Line @ Dalton | 4/23/2013 | 4/25/2013 | 2 | | \$1,562 |
| 032.00 | 104.00 | Highland Ave Abandoned CMP sleeves | 5/1/2013 | 5/3/2013 | 2 | | \$15,005 |
| 033.00 | 114.00 | Remove contaminated wood culvert | 5/3/2013 | 5/7/2013 | 4 | | \$4,714 |
| 034.00 | 128.00 | M&O Backup Power/Generator Changes | 5/13/2013 | 5/21/2013 | 8 | | \$121,340 |



Change Management Log

Date: 2/19/2015

Page: 2 of 5

Project: C1135 Alignment - FTC Contract #: C1135

Change Orders

| Number | Change Management | Title | Initiated Date | Approved Date | Outstanding Days | Time Extension | Amount |
|-------------------------------|-------------------|-------------------------------------|----------------|---------------|------------------|----------------|-------------|
| EXECUTED Change Orders | | | | | | | |
| 035.00 | 083.00 | M&O Vehicle Sanding System Changes | 5/21/2013 | 5/24/2013 | 3 | | \$27,463 |
| 036.00 | 006.00 | IFS Related Contract Changes | 6/7/2013 | 6/11/2013 | 4 | | (\$263,111) |
| 037.00 | 137.00 | CTS Redesign | 7/12/2013 | 7/16/2013 | 4 | | \$58,214 |
| 038.00 | 138.00 | Segment 4 Safety Manager | 7/12/2013 | 7/16/2013 | 4 | | \$157,274 |
| 038.01 | 138.01 | Segment 4 Safety manager - Part 2 | 11/19/2013 | 11/21/2013 | 2 | | \$72,963 |
| 038.02 | 138.02 | Segment 4 Safety Manager - Part 3 | 4/3/2014 | 4/7/2014 | 4 | | \$82,271 |
| 039.00 | 085.00 | M&O Drainage System Enhancements | 7/19/2013 | 8/13/2013 | 25 | | \$251,579 |
| 040.00 | 067.00 | Station Paver Changes | 7/23/2013 | 8/13/2013 | 21 | | \$728,340 |
| 040.01 | 067.01 | Rebar Changes for Station Pavers | 10/28/2013 | 10/31/2013 | 3 | | \$10,586 |
| 041.00 | 112.00 | 12" Pasadena Waterline Potholes | 8/12/2013 | 8/16/2013 | 4 | | \$19,735 |
| 042.00 | 150.00 | Demo Abandoned Water Lines @ Dalton | 8/12/2013 | 8/16/2013 | 4 | | \$5,937 |
| 043.00 | 007.01 | Emer. Backup for Guideway Lighting | 8/16/2013 | 10/1/2013 | 46 | | \$359,158 |
| 044.00 | 172.00 | Contaminated Wood Culvert Sta. 1202 | 8/27/2013 | 8/28/2013 | 1 | | \$7,712 |
| 045.00 | 139.00 | BLS Changes | 8/28/2013 | 9/4/2013 | 7 | | \$110,801 |
| 046.00 | 165.00 | Azusa-Alameda Station; 2nd Portal | 8/28/2013 | 9/4/2013 | 7 | | \$77,175 |
| 047.00 | 145.00 | St. Joseph drainage enhancements | 9/4/2013 | 9/6/2013 | 2 | | \$17,592 |
| 048.00 | 149.00 | M&O - Lights at NW Corner Park | 9/4/2013 | 9/6/2013 | 2 | | \$29,351 |
| 049.00 | 174.00 | TPSS #5 Cal-Am Power Conflict | 9/4/2013 | 9/6/2013 | 2 | | \$127,260 |
| 050.00 | 171.00 | Relocate Access Stair to Foothill | 9/4/2013 | 9/6/2013 | 2 | | \$20,276 |
| 051.00 | 173.00 | Dalton 8" Water Line Work | 9/5/2013 | 9/12/2013 | 7 | | \$35,316 |
| 052.00 | 071.00 | Duarte Rd Screen Wall Change | 9/5/2013 | 9/17/2013 | 12 | | (\$133,864) |
| 053.00 | 176.00 | Remove Contaminatd Wood-Buena Vista | 9/10/2013 | 9/12/2013 | 2 | | \$5,543 |
| 054.00 | 147.00 | DECCO Bypass | 9/10/2013 | 9/12/2013 | 2 | | \$18,519 |
| 055.00 | 166.00 | Foothill Blvd. Water/SD Relocation | 9/20/2013 | 9/20/2013 | 0 | | \$127,074 |
| 056.00 | 186.00 | Contaminated Wood @ San Gabriel Ave | 9/23/2013 | 9/24/2013 | 1 | | \$4,291 |
| 057.00 | 194.00 | California/Duarte Water Line Work | 10/28/2013 | 10/31/2013 | 3 | | \$220,743 |
| 058.00 | 189.00 | Four Utility Changes | 10/28/2013 | 10/31/2013 | 3 | | \$14,157 |
| 059.00 | 180.00 | Remove/Dispose of ACM E of Highland | 10/30/2013 | 11/1/2013 | 2 | | \$29,311 |
| 060.00 | 179.00 | CTS Upgrade to OC-192 | 10/30/2013 | 11/1/2013 | 2 | | \$112,543 |
| 061.00 | 213.00 | Irwindale On-ramp Stockpile | 11/8/2013 | 11/21/2013 | 13 | | \$200,185 |
| 062.00 | 053.00 | Delete Totten Tubes Scope of Work | 11/8/2013 | 11/21/2013 | 13 | | (\$143,801) |
| 063.00 | 146.00 | Home Depot Striping and Signing | 11/15/2013 | 11/21/2013 | 6 | | \$21,003 |
| 064.00 | 204.00 | Unknown Duct Bank @ San Gabriel Ave | 11/15/2013 | 11/21/2013 | 6 | | \$1,265 |
| 065.00 | 140.00 | M&O-Overhead Work Platform Changes | 12/5/2013 | 12/16/2013 | 11 | | \$317,656 |
| 066.00 | 217.00 | Buried SD & Headwall, STA 1306+50 | 12/6/2013 | 12/17/2013 | 11 | | \$1,020 |
| 067.00 | 219.00 | Contaminated Soil, Monrovia Station | 12/12/2013 | 12/17/2013 | 5 | | \$17,503 |
| 068.00 | 220.00 | DSC at Sawpit Wash Abutments | 12/12/2013 | 12/17/2013 | 5 | | \$12,668 |
| 069.00 | 188.00 | Costco Emergency Gate-Path to POS | 1/21/2014 | 1/22/2014 | 1 | | \$19,882 |
| 070.00 | 214.00 | M&O - Generator Load Bank | 1/21/2014 | 1/22/2014 | 1 | | \$38,092 |
| 071.00 | 224.00 | Alameda South Water Line Tie-in | 1/30/2014 | 1/31/2014 | 1 | | \$6,330 |
| 072.00 | 202.00 | Aesthetic Lighting Provisions-SGRB | 2/3/2014 | 2/4/2014 | 1 | | \$27,055 |
| 073.00 | 160.00 | Move Mountain Interlocking Bungalow | 2/11/2014 | 2/13/2014 | 2 | | \$68,596 |
| 074.00 | 200.00 | M&O Parts Carousel Warranty & PM | 2/11/2014 | 2/13/2014 | 2 | | \$68,906 |
| 075.00 | 235.00 | Remove Contaminated Wood Ties | 2/14/2014 | 2/18/2014 | 4 | | \$4,571 |
| 076.00 | 234.00 | Accelerate Work at California Ave | 2/14/2014 | 2/18/2014 | 4 | | \$5,663 |
| 077.00 | 247.00 | Line Stop in California | 2/18/2014 | 2/20/2014 | 2 | | \$14,524 |
| 078.00 | 201.00 | Added Sound Wall, SW of IFS | 2/27/2014 | 2/28/2014 | 1 | | \$18,201 |
| 079.00 | 238.00 | M&O-MOW Canopy Structural Eval | 2/27/2014 | 2/28/2014 | 1 | | \$7,147 |
| 079.01 | 238.01 | M&O - MOW Canopy Solar | 8/20/2014 | 8/26/2014 | 6 | | \$714,659 |
| 080.00 | 232.00 | Car Moving Tractor-Coupler Upgrade | 2/27/2014 | 2/28/2014 | 1 | | \$177,145 |



Change Management Log

Date: 2/19/2015

Page: 3 of 5

Project: C1135 Alignment - FTC Contract #: C1135

Change Orders

| Number | Change Management | Title | Initiated Date | Approved Date | Outstanding Days | Time Extension | Amount |
|-------------------------------|-------------------|-------------------------------------|----------------|---------------|------------------|----------------|-------------|
| EXECUTED Change Orders | | | | | | | |
| 081.00 | 242.00 | Car Moving Tractor Options/Features | 2/27/2014 | 2/28/2014 | 1 | | \$69,099 |
| 082.00 | 091.00 | Rockvale Water Line Mitigation | 3/4/2014 | 3/5/2014 | 1 | | \$163,750 |
| 082.01 | 091.01 | Rockvale Water Line-EIC credit | 4/11/2014 | 4/14/2014 | 3 | | (\$5,391) |
| 083.00 | 251.00 | Cut and Move Rail to Segment 1 | 3/4/2014 | 3/5/2014 | 1 | | \$249,934 |
| 084.00 | 218.00 | Delete Equipment at ROC | 3/26/2014 | 3/27/2014 | 1 | | (\$91,708) |
| 085.00 | 239.00 | Install Sound Wall Door @ STA. 1169 | 3/26/2014 | 3/27/2014 | 1 | | \$12,737 |
| 086.00 | 250.00 | Change Top Row of Block Wall 1124.1 | 3/26/2014 | 3/27/2014 | 1 | | \$3,688 |
| 087.00 | 229.00 | Inwindale TPSS-Adjust Eqpt. Layout | 4/3/2014 | 4/7/2014 | 4 | | \$17,878 |
| 088.00 | 262.00 | Provisional Sum Adjustment | 4/3/2014 | 4/7/2014 | 4 | | \$0 |
| 088.01 | 262.01 | Provisional Sum Adjustment - 2 | 9/19/2014 | 9/25/2014 | 6 | | \$0 |
| 088.02 | 262.02 | Provisional Sum Adjustment - 3 | 11/12/2014 | 11/14/2014 | 2 | | \$0 |
| 089.00 | 261.00 | Longer DF Bolts - SGRB | 4/3/2014 | 4/7/2014 | 4 | | \$17,331 |
| 090.00 | 169.02 | M&O Trammng Table Changes (rev. 2) | 4/11/2014 | 4/14/2014 | 3 | | \$54,083 |
| 091.00 | 181.00 | Alameda Utility Changes | 4/11/2014 | 4/14/2014 | 3 | | (\$9,599) |
| 092.00 | 241.00 | Business Center TPSS Crane Changes | 4/23/2014 | 4/28/2014 | 5 | | \$13,655 |
| 093.00 | 276.00 | Myrtle Early Completion Incentive | 4/23/2014 | 4/28/2014 | 5 | | \$160,000 |
| 094.00 | 254.00 | Drainage East of Pasadena Ave. | 4/23/2014 | 4/28/2014 | 5 | | \$6,569 |
| 095.00 | 275.00 | Remove Rail Ties at 1st/Santa Clara | 4/23/2014 | 4/28/2014 | 5 | | \$2,270 |
| 096.00 | 274.00 | Buried Concrete @ Huntington Bridge | 4/23/2014 | 4/28/2014 | 5 | | \$2,819 |
| 097.00 | 269.00 | Asbestos Pipe at Duarte and Myrtle | 4/23/2014 | 4/28/2014 | 5 | | \$6,583 |
| 098.00 | 278.00 | Abandoned Gas Line at California | 5/6/2014 | 5/7/2014 | 1 | | \$8,170 |
| 099.00 | 170.00 | M&O Car Wash Betterments | 5/6/2014 | 5/7/2014 | 1 | | \$166,144 |
| 100.00 | 223.00 | M&O-Volume Control for PA Speakers | 5/6/2014 | 5/7/2014 | 1 | | \$38,105 |
| 101.00 | 283.00 | Track Work Around at Mountain Ave | 5/6/2014 | 5/7/2014 | 1 | | \$29,996 |
| 102.00 | 284.00 | Install 115# Buffer Rails in Seg. 1 | 5/6/2014 | 5/7/2014 | 1 | | \$29,442 |
| 103.00 | 230.00 | Azusa-Citrus Ped Crossing Operation | 5/6/2014 | 5/7/2014 | 1 | | \$84,183 |
| 104.00 | 231.00 | Red Signal Violation Indication | 6/3/2014 | 6/3/2014 | 0 | | \$335,134 |
| 105.00 | 253.00 | Remove Stem Wall along Duarte Rd. | 6/11/2014 | 6/12/2014 | 1 | | \$37,527 |
| 106.00 | 271.00 | DVR Changes | 7/16/2014 | 7/17/2014 | 1 | | \$181,301 |
| 107.00 | 260.00 | M&O Supplemental Fire Water System | 7/16/2014 | 8/4/2014 | 19 | | \$1,642,824 |
| 108.00 | 163.00 | 1st/Santa Clara Grade X-ing Changes | 7/25/2014 | 7/30/2014 | 5 | | \$156,177 |
| 109.00 | 164.00 | M&O Body Shop Changes | 7/25/2014 | 8/4/2014 | 10 | | \$488,598 |
| 110.00 | 256.00 | Monrovia North Bunglow LCP Changes | 7/25/2014 | 7/30/2014 | 5 | | \$125,313 |
| 111.00 | 237.00 | M&O-Signaling System Changes | 7/29/2014 | 8/4/2014 | 6 | | \$1,133,746 |
| 112.00 | 252.00 | Inwindale Security Kiosk Provisions | 8/4/2014 | 8/6/2014 | 2 | | \$178,044 |
| 112.01 | 252.01 | Inwindale Security Kiosk - Part 2 | 2/9/2015 | 2/11/2015 | 2 | | \$47,168 |
| 113.00 | 281.00 | M&O - Accent Colors | 8/4/2014 | 8/6/2014 | 2 | | \$26,928 |
| 114.00 | 305.00 | Lead Paint, Foothill Median Barrier | 8/18/2014 | 8/20/2014 | 2 | | \$5,690 |
| 115.00 | 270.00 | TES Load Flow Simulation | 8/19/2014 | 8/21/2014 | 2 | | \$22,399 |
| 116.00 | 203.00 | Mayflower Driveway/Wall Credit | 8/20/2014 | 8/26/2014 | 6 | | (\$19,138) |
| 117.00 | 307.00 | Contaminated Wood Ties-Santa Anita | 8/20/2014 | 8/26/2014 | 6 | | \$3,226 |
| 118.00 | 082.01 | M&O / 3M Fence Revisions (rev 1) | 9/17/2014 | 9/25/2014 | 8 | | \$886,650 |
| 119.00 | 314.00 | Mountain Early Completion Incentive | 9/17/2014 | 9/24/2014 | 7 | | \$80,000 |
| 120.00 | 301.00 | Santa Anita Avenue Bridge Artwork | 9/17/2014 | 9/25/2014 | 8 | | \$57,224 |
| 121.00 | 313.00 | Additional Traffic Signal Testing D | 9/19/2014 | 9/25/2014 | 6 | | \$7,875 |
| 122.00 | 320.00 | Remove Asbestos Pipe at Virginia | 11/12/2014 | 11/14/2014 | 2 | | \$9,485 |
| 123.00 | 303.00 | Additional Anti-Graffiti Coating | 12/8/2014 | 12/8/2014 | 0 | | \$63,727 |
| 124.00 | 326.00 | Santa Anita Avenue Bridge Lighting | 12/8/2014 | 12/8/2014 | 0 | | \$208,633 |
| 124.01 | 326.01 | Santa Anita Bridge Lighting-Part 2 | 1/16/2015 | 1/19/2015 | 3 | | \$5,744 |
| 125.00 | 335.00 | M&O - Interior Wall Revisions | 12/18/2014 | 12/19/2014 | 1 | | \$43,786 |



Change Management Log

Date: 2/19/2015

Page: 4 of 5

Project: C1135 Alignment - FTC Contract #: C1135

Change Orders

| Number | Change Management | Title | Initiated Date | Approved Date | Outstanding Days | Time Extension | Amount |
|-------------------------------|-------------------|-------------------------------------|----------------|---------------|------------------|----------------|---------------------|
| EXECUTED Change Orders | | | | | | | |
| 126.00 | 304.00 | M&O Lobby Aesthetic Changes | 12/18/2014 | 12/19/2014 | 1 | | \$128,047 |
| 127.00 | 292.00 | M&O - Guard House Changes | 12/19/2014 | 12/19/2014 | 0 | | \$65,463 |
| 128.00 | 339.00 | Mountain Ped. Crossing Changes | 1/8/2015 | 1/12/2015 | 4 | | \$96,159 |
| 129.00 | 340.00 | Business Center TPSS Drainage | 1/16/2015 | 1/19/2015 | 3 | | \$249,959 |
| 130.00 | 255.00 | Virginia TPSS Access Road | 1/8/2015 | 1/12/2015 | 4 | | \$39,718 |
| 131.00 | 291.00 | Eliminate 'Train Coming' Signs | 1/8/2015 | 1/12/2015 | 4 | | \$9,325 |
| 132.00 | 322.00 | Replace Existing OCS Pole at SMV | 1/16/2015 | 1/19/2015 | 3 | | \$27,010 |
| 133.00 | 187.01 | Inwindale Ramp Signs | 1/20/2015 | 1/26/2015 | 6 | | \$125,015 |
| 134.00 | 346.00 | Delay in Setting of Yard Substation | 1/20/2015 | 1/26/2015 | 6 | | \$15,181 |
| 135.00 | 344.00 | Virginia TPSS-Access for Delivery | 1/30/2015 | 2/2/2015 | 3 | | \$67,019 |
| 136.00 | 328.00 | Rail Profile Grinding | 2/9/2015 | 2/18/2015 | 9 | | \$524,000 |
| 137.00 | 065.03 | M&O Main Building Comm. Room Floors | 2/17/2015 | 2/17/2015 | 0 | | \$4,402 |
| 138.00 | 353.00 | 1st/Santa Clara Noise Mitigations | 2/17/2015 | 2/17/2015 | 0 | | \$13,889 |
| 139.00 | 323.00 | Add Pavers to Duarte Station W Ramp | 2/18/2015 | 2/18/2015 | 0 | | \$31,982 |
| 140.00 | 338.00 | M&O-Wheel Truing Machine Car Puller | 2/19/2015 | 2/19/2015 | 0 | | \$83,112 |
| Subtotal: | | | | | | | <u>\$18,473,187</u> |
| Subtotal: | | | | | | | <u>\$18,473,187</u> |
| Total: | | | | | | | <u>\$18,473,187</u> |

Open PCOs

| PCO Number | Title |
|-------------|--------------------------------------|
| OPEN | |
| 022.04 | M&O IT Changes - Furniture Interface |
| 029.00 | Del. Irwindale/Gladstone Mitigation |
| 075.00 | Comm. Changes Parking Structures |
| 075.01 | Add 2 ETEs to Duarte Parking Lot |
| 076.00 | M&O Tactile Guidance Changes |
| 080.00 | Delete Evergreen / Myrtle Mitigation |
| 084.00 | M&O Service Vehicle Pathways |
| 085.00 | Joseph TPSS Power Feed Credit |
| 087.00 | ETEL/PTEL Faceplate Betterment |
| 091.00 | UP Tunnel Analysis & Modifications |
| 092.00 | Abandoned California Water Lines |
| 096.00 | Station Identifier Changes |
| 098.00 | M&O Facility - NW Corner Changes |
| 100.00 | Change Wayside Operational Signage |
| 101.00 | Peck Road Ramp |
| 103.00 | Tactile Guidance Tile at Stations |
| 104.00 | Striping/Signs at Station Ped Xings |
| 105.00 | M&O - Fire Alarm System |
| 107.00 | Add APS @ 2 intersections in Duarte |

Open RFCs

| RFC Number | Title |
|-------------|-------------------------------------|
| OPEN | |
| 075.00 | Grade X-ing Train Signal Changes CS |
| 078.00 | Addl Fence To Close Gaps at Alignmn |
| 080.00 | Irwindale Signal Case and Push But |
| 083.00 | Sierra Madre Track Rehab CSP |
| 091.00 | Removal of CALAM Waterline at Corp |
| 093.00 | Blk Wall Finish In the MO Fac CSP |



Change Management Log

Date: 2/19/2015

Page: 5 of 5

Project: C1135 Alignment - FTC Contract #: C1135

Open RFC Notices

| Number | Title |
|--------|-------------------------------------|
| 037.00 | DSC at Santa Anita Wash Abutment 1 |
| 044.00 | DSC Utility at Azusa Avenue |
| 086.00 | Ground Grid Damaged at Citrus TPSS |
| 088.00 | Change to Exit Gate Procedure |
| 095.00 | Gen for Wysd House Btwn SGRB-IRW St |
| 098.00 | Housekeeping Pads for Electrical Eq |
| 099.00 | Dispose of Haz Mat at Angelino Ave |
| 100.00 | MO Yard Signage Changes |
| 102.00 | Foothill Yard MOW Track Fouling Iss |
| 103.00 | MO Facility Yard Control Console |



Description: Intermodal Parking Facilities & Enhancements **Status:** January 15, 2015

Contract No.: C1150

Contractor: Webcor Builders

Progress Completed This Period

Design

- Submit AFC Design - Arcadia Parking Structure Revisions
- Submit AFC Design - Irwindale Enhancements (partial set)
- Submit AFC Design - Monrovia Parking Structure Revisions

Activities Planned Next Period

Design

- Submit AFC Design - Duarte Parking Lot
- Submit AFC Design - Irwindale Enhancements (full set)

Areas of Concern

- **IRWINDALE PARKING STRUCTURE RECOVERY** - The Design-Build Contractor has started to accelerate the Irwindale parking structure and has made a significant improvement by implementing a 6-day work week schedule. The Design-Build Contractor is currently on pace to complete the concrete structure and provide access to the C1135 - Alignment Design-Build Contractor before May 2015.

Areas of Concern (Continued)



Description: Intermodal Parking Facilities & Enhancements **Status:** January 15, 2015

Contract No.: C1150

Contractor: Webcor Builders

Cost Summary:

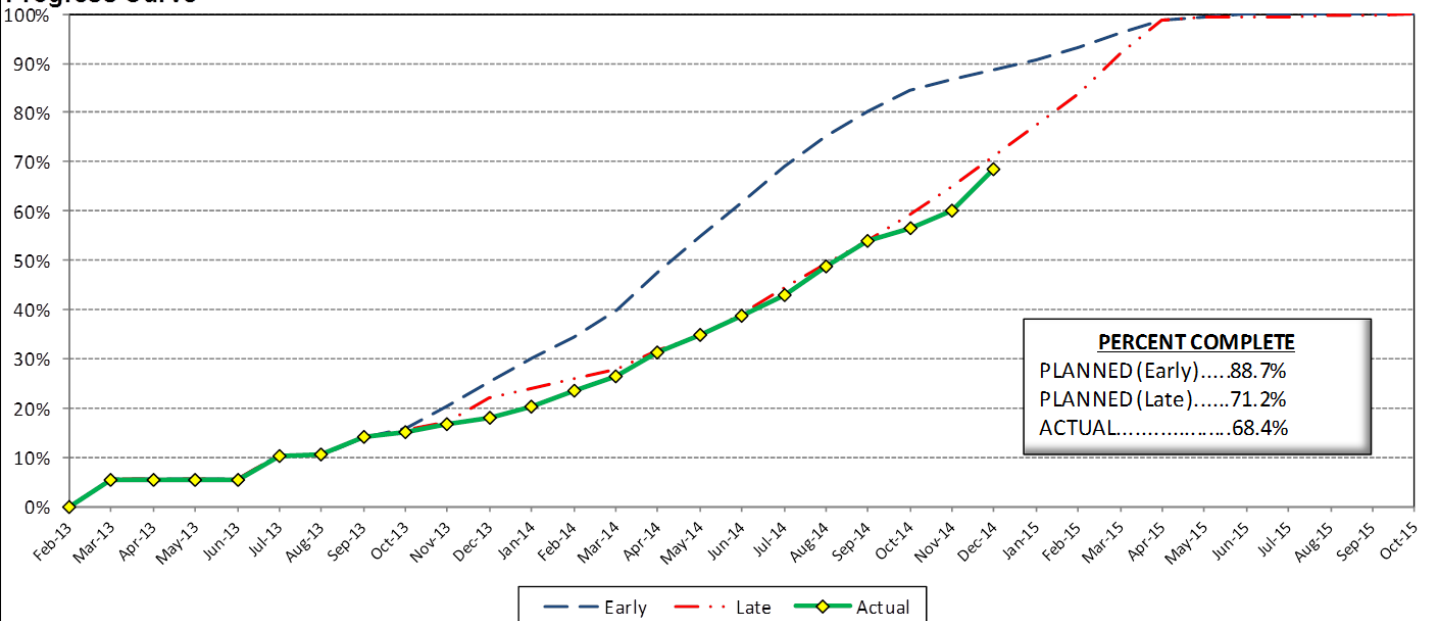
| | Million(s) |
|--------------------------------------|------------|
| CONTRACT | |
| Contract Award Value: | 48.8 |
| Executed Change Orders: | 0.9 |
| Current Contract Value: | 49.7 |
| Potential Change Orders: | 0.3 |
| Current Forecast: | 50.0 |
| Earned Value/Actual Cost | 34.1 |
| AUTHORIZATION FOR EXPENDITURE | |
| Budget | 50.3 |
| Commitment | 49.7 |
| Balance | 0.3 |

Cost Assessment:

The current cost forecast is \$50.0 Million and has increased \$122 Thousand from the previous period. The increase is due to the addition of PCO-019 - Michillinda TPSS Architectural Mods. The increase was offset by a decrease, which was due to a reduction a reduction to the final negotiated Change Order price for CO-021 - Azusa-Citrus Pavers. The current forecast is within the authorized budget.

Although a 90 day time extension was granted, the Design-Build Contractor remains behind the revised plan due to schedule delays at the Irwindale site. In order to recover for an on schedule completion of June 2015, the Design-Build Contractor will need to progress 9% by next period.

Progress Curve



Schedule Summary:

| | | |
|-----------------------------|----------|---------------|
| Contract Award: | 02/27/13 | |
| Notice to Proceed (NTP) : | 03/20/13 | |
| Original Contract Duration: | 845 | Calendar Days |
| Current Contract Duration: | 935 | Calendar Days |
| Elapsed Time from NTP: | 666 | Calendar Days |

Contract Milestones

| Milestones | Description | Original Contract | Current Contract | Forecast | Variance |
|------------|------------------------|-------------------|------------------|-------------|----------|
| 1 | Substantial Completion | 03/15/15 | 06/13/15 | 07/15/15 | (32) |
| 2 | Punchlist Complete | 05/29/15 | 08/27/15 | 09/28/15 | (32) |
| 3 | Final Completion | 07/13/15 | 10/11/15 | 11/12/15 | (32) |
| 4 | TPSS Work | 03/01/14 | 03/01/14 | 3/31/2014 A | (30) |
| | | | | | |

Schedule Assessment:

The critical path is currently through the Irwindale parking structure construction. This period, the Design-Build Contractor completed the site prep, which included the MSE wall and Soil Nail wall installations. In addition, significant progress was achieved by completing the parking structure foundations. Over the next period, the critical path will continue through the level 1 vertical columns/shear walls, CMU ramp walls, and slab on grade.

The Design-Build Contractor is 32 days behind schedule. Since the start of the foundation work, the Design-Build Contractor has been successful with mitigating some of the time which was lost due to the schedule impacts from the SCE & Railroad shoring. A 6-day work week has been in effect since the start of the foundation work and it will continue until the schedule delays have been mitigated.



PARKING FACILITY CONSTRUCTION IMAGES



Arcadia Parking Structure Site Overview



Monrovia Parking Structure Site Overview



PARKING FACILITY CONSTRUCTION IMAGES

Duarte Parking Lot Demolition



Irwindale Parking Structure Site Overview

Azusa-Citrus Parking Structure Site Overview





Change Management Log

Date: 2/19/2015

Page: 1 of 2

Project: C1150 Parking - Webcor Contract #: C1150

| | | | | | |
|---------------------------|--------------|-------|-------------------------|--------------|-------|
| Original Contract Amount: | \$48,750,000 | | | | |
| Approved Change Orders: | \$907,617 | 1.86% | Pending Change Orders: | \$16,295 | 0.03% |
| Current Contract Total: | \$49,657,617 | | Pending Contract Total: | \$49,673,912 | 1.90% |

Change Orders

| Number | Change Management | Title | Initiated Date | Approved Date | Outstanding Days | Time Extension | Amount |
|-------------------------------|-------------------|-------------------------------------|----------------|---------------|------------------|----------------|------------|
| EXECUTED Change Orders | | | | | | | |
| 001.00 | 001.00 | Monrovia Parking Alternative Layout | 6/25/2013 | 7/11/2013 | 16 | | \$21,382 |
| 001.01 | 001.01 | Monrovia Alternative - Cancellation | 9/17/2013 | 10/7/2013 | 20 | | (\$12,006) |
| 002.00 | 003.00 | Clock Tower Procurement | 7/3/2013 | 7/11/2013 | 8 | | \$107,246 |
| 003.00 | 002.00 | Relocate Elevator @ Azusa-Citrus PF | 12/18/2013 | 1/8/2014 | 21 | | \$159,899 |
| 004.00 | 013.00 | Irwindale Structure Relocation | 1/23/2014 | 8/28/2014 | 217 | 90 | (\$65,564) |
| 005.00 | 018.00 | Monrovia Demo Unforeseen Conditions | 3/18/2014 | 3/26/2014 | 8 | | \$17,013 |
| 006.00 | 010.00 | Arcadia Transit Plaza Betterments | 3/14/2014 | 3/26/2014 | 12 | | \$35,466 |
| 007.00 | 009.01 | Irwindale Intersection Betterments | 3/25/2014 | 3/26/2014 | 1 | | \$19,985 |
| 008.00 | 017.00 | Irwindale Intersection Water Line | 3/25/2014 | 4/14/2014 | 20 | | \$7,748 |
| 009.00 | 020.00 | Unforeseen Underground Demo-Arcadia | 6/13/2014 | 7/9/2014 | 26 | | \$6,313 |
| 010.00 | 011.00 | Soldano TPSS Added ROW Fence | 7/24/2014 | 7/28/2014 | 4 | | \$8,481 |
| 011.00 | 024.00 | SCE Power Feed to DB2 Arcadia TPSS | 7/24/2014 | 7/28/2014 | 4 | | \$17,199 |
| 012.00 | 025.00 | Additional Sidewalk at Arcadia | 7/24/2014 | 7/28/2014 | 4 | | \$3,342 |
| 013.00 | 006.00 | St. Joseph Drainage Enhancements | 7/31/2014 | 7/31/2014 | 0 | | \$139,488 |
| 014.00 | 012.00 | Additional Conduit Provisions | 8/13/2014 | 9/3/2014 | 21 | | \$57,262 |
| 015.00 | 030.00 | Unforeseen Conditions at Michillind | 8/22/2014 | 8/28/2014 | 6 | | \$1,643 |
| 016.00 | 019.00 | Parking Facility Artwork | 8/27/2014 | 8/28/2014 | 1 | | \$75,850 |
| 017.00 | 034.00 | Michillinda Conduit Demo & Pull Box | 11/12/2014 | 11/20/2014 | 8 | | \$31,506 |
| 018.00 | 016.00 | Monrovia Canopies & Banding Color | 12/19/2014 | 12/29/2014 | 10 | | \$247,577 |
| 019.00 | 035.00 | Irwindale CCTV Pole | 12/29/2014 | 1/5/2015 | 7 | | \$6,220 |
| 020.00 | 039.00 | Engineering Costs for Arcadia Clock | 12/17/2014 | 12/29/2014 | 12 | | \$5,292 |
| 021.00 | 008.00 | Azusa-Citrus Plaza Pavers | 1/5/2015 | 1/13/2015 | 8 | | \$7,350 |
| 022.00 | 038.00 | Temporary Power for Irrigation at M | 1/7/2015 | 1/13/2015 | 6 | | \$1,465 |
| 023.00 | 037.00 | Additional Slurry for City of Arcad | 1/7/2015 | 1/13/2015 | 6 | | \$7,460 |
| Subtotal: | | | | | | | \$907,617 |
| Subtotal: | | | | | | | \$907,617 |

| | | | | | | | |
|------------------------------|--------|-------------------------------------|-----------|--|---|--|-----------|
| PENDING Change Orders | | | | | | | |
| 025.00 | 029.00 | Metro-Requestd Elevator Vent Detail | 2/12/2015 | | 7 | | \$11,553 |
| 026.00 | 041.00 | Azusa Citrus Grand Pylon Power | 2/13/2015 | | 6 | | \$4,742 |
| Subtotal: | | | | | | | \$16,295 |
| Subtotal: | | | | | | | \$16,295 |
| Total: | | | | | | | \$923,912 |

Open PCOs

| PCO Number | Title |
|-------------|-------------------------------------|
| OPEN | |
| 013.00 | Primrose Avenue cul-de-sac Deletion |
| 014.00 | Delete Azusa-Alameda Enhancements |
| 017.00 | Michillinda Pull Box Replacement |
| 018.00 | Irwindale Kiosk Foundation |

Open RFCs

| RFC Number | Title |
|-------------|-------------------------------------|
| OPEN | |
| 007.00 | Added PME Switch & 2 Spare Conduits |
| 011.00 | Comm. Duct Bank Interface with DB2 |
| 012.00 | SCE Capacitor Bank at Michillinda T |
| 013.00 | ETEL Enclosures |



Change Management Log

Date: 2/19/2015

Page: 2 of 2

Project: C1150 Parking - Webcor Contract #: C1150

Open PCOs

| PCO Number | Title |
|------------|-------------------------------------|
| 019.00 | Michillinda TPSS Architectural Mods |

Open RFCs

| RFC Number | Title |
|------------|------------------------|
| 017.00 | Elevator Holding Tanks |

Open RFC Notices

| Number | Title |
|--------|-------------------------------------|
| 016.00 | Irwindale Added FH for LACFD Code C |
| 023.00 | Generator for Monrovia Elevators |
| 024.00 | Relocate Monrovia Jobsite Trailers |
| 025.00 | CCTV Scope at Duarte Surface Lot |



AZUSA TO MONTCLAIR SEGMENT

ACTIVITIES COMPLETED THIS PERIOD

Authority and City staff continued to hold coordination meetings to discuss the project. A draft of the Master Cooperative Agreement (MCA) has been distributed to all cities for review, after which all parties will convene to discuss and negotiate the MCA for execution. The MCA is expected to be agreed upon by all parties by April 30, 2015.

The Authority also continued to hold regular coordination meetings with the Station Design Art Program (SDAR) committees from each city. In November, the Authority conducted a tour of the Gold Line Phase 1 artwork for the SDAR members of each city.

This period, Authority staff worked on the following technical elements of the project:

- Continued advancement of the plan and profile drawings
- Began right-of-way survey and drawings
- AECOM began surveying work
- AECOM began geotechnical work
- AECOM began Pomona parking facility conceptual design

KEY FUTURE ACTIVITIES

The advanced conceptual engineering process is an 18-month process. Upon completion, the Azusa to Montclair segment will be ready for a design-build procurement. Upcoming activities include continuing to attend coordination meetings with each corridor city, finalizing the city MCAs, development of the ROW drawing work, refinement of the alignment, completing the SDAR, and completing the geotechnical investigations.

Federal Transit Administration (FTA)

The Metro Board of Directors excluded the Gold Line from seeking federal New Starts funding. The Authority will work together with Metro along with the Congressional delegation to seek funding to construct the extension following completion of the environmental review.



PHASE 2 FOOTHILL EXTENSION FINANCIAL STATUS

Project Operating Budget Summary in Millions of Dollars

January 31, 2015

| | (a) | (b) | (c=a-b) | (d) |
|---|-----------------------|-------------------------------------|-----------------------------|----------------------------------|
| FINANCIAL PLAN | Current Budget | Funding Committed to Project | Uncommitted Funds | Revenues Received |
| SCAG | 1.0 | 0.9 | 0.1 | 0.9 |
| Interest Income | 2.0 | 2.0 | - | 2.0 |
| Bridge Replacement | 13.9 | 13.9 | - | 13.9 |
| Phase I Carryover | 4.0 | 4.0 | - | 4.0 |
| Maintenance and Operations Facility | - | - | - | - |
| Cities | 11.0 | - | 11.0 | - |
| Measure R - Pasadena to Azusa | 810.5 | 777.0 | 33.5 | 479.9 |
| Measure R - Azusa to Montclair | - | - | - | - |
| SANBAG | 55.2 | 1.5 | 53.7 | 1.5 |
| Federal TCSP | 2.9 | 2.9 | - | 2.8 |
| Federal Bus Intermodal Plan | 9.0 | 9.0 | - | 4.6 |
| Federal New Starts 2004 MTA Passthrough | 4.0 | 4.0 | - | 4.0 |
| Federal New Starts 2005 MTA Passthrough | 0.5 | 0.5 | - | 0.5 |
| Federal New Starts 2006 Corridor Study | 2.5 | 2.5 | - | 2.5 |
| Federal/Other | 1,033.5 | - | 1,033.5 | - |
| Total Revenues | 1,950.0 | 818.2 | 1,131.8 | 516.6 |
| | | | | |
| | (a) | (b) | (c) | (d=a-b) |
| | Current Budget | Current Obligation | Current Expenditures | Current Available Balance |
| EXPENSES | | | | |
| Program Management and Administration | 108.9 | 99.0 | 96.4 | 9.9 |
| Master Cooperative Agreements | 11.0 | 3.3 | 2.7 | 7.7 |
| Real Estate including ROW Acq | 21.0 | 21.0 | 19.7 | - |
| Special Programs | 0.3 | - | - | 0.3 |
| Procurement/Vehicles | 60.0 | - | - | 60.0 |
| Maintenance and Operations Facility Land | 22.0 | 22.0 | 22.0 | - |
| Construction - IFS | 19.8 | 19.8 | 19.8 | - |
| Construction - Pasadena to Azusa segment | 328.9 | 328.9 | 300.0 | - |
| Construction - Azusa to Montclair segment | 1,181.0 | - | - | 1,181.0 |
| Construction - M&O | 47.0 | 44.0 | 35.1 | 2.0 |
| Construction - Parking Structures | 44.2 | 44.2 | 36.1 | - |
| MTA Project Costs | 64.0 | 64.0 | 14.3 | - |
| Contingency | 27.4 | - | - | 27.4 |
| Project Reserve | 14.5 | - | - | 14.5 |
| Total Project | 1,950.0 | 646.2 | 546.1 | 1,303.8 |
| | | | | |