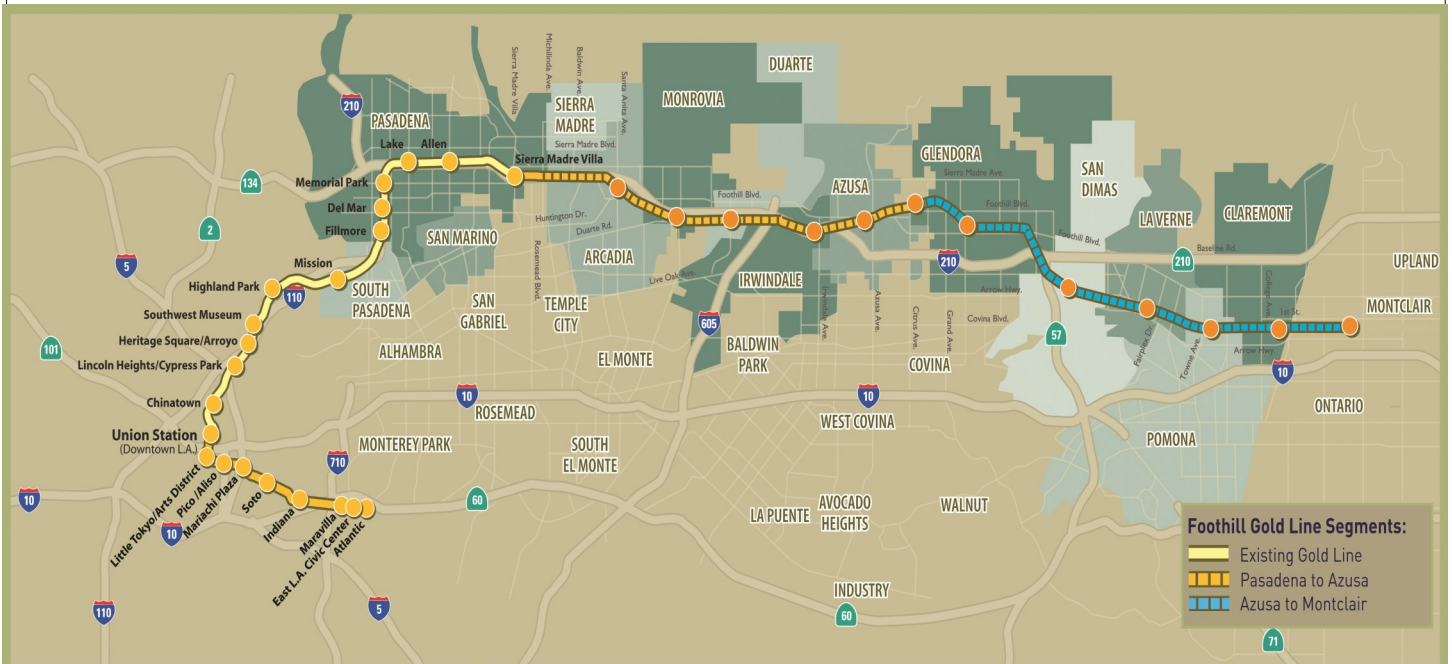


Metro Gold Line

Foothill Extension Project

Monthly Project Status Report

July 2015



Foothill Gold Line

Connecting Los Angeles, the San Gabriel Valley and Inland Empire



TABLE OF CONTENTS

PHASE 2 FOOTHILL EXTENSION PROJECT STATUS

Project Description	3
Pasadena to Azusa Segment	4
Management Issues	4
Key Activities Completed This Period	5
Key Future Activities	6
Critical Path Schedule	7
Critical Path Float Trend	8
Alignment Contract Status	9
Alignment Construction Progress This Period	11
Facility Construction Progress This Period	12
Alignment Construction Progress Next Period	13
Facility Construction Progress Next Period	14
Alignment Construction Images	15
Alignment Change Management Log	17
Parking Facilities and Enhancements Contract Status	22
Parking Facilities and Enhancements Construction Images	24
Parking Facilities and Enhancements Change Management Log	26
Azusa to Montclair Segment	28
Financial Status	29



FOOTHILL EXTENSION PROJECT DESCRIPTION

The Authority's mandate is to plan, design and construct a 37-mile light rail link between Downtown Los Angeles and Claremont. In addition, the San Bernardino Associated Governments (SANBAG) has requested that planning be extended one mile inside San Bernardino County to the City of Montclair and then possibly to Ontario Airport.

The Metro Gold Line Phase 2 (Foothill Extension) corridor includes the cities of Pasadena, Arcadia, Monrovia, Duarte, Irwindale, Azusa, Glendora, San Dimas, La Verne, Pomona, Claremont, and Montclair; and the counties of Los Angeles and San Bernardino (Figure 1). The Foothill Extension is estimated to cost approximately \$1.950 billion.

The Foothill Extension will be built in two segments to align effectively with projected cash flows and financial capacity constraints. The first segment is defined from the Sierra Madre Villa Station in Pasadena to the city of Azusa. Revenue service along this segment is planned for the year 2016. The second segment would include an extension from Azusa to the City of Montclair with revenue service projected for the year 2023.

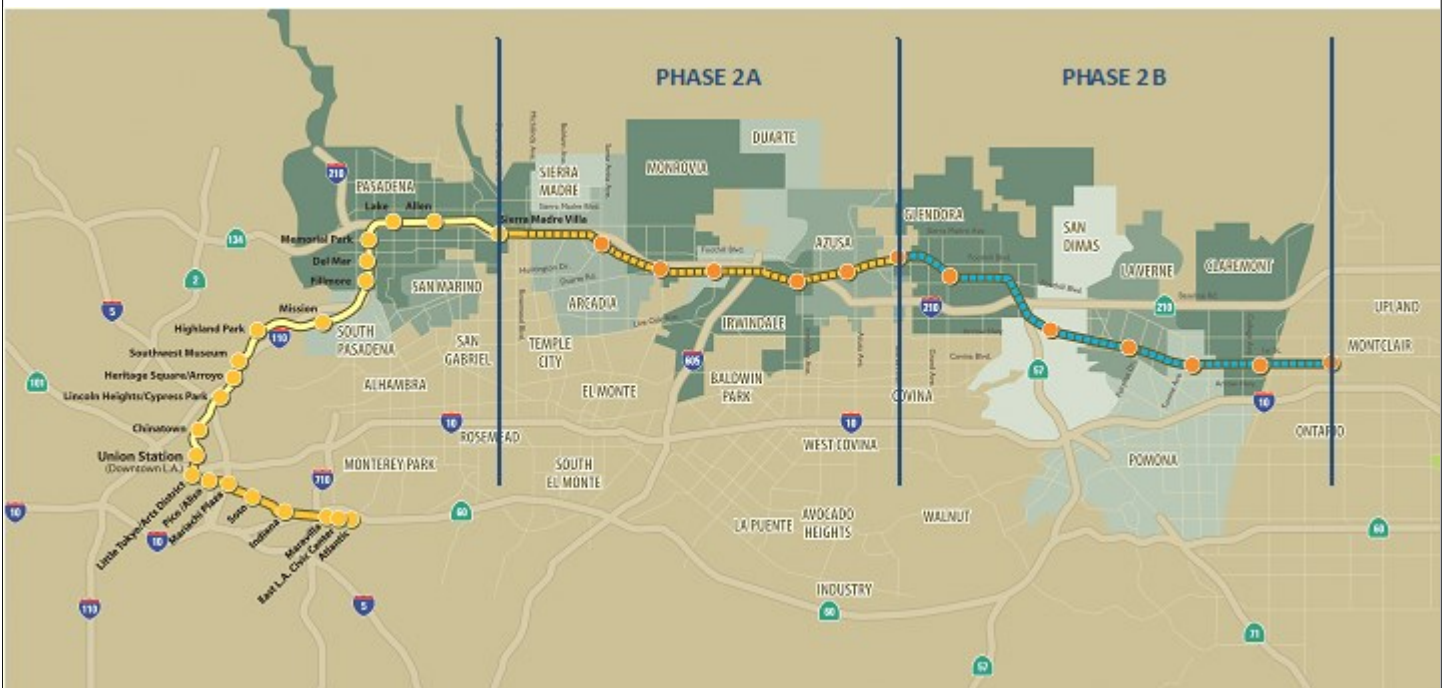


Figure 1: Metro Gold Line Foothill Extension Alignment



Pasadena to Azusa Segment

MANAGEMENT ISSUES

Metro Betterments

During the design process Metro staff have identified betterments that Metro staff would like to add to the project. Metro has provided a final disposition on all but a few items. Authority staff continues to work with Metro staff to resolve the remaining items.



KEY ACTIVITIES COMPLETED THIS PERIOD

FTC reports the following SBE statistics for the month of May:

- Target SBE commitment: \$59,500,000
- SBE percent committed versus value of Project: 19.11%
- Overall Authority Project SBE goal: 12.25%

FTC reports the following approximate safety statistics to date:

- 2,142,830 total work hours performed by FTC, Mass Electric, and Subcontractors
- 14 recordable injuries reported to date
- 4 lost time injuries reported to date

Webcor reports the following DBE statistics for the month of May:

- Target DBE commitment: \$1,121,250
- DBE percent committed versus value of Project: 4.76%
- Overall Authority Project DBE goal: 2.3%

Webcor reports the following approximate safety statistics to date:

- 208,615 total work hours performed by Webcor and Subcontractors
- 1 recordable injuries reported to date
- 0 lost time injuries reported to date

Continued placement of art and architectural elements at all stations

Began preparing for station dedication events – first event at Duarte station scheduled for August 15th

Continued systems integration testing

Continued Communications Local Field Acceptance Testing (LFAT) throughout alignment

Continued performing punch list walks with Metro

Continued addressing punch list items at all parking facilities

Continued testing of communication devices fire alarm systems at all parking structures

Obtained state certification for Arcadia parking structure elevator

Addressed punch list deficiencies at Duarte lot site in preparation for the station dedication event

Continued interior dry finish of fractured fin wall and barrier wall at Irwindale parking structure

Continued pretesting of elevators at Irwindale parking structure

Continued installation of guardrails at Azusa-Citrus parking structure



KEY FUTURE ACTIVITIES

Continue discussions with corridor cities regarding the project

Continue management of the Alignment contract, which will include oversight of construction activities and start-up activities

Continue to meet with Intermodal Parking Facilities and Enhancements Project contractor, Webcor Builders regarding design and construction of the Project

Complete construction of art and architectural elements at all stations

Complete system integration tests

Complete communications LFAT testing

Finalize construction of all Parking Facilities

Finalize the following property acquisitions:

- Arcadia:

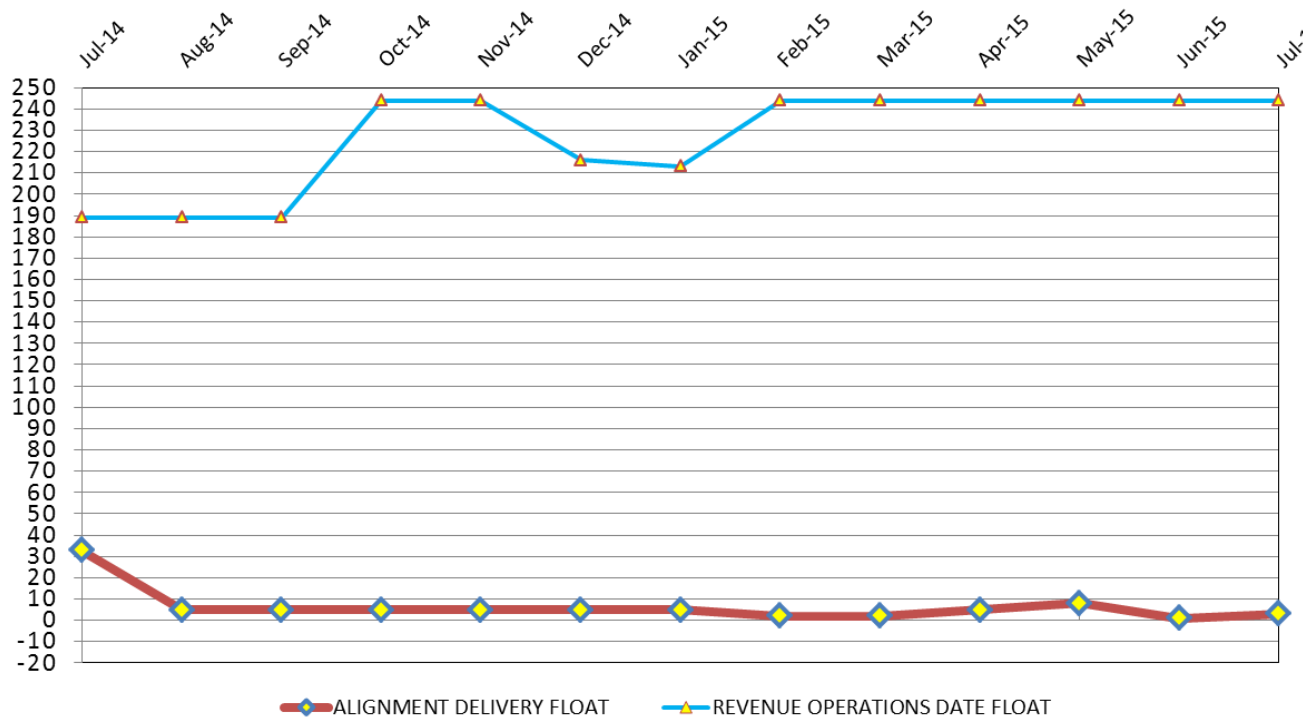
1. Parcel 1310/1311 (Indiana St.) – To be vacated by the City of Arcadia.
2. Parcel 1401a (Huntington Dr. Aerial Easement) – To be conveyed by the City of Arcadia.
3. Parcel 1401b (Huntington Dr. Bridge Abutments) – To be conveyed by the City of Arcadia.
4. Parcel 1403 (99 N. Second Av.) – Continuing to negotiate. Possession hearing 9/15/15.
5. Parcel 6009 (Huntington Dr. Bridge Abutments) – To be conveyed by the City of Arcadia.
6. Parcel 6010 (Huntington Dr. Bridge Abutments) – To be conveyed by the City of Arcadia.
7. Parcel 6011 (Huntington Dr. Bridge Abutments) – To be conveyed by the City of Arcadia.

- Monrovia:

1. Parcel 1601 (Encino Av.) – To be conveyed by the City of Monrovia.
2. Parcel 1903 (Monrovia Station) – To be conveyed by the City of Monrovia.
3. Parcel 21A12 (3M Parking Lot) – Finalizing.
4. Parcel 21A21 (North Duarte Road) – May need to be conveyed by the City of Monrovia.
5. Parcel 21A23 (Shamrock Trapezoid) – Working with Attorney to determine ownership.



CRITICAL PATH FLOAT TREND



FOOTHILL EXTENSION FUNDING AGREEMENT MILESTONES
 Alignment Delivery Date - October 31, 2015
 Revenue Operation Date - November 30, 2016

Revenue Operations Date Critical Path - (244 Calendar Days)

The critical path is currently running through the P3010 LRV procurement. At this time, Metro is forecasting the delivery of the 15th vehicle by December 2015. The critical path continues through Pre-Revenue Operations, which is expected to be completed by February 16, 2016. The Revenue Operations Date (ROD) is projected to be complete by March 31, 2016, which is eight (8) months ahead of the Funding Agreement Milestone date of November 30, 2016.

Alignment Delivery Date Critical Path - (3 Calendar Days)

This period, the Duarte Parking Lot communications installation and testing is on the critical path. The site is available to start the communications equipment installation at the parking lot, but Local Field Acceptance Testing (LFAT) is not expected to be complete until mid August 2015. Upon completion of the Duarte Parking Lot communications LFAT, the critical path will continue through the SCADA Phase 1 Systems Integration Test (SIT). Upon completion of the SCADA Phase 1 SIT, the Phase 1 systems integration testing will conclude and Metro will begin Phase 2 SIT. Upon the conclusion of Phase 2 SIT, the alignment will be available for Metro to complete Pre-Revenue Operations.

Other elements of construction work, which are in progress and near critical are Segment 4 train control testing; Irwindale Station communications installation; Irwindale Parking Structure communications installation, Citrus Station communications installation, and Duarte Station communications Phase 1 SIT.

Project Float

The project float for the Revenue Operations Date is 244 days. The critical activities on this path are on schedule to meet the Target Revenue Operations Date of November 2016. The Alignment Delivery Date float value is 3 days and is currently on schedule to meet the October 31, 2015 deadline.



Description: Alignment Design / Build	Status: July 15, 2015
Contract No.: C1135	Contractor: Foothill Transit Constructors (Kiewit-Parsons JV)

<p>Progress Completed This Period</p> <p>Design</p> <ul style="list-style-type: none"> • Submit AFC Design - Wayside Operational Signage • Submit AFC Design - Tactile Guidance Tile • Submit AFC Design - LRV Driveway <p>Construction</p> <ul style="list-style-type: none"> • See "Construction Progress This Period"

<p>Activities Planned Next Period</p> <p>Design</p> <ul style="list-style-type: none"> • Submit AFC Design - Alameda Communications Book of Plans • Submit AFC Design - Irwindale Communications Book of Plans • Submit AFC Design - Parking Struc. Communications BOP • Submit AFC Design - Monrovia Communications Book of Plans • Submit AFC Design - Irwindale Ramp <p>Construction</p> <ul style="list-style-type: none"> • See "Construction Progress Next Period"

<p>Areas of Concern</p> <ul style="list-style-type: none"> • Irwindale Parking Communications - The C1150 DB- Contractor progress at the Irwindale Parking Structure continues to slip. As a result, the C1135 Design-Build Contractor will be impacted by the late access to all areas within the parking facility, which includes the elevator cab and other mounting locations for communication devices. Delays to the communications installations will impact the LFAT and Phase 1 Systems Integration testing.
--

<p>Areas of Concern (Continued)</p> <ul style="list-style-type: none"> • Communications Installation - The communications installation progress at the Citrus and Irwindale stations are starting slip and approaching critical. Further delays may have an impact on the completion of Phase 1 Systems Integration testing. The Authority will continue monitor the field progress to ensure the installations are completed per the schedule and eliminate the potential impact to Phase 1 Systems Integration testing.
--



Description: Alignment Design / Build

Status: July 15, 2015

Contract No.: C1135

Contractor: Foothill Transit Constructors (Kiewit-Parsons J.V.)

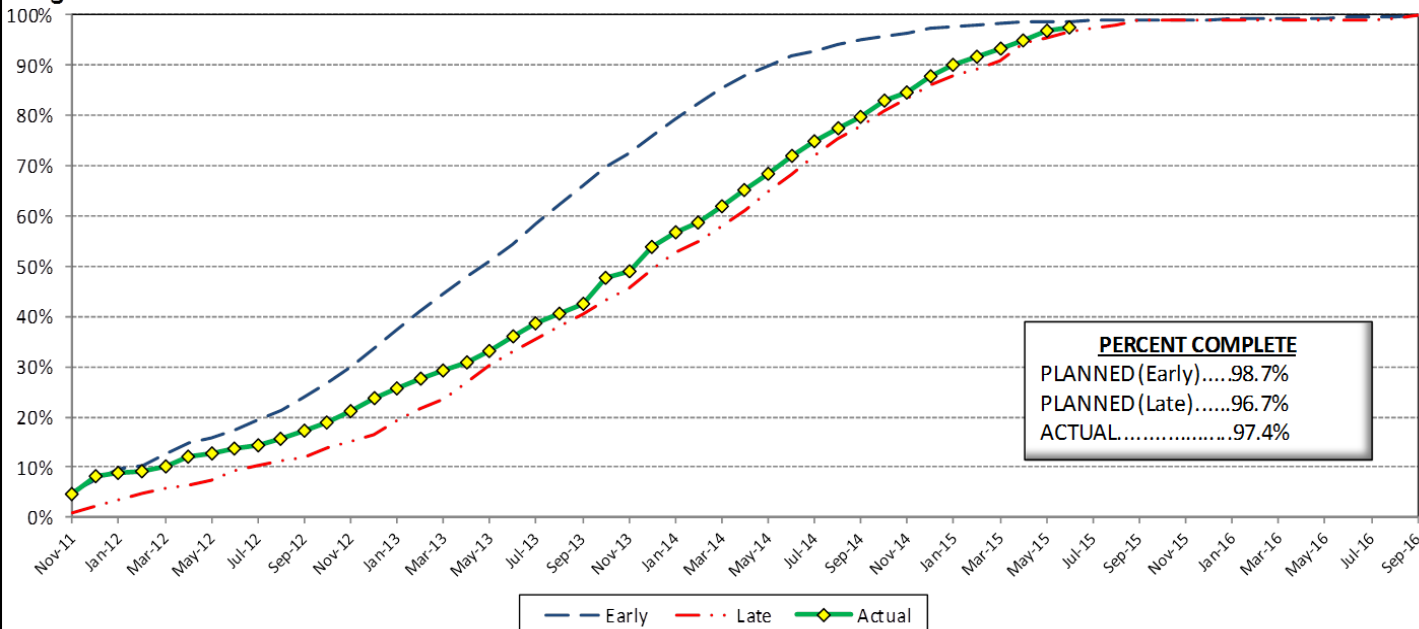
Cost Summary:

	Million(s)
CONTRACT	
Contract Award Value:	485.9
Executed Change Orders:	22.2
Current Contract Value:	508.1
Potential Change Orders:	3.9
Current Forecast:	512.0
Eamed Value/Actual Cost	482.0
AUTHORIZATION FOR EXPENDITURE	
Budget	514.5
Commitment	508.1
Balance	2.6

Cost Assessment:

This period the Contract forecast increased \$399 thousand. The major increase was due to the following: CO 167 - *M&O Main Entrance Changes*, PCO 022.05 - *M&O IT Changes Office Equipment & Audio/Visual*, RFC 127 - *Steam Cleaner Changes*. The current forecast is within the Authorized budget.

Progress Curve



Schedule Summary:

Contract Award:	07/27/11
Interim Notice to Proceed (INTP) :	11/03/11
Original Contract Duration:	1,780 Calendar Days
Current Contract Duration:	1,780 Calendar Days
Elapsed Time from NTP:	1,350 Calendar Days

Contract Milestones

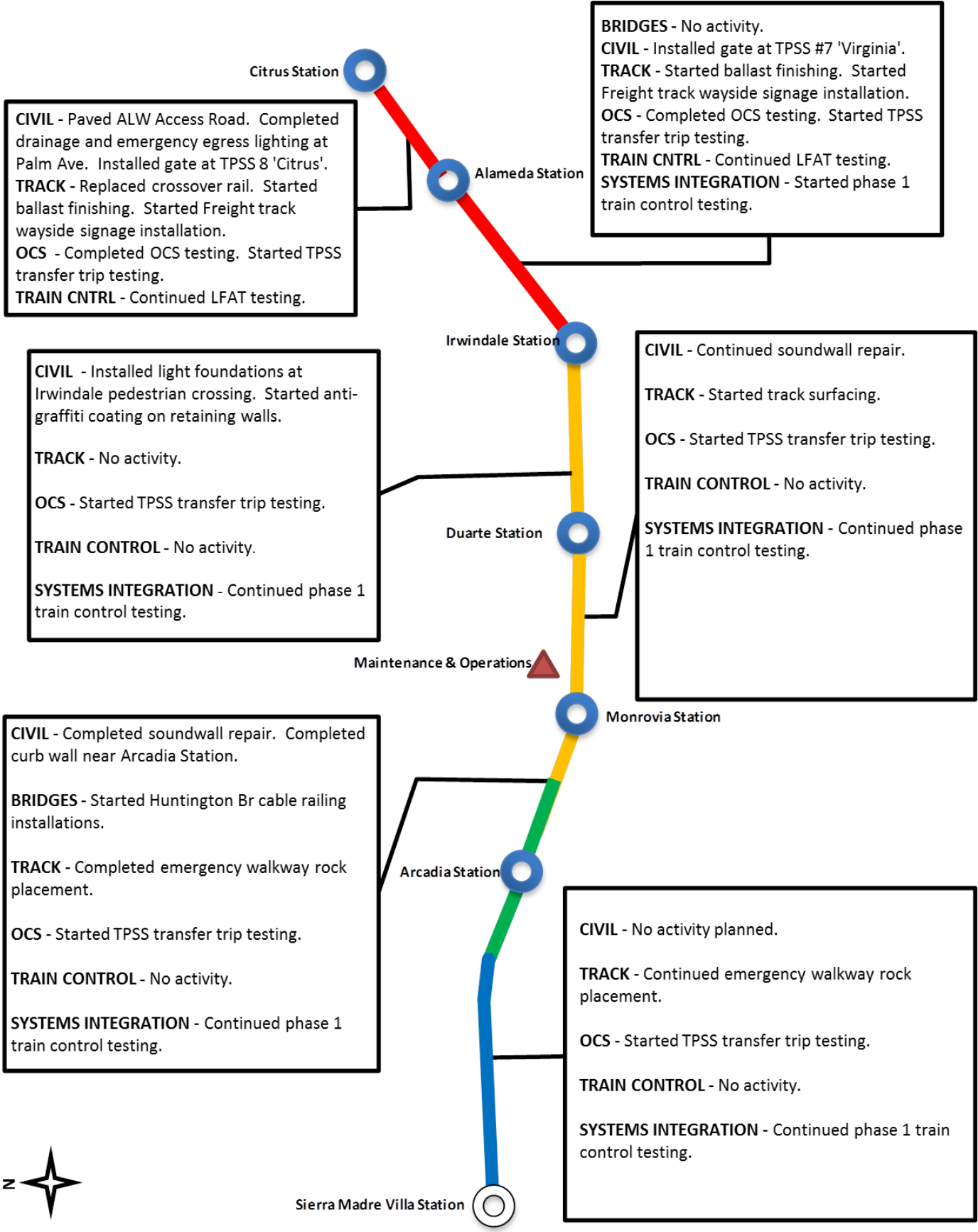
Milestones	Description	Original Contract	Current Contract	Forecast	Variance
1	Substantial Completion	09/23/15	09/23/15	10/28/15	(35)
2	Punchlist Complete	06/19/16	06/19/16	07/24/16	(35)
3	Final Completion	09/17/16	09/17/16	10/22/16	(35)
4	Access - IFS Br.	12/15/12	12/15/12	12/15/2012 A	0
5	Test Track Complete	03/27/15	03/27/15	3/27/2015 A	0
6	Colorado Br. Demo Complete	02/01/12	02/01/12	6/15/2012 A	(135)

Schedule Assessment:

With the progress continuing to trend at the rate of the late progress curve, activities in all Segments continue to approach near critical. The Design-Build Contractor continues to meet the requisite use of resources in order to meet the critical elements of the schedule. At this time, the primary activities which are critical or near critical are as follows: Inwindale Station Communications installation, Inwindale Parking Structure Communications installation, Train Control Phase 1 Systems Integration Testing, Duarte Parking Lot Communications installation, Duarte Station Communications Phase 1 Systems Integration Testing.



ALIGNMENT CONSTRUCTION PROGRESS THIS PERIOD





FACILITY CONSTRUCTION PROGRESS THIS PERIOD

Citrus Ave Station

STATION - Started communications LFAT testing. Completed artwork installation. Continued map case installation. Completed installation of trash cans.

PARKING - Continued lay over room finishes. Continued elevator testing. Continued communications LFAT testing. Completed railing installation. Completed landscape installation.

STATION - Continued artwork installation. Continued map case installation. Started Communications LFAT testing.

ENHANCEMENTS - Installed bike racks and lockers. Completed street lighting.

Alameda Station

STATION - Continued map case installations. Started installation of benches and trash cans. Started install action of pavers and hand rail at ramp landing. Continued installation of Communications Equipment.

PARKING - Completed permanent power. Continued barrier walls. Continued pump station testing. Completed parking structure striping. Continued cast-in-place wall. Started sidewalks installation. Started AC paving.

Irwindale Station

CIVIL - Continued Wall 'B' and 3M fence installations. Started storm drain and catch basin at Central Ave.

STRUCTURES - *M&O Building* - Installed grates at blow down pit. Completed shop DC switch board. *Car Wash* - Complete communications installation. *Cleaning Platform* - Complete communications installation. *MOW Building* - Continued communications installation. *Material Storage* - Continued communications installation. *Guard House* - Completed installation of finishes. Continued communications installation.

OCS - Started TPSS transfer trip test.

TRAIN CONTROL - Completed LFAT testing.

STATION - Completed Communications LFAT testing. Complete map case installations. Started trash can installations. Started Phase 1 communications testing.

PARKING - Completed installation of underground conduits. Continued metal picket fence. Completed bike lockers/racks. Completed striping. Continued sidewalk and trees. Completed artwork.

Duarte Station

STATION - Completed communications LFAT testing. Continued artwork installation. Continued map case installation. Complete trash receptacle installations. Completed pylon installation

PARKING - Completed bike lockers.

Maintenance & Operations

Monrovia Station

STATION - Completed communications LFAT testing. Continued map case installation. Completed art canopy. Completed artwork installation. Completed emergency egress lighting. Completed pylon installation.

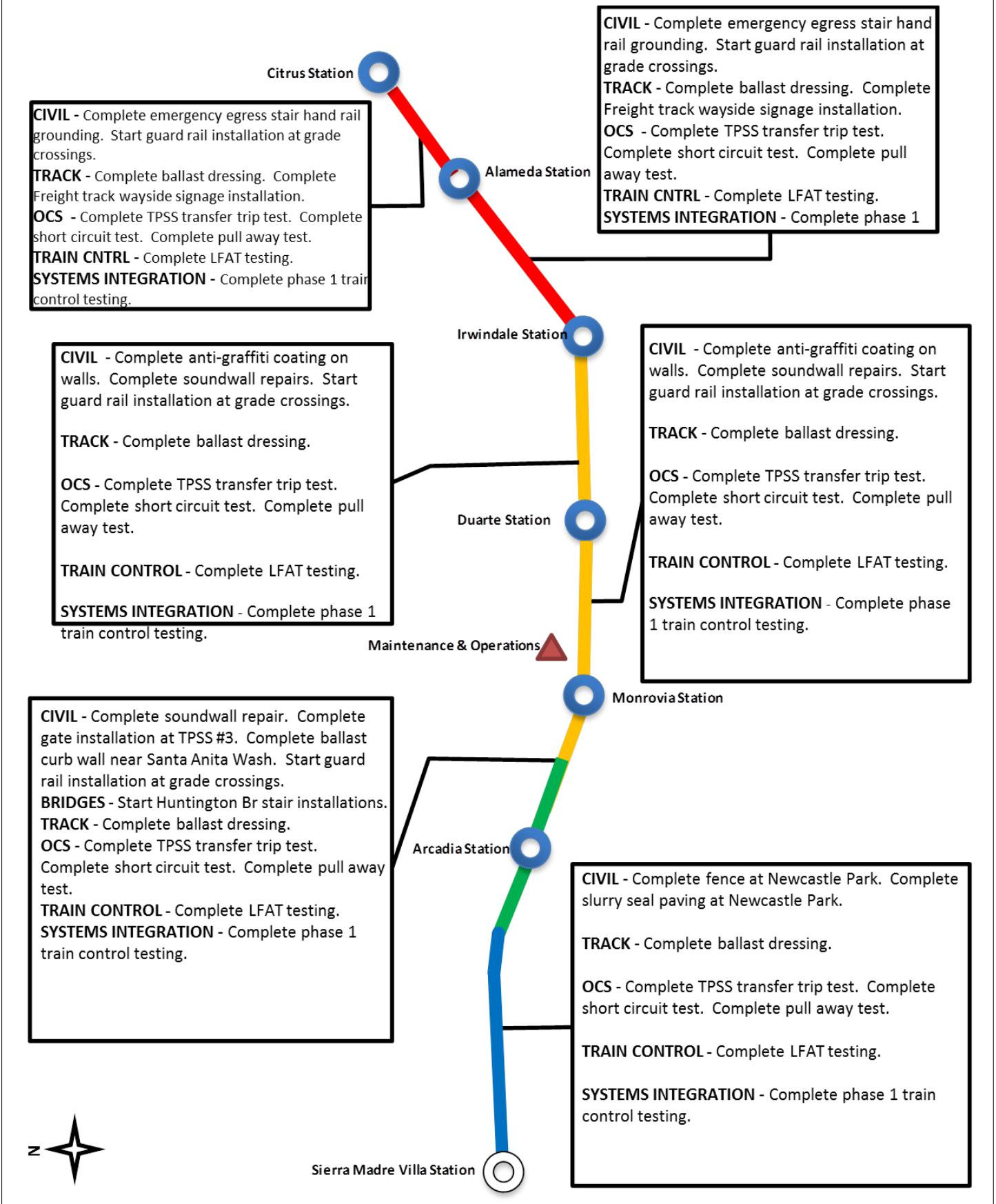
PARKING - No activity.

Arcadia Station





ALIGNMENT CONSTRUCTION PROGRESS NEXT PERIOD





FACILITY CONSTRUCTION PROGRESS NEXT PERIOD

Citrus Ave Station

STATION - Complete communications LFAT testing. Complete map case installation. Complete installation of trash cans. Install pylon.
PARKING - Complete lay over room. Complete elevator testing. Complete communications LFAT testing. Start grading Citrus Ave roadway.

STATION - Complete artwork installation. Complete map case installation. Complete bench and trash can installations. Install pylon. Complete Communications LFAT testing.

ENHANCEMENTS - Complete permanent power.

Alameda Station

STATION - Complete map case installations. Complete installation of benches and trash cans. Complete pavers and hand rail at ramp landing. Complete Communications LFAT testing and Complete Phase 1 systems integration testing.

PARKING - Complete barrier walls. Complete pump station testing. Complete cast-in-place wall. Continue street lighting and sidewalks. Complete fence installation.

Irwindale Station

STATION - Complete Phase 1 systems integration testing. Complete map case installations. Complete trash can and bench installations. Install pylon.

PARKING - Complete metal picket fence. Complete sidewalk and trees. Start communications installation.

CIVIL - Complete Wall 'B' and 3M fence installations. Complete storm drain and catch basin at Central Ave. Complete Shamrock Ave paving. Install main entrance gate.

STRUCTURES - *M&O Building* - No activity. *Car Wash* - No activity. *Cleaning Platform* - No activity. *MOW Building* - No activity. *Material Storage* - No activity. *Guard House* - No activity.

OCS - Complete short circuit test. Complete pull away test.

TRAIN CONTROL - Complete train control systems integration testing.

Duarte Station

STATION - Complete Phase 1 communications systems integration testing. Complete map case installation. Complete bench installations. Complete trash receptacle installations.

PARKING - Complete elevator State Certification.

Maintenance & Operations

Monrovia Station

STATION - Complete communications LFAT testing and Phase 1 communications systems integration testing. Complete map case installation.

PARKING - Complete elevator State Certification.

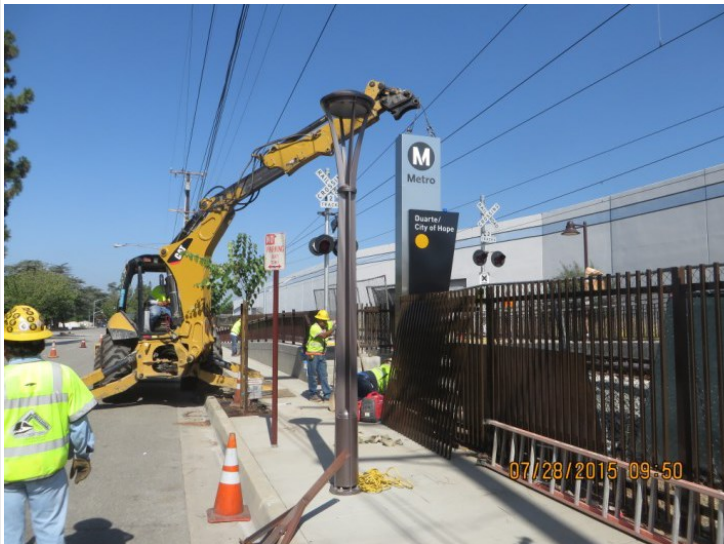
Arcadia Station





ALIGNMENT CONSTRUCTION IMAGES

Segment 2: Huntington/2nd St - Emergency Stairs



Segment 3: Duarte Station - Grand Pylon

Segment 3: Monrovia Station - Picket Fence
Installation





ALIGNMENT CONSTRUCTION IMAGES (CONTINUED)



Segment 4: Irwindale Station Name

Segment 4: Irwindale Station -
Anti-graffiti Coating



Operations Campus: P3010 Vehicle in
Storage Tracks



Change Management Log

Date: 8/10/2015

Page: 1 of 6

Project: C1135 Alignment - FTC Contract #: C1135

Original Contract Amount:	\$485,867,000				
Approved Change Orders:	\$23,157,275	4.77%	Pending Change Orders:	\$45,156	0.01%
Current Contract Total:	\$509,024,275		Pending Contract Total:	\$509,069,431	4.78%

Change Orders

Number	Change Management	Title	Initiated Date	Approved Date	Outstanding Days	Time Extension	Amount
EXECUTED Change Orders							
001.00	000.00	Interim NTP	11/3/2011	11/3/2011	0		\$0
002.00	013.00	Colorado Bridge Haz Mat	5/17/2012	5/18/2012	1		\$121,382
002.01	013.01	Colorado Bridge HazMat - Final	9/5/2012	9/7/2012	2		\$13,164
003.00	001.00	Sound Wall Deletion - Duarte Road	7/12/2012	7/18/2012	6		(\$74,707)
004.00	018.00	Revise Block Design - CBD Calc	8/23/2012	8/29/2012	6		\$3,986
004.01	018.01	Revise Block Design - CBD Calc - 2	9/5/2013	9/11/2013	6		\$0
005.00	023.00	Wayside Signal Aspect Revision	9/6/2012	9/7/2012	1		\$26,072
005.01	023.01	Wayside Signal "Call On" Function	10/30/2013	11/1/2013	2		\$75,169
006.00	040.00	Arcadia Frieze, Bench-Artist Design	9/6/2012	9/10/2012	4		\$13,683
006.01	040.01	Arcadia Frieze, Bench-Construction	3/7/2013	3/12/2013	5		\$155,894
007.00	019.02	Soils Testing Abutments & Fdns	9/14/2012	9/18/2012	4		\$44,993
008.00	041.00	Unknown Utilities RFCN 005 006 008	9/14/2012	9/18/2012	4		\$132,450
009.00	038.00	Illuminate City Names @ Stations	9/18/2012	9/24/2012	6		\$184,657
010.00	046.00	SGRB - Lead Based Paint Remediation	9/21/2012	9/24/2012	3		\$244,536
011.00	004.00	Station Architectural Changes	10/11/2012	10/12/2012	1		\$443,950
012.00	003.01	Systems and Testing for Added TPSS	12/13/2012	12/14/2012	1		\$1,443,193
013.00	005.02	IDIQ Comm Contract (Rev 2)	12/14/2012	1/22/2013	39		\$698,259
014.00	060.00	Sewer Encasement Changes in Azusa	12/18/2012	1/24/2013	37		\$141,354
015.00	037.02	M&O - Materials Storage Revisions	12/26/2012	1/15/2013	20		\$62,862
015.01	037.03	M&O Storage Shelving Revisions	9/16/2013	9/19/2013	3		\$20,380
016.00	002.00	Relocation of Access Road to 3M Fac	12/26/2012	1/16/2013	21		\$53,814
017.00	025.00	3 Electrical Casings for ALW	2/27/2013	3/1/2013	2		\$219,033
018.00	073.00	Hazardous Abatement at Bridges	1/15/2013	2/6/2013	22		\$1,081,803
019.00	054.00	City of Hope Conduits	1/11/2013	1/22/2013	11		\$34,313
020.00	059.00	Citrus TPSS Transformer Pad Changes	2/6/2013	2/7/2013	1		\$34,536
021.00	075.00	Demo & Replace Palm Dr. Roadway	2/7/2013	2/14/2013	7		\$90,365
022.00	077.00	M&O Differing Site Conditions; Pt 1	2/13/2013	2/15/2013	2		\$66,360
022.01	093.00	M and O DSC T and M Work Part 2	3/8/2013	3/12/2013	4		\$66,625
022.02	103.00	M and O DSC Part 3	3/27/2013	3/28/2013	1		\$35,211
022.03	115.00	DSC at M and O Part 4	5/3/2013	5/7/2013	4		\$5,706
022.04	390.00	M&O DSC - Part 5	7/14/2015	7/21/2015	7		\$7,192
023.00	089.00	Contaminated Soil Abatement	2/26/2013	2/27/2013	1		\$422,068
024.00	068.00	Monrovia Sound Wall Panel Change	2/26/2013	2/28/2013	2		(\$24,150)
025.00	052.00	Santa Anita Trail Detour	3/8/2013	3/12/2013	4		\$27,691
026.00	070.00	Block Type Change at M&O Building	3/26/2013	3/26/2013	0		\$35,016
027.00	065.00	M&O IT Changes-Duct Banks/Conduits	3/26/2013	3/26/2013	0		\$88,650
027.01	065.01	M&O IT Changes - Power to WAP	9/4/2013	9/6/2013	2		\$73,049
027.02	065.02	M&O IT Changes - Remaining Work	7/16/2014	7/17/2014	1		\$155,991
027.03	065.04	M&O IT Changes -Furniture Interface	6/18/2015	6/19/2015	1		\$293,896
027.04	065.05	M&O IT Changes-OFCI Eqpt and A/V	7/17/2015	7/21/2015	4		\$380,546
028.00	039.01	Delete Layover Building	4/11/2013	4/12/2013	1		(\$313,832)
029.00	095.00	8in Sanitary Sewer Line- Alameda Av	4/23/2013	4/25/2013	2		\$226,089
029.01	095.01	Alameda Sewer Line Revised Scope	11/22/2013	11/26/2013	4		(\$37,425)
030.00	102.00	M&O-Disconnect Switches, Insulators	4/23/2013	4/25/2013	2		\$67,817
031.00	110.00	Rmv Abandoned Utility Line @ Dalton	4/23/2013	4/25/2013	2		\$1,562



Change Management Log

Date: 8/10/2015

Page: 2 of 6

Project: C1135 Alignment - FTC Contract #: C1135

Change Orders

Number	Change Management	Title	Initiated Date	Approved Date	Outstanding Days	Time Extension	Amount
EXECUTED Change Orders							
032.00	104.00	Highland Ave Abandoned CMP sleeves	5/1/2013	5/3/2013	2		\$15,005
033.00	114.00	Remove contaminated wood culvert	5/3/2013	5/7/2013	4		\$4,714
034.00	128.00	M&O Backup Power/Generator Changes	5/13/2013	5/21/2013	8		\$121,340
035.00	083.00	M&O Vehicle Sanding System Changes	5/21/2013	5/24/2013	3		\$27,463
036.00	006.00	IFS Related Contract Changes	6/7/2013	6/11/2013	4		(\$263,111)
037.00	137.00	CTS Redesign	7/12/2013	7/16/2013	4		\$58,214
038.00	138.00	Segment 4 Safety Manager	7/12/2013	7/16/2013	4		\$157,274
038.01	138.01	Segment 4 Safety manager - Part 2	11/19/2013	11/21/2013	2		\$72,963
038.02	138.02	Segment 4 Safety Manager - Part 3	4/3/2014	4/7/2014	4		\$82,271
039.00	085.00	M&O Drainage System Enhancements	7/19/2013	8/13/2013	25		\$251,579
040.00	067.00	Station Paver Changes	7/23/2013	8/13/2013	21		\$728,340
040.01	067.01	Rebar Changes for Station Pavers	10/28/2013	10/31/2013	3		\$10,586
041.00	112.00	12" Pasadena Waterline Potholes	8/12/2013	8/16/2013	4		\$19,735
042.00	150.00	Demo Abandoned Water Lines @ Dalton	8/12/2013	8/16/2013	4		\$5,937
043.00	007.01	Emer. Backup for Guideway Lighting	8/16/2013	10/1/2013	46		\$359,158
044.00	172.00	Contaminated Wood Culvert Sta. 1202	8/27/2013	8/28/2013	1		\$7,712
045.00	139.00	BLS Changes	8/28/2013	9/4/2013	7		\$110,801
046.00	165.00	Azusa-Alameda Station; 2nd Portal	8/28/2013	9/4/2013	7		\$77,175
047.00	145.00	St. Joseph drainage enhancements	9/4/2013	9/6/2013	2		\$17,592
048.00	149.00	M&O - Lights at NW Corner Park	9/4/2013	9/6/2013	2		\$29,351
049.00	174.00	TPSS #5 Cal-Am Power Conflict	9/4/2013	9/6/2013	2		\$127,260
050.00	171.00	Relocate Access Stair to Foothill	9/4/2013	9/6/2013	2		\$20,276
051.00	173.00	Dalton 8" Water Line Work	9/5/2013	9/12/2013	7		\$35,316
052.00	071.00	Duarte Rd Screen Wall Change	9/5/2013	9/17/2013	12		(\$133,864)
053.00	176.00	Remove Contaminatd Wood-Buena Vista	9/10/2013	9/12/2013	2		\$5,543
054.00	147.00	DECCO Bypass	9/10/2013	9/12/2013	2		\$18,519
055.00	166.00	Foothill Blvd. Water/SD Relocation	9/20/2013	9/20/2013	0		\$127,074
056.00	186.00	Contaminated Wood @ San Gabriel Ave	9/23/2013	9/24/2013	1		\$4,291
057.00	194.00	California/Duarte Water Line Work	10/28/2013	10/31/2013	3		\$220,743
058.00	189.00	Four Utility Changes	10/28/2013	10/31/2013	3		\$14,157
059.00	180.00	Remove/Dispose of ACM E of Highland	10/30/2013	11/1/2013	2		\$29,311
060.00	179.00	CTS Upgrade to OC-192	10/30/2013	11/1/2013	2		\$112,543
060.01	371.00	IDIQ Pricing Error - OC-192 Cards	4/29/2015	5/6/2015	7		\$87,034
061.00	213.00	Inwindale On-ramp Stockpile	11/8/2013	11/21/2013	13		\$200,185
062.00	053.00	Delete Totten Tubes Scope of Work	11/8/2013	11/21/2013	13		(\$143,801)
063.00	146.00	Home Depot Striping and Signing	11/15/2013	11/21/2013	6		\$21,003
064.00	204.00	Unknown Duct Bank @ San Gabriel Ave	11/15/2013	11/21/2013	6		\$1,265
065.00	140.00	M&O-Overhead Work Platform Changes	12/5/2013	12/16/2013	11		\$317,656
066.00	217.00	Buried SD & Headwall, STA 1306+50	12/6/2013	12/17/2013	11		\$1,020
067.00	219.00	Contaminated Soil, Monrovia Station	12/12/2013	12/17/2013	5		\$17,503
068.00	220.00	DSC at Sawpit Wash Abutments	12/12/2013	12/17/2013	5		\$12,668
069.00	188.00	Costco Emergency Gate-Path to POS	1/21/2014	1/22/2014	1		\$19,882
070.00	214.00	M&O - Generator Load Bank	1/21/2014	1/22/2014	1		\$38,092
071.00	224.00	Alameda South Water Line Tie-in	1/30/2014	1/31/2014	1		\$6,330
072.00	202.00	Aesthetic Lighting Provisions-SGRB	2/3/2014	2/4/2014	1		\$27,055
073.00	160.00	Move Mountain Interlocking Bungalow	2/11/2014	2/13/2014	2		\$68,596
074.00	200.00	M&O Parts Carousel Warranty & PM	2/11/2014	2/13/2014	2		\$68,906
075.00	235.00	Remove Contaminated Wood Ties	2/14/2014	2/18/2014	4		\$4,571
076.00	234.00	Accelerate Work at California Ave	2/14/2014	2/18/2014	4		\$5,663
077.00	247.00	Line Stop in California	2/18/2014	2/20/2014	2		\$14,524



Change Management Log

Date: 8/10/2015

Page: 3 of 6

Project: C1135 Alignment - FTC Contract #: C1135

Change Orders

Number	Change Management	Title	Initiated Date	Approved Date	Outstanding Days	Time Extension	Amount
EXECUTED Change Orders							
078.00	201.00	Added Sound Wall, SW of IFS	2/27/2014	2/28/2014	1		\$18,201
079.00	238.00	M&O-MOW Canopy Structural Eval	2/27/2014	2/28/2014	1		\$7,147
079.01	238.01	M&O - MOW Canopy Solar	8/20/2014	8/26/2014	6		\$714,659
080.00	232.00	Car Moving Tractor-Coupler Upgrade	2/27/2014	2/28/2014	1		\$177,145
081.00	242.00	Car Moving Tractor Options/Features	2/27/2014	2/28/2014	1		\$69,099
082.00	091.00	Rockvale Water Line Mitigation	3/4/2014	3/5/2014	1		\$163,750
082.01	091.01	Rockvale Water Line-EIC credit	4/11/2014	4/14/2014	3		(\$5,391)
083.00	251.00	Cut and Move Rail to Segment 1	3/4/2014	3/5/2014	1		\$249,934
084.00	218.00	Delete Equipment at ROC	3/26/2014	3/27/2014	1		(\$91,708)
085.00	239.00	Install Sound Wall Door @ STA. 1169	3/26/2014	3/27/2014	1		\$12,737
086.00	250.00	Change Top Row of Block Wall 1124.1	3/26/2014	3/27/2014	1		\$3,688
087.00	229.00	Irwindale TPSS-Adjust Eqpt. Layout	4/3/2014	4/7/2014	4		\$17,878
088.00	262.00	Provisional Sum Adjustment	4/3/2014	4/7/2014	4		\$0
088.01	262.01	Provisional Sum Adjustment - 2	9/19/2014	9/25/2014	6		\$0
088.02	262.02	Provisional Sum Adjustment - 3	11/12/2014	11/14/2014	2		\$0
088.03	262.03	Provisional Sum Adjustment - 4	3/19/2015	3/19/2015	0		\$0
089.00	261.00	Longer DF Bolts - SGRB	4/3/2014	4/7/2014	4		\$17,331
090.00	169.02	M&O Trimming Table Changes (rev. 2)	4/11/2014	4/14/2014	3		\$54,083
091.00	181.00	Alameda Utility Changes	4/11/2014	4/14/2014	3		(\$9,599)
092.00	241.00	Business Center TPSS Crane Changes	4/23/2014	4/28/2014	5		\$13,655
093.00	276.00	Myrtle Early Completion Incentive	4/23/2014	4/28/2014	5		\$160,000
094.00	254.00	Drainage East of Pasadena Ave.	4/23/2014	4/28/2014	5		\$6,569
095.00	275.00	Remove Rail Ties at 1st/Santa Clara	4/23/2014	4/28/2014	5		\$2,270
096.00	274.00	Buried Concrete @ Huntington Bridge	4/23/2014	4/28/2014	5		\$2,819
097.00	269.00	Asbestos Pipe at Duarte and Myrtle	4/23/2014	4/28/2014	5		\$6,583
098.00	278.00	Abandoned Gas Line at California	5/6/2014	5/7/2014	1		\$8,170
099.00	170.00	M&O Car Wash Betterments	5/6/2014	5/7/2014	1		\$166,144
100.00	223.00	M&O-Volume Control for PA Speakers	5/6/2014	5/7/2014	1		\$38,105
101.00	283.00	Track Work Around at Mountain Ave	5/6/2014	5/7/2014	1		\$29,996
102.00	284.00	Install 115# Buffer Rails in Seg. 1	5/6/2014	5/7/2014	1		\$29,442
103.00	230.00	Azusa-Citrus Ped Crossing Operation	5/6/2014	5/7/2014	1		\$84,183
104.00	231.00	Red Signal Violation Indication	6/3/2014	6/3/2014	0		\$335,134
105.00	253.00	Remove Stem Wall along Duarte Rd.	6/11/2014	6/12/2014	1		\$37,527
106.00	271.00	DVR Changes	7/16/2014	7/17/2014	1		\$181,301
107.00	260.00	M&O Supplemental Fire Water System	7/16/2014	8/4/2014	19		\$1,642,824
108.00	163.00	1st/Santa Clara Grade X-ing Changes	7/25/2014	7/30/2014	5		\$156,177
109.00	164.00	M&O Body Shop Changes	7/25/2014	8/4/2014	10		\$488,598
110.00	256.00	Monrovia North Bunglow LCP Changes	7/25/2014	7/30/2014	5		\$125,313
111.00	237.00	M&O-Signaling System Changes	7/29/2014	8/4/2014	6		\$1,133,746
112.00	252.00	Irwindale Security Kiosk Provisions	8/4/2014	8/6/2014	2		\$178,044
112.01	252.01	Irwindale Security Kiosk - Part 2	2/9/2015	2/11/2015	2		\$47,168
112.02	252.02	Irwindale Security Kiosk - Credit	7/14/2015	7/21/2015	7		(\$47,168)
113.00	281.00	M&O - Accent Colors	8/4/2014	8/6/2014	2		\$26,928
114.00	305.00	Lead Paint, Foothill Median Barrier	8/18/2014	8/20/2014	2		\$5,690
115.00	270.00	TES Load Flow Simulation	8/19/2014	8/21/2014	2		\$22,399
116.00	203.00	Mayflower Driveway/Wall Credit	8/20/2014	8/26/2014	6		(\$19,138)
117.00	307.00	Contaminated Wood Ties-Santa Anita	8/20/2014	8/26/2014	6		\$3,226
118.00	082.01	M&O / 3M Fence Revisions (rev 1)	9/17/2014	9/25/2014	8		\$886,650
119.00	314.00	Mountain Early Completion Incentive	9/17/2014	9/24/2014	7		\$80,000
120.00	301.00	Santa Anita Avenue Bridge Artwork	9/17/2014	9/25/2014	8		\$57,224



Change Management Log

Date: 8/10/2015

Page: 4 of 6

Project: C1135 Alignment - FTC Contract #: C1135

Change Orders

Number	Change Management	Title	Initiated Date	Approved Date	Outstanding Days	Time Extension	Amount
EXECUTED Change Orders							
121.00	313.00	Additional Traffic Signal Testing D	9/19/2014	9/25/2014	6		\$7,875
122.00	320.00	Remove Asbestos Pipe at Virginia	11/12/2014	11/14/2014	2		\$9,485
123.00	303.00	Additional Anti-Graffiti Coating	12/8/2014	12/8/2014	0		\$63,727
124.00	326.00	Santa Anita Avenue Bridge Lighting	12/8/2014	12/8/2014	0		\$208,633
124.01	326.01	Santa Anita Bridge Lighting-Part 2	1/16/2015	1/19/2015	3		\$5,744
124.02	380.00	Santa Anita Ave. Bridge Lighting-3	7/14/2015	7/21/2015	7		\$68,775
125.00	335.00	M&O - Interior Wall Revisions	12/18/2014	12/19/2014	1		\$43,786
126.00	304.00	M&O Lobby Aesthetic Changes	12/18/2014	12/19/2014	1		\$128,047
127.00	292.00	M&O - Guard House Changes	12/19/2014	12/19/2014	0		\$65,463
128.00	339.00	Mountain Ped. Crossing Changes	1/8/2015	1/12/2015	4		\$96,159
129.00	340.00	Business Center TPSS Drainage	1/16/2015	1/19/2015	3		\$249,959
130.00	255.00	Virginia TPSS Access Road	1/8/2015	1/12/2015	4		\$39,718
131.00	291.00	Eliminate 'Train Coming' Signs	1/8/2015	1/12/2015	4		\$9,325
132.00	322.00	Replace Existing OCS Pole at SMV	1/16/2015	1/19/2015	3		\$27,010
133.00	187.01	Irwindale Ramp Signs	1/20/2015	1/26/2015	6		\$125,015
134.00	346.00	Delay in Setting of Yard Substation	1/20/2015	1/26/2015	6		\$15,181
135.00	344.00	Virginia TPSS-Access for Delivery	1/30/2015	2/2/2015	3		\$67,019
136.00	328.00	Rail Profile Grinding	2/9/2015	2/18/2015	9		\$524,000
137.00	065.03	M&O Main Building Comm. Room Floors	2/17/2015	2/17/2015	0		\$4,402
138.00	353.00	1st/Santa Clara Noise Mitigations	2/17/2015	2/17/2015	0		\$13,889
139.00	323.00	Add Pavers to Duarte Station W Ramp	2/18/2015	2/18/2015	0		\$31,982
140.00	338.00	M&O-Wheel Truing Machine Car Puller	2/19/2015	2/19/2015	0		\$83,112
141.00	258.00	M&O Tactile Guidance Changes	2/23/2015	2/26/2015	3		\$203,945
142.00	352.00	M&O - Fire Alarm System	2/23/2015	2/26/2015	3		\$238,983
143.00	351.00	Sierra Madre Track Rehab	2/23/2015	2/26/2015	3		\$18,107
144.00	349.00	Remove water line east of Highland	2/23/2015	2/26/2015	3		\$4,648
145.00	360.00	M&O Facility - Yard Control Console	3/2/2015	3/3/2015	1		\$23,158
146.00	359.00	Generators for Testing-SRGB to IRW	3/2/2015	3/3/2015	1		\$6,758
147.00	325.00	Station Identifier Changes	3/23/2015	3/25/2015	2		\$4,712
148.00	345.00	Irwindale Signal Case & Push Button	3/24/2015	3/25/2015	1		\$111,110
149.00	296.00	M&O Service Vehicle Pathways	3/26/2015	3/30/2015	4		\$164,480
149.01	296.01	M&O-Service Vehicle Pathways - 2	6/18/2015	6/22/2015	4		\$4,955
150.00	327.00	M&O Facility-NW Corner Fence & Wall	4/29/2015	5/5/2015	6		\$461,480
151.00	311.00	Abandoned California Water Lines	4/29/2015	5/6/2015	7		\$61,219
152.00	358.00	M&O Facility-Interior Wall Finishes	4/29/2015	5/6/2015	7		\$24,582
153.00	337.00	Grade X-ing Train Signal Changes	4/29/2015	5/6/2015	7		\$136,849
154.00	367.00	M&O NW Corner Hardscape Changes	5/8/2015	5/20/2015	12		\$444,632
155.00	363.00	M&O Early Completion Milestone	5/13/2015	5/20/2015	7		\$215,290
156.00	375.00	M&O - Beaumont Acceleration for TCO	5/14/2015	5/20/2015	6		\$130,681
157.00	357.00	Add APS @ 2 intersections in Duarte	5/15/2015	5/20/2015	5		\$39,826
158.00	257.00	Comm. Changes Parking Structures	6/4/2015	6/4/2015	0		\$186,672
159.00	257.01	Duarte Parking Lot ETEs and CCTVs	6/4/2015	6/4/2015	0		\$289,578
160.00	364.00	M&O - MOW Track Fouling Issue	6/4/2015	6/4/2015	0		\$309,417
161.00	376.00	Remove Hazardous Waste at Angeleno	6/4/2015	6/4/2015	0		\$4,635
162.00	383.00	M&O - WTM elect changes in pit	6/4/2015	6/4/2015	0		\$19,063
163.00	381.00	M&O - Elevator Inspector Upgrades	6/4/2015	6/4/2015	0		\$12,200
164.00	382.00	M&O - Fire Alarm System Upgrades	6/11/2015	6/15/2015	4		\$109,631
164.01	389.00	M&O - Fire Alarm System Upgrades-2	6/18/2015	6/22/2015	4		\$109,920
165.00	385.00	M&O-replace LRV access stairs	6/11/2015	6/15/2015	4		\$9,519
166.00	384.00	M&O-NW Corner Added Paving & Curb	6/11/2015	6/15/2015	4		\$19,095



Change Management Log

Date: 8/10/2015

Page: 5 of 6

Project: C1135 Alignment - FTC Contract #: C1135

Change Orders

Number	Change Management	Title	Initiated Date	Approved Date	Outstanding Days	Time Extension	Amount
EXECUTED Change Orders							
167.00	391.00	M&O Main Entrance Changes	7/14/2015	7/21/2015	7		\$209,772
168.00	306.00	Close Fence Gaps to Adj. Buildings	7/14/2015	7/21/2015	7		\$19,939
169.00	377.00	Pedestrian Grade Crossing Mods	7/14/2015	7/21/2015	7		\$31,469
170.00	343.00	Striping/Signs at Station Ped Xings	7/14/2015	7/21/2015	7		\$267,488
						Subtotal:	\$23,157,275
						Subtotal:	\$23,157,275
PENDING Change Orders							
171.00	362.00	M&O - Move East Lobby Wall	8/10/2015		0		\$45,156
						Subtotal:	\$45,156
						Subtotal:	\$45,156
						Total:	\$23,202,431

Open PCOs

PCO Number	Title
OPEN	
029.00	Del. Irwindale/Gladstone Mitigation
080.00	Delete Evergreen / Myrtle Mitigation
085.00	Joseph TPSS Power Feed Credit
087.00	ETEL/PTEL Faceplate Betterment
091.00	UP Tunnel Analysis & Modifications
099.01	Rail Profile Grinding - Closeout
100.00	Change Wayside Operational Signage
101.00	Peck Road Ramp
103.00	Tactile Guidance Tile at Stations
110.00	M&O Completion Items
111.00	3M Fence Changes

Open RFCs

RFC Number	Title
OPEN	
051.00	Irwindale Ramp CSP
088.00	Programming Changes for SCRRA Exit
094.00	Intersection Changes at Highland an
096.00	TPSS Metering Extension Changes CSP
097.00	Relocation of Buena Vista Pole D CS
112.00	Temporary FACP Monitoring for Parki
115.00	MO Flooring Acceleration CSP
127.00	Steam Cleaner Change CSP

Open RFC Notices

Number	Title
037.00	DSC at Santa Anita Wash Abutment 1
044.00	DSC Utility at Azusa Avenue
086.00	Ground Grid Damaged at Citrus TPSS
098.00	Housekeeping Pads for Electrical Eq
100.00	MO Yard Signage Changes
105.00	MO Facility Blow Down Pit Grating C
111.00	Move BLS at Azusa-Alameda Station
114.00	Changes to MO Landscaping
116.00	Added Paving at LRV Loading Driveway
117.00	City of Hope Traffic Signal Conduit
123.00	Relocate the CICs at Stations



Change Management Log

Date: 8/10/2015

Page: 6 of 6

Project: C1135 Alignment - FTC Contract #: C1135

Open RFC Notices

Number	Title
131.00	Additional Training for Wheel Truin
134.00	Pedestal Track Welds at MO
135.00	Irwindale Ped Xing Extra Work
136.00	MO Entrance Changes Part 2



Description: Intermodal Parking Facilities & Enhancements **Status:** July 15, 2015

Contract No.: C1150

Contractor: Webcor Builders

Progress Completed This Period

Design

-

Activities Planned Next Period

Design

-

Areas of Concern

- **ALAMEDA PLAZA - Underground Conduits** - The DB Contractor has completed the installation of the underground conduits. The remaining concrete work and light pole installation is currently in progress. As a result of the improved progress, the Alameda site appears to have recovered and on target to be completed before the revised Substantial Completion Dead Line.

Areas of Concern (Continued)

- **DUARTE PARKING LOT PROCUREMENT** - In February 2015, the light pole procurement was incorporated into the DB Contractor's schedule, and the projected duration for delivery was estimated to be four (4) months. As a result, there was a potential 1.5 month delay to the Substantial Completion. On June 12, 2015, the Authority issued the C1150 Design-Build Contractor a 34-day time extension and as a result, the delayed procurement is no longer in jeopardy of impacting the Substantial Completion Dead Line.



Description: Intermodal Parking Facilities & Enhancements **Status:** July 15, 2015

Contract No.: C1150

Contractor: Webcor Builders

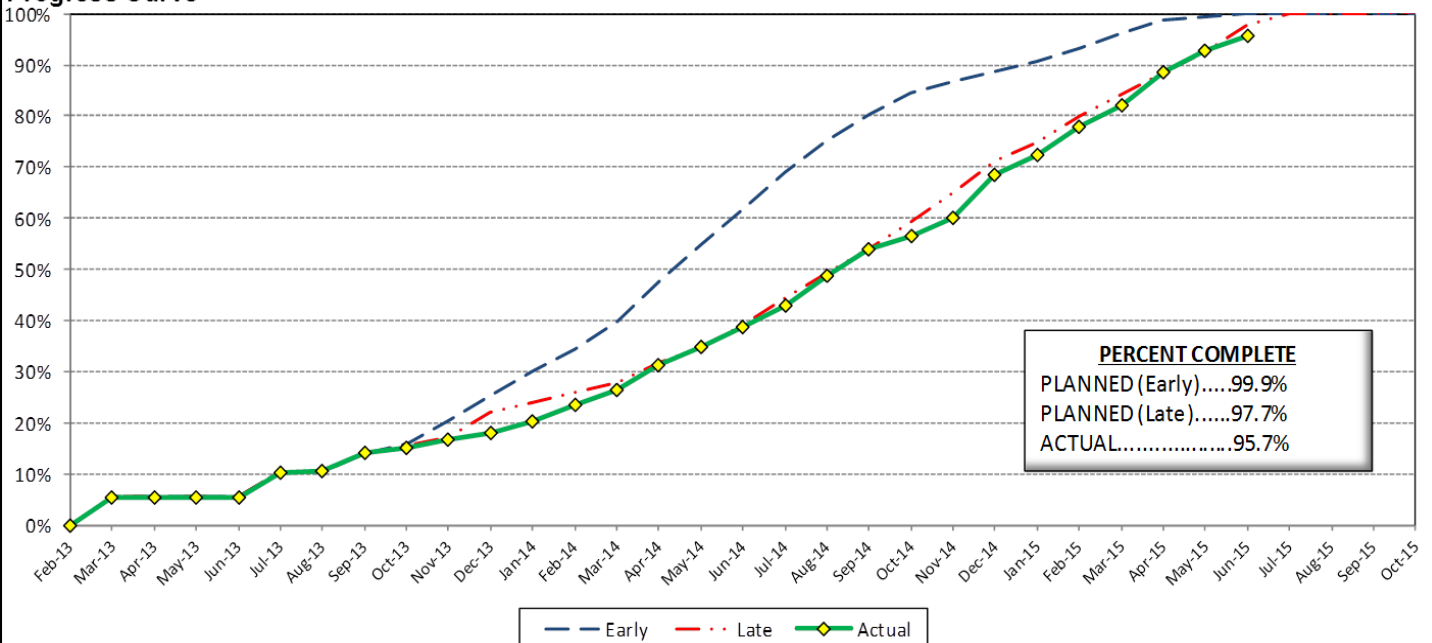
Cost Summary:

	Million(s)
CONTRACT	
Contract Award Value:	48.8
Executed Change Orders:	1.3
Current Contract Value:	50.0
Potential Change Orders:	(0.1)
Current Forecast:	50.0
Earned Value/Actual Cost	47.8
AUTHORIZATION FOR EXPENDITURE	
Budget	50.4
Commitment	50.0
Balance	0.4

Cost Assessment:

This period, the current cost forecast is 50.0 Million and decreased 385 thousand from the previous period. The cost decrease is due to the withdrawal of RFC 007 - Added PME Switch & 2 Spare Conduits, RFC 011 - Comm. Ductbank Interface, RFC 012 - SCE Capacitor Bank at Michillinda TPSS, and RFC 016 - Irwindale Added FH for LACFD Code C. The current forecast is within the authorized budget.

Progress Curve



Schedule Summary:

Contract Award:	02/27/13	
Notice to Proceed (NTP) :	03/20/13	
Original Contract Duration:	845	Calendar Days
Current Contract Duration:	969	Calendar Days
Elapsed Time from NTP:	847	Calendar Days

Contract Milestones

Milestones	Description	Original Contract	Current Contract	Forecast	Variance
1	Substantial Completion	03/15/15	07/17/15	09/01/15	(46)
2	Punchlist Complete	05/29/15	09/30/15	11/15/15	(46)
3	Final Completion	07/13/15	11/14/15	12/30/15	(46)
4	TPSS Work	03/01/14	03/01/14	3/31/2014 A	(30)

Schedule Assessment:

Currently, the Irwindale site improvements have been delayed by several issues. The steel picket fence fabrication continues to slip and the installation will be delayed until mid August 2015. In addition, the Irwindale sidewalk improvements were delayed by design changes, which were due to design elevation errors on Avenida Padilla and utility gas line conflicts at N. Irwindale Ave. Although the Design-Build Contractor has fallen behind, the Authority intends on issuing a change order with a 42 day time extension for the additional systems interface delays.



PARKING FACILITY CONSTRUCTION IMAGES



Arcadia Parking Structure Site Overview



Monrovia Parking Structure Site Overview



PARKING FACILITY CONSTRUCTION IMAGES

Duarte Parking Landscaping and
Lighting Installed



Irwindale Parking Structure Site Overview

Azusa-Citrus Parking Structure Site Overview





Change Management Log

Date: 8/10/2015

Page: 1 of 2

Project: C1150 Parking - Webcor Contract #: C1150

Original Contract Amount:	\$48,750,000				
Approved Change Orders:	\$1,309,077	2.69%	Pending Change Orders:	\$0	0.00%
Current Contract Total:	\$50,059,077		Pending Contract Total:	\$50,059,077	2.69%

Change Orders

Number	Change Management	Title	Initiated Date	Approved Date	Outstanding Days	Time Extension	Amount
EXECUTED Change Orders							
001.00	001.00	Monrovia Parking Alternative Layout	6/25/2013	7/11/2013	16		\$21,382
001.01	001.01	Monrovia Alternative - Cancellation	9/17/2013	10/7/2013	20		(\$12,006)
002.00	003.00	Clock Tower Procurement	7/3/2013	7/11/2013	8		\$107,246
003.00	002.00	Relocate Elevator @ Azusa-Citrus PF	12/18/2013	1/8/2014	21		\$159,899
004.00	013.00	Irwindale Structure Relocation	1/23/2014	8/28/2014	217	90	(\$65,564)
005.00	018.00	Monrovia Demo Unforeseen Conditions	3/18/2014	3/26/2014	8		\$17,013
006.00	010.00	Arcadia Transit Plaza Betterments	3/14/2014	3/26/2014	12		\$35,466
007.00	009.01	Irwindale Intersection Betterments	3/25/2014	3/26/2014	1		\$19,985
008.00	017.00	Irwindale Intersection Water Line	3/25/2014	4/14/2014	20		\$7,748
009.00	020.00	Unforeseen Underground Demo-Arcadia	6/13/2014	7/9/2014	26		\$6,313
010.00	011.00	Soldano TPSS Added ROW Fence	7/24/2014	7/28/2014	4		\$8,481
011.00	024.00	SCE Power Feed to DB2 Arcadia TPSS	7/24/2014	7/28/2014	4		\$17,199
012.00	025.00	Additional Sidewalk at Arcadia	7/24/2014	7/28/2014	4		\$3,342
013.00	006.00	St. Joseph Drainage Enhancements	7/31/2014	7/31/2014	0		\$139,488
014.00	012.00	Additional Conduit Provisions	8/13/2014	9/3/2014	21		\$57,262
015.00	030.00	Unforeseen Conditions at Michillind	8/22/2014	8/28/2014	6		\$1,643
016.00	019.00	Parking Facility Artwork	8/27/2014	8/28/2014	1		\$75,850
017.00	034.00	Michillinda Conduit Demo & Pull Box	11/12/2014	11/20/2014	8		\$31,506
018.00	016.00	Monrovia Canopies & Banding Color	12/19/2014	12/29/2014	10		\$247,577
019.00	035.00	Irwindale CCTV Pole	12/29/2014	1/5/2015	7		\$6,220
020.00	039.00	Engineering Costs for Arcadia Clock	12/17/2014	12/29/2014	12		\$5,292
021.00	008.00	Azusa-Citrus Plaza Pavers	1/5/2015	1/13/2015	8		\$7,350
022.00	038.00	Temporary Power for Irrigation at M	1/7/2015	1/13/2015	6		\$1,465
023.00	037.00	Additional Slurry for City of Arcad	1/7/2015	1/13/2015	6		\$7,460
024.00	033.00	Elevator Holding Tanks	3/25/2015	3/27/2015	2		\$76,833
025.00	029.00	Metro-Requestd Elevator Vent Detail	2/12/2015	2/12/2015	0		\$11,553
026.00	041.00	Azusa Citrus Grand Pylon Power	2/13/2015	2/13/2015	0		\$4,742
027.00	045.00	Irwindale Form Liner Product Change	4/9/2015	4/9/2015	0		\$13,170
028.00	044.00	Irwindale City Light Poles Upgrade	4/9/2015	4/9/2015	0		\$10,543
029.00	043.00	Metro Requested Signage Betterments	4/10/2015	6/24/2015	75		\$12,884
030.00	027.00	ETEL Enclosures	4/10/2015	4/30/2015	20		\$42,885
031.00	046.00	Generator for Monrovia Elevators	4/21/2015	4/30/2015	9		\$26,901
032.00	049.00	Irwindale Completion Incentive	6/8/2015	6/11/2015	3		\$50,000
033.00	053.00	Systems Interface Delay	6/10/2015	6/12/2015	2	34	\$0
034.00	047.00	CCTV Scope at Duarte Surface Lot	6/11/2015	6/16/2015	5		\$87,799
035.00	048.00	Irwindale Crash Wall Screen Revisio	6/25/2015	6/29/2015	4		\$26,694
036.00	054.00	Irwindale Street Improvements	7/7/2015	7/8/2015	1		\$14,707
037.00	055.00	Systems Interface Delay Part 2	7/16/2015	7/17/2015	1	42	\$0
038.00	051.00	Relocate Monrovia Jobsite Trailers	7/17/2015	7/23/2015	6		\$22,749
		Subtotal:					\$1,309,077
		Subtotal:					\$1,309,077
		Total:					\$1,309,077



Change Management Log

Date: 8/10/2015

Page: 2 of 2

Project: C1150 Parking - Webcor Contract #: C1150

Open PCOs

PCO Number	Title
OPEN	
013.00	Primrose Avenue cul-de-sac Deletion
014.00	Delete Azusa-Alameda Enhancements
016.01	Artwork Installation
018.00	Inwindale Kiosk Foundation
020.00	Azusa-Citrus Roadway



AZUSA TO MONTCLAIR SEGMENT

ACTIVITIES COMPLETED THIS PERIOD

Authority and City staff continued to hold coordination meetings to discuss the project. The Authority has been meeting with the cities bi-monthly to discuss the terms of the Master Cooperative Agreement (MCA). The MCA is expected to be agreed upon by all parties by September 2015. The Authority and cities are working together to meet this deadline.

This period, Authority staff worked on the following technical elements of the project:

- Continued advancement of the plan and profile drawings
- Continued right-of-way survey and drawings
- Continued geotechnical work
- Continued surveying work
- Began conceptual design of the parking facilities
- Began preparing scope for environmental site assessments

KEY FUTURE ACTIVITIES

The advanced conceptual engineering process is an 18-month process. Upon completion, the Azusa to Montclair segment will be ready for a design-build procurement. Upcoming activities include continuing to attend coordination meetings with each corridor city, finalizing the city MCAs, development of the ROW drawing work, refinement of the alignment, completing the SDAR, and completing the geotechnical investigations.

Federal Transit Administration (FTA)

The Metro Board of Directors excluded the Gold Line from seeking federal New Starts funding. The Authority will work together with Metro along with the Congressional delegation to seek funding to construct the extension following completion of the environmental review.



PHASE 2 FOOTHILL EXTENSION FINANCIAL STATUS

Project Operating Budget Summary in Millions of Dollars

July 31, 2015

	(a)	(b)	(c=a-b)	(d)
FINANCIAL PLAN	Current Budget	Funding Committed to Project	Uncommitted Funds	Revenues Received
SCAG	1.0	0.9	0.1	0.9
Interest Income	2.0	2.0	-	2.0
Bridge Replacement	13.9	13.9	-	13.9
Phase I Carryover	4.0	4.0	-	4.0
Maintenance and Operations Facility	-	-	-	-
Cities	11.0	-	11.0	-
Measure R - Pasadena to Azusa	810.5	777.0	33.5	612.9
Measure R - Azusa to Montclair	-	-	-	-
SANBAG	55.2	1.5	53.7	1.5
Federal TCSP	2.9	2.9	-	2.9
Federal Bus Intermodal Plan	9.0	9.0	-	5.8
Federal New Starts 2004 MTA Passthrough	4.0	4.0	-	4.0
Federal New Starts 2005 MTA Passthrough	0.5	0.5	-	0.5
Federal New Starts 2006 Corridor Study	2.5	2.5	-	2.5
Federal/Other	1,033.5	-	1,033.5	-
Total Revenues	1,950.0	818.2	1,131.8	650.9
	(a)	(b)	(c)	(d=a-b)
	Current Budget	Current Obligation	Current Expenditures	Current Available Balance
EXPENSES				
Program Management and Administration	108.9	108.9	102.9	-
Master Cooperative Agreements	11.0	3.3	2.9	7.7
Real Estate including ROW Acq	21.0	21.0	20.0	-
Special Programs	0.3	-	-	0.3
Procurement/Vehicles	60.0	-	-	60.0
Maintenance and Operations Facility Land	22.0	22.0	22.0	-
Construction - IFS	19.8	19.8	19.8	-
Construction - Pasadena to Azusa segment	328.9	328.9	323.9	-
Construction - Azusa to Montclair segment	1,181.0	-	-	1,181.0
Construction - M&O	47.0	47.0	41.1	-
Construction - Parking Structures	44.2	44.2	44.2	-
MTA Project Costs	64.0	64.0	14.3	-
Contingency	27.4	-	-	27.4
Project Reserve	14.5	-	-	14.5
Total Project	1,950.0	659.1	591.1	1,290.9