

Westside Purple Line Extension Section 1 Project



WESTSIDE PURPLE LINE EXTENSION SECTION 1 PROJECT

MONTHLY PROJECT STATUS REPORT

THE PREPARATION OF THIS DOCUMENT HAS BEEN FINANCED IN PART THROUGH A GRANT FROM THE U. S. DEPARTMENT OF TRANSPORTATION, FEDERAL TRANSIT ADMINISTRATION (FTA).

JULY 2015

TABLE OF CONTENTS

| | Page No. |
|---|----------|
| Project Summary..... | 1 |
| Project Overview & Status..... | 2-4 |
| Management Issues..... | 5 |
| Project Alignment by Sections..... | 6 |
| Project Alignment Section 1..... | 7 |
| Base Project Scope..... | 8-10 |
| Project Status | |
| • Project Schedule | |
| ○ Key Milestones Six-Month Look Ahead..... | 11 |
| ○ Project Summary Schedule..... | 12 |
| ○ Schedule Measurements..... | 13 |
| ○ Overall Construction Progress Curve..... | 14 |
| ○ Major Equipment Delivery..... | 15 |
| ○ Design-Builder's (C0145) Long Lead Item List..... | 16 |
| ○ Critical Path Narrative..... | 17 |
| ○ Project Schedule Contingency Drawdown..... | 18 |
| ○ Project Schedule Contingency Drawdown Analysis..... | 18 |
| • Project Cost | |
| ○ Project Cost | 19 |
| ○ Project Cost Analysis..... | 19 |
| ○ Project Cost Contingency Drawdown..... | 20 |
| ○ Project Cost Contingency Drawdown Analysis..... | 20 |
| ○ Disadvantaged Business Enterprise (DBE)..... | 21 |
| ○ Project Labor Agreements (PLA) Status..... | 22 |
| ○ Summary of Contract Modifications..... | 23 |
| • Financial/Grant | |
| ○ Financial/Grant | 24 |
| ○ Status of Funding..... | 24 |
| • Staffing | |
| ○ Total Project Staffing..... | 25 |
| ○ Metro Staffing..... | 26 |

TABLE OF CONTENTS (Continued)

| | Page No. |
|---|----------|
| • Construction Management Services Consultant..... | 26 |
| • Engineering Management Services Consultant..... | 27 |
| • Real Estate..... | 28 |
| • Quality Assurance..... | 28 |
| • Environmental..... | 29 |
| • Construction Relations..... | 30 |
| • Creative Services | 30 |
| • Safety & Security..... | 31 |
| • Third Party Agreement & Status..... | 32 |
| • Advanced Utility Relocation Status..... | 33 |
| • Peak Hour and Nighttime Construction Variances..... | 34 |
| • Chronology of Events..... | 35-36 |
| • Construction Contracts | |
| o Contract C1045 Status..... | 37 |
| o Contract C1048 Status..... | 38 |
| o Contract C1055 Status..... | 39 |
| o Contract C1056 Status..... | 40 |
| • Construction Photographs..... | 41-42 |
| Appendices | |
| • Cost and Budget Terminology..... | 43 |
| • List of Acronyms..... | 44-47 |

PROJECT SUMMARY

| | | | | | | | |
|---|-----------------------|------------------------|-------------------------|---|-------------------|---------------------|-----------------------|
| LOCATION: Los Angeles / Beverly Hills | | | | CONSTRUCTION MANAGEMENT CONSULTANT: WEST, a Joint Venture | | | |
| DESIGN CONSULTANT: Parsons / Brinckerhoff | | | | CONTRACTOR: Skanska, Traylor and Shea, a Joint Venture | | | |
| Building Demolition North Wilshire/La Brea Site | | | | WORK COMPLETED PAST MONTH | | | |
|  | | | | <ul style="list-style-type: none"> - Finalizing real estate acquisitions and relocations - C1045 Wilshire/Western 85% design pkg. underway - C1045 Wilshire/La Brea 85% design review & QC in process - C1045 Wilshire/La Brea area UG Utility design AFC in process - C1045 Wilshire/La Brea SOE design 85% underway - C1045 Wilshire/Fairfax 60% design underway - C1045 Wilshire/La Cienega design began - C1045 Tunnel & Systems 60% design underway - C1045 La Brea North buildings demo underway - C1045 Final stages of Baseline Schedule development - C1055 Wilshire/Fairfax AUR: 12" Waterline completed on Fairfax - C1055 Wilshire/Fairfax AUR: Orange Dr duct bank complete - C1055 Wilshire/Fairfax MS #2 complete - C1056 Wilshire/La Cienega AUR: Sewer line A La Cienega to Gale completed - C1056 Wilshire/La Cienega AUR: Sewer line B Hamilton to Tower & Intersect completed - C1056 Wilshire/La Cienega AUR: Sewer line D Hamilton N. to S. completed | | | |
| EXPENDITURE STATUS (\$ In Millions) | | | | SCHEDULE ASSESSMENT | | | |
| ACTIVITIES | CURRENT BUDGET | EXPENDED AMOUNT | PERCENT EXPENDED | MAJOR SCHEDULE ACTIVITIES | PRIOR PLAN | CURRENT PLAN | VARIANCE WEEKS |
| DESIGN | \$157.7 | \$83.5 | 52.9% | Environmental | | | |
| | | | | FEIS / FEIR | N/A | 05/31/12 | Complete |
| RIGHT-OF-WAY | \$175.6 | \$111.5 | 63.5% | Design | | | |
| | | | | PE Notice to Proceed | N/A | 01/12/11 | Complete |
| CONSTRUCTION | \$1,737.4 | \$210.0 | 12.1% | Final Design complete | 03/22/17 | 03/22/17 | 0 |
| | | | | Right-of-Way | | | |
| OTHER | \$1,078.7 | \$84.5 | 7.8% | All parcels available | 12/31/15 | 12/31/15 | 0 |
| TOTAL | \$3,149.4 | \$489.5 | 15.5% | Construction - Main Design / Build Contract | | | |
| Current Budget includes Environmental/Planning and Finance Costs. | | | | Notice to Proceed | 01/12/15 | 01/12/15 | Complete |
| AREAS OF CONCERN | | | | Construction complete | 11/08/23 | 11/08/23 | 0 |
| ROW ACQUISITION | PLAN | AVAILABLE | REMAINING | CRITICAL ACTIVITIES / 3 MONTH LOOK AHEAD | | | |
| PERMANENT PARCELS | 15 | 10 | 5 | <ul style="list-style-type: none"> - C1045 Wilshire/La Brea UG utility design complete - C1045 Wilshire/La Brea SOE complete - C1045 Wilshire/La Brea utility work & soundwall to begin - C1045 TBM temporary power work to begin - C1045 Contractor orders piles for Wilshire/La Brea Station - C1055 Wilshire/Fairfax AUR: MS #3 complete substantial completion - C1056 Wilshire/La Cienega AUR: Power relocation work continuing | | | |
| TEMPORARY PARCELS | 4 | 3 | 1 | | | | |
| TOTAL PARCELS | 19 | 13 | 6 | | | | |

PROJECT OVERVIEW & STATUS

Section 1 of the Westside Purple Line Extension Project is the first of three sections to be designed and constructed as part of the Los Angeles County Metropolitan Transportation Authority (LACMTA) Measure R Program. The program was approved by Los Angeles County voters in November 2008 and provides a half-cent sales tax to finance new transportation projects. In April 2012, the three sections of the Project were environmentally cleared and adopted by LACMTA Board of Directors.

Section 1 will extend the existing Purple Line by 3.92 miles beginning at the Wilshire/Western Station. From this station, the twin tunnel alignment will travel westerly within the existing Wilshire Boulevard right-of-way. Stations will be located at the intersections of Wilshire/La Brea, Wilshire/Fairfax, and Wilshire/La Cienega. All three of the station boxes will be located within the Wilshire Boulevard right-of-way with station portals extending to off-street entrances. Two of the stations, Wilshire/La Brea and Wilshire/Fairfax are within the jurisdiction of the City of Los Angeles. The Wilshire/La Cienega Station is within the City of Beverly Hills jurisdiction.

Design

The Engineering Management Services (EMS) team continues to provide design support to the Advanced Utility Relocation (AUR) contracts, the Design/Build Contract, and the Division 20 Maintenance-of-Way and Non-Revenue Vehicle Building 61S Contract.

For the Wilshire/La Brea AUR Contract (C1048), record drawings are being finalized to reflect the C1048 as-built conditions. The information from these drawings is being incorporated into the Tunnels, Stations, Trackwork, Systems and Systems Integration Testing Contract (C1045) composite utility drawings. *Record drawings were sent to LADWP (Water) in April 2015 for their final review and acceptance, prior to them being finalized.*

For the Wilshire/Fairfax AUR Contract (C1055), the team continues to support Metro in responding to Request for Information (RFI's) and submittals. A fulltime field engineering representative continues to support nighttime construction activities.

For the Wilshire/La Cienega Station AUR Contract (C1056), support to Metro continues with traffic control requests for revised Worksite Traffic Control Plans for the contractor to comply with the Memorandum of Agreement (MOA) between Metro and the City of Beverly Hills; and also with the City of Los Angeles Department of Transportation where the traffic control plans extends beyond the City of Beverly Hills jurisdiction at San Vicente Boulevard. A fulltime field engineering representative continues to support construction activities.

The team is continuing to support Metro in the coordination with the City of Los Angeles, City of Beverly Hills, and third party utility companies, including updates to the AT&T and SCG relocation designs and associated traffic control plans.

The Division 20 Maintenance-of-Way (MOW) and the Non-Revenue Vehicle (NRV) Building 61S massing study was completed with the Arts District Stakeholders. Also, the project definition documents were conformed in advance of contract award.

Attended bi-weekly task force meetings with Metro and the C1045 Contractor for Tunnels, Stations, Trackwork, Systems and Systems Integration Testing to resolve technical issues related to each design discipline. The team is supporting Metro in reviewing final design submittals, responding to RFI's, and assisting in preparation of change notices. *Design review comments were provided to the C1045 Contractor on the 60% Tunnels Design submittal, and the 100% Wilshire/La Brea and 60% Wilshire/Fairfax Geotechnical Reports.*

The C1045 Contractor, Skanska, Traylor and Shea (STS), has mobilized the final design team, Parson's Transportation Group (PTG).

The design work has been identified into six distinct design units. They are:

1. Design Unit 1 – Wilshire/Western Interface Chamber (Shaft)
2. Design Unit 2 – Wilshire/La Brea Station
3. Design Unit 3 – Wilshire/Fairfax Station
4. Design Unit 4 – Wilshire/La Cienega Station
5. Design Unit 5 – Tunnels
6. Design Unit 6 – Systems/Traffic/Trackwork

Each design unit package will be submitted and evaluated at each of the following phases; 60%, 85%, 100%, Approved for Construction (AFC) and Issued for Construction (IFC). If required, critical design units can be advanced as Advanced Partial Design Units (APDU's) to support ongoing construction activities.

Design activities are well underway with the involvement of every discipline and design task force meetings are occurring weekly related to each design unit.

"Pencils down" for Wilshire/La Brea Station 85% design submittal and the Systems/Traffic/Trackwork 60% design submittal occurred in late July 2015.

STS submitted drawings and calculations for the 85% Support of Excavation (SOE) Wilshire/La Brea Station design. A special task force has been assembled to review the SOE drawings and calculations in conjunction with the draft dewatering plans and building protection report. Additional geotechnical investigation work and a water pump test will be performed in the area of the Wilshire/La Brea Station to confirm the initial dewatering and settlement data. STS is planning to complete the analysis of the additional field investigation work by mid-September in order for the station pile fabrication to begin.

The Wilshire/La Cienega Station design began in early July 2015 with the 60% design submittal planned for November 2015.

The 60% design submittal for Wilshire/Fairfax Station and the 85% design submittal for the Wilshire/Western Interface and TBM Retrieval Shaft are scheduled to occur in August 2015.

"Over-the-shoulder" design reviews are occurring with STS, PTG, Metro and the EMS team prior to each major design submittal and monthly Metro Fire/Life/Safety meetings are occurring.

Several follow-up meetings and “over the shoulder” reviews have occurred with STS and Metro’s Project Control staff to bring closure to the remaining schedule comments of the Contract Baseline CPM Schedule. *It is anticipated that all comments will be addressed in August, so that schedule can be finalized.*

STS is continuing with the required contractual submittals.

Major Contract Procurement

On July 23, 2015, the MTA Board authorized the CEO to award Contract C1078, Division 20 Maintenance-of-Way (MOW) and the Non-Revenue Vehicle (NRV) Building 61S, to Clark Construction Group for a firm fixed price amount of \$52,830,310. Contract award is scheduled to occur on August 3, 2015, followed by notice-to-proceed in late September 2015.

Construction

The Wilshire/La Brea AUR Contractor (C1048) achieved substantial completion on October 27, 2014. Follow-on work by LADWP Power has been completed. Work performed in the same area by Southern California Gas was completed in late March 2015. AT&T work was completed in early May 2015. *Contract closeout completion of C1048 is anticipated to occur in two months.*

This month the Wilshire/Fairfax AUR (C1055) contractor achieved contractual Milestone #2, Completion of Power, and is on schedule to achieve substantial completion in October 2015. The C1055 contractor has begun constructing an electrical ductbank crossing at Wilshire Boulevard and Orange Grove in the Wilshire/La Brea Station area. This is additional work for the contractor. This work is anticipated to be completed in early August 2015 and will not have an impact to Contract C1045 early utility construction activities.

Follow-on work in the Wilshire/Fairfax Station area by third party utilities (AT&T, LADWP Power, and SCG) is anticipated to be completed by summer 2016. This will complete all AUR work at this location and prior to the contractual access date for the C1045 Design/Build contractor to begin construction of the Wilshire/Fairfax Station.

On June 16, 2015, the Beverly Hills City Council approved permits for the C1045 contractor to conduct design survey and mapping, and geotechnical site investigation work with the City of Beverly Hills.

The C1045 contractor has mobilized to the North Wilshire/La Brea construction staging site in preparation of overhead utility relocations, relocation of the alleyway, removal and storage of the artwork on the former Metro Customer Center and building demolition. The relocation of the alleyway has been completed. *Building demolition is well underway and pre-demolition work on the South Wilshire/La Brea construction staging site has begun.*

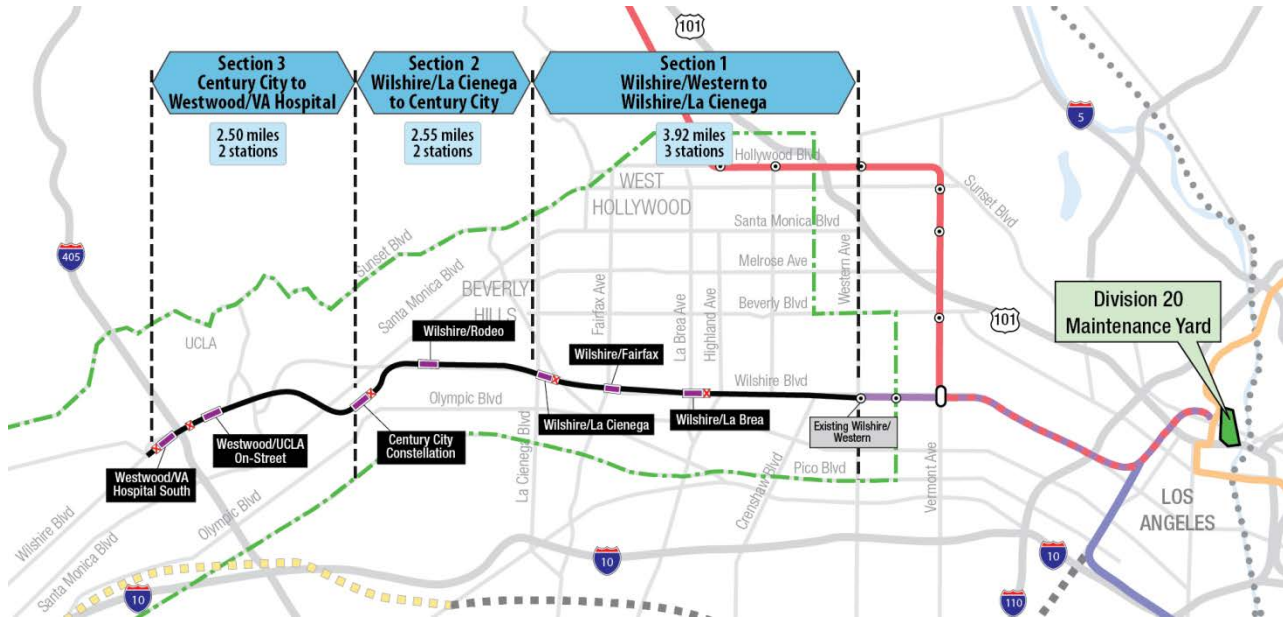
Metro staff continues to meet with the City of Beverly Hills to obtain a Memorandum of Agreement (MOA) for Contract C1045.

Property abatement and remediation work is continuing prior to providing site access to the C1045 contractor.

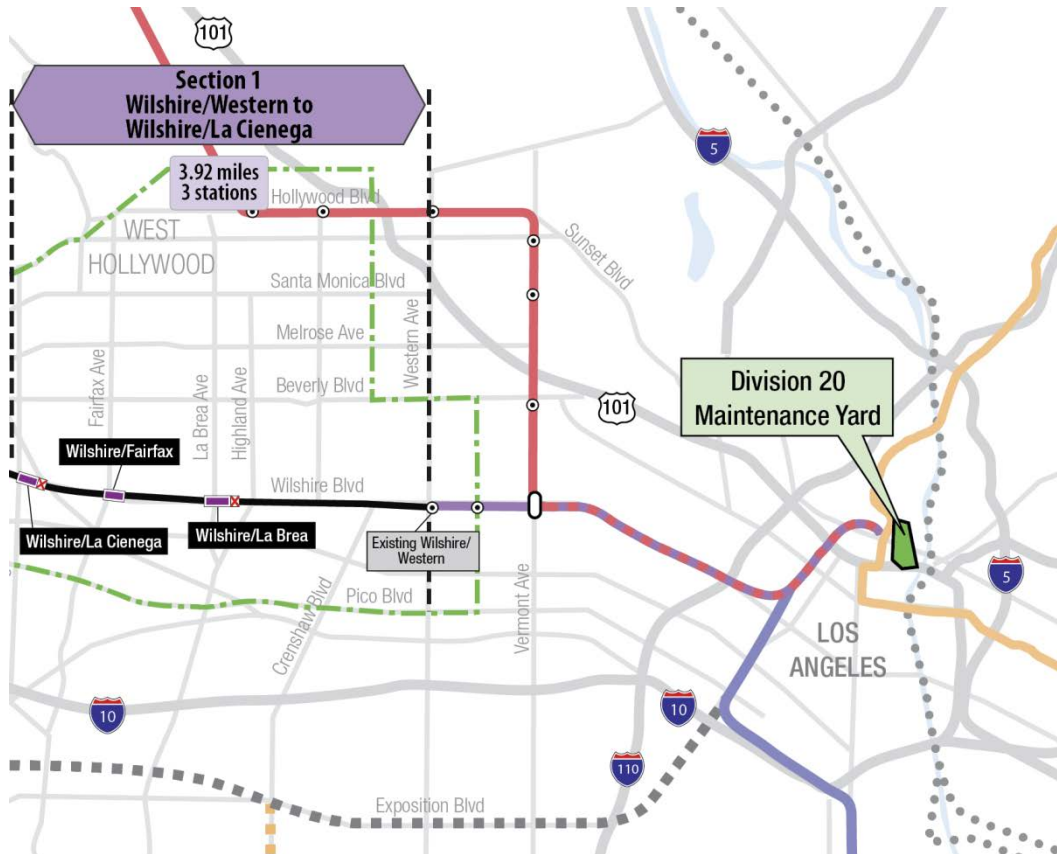
MANAGEMENT ISSUES

No Management Issues this period.

PROJECT ALIGNMENT by SECTIONS



PROJECT ALIGNMENT SECTION 1



BASE PROJECT SCOPE

Section 1 of the Westside Purple Line Extension Project is the first of three sections to be designed and constructed as part of the Los Angeles County Metropolitan Transportation Authority (LACMTA) Measure R Program. The program was approved by Los Angeles County voters in November 2008 and provides a half-cent sales tax to finance new transportation projects. In April 2012, the three sections of the Project were environmentally cleared and adopted by LACMTA Board of Directors.

Section 1 will extend the existing Purple Line by 3.92 miles beginning at the Wilshire/Western Station. From this station, the twin tunnel alignment will travel westerly within the existing Wilshire Boulevard right-of-way. Stations will be located at the intersections of Wilshire/La Brea, Wilshire/Fairfax, and Wilshire/La Cienega. All three of the station boxes will be located within the Wilshire Boulevard right-of-way with station portals extending to off-street entrances. Two of the stations, Wilshire/La Brea and Wilshire/Fairfax are within the jurisdiction of the City of Los Angeles. The Wilshire/La Cienega Station is within the City of Beverly Hills jurisdiction.

The Wilshire/La Brea Station box will be located under the center of Wilshire Boulevard in between Detroit Street and Orange Drive. A double crossover will be located east of the station box. The station entrance will be on the northwest corner of Wilshire Boulevard and La Brea Avenue.

The Wilshire/Fairfax Station box will be located under the center of Wilshire Boulevard west of Fairfax Avenue to west of Ogden Drive. The station entrance will be on the southeast corner of Wilshire Boulevard and Orange Grove Avenue.

The Wilshire/La Cienega Station box will be located under the center of Wilshire Boulevard immediately east of La Cienega Boulevard. A double crossover will be located east of the station box. The station entrance will be on the northeast corner of Wilshire Boulevard and La Cienega Boulevard. Since the station will be the terminus station for Section 1, tail tracks will be located west of the station box.

Contract C1034 – Wilshire/Fairfax Exploratory Shaft

Metro constructed an exploratory shaft to observe ground conditions prior to the award of Contract C1045. The location of the exploratory shaft was adjacent to the future Wilshire/Fairfax Station. The construction of the shaft included furnishing and installing monitoring instruments, ventilation, and record and report instrumentation data during the excavation of the shaft. After construction of the shaft, the shaft was maintained for an observation time period. Afterwards, the shaft was dismantled and the site backfilled in a condition acceptable to the property owner. The contract was substantially completed on October 31, 2014.

Contract C1048 – Wilshire/La Brea Advanced Utility Relocations

The work scope of this contract included the relocation of existing LADWP power, water utilities and a sewer line within the construction limits of the Wilshire/La Brea Station. The contractor was responsible for working in streets, procuring materials, and coordinating with the utility owner. The contractor constructed the new facilities in accordance with the utility

plans and specifications, provided traffic control, restored streets, and supported utility crews installing cabling and during cut-over of the existing utilities. The contract was substantially completed on October 27, 2014.

Contract C1055 – Wilshire/Fairfax Advanced Utility Relocations

Relocate existing LADWP power and water utilities within the construction limits of the Wilshire/Fairfax Station. The contractor is responsible for working in streets, procure materials, and coordinate with the utility owner. The contractor is to construct the new facilities in accordance with utility plans and specifications, provide traffic control, restore streets, and support utility crews installing cabling and during cut-over of the existing utilities.

Contract C1056 – Wilshire/La Cienega Advanced Utility Relocations

Relocate existing City of Beverly Hills water, storm drain and sewer utilities within the construction limits of the Wilshire/La Cienega Station. The contractor is responsible for working in streets, procure materials, and coordinate with the utility owner. The contractor is to construct the new facilities in accordance with utility plans and specifications, provide traffic control, restore streets, and support utility crews during cut-over of the existing utilities.

Contract C1045 – Tunnels, Stations, Trackwork, Systems and Systems Integration Testing

The procurement of this contract utilizes a two-step approach with the submittal of qualification statements through a Request for Qualification (RFQ) process, prequalification of qualified proposers followed by the release of a Request for Proposals (RFP) soliciting technical and price proposals with an option at Metro's discretion for Best and Final Offers (BAFO).

The Design/Build contract provides for final design and construction of the infrastructure along the 3.92 mile alignment. Contract scope includes demolition and removal of structures and clearing sites to facilitate construction operations. The structures to be constructed include twin bored tunnels, complete with cross-passages and walkways, including all mechanical, electrical and finish work. A retrieval shaft will be constructed to the west of the existing Wilshire/Western Station for extraction of the tunnel boring machines. Three underground stations are to be constructed, two with double-crossovers, and the terminus station to include tail tracks. Each station has a single entrance plaza with stairs, escalators and elevators which meet ADA requirements. The scope of work includes all architectural finishes, mechanical, electrical, systems and equipment including train control, traction power, communications, trackwork and the system tie-in to the existing Metro Purple Line, testing and commissioning.

Contract C1078 – Division 20 Maintenance-of-Way and Non-Revenue Vehicle Building 61S

The Design/Build contract provides for final design and construction of a new Maintenance-Of-Way (MOW) stores and Non-Revenue Vehicle (NRV) building at the south end of the existing Division 20 Yard (Location 61S). The displacement of the existing MOW stores building and NRV facility are due to the proposed turn-back facility site in the yard.

BASE PROJECT SCOPE (Continued)

Metro Furnished Equipment

Metro will procure separate contracts to provide the 34 Heavy Rail Vehicles (HRV) and the Universal Fare System (UFS) necessary to operate the extension to the Purple Line. The scope of the HRV contract includes design, manufacturing, testing and delivery of the vehicles. The scope of the UFS contract includes design, fabrication and installation of equipment at the three stations and system testing.

Start Up

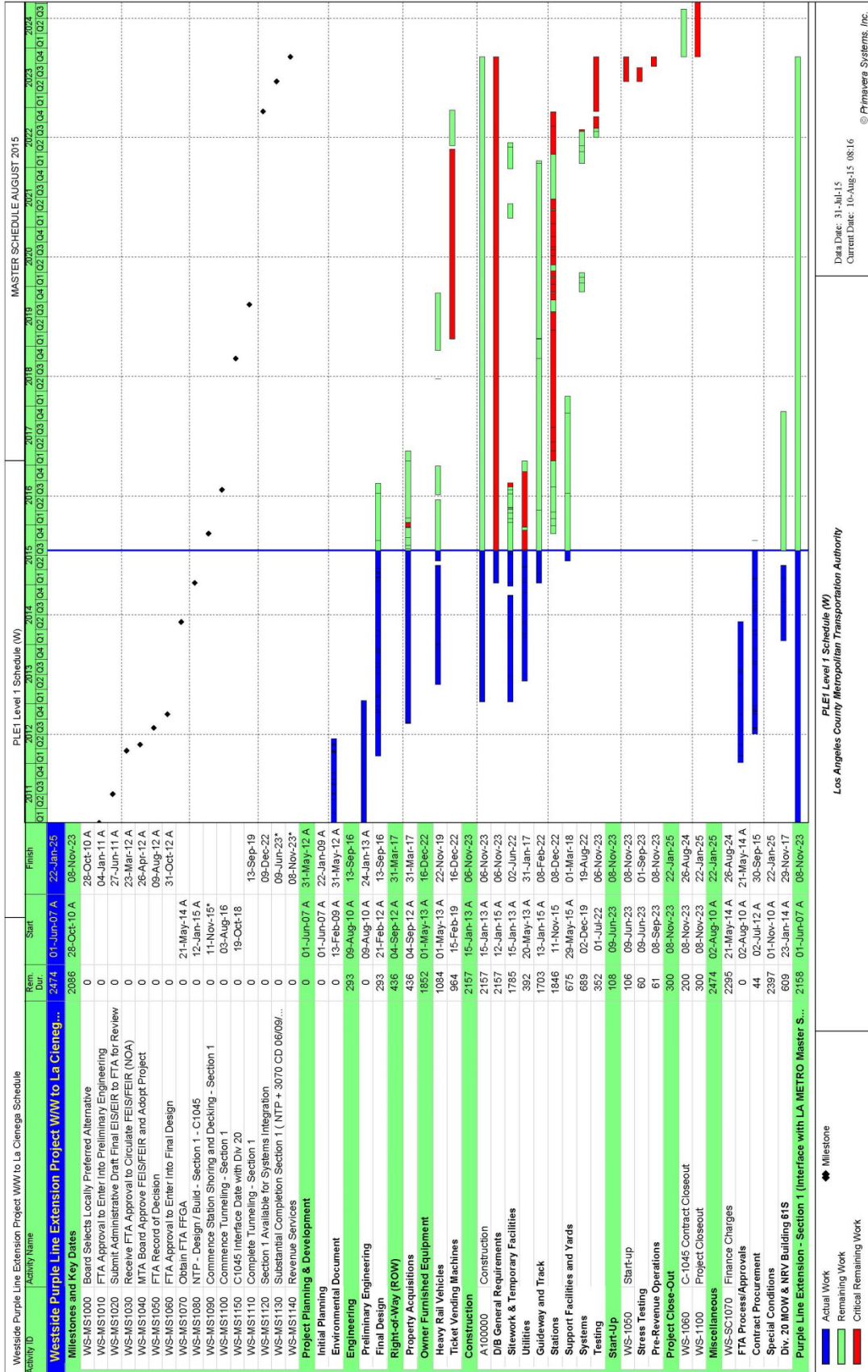
The commencement of pre-revenue operations will be determined by Metro. Generally, all systems integration testing will have been completed and passed. All testing will be required to include and pass a “stress test” of maximum operational service levels to be acceptable. Pre-Revenue Operations include train runs, especially those involving multiple trains, on the integrated and fully operational extension; rehearsal of expected revenue operations scenarios; as well as abnormal and emergency scenarios in which random combinations of system interactions are tested; equipment “burned-in”; and training of Metro personnel who will eventually operate and maintain the extension and for emergency services personnel. Activities occurring during Pre-Revenue Operations are carried out by a designated Metro Project Rail Activation Group.

KEY MILESTONES SIX- MONTH LOOK AHEAD

| | Milestone Date | Aug-15 | Sep-15 | Oct-15 | Nov-15 | Dec-15 | Jan-16 |
|---|----------------|--------------------------|--------------------------|--------------------------|--------------------------|--------------------------|--------------------------|
| C1045 TBM Temporary Power Work Begins | 08/03/15 | <input type="checkbox"/> | | | | | |
| C1078 Award | 08/03/15 | ◆ | | | | | |
| C1045 Wilshire/La Brea Soldier Pile Fabrication Begins | 08/15/15 | <input type="checkbox"/> | | | | | |
| C1045 Site Wilshire/La Brea North Soundwall Begins | 08/17/15 | <input type="checkbox"/> | | | | | |
| C1045 Wilshire/La Brea Temp. Wet Utility Works Begins | 09/03/15 | | <input type="checkbox"/> | | | | |
| C1045 Wilshire/La Brea North Bldg. Demo. Complete | 09/07/15 | | <input type="checkbox"/> | | | | |
| C1078 Contract Notice-to-Proceed | 09/30/15 | | ◆ | | | | |
| C1078 Design Mobilization Begins | 10/01/15 | | | <input type="checkbox"/> | | | |
| C1045 Building Demolition Wilshire/La Cienega East & Western Complete | 11/10/15 | | | | <input type="checkbox"/> | | |
| C1045 Wilshire/La Brea Utility Relocation Complete | 11/10/15 | | | | <input type="checkbox"/> | | |
| C1045 Wilshire/La Brea Pile Installation Begins | 11/11/15 | | | | <input type="checkbox"/> | | |
| C1045 TBM Temp Power Work Complete | 12/30/15 | | | | | <input type="checkbox"/> | |
| C1045 La Brea Soldier Pile Complete | 01/20/16 | | | | | | <input type="checkbox"/> |
| C1045 TBM Temporary Power Work Complete | 01/26/16 | | | | | | <input type="checkbox"/> |

◆ MTA Staff  MTA Board Action FTA
 △ Other Agencies Contractors

PROJECT SUMMARY SCHEDULE



SCHEDULE MEASUREMENTS

To be provided when the baseline schedule for Contract C1045 has been approved.

OVERALL CONSTRUCTION PROGRESS CURVE

To be provided when the baseline schedule for Contract C1045 has been approved.

MAJOR EQUIPMENT DELIVERY

To be provided when the baseline schedule for Contract C1045 has been approved.

DESIGN BUILDER'S (C1045) LONG LEAD ITEM LIST

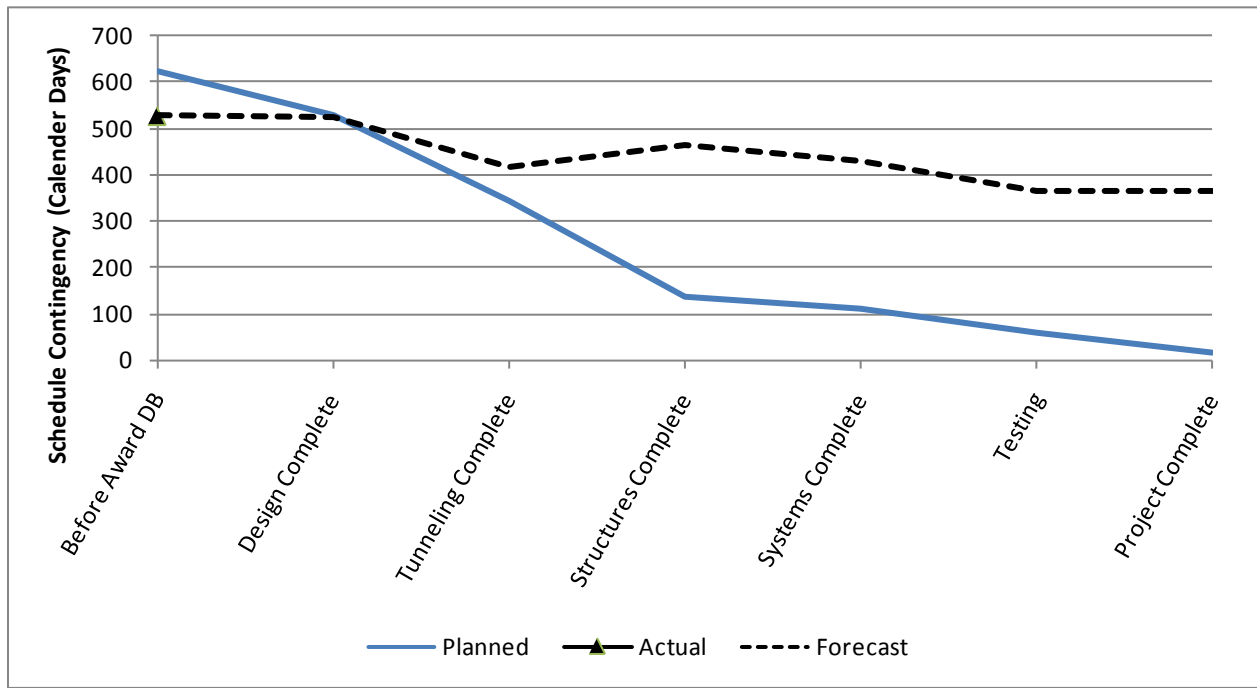
To be provided when the baseline schedule for Contract C1045 has been approved.

CRITICAL PATH NARRATIVE

Critical Path:

The critical path for the Westside Purple Line Extension Project begins with the procurement process for the C1045 Design/Build contract, mobilization of the design team for the selected contractor, and the start of final design for station boxes and tunnels. *Final design is concurrent with the C1055 Wilshire/Fairfax Advanced Utility Relocation and C1056 Wilshire/ La Cienega Advanced Utility Relocation contracts being performed by Metro's AUR Contractors and by third party utility companies. Upon completion of advanced utility relocations, the Design/Build contractor begins installation of soldier piles, first on the north side of the Wilshire/La Brea Station box, and then on the south side. Street decking is then installed, the station structural box is excavated, and invert concrete is placed. Tunneling then begins, first driving eastbound from Wilshire/La Brea to Wilshire/Western. TBMs are removed through a retrieval shaft at Wilshire/Western, reassembled at Wilshire/La Brea, and then driven westbound to Wilshire/La Cienega. Following construction of cross passages, the critical path continues through construction of the Wilshire/Fairfax station box, installation of trackwork and traction power, systems integration and testing, and pre-revenue operations.*

PROJECT SCHEDULE CONTINGENCY DRAWDOWN



PROJECT SCHEDULE CONTINGENCY DRAWDOWN ANALYSIS

The project schedule contingency drawdown curve is based on a November 8, 2023 Revenue Service Date (RSD).

PROJECT COST STATUS

DOLLARS IN THOUSANDS

| SCC CODE | DESCRIPTION | ORIGINAL BUDGET | CURRENT BUDGET | | COMMITMENTS | | EXPENDITURES | | CURRENT FORECAST | | CURRENT BUDGET / FORECAST VARIANCE |
|--|--|------------------|----------------|------------------|--------------|------------------|---------------|----------------|------------------|------------------|------------------------------------|
| | | | PERIOD | TO DATE | PERIOD | TO DATE | PERIOD | TO DATE | PERIOD | TO DATE | |
| 10 | GUIDEWAY & TRACK ELEMENTS | 388,294 | - | 388,294 | - | 380,680 | - | 1,820 | - | 388,294 | - |
| 20 | STATIONS, STOPS, TERMINALS, INTERMODAL | 440,621 | - | 440,621 | - | 435,131 | - | - | - | 440,621 | - |
| 30 | SUPPORT FACILITIES: YARDS, SHOPS, ADMIN. BLDGS | 43,323 | - | 43,323 | - | - | - | - | (3,996) | 39,327 | (3,996) |
| 40 | SITework & SPECIAL CONDITIONS | 751,566 | - | 751,566 | 1,077 | 735,392 | 28,343 | 208,213 | 7,148 | 762,589 | 11,023 |
| 50 | SYSTEMS | 113,574 | - | 113,574 | - | 97,466 | - | - | - | 113,574 | - |
| CONSTRUCTION SUBTOTAL (10-50) | | 1,737,378 | - | 1,737,378 | 1,077 | 1,648,669 | 28,343 | 210,033 | 3,152 | 1,744,405 | 7,027 |
| 60 | ROW, LAND, EXISTING IMPROVEMENTS | 175,634 | - | 175,634 | - | 175,634 | 1,646 | 111,470 | - | 175,634 | - |
| 70 | VEHICLES | 160,196 | - | 160,196 | - | - | - | - | - | 145,493 | (14,703) |
| 80 | PROFESSIONAL SERVICES | 412,710 | - | 412,710 | - | 200,771 | 6,717 | 128,611 | 2,865 | 415,575 | 2,865 |
| SUBTOTAL (10-80) | | 2,485,918 | - | 2,485,918 | 1,077 | 2,025,074 | 36,706 | 450,114 | 6,017 | 2,481,107 | (4,811) |
| 90 | UNALLOCATED CONTINGENCY | 248,592 | - | 248,592 | - | - | - | - | (6,017) | 297,808 | 49,216 |
| 100 | FINANCE CHARGES | 375,470 | - | 375,470 | - | - | - | - | - | 331,065 | (44,405) |
| TOTAL PROJECTS 465518 & 865518 (10-100) | | 3,109,980 | - | 3,109,980 | 1,077 | 2,025,074 | 36,706 | 450,114 | - | 3,109,980 | - |
| ENVIRONMENTAL/PLANNING - 405518 | | 8,505 | - | 8,505 | - | 8,505 | - | 8,505 | - | 8,505 | - |
| ENVIRONMENTAL/PLANNING - 465518 | | 30,865 | - | 30,865 | - | 30,865 | 41 | 30,860 | - | 30,865 | - |
| TOTAL PROJECTS 405518 & 465518 (ENV / PLAN'G) | | 39,370 | - | 39,370 | - | 39,370 | 41 | 39,365 | - | 39,370 | - |
| TOTAL PROJECTS 405518, 465518 & 865518 | | 3,149,350 | - | 3,149,350 | 1,077 | 2,064,444 | 36,747 | 489,479 | - | 3,149,350 | - |

NOTE: EXPENDITURES ARE CUMULATIVE THROUGH JUNE 2015

PROJECT COST ANALYSIS

Original Budget and Current Budget

The Original Budget and Current Budget of \$3.1 billion reflect the Board approved Life of Project Budget, July 24, 2014, plus Finance Charges of \$0.4 billion.

Current Forecast

The Current Forecast remains the same this period at \$3.1 billion. However, the Unallocated Contingency was decreased by \$6.0 million per the MTA Board Action for Contract C1078 – Division 20 Maintenance-of-Way and Non-Revenue Vehicle Building 61S.

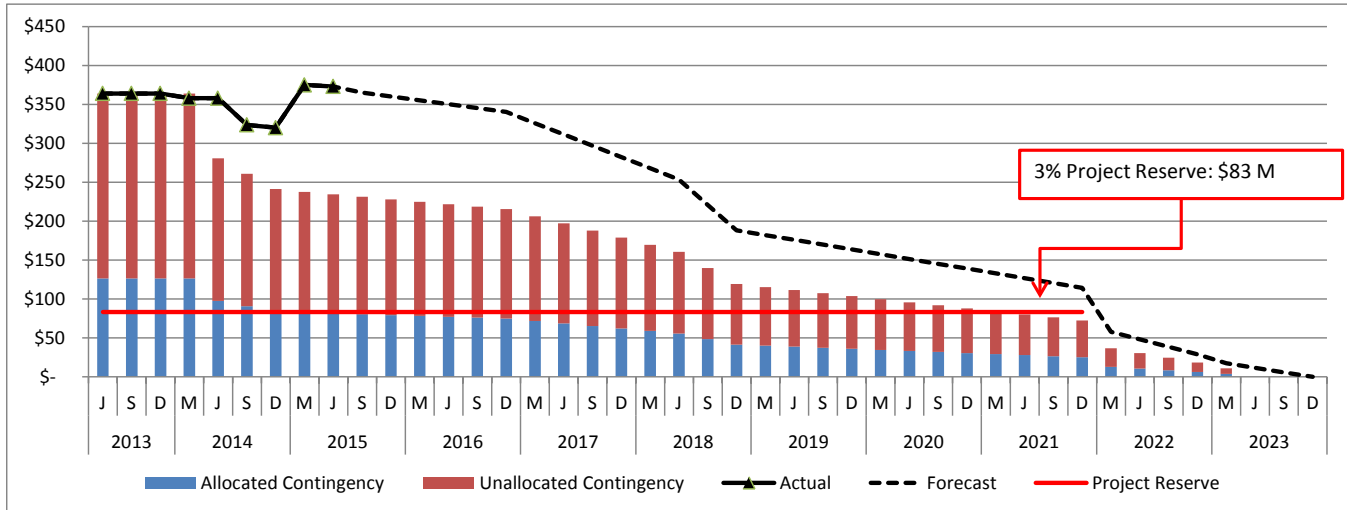
Commitments

The Commitments increased by \$1.1 million due to executed modifications associated with the Environmental Waste Handling Services, AUR Contract C1055 and private utility companies. The \$2.1 billion in Commitments to date represents 65.6% of the Current Budget.

Expenditures

The expenditures are cumulative through June 2015. The expenditures increased by \$36.7 million this period primarily for costs associated with the Design/Build Contract C1045, Advanced Utility Relocations, Environmental Services, Real Estate Acquisitions, Engineering Management Services, Construction Management Support Services, and Metro Project Administration. The \$489.5 million in Expenditures to date represents 15.5% of the Current Budget.

PROJECT COST CONTINGENCY DRAWDOWN



PROJECT COST CONTINGENCY DRAWDOWN ANALYSIS

The current budget includes a project cost contingency of \$320.6 million or 10.2% of the total project. This includes an unallocated contingency of \$248.6 million and an allocated contingency amount of \$72.0 million. The allocated contingency is an amount to cover anticipated but unknown contract modifications issued by Metro where applicable to specific contracts within each Standard Cost Category (SCC).

Included in the project cost contingency drawdown is a 3% project reserve threshold. Metro’s Board is to be notified when it becomes necessary to drawdown contingency below the project reserve threshold to cover project costs. This was adopted by the Metro Board of Directors in September 2012.

The project cost contingency drawdown curve is based on a November 8, 2023 Revenue Service date.

The unallocated contingency was decreased by \$6.0 million due to the MTA Board Action for Contract C1078 – Division 20 Maintenance-of-Way and Non-Revenue Vehicle Building 61S. The allocated contingency increased this period by a net of \$0.6 million for C1078 Contract and executed Contract Modifications for the Wilshire/Fairfax AUR Contract C1055.

| PROJECT COST CONTINGENCY | | | | | |
|---------------------------------|--------------------------------------|------------------------|-----------------------|----------------|---|
| DOLLARS IN THOUSANDS | | | | | |
| | Original Contingency (Budget) | Previous Period | Current Period | To-Date | Remaining Contingency (Forecast) |
| Unallocated Contingency | 248,592 | 55,233 | (6,017) | 49,216 | 297,808 |
| Allocated Contingency | 71,963 | (2,780) | 604 | (2,176) | 69,787 |
| Total Contingency | 320,555 | 52,453 | (5,413) | 47,040 | 367,596 |

DISADVANTAGED BUSINESS ENTERPRISE (DBE)

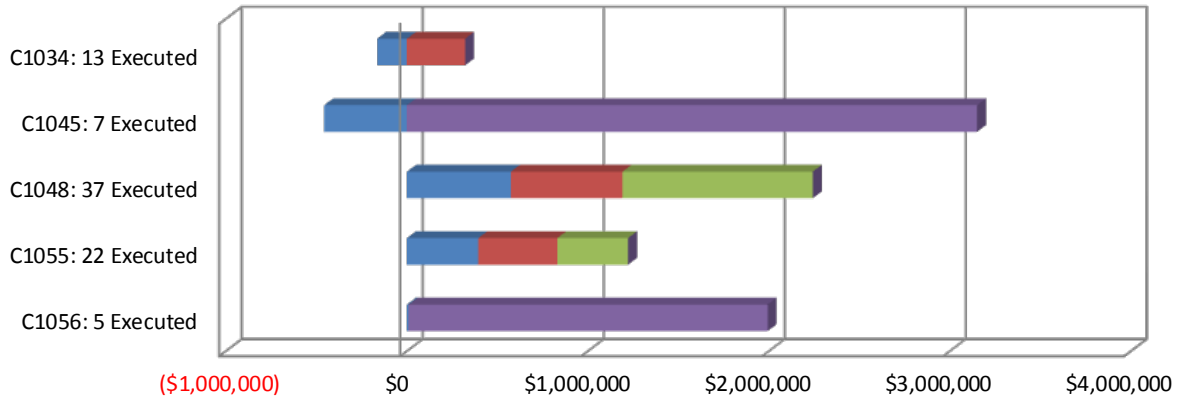
To be provided when the baseline schedule for Contract C1045 has been approved.

PROJECT LABOR AGREEMENTS (PLA) STATUS

To be provided when the baseline schedule for Contract C1045 has been approved.

SUMMARY OF CONTRACT MODIFICATIONS

Contract Modifications (MODs) by Cost Level



| | C1034 13 Executed | C1045 7 Executed | C1048 37 Executed | C1055 22 Executed | C1056 5 Executed | Total |
|------------------------------|-----------------------------|----------------------------|-----------------------------|-----------------------------|----------------------------|----------------------|
| ■ Under \$100K | (164,288) | (456,738) | 574,448 | 394,633 | 9,515 | 357,570 |
| ■ \$100K to \$250K | 321,000 | - | 616,809 | 436,190 | - | 1,373,999 |
| ■ \$250K to \$1M | - | - | 1,050,980 | 390,709 | - | 1,441,689 |
| ■ Over \$1M | - | 3,150,000 | - | - | 1,983,179 | 5,133,179 |
| Total Contract MODs | 156,712 | 2,693,262 | 2,242,237 | 1,221,532 | 1,992,694 | 8,306,437 |
| Contract Award Amount | 6,487,020 | 1,636,418,585 | 6,181,000 | 14,430,000 | 20,250,000 | 1,683,766,605 |
| % of Contract MODs | 2.4% | 0.2% | 36.3% | 8.5% | 9.8% | 0.5% |

Percent of Contract MODs equals the Total Contract MODs divided by the Contract Award Amount.

Thirteen Contract MODs with a total value of \$0.2 million have been executed since the award of Contract C1034 – Exploratory Shaft Construction by Innovative Construction Solutions (ICS).

Seven Contract MODs with a total value of \$2.7 million have been executed since the award of Contract C1045 – Tunnels, Stations, Trackwork, Systems and Systems Integration Testing by Skanska - Traylor - Shea, a Joint Venture.

Thirty-seven Contract MODs with a total value of \$2.2 million have been executed since the award of Contract C1048 – Advanced Utility Relocations at Wilshire/La Brea by Metro Builders & Engineering Group, LTD.

Twenty-two Contract MODs with a total value of \$1.2 million have been executed since the award of Contract C1055 – Advanced Utility Relocations at Wilshire/Fairfax by W. A. Rasic Construction Company, Inc.

Five Contract MODs with a total value of \$2.0 million have been executed since the award of Contract C1056 – Advanced Utility Relocations at Wilshire/La Cienega by Steve Bubalo Construction Co.

FINANCIAL/GRANT STATUS

| July 2015 | | STATUS OF FUNDS BY SOURCE | | | | | | | |
|--|--------------------|---------------------------|-----------------------|--------------------|--------------|------------------|--------------|--------------------------|-------------|
| SOURCE | (A) | (B) | (C) | (D) | (D/B) | (E) | (E/B) | (F) | (F/B) |
| | ORIGINAL BUDGET | TOTAL FUNDS ANTICIPATED | TOTAL FUNDS AVAILABLE | COMMITMENTS | % | EXPENDITURES | % | BILLED TO FUNDING SOURCE | % |
| | \$ | | | \$ | % | \$ | % | \$ | % |
| FEDERAL - SECTION 5309 NEW STARTS | \$1,250.000 | \$1,250.000 | \$65.000 | \$1,250.000 | 100% | \$65.000 | 5% | \$65.000 | 5% |
| FEDERAL CMAQ | \$12.171 | \$12.171 | \$0.000 | \$0.000 | 0% | \$0.000 | 0% | \$0.000 | 0% |
| FEDERAL SECTION 5339 - ALTERNATIVES ANALYSIS | \$0.512 | \$0.512 | \$0.512 | \$0.512 | 100% | \$0.512 | 100% | \$0.512 | 100% |
| MEASURE R - TIFIA LOAN | \$856.000 | \$856.000 | \$0.000 | \$0.000 | 0% | \$0.000 | 0% | \$0.000 | 0% |
| MEASURE R 35% | \$869.178 | \$869.178 | \$255.104 | \$727.716 | 84% | \$337.751 | 39% | \$70.334 | 8% |
| STATE STIP RIP | \$2.568 | \$2.568 | \$2.568 | \$2.568 | 100% | \$2.568 | 100% | \$2.568 | 100% |
| STATE CAPITAL PROJECT LOANS - OTHERS * | \$83.648 | \$83.648 | \$83.648 | \$83.648 | 100% | \$83.648 | 100% | \$50.898 | 61% |
| CITY OF LOS ANGELES | \$75.273 | \$75.273 | \$0.000 | \$0.000 | 0% | \$0.000 | 0% | \$0.000 | 0% |
| TOTAL | \$3,149.350 | \$3,149.350 | \$406.832 | \$2,064.444 | 65.6% | \$489.479 | 15.5% | \$189.312 | 6.0% |

EXPENDITURES ARE CUMULATIVE THROUGH JUNE 2015
ORIGINAL BUDGET BASED ON JULY 2014 BOARD APPROVED LOP BUDGET

* OTHERS INCLUDE TDA ADMINISTRATION (\$4.1M), LTF GENERAL REVENUES (\$1.8M), AND LEASE REVENUES (\$37.8M)

STATUS OF FUNDS ANTICIPATED

FEDERAL SECTION 5309 NEW STARTS: FTA grant application of \$65 million was awarded on June 2, 2014. Funds are available for drawdown. *FTA Grant CA-03-0824 for \$100 million was submitted on July 10, 2015. Grant is expected to be approved by September 2015.*

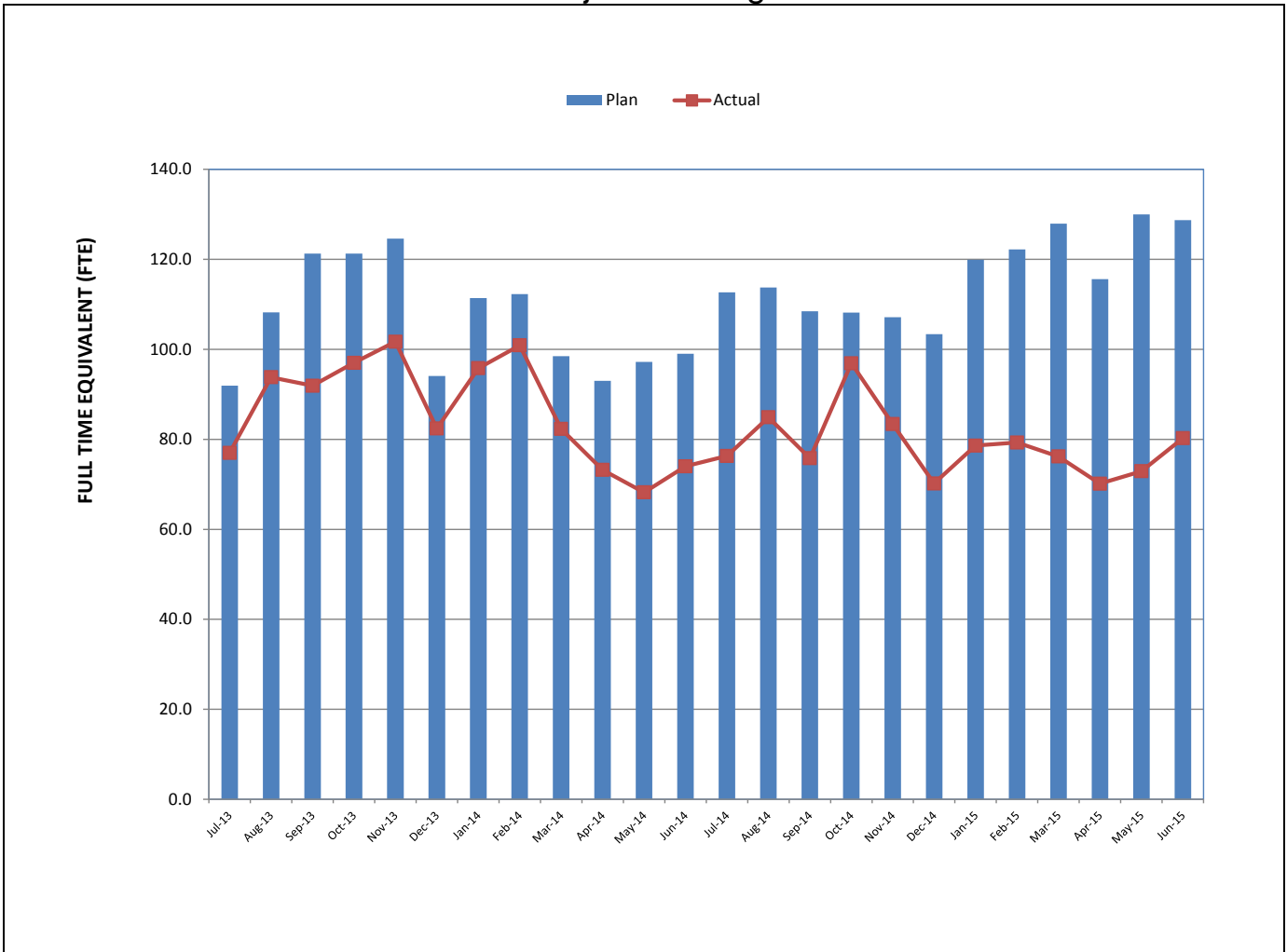
FEDERAL SECTION 5309 ALTERNATIVE ANALYSIS: FTA grant application of \$511.6 million was awarded on July 25, 2014. Funds are available for drawdown.

MEASURE R – TIFIA LOAN (Transportation Infrastructure Finance & Innovation Act): TIFIA Loan was executed on May 21, 2014 for \$856 million. First disbursement is planned for FY 2018.

STATE STIP RIP: State grant application of \$8.4 million, of which \$2.6 million has been allocated to this project, was awarded on July 26, 2007. Funds are available for drawdown.

CMAQ (Congestion Mitigation & Air Quality): *FTA Grant CA-95-X264 for \$12.2 million was awarded July 27, 2015. Funds are available for drawdown.*

STAFFING STATUS
Total Project Staffing – FTES

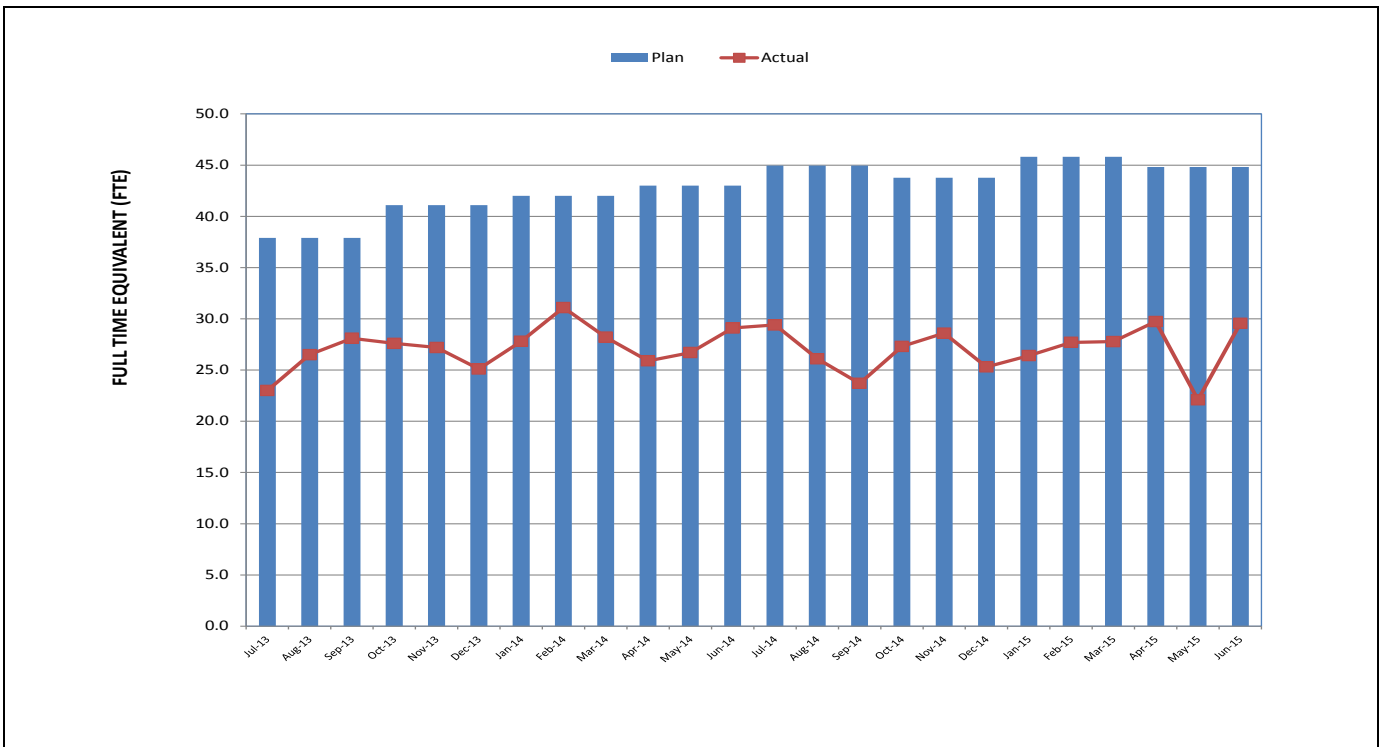


TOTAL PROJECT STAFFING

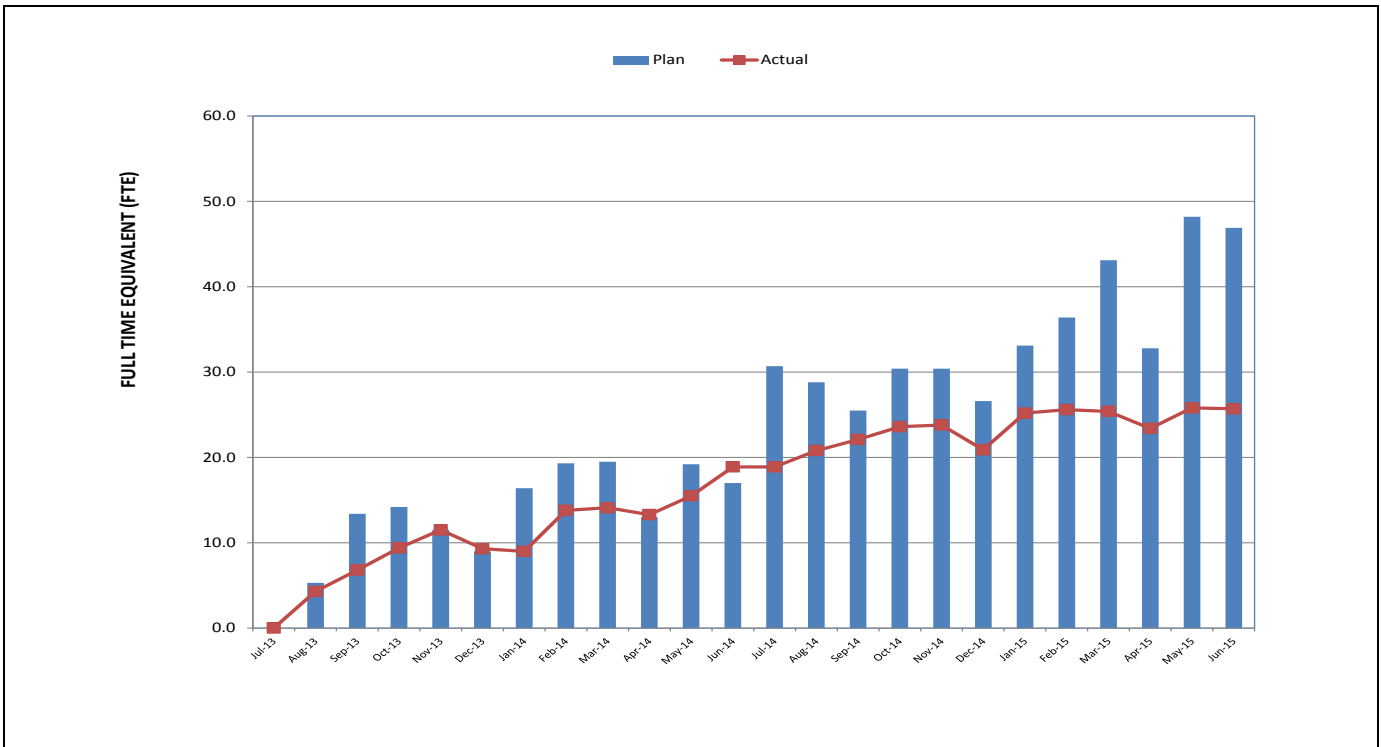
The overall FY15 Total Project Staffing Plan averages 116.5 FTES per month.

For June 2015, there were a total of 29.6 FTES for MTA's Project Administration staff and 50.7 FTES for consulting staff. The total project staffing for June 2015 was 80.3 FTES.

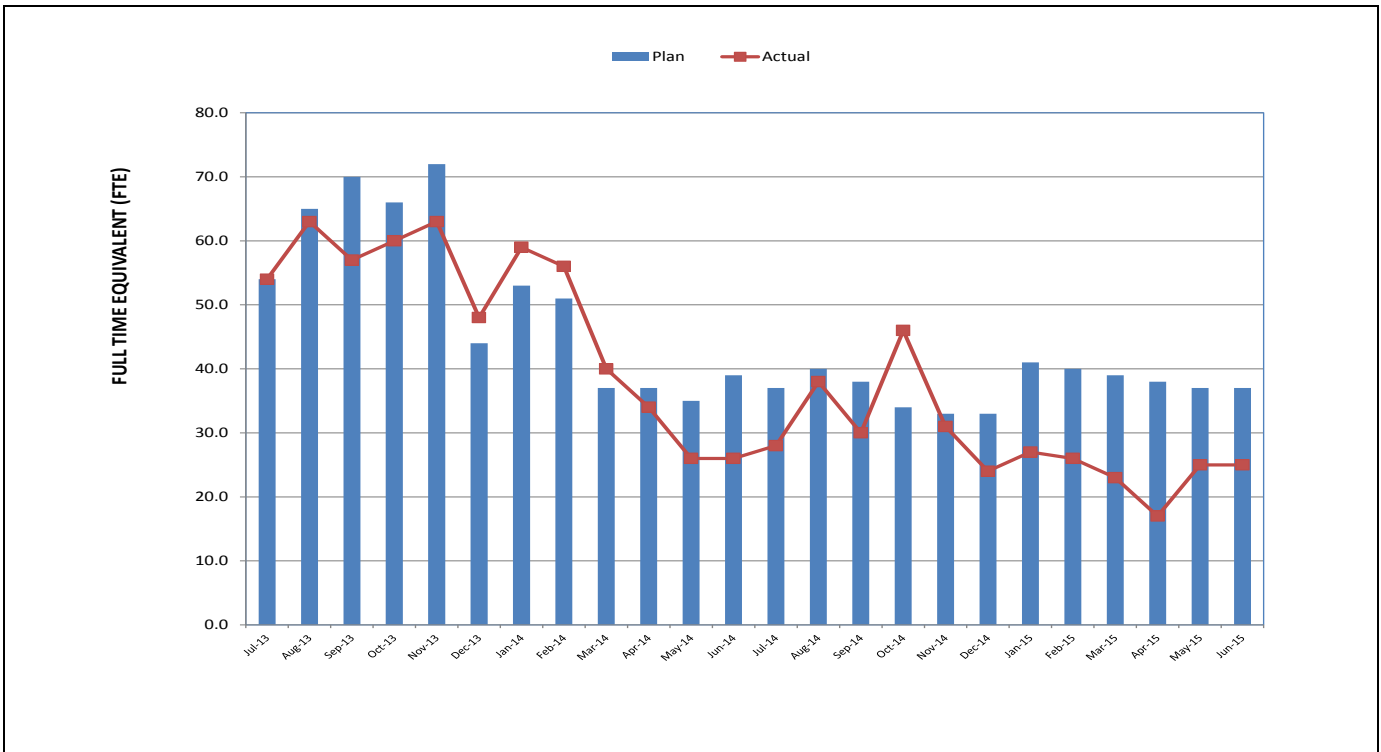
**STAFFING STATUS (Continued)
METRO STAFFING – FTES**



**CONSTRUCTION MANAGEMENT
SERVICES CONSULTANT – FTES**



**STAFFING STATUS (Continued)
ENGINEERING MANAGEMENT SERVICES CONSULTANT – FTES**



REAL ESTATE STATUS

Purple Line Extension Section 1 - Real Estate Status Summary

| Description | Number of Parcels | Certified | Appraisals Completed | Offers Made | Agreements Signed | Condemnation Filed | Relocations | | Parcels Available |
|----------------------|-------------------|-----------|----------------------|-------------|-------------------|--------------------|-------------|-----------|-------------------|
| | | | | | | | Required | Completed | |
| Full Takes | 9 | 9 | 9 | 9 | 2 | 7 | 109 | 66 | 7 |
| Part Takes | 6 | 6 | 6 | 5 | 1 | 3 | 0 | 0 | 3 |
| TCE | 4 | 4 | 4 | 4 | 1 | 4 | 0 | 0 | 3 |
| Total Parcels | 19 | 19 | 19 | 18 | 4 | 14 | 109 | 66 | 13 |

The total count of the 19 parcels include the two Division 20 parcels required for constructing the MOW/NRV Building 61S.

Metro has possession of 13 parcels that are available to meet the C1045 Contract site availability dates. Metro will have possession of the remaining parcels by October 2015 and all parcels will be made available to the C1045 Contractor by late December 2015.

QUALITY ASSURANCE STATUS

C1045 – Tunnels, Stations, Trackwork, Systems and Systems Integration Testing

- Attended weekly Project staff meetings and progress meetings with the Contractor.
- Ongoing discussions and coordination with the Engineering Management Services Consultant (EMSC) and Construction Management Support Services (CMSS) support staff for quality oversight.
- Reviewed and provided comments on quality related submittals.
- *Conducted quality surveillance (S2015-010) of the design review activities for the 60% Tunnel submittal.*

C1055 – Advanced Utility Relocations – Wilshire/Fairfax

- Attended weekly progress meeting with the Contractor and internal monthly quality meeting.
- Reviewed and provided comments on quality related submittals.
- Attended Readiness Review Meetings.
- Reviewed daily inspection reports from the Contractor/Field Technician.

C1056 – Advanced Utility Relocations – Wilshire/La Cienega

- Attended weekly progress meeting with the Contractor and internal monthly quality meeting.
- Reviewed and provided comments on quality related submittals.
- Attended Readiness Review Meetings.
- Reviewed daily inspection reports from the Contractor/Field Technician.
- *Conducted quality surveillance (S2015-009) of the as-built development for utilities installation.*

ENVIRONMENTAL STATUS

- Limited noise and vibration monitoring performed by AUR and DB Contractors. No significant noise or vibration exceedances were reported for work performed.
- Noise and Archeo/Paleo Monitoring for C1055, C1056, and C1045 work activities.
- Continued Construction Noise, Stormwater BMP and Archeo/Paleo Awareness Training for C1055, C1056 and C1045.
- Established day and night noise level limits based on measured data pending final approval of ambient report.
- Reviewed C1055, C1056 and C1045 Contractor submittals and tracked monitoring and reporting obligations in accordance with contract Specifications and EIR requirements.
- Reviewed NPDES permit and C1045 SWPPP updates.
- Coordinated noise compliance protocols and evaluated contractual noise compliance requirements for consistency across the other major rail projects.
- Prepared comparative analysis of contract specifications and potential additional contract needs related to noise monitoring and an analysis of existing noise monitoring locations and new locations proposed by DB contractor.
- Participated in weekly C1055, C1056 and C1045 contract coordination meetings.
- Continued coordination and review process with City of Los Angeles and Beverly Hills municipalities and 3rd party utility companies.
- Noise Compliance Report to City of Beverly Hills was finalized and submitted 7/6/15.
- Weekly City of Beverly Hills Construction Noise Compliance Reports prepared by the Independent Compliance Monitor and submitted to Metro and City of Beverly Hills.
- Continued Investigation of the oil/tar sump at La Brea and Detroit after Metro takes possession of Parcels W-1202 and W-1205 south of the sump.
- Finalized Cultural Resources Monitoring and Mitigation Plan (CRMMP).
- Ensured MMRP reporting responsibilities are in place with C1045 Contractor.
- Continued cleanup of 590 S. Santa Fe (PLE Yard). Abatement of buildings complete.
- *Bank of America property (Parcel W-1203) abatement nearing completion.*
- Participated in DWP Ductbank Construction Work Plan Work Shop and Readiness Review Meeting for La Brea Building demolition. Reviewed environmental submittals and applicable EIR mitigation measure adherence.
- *Submitted 9th Quarterly MMRP Report to FTA.*
- *Completed lead and asbestos abatement of Marinello School for Beauty (Parcel W-1802).*

CONSTRUCTION RELATIONS STATUS

- Attended the following meetings: Construction Management, Advanced Utility Relocations, Construction Relations, Environmental Mitigations, Traffic Mitigation with the City of Los Angeles/City of Beverly Hills, STS Third Party Workshop, Beverly Hills MOA, Marketing, Social Media, Eat, Shop, Play, Landscape and Sound Wall Noise Studies.
- *Produced and distributed 24 construction work notices for advance utility relocations and construction activities.*
- *Made Project Presentations at the following: Beverly Hills Chamber of Commerce, Fairfax Coordinated Construction Projects, Eat, Shop, Play Lunch Club, City of Los Angeles Engineer, Elected Officials Briefing, Construction Community Meeting, Council District 4 Briefing and Board of Public Works Tree Removal Hearing.*
- Visited and updated businesses and residences at future station locations to discuss utility relocations, business profiles and Eat, Shop, Play promotional campaign for businesses.
- *Fielded and addressed homeless issues around staging yards, trucks using local streets instead of Wilshire Boulevard, and bus relocation issues, bus operators stopping at old stops not new ones.*
- Updated Facebook/Twitter website as needed.

CREATIVE SERVICES STATUS

- Continue to support mitigation efforts.
- Participated in Systemwide Design document reviews.
- Participated in Wilshire/La Brea Station 60% Design comment resolution.
- *Participated in Art Specification 85% review and comment resolution.*
- *Formed selection panel for Division 20.*
- *Review PE design package for Division 20.*

SAFETY & SECURITY STATUS

- *There were no injuries on the Project during July 2015.*
- Safety staff participated in scheduled readiness review meetings to ensure compliance with approved Work Plans and contract specifications.
- Construction activities Advance Utility Relocations and pre-construction (C1045) activities continue to be monitored during both day and night work shifts to document re contractor compliance with contract specifications.
- Safety staff attended weekly progress meetings and other project meetings to evaluate Contractors Safety Program compliance with contract requirements.
- *Hosted Monthly All Hands Safety Meeting for all Westside Purple Line Extension Section 1 Contractors on July 28, 2015.*
- Construction Safety staff continue to work with Program Management and Construction Relations staff to monitor issues related to public concerns regarding noise, traffic and transient encampment hazards as well as public interactions with the construction crews.
- Work Hour and Injury statistics are reported with a one month lag. All Contracts are up to date on their reporting.
- *June 2015 Contractor Work Hours (Design & Construction): 27,685*
- *Contractor – Project to Date Work Hours (Design & Construction through 6/30/2015): 224,575*
- *Total Project to Date Work Hours (Contractor & the IPMO Staff through 6/30/2015): 371,905*
- *Project to Date Recordable Injury Rate: 0.5 (One Recordable Injury). Each rate is per 200,000 work hours (National Rate) : 3.2*
- *Project to Date Total Time Away Injury Rate: 0.5 (One Time Away From Work Injury) (National Rate 1.8).*
- *Project to Date Total Days Away Rate: 26.4 (Forty-nine Days Away From Work) (No National Rate Published).*
- National Rates for Heavy and Civil Construction (NAICS Code 237) are for Calendar Year 2013, published by USBLS in December 2014.

THIRD PARTY AGREEMENT STATUS

| Third Party | Type of Agreement | Forecast Execution Date | Required Need Date | Status/ Comments |
|---|---|--------------------------|--------------------------|---|
| City of Los Angeles (LA) | Amendment to Master Cooperative Agreement | N/A | N/A | Parties will work under 2003 MCA. |
| City of Beverly Hills (BH) | MOAs (La Cienega only) | 9/14 (AUR) 7/15 (D/B) | 9/14 (AUR) 9/15 (D/B) | City of Beverly Hills approved the MOA for the C1056 Wilshire/La Cienega AUR contract on August 19, 2014. Metro continues to work with the City to establish an MOA for the C1045 Design/Build contract. |
| Los Angeles Department of Water and Power | Amendment to Memorandum of Understanding | N/A | N/A | Metro and LADWP will continue to work under the terms of the previous Cooperative Agreement. |
| Los Angeles County Public Works | Letter of Agreement | 4/11 | 3/12 | Executed |
| Caltrans | Amendment | 8/11 | 3/12 | Executed |
| Private Utilities | LOA, MOU, MCA, or MUA | 9/14 | N/A | Metro is working with affected third party utilities under existing agreements except for Qwest and Level 3. <i>Draft agreements for Qwest and Level 3, and a new agreement for SCE are all under review. In absence of an agreement, work is being performed by work orders.</i> |

ADVANCED UTILITY RELOCATION STATUS

- C1048 AUR for the Wilshire/La Brea Station was substantially completed on October 27, 2014. *Contract closeout is underway and is expected to be completed within two months.*
- AT&T relocations at the Wilshire/La Brea Station were completed in May 2015. AT&T relocations at the Wilshire/Fairfax Station began in January 2015 and are anticipated to be completed in November 2015. *AT&T relocations on Hamilton Drive in the Wilshire/La Cienega Station area were completed in July 2015.* AT&T work for the remaining portion of the Wilshire/La Cienega Station area is anticipated to be completed in February 2016.
- *The Gas Company relocations at the Wilshire/Fairfax Station began in March 2015 and are anticipated to be completed in September 2015. The AT&T and LADWP Power relocations at this location will be completed by summer 2016.*
- The C1055 AUR contractor for Wilshire/Fairfax Station continues with power and water relocations. *Contract Milestone #2 – Power at Fairfax was completed on July 10, 2015. The contractor is on schedule to achieve substantial completion in October 2015.*
- The Notice to Proceed (NTP) Wilshire/La Cienega AUR Contract (C1056) was issued on January 12, 2015. Construction began in late April 2015 to relocate Southern California Edison (SCE) utilities on the westbound side of Wilshire Boulevard. *SCE relocations are continuing along with the City of Beverly Hills sewer, water and storm drain relocations.*

PEAK HOUR AND NIGHTTIME CONSTRUCTION VARIANCES

Metro is actively pursuing extended hour variances/exemptions to accommodate the Project needs. Metro staff is working with the City of Los Angeles Bureau of Engineering and the Los Angeles Police Commission to obtain Peak Hour Exemptions and Nighttime Construction Variances. Current efforts center around extending the existing nighttime noise variances to accommodate advanced utility relocations at the Wilshire/La Brea and Wilshire/Fairfax Station sites as well as obtaining new nighttime noise variances and peak hour exemptions to allow night work and weekend work to accommodate the Wilshire/La Brea, Wilshire/Fairfax and Wilshire/Western piling operations for the Design/Build contractor.

- The Peak Hour Exemption for Wilshire/La Brea pile installation was approved by the City of Los Angeles on November 8, 2013. *A revised application was approved in June 2015 with the new construction dates of November 11, 2015 to May 3, 2016.*
- The Peak Hour Exemptions for Wilshire/Fairfax and Wilshire/Western pile installations were approved by the City of Los Angeles on May 12, 2014. There will be a resubmittal with updated construction dates in early 2016.
- *The Nighttime Noise Variance for the Wilshire/La Brea Advanced Utility Relocation work has been extended to February 2016 by the Los Angeles Police Commission.*
- *A six-month extension to the Nighttime Noise Variance for the Wilshire/Fairfax Advanced Utility Relocation work will be requested of the Los Angeles Police Commission in August 2016.*
- Metro has received a Peak Hour Exemption from the City of Los Angeles for the area near the Wilshire/La Cienega Station. This will accommodate the spillover of traffic control devices from the City of Beverly Hills into the City of Los Angeles. *This Peak Hour Exemption was extended to November 2015.*
- An approved Nighttime Noise Variance for pile installations at the Wilshire/La Brea Station was extended to October 30, 2015, at which time a six-month extension will be requested.

CHRONOLOGY OF EVENTS

| | |
|----------------|--|
| June 2007 | Began Alternatives Analysis study |
| January 2009 | Board approval of Alternatives Analysis study and next phase |
| February 2009 | Began Draft Environmental Impact Statement / Report (EIS / EIR) |
| October 2010 | Board approval of Draft EIS / EIR and selection of locally preferred alternative |
| January 2011 | FTA approval to enter Preliminary Engineering |
| May 2011 | Began Preliminary Engineering |
| April 2012 | Board certification of Final EIS / EIR and adoption of project |
| July 2012 | Completion of Exploratory Shaft final design |
| August 2012 | FTA Record of Decision |
| September 2012 | Began Real Estate Acquisition |
| November 2012 | Began Final Design - C1048 - Advanced Utility Relocations contract – Wilshire/La Brea |
| November 2012 | Began Final Design - C1055 - Advanced Utility Relocations contract – Wilshire/Fairfax |
| November 2012 | Issued RFQ for C1045 Design / Build contract |
| December 2012 | Began Final Design - C1056 - Advanced Utility Relocations contract – Wilshire/La Cienega |
| January 2013 | Began C1034 Exploratory Shaft construction |
| February 2013 | Received RFQ responses for C1045 Design / Build contract |
| June 2013 | Issued RFP for C1045 Tunnels, Stations, Trackwork, Systems and Systems Integration Testing |
| June 2013 | Beginning of C1055 AUR Wilshire/Fairfax Bid Period |
| July 2013 | Submitted draft FFGA application |

CHRONOLOGY OF EVENTS (Continued)

| | |
|----------------|---|
| July 2013 | Completed Final Design - C1048 - Advanced Utility Relocations contract – Wilshire/La Brea |
| July 2013 | Submitted TIFIA loan application |
| August 2013 | Began C1048 Advanced Utility Relocations contract – Wilshire/La Brea |
| August 2013 | NTP for Construction Management Services Contract |
| January 2014 | Submitted application to FTA requesting an FFGA |
| January 2014 | Received RFP Proposals for Contract C1045 |
| February 2014 | Beginning of C1056 AUR Wilshire/La Cienega Bid Period |
| May 2014 | FTA awarded FFGA |
| May 2014 | Received TIFIA Loan |
| June 2014 | Began C1055 Advanced Utility Relocations at Wilshire/Fairfax |
| July 2014 | Metro Board approved staff recommendation to award Contract C1045 and approved Life-of-Project Budget |
| September 2014 | Issued Invitation to Bid for Contract C1078 |
| October 2014 | Issued C1056 Contract Award |
| November 2014 | Issued C1045 Contract Award |
| January 2015 | Issued C1045 Contract Notice to Proceed |
| January 2015 | Issued C1056 Contract Notice to Proceed |
| February 2015 | Received Contract C1078 Bids |

CONTRACT C1045 STATUS

| <p>Description: Westside Purple Line Extension Design-Build Contractor: SKANSKA - TRAYLOR - SHEA</p> | <p>Contract No. C1045 Status as of: July 31, 2015</p> | | | | | | | | | | | | | | | | | | | | | | | | | | | | | | | | | | | | | | | | | | |
|--|---|----------------|-------------------------|----------------|------------------|----------|-----------------|-------------------------------|----------------------------|-----|----------------------------|----------|------------------------------------|-------------------------------------|-------------------|-------|----------|----------|---|--|----------|---|----------|----------|---|--|----------|---|----------|----------|---|-----------------------------|----------|---|----------|----------|---|---|----------|---|----------|----------|---|
| <p>Progress / Work Completed:</p> <ul style="list-style-type: none"> - Wilshire/Western 85% design pkg. underway - Wilshire/La Brea 85% design review & QC in process - Wilshire/La Brea area UG Utility design AFC in process - Wilshire/La Brea SOE design 85% underway - Wilshire/Fairfax 60% design underway - Wilshire/La Cienega 60% design began - Tunnel & Systems 60% design underway - La Brea North buildings demo underway - Final stages of Baseline Schedule development <p>Areas of Concern: None</p> | <p>Major Activities (In Progress):</p> <ul style="list-style-type: none"> - Wilshire/Western - 85% design continues - Wilshire/La Brea - 85% design continues - Wilshire/Fairfax - 60% design continues - Tunnels & Controls - 85% design continues - La Brea SOE design continues - TBM Temp Power construction - Wilshire/La Brea North site buildings demolition - Temporary wet utility work at Wilshire/La Brea <p>Major Activities Next Period:</p> <ul style="list-style-type: none"> - 85% Design Package Wilshire/Western Completes - Wilshire/La Brea SOE 85% Design Completes - Wilshire/Fairfax 60% Design Completes - Baseline schedule approval - Wilshire/La Brea Station median removal - TBM Power duct bank completes | | | | | | | | | | | | | | | | | | | | | | | | | | | | | | | | | | | | | | | | | | |
| <p>Schedule Summary:</p> <p>Date of Award: 11/04/14</p> <p>Notice to Proceed: (actual) 01/12/15</p> <p>Original Contract Duration: 3250 CD</p> <p>Current Contract Duration: 3250 CD</p> <p>Elapsed Time from NTP: 200 CD</p> | <table border="1"> <thead> <tr> <th></th> <th>Original Contract Dates</th> <th>Time Extension</th> <th>Current Contract</th> <th>Forecast</th> <th>Variance CDs</th> </tr> </thead> <tbody> <tr> <td>Notice to Proceed (Estimated)</td> <td>01/12/15</td> <td>0</td> <td>01/12/15</td> <td>01/12/15</td> <td>0</td> </tr> <tr> <td>Milestone 1: Substantial Completion</td> <td>06/09/23</td> <td>0</td> <td>06/09/23</td> <td>06/09/23</td> <td>0</td> </tr> <tr> <td>Milestone 2: Stations available to UFS</td> <td>10/07/22</td> <td>0</td> <td>10/07/22</td> <td>10/07/22</td> <td>0</td> </tr> <tr> <td>Milestone 3: Start of Integration Testing to ROC</td> <td>01/10/23</td> <td>0</td> <td>01/10/23</td> <td>01/10/23</td> <td>0</td> </tr> <tr> <td>Milestone 4: Demobilization</td> <td>12/06/23</td> <td>0</td> <td>12/06/23</td> <td>12/06/23</td> <td>0</td> </tr> <tr> <td>Milestone 5: Temporary Construction Easements</td> <td>01/10/23</td> <td>0</td> <td>01/10/23</td> <td>01/10/23</td> <td>0</td> </tr> </tbody> </table> | | Original Contract Dates | Time Extension | Current Contract | Forecast | Variance CDs | Notice to Proceed (Estimated) | 01/12/15 | 0 | 01/12/15 | 01/12/15 | 0 | Milestone 1: Substantial Completion | 06/09/23 | 0 | 06/09/23 | 06/09/23 | 0 | Milestone 2: Stations available to UFS | 10/07/22 | 0 | 10/07/22 | 10/07/22 | 0 | Milestone 3: Start of Integration Testing to ROC | 01/10/23 | 0 | 01/10/23 | 01/10/23 | 0 | Milestone 4: Demobilization | 12/06/23 | 0 | 12/06/23 | 12/06/23 | 0 | Milestone 5: Temporary Construction Easements | 01/10/23 | 0 | 01/10/23 | 01/10/23 | 0 |
| | Original Contract Dates | Time Extension | Current Contract | Forecast | Variance CDs | | | | | | | | | | | | | | | | | | | | | | | | | | | | | | | | | | | | | | |
| Notice to Proceed (Estimated) | 01/12/15 | 0 | 01/12/15 | 01/12/15 | 0 | | | | | | | | | | | | | | | | | | | | | | | | | | | | | | | | | | | | | | |
| Milestone 1: Substantial Completion | 06/09/23 | 0 | 06/09/23 | 06/09/23 | 0 | | | | | | | | | | | | | | | | | | | | | | | | | | | | | | | | | | | | | | |
| Milestone 2: Stations available to UFS | 10/07/22 | 0 | 10/07/22 | 10/07/22 | 0 | | | | | | | | | | | | | | | | | | | | | | | | | | | | | | | | | | | | | | |
| Milestone 3: Start of Integration Testing to ROC | 01/10/23 | 0 | 01/10/23 | 01/10/23 | 0 | | | | | | | | | | | | | | | | | | | | | | | | | | | | | | | | | | | | | | |
| Milestone 4: Demobilization | 12/06/23 | 0 | 12/06/23 | 12/06/23 | 0 | | | | | | | | | | | | | | | | | | | | | | | | | | | | | | | | | | | | | | |
| Milestone 5: Temporary Construction Easements | 01/10/23 | 0 | 01/10/23 | 01/10/23 | 0 | | | | | | | | | | | | | | | | | | | | | | | | | | | | | | | | | | | | | | |
| <p>Physical Percent Complete:</p> <p>Physical completion: 1.96%*</p> <p><i>* Note: Physical completion assessment reflects work completed and work in progress.</i></p> | <p>Cost Summary: \$ In millions</p> <table> <tr> <td>1. Award Value:</td> <td>1,636.4</td> </tr> <tr> <td>2. Executed Modifications:</td> <td>2.7</td> </tr> <tr> <td>3. Approved Change Orders:</td> <td>0.0</td> </tr> <tr> <td>4. Current Contract Value (1+2+3):</td> <td>1,639.1</td> </tr> <tr> <td>5. Incurred Cost:</td> <td>244.8</td> </tr> </table> | | | | | | 1. Award Value: | 1,636.4 | 2. Executed Modifications: | 2.7 | 3. Approved Change Orders: | 0.0 | 4. Current Contract Value (1+2+3): | 1,639.1 | 5. Incurred Cost: | 244.8 | | | | | | | | | | | | | | | | | | | | | | | | | | | |
| 1. Award Value: | 1,636.4 | | | | | | | | | | | | | | | | | | | | | | | | | | | | | | | | | | | | | | | | | | |
| 2. Executed Modifications: | 2.7 | | | | | | | | | | | | | | | | | | | | | | | | | | | | | | | | | | | | | | | | | | |
| 3. Approved Change Orders: | 0.0 | | | | | | | | | | | | | | | | | | | | | | | | | | | | | | | | | | | | | | | | | | |
| 4. Current Contract Value (1+2+3): | 1,639.1 | | | | | | | | | | | | | | | | | | | | | | | | | | | | | | | | | | | | | | | | | | |
| 5. Incurred Cost: | 244.8 | | | | | | | | | | | | | | | | | | | | | | | | | | | | | | | | | | | | | | | | | | |

CONTRACT C1048 STATUS

| | | | | | | | |
|--|--|---|-------------------------|----------------|------------------|----------|--------------|
| Description: Wilshire/La Brea AUR Contractor: Metro Builders & Engineers Group, Ltd. | | Contract No. C1048 Status as of: July 31, 2015 | | | | | |
| Progress / Work Completed: - Substantial Completion - Completed remaining Punch-List Items | | Major Activities (In Progress): - Contract closeout | | | | | |
| Areas of Concern: None | | Major Activities Next Period: - Contract closeout | | | | | |
| Schedule Summary: Date of Award: 05/13/13 Notice to Proceed: 08/01/13 Original Contract Duration: 230 CD Current Contract Duration: 452 CD Elapsed Time from NTP: 452 CD | | | Original Contract Dates | Time Extension | Current Contract | Forecast | Variance CDs |
| | | Notice to Proceed | 08/01/13 | 0 | 08/01/13 | 08/01/13 | 0 |
| | | Milestone 1: Completion of LADWP Power Work | 12/28/13 | 0 | 12/28/13 | 05/22/14 | -145 |
| | | Milestone 2: Substantial Completion | 03/18/14 | 223 | 10/27/14 | 10/27/14 | 0 |
| Physical Percent Complete: Physical completion: 100%* * Note: Physical completion assessment reflects work completed and work in progress. | | Cost Summary: \$ In millions 1. Award Value: 6.2 2. Executed Modifications: 2.2 3. Approved Change Orders: 0.0 4. Current Contract Value (1+2+3): 8.4 5. Incurred Cost: 8.4 | | | | | |

CONTRACT C1055 STATUS

| | | | | | | | | | | | | | | | | |
|---|---|--------------------------------|-----------------------|-------------------------|-----------------|---------------------|-----------------|------|----------------------------|-----|----------------------------|-----|------------------------------------|------|-------------------|------|
| <p>Description: Wilshire/Fairfax AUR Contractor: W.A. RASIC Construction Company, Inc.</p> | <p>Contract No. C1055 Status as of: July 31, 2015</p> | | | | | | | | | | | | | | | |
| <p>Progress / Work Completed:</p> <ul style="list-style-type: none"> - C12" Waterline completed - MS #2 completed - Power <p>Areas of Concern: None</p> | <p>Major Activities (In Progress):</p> <ul style="list-style-type: none"> - Power Vault Vents - Power work punch list - 12" Waterline South of Wilshire - Wilshire/Fairfax AUR: Orange Dr duct bank <p>Major Activities Next Period:</p> <ul style="list-style-type: none"> - Orange Dr duct bank complete | | | | | | | | | | | | | | | |
| <p>Schedule Summary:</p> <p>Date of Award: 03/28/14 Notice to Proceed: 05/01/14 Original Contract Duration: 535 CD Current Contract Duration: 535 CD Elapsed Time from NTP: 456 CD</p> | | <p>Original Contract Dates</p> | <p>Time Extension</p> | <p>Current Contract</p> | <p>Forecast</p> | <p>Variance CDs</p> | | | | | | | | | | |
| | <p>Notice to Proceed</p> | <p>05/01/14</p> | <p>0</p> | <p>05/01/14</p> | <p>05/01/14</p> | <p>0</p> | | | | | | | | | | |
| | <p>Milestone 1: Water @ La Brea</p> | <p>08/29/14</p> | <p>159</p> | <p>02/05/15</p> | <p>02/05/15</p> | <p>0</p> | | | | | | | | | | |
| | <p>Milestone 2: Power @ Fairfax</p> | <p>07/25/15</p> | <p>0</p> | <p>07/25/15</p> | <p>07/10/15</p> | <p>15</p> | | | | | | | | | | |
| | <p>Milestone 3: Substantial Completion</p> | <p>10/18/15</p> | <p>0</p> | <p>10/18/15</p> | <p>10/18/15</p> | <p>0</p> | | | | | | | | | | |
| <p>Physical Percent Complete:</p> <p>Physical completion: 79%*</p> <p><i>* Note: Physical completion assessment reflects work completed and work in progress.</i></p> | <p>Cost Summary: \$ In millions</p> <table border="0"> <tr> <td>1. Award Value:</td> <td>14.4</td> </tr> <tr> <td>2. Executed Modifications:</td> <td>1.2</td> </tr> <tr> <td>3. Approved Change Orders:</td> <td>0.0</td> </tr> <tr> <td>4. Current Contract Value (1+2+3):</td> <td>15.6</td> </tr> <tr> <td>5. Incurred Cost:</td> <td>12.6</td> </tr> </table> | | | | | | 1. Award Value: | 14.4 | 2. Executed Modifications: | 1.2 | 3. Approved Change Orders: | 0.0 | 4. Current Contract Value (1+2+3): | 15.6 | 5. Incurred Cost: | 12.6 |
| 1. Award Value: | 14.4 | | | | | | | | | | | | | | | |
| 2. Executed Modifications: | 1.2 | | | | | | | | | | | | | | | |
| 3. Approved Change Orders: | 0.0 | | | | | | | | | | | | | | | |
| 4. Current Contract Value (1+2+3): | 15.6 | | | | | | | | | | | | | | | |
| 5. Incurred Cost: | 12.6 | | | | | | | | | | | | | | | |

CONTRACT C1056 STATUS

| <p>Description: Wilshire/La Cienega AUR Contractor: Steve Bubalo Construction Co.</p> | <p>Contract No. C1056 Status as of: July 31, 2015</p> | | | | | | | | | | | | | | | | | | | | | | | | | | | | | | | | | | | |
|---|---|---|------------------|-------------------------|----------------|------------------|-----------------|--------------|-------------------------------|----------|----------------------------|----------|------------------------------------|------|-------------------|----------|---|----------|----------|---|-------------------------------------|----------|---|----------|----------|---|--|--|--|--|--|--|--|--|--|--|
| <p>Progress / Work Completed:</p> <ul style="list-style-type: none"> - Sewer line A La Cienega to Gale completed - Sewer line B Hamilton to Tower Completed - Sewer line D Hamilton N. to S. completed <p>Areas of Concern: None</p> | <p>Major Activities (In Progress):</p> <ul style="list-style-type: none"> - 2x5" SCE Electrical DB Tower STA 60+18 to EX VL #5040385 - Sewer Line B- STA 15+00 to 17+62 (Gale to Tower) - Sewer Line D- STA 11+46 to 10+93 (Hamilton N to S) - Sewer Line D- STA 10+93 to 10+67 (Hamilton N to S) - Sewer Line F- STA 1+00 to 1+52 (Tower Dr.) - Sewer Line C- South Wilshire- Hamilton Dr. to Tower Dr. <p>Major Activities Next Period:</p> <ul style="list-style-type: none"> - Sewer Line C- South Wilshire- Hamilton Dr. to Tower Dr. Cont. - Completion of: <ul style="list-style-type: none"> - Sewer Line B- STA 15+00 to 17+62 (Gale to Tower) - Sewer Line D- STA 11+46 to 10+93 (Hamilton N to S) - Sewer Line D- STA 10+93 to 10+67 (Hamilton N to S) - Sewer Line F- STA 1+00 to 1+52 (Tower Dr.) | | | | | | | | | | | | | | | | | | | | | | | | | | | | | | | | | | | |
| <p>Schedule Summary:</p> <p>Date of Award: 10/13/14 Notice to Proceed (estimated) 01/12/15 Original Contract Duration: 696 CD Current Contract Duration: 696 CD Elapsed Time from NTP: 200 CD</p> | | <table border="1"> <thead> <tr> <th></th> <th>Original Contract Dates</th> <th>Time Extension</th> <th>Current Contract</th> <th>Forecast</th> <th>Variance CDs</th> </tr> </thead> <tbody> <tr> <td>Notice to Proceed (Estimated)</td> <td>01/12/15</td> <td>0</td> <td>01/12/15</td> <td>01/12/15</td> <td>0</td> </tr> <tr> <td>Milestone 1:</td> <td>07/13/16</td> <td>0</td> <td>07/13/16</td> <td>07/13/16</td> <td>0</td> </tr> <tr> <td>Milestone 2: Substantial Completion</td> <td>12/08/16</td> <td>0</td> <td>12/08/16</td> <td>12/08/16</td> <td>0</td> </tr> <tr> <td></td> <td></td> <td></td> <td></td> <td></td> <td></td> </tr> </tbody> </table> | | Original Contract Dates | Time Extension | Current Contract | Forecast | Variance CDs | Notice to Proceed (Estimated) | 01/12/15 | 0 | 01/12/15 | 01/12/15 | 0 | Milestone 1: | 07/13/16 | 0 | 07/13/16 | 07/13/16 | 0 | Milestone 2: Substantial Completion | 12/08/16 | 0 | 12/08/16 | 12/08/16 | 0 | | | | | | | | | | |
| | Original Contract Dates | Time Extension | Current Contract | Forecast | Variance CDs | | | | | | | | | | | | | | | | | | | | | | | | | | | | | | | |
| Notice to Proceed (Estimated) | 01/12/15 | 0 | 01/12/15 | 01/12/15 | 0 | | | | | | | | | | | | | | | | | | | | | | | | | | | | | | | |
| Milestone 1: | 07/13/16 | 0 | 07/13/16 | 07/13/16 | 0 | | | | | | | | | | | | | | | | | | | | | | | | | | | | | | | |
| Milestone 2: Substantial Completion | 12/08/16 | 0 | 12/08/16 | 12/08/16 | 0 | | | | | | | | | | | | | | | | | | | | | | | | | | | | | | | |
| | | | | | | | | | | | | | | | | | | | | | | | | | | | | | | | | | | | | |
| <p>Physical Percent Complete:</p> <p>Physical completion: 12%*</p> <p><i>* Note: Physical completion assessment reflects work completed and work in progress.</i></p> | <p>Cost Summary: \$ In millions</p> <table border="1"> <tbody> <tr> <td>1. Award Value:</td> <td>20.3</td> </tr> <tr> <td>2. Executed Modifications:</td> <td>2.0</td> </tr> <tr> <td>3. Approved Change Orders:</td> <td>0.0</td> </tr> <tr> <td>4. Current Contract Value (1+2+3):</td> <td>22.3</td> </tr> <tr> <td>5. Incurred Cost:</td> <td>4.7</td> </tr> </tbody> </table> | | | | | | 1. Award Value: | 20.3 | 2. Executed Modifications: | 2.0 | 3. Approved Change Orders: | 0.0 | 4. Current Contract Value (1+2+3): | 22.3 | 5. Incurred Cost: | 4.7 | | | | | | | | | | | | | | | | | | | | |
| 1. Award Value: | 20.3 | | | | | | | | | | | | | | | | | | | | | | | | | | | | | | | | | | | |
| 2. Executed Modifications: | 2.0 | | | | | | | | | | | | | | | | | | | | | | | | | | | | | | | | | | | |
| 3. Approved Change Orders: | 0.0 | | | | | | | | | | | | | | | | | | | | | | | | | | | | | | | | | | | |
| 4. Current Contract Value (1+2+3): | 22.3 | | | | | | | | | | | | | | | | | | | | | | | | | | | | | | | | | | | |
| 5. Incurred Cost: | 4.7 | | | | | | | | | | | | | | | | | | | | | | | | | | | | | | | | | | | |

CONSTRUCTION PHOTOGRAPHS



Buy America Fire Hydrants for Wilshire/La Brea and Wilshire/Fairfax



Geotechnical Site Investigation Work by the C1045 Contractor

**APPENDIX
COST AND BUDGET TERMINOLOGY**

Project Cost Descriptions

| | |
|------------------|---|
| ORIGINAL BUDGET | The Original Project Budget as authorized by the Metropolitan Transportation Authority (Metro) Board. |
| CURRENT BUDGET | The Original Budget plus all budget amendments approved by formal Metro Board action. Also referred to as Approved Budget. |
| COMMITMENTS | The total of actual contracts awarded, executed change orders or amendments, and approved work orders of Master Cooperative Agreements, offers accepted for purchase of real estate, and other Metro actions which have been spent or result in the obligation of specific expenditures at a future time. |
| EXPENDITURES | The total dollar amount of funds expended by Metro for contractor or consultant services, third party services, staff salaries, real estate and other expenses that is reported in Metro's Financial Information System (FIS). |
| CURRENT FORECAST | The best estimate of the final cost of the Project when all checks have been issued and the Project is closed out. Current Forecast is composed of actual costs incurred to date, the best estimate of work remaining and a current risk assessment for each budgeted cost item. |

Cost Report by Element Descriptions

| | |
|-----------------------|---|
| CONSTRUCTION | Includes construction contracts. Cost associated with Guideways, Stations, Southwestern Yard, Sitework/Special Conditions and Systems. |
| RIGHT-OF-WAY | Includes purchase cost of parcels, easements, right-of-entry permits, escrow fees, contracted real estate appraisals and tenant relocation. |
| VEHICLES | Includes the purchase of Heavy Rail Vehicles and spare parts for the Project. |
| PROFESSIONAL SERVICES | Includes design engineering, project management assistance, construction management support services, legal counsel, agency staff costs, and other specialty consultants. |
| CONTINGENCY | A fund established at the beginning of a project to provide for anticipated but unknown additional costs that may arise during the course of the Project. |
| PROJECT REVENUE | Includes all revenue received by Metro as a direct result of project activities. This includes cost sharing construction items, insurance premium rebates, and the like. |

**APPENDIX
LIST OF ACRONYMS**

| | |
|----------|---|
| ATC | Automatic Train Control |
| ATSAC | Automated Traffic Surveillance and Control |
| BAFO | Best and Final Offer |
| BIM | Building Information Modeling |
| BNSF | Burlington Northern Santa Fe Railway Company |
| BRT | Bus Rapid Transit |
| CADD | Computer Aided Drafting and Design |
| CALTRANS | California Department of Transportation |
| CCTV | Closed Circuit Television |
| CD | Calendar Day |
| CEQA | California Environmental Quality Act |
| CM | Construction Manager |
| CMAQ | Congestion Mitigation and Air Quality Improvement Program |
| CMSS | Construction Management Support Services |
| CN | Change Notice |
| CO | Change Order |
| COBH | City of Beverly Hills |
| COLA | City of Los Angeles |
| CPM | Critical Path Method |
| CPUC | California Public Utilities Commission |
| CR | Camera Ready |
| CRMMP | Cultural Resource Monitoring and Mitigation Plan |
| CSPP | Construction Safety Phasing Plan |
| CTC | California Transportation Commission |
| CUD | Contract Unit Description |
| DB | Design Build |
| DBB | Design Bid Build |
| DOT | Department of Transportation |
| DWP | Department of Water and Power |
| EIR | Environmental Impact Report |
| EIS | Environmental Impact Statement |
| EMS | Engineering Management Services |
| EPBM | Earth Pressure Balance Machine |
| FAA | Federal Aviation Administration |
| FAR | Federal Acquisition Regulation |
| FD | Final Design |
| FEIS | Final Environmental Impact Statement |
| FEIR | Final Environmental Impact Report |
| FIS | Financial Information System |
| FLSR | Fire Life Safety Report |
| FONSI | Finding of No Significant Impact |
| FRA | Federal Railroad Administration |
| FSEIR | Final Supplemental Environmental Impact Report |
| FSEIS | Final Supplemental Environmental Impact Statement |

**APPENDIX
LIST OF ACRONYMS (Continued)**

| | |
|--------|--|
| FTA | Federal Transit Administration |
| FTE | Full Time Equivalent |
| GBR | Geotechnical Baseline Report |
| GDSR | Geotechnical Design Summary Report |
| HMM | Hatch Mott MacDonald |
| HRT | Heavy Rail Transit |
| HRV | Heavy Rail Vehicle |
| IFB | Invitation for Bid |
| IPMO | Integrated Project Management Office |
| JV | Joint Venture |
| LA | Los Angeles |
| LABOE | Los Angeles Bureau of Engineering |
| LABOS | Los Angeles Bureau of Sanitation |
| LABSL | Los Angeles Bureau of Street Lighting |
| LACFCD | Los Angeles County Flood Control District |
| LACMTA | Los Angeles County Metropolitan Transportation Authority |
| LADOT | Los Angeles Department of Transportation |
| LADPW | Los Angeles Department of Public Works |
| LADWP | Los Angeles Department of Water and Power |
| LAUSD | Los Angeles Unified School District |
| LAWA | Los Angeles World Airports |
| LAX | Los Angeles International Airport |
| LNTP | Limited Notice To Proceed |
| LONP | Letter Of No Prejudice |
| LOP | Life-of-Project |
| LPA | Locally Preferred Alternative |
| LRTP | Long Range Transportation Plan |
| LRV | Light Rail Vehicle |
| MCA | Master Cooperative Agreement |
| MIS | Major Investment Study |
| MMRP | Mitigation Monitoring and Reporting Plan |
| MOU | Memorandum of Understanding |
| MPSR | Monthly Project Status Report |
| N/A | Not Applicable |
| NEPA | National Environmental Protection Act |
| NOD | Notice of Determination |
| NPDES | National Pollution Discharge Elimination System |
| NTE | Not to Exceed |
| NTP | Notice To Proceed |
| OCC | Operations Control Center |
| OSHA | Occupational Health and Safety Administration |
| PA/VMS | Public Address/Visual Messaging Sign |
| PE | Preliminary Engineering |

APPENDIX

LIST OF ACRONYMS (Continued)

| | |
|--------|---|
| PEER | Permit Engineering Evaluation Report |
| PIP | Project Implementation Plan |
| PLA | Project Labor Agreement |
| PM | Project Manager |
| PMIP | Project Management Implementation Plan |
| PMOC | Project Management Oversight Consultant |
| PMP | Project Management Plan |
| P&P | Policies & Procedures |
| PR | Project Report |
| PRMMP | Paleontological Resource Monitoring Mitigation Plan |
| PSR | Project Study Report |
| QA | Quality Assurance |
| QAR | Quality Assurance Report |
| QC | Quality Control |
| QPSR | Quarterly Project Status Report |
| QTIB | Qualified Transit Improvement Bonds |
| RAMP | Real Estate Acquisition Management Plan |
| RCHAR | Rail Crossing Hazards Analysis Report |
| RCMP | Risk Assessment Management Plan |
| RFC | Request For Change |
| RFP | Request For Proposals |
| RFSC | Request for Special Consideration |
| RHA | Risk Hazard Analysis |
| RLPE | Red Light Photo Enforcement |
| ROC | Rail Operations Center |
| ROD | Record Of Decision |
| ROM | Rough Order of Magnitude |
| ROW | Right-Of-Way |
| RPZ | Runway Protection Zone |
| RSD | Revenue Service Date |
| SAV | Stand Alone Validator |
| SBCC | <i>Steve Bubalo Construction Co</i> |
| SCAQMD | Southern California Air Quality Management District |
| SCADA | Supervisory Control and Data Acquisition |
| SCC | Standard Cost Category |
| SCE | Southern California Edison |
| SCG | Southern California Gas Company |
| SCRRA | Southern California Regional Rail Authority |
| SHA | State Highway Account |
| SHPO | State Historic Preservation Office |
| SIT | System Integration Testing |
| SOQ | Statement of Qualification |
| SOV | Schedule Of Value |
| SOW | Statement Of Work |

**APPENDIX
LIST OF ACRONYMS (Continued)**

| | |
|-------|--|
| SP | Special Provision |
| SSMP | Safety and Security Management Plan |
| STB | Surface Transportation Board |
| STIP | State Transportation Improvement Program |
| STP | Surface Transportation Program |
| STV | STV Group |
| SWPPP | Storm Water Pollution Prevention Plan |
| TBD | To Be Determined |
| TBM | Tunnel Boring Machine |
| TCE | Temporary Construction Easement |
| TCRP | Traffic Congestion Relief Program |
| TIFIA | Transportation Infrastructure Finance and Innovation Act |
| TIGER | Transportation Investment Generating Economic Recovery |
| TPSS | Traction Power Substation |
| TRACS | Transit Automatic Control System |
| TVA | Threat Vulnerability Analysis |
| TVM | Ticket Vending Machine |
| UFS | Universal Fare System |
| USDOT | United States Department Of Transportation |
| VE | Value Engineering |
| WBS | Work Breakdown Structure |
| WP | Work Package |
| YOE | Year of Expenditure |