



TABLE OF CONTENTS

PHASE 2 FOOTHILL EXTENSION PROJECT STATUS

Project Description	3
Pasadena to Azusa Segment	4
Management Issues	4
Key Activities Completed This Period	5
Key Future Activities	6
Critical Path Schedule	7
Critical Path Float Trend	8
Alignment Contract Status	9
Alignment Construction Progress This Period	11
Facility Construction Progress This Period	12
Alignment Construction Progress Next Period	13
Facility Construction Progress Next Period	14
Alignment Construction Images	15
Alignment Change Management Log	17
Parking Facilities and Enhancements Contract Status	22
Parking Facilities and Enhancements Construction Images	24
Parking Facilities and Enhancements Change Management Log	26
Azusa to Montclair Segment	28
Financial Status	29



FOOTHILL EXTENSION PROJECT DESCRIPTION

The Authority's mandate is to plan, design and construct a 37-mile light rail link between Downtown Los Angeles and Claremont. In addition, the San Bernardino Associated Governments (SANBAG) has requested that planning be extended one mile inside San Bernardino County to the City of Montclair and then possibly to Ontario Airport.

The Metro Gold Line Phase 2 (Foothill Extension) corridor includes the cities of Pasadena, Arcadia, Monrovia, Duarte, Irwindale, Azusa, Glendora, San Dimas, La Verne, Pomona, Claremont, and Montclair; and the counties of Los Angeles and San Bernardino (Figure 1). The Foothill Extension is estimated to cost approximately \$1.950 billion.

The Foothill Extension will be built in two segments to align effectively with projected cash flows and financial capacity constraints. The first segment is defined from the Sierra Madre Villa Station in Pasadena to the city of Azusa. Revenue service along this segment is planned for the year 2016. The second segment would include an extension from Azusa to the City of Montclair with revenue service projected for the year 2023.



Figure 1: Metro Gold Line Foothill Extension Alignment



Pasadena to Azusa Segment

MANAGEMENT ISSUES

Metro Betterments

During the design process Metro staff have identified betterments that Metro staff would like to add to the project. Metro has provided a final disposition on all but a few items. Authority staff continues to work with Metro staff to resolve the remaining items.



KEY ACTIVITIES COMPLETED THIS PERIOD

FTC reports the following SBE statistics for the month of March:

- Target SBE commitment: \$59,500,000
- SBE percent committed versus value of Project: 17.07%
- Overall Authority Project SBE goal: 16%

FTC reports the following approximate safety statistics to date:

- 2,102,358 total work hours performed by FTC, Mass Electric, and Subcontractors
- 13 recordable injuries reported to date
- 4 lost time injuries reported to date

Webcor reports the following DBE statistics for the month of March:

- Target DBE commitment: \$1,121,250
- DBE percent committed versus value of Project: 4.74%
- Overall Authority Project DBE goal: 2.3%

Webcor reports the following approximate safety statistics to date:

- 202,561 total work hours performed by Webcor and Subcontractors
- 1 recordable injuries reported to date
- 0 lost time injuries reported to date

Continued placement of art and architectural elements at all stations

Continued systems integration testing

Continued Communications Local Field Acceptance Testing (LFAT) throughout alignment

Continued performing punch list walks with Metro

Began addressing punch list items at all parking facilities

Began testing of communication devices fire alarm systems at Arcadia and Monrovia parking structures

Continued installation of bike lockers and bike racks at Duarte lot site

Continued interior dry finish and exterior structure painting of Irwindale parking structure

Completed elevator installation at Irwindale and Azusa-Citrus parking structures

Completed installation of fire alarm system and prepared for system test at Azusa-Citrus and parking structure



KEY FUTURE ACTIVITIES

Continue discussions with corridor cities regarding the project

Continue management of the Alignment contract, which will include oversight of construction activities and start-up activities

Continue to meet with Intermodal Parking Facilities and Enhancements Project contractor, Webcor Builders regarding design and construction of the Project

Complete construction of art and architectural elements at all stations

Complete system integration tests

Complete communications LFAT testing

Finalize construction of all Parking Facilities

Finalize the following property acquisitions:

- **Arcadia:**

1. Parcel 1310/1311 (Indiana St.) – To be vacated by the City of Arcadia.
2. Parcel 1401a (Huntington Dr. Aerial Easement) – To be conveyed by the City of Arcadia.
3. Parcel 1401b (Huntington Dr. Bridge Abutments) – To be conveyed by the City of Arcadia.
4. Parcel 1403 (99 N. Second Av.) – Continuing to negotiate. Also filed a eminent domain claim in court.
5. Parcel 6009 (Huntington Dr. Bridge Abutments) – To be conveyed by the City of Arcadia.
6. Parcel 6010 (Huntington Dr. Bridge Abutments) – To be conveyed by the City of Arcadia.
7. Parcel 6011 (Huntington Dr. Bridge Abutments) – To be conveyed by the City of Arcadia.

- **Monrovia:**

1. Parcel 1601 (Encino Av.) – To be conveyed by the City of Monrovia.
2. Parcel 1903 (Monrovia Station) – To be conveyed by the City of Monrovia.
3. Parcel 21A12 (3M Parking Lot) – Finalizing.
4. Parcel 21A23 (Shamrock Trapezoid) – Working with Attorney to determine ownership.

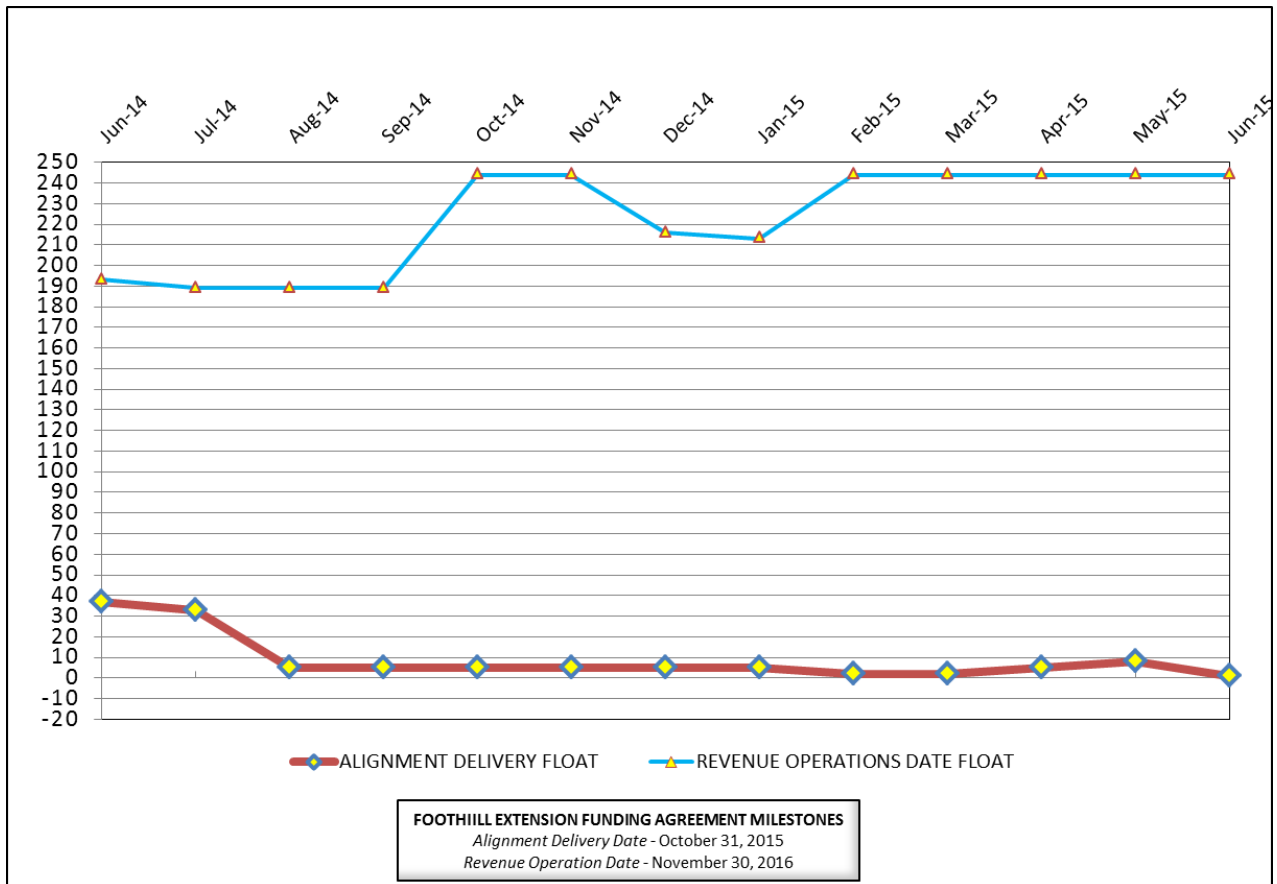


CRITICAL PATH SCHEDULE

Activity Name	OD	RD	AD	Start	Finish	Total Float	Timeline																			
							2012				2013				2014				2015				2016			
							Q2	Q3	Q4	Q1	Q2	Q3	Q4	Q1	Q2	Q3	Q4	Q1	Q2	Q3	Q4	Q1	Q2	Q3	Q4	
REVENUE OPERATIONS DATE - CRITICAL PATH																										
RFP - LRV PROCUREMENT	375	0	557	18.Oct.10 08:00 A	26.Apr.12 15:00 A		[Gantt bar: Oct 2010 - Apr 2012]																			
LRV FABRICATION / DELIVER 15 VEHICLES	1353	187	1032	17.Aug.12 07:00 A	18.Dec.15 15:00	244	[Gantt bar: Aug 2012 - Dec 2015]																			
METRO - Pre-Revenue Operations - Phase 2A	60	60	0	19.Dec.15 07:00	16.Feb.16 15:00	244	[Gantt bar: Dec 2015 - Feb 2016]																			
METRO - Project Schedule Contingency (2 Mo.)	44	44	0	17.Feb.16 07:00	31.Mar.16 15:00	244	[Gantt bar: Feb 2016 - Mar 2016]																			
Phase 2A - Revenue Operations Date (ROD)	0	0	0		31.Mar.16 15:00*	244	[Milestone: Mar 2016]																			
ALIGNMENT DELIVERY DATE - CRITICAL PATH																										
SYSTEMS INTERGRATION TESTING - PHASE 1	185	55	134	09.Dec.14 07:00 A	31.Aug.15 15:00	0	[Gantt bar: Dec 2014 - Aug 2015]																			
IRWINDALE STATION - COMMUNICATIONS INSTL / TEST	60	35	45	13.Apr.15 07:00 A	31.Jul.15 15:00	1	[Gantt bar: Apr 2015 - Jul 2015]																			
IRWINDALE PARKING STRUCTURE - COMMUNICATIONS INSTL / TEST	45	35	30	04.May.15 07:00 A	31.Jul.15 15:00	1	[Gantt bar: May 2015 - Jul 2015]																			
SYSTEMS INTERGRATION TESTING - PHASE 2	44	44	0	01.Sep.15 07:00	30.Oct.15 15:00	0	[Gantt bar: Sep 2015 - Oct 2015]																			
C1135 - >>>SUBSTANTIAL COMPLETION - 1420 CD<<<	0	0	0		30.Oct.15 15:00*	1	[Milestone: Oct 2015]																			
ALIGNMENT DELIVERY DATE - SECONDARY - CRITICAL PATH																										
OCS - TESTING - SEGMENT 4	15	2	19	19.May.15 07:00 A	16.Jun.15 15:00	4	[Gantt bar: May 2015 - Jun 2015]																			



CRITICAL PATH FLOAT TREND



Revenue Operations Date Critical Path - (244 Calendar Days)

The critical path is currently running through the P3010 LRV procurement. At this time, Metro is forecasting the delivery of the 15th vehicle by December 2015. The critical path continues through Pre-Revenue Operations, which is expected to be completed by February 16, 2016. The Revenue Operations Date (ROD) is projected to be complete by March 31, 2016, which is eight (8) months ahead of the Funding Agreement Milestone date of November 30, 2016 .

Alignment Delivery Date Critical Path - (1 Calendar Day)

This period, the Irwindale Station and Parking Structure communications installation and testing is on the critical path. The communications equipment installation is in progress at both the station and parking structure, but LFAT is not expected to be complete until late July 2015. The CTS Phase 1 SIT will commence at the Duarte Station by late June 2015, and upon completion the CTS Phase 1 SIT will continue through the Monrovia, Arcadia, Alameda, Citrus, and Irwindale. After the CTS Phase 1 SIT is complete, the critical path will continue through the SCADA Phase 1 SIT. Upon completion of the SCADA Phase 1 SIT, Phase 1 systems integration testing will conclude and Metro to begin Phase 2 systems integration testing. Upon the conclusion of Phase 2 systems integration testing, the alignment will be available for Metro to complete Pre-Revenue Operations.

Other elements of construction work, which are in progress and near critical are Segment 4 train control testing; Citrus Station communications installation; Irwindale Parking Structure; Duarte parking lot; and Citrus Parking .

Project Float

The project float for the Revenue Operations Date is 244 days. The critical activities on this path are on schedule to meet the Target Revenue Operations Date of November 2016. The Alignment Delivery Date float value is 1 day and is currently on schedule to meet the October 31, 2015 deadline.



Description: Alignment Design / Build	Status: June 15, 2015
Contract No.: C1135	Contractor: Foothill Transit Constructors (Kiewit-Parsons J.V.)

<p>Progress Completed This Period</p> <p>Design</p> <ul style="list-style-type: none"> • Submit AFC Design - Wayside Operational Signage • Submit AFC Design - Tactile Guidance Tile • Submit AFC Design - LRV Driveway <p>Construction</p> <ul style="list-style-type: none"> • See "Construction Progress This Period" 	<p>Activities Planned Next Period</p> <p>Design</p> <ul style="list-style-type: none"> • Submit AFC Design - Alameda Communications Book of Plans • Submit AFC Design - Irwindale Communications Book of Plans • Submit AFC Design - Parking Struc. Communications Book of Plans • Submit AFC Design - Monrovia Communications Book of Plans • Submit AFC Design - Irwindale Ramp <p>Construction</p> <ul style="list-style-type: none"> • See "Construction Progress Next Period"
---	---

<p>Areas of Concern</p> <ul style="list-style-type: none"> • Irwindale Parking Communications - The C1150 Design-Build Contractor progress at the Irwindale Parking Structure continues to slip. As a result, the C1135 Design-Build Contractor will be impacted by the late access to all areas within the parking facility, which includes the elevator cab and other mounting locations for communication devices. Delays to the communications installations will impact the LFAT and Phase 1 Systems Integration testing. 	<p>Areas of Concern (Continued)</p> <ul style="list-style-type: none"> • Communications Installation - The communications installation progress at the Citrus and Irwindale stations are starting slip and approaching critical. Further delays may have an impact on the completion of Phase 1 Systems Integration testing. The Authority will continue monitor the field progress to ensure the installations are completed per the schedule and eliminate the potential impact to Phase 1 Systems Integration testing.
---	--



Description: Alignment Design / Build

Status: June 15, 2015

Contract No.: C1135

Contractor: Foothill Transit Constructors (Kiewit-Parsons J.V.)

Cost Summary:

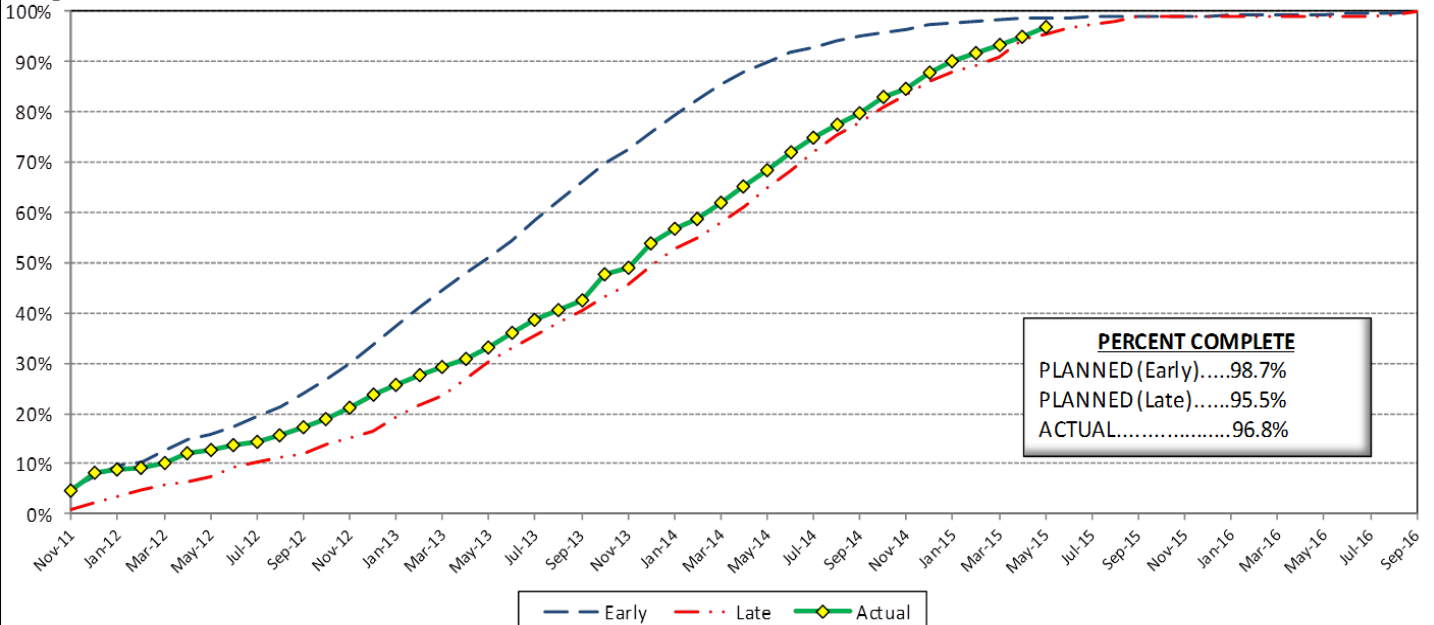
	Million(s)
CONTRACT	
Contract Award Value:	485.9
Executed Change Orders:	21.7
Current Contract Value:	507.5
Potential Change Orders:	4.0
Current Forecast:	511.6
Eamed Value/Actual Cost	479.1
AUTHORIZATION FOR EXPENDITURE	
Budget	514.5
Commitment	507.5
Balance	3.0

Cost Assessment:

This period the Contract forecast increased \$268 thousand. The major increase was due to the following: CO 157 - Add APS @ 2 Intersection in Duarte, CO 164 - M&O Fire Alarm System Upgrades, RFC 104 - Pedestrian Grade Crossing Mods, RFC 112 - Temporary FACP Monitoring for Parking, RFC 115 - M&O Flooring Acceleration, RFC 118 - Santa Anita Ave Bridge Lighting, CO 166 - M&O NW Corner Added Paving & Curb.

The current forecast is within the Authorized budget.

Progress Curve



Schedule Summary:

Contract Award:	07/27/11
Interim Notice to Proceed (INTP) :	11/03/11
Original Contract Duration:	1,780 Calendar Days
Current Contract Duration:	1,780 Calendar Days
Elapsed Time from NTP:	1,320 Calendar Days

Contract Milestones

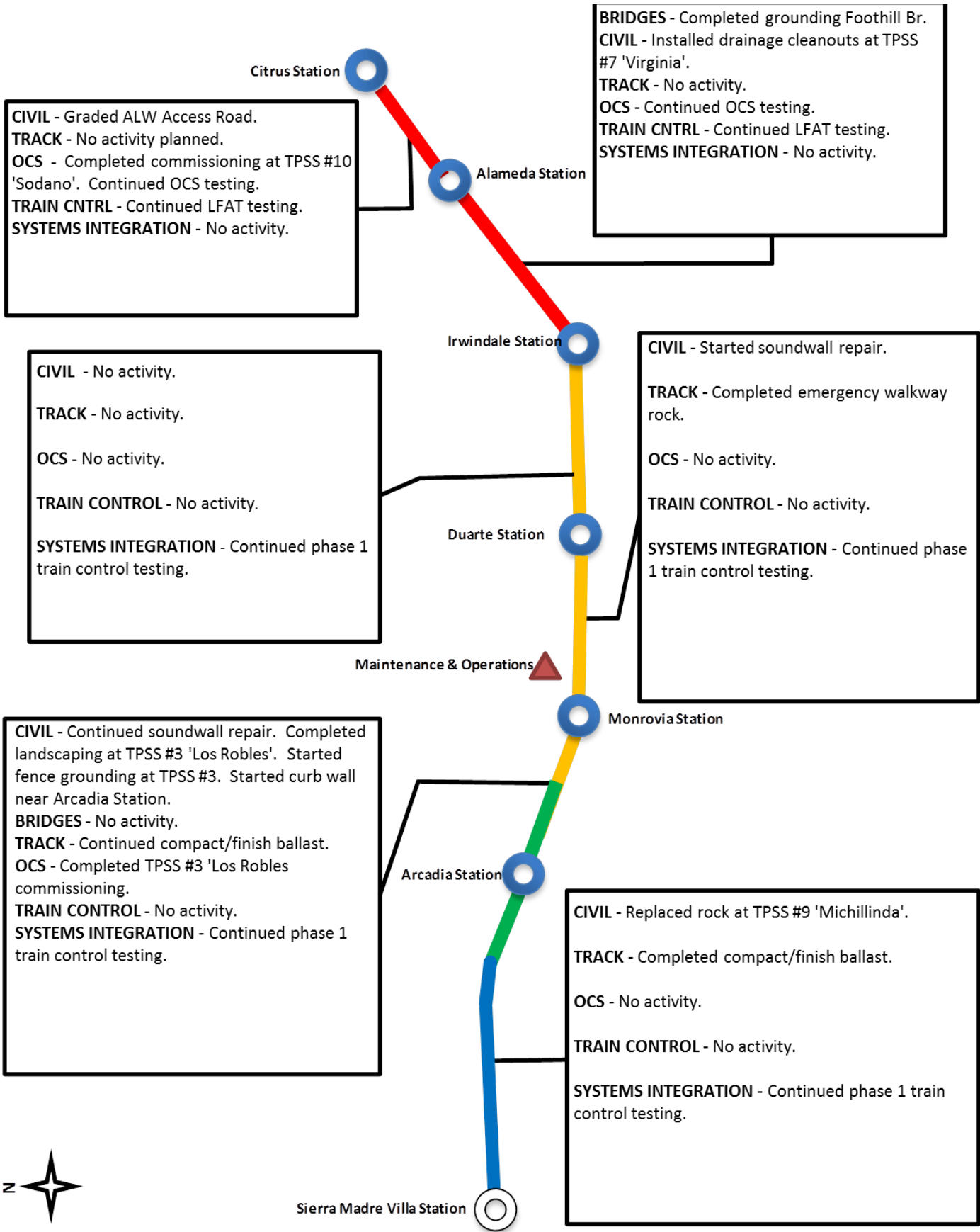
Milestones	Description	Original Contract	Current Contract	Forecast	Variance
1	Substantial Completion	09/23/15	09/23/15	10/30/15	(37)
2	Punchlist Complete	06/19/16	06/19/16	07/26/16	(37)
3	Final Completion	09/17/16	09/17/16	10/24/16	(37)
4	Access - IFS Br.	12/15/12	12/15/12	12/15/2012 A	0
5	Test Track Complete	03/27/15	03/27/15	3/27/2015 A	0
6	Colorado Br. Demo Complete	02/01/12	02/01/12	6/15/2012 A	(135)

Schedule Assessment:

With the progress continuing to trend at the rate of the late progress curve, activities in all Segments continue to approach near critical. The Design-Build Contractor continues to meet the requisite use of resources in order to meet the critical elements of the schedule. At this time, the primary activities which are critical or near critical by Segment are as follows: Irwindale Station Communications installation, Irwindale Parking Structure Communications installation, Segment 4 - OCS testing, Train Control LFAT Segment 4, and CTS Fiber Optic Cable LFAT testing.



ALIGNMENT CONSTRUCTION PROGRESS THIS PERIOD





FACILITY CONSTRUCTION PROGRESS THIS PERIOD

Citrus Ave Station

STATION - Completed communications equipment installation. Completed metal railing installation & steel picket fence. Completed platform lighting. Started Artwork installation.
PARKING - Completed elevator glazing installation. Continued lay over room. Completed walkway light pole installation. Completed sewer installation. Completed elevator testing. Completed CCTV/PA/Fire Alarm/Telephone installation.

STATION - Completed communications equipment installation. Completed metal picket fence. Started artwork installation. Continued map case installation.
ENHANCEMENTS - Installed underground conduits. Completed irrigation installation. Completed grading. Installed light pole bases and poles.

Alameda Station

STATION - Continued map case installations. Started installation of Communications Equipment. Completed ramp landing. Started installation of pedestrian crossing equipment.
PARKING - Completed fire protection. Completed elevator cab installations. Completed glazing installation at elevator hoistway. Continued barrier walls. Continued pump station testing.

Irwindale Station

STATION - Continued Communications LFAT testing. Continued map case installations.
PARKING - Continued installation of underground conduits. Completed light pole bases at parking lot. Started light pole installations. Completed curbs and AC paving at parking lot. Completed irrigation. Installed electrical meters. Continued metal picket

CIVIL - Completed paving. Completed steel picket fence installations at Wall 'C', 'D' and started Wall 'B' and 3M fence installations. Completed North East Plaza flatwork & hardscape. Complete lanscape irrigation. Installed pre-cast wall panels and wire mesh art fence. Completed site lighting. Completed LRV Driveway installation.
STRUCTURES - *M&O Building* - Completed art wall installation. Completed acoustical ceiling tile installation. Completed carpet & vinyl flooring. Completed fire alarms. Started shop DC switch board. *Car Wash* - Completed lighting installation. *Cleaning Platform* - No activity. *MOW Building* - Completed lighting installation. *Material Storage* - Completed lighting installation. *Guard House* - Installed pre-fabricated structure. Completed installation of finishes. *Fire Tank* - Completed MEP testing.
OCS - Completed livewire testing.
TRAIN CONTROL - Completed LFAT testing.

Duarte Station

STATION - Continued LFAT testing. Continued artwork installation. Continued map case installation.
PARKING - Started elevator testing. Completed driveway replacement.

Maintenance & Operations

Monrovia Station

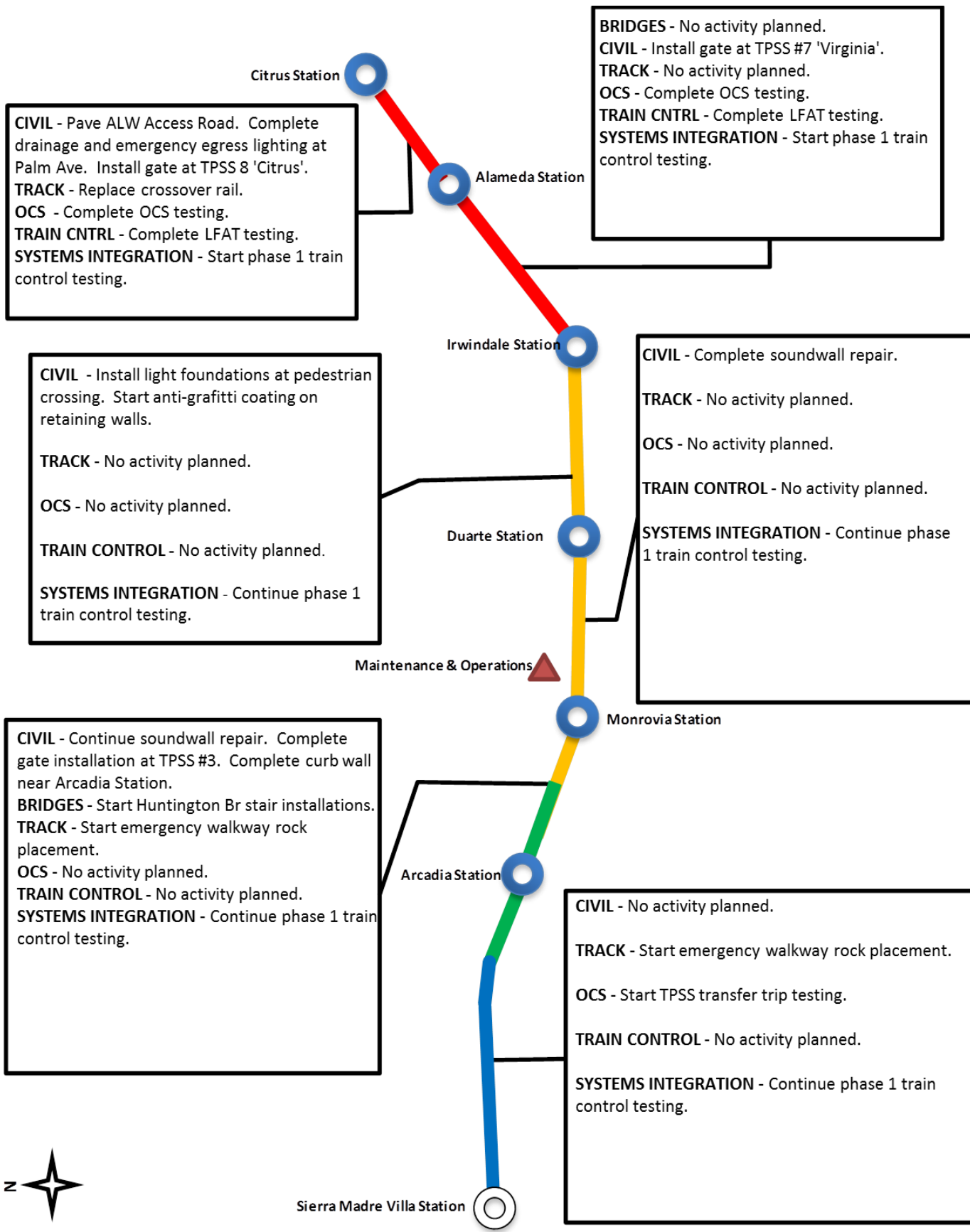
STATION - Complete LFAT testing. Continued map case installation. Installed curb wall for fence.
PARKING - Continued LFAT testing. Completed St. Joesph landscape installation. Completed elevator testing.

Arcadia Station





ALIGNMENT CONSTRUCTION PROGRESS NEXT PERIOD





FACILITY CONSTRUCTION PROGRESS NEXT PERIOD

Citrus Ave Station

STATION - Start communications LFAT testing. Complete artwork installation. Complete map case installation. Complete installation of trash cans. Install pylon.
PARKING - Complete lay over room. Complete elevator testing. Start communications LFAT testing. Complete railing installation. Complete lanscape installation. Start grading Citrus Ave roadway.

STATION - Complete artwork installation. Complete map case installation. Complete bench and trash can installations. Install pylon. Start Communications LFAT testing.
ENHANCEMENTS - Complete permanent power. Install bike racks and lockers. Complete street lighting.

Alameda Station

STATION - Complete map case installations. Complete installation of benches and trash cans. Install pavers and hand rail at ramp landing. Ininstall pylon. Complete installation of Communications Equipment.
PARKING - Complete permanent power. Complete barrier walls. Complete pump station testing. Complete striping. Complete cast-in-place wall. Start street lighting and sidewalks.

Irwindale Station

CIVIL - Complete Wall 'B' and 3M fence installations. Install storm drain and catch basin at Central Ave. Install main entrance gate.
STRUCTURES - *M&O Building* - Install grates at blow down pit. Complete shop DC switch board. *Car Wash* - Complete communications installation. *Cleaning Platform* - Complete communications installation. *MOW Building* - Complete communications installation. *Material Storage* - Complete communications installation. *Guard House* - Complete installation of finishes. Complete communications installation. **OCS** - No activity planned.
TRAIN CONTROL - No activity planned.

STATION - Complete Communications LFAT testing. Complete map case installations. Complete trash can and bench installations. Install pylon.
PARKING - Complete installation of underground conduits. Complete metal picket fence. Complete bike lockers/racks. Complete striping. Complete sidewalk and trees. Install artwork. Start communications

Duarte Station

Maintenance & Operations

STATION - Complete communications LFAT testing. Complete artwork installation. Complete map case installation. Complete bench installations. Complete trash receptacle installations. Install pylon.
PARKING - Complete elevator State Certification.

Monrovia Station

Arcadia Station

STATION - Complete communications LFAT testing. Complete map case installation. Complete bench installations. Complete art canopy. Complete emergency egress lighting. Install pylon.
PARKING - Complete elevator State Certification.





ALIGNMENT CONSTRUCTION IMAGES

Segment 2: Arcadia Station - Canopy Glass



Segment 3: Monrovia Station - Mosaic Tile

Segment 3: Monrovia Station - Quarry Tile





ALIGNMENT CONSTRUCTION IMAGES (CONTINUED)



Segment 4: Irwindale Station - Map Cases

Segment 4: Azusa-Downtown Station -
Portal Installation



Operations Campus: Track Punch List Work



Change Management Risk Log

Date: 7/6/2015

Page: 1 of 6

Project: C1135 Alignment - FTC Contract #: C1135

Original Contract Amount:	\$485,867,000				
Approved Change Orders:	\$22,219,262	4.57%	Potential Additional Exposure:		
Current Contract Total:	\$508,086,262		Open Proposals (PCOs, RFCs, DIRs)	\$3,752,559	0.77%
Pending Change Orders:	\$169,796	0.03%	Disputed Proposals and Changes:	\$0	0.00%
Pending Contract Total:	\$508,256,058	4.61%	Potential Contract Total:	\$512,008,617	5.38%

Change Orders

Number	Change Management	Title	Initiated Date	Approved Date	Outstanding Days	Time Extension	Amount
EXECUTED Change Orders							
001.00	000.00	Interim NTP	11/3/2011	11/3/2011	0		\$0
002.00	013.00	Colorado Bridge Haz Mat	5/17/2012	5/18/2012	1		\$121,382
002.01	013.01	Colorado Bridge HazMat - Final	9/5/2012	9/7/2012	2		\$13,164
003.00	001.00	Sound Wall Deletion - Duarte Road	7/12/2012	7/18/2012	6		(\$74,707)
004.00	018.00	Revise Block Design - CBD Calc	8/23/2012	8/29/2012	6		\$3,986
004.01	018.01	Revise Block Design - CBD Calc - 2	9/5/2013	9/11/2013	6		\$0
005.00	023.00	Wayside Signal Aspect Revision	9/6/2012	9/7/2012	1		\$26,072
005.01	023.01	Wayside Signal "Call On" Function	10/30/2013	11/1/2013	2		\$75,169
006.00	040.00	Arcadia Frieze, Bench-Artist Design	9/6/2012	9/10/2012	4		\$13,683
006.01	040.01	Arcadia Frieze, Bench-Construction	3/7/2013	3/12/2013	5		\$155,894
007.00	019.02	Soils Testing Abutments & Fdns	9/14/2012	9/18/2012	4		\$44,993
008.00	041.00	Unknown Utilities RFCN 005 006 008	9/14/2012	9/18/2012	4		\$132,450
009.00	038.00	Illuminate City Names @ Stations	9/18/2012	9/24/2012	6		\$184,657
010.00	046.00	SGRB - Lead Based Paint Remediation	9/21/2012	9/24/2012	3		\$244,536
011.00	004.00	Station Architectural Changes	10/11/2012	10/12/2012	1		\$443,950
012.00	003.01	Systems and Testing for Added TPSS	12/13/2012	12/14/2012	1		\$1,443,193
013.00	005.02	IDIQ Comm Contract (Rev 2)	12/14/2012	1/22/2013	39		\$698,259
014.00	060.00	Sewer Encasement Changes in Azusa	12/18/2012	1/24/2013	37		\$141,354
015.00	037.02	M&O - Materials Storage Revisions	12/26/2012	1/15/2013	20		\$62,862
015.01	037.03	M&O Storage Shelving Revisions	9/16/2013	9/19/2013	3		\$20,380
016.00	002.00	Relocation of Access Road to 3M Fac	12/26/2012	1/16/2013	21		\$53,814
017.00	025.00	3 Electrical Casings for ALW	2/27/2013	3/1/2013	2		\$219,033
018.00	073.00	Hazardous Abatement at Bridges	1/15/2013	2/6/2013	22		\$1,081,803
019.00	054.00	City of Hope Conduits	1/11/2013	1/22/2013	11		\$34,313
020.00	059.00	Citrus TPSS Transformer Pad Changes	2/6/2013	2/7/2013	1		\$34,536
021.00	075.00	Demo & Replace Palm Dr. Roadway	2/7/2013	2/14/2013	7		\$90,365
022.00	077.00	M&O Differing Site Conditions; Pt 1	2/13/2013	2/15/2013	2		\$66,360
022.01	093.00	M and O DSC T and M Work Part 2	3/8/2013	3/12/2013	4		\$66,625
022.02	103.00	M and O DSC Part 3	3/27/2013	3/28/2013	1		\$35,211
022.03	115.00	DSC at M and O Part 4	5/3/2013	5/7/2013	4		\$5,706
023.00	089.00	Contaminated Soil Abatement	2/26/2013	2/27/2013	1		\$422,068
024.00	068.00	Monrovia Sound Wall Panel Change	2/26/2013	2/28/2013	2		(\$24,150)
025.00	052.00	Santa Anita Trail Detour	3/8/2013	3/12/2013	4		\$27,691
026.00	070.00	Block Type Change at M&O Building	3/26/2013	3/26/2013	0		\$35,016
027.00	065.00	M&O IT Changes-Duct Banks/Conduits	3/26/2013	3/26/2013	0		\$88,650
027.01	065.01	M&O IT Changes - Power to WAP	9/4/2013	9/6/2013	2		\$73,049
027.02	065.02	M&O IT Changes - Remaining Work	7/16/2014	7/17/2014	1		\$155,991
027.03	065.04	M&O IT Changes -Furniture Interface	6/18/2015	6/19/2015	1		\$293,896
028.00	039.01	Delete Layover Building	4/11/2013	4/12/2013	1		(\$313,832)
029.00	095.00	8in Sanitary Sewer Line- Alameda Av	4/23/2013	4/25/2013	2		\$226,089
029.01	095.01	Alameda Sewer Line Revised Scope	11/22/2013	11/26/2013	4		(\$37,425)



Change Management Risk Log

Date: 7/6/2015

Page: 2 of 6

Project: C1135 Alignment - FTC Contract #: C1135

Change Orders

Number	Change Management	Title	Initiated Date	Approved Date	Outstanding Days	Time Extension	Amount
EXECUTED Change Orders							
030.00	102.00	M&O-Disconnect Switches, Insulators	4/23/2013	4/25/2013	2		\$67,817
031.00	110.00	Rmv Abandoned Utility Line @ Dalton	4/23/2013	4/25/2013	2		\$1,562
032.00	104.00	Highland Ave Abandoned CMP sleeves	5/1/2013	5/3/2013	2		\$15,005
033.00	114.00	Remove contaminated wood culvert	5/3/2013	5/7/2013	4		\$4,714
034.00	128.00	M&O Backup Power/Generator Changes	5/13/2013	5/21/2013	8		\$121,340
035.00	083.00	M&O Vehicle Sanding System Changes	5/21/2013	5/24/2013	3		\$27,463
036.00	006.00	IFS Related Contract Changes	6/7/2013	6/11/2013	4		(\$263,111)
037.00	137.00	CTS Redesign	7/12/2013	7/16/2013	4		\$58,214
038.00	138.00	Segment 4 Safety Manager	7/12/2013	7/16/2013	4		\$157,274
038.01	138.01	Segment 4 Safety manager - Part 2	11/19/2013	11/21/2013	2		\$72,963
038.02	138.02	Segment 4 Safety Manager - Part 3	4/3/2014	4/7/2014	4		\$82,271
039.00	085.00	M&O Drainage System Enhancements	7/19/2013	8/13/2013	25		\$251,579
040.00	067.00	Station Paver Changes	7/23/2013	8/13/2013	21		\$728,340
040.01	067.01	Rebar Changes for Station Pavers	10/28/2013	10/31/2013	3		\$10,586
041.00	112.00	12" Pasadena Waterline Potholes	8/12/2013	8/16/2013	4		\$19,735
042.00	150.00	Demo Abandoned Water Lines @ Dalton	8/12/2013	8/16/2013	4		\$5,937
043.00	007.01	Emer. Backup for Guideway Lighting	8/16/2013	10/1/2013	46		\$359,158
044.00	172.00	Contaminated Wood Culvert Sta. 1202	8/27/2013	8/28/2013	1		\$7,712
045.00	139.00	BLS Changes	8/28/2013	9/4/2013	7		\$110,801
046.00	165.00	Azusa-Alameda Station; 2nd Portal	8/28/2013	9/4/2013	7		\$77,175
047.00	145.00	St. Joseph drainage enhancements	9/4/2013	9/6/2013	2		\$17,592
048.00	149.00	M&O - Lights at NW Corner Park	9/4/2013	9/6/2013	2		\$29,351
049.00	174.00	TPSS #5 Cal-Am Power Conflict	9/4/2013	9/6/2013	2		\$127,260
050.00	171.00	Relocate Access Stair to Foothill	9/4/2013	9/6/2013	2		\$20,276
051.00	173.00	Dalton 8" Water Line Work	9/5/2013	9/12/2013	7		\$35,316
052.00	071.00	Duarte Rd Screen Wall Change	9/5/2013	9/17/2013	12		(\$133,864)
053.00	176.00	Remove Contaminatd Wood-Buena Vista	9/10/2013	9/12/2013	2		\$5,543
054.00	147.00	DECCO Bypass	9/10/2013	9/12/2013	2		\$18,519
055.00	166.00	Foothill Blvd. Water/SD Relocation	9/20/2013	9/20/2013	0		\$127,074
056.00	186.00	Contaminated Wood @ San Gabriel Ave	9/23/2013	9/24/2013	1		\$4,291
057.00	194.00	California/Duarte Water Line Work	10/28/2013	10/31/2013	3		\$220,743
058.00	189.00	Four Utility Changes	10/28/2013	10/31/2013	3		\$14,157
059.00	180.00	Remove/Dispose of ACM E of Highland	10/30/2013	11/1/2013	2		\$29,311
060.00	179.00	CTS Upgrade to OC-192	10/30/2013	11/1/2013	2		\$112,543
060.01	371.00	IDIQ Pricing Error - OC-192 Cards	4/29/2015	5/6/2015	7		\$87,034
061.00	213.00	Irwindale On-ramp Stockpile	11/8/2013	11/21/2013	13		\$200,185
062.00	053.00	Delete Totten Tubes Scope of Work	11/8/2013	11/21/2013	13		(\$143,801)
063.00	146.00	Home Depot Striping and Signing	11/15/2013	11/21/2013	6		\$21,003
064.00	204.00	Unknown Duct Bank @ San Gabriel Ave	11/15/2013	11/21/2013	6		\$1,265
065.00	140.00	M&O-Overhead Work Platform Changes	12/5/2013	12/16/2013	11		\$317,656
066.00	217.00	Buried SD & Headwall, STA 1306+50	12/6/2013	12/17/2013	11		\$1,020
067.00	219.00	Contaminated Soil, Monrovia Station	12/12/2013	12/17/2013	5		\$17,503
068.00	220.00	DSC at Sawpit Wash Abutments	12/12/2013	12/17/2013	5		\$12,668
069.00	188.00	Costco Emergency Gate-Path to POS	1/21/2014	1/22/2014	1		\$19,882
070.00	214.00	M&O - Generator Load Bank	1/21/2014	1/22/2014	1		\$38,092
071.00	224.00	Alameda South Water Line Tie-in	1/30/2014	1/31/2014	1		\$6,330
072.00	202.00	Aesthetic Lighting Provisions-SGRB	2/3/2014	2/4/2014	1		\$27,055
073.00	160.00	Move Mountain Interlocking Bungalow	2/11/2014	2/13/2014	2		\$68,596
074.00	200.00	M&O Parts Carousel Warranty & PM	2/11/2014	2/13/2014	2		\$68,906
075.00	235.00	Remove Contaminated Wood Ties	2/14/2014	2/18/2014	4		\$4,571



Change Management Risk Log

Date: 7/6/2015

Page: 3 of 6

Project: C1135 Alignment - FTC Contract #: C1135

Change Orders

Number	Change Management	Title	Initiated Date	Approved Date	Outstanding Days	Time Extension	Amount
EXECUTED Change Orders							
076.00	234.00	Accelerate Work at California Ave	2/14/2014	2/18/2014	4		\$5,663
077.00	247.00	Line Stop in California	2/18/2014	2/20/2014	2		\$14,524
078.00	201.00	Added Sound Wall, SW of IFS	2/27/2014	2/28/2014	1		\$18,201
079.00	238.00	M&O-MOW Canopy Structural Eval	2/27/2014	2/28/2014	1		\$7,147
079.01	238.01	M&O - MOW Canopy Solar	8/20/2014	8/26/2014	6		\$714,659
080.00	232.00	Car Moving Tractor-Coupler Upgrade	2/27/2014	2/28/2014	1		\$177,145
081.00	242.00	Car Moving Tractor Options/Features	2/27/2014	2/28/2014	1		\$69,099
082.00	091.00	Rockvale Water Line Mitigation	3/4/2014	3/5/2014	1		\$163,750
082.01	091.01	Rockvale Water Line-EIC credit	4/11/2014	4/14/2014	3		(\$5,391)
083.00	251.00	Cut and Move Rail to Segment 1	3/4/2014	3/5/2014	1		\$249,934
084.00	218.00	Delete Equipment at ROC	3/26/2014	3/27/2014	1		(\$91,708)
085.00	239.00	Install Sound Wall Door @ STA. 1169	3/26/2014	3/27/2014	1		\$12,737
086.00	250.00	Change Top Row of Block Wall 1124.1	3/26/2014	3/27/2014	1		\$3,688
087.00	229.00	Irwindale TPSS-Adjust Eqpt. Layout	4/3/2014	4/7/2014	4		\$17,878
088.00	262.00	Provisional Sum Adjustment	4/3/2014	4/7/2014	4		\$0
088.01	262.01	Provisional Sum Adjustment - 2	9/19/2014	9/25/2014	6		\$0
088.02	262.02	Provisional Sum Adjustment - 3	11/12/2014	11/14/2014	2		\$0
088.03	262.03	Provisional Sum Adjustment - 4	3/19/2015	3/19/2015	0		\$0
089.00	261.00	Longer DF Bolts - SGRB	4/3/2014	4/7/2014	4		\$17,331
090.00	169.02	M&O Trammng Table Changes (rev. 2)	4/11/2014	4/14/2014	3		\$54,083
091.00	181.00	Alameda Utility Changes	4/11/2014	4/14/2014	3		(\$9,599)
092.00	241.00	Business Center TPSS Crane Changes	4/23/2014	4/28/2014	5		\$13,655
093.00	276.00	Myrtle Early Completion Incentive	4/23/2014	4/28/2014	5		\$160,000
094.00	254.00	Drainage East of Pasadena Ave.	4/23/2014	4/28/2014	5		\$6,569
095.00	275.00	Remove Rail Ties at 1st/Santa Clara	4/23/2014	4/28/2014	5		\$2,270
096.00	274.00	Buried Concrete @ Huntington Bridge	4/23/2014	4/28/2014	5		\$2,819
097.00	269.00	Asbestos Pipe at Duarte and Myrtle	4/23/2014	4/28/2014	5		\$6,583
098.00	278.00	Abandoned Gas Line at California	5/6/2014	5/7/2014	1		\$8,170
099.00	170.00	M&O Car Wash Betterments	5/6/2014	5/7/2014	1		\$166,144
100.00	223.00	M&O-Volume Control for PA Speakers	5/6/2014	5/7/2014	1		\$38,105
101.00	283.00	Track Work Around at Mountain Ave	5/6/2014	5/7/2014	1		\$29,996
102.00	284.00	Install 115# Buffer Rails in Seg. 1	5/6/2014	5/7/2014	1		\$29,442
103.00	230.00	Azusa-Citrus Ped Crossing Operation	5/6/2014	5/7/2014	1		\$84,183
104.00	231.00	Red Signal Violation Indication	6/3/2014	6/3/2014	0		\$335,134
105.00	253.00	Remove Stem Wall along Duarte Rd.	6/11/2014	6/12/2014	1		\$37,527
106.00	271.00	DVR Changes	7/16/2014	7/17/2014	1		\$181,301
107.00	260.00	M&O Supplemental Fire Water System	7/16/2014	8/4/2014	19		\$1,642,824
108.00	163.00	1st/Santa Clara Grade X-ing Changes	7/25/2014	7/30/2014	5		\$156,177
109.00	164.00	M&O Body Shop Changes	7/25/2014	8/4/2014	10		\$488,598
110.00	256.00	Monrovia North Bunglow LCP Changes	7/25/2014	7/30/2014	5		\$125,313
111.00	237.00	M&O-Signaling System Changes	7/29/2014	8/4/2014	6		\$1,133,746
112.00	252.00	Irwindale Security Kiosk Provisions	8/4/2014	8/6/2014	2		\$178,044
112.01	252.01	Irwindale Security Kiosk - Part 2	2/9/2015	2/11/2015	2		\$47,168
113.00	281.00	M&O - Accent Colors	8/4/2014	8/6/2014	2		\$26,928
114.00	305.00	Lead Paint, Foothill Median Barrier	8/18/2014	8/20/2014	2		\$5,690
115.00	270.00	TES Load Flow Simulation	8/19/2014	8/21/2014	2		\$22,399
116.00	203.00	Mayflower Driveway/Wall Credit	8/20/2014	8/26/2014	6		(\$19,138)
117.00	307.00	Contaminated Wood Ties-Santa Anita	8/20/2014	8/26/2014	6		\$3,226
118.00	082.01	M&O / 3M Fence Revisions (rev 1)	9/17/2014	9/25/2014	8		\$886,650
119.00	314.00	Mountain Early Completion Incentive	9/17/2014	9/24/2014	7		\$80,000



Change Management Risk Log

Date: 7/6/2015

Page: 4 of 6

Project: C1135 Alignment - FTC Contract #: C1135

Change Orders

Number	Change Management	Title	Initiated Date	Approved Date	Outstanding Days	Time Extension	Amount
EXECUTED Change Orders							
120.00	301.00	Santa Anita Avenue Bridge Artwork	9/17/2014	9/25/2014	8		\$57,224
121.00	313.00	Additional Traffic Signal Testing D	9/19/2014	9/25/2014	6		\$7,875
122.00	320.00	Remove Asbestos Pipe at Virginia	11/12/2014	11/14/2014	2		\$9,485
123.00	303.00	Additional Anti-Graffiti Coating	12/8/2014	12/8/2014	0		\$63,727
124.00	326.00	Santa Anita Avenue Bridge Lighting	12/8/2014	12/8/2014	0		\$208,633
124.01	326.01	Santa Anita Bridge Lighting-Part 2	1/16/2015	1/19/2015	3		\$5,744
125.00	335.00	M&O - Interior Wall Revisions	12/18/2014	12/19/2014	1		\$43,786
126.00	304.00	M&O Lobby Aesthetic Changes	12/18/2014	12/19/2014	1		\$128,047
127.00	292.00	M&O - Guard House Changes	12/19/2014	12/19/2014	0		\$65,463
128.00	339.00	Mountain Ped. Crossing Changes	1/8/2015	1/12/2015	4		\$96,159
129.00	340.00	Business Center TPSS Drainage	1/16/2015	1/19/2015	3		\$249,959
130.00	255.00	Virginia TPSS Access Road	1/8/2015	1/12/2015	4		\$39,718
131.00	291.00	Eliminate 'Train Coming' Signs	1/8/2015	1/12/2015	4		\$9,325
132.00	322.00	Replace Existing OCS Pole at SMV	1/16/2015	1/19/2015	3		\$27,010
133.00	187.01	Irwindale Ramp Signs	1/20/2015	1/26/2015	6		\$125,015
134.00	346.00	Delay in Setting of Yard Substation	1/20/2015	1/26/2015	6		\$15,181
135.00	344.00	Virginia TPSS-Access for Delivery	1/30/2015	2/2/2015	3		\$67,019
136.00	328.00	Rail Profile Grinding	2/9/2015	2/18/2015	9		\$524,000
137.00	065.03	M&O Main Building Comm. Room Floors	2/17/2015	2/17/2015	0		\$4,402
138.00	353.00	1st/Santa Clara Noise Mitigations	2/17/2015	2/17/2015	0		\$13,889
139.00	323.00	Add Pavers to Duarte Station W Ramp	2/18/2015	2/18/2015	0		\$31,982
140.00	338.00	M&O-Wheel Truing Machine Car Puller	2/19/2015	2/19/2015	0		\$83,112
141.00	258.00	M&O Tactile Guidance Changes	2/23/2015	2/26/2015	3		\$203,945
142.00	352.00	M&O - Fire Alarm System	2/23/2015	2/26/2015	3		\$238,983
143.00	351.00	Sierra Madre Track Rehab	2/23/2015	2/26/2015	3		\$18,107
144.00	349.00	Remove water line east of Highland	2/23/2015	2/26/2015	3		\$4,648
145.00	360.00	M&O Facility - Yard Control Console	3/2/2015	3/3/2015	1		\$23,158
146.00	359.00	Generators for Testing-SRGB to IRW	3/2/2015	3/3/2015	1		\$6,758
147.00	325.00	Station Identifier Changes	3/23/2015	3/25/2015	2		\$4,712
148.00	345.00	Irwindale Signal Case & Push Button	3/24/2015	3/25/2015	1		\$111,110
149.00	296.00	M&O Service Vehicle Pathways	3/26/2015	3/30/2015	4		\$164,480
149.01	296.01	M&O-Service Vehicle Pathways - 2	6/18/2015	6/22/2015	4		\$4,955
150.00	327.00	M&O Facility-NW Corner Fence & Wall	4/29/2015	5/5/2015	6		\$461,480
151.00	311.00	Abandoned California Water Lines	4/29/2015	5/6/2015	7		\$61,219
152.00	358.00	M&O Facility-Interior Wall Finishes	4/29/2015	5/6/2015	7		\$24,582
153.00	337.00	Grade X-ing Train Signal Changes	4/29/2015	5/6/2015	7		\$136,849
154.00	367.00	M&O NW Corner Hardscape Changes	5/8/2015	5/20/2015	12		\$444,632
155.00	363.00	M&O Early Completion Milestone	5/13/2015	5/20/2015	7		\$215,290
156.00	375.00	M&O - Beaumont Acceleration for TCO	5/14/2015	5/20/2015	6		\$130,681
157.00	357.00	Add APS @ 2 intersections in Duarte	5/15/2015	5/20/2015	5		\$39,826
158.00	257.00	Comm. Changes Parking Structures	6/4/2015	6/4/2015	0		\$186,672
159.00	257.01	Duarte Parking Lot ETEs and CCTVs	6/4/2015	6/4/2015	0		\$289,578
160.00	364.00	M&O - MOW Track Fouling Issue	6/4/2015	6/4/2015	0		\$309,417
161.00	376.00	Remove Hazardous Waste at Angeleno	6/4/2015	6/4/2015	0		\$4,635
162.00	383.00	M&O - WTM elect changes in pit	6/4/2015	6/4/2015	0		\$19,063
163.00	381.00	M&O - Elevator Inspector Upgrades	6/4/2015	6/4/2015	0		\$12,200
164.00	382.00	M&O - Fire Alarm System Upgrades	6/11/2015	6/15/2015	4		\$109,631
164.01	389.00	M&O - Fire Alarm System Upgrades-2	6/18/2015	6/22/2015	4		\$109,920
165.00	385.00	M&O-replace LRV access stairs	6/11/2015	6/15/2015	4		\$9,519



Change Management Risk Log

Date: 7/6/2015

Page: 5 of 6

Project: C1135 Alignment - FTC Contract #: C1135

Change Orders

Number	Change Management	Title	Initiated Date	Approved Date	Outstanding Days	Time Extension	Amount	
EXECUTED Change Orders								
166.00	384.00	M&O-NW Corner Added Paving & Curb	6/11/2015	6/15/2015	4		\$19,095	
							Subtotal:	\$22,219,262
							Subtotal:	\$22,219,262
PENDING Change Orders								
022.04	390.00	M&O DSC - Part 5	7/14/2015		-8		\$7,192	
112.02	252.02	Inwindale Security Kiosk - Credit	7/14/2015		-8		(\$47,168)	
167.00	391.00	M&O Main Entrance Changes	7/14/2015		-8		\$209,772	
							Subtotal:	\$169,796
							Subtotal:	\$169,796
							Total:	\$22,389,058

Open PCOs

PCO Number	Title	PCO Amount	CSP Amount	Initiated Date	Outstanding Days	Time Extension	Risk	
OPEN								
022.05	M&O IT Changes-OFCl Eqpt and A/V	\$403,790	\$434,909	04/02/15	95		\$434,909	
029.00	Del. Irwindale/Gladstone Mitigation	(\$82,215)		01/07/13	910		(\$82,215)	
080.00	Delete Evergreen / Myrtle Mitigation	(\$17,500)		05/14/14	418		(\$17,500)	
085.00	Joseph TPSS Power Feed Credit	(\$24,239)		07/30/14	341		(\$24,239)	
087.00	ETEL/PTEL Faceplate Betterment	\$20,000	\$156,829	08/07/14	333		\$156,829	
091.00	UP Tunnel Analysis & Modifications	\$560,241		08/26/14	314		\$560,241	
100.00	Change Wayside Operational Signage	\$45,000		11/19/14	229		\$45,000	
101.00	Peck Road Ramp	\$85,000		11/19/14	229		\$85,000	
103.00	Tactile Guidance Tile at Stations	\$403,150		01/08/15	179		\$403,150	
104.00	Striping/Signs at Station Ped Xings	\$170,875	\$288,572	01/08/15	179		\$288,572	
108.00	M&O - Move East Lobby Wall	\$30,000		03/03/15	125		\$30,000	
110.00	M&O Completion Items	\$100,000		04/08/15	89		\$100,000	
111.00	3M Fence Changes	\$0		06/12/15	24		\$0	
							Subtotal:	\$1,979,747
							Total:	\$1,979,747

Open RFCs

RFC Number	Title	RFC Amount	CSP Amount	Initiated Date	Outstanding Days	Time Extension	Risk	
OPEN								
051.00	Inwindale Ramp CSP	\$1,036,918	\$1,316,168	03/10/15	118		\$1,316,168	
078.00	Addl Fence To Close Gaps at Alignmn	\$37,762	\$22,067	08/15/14	325		\$37,762	
088.00	Programming Changes for SCRRA Exit	\$157,052		03/19/15	109		\$157,052	
104.00	Pedestrian Grade Crossing Modificat	\$28,429		05/22/15	45		\$28,429	
112.00	Temporary FACP Monitoring for Parki	\$78,862		05/22/15	45		\$78,862	
115.00	MO Flooring Acceleration CSP	\$0	\$20,758	05/22/15	45		\$20,758	
118.00	Santa Anita Avenue Bridge Lighting	\$0	\$78,364	05/22/15	45		\$78,364	
127.00	Steam Cleaner Change CSP	\$0	\$55,417	06/17/15	19		\$55,417	
							Subtotal:	\$1,772,812
							Total:	\$1,772,812



Change Management Risk Log

Date: 7/6/2015

Page: 6 of 6

Project: C1135 Alignment - FTC Contract #: C1135

Open RFC Notices

Number	Title
037.00	DSC at Santa Anita Wash Abutment 1
044.00	DSC Utility at Azusa Avenue
086.00	Ground Grid Damaged at Citrus TPSS
096.00	TPSS Metering Extension Changes
098.00	Housekeeping Pads for Electrical Eq
100.00	MO Yard Signage Changes
105.00	MO Facility Blow Down Pit Grating C
111.00	Move BLS at Azusa-Alameda Station
114.00	Changes to MO Landscaping
116.00	Added Paving at LRV Loading Driveway
117.00	City of Hope Traffic Signal Conduit
123.00	Relocate the CICs at Stations



Description: Intermodal Parking Facilities & Enhancements **Status:** June 15, 2015

Contract No.: C1150

Contractor: Webcor Builders

Progress Completed This Period

Design

-

Activities Planned Next Period

Design

-

Areas of Concern

- **ALAMEDA PLAZA - UNDERGROUND CONDUITS** - The Design-Build Contractor has completed the installation of the underground conduits. The remaining concrete work and light pole installation is currently in progress. As a result of the improved progress, the Alameda site appears to have recovered and on target to be completed before the revised Substantial Completion Dead Line.

Areas of Concern (Continued)

- **DUARTE PARKING LOT PROCUREMENT** - In February 2015, the light pole procurement was incorporated into the Design-Build Contractor's schedule, and the projected duration for delivery was estimated to be four (4) months. As a result, there was a potential 1.5 month delay to the Substantial Completion. On June 12, 2015, the Authority issued the C1150 Design-Build Contractor a 34-day time extension and as a result, the delayed procurement is no longer in jeopardy of impacting the Substantial Completion Dead Line.



Description: Intermodal Parking Facilities & Enhancements **Status:** June 15, 2015

Contract No.: C1150

Contractor: Webcor Builders

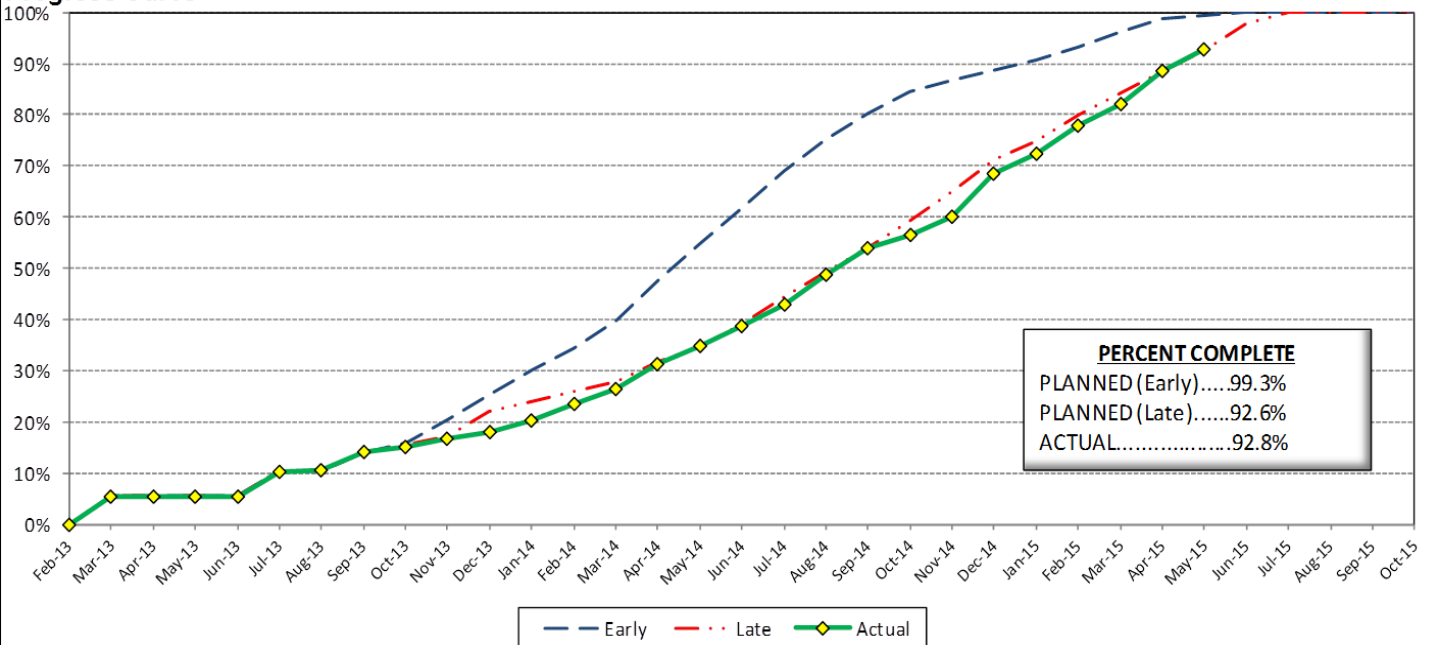
Cost Summary:

	Million(s)
CONTRACT	
Contract Award Value:	48.8
Executed Change Orders:	1.1
Current Contract Value:	49.9
Potential Change Orders:	0.5
Current Forecast:	50.3
Earned Value/Actual Cost	46.3
AUTHORIZATION FOR EXPENDITURE	
Budget	50.4
Commitment	49.9
Balance	0.0

Cost Assessment:

This period, the current cost forecast is 50.3 Million and increased 135 thousand previous period. The current forecast is within the authorized budget.

Progress Curve



Schedule Summary:

Contract Award:	02/27/13
Notice to Proceed (NTP) :	03/20/13
Original Contract Duration:	845 Calendar Days
Current Contract Duration:	969 Calendar Days
Elapsed Time from NTP:	817 Calendar Days

Contract Milestones

Milestones	Description	Original Contract	Current Contract	Forecast	Variance
1	Substantial Completion	03/15/15	07/17/15	07/17/15	0
2	Punchlist Complete	05/29/15	09/30/15	09/30/15	0
3	Final Completion	07/13/15	11/14/15	11/14/15	0
4	TPSS Work	03/01/14	03/01/14	3/31/2014 A	(30)

Schedule Assessment:

The critical path is currently running through the cast-in-place wall at the Irwindale site. The secondary critical path is currently running through the sidewalk and street lighting improvements at the Irwindale site.

The Authority issued a 34 calendar day time extension this period, and the Design-Build Contractor has sufficient time to complete the remaining work.



PARKING FACILITY CONSTRUCTION IMAGES



Arcadia Parking Structure Site Overview



Monrovia Parking Structure Site Overview



PARKING FACILITY CONSTRUCTION IMAGES

Duarte Parking Lot Site Overview



Construction of fractured fin form for CIP Wall on
Irwindale Parking Structure Soil Nail Wall

Azusa-Citrus Parking Structure Site Overview





Change Management Risk Log

Date: 7/6/2015

Page: 1 of 2

Project: C1150 Parking - Webcor Contract #: C1150

Original Contract Amount:	\$48,750,000		Potential Additional Exposure:		
Approved Change Orders:	\$1,271,621	2.61%	Open Proposals (PCOs, RFCs, DIRs)	\$338,919	0.70%
Current Contract Total:	\$50,021,621		Disputed Proposals and Changes:	\$0	0.00%
Pending Change Orders:	\$0	0.00%	Potential Contract Total:	\$50,360,540	3.30%
Pending Contract Total:	\$50,021,621	2.61%			

Change Orders

Number	Change Management	Title	Initiated Date	Approved Date	Outstanding Days	Time Extension	Amount
EXECUTED Change Orders							
001.00	001.00	Monrovia Parking Alternative Layout	6/25/2013	7/11/2013	16		\$21,382
001.01	001.01	Monrovia Alternative - Cancellation	9/17/2013	10/7/2013	20		(\$12,006)
002.00	003.00	Clock Tower Procurement	7/3/2013	7/11/2013	8		\$107,246
003.00	002.00	Relocate Elevator @ Azusa-Citrus PF	12/18/2013	1/8/2014	21		\$159,899
004.00	013.00	Irwindale Structure Relocation	1/23/2014	8/28/2014	217	90	(\$65,564)
005.00	018.00	Monrovia Demo Unforeseen Conditions	3/18/2014	3/26/2014	8		\$17,013
006.00	010.00	Arcadia Transit Plaza Betterments	3/14/2014	3/26/2014	12		\$35,466
007.00	009.01	Irwindale Intersection Betterments	3/25/2014	3/26/2014	1		\$19,985
008.00	017.00	Irwindale Intersection Water Line	3/25/2014	4/14/2014	20		\$7,748
009.00	020.00	Unforeseen Underground Demo-Arcadia	6/13/2014	7/9/2014	26		\$6,313
010.00	011.00	Soldano TPSS Added ROW Fence	7/24/2014	7/28/2014	4		\$8,481
011.00	024.00	SCE Power Feed to DB2 Arcadia TPSS	7/24/2014	7/28/2014	4		\$17,199
012.00	025.00	Additional Sidewalk at Arcadia	7/24/2014	7/28/2014	4		\$3,342
013.00	006.00	St. Joseph Drainage Enhancements	7/31/2014	7/31/2014	0		\$139,488
014.00	012.00	Additional Conduit Provisions	8/13/2014	9/3/2014	21		\$57,262
015.00	030.00	Unforeseen Conditions at Michillind	8/22/2014	8/28/2014	6		\$1,643
016.00	019.00	Parking Facility Artwork	8/27/2014	8/28/2014	1		\$75,850
017.00	034.00	Michillinda Conduit Demo & Pull Box	11/12/2014	11/20/2014	8		\$31,506
018.00	016.00	Monrovia Canopies & Banding Color	12/19/2014	12/29/2014	10		\$247,577
019.00	035.00	Irwindale CCTV Pole	12/29/2014	1/5/2015	7		\$6,220
020.00	039.00	Engineering Costs for Arcadia Clock	12/17/2014	12/29/2014	12		\$5,292
021.00	008.00	Azusa-Citrus Plaza Pavers	1/5/2015	1/13/2015	8		\$7,350
022.00	038.00	Temporary Power for Irrigation at M	1/7/2015	1/13/2015	6		\$1,465
023.00	037.00	Additional Slurry for City of Arcad	1/7/2015	1/13/2015	6		\$7,460
024.00	033.00	Elevator Holding Tanks	3/25/2015	3/27/2015	2		\$76,833
025.00	029.00	Metro-Requestd Elevator Vent Detail	2/12/2015	2/12/2015	0		\$11,553
026.00	041.00	Azusa Citrus Grand Pylon Power	2/13/2015	2/13/2015	0		\$4,742
027.00	045.00	Irwindale Form Liner Product Change	4/9/2015	4/9/2015	0		\$13,170
028.00	044.00	Irwindale City Light Poles Upgrade	4/9/2015	4/9/2015	0		\$10,543
029.00	043.00	Metro Requested Signage Betterments	4/10/2015	6/24/2015	75		\$12,884
030.00	027.00	ETEL Enclosures	4/10/2015	4/30/2015	20		\$42,885
031.00	046.00	Generator for Monrovia Elevators	4/21/2015	4/30/2015	9		\$26,901
032.00	049.00	Irwindale Completion Incentive	6/8/2015	6/11/2015	3		\$50,000
033.00	053.00	Systems Interface Delay	6/10/2015	6/12/2015	2	34	\$0
034.00	047.00	CCTV Scope at Duarte Surface Lot	6/11/2015	6/16/2015	5		\$87,799
035.00	048.00	Irwindale Crash Wall Screen Revisio	6/25/2015	6/29/2015	4		\$26,694
Subtotal:							\$1,271,621
Subtotal:							\$1,271,621
Total:							\$1,271,621



Change Management Risk Log

Date: 7/6/2015

Page: 2 of 2

Project: C1150 Parking - Webcor Contract #: C1150

Open PCOs

PCO Number	Title	PCO Amount	CSP Amount	Initiated Date	Outstanding Days	Time Extension	Risk
OPEN							
013.00	Primrose Avenue cul-de-sac Deletion	(\$60,000)		01/23/14	529		(\$60,000)
014.00	Delete Azusa-Alameda Enhancements	(\$77,113)		01/30/14	522		(\$77,113)
016.01	Artwork Installation	\$0		04/09/15	88		\$0
017.00	Michillinda Pull Box Replacement	\$0		08/14/14	326		\$0
018.00	Irwindale Kiosk Foundation	\$10,000		10/15/14	264		\$10,000
						Subtotal:	(\$127,113)
						Total:	(\$127,113)

Open RFCs

RFC Number	Title	RFC Amount	CSP Amount	Initiated Date	Outstanding Days	Time Extension	Risk
OPEN							
007.00	Added PME Switch & 2 Spare Conduits	\$96,088		06/09/14	392		\$96,088
011.00	Comm. Duct Bank Interface with DB2	\$46,982		06/09/14	392		\$46,982
012.00	SCE Capacitor Bank at Michillinda T	\$9,236		06/09/14	392		\$9,236
016.00	Irwindale Added FH for LACFD Code C	\$247,812		02/26/15	130		\$247,812
024.00	Relocate Monrovia Jobsite Trailers	\$51,207		06/09/15	27		\$51,207
031.00	Irwindale Street Improvements	\$14,707		06/16/15	20		\$14,707
						Subtotal:	\$466,032
						Total:	\$466,032



AZUSA TO MONTCLAIR SEGMENT

ACTIVITIES COMPLETED THIS PERIOD

Authority and City staff continued to hold coordination meetings to discuss the project. A draft of the Master Cooperative Agreement (MCA) was distributed to all cities for review in September 2014, after which all the cities met to discuss the terms of the MCA. The cities provided comments in early February 2015, and the cities and Authority met on February 18th to discuss these comments. The MCA is expected to be agreed upon by all parties by September 2015. The Authority and cities are working together to meet this deadline.

This period, Authority staff worked on the following technical elements of the project:

- Continued advancement of the plan and profile drawings
- Continued right-of-way survey and drawings
- Continued geotechnical work
- Continued surveying work
- Began conceptual design of the parking facilities
- Began preparing scope for environmental site assessments

KEY FUTURE ACTIVITIES

The advanced conceptual engineering process is an 18-month process. Upon completion, the Azusa to Montclair segment will be ready for a design-build procurement. Upcoming activities include continuing to attend coordination meetings with each corridor city, finalizing the city MCAs, development of the ROW drawing work, refinement of the alignment, completing the SDAR, and completing the geotechnical investigations.

Federal Transit Administration (FTA)

The Metro Board of Directors excluded the Gold Line from seeking federal New Starts funding. The Authority will work together with Metro along with the Congressional delegation to seek funding to construct the extension following completion of the environmental review.



PHASE 2 FOOTHILL EXTENSION FINANCIAL STATUS

Project Operating Budget Summary in Millions of Dollars

June 30, 2015

	(a)	(b)	(c=a-b)	(d)
FINANCIAL PLAN	Current Budget	Funding Committed to Project	Uncommitted Funds	Revenues Received
SCAG	1.0	0.9	0.1	0.9
Interest Income	2.0	2.0	-	2.0
Bridge Replacement	13.9	13.9	-	13.9
Phase I Carryover	4.0	4.0	-	4.0
Maintenance and Operations Facility	-	-	-	-
Cities	11.0	-	11.0	-
Measure R - Pasadena to Azusa	810.5	777.0	33.5	606.0
Measure R - Azusa to Montclair	-	-	-	-
SANBAG	55.2	1.5	53.7	1.5
Federal TCSP	2.9	2.9	-	2.9
Federal Bus Intermodal Plan	9.0	9.0	-	4.8
Federal New Starts 2004 MTA Passthrough	4.0	4.0	-	4.0
Federal New Starts 2005 MTA Passthrough	0.5	0.5	-	0.5
Federal New Starts 2006 Corridor Study	2.5	2.5	-	2.5
Federal/Other	1,033.5	-	1,033.5	-
Total Revenues	1,950.0	818.2	1,131.8	643.0
	(a)	(b)	(c)	(d=a-b)
	Current Budget	Current Obligation	Current Expenditures	Current Available Balance
EXPENSES				
Program Management and Administration	108.9	102.9	102.0	6.0
Master Cooperative Agreements	11.0	3.3	2.9	7.7
Real Estate including ROW Acq	21.0	21.0	20.0	-
Special Programs	0.3	-	-	0.3
Procurement/Vehicles	60.0	-	-	60.0
Maintenance and Operations Facility Land	22.0	22.0	22.0	-
Construction - IFS	19.8	19.8	19.8	-
Construction - Pasadena to Azusa segment	328.9	328.9	319.2	-
Construction - Azusa to Montclair segment	1,181.0	-	-	1,181.0
Construction - M&O	47.0	44.0	40.7	2.0
Construction - Parking Structures	44.2	44.2	44.2	-
MTA Project Costs	64.0	64.0	14.3	-
Contingency	27.4	-	-	27.4
Project Reserve	14.5	-	-	14.5
Total Project	1,950.0	650.1	585.1	1,299.9