

Westside Purple Line Extension Section 1 Project



WESTSIDE PURPLE LINE EXTENSION SECTION 1 PROJECT

QUARTERLY PROJECT STATUS REPORT

THE PREPARATION OF THIS DOCUMENT HAS BEEN FINANCED IN PART THROUGH A GRANT FROM THE U. S. DEPARTMENT OF TRANSPORTATION, FEDERAL TRANSIT ADMINISTRATION (FTA).

JUNE 2015


TABLE OF CONTENTS

	Page No.
Project Summary.....	1
Project Overview & Status.....	2-5
Management Issues.....	6
Project Alignment by Sections.....	7
Project Alignment Section 1.....	8
Base Project Scope.....	9-11
Project Status	
• Project Schedule	
○ Key Milestones Six-Month Look Ahead.....	12
○ Project Summary Schedule.....	13
○ Schedule Measurements.....	14
○ Overall Construction Progress Curve.....	15
○ Major Equipment Delivery.....	16
○ Design-Builder’s (C0145) Long Lead Item List.....	17
○ Critical Path Narrative.....	18
○ Project Schedule Contingency Drawdown.....	19
○ Project Schedule Contingency Drawdown Analysis.....	19
• Project Cost	
○ Project Cost	20
○ Project Cost Analysis.....	20
○ Project Cost Contingency Drawdown.....	21
○ Project Cost Contingency Drawdown Analysis.....	21
○ Disadvantaged Business Enterprise (DBE).....	22
○ Project Labor Agreements (PLA) Status.....	23
○ Summary of Contract Modifications.....	24
• Financial/Grant	
○ Financial/Grant	25
○ Status of Funding.....	25
• Staffing	
○ Total Project Staffing.....	26
○ Metro Staffing.....	27

TABLE OF CONTENTS (Continued)

	Page No.
• Construction Management Services Consultant.....	27
• Engineering Management Services Consultant.....	28
• Real Estate.....	29
• Quality Assurance.....	29
• Environmental.....	30-31
• Construction Relations.....	31
• Creative Services	31
• Safety & Security.....	32
• Third Party Agreement & Status.....	33
• Advanced Utility Relocation Status.....	34
• Peak Hour and Nighttime Construction Variances.....	35
• Chronology of Events.....	36-37
• Construction Contracts	
o Contract C1045 Status.....	38
o Contract C1048 Status.....	39
o Contract C1055 Status.....	40
o Contract C1056 Status.....	41
• Construction Photographs.....	42-43
Appendices	
• Cost and Budget Terminology.....	44
• List of Acronyms.....	45-48

PROJECT SUMMARY

LOCATION: Los Angeles / Beverly Hills				CONSTRUCTION MANAGEMENT CONSULTANT: WEST, a Joint Venture			
DESIGN CONSULTANT: Parsons / Brinckerhoff				CONTRACTOR: Skanska, Traylor and Shea, a Joint Venture			
Ductbank Wilshire West of Ogden				WORK COMPLETED PAST MONTH			
				<ul style="list-style-type: none"> - Finalizing real estate acquisitions - C1045 Design/Build: Final design underway for five of six design units - C1045 Design/Build: Final stages of Baseline Schedule development - C1045 Design Build: Wilshire/Western TBM shaft 85% design underway - C1045 Design/Build: Wilshire/La Brea SOE 85% design package revisions underway - C1045 Design/Build: Wilshire/La Brea utility relocation design 100% complete - C1045 Design/Build: Wilshire/La Brea Station 85% design underway - C1045 Design/Build: Tunnel & Systems 60% design underway - C1055 Wilshire/Fairfax AUR: Waterline and power work continues - C1056 Wilshire/La Cienega AUR: Power utility and sanitary sewer relocations continue 			
EXPENDITURE STATUS (\$ In Millions)				SCHEDULE ASSESSMENT			
ACTIVITIES	CURRENT BUDGET	EXPENDED AMOUNT	PERCENT EXPENDED	MAJOR SCHEDULE ACTIVITIES	PRIOR PLAN	CURRENT PLAN	VARIANCE WEEKS
DESIGN	\$157.7	\$79.0	50.1%	Environmental			
				FEIS / FEIR	N/A	05/31/12	Complete
RIGHT-OF-WAY	\$175.6	\$109.8	62.5%	Design			
CONSTRUCTION	\$1,737.4	\$181.7	10.5%	PE Notice to Proceed	N/A	01/12/11	Complete
				Final Design complete	03/22/17	03/22/17	0
OTHER	\$1,078.7	\$82.2	7.6%	Right-of-Way			
TOTAL	\$3,149.4	\$452.7	14.4%	All parcels available	12/31/15	12/31/15	0
Current Budget includes Environmental/Planning and Finance Costs.				Construction - Main Design / Build Contract			
AREAS OF CONCERN				Notice to Proceed	01/12/15	01/12/15	Complete
				Construction complete	11/08/23	11/08/23	0
ROW ACQUISITION	PLAN	AVAILABLE	REMAINING	CRITICAL ACTIVITIES / 3 MONTH LOOK AHEAD			
PERMANENT PARCELS	15	9	6	- C1045 Design/Build: Final design Wilshire/La Cienega to begin			
TEMPORARY PARCELS	4	0	4	- C1045 Design/Build: TBM procurement			
TOTAL PARCELS	19	9	10	- C1045 Design/Build: Wilshire/La Brea utility work to begin			
				- C1045 Design/Build: Wilshire/La Brea North site preparation and demolition			
				- C1055 Wilshire/Fairfax AUR: Power work complete MS#2			
				- C1055 Wilshire/Fairfax AUR: Water line construction continuing			
				- C1056 Wilshire/La Cienega AUR: Power relocation work continuing			

PROJECT OVERVIEW & STATUS

Section 1 of the Westside Purple Line Extension Project is the first of three sections to be designed and constructed as part of the Los Angeles County Metropolitan Transportation Authority (LACMTA) Measure R Program. The program was approved by Los Angeles County voters in November 2008 and provides a half-cent sales tax to finance new transportation projects. In April 2012, the three sections of the Project were environmentally cleared and adopted by LACMTA Board of Directors.

Section 1 will extend the existing Purple Line by 3.92 miles beginning at the Wilshire/Western Station. From this station, the twin tunnel alignment will travel westerly within the existing Wilshire Boulevard right-of-way. Stations will be located at the intersections of Wilshire/La Brea, Wilshire/Fairfax, and Wilshire/La Cienega. All three of the station boxes will be located within the Wilshire Boulevard right-of-way with station portals extending to off-street entrances. Two of the stations, Wilshire/La Brea and Wilshire/Fairfax are within the jurisdiction of the City of Los Angeles. The Wilshire/La Cienega Station is within the City of Beverly Hills jurisdiction.

Design

The Engineering Management Services (EMS) team continued to provide design support to the three Advanced Utility Relocation (AUR) contracts, the Design/Build Contract and support to the procurement phase of Contract C1078.

For the Wilshire/La Brea AUR Contract (C1048), the team is finalizing the record drawings to reflect C1048 as-built conditions. The information from these drawings is being incorporated into the Tunnels, Stations, Trackwork, Systems and Systems Integration Testing Contract (C1045) composite utility drawings. *The team has sent the record drawings to LADWP (Water) in April 2015 for their final review and acceptance.*

For the Wilshire/Fairfax AUR Contract (C1055), the team continues to support Metro in responding to Request for Information (RFI's) and submittals. The team continues to review potholing data from the contractor. *The team prepared exhibits and drawings in support of additional LADWP power service at Orange Drive in the Wilshire/La Brea area. This is in support of the C1055 contractor performing the work.* A fulltime field engineering representative continues to support nighttime construction activities.

For the Wilshire/La Cienega Station AUR Contract (C1056), the team is supporting Metro with traffic control requests for revised Worksite Traffic Control Plans to comply with the Memorandum of Agreement (MOA) between Metro and the City of Beverly Hills. The team is also providing support in discussions with the City of Los Angeles Department of Transportation where the traffic control plans extends beyond the City of Beverly Hills jurisdiction at San Vicente Boulevard. *The team updated Southern California Edison (SCE) related drawings to account for SCE requested changes.* The team is supporting Metro with a fulltime engineer at the field office.

The team is continuing to support Metro in the coordination with the City of Los Angeles, City

of Beverly Hills, and third party utility companies, including updates to the AT&T and SCG relocation designs and associated traffic control plans.

The team continues to provide support to Metro in the coordination with various third parties involved in the Division 20 Maintenance-of-Way (MOW) and the Non-Revenue Vehicle (NRV) Building 61S Contract (C1078). The team continues to meet with Metro to discuss the latest developments on the environmental remediation for the building site. *The team participated in massing studies to address concerns raised by the Arts District Stakeholders.*

Attended bi-weekly task force meetings with Metro and the C1045 Contractor for Tunnels, Stations, Trackwork, Systems and Systems Integration Testing to resolve technical issues related to each design discipline. The team is supporting Metro in reviewing final design submittals, responding to RFI's, and assisting in preparation of change notices. *The team provided comments on the Wilshire/La Brea Station 60% design submittal and two specification packages for the Wilshire/Western TBM Shaft and the Wilshire/La Brea Station.*

The team is assisting Metro in obtaining an MOA with the City of Beverly Hills for the C1045 contract.

The C1045 Contractor, Skanska, Traylor and Shea (STS), has mobilized the final design team, Parson's Transportation Group (PTG).

The design work has been identified into six distinct design units. They are:

1. Design Unit 1 – Wilshire/Western Interface Chamber (Shaft)
2. Design Unit 2 – Wilshire/La Brea Station
3. Design Unit 3 – Wilshire/Fairfax Station
4. Design Unit 4 – Wilshire/La Cienega Station
5. Design Unit 5 – Tunnels
6. Design Unit 6 – Systems/Traffic/Trackwork

Each design unit package will be submitted and evaluated at each of the following phases; 60%, 85%, 100%, Approved for Construction (AFC) and Issued for Construction (IFC). If required, critical design units can be advanced as Advanced Partial Design Units (APDU's) to support ongoing construction activities.

Design activities are well underway with the involvement of every discipline. Design task force meetings are occurring weekly related to design unit packages for the Wilshire/Western Interface Chamber, Wilshire/La Brea Station, Wilshire/Fairfax Station, Tunnels and Systems/Traffic/Trackwork.

A total of 469 comments were received on the 60% Wilshire/La Brea Station design submittal. STS received 456 of those comments. The remaining 13 comments are pending the implementation of systemwide baseline changes. Of the 456 comments, 11 comments remain unresolved and are to be addressed prior to the 85% design submittal which is planned for early September 2015.

“Pencils down” for Wilshire/La Brea Station 85% design submittal and the Systems/Trackwork 60% design submittal are scheduled to occur in late July 2015.

The 60% design submittal for Wilshire/Fairfax Station and the 85% design submittal for the Wilshire/Western Interface and TBM Retrieval Shat are scheduled to occur in mid-August 2015.

The Wilshire/La Cienega Station design is scheduled to begin in early July 2015 with the 60% design submittal planned for November 2015.

“Over-the-shoulder” design reviews are occurring with STS, PTG, Metro and the EMS team prior to each major design submittal and monthly Metro Fire/Life/Safety are occurring.

Several follow-up meetings and “over the shoulder” reviews have occurred with STS and Metro’s Project Control staff to bring closure to the remaining schedule comments of the Contract Baseline CPM Schedule. It is anticipated that all comments will be addressed in July, followed by a schedule resubmittal.

STS is continuing with the required contractual submittals.

Major Contract Procurement

The Division 20 Maintenance-of-Way (MOW) and the Non-Revenue Vehicle (NRV) Building 61S Contract (C1078) Invitation for Bid (IFB) was issued on September 19, 2014. Amendment 1 was issued on October 31, 2014, which extended the due date for bids from December 5, 2014 to January 16, 2015. A second amendment was issued on December 12, 2014, which extended the due date for bids from January 16, 2015 to February 6, 2015. The third and final amendment, which included the geotechnical report, was issued on January 16, 2015. Bids were received on February 6, 2015 and have been evaluated. Staff’s recommendation to award the Contract will be presented at the July 2015 Metro Board meeting for approval. The Staff recommendation will be supported with a description of the coordination that has occurred with the Arts District Representatives and the City of Los Angeles on the requested changes to the MOW/NRV Building.

Construction

The Wilshire/La Brea AUR Contractor (C1048) achieved substantial completion on October 27, 2014. Follow-on work by LADWP Power has been completed. Work performed in the same area by Southern California Gas was completed in late March 2015. AT&T work was completed in early May 2015. *Contract closeout completion of C1048 is anticipated to occur by the end of August 2015.*

The Wilshire/Fairfax AUR (C1055) contractor is continuing with water and power relocations, and is on schedule to complete in October 2015. *The C1055 contractor will be constructing an electrical ductbank crossing at Wilshire Boulevard and Orange Grove in the Wilshire/La Brea Station area. This work is anticipated to be completed in early August 2015 and will not have an impact to Contract C1045 early utility construction activities that are scheduled to begin in July 2015.*

Follow-on work in the Wilshire/Fairfax Station area by third party utilities (AT&T, LADWP Power, Verizon Business and SCG) is anticipated to be completed in summer 2016. This will complete all AUR work at this location and prior to the contractual access date for the C1045 Design/Build contractor to begin construction of the Wilshire/Fairfax Station.

On June 16, 2015, the Beverly Hills City Council approved permits for the C1045 contractor to conduct design survey and mapping, and geotechnical site investigation work with the City of Beverly Hills.

The contractor has mobilized to the North Wilshire/La Brea construction staging site in preparation of overhead utility relocations, relocation of the alleyway, removal and storage of the artwork on the former Metro Customer Center and building demolition. The relocation of the alleyway has been completed. *Building demolition is anticipated to be completed by the end of July 2015. Pre-demolition work on the South Wilshire/La Brea construction staging site has begun.*

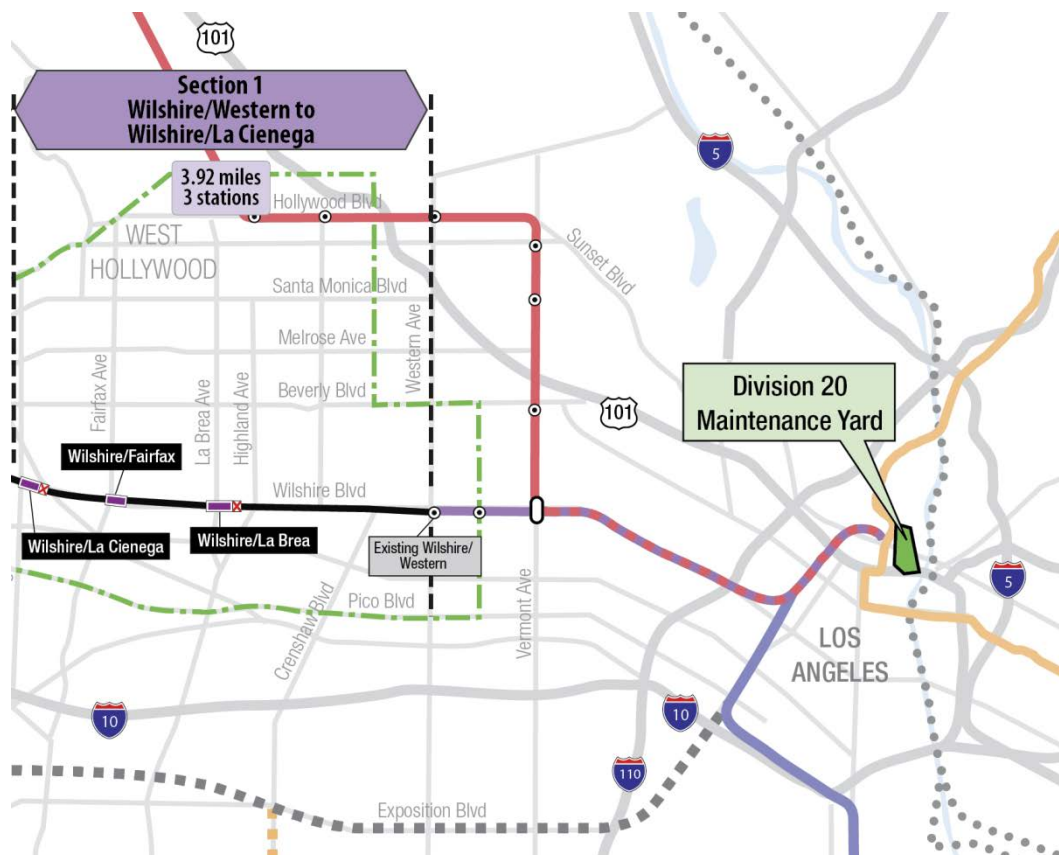
Metro staff continues to meet with the City of Beverly Hills to obtain a Memorandum of Agreement (MOA) for Contract C1045.

Property abatement and remediation work is continuing prior to providing site access to the C1045 contractor.

MANAGEMENT ISSUES

No Management Issues this period.

PROJECT ALIGNMENT SECTION 1



BASE PROJECT SCOPE

Section 1 of the Westside Purple Line Extension Project is the first of three sections to be designed and constructed as part of the Los Angeles County Metropolitan Transportation Authority (LACMTA) Measure R Program. The program was approved by Los Angeles County voters in November 2008 and provides a half-cent sales tax to finance new transportation projects. In April 2012, the three sections of the Project were environmentally cleared and adopted by LACMTA Board of Directors.

Section 1 will extend the existing Purple Line by 3.92 miles beginning at the Wilshire/Western Station. From this station, the twin tunnel alignment will travel westerly within the existing Wilshire Boulevard right-of-way. Stations will be located at the intersections of Wilshire/La Brea, Wilshire/Fairfax, and Wilshire/La Cienega. All three of the station boxes will be located within the Wilshire Boulevard right-of-way with station portals extending to off-street entrances. Two of the stations, Wilshire/La Brea and Wilshire/Fairfax are within the jurisdiction of the City of Los Angeles. The Wilshire/La Cienega Station is within the City of Beverly Hills jurisdiction.

The Wilshire/La Brea Station box will be located under the center of Wilshire Boulevard in between Detroit Street and Orange Drive. A double crossover will be located east of the station box. The station entrance will be on the northwest corner of Wilshire Boulevard and La Brea Avenue.

The Wilshire/Fairfax Station box will be located under the center of Wilshire Boulevard west of Fairfax Avenue to west of Ogden Drive. The station entrance will be on the southeast corner of Wilshire Boulevard and Orange Grove Avenue.

The Wilshire/La Cienega Station box will be located under the center of Wilshire Boulevard immediately east of La Cienega Boulevard. A double crossover will be located east of the station box. The station entrance will be on the northeast corner of Wilshire Boulevard and La Cienega Boulevard. Since the station will be the terminus station for Section 1, tail tracks will be located west of the station box.

Contract C1034 – Wilshire/Fairfax Exploratory Shaft

Metro constructed an exploratory shaft to observe ground conditions prior to the award of Contract C1045. The location of the exploratory shaft was adjacent to the future Wilshire/Fairfax Station. The construction of the shaft included furnishing and installing monitoring instruments, ventilation, and record and report instrumentation data during the excavation of the shaft. After construction of the shaft, the shaft was maintained for an observation time period. Afterwards, the shaft was dismantled and the site backfilled in a condition acceptable to the property owner. The contract was substantially completed on October 31, 2014.

Contract C1048 – Wilshire/La Brea Advanced Utility Relocations

The work scope of this contract included the relocation of existing LADWP power, water utilities and a sewer line within the construction limits of the Wilshire/La Brea Station. The contractor was responsible for working in streets, procuring materials, and coordinating with the utility owner. The contractor constructed the new facilities in accordance with the utility

plans and specifications, provided traffic control, restored streets, and supported utility crews installing cabling and during cut-over of the existing utilities. The contract was substantially completed on October 27, 2014.

Contract C1055 – Wilshire/Fairfax Advanced Utility Relocations

Relocate existing LADWP power and water utilities within the construction limits of the Wilshire/Fairfax Station. The contractor is responsible for working in streets, procure materials, and coordinate with the utility owner. The contractor is to construct the new facilities in accordance with utility plans and specifications, provide traffic control, restore streets, and support utility crews installing cabling and during cut-over of the existing utilities.

Contract C1056 – Wilshire/La Cienega Advanced Utility Relocations

Relocate existing City of Beverly Hills water, storm drain and sewer utilities within the construction limits of the Wilshire/La Cienega Station. The contractor is responsible for working in streets, procure materials, and coordinate with the utility owner. The contractor is to construct the new facilities in accordance with utility plans and specifications, provide traffic control, restore streets, and support utility crews during cut-over of the existing utilities.

Contract C1045 – Tunnels, Stations, Trackwork, Systems and Systems Integration Testing

The procurement of this contract utilizes a two-step approach with the submittal of qualification statements through a Request for Qualification (RFQ) process, prequalification of qualified proposers followed by the release of a Request for Proposals (RFP) soliciting technical and price proposals with an option at Metro's discretion for Best and Final Offers (BAFO).

The Design/Build contract provides for final design and construction of the infrastructure along the 3.92 mile alignment. Contract scope includes demolition and removal of structures and clearing sites to facilitate construction operations. The structures to be constructed include twin bored tunnels, complete with cross-passages and walkways, including all mechanical, electrical and finish work. A retrieval shaft will be constructed to the west of the existing Wilshire/Western Station for extraction of the tunnel boring machines. Three underground stations are to be constructed, two with double-crossovers, and the terminus station to include tail tracks. Each station has a single entrance plaza with stairs, escalators and elevators which meet ADA requirements. The scope of work includes all architectural finishes, mechanical, electrical, systems and equipment including train control, traction power, communications, trackwork and the system tie-in to the existing Metro Purple Line, testing and commissioning.

Contract C1078 – Division 20 Maintenance-of-Way and Non-Revenue Vehicle Building 61S

The Design/Build contract provides for final design and construction of a new Maintenance-Of-Way (MOW) stores and Non-Revenue Vehicle (NRV) building at the south end of the existing Division 20 Yard (Location 61S). The displacement of the existing MOW stores building and NRV facility are due to the proposed turn-back facility site in the yard.

BASE PROJECT SCOPE (Continued)

Metro Furnished Equipment

Metro will procure separate contracts to provide the 34 Heavy Rail Vehicles (HRV) and the Universal Fare System (UFS) necessary to operate the extension to the Purple Line. The scope of the HRV contract includes design, manufacturing, testing and delivery of the vehicles. The scope of the UFS contract includes design, fabrication and installation of equipment at the three stations and system testing.

Start Up

The commencement of pre-revenue operations will be determined by Metro. Generally, all systems integration testing will have been completed and passed. All testing will be required to include and pass a “stress test” of maximum operational service levels to be acceptable. Pre-Revenue Operations include train runs, especially those involving multiple trains, on the integrated and fully operational extension; rehearsal of expected revenue operations scenarios; as well as abnormal and emergency scenarios in which random combinations of system interactions are tested; equipment “burned-in”; and training of Metro personnel who will eventually operate and maintain the extension and for emergency services personnel. Activities occurring during Pre-Revenue Operations are carried out by a designated Metro Project Rail Activation Group.

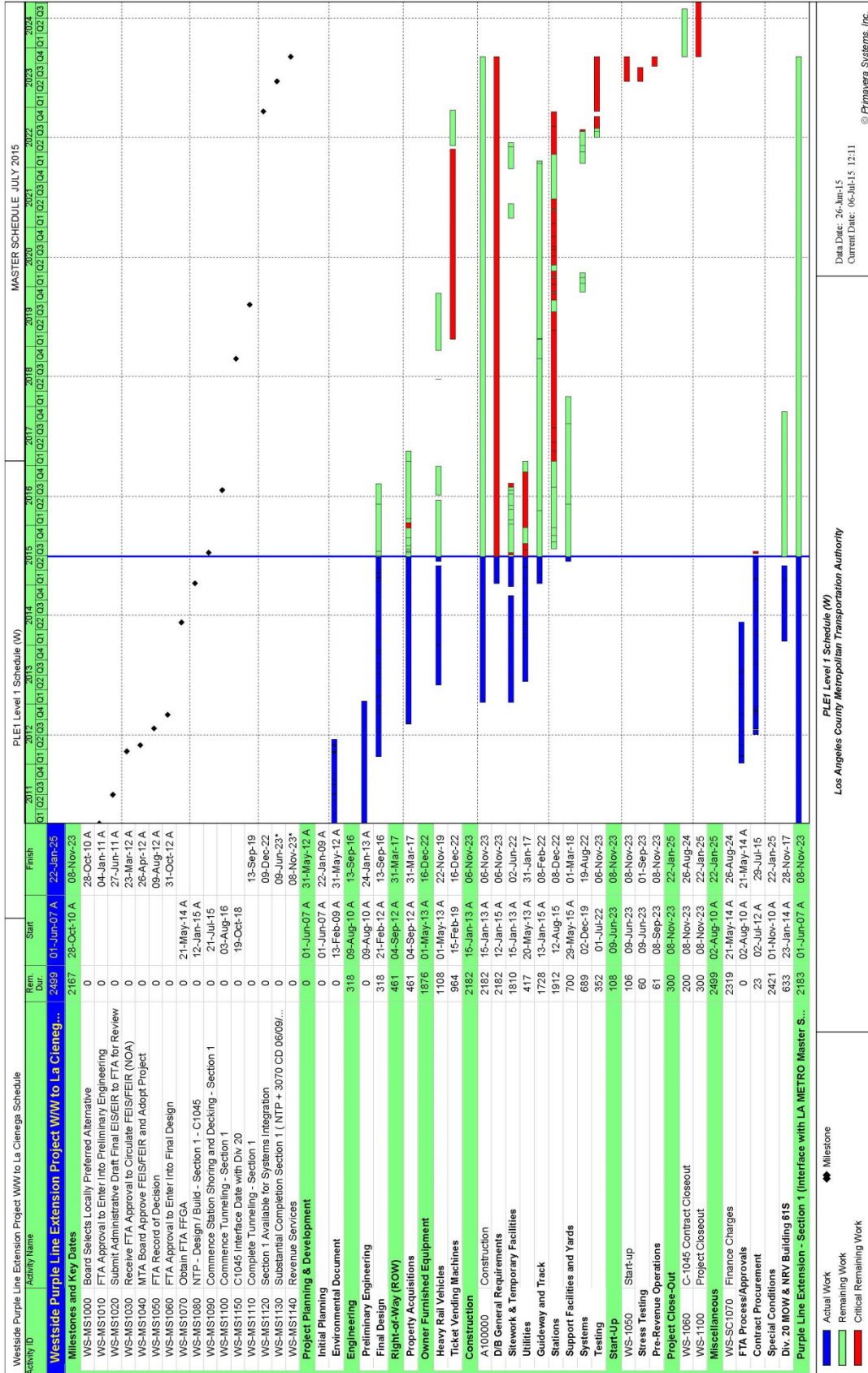
KEY MILESTONES SIX- MONTH LOOK AHEAD

	Milestone Date	Jul-15	Aug-15	Sep-15	Oct-15	Nov-15	Dec-15
C1045 Site Access MS to Wilshire/La Brea	07/06/15	◆					
C1045 Building demolition begins Wilshire/La Brea North	07/06/15	□					
C1045 Wilshire/La Brea Soldier Pile Fabrication begins	07/09/15	□					
C1045 TBM Temporary Power work begins	07/15/15	□					
C1045 Wilshire/La Brea Temp. Wet Utility Works Begins	07/20/15	□					
C1055 MS#2 - Power Work for LADWP Complete	07/25/15	□					
C1045 Site Wilshire/La Brea North Soundwall Begins	08/03/15		□				
C1078 Award	08/07/15		◆				
C1045 Wilshire/Western Shaft street deck panels delivery	09/12/15			□			
C1078 NTP	09/30/15			◆			
C1078 Design Mobilization Begins	10/01/15				□		
C1045 Building Demolition Wilshire/La Cienega East & Western Complete	11/10/15					□	
C1045 Wilshire/La Brea Utility Relocation Complete	11/10/15					□	
C1045 Wilshire/La Brea Pile installation begins	11/11/15					□	
C1045 TBM Temp Power Work Complete	12/30/15						□

 MTA Staff
  MTA Board Action
 FTA (Federal)

 Other Agencies
  Contractors

PROJECT SUMMARY SCHEDULE



SCHEDULE MEASUREMENTS

To be provided when the baseline schedule for Contract C1045 has been approved.

OVERALL CONSTRUCTION PROGRESS CURVE

To be provided when the baseline schedule for Contract C1045 has been approved.

MAJOR EQUIPMENT DELIVERY

To be provided when the baseline schedule for Contract C1045 has been approved.

DESIGN BUILDER'S (C1045) LONG LEAD ITEM LIST

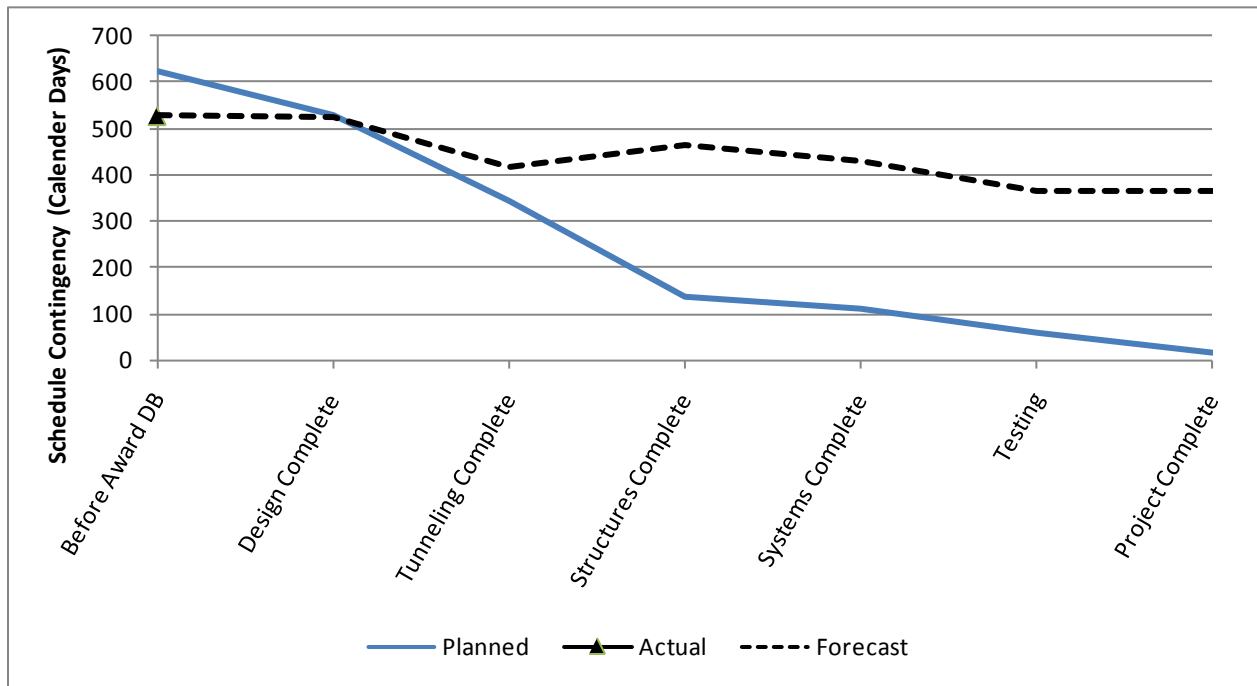
To be provided when the baseline schedule for Contract C1045 has been approved.

CRITICAL PATH NARRATIVE

Critical Path:

The critical path for the Westside Purple Line Extension Project begins with the procurement process for the C1045 Design / Build contract, mobilization of the design team for the selected contractor, and the start of final design for station boxes and tunnels. Final design is concurrent with the La Brea advanced utilities that are being relocated under the C1048 contract and by third parties. Upon completion of utility relocations, the contractor begins installation of soldier piles, first on the north side of the La Brea station box, and then on the south side. Street decking is then installed, the station structural box is excavated, and invert concrete is placed. Tunneling then begins, first driving eastbound from Wilshire / La Brea to Wilshire / Western. TBMs are removed through a retrieval shaft at Wilshire / Western, re-assembled at Wilshire / La Brea, and then driven westbound to Wilshire / La Cienega. Following construction of cross passages, the critical path continues through construction of the Wilshire / Fairfax station box, installation of trackwork and traction power, systems integration and testing, and pre-revenue operations.

PROJECT SCHEDULE CONTINGENCY DRAWDOWN



PROJECT SCHEDULE CONTINGENCY DRAWDOWN ANALYSIS

The project schedule contingency drawdown curve is based on a November 8, 2023 Revenue Service Date (RSD).

PROJECT COST STATUS

DOLLARS IN THOUSANDS

SCC CODE	DESCRIPTION	ORIGINAL BUDGET	CURRENT BUDGET		COMMITMENTS		EXPENDITURES		CURRENT FORECAST		CURRENT BUDGET / FORECAST VARIANCE
			PERIOD	TO DATE	PERIOD	TO DATE	PERIOD	TO DATE	PERIOD	TO DATE	
10	GUIDEWAY & TRACK ELEMENTS	388,294	-	388,294	-	380,680	-	1,820	-	388,294	-
20	STATIONS, STOPS, TERMINALS, INTERMODAL	440,621	-	440,621	-	435,131	-	-	-	440,621	-
30	SUPPORT FACILITIES: YARDS, SHOPS, ADMIN. BLDGS	43,323	-	43,323	-	-	-	-	-	43,323	-
40	SITWORK & SPECIAL CONDITIONS	751,566	-	751,566	4,212	734,315	28,146	179,871	-	755,441	3,875
50	SYSTEMS	113,574	-	113,574	-	97,466	-	-	-	113,574	-
CONSTRUCTION SUBTOTAL (10-50)		1,737,378	-	1,737,378	4,212	1,647,592	28,146	181,691	-	1,741,253	3,875
60	ROW, LAND, EXISTING IMPROVEMENTS	175,634	-	175,634	-	175,634	(2,519)	109,823	-	175,634	-
70	VEHICLES	160,196	-	160,196	-	-	-	-	-	145,493	(14,703)
80	PROFESSIONAL SERVICES	412,710	-	412,710	197	200,771	5,845	121,893	-	412,710	-
SUBTOTAL (10-80)		2,485,918	-	2,485,918	4,408	2,023,997	31,472	413,408	-	2,475,090	(10,828)
90	UNALLOCATED CONTINGENCY	248,592	-	248,592	-	-	-	-	-	303,825	55,233
100	FINANCE CHARGES	375,470	-	375,470	-	-	-	-	-	331,065	(44,405)
TOTAL PROJECTS 465518 & 865518 (10-100)		3,109,980	-	3,109,980	4,408	2,023,997	31,472	413,408	-	3,109,980	-
ENVIRONMENTAL/PLANNING - 405518		8,505	-	8,505	-	8,505	-	8,505	-	8,505	-
ENVIRONMENTAL/PLANNING - 465518		30,865	-	30,865	-	30,865	2	30,820	-	30,865	-
TOTAL PROJECTS 405518 & 465518 (ENV / PLAN'G)		39,370	-	39,370	-	39,370	2	39,324	-	39,370	-
TOTAL PROJECTS 405518, 465518 & 865518		3,149,350	-	3,149,350	4,408	2,063,367	31,475	452,732	-	3,149,350	-

NOTE: EXPENDITURES ARE CUMULATIVE THROUGH MAY 2015

PROJECT COST ANALYSIS

Original Budget and Current Budget

The Original Budget and Current Budget of \$3.1 billion reflect the Board approved Life of Project Budget, July 24, 2014, plus Finance Charges of \$0.4 billion.

Current Forecast

The Current Forecast remains the same this period at \$3.1 billion.

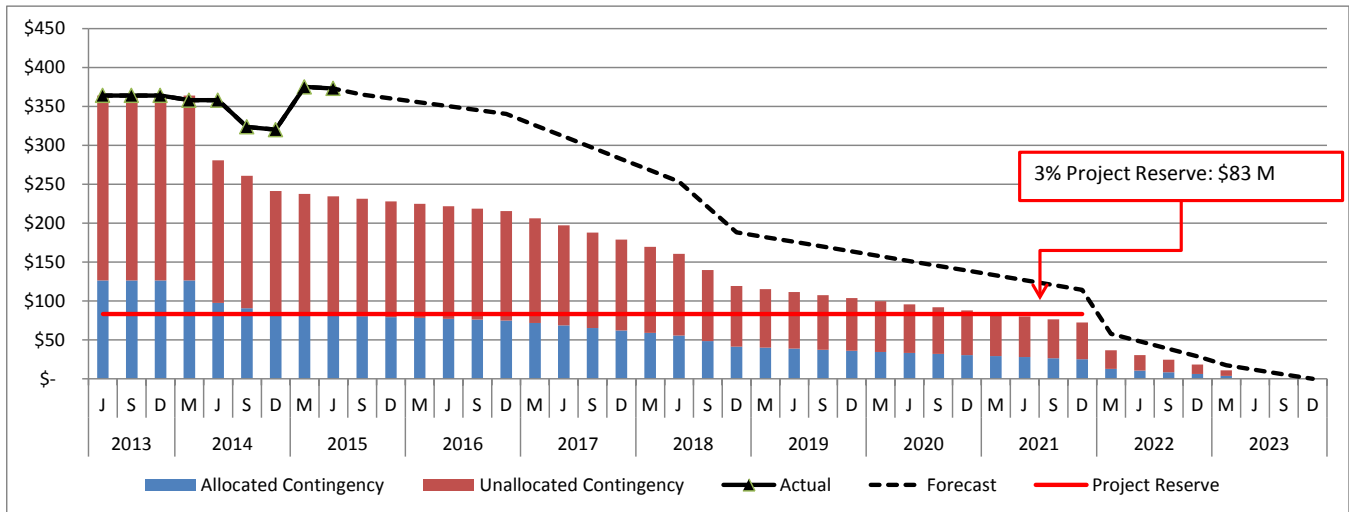
Commitments

The Commitments increased by \$4.4 million due to executed modifications associated with the AUR Contracts C1055 and C1056, private utility companies, and Program Management Assistance. The \$2.1 billion in Commitments to date represents 65.5% of the Current Budget.

Expenditures

The expenditures are cumulative through May 2015. The expenditures increased by \$31.5 million this period primarily for costs associated with the Design/Build Contract C1045, Advanced Utility Relocations, Engineering Management Services, Construction Management Services, Legal Services, and Metro Project Administration. The ROW (SCC-60) decrease by \$2.5 million due to a payment returned from the State Condemnation Fund because of a double deposit that was made for one property acquisition. The \$452.7 million in Expenditures to date represents 14.4% of the Current Budget.

PROJECT COST CONTINGENCY DRAWDOWN



PROJECT COST CONTINGENCY DRAWDOWN ANALYSIS

The current budget includes a project cost contingency of \$320.6 million or 10.2% of the total project. This includes an unallocated contingency of \$248.6 million and an allocated contingency amount of \$72.0 million. The allocated contingency is an amount to cover anticipated but unknown contract modifications issued by Metro where applicable to specific contracts within each Standard Cost Category (SCC).

Included in the project cost contingency drawdown is a 3% project reserve threshold. Metro’s Board is to be notified when it becomes necessary to drawdown contingency below the project reserve threshold to cover project costs. This was adopted by the Metro Board of Directors in September 2012.

The project cost contingency drawdown curve is based on a November 8, 2023 Revenue Service date.

The allocated contingency decreased by \$2.2 million this period due to executed Contract Modifications for the Advanced Utility Contracts C1055 and C1056.

PROJECT COST CONTINGENCY					
DOLLARS IN THOUSANDS					
	Original Contingency (Budget)	Previous Period	Current Period	To-Date	Remaining Contingency (Forecast)
Unallocated Contingency	248,592	55,233	0	55,233	303,825
Allocated Contingency	71,963	(618)	(2,162)	(2,780)	69,183
Total Contingency	320,555	54,615	(2,162)	52,453	373,008

DISADVANTAGED BUSINESS ENTERPRISE (DBE)

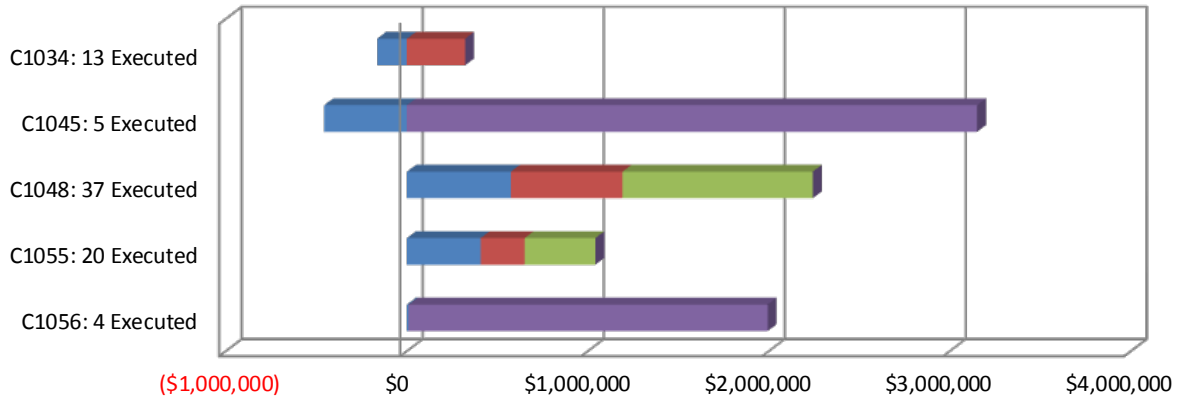
To be provided when the baseline schedule for Contract C1045 has been approved.

PROJECT LABOR AGREEMENTS (PLA) STATUS

To be provided when the baseline schedule for Contract C1045 has been approved.

SUMMARY OF CONTRACT MODIFICATIONS

Contract Modifications (MODs) by Cost Level



	C1034 13 Executed	C1045 5 Executed	C1048 37 Executed	C1055 20 Executed	C1056 4 Executed	Total
■ Under \$100K	(164,288)	(456,738)	574,448	407,194	9,515	370,131
■ \$100K to \$250K	321,000	-	616,809	242,931	-	1,180,740
■ \$250K to \$1M	-	-	1,050,980	390,709	-	1,441,689
■ Over \$1M	-	3,150,000	-	-	1,983,179	5,133,179
Total Contract MODs	156,712	2,693,262	2,242,237	1,040,834	1,992,694	8,125,739
Contract Award Amount	6,487,020	1,636,418,585	6,181,000	14,430,000	20,250,000	1,683,766,605
% of Contract MODs	2.4%	0.2%	36.3%	7.2%	9.8%	0.5%

Percent of Contract MODs equals the Total Contract MODs divided by the Contract Award Amount.

Thirteen Contract MODs with a total value of \$0.2 million have been executed since the award of Contract C1034 – Exploratory Shaft Construction by Innovative Construction Solutions (ICS).

Five Contract MODs with a total value of \$2.7 million have been executed since the award of Contract C1045 – Tunnels, Stations, Trackwork, Systems and Systems Integration Testing by Skanska - Traylor - Shea, a Joint Venture.

Thirty-seven Contract MODs with a total value of \$2.2 million have been executed since the award of Contract C1048 – Advanced Utility Relocations at Wilshire/La Brea by Metro Builders & Engineering Group, LTD.

Twenty Contract MODs with a total value of \$1.0 million have been executed since the award of Contract C1055 – Advanced Utility Relocations at Wilshire/Fairfax by W. A. Rasic Construction Company, Inc.

Four Contract MODs with a total value of \$2.0 million have been executed since the award of Contract C1056 – Advanced Utility Relocations at Wilshire/La Cienega by Steve Bubalo Construction Co.

FINANCIAL/GRANT STATUS

June 2015 STATUS OF FUNDS BY SOURCE									
SOURCE	(A)	(B)	(C)	(D)	(D/B)	(E)	(E/B)	(F)	(F/B)
	ORIGINAL BUDGET	TOTAL FUNDS ANTICIPATED	TOTAL FUNDS AVAILABLE	COMMITMENTS \$	%	EXPENDITURES \$	%	BILLED TO FUNDING SOURCE \$	%
FEDERAL - SECTION 5309 NEW STARTS	\$1,250.000	\$1,250.000	\$65.000	\$1,250.000	100%	\$65.000	5%	\$65.000	5%
FEDERAL CMAQ	\$12.171	\$12.171	\$0.000	\$0.000	0%	\$0.000	0%	\$0.000	0%
FEDERAL SECTION 5339 - ALTERNATIVES ANALYSIS	\$0.512	\$0.512	\$0.512	\$0.512	100%	\$0.512	100%	\$0.512	100%
MEASURE R - TIFIA LOAN	\$856.000	\$856.000	\$0.000	\$0.000	0%	\$0.000	0%	\$0.000	0%
MEASURE R 35%	\$869.178	\$869.178	\$255.104	\$726.639	84%	\$301.004	35%	\$70.333	8%
STATE STIP RIP	\$2.568	\$2.568	\$2.568	\$2.568	100%	\$2.568	100%	\$2.568	100%
STATE CAPITAL PROJECT LOANS - OTHERS *	\$83.648	\$83.648	\$83.648	\$83.648	100%	\$83.648	100%	\$50.898	61%
CITY OF LOS ANGELES	\$75.273	\$75.273	\$0.000	\$0.000	0%	\$0.000	0%	\$0.000	0%
TOTAL	\$3,149.350	\$3,149.350	\$406.832	\$2,063.367	65.5%	\$452.732	14.4%	\$189.311	6.0%

EXPENDITURES ARE CUMULATIVE THROUGH MAY 2015
ORIGINAL BUDGET BASED ON JULY 2014 BOARD APPROVED LOP BUDGET

* OTHERS INCLUDE TDA ADMINISTRATION (\$4.1M), LTF GENERAL REVENUES (\$1.8M), AND LEASE REVENUES (\$37.8M)

STATUS OF FUNDS ANTICIPATED

FEDERAL SECTION 5309 NEW STARTS: FTA grant application of \$65 million was awarded on June 2, 2014. Funds are available for drawdown. *FTA Grant CA-03-0824 for \$100 million is anticipated to be submitted in mid-July 2015. Grant is expected to be approved by September 2015.*

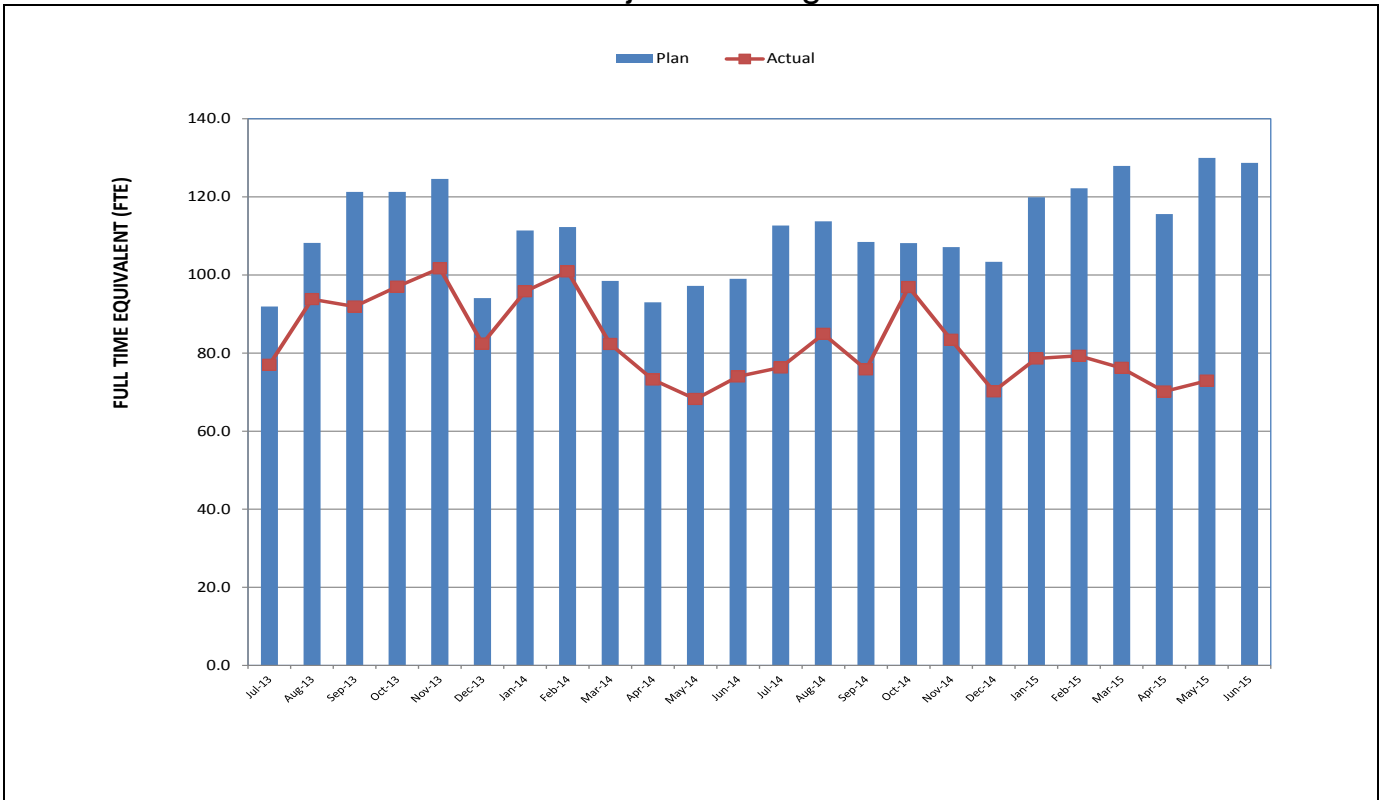
FEDERAL SECTION 5309 ALTERNATIVE ANALYSIS: FTA grant application of \$511.6 million was awarded on July 25, 2014. Funds are available for drawdown.

MEASURE R – TIFIA LOAN (Transportation Infrastructure Finance & Innovation Act): TIFIA Loan was executed on May 21, 2014 for \$856 million. First disbursement is planned for FY 2018.

STATE STIP RIP: State grant application of \$8.4 million, of which \$2.6 million has been allocated to this project, was awarded on July 26, 2007. Funds are available for drawdown.

CMAQ (Congestion Mitigation & Air Quality): *FTA Grant CA-95-X264 for \$12.2 million is anticipated to be submitted in mid-July 2015. Grant is expected to be approved by September 2015.*

STAFFING STATUS
Total Project Staffing – FTES

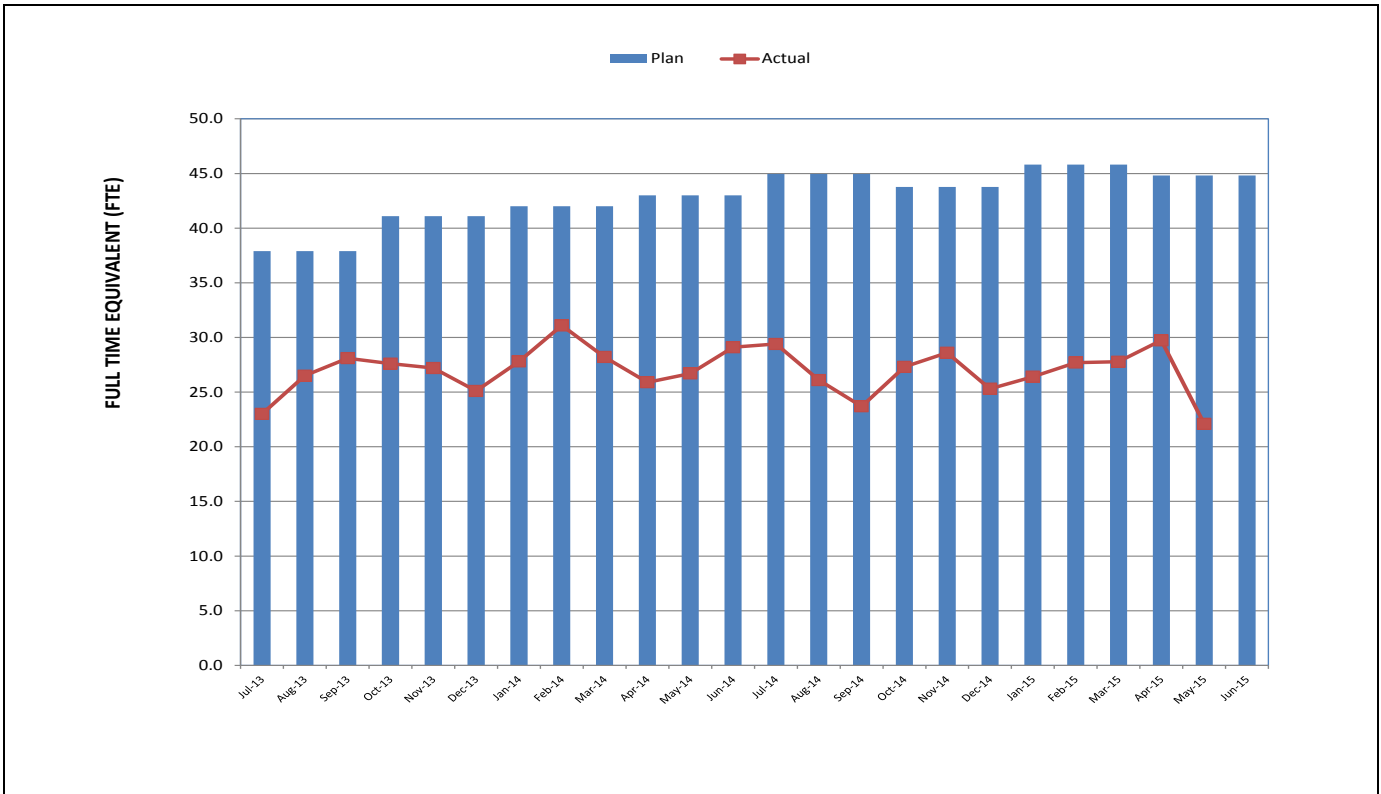


TOTAL PROJECT STAFFING

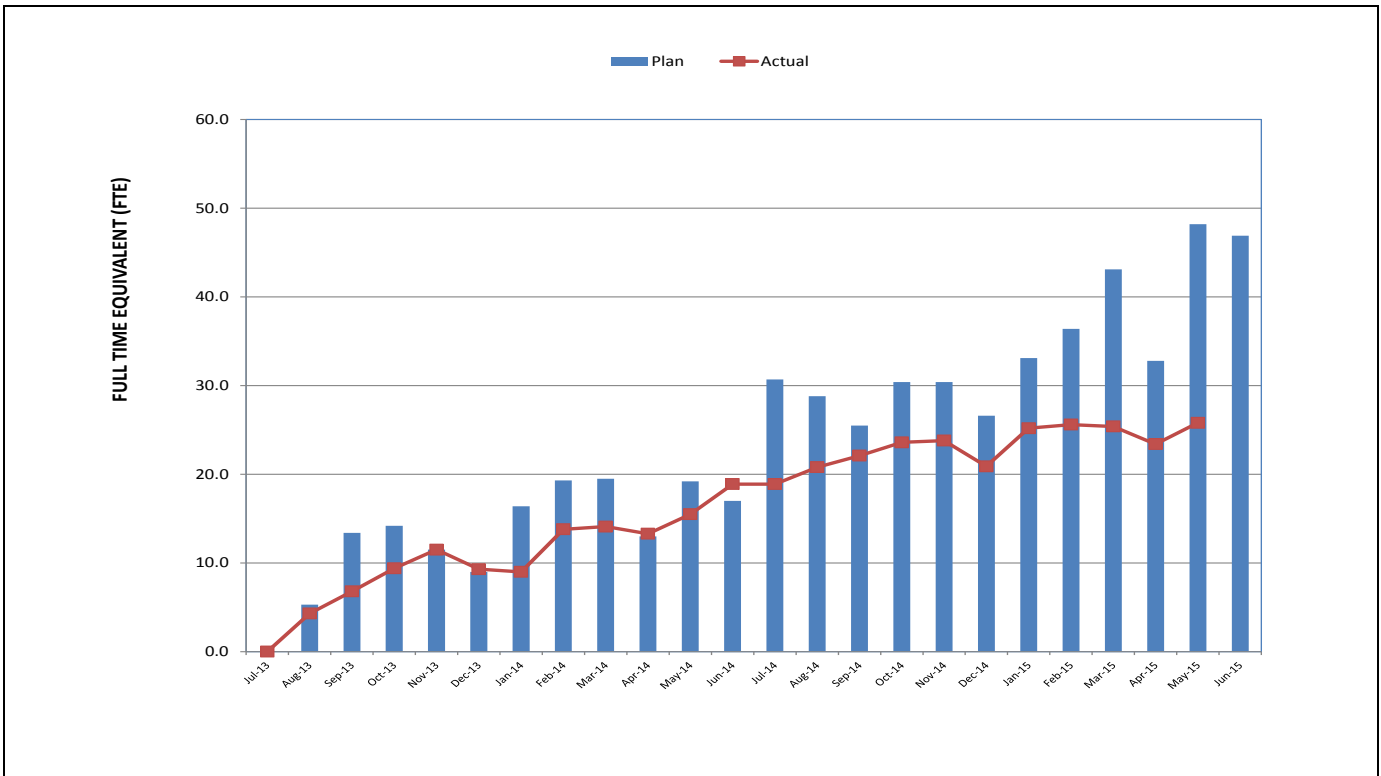
The overall FY15 Total Project Staffing Plan averages 116.5 FTEs per month.

For May 2015, there were a total of 22.1 FTEs for MTA's Project Administration staff and 50.8 FTEs for consulting staff. The total project staffing for May 2015 was 72.9 FTEs.

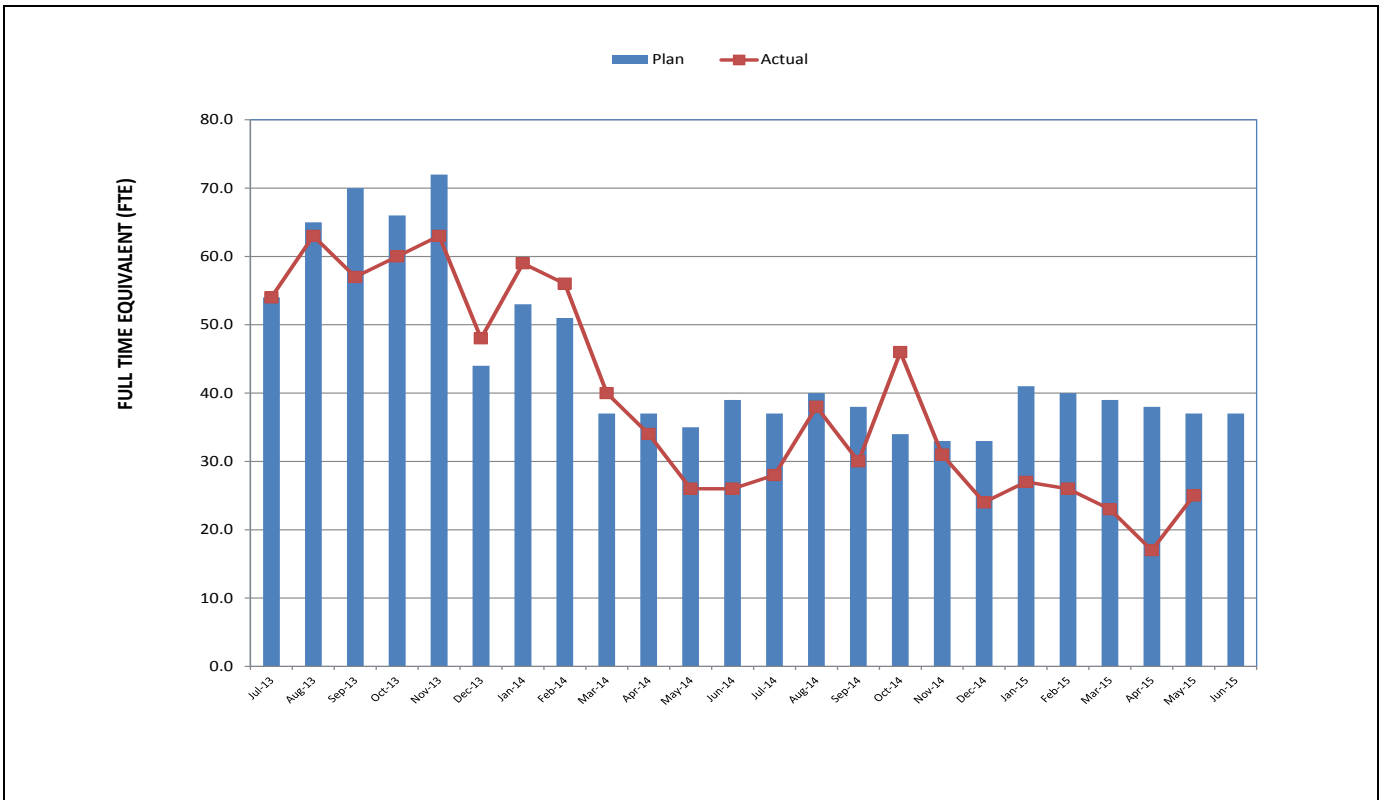
**STAFFING STATUS (Continued)
METRO STAFFING – FTES**



**CONSTRUCTION MANAGEMENT
SERVICES CONSULTANT – FTES**



STAFFING STATUS (Continued)
ENGINEERING MANAGEMENT SERVICES CONSULTANT – FTES



REAL ESTATE STATUS

Purple Line Extension Section 1 - Real Estate Status Summary									
Description	Number of Parcels	Certified	Appraisals Completed	Offers Made	Agreements Signed	Condemnation Filed	Relocations		Parcels Available
							Required	Completed	
Full Takes	9	9	9	9	2	7	109	66	6
Part Takes	6	6	6	5	1	3	0	0	3
TCE	4	4	4	4	1	4	0	0	0
Total Parcels	19	19	19	18	4	14	109	66	9

The total count of the 19 parcels include the two Division 20 parcels required for constructing the MOW/NRV Building 61S.

Metro has possession of nine parcels that are available to meet the C1045 Contract site availability dates. However, only three parcels have been made available to the C1045 Contractor, plus one Metro-owned parcel. The parcels are located at Wilshire/Crenshaw Yard, Wilshire/La Brea North, and Wilshire/Fairfax South.

Metro is anticipating having possession of five additional parcels within the next period.

QUALITY ASSURANCE STATUS

C1045 – Tunnels, Stations, Trackwork, Systems and Systems Integration Testing

- Attended weekly Project staff meetings and progress meetings with the Contractor.
- Ongoing discussions and coordination with the Engineering Management Services (EMS) and Construction Management Services (CMS) support staff for quality oversight.
- Reviewed and provided comments on quality related submittals.
- *Conducted quality surveillance (S2015-008) of the design review activities for the C1045 85% Track Alignment submittal.*

C1055 – Advanced Utility Relocations – Wilshire/Fairfax

- Attended weekly progress meeting with the Contractor and internal monthly quality meeting.
- Reviewed and provided comments on quality related submittals.
- Attended Readiness Review Meetings.
- Reviewed daily inspection reports from the Contractor/Field Technician.
- *Conducted quality surveillance (S2015-006) of the as-built development for utilities installation.*

C1056 – Advanced Utility Relocations – Wilshire/La Cienega

- Attended weekly progress meeting with the Contractor and internal monthly quality meeting.
- Reviewed and provided comments on quality related submittals.
- Attended Readiness Review Meetings.
- Reviewed daily inspection reports from the Contractor/Field Technician.
- *Conducted quality surveillance (S2015-007) of the as-built development for utilities installation.*

ENVIRONMENTAL STATUS

- *Ongoing limited noise and vibration monitoring being performed by AUR and DB Contractors. Data reports are submitted to Metro on a weekly basis, as per contract specs. No significant noise or vibration exceedances were reported for work performed.*
- *Ongoing as-needed Noise monitoring, oversight of SWPPP requirements, and Paleo/Archeo and Cultural Resources monitoring for C1055, C1056, and C1045 work activities.*
- *Construction noise, stormwater BMP, and Archeo/Paleo Awareness Trainings for AUR, Third Party and DB Contractors continue to be performed each month.*
- *Metro will establish day and night noise level limits based on measured data pending final approval of ambient report.*
- *Review of C1055, C1056, and C1045 Contractor submittals and track pending monitoring and reporting obligations in accordance with contract Specifications and EIR requirements.*
- *Reviewed NPDES permit and C1045 SWPPP updates. Currently awaiting updates for La Brea yard due to alley reconfiguration.*
- *Coordinating noise compliance protocols and evaluation of contractual noise compliance requirements for consistency across the other major rail projects.*
- *Prepared a comparative analysis of contract specifications and potential additional contract needs related to noise monitoring as well as an analysis of existing noise monitoring locations and new locations proposed by DB contractor.*
- *Continued participation in weekly C1055, C1056, and C1045 contract coordination meetings.*
- *Continued the coordination and review process with both City of Los Angeles and Beverly Hills municipalities as well as 3rd party utility companies.*
- *May 2015 Noise Compliance Report to City of Beverly Hills was finalized and submitted 7/6/15. May 2015 Noise Compliance Reports for City of Los Angeles under final review and expected to be finalized on 7/9/15 for submission by 3^d Party coordination staff to the Los Angeles Police Commission.*
- *Weekly City of Beverly Hills Construction Noise Compliance Reports are prepared by the Independent Compliance Monitor and submitted to Metro and City of Beverly Hills.*
- *Ongoing coordination with Saban Theater representatives, City of Beverly Hills staff, and acoustical engineering consultants to finalize ambient and façade analysis. Draft report in review will establish baseline ambient data for reference in the final City of Beverly Hills MOA.*
- *Investigation of the oil/tar sump at La Brea and Detroit will continue after Metro takes possession of parcels W-1202 and W-1205, south of the sump. Investigation activities will include performing a trace wire test and additional potholing south of the sump to try and determine the location of the source and suspected gas wells, and the direction of feeder piping.*
- *Finalized Cultural Resources Monitoring and Mitigation Plan (CRMMP) after receiving FTA approval and forwarded to SHPO for their review. Comments from SHPO still pending.*
- *Coordination with C1045 contractor to ensure MMRP reporting responsibilities are in place.*
- *Attended MMRP meeting with FTA PMOC and provided backup compliance data requested.*

- *Continued on cleanup of 590 S Santa Fe (PLE Yard). Abatement of existing buildings and firming up the draft RAW for DTSC to approve.*
- *Job walk for Bank of America property (W1203) prior to lead and asbestos surveys and abatement work. Updating of real estate acquisition schedule and abatement schedules.*
- *Participate in upcoming DWP Ductbank Construction Work Plan Work Shop and Readiness Review Meeting for La Brea Building demo and review environmental submittals and applicable EIR mitigation measure adherence.*

CONSTRUCTION RELATIONS STATUS

- *Attended the following meetings: Construction Management; Advanced Utility Relocations; Construction Relations; Environmental Mitigations; Traffic Mitigation with the City of Los Angeles/City of Beverly Hills; STS Third Party Workshop; Beverly Hills MOA; Marketing; Social Media; Eat, Shop, Play; Landscape and Sound Wall Noise Studies.*
- *Produced and distributed fourteen construction work notices for advance utility relocations and construction activities.*
- *Made Project Presentations at the following: Beverly Hills Police Department; Fairfax Coordinated Construction Projects; Eat, Shop, Play Community Partners; Mid-City Homeless Coalition; Miracle Mile Residential Association; Beverly Hills The Guide; BSS Landscape Review; Beverly Hills City Council; Los Angeles Neighborhood Initiative Community Forum and Wilshire Center Business Improvement District.*
- *Visited and updated businesses and residences at future station locations to discuss utility relocations, business profiles and Eat, Shop, Play promotional campaign for businesses.*
- *Fielded and addressed steel plates not secured properly at Wilshire/La Cienega AUR work; no parking signage at the North Wilshire/La Brea construction site; installed Eat, Shop, Play banners; working with LAHSA, LAPD and STS to remove homeless from construction staging sites and cleanup of graffiti on staging wall at Wilshire/Crenshaw, Wilshire/La Brea and Wilshire/Fairfax.*
- *Updated Facebook/Twitter website as needed.*

CREATIVE SERVICES STATUS

- *Continue to support mitigation efforts.*
- *Participated in Systemwide Design document reviews.*
- *Participated in Wilshire/La Brea Station 60% Design comment resolution.*

SAFETY & SECURITY STATUS

- *There were no injuries on the Project during June 2015. The injury which occurred in May 2015 is reflected in the May 2015 statistics.*
- Safety staff participated in scheduled readiness review meetings to ensure compliance with approved Work Plans and contract specifications.
- Construction activities Advance Utility Relocations and pre-construction (C1045) activities continue to be monitored during both day and night work shifts to ensure contractor compliance with contract specifications.
- Safety staff attended weekly progress meetings and other project meetings to evaluate Contractors Safety Program compliance with contract requirements.
- Construction Safety staff continue to work with Program Management and Construction Relations staff to monitor issues related to public concerns regarding noise, traffic and transient encampment hazards as well as public interactions with the construction crews.
- Work Hour and Injury statistics are reported with a one month lag. All Contracts are up to date on their reporting.
- *May 2015 Contractor Work Hours (Design & Construction): 26,307*
- *Contractor – Project to Date Work Hours (Design & Construction through 5/31/2015): 196,890*
- *Total Project to Date Work Hours (Contractor & the IPMO Staff through 5/31/2015): 334,788*
- *Project to Date Recordable Injury Rate: 0.6 (One Recordable Injury). Each rate is per 200,000 work hours (National Rate) : 3.2*
- *Project to Date Total Time Away Injury Rate: 0.6 (One Time Away From Work Injury) (National Rate 1.8).*
- *Project to Date Total Days Away Rate: 11.4 (Nineteen Days Away From Work) (No National Rate Published).*
- *National Rates for Heavy and Civil Construction (NAICS Code 237) are for Calendar Year 2013, published by USBLIS in December 2014.*

THIRD PARTY AGREEMENT STATUS

Third Party	Type of Agreement	Forecast Execution Date	Required Need Date	Status/ Comments
City of Los Angeles (LA)	Amendment to Master Cooperative Agreement	N/A	N/A	Parties will work under 2003 MCA.
City of Beverly Hills (BH)	MOAs (La Cienega only)	9/14 (AUR) 7/15 (D/B)	9/14 (AUR) 9/15 (D/B)	City of Beverly Hills approved the MOA for the C1056 Wilshire/La Cienega AUR contract on August 19, 2014. Metro continues to work with the City to establish an MOA for the C1045 Design/Build contract.
Los Angeles Department of Water and Power	Amendment to Memorandum of Understanding	N/A	N/A	Metro and LADWP will continue to work under the terms of the previous Cooperative Agreement.
Los Angeles County Public Works	Letter of Agreement	4/11	3/12	Executed
Caltrans	Amendment	8/11	3/12	Executed
Private Utilities	LOA, MOU, MCA, or MUA	9/14	N/A	Metro is working with affected third party utilities under existing agreements except for Qwest and Level 3. Metro has provided comments to Qwest on the revised agreement. Level 3 informed Metro that they will not honor the existing agreement. A draft copy of the new agreement has been sent and is currently being reviewed by Level 3. Metro's proposed MOU is being reviewed by SCE. In absence of an agreement, work is being performed by work orders.

ADVANCED UTILITY RELOCATION STATUS

- C1048 AUR for the Wilshire/La Brea Station was substantially completed on October 27, 2014. *Contract closeout is underway and is expected to be completed by the end of August 2015.*
- AT&T relocations at the Wilshire/La Brea Station were completed in May 2015. *AT&T relocations at the Wilshire/Fairfax Station began in January 2015 and are anticipated to be completed in November 2015. AT&T relocations on Hamilton Drive in the Wilshire/La Cienega Station area are anticipated to be completed in July 2015. AT&T work for the remaining portion of the Wilshire/La Cienega Station area is anticipated to be completed in February 2016.*
- The C1055 AUR contractor for Wilshire/Fairfax Station continues with power and water relocations. *Contract Milestone #2 – Power at Fairfax is on schedule to complete on July 25, 2015, and the contractor is also on schedule to achieve substantial completion in October 2015.*
- The Notice to Proceed (NTP) Wilshire/La Cienega AUR Contract (C1056) was issued on January 12, 2015. Construction began in late April 2015 to relocate Southern California Edison (SCE) utilities on the westbound side of Wilshire Boulevard. SCE relocations are continuing along with sewer, water and storm drain relocations.

PEAK HOUR AND NIGHTTIME CONSTRUCTION VARIANCES

Metro is actively pursuing extended hour variances/exemptions to accommodate the Project needs. Metro staff is working with the City of Los Angeles Bureau of Engineering and the Los Angeles Police Commission to obtain Peak Hour Exemptions and Nighttime Construction Variances. Current efforts center around extending the existing nighttime noise variances to accommodate advanced utility relocations at the Wilshire/La Brea and Wilshire/Fairfax Station sites as well as obtaining new nighttime noise variances and peak hour exemptions to allow night work and weekend work to accommodate the Wilshire/La Brea, Wilshire/Fairfax and Wilshire/Western piling operations for the Design/Build contractor.

- The Peak Hour Exemption for Wilshire/La Brea pile installation was approved by the City of Los Angeles on November 8, 2013. *A revised application was submitted in June 2015 with new construction dates.*
- The Peak Hour Exemptions for Wilshire/Fairfax and Wilshire/Western pile installations were approved by the City of Los Angeles on May 12, 2014. There will be a resubmittal with updated construction dates in early 2016.
- *The Nighttime Noise Variance for the Wilshire/La Brea and Wilshire/Fairfax Advanced Utility Relocation work has been extended to August 2015 and September 2015, respectively by the Los Angeles Police Commission.*
- Metro has received a Peak Hour Exemption from the City of Los Angeles for the area near the Wilshire/La Cienega Station. This will accommodate the spillover of traffic control devices from the City of Beverly Hills into the City of Los Angeles.
- An approved Nighttime Noise Variance for pile installations at the Wilshire/La Brea Station was extended to October 30, 2015, at which time a six-month extension will be requested.

CHRONOLOGY OF EVENTS

June 2007	Began Alternatives Analysis study
January 2009	Board approval of Alternatives Analysis study and next phase
February 2009	Began Draft Environmental Impact Statement / Report (EIS / EIR)
October 2010	Board approval of Draft EIS / EIR and selection of locally preferred alternative
January 2011	FTA approval to enter Preliminary Engineering
May 2011	Began Preliminary Engineering
April 2012	Board certification of Final EIS / EIR and adoption of project
July 2012	Completion of Exploratory Shaft final design
August 2012	FTA Record of Decision
September 2012	Began Real Estate Acquisition
November 2012	Began Final Design - C1048 - Advanced Utility Relocations contract – Wilshire/La Brea
November 2012	Began Final Design - C1055 - Advanced Utility Relocations contract – Wilshire/Fairfax
November 2012	Issued RFQ for C1045 Design / Build contract
December 2012	Began Final Design - C1056 - Advanced Utility Relocations contract – Wilshire/La Cienega
January 2013	Began C1034 Exploratory Shaft construction
February 2013	Received RFQ responses for C1045 Design / Build contract
June 2013	Issued RFP for C1045 Tunnels, Stations, Trackwork, Systems and Systems Integration Testing
June 2013	Beginning of C1055 AUR Wilshire/Fairfax Bid Period
July 2013	Submitted draft FFGA application

CHRONOLOGY OF EVENTS (Continued)

July 2013	Completed Final Design - C1048 - Advanced Utility Relocations contract – Wilshire/La Brea
July 2013	Submitted TIFIA loan application
August 2013	Began C1048 Advanced Utility Relocations contract – Wilshire/La Brea
August 2013	NTP for Construction Management Services Contract
January 2014	Submitted application to FTA requesting an FFGA
January 2014	Received RFP Proposals for Contract C1045
February 2014	Beginning of C1056 AUR Wilshire/La Cienega Bid Period
May 2014	FTA awarded FFGA
May 2014	Received TIFIA Loan
June 2014	Began C1055 Advanced Utility Relocations at Wilshire/Fairfax
July 2014	Metro Board approved staff recommendation to award Contract C1045 and approved Life-of-Project Budget
September 2014	Issued Invitation to Bid for Contract C1078
October 2014	Issued C1056 Contract Award
November 2014	Issued C1045 Contract Award
January 2015	Issued C1045 Contract Notice to Proceed
January 2015	Issued C1056 Contract Notice to Proceed
February 2015	Received Contract C1078 Bids

CONTRACT C1045 STATUS

<p>Description: Westside Purple Line Extension Design-Build Contractor: SKANSKA - TRAYLOR - SHEA</p>	<p>Contract No. C1045 Status as of: June 26, 2015</p>																																															
<p>Progress / Work Completed:</p> <ul style="list-style-type: none"> - Design Unit 2 - Temporary Utilities completed - Design Unit 2 - 85% design underway - Design Unit 3 - 60% design underway - Design Unit 5 - 60% design underway <p>Areas of Concern:</p> <p style="text-align: center;">None</p>	<p>Major Activities (In Progress):</p> <ul style="list-style-type: none"> - Design Unit 1 - 85% design continues - 85% Wilshire/La Brea Station specifications under review - Design Unit 6 - 60% design continues - Baseline schedule development continues <p>Major Activities Next Period:</p> <ul style="list-style-type: none"> - Building demolition work to begin Wilshire/La Brea North - Material procurement - Design and development of specifications continue - TBM Temp Power construction - Wilshire/La Brea North site building demolition - Temporary wet utility work at Wilshire/La Brea 																																															
<p>Schedule Summary:</p> <p>Date of Award: 11/04/14</p> <p>Notice to Proceed: (actual) 01/12/15</p> <p>Original Contract Duration: 3250 CD</p> <p>Current Contract Duration: 3250 CD</p> <p>Elapsed Time from NTP: 165 CD</p>	<table border="1"> <thead> <tr> <th></th> <th>Original Contract Dates</th> <th>Time Extension</th> <th>Current Contract</th> <th>Forecast</th> <th>Variance CDs</th> </tr> </thead> <tbody> <tr> <td>Notice to Proceed (Estimated)</td> <td>01/12/15</td> <td>0</td> <td>01/12/15</td> <td>01/12/15</td> <td>0</td> </tr> <tr> <td>Milestone 1: Substantial Completion</td> <td>06/09/23</td> <td>0</td> <td>06/09/23</td> <td>06/09/23</td> <td>0</td> </tr> <tr> <td>Milestone 2: Stations available to UFS</td> <td>10/07/22</td> <td>0</td> <td>10/07/22</td> <td>10/07/22</td> <td>0</td> </tr> <tr> <td>Milestone 3: Start of Integration Testing to ROC</td> <td>01/10/23</td> <td>0</td> <td>01/10/23</td> <td>01/10/23</td> <td>0</td> </tr> <tr> <td>Milestone 4: Demobilization</td> <td>12/06/23</td> <td>0</td> <td>12/06/23</td> <td>12/06/23</td> <td>0</td> </tr> <tr> <td>Milestone 5: Temporary Construction Easements</td> <td>01/10/23</td> <td>0</td> <td>01/10/23</td> <td>01/10/23</td> <td>0</td> </tr> </tbody> </table>							Original Contract Dates	Time Extension	Current Contract	Forecast	Variance CDs	Notice to Proceed (Estimated)	01/12/15	0	01/12/15	01/12/15	0	Milestone 1: Substantial Completion	06/09/23	0	06/09/23	06/09/23	0	Milestone 2: Stations available to UFS	10/07/22	0	10/07/22	10/07/22	0	Milestone 3: Start of Integration Testing to ROC	01/10/23	0	01/10/23	01/10/23	0	Milestone 4: Demobilization	12/06/23	0	12/06/23	12/06/23	0	Milestone 5: Temporary Construction Easements	01/10/23	0	01/10/23	01/10/23	0
	Original Contract Dates	Time Extension	Current Contract	Forecast	Variance CDs																																											
Notice to Proceed (Estimated)	01/12/15	0	01/12/15	01/12/15	0																																											
Milestone 1: Substantial Completion	06/09/23	0	06/09/23	06/09/23	0																																											
Milestone 2: Stations available to UFS	10/07/22	0	10/07/22	10/07/22	0																																											
Milestone 3: Start of Integration Testing to ROC	01/10/23	0	01/10/23	01/10/23	0																																											
Milestone 4: Demobilization	12/06/23	0	12/06/23	12/06/23	0																																											
Milestone 5: Temporary Construction Easements	01/10/23	0	01/10/23	01/10/23	0																																											
<p>Physical Percent Complete:</p> <p>Physical completion: 1.6%*</p> <p><i>* Note: Physical completion assessment reflects work completed and work in progress.</i></p>	<p>Cost Summary: \$ In millions</p> <table> <tr> <td>1. Award Value:</td> <td>1,636.4</td> </tr> <tr> <td>2. Executed Modifications:</td> <td>2.7</td> </tr> <tr> <td>3. Approved Change Orders:</td> <td>0.0</td> </tr> <tr> <td>4. Current Contract Value (1+2+3):</td> <td>1,639.1</td> </tr> <tr> <td>5. Incurred Cost:</td> <td>214.2</td> </tr> </table>						1. Award Value:	1,636.4	2. Executed Modifications:	2.7	3. Approved Change Orders:	0.0	4. Current Contract Value (1+2+3):	1,639.1	5. Incurred Cost:	214.2																																
1. Award Value:	1,636.4																																															
2. Executed Modifications:	2.7																																															
3. Approved Change Orders:	0.0																																															
4. Current Contract Value (1+2+3):	1,639.1																																															
5. Incurred Cost:	214.2																																															

CONTRACT C1048 STATUS

<p>Description: Wilshire/La Brea AUR Contractor: Metro Builders & Engineers Group, Ltd.</p>	<p>Contract No. C1048 Status as of: June 26, 2015</p>															
<p>Progress / Work Completed:</p> <ul style="list-style-type: none"> - Substantial Completion - Completed remaining Punch-List Items <p>Areas of Concern: None</p>	<p>Major Activities (In Progress):</p> <ul style="list-style-type: none"> - Contract closeout <p>Major Activities Next Period:</p> <ul style="list-style-type: none"> -Complete contract closeout 															
<p>Schedule Summary:</p> <p>Date of Award: 05/13/13 Notice to Proceed: 08/01/13 Original Contract Duration: 230 CD Current Contract Duration: 452 CD Elapsed Time from NTP: 452 CD</p>		<p>Original Contract Dates</p>	<p>Time Extension</p>	<p>Current Contract</p>	<p>Forecast</p>	<p>Variance CDs</p>										
	<p>Notice to Proceed</p>	<p>08/01/13</p>	<p>0</p>	<p>08/01/13</p>	<p>08/01/13</p>	<p>0</p>										
	<p>Milestone 1: Completion of LADWP Power Work</p>	<p>12/28/13</p>	<p>0</p>	<p>12/28/13</p>	<p>05/22/14</p>	<p>-145</p>										
	<p>Milestone 2: Substantial Completion</p>	<p>03/18/14</p>	<p>223</p>	<p>10/27/14</p>	<p>10/27/14</p>	<p>0</p>										
<p>Physical Percent Complete:</p> <p>Physical completion: 100%*</p> <p><i>* Note: Physical completion assessment reflects work completed and work in progress.</i></p>	<p>Cost Summary: \$ In millions</p> <table border="0"> <tr> <td>1. Award Value:</td> <td>6.2</td> </tr> <tr> <td>2. Executed Modifications:</td> <td>2.2</td> </tr> <tr> <td>3. Approved Change Orders:</td> <td>0.0</td> </tr> <tr> <td>4. Current Contract Value (1+2+3):</td> <td>8.4</td> </tr> <tr> <td>5. Incurred Cost:</td> <td>8.4</td> </tr> </table>						1. Award Value:	6.2	2. Executed Modifications:	2.2	3. Approved Change Orders:	0.0	4. Current Contract Value (1+2+3):	8.4	5. Incurred Cost:	8.4
1. Award Value:	6.2															
2. Executed Modifications:	2.2															
3. Approved Change Orders:	0.0															
4. Current Contract Value (1+2+3):	8.4															
5. Incurred Cost:	8.4															

CONTRACT C1055 STATUS

<p>Description: Wilshire/Fairfax AUR Contractor: W.A. RASIC Construction Company, Inc.</p>	<p>Contract No. C1055 Status as of: June 26, 2015</p>					
<p>Progress / Work Completed:</p> <p>- Power on Wilshire Segments 22, 23,35, 33, 32</p> <p>Areas of Concern: None</p>	<p>Major Activities (In Progress):</p> <p>- Power Vault Vents - Power work punch list</p> <p>Major Activities Next Period:</p> <p>- Continue waterline on Wilshire Blvd. - MS #2 Power Complete 7/25/15</p>					
<p>Schedule Summary:</p> <p>Date of Award: 03/28/14 Notice to Proceed: 05/01/14 Original Contract Duration: 535 CD Current Contract Duration: 535 CD Elapsed Time from NTP: 421 CD</p>		Original Contract Dates	Time Extension	Current Contract	Forecast	Variance CDs
	Notice to Proceed	05/01/14	0	05/01/14	05/01/14	0
	Milestone 1: Water @ La Brea	08/29/14	159	02/05/15	02/05/15	0
	Milestone 2: Power @ Fairfax	07/25/15	0	07/25/15	07/25/15	0
	Milestone 3: Substantial Completion	10/18/15	0	10/18/15	10/18/15	0
<p>Physical Percent Complete:</p> <p>Physical completion: 77%*</p> <p><i>* Note: Physical completion assessment reflects work completed and work in progress.</i></p>	<p>Cost Summary: \$ In millions</p> <p>1. Award Value: 14.4 2. Executed Modifications: 1.0 3. Approved Change Orders: 0.0 4. Current Contract Value (1+2+3): 15.4 5. Incurred Cost: 12.1</p>					

CONTRACT C1056 STATUS

<p>Description: Wilshire/La Cienega AUR Contractor: Steve Bubalo Construction Co.</p>	<p>Contract No. C1056 Status as of: June 26, 2015</p>															
<p>Progress / Work Completed:</p> <ul style="list-style-type: none"> - SCE power ductbank DB - STA 22+90 TO 22+59 - SCE 4x5" Electrical STA-13+60 to 11+45 (Hamilton to Gale) <p>Areas of Concern: None</p>	<p>Major Activities (In Progress):</p> <ul style="list-style-type: none"> - 2x5" SCE Electrical Tower STA 60+18 to EX VL #5040385 - Sewer Line A- STA 12+70 to 10+08 (Hamilton to La Cienega) - Sewer Line B- STA 10+08 to 13+00 (Hamilton to Gale) - Sewer Line B- STA 13+00 to 17+62 (Gale to Tower) <p>Major Activities Next Period:</p> <ul style="list-style-type: none"> - SCE Vault- South Hamilton - Continue SCE power ductbank west-bound on Wilshire Blvd. - Continue Sewer line A west-bound on Wilshire Blvd. 															
<p>Schedule Summary:</p> <p>Date of Award: 10/13/14 Notice to Proceed: (estimated) 01/12/15 Original Contract Duration: 696 CD Current Contract Duration: 696 CD Elapsed Time from NTP: 165 CD</p>		Original Contract Dates	Time Extension	Current Contract	Forecast	Variance CDs										
	Notice to Proceed (Estimated)	01/12/15	0	01/12/15	01/12/15	0										
	Milestone 1:	07/13/16	0	07/13/16	07/13/16	0										
	Milestone 2: Substantial Completion	12/08/16	0	12/08/16	12/08/16	0										
<p>Physical Percent Complete:</p> <p>Physical completion: 8%*</p> <p><i>* Note: Physical completion assessment reflects work completed and work in progress.</i></p>	<p>Cost Summary: \$ In millions</p> <table border="0"> <tr> <td>1. Award Value:</td> <td>20.3</td> </tr> <tr> <td>2. Executed Modifications:</td> <td>2.0</td> </tr> <tr> <td>3. Approved Change Orders:</td> <td>0.0</td> </tr> <tr> <td>4. Current Contract Value (1+2+3):</td> <td>22.3</td> </tr> <tr> <td>5. Incurred Cost:</td> <td>3.8</td> </tr> </table>						1. Award Value:	20.3	2. Executed Modifications:	2.0	3. Approved Change Orders:	0.0	4. Current Contract Value (1+2+3):	22.3	5. Incurred Cost:	3.8
1. Award Value:	20.3															
2. Executed Modifications:	2.0															
3. Approved Change Orders:	0.0															
4. Current Contract Value (1+2+3):	22.3															
5. Incurred Cost:	3.8															

CONSTRUCTION PHOTOGRAPHS



C1055 Wilshire/Fairfax AUR Placement of Trench Shoring



Removal and Storage of Artwork from the former Wilshire/La Brea Customer Service Center

**APPENDIX
COST AND BUDGET TERMINOLOGY**

Project Cost Descriptions

ORIGINAL BUDGET	The Original Project Budget as authorized by the Metropolitan Transportation Authority (Metro) Board.
CURRENT BUDGET	The Original Budget plus all budget amendments approved by formal Metro Board action. Also referred to as Approved Budget.
COMMITMENTS	The total of actual contracts awarded, executed change orders or amendments, and approved work orders of Master Cooperative Agreements, offers accepted for purchase of real estate, and other Metro actions which have been spent or result in the obligation of specific expenditures at a future time.
EXPENDITURES	The total dollar amount of funds expended by Metro for contractor or consultant services, third party services, staff salaries, real estate and other expenses that is reported in Metro's Financial Information System (FIS).
CURRENT FORECAST	The best estimate of the final cost of the Project when all checks have been issued and the Project is closed out. Current Forecast is composed of actual costs incurred to date, the best estimate of work remaining and a current risk assessment for each budgeted cost item.

Cost Report by Element Descriptions

CONSTRUCTION	Includes construction contracts. Cost associated with Guideways, Stations, Southwestern Yard, Sitework/Special Conditions and Systems.
RIGHT-OF-WAY	Includes purchase cost of parcels, easements, right-of-entry permits, escrow fees, contracted real estate appraisals and tenant relocation.
VEHICLES	Includes the purchase of Heavy Rail Vehicles and spare parts for the Project.
PROFESSIONAL SERVICES	Includes design engineering, project management assistance, construction management support services, legal counsel, agency staff costs, and other specialty consultants.
CONTINGENCY	A fund established at the beginning of a project to provide for anticipated but unknown additional costs that may arise during the course of the Project.
PROJECT REVENUE	Includes all revenue received by Metro as a direct result of project activities. This includes cost sharing construction items, insurance premium rebates, and the like.

**APPENDIX
LIST OF ACRONYMS**

ATC	Automatic Train Control
ATSAC	Automated Traffic Surveillance and Control
BAFO	Best and Final Offer
BIM	Building Information Modeling
BNSF	Burlington Northern Santa Fe Railway Company
BRT	Bus Rapid Transit
CADD	Computer Aided Drafting and Design
CALTRANS	California Department of Transportation
CCTV	Closed Circuit Television
CD	Calendar Day
CEQA	California Environmental Quality Act
CM	Construction Manager
CMAQ	Congestion Mitigation and Air Quality Improvement Program
CMSS	Construction Management Support Services
CN	Change Notice
CO	Change Order
COBH	City of Beverly Hills
COLA	City of Los Angeles
CPM	Critical Path Method
CPUC	California Public Utilities Commission
CR	Camera Ready
CRMMP	Cultural Resource Monitoring and Mitigation Plan
CSPP	Construction Safety Phasing Plan
CTC	California Transportation Commission
CUD	Contract Unit Description
DB	Design Build
DBB	Design Bid Build
DOT	Department of Transportation
DWP	Department of Water and Power
EIR	Environmental Impact Report
EIS	Environmental Impact Statement
EMS	Engineering Management Services
EPBM	Earth Pressure Balance Machine
FAA	Federal Aviation Administration
FAR	Federal Acquisition Regulation
FD	Final Design
FEIS	Final Environmental Impact Statement
FEIR	Final Environmental Impact Report
FIS	Financial Information System
FLSR	Fire Life Safety Report
FONSI	Finding of No Significant Impact
FRA	Federal Railroad Administration
FSEIR	Final Supplemental Environmental Impact Report
FSEIS	Final Supplemental Environmental Impact Statement

**APPENDIX
LIST OF ACRONYMS (Continued)**

FTA	Federal Transit Administration
FTE	Full Time Equivalent
GBR	Geotechnical Baseline Report
GDSR	Geotechnical Design Summary Report
HMM	Hatch Mott MacDonald
HRT	Heavy Rail Transit
HRV	Heavy Rail Vehicle
IFB	Invitation for Bid
IPMO	Integrated Project Management Office
JV	Joint Venture
LA	Los Angeles
LABOE	Los Angeles Bureau of Engineering
LABOS	Los Angeles Bureau of Sanitation
LABSL	Los Angeles Bureau of Street Lighting
LACFCD	Los Angeles County Flood Control District
LACMTA	Los Angeles County Metropolitan Transportation Authority
LADOT	Los Angeles Department of Transportation
LADPW	Los Angeles Department of Public Works
LADWP	Los Angeles Department of Water and Power
LAUSD	Los Angeles Unified School District
LAWA	Los Angeles World Airports
LAX	Los Angeles International Airport
LNTP	Limited Notice To Proceed
LONP	Letter Of No Prejudice
LOP	Life-of-Project
LPA	Locally Preferred Alternative
LRTP	Long Range Transportation Plan
LRV	Light Rail Vehicle
MCA	Master Cooperative Agreement
MIS	Major Investment Study
MMRP	Mitigation Monitoring and Reporting Plan
MOU	Memorandum of Understanding
MPSR	Monthly Project Status Report
N/A	Not Applicable
NEPA	National Environmental Protection Act
NOD	Notice of Determination
NPDES	National Pollution Discharge Elimination System
NTE	Not to Exceed
NTP	Notice To Proceed
OCC	Operations Control Center
OSHA	Occupational Health and Safety Administration
PA/VMS	Public Address/Visual Messaging Sign
PE	Preliminary Engineering

APPENDIX

LIST OF ACRONYMS (Continued)

PEER	Permit Engineering Evaluation Report
PIP	Project Implementation Plan
PLA	Project Labor Agreement
PM	Project Manager
PMIP	Project Management Implementation Plan
PMOC	Project Management Oversight Consultant
PMP	Project Management Plan
P&P	Policies & Procedures
PR	Project Report
PRMMP	Paleontological Resource Monitoring Mitigation Plan
PSR	Project Study Report
QA	Quality Assurance
QAR	Quality Assurance Report
QC	Quality Control
QPSR	Quarterly Project Status Report
QTIB	Qualified Transit Improvement Bonds
RAMP	Real Estate Acquisition Management Plan
RCHAR	Rail Crossing Hazards Analysis Report
RCMP	Risk Assessment Management Plan
RFC	Request For Change
RFP	Request For Proposals
RFSC	Request for Special Consideration
RHA	Risk Hazard Analysis
RLPE	Red Light Photo Enforcement
ROC	Rail Operations Center
ROD	Record Of Decision
ROM	Rough Order of Magnitude
ROW	Right-Of-Way
RPZ	Runway Protection Zone
RSD	Revenue Service Date
SAV	Stand Alone Validator
SBCC	<i>Steve Bubalo Construction Co</i>
SCAQMD	Southern California Air Quality Management District
SCADA	Supervisory Control and Data Acquisition
SCC	Standard Cost Category
SCE	Southern California Edison
SCG	Southern California Gas Company
SCRRA	Southern California Regional Rail Authority
SHA	State Highway Account
SHPO	State Historic Preservation Office
SIT	System Integration Testing
SOQ	Statement of Qualification
SOV	Schedule Of Value
SOW	Statement Of Work

**APPENDIX
LIST OF ACRONYMS (Continued)**

SP	Special Provision
SSMP	Safety and Security Management Plan
STB	Surface Transportation Board
STIP	State Transportation Improvement Program
STP	Surface Transportation Program
STV	STV Group
SWPPP	Storm Water Pollution Prevention Plan
TBD	To Be Determined
TBM	Tunnel Boring Machine
TCE	Temporary Construction Easement
TCRP	Traffic Congestion Relief Program
TIFIA	Transportation Infrastructure Finance and Innovation Act
TIGER	Transportation Investment Generating Economic Recovery
TPSS	Traction Power Substation
TRACS	Transit Automatic Control System
TVA	Threat Vulnerability Analysis
TVM	Ticket Vending Machine
UFS	Universal Fare System
USDOT	United States Department Of Transportation
VE	Value Engineering
WBS	Work Breakdown Structure
WP	Work Package
YOE	Year of Expenditure