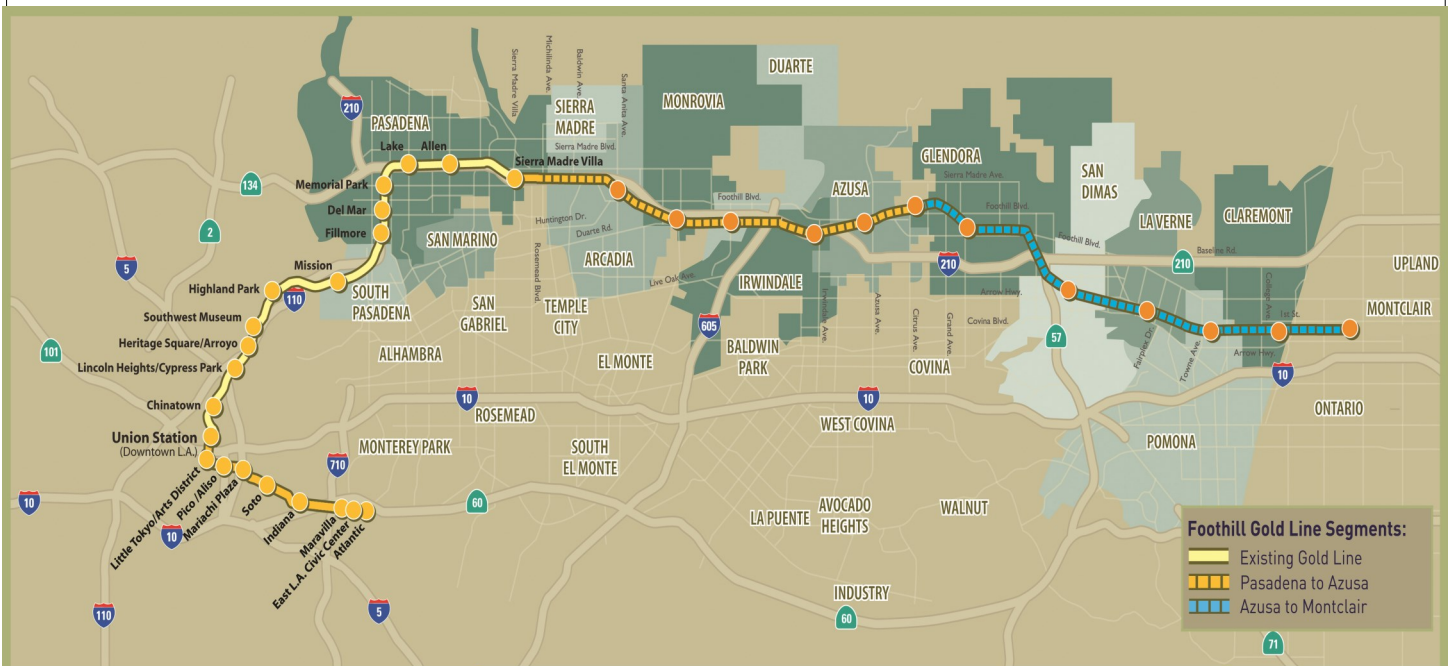


Metro Gold Line

Foothill Extension Project

Monthly Project Status Report

March 2015



Foothill Gold Line

Connecting Los Angeles, the San Gabriel Valley and Inland Empire



TABLE OF CONTENTS

PHASE 2 FOOTHILL EXTENSION PROJECT STATUS

Project Description	3
Pasadena to Azusa Segment	4
Management Issues	4
Key Activities Completed This Period	5
Key Future Activities	6
Critical Path Schedule	7
Critical Path Float Trend	8
Alignment Contract Status	9
Alignment Construction Progress This Period	11
Facility Construction Progress This Period	12
Alignment Construction Progress Next Period	13
Facility Construction Progress Next Period	14
Alignment Construction Images	15
Alignment Change Management Log	17
Parking Facilities and Enhancements Contract Status	22
Parking Facilities and Enhancements Construction Images	24
Parking Facilities and Enhancements Change Management Log	26
Azusa to Montclair Segment	28
Financial Status	29



FOOTHILL EXTENSION PROJECT DESCRIPTION

The Authority's mandate is to plan, design and construct a 37-mile light rail link between Downtown Los Angeles and Claremont. In addition, the San Bernardino Associated Governments (SANBAG) has requested that planning be extended one mile inside San Bernardino County to the City of Montclair and then possibly to Ontario Airport.

The Metro Gold Line Phase 2 (Foothill Extension) corridor includes the cities of Pasadena, Arcadia, Monrovia, Duarte, Irwindale, Azusa, Glendora, San Dimas, La Verne, Pomona, Claremont, and Montclair; and the counties of Los Angeles and San Bernardino (Figure 1). The Foothill Extension is estimated to cost approximately \$1.950 billion.

The Foothill Extension will be built in two segments to align effectively with projected cash flows and financial capacity constraints. The first segment is defined from the Sierra Madre Villa Station in Pasadena to the city of Azusa. Revenue service along this segment is planned for the year 2016. The second segment would include an extension from Azusa to the City of Montclair with revenue service projected for the year 2023 and the third segment, if applicable, will be comprised of an extension from Montclair to the Ontario Airport.

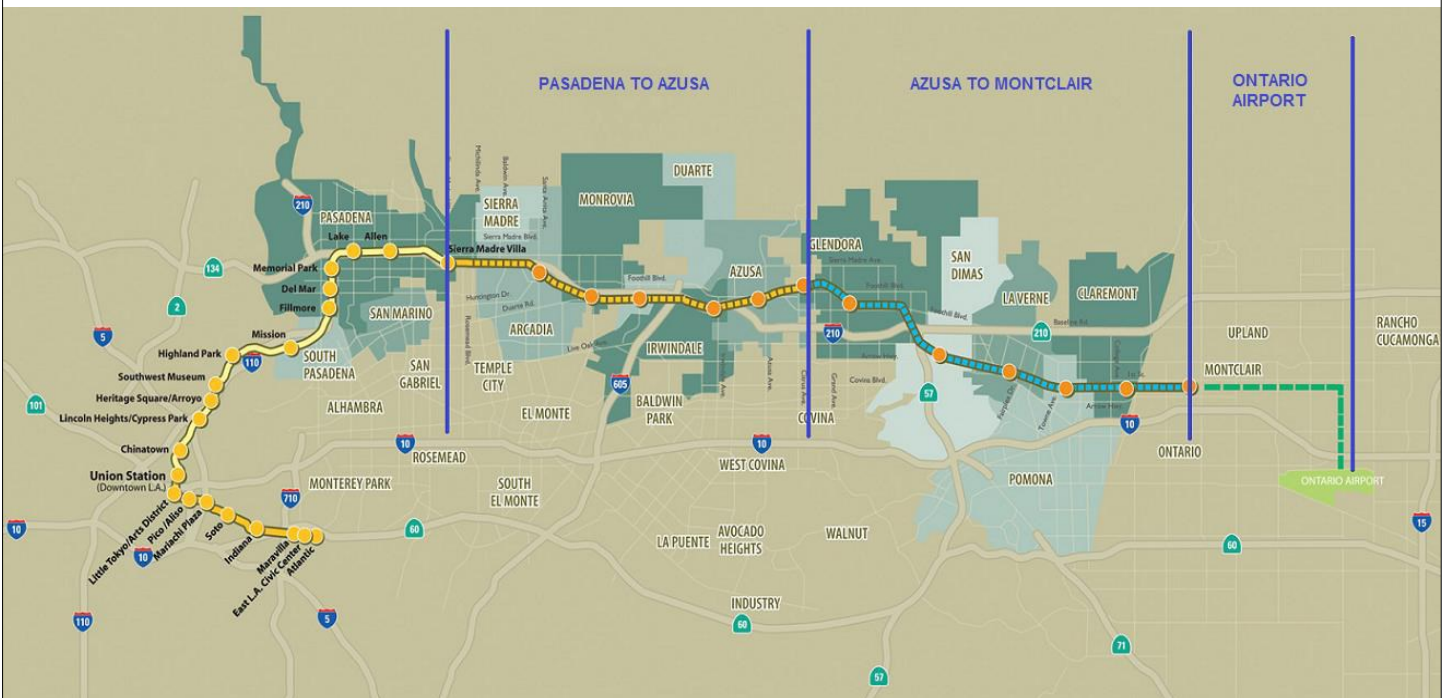


Figure 1: Metro Gold Line Foothill Extension Alignment



Pasadena to Azusa Segment

MANAGEMENT ISSUES

Metro Betterments

During the design process Metro staff have identified betterments that Metro staff would like to add to the project. Metro has provided a final disposition on all but a few items. Authority staff continues to work with Metro staff to resolve the remaining items.

TPSS Commissioning

The traction power substations (TPSS) provide equipment to transform utility power required for Light Rail Vehicle (LRV) propulsion, and then distribute that power to the LRVs via the overhead wires. Metro is responsible for purchasing the traction power substations. All TPSS have been delivered and set to date, however these deliveries were all behind schedule which proposed a potential to impact the project schedule. Authority staff coordinated with Metro and FTC to ensure minimal impact to the project, however the energization process will need to be finalized before schedule concerns are eliminated.



KEY ACTIVITIES COMPLETED THIS PERIOD

FTC reports the following SBE statistics for the month of November:

- Current SBE commitment: \$59,500,000
- SBE percent committed versus value of Project: 19.15%
- Overall Authority Project SBE goal: 16%

FTC reports the following approximate safety statistics to date:

- 1,936,121 total work hours performed by FTC, Mass Electric, and Subcontractors
- 13 recordable injuries reported to date
- 4 lost time injuries reported to date

Webcor reports the following DBE statistics for the month of November:

- Current DBE commitment: \$1,121,250
- DBE percent committed versus value of Project: 3.57%
- Overall Authority Project DBE goal: 2.3%

Webcor reports the following approximate safety statistics to date:

- 155,674 total work hours performed by Webcor and Subcontractors
- 1 recordable injuries reported to date
- 0 lost time injuries reported to date

The Citrus Traction Power Supply Substation was energized (3 remaining)

Continued placement of art and architectural elements at all stations

Completed track destressing throughout the alignment

Completed trackwork at the Gold Line Operations Campus (Campus)

Continued rail grinding throughout the Alignment

Continued OCS wire runs throughout the alignment and Campus

Completed installation of train control cases/bungalows and associated equipment

Completed installation of the communications system

Continued systems integration testing

Completed painting of Arcadia and Monrovia parking structures and began anti-graffiti coating

Continued installation of Azusa-Citrus elevators and finalized construction of parking structure

Continued underground conduit runs for lighting, communications, and power at Duarte parking lot site

Continued construction of Irwindale parking structure

Authority completed review of all Parking Facility design submittals



KEY FUTURE ACTIVITIES

Continue discussions with corridor cities regarding the project

Continue management of the Alignment contract, which will include oversight of construction activities and start-up activities

Continue to meet with Intermodal Parking Facilities and Enhancements Project contractor, Webcor Builders regarding design and construction of the Project

Complete construction of art and architectural elements at all stations

Complete OCS installation

Complete system integration tests

Finalize construction of all Parking Facilities

Energize Los Robles, Soldano, and Virginia Traction Power Supply Substations

Finalize the following property acquisitions:

- Arcadia:
 1. Parcel 13010/1311 (Indiana St.) – To be vacated by the City of Arcadia.
 2. Parcel 1401a (Huntington Dr. Aerial Easement) – To be conveyed by the City of Arcadia.
 3. Parcel 1401b (Huntington Dr. Bridge Abutments) – To be conveyed by the City of Arcadia.
 4. Parcel 1403 (99 N. Second Av.) – Offer sent. Expires 4/23/15.
 5. Parcel 6009 (Huntington Dr. Bridge Abutments) – To be conveyed by the City of Arcadia.
 6. Parcel 6010 (Huntington Dr. Bridge Abutments) – To be conveyed by the City of Arcadia.
 7. Parcel 6011 (Huntington Dr. Bridge Abutments) – To be conveyed by the City of Arcadia.
- Monrovia:
 1. Parcel 1601 (Encino Av.) – Conveyed by the City of Monrovia.
 2. Parcel 1903 (Monrovia Station) – To be conveyed by the City of Monrovia.
 3. Parcel 21A12 (3M Parking Lot) – Waiting for legal description/as-builts.
 4. Parcel 21A23 (Shamrock Trapezoid) – To be conveyed by the City of Monrovia.
- Azusa:
 1. Parcel 3501 (1220 W. Foothill Blvd.) – Offer sent. Expires 4/23/15.

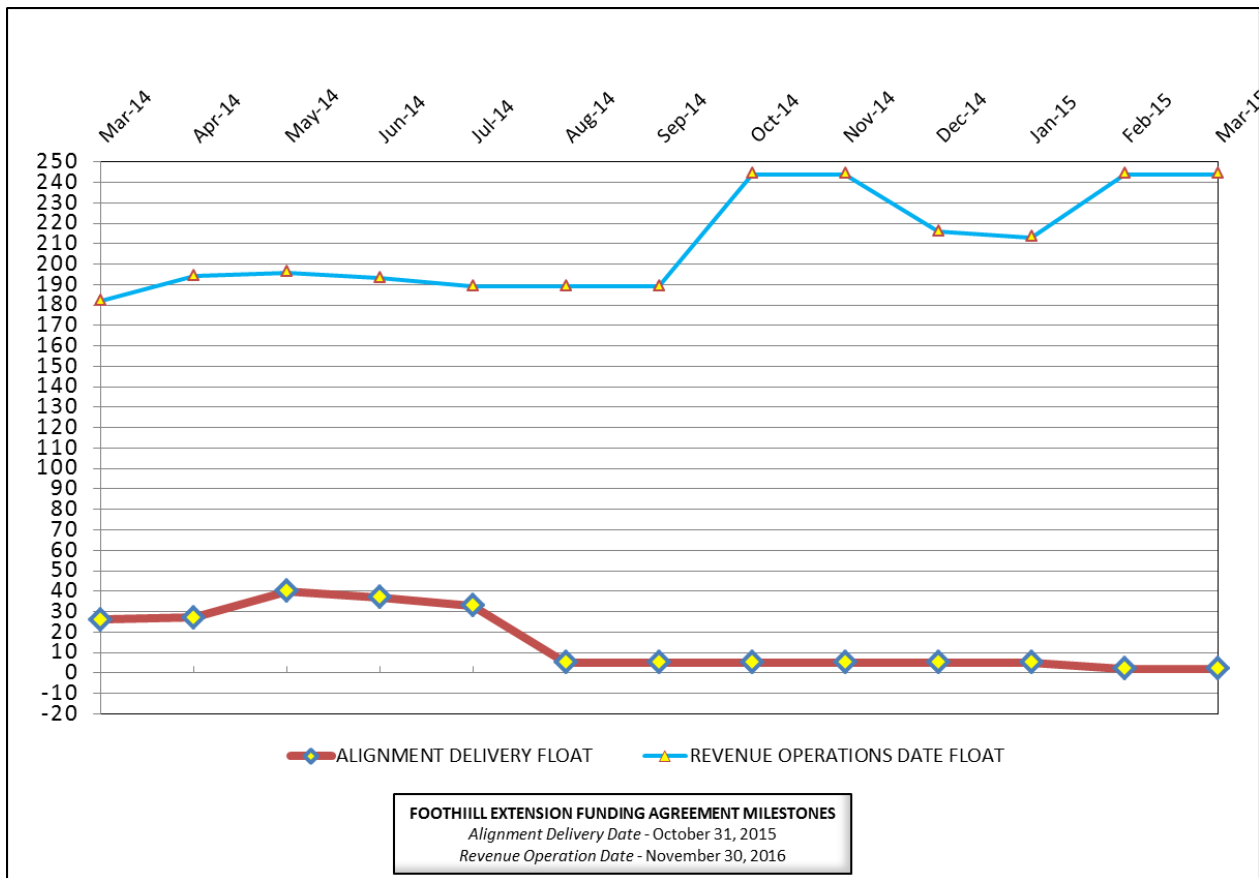


CRITICAL PATH SCHEDULE

Activity Name	OD	RD	AD	Start	Finish	Total Float	Timeline																
							2012			2013			2014			2015			2016				
							Q2	Q3	Q4	Q1	Q2	Q3	Q4	Q1	Q2	Q3	Q4	Q1	Q2	Q3	Q4		
REVENUE OPERATIONS DATE - CRITICAL PATH																							
RFP - LRV PROCUREMENT	375	0	557	18.Oct.10 08:00 A	26.Apr.12 15:00 A																		
LRV FABRICATION / DELIVER 15 VEHICLES	1353	279	940	17.Aug.12 07:00 A	18.Dec.15 15:00	244																	
METRO - Pre-Revenue Operations - Phase 2A	60	60	0	19.Dec.15 07:00	16.Feb.16 15:00	244																	
METRO - Project Schedule Contingency (2 Mo.)	44	44	0	17.Feb.16 07:00	31.Mar.16 15:00	244																	
Phase 2A - Revenue Operations Date (ROD)	0	0	0		31.Mar.16 15:00*	244																	
ALIGNMENT DELIVERY DATE - CRITICAL PATH																							
CITRUS STATION - COMMUNICATIONS INSTL / TEST	80	60	113	08.Oct.14 07:00 A	05.Jun.15 15:00	1																	
SYSTEMS INTERGRATION TESTING - PHASE 1	185	120	69	09.Dec.14 07:00 A	28.Aug.15 15:00	1																	
IRWINDALE STATION - COMMUNICATIONS INSTL / TEST	60	60	0	16.Mar.15 07:00	05.Jun.15 15:00	1																	
SYSTEMS INTERGRATION TESTING - PHASE 2	44	44	0	31.Aug.15 07:00	29.Oct.15 15:00	1																	
C1135 - >>>SUBSTANTIAL COMPLETION - 1420 CD<<<	0	0	0		29.Oct.15 15:00*	2																	
ALIGNMENT DELIVERY DATE - SECONDARY - CRITICAL PATH																							
OCS - INSTALLATION - SEGMENT 4	130	17	190	23.Jun.14 07:00 A	07.Apr.15 15:00	4																	
OCS - TESTING - SEGMENT 4	20	20	0	08.Apr.15 07:00	05.May.15 15:00	4																	
ALIGNMENT DELIVERY DATE - TERTIARY CRITICAL PATH																							
DUARTE STATION - COMMUNICATIONS INSTL / TEST	44	13	129	16.Sep.14 07:00 A	01.Apr.15 15:00	5																	
MONROVIA STATION - COMMUNICATIONS INSTL / TEST	80	26	122	25.Sep.14 07:00 A	20.Apr.15 15:00	5																	
ARCADIA STATION - COMMUNICATIONS INSTL / TEST	80	30	121	26.Sep.14 07:00 A	27.Apr.15 15:00	5																	
ALAMEDA STATION - COMMUNICATIONS INSTL / TEST	80	45	116	03.Oct.14 07:00 A	15.May.15 15:00	5																	



CRITICAL PATH FLOAT TREND



Revenue Operations Date Critical Path - (244 Calendar Days)

The critical path is currently running through the P3010 LRV procurement. At this time, Metro is forecasting the delivery of the 15th vehicle by December 2015. The critical path continues through Pre-Revenue Operations, which is expected to be completed by February 16, 2016. The Revenue Operations Date (ROD) is projected to be complete by March 31, 2016, which is eight (8) months ahead of the Funding Agreement Milestone date of November 30, 2016.

Alignment Delivery Date Critical Path - (2 Calendar Days / 1 Work Day)

This period, both the Citrus Station communications installation/testing and the Irwindale Station communications installation/testing have slipped. As a result, both locations have become critical and are both on parallel critical paths. Upon completion of local field acceptance tests (LFAT), each station will be ready to begin Phase 1 systems integration testing. Upon the conclusion of systems integration testing, the alignment will be available for Metro to complete Pre-Revenue Operations.

Other elements of construction work, which are in progress and near critical are Segment 4 OCS installation; Duarte Station communications testing; Irwindale Station mechanical/electrical/finish installations; TPSS No.3 'Los Robles' commissioning, Irwindale Parking Structure; Duarte parking lot; Citrus Station mechanical/electrical/finish installations; Citrus Parking Structure and the Maintenance & Operations Campus..

Project Float

The project float for the Revenue Operations Date is 244 days. The critical activities on this path are on schedule to meet the Target Revenue Operations Date of November 2016. The Alignment Delivery Date float value is 2 days and is currently on schedule to meet the October 31, 2015 deadline.



Description: Alignment Design / Build	Status: March 15, 2015
Contract No.: C1135	Contractor: Foothill Transit Constructors (Kiewit-Parsons J.V.)

<p>Progress Completed This Period</p> <p>Design</p> <ul style="list-style-type: none"> • Submit AFC Design - M&O Communications Book of Plans • Submit AFC Design - Pedestrian Swing Gates • Submit AFC Design - Payphone Communications • Submit AFC Design - M&O Landscaping • Submit AFC Design - Highland Gate Arm Re-Design • Submit AFC Design - Irwindale Station Retaining Wall <p>Construction</p> <ul style="list-style-type: none"> • See "Construction Progress This Period" 	<p>Activities Planned Next Period</p> <p>Design</p> <ul style="list-style-type: none"> • Submit AFC Design - Alameda Communications Book of Plans • Submit AFC Design - Duarte Communications Book of Plans • Submit AFC Design - Irwindale Communications Book of Plans • Submit AFC Design - Parking Struc. Communications Book of Plans • Submit AFC Design - Irwindale Ramp <p>Construction</p> <ul style="list-style-type: none"> • See "Construction Progress Next Period"
--	---

<p>Areas of Concern</p> <ul style="list-style-type: none"> • Irwindale Parking Communications - The C1150 Design-Build Contractor continues to mitigate the Irwindale Parking Structure railroad shoring delays which was causing a potential delay to the C1135 Design-Build Contractor to begin the communications installation. As of March 15, 2015, the Irwindale Parking Structure appears to be back on schedule and access will be provided on schedule to begin the communications installation without impact. Access to the site is expected April 2015. 	<p>Areas of Concern (Continued)</p> <ul style="list-style-type: none"> •
--	--



Description: Alignment Design / Build

Status: March 15, 2015

Contract No.: C 1135

Contractor: Foothill Transit Constructors (Kiewit-Parsons J.V.)

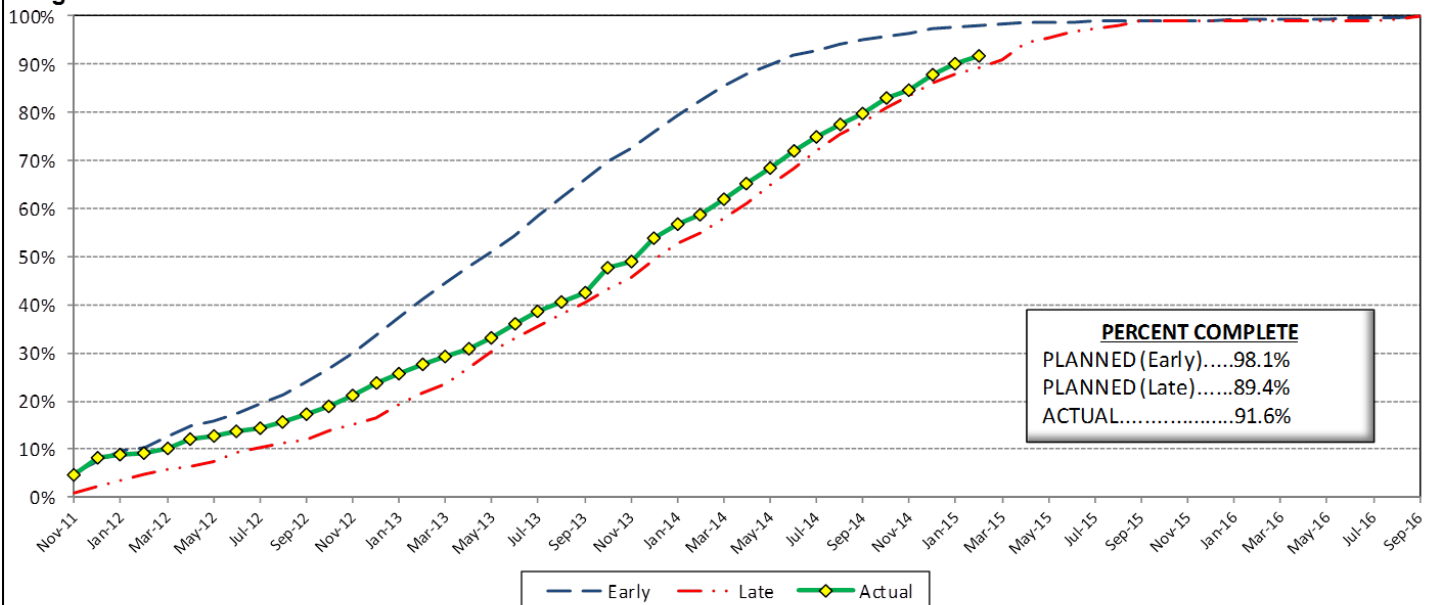
Cost Summary:

	Million(s)
CONTRACT	
Contract Award Value:	485.9
Executed Change Orders:	19.0
Current Contract Value:	504.8
Potential Change Orders:	4.3
Current Forecast:	509.2
Eamed Value/Actual Cost	449.2
AUTHORIZATION FOR EXPENDITURE	
Budget	514.5
Commitment	504.8
Balance	5.4

Cost Assessment:

This period the Contract forecast increased \$3.6 Million. The major increase was due to the following: RFC 051 - *Irwindale Ramp Changes*, PCO 098 - *M&O Facility NW Corner Changes*, PCO 103 - *Tactile Guidance at Stations*, PCO 091 - *UP Tunnel Analysis & Modifications*, RFC 102 - *MOW Track Fouling Issue*, PCO 022.04 - *M&O IT Changes Furniture Interface*, PCO 104 - *Striping/Signs at Station Pedestrian Crossings*, PCO 080 - *Irwindale Signal Case Push Button*, negotiated price of CO 133 - *Irwindale Ramp Signs*, PCO 109 - *M&O Early Completion Milestone*. The current forecast is within the Authorized budget.

Progress Curve



Schedule Summary:

Contract Award:	07/27/11
Interim Notice to Proceed (INTP) :	11/03/11
Original Contract Duration:	1,780 Calendar Days
Current Contract Duration:	1,780 Calendar Days
Elapsed Time from NTP:	1,228 Calendar Days

Contract Milestones

Milestones	Description	Original Contract	Current Contract	Forecast	Variance
1	Substantial Completion	09/23/15	09/23/15	10/29/15	(36)
2	Punchlist Complete	06/19/16	06/19/16	07/25/16	(36)
3	Final Completion	09/17/16	09/17/16	10/23/16	(36)
4	Access - IFS Br.	12/15/12	12/15/12	12/15/2012 A	0
5	Test Track Complete	03/27/15	03/27/15	03/27/15	0
6	Colorado Br. Demo Complete	02/01/12	02/01/12	6/15/2012 A	(135)

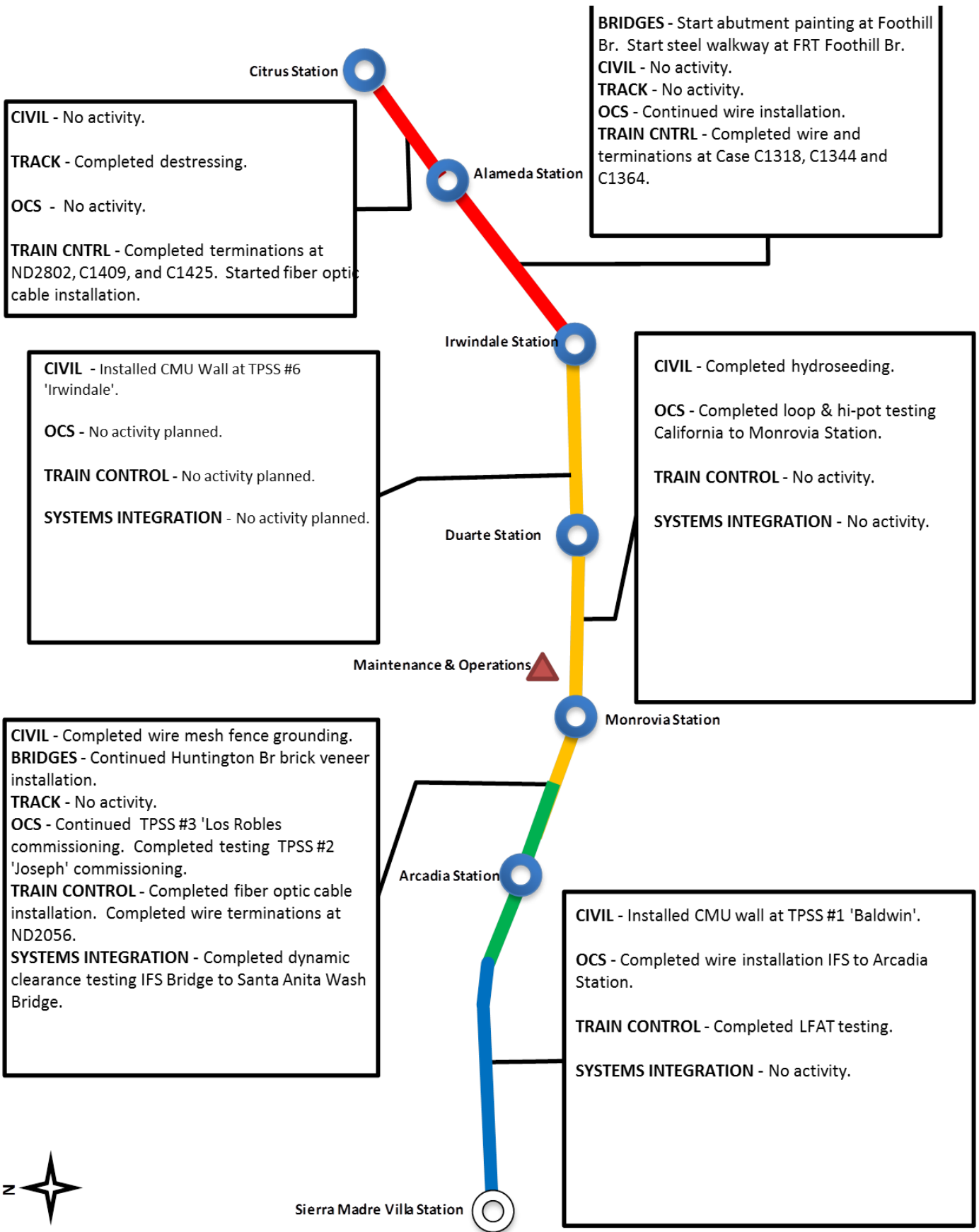
Schedule Assessment:

With the progress continuing to trend at the rate of the late progress curve, activities in all Segments continue to approach near critical. The Design-Build Contractor continues to meet the requisite use of resources in order to meet the critical elements of the schedule. At this time, the primary activities which are critical or near critical by Segment are as follows: Segment 2 - OCS testing, Train Control LFAT, Segment 3 - Duarte Station Communications LFAT Testing, Segment 4 - OCS Installation, Fiber Optic Cable Installation, and Irwindale Station mechanical/electrical & finishes. Maintenance & Operations Facility - train control installation & testing, OCS Installation, Main Building Finishes, Car Wash Building.

The Test Track Completion is forecast to be available on March 27, 2015, which is on schedule.



ALIGNMENT CONSTRUCTION PROGRESS THIS PERIOD





FACILITY CONSTRUCTION PROGRESS THIS PERIOD

Citrus Ave Station

STATION - Started metal roofing installation.

PARKING - Completed installation of stair No.2 and elevator No.2 hoist way structural steel. Started fire protection installation. Completed electrical rough-in. Started electrical equipment installation. Completed plumbing installation. Start pedestrian walkway & lighting foundations.

STATION - Continued electrical /communications bungalow wire installation & terminations. Completed platform paver installation. Started metal platform railing installation.

ENHANCEMENTS - No activity planned.

Alameda Station

STATION - Continued paver installation. Continued canopy metal roofing. Continued wire installation & terminations.

PARKING - Completed Level 2 columns/shear walls and level 2 deck. Started Level 3 deck. Started MSE Wall barrier rail. Completed electrical room CMU block walls.

Irwindale Station

STATION - Completed installation communications equipment and terminations. Completed metal railing installation. Started Communications LFAT testing.

PARKING - Completed site demolition and started site grading.

CIVIL - Completed steel picket fence installations at Wall 'A', continued Wall 'C', and started Wall 'D' installations.

STRUCTURES - *M&O Building* - Completed interior doors & glazing. Completed exterior metal panels. Continued elevators. Continued acoustical ceiling tile installation. Completed bathroom tile installation and plumbing finishes. *Car Wash* - Completed installation of car wash equipment. *Cleaning Platform* - Continued communications installation. Completed tile and bathroom finishes. *MOW Building* - Completed solar panels, continued communications installation. *Fire Tank* - Installed roof and start MEP testing.

OCS - Continued OCS wire installations. Started OCS testing.

TRAIN CONTROL - Continued LFAT testing.

Duarte Station

STATION - Started painting metal railings.

PARKING - Continued communications equipment installation. Completed installation of cabs. Started painting and anti-graffiti coating.

Maintenance & Operations

Monrovia Station

STATION - Completed communications wire terminations. Completed painting metal railing. Started artwork installation.

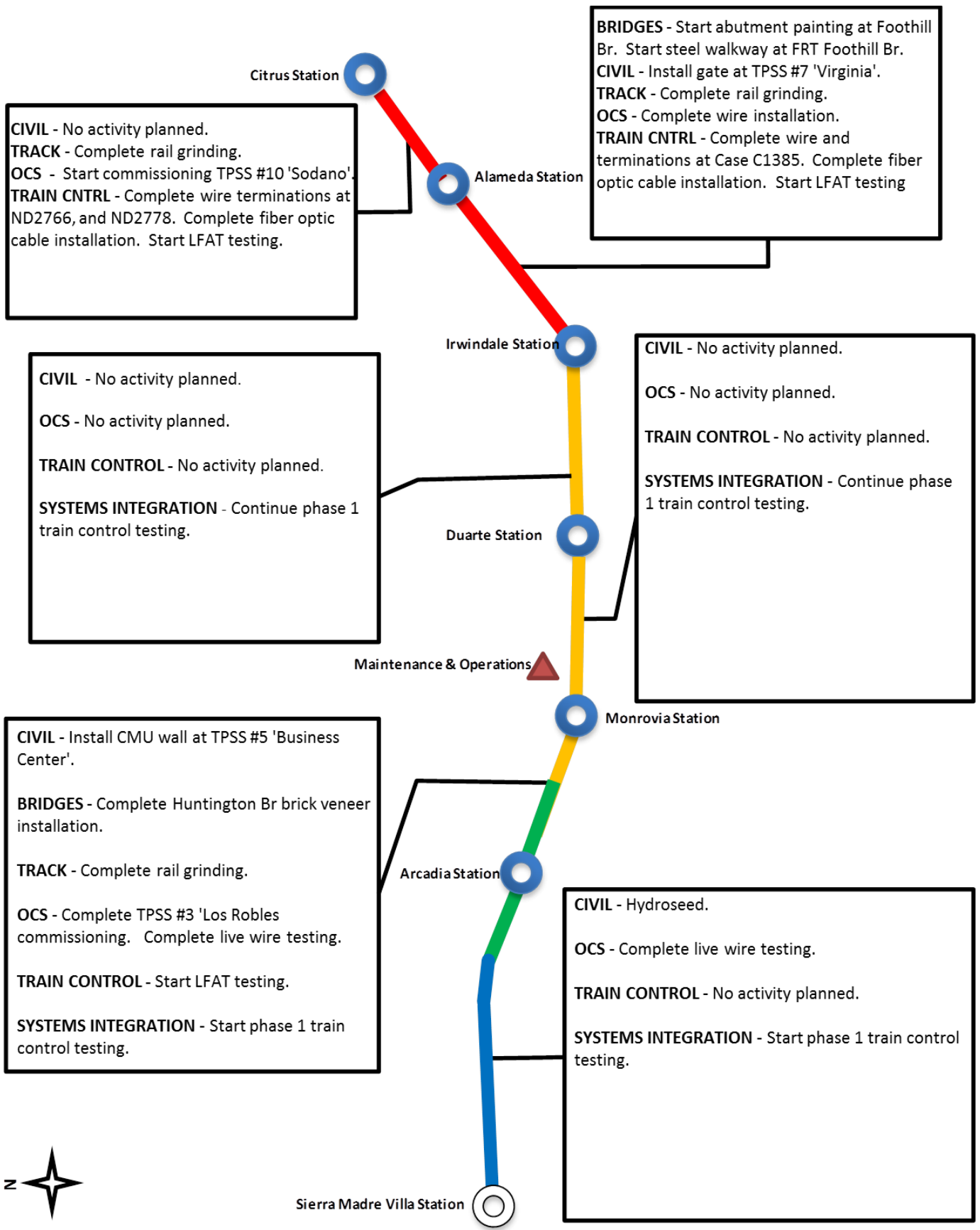
PARKING - Completed painting structure exterior. Completed installation of elevator cabs. Continued

Arcadia Station





ALIGNMENT CONSTRUCTION PROGRESS NEXT PERIOD





FACILITY CONSTRUCTION PROGRESS NEXT PERIOD

Citrus Ave Station

STATION - Continue communications bungalow wire terminations. Complete metal roofing installation. Start CCTV/PA/Fire Alarm/Telephone installation. Start metal railing installation.
PARKING - Complete elevator glazing installation. Continue fire protection installation. Continue electrical equipment installation. Continue sewer installation. Start elevator cab installations. Continue CCTV/PA/Fire Alarm/Telephone installation.

STATION - Start CCTV/PA/Fire Alarm/Telephone installation. Start metal picket fence. Complete metal platform railing installation. Complete wire & terminations.
ENHANCEMENTS - Start site demolition.

Alameda Station

STATION - Complete paver installation. Complete canopy metal roofing installation. Continue wire installation & terminations. Start installation of communications devices.
PARKING - Complete Level 3 deck. Complete elevator steel hoistway and stairs. Start installation of electrical equipment. Start elevator cab installations.

Irwindale Station

STATION - Complete Communications LFAT testing.
PARKING - Start installation of underground conduits. Start light pole bases. Start curbs.

CIVIL - Complete paving. Complete steel picket fence installations at Wall 'C', 'D' and start Wall 'B' and 3M fence installations. Start North East Plaza demolition and grading.
STRUCTURES - *M&O Building* - Complete elevators. Complete acoustical ceiling tile installation. Complete fiber optic cable. Complete fire alarms. Start shop DC switch board. *Car Wash* - Complete wire terminations and communications installation. *Cleaning Platform* - Complete glazing and door installations. Complete communications installation. Complete tile and bathroom finishes. *MOW Building* - Complete communications installation. *Material Storage* - Complete communications installation. *Guard House* - Start foundation. *Fire Tank* - Install roof and start MEP testing.
OCS - Complete wire installations. Complete testing.
TRAIN CONTROL - Complete LFAT testing.

Duarte Station

STATION - Complete painting metal railings. Continue Communications LFAT testing.
PARKING - Complete CCTV/PA/Fire Alarm/Telephone installation. Start installation of signs and start paint markings.

Maintenance & Operations

Monrovia Station

STATION - Continue communications wire terminations. Complete painting metal railing. Complete artwork installation. Start LFAT testing
PARKING - Complete CCTV/PA/Fire Alarm/ Telephone installation.

Arcadia Station





ALIGNMENT CONSTRUCTION IMAGES

Segment 1: Wayside Sign Installation



Segment 2: Arcadia Station - Grading Work

Segment 3: Duarte Station - Guardrail Painting





ALIGNMENT CONSTRUCTION IMAGES (CONTINUED)



Segment 4: Azusa-Citrus Station -
Canopy Roof Panel Installation

Operations Campus: Paving



Operations Campus: First Vehicle in Building



Change Management Log

Date: 4/1/2015

Page: 1 of 5

Project: C1135 Alignment - FTC Contract #: C1135

Original Contract Amount:	\$485,867,000				
Approved Change Orders:	\$19,249,088	3.96%	Pending Change Orders:	\$0	0.00%
Current Contract Total:	\$505,116,088		Pending Contract Total:	\$505,116,088	3.96%

Change Orders

Number	Change Management	Title	Initiated Date	Approved Date	Outstanding Days	Time Extension	Amount
EXECUTED Change Orders							
001.00	000.00	Interim NTP	11/3/2011	11/3/2011	0		\$0
002.00	013.00	Colorado Bridge Haz Mat	5/17/2012	5/18/2012	1		\$121,382
002.01	013.01	Colorado Bridge HazMat - Final	9/5/2012	9/7/2012	2		\$13,164
003.00	001.00	Sound Wall Deletion - Duarte Road	7/12/2012	7/18/2012	6		(\$74,707)
004.00	018.00	Revise Block Design - CBD Calc	8/23/2012	8/29/2012	6		\$3,986
004.01	018.01	Revise Block Design - CBD Calc - 2	9/5/2013	9/11/2013	6		\$0
005.00	023.00	Wayside Signal Aspect Revision	9/6/2012	9/7/2012	1		\$26,072
005.01	023.01	Wayside Signal "Call On" Function	10/30/2013	11/1/2013	2		\$75,169
006.00	040.00	Arcadia Frieze, Bench-Artist Design	9/6/2012	9/10/2012	4		\$13,683
006.01	040.01	Arcadia Frieze, Bench-Construction	3/7/2013	3/12/2013	5		\$155,894
007.00	019.02	Soils Testing Abutments & Fdns	9/14/2012	9/18/2012	4		\$44,993
008.00	041.00	Unknown Utilities RFCN 005 006 008	9/14/2012	9/18/2012	4		\$132,450
009.00	038.00	Illuminate City Names @ Stations	9/18/2012	9/24/2012	6		\$184,657
010.00	046.00	SGRB - Lead Based Paint Remediation	9/21/2012	9/24/2012	3		\$244,536
011.00	004.00	Station Architectural Changes	10/11/2012	10/12/2012	1		\$443,950
012.00	003.01	Systems and Testing for Added TPSS	12/13/2012	12/14/2012	1		\$1,443,193
013.00	005.02	IDIQ Comm Contract (Rev 2)	12/14/2012	1/22/2013	39		\$698,259
014.00	060.00	Sewer Encasement Changes in Azusa	12/18/2012	1/24/2013	37		\$141,354
015.00	037.02	M&O - Materials Storage Revisions	12/26/2012	1/15/2013	20		\$62,862
015.01	037.03	M&O Storage Shelving Revisions	9/16/2013	9/19/2013	3		\$20,380
016.00	002.00	Relocation of Access Road to 3M Fac	12/26/2012	1/16/2013	21		\$53,814
017.00	025.00	3 Electrical Casings for ALW	2/27/2013	3/1/2013	2		\$219,033
018.00	073.00	Hazardous Abatement at Bridges	1/15/2013	2/6/2013	22		\$1,081,803
019.00	054.00	City of Hope Conduits	1/11/2013	1/22/2013	11		\$34,313
020.00	059.00	Citrus TPSS Transformer Pad Changes	2/6/2013	2/7/2013	1		\$34,536
021.00	075.00	Demo & Replace Palm Dr. Roadway	2/7/2013	2/14/2013	7		\$90,365
022.00	077.00	M&O Differing Site Conditions; Pt 1	2/13/2013	2/15/2013	2		\$66,360
022.01	093.00	M and O DSC T and M Work Part 2	3/8/2013	3/12/2013	4		\$66,625
022.02	103.00	M and O DSC Part 3	3/27/2013	3/28/2013	1		\$35,211
022.03	115.00	DSC at M and O Part 4	5/3/2013	5/7/2013	4		\$5,706
023.00	089.00	Contaminated Soil Abatement	2/26/2013	2/27/2013	1		\$422,068
024.00	068.00	Monrovia Sound Wall Panel Change	2/26/2013	2/28/2013	2		(\$24,150)
025.00	052.00	Santa Anita Trail Detour	3/8/2013	3/12/2013	4		\$27,691
026.00	070.00	Block Type Change at M&O Building	3/26/2013	3/26/2013	0		\$35,016
027.00	065.00	M&O IT Changes-Duct Banks/Conduits	3/26/2013	3/26/2013	0		\$88,650
027.01	065.01	M&O IT Changes - Power to WAP	9/4/2013	9/6/2013	2		\$73,049
027.02	065.02	M&O IT Changes - Remaining Work	7/16/2014	7/17/2014	1		\$155,991
028.00	039.01	Delete Layover Building	4/11/2013	4/12/2013	1		(\$313,832)
029.00	095.00	8in Sanitary Sewer Line- Alameda Av	4/23/2013	4/25/2013	2		\$226,089
029.01	095.01	Alameda Sewer Line Revised Scope	11/22/2013	11/26/2013	4		(\$37,425)
030.00	102.00	M&O-Disconnect Switches, Insulators	4/23/2013	4/25/2013	2		\$67,817
031.00	110.00	Rmv Abandoned Utility Line @ Dalton	4/23/2013	4/25/2013	2		\$1,562
032.00	104.00	Highland Ave Abandoned CMP sleeves	5/1/2013	5/3/2013	2		\$15,005
033.00	114.00	Remove contaminated wood culvert	5/3/2013	5/7/2013	4		\$4,714
034.00	128.00	M&O Backup Power/Generator Changes	5/13/2013	5/21/2013	8		\$121,340



Change Management Log

Date: 4/1/2015

Page: 2 of 5

Project: C1135 Alignment - FTC Contract #: C1135

Change Orders

Number	Change Management	Title	Initiated Date	Approved Date	Outstanding Days	Time Extension	Amount
EXECUTED Change Orders							
035.00	083.00	M&O Vehicle Sanding System Changes	5/21/2013	5/24/2013	3		\$27,463
036.00	006.00	IFS Related Contract Changes	6/7/2013	6/11/2013	4		(\$263,111)
037.00	137.00	CTS Redesign	7/12/2013	7/16/2013	4		\$58,214
038.00	138.00	Segment 4 Safety Manager	7/12/2013	7/16/2013	4		\$157,274
038.01	138.01	Segment 4 Safety manager - Part 2	11/19/2013	11/21/2013	2		\$72,963
038.02	138.02	Segment 4 Safety Manager - Part 3	4/3/2014	4/7/2014	4		\$82,271
039.00	085.00	M&O Drainage System Enhancements	7/19/2013	8/13/2013	25		\$251,579
040.00	067.00	Station Paver Changes	7/23/2013	8/13/2013	21		\$728,340
040.01	067.01	Rebar Changes for Station Pavers	10/28/2013	10/31/2013	3		\$10,586
041.00	112.00	12" Pasadena Waterline Potholes	8/12/2013	8/16/2013	4		\$19,735
042.00	150.00	Demo Abandoned Water Lines @ Dalton	8/12/2013	8/16/2013	4		\$5,937
043.00	007.01	Emer. Backup for Guideway Lighting	8/16/2013	10/1/2013	46		\$359,158
044.00	172.00	Contaminated Wood Culvert Sta. 1202	8/27/2013	8/28/2013	1		\$7,712
045.00	139.00	BLS Changes	8/28/2013	9/4/2013	7		\$110,801
046.00	165.00	Azusa-Alameda Station; 2nd Portal	8/28/2013	9/4/2013	7		\$77,175
047.00	145.00	St. Joseph drainage enhancements	9/4/2013	9/6/2013	2		\$17,592
048.00	149.00	M&O - Lights at NW Corner Park	9/4/2013	9/6/2013	2		\$29,351
049.00	174.00	TPSS #5 Cal-Am Power Conflict	9/4/2013	9/6/2013	2		\$127,260
050.00	171.00	Relocate Access Stair to Foothill	9/4/2013	9/6/2013	2		\$20,276
051.00	173.00	Dalton 8" Water Line Work	9/5/2013	9/12/2013	7		\$35,316
052.00	071.00	Duarte Rd Screen Wall Change	9/5/2013	9/17/2013	12		(\$133,864)
053.00	176.00	Remove Contaminatd Wood-Buena Vista	9/10/2013	9/12/2013	2		\$5,543
054.00	147.00	DECCO Bypass	9/10/2013	9/12/2013	2		\$18,519
055.00	166.00	Foothill Blvd. Water/SD Relocation	9/20/2013	9/20/2013	0		\$127,074
056.00	186.00	Contaminated Wood @ San Gabriel Ave	9/23/2013	9/24/2013	1		\$4,291
057.00	194.00	California/Duarte Water Line Work	10/28/2013	10/31/2013	3		\$220,743
058.00	189.00	Four Utility Changes	10/28/2013	10/31/2013	3		\$14,157
059.00	180.00	Remove/Dispose of ACM E of Highland	10/30/2013	11/1/2013	2		\$29,311
060.00	179.00	CTS Upgrade to OC-192	10/30/2013	11/1/2013	2		\$112,543
061.00	213.00	Irwindale On-ramp Stockpile	11/8/2013	11/21/2013	13		\$200,185
062.00	053.00	Delete Totten Tubes Scope of Work	11/8/2013	11/21/2013	13		(\$143,801)
063.00	146.00	Home Depot Striping and Signing	11/15/2013	11/21/2013	6		\$21,003
064.00	204.00	Unknown Duct Bank @ San Gabriel Ave	11/15/2013	11/21/2013	6		\$1,265
065.00	140.00	M&O-Overhead Work Platform Changes	12/5/2013	12/16/2013	11		\$317,656
066.00	217.00	Buried SD & Headwall, STA 1306+50	12/6/2013	12/17/2013	11		\$1,020
067.00	219.00	Contaminated Soil, Monrovia Station	12/12/2013	12/17/2013	5		\$17,503
068.00	220.00	DSC at Sawpit Wash Abutments	12/12/2013	12/17/2013	5		\$12,668
069.00	188.00	Costco Emergency Gate-Path to POS	1/21/2014	1/22/2014	1		\$19,882
070.00	214.00	M&O - Generator Load Bank	1/21/2014	1/22/2014	1		\$38,092
071.00	224.00	Alameda South Water Line Tie-in	1/30/2014	1/31/2014	1		\$6,330
072.00	202.00	Aesthetic Lighting Provisions-SGRB	2/3/2014	2/4/2014	1		\$27,055
073.00	160.00	Move Mountain Interlocking Bungalow	2/11/2014	2/13/2014	2		\$68,596
074.00	200.00	M&O Parts Carousel Warranty & PM	2/11/2014	2/13/2014	2		\$68,906
075.00	235.00	Remove Contaminated Wood Ties	2/14/2014	2/18/2014	4		\$4,571
076.00	234.00	Accelerate Work at California Ave	2/14/2014	2/18/2014	4		\$5,663
077.00	247.00	Line Stop in California	2/18/2014	2/20/2014	2		\$14,524
078.00	201.00	Added Sound Wall, SW of IFS	2/27/2014	2/28/2014	1		\$18,201
079.00	238.00	M&O-MOW Canopy Structural Eval	2/27/2014	2/28/2014	1		\$7,147
079.01	238.01	M&O - MOW Canopy Solar	8/20/2014	8/26/2014	6		\$714,659
080.00	232.00	Car Moving Tractor-Coupler Upgrade	2/27/2014	2/28/2014	1		\$177,145



Change Management Log

Date: 4/1/2015

Page: 3 of 5

Project: C1135 Alignment - FTC Contract #: C1135

Change Orders

Number	Change Management	Title	Initiated Date	Approved Date	Outstanding Days	Time Extension	Amount
EXECUTED Change Orders							
081.00	242.00	Car Moving Tractor Options/Features	2/27/2014	2/28/2014	1		\$69,099
082.00	091.00	Rockvale Water Line Mitigation	3/4/2014	3/5/2014	1		\$163,750
082.01	091.01	Rockvale Water Line-EIC credit	4/11/2014	4/14/2014	3		(\$5,391)
083.00	251.00	Cut and Move Rail to Segment 1	3/4/2014	3/5/2014	1		\$249,934
084.00	218.00	Delete Equipment at ROC	3/26/2014	3/27/2014	1		(\$91,708)
085.00	239.00	Install Sound Wall Door @ STA. 1169	3/26/2014	3/27/2014	1		\$12,737
086.00	250.00	Change Top Row of Block Wall 1124.1	3/26/2014	3/27/2014	1		\$3,688
087.00	229.00	Irwindale TPSS-Adjust Eqpt. Layout	4/3/2014	4/7/2014	4		\$17,878
088.00	262.00	Provisional Sum Adjustment	4/3/2014	4/7/2014	4		\$0
088.01	262.01	Provisional Sum Adjustment - 2	9/19/2014	9/25/2014	6		\$0
088.02	262.02	Provisional Sum Adjustment - 3	11/12/2014	11/14/2014	2		\$0
088.03	262.03	Provisional Sum Adjustment - 4	3/19/2015	3/19/2015	0		\$0
089.00	261.00	Longer DF Bolts - SGRB	4/3/2014	4/7/2014	4		\$17,331
090.00	169.02	M&O Trimming Table Changes (rev. 2)	4/11/2014	4/14/2014	3		\$54,083
091.00	181.00	Alameda Utility Changes	4/11/2014	4/14/2014	3		(\$9,599)
092.00	241.00	Business Center TPSS Crane Changes	4/23/2014	4/28/2014	5		\$13,655
093.00	276.00	Myrtle Early Completion Incentive	4/23/2014	4/28/2014	5		\$160,000
094.00	254.00	Drainage East of Pasadena Ave.	4/23/2014	4/28/2014	5		\$6,569
095.00	275.00	Remove Rail Ties at 1st/Santa Clara	4/23/2014	4/28/2014	5		\$2,270
096.00	274.00	Buried Concrete @ Huntington Bridge	4/23/2014	4/28/2014	5		\$2,819
097.00	269.00	Asbestos Pipe at Duarte and Myrtle	4/23/2014	4/28/2014	5		\$6,583
098.00	278.00	Abandoned Gas Line at California	5/6/2014	5/7/2014	1		\$8,170
099.00	170.00	M&O Car Wash Betterments	5/6/2014	5/7/2014	1		\$166,144
100.00	223.00	M&O-Volume Control for PA Speakers	5/6/2014	5/7/2014	1		\$38,105
101.00	283.00	Track Work Around at Mountain Ave	5/6/2014	5/7/2014	1		\$29,996
102.00	284.00	Install 115# Buffer Rails in Seg. 1	5/6/2014	5/7/2014	1		\$29,442
103.00	230.00	Azusa-Citrus Ped Crossing Operation	5/6/2014	5/7/2014	1		\$84,183
104.00	231.00	Red Signal Violation Indication	6/3/2014	6/3/2014	0		\$335,134
105.00	253.00	Remove Stem Wall along Duarte Rd.	6/11/2014	6/12/2014	1		\$37,527
106.00	271.00	DVR Changes	7/16/2014	7/17/2014	1		\$181,301
107.00	260.00	M&O Supplemental Fire Water System	7/16/2014	8/4/2014	19		\$1,642,824
108.00	163.00	1st/Santa Clara Grade X-ing Changes	7/25/2014	7/30/2014	5		\$156,177
109.00	164.00	M&O Body Shop Changes	7/25/2014	8/4/2014	10		\$488,598
110.00	256.00	Monrovia North Bungalow LCP Changes	7/25/2014	7/30/2014	5		\$125,313
111.00	237.00	M&O-Signaling System Changes	7/29/2014	8/4/2014	6		\$1,133,746
112.00	252.00	Irwindale Security Kiosk Provisions	8/4/2014	8/6/2014	2		\$178,044
112.01	252.01	Irwindale Security Kiosk - Part 2	2/9/2015	2/11/2015	2		\$47,168
113.00	281.00	M&O - Accent Colors	8/4/2014	8/6/2014	2		\$26,928
114.00	305.00	Lead Paint, Foothill Median Barrier	8/18/2014	8/20/2014	2		\$5,690
115.00	270.00	TES Load Flow Simulation	8/19/2014	8/21/2014	2		\$22,399
116.00	203.00	Mayflower Driveway/Wall Credit	8/20/2014	8/26/2014	6		(\$19,138)
117.00	307.00	Contaminated Wood Ties-Santa Anita	8/20/2014	8/26/2014	6		\$3,226
118.00	082.01	M&O / 3M Fence Revisions (rev 1)	9/17/2014	9/25/2014	8		\$886,650
119.00	314.00	Mountain Early Completion Incentive	9/17/2014	9/24/2014	7		\$80,000
120.00	301.00	Santa Anita Avenue Bridge Artwork	9/17/2014	9/25/2014	8		\$57,224
121.00	313.00	Additional Traffic Signal Testing D	9/19/2014	9/25/2014	6		\$7,875
122.00	320.00	Remove Asbestos Pipe at Virginia	11/12/2014	11/14/2014	2		\$9,485
123.00	303.00	Additional Anti-Graffiti Coating	12/8/2014	12/8/2014	0		\$63,727
124.00	326.00	Santa Anita Avenue Bridge Lighting	12/8/2014	12/8/2014	0		\$208,633
124.01	326.01	Santa Anita Bridge Lighting-Part 2	1/16/2015	1/19/2015	3		\$5,744



Change Management Log

Date: 4/1/2015

Page: 4 of 5

Project: C1135 Alignment - FTC Contract #: C1135

Change Orders

Number	Change Management	Title	Initiated Date	Approved Date	Outstanding Days	Time Extension	Amount
EXECUTED Change Orders							
125.00	335.00	M&O - Interior Wall Revisions	12/18/2014	12/19/2014	1		\$43,786
126.00	304.00	M&O Lobby Aesthetic Changes	12/18/2014	12/19/2014	1		\$128,047
127.00	292.00	M&O - Guard House Changes	12/19/2014	12/19/2014	0		\$65,463
128.00	339.00	Mountain Ped. Crossing Changes	1/8/2015	1/12/2015	4		\$96,159
129.00	340.00	Business Center TPSS Drainage	1/16/2015	1/19/2015	3		\$249,959
130.00	255.00	Virginia TPSS Access Road	1/8/2015	1/12/2015	4		\$39,718
131.00	291.00	Eliminate 'Train Coming' Signs	1/8/2015	1/12/2015	4		\$9,325
132.00	322.00	Replace Existing OCS Pole at SMV	1/16/2015	1/19/2015	3		\$27,010
133.00	187.01	Irwindale Ramp Signs	1/20/2015	1/26/2015	6		\$125,015
134.00	346.00	Delay in Setting of Yard Substation	1/20/2015	1/26/2015	6		\$15,181
135.00	344.00	Virginia TPSS-Access for Delivery	1/30/2015	2/2/2015	3		\$67,019
136.00	328.00	Rail Profile Grinding	2/9/2015	2/18/2015	9		\$524,000
137.00	065.03	M&O Main Building Comm. Room Floors	2/17/2015	2/17/2015	0		\$4,402
138.00	353.00	1st/Santa Clara Noise Mitigations	2/17/2015	2/17/2015	0		\$13,889
139.00	323.00	Add Pavers to Duarte Station W Ramp	2/18/2015	2/18/2015	0		\$31,982
140.00	338.00	M&O-Wheel Truing Machine Car Puller	2/19/2015	2/19/2015	0		\$83,112
141.00	258.00	M&O Tactile Guidance Changes	2/23/2015	2/26/2015	3		\$203,945
142.00	352.00	M&O - Fire Alarm System	2/23/2015	2/26/2015	3		\$238,983
143.00	351.00	Sierra Madre Track Rehab	2/23/2015	2/26/2015	3		\$18,107
144.00	349.00	Remove water line east of Highland	2/23/2015	2/26/2015	3		\$4,648
145.00	360.00	M&O Facility - Yard Control Console	3/2/2015	3/3/2015	1		\$23,158
146.00	359.00	Generators for Testing-SRGB to IRW	3/2/2015	3/3/2015	1		\$6,758
147.00	325.00	Station Identifier Changes	3/23/2015	3/25/2015	2		\$4,712
148.00	345.00	Irwindale Signal Case & Push Button	3/24/2015	3/25/2015	1		\$111,110
149.00	296.00	M&O Service Vehicle Pathways	3/26/2015	3/30/2015	4		\$164,480
Subtotal:							\$19,249,088
Subtotal:							\$19,249,088
Total:							\$19,249,088

Open PCOs

PCO Number	Title
OPEN	
022.04	M&O IT Changes - Furniture Interface
029.00	Del. Irwindale/Gladstone Mitigation
075.01	Add 2 ETELS to Duarte Parking Lot
080.00	Delete Evergreen / Myrtle Mitigation
085.00	Joseph TPSS Power Feed Credit
087.00	ETEL/PTEL Faceplate Betterment
091.00	UP Tunnel Analysis & Modifications
092.00	Abandoned California Water Lines
098.00	M&O Facility - NW Corner Changes
100.00	Change Wayside Operational Signage
101.00	Peck Road Ramp
103.00	Tactile Guidance Tile at Stations
104.00	Striping/Signs at Station Ped Xings
107.00	Add APS @ 2 intersections in Duarte
108.00	M&O - Move East Lobby Wall

Open RFCs

RFC Number	Title
OPEN	
051.00	Irwindale Ramp CSP
075.00	Grade X-ing Train Signal Changes CS
078.00	Addl Fence To Close Gaps at Alignmn
088.00	Programming Changes for SCRRA Exit
093.00	Blk Wall Finish In the MO Fac CSP
101.00	Changes to MO Landscapping CSP
102.00	Foothill Yard MOW Track Fouling Iss
107.00	CTS Equipment Balance Due for IDIQ



Change Management Log

Date: 4/1/2015

Page: 5 of 5

Project: C1135 Alignment - FTC Contract #: C1135

Open PCOs

PCO Number	Title
OPEN	
109.00	M&O Early Completion Milestone

Open RFC Notices

Number	Title
037.00	DSC at Santa Anita Wash Abutment 1
044.00	DSC Utility at Azusa Avenue
086.00	Ground Grid Damaged at Citrus TPSS
098.00	Housekeeping Pads for Electrical Eq
099.00	Dispose of Haz Mat at Angelino Ave
100.00	MO Yard Signage Changes
105.00	MO Facility Blow Down Pit Grating C
109.00	MO Main Entrance Changes



Description: Intermodal Parking Facilities & Enhancements **Status:** March 15, 2015

Contract No.: C1150

Contractor: Webcor Builders

Progress Completed This Period

Design

- Submit AFC Design - Irwindale Enhancements (full set)

Activities Planned Next Period

Design

- Submit AFC Design - Signage

Areas of Concern

- **IRWINDALE PARKING STRUCTURE RECOVERY** - The Design-Build Contractor has started to accelerate the Irwindale parking structure and has made a significant improvement by implementing a 6-day work week schedule. The Design-Build Contractor is currently on pace to complete the concrete structure and provide access to the C1135 - Alignment Design-Build Contractor before May 2015.

Areas of Concern (Continued)

DUARTE PARKING LOT PROCUREMENT - In February 2015, the light pole procurement was incorporated into the Design-Build Contractor's schedule, and the projected duration for delivery was estimated to be four (4) months. As a result, there was a potential 1.5 month delay to the Substantial Completion milestone. In March 2015, the Design-Build Contractor revised the procurement duration to depict an expedited delivery of the light poles to minimize potential impacts to the Substantial Completion milestone.



Description: Intermodal Parking Facilities & Enhancements **Status:** March 15, 2015

Contract No.: C1150

Contractor: Webcor Builders

Cost Summary:

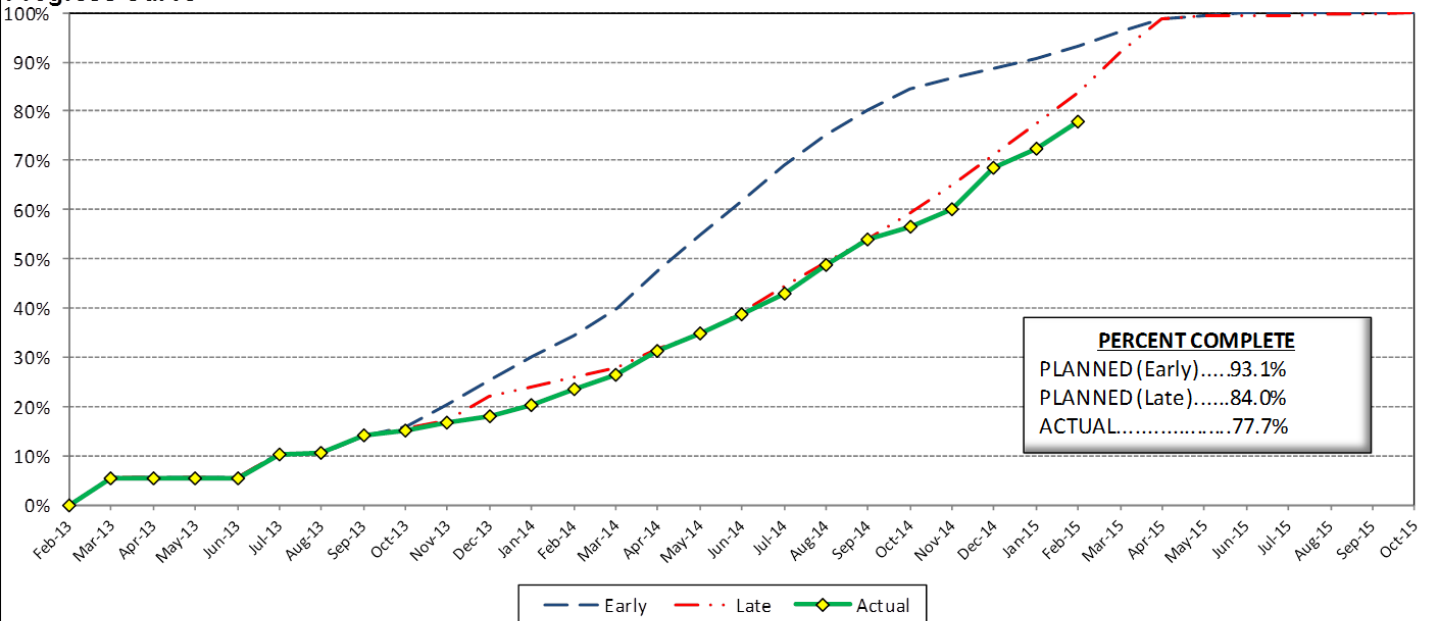
	Million(s)
CONTRACT	
Contract Award Value:	48.8
Executed Change Orders:	0.9
Current Contract Value:	49.7
Potential Change Orders:	0.5
Current Forecast:	50.2
Earned Value/Actual Cost	38.7
AUTHORIZATION FOR EXPENDITURE	
Budget	50.3
Commitment	49.7
Balance	0.0

Cost Assessment:

This period, the current cost forecast is 50.3 Million and increased 248 thousand from the previous period. The increase is due to RFC 016 - *Irwindale Added Fire Hydrant*. The current forecast is within the authorized budget. The remaining budget is 38 thousand.

Although a 90 day time extension was granted, the Design-Build Contractor remains behind the revised plan due to schedule delays at the Irwindale site. In addition, the Design-Build Contractor has delayed the completion of the electrical testing, signage, striping at the Arcadia and Monrovia sites. Furthermore, the Duarte and Alameda sites have had minimal work and started as late as possible. In order to recover for an on schedule completion of June 2015, the Design-Build Contractor will need to progress 14% over the next period.

Progress Curve



Schedule Summary:

Contract Award:	02/27/13	
Notice to Proceed (NTP) :	03/20/13	
Original Contract Duration:	845	Calendar Days
Current Contract Duration:	935	Calendar Days
Elapsed Time from NTP:	725	Calendar Days

Contract Milestones

Milestones	Description	Original Contract	Current Contract	Forecast	Variance
1	Substantial Completion	03/15/15	06/13/15	06/12/15	1
2	Punchlist Complete	05/29/15	08/27/15	08/26/15	1
3	Final Completion	07/13/15	10/11/15	10/10/15	1
4	TPSS Work	03/01/14	03/01/14	3/31/2014 A	(30)

Schedule Assessment:

The Design-Build Contractor continues to successfully manage the schedule mitigation effort at the Irwindale parking structure site. In addition, the Duarte parking lot and Alameda enhancements are back on schedule for completion due to expedited fabrications for bus shelters and light pole procurements. The schedule progress at the Citrus parking structure slipped due to elevator hoistway delays.

The critical path is currently running through the Irwindale parking structure Level 3 deck. The secondary critical path is currently running through the Citrus parking structure elevator glazing installation.



PARKING FACILITY CONSTRUCTION IMAGES



Arcadia Parking Structure Site Overview



Monrovia Parking Structure Site Overview



PARKING FACILITY CONSTRUCTION IMAGES

Duarte Parking Lot Site Overview



Irwindale Parking Structure Site Overview

Azusa-Citrus Parking Structure Elevator Hoistway





Change Management Log

Date: 4/1/2015

Page: 1 of 2

Project: C1150 Parking - Webcor Contract #: C1150

Original Contract Amount:	\$48,750,000				
Approved Change Orders:	\$1,000,745	2.05%	Pending Change Orders:	\$0	0.00%
Current Contract Total:	\$49,750,745		Pending Contract Total:	\$49,750,745	2.05%

Change Orders

Number	Change Management	Title	Initiated Date	Approved Date	Outstanding Days	Time Extension	Amount
EXECUTED Change Orders							
001.00	001.00	Monrovia Parking Alternative Layout	6/25/2013	7/11/2013	16		\$21,382
001.01	001.01	Monrovia Alternative - Cancellation	9/17/2013	10/7/2013	20		(\$12,006)
002.00	003.00	Clock Tower Procurement	7/3/2013	7/11/2013	8		\$107,246
003.00	002.00	Relocate Elevator @ Azusa-Citrus PF	12/18/2013	1/8/2014	21		\$159,899
004.00	013.00	Irwindale Structure Relocation	1/23/2014	8/28/2014	217	90	(\$65,564)
005.00	018.00	Monrovia Demo Unforeseen Conditions	3/18/2014	3/26/2014	8		\$17,013
006.00	010.00	Arcadia Transit Plaza Betterments	3/14/2014	3/26/2014	12		\$35,466
007.00	009.01	Irwindale Intersection Betterments	3/25/2014	3/26/2014	1		\$19,985
008.00	017.00	Irwindale Intersection Water Line	3/25/2014	4/14/2014	20		\$7,748
009.00	020.00	Unforeseen Underground Demo-Arcadia	6/13/2014	7/9/2014	26		\$6,313
010.00	011.00	Soldano TPSS Added ROW Fence	7/24/2014	7/28/2014	4		\$8,481
011.00	024.00	SCE Power Feed to DB2 Arcadia TPSS	7/24/2014	7/28/2014	4		\$17,199
012.00	025.00	Additional Sidewalk at Arcadia	7/24/2014	7/28/2014	4		\$3,342
013.00	006.00	St. Joseph Drainage Enhancements	7/31/2014	7/31/2014	0		\$139,488
014.00	012.00	Additional Conduit Provisions	8/13/2014	9/3/2014	21		\$57,262
015.00	030.00	Unforeseen Conditions at Michillind	8/22/2014	8/28/2014	6		\$1,643
016.00	019.00	Parking Facility Artwork	8/27/2014	8/28/2014	1		\$75,850
017.00	034.00	Michillinda Conduit Demo & Pull Box	11/12/2014	11/20/2014	8		\$31,506
018.00	016.00	Monrovia Canopies & Banding Color	12/19/2014	12/29/2014	10		\$247,577
019.00	035.00	Irwindale CCTV Pole	12/29/2014	1/5/2015	7		\$6,220
020.00	039.00	Engineering Costs for Arcadia Clock	12/17/2014	12/29/2014	12		\$5,292
021.00	008.00	Azusa-Citrus Plaza Pavers	1/5/2015	1/13/2015	8		\$7,350
022.00	038.00	Temporary Power for Irrigation at M	1/7/2015	1/13/2015	6		\$1,465
023.00	037.00	Additional Slurry for City of Arcad	1/7/2015	1/13/2015	6		\$7,460
024.00	033.00	Elevator Holding Tanks	3/25/2015	3/27/2015	2		\$76,833
025.00	029.00	Metro-Requestd Elevator Vent Detail	2/12/2015	2/12/2015	0		\$11,553
026.00	041.00	Azusa Citrus Grand Pylon Power	2/13/2015	2/13/2015	0		\$4,742
Subtotal:							\$1,000,745
Subtotal:							\$1,000,745
Total:							\$1,000,745

Open PCOs

PCO Number	Title
OPEN	
013.00	Primrose Avenue cul-de-sac Deletion
014.00	Delete Azusa-Alameda Enhancements
017.00	Michillinda Pull Box Replacement
018.00	Irwindale Kiosk Foundation
019.00	Michillinda TPSS Architectural Mods

Open RFCs

RFC Number	Title
OPEN	
007.00	Added PME Switch & 2 Spare Conduits
011.00	Comm. Duct Bank Interface with DB2
012.00	SCE Capacitor Bank at Michillinda T
013.00	EDEL Enclosures
016.00	Irwindale Added FH for LACFD Code C



Change Management Log

Date: 4/1/2015

Page: 2 of 2

Project: C1150 Parking - Webcor Contract #: C1150

Open RFC Notices

Number	Title
023.00	Generator for Monrovia Elevators
024.00	Relocate Monrovia Jobsite Trailers
025.00	CCTV Scope at Duarte Surface Lot
026.00	Metro Requested Signage Changes
027.00	Irwindale Form Liner Product Change
028.00	Irwindale City Pole LED Upgrade



AZUSA TO MONTCLAIR SEGMENT

ACTIVITIES COMPLETED THIS PERIOD

Authority and City staff continued to hold coordination meetings to discuss the project. A draft of the Master Cooperative Agreement (MCA) was distributed to all cities for review in September 2014, after which all the cities met to discuss the terms of the MCA. The cities provided comments in early February 2015, and the cities and Authority met on February 18th to discuss these comments. The MCA is expected to be agreed upon by all parties by April 30, 2015. The Authority and cities are working together to meet this deadline.

The Authority also continued to hold meetings with the Station Design Art Review (SDAR) committees from each city. Last November, the Authority conducted a tour of the Gold Line Phase 1 artwork and the Phase 2A Arcadia Transit Plaza for all SDAR members. Each Station Artist has developed concepts for the Station Artwork based on research of the cultural, historical and natural characteristics of their Station Area. These concepts will be presented at the upcoming Community Open Houses.

This period, Authority staff worked on the following technical elements of the project:

- Continued advancement of the plan and profile drawings
- Continued right-of-way survey and drawings
- Continued geotechnical work
- Continued surveying work
- Continued Pomona parking facility conceptual design

KEY FUTURE ACTIVITIES

The advanced conceptual engineering process is an 18-month process. Upon completion, the Azusa to Montclair segment will be ready for a design-build procurement. Upcoming activities include continuing to attend coordination meetings with each corridor city, finalizing the city MCAs, development of the ROW drawing work, refinement of the alignment, completing the SDAR, holding open houses for each city, and completing the geotechnical investigations.

Federal Transit Administration (FTA)

The Metro Board of Directors excluded the Gold Line from seeking federal New Starts funding. The Authority will work together with Metro along with the Congressional delegation to seek funding to construct the extension following completion of the environmental review.



PHASE 2 FOOTHILL EXTENSION FINANCIAL STATUS

Project Operating Budget Summary in Millions of Dollars

March 31, 2015

	(a)	(b)	(c=a-b)	(d)
FINANCIAL PLAN	Current Budget	Funding Committed to Project	Uncommitted Funds	Revenues Received
SCAG	1.0	0.9	0.1	0.9
Interest Income	2.0	2.0	-	2.0
Bridge Replacement	13.9	13.9	-	13.9
Phase I Carryover	4.0	4.0	-	4.0
Maintenance and Operations Facility	-	-	-	-
Cities	11.0	-	11.0	-
Measure R - Pasadena to Azusa	810.5	777.0	33.5	493.5
Measure R - Azusa to Montclair	-	-	-	-
SANBAG	55.2	1.5	53.7	1.5
Federal TCSP	2.9	2.9	-	2.9
Federal Bus Intermodal Plan	9.0	9.0	-	4.8
Federal New Starts 2004 MTA Passthrough	4.0	4.0	-	4.0
Federal New Starts 2005 MTA Passthrough	0.5	0.5	-	0.5
Federal New Starts 2006 Corridor Study	2.5	2.5	-	2.5
Federal/Other	1,033.5	-	1,033.5	-
Total Revenues	1,950.0	818.2	1,131.8	530.5
	(a)	(b)	(c)	(d=a-b)
	Current Budget	Current Obligation	Current Expenditures	Current Available Balance
EXPENSES				
Program Management and Administration	108.9	99.0	98.7	9.9
Master Cooperative Agreements	11.0	3.3	2.8	7.7
Real Estate including ROW Acq	21.0	21.0	19.7	-
Special Programs	0.3	-	-	0.3
Procurement/Vehicles	60.0	-	-	60.0
Maintenance and Operations Facility Land	22.0	22.0	22.0	-
Construction - IFS	19.8	19.8	19.8	-
Construction - Pasadena to Azusa segment	328.9	328.9	310.4	-
Construction - Azusa to Montclair segment	1,181.0	-	-	1,181.0
Construction - M&O	47.0	44.0	37.3	2.0
Construction - Parking Structures	44.2	44.2	38.7	-
MTA Project Costs	64.0	64.0	14.3	-
Contingency	27.4	-	-	27.4
Project Reserve	14.5	-	-	14.5
Total Project	1,950.0	646.2	563.7	1,303.8