

# Westside Purple Line Extension Section 1 Project



**Metro**

# **WESTSIDE PURPLE LINE EXTENSION SECTION 1 PROJECT**

## **QUARTERLY PROJECT STATUS REPORT**

THE PREPARATION OF THIS DOCUMENT HAS BEEN FINANCED IN PART THROUGH A GRANT FROM THE U. S. DEPARTMENT OF TRANSPORTATION, FEDERAL TRANSIT ADMINISTRATION (FTA).

**MARCH 2015**

## TABLE OF CONTENTS

	Page No.
Project Summary.....	1
Project Overview & Status.....	2-4
Management Issues.....	5
Project Alignment by Sections.....	6
Project Alignment Section 1.....	7
Base Project Scope.....	8-10
Project Status	
• Project Schedule	
○ Key Milestones Six-Month Look Ahead.....	11
○ Project Summary Schedule.....	12
○ Schedule Measurements.....	13
○ Overall Construction Progress Curve.....	14
○ Major Equipment Delivery.....	15
○ Design-Builder’s (C0145) Long Lead Item List.....	16
○ Critical Path Narrative.....	17
○ Project Schedule Contingency Drawdown.....	18
○ Project Schedule Contingency Drawdown Analysis.....	18
• Project Cost	
○ Project Cost .....	19
○ Project Cost Analysis.....	19
○ Project Cost Contingency Drawdown.....	20
○ Project Cost Contingency Drawdown Analysis.....	19
○ Disadvantaged Business Enterprise (DBE).....	21
○ Project Labor Agreements (PLA) Status.....	22
○ Summary of Contract Modifications.....	23
• Financial/Grant	
○ Financial/Grant .....	24
○ Status of Funding.....	24
• Staffing	
○ Total Project Staffing.....	25
○ Metro Staffing.....	26


**TABLE OF CONTENTS (Continued)**

	Page No.
• Construction Management Services Consultant.....	26
• Engineering Management Services Consultant.....	27
• Real Estate.....	28
• Quality Assurance.....	28
• Environmental.....	29
• Construction Relations.....	30
• Creative Services .....	30
• Safety & Security.....	31
• Third Party Agreement & Status.....	32
• Advanced Utility Relocation Status.....	33
• Peak Hour and Nighttime Construction Variances.....	34
• Chronology of Events.....	36-36
• Construction Contracts	
o Contract C1034 Status.....	37
o Contract C1045 Status.....	38
o Contract C1048 Status.....	39
o Contract C1055 Status.....	40
o Contract C1056 Status.....	41
• Construction Photographs.....	42
Appendices	
• Cost and Budget Terminology.....	43
• List of Acronyms.....	44-47

**Westside Purple Line Extension Section 1 Project  
Quarterly Project Status Report**

**March 2015**

**PROJECT SUMMARY**

<b>LOCATION:</b> Los Angeles / Beverly Hills <b>DESIGN CONSULTANT:</b> Parsons / Brinckerhoff				<b>CONSTRUCTION MANAGEMENT CONSULTANT:</b> WEST, a Joint Venture <b>CONTRACTOR:</b> Skanska, Traylor and Shea, a Joint Venture			
<b>Utility Work on Wilshire Boulevard</b>				<b>WORK COMPLETED PAST MONTH</b>			
 <p>3/30/15 - 9:19 AM Contractor (SE Pipeline) installing fence behind a sound barrier on Wilshire Blvd, west of Ogden St, facing southwest.</p>				<ul style="list-style-type: none"> <li>- Continuing real estate acquisitions</li> <li>- C1045 Design/Build: Final design is underway</li> <li>- C1045 Design/Build: Received Revised Baseline Schedule, under review</li> <li>- C1045 Design/Build: Completion of site preparation work at Wilshire/Crenshaw Yard</li> <li>- C1045 Design/Build: Design survey and mapping have begun</li> <li>- C1055 Wilshire/Fairfax AUR: Waterline east of Fairfax continues</li> <li>- C1055 Wilshire/Fairfax AUR: Power east of Fairfax continues</li> <li>- C1056 Wilshire/La Cienega AUR: Submittals and material procurement underway</li> <li>- Finalizing C1045 MOA with City of Beverly Hills</li> </ul>			
<b>EXPENDITURE STATUS (\$ In Millions)</b>				<b>SCHEDULE ASSESSMENT</b>			
ACTIVITIES	CURRENT BUDGET	EXPENDED AMOUNT	PERCENT EXPENDED	MAJOR SCHEDULE ACTIVITIES	PRIOR PLAN	CURRENT PLAN	VARIANCE WEEKS
DESIGN	\$157.7	\$66.2	42.0%	<b>Environmental</b>			
				FEIS / FEIR	N/A	05/31/12	Complete
RIGHT-OF-WAY	\$175.6	\$95.8	54.6%	<b>Design</b>			
CONSTRUCTION	\$1,737.4	\$70.7	4.1%	PE Notice to Proceed	N/A	01/12/11	Complete
				Final Design complete	03/22/17	03/22/17	0
OTHER	\$1,078.7	\$77.3	7.2%	<b>Right-of-Way</b>			
TOTAL	\$3,149.4	\$310.0	9.8%	All parcels available	12/31/15	12/31/15	0
Current Budget includes Environmental/Planning and Finance Costs.				<b>Construction - Main Design / Build Contract</b>			
<b>AREAS OF CONCERN</b>				Notice to Proceed	01/12/15	01/12/15	0
				Construction complete	11/08/23	11/08/23	0
<b>ROW ACQUISITION</b>				<b>CRITICAL ACTIVITIES / 3 MONTH LOOK AHEAD</b>			
PERMANENT PARCELS	17	3	14	<ul style="list-style-type: none"> <li>- C1045 Design/Build: Planning and major submittal development</li> <li>- C1045 Design/Build: Wilshire/Western TBM Shaft 60% final design submittal</li> <li>- C1045 Design/Build: Wilshire/La Brea Station 60% final design submittal</li> <li>- C1045 Design/Build: La Brea North site preparation and temporary fencing</li> <li>- C1045 Design/Build: Begin geotechnical field investigations and continue survey</li> <li>- C1055 Wilshire/Fairfax AUR: Water line construction east of Fairfax</li> <li>- C1056 Wilshire/La Cienega AUR: Mobilize and begin power relocations</li> <li>- Finalize C1045 MOA with City of Beverly Hills</li> </ul>			
TEMPORARY PARCELS	1	0	1				
<b>TOTAL PARCELS</b>	18	3	15				

## **PROJECT OVERVIEW & STATUS**

*Section 1 of the Westside Purple Line Extension Project is the first of three sections to be designed and constructed as part of the Los Angeles County Metropolitan Transportation Authority (LACMTA) Measure R Program. The program was approved by Los Angeles County voters in November 2008 and provides a half-cent sales tax to finance new transportation projects. In April 2012, the three sections of the Project were environmentally cleared and adopted by LACMTA Board of Directors.*

*Section 1 will extend the existing Purple Line by 3.92 miles beginning at the Wilshire/Western Station. From this station, the twin tunnel alignment will travel westerly within the existing Wilshire Boulevard right-of-way. Stations will be located at the intersections of Wilshire/La Brea, Wilshire/Fairfax, and Wilshire/La Cienega. All three of the station boxes will be located within the Wilshire Boulevard right-of-way with station portals extending to off-street entrances. Two of the stations, Wilshire/La Brea and Wilshire/Fairfax are within the jurisdiction of the City of Los Angeles. The Wilshire/La Cienega Station is within the City of Beverly Hills jurisdiction.*

### **Design**

The Engineering Management Services (EMS) team continued to provide design support to the three Advanced Utility Relocation (AUR) contracts and to the Design/Build contract.

For the Wilshire/La Brea AUR Contract (C1048), the team continues to prepare record drawings to reflect C1048 as-built conditions. The information from these drawings is being incorporated into the Tunnels, Stations, Trackwork, Systems and Systems Integration Testing Contract (C1045) composite utility drawings. *The team received the as-built drawing standards manual from LADWP (Water), which will allow the team to proceed with the completion of the water record drawings.*

For the Wilshire/Fairfax AUR Contract (C1055), the team continues to support Metro in responding to Request for Information (RFI's) and submittals. The team continues to review potholing data from the contractor. A fulltime field engineering representative continues to support nighttime construction activities.

*For the Wilshire/La Cienega Station AUR Contract (C1056), the team is supporting Metro with traffic control requests for revised Worksite Traffic Control Plans to comply with the Memorandum of Agreement (MOA) between Metro and the City of Beverly Hills. The team is also providing support in discussions with the City of Los Angeles Department of Transportation where the traffic control plans extends beyond the City of Beverly Hills jurisdiction at San Vicente Boulevard.*

The team continues to provide support to Metro in the coordination with various third parties involved in the Division 20 Maintenance-of-Way (MOW) and the Non-Revenue Vehicle (NRV) Building 61S Contract (C1078). The team continues to meet with Metro weekly to discuss the latest developments on the environmental remediation for the building site and the specific utilities that are to be relocated or abandoned.

Attended bi-weekly task force meetings with Metro and the C1045 Contractor for Tunnels, Stations, Trackwork, Systems and Systems Integration Testing to resolve technical issues related to each design discipline and to summarize potential RFI's. An additional task force was created for Building Information Modeling (BIM) implementation.

*The team is assisting Metro in obtaining an MOA with the City of Beverly Hills for the C1045 contract.*

The C1045 Contractor, Skanska, Traylor and Shea (STS), has mobilized the final design team, Parson's Transportation Group (PTG).

The design work has been identified into six distinct design units. They are:

1. Design Unit 1 – Wilshire/Western Interface Chamber (Shaft)
2. Design Unit 2 – Wilshire/La Brea Station
3. Design Unit 3 – Wilshire/Fairfax Station
4. Design Unit 4 – Wilshire/La Cienega Station
5. Design Unit 5 – Tunnels
6. Design Unit 6 – Systems/Traffic/Trackwork

Each design unit package will be submitted and evaluated at each of the following phases; 60%, 85%, 100%, Approved for Construction (AFC) and Issued for Construction (IFC). If required, critical design units can be advanced as Advanced Partial Design Units (APDU's) to support ongoing construction activities.

Several design activities have begun with the involvement of nearly every discipline. Design task force meetings are occurring weekly related to design unit packages for the Wilshire/Western Interface Chamber, Wilshire/La Brea Station (including utilities), Tunnels and Systems/Civil/Trackwork. *An "over the shoulder" review meeting was held to review the progress of Design Unit 2, Wilshire/La Brea Station, and to solicit early comments.*

*STS is scheduled to submit by mid-April 2015 the 60% design submittal for Design Unit 1, Wilshire/Western Interface Chamber (Shaft). This will be followed by the 60% design submittal for Design Unit 2, Wilshire/La Brea Station, in May 2015.*

*The first draft of the Contract Baseline CPM Schedule was reviewed and comments were provided to STS. STS is to resubmit, followed by an "over the shoulder" review of the revised schedule.*

*STS is continuing with the required contractual submittals.*

**Major Contract Procurement**

The Division 20 Maintenance-of-Way (MOW) and the Non-Revenue Vehicle (NRV) Building 61S Contract (C1078) Invitation for Bid (IFB) was issued on September 19, 2014. Amendment 1 was issued on October 31, 2014, which extended the due date for bids from December 5, 2014 to January 16, 2015. A second amendment was issued on December 12, 2014, which extended the due date for bids from January 16, 2015 to February 6, 2015. The third and final amendment, which included the geotechnical report, was issued on January 16, 2015. *Bids were received on February 6, 2015 and have been evaluated. Contract award is anticipated in May 2015.*

**Construction**

*Contract closeout of the Wilshire/Fairfax Exploratory Shaft (C1034) will complete in April 2015.*

The Wilshire/La Brea AUR Contractor (C1048) achieved substantial completion on October 27, 2014. Follow-on work by LADWP Power has been completed. *Work performed in the same area by Southern California Gas was completed in late March 2015. AT&T work is anticipated to be completed in April 2015. This will complete all AUR work at this location. Contract closeout completion of C1048 is anticipated to occur within two months.*

The Wilshire/Fairfax AUR (C1055) contractor is continuing with water and power relocations, and is on schedule to complete in October 2015. *Follow-on work in the same area by third party utilities (AT&T, LADWP Power, Verizon Business and SCG) are anticipated to be completed in late spring 2016. This will complete all AUR work at this location and prior to the contractual access date for the C1045 Design/Build contractor to begin construction of the Wilshire/Fairfax Station.*

The contractor for Tunnels, Stations, Trackwork, Systems, and Systems Integration Testing (C1045) plans on mobilizing to the main construction field office in April 2015. *The contractor has completed the site preparation work at the Wilshire/Crenshaw Yard. Design survey and mapping activities have commenced and is being performed days and nights. The construction work plan for geotechnical work has been submitted for review. Geotechnical borings are scheduled to begin March 30, 2015 at the Wilshire/Western site. Site preparation and installation of the temporary fencing at the North Wilshire/La Brea construction staging site will also begin next month. Utility potholing activities are to begin as well.*

Metro staff is working with the City of Beverly Hills to obtain a Memorandum of Agreement (MOA) for Contract C1045.

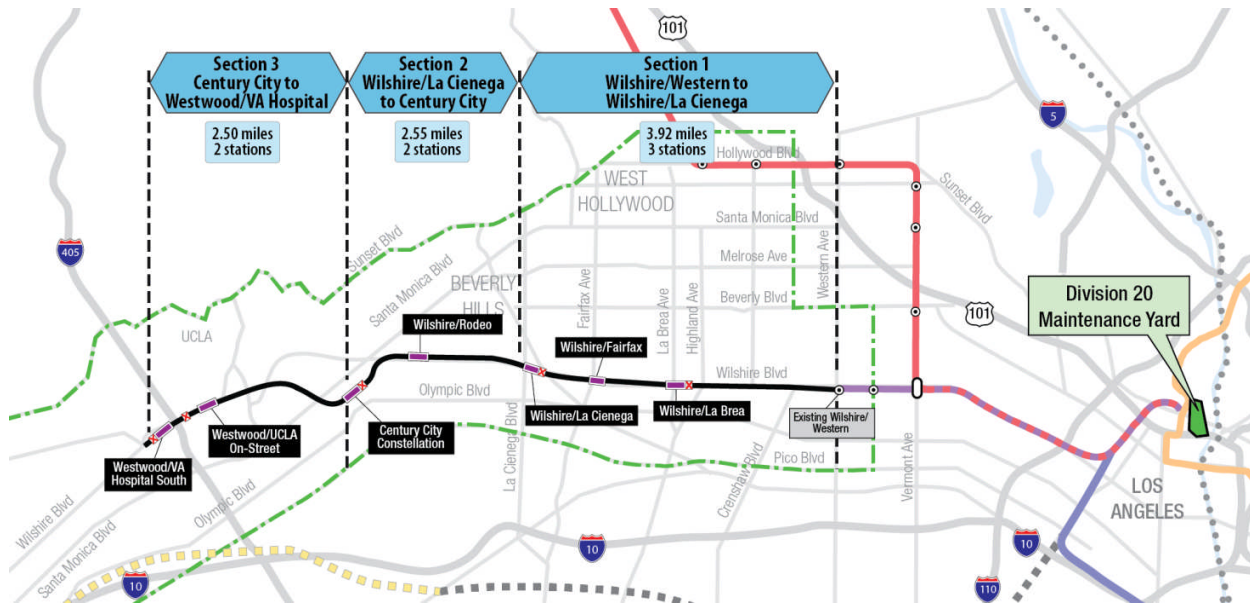
Property abatement and remediation work is continuing prior to providing site access to the C1045 contractor.



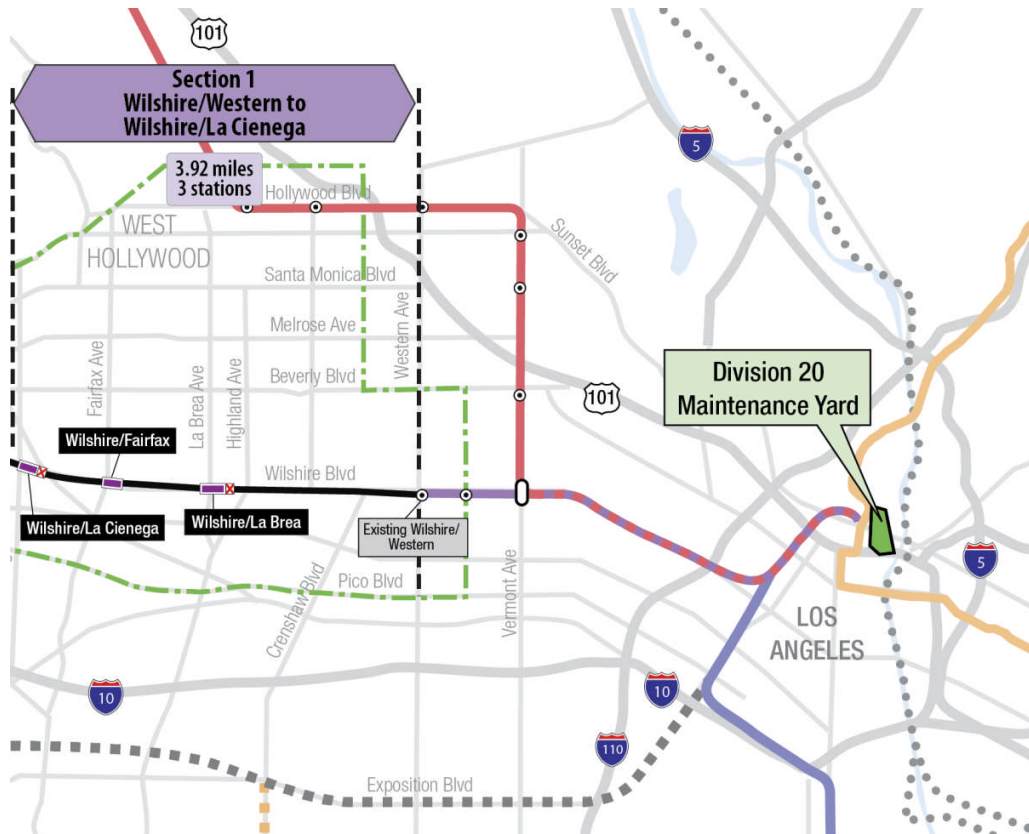
**MANAGEMENT ISSUES**

No Management Issues this period.

**PROJECT ALIGNMENT by SECTIONS**



**PROJECT ALIGNMENT SECTION 1**



## **BASE PROJECT SCOPE**

Section 1 of the Westside Purple Line Extension Project is the first of three sections to be designed and constructed as part of the Los Angeles County Metropolitan Transportation Authority (LACMTA) Measure R Program. The program was approved by Los Angeles County voters in November 2008 and provides a half-cent sales tax to finance new transportation projects. In April 2012, the three sections of the Project were environmentally cleared and adopted by LACMTA Board of Directors.

Section 1 will extend the existing Purple Line by 3.92 miles beginning at the Wilshire/Western Station. From this station, the twin tunnel alignment will travel westerly within the existing Wilshire Boulevard right-of-way. Stations will be located at the intersections of Wilshire/La Brea, Wilshire/Fairfax, and Wilshire/La Cienega. All three of the station boxes will be located within the Wilshire Boulevard right-of-way with station portals extending to off-street entrances. Two of the stations, Wilshire/La Brea and Wilshire/Fairfax are within the jurisdiction of the City of Los Angeles. The Wilshire/La Cienega Station is within the City of Beverly Hills jurisdiction.

The Wilshire/La Brea Station box will be located under the center of Wilshire Boulevard in between Detroit Street and Orange Drive. A double crossover will be located east of the station box. The station entrance will be on the northwest corner of Wilshire Boulevard and La Brea Avenue.

The Wilshire/Fairfax Station box will be located under the center of Wilshire Boulevard west of Fairfax Avenue to west of Ogden Drive. The station entrance will be on the southeast corner of Wilshire Boulevard and Orange Grove Avenue.

The Wilshire/La Cienega Station box will be located under the center of Wilshire Boulevard immediately east of La Cienega Boulevard. A double crossover will be located east of the station box. The station entrance will be on the northeast corner of Wilshire Boulevard and La Cienega Boulevard. Since the station will be the terminus station for Section 1, tail tracks will be located west of the station box.

### **Contract C1034 – Wilshire/Fairfax Exploratory Shaft**

*Metro constructed an exploratory shaft to observe ground conditions prior to the award of Contract C1045. The location of the exploratory shaft was adjacent to the future Wilshire/Fairfax Station. The construction of the shaft included furnishing and installing monitoring instruments, ventilation, and record and report instrumentation data during the excavation of the shaft. After construction of the shaft, the shaft was maintained for an observation time period. Afterwards, the shaft was dismantled and the site backfilled in a condition acceptable to the property owner. The contract was substantially completed on October 31, 2014.*

### **Contract C1048 – Wilshire/La Brea Advanced Utility Relocations**

*The work scope of this contract included the relocation of existing LADWP power, water utilities and a sewer line within the construction limits of the Wilshire/La Brea Station. The contractor was responsible for working in streets, procuring materials, and coordinating with the utility owner. The contractor constructed the new facilities in accordance with the utility*

*plans and specifications, provided traffic control, restored streets, and supported utility crews installing cabling and during cut-over of the existing utilities. The contract was substantially completed on October 27, 2014.*

**Contract C1055 – Wilshire/Fairfax Advanced Utility Relocations**

Relocate existing LADWP power and water utilities within the construction limits of the Wilshire/Fairfax Station. The contractor is responsible for working in streets, procure materials, and coordinate with the utility owner. The contractor is to construct the new facilities in accordance with utility plans and specifications, provide traffic control, restore streets, and support utility crews installing cabling and during cut-over of the existing utilities.

**Contract C1056 – Wilshire/La Cienega Advanced Utility Relocations**

Relocate existing City of Beverly Hills water, storm drain and sewer utilities within the construction limits of the Wilshire/La Cienega Station. The contractor is responsible for working in streets, procure materials, and coordinate with the utility owner. The contractor is to construct the new facilities in accordance with utility plans and specifications, provide traffic control, restore streets, and support utility crews during cut-over of the existing utilities.

**Contract C1045 – Tunnels, Stations, Trackwork, Systems and Systems Integration Testing**

The procurement of this contract utilizes a two-step approach with the submittal of qualification statements through a Request for Qualification (RFQ) process, prequalification of qualified proposers followed by the release of a Request for Proposals (RFP) soliciting technical and price proposals with an option at Metro's discretion for Best and Final Offers (BAFO).

The Design/Build contract provides for final design and construction of the infrastructure along the 3.92 mile alignment. Contract scope includes demolition and removal of structures and clearing sites to facilitate construction operations. The structures to be constructed include twin bored tunnels, complete with cross-passages and walkways, including all mechanical, electrical and finish work. A retrieval shaft will be constructed to the west of the existing Wilshire/Western Station for extraction of the tunnel boring machines. Three underground stations are to be constructed, two with double-crossovers, and the terminus station to include tail tracks. Each station has a single entrance plaza with stairs, escalators and elevators which meet ADA requirements. The scope of work includes all architectural finishes, mechanical, electrical, systems and equipment including train control, traction power, communications, trackwork and the system tie-in to the existing Metro Purple Line, testing and commissioning.

**Contract C1078 – Division 20 Maintenance-of-Way and Non-Revenue Vehicle Building 61S**

The Design/Build contract provides for final design and construction of a new Maintenance-Of-Way (MOW) stores and Non-Revenue Vehicle (NRV) building at the south end of the existing Division 20 Yard (Location 61S). The displacement of the existing MOW stores building and NRV facility are due to the proposed turn-back facility site in the yard.

## **BASE PROJECT SCOPE (Continued)**

### **Metro Furnished Equipment**


Metro will procure separate contracts to provide the 34 Heavy Rail Vehicles (HRV) and the Universal Fare System (UFS) necessary to operate the extension to the Purple Line. The scope of the HRV contract includes design, manufacturing, testing and delivery of the vehicles. The scope of the UFS contract includes design, fabrication and installation of equipment at the three stations and system testing.

### **Start Up**

The commencement of pre-revenue operations will be determined by Metro. Generally, all systems integration testing will have been completed and passed. All testing will be required to include and pass a “stress test” of maximum operational service levels to be acceptable. Pre-Revenue Operations include train runs, especially those involving multiple trains, on the integrated and fully operational extension; rehearsal of expected revenue operations scenarios; as well as abnormal and emergency scenarios in which random combinations of system interactions are tested; equipment “burned-in”; and training of Metro personnel who will eventually operate and maintain the extension and for emergency services personnel. Activities occurring during Pre-Revenue Operations are carried out by a designated Metro Project Rail Activation Group.

**KEY MILESTONES SIX- MONTH LOOK AHEAD**

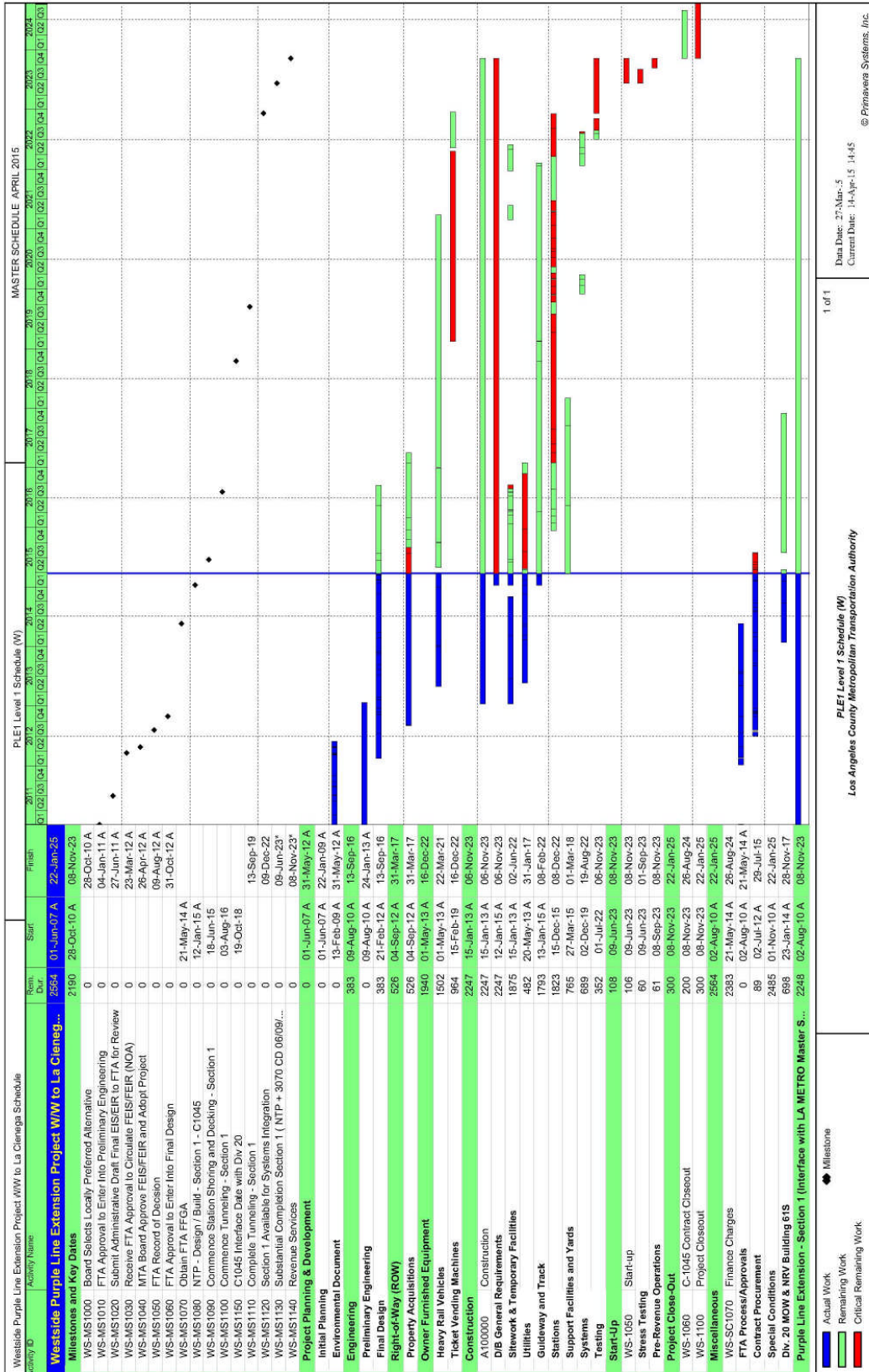
	Milestone Date	Apr-15	May-15	Jun-15	Jul-15	Aug-15	Sep-15
C1056 Begin Advanced Utility Relocations	04/23/15	<input type="checkbox"/>					
C1045 Begin Pothole Investigations at La Brea	04/10/15	<input type="checkbox"/>					
C1045 LADWP Power Drop at La Brea	04/15/15	<input type="checkbox"/>					
C1045 Wilshire/La Brea North Staging Turnover (MS)	04/01/15	◆					
C1045 TBM Temporary Power Work Begins	05/15/15		<input type="checkbox"/>				
C1045 Site Access MS to La Brea	07/06/15				◆		
C1045 Utility Work Begins La Brea	07/06/15				<input type="checkbox"/>		
C1045 Wilshire/La Brea Soldier Pile Fabrication begins	07/09/15				<input type="checkbox"/>		
C1055 MS#2 - Power Work for LADWP Complete	07/25/15				<input type="checkbox"/>		
C1078 Contract NTP	07/29/15				◆		
C1078 Design Mobilization Begins	08/10/15					<input type="checkbox"/>	
C1045 Wilshire/La Brea South Begin Site Preparation	09/01/15						<input type="checkbox"/>

- ◆ MTA Staff
-  MTA Board Action
- FTA (Federal Transit Administration)
- △ Other Agencies
- Contractors

# Westside Purple Line Extension Section 1 Project Quarterly Project Status Report

March 2015

## PROJECT SUMMARY SCHEDULE





## **SCHEDULE MEASUREMENTS**

To be provided when the baseline schedule for Contract C1045 has been approved.

**OVERALL CONSTRUCTION PROGRESS CURVE**

To be provided when the baseline schedule for Contract C1045 has been approved.

**MAJOR EQUIPMENT DELIVERY**

To be provided when the baseline schedule for Contract C1045 has been approved.

**DESIGN BUILDER'S (C1045) LONG LEAD ITEM LIST**

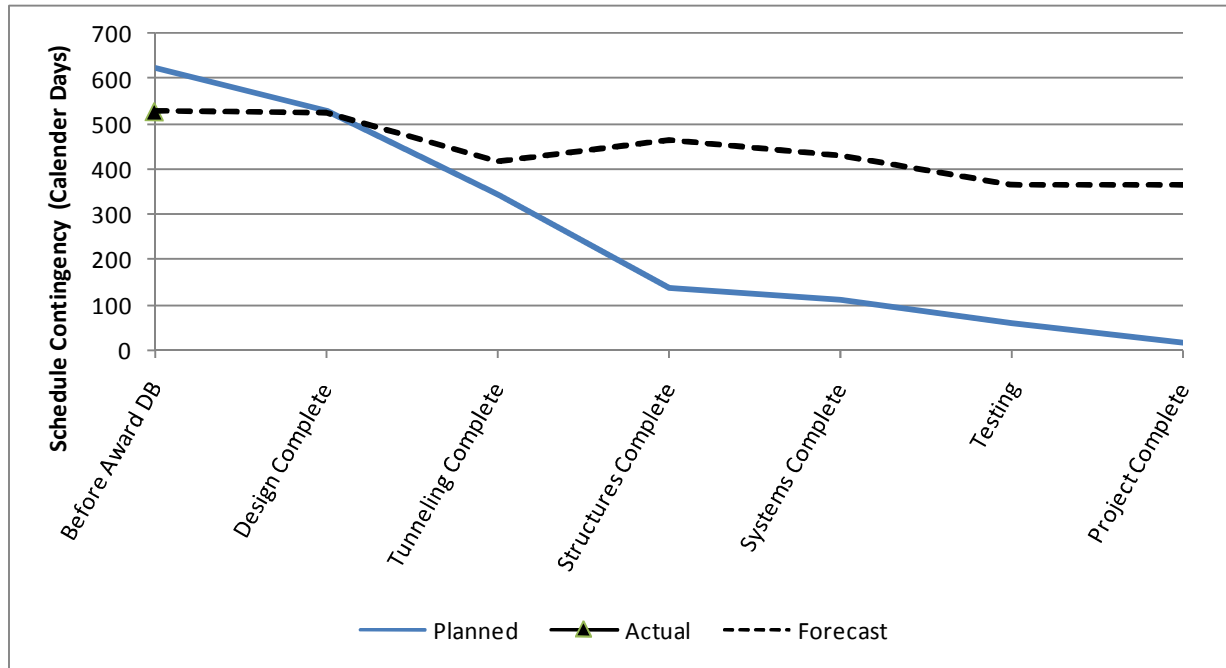
To be provided when the baseline schedule for Contract C1045 has been approved.

## **CRITICAL PATH NARRATIVE**

### **Critical Path:**

The critical path for the Westside Purple Line Extension Project begins with the procurement process for the C1045 Design / Build contract, mobilization of the design team for the selected contractor, and the start of final design for station boxes and tunnels. Final design is concurrent with the La Brea advanced utilities that are being relocated under the C1048 contract and by third parties. Upon completion of utility relocations, the contractor begins installation of soldier piles, first on the north side of the La Brea station box, and then on the south side. Street decking is then installed, the station structural box is excavated, and invert concrete is placed. Tunneling then begins, first driving eastbound from Wilshire / La Brea to Wilshire / Western. TBMs are removed through a retrieval shaft at Wilshire / Western, re-assembled at Wilshire / La Brea, and then driven westbound to Wilshire / La Cienega. Following construction of cross passages, the critical path continues through construction of the Wilshire / Fairfax station box, installation of trackwork and traction power, systems integration and testing, and pre-revenue operations.

### PROJECT SCHEDULE CONTINGENCY DRAWDOWN



### PROJECT SCHEDULE CONTINGENCY DRAWDOWN ANALYSIS

The project schedule contingency drawdown curve is based on a November 8, 2023 Revenue Service Date (RSD).

**Westside Purple Line Extension Section 1 Project  
Quarterly Project Status Report**

**March 2015**

**PROJECT COST STATUS**

COST REPORT  
DOLLARS IN THOUSANDS

SCC CODE	DESCRIPTION	ORIGINAL BUDGET	CURRENT BUDGET		COMMITMENTS		EXPENDITURES		CURRENT FORECAST		CURRENT BUDGET / FORECAST VARIANCE
			PERIOD	TO DATE	PERIOD	TO DATE	PERIOD	TO DATE	PERIOD	TO DATE	
10	GUIDEWAY & TRACK ELEMENTS	388,294	-	388,294	-	380,680	-	-	-	388,294	-
20	STATIONS, STOPS, TERMINALS, INTERMODAL	440,621	-	440,621	-	435,131	-	-	-	440,621	-
30	SUPPORT FACILITIES: YARDS, SHOPS, ADMIN. BLDGS	43,323	-	43,323	-	-	-	-	-	43,323	-
40	SITework & SPECIAL CONDITIONS	751,566	-	751,566	636	729,541	2,114	70,687	1,115	755,441	3,875
50	SYSTEMS	113,574	-	113,574	-	97,466	-	-	-	113,574	-
<b>CONSTRUCTION SUBTOTAL (10-50)</b>		<b>1,737,378</b>	<b>-</b>	<b>1,737,378</b>	<b>636</b>	<b>1,642,818</b>	<b>2,114</b>	<b>70,687</b>	<b>1,115</b>	<b>1,741,253</b>	<b>3,875</b>
60	ROW, LAND, EXISTING IMPROVEMENTS	175,634	-	175,634	-	175,634	19,720	95,776	-	175,634	-
70	VEHICLES	160,196	-	160,196	-	-	-	-	(14,703)	145,493	(14,703)
80	PROFESSIONAL SERVICES	412,710	-	412,710	-	200,574	2,761	104,245	-	412,710	-
<b>SUBTOTAL (10-80)</b>		<b>2,485,918</b>	<b>-</b>	<b>2,485,918</b>	<b>636</b>	<b>2,019,027</b>	<b>24,596</b>	<b>270,708</b>	<b>(13,588)</b>	<b>2,475,090</b>	<b>(10,828)</b>
90	UNALLOCATED CONTINGENCY	248,592	-	248,592	-	-	-	-	57,993	303,825	55,233
100	FINANCE CHARGES	375,470	-	375,470	-	-	-	-	(44,405)	331,065	(44,405)
<b>TOTAL PROJECTS 465518 &amp; 865518 (10-100)</b>		<b>3,109,980</b>	<b>-</b>	<b>3,109,980</b>	<b>636</b>	<b>2,019,027</b>	<b>24,596</b>	<b>270,708</b>	<b>-</b>	<b>3,109,980</b>	<b>-</b>
ENVIRONMENTAL/PLANNING - 405518		8,505	-	8,505	-	8,505	-	8,505	-	8,505	-
ENVIRONMENTAL/PLANNING - 465518		30,865	-	30,865	-	30,865	33	30,747	-	30,865	-
<b>TOTAL PROJECTS 405518 &amp; 465518 (ENV / PLAN'G)</b>		<b>39,370</b>	<b>-</b>	<b>39,370</b>	<b>-</b>	<b>39,370</b>	<b>33</b>	<b>39,252</b>	<b>-</b>	<b>39,370</b>	<b>-</b>
<b>TOTAL PROJECTS 405518, 465518 &amp; 865518</b>		<b>3,149,350</b>	<b>-</b>	<b>3,149,350</b>	<b>636</b>	<b>2,058,397</b>	<b>24,629</b>	<b>309,961</b>	<b>-</b>	<b>3,149,350</b>	<b>-</b>

NOTE: EXPENDITURES ARE CUMULATIVE THROUGH FEBRUARY 2015

**PROJECT COST ANALYSIS**

**Original Budget and Current Budget**

The Original Budget and Current Budget of \$3.1 billion reflect the Board approved Life of Project Budget, July 24, 2014, plus Finance Charges of \$0.4 billion.

**Current Forecast**

The Current Forecast remains the same at \$3.1 billion. However, the Sitework & Special Conditions was increased by \$1.1 million to reflect the Board approved Contract Modification Authority increase to Contract C1056 – Advanced Utility Relocations at Wilshire/La Cienega Station. The Vehicles were decreased by \$14.7 million per Metro Operations’ current cost estimate, and the Finance Charges were decreased by \$44.4 million due to lower than anticipated interest rate on the TIFIA loan. The Unallocated Contingency was increased by the net of \$58.0 million.

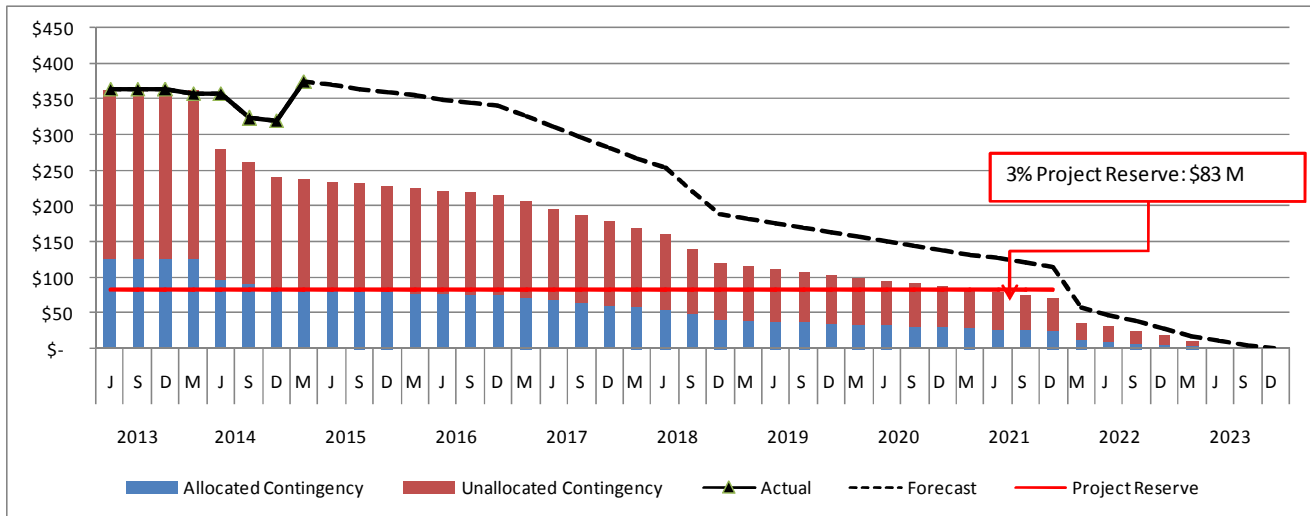
**Commitments**

The Commitments increased by \$0.6 million due to executed modifications associated with the Wilshire/Fairfax AUR Contract C1055 and Environmental services. The \$2.1 billion in Commitments to date represents 65.4% of the Current Budget.

**Expenditures**

The expenditures are cumulative through February 2015. The expenditures increased by \$24.6 million this period primarily for costs associated the Advanced Utility Relocations, Environmental services, Real Estate Acquisitions, Engineering Management Services, Construction Management Support Services, and Metro Project Administration. The \$310.0 million in Expenditures to date represents 9.8% of the Current Budget.

**PROJECT COST CONTINGENCY DRAWDOWN**



**PROJECT COST CONTINGENCY DRAWDOWN ANALYSIS**

The current budget includes a project cost contingency of \$320.6 million or 10.2% of the total project. This includes an unallocated contingency of \$248.6 million and an allocated contingency amount of \$72.0 million. The allocated contingency is an amount to cover anticipated but unknown contract modifications issued by Metro where applicable to specific contracts within each Standard Cost Category (SCC).

Included in the project cost contingency drawdown is a 3% project reserve threshold. Metro’s Board is to be notified when it becomes necessary to drawdown contingency below the project reserve threshold to cover project costs. This was adopted by the Metro Board of Directors in September 2012.

The project cost contingency drawdown curve is based on a November 8, 2023 Revenue Service date.

The unallocated contingency increased this period by a net \$58.0 million due to the cost forecast changes of the Wilshire/La Cienega Station AUR Contract C1056, Vehicles, and the Finance Charges. The allocated contingency increased by \$1.0 million this period to reflect the drawdown of \$1.1 million from unallocated to allocated contingency for the Wilshire/La Cienega Station AUR Contract C1056 and \$0.1 million from allocated contingency to an executed MOD for the Wilshire/Fairfax AUR Contract C1055.

<b>PROJECT COST CONTINGENCY</b>					
<b>DOLLARS IN THOUSANDS</b>					
	<b>Original Contingency (Budget)</b>	<b>Previous Period</b>	<b>Current Period</b>	<b>To-Date</b>	<b>Remaining Contingency (Forecast)</b>
Unallocated Contingency	248,592	(2,760)	57,993	55,233	303,825
Allocated Contingency	71,963	(2,043)	994	(1,048)	70,915
<b>Total Contingency</b>	<b>320,555</b>	<b>(4,803)</b>	<b>58,987</b>	<b>54,185</b>	<b>374,740</b>



**DISADVANTAGED BUSINESS ENTERPRISE (DBE)**

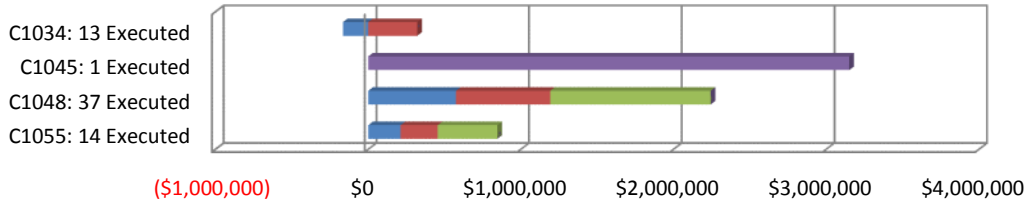
To be provided when the baseline schedule for Contract C1045 has been approved.

**PROJECT LABOR AGREEMENTS (PLA) STATUS**

To be provided when the baseline schedule for Contract C1045 has been approved.

**SUMMARY OF CONTRACT MODIFICATIONS**

**Contract Modifications (MODs) by Cost Level**



	<b>C1034</b> 13 Executed	<b>C1045</b> 1 Executed	<b>C1048</b> 37 Executed	<b>C1055</b> 14 Executed	<b>Total</b>
■ Under \$100K	(164,288)	-	574,448	211,526	<b>621,686</b>
■ \$100K to \$250K	321,000	-	616,809	242,931	<b>1,180,740</b>
■ \$250K to \$1M	-	-	1,050,980	390,709	<b>1,441,689</b>
■ Over \$1M	-	3,150,000	-	-	<b>3,150,000</b>
<b>Total Contract MODs</b>	<b>156,712</b>	<b>3,150,000</b>	<b>2,242,237</b>	<b>845,166</b>	<b>6,394,115</b>
<b>Contract Award Amount</b>	<b>6,487,020</b>	<b>1,636,418,585</b>	<b>6,181,000</b>	<b>14,430,000</b>	<b>1,663,516,605</b>
<b>% of Contract MODs</b>	<b>2.4%</b>	<b>0.2%</b>	<b>36.3%</b>	<b>5.9%</b>	<b>0.4%</b>

Percent of Contract MODs equals the Total Contract MODs divided by the Contract Award Amount.

Thirteen Contract MODs with a total value of \$0.2 million have been executed since the award of Contract C1034 – Exploratory Shaft Construction by Innovative Construction Solutions (ICS).

One Contract MOD with a total value of \$3.2 million has been executed since the award of Contract C1045 – Tunnels, Stations, Trackwork, Systems and Systems Integration Testing by Skanska - Taylor - Shea, a Joint Venture.

Thirty-seven Contract MODs with a total value of \$2.2 million have been executed since the award of Contract C1048 – Advanced Utility Relocations at Wilshire/La Brea by Metro Builders & Engineering Group, LTD.

*Fourteen* Contract MODs with a total value of \$0.8 million have been executed since the award of Contract C1055 – Advanced Utility Relocations at Wilshire/Fairfax by W. A. Rasic Construction Company, Inc.

**Westside Purple Line Extension Section 1 Project  
Quarterly Project Status Report**

**March 2015**

**FINANCIAL/GRANT STATUS**

March 2015		STATUS OF FUNDS BY SOURCE							
SOURCE	(A)	(B)	(C)	(D)	(D/B)	(E)	(E/B)	(F)	(F/B)
	ORIGINAL BUDGET	TOTAL FUNDS ANTICIPATED	TOTAL FUNDS AVAILABLE	\$	%	\$	%	BILLED TO FUNDING SOURCE \$	%
FEDERAL - SECTION 5309 NEW STARTS	\$1,250.000	\$1,250.000	\$65.000	\$1,250.000	100%	\$65.000	5%	\$65.000	5%
FEDERAL CMAQ	\$12.171	\$12.171	\$0.000	\$0.000	0%	\$0.000	0%	\$0.000	0%
FEDERAL SECTION 5339 - ALTERNATIVES ANALYSIS	\$0.512	\$0.512	\$0.512	\$0.512	100%	\$0.512	100%	\$0.512	100%
MEASURE R - TIFIA LOAN	\$856.000	\$856.000	\$0.000	\$0.000	0%	\$0.000	0%	\$0.000	0%
MEASURE R 35%	\$869.178	\$869.178	\$255.104	\$721.669	83%	\$158.233	18%	\$70.333	8%
STATE STIP RIP	\$2.568	\$2.568	\$2.568	\$2.568	100%	\$2.568	100%	\$2.568	100%
STATE CAPITAL PROJECT LOANS - OTHERS *	\$83.648	\$83.648	\$64.931	\$83.648	100%	\$83.648	100%	\$50.898	61%
CITY OF LOS ANGELES	\$75.273	\$75.273	\$0.000	\$0.000	0%	\$0.000	0%	\$0.000	0%
<b>TOTAL</b>	<b>\$3,149.350</b>	<b>\$3,149.350</b>	<b>\$388.115</b>	<b>\$2,058.397</b>	<b>65.4%</b>	<b>\$309.961</b>	<b>9.8%</b>	<b>\$189.311</b>	<b>6.0%</b>

EXPENDITURES ARE CUMULATIVE THROUGH FEBRUARY 2015  
ORIGINAL BUDGET BASED ON JULY 2014 BOARD APPROVED LOP BUDGET

\* OTHERS INCLUDE TDA ADMINISTRATION (\$4.1M), LTF GENERAL REVENUES (\$1.8M), AND LEASE REVENUES (\$37.8M)

**STATUS OF FUNDS ANTICIPATED**

**FEDERAL SECTION 5309 NEW STARTS:** FTA grant application of \$65 million was awarded on June 2, 2014. Funds are available for drawdown.

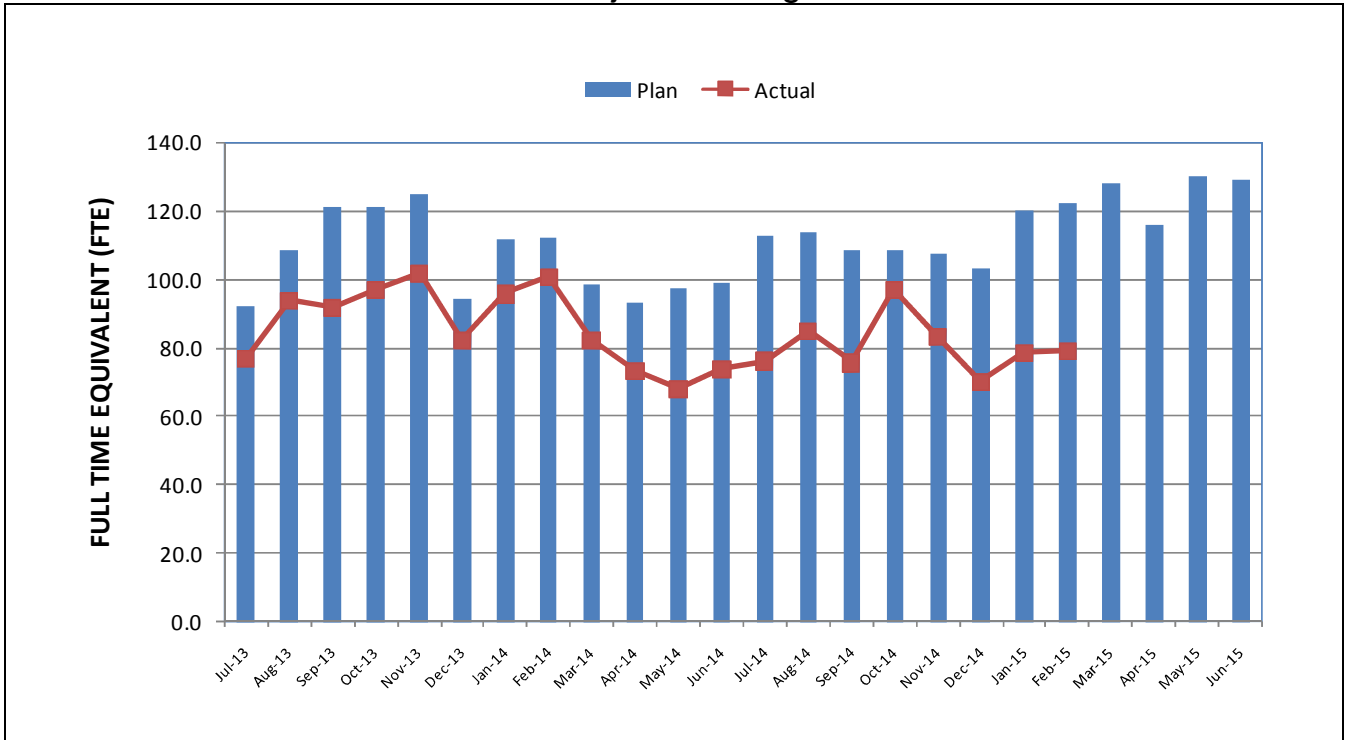
**FEDERAL SECTION 5309 ALTERNATIVE ANALYSIS:** FTA grant application of \$511.6 million was awarded on July 25, 2014. Funds are available for drawdown.

**MEASURE R – TIFIA LOAN (Transportation Infrastructure Finance & Innovation Act):** TIFIA Loan was executed on May 21, 2014 for \$856 million. First disbursement is planned for FY 2018.

**STATE STIP RIP:** State grant application of \$8.4 million, of which \$2.6 million has been allocated to this project, was awarded on July 26, 2007. Funds are available for drawdown.

**CMAQ (Congestion Mitigation & Air Quality):** The request to transfer \$12.1 million to the FTA was submitted to Caltrans on March 5, 2015.

**STAFFING STATUS**  
Total Project Staffing – FTES

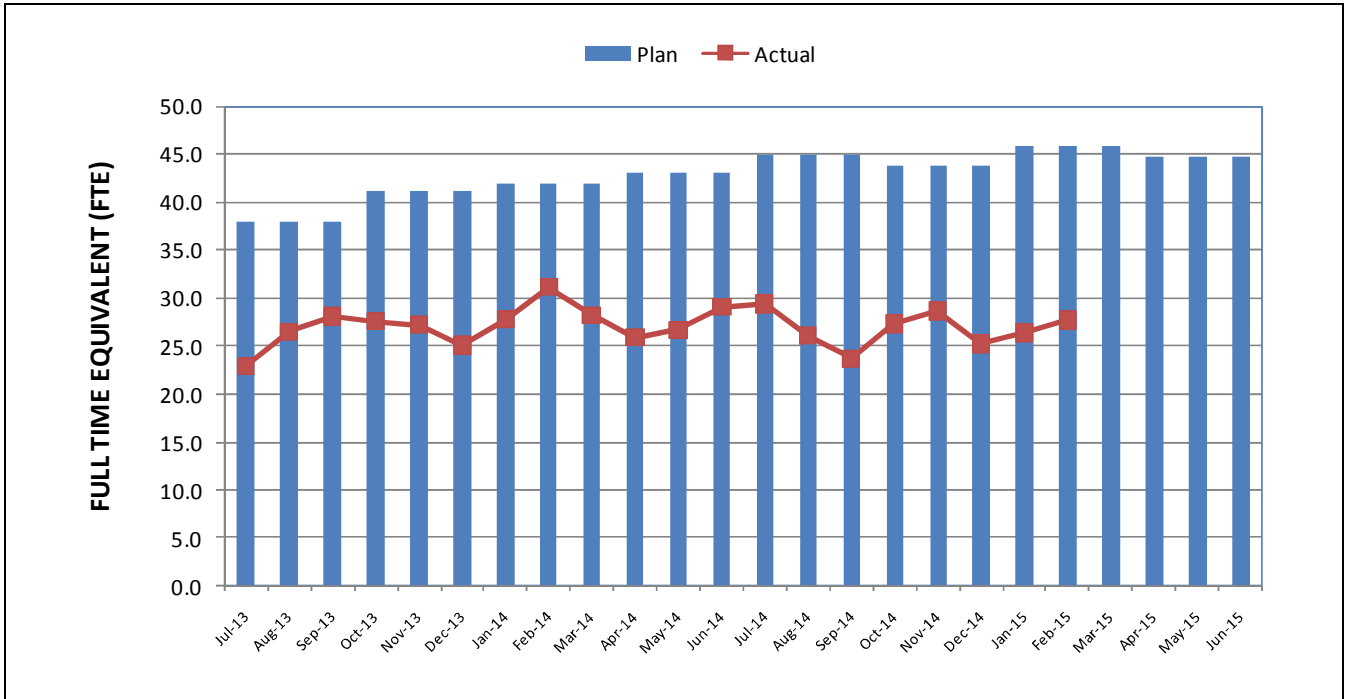


**TOTAL PROJECT STAFFING**

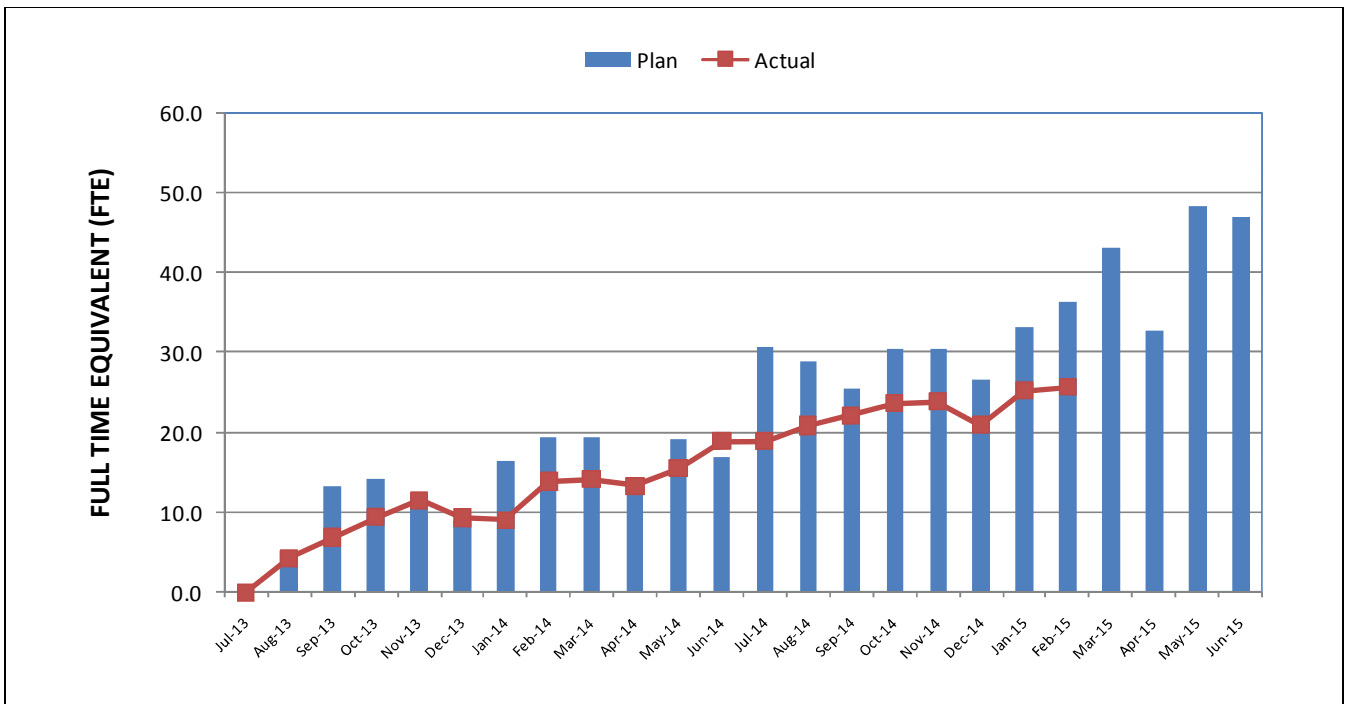
The overall FY15 Total Project Staffing plan averages 116.5 FTEs per month.

*For February 2015, there were a total of 27.7 FTEs for MTA's Project Administration staff and 51.6 FTEs for consulting staff. The total project staffing for February 2015 was 79.3 FTEs.*

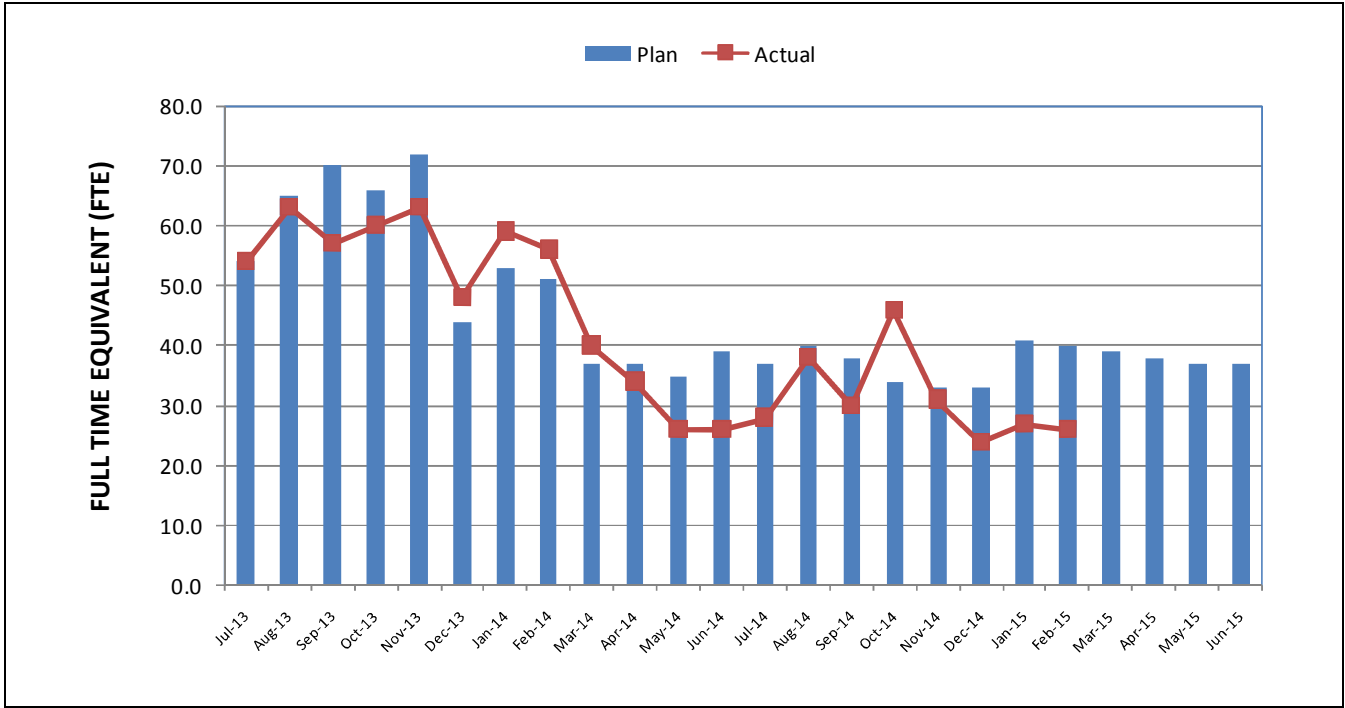
**STAFFING STATUS (Continued)  
METRO STAFFING – FTES**



**CONSTRUCTION MANAGEMENT  
SERVICES CONSULTANT – FTES**



**STAFFING STATUS (Continued)  
ENGINEERING MANAGEMENT SERVICES CONSULTANT – FTES**



**REAL ESTATE STATUS**

Purple Line Extension Section 1 - Real Estate Status Summary									
Description	Number of Parcels	Certified	Appraisals Completed	Offers Made	Agreements Signed	Condemnation Filed	Relocations		Parcels Available
							Required	Completed	
Full Takes	15	15	15	15	2	13	109	19	1
Part Takes	2	2	2	2	0	2	0	0	2
TCE	1	1	1	1	0	1	0	0	0
<b>Total Parcels</b>	<b>18</b>	<b>18</b>	<b>18</b>	<b>18</b>	<b>2</b>	<b>16</b>	<b>109</b>	<b>19</b>	<b>3</b>

**QUALITY ASSURANCE STATUS**

**C1045 – Tunnels, Stations, Trackwork, Systems and Systems Integration Testing**

- Attended weekly Project staff meetings and progress meetings with the Contractor.
- *Ongoing discussions and coordination with the Engineering Management Services (EMS) and Construction Management Support Services (CMSS) support staff for quality oversight.*
- *Reviewed and provided comments on quality related submittals.*
- *Conducted surveillance S-004 of the 85% Track Alignment design submittal.*

**C1055 – Advanced Utility Relocations – Wilshire/Fairfax**

- Attended weekly progress meeting with the Contractor.
- Attended internal monthly quality meeting.
- Reviewed and provided comments on quality related submittals.
- Ongoing discussions and coordination with the EMS/CMSS support staff for quality oversight.
- Reviewed daily inspection reports from the Contractor/Field Technician.
- Conducted surveillance S-002 of the as-built drawings development.

**C1056 – Advanced Utility Relocations – Wilshire/La Cienega**

- Attended weekly progress meeting with the Contractor.
- Reviewed and provided comments on quality related submittals.
- Ongoing discussions and coordination with the EMS/CMSS staff for quality oversight.



## **ENVIRONMENTAL STATUS**

- Ongoing Noise and Volatile Organic Compounds (VOC) monitoring in support of AUR Contracts and basic oversight on Storm Water Pollution Prevention Plan (SWPPP) requirements.
- Continued review of Wilshire/Fairfax (C1055), Wilshire/La Cienega (C1056) and overall DB Contract (C1045) submittals.
- *Conducted monthly construction noise, storm water Best Management Practices and Archeo/Paleo Awareness Training for AUR, Third Party and DB Contractor.*
- *Ambient and monitoring locations established for all four stations, including the Wilshire/Crenshaw Yard. The C1045 Contractor's Acoustic Engineer is proposing to re-measure approximately eight out of 25 of the established locations as part of pre-construction monitoring effort.*
- *A revised Baseline Measurements Work Plan was prepared with new measurements due to access constraints of the Saban Theatre.*
- *Pre-construction survey scope was forwarded to Saban Theater for approval.*
- *Reviewed and coordinated revisions to the Cultural Resource Monitoring and Mitigation Plan (CRMMP).*
- *Finalized the latest revisions to the Paleontological Resource Monitoring and Mitigation Plan (PRMMP).*
- *Reviewed and approved Noise and Vibration Control and Monitoring Plan for proposed geotechnical boring work by the C1045 DB Contractor.*
- *The February 2015 Noise Monitoring Summary Report finalized for submittal to the City of Los Angeles Police Commission.*
- *Coordinated final January 2015 Compliance Report for submittal to the City of Los Angeles Police Commission.*
- *Independent Compliance Monitor (ICM) began oversight duties in the City of Beverly Hills.*
- *Revisions to Tree Removal Plan forwarded to the City of Los Angeles for review and approval.*
- *Working on Eighth Quarter Mitigation Monitoring & Reporting Plan (MMRP) which is scheduled to be submitted to FTA in early April 2015.*
- *Task orders are being negotiated with a specialty hazardous waste contractor for cleanup of the 590 S. Santa Fe Site for the Division 20 Yard expansion.*
- *Environmental oversight of AT&T work at the Wilshire/La Cienega Station area including Saban Theater noise and vibration mitigation, stormwater BMPs and cultural resources.*
- *Attended weekly AUR and DB Construction Coordination Meetings.*

## **CONSTRUCTION RELATIONS STATUS**

- Attended the following meetings: Construction Management, Advanced Utility Relocations, Construction Relations, Environmental Mitigations, Traffic Mitigation with the City of Los Angeles/City of Beverly Hills, C1045 Third Party Workshop, Beverly Hills MOA and Marketing.
- *Produced and distributed fourteen construction work notices for advance utility relocations and construction activities.*
- *Made Project Presentations at the following: Pile drilling peak hour exemption review with Councilmember Tom LaBonge, Cedar Sinai Medical Facilities, construction update at Elected Officials Briefing, Construction Community Meeting, Beverly Hills Chamber of Commerce, Beverly Hills Community Meeting and Fairfax Coordinated Construction Projects.*
- Visited and updated businesses and residences at future station locations to discuss utility relocations, business profiles and Eat, Shop, Play promotional campaign for businesses.
- *Fielded and addressed parking alternatives when the Detroit lot closes April 1<sup>st</sup>, pedestrian access issues in Beverly Hills, noise complaints from Wilshire/Fairfax in relation to lack of sound blankets and homeless issue at the Detroit lot.*
- Updated Facebook/Twitter website as needed.

## **CREATIVE SERVICES STATUS**

- Continue to support mitigation efforts.
- Participated in Design/Build Workshops and document reviews.

## **SAFETY & SECURITY STATUS**

- *There were no recordable injuries on the Project during March 2015.*
- Safety staff participated in scheduled readiness review meetings to ensure compliance with approved Work Plans and contract specifications.
- Safety staff worked with the C1045 and C1056 contractors to insure required safety submittals are submitted and approved prior to any field work.
- Construction activities (Advance Utility Relocations continue to be monitored during both day and night work shifts to ensure contractor compliance with contract specifications.
- Safety staff attended weekly progress meetings and other project meetings to evaluate Contractors Safety Program compliance with contract requirements.
- Construction Safety staff continue to work with Program Management and Construction Relations staff to monitor issues related to public concerns regarding noise, traffic and transient encampment hazards as well as public interactions with the construction crews.
- *Metro Construction Safety hosted the first Monthly All Hands Safety Meeting for all Westside Purple Line Extension Section 1 Contractors on March 24, 2015.*
- Work Hour and Injury statistics are reported with a one month lag. All Contracts are up to date on their reporting.
- *February 2015 Contractor Work Hours (Design & Construction): 17,481*
- *Contractor – Project to Date Work Hours (Design & Construction through 2/28/2015): 118,712*
- *Total Project to Date Work Hours (Contractor & the IPMO Staff through 2/28/2015): 230,282*
- Project to Date Recordable Injury Rate: 0.0 (Zero Recordable Injuries). Each rate is per 200,000 work hours.
- Project to Date Total Time Away Injury Rate: 0.0 (Zero Time Away From Work Injuries).
- Project to Date Total Days Away Rate: 0.0 (Zero Days Away From Work).

**THIRD PARTY AGREEMENT STATUS**

Third Party	Type of Agreement	Forecast Execution Date	Required Need Date	Status/ Comments
City of Los Angeles (LA)	Amendment to Master Cooperative Agreement	N/A	N/A	Parties will work under 2003 MCA.
City of Beverly Hills (BH)	MOAs (La Cienega only)	9/14 (AUR) 3/15 (D/B)	9/14 (AUR) 9/15 (D/B)	City of Beverly Hills approved the MOA for the C1056 Wilshire/La Cienega AUR contract on August 19, 2014. Metro continues to work with the City to establish an MOA for the C1045 Design/Build contract.
Los Angeles Department of Water and Power	Amendment to Memorandum of Understanding	N/A	N/A	Metro and LADWP will continue to work under the terms of the previous Cooperative Agreement.
Los Angeles County Public Works	Letter of Agreement	4/11	3/12	Executed
Caltrans	Amendment	8/11	3/12	Executed
Private Utilities	LOA, MOU, MCA, or MUA	9/14	N/A	Metro is working with affected third party utilities under existing agreements except for Qwest and Level 3. Metro has provided comments to Qwest on the revised agreement. Level 3 informed Metro that they will not honor the existing agreement. A draft copy of the new agreement has been sent and is currently being reviewed by Level 3. Metro's proposed MOU is being reviewed by SCE. In absence of an agreement, work is being performed by work orders.

## **ADVANCED UTILITY RELOCATION STATUS**

- C1048 AUR for the Wilshire/La Brea Station was substantially completed on October 27, 2014. *The remaining punch list item is expected to be completed by mid-April 2015. Contract closeout is underway and is expected to be completed within two months.*
- *AT&T relocations at the Wilshire/La Brea Station are scheduled to be completed in April 2015. AT&T relocations at the Wilshire/Fairfax Station began in January 2015 and are anticipated to be completed in August 2015.*
- LADWP Power work at the Wilshire/La Brea Station site was completed in January 2015. *Southern California Gas relocations in the same area were completed in March 2015.*
- The C1055 AUR contractor for Wilshire/Fairfax Station continues with submittals and power and water relocations. Milestone #1, Water at La Brea Complete, was completed on February 5, 2015. *The contractor is on schedule to achieve substantial completion in October 2015.*
- *Verizon Business is continuing fiber relocations at the Wilshire/Fairfax Station.*
- The Notice of Intent to Award for the Wilshire/La Cienega AUR Contract (C1056) was issued on September 26, 2014. Contract award occurred on October 13, 2014 and the Notice to Proceed (NTP) was issued on January 12, 2015. *Construction is scheduled to begin in late April 2015.*

## **PEAK HOUR AND NIGHTTIME CONSTRUCTION VARIANCES**

Metro is actively pursuing extended hour variances/exemptions to accommodate the Project needs. Metro staff is working with the City of Los Angeles Bureau of Engineering and the Los Angeles Police Commission to obtain Peak Hour Exemptions and Nighttime Construction Variances. Current efforts center around extending the existing nighttime noise variances to accommodate advanced utility relocations at the Wilshire/La Brea and Wilshire/Fairfax Station sites as well as obtaining new nighttime noise variances and peak hour exemptions to allow night work and weekend work to accommodate the Wilshire/La Brea, Wilshire/Fairfax and Wilshire/Western piling operations for the Design/Build contractor.

- The Peak Hour Exemption for Wilshire/La Brea pile installation was approved by the City of Los Angeles on November 8, 2013. *A revised application is scheduled to be submitted in April 2015 with new construction dates.*
- The Peak Hour Exemptions for Wilshire/Fairfax and Wilshire/Western pile installations were approved by the City of Los Angeles on May 12, 2014.
- The Nighttime Noise Variance for the Wilshire/La Brea and Wilshire/Fairfax Advanced Utility Relocation work was extended to August 2015 and June 2015, respectively by the Los Angeles Police Commission.
- Metro is working with the City of Los Angeles on a Peak Hour Exemption for the area near the La Cienega Station. This will accommodate the spillover of traffic control devices from the City of Beverly Hills into the City of Los Angeles.
- *An approved Nighttime Noise Variance for pile installations at the Wilshire/La Brea Station was extended to October 30, 2015, at which time a six-month extension will be requested.*

## **CHRONOLOGY OF EVENTS**

June 2007	Began Alternatives Analysis study
January 2009	Board approval of Alternatives Analysis study and next phase
February 2009	Began Draft Environmental Impact Statement / Report (EIS / EIR)
October 2010	Board approval of Draft EIS / EIR and selection of locally preferred alternative
January 2011	FTA approval to enter Preliminary Engineering
May 2011	Began Preliminary Engineering
April 2012	Board certification of Final EIS / EIR and adoption of project
July 2012	Completion of Exploratory Shaft final design
August 2012	FTA Record of Decision
September 2012	Began Real Estate Acquisition
November 2012	Began Final Design - C1048 - Advanced Utility Relocations contract – Wilshire/La Brea
November 2012	Began Final Design - C1055 - Advanced Utility Relocations contract – Wilshire/Fairfax
November 2012	Issued RFQ for C1045 Design / Build contract
December 2012	Began Final Design - C1056 - Advanced Utility Relocations contract – Wilshire/La Cienega
January 2013	Began C1034 Exploratory Shaft construction
February 2013	Received RFQ responses for C1045 Design / Build contract
June 2013	Issued RFP for C1045 Tunnels, Stations, Trackwork, Systems and Systems Integration Testing
June 2013	Beginning of C1055 AUR Wilshire/Fairfax Bid Period
July 2013	Submitted draft FFGA application

**CHRONOLOGY OF EVENTS (Continued)**

July 2013	Completed Final Design - C1048 - Advanced Utility Relocations contract – Wilshire/La Brea
July 2013	Submitted TIFIA loan application
August 2013	Began C1048 Advanced Utility Relocations contract – Wilshire/La Brea
August 2013	NTP for Construction Management Services Contract
January 2014	Submitted application to FTA requesting an FFGA
January 2014	Received RFP Proposals for Contract C1045
February 2014	Beginning of C1056 AUR Wilshire/La Cienega Bid Period
May 2014	FTA awarded FFGA
May 2014	Received TIFIA Loan
June 2014	Began C1055 Advanced Utility Relocations at Wilshire/Fairfax
July 2014	Metro Board approved staff recommendation to award Contract C1045 and approved Life-of-Project Budget
September 2014	Issued Invitation to Bid for Contract C1078
October 2014	Issued C1056 Contract Award
November 2014	Issued C1045 Contract Award
January 2015	Issued C1045 Contract Notice to Proceed
January 2015	Issued C1056 Contract Notice to Proceed
February 2015	Received Contract C1078 Bids



**CONTRACT C1034 STATUS**

<p><b>Description: Exploratory Shaft</b> <b>Contractor: Innovative Construction Solutions (ICS)</b></p>	<p><b>Contract No. C1034</b> <b>Status as of: March 27, 2015</b></p>																												
<p><b>Progress / Work Completed:</b></p> <ul style="list-style-type: none"> <li>- Notice to Proceed: 01/15/13</li> <li>- Demolition / site preparation: 04/05/13 - 06/17/13</li> <li>- Site Utilities: 05/06/13 - 09/04/13</li> <li>- Soldier Piles: 07/05/13 - 08/27/13</li> <li>- Shaft excavation started: 09/03/13</li> <li>- Shaft excavation to 15' depth: 10/18/13</li> <li>- Shaft excavation to 20' depth: 11/01/13</li> <li>- Shaft excavation to 32' depth: 11/30/13</li> <li>- Shaft excavation to 44' depth: 12/27/13</li> <li>- Shaft excavation to 58' depth: 01/31/14</li> <li>- Shaft excavation to 66' depth: 02/28/14</li> <li>- Shaft excavation to bottom of pit: 03/28/14</li> <li>- Monitoring period began: 04/01/14</li> <li>- Monitoring period completed: 09/22/14</li> <li>- Backfill complete 10/22/14</li> <li>- Substantial Completion 10/31/14</li> <li>- Demobilized</li> </ul> <p><b>Areas of Concern:</b> None</p>	<p><b>Major Activities (In Progress):</b></p> <ul style="list-style-type: none"> <li>- Contract closeout</li> </ul> <p><b>Major Activities Next Period:</b></p> <ul style="list-style-type: none"> <li>- Complete contract closeout</li> </ul>																												
<p><b>Schedule Summary:</b></p> <p>Date of Award: 11/26/12          Notice to Proceed: 01/15/13          Original Contract Duration: 669 CD          Current Contract Duration: 669 CD          Elapsed Time from NTP: 669 CD</p>		<table border="1"> <thead> <tr> <th></th> <th>Original Contract Dates</th> <th>Time Extension</th> <th>Current Contract</th> <th>Forecast</th> <th>Variance CDs</th> </tr> </thead> <tbody> <tr> <td>Notice to Proceed</td> <td>01/15/13</td> <td>0</td> <td>01/15/13</td> <td>01/15/13</td> <td>0</td> </tr> <tr> <td>Milestone 1: Shaft Completion</td> <td>02/14/14</td> <td>16</td> <td>03/07/14</td> <td>03/28/14</td> <td>-21</td> </tr> <tr> <td>Milestone 2: Substantial Completion</td> <td>11/15/14</td> <td>0</td> <td>11/15/14</td> <td>10/31/14</td> <td>15</td> </tr> </tbody> </table>		Original Contract Dates	Time Extension	Current Contract	Forecast	Variance CDs	Notice to Proceed	01/15/13	0	01/15/13	01/15/13	0	Milestone 1: Shaft Completion	02/14/14	16	03/07/14	03/28/14	-21	Milestone 2: Substantial Completion	11/15/14	0	11/15/14	10/31/14	15			
	Original Contract Dates	Time Extension	Current Contract	Forecast	Variance CDs																								
Notice to Proceed	01/15/13	0	01/15/13	01/15/13	0																								
Milestone 1: Shaft Completion	02/14/14	16	03/07/14	03/28/14	-21																								
Milestone 2: Substantial Completion	11/15/14	0	11/15/14	10/31/14	15																								
<p><b>Physical Percent Complete:</b></p> <p>Physical completion: 100%*</p> <p><i>* Note: Physical completion assessment reflects work completed and work in progress.</i></p>	<p><b>Cost Summary: \$ In millions</b></p> <table border="0"> <tr> <td>1. Award Value:</td> <td style="text-align: right;">6.5</td> </tr> <tr> <td>2. Executed Modifications:</td> <td style="text-align: right;">0.2</td> </tr> <tr> <td>3. Approved Change Orders:</td> <td style="text-align: right;">0.0</td> </tr> <tr> <td>4. Current Contract Value (1+2+3):</td> <td style="text-align: right;">6.6</td> </tr> <tr> <td>5. Incurred Cost:</td> <td style="text-align: right;">6.6</td> </tr> </table>					1. Award Value:	6.5	2. Executed Modifications:	0.2	3. Approved Change Orders:	0.0	4. Current Contract Value (1+2+3):	6.6	5. Incurred Cost:	6.6														
1. Award Value:	6.5																												
2. Executed Modifications:	0.2																												
3. Approved Change Orders:	0.0																												
4. Current Contract Value (1+2+3):	6.6																												
5. Incurred Cost:	6.6																												

**CONTRACT C1045 STATUS**

<p><b>Description:</b> Westside Purple Line Extension Design-Build  <b>Contractor:</b> SKANSKA - TRAYLOR - SHEA</p>	<p><b>Contract No. C1045</b>  <b>Status as of: March 27, 2015</b></p>																																										
<p><b>Progress / Work Completed:</b></p> <ul style="list-style-type: none"> <li>- Issued Contract Notice to Proceed January 12, 2015</li> <li>- Design mobilization</li> <li>- Final design continues</li> <li>- Contract submittals continue</li> <li>- Submitted Revised baseline schedule for review</li> <li>- Site preparation work at Wilshire/Crenshaw Yard</li> <li>- Completed 60% UG Utility Design at Wilshire/La Brea Station</li> </ul> <p><b>Areas of Concern:</b>  None</p>	<p><b>Major Activities (In Progress):</b></p> <ul style="list-style-type: none"> <li>- Final Design 60% design submittals continue</li> <li>- Contractor final planning and subcontracting</li> <li>- Preparing for field work - geotechnical exploration</li> <li>- Completing required safety &amp; environ. submittals for field work</li> <li>- Design survey and mapping</li> </ul> <p><b>Major Activities Next Period:</b></p> <ul style="list-style-type: none"> <li>- Material procurement</li> <li>- Traffic control &amp; permits</li> <li>- Final Design &amp; Planning</li> <li>- Pothole, geotechnical, and soil conditioning work</li> <li>- Pre-construction surveys</li> <li>- Final Design 60% design submittal on 4 of 6 design units</li> <li>- Design survey and mapping</li> </ul>																																										
<p><b>Schedule Summary:</b></p> <p>Date of Award: 11/04/14  Notice to Proceed: (actual) 01/12/15  Original Contract Duration: 3250 CD  Current Contract Duration: 3250 CD  Elapsed Time from NTP: 74 CD</p>	<table border="1"> <thead> <tr> <th></th> <th>Original Contract Dates</th> <th>Time Extension</th> <th>Current Contract</th> <th>Forecast</th> <th>Variance CDs</th> </tr> </thead> <tbody> <tr> <td>Notice to Proceed (Estimated)</td> <td>01/12/15</td> <td>0</td> <td>01/12/15</td> <td>01/12/15</td> <td>0</td> </tr> <tr> <td>Milestone 1: Substantial Completion</td> <td>06/09/23</td> <td>0</td> <td>06/09/23</td> <td>06/09/23</td> <td>0</td> </tr> <tr> <td>Milestone 2: Stations available to UFS</td> <td>10/07/22</td> <td>0</td> <td>10/07/22</td> <td>10/07/22</td> <td>0</td> </tr> <tr> <td>Milestone 3: Start of Integration Testing to ROC</td> <td>01/10/23</td> <td>0</td> <td>01/10/23</td> <td>01/10/23</td> <td>0</td> </tr> <tr> <td>Milestone 4: Demobilization</td> <td>12/06/23</td> <td>0</td> <td>12/06/23</td> <td>12/06/23</td> <td>0</td> </tr> <tr> <td>Milestone 5: Temporary Construction Easements</td> <td>01/10/23</td> <td>0</td> <td>01/10/23</td> <td>01/10/23</td> <td>0</td> </tr> </tbody> </table>		Original Contract Dates	Time Extension	Current Contract	Forecast	Variance CDs	Notice to Proceed (Estimated)	01/12/15	0	01/12/15	01/12/15	0	Milestone 1: Substantial Completion	06/09/23	0	06/09/23	06/09/23	0	Milestone 2: Stations available to UFS	10/07/22	0	10/07/22	10/07/22	0	Milestone 3: Start of Integration Testing to ROC	01/10/23	0	01/10/23	01/10/23	0	Milestone 4: Demobilization	12/06/23	0	12/06/23	12/06/23	0	Milestone 5: Temporary Construction Easements	01/10/23	0	01/10/23	01/10/23	0
	Original Contract Dates	Time Extension	Current Contract	Forecast	Variance CDs																																						
Notice to Proceed (Estimated)	01/12/15	0	01/12/15	01/12/15	0																																						
Milestone 1: Substantial Completion	06/09/23	0	06/09/23	06/09/23	0																																						
Milestone 2: Stations available to UFS	10/07/22	0	10/07/22	10/07/22	0																																						
Milestone 3: Start of Integration Testing to ROC	01/10/23	0	01/10/23	01/10/23	0																																						
Milestone 4: Demobilization	12/06/23	0	12/06/23	12/06/23	0																																						
Milestone 5: Temporary Construction Easements	01/10/23	0	01/10/23	01/10/23	0																																						
<p><b>Physical Percent Complete:</b></p> <p>Physical completion: 1%*</p> <p>* Note: Physical completion assessment reflects work completed and work in progress.</p>	<p><b>Cost Summary:</b> <span style="float: right;"><b>\$ In millions</b></span></p> <table style="width: 100%;"> <tr> <td>1. Award Value:</td> <td style="text-align: right;">1,636.4</td> </tr> <tr> <td>2. Executed Modifications:</td> <td style="text-align: right;">3.2</td> </tr> <tr> <td>3. Approved Change Orders:</td> <td style="text-align: right;">0.0</td> </tr> <tr> <td>4. Current Contract Value (1+2+3):</td> <td style="text-align: right;">1,639.6</td> </tr> <tr> <td>5. Incurred Cost:</td> <td style="text-align: right;">123.9</td> </tr> </table>						1. Award Value:	1,636.4	2. Executed Modifications:	3.2	3. Approved Change Orders:	0.0	4. Current Contract Value (1+2+3):	1,639.6	5. Incurred Cost:	123.9																											
1. Award Value:	1,636.4																																										
2. Executed Modifications:	3.2																																										
3. Approved Change Orders:	0.0																																										
4. Current Contract Value (1+2+3):	1,639.6																																										
5. Incurred Cost:	123.9																																										



**CONTRACT C1055 STATUS**

<p><b>Description:</b> Wilshire/Fairfax AUR <b>Contractor:</b> W.A. RASIC Construction Company, Inc.</p>	<p><b>Contract No. C1055</b> <b>Status as of: March 27, 2015</b></p>															
<p><b>Progress / Work Completed:</b></p> <ul style="list-style-type: none"> <li>- La Brea waterline MS#1 complete</li> <li>- Wilshire/Fairfax Power complete</li> <li>- Sound wall gate complete</li> </ul> <p><b>Areas of Concern:</b> None</p>	<p><b>Major Activities (In Progress):</b></p> <ul style="list-style-type: none"> <li>- Power east of Fairfax</li> <li>- Water line east of Fairfax</li> <li>- Fire hydrant installation</li> </ul> <p><b>Major Activities Next Period:</b></p> <ul style="list-style-type: none"> <li>- Continue power and water line east of Fairfax</li> <li>- Installation of four vaults</li> <li>- Water tie-in at Orange Grove</li> </ul>															
<p><b>Schedule Summary:</b></p> <p>Date of Award: 03/28/14          Notice to Proceed: 05/01/14          Original Contract Duration: 535 CD          Current Contract Duration: 535 CD          Elapsed Time from NTP: 331 CD</p>		<p>Original Contract Dates</p>	<p>Time Extension</p>	<p>Current Contract</p>	<p>Forecast</p>	<p>Variance CDs</p>										
	<p>Notice to Proceed</p>	<p>05/01/14</p>	<p>0</p>	<p>05/01/14</p>	<p>05/01/14</p>	<p>0</p>										
	<p>Milestone 1: Water @ La Brea</p>	<p>08/29/14</p>	<p>159</p>	<p>02/05/15</p>	<p>02/05/15</p>	<p>0</p>										
	<p>Milestone 2: Power @ Fairfax</p>	<p>07/25/15</p>	<p>0</p>	<p>07/25/15</p>	<p>07/25/15</p>	<p>0</p>										
	<p>Milestone 3: Substantial Completion</p>	<p>10/18/15</p>	<p>0</p>	<p>10/18/15</p>	<p>10/18/15</p>	<p>0</p>										
<p><b>Physical Percent Complete:</b></p> <p>Physical completion: 54%*</p> <p>* Note: Physical completion assessment reflects work completed and work in progress.</p>	<p><b>Cost Summary: \$ In millions</b></p> <table border="0"> <tr> <td>1. Award Value:</td> <td>14.4</td> </tr> <tr> <td>2. Executed Modifications:</td> <td>0.8</td> </tr> <tr> <td>3. Approved Change Orders:</td> <td>0.0</td> </tr> <tr> <td>4. Current Contract Value (1+2+3):</td> <td>15.2</td> </tr> <tr> <td>5. Incurred Cost:</td> <td>8.8</td> </tr> </table>						1. Award Value:	14.4	2. Executed Modifications:	0.8	3. Approved Change Orders:	0.0	4. Current Contract Value (1+2+3):	15.2	5. Incurred Cost:	8.8
1. Award Value:	14.4															
2. Executed Modifications:	0.8															
3. Approved Change Orders:	0.0															
4. Current Contract Value (1+2+3):	15.2															
5. Incurred Cost:	8.8															

**CONTRACT C1056 STATUS**

<p><b>Description: Wilshire/La Cienega AUR</b> <b>Contractor: Steve Bubalo Construction Co.</b></p>	<p><b>Contract No. C1056</b> <b>Status as of: March 27, 2015</b></p>															
<p><b>Progress / Work Completed:</b></p> <p>- Planning, submittals, material procurement has begun</p> <p><b>Areas of Concern:</b> None</p>	<p><b>Major Activities (In Progress):</b></p> <ul style="list-style-type: none"> <li>- Submittals &amp; procurement</li> <li>- Rediness review for construction to begin</li> <li>- Baseline schedule revised incorporating City of Beverly Hills MOA</li> </ul> <p><b>Major Activities Next Period:</b></p> <ul style="list-style-type: none"> <li>- Construction Mobilization</li> <li>- Traffic control &amp; permits</li> <li>- Power line work to begin</li> <li>- Material procurement</li> </ul>															
<p><b>Schedule Summary:</b></p> <p>Date of Award: 10/13/14          Notice to Proceed: (estimated) 01/12/15          Original Contract Duration: 696 CD          Current Contract Duration: 696 CD          Elapsed Time from NTP: 74 CD</p>		Original Contract Dates	Time Extension	Current Contract	Forecast	Variance CDs										
	Notice to Proceed (Estimated)	01/12/15	0	01/12/15	01/12/15	0										
	Milestone 1:	07/13/16	0	07/13/16	07/13/16	0										
	Milestone 2: Substantial Completion	12/08/16	0	12/08/16	12/08/16	0										
<p><b>Physical Percent Complete:</b></p> <p>Physical completion: 0%*</p> <p><i>* Note: Physical completion assessment reflects work completed and work in progress.</i></p>	<p><b>Cost Summary:</b> <span style="float: right;"><b>\$ In millions</b></span></p> <table style="width: 100%; border-collapse: collapse;"> <tr> <td style="width: 80%;">1. Award Value:</td> <td style="text-align: right;">20.3</td> </tr> <tr> <td>2. Executed Modifications:</td> <td style="text-align: right;">0.0</td> </tr> <tr> <td>3. Approved Change Orders:</td> <td style="text-align: right;">0.0</td> </tr> <tr> <td>4. Current Contract Value (1+2+3):</td> <td style="text-align: right;">20.3</td> </tr> <tr> <td>5. Incurred Cost:</td> <td style="text-align: right;">2.2</td> </tr> </table>						1. Award Value:	20.3	2. Executed Modifications:	0.0	3. Approved Change Orders:	0.0	4. Current Contract Value (1+2+3):	20.3	5. Incurred Cost:	2.2
1. Award Value:	20.3															
2. Executed Modifications:	0.0															
3. Approved Change Orders:	0.0															
4. Current Contract Value (1+2+3):	20.3															
5. Incurred Cost:	2.2															

**CONSTRUCTION PHOTOGRAPHS**



*C1055 Wilshire/Fairfax AUR Contractor Restoring Pavement for Power Trenches at Wilshire/Fairfax Intersection*



*C1055 Wilshire/Fairfax AUR Contractor Completing Water Line Relocation at Wilshire/Ogden*

**APPENDIX  
COST AND BUDGET TERMINOLOGY**

**Project Cost Descriptions**

ORIGINAL BUDGET	The Original Project Budget as authorized by the Metropolitan Transportation Authority (Metro) Board.
CURRENT BUDGET	The Original Budget plus all budget amendments approved by formal Metro Board action. Also referred to as Approved Budget.
COMMITMENTS	The total of actual contracts awarded, executed change orders or amendments, and approved work orders of Master Cooperative Agreements, offers accepted for purchase of real estate, and other Metro actions which have been spent or result in the obligation of specific expenditures at a future time.
EXPENDITURES	The total dollar amount of funds expended by Metro for contractor or consultant services, third party services, staff salaries, real estate and other expenses that is reported in Metro's Financial Information System (FIS).
CURRENT FORECAST	The best estimate of the final cost of the Project when all checks have been issued and the Project is closed out. Current Forecast is composed of actual costs incurred to date, the best estimate of work remaining and a current risk assessment for each budgeted cost item.

**Cost Report by Element Descriptions**

CONSTRUCTION	Includes construction contracts. Cost associated with Guideways, Stations, Southwestern Yard, Sitework/Special Conditions and Systems.
RIGHT-OF-WAY	Includes purchase cost of parcels, easements, right-of-entry permits, escrow fees, contracted real estate appraisals and tenant relocation.
VEHICLES	Includes the purchase of Heavy Rail Vehicles and spare parts for the Project.
PROFESSIONAL SERVICES	Includes design engineering, project management assistance, construction management support services, legal counsel, agency staff costs, and other specialty consultants.
CONTINGENCY	A fund established at the beginning of a project to provide for anticipated but unknown additional costs that may arise during the course of the Project.
PROJECT REVENUE	Includes all revenue received by Metro as a direct result of project activities. This includes cost sharing construction items, insurance premium rebates, and the like.

**APPENDIX  
LIST OF ACRONYMS**

ATC	Automatic Train Control
ATSAC	Automated Traffic Surveillance and Control
BAFO	Best and Final Offer
BIM	Building Information Modeling
BNSF	Burlington Northern Santa Fe Railway Company
BRT	Bus Rapid Transit
CADD	Computer Aided Drafting and Design
CALTRANS	California Department of Transportation
CCTV	Closed Circuit Television
CD	Calendar Day
CEQA	California Environmental Quality Act
CM	Construction Manager
CMAQ	Congestion Mitigation and Air Quality Improvement Program
CMSS	Construction Management Support Services
CN	Change Notice
CO	Change Order
COBH	City of Beverly Hills
COLA	City of Los Angeles
CPM	Critical Path Method
CPUC	California Public Utilities Commission
CR	Camera Ready
CRMMP	Cultural Resource Monitoring and Mitigation Plan
CSPP	Construction Safety Phasing Plan
CTC	California Transportation Commission
CUD	Contract Unit Description
DB	Design Build
DBB	Design Bid Build
DOT	Department of Transportation
DWP	Department of Water and Power
EIR	Environmental Impact Report
EIS	Environmental Impact Statement
EMS	Engineering Management Services
EPBM	Earth Pressure Balance Machine
FAA	Federal Aviation Administration
FAR	Federal Acquisition Regulation
FD	Final Design
FEIS	Final Environmental Impact Statement
FEIR	Final Environmental Impact Report
FIS	Financial Information System
FLSR	Fire Life Safety Report
FONSI	Finding of No Significant Impact
FRA	Federal Railroad Administration
FSEIR	Final Supplemental Environmental Impact Report
FSEIS	Final Supplemental Environmental Impact Statement



**APPENDIX  
LIST OF ACRONYMS (Continued)**

FTA	Federal Transit Administration
FTE	Full Time Equivalent
GBR	Geotechnical Baseline Report
GDSR	Geotechnical Design Summary Report
HMM	Hatch Mott MacDonald
HRT	Heavy Rail Transit
HRV	Heavy Rail Vehicle
IFB	Invitation for Bid
IPMO	Integrated Project Management Office
JV	Joint Venture
LA	Los Angeles
LABOE	Los Angeles Bureau of Engineering
LABOS	Los Angeles Bureau of Sanitation
LABSL	Los Angeles Bureau of Street Lighting
LACFCD	Los Angeles County Flood Control District
LACMTA	Los Angeles County Metropolitan Transportation Authority
LADOT	Los Angeles Department of Transportation
LADPW	Los Angeles Department of Public Works
LADWP	Los Angeles Department of Water and Power
LAUSD	Los Angeles Unified School District
LAWA	Los Angeles World Airports
LAX	Los Angeles International Airport
LNTP	Limited Notice To Proceed
LONP	Letter Of No Prejudice
LOP	Life-of-Project
LPA	Locally Preferred Alternative
LRTP	Long Range Transportation Plan
LRV	Light Rail Vehicle
MCA	Master Cooperative Agreement
MIS	Major Investment Study
MMRP	Mitigation Monitoring and Reporting Plan
MOU	Memorandum of Understanding
MPSR	Monthly Project Status Report
N/A	Not Applicable
NEPA	National Environmental Protection Act
NOD	Notice of Determination
NPDES	National Pollution Discharge Elimination System
NTE	Not to Exceed
NTP	Notice To Proceed
OCC	Operations Control Center
OSHA	Occupational Health and Safety Administration
PA/VMS	Public Address/Visual Messaging Sign
PE	Preliminary Engineering

**APPENDIX  
LIST OF ACRONYMS (Continued)**

PEER	Permit Engineering Evaluation Report
PIP	Project Implementation Plan
PLA	Project Labor Agreement
PM	Project Manager
PMIP	Project Management Implementation Plan
PMOC	Project Management Oversight Consultant
PMP	Project Management Plan
P&P	Policies & Procedures
PR	Project Report
PRMMP	Paleontological Resource Monitoring Mitigation Plan
PSR	Project Study Report
QA	Quality Assurance
QAR	Quality Assurance Report
QC	Quality Control
QPSR	Quarterly Project Status Report
QTIB	Qualified Transit Improvement Bonds
RAMP	Real Estate Acquisition Management Plan
RCHAR	Rail Crossing Hazards Analysis Report
RCMP	Risk Assessment Management Plan
RFC	Request For Change
RFP	Request For Proposals
RFSC	Request for Special Consideration
RHA	Risk Hazard Analysis
RLPE	Red Light Photo Enforcement
ROC	Rail Operations Center
ROD	Record Of Decision
ROM	Rough Order of Magnitude
ROW	Right-Of-Way
RPZ	Runway Protection Zone
RSD	Revenue Service Date
SAV	Stand Alone Validator
SCAQMD	Southern California Air Quality Management District
SCADA	Supervisory Control and Data Acquisition
SCC	Standard Cost Category
SCE	Southern California Edison
SCG	Southern California Gas Company
SCRRA	Southern California Regional Rail Authority
SHA	State Highway Account
SHPO	State Historic Preservation Office
SIT	System Integration Testing
SOQ	Statement of Qualification
SOV	Schedule Of Value
SOW	Statement Of Work

**APPENDIX  
LIST OF ACRONYMS (Continued)**

SP	Special Provision
SSMP	Safety and Security Management Plan
STB	Surface Transportation Board
STIP	State Transportation Improvement Program
STP	Surface Transportation Program
STV	STV Group
SWPPP	Storm Water Pollution Prevention Plan
TBD	To Be Determined
TBM	Tunnel Boring Machine
TCE	Temporary Construction Easement
TCRP	Traffic Congestion Relief Program
TIFIA	Transportation Infrastructure Finance and Innovation Act
TIGER	Transportation Investment Generating Economic Recovery
TPSS	Traction Power Substation
TRACS	Transit Automatic Control System
TVA	Threat Vulnerability Analysis
TVM	Ticket Vending Machine
UFS	Universal Fare System
USDOT	United States Department Of Transportation
VE	Value Engineering
WBS	Work Breakdown Structure
WP	Work Package
YOE	Year of Expenditure