

# Westside Purple Line Extension Section 1 Project



# **WESTSIDE PURPLE LINE EXTENSION SECTION 1 PROJECT**

## **MONTHLY PROJECT STATUS REPORT**

THE PREPARATION OF THIS DOCUMENT HAS BEEN FINANCED IN PART THROUGH A GRANT FROM THE U. S. DEPARTMENT OF TRANSPORTATION, FEDERAL TRANSIT ADMINISTRATION (FTA).

**OCTOBER 2015**


## **TABLE OF CONTENTS**

	Page No.
Project Summary.....	1
Project Overview & Status.....	2-4
Management Issues.....	5
Project Alignment by Sections.....	6
Project Alignment Section 1.....	7
Base Project Scope.....	8-10
Project Status	
• Project Schedule	
○ Key Milestones Six-Month Look Ahead.....	11
○ Project Summary Schedule.....	12
○ Schedule Measurements.....	13
○ Overall Construction Progress Curve.....	14
○ Major Equipment Delivery.....	15
○ Design-Builder's (C0145) Long Lead Item List.....	16
○ Critical Path Narrative.....	17
○ Project Schedule Contingency Drawdown.....	18
○ Project Schedule Contingency Drawdown Analysis.....	18
• Project Cost	
○ Project Cost .....	19
○ Project Cost Analysis.....	19
○ Project Cost Contingency Drawdown.....	20
○ Project Cost Contingency Drawdown Analysis.....	20
○ Disadvantaged Business Enterprise (DBE).....	21
○ Project Labor Agreements (PLA) Status.....	21
○ Summary of Contract Modifications.....	22
• Financial/Grant	
○ Financial/Grant .....	23
○ Status of Funding.....	23
• Staffing	
○ Total Project Staffing.....	24
○ Metro Staffing.....	25

**TABLE OF CONTENTS (Continued)**

	Page No.
• Construction Management Support Services Consultant.....	25
• Engineering Management Services Consultant.....	26
• Real Estate.....	27
• Quality Assurance.....	28
• Environmental.....	29
• Construction Relations.....	30
• Creative Services .....	30
• Safety & Security.....	31
• Third Party Agreement & Status.....	32
• Advanced Utility Relocation Status.....	33
• Peak Hour and Nighttime Construction Variances.....	34
• Chronology of Events.....	35-36
• Construction Contracts	
o Contract C1045 Status.....	37
o Contract C1055 Status.....	38
o Contract C1056 Status.....	39
o Contract C1078Status.....	40
• Construction Photographs.....	41
Appendices	
• Cost and Budget Terminology.....	42
• List of Acronyms.....	43-46

**PROJECT SUMMARY**

<b>LOCATION:</b> Los Angeles / Beverly Hills				<b>CONSTRUCTION MANAGEMENT CONSULTANT:</b> WEST, a Joint Venture			
<b>DESIGN CONSULTANT:</b> Parsons / Brinckerhoff				<b>CONTRACTOR:</b> Skanska, Traylor and Shea, a Joint Venture			
<b>190 Ton Crane at Wilshire/La Brea staging area</b>				<b>WORK COMPLETED PAST MONTH</b>			
				<ul style="list-style-type: none"> <li>- C1045 Finalizing real estate acquisitions and relocations</li> <li>- C1045 Wilshire/Western 100% design</li> <li>- C1045 Wilshire/La Brea 100% design started</li> <li>- C1045 Tunnel 85% design nears completion</li> <li>- C1045 Systems/Trackwork 60% design complete</li> <li>- C1045 Soundwall construction continues at North Wilshire/La Brea</li> <li>- C1045 Temp. TBM Power Substation continues</li> <li>- C1045 La Brea South building demolition nearing completion</li> <li>- C1045 Utility Relocation continues</li> <li>- C1055 Wilshire/Fairfax substantial completion</li> <li>- C1056 Wilshire/La Cienega AUR SCE relocations continue</li> </ul>			
<b>EXPENDITURE STATUS (\$ In Millions)</b>				<b>SCHEDULE ASSESSMENT</b>			
<b>ACTIVITIES</b>	<b>CURRENT BUDGET</b>	<b>EXPENDED AMOUNT</b>	<b>PERCENT EXPENDED</b>	<b>MAJOR SCHEDULE ACTIVITIES</b>	<b>PRIOR PLAN</b>	<b>CURRENT PLAN</b>	<b>VARIANCE WEEKS</b>
<b>DESIGN</b>	\$157.7	\$96.1	60.9%	<b>Environmental</b>			
				FEIS / FEIR	N/A	05/31/12	Complete
<b>RIGHT-OF-WAY</b>	\$175.6	\$119.1	67.8%	<b>Design</b>			
<b>CONSTRUCTION</b>	\$1,737.4	\$296.4	17.1%	PE Notice to Proceed	N/A	01/12/11	Complete
<b>OTHER</b>	\$1,078.7	\$89.1	8.3%	Final Design complete	03/22/17	03/22/17	0
<b>TOTAL</b>	\$3,149.4	\$600.7	19.1%	<b>Right-of-Way</b>			
				All parcels available	12/31/15	12/31/15	0
Current Budget includes Environmental/Planning and Finance Costs.				<b>Construction - Main Design / Build Contract</b>			
<b>AREAS OF CONCERN</b>				Notice to Proceed	01/12/15	01/12/15	Complete
				Construction complete	11/08/23	11/08/23	0
<b>ROW ACQUISITION</b>	<b>PLAN</b>	<b>AVAILABLE</b>	<b>REMAINING</b>	<b>CRITICAL ACTIVITIES / 3 MONTH LOOK AHEAD</b>			
PERMANENT PARCELS	15	14	1	<ul style="list-style-type: none"> <li>- C1045 Wilshire/La Brea 100% permanent utility design complete</li> <li>- C1045 Wilshire/La Brea 100% SOE Design complete</li> <li>- C1045 Systems/Trackwork 85% design complete</li> <li>- C1045 North side Traffic Control for Wilshire/La Brea pile installation</li> <li>- C1045 Wilshire/La Brea Station pile installation begins North side</li> <li>- C1056 Wilshire/La Cienega AUR: Power relocation work continuing</li> </ul>			
TEMPORARY PARCELS	4	4	0				
<b>TOTAL PARCELS</b>	19	18	1				

## **PROJECT OVERVIEW & STATUS**

*Section 1 of the Westside Purple Line Extension Project is the first of three sections to be designed and constructed as part of the Los Angeles County Metropolitan Transportation Authority (LACMTA) Measure R Program. The program was approved by Los Angeles County voters in November 2008 and provides a half-cent sales tax to finance new transportation projects. In April 2012, the three sections of the Project were environmentally cleared and adopted by LACMTA Board of Directors.*

*Section 1 will extend the existing Purple Line by 3.92 miles beginning at the Wilshire/Western Station. From this station, the twin tunnel alignment will travel westerly within the existing Wilshire Boulevard right-of-way. Stations will be located at the intersections of Wilshire/La Brea, Wilshire/Fairfax, and Wilshire/La Cienega. All three of the station boxes will be located within the Wilshire Boulevard right-of-way with station portals extending to off-street entrances. Two of the stations, Wilshire/La Brea and Wilshire/Fairfax are within the jurisdiction of the City of Los Angeles. The Wilshire/La Cienega Station is within the City of Beverly Hills jurisdiction.*

### **Design**

The Engineering Management Services (EMS) team continues to provide design support to the Advanced Utility Relocation (AUR) contracts, the Design/Build Contract, and the Division 20 Maintenance-of-Way and Non-Revenue Vehicle Building 61S Contract.

*For the Wilshire/Fairfax AUR Contract (C1055), the production of record drawings has begun to reflect the as-built conditions. The C1055 contractor achieved substantial completion on October 7, 2015.*

For the Wilshire/La Cienega Station AUR Contract (C1056), support to Metro continues with traffic control requests for revised Worksite Traffic Control Plans for the contractor to comply with the Memorandum of Agreement (MOA) between Metro and the City of Beverly Hills; and also with the City of Los Angeles Department of Transportation where the traffic control plans extends beyond the City of Beverly Hills jurisdiction at San Vicente Boulevard. *Technical documents are being produced in support of change notices.* A fulltime field engineering representative continues to support construction activities.

*The team continues to attend design task force meetings with Metro and the C1045 Contractor for Tunnels, Stations, Trackwork, Systems and Systems Integration Testing in preparation for the design development and reviews. Support continues in the review of final design submittals, responding to RFI's, and assisting in preparation of change notices. The design submittals under review are the Wilshire/La Brea Station 85% design and Support of Excavation (SOE) 100% design, and Systems specification packages.*

The C1045 Contractor, Skanska, Traylor and Shea (STS), and their final design team, Parson's Transportation Group (PTG), have identified the design work into six distinct design units. They are:

1. Design Unit 1 – Wilshire/Western Interface Chamber (Shaft)
2. Design Unit 2 – Wilshire/La Brea Station

3. Design Unit 3 – Wilshire/Fairfax Station
4. Design Unit 4 – Wilshire/La Cienega Station
5. Design Unit 5 – Tunnels
6. Design Unit 6 – Systems/Traffic/Trackwork

Each design unit package will be submitted and evaluated at each of the following phases; 60%, 85%, 100%, Approved for Construction (AFC) and Issued for Construction (IFC). If required, critical design units can be advanced as Advanced Partial Design Units (APDU's) to support ongoing construction activities.

Design activities are well underway with the involvement of every discipline and design task force meetings are occurring weekly related to each design unit.

“Over-the-shoulder” design reviews are occurring with STS, PTG, Metro and the EMS team prior to each major design submittal and monthly Metro Fire/Life/Safety meetings are occurring.

*The upcoming design submittals are as follows:*

<b>Design Unit</b>	<b>Design Phase</b>	<b>Submittal Date</b>
DU# 1 - Western	100%	12/14/2015
DU# 2 - La Brea	100%	1/5/2016
DU# 3 - Fairfax	85%	12/16/2015
DU# 4 - La Cienega	60%	11/6/2015
DU# 5 - Tunnels	85%	11/3/2015
DU# 6 - Systems	85%	12/31/2015

STS is continuing with the required contractual submittals.

**Major Contract Procurement**

On July 23, 2015, the MTA Board authorized the CEO to award Contract C1078, Division 20 Maintenance-of-Way (MOW) and the Non-Revenue Vehicle (NRV) Building 61S, to Clark Construction Group for a firm fixed price amount of \$52,830,310. Contract award occurred on August 3, 2015 and the Notice-to-Proceed was issued on September 30, 2015. *All contracts for the Project have been awarded.*

**Construction**

*The C1055 AUR contractor for the Wilshire/Fairfax Station obtained Contractual Milestone No. 3 (Substantial Completion) on October 7, 2015, 11 days ahead of schedule and within budget. Final punch list items are anticipated to complete by November 16, 2015.*

Follow-on work in the Wilshire/Fairfax Station area by third party utilities (AT&T and LADWP Power) is anticipated to be completed by summer 2016. This will complete all AUR work at this location and prior to the contractual access date for the C1045 Design/Build contractor to begin construction of the Wilshire/Fairfax Station.

The C1045 contractor has completed building demolition at the Wilshire/La Brea North construction staging area and is continuing with the construction of the soundwall. *Building demolition at the Wilshire/La Brea South construction staging area began in August 2015 and is expected to complete in November 2015. Soundwall construction at the North and South staging areas is scheduled to complete by the end of November 2015.* The contractor has completed construction of the TBM power ductbank and has begun construction of the substation.

*The C1045 contractor is planning to begin station pile installation for the Wilshire/La Brea Station in November 2015.*

Metro staff continues to meet with the City of Beverly Hills to finalize the terms and conditions of the Memorandum of Agreement (MOA) required for Contract C1045. *Key terms of the agreement will be presented to the City Council on December 15, 2015.*

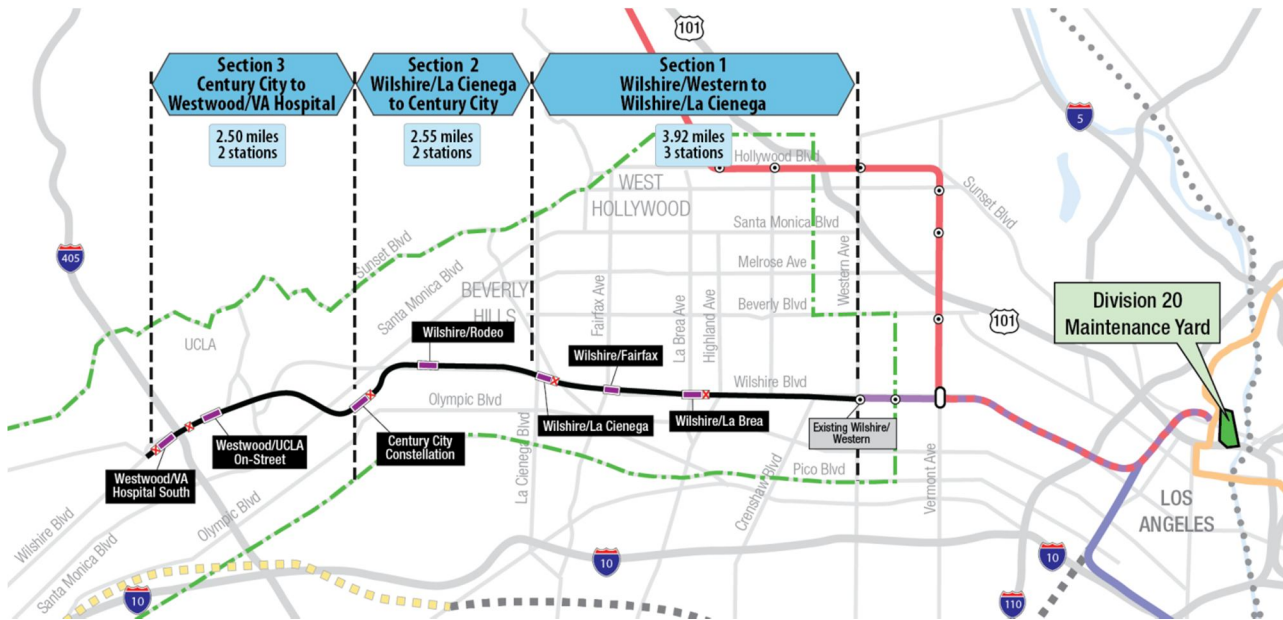
*Metro has possession of all parcels to meet the C1045 contract site availability dates.* Property abatement and remediation work is continuing prior to providing site access to the contractor.



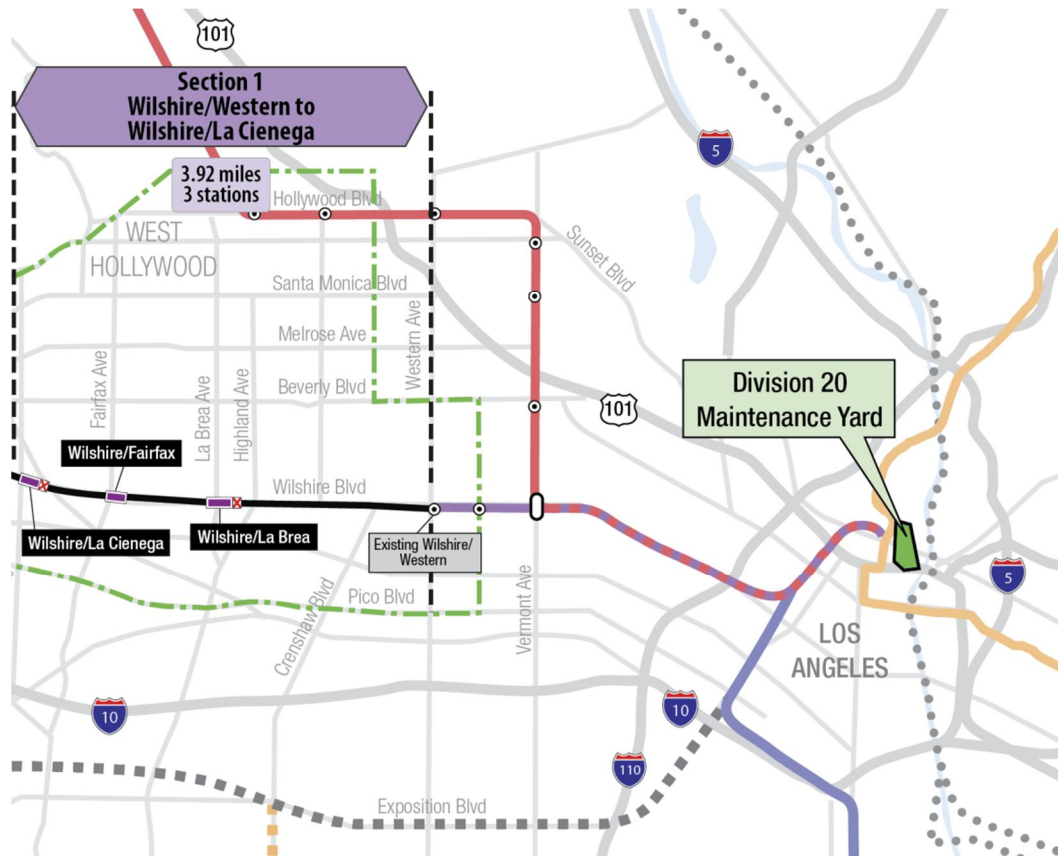
**MANAGEMENT ISSUES**

No Management Issues this period.

## PROJECT ALIGNMENT by SECTIONS



## PROJECT ALIGNMENT SECTION 1



## **BASE PROJECT SCOPE**

Section 1 of the Westside Purple Line Extension Project is the first of three sections to be designed and constructed as part of the Los Angeles County Metropolitan Transportation Authority (LACMTA) Measure R Program. The program was approved by Los Angeles County voters in November 2008 and provides a half-cent sales tax to finance new transportation projects. In April 2012, the three sections of the Project were environmentally cleared and adopted by LACMTA Board of Directors.

Section 1 will extend the existing Purple Line by 3.92 miles beginning at the Wilshire/Western Station. From this station, the twin tunnel alignment will travel westerly within the existing Wilshire Boulevard right-of-way. Stations will be located at the intersections of Wilshire/La Brea, Wilshire/Fairfax, and Wilshire/La Cienega. All three of the station boxes will be located within the Wilshire Boulevard right-of-way with station portals extending to off-street entrances. Two of the stations, Wilshire/La Brea and Wilshire/Fairfax are within the jurisdiction of the City of Los Angeles. The Wilshire/La Cienega Station is within the City of Beverly Hills jurisdiction.

The Wilshire/La Brea Station box will be located under the center of Wilshire Boulevard in between Detroit Street and Orange Drive. A double crossover will be located east of the station box. The station entrance will be on the northwest corner of Wilshire Boulevard and La Brea Avenue.

The Wilshire/Fairfax Station box will be located under the center of Wilshire Boulevard west of Fairfax Avenue to west of Ogden Drive. The station entrance will be on the southeast corner of Wilshire Boulevard and Orange Grove Avenue.

The Wilshire/La Cienega Station box will be located under the center of Wilshire Boulevard immediately east of La Cienega Boulevard. A double crossover will be located east of the station box. The station entrance will be on the northeast corner of Wilshire Boulevard and La Cienega Boulevard. Since the station will be the terminus station for Section 1, tail tracks will be located west of the station box.

### **Contract C1034 – Wilshire/Fairfax Exploratory Shaft**

Metro constructed an exploratory shaft to observe ground conditions prior to the award of Contract C1045. The location of the exploratory shaft was adjacent to the future Wilshire/Fairfax Station. The construction of the shaft included furnishing and installing monitoring instruments, ventilation, and record and report instrumentation data during the excavation of the shaft. After construction of the shaft, the shaft was maintained for an observation time period. Afterwards, the shaft was dismantled and the site backfilled in a condition acceptable to the property owner. The contract was substantially completed on October 31, 2014.

### **Contract C1048 – Wilshire/La Brea Advanced Utility Relocations**

The work scope of this contract included the relocation of existing LADWP power, water utilities and a sewer line within the construction limits of the Wilshire/La Brea Station. The contractor was responsible for working in streets, procuring materials, and coordinating with the utility owner. The contractor constructed the new facilities in accordance with the utility

plans and specifications, provided traffic control, restored streets, and supported utility crews installing cabling and during cut-over of the existing utilities. The contract was substantially completed on October 27, 2014.

**Contract C1055 – Wilshire/Fairfax Advanced Utility Relocations**

*The work scope of this contract included the relocation of existing LADWP power and water utilities within the construction limits of the Wilshire/Fairfax Station. The contractor was responsible for working in streets, procuring materials, and coordinating with the utility owner. The contractor constructed the new facilities in accordance with utility plans and specifications, provided traffic control, restored streets, and supported utility crews installing cabling and during cut-over of the existing utilities. The contract was substantially completed on October 7, 2015.*

**Contract C1056 – Wilshire/La Cienega Advanced Utility Relocations**

Relocate existing City of Beverly Hills water, storm drain and sewer utilities within the construction limits of the Wilshire/La Cienega Station. The contractor is responsible for working in streets, procure materials, and coordinate with the utility owner. The contractor is to construct the new facilities in accordance with utility plans and specifications, provide traffic control, restore streets, and support utility crews during cut-over of the existing utilities.

**Contract C1045 – Tunnels, Stations, Trackwork, Systems and Systems Integration Testing**

The procurement of this contract utilizes a two-step approach with the submittal of qualification statements through a Request for Qualification (RFQ) process, prequalification of qualified proposers followed by the release of a Request for Proposals (RFP) soliciting technical and price proposals with an option at Metro's discretion for Best and Final Offers (BAFO).

The Design/Build contract provides for final design and construction of the infrastructure along the 3.92 mile alignment. Contract scope includes demolition and removal of structures and clearing sites to facilitate construction operations. The structures to be constructed include twin bored tunnels, complete with cross-passages and walkways, including all mechanical, electrical and finish work. A retrieval shaft will be constructed to the west of the existing Wilshire/Western Station for extraction of the tunnel boring machines. Three underground stations are to be constructed, two with double-crossovers, and the terminus station to include tail tracks. Each station has a single entrance plaza with stairs, escalators and elevators which meet ADA requirements. The scope of work includes all architectural finishes, mechanical, electrical, systems and equipment including train control, traction power, communications, trackwork and the system tie-in to the existing Metro Purple Line, testing and commissioning.

**Contract C1078 – Division 20 Maintenance-of-Way and Non-Revenue Vehicle Building 61S**

The Design/Build contract provides for final design and construction of a new Maintenance-Of-Way (MOW) stores and Non-Revenue Vehicle (NRV) building at the south end of the existing Division 20 Yard (Location 61S). The displacement of the existing MOW stores building and NRV facility are due to the proposed turn-back facility site in the yard.

## BASE PROJECT SCOPE (Continued)

### **Metro Furnished Equipment**

Metro will procure separate contracts to provide the 34 Heavy Rail Vehicles (HRV) and the Universal Fare System (UFS) necessary to operate the extension to the Purple Line. The scope of the HRV contract includes design, manufacturing, testing and delivery of the vehicles. The scope of the UFS contract includes design, fabrication and installation of equipment at the three stations and system testing.

### **Start Up**

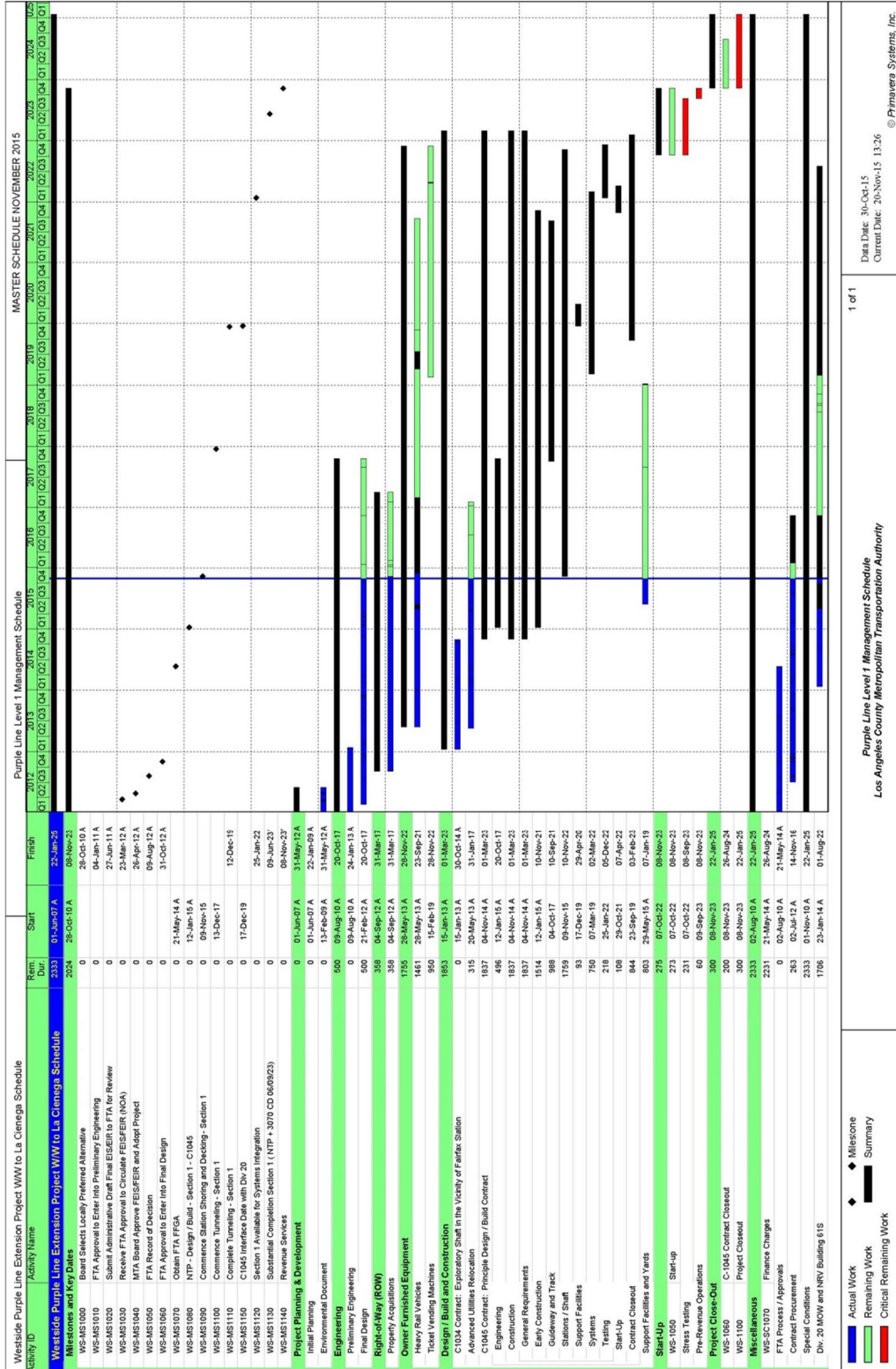
The commencement of pre-revenue operations will be determined by Metro. Generally, all systems integration testing will have been completed and passed. All testing will be required to include and pass a “stress test” of maximum operational service levels to be acceptable. Pre-Revenue Operations include train runs, especially those involving multiple trains, on the integrated and fully operational extension; rehearsal of expected revenue operations scenarios; as well as abnormal and emergency scenarios in which random combinations of system interactions are tested; equipment “burned-in”; and training of Metro personnel who will eventually operate and maintain the extension and for emergency services personnel. Activities occurring during Pre-Revenue Operations are carried out by a designated Metro Project Rail Activation Group.

### KEY MILESTONES SIX-MONTH LOOK AHEAD

	Milestone Date	Nov-15	Dec-15	Jan-16	Feb-16	Mar-16	Apr-16
C1078 Final Design Begins	11/2/2015	<input type="checkbox"/>					
C1045 Wilshire/La Brea North Pile Installation Begins	11/17/15	<input type="checkbox"/>					
C1045 Wilshire/La Brea Soundwalls Complete	11/25/15	<input type="checkbox"/>					
C1045 Building Demolition Wilshire/Fairfax Complete	12/15/15		<input type="checkbox"/>				
C1045 TBM Temporary Power Work Complete	12/30/15		<input type="checkbox"/>				
C1045 Wilshire/Western Shaft Design Complete	02/24/16				<input type="checkbox"/>		
C1045 Initial Excavation and Decking Installation at Wilshire/La Brea	03/15/16					<input type="checkbox"/>	
C1045 Jet Grouting at Wilshire/La Brea	03/20/16					<input type="checkbox"/>	
C1045 Wilshire/La Brea Station Design Complete	03/25/16					<input type="checkbox"/>	
C1045 Fairfax SOE Design complete	4/1/2016						<input type="checkbox"/>

- ◆ MTA Staff
- Ⓜ MTA Board Action
- FTA
- △ Other Agencies
- Contractors

# PROJECT SUMMARY SCHEDULE



Westside Purple Line Extension Project W/W to La Cienega Schedule  
 Purple Line Level 1 Management Schedule  
 MASTER SCHEDULE NOVEMBER 2015  
 Date Due: 30-Oct-15  
 Current Date: 30-Nov-15 13:26  
 © Primavera Systems, Inc.

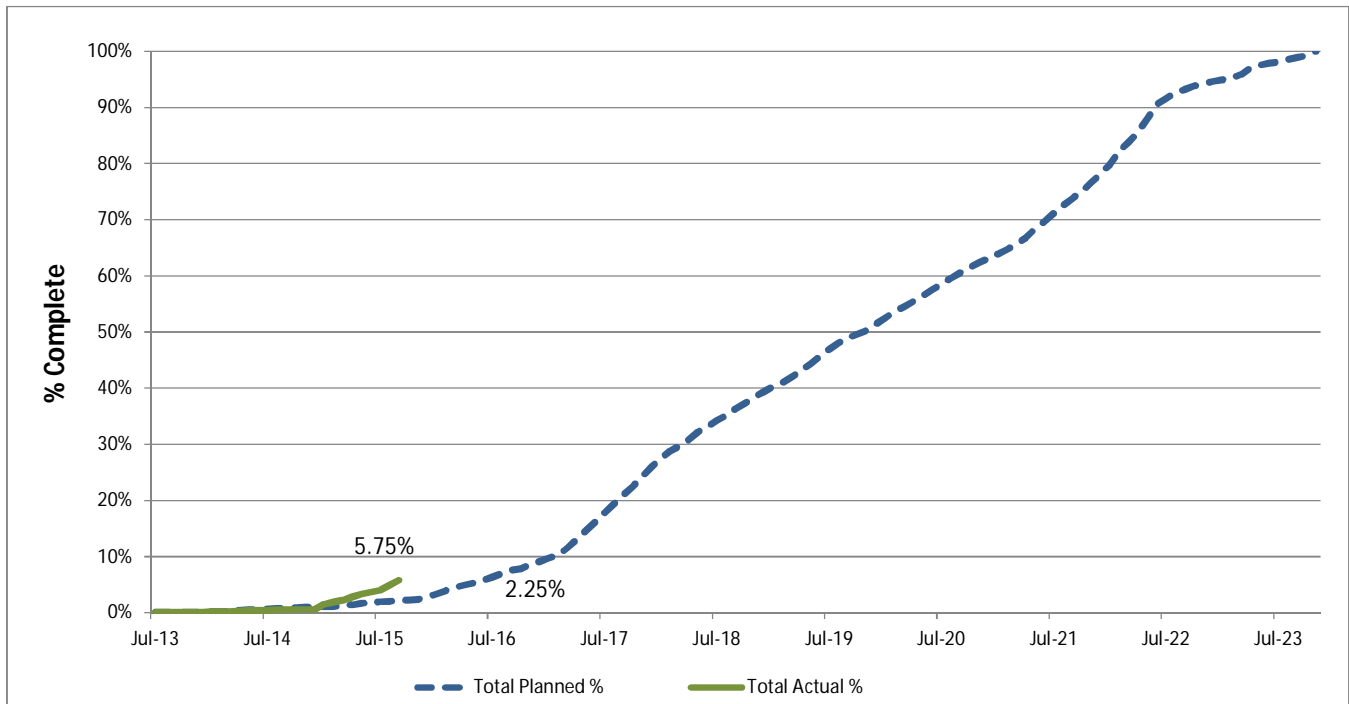


## SCHEDULE MEASUREMENTS

	Status	Change from Last Period	Comment
Forecast Revenue Service	11/8/2023	None	
FFGA Revenue Service	10/31/2024	None	
<b>Final Design Progress:</b>			
Contract C1045	52.69%	8.12%	
Contract C1078	0.00%	0.00%	NTP Issued 09/30/15
<b>Construction Contracts Progress*:</b>			
Contract C1048	100.00%	0.00%	Completed on Schedule
Contract C1045	3.73%	0.67%	On Schedule
Contract C1055	86.82%	0.86%	Ahead of Schedule
Contract C1056	34.61%	11.69%	Ahead of Schedule
Contract C1078	0.00%	0.00%	Awaiting Baseline Schedule to be Submitted

\*Note: Physical completion assessment reflects work completed and work in progress.

## OVERALL CONSTRUCTION PROGRESS CURVE



The actual overall construction progress is 5.75% versus a planned of 2.25% through October 2015. The progress curves represent a composite percentage for the physical progress of work performed to complete the Project's construction contracts, including the major Design-Build (C1045), the three Advanced Utility Relocations (C1048, C1055 & C1056), and the Division 20 MOW & NRV Building 61S (C1078). Currently Contract C1078 is not included with the overall progress calculation. Once the contract baseline schedule is approved, the curve will be updated to include Contract C1078 progress.

The physical progress percentage excludes non-construction items such as contractor's design and construction mobilization costs and all general requirement costs not tied specifically to a construction work effort.

**MAJOR EQUIPMENT DELIVERY**

	<b>Initial Procurement</b>	<b>Submittal</b>	<b>Delivery</b>	<b>Installation</b>
<b>Tunnel Boring Machine</b>	10/23/15	5/30/16	5/30/17	10/4/17
Deliver to Site - Station HVAC System	5/30/16	10/27/16	7/5/19	1/14/21
Deliver to Site - Ventilation Fans	5/30/16	10/27/16	8/9/19	1/14/21
Deliver to Site - Elevators	8/22/18	1/19/19	8/19/19	12/9/19
Deliver to Site - Elevators	11/18/20	4/17/21	12/17/19	6/14/21
<b>Heavy Rail Vehicles</b>	7/16/15	3/1/19	8/1/21	1/1/22
<b>Ticket Vending Machines</b>	4/18/19	11/24/19	2/22/20	2/21/21

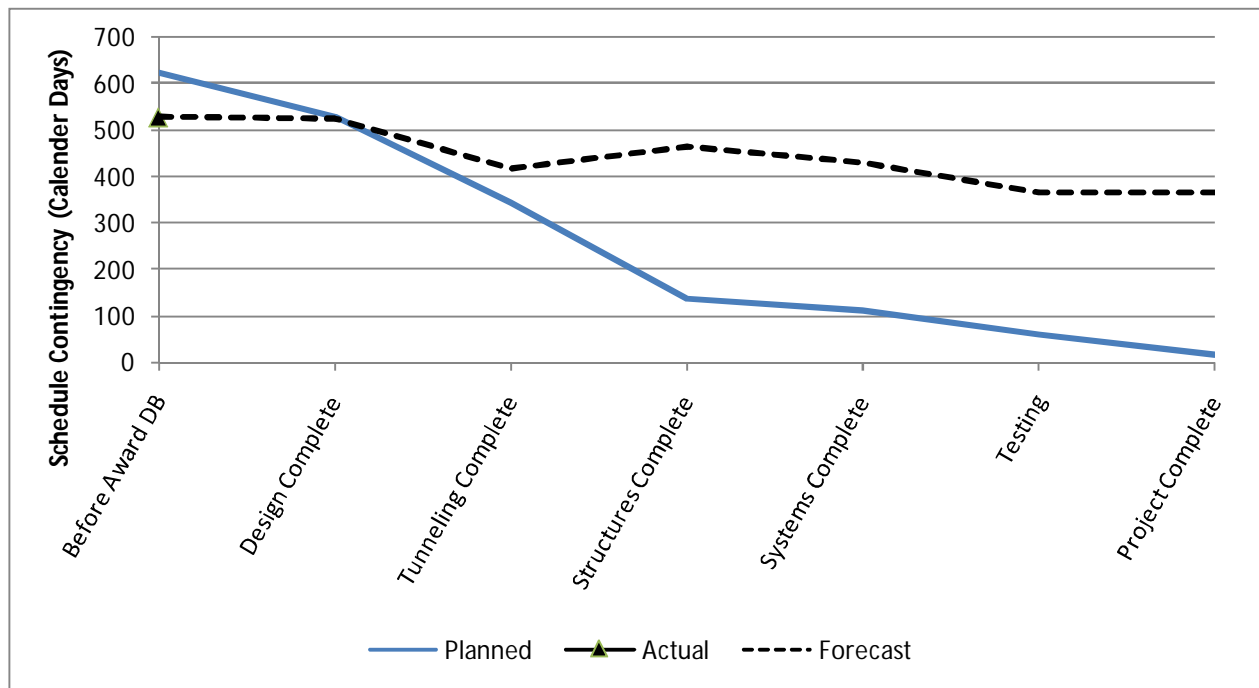
**DESIGN BUILDER'S (C1045) LONG LEAD ITEM LIST**

Item	Initial Procurement	Approved Submittal	Delivery	Installation Date
ATC: Cables	9-May-15	6-Oct-15	1/4/2016	3/7/2019
ATC: Procure/Deliver Components & Materials - All Stations	6-Jan-16	4-Jun-16	2-Sep-16	3/7/2019
ATC: Procure/Deliver Switch Machines	25-Jul-15	22-Dec-15	21-Mar-16	3/7/2019
ATC: Procure/Deliver WS Equipment & Devices	2-Dec-15	30-Apr-16	29-Jul-16	3/7/2019
CCTV: Pack & Ship COM Equipment for Fairfax	14-Dec-16	13-May-17	11-Aug-17	13-May-21
CCTV: Pack & Ship COM Equipment for La Brea	15-Aug-16	12-Jan-17	12-Apr-17	13-May-21
CCTV: Pack & Ship COM Equipment for La Cienega	17-Apr-17	14-Sep-17	13-Dec-17	13-May-21
CCTV: Pack & Ship COM Equipment for Western	16-Apr-16	13-Sep-16	12-Dec-16	13-May-21
CCTV: METRO Furnish NVR Software	30-Nov-15	28-Apr-16	27-Jul-16	13-May-21
CTS: Pack & Ship COM Equipment for Fairfax	2-Oct-16	1-Mar-17	30-May-17	13-May-21
CTS: Pack & Ship COM Equipment for La Brea	4-Jun-16	1-Nov-16	30-Jan-17	13-May-21
CTS: Pack & Ship COM Equipment for La Cienega	31-Jan-17	30-Jun-17	28-Sep-17	13-May-21
CTS: Pack & Ship COM Equipment for Western	31-Jan-16	29-Jun-16	27-Sep-16	13-May-21
Deliver track materials	1-Mar-19	29-Jul-19	27-Oct-19	16-Jun-20
EMER MGMT: Pack & Ship COM Equipment for Fairfax	4-Jun-16	1-Nov-16	30-Jan-17	13-May-21
EMER MGMT: Pack & Ship COM Equipment for La Brea	31-Jan-16	29-Jun-16	27-Sep-16	13-May-21
EMER MGMT: Pack & Ship COM Equipment for La Cienega	2-Oct-16	1-Mar-17	30-May-17	13-May-21
FABRICATE CANOPY STRUCTURE - FAIRFAX STATION	29-May-16	26-Oct-16	24-Jan-17	21-Dec-21
FIRE ALARM: Pack & Ship COM Equipment for Fairfax	2-Oct-16	1-Mar-17	30-May-17	13-May-21
FIRE ALARM: Pack & Ship COM Equipment for La Brea	4-Jun-16	1-Nov-16	30-Jan-17	13-May-21
FIRE ALARM: Pack & Ship COM Equipment for La Cienega	31-Jan-17	30-Jun-17	28-Sep-17	13-May-21
FIRE ALARM: Pack & Ship COM Equipment for Western	31-Jan-16	29-Jun-16	27-Sep-16	13-May-21
GAS DETECTION: Pack & Ship COM Equipment for Fairfax	2-Oct-16	1-Mar-17	30-May-17	20-Feb-21
GAS DETECTION: Pack & Ship COM Equipment for La Brea	4-Jun-16	1-Nov-16	30-Jan-17	3/7/2019
GAS DETECTION: Pack & Ship COM Equipment for La Cienega	31-Jan-17	30-Jun-17	28-Sep-17	3/7/2019
GAS DETECTION: Pack & Ship COM Equipment for Western	31-Jan-16	29-Jun-16	27-Sep-16	3/7/2019
Mock up, fabricate La Brea canopy structure	29-Feb-16	28-Jul-16	26-Oct-16	3/7/2019
Prepare & Ship 480VAC Switchgear - Fairfax GBS	6-Mar-17	3-Aug-17	1-Nov-17	3/7/2019
Prepare & Ship AC Switchgear - Fairfax GBS	13-Aug-17	10-Jan-18	10-Apr-18	3/7/2019
Prepare & Ship AC Switchgear - La Brea TPSS	17-Jan-18	16-Jun-18	14-Sep-18	3/7/2019
Prepare & Ship AC Switchgear - La Cienega TPSS	6-Mar-17	3-Aug-17	1-Nov-17	3/7/2019
Prepare & Ship Aux Power Equipment - La Brea TPSS	4-Jun-17	1-Nov-17	30-Jan-18	3/7/2019
Prepare & Ship Aux Power Equipment - La Cienega TPSS	11-Dec-16	10-May-17	8-Aug-17	3/7/2019
Prepare & Ship DC Rectifier/Transformer - La Brea TPSS	21-May-17	18-Oct-17	16-Jan-18	3/7/2019
Prepare & Ship DC Rectifier/Transformer - La Cienega TPSS	23-Jan-17	22-Jun-17	20-Sep-17	3/7/2019
Prepare & Ship DC Switches - Fairfax GBS	23-Jan-17	22-Jun-17	20-Sep-17	3/7/2019
Prepare & Ship DC Switchgear - La Brea TPSS	13-Aug-17	10-Jan-18	10-Apr-18	3/7/2019
Prepare & Ship DC Switchgear - La Cienega TPSS	6-Mar-17	3-Aug-17	1-Nov-17	3/7/2019
Prepare & Ship HV Metering Switchgear - Fairfax GBS	21-May-17	18-Oct-17	16-Jan-18	3/7/2019
Prepare & Ship HV Metering Switchgear - La Brea TPSS	10-Sep-17	7-Feb-18	8-May-18	3/7/2019
Prepare & Ship HV Metering Switchgear - La Cienega TPSS	23-Jan-17	22-Jun-17	20-Sep-17	3/7/2019
Procure / Deliver PAVMS Cable	27-May-15	24-Oct-15	1/22/2016	3/7/2019
Procure / Deliver TPS Bonding Cable	24-Sep-16	21-Feb-17	22-May-17	3/7/2019
Procure / Deliver Traction Power Cable	24-Sep-16	21-Feb-17	22-May-17	3/7/2019
RADIO: Pack & Ship COM Equipment for Fairfax	11-Sep-16	8-Feb-17	9-May-17	13-May-21
RADIO: Pack & Ship COM Equipment for La Brea	15-May-16	12-Oct-16	10-Jan-17	13-May-21
RADIO: Pack & Ship COM Equipment for La Cienega	11-Jan-17	10-Jun-17	8-Sep-17	13-May-21
RADIO: Pack & Ship COM Equipment for Western	11-Jan-16	9-Jun-16	7-Sep-16	13-May-21
SCADA: Pack & Ship COM Equipment for Fairfax	2-Oct-16	1-Mar-17	30-May-17	13-May-21
SCADA: Pack & Ship COM Equipment for La Brea	4-Jun-16	1-Nov-16	30-Jan-17	13-May-21
SCADA: Pack & Ship COM Equipment for La Cienega	31-Jan-17	30-Jun-17	28-Sep-17	13-May-21
SCADA: Pack & Ship COM Equipment for Western	31-Jan-16	29-Jun-16	27-Sep-16	13-May-21
TPIS: Pack & Ship COM Equipment for Fairfax	16-Aug-16	13-Jan-17	13-Apr-17	13-May-21
TPIS: Pack & Ship COM Equipment for La Brea	17-Apr-16	14-Sep-16	13-Dec-16	13-May-21
TPIS: Pack & Ship COM Equipment for La Cienega	17-Dec-16	16-May-17	14-Aug-17	13-May-21
TPIS: METRO Furnish Transit Vue System	1-Dec-15	29-Apr-16	28-Jul-16	6/14/2021
Tunnel precast segment delivery start	19-Mar-16	16-Aug-16	11/14/2016	4/30/2016
UPS: Pack & Ship COM Equipment for Fairfax	9-Jul-16	6-Dec-16	6-Mar-17	13-May-21
UPS: Pack & Ship COM Equipment for La Brea	6-Mar-16	3-Aug-16	1-Nov-16	13-May-21
UPS: Pack & Ship COM Equipment for La Cienega	7-Nov-16	6-Apr-17	5-Jul-17	13-May-21
UPS: Pack & Ship COM Equipment for Western	28-Oct-15	26-Mar-16	24-Jun-16	13-May-21
Wilshire/Fairfax Soldier pile delivery start	16-Sep-15	13-Feb-16	5/13/2016	9/16/2016
Wilshire/Fairfax Street decking delivery start	19-Jan-16	17-Jun-16	9/15/2016	2/4/2017
Wilshire/La Brea Soldier pile delivery start	11-Mar-15	8-Aug-15	11/6/2015	11/16/2015
Wilshire/La Brea Street decking delivery start	14-Mar-15	11-Aug-15	11/9/2015	3/26/2016
Wilshire/La Cienega Soldier pile delivery start	15-Jan-16	13-Jun-16	9/11/2016	1/31/2017
Wilshire/La Cienega Street decking delivery start	19-May-16	16-Oct-16	1/14/2017	6/24/2017
Wilshire/Western Soldier pile delivery start	1-Jul-15	28-Nov-15	2/26/2016	3/9/2016
Wilshire/Western Street decking delivery start	3-Nov-15	1-Apr-16	6/30/2016	4/26/2016

## **CRITICAL PATH NARRATIVE**

The critical path for the Westside Purple Line Extension Project begins with the procurement process for the C1045 Design/Build contract, mobilization of the design team for the selected contractor, and the start of final design for station boxes and tunnels. Final design is concurrent with the C1055 Wilshire/Fairfax Advanced Utility Relocation and C1056 Wilshire/ La Cienega Advanced Utility Relocation contracts being performed by Metro's AUR Contractors and by third party utility companies. Upon completion of advanced utility relocations, the Design/Build contractor begins installation of soldier piles, first on the north side of the Wilshire/La Brea Station box, and then on the south side. Street decking is then installed, the station structural box is excavated, and invert concrete is placed. Tunneling then begins, first driving eastbound from Wilshire/La Brea to Wilshire/Western. TBMs are removed through a retrieval shaft at Wilshire/Western, reassembled at Wilshire/La Brea, and then driven westbound to Wilshire/La Cienega. Following construction of cross passages, the critical path continues through construction of the Wilshire/Fairfax station box, installation of trackwork and traction power, systems integration and testing, and pre-revenue operations.

### PROJECT SCHEDULE CONTINGENCY DRAWDOWN



### PROJECT SCHEDULE CONTINGENCY DRAWDOWN ANALYSIS

The project schedule contingency drawdown curve is based on a November 8, 2023 Revenue Service Date (RSD).

## PROJECT COST STATUS

DOLLARS IN THOUSANDS

SCC CODE	DESCRIPTION	ORIGINAL BUDGET	CURRENT BUDGET		COMMITMENTS		EXPENDITURES		CURRENT FORECAST		CURRENT BUDGET / FORECAST VARIANCE
			PERIOD	TO DATE	PERIOD	TO DATE	PERIOD	TO DATE	PERIOD	TO DATE	
10	GUIDEWAY & TRACK ELEMENTS	388,294	-	388,294	290	380,970	-	1,820	-	388,294	-
20	STATIONS, STOPS, TERMINALS, INTERMODAL	440,621	-	440,621	-	435,131	-	-	-	440,621	-
30	SUPPORT FACILITIES: YARDS, SHOPS, ADMIN. BLDGS	43,323	-	43,323	-	-	-	-	-	39,327	(3,996)
40	SITWORK & SPECIAL CONDITIONS	751,566	-	751,566	2,129	739,421	28,414	294,603	-	762,303	10,738
50	SYSTEMS	113,574	-	113,574	-	97,506	-	-	-	113,574	-
<b>CONSTRUCTION SUBTOTAL (10-50)</b>		<b>1,737,378</b>	<b>-</b>	<b>1,737,378</b>	<b>2,419</b>	<b>1,653,027</b>	<b>28,414</b>	<b>296,423</b>	<b>-</b>	<b>1,744,119</b>	<b>6,741</b>
60	ROW, LAND, EXISTING IMPROVEMENTS	175,634	-	175,634	-	175,634	1,700	119,100	-	175,634	-
70	VEHICLES	160,196	-	160,196	-	-	-	-	-	145,493	(14,703)
80	PROFESSIONAL SERVICES	412,710	-	412,710	-	207,847	5,203	145,807	-	415,575	2,865
<b>SUBTOTAL (10-80)</b>		<b>2,485,918</b>	<b>-</b>	<b>2,485,918</b>	<b>2,419</b>	<b>2,036,508</b>	<b>35,317</b>	<b>561,330</b>	<b>-</b>	<b>2,480,822</b>	<b>(5,097)</b>
90	UNALLOCATED CONTINGENCY	248,592	-	248,592	-	-	-	-	-	298,094	49,502
100	FINANCE CHARGES	375,470	-	375,470	-	-	-	-	-	331,065	(44,405)
<b>TOTAL PROJECTS 465518 &amp; 865518 (10-100)</b>		<b>3,109,980</b>	<b>-</b>	<b>3,109,980</b>	<b>2,419</b>	<b>2,036,508</b>	<b>35,317</b>	<b>561,330</b>	<b>-</b>	<b>3,109,980</b>	<b>-</b>
ENVIRONMENTAL/PLANNING - 405518		8,505	-	8,505	-	8,505	-	8,505	-	8,505	-
ENVIRONMENTAL/PLANNING - 465518		30,865	-	30,865	-	30,865	-	30,852	-	30,865	-
<b>TOTAL PROJECTS 405518 &amp; 465518 (ENV / PLANG)</b>		<b>39,370</b>	<b>-</b>	<b>39,370</b>	<b>-</b>	<b>39,370</b>	<b>-</b>	<b>39,357</b>	<b>-</b>	<b>39,370</b>	<b>-</b>
<b>TOTAL PROJECTS 405518, 465518 &amp; 865518</b>		<b>3,149,350</b>	<b>-</b>	<b>3,149,350</b>	<b>2,419</b>	<b>2,075,878</b>	<b>35,317</b>	<b>600,687</b>	<b>-</b>	<b>3,149,350</b>	<b>-</b>

NOTE: EXPENDITURES ARE CUMULATIVE THROUGH SEPTEMBER 2015

## PROJECT COST ANALYSIS

### Original Budget and Current Budget

The Original Budget and Current Budget of \$3.1 billion reflect the Board approved Life of Project Budget, July 24, 2014, plus Finance Charges of \$0.4 billion.

### Current Forecast

The Current Forecast remains the same this period at \$3.1 billion.

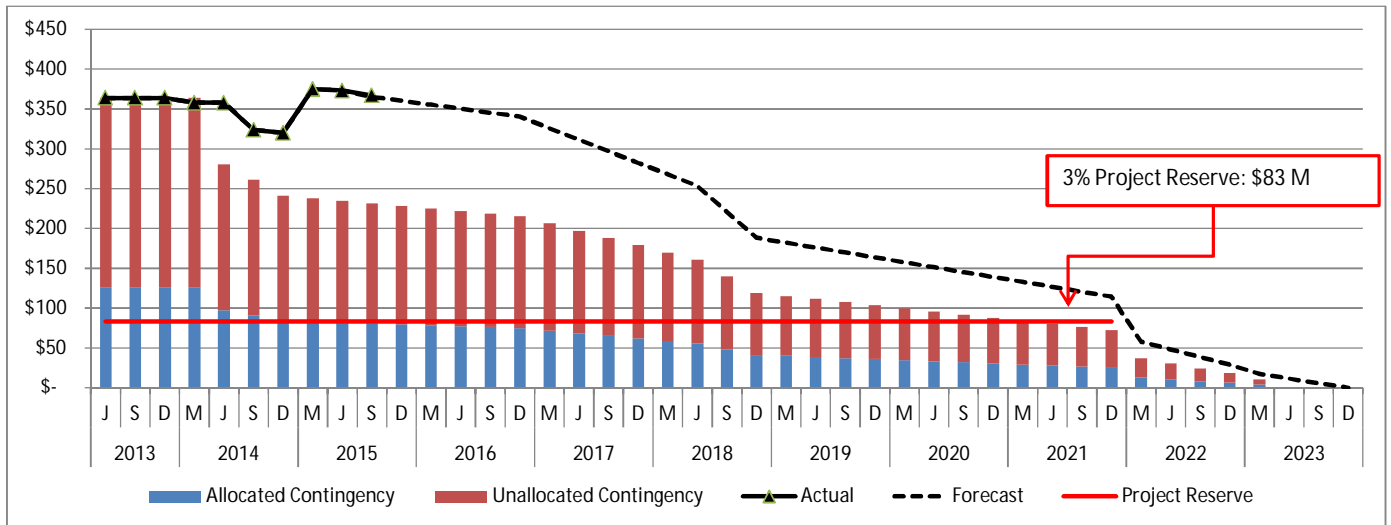
### Commitments

The Commitments increased by \$2.4 million primarily due to Environmental Waste Handling Services at the Division 20 Yard (Contract C1078) and executed modifications associated with the Design/Build Contract C1045. The \$2.1 billion in Commitments to date represents 65.9% of the Current Budget.

### Expenditures

The Expenditures are cumulative through September 2015. The Expenditures increased by \$35.3 million this period primarily for costs associated with the Design/Build Contract C1045, Advanced Utility Relocations, Environmental Services, Real Estate Acquisitions, Legal Services, Engineering Management Services, Construction Management Support Services, and Metro Project Administration. The \$600.7 million in Expenditures to date represents 19.1% of the Current Budget.

### PROJECT COST CONTINGENCY DRAWDOWN



### PROJECT COST CONTINGENCY DRAWDOWN ANALYSIS

The Current Budget of \$3.1 billion (plus Finance Charges of \$0.4 billion) includes a project cost contingency of \$320.6 million or 10.2% of the total project. This includes an unallocated contingency of \$248.6 million and an allocated contingency amount of \$72.0 million. The allocated contingency is an amount to cover anticipated but unknown contract modifications issued by Metro where applicable to specific contracts within each Standard Cost Category (SCC).

Included in the project cost contingency drawdown is a 3% project reserve threshold. Metro’s Board is to be notified when it becomes necessary to drawdown contingency below the project reserve threshold to cover project costs. This was adopted by the Metro Board of Directors in September 2012.

The project cost contingency drawdown curve is based on a November 8, 2023 Revenue Service date.

*The allocated contingency decreased this period by a net of \$0.3 million due to executed Contract Modifications for the Design/Build Contract C1045 and Wilshire/La Cienega AUR Contract C1056.*

PROJECT COST CONTINGENCY					
DOLLARS IN THOUSANDS					
	Original Contingency (Budget)	Previous Period	Current Period	To-Date	Remaining Contingency (Forecast)
Unallocated Contingency	248,592	49,502	0	49,502	298,094
Allocated Contingency	71,963	(2,554)	(277)	(2,831)	69,133
<b>Total Contingency</b>	<b>320,555</b>	<b>46,948</b>	<b>(277)</b>	<b>46,671</b>	<b>367,226</b>



## **DISADVANTAGED BUSINESS ENTERPRISE (DBE)**

### **RACE-CONSCIOUS DISADVANTAGED BUSINESS ENTERPRISE (RC-DBE) STATUS**

#### **Contract C1045 Westside Purple Line Extension, Section 1 Design-Build**

- RC-DBE Goal – Design 20%
- Current RC-DBE Commitment \$12,853,485 (20.25%)
- Current RC-DBE Participation \$ 4,520,809.98 (15.30%)
- Eleven (11) Design DBE subcontractors have been identified for Design
  
- DBE Goal – Construction 17%
- Current DBE Commitment \$258,241,829 (17%)
- Current DBE Participation \$1,391,162 (0.53%)
- Twenty (20) Construction DBE subcontractors have been identified to-date

## **PROJECT LABOR AGREEMENTS (PLA) STATUS**

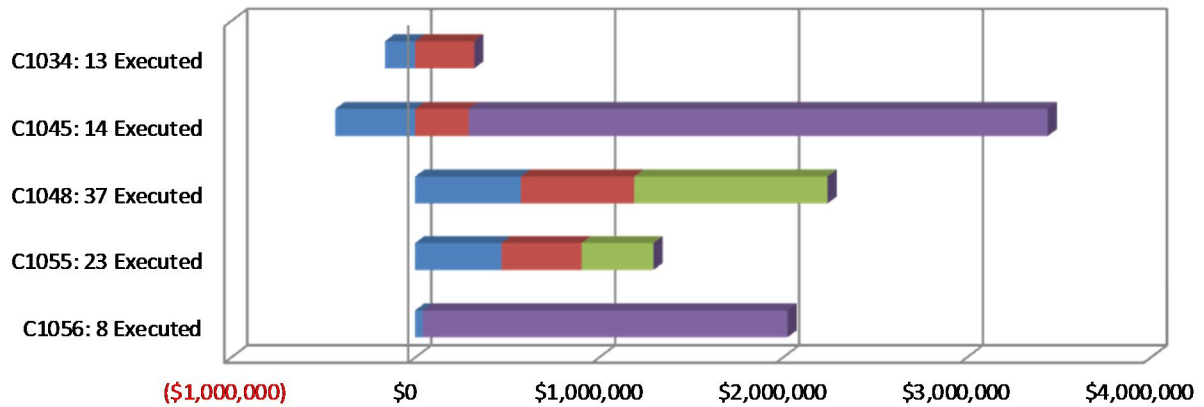
#### **Contract C1045 Westside Purple Line Extension, Section 1 Design-Build**

(Reporting Data as of September 30, 2015)

- Targeted Worker Goal 40.00%
- Targeted Worker Current Participation 64.55%
  
- Apprentice Worker Goal 20.00%
- Apprentice Worker Current Participation 17.70%
  
- Disadvantaged Worker Goal 10.00%
- Disadvantaged Worker Current Participation 17.53%

## SUMMARY OF CONTRACT MODIFICATIONS

**Contract Modifications (MODs) by Cost Level**



	C1034 13 Executed	C1045 14 Executed	C1048 37 Executed	C1055 23 Executed	C1056 8 Executed	Total
■ Under \$100K	(164,288)	(434,115)	574,448	468,856	42,013	<b>486,914</b>
■ \$100K to \$250K	321,000	290,000	616,809	436,190	-	<b>1,663,999</b>
■ \$250K to \$1M	-	-	1,050,980	390,709	-	<b>1,441,689</b>
■ Over \$1M	-	3,150,000	-	-	1,983,179	<b>5,133,179</b>
<b>Total Contract MODs</b>	<b>156,712</b>	<b>3,005,885</b>	<b>2,242,237</b>	<b>1,295,755</b>	<b>2,025,192</b>	<b>8,725,781</b>
<b>Contract Award Amount</b>	<b>6,487,020</b>	<b>1,636,418,585</b>	<b>6,181,000</b>	<b>14,430,000</b>	<b>20,250,000</b>	<b>1,683,766,605</b>
<b>% of Contract MODs</b>	<b>2.4%</b>	<b>0.2%</b>	<b>36.3%</b>	<b>9.0%</b>	<b>10.0%</b>	<b>0.5%</b>

Percent of Contract MODs equals the Total Contract MODs divided by the Contract Award Amount.

Thirteen Contract MODs with a total value of \$0.2 million have been executed since the award of Contract C1034 – Exploratory Shaft Construction by Innovative Construction Solutions (ICS).

*Fourteen Contract MODs with a total value of \$3.0 million have been executed since the award of Contract C1045 – Tunnels, Stations, Trackwork, Systems and Systems Integration Testing by Skanska - Taylor - Shea, a Joint Venture.*

Thirty-seven Contract MODs with a total value of \$2.2 million have been executed since the award of Contract C1048 – Advanced Utility Relocations at Wilshire/La Brea by Metro Builders & Engineering Group, LTD.

Twenty-three Contract MODs with a total value of \$1.3 million have been executed since the award of Contract C1055 – Advanced Utility Relocations at Wilshire/Fairfax by W. A. Rasic Construction Company, Inc.

*Eight Contract MODs with a total value of \$2.0 million have been executed since the award of Contract C1056 – Advanced Utility Relocations at Wilshire/La Cienega by Steve Bubalo Construction Co.*

**FINANCIAL/GRANT STATUS**

OCTOBER 2015		STATUS OF FUNDS BY SOURCE							
SOURCE	(A)	(B)	(C)	(D)	(D/B)	(E)	(E/B)	(F)	(F/B)
	ORIGINAL BUDGET	TOTAL FUNDS ANTICIPATED	TOTAL FUNDS AVAILABLE	COMMITMENTS \$	%	EXPENDITURES \$	%	BILLED TO FUNDING SOURCE \$	%
FEDERAL - SECTION 5309 NEW STARTS	\$1,250.000	\$1,250.000	\$165.000	\$1,250.000	100%	\$165.000	13%	\$165.000	13%
FEDERAL CMAQ	\$12.171	\$12.171	\$12.171	\$0.000	0%	\$0.000	0%	\$0.000	0%
FEDERAL SECTION 5339 - ALTERNATIVES ANALYSIS	\$0.512	\$0.512	\$0.512	\$0.512	100%	\$0.512	100%	\$0.512	100%
MEASURE R - TIFIA LOAN	\$856.000	\$856.000	\$0.000	\$0.000	0%	\$0.000	0%	\$0.000	0%
MEASURE R 35%	\$869.178	\$869.178	\$348.959	\$739.150	85%	\$348.959	40%	\$250.152	29%
STATE STIP RIP	\$2.568	\$2.568	\$2.568	\$2.568	100%	\$2.568	100%	\$2.568	100%
STATE CAPITAL PROJECT LOANS - OTHERS *	\$83.648	\$83.648	\$83.648	\$83.648	100%	\$83.648	100%	\$50.898	61%
CITY OF LOS ANGELES	\$75.273	\$75.273	\$0.000	\$0.000	0%	\$0.000	0%	\$0.000	0%
<b>TOTAL</b>	<b>\$3,149.350</b>	<b>\$3,149.350</b>	<b>\$612.858</b>	<b>\$2,075.878</b>	<b>65.9%</b>	<b>\$600.687</b>	<b>19.1%</b>	<b>\$469.130</b>	<b>14.9%</b>

EXPENDITURES ARE CUMULATIVE THROUGH SEPTEMBER 2015  
ORIGINAL BUDGET BASED ON JULY 2014 BOARD APPROVED LOP BUDGET

\* OTHERS INCLUDE TDA ADMINISTRATION (\$4.1M), LTF GENERAL REVENUES (\$1.8M), AND LEASE REVENUES (\$37.8M)

**STATUS OF FUNDS ANTICIPATED**

**FEDERAL SECTION 5309 NEW STARTS:** FTA grant CA-03-0824 for \$65 million was awarded on June 2, 2014. FTA Grant CA-03-0824-01 for \$100 million was awarded on August 10, 2015. Funds are available for drawdown.

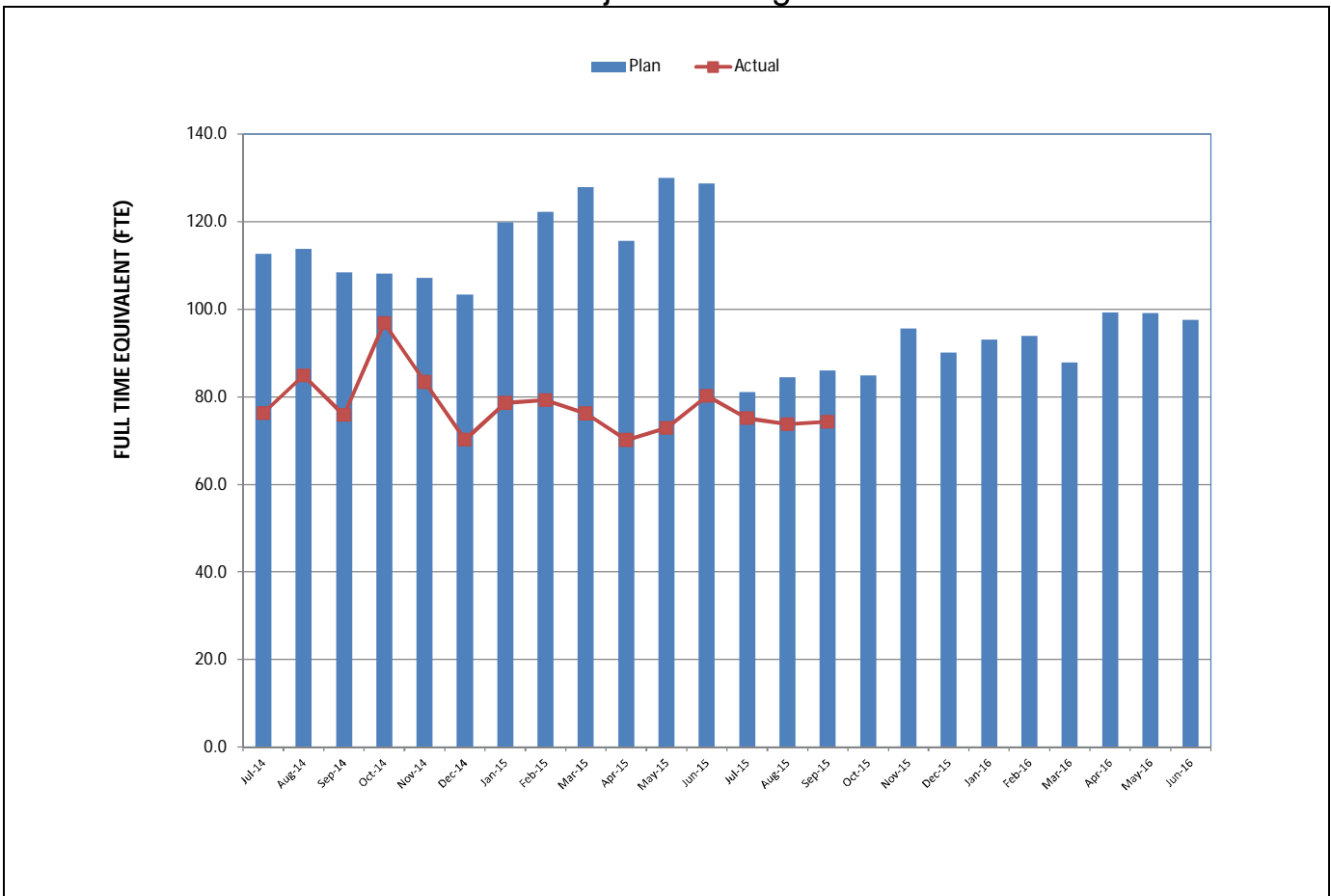
**FEDERAL SECTION 5309 ALTERNATIVE ANALYSIS:** FTA grant CA-39-0006 of \$0.5 million was awarded on July 25, 2014. Funds are available for drawdown.

**MEASURE R – TIFIA LOAN (Transportation Infrastructure Finance & Innovation Act):** TIFIA Loan was executed on May 21, 2014 for \$856 million. First disbursement is planned for FY 2018.

**STATE STIP RIP:** State grant application of \$8.4 million, of which \$2.6 million has been allocated to this project, was awarded on July 26, 2007. Funds are available for drawdown.

**CMAQ (Congestion Mitigation & Air Quality):** FTA Grant CA-95-X264 for \$12.2 million was awarded July 27, 2015. Funds are available for drawdown.

**STAFFING STATUS**  
Total Project Staffing – FTES



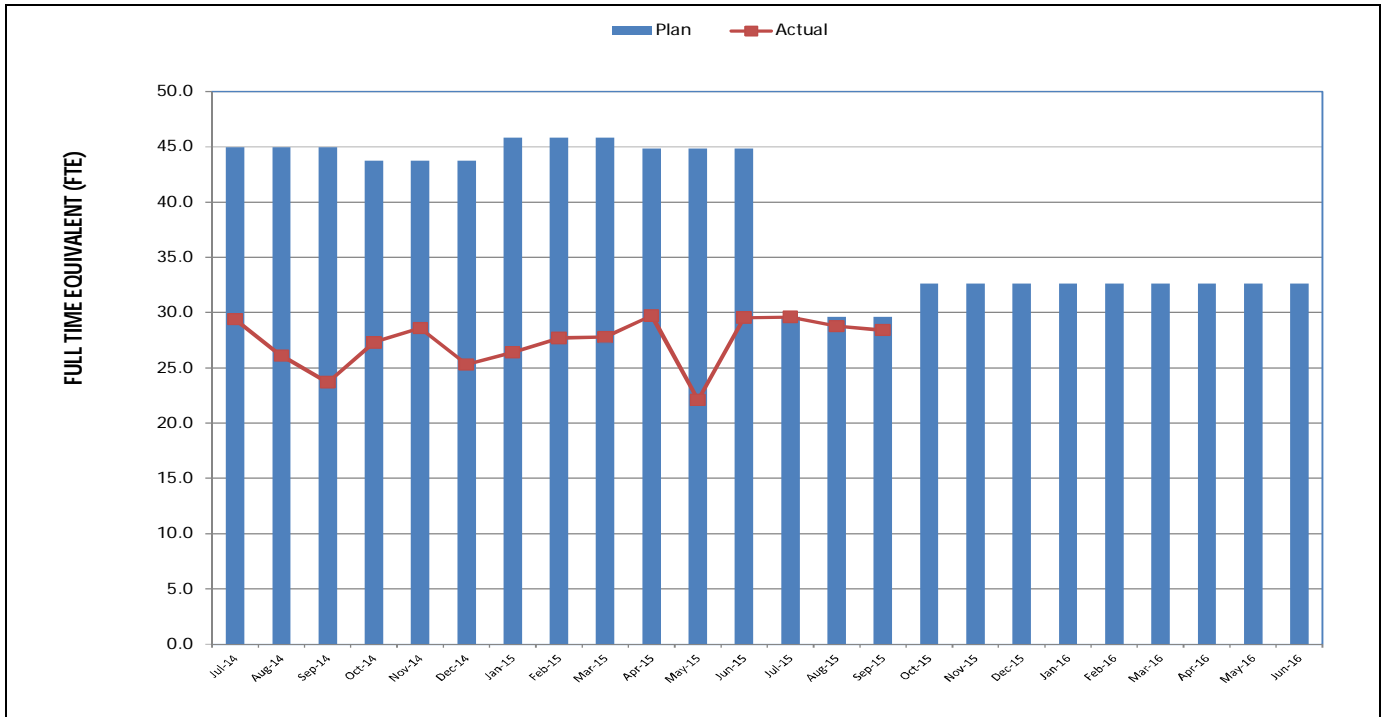
**TOTAL PROJECT STAFFING**

The overall FY16 Total Project Staffing Plan averages 91.1 FTEs per month.

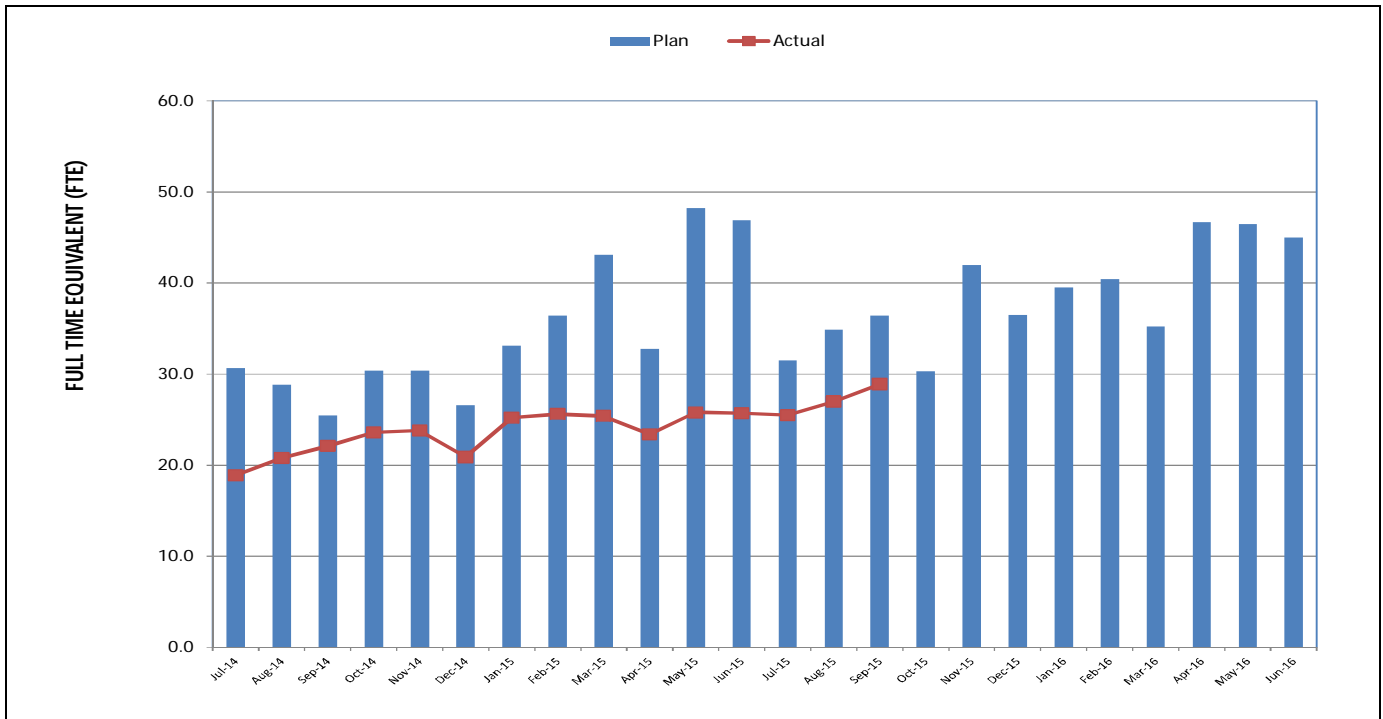
*For September 2015, there were a total of 28.4 FTEs for MTA's Project Administration staff and 45.9 FTEs for consulting staff. The total project staffing for September 2015 was 74.3 FTEs.*

Metro has re-visited the staffing requirements for Fiscal Year 2016 and has provided an update based upon the current project schedule and project needs. *The Construction Management Support Services Consultant (CMSSC) staffing level plan may change in the upcoming months to reflect the actual position conversions of CMSSC staff to Metro staff per the July 2015 Metro Board action and the Board action to be taken in January 2016 to extend CMSSC services to June 2017.*

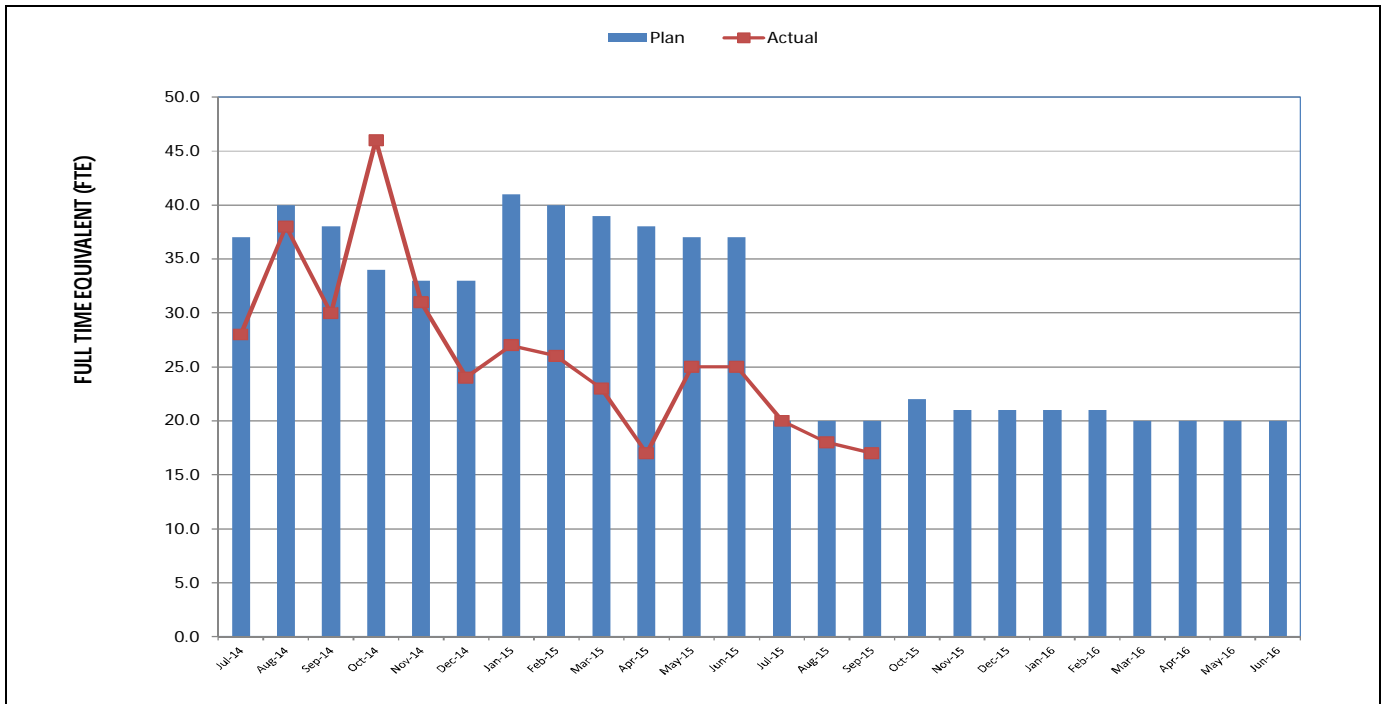
**STAFFING STATUS (Continued)**  
**METRO STAFFING – FTES**



**CONSTRUCTION MANAGEMENT SUPPORT  
 SERVICES CONSULTANT – FTES**



### STAFFING STATUS (Continued) ENGINEERING MANAGEMENT SERVICES CONSULTANT – FTES



**REAL ESTATE STATUS**

**Purple Line Extension Section 1 - Real Estate Status Summary**

Description	Number of Parcels	Certified	Appraisals Completed	Offers Made	Agreements Signed	Condemnation Filed	Relocations		Parcels Available
							Required	Completed	
Full Takes	9	9	9	9	2	7	109	109	9
Part Takes	6	6	6	5	1	3	0	0	5
TCE	4	4	4	4	1	4	0	0	4
<b>Total Parcels</b>	<b>19</b>	<b>19</b>	<b>19</b>	<b>18</b>	<b>4</b>	<b>14</b>	<b>109</b>	<b>109</b>	<b>18</b>

The total count of the 19 parcels include the two Division 20 parcels required for constructing the MOW/NRV Building 61S.

*Metro has possession of all parcels to meet the C1045 Contract site availability dates.*

## QUALITY ASSURANCE STATUS

### **C1045 – Tunnels, Stations, Trackwork, Systems and Systems Integration Testing**

- Attended weekly Project staff meetings and progress meetings with the Contractor.
- Ongoing discussions and coordination with the Engineering Management Services Consultant (EMSC) and Construction Management Support Services Consultant (CMSSC) support staff for quality oversight.
- Reviewed and provided comments on quality related submittals.
- *Tunnels – 85% Design Submittal in review with Metro.*
- *Wilshire/La Brea 100% SOE – BOE and Metro comments being addressed.*
- *Wilshire/Fairfax 65% SOE – In constructability review. 85% Design Submittal under QC review.*

### **C1055 – Advanced Utility Relocations – Wilshire/Fairfax**

- *Contract closeout meetings in progress.*
- Metro Quality Management is reviewing final quality inspection and test documentation for closeout and submittal to local jurisdiction. *Contractor to submit final inspection report and testing agency compliance statement by November 20, 2015.*

### **C1056 – Advanced Utility Relocations – Wilshire/La Cienega**

- Attended weekly progress meeting with the Contractor and monthly quality meeting.
- Reviewed and provided comments on quality related submittals.
- Attended Readiness Review Meetings.
- Reviewed daily inspection reports from the Contractor/Field Technician and CMSC oversight inspection personnel.
- *Conducted quality surveillance (S2015-013 and S2015-016) of the as-built development for utilities installation.*
- *Reviewed Monthly Quality Report for submittal to City of Beverly Hills.*

### **C1078 – Division 20 MOW and NRV Building 61S**

- Conducted initial Quality/Safety Meeting.
- *Soils mitigation and underground tank removal underway.*



## ENVIRONMENTAL STATUS

- Limited noise and vibration monitoring performed by AUR and DB Contractors. No significant noise or vibration exceedances were reported for work performed.
- Noise and Archeo/Paleo Monitoring for C1055, C1056, and C1045 work activities.
- Continued Construction Noise, Stormwater BMP and Archeo/Paleo Awareness Training for C1055, C1056 and C1045.
- Reviewed C1055, C1056 and C1045 Contractor submittals and tracked monitoring and reporting obligations in accordance with contract Specifications and EIR requirements.
- Participated in weekly C1055, C1056 and C1045 contract coordination meetings.
- Held monthly Environmental Mitigations Meeting to discuss soil disposal and air quality permits.
- Weekly Construction Noise Compliance Reports prepared by the Independent Compliance Monitor and submitted to Metro and City of Beverly Hills.
- Continued coordination and review process with City of Los Angeles and Beverly Hills municipalities and 3rd party utility companies.
- Coordinated schedule and oversight requirements for noise, cultural resources and paleontological monitoring for upcoming construction activities.
- *Reviewed Sustainability Plan.*
- *Submitted 10<sup>th</sup> Quarterly MMRP Report to the FTA.*
- *Participated in Construction Work Plan Workshops and Readiness Review Meetings.*
- *Addressed pending submittals and reporting requirements.*
- *Performed onsite inspection of noise mitigation measures.*
- *Reviewed and tracked contractor monitoring and reporting requirements.*
- *Reviewed requests for consolidated equipment list proposed by the C1045 Contractor.*
- *Coordinated Stormwater Management and Green Construction Policy audit/site visit.*
- *Coordinated access issues to Samsung Building with Cultural Resources Manager.*

## **CONSTRUCTION RELATIONS STATUS**

- *Produced and distributed 20 construction work notices for advance utility relocations and construction activities.*
- *Made Project Presentations at the following: 5900 Wilshire, Miracle Mile Residential Association, Mid-Town Homeless Coalition , LA Current Affairs Forum, Councilmember Ryu, Mid-City West Neighborhood Council, Greater Wilshire Neighborhood Council, Business Interruption Fund Workshop, John Burroughs Middle School Parent Meeting, Samsung Building Owner, Safety Agencies, Miracle Mile Civic Coalition, Saban Theater Working Group, Windsor Village HOA, Brookside HOA, Mayor's Office and Mid-City West NC Transportation Committee.*
- *Fielded and addressed the following: dust and noise mitigation around the Wilshire/Crenshaw staging yard, homeless encampments moving around Wilshire/La Brea area and traffic concerns in the City of Beverly Hills during day work.*
- *Contacted businesses and residents about street decking options for Wilshire/La Brea.*
- Visited and updated businesses and residences at future station locations to discuss utility relocations, business profiles and Eat, Shop, Play promotional campaign for businesses.
- Attended the following meetings: Construction Management, Advanced Utility Relocations, Construction Relations, Environmental Mitigations, STS Third Party Workshop, Beverly Hills MOA, Marketing, Social Media, Eat, Shop, Play, and Bus Relocations and Stops.
- Updated Facebook/Twitter website as needed.
- *Continued with the "Eat, Shop, Play Spotlight" campaign to advertise and promote businesses along Wilshire Boulevard. Two businesses are being highlighted per month.*

## **CREATIVE SERVICES STATUS**

- Continued to refine project artwork opportunities and locations.
- Responded to RFIs and submittals.
- Participated in Design Build Workshops and document reviews.

## SAFETY & SECURITY STATUS

- *There were no injuries on the Project during October 2015.*
- Safety staff participated in scheduled readiness review meetings to ensure compliance with approved Work Plans and contract specifications.
- Construction activities, Advance Utility Relocations and pre-construction (C1045) activities continue to be monitored during both day and night work shifts to document contractor compliance with contract specifications.
- Safety staff attended weekly progress meetings and other project meetings to evaluate Contractors Safety Program compliance with contract requirements.
- *Hosted Monthly All Hands Safety Meeting for all Westside Purple Line Extension Contractors on October 27, 2015.*
- Construction Safety staff continue to work with Program Management and Construction Relations staff to monitor issues related to public concerns regarding noise, traffic and transient encampment hazards as well as public interactions with the construction crews.
- *Contract C1078 work hours will be reported beginning next month as part of the Project Hours.*
- *September data are presented below. Construction Safety staff continue to work with contractors to insure accurate data.*
- *September 2015 Contractor Work Hours (Design & Construction): 34,961*
- *Contractor Work Hours (Design & Construction): 34,961*
- *Contractor – Project to Date Work Hours (Design & Construction through September 30, 2015): 325,745*
- *Total Project to Date Work Hours (Contractor & the IPMO Staff through September 30, 2015): 501,298*
- *Project to Date Recordable Injury Rate: 0.4 (One Recordable Injury). Each rate is per 200,000 work hours (National Rate): 3.2*
- *Project to Date Total Time Away Injury Rate: 0.4 (One Time Away From Work Injury) (National Rate 1.8).*
- *Project to Date Total Days Away Rate: 56.3 (141 Days Away From Work) (No National Rate Published).*
- National Rates for Heavy and Civil Construction (NAICS Code 237) are for Calendar Year 2013, published by USBLIS in December 2014.

**THIRD PARTY AGREEMENT STATUS**

<b>Third Party</b>	<b>Type of Agreement</b>	<b>Forecast Execution Date</b>	<b>Required Need Date</b>	<b>Status/ Comments</b>
City of Los Angeles (LA)	Amendment to Master Cooperative Agreement	N/A	N/A	Parties will work under 2003 MCA.
City of Beverly Hills (BH)	MOAs (La Cienega only)	9/14 (AUR) 3/16 (D/B)	9/14 (AUR) 8/16 (D/B)	City of Beverly Hills approved the MOA for the C1056 Wilshire/La Cienega AUR contract on August 19, 2014. Metro continues to work with the City to establish an MOA for the C1045 Design/Build contract.
Los Angeles Department of Water and Power	Amendment to Memorandum of Understanding	N/A	N/A	Metro and LADWP will continue to work under the terms of the previous Cooperative Agreement.
Los Angeles County Public Works	Letter of Agreement	4/11	3/12	Executed
Caltrans	Amendment	8/11	3/12	Executed
Private Utilities	LOA, MOU, MCA, or MUA	9/14	N/A	Metro is working with affected third party utilities under existing agreements except for Qwest and Level 3. Draft agreements for Qwest and Level 3, and a new agreement for SCE are all under review. In absence of an agreement, work is being performed by work orders.

## ADVANCED UTILITY RELOCATION STATUS

- C1048 AUR for the Wilshire/La Brea Station was substantially completed on October 27, 2014. Contract closeout was finalized in August 2015.
- AT&T relocations at the Wilshire/La Brea Station were completed in May 2015. *AT&T relocations at the Wilshire/Fairfax Station began in January 2015 and are anticipated to be completed in January 2016.* AT&T relocations on Hamilton Drive in the Wilshire/La Cienega Station area were completed in July 2015. AT&T work for the remaining portion of the Wilshire/La Cienega Station area is anticipated to be completed in February 2016.
- *The Gas Company relocations at the Wilshire/Fairfax Station began in March 2015 and were completed in October 2015.*
- *The C1055 AUR contractor for the Wilshire/Fairfax Station obtained Contractual Milestone No. 3 (Substantial Completion) on October 7, 2015. Final punch list items are anticipated to complete by November 16, 2015.*
- *The LADWP Power relocations at the Wilshire/Fairfax Station are anticipated to complete by August 2016.*
- The Notice to Proceed (NTP) Wilshire/La Cienega AUR Contract (C1056) was issued on January 12, 2015. Construction began in late April 2015. SCE relocations are continuing along with the City of Beverly Hills sewer, water and storm drain relocations.

## PEAK HOUR AND NIGHTTIME CONSTRUCTION VARIANCES

Metro is actively pursuing extended hour variances/exemptions to accommodate the Project needs. Metro staff is working with the City of Los Angeles Bureau of Engineering and the Los Angeles Police Commission to obtain Peak Hour Exemptions and Nighttime Construction Variances. Current efforts center around extending the existing nighttime noise variances to accommodate advanced utility relocations at the Wilshire/La Brea and Wilshire/Fairfax Station sites as well as obtaining new nighttime noise variances and peak hour exemptions to allow night work and weekend work to accommodate the Wilshire/La Brea, Wilshire/Fairfax and Wilshire/Western piling operations for the Design/Build contractor.

- The Peak Hour Exemption for Wilshire/La Brea pile installation was approved by the City of Los Angeles on November 8, 2013. A revised application was approved in June 2015 with the new construction dates of November 11, 2015 to May 3, 2016.
- The Peak Hour Exemptions for Wilshire/Fairfax and Wilshire/Western pile installations were approved by the City of Los Angeles on May 12, 2014. There will be a resubmittal with updated construction dates in early 2016.
- The Nighttime Noise Variance for the Wilshire/La Brea Advanced Utility Relocation work has been extended to February 2016 by the Los Angeles Police Commission.
- The Nighttime Noise Variance for the Wilshire/Fairfax Advanced Utility Relocation work has been extended to January 17, 2016 by the Los Angeles Police Commission.
- *A Peak Hour Exemption was granted by the City of Los Angeles for the area near the Wilshire/La Cienega Station to allow for the spillover of traffic control devices from the City of Beverly Hills into the City of Los Angeles through November 2015. An extension is expected to be received in November 2015 to allow Metro to proceed with the exemption through January 2016.*
- An approved Nighttime Noise Variance for pile installations at the Wilshire/La Brea Station was extended to April 30, 2016, at which time a six-month extension will be requested, if needed.
- *A Holiday Moratorium Exemption for 2015 has been submitted to the City of Los Angeles for approval. Metro Construction Relations is work with the local City Council District office to obtain approval prior to the Thanksgiving Holiday.*

## **CHRONOLOGY OF EVENTS**

June 2007	Began Alternatives Analysis study
January 2009	Board approval of Alternatives Analysis study and next phase
February 2009	Began Draft Environmental Impact Statement / Report (EIS / EIR)
October 2010	Board approval of Draft EIS / EIR and selection of locally preferred alternative
January 2011	FTA approval to enter Preliminary Engineering
May 2011	Began Preliminary Engineering
April 2012	Board certification of Final EIS / EIR and adoption of project
July 2012	Completion of Exploratory Shaft final design
August 2012	FTA Record of Decision
September 2012	Began Real Estate Acquisition
November 2012	Began Final Design - C1048 - Advanced Utility Relocations contract – Wilshire/La Brea
November 2012	Began Final Design - C1055 - Advanced Utility Relocations contract – Wilshire/Fairfax
November 2012	Issued RFQ for C1045 Design / Build contract
December 2012	Began Final Design - C1056 - Advanced Utility Relocations contract – Wilshire/La Cienega
January 2013	Began C1034 Exploratory Shaft construction
February 2013	Received RFQ responses for C1045 Design / Build contract
June 2013	Issued RFP for C1045 Tunnels, Stations, Trackwork, Systems and Systems Integration Testing
June 2013	Beginning of C1055 AUR Wilshire/Fairfax Bid Period
July 2013	Submitted draft FFGA application

**CHRONOLOGY OF EVENTS (Continued)**

July 2013	Completed Final Design - C1048 - Advanced Utility Relocations contract – Wilshire/La Brea
July 2013	Submitted TIFIA loan application
August 2013	Began C1048 Advanced Utility Relocations contract – Wilshire/La Brea
August 2013	NTP for Construction Management Support Services Contract
January 2014	Submitted application to FTA requesting an FFGA
January 2014	Received RFP Proposals for Contract C1045
February 2014	Beginning of C1056 AUR Wilshire/La Cienega Bid Period
May 2014	FTA awarded FFGA
May 2014	Received TIFIA Loan
June 2014	Began C1055 Advanced Utility Relocations at Wilshire/Fairfax
July 2014	Metro Board approved staff recommendation to award Contract C1045 and approved Life-of-Project Budget
September 2014	Issued Invitation to Bid for Contract C1078
October 2014	Issued C1056 Contract Award
November 2014	Issued C1045 Contract Award
January 2015	Issued C1045 Contract Notice to Proceed
January 2015	Issued C1056 Contract Notice to Proceed
February 2015	Received Contract C1078 Bids
August 2015	Issued C1078 Contract Award
September 2015	Issued C1078 Contract Notice to Proceed
<i>October 2015</i>	<i>Contract C1055 achieved Substantial Completion</i>



**CONTRACT C1045 STATUS**

<p><b>Description: Westside Purple Line Extension Design-Build</b> <b>Contractor: SKANSKA - TRAYLOR - SHEA</b></p>	<p><b>Contract No. C1045</b> <b>Status as of: October 30, 2015</b></p>																																														
<p><b>Progress / Work Completed:</b></p> <ul style="list-style-type: none"> <li>- Wilshire/Western 85% design Metro review</li> <li>- Wilshire/Western 100% Design underway</li> <li>- Wilshire/La Brea 85% design comment resolution complete</li> <li>- Wilshire/La Brea 100% SOE design complete</li> <li>- Wilshire/La Brea 100% permanent utility design complete</li> </ul> <p><b>Areas of Concern:</b></p> <p style="padding-left: 40px;">None</p>	<p><b>Major Activities (In Progress):</b></p> <ul style="list-style-type: none"> <li>- Wilshire/La Brea 100% design underway</li> <li>- Wilshire/Fairfax 85% design underway</li> <li>- Tunnels 85% design nears completion</li> <li>- Temporary wet utility work at Wilshire/La Brea continues</li> <li>- Wilshire/La Brea North Soundwall continues</li> <li>- Wilshire/La Cienega 60% design continues</li> <li>- North Side Traffic Control for Wilshire/La Brea pile installation</li> </ul> <p><b>Major Activities Next Period:</b></p> <ul style="list-style-type: none"> <li>- Pile delivery at Wilshire/La Brea</li> <li>- Pile installation begins at Wilshire/La Brea</li> <li>- South yard soundwall complete</li> <li>- North yard soundwall complete</li> <li>- South yard bldg demo complete</li> <li>- Receive Wilshire/La Cienega 60% design for review</li> <li>- Receive Tunnels 85% design for review</li> </ul>																																														
<p><b>Schedule Summary:</b></p> <p>Date of Award: 11/04/14</p> <p>Notice to Proceed: (actual) 01/12/15</p> <p>Original Contract Duration: 3250 CD</p> <p>Current Contract Duration: 3250 CD</p> <p>Elapsed Time from NTP: 291 CD</p>		<table border="1"> <thead> <tr> <th></th> <th>Original Contract Dates</th> <th>Time Extension</th> <th>Current Contract</th> <th>Forecast</th> <th>Variance CDs</th> </tr> </thead> <tbody> <tr> <td>Notice to Proceed (Estimated)</td> <td>01/12/15</td> <td>0</td> <td>01/12/15</td> <td>01/12/15</td> <td>0</td> </tr> <tr> <td>Milestone 1: Substantial Completion</td> <td>06/09/23</td> <td>0</td> <td>06/09/23</td> <td>06/09/23</td> <td>0</td> </tr> <tr> <td>Milestone 2: Stations available to UFS</td> <td>10/07/22</td> <td>0</td> <td>10/07/22</td> <td>10/07/22</td> <td>0</td> </tr> <tr> <td>Milestone 3: Start of Integration Testing to ROC</td> <td>01/10/23</td> <td>0</td> <td>01/10/23</td> <td>01/10/23</td> <td>0</td> </tr> <tr> <td>Milestone 4: Demobilization</td> <td>12/06/23</td> <td>0</td> <td>12/06/23</td> <td>12/06/23</td> <td>0</td> </tr> <tr> <td>Milestone 5: Temporary Construction Easements</td> <td>01/10/23</td> <td>0</td> <td>01/10/23</td> <td>01/10/23</td> <td>0</td> </tr> </tbody> </table>		Original Contract Dates	Time Extension	Current Contract	Forecast	Variance CDs	Notice to Proceed (Estimated)	01/12/15	0	01/12/15	01/12/15	0	Milestone 1: Substantial Completion	06/09/23	0	06/09/23	06/09/23	0	Milestone 2: Stations available to UFS	10/07/22	0	10/07/22	10/07/22	0	Milestone 3: Start of Integration Testing to ROC	01/10/23	0	01/10/23	01/10/23	0	Milestone 4: Demobilization	12/06/23	0	12/06/23	12/06/23	0	Milestone 5: Temporary Construction Easements	01/10/23	0	01/10/23	01/10/23	0			
	Original Contract Dates	Time Extension	Current Contract	Forecast	Variance CDs																																										
Notice to Proceed (Estimated)	01/12/15	0	01/12/15	01/12/15	0																																										
Milestone 1: Substantial Completion	06/09/23	0	06/09/23	06/09/23	0																																										
Milestone 2: Stations available to UFS	10/07/22	0	10/07/22	10/07/22	0																																										
Milestone 3: Start of Integration Testing to ROC	01/10/23	0	01/10/23	01/10/23	0																																										
Milestone 4: Demobilization	12/06/23	0	12/06/23	12/06/23	0																																										
Milestone 5: Temporary Construction Easements	01/10/23	0	01/10/23	01/10/23	0																																										
<p><b>Physical Percent Complete:</b></p> <p>Physical completion: 3.73%*</p> <p><i>* Note: Physical completion assessment reflects work completed and work in progress.</i></p>	<p><b>Cost Summary: \$ In millions</b></p> <table border="0"> <tr> <td>1. Award Value:</td> <td style="text-align: right;">1,636.4</td> </tr> <tr> <td>2. Executed Modifications:</td> <td style="text-align: right;">3.0</td> </tr> <tr> <td>3. Approved Change Orders:</td> <td style="text-align: right;">0.0</td> </tr> <tr> <td>4. Current Contract Value (1+2+3):</td> <td style="text-align: right;">1,639.4</td> </tr> <tr> <td>5. Incurred Cost:</td> <td style="text-align: right;">335.1</td> </tr> </table>					1. Award Value:	1,636.4	2. Executed Modifications:	3.0	3. Approved Change Orders:	0.0	4. Current Contract Value (1+2+3):	1,639.4	5. Incurred Cost:	335.1																																
1. Award Value:	1,636.4																																														
2. Executed Modifications:	3.0																																														
3. Approved Change Orders:	0.0																																														
4. Current Contract Value (1+2+3):	1,639.4																																														
5. Incurred Cost:	335.1																																														



**CONTRACT C1056 STATUS**

<p><b>Description: Wilshire/La Cienega AUR</b> <b>Contractor: Steve Bubalo Construction Co.</b></p>	<p><b>Contract No. C1056</b> <b>Status as of: October 30, 2015</b></p>															
<p><b>Progress / Work Completed:</b></p> <ul style="list-style-type: none"> <li>- Waterline North Wilshire/La Cienega to Hamilton (STA 24+09 to Tower)</li> <li>- Sewer Line D Hamilton north to south</li> <li>- Sewer Line C tie-in south side of Wilshire</li> <li>- SCE crossing along sidewalk - Tower to Gale vault</li> <li>- SCE ductbank along 8484 Wilshire Blvd. - STA 51+30 to 52+69</li> </ul> <p><b>Areas of Concern:</b></p> <p style="text-align: center;">None</p>	<p><b>Major Activities (In Progress):</b></p> <ul style="list-style-type: none"> <li>- SCE crossing from Coffee Bean vault Tower to Gale (South Sidewalk)</li> <li>- SCE ductbank along 8484 Wilshire Blvd from STA 51+30 to 52+69</li> </ul> <p><b>Major Activities Next Period:</b></p> <ul style="list-style-type: none"> <li>- Continue sewer lines on Wilshire Blvd</li> <li>- Continue SCE ductbank going West</li> </ul>															
<p><b>Schedule Summary:</b></p> <p>Date of Award: 10/13/14</p> <p>Notice to Proceed: (estimated) 01/12/15</p> <p>Original Contract Duration: 696 CD</p> <p>Current Contract Duration: 696 CD</p> <p>Elapsed Time from NTP: 291 CD</p>		Original Contract Dates	Time Extension	Current Contract	Forecast	Variance CDs										
	Notice to Proceed (Estimated)	01/12/15	0	01/12/15	01/12/15	0										
	Milestone 1:	07/13/16	0	07/13/16	07/13/16	0										
	Milestone 2: Substantial Completion	12/08/16	0	12/08/16	12/08/16	0										
<p><b>Physical Percent Complete:</b></p> <p>Physical completion: 34.61%*</p> <p><i>* Note: Physical completion assessment reflects work completed and work in progress.</i></p>	<p><b>Cost Summary: \$ In millions</b></p> <table style="width: 100%; border-collapse: collapse;"> <tr> <td style="width: 80%;">1. Award Value:</td> <td style="text-align: right;">20.3</td> </tr> <tr> <td>2. Executed Modifications:</td> <td style="text-align: right;">2.0</td> </tr> <tr> <td>3. Approved Change Orders:</td> <td style="text-align: right;">0.0</td> </tr> <tr> <td>4. Current Contract Value (1+2+3):</td> <td style="text-align: right;">22.3</td> </tr> <tr> <td>5. Incurred Cost:</td> <td style="text-align: right;">9.1</td> </tr> </table>						1. Award Value:	20.3	2. Executed Modifications:	2.0	3. Approved Change Orders:	0.0	4. Current Contract Value (1+2+3):	22.3	5. Incurred Cost:	9.1
1. Award Value:	20.3															
2. Executed Modifications:	2.0															
3. Approved Change Orders:	0.0															
4. Current Contract Value (1+2+3):	22.3															
5. Incurred Cost:	9.1															

**CONTRACT C1078 STATUS**

<p><b>Description: Division 20 (MOW/NRV)</b> <b>Contractor: Clark Construction</b></p>	<p><b>Contract No. C1078</b> <b>Status as of: October 30, 2015</b></p>															
<p><b>Progress / Work Completed:</b> - Contractor mobilized their design team</p> <p><b>Areas of Concern:</b> <b>None</b></p>	<p><b>Major Activities (In Progress):</b> - Contractor preparing early submittals - Preparing 120 day schedule and partial schedule of values - Started final design on the first of three APDUs</p> <p><b>Major Activities Next Period:</b> - Submit 120 day schedule and partial schedule of values - Prepare baseline schedule and final schedule of values - Continue final design on the first of three APDUs - Start final design APDU No. 2 and DU No. 1</p>															
<p><b>Schedule Summary:</b> Date of Award: 8/6/2015A Notice to Proceed: (estimated) 9/30/2015A Original Contract Duration: 853 CD Current Contract Duration: 853 CD Elapsed Time from NTP: 30 CD</p>		Original Contract Dates	Time Extension	Current Contract	Forecast	Variance CDs										
	Notice to Proceed (Estimated)	09/30/15	0	0	09/30/15	0										
	Milestone 1: Substantial Completion	01/30/18	0	853	01/30/18	0										
<p><b>Physical Percent Complete:</b> Physical completion: 0%</p> <p><i>* Note: Physical completion assessment reflects work completed and work in progress.</i></p>	<p><b>Cost Summary:</b> <b>\$ In millions</b></p> <table border="0"> <tr> <td>1. Award Value:</td> <td>52.8</td> </tr> <tr> <td>2. Executed Modifications:</td> <td>0.0</td> </tr> <tr> <td>3. Approved Change Orders:</td> <td>0.0</td> </tr> <tr> <td>4. Current Contract Value (1+2+3):</td> <td>52.8</td> </tr> <tr> <td>5. Incurred Cost:</td> <td>0.0</td> </tr> </table>						1. Award Value:	52.8	2. Executed Modifications:	0.0	3. Approved Change Orders:	0.0	4. Current Contract Value (1+2+3):	52.8	5. Incurred Cost:	0.0
1. Award Value:	52.8															
2. Executed Modifications:	0.0															
3. Approved Change Orders:	0.0															
4. Current Contract Value (1+2+3):	52.8															
5. Incurred Cost:	0.0															

## CONSTRUCTION PHOTOGRAPHS



*C1045 Contractor Installing Soundwall Panels at the South Wilshire/La Brea Construction Staging Site*



*Surveyors Providing As-Built Data for SCE Ductbank Relocation*

## APPENDIX

### COST AND BUDGET TERMINOLOGY

#### Project Cost Descriptions

ORIGINAL BUDGET	The Original Project Budget as authorized by the Metropolitan Transportation Authority (Metro) Board.
CURRENT BUDGET	The Original Budget plus all budget amendments approved by formal Metro Board action. Also referred to as Approved Budget.
COMMITMENTS	The total of actual contracts awarded, executed change orders or amendments, and approved work orders of Master Cooperative Agreements, offers accepted for purchase of real estate, and other Metro actions which have been spent or result in the obligation of specific expenditures at a future time.
EXPENDITURES	The total dollar amount of funds expended by Metro for contractor or consultant services, third party services, staff salaries, real estate and other expenses that is reported in Metro's Financial Information System (FIS).
CURRENT FORECAST	The best estimate of the final cost of the Project when all checks have been issued and the Project is closed out. Current Forecast is composed of actual costs incurred to date, the best estimate of work remaining and a current risk assessment for each budgeted cost item.

#### Cost Report by Element Descriptions

CONSTRUCTION	Includes construction contracts. Cost associated with Guideways, Stations, Southwestern Yard, Sitework/Special Conditions and Systems.
RIGHT-OF-WAY	Includes purchase cost of parcels, easements, right-of-entry permits, escrow fees, contracted real estate appraisals and tenant relocation.
VEHICLES	Includes the purchase of Heavy Rail Vehicles and spare parts for the Project.
PROFESSIONAL SERVICES	Includes design engineering, project management assistance, construction management support services, legal counsel, agency staff costs, and other specialty consultants.
CONTINGENCY	A fund established at the beginning of a project to provide for anticipated but unknown additional costs that may arise during the course of the Project.
PROJECT REVENUE	Includes all revenue received by Metro as a direct result of project activities. This includes cost sharing construction items, insurance premium rebates, and the like.

## APPENDIX

### LIST OF ACRONYMS

ATC	Automatic Train Control
ATSAC	Automated Traffic Surveillance and Control
BAFO	Best and Final Offer
BIM	Building Information Modeling
BNSF	Burlington Northern Santa Fe Railway Company
BRT	Bus Rapid Transit
CADD	Computer Aided Drafting and Design
CALTRANS	California Department of Transportation
CCTV	Closed Circuit Television
CD	Calendar Day
CEQA	California Environmental Quality Act
CM	Construction Manager
CMAQ	Congestion Mitigation and Air Quality Improvement Program
CMSSC	Construction Management Support Services Consultant
CN	Change Notice
CO	Change Order
COBH	City of Beverly Hills
COLA	City of Los Angeles
CPM	Critical Path Method
CPUC	California Public Utilities Commission
CR	Camera Ready
CRMMP	Cultural Resource Monitoring and Mitigation Plan
CSPP	Construction Safety Phasing Plan
CTC	California Transportation Commission
CUD	Contract Unit Description
DB	Design Build
DBB	Design Bid Build
DOT	Department of Transportation
DWP	Department of Water and Power
EIR	Environmental Impact Report
EIS	Environmental Impact Statement
EMS	Engineering Management Services
EPBM	Earth Pressure Balance Machine
FAA	Federal Aviation Administration
FAR	Federal Acquisition Regulation
FD	Final Design
FEIS	Final Environmental Impact Statement
FEIR	Final Environmental Impact Report
FIS	Financial Information System
FLSR	Fire Life Safety Report
FONSI	Finding of No Significant Impact
FRA	Federal Railroad Administration
FSEIR	Final Supplemental Environmental Impact Report
FSEIS	Final Supplemental Environmental Impact Statement

**APPENDIX  
LIST OF ACRONYMS (Continued)**

FTA	Federal Transit Administration
FTE	Full Time Equivalent
GBR	Geotechnical Baseline Report
GDSR	Geotechnical Design Summary Report
HMM	Hatch Mott MacDonald
HRT	Heavy Rail Transit
HRV	Heavy Rail Vehicle
IFB	Invitation for Bid
IPMO	Integrated Project Management Office
JV	Joint Venture
LA	Los Angeles
LABOE	Los Angeles Bureau of Engineering
LABOS	Los Angeles Bureau of Sanitation
LABSL	Los Angeles Bureau of Street Lighting
LACFCD	Los Angeles County Flood Control District
LACMTA	Los Angeles County Metropolitan Transportation Authority
LADOT	Los Angeles Department of Transportation
LADPW	Los Angeles Department of Public Works
LADWP	Los Angeles Department of Water and Power
LAUSD	Los Angeles Unified School District
LAWA	Los Angeles World Airports
LAX	Los Angeles International Airport
LNTP	Limited Notice To Proceed
LONP	Letter Of No Prejudice
LOP	Life-of-Project
LPA	Locally Preferred Alternative
L RTP	Long Range Transportation Plan
LRV	Light Rail Vehicle
MCA	Master Cooperative Agreement
MIS	Major Investment Study
MMRP	Mitigation Monitoring and Reporting Plan
MOU	Memorandum of Understanding
MPSR	Monthly Project Status Report
N/A	Not Applicable
NEPA	National Environmental Protection Act
NOD	Notice of Determination
NPDES	National Pollution Discharge Elimination System
NTE	Not to Exceed
NTP	Notice To Proceed
OCC	Operations Control Center
OSHA	Occupational Health and Safety Administration
PA/VMS	Public Address/Visual Messaging Sign
PE	Preliminary Engineering



**APPENDIX**

**LIST OF ACRONYMS (Continued)**

PEER	Permit Engineering Evaluation Report
PIP	Project Implementation Plan
PLA	Project Labor Agreement
PM	Project Manager
PMIP	Project Management Implementation Plan
PMOC	Project Management Oversight Consultant
PMP	Project Management Plan
P&P	Policies & Procedures
PR	Project Report
PRMMP	Paleontological Resource Monitoring Mitigation Plan
PSR	Project Study Report
QA	Quality Assurance
QAR	Quality Assurance Report
QC	Quality Control
QPSR	Quarterly Project Status Report
QTIB	Qualified Transit Improvement Bonds
RAMP	Real Estate Acquisition Management Plan
RCHAR	Rail Crossing Hazards Analysis Report
RCMP	Risk Assessment Management Plan
RFC	Request For Change
RFP	Request For Proposals
RFSC	Request for Special Consideration
RHA	Risk Hazard Analysis
RLPE	Red Light Photo Enforcement
ROC	Rail Operations Center
ROD	Record Of Decision
ROM	Rough Order of Magnitude
ROW	Right-Of-Way
RPZ	Runway Protection Zone
RSD	Revenue Service Date
SAV	Stand Alone Validator
SBCC	<i>Steve Bubalo Construction Co</i>
SCAQMD	Southern California Air Quality Management District
SCADA	Supervisory Control and Data Acquisition
SCC	Standard Cost Category
SCE	Southern California Edison
SCG	Southern California Gas Company
SCRRA	Southern California Regional Rail Authority
SHA	State Highway Account
SHPO	State Historic Preservation Office
SIT	System Integration Testing
SOQ	Statement of Qualification
SOV	Schedule Of Value
SOW	Statement Of Work

**APPENDIX**  
**LIST OF ACRONYMS (Continued)**

SP	Special Provision
SSMP	Safety and Security Management Plan
STB	Surface Transportation Board
STIP	State Transportation Improvement Program
STP	Surface Transportation Program
STV	STV Group
SWPPP	Storm Water Pollution Prevention Plan
TBD	To Be Determined
TBM	Tunnel Boring Machine
TCE	Temporary Construction Easement
TCRP	Traffic Congestion Relief Program
TIFIA	Transportation Infrastructure Finance and Innovation Act
TIGER	Transportation Investment Generating Economic Recovery
TPSS	Traction Power Substation
TRACS	Transit Automatic Control System
TVA	Threat Vulnerability Analysis
TVM	Ticket Vending Machine
UFS	Universal Fare System
USDOT	United States Department Of Transportation
VE	Value Engineering
WBS	Work Breakdown Structure
WP	Work Package
YOE	Year of Expenditure