

Westside Purple Line Extension Section 2 Project



Metro®

WESTSIDE PURPLE LINE EXTENSION SECTION 2 PROJECT

MONTHLY PROJECT STATUS REPORT

THE PREPARATION OF THIS DOCUMENT HAS BEEN FINANCED IN PART THROUGH A GRANT FROM THE U. S. DEPARTMENT OF TRANSPORTATION, FEDERAL TRANSIT ADMINISTRATION (FTA).

FEBRUARY 2017


TABLE OF CONTENTS

	Page No.
Project Summary.....	1
Project Overview & Status.....	2
Management Issues.....	3
Project Alignment by Sections.....	4
Project Alignment Section 2.....	5
Base Project Scope.....	6-7
Project Status	
• Project Schedule	
○ Key Milestones Six-Month Look Ahead.....	8
○ Project Summary Schedule.....	9
○ Schedule Measurements.....	10
○ Overall Construction Progress Curve.....	11
○ Major Equipment Delivery.....	12
○ Design-Builder’s (C1120) Long Lead Item List.....	13
○ Critical Path Narrative.....	14
○ Project Schedule Contingency Drawdown.....	15
○ Project Schedule Contingency Drawdown Analysis.....	15
• Project Cost	
○ Project Cost	16
○ Project Cost Analysis.....	16
○ Project Cost Contingency Drawdown.....	17
○ Project Cost Contingency Drawdown Analysis.....	17
○ Disadvantaged Business Enterprise (DBE).....	18
○ Project Labor Agreements (PLA) Status.....	18
○ Summary of Contract Modifications.....	19
• Financial/Grant	
○ Financial/Grant	20
○ Status of Funding.....	20
• Staffing	
○ Total Project Staffing.....	21
○ Metro Staffing.....	22

TABLE OF CONTENTS (Continued)

	Page No.
• Construction Management Support Services Consultant.....	22
• Engineering Management Services Consultant.....	23
• Real Estate.....	24
• Quality Assurance.....	25
• Environmental.....	25
• Construction Relations.....	25
• Creative Services	26
• Safety & Security.....	26
• Third Party Agreement & Status.....	27
• Advanced Utility Relocation Status.....	28
• Peak Hour and Nighttime Construction Variances.....	34
• Chronology of Events.....	29
• Construction Contracts	
◦ Contract C1120 Status	30
• Construction Photographs.....	31
Appendices	
• Cost and Budget Terminology.....	32
• List of Acronyms and Abbreviations.....	33-36

PROJECT SUMMARY

LOCATION: Los Angeles / Beverly Hills DESIGN CONSULTANT: Parsons Brinkerhoff				CM CONSULTANT: AECOM, Saferwork, Morgner, TEC (PL2CM) CONTRACTOR: Tutor Perini / O&G (TPOG)			
Century City Constellation Joint Trench				WORK COMPLETED PAST MONTH			
				<p>Century City Constellation</p> <ul style="list-style-type: none"> -Continuation of joint trench construction -Joint trench design plans and worksite traffic control plans submitted and approved <p>Wilshire/Rodeo</p> <ul style="list-style-type: none"> -Received City of Beverly Hills (COBH) staff concurrence on final design plans for SCE relocation -Submitted to COBH staff final worksite traffic controls plans for SCG & AT&T relocations 			
EXPENDITURE STATUS (\$ In Millions)				SCHEDULE ASSESSMENT			
ACTIVITIES	CURRENT BUDGET	EXPENDED AMOUNT	PERCENT EXPENDED	MAJOR SCHEDULE ACTIVITIES	PRIOR PLAN	CURRENT PLAN	VARIANCE WEEKS
DESIGN	\$153.5	\$40.3	26.3%	Environmental			
				FEIS / FEIR		09/06/17	
RIGHT-OF-WAY	\$426.4	\$83.3	19.5%	Design			
CONSTRUCTION	\$1,416.2	\$4.3	0.3%	Approval to Enter into PE	N/A	01/24/13	Complete
				Final Design Complete		10/25/19	
OTHER	\$533.6	\$12.6	2.4%	Right-of-Way			
TOTAL	\$2,529.7	\$140.5	5.6%	All parcels available		11/19/19	
Current Budget includes Environmental/Planning and Finance Costs.				Construction - Main Design / Build Contract			
AREAS OF CONCERN				Notice to Proceed		04/28/17	Pending
				Demobilization		10/23/25	
ROW ACQUISITION	PLAN	AVAILABLE	REMAINING	CRITICAL ACTIVITIES / 3 MONTH LOOK AHEAD			
PERMANENT PARCELS	34	0	34	-Award NTP to C1120 contract -Obtain construction permits from COBH for 3rd party construction at Wilshire/Rodeo -Complete joint trench duct bank construction -Commence cable pulling and splicing for Telecom at Century City			
TEMPORARY PARCELS	3	0	3				
TOTAL PARCELS	37	0	37				

PROJECT OVERVIEW & STATUS

Section 2 of the Westside Purple Line Extension Project is the second of three sections to be designed and constructed as part of the Los Angeles County Metropolitan Transportation Authority (LACMTA) Measure R Program. The program was approved by Los Angeles County voters in November 2008 and provides a half-cent sales tax to finance new transportation projects. In April 2012, the three sections of the Project were environmentally cleared and adopted by LACMTA Board of Directors.

Section 2 will extend the future Wilshire/La Cienega Station that is part of the Westside Purple Line Extension Section 1 project currently under construction to the Century City area. The Project is located entirely underground, primarily following Wilshire Boulevard, and includes the design and construction of approximately 2.59 miles of double-track heavy rail and two new stations as well as the purchase of 20 heavy rail vehicles. The Project also includes train controls, signals, traffic controls, communications, traction power supply and distribution, fare collection systems and equipment, acquisition of right-of-way, and utility relocations.

Design

The Engineering Management Services (EMS) team continues to provide design support for the Advanced Utility Relocation (AUR) work in Century City. Completed conformed technical documents in addition to providing real estate support services.

Major Contract Procurement

The recommendation to award the C1120 was presented to the Board at the January 26, 2017 Metro Board Meeting. The Board of Directors approved staff's recommendation to award to Tutor Perini/O & G, a Joint Venture (TPOG) and authorized the Chief Executive Officer (CEO) to award the 102-month firm fixed contract, subject to the resolution of any timely protests. Notice of Award for Contract C1120 was issued January 31, 2017 and Notice to Proceed is anticipated in April 2017.

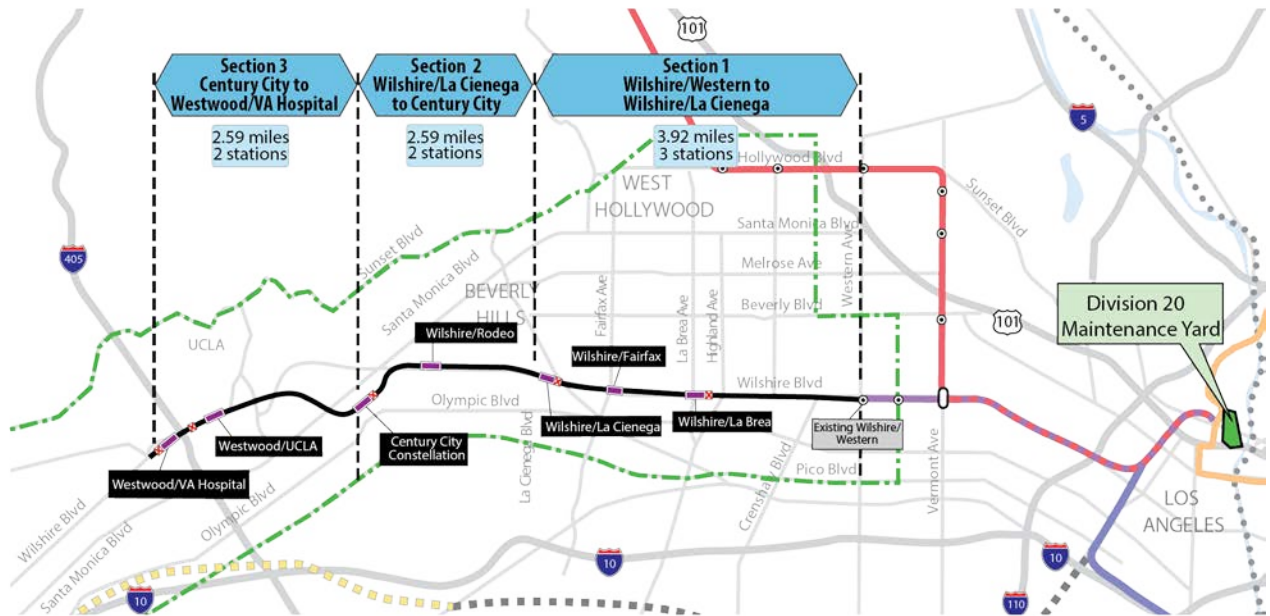
Construction

Construction of the telecom joint trench is proceeding in Century City. Duct bank work is planned to complete in April 2017 and cable pulling/splicing completion is anticipated in August 2017.

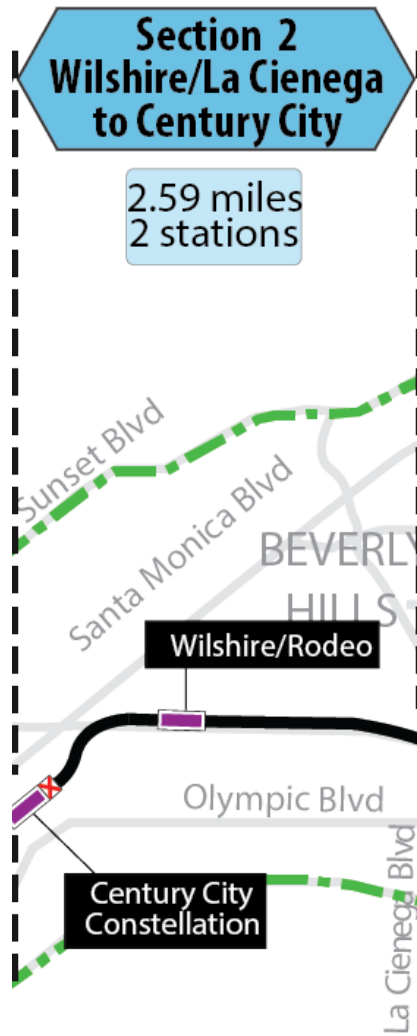
MANAGEMENT ISSUES

No Management Issues this period.

PROJECT ALIGNMENT by SECTIONS



PROJECT ALIGNMENT SECTION 2



BASE PROJECT SCOPE

Section 2 of the Westside Purple Line Extension Project is the second of three sections to be designed and constructed as part of the Los Angeles County Metropolitan Transportation Authority (LACMTA) Measure R Program. The program was approved by Los Angeles County voters in November 2008 and provides a half-cent sales tax to finance new transportation projects. In April 2012, the three sections of the Project were environmentally cleared and adopted by LACMTA Board of Directors.

Section 2 will extend the future Wilshire/La Cienega Station that is part of the Westside Purple Line Extension Section 1 project currently under construction to the Century City area. The Project is located entirely underground, primarily following Wilshire Boulevard, and includes the design and construction of approximately 2.59 miles of double-track heavy rail and two new stations as well as the purchase of 20 heavy rail vehicles. The Project also includes train controls, signals, traffic controls, communications, traction power supply and distribution, fare collection systems and equipment, acquisition of right-of-way, and utility relocations.

The Wilshire/Rodeo Station box will be under the center of Wilshire Boulevard, beginning just east of South Canon Drive, and extending to El Camino Drive. The entrance will be on the southwest corner of Wilshire Boulevard and Reeves Drive.

The Century City Constellation Station box will be under the center of Constellation Boulevard, between Century Park East and Solar Way. A double crossover will be located east of this station. The entrance will be on the northeast corner of Constellation Boulevard and Avenue of the Stars. In lieu of tail tracks, safe breaking distance will be provided at the interim terminus station.

Contract C1120 – Tunnels, Stations, Trackwork, Systems and Systems Integration

Testing

The procurement of this contract utilized a two-step approach with the submittal of qualification statements through a Request for Qualification (RFQ) process, prequalification of qualified proposers followed by the release of a Request for Proposals (RFP) soliciting technical and price proposals with an option at Metro's discretion for Best and Final Offers (BAFO).

The Design/Build contract provides for final design and construction of the infrastructure along the 2.59 mile alignment. Contract scope includes demolition and removal of structures and clearing sites to facilitate construction operations. The structures to be constructed include twin bored tunnels, complete with cross-passages and walkways, including all mechanical, electrical and finish work. A tunnel boring launch (TBM) shaft will be constructed at the Century City Constellation Station. Two underground stations are to be constructed, one double crossover location, which is located east of the Century City Constellation Station which is the terminus station. Each station has a single entrance plaza with stairs, escalators and elevators which meet ADA requirements. The scope of work also includes all architectural finishes, mechanical, electrical, systems and equipment including train control, traction power, communications, trackwork, system tie-in to the Wilshire/La Cienega Station (currently under construction), testing and commissioning.

BASE PROJECT SCOPE (Continued)

Metro Furnished Equipment

Metro will procure separate contracts to provide the 20 Heavy Rail Vehicles (HRV) and the Universal Fare System (UFS) necessary to operate the Purple Line. The scope of the HRV contract includes design, manufacturing, testing and delivery of the vehicles. The scope of the UFS contract includes design, fabrication and installation of equipment at the two stations and system testing.

Start Up

The commencement of pre-revenue operations will be determined by Metro. Generally, all systems integration testing will have been completed and passed. All testing will be required to include and pass a “stress test” of maximum operational service levels to be acceptable. Pre-Revenue Operations include train runs, especially those involving multiple trains, on the integrated and fully operational extension; rehearsal of expected revenue operations scenarios; as well as abnormal and emergency scenarios in which random combinations of system interactions are tested; equipment “burned-in”; and training of Metro personnel who will operate and maintain the extension and for emergency services personnel. Activities occurring during Pre-Revenue Operations are carried out by a designated Metro Project Rail Activation Group.

KEY MILESTONES SIX-MONTH LOOK AHEAD

	Milestone Date	Mar-17	Apr-17	May-17	Jun-17	Jul-17	Aug-17
DWP Power utility relocations at Century City Constellation begins	03/27/17	△					
Obtain construction permit from COBH for 3rd party utility relocation construction	04/20/17		△				
Joint trench (ducts and vaults) completion at Century City Constellation	04/28/17		△				
Issue NTP to C1120 Contractor	04/28/17		◆				
Third party utility construction start at Century City Constellation - SCG	05/08/17			△			
Third party utility construction start at Wilshire/Rodeo - SCE	05/25/17			△			
Third party utility construction start at Century City Constellation - DWP Water	07/11/17					△	
Third party utility construction start at Century City Constellation - DWP Power	07/11/17					△	
Third party utility cable pulling & splicing complete at Century City Constellation -Time Warner	08/24/17						△



MTA Staff



MTA Board Action

FTA (Federal Transit Administration)

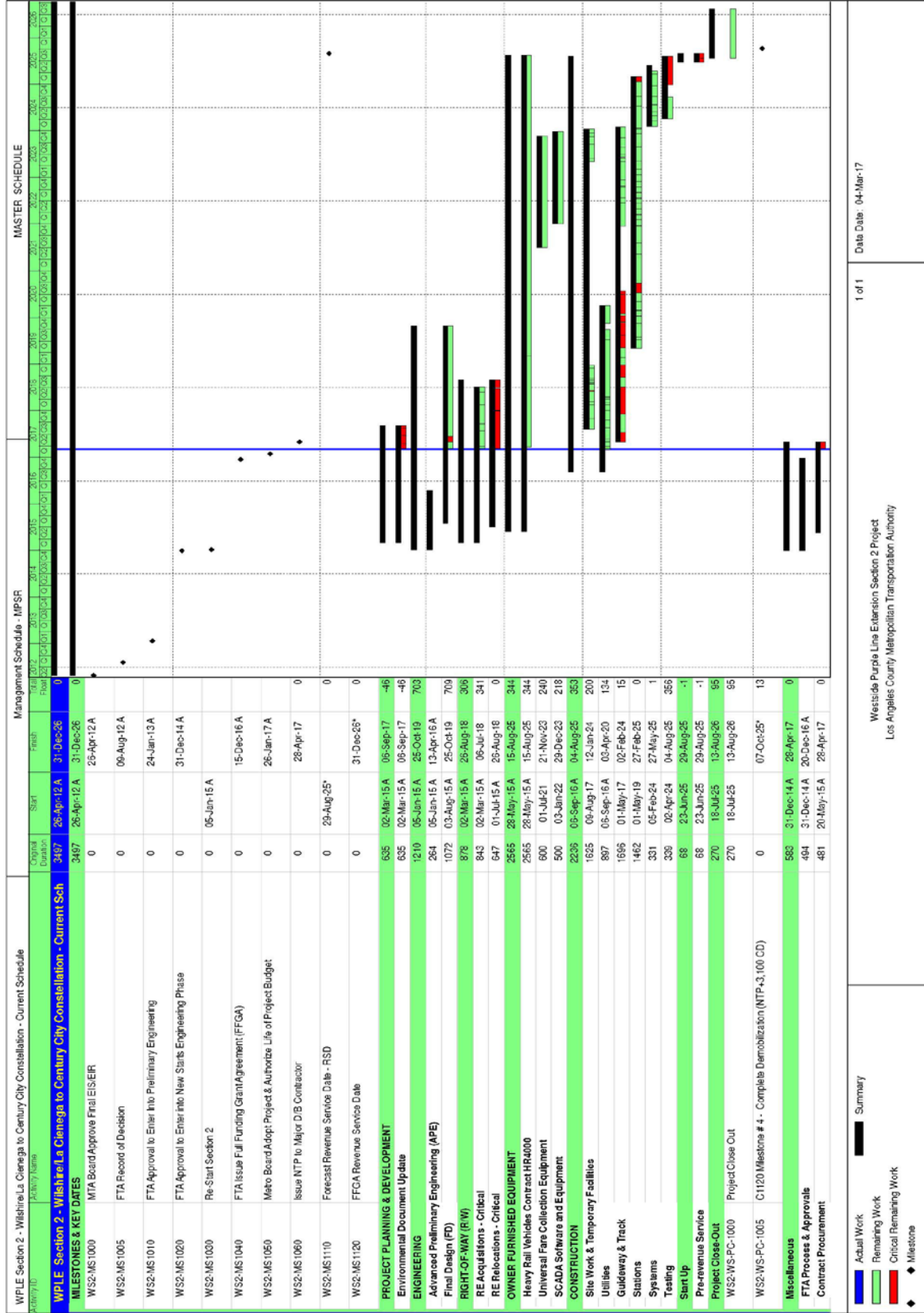


Other Agencies



Contractor

PROJECT SUMMARY SCHEDULE



Date Date 04-Mar-17

1 of 1

Westside Purple Line Extension Section 2 Project
 Los Angeles County Metropolitan Transportation Authority

Summary

- Actual Work
- Remaining Work
- Critical Remaining Work
- Milestone

SCHEDULE MEASUREMENTS

To be provided when the baseline schedule for Contract C1120 has been approved.

OVERALL CONSTRUCTION PROGRESS CURVE

To be provided when the baseline schedule for Contract C1120 has been approved.

MAJOR EQUIPMENT DELIVERY

To be provided when the baseline schedule for Contract C1120 has been approved.

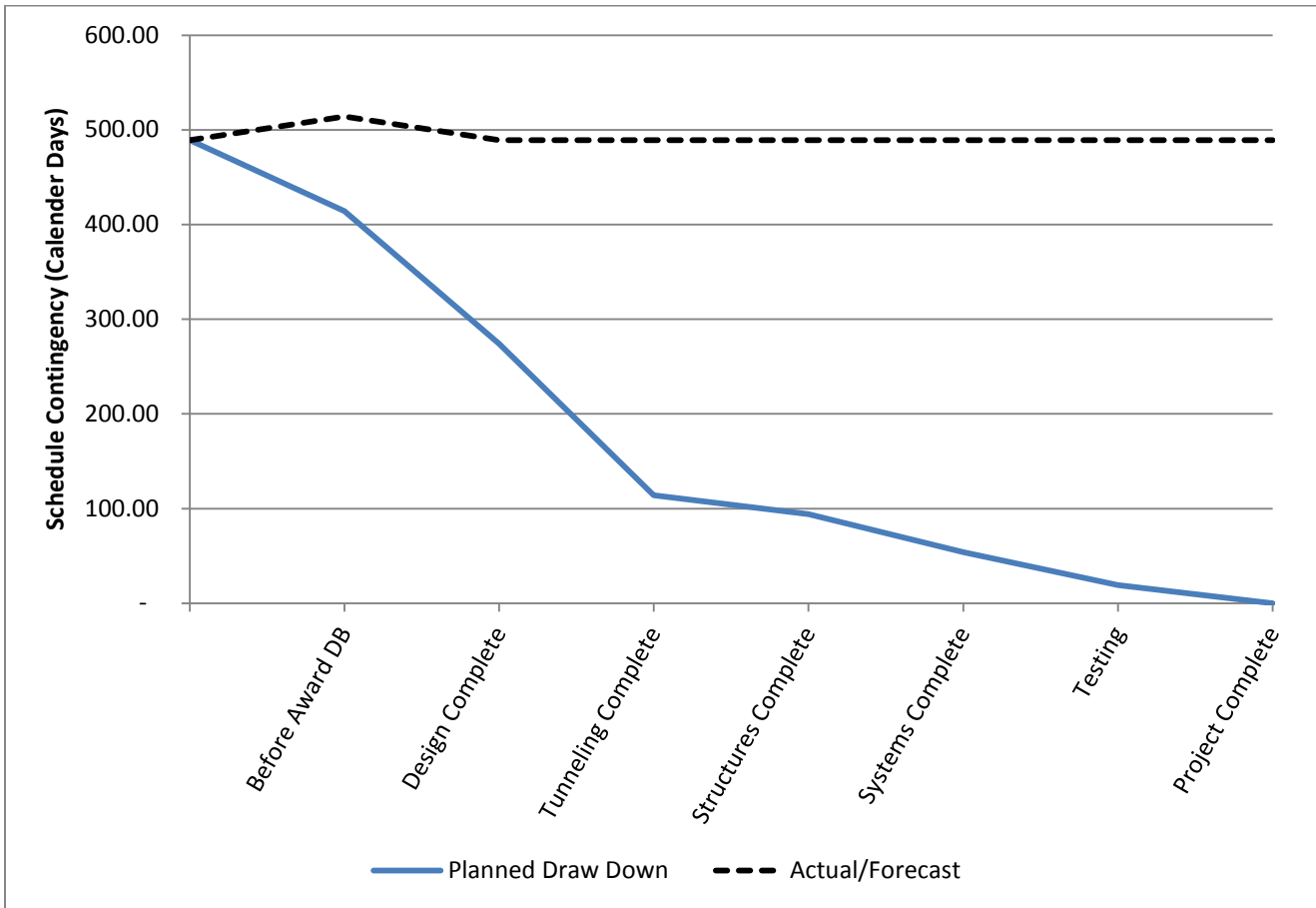
DESIGN BUILDER'S (C1120) LONG LEAD ITEM LIST

To be provided when the baseline schedule for Contract C1120 has been approved.

CRITICAL PATH NARRATIVE

The Critical Path begins with the procurement process for the C1120 Design/Build contract, mobilization of the design team for the contractor, and the start of final design for station boxes and tunnels. The Design/Build contractor begins installation of soldier piles, first on the north side of the Century City Constellation Station box, and then on the south side. Temporary Street decking is then installed, the station structural box is excavated, and invert concrete is placed. Concurrently with this is the procurement and assembly of the tunnel boring machine (TBM). The path continues with tunneling and then street decking, station box excavation and concrete invert at the Wilshire/Rodeo Station. The path then follows into Systems Integration and Testing and pre-revenue operations.

PROJECT SCHEDULE CONTINGENCY DRAWDOWN



PROJECT SCHEDULE CONTINGENCY DRAWDOWN ANALYSIS

The project schedule contingency drawdown curve is based on an August 29, 2025 Revenue Service Date (RSD).

PROJECT COST STATUS

DOLLARS IN THOUSANDS

SCC CODE	DESCRIPTION	ORIGINAL BUDGET	CURRENT BUDGET		COMMITMENTS		EXPENDITURES		CURRENT FORECAST		FORECAST/ BUDGET VARIANCE
			PERIOD	TO DATE	PERIOD	TO DATE	PERIOD	TO DATE	PERIOD	TO DATE	
10	GUIDEWAY & TRACK ELEMENTS	346,440	-	346,440	-	329,943	-	-	-	346,440	-
20	STATIONS, STOPS, TERMINALS, INTERMODAL	434,990	-	434,990	-	410,368	-	-	-	434,990	-
30	SUPPORT FACILITIES: YARDS, SHOPS, ADMIN. BLDGS	-	-	-	-	-	-	-	-	-	-
40	SITWORK & SPECIAL CONDITIONS	553,282	-	553,282	15,000	517,948	3,054	4,271	-	553,282	-
50	SYSTEMS	81,457	-	81,457	-	68,537	-	-	-	81,457	-
CONSTRUCTION SUBTOTAL (10-50)		1,416,169	-	1,416,169	15,000	1,326,796	3,054	4,271	-	1,416,169	-
60	ROW, LAND, EXISTING IMPROVEMENTS	426,396	-	426,396	-	166,839.29	29	83,288	-	426,396	-
70	VEHICLES	42,000	-	42,000	-	-	-	-	-	42,000	-
80	PROFESSIONAL SERVICES	374,878	-	374,878	-	167,592	795	51,550	-	374,878	-
SUBTOTAL (10-80)		2,259,444	-	2,259,444	15,000	1,661,227	3,878	139,109	-	2,259,444	-
90	UNALLOCATED CONTINGENCY	177,176	-	177,176	-	-	-	-	-	177,176	-
100	FINANCE CHARGES	88,695	-	88,695	-	-	-	-	-	88,695	-
TOTAL PROJECT 865522 (FFGA & NON-FFGA CONCURRENT ACTIVITIES)		2,525,314	-	2,525,314	15,000	1,661,227	3,878	139,109	-	2,525,314	-
ENVIRONMENTAL/PLANNING - 465518 & 465522		4,349	-	4,349	-	1,793	96	1,379	-	4,349	-
TOTAL PROJECT 465518 & 465522 (ENV / PLAN'G)		4,349	-	4,349	-	1,793	96	1,379	-	4,349	-
TOTAL PROJECTS 465518, 465522 & 865522		2,529,664	-	2,529,664	15,000	1,663,019	3,974	140,488	-	2,529,664	-

PROJECT COST ANALYSIS

Original Budget, Current Budget and Forecast

The Original Budget, Current Budget and Forecast of \$2.5 billion reflects the Life of Project (LOP) budget approved by the Board on January 26, 2017, plus Finance Charges of \$88.7 million.

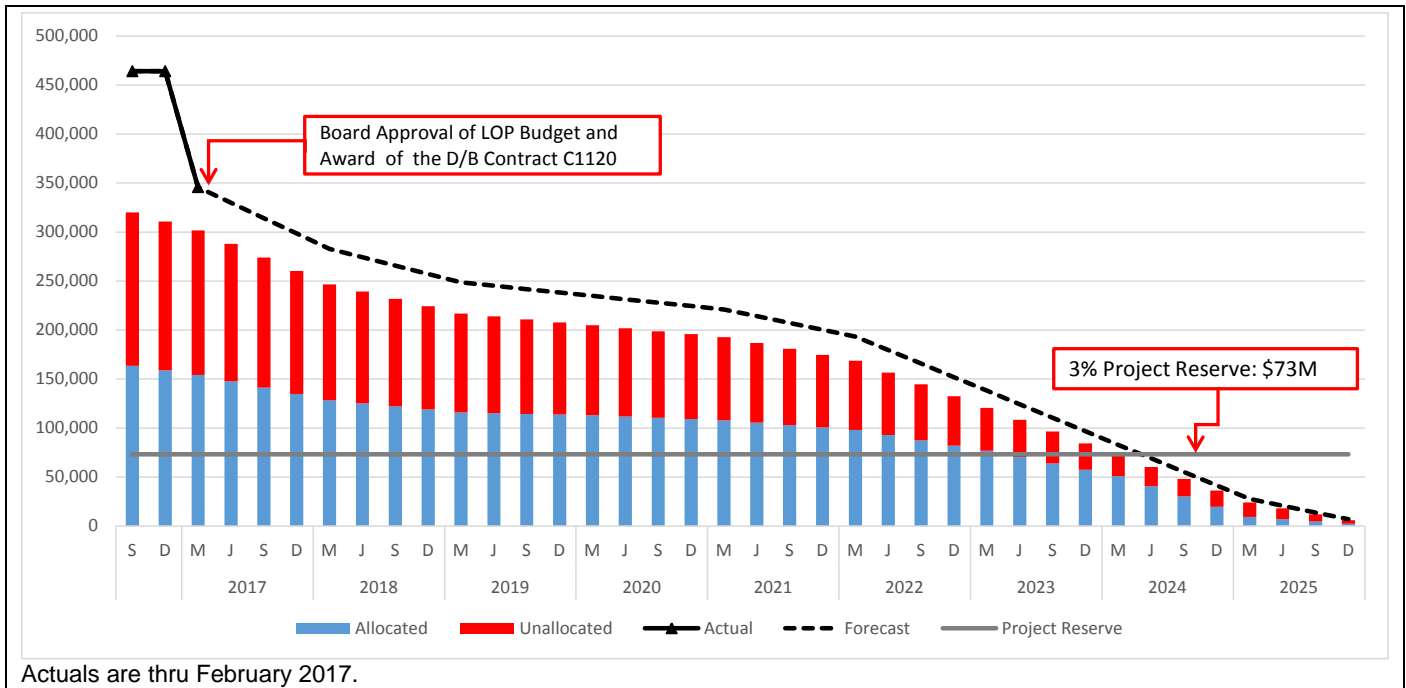
Commitments

The Commitments increased this period by \$15.0 million primarily due to design and construction services by LADWP. The \$1.7 billion in Commitments to date represents 65.7% of the Current Budget.

Expenditures

The Expenditures increased this period by \$3.9 million this period primarily for costs associated with the Design/Build Contract Proposal Stipend Agreements, Engineering Management Services, and Metro Project Administration. The \$140.5 million in Expenditures to date represents 5.6% of the Current Budget.

PROJECT COST CONTINGENCY DRAWDOWN



PROJECT COST CONTINGENCY DRAWDOWN ANALYSIS

The Current Budget of \$2.5 billion includes finance charges totaling \$88 million. It also, includes a project cost contingency of \$345.7 million or 13.7% of the total project, which is based upon the Life of Project (LOP) Budget approved by the Board in January 2017. Included in the total cost contingency is an allocated contingency amount of \$168.5 million. The allocated contingency is an amount to cover anticipated but unknown contract modifications issued by Metro where applicable to specific contracts within each Standard Cost Category (SCC).

A 3% project reserve threshold is included in the project cost contingency drawdown. Metro’s Board is to be notified when it becomes necessary to drawdown contingency below the project reserve threshold to cover project costs. This process was adopted by the Metro Board of Directors in September 2012.

The project cost contingency drawdown curve is based on an August 29, 2025 Forecast Revenue Service Date (RSD).

PROJECT COST CONTINGENCY					
DOLLARS IN THOUSANDS					
	Original Contingency (Budget)	Previous Period	Current Period	To-Date	Remaining Contingency (Forecast)
Unallocated Contingency	177,176	0	0	0	177,176
Allocated Contingency	168,534	0	0	0	168,534
Total Contingency	345,710	0	0	0	345,710

DISADVANTAGED BUSINESS ENTERPRISE (DBE)

To be provided after NTP is issued for Contract C1120.

PROJECT LABOR AGREEMENTS (PLA) STATUS

To be provided after NTP is issued for Contract C1120.

SUMMARY OF CONTRACT MODIFICATIONS

To be provided after NTP is issued for C1120 Contract.

FINANCIAL/GRANT STATUS

SOURCE	(IN MILLIONS OF DOLLARS)									
	(A)	(B)	(C)	(D)	(D/B)	(E)	(E/B)	(F)	(F/B)	
	ORIGINAL BUDGET	TOTAL FUNDS ANTICIPATED	TOTAL FUNDS AVAILABLE	COMMITMENTS \$	%	EXPENDITURES \$	%	BILLED TO FUNDING SOURCE \$	%	
FEDERAL - SECTION 5309 NEW STARTS	\$1,187.000	\$1,187.000	\$100.000	\$1,043.956	88%	\$58.205	5%	\$54.362	5%	
FEDERAL CMAQ	\$169.000	\$169.000	\$43.000	\$43.000	25%	\$0.000	0%	\$0.000	0%	
MEASURE R - TIFIA LOAN	\$307.000	\$307.000	\$307.000	\$307.000	100%	\$0.000	0%	\$0.000	0%	
MEASURE R 35%	\$757.402	\$757.402	\$119.862	\$214.301	28%	\$27.521	4%	\$25.517	3%	
LOCAL AGENCY FUNDS	\$54.500	\$54.500	\$0.000	\$0.000	0%	\$0.000	0%	\$0.000	0%	
STATE CAPITAL PROJECT LOANS	\$54.762	\$54.762	\$54.762	\$54.762	100%	\$54.762	100%	\$54.762	100%	
TOTAL	\$2,529.664	\$2,529.664	\$624.624	\$1,663.019	65.7%	\$140.488	5.6%	\$134.641	5.3%	

STATUS OF FUNDS ANTICIPATED

FEDERAL SECTION 5309 NEW STARTS: FTA grant CA-2016-047 for \$100.0 million was awarded by the FTA on December 15, 2016. Funds are available for drawdown.

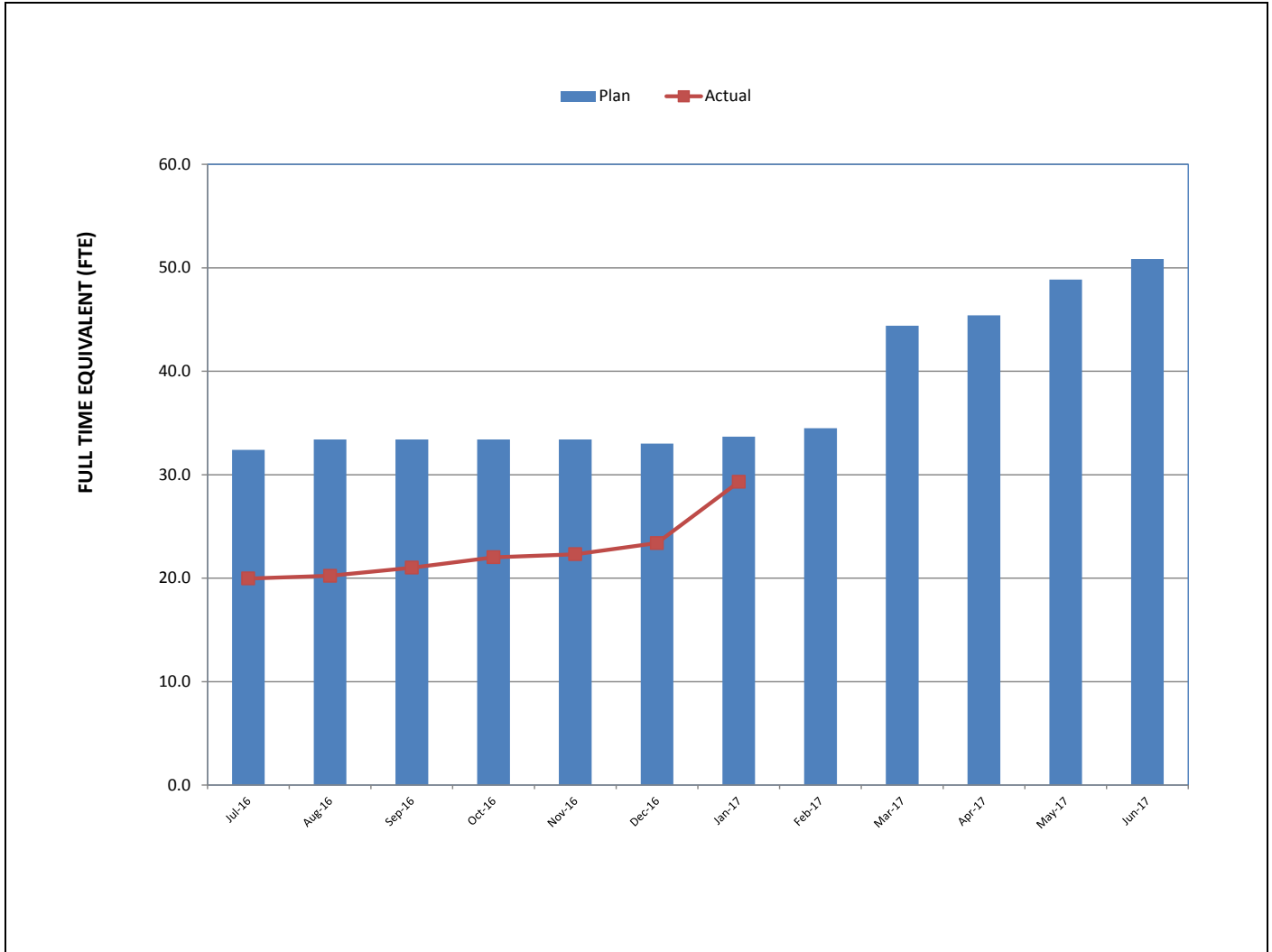
CMAQ (Congestion Mitigation & Air Quality): FTA grant CA-2016-2045 for \$43.0 million was awarded by the FTA on December 15, 2016. Funds are available for drawdown.

MEASURE R – TIFIA LOAN (Transportation Infrastructure Finance & Innovation Act): TIFIA Loan was executed on December 20, 2016 for \$307.0 million. First disbursement is planned for FY17.

MEASURE R: \$119.9 million have been allocated to the Project through FY16. Funds are available for drawdown.

STAFFING STATUS

Total Project Staffing – FTEs

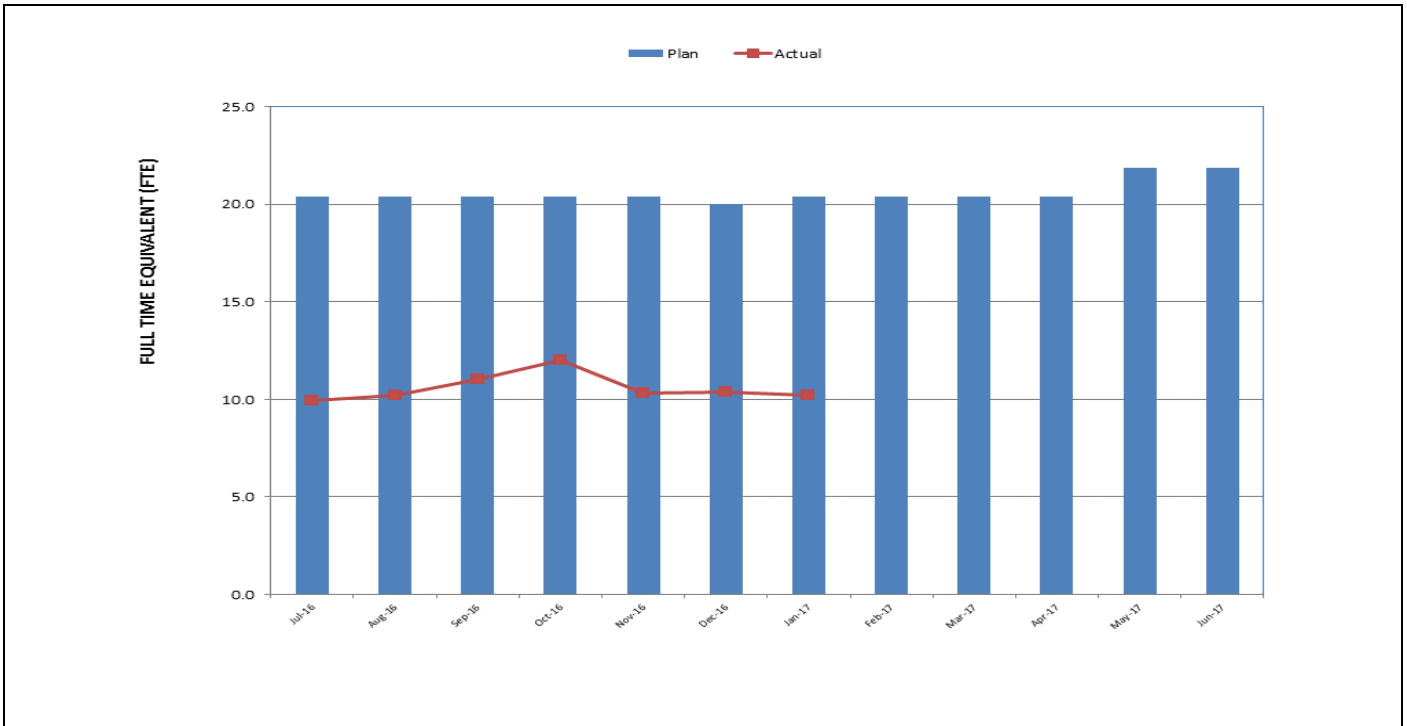


TOTAL PROJECT STAFFING

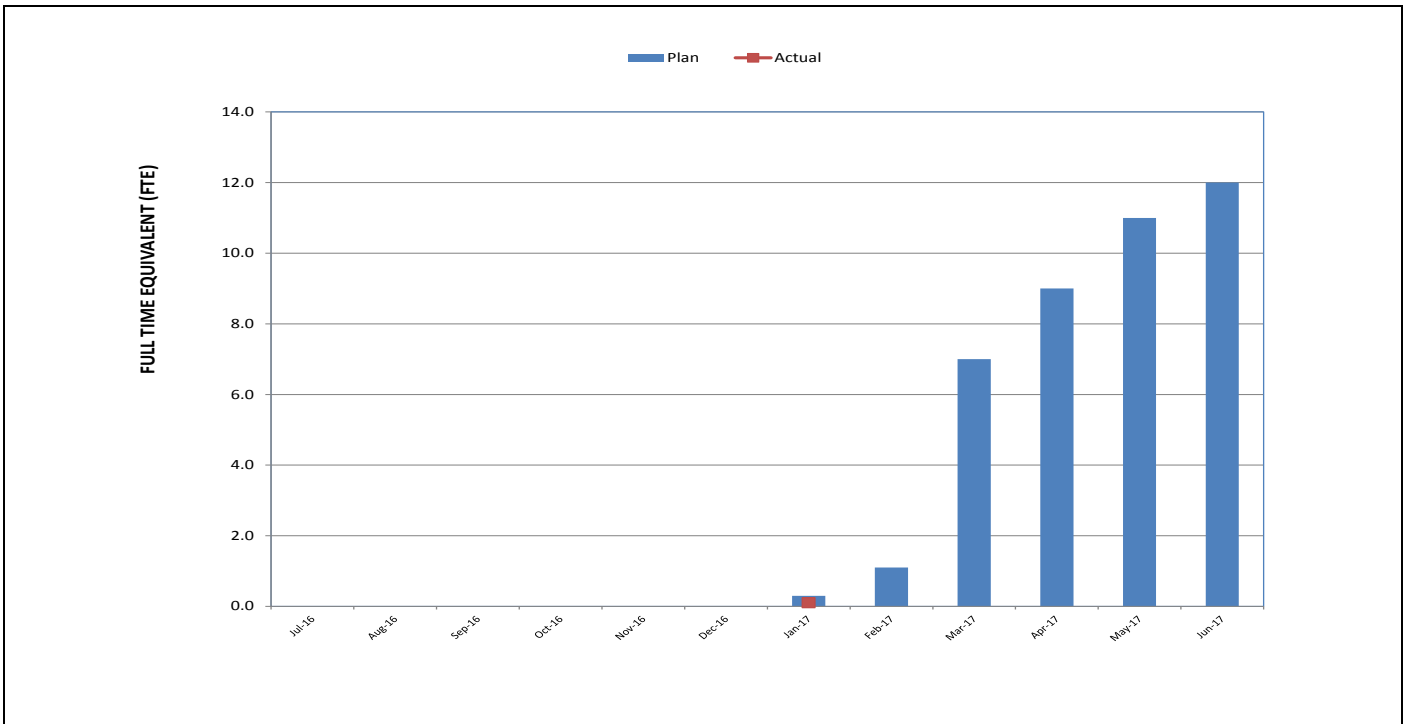
The overall FY17 Total Project Staffing Plan averages 38.1 FTEs per month.

For January 2017, there were a total of 10.2 FTEs for MTA's Project Administration Staff and 19.1 FTEs for Consulting Staff. The total project staffing for January 2017 was 29.3 FTEs.

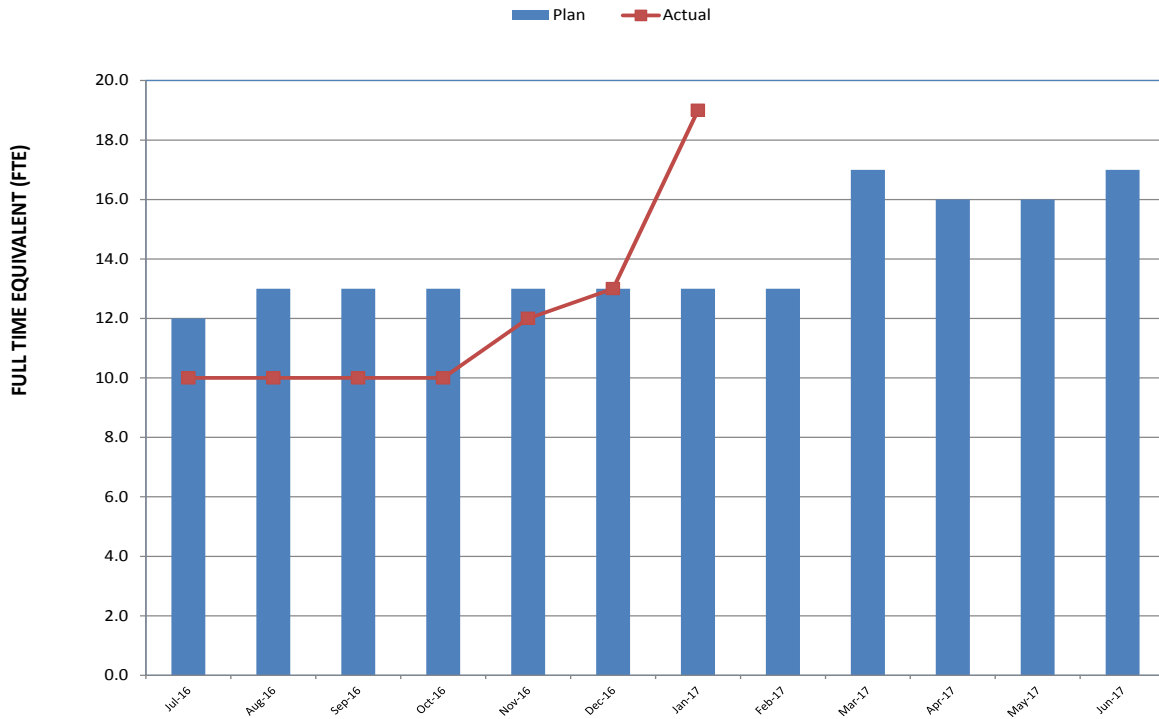
**STAFFING STATUS (Continued)
METRO STAFFING – FTEs**



**CONSTRUCTION MANAGEMENT SUPPORT
SERVICES CONSULTANT – FTEs**



STAFFING STATUS (Continued) ENGINEERING MANAGEMENT SERVICES CONSULTANT – FTEs



REAL ESTATE STATUS

Real Estate Status Summary									
Description	Number of Parcels	Certified	Appraisals Completed	Offers Made	Agreements Signed	Condemnation Filed	Relocations		Parcels Available
							Required	Completed	
Full Takes	3	3	3	3	1	1	19	2	0
Part Takes	2	1	1	1	0	0	1	0	0
TCE	3	3	1	1	0	0	6	0	0
SSE	25	0	0	0	0	0	0	0	0
Permanent Easements	2	0	0	0	0	0	0	0	0
Surface Easements	2	0	0	0	0	0	0	0	0
Total Parcels	37	7	5	5	1	1	26	2	0

QUALITY ASSURANCE STATUS

- None to report at this time.

ENVIRONMENTAL STATUS

- Performed daily noise monitoring activities at Century City Constellation Station for utility relocation work and submitted daily field reports.
- Completed December 2016 Noise Monitoring Report for Century City Constellation Station.
- Submitted Q7 Mitigation Measures Status Report (MMSR) to FTA.
- Provided environmental awareness training to construction crew as required.
- Participated in weekly project construction meetings and reported on environmental compliance with local, state and federal regulations & specifications and EIR.
- Met with City of Beverly Hills (COBH) officials to coordinate and collaborate on upcoming Ambient Noise Study for Wilshire/Rodeo Station.
- Obtained encroachment permit from COBH for Ambient Noise Study. Installed monitors and began study at Rodeo Station.
- Worked on noise and dust/emissions FAQ sheets to be uploaded to PLE website.

CONSTRUCTION RELATIONS STATUS

- Produced and distributed three pre-construction work notices for advance utility relocations and two notices for community meetings.
- Made Project presentations at the following: Pre-Construction Community Meeting, Beverly Hill Chamber of Commerce Government Affairs Meeting, City of Beverly Hills Community Meeting, Sirtaj Hotel, Beverly Hills, Sun American Building Management, Century City, Bank of America building owner, Beverly Hills and Beverly Hills Chamber "My Beverly Hills" launch event.
- Visited and updated businesses and residences at future station locations to discuss advanced utility relocations and noise monitoring equipment installation.
- Conducted outreach to residents and businesses prior to community meeting.
- Attended the following meetings: Construction Management, Advanced Utility Relocations, Construction Relations, Environmental Mitigations, Third Party Workshop, Marketing, Social Media and Bus Relocations and Stops.
- Updated social media as needed.

CREATIVE SERVICES STATUS

- Provided input on Century City Constellation Station portal configuration with systemwide design staff.

SAFETY & SECURITY STATUS

- Third party contract work is being completed in the field. No injuries were reported during February 2017.
- Third party construction work is being monitored to document contractor compliance with regulations and good business practices.
- Injury and work hour statistics will be tracked once the Design/Builders is onboard.

THIRD PARTY AGREEMENT STATUS

No.	Third Party	Type of Agreement	Forecast Execution Date	Required Need Date	Status/ Comments
1	City of Los Angeles (LA)	Master Cooperative Agreement	N/A	N/A	Parties will work under 2003 MCA.
2	City of Beverly Hills (COBH)	Memorandum of Agreement	5/17	5/17	Beverly Hills City Council authorized the City Manager to execute the reimbursement agreement on March 1, 2016 and it was presented to the Metro Board and approved at the September 2016 Board. Negotiations for a Memorandum of Agreement (MOA) governing utility work began in March 2017.
3	Los Angeles Department of Water and Power (LADWP)- WATER & POWER	Master Cooperative Agreement	N/A	N/A	Metro and LADWP will continue to work under the terms of the previous Master Cooperative Agreement.
4	Los Angeles County Public Works Flood Control	Master Cooperative Agreement	N/A	N/A	Executed.
5	Private Utilities	Utility Cooperative Agreement	5/17	5/17	Level 3 - Metro and Level 3 have initiated a new agreement. Currently, awaiting comments from Level 3. Time Warner Cable Pacific West LLC, D/B/A Time Warner Cable - County Counsel to respond to Time Warner's latest comments. SCE - Metro and SCE have initiated a new agreement. A draft is under review. Veolia - A draft agreement has been submitted to Veolia for review and comment. Sprint - Draft of Agreement submitted to Sprint, currently pending comments.
			N/A	N/A	AT&T, Pac Bell, SBC, MCI, Verizon, Southern California Gas Company (SCGC), TCG Los Angeles - Metro is working with affected third party utilities under existing agreements.
			05/17	05/17	Zayo, XO Communications, LLC - The agreement has been finalized and will be presented to the Metro Board.

ADVANCED UTILITY RELOCATION STATUS

Century City Constellation AUR

- Telecommunication relocation is underway. Completion of infrastructure work is currently planned for April 2017 and cable pulling and splicing in August 2017.
- LADWP Power relocations anticipated to begin in April 2017.

Wilshire/Rodeo AUR

- City of Beverly Hills (COBH) Council permit approval for SCE relocations anticipated in April 2017 and construction to begin in May 2017.

PEAK HOUR AND NIGHTTIME CONSTRUCTION VARIANCES

Metro is actively pursuing extended hour variances/exemptions to accommodate the Project needs. Metro staff is working with the City of Beverly Hills, City of Los Angeles Bureau of Engineering and the Los Angeles Police Commission to obtain Peak Hour Exemptions and Nighttime Construction Variances. Currents efforts include the Peak Hour Exemption (PHE) for full closure of Constellation Boulevard.

CHRONOLOGY OF EVENTS

August 2012	FTA Record of Decision
January 2013	FTA approval to enter to Preliminary Engineering
December 2014	FTA approval to enter to New Starts Engineering Phase
March 2015	Began Real Estate Acquisition
May 2015	Began Advanced Preliminary Engineering
September 2015	Issued RFQ for C1120 Design / Build contract
October 2015	Received RFQ responses for C1120 Design / Build contract
May 2016	Submitted draft FFGA application
May 2016	Submitted TIFIA loan application
June 2016	Submitted application to FTA requesting an FFGA
June 2016	Received RFP Proposals for Contract C1120
September 2016	Commenced joint trench construction in Century City
December 2016	FTA executed FFGA
December 2016	Received TIFIA Loan
January 2017	NTP for Construction Management Support Services Contract
January 2017	Metro Board approved staff recommendation to award Contract C1120 and approved Life-of-Project Budget
January 2017	Issued C1120 Contract Award

CONSTRUCTION PHOTOGRAPHS



Century City Constellation Joint Trench



Century City Constellation Joint Trench

**APPENDIX
COST AND BUDGET TERMINOLOGY**

Project Cost Descriptions

ORIGINAL BUDGET	The Original Project Budget as authorized by the Metropolitan Transportation Authority (Metro) Board.
CURRENT BUDGET	The Original Budget plus all budget amendments approved by formal Metro Board action. Also referred to as Approved Budget.
COMMITMENTS	The total of actual contracts awarded, executed change orders or amendments, and approved work orders of Master Cooperative Agreements, offers accepted for purchase of real estate, and other Metro actions which have been spent or result in the obligation of specific expenditures at a future time.
EXPENDITURES	The total dollar amount of funds expended by Metro for contractor or consultant services, third party services, staff salaries, real estate and other expenses that is reported in Metro's Financial Information System (FIS).
CURRENT FORECAST	The best estimate of the final cost of the Project when all checks have been issued and the Project is closed out. Current Forecast is composed of actual costs incurred to date, the best estimate of work remaining and a current risk assessment for each budgeted cost item.

Cost Report by Element Descriptions

CONSTRUCTION	Includes construction contracts. Cost associated with Guideways, Stations, Southwestern Yard, Sitework/Special Conditions and Systems.
RIGHT-OF-WAY	Includes purchase cost of parcels, easements, right-of-entry permits, escrow fees, contracted real estate appraisals and tenant relocation.
VEHICLES	Includes the purchase of Heavy Rail Vehicles and spare parts for the Project.
PROFESSIONAL SERVICES	Includes design engineering, project management assistance, construction management support services, legal counsel, agency staff costs, and other specialty consultants.
CONTINGENCY	A fund established at the beginning of a project to provide for anticipated but unknown additional costs that may arise during the course of the Project.
PROJECT REVENUE	Includes all revenue received by Metro as a direct result of project activities. This includes cost sharing construction items, insurance premium rebates, and the like.

APPENDIX

LIST OF ACRONYMS AND ABBREVIATIONS

ATC	Automatic Train Control
ATSAC	Automated Traffic Surveillance and Control
BAFO	Best and Final Offer
BIM	Building Information Modeling
BNSF	Burlington Northern Santa Fe Railway Company
BRT	Bus Rapid Transit
CADD	Computer Aided Drafting and Design
CALTRANS	California Department of Transportation
CCTV	Closed Circuit Television
CD	Calendar Day
CEQA	California Environmental Quality Act
CM	Construction Manager
CMAQ	Congestion Mitigation and Air Quality Improvement Program
CMSSC	Construction Management Support Services Consultant
CN	Change Notice
CO	Change Order
COBH	City of Beverly Hills
COLA	City of Los Angeles
CPM	Critical Path Method
CPUC	California Public Utilities Commission
CR	Camera Ready
CRMMP	Cultural Resource Monitoring and Mitigation Plan
CSPP	Construction Safety Phasing Plan
CTC	California Transportation Commission
CUD	Contract Unit Description
DB	Design Build
DBB	Design Bid Build
DOT	Department of Transportation
DWP	Department of Water and Power
EIR	Environmental Impact Report
EIS	Environmental Impact Statement
EMS	Engineering Management Services
EPBM	Earth Pressure Balance Machine
FAA	Federal Aviation Administration
FAR	Federal Acquisition Regulation
FD	Final Design
FEIS	Final Environmental Impact Statement
FEIR	Final Environmental Impact Report
FIS	Financial Information System
FLSR	Fire Life Safety Report
FONSI	Finding of No Significant Impact
FRA	Federal Railroad Administration
FSEIR	Final Supplemental Environmental Impact Report
FSEIS	Final Supplemental Environmental Impact Statement

APPENDIX

LIST OF ACRONYMS (Continued)

FTA	Federal Transit Administration
FTE	Full Time Equivalent
GBR	Geotechnical Baseline Report
GDSR	Geotechnical Design Summary Report
HRT	Heavy Rail Transit
HRV	Heavy Rail Vehicle
IFB	Invitation for Bid
IPMO	Integrated Project Management Office
JV	Joint-Venture
LA	Los Angeles
LABOE	Los Angeles Bureau of Engineering
LABOS	Los Angeles Bureau of Sanitation
LABSL	Los Angeles Bureau of Street Lighting
LACFCD	Los Angeles County Flood Control District
LACMTA	Los Angeles County Metropolitan Transportation Authority
LADOT	Los Angeles Department of Transportation
LADPW	Los Angeles Department of Public Works
LADWP	Los Angeles Department of Water and Power
LAUSD	Los Angeles Unified School District
LAWA	Los Angeles World Airports
LAX	Los Angeles International Airport
LNTF	Limited Notice To Proceed
LONP	Letter Of No Prejudice
LOP	Life-of-Project
LPA	Locally Preferred Alternative
L RTP	Long Range Transportation Plan
MCA	Master Cooperative Agreement
MIS	Major Investment Study
MMRP	Mitigation Monitoring and Reporting Plan
MOU	Memorandum of Understanding
MPSR	Monthly Project Status Report
N/A	Not Applicable
NEPA	National Environmental Protection Act
NOD	Notice of Determination
NPDES	National Pollution Discharge Elimination System
NTE	Not to Exceed
NTP	Notice To Proceed
OCC	Operations Control Center
OSHA	Occupational Health and Safety Administration
PA/VMS	Public Address/Visual Messaging Sign
PE	Preliminary Engineering

APPENDIX

LIST OF ACRONYMS (Continued)

PEER	Permit Engineering Evaluation Report
PIP	Project Implementation Plan
PLA	Project Labor Agreement
PM	Project Manager
PMIP	Project Management Implementation Plan
PMOC	Project Management Oversight Consultant
PMP	Project Management Plan
P&P	Policies & Procedures
PR	Project Report
PRMMP	Paleontological Resource Monitoring Mitigation Plan
PSR	Project Study Report
QA	Quality Assurance
QAR	Quality Assurance Report
QC	Quality Control
QPSR	Quarterly Project Status Report
QTIB	Qualified Transit Improvement Bonds
RAMP	Real Estate Acquisition Management Plan
RCHAR	Rail Crossing Hazards Analysis Report
RCMP	Risk Assessment Management Plan
RFC	Request For Change
RFP	Request For Proposals
RFSC	Request for Special Consideration
RHA	Risk Hazard Analysis
ROC	Rail Operations Center
ROD	Record Of Decision
ROM	Rough Order of Magnitude
ROW	Right-Of-Way
RPZ	Runway Protection Zone
RSD	Revenue Service Date
SAV	Stand Alone Validator
SCAQMD	Southern California Air Quality Management District
SCADA	Supervisory Control and Data Acquisition
SCC	Standard Cost Category
SCE	Southern California Edison
SCG	Southern California Gas Company
SCRRA	Southern California Regional Rail Authority
SHA	State Highway Account
SHPO	State Historic Preservation Office
SIT	System Integration Testing
SOQ	Statement of Qualification
SOV	Schedule Of Value
SOW	Statement Of Work
SP	Special Provision

APPENDIX

LIST OF ACRONYMS (Continued)

SP	Special Provision
SSMP	Safety and Security Management Plan
STB	Surface Transportation Board
STIP	State Transportation Improvement Program
STP	Surface Transportation Program
STV	STV Group
SWPPP	Storm Water Pollution Prevention Plan
TBD	To Be Determined
TBM	Tunnel Boring Machine
TCE	Temporary Construction Easement
TCRP	Traffic Congestion Relief Program
TIFIA	Transportation Infrastructure Finance and Innovation Act
TIGER	Transportation Investment Generating Economic Recovery
TPSS	Traction Power Substation
TRACS	Transit Automatic Control System
TVA	Threat Vulnerability Analysis
TVM	Ticket Vending Machine
UFS	Universal Fare System
USDOT	United States Department Of Transportation
VE	Value Engineering
WBS	Work Breakdown Structure
WP	Work Package
YOE	Year of Expenditure