

Westside Purple Line Extension Section 2 Project



Metro®

WESTSIDE PURPLE LINE EXTENSION SECTION 2 PROJECT

QUARTERLY PROJECT STATUS REPORT

THE PREPARATION OF THIS DOCUMENT HAS BEEN FINANCED IN PART THROUGH A GRANT FROM THE U. S. DEPARTMENT OF TRANSPORTATION, FEDERAL TRANSIT ADMINISTRATION (FTA).

JUNE 2017


TABLE OF CONTENTS

	Page No.
Project Summary.....	1
Project Overview & Status.....	2
Management Issues.....	4
Project Alignment by Sections.....	5
Project Alignment Section 2.....	6
Base Project Scope.....	7
Project Status	
• Project Schedule	
○ Key Milestones Six-Month Look Ahead.....	9
○ Project Summary Schedule.....	10
○ Schedule Measurements.....	11
○ Overall Construction Progress Curve.....	12
○ Major Equipment Delivery.....	13
○ Design-Builder's (C1120) Long Lead Item List.....	14
○ Critical Path Narrative.....	15
○ Project Schedule Contingency Drawdown.....	16
○ Project Schedule Contingency Drawdown Analysis.....	16
• Project Cost	
○ Project Cost Status.....	17
○ Project Cost Analysis.....	17
○ Project Cost Contingency Drawdown.....	18
○ Project Cost Contingency Drawdown Analysis.....	18
○ Disadvantaged Business Enterprise (DBE).....	19
○ Project Labor Agreements (PLA) Status.....	19
○ Summary of Contract Modifications.....	20
• Financial/Grant	
○ Financial/Grant Status.....	21
○ Status of Funding Anticipated.....	21
• Staffing Status	
○ Total Project Staffing.....	22
○ Metro Staffing.....	23

TABLE OF CONTENTS (Continued)

	Page No.
• Construction Management Support Services Consultant.....	23
• Engineering Management Services Consultant.....	24
• Real Estate Status.....	25
• Quality Assurance Status.....	26
• Environmental Status.....	26
• Construction Relations Status.....	26
• Creative Services Status.....	27
• Safety & Security Status.....	27
• Third Party Agreement Status.....	28
• Advanced Utility Relocation Status.....	29
• Peak Hour and Nighttime Construction Variances.....	29
• Chronology of Events.....	30
• Construction Contracts	
◦ Contract C1120 Status	31
• Construction Photographs.....	32
Appendices	
• Cost and Budget Terminology.....	33
• List of Acronyms and Abbreviations.....	34-37

PROJECT SUMMARY

LOCATION: Los Angeles / Beverly Hills DESIGN CONSULTANT: WSP USA Inc.				CM CONSULTANT: Purple Line 2 CM Partners, a Joint Venture (PL2CM) CONTRACTOR: Tutor Perini / O&G, a Joint Venture (TPOG)			
Century City Constellation LADWP Trenching				WORK COMPLETED PAST MONTH			
				Century City Constellation - Joint Trench infrastructure for telecommunication complete - LADWP (Water) relocations in the launch box area complete Wilshire/Rodeo - Continue negotiations for a Memorandum of Agreement (MOA) governing utility work - Obtained approval for SCE relocation work from Beverly Hills City Council			
EXPENDITURE STATUS (\$ In Millions)				SCHEDULE ASSESSMENT			
ACTIVITIES	CURRENT BUDGET	EXPENDED AMOUNT	PERCENT EXPENDED	MAJOR SCHEDULE ACTIVITIES	PRIOR PLAN	CURRENT PLAN	VARIANCE WEEKS
DESIGN	\$153.5	\$55.9	36.4%	Environmental			
				FEIS / FEIR	N/A	05/31/12	Complete
RIGHT-OF-WAY	\$426.4	\$125.0	29.3%	SEIS	09/06/17	09/15/17	-1
				Design			
CONSTRUCTION	\$1,416.2	\$95.1	6.7%	Approval to Enter into PE	N/A	01/24/13	Complete
				Final Design Complete	N/A	10/25/19	
OTHER	\$533.6	\$16.4	3.1%	Right-of-Way			
				All parcels available	N/A	11/19/19	
TOTAL	\$2,529.7	\$292.4	11.6%				
Current Budget includes Environmental/Planning and Finance Costs.				Construction - Main Design / Build Contract			
AREAS OF CONCERN -None at this time.				Notice to Proceed	04/28/17	04/26/17	Complete
				Demobilization	10/25/25	10/25/25	
ROW ACQUISITION	PLAN	AVAILABLE	REMAINING	CRITICAL ACTIVITIES / 3 MONTH LOOK AHEAD			
PERMANENT PARCELS	30	0	30	-Obtain construction permits from SCE relocation work at Wilshire/Rodeo -Start AT&T work at Century City -Start SCG work at Century City -Begin/finish cable pulling and splicing for Telecom at Century City -Package 1 (underground utilities at launch box) 60% submittal			
TEMPORARY PARCELS	3	0	3				
TOTAL PARCELS	33	0	33				

PROJECT OVERVIEW & STATUS

Section 2 of the Westside Purple Line Extension Project is the second of three sections to be designed and constructed as part of the Los Angeles County Metropolitan Transportation Authority (LACMTA) Measure R Program. The program was approved by Los Angeles County voters in November 2008 and provides a half-cent sales tax to finance new transportation projects. In April 2012, the three sections of the Project were environmentally cleared and adopted by LACMTA Board of Directors.

Section 2 will extend the future Wilshire/La Cienega Station that is part of the Westside Purple Line Extension Section 1 Project currently under construction to the Century City area. The Project is located entirely underground, primarily following Wilshire Boulevard, and includes the design and construction of approximately 2.59 miles of double-track heavy rail and two new stations as well as the purchase of 20 heavy rail vehicles. The Project also includes train controls, signals, traffic controls, communications, traction power supply and distribution, fare collection systems and equipment, acquisition of right-of-way, and utility relocations.

Design

The Engineering Management Services (EMS) team continues to provide design support for the Advanced Utility Relocation (AUR) work in Century City and real estate support services. The team is supporting Metro in reviewing final design submittals, responding to RFI's, and assisting in preparation of change notices.

The C1120 Contractor, Tutor Perini/O&G a Joint Venture (TPOG), has mobilized the final design team, STV.

The design work has been identified into three distinct design unit packages. They are:

1. Design Package 1 – Utility/Civil Design at Launch Box
2. Design Package 2 – Remaining Utility Conflicts (Outside of Launch Box)
3. Design Package 3 (Volume 1) - Tunnel Reaches
Design Package 3 (Volume 2) – Stations
Design Package 3 (Volume 3) – Track & Systems

Each design unit package will be submitted and evaluated at each of the following phases; 60%, 85%, 100%, Approved for Construction (AFC) and Issued for Construction (IFC). If required, critical design units can be advanced as Advanced Partial Design Units (APDU's) to support ongoing construction activities.

TPOG submitted for review the Tunnel Boring Machines (TBMs) preconstruction initial design demonstrating that the TBMs meet the Project's specifications. Design progress meetings are occurring weekly related to the design unit packages. Contractor is continuing with the required contractual submittals.

The 120 Day Project Schedule has been submitted and approved and will be used as the basis for progress evaluation until such time as the Baseline Schedule is approved. *Weekly working sessions are being conducted with the Contractor on the Contract Baseline CPM Schedule.*

Major Contract Procurement

All construction contracts for the Project have been awarded.

Construction

TBMs purchase order has been executed.

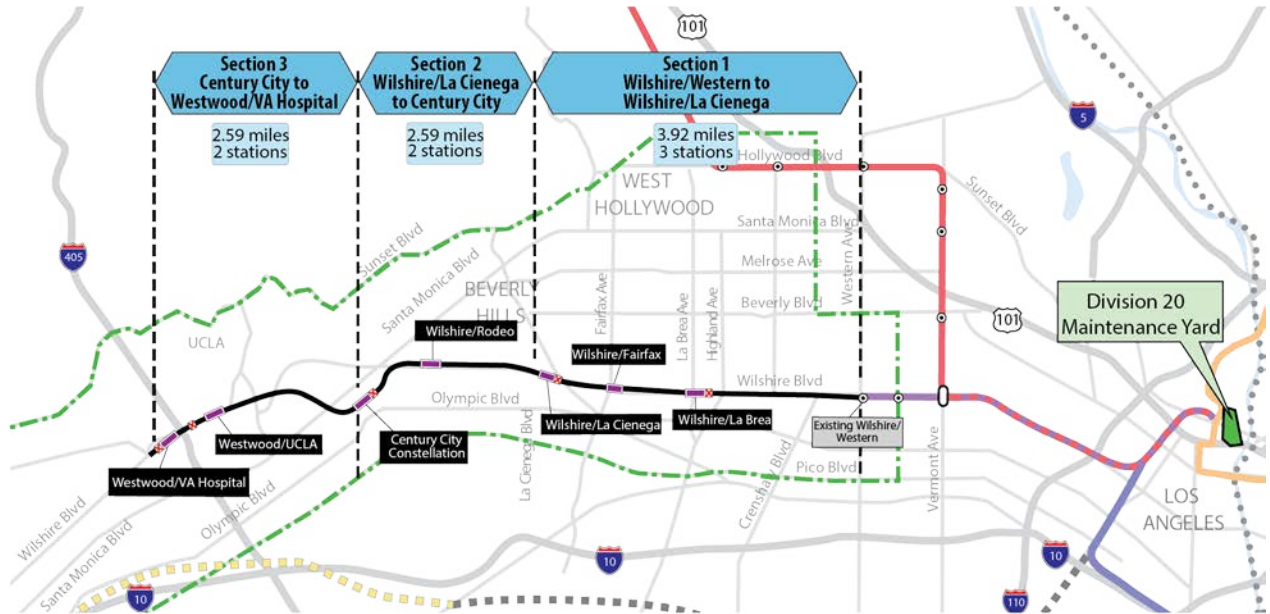
Telecom joint trench civil work completed in June 2017, cable pulling and splicing work anticipated to complete in September 2017. The Los Angeles Department of Water and Power (LADWP) Water utility relocations inside the TBM Launch Box were completed in June 2017. LADWP Power relocations began in May 2017 at the Century City.

Advanced third party utility relocations are anticipated to begin at the Wilshire/Rodeo Station in July 2017. Approval of SCE construction permit by the Beverly Hills City Council was obtained in June 2017. SCE construction work anticipated to begin August 2017.

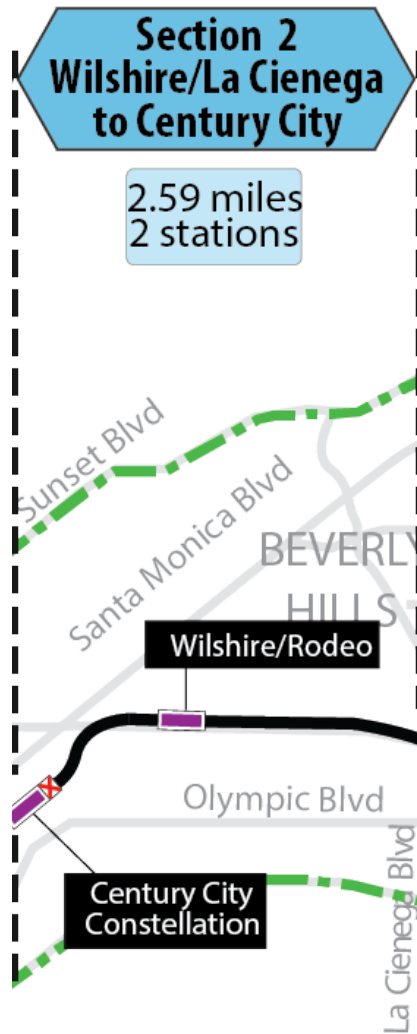
MANAGEMENT ISSUES

No Management Issues this period.

PROJECT ALIGNMENT by SECTIONS



PROJECT ALIGNMENT SECTION 2



BASE PROJECT SCOPE

Section 2 of the Westside Purple Line Extension Project is the second of three sections to be designed and constructed as part of the Los Angeles County Metropolitan Transportation Authority (LACMTA) Measure R Program. The program was approved by Los Angeles County voters in November 2008 and provides a half-cent sales tax to finance new transportation projects. In April 2012, the three sections of the Project were environmentally cleared and adopted by LACMTA Board of Directors.

Section 2 will extend the future Wilshire/La Cienega Station that is part of the Westside Purple Line Extension Section 1 Project currently under construction to the Century City area. The Project is located entirely underground, primarily following Wilshire Boulevard, and includes the design and construction of approximately 2.59 miles of double-track heavy rail and two new stations as well as the purchase of 20 heavy rail vehicles. The Project also includes train controls, signals, traffic controls, communications, traction power supply and distribution, fare collection systems and equipment, acquisition of right-of-way, and utility relocations.

The Wilshire/Rodeo Station box will be under the center of Wilshire Boulevard, beginning just east of South Canon Drive, and extending to El Camino Drive. The entrance will be on the southwest corner of Wilshire Boulevard and Reeves Drive.

The Century City Constellation Station box will be under the center of Constellation Boulevard, between Century Park East and Solar Way. A double crossover will be located east of this station. The entrance will be on the northeast corner of Constellation Boulevard and Avenue of the Stars. In lieu of tail tracks, safe breaking distance will be provided at the interim terminus station.

Contract C1120 – Tunnels, Stations, Trackwork, Systems and Systems Integration Testing

The procurement of this contract utilized a two-step approach with the submittal of qualification statements through a Request for Qualification (RFQ) process, prequalification of qualified proposers followed by the release of a Request for Proposals (RFP) soliciting technical and price proposals with an option at Metro's discretion for Best and Final Offers (BAFO).

The Design/Build contract provides for final design and construction of the infrastructure along the 2.59 mile alignment. Contract scope includes demolition and removal of structures and clearing sites to facilitate construction operations. The structures to be constructed include twin bored tunnels, complete with cross-passages and walkways, including all mechanical, electrical and finish work. A tunnel boring launch (TBM) shaft will be constructed at the Century City Constellation Station. Two underground stations are to be constructed, one double crossover location, which is located east of the Century City Constellation Station which is the terminus station. Each station has a single entrance plaza with stairs, escalators and elevators which meet ADA requirements. The scope of work also includes all architectural finishes, mechanical, electrical, systems and equipment including train control, traction power, communications, trackwork, system tie-in to the Wilshire/La Cienega Station (currently under construction), testing and commissioning.

BASE PROJECT SCOPE (Continued)

Metro Furnished Equipment

Metro has procured a separate contract to provide the 20 Heavy Rail Vehicles (HRV) and will procure a separate contract for the Universal Fare System (UFS) necessary to operate the Purple Line. The scope of the HRV contract includes design, manufacturing, testing and delivery of the vehicles. The scope of the UFS contract will include design, fabrication and installation of equipment at the two stations and system testing.

Start Up

The commencement of pre-revenue operations will be determined by Metro. Generally, all systems integration testing will have been completed and passed. All testing will be required to include and pass a “stress test” of maximum operational service levels to be acceptable. Pre-Revenue Operations include train runs, especially those involving multiple trains, on the integrated and fully operational extension; rehearsal of expected revenue operations scenarios; as well as abnormal and emergency scenarios in which random combinations of system interactions are tested; equipment “burned-in”; and training of Metro personnel who will operate and maintain the extension and for emergency services personnel. Activities occurring during Pre-Revenue Operations are carried out by a designated Metro Project Rail Activation Group.

KEY MILESTONES SIX-MONTH LOOK AHEAD

	Milestone Date	Jul-17	Aug-17	Sep-17	Oct-17	Nov-17	Dec-17
Start environmental validation 60% (Package 2 remaining utilities)	07/26/17	□					
Start 100% Design Package - SOE for TBMs Launch Box and Mucking Shaft	07/27/17	□					
Third party utility construction begins at Century City Constellation - AT&T	08/01/17		△				
Third party utility construction begins at Century City Constellation - SCG (inside Launch Box)	08/14/17		△				
Third party utility construction begins at Wilshire/Rodeo - SCE	08/14/17		△				
Submit 60% Design (Package 2 remaining utilities conflicts outside of Launch Box)	08/15/17		□				
Submit 60% Design (Package 1 utilities at Launch Box)	08/18/17		□				
Complete SEIS	09/15/17			◆			
Third party utility construction complete at Century City Constellation - SCG (inside Launch Box)	09/25/17			△			
Third party utility construction begins at Century City Constellation - SCG (outside Launch Box)	09/26/17			△			
Third party utility cable pulling & splicing completes at Century City Constellation -Telecom	09/29/17			△			
Submit 85% Design (Package 1 utilities at Launch Box)	10/16/17				□		
Submit 85% Design (Package 2 remaining utilities conflicts outside of Launch Box)	11/01/17					□	
Third party utility cable pulling & splicing begins at Wilshire/Rodeo SCE	11/14/17					△	
Submit 100% Design (Package 1 utilities at Launch Box)	12/06/17					□	
Third party utility construction complete at Century City Constellation - AT&T	12/21/17						△



MTA Staff



MTA Board Action

FTA (Federal Transit Administration)

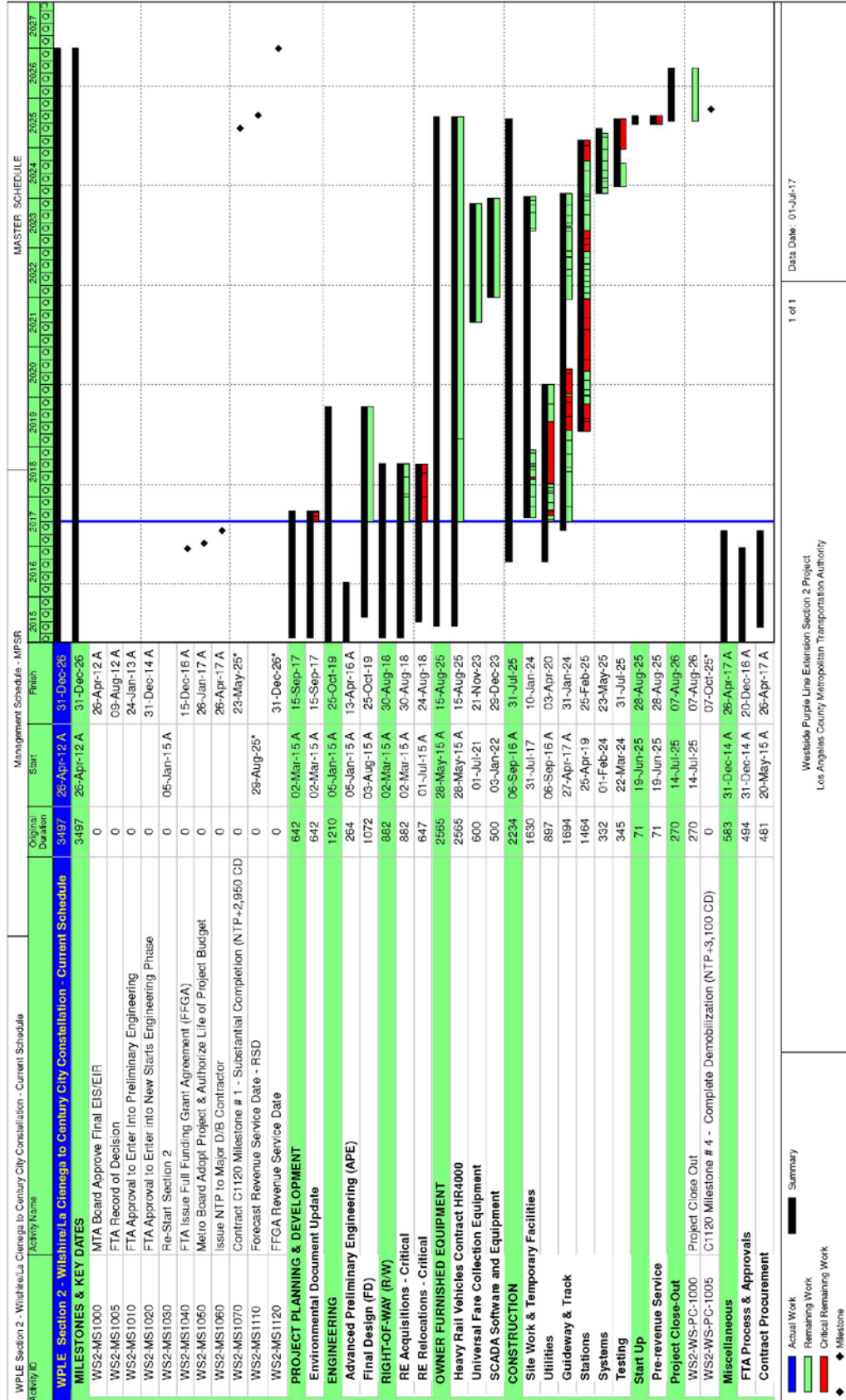


Other Agencies



Contractor

PROJECT SUMMARY SCHEDULE



SCHEDULE MEASUREMENTS

To be provided when the baseline schedule for Contract C1120 has been approved.

OVERALL CONSTRUCTION PROGRESS CURVE

To be provided when the baseline schedule for Contract C1120 has been approved.

MAJOR EQUIPMENT DELIVERY

To be provided when the baseline schedule for Contract C1120 has been approved.

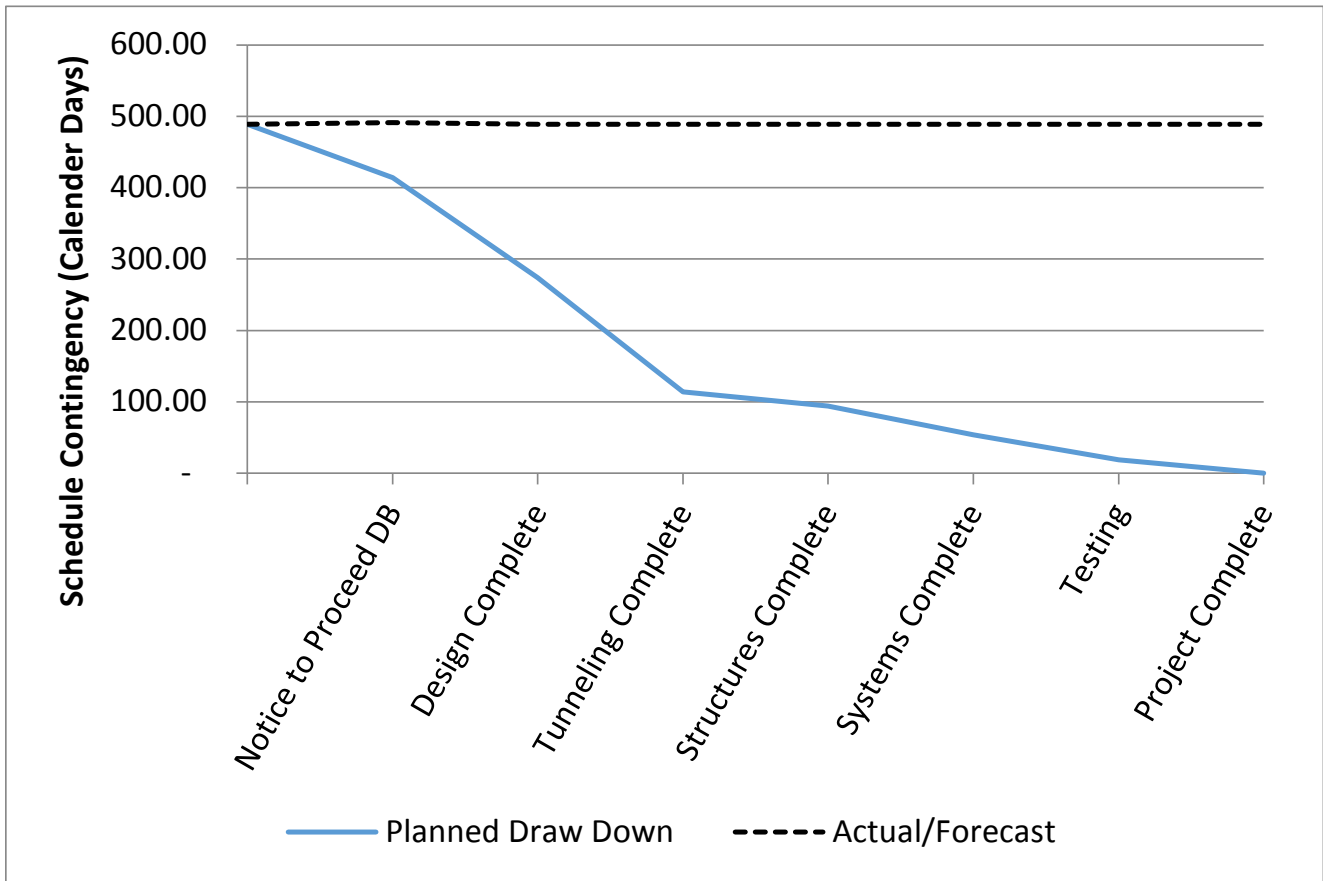
DESIGN BUILDER'S (C1120) LONG LEAD ITEM LIST

To be provided when the baseline schedule for Contract C1120 has been approved.

CRITICAL PATH NARRATIVE

The Critical Path begins with the procurement process for the C1120 Design/Build contract, mobilization of the design team for the contractor, and the start of final design for station boxes and tunnels. The Design/Build contractor begins installation of soldier piles, first on the north side of the Century City Constellation Station box, and then on the south side. Temporary Street decking is then installed, the station structural box is excavated, and invert concrete is placed. Concurrently with this is the procurement and assembly of the tunnel boring machines (TBM). The path continues with tunneling and then street decking, station box excavation and concrete invert at the Wilshire/Rodeo Station. The path then follows into systems integration and testing and pre-revenue operations.

PROJECT SCHEDULE CONTINGENCY DRAWDOWN



PROJECT SCHEDULE CONTINGENCY DRAWDOWN ANALYSIS

The project schedule contingency drawdown curve is based on an August 29, 2025 Forecast Revenue Service Date (RSD).

PROJECT COST STATUS

DOLLARS IN THOUSANDS

SCC CODE	DESCRIPTION	ORIGINAL BUDGET	CURRENT BUDGET		COMMITMENTS		EXPENDITURES		CURRENT FORECAST		FORECAST/ BUDGET VARIANCE
			PERIOD	TO DATE	PERIOD	TO DATE	PERIOD	TO DATE	PERIOD	TO DATE	
10	GUIDEWAY & TRACK ELEMENTS	346,440	-	346,440	-	329,943	5,175	5,175	-	346,440	-
20	STATIONS, STOPS, TERMINALS, INTERMODAL	434,990	-	434,990	-	410,368	41	41	-	434,990	-
30	SUPPORT FACILITIES: YARDS, SHOPS, ADMIN. BLDGS	-	-	-	-	-	-	-	-	-	-
40	SITework & SPECIAL CONDITIONS	553,282	-	553,282	2,271	520,626	85,346	89,848	-	553,282	-
50	SYSTEMS	81,457	-	81,457	-	68,537	-	-	-	81,457	-
CONSTRUCTION SUBTOTAL (10-50)		1,416,169	-	1,416,169	2,271	1,329,474	90,563	95,064	-	1,416,169	-
60	ROW, LAND, EXISTING IMPROVEMENTS	426,396	-	426,396	-	166,839	29,852	124,970	-	426,396	-
70	VEHICLES	42,000	-	42,000	-	-	-	-	-	42,000	-
80	PROFESSIONAL SERVICES	374,878	-	374,878	-	167,592	15,443	70,388	-	374,878	-
SUBTOTAL (10-80)		2,259,444	-	2,259,444	2,271	1,663,905	135,858	290,422	-	2,259,444	-
90	UNALLOCATED CONTINGENCY	177,176	-	177,176	-	-	-	-	-	177,176	-
100	FINANCE CHARGES	88,695	-	88,695	-	-	-	-	-	88,695	-
TOTAL PROJECT 865522 (FFGA & NON-FFGA CONCURRENT ACTIVITIES)		2,525,314	-	2,525,314	2,271	1,663,905	135,858	290,422	-	2,525,314	-
ENVIRONMENTAL/PLANNING - 465518 & 465522		4,349	-	4,349	410	2,203	194	1,959	-	4,349	-
TOTAL PROJECT 465518 & 465522 (ENV / PLAN'G)		4,349	-	4,349	410	2,203	194	1,959	-	4,349	-
TOTAL PROJECTS 465518, 465522 & 865522		2,529,664	-	2,529,664	2,681	1,666,108	136,052	292,381	-	2,529,664	-

PROJECT COST ANALYSIS

Original Budget, Current Budget and Forecast

The Original Budget, Current Budget and Forecast of \$2.5 billion reflects the Life of Project (LOP) budget approved by the Board on January 26, 2017, plus Finance Charges of \$88.7 million.

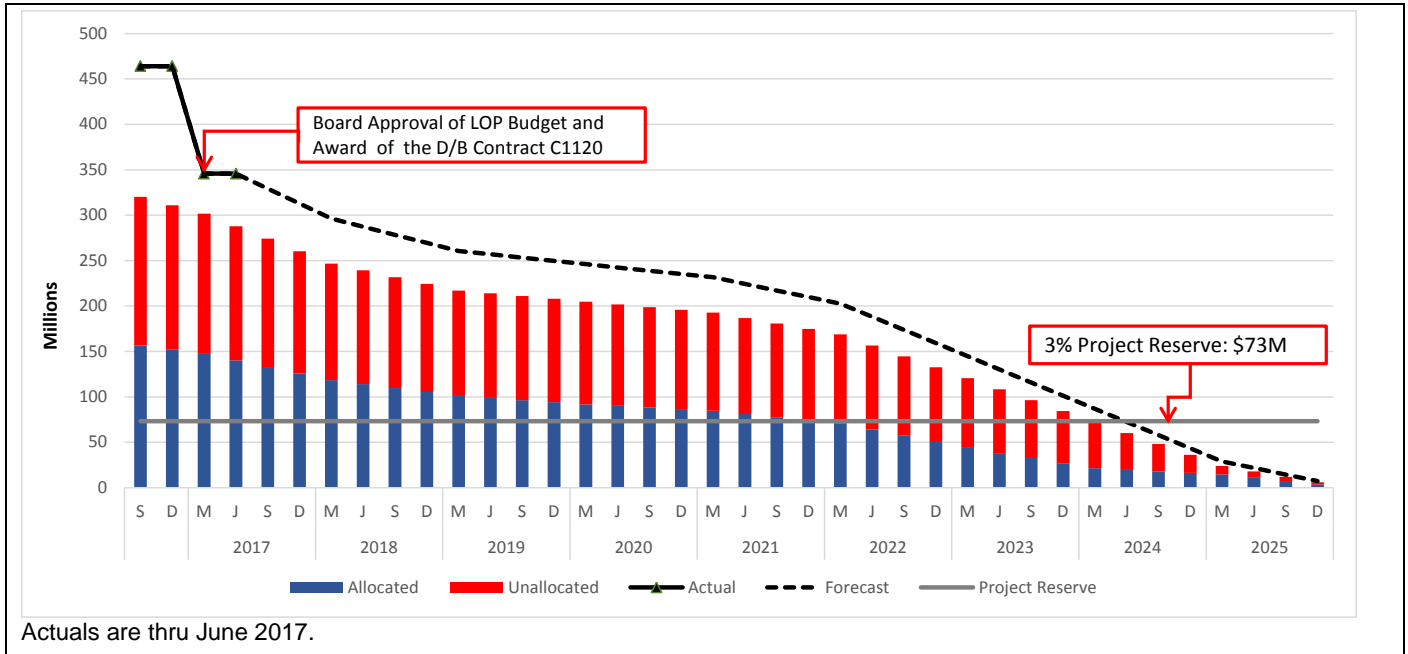
Commitments

The Commitments increased this period by \$2.7 million due to executed work orders for private utilities. The \$1.7 billion in Commitments to date represents 65.9% of the Current Budget.

Expenditures

The Expenditures increased this period by \$136.1 million this period primarily for costs associated with Design/Build Contract C1120, Real Estate Acquisitions, Engineering Management Services, Metro Project Administration, Construction Management Support Services, and Master Cooperative Agreement with the City of Los Angeles. The \$292.4 million in Expenditures to date represents 11.6% of the Current Budget.

PROJECT COST CONTINGENCY DRAWDOWN



PROJECT COST CONTINGENCY DRAWDOWN ANALYSIS

The Current Budget of \$2.5 billion includes finance charges totaling \$88.7 million. It also, includes a project cost contingency of \$345.7 million or 13.7% of the total project, which is based upon the Life of Project (LOP) Budget approved by the Board in January 2017. Included in the total cost contingency is an allocated contingency amount of \$168.5 million. The allocated contingency is an amount to cover anticipated but unknown contract modifications issued by Metro where applicable to specific contracts within each Standard Cost Category (SCC).

A 3% project reserve threshold is included in the project cost contingency drawdown. Metro’s Board is to be notified when it becomes necessary to drawdown contingency below the project reserve threshold to cover project costs. This process was adopted by the Metro Board of Directors in September 2012.

The project cost contingency drawdown curve is based on an August 29, 2025 Forecast Revenue Service Date (RSD).

The project contingency remained unchanged this period.

PROJECT COST CONTINGENCY					
DOLLARS IN THOUSANDS					
	Original Contingency (Budget)	Previous Period	Current Period	To-Date	Remaining Contingency (Forecast)
Unallocated Contingency	177,176	0	0	0	177,176
Allocated Contingency	168,534	0	0	0	168,534
Total Contingency	345,710	0	0	0	345,710

DISADVANTAGED BUSINESS ENTERPRISE (DBE)

None to report at this time.

PROJECT LABOR AGREEMENTS (PLA) STATUS

The Contractor has committed to complying with PLA/CCP requirements for the Project. Project Staff will monitor and report the contractor's progress toward meeting the goals of the PLA/CCP once construction begins.

SUMMARY OF CONTRACT MODIFICATIONS

No Contract MODs have been executed since the award of Contract C1120– Tunnels, Stations, Trackwork, and Systems to Tutor Perini/O&G, a Joint Venture.

FINANCIAL/GRANT STATUS

SOURCE	(IN MILLIONS OF DOLLARS)									
	(A)	(B)	(C)	(D)	(D/B)	(E)	(E/B)	(F)	(F/B)	
	ORIGINAL BUDGET	TOTAL FUNDS ANTICIPATED	TOTAL FUNDS AVAILABLE	COMMITMENTS \$	%	EXPENDITURES \$	%	BILLED TO FUNDING SOURCE \$	%	
FEDERAL - SECTION 5309 NEW STARTS	\$1,187.000	\$1,187.000	\$100.000	\$1,043.956	88%	\$99.793	8%	\$95.030	8%	
FEDERAL CMAQ	\$169.000	\$169.000	\$43.000	\$43.000	25%	\$16.069	10%	\$16.069	10%	
MEASURE R - TIFIA LOAN	\$307.000	\$307.000	\$307.000	\$307.000	100%	\$0.000	0%	\$0.000	0%	
MEASURE R 35%	\$811.902	\$811.902	\$119.862	\$217.390	27%	\$121.757	15%	\$56.265	7%	
STATE CAPITAL PROJECT LOANS	\$54.762	\$54.762	\$54.762	\$54.762	100%	\$54.762	100%	\$54.762	100%	
TOTAL	\$2,529.664	\$2,529.664	\$624.624	\$1,666.108	65.9%	\$292.381	11.6%	\$222.126	8.8%	

STATUS OF FUNDS ANTICIPATED

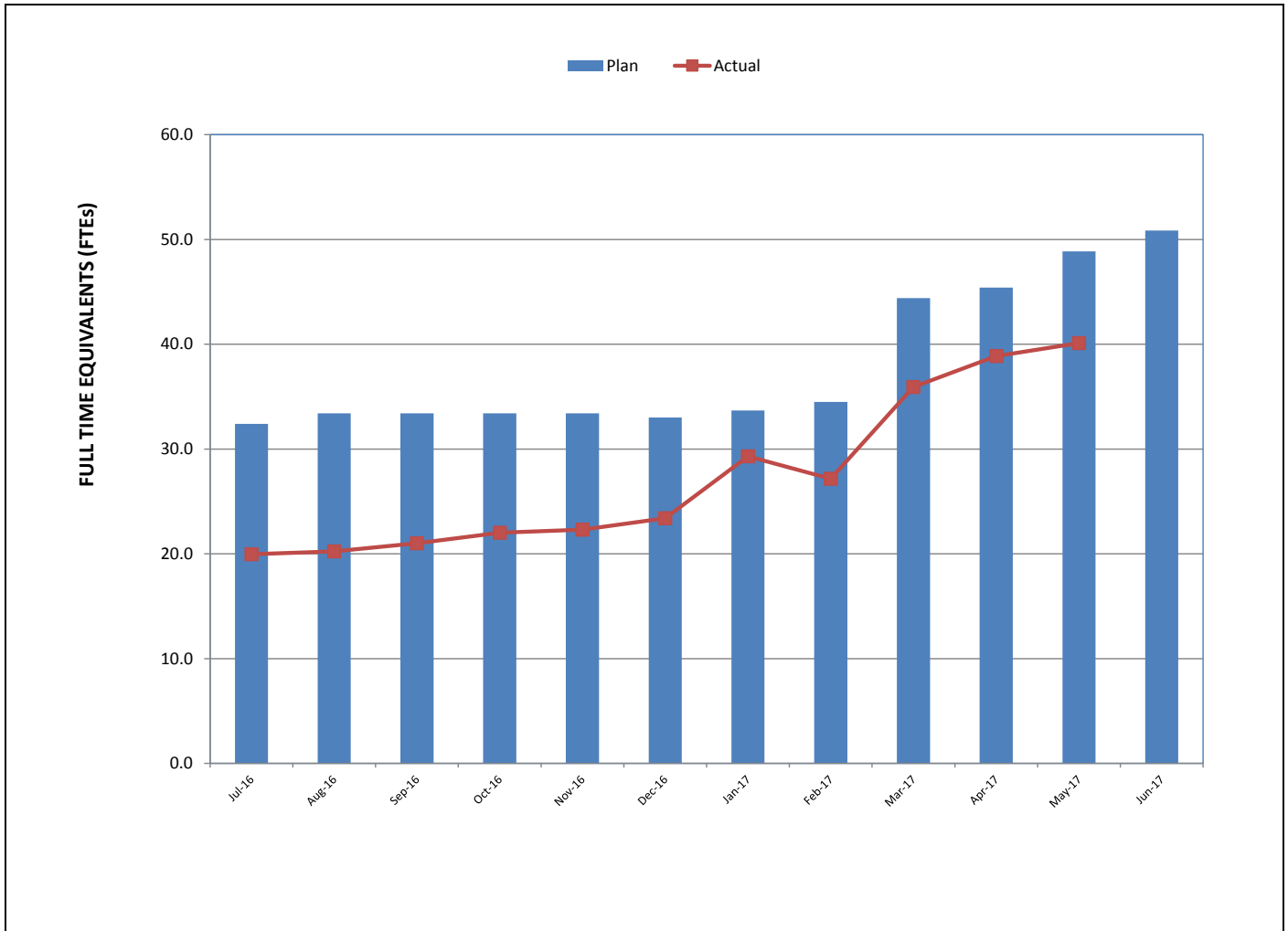
FEDERAL SECTION 5309 NEW STARTS: FTA grant CA-2016-047 for \$100.0 million was awarded by the FTA on December 15, 2016. Funds are available for drawdown.

CMAQ (Congestion Mitigation & Air Quality): FTA grant CA-2016-2045 for \$43.0 million was awarded by the FTA on December 15, 2016. Funds are available for drawdown.

MEASURE R – TIFIA LOAN (Transportation Infrastructure Finance & Innovation Act): TIFIA Loan was executed on December 20, 2016 for \$307.0 million. \$146M funds are available for drawdown. First disbursement is planned for November 2017.

MEASURE R: \$119.9 million have been allocated to the Project through FY16. Funds are available for drawdown.

STAFFING STATUS
Total Project Staffing – FTEs

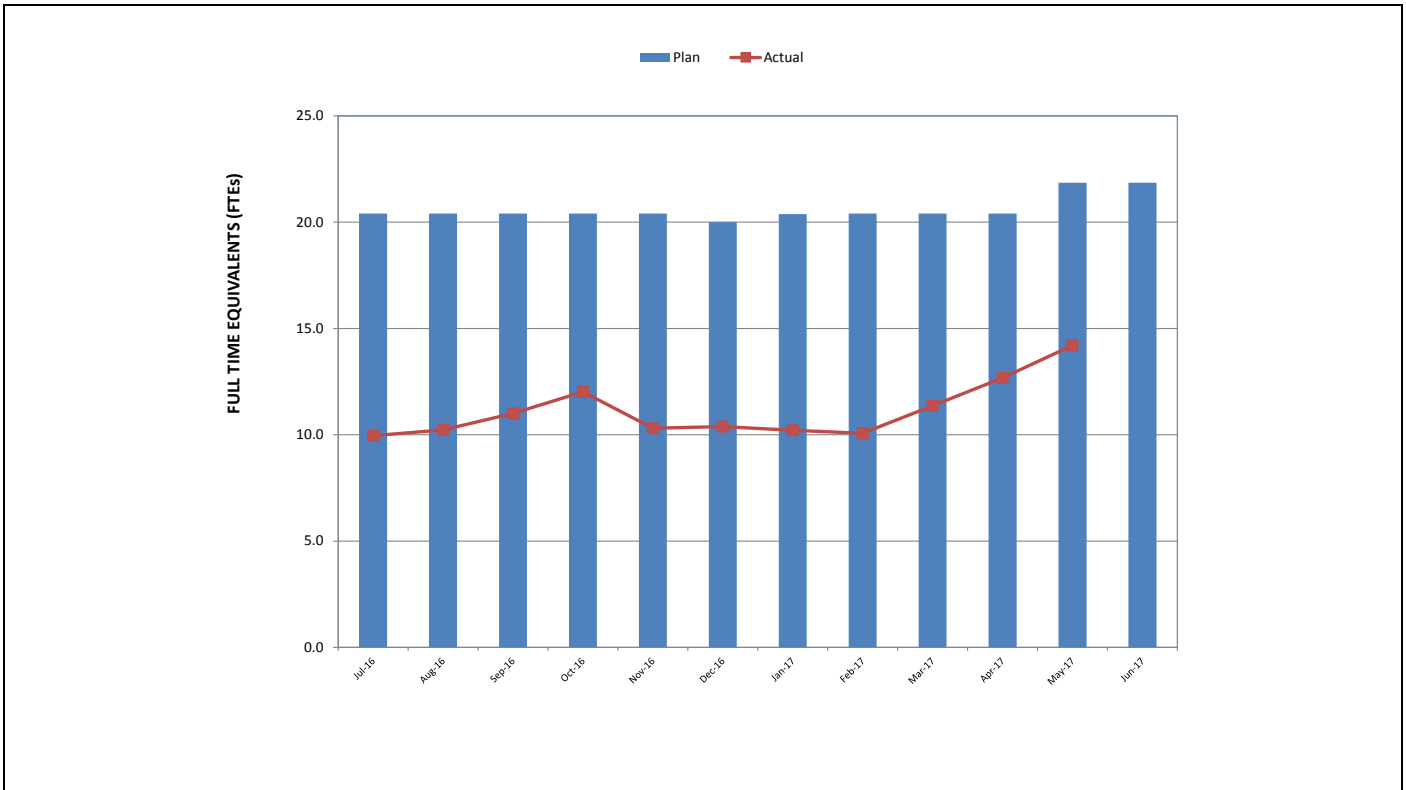


TOTAL PROJECT STAFFING

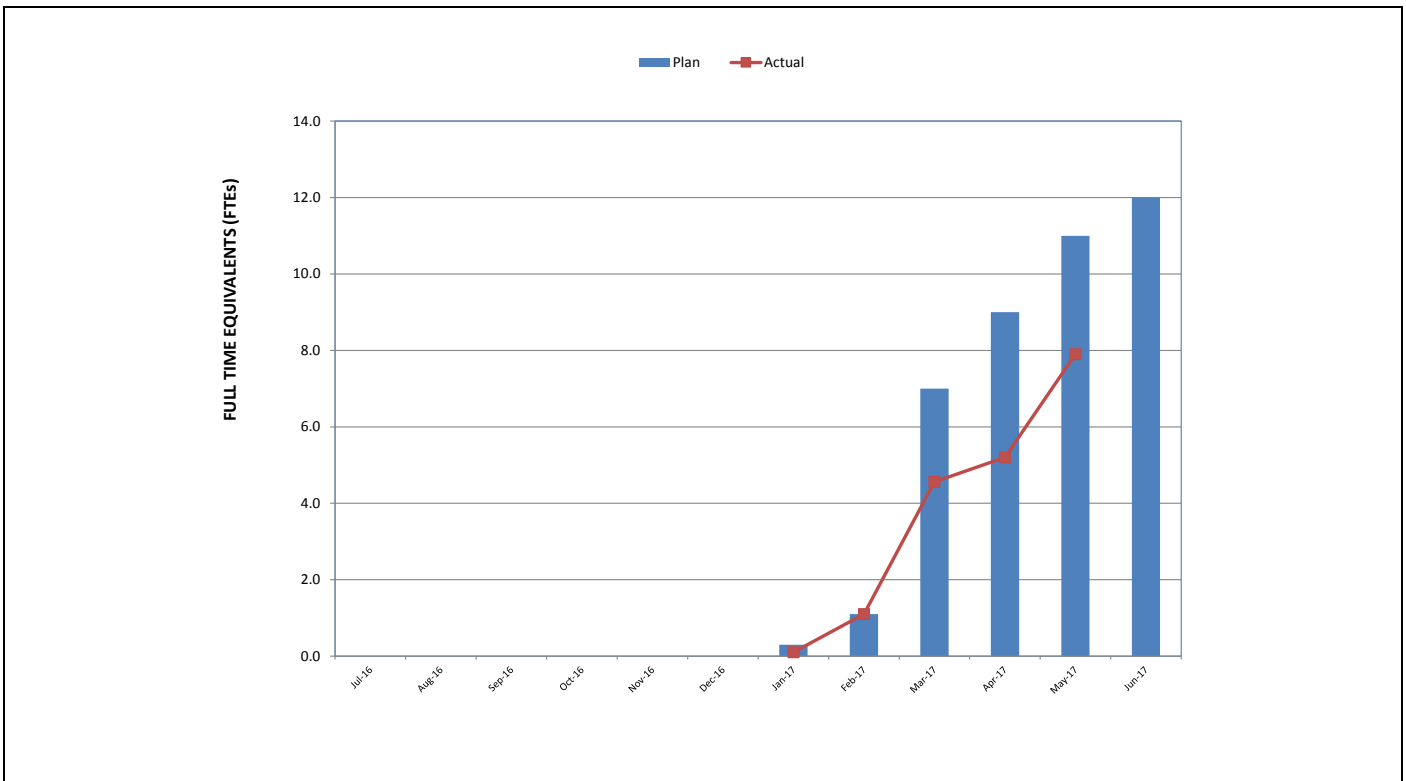
The overall FY17 Total Project Staffing Plan averages 38.1 FTEs per month.

For May 2017, there were a total of 14.2 FTEs for MTA's Project Administration Staff and 25.9 FTEs for Consulting Staff. The total project staffing for May 2017 was 40.1 FTEs.

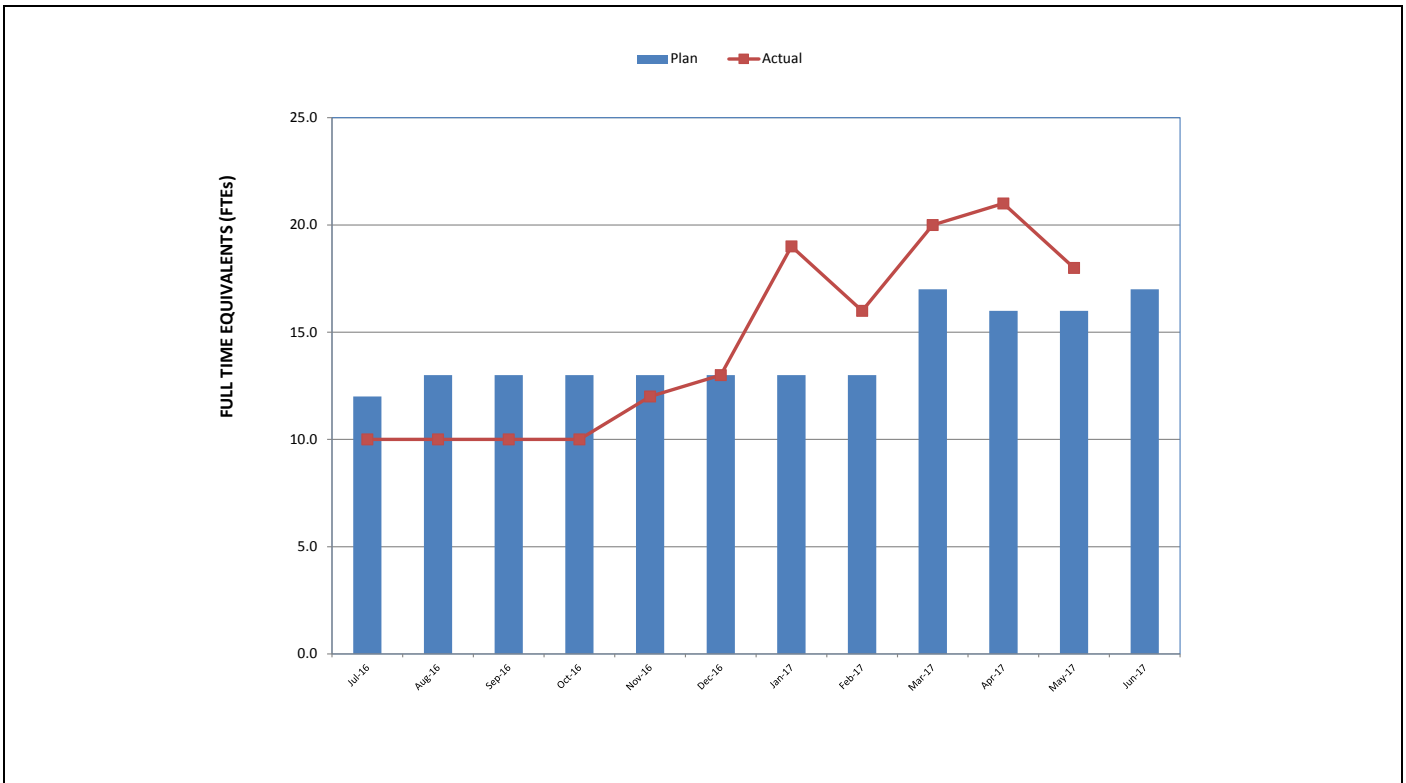
**STAFFING STATUS (Continued)
METRO STAFFING – FTEs**



**CONSTRUCTION MANAGEMENT SUPPORT
SERVICES CONSULTANT – FTEs**



STAFFING STATUS (Continued) ENGINEERING MANAGEMENT SERVICES CONSULTANT – FTEs



REAL ESTATE STATUS

Real Estate Status Summary									
Description	Number of Parcels	Certified	Appraisals Completed	Offers Made	Agreements Signed	Condemnation Filed	Relocations		Parcels Available
							Required	Completed	
Full Takes	3	3	3	3	1	2	21	10	1
Part Takes	3	1	1	1	0	0	0	0	0
TCE	3	3	1	1	0	1	1	0	0
SSE	23	1	1	1	0	1	0	0	0
Permanent Easements	1	0	0	0	0	0	0	0	0
Surface Easements	0	0	0	0	0	0	0	0	0
Total Parcels	33	8	6	6	1	4	22	10	1

QUALITY ASSURANCE STATUS

- None to report at this time.

ENVIRONMENTAL STATUS

- Performed daily noise monitoring activities at Century City Constellation Station for utility relocation work and submitted daily field reports.
- Participated in weekly project construction and utility relocation meetings and reported on environmental compliance with local, state and federal regulations, specifications and EIR.
- Provided environmental awareness training to construction crews as required.
- *Prepared the May 2017 Noise Monitoring Report for Century City Constellation Station.*
- Conducted field environmental monitoring and spot check inspections for stormwater and dust BMPs, cultural resources and Metro's Green Construction Policy.
- *Completed Noise FAQ Sheet to be uploaded to PLE website.*
- *Participated in comment/resolution meeting with the PMOC regarding the 8th Quarter Mitigation Measures Status Report (MMSR).*
- *Began preparation of the 9th Quarter Mitigation Measures Status Report (MMSR).*
- *Completed additional sampling and finalized supplemental ACM/LBP survey report for the former Ace Gallery property.*
- *Began COBH permitting process and contractor coordination for abatement of the former Ace Gallery.*
- *Held Sustainability Kickoff Workshop with C1120 Contractor.*
- Participated in various C1120 contract coordination meetings and evaluated progress and schedules for environmental compliance and sustainability efforts.

CONSTRUCTION RELATIONS STATUS

- *Produced and distributed four pre-construction work notices for advanced utility relocations and four notices for the June 7th and 15th Community Meetings.*
- *Made Project presentations at the following: Business Walk on Beverly Drive and Canon Drive, Metro PLE Southern California Edison Meeting, Century City Building Manager's Meeting, Business/Resident Walk on Reeves Drive, Beverly Hills Southern California Edison Community Meeting, Beverly Hills Chamber Summer Garden Party, Century City Chamber President Meeting, Annenberg Photography Museum Meeting and Beverly Hills*

City Council Meeting.

- Attended the following meetings: Construction Management, Advanced Utility Relocations, Construction Relations, Environmental Mitigations, Third Party Workshop, Marketing, Social Media and Bus Relocations and Stops.
- Online and door to door outreach for community meetings.
- Addressed traffic control complaints for utility work at Century City Constellation.
- Updated Facebook/Twitter website as needed.

CREATIVE SERVICES STATUS

- Conducted community outreach and coordinated cultural partnerships.

SAFETY & SECURITY STATUS

- Third party advanced utility relocation work continues.
- Third party construction work is being monitored to document contractor compliance with regulations and good business practices.
- Attended LADWP Water and Power Field Tool-Box Safety Meetings and conducted site safety walks.
- Attended weekly Project Issues Standing Meetings.
- Conducted Safety Workshop and coordination meetings with TPOG safety staff and defined over-the-shoulder review schedules.
- Attended Telecom Joint Trench Weekly Construction Meetings
- Attended LADWP Water/Power Relocation Weekly Construction Meeting.
- Continued coordination with the D/B Contractor safety personnel to insure pre-submittal compliance for adequate contractual construction safety staffing.
- Conducted project safety orientation for new Metro/Consultants and IPMO project staff.
- Injury and work hour statistics will be tracked beginning on the Design/Builders NTP date. Coordination with the D/B Contractor Safety Manager is ongoing.
- *Continued ongoing project safety and security administrative requirements.*
- *Conducted over-the-shoulder reviews on safety/security submittal drafts with TPOG safety staff.*

THIRD PARTY AGREEMENT STATUS

No.	Third Party	Type of Agreement	Forecast Execution Date	Required Need Date	Status/ Comments
1	City of Los Angeles (LA)	Master Cooperative Agreement	N/A	N/A	Parties will work under 2003 MCA.
2	City of Beverly Hills (COBH)	Memorandum of Agreement	03/17	03/17	Reimbursement Agreement was executed in March 2017.
			06/17	06/17	<i>Beverly Hills City Council approved the construction permit for SCE work in June 2017. Other utility relocation construction permits will be processed as needed.</i>
			03/18	04/18	Metro continues to work with the City to establish an MOA for the C1120 Design/Build contract. Required Need Date reflects turnover date to C1120 contractor for station footprint availability.
3	Los Angeles Department of Water and Power (LADWP)- Water & Power	Master Cooperative Agreement	N/A	N/A	Metro and LADWP will continue to work under the terms of the previous Master Cooperative Agreement.
4	Los Angeles County Public Works Flood Control	Master Cooperative Agreement	N/A	N/A	Executed.
5	Private Utilities	Utility Cooperative Agreement	N/A	N/A	AT&T, Pac Bell, SBC, MCI, Verizon, Southern California Gas Company (SCGC), TCG Los Angeles – Metro is working under existing agreements.
			11/17	11/17	Level 3 – Metro and Level 3 have initiated a new agreement. Currently, awaiting comments from Level 3. Time Warner Pacific West LLC, D/B/A Time Warner Cable – County Counsel to respond to Time Warner’s latest comments. SCE – Metro and SCE have initiated a new agreement. A draft is under review. Veolia – A draft agreement has been submitted to Veolia for review and comment. Sprint – A draft of the Agreement submitted has been submitted to Sprint, pending comments.
			09/17	09/17	Zayo, XO Communications, LLC – the agreements have been finalized and will be presented to the Board.

ADVANCED UTILITY RELOCATION STATUS

Telecom joint trench civil work in Century City was completed in June 2017. Cable pulling and splicing work is anticipated to complete in September 2017. The Los Angeles Department of Water and Power (LADWP) Water utility relocations inside the TBM Launch Box completed in June 2017. LADWP Power relocations began in May 2017 at the Century City Constellation Station.

Advanced third party utility relocations are anticipated to begin at the Wilshire/Rodeo Station in August 2017. Approval of SCE construction permit by the Beverly Hills City Council was obtained in June 2017. Construction anticipated to begin August 2017.

PEAK HOUR AND NIGHTTIME CONSTRUCTION VARIANCES

Metro is actively pursuing extended hour variances/exemptions to accommodate the Project needs. Metro staff is working with the City of Beverly Hills, City of Los Angeles Bureau of Engineering and the Los Angeles Police Commission to obtain Peak Hour Exemptions and Nighttime Construction Variances.

- Peak Hour Exemption application is in progress for the TBM launch box excavation on Constellation Boulevard.
- A peak hour exemption for the LADWP Water relocation has been approved from May 15, 2017 to August 17, 2017.
- Nighttime noise variance for relocation of third party utilities on Constellation Boulevard is approved through October 2017.
- *Peak Hour Exemption application for AT&T relocations on Constellation Boulevard is being processed.*

CHRONOLOGY OF EVENTS

August 2012	FTA Record of Decision
January 2013	FTA approval to enter to Preliminary Engineering
December 2014	FTA approval to enter to New Starts Engineering Phase
March 2015	Began Real Estate Acquisition
May 2015	Began Advanced Preliminary Engineering
September 2015	Issued RFQ for C1120 Design / Build contract
October 2015	Received RFQ responses for C1120 Design / Build contract
May 2016	Submitted draft FFGA application
May 2016	Submitted TIFIA loan application
June 2016	Submitted application to FTA requesting an FFGA
June 2016	Received RFP Proposals for Contract C1120
September 2016	Began joint trench construction in Century City
December 2016	FTA executed FFGA
December 2016	Received TIFIA Loan
January 2017	NTP for Construction Management Support Services Contract
January 2017	Metro Board approved staff recommendation to award the D/B Contract C1120 to Tutor Perini/O&G, a Joint Venture (TPOG) and approved Life-of-Project Budget
January 2017	Issued C1120 Contract Award TPOG
April 2017	Issued C1120 Contract NTP to TPOG
May 2017	Mobilized C1120 Contract Design Team

CONTRACT C1120 STATUS

<p>Description: Purple Line Extension Design-Build Contractor: Tutor Perini/O&G a Joint Venture</p>	<p>Contract No. C1120 Status as of: June 30, 2017</p>															
<p>Progress / Work Completed:</p> <ul style="list-style-type: none"> - Executed purchase order for the TBMs - Project site office established and personnel being assigned to job - Started preliminary design of tunnel systems infrastructure - Initiated track alignment design for 60% submittal - Completed draft SWPP including QA/QC - Prepared 1st draft of BIM model <p>Areas of Concern:</p> <ul style="list-style-type: none"> - None 	<p>Major Activities (In Progress):</p> <ul style="list-style-type: none"> - Prepare 60% Design - Utility Plans (Package 1 Utilities at Launch Box) - Prepare 60% Design - Traffic Control Plans (Pkg 1 Util. at Launch Box) - Prepare 60% Design - Utility Plans (Package 2 Remaining Utilities) - Prepare 60% Design - Traffic Control Plans (Pkg 2 Remaining Utilities) - Tunnel & CFD Modeling (FLS) (Package 3 Tunnels) - Prepare FLS Calcs/Layout Design (Package 3 Track & Systems) <p>Major Activities Next Period:</p> <ul style="list-style-type: none"> - 100% Dsgn Package - SOE for TBM Launch Box & Mucking Shaft - Environmental Validation 60% (Package 2 Remaining Utilities) - Power Load Study & Verification of TP & Train Control Room Sizes - COLA Review & Comment Civil/Drainage Permit Application - COLA Review & Comment NPDES Permit Application 															
<p>Schedule Summary:</p> <p>Date of Award: 01/31/17</p> <p>Notice to Proceed: 04/26/17</p> <p>Original Contract Duration: 3,100 CD</p> <p>Current Contract Duration: 3,100 CD</p> <p>Elapsed Time from NTP: 66 CD</p>		Original Contract Dates	Time Extension	Current Contract	Forecast	Variance CDs										
	Notice to Proceed (Estimated)	04/26/17	0	04/26/17	04/26/17	0										
	MS 1 (NTP + 2950): Substantial Completion	05/24/25	0	05/24/25	05/24/25	0										
	MS 2 (NTP + 2600): Stations Available	06/08/24	0	06/08/24	06/08/24	0										
	MS 3 (NTP + 2700): Ready for Systems Integration Testing	09/16/24	0	09/16/24	09/16/24	0										
	MS 4 (NTP + 3100): Demobilization	10/21/25	0	10/21/25	10/21/25	0										
<p>Physical Percent Complete:</p> <p>Physical completion: 1.40%</p> <p><i>* Note: Physical completion assessment reflects work completed and work in progress.</i></p>	<p>Cost Summary: \$ In millions</p> <table border="0"> <tr> <td>1. Award Value:</td> <td style="text-align: right;">1,376.5</td> </tr> <tr> <td>2. Executed Modifications:</td> <td style="text-align: right;">0.0</td> </tr> <tr> <td>3. Approved Change Orders:</td> <td style="text-align: right;">0.0</td> </tr> <tr> <td>4. Current Contract Value (1+2+3):</td> <td style="text-align: right;">1,376.5</td> </tr> <tr> <td>5. Incurred Cost:</td> <td style="text-align: right;">103.8</td> </tr> </table>						1. Award Value:	1,376.5	2. Executed Modifications:	0.0	3. Approved Change Orders:	0.0	4. Current Contract Value (1+2+3):	1,376.5	5. Incurred Cost:	103.8
1. Award Value:	1,376.5															
2. Executed Modifications:	0.0															
3. Approved Change Orders:	0.0															
4. Current Contract Value (1+2+3):	1,376.5															
5. Incurred Cost:	103.8															

CONSTRUCTION PHOTOGRAPHS



LAWDP water relocation work in Century City

**APPENDIX
COST AND BUDGET TERMINOLOGY**

Project Cost Descriptions

ORIGINAL BUDGET	The Original Project Budget as authorized by the Metropolitan Transportation Authority (Metro) Board.
CURRENT BUDGET	The Original Budget plus all budget amendments approved by formal Metro Board action. Also referred to as Approved Budget.
COMMITMENTS	The total of actual contracts awarded, executed change orders or amendments, and approved work orders of Master Cooperative Agreements, offers accepted for purchase of real estate, and other Metro actions which have been spent or result in the obligation of specific expenditures at a future time.
EXPENDITURES	The total dollar amount of funds expended by Metro for contractor or consultant services, third party services, staff salaries, real estate and other expenses that is reported in Metro's Financial Information System (FIS).
CURRENT FORECAST	The best estimate of the final cost of the Project when all checks have been issued and the Project is closed out. Current Forecast is composed of actual costs incurred to date, the best estimate of work remaining and a current risk assessment for each budgeted cost item.

Cost Report by Element Descriptions

CONSTRUCTION	Includes construction contracts. Cost associated with Guideways, Stations, Southwestern Yard, Sitework/Special Conditions and Systems.
RIGHT-OF-WAY	Includes purchase cost of parcels, easements, right-of-entry permits, escrow fees, contracted real estate appraisals and tenant relocation.
VEHICLES	Includes the purchase of Heavy Rail Vehicles and spare parts for the Project.
PROFESSIONAL SERVICES	Includes design engineering, project management assistance, construction management support services, legal counsel, agency staff costs, and other specialty consultants.
CONTINGENCY	A fund established at the beginning of a project to provide for anticipated but unknown additional costs that may arise during the course of the Project.
PROJECT REVENUE	Includes all revenue received by Metro as a direct result of project activities. This includes cost sharing construction items, insurance premium rebates, and the like.

APPENDIX

LIST OF ACRONYMS AND ABBREVIATIONS

ATC	Automatic Train Control
ATSAC	Automated Traffic Surveillance and Control
BAFO	Best and Final Offer
BIM	Building Information Modeling
BNSF	Burlington Northern Santa Fe Railway Company
BRT	Bus Rapid Transit
CADD	Computer Aided Drafting and Design
CALTRANS	California Department of Transportation
CCTV	Closed Circuit Television
CD	Calendar Day
CEQA	California Environmental Quality Act
CM	Construction Manager
CMAQ	Congestion Mitigation and Air Quality Improvement Program
CMSSC	Construction Management Support Services Consultant
CN	Change Notice
CO	Change Order
COBH	City of Beverly Hills
COLA	City of Los Angeles
CPM	Critical Path Method
CPUC	California Public Utilities Commission
CR	Camera Ready
CRMMP	Cultural Resource Monitoring and Mitigation Plan
CSPP	Construction Safety Phasing Plan
CTC	California Transportation Commission
CUD	Contract Unit Description
DB	Design Build
DBB	Design Bid Build
DOT	Department of Transportation
DWP	Department of Water and Power
EIR	Environmental Impact Report
EIS	Environmental Impact Statement
EMS	Engineering Management Services
EPBM	Earth Pressure Balance Machine
FAA	Federal Aviation Administration
FAR	Federal Acquisition Regulation
FD	Final Design
FEIS	Final Environmental Impact Statement
FEIR	Final Environmental Impact Report
FIS	Financial Information System
FLSR	Fire Life Safety Report
FONSI	Finding of No Significant Impact
FRA	Federal Railroad Administration
FSEIR	Final Supplemental Environmental Impact Report
FSEIS	Final Supplemental Environmental Impact Statement

APPENDIX

LIST OF ACRONYMS AND ABBREVIATIONS (Continued)

FTA	Federal Transit Administration
FTE	Full Time Equivalent
GBR	Geotechnical Baseline Report
GDSR	Geotechnical Design Summary Report
HRT	Heavy Rail Transit
HRV	Heavy Rail Vehicle
IFB	Invitation for Bid
IPMO	Integrated Project Management Office
JV	Joint-Venture
LA	Los Angeles
LABOE	Los Angeles Bureau of Engineering
LABOS	Los Angeles Bureau of Sanitation
LABSL	Los Angeles Bureau of Street Lighting
LACFCD	Los Angeles County Flood Control District
LACMTA	Los Angeles County Metropolitan Transportation Authority
LADOT	Los Angeles Department of Transportation
LADPW	Los Angeles Department of Public Works
LADWP	Los Angeles Department of Water and Power
LAUSD	Los Angeles Unified School District
LAWA	Los Angeles World Airports
LAX	Los Angeles International Airport
LNTP	Limited Notice To Proceed
LONP	Letter Of No Prejudice
LOP	Life-of-Project
LPA	Locally Preferred Alternative
LRTP	Long Range Transportation Plan
MCA	Master Cooperative Agreement
MIS	Major Investment Study
MMRP	Mitigation Monitoring and Reporting Plan
MOU	Memorandum of Understanding
MPSR	Monthly Project Status Report
N/A	Not Applicable
NEPA	National Environmental Protection Act
NOD	Notice of Determination
NPDES	National Pollution Discharge Elimination System
NTE	Not to Exceed
NTP	Notice To Proceed
OCC	Operations Control Center
OSHA	Occupational Health and Safety Administration
PA/VMS	Public Address/Visual Messaging Sign
PE	Preliminary Engineering
PEER	Permit Engineering Evaluation Report
PIP	Project Implementation Plan
PLA	Project Labor Agreement

APPENDIX

LIST OF ACRONYMS AND ABBREVIATIONS (Continued)

PM	Project Manager
PMIP	Project Management Implementation Plan
PMOC	Project Management Oversight Consultant
PMP	Project Management Plan
P&P	Policies & Procedures
PR	Project Report
PRMMP	Paleontological Resource Monitoring Mitigation Plan
PSR	Project Study Report
QA	Quality Assurance
QAR	Quality Assurance Report
QC	Quality Control
QPSR	Quarterly Project Status Report
QTIB	Qualified Transit Improvement Bonds
RAMP	Real Estate Acquisition Management Plan
RCHAR	Rail Crossing Hazards Analysis Report
RCMP	Risk Assessment Management Plan
RFC	Request For Change
RFP	Request For Proposals
RFSC	Request for Special Consideration
RHA	Risk Hazard Analysis
ROC	Rail Operations Center
ROD	Record Of Decision
ROM	Rough Order of Magnitude
ROW	Right-Of-Way
RPZ	Runway Protection Zone
RSD	Revenue Service Date
SAV	Stand Alone Validator
SCAQMD	Southern California Air Quality Management District
SCADA	Supervisory Control and Data Acquisition
SCC	Standard Cost Category
SCE	Southern California Edison
SCG	Southern California Gas Company
SCRRA	Southern California Regional Rail Authority
SHA	State Highway Account
SHPO	State Historic Preservation Office
SIT	System Integration Testing
SOQ	Statement of Qualification
SOV	Schedule Of Value
SOW	Statement Of Work
SP	Special Provision
SSMP	Safety and Security Management Plan
STB	Surface Transportation Board
STIP	State Transportation Improvement Program
STP	Surface Transportation Program

APPENDIX

LIST OF ACRONYMS AND ABBREVIATIONS (Continued)

STV	STV Group
SWPPP	Storm Water Pollution Prevention Plan
TBD	To Be Determined
TBM	Tunnel Boring Machine
TCE	Temporary Construction Easement
TCRP	Traffic Congestion Relief Program
TIFIA	Transportation Infrastructure Finance and Innovation Act
TIGER	Transportation Investment Generating Economic Recovery
TPOG	Tutor Perini/O&G a Joint Venture
TPSS	Traction Power Substation
TRACS	Transit Automatic Control System
TVA	Threat Vulnerability Analysis
TVM	Ticket Vending Machine
UFS	Universal Fare System
USDOT	United States Department Of Transportation
VE	Value Engineering
WBS	Work Breakdown Structure
WP	Work Package
YOE	Year of Expenditure